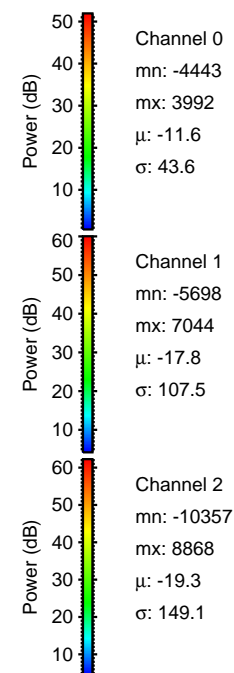
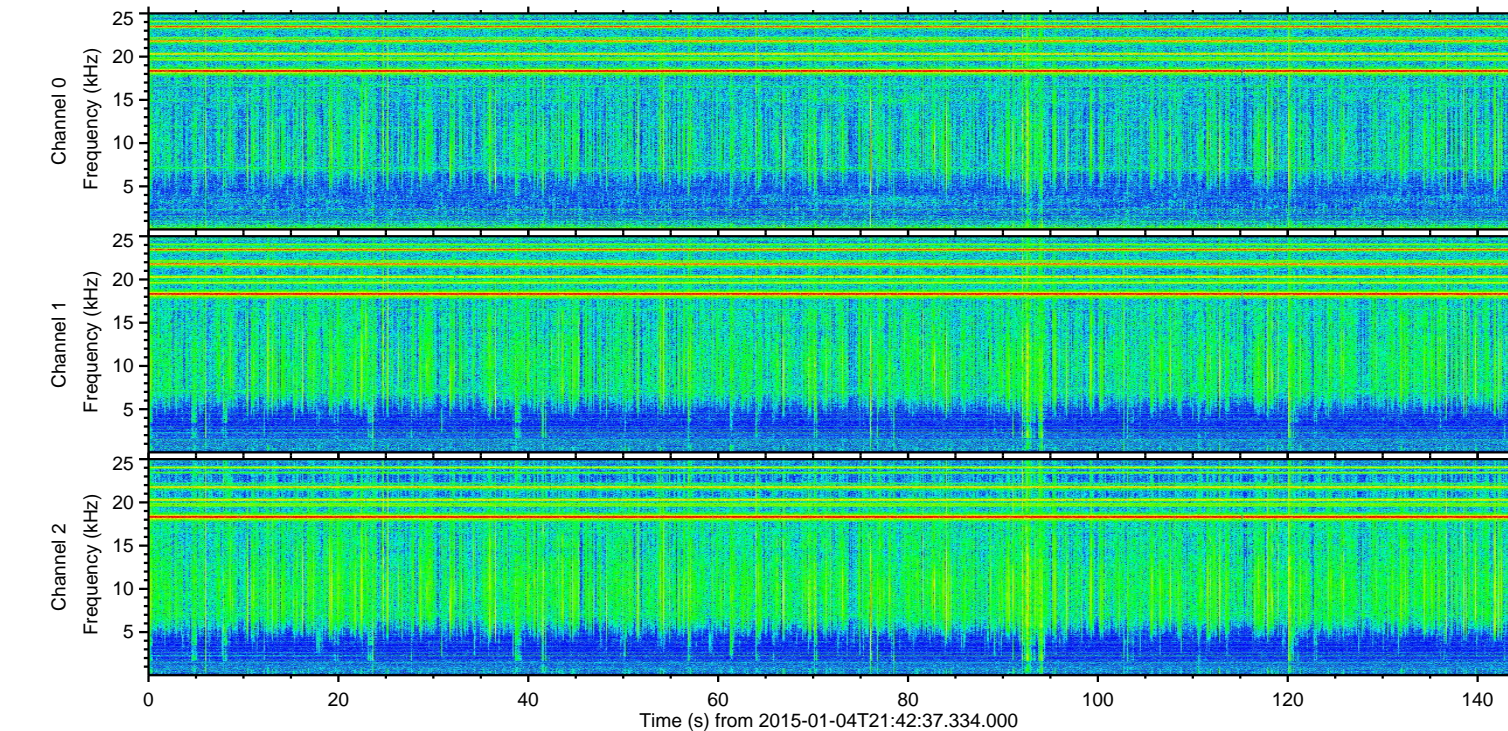
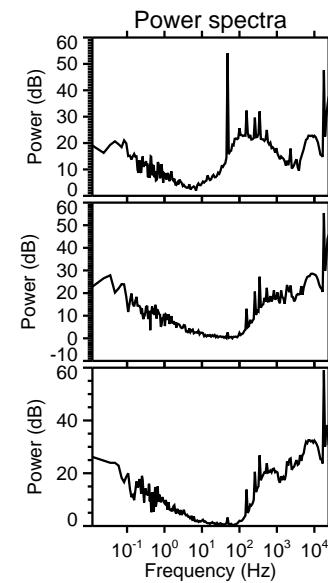
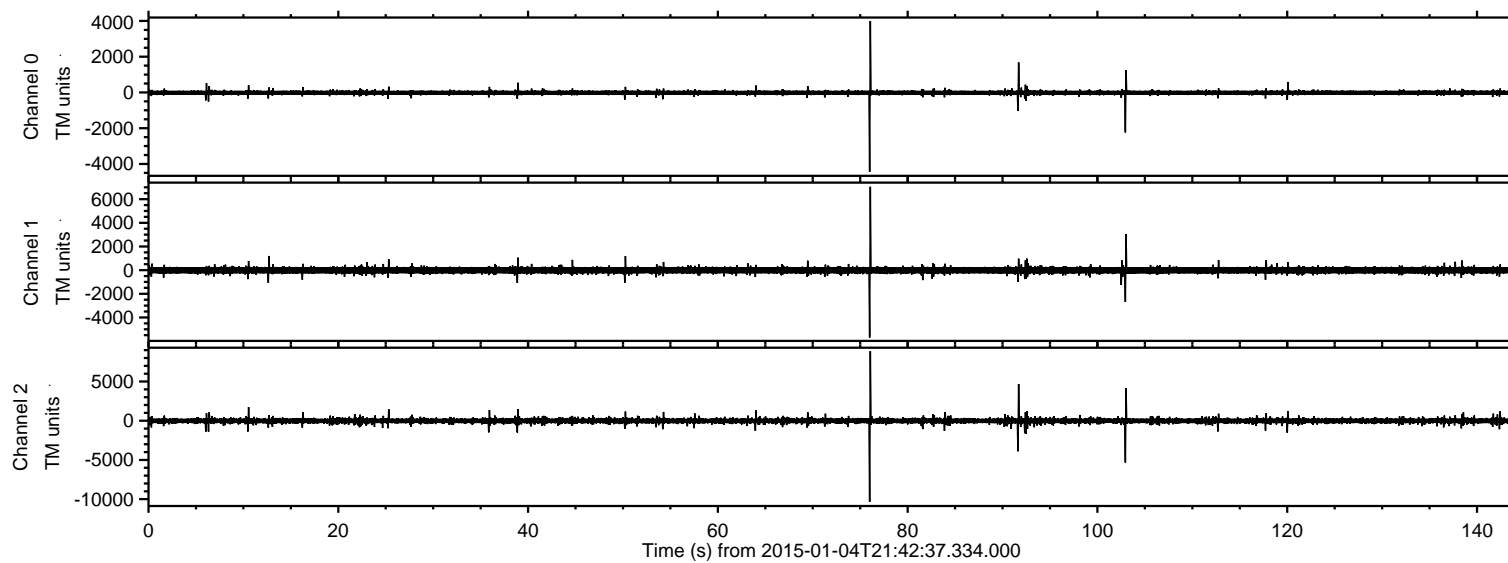


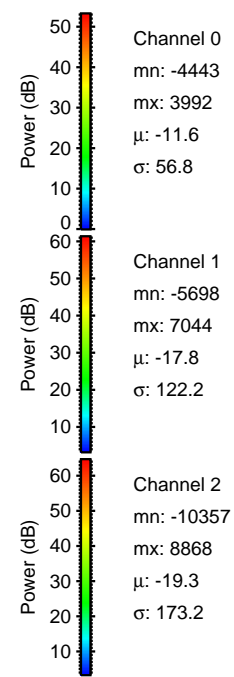
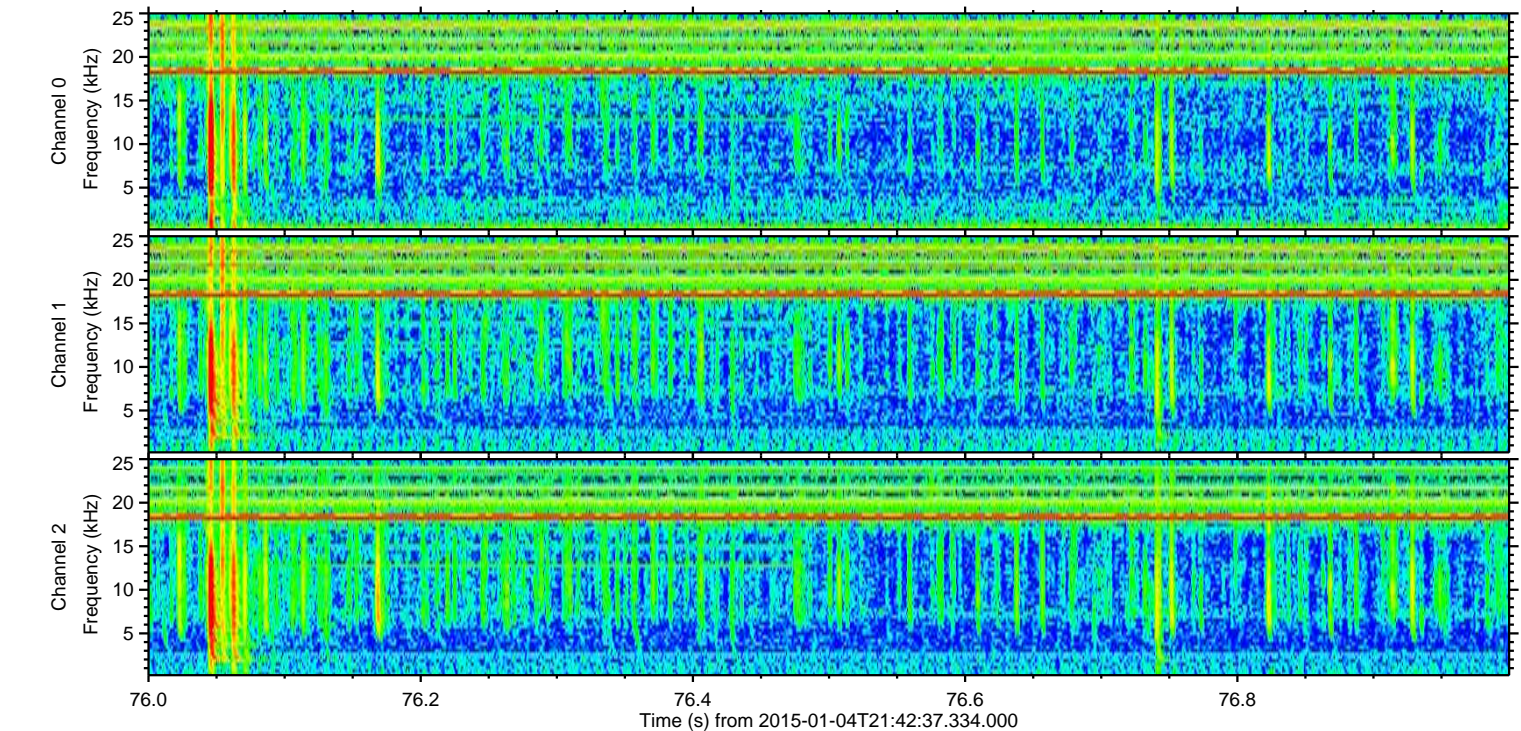
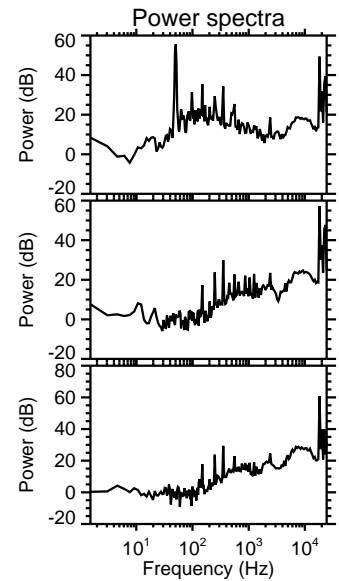
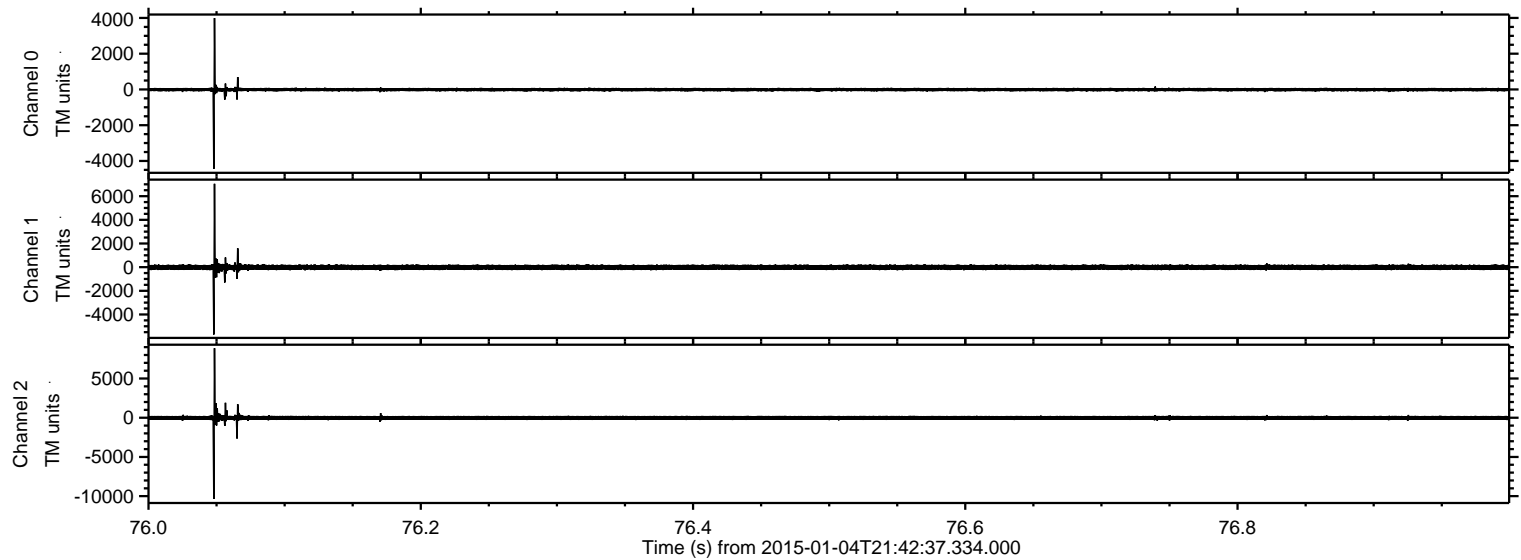
ELMAVAN 3D WAVEFORMS (Measured data sampled at 50 kHz) 49787 packets of 144 samples from 2015-01-04T21:42:37.334.000.

Processed Sun Jan 4 22:50:42 2015 by ELM ver.2012-10-06 from 001__elm20150104_214236__dat00.bin

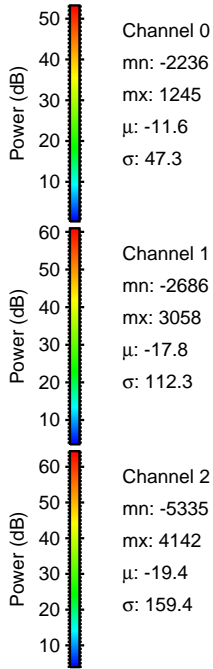
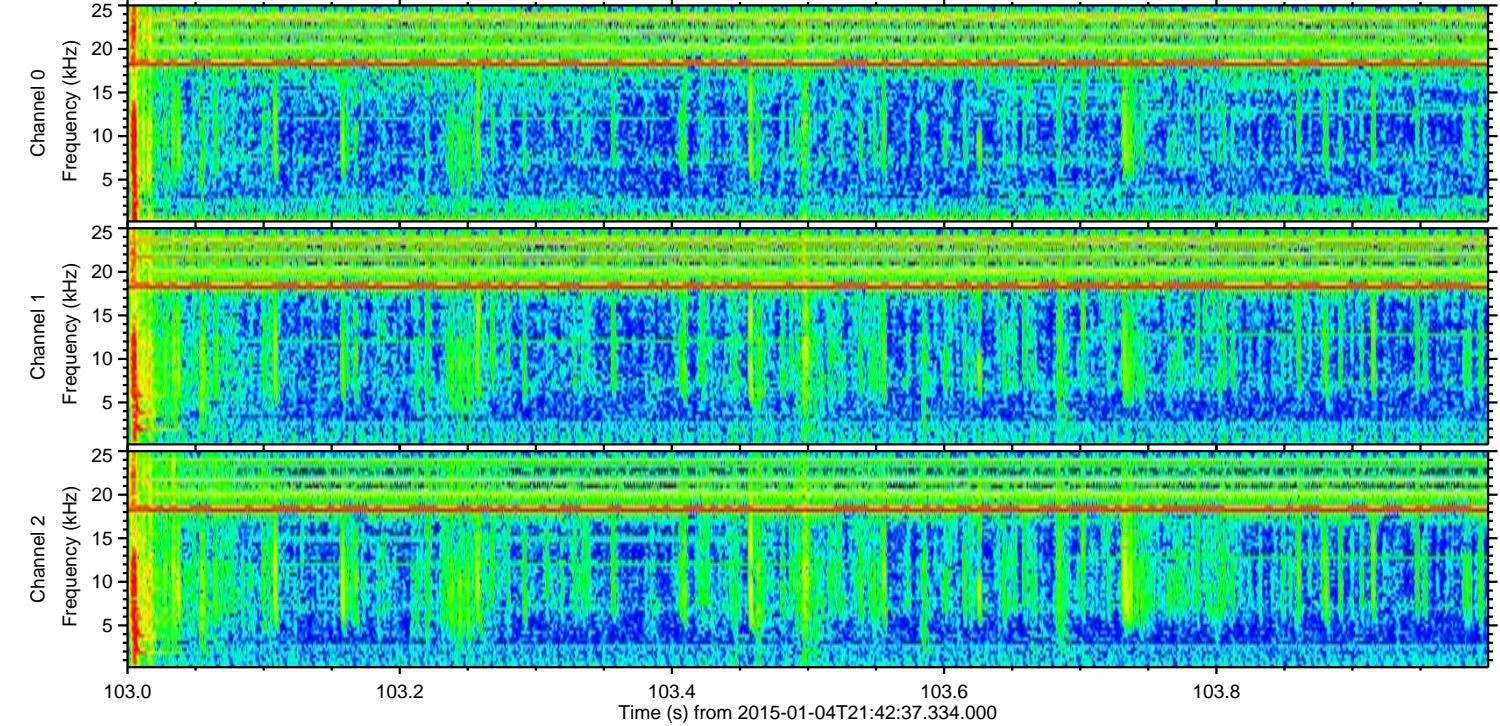
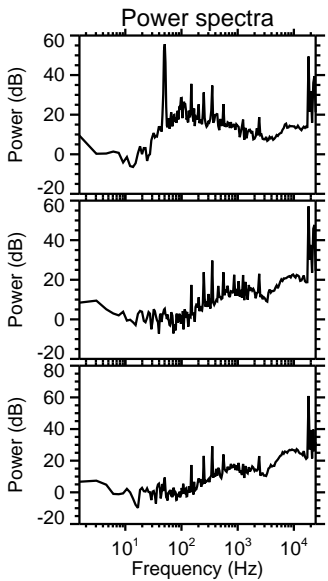
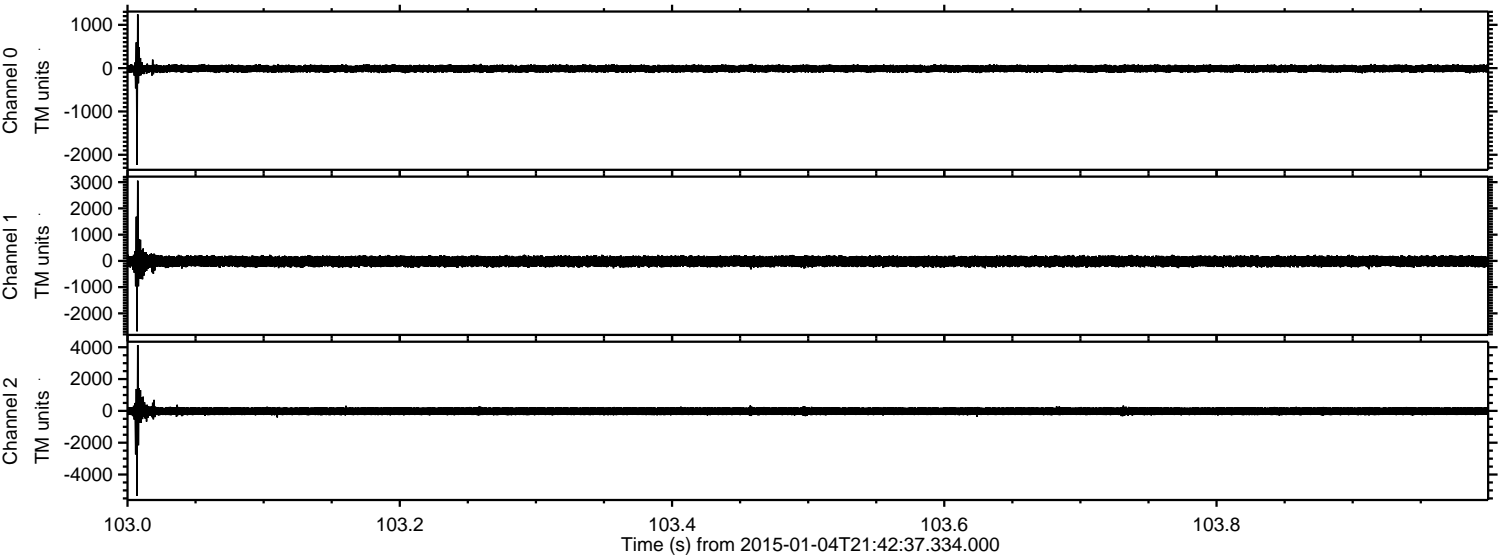


ELMAVAN 3D WAVEFORMS (Measured data sampled at 50 kHz) 49787 packets of 144 samples from 2015-01-04T21:42:37.334.000. Part 77/144

Processed Sun Jan 4 22:50:55 2015 by ELM ver.2012-10-06 from 001__elm20150104_214236__dat00.bin



Processed Sun Jan 4 22:50:55 2015 by ELM ver.2012-10-06 from 001__elm20150104_214236__dat00.bin

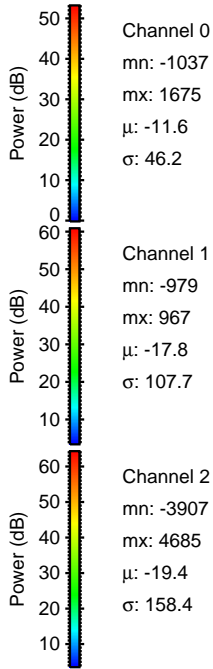
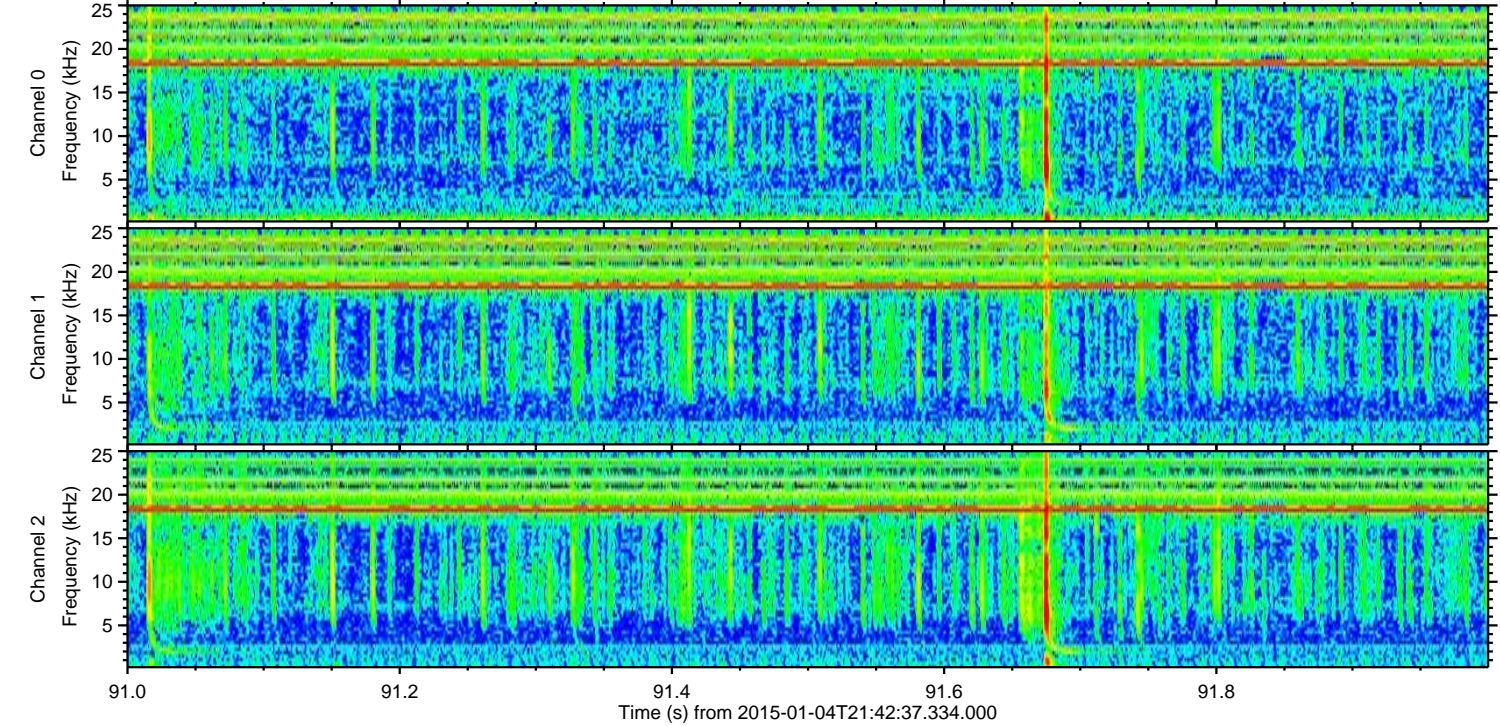
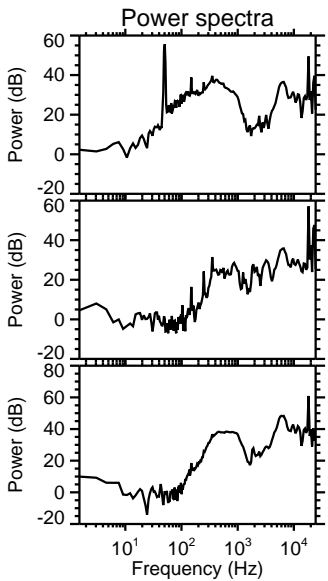
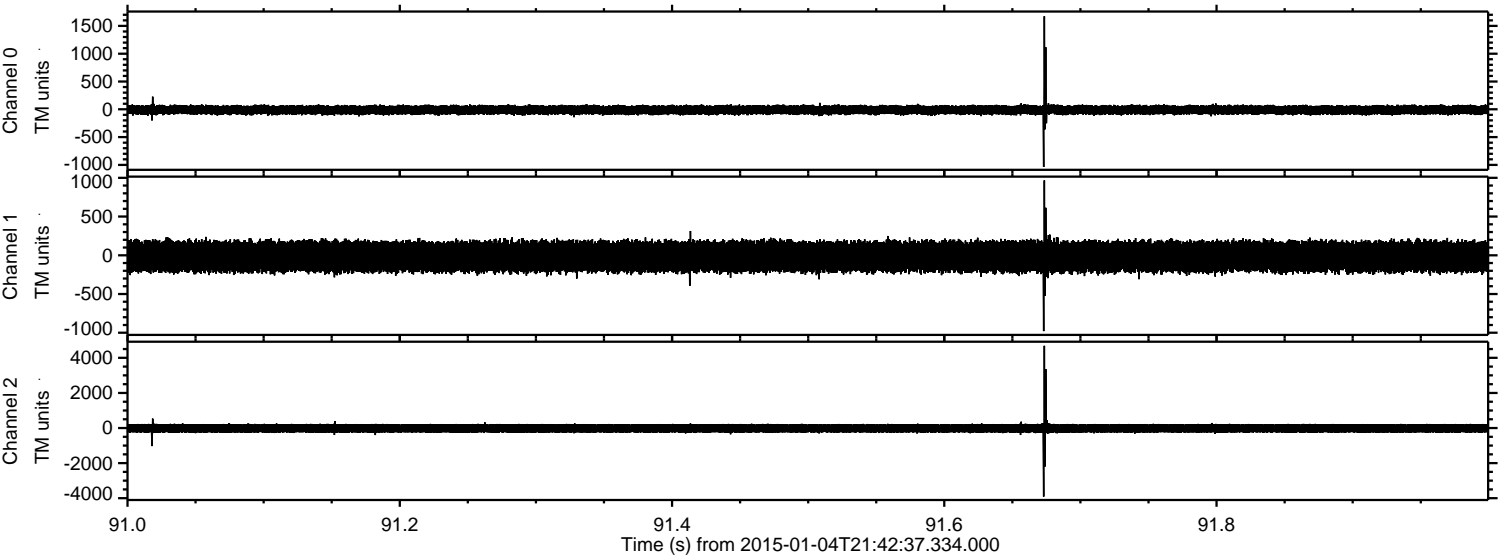


Channel 0
mn: -2236
mx: 1245
 μ : -11.6
 σ : 47.3

Channel 1
mn: -2686
mx: 3058
 μ : -17.8
 σ : 112.3

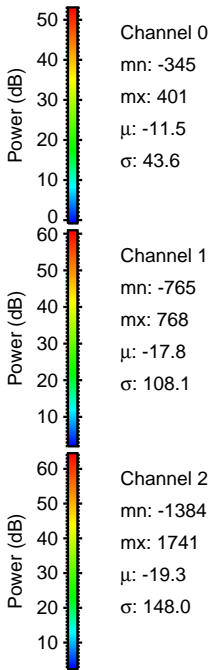
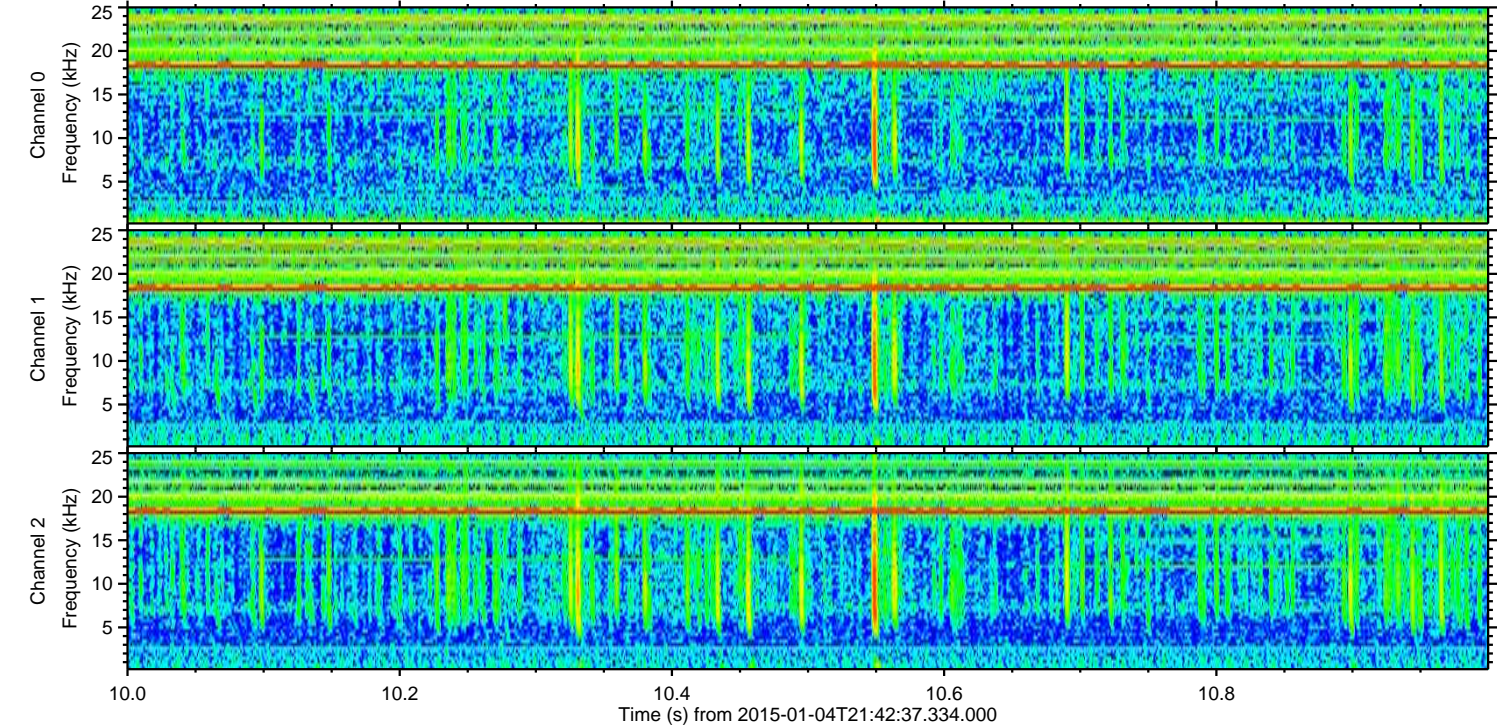
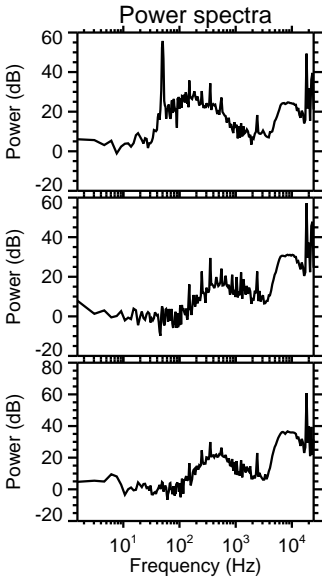
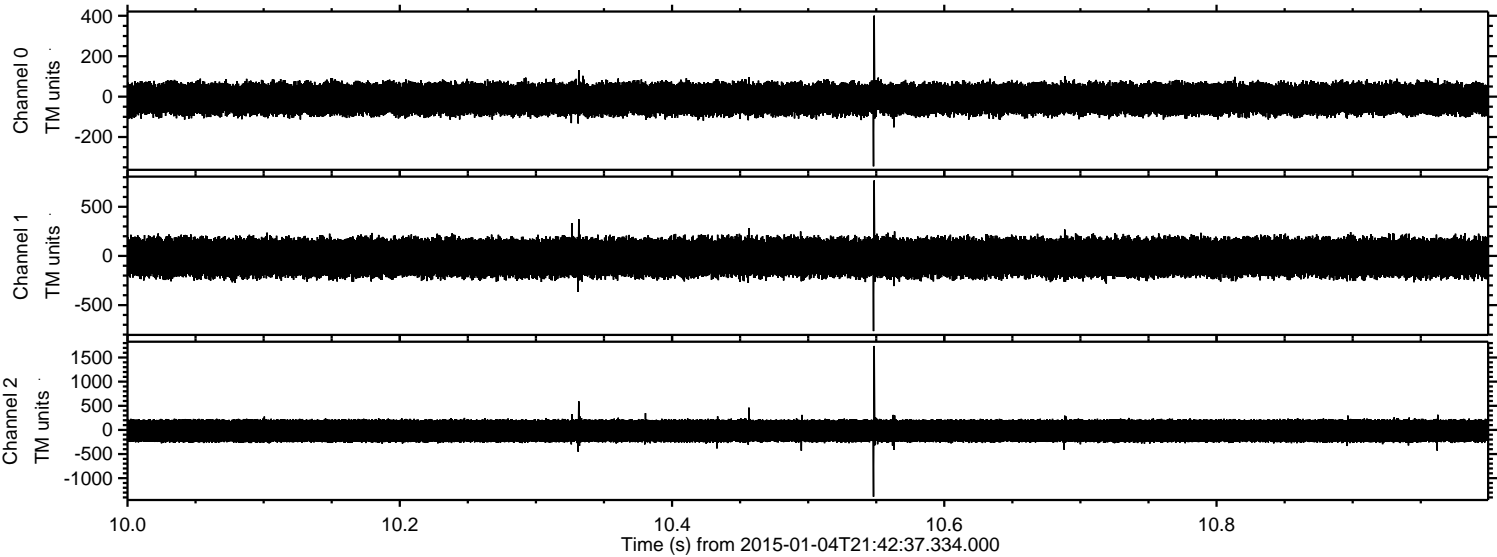
Channel 2
mn: -5335
mx: 4142
 μ : -19.4
 σ : 159.4

Processed Sun Jan 4 22:50:56 2015 by ELM ver.2012-10-06 from 001__elm20150104_214236__dat00.bin

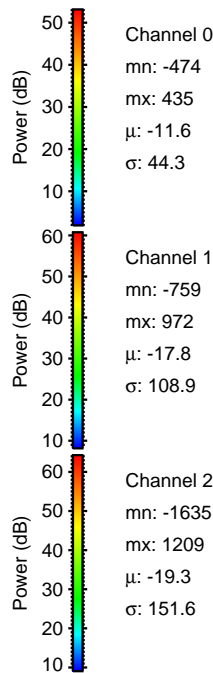
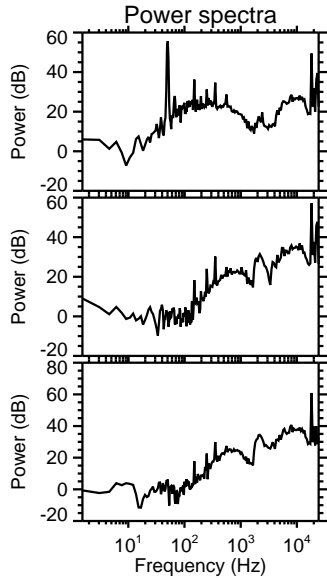
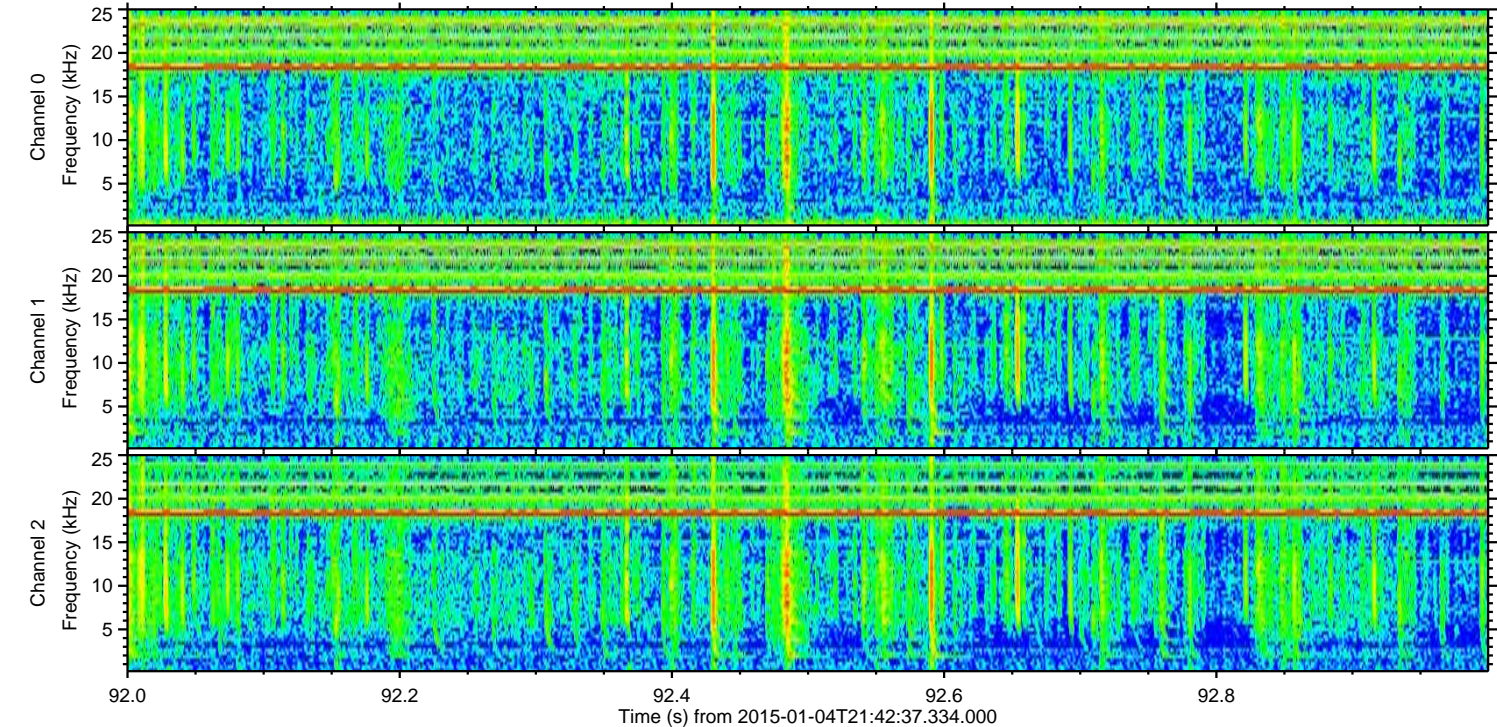
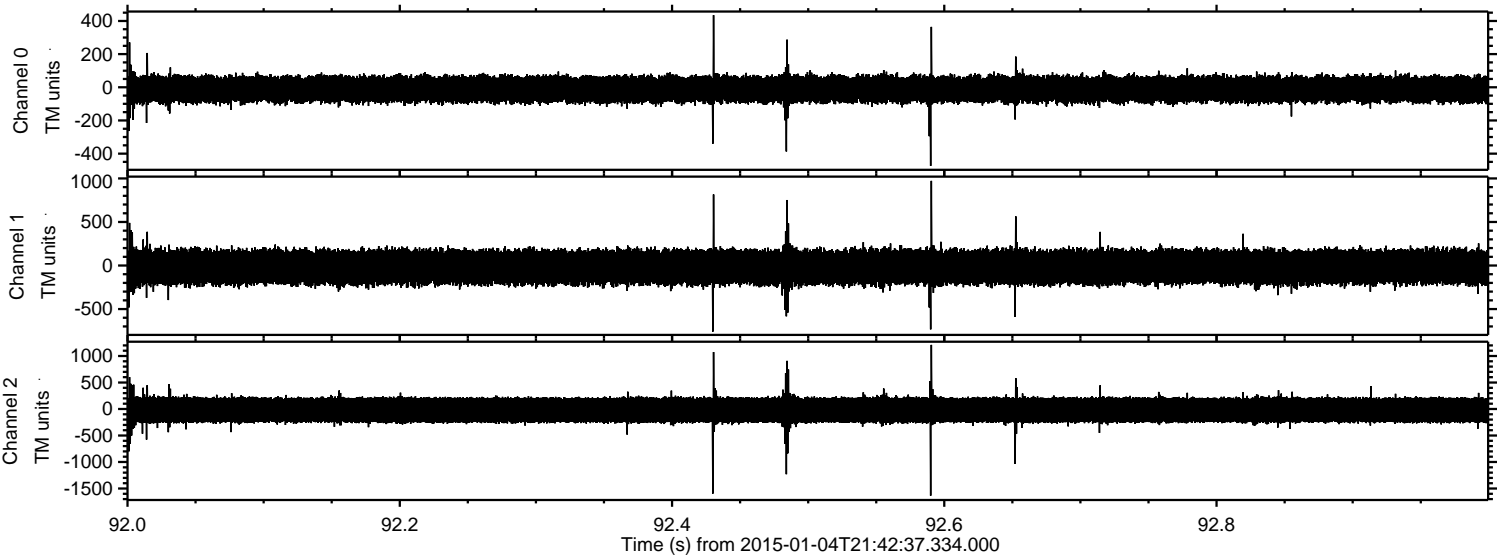


ELMAVAN 3D WAVEFORMS (Measured data sampled at 50 kHz) 49787 packets of 144 samples from 2015-01-04T21:42:37.334.000. Part 11/144

Processed Sun Jan 4 22:50:57 2015 by ELM ver.2012-10-06 from 001__elm20150104_214236__dat00.bin



Processed Sun Jan 4 22:50:58 2015 by ELM ver.2012-10-06 from 001__elm20150104_214236__dat00.bin



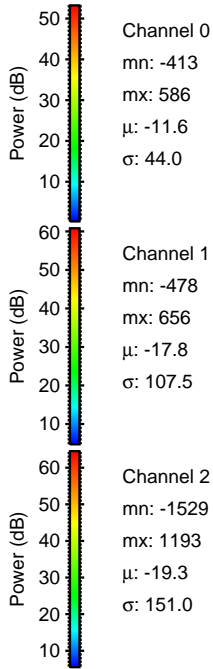
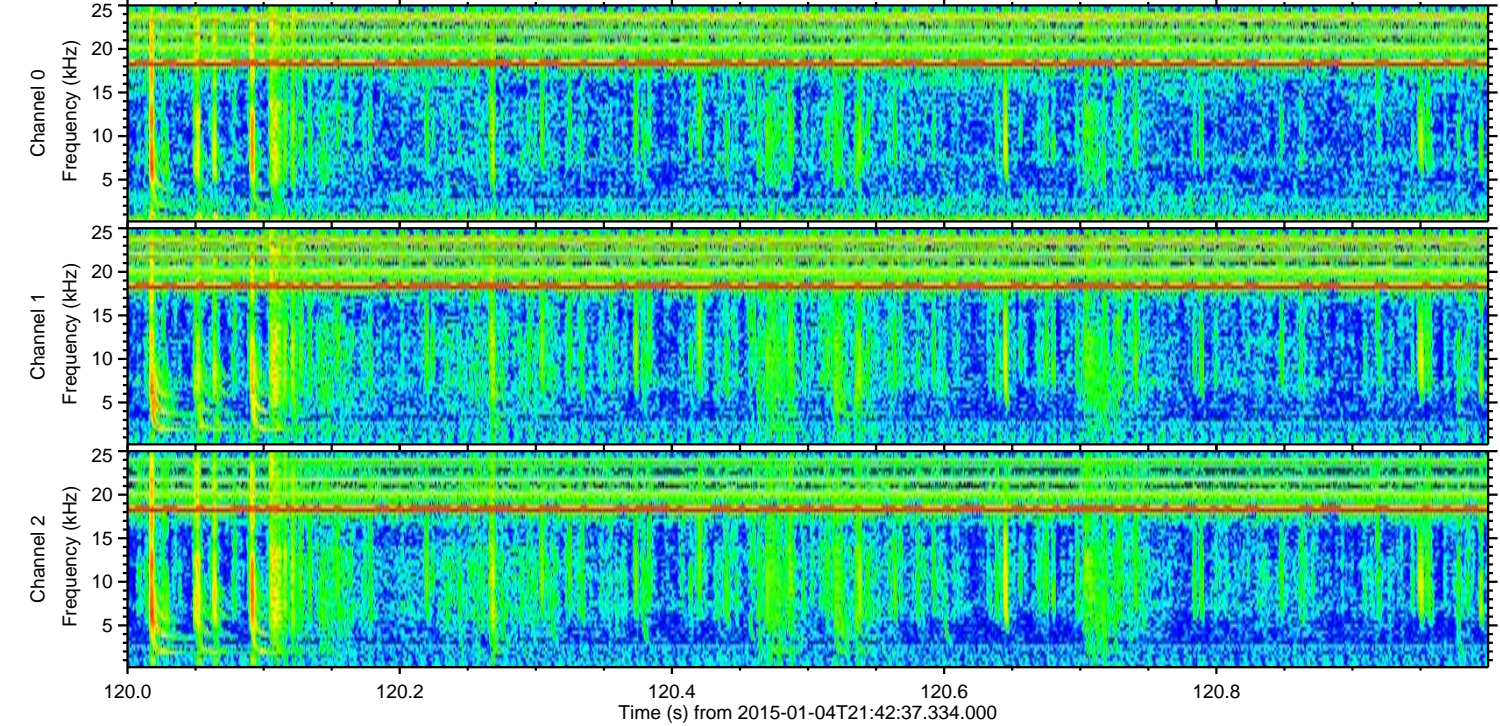
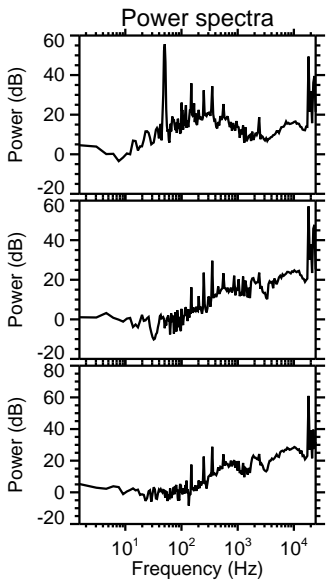
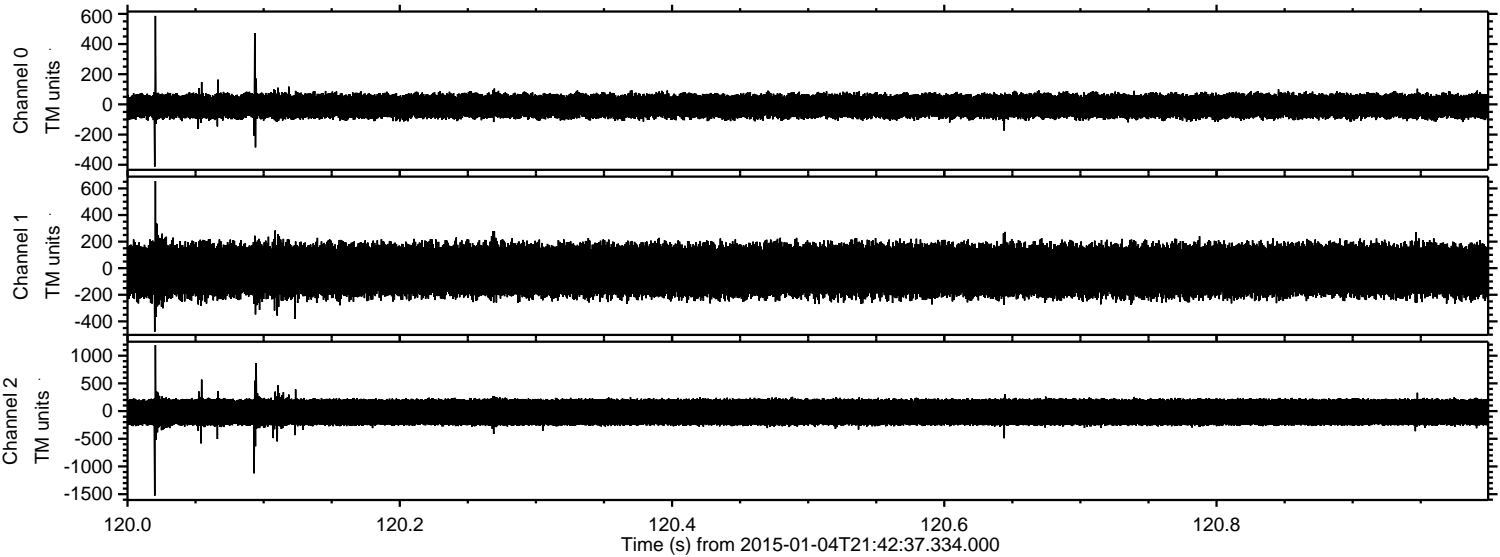
Channel 0
mn: -474
mx: 435
 μ : -11.6
 σ : 44.3

Channel 1
mn: -759
mx: 972
 μ : -17.8
 σ : 108.9

Channel 2
mn: -1635
mx: 1209
 μ : -19.3
 σ : 151.6

ELMAVAN 3D WAVEFORMS (Measured data sampled at 50 kHz) 49787 packets of 144 samples from 2015-01-04T21:42:37.334.000. Part 121/144

Processed Sun Jan 4 22:50:59 2015 by ELM ver.2012-10-06 from 001__elm20150104_214236__dat00.bin

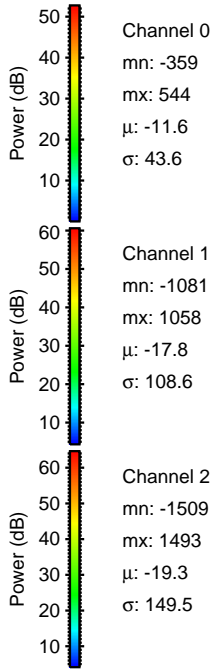
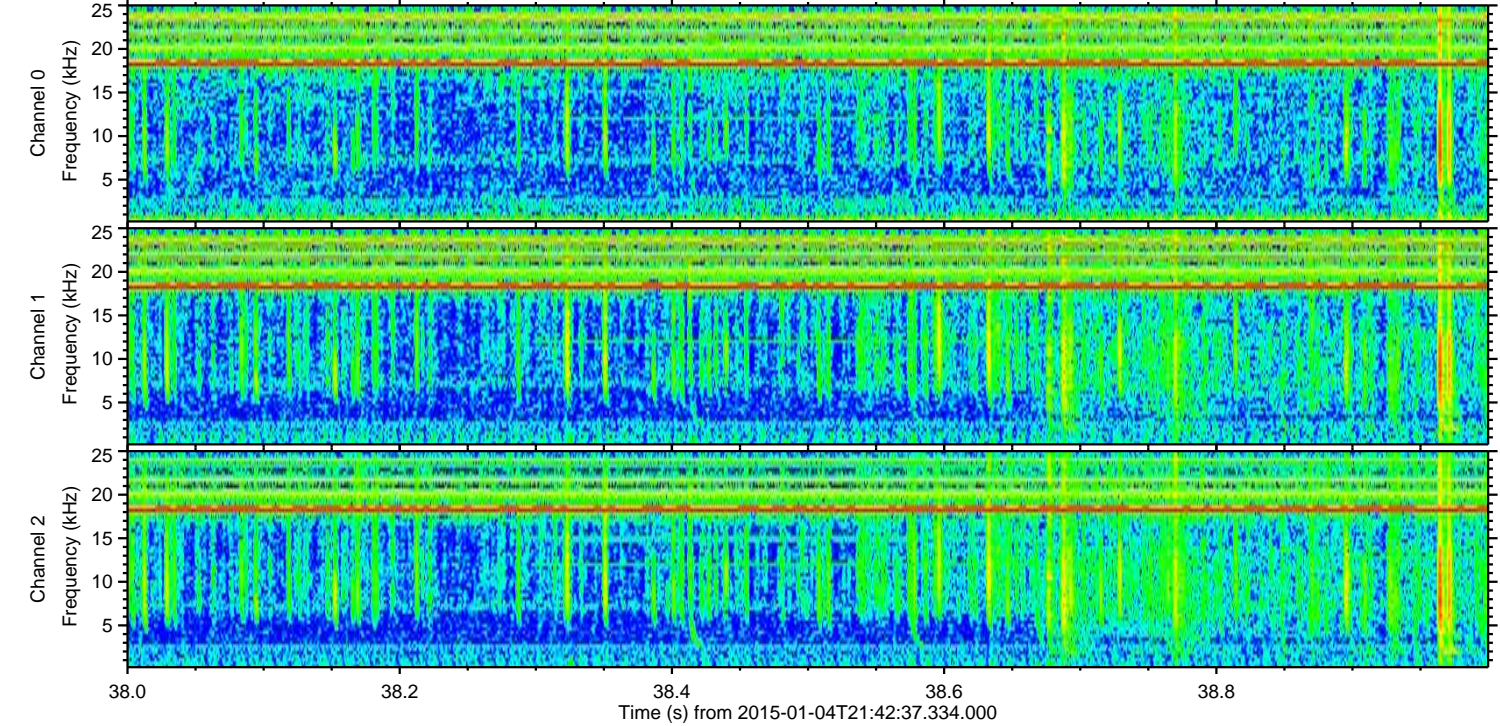
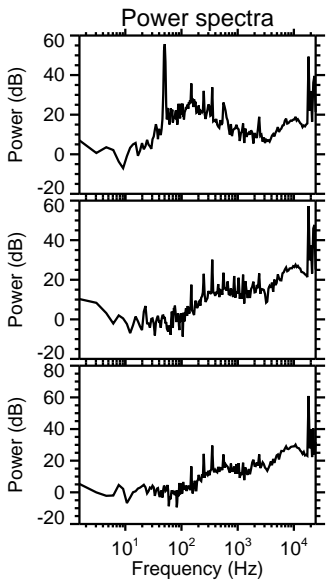
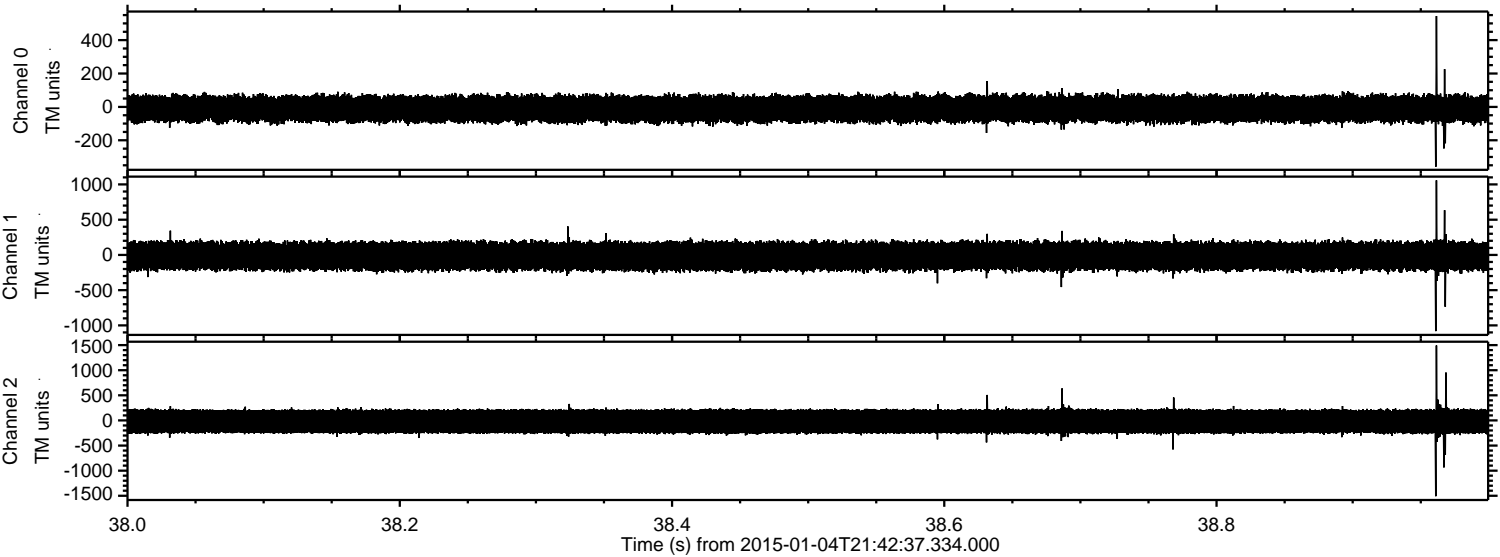


Channel 0
mn: -413
mx: 586
 μ : -11.6
 σ : 44.0

Channel 1
mn: -478
mx: 656
 μ : -17.8
 σ : 107.5

Channel 2
mn: -1529
mx: 1193
 μ : -19.3
 σ : 151.0

Processed Sun Jan 4 22:51:00 2015 by ELM ver.2012-10-06 from 001__elm20150104_214236__dat00.bin

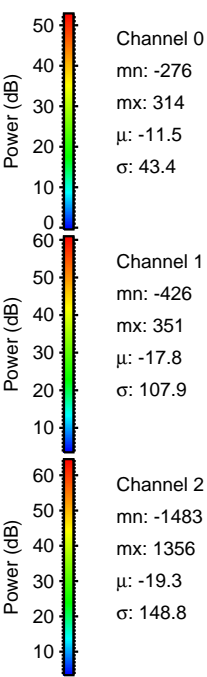
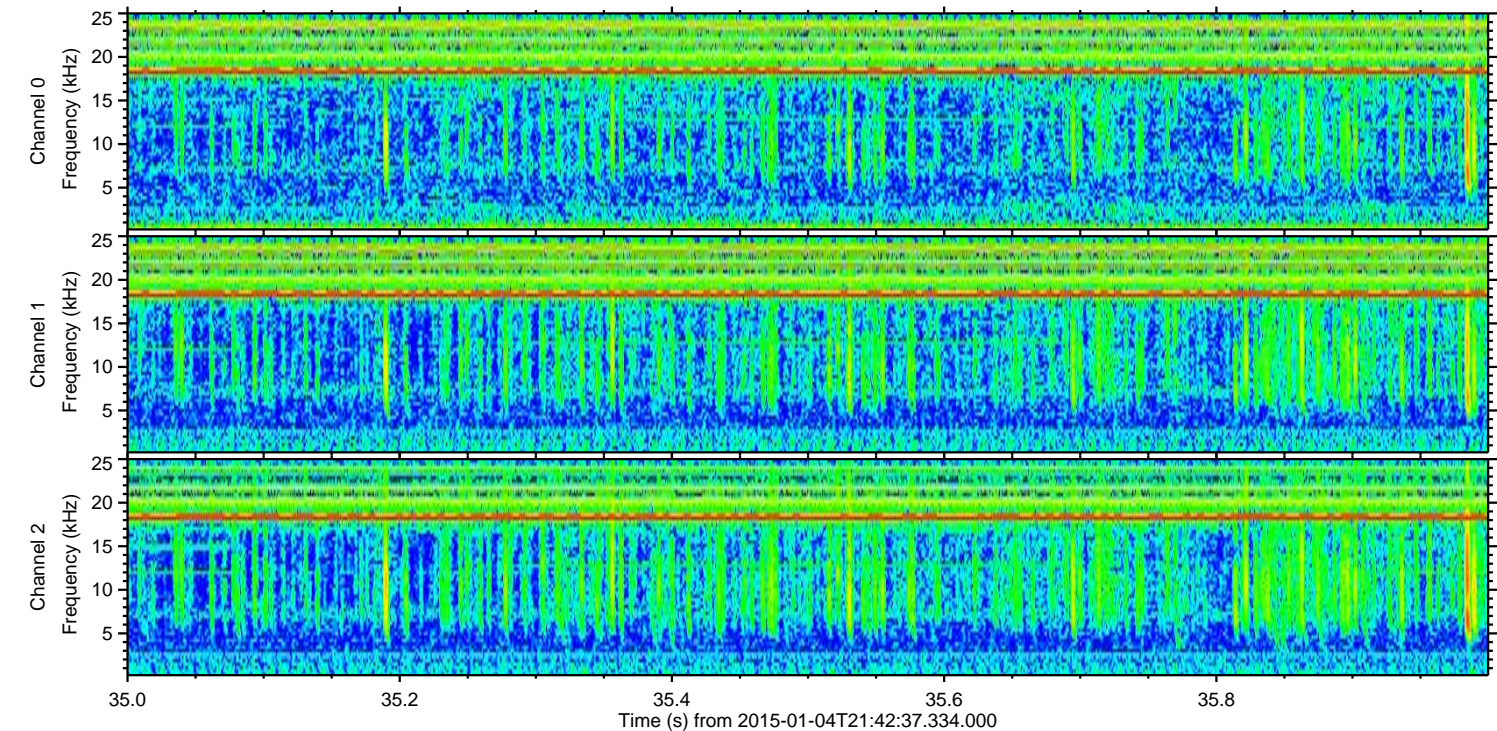
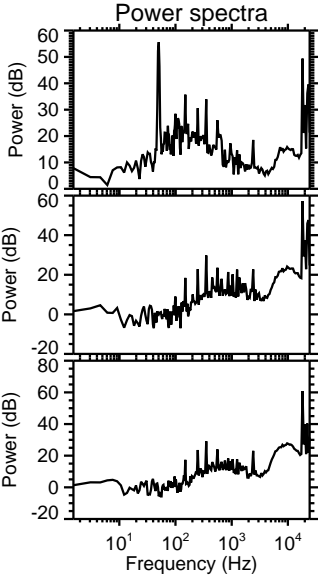
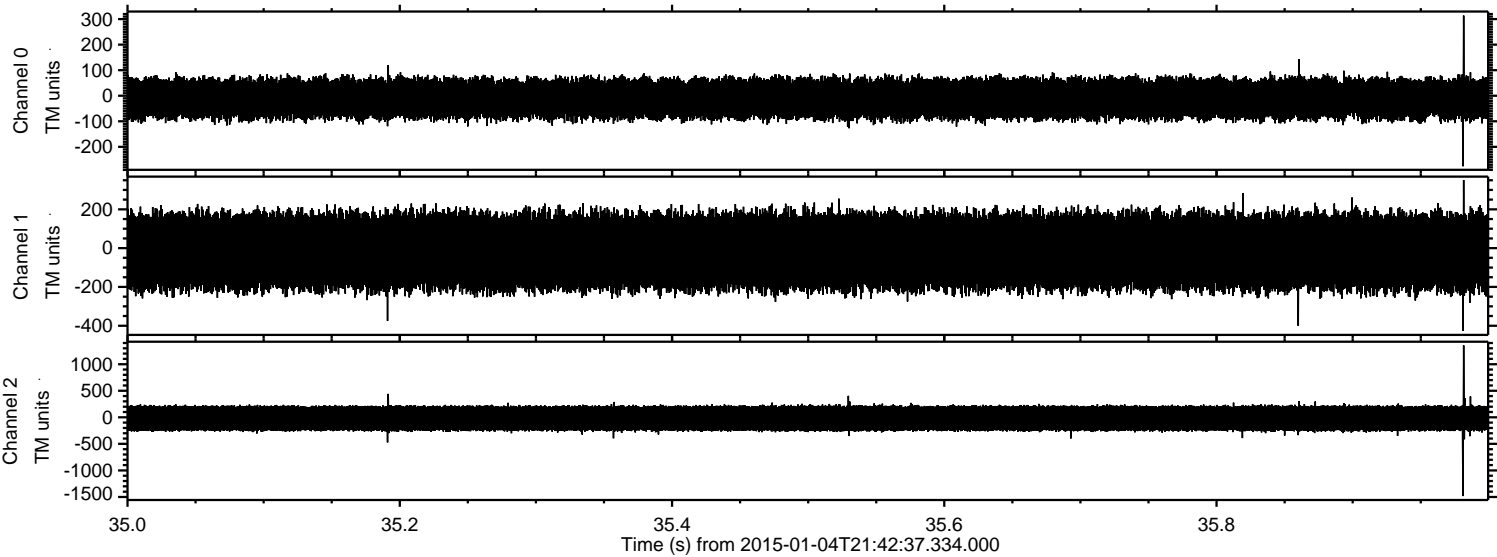


Channel 0
mn: -359
mx: 544
 μ : -11.6
 σ : 43.6

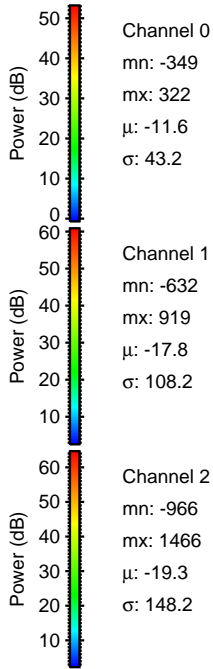
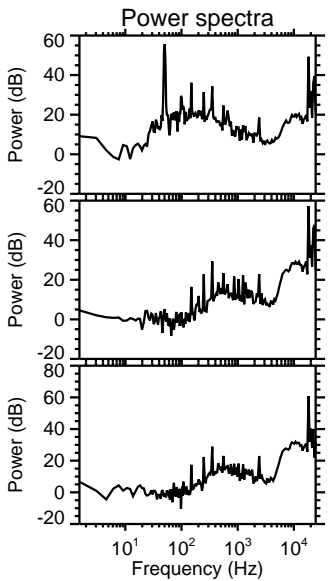
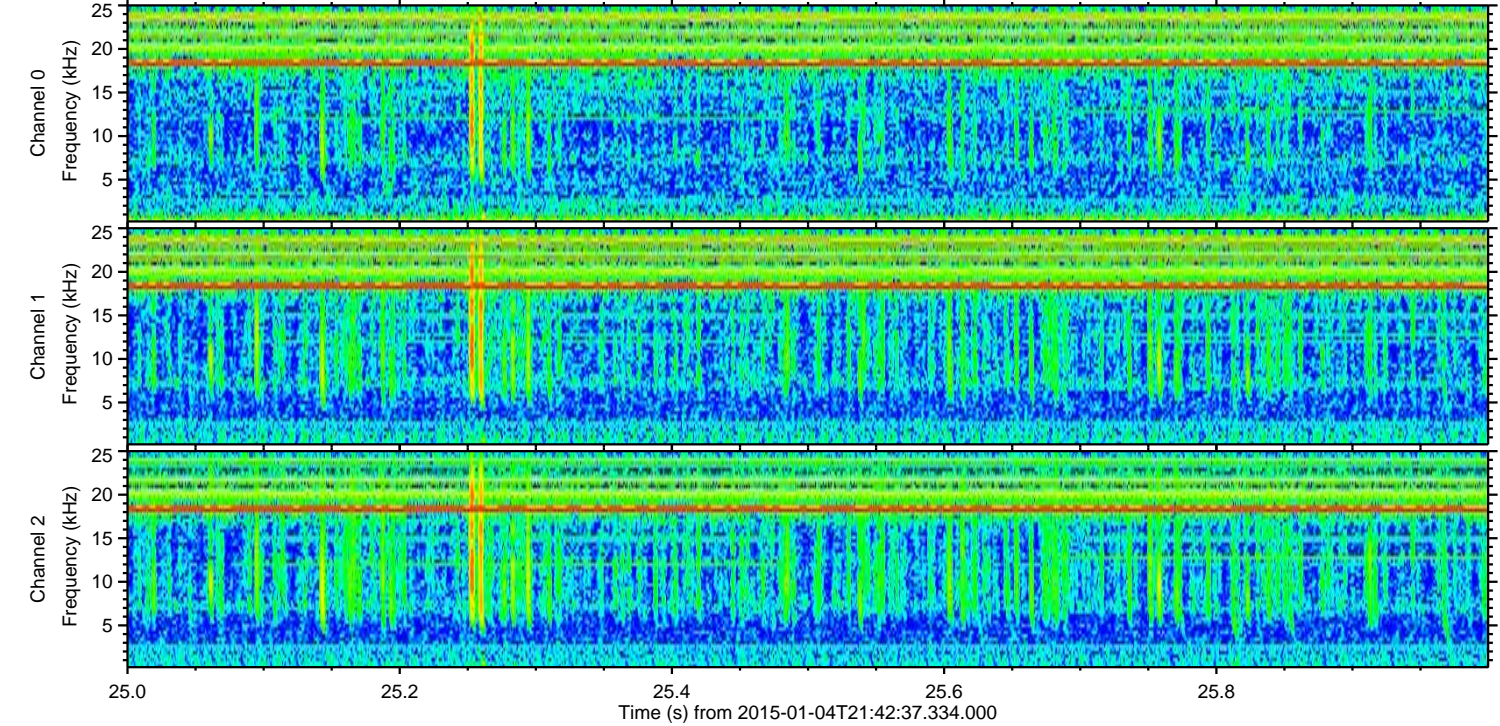
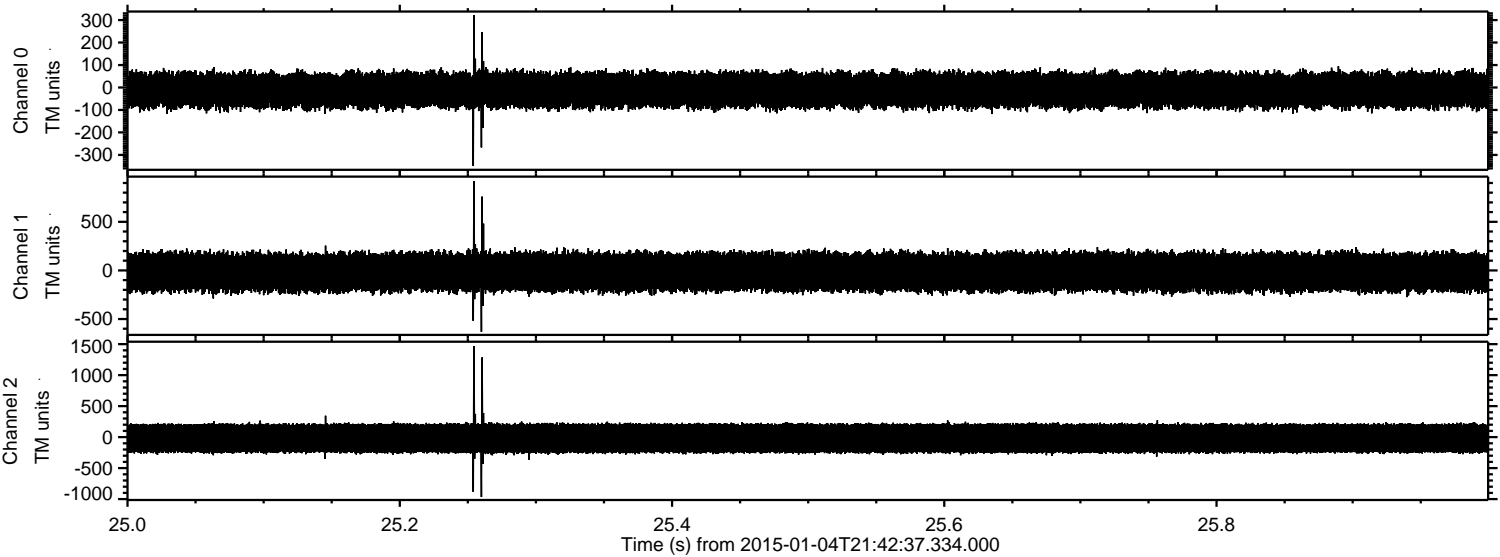
Channel 1
mn: -1081
mx: 1058
 μ : -17.8
 σ : 108.6

Channel 2
mn: -1509
mx: 1493
 μ : -19.3
 σ : 149.5

Processed Sun Jan 4 22:51:01 2015 by ELM ver.2012-10-06 from 001__elm20150104_214236__dat00.bin



Processed Sun Jan 4 22:51:02 2015 by ELM ver.2012-10-06 from 001__elm20150104_214236__dat00.bin



ELMAVAN 3D WAVEFORMS (Measured data sampled at 50 kHz) 49787 packets of 144 samples from 2015-01-04T21:42:37.334.000. Part 4/144

Processed Sun Jan 4 22:51:03 2015 by ELM ver.2012-10-06 from 001__elm20150104_214236__dat00.bin

