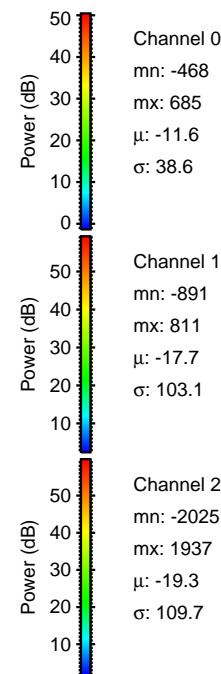
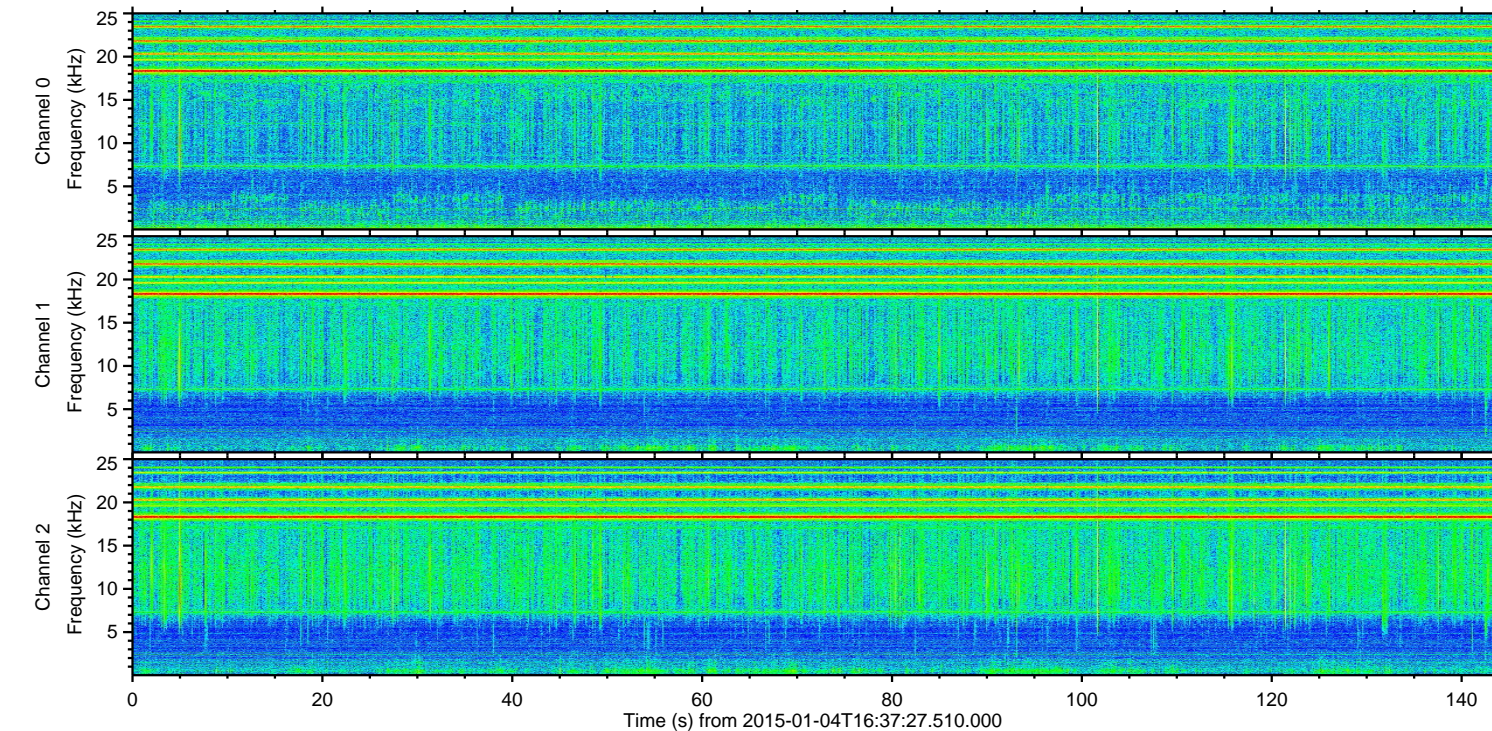
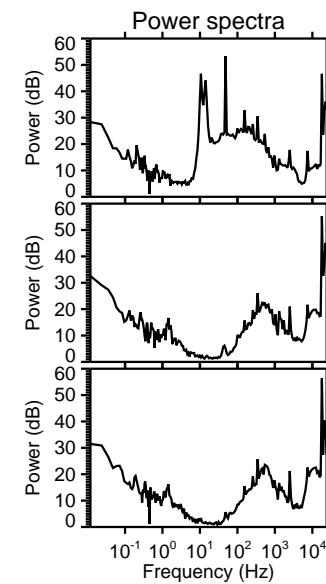
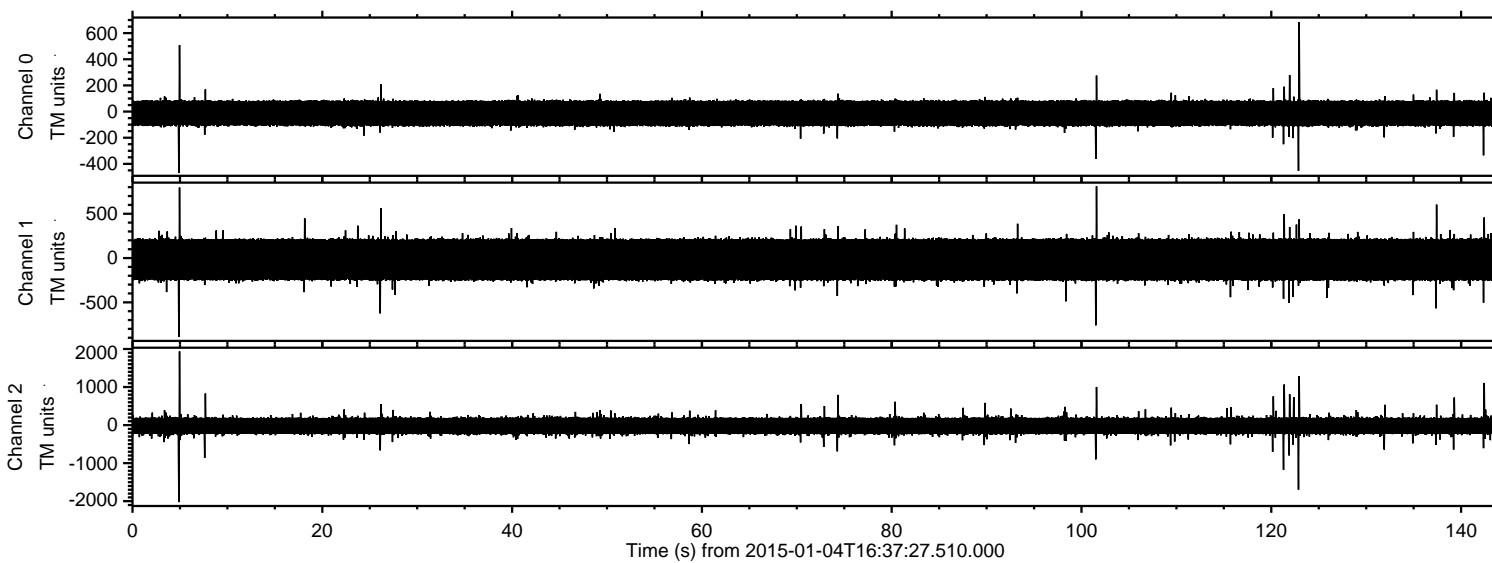
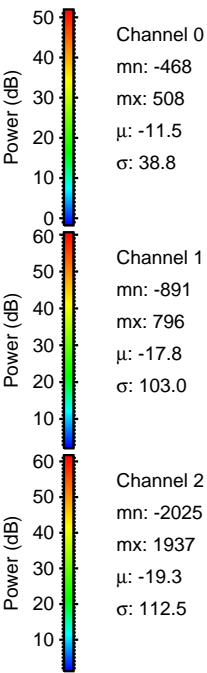
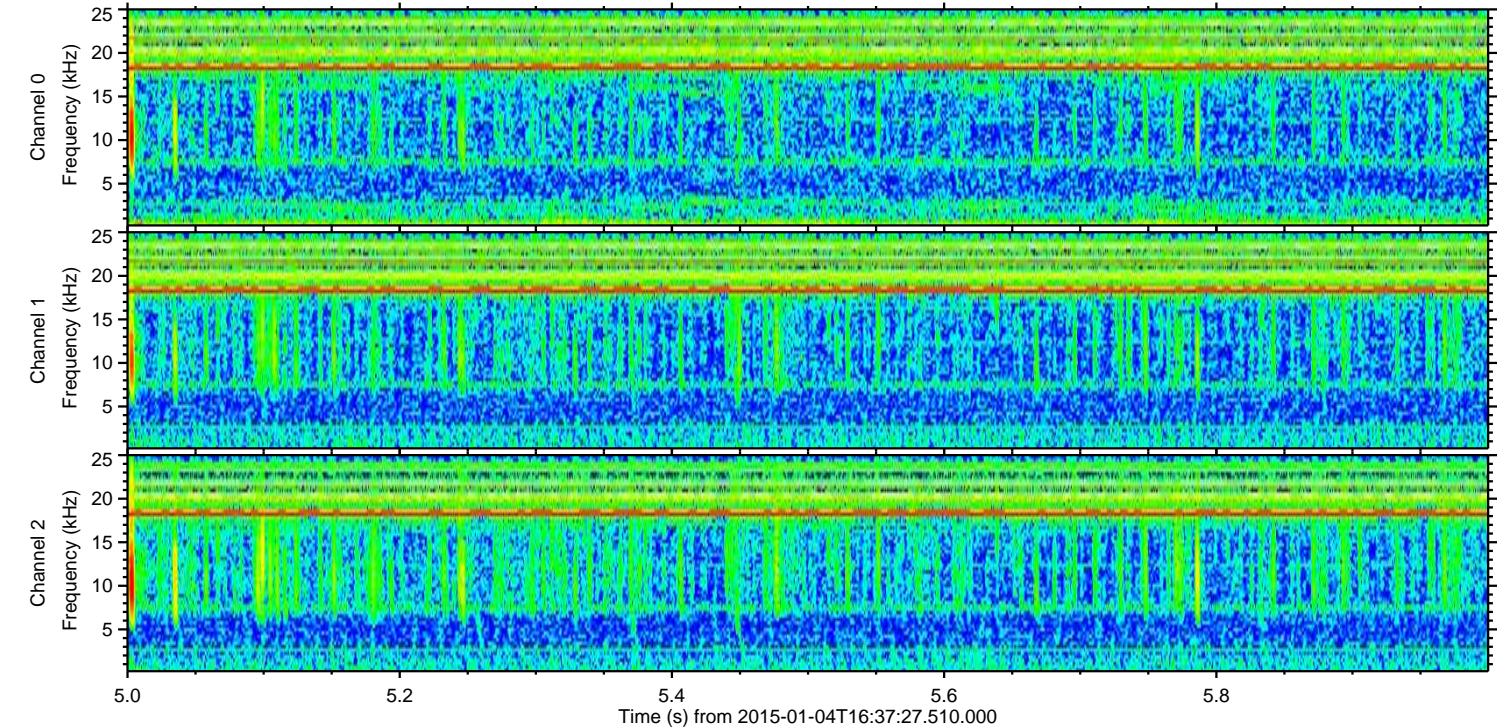
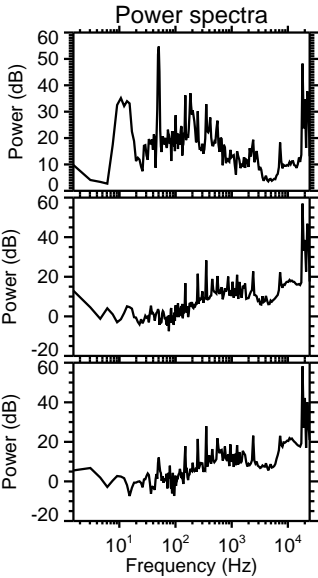
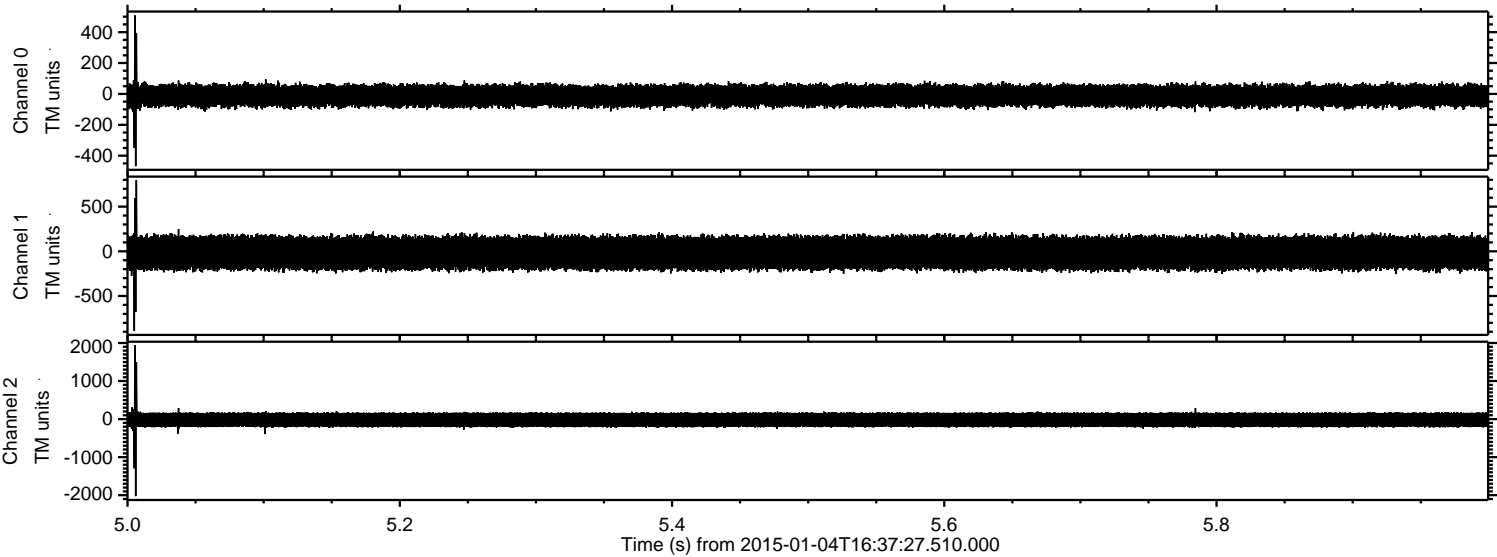


ELMAVAN 3D WAVEFORMS (Measured data sampled at 50 kHz) 49784 packets of 144 samples from 2015-01-04T16:37:27.510.000.

Processed Sun Jan 4 17:44:34 2015 by ELM ver.2012-10-06 from 001__elm20150104_163726__dat00.bin

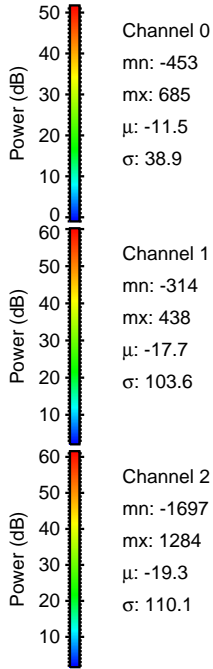
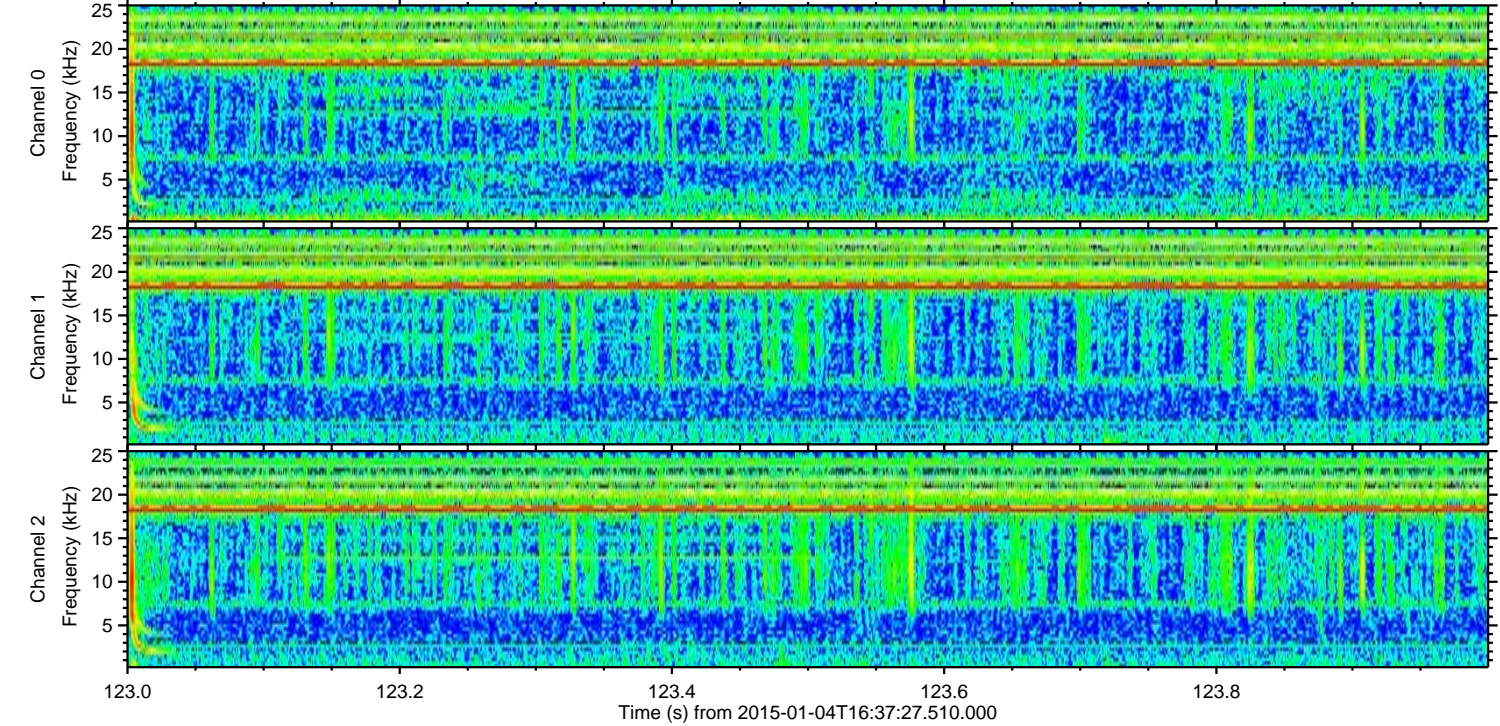
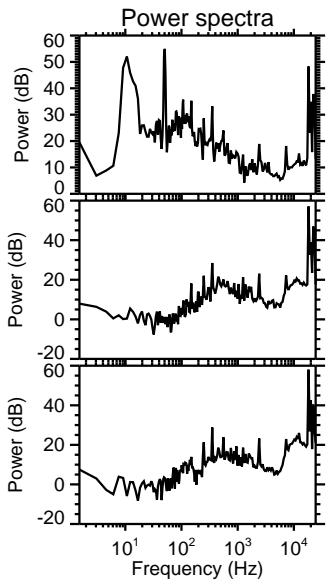
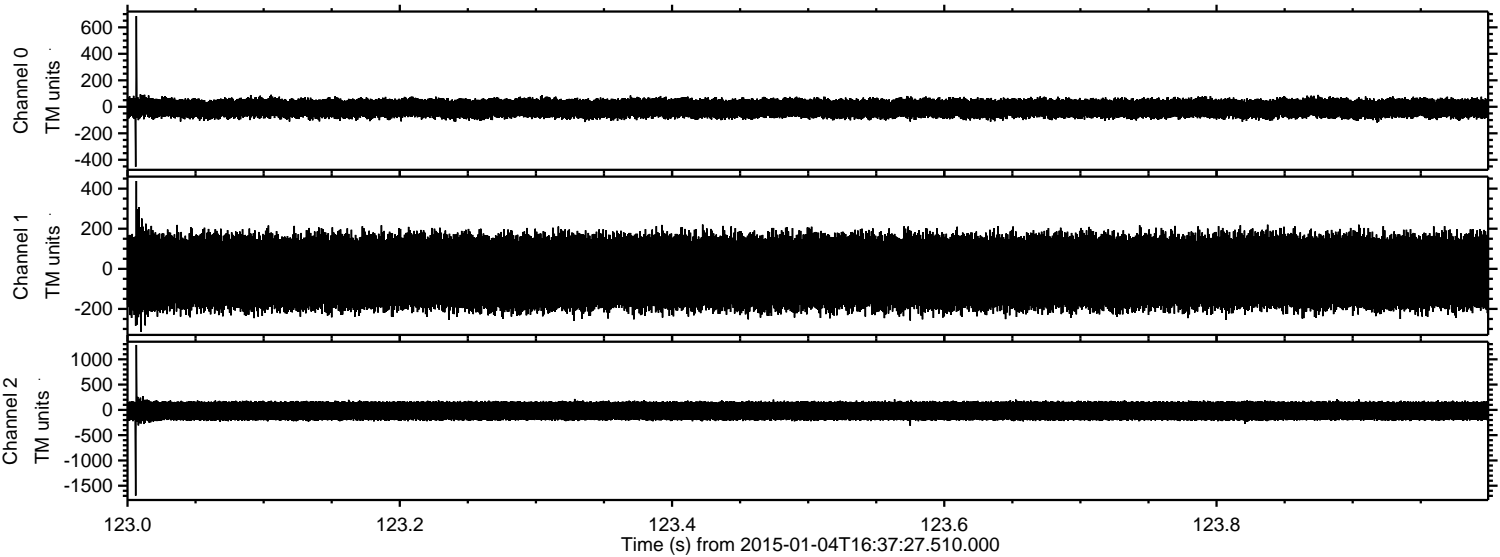


Processed Sun Jan 4 17:44:47 2015 by ELM ver.2012-10-06 from 001__elm20150104_163726__dat00.bin



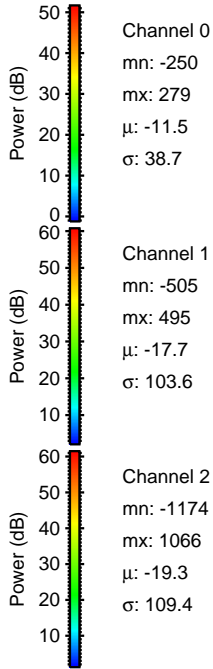
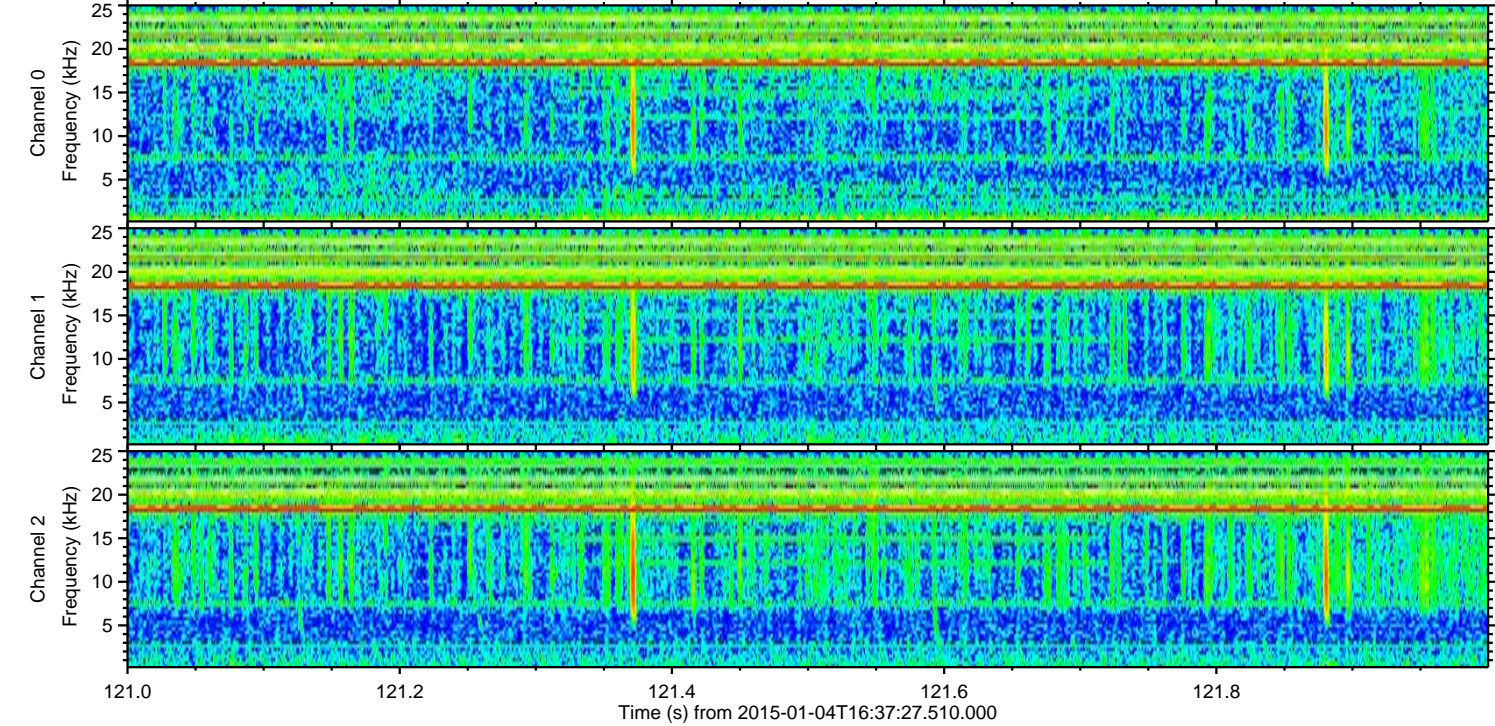
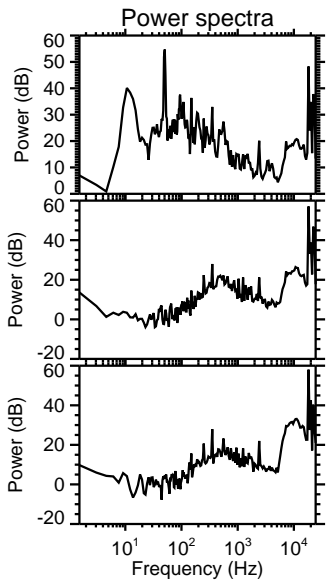
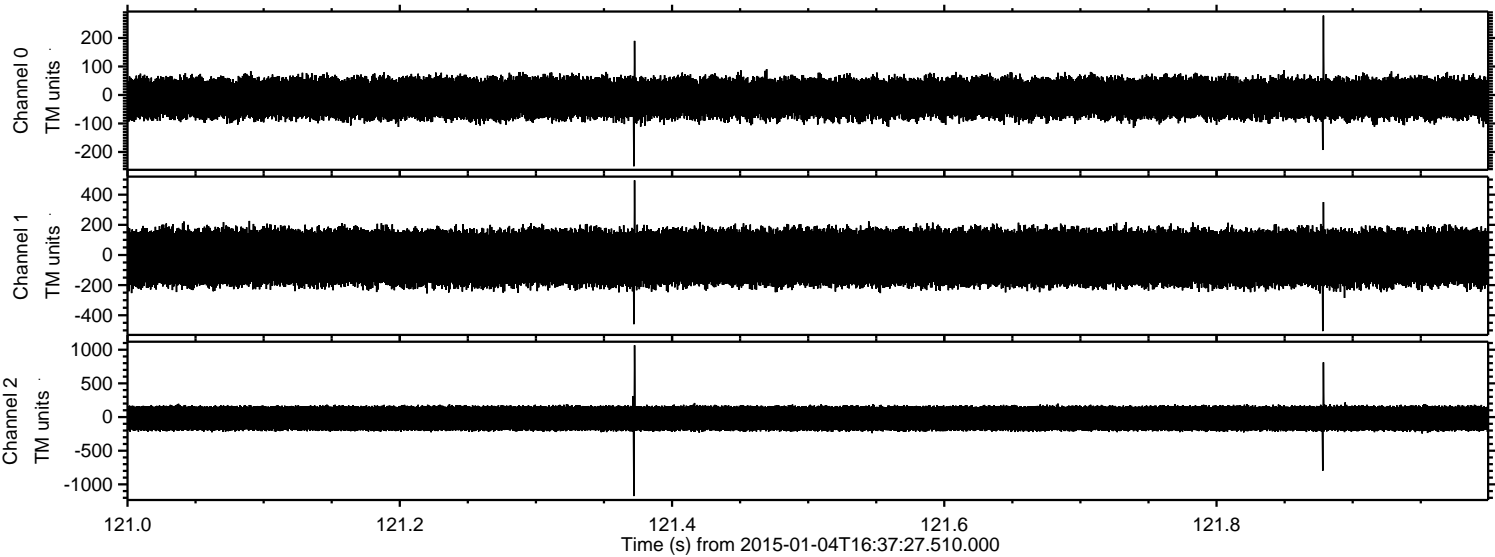
ELMAVAN 3D WAVEFORMS (Measured data sampled at 50 kHz) 49784 packets of 144 samples from 2015-01-04T16:37:27.510.000. Part 124/144

Processed Sun Jan 4 17:44:48 2015 by ELM ver.2012-10-06 from 001__elm20150104_163726__dat00.bin

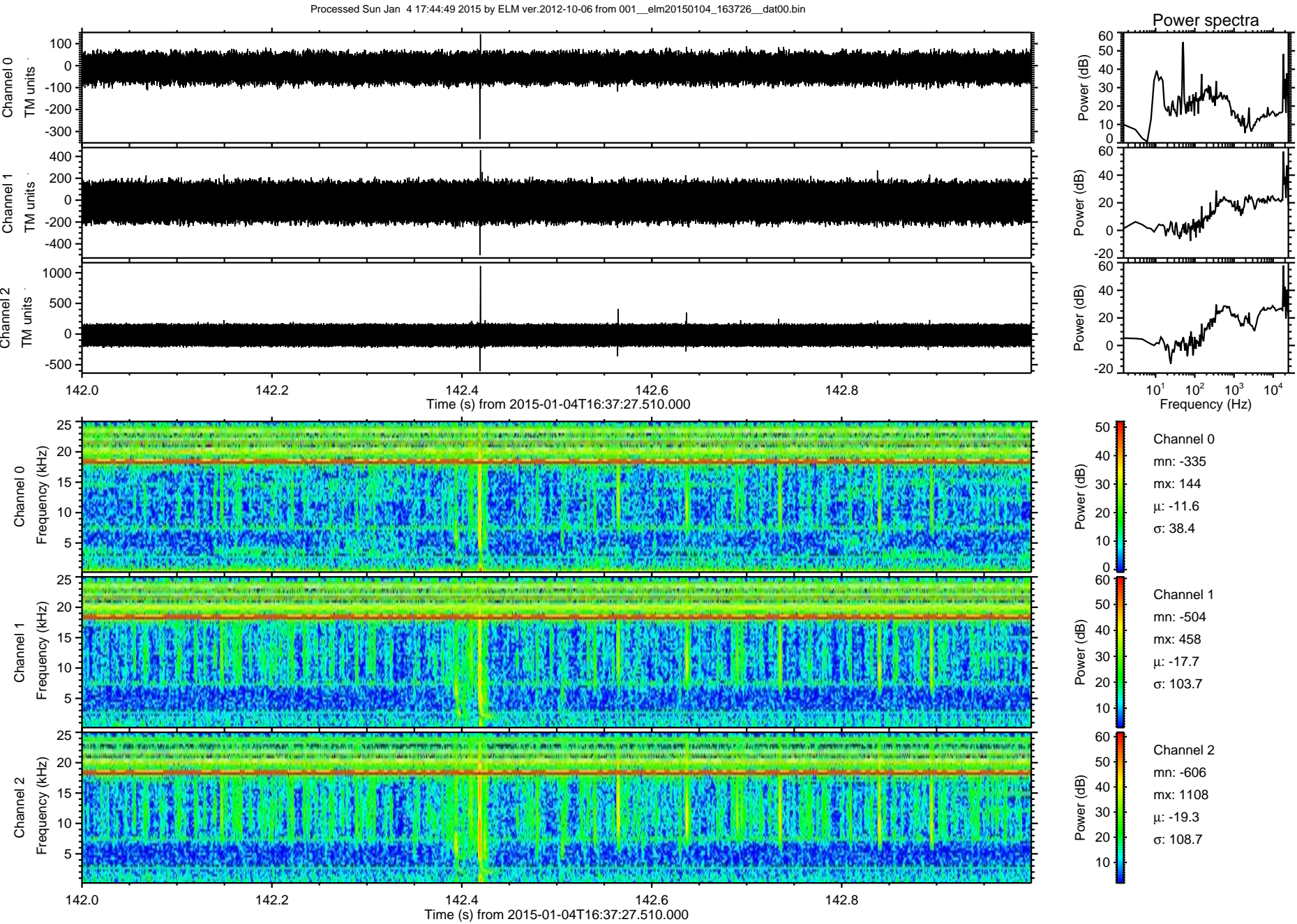


ELMAVAN 3D WAVEFORMS (Measured data sampled at 50 kHz) 49784 packets of 144 samples from 2015-01-04T16:37:27.510.000. Part 122/144

Processed Sun Jan 4 17:44:49 2015 by ELM ver.2012-10-06 from 001__elm20150104_163726__dat00.bin

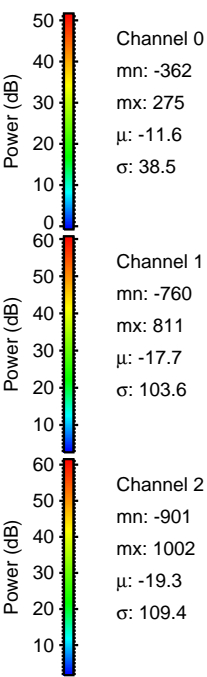
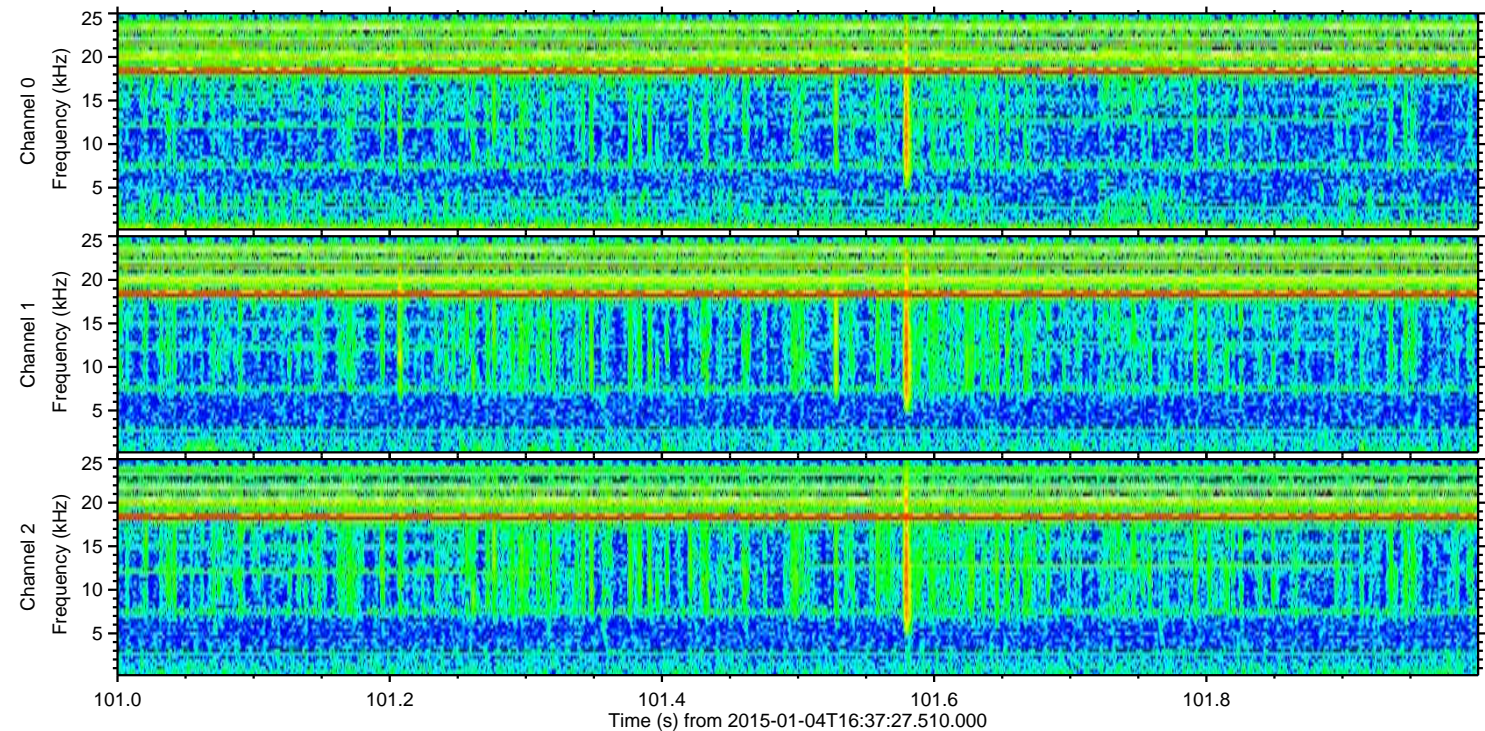
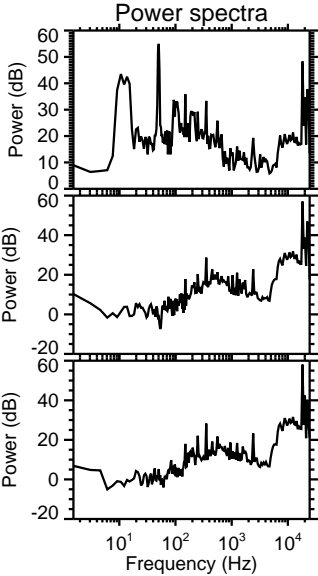
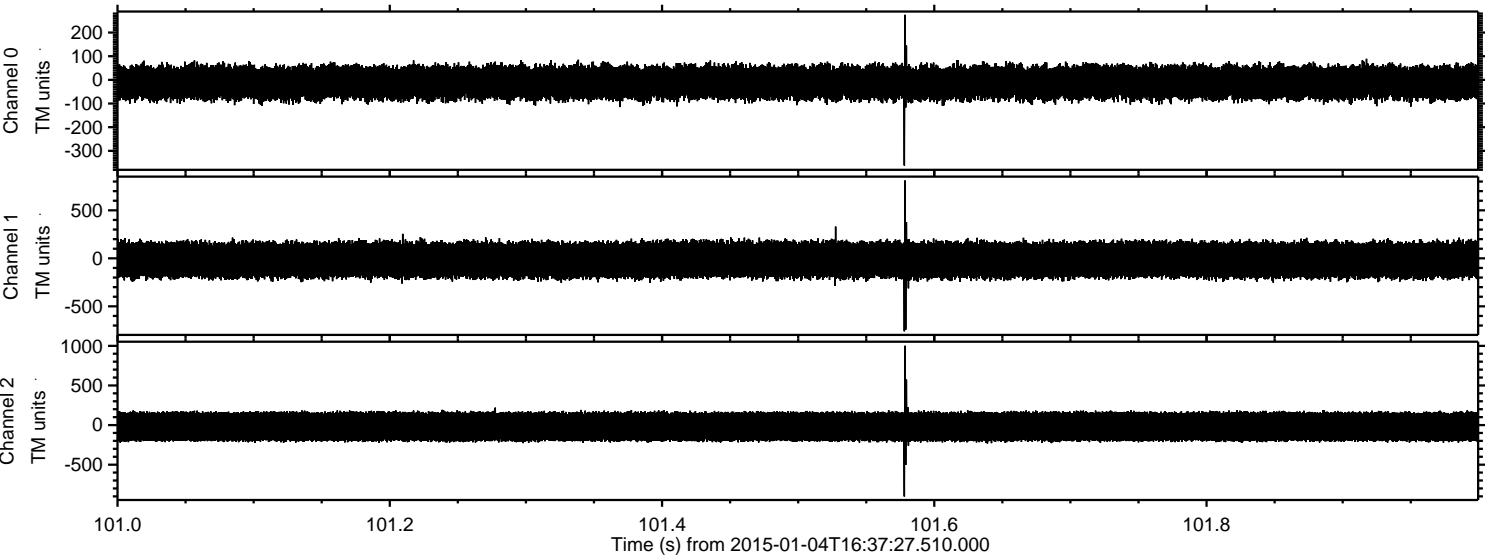


ELMAVAN 3D WAVEFORMS (Measured data sampled at 50 kHz) 49784 packets of 144 samples from 2015-01-04T16:37:27.510.000. Part 143/144

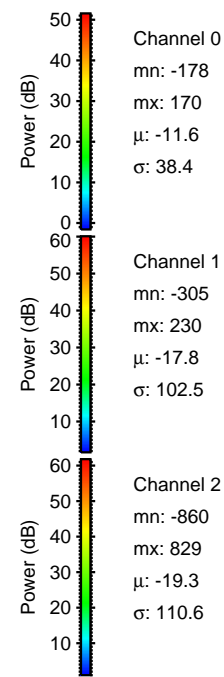
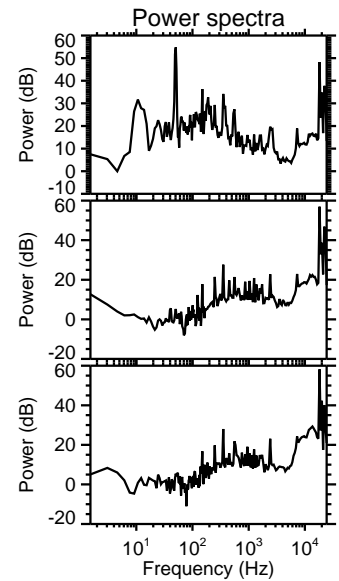
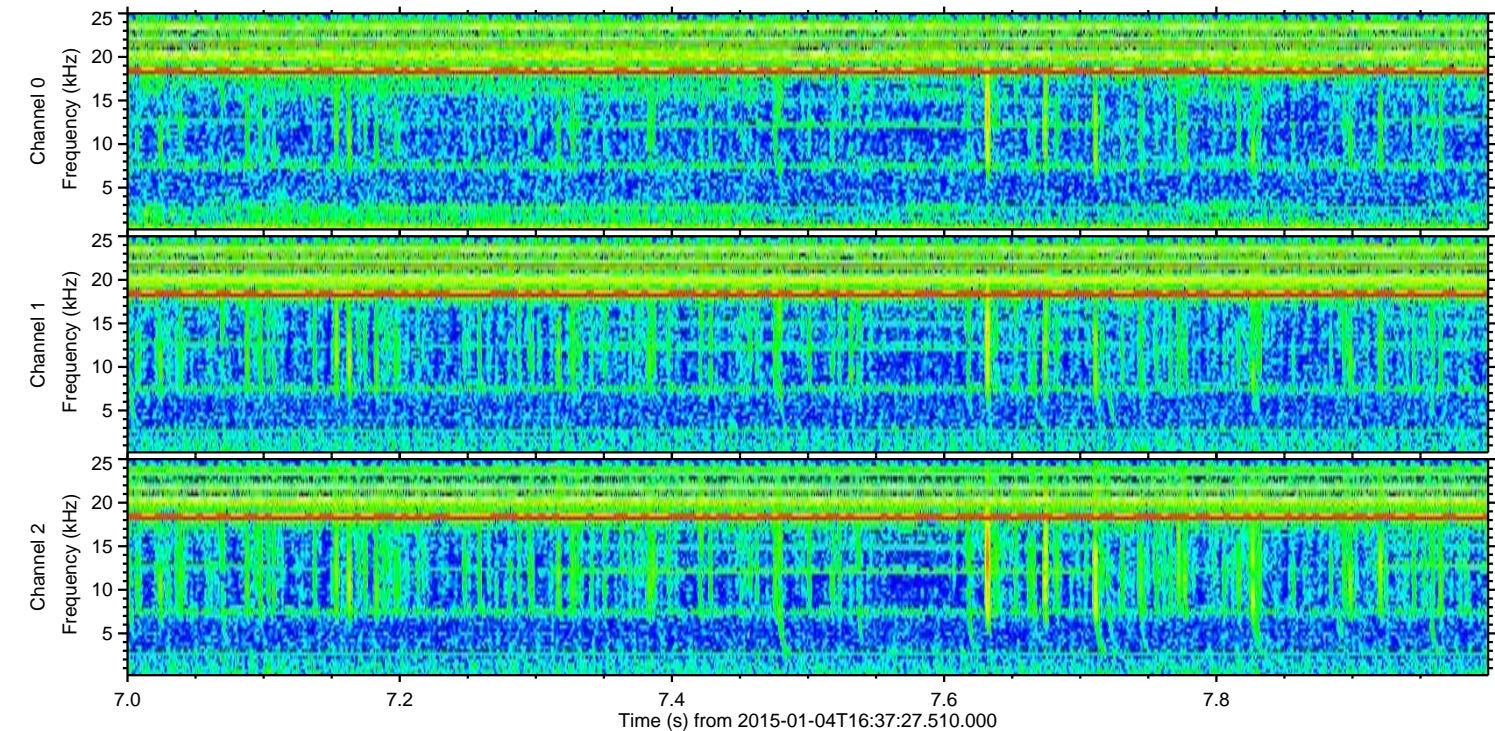
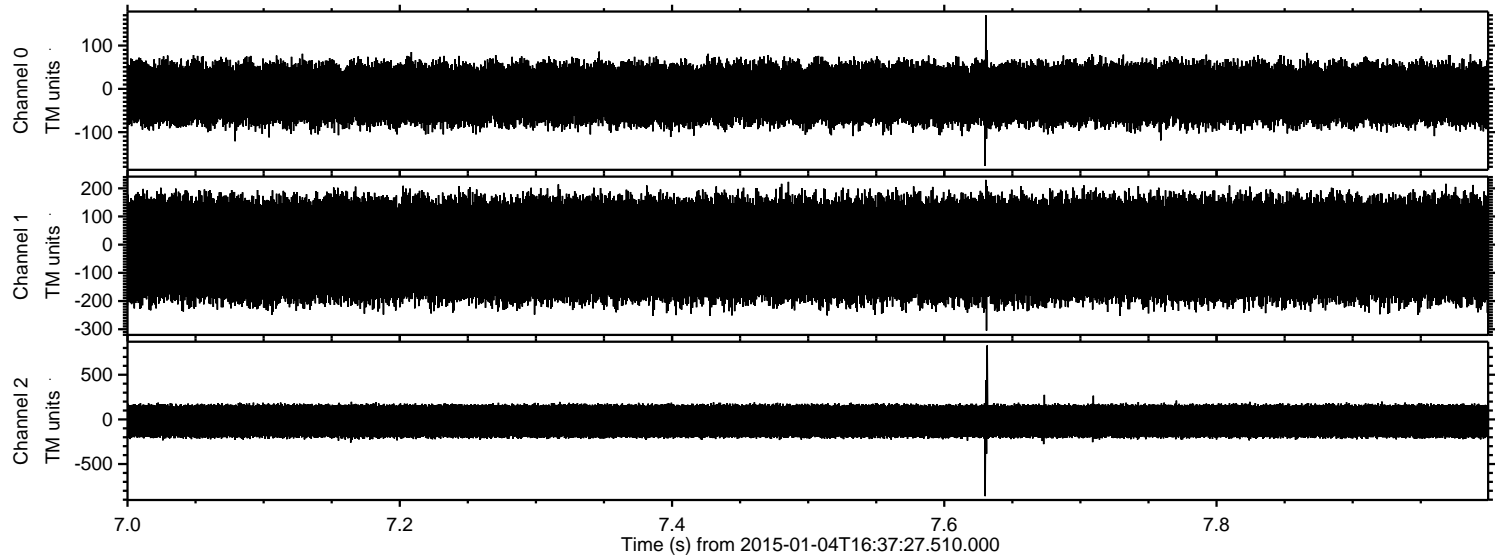


ELMAVAN 3D WAVEFORMS (Measured data sampled at 50 kHz) 49784 packets of 144 samples from 2015-01-04T16:37:27.510.000. Part 102/144

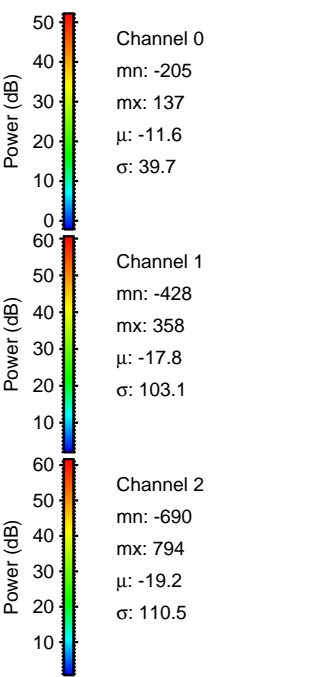
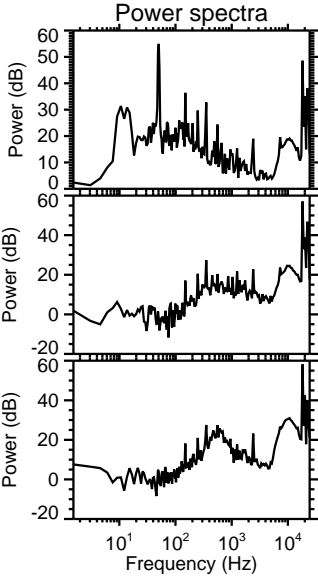
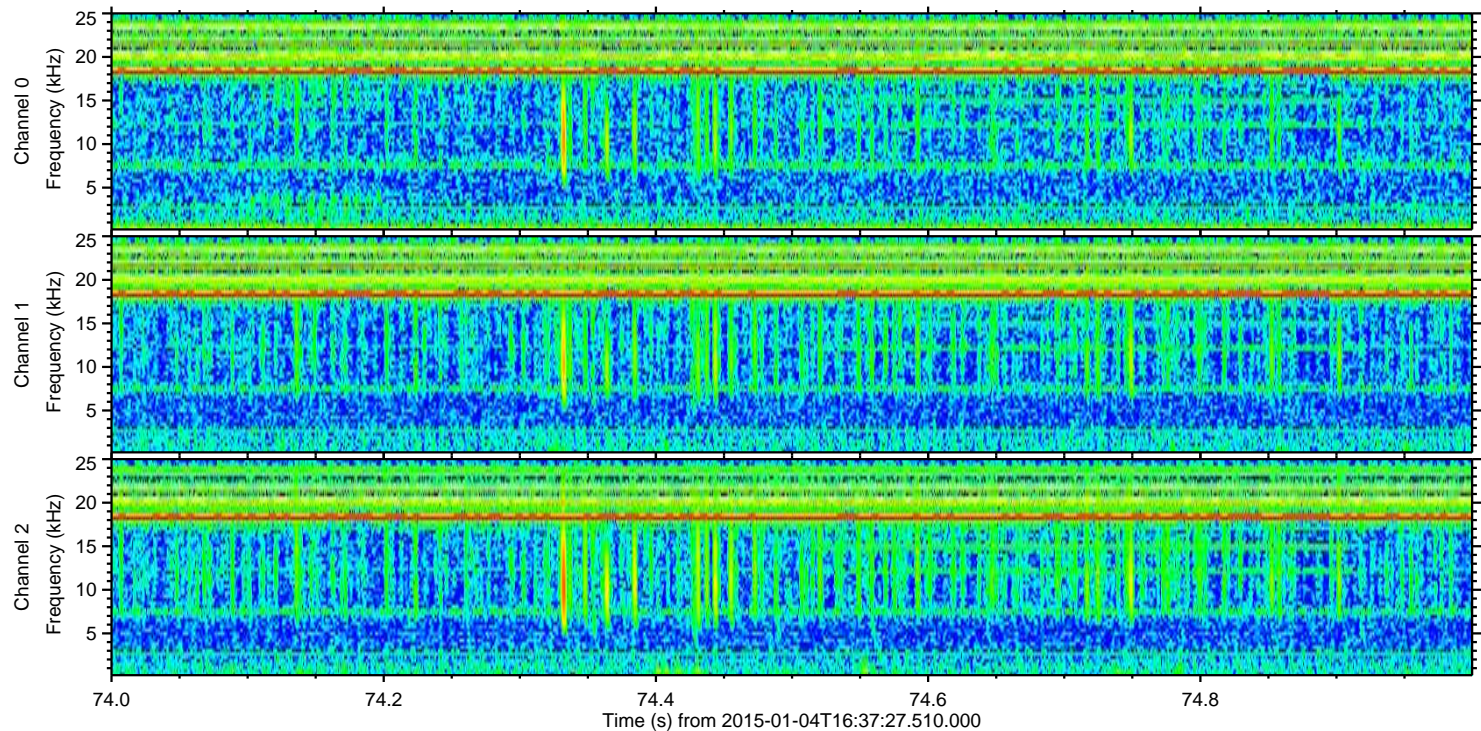
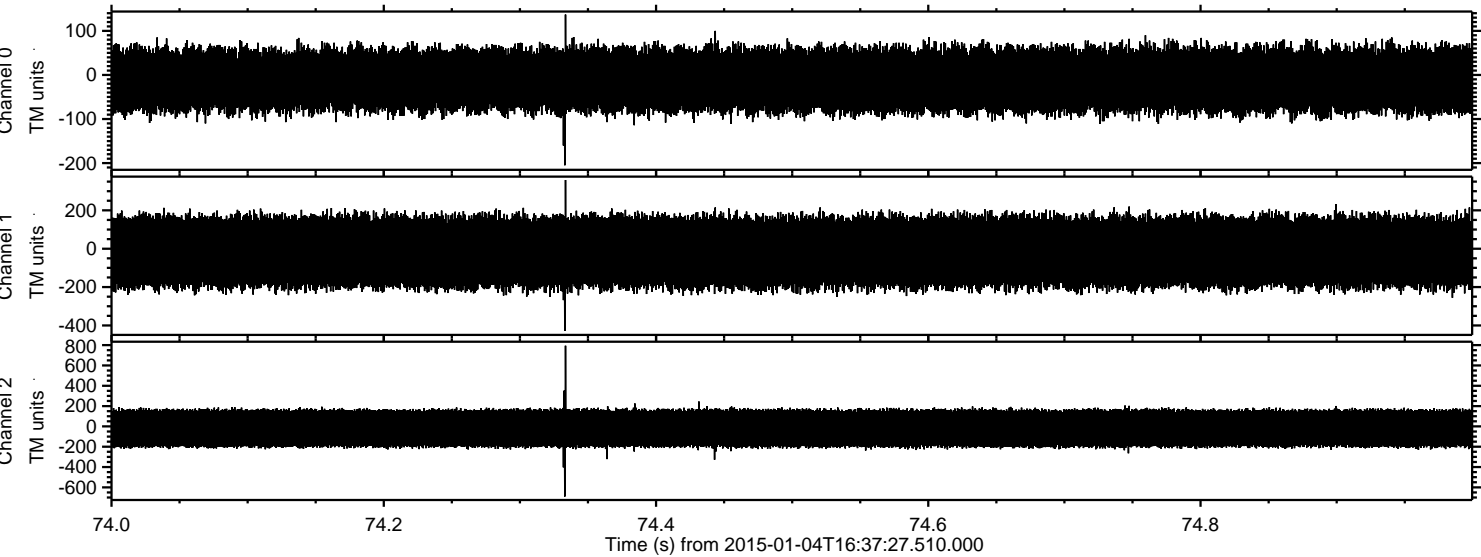
Processed Sun Jan 4 17:44:50 2015 by ELM ver.2012-10-06 from 001__elm20150104_163726__dat00.bin



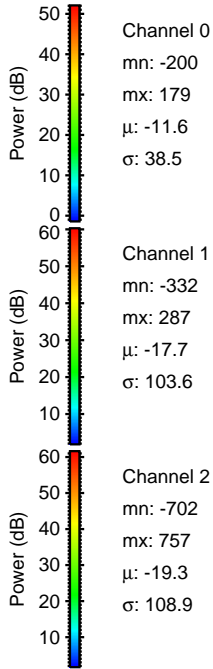
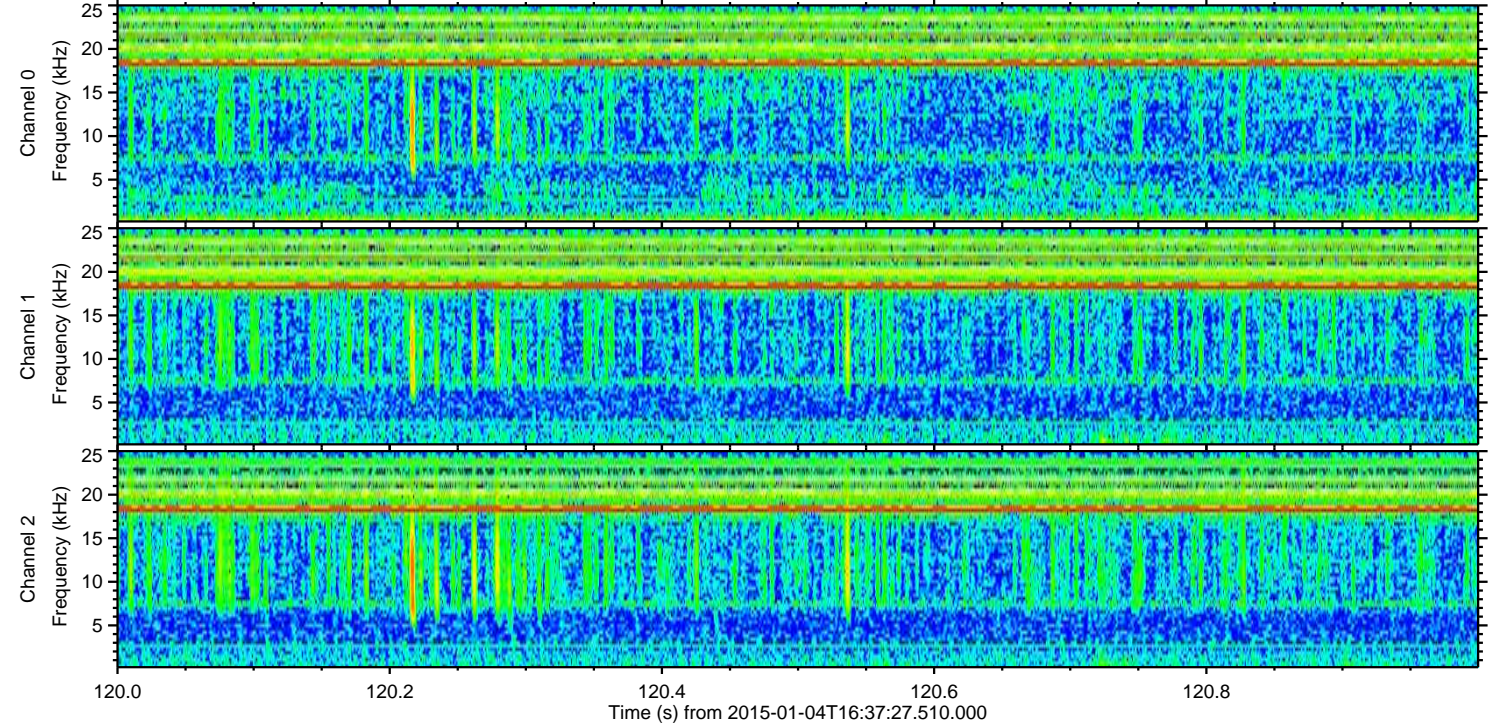
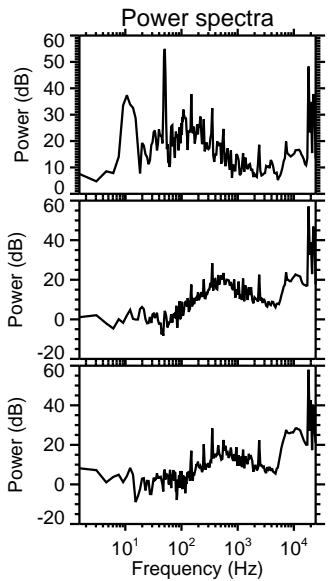
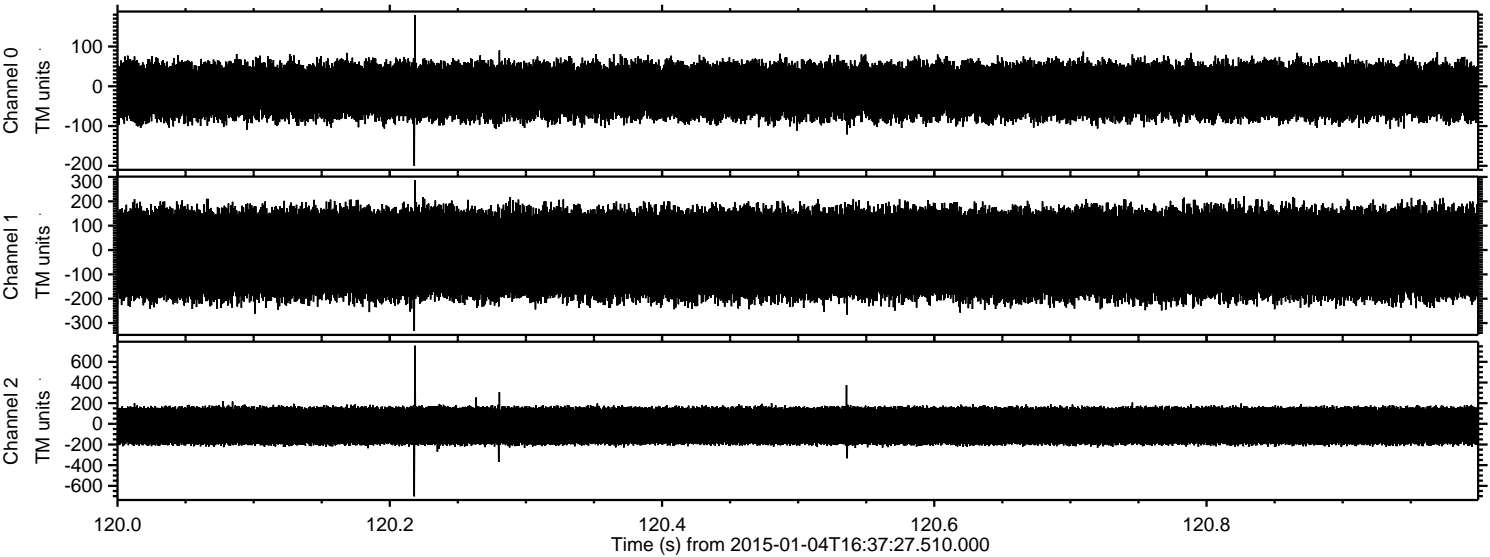
Processed Sun Jan 4 17:44:51 2015 by ELM ver.2012-10-06 from 001__elm20150104_163726__dat00.bin



Processed Sun Jan 4 17:44:52 2015 by ELM ver.2012-10-06 from 001__elm20150104_163726__dat00.bin



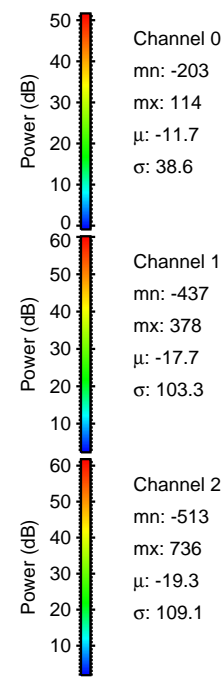
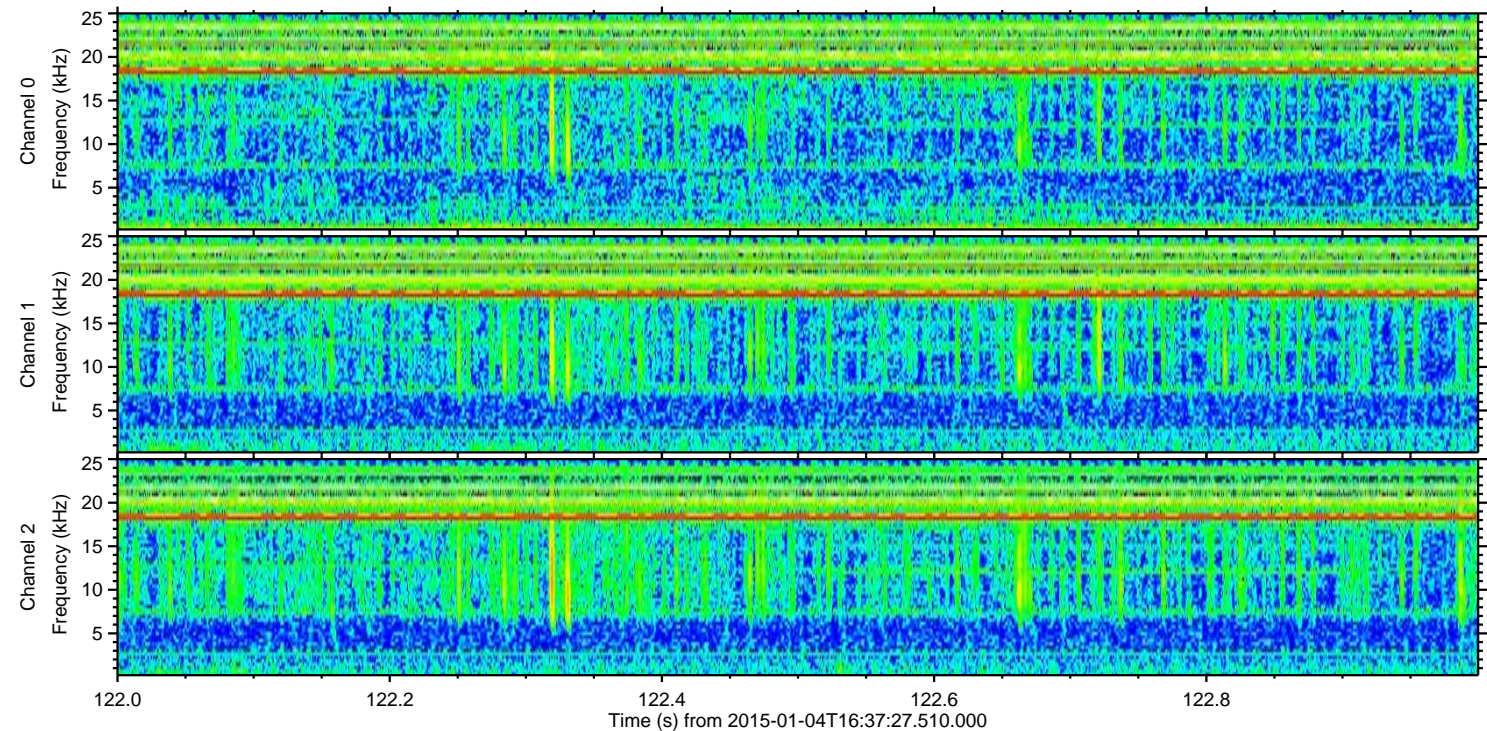
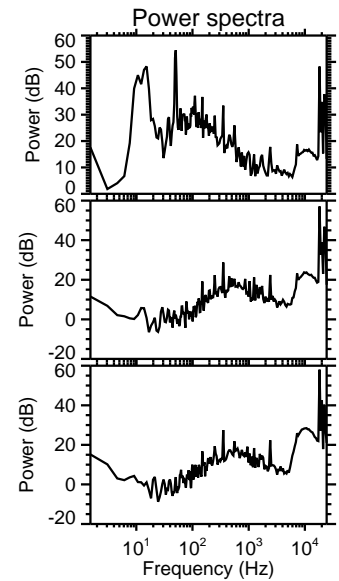
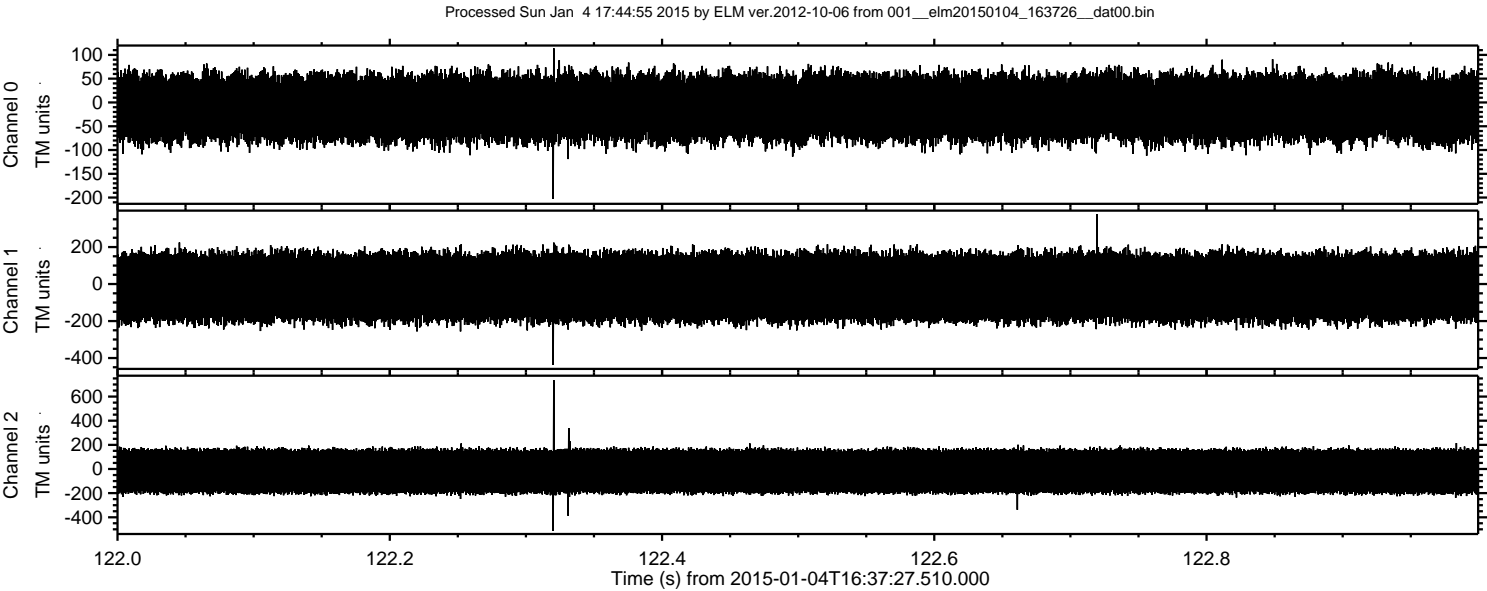
Processed Sun Jan 4 17:44:53 2015 by ELM ver.2012-10-06 from 001__elm20150104_163726__dat00.bin



Channel 0
mn: -200
mx: 179
 μ : -11.6
 σ : 38.5

Channel 1
mn: -332
mx: 287
 μ : -17.7
 σ : 103.6

Channel 2
mn: -702
mx: 757
 μ : -19.3
 σ : 108.9



Processed Sun Jan 4 17:44:56 2015 by ELM ver.2012-10-06 from 001__elm20150104_163726__dat00.bin

