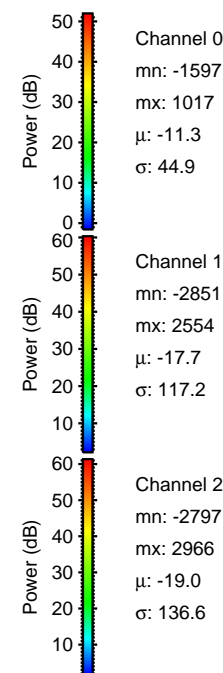
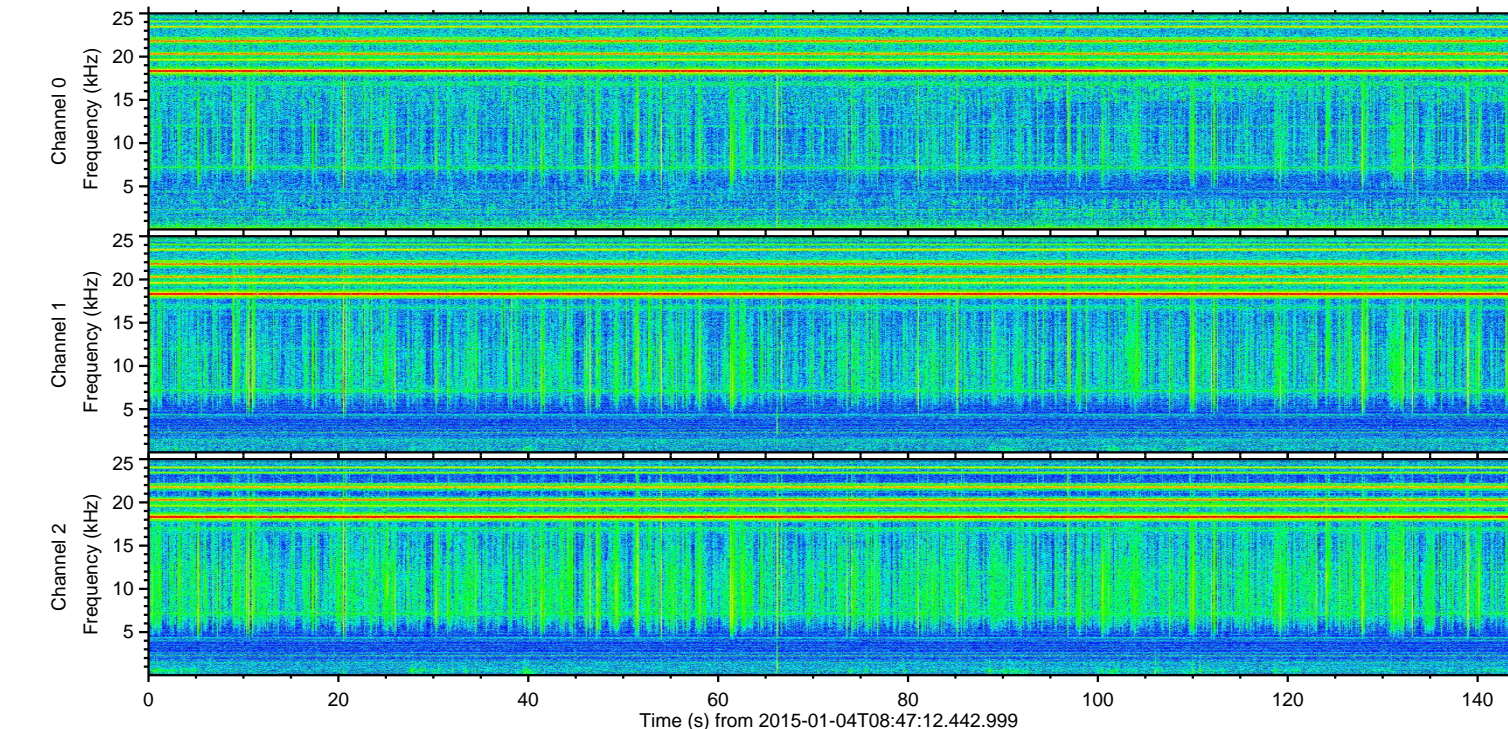
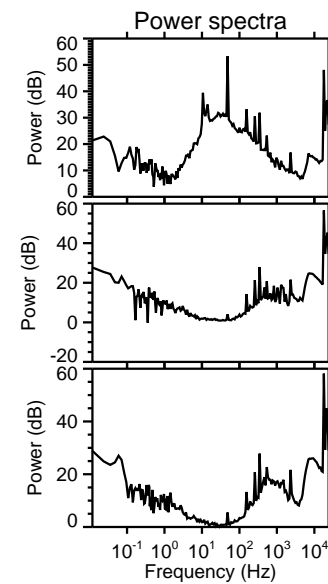
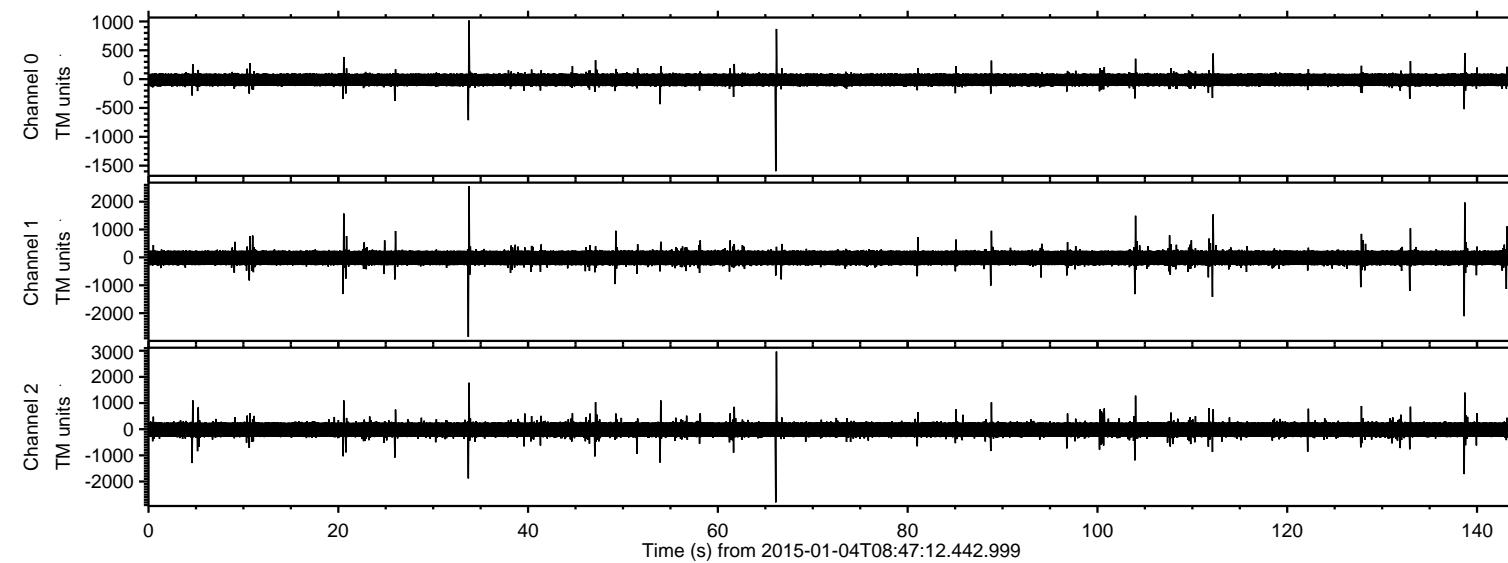


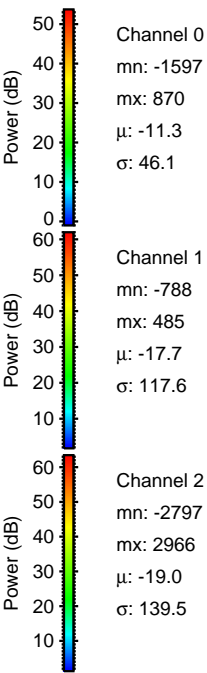
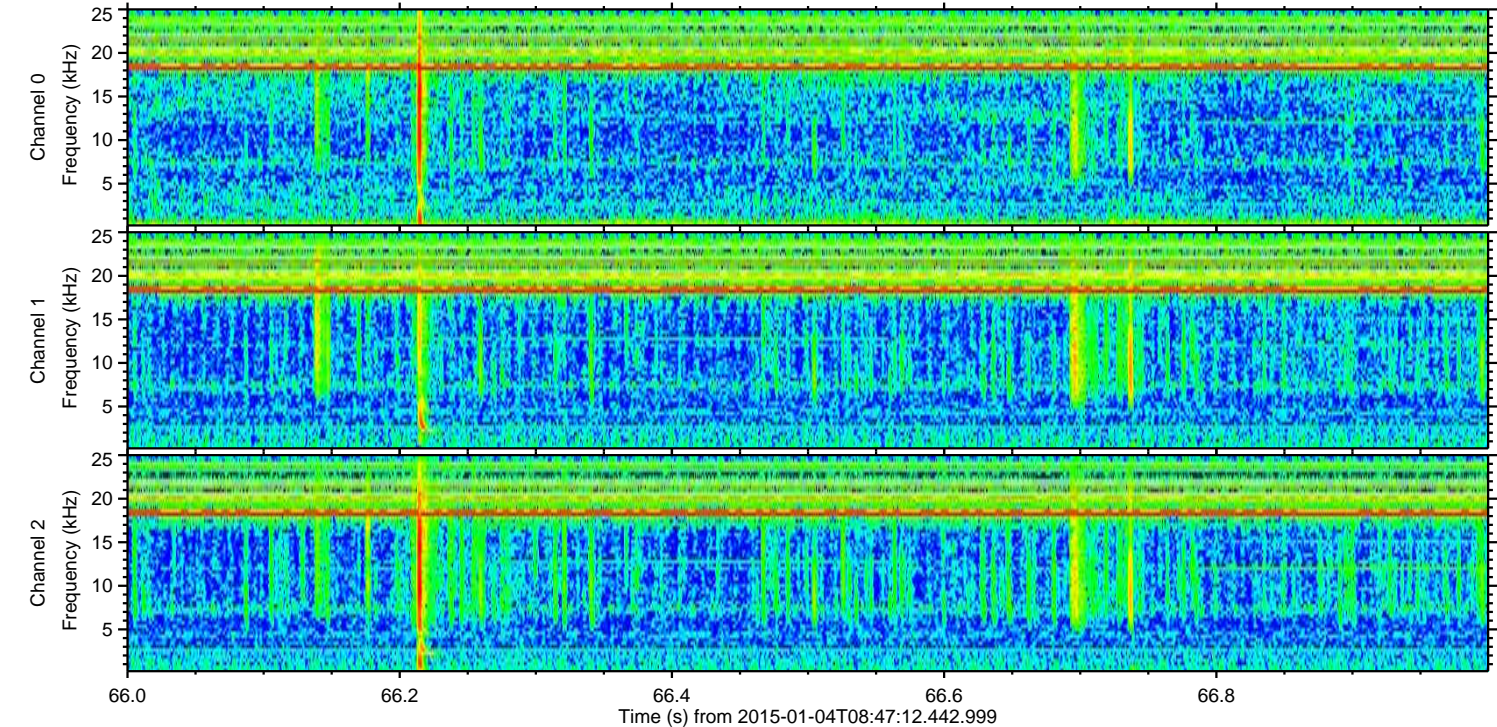
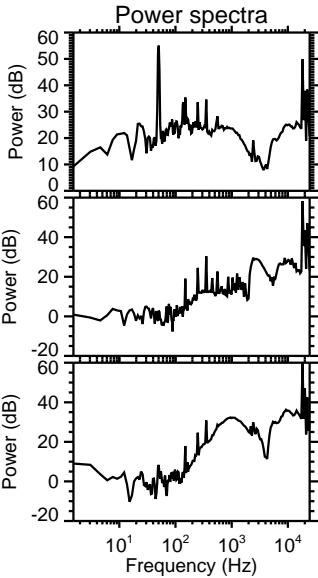
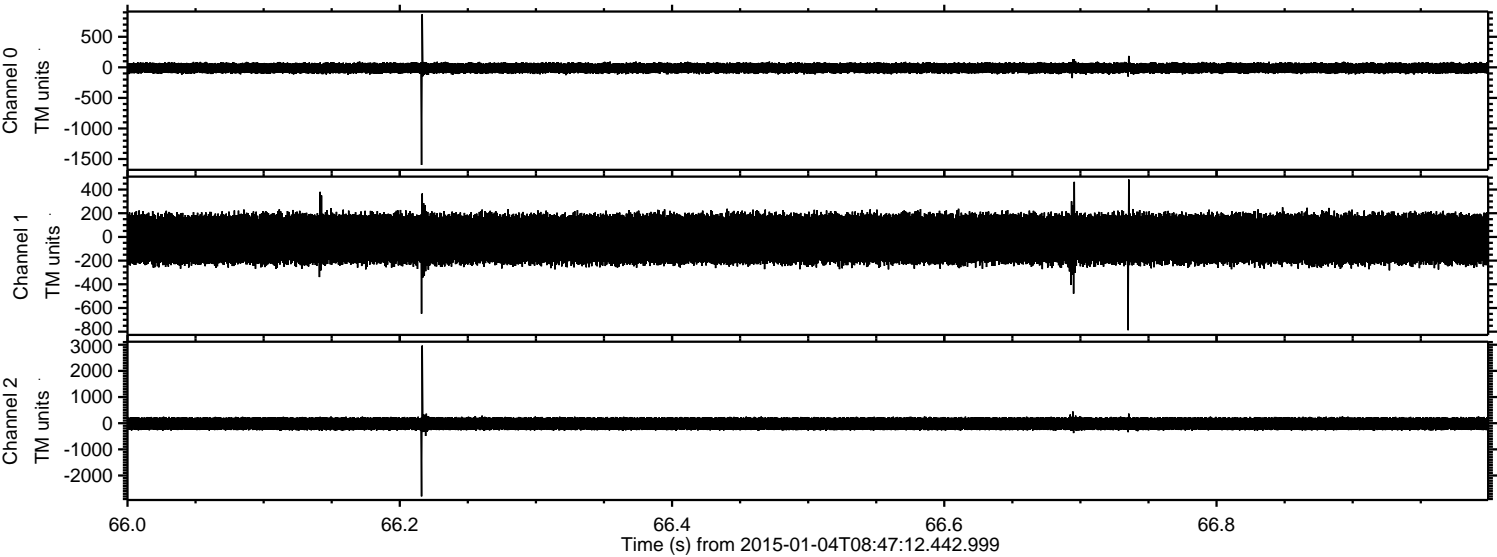
ELMAVAN 3D WAVEFORMS (Measured data sampled at 50 kHz) 49786 packets of 144 samples from 2015-01-04T08:47:12.442.999.

Processed Sun Jan 4 09:54:55 2015 by ELM ver.2012-10-06 from 001__elm20150104_084711__dat00.bin



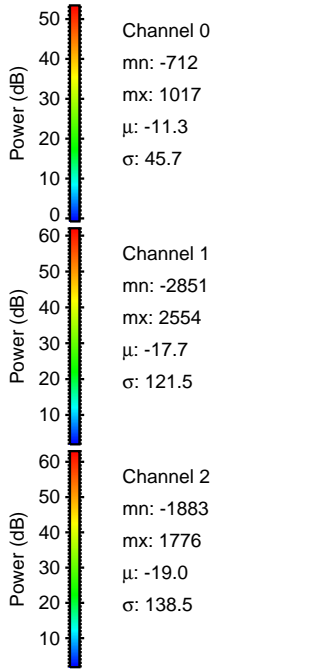
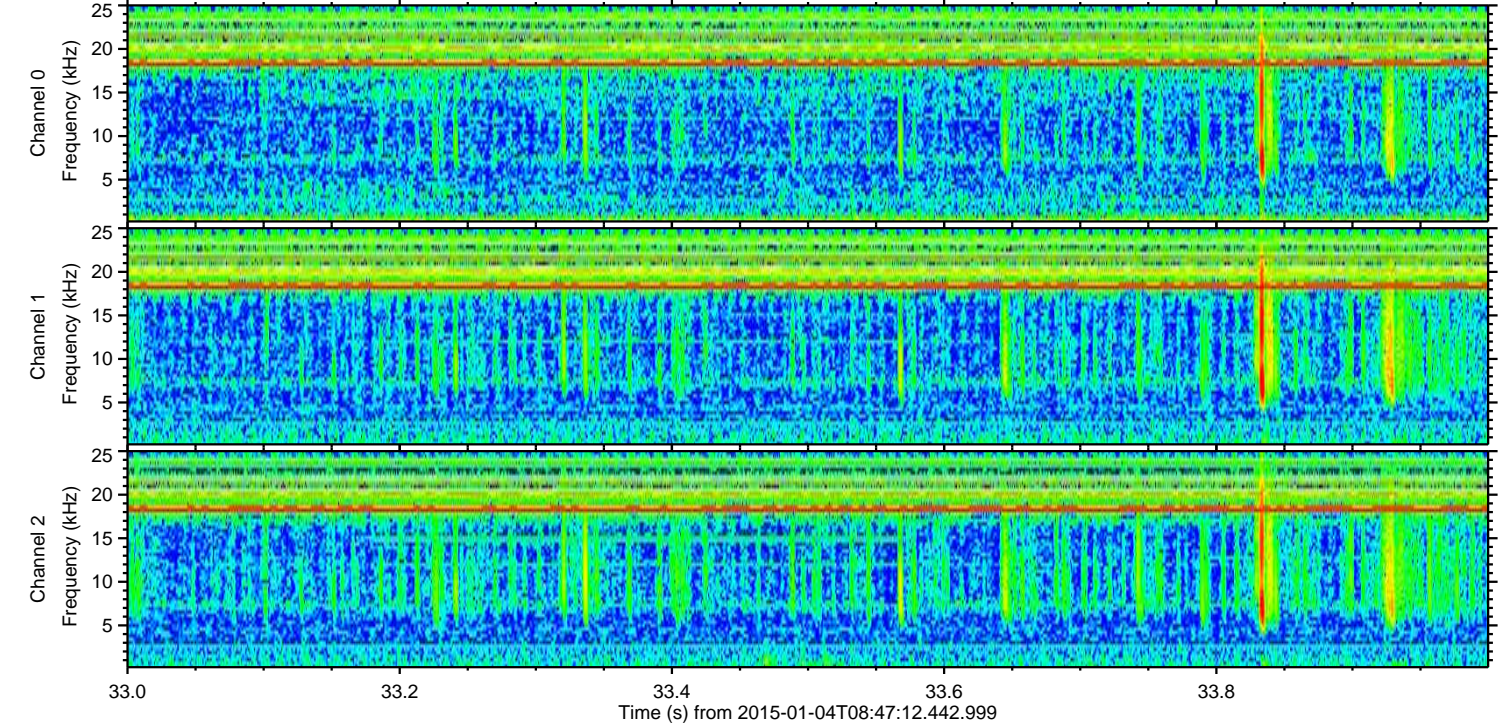
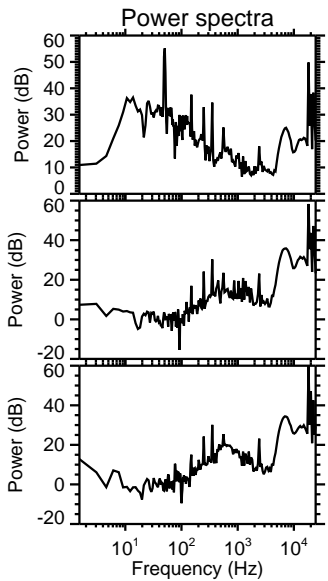
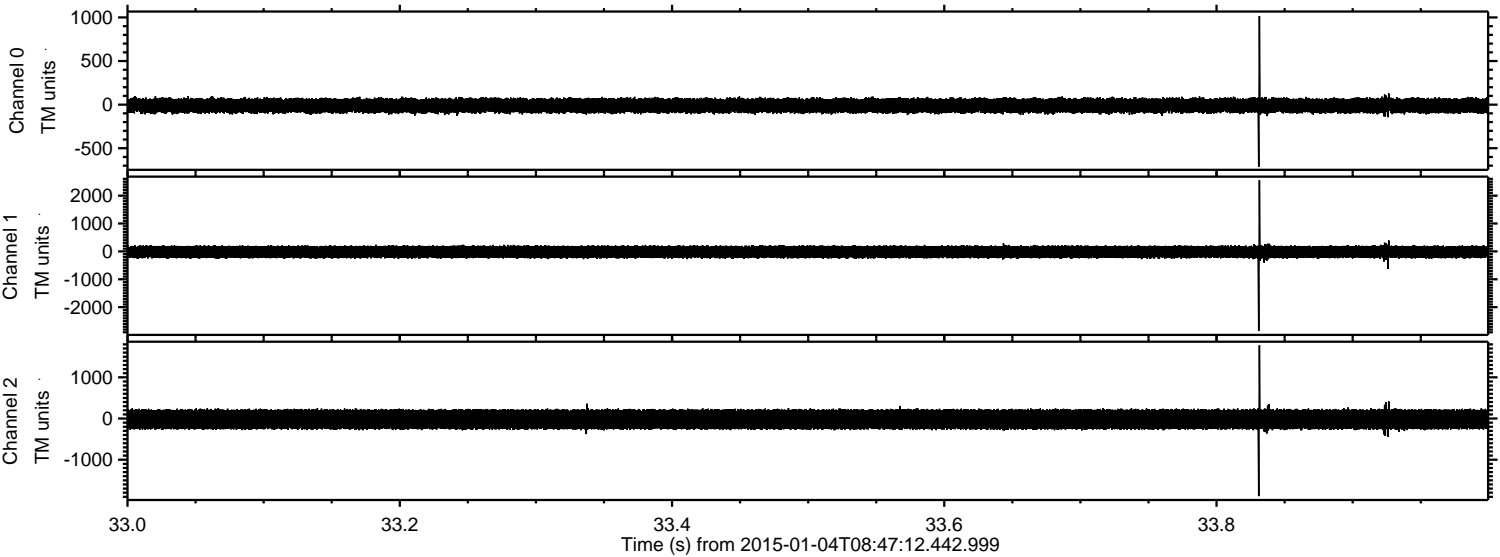
ELMAVAN 3D WAVEFORMS (Measured data sampled at 50 kHz) 49786 packets of 144 samples from 2015-01-04T08:47:12.442.999. Part 67/144

Processed Sun Jan 4 09:55:08 2015 by ELM ver.2012-10-06 from 001__elm20150104_084711__dat00.bin



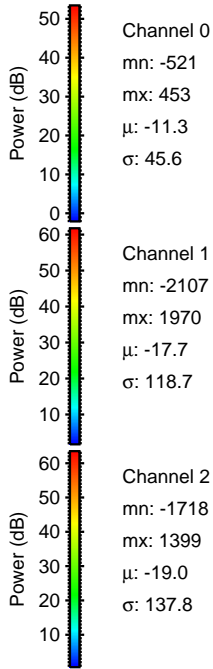
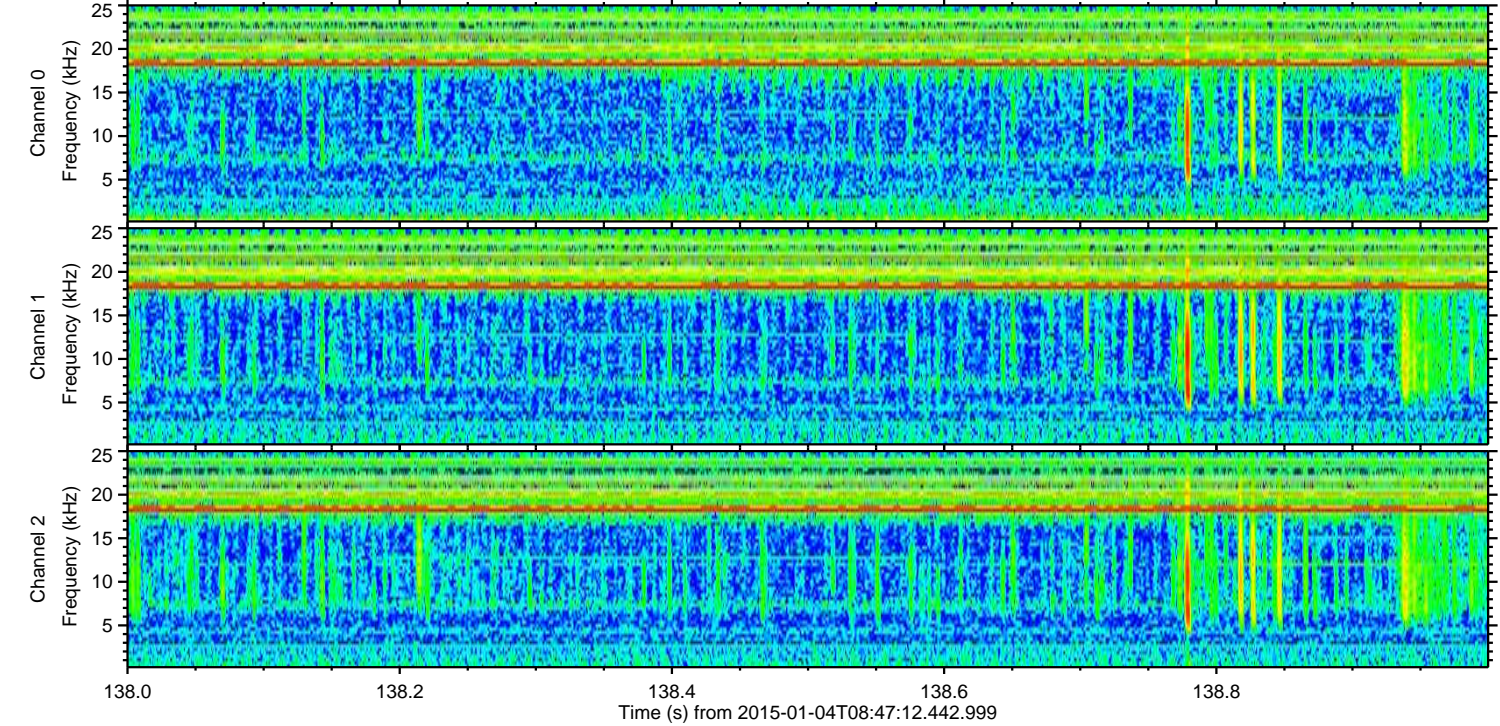
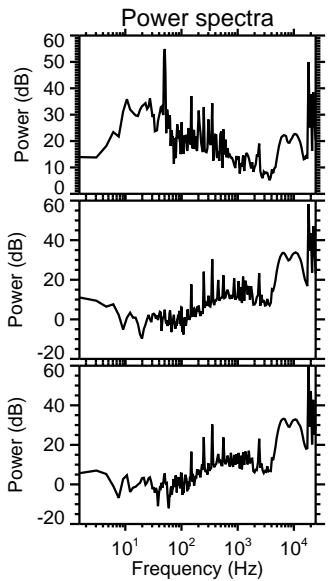
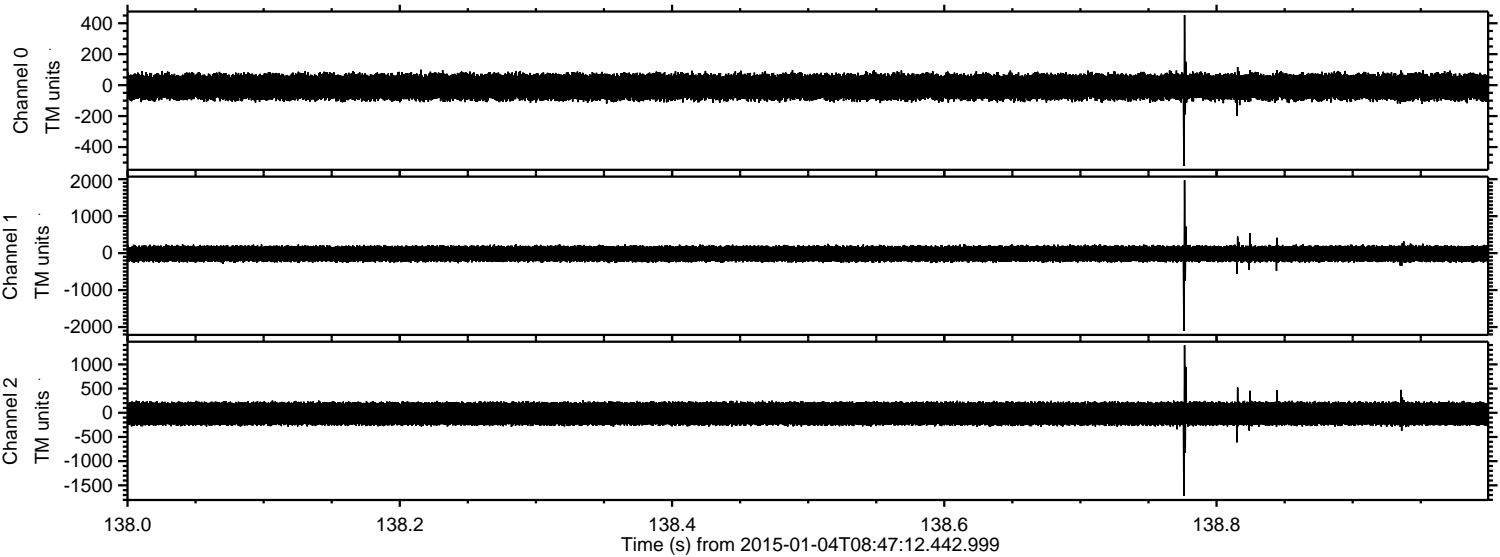
ELMAVAN 3D WAVEFORMS (Measured data sampled at 50 kHz) 49786 packets of 144 samples from 2015-01-04T08:47:12.442.999. Part 34/144

Processed Sun Jan 4 09:55:09 2015 by ELM ver.2012-10-06 from 001__elm20150104_084711__dat00.bin



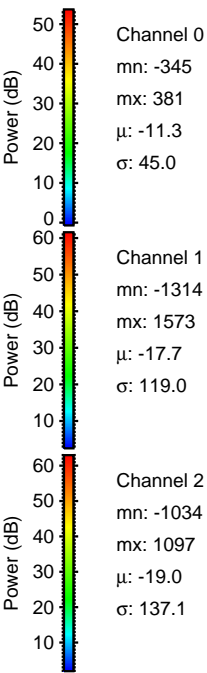
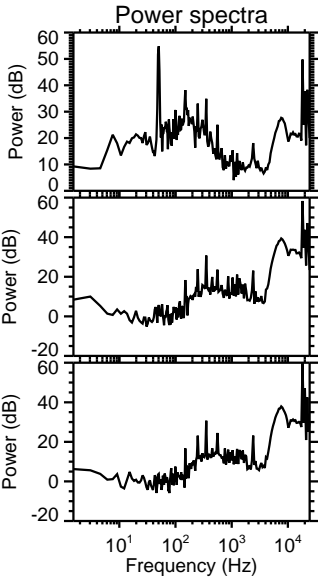
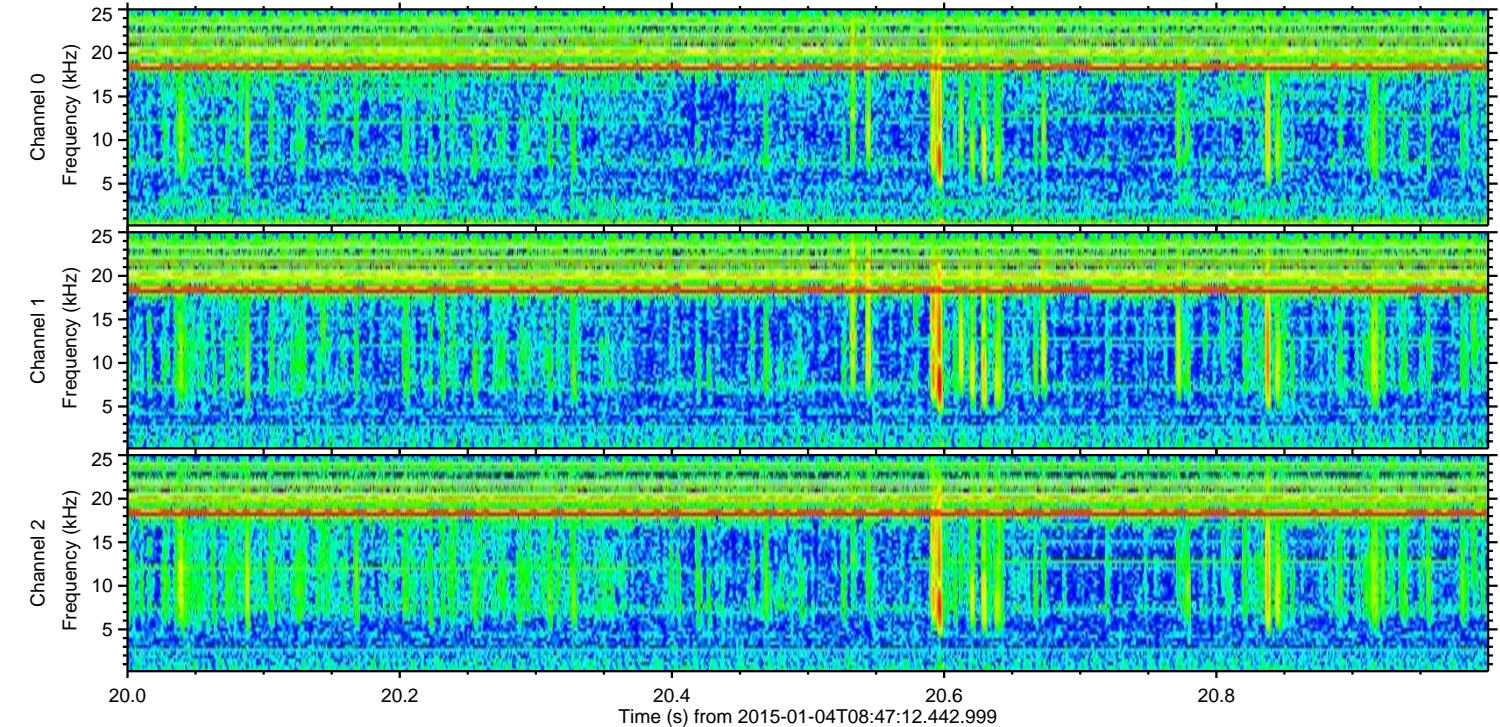
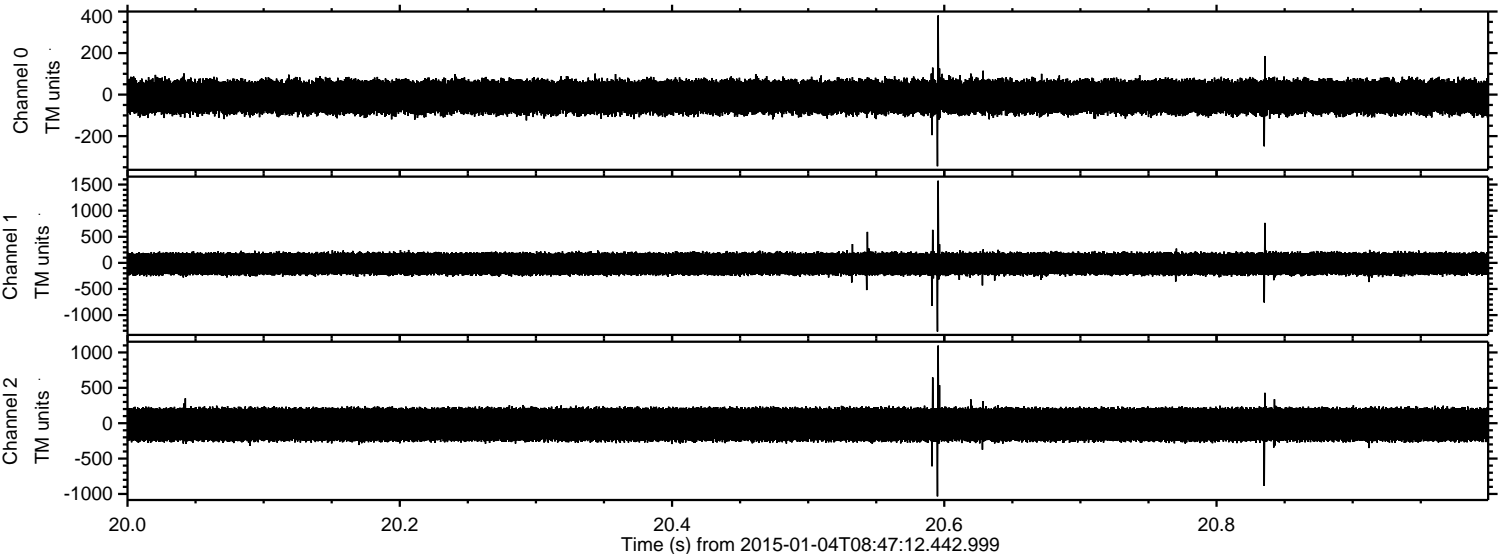
ELMAVAN 3D WAVEFORMS (Measured data sampled at 50 kHz) 49786 packets of 144 samples from 2015-01-04T08:47:12.442.999. Part 139/144

Processed Sun Jan 4 09:55:10 2015 by ELM ver.2012-10-06 from 001__elm20150104_084711__dat00.bin



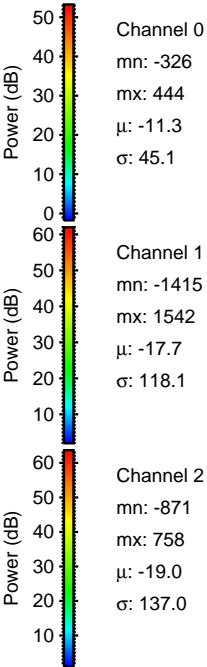
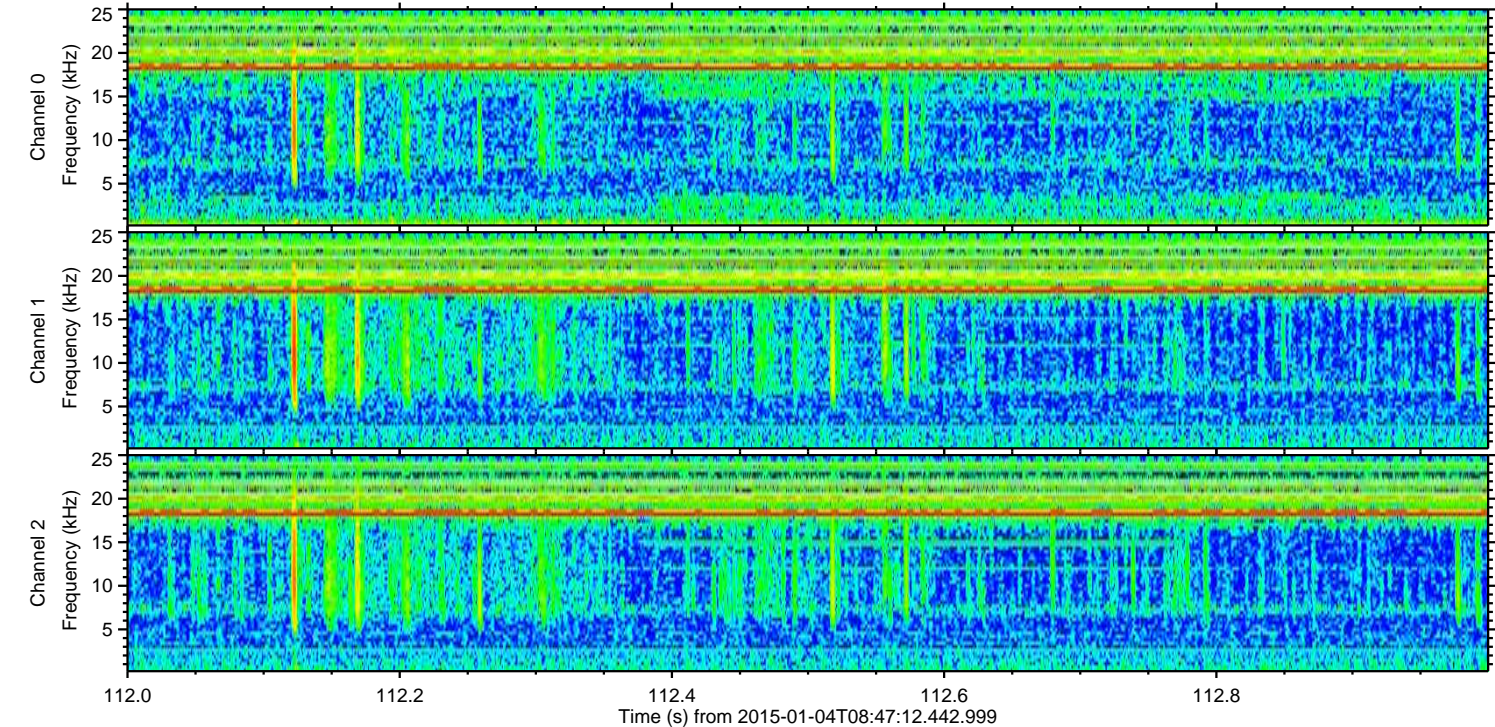
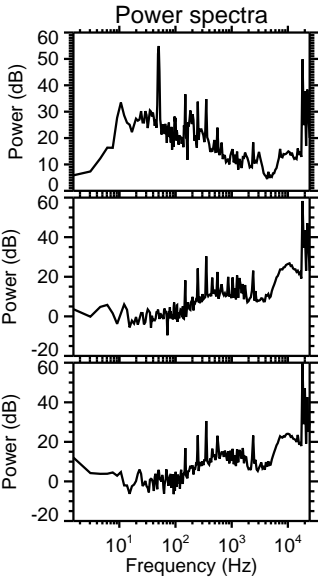
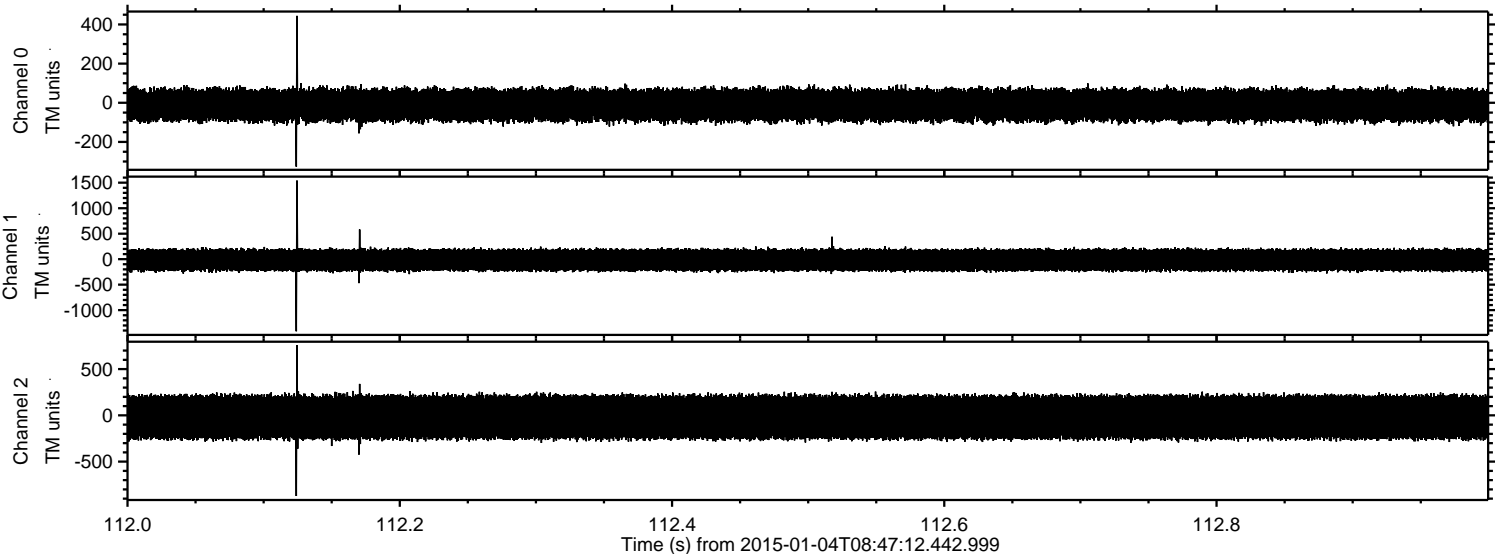
ELMAVAN 3D WAVEFORMS (Measured data sampled at 50 kHz) 49786 packets of 144 samples from 2015-01-04T08:47:12.442.999. Part 21/144

Processed Sun Jan 4 09:55:10 2015 by ELM ver.2012-10-06 from 001__elm20150104_084711__dat00.bin

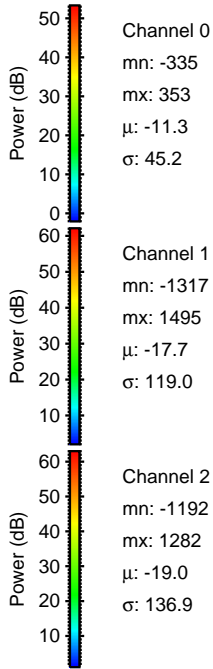
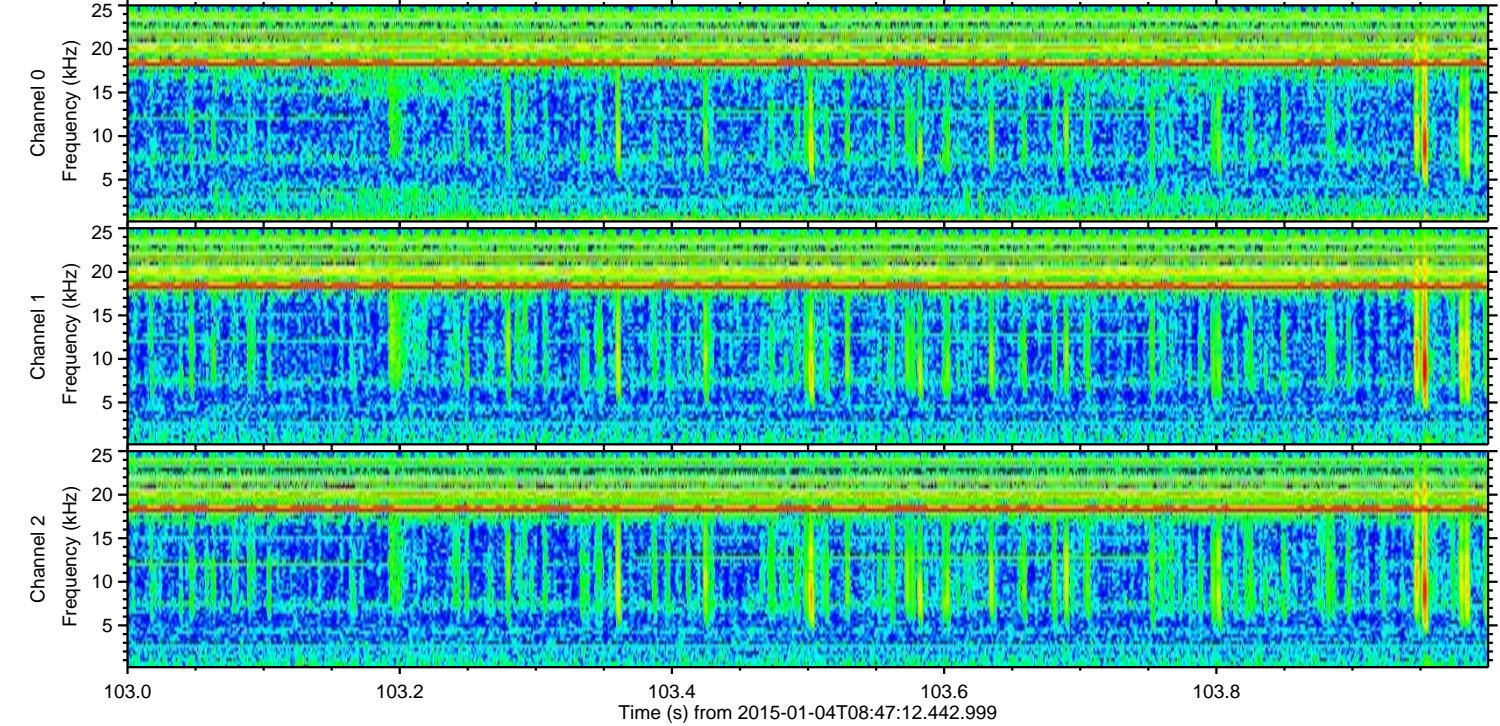
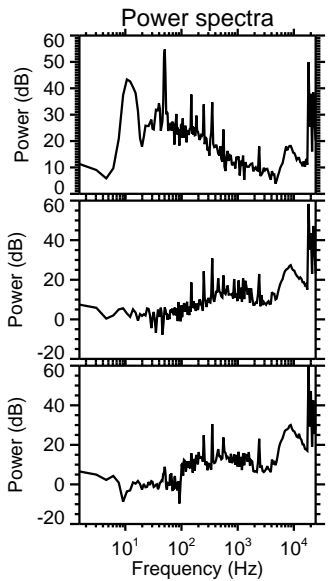
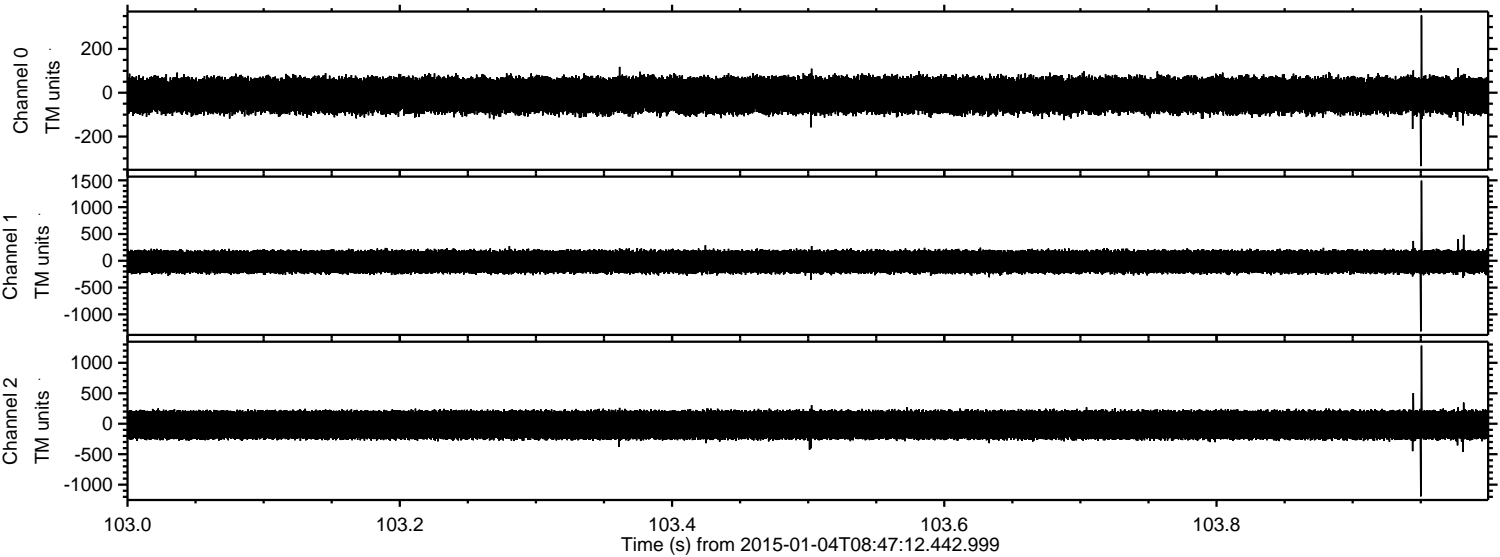


ELMAVAN 3D WAVEFORMS (Measured data sampled at 50 kHz) 49786 packets of 144 samples from 2015-01-04T08:47:12.442.999. Part 113/144

Processed Sun Jan 4 09:55:11 2015 by ELM ver.2012-10-06 from 001__elm20150104_084711__dat00.bin



Processed Sun Jan 4 09:55:12 2015 by ELM ver.2012-10-06 from 001__elm20150104_084711__dat00.bin

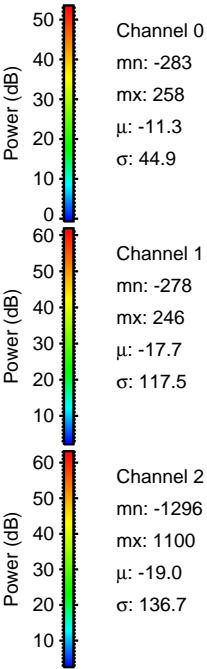
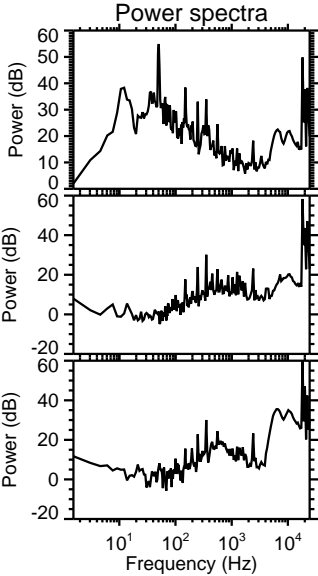
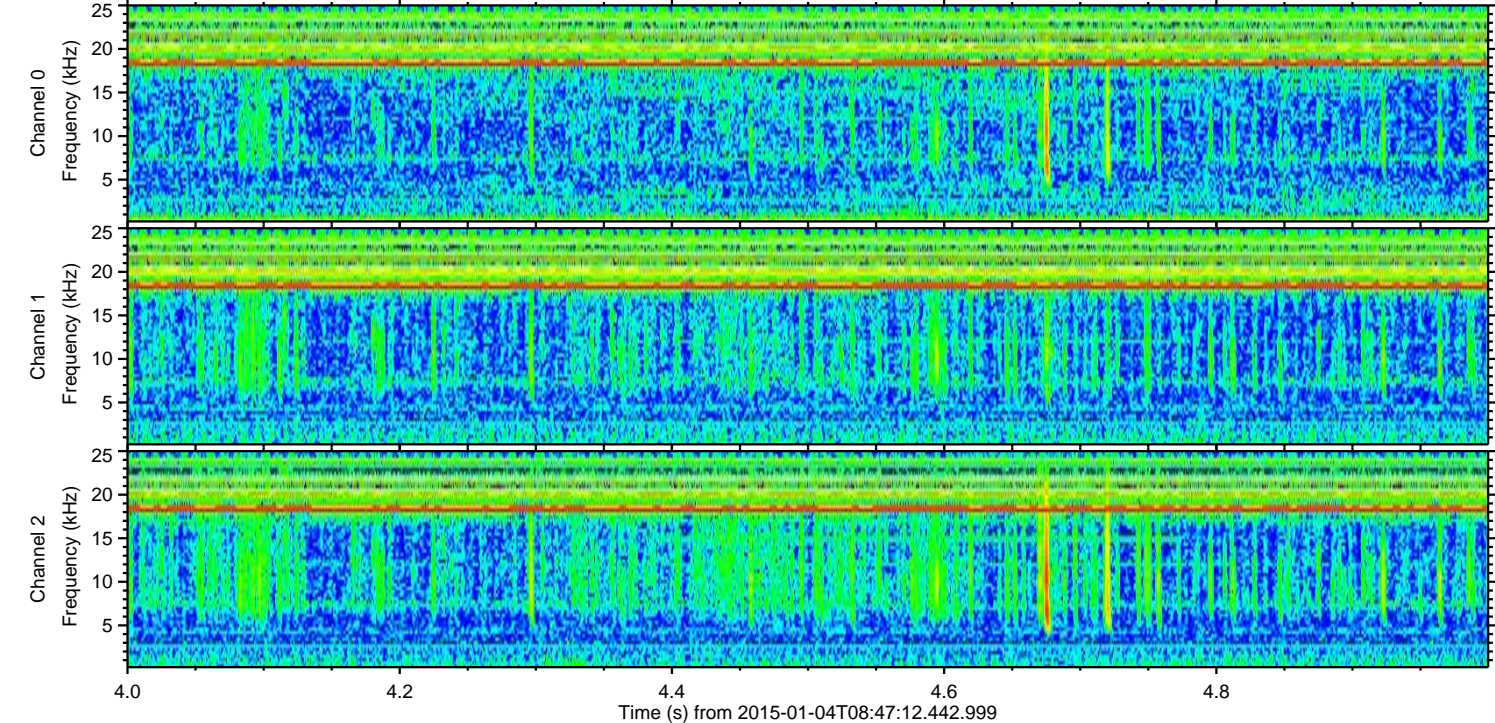
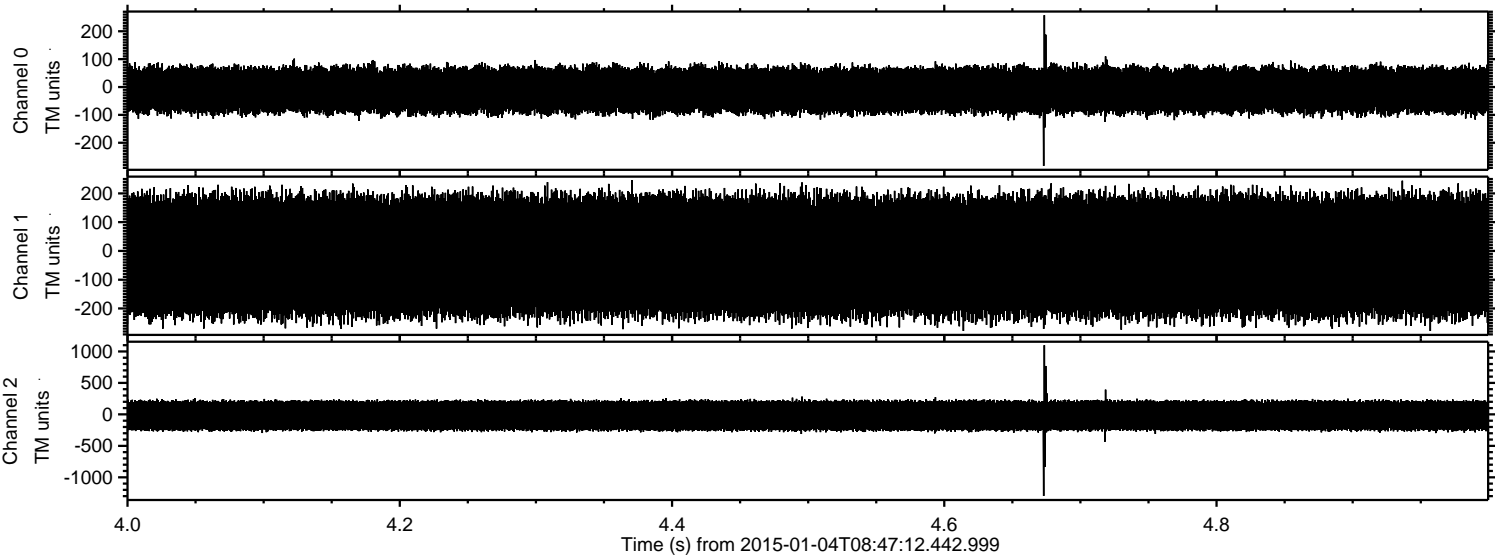


Channel 0
mn: -335
mx: 353
 μ : -11.3
 σ : 45.2

Channel 1
mn: -1317
mx: 1495
 μ : -17.7
 σ : 119.0

Channel 2
mn: -1192
mx: 1282
 μ : -19.0
 σ : 136.9

Processed Sun Jan 4 09:55:13 2015 by ELM ver.2012-10-06 from 001__elm20150104_084711__dat00.bin

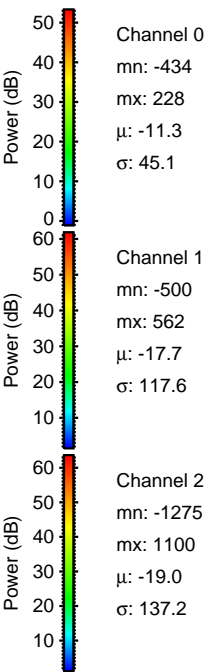
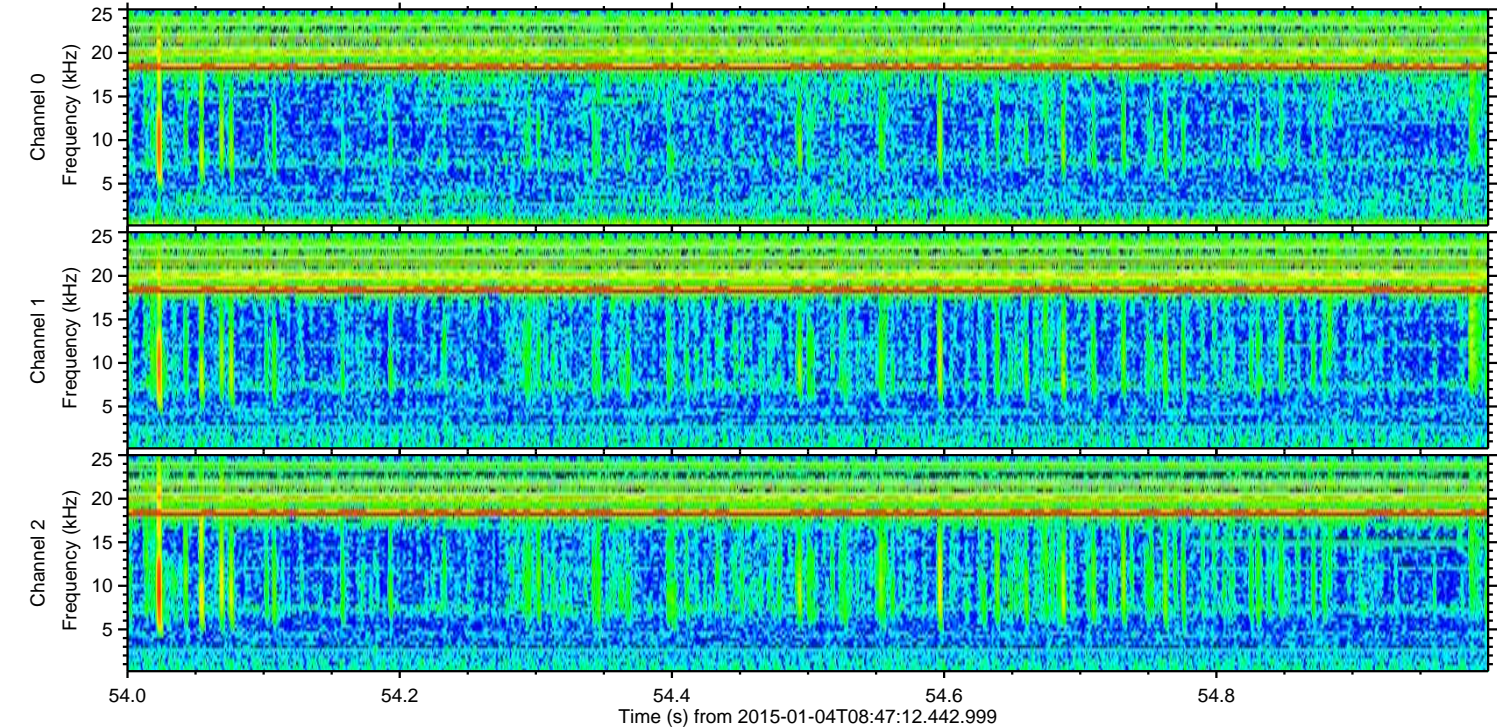
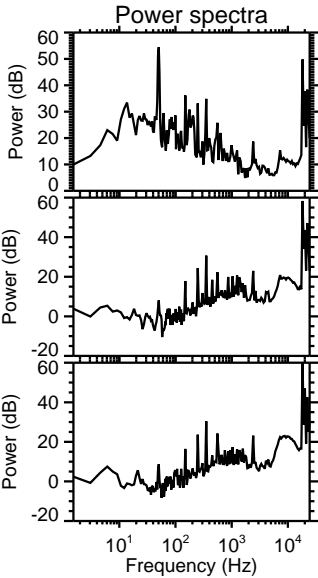
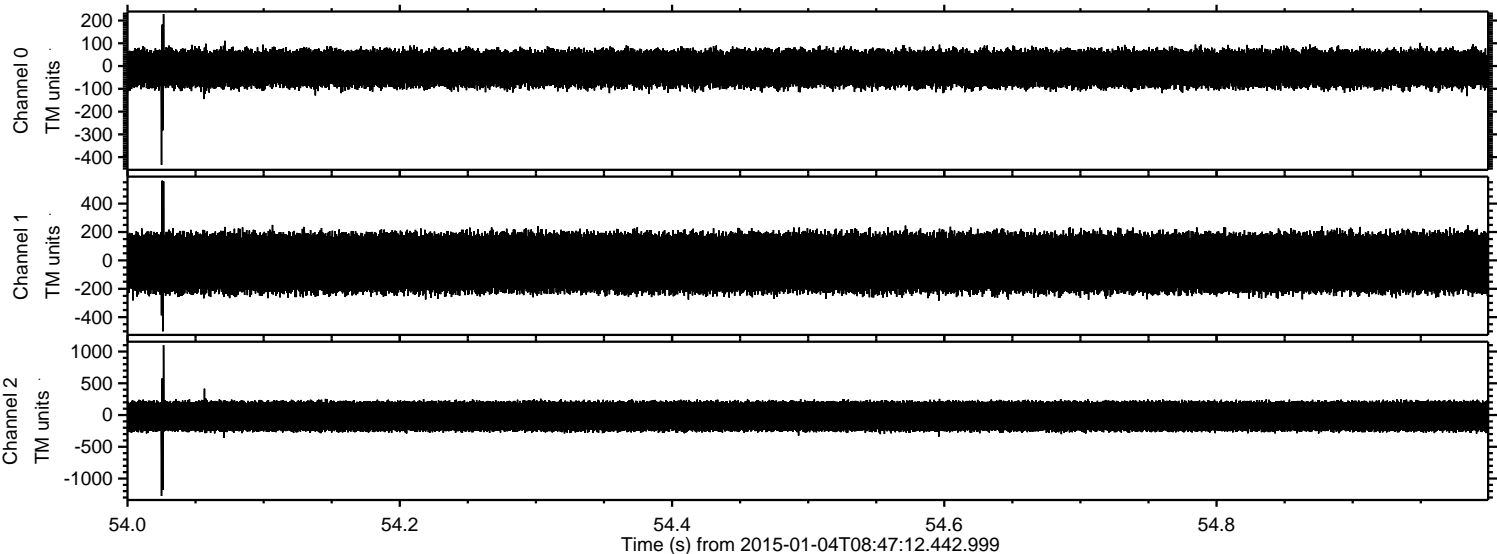


Channel 0
mn: -283
mx: 258
 μ : -11.3
 σ : 44.9

Channel 1
mn: -278
mx: 246
 μ : -17.7
 σ : 117.5

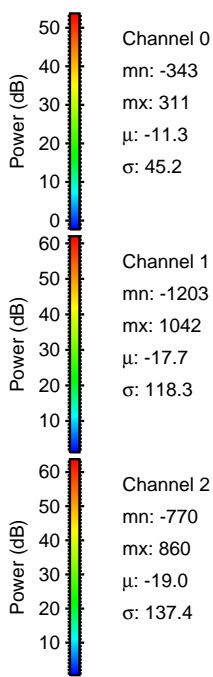
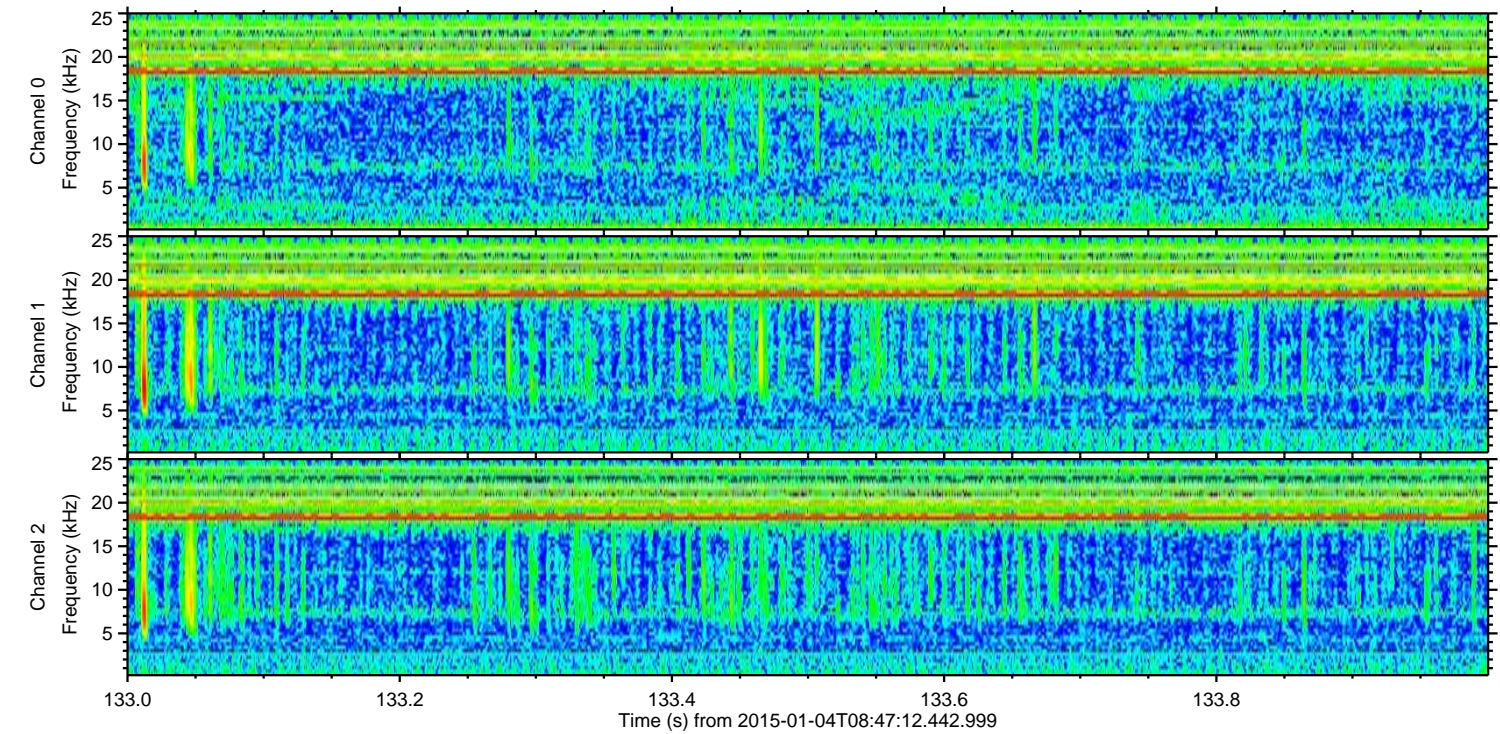
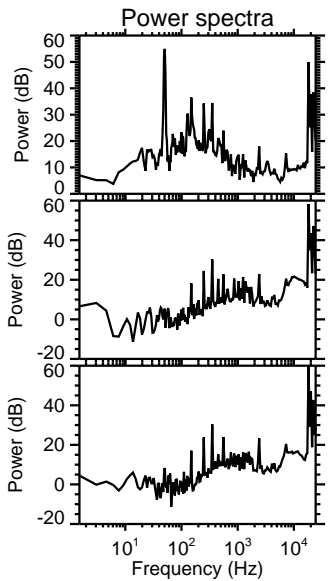
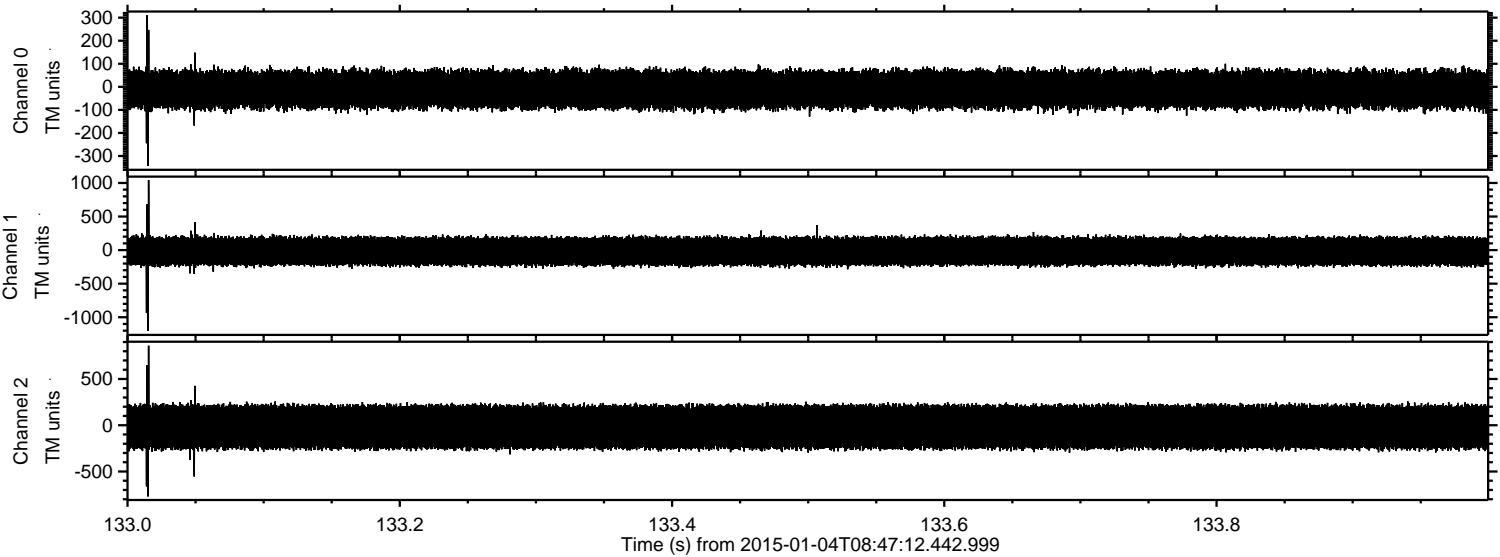
Channel 2
mn: -1296
mx: 1100
 μ : -19.0
 σ : 136.7

Processed Sun Jan 4 09:55:14 2015 by ELM ver.2012-10-06 from 001__elm20150104_084711__dat00.bin



ELMAVAN 3D WAVEFORMS (Measured data sampled at 50 kHz) 49786 packets of 144 samples from 2015-01-04T08:47:12.442.999. Part 134/144

Processed Sun Jan 4 09:55:15 2015 by ELM ver.2012-10-06 from 001__elm20150104_084711__dat00.bin



ELMAVAN 3D WAVEFORMS (Measured data sampled at 50 kHz) 49786 packets of 144 samples from 2015-01-04T08:47:12.442.999. Part 140/144

Processed Sun Jan 4 09:55:16 2015 by ELM ver.2012-10-06 from 001__elm20150104_084711__dat00.bin

