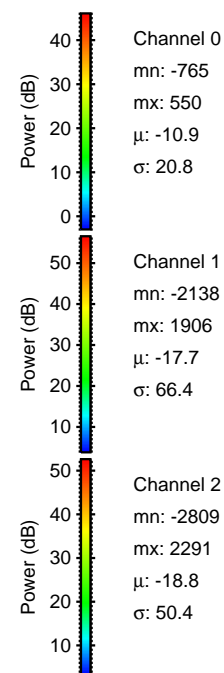
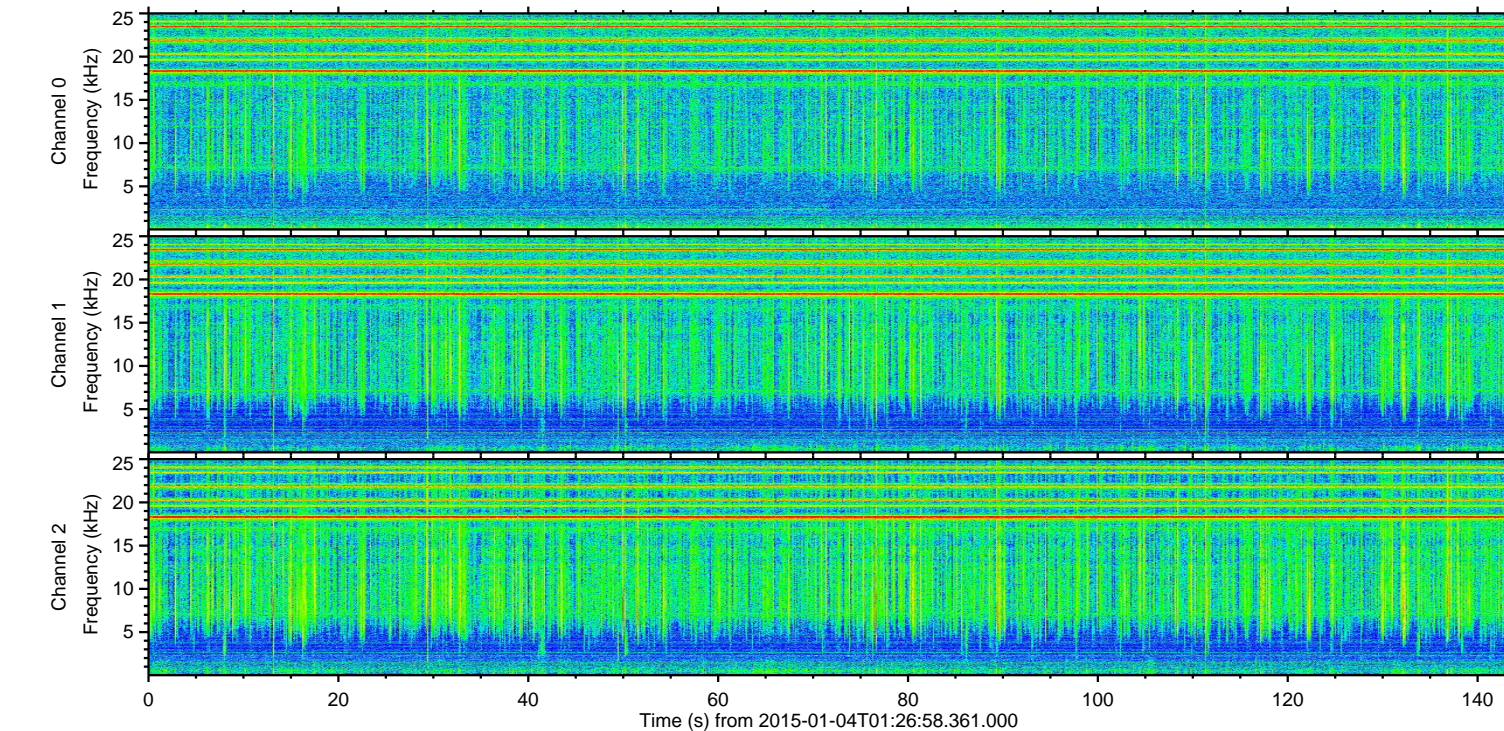
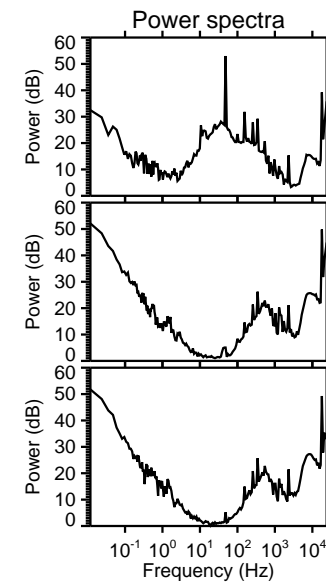
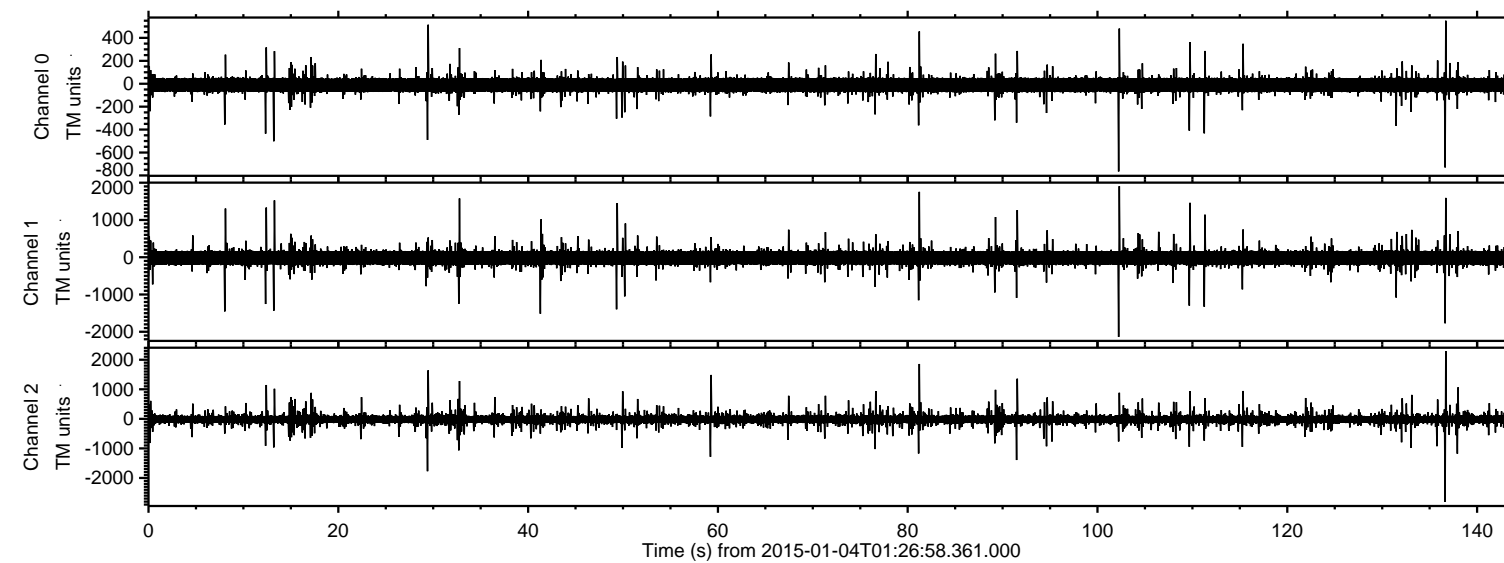


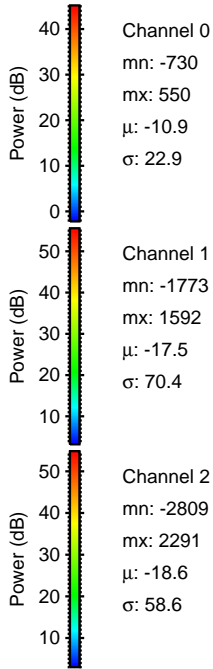
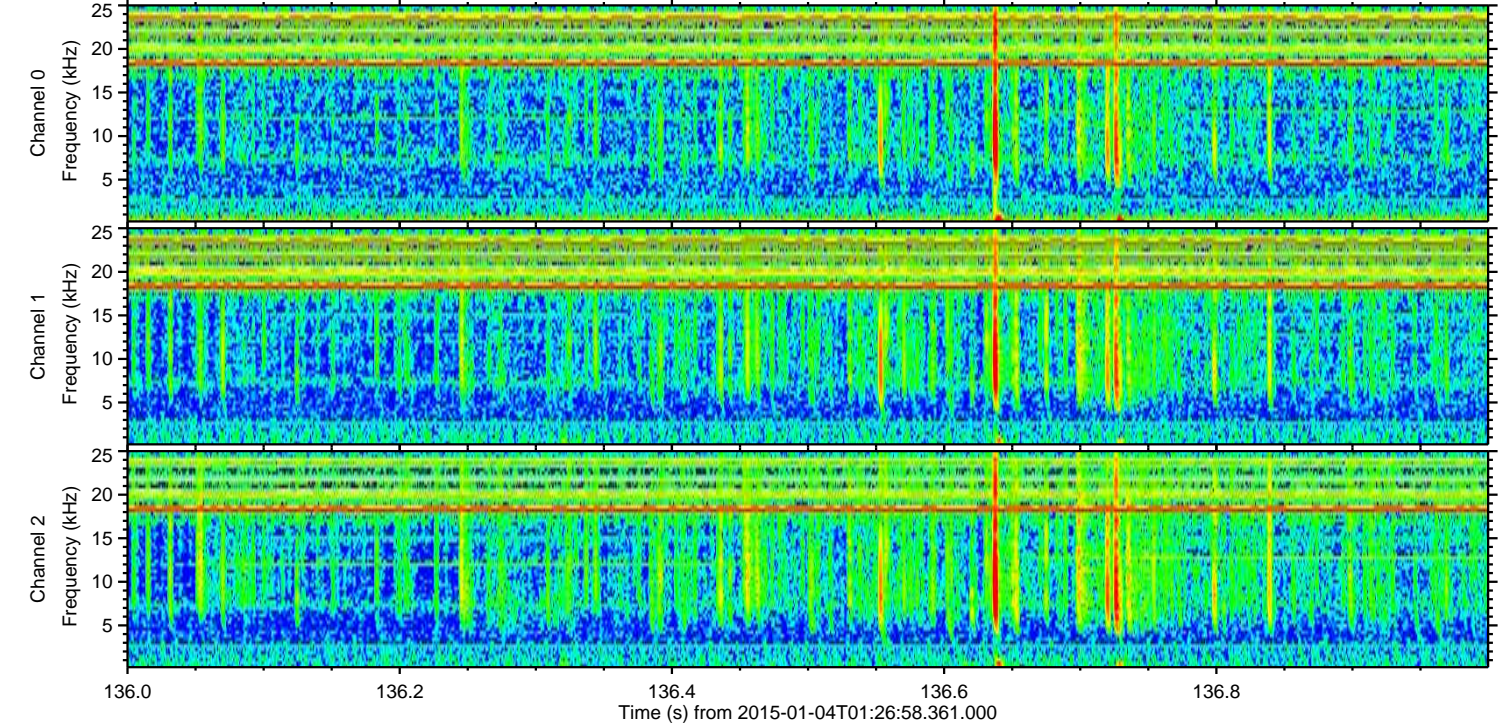
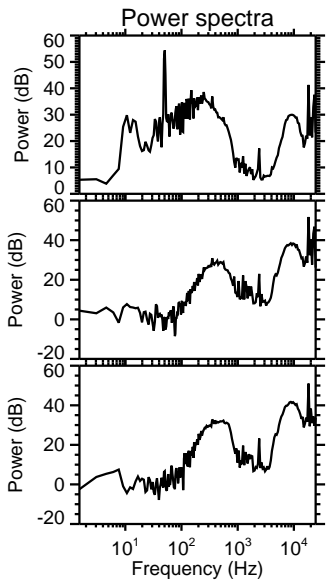
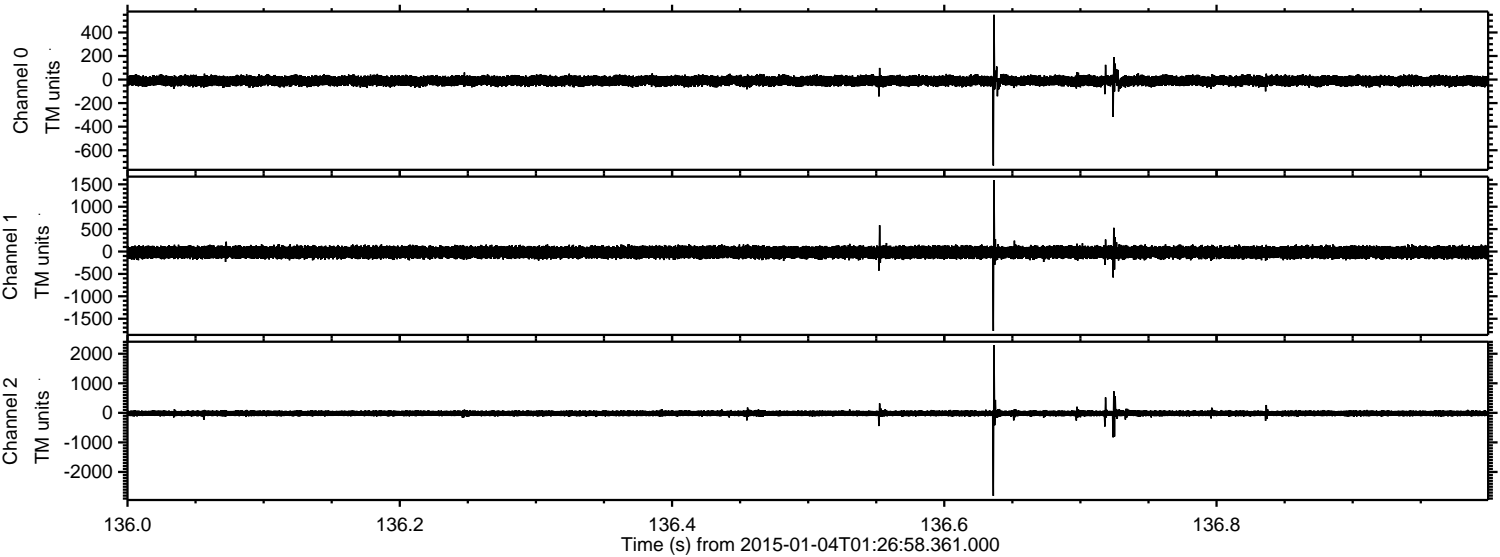
ELMAVAN 3D WAVEFORMS (Measured data sampled at 50 kHz) 49784 packets of 144 samples from 2015-01-04T01:26:58.361.000.

Processed Sun Jan 4 02:34:39 2015 by ELM ver.2012-10-06 from 001__elm20150104_012657__dat00.bin



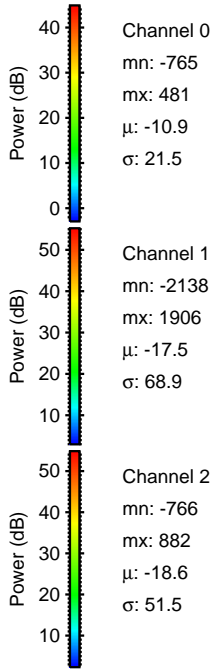
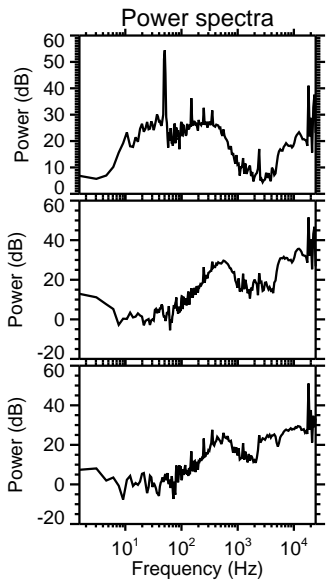
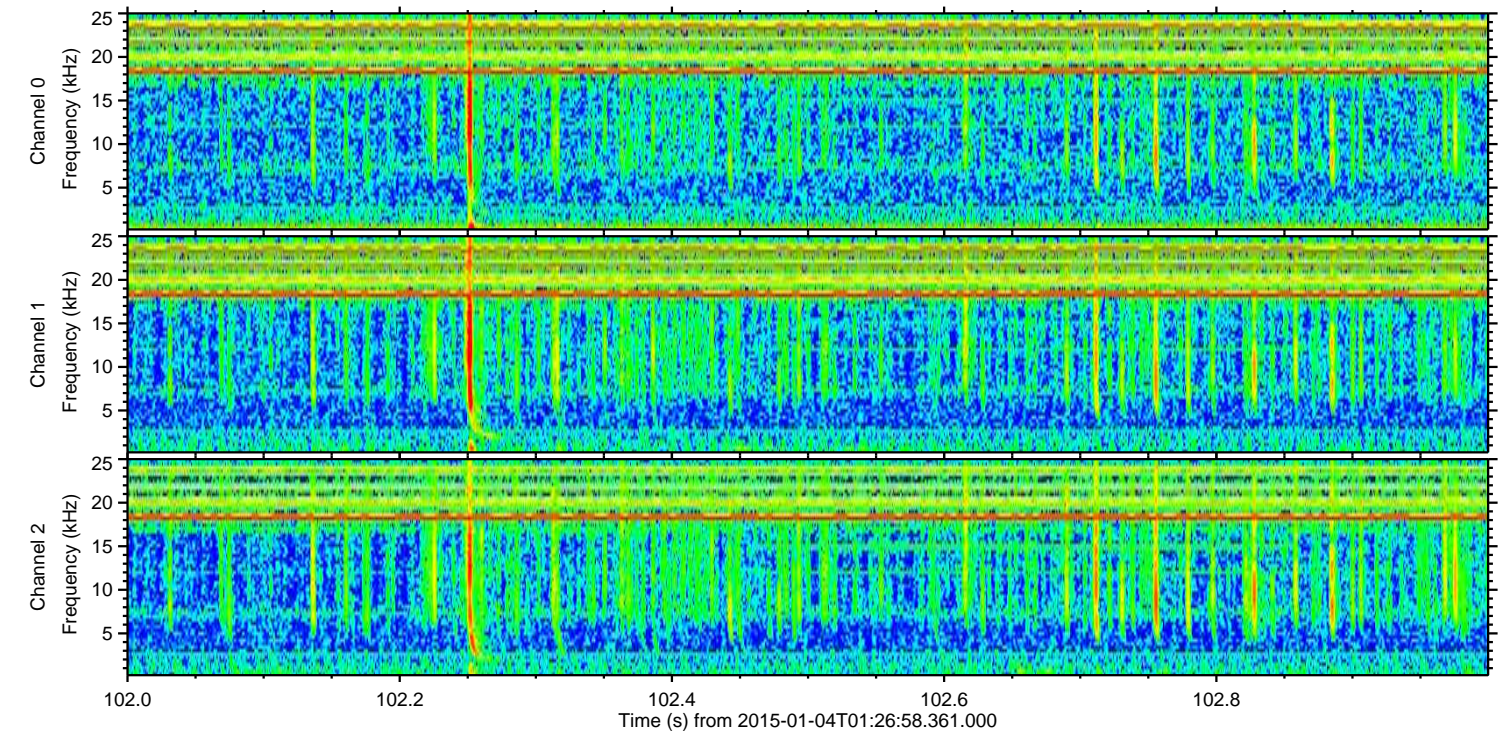
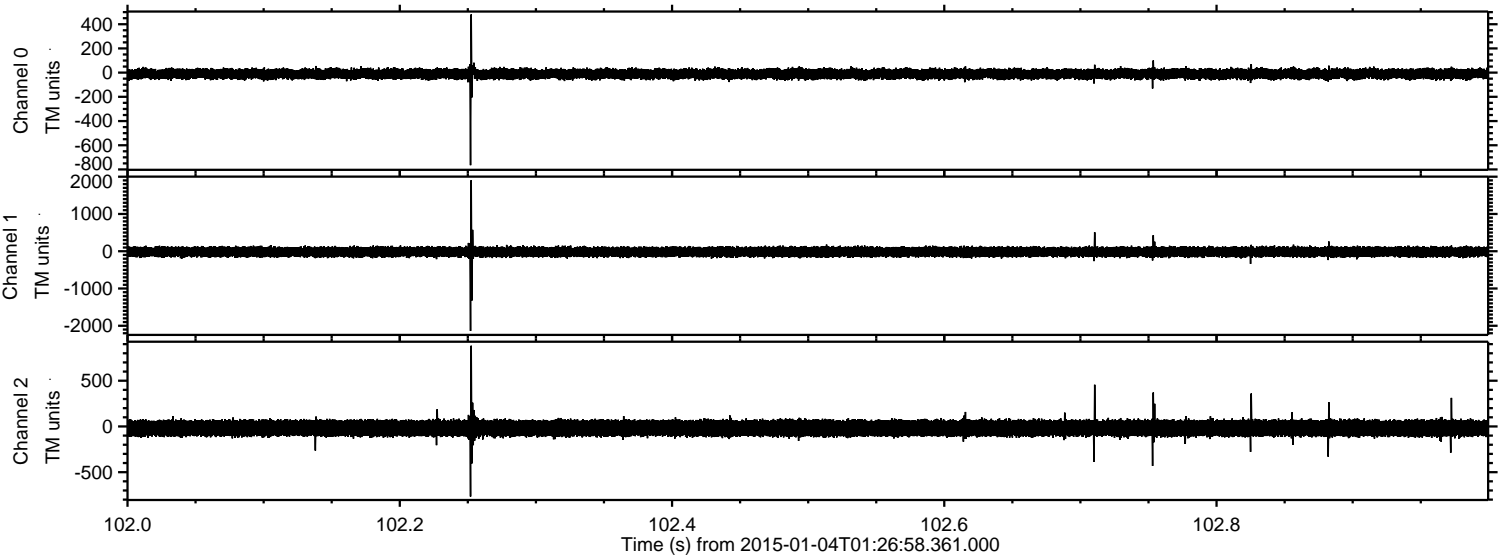
ELMAVAN 3D WAVEFORMS (Measured data sampled at 50 kHz) 49784 packets of 144 samples from 2015-01-04T01:26:58.361.000. Part 137/144

Processed Sun Jan 4 02:34:51 2015 by ELM ver.2012-10-06 from 001__elm20150104_012657__dat00.bin

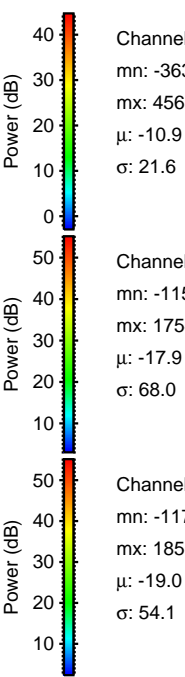
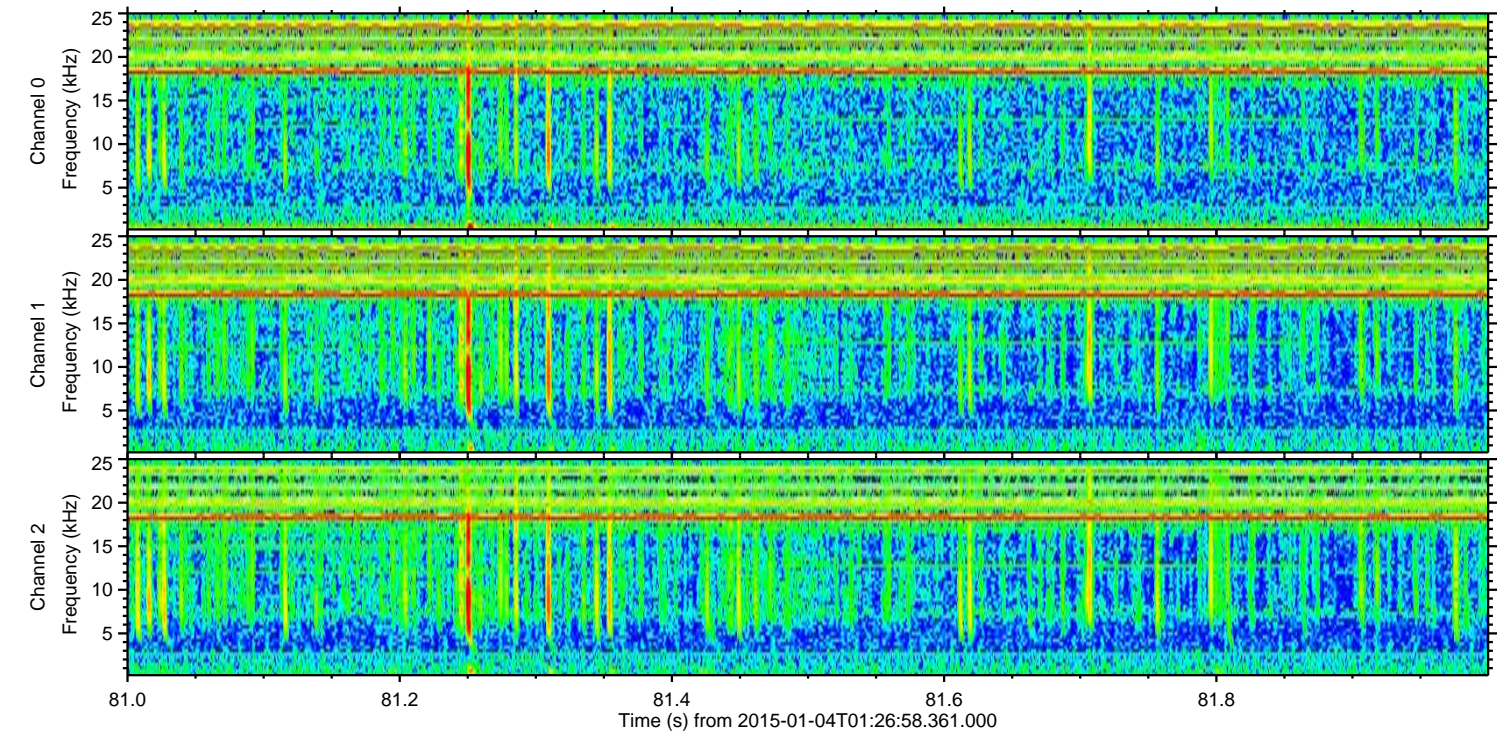
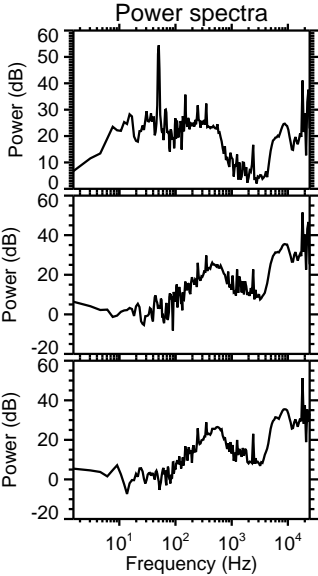
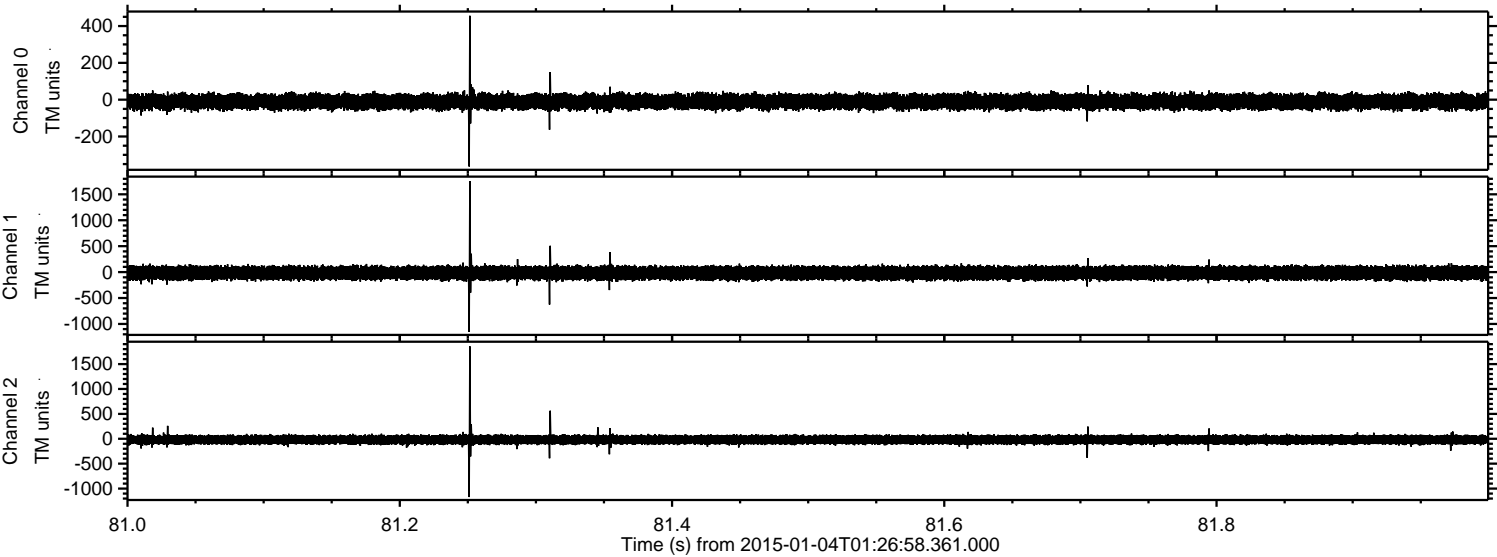


ELMAVAN 3D WAVEFORMS (Measured data sampled at 50 kHz) 49784 packets of 144 samples from 2015-01-04T01:26:58.361.000. Part 103/144

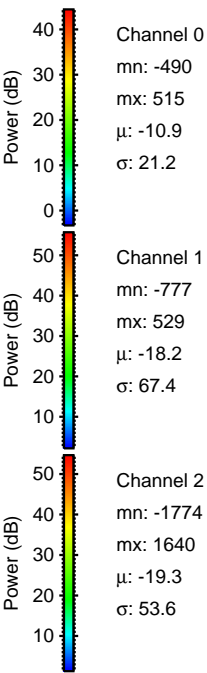
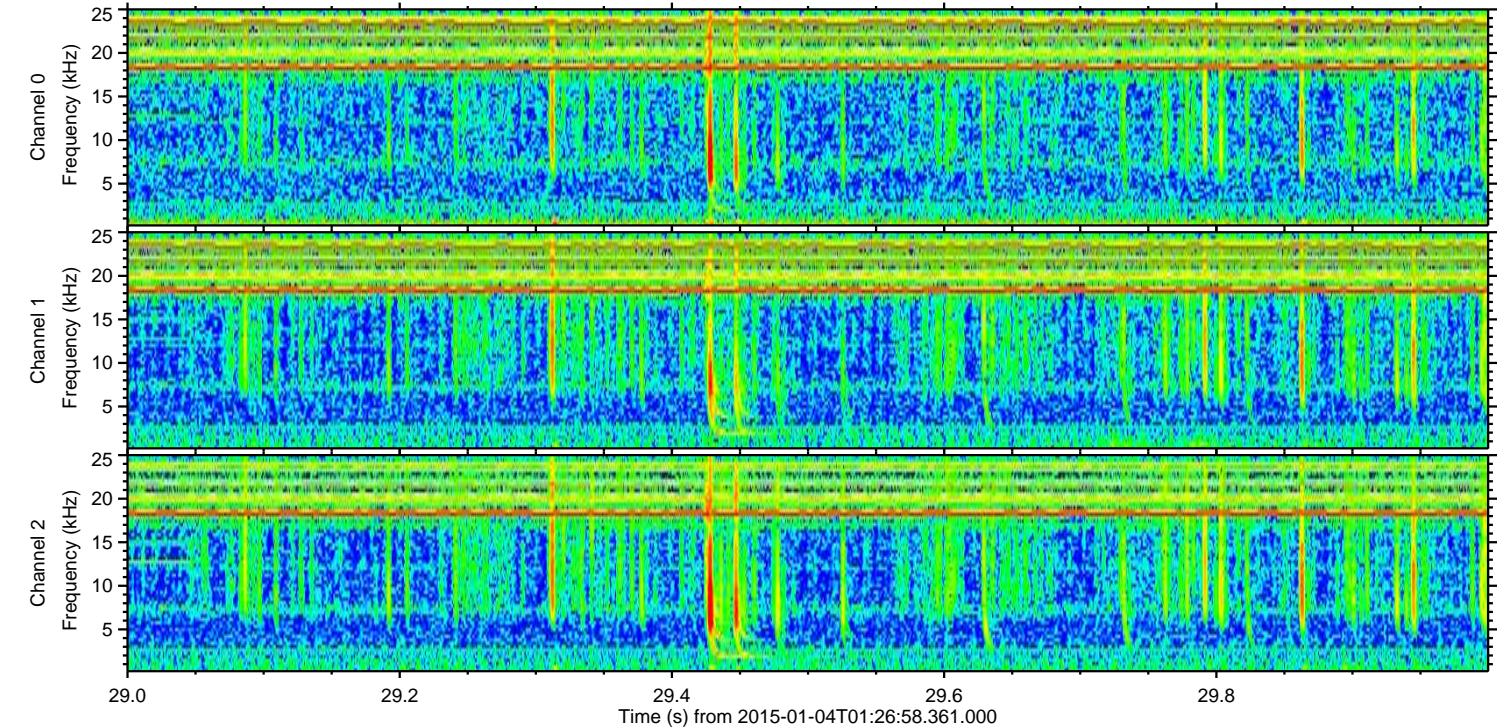
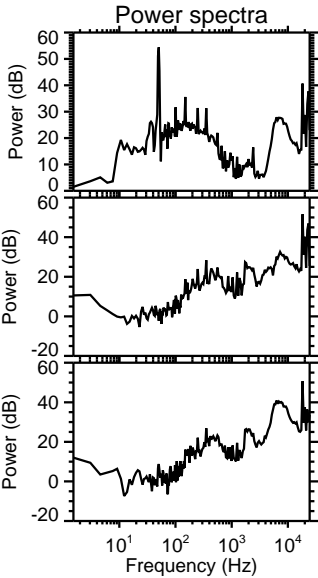
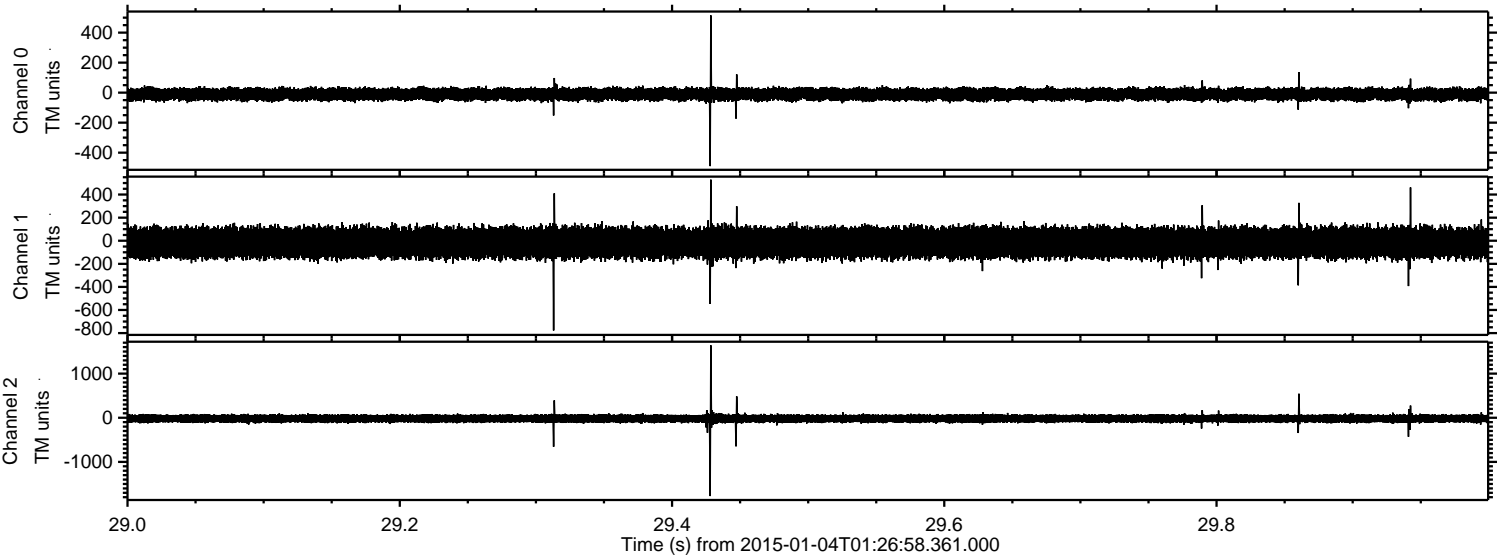
Processed Sun Jan 4 02:34:52 2015 by ELM ver.2012-10-06 from 001__elm20150104_012657__dat00.bin



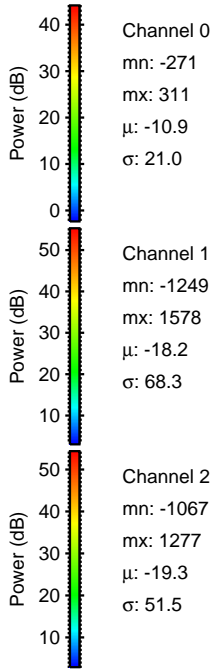
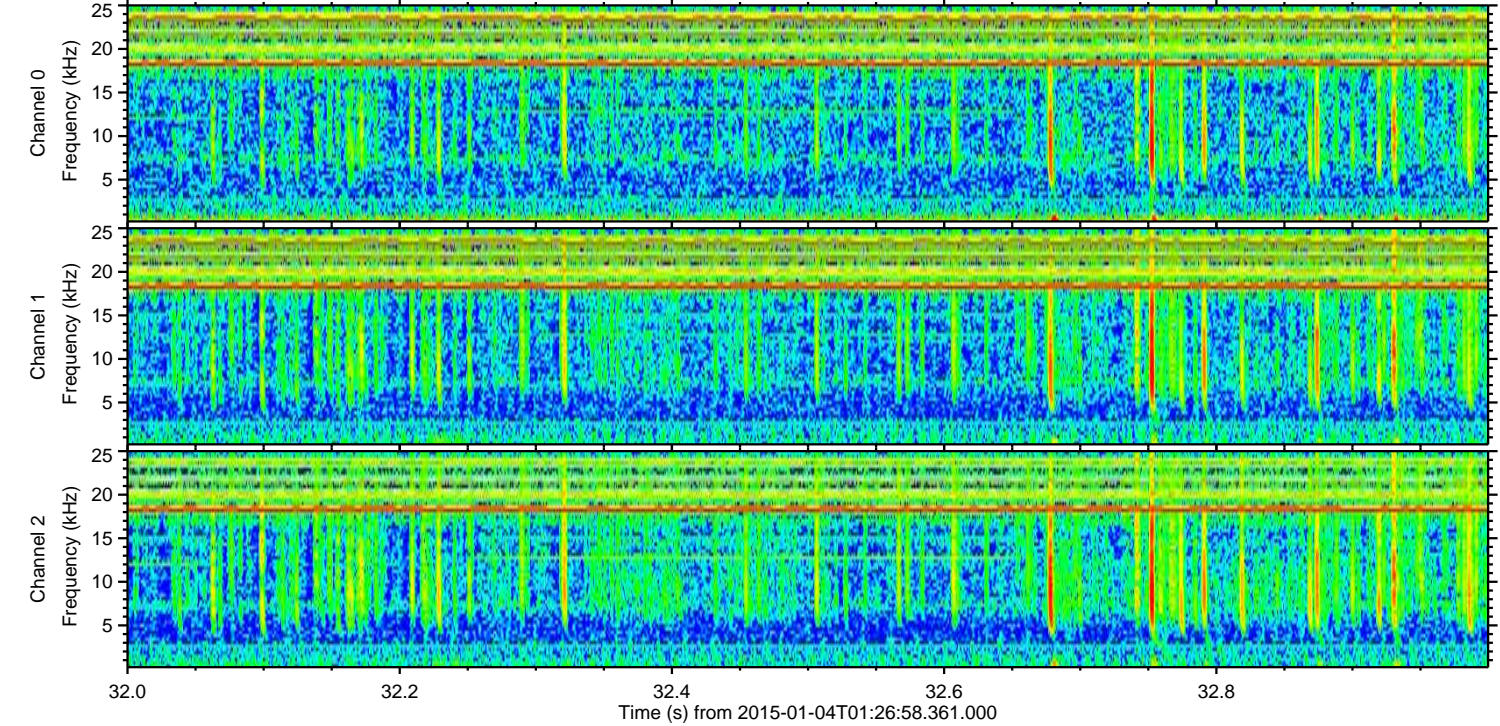
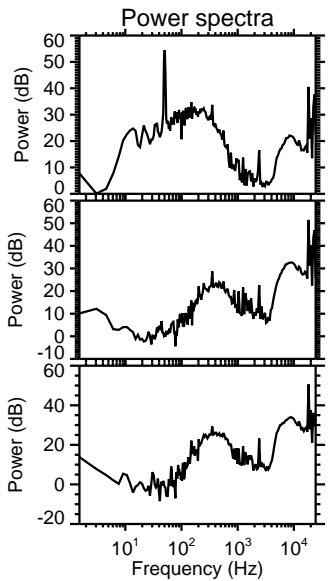
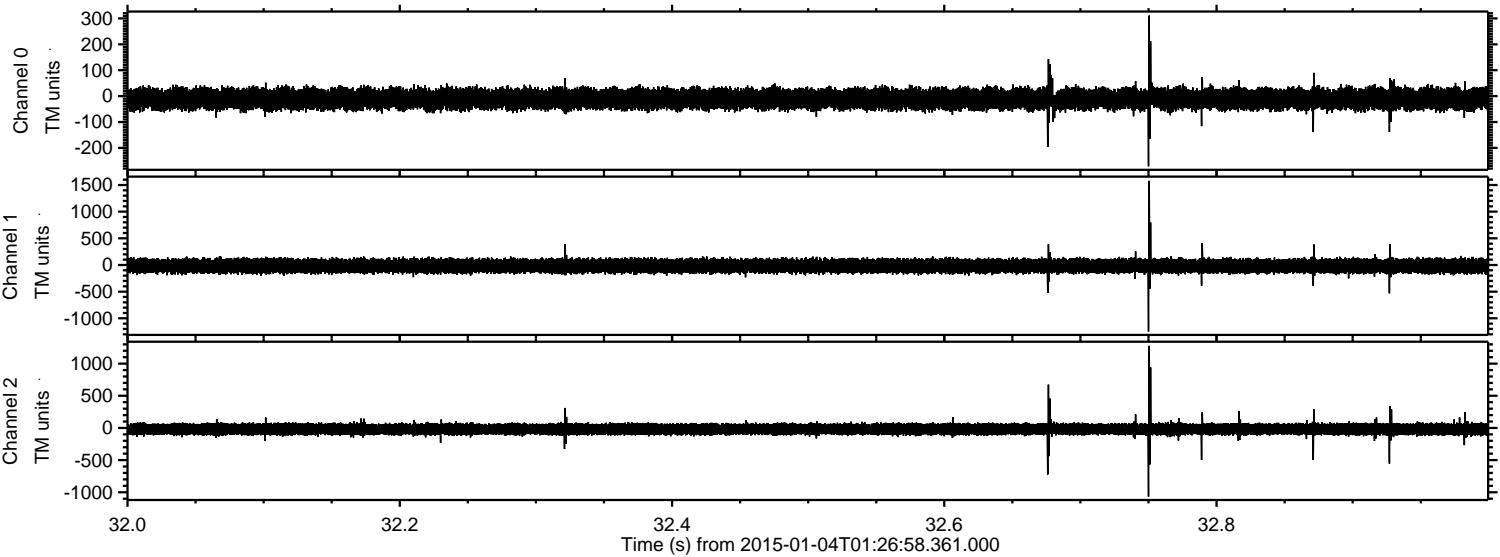
Processed Sun Jan 4 02:34:53 2015 by ELM ver.2012-10-06 from 001__elm20150104_012657__dat00.bin



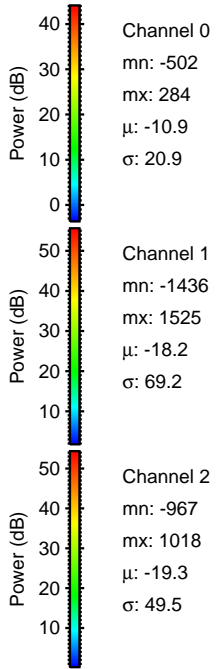
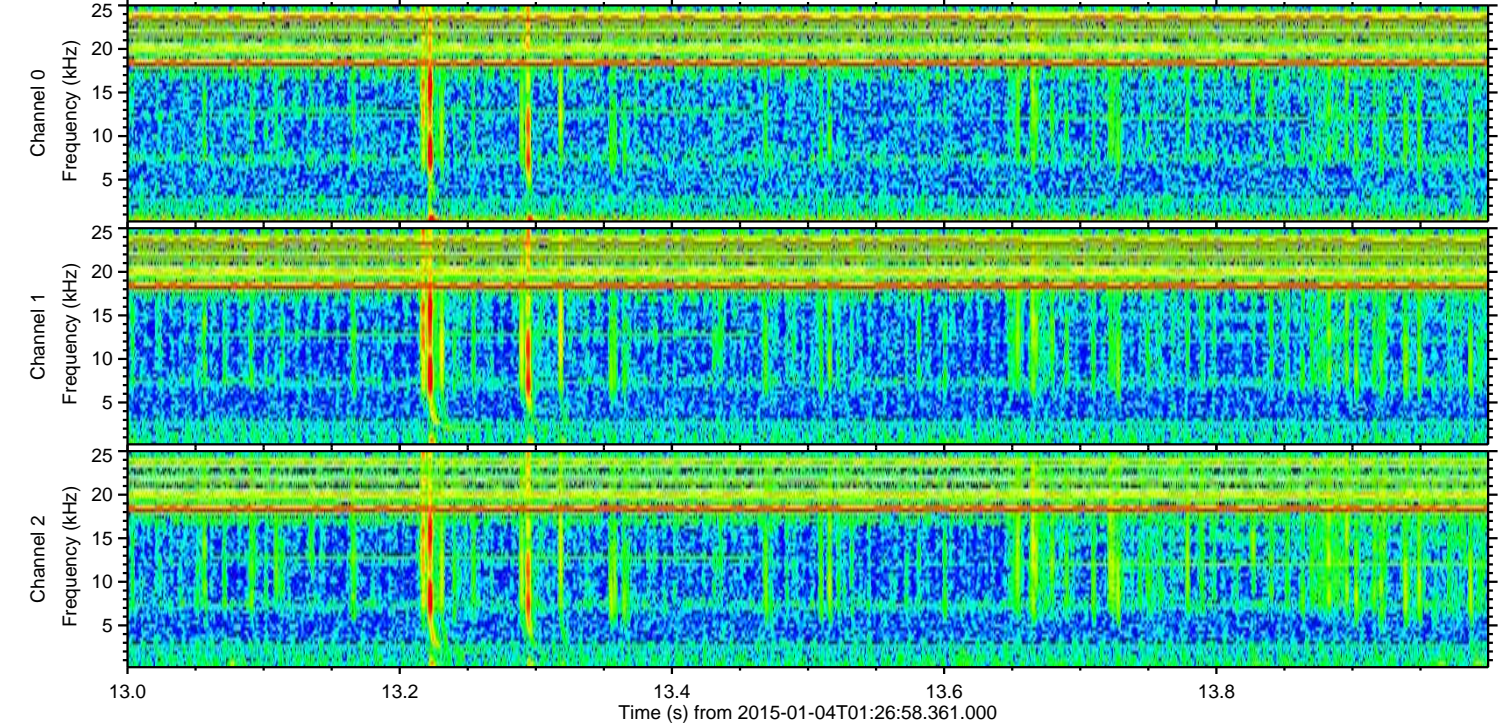
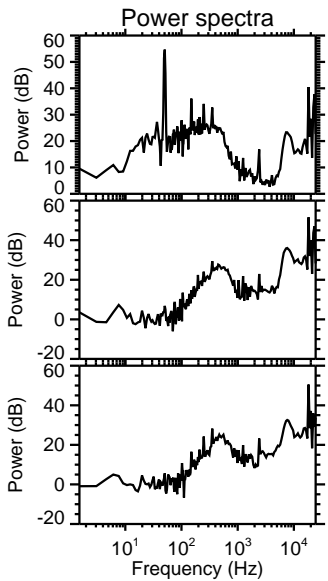
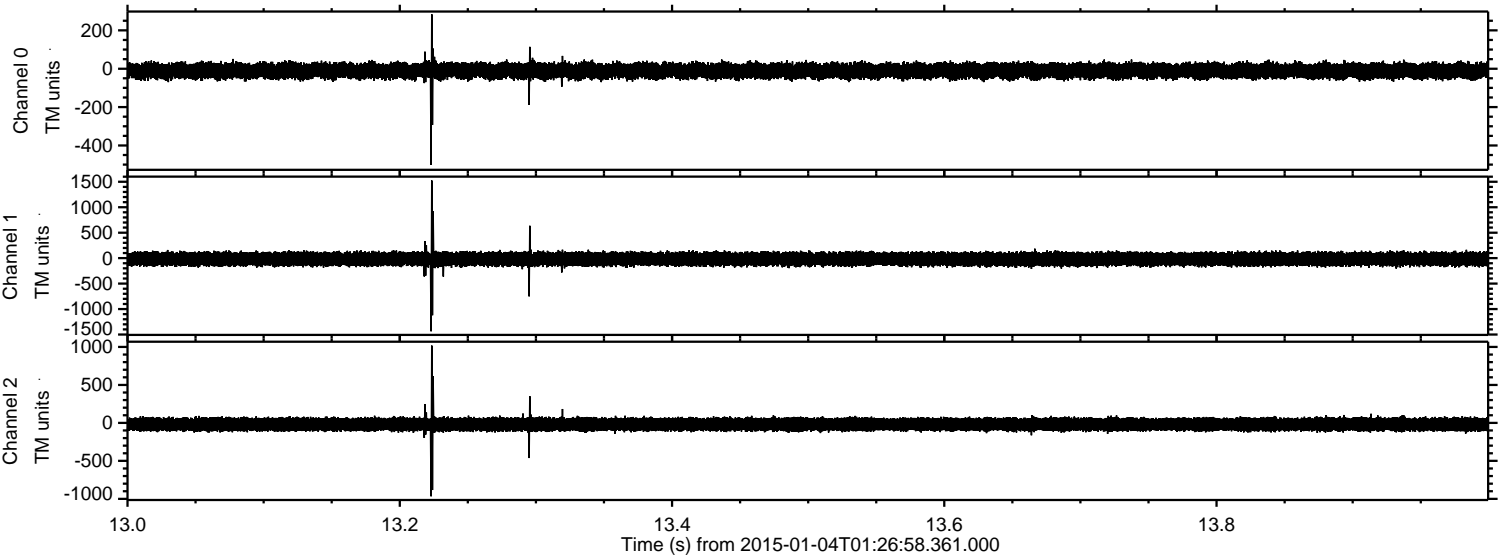
Processed Sun Jan 4 02:34:54 2015 by ELM ver.2012-10-06 from 001__elm20150104_012657__dat00.bin



Processed Sun Jan 4 02:34:55 2015 by ELM ver.2012-10-06 from 001__elm20150104_012657__dat00.bin

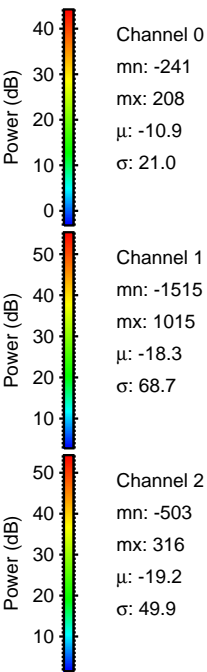
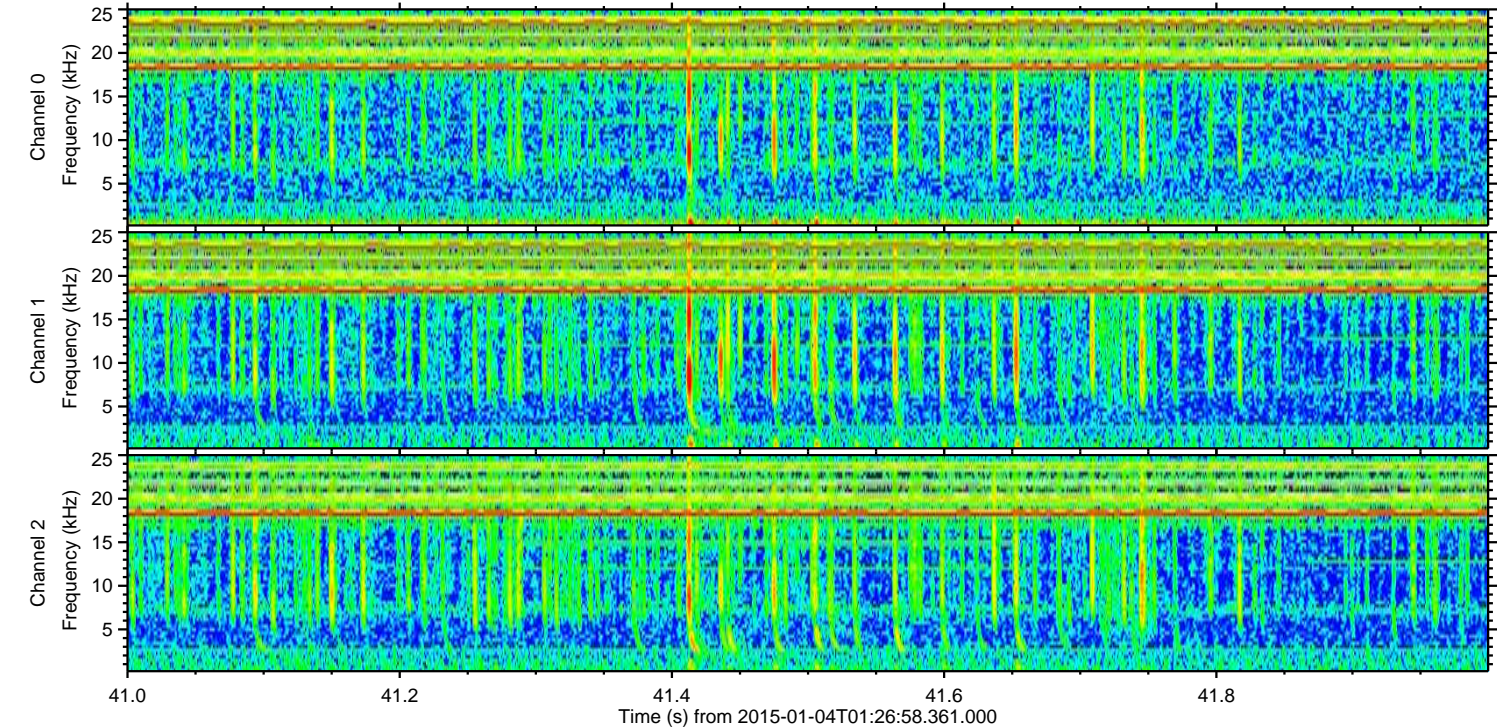
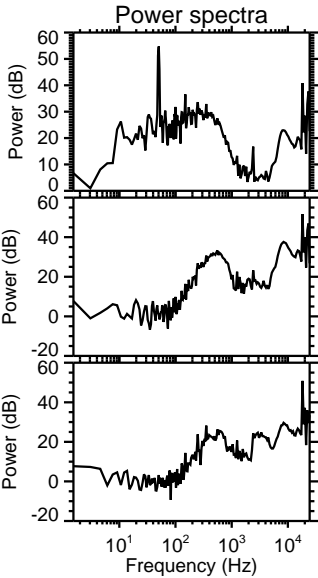
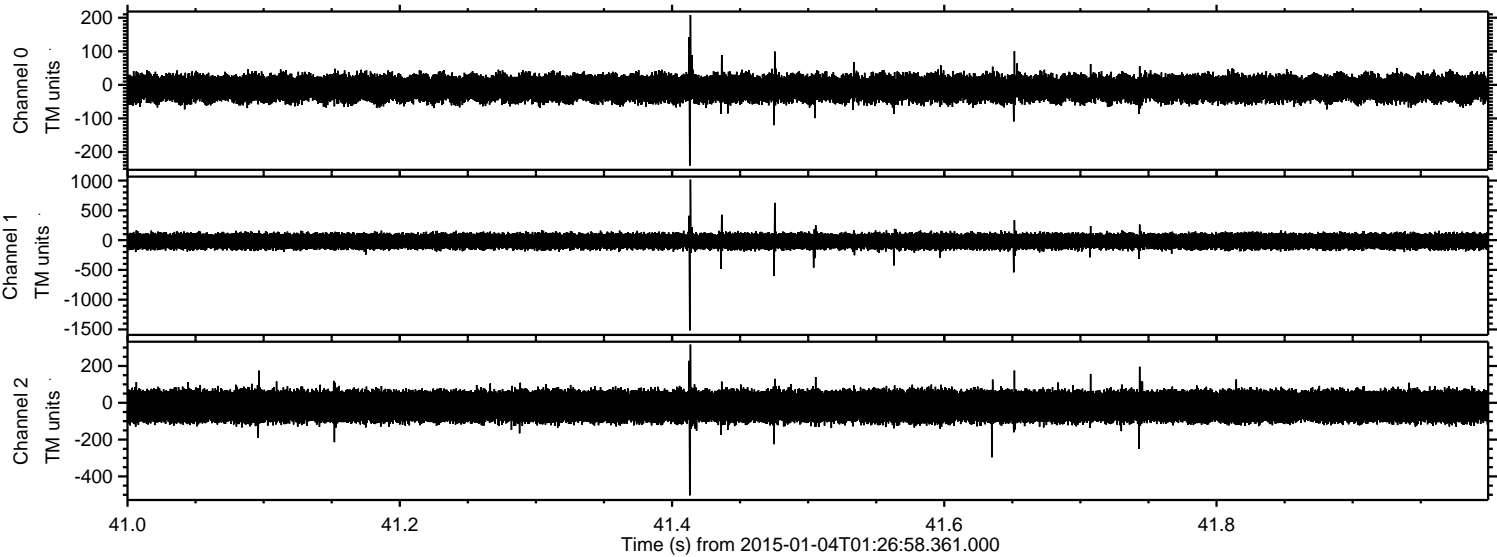


Processed Sun Jan 4 02:34:56 2015 by ELM ver.2012-10-06 from 001__elm20150104_012657__dat00.bin

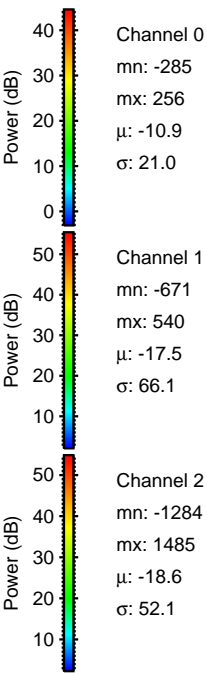
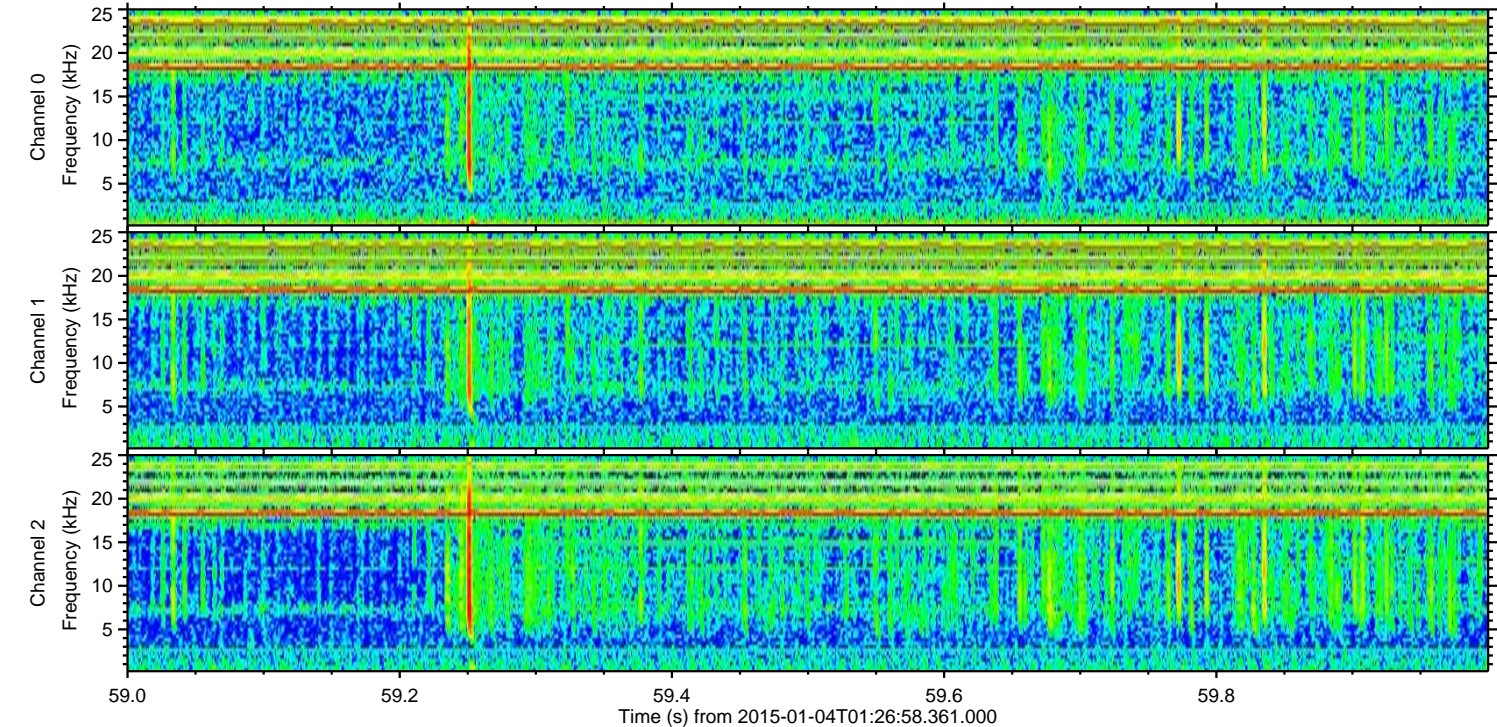
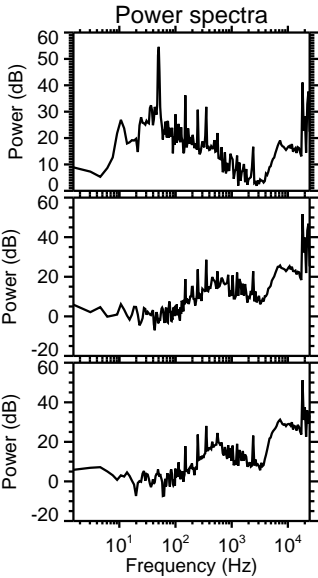
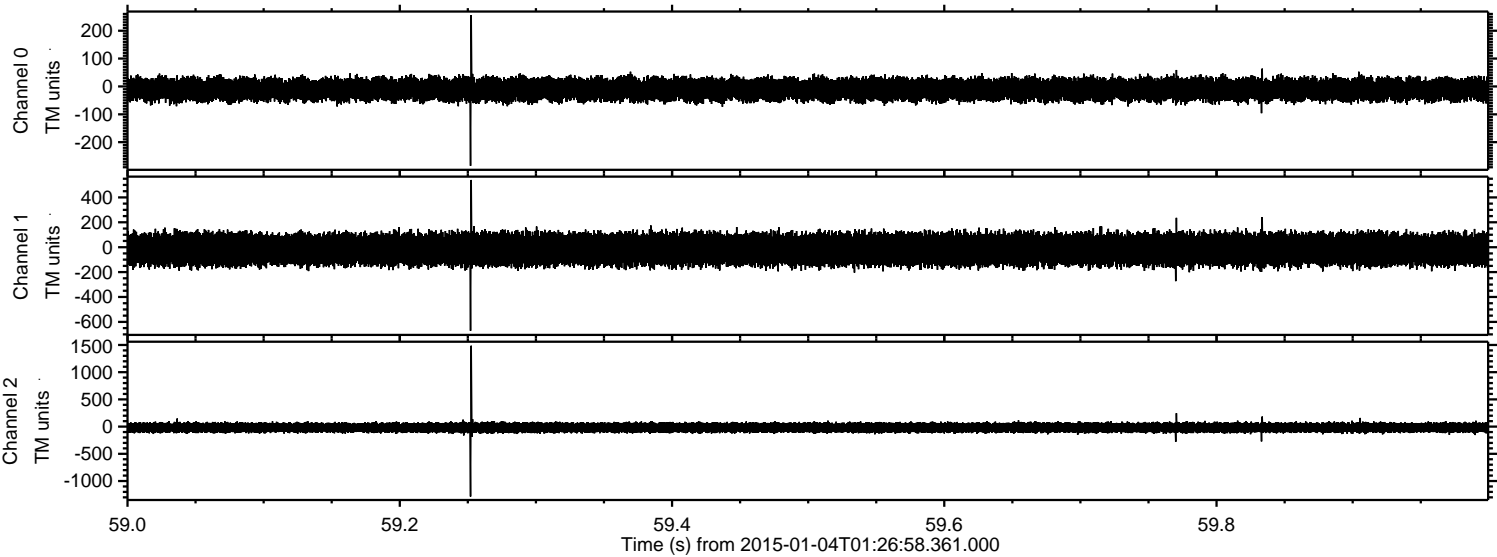


ELMAVAN 3D WAVEFORMS (Measured data sampled at 50 kHz) 49784 packets of 144 samples from 2015-01-04T01:26:58.361.000. Part 42/144

Processed Sun Jan 4 02:34:57 2015 by ELM ver.2012-10-06 from 001__elm20150104_012657__dat00.bin



Processed Sun Jan 4 02:34:58 2015 by ELM ver.2012-10-06 from 001__elm20150104_012657__dat00.bin

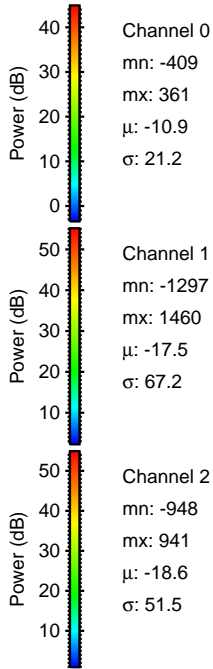
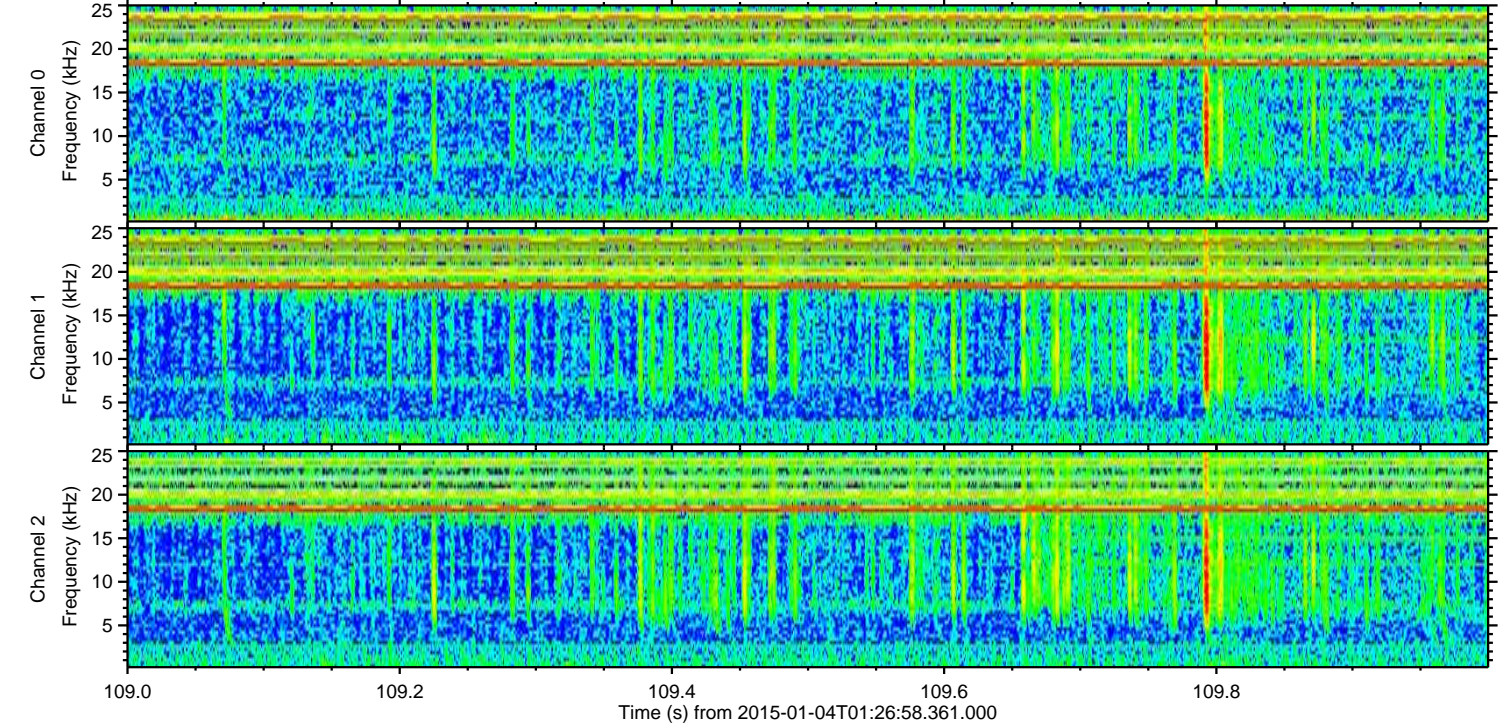
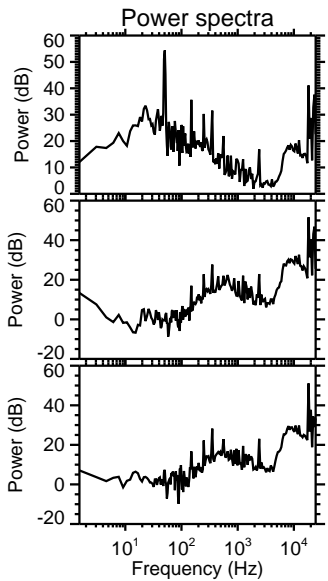
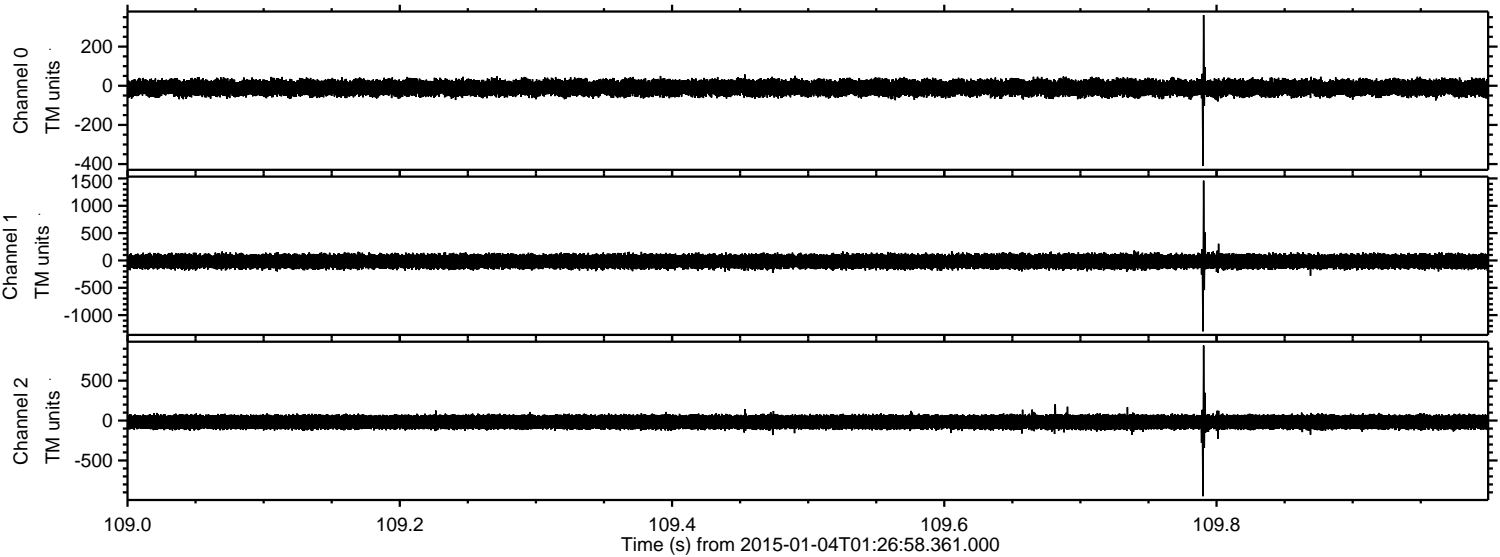


Channel 0
mn: -285
mx: 256
 μ : -10.9
 σ : 21.0

Channel 1
mn: -671
mx: 540
 μ : -17.5
 σ : 66.1

Channel 2
mn: -1284
mx: 1485
 μ : -18.6
 σ : 52.1

Processed Sun Jan 4 02:34:59 2015 by ELM ver.2012-10-06 from 001__elm20150104_012657__dat00.bin



Processed Sun Jan 4 02:35:00 2015 by ELM ver.2012-10-06 from 001__elm20150104_012657__dat00.bin

