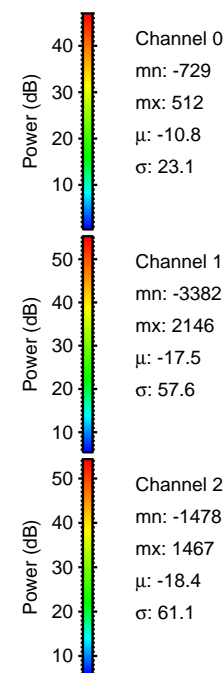
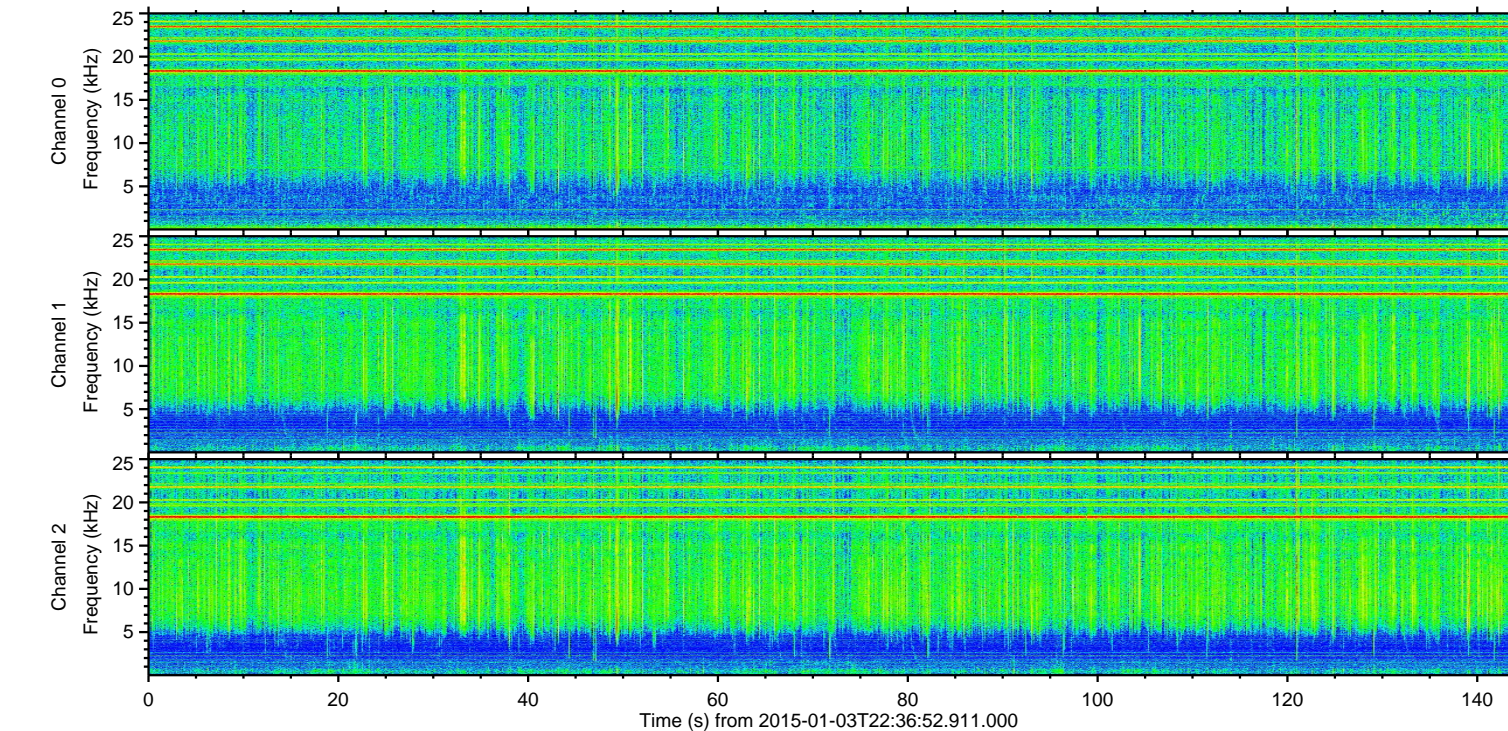
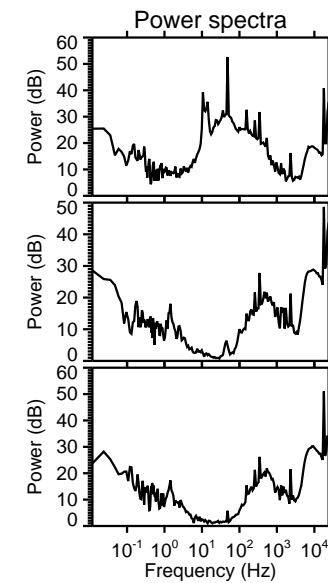
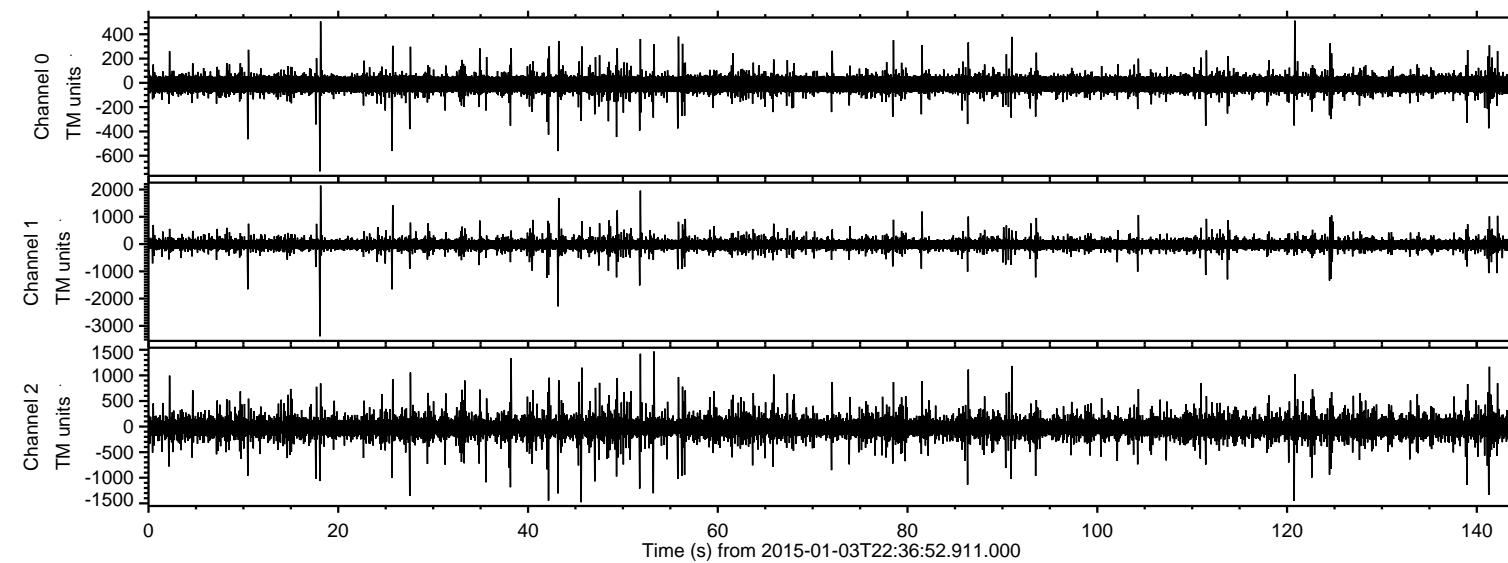
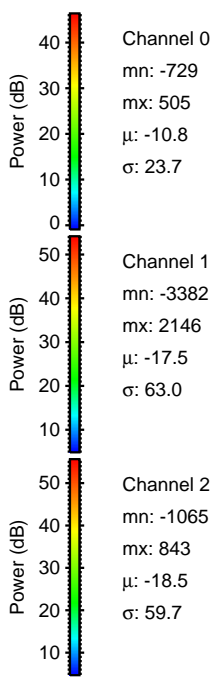
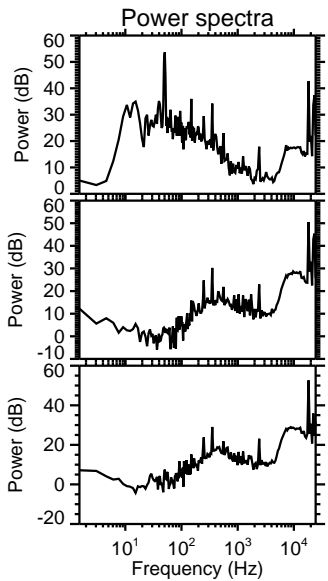
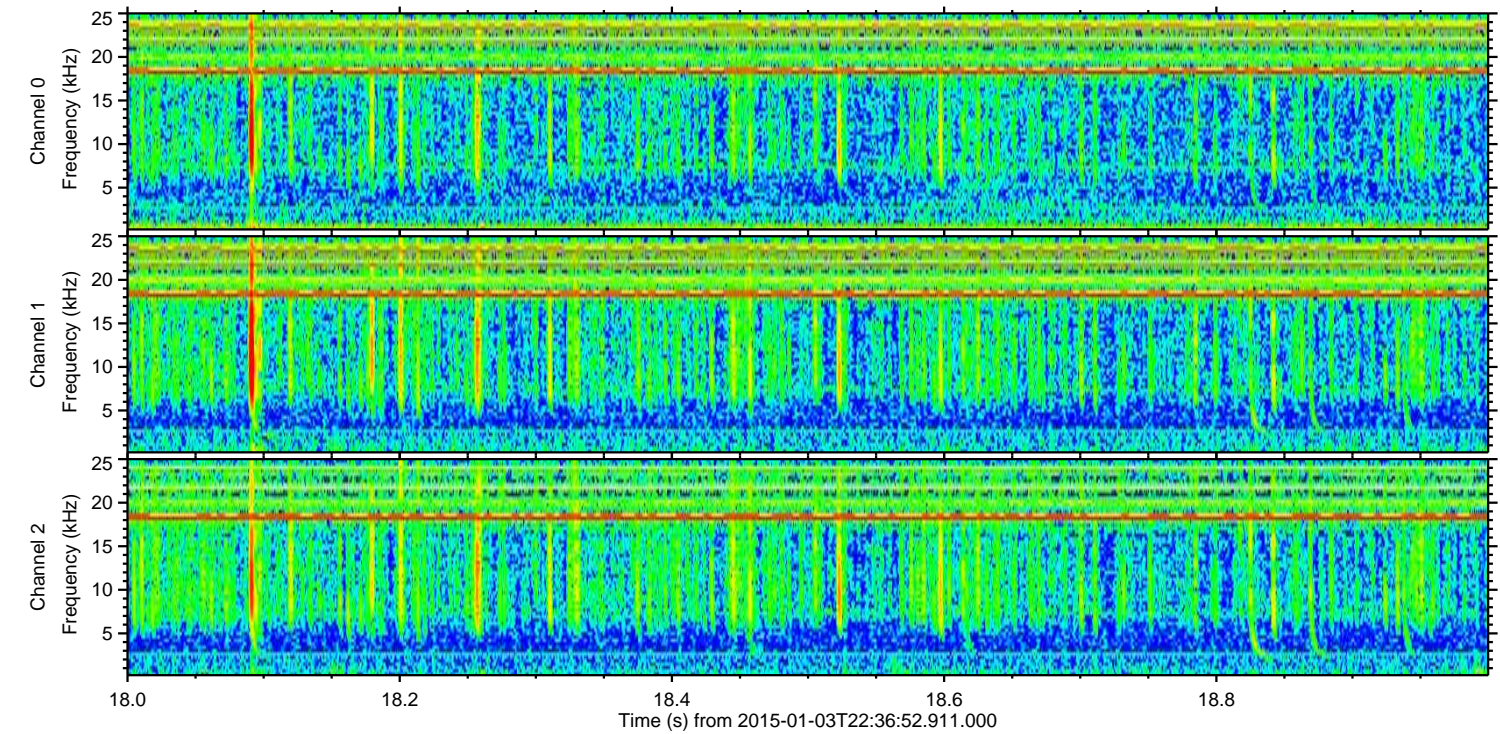
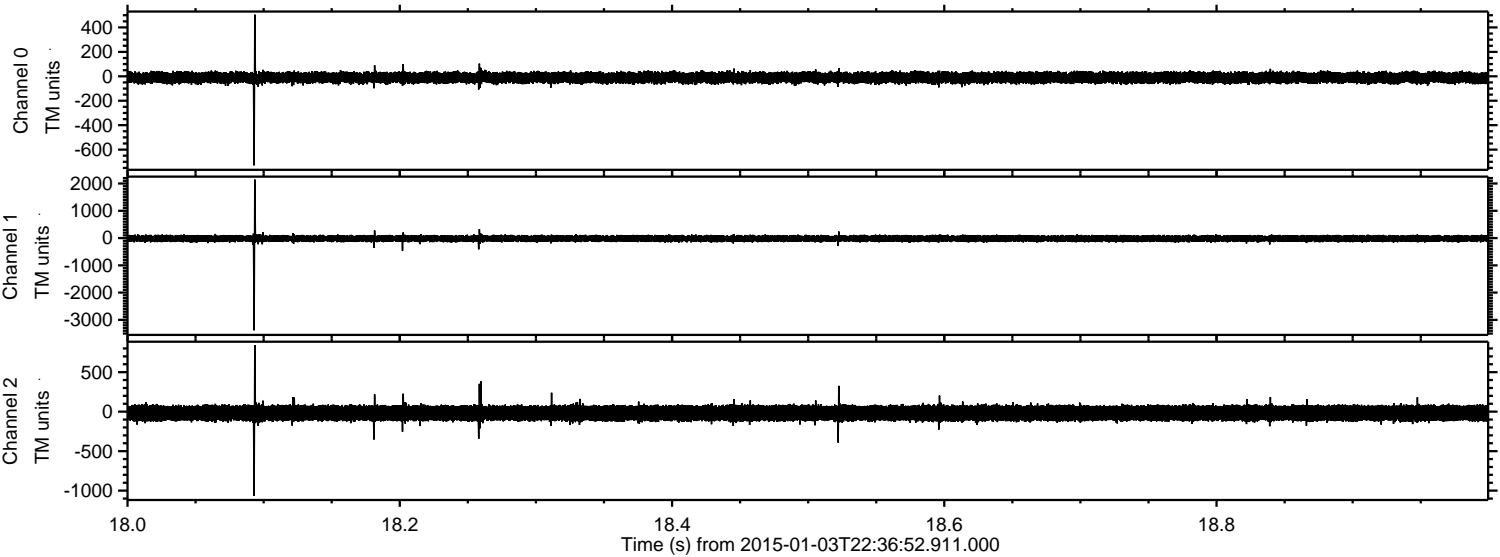


ELMAVAN 3D WAVEFORMS (Measured data sampled at 50 kHz) 49794 packets of 144 samples from 2015-01-03T22:36:52.911.000.

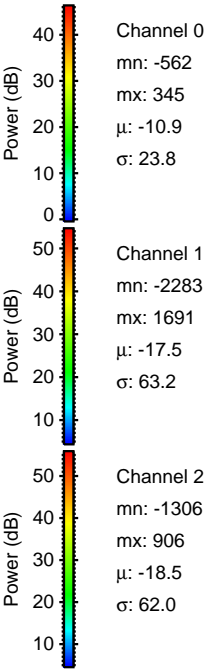
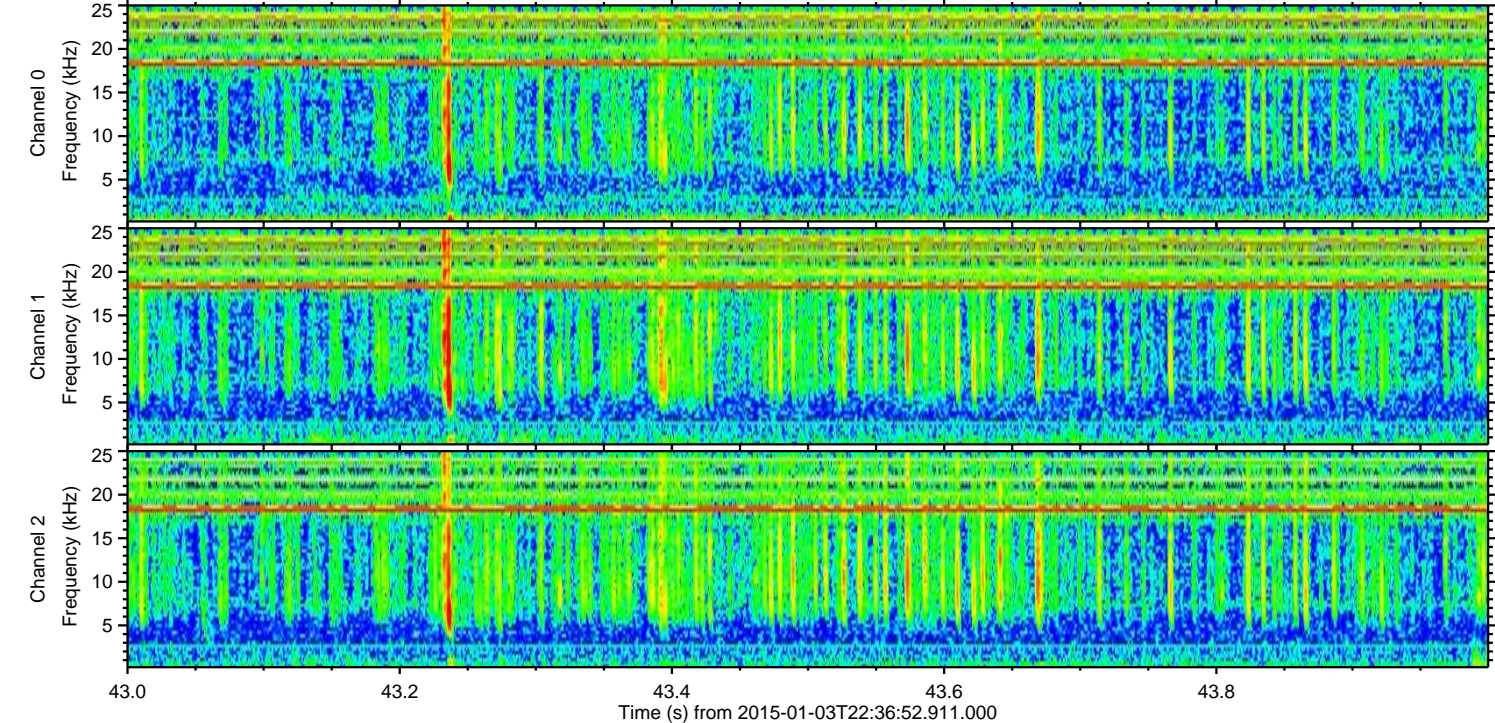
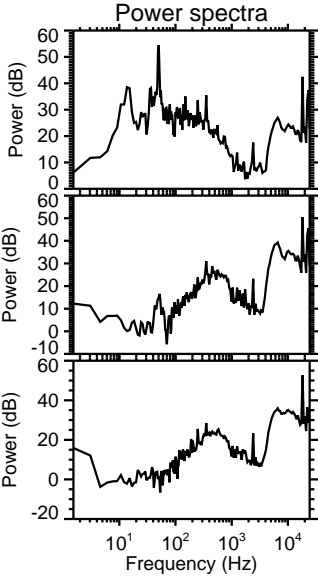
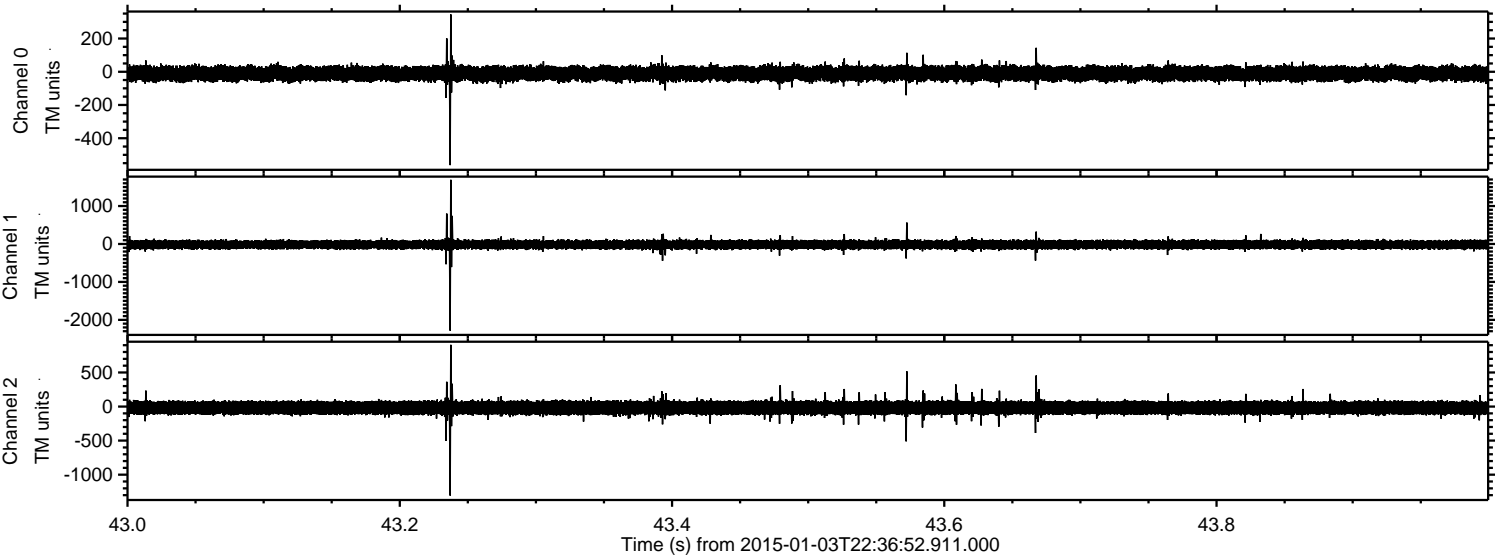
Processed Sun Jan 4 00:39:04 2015 by ELM ver.2012-10-06 from 001__elm20150103_223651__dat00.bin



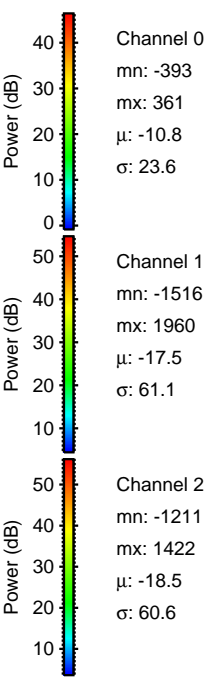
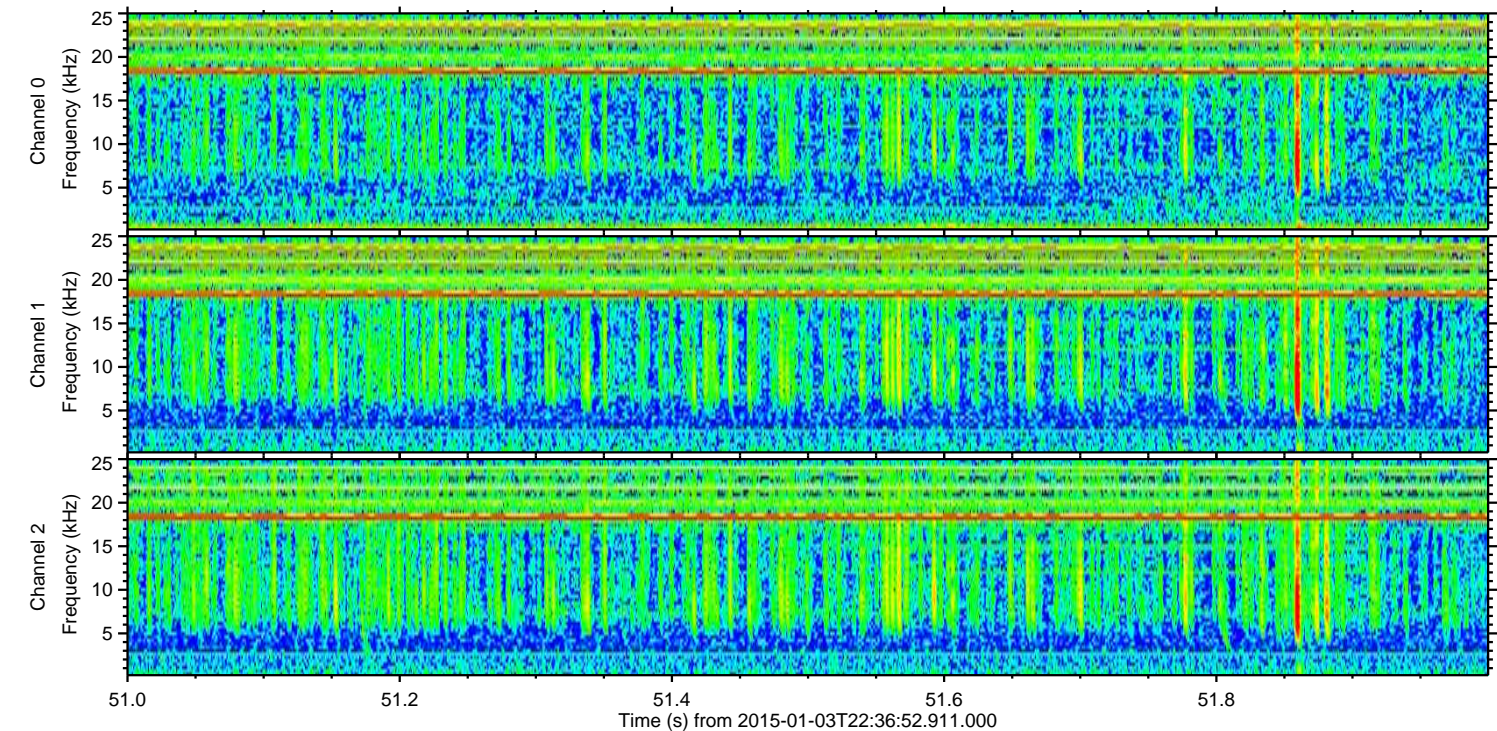
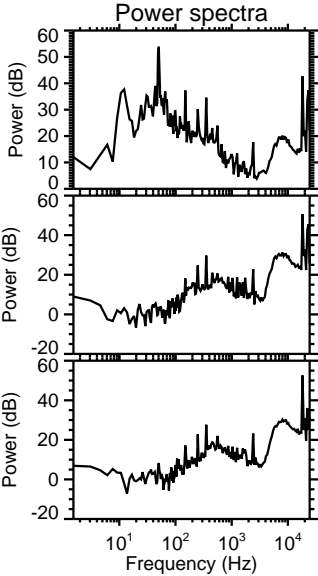
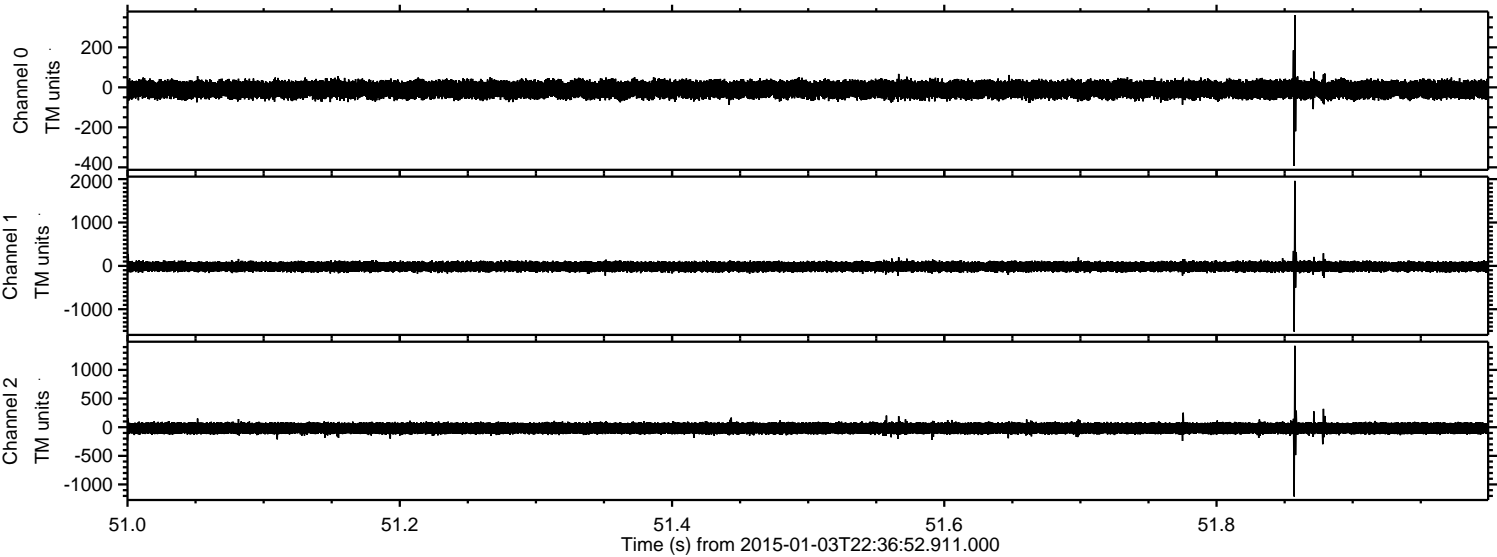
Processed Sun Jan 4 00:39:17 2015 by ELM ver.2012-10-06 from 001__elm20150103_223651__dat00.bin



Processed Sun Jan 4 00:39:18 2015 by ELM ver.2012-10-06 from 001__elm20150103_223651__dat00.bin

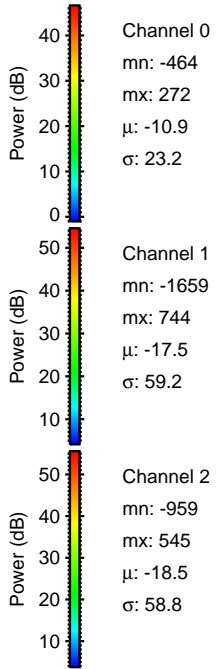
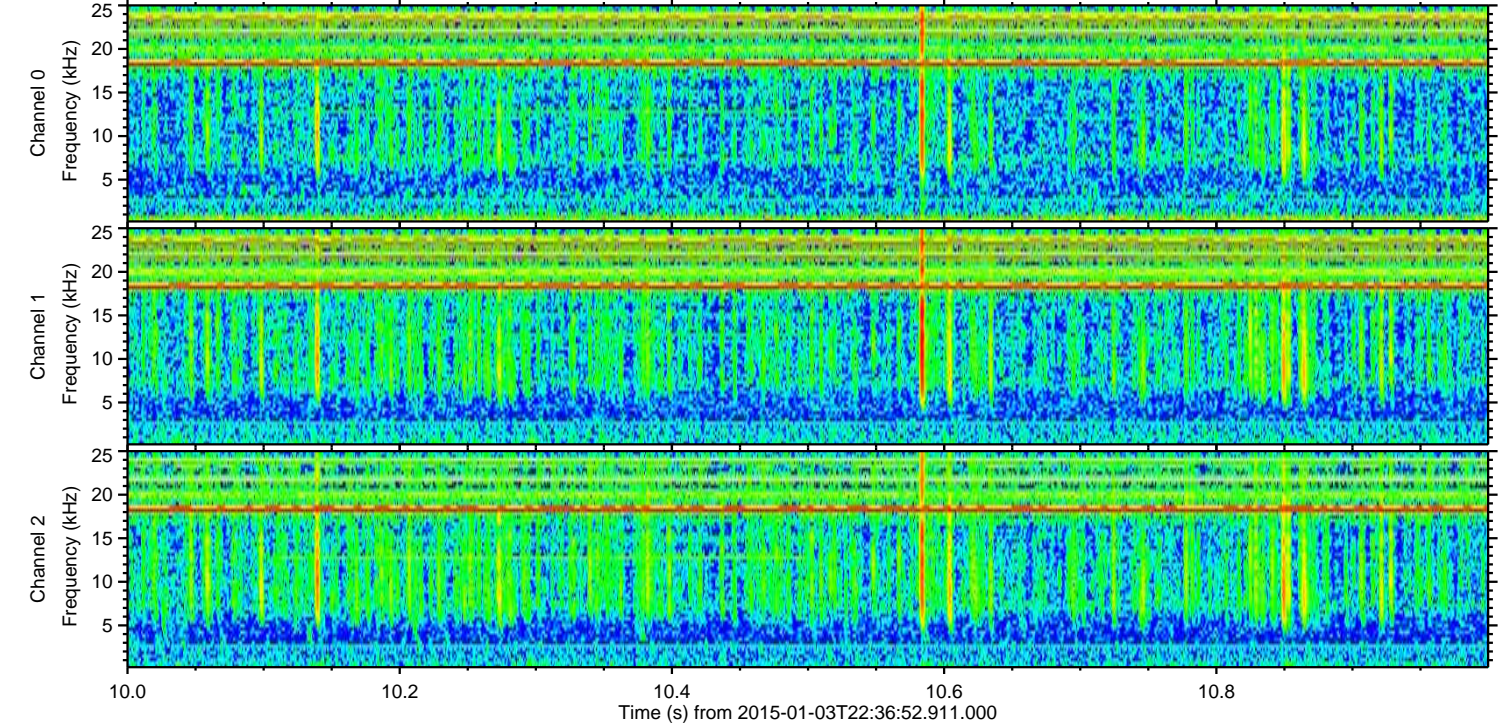
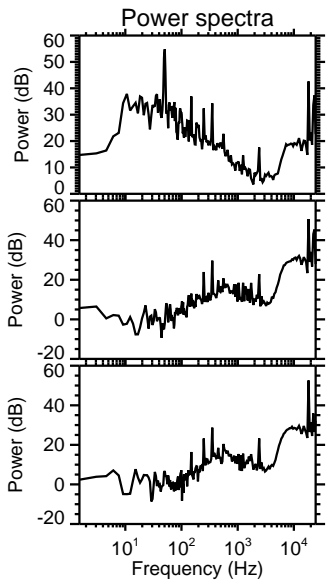
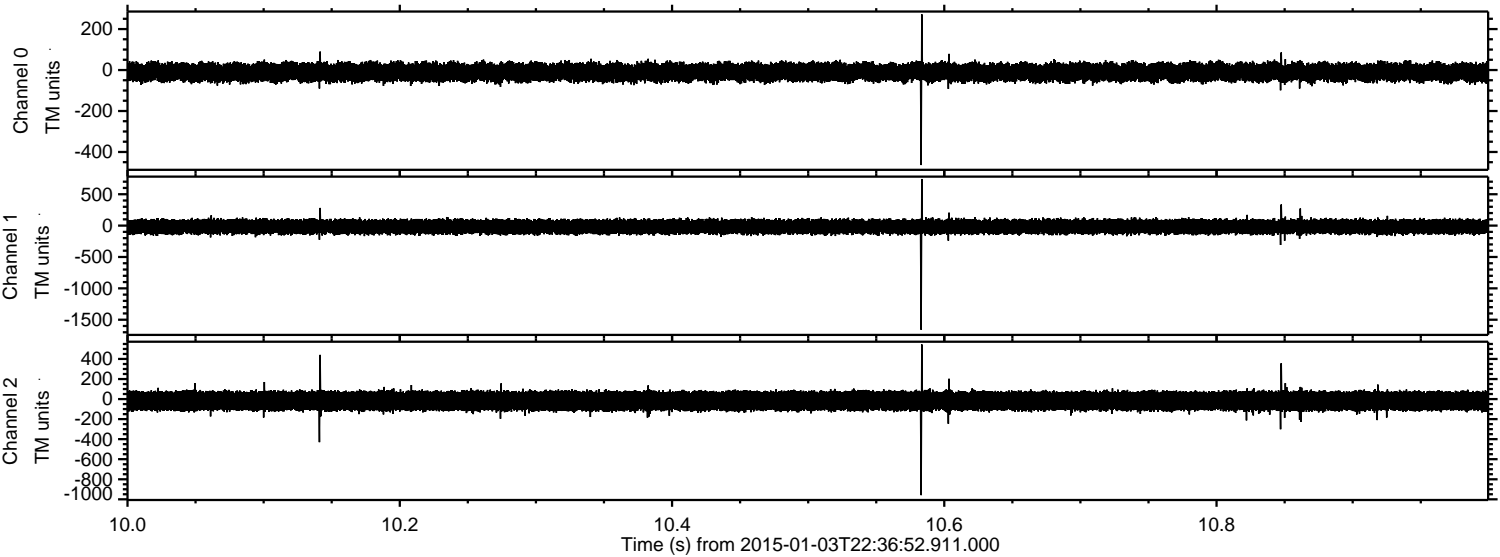


Processed Sun Jan 4 00:39:19 2015 by ELM ver.2012-10-06 from 001__elm20150103_223651__dat00.bin

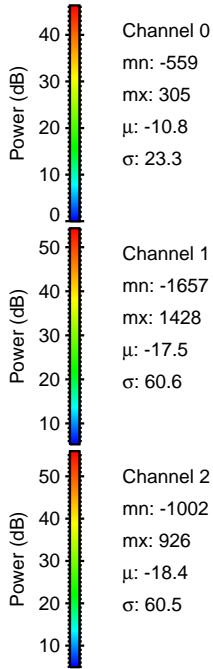
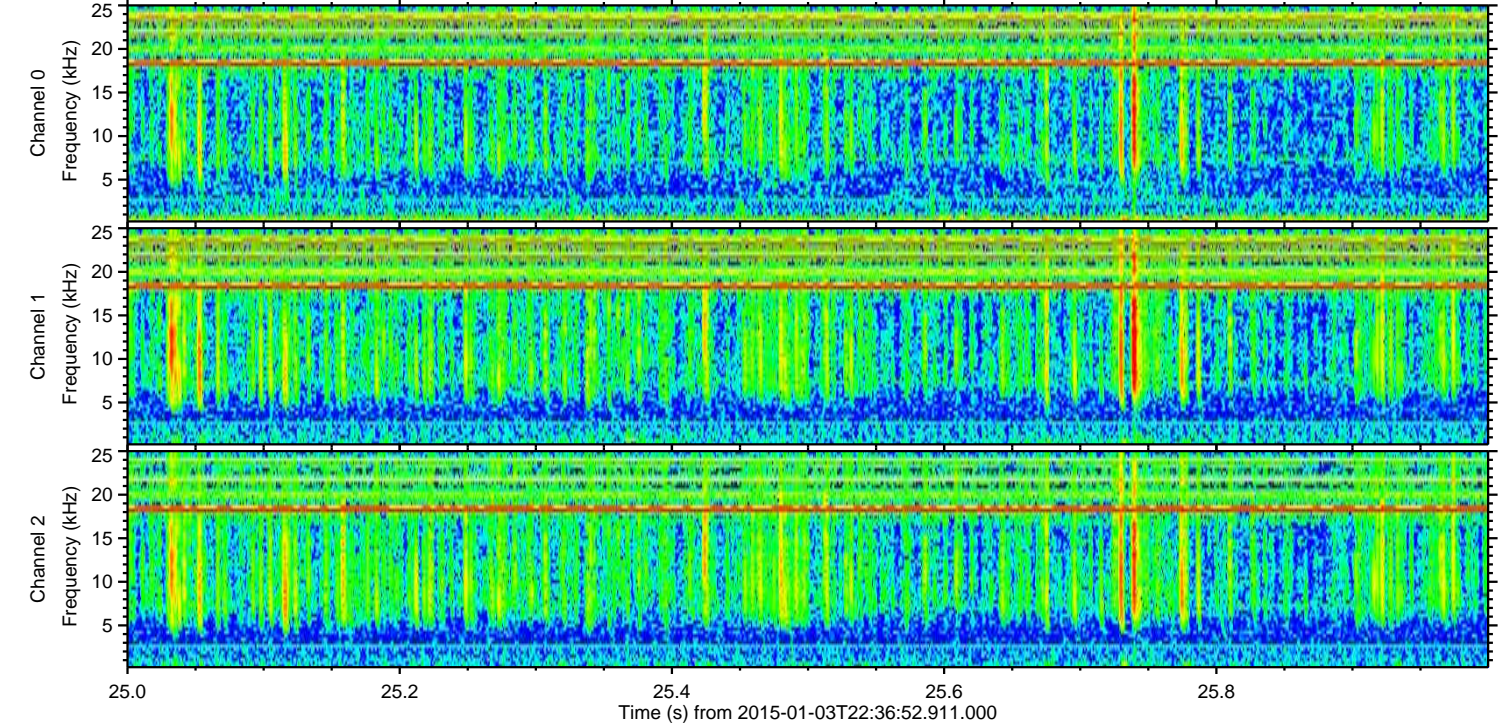
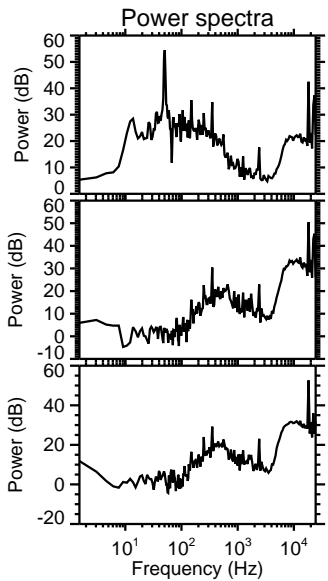
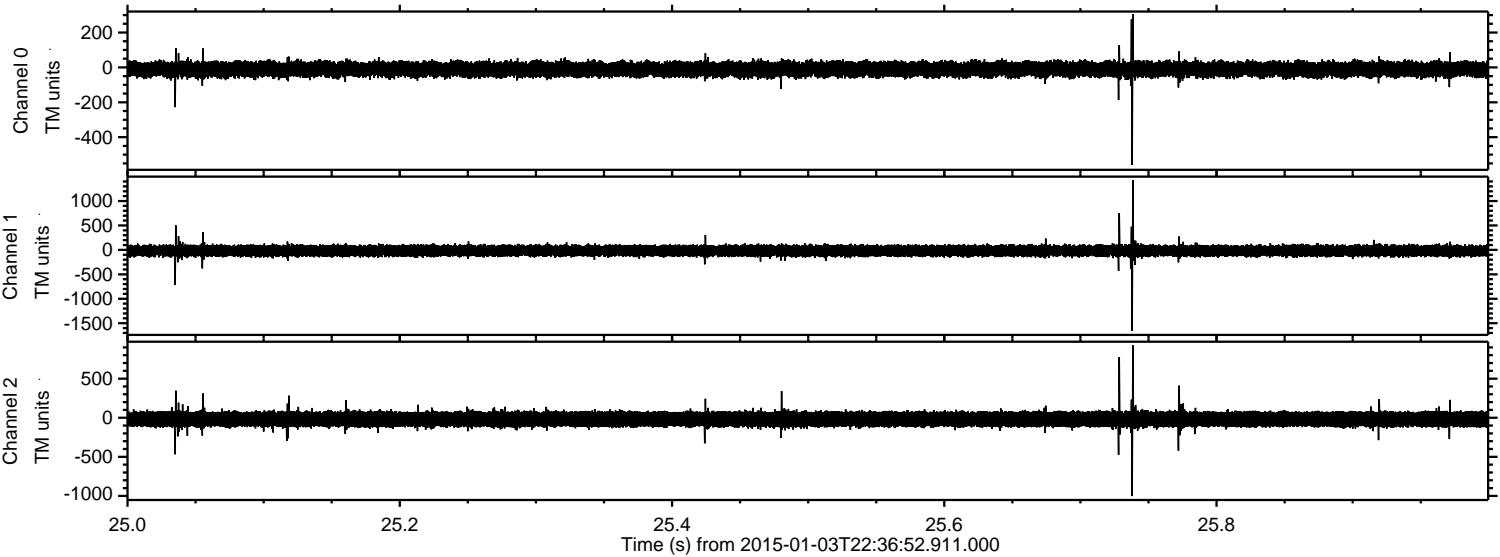


ELMAVAN 3D WAVEFORMS (Measured data sampled at 50 kHz) 49794 packets of 144 samples from 2015-01-03T22:36:52.911.000. Part 11/144

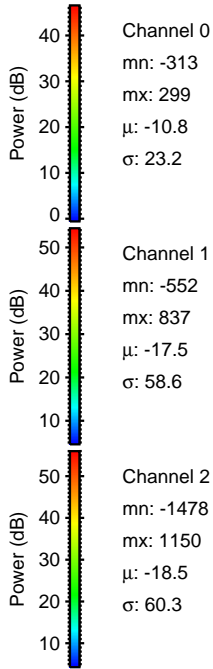
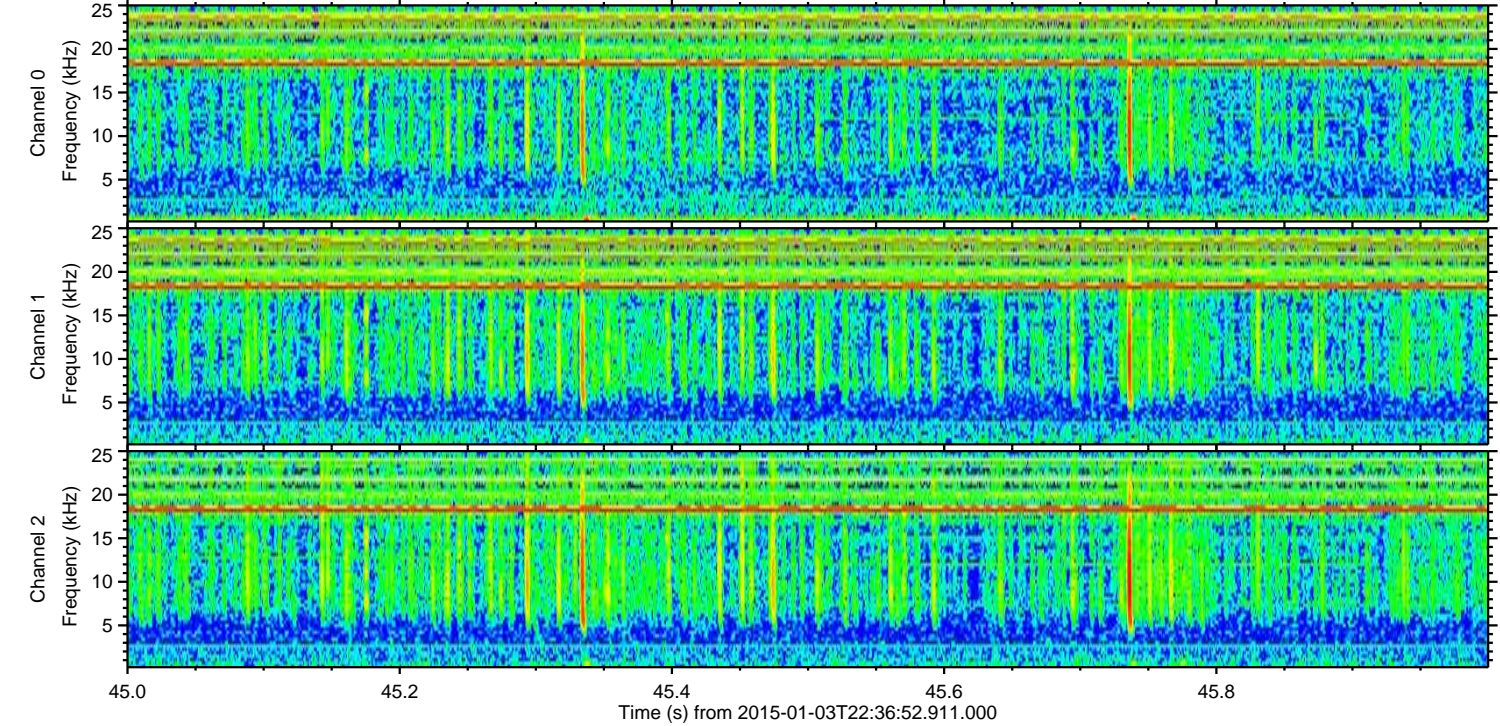
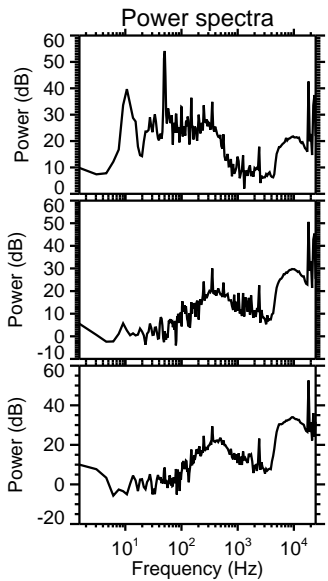
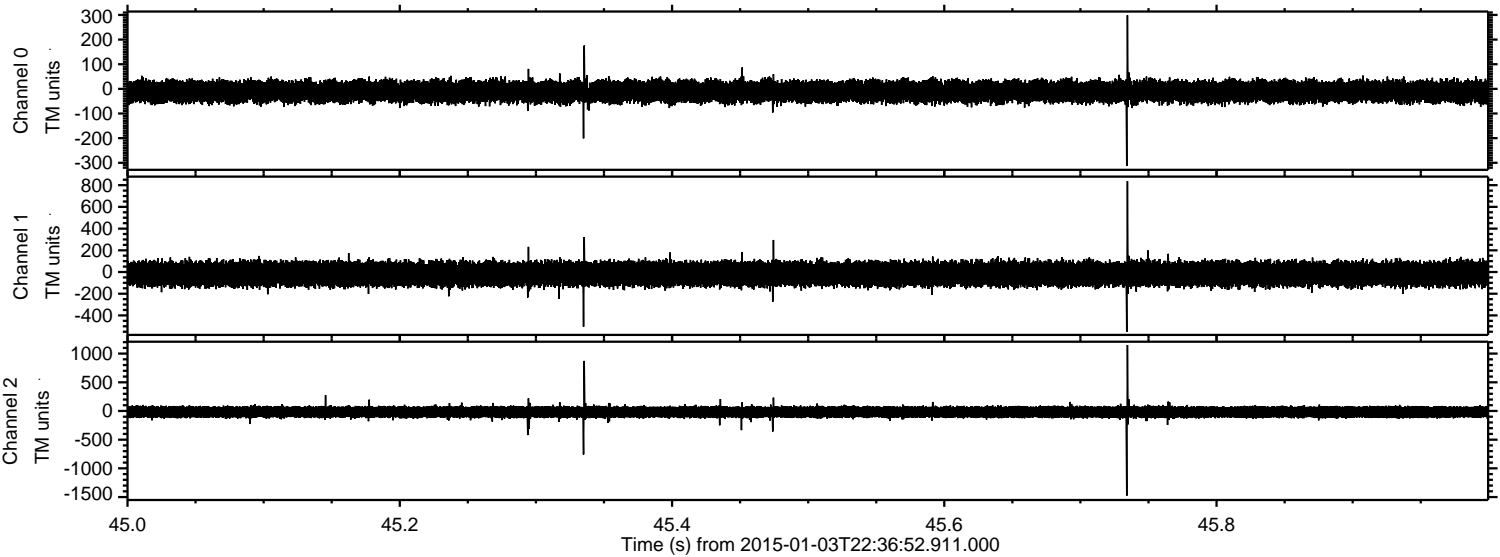
Processed Sun Jan 4 00:39:20 2015 by ELM ver.2012-10-06 from 001__elm20150103_223651__dat00.bin



Processed Sun Jan 4 00:39:21 2015 by ELM ver.2012-10-06 from 001__elm20150103_223651__dat00.bin



Processed Sun Jan 4 00:39:22 2015 by ELM ver.2012-10-06 from 001__elm20150103_223651__dat00.bin

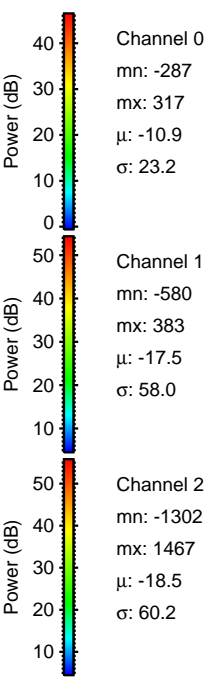
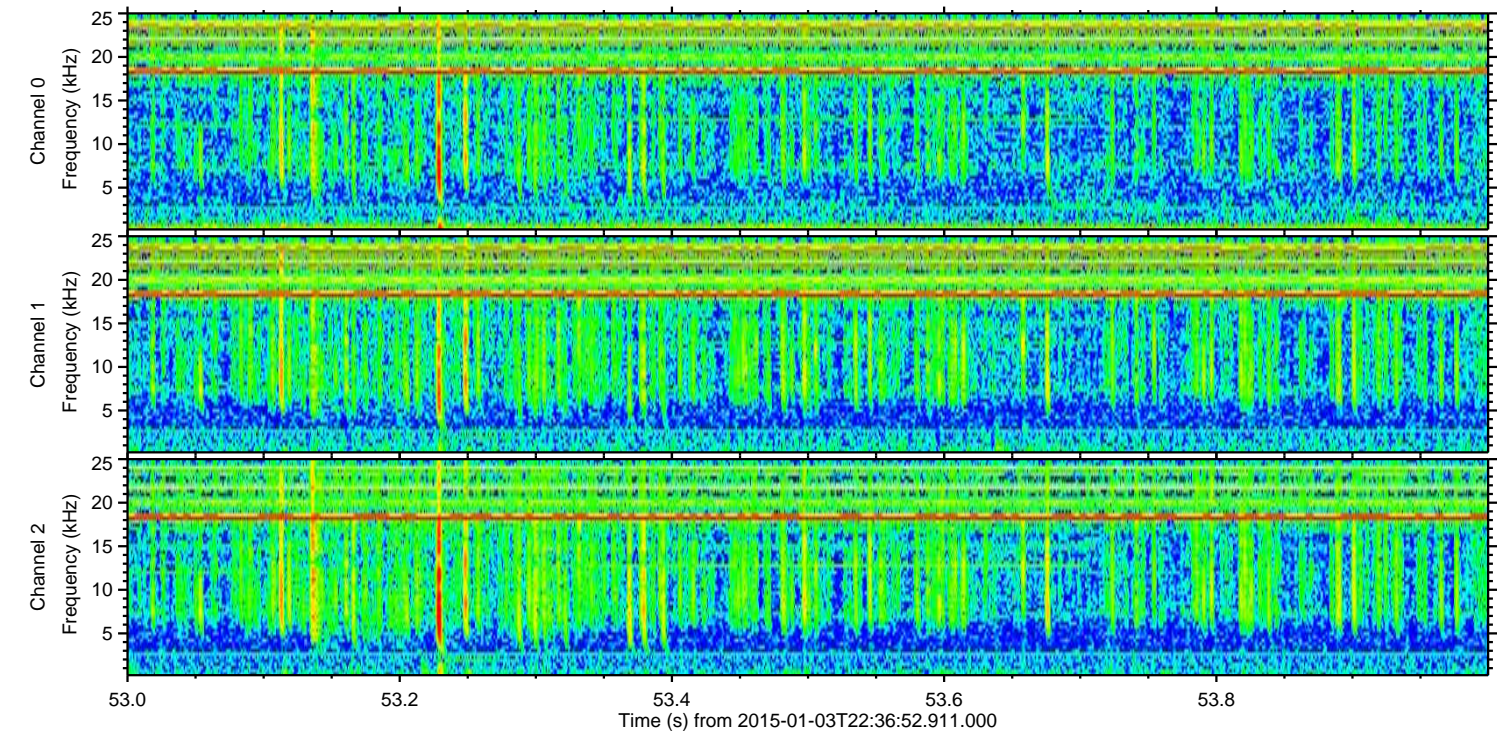
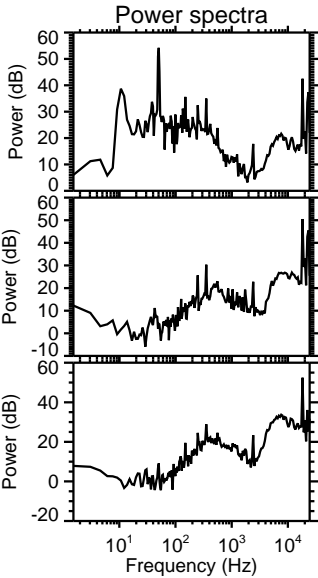
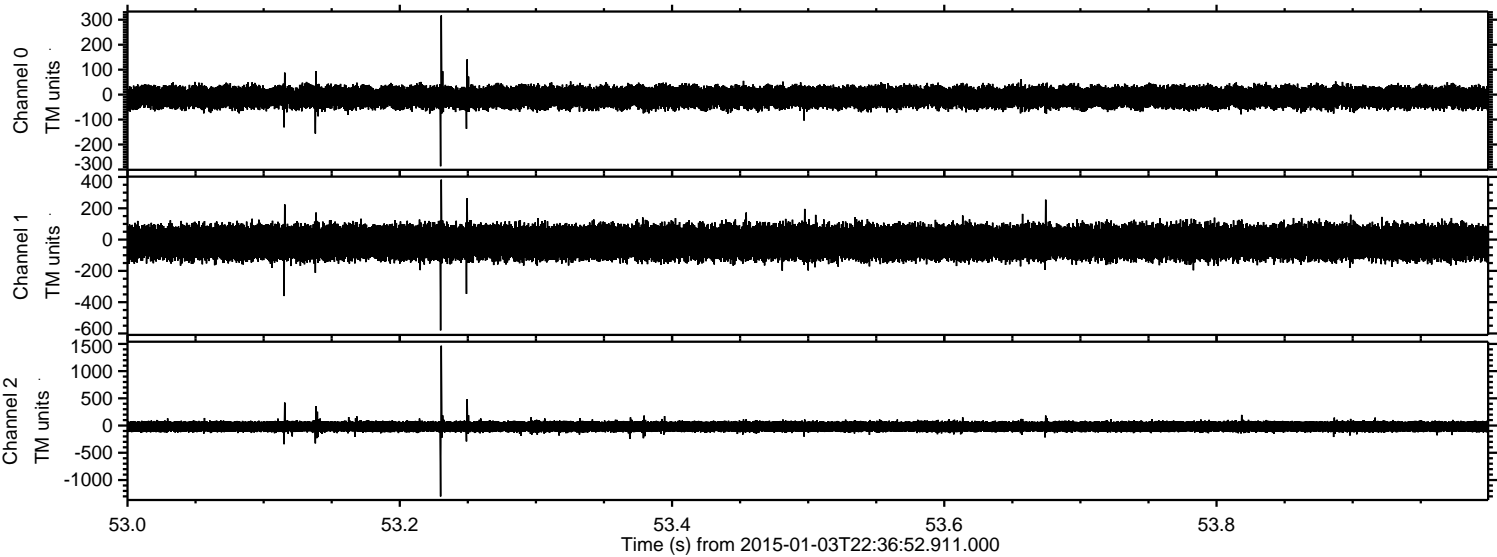


Channel 0
mn: -313
mx: 299
 μ : -10.8
 σ : 23.2

Channel 1
mn: -552
mx: 837
 μ : -17.5
 σ : 58.6

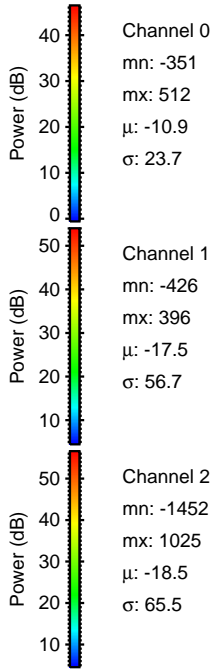
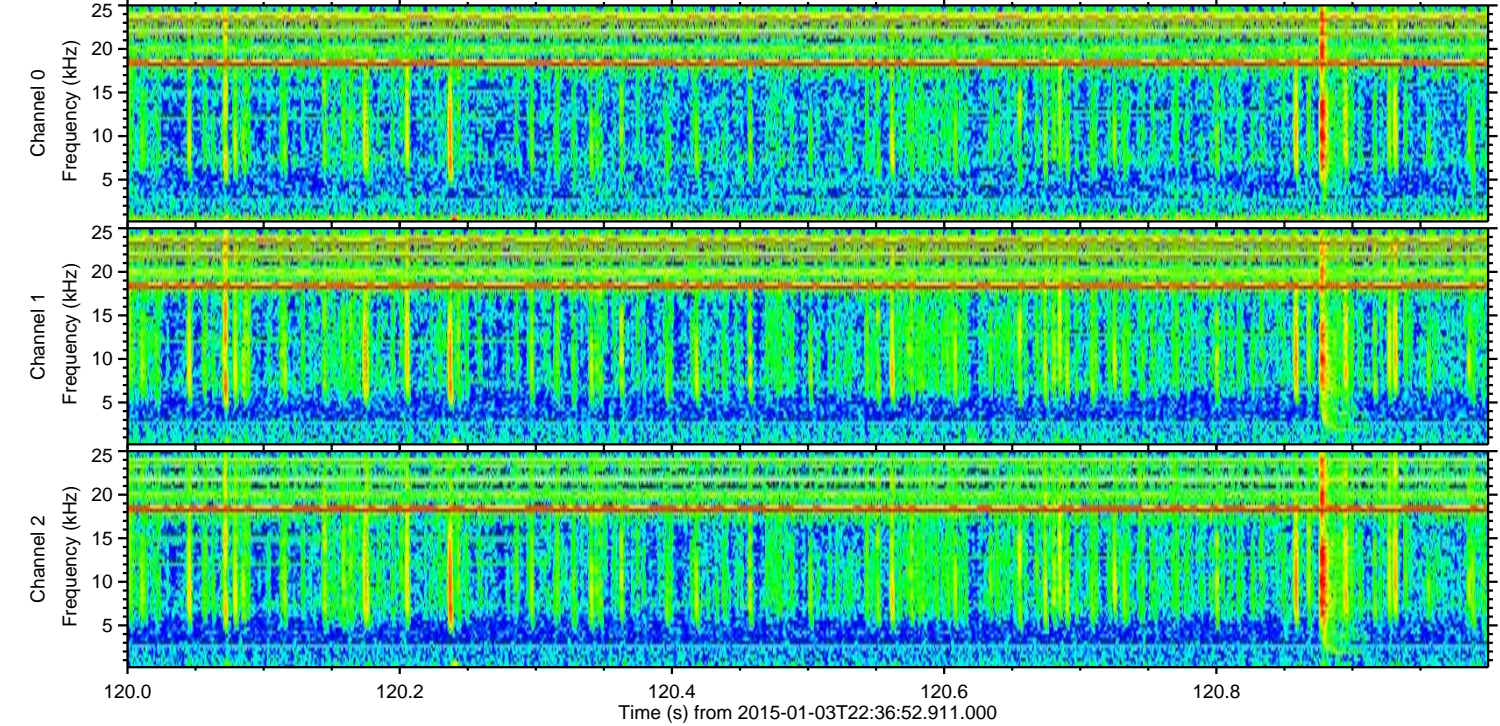
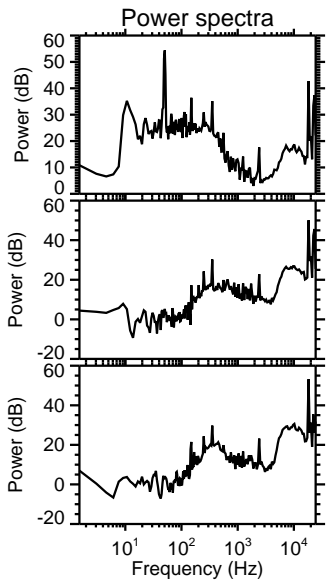
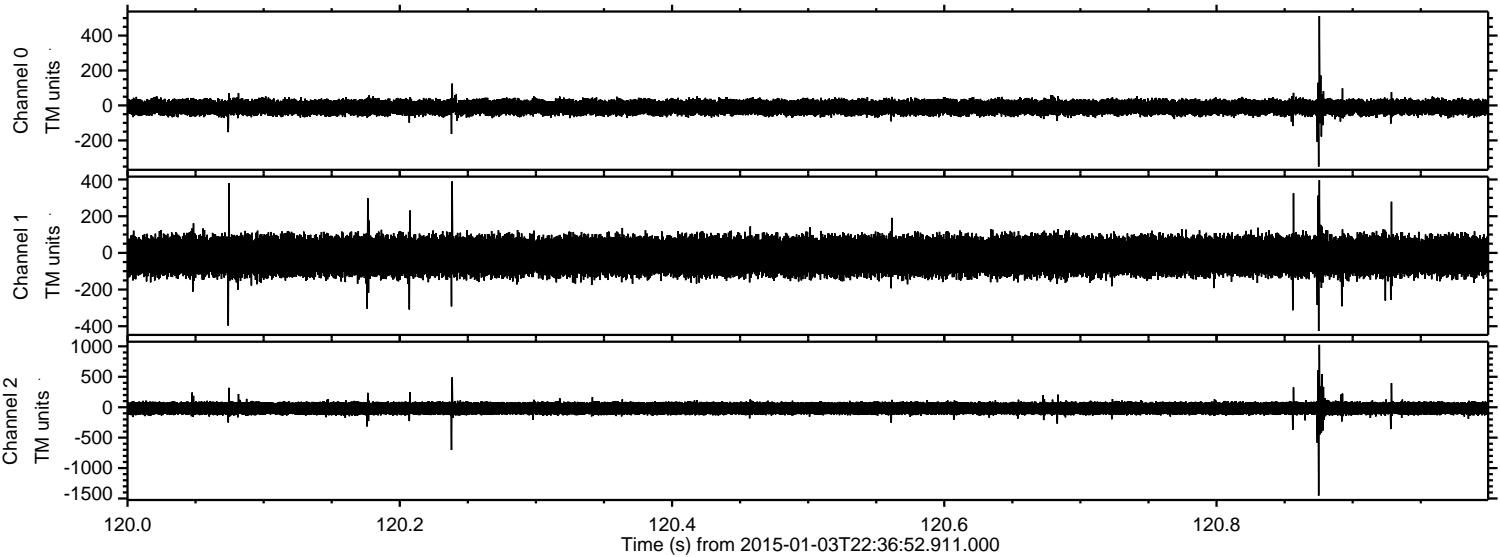
Channel 2
mn: -1478
mx: 1150
 μ : -18.5
 σ : 60.3

Processed Sun Jan 4 00:39:23 2015 by ELM ver.2012-10-06 from 001__elm20150103_223651__dat00.bin



ELMAVAN 3D WAVEFORMS (Measured data sampled at 50 kHz) 49794 packets of 144 samples from 2015-01-03T22:36:52.911.000. Part 121/144

Processed Sun Jan 4 00:39:24 2015 by ELM ver.2012-10-06 from 001__elm20150103_223651__dat00.bin



Channel 0
mn: -351
mx: 512
 μ : -10.9
 σ : 23.7

Channel 1
mn: -426
mx: 396
 μ : -17.5
 σ : 56.7

Channel 2
mn: -1452
mx: 1025
 μ : -18.5
 σ : 65.5

Processed Sun Jan 4 00:39:25 2015 by ELM ver.2012-10-06 from 001__elm20150103_223651__dat00.bin

