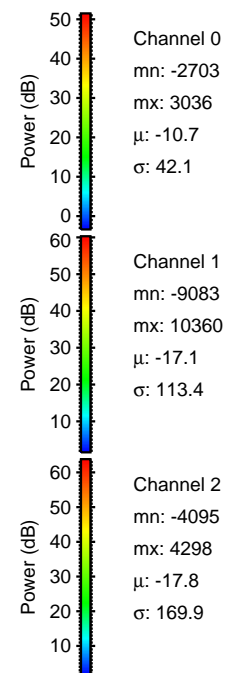
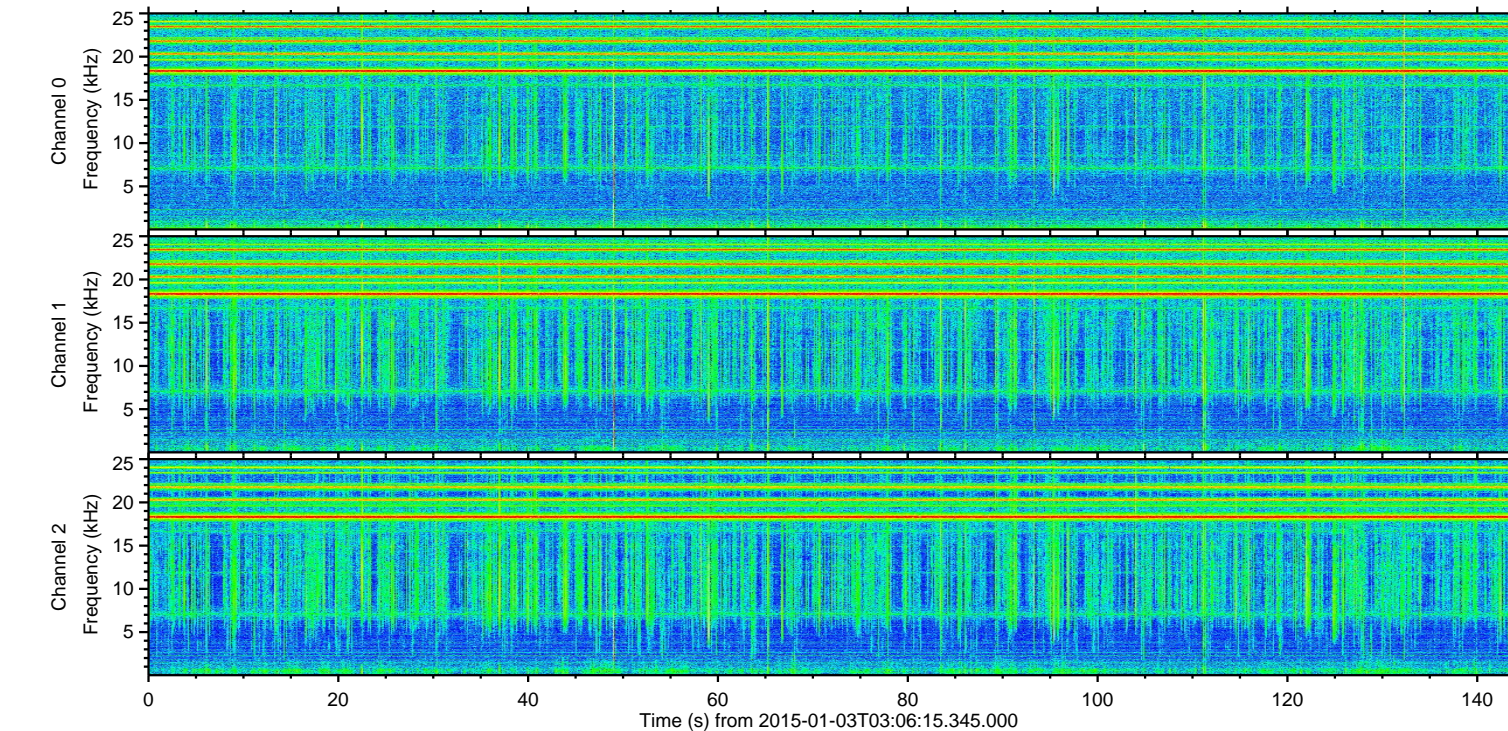
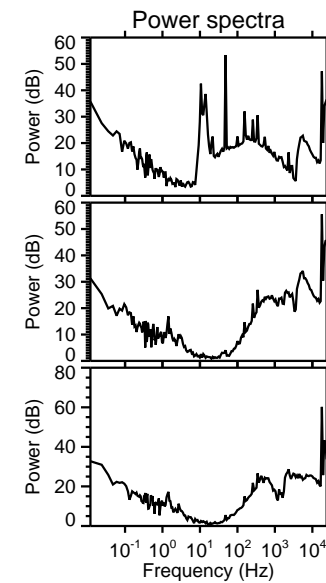
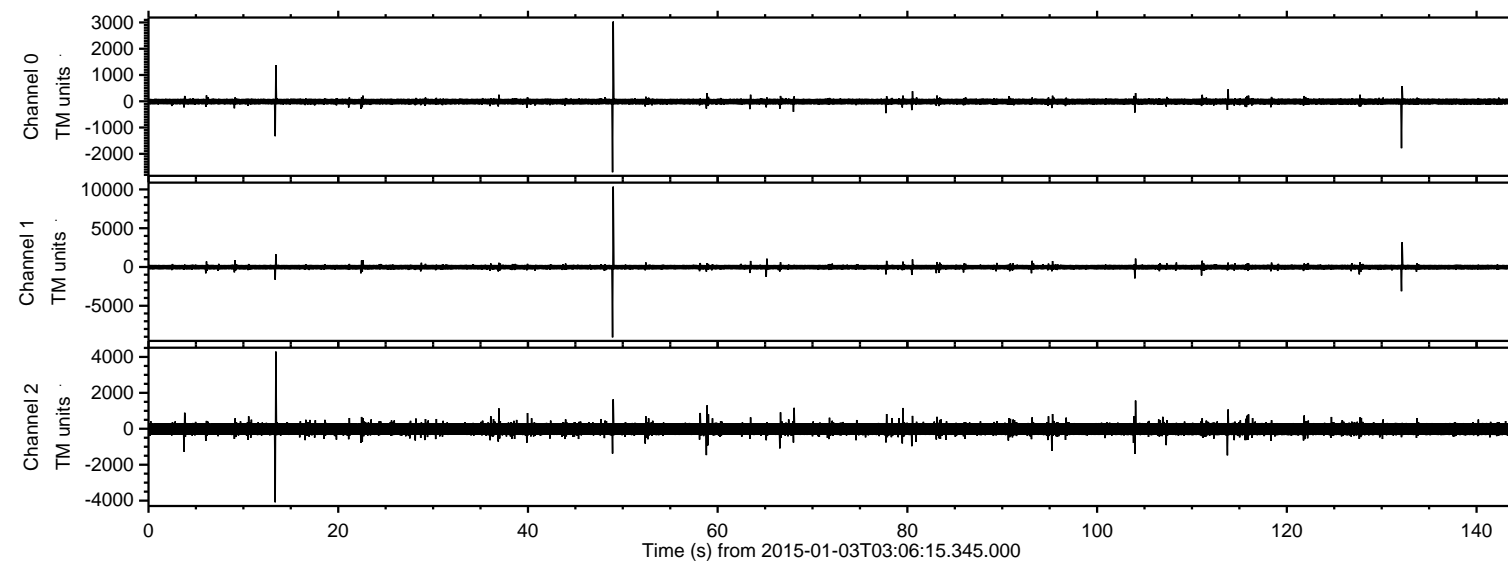


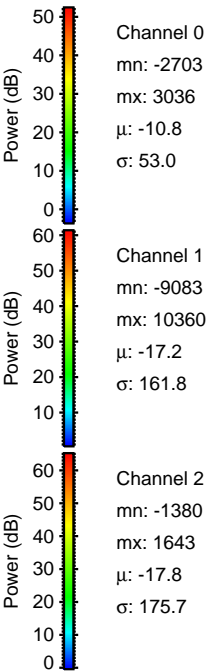
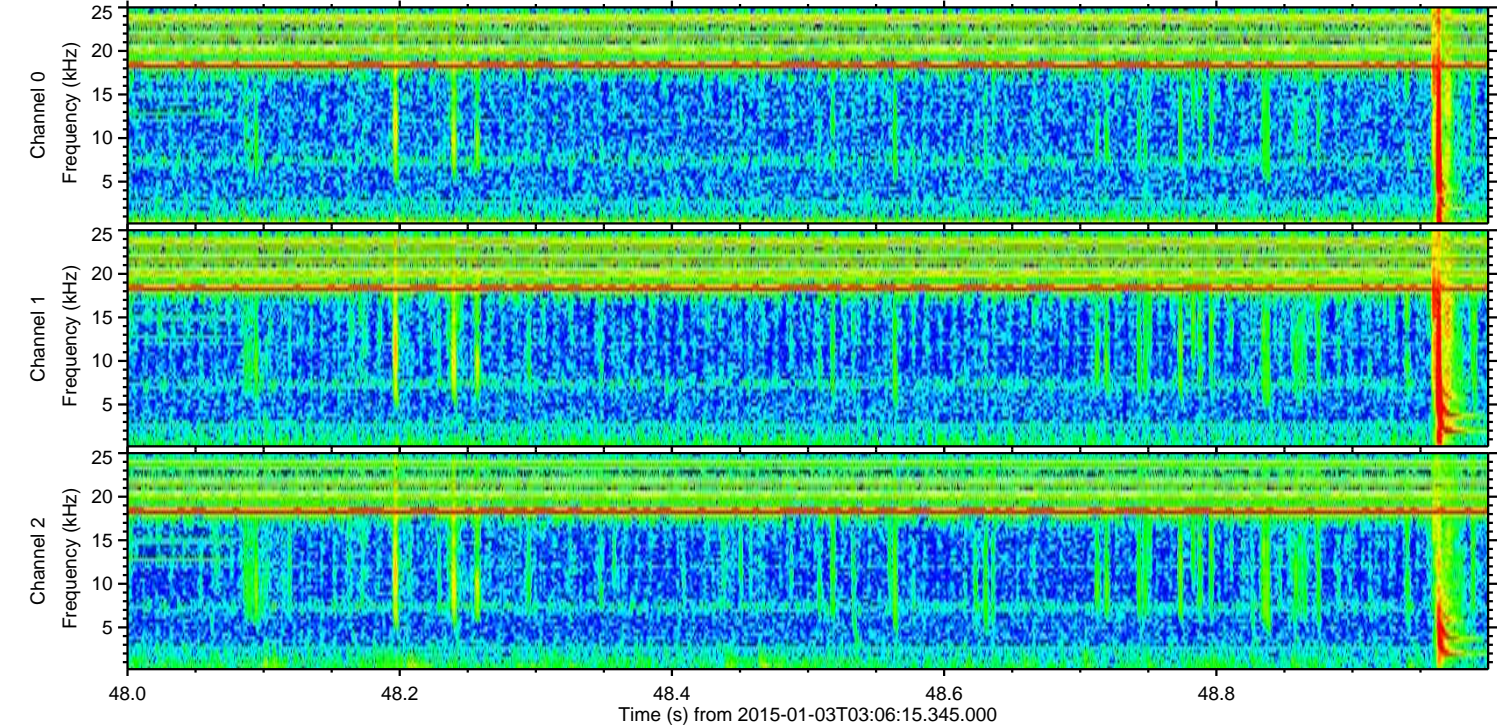
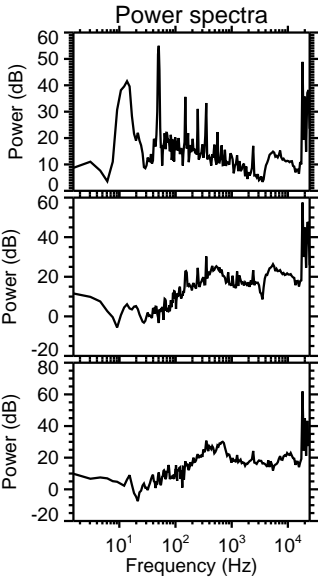
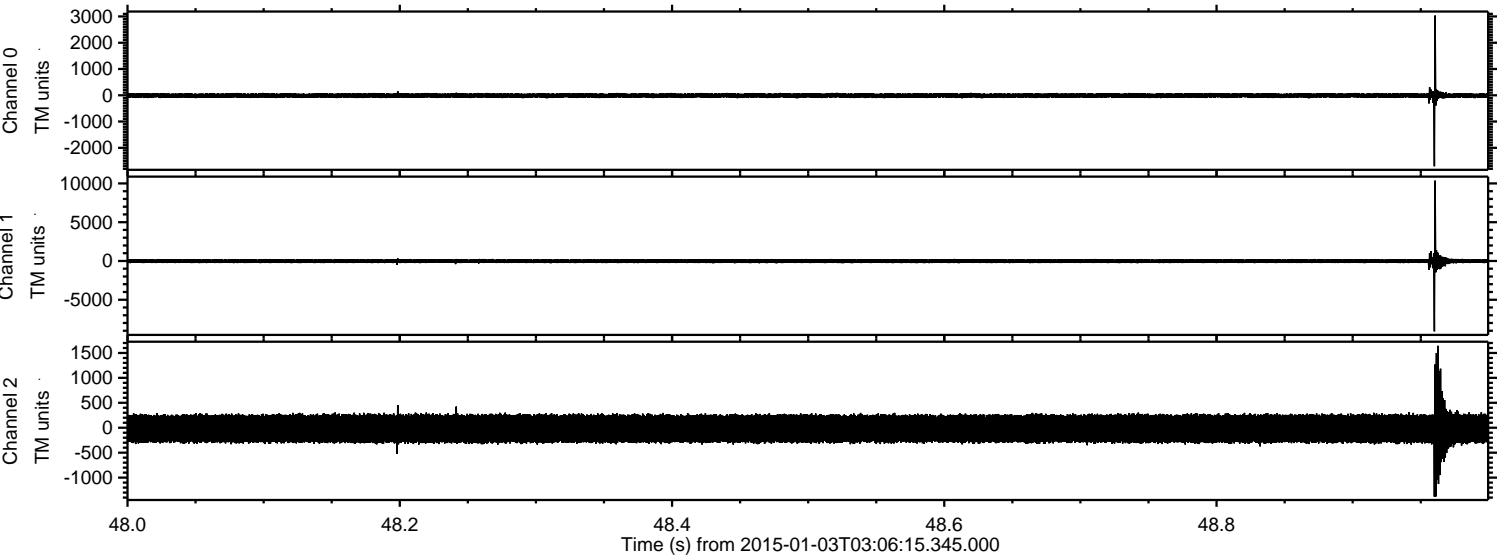
ELMAVAN 3D WAVEFORMS (Measured data sampled at 50 kHz) 49805 packets of 144 samples from 2015-01-03T03:06:15.345.000.

Processed Sat Jan 3 19:11:14 2015 by ELM ver.2012-10-06 from 001__elm20150103_030614__dat00.bin

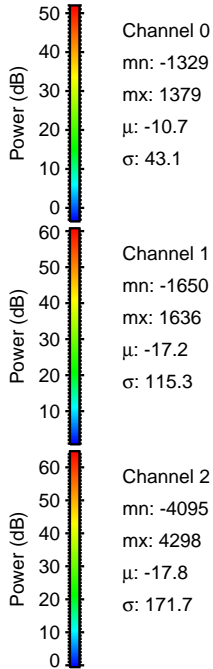
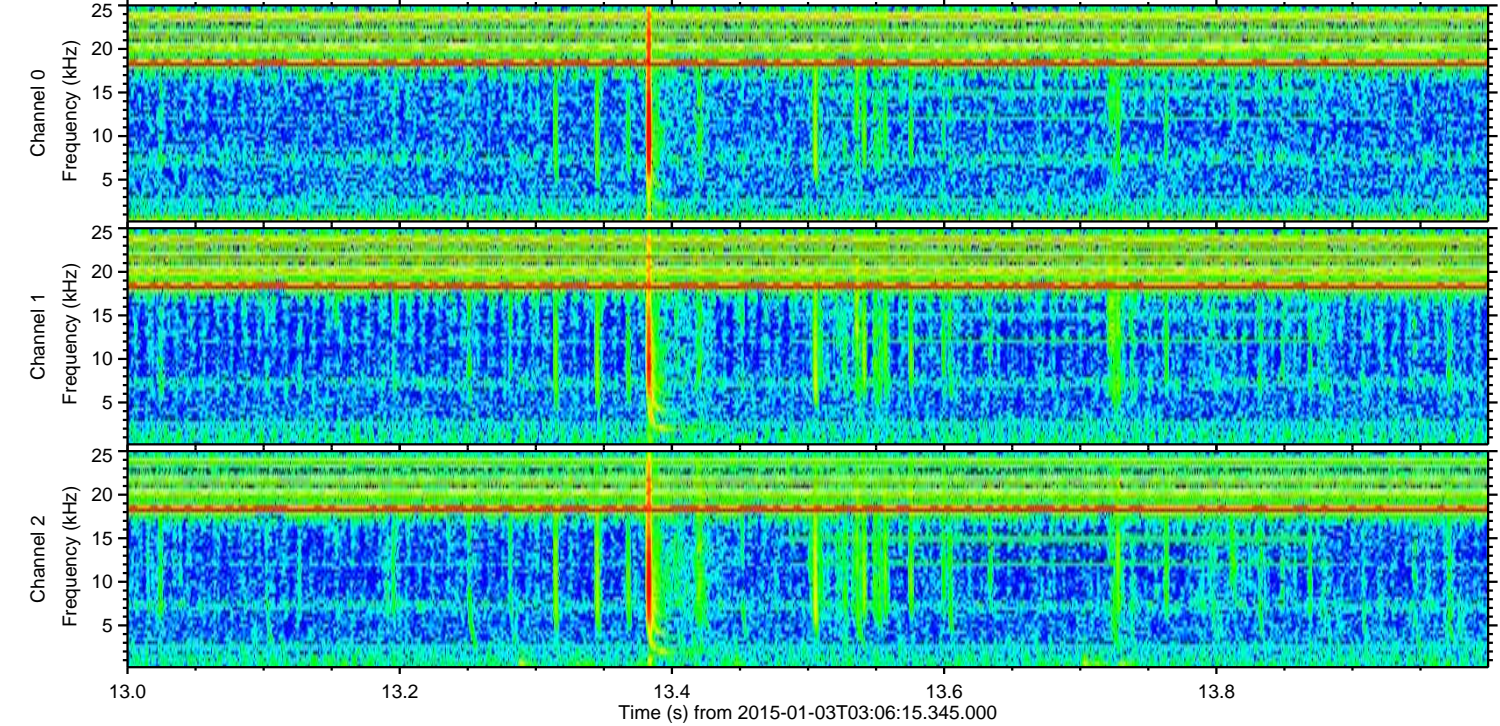
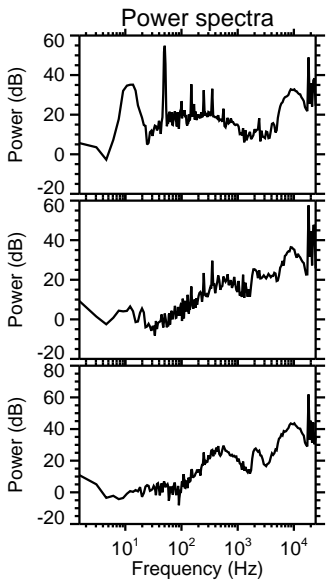
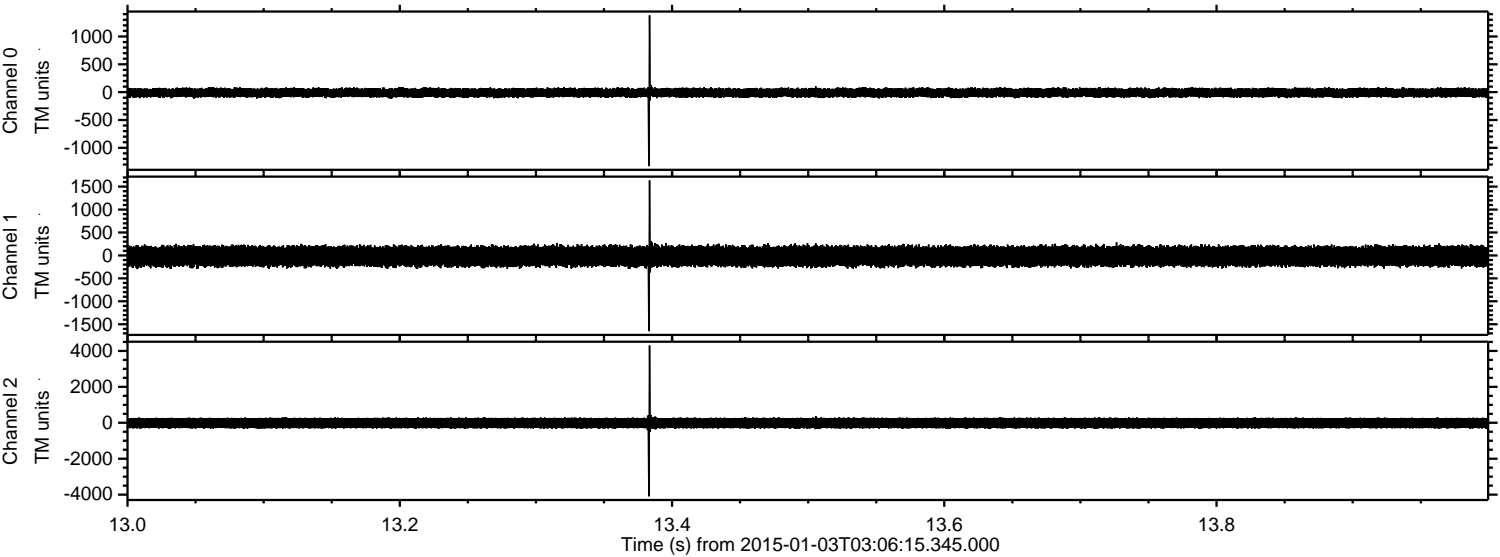


ELMAVAN 3D WAVEFORMS (Measured data sampled at 50 kHz) 49805 packets of 144 samples from 2015-01-03T03:06:15.345.000. Part 49/144

Processed Sat Jan 3 19:11:26 2015 by ELM ver.2012-10-06 from 001__elm20150103_030614__dat00.bin

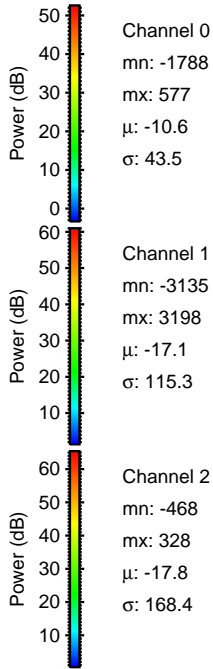
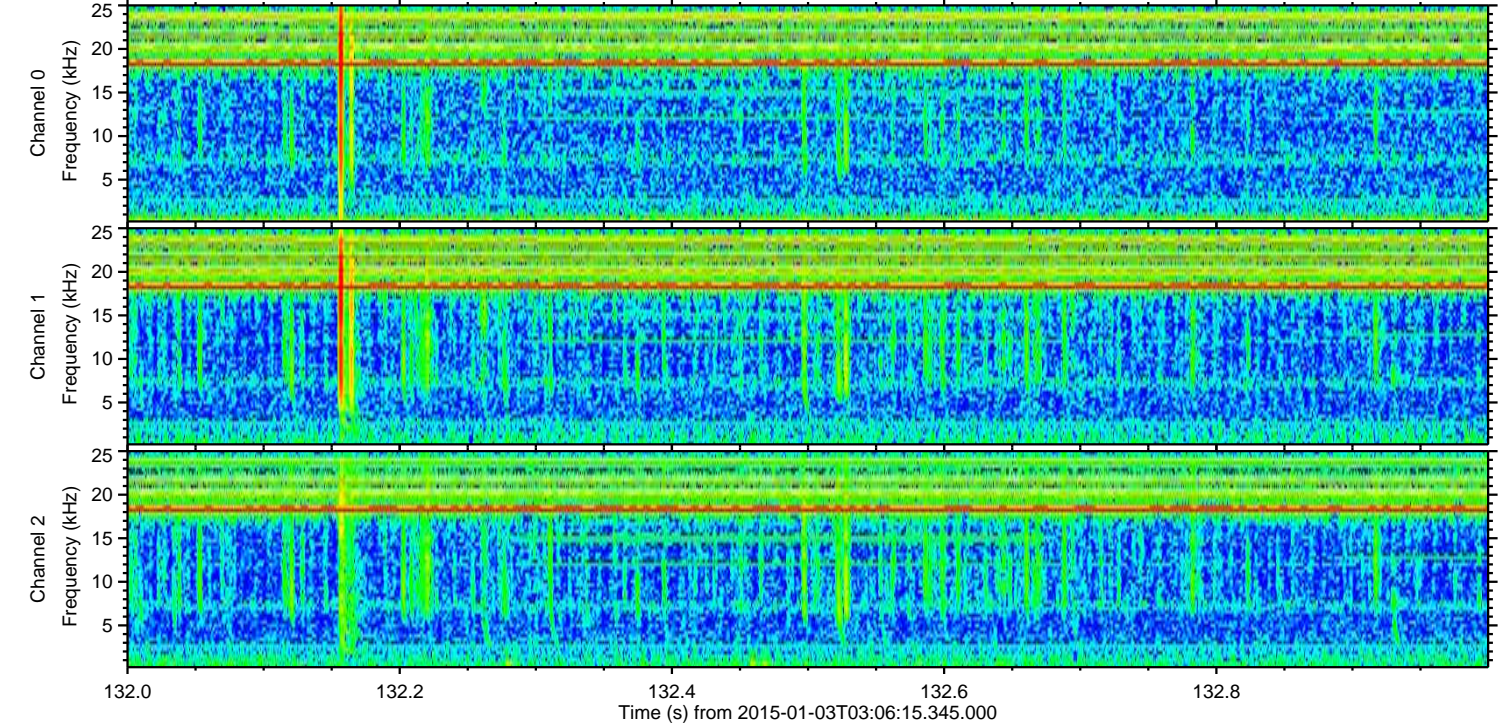
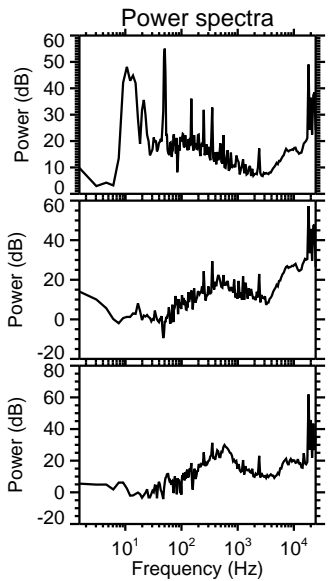
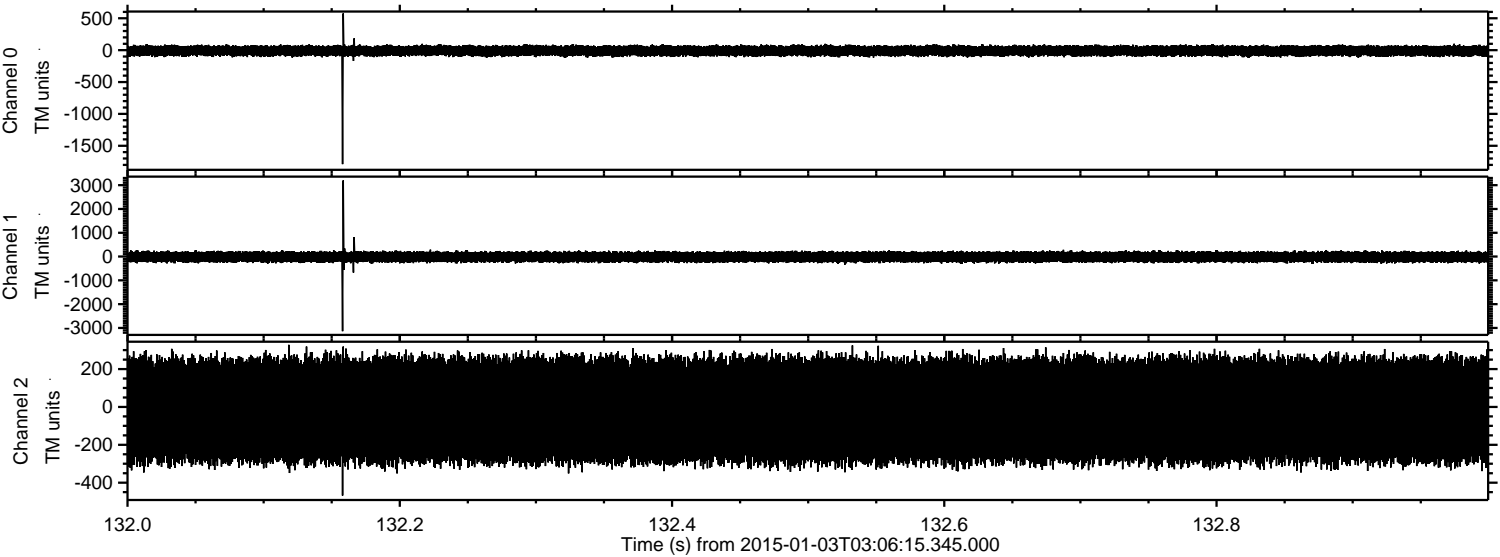


Processed Sat Jan 3 19:11:27 2015 by ELM ver.2012-10-06 from 001__elm20150103_030614__dat00.bin

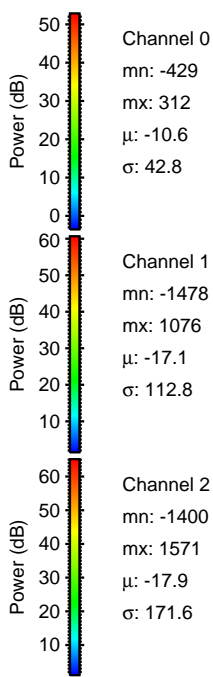
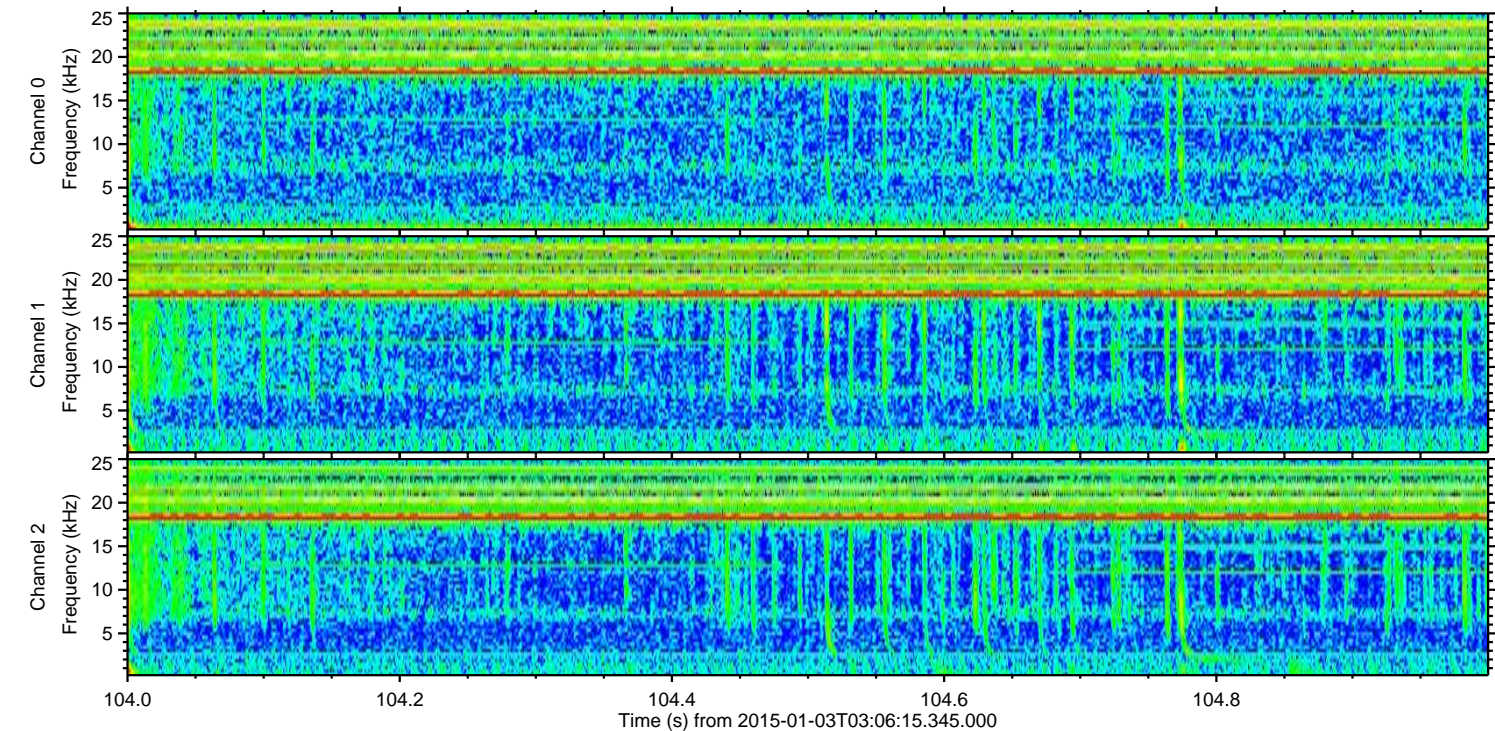
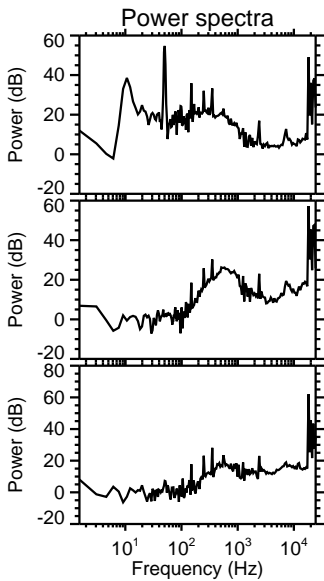
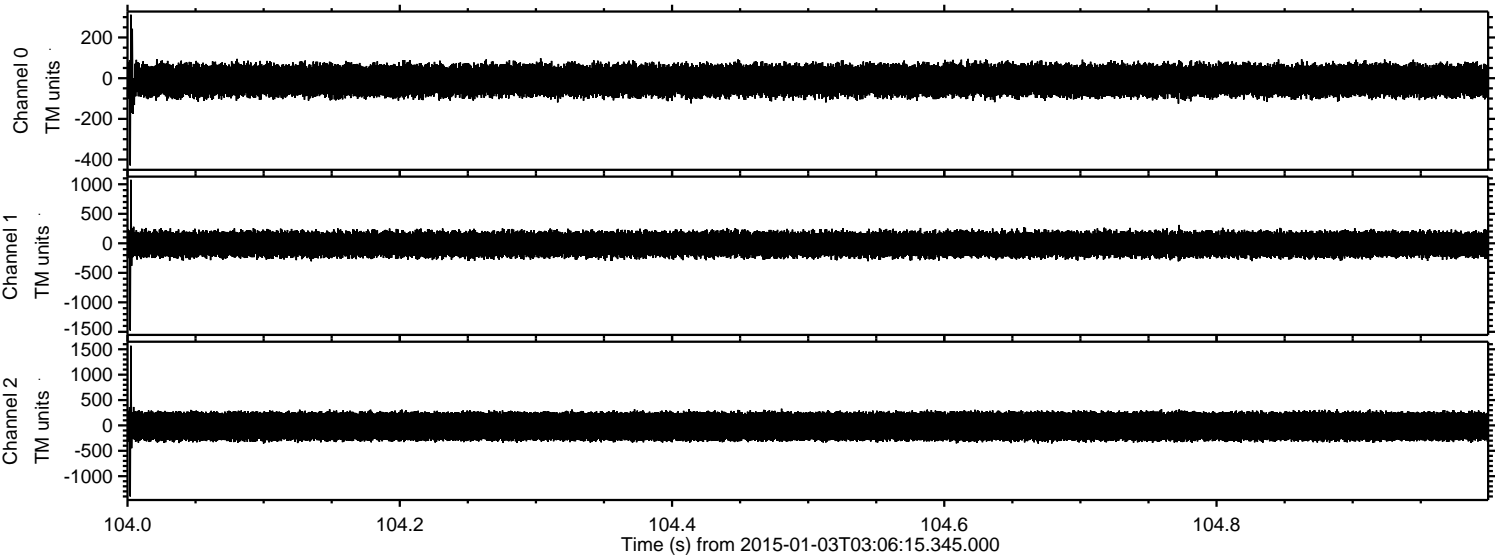


ELMAVAN 3D WAVEFORMS (Measured data sampled at 50 kHz) 49805 packets of 144 samples from 2015-01-03T03:06:15.345.000. Part 133/144

Processed Sat Jan 3 19:11:28 2015 by ELM ver.2012-10-06 from 001__elm20150103_030614__dat00.bin

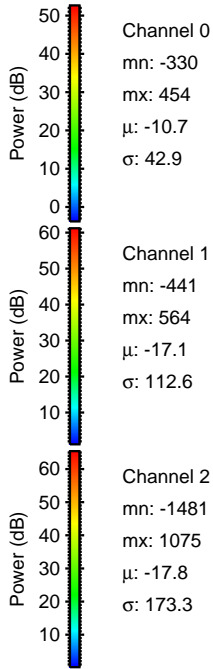
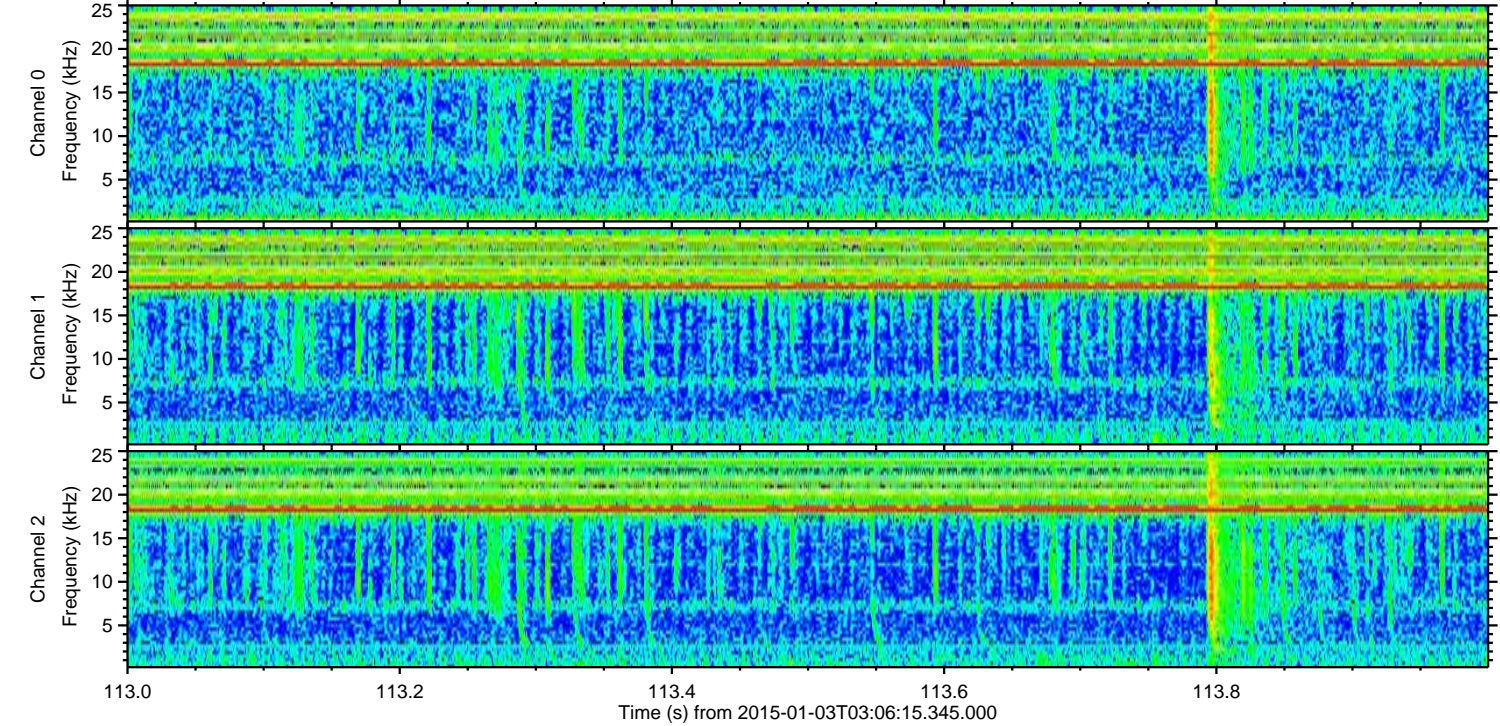
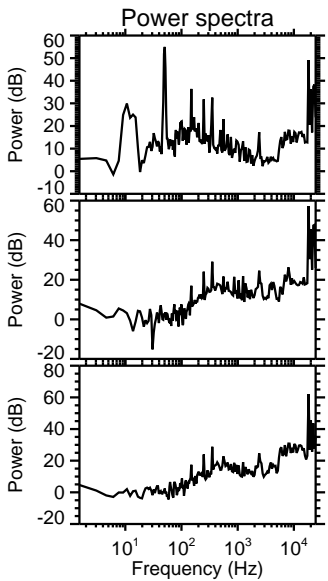
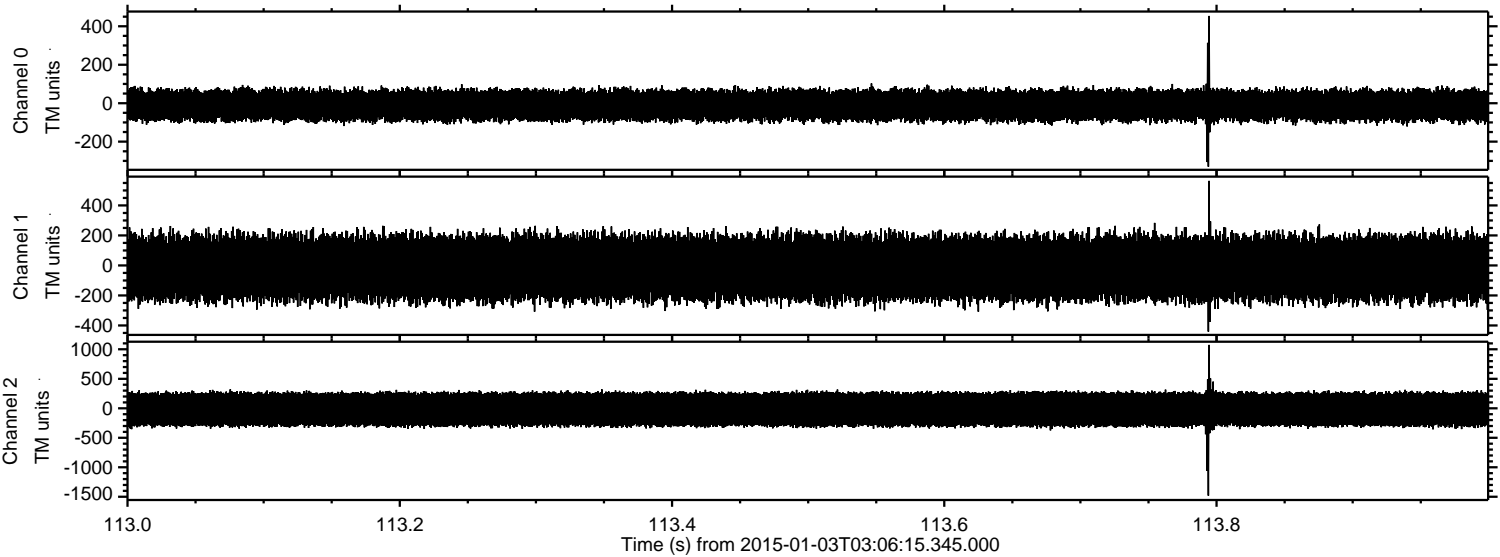


Processed Sat Jan 3 19:11:29 2015 by ELM ver.2012-10-06 from 001__elm20150103_030614__dat00.bin



ELMAVAN 3D WAVEFORMS (Measured data sampled at 50 kHz) 49805 packets of 144 samples from 2015-01-03T03:06:15.345.000. Part 114/144

Processed Sat Jan 3 19:11:30 2015 by ELM ver.2012-10-06 from 001__elm20150103_030614__dat00.bin



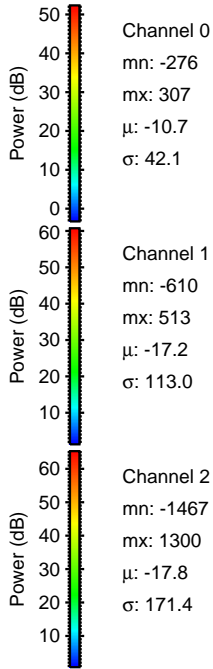
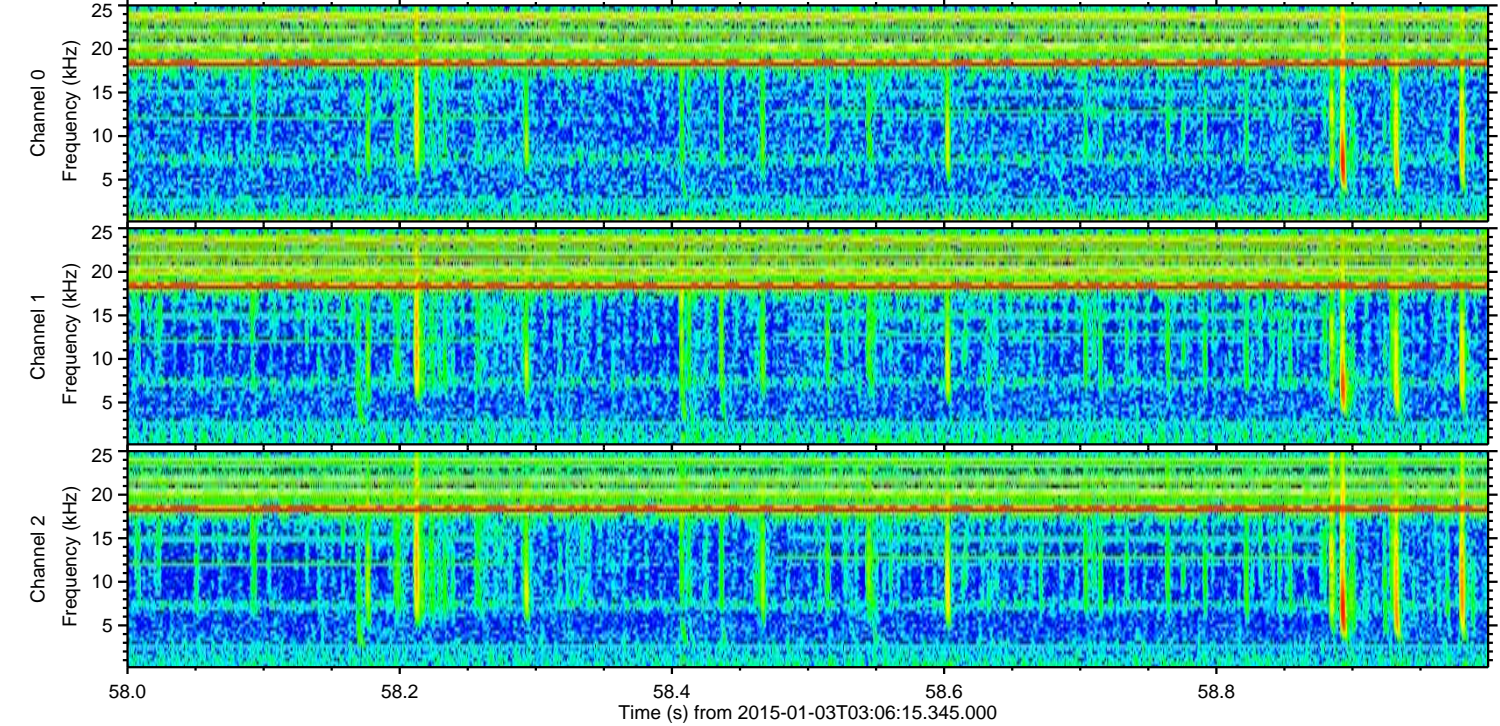
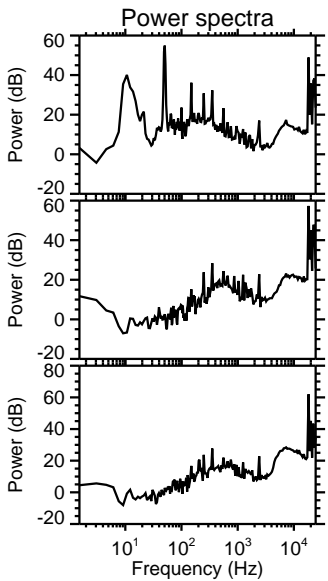
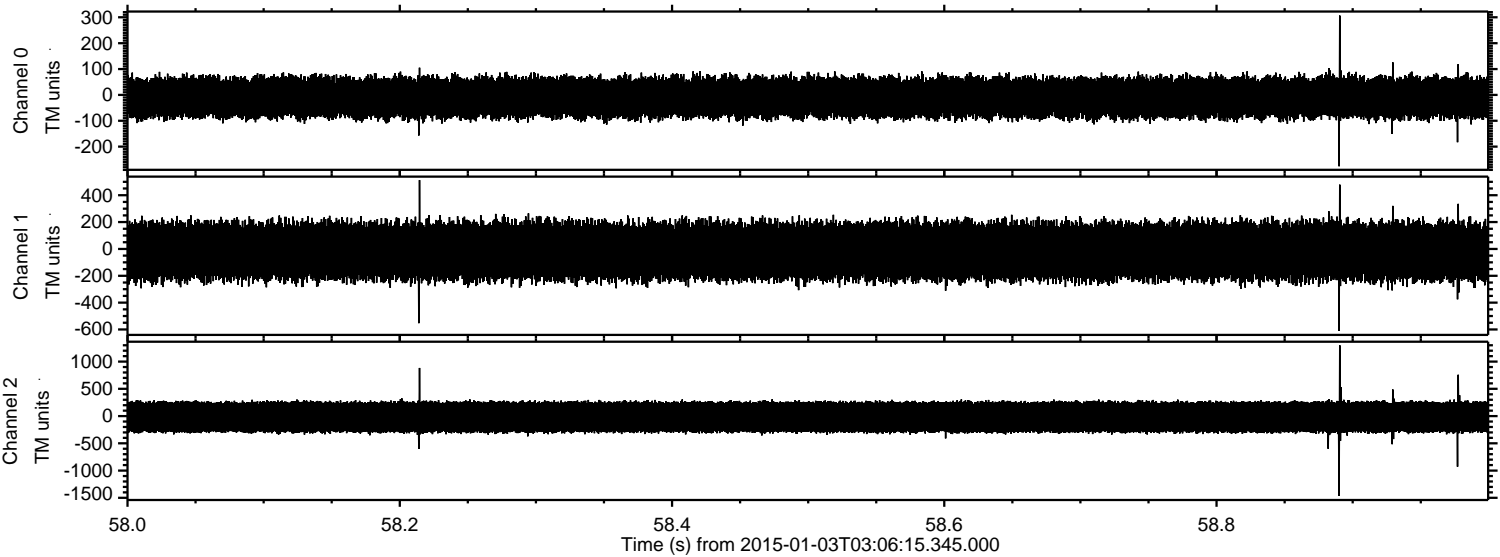
Channel 0
mn: -330
mx: 454
 μ : -10.7
 σ : 42.9

Channel 1
mn: -441
mx: 564
 μ : -17.1
 σ : 112.6

Channel 2
mn: -1481
mx: 1075
 μ : -17.8
 σ : 173.3

ELMAVAN 3D WAVEFORMS (Measured data sampled at 50 kHz) 49805 packets of 144 samples from 2015-01-03T03:06:15.345.000. Part 59/144

Processed Sat Jan 3 19:11:31 2015 by ELM ver.2012-10-06 from 001__elm20150103_030614__dat00.bin

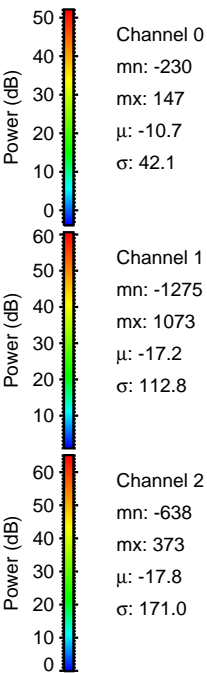
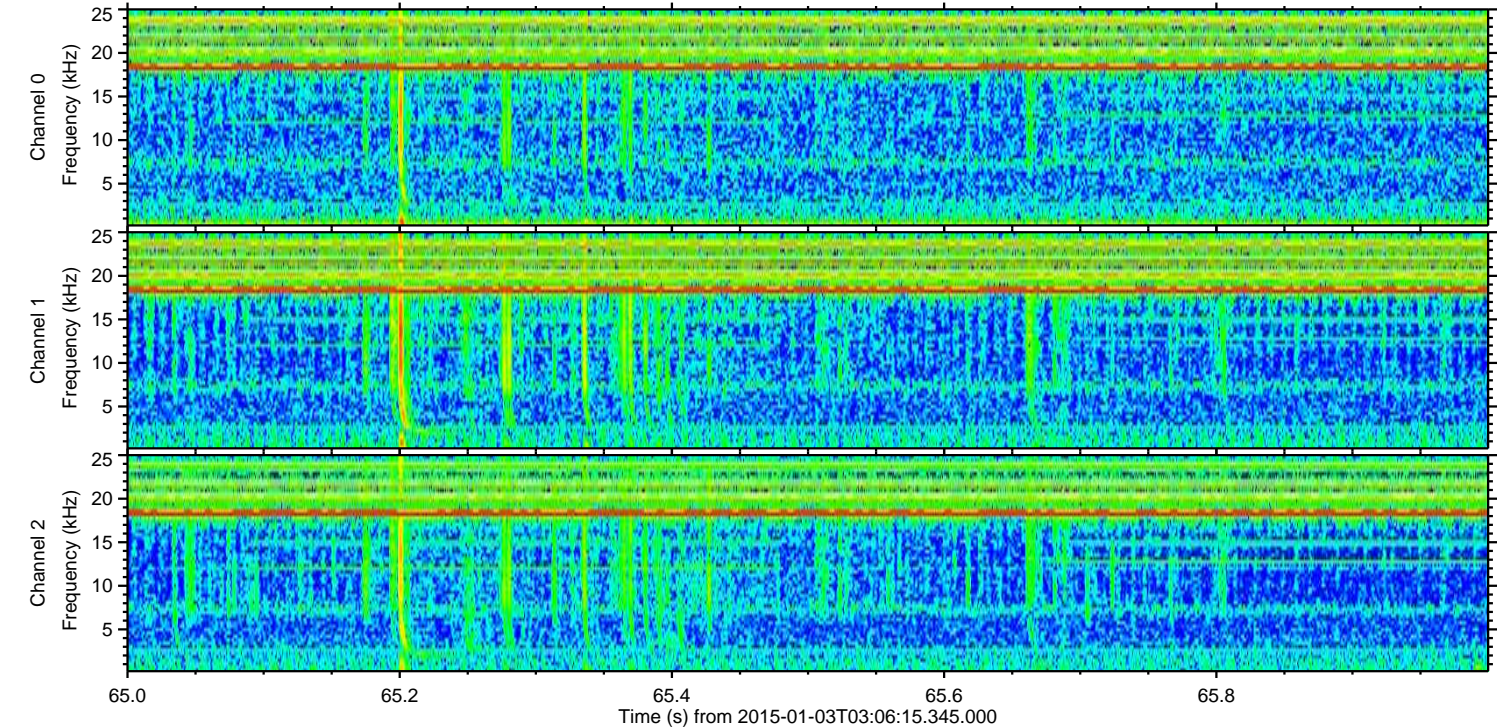
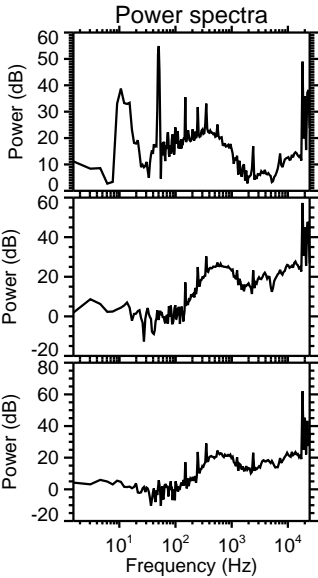
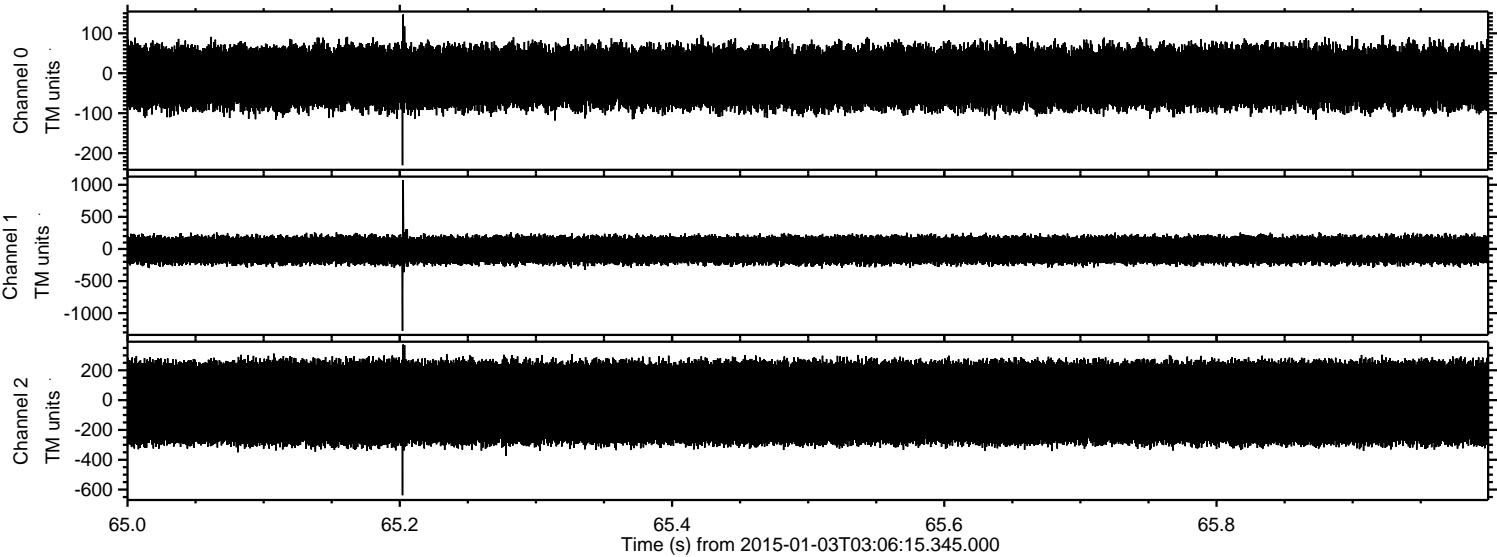


Channel 0
mn: -276
mx: 307
 μ : -10.7
 σ : 42.1

Channel 1
mn: -610
mx: 513
 μ : -17.2
 σ : 113.0

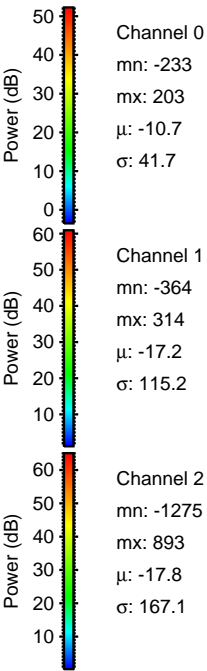
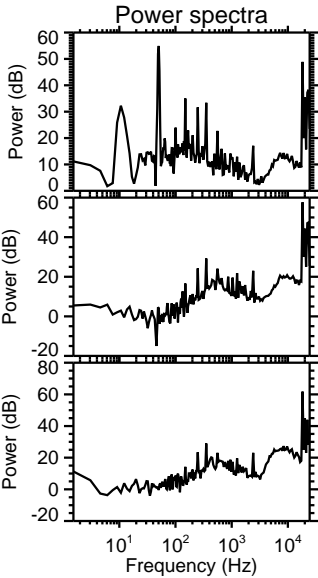
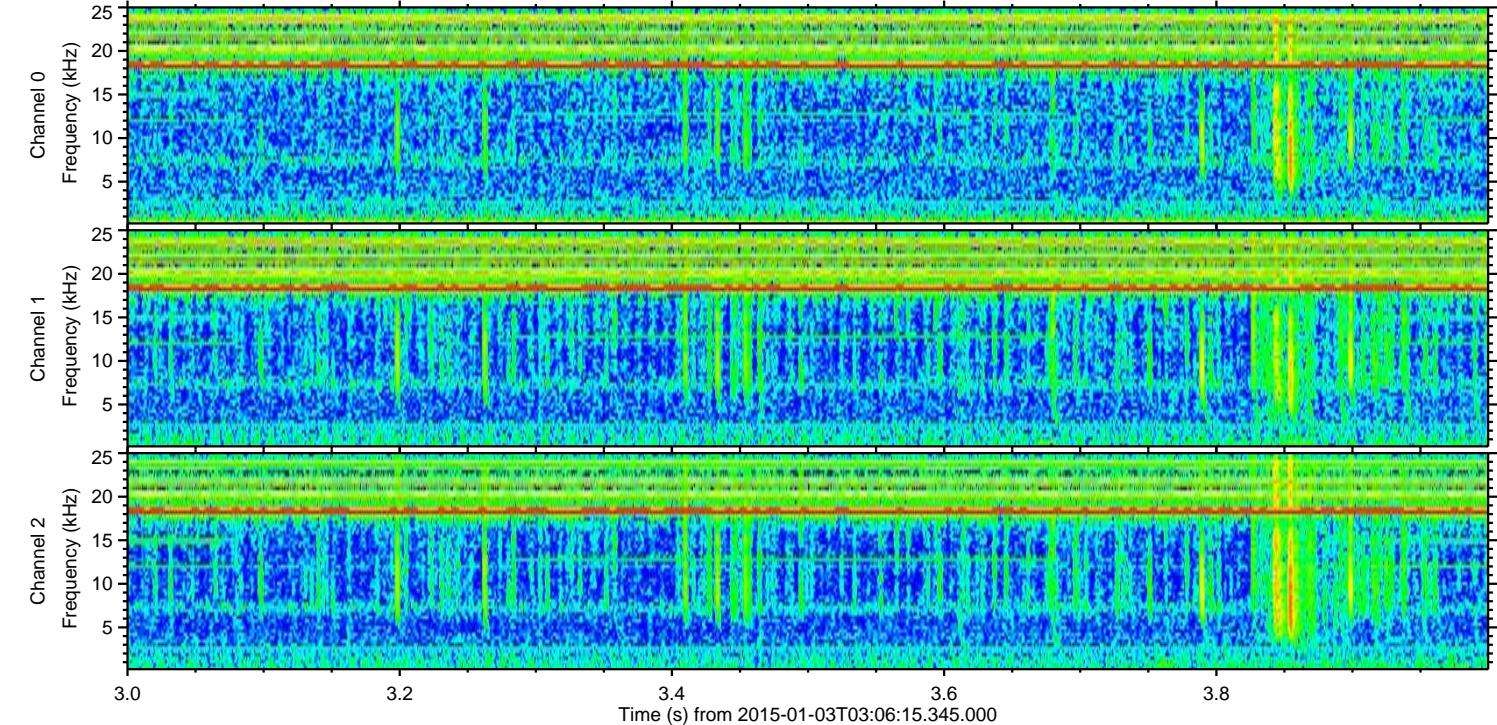
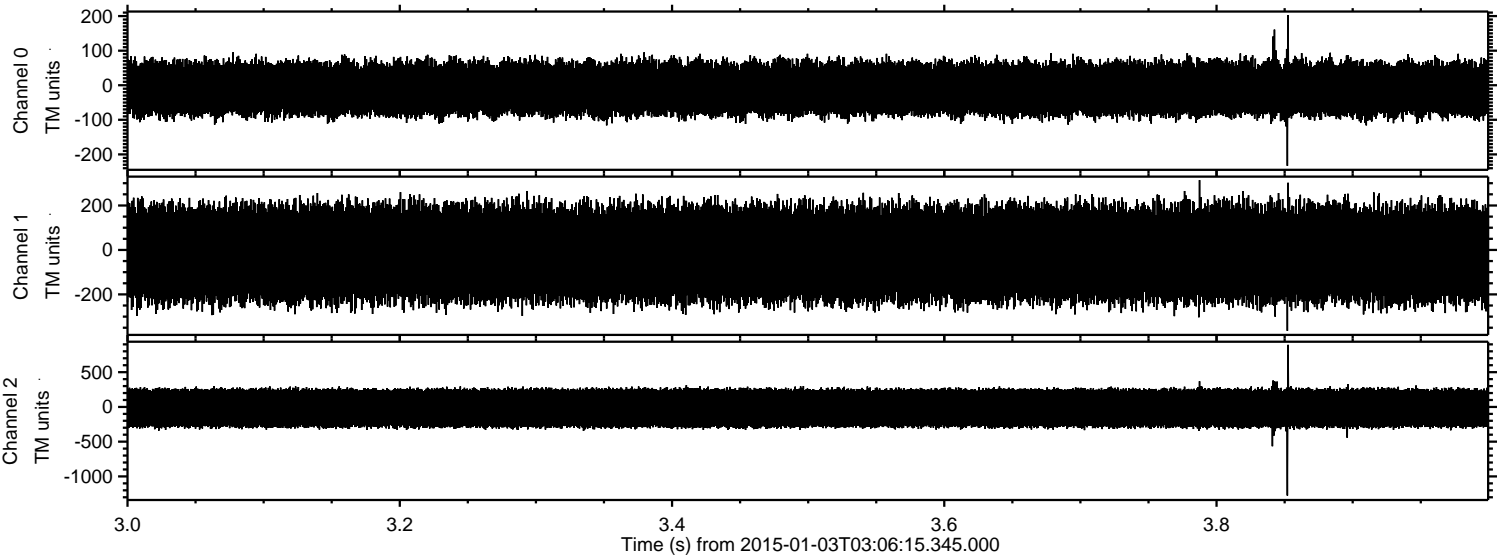
Channel 2
mn: -1467
mx: 1300
 μ : -17.8
 σ : 171.4

Processed Sat Jan 3 19:11:32 2015 by ELM ver.2012-10-06 from 001__elm20150103_030614__dat00.bin



ELMAVAN 3D WAVEFORMS (Measured data sampled at 50 kHz) 49805 packets of 144 samples from 2015-01-03T03:06:15.345.000. Part 4/144

Processed Sat Jan 3 19:11:33 2015 by ELM ver.2012-10-06 from 001__elm20150103_030614__dat00.bin



Power spectra

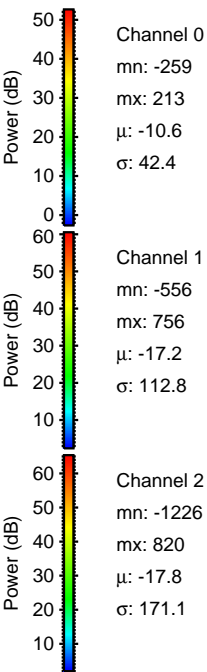
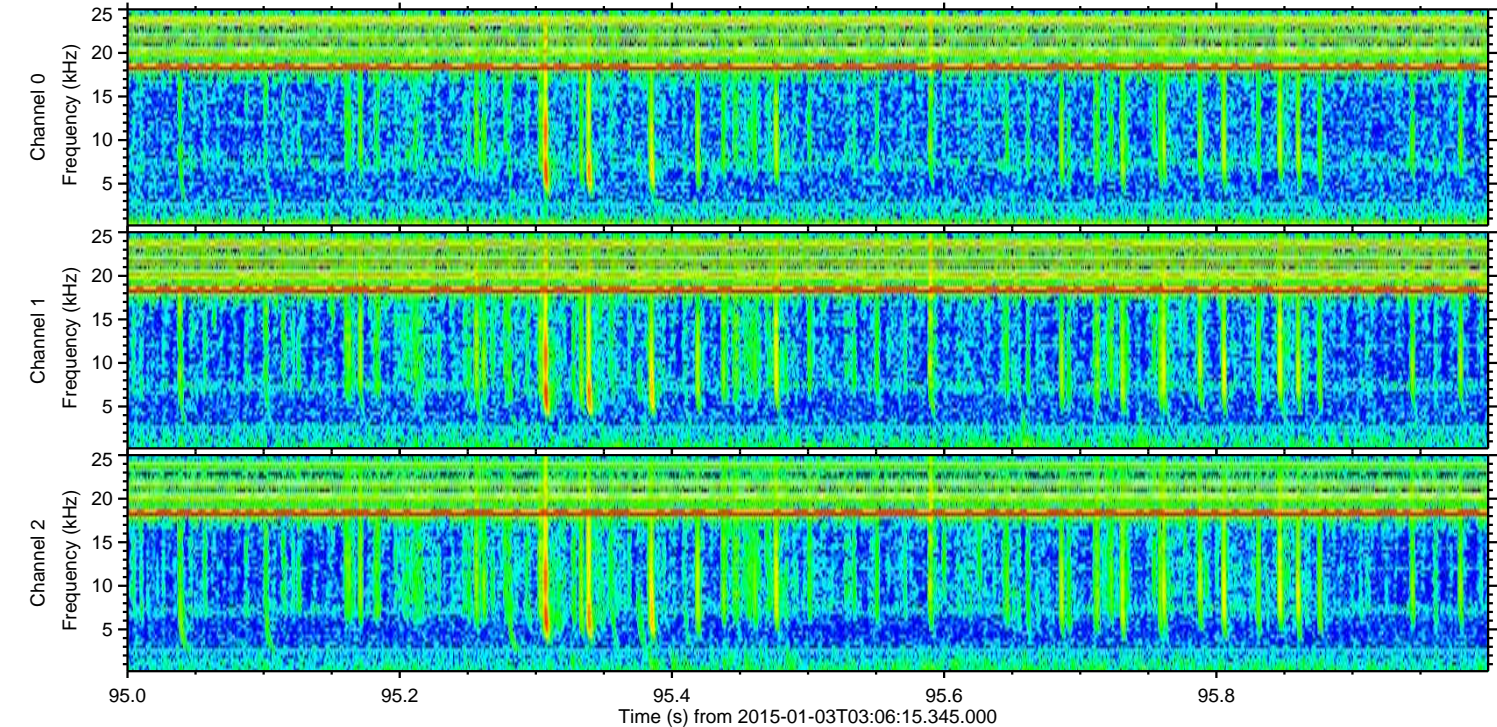
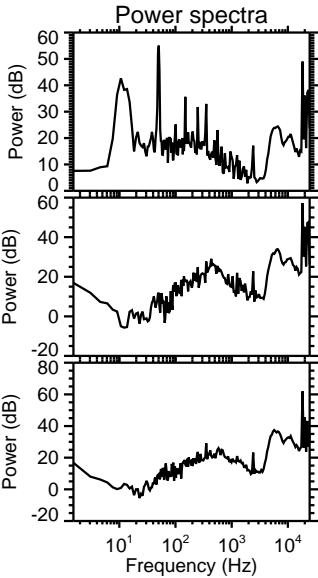
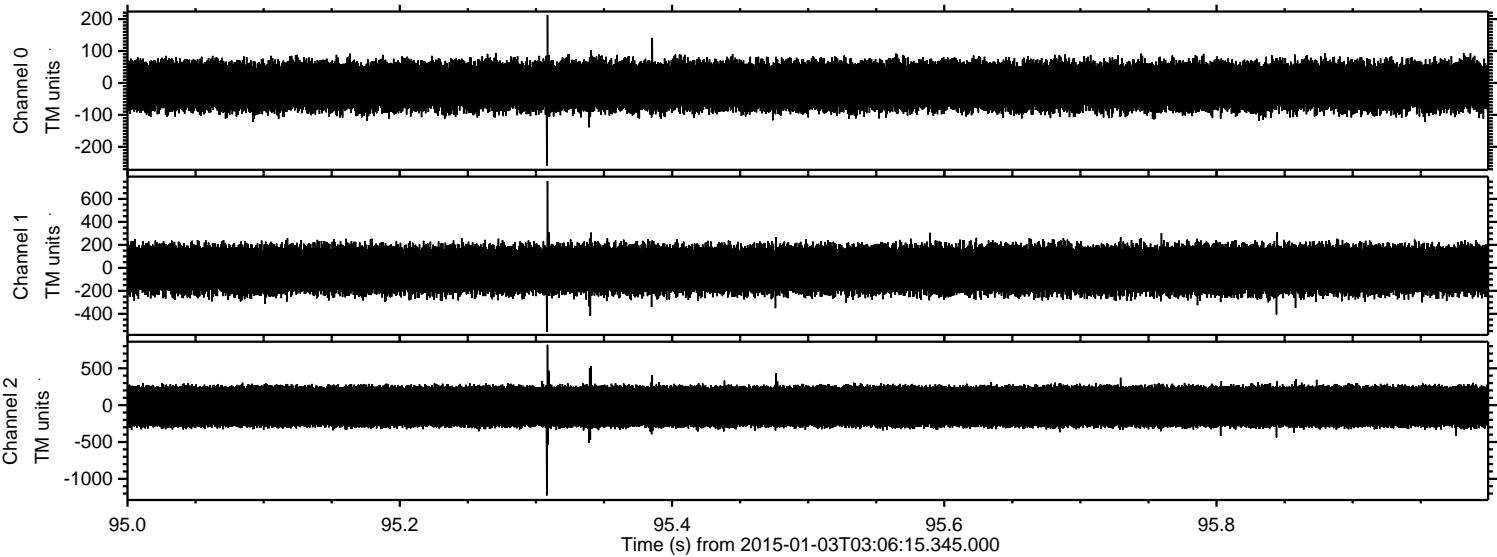
Channel 0
mn: -233
mx: 203
 μ : -10.7
 σ : 41.7

Channel 1
mn: -364
mx: 314
 μ : -17.2
 σ : 115.2

Channel 2
mn: -1275
mx: 893
 μ : -17.8
 σ : 167.1

ELMAVAN 3D WAVEFORMS (Measured data sampled at 50 kHz) 49805 packets of 144 samples from 2015-01-03T03:06:15.345.000. Part 96/144

Processed Sat Jan 3 19:11:34 2015 by ELM ver.2012-10-06 from 001__elm20150103_030614__dat00.bin



ELMAVAN 3D WAVEFORMS (Measured data sampled at 50 kHz) 49805 packets of 144 samples from 2015-01-03T03:06:15.345.000. Part 2/144

Processed Sat Jan 3 19:11:35 2015 by ELM ver.2012-10-06 from 001__elm20150103_030614__dat00.bin

