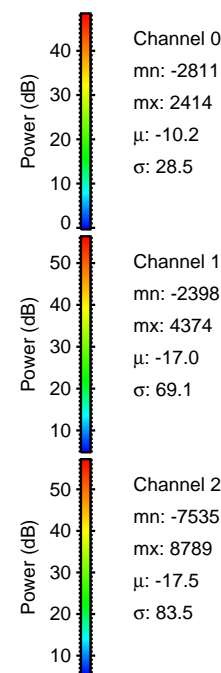
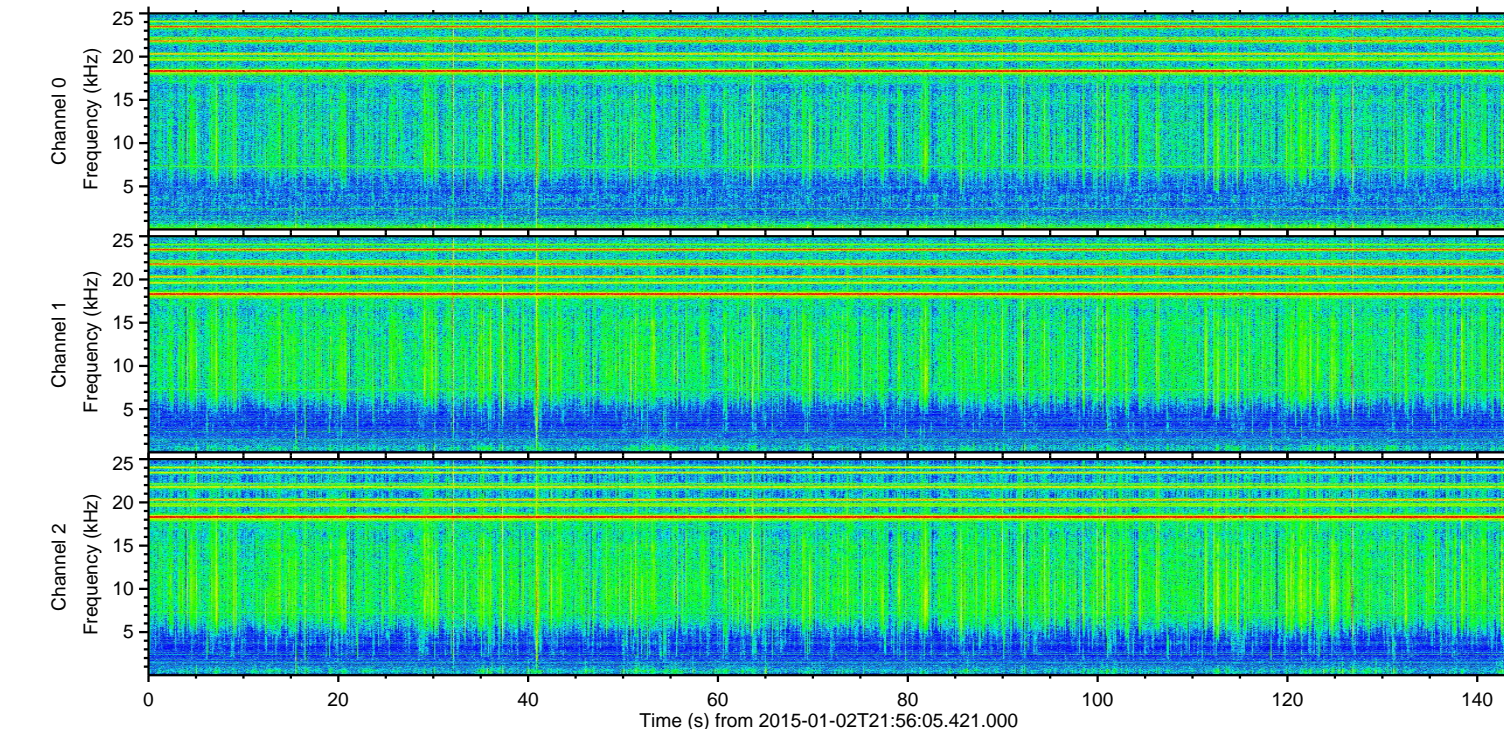
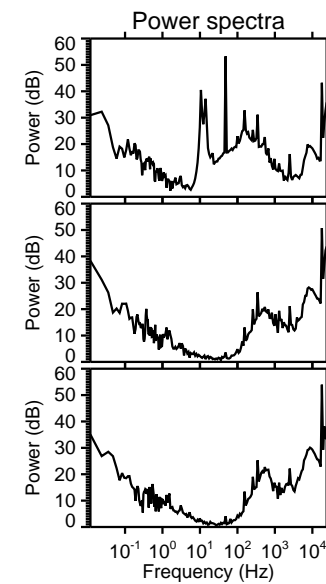
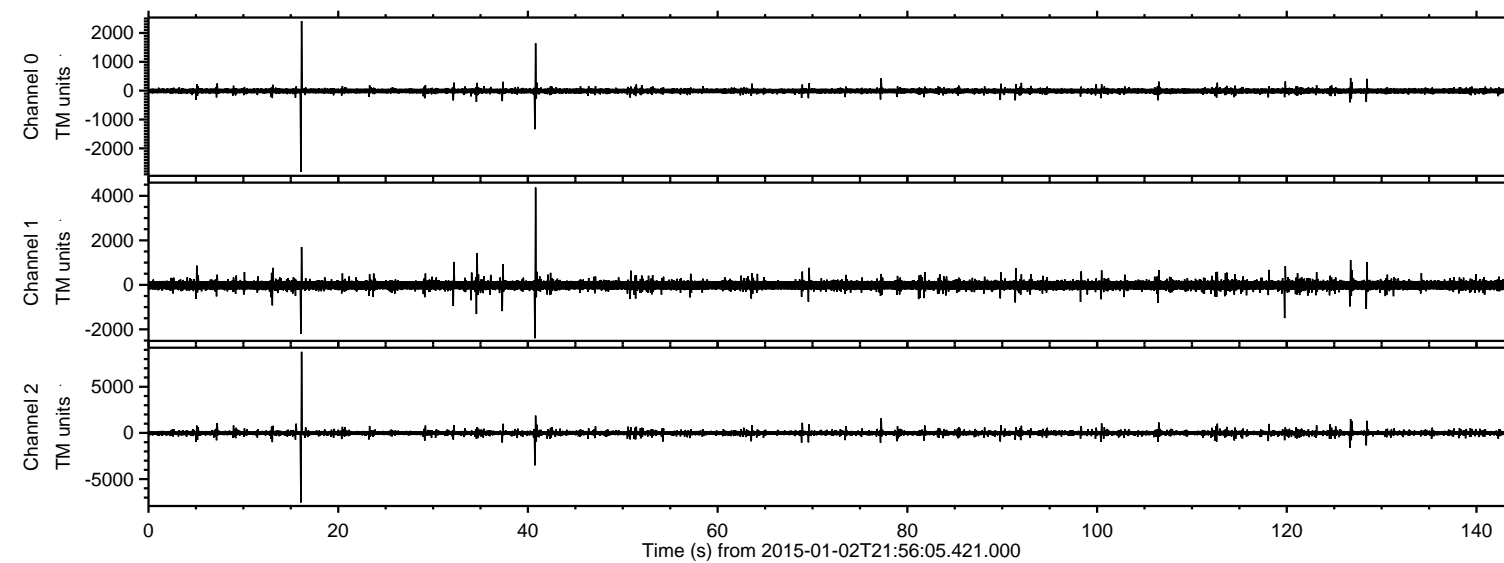


# ELMAVAN 3D WAVEFORMS (Measured data sampled at 50 kHz) 49806 packets of 144 samples from 2015-01-02T21:56:05.421.000.

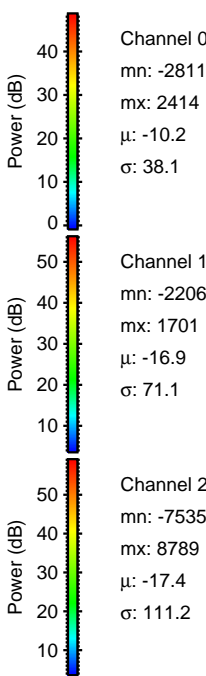
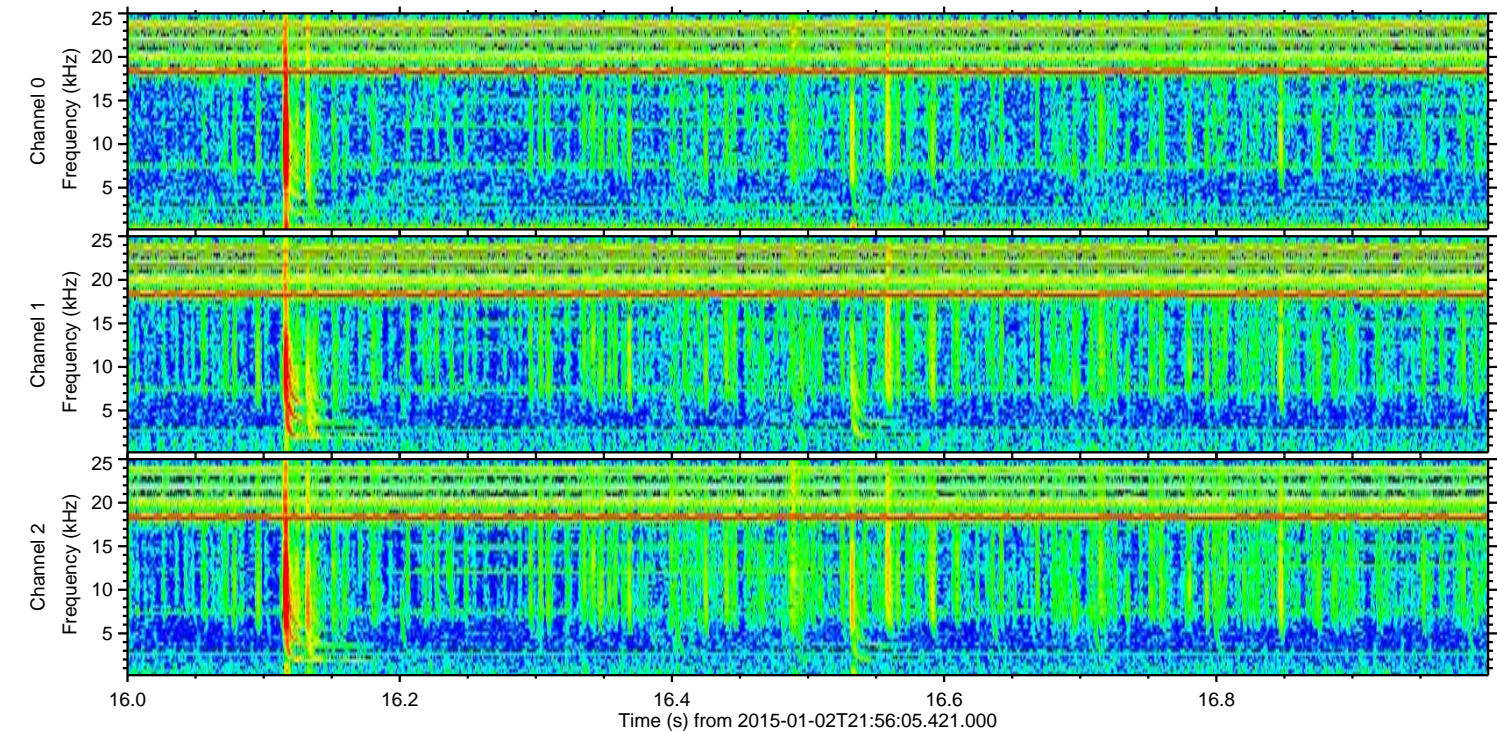
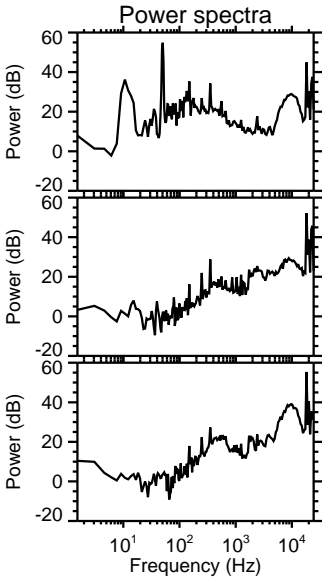
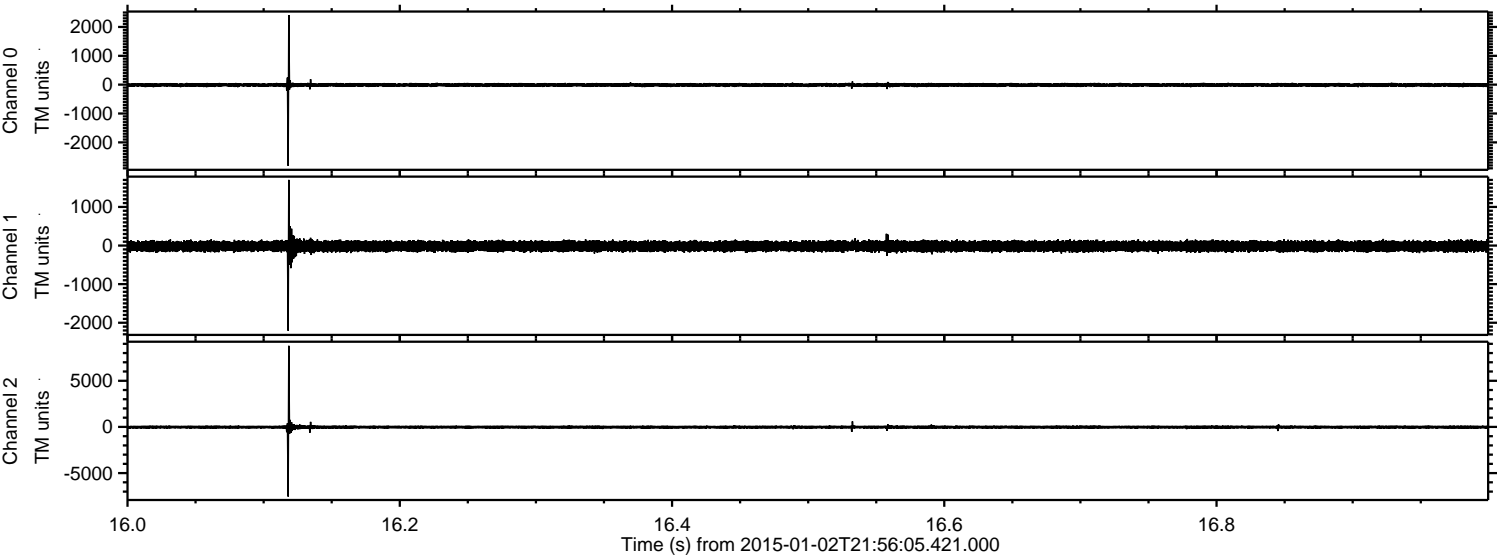
Processed Sat Jan 3 17:47:28 2015 by ELM ver.2012-10-06 from 001\_\_elm20150102\_215604\_\_dat00.bin





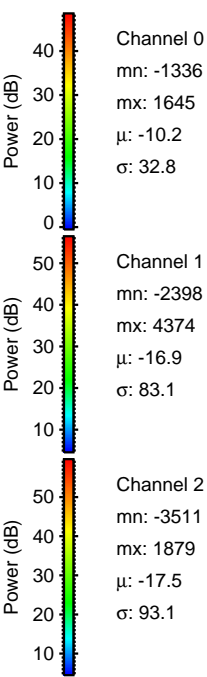
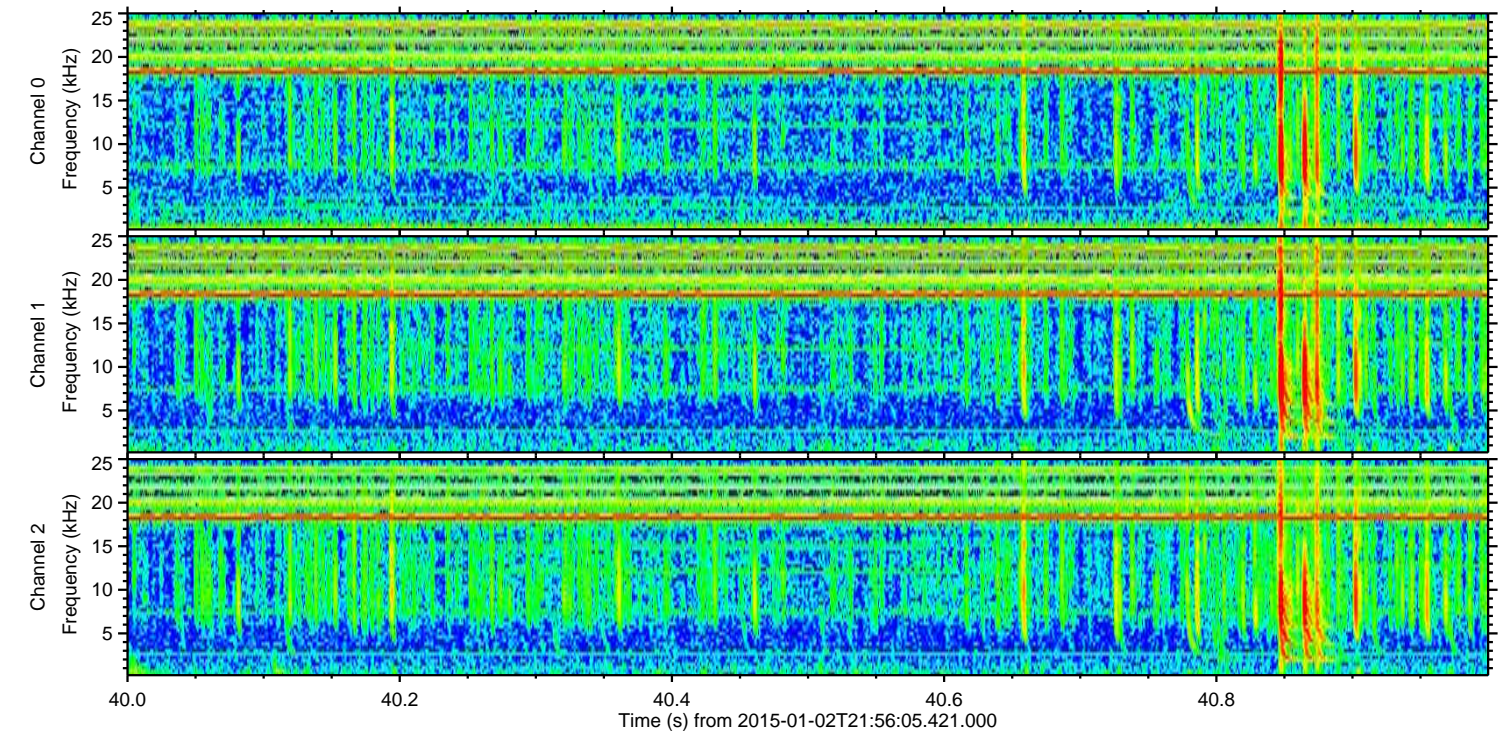
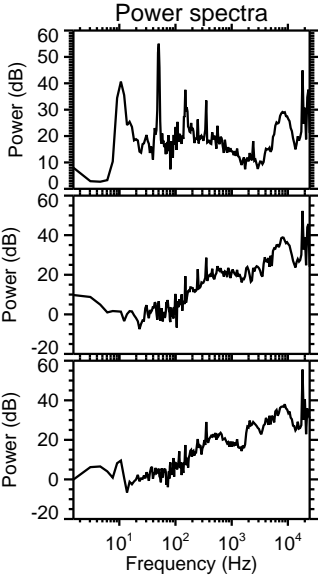
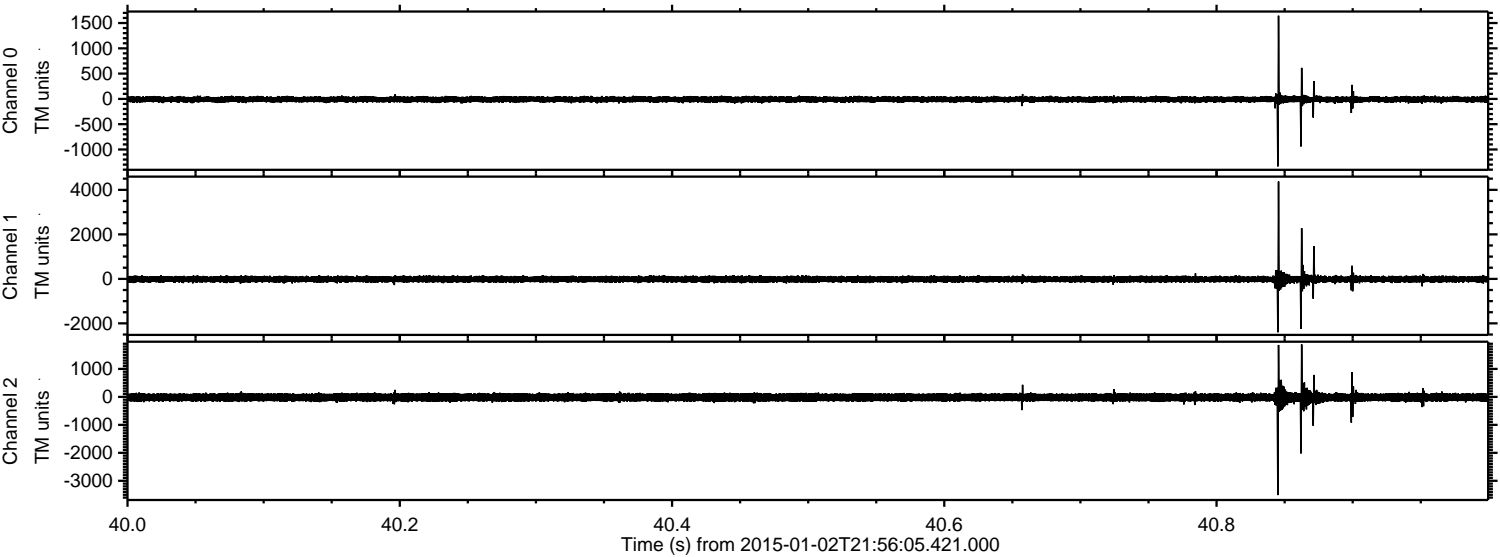
ELMAVAN 3D WAVEFORMS (Measured data sampled at 50 kHz) 49806 packets of 144 samples from 2015-01-02T21:56:05.421.000. Part 17/144

Processed Sat Jan 3 17:47:40 2015 by ELM ver.2012-10-06 from 001\_\_elm20150102\_215604\_\_dat00.bin





Processed Sat Jan 3 17:47:41 2015 by ELM ver.2012-10-06 from 001\_\_elm20150102\_215604\_\_dat00.bin



Channel 0  
mn: -1336  
mx: 1645  
 $\mu$ : -10.2  
 $\sigma$ : 32.8

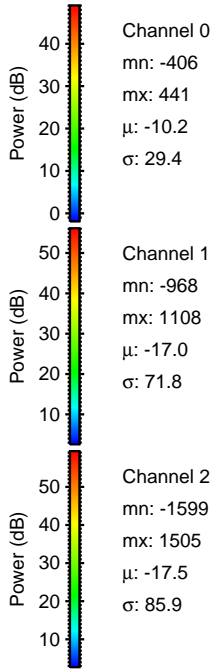
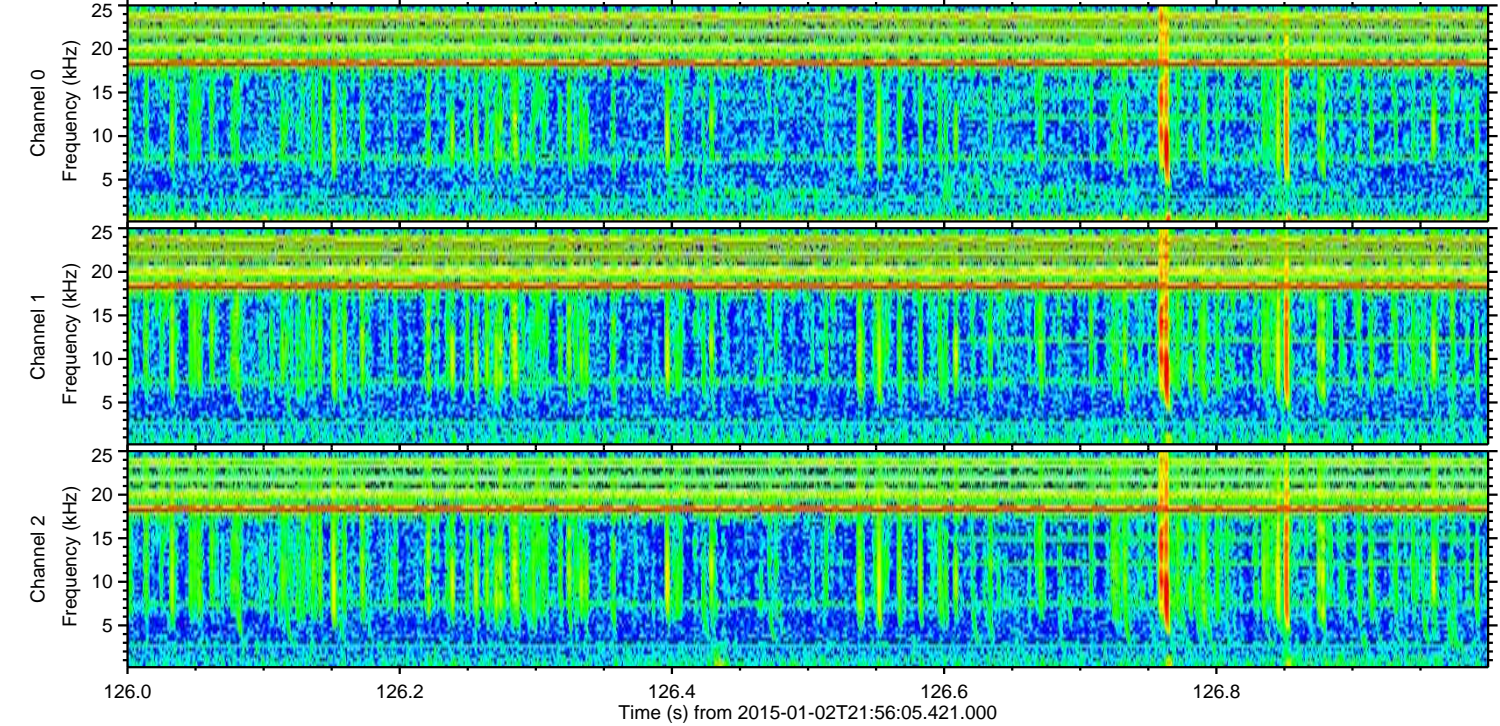
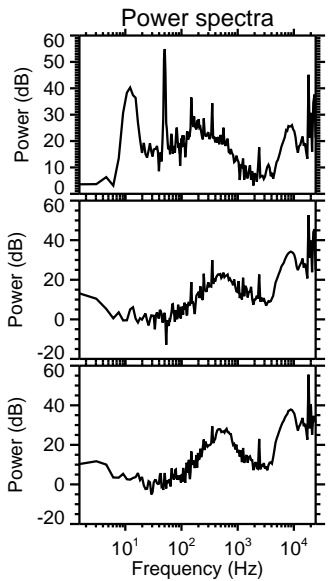
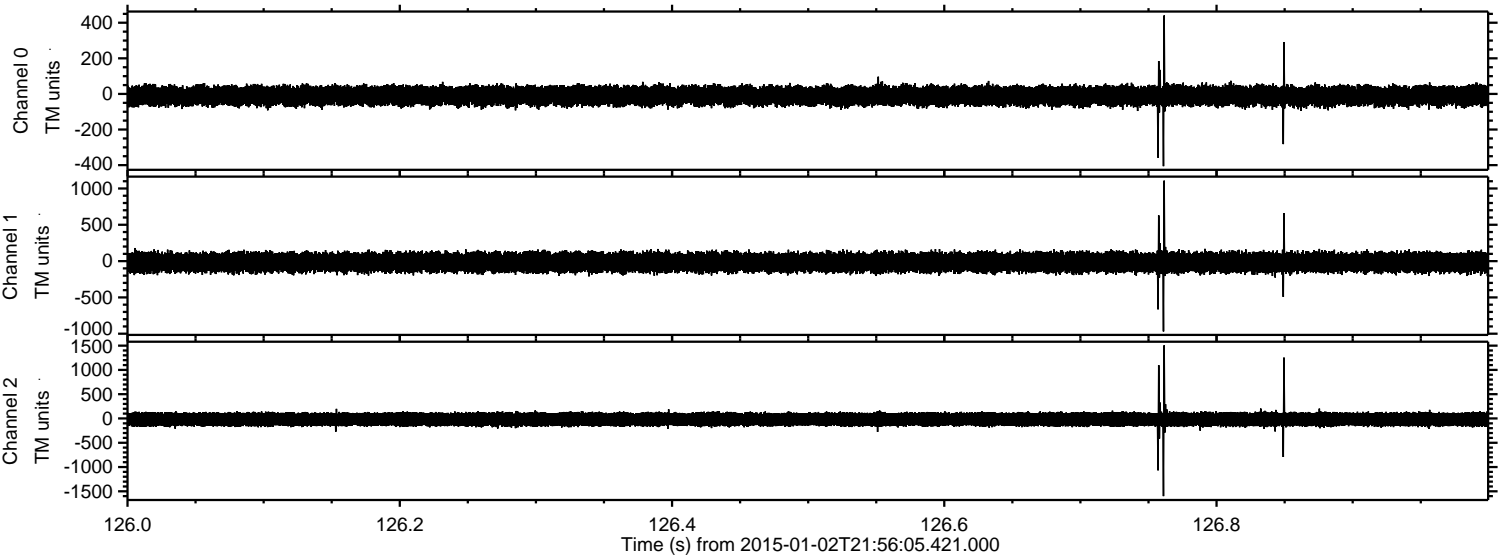
Channel 1  
mn: -2398  
mx: 4374  
 $\mu$ : -16.9  
 $\sigma$ : 83.1

Channel 2  
mn: -3511  
mx: 1879  
 $\mu$ : -17.5  
 $\sigma$ : 93.1



ELMAVAN 3D WAVEFORMS (Measured data sampled at 50 kHz) 49806 packets of 144 samples from 2015-01-02T21:56:05.421.000. Part 127/144

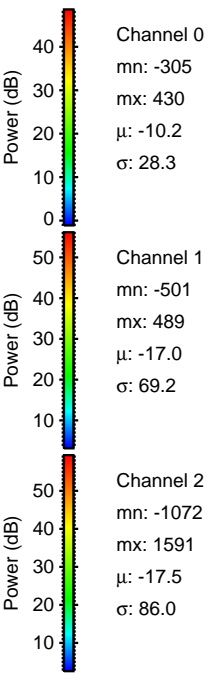
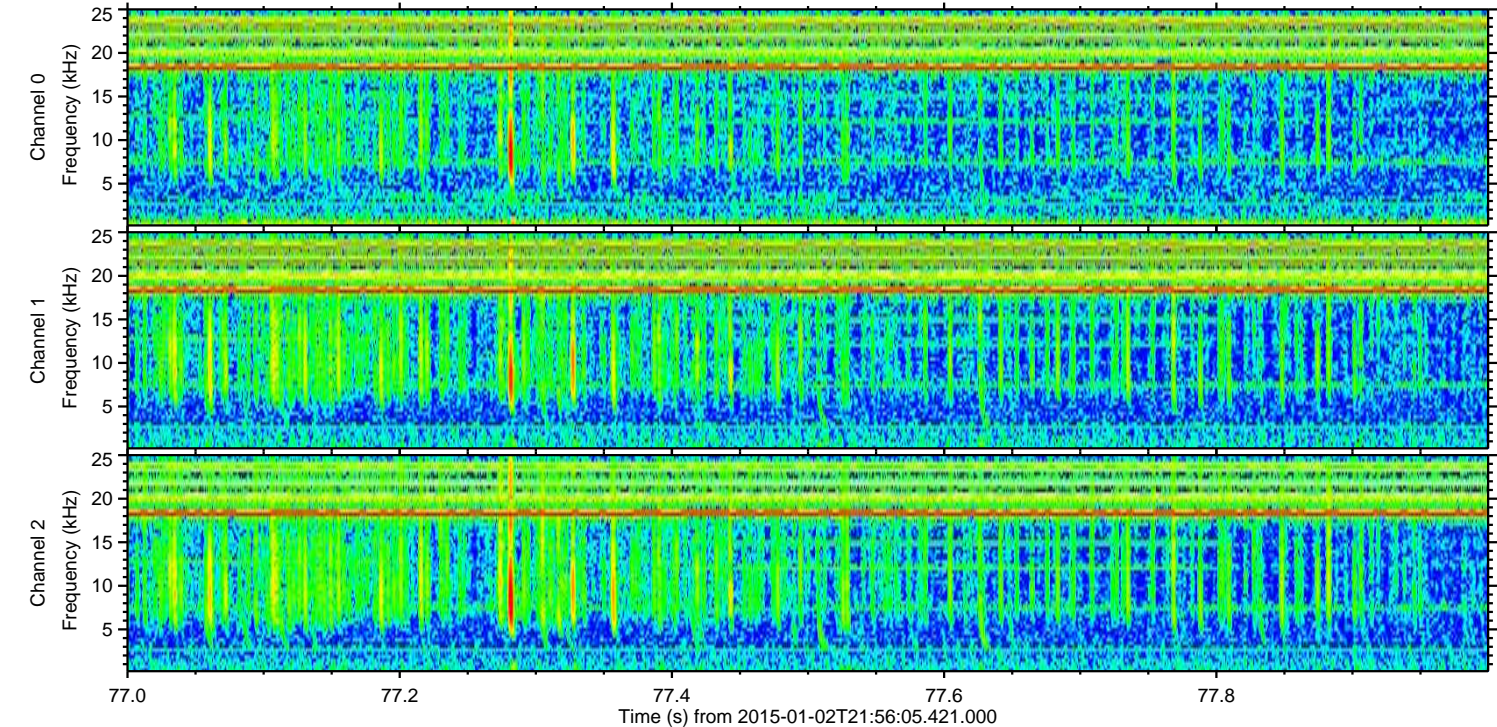
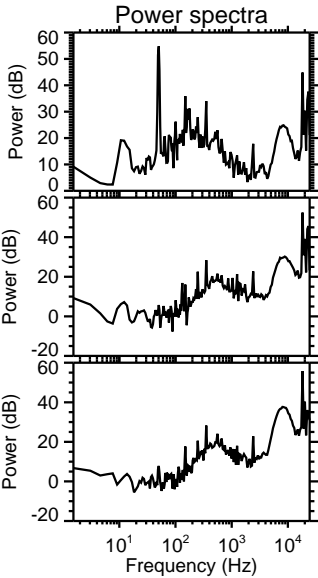
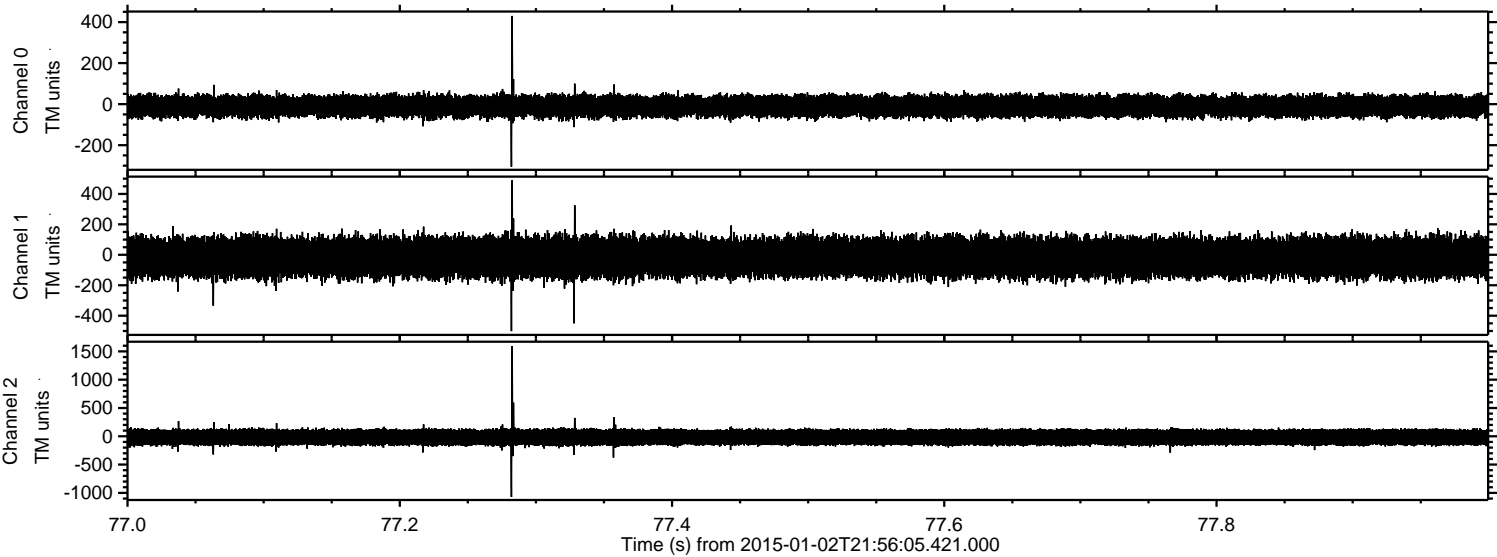
Processed Sat Jan 3 17:47:42 2015 by ELM ver.2012-10-06 from 001\_\_elm20150102\_215604\_\_dat00.bin





ELMAVAN 3D WAVEFORMS (Measured data sampled at 50 kHz) 49806 packets of 144 samples from 2015-01-02T21:56:05.421.000. Part 78/144

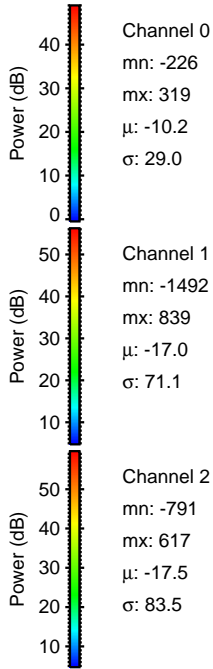
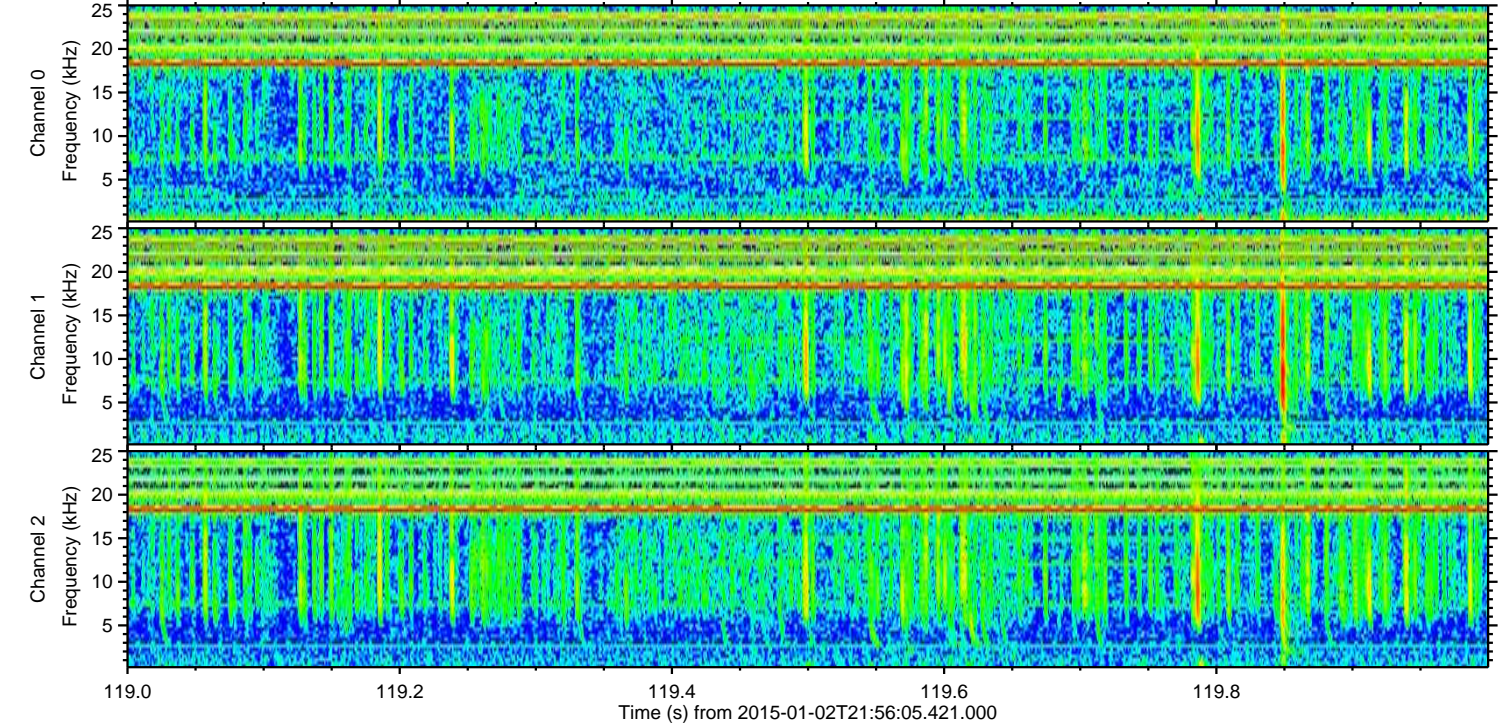
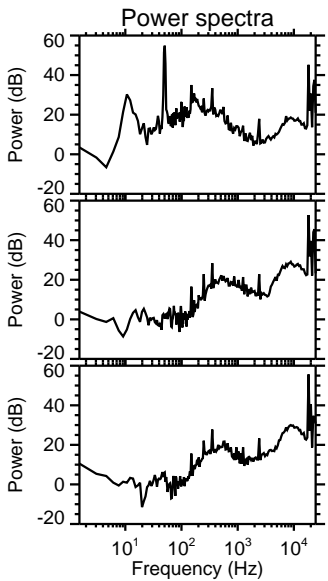
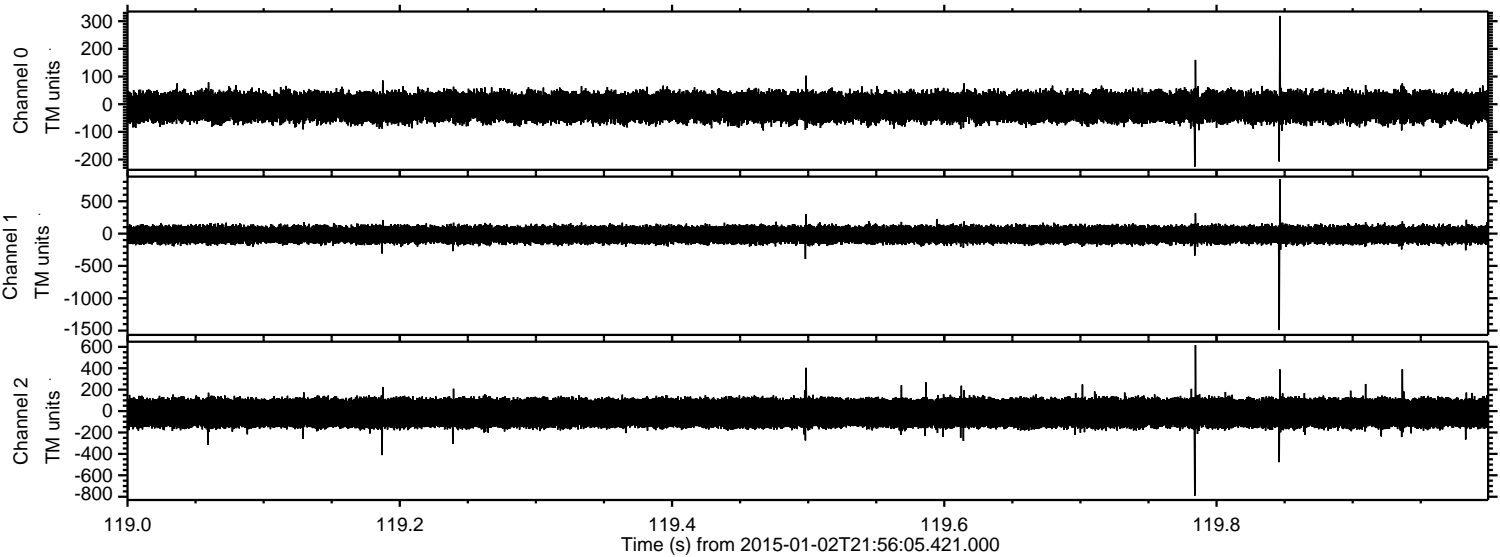
Processed Sat Jan 3 17:47:43 2015 by ELM ver.2012-10-06 from 001\_\_elm20150102\_215604\_\_dat00.bin





ELMAVAN 3D WAVEFORMS (Measured data sampled at 50 kHz) 49806 packets of 144 samples from 2015-01-02T21:56:05.421.000. Part 120/144

Processed Sat Jan 3 17:47:44 2015 by ELM ver.2012-10-06 from 001\_\_elm20150102\_215604\_\_dat00.bin



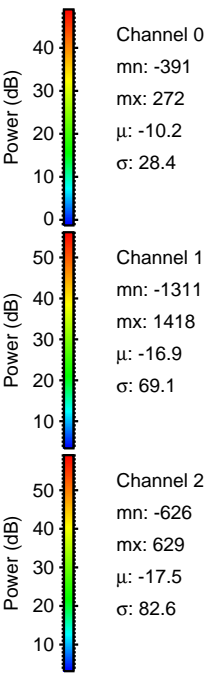
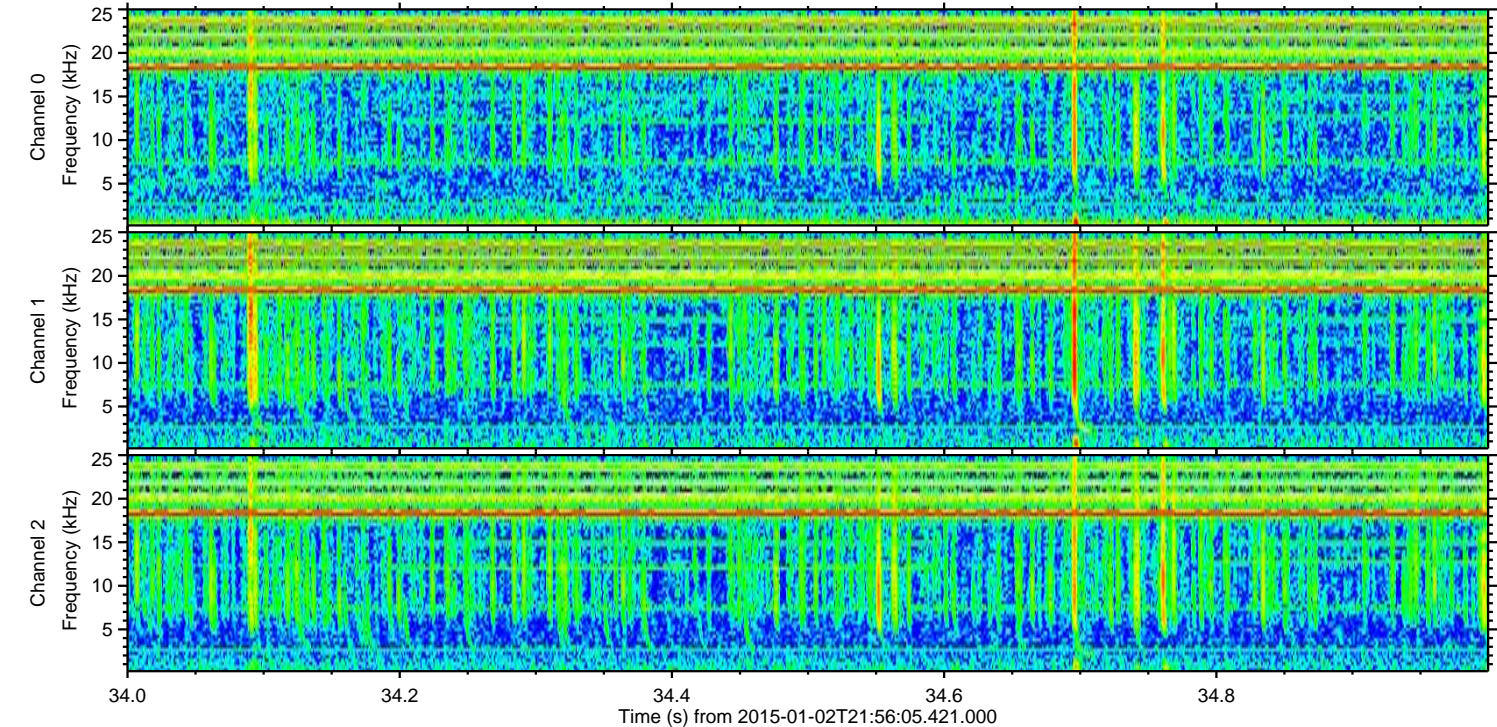
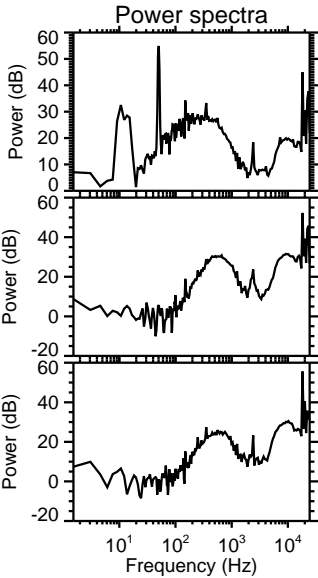
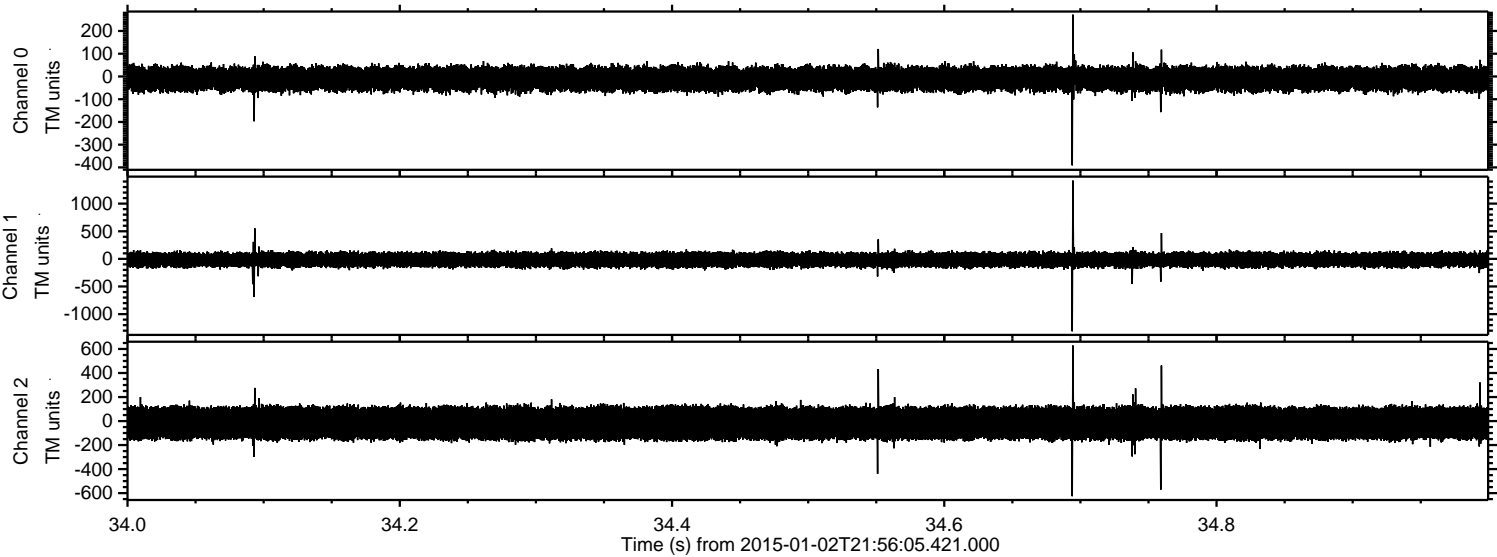
Channel 0  
mn: -226  
mx: 319  
 $\mu$ : -10.2  
 $\sigma$ : 29.0

Channel 1  
mn: -1492  
mx: 839  
 $\mu$ : -17.0  
 $\sigma$ : 71.1

Channel 2  
mn: -791  
mx: 617  
 $\mu$ : -17.5  
 $\sigma$ : 83.5



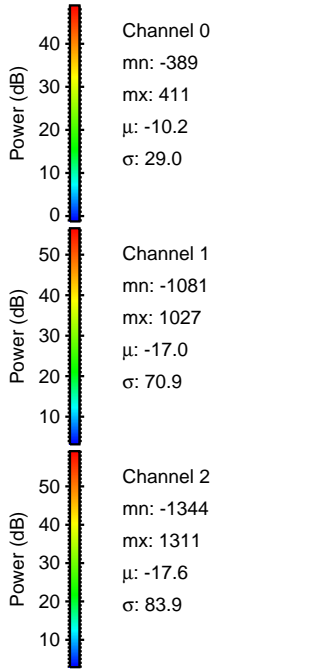
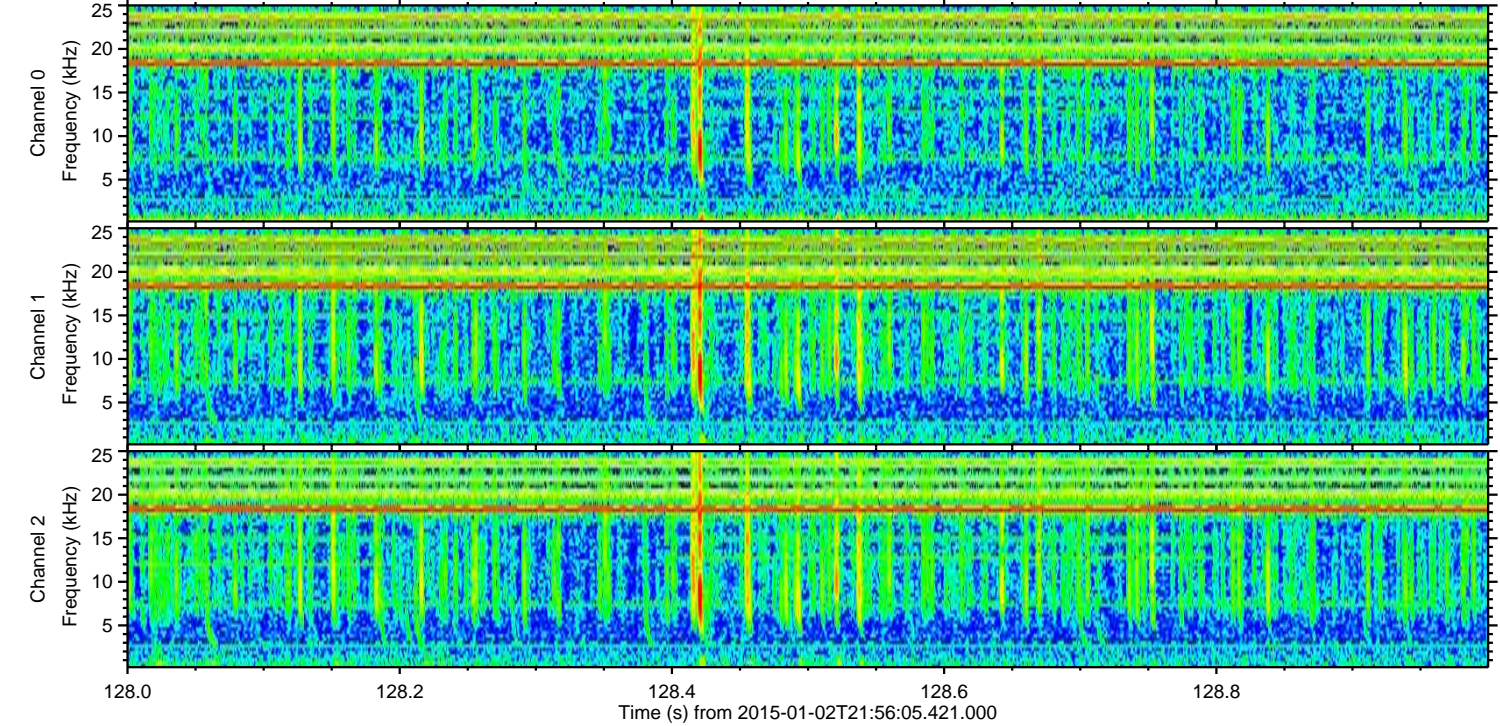
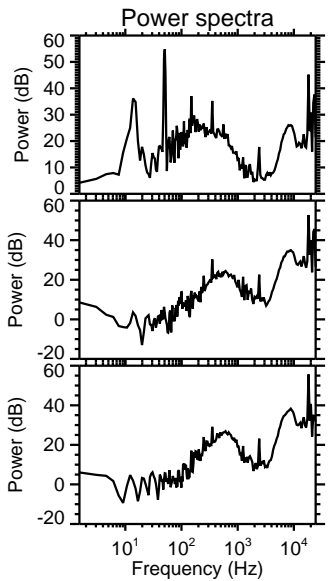
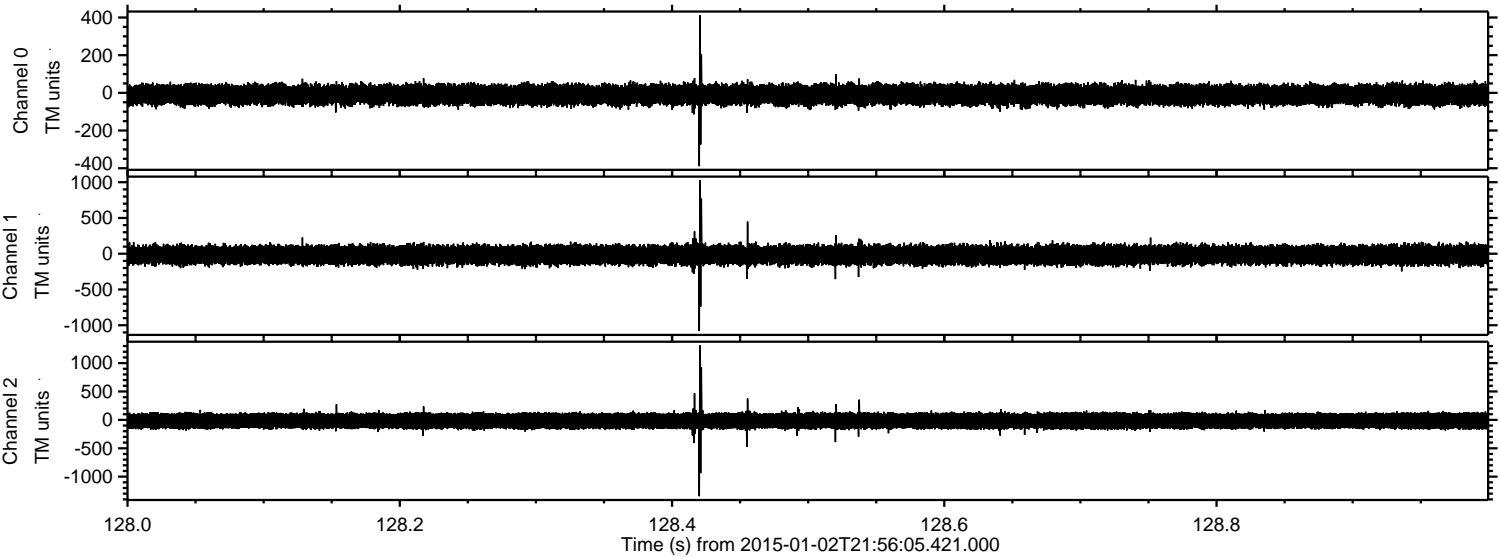
Processed Sat Jan 3 17:47:45 2015 by ELM ver.2012-10-06 from 001\_\_elm20150102\_215604\_\_dat00.bin





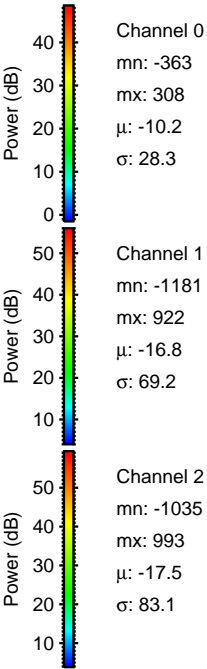
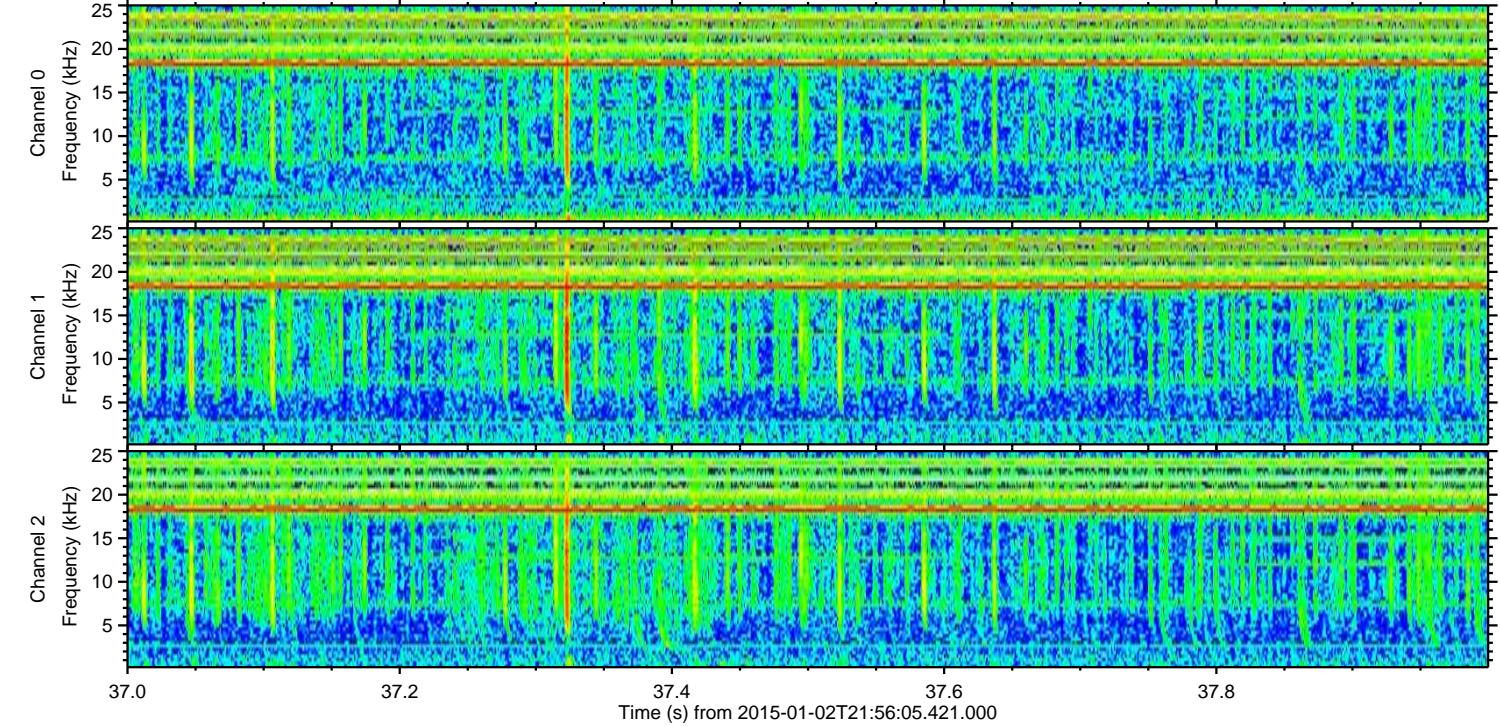
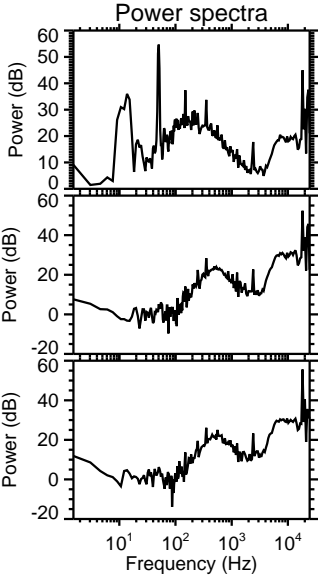
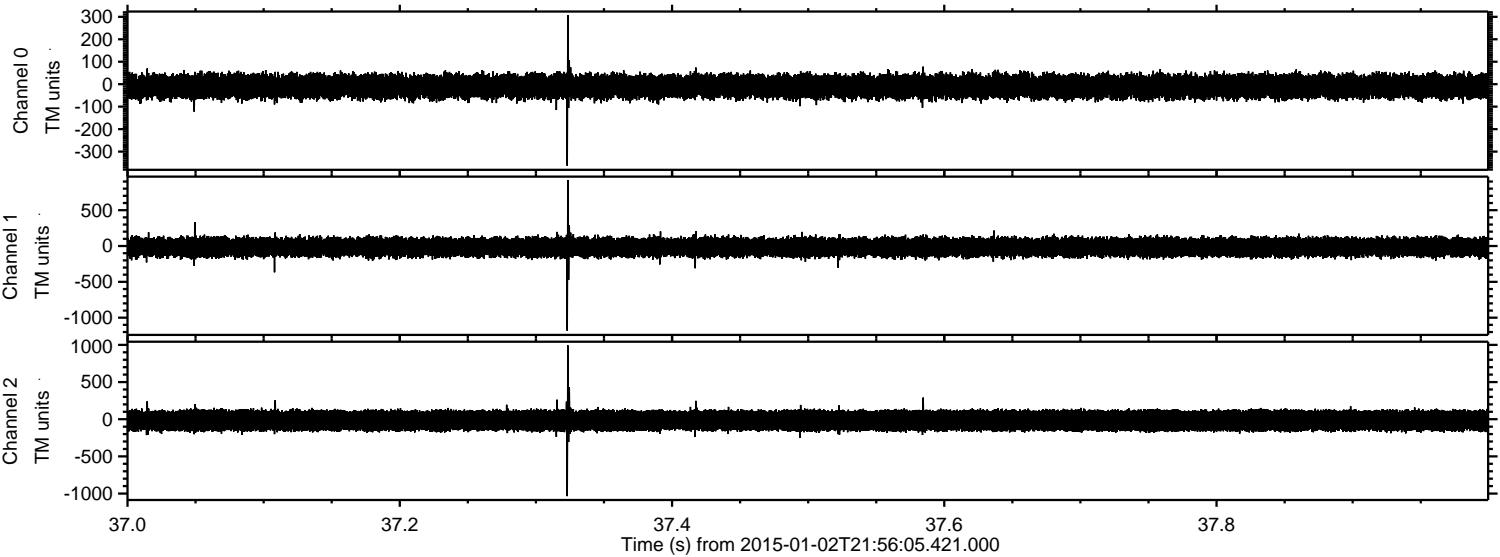
ELMAVAN 3D WAVEFORMS (Measured data sampled at 50 kHz) 49806 packets of 144 samples from 2015-01-02T21:56:05.421.000. Part 129/144

Processed Sat Jan 3 17:47:46 2015 by ELM ver.2012-10-06 from 001\_\_elm20150102\_215604\_\_dat00.bin





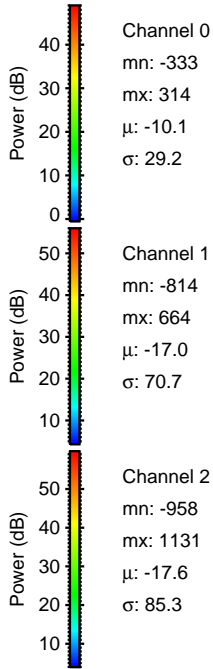
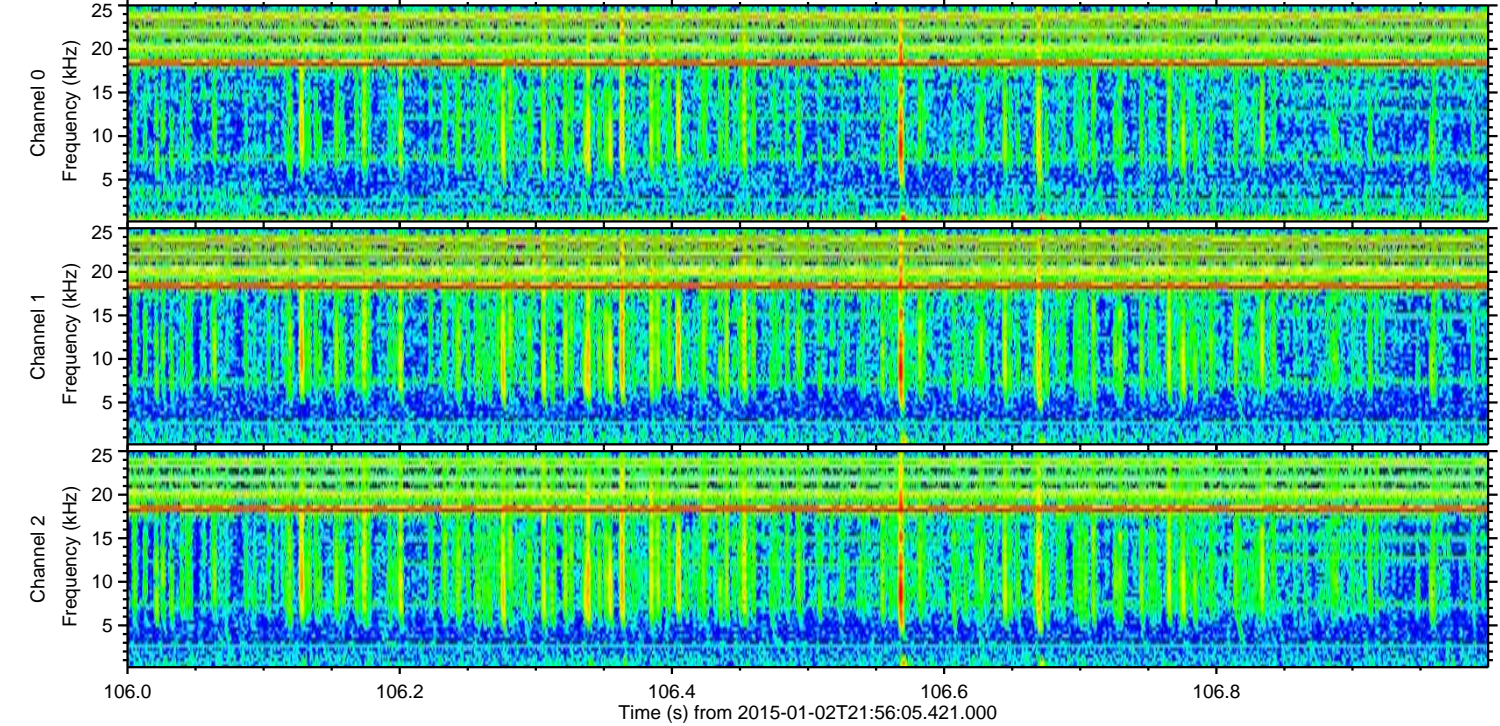
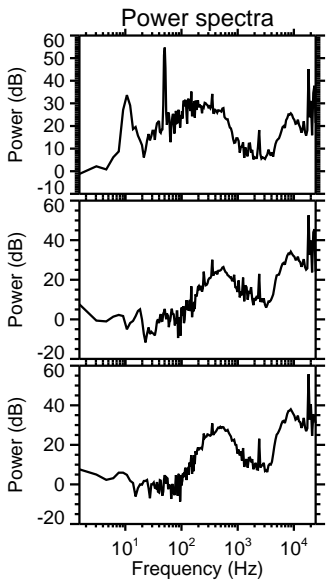
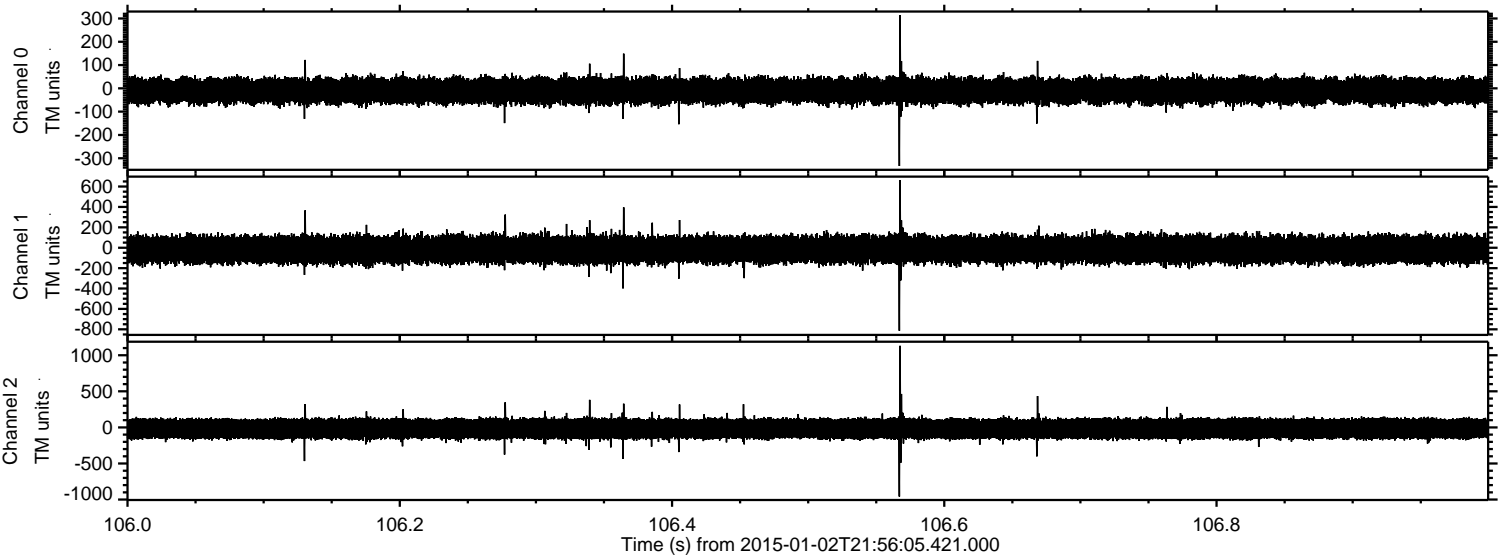
Processed Sat Jan 3 17:47:47 2015 by ELM ver.2012-10-06 from 001\_\_elm20150102\_215604\_\_dat00.bin





ELMAVAN 3D WAVEFORMS (Measured data sampled at 50 kHz) 49806 packets of 144 samples from 2015-01-02T21:56:05.421.000. Part 107/144

Processed Sat Jan 3 17:47:48 2015 by ELM ver.2012-10-06 from 001\_\_elm20150102\_215604\_\_dat00.bin





Processed Sat Jan 3 17:47:49 2015 by ELM ver.2012-10-06 from 001\_\_elm20150102\_215604\_\_dat00.bin

