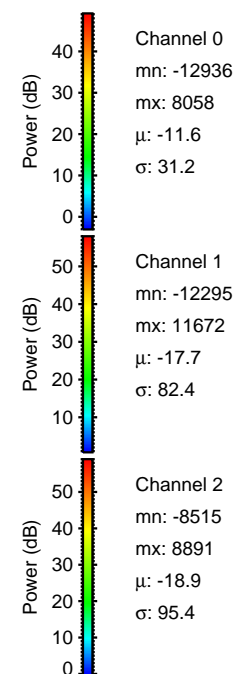
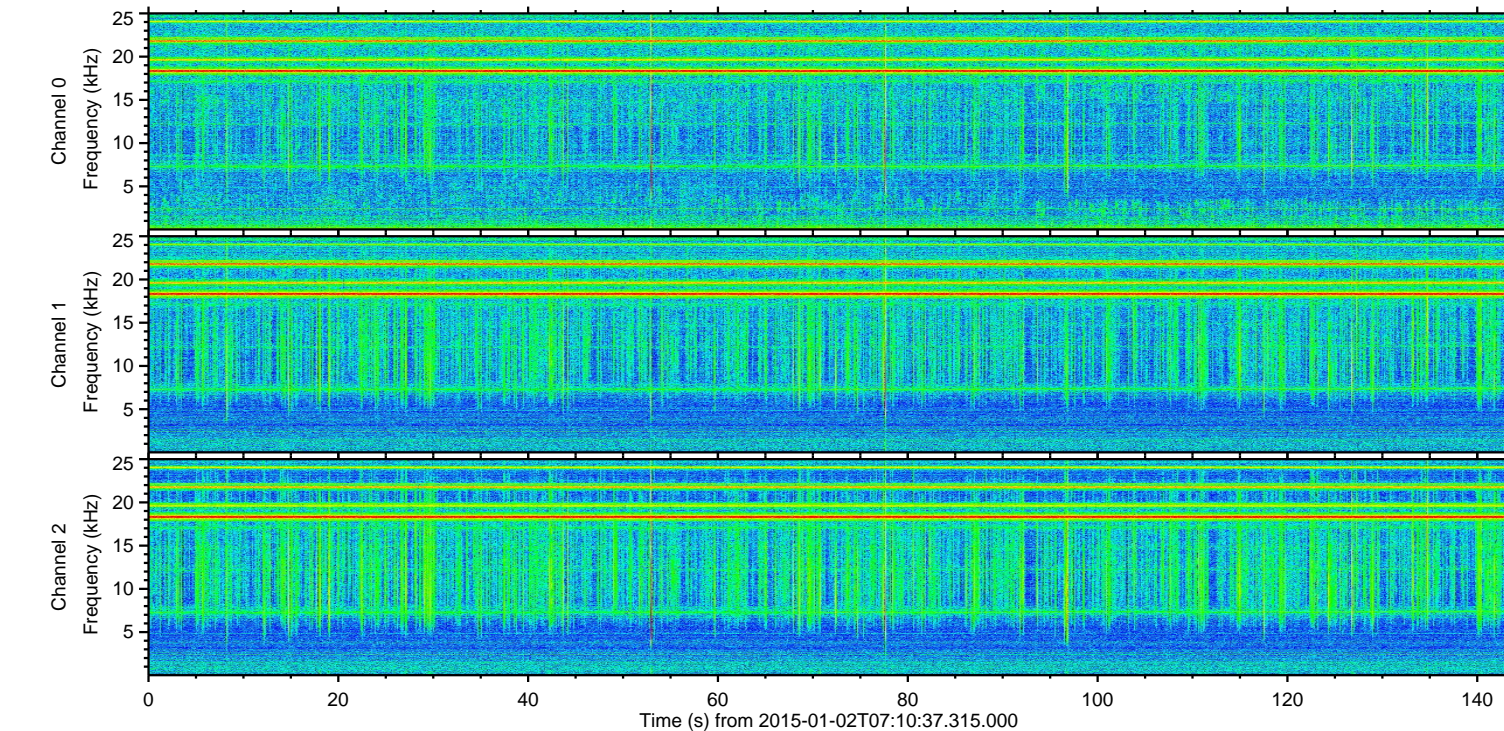
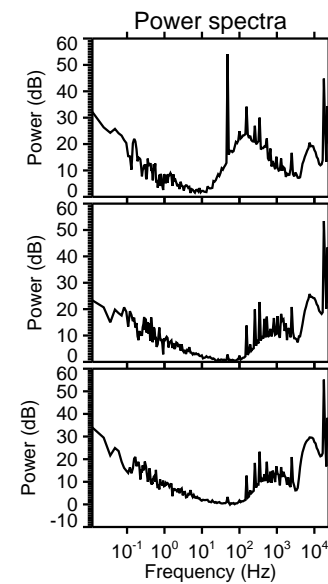
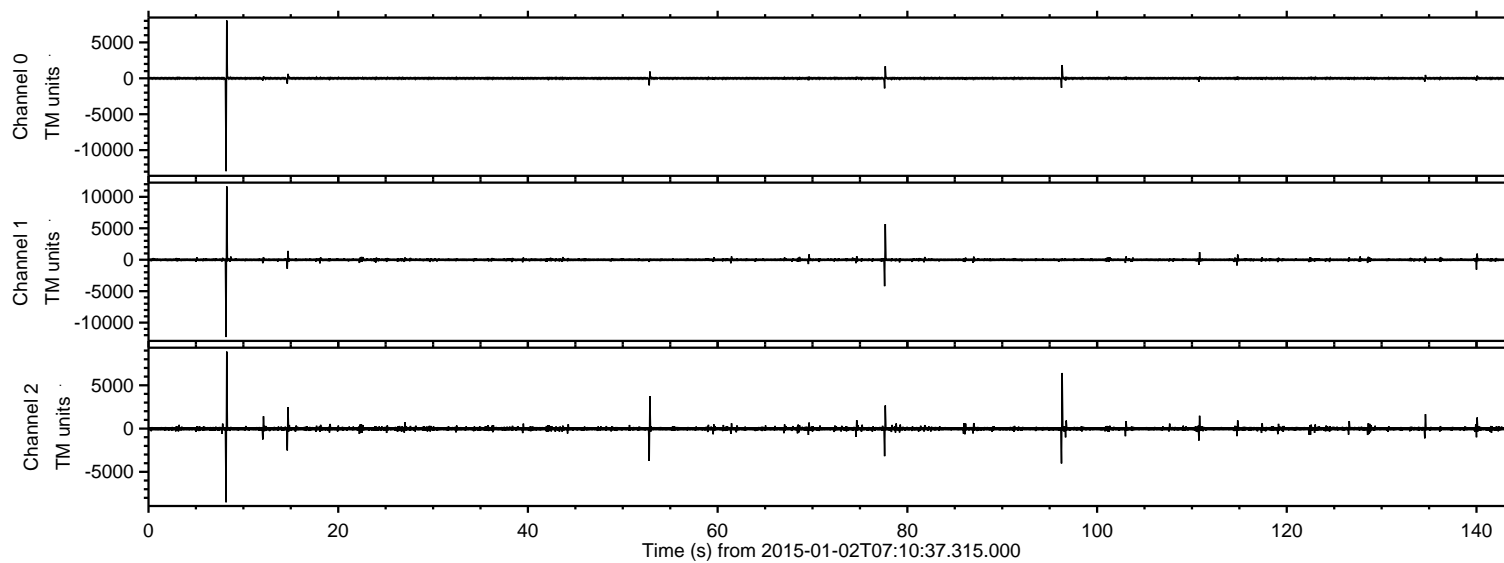
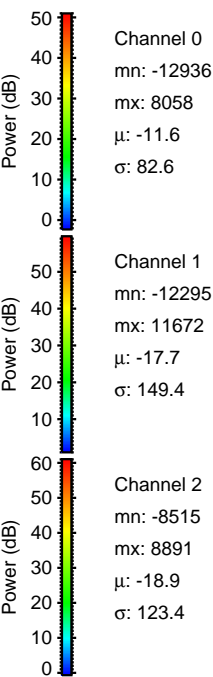
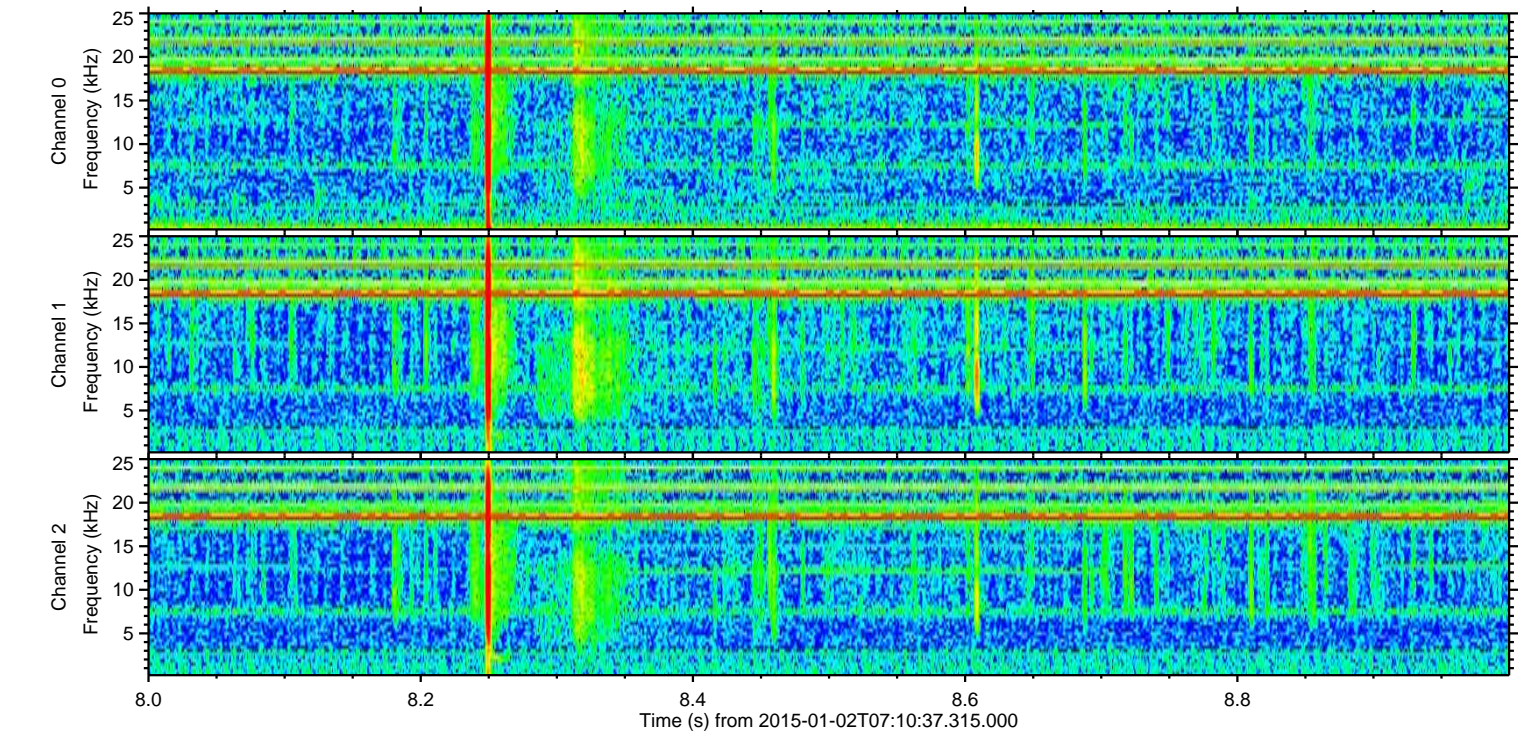
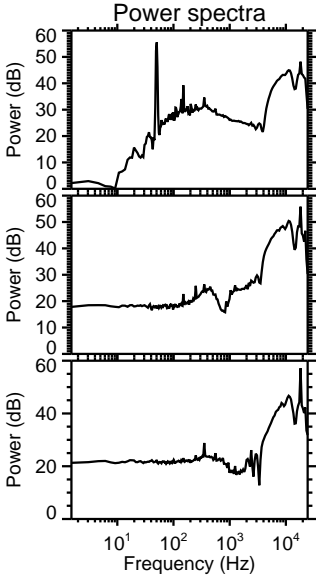
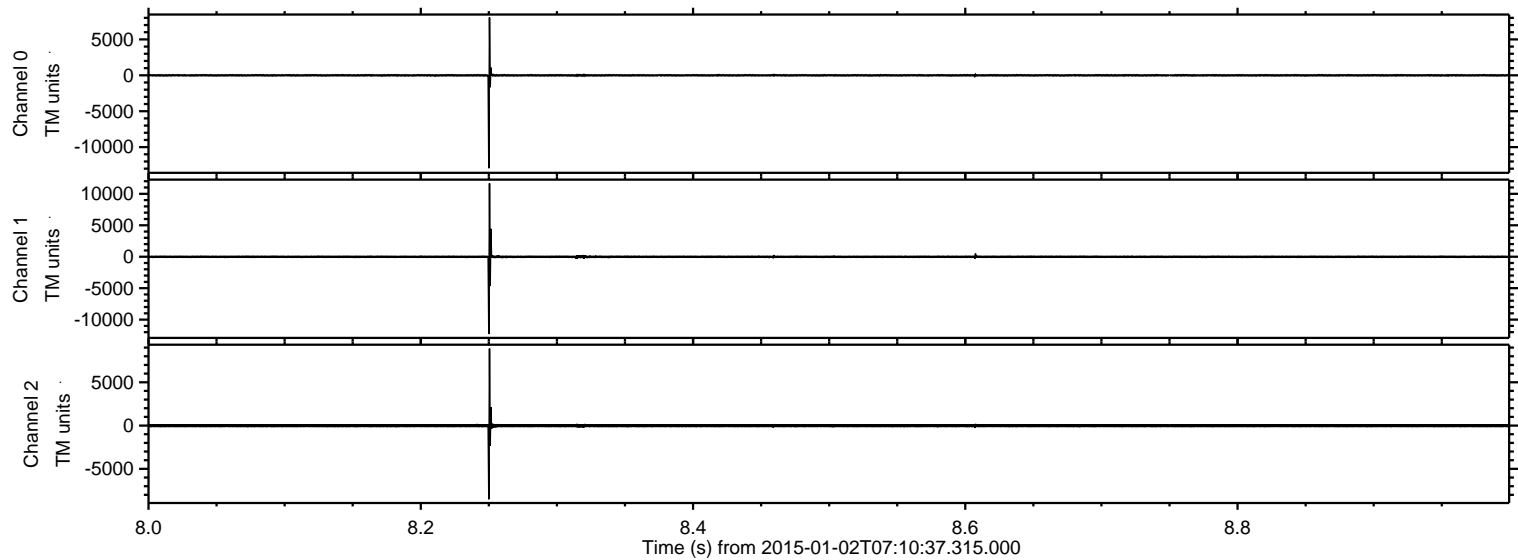


ELMAVAN 3D WAVEFORMS (Measured data sampled at 50 kHz) 49806 packets of 144 samples from 2015-01-02T07:10:37.315.000.

Processed Sat Jan 3 14:00:51 2015 by ELM ver.2012-10-06 from 001__elm20150102_071036__dat00.bin

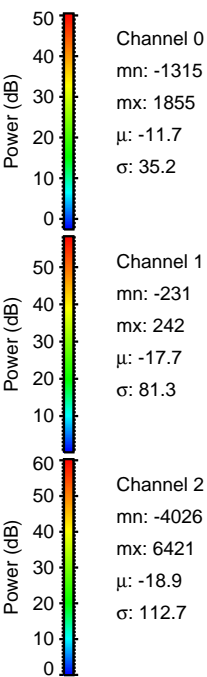
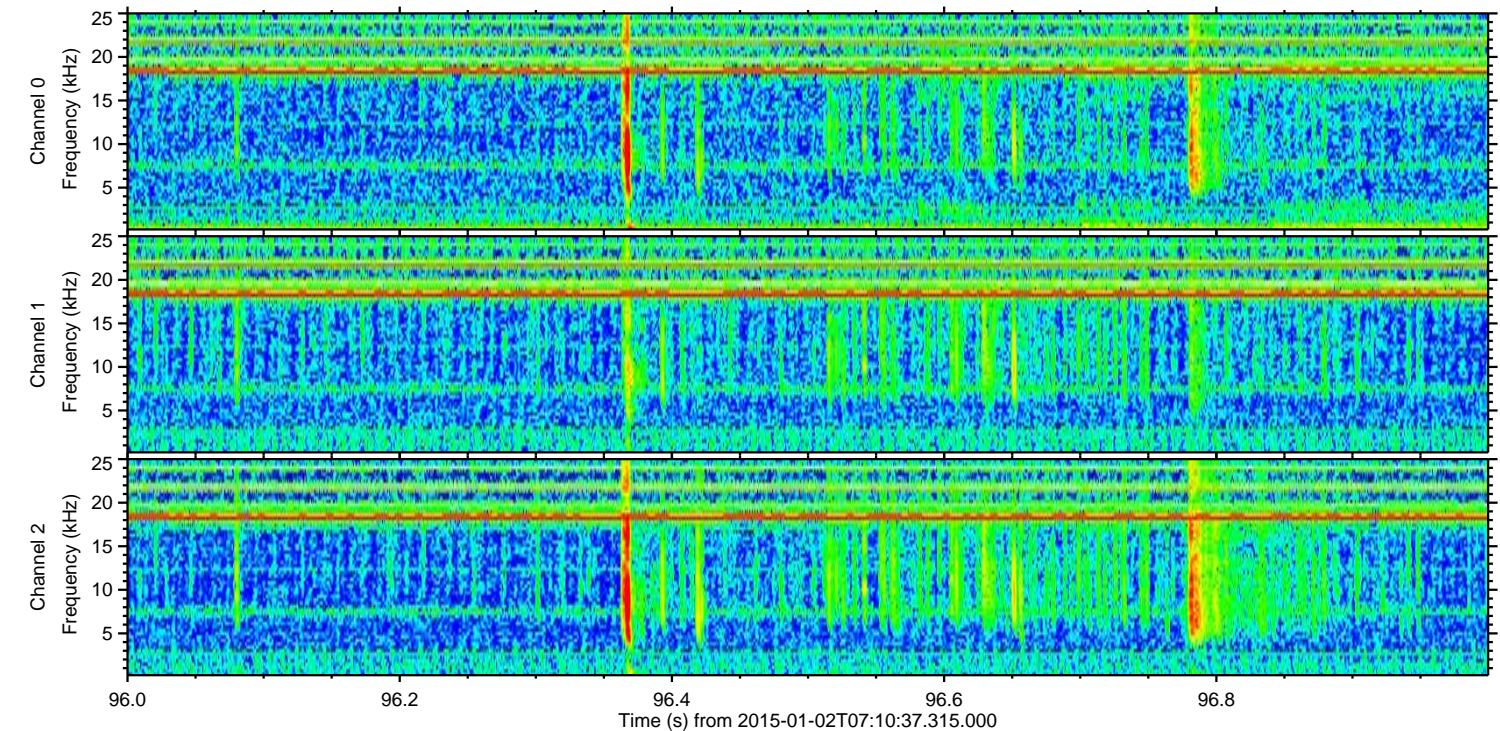
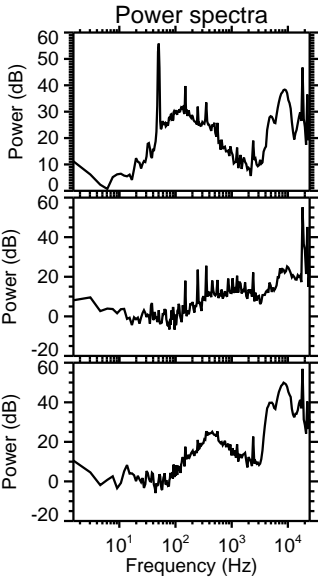
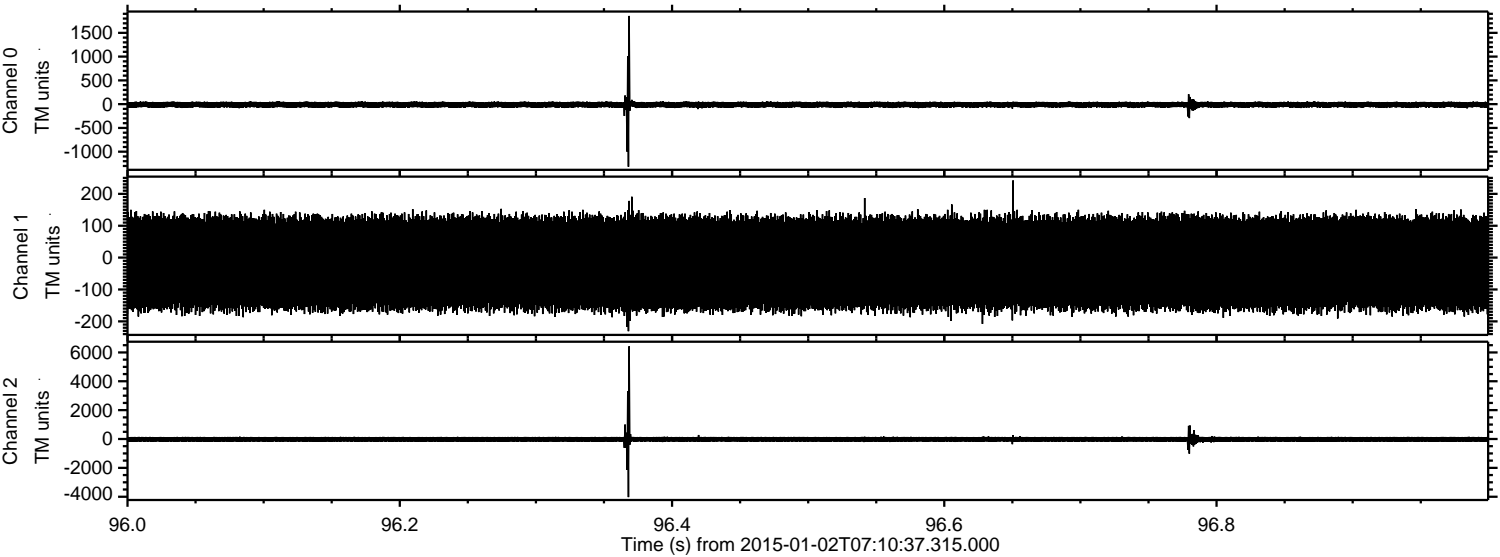


Processed Sat Jan 3 14:01:03 2015 by ELM ver.2012-10-06 from 001__elm20150102_071036__dat00.bin

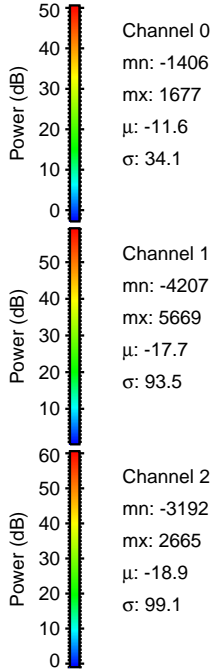
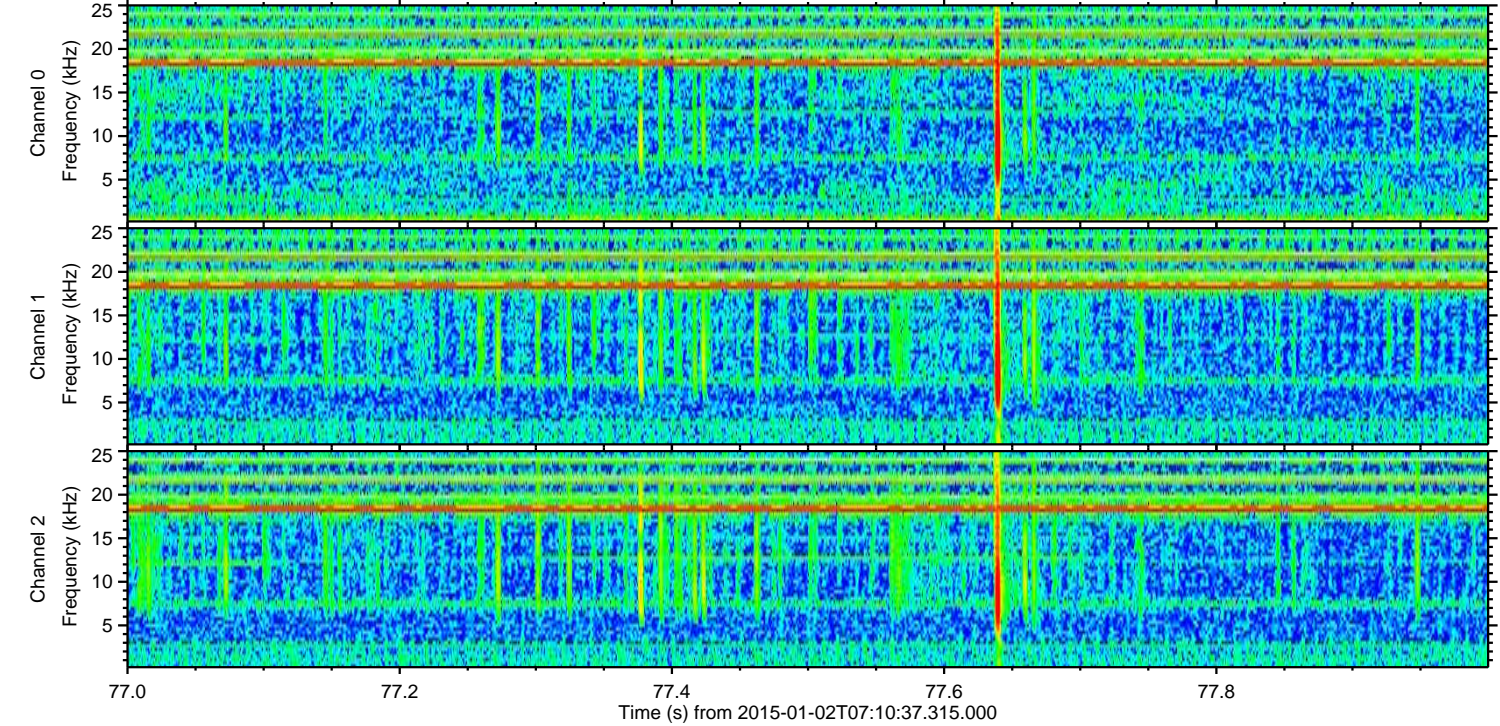
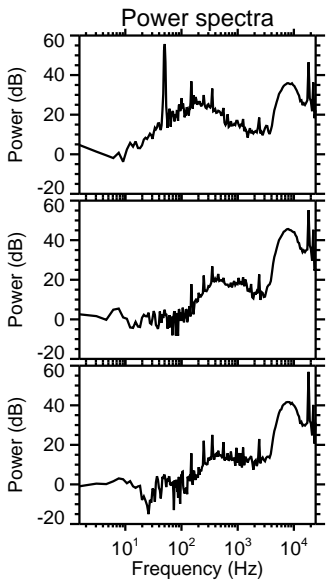
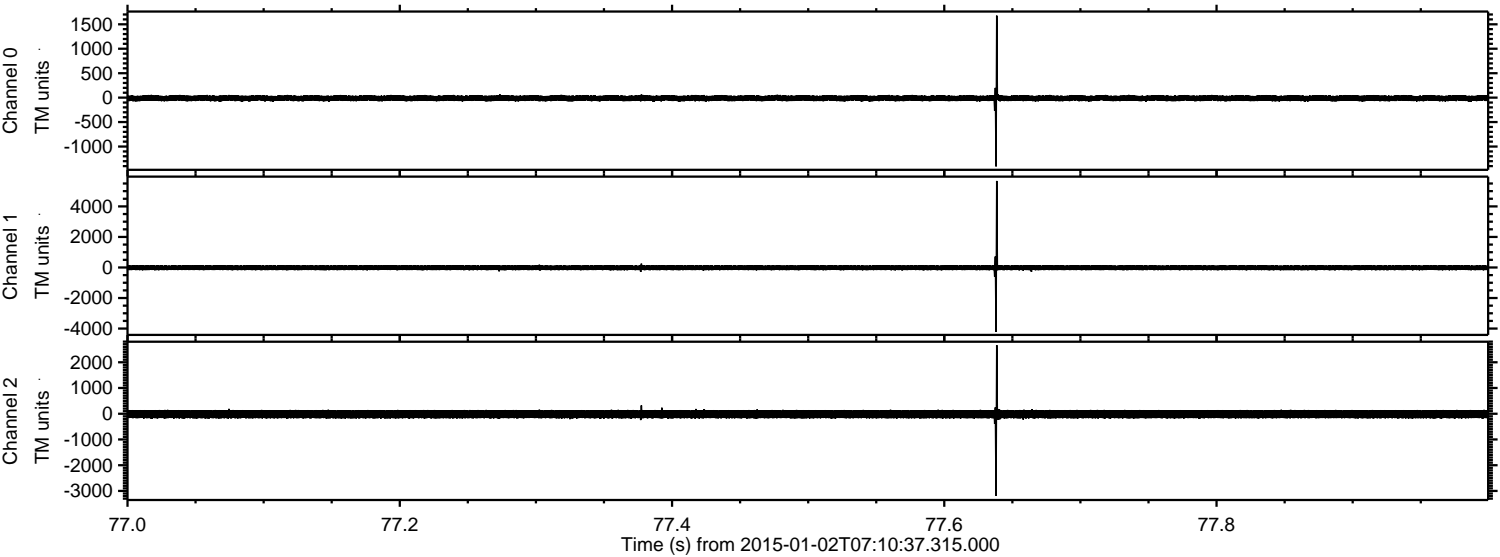


ELMAVAN 3D WAVEFORMS (Measured data sampled at 50 kHz) 49806 packets of 144 samples from 2015-01-02T07:10:37.315.000. Part 97/144

Processed Sat Jan 3 14:01:04 2015 by ELM ver.2012-10-06 from 001__elm20150102_071036__dat00.bin



Processed Sat Jan 3 14:01:05 2015 by ELM ver.2012-10-06 from 001__elm20150102_071036__dat00.bin

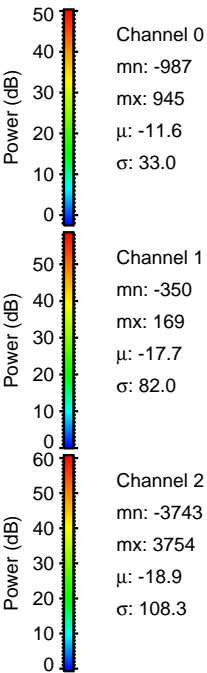
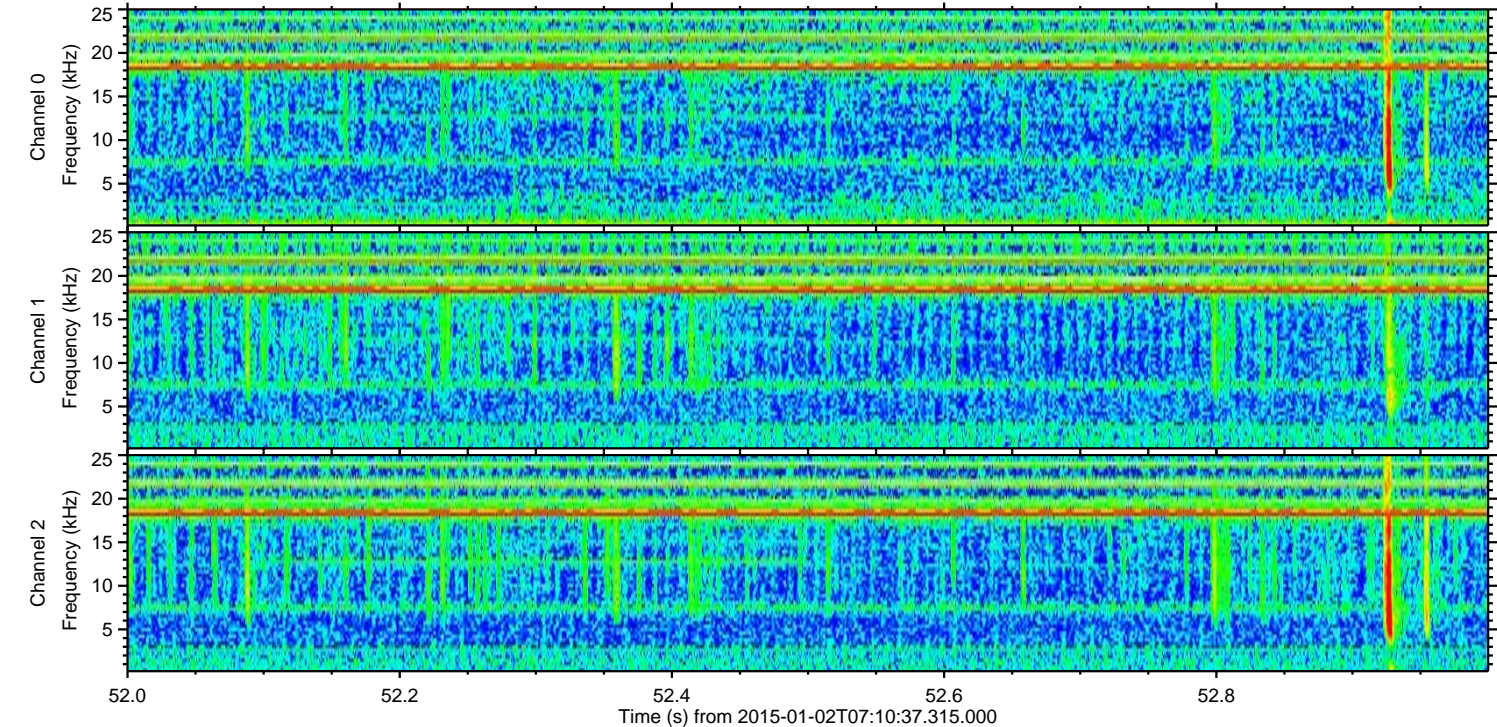
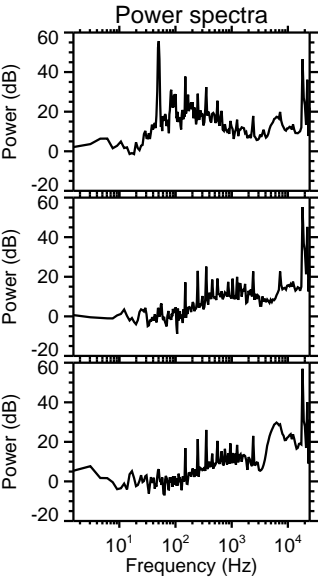
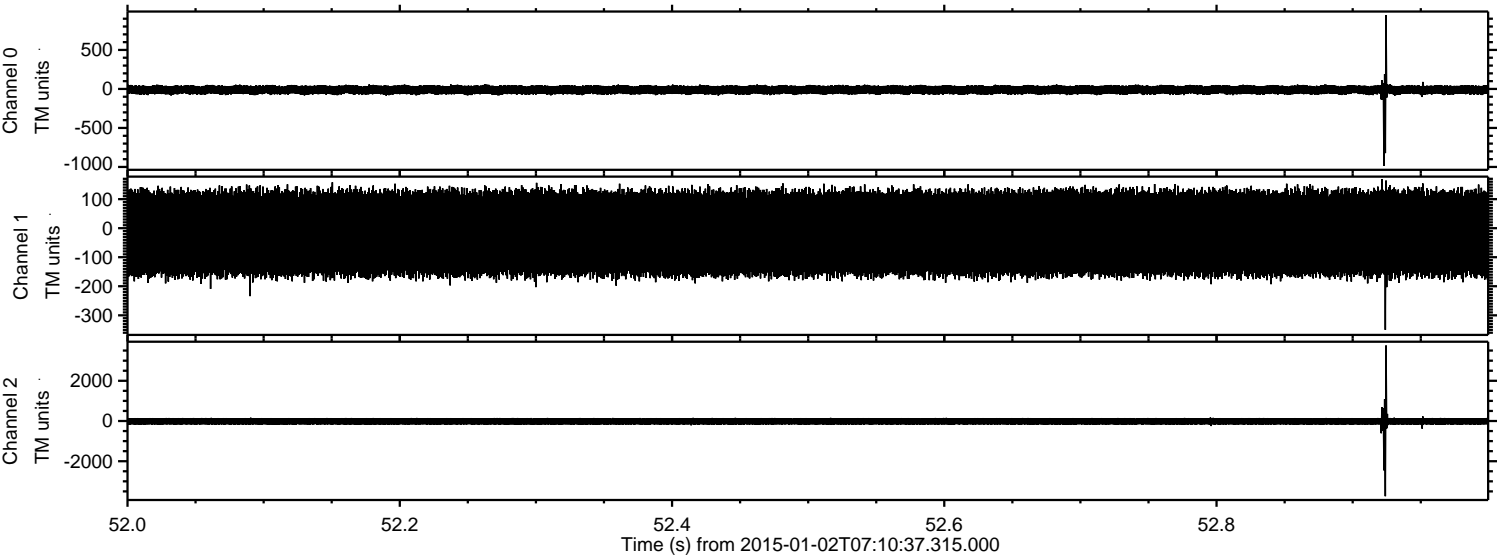


Channel 0
mn: -1406
mx: 1677
 μ : -11.6
 σ : 34.1

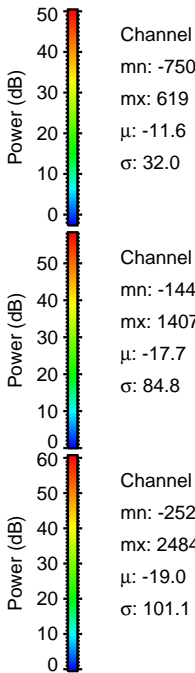
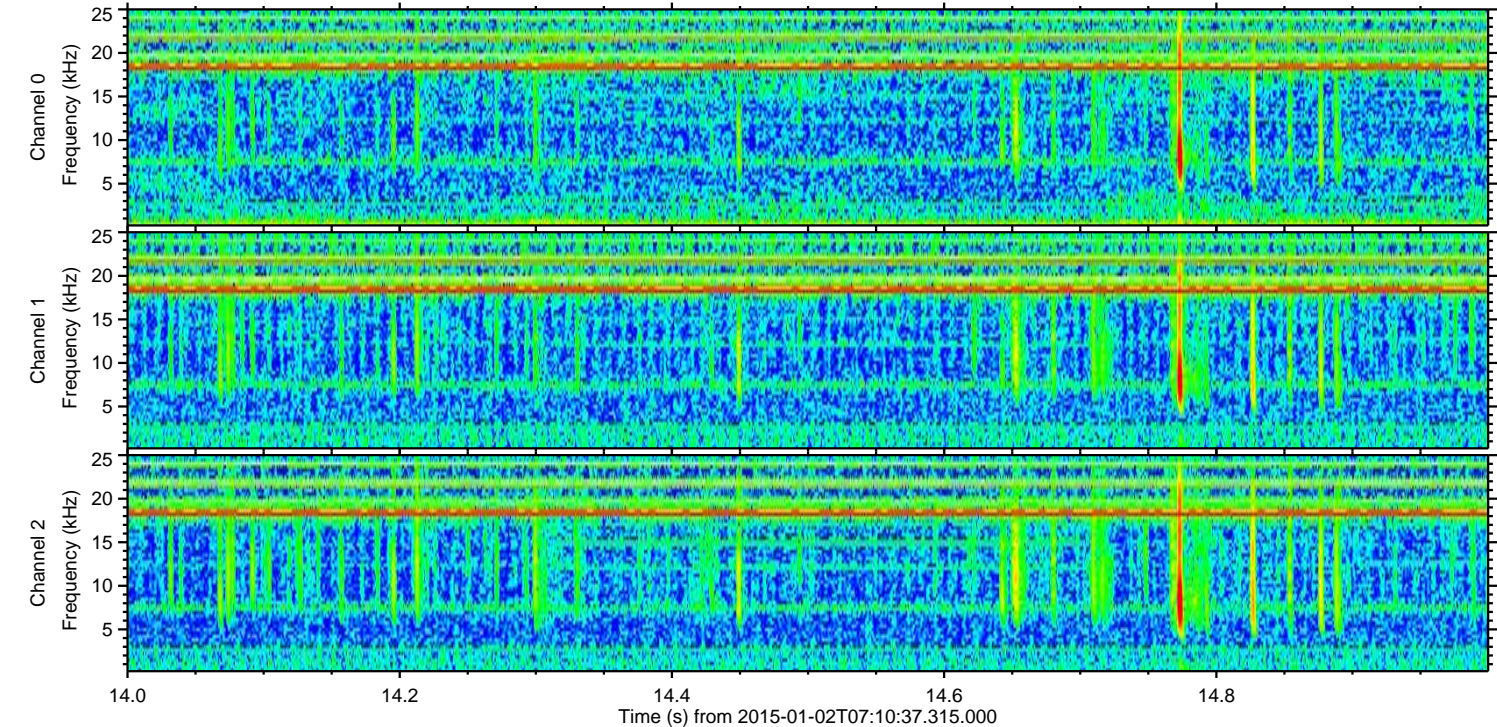
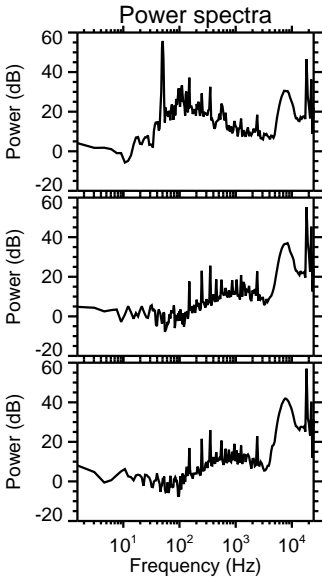
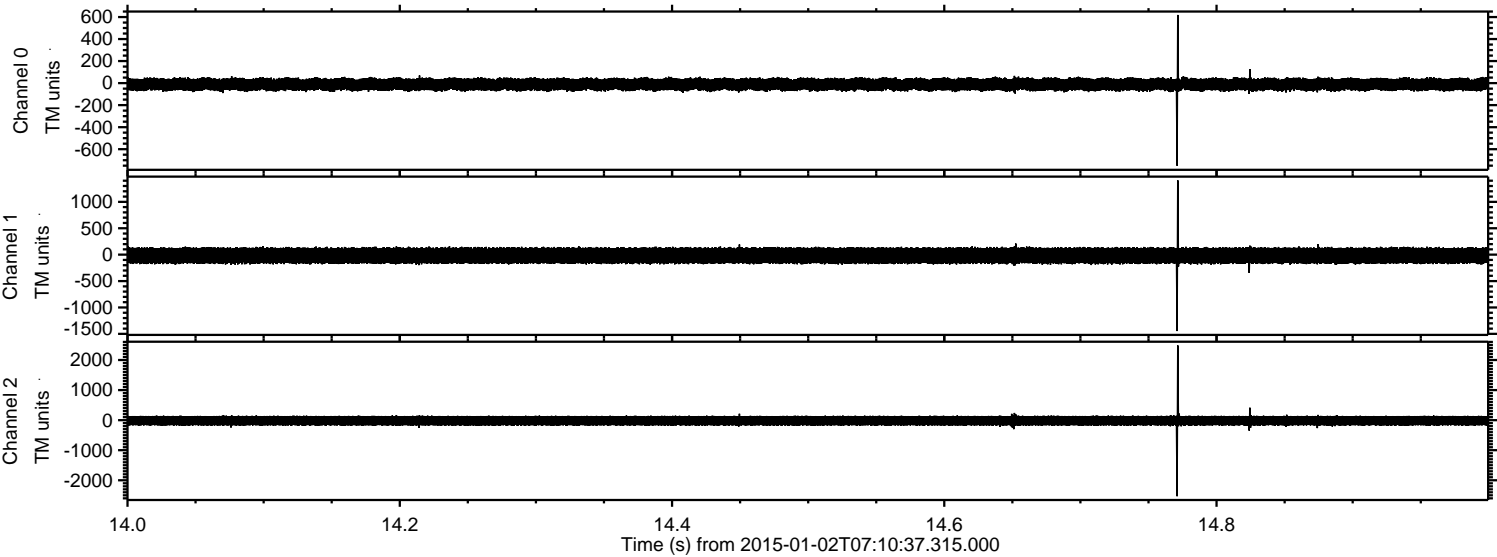
Channel 1
mn: -4207
mx: 5669
 μ : -17.7
 σ : 93.5

Channel 2
mn: -3192
mx: 2665
 μ : -18.9
 σ : 99.1

Processed Sat Jan 3 14:01:06 2015 by ELM ver.2012-10-06 from 001__elm20150102_071036__dat00.bin

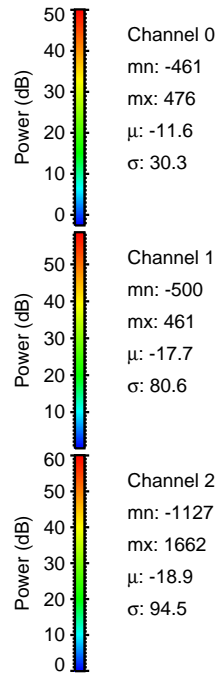
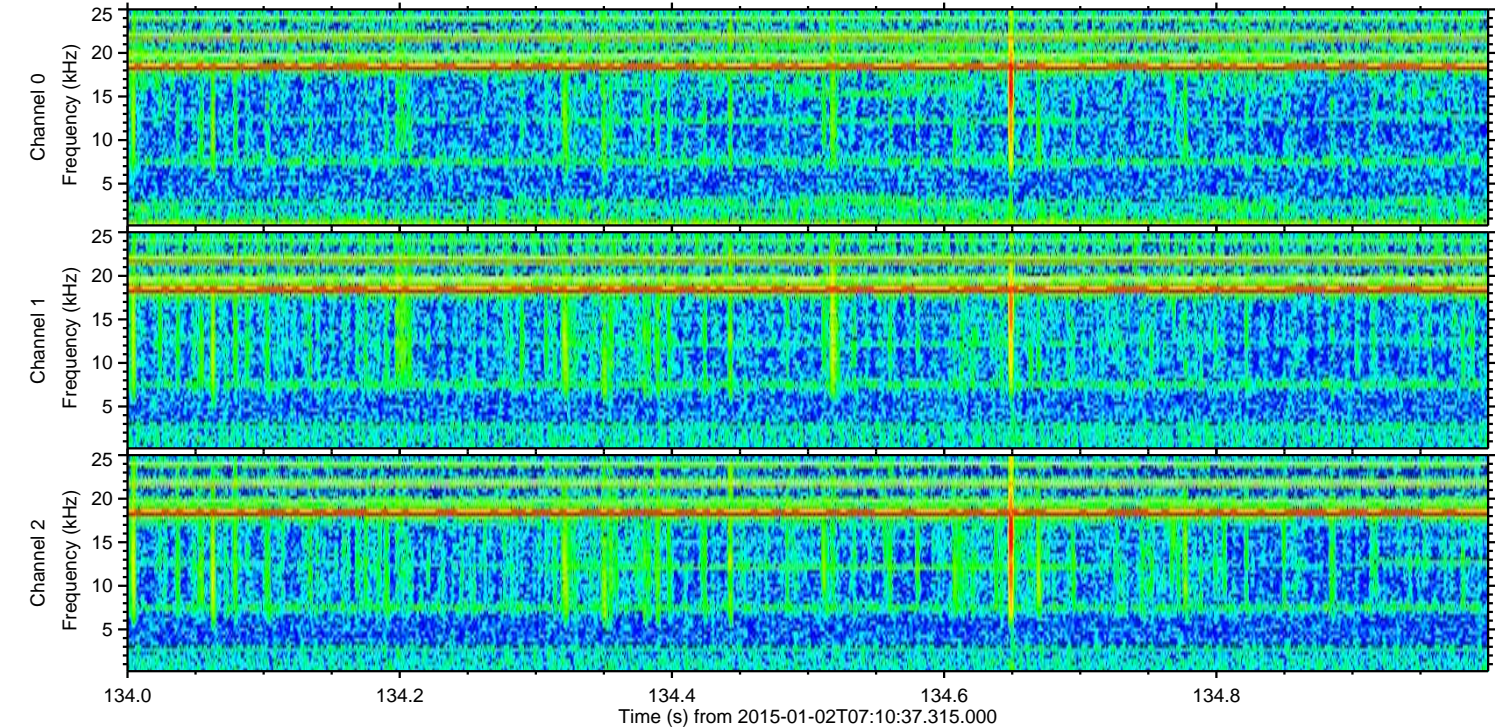
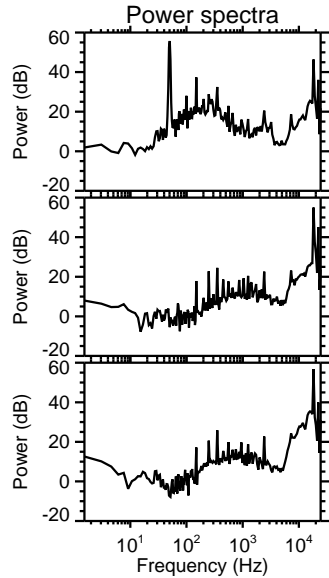
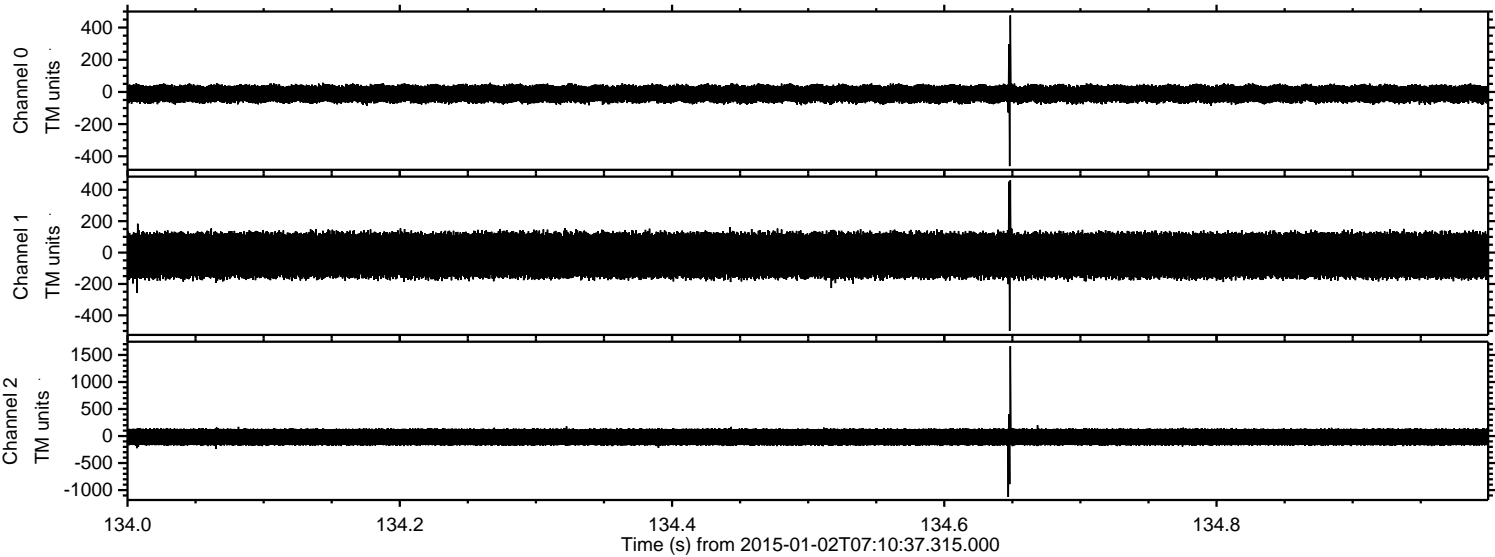


Processed Sat Jan 3 14:01:07 2015 by ELM ver.2012-10-06 from 001__elm20150102_071036__dat00.bin



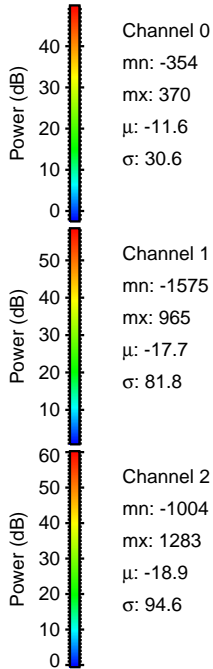
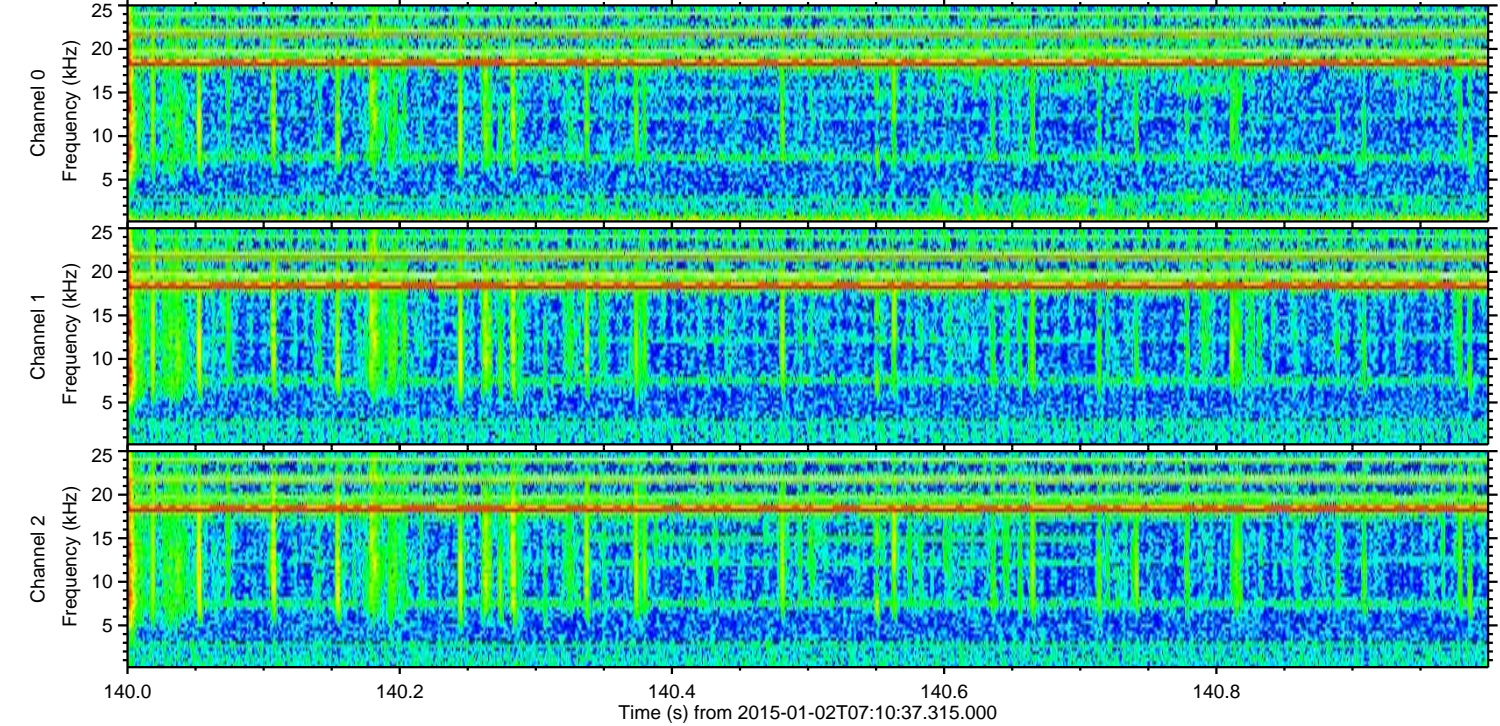
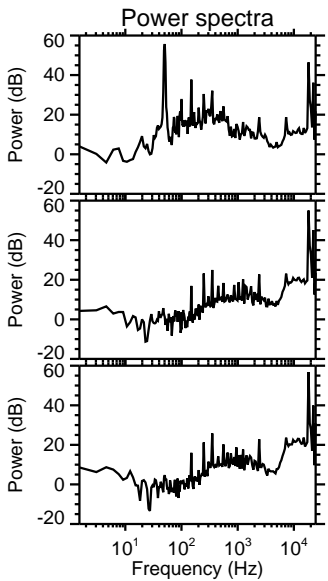
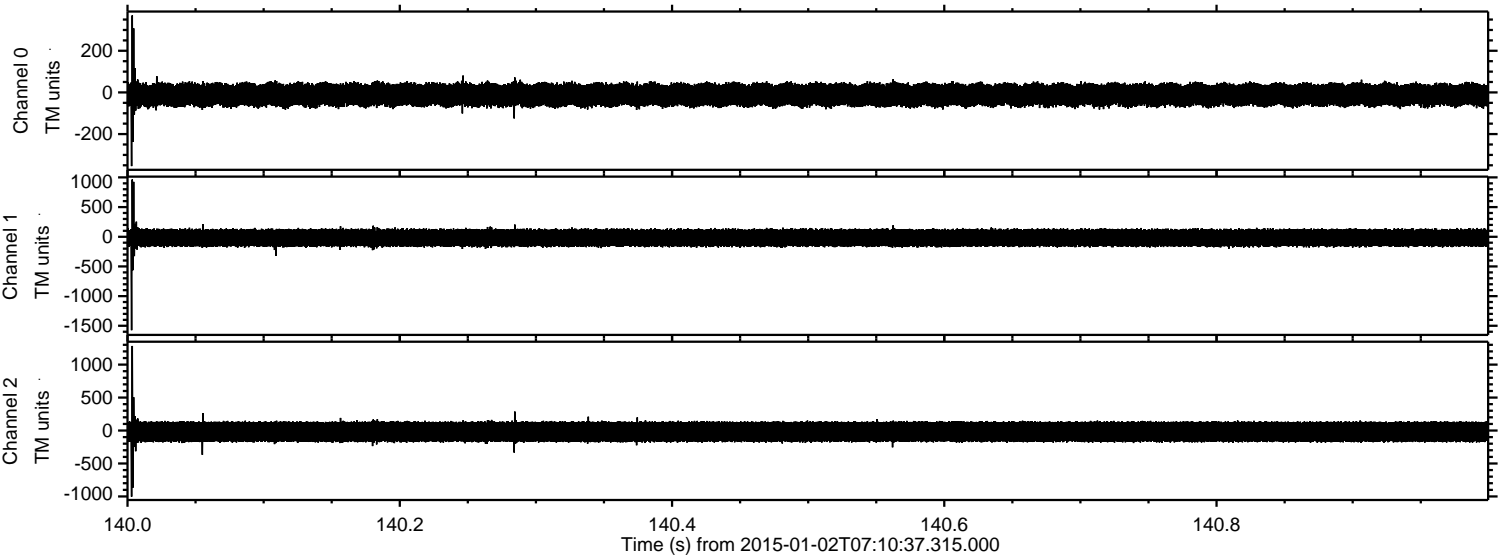
ELMAVAN 3D WAVEFORMS (Measured data sampled at 50 kHz) 49806 packets of 144 samples from 2015-01-02T07:10:37.315.000. Part 135/144

Processed Sat Jan 3 14:01:08 2015 by ELM ver.2012-10-06 from 001__elm20150102_071036__dat00.bin

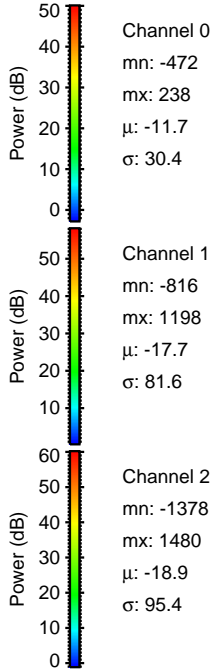
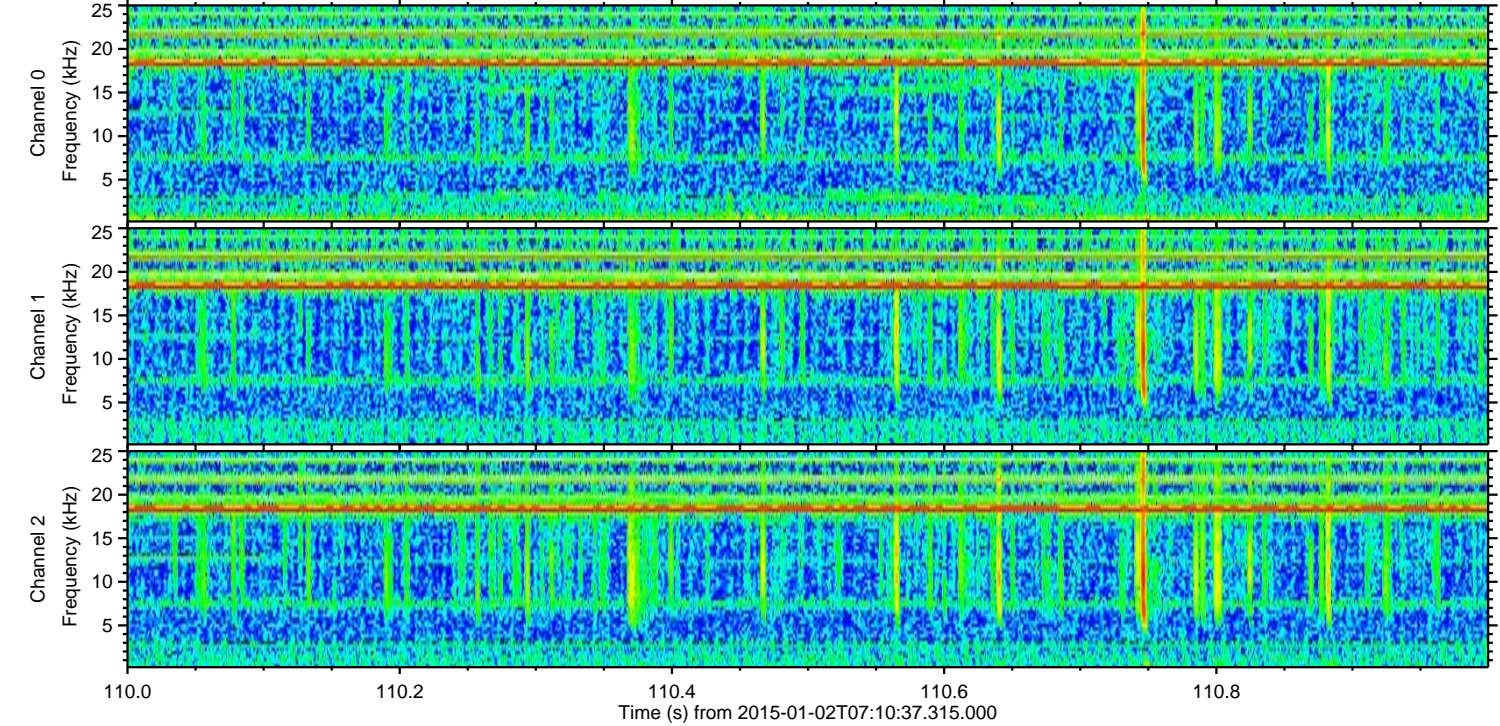
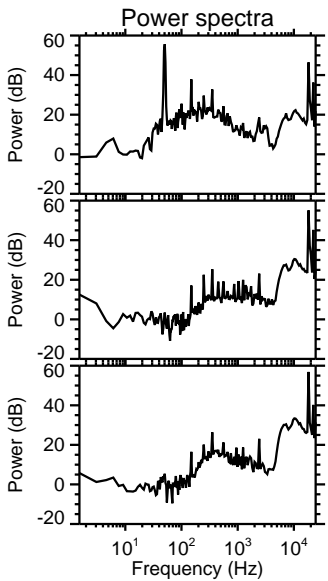
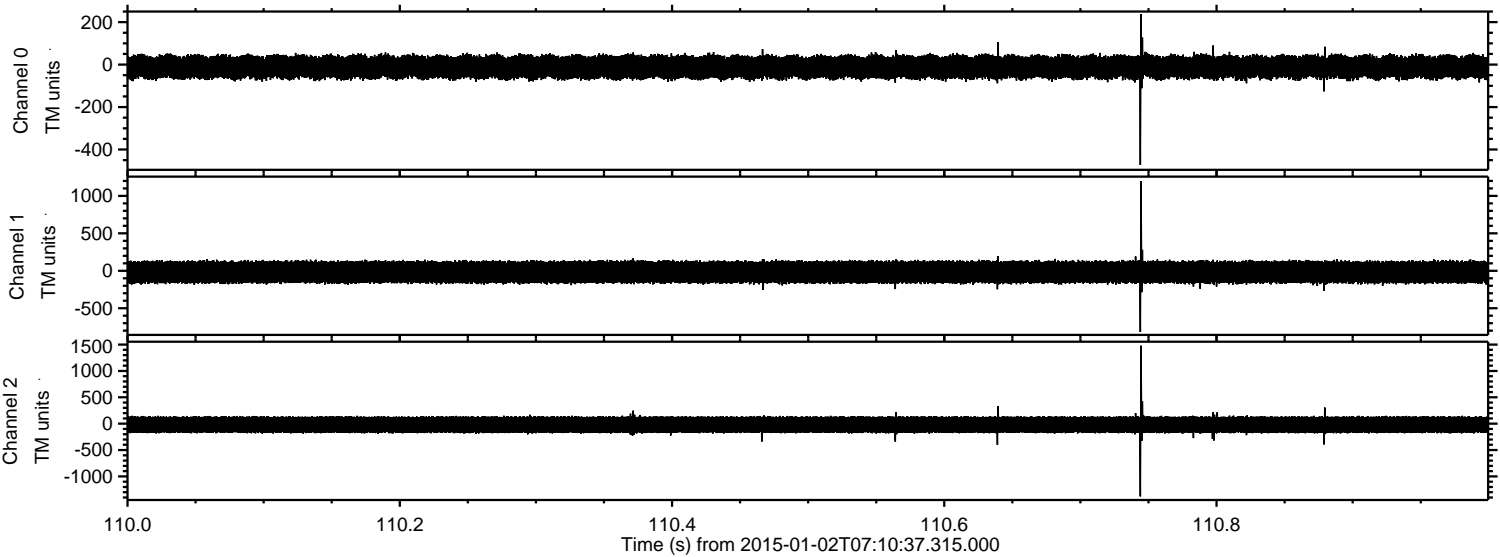


ELMAVAN 3D WAVEFORMS (Measured data sampled at 50 kHz) 49806 packets of 144 samples from 2015-01-02T07:10:37.315.000. Part 141/144

Processed Sat Jan 3 14:01:09 2015 by ELM ver.2012-10-06 from 001__elm20150102_071036__dat00.bin



Processed Sat Jan 3 14:01:10 2015 by ELM ver.2012-10-06 from 001__elm20150102_071036__dat00.bin



Processed Sat Jan 3 14:01:11 2015 by ELM ver.2012-10-06 from 001__elm20150102_071036__dat00.bin

