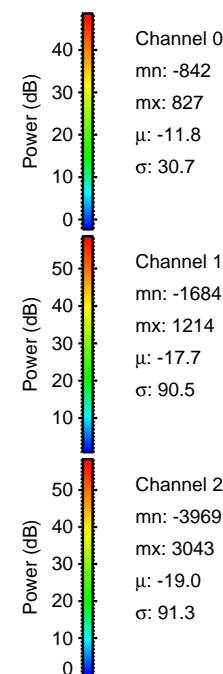
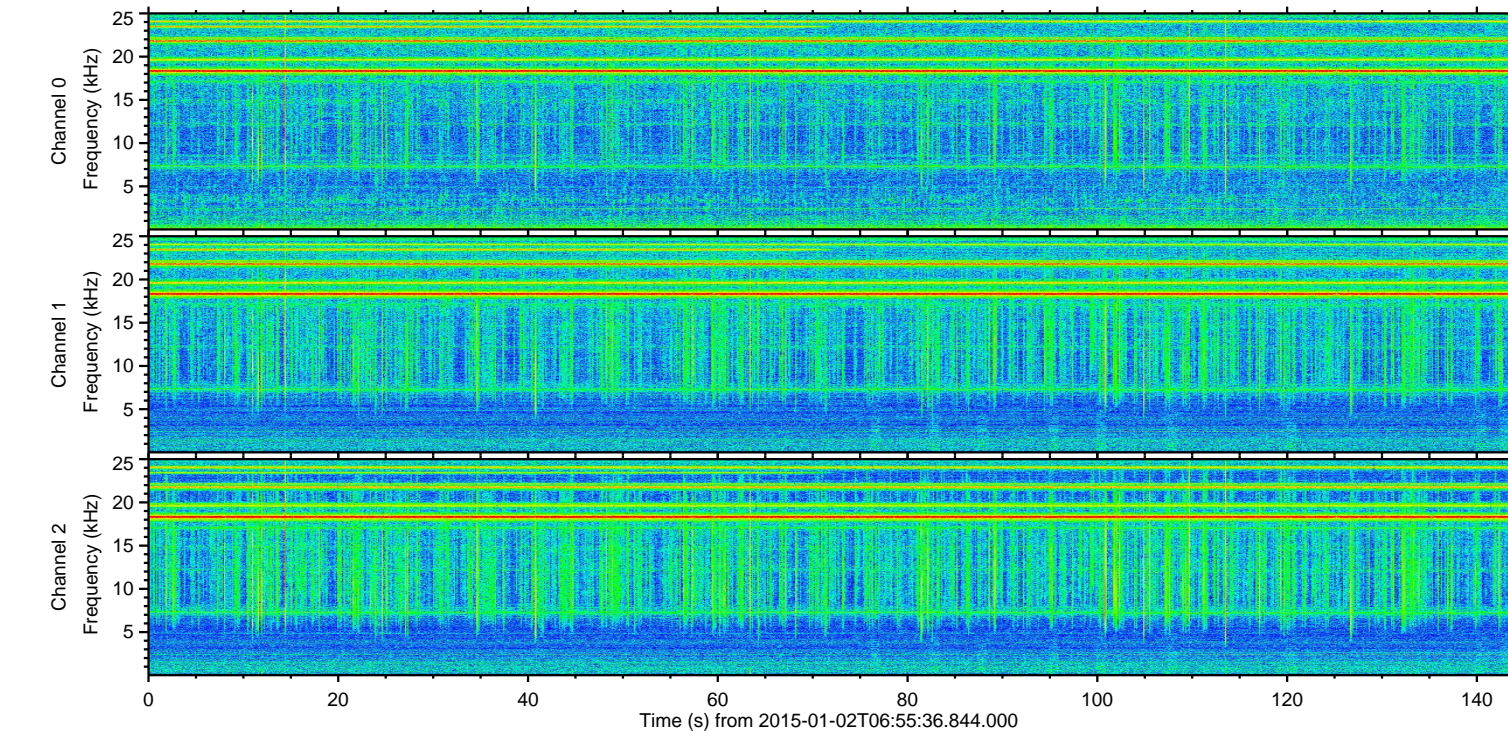
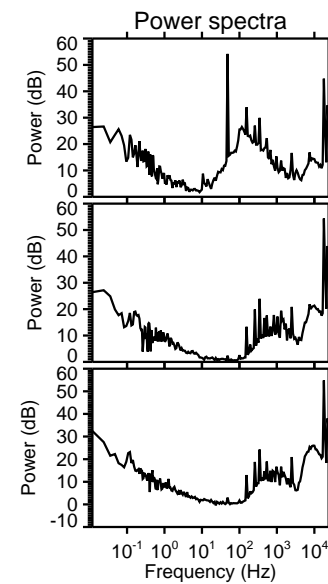
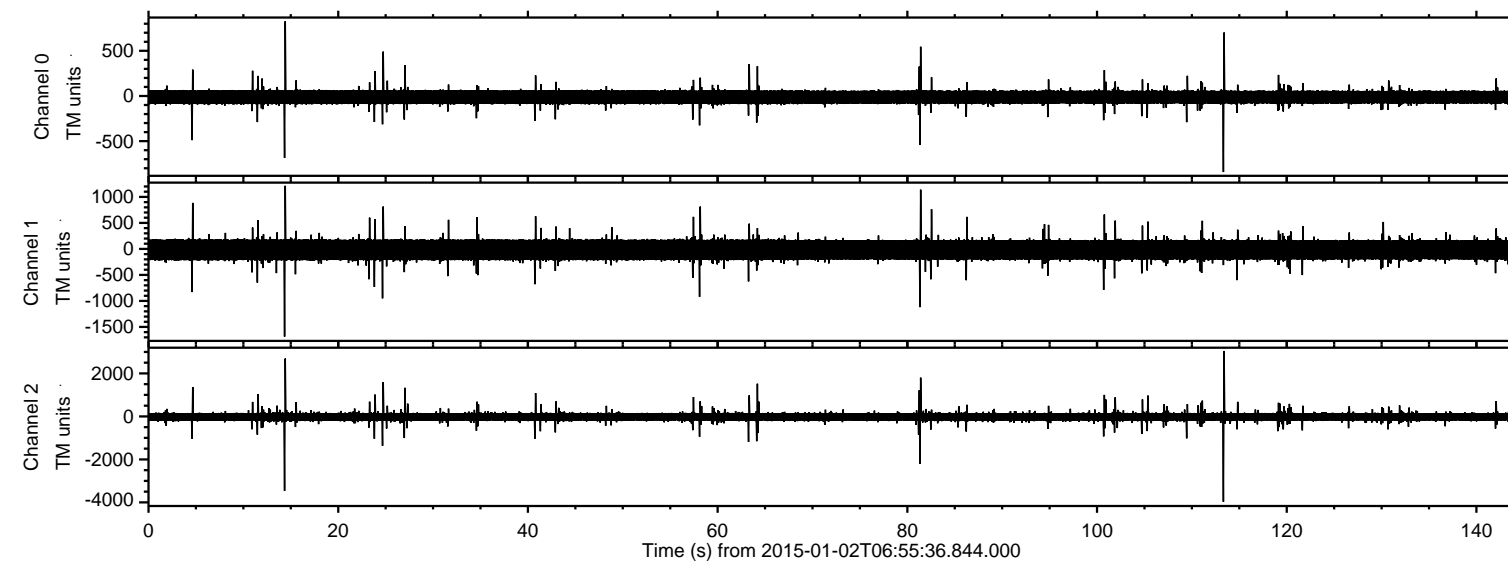
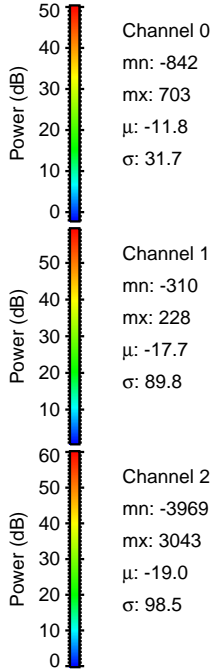
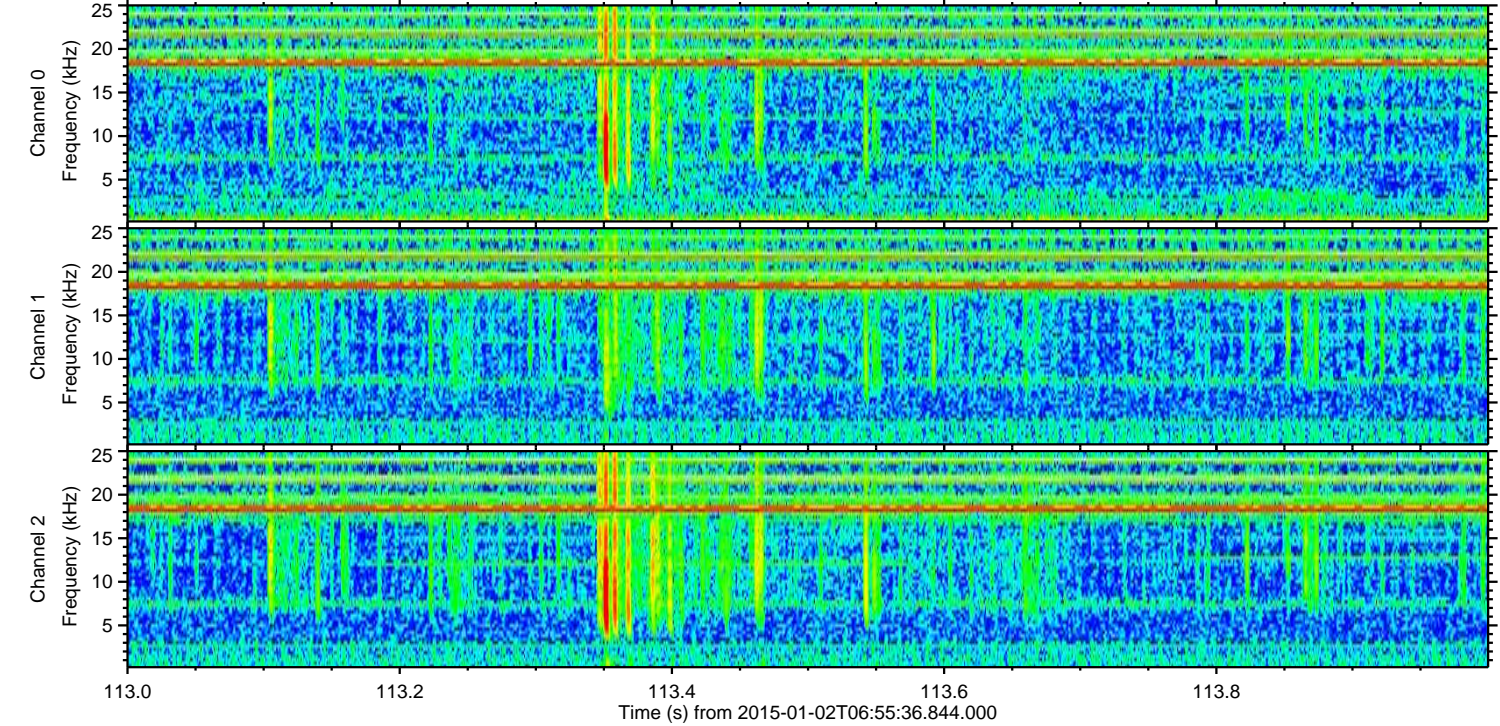
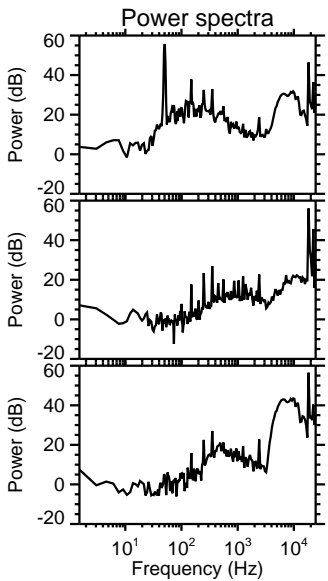
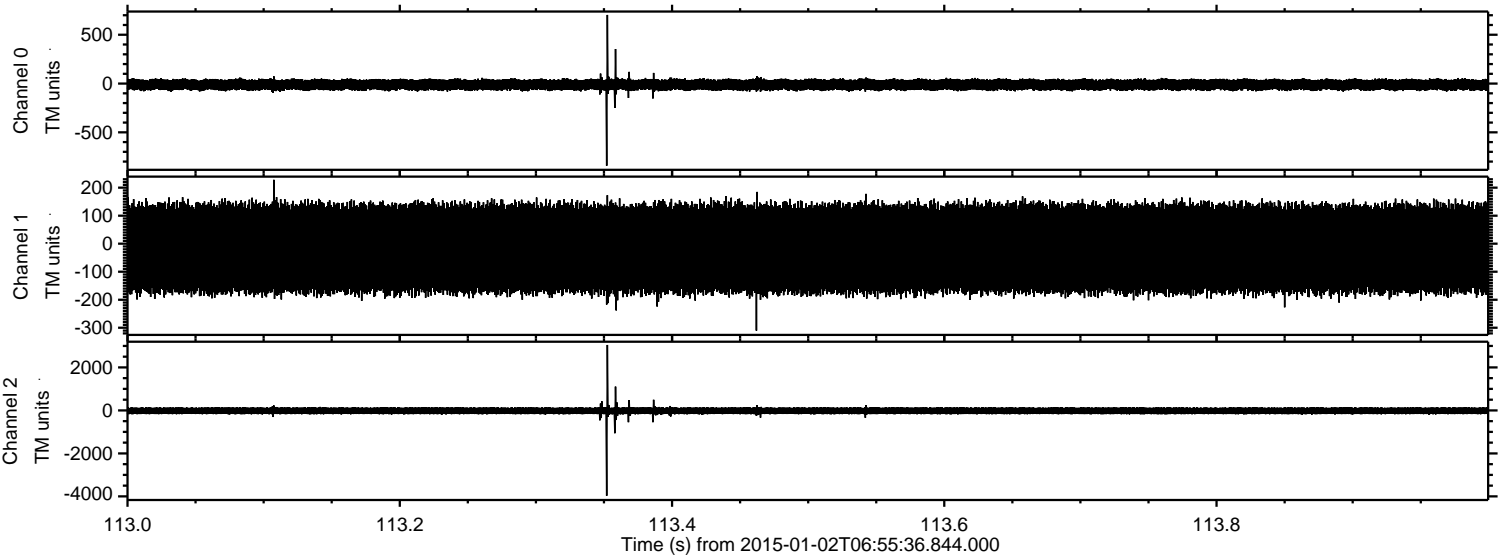


ELMAVAN 3D WAVEFORMS (Measured data sampled at 50 kHz) 49808 packets of 144 samples from 2015-01-02T06:55:36.844.000.

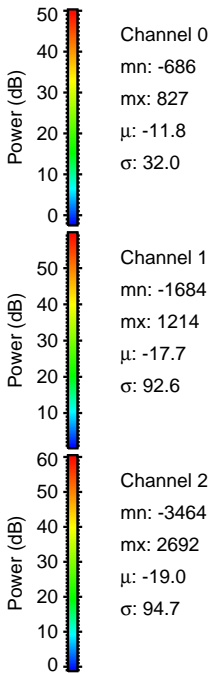
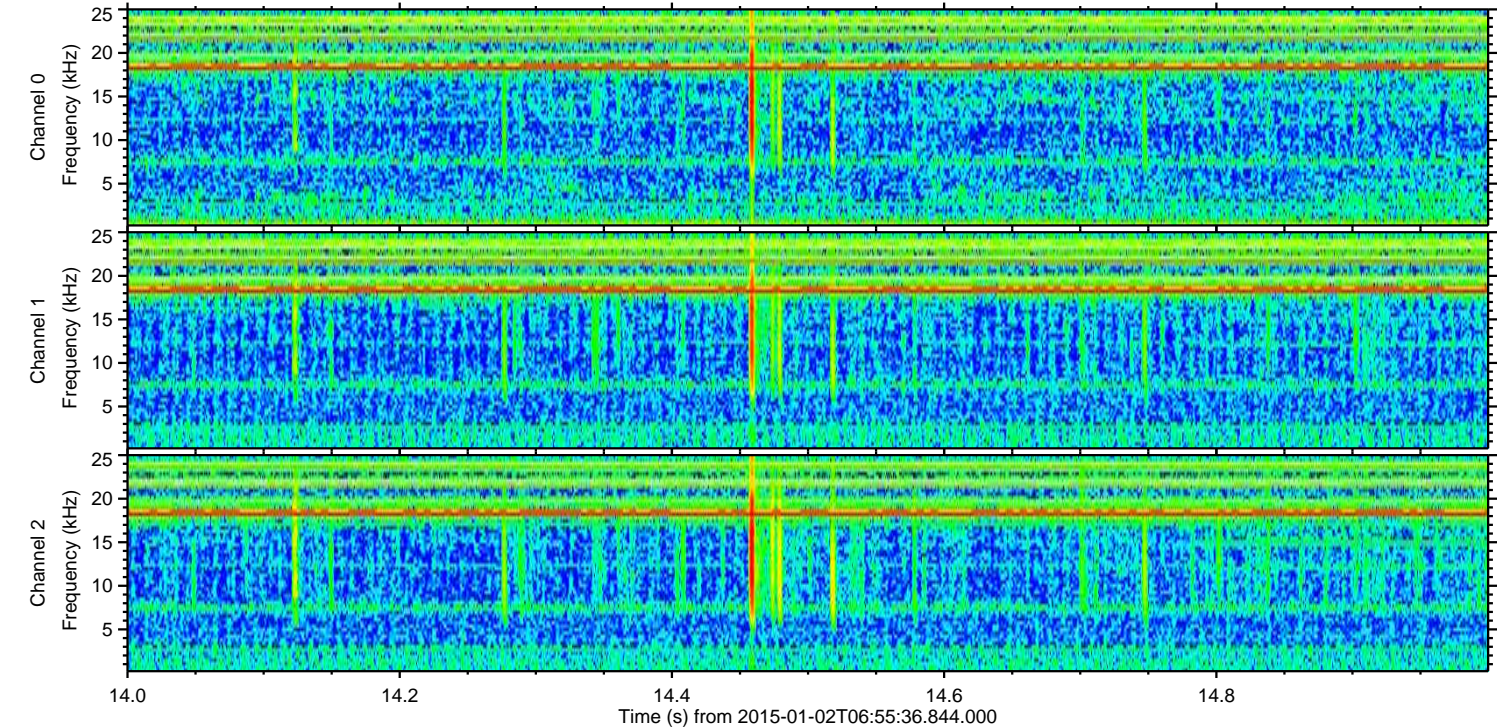
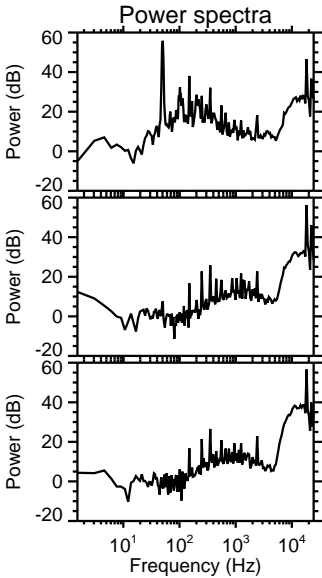
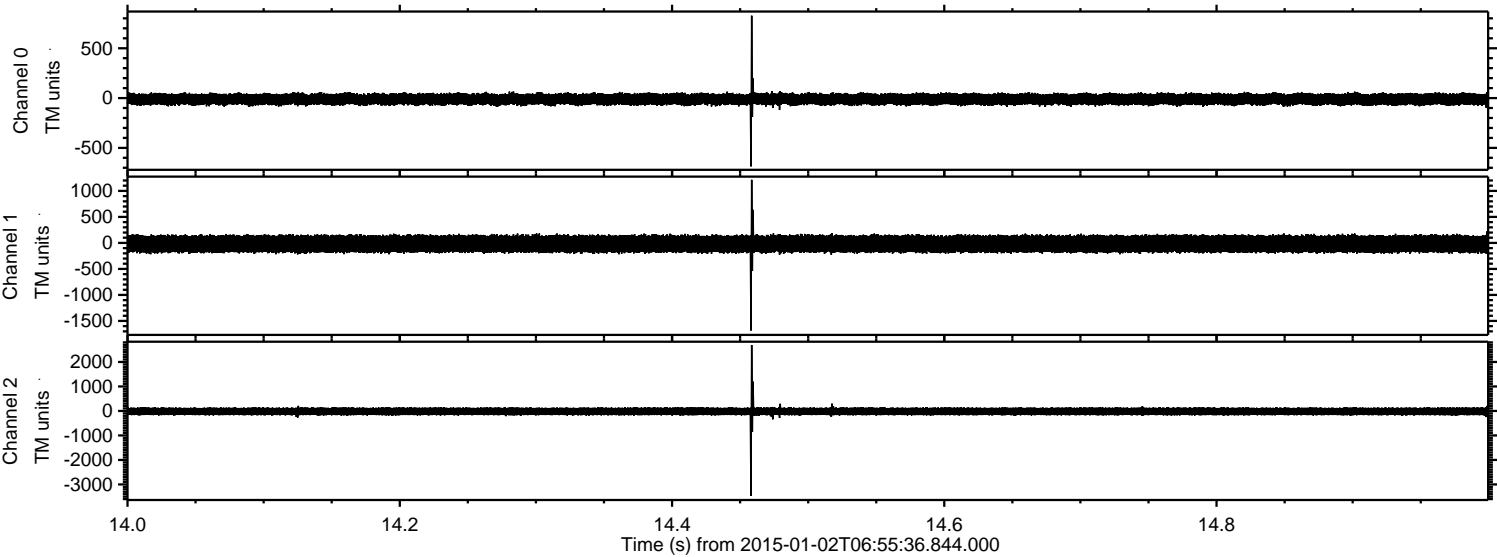
Processed Sat Jan 3 13:57:27 2015 by ELM ver.2012-10-06 from 001__elm20150102_065535__dat00.bin



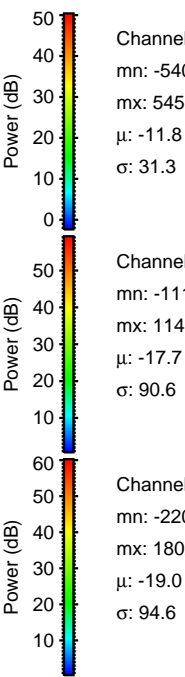
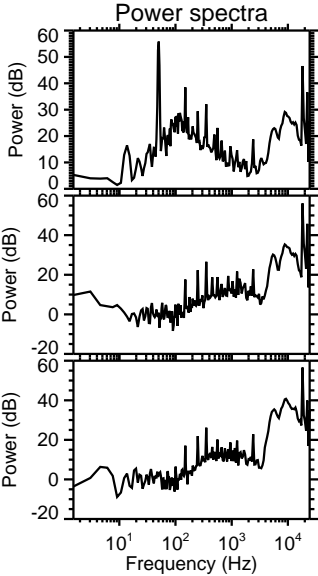
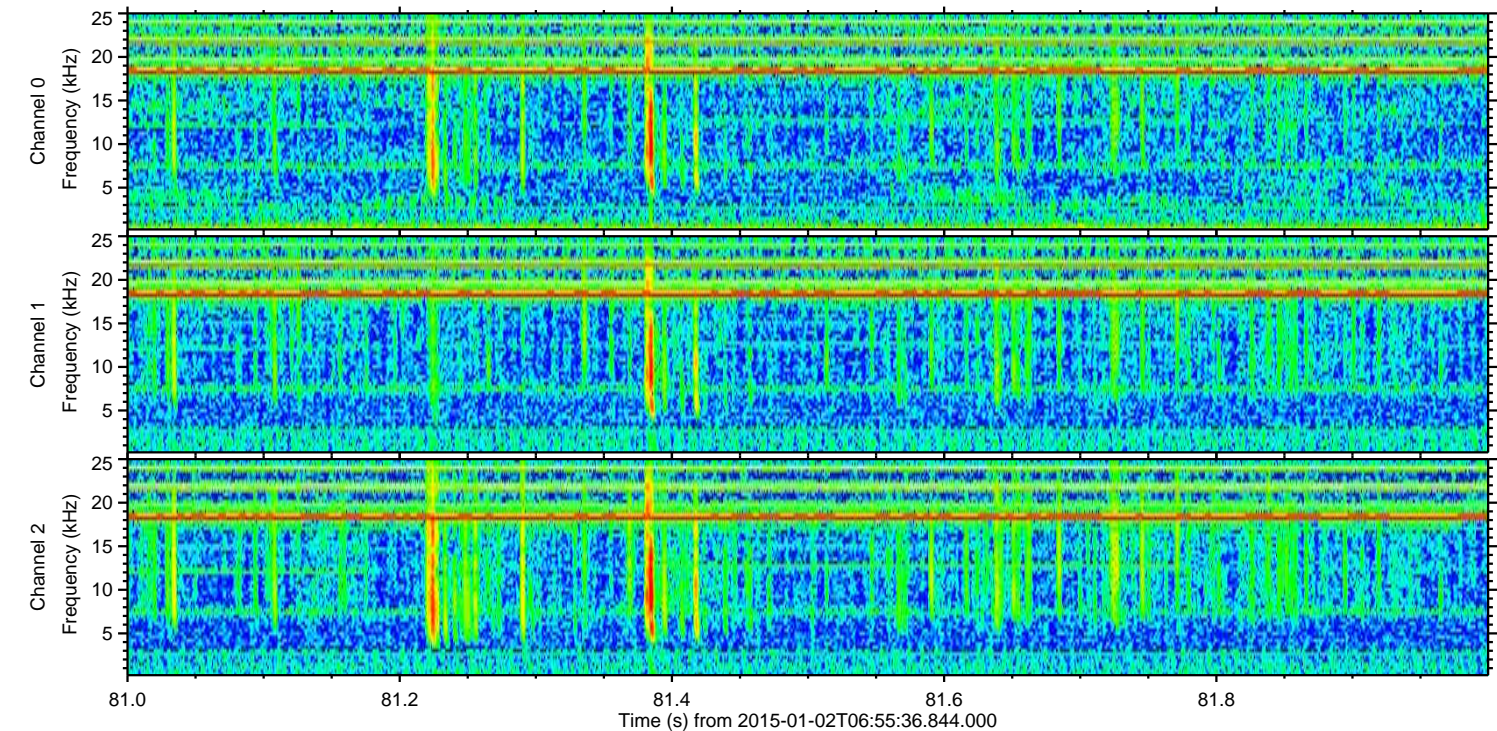
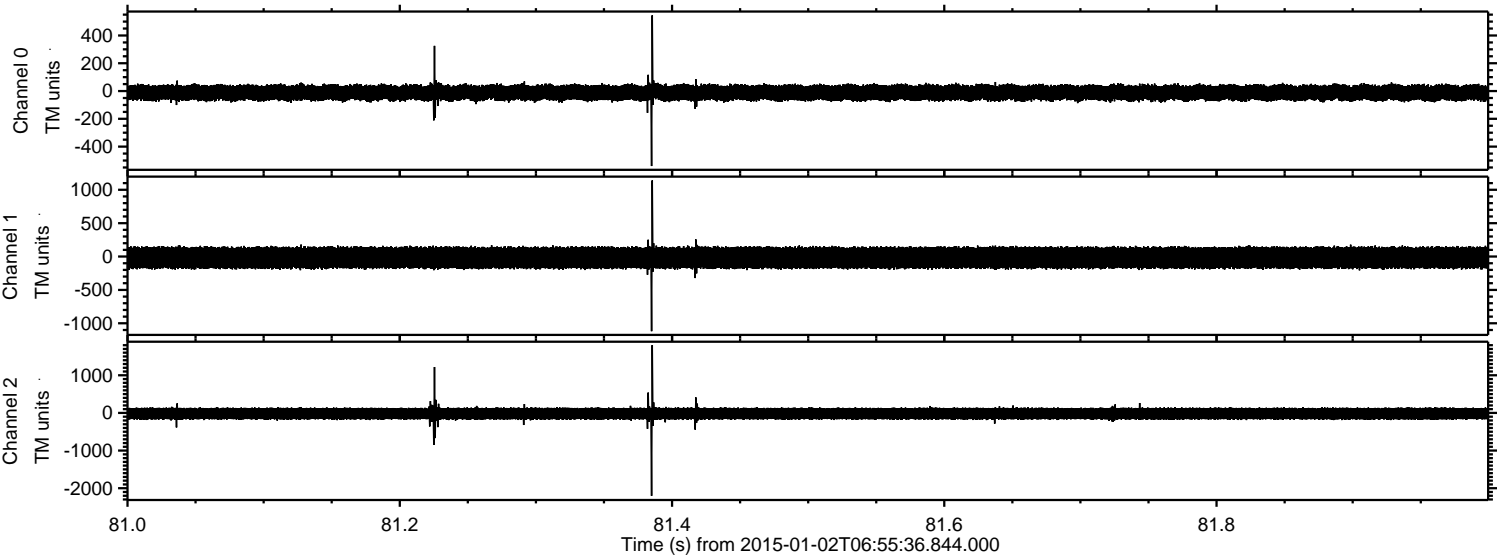
Processed Sat Jan 3 13:57:40 2015 by ELM ver.2012-10-06 from 001__elm20150102_065535__dat00.bin



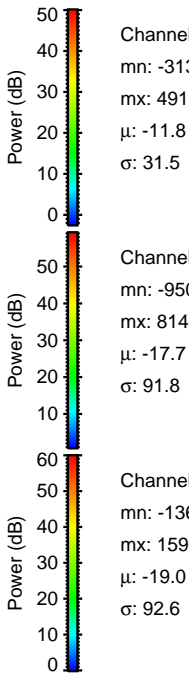
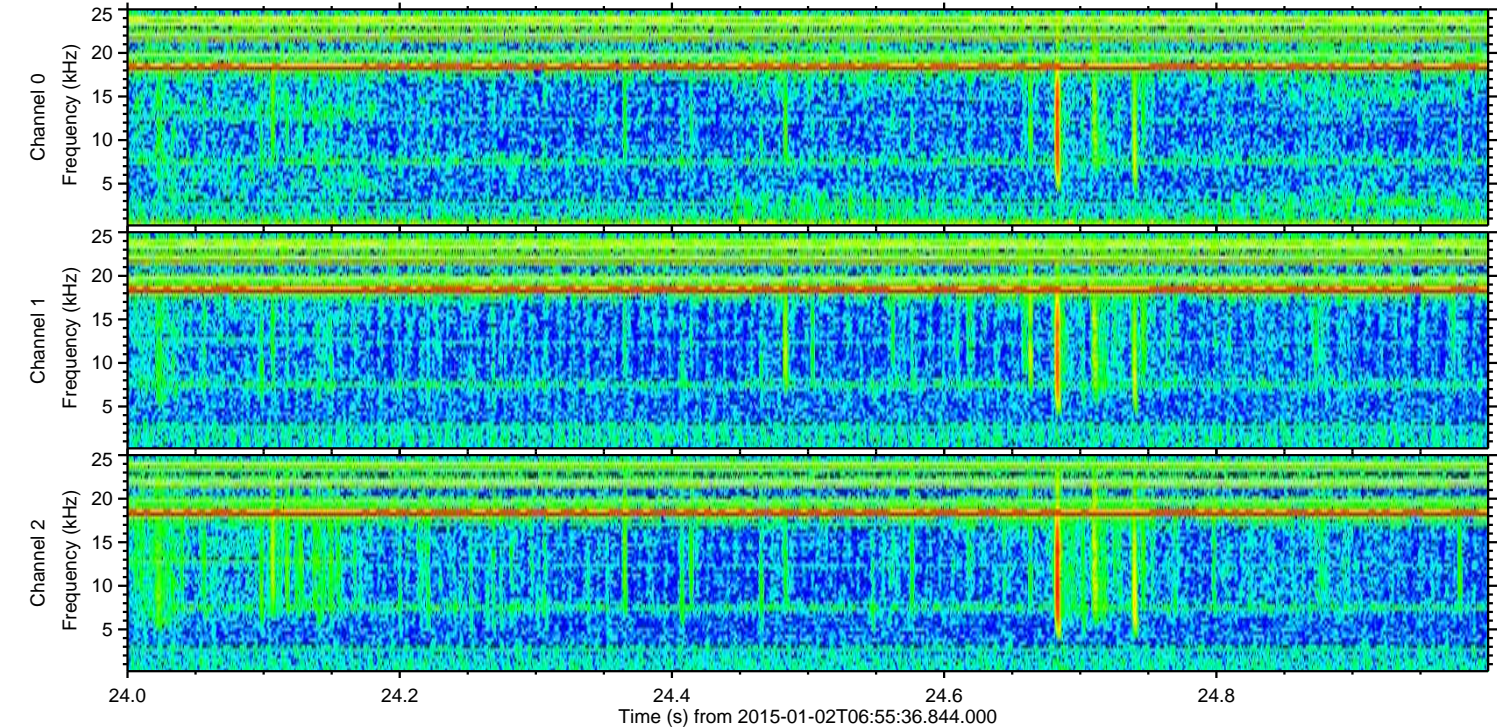
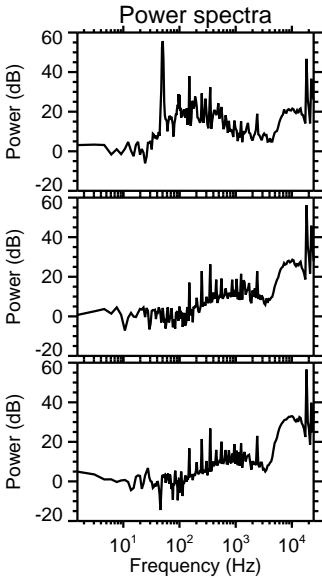
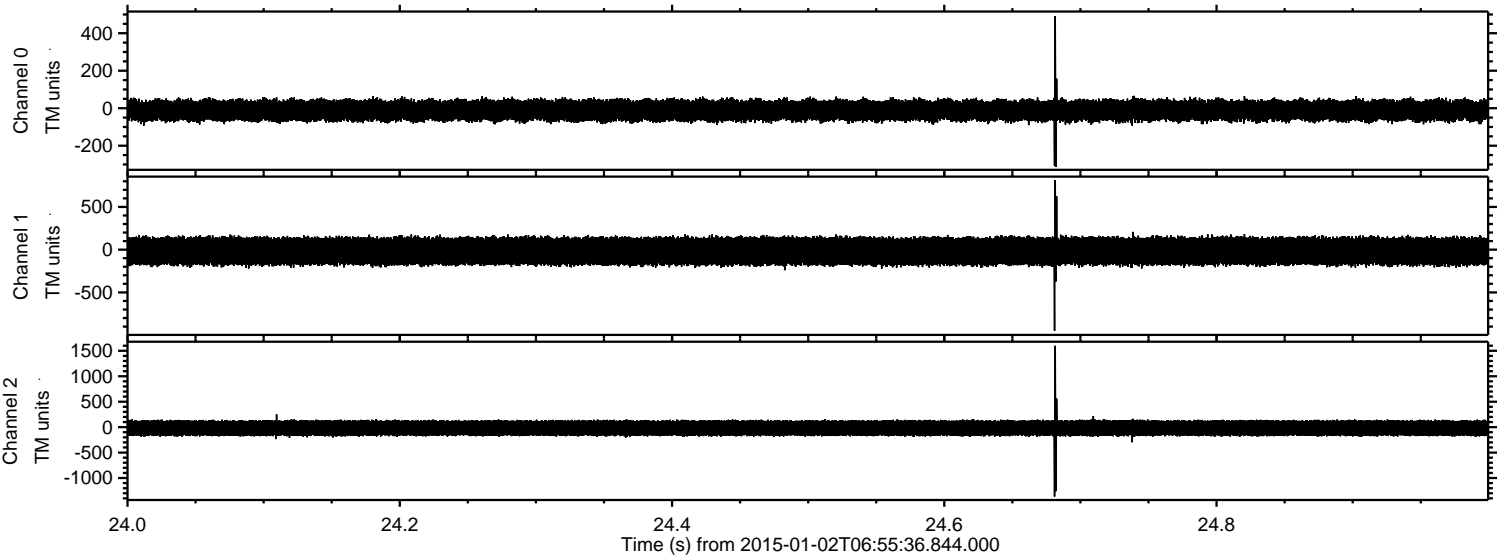
Processed Sat Jan 3 13:57:41 2015 by ELM ver.2012-10-06 from 001__elm20150102_065535__dat00.bin



Processed Sat Jan 3 13:57:42 2015 by ELM ver.2012-10-06 from 001__elm20150102_065535__dat00.bin



Processed Sat Jan 3 13:57:43 2015 by ELM ver.2012-10-06 from 001__elm20150102_065535__dat00.bin

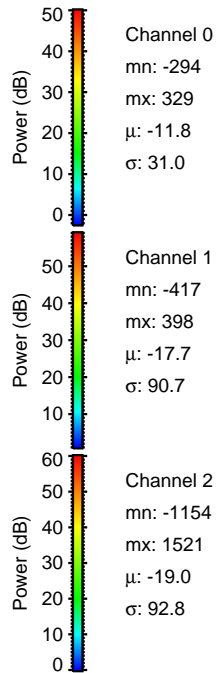
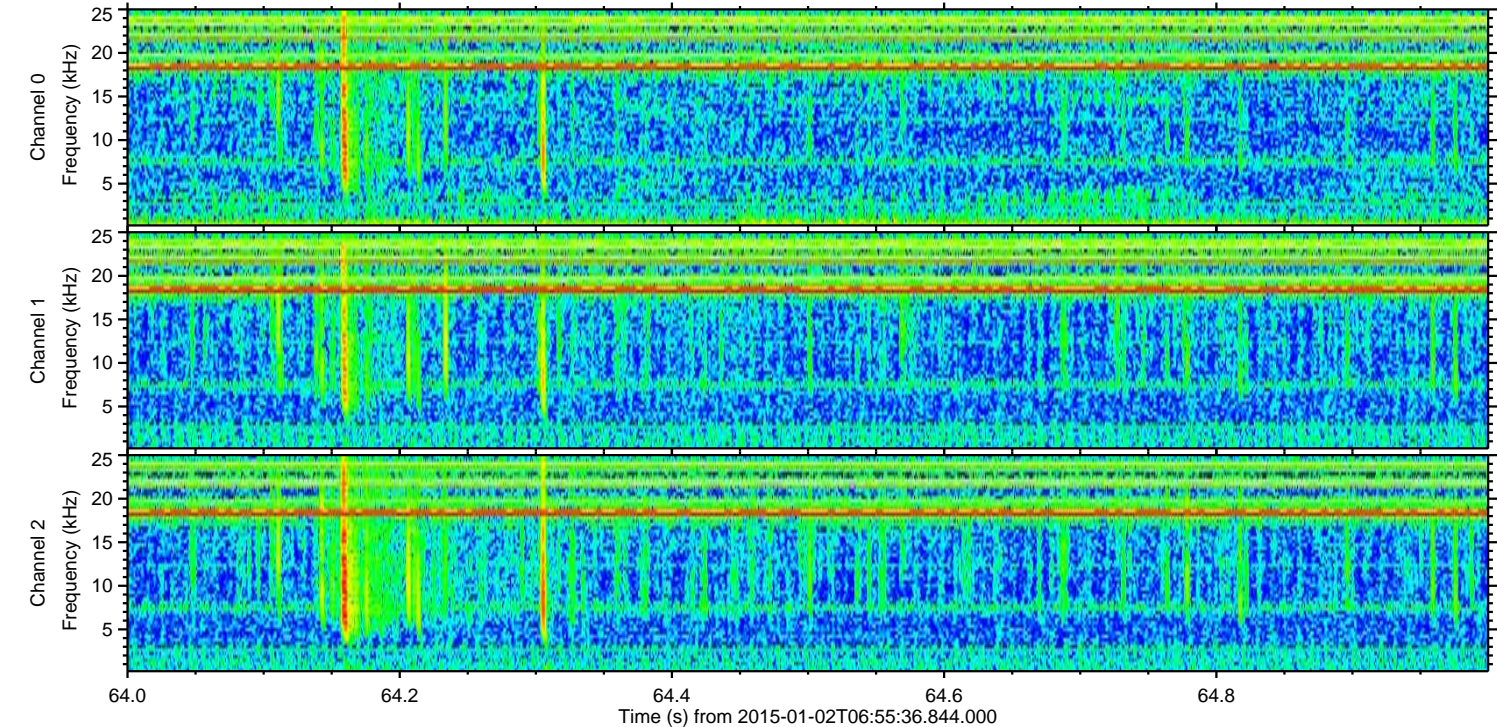
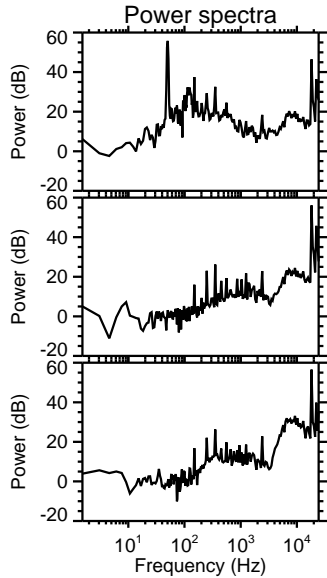
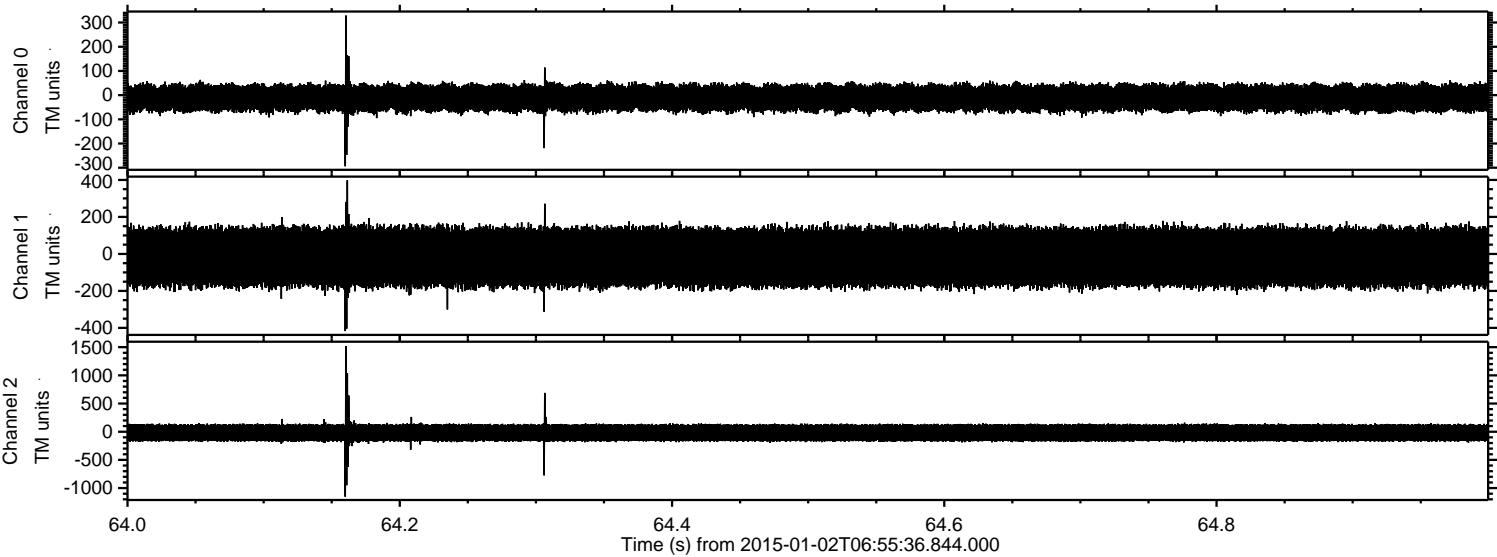


Channel 0
mn: -313
mx: 491
 μ : -11.8
 σ : 31.5

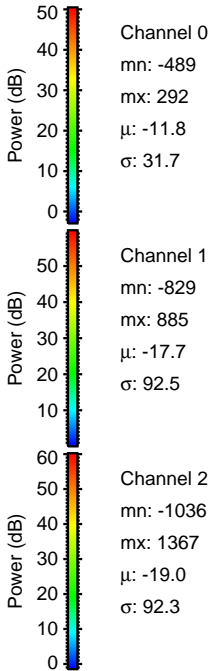
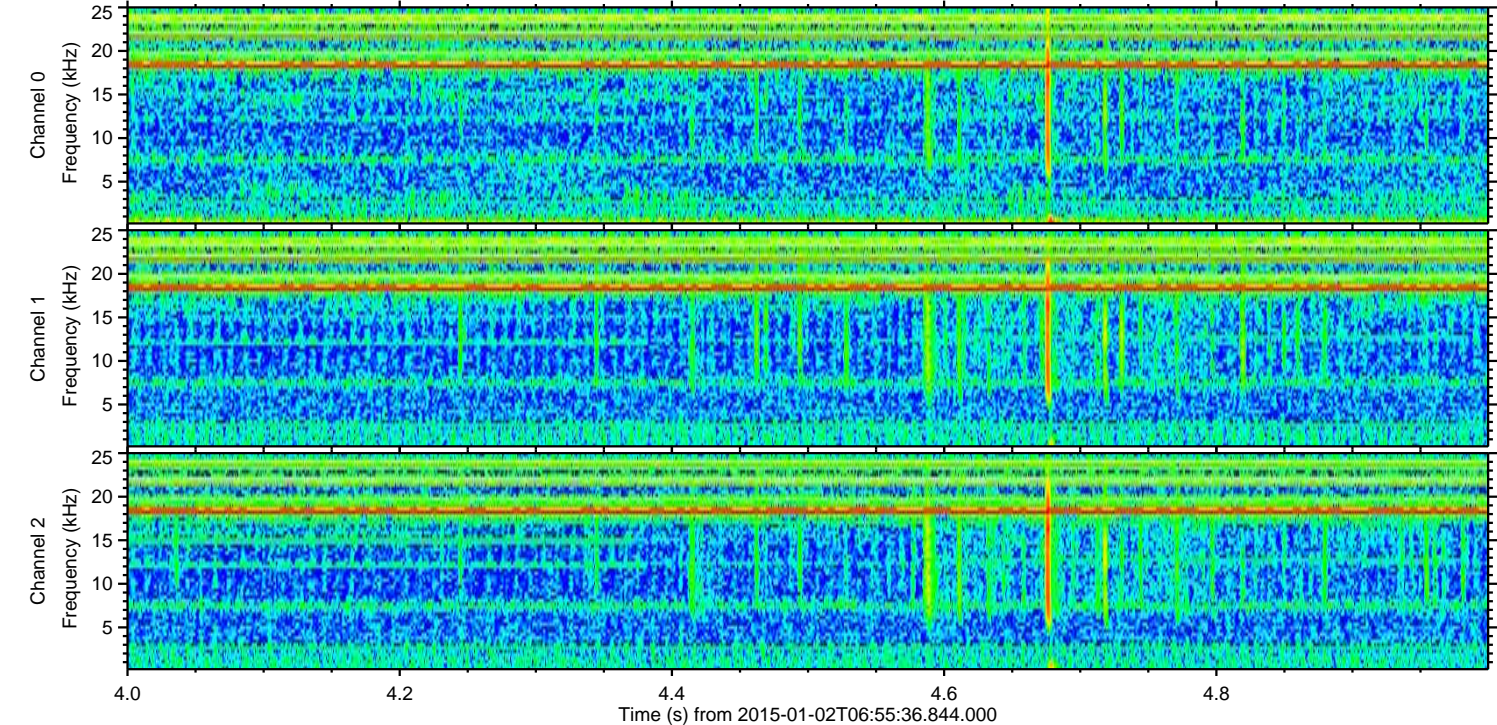
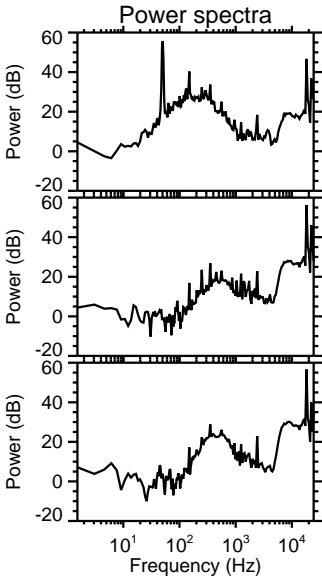
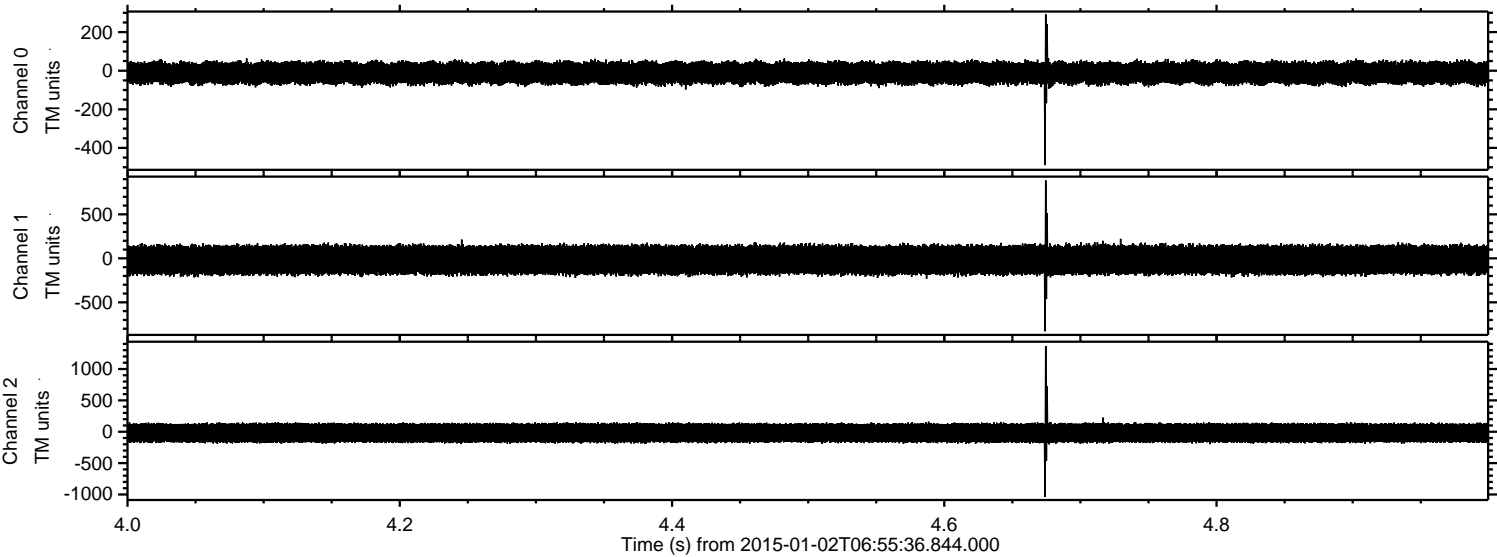
Channel 1
mn: -950
mx: 814
 μ : -17.7
 σ : 91.8

Channel 2
mn: -1364
mx: 1599
 μ : -19.0
 σ : 92.6

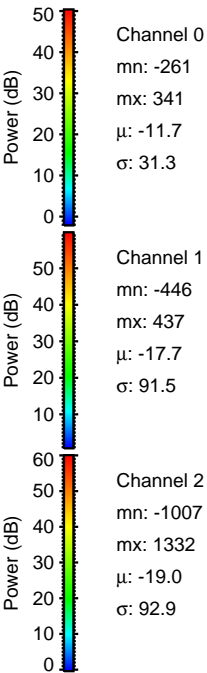
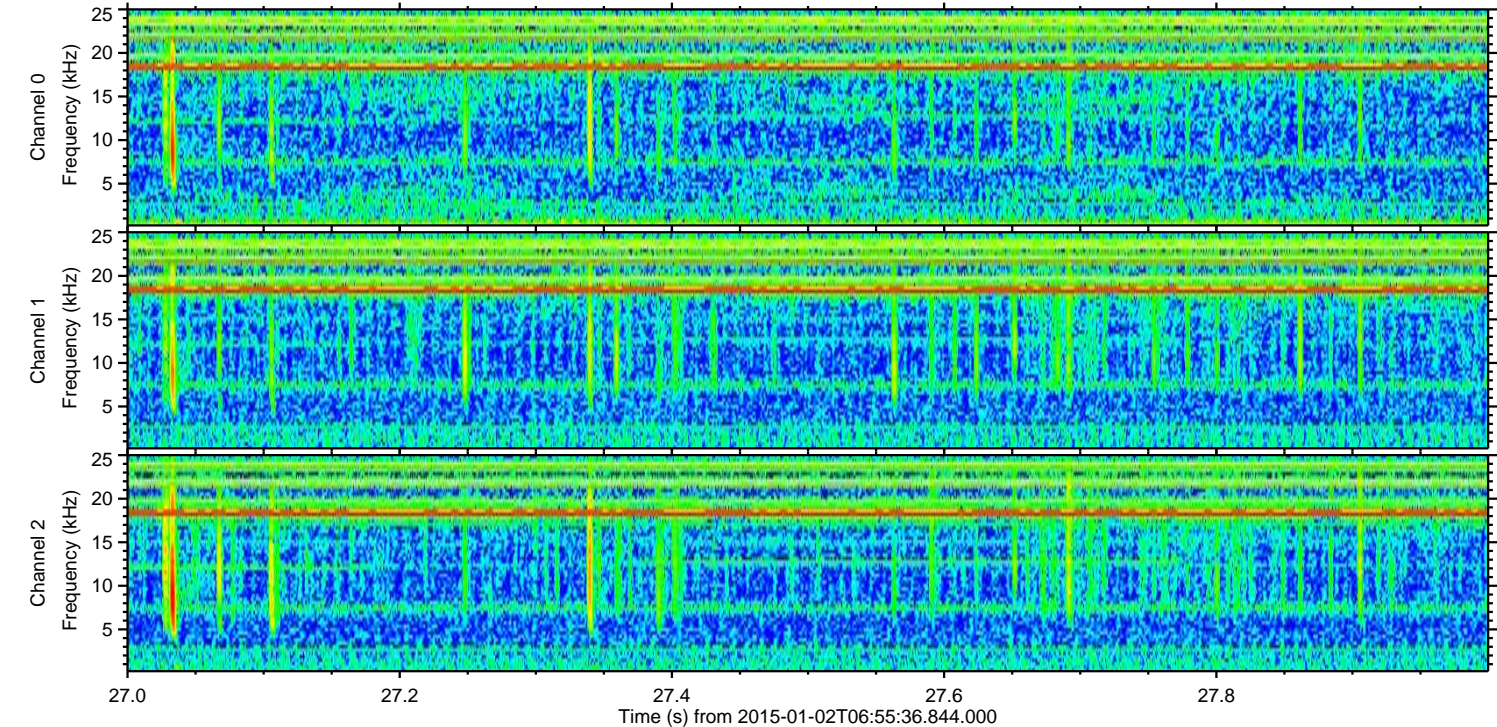
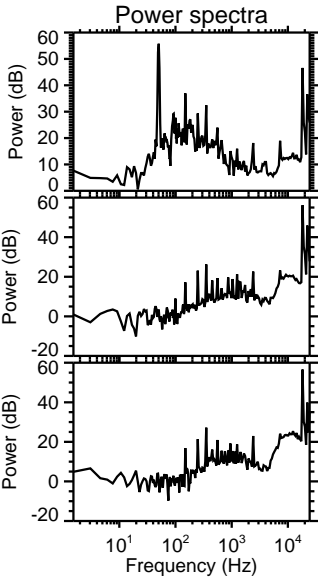
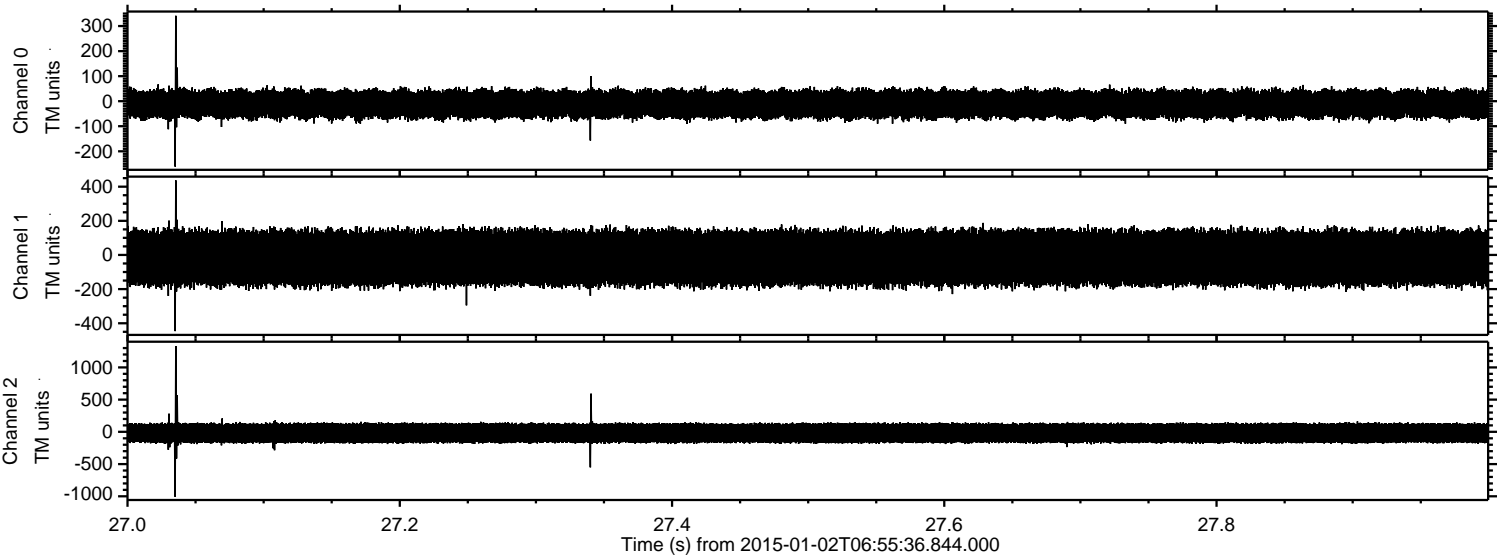
Processed Sat Jan 3 13:57:44 2015 by ELM ver.2012-10-06 from 001__elm20150102_065535__dat00.bin



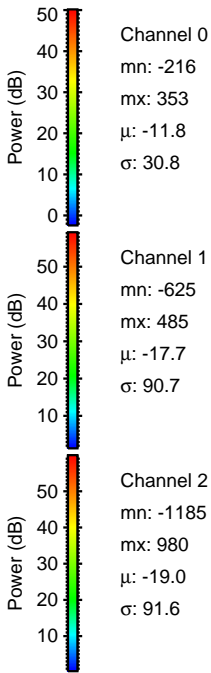
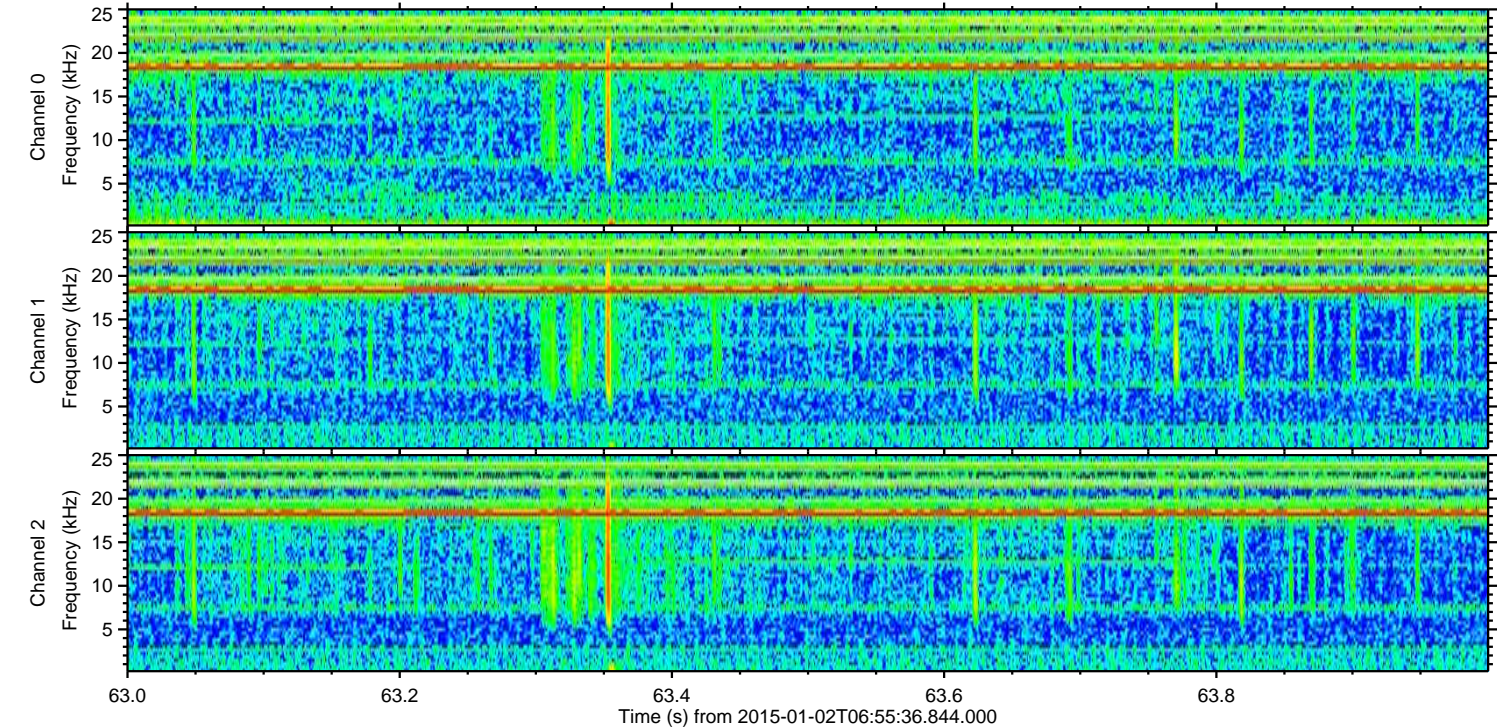
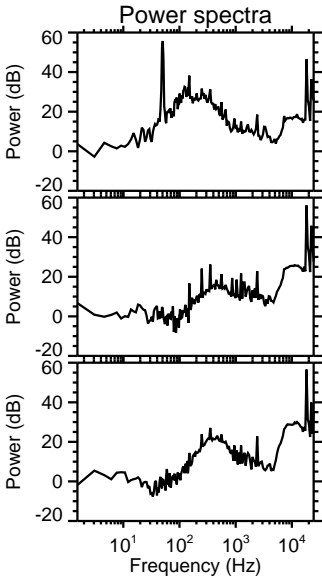
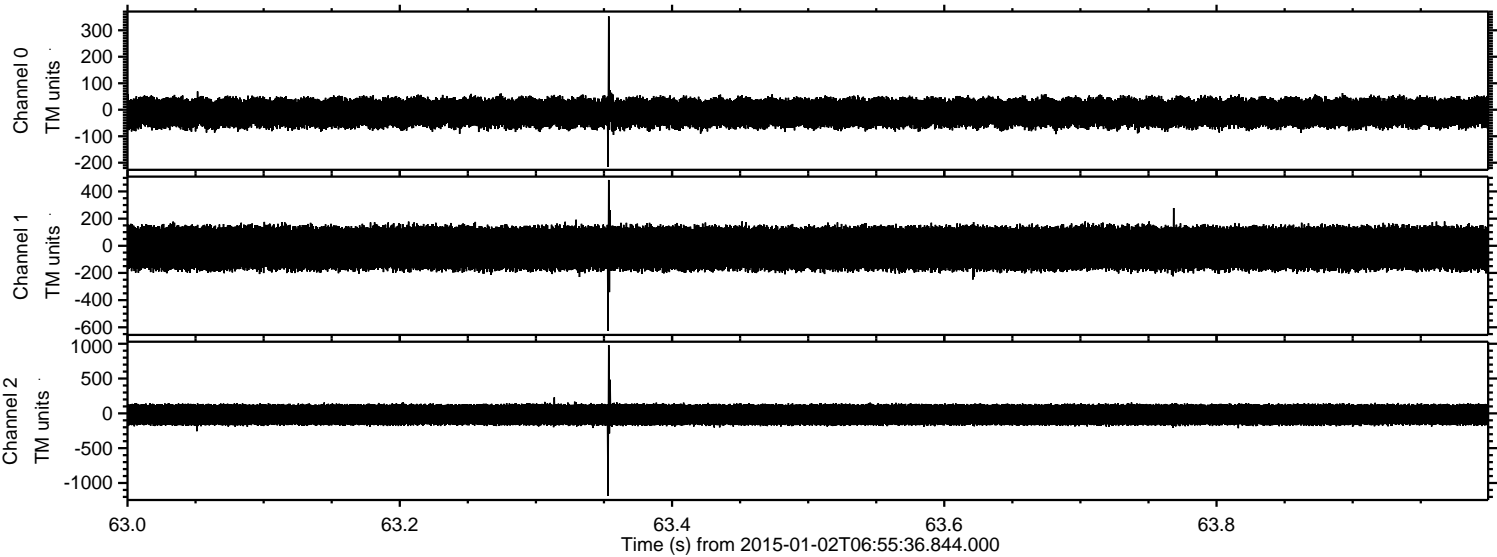
Processed Sat Jan 3 13:57:45 2015 by ELM ver.2012-10-06 from 001__elm20150102_065535__dat00.bin



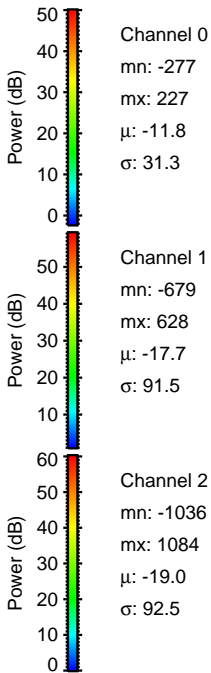
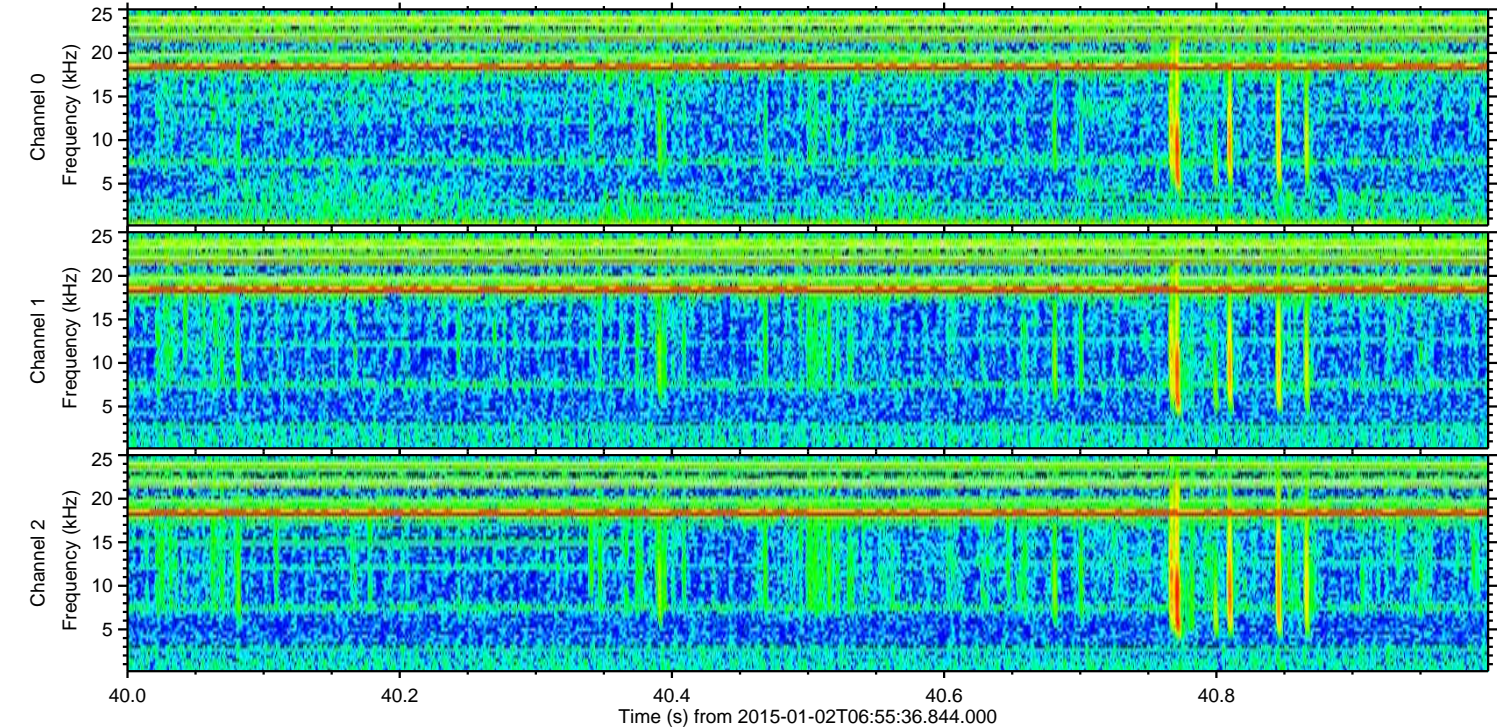
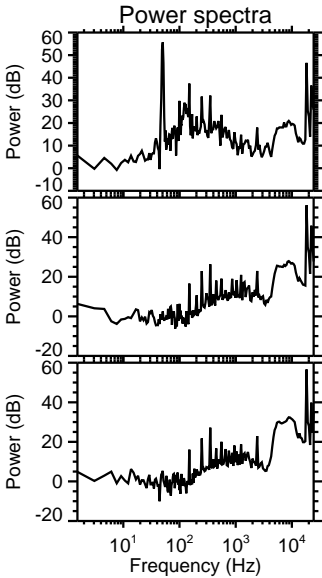
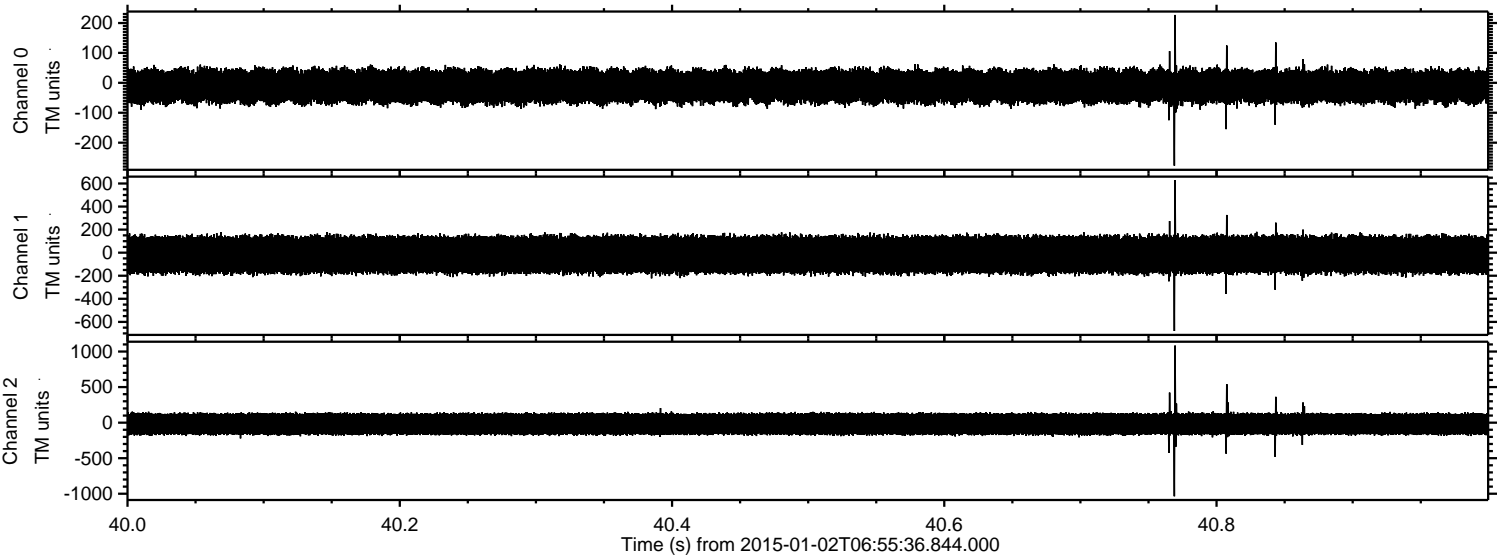
Processed Sat Jan 3 13:57:46 2015 by ELM ver.2012-10-06 from 001__elm20150102_065535__dat00.bin



Processed Sat Jan 3 13:57:47 2015 by ELM ver.2012-10-06 from 001__elm20150102_065535__dat00.bin



Processed Sat Jan 3 13:57:48 2015 by ELM ver.2012-10-06 from 001__elm20150102_065535__dat00.bin



ELMAVAN 3D WAVEFORMS (Measured data sampled at 50 kHz) 49808 packets of 144 samples from 2015-01-02T06:55:36.844.000. Part 139/144

