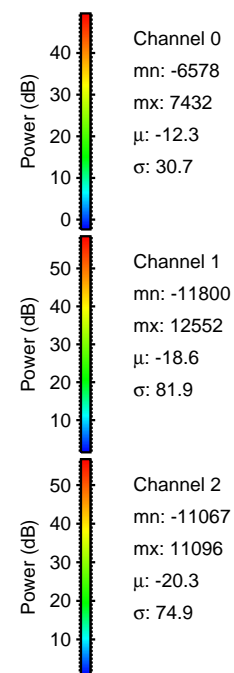
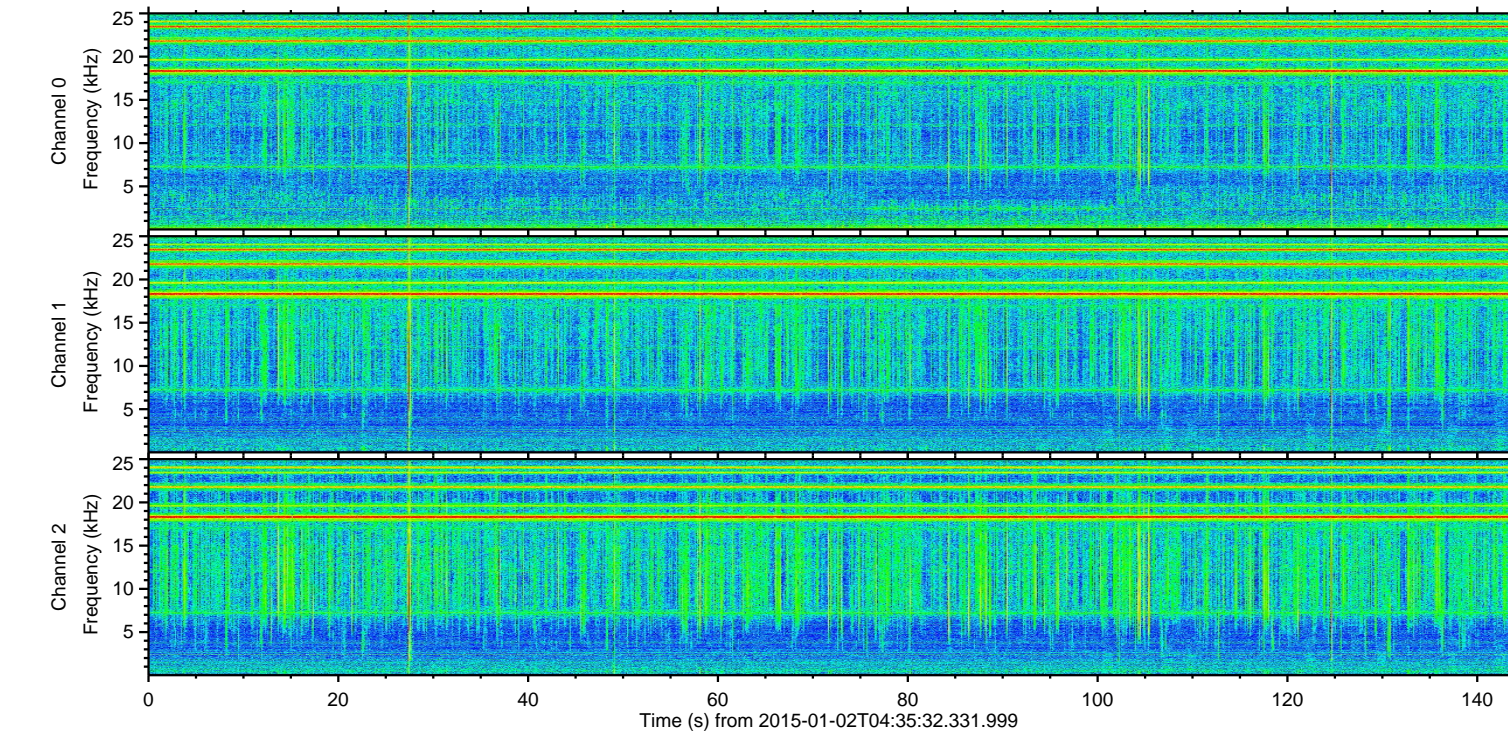
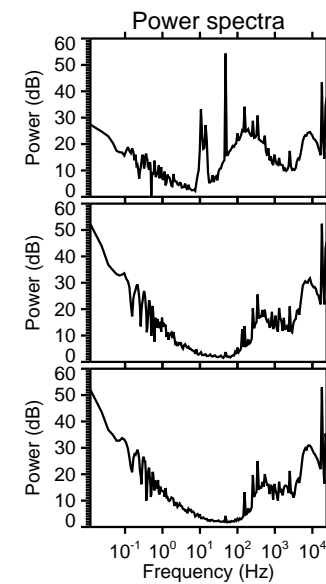
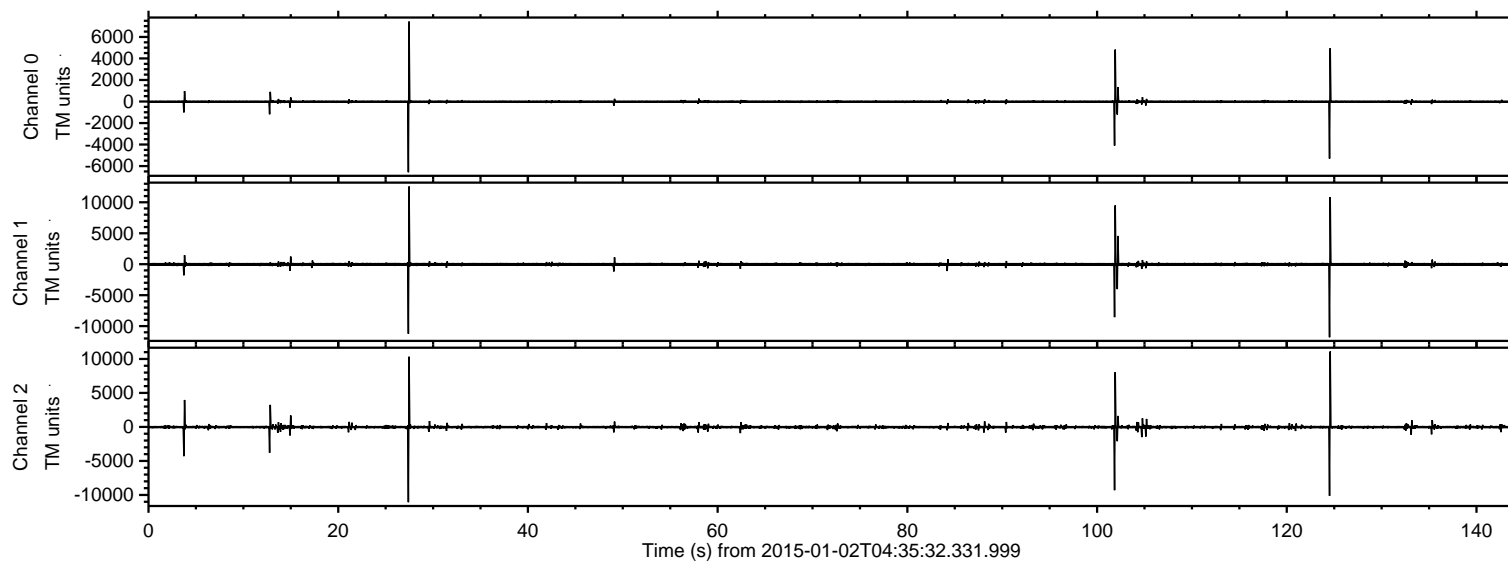


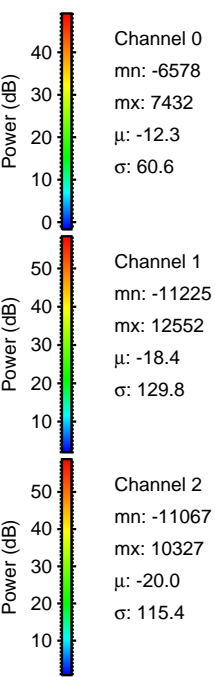
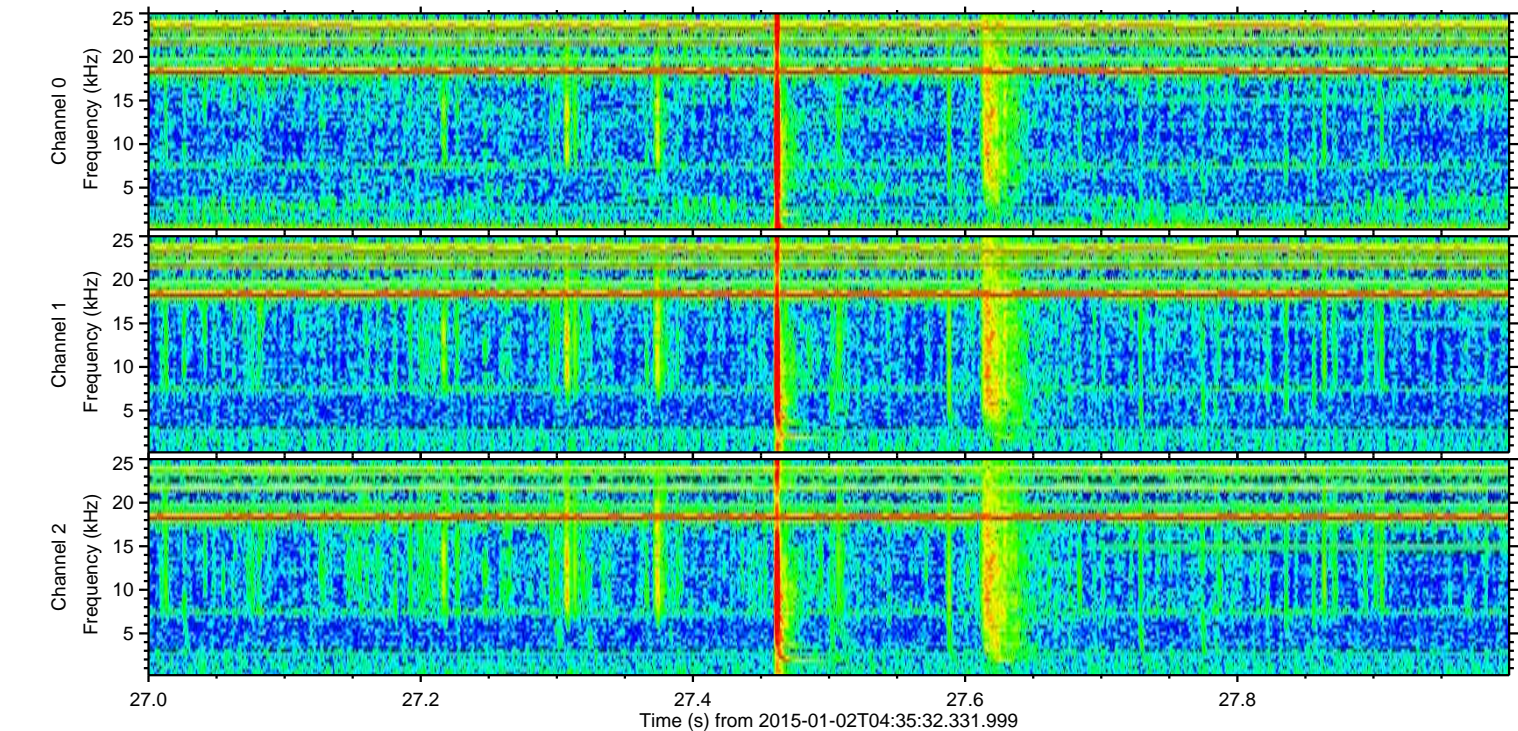
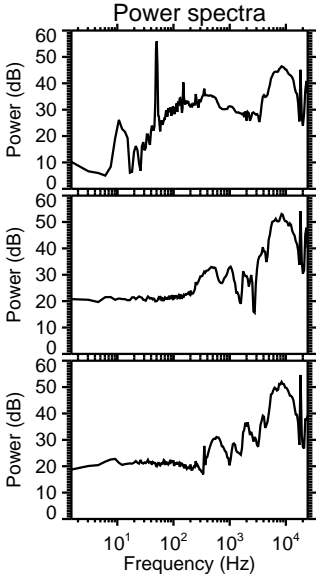
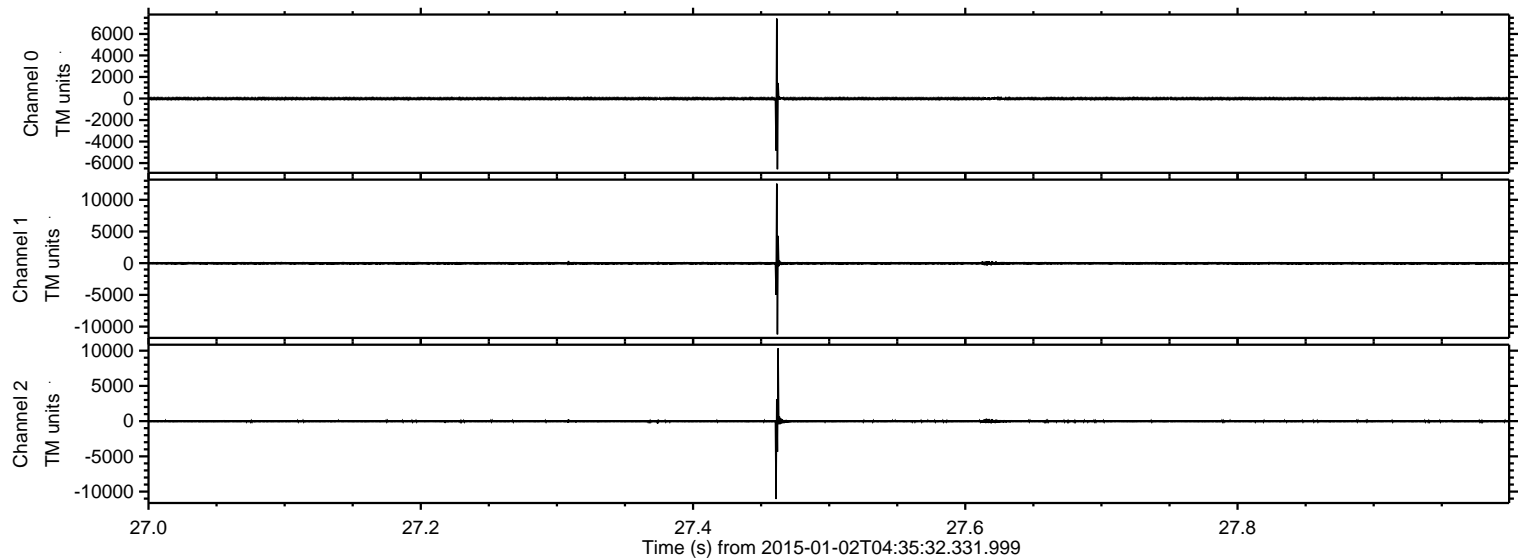
ELMAVAN 3D WAVEFORMS (Measured data sampled at 50 kHz) 49806 packets of 144 samples from 2015-01-02T04:35:32.331.999.

Processed Sat Jan 3 13:15:50 2015 by ELM ver.2012-10-06 from 001\_\_elm20150102\_043531\_\_dat00.bin





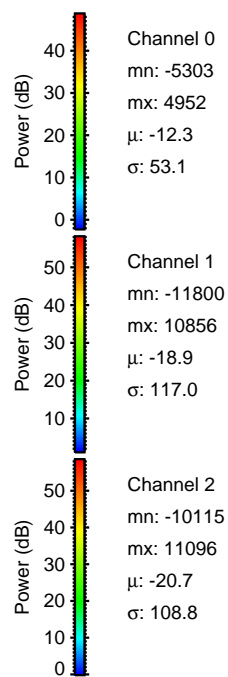
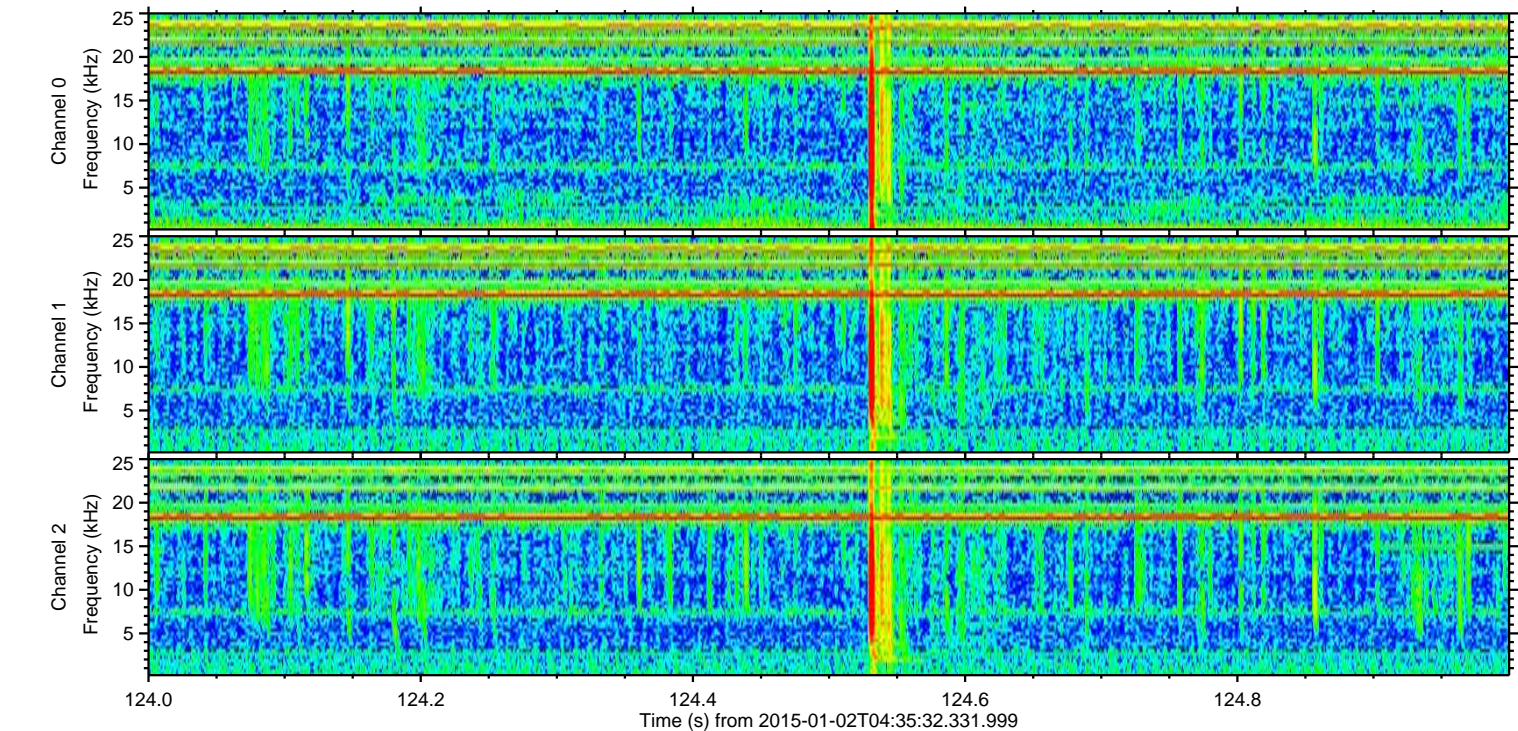
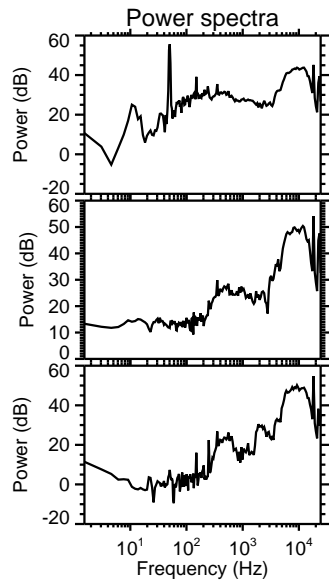
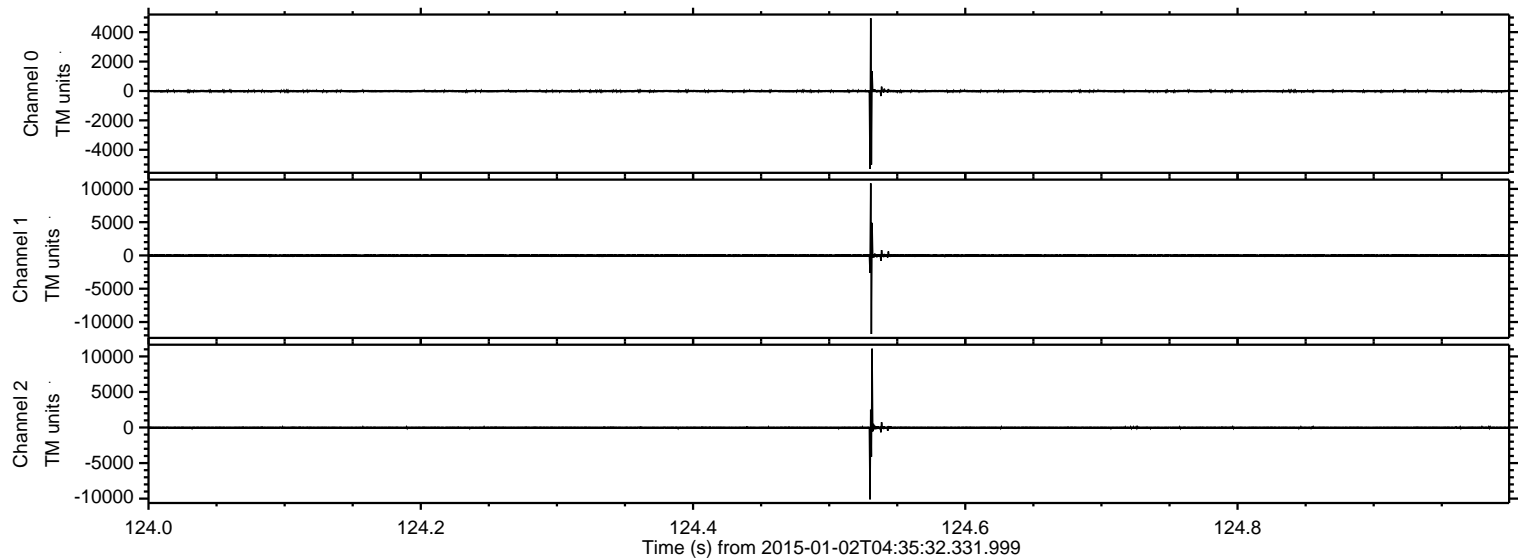
Processed Sat Jan 3 13:16:02 2015 by ELM ver.2012-10-06 from 001\_\_elm20150102\_043531\_\_dat00.bin





ELMAVAN 3D WAVEFORMS (Measured data sampled at 50 kHz) 49806 packets of 144 samples from 2015-01-02T04:35:32.331.999. Part 125/144

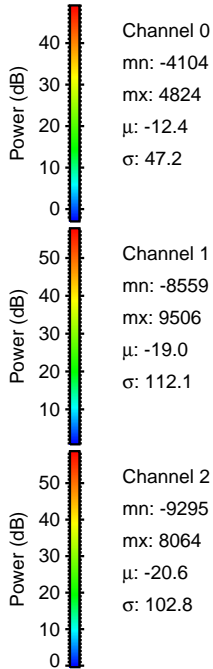
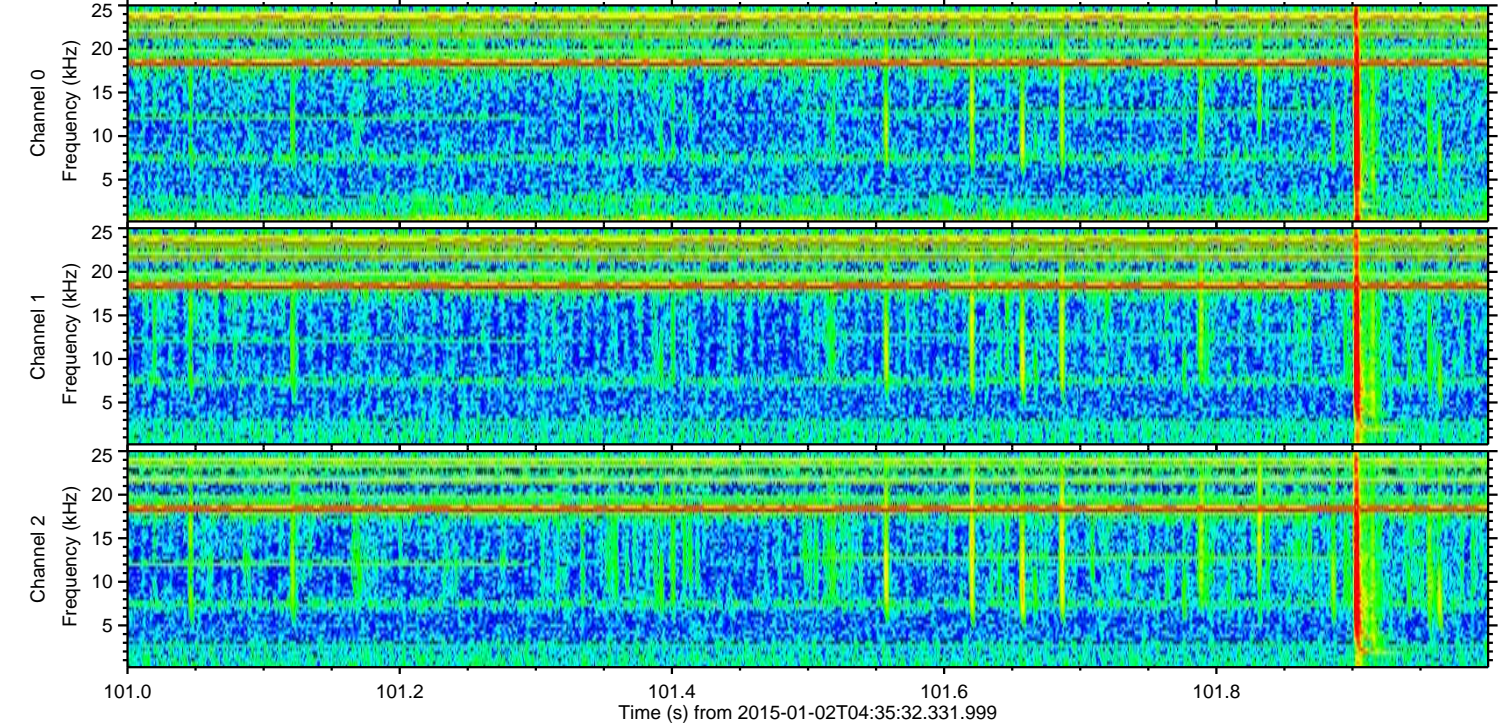
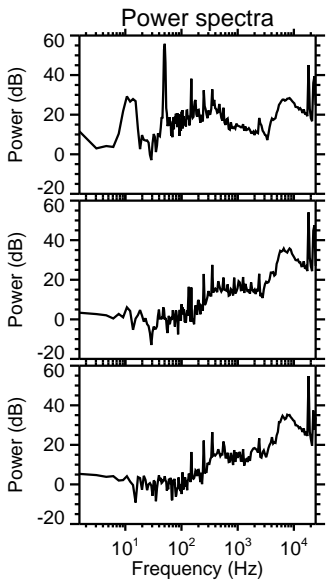
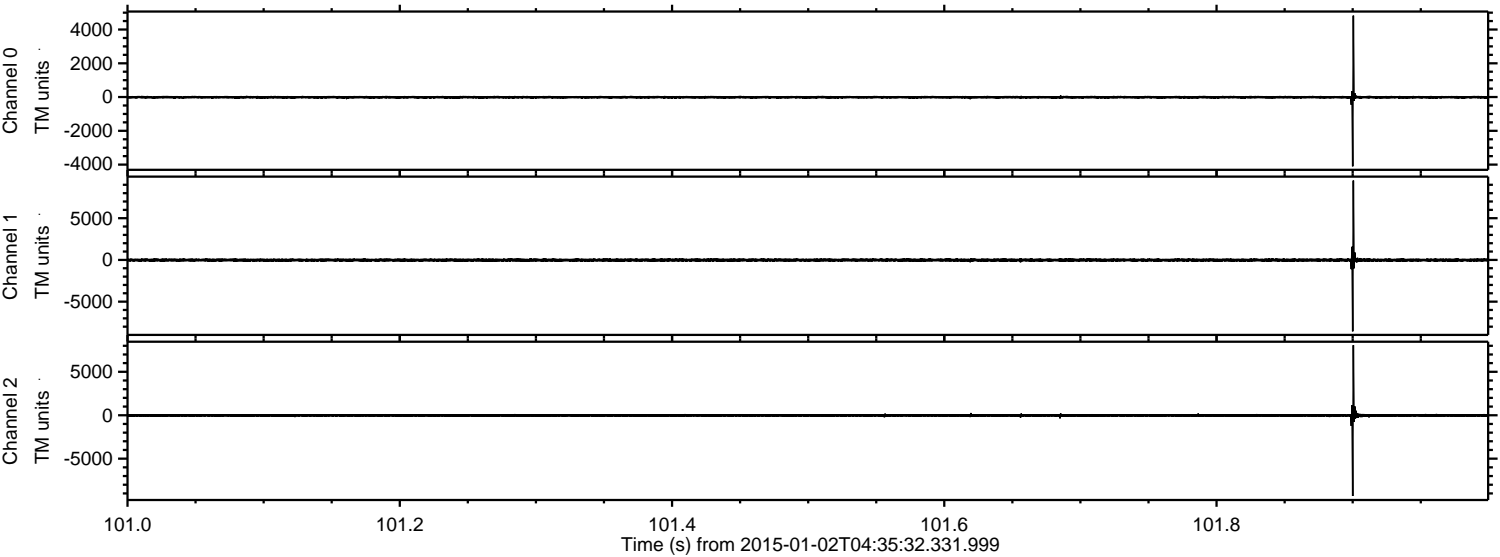
Processed Sat Jan 3 13:16:03 2015 by ELM ver.2012-10-06 from 001\_\_elm20150102\_043531\_\_dat00.bin





ELMAVAN 3D WAVEFORMS (Measured data sampled at 50 kHz) 49806 packets of 144 samples from 2015-01-02T04:35:32.331.999. Part 102/144

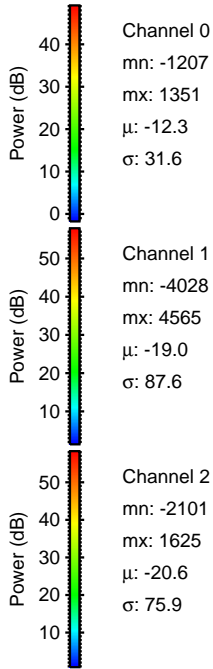
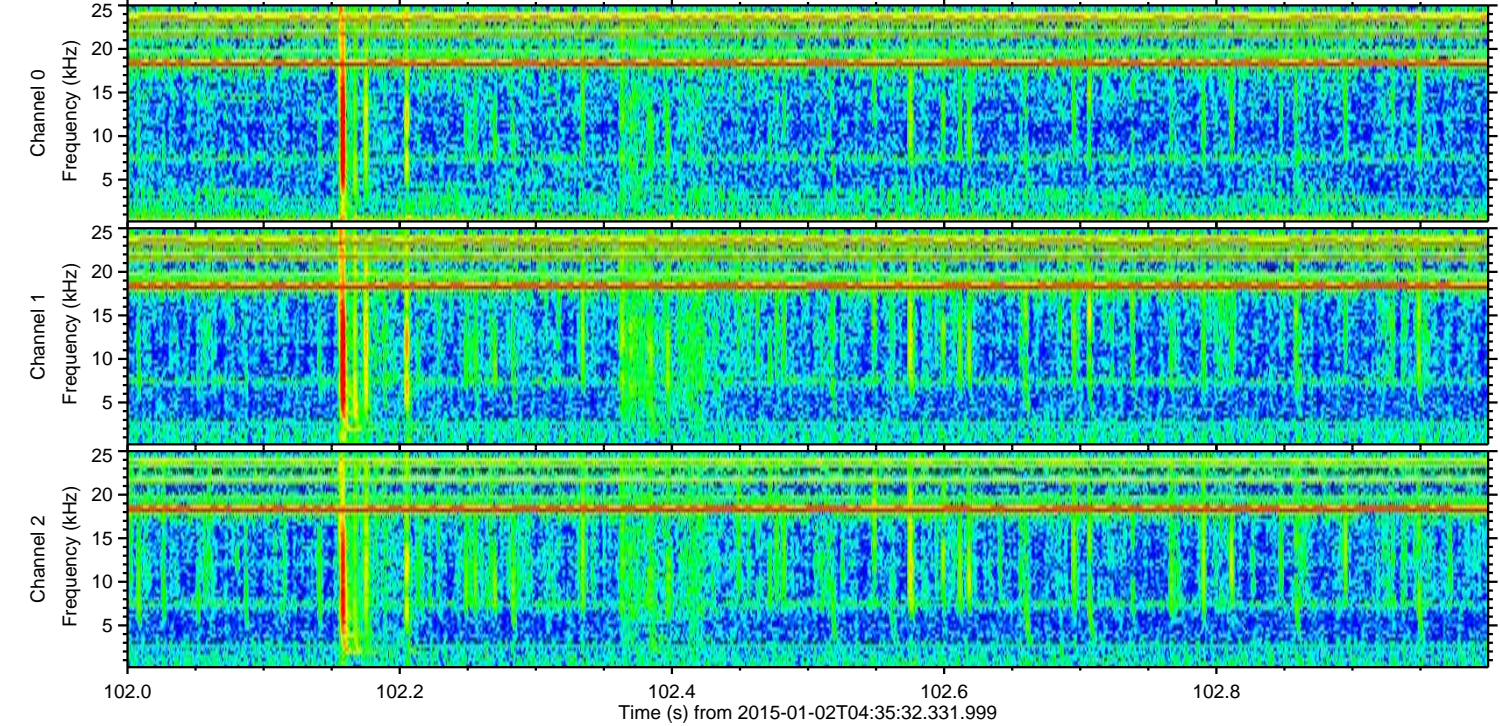
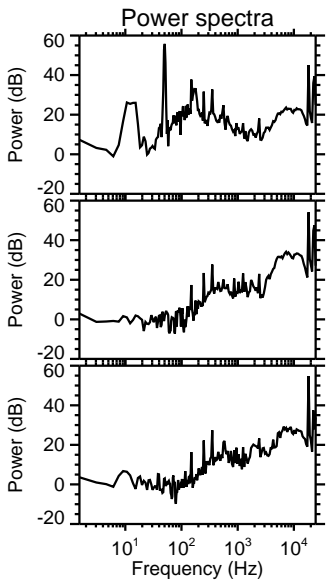
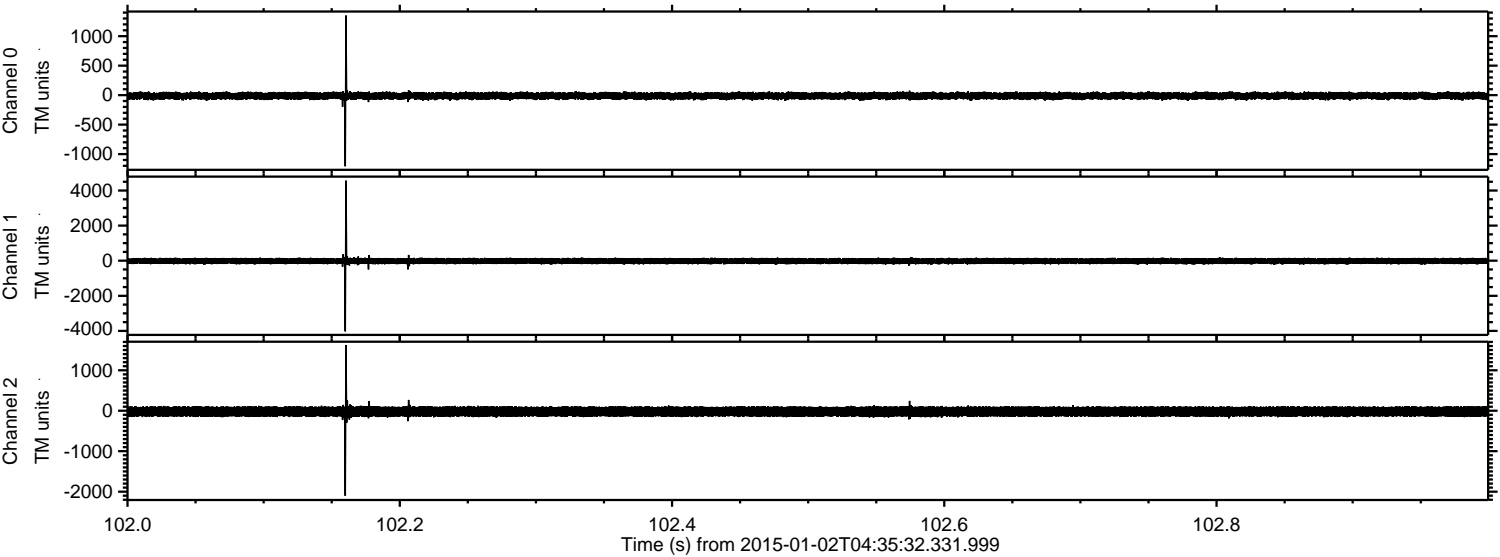
Processed Sat Jan 3 13:16:04 2015 by ELM ver.2012-10-06 from 001\_\_elm20150102\_043531\_\_dat00.bin





ELMAVAN 3D WAVEFORMS (Measured data sampled at 50 kHz) 49806 packets of 144 samples from 2015-01-02T04:35:32.331.999. Part 103/144

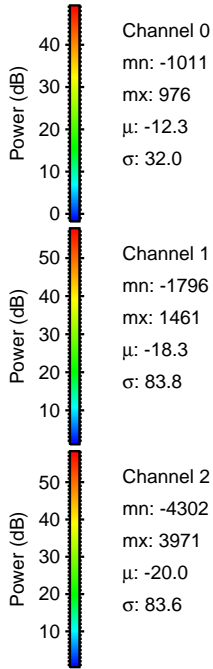
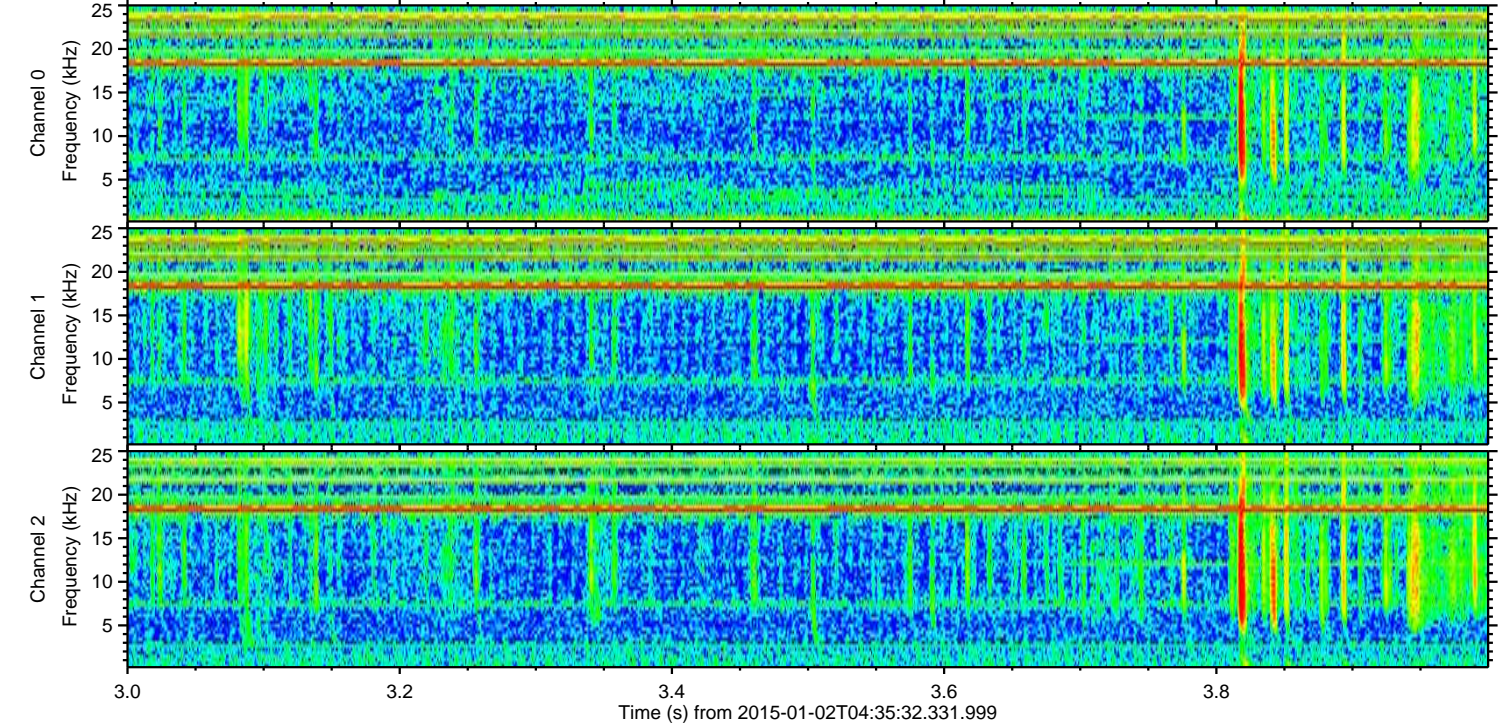
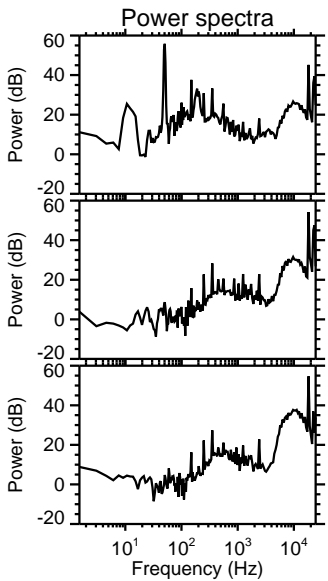
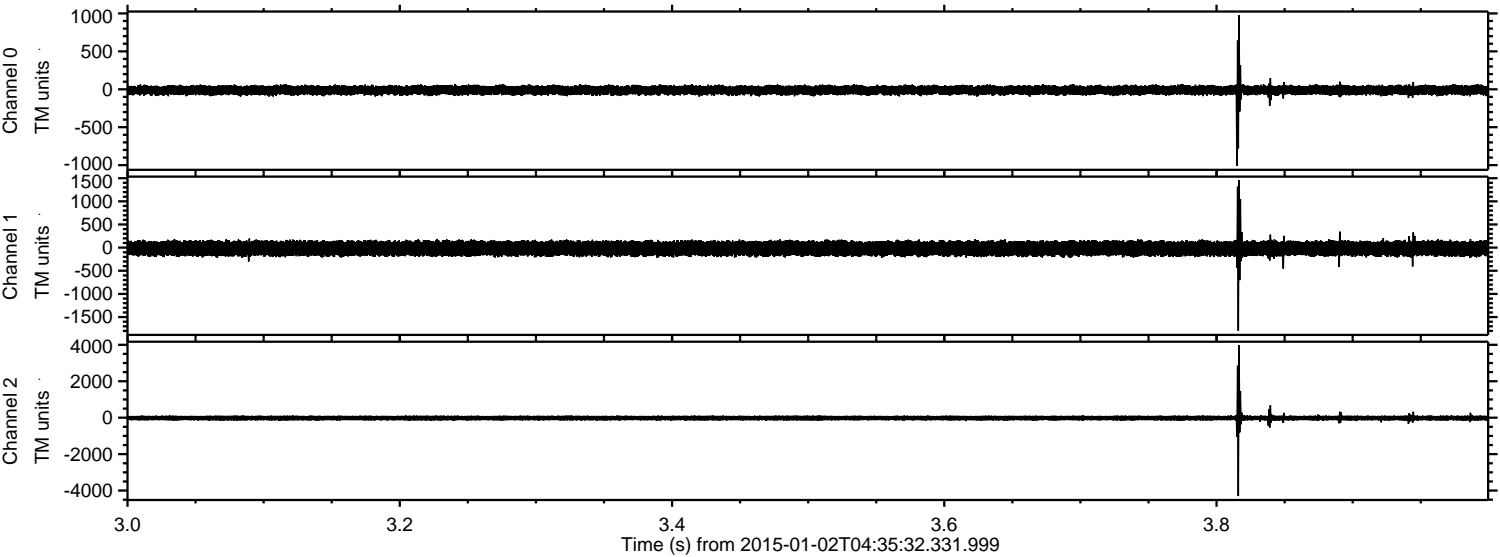
Processed Sat Jan 3 13:16:05 2015 by ELM ver.2012-10-06 from 001\_\_elm20150102\_043531\_\_dat00.bin





ELMAVAN 3D WAVEFORMS (Measured data sampled at 50 kHz) 49806 packets of 144 samples from 2015-01-02T04:35:32.331.999. Part 4/144

Processed Sat Jan 3 13:16:06 2015 by ELM ver.2012-10-06 from 001\_\_elm20150102\_043531\_\_dat00.bin



Channel 0  
mn: -1011  
mx: 976  
 $\mu$ : -12.3  
 $\sigma$ : 32.0

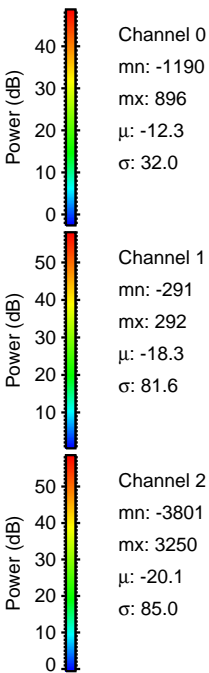
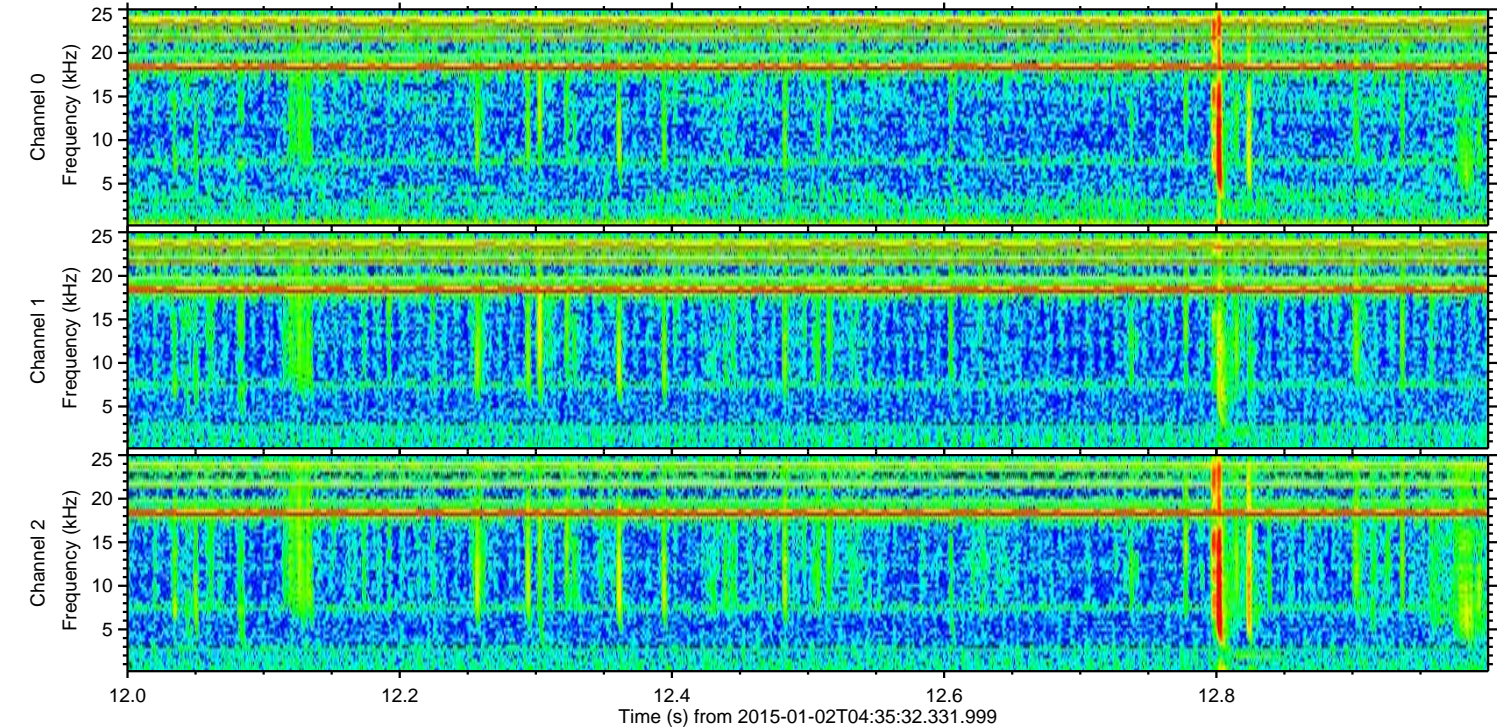
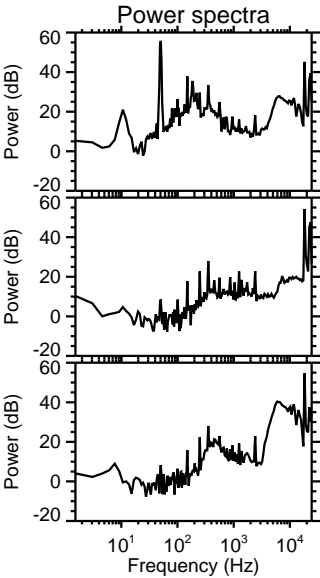
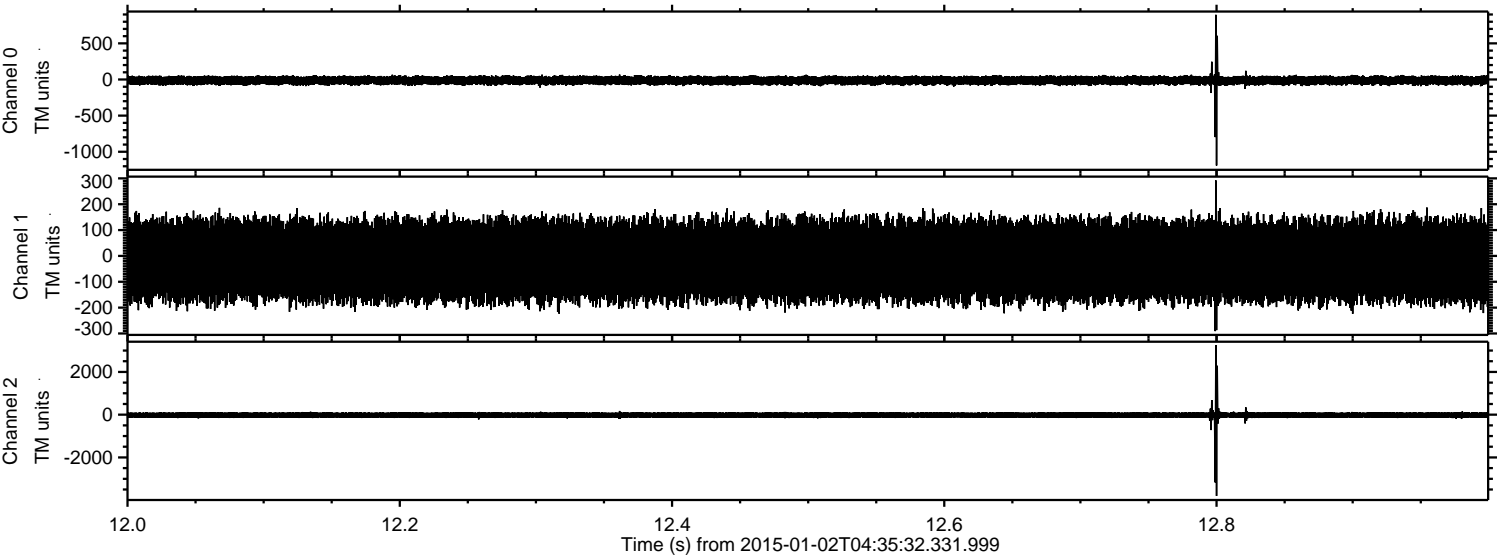
Channel 1  
mn: -1796  
mx: 1461  
 $\mu$ : -18.3  
 $\sigma$ : 83.8

Channel 2  
mn: -4302  
mx: 3971  
 $\mu$ : -20.0  
 $\sigma$ : 83.6



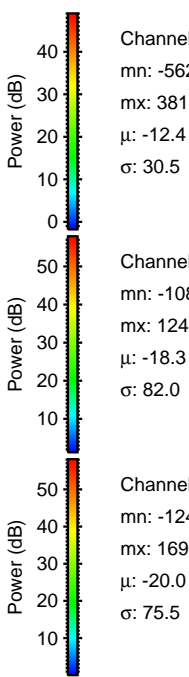
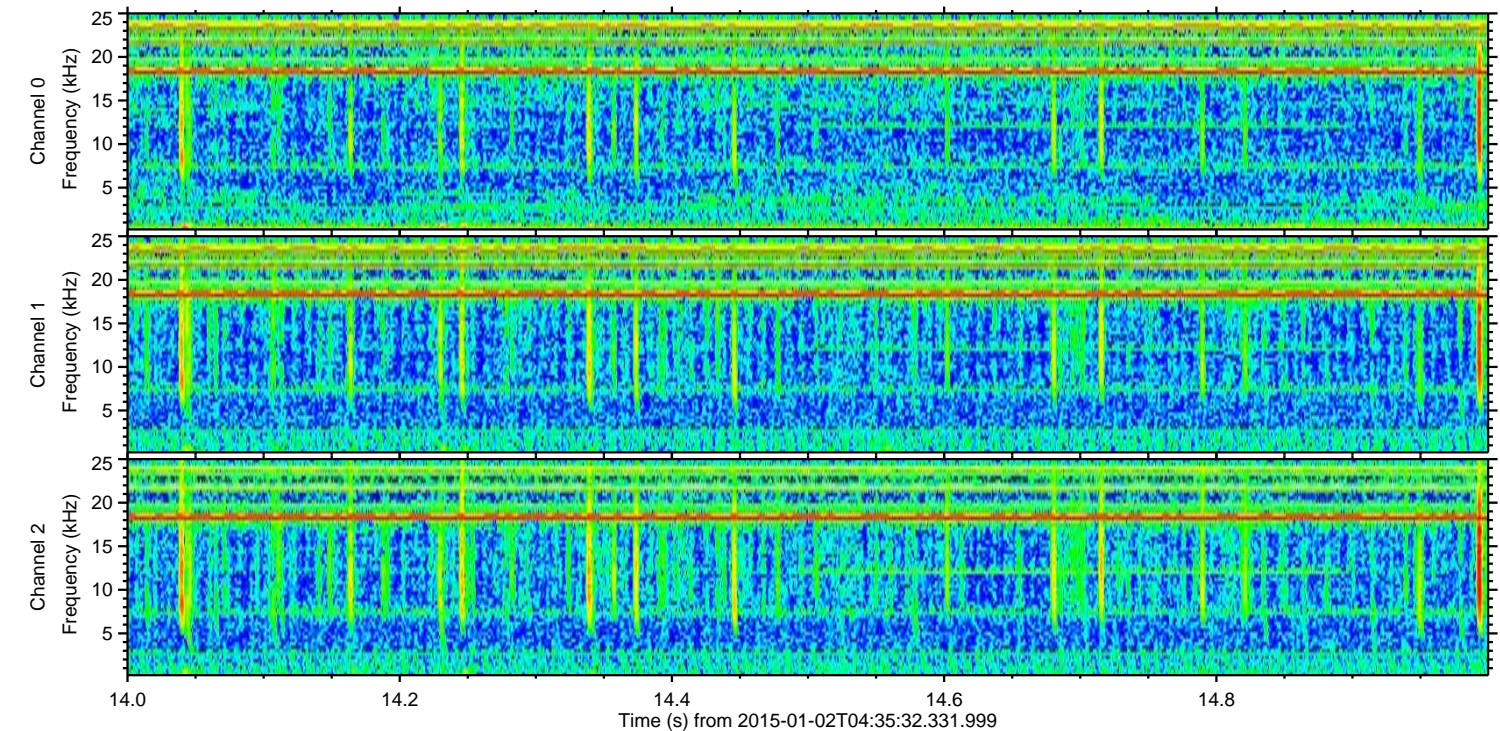
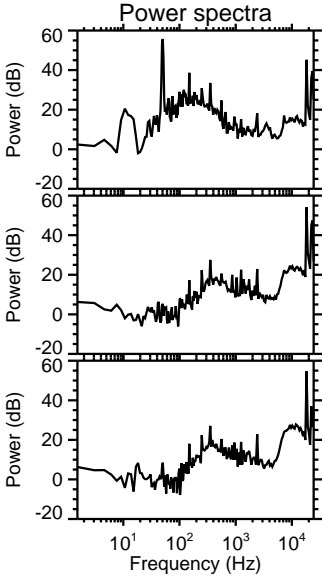
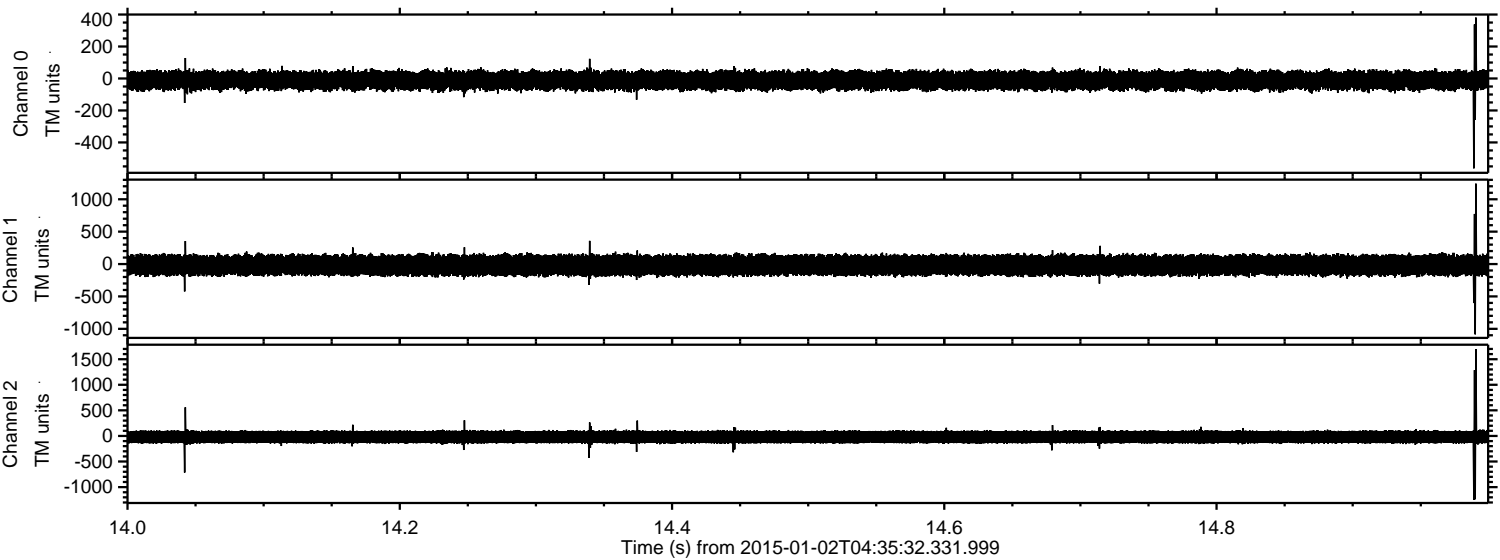
ELMAVAN 3D WAVEFORMS (Measured data sampled at 50 kHz) 49806 packets of 144 samples from 2015-01-02T04:35:32.331.999. Part 13/144

Processed Sat Jan 3 13:16:07 2015 by ELM ver.2012-10-06 from 001\_\_elm20150102\_043531\_\_dat00.bin





Processed Sat Jan 3 13:16:08 2015 by ELM ver.2012-10-06 from 001\_\_elm20150102\_043531\_\_dat00.bin



Channel 0  
mn: -562  
mx: 381  
 $\mu$ : -12.4  
 $\sigma$ : 30.5

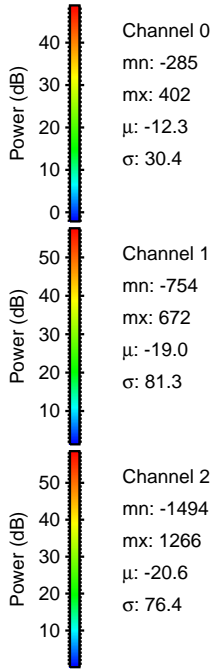
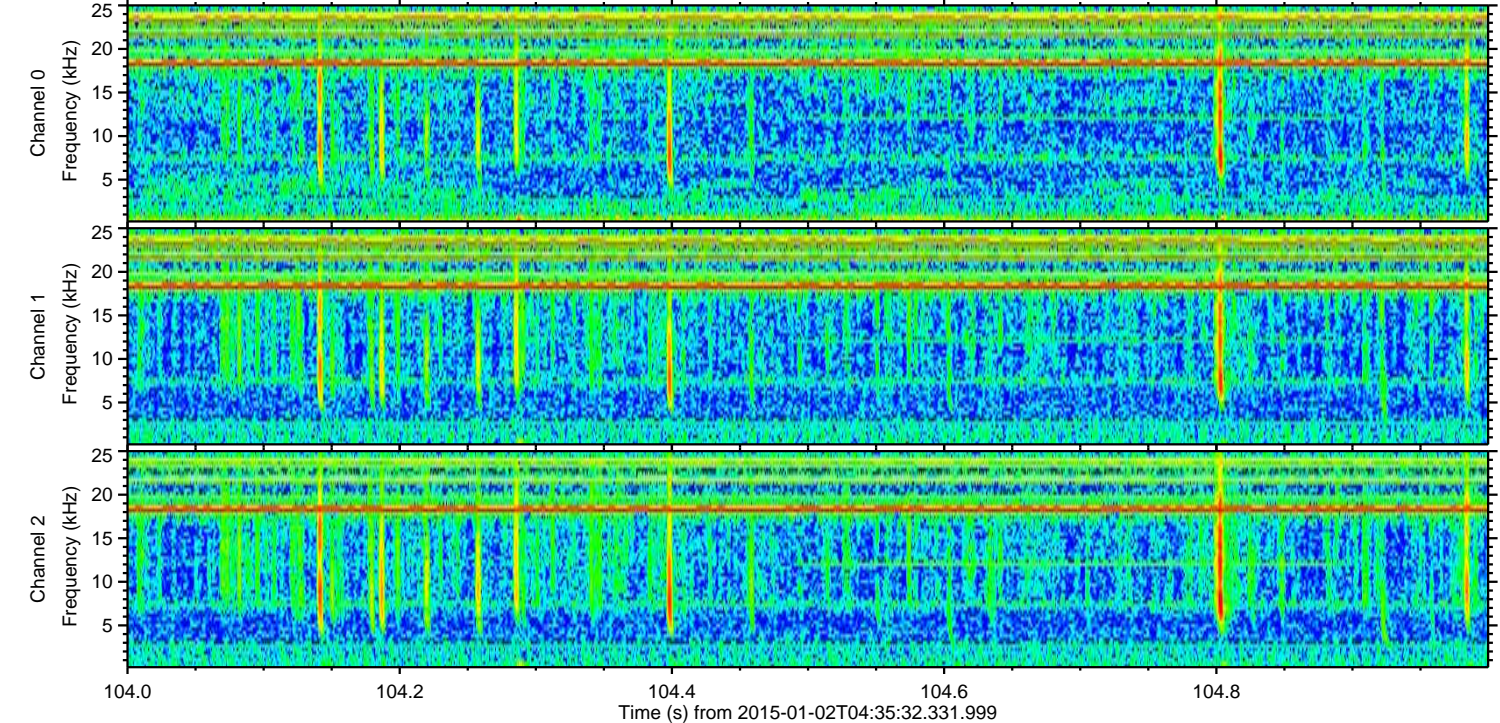
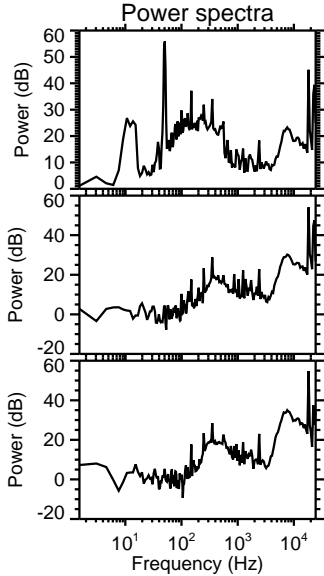
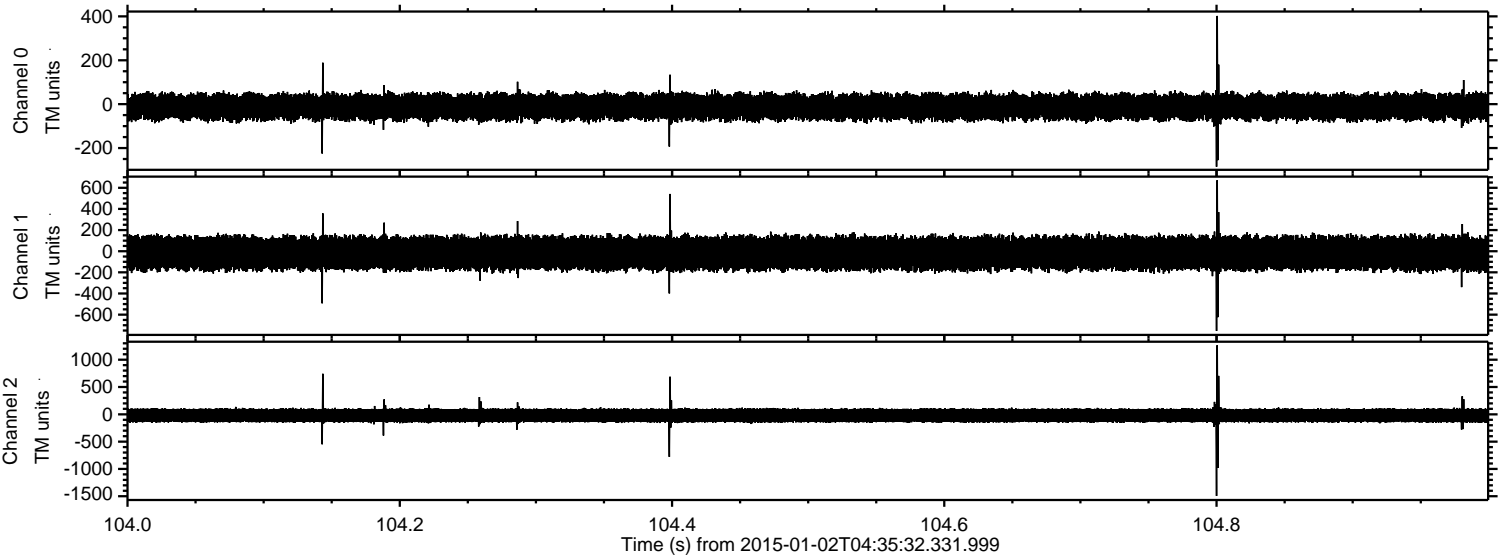
Channel 1  
mn: -1086  
mx: 1241  
 $\mu$ : -18.3  
 $\sigma$ : 82.0

Channel 2  
mn: -1248  
mx: 1698  
 $\mu$ : -20.0  
 $\sigma$ : 75.5



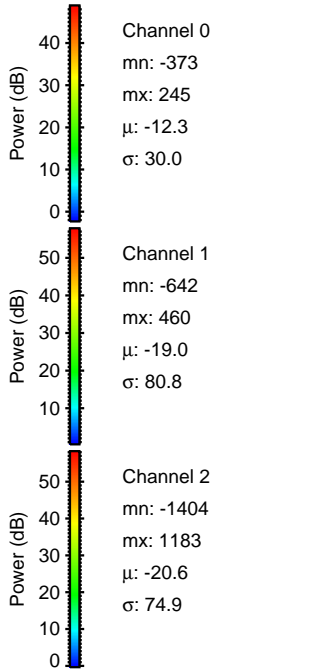
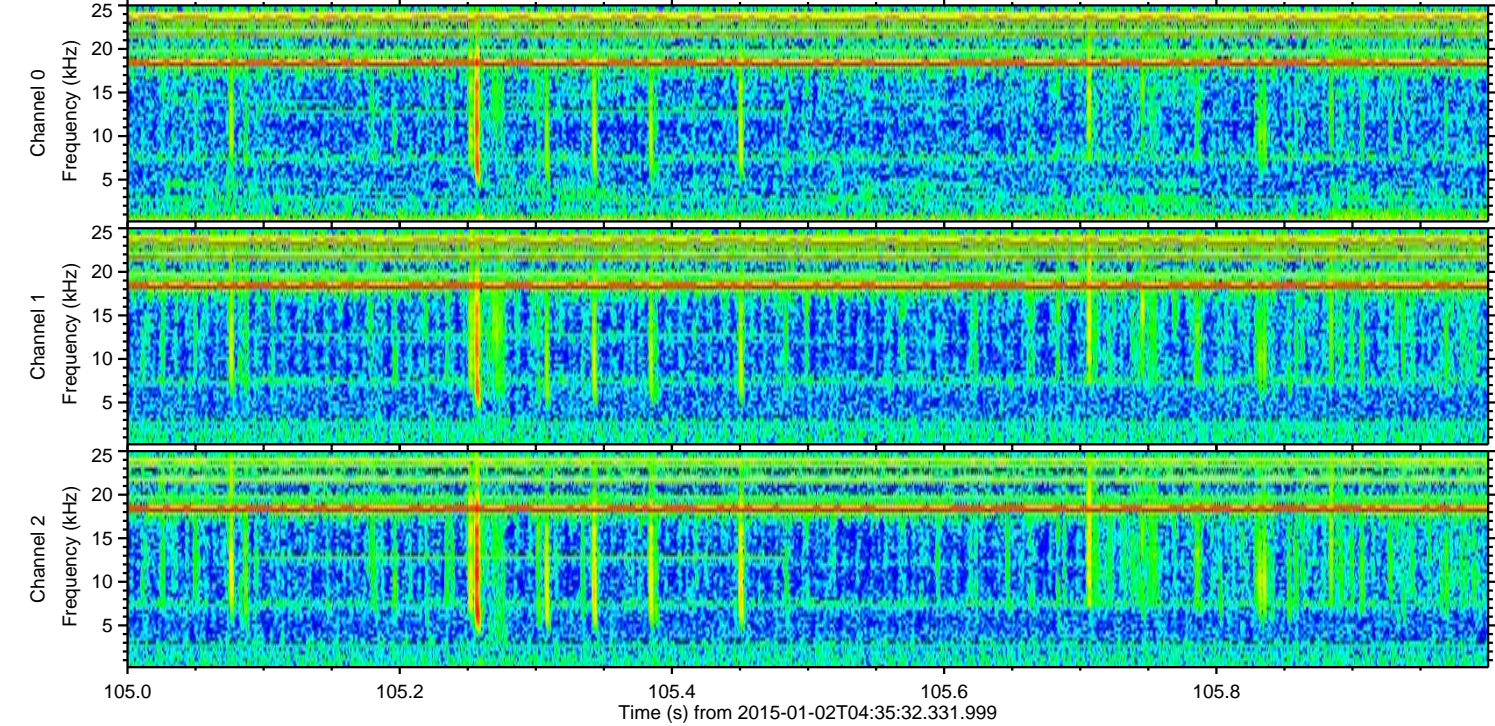
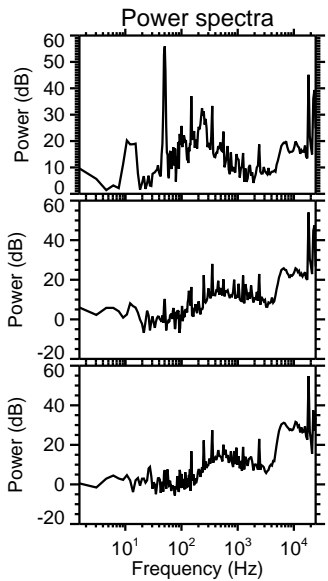
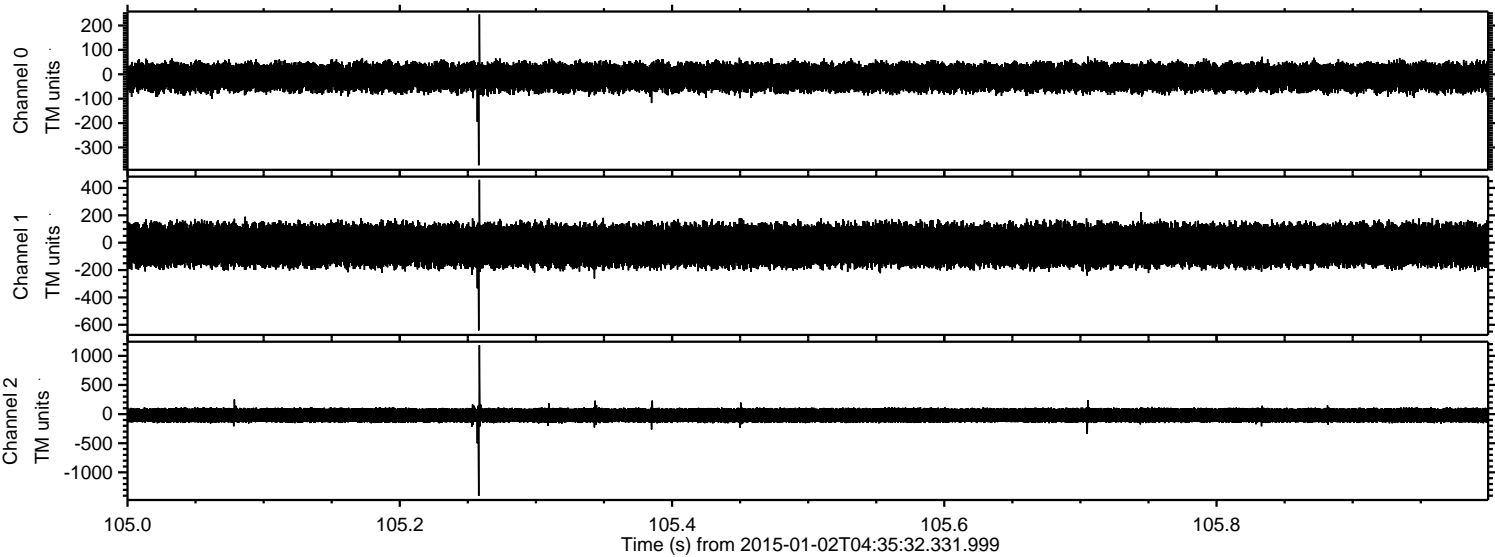
ELMAVAN 3D WAVEFORMS (Measured data sampled at 50 kHz) 49806 packets of 144 samples from 2015-01-02T04:35:32.331.999. Part 105/144

Processed Sat Jan 3 13:16:09 2015 by ELM ver.2012-10-06 from 001\_\_elm20150102\_043531\_\_dat00.bin





Processed Sat Jan 3 13:16:10 2015 by ELM ver.2012-10-06 from 001\_\_elm20150102\_043531\_\_dat00.bin





ELMAVAN 3D WAVEFORMS (Measured data sampled at 50 kHz) 49806 packets of 144 samples from 2015-01-02T04:35:32.331.999. Part 142/144

