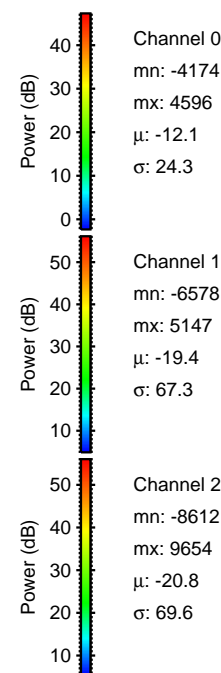
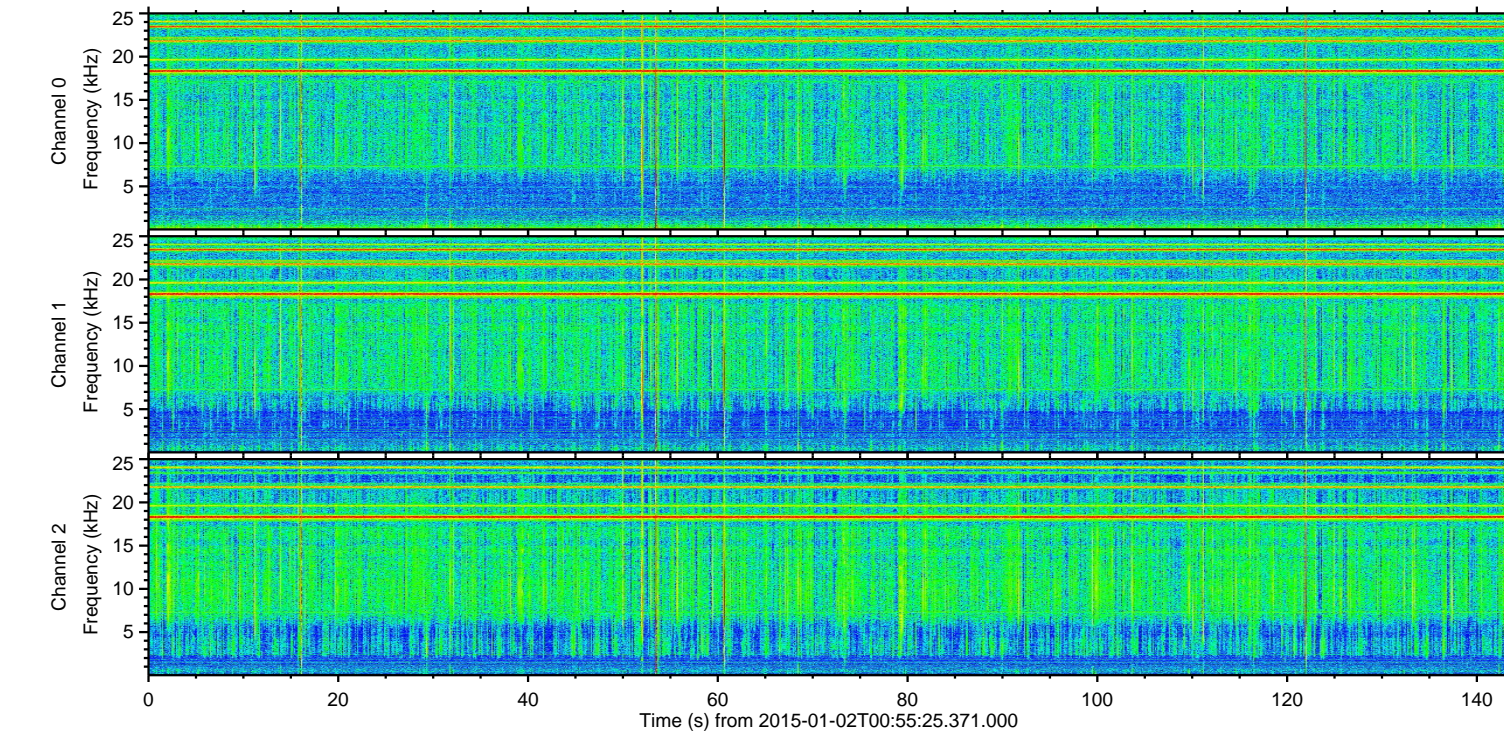
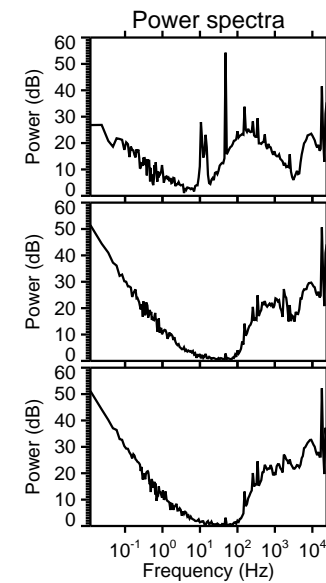
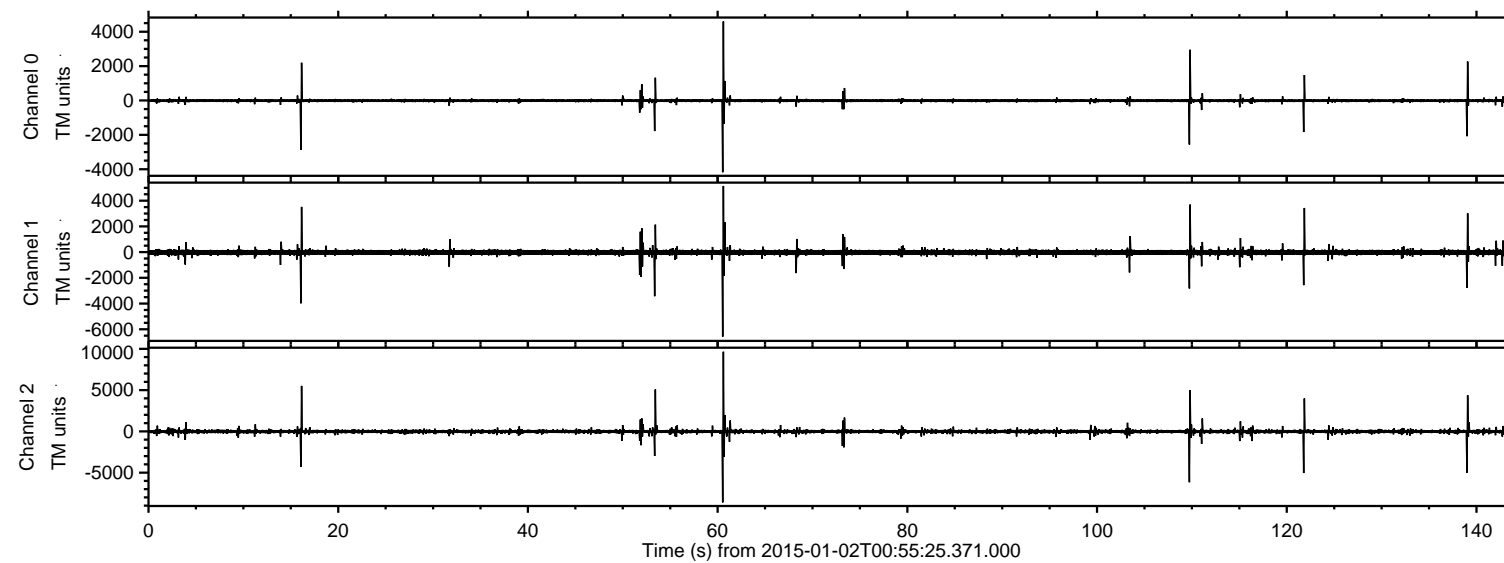


ELMAVAN 3D WAVEFORMS (Measured data sampled at 50 kHz) 49807 packets of 144 samples from 2015-01-02T00:55:25.371.000.

Processed Sat Jan 3 12:15:18 2015 by ELM ver.2012-10-06 from 001\_\_elm20150102\_005524\_\_dat00.bin



Channel 0  
mn: -4174  
mx: 4596  
 $\mu$ : -12.1  
 $\sigma$ : 24.3

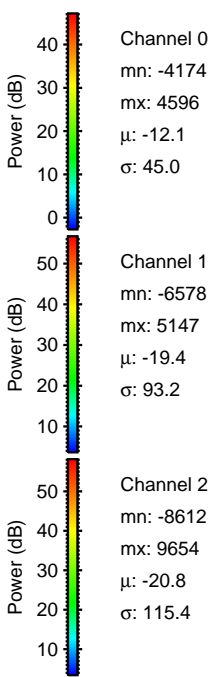
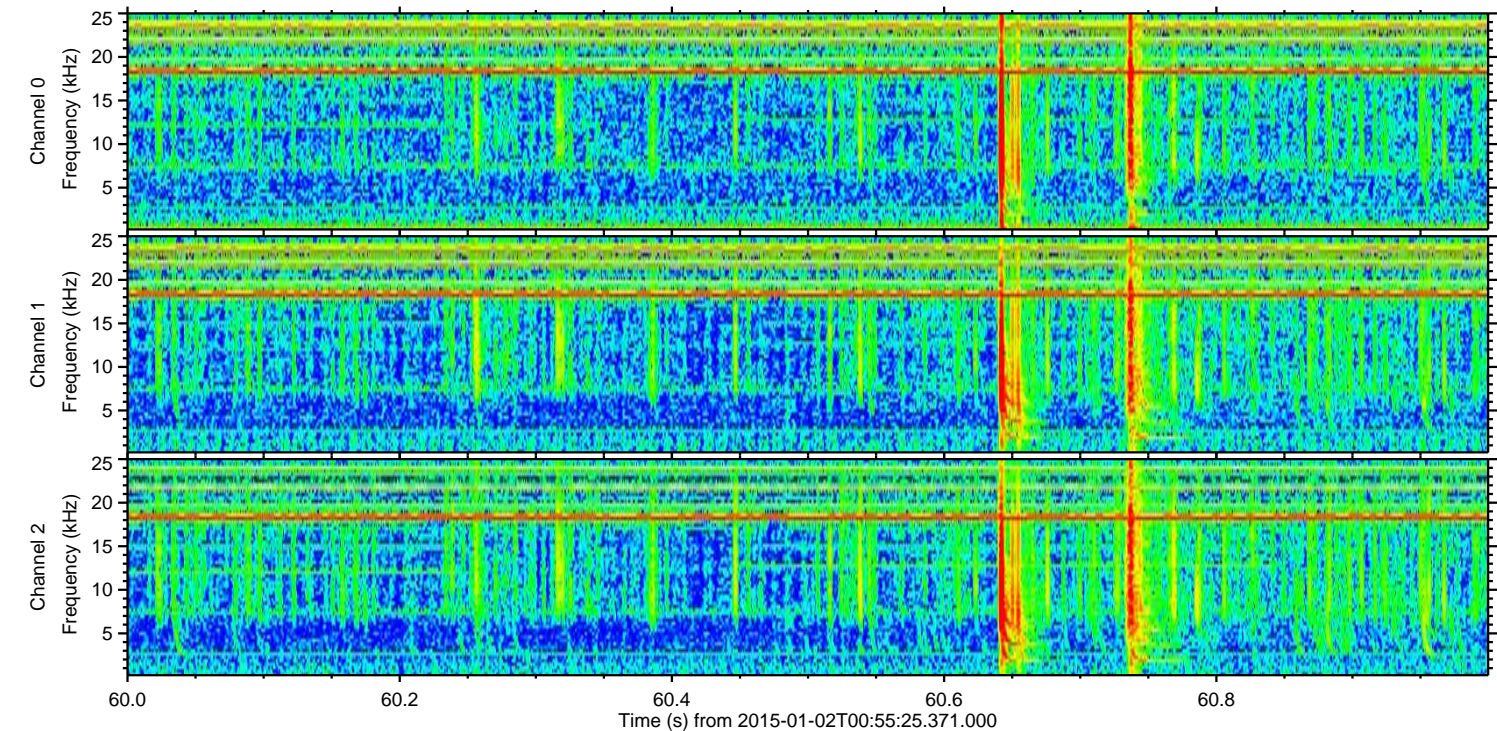
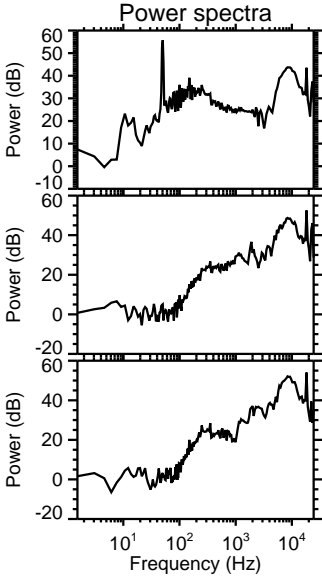
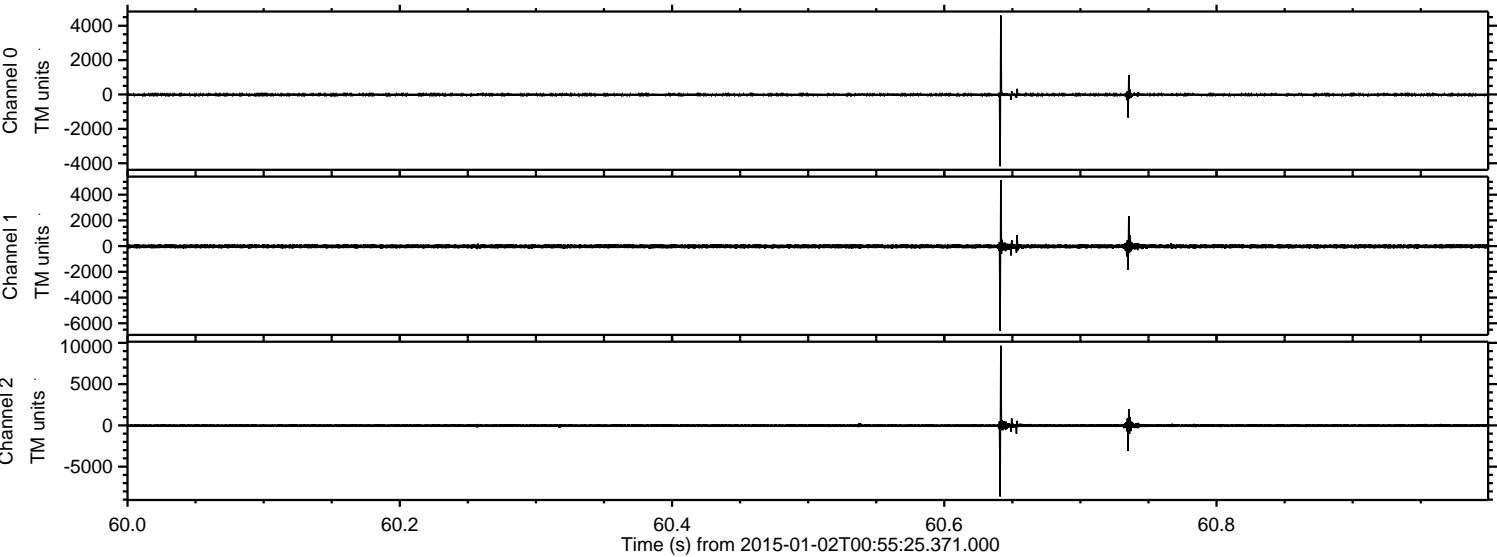
Channel 1  
mn: -6578  
mx: 5147  
 $\mu$ : -19.4  
 $\sigma$ : 67.3

Channel 2  
mn: -8612  
mx: 9654  
 $\mu$ : -20.8  
 $\sigma$ : 69.6



ELMAVAN 3D WAVEFORMS (Measured data sampled at 50 kHz) 49807 packets of 144 samples from 2015-01-02T00:55:25.371.000. Part 61/144

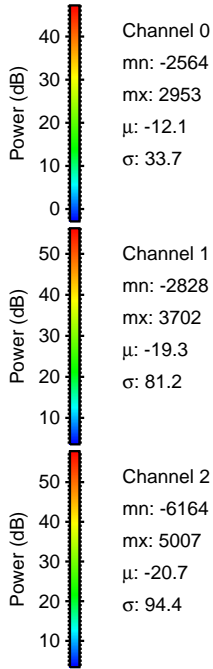
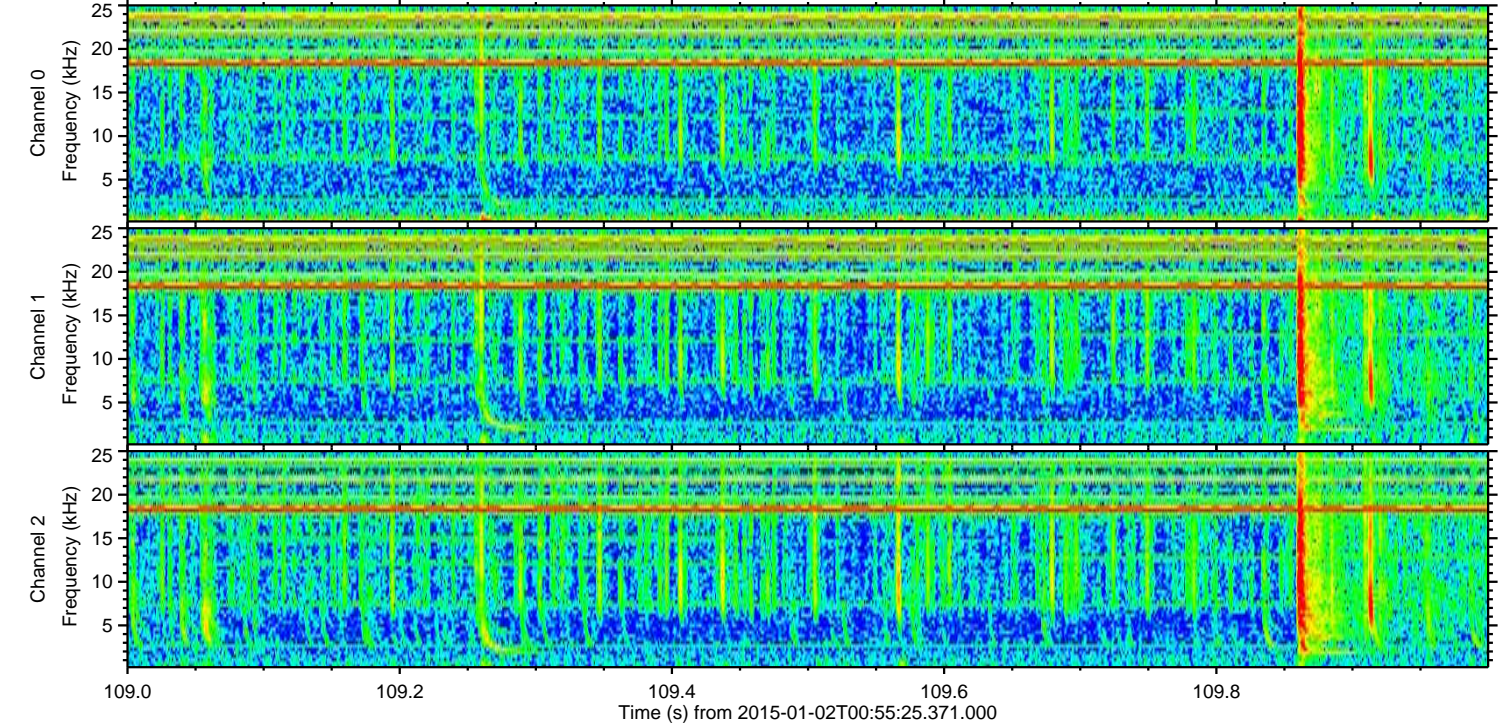
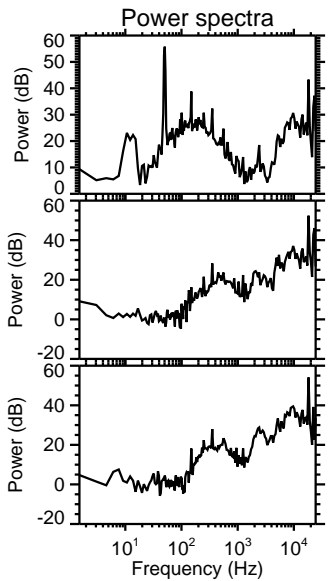
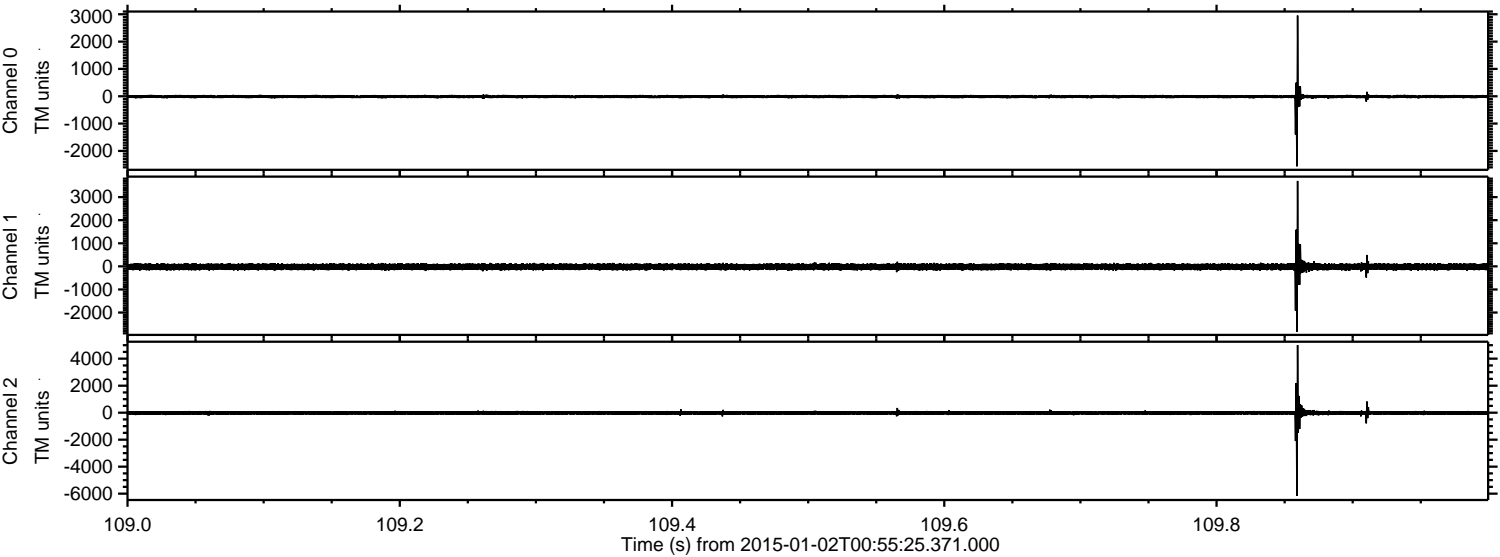
Processed Sat Jan 3 12:15:30 2015 by ELM ver.2012-10-06 from 001\_\_elm20150102\_005524\_\_dat00.bin





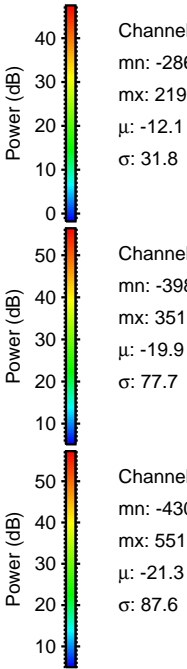
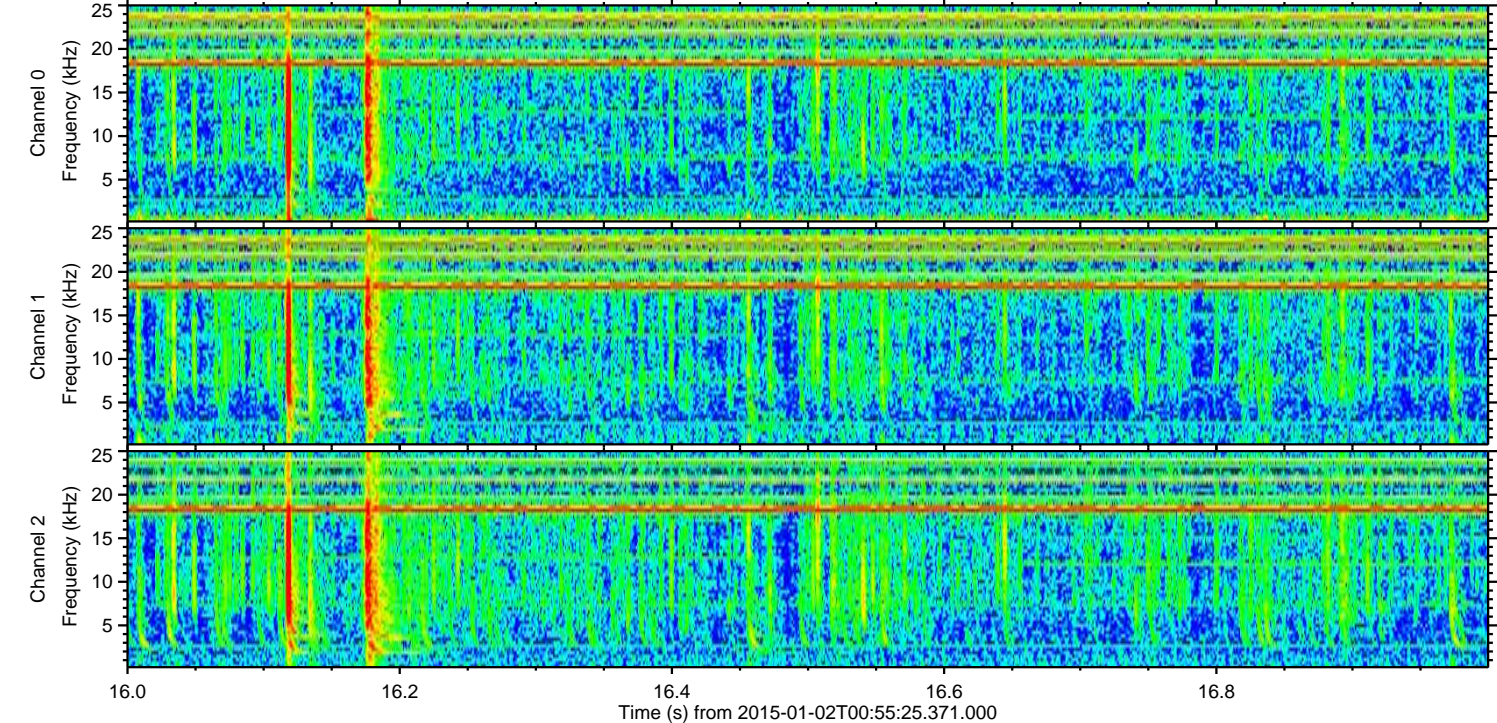
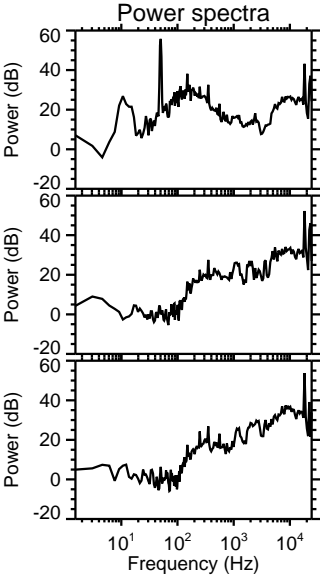
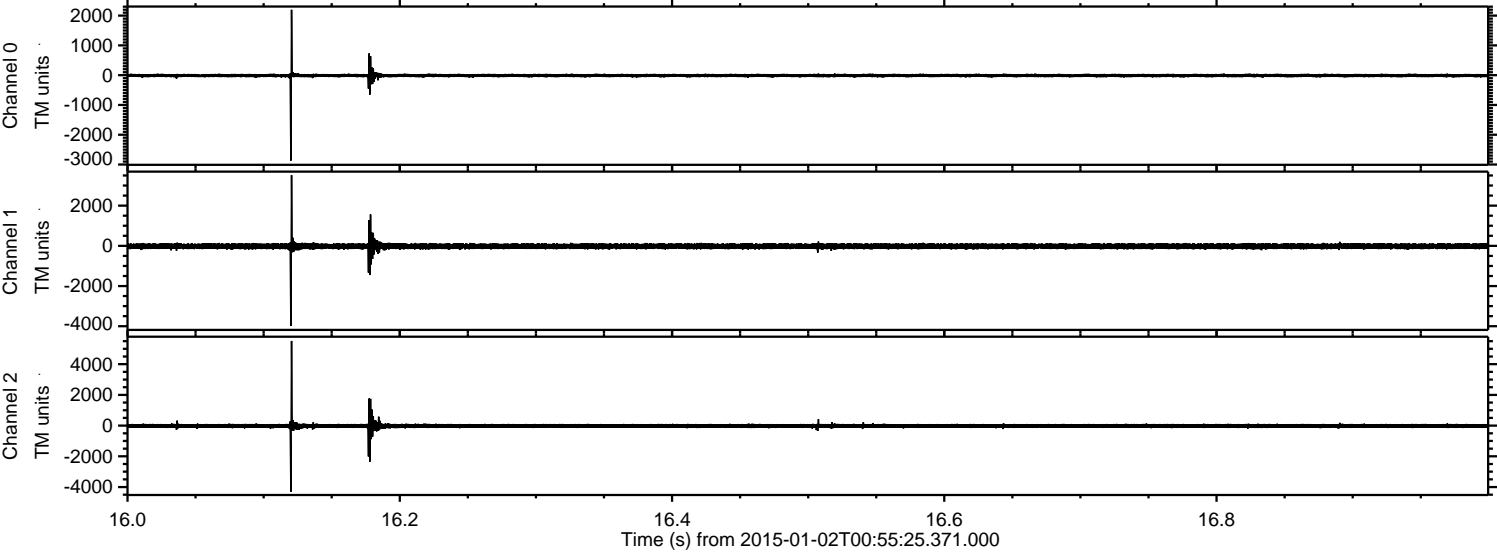
ELMAVAN 3D WAVEFORMS (Measured data sampled at 50 kHz) 49807 packets of 144 samples from 2015-01-02T00:55:25.371.000. Part 110/144

Processed Sat Jan 3 12:15:31 2015 by ELM ver.2012-10-06 from 001\_\_elm20150102\_005524\_\_dat00.bin



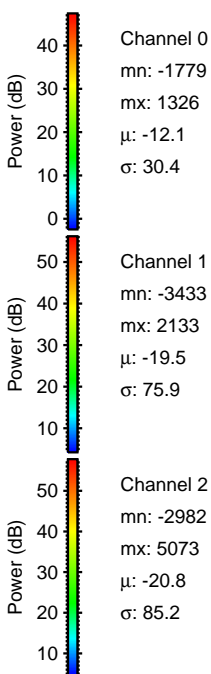
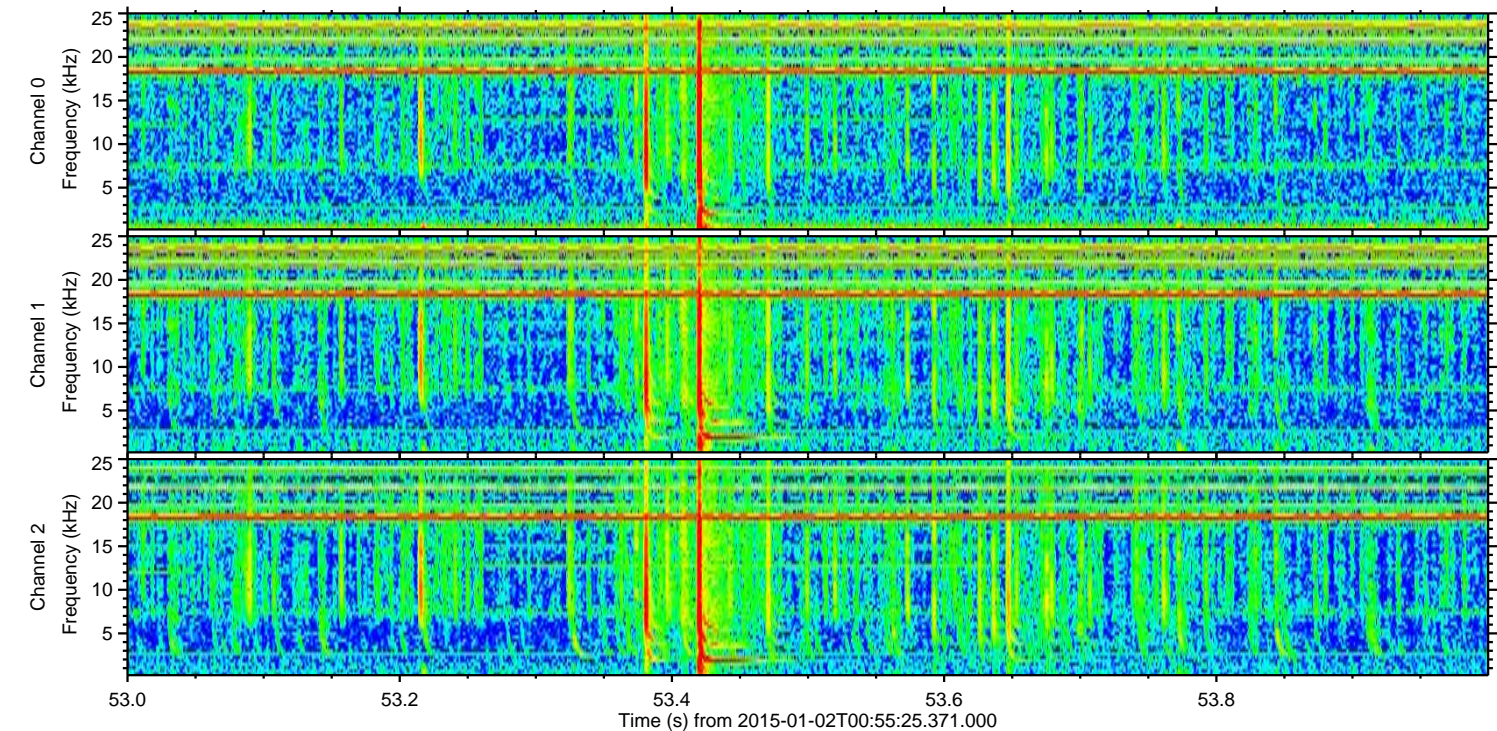
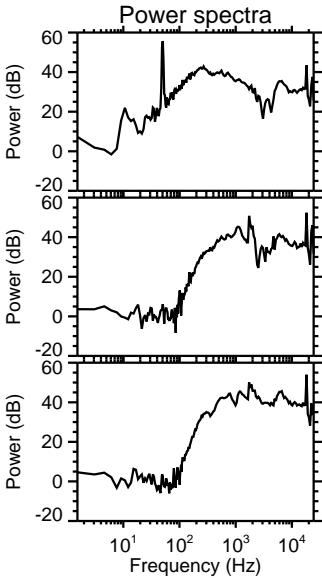
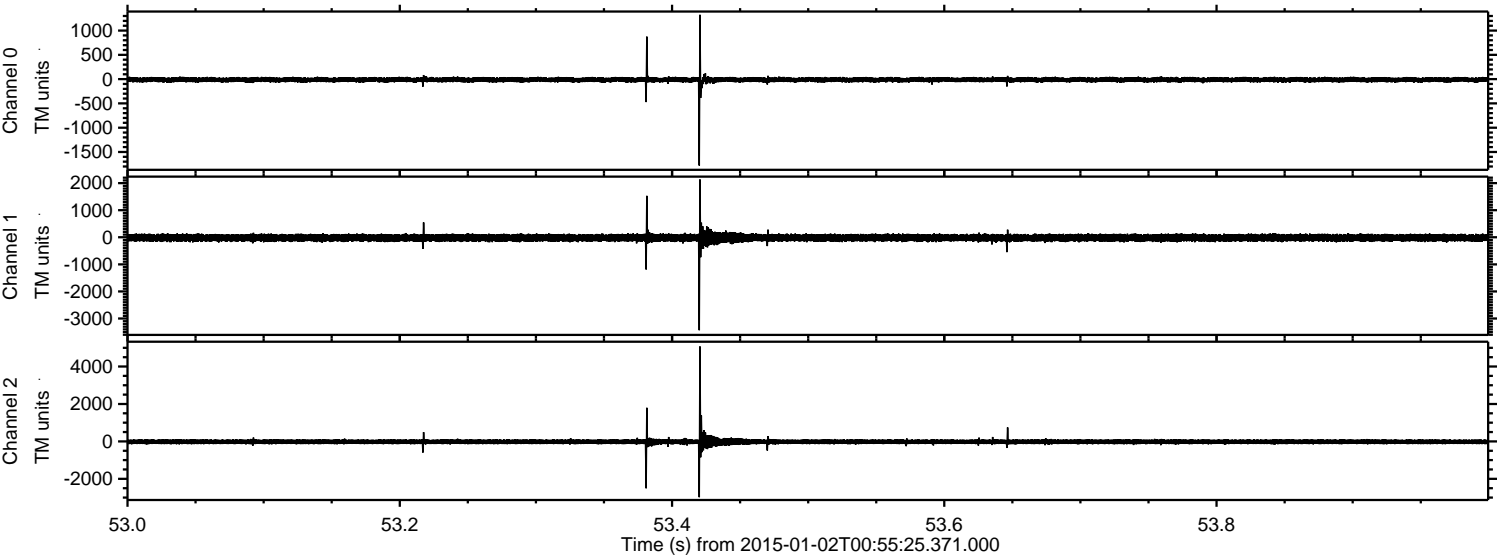


Processed Sat Jan 3 12:15:32 2015 by ELM ver.2012-10-06 from 001\_\_elm20150102\_005524\_\_dat00.bin





Processed Sat Jan 3 12:15:33 2015 by ELM ver.2012-10-06 from 001\_\_elm20150102\_005524\_\_dat00.bin



Channel 0  
mn: -1779  
mx: 1326  
 $\mu$ : -12.1  
 $\sigma$ : 30.4

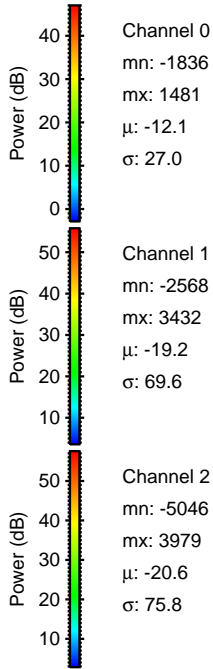
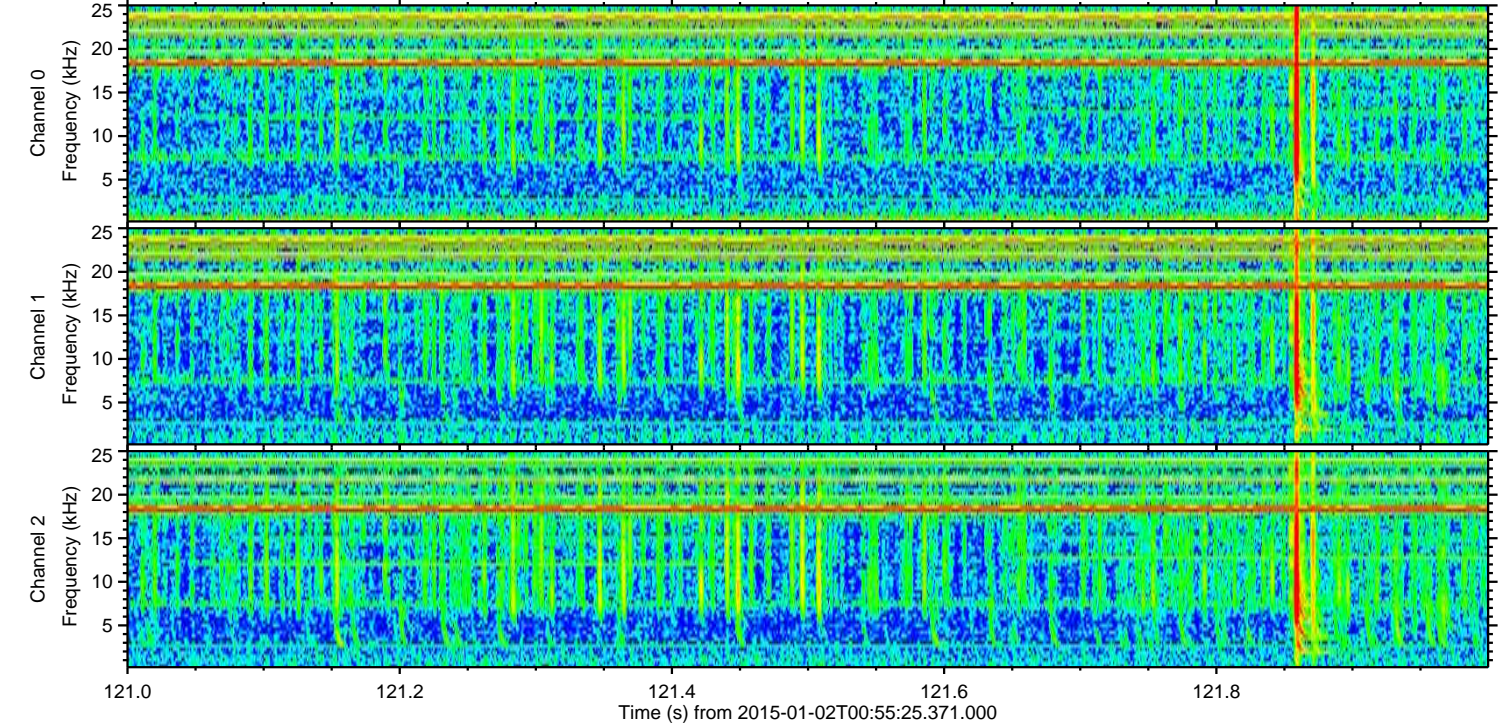
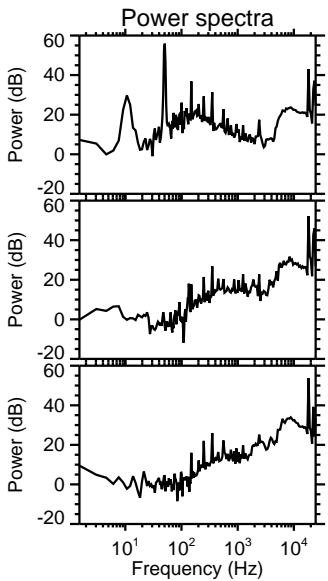
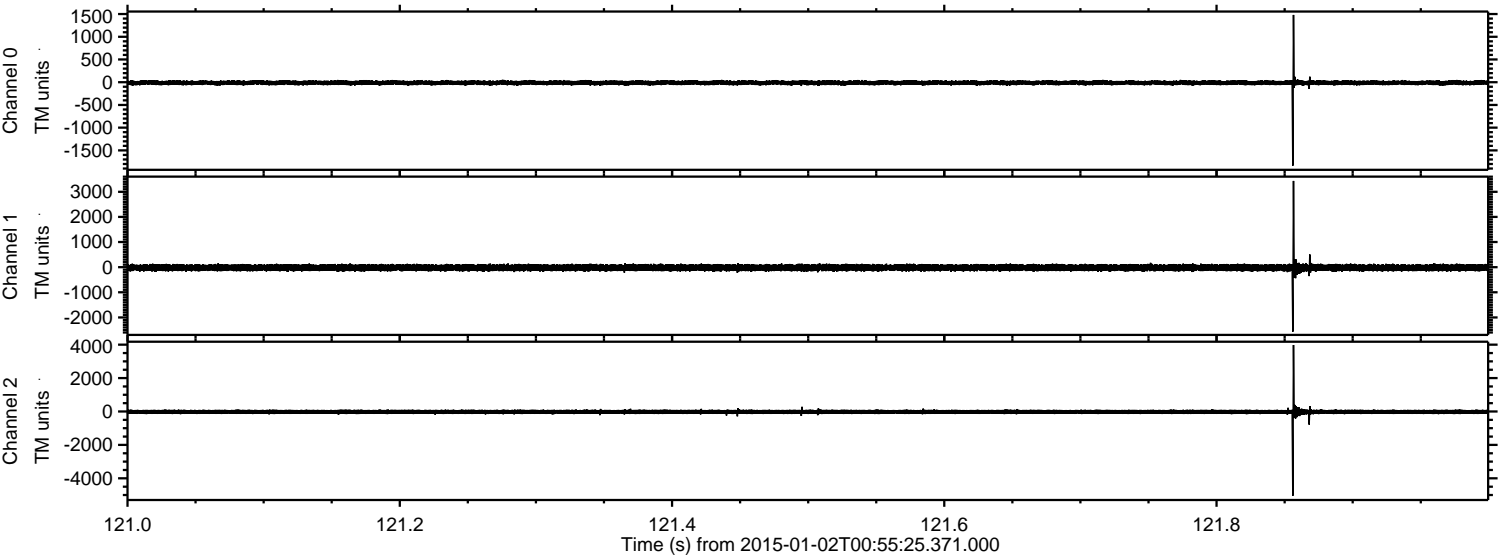
Channel 1  
mn: -3433  
mx: 2133  
 $\mu$ : -19.5  
 $\sigma$ : 75.9

Channel 2  
mn: -2982  
mx: 5073  
 $\mu$ : -20.8  
 $\sigma$ : 85.2



ELMAVAN 3D WAVEFORMS (Measured data sampled at 50 kHz) 49807 packets of 144 samples from 2015-01-02T00:55:25.371.000. Part 122/144

Processed Sat Jan 3 12:15:34 2015 by ELM ver.2012-10-06 from 001\_\_elm20150102\_005524\_\_dat00.bin



Channel 0  
mn: -1836  
mx: 1481  
 $\mu$ : -12.1  
 $\sigma$ : 27.0

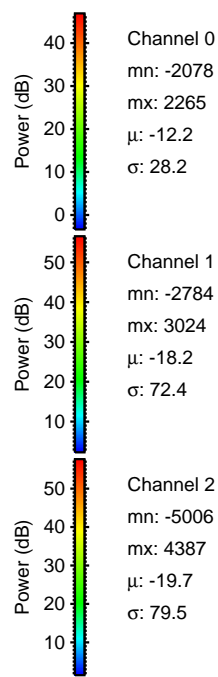
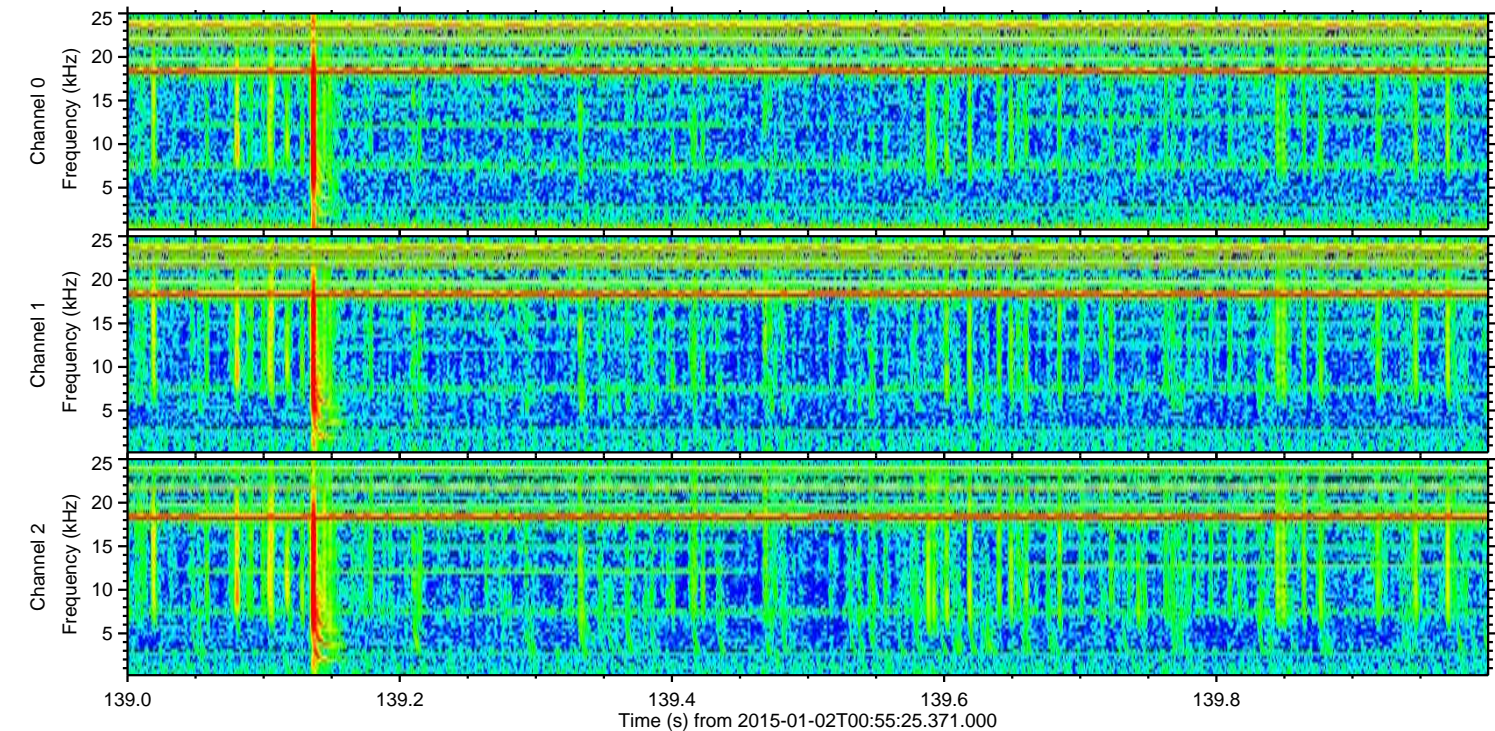
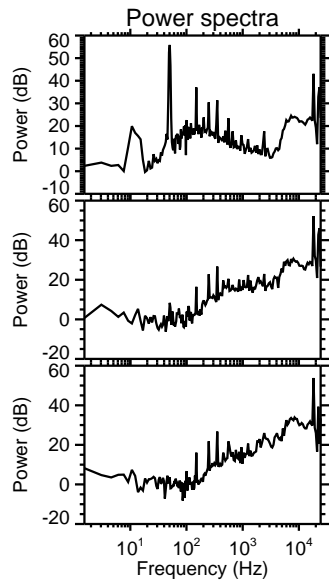
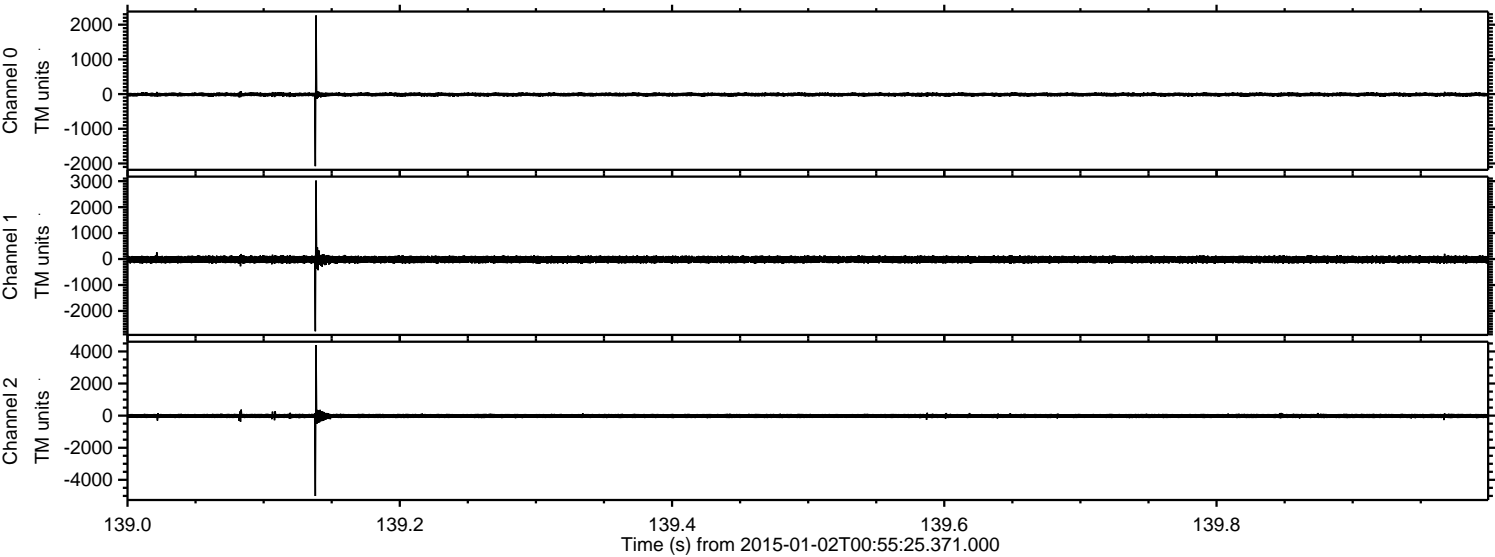
Channel 1  
mn: -2568  
mx: 3432  
 $\mu$ : -19.2  
 $\sigma$ : 69.6

Channel 2  
mn: -5046  
mx: 3979  
 $\mu$ : -20.6  
 $\sigma$ : 75.8



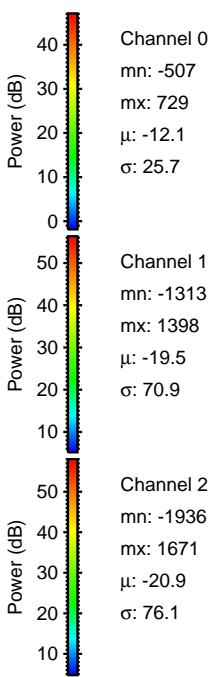
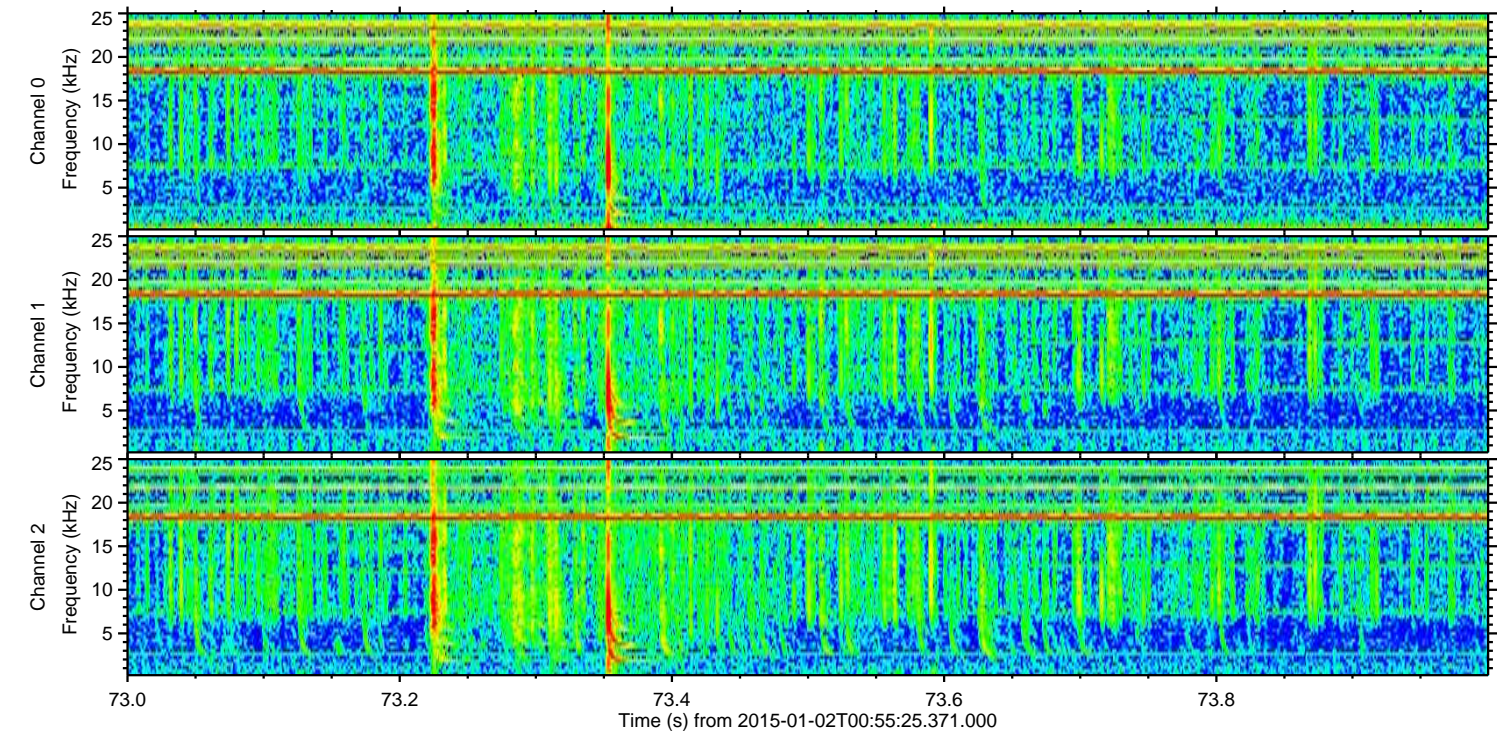
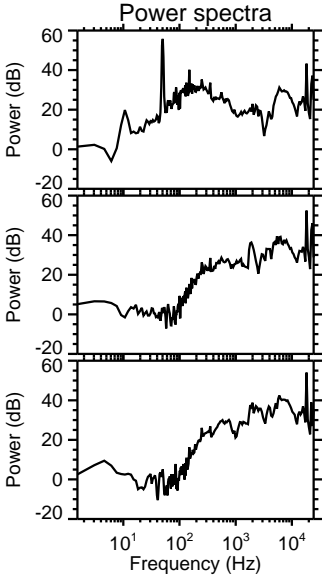
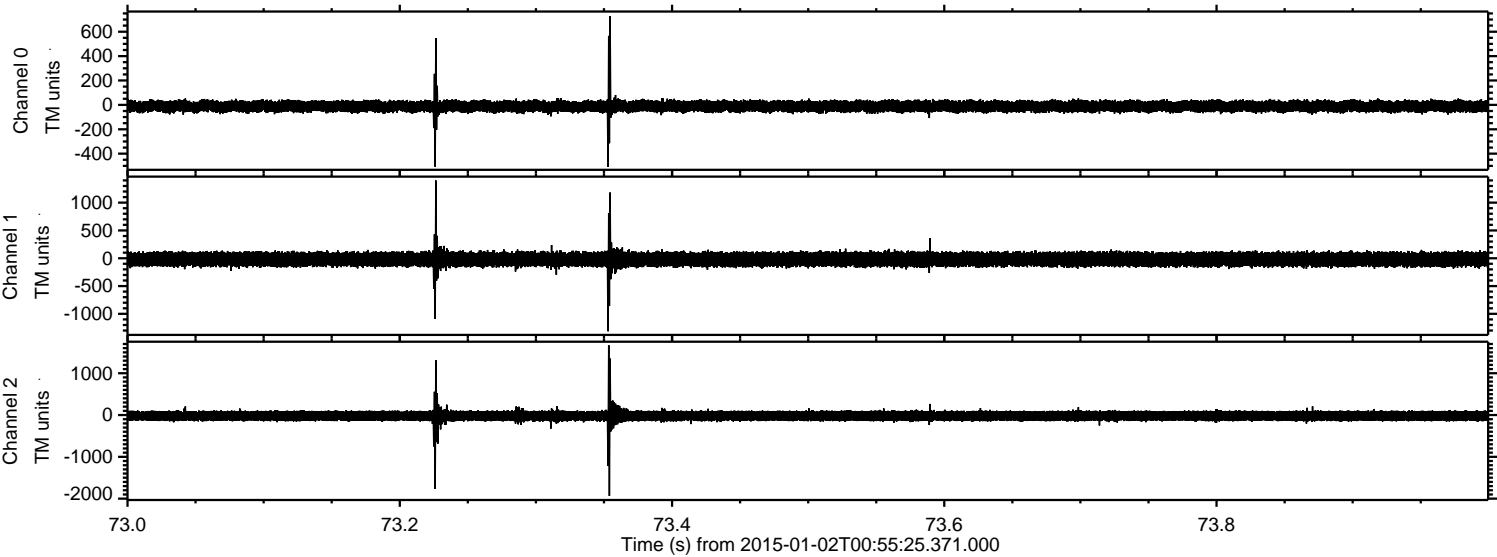
ELMAVAN 3D WAVEFORMS (Measured data sampled at 50 kHz) 49807 packets of 144 samples from 2015-01-02T00:55:25.371.000. Part 140/144

Processed Sat Jan 3 12:15:35 2015 by ELM ver.2012-10-06 from 001\_\_elm20150102\_005524\_\_dat00.bin





Processed Sat Jan 3 12:15:36 2015 by ELM ver.2012-10-06 from 001\_\_elm20150102\_005524\_\_dat00.bin



Channel 0  
mn: -507  
mx: 729  
 $\mu$ : -12.1  
 $\sigma$ : 25.7

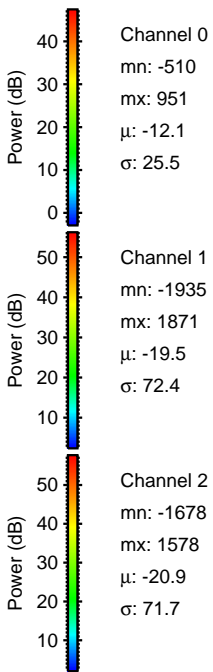
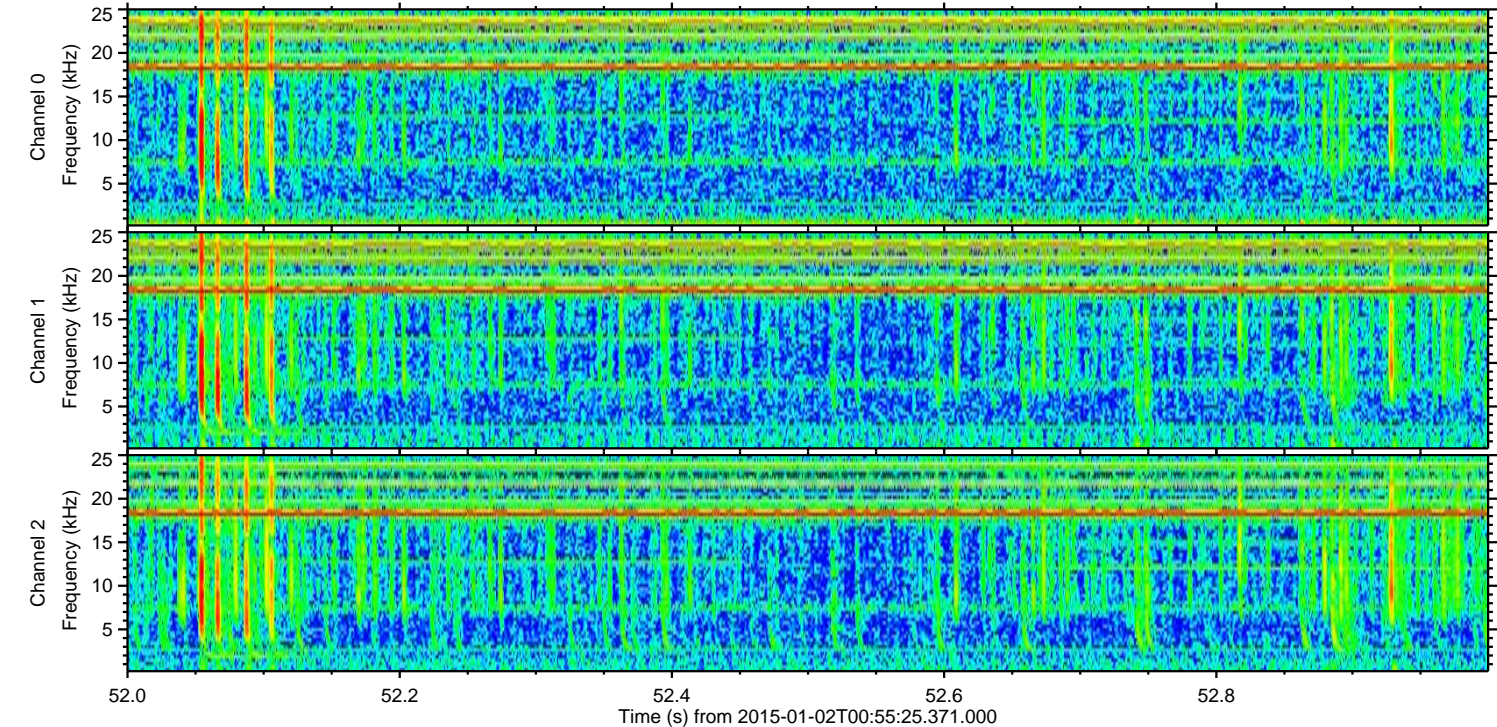
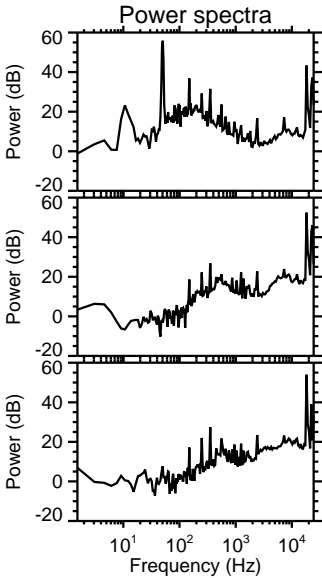
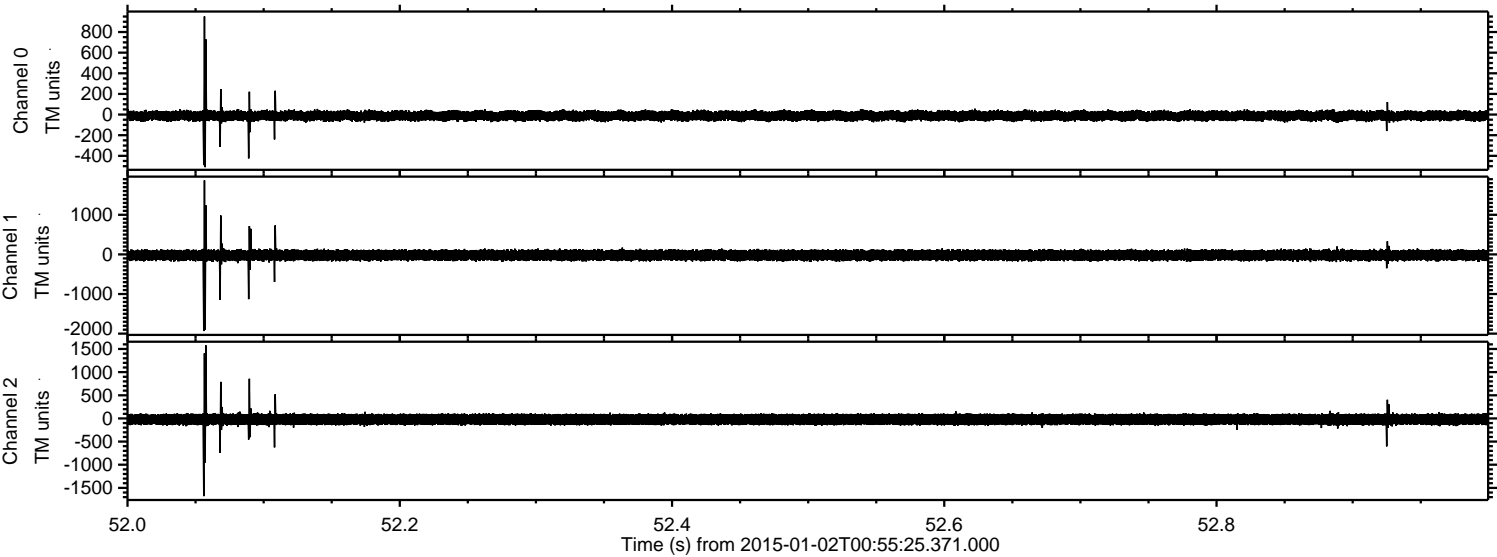
Channel 1  
mn: -1313  
mx: 1398  
 $\mu$ : -19.5  
 $\sigma$ : 70.9

Channel 2  
mn: -1936  
mx: 1671  
 $\mu$ : -20.9  
 $\sigma$ : 76.1



ELMAVAN 3D WAVEFORMS (Measured data sampled at 50 kHz) 49807 packets of 144 samples from 2015-01-02T00:55:25.371.000. Part 53/144

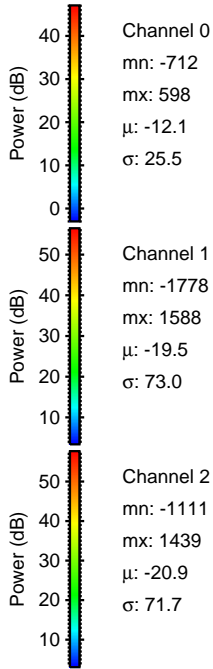
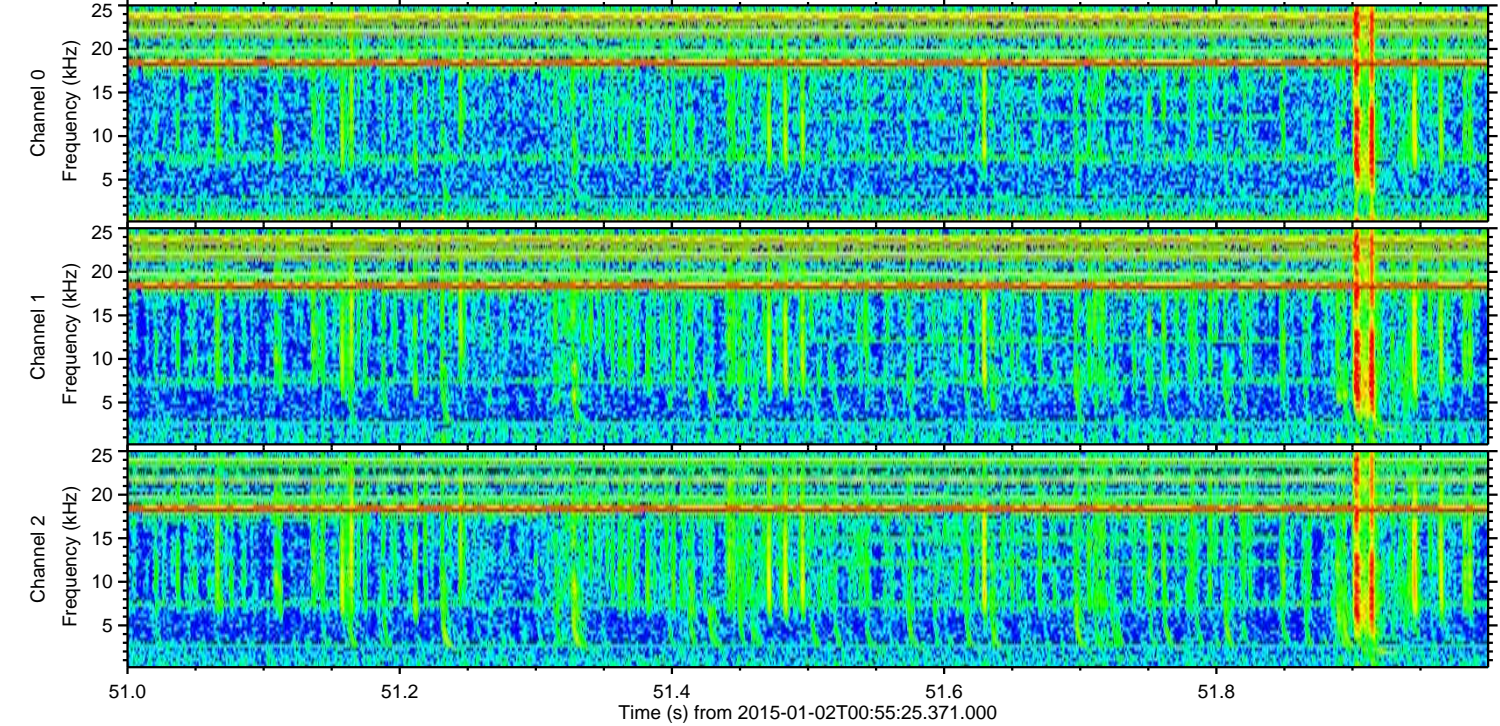
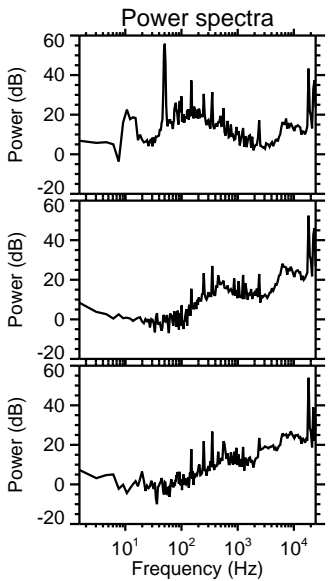
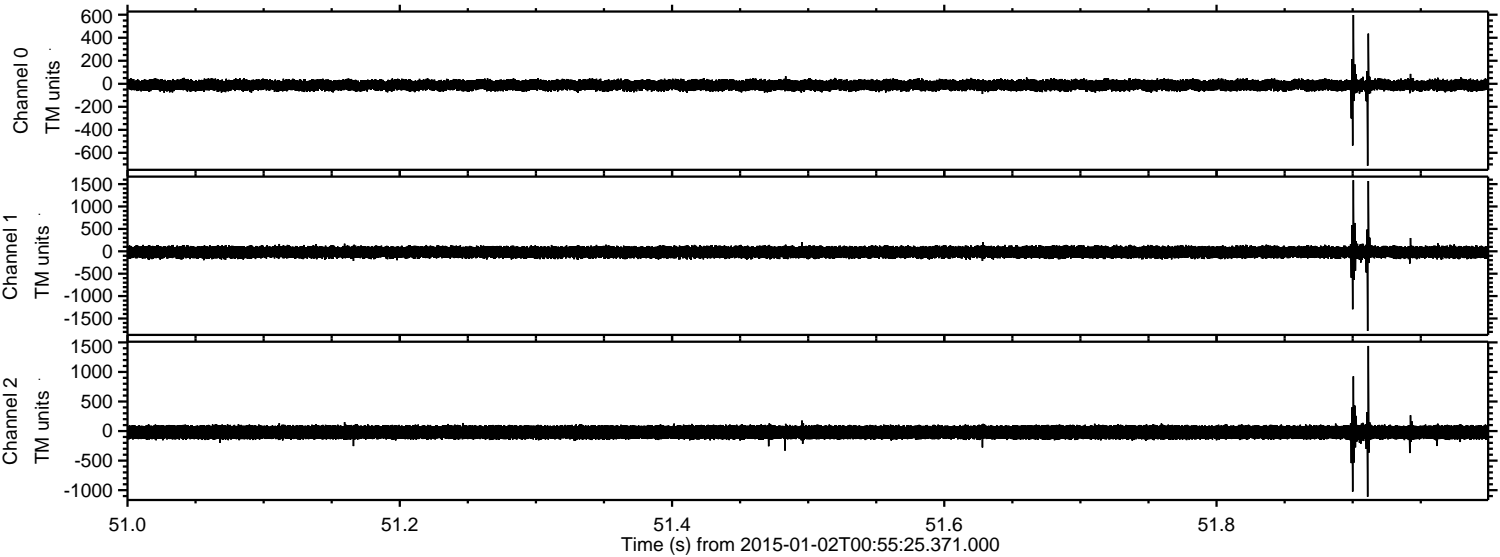
Processed Sat Jan 3 12:15:37 2015 by ELM ver.2012-10-06 from 001\_\_elm20150102\_005524\_\_dat00.bin





ELMAVAN 3D WAVEFORMS (Measured data sampled at 50 kHz) 49807 packets of 144 samples from 2015-01-02T00:55:25.371.000. Part 52/144

Processed Sat Jan 3 12:15:38 2015 by ELM ver.2012-10-06 from 001\_\_elm20150102\_005524\_\_dat00.bin





ELMAVAN 3D WAVEFORMS (Measured data sampled at 50 kHz) 49807 packets of 144 samples from 2015-01-02T00:55:25.371.000. Part 136/144

