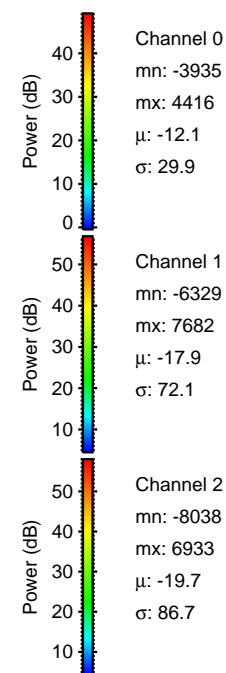
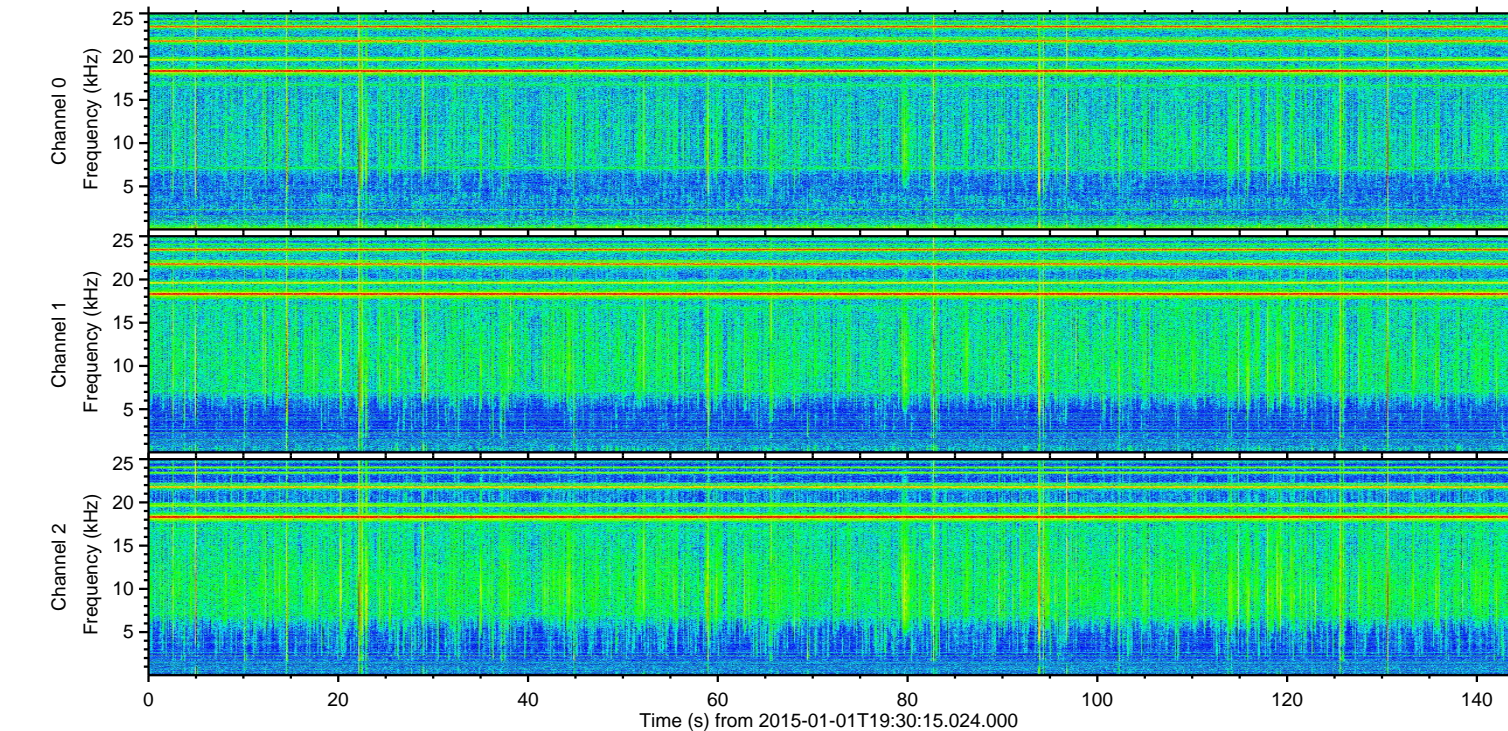
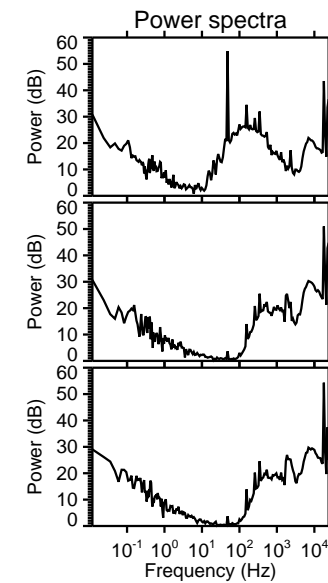
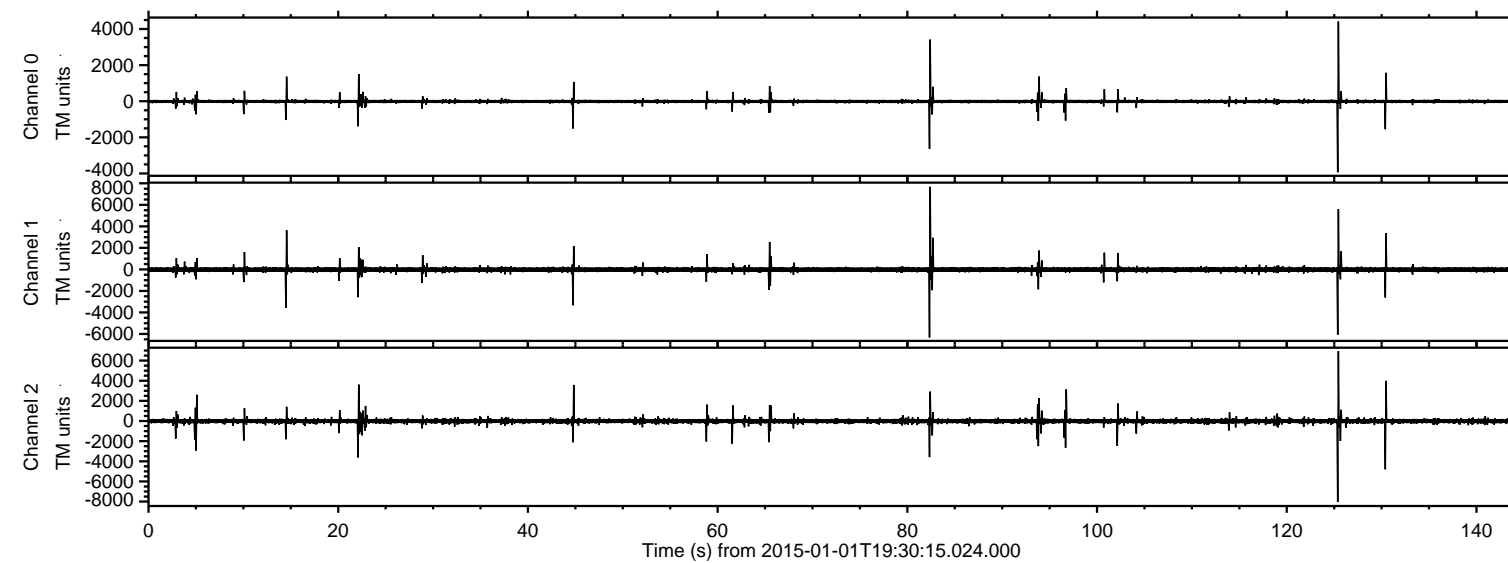


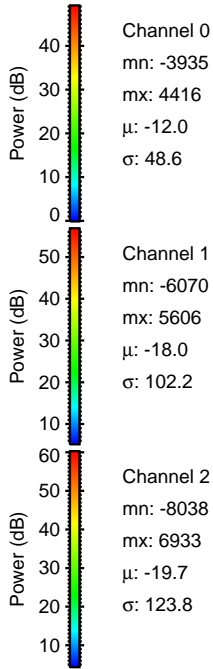
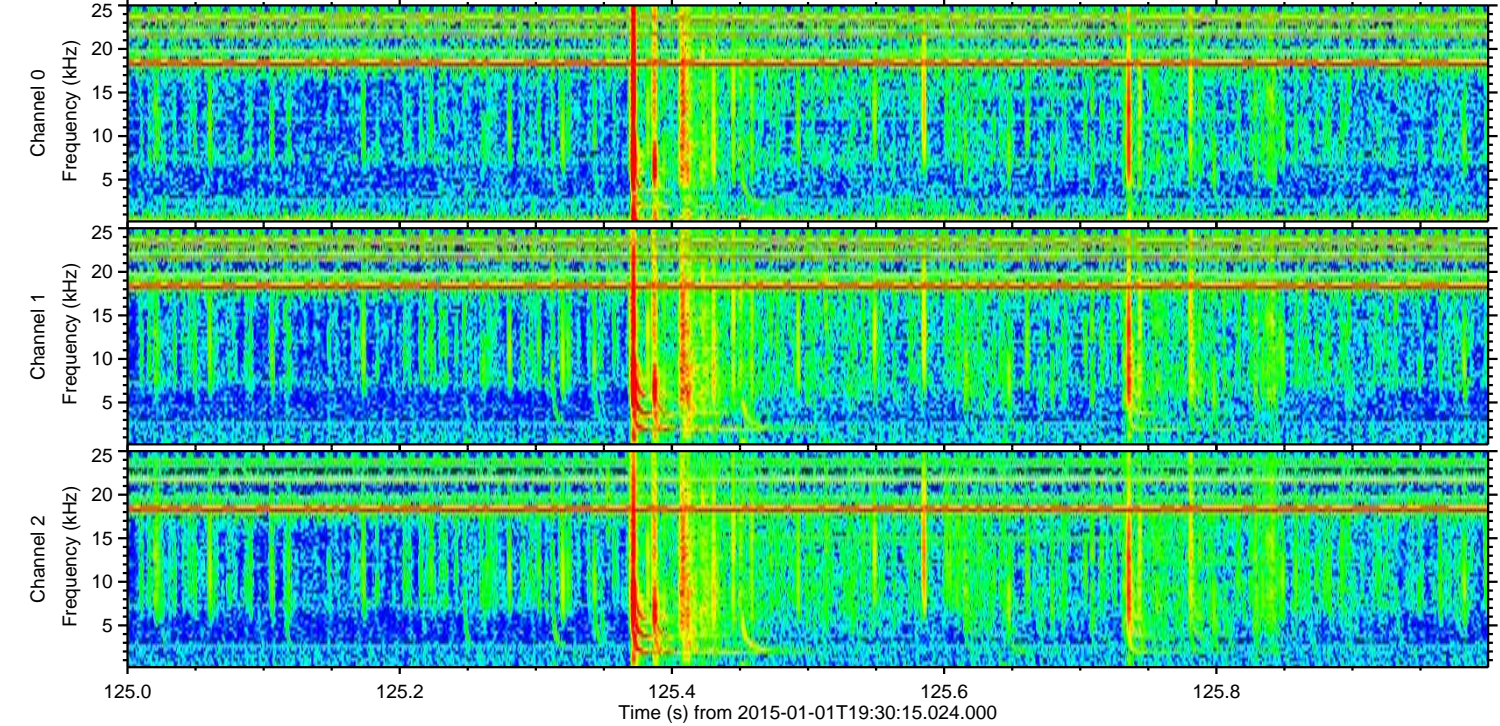
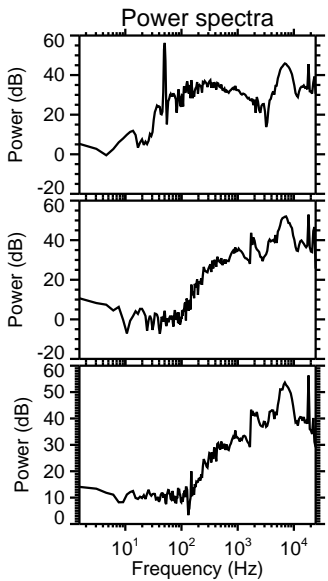
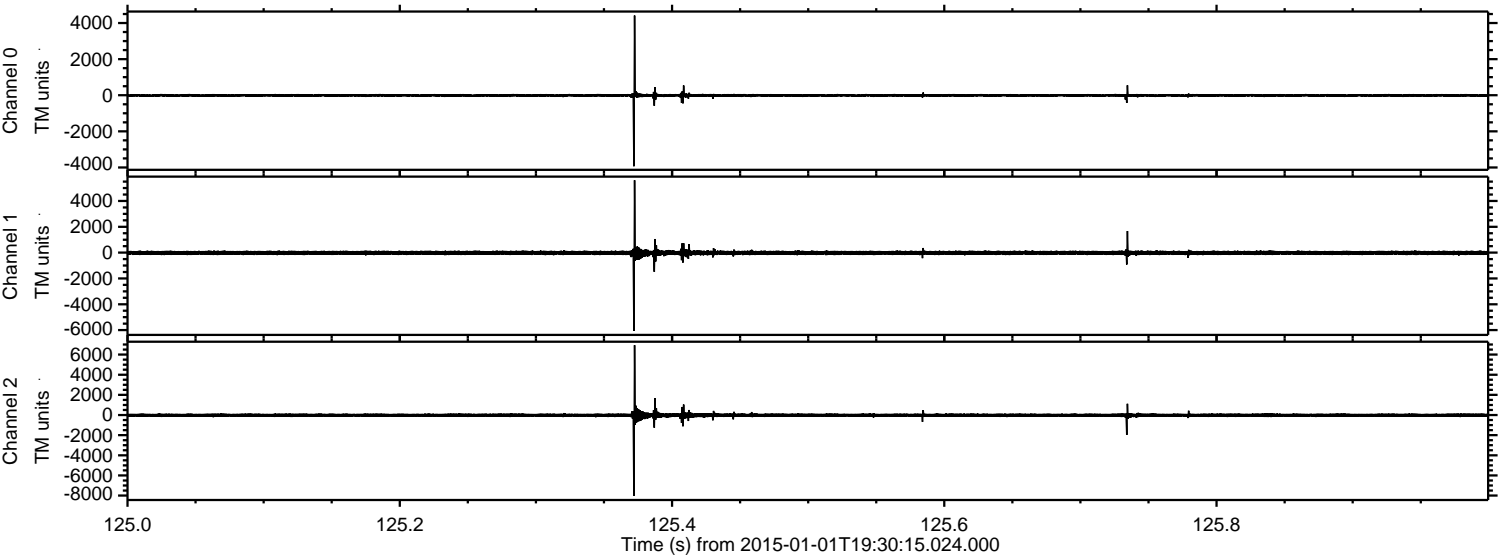
ELMAVAN 3D WAVEFORMS (Measured data sampled at 50 kHz) 49807 packets of 144 samples from 2015-01-01T19:30:15.024.000.

Processed Sat Jan 3 10:33:22 2015 by ELM ver.2012-10-06 from 001__elm20150101_193014__dat00.bin

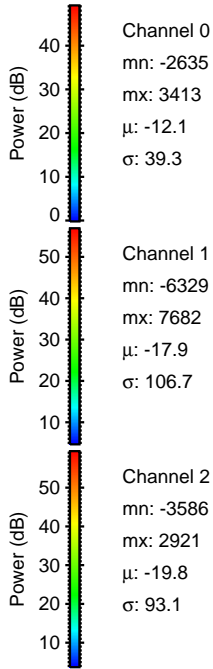
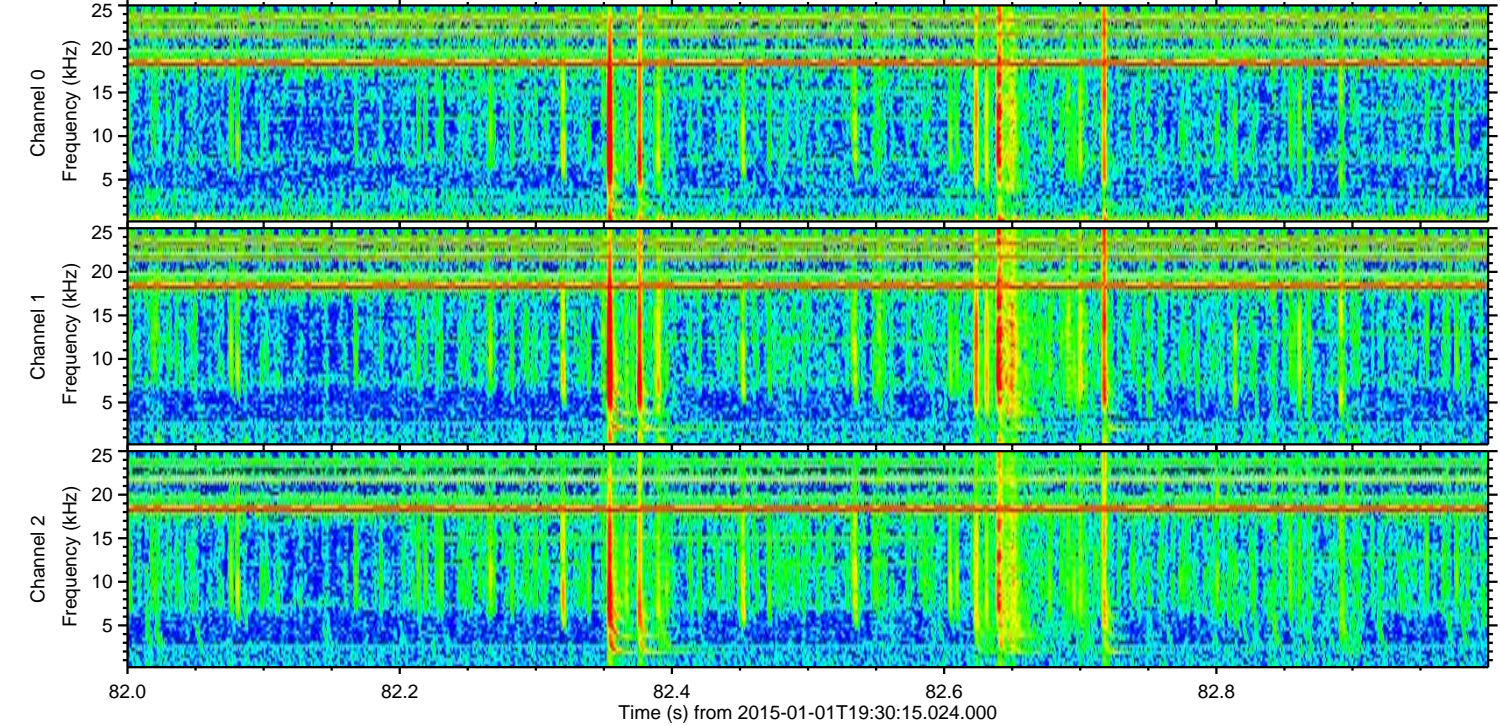
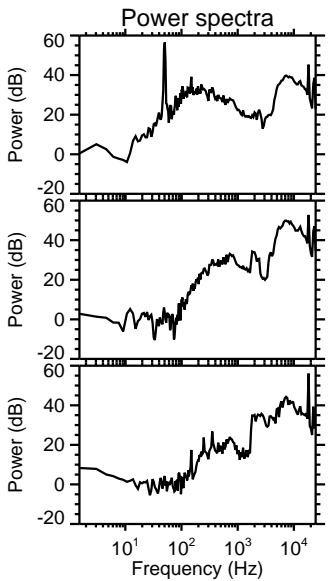
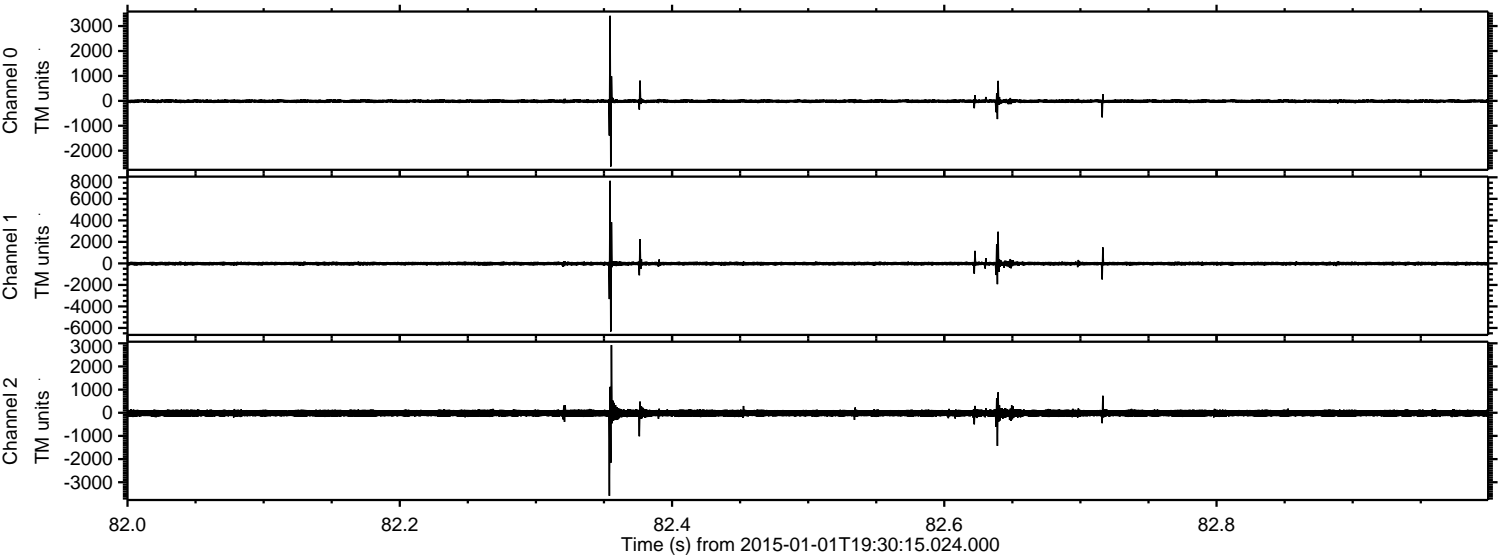


ELMAVAN 3D WAVEFORMS (Measured data sampled at 50 kHz) 49807 packets of 144 samples from 2015-01-01T19:30:15.024.000. Part 126/144

Processed Sat Jan 3 10:33:34 2015 by ELM ver.2012-10-06 from 001__elm20150101_193014__dat00.bin

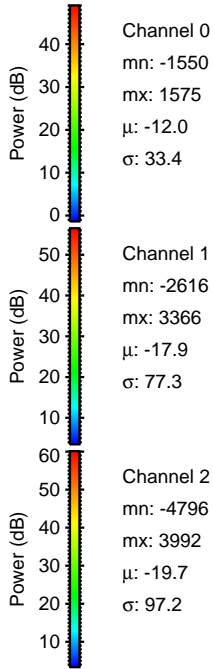
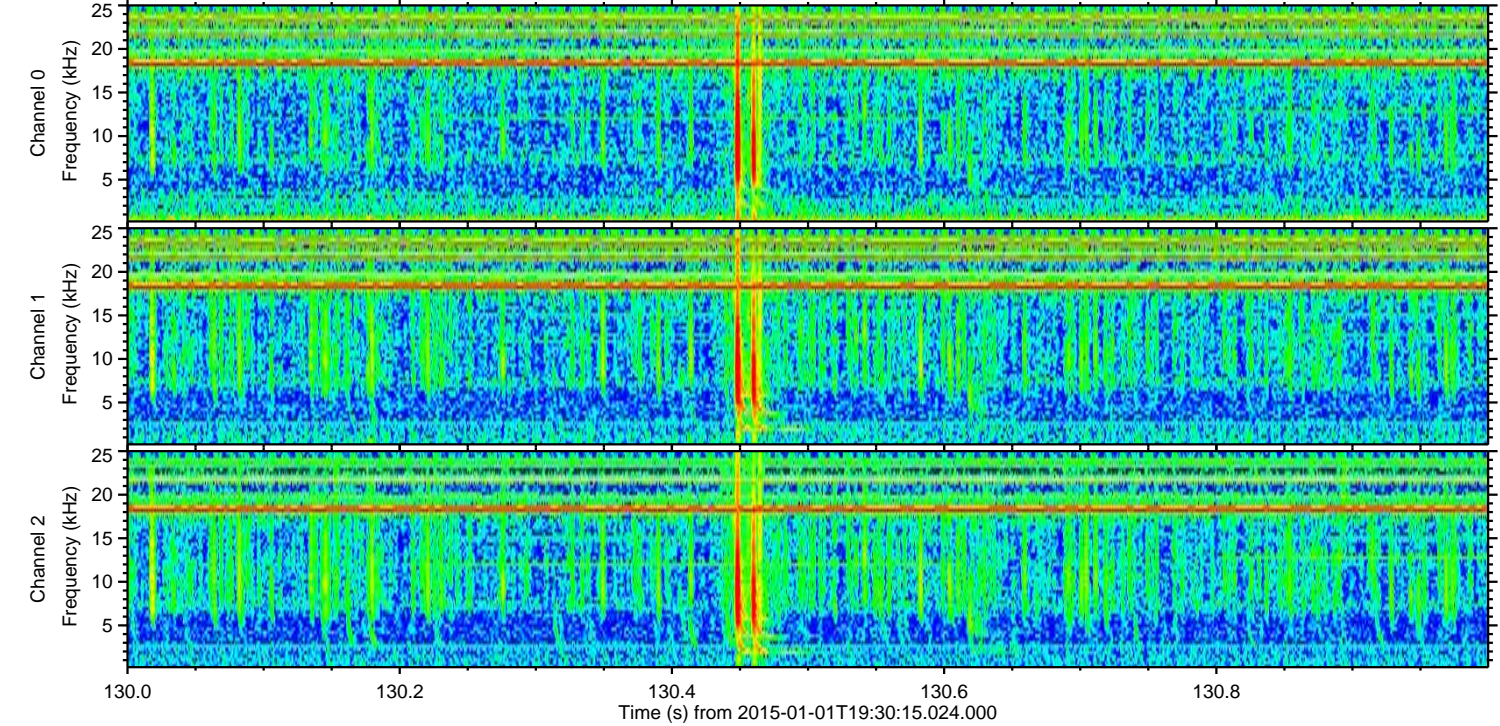
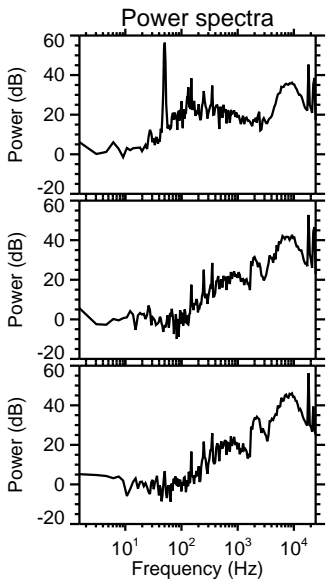
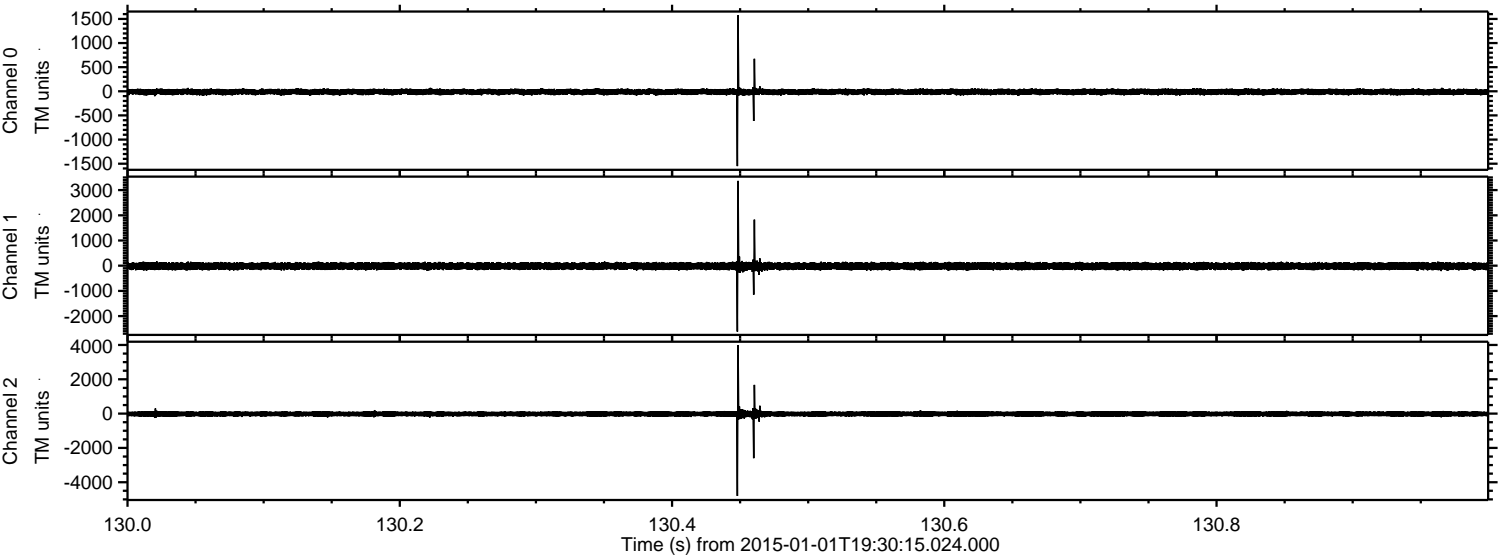


Processed Sat Jan 3 10:33:35 2015 by ELM ver.2012-10-06 from 001__elm20150101_193014__dat00.bin



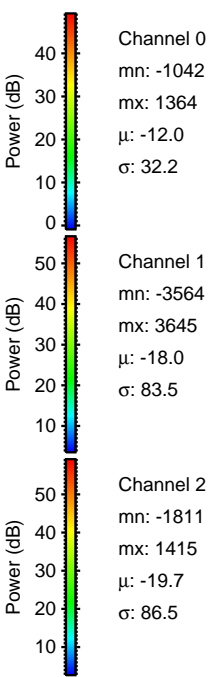
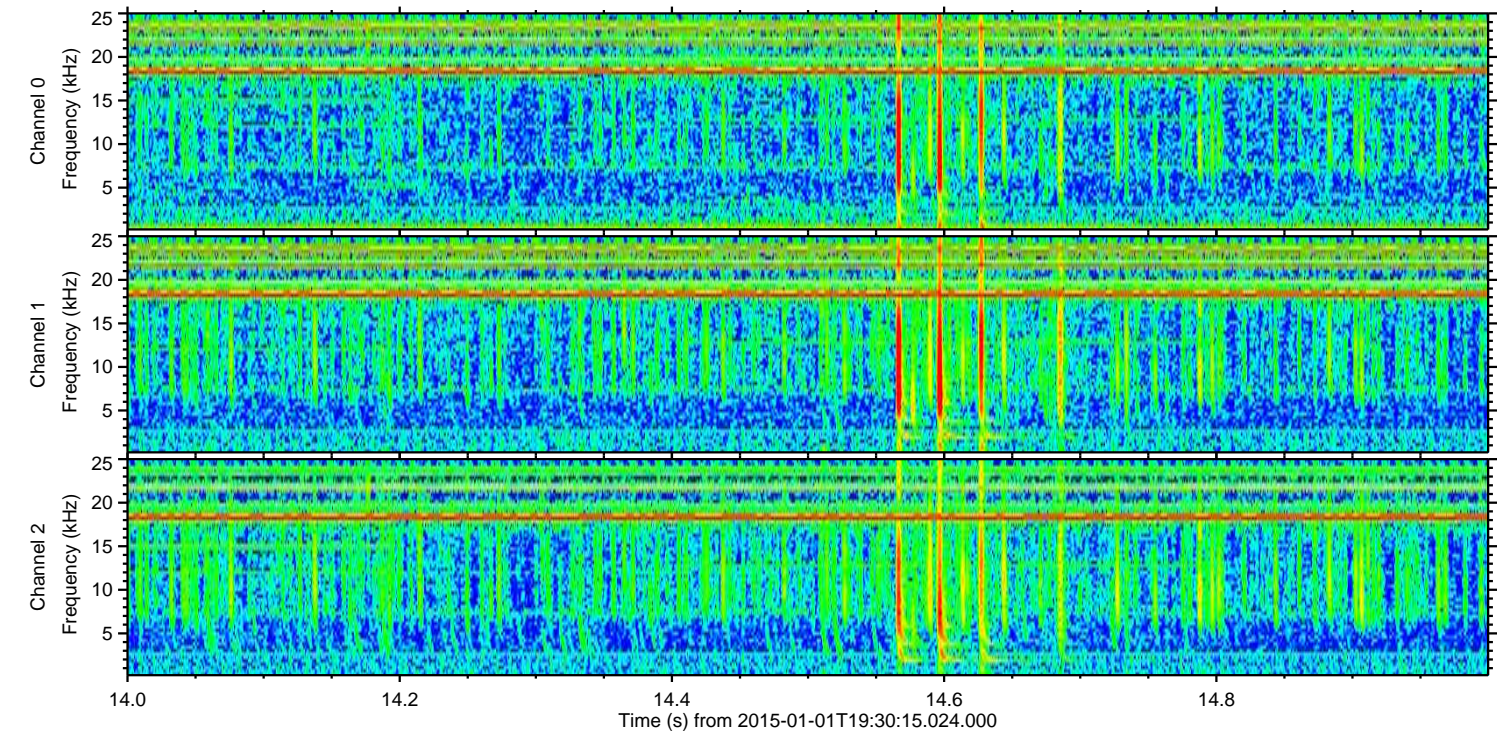
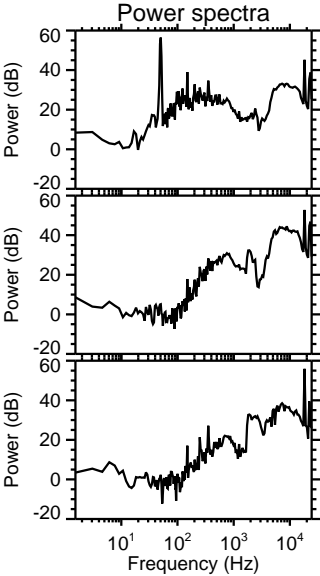
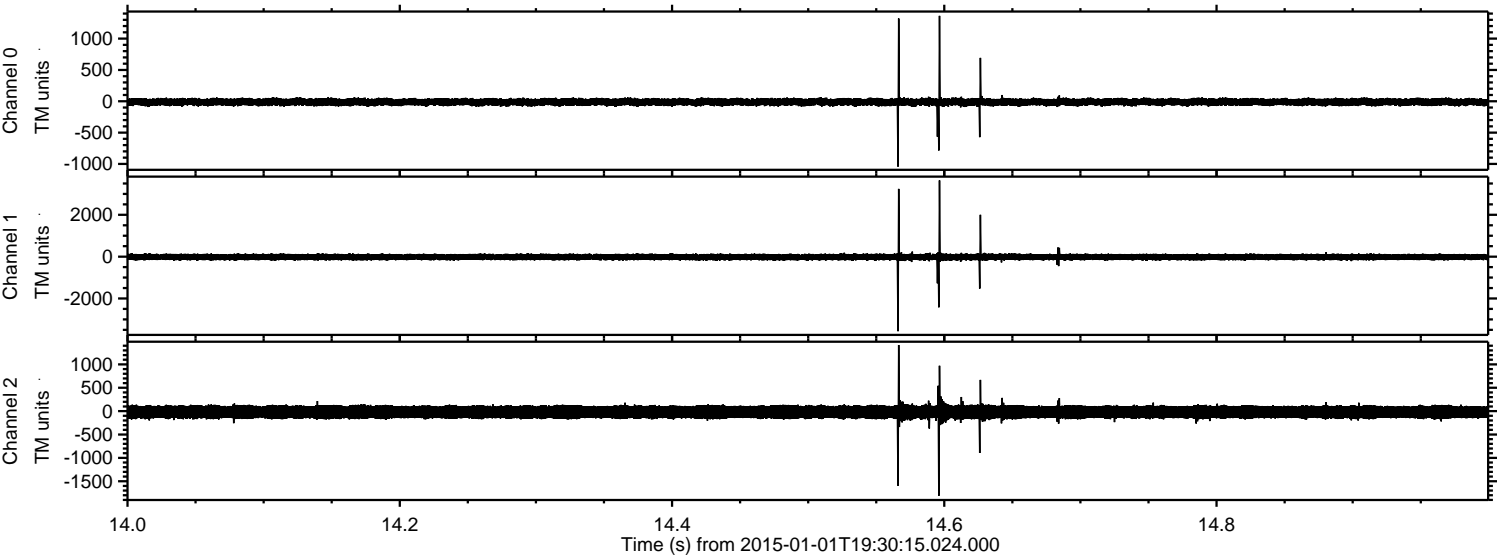
ELMAVAN 3D WAVEFORMS (Measured data sampled at 50 kHz) 49807 packets of 144 samples from 2015-01-01T19:30:15.024.000. Part 131/144

Processed Sat Jan 3 10:33:36 2015 by ELM ver.2012-10-06 from 001__elm20150101_193014__dat00.bin



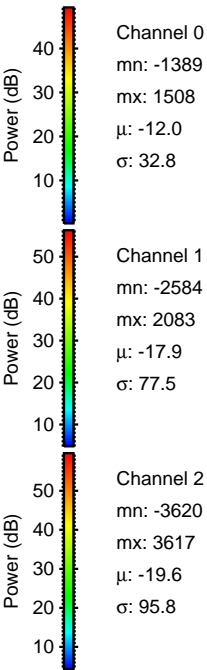
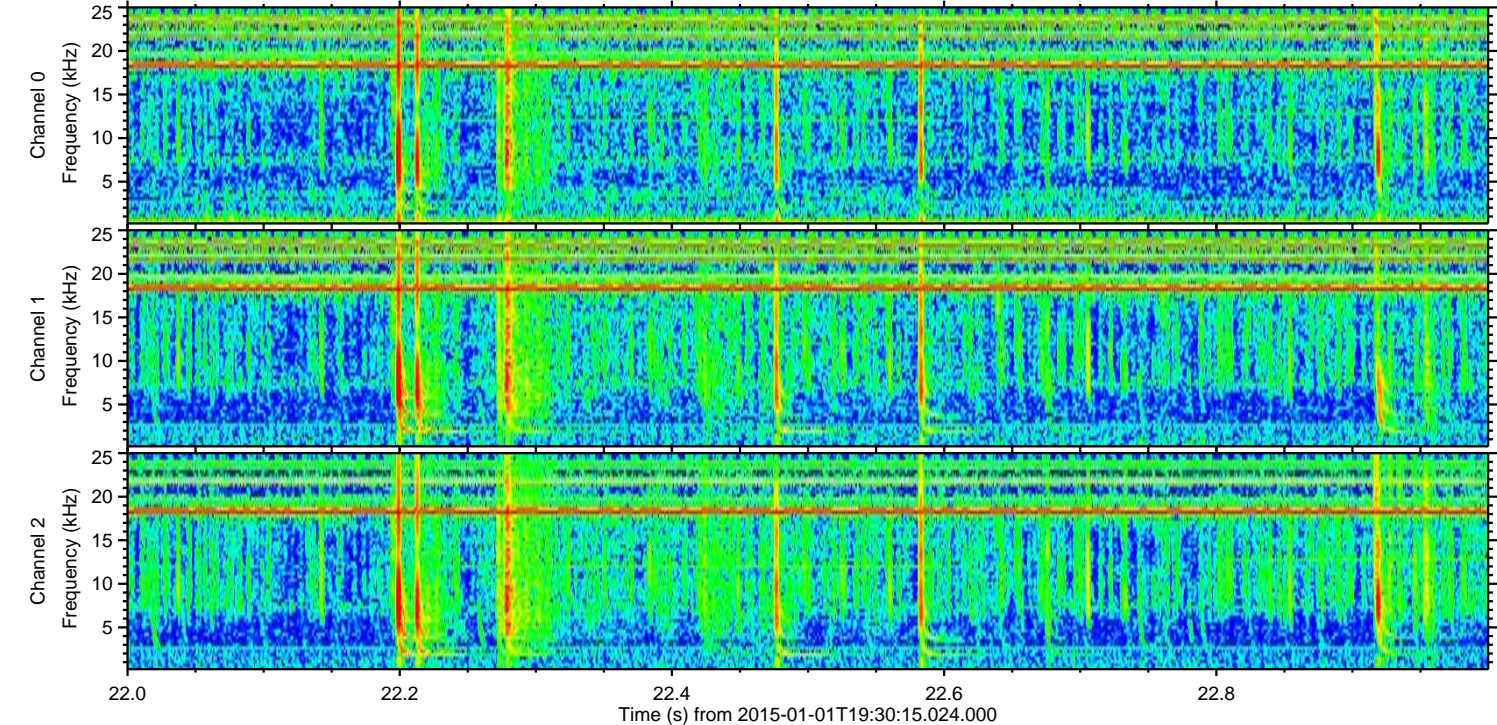
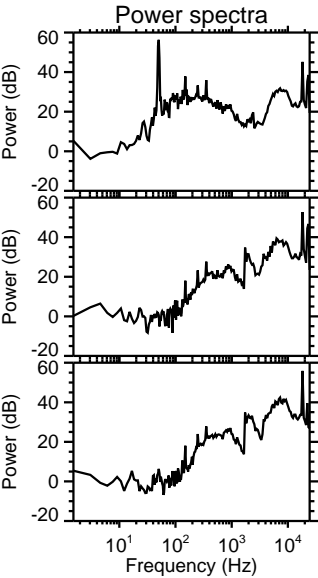
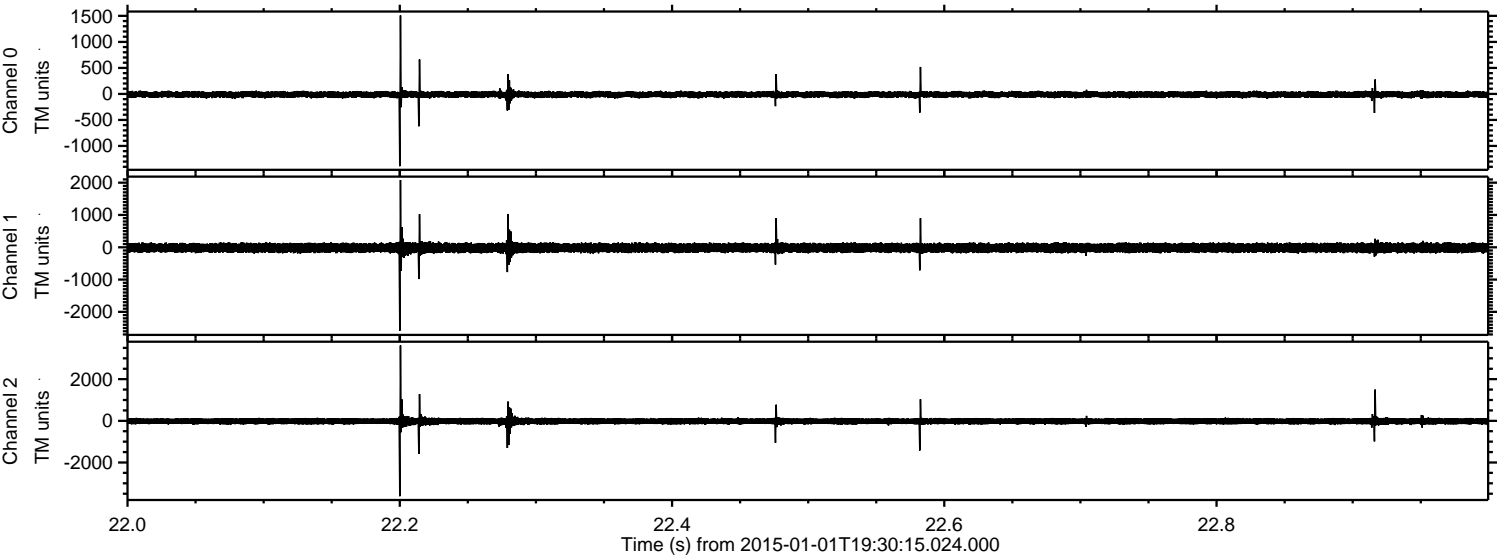
ELMAVAN 3D WAVEFORMS (Measured data sampled at 50 kHz) 49807 packets of 144 samples from 2015-01-01T19:30:15.024.000. Part 15/144

Processed Sat Jan 3 10:33:37 2015 by ELM ver.2012-10-06 from 001__elm20150101_193014__dat00.bin



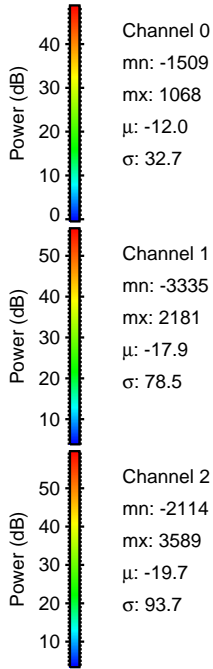
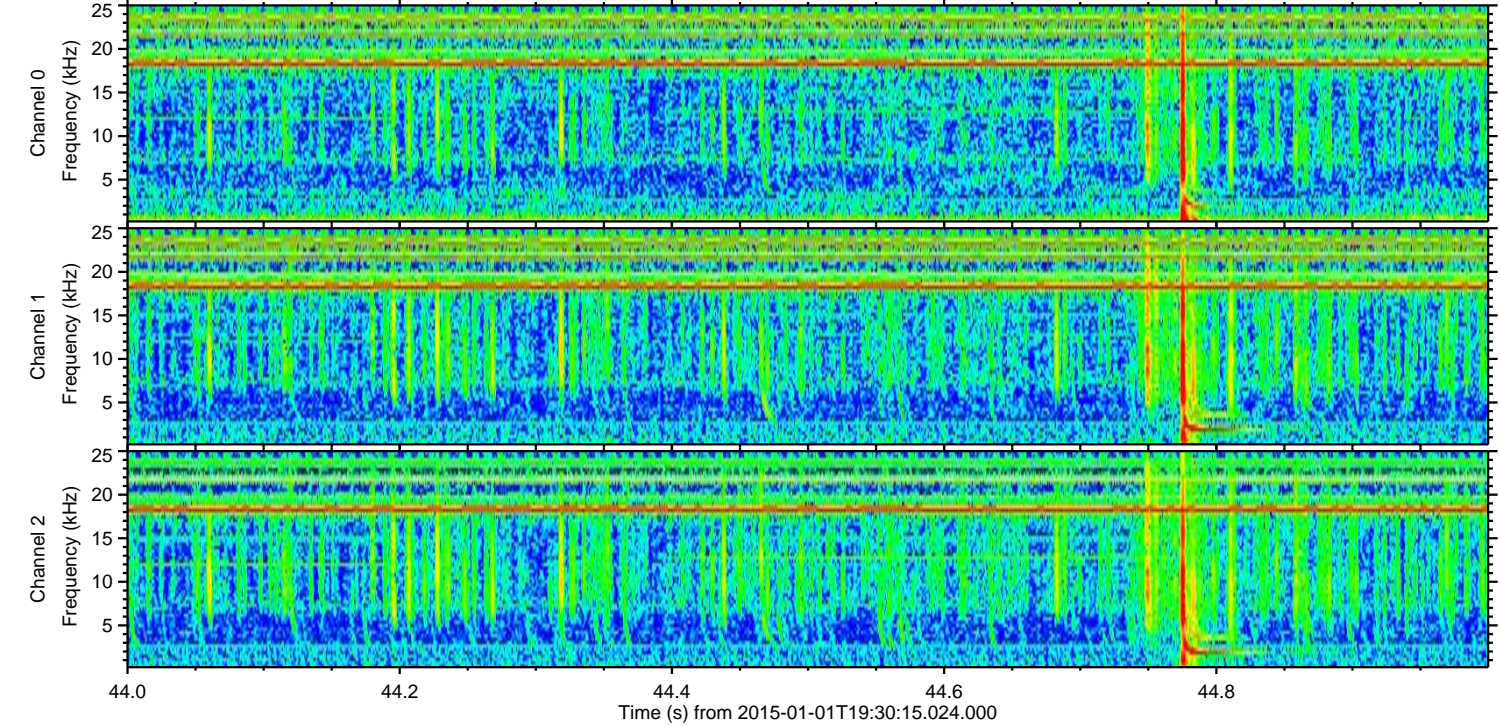
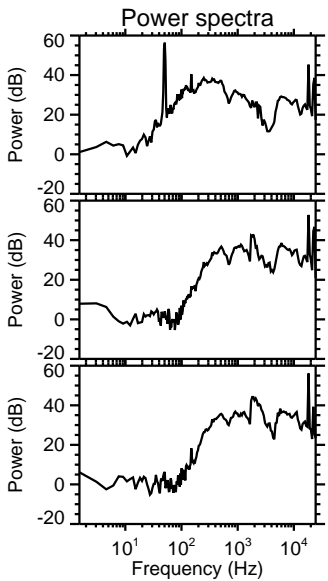
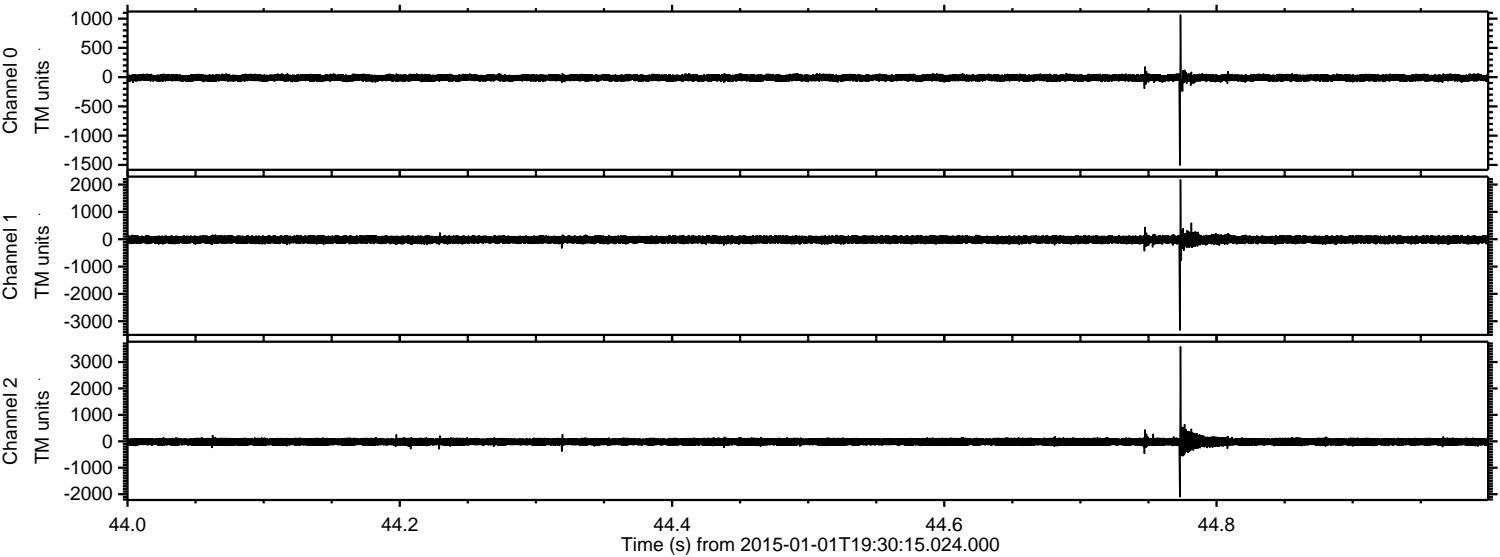
ELMAVAN 3D WAVEFORMS (Measured data sampled at 50 kHz) 49807 packets of 144 samples from 2015-01-01T19:30:15.024.000. Part 23/144

Processed Sat Jan 3 10:33:38 2015 by ELM ver.2012-10-06 from 001__elm20150101_193014__dat00.bin



ELMAVAN 3D WAVEFORMS (Measured data sampled at 50 kHz) 49807 packets of 144 samples from 2015-01-01T19:30:15.024.000. Part 45/144

Processed Sat Jan 3 10:33:39 2015 by ELM ver.2012-10-06 from 001__elm20150101_193014__dat00.bin

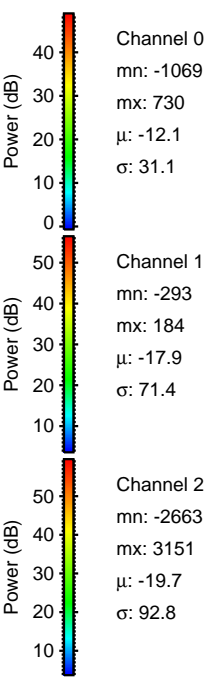
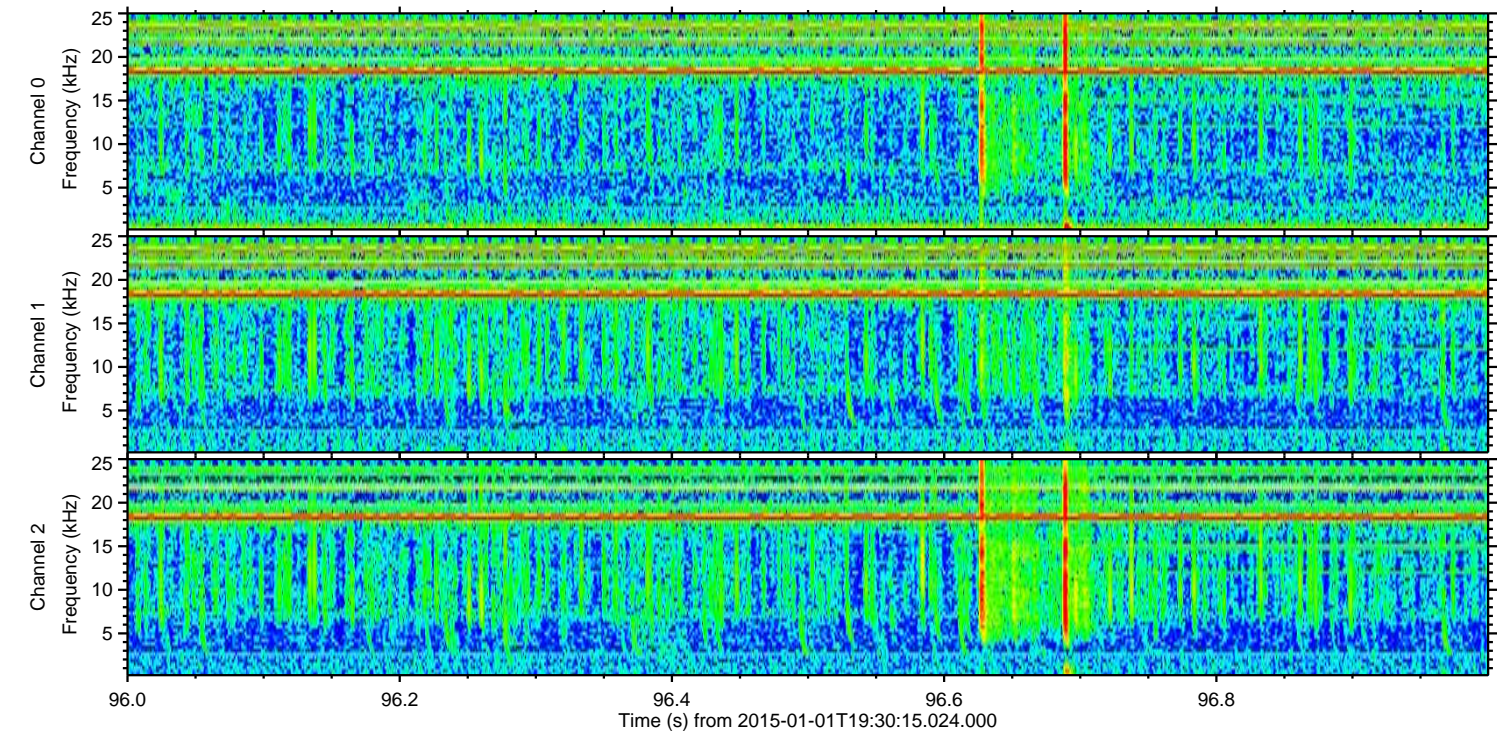
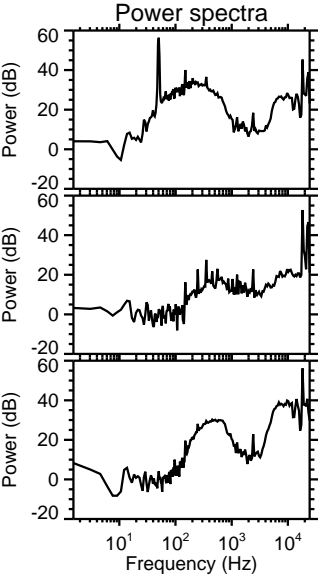
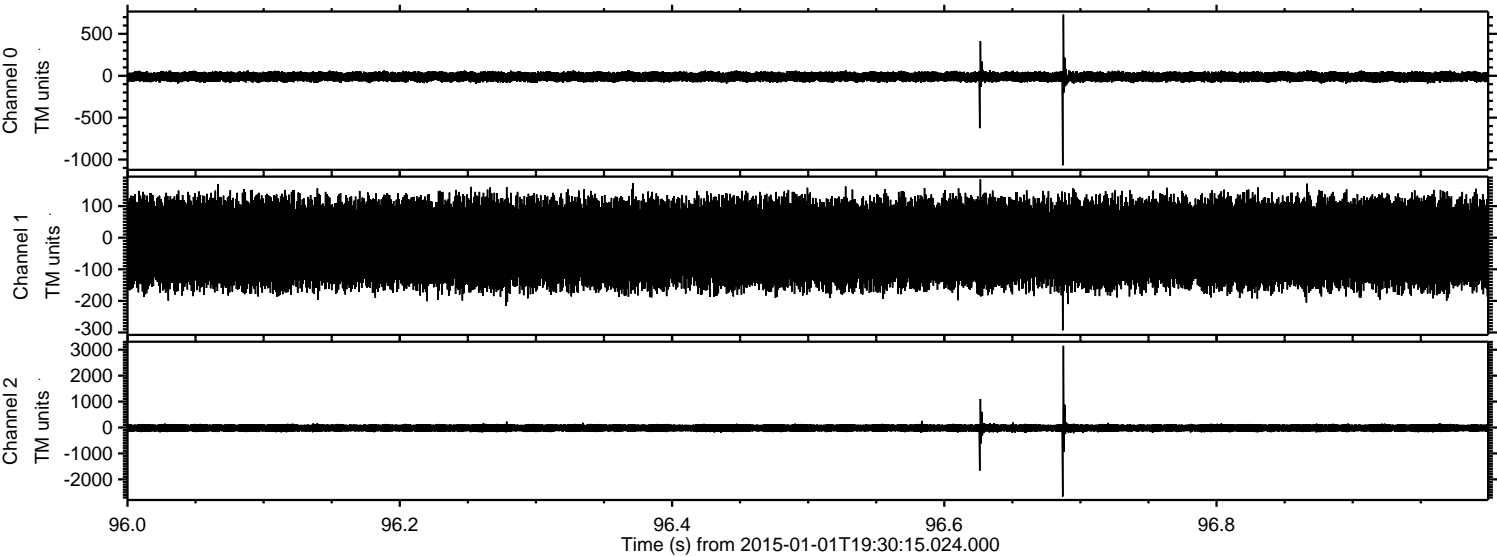


Channel 0
mn: -1509
mx: 1068
 μ : -12.0
 σ : 32.7

Channel 1
mn: -3335
mx: 2181
 μ : -17.9
 σ : 78.5

Channel 2
mn: -2114
mx: 3589
 μ : -19.7
 σ : 93.7

Processed Sat Jan 3 10:33:40 2015 by ELM ver.2012-10-06 from 001__elm20150101_193014__dat00.bin



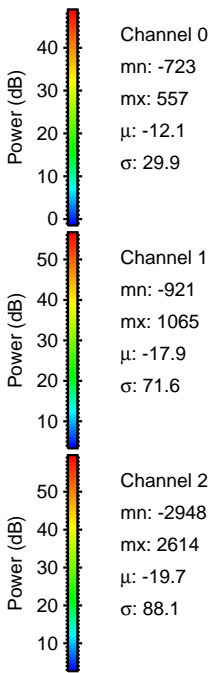
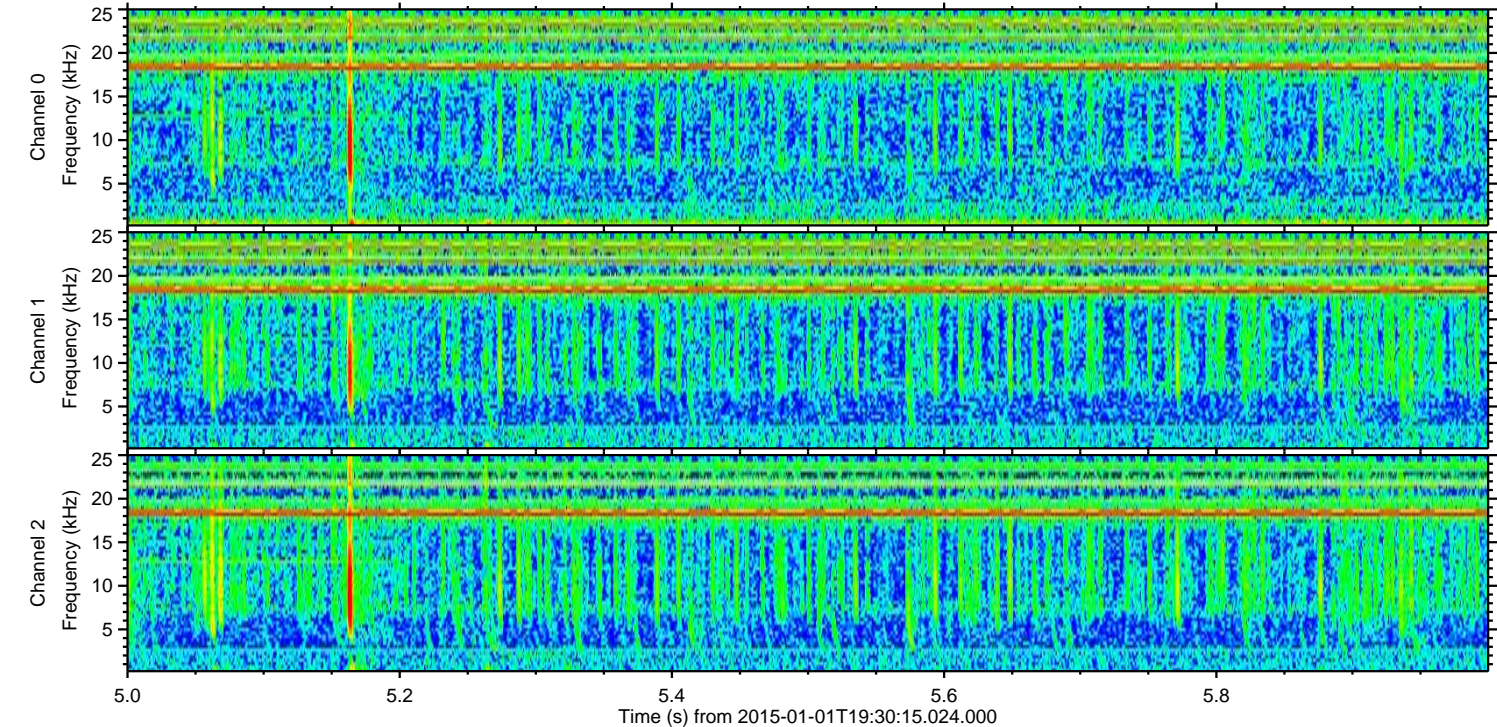
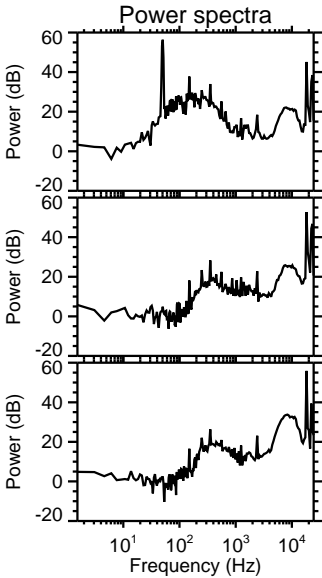
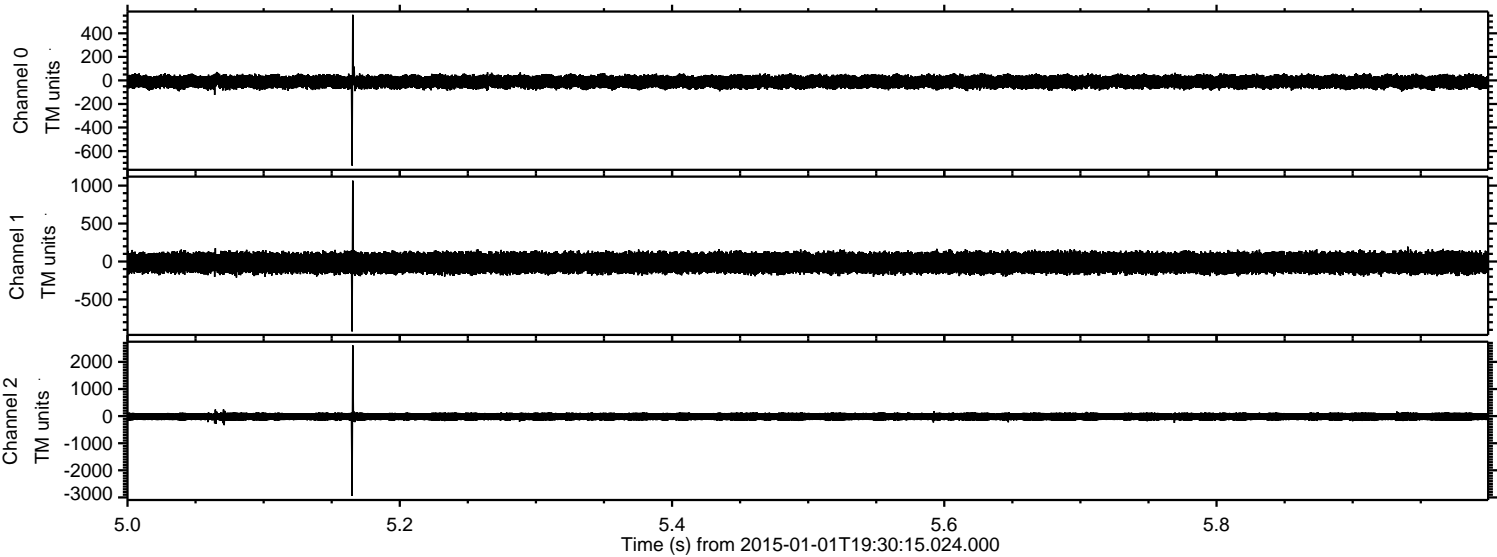
Channel 0
mn: -1069
mx: 730
 μ : -12.1
 σ : 31.1

Channel 1
mn: -293
mx: 184
 μ : -17.9
 σ : 71.4

Channel 2
mn: -2663
mx: 3151
 μ : -19.7
 σ : 92.8

ELMAVAN 3D WAVEFORMS (Measured data sampled at 50 kHz) 49807 packets of 144 samples from 2015-01-01T19:30:15.024.000. Part 6/144

Processed Sat Jan 3 10:33:41 2015 by ELM ver.2012-10-06 from 001__elm20150101_193014__dat00.bin



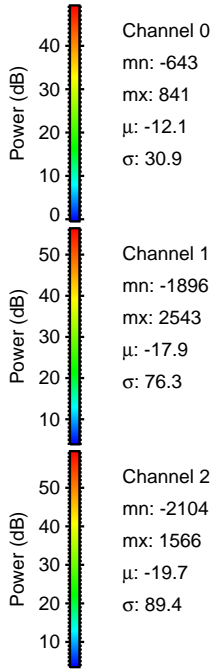
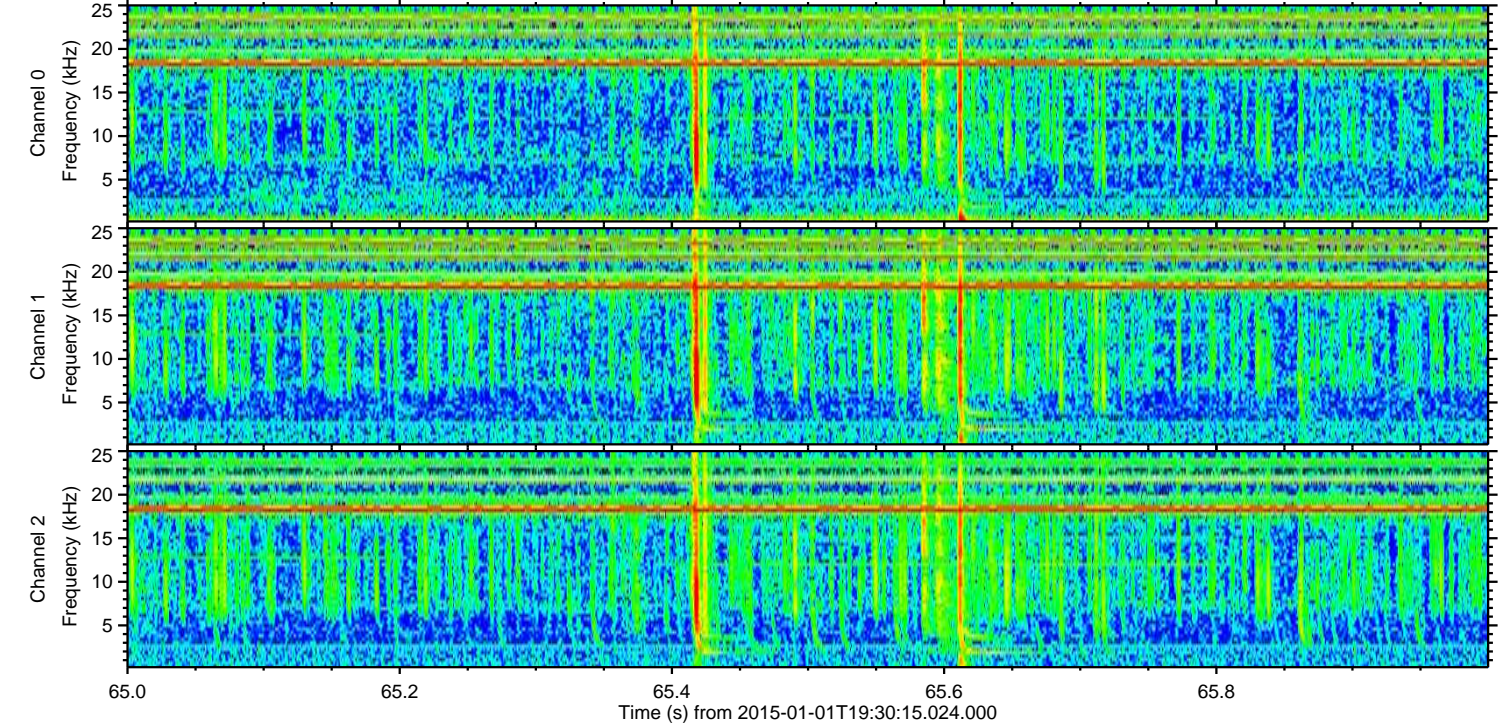
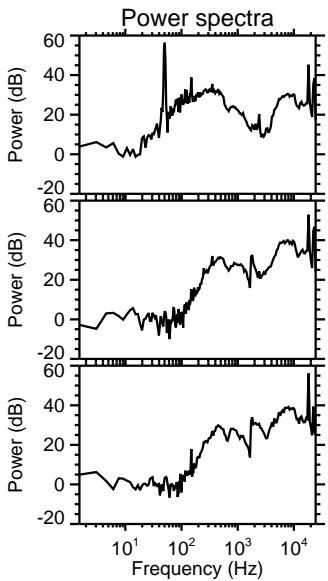
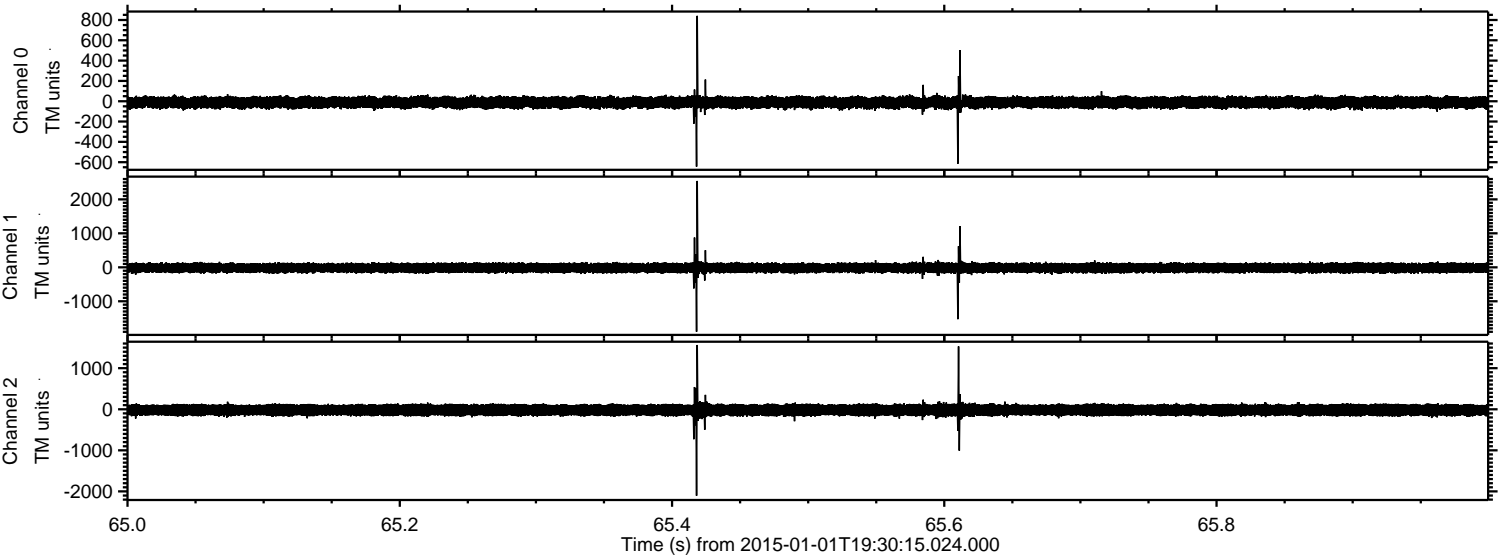
Channel 0
mn: -723
mx: 557
 μ : -12.1
 σ : 29.9

Channel 1
mn: -921
mx: 1065
 μ : -17.9
 σ : 71.6

Channel 2
mn: -2948
mx: 2614
 μ : -19.7
 σ : 88.1

ELMAVAN 3D WAVEFORMS (Measured data sampled at 50 kHz) 49807 packets of 144 samples from 2015-01-01T19:30:15.024.000. Part 66/144

Processed Sat Jan 3 10:33:42 2015 by ELM ver.2012-10-06 from 001__elm20150101_193014__dat00.bin



Processed Sat Jan 3 10:33:42 2015 by ELM ver.2012-10-06 from 001__elm20150101_193014__dat00.bin

