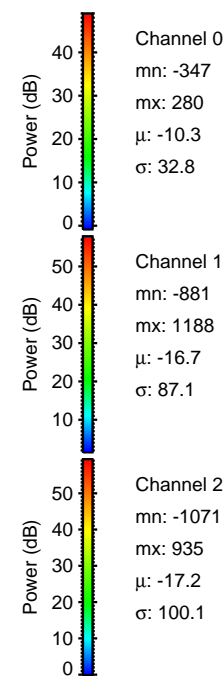
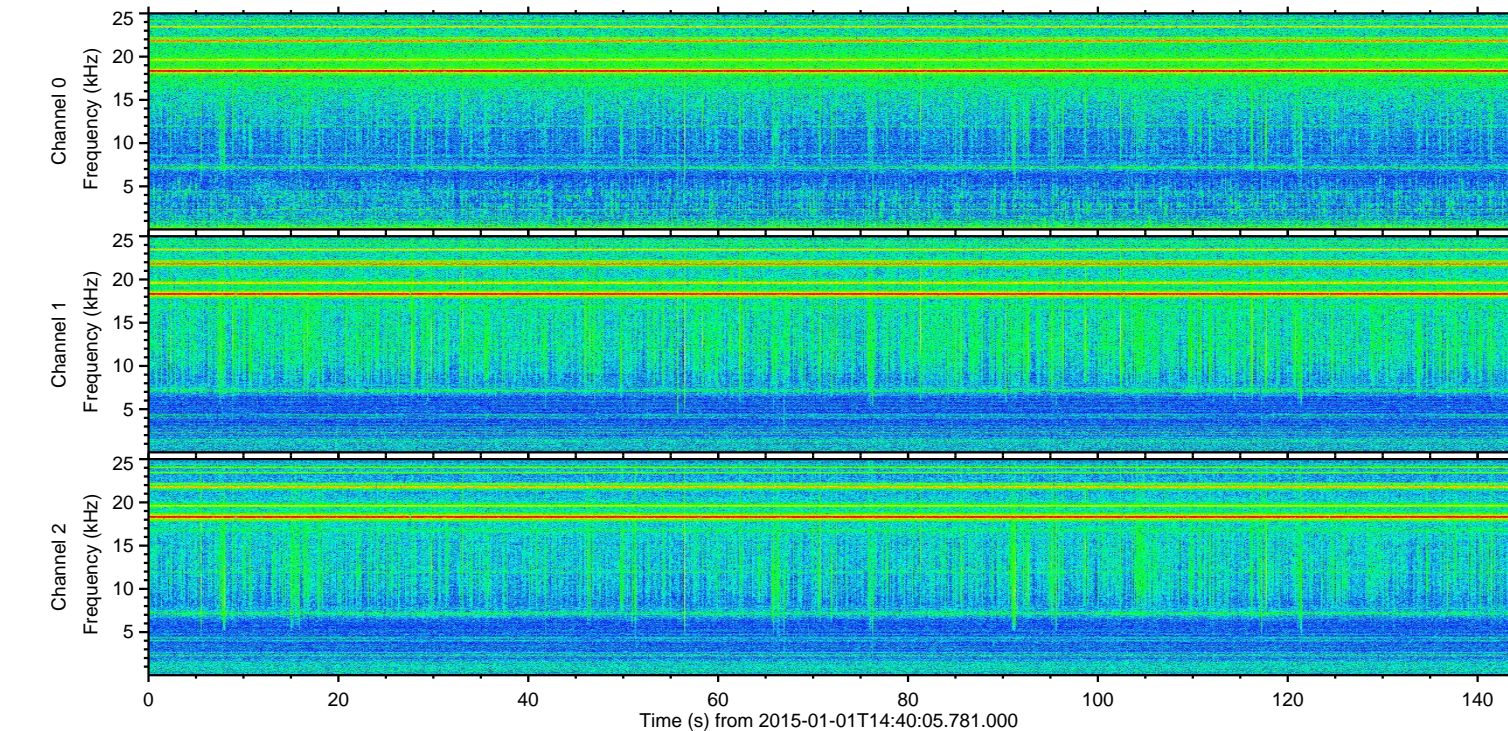
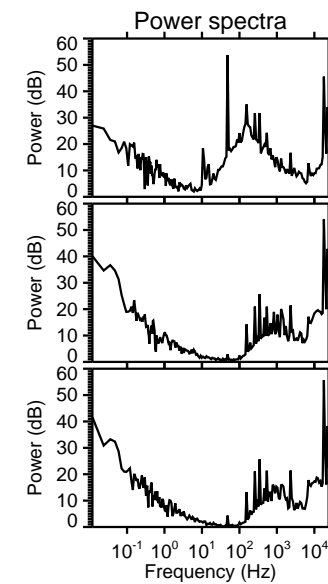
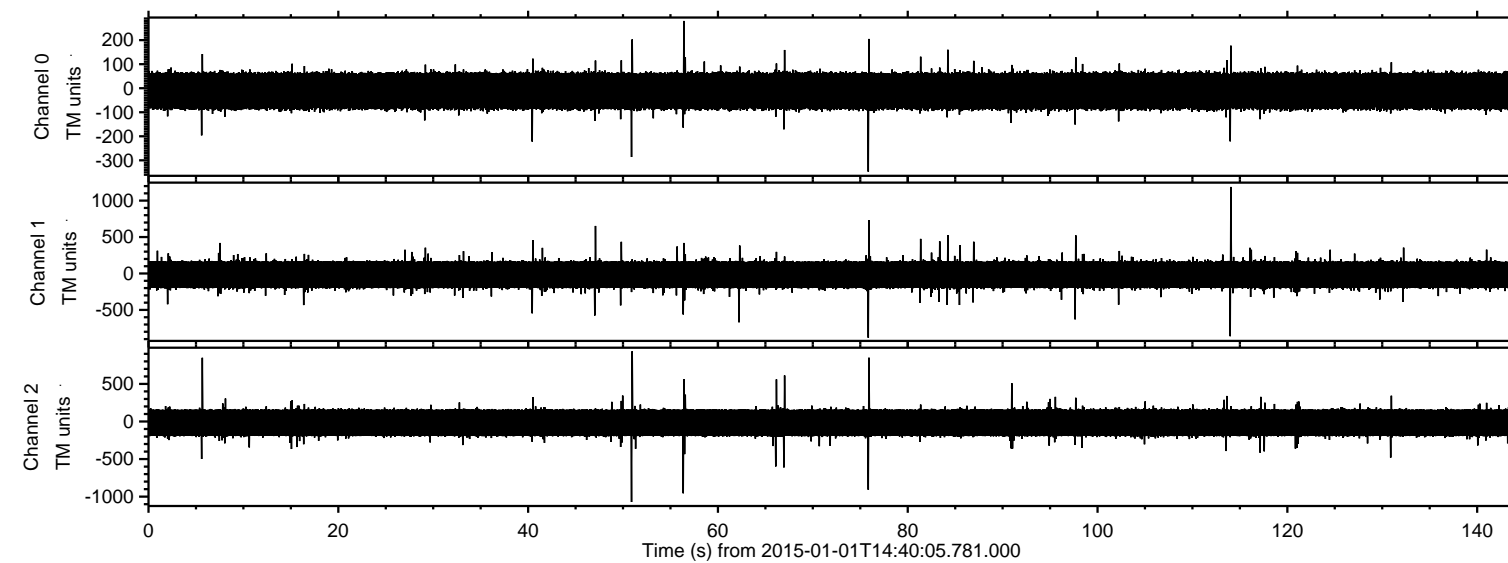


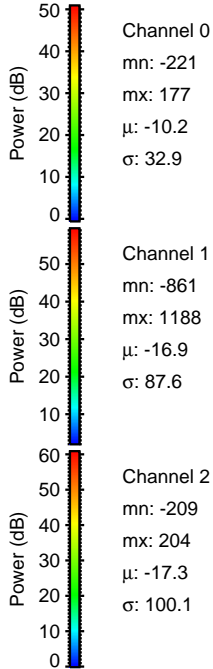
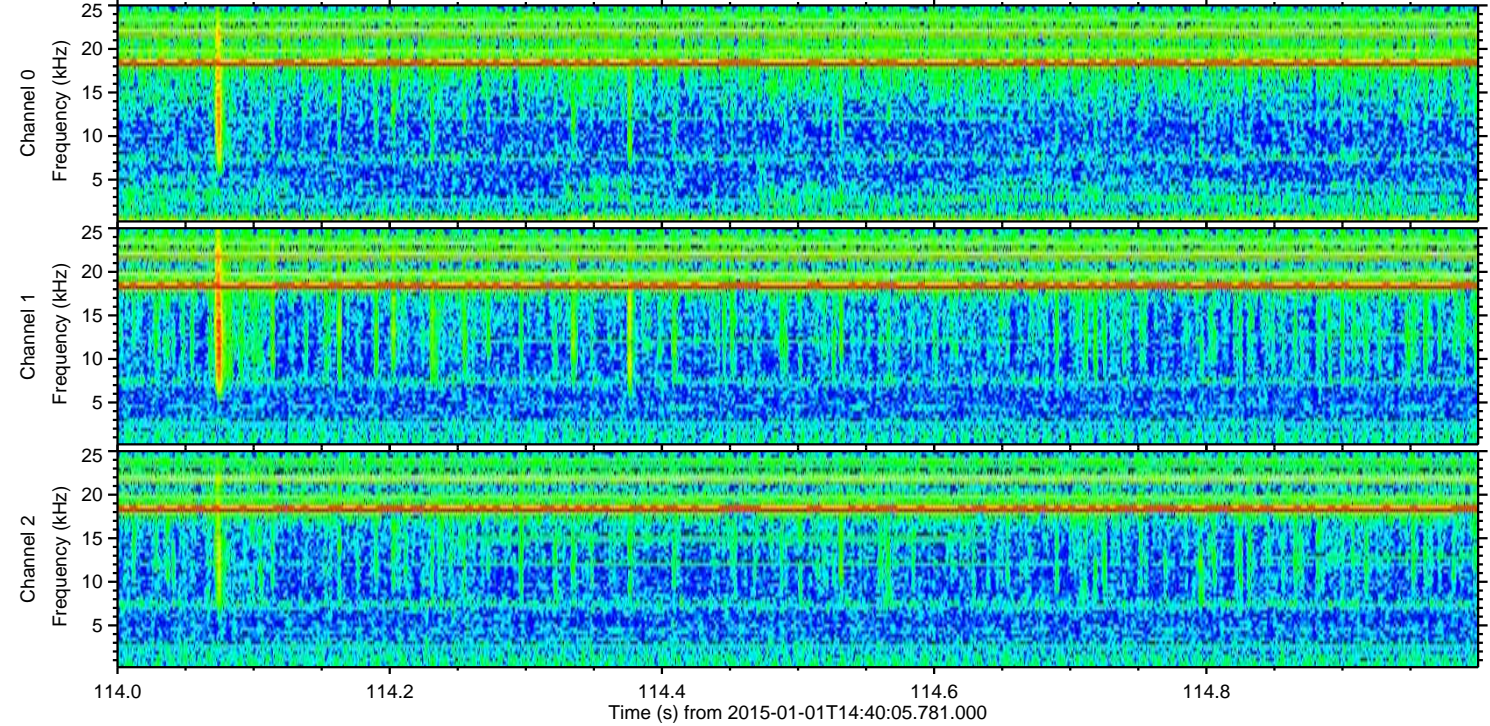
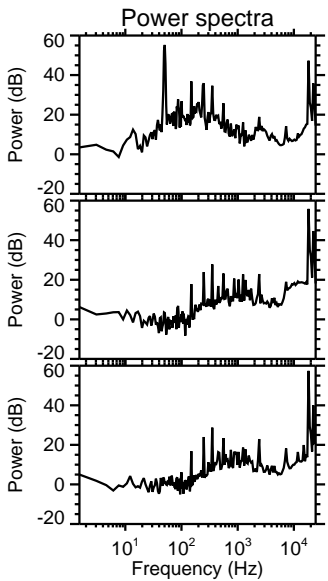
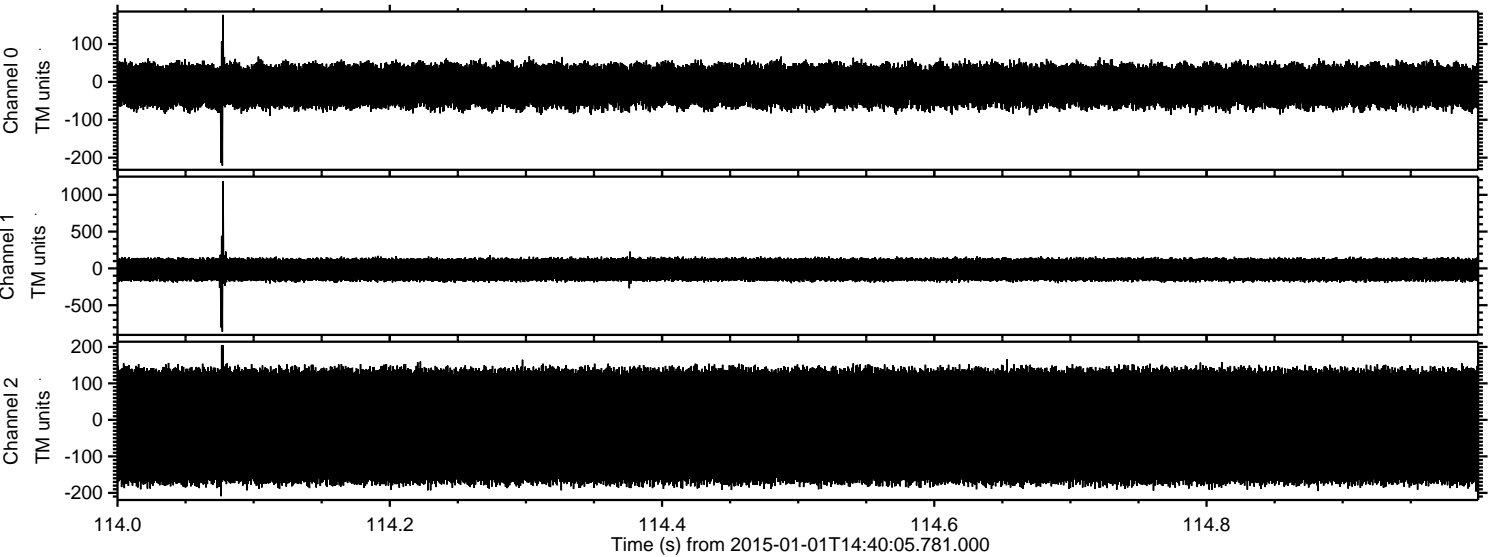
ELMAVAN 3D WAVEFORMS (Measured data sampled at 50 kHz) 49782 packets of 144 samples from 2015-01-01T14:40:05.781.000.

Processed Sat Jan 3 08:45:09 2015 by ELM ver.2012-10-06 from 001__elm20150101_144004__dat00.bin

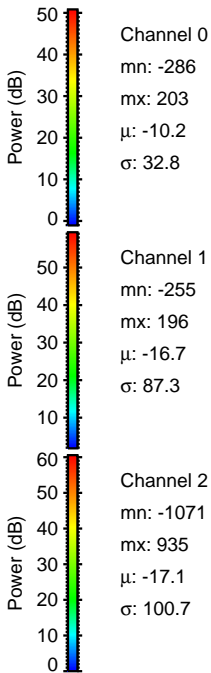
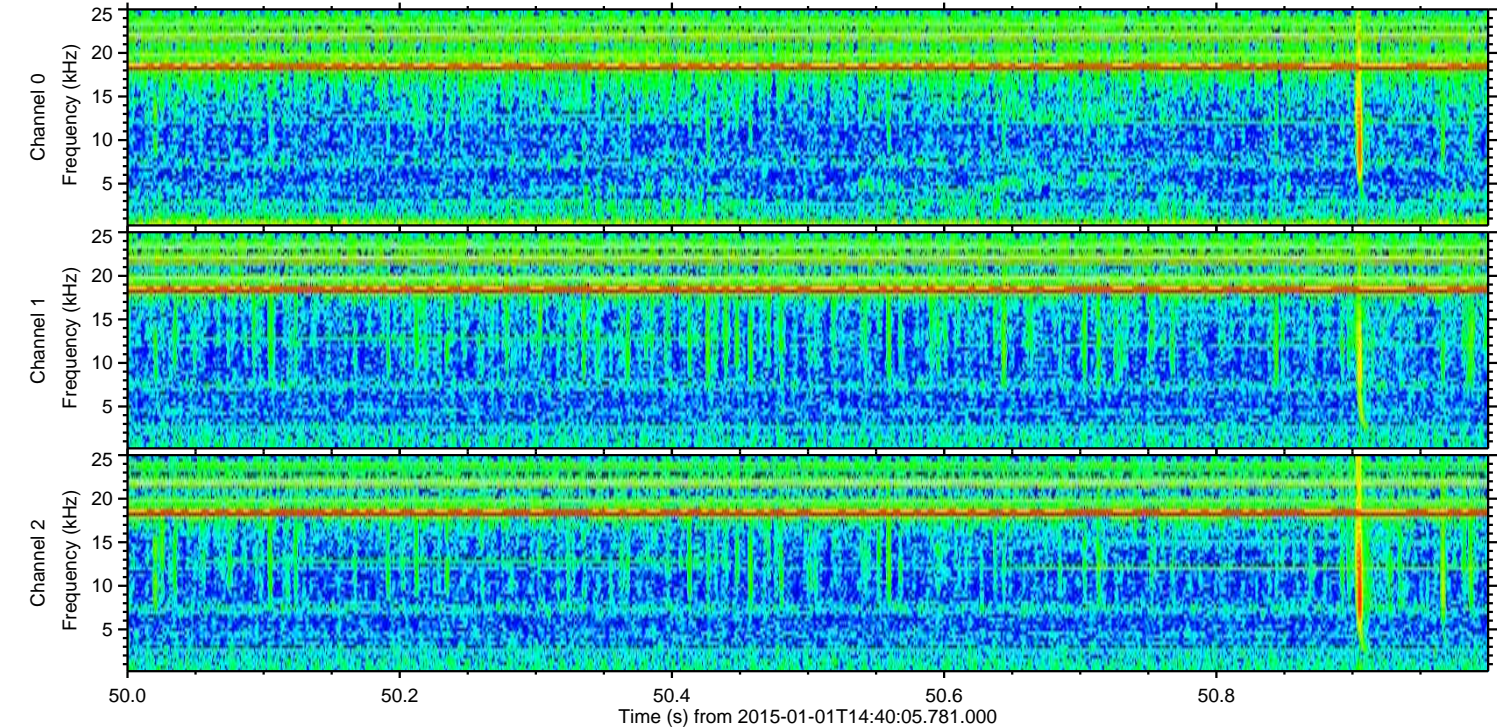
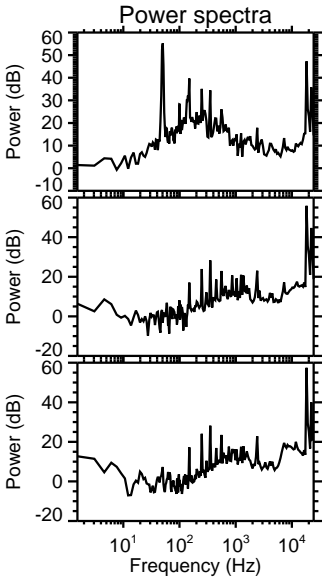
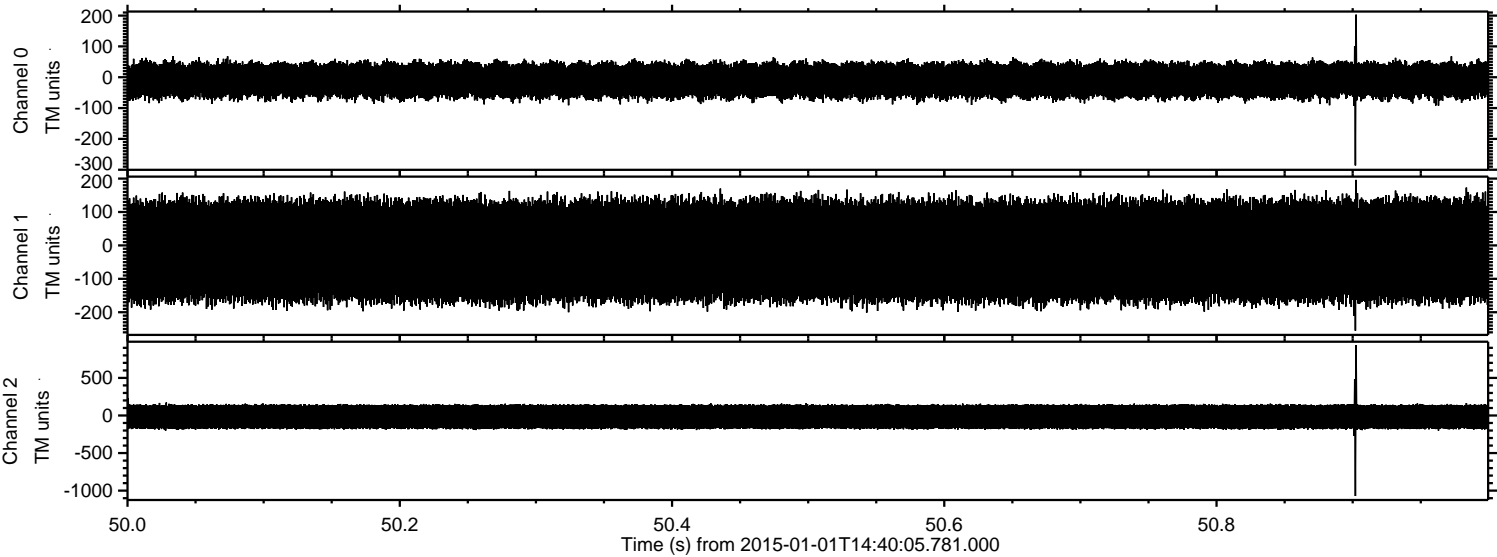


ELMAVAN 3D WAVEFORMS (Measured data sampled at 50 kHz) 49782 packets of 144 samples from 2015-01-01T14:40:05.781.000. Part 115/144

Processed Sat Jan 3 08:45:22 2015 by ELM ver.2012-10-06 from 001__elm20150101_144004__dat00.bin

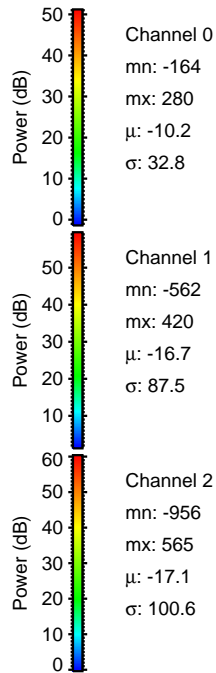
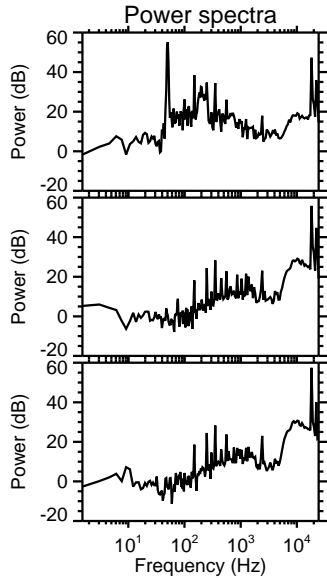
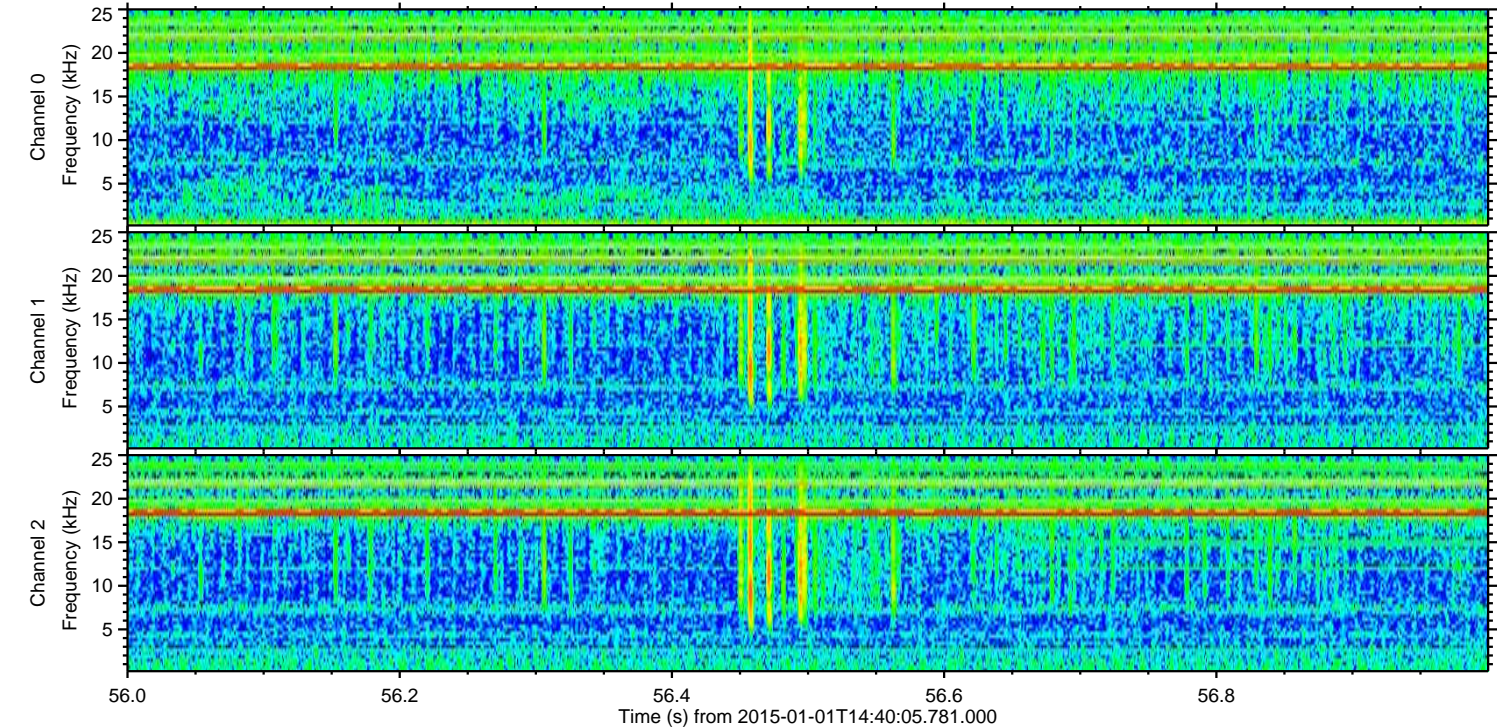
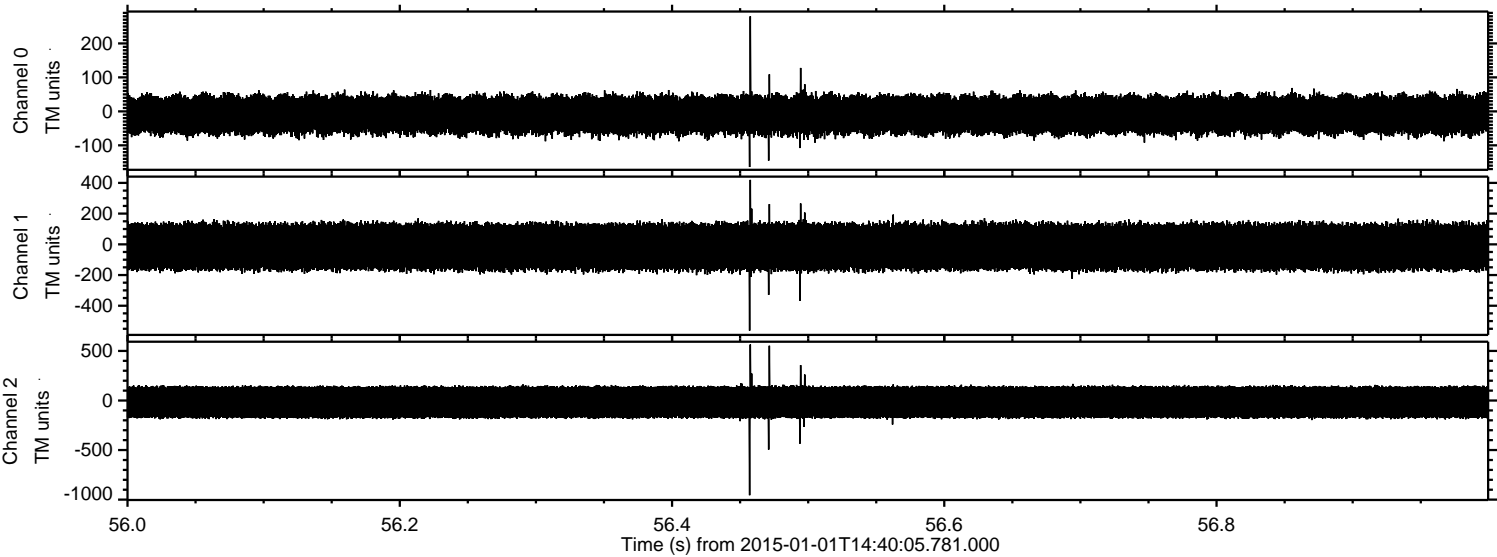


Processed Sat Jan 3 08:45:23 2015 by ELM ver.2012-10-06 from 001__elm20150101_144004__dat00.bin

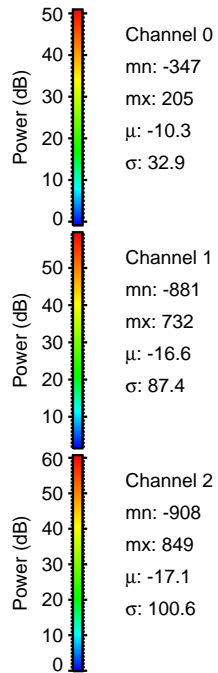
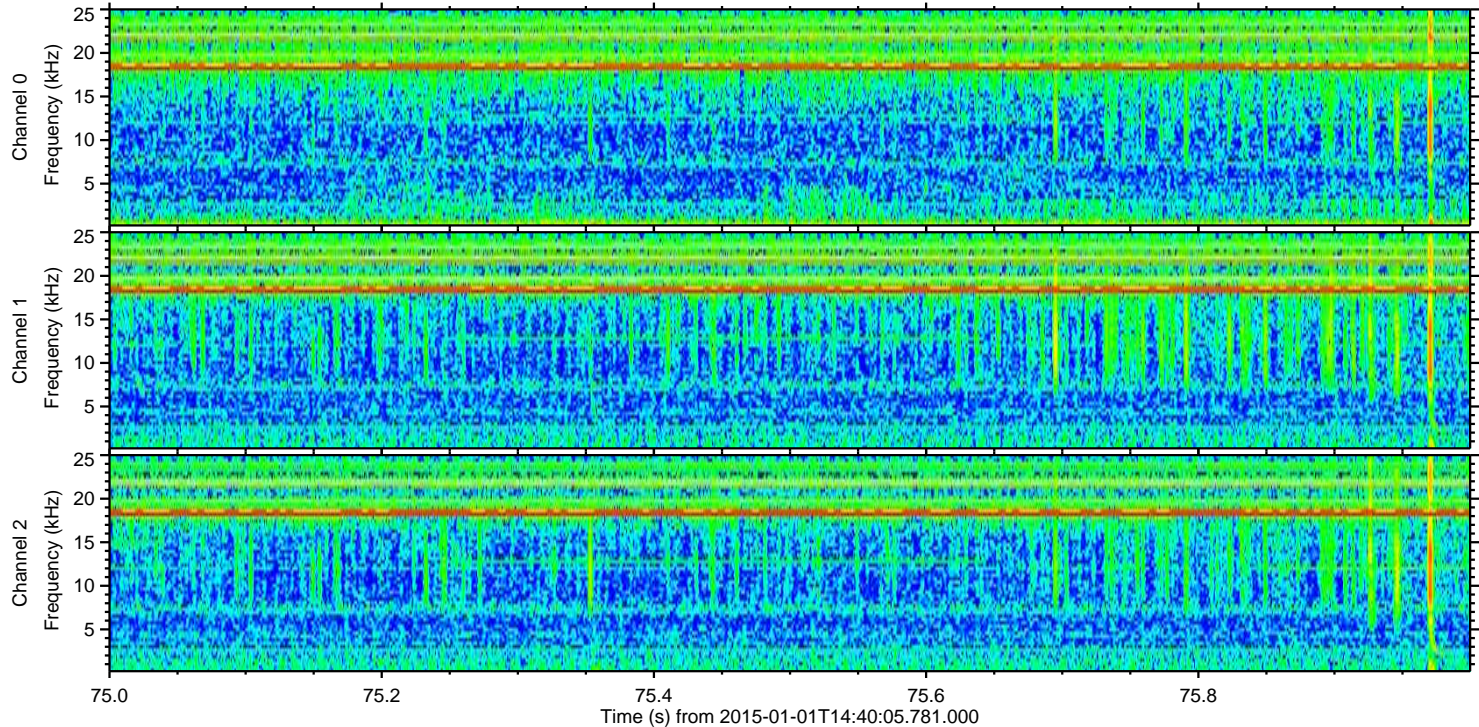
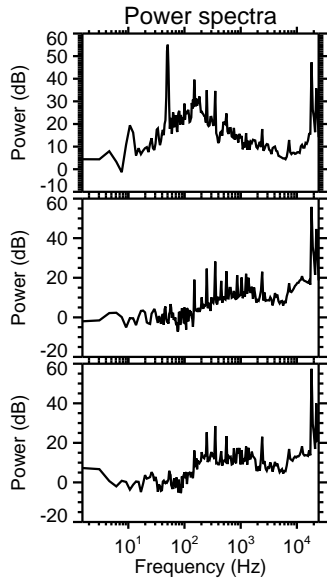
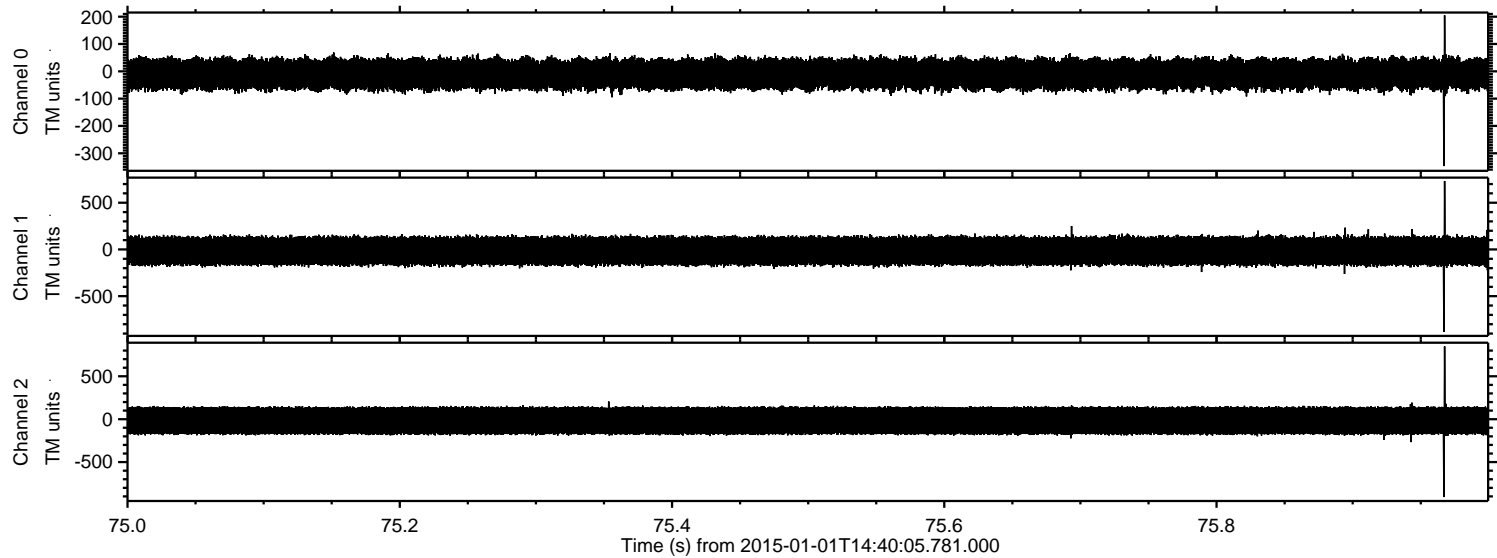


ELMAVAN 3D WAVEFORMS (Measured data sampled at 50 kHz) 49782 packets of 144 samples from 2015-01-01T14:40:05.781.000. Part 57/144

Processed Sat Jan 3 08:45:24 2015 by ELM ver.2012-10-06 from 001__elm20150101_144004__dat00.bin

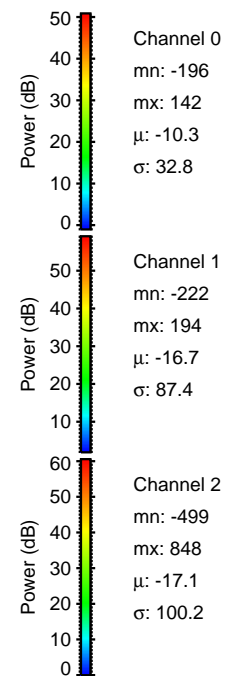
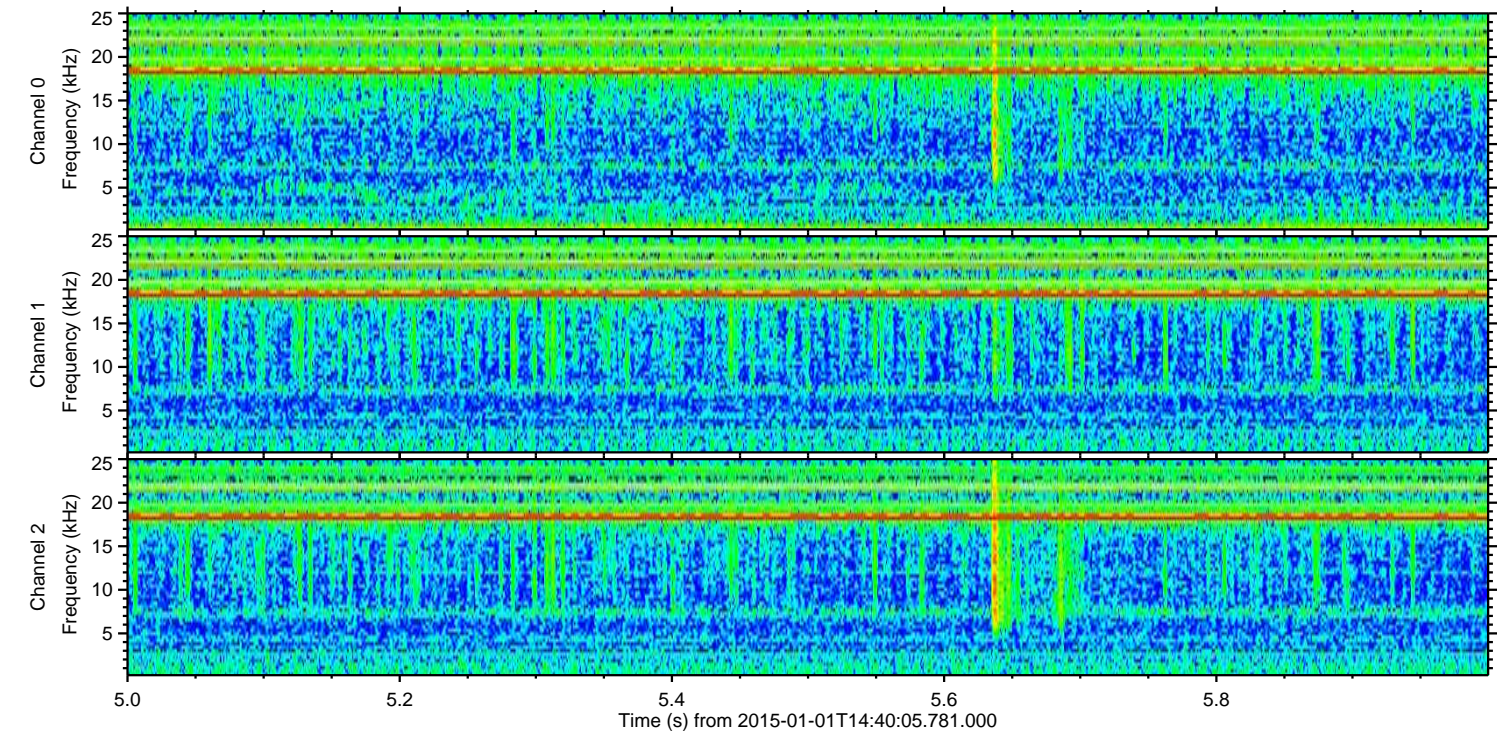
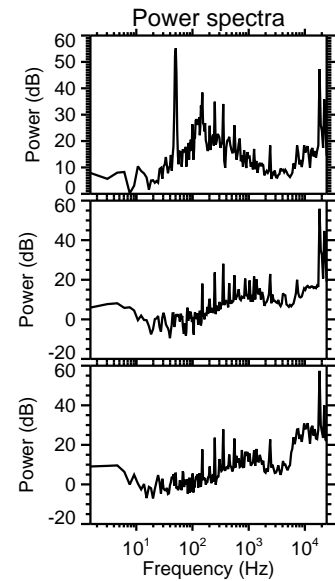
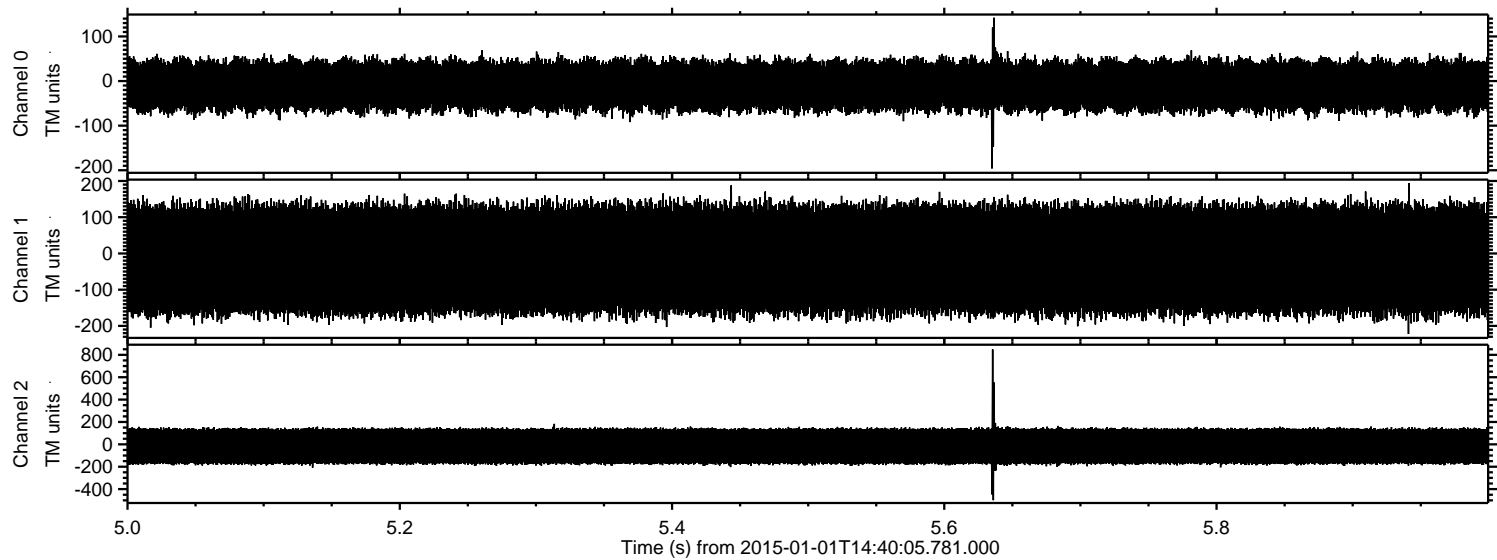


Processed Sat Jan 3 08:45:25 2015 by ELM ver.2012-10-06 from 001__elm20150101_144004__dat00.bin

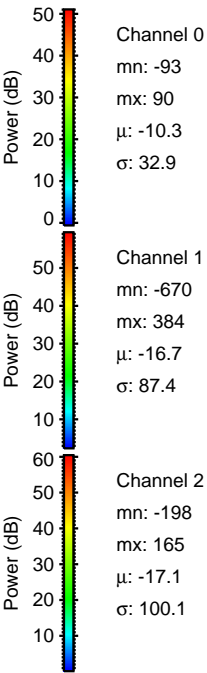
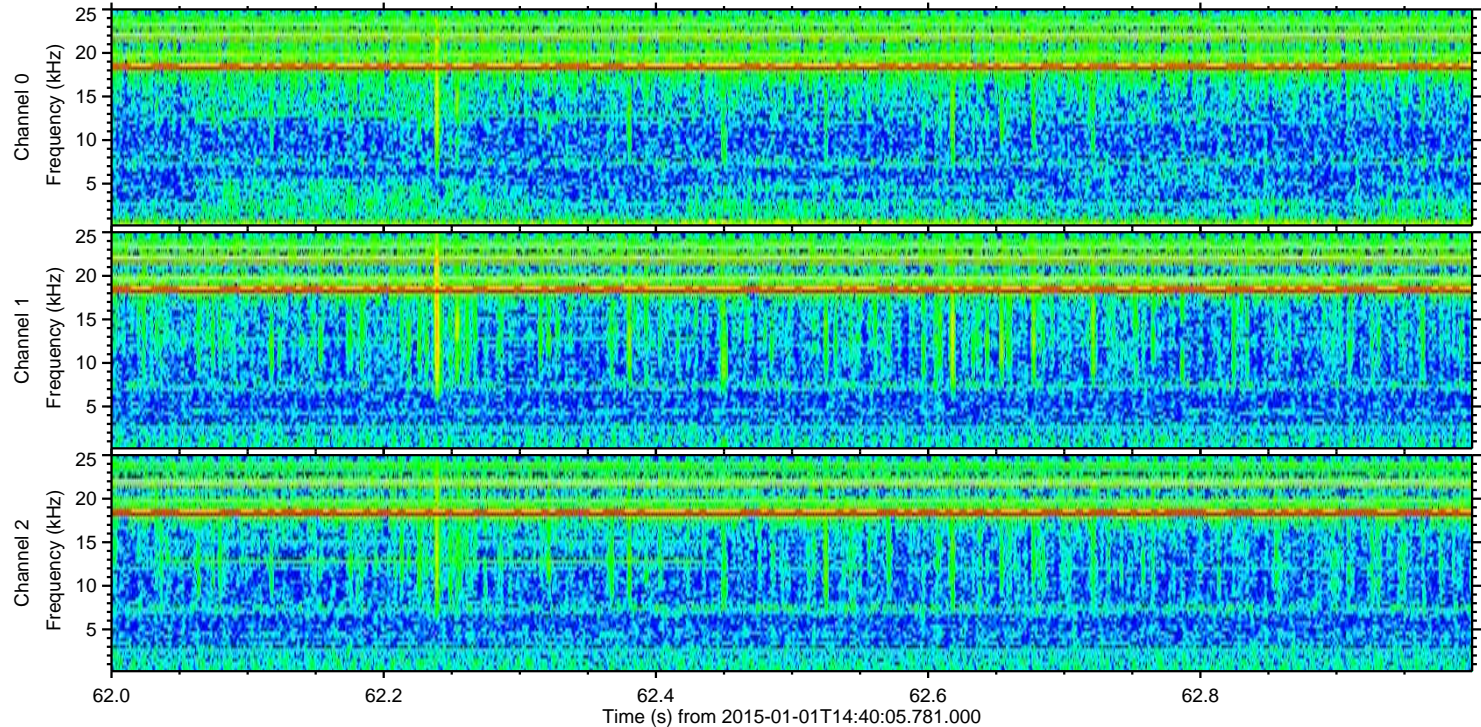
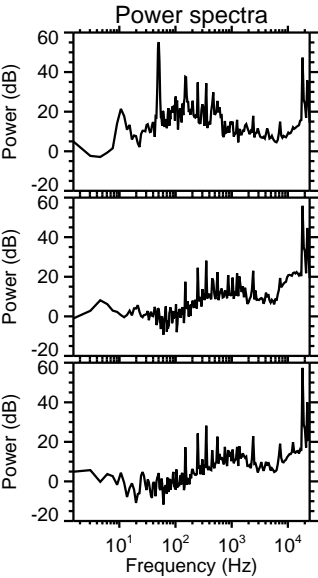
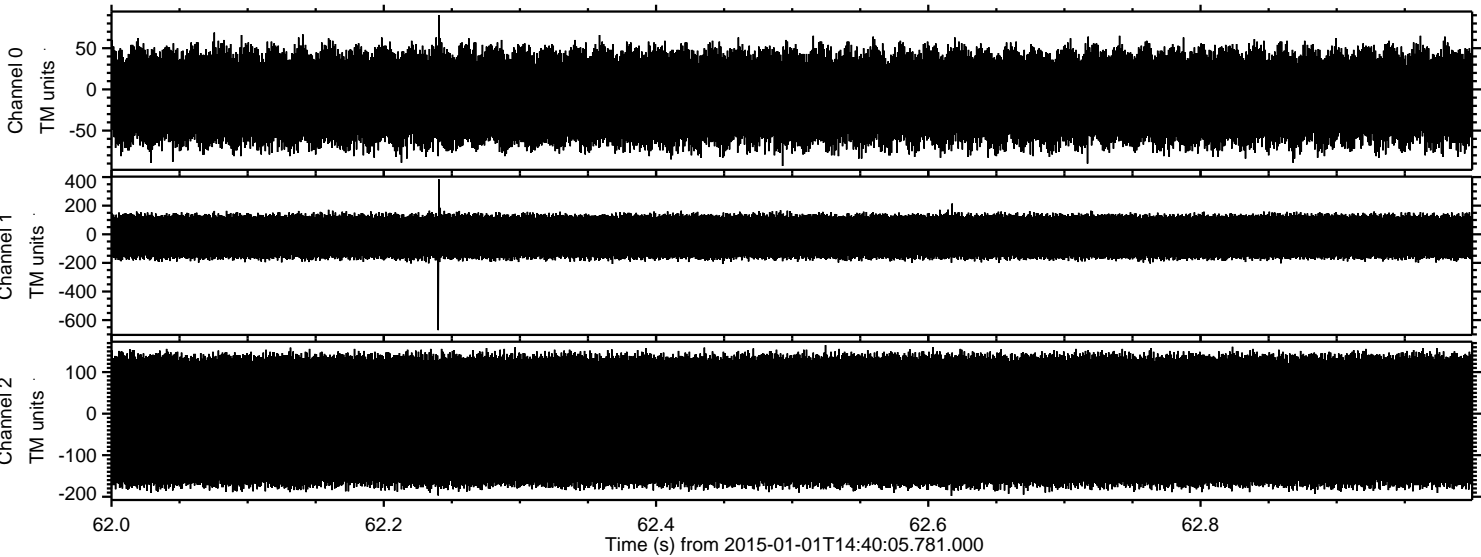


ELMAVAN 3D WAVEFORMS (Measured data sampled at 50 kHz) 49782 packets of 144 samples from 2015-01-01T14:40:05.781.000. Part 6/144

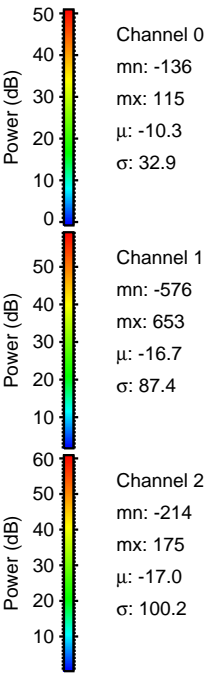
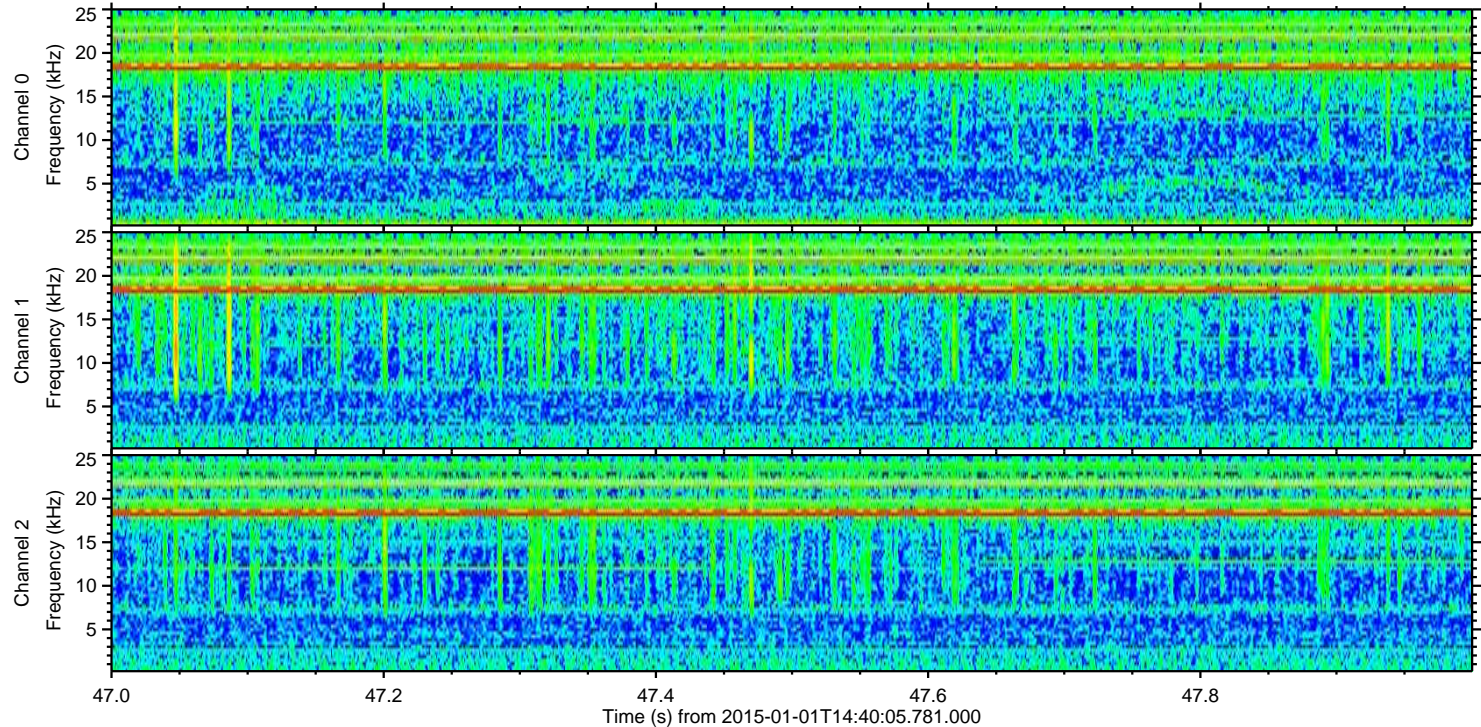
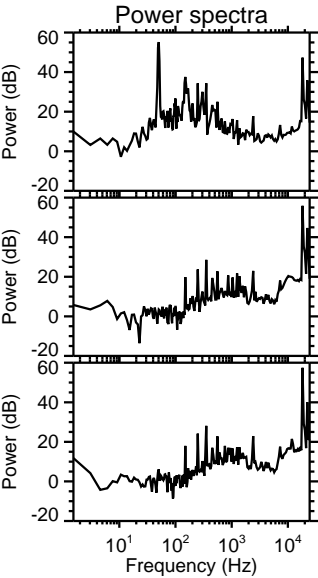
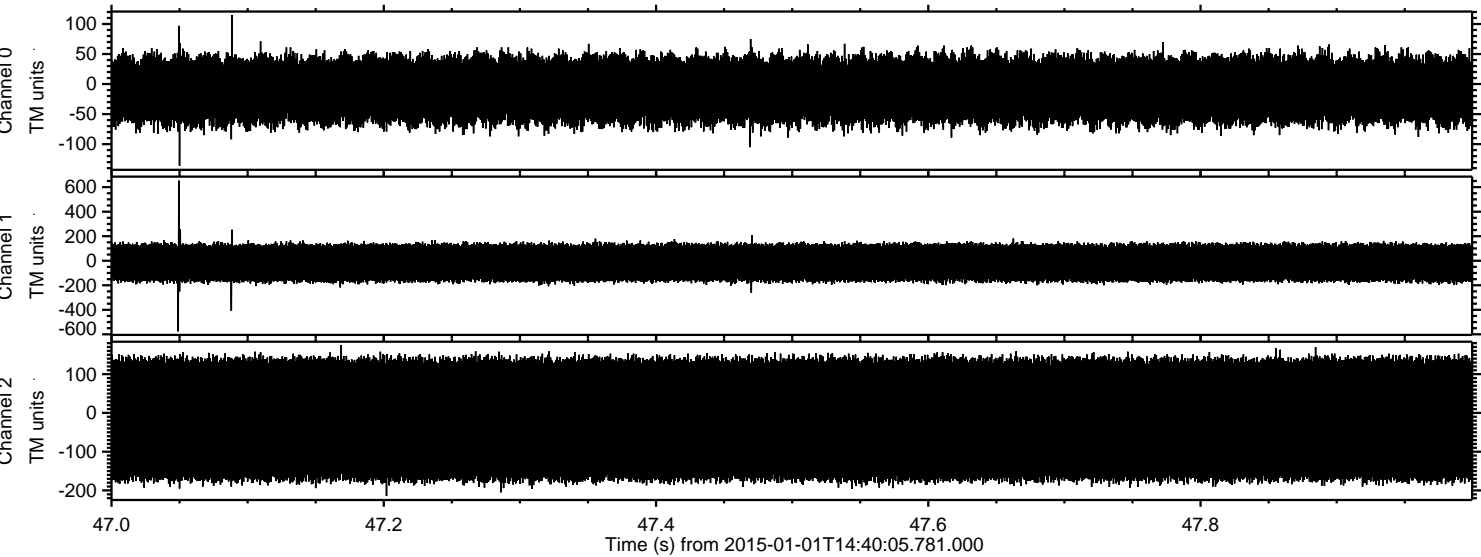
Processed Sat Jan 3 08:45:26 2015 by ELM ver.2012-10-06 from 001__elm20150101_144004__dat00.bin



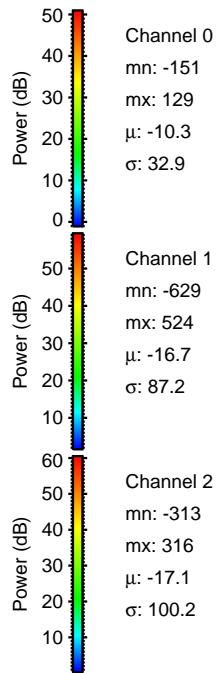
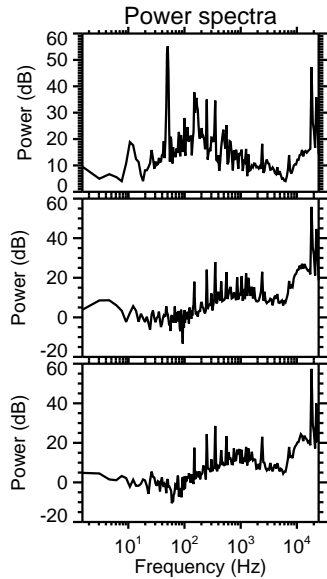
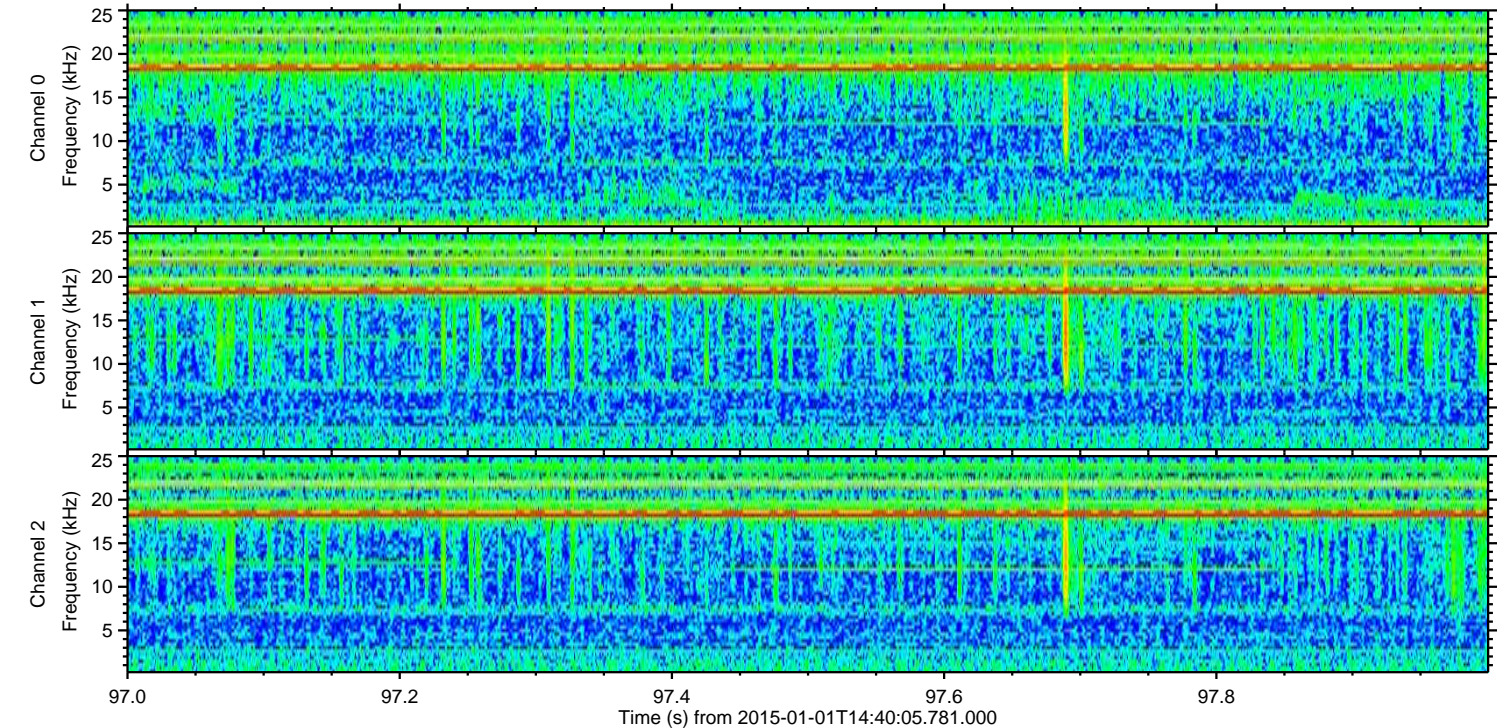
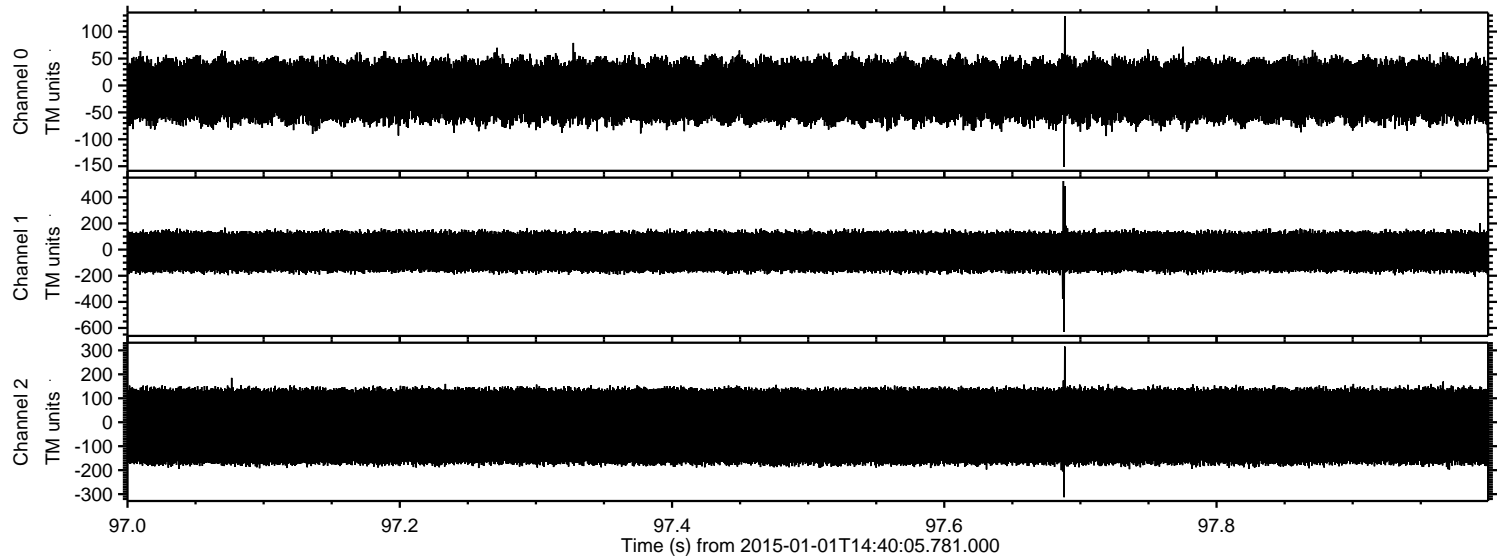
Processed Sat Jan 3 08:45:27 2015 by ELM ver.2012-10-06 from 001__elm20150101_144004__dat00.bin



Processed Sat Jan 3 08:45:28 2015 by ELM ver.2012-10-06 from 001__elm20150101_144004__dat00.bin



Processed Sat Jan 3 08:45:29 2015 by ELM ver.2012-10-06 from 001__elm20150101_144004__dat00.bin

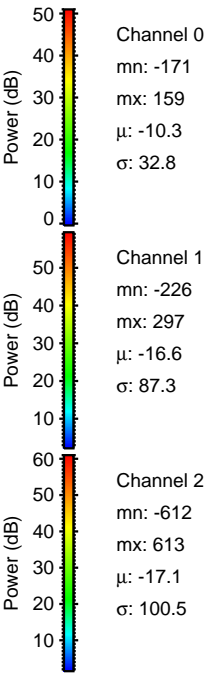
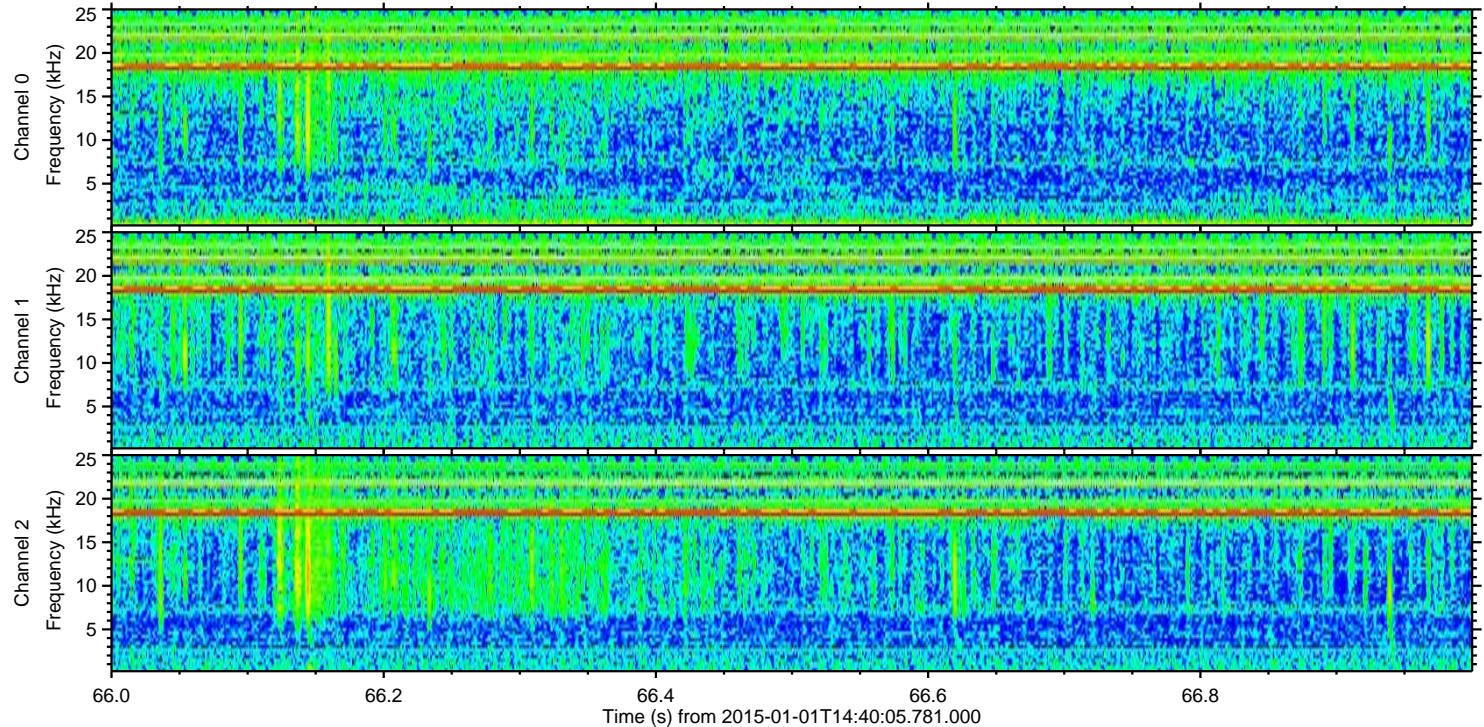
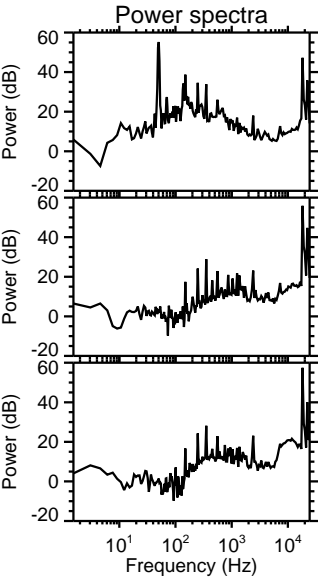
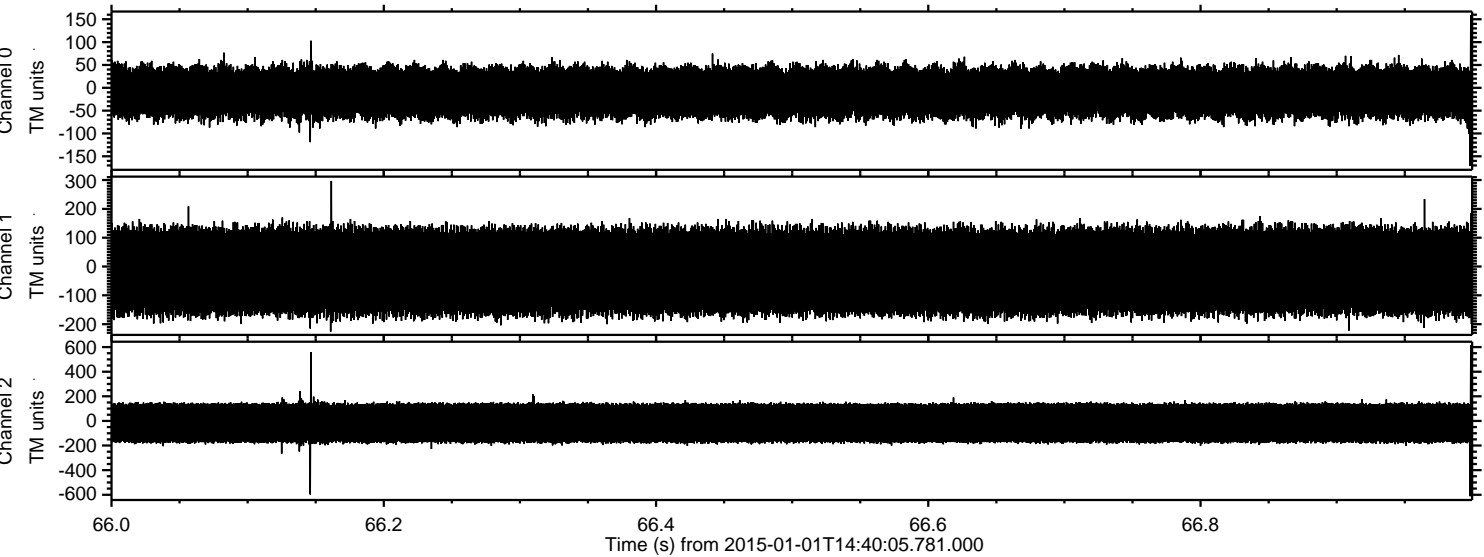


Channel 0
mn: -151
mx: 129
 μ : -10.3
 σ : 32.9

Channel 1
mn: -629
mx: 524
 μ : -16.7
 σ : 87.2

Channel 2
mn: -313
mx: 316
 μ : -17.1
 σ : 100.2

Processed Sat Jan 3 08:45:30 2015 by ELM ver.2012-10-06 from 001__elm20150101_144004__dat00.bin



Processed Sat Jan 3 08:45:30 2015 by ELM ver.2012-10-06 from 001__elm20150101_144004__dat00.bin

