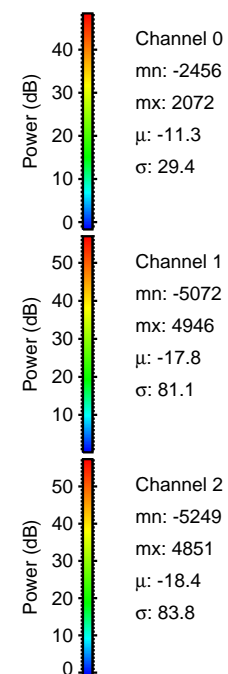
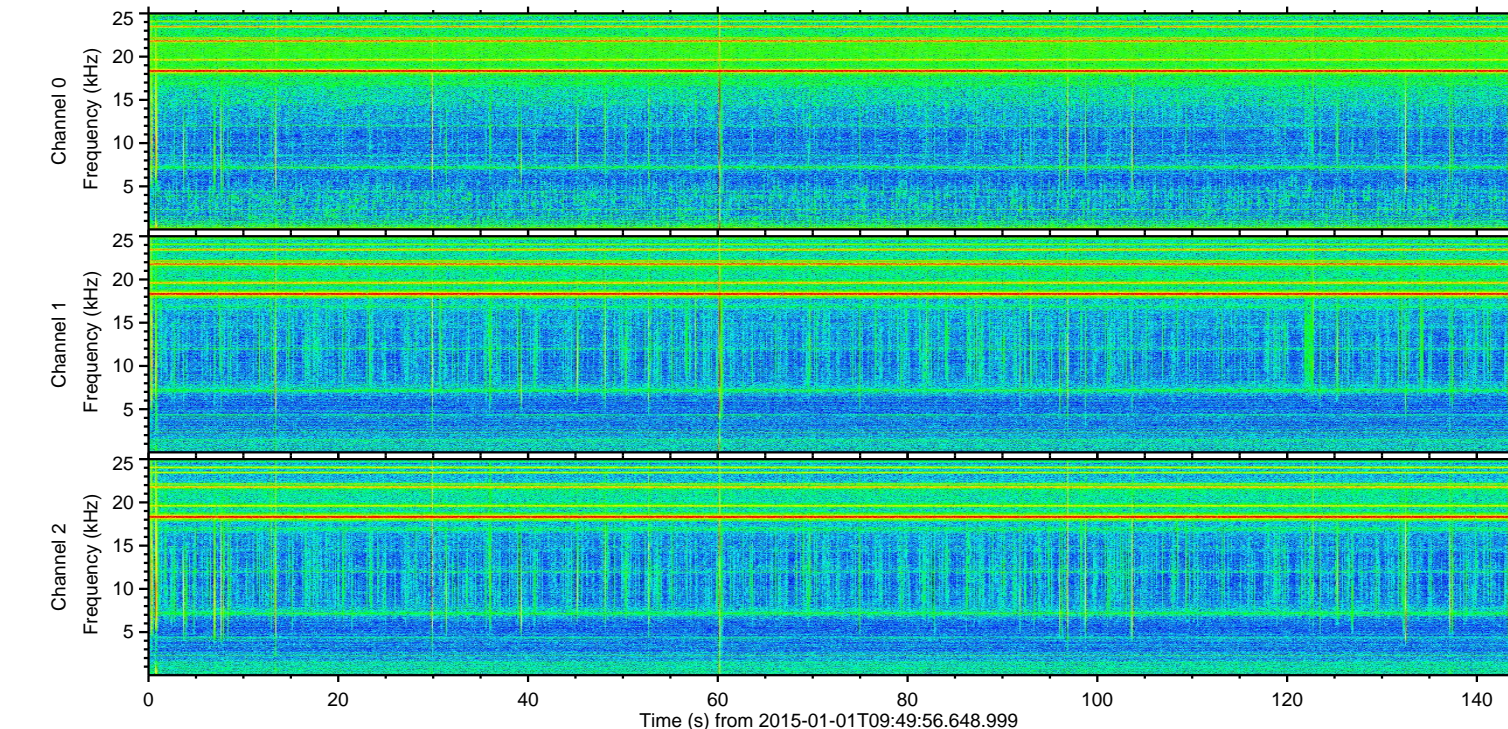
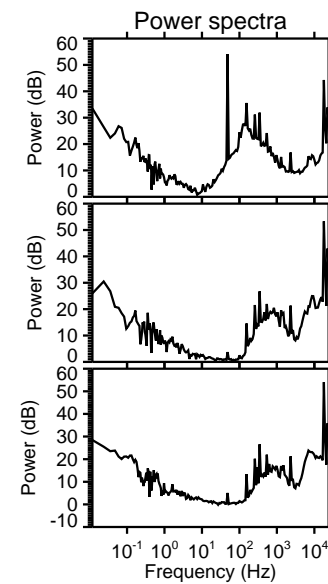
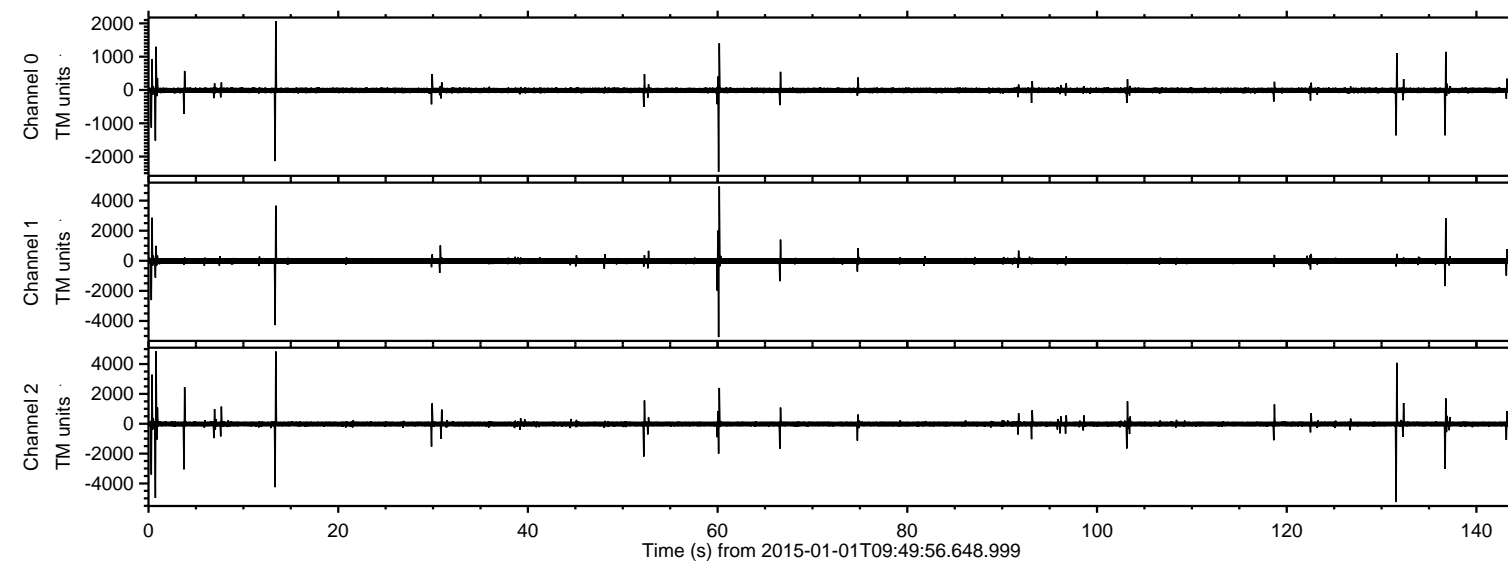


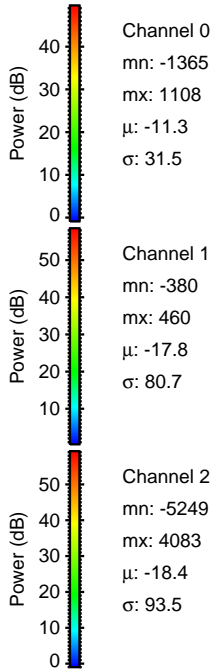
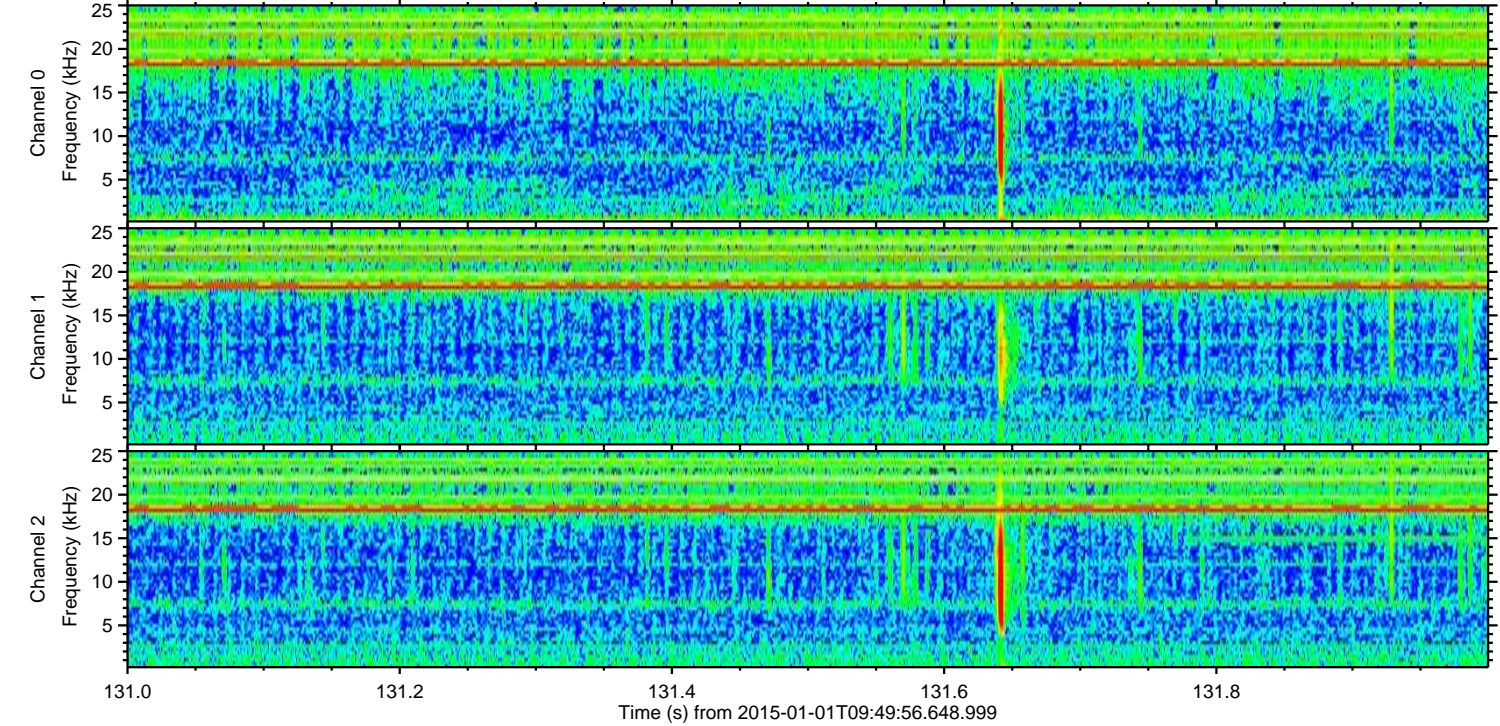
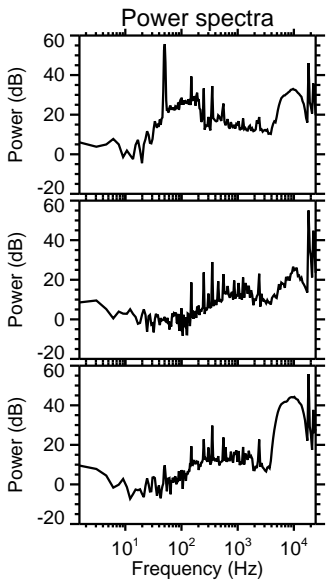
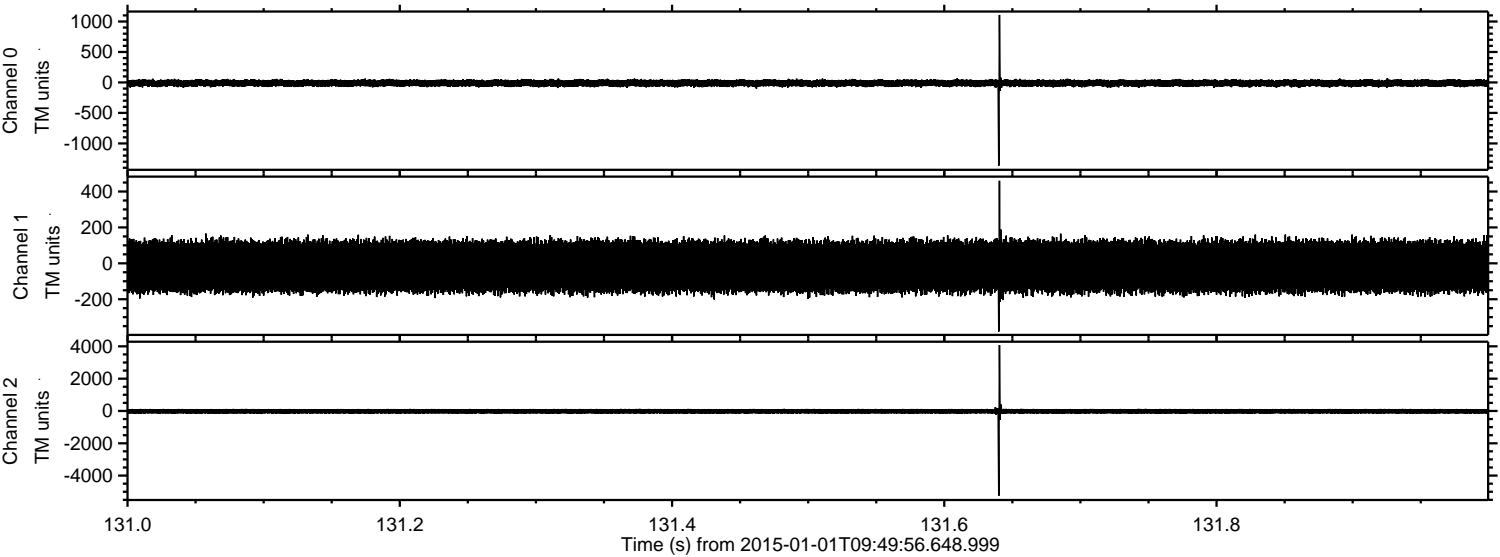
ELMAVAN 3D WAVEFORMS (Measured data sampled at 50 kHz) 49809 packets of 144 samples from 2015-01-01T09:49:56.648.999.

Processed Sat Jan 3 07:07:19 2015 by ELM ver.2012-10-06 from 001__elm20150101_094955__dat00.bin

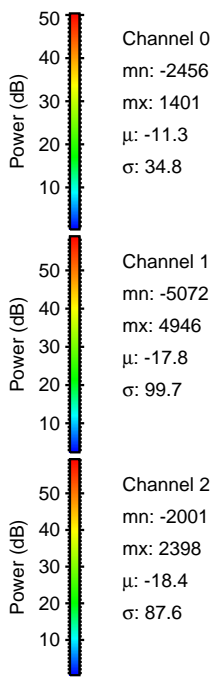
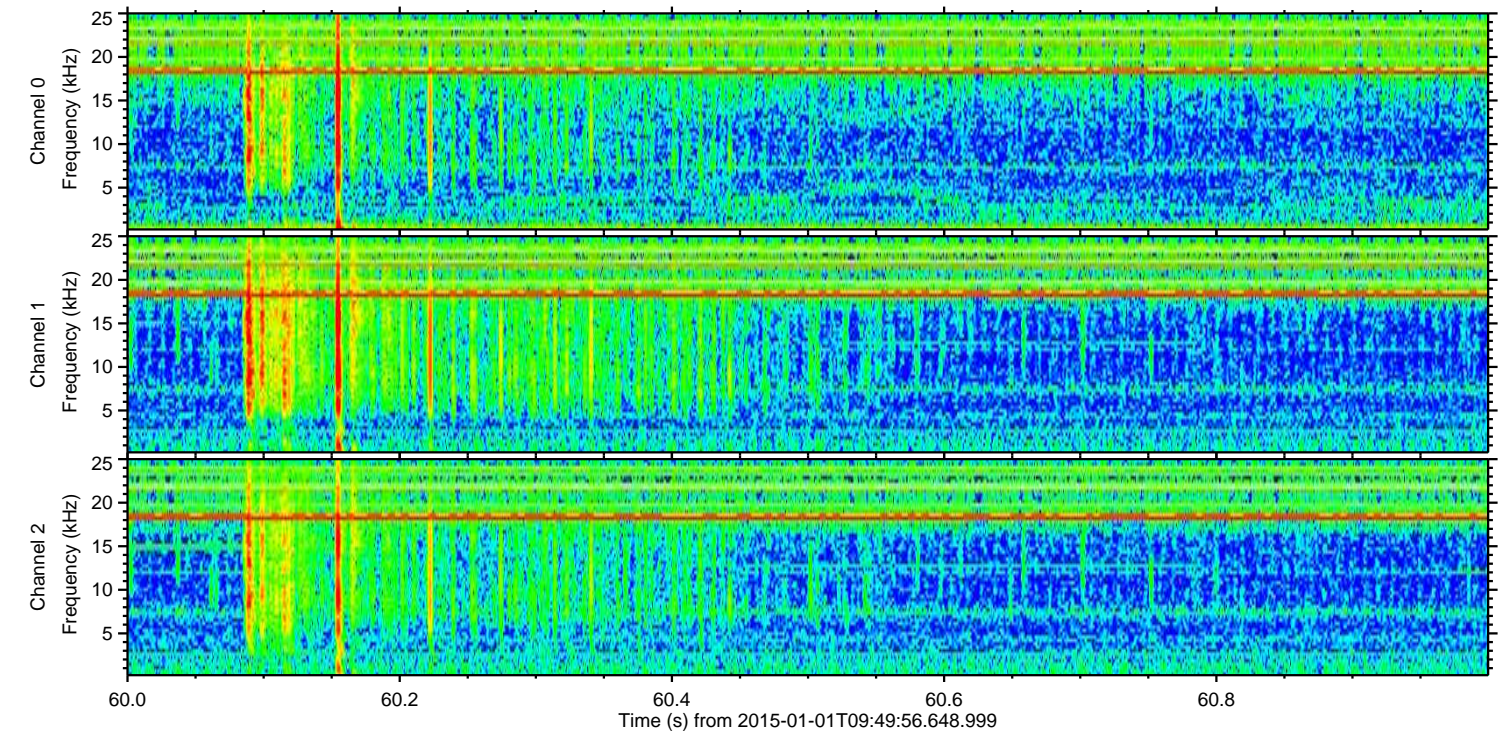
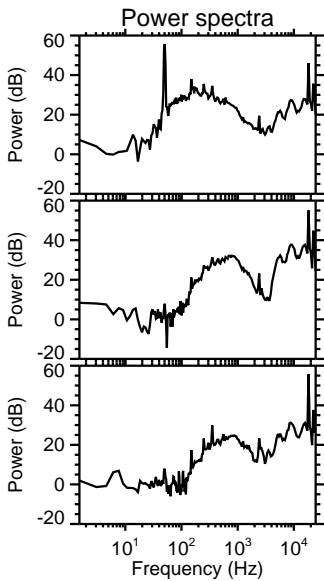
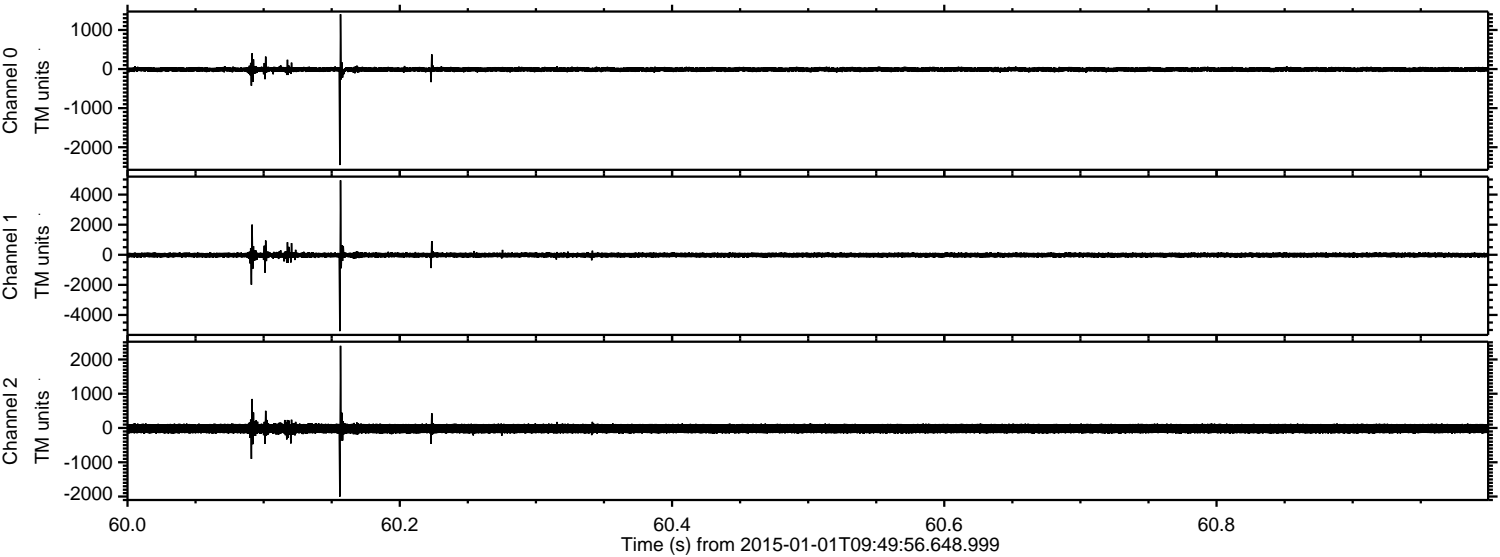


ELMAVAN 3D WAVEFORMS (Measured data sampled at 50 kHz) 49809 packets of 144 samples from 2015-01-01T09:49:56.648.999. Part 132/144

Processed Sat Jan 3 07:07:31 2015 by ELM ver.2012-10-06 from 001__elm20150101_094955__dat00.bin

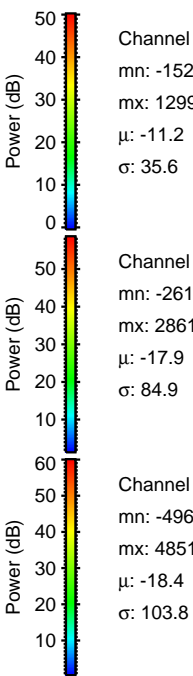
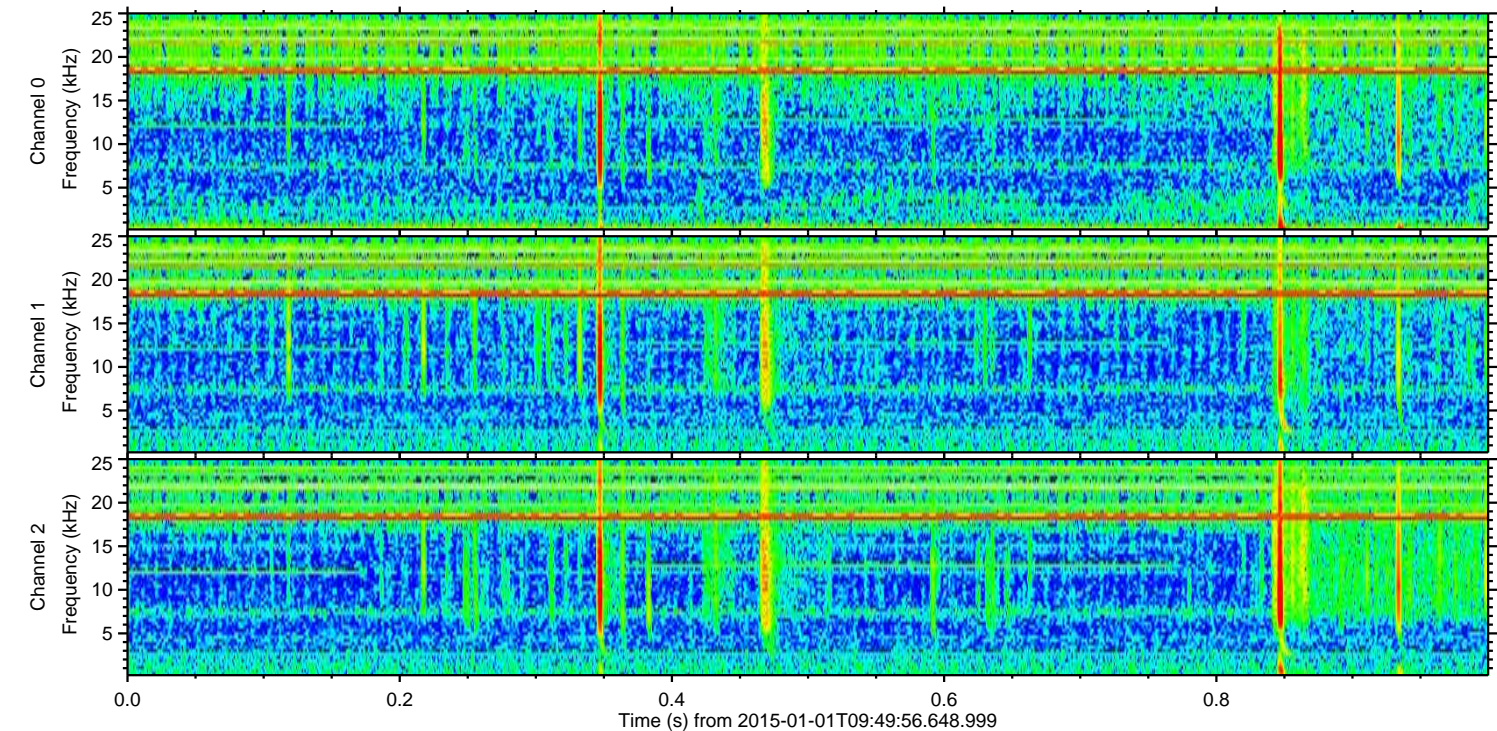
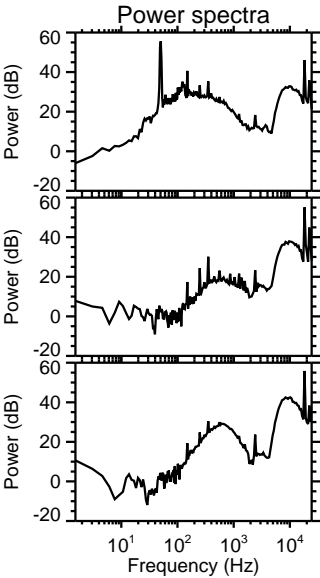
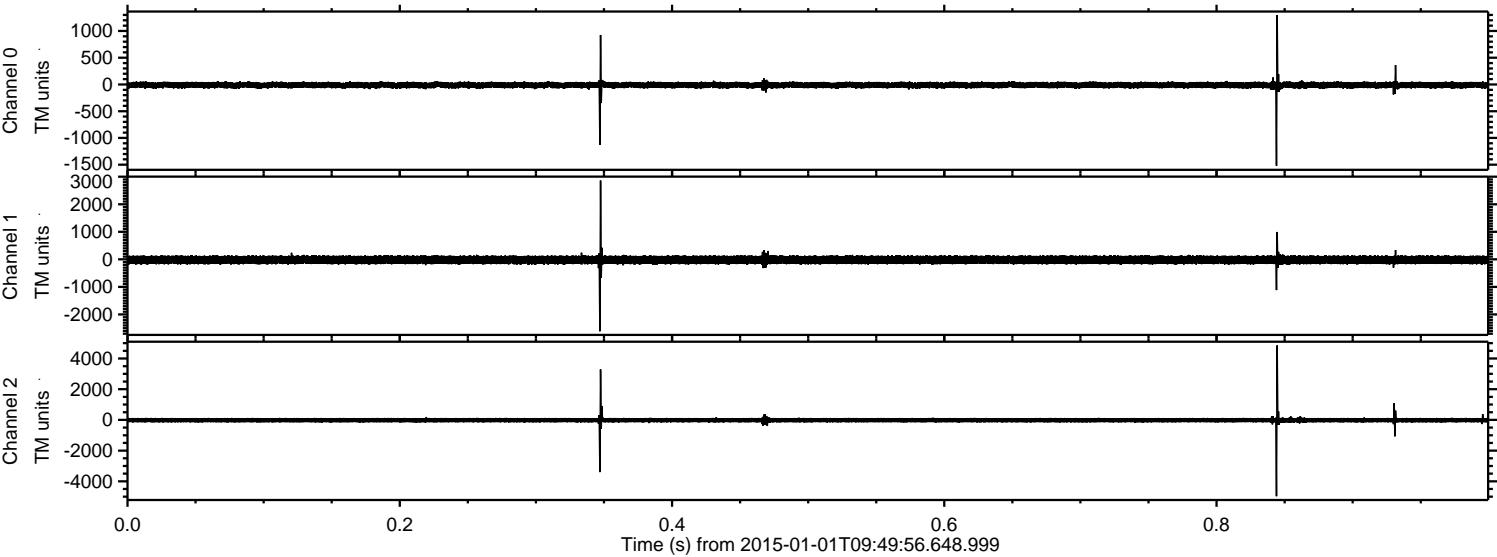


Processed Sat Jan 3 07:07:32 2015 by ELM ver.2012-10-06 from 001__elm20150101_094955__dat00.bin

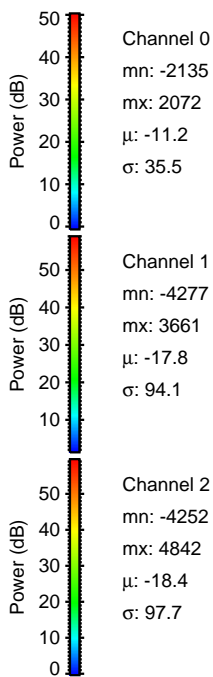
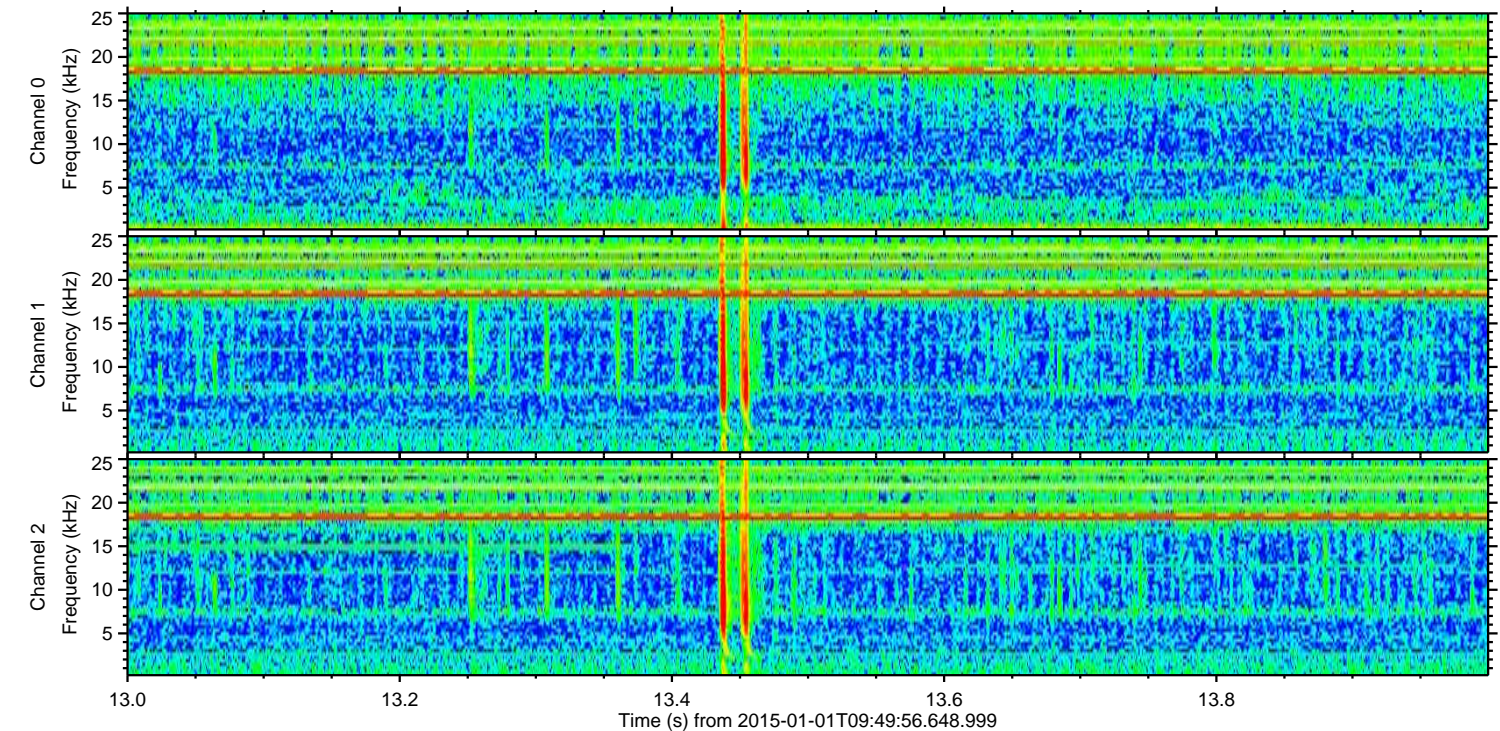
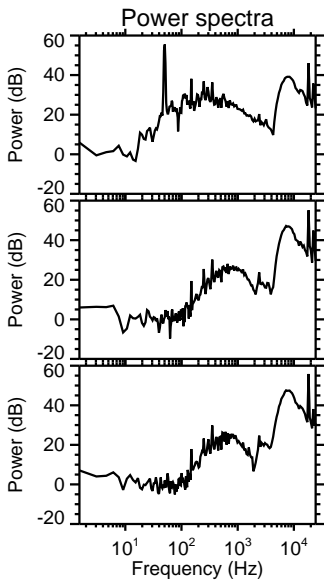
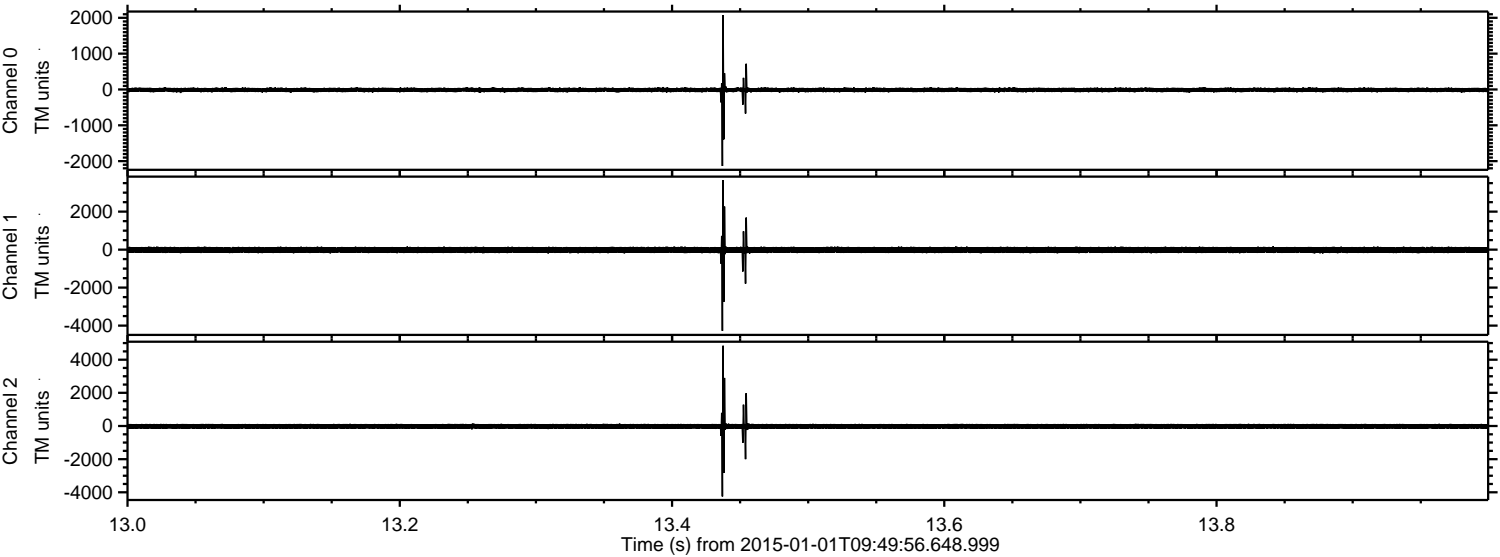


ELMAVAN 3D WAVEFORMS (Measured data sampled at 50 kHz) 49809 packets of 144 samples from 2015-01-01T09:49:56.648.999. Part 1/144

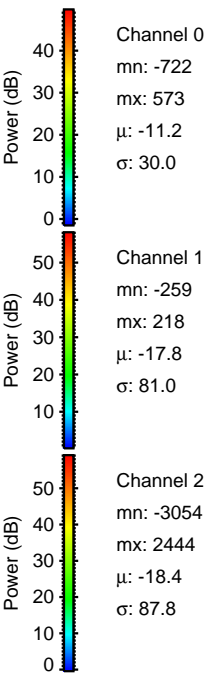
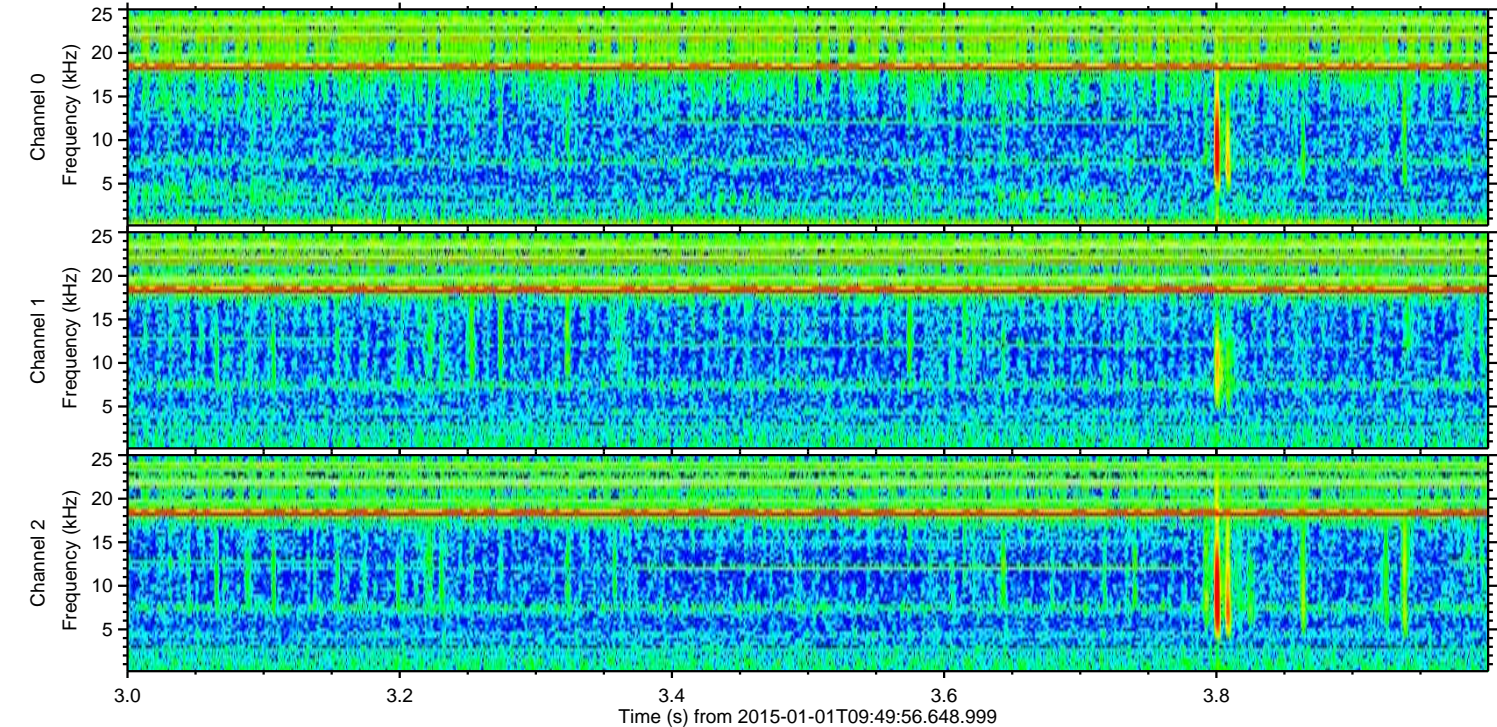
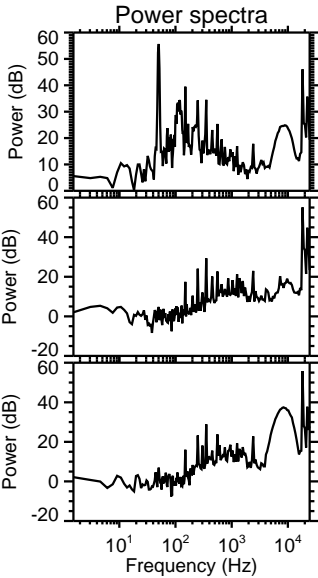
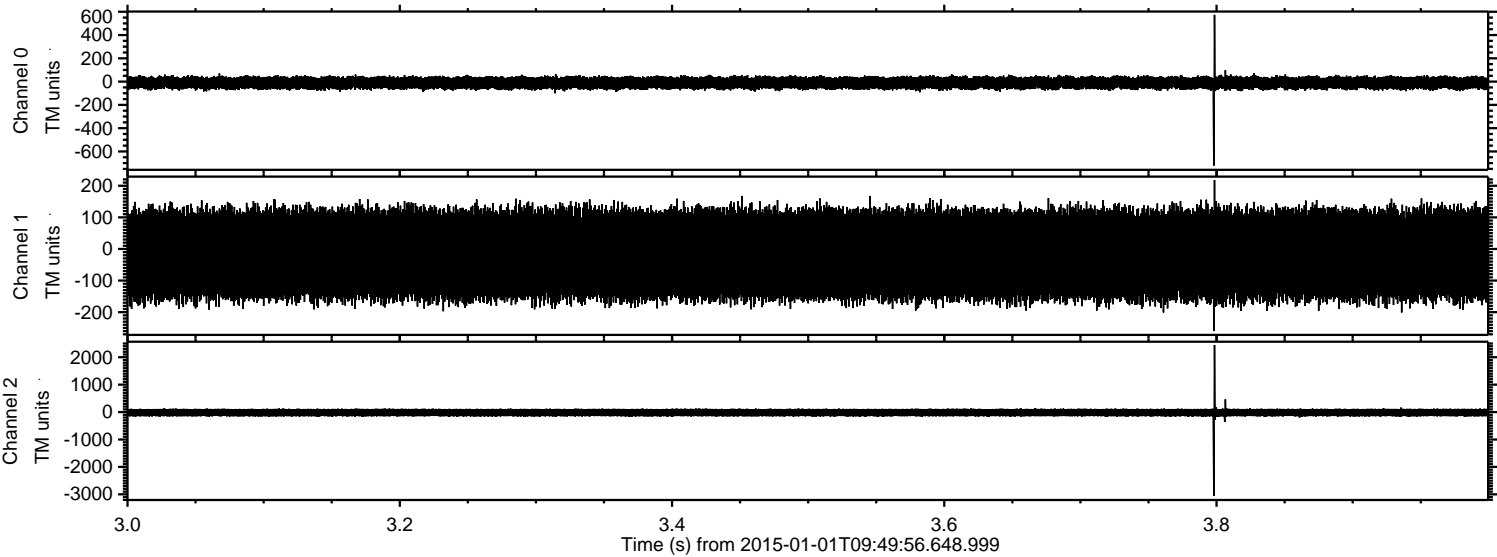
Processed Sat Jan 3 07:07:33 2015 by ELM ver.2012-10-06 from 001__elm20150101_094955__dat00.bin



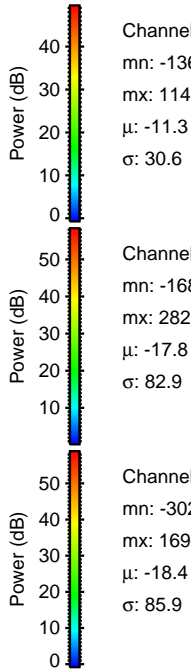
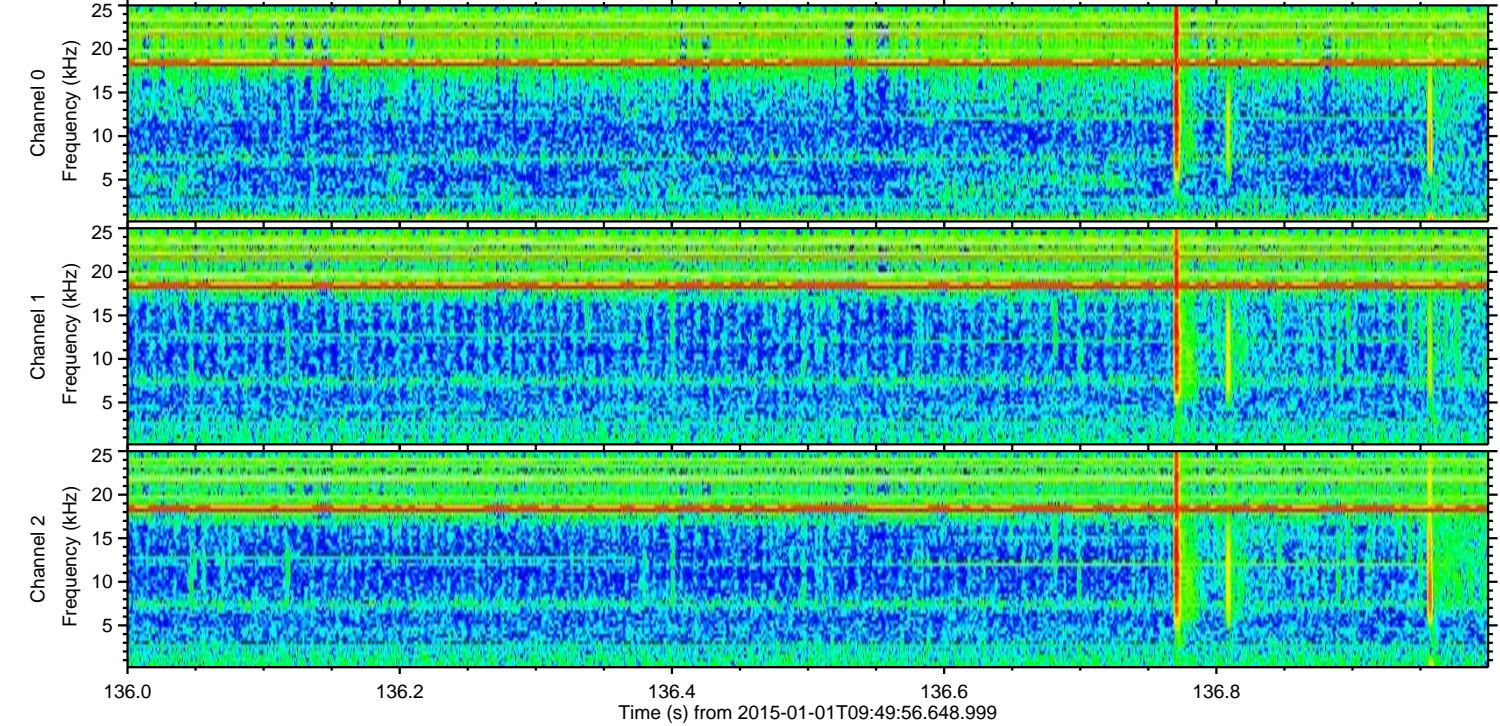
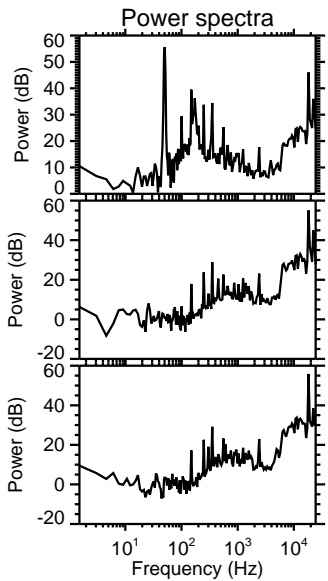
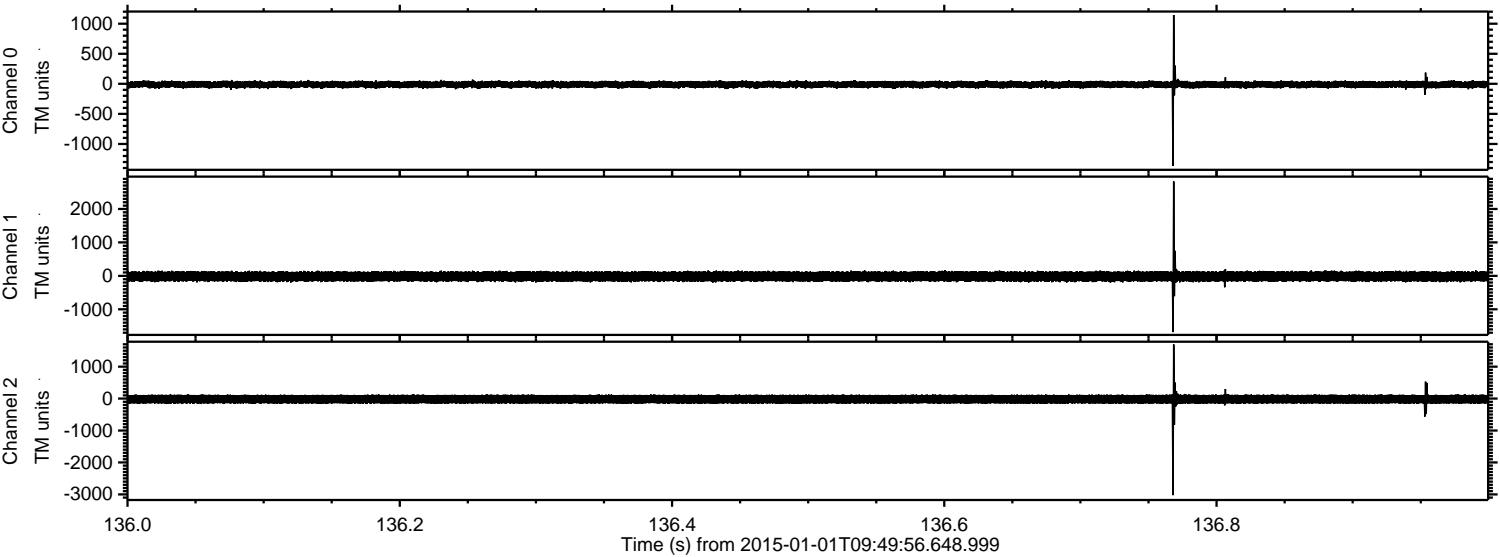
Processed Sat Jan 3 07:07:34 2015 by ELM ver.2012-10-06 from 001__elm20150101_094955__dat00.bin



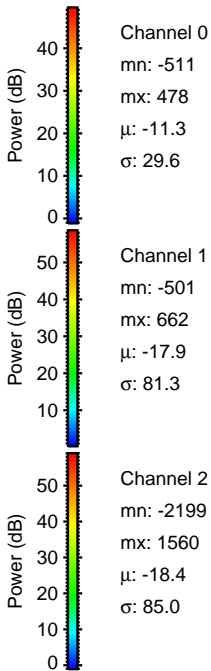
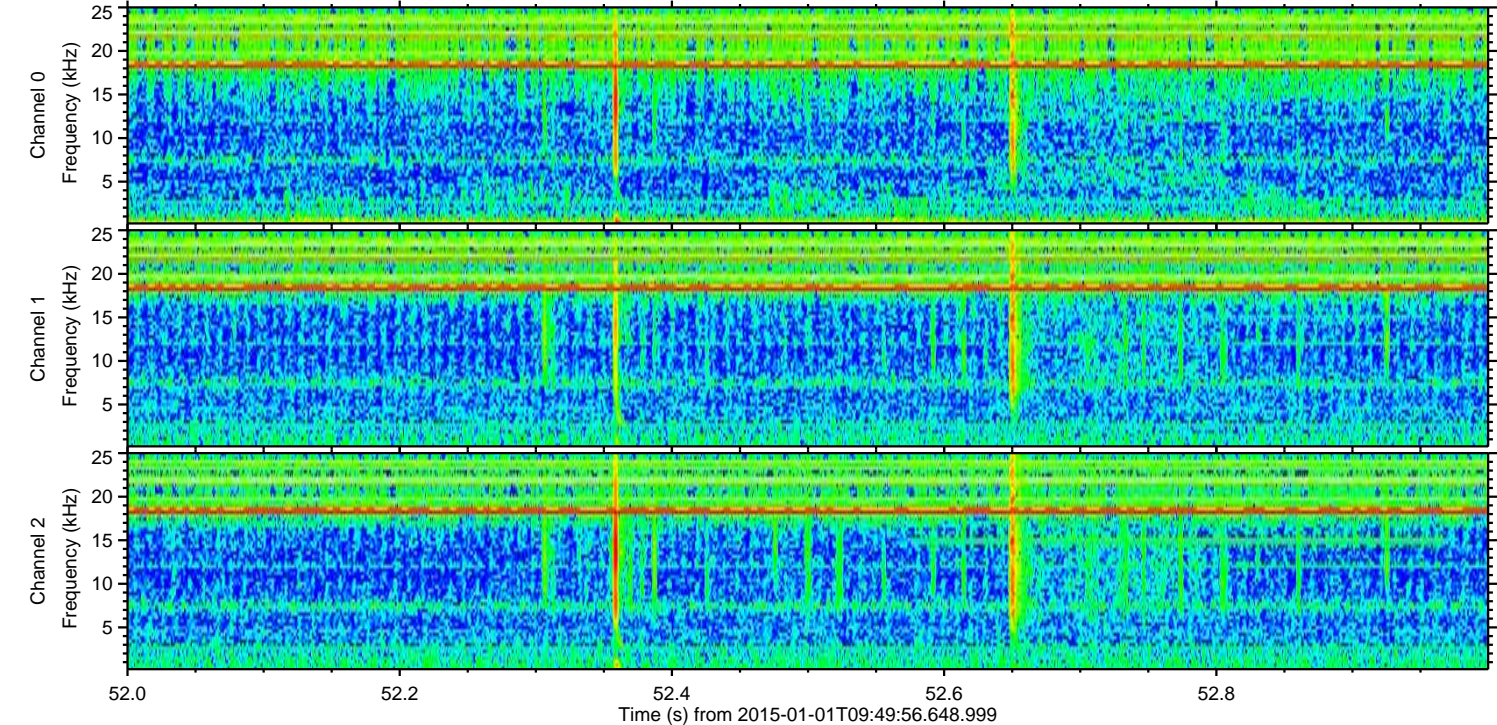
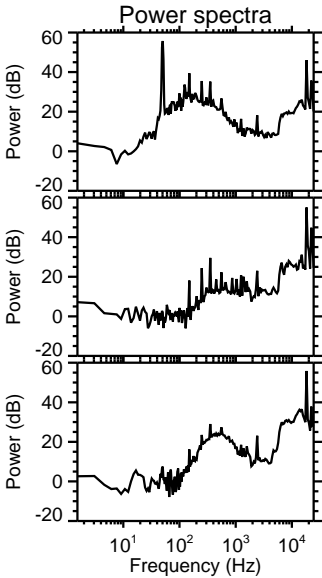
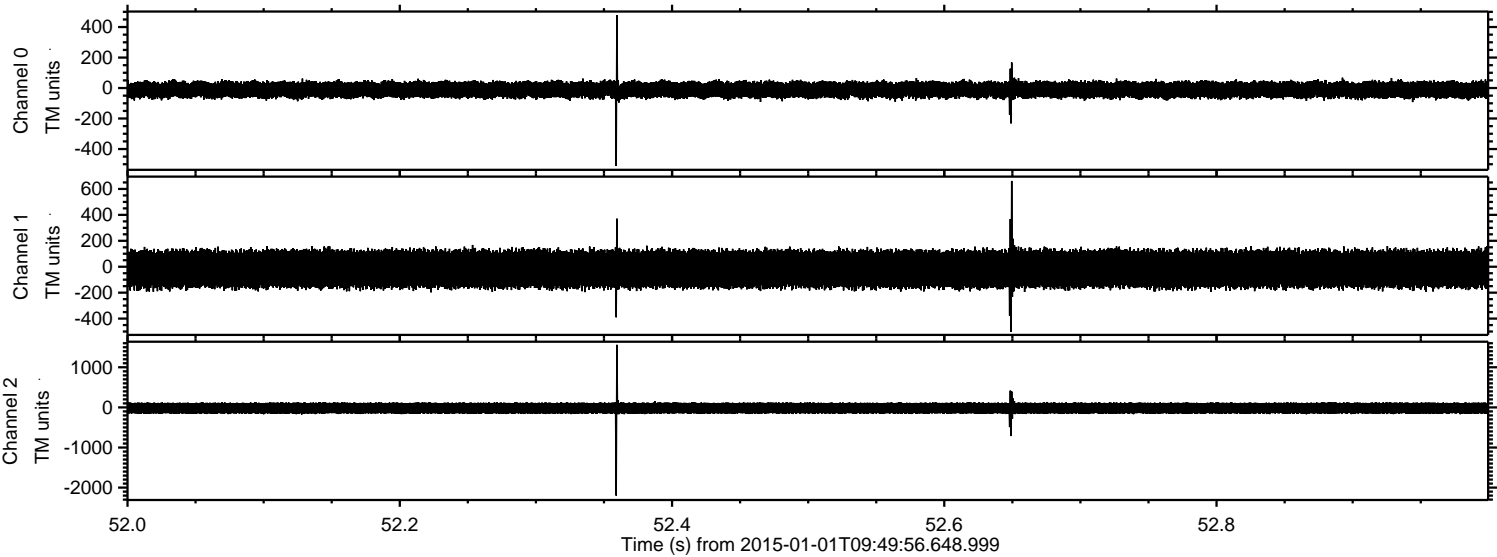
Processed Sat Jan 3 07:07:35 2015 by ELM ver.2012-10-06 from 001__elm20150101_094955__dat00.bin



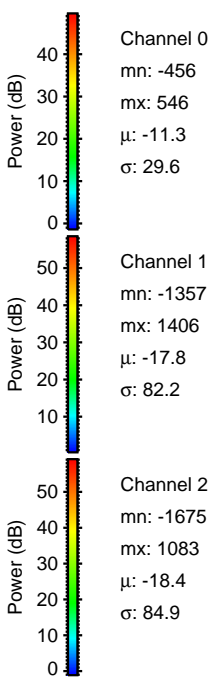
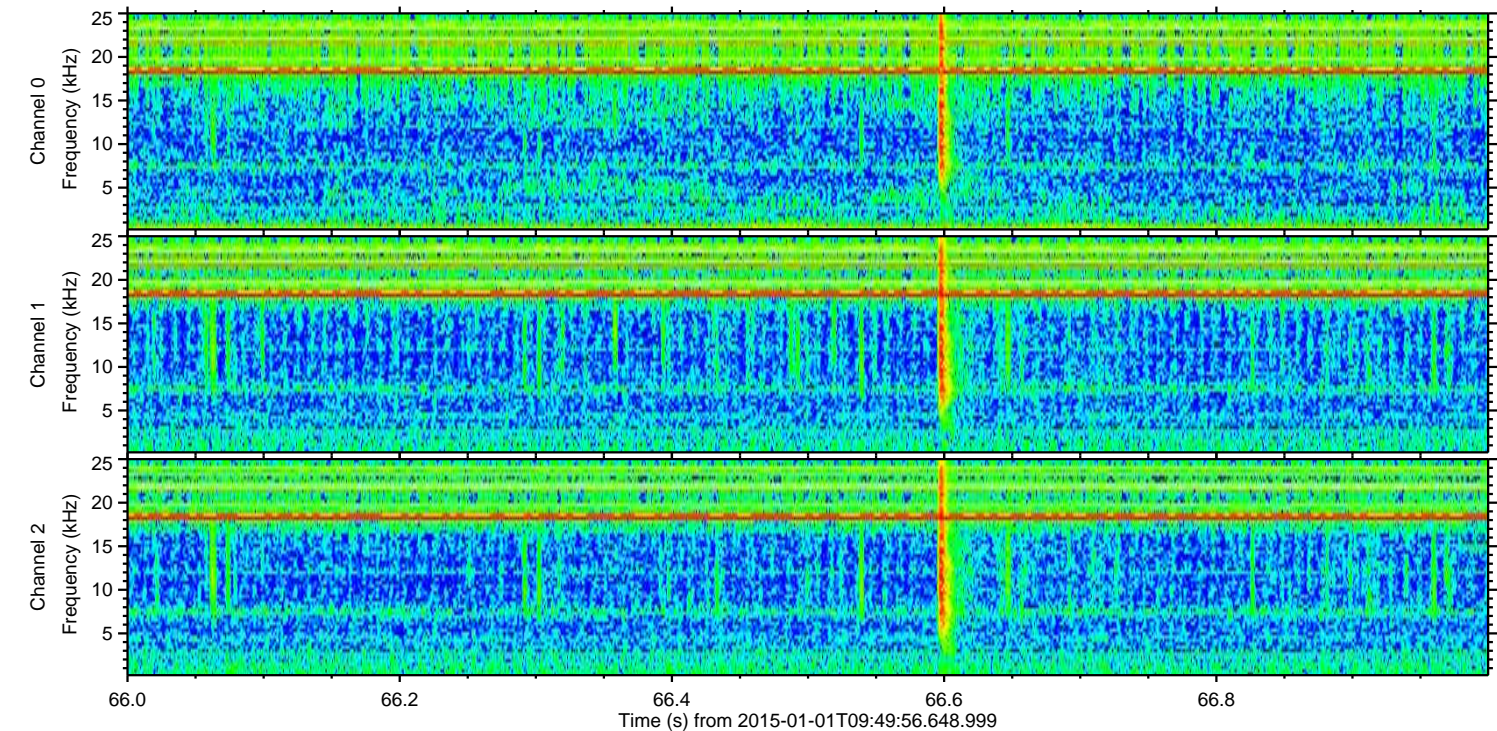
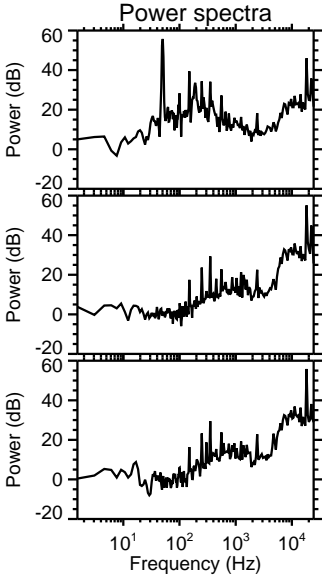
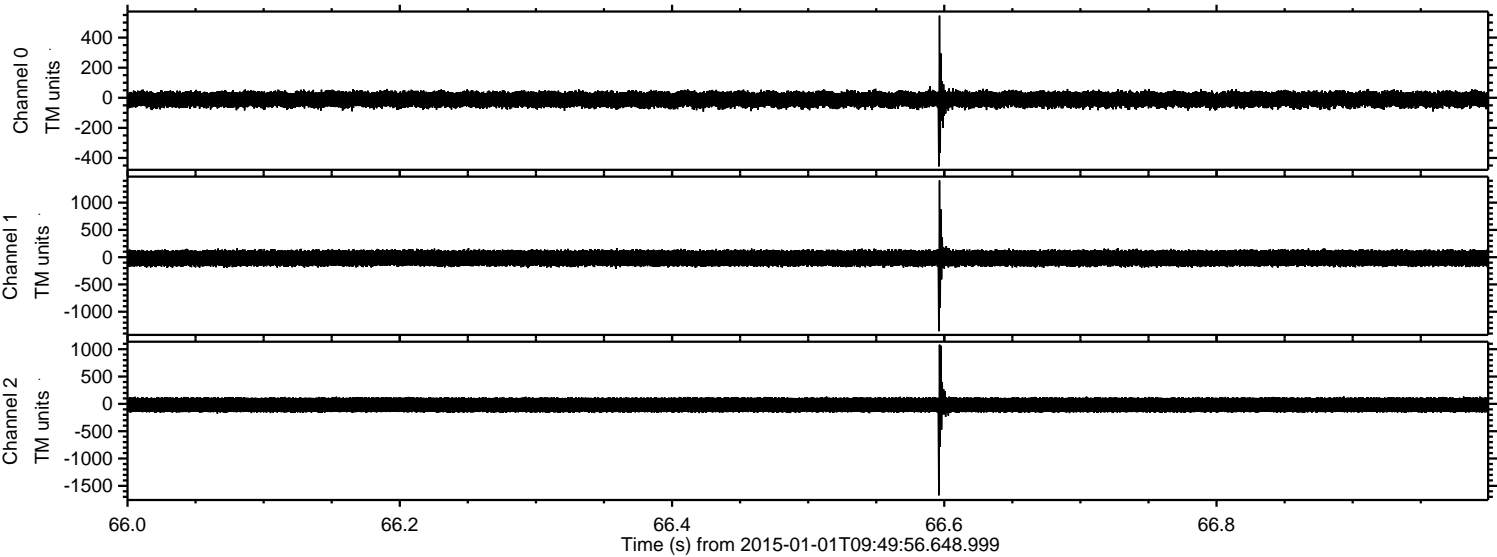
Processed Sat Jan 3 07:07:36 2015 by ELM ver.2012-10-06 from 001__elm20150101_094955__dat00.bin



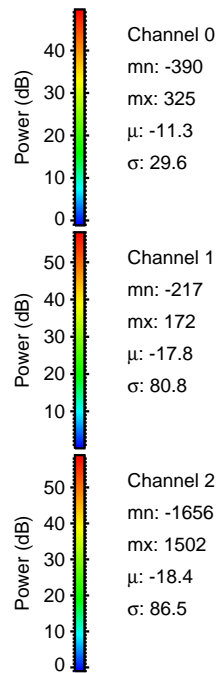
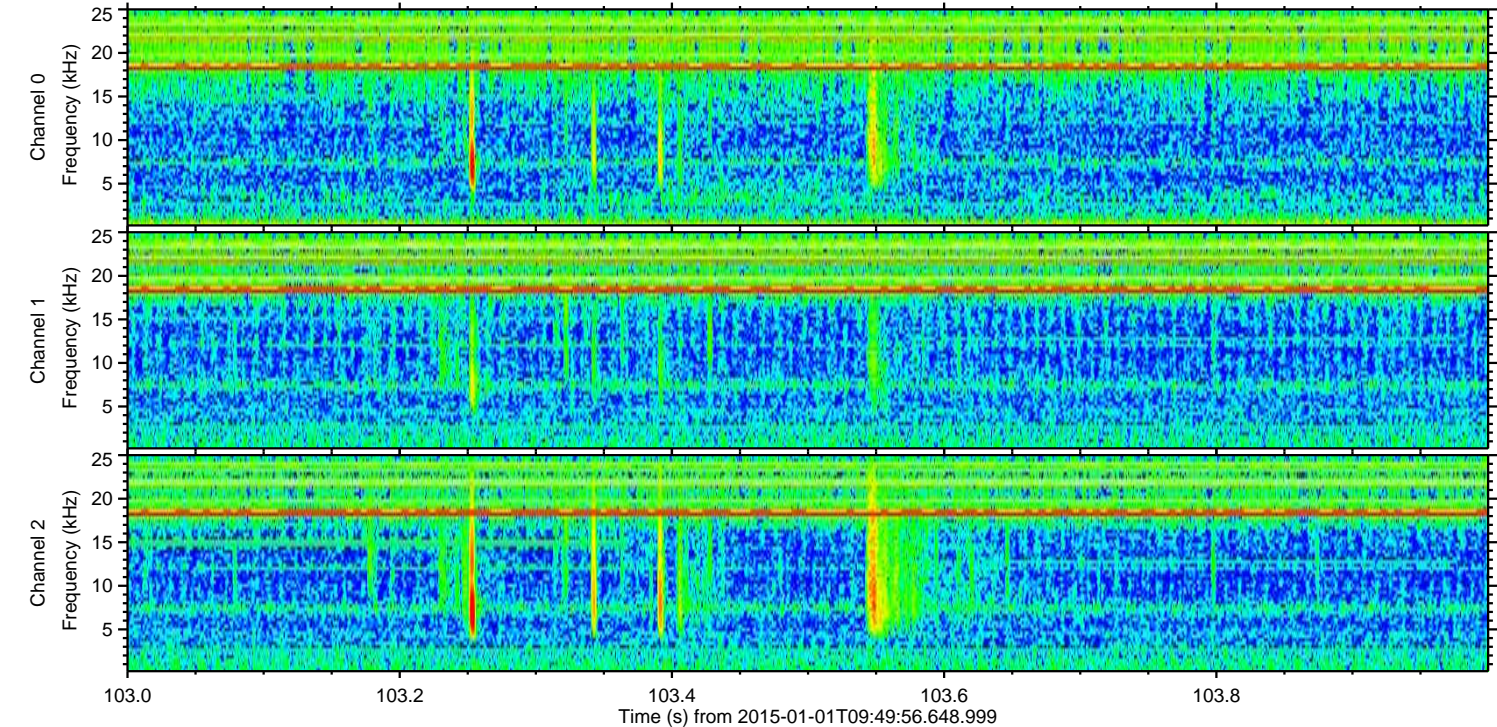
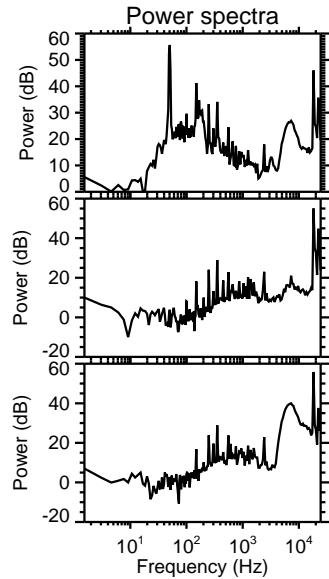
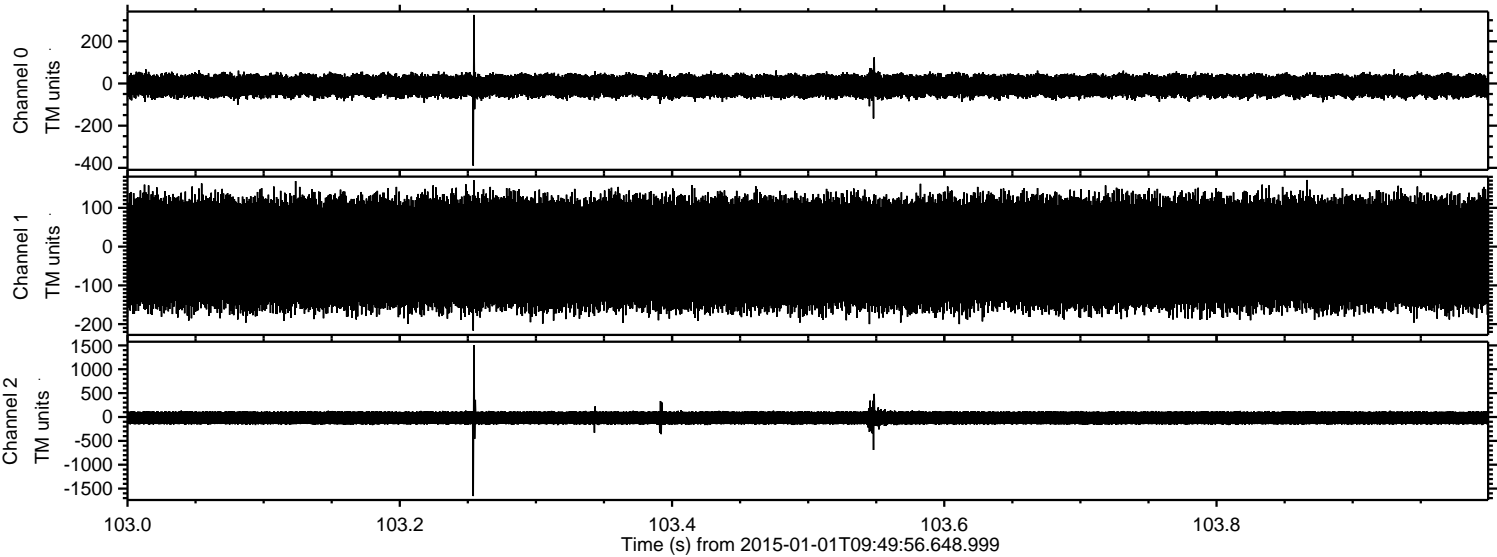
Processed Sat Jan 3 07:07:37 2015 by ELM ver.2012-10-06 from 001__elm20150101_094955__dat00.bin



Processed Sat Jan 3 07:07:38 2015 by ELM ver.2012-10-06 from 001__elm20150101_094955__dat00.bin



Processed Sat Jan 3 07:07:39 2015 by ELM ver.2012-10-06 from 001__elm20150101_094955__dat00.bin



Channel 0
mn: -390
mx: 325
 μ : -11.3
 σ : 29.6

Channel 1
mn: -217
mx: 172
 μ : -17.8
 σ : 80.8

Channel 2
mn: -1656
mx: 1502
 μ : -18.4
 σ : 86.5

Processed Sat Jan 3 07:07:40 2015 by ELM ver.2012-10-06 from 001__elm20150101_094955__dat00.bin

