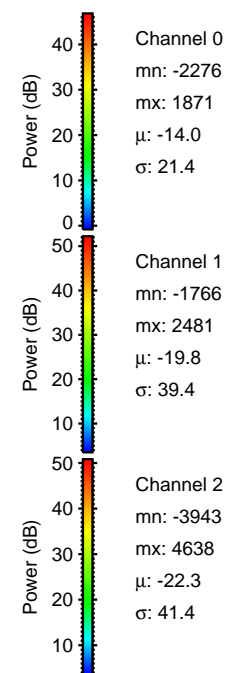
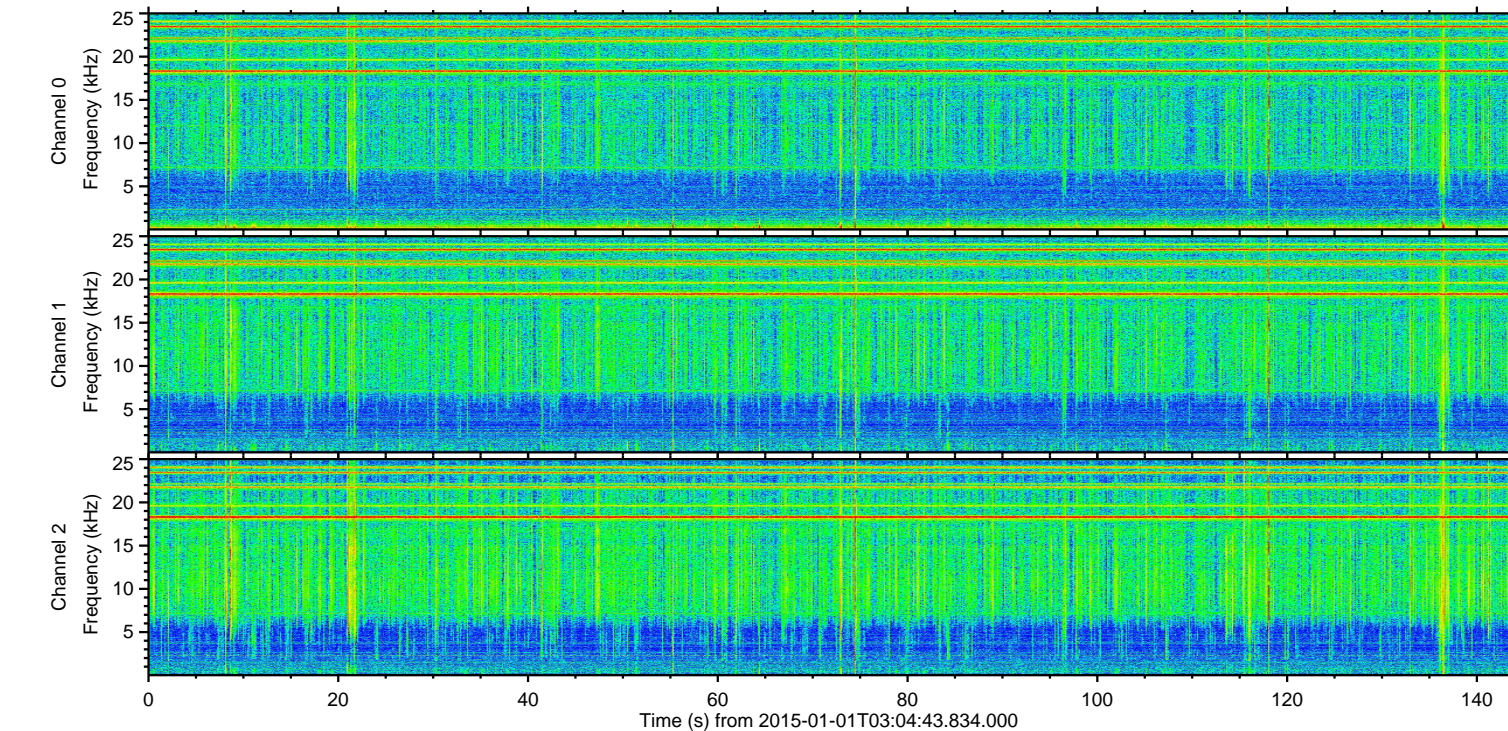
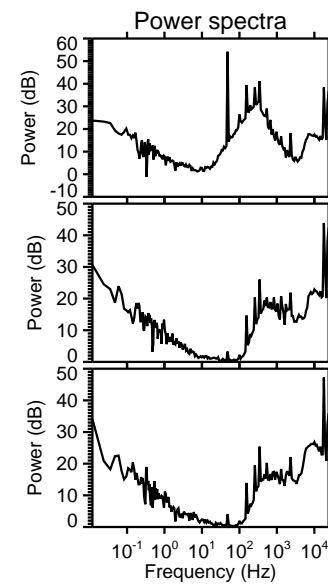
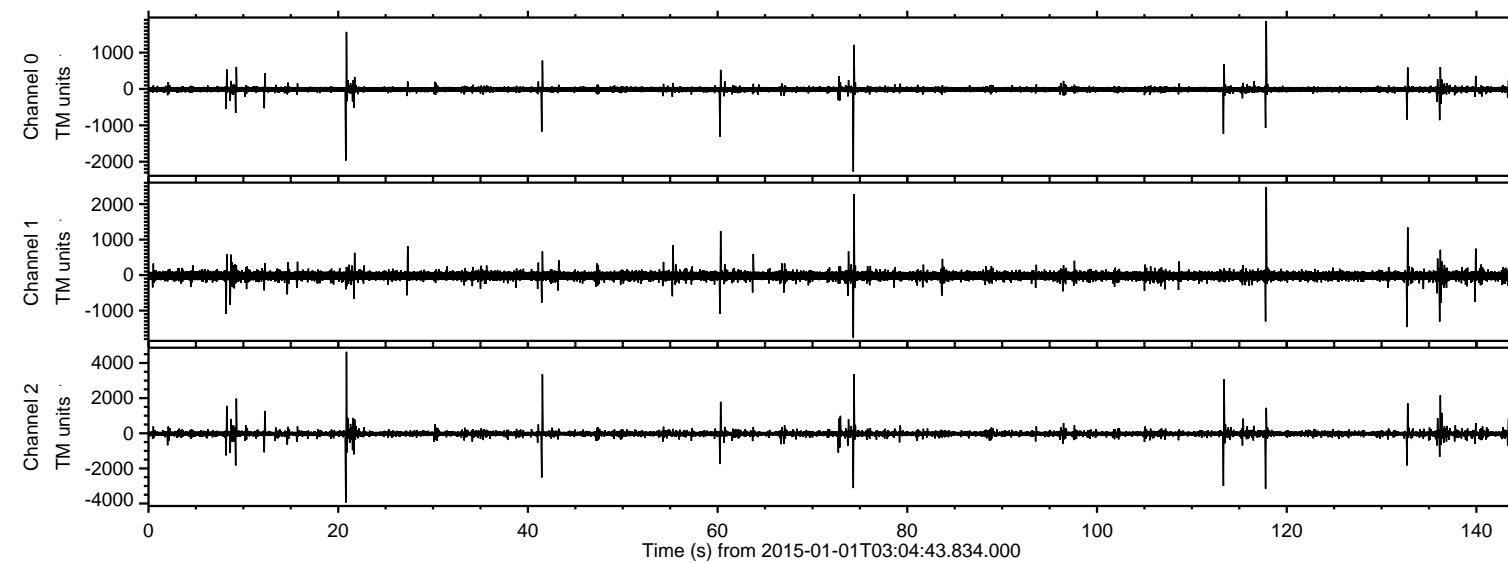


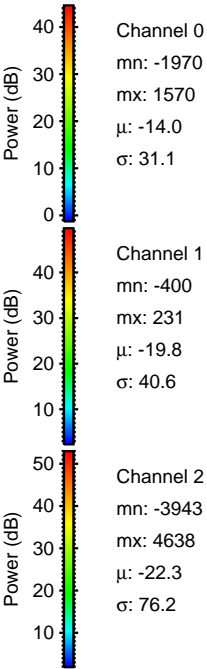
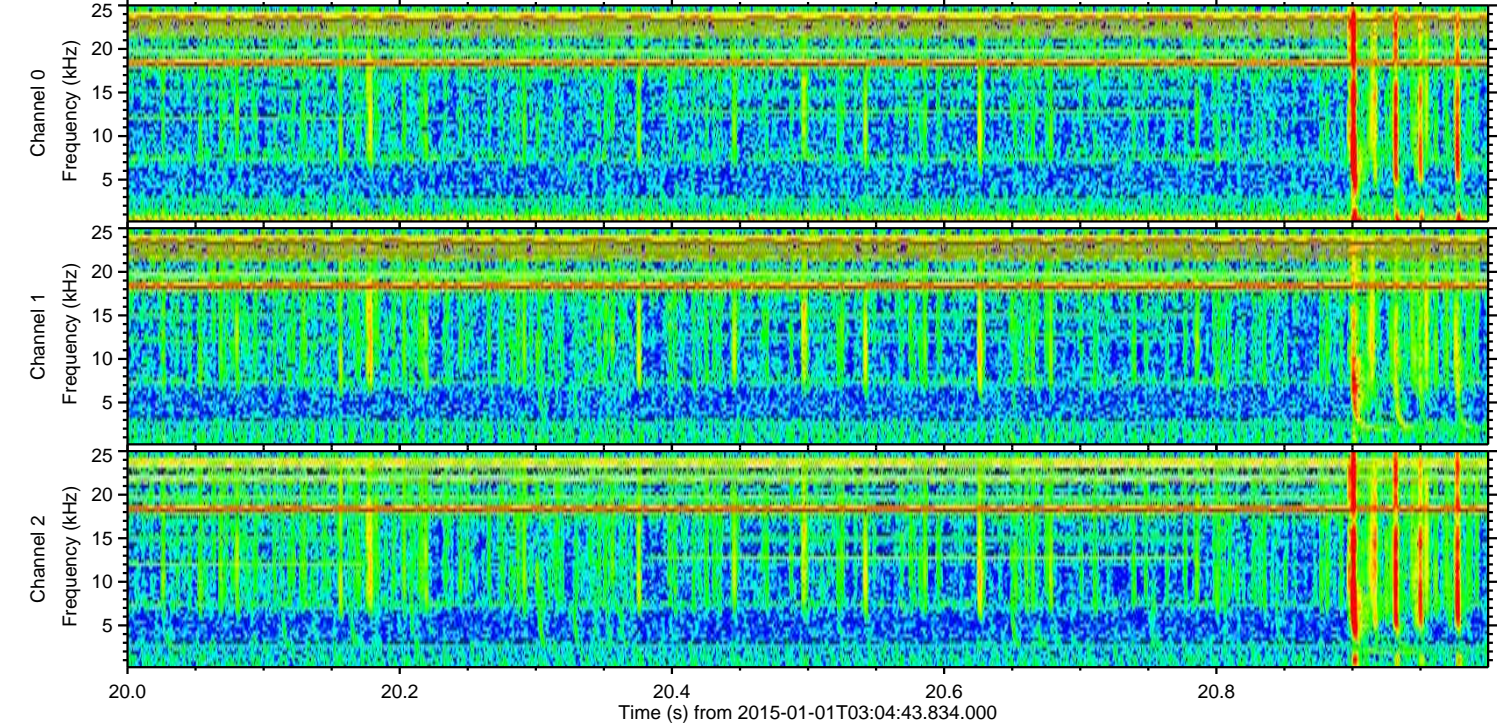
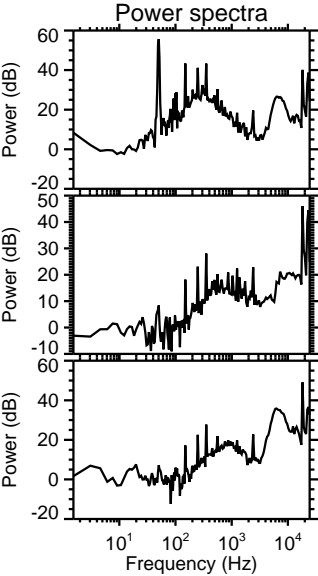
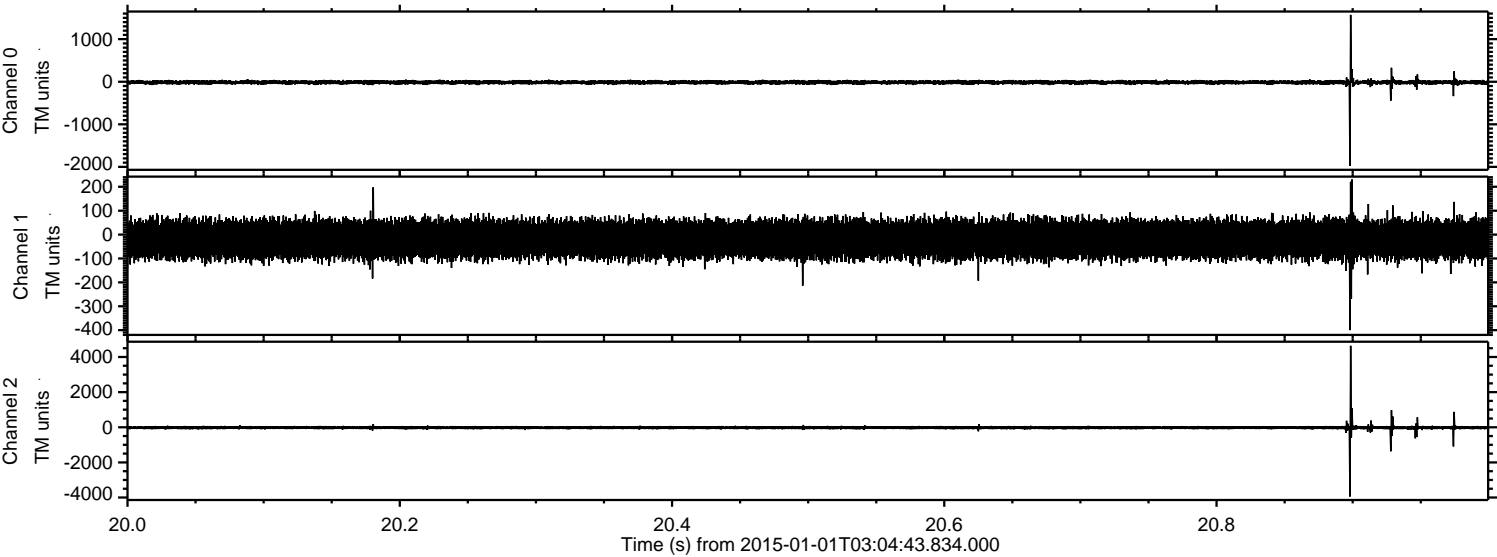
ELMAVAN 3D WAVEFORMS (Measured data sampled at 50 kHz) 49809 packets of 144 samples from 2015-01-01T03:04:43.834.000.

Processed Sat Jan 3 04:55:35 2015 by ELM ver.2012-10-06 from 001\_\_elm20150101\_030442\_\_dat00.bin

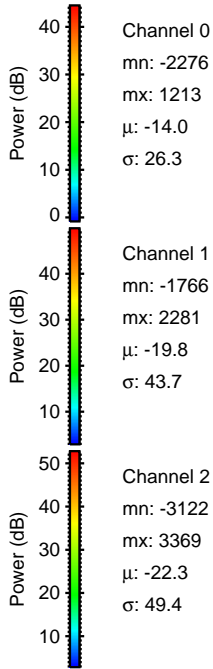
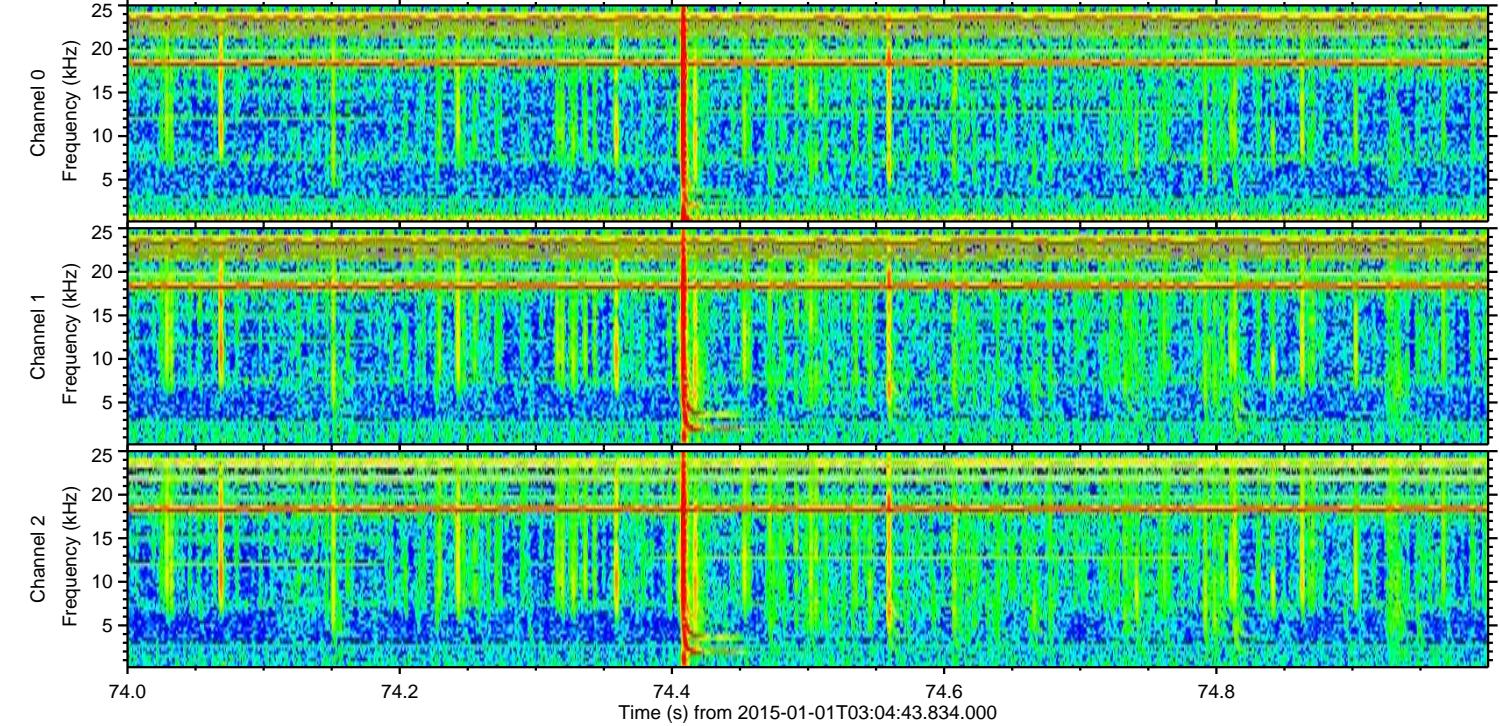
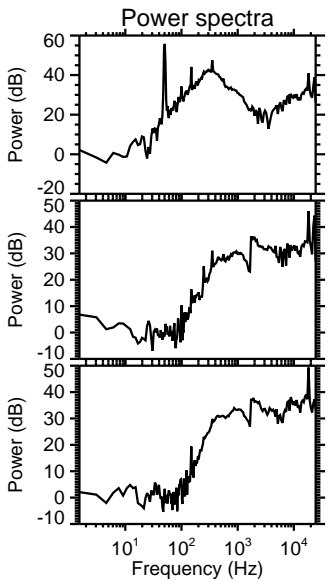
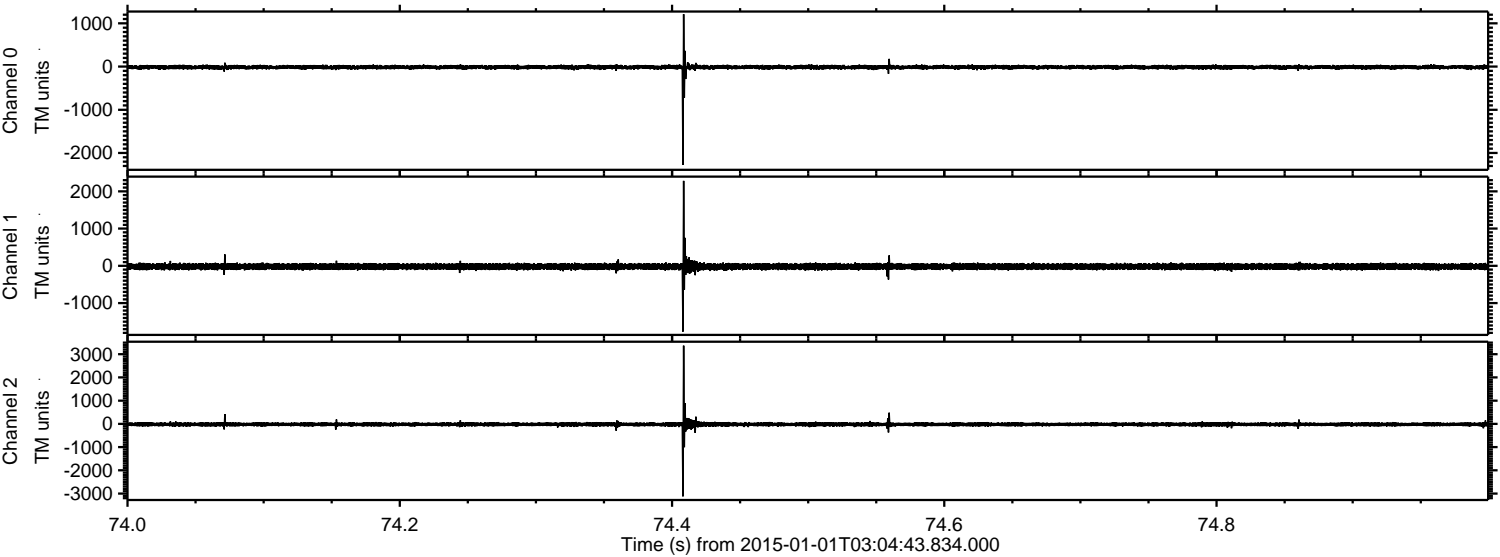


ELMAVAN 3D WAVEFORMS (Measured data sampled at 50 kHz) 49809 packets of 144 samples from 2015-01-01T03:04:43.834.000. Part 21/144

Processed Sat Jan 3 04:55:48 2015 by ELM ver.2012-10-06 from 001\_\_elm20150101\_030442\_\_dat00.bin



Processed Sat Jan 3 04:55:49 2015 by ELM ver.2012-10-06 from 001\_\_elm20150101\_030442\_\_dat00.bin

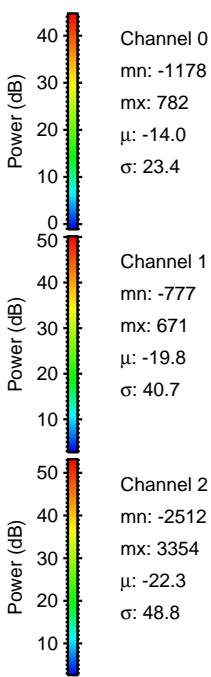
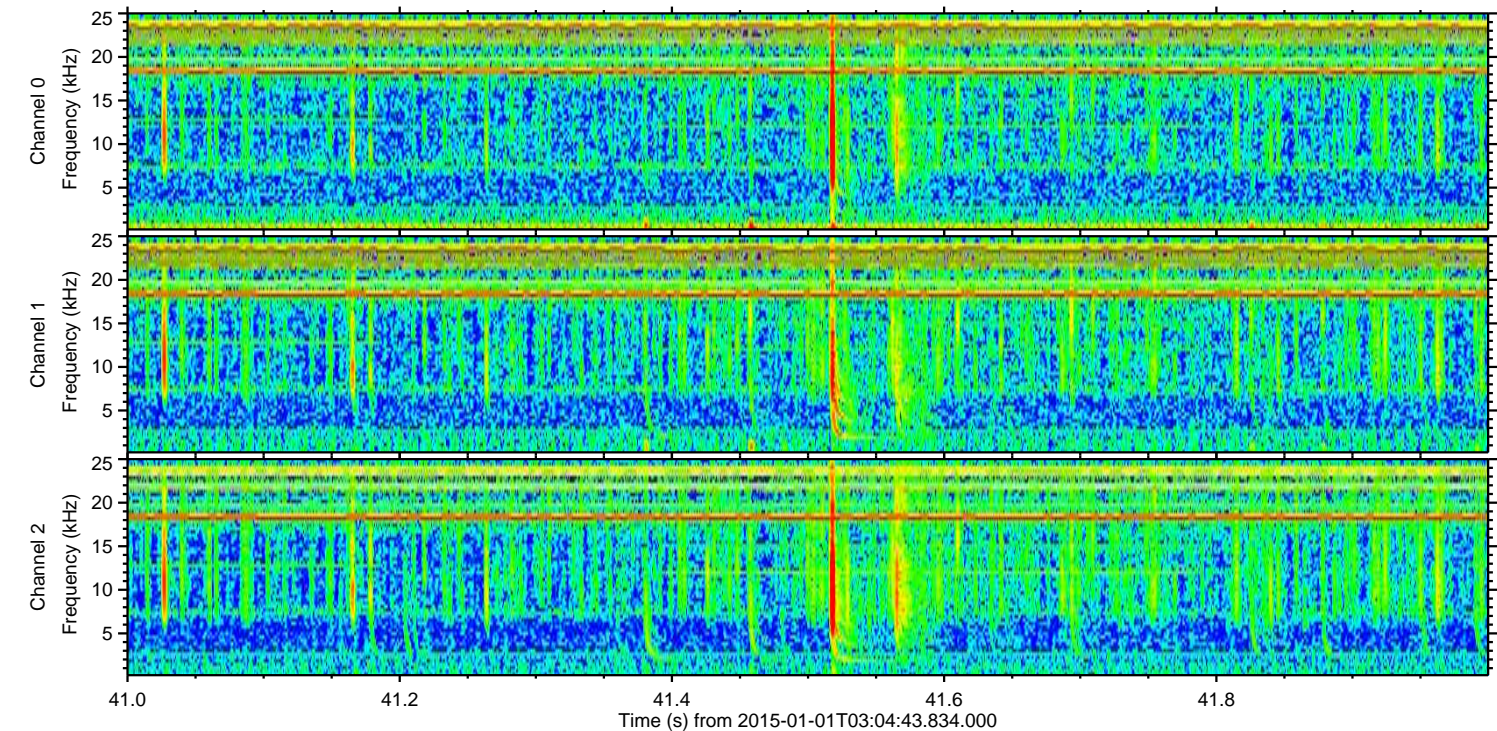
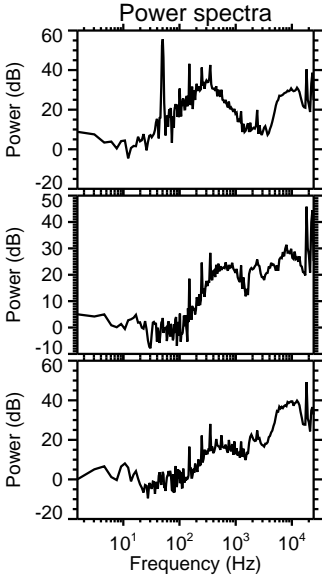
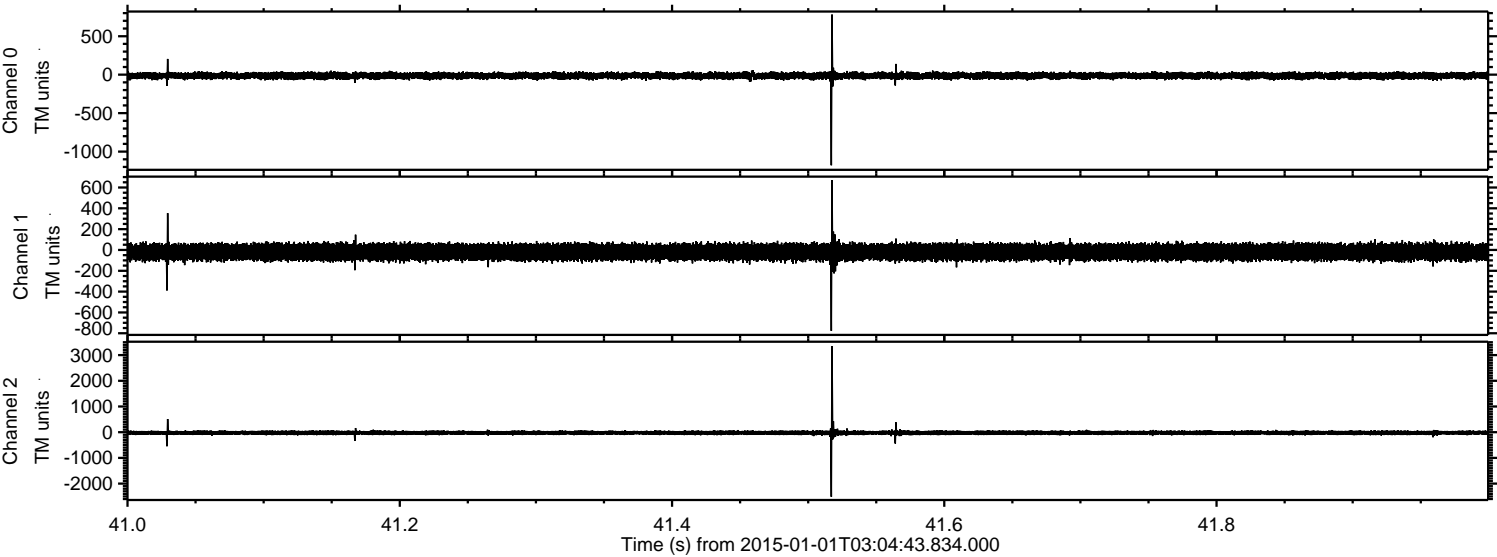


Channel 0  
mn: -2276  
mx: 1213  
 $\mu$ : -14.0  
 $\sigma$ : 26.3

Channel 1  
mn: -1766  
mx: 2281  
 $\mu$ : -19.8  
 $\sigma$ : 43.7

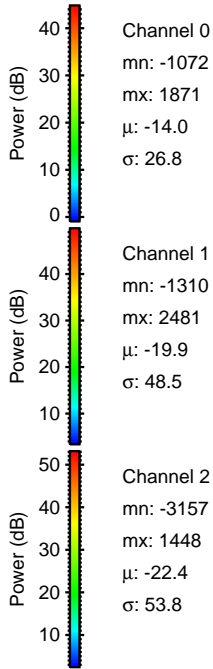
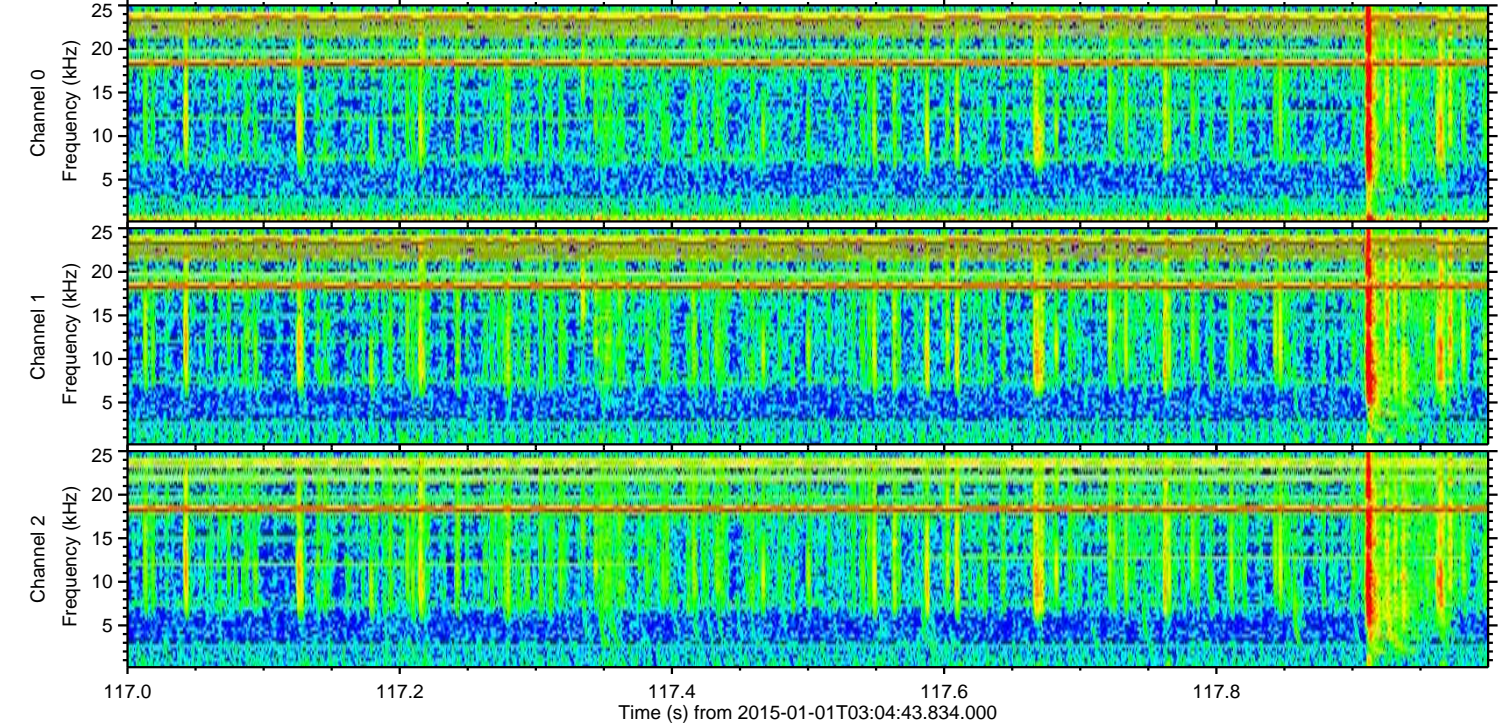
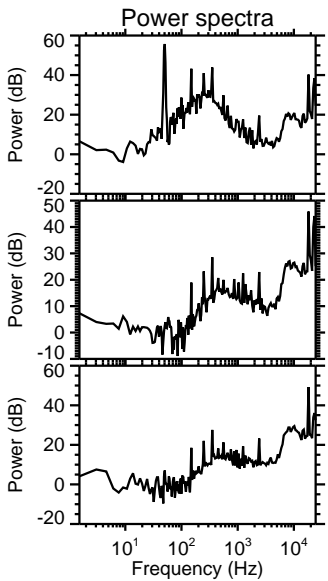
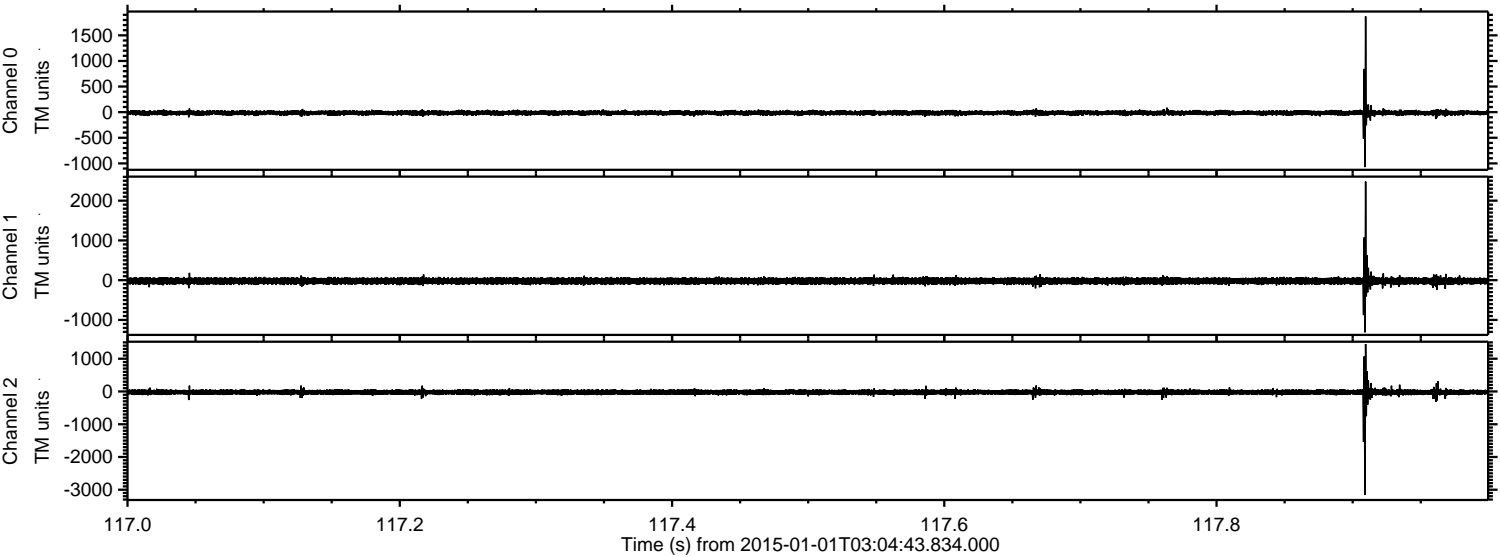
Channel 2  
mn: -3122  
mx: 3369  
 $\mu$ : -22.3  
 $\sigma$ : 49.4

Processed Sat Jan 3 04:55:50 2015 by ELM ver.2012-10-06 from 001\_\_elm20150101\_030442\_\_dat00.bin



ELMAVAN 3D WAVEFORMS (Measured data sampled at 50 kHz) 49809 packets of 144 samples from 2015-01-01T03:04:43.834.000. Part 118/144

Processed Sat Jan 3 04:55:51 2015 by ELM ver.2012-10-06 from 001\_\_elm20150101\_030442\_\_dat00.bin



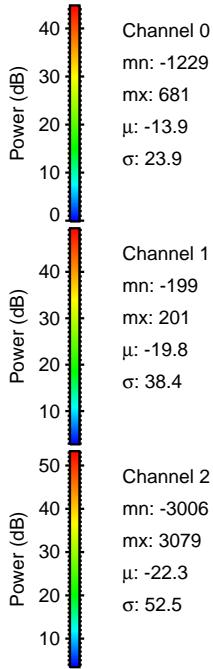
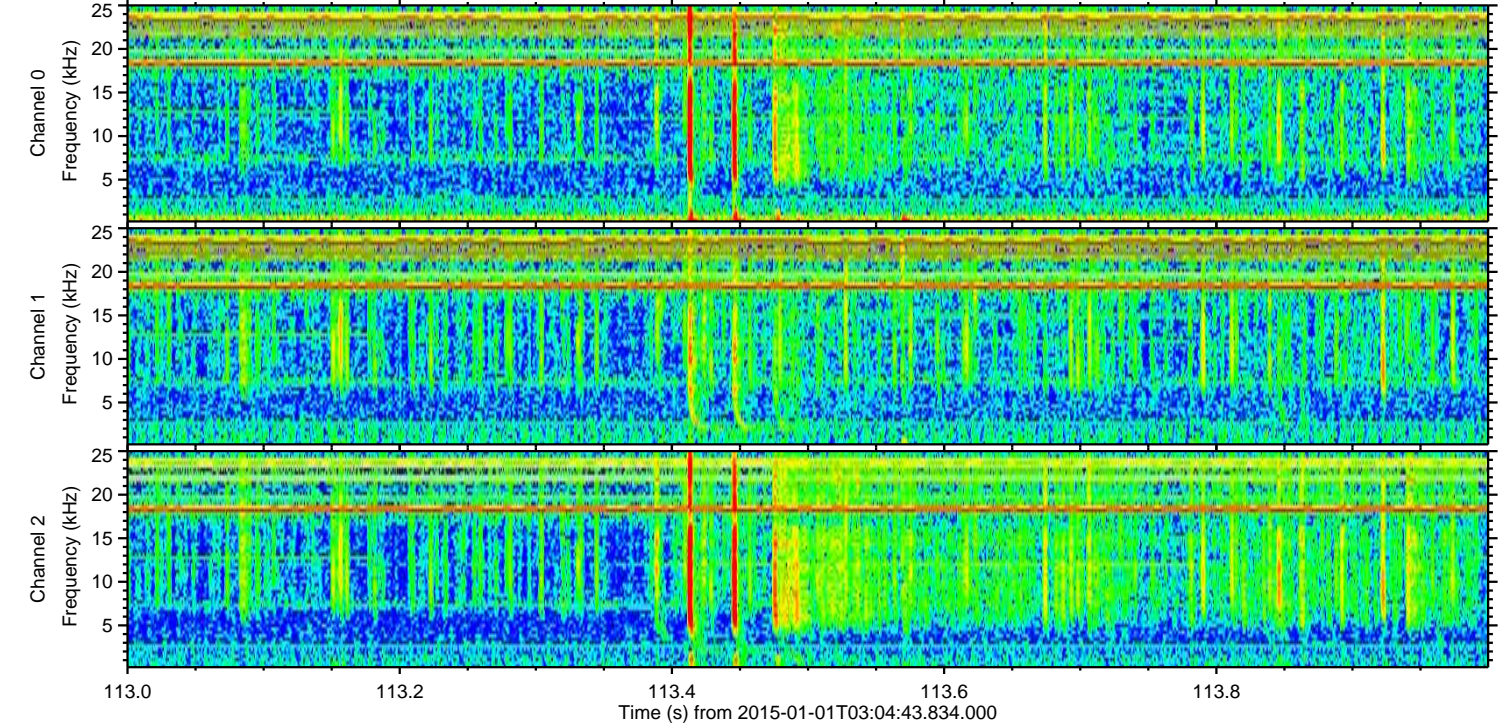
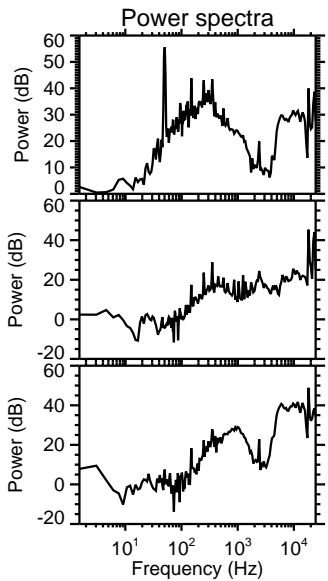
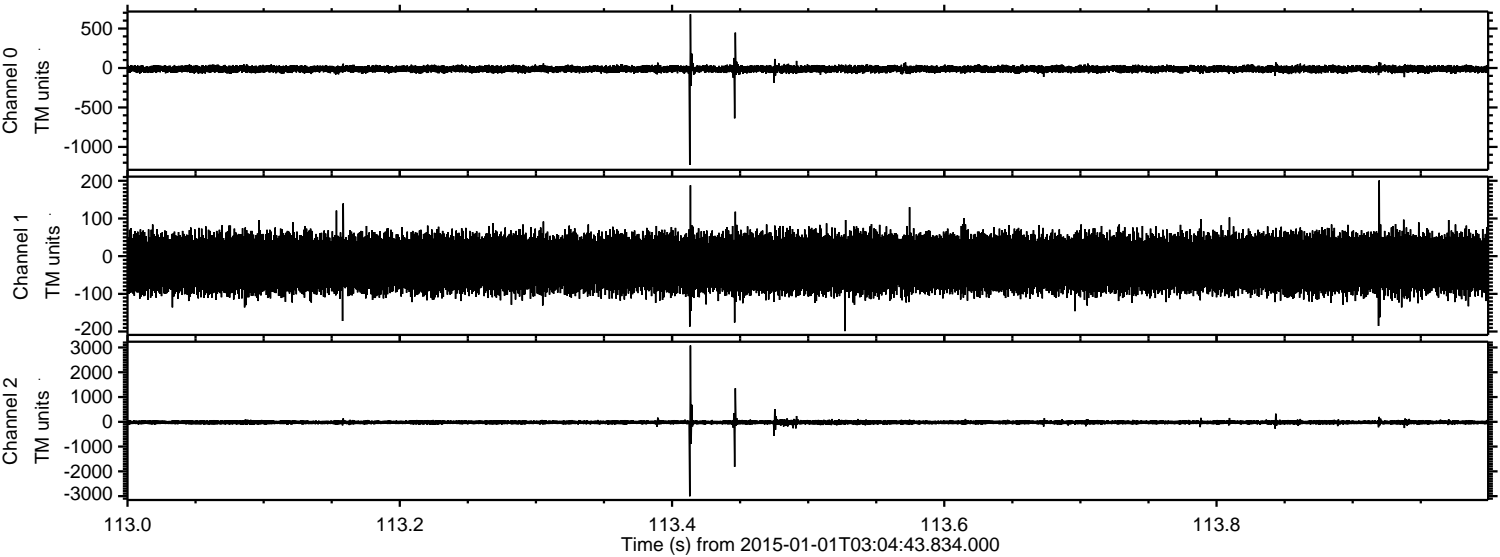
Channel 0  
mn: -1072  
mx: 1871  
 $\mu$ : -14.0  
 $\sigma$ : 26.8

Channel 1  
mn: -1310  
mx: 2481  
 $\mu$ : -19.9  
 $\sigma$ : 48.5

Channel 2  
mn: -3157  
mx: 1448  
 $\mu$ : -22.4  
 $\sigma$ : 53.8

ELMAVAN 3D WAVEFORMS (Measured data sampled at 50 kHz) 49809 packets of 144 samples from 2015-01-01T03:04:43.834.000. Part 114/144

Processed Sat Jan 3 04:55:52 2015 by ELM ver.2012-10-06 from 001\_\_elm20150101\_030442\_\_dat00.bin



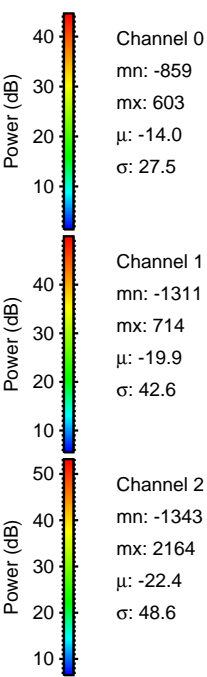
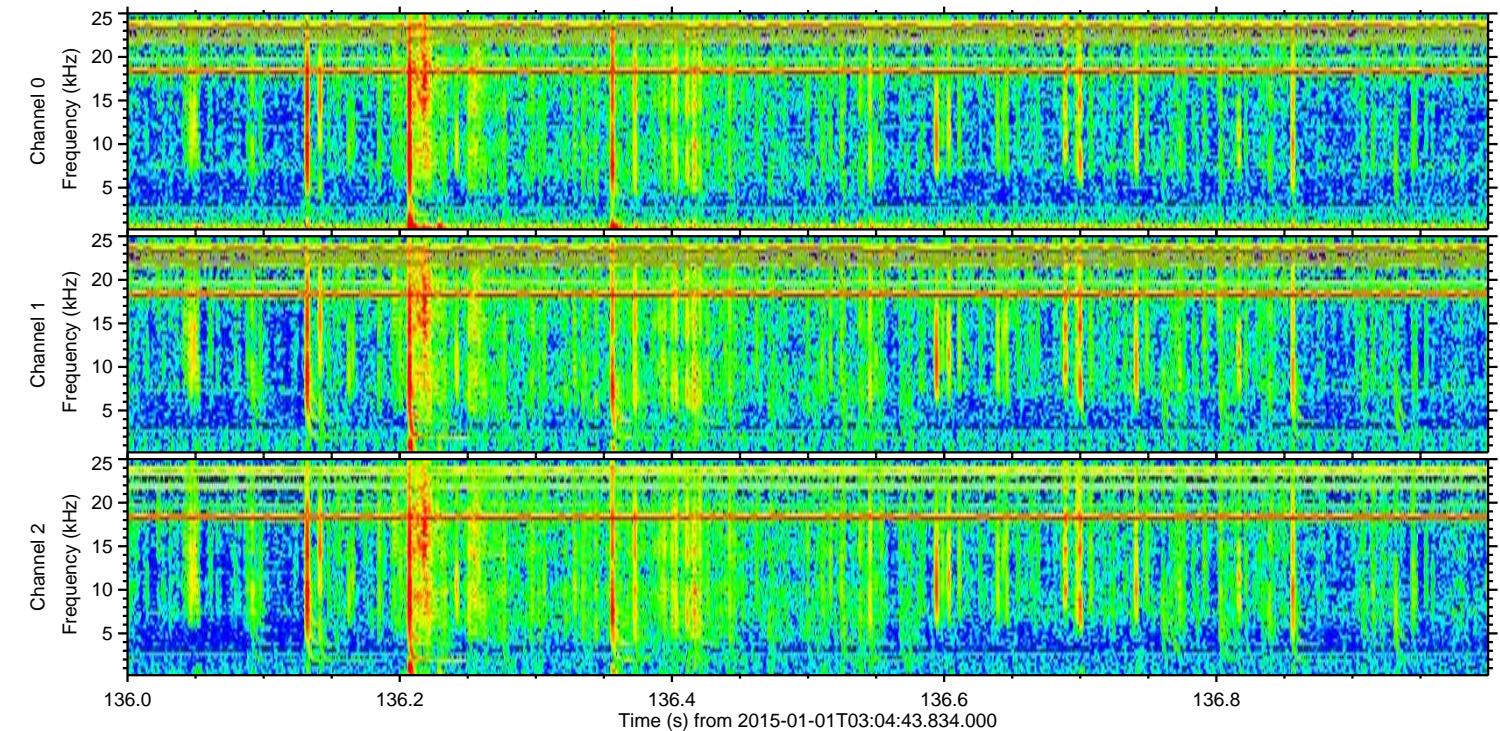
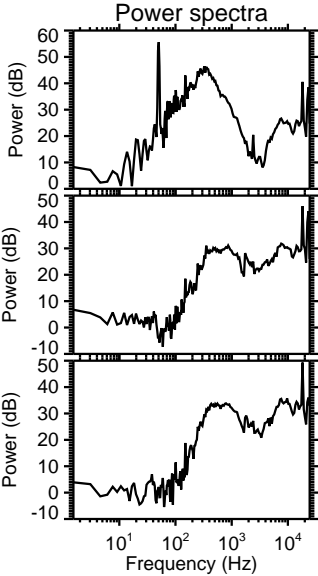
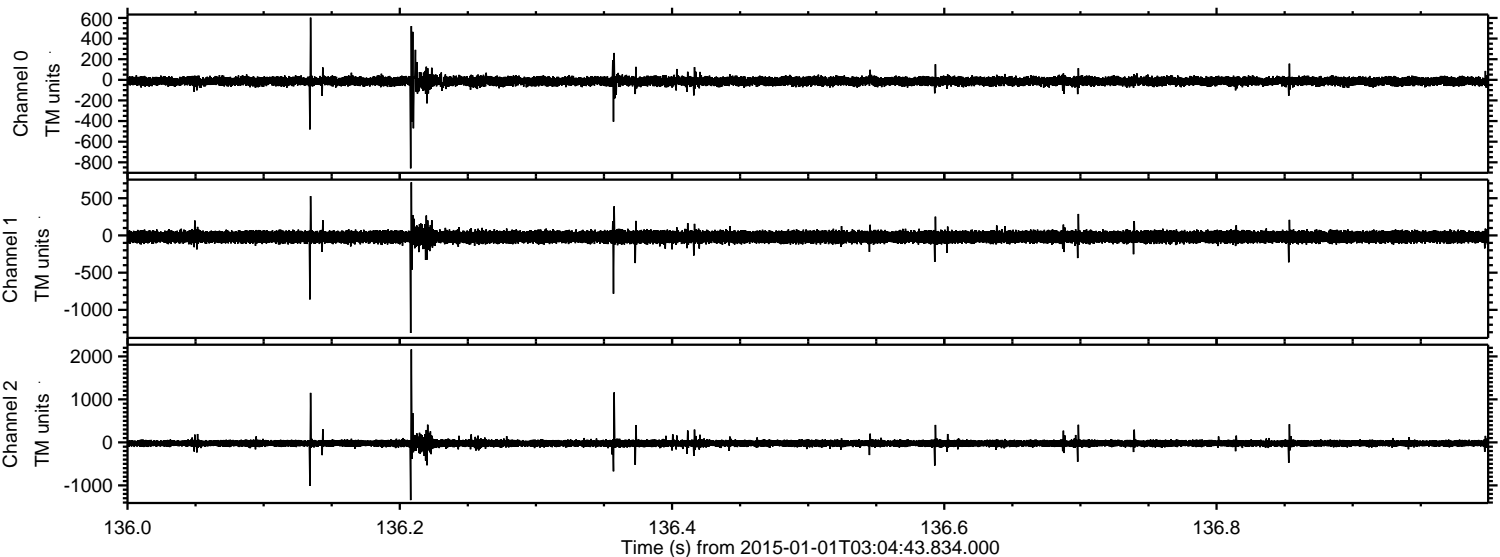
Channel 0  
mn: -1229  
mx: 681  
 $\mu$ : -13.9  
 $\sigma$ : 23.9

Channel 1  
mn: -199  
mx: 201  
 $\mu$ : -19.8  
 $\sigma$ : 38.4

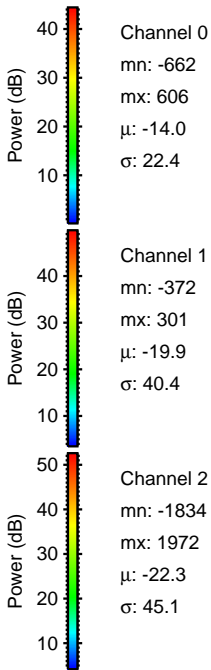
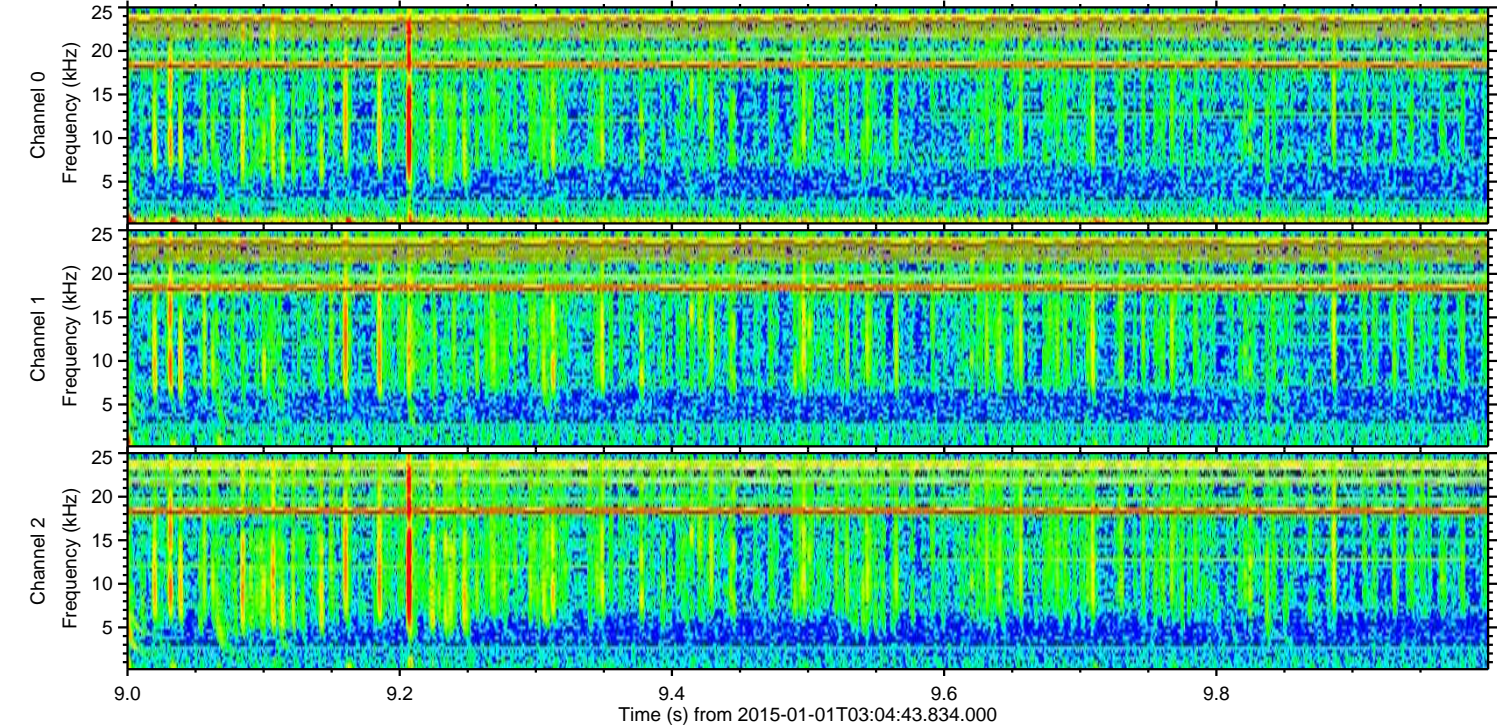
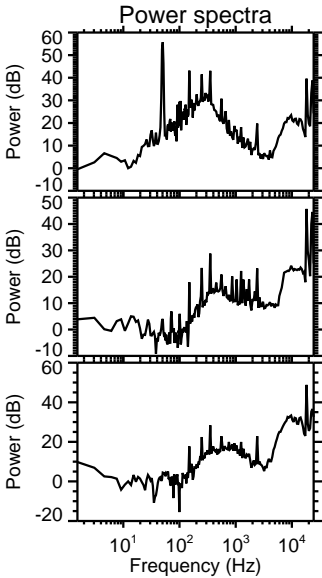
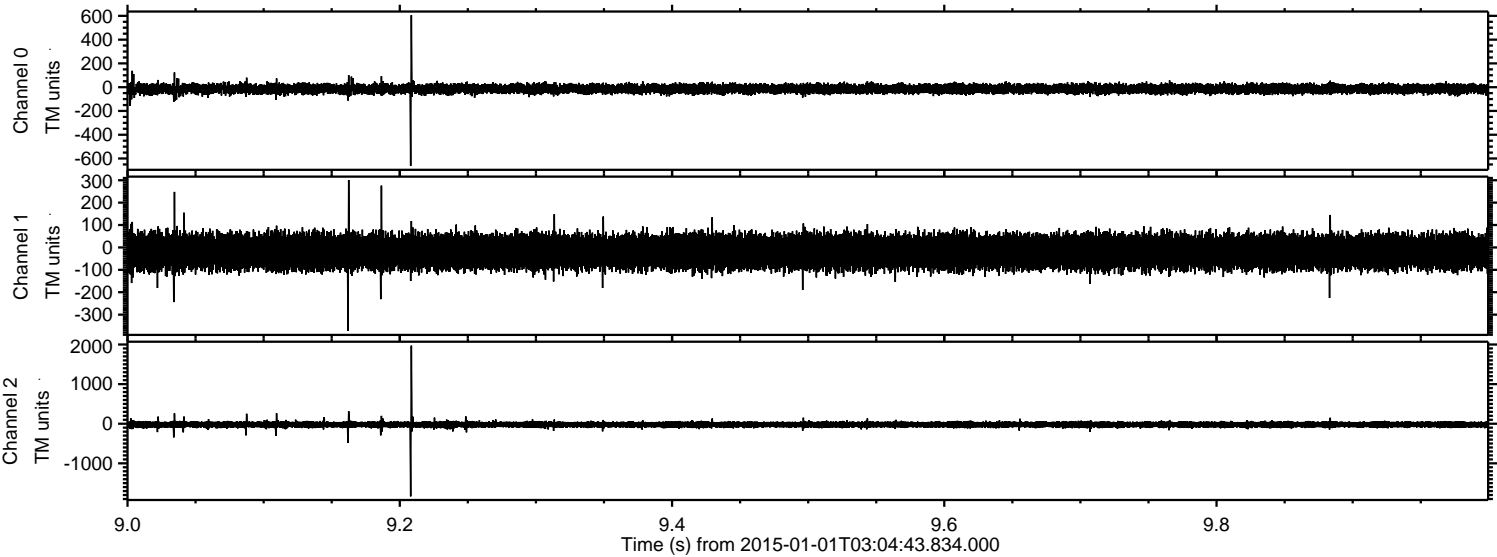
Channel 2  
mn: -3006  
mx: 3079  
 $\mu$ : -22.3  
 $\sigma$ : 52.5

ELMAVAN 3D WAVEFORMS (Measured data sampled at 50 kHz) 49809 packets of 144 samples from 2015-01-01T03:04:43.834.000. Part 137/144

Processed Sat Jan 3 04:55:53 2015 by ELM ver.2012-10-06 from 001\_\_elm20150101\_030442\_\_dat00.bin

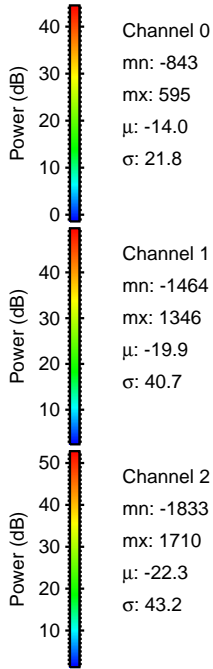
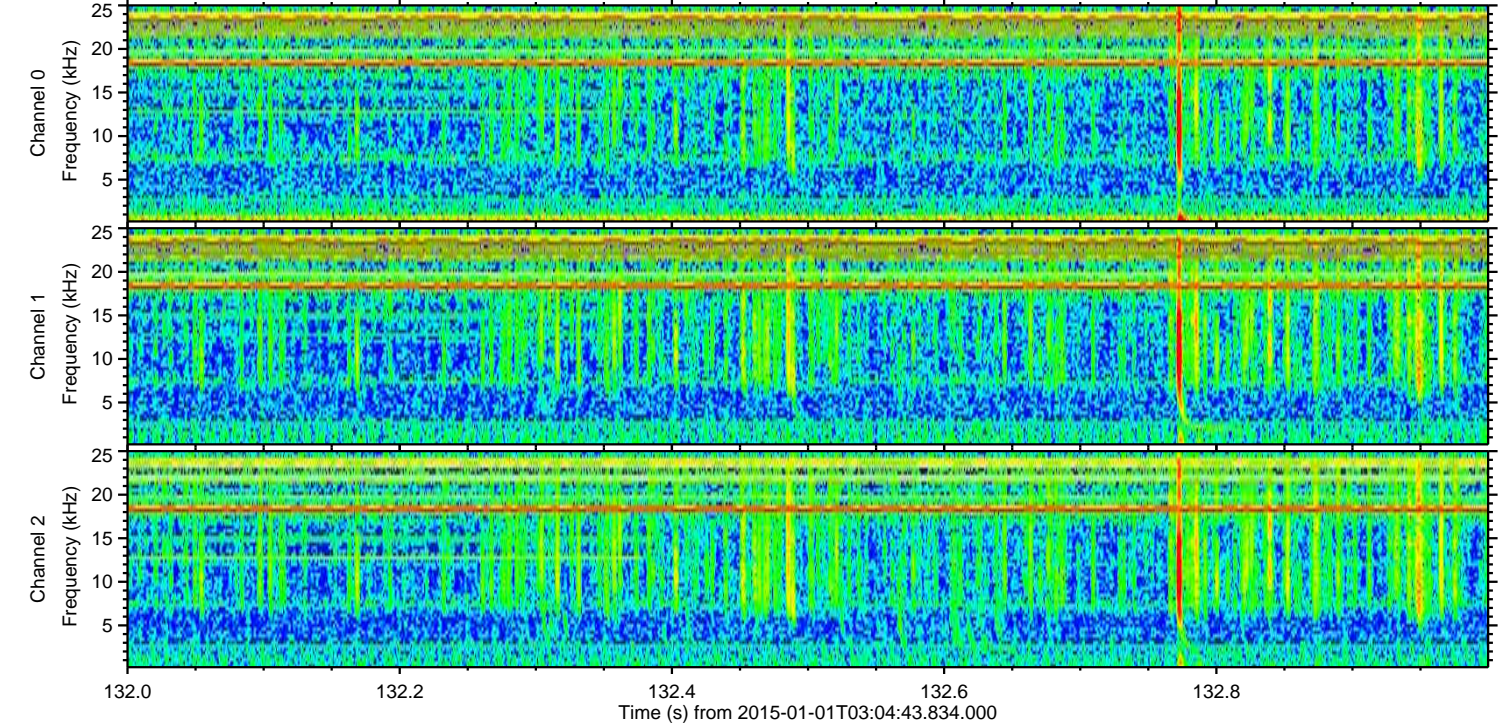
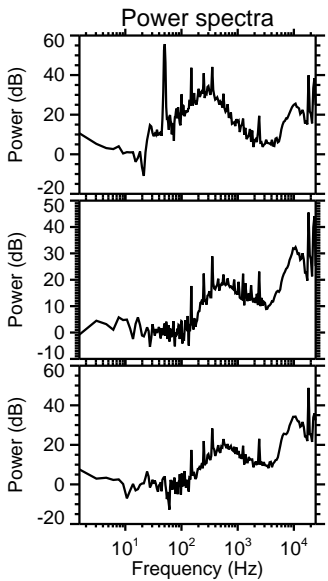
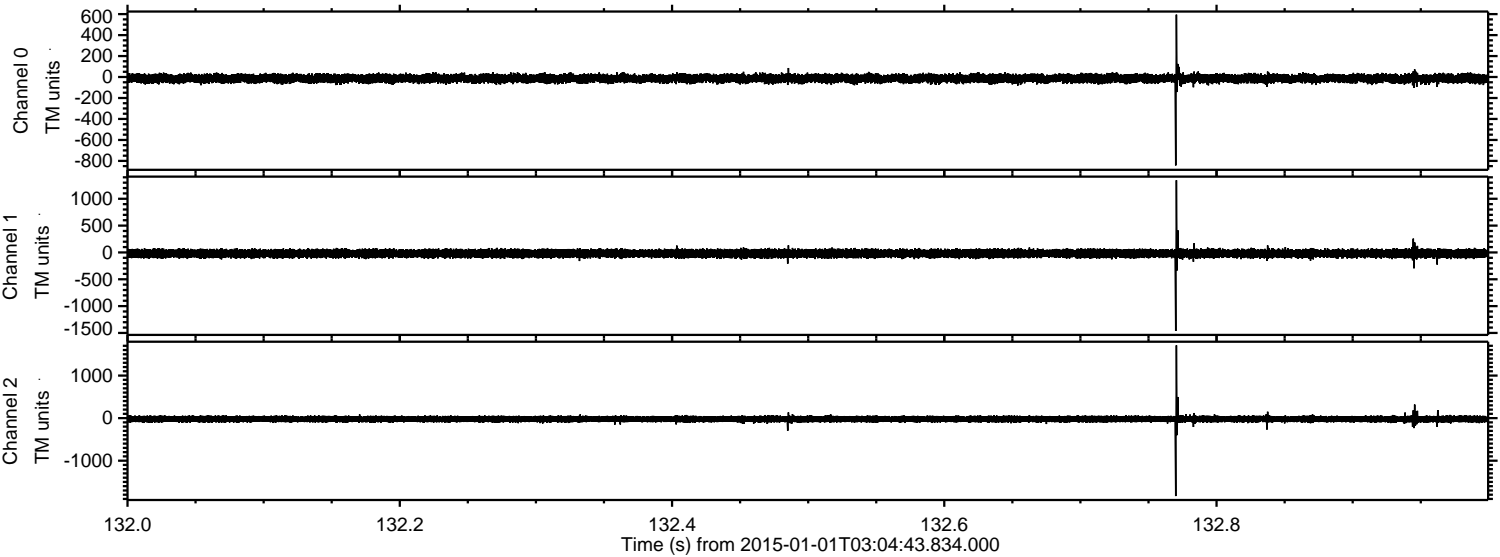


Processed Sat Jan 3 04:55:54 2015 by ELM ver.2012-10-06 from 001\_\_elm20150101\_030442\_\_dat00.bin



ELMAVAN 3D WAVEFORMS (Measured data sampled at 50 kHz) 49809 packets of 144 samples from 2015-01-01T03:04:43.834.000. Part 133/144

Processed Sat Jan 3 04:55:54 2015 by ELM ver.2012-10-06 from 001\_\_elm20150101\_030442\_\_dat00.bin



Channel 0  
mn: -843  
mx: 595  
 $\mu$ : -14.0  
 $\sigma$ : 21.8

Channel 1  
mn: -1464  
mx: 1346  
 $\mu$ : -19.9  
 $\sigma$ : 40.7

Channel 2  
mn: -1833  
mx: 1710  
 $\mu$ : -22.3  
 $\sigma$ : 43.2

Processed Sat Jan 3 04:55:55 2015 by ELM ver.2012-10-06 from 001\_\_elm20150101\_030442\_\_dat00.bin

