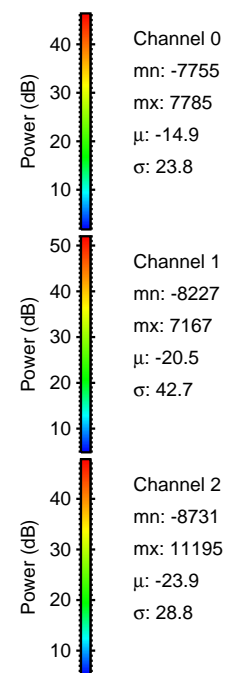
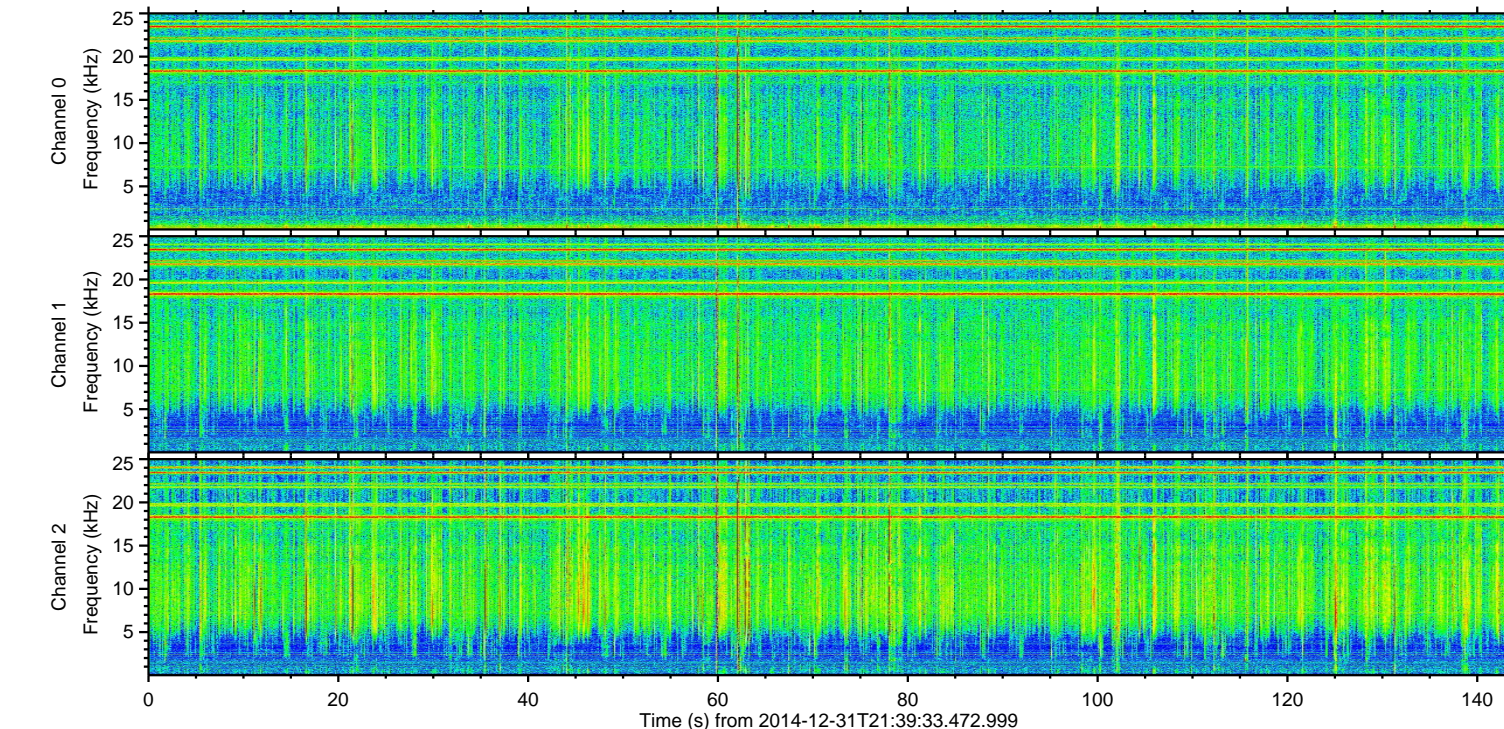
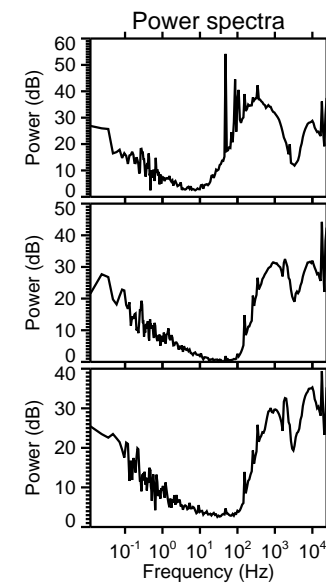
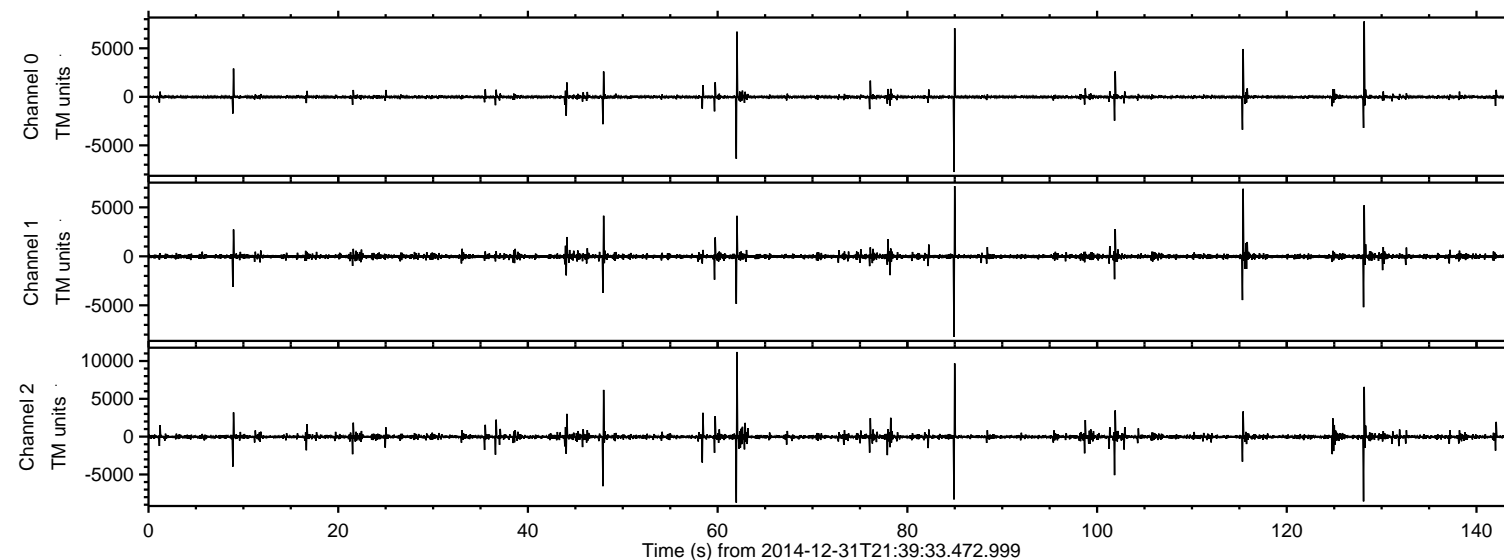


ELMAVAN 3D WAVEFORMS (Measured data sampled at 50 kHz) 49806 packets of 144 samples from 2014-12-31T21:39:33.472.999.

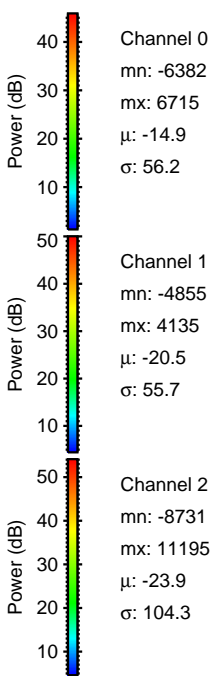
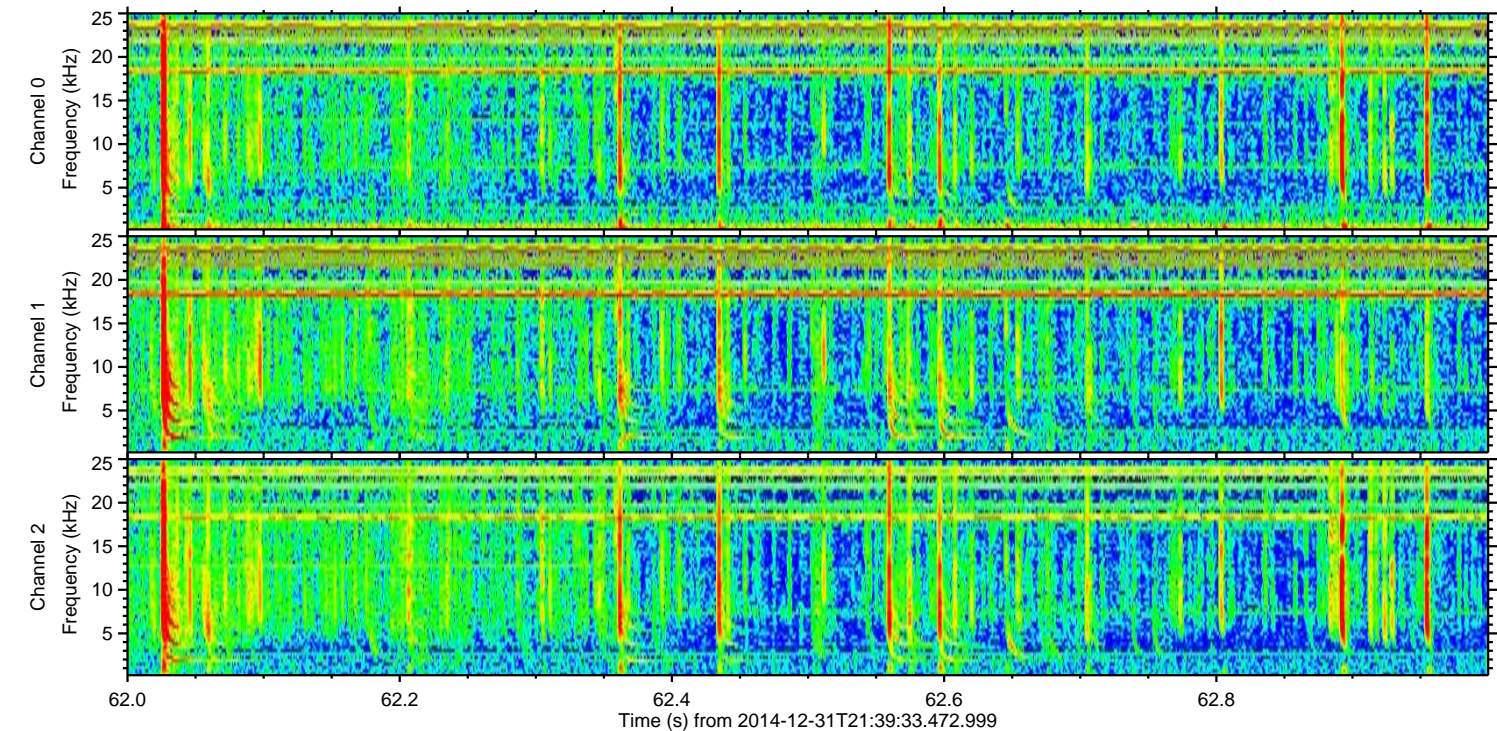
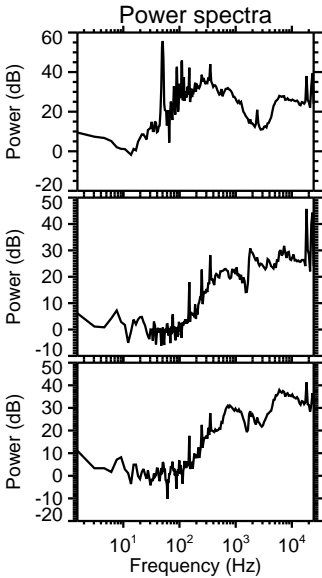
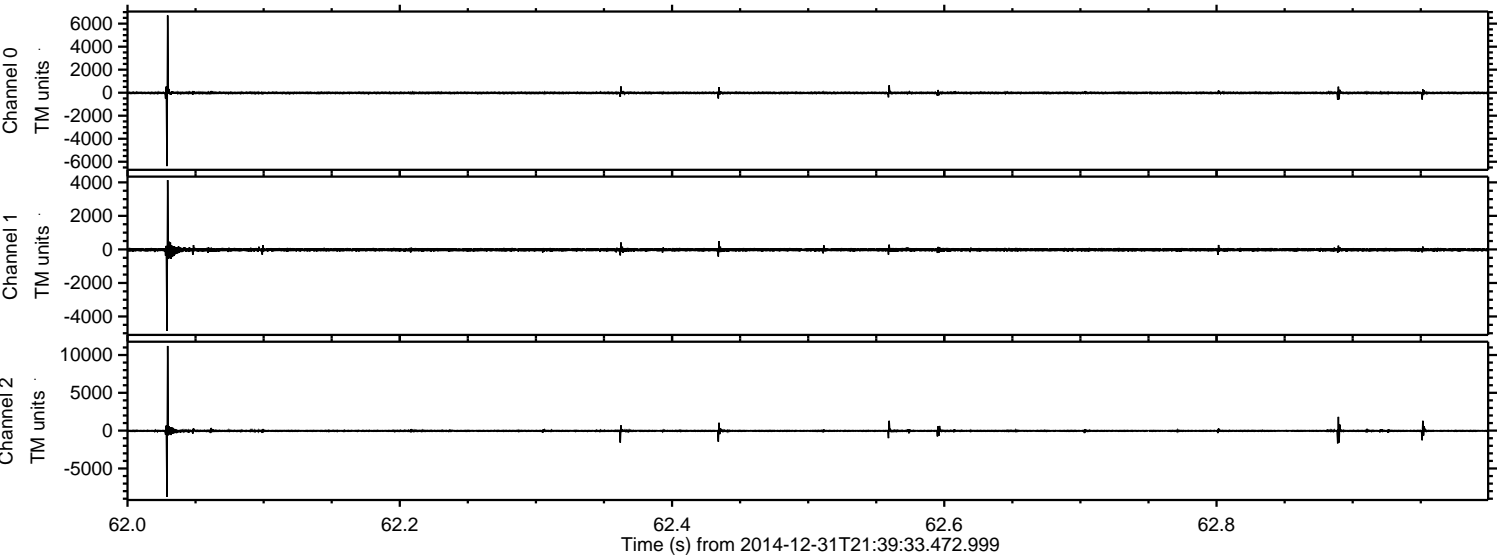
Processed Sat Jan 3 03:13:12 2015 by ELM ver.2012-10-06 from 001\_\_elm20141231\_213932\_\_dat00.bin





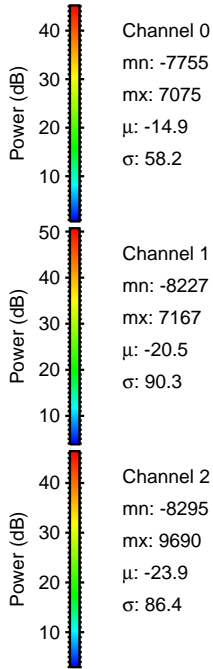
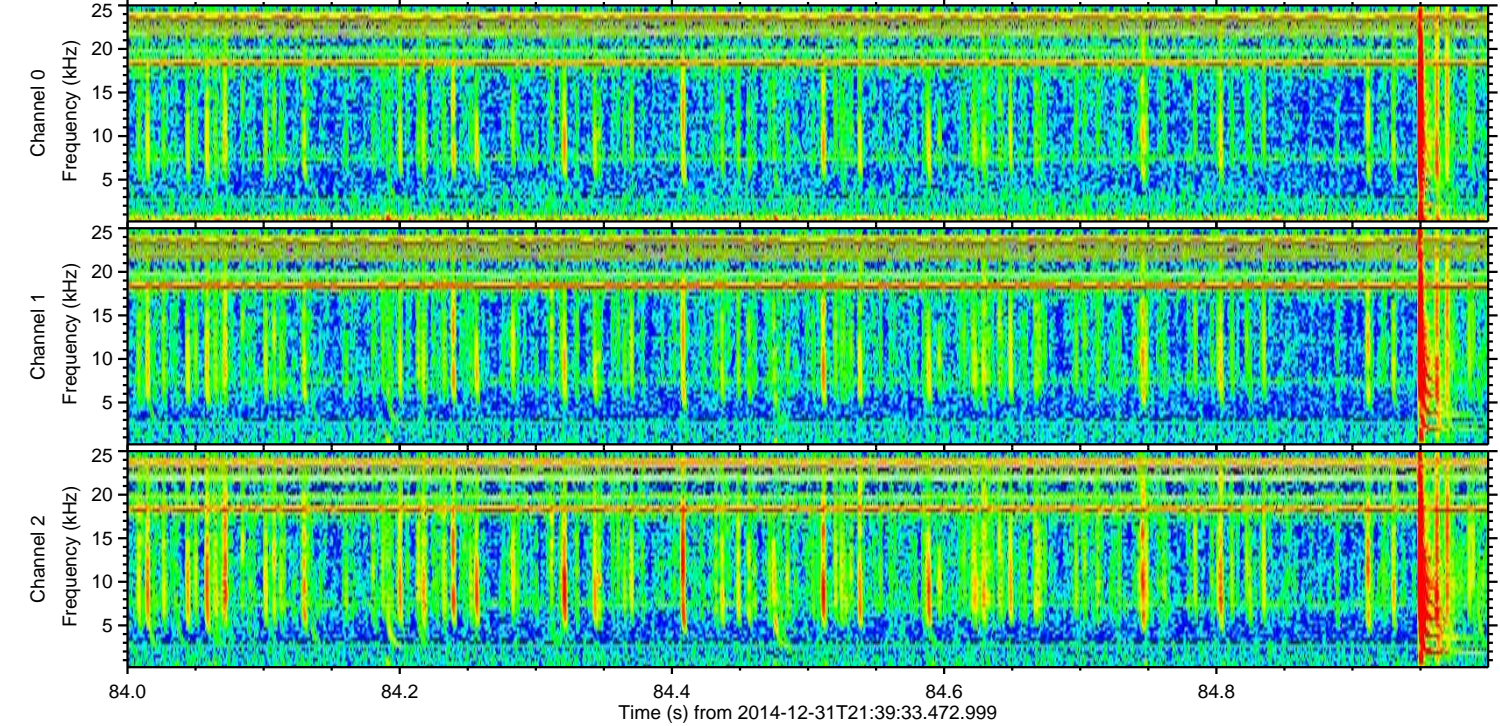
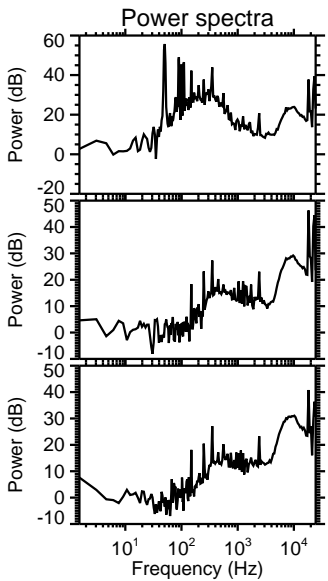
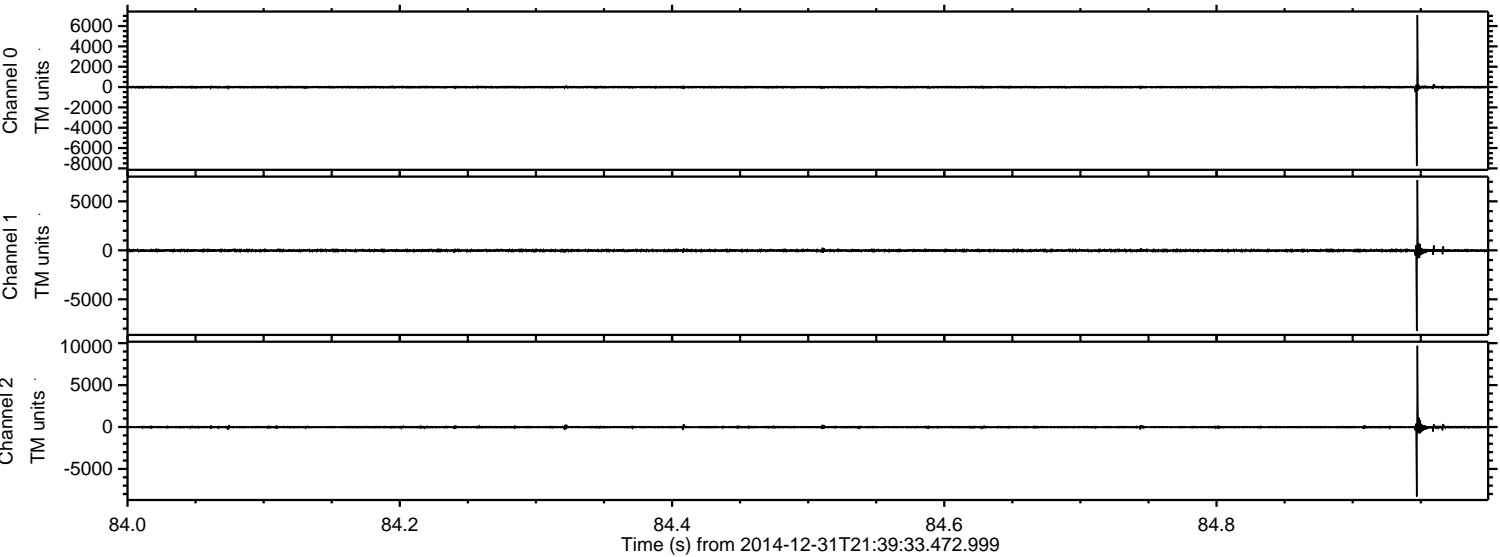
ELMAVAN 3D WAVEFORMS (Measured data sampled at 50 kHz) 49806 packets of 144 samples from 2014-12-31T21:39:33.472.999. Part 63/144

Processed Sat Jan 3 03:13:25 2015 by ELM ver.2012-10-06 from 001\_\_elm20141231\_213932\_\_dat00.bin





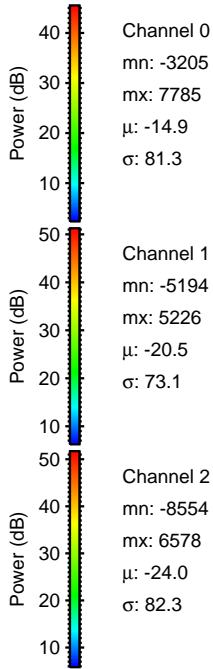
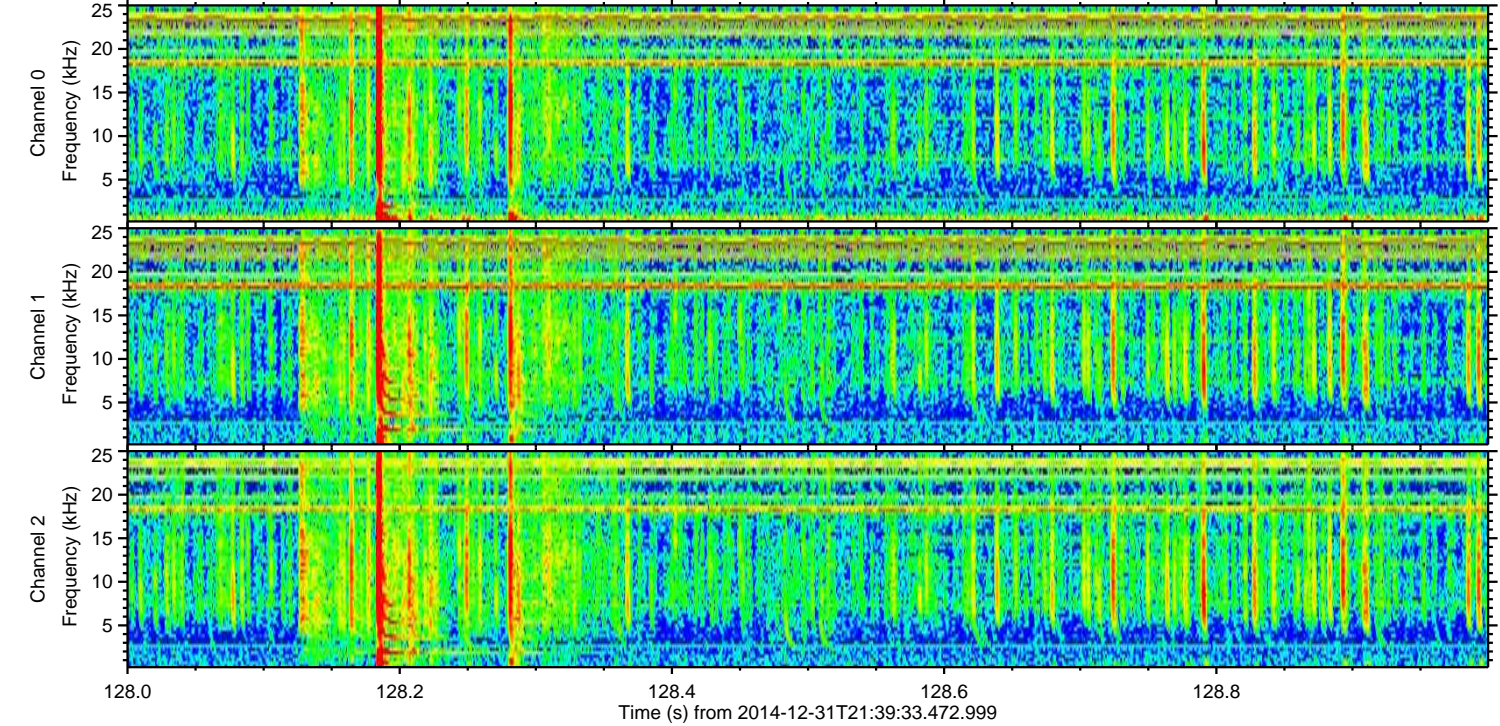
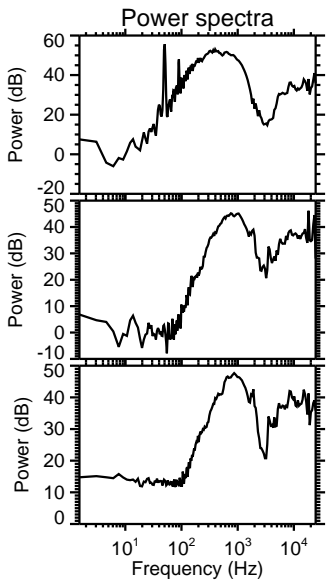
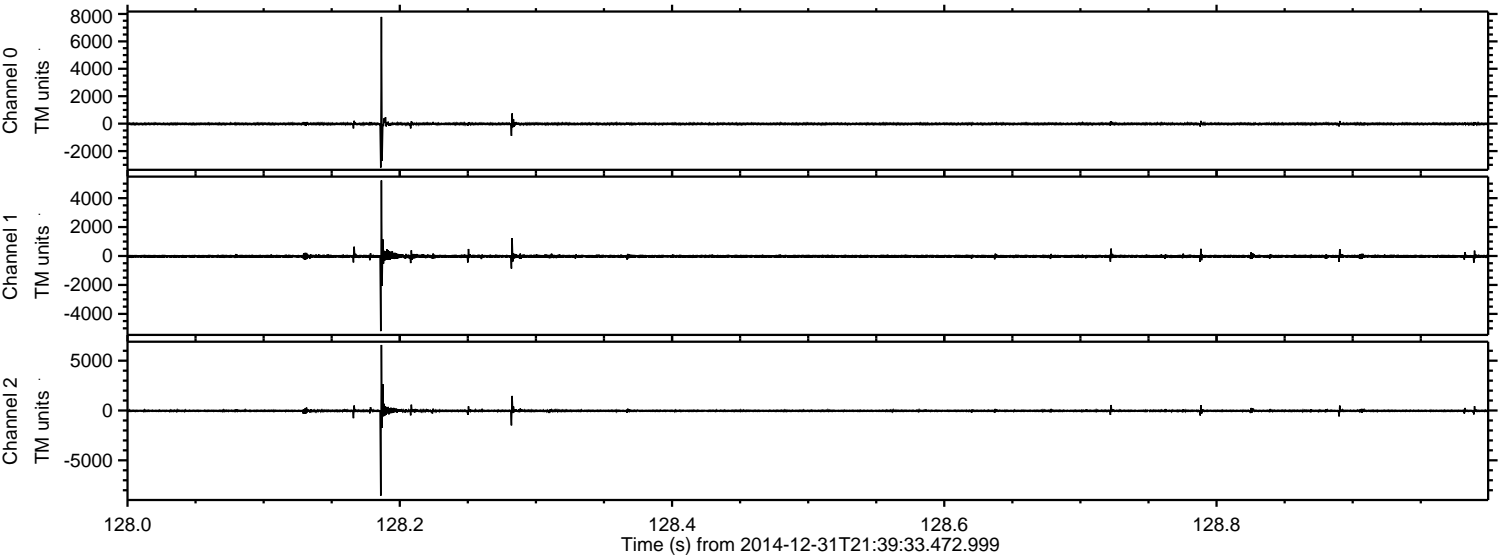
Processed Sat Jan 3 03:13:26 2015 by ELM ver.2012-10-06 from 001\_\_elm20141231\_213932\_\_dat00.bin





ELMAVAN 3D WAVEFORMS (Measured data sampled at 50 kHz) 49806 packets of 144 samples from 2014-12-31T21:39:33.472.999. Part 129/144

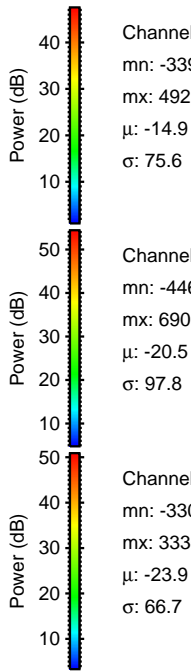
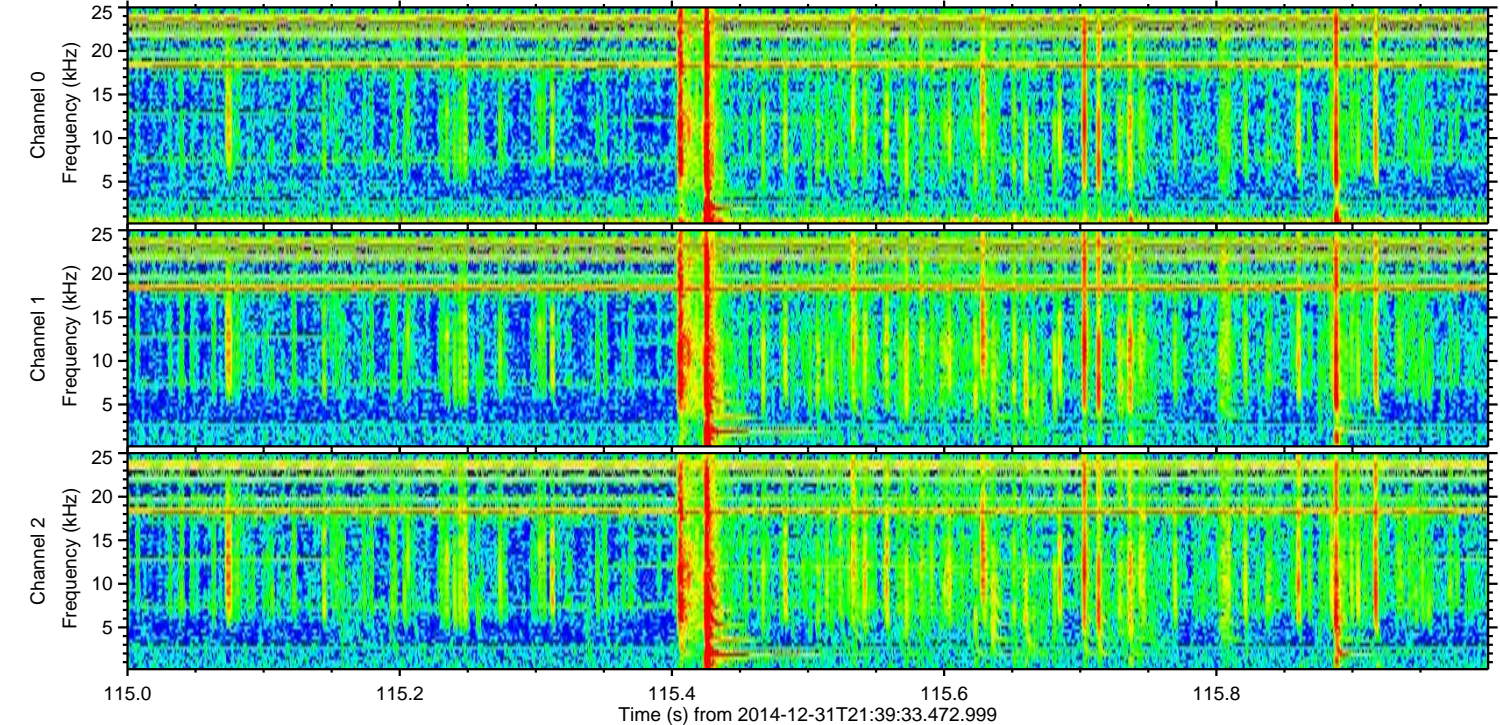
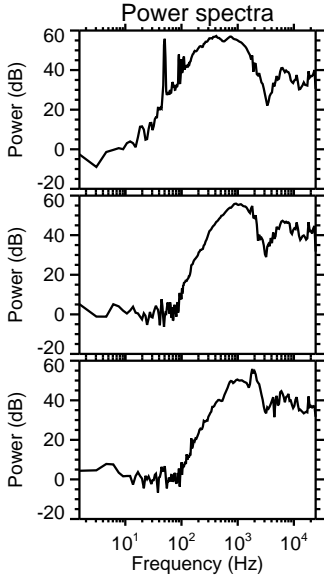
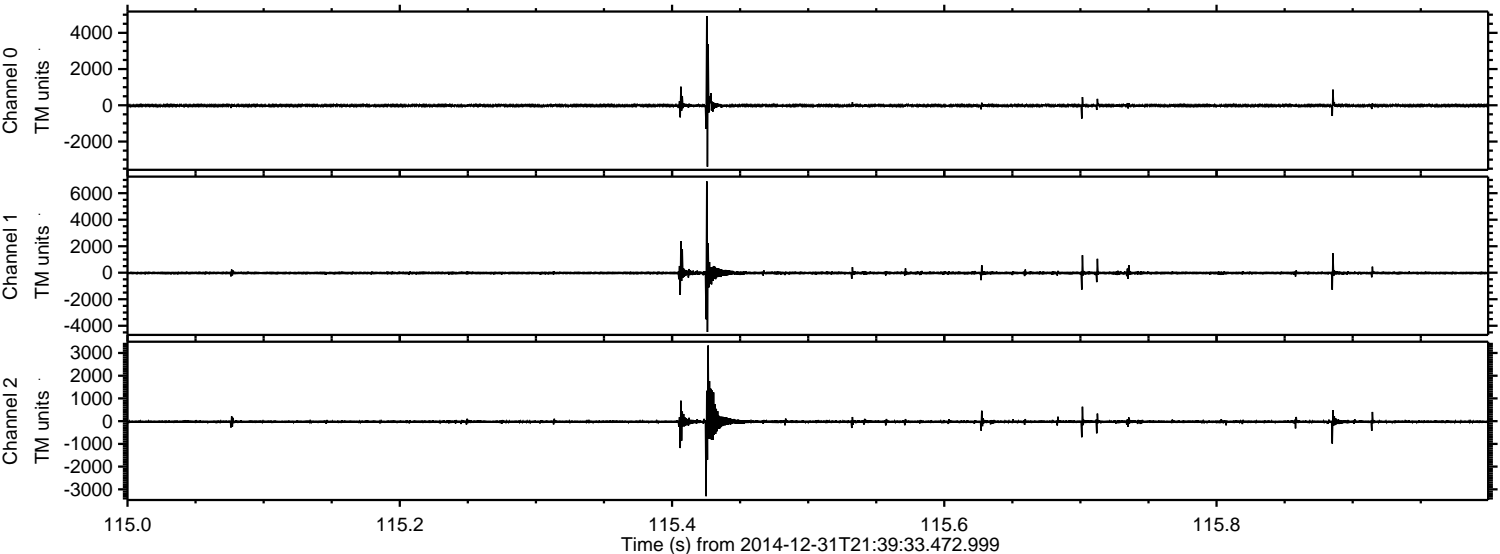
Processed Sat Jan 3 03:13:27 2015 by ELM ver.2012-10-06 from 001\_\_elm20141231\_213932\_\_dat00.bin





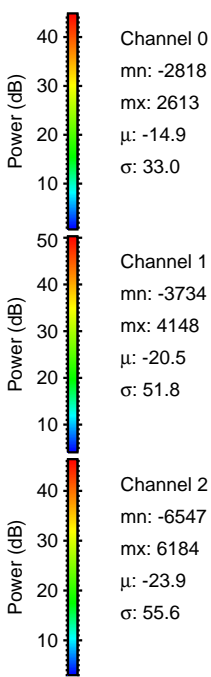
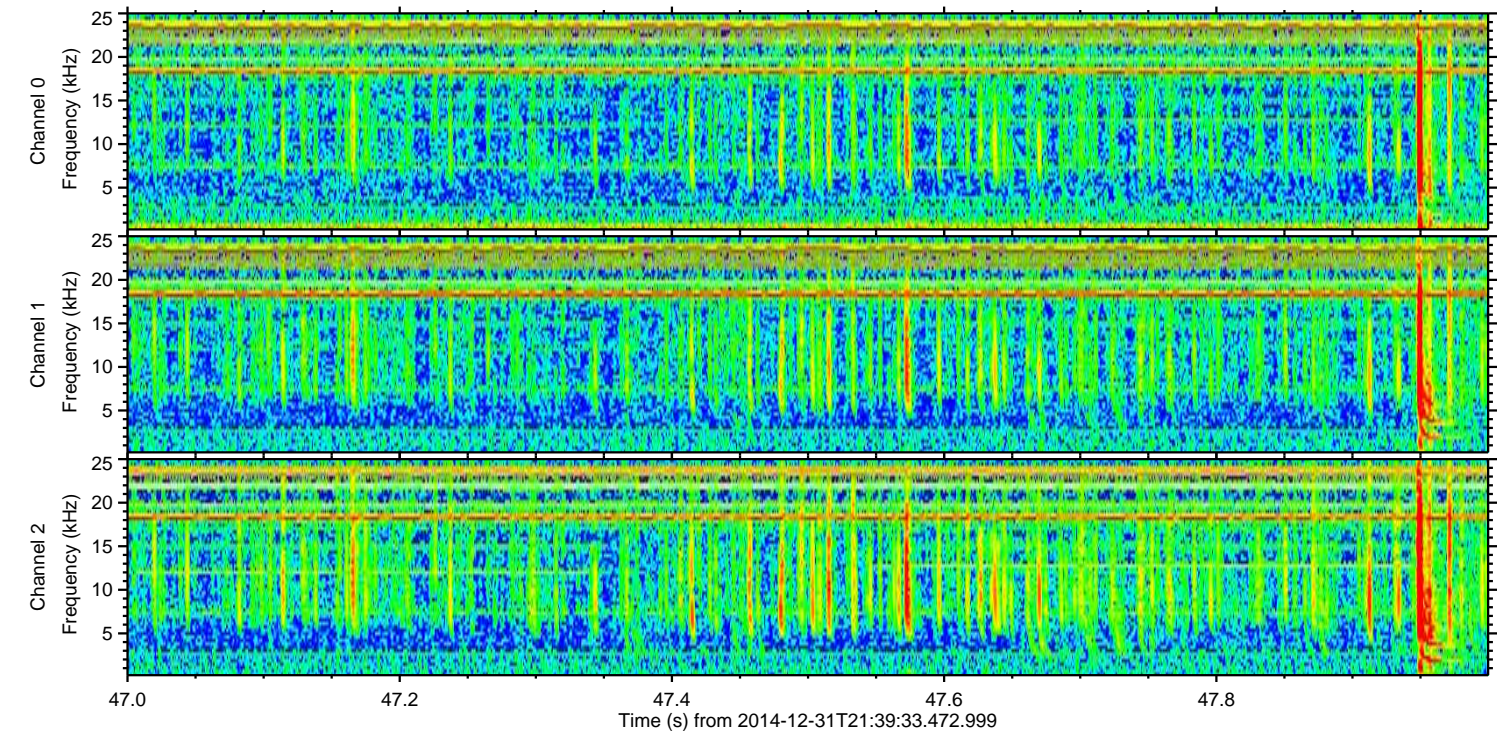
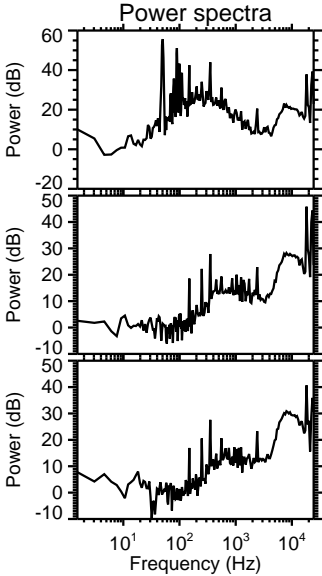
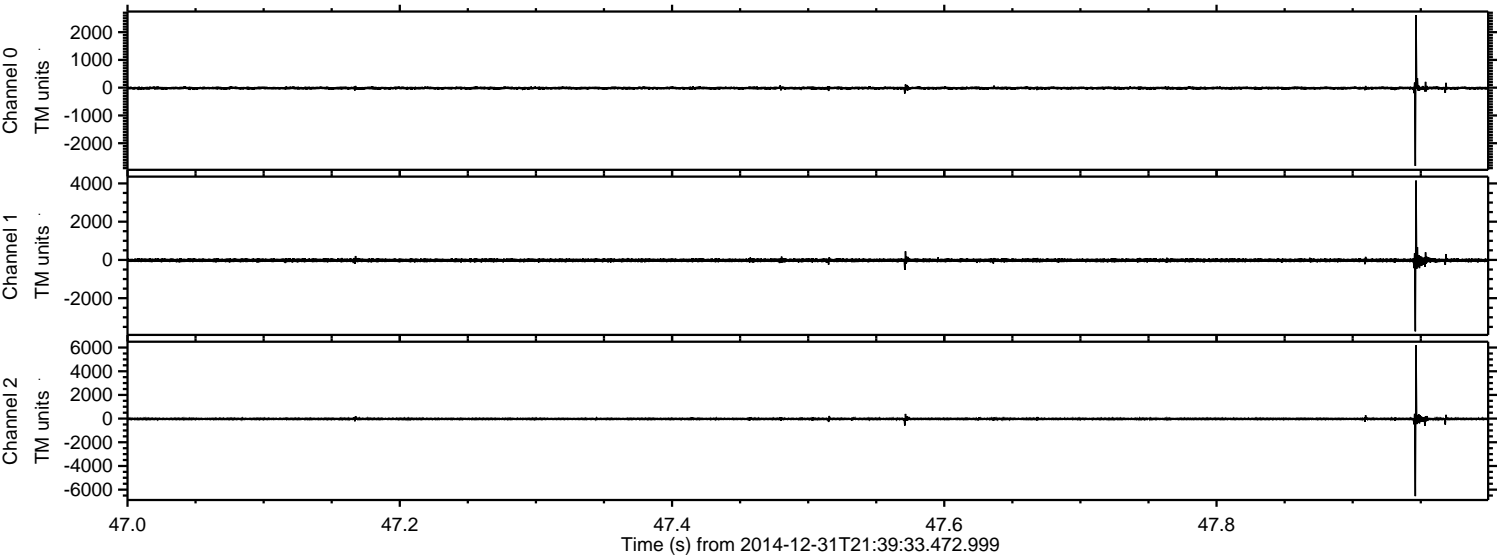
ELMAVAN 3D WAVEFORMS (Measured data sampled at 50 kHz) 49806 packets of 144 samples from 2014-12-31T21:39:33.472.999. Part 116/144

Processed Sat Jan 3 03:13:28 2015 by ELM ver.2012-10-06 from 001\_\_elm20141231\_213932\_\_dat00.bin





Processed Sat Jan 3 03:13:29 2015 by ELM ver.2012-10-06 from 001\_\_elm20141231\_213932\_\_dat00.bin



Channel 0  
mn: -2818  
mx: 2613  
 $\mu$ : -14.9  
 $\sigma$ : 33.0

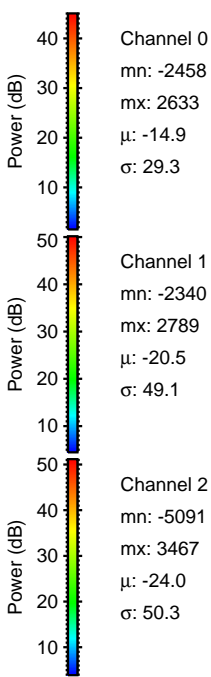
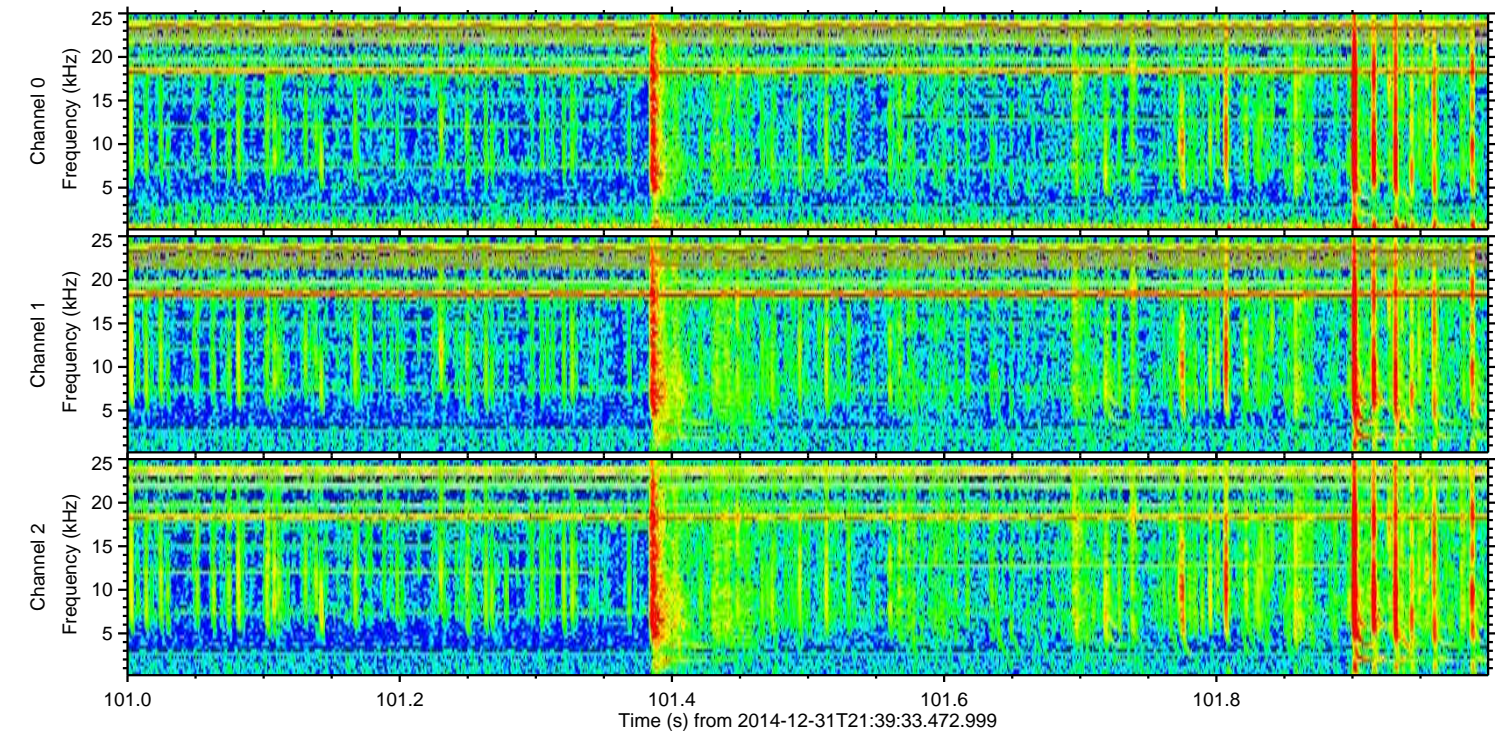
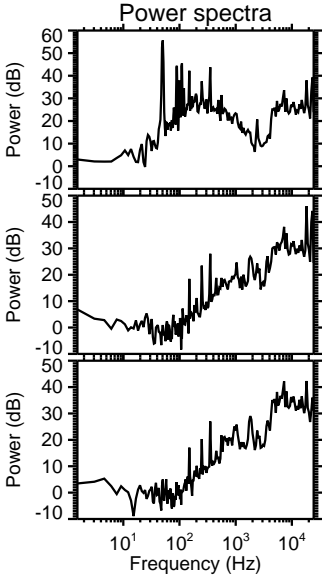
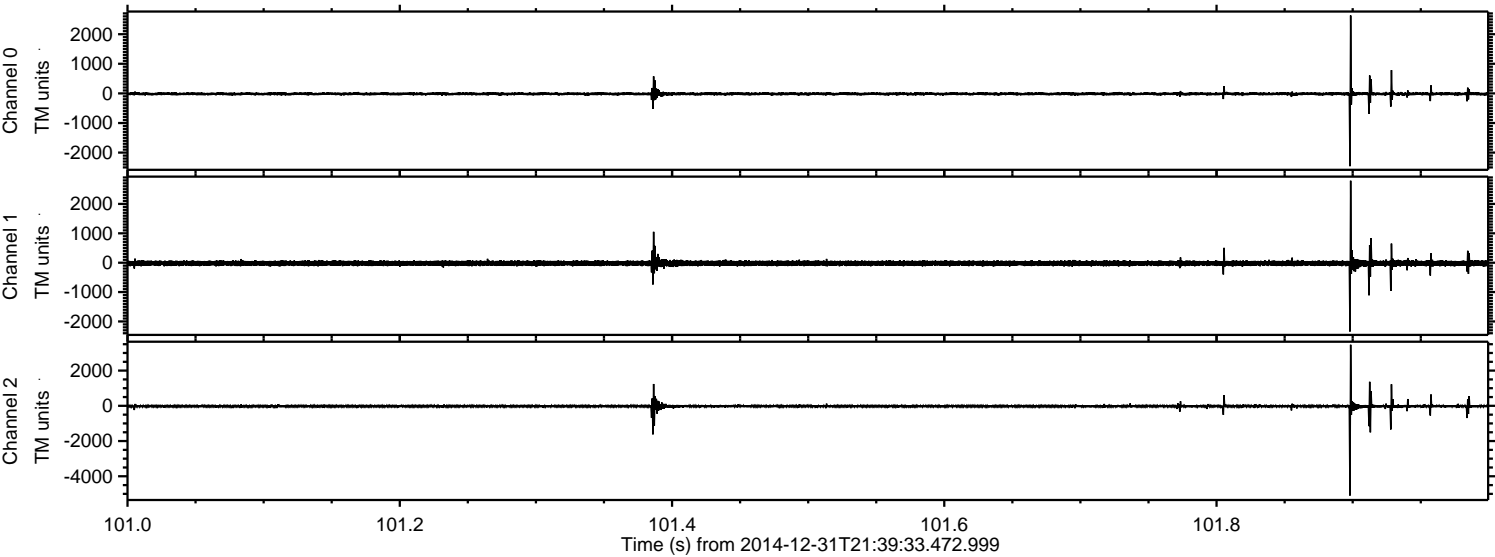
Channel 1  
mn: -3734  
mx: 4148  
 $\mu$ : -20.5  
 $\sigma$ : 51.8

Channel 2  
mn: -6547  
mx: 6184  
 $\mu$ : -23.9  
 $\sigma$ : 55.6



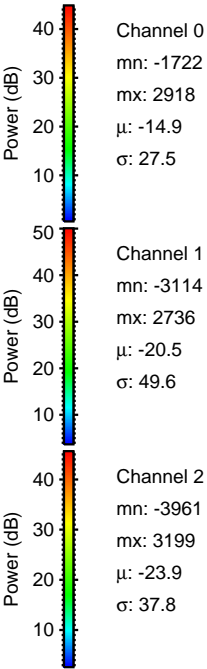
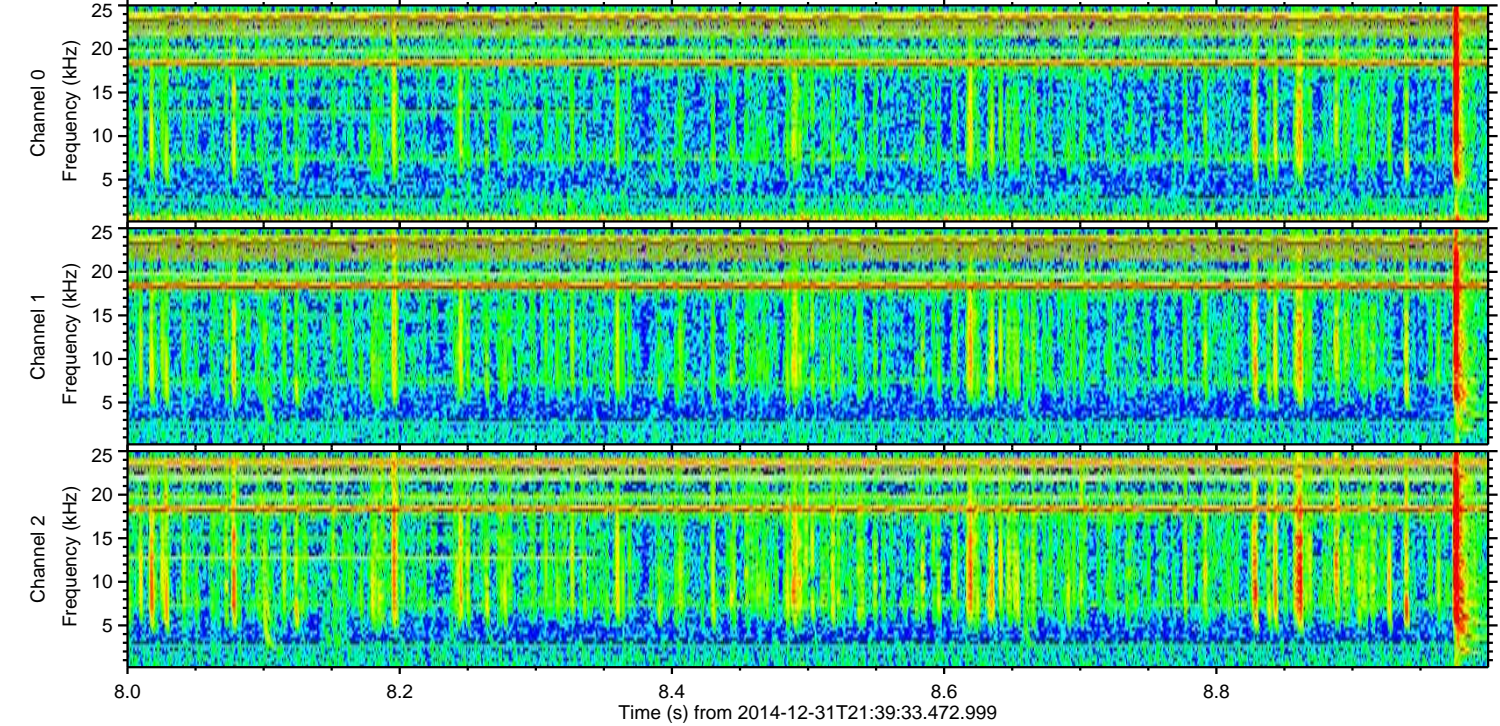
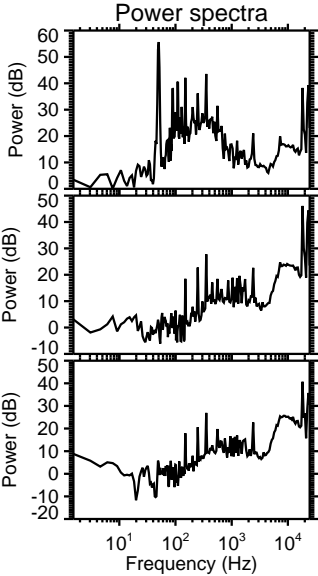
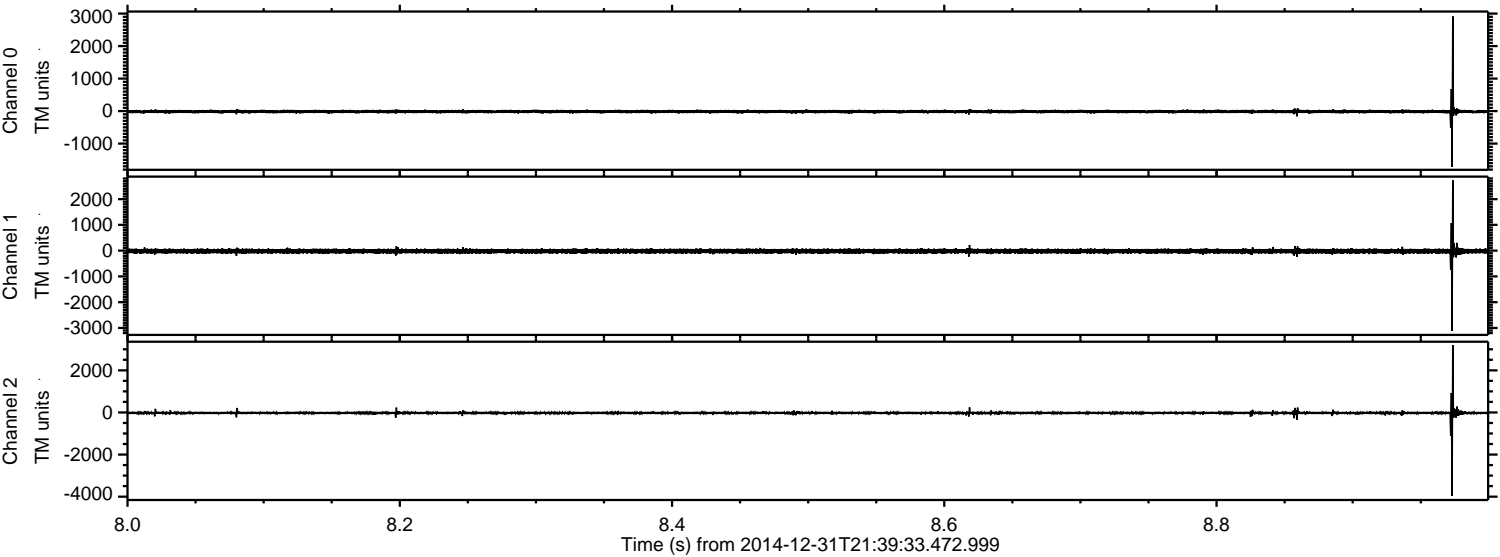
ELMAVAN 3D WAVEFORMS (Measured data sampled at 50 kHz) 49806 packets of 144 samples from 2014-12-31T21:39:33.472.999. Part 102/144

Processed Sat Jan 3 03:13:30 2015 by ELM ver.2012-10-06 from 001\_\_elm20141231\_213932\_\_dat00.bin





Processed Sat Jan 3 03:13:31 2015 by ELM ver.2012-10-06 from 001\_\_elm20141231\_213932\_\_dat00.bin



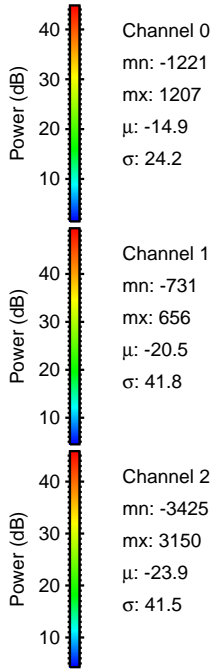
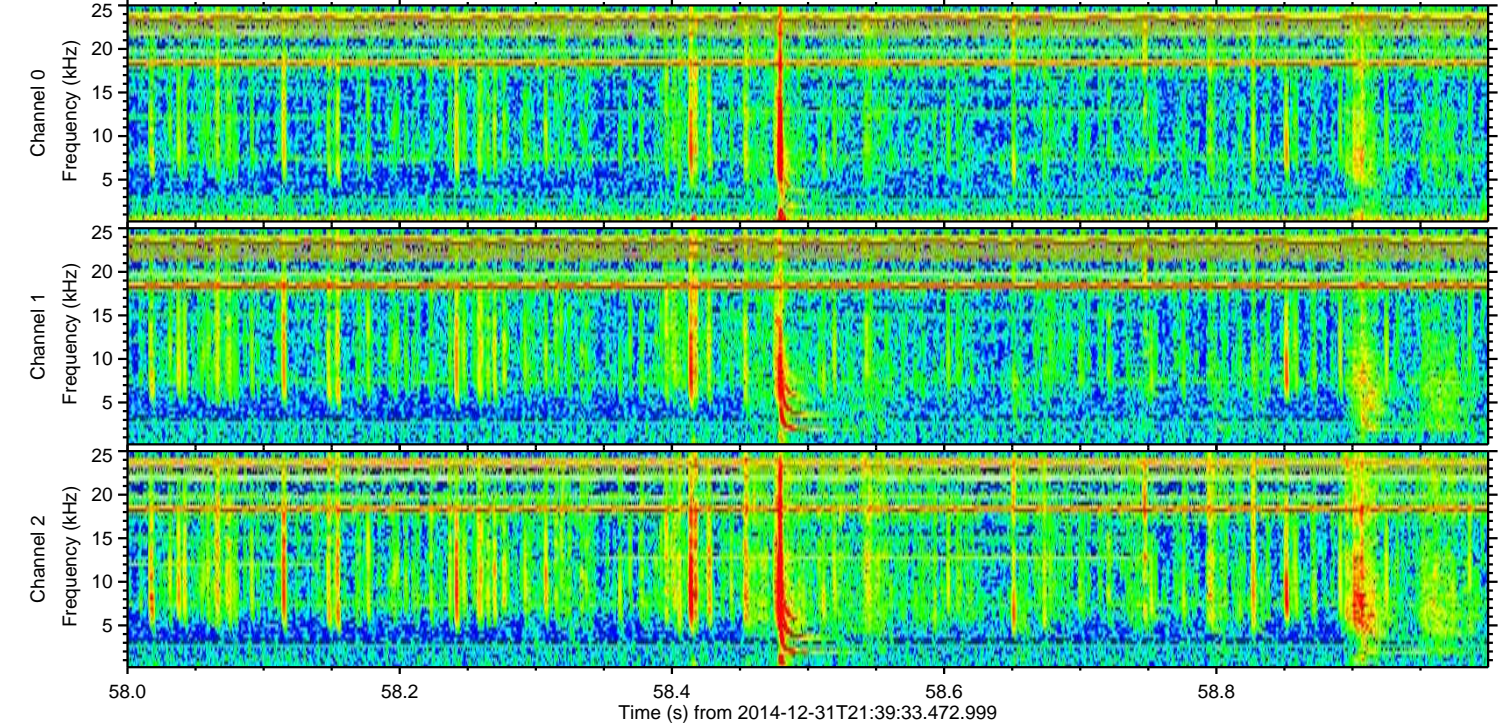
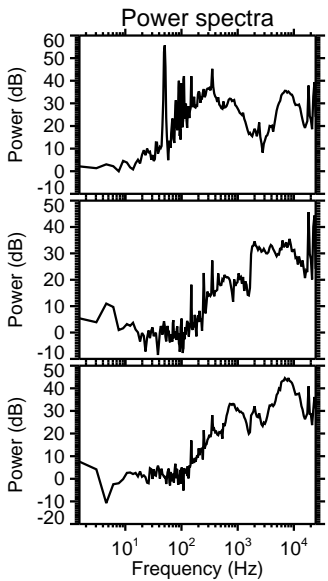
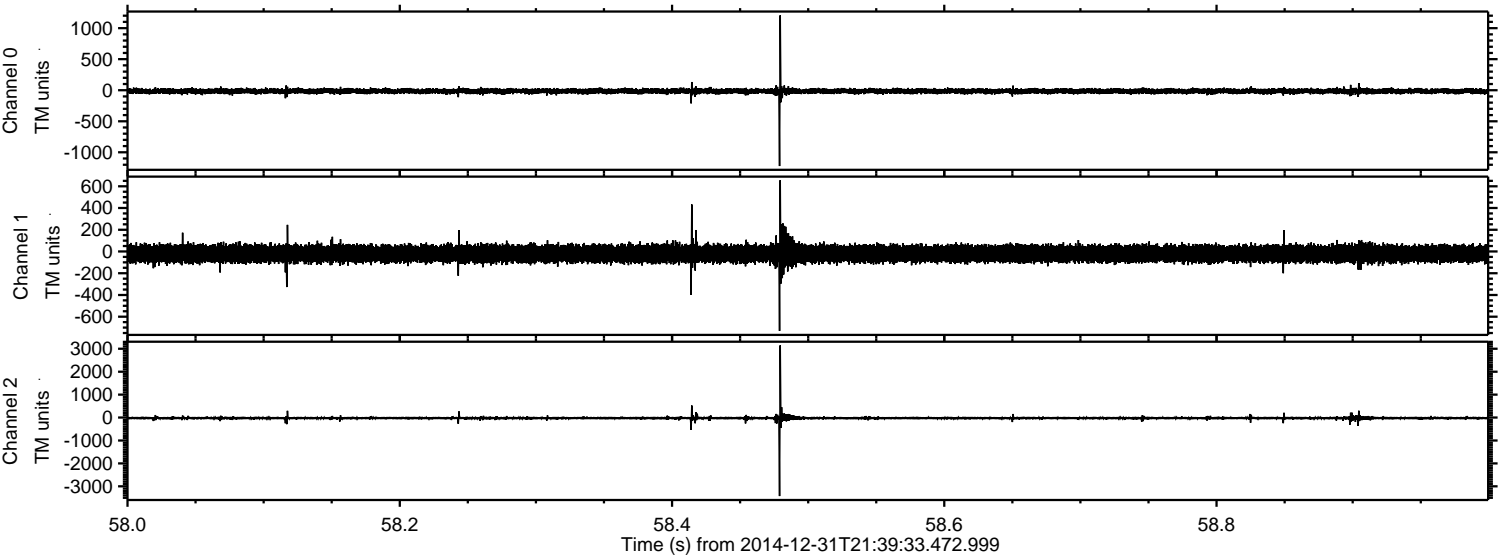
Channel 0  
mn: -1722  
mx: 2918  
 $\mu$ : -14.9  
 $\sigma$ : 27.5

Channel 1  
mn: -3114  
mx: 2736  
 $\mu$ : -20.5  
 $\sigma$ : 49.6

Channel 2  
mn: -3961  
mx: 3199  
 $\mu$ : -23.9  
 $\sigma$ : 37.8

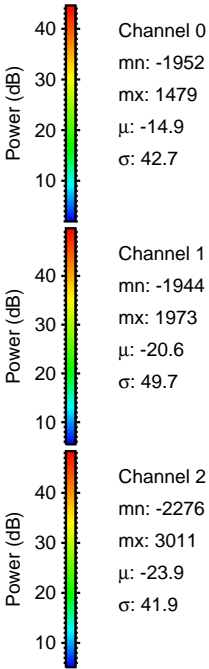
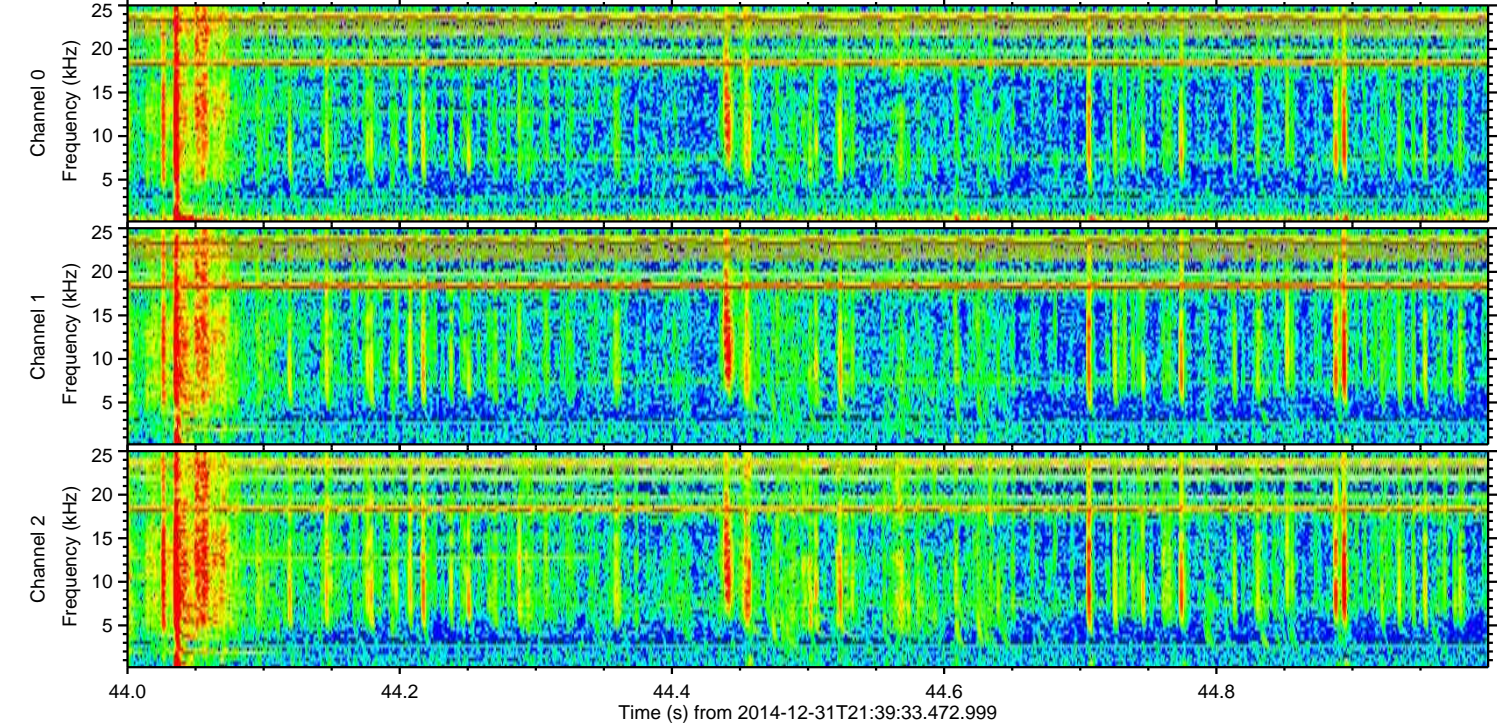
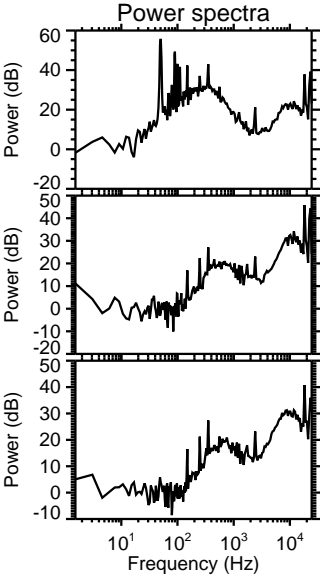
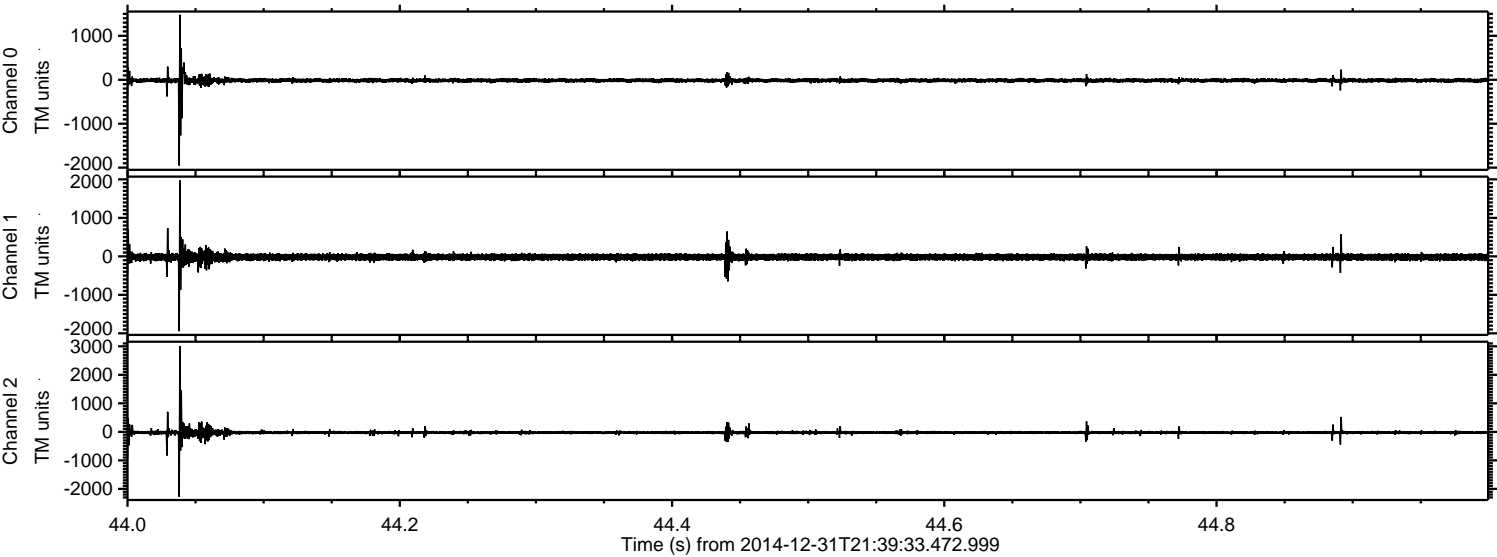


Processed Sat Jan 3 03:13:32 2015 by ELM ver.2012-10-06 from 001\_\_elm20141231\_213932\_\_dat00.bin



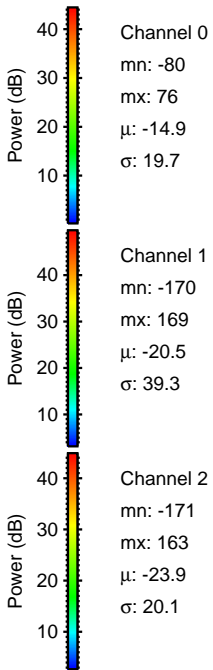
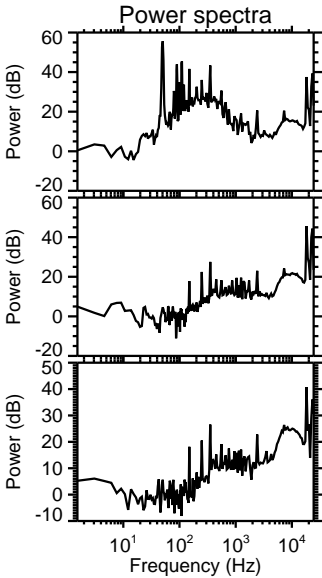
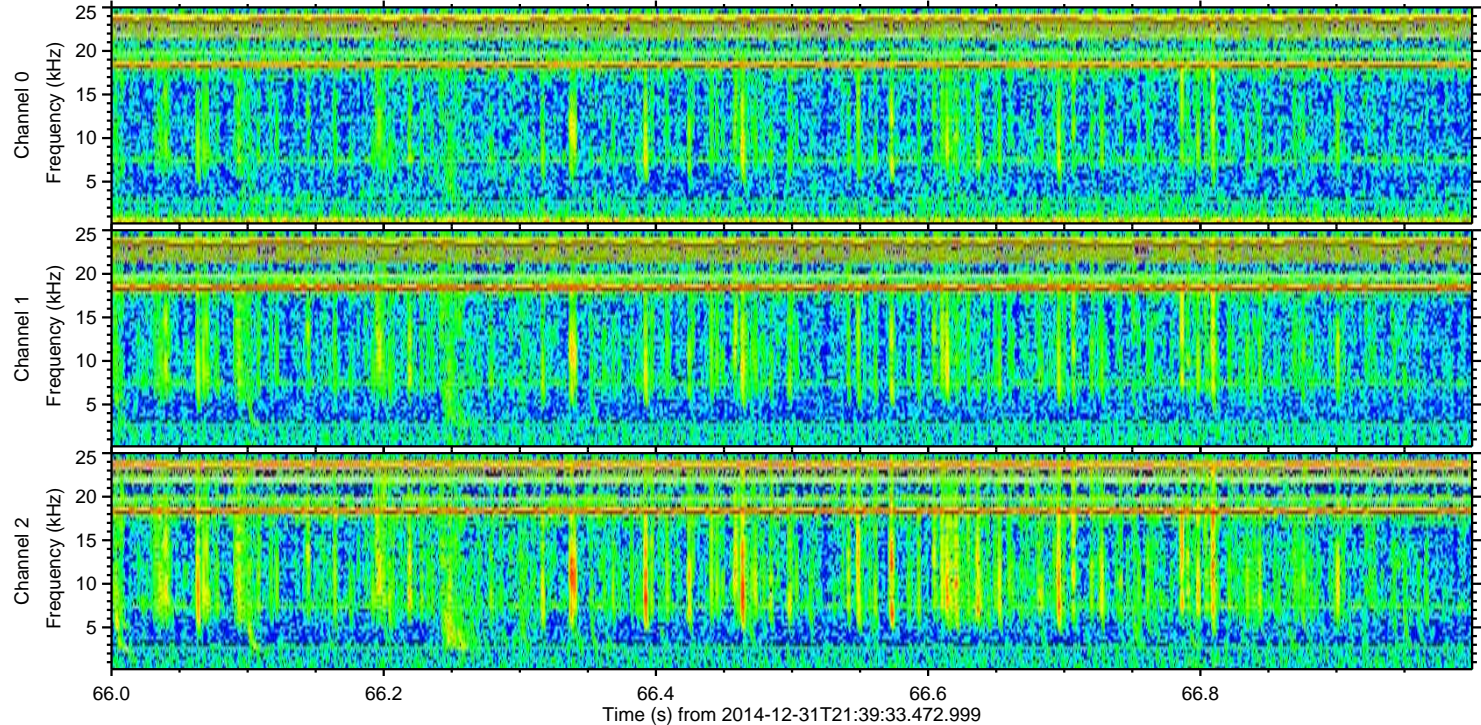
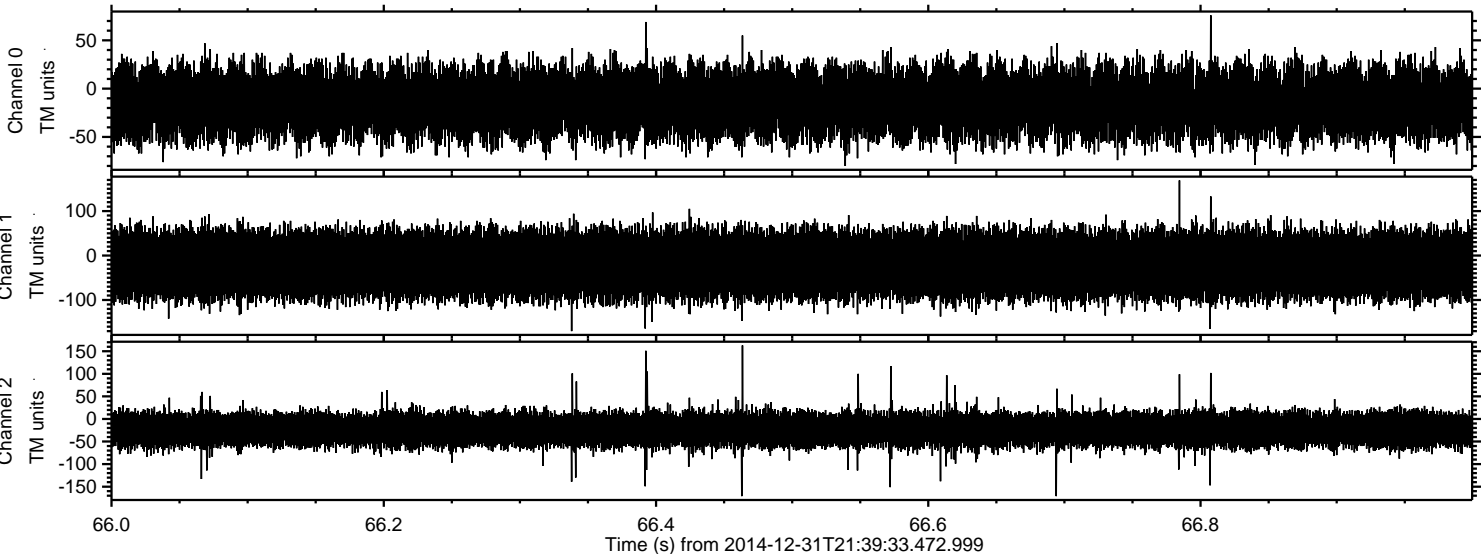


Processed Sat Jan 3 03:13:33 2015 by ELM ver.2012-10-06 from 001\_\_elm20141231\_213932\_\_dat00.bin





Processed Sat Jan 3 03:13:34 2015 by ELM ver.2012-10-06 from 001\_\_elm20141231\_213932\_\_dat00.bin



Channel 0  
mn: -80  
mx: 76  
 $\mu$ : -14.9  
 $\sigma$ : 19.7

Channel 1  
mn: -170  
mx: 169  
 $\mu$ : -20.5  
 $\sigma$ : 39.3

Channel 2  
mn: -171  
mx: 163  
 $\mu$ : -23.9  
 $\sigma$ : 20.1