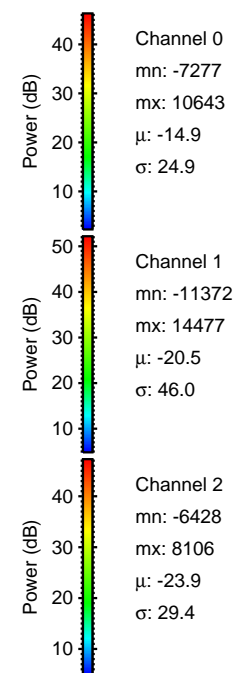
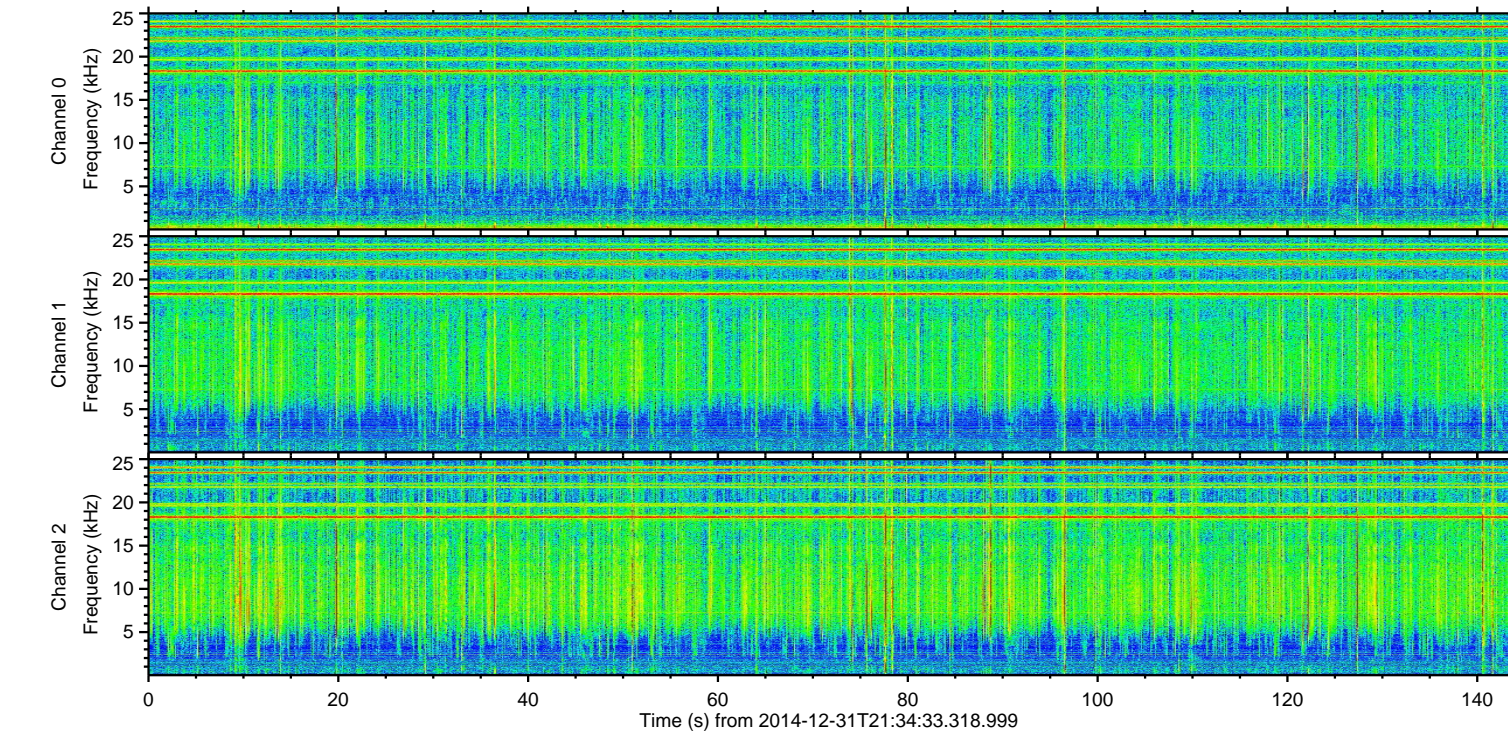
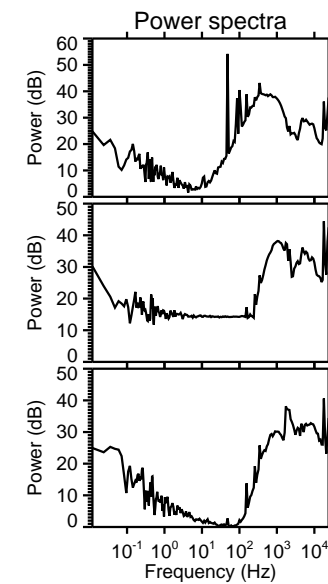
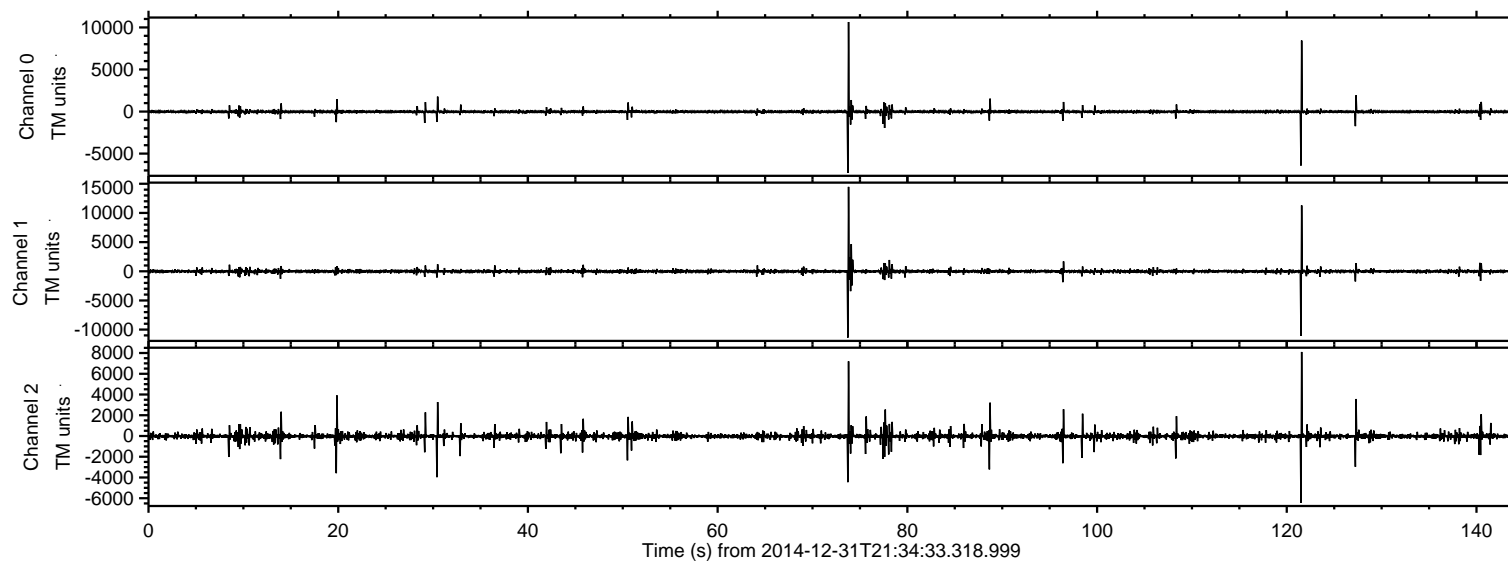


ELMAVAN 3D WAVEFORMS (Measured data sampled at 50 kHz) 49806 packets of 144 samples from 2014-12-31T21:34:33.318.999.

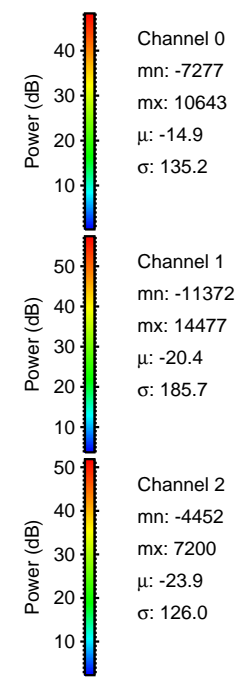
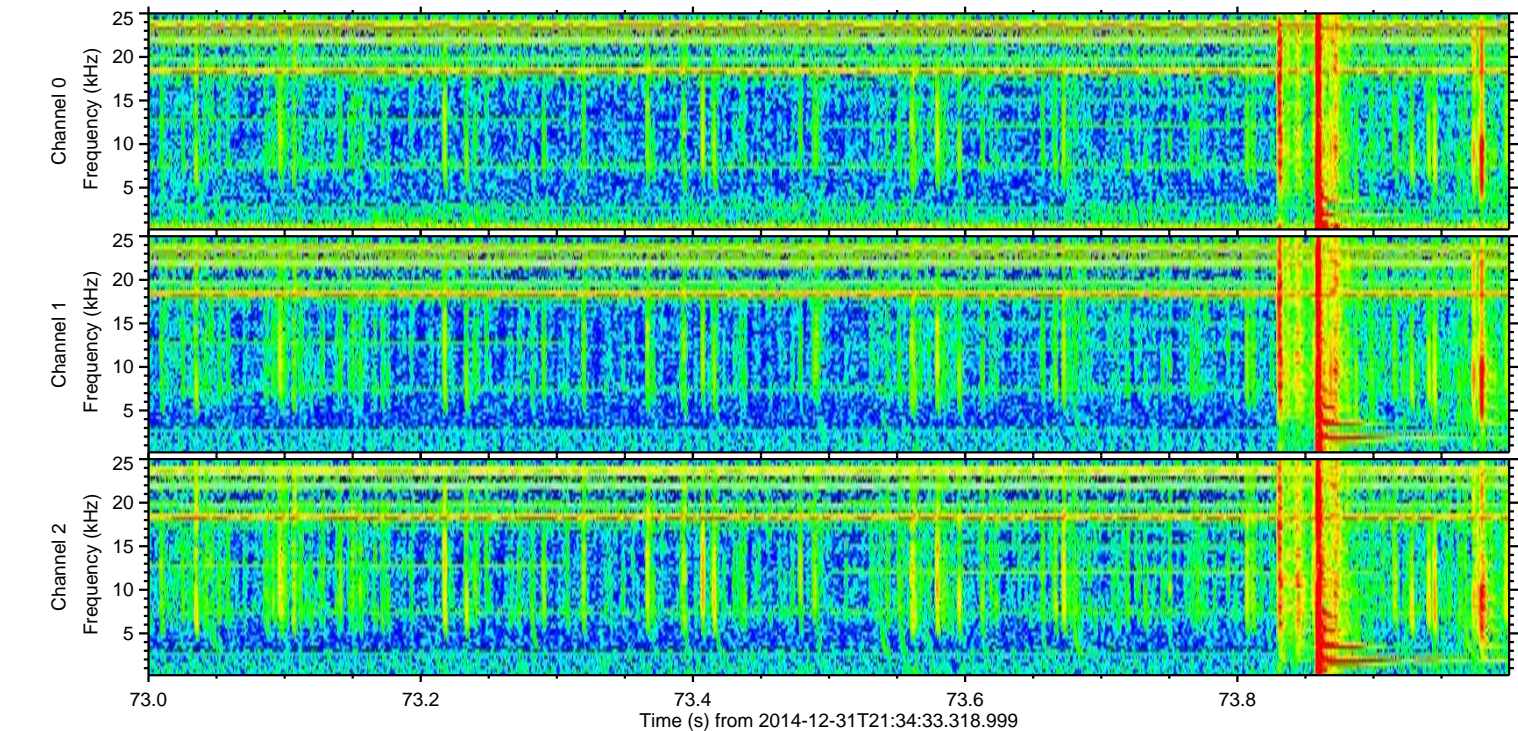
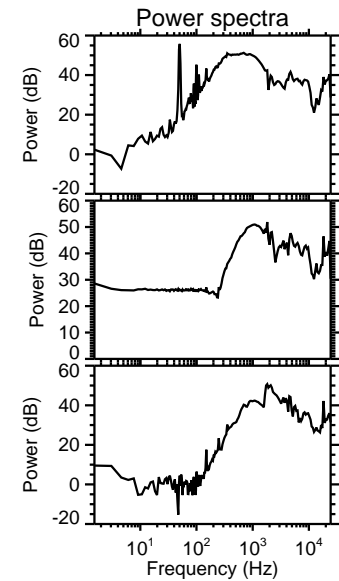
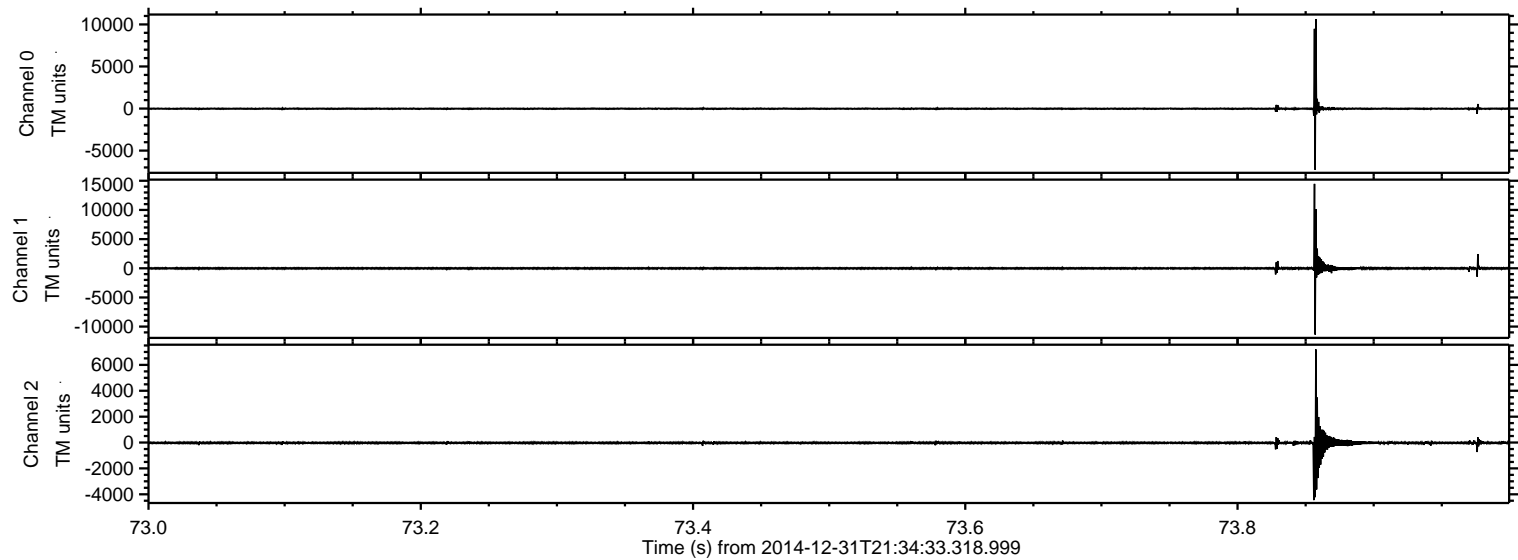
Processed Sat Jan 3 03:12:05 2015 by ELM ver.2012-10-06 from 001\_\_elm20141231\_213432\_\_dat00.bin





ELMAVAN 3D WAVEFORMS (Measured data sampled at 50 kHz) 49806 packets of 144 samples from 2014-12-31T21:34:33.318.999. Part 74/144

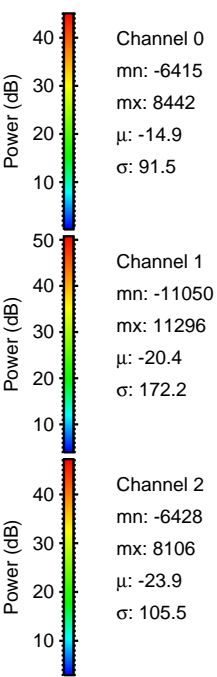
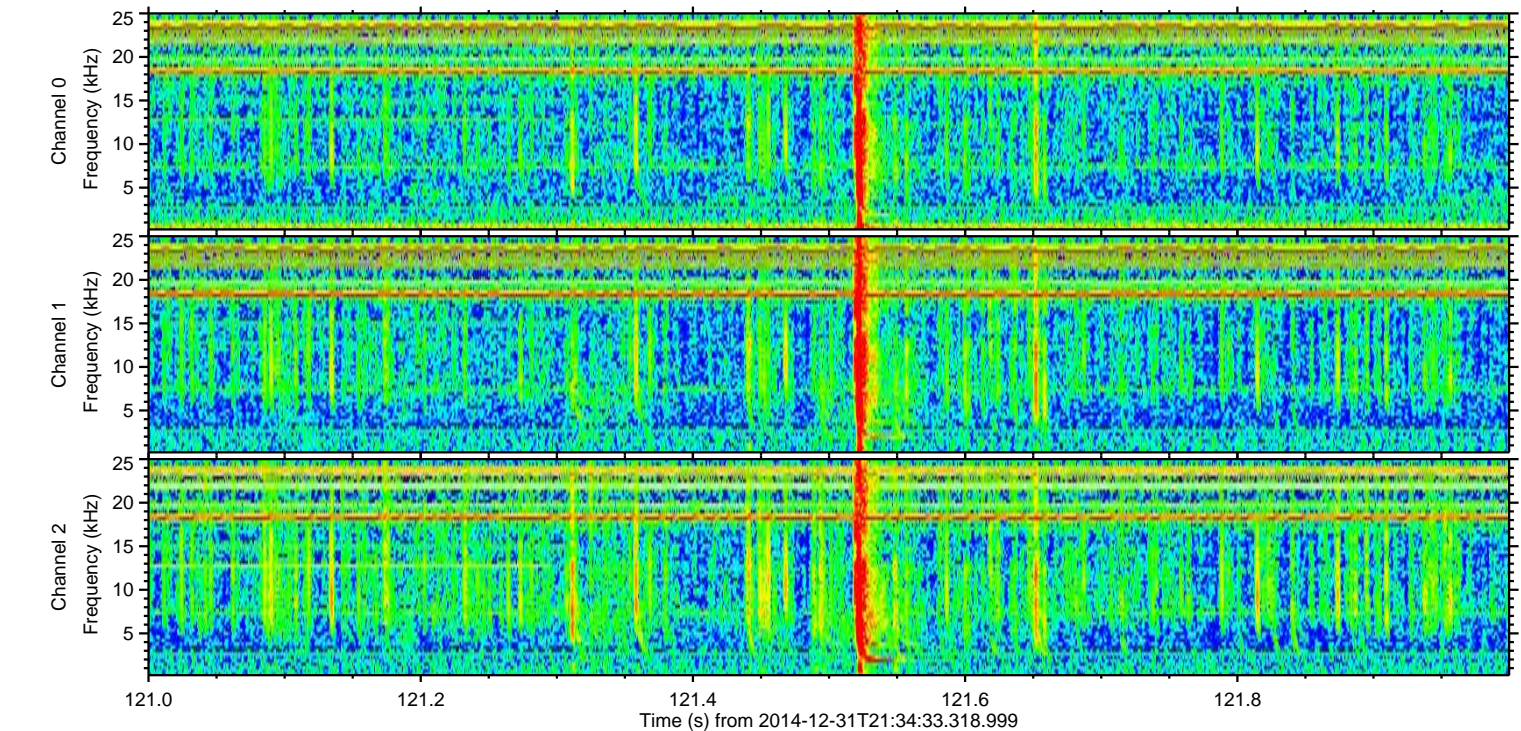
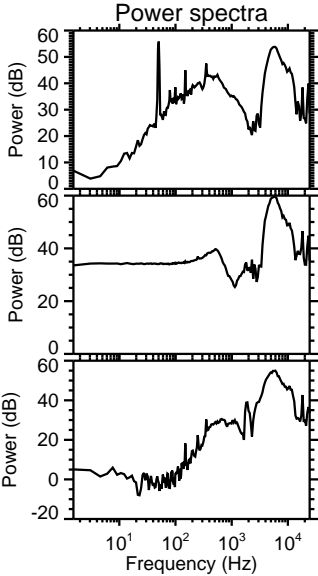
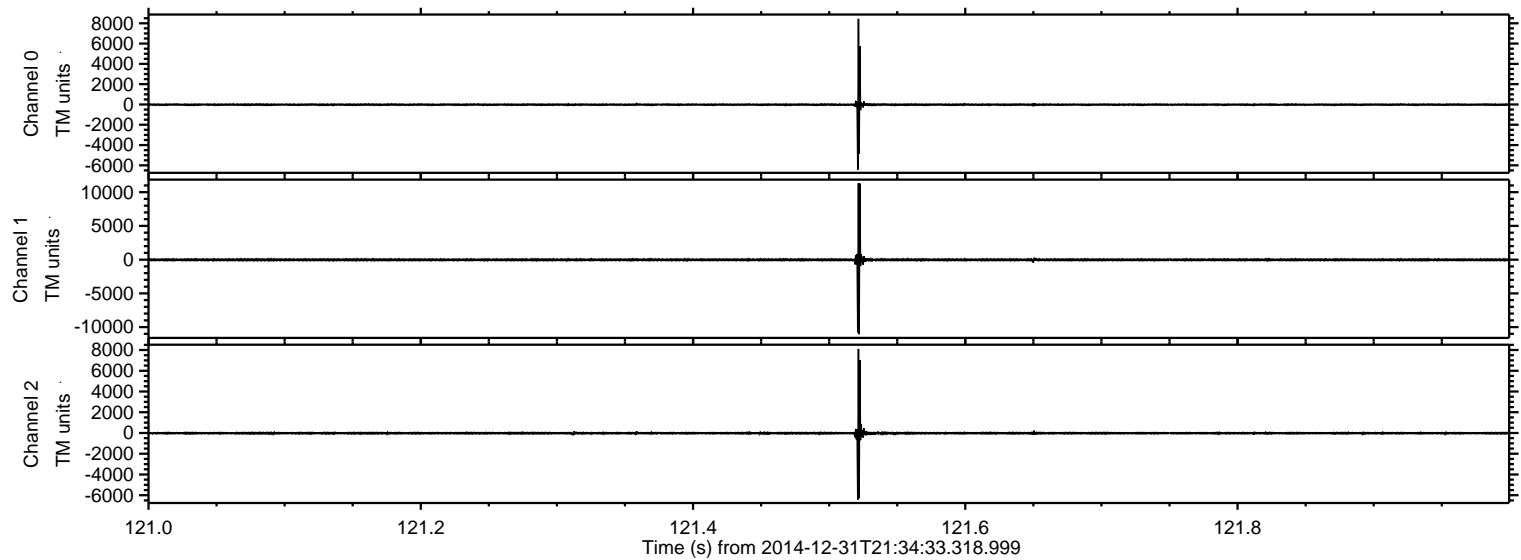
Processed Sat Jan 3 03:12:18 2015 by ELM ver.2012-10-06 from 001\_\_elm20141231\_213432\_\_dat00.bin





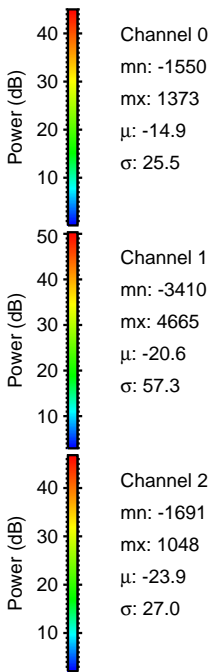
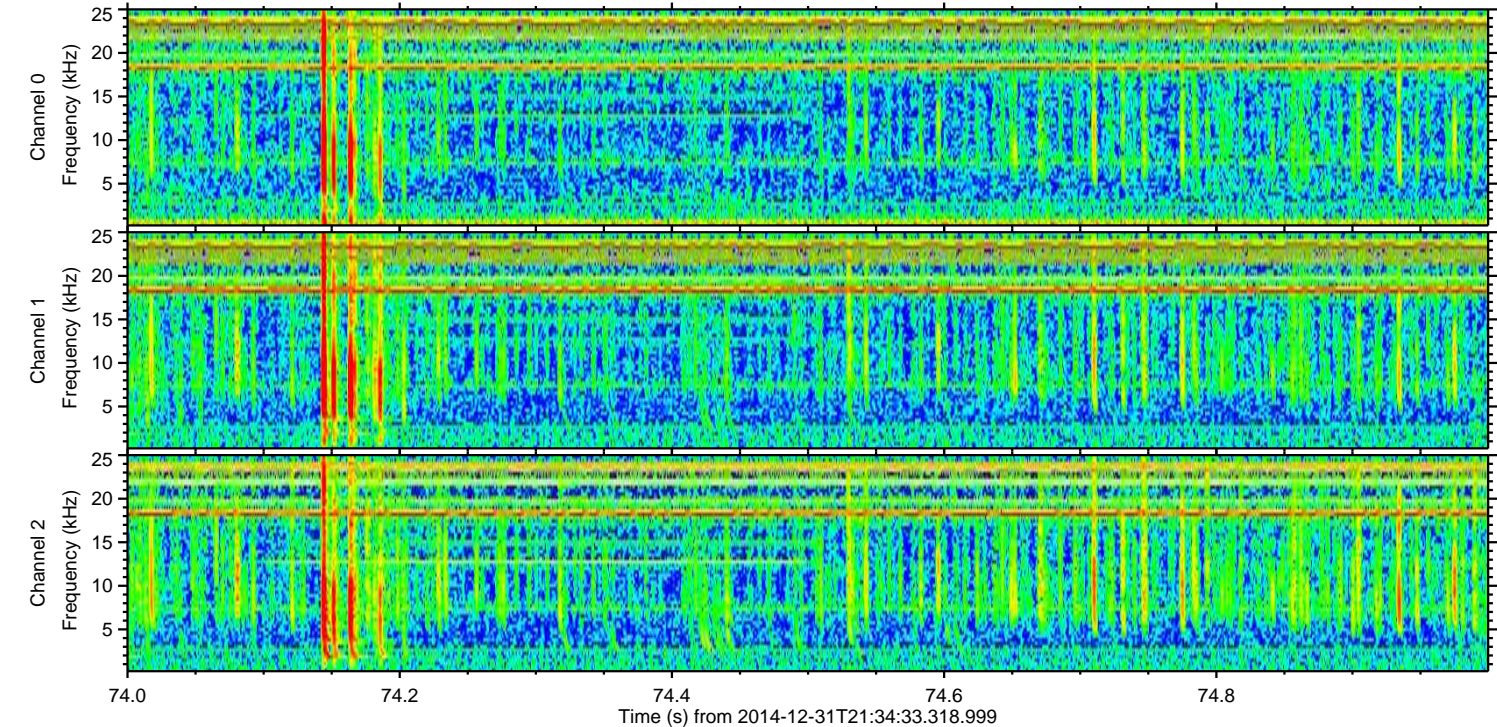
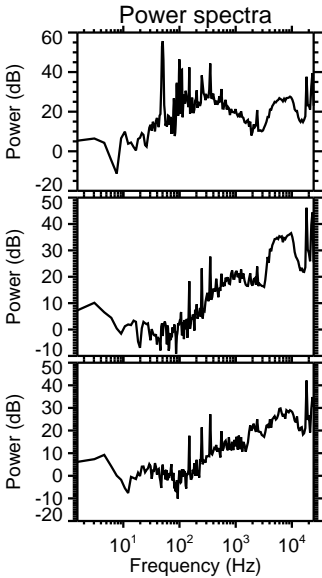
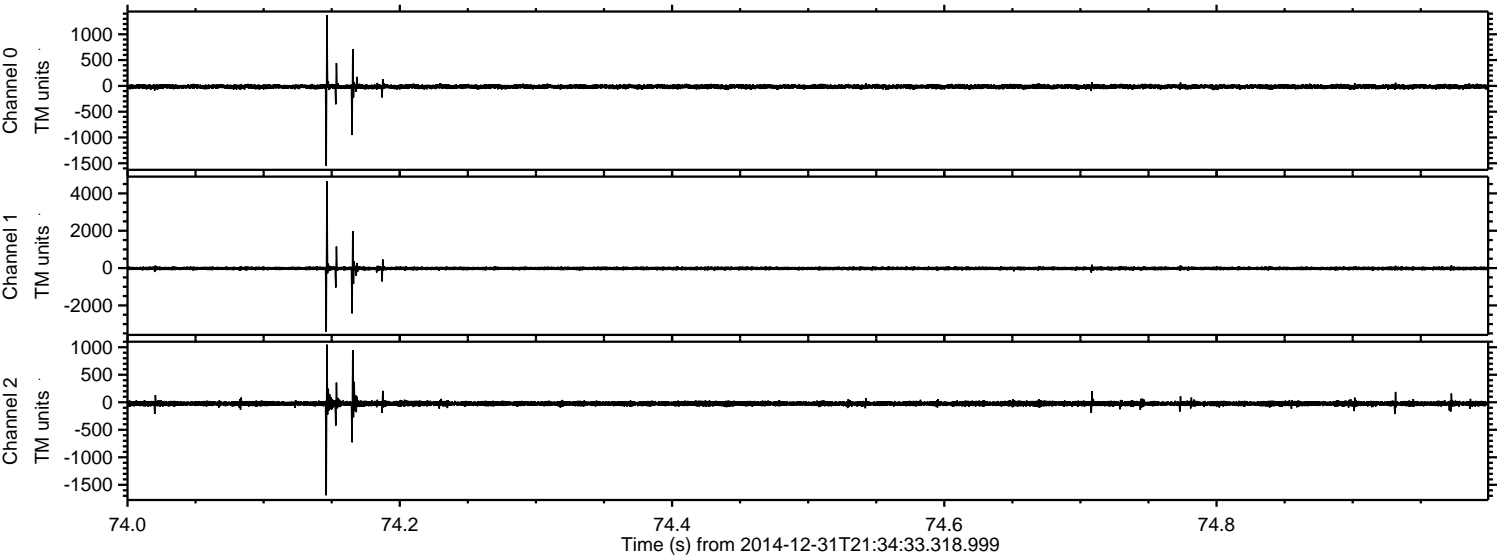
ELMAVAN 3D WAVEFORMS (Measured data sampled at 50 kHz) 49806 packets of 144 samples from 2014-12-31T21:34:33.318.999. Part 122/144

Processed Sat Jan 3 03:12:18 2015 by ELM ver.2012-10-06 from 001\_\_elm20141231\_213432\_\_dat00.bin



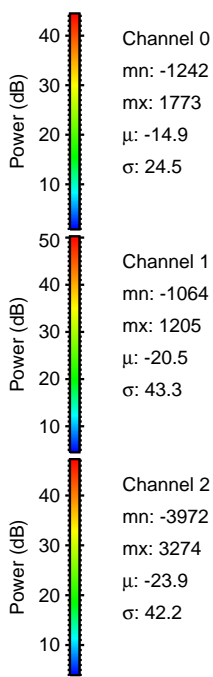
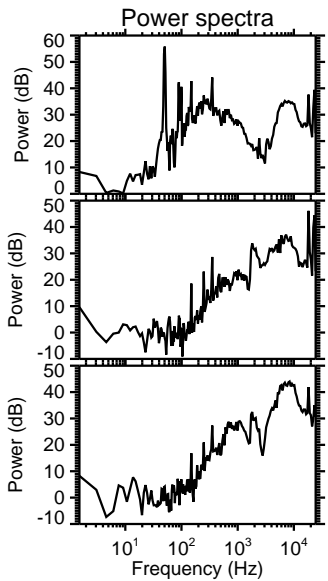
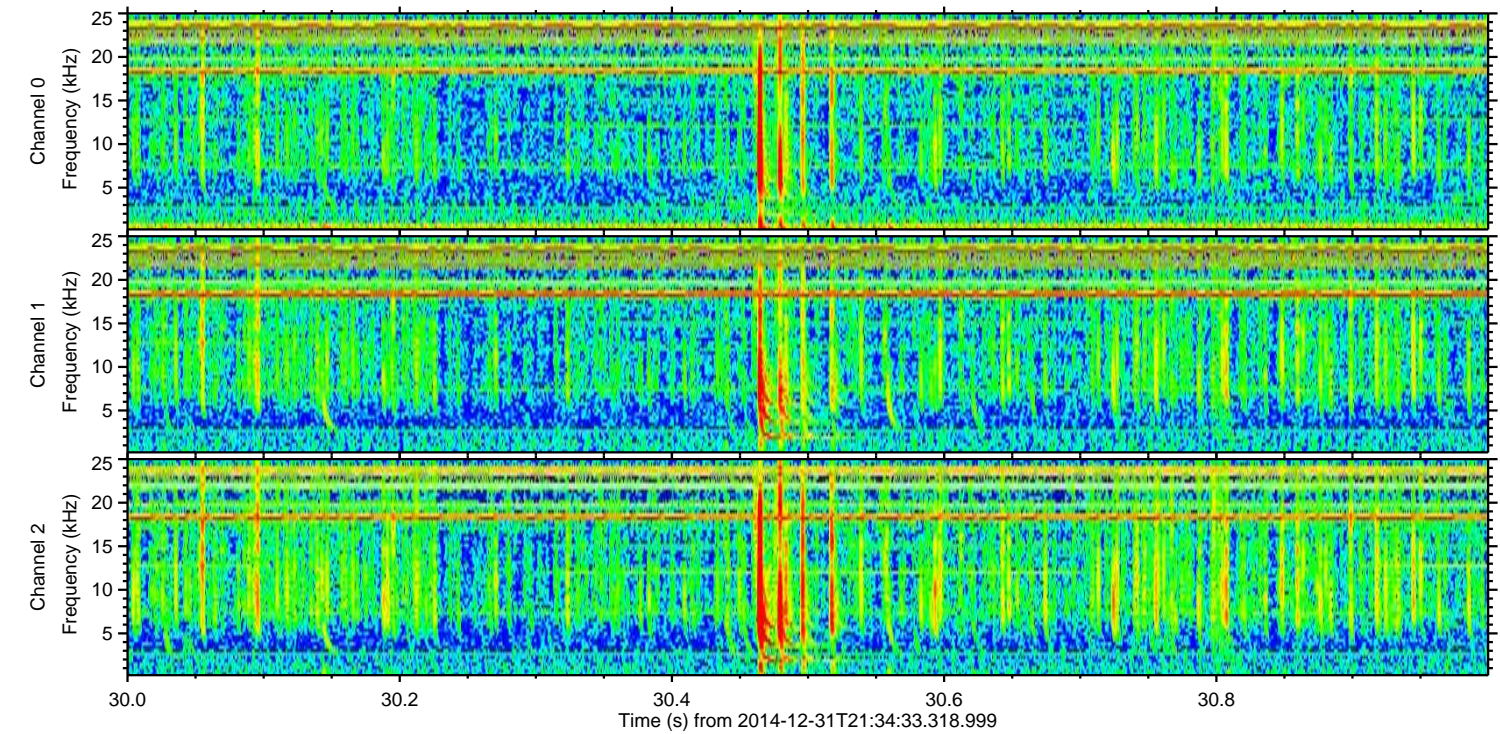
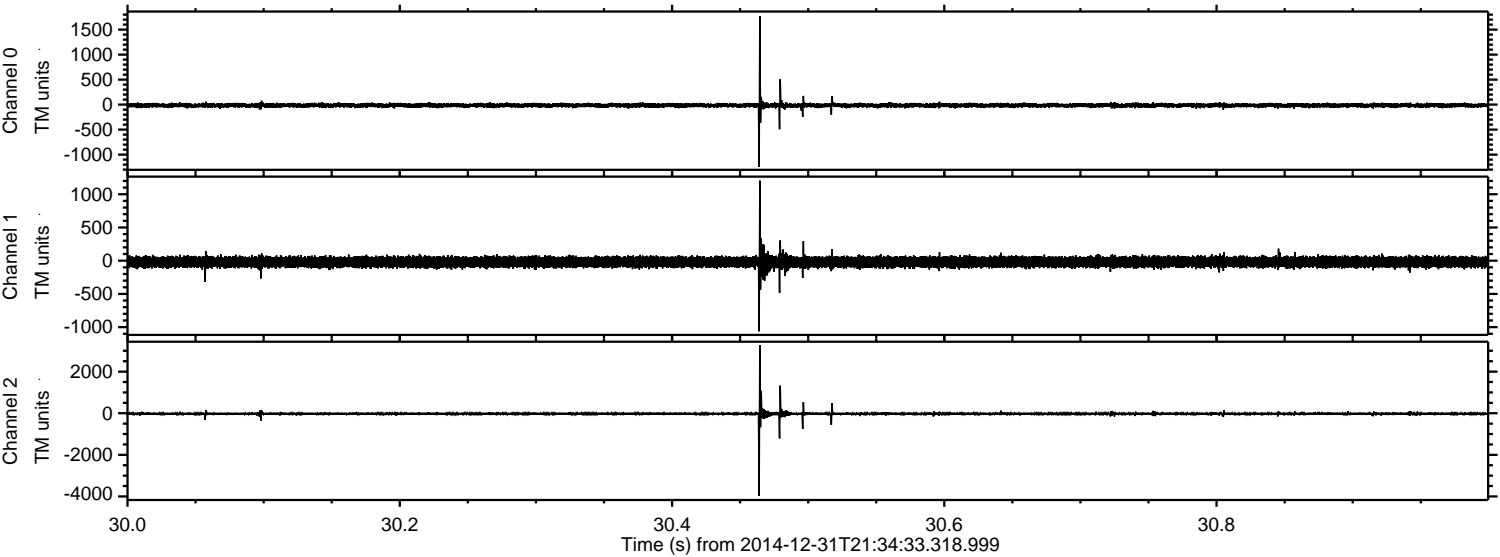


Processed Sat Jan 3 03:12:19 2015 by ELM ver.2012-10-06 from 001\_\_elm20141231\_213432\_\_dat00.bin





Processed Sat Jan 3 03:12:20 2015 by ELM ver.2012-10-06 from 001\_\_elm20141231\_213432\_\_dat00.bin



Channel 0  
mn: -1242  
mx: 1773  
 $\mu$ : -14.9  
 $\sigma$ : 24.5

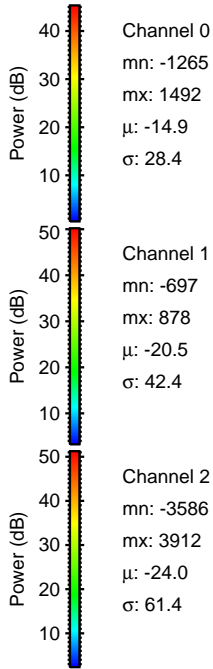
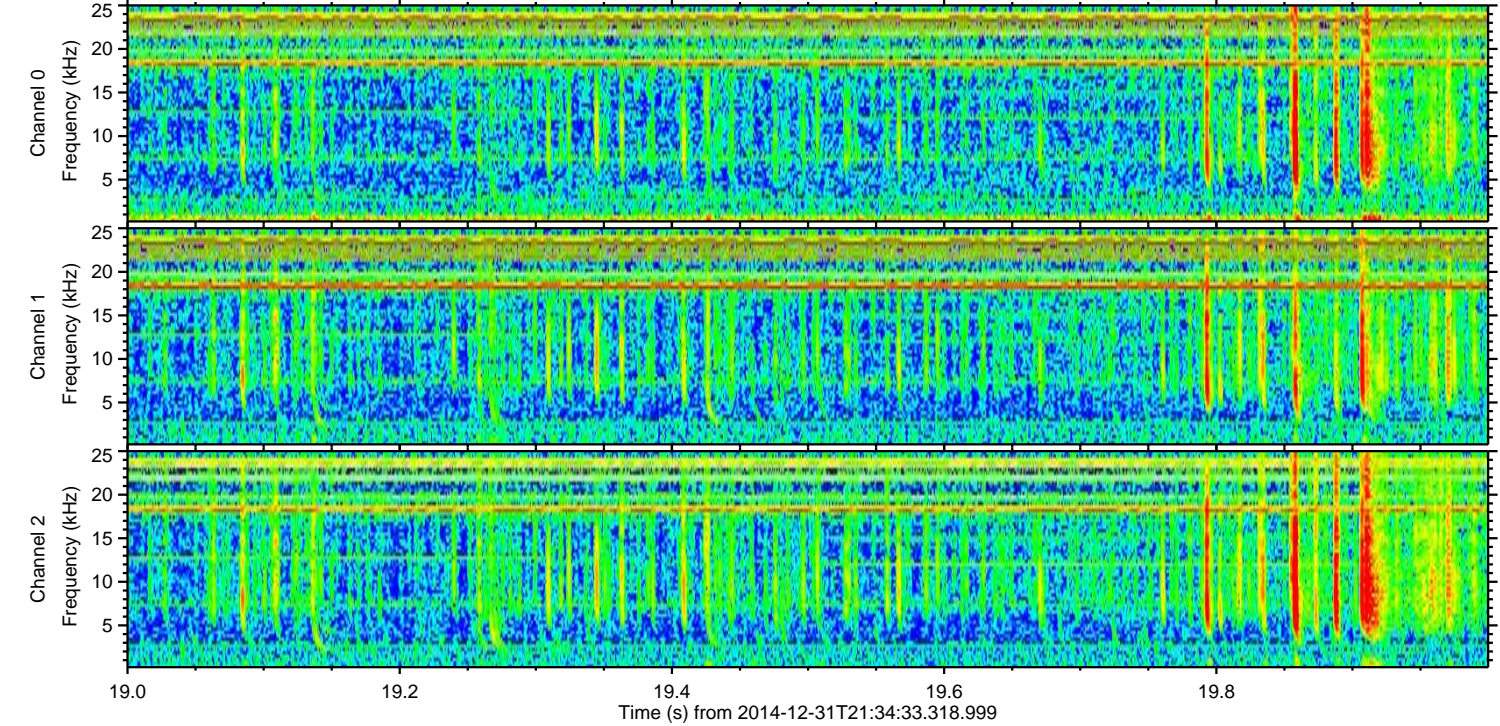
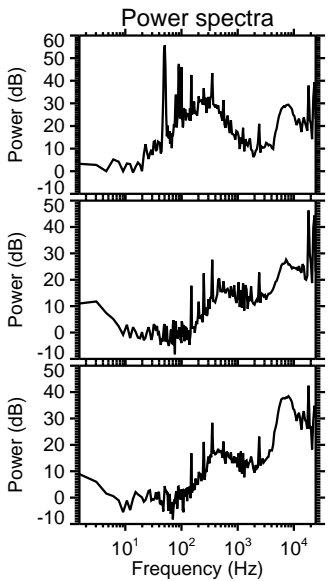
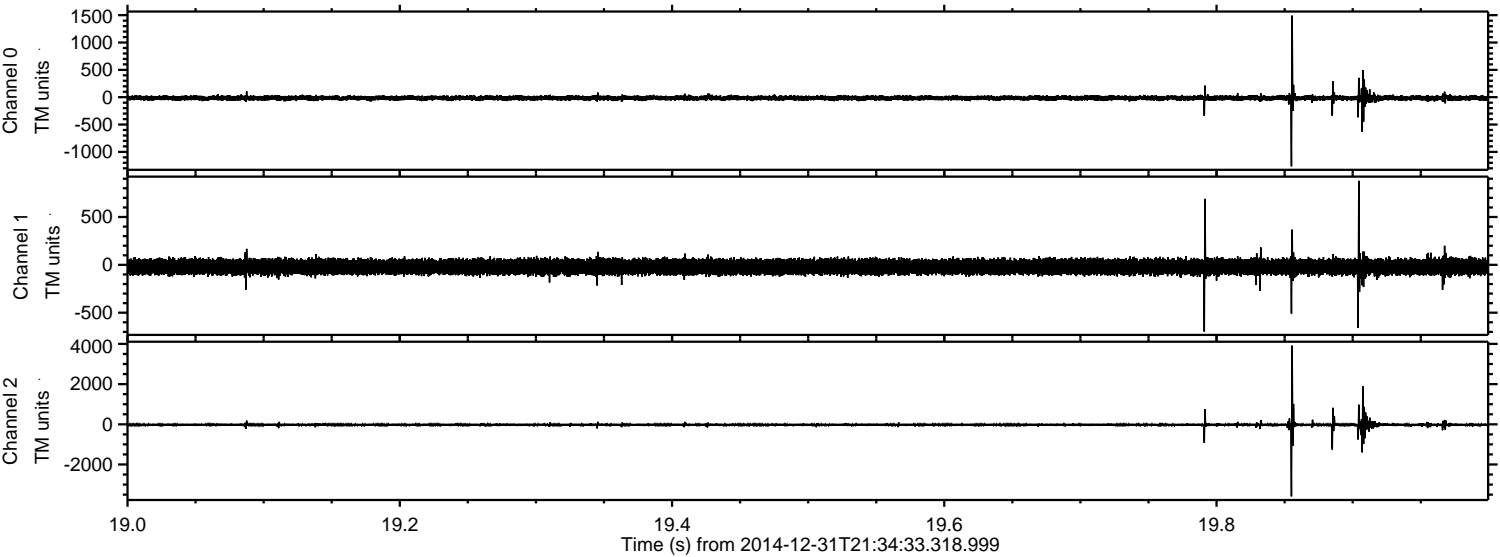
Channel 1  
mn: -1064  
mx: 1205  
 $\mu$ : -20.5  
 $\sigma$ : 43.3

Channel 2  
mn: -3972  
mx: 3274  
 $\mu$ : -23.9  
 $\sigma$ : 42.2



ELMAVAN 3D WAVEFORMS (Measured data sampled at 50 kHz) 49806 packets of 144 samples from 2014-12-31T21:34:33.318.999. Part 20/144

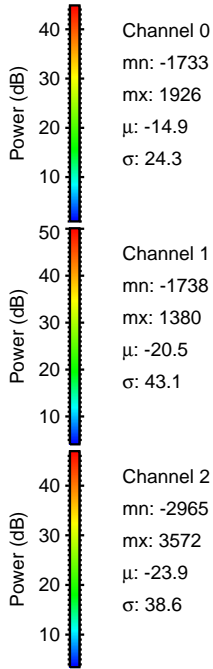
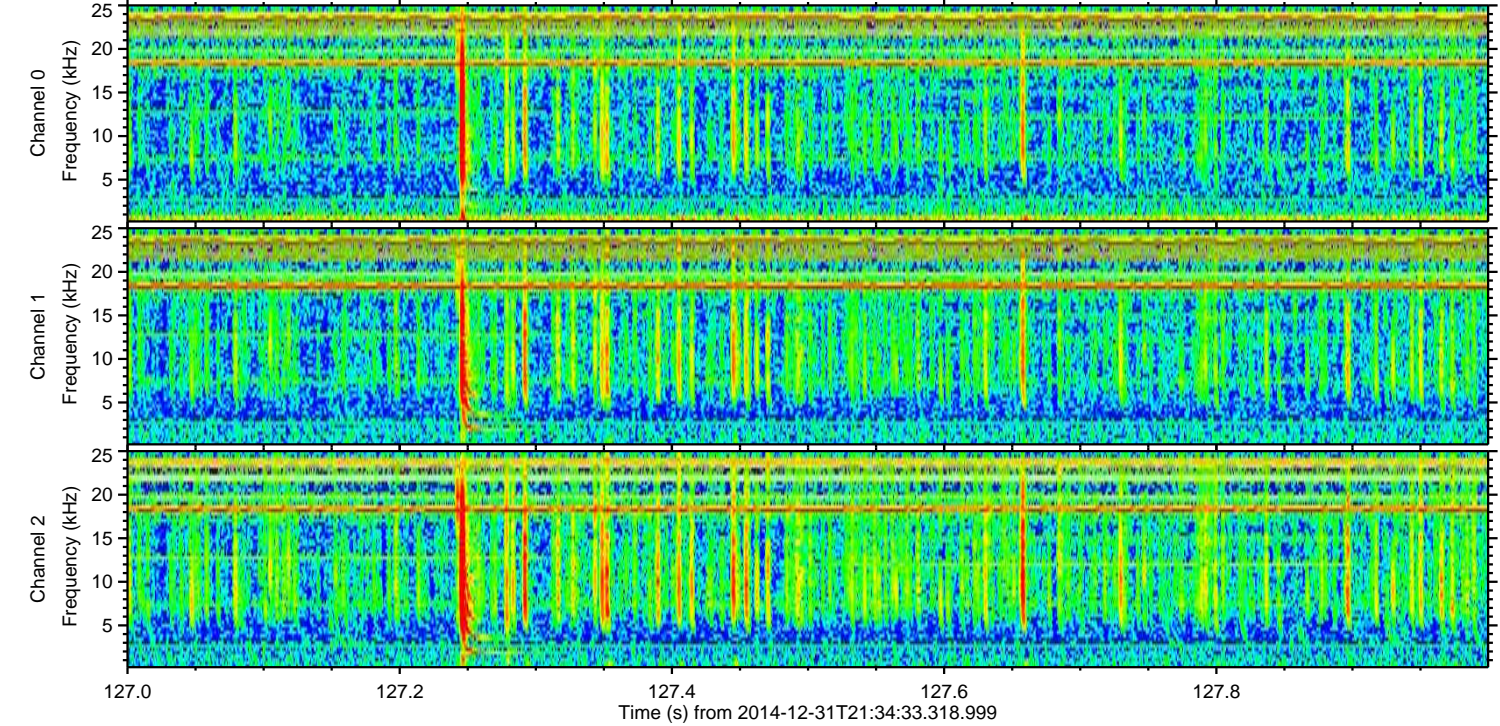
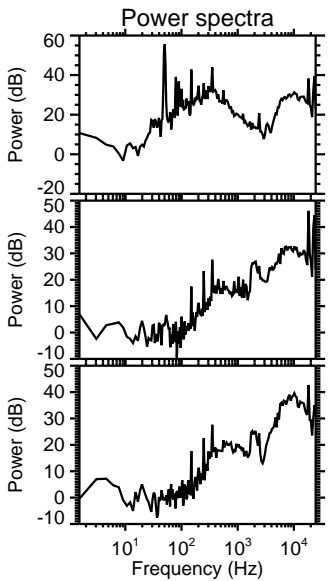
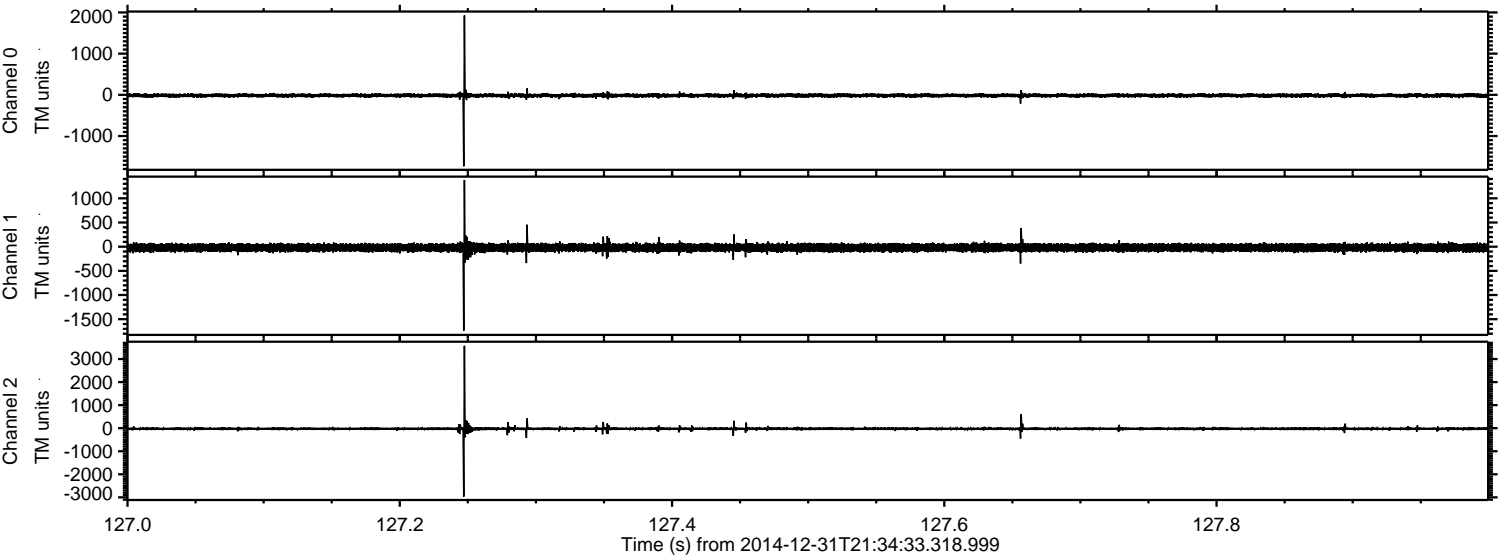
Processed Sat Jan 3 03:12:21 2015 by ELM ver.2012-10-06 from 001\_\_elm20141231\_213432\_\_dat00.bin





ELMAVAN 3D WAVEFORMS (Measured data sampled at 50 kHz) 49806 packets of 144 samples from 2014-12-31T21:34:33.318.999. Part 128/144

Processed Sat Jan 3 03:12:22 2015 by ELM ver.2012-10-06 from 001\_\_elm20141231\_213432\_\_dat00.bin



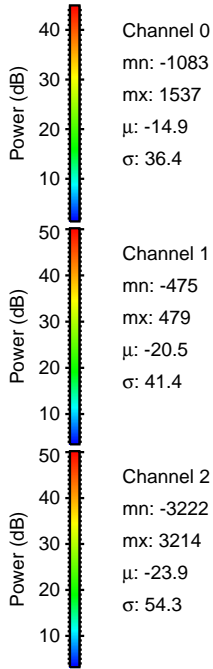
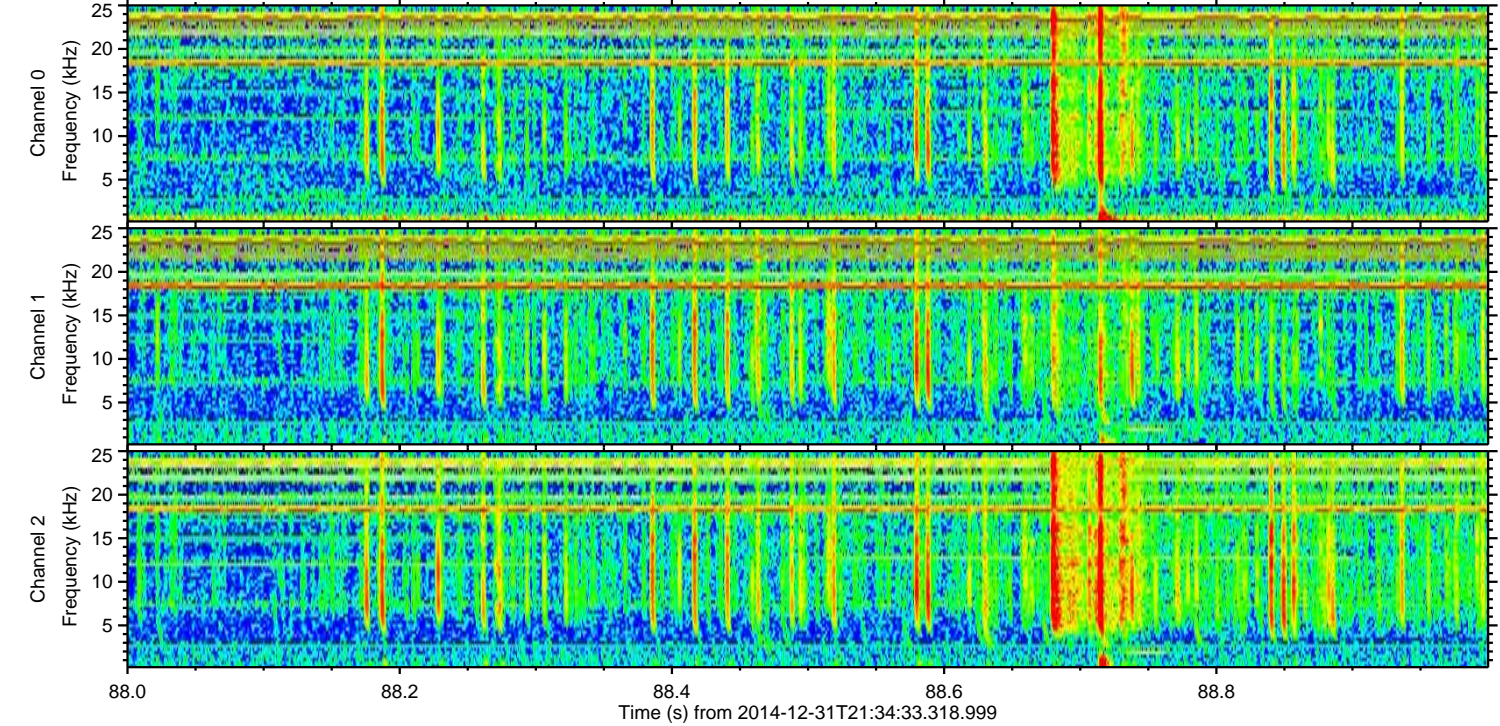
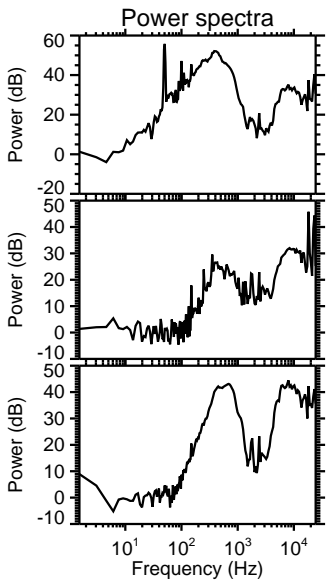
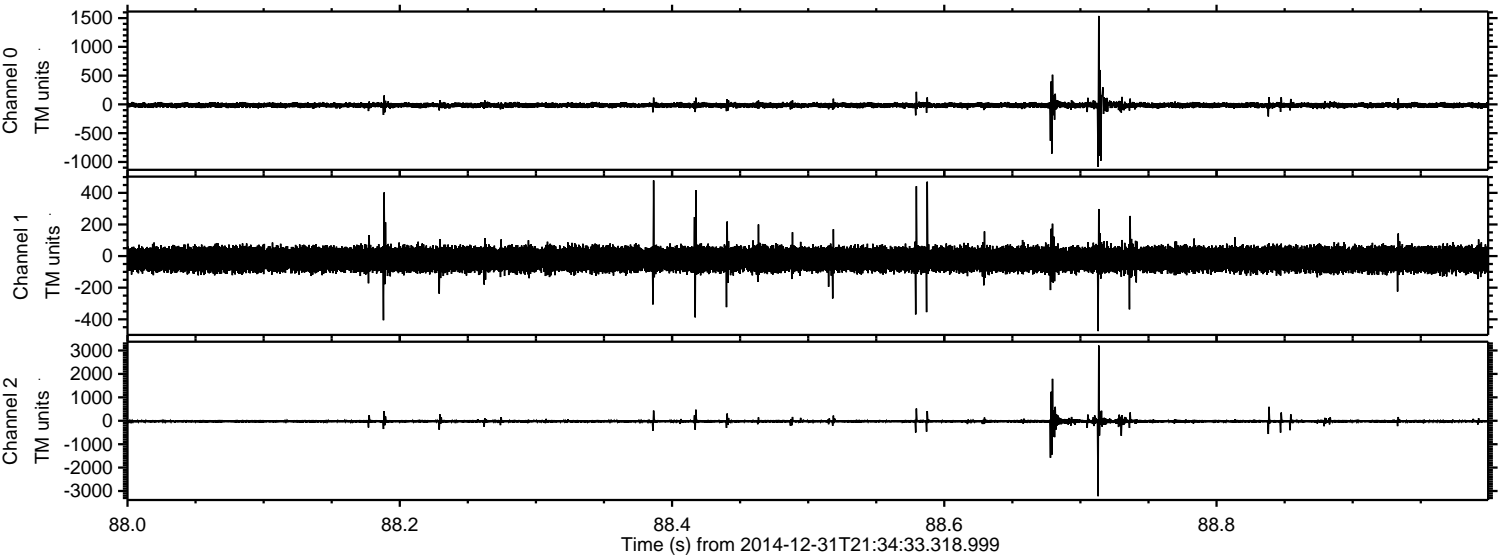
Channel 0  
mn: -1733  
mx: 1926  
 $\mu$ : -14.9  
 $\sigma$ : 24.3

Channel 1  
mn: -1738  
mx: 1380  
 $\mu$ : -20.5  
 $\sigma$ : 43.1

Channel 2  
mn: -2965  
mx: 3572  
 $\mu$ : -23.9  
 $\sigma$ : 38.6



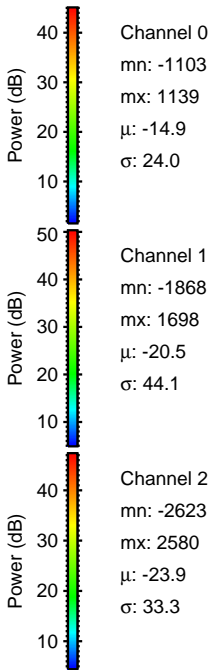
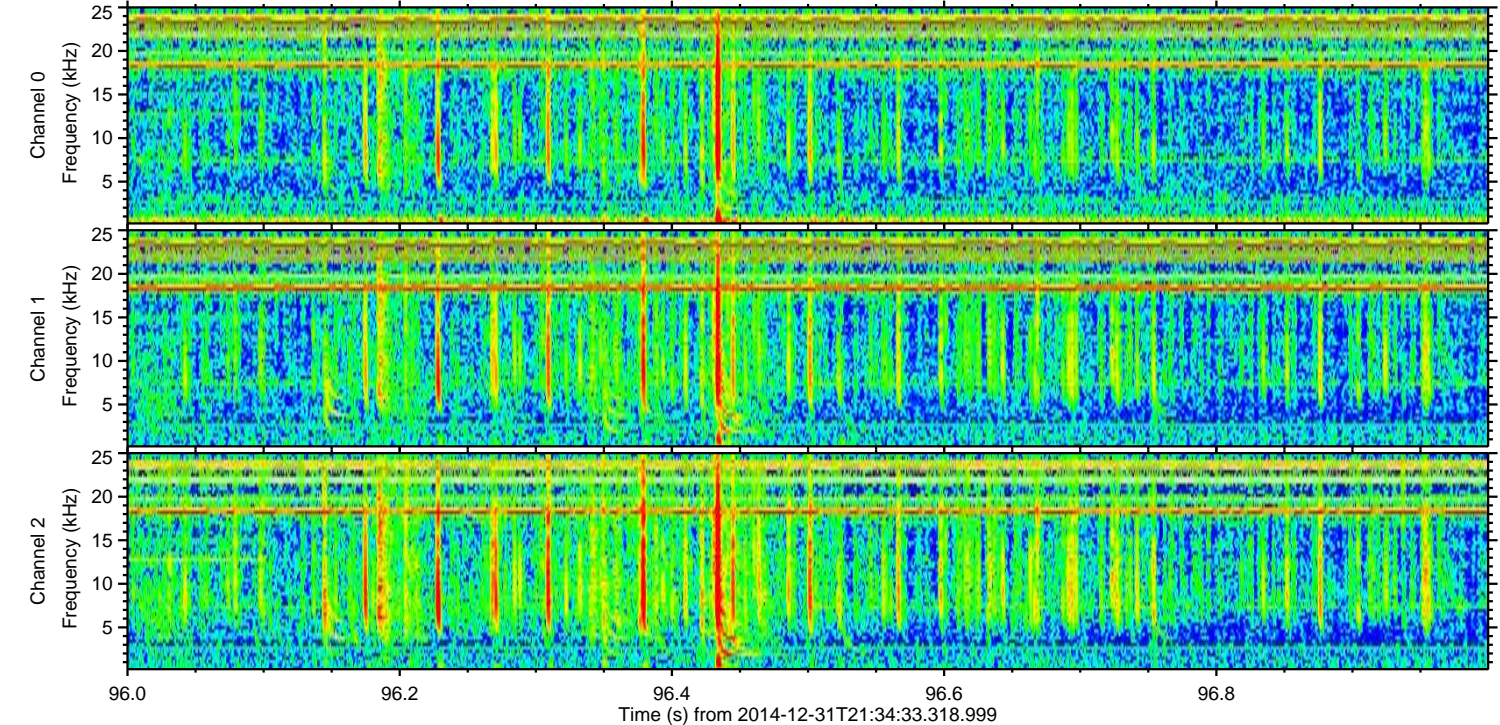
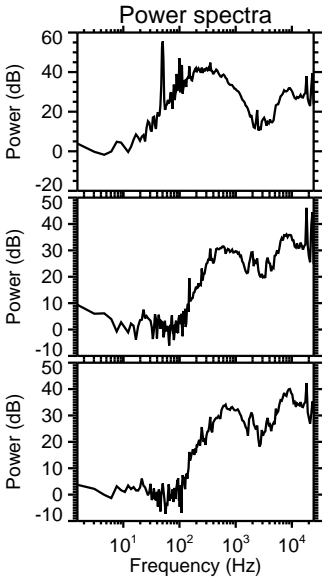
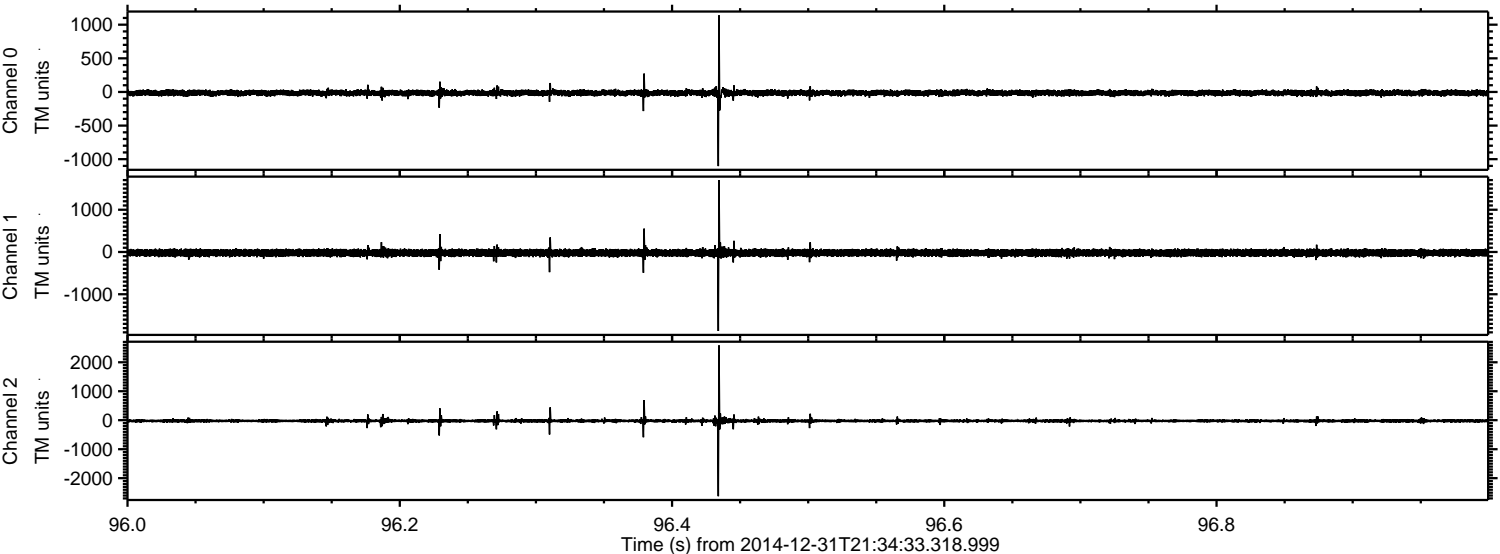
Processed Sat Jan 3 03:12:23 2015 by ELM ver.2012-10-06 from 001\_\_elm20141231\_213432\_\_dat00.bin





ELMAVAN 3D WAVEFORMS (Measured data sampled at 50 kHz) 49806 packets of 144 samples from 2014-12-31T21:34:33.318.999. Part 97/144

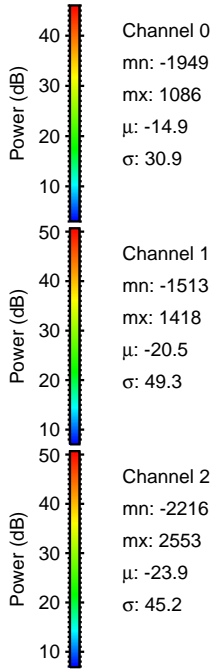
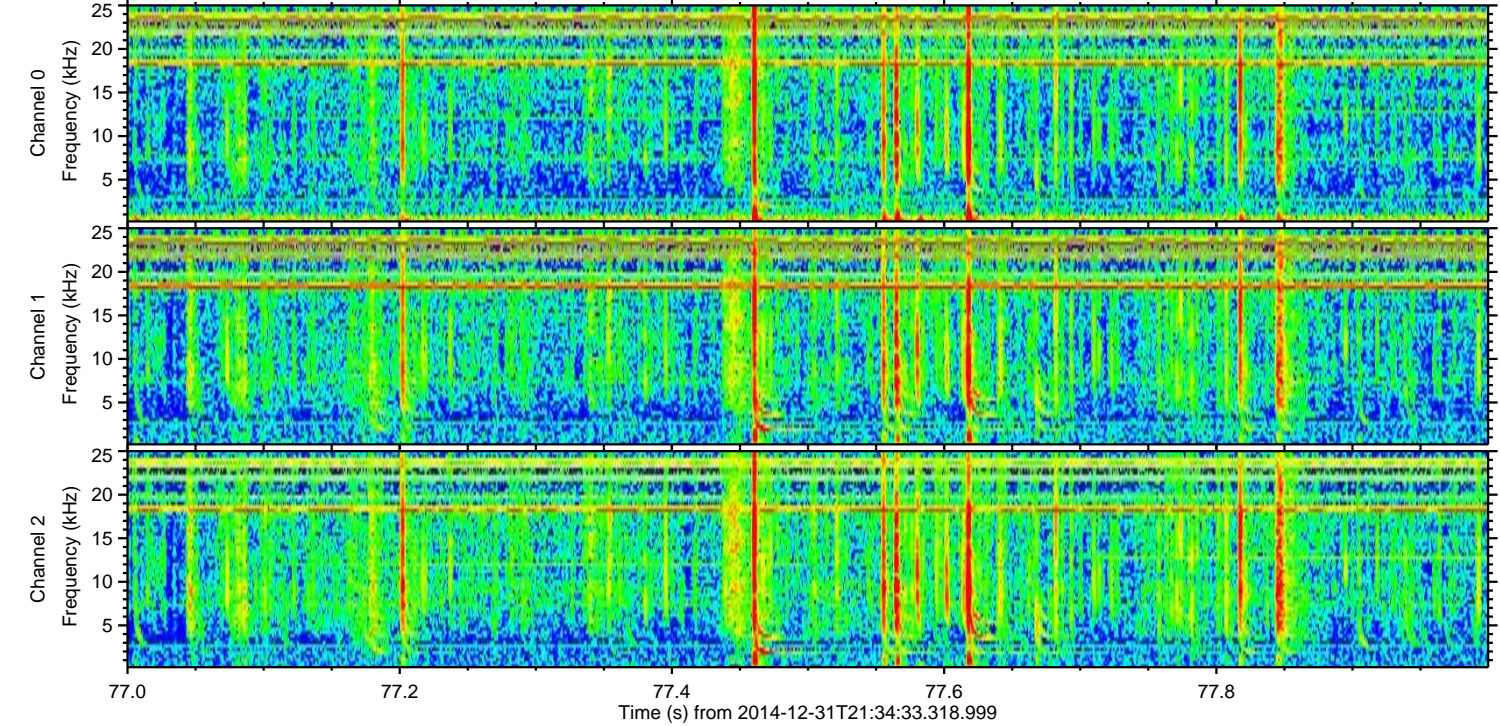
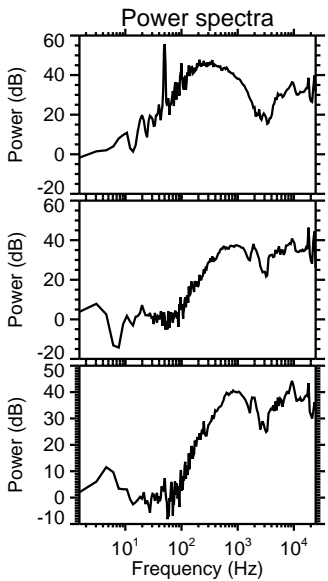
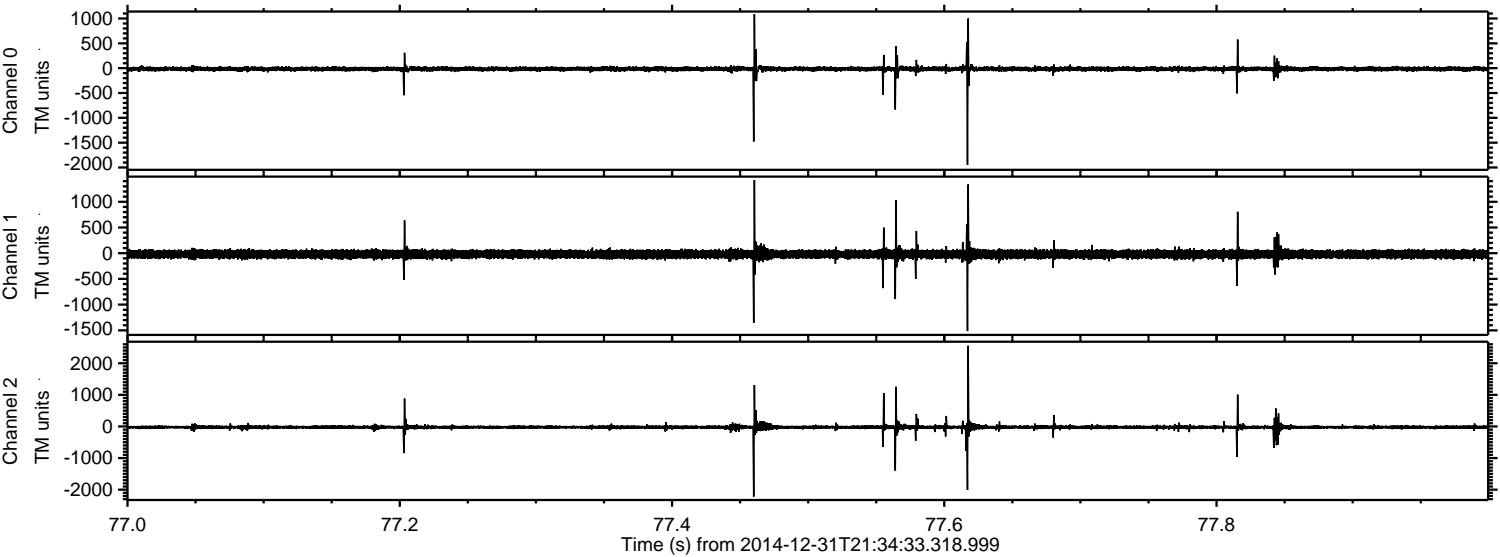
Processed Sat Jan 3 03:12:24 2015 by ELM ver.2012-10-06 from 001\_\_elm20141231\_213432\_\_dat00.bin





ELMAVAN 3D WAVEFORMS (Measured data sampled at 50 kHz) 49806 packets of 144 samples from 2014-12-31T21:34:33.318.999. Part 78/144

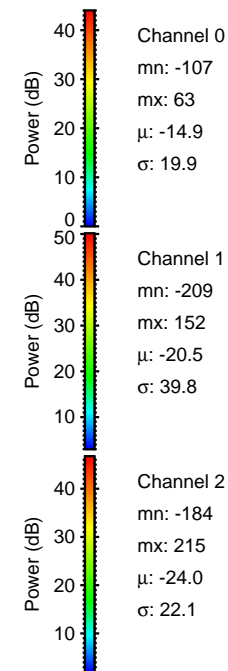
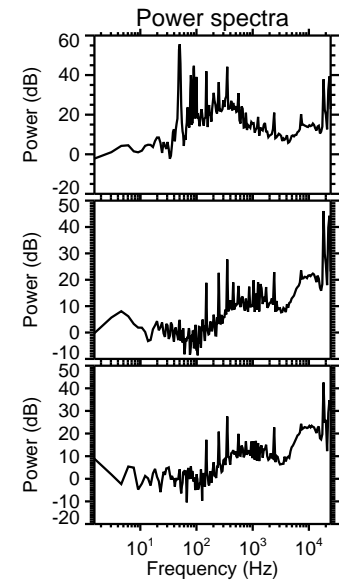
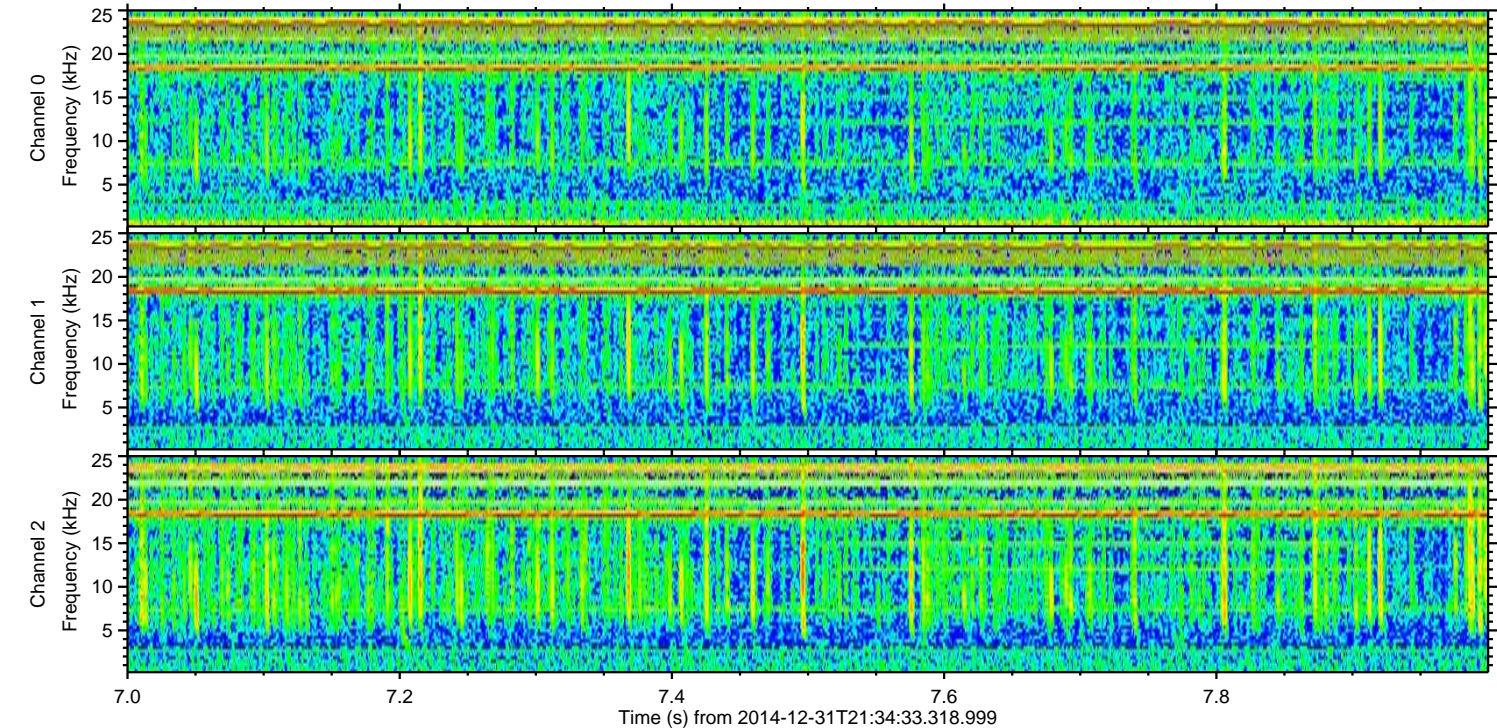
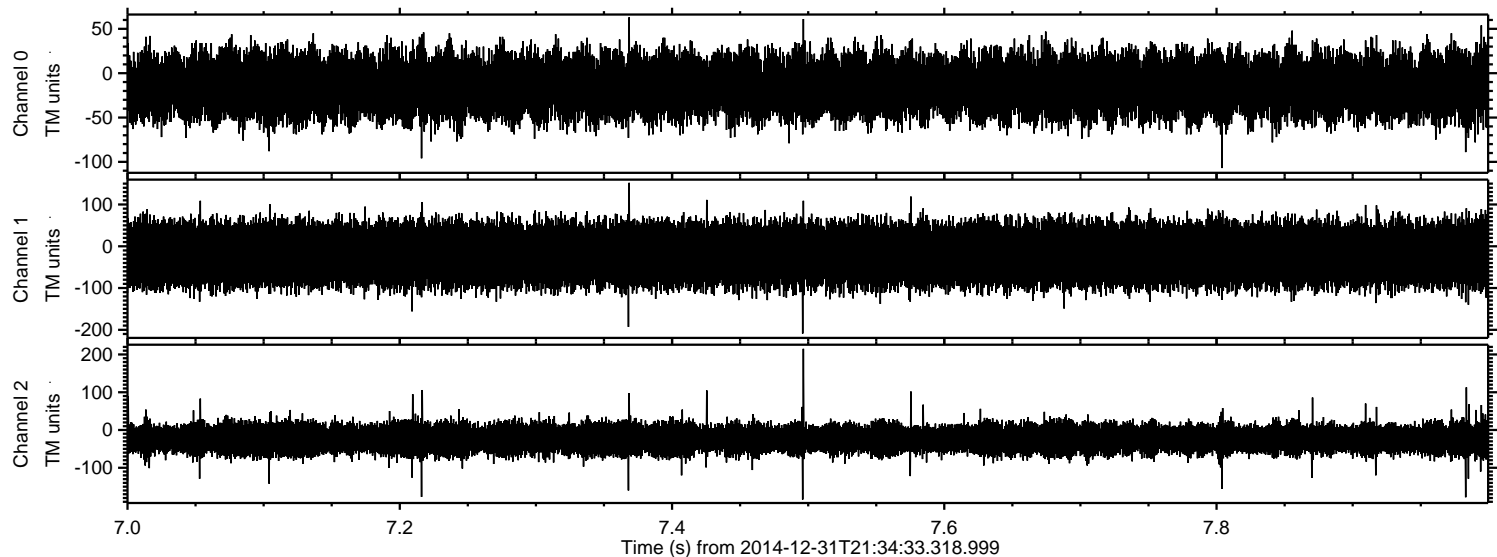
Processed Sat Jan 3 03:12:25 2015 by ELM ver.2012-10-06 from 001\_\_elm20141231\_213432\_\_dat00.bin





ELMAVAN 3D WAVEFORMS (Measured data sampled at 50 kHz) 49806 packets of 144 samples from 2014-12-31T21:34:33.318.999. Part 8/144

Processed Sat Jan 3 03:12:26 2015 by ELM ver.2012-10-06 from 001\_\_elm20141231\_213432\_\_dat00.bin



Channel 0  
mn: -107  
mx: 63  
 $\mu$ : -14.9  
 $\sigma$ : 19.9

Channel 1  
mn: -209  
mx: 152  
 $\mu$ : -20.5  
 $\sigma$ : 39.8

Channel 2  
mn: -184  
mx: 215  
 $\mu$ : -24.0  
 $\sigma$ : 22.1