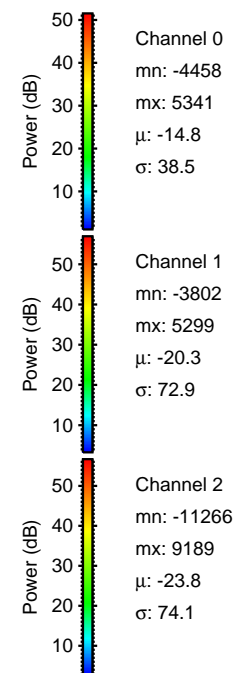
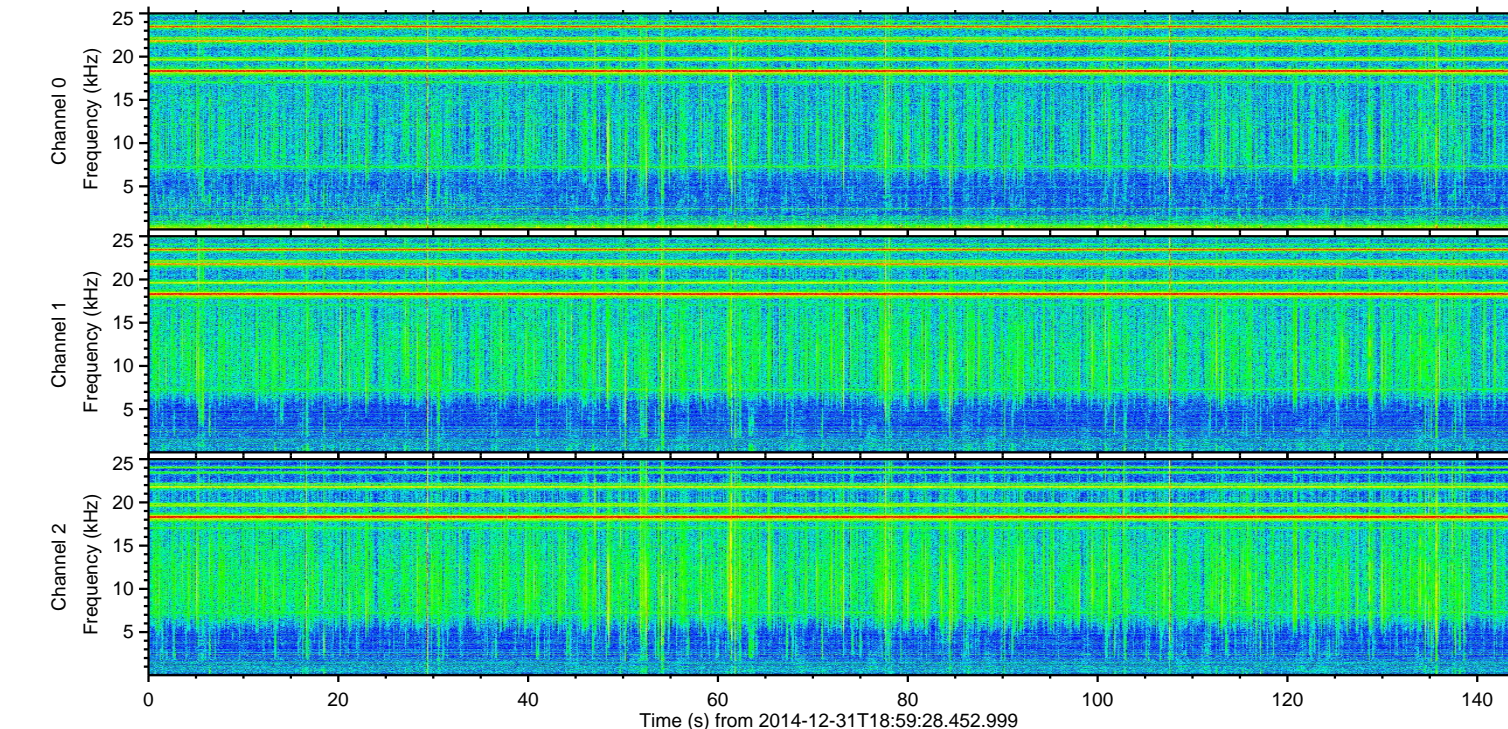
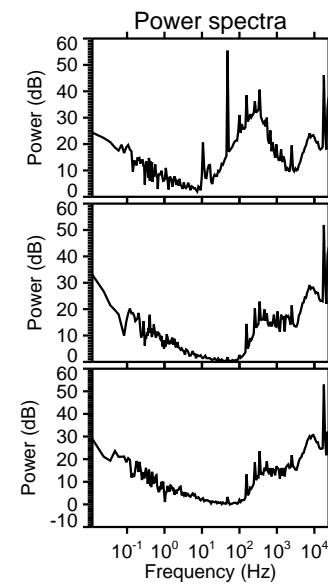
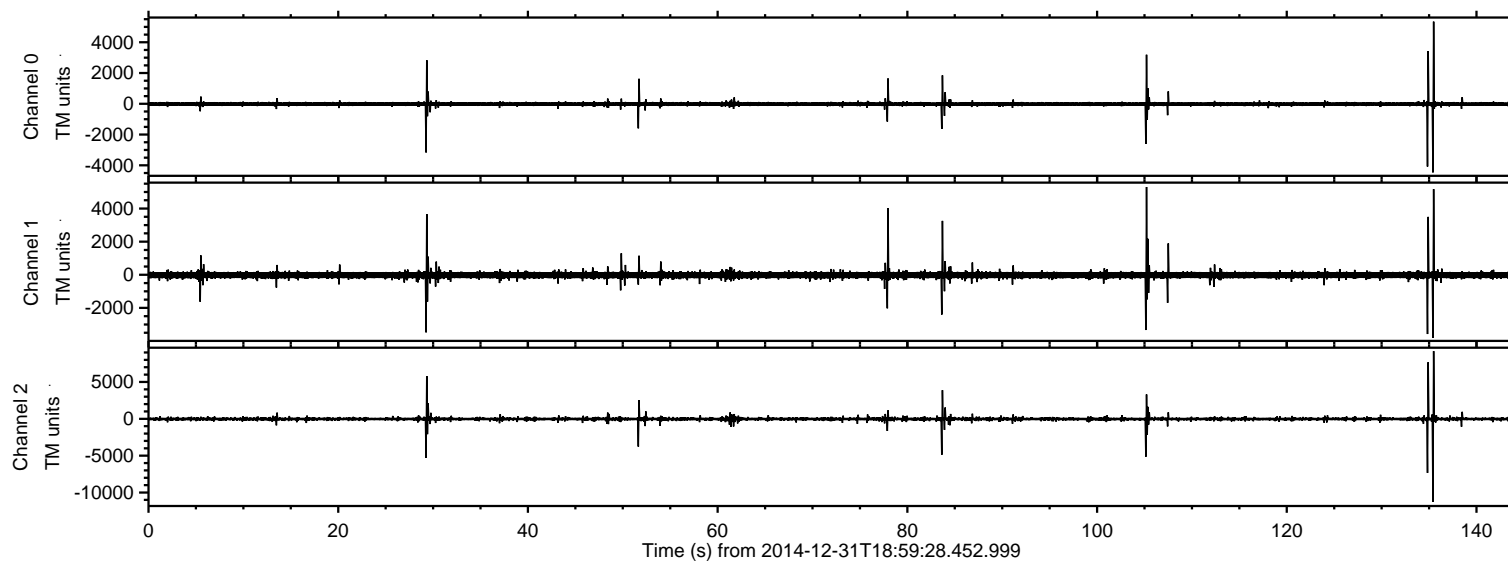


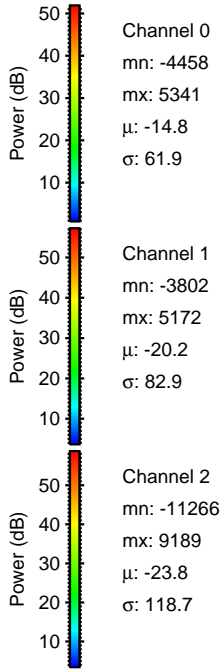
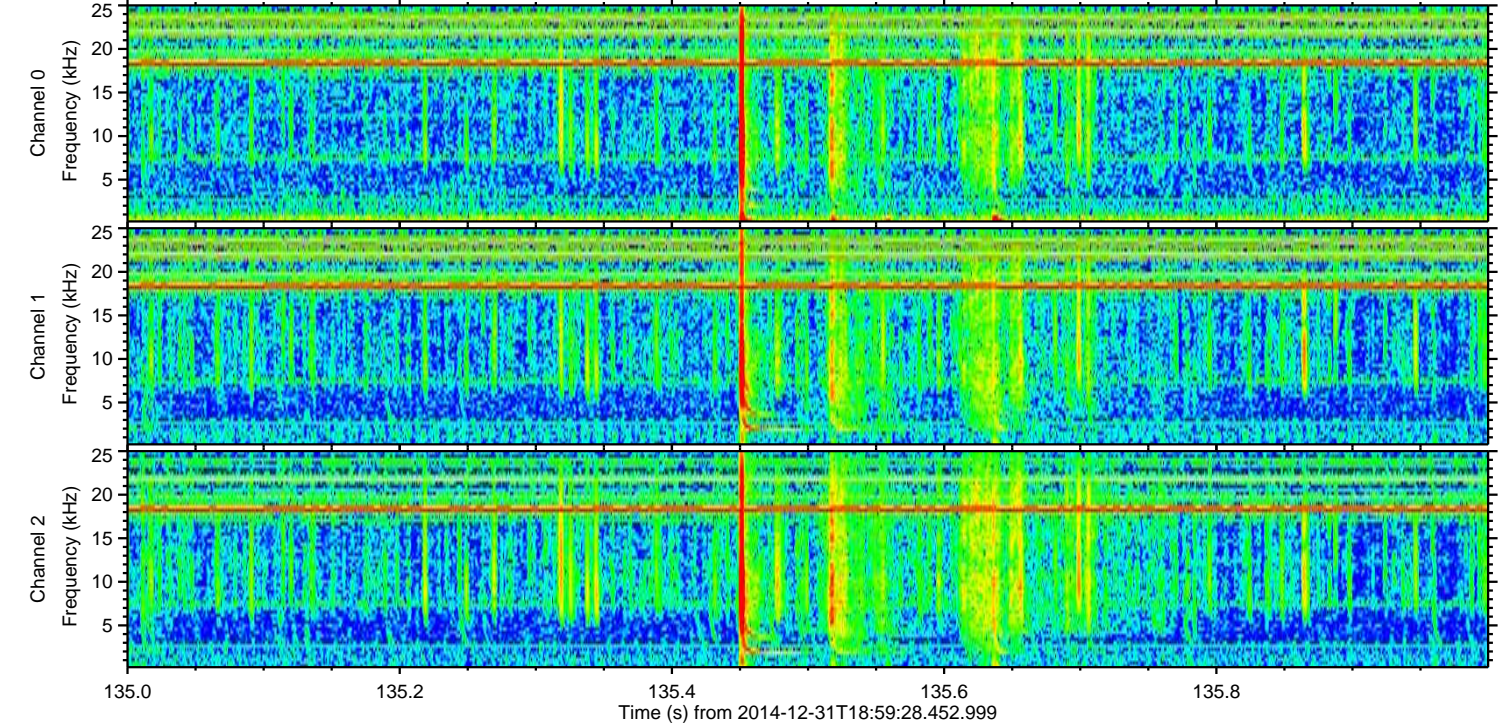
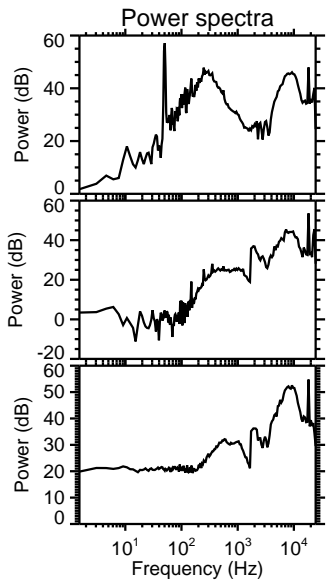
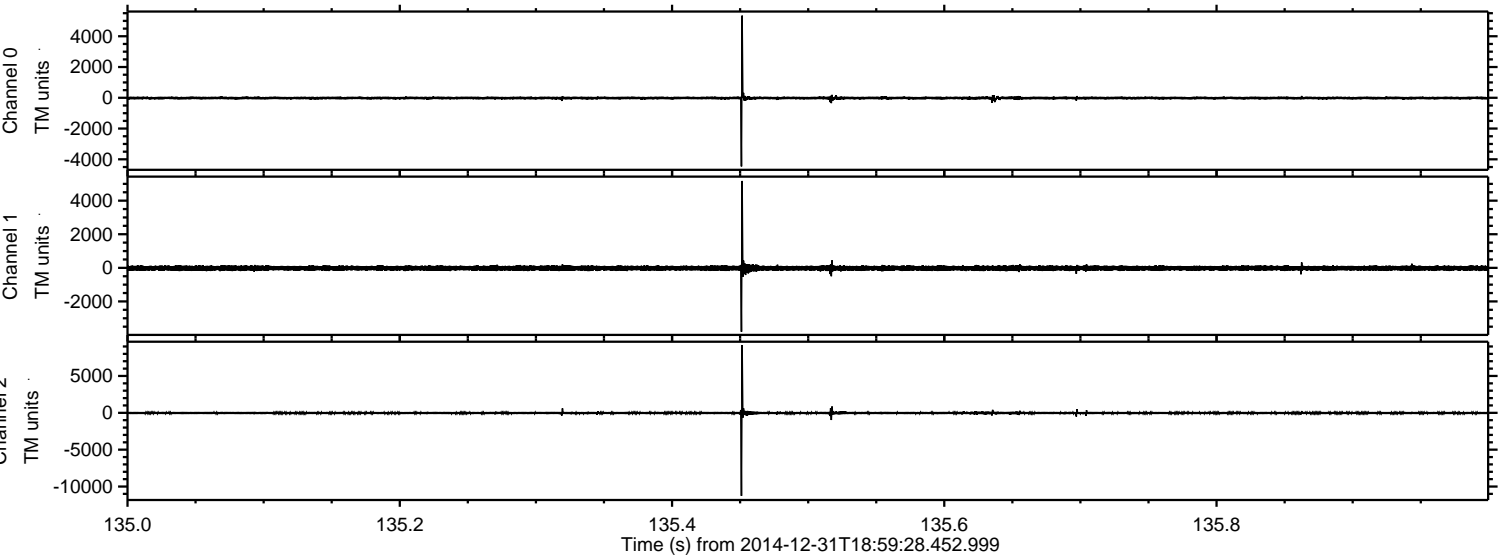
ELMAVAN 3D WAVEFORMS (Measured data sampled at 50 kHz) 49806 packets of 144 samples from 2014-12-31T18:59:28.452.999.

Processed Sat Jan 3 02:25:40 2015 by ELM ver.2012-10-06 from 001__elm20141231_185927__dat00.bin



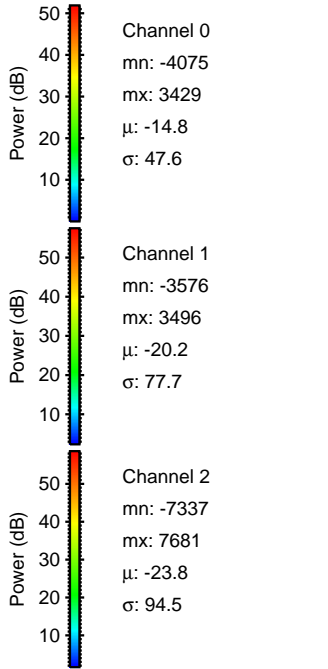
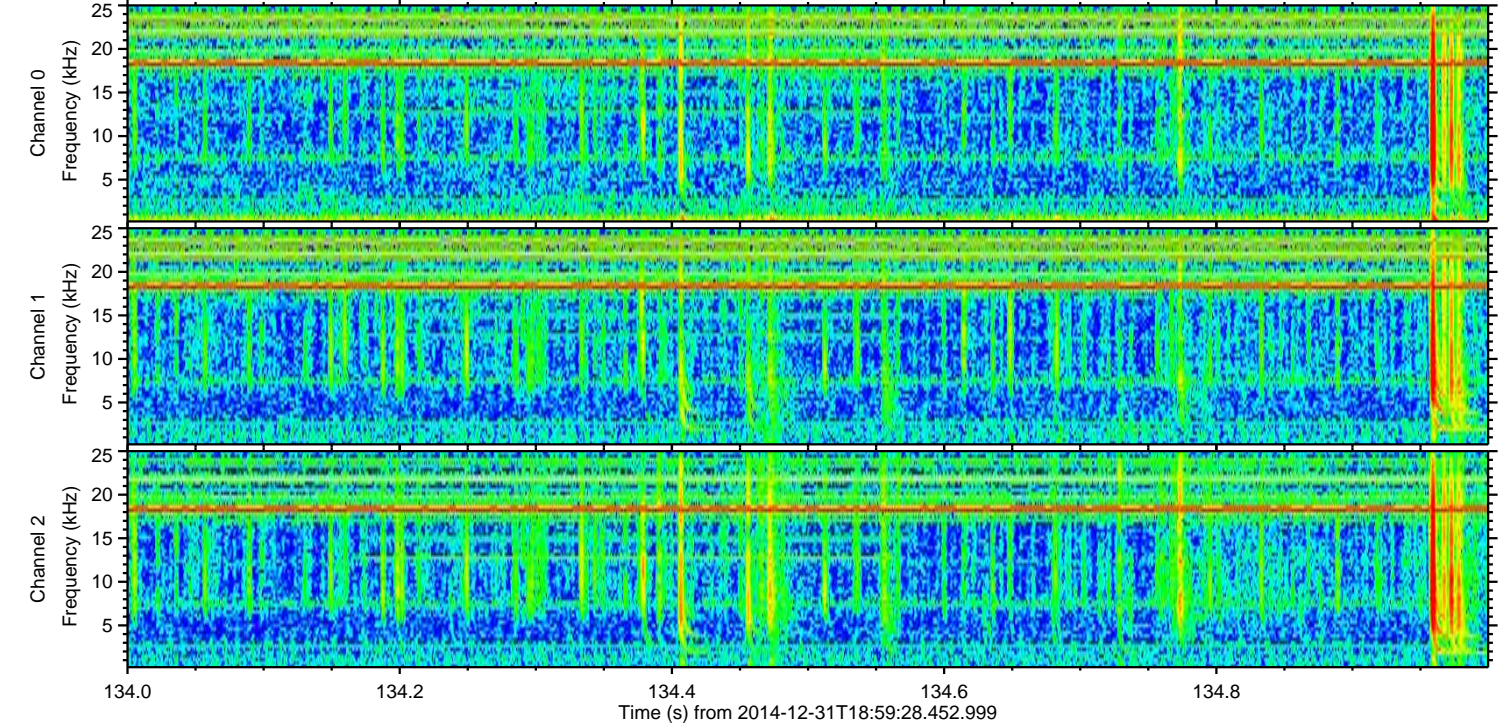
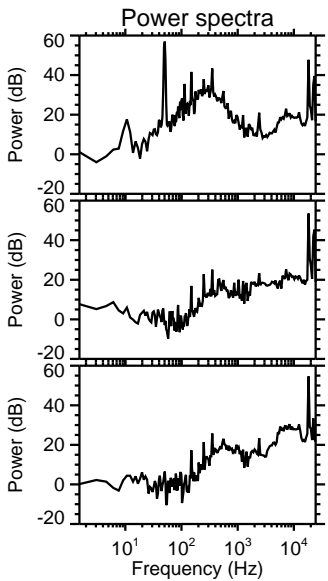
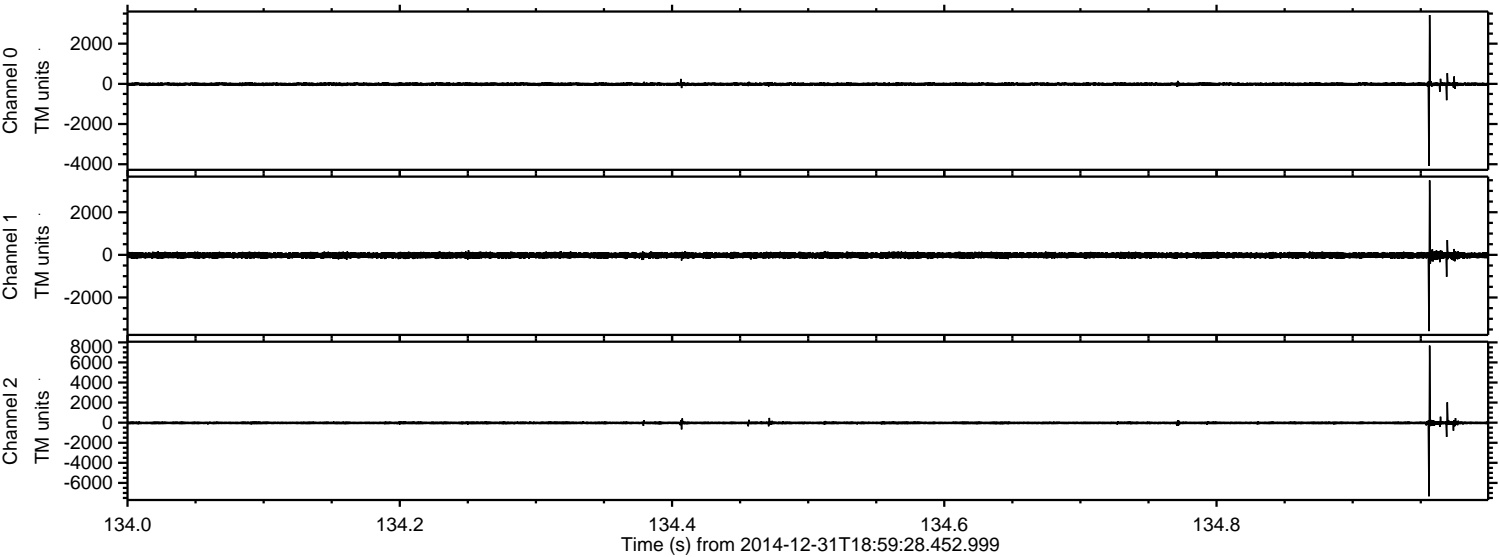
ELMAVAN 3D WAVEFORMS (Measured data sampled at 50 kHz) 49806 packets of 144 samples from 2014-12-31T18:59:28.452.999. Part 136/144

Processed Sat Jan 3 02:25:52 2015 by ELM ver.2012-10-06 from 001__elm20141231_185927__dat00.bin

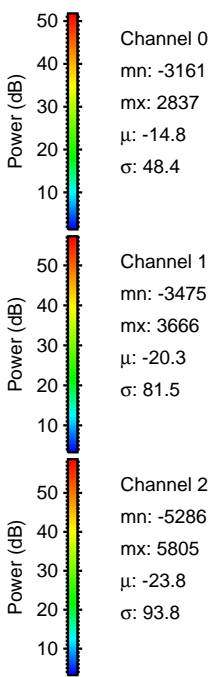
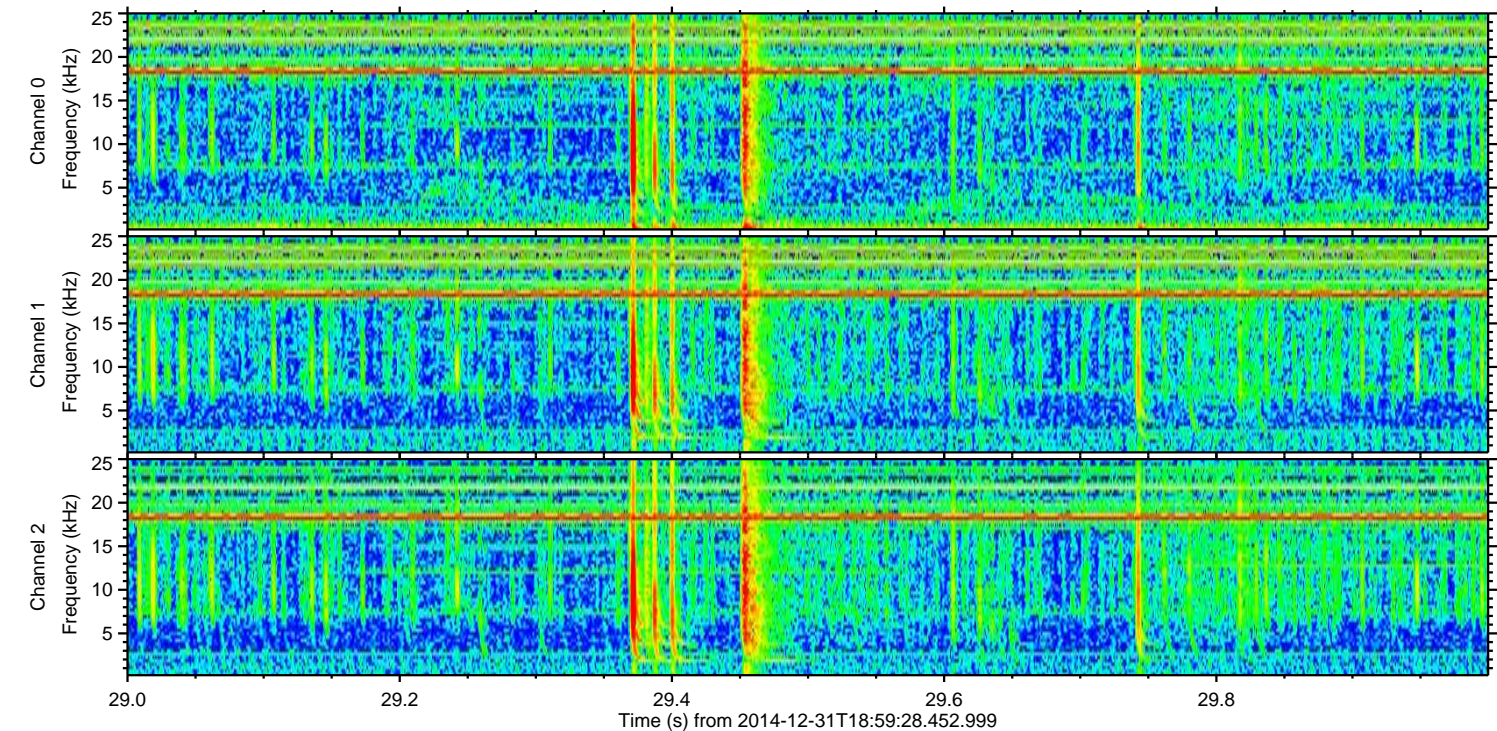
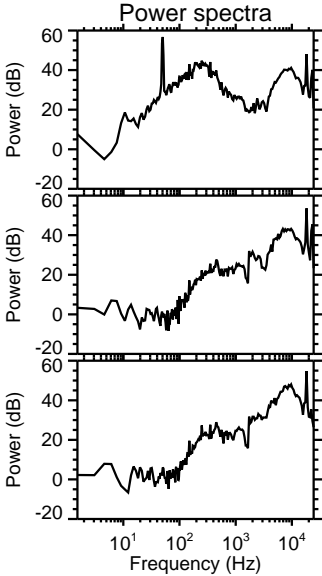
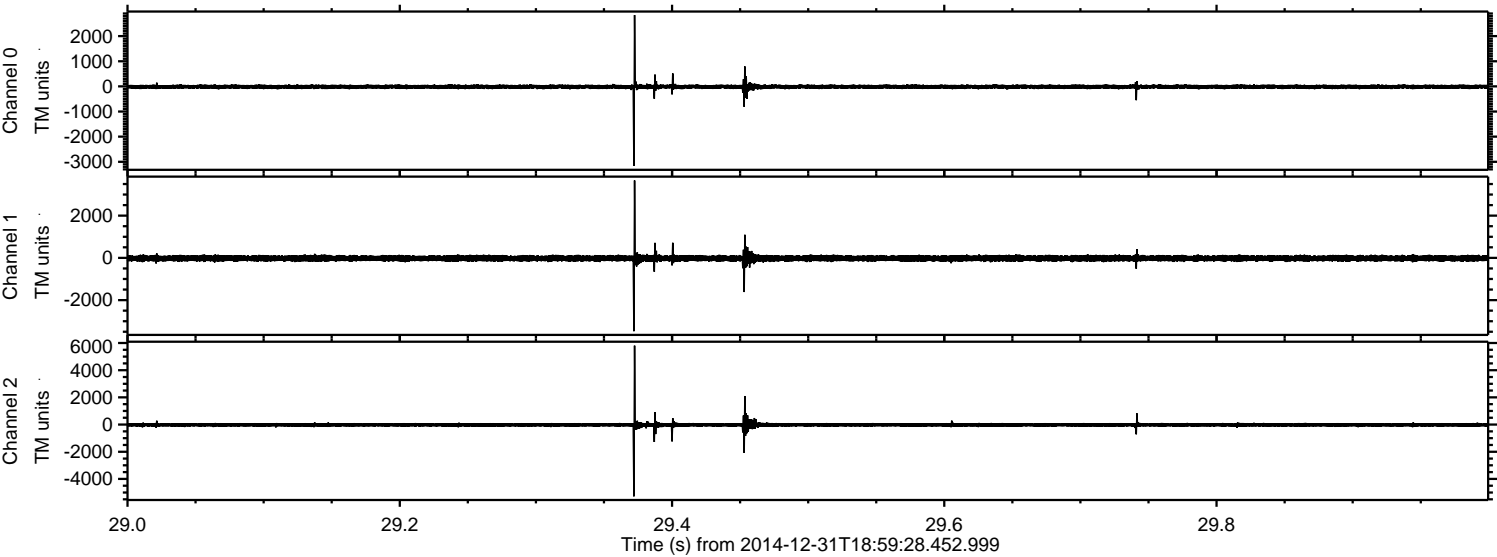


ELMAVAN 3D WAVEFORMS (Measured data sampled at 50 kHz) 49806 packets of 144 samples from 2014-12-31T18:59:28.452.999. Part 135/144

Processed Sat Jan 3 02:25:53 2015 by ELM ver.2012-10-06 from 001__elm20141231_185927__dat00.bin

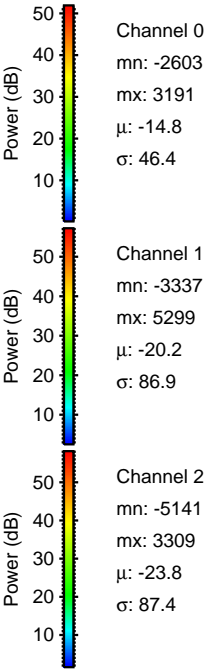
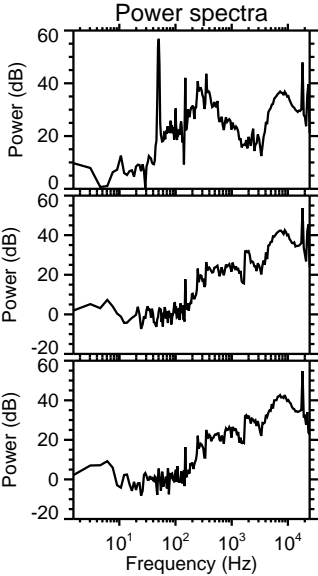
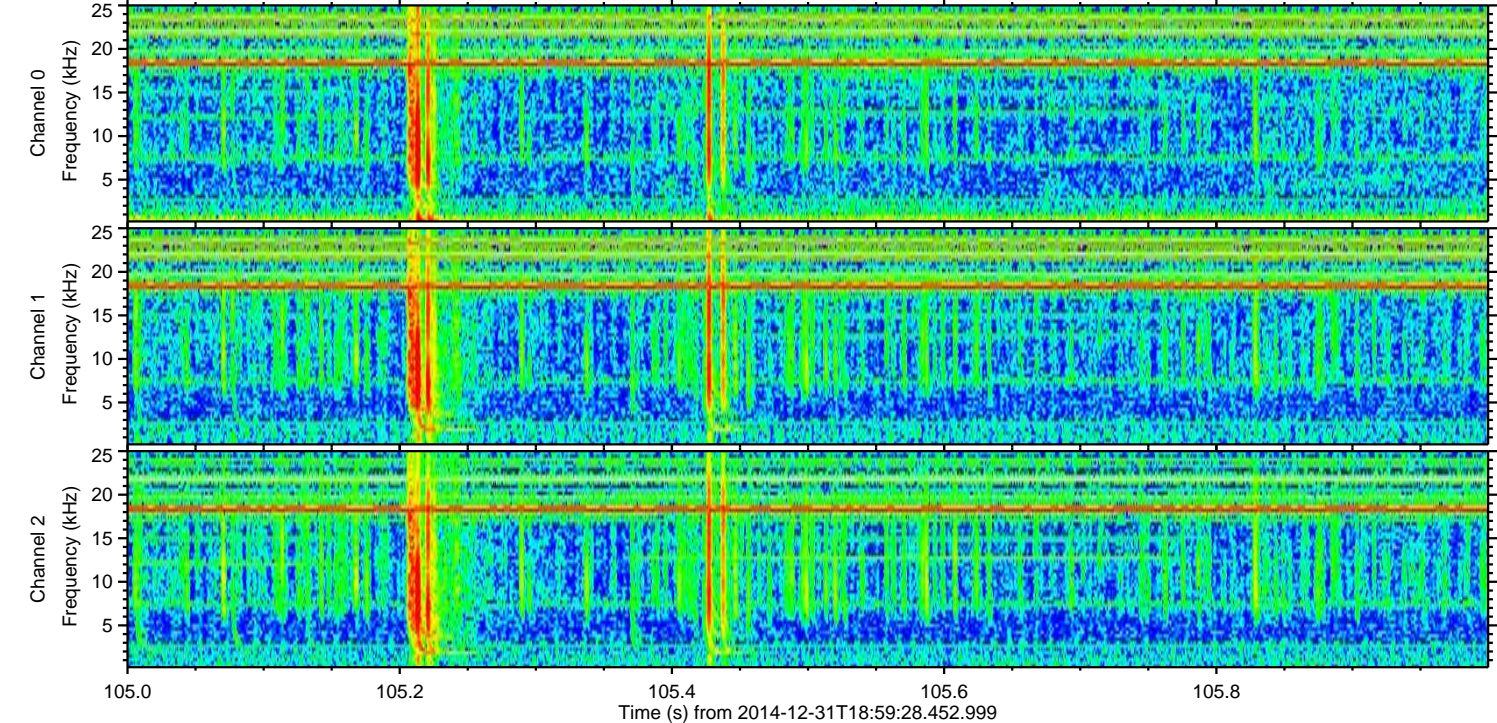
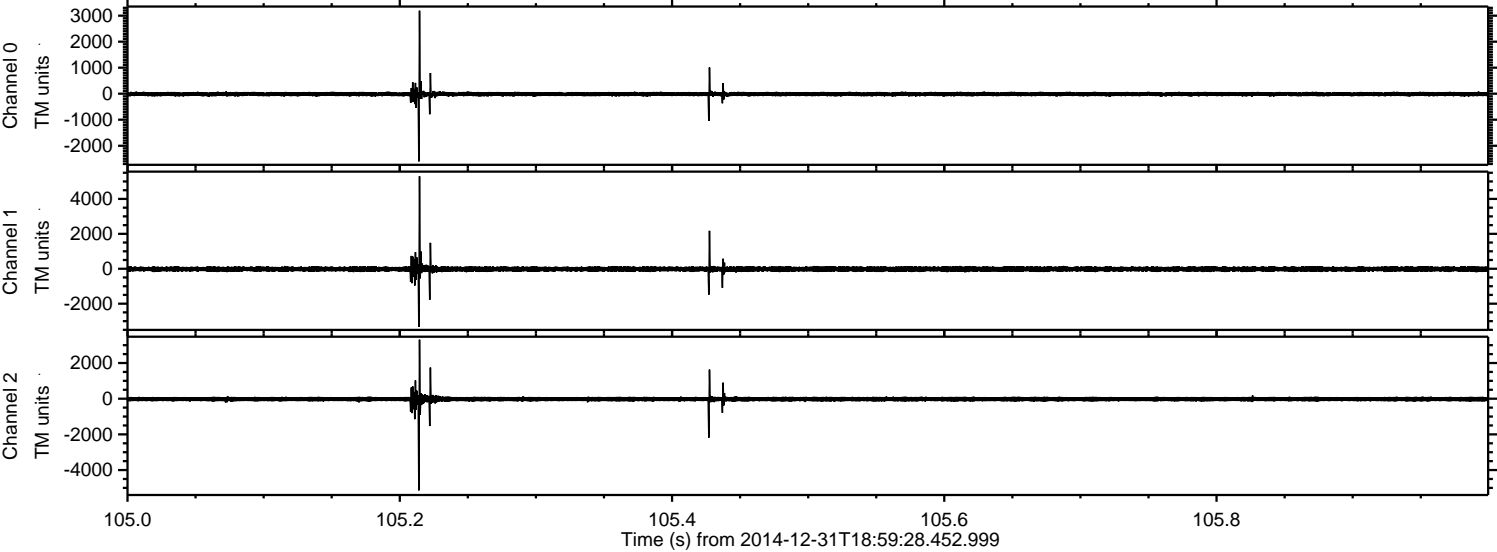


Processed Sat Jan 3 02:25:54 2015 by ELM ver.2012-10-06 from 001__elm20141231_185927__dat00.bin

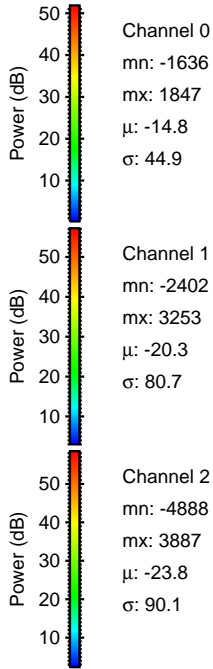
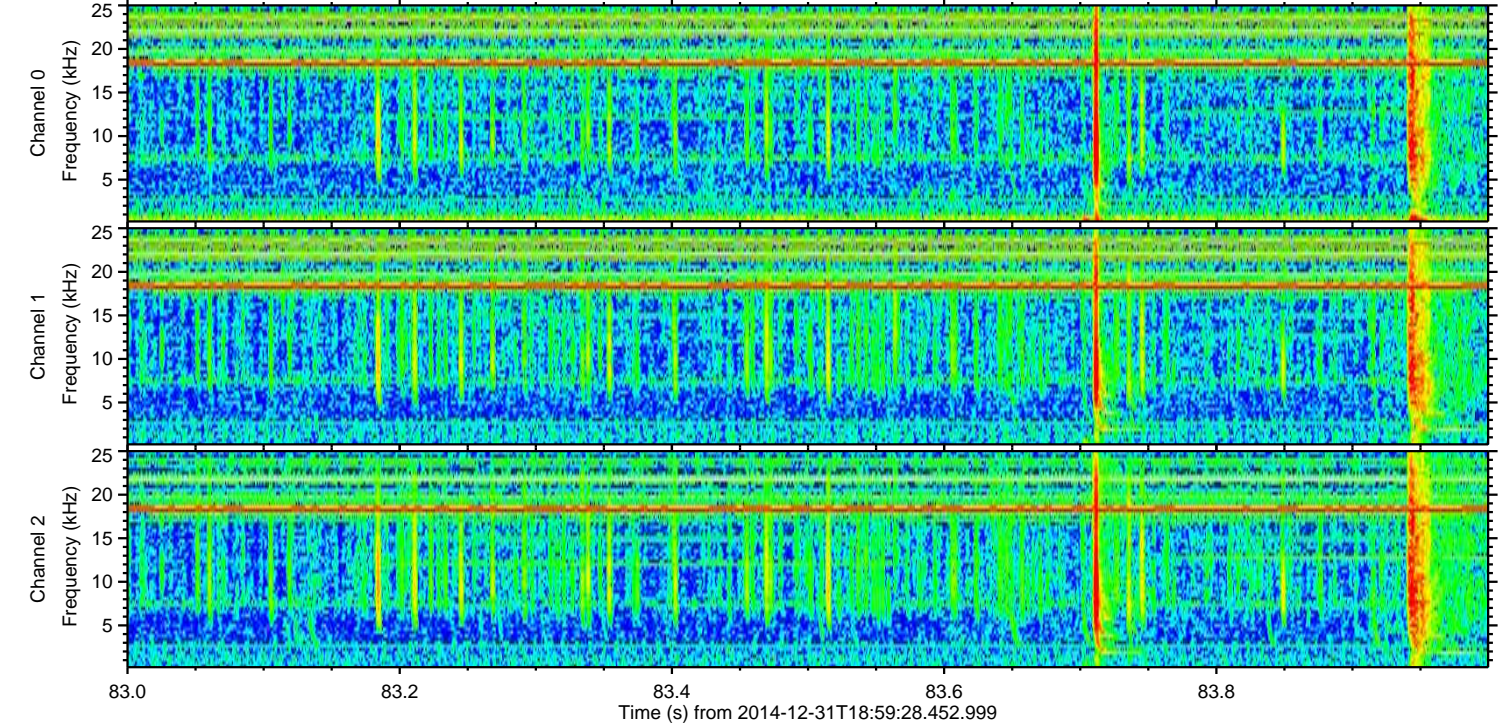
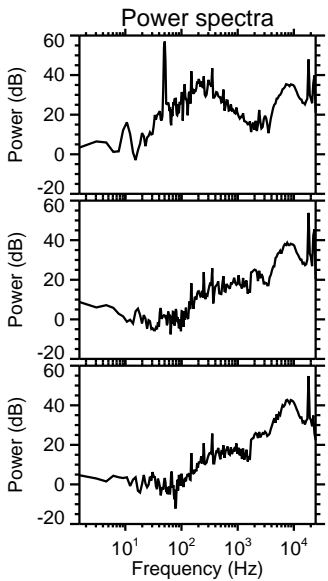
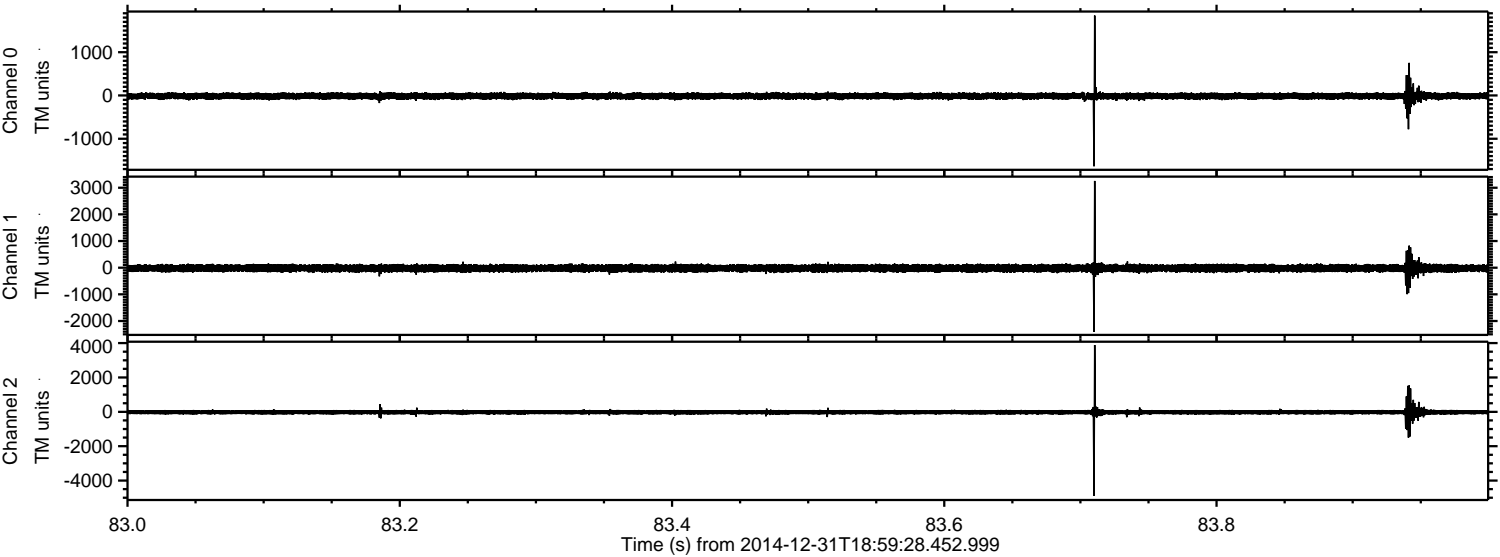


ELMAVAN 3D WAVEFORMS (Measured data sampled at 50 kHz) 49806 packets of 144 samples from 2014-12-31T18:59:28.452.999. Part 106/144

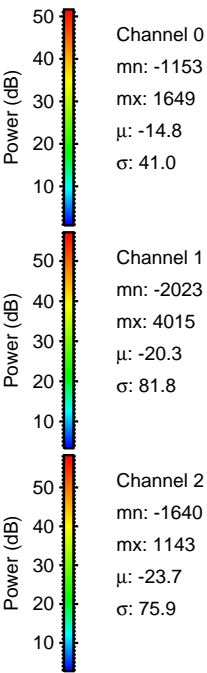
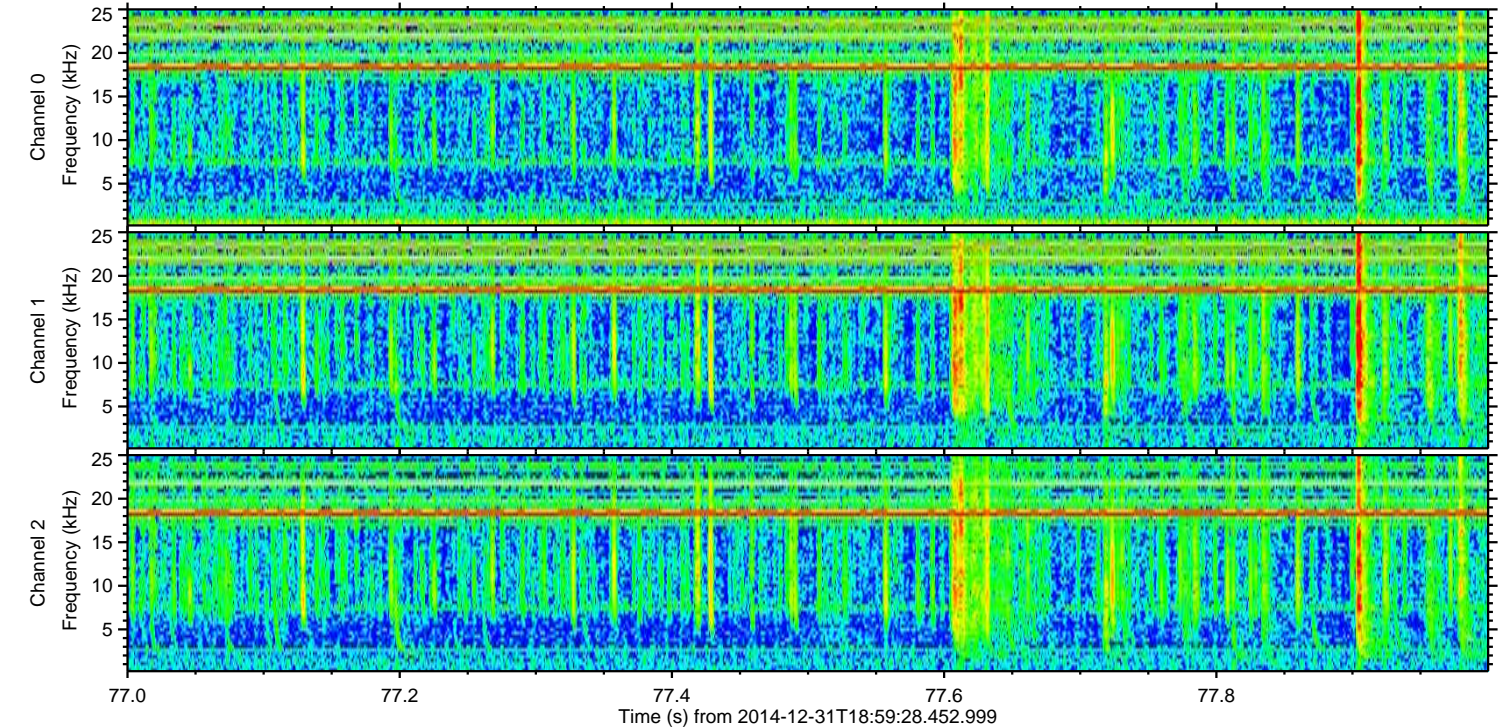
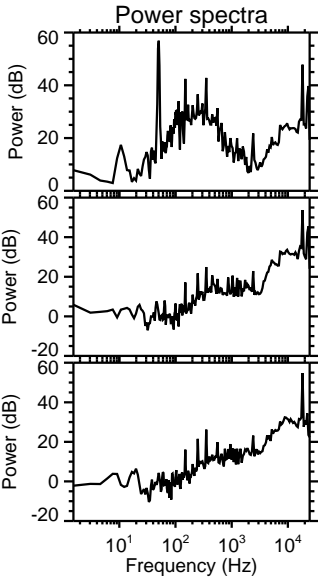
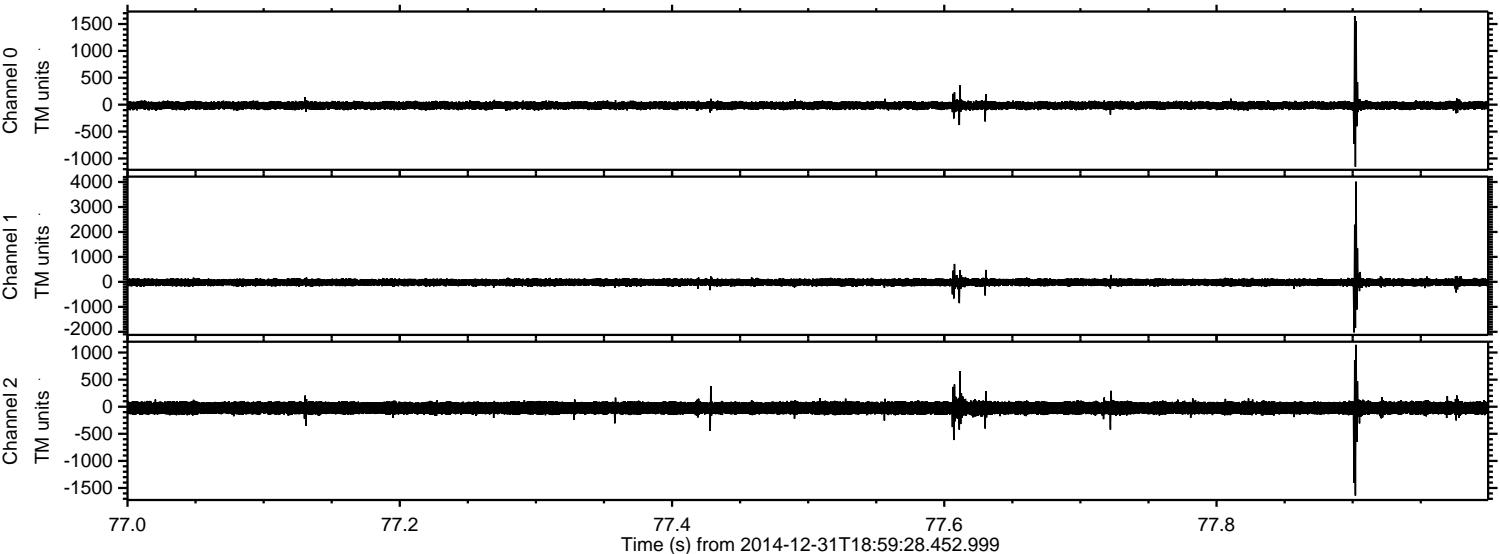
Processed Sat Jan 3 02:25:55 2015 by ELM ver.2012-10-06 from 001__elm20141231_185927__dat00.bin



Processed Sat Jan 3 02:25:56 2015 by ELM ver.2012-10-06 from 001__elm20141231_185927__dat00.bin

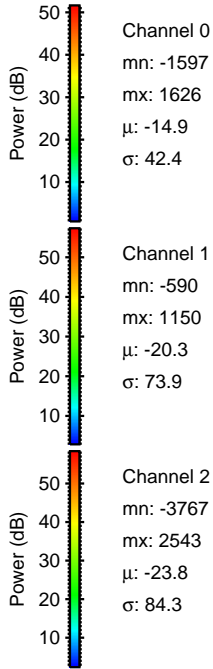
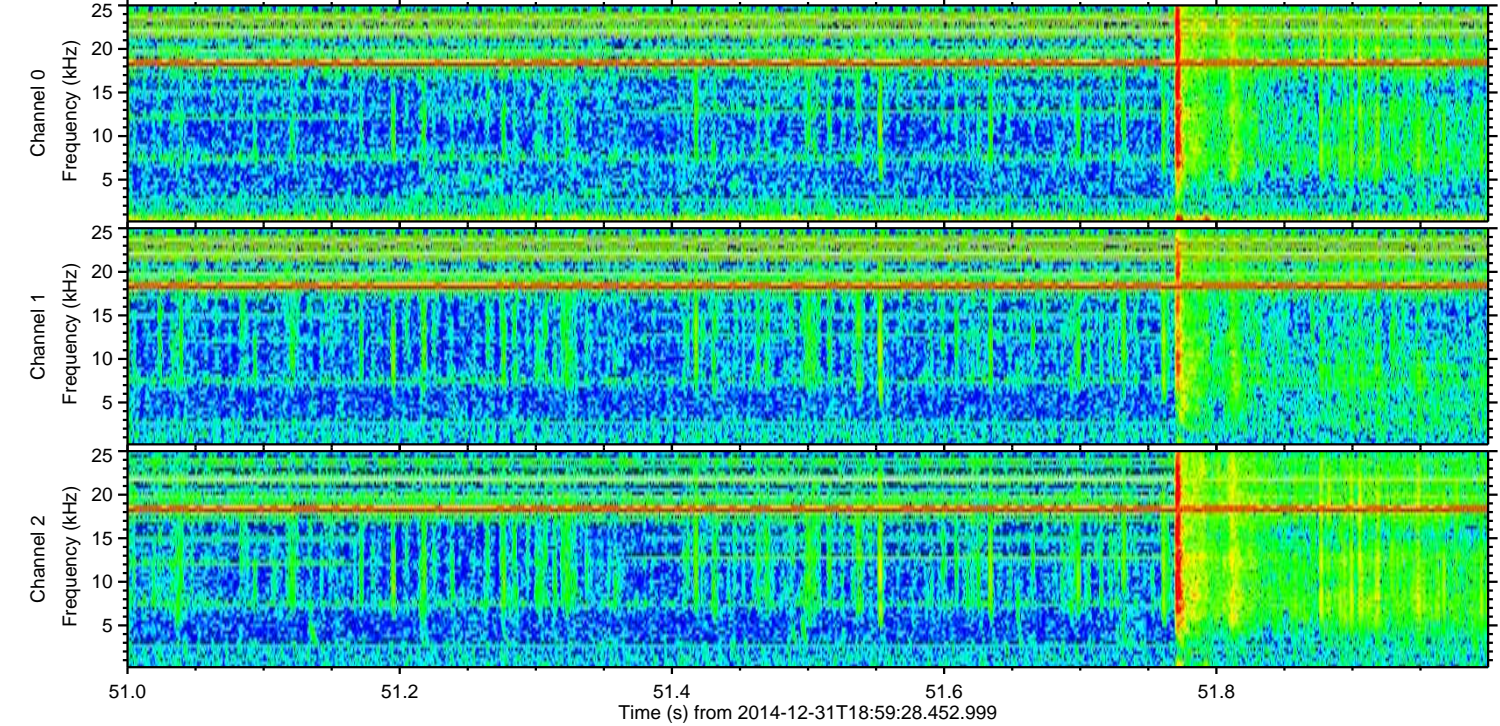
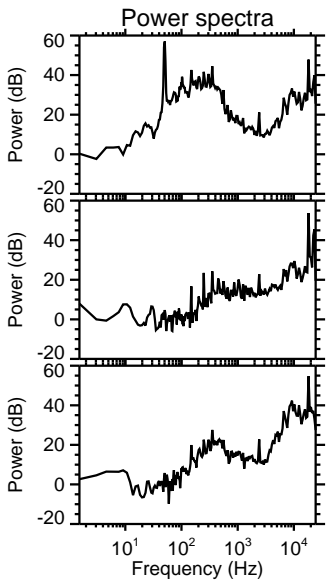
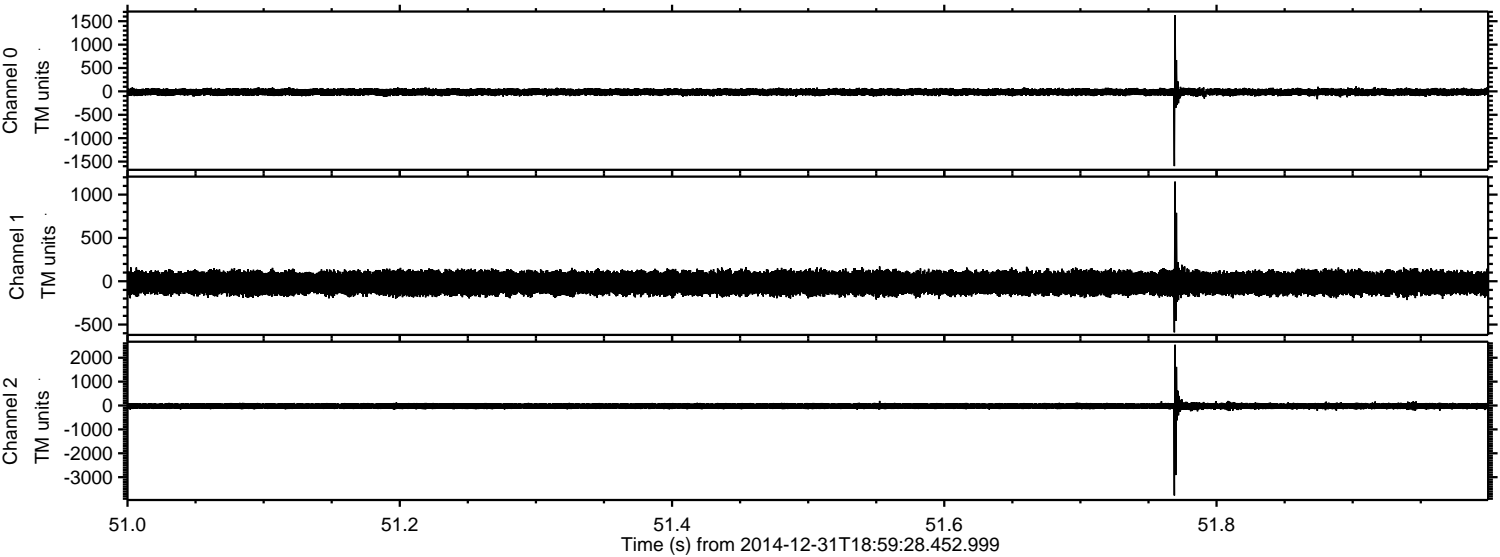


Processed Sat Jan 3 02:25:57 2015 by ELM ver.2012-10-06 from 001__elm20141231_185927__dat00.bin

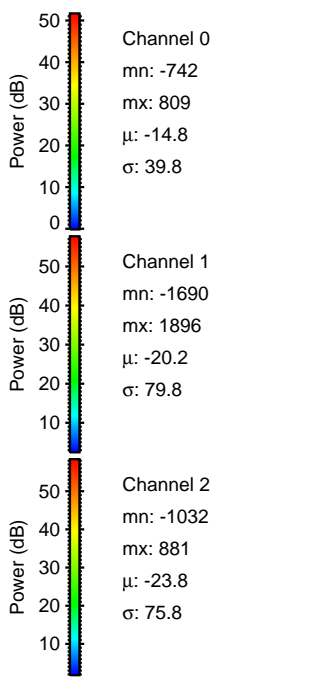
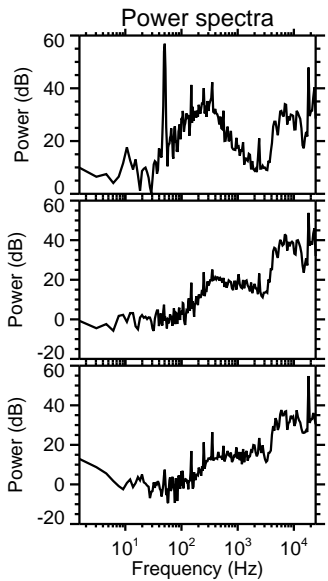
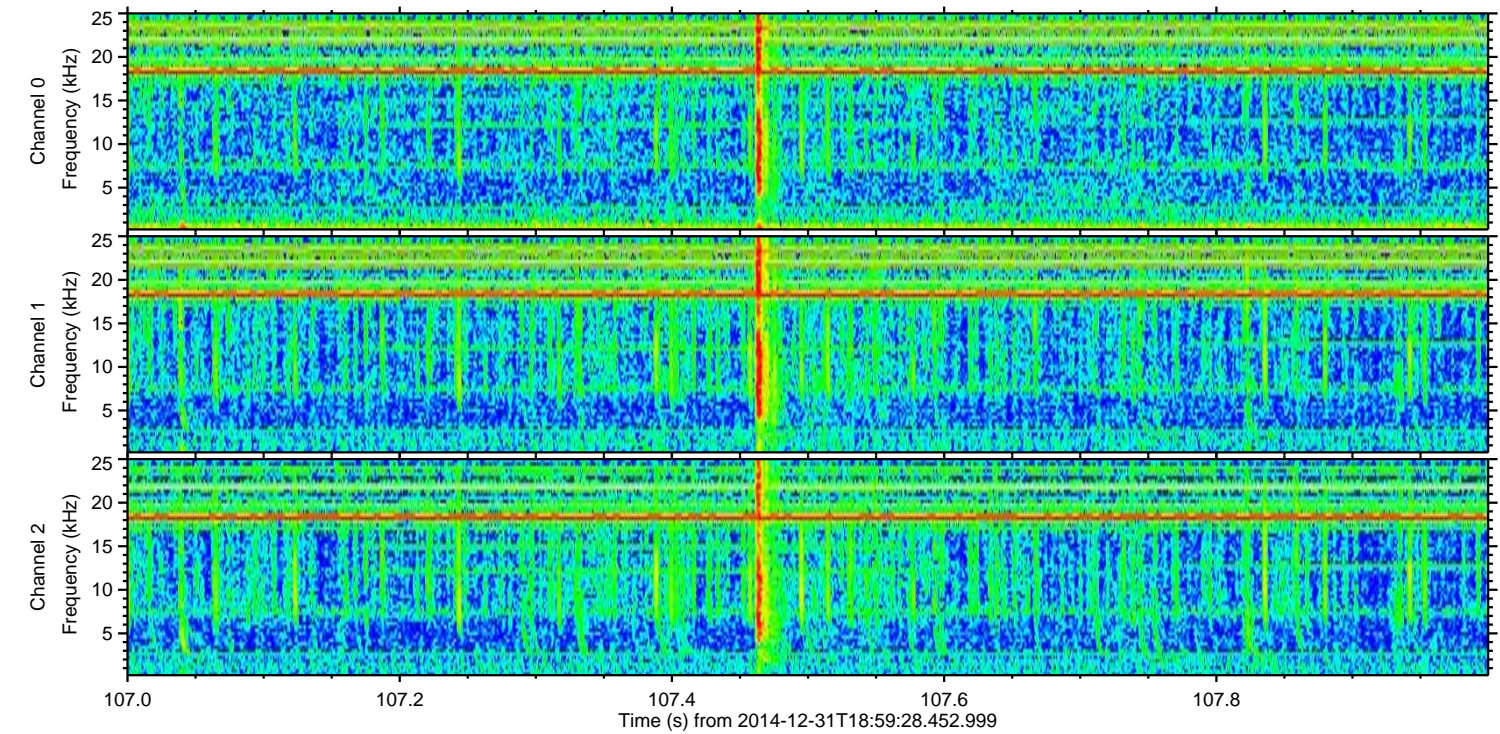
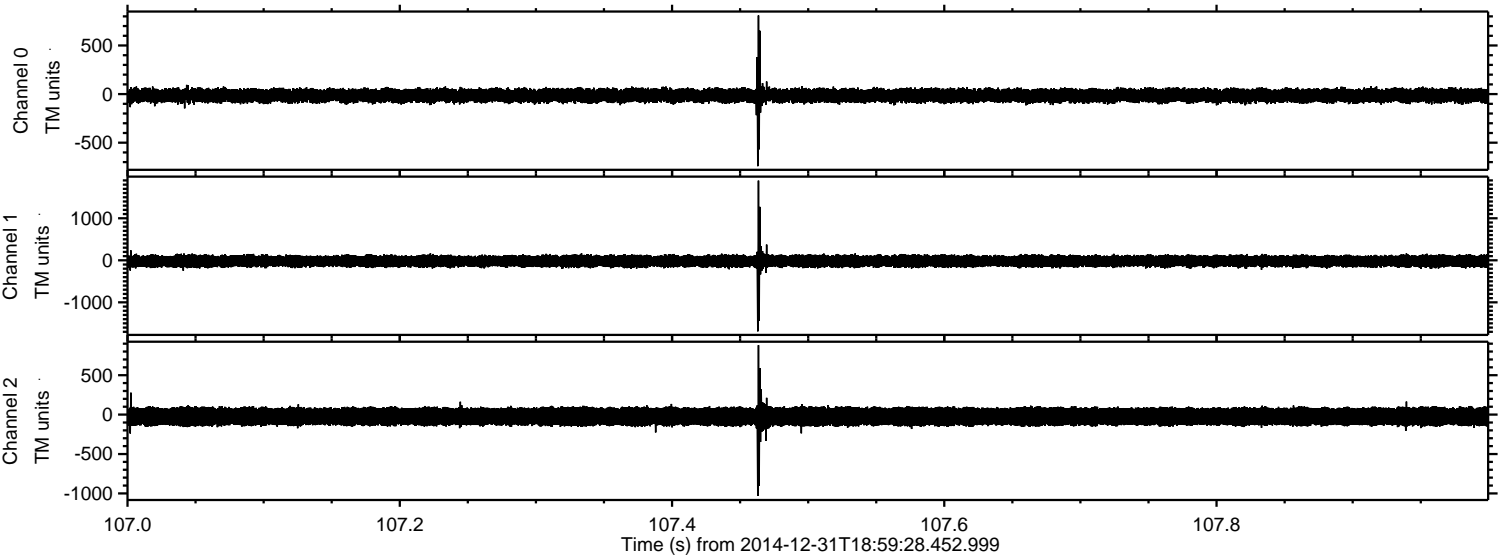


ELMAVAN 3D WAVEFORMS (Measured data sampled at 50 kHz) 49806 packets of 144 samples from 2014-12-31T18:59:28.452.999. Part 52/144

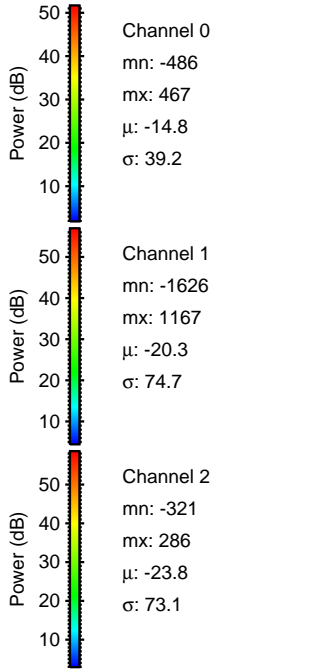
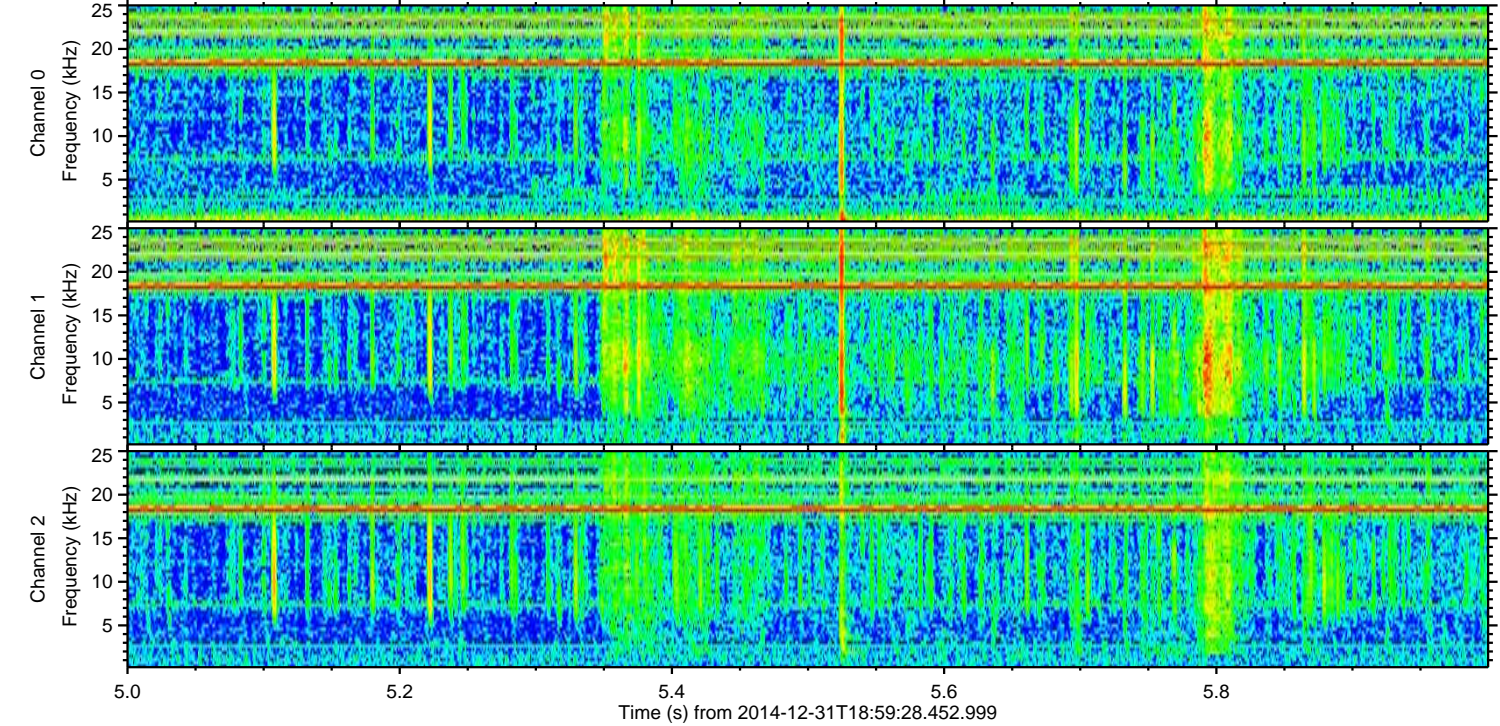
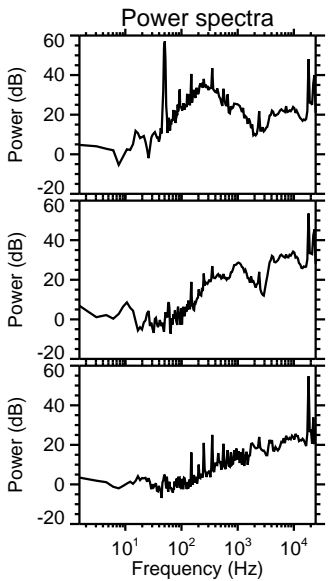
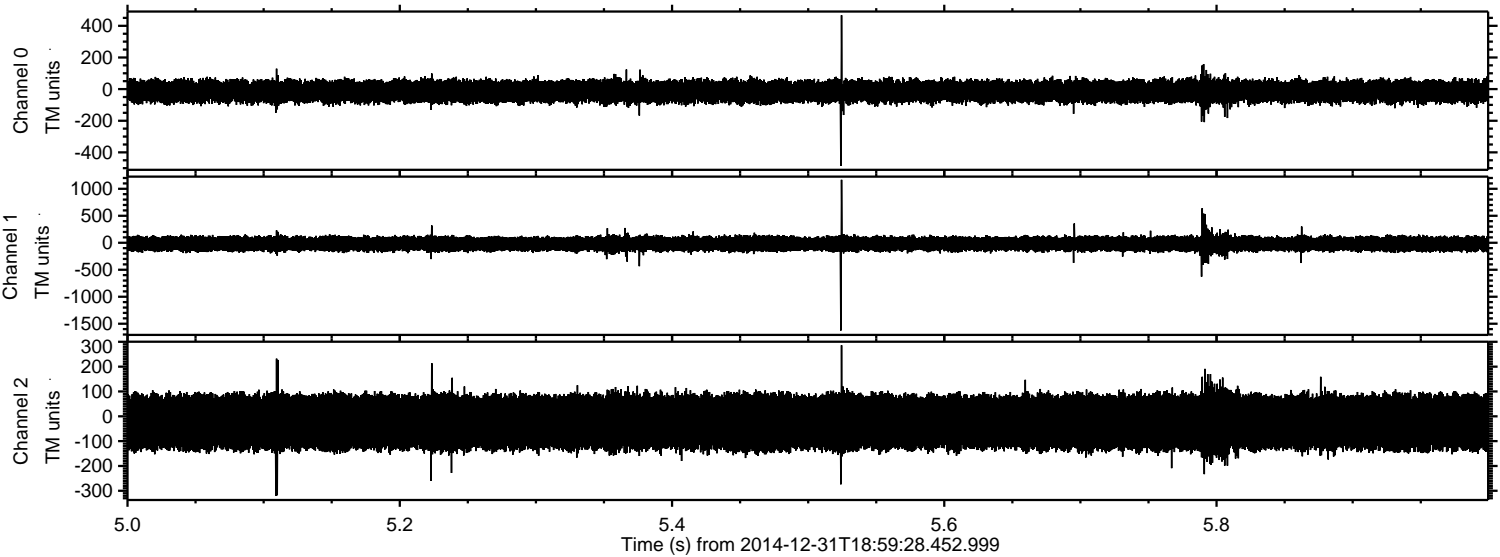
Processed Sat Jan 3 02:25:58 2015 by ELM ver.2012-10-06 from 001__elm20141231_185927__dat00.bin



Processed Sat Jan 3 02:25:59 2015 by ELM ver.2012-10-06 from 001__elm20141231_185927__dat00.bin



Processed Sat Jan 3 02:26:00 2015 by ELM ver.2012-10-06 from 001__elm20141231_185927__dat00.bin



Channel 0
mn: -486
mx: 467
 μ : -14.8
 σ : 39.2

Channel 1
mn: -1626
mx: 1167
 μ : -20.3
 σ : 74.7

Channel 2
mn: -321
mx: 286
 μ : -23.8
 σ : 73.1

Processed Sat Jan 3 02:26:01 2015 by ELM ver.2012-10-06 from 001__elm20141231_185927__dat00.bin

