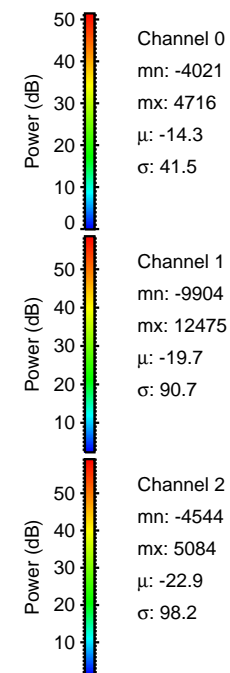
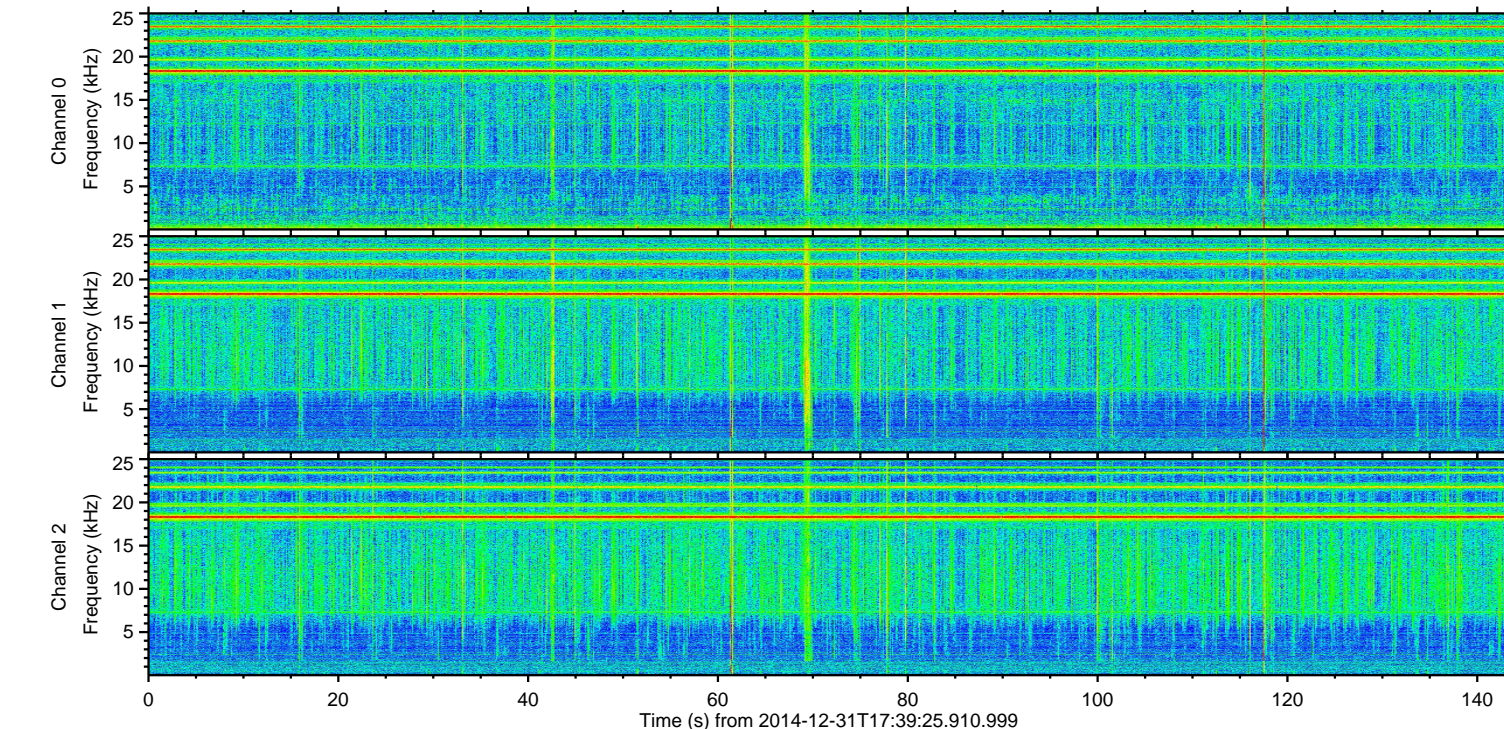
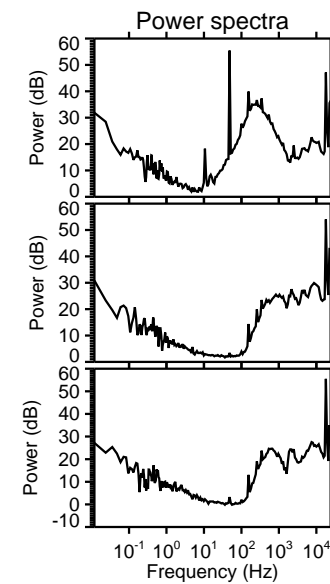
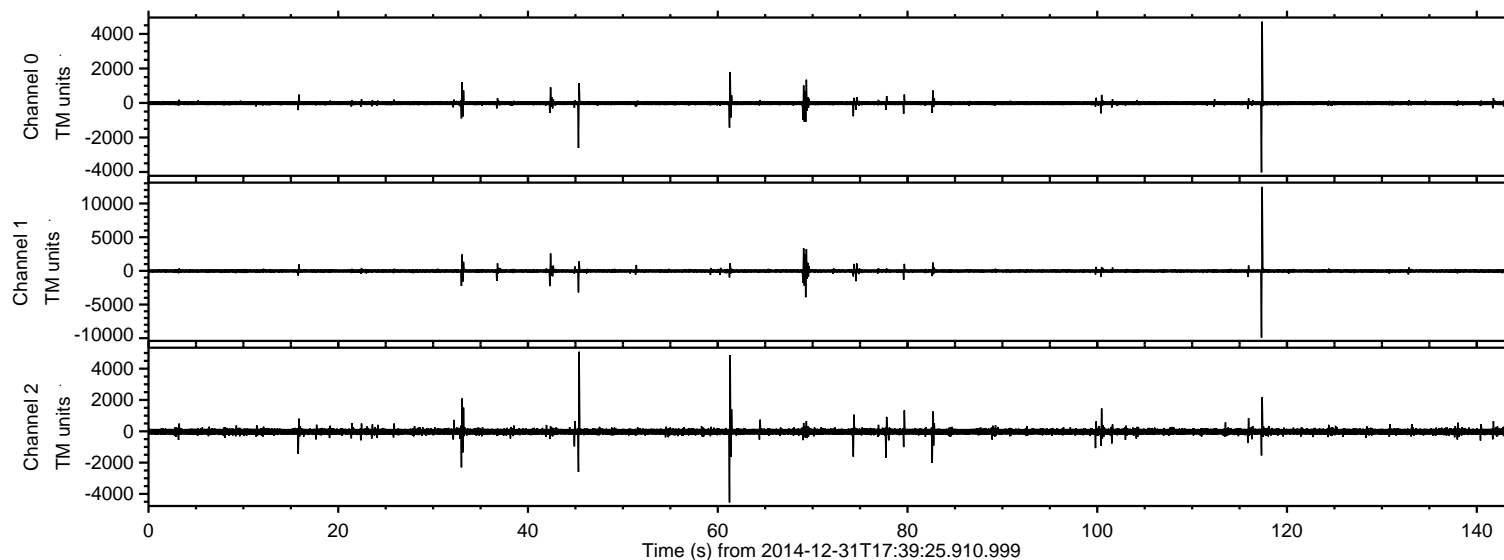


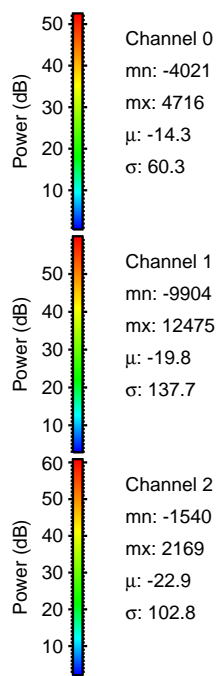
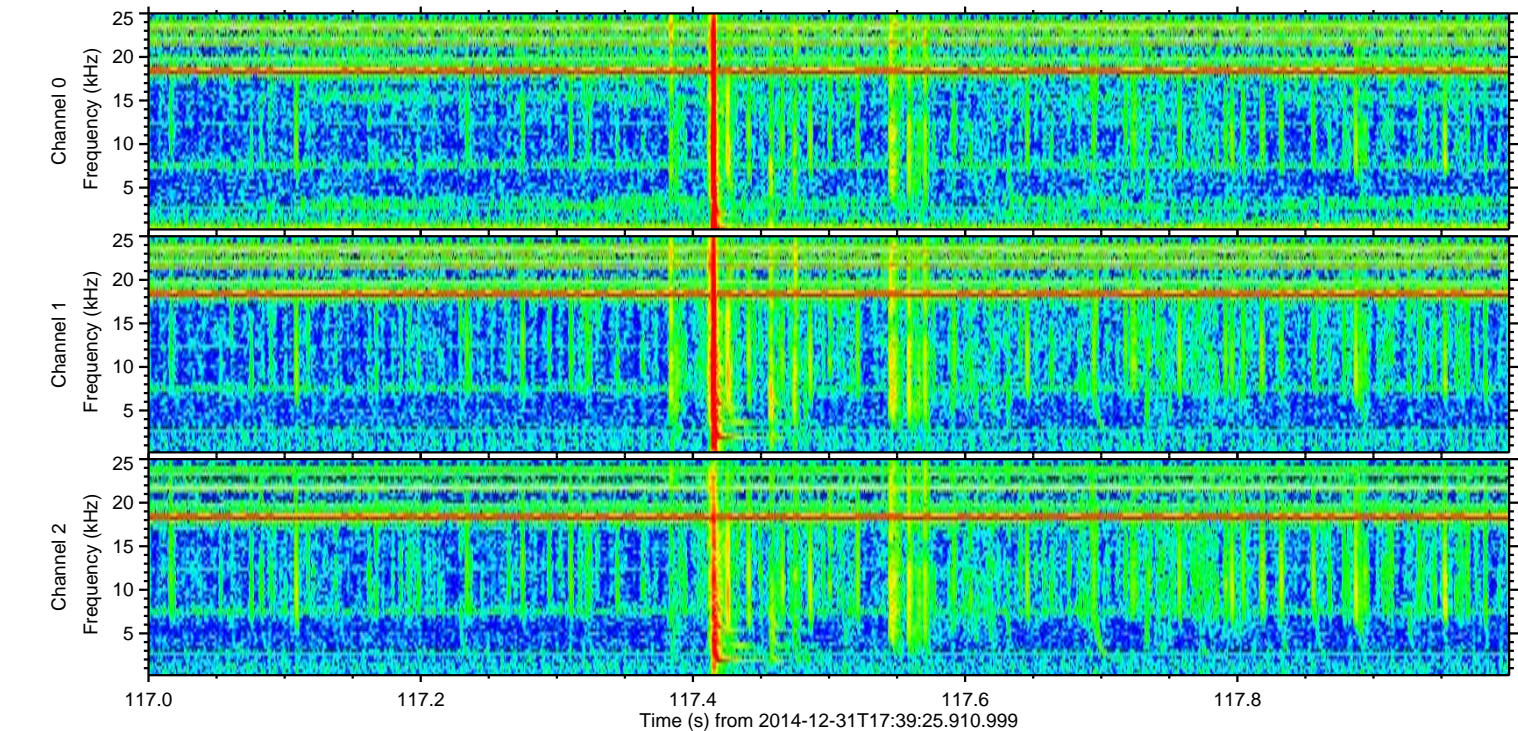
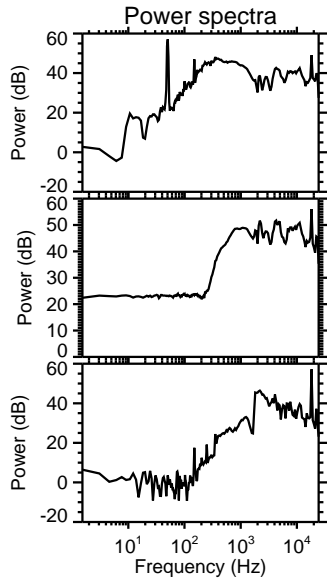
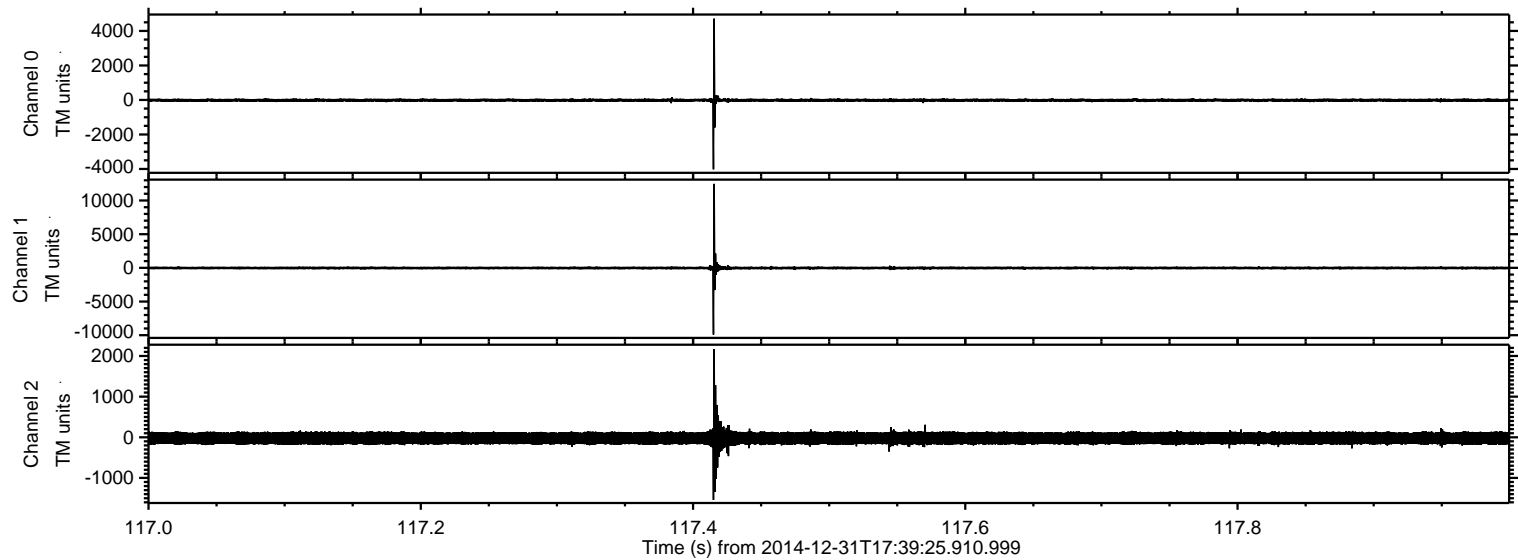
ELMAVAN 3D WAVEFORMS (Measured data sampled at 50 kHz) 49796 packets of 144 samples from 2014-12-31T17:39:25.910.999.

Processed Sat Jan 3 02:04:56 2015 by ELM ver.2012-10-06 from 001__elm20141231_173924__dat00.bin



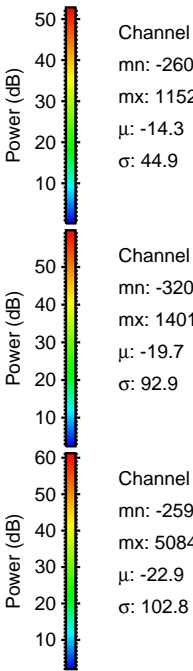
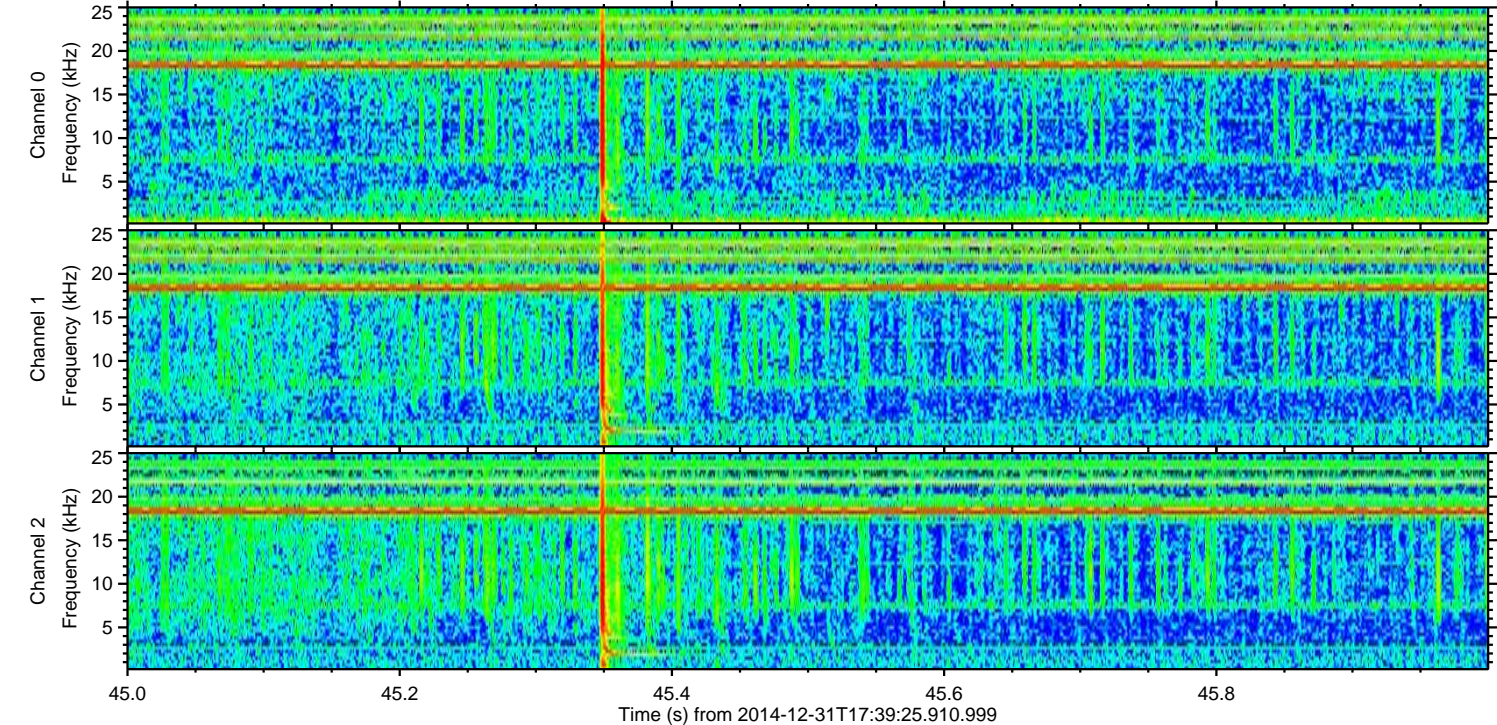
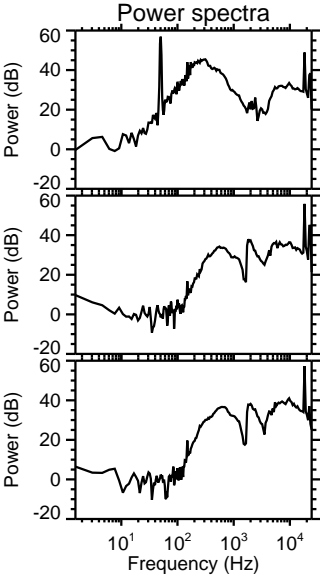
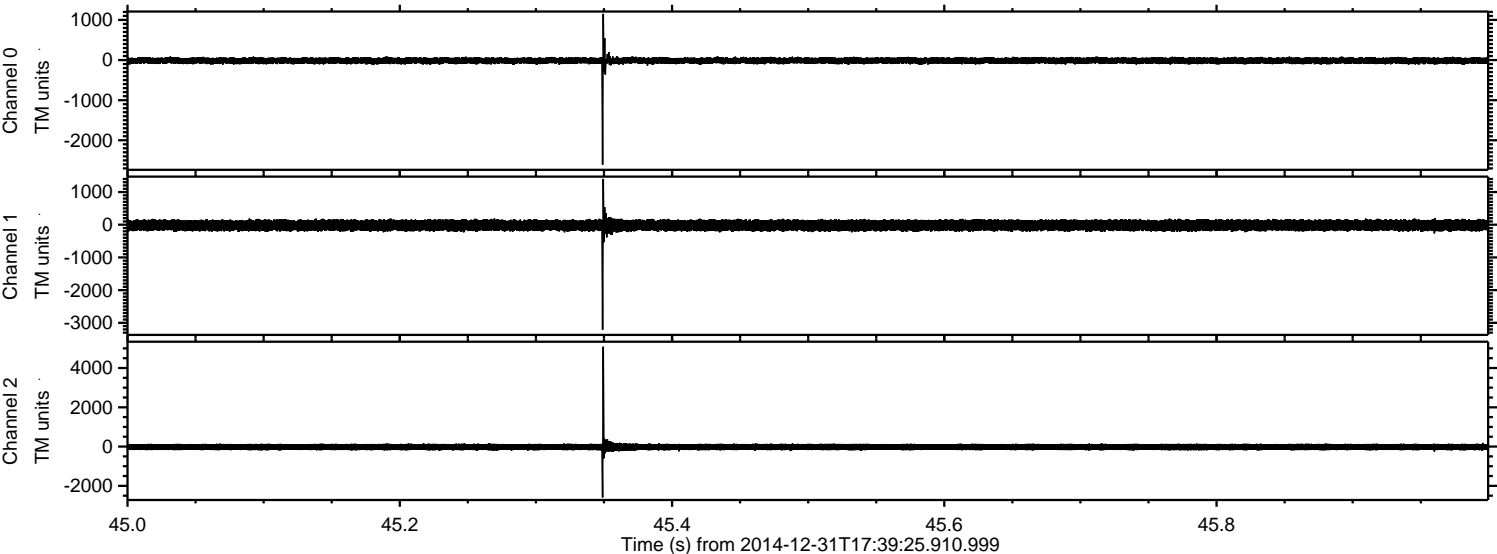
ELMAVAN 3D WAVEFORMS (Measured data sampled at 50 kHz) 49796 packets of 144 samples from 2014-12-31T17:39:25.910.999. Part 118/144

Processed Sat Jan 3 02:05:09 2015 by ELM ver.2012-10-06 from 001__elm20141231_173924__dat00.bin



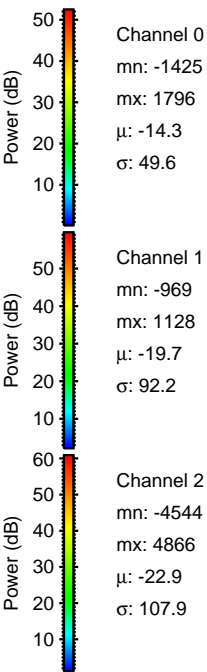
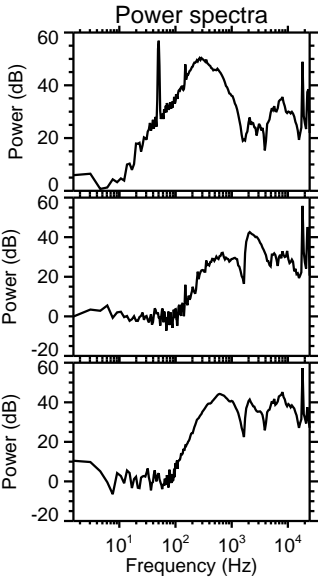
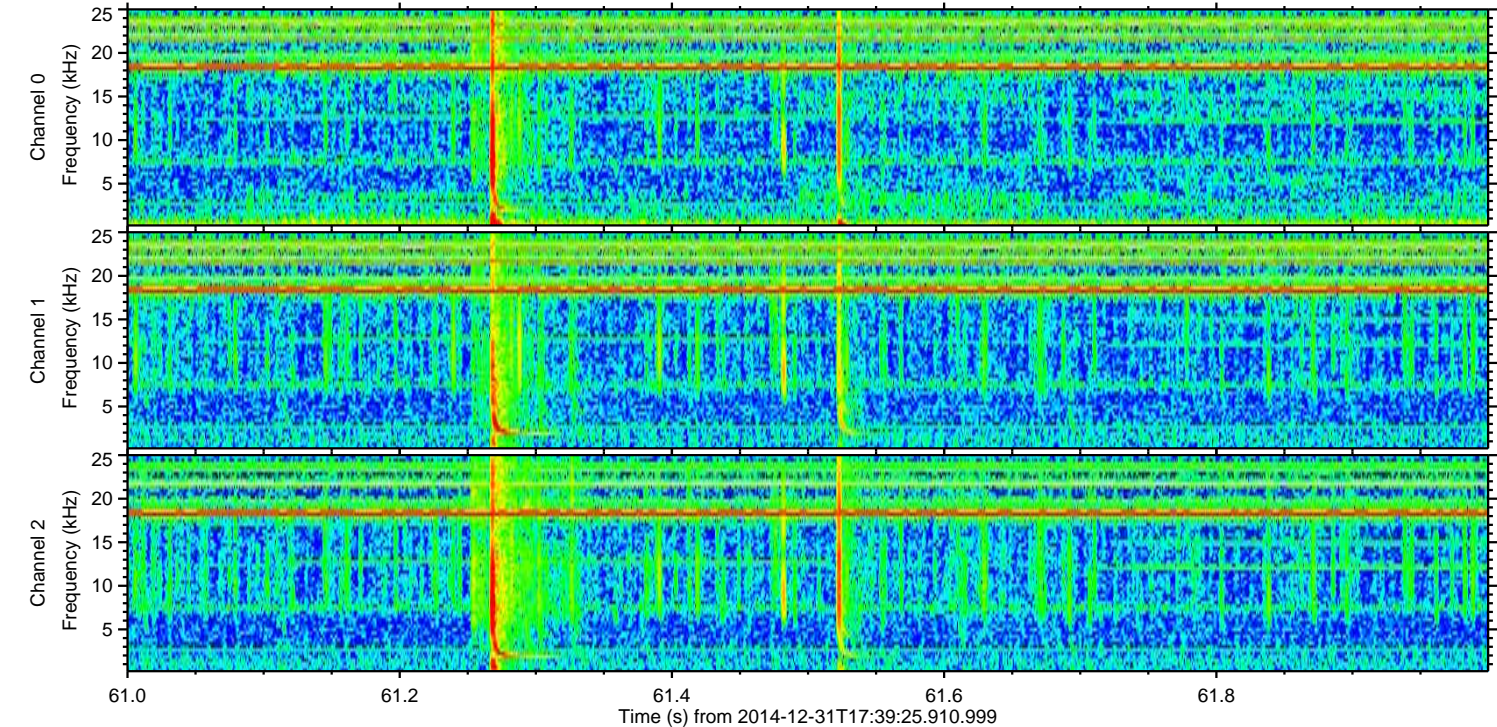
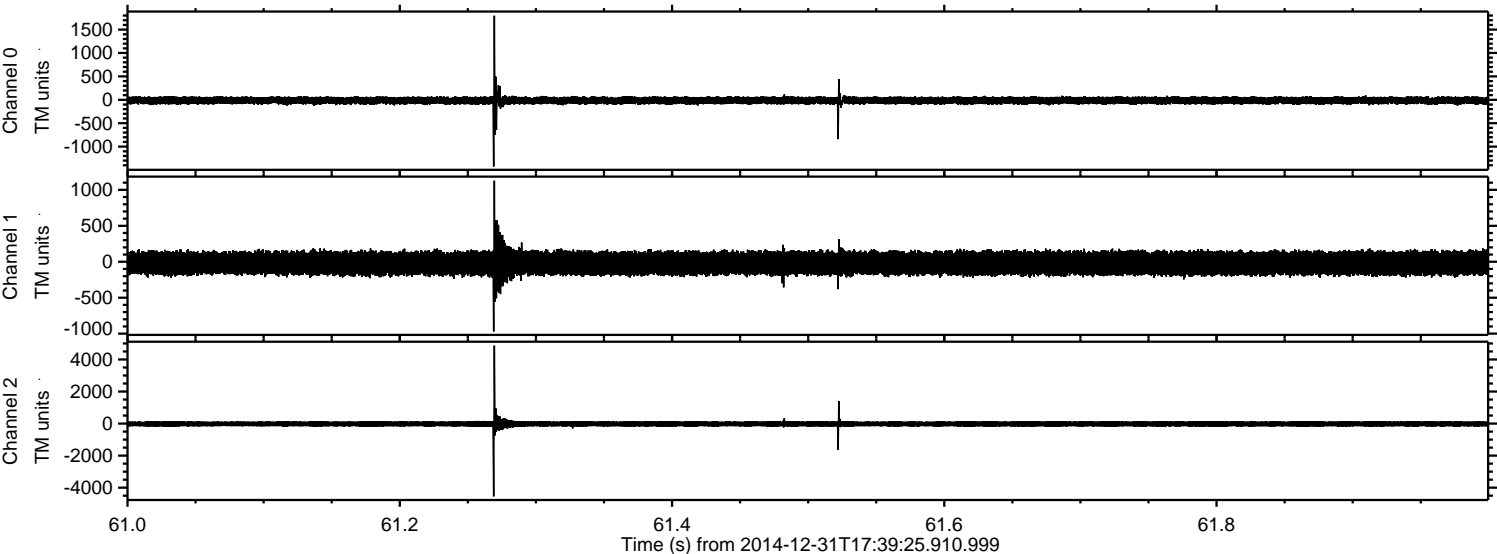
ELMAVAN 3D WAVEFORMS (Measured data sampled at 50 kHz) 49796 packets of 144 samples from 2014-12-31T17:39:25.910.999. Part 46/144

Processed Sat Jan 3 02:05:09 2015 by ELM ver.2012-10-06 from 001__elm20141231_173924__dat00.bin



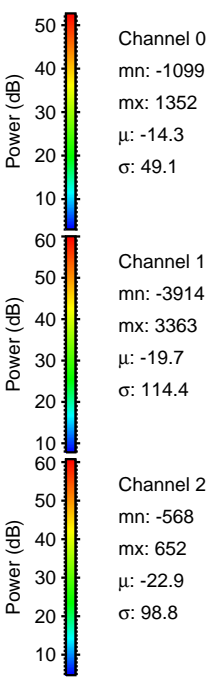
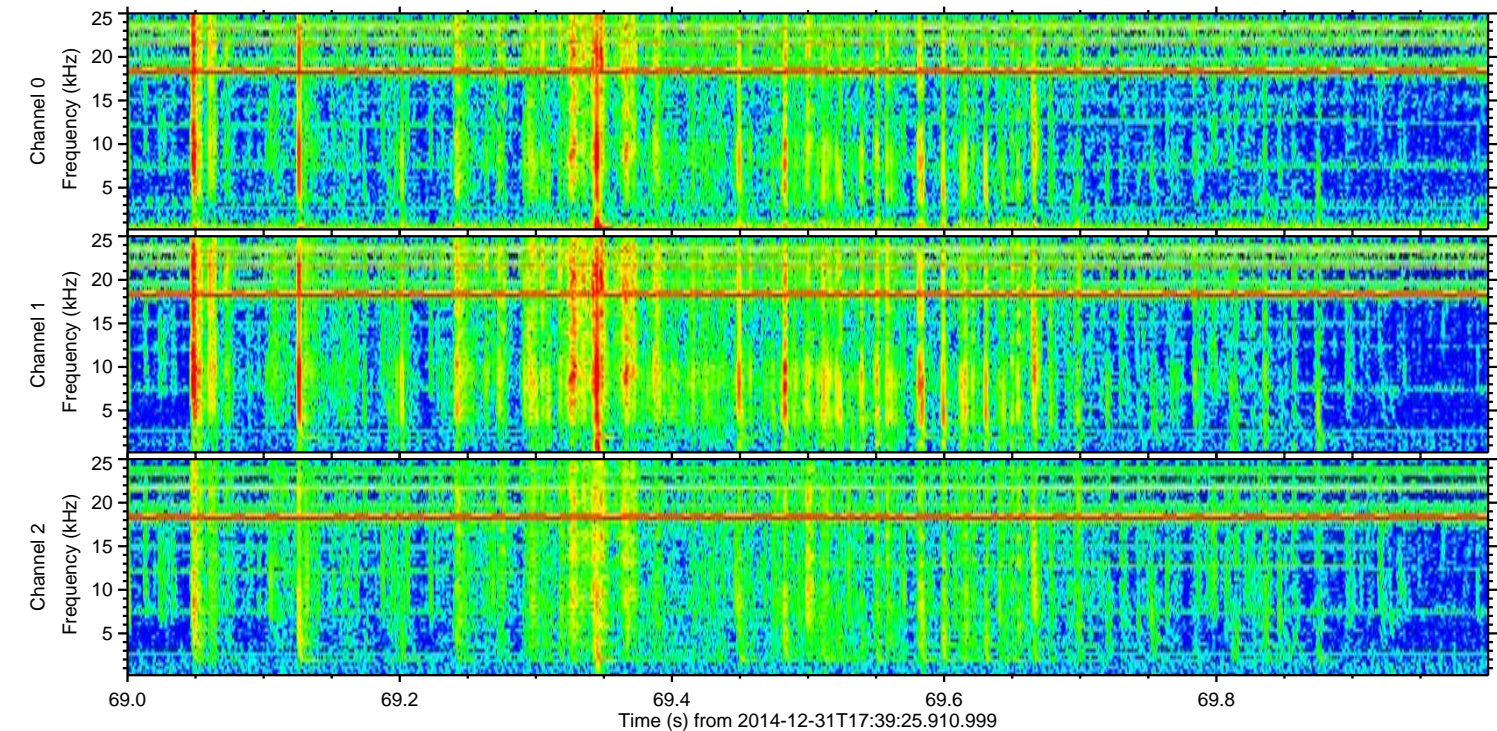
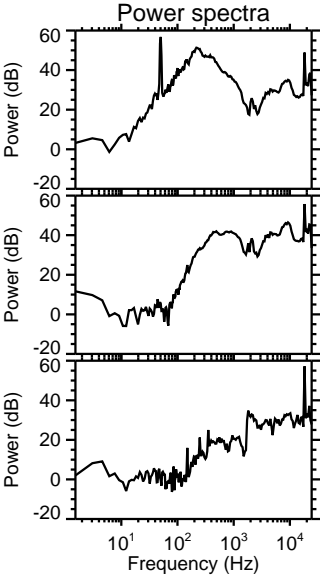
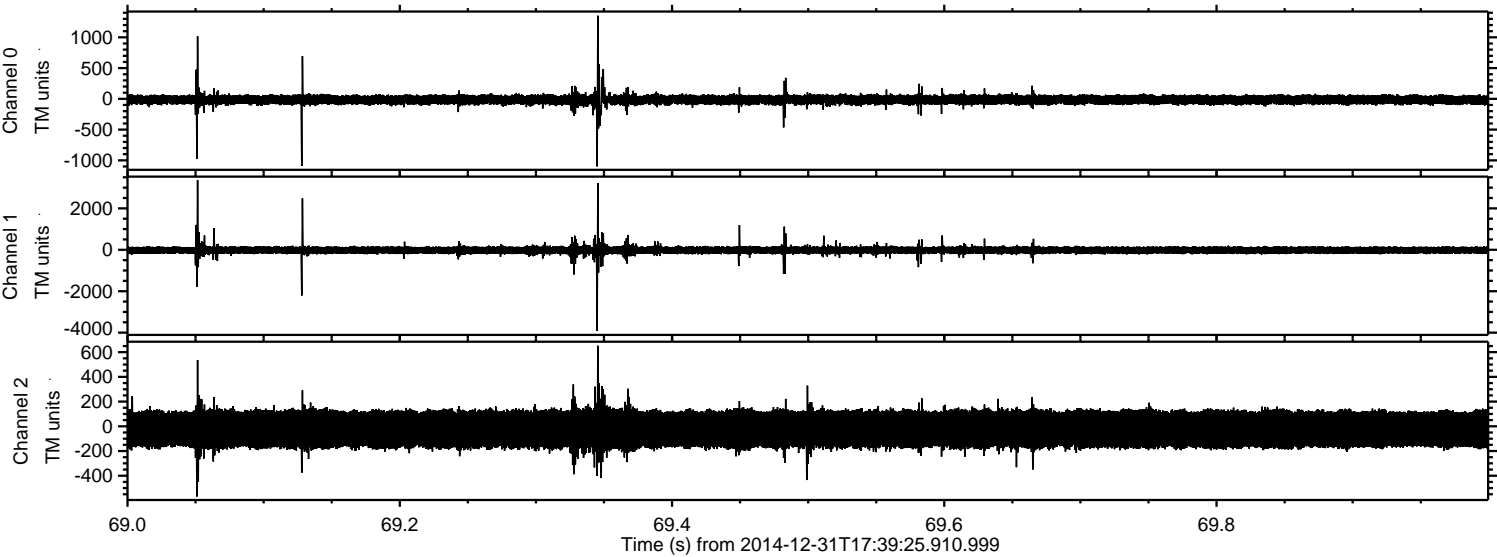
ELMAVAN 3D WAVEFORMS (Measured data sampled at 50 kHz) 49796 packets of 144 samples from 2014-12-31T17:39:25.910.999. Part 62/144

Processed Sat Jan 3 02:05:10 2015 by ELM ver.2012-10-06 from 001__elm20141231_173924__dat00.bin



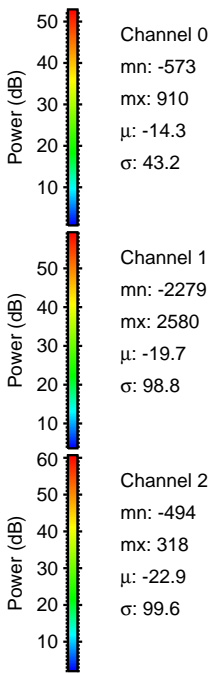
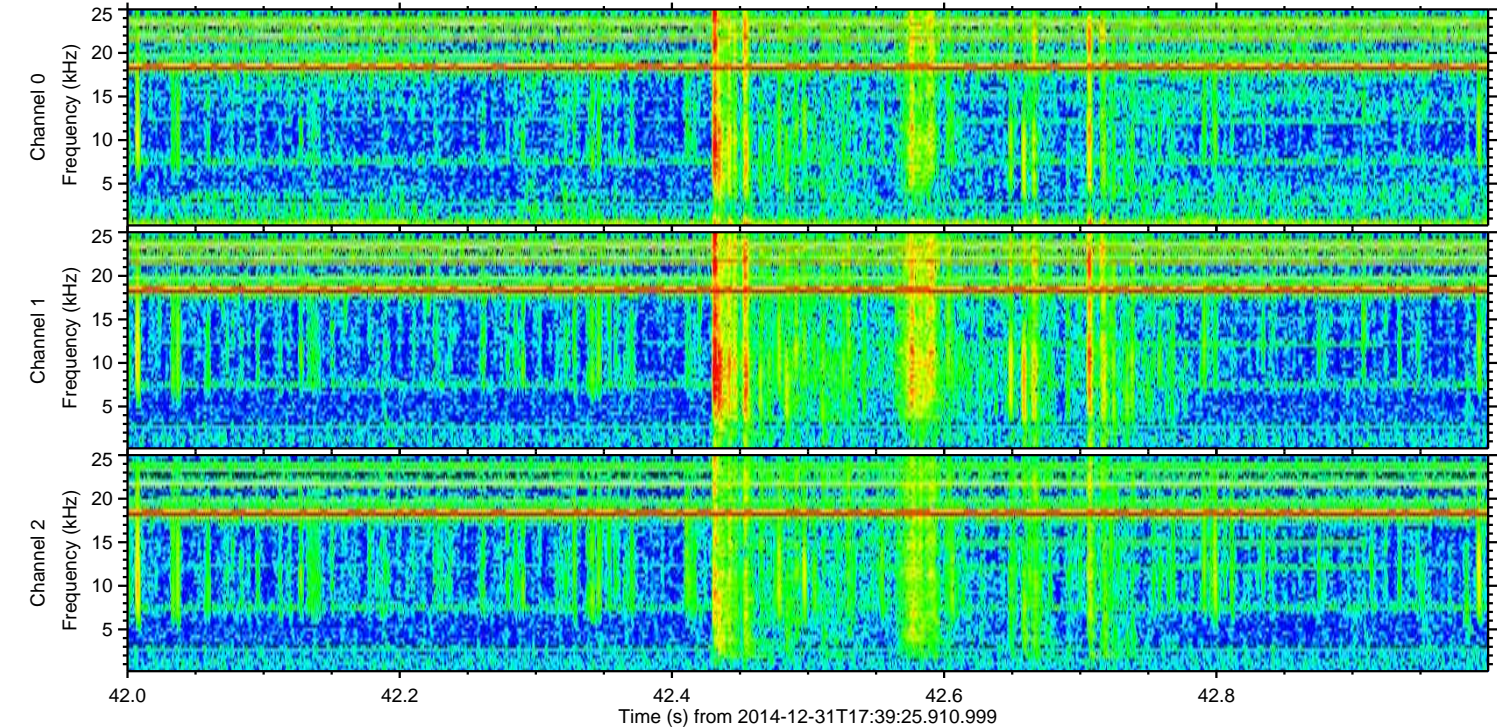
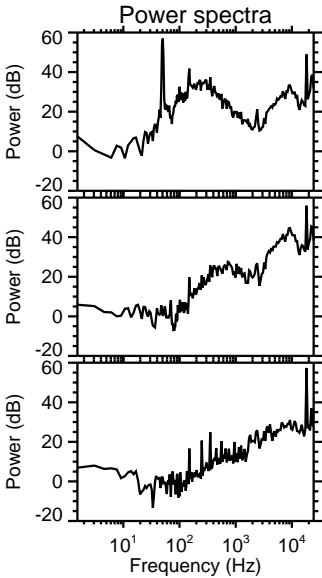
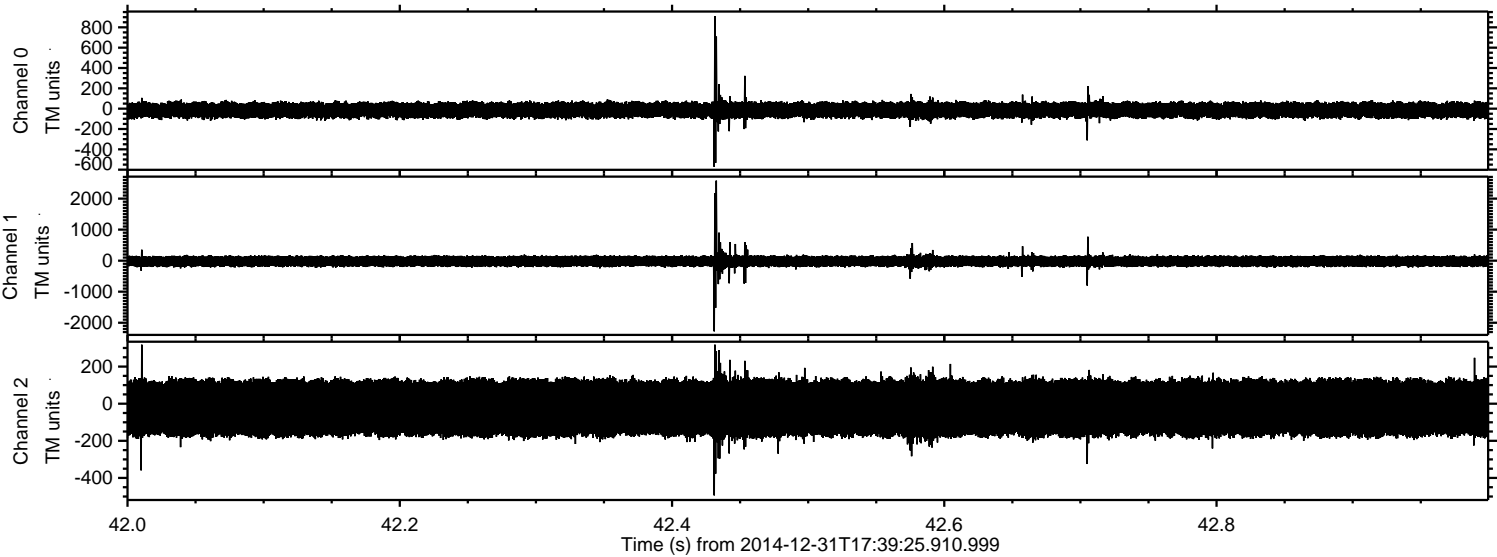
ELMAVAN 3D WAVEFORMS (Measured data sampled at 50 kHz) 49796 packets of 144 samples from 2014-12-31T17:39:25.910.999. Part 70/144

Processed Sat Jan 3 02:05:11 2015 by ELM ver.2012-10-06 from 001__elm20141231_173924__dat00.bin

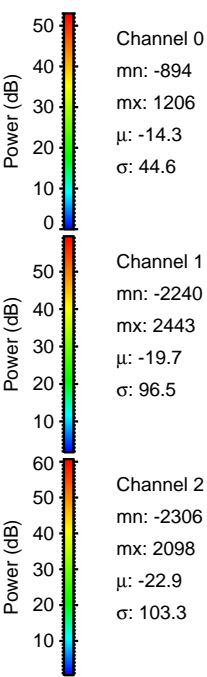
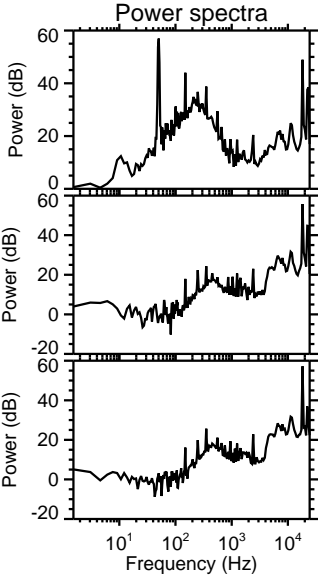
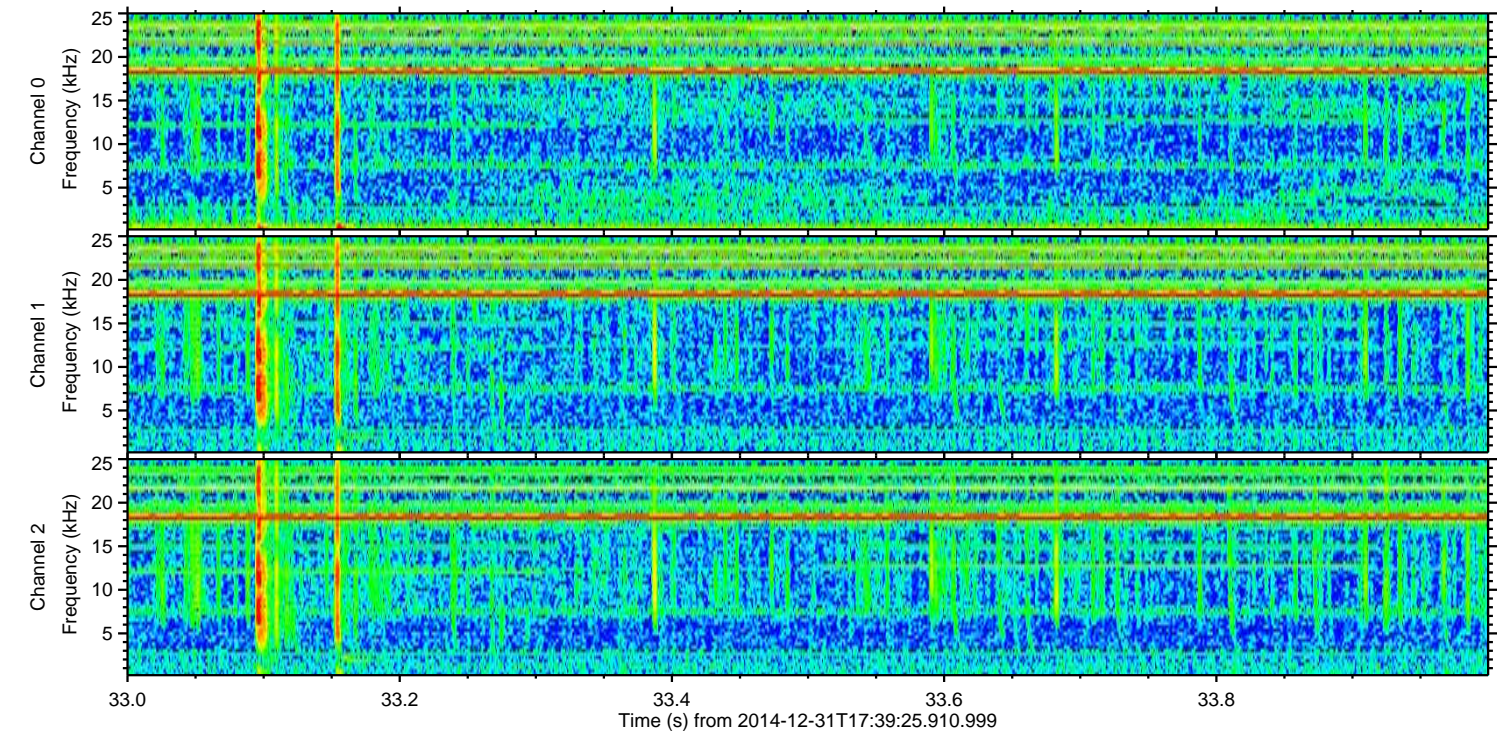
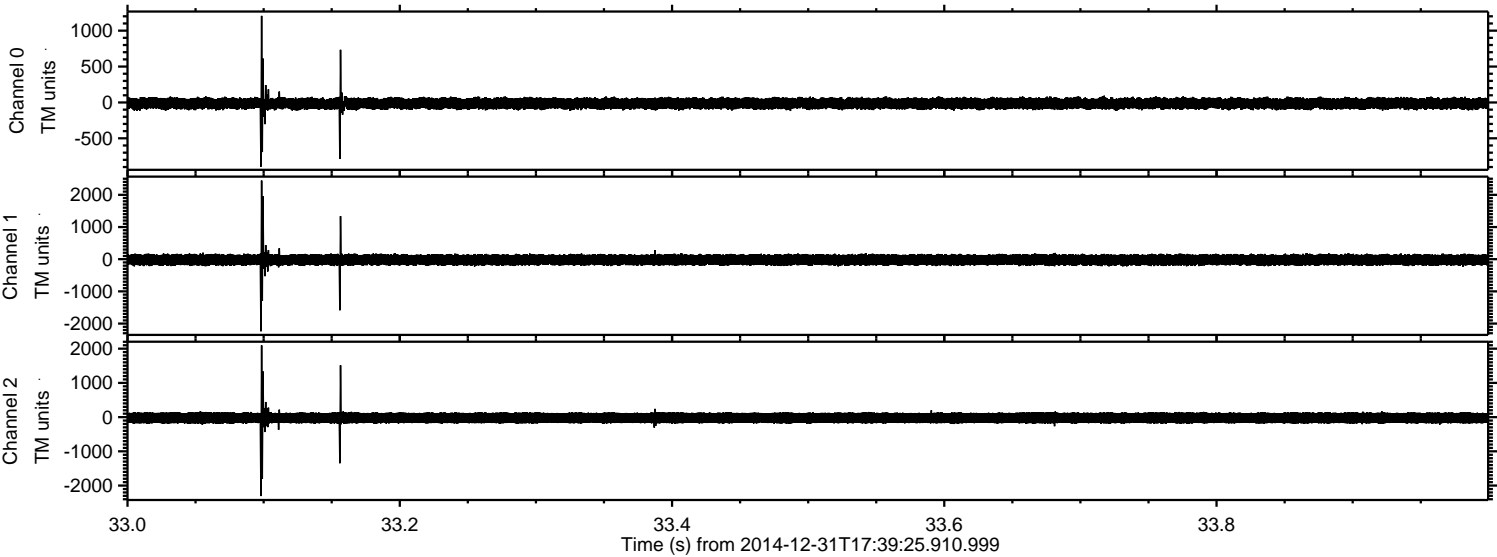


ELMAVAN 3D WAVEFORMS (Measured data sampled at 50 kHz) 49796 packets of 144 samples from 2014-12-31T17:39:25.910.999. Part 43/144

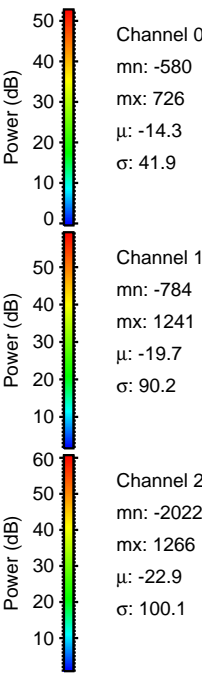
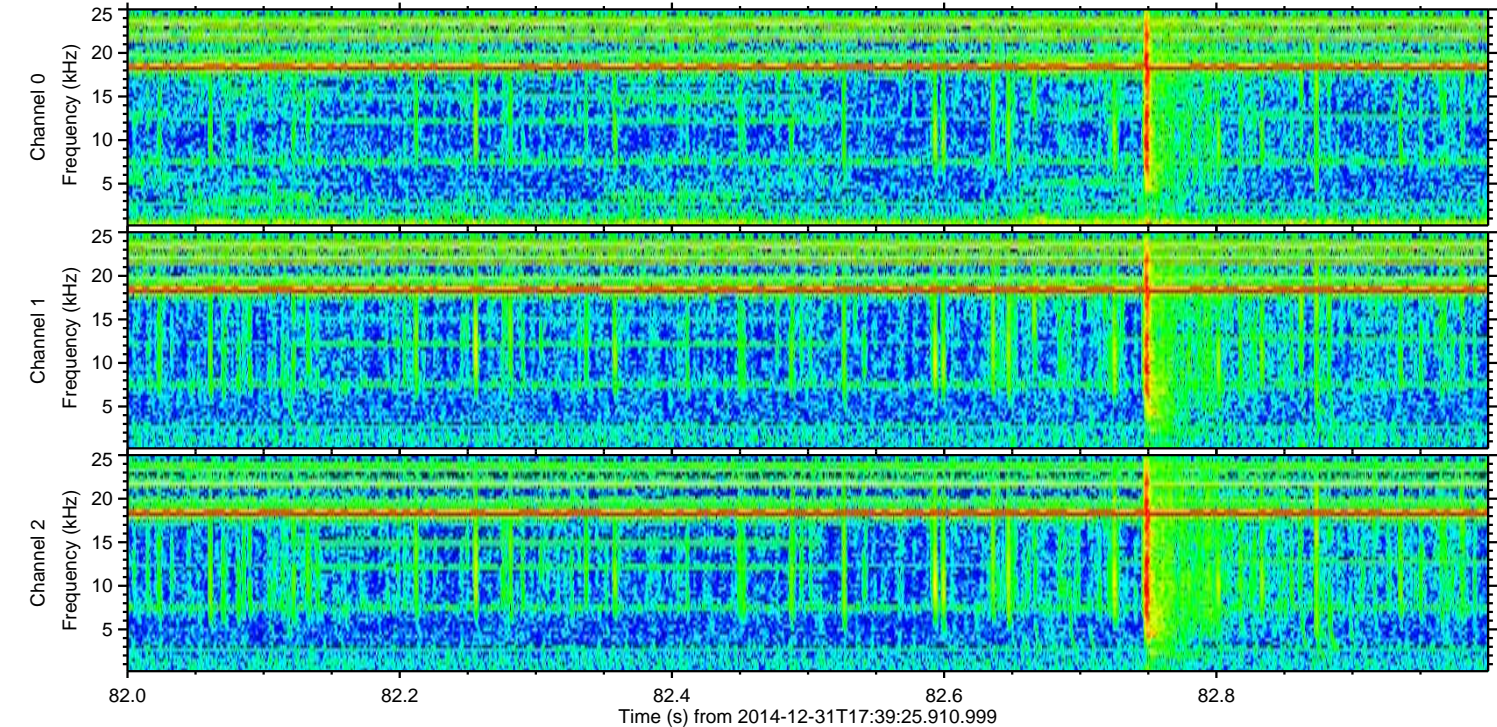
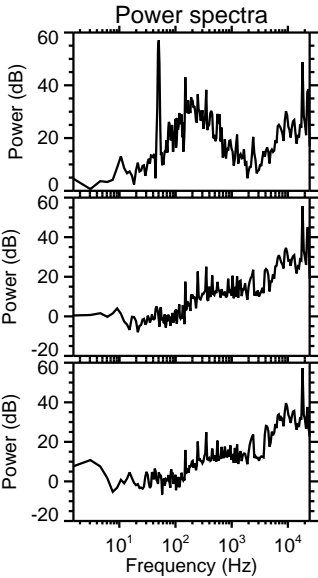
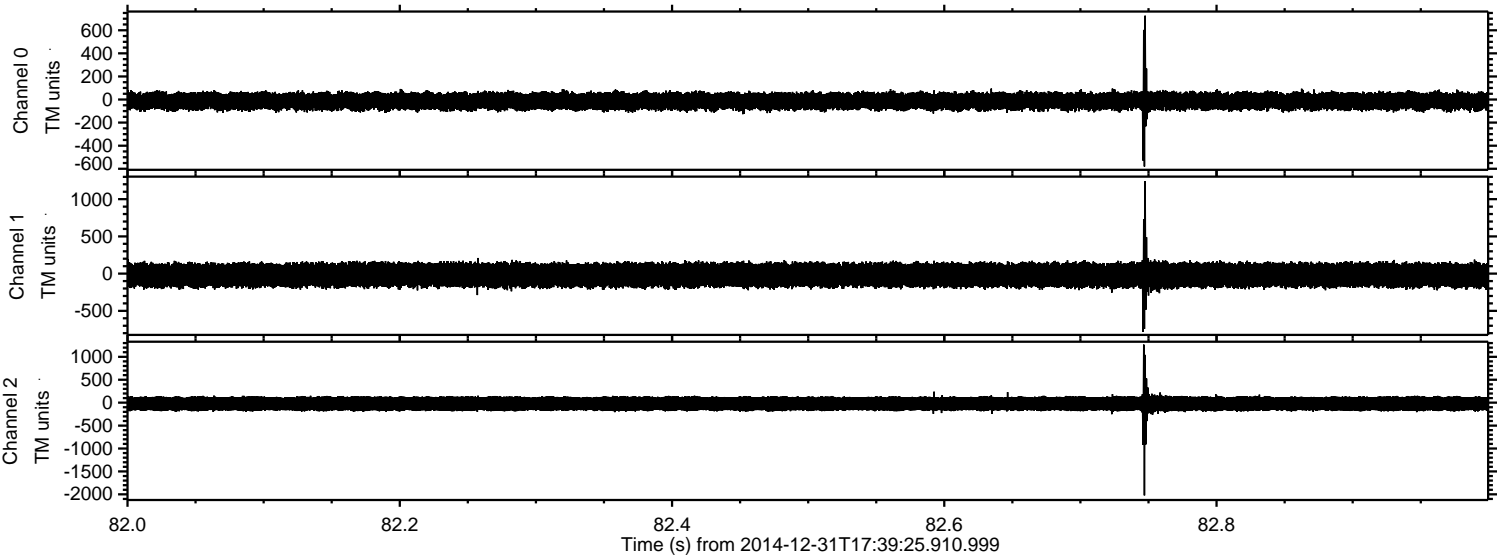
Processed Sat Jan 3 02:05:12 2015 by ELM ver.2012-10-06 from 001__elm20141231_173924__dat00.bin



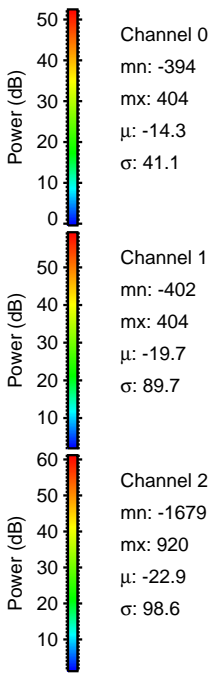
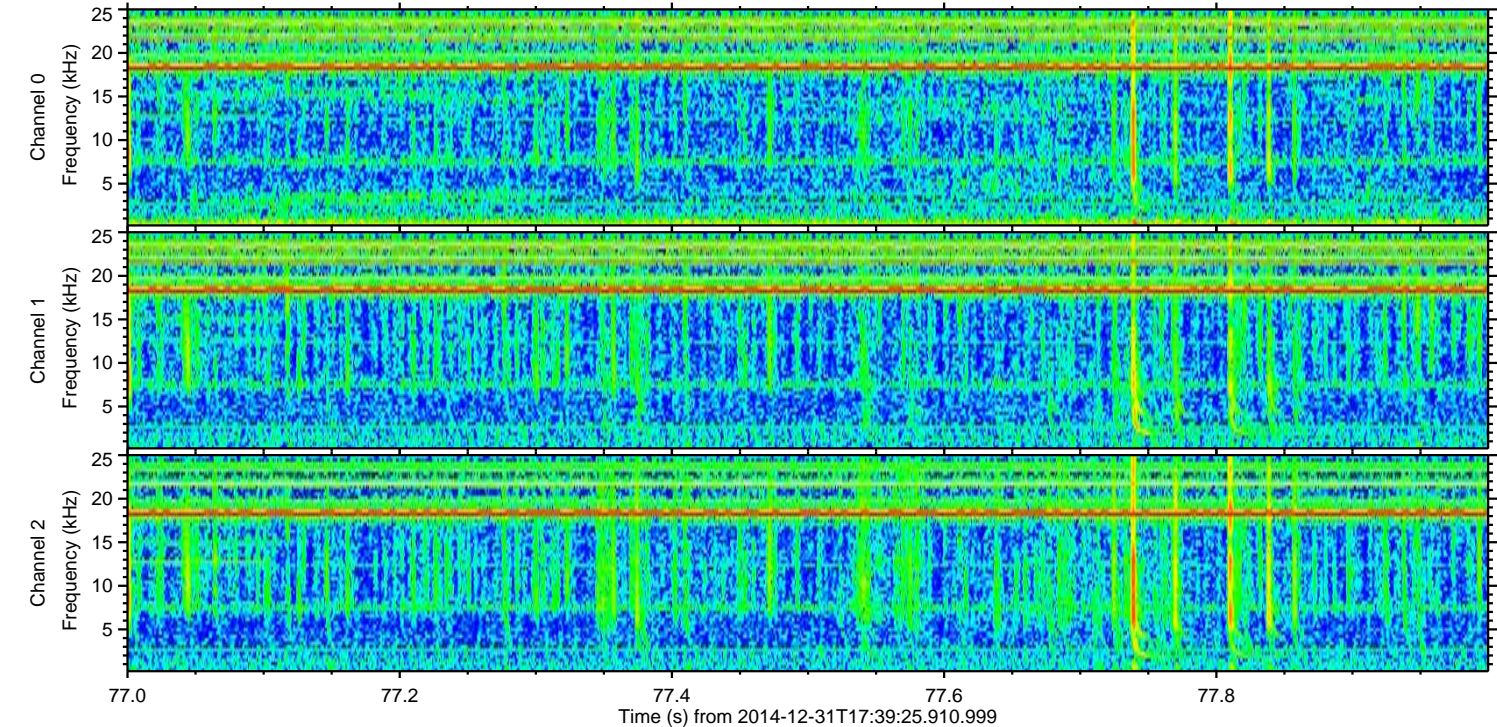
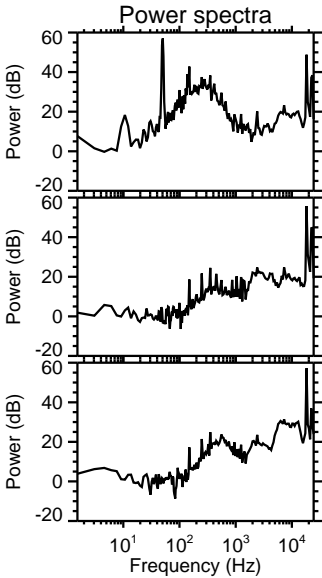
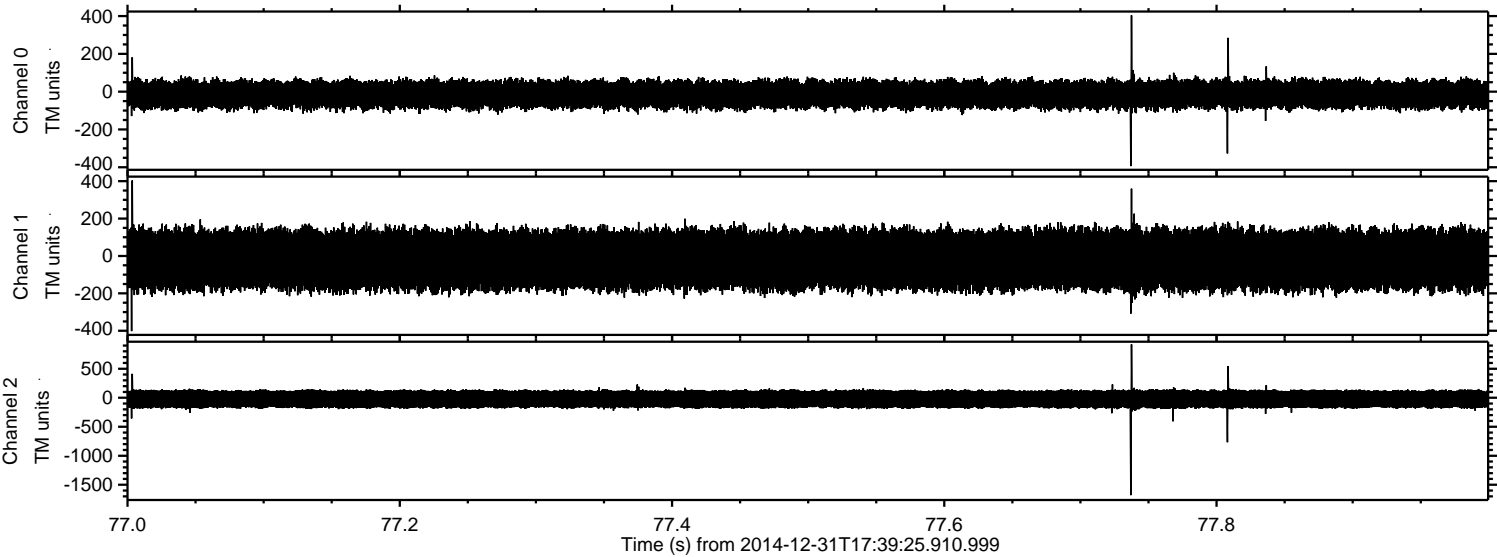
Processed Sat Jan 3 02:05:13 2015 by ELM ver.2012-10-06 from 001__elm20141231_173924__dat00.bin



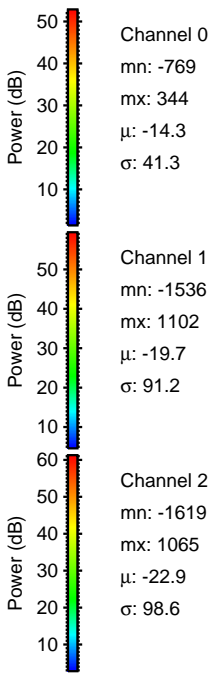
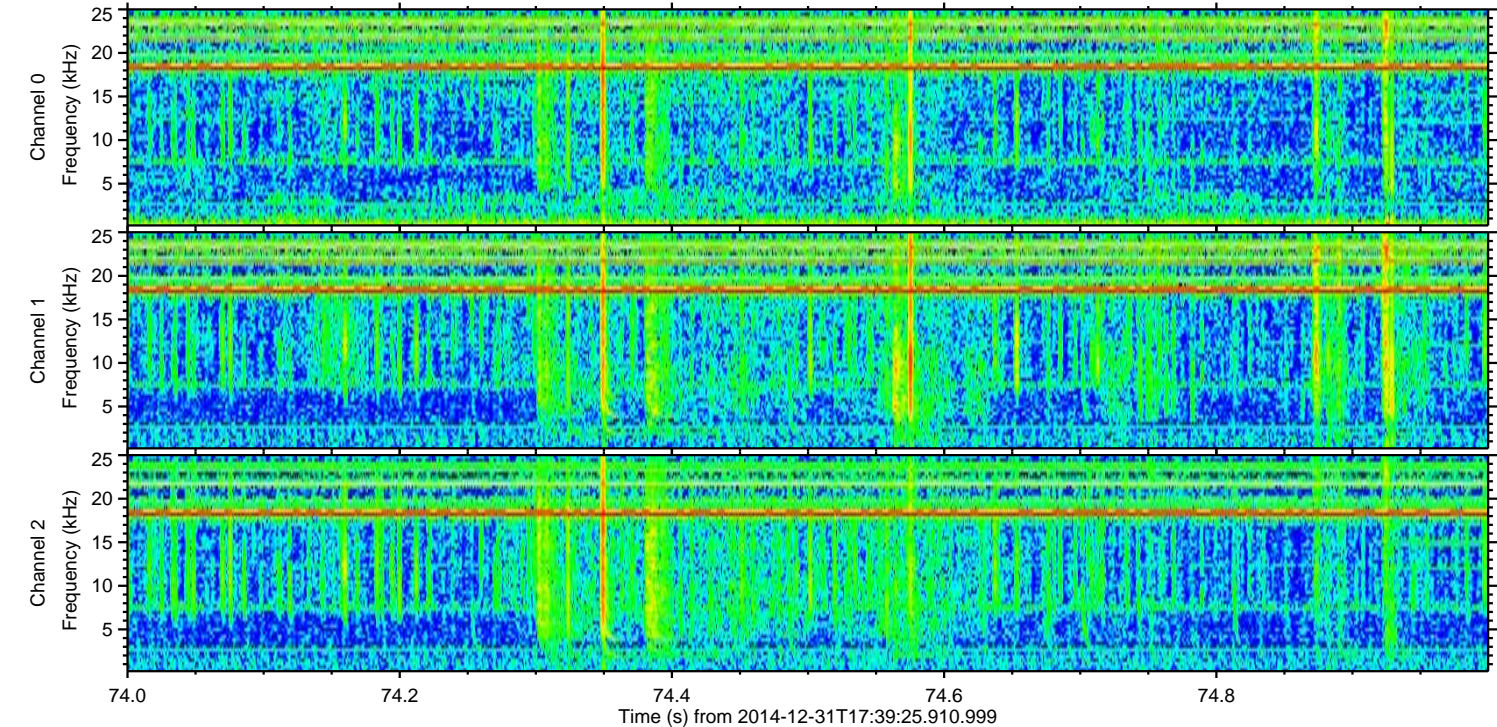
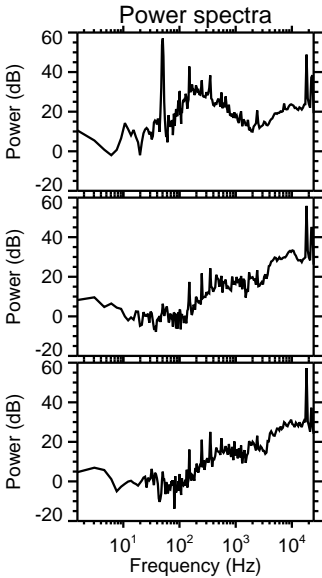
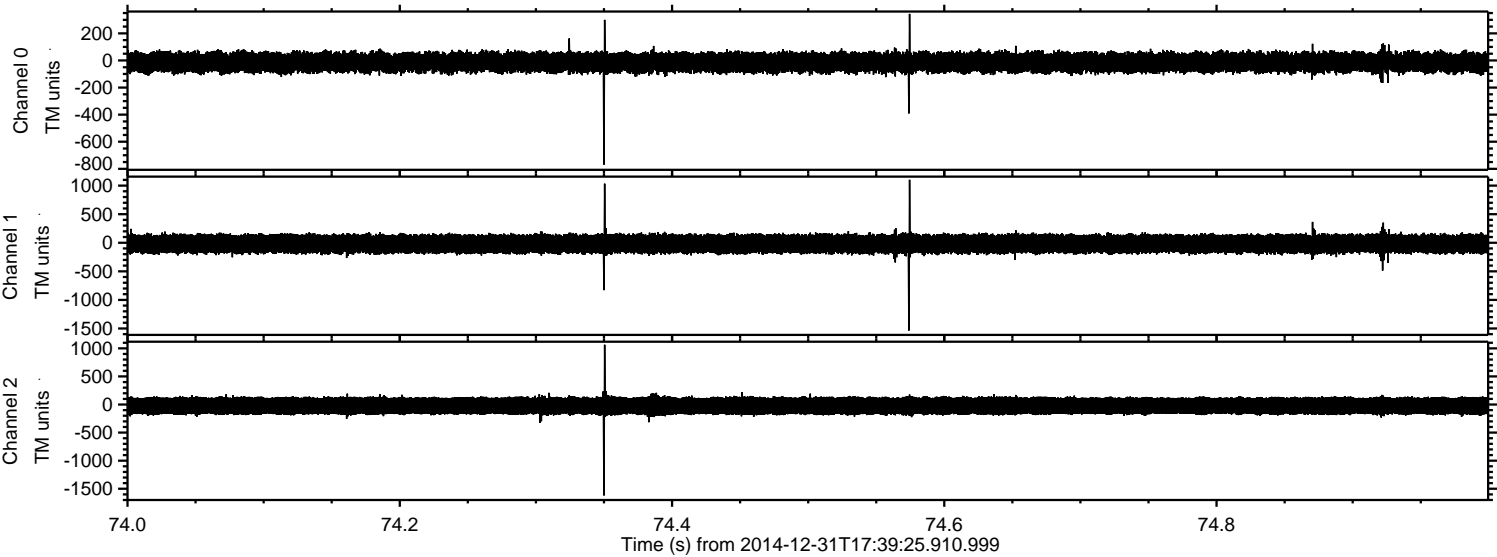
Processed Sat Jan 3 02:05:14 2015 by ELM ver.2012-10-06 from 001__elm20141231_173924__dat00.bin



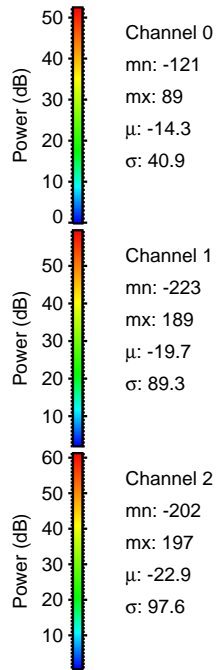
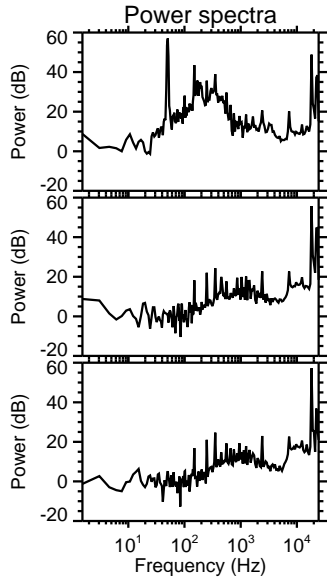
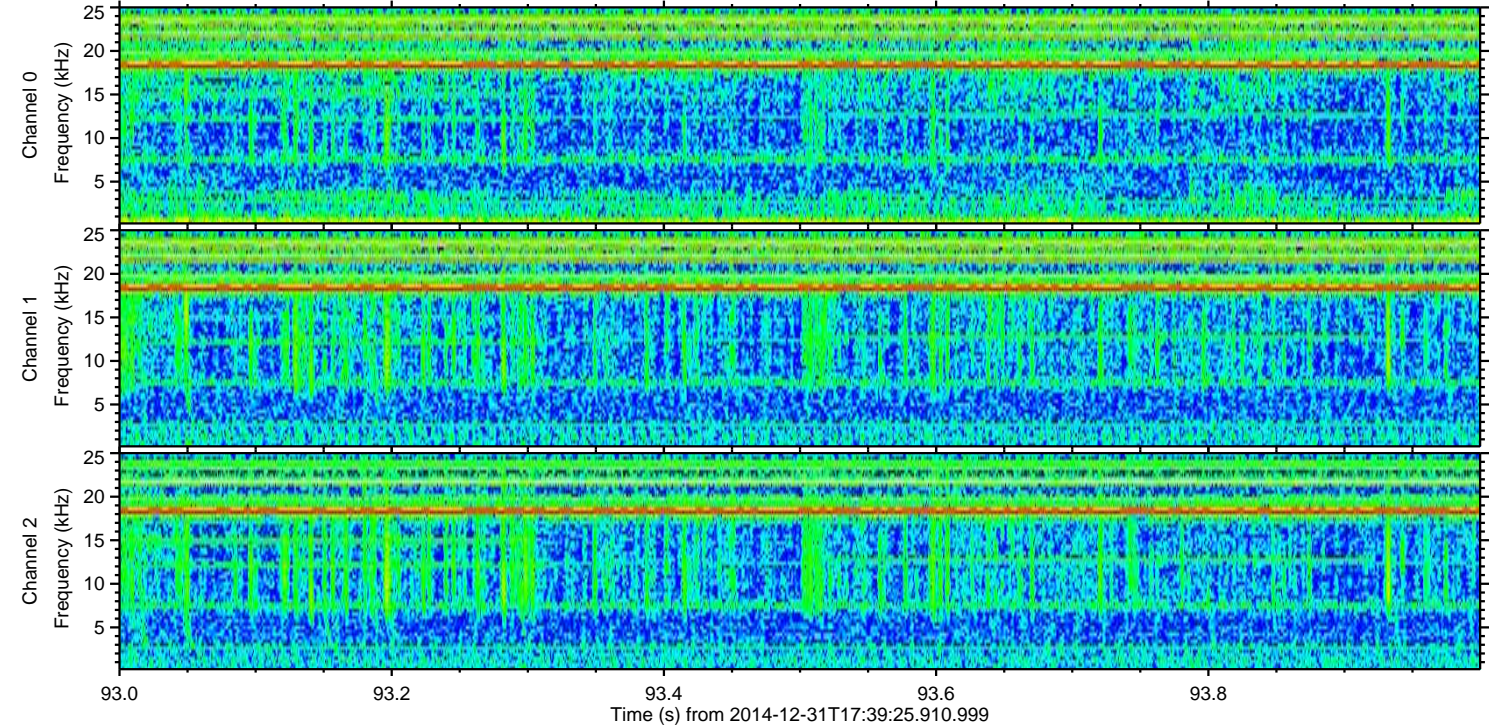
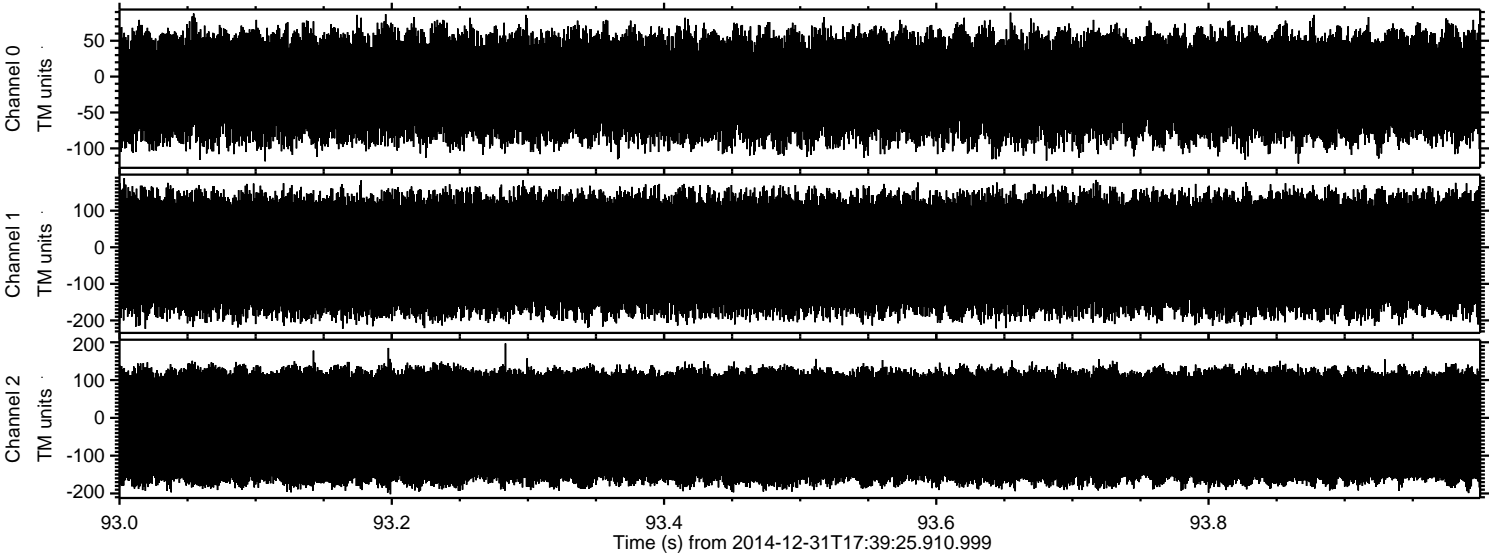
Processed Sat Jan 3 02:05:15 2015 by ELM ver.2012-10-06 from 001__elm20141231_173924__dat00.bin



Processed Sat Jan 3 02:05:16 2015 by ELM ver.2012-10-06 from 001__elm20141231_173924__dat00.bin



Processed Sat Jan 3 02:05:17 2015 by ELM ver.2012-10-06 from 001__elm20141231_173924__dat00.bin



Channel 0
mn: -121
mx: 89
 μ : -14.3
 σ : 40.9

Channel 1
mn: -223
mx: 189
 μ : -19.7
 σ : 89.3

Channel 2
mn: -202
mx: 197
 μ : -22.9
 σ : 97.6