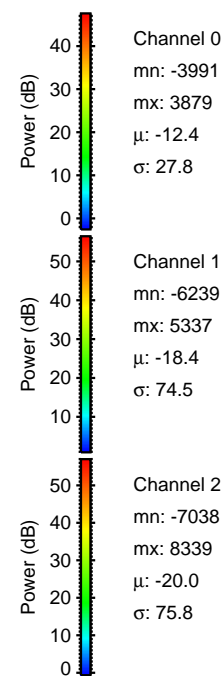
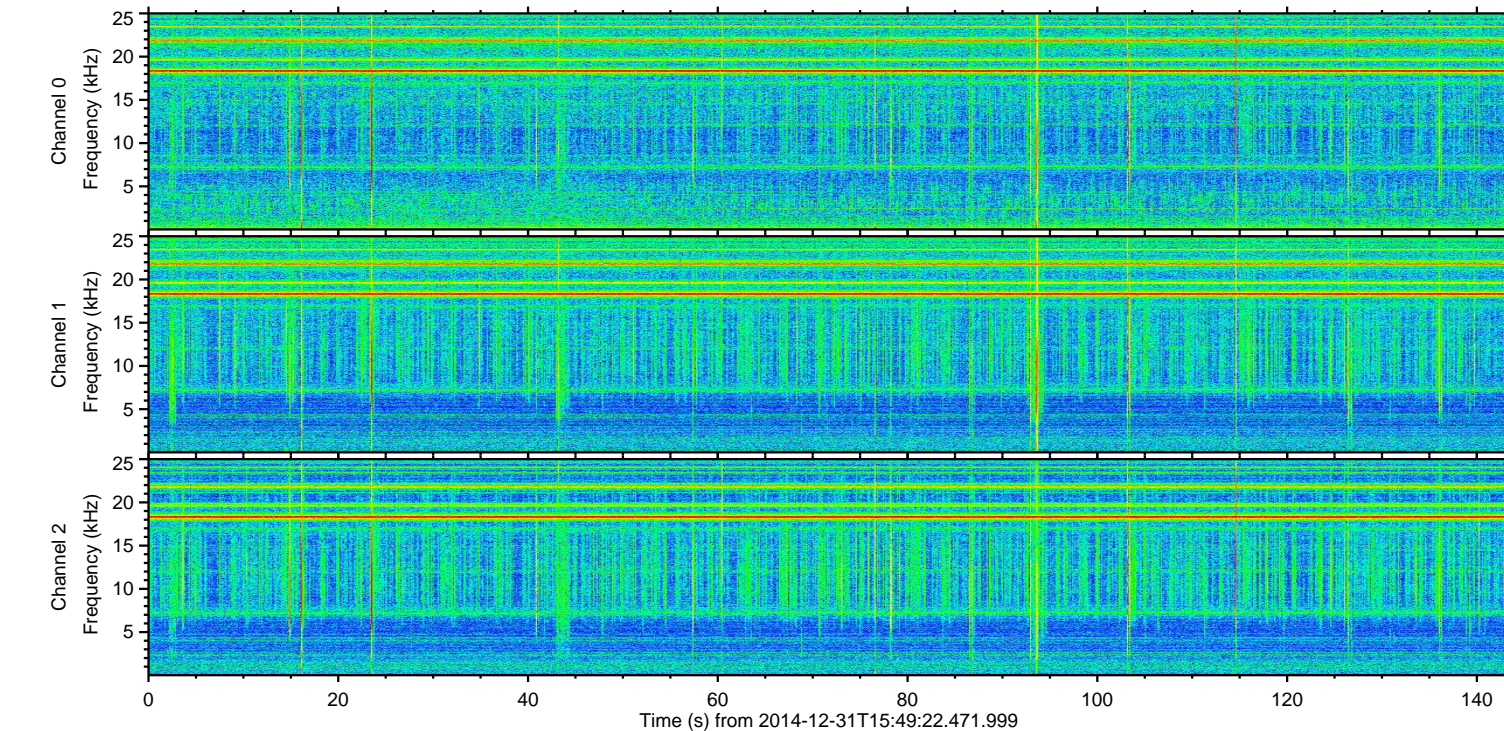
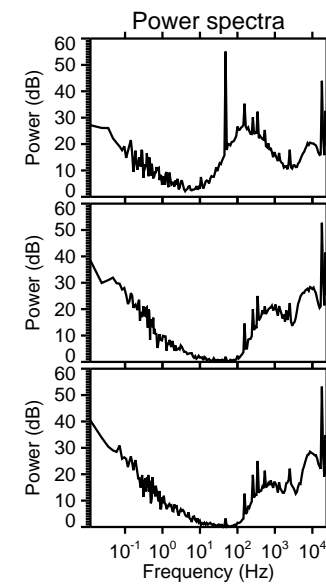
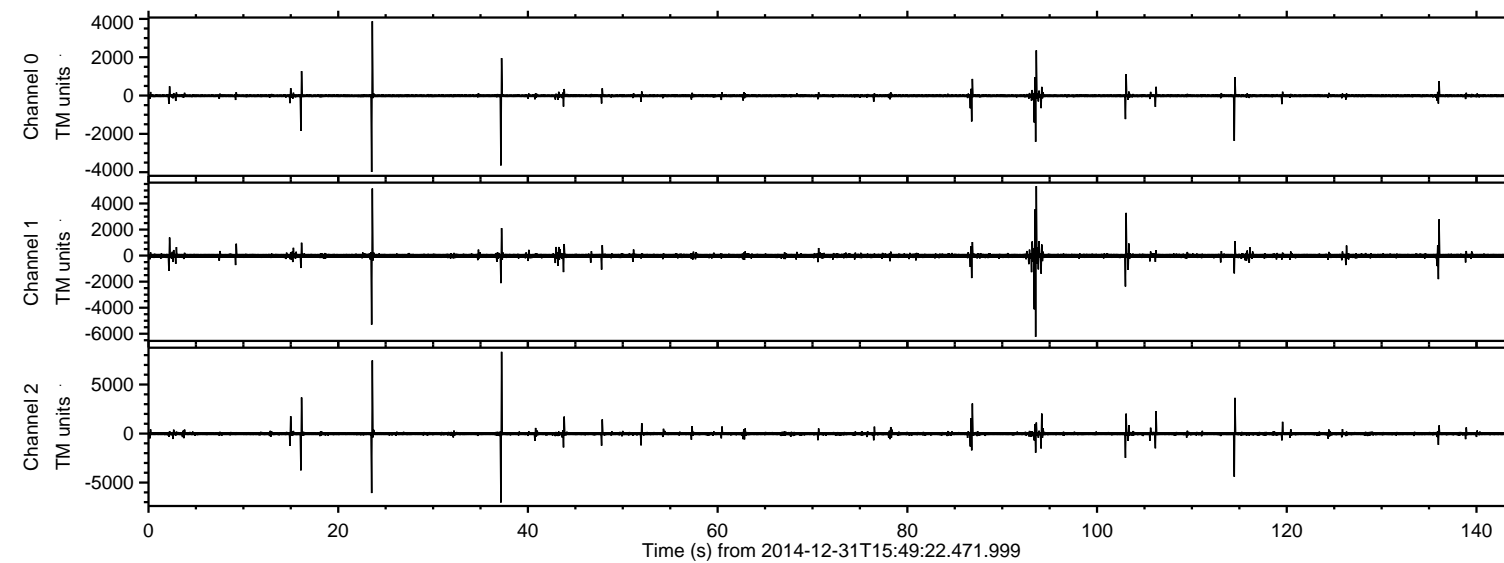


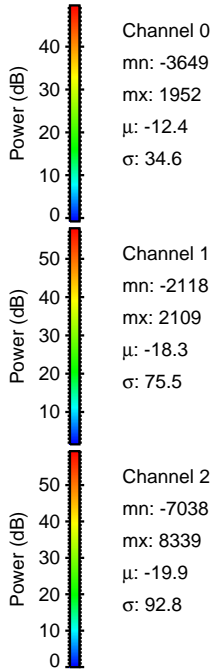
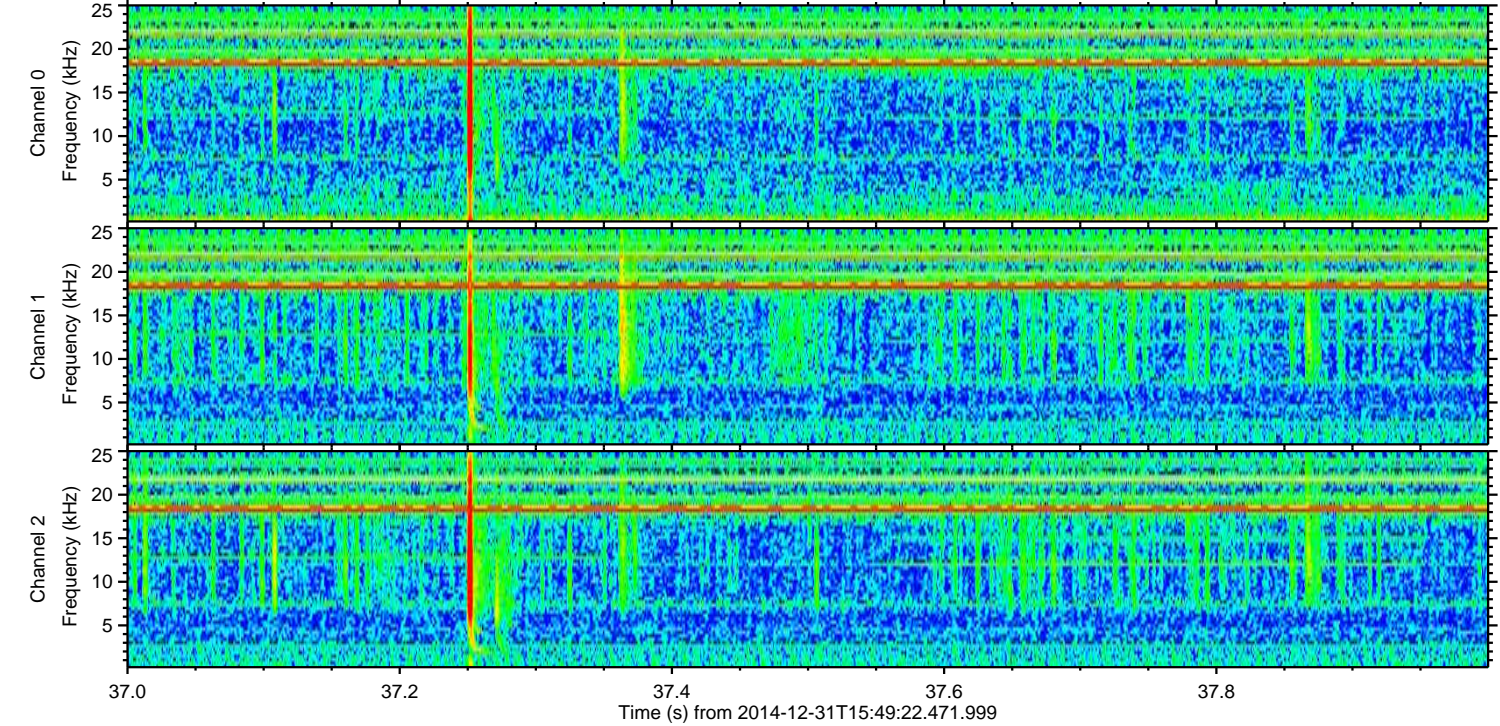
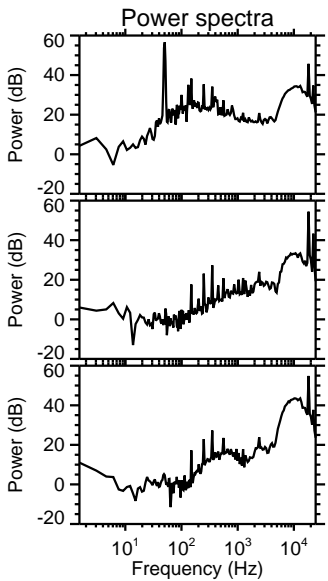
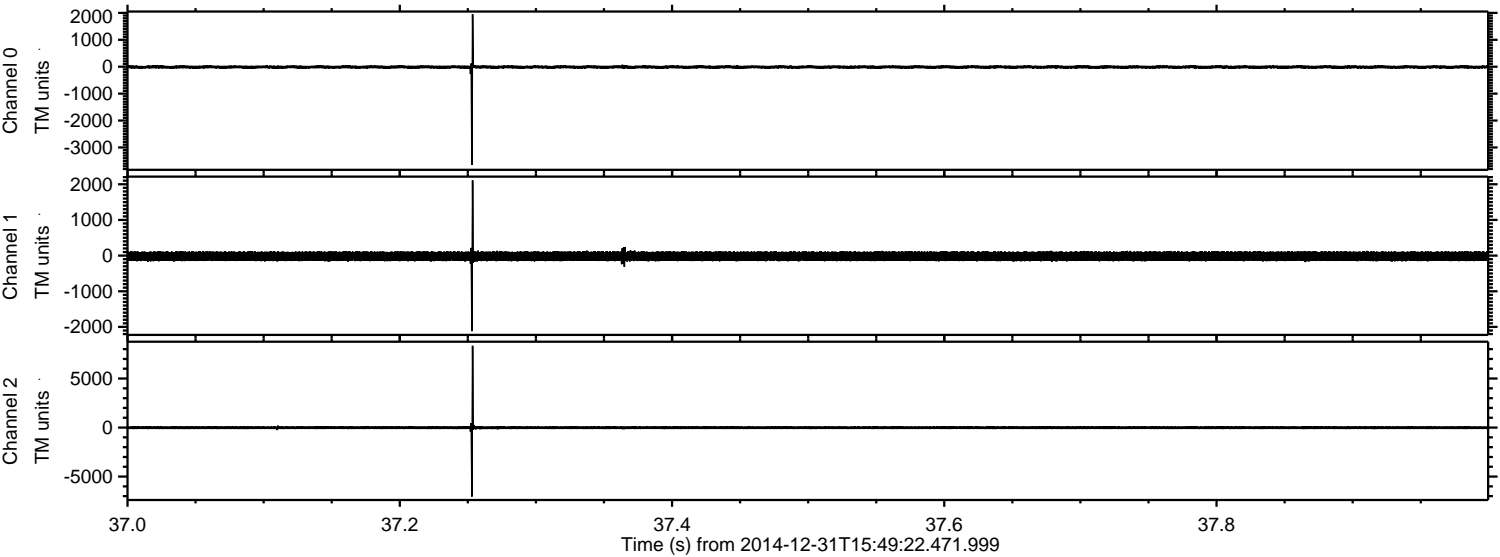
# ELMAVAN 3D WAVEFORMS (Measured data sampled at 50 kHz) 49807 packets of 144 samples from 2014-12-31T15:49:22.471.999.

Processed Sat Jan 3 01:39:34 2015 by ELM ver.2012-10-06 from 001\_\_elm20141231\_154921\_\_dat00.bin





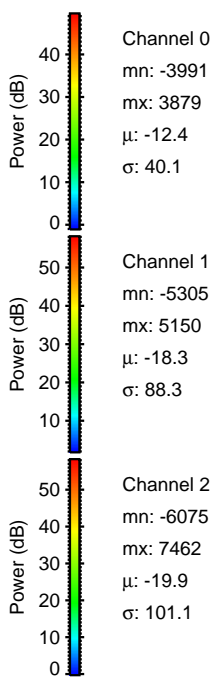
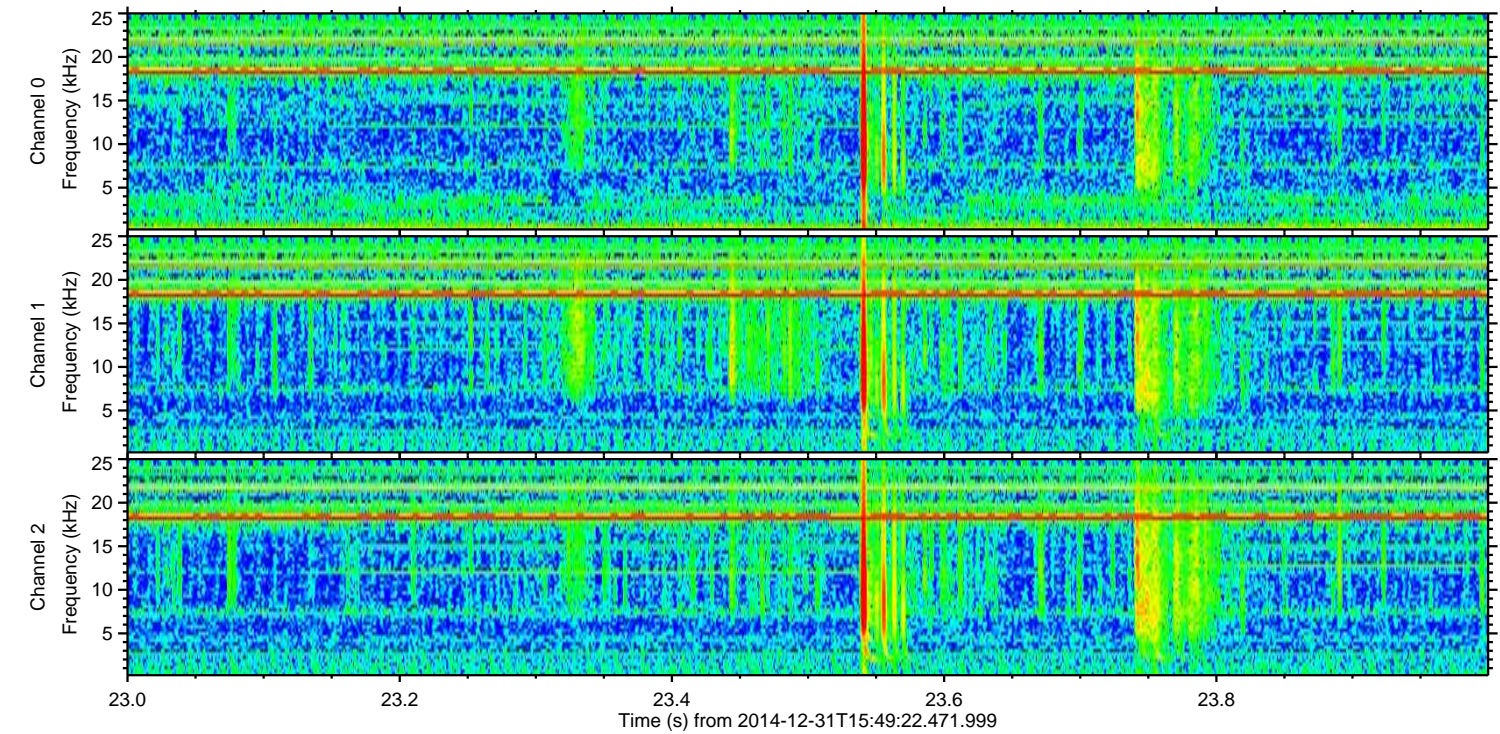
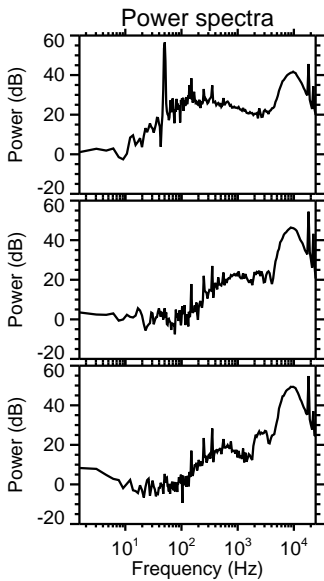
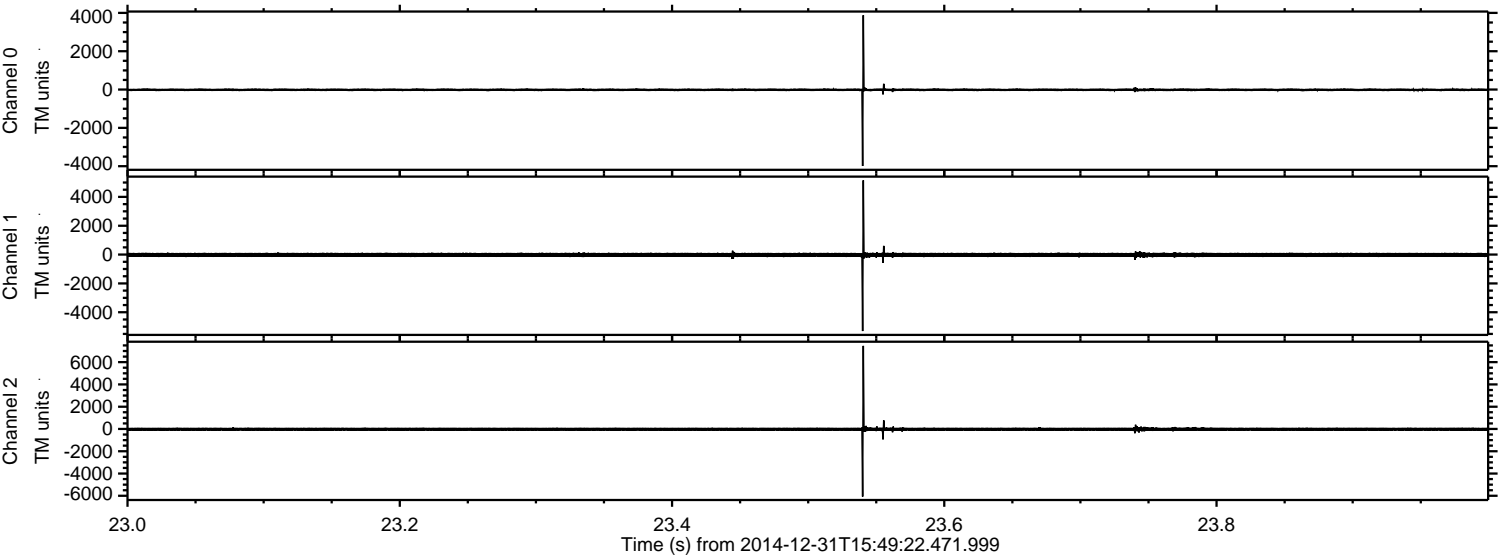
Processed Sat Jan 3 01:39:46 2015 by ELM ver.2012-10-06 from 001\_\_elm20141231\_154921\_\_dat00.bin





ELMAVAN 3D WAVEFORMS (Measured data sampled at 50 kHz) 49807 packets of 144 samples from 2014-12-31T15:49:22.471.999. Part 24/144

Processed Sat Jan 3 01:39:47 2015 by ELM ver.2012-10-06 from 001\_\_elm20141231\_154921\_\_dat00.bin



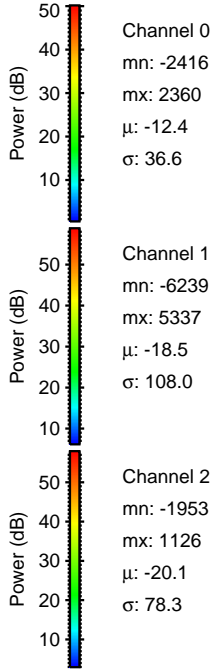
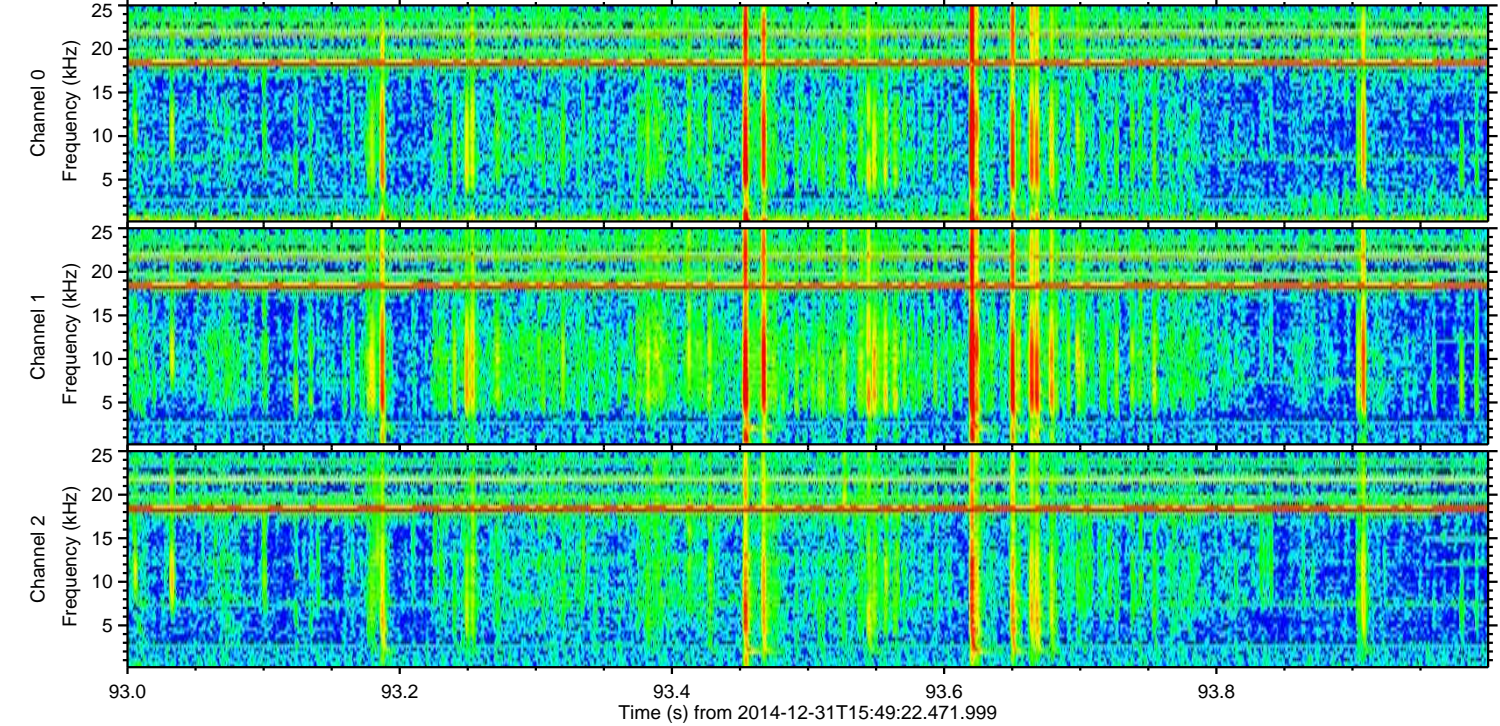
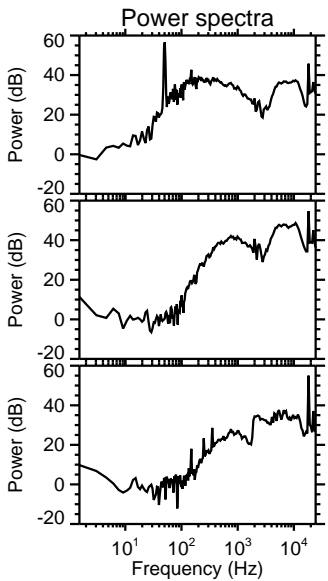
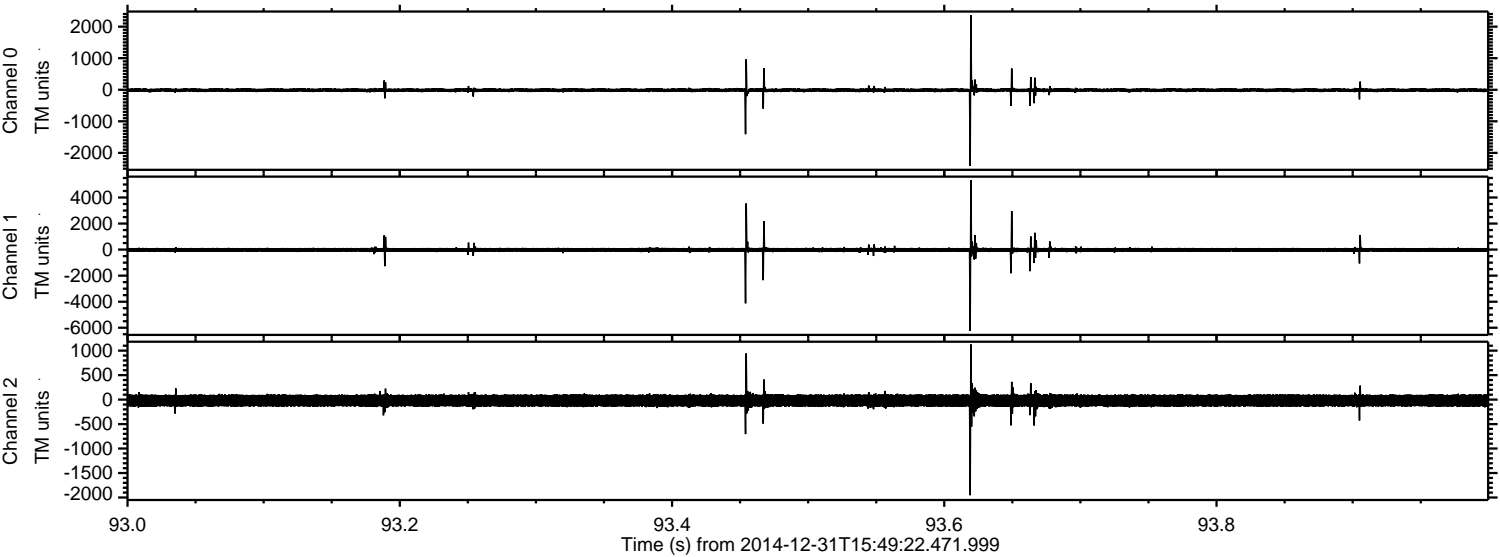
Channel 0  
mn: -3991  
mx: 3879  
 $\mu$ : -12.4  
 $\sigma$ : 40.1

Channel 1  
mn: -5305  
mx: 5150  
 $\mu$ : -18.3  
 $\sigma$ : 88.3

Channel 2  
mn: -6075  
mx: 7462  
 $\mu$ : -19.9  
 $\sigma$ : 101.1



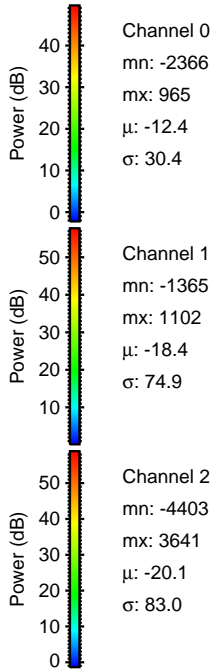
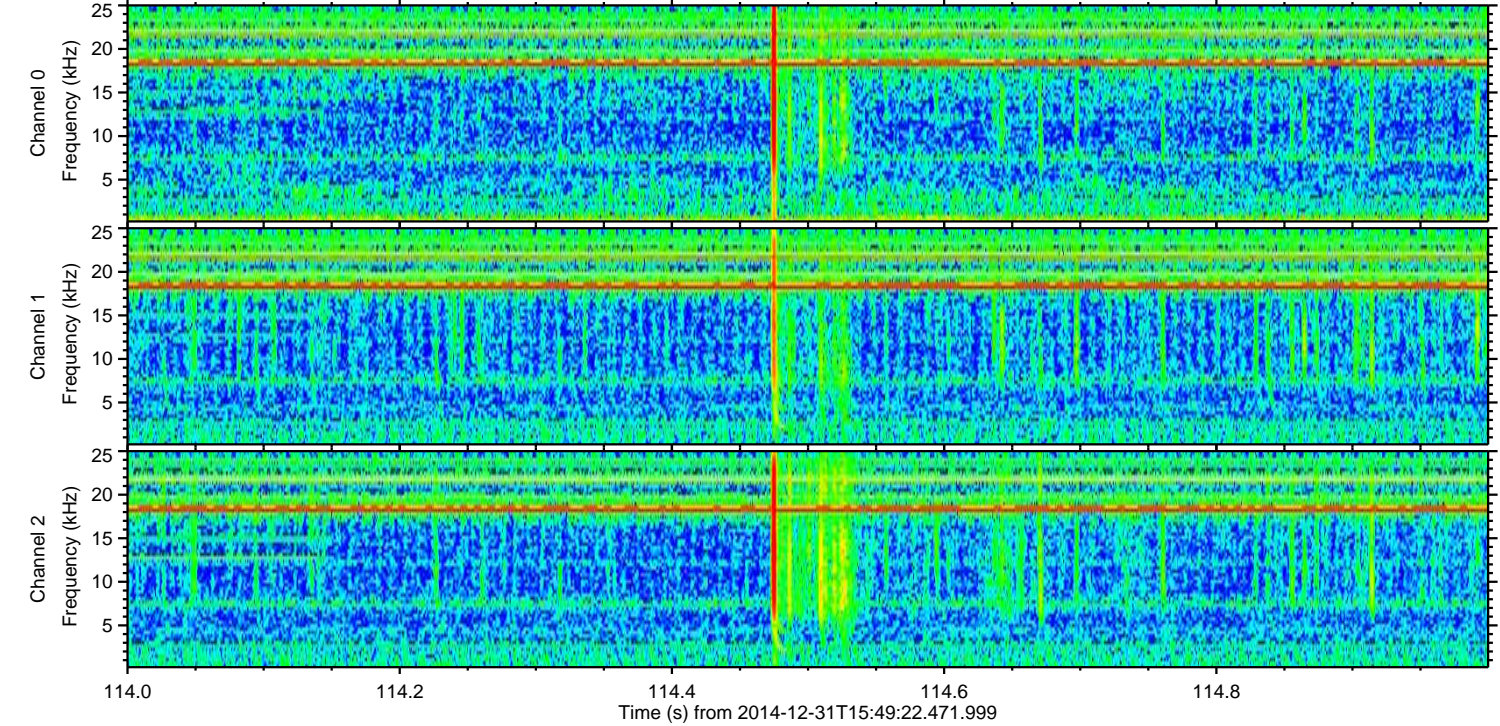
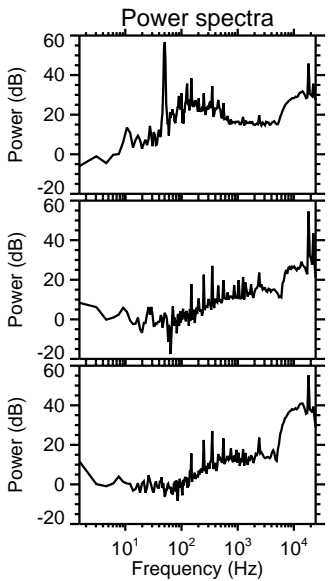
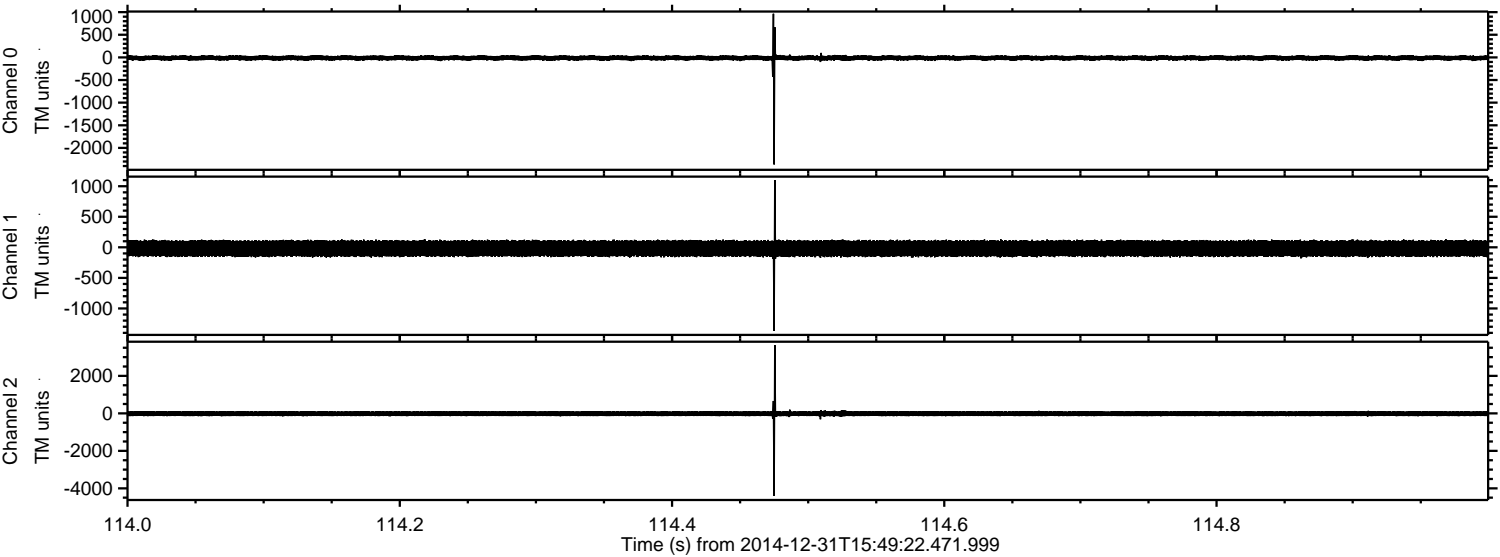
Processed Sat Jan 3 01:39:48 2015 by ELM ver.2012-10-06 from 001\_\_elm20141231\_154921\_\_dat00.bin





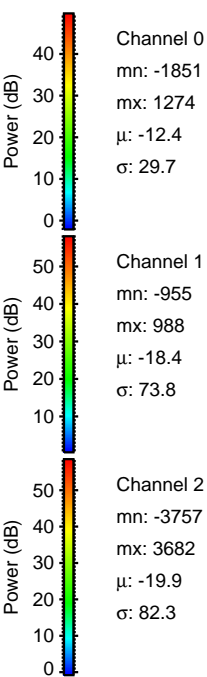
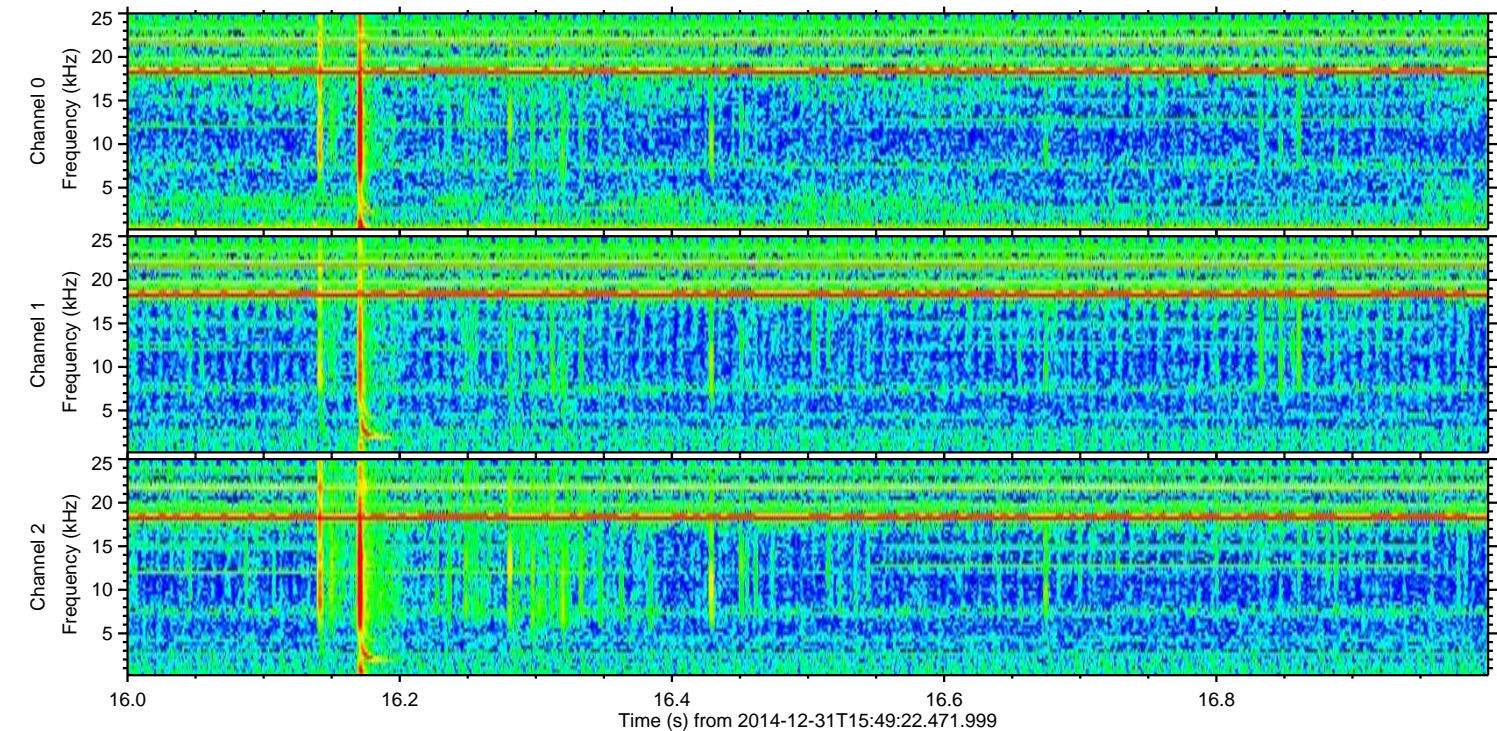
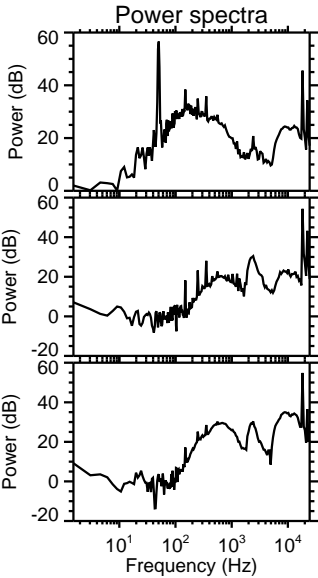
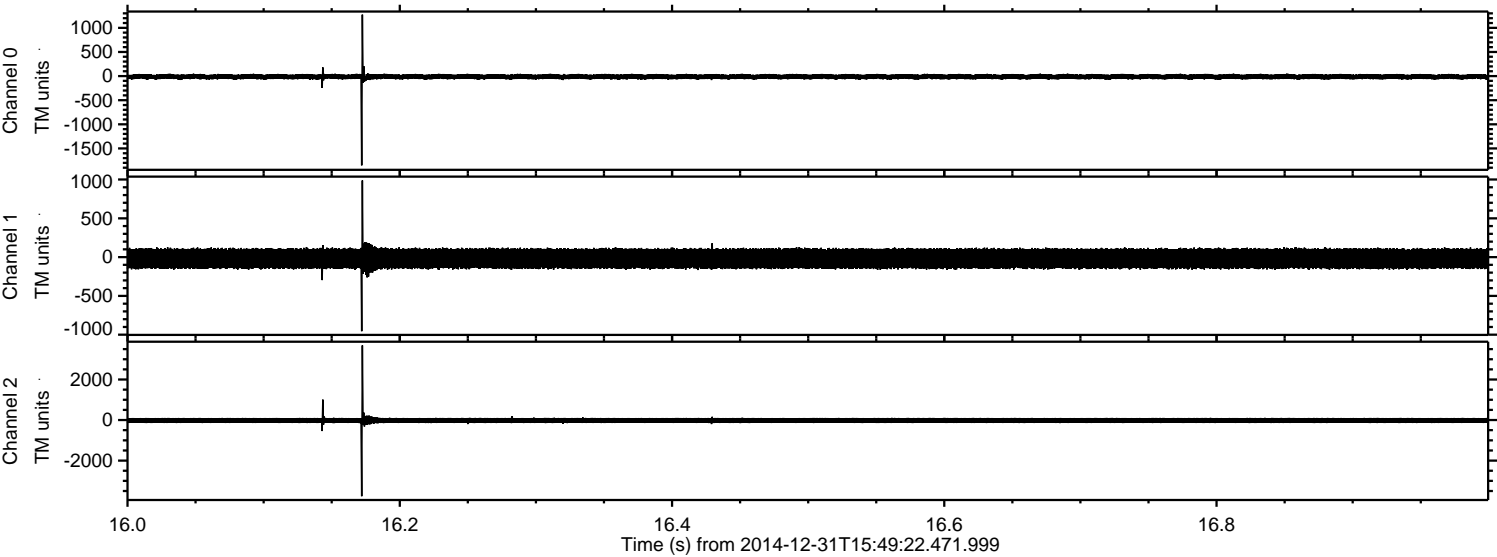
ELMAVAN 3D WAVEFORMS (Measured data sampled at 50 kHz) 49807 packets of 144 samples from 2014-12-31T15:49:22.471.999. Part 115/144

Processed Sat Jan 3 01:39:49 2015 by ELM ver.2012-10-06 from 001\_\_elm20141231\_154921\_\_dat00.bin





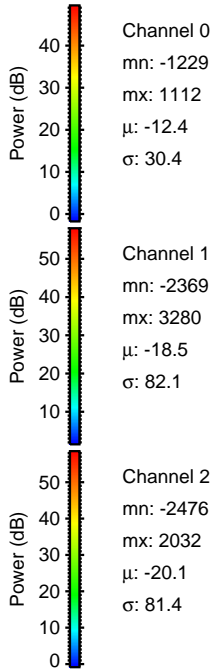
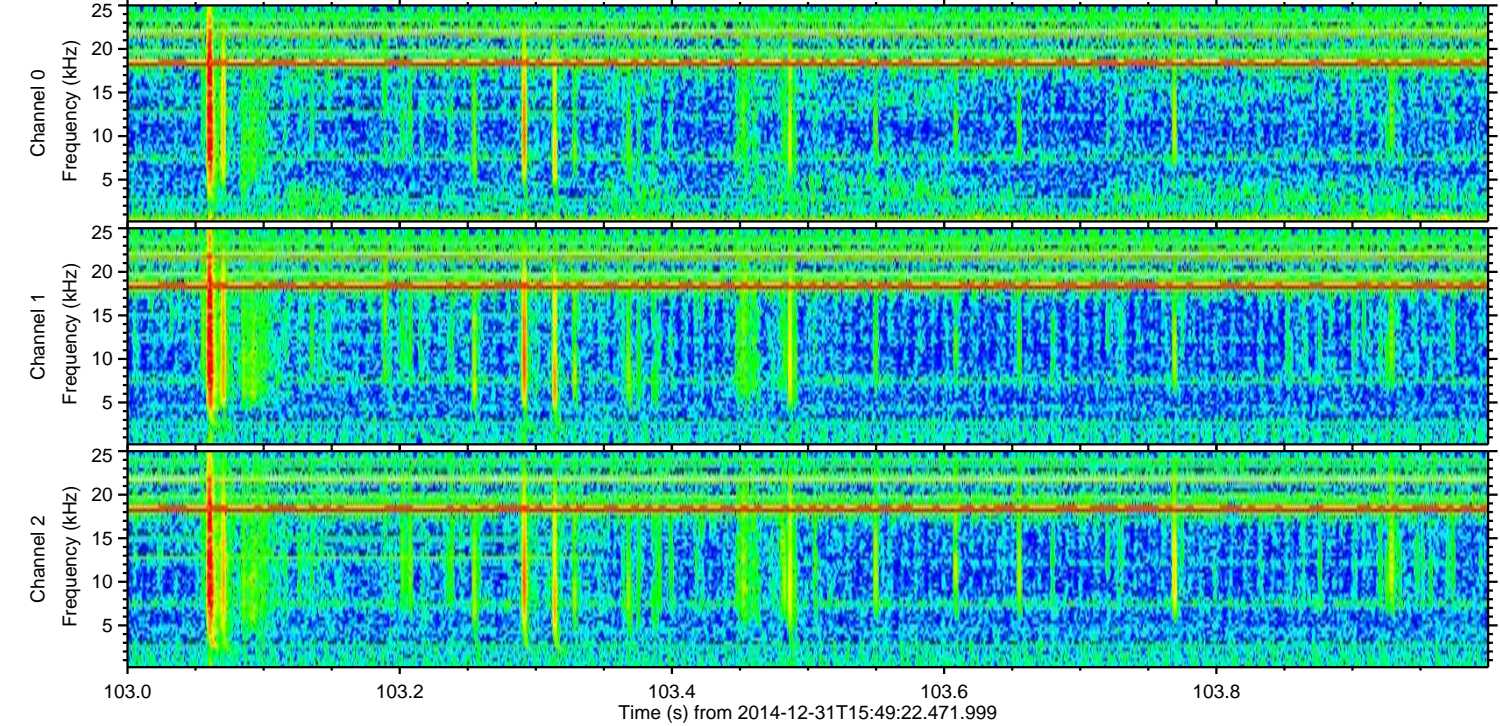
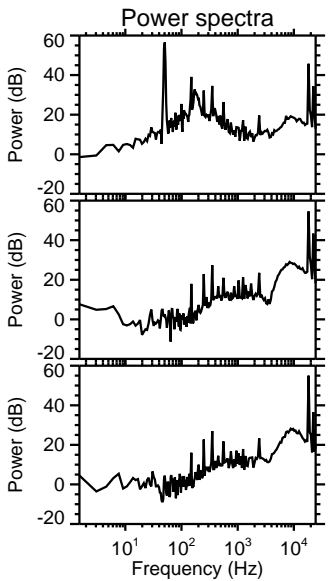
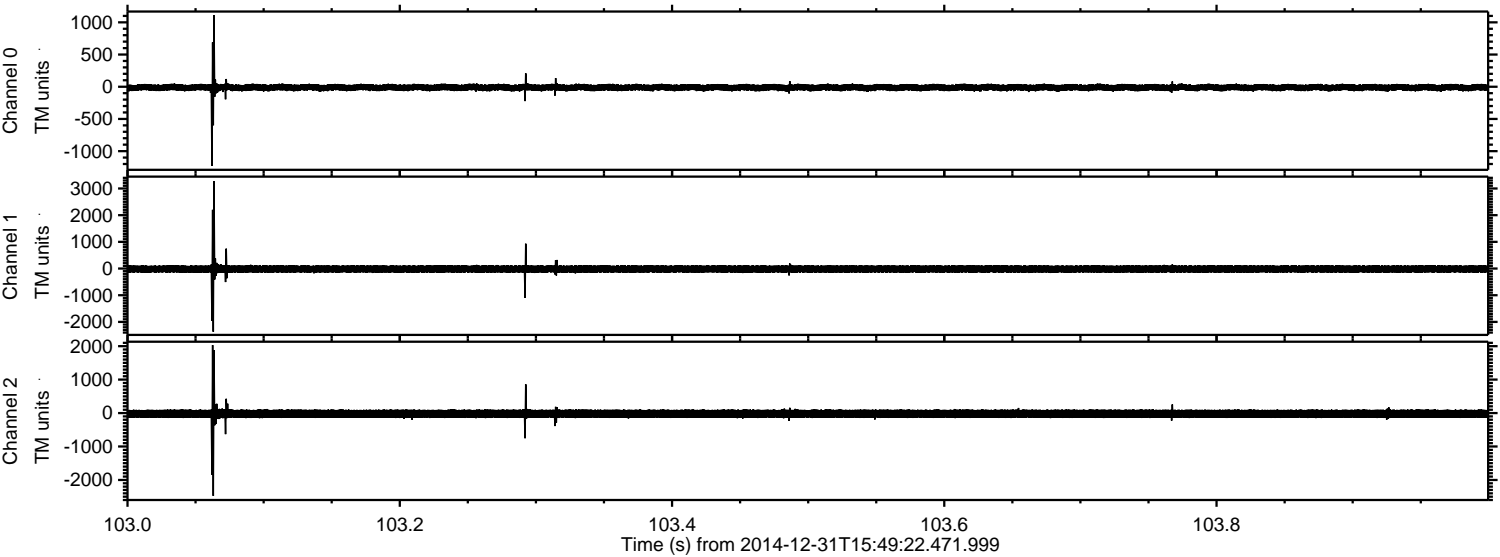
Processed Sat Jan 3 01:39:50 2015 by ELM ver.2012-10-06 from 001\_\_elm20141231\_154921\_\_dat00.bin





ELMAVAN 3D WAVEFORMS (Measured data sampled at 50 kHz) 49807 packets of 144 samples from 2014-12-31T15:49:22.471.999. Part 104/144

Processed Sat Jan 3 01:39:51 2015 by ELM ver.2012-10-06 from 001\_\_elm20141231\_154921\_\_dat00.bin



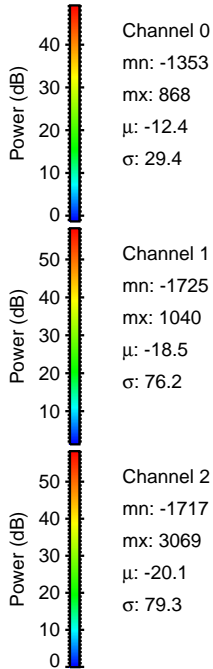
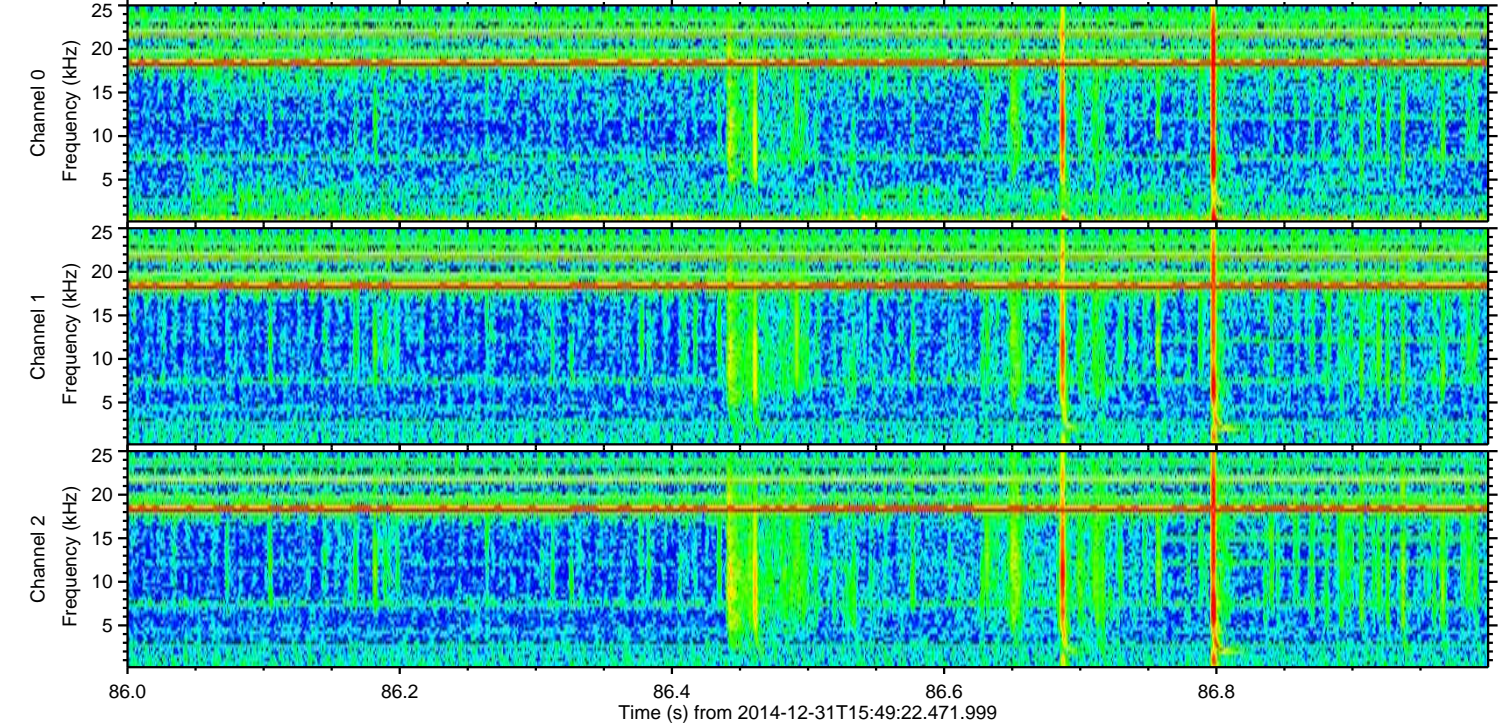
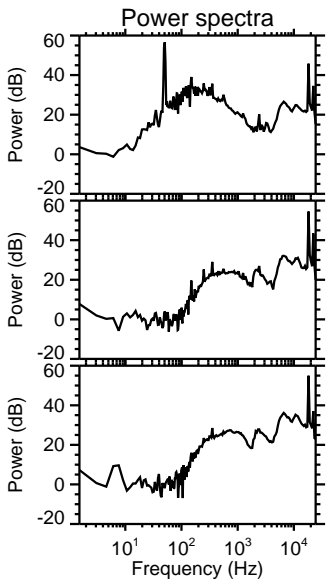
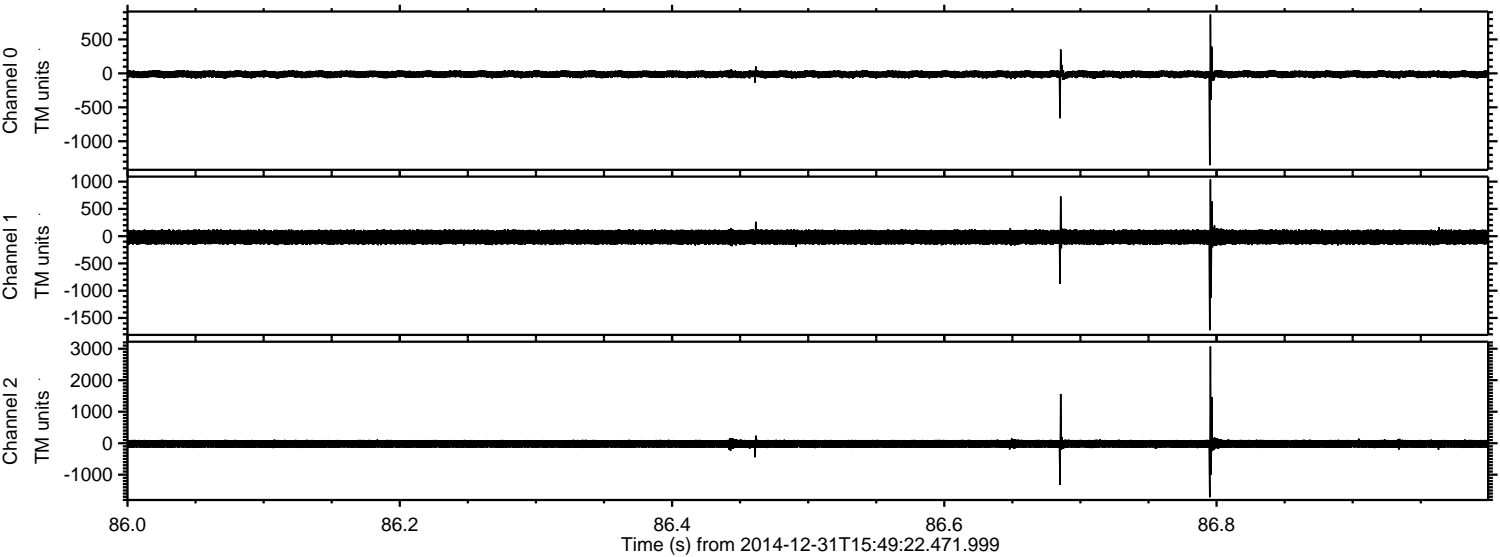
Channel 0  
mn: -1229  
mx: 1112  
 $\mu$ : -12.4  
 $\sigma$ : 30.4

Channel 1  
mn: -2369  
mx: 3280  
 $\mu$ : -18.5  
 $\sigma$ : 82.1

Channel 2  
mn: -2476  
mx: 2032  
 $\mu$ : -20.1  
 $\sigma$ : 81.4



Processed Sat Jan 3 01:39:52 2015 by ELM ver.2012-10-06 from 001\_\_elm20141231\_154921\_\_dat00.bin



Channel 0  
mn: -1353  
mx: 868  
 $\mu$ : -12.4  
 $\sigma$ : 29.4

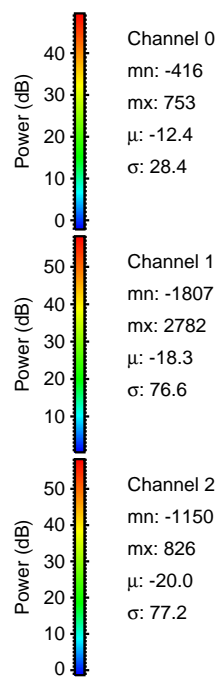
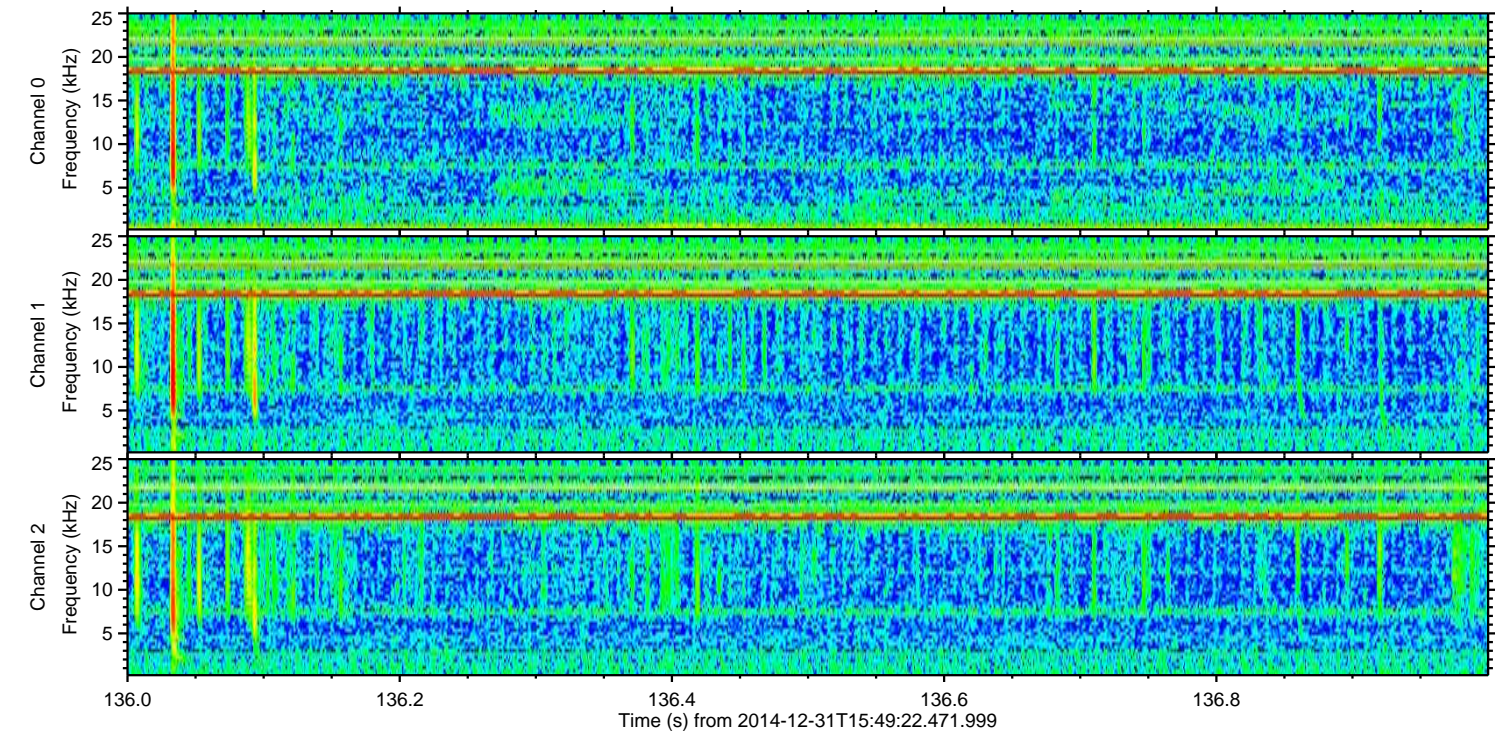
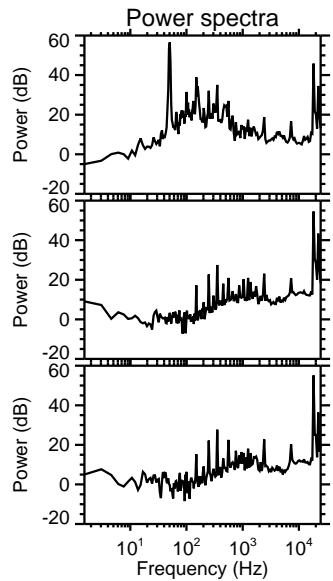
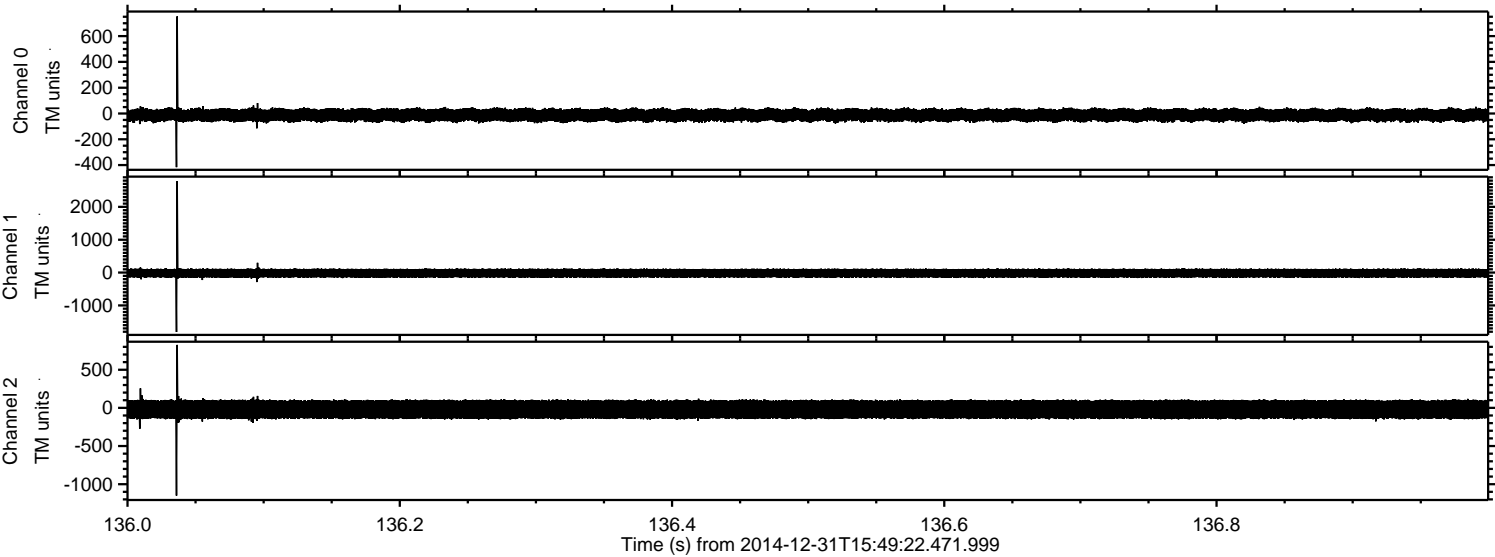
Channel 1  
mn: -1725  
mx: 1040  
 $\mu$ : -18.5  
 $\sigma$ : 76.2

Channel 2  
mn: -1717  
mx: 3069  
 $\mu$ : -20.1  
 $\sigma$ : 79.3



ELMAVAN 3D WAVEFORMS (Measured data sampled at 50 kHz) 49807 packets of 144 samples from 2014-12-31T15:49:22.471.999. Part 137/144

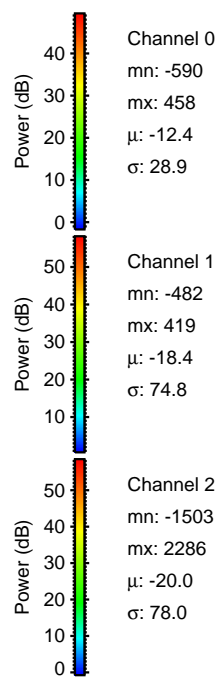
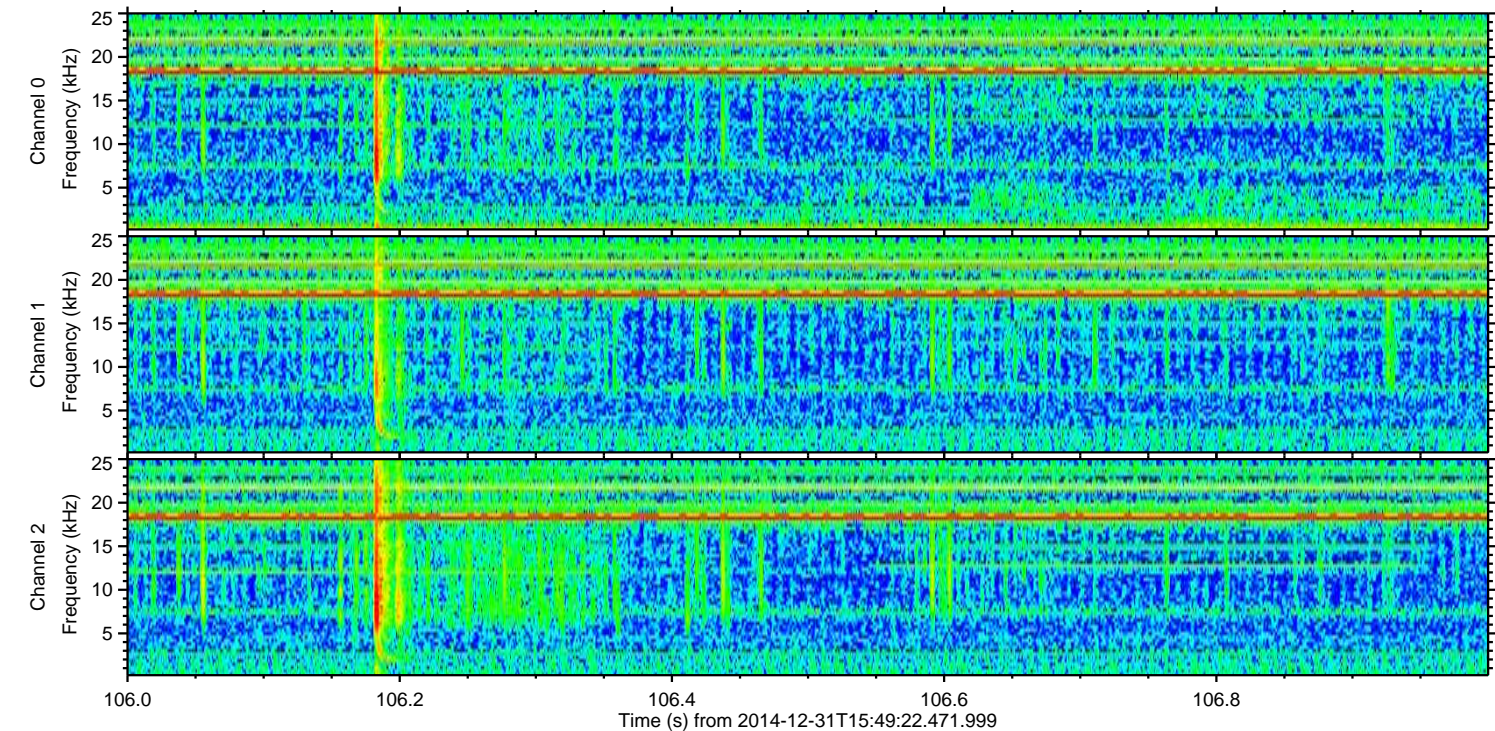
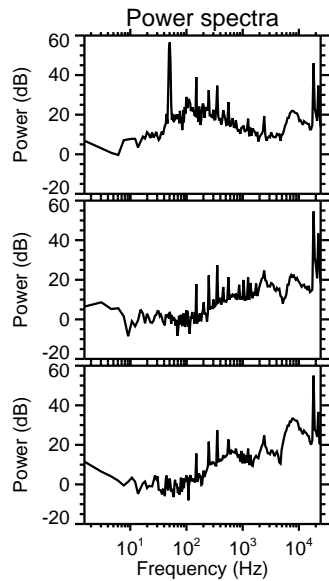
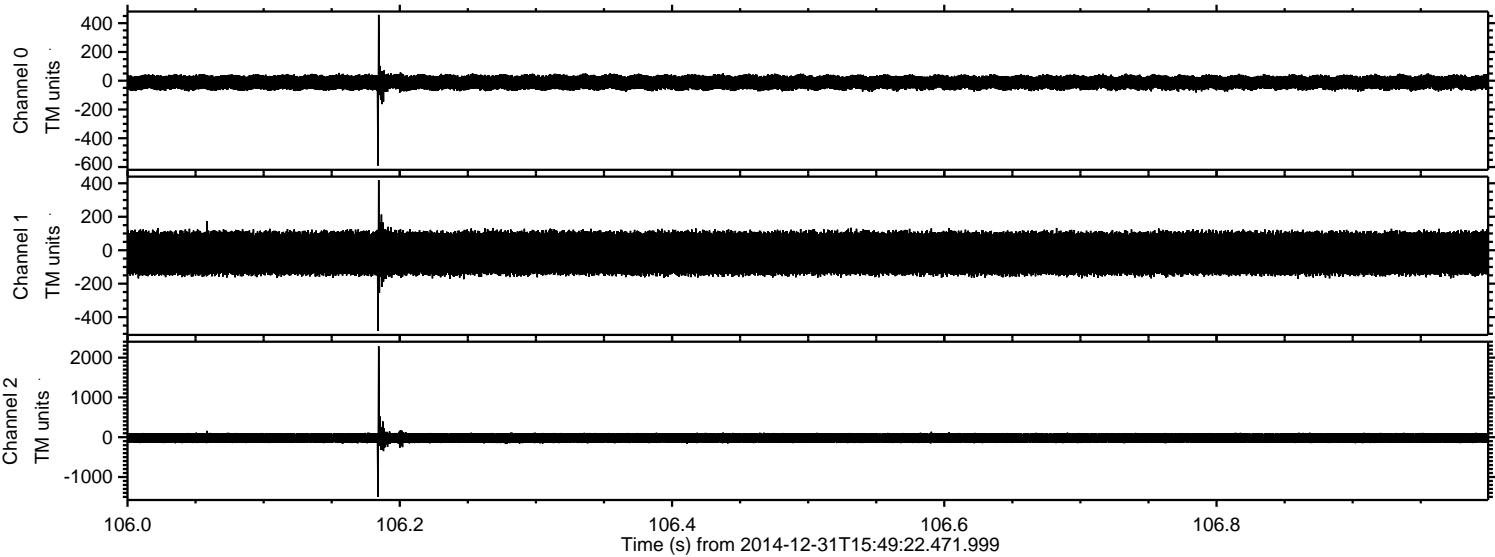
Processed Sat Jan 3 01:39:53 2015 by ELM ver.2012-10-06 from 001\_\_elm20141231\_154921\_\_dat00.bin





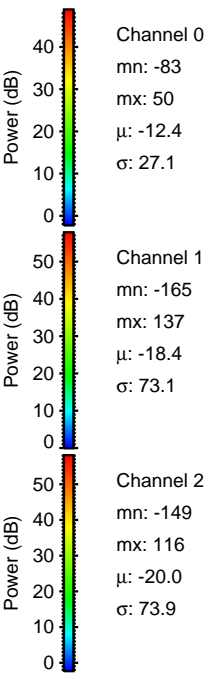
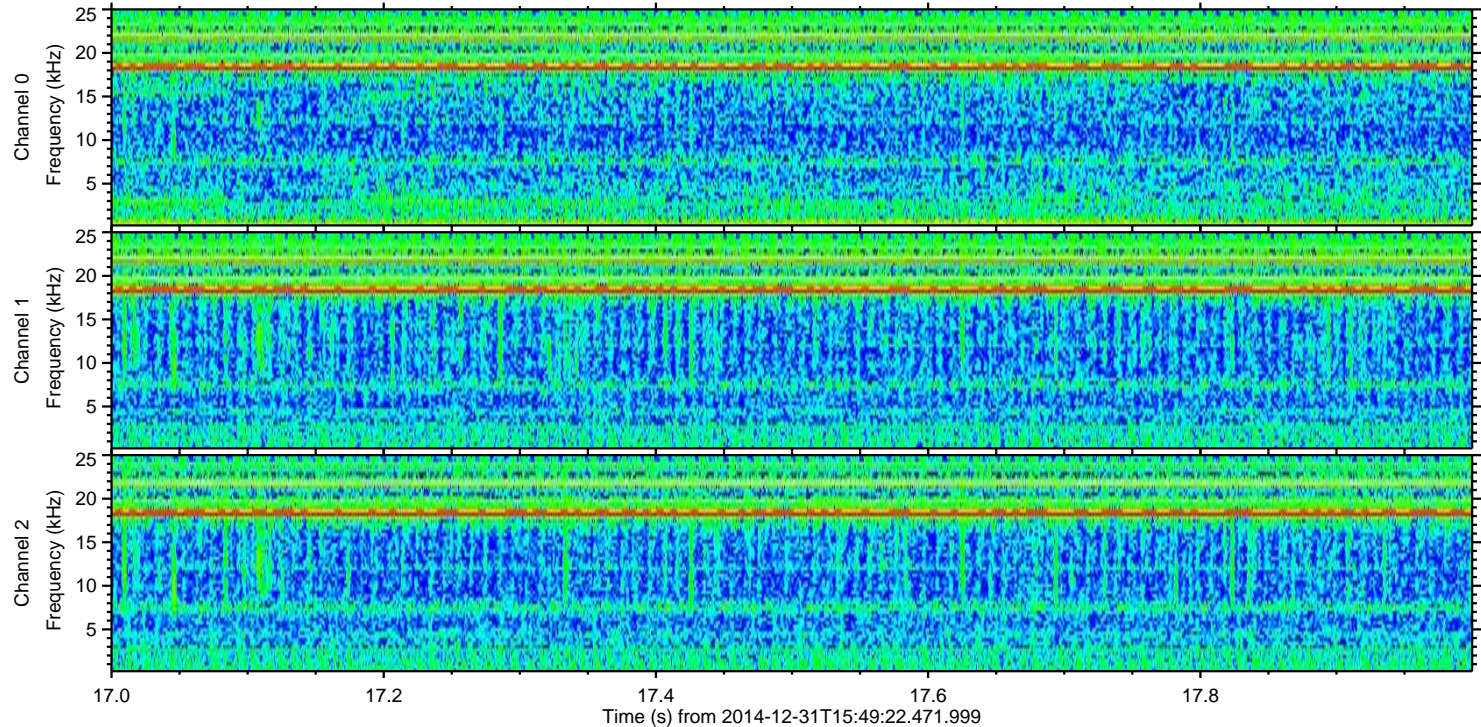
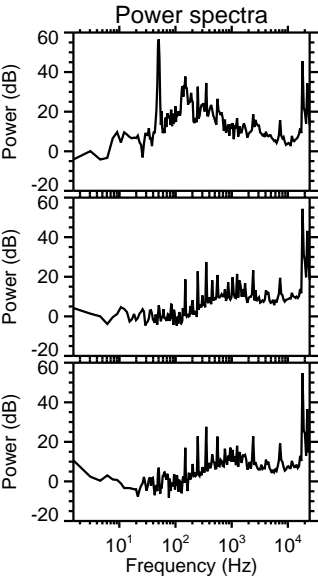
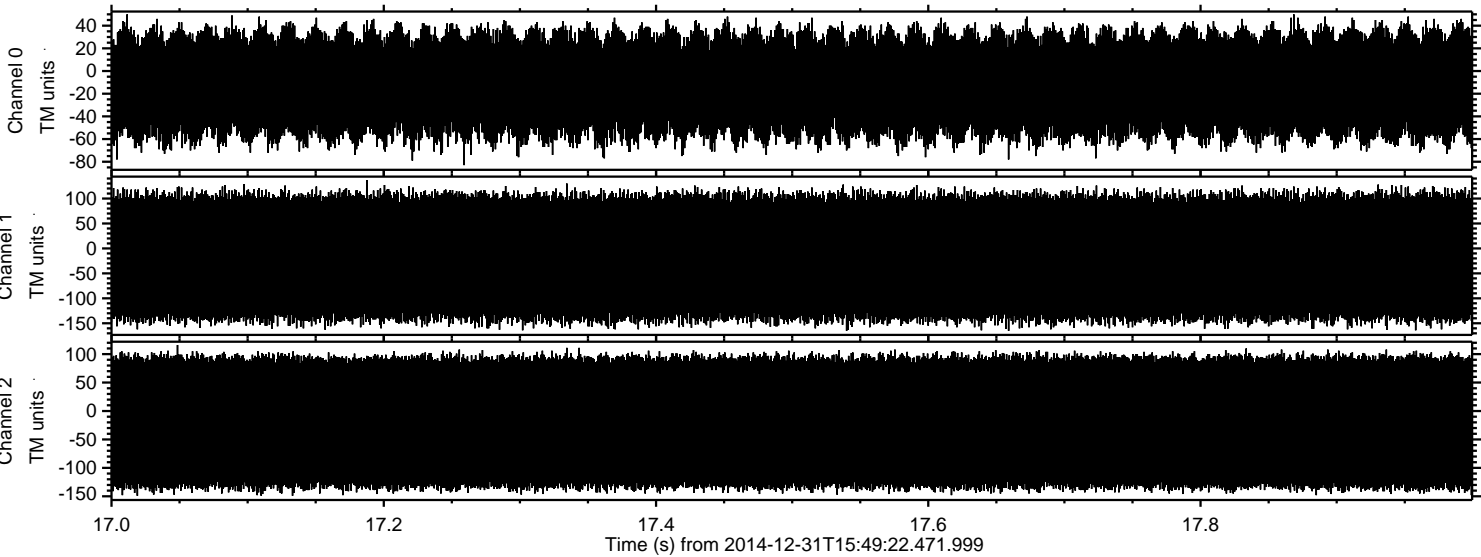
ELMAVAN 3D WAVEFORMS (Measured data sampled at 50 kHz) 49807 packets of 144 samples from 2014-12-31T15:49:22.471.999. Part 107/144

Processed Sat Jan 3 01:39:54 2015 by ELM ver.2012-10-06 from 001\_\_elm20141231\_154921\_\_dat00.bin





Processed Sat Jan 3 01:39:55 2015 by ELM ver.2012-10-06 from 001\_\_elm20141231\_154921\_\_dat00.bin



Channel 0

mn: -83  
mx: 50  
 $\mu$ : -12.4  
 $\sigma$ : 27.1

Channel 1

mn: -165  
mx: 137  
 $\mu$ : -18.4  
 $\sigma$ : 73.1

Channel 2

mn: -149  
mx: 116  
 $\mu$ : -20.0  
 $\sigma$ : 73.9