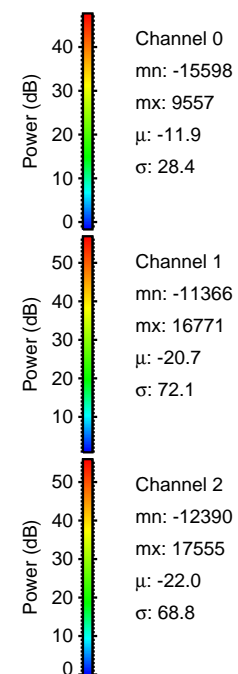
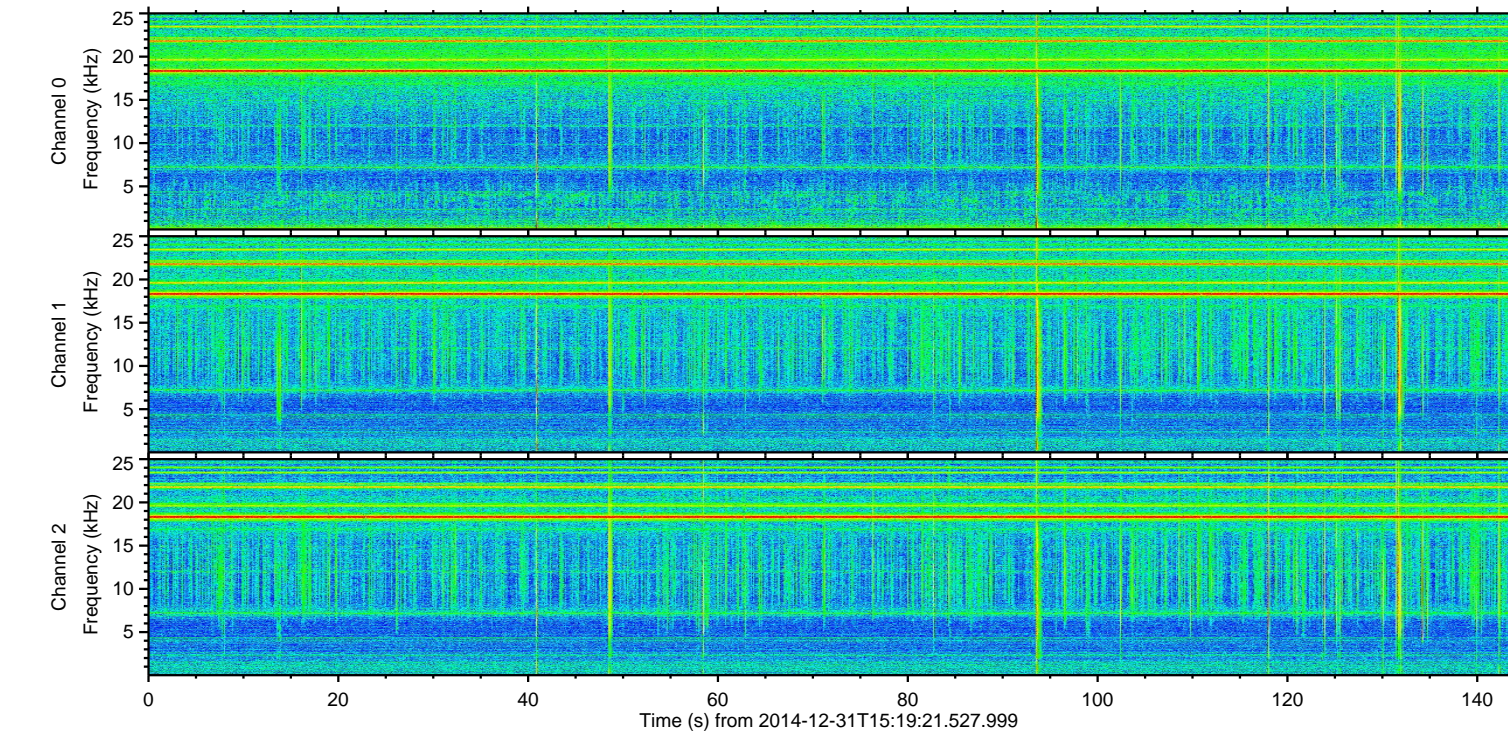
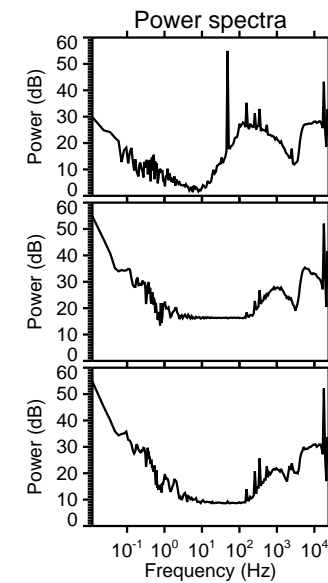
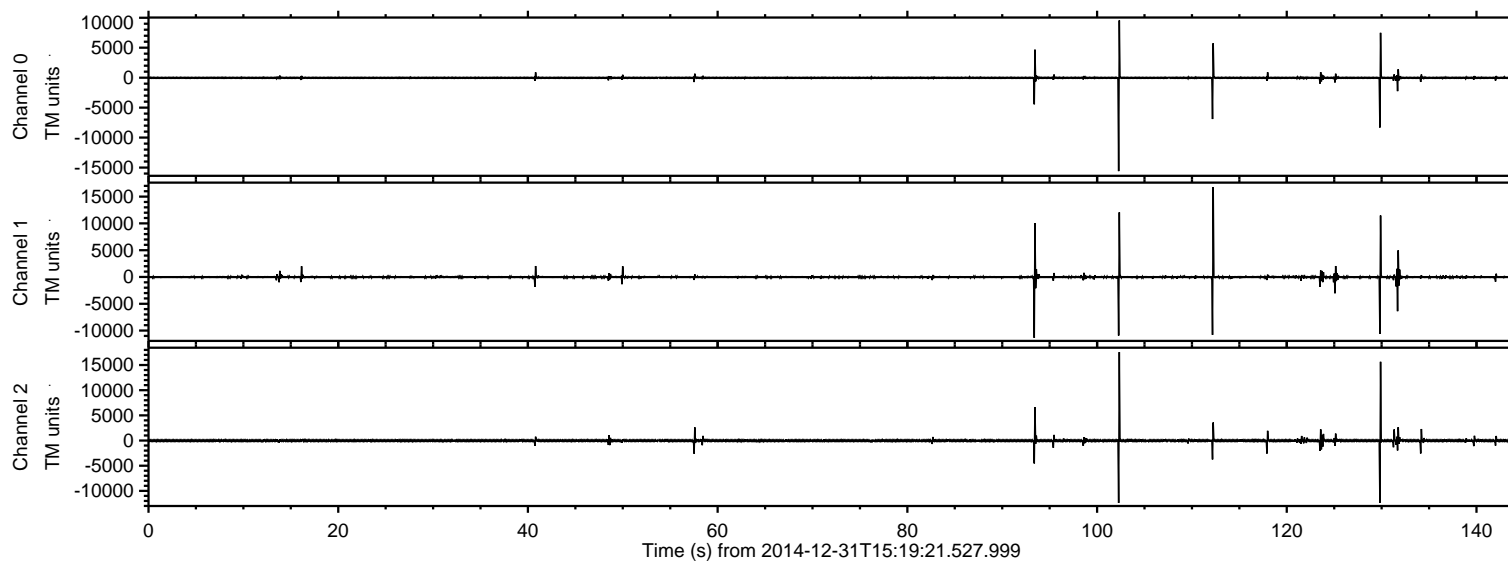


ELMAVAN 3D WAVEFORMS (Measured data sampled at 50 kHz) 49806 packets of 144 samples from 2014-12-31T15:19:21.527.999.

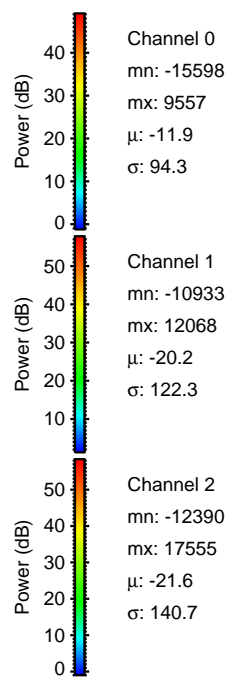
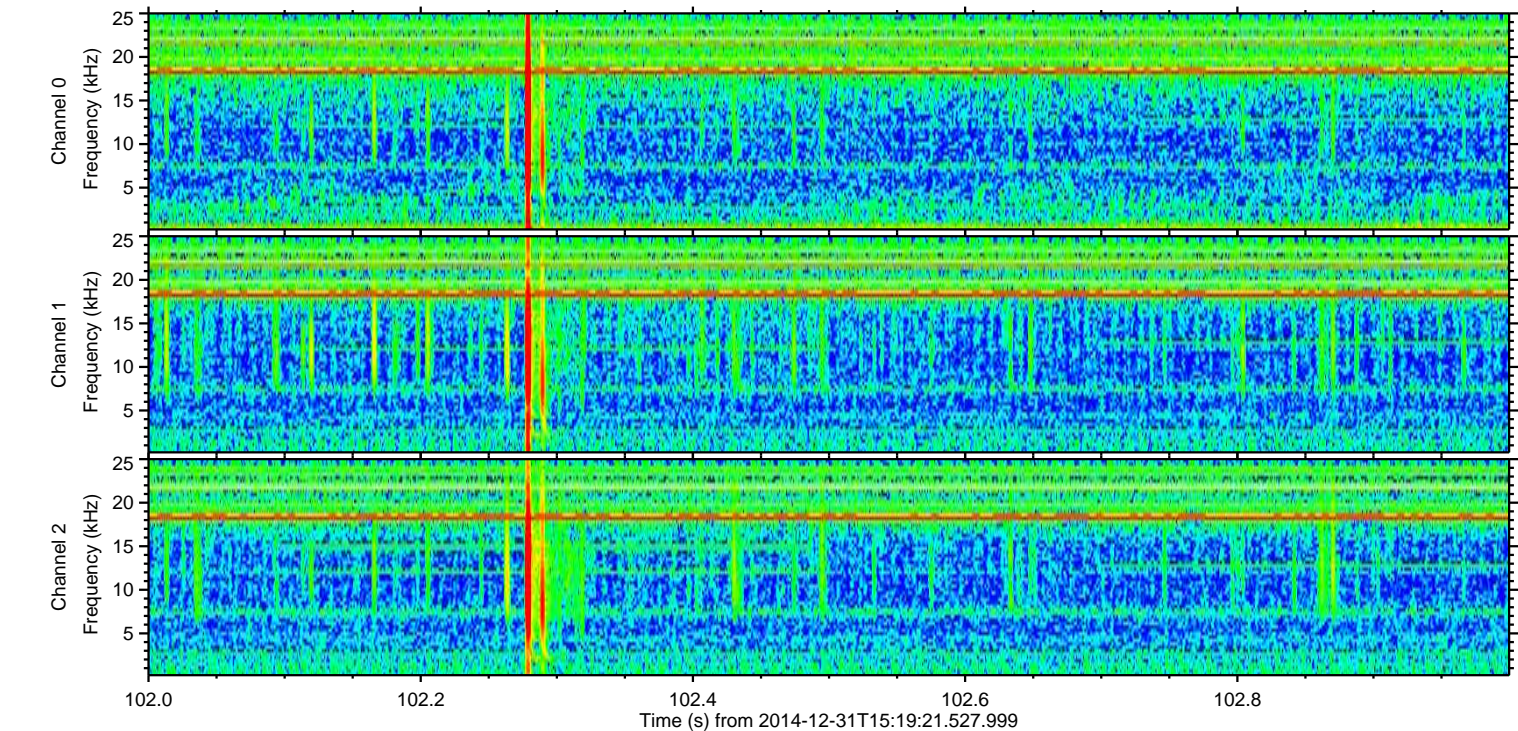
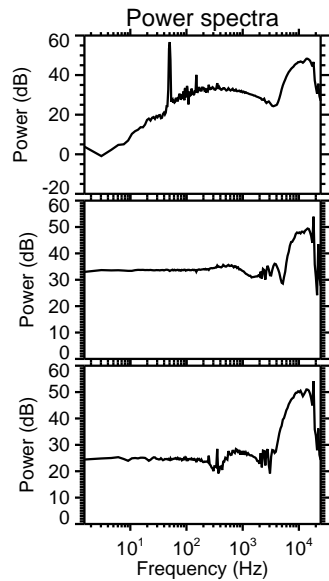
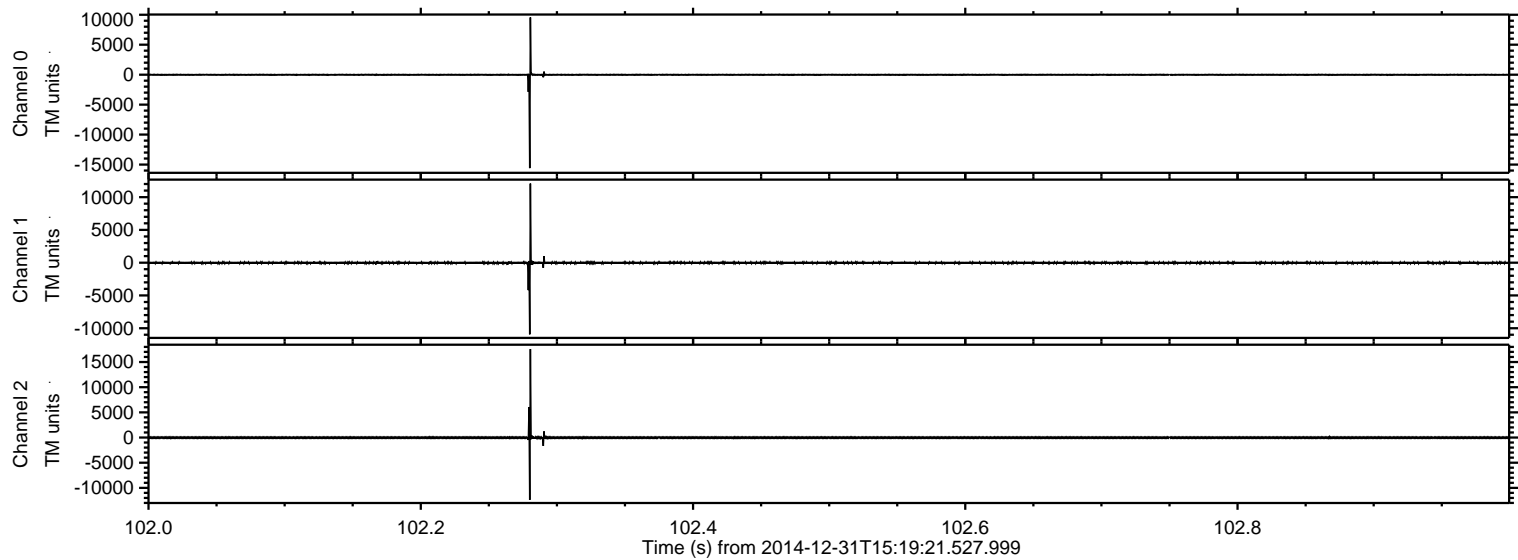
Processed Sat Jan 3 01:32:51 2015 by ELM ver.2012-10-06 from 001\_\_elm20141231\_151920\_\_dat00.bin





ELMAVAN 3D WAVEFORMS (Measured data sampled at 50 kHz) 49806 packets of 144 samples from 2014-12-31T15:19:21.527.999. Part 103/144

Processed Sat Jan 3 01:33:03 2015 by ELM ver.2012-10-06 from 001\_\_elm20141231\_151920\_\_dat00.bin



Channel 0  
mn: -15598  
mx: 9557  
 $\mu$ : -11.9  
 $\sigma$ : 94.3

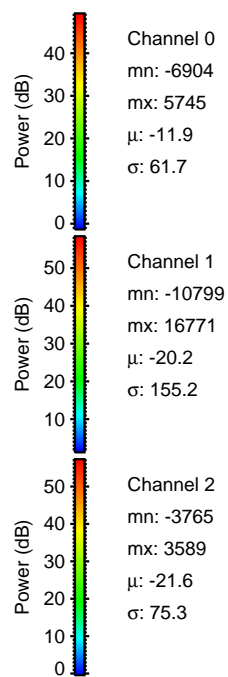
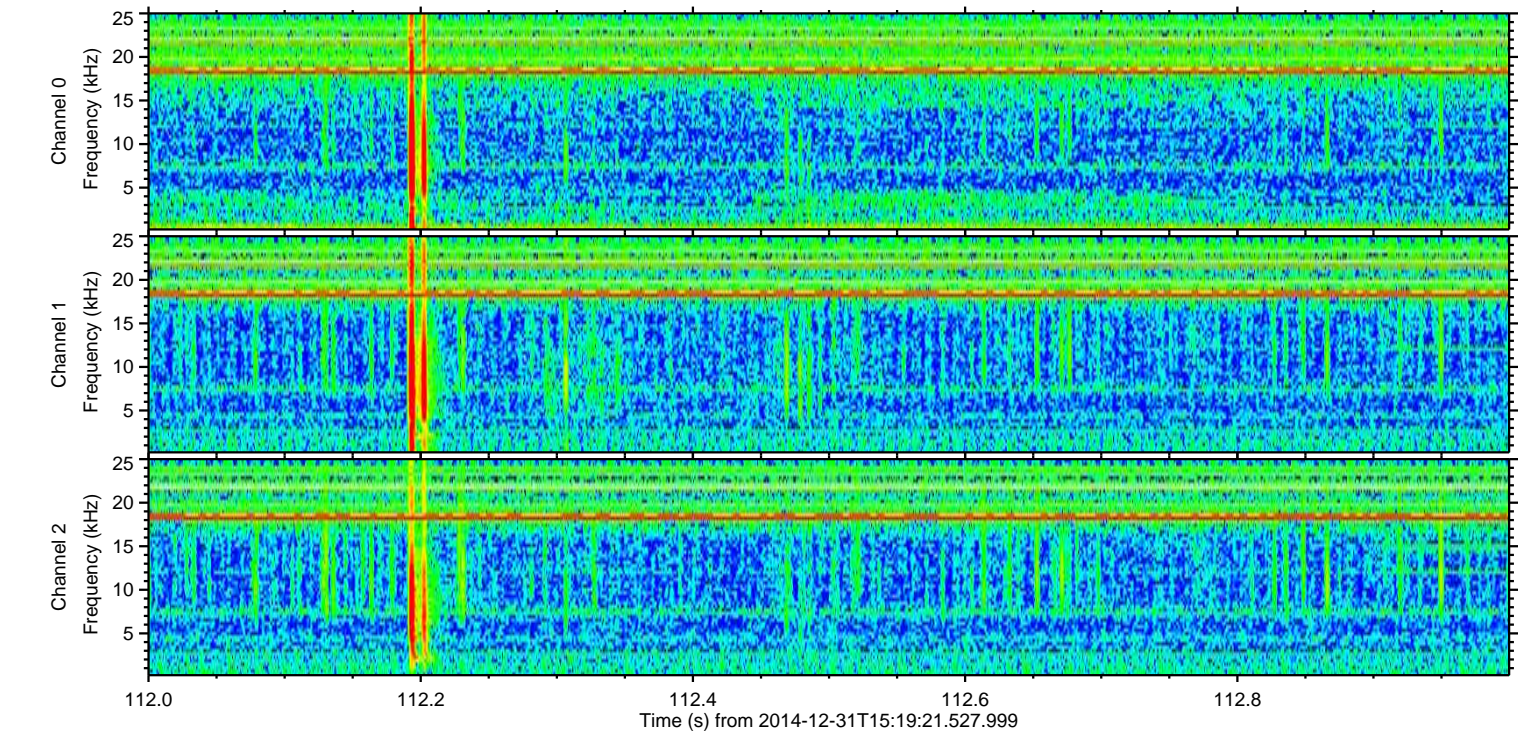
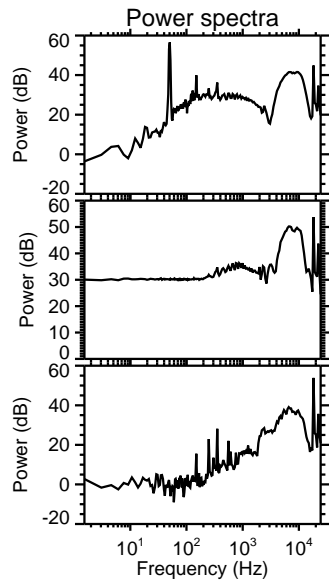
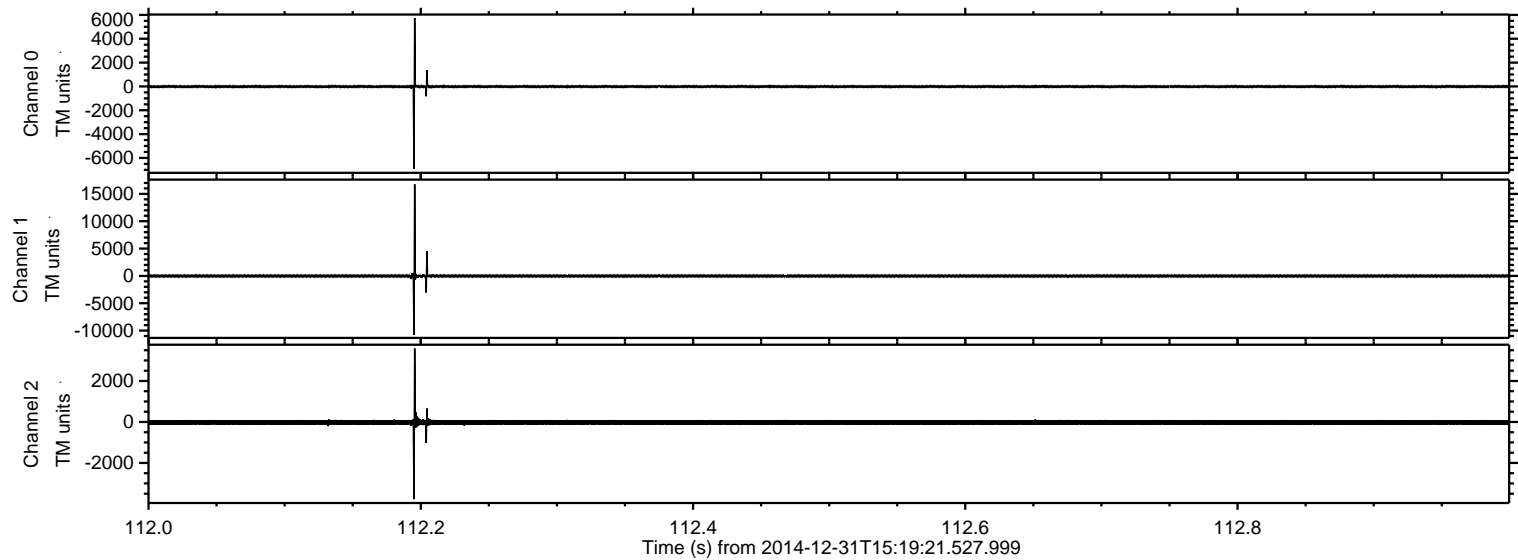
Channel 1  
mn: -10933  
mx: 12068  
 $\mu$ : -20.2  
 $\sigma$ : 122.3

Channel 2  
mn: -12390  
mx: 17555  
 $\mu$ : -21.6  
 $\sigma$ : 140.7



ELMAVAN 3D WAVEFORMS (Measured data sampled at 50 kHz) 49806 packets of 144 samples from 2014-12-31T15:19:21.527.999. Part 113/144

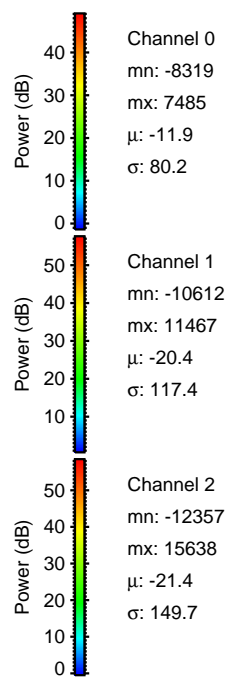
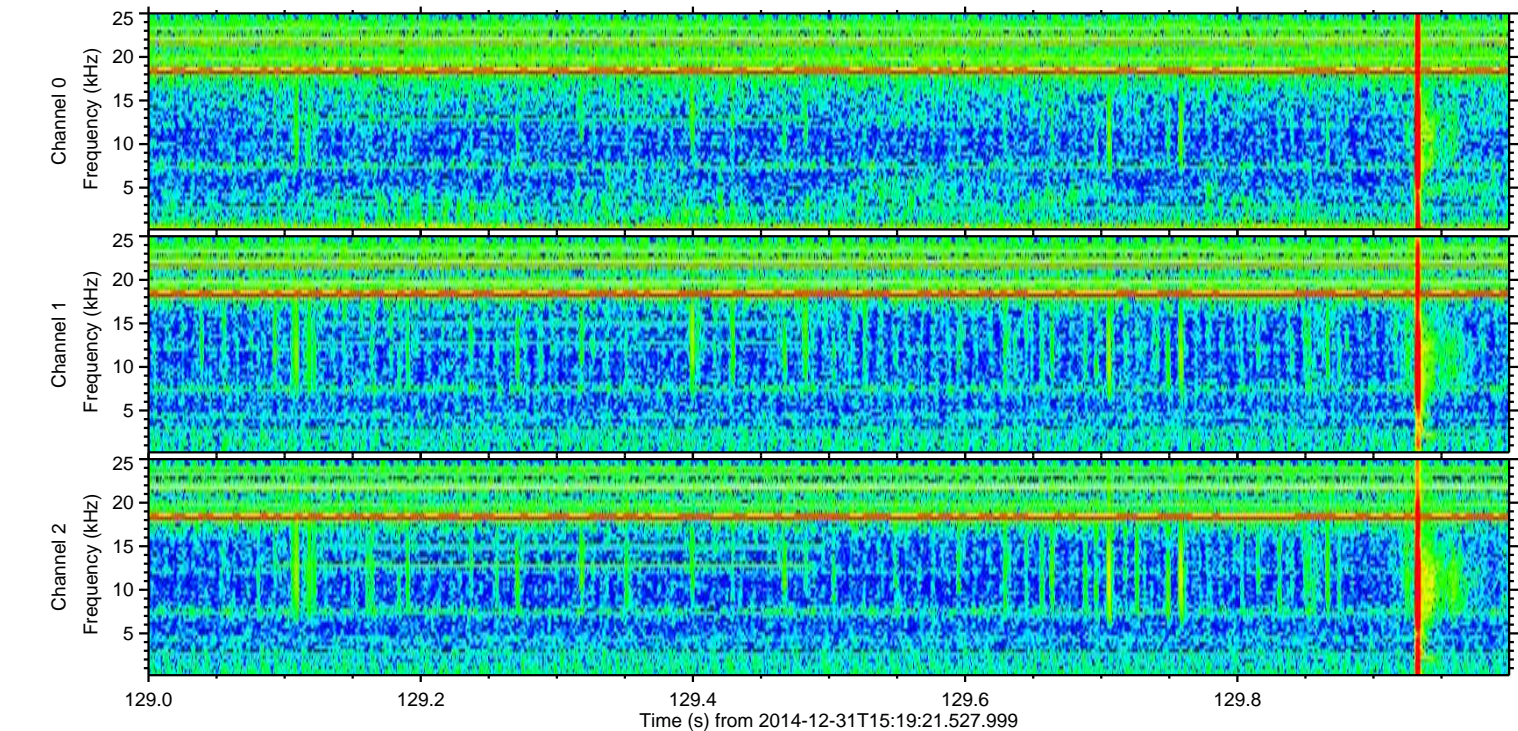
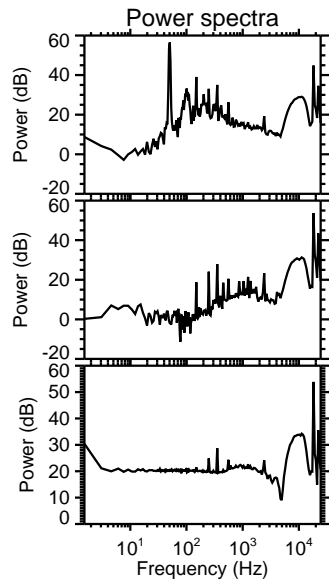
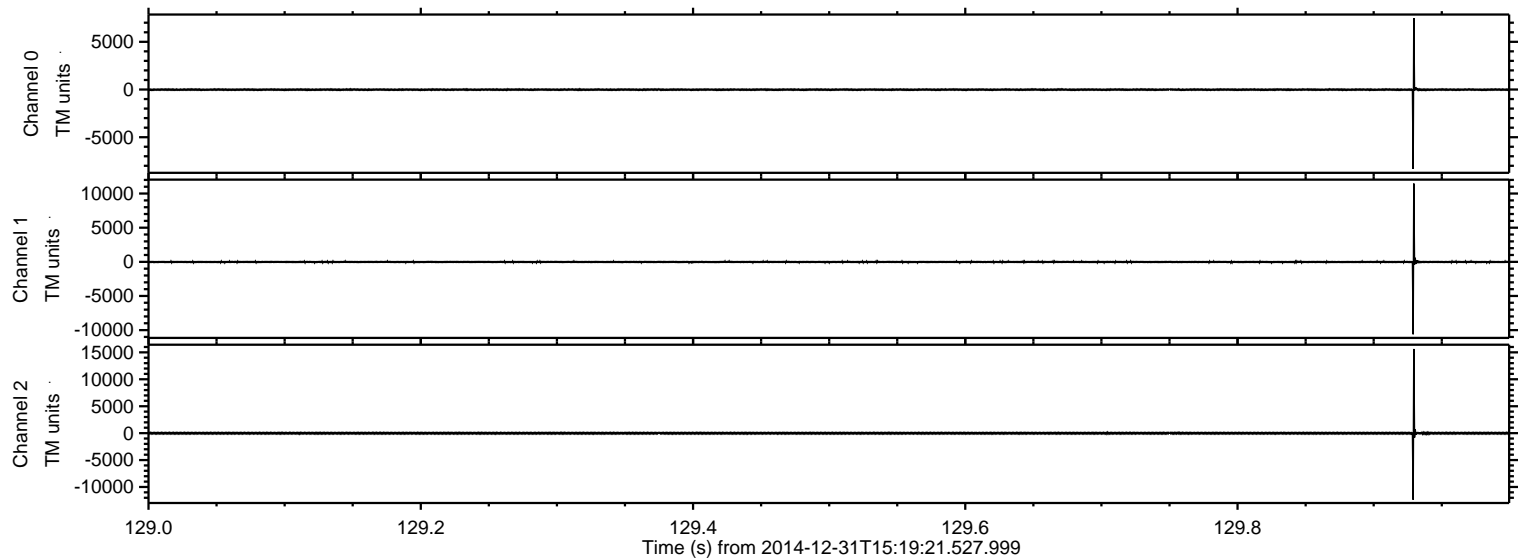
Processed Sat Jan 3 01:33:04 2015 by ELM ver.2012-10-06 from 001\_\_elm20141231\_151920\_\_dat00.bin





ELMAVAN 3D WAVEFORMS (Measured data sampled at 50 kHz) 49806 packets of 144 samples from 2014-12-31T15:19:21.527.999. Part 130/144

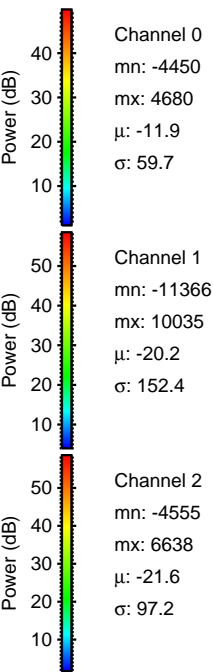
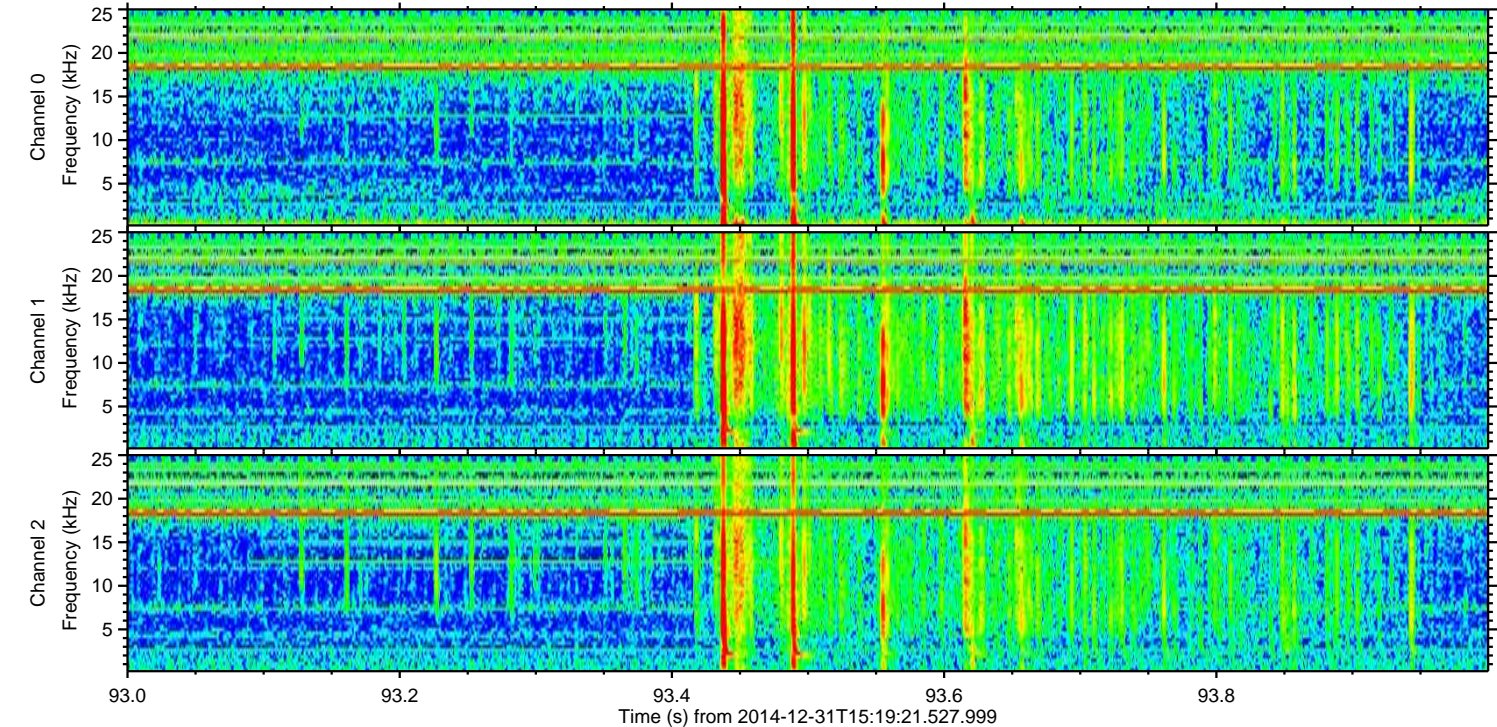
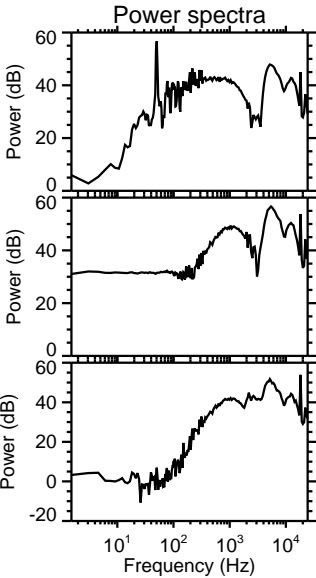
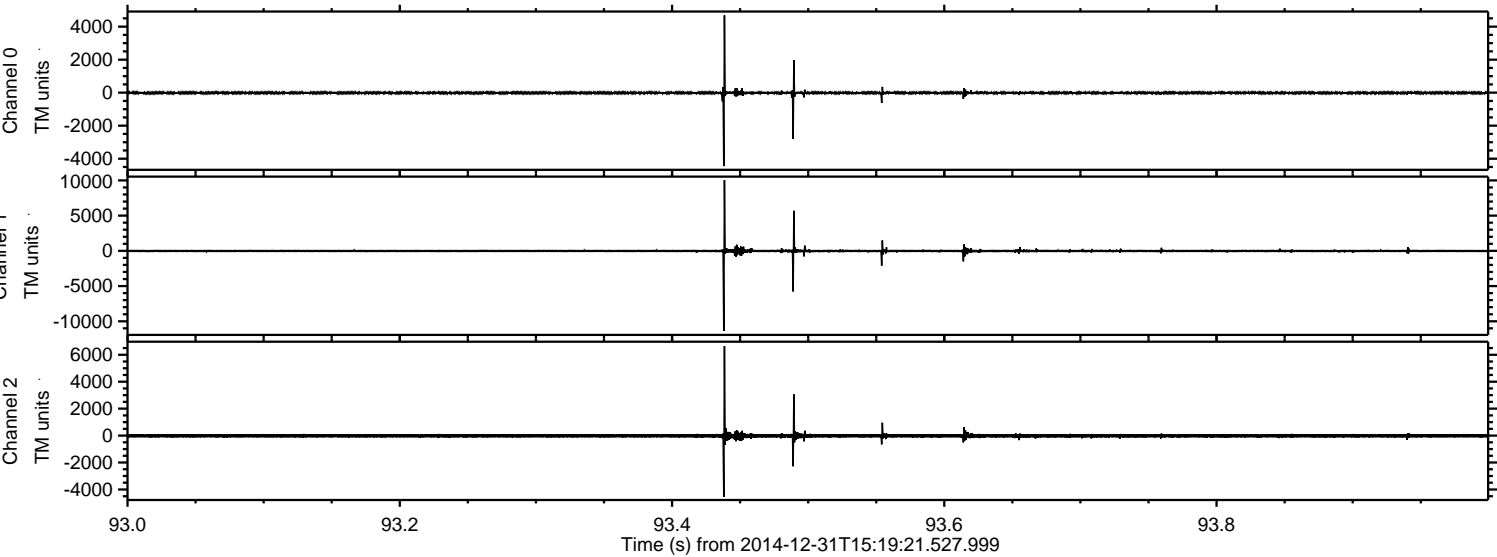
Processed Sat Jan 3 01:33:05 2015 by ELM ver.2012-10-06 from 001\_\_elm20141231\_151920\_\_dat00.bin





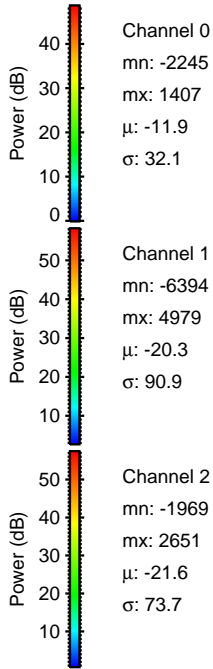
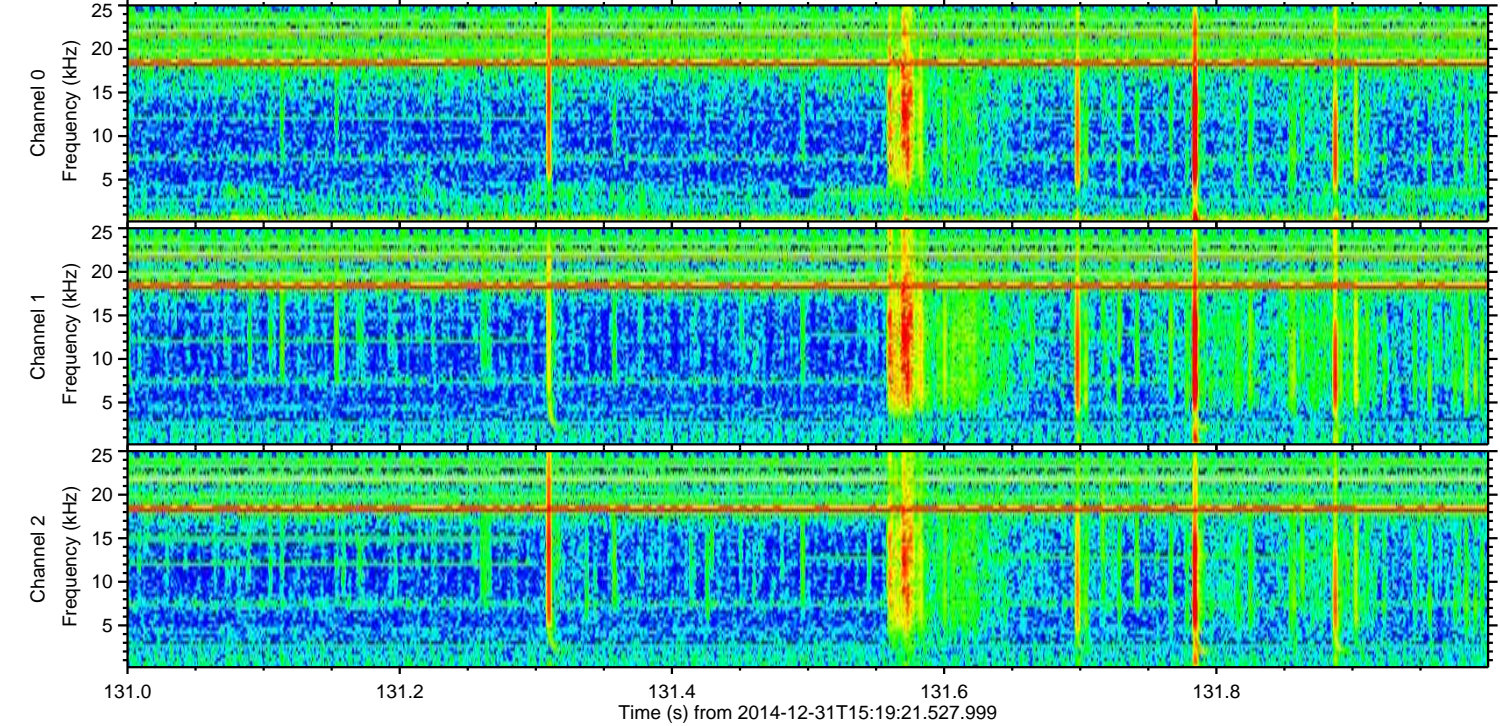
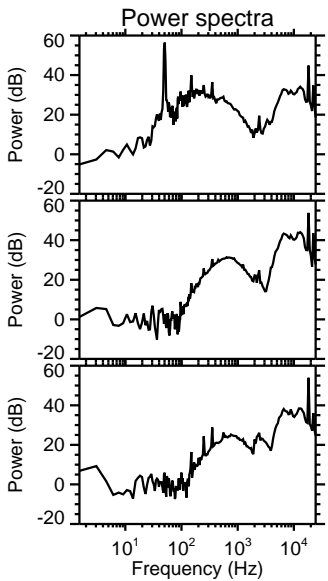
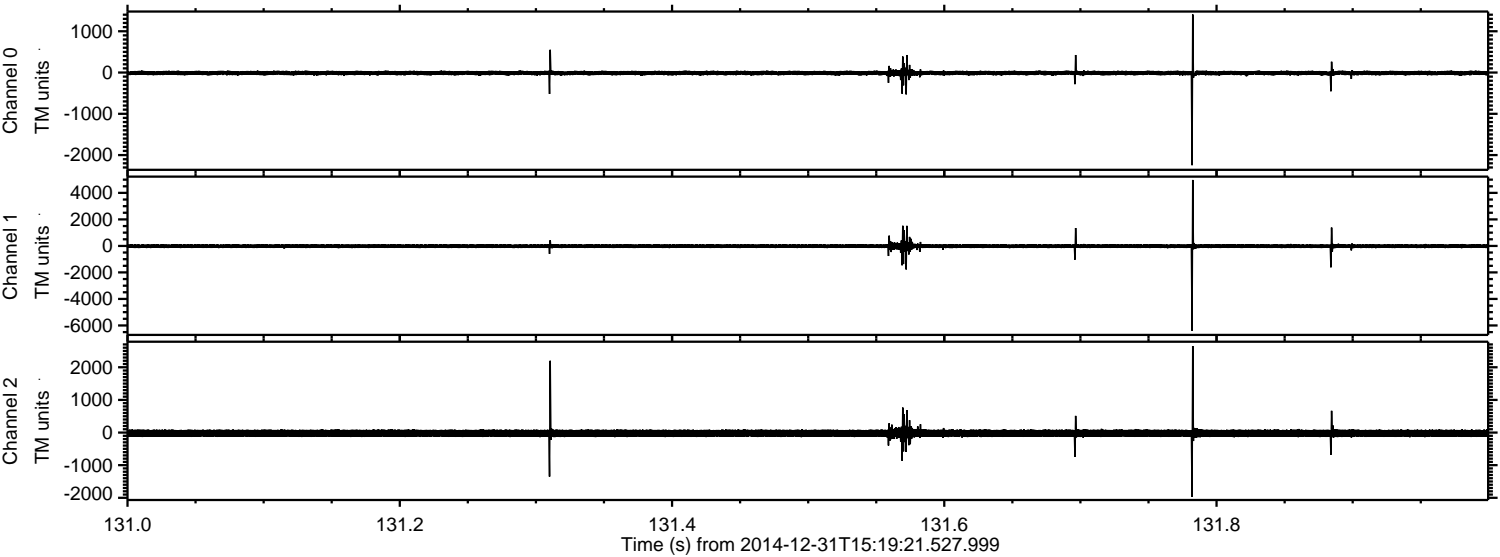
ELMAVAN 3D WAVEFORMS (Measured data sampled at 50 kHz) 49806 packets of 144 samples from 2014-12-31T15:19:21.527.999. Part 94/144

Processed Sat Jan 3 01:33:06 2015 by ELM ver.2012-10-06 from 001\_\_elm20141231\_151920\_\_dat00.bin





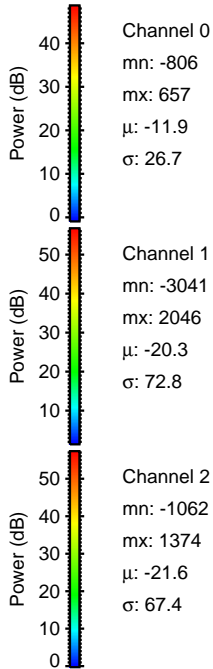
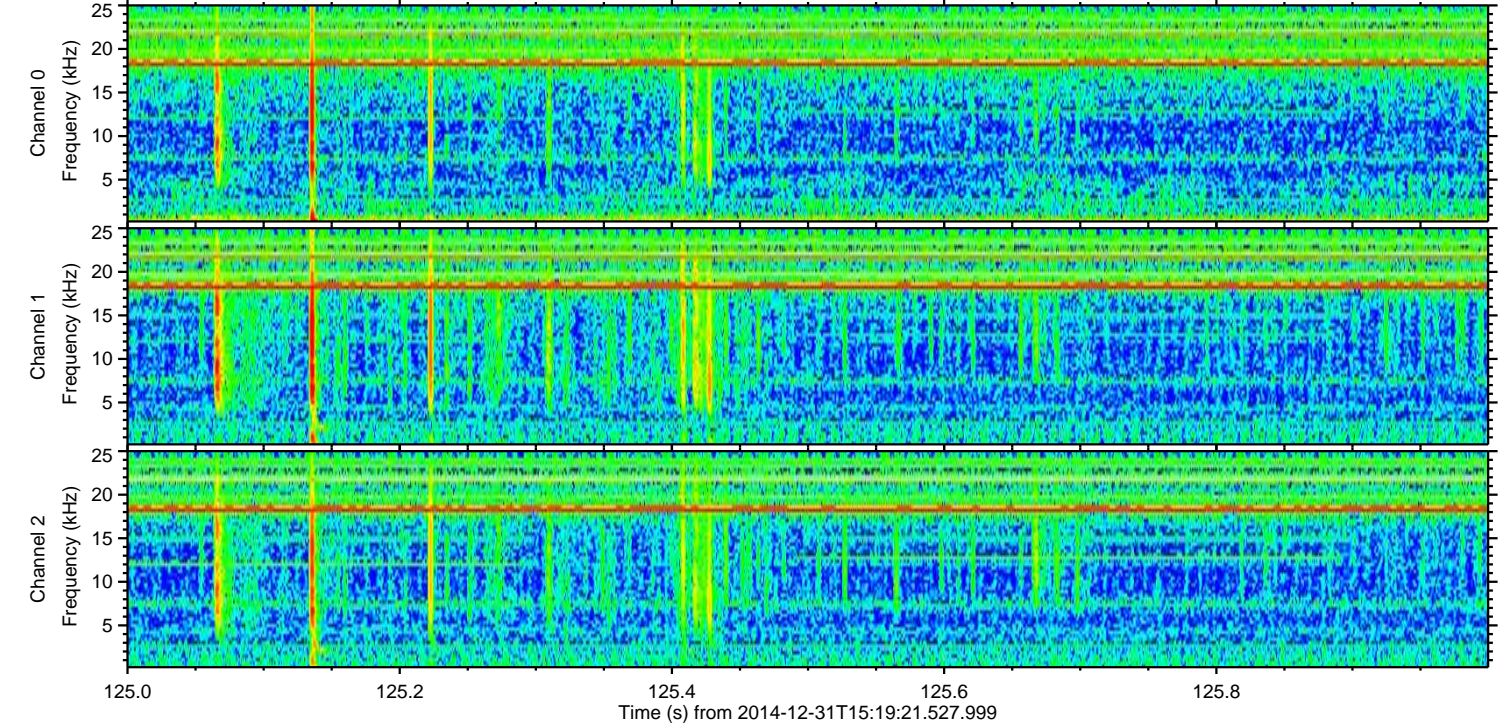
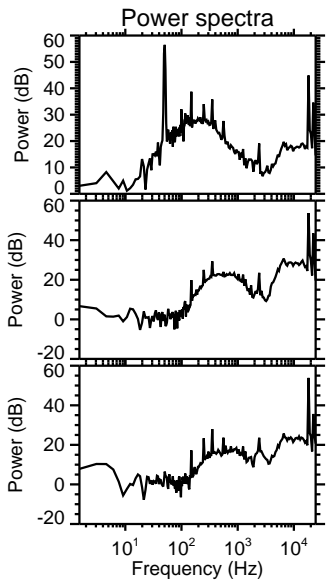
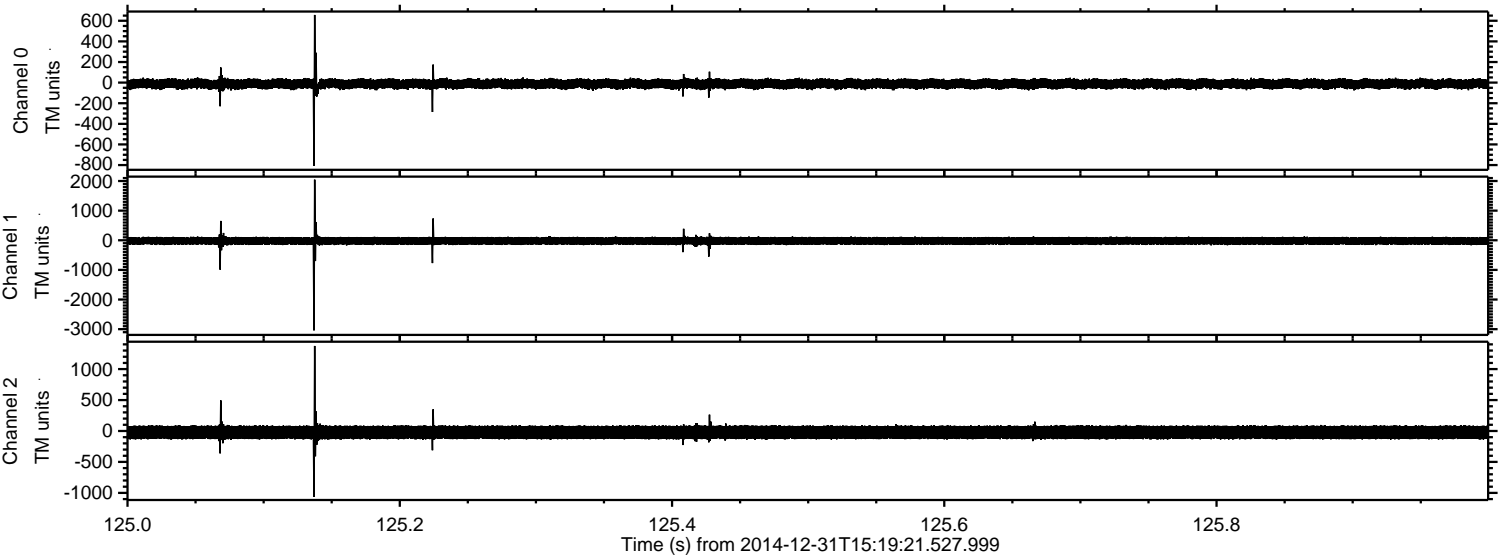
Processed Sat Jan 3 01:33:07 2015 by ELM ver.2012-10-06 from 001\_\_elm20141231\_151920\_\_dat00.bin





ELMAVAN 3D WAVEFORMS (Measured data sampled at 50 kHz) 49806 packets of 144 samples from 2014-12-31T15:19:21.527.999. Part 126/144

Processed Sat Jan 3 01:33:08 2015 by ELM ver.2012-10-06 from 001\_\_elm20141231\_151920\_\_dat00.bin



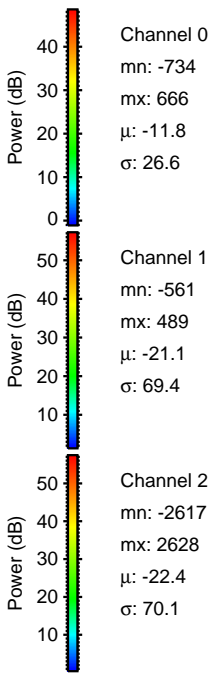
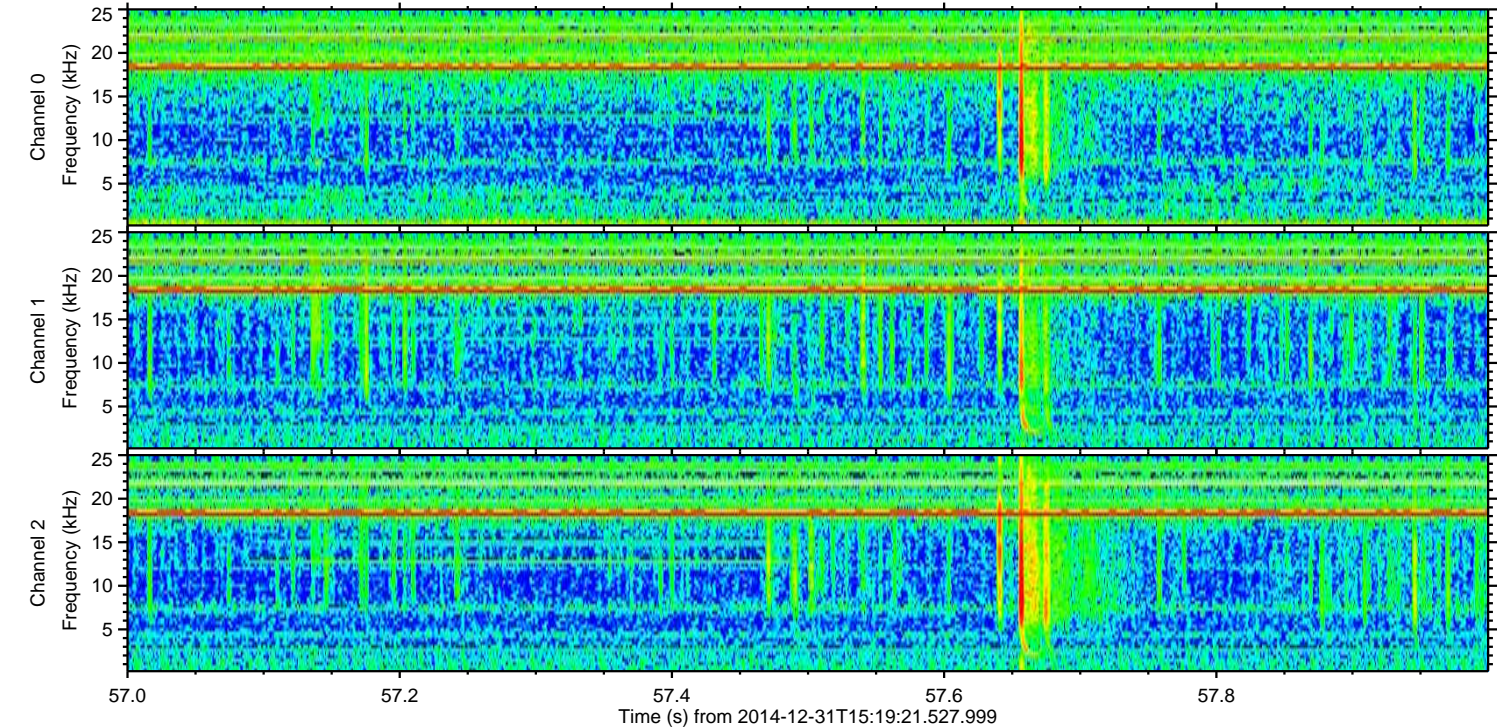
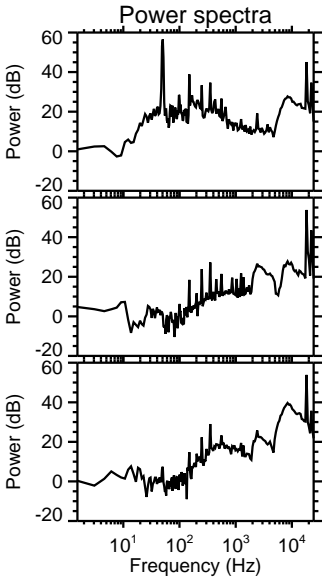
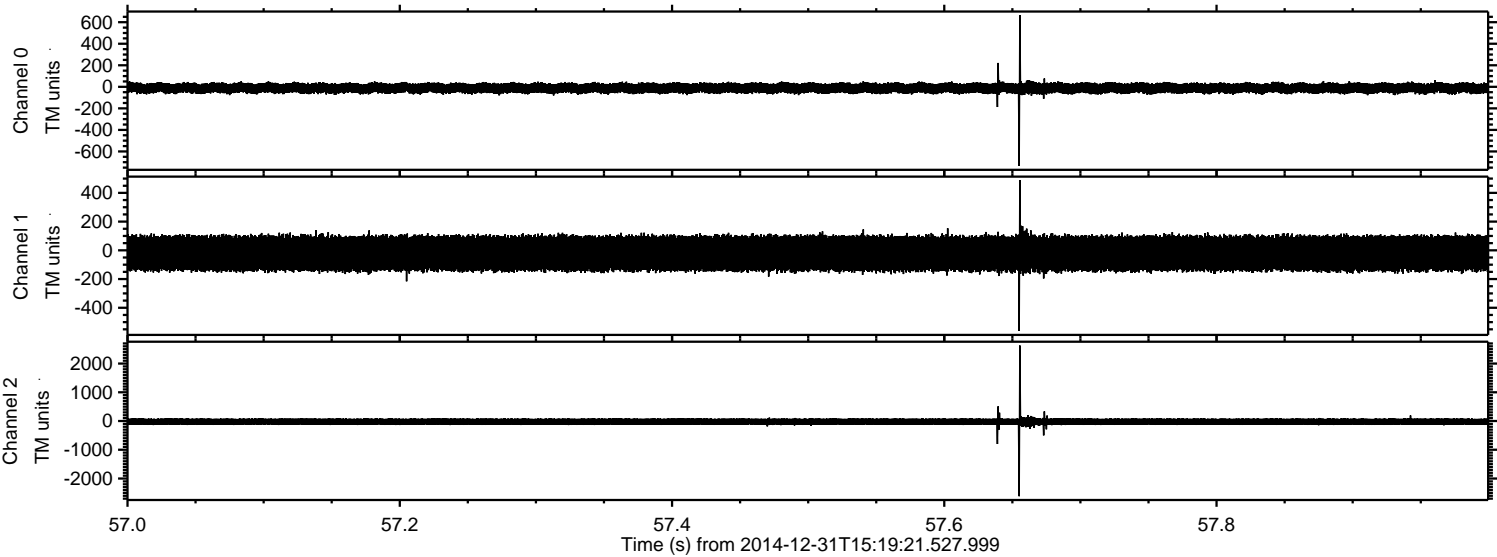
Channel 0  
mn: -806  
mx: 657  
 $\mu$ : -11.9  
 $\sigma$ : 26.7

Channel 1  
mn: -3041  
mx: 2046  
 $\mu$ : -20.3  
 $\sigma$ : 72.8

Channel 2  
mn: -1062  
mx: 1374  
 $\mu$ : -21.6  
 $\sigma$ : 67.4



Processed Sat Jan 3 01:33:09 2015 by ELM ver.2012-10-06 from 001\_\_elm20141231\_151920\_\_dat00.bin



Channel 0  
mn: -734  
mx: 666  
 $\mu$ : -11.8  
 $\sigma$ : 26.6

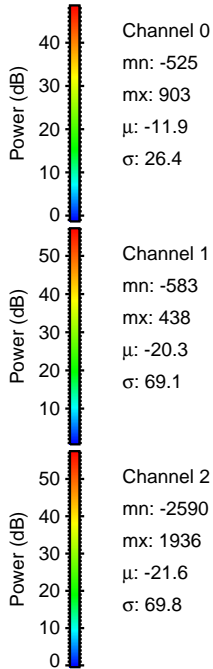
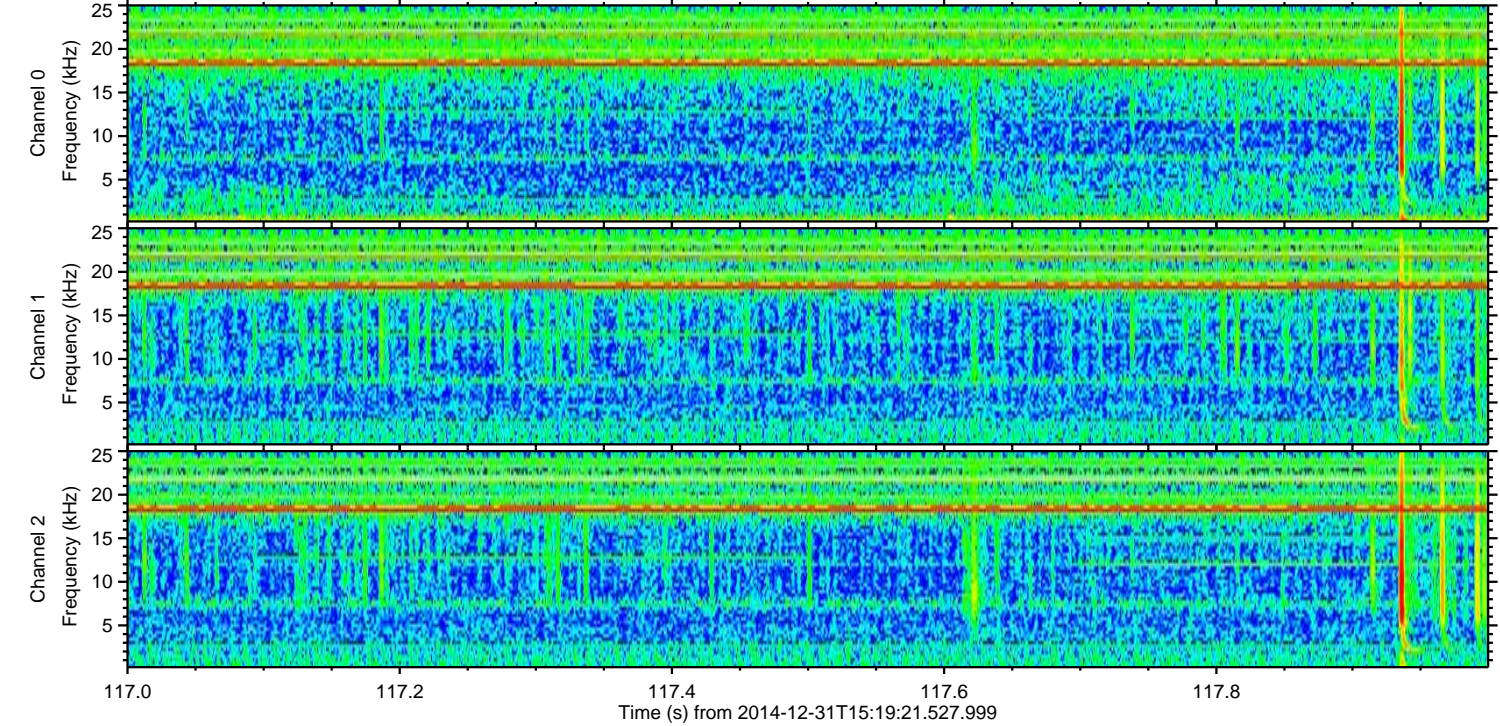
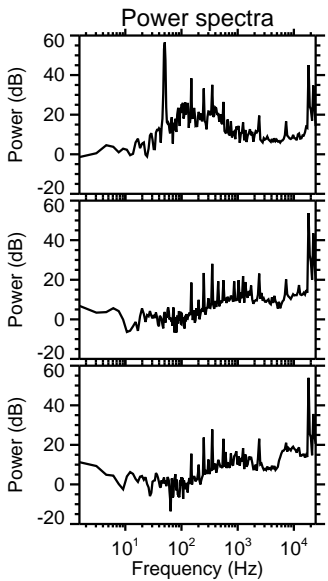
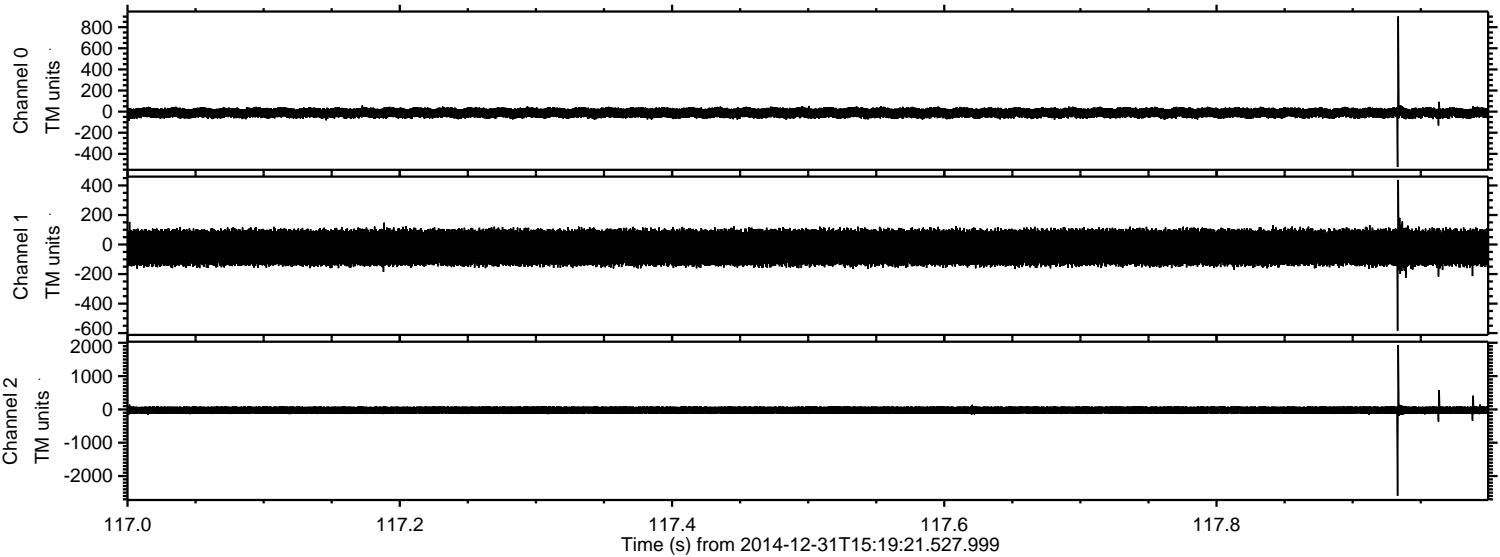
Channel 1  
mn: -561  
mx: 489  
 $\mu$ : -21.1  
 $\sigma$ : 69.4

Channel 2  
mn: -2617  
mx: 2628  
 $\mu$ : -22.4  
 $\sigma$ : 70.1



ELMAVAN 3D WAVEFORMS (Measured data sampled at 50 kHz) 49806 packets of 144 samples from 2014-12-31T15:19:21.527.999. Part 118/144

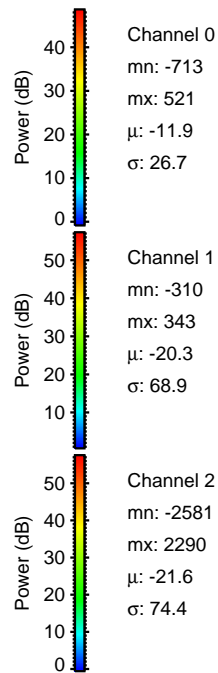
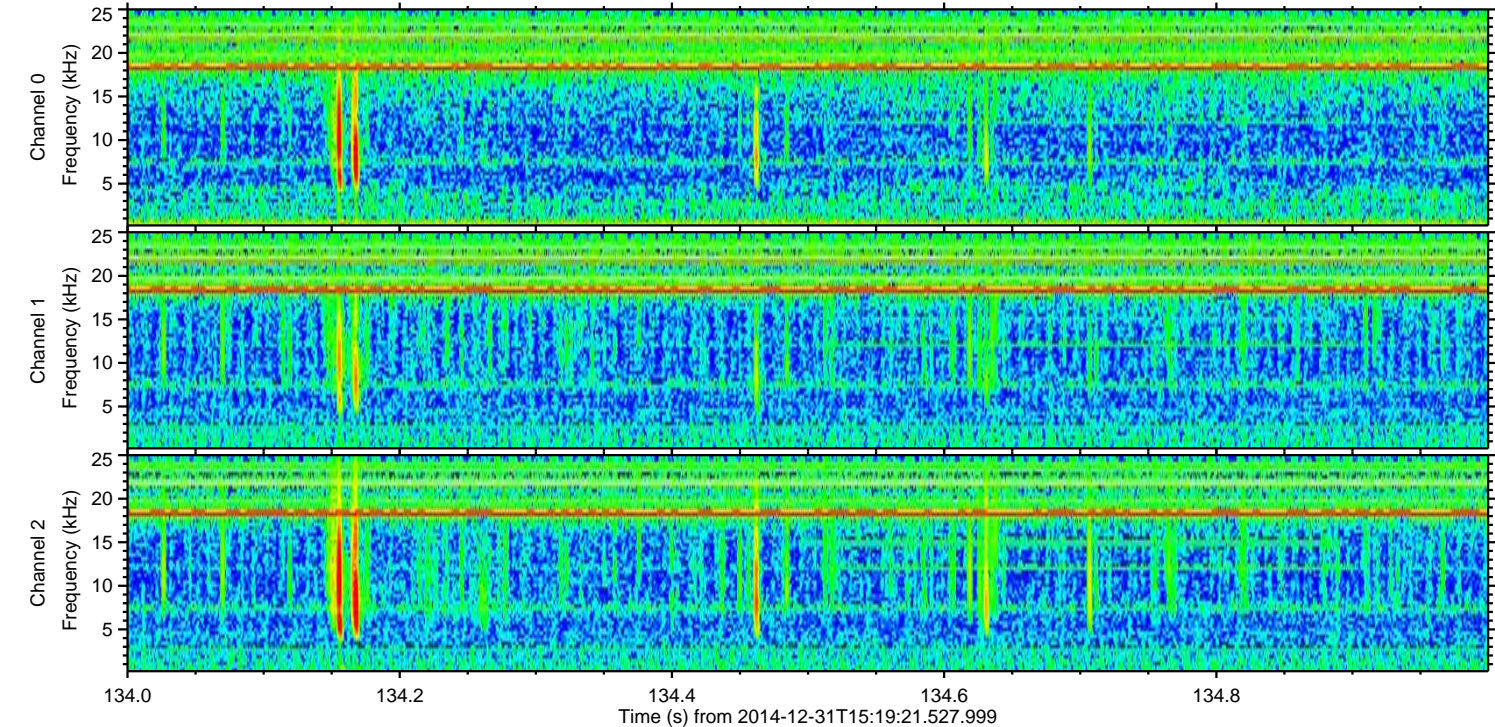
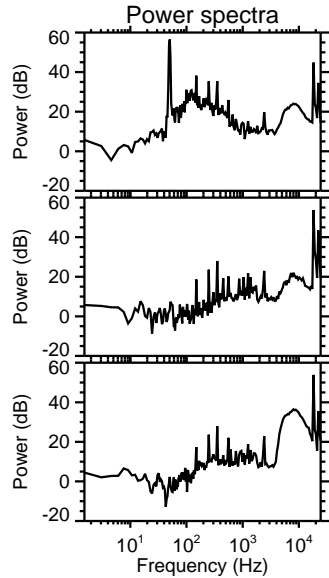
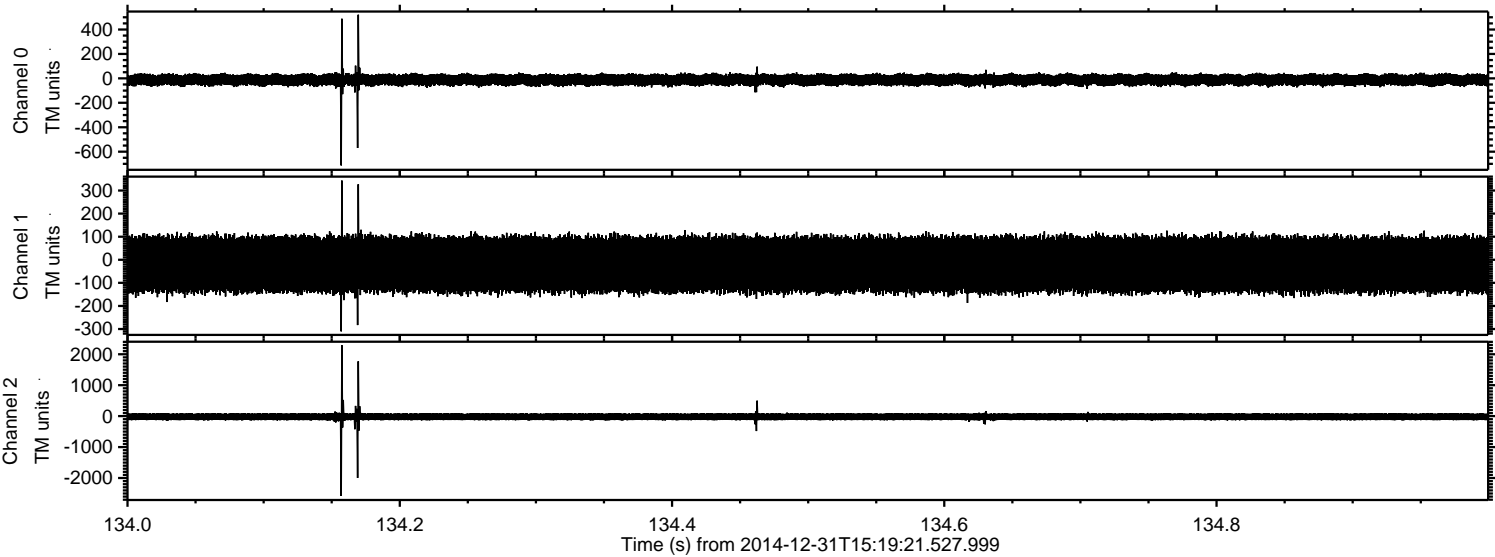
Processed Sat Jan 3 01:33:10 2015 by ELM ver.2012-10-06 from 001\_\_elm20141231\_151920\_\_dat00.bin





ELMAVAN 3D WAVEFORMS (Measured data sampled at 50 kHz) 49806 packets of 144 samples from 2014-12-31T15:19:21.527.999. Part 135/144

Processed Sat Jan 3 01:33:11 2015 by ELM ver.2012-10-06 from 001\_\_elm20141231\_151920\_\_dat00.bin





ELMAVAN 3D WAVEFORMS (Measured data sampled at 50 kHz) 49806 packets of 144 samples from 2014-12-31T15:19:21.527.999. Part 1/144

Processed Sat Jan 3 01:33:12 2015 by ELM ver.2012-10-06 from 001\_\_elm20141231\_151920\_\_dat00.bin

