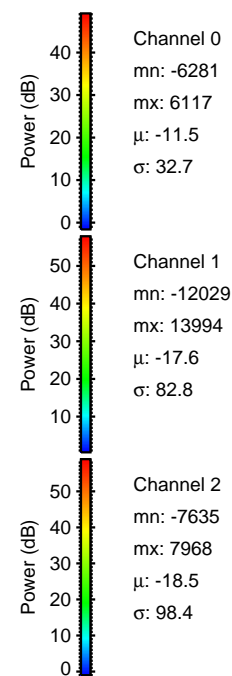
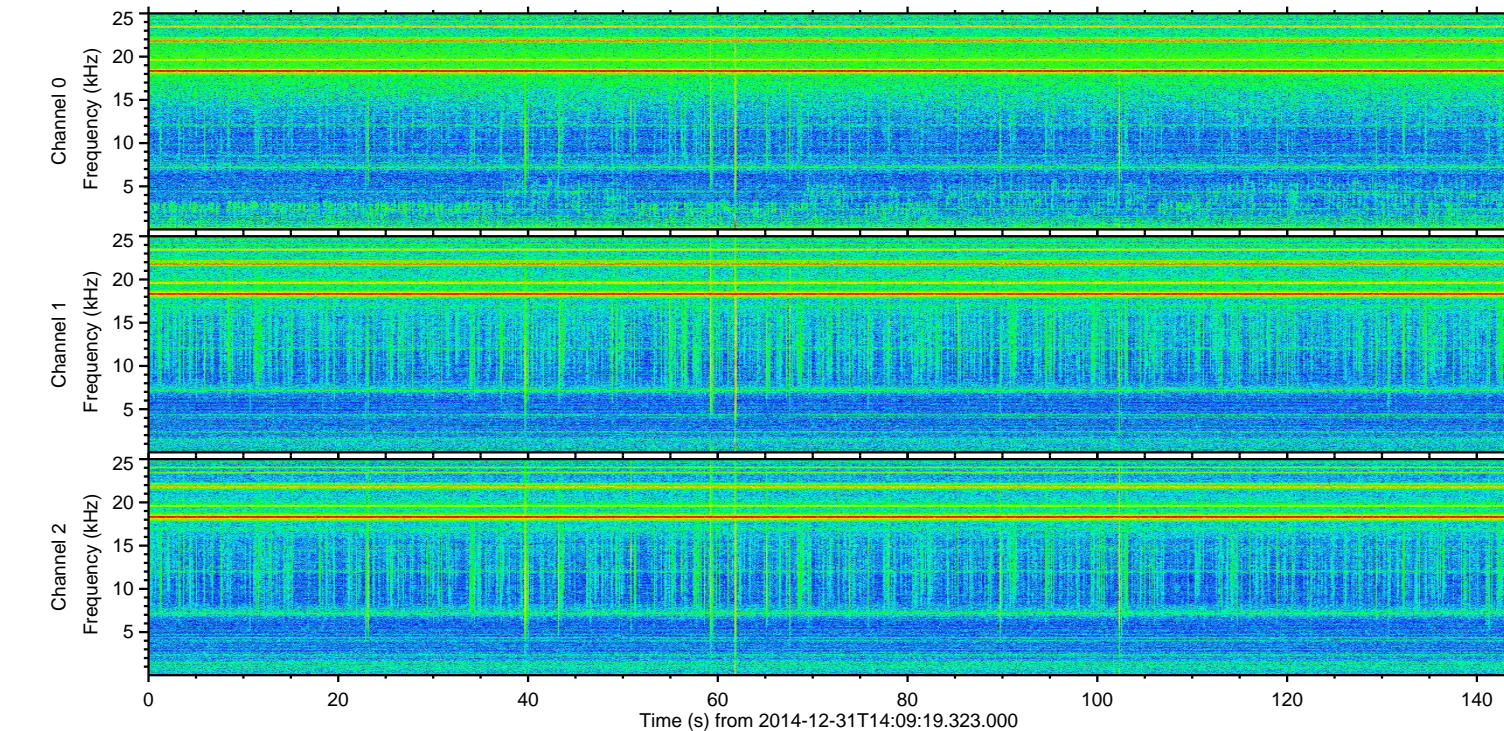
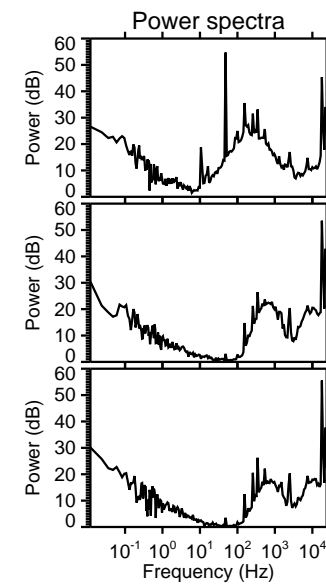
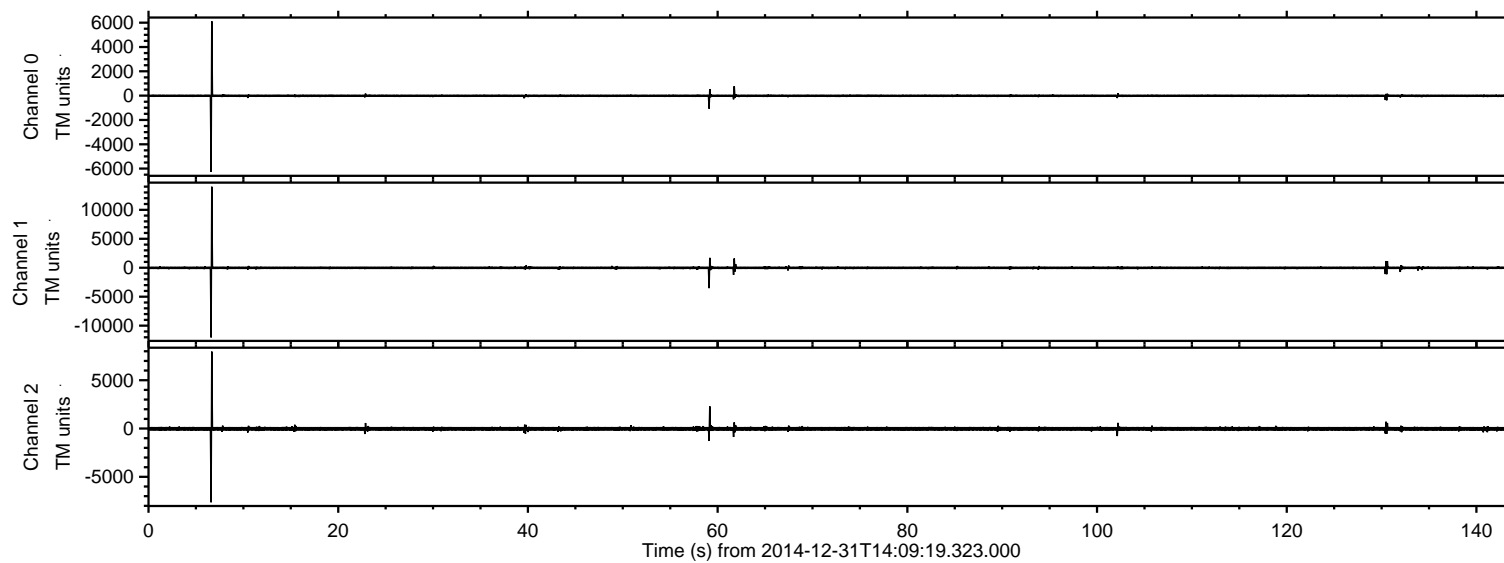


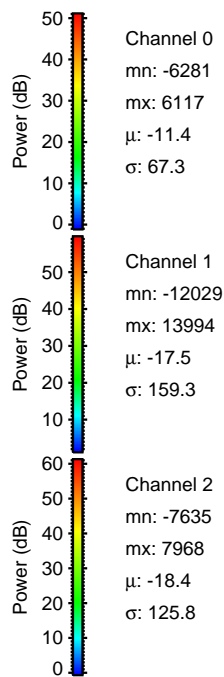
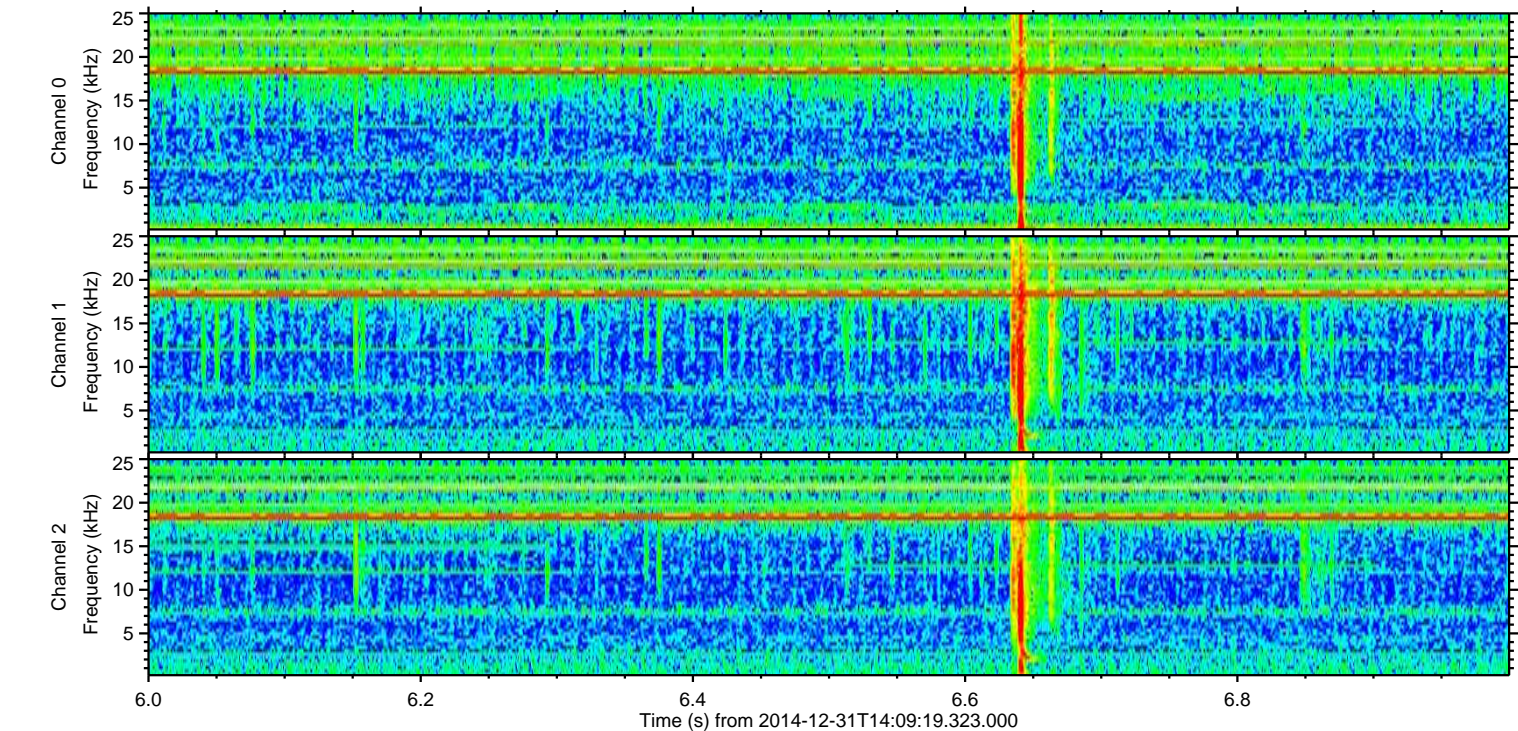
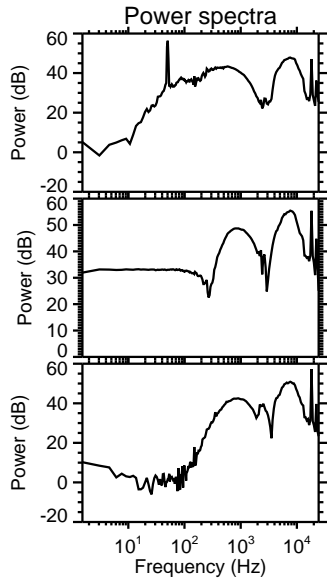
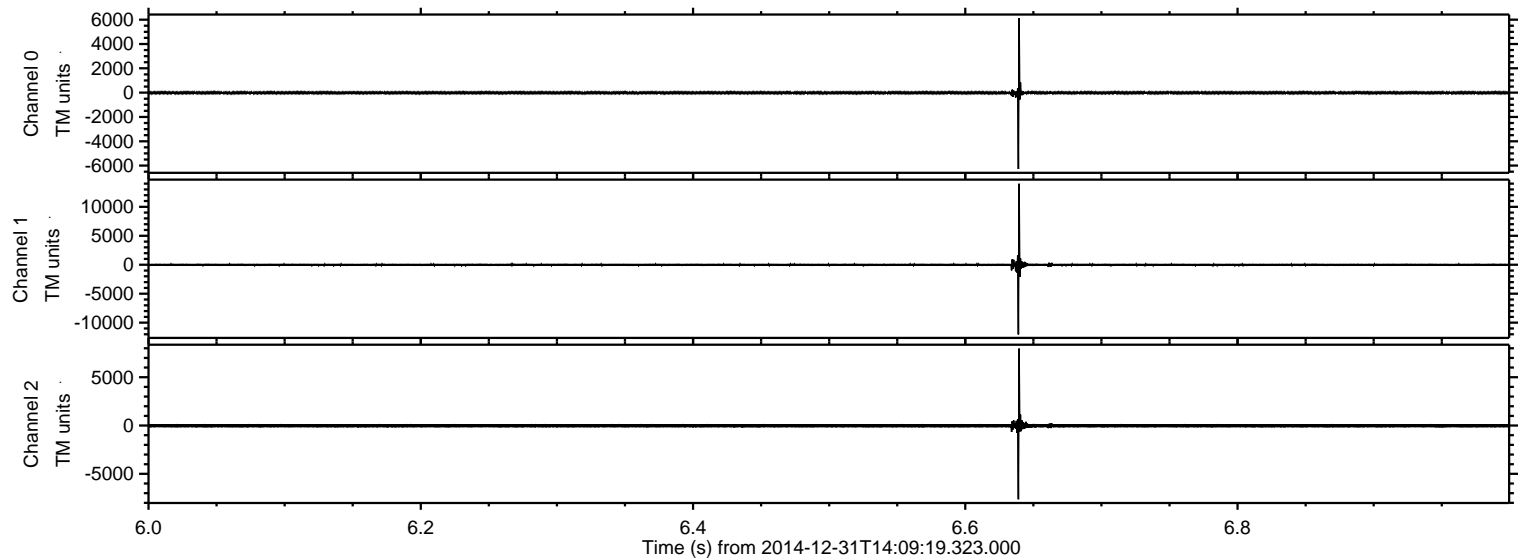
# ELMAVAN 3D WAVEFORMS (Measured data sampled at 50 kHz) 49808 packets of 144 samples from 2014-12-31T14:09:19.323.000.

Processed Sat Jan 3 01:16:21 2015 by ELM ver.2012-10-06 from 001\_\_elm20141231\_140918\_\_dat00.bin



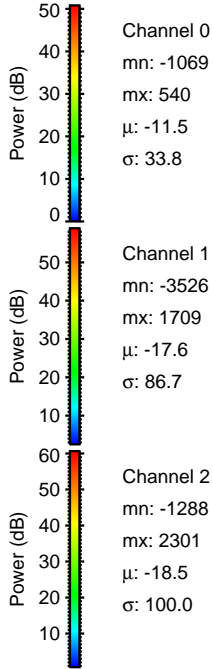
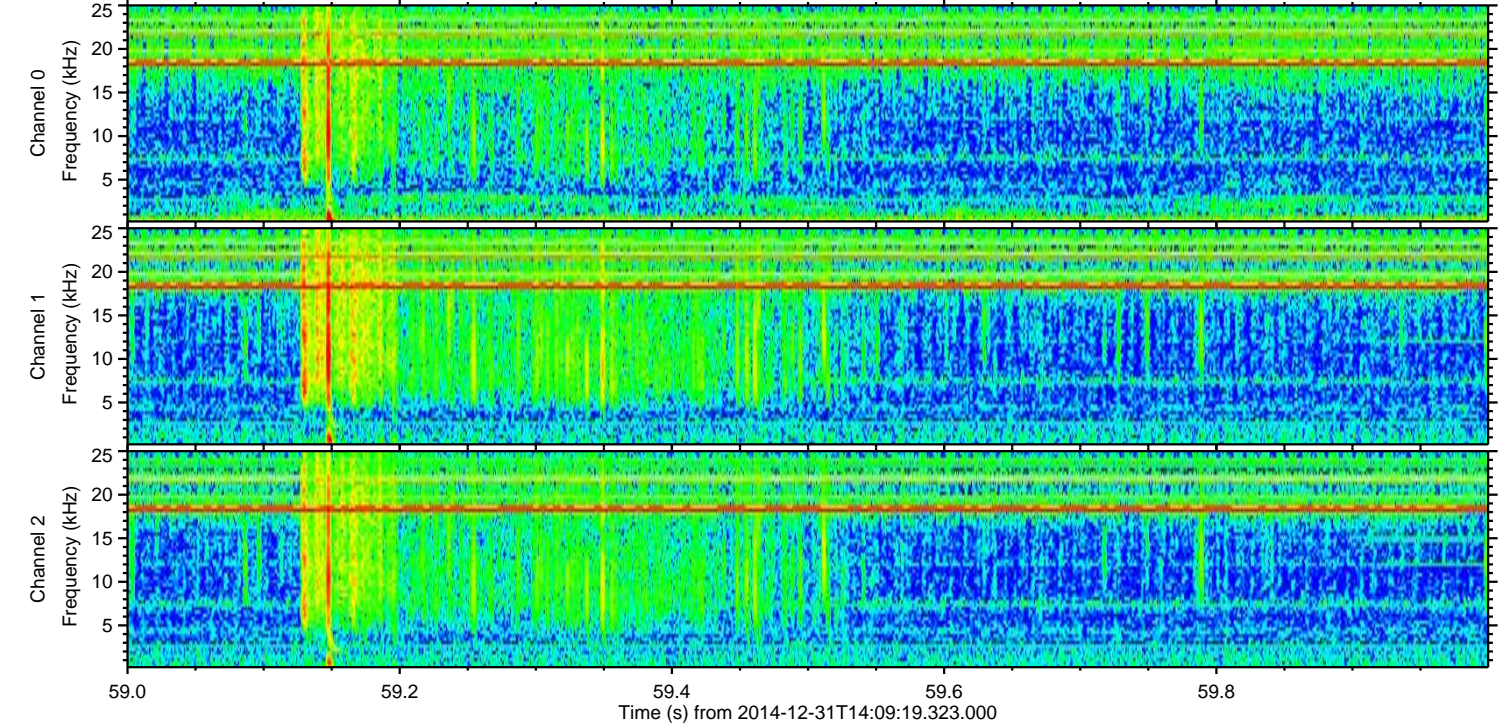
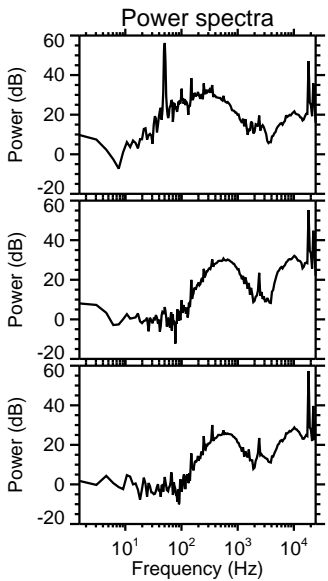
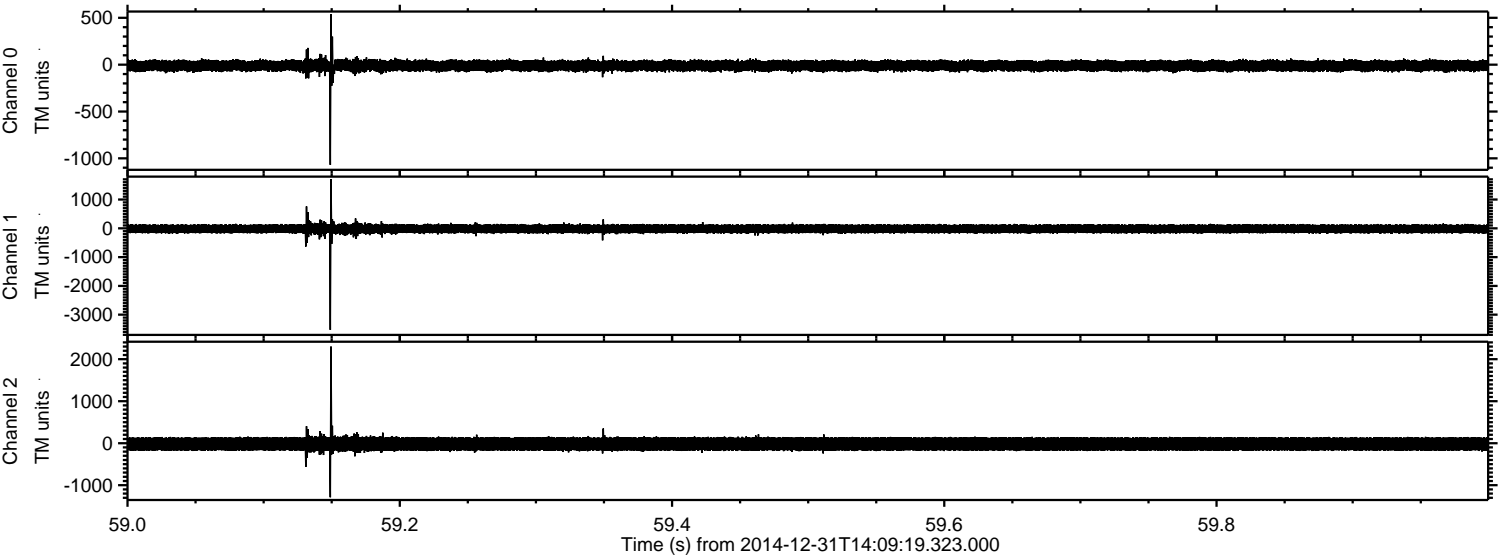


Processed Sat Jan 3 01:16:33 2015 by ELM ver.2012-10-06 from 001\_\_elm20141231\_140918\_\_dat00.bin



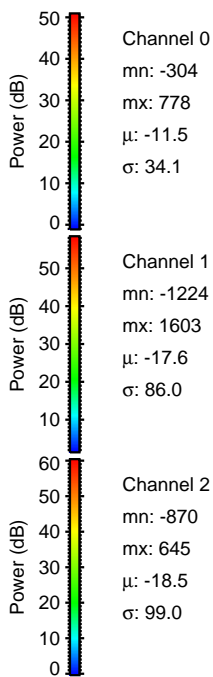
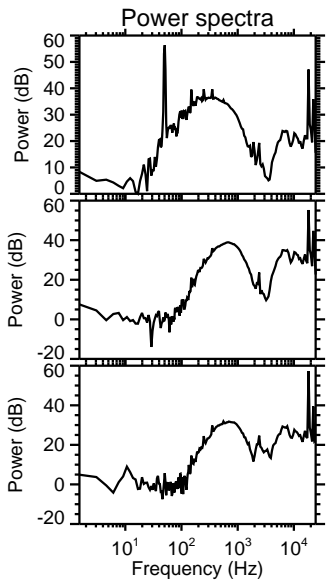
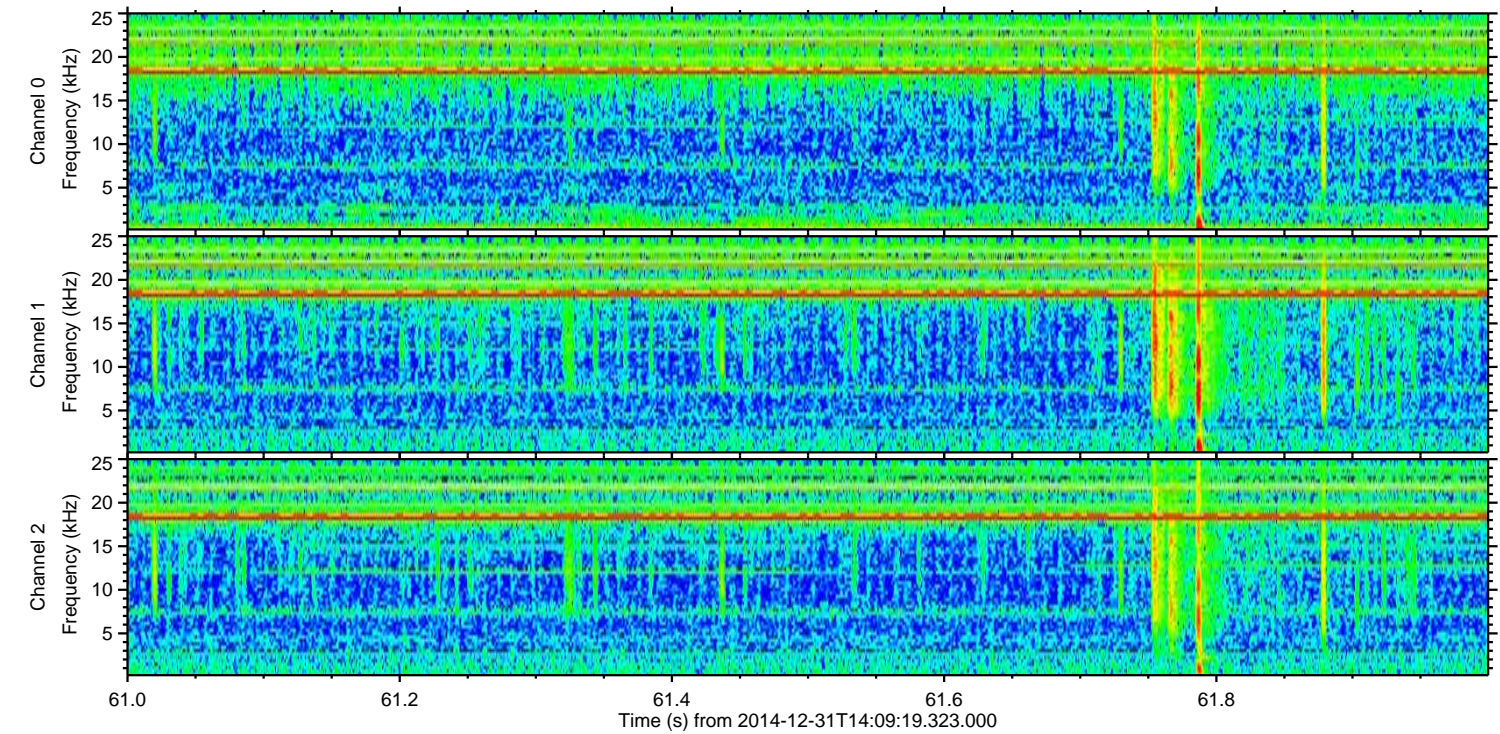
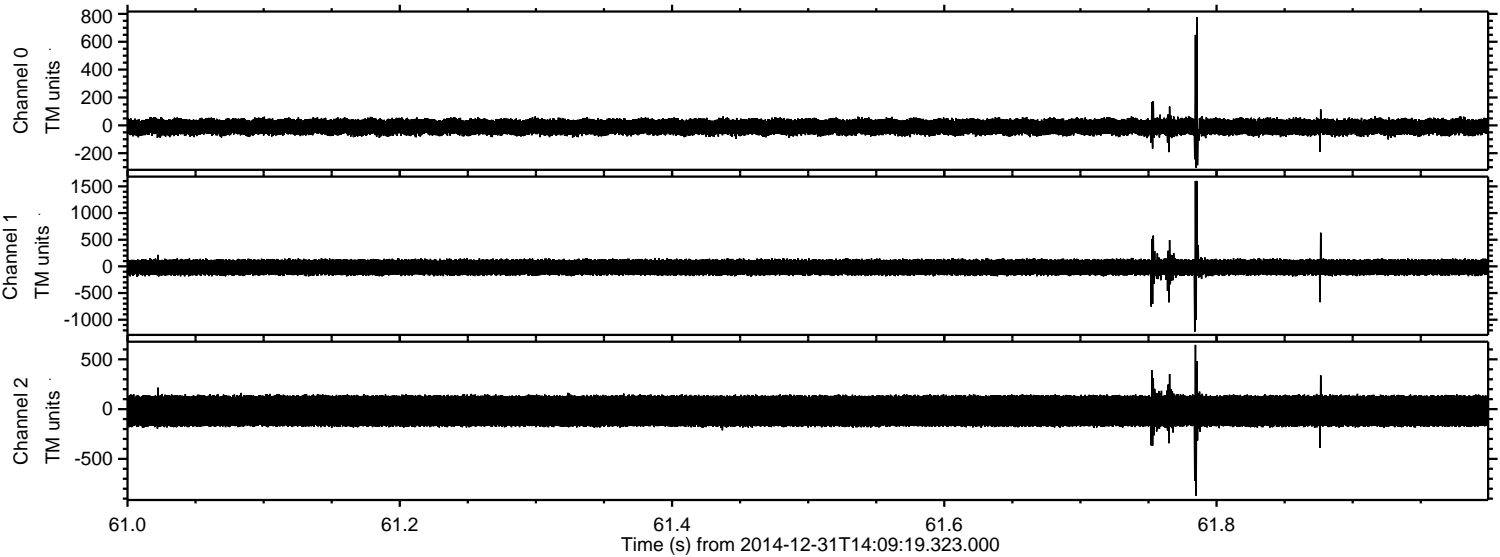


Processed Sat Jan 3 01:16:34 2015 by ELM ver.2012-10-06 from 001\_\_elm20141231\_140918\_\_dat00.bin





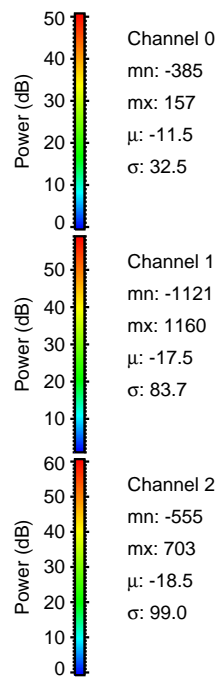
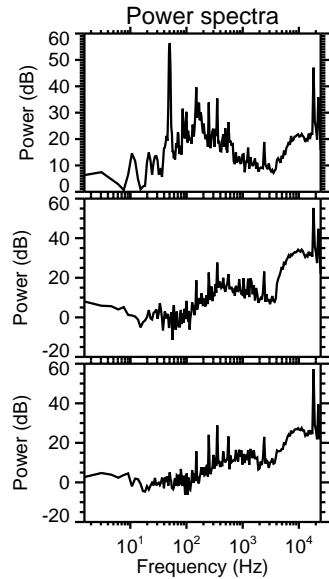
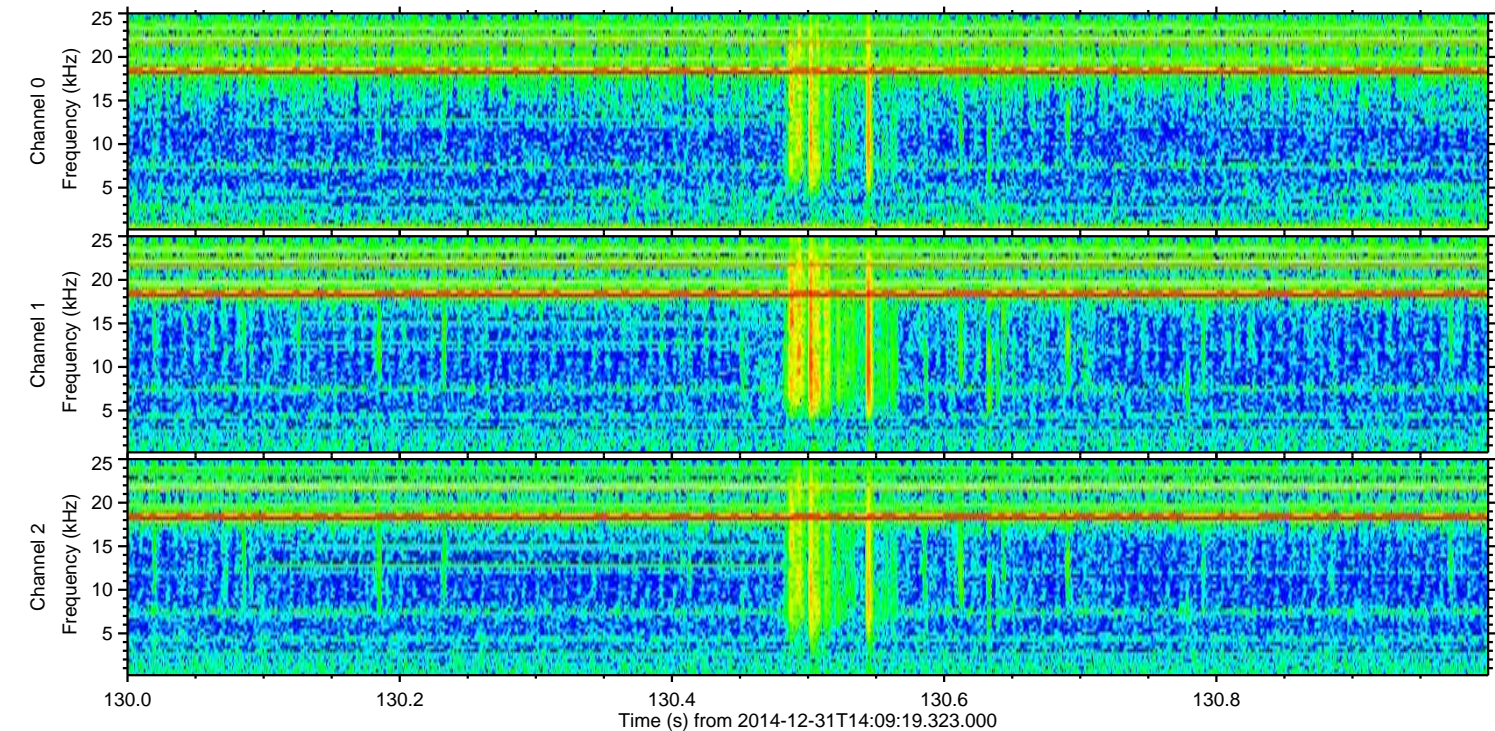
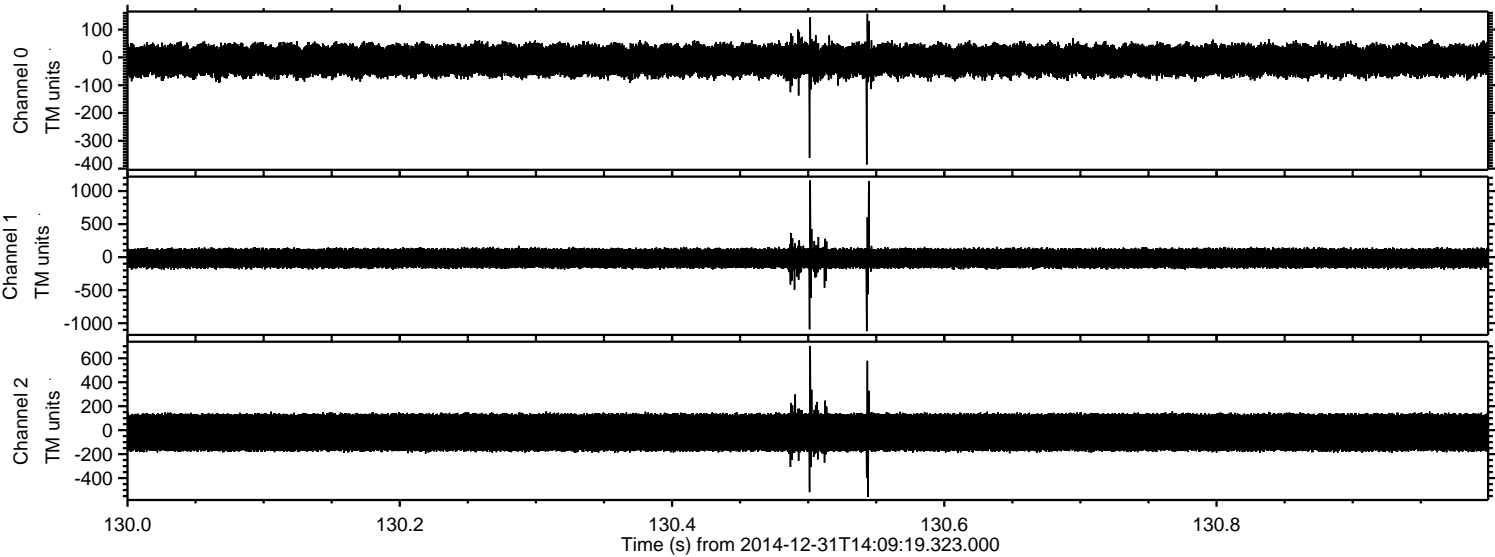
Processed Sat Jan 3 01:16:35 2015 by ELM ver.2012-10-06 from 001\_\_elm20141231\_140918\_\_dat00.bin





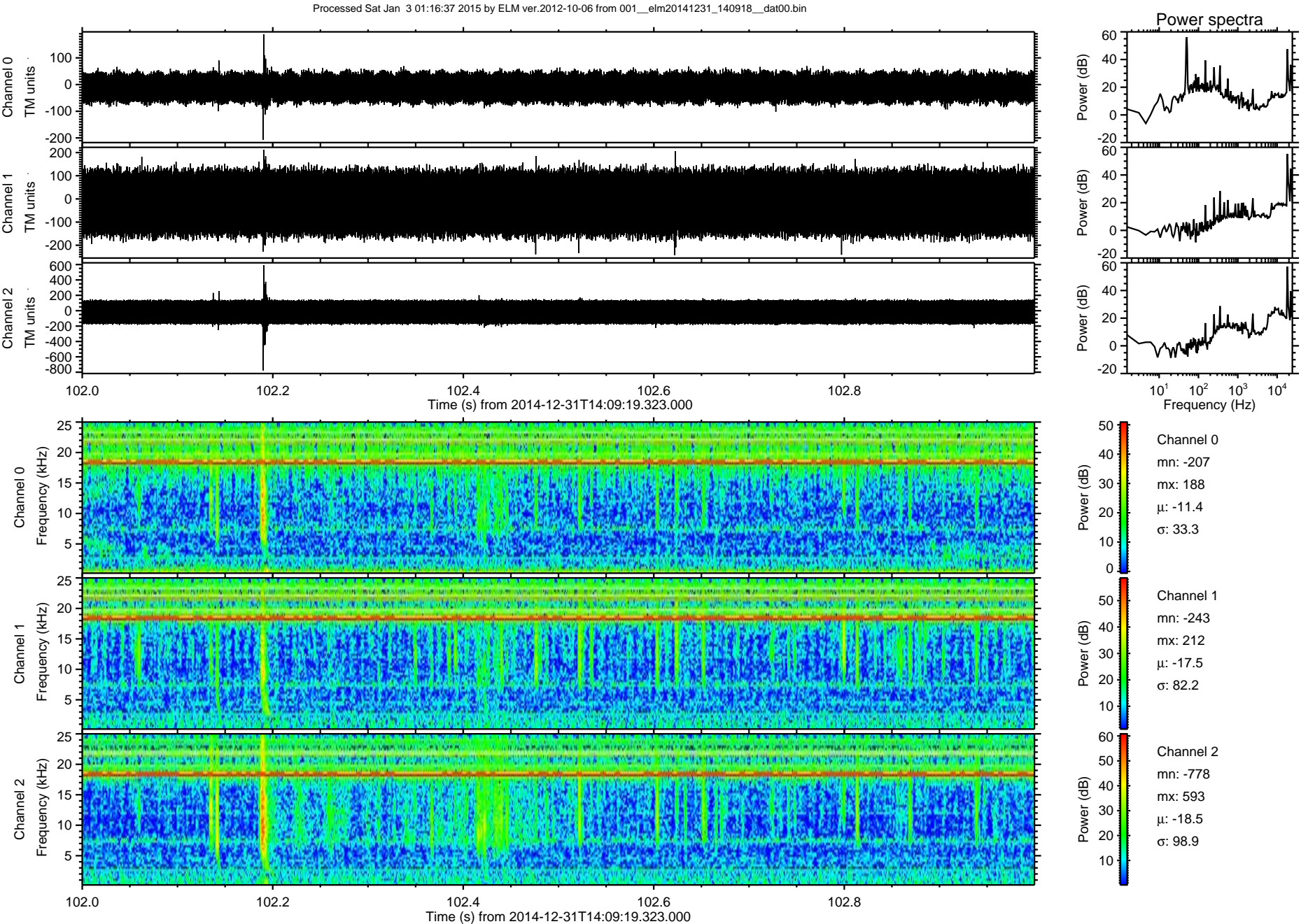
ELMAVAN 3D WAVEFORMS (Measured data sampled at 50 kHz) 49808 packets of 144 samples from 2014-12-31T14:09:19.323.000. Part 131/144

Processed Sat Jan 3 01:16:36 2015 by ELM ver.2012-10-06 from 001\_\_elm20141231\_140918\_\_dat00.bin



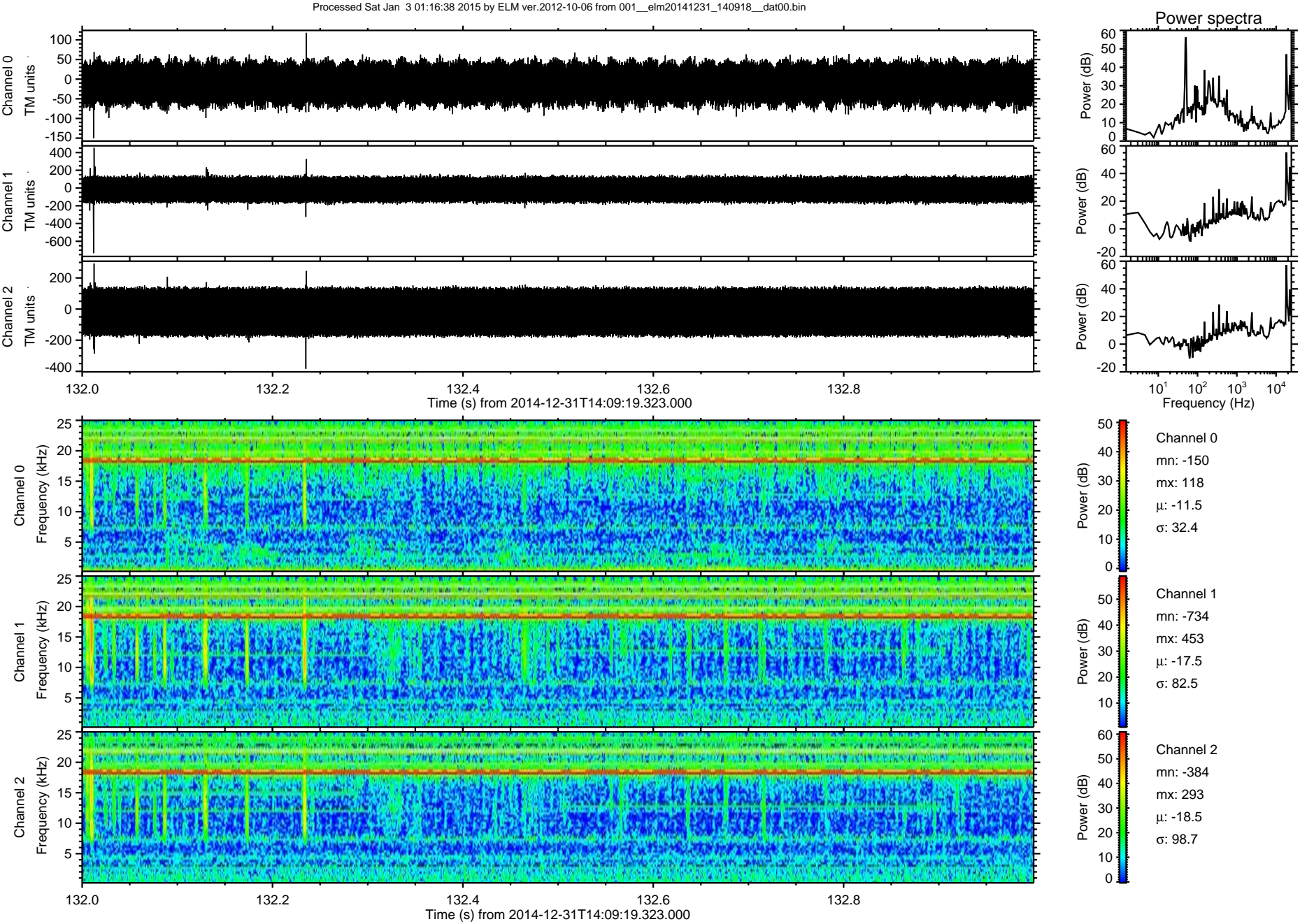


ELMAVAN 3D WAVEFORMS (Measured data sampled at 50 kHz) 49808 packets of 144 samples from 2014-12-31T14:09:19.323.000. Part 103/144





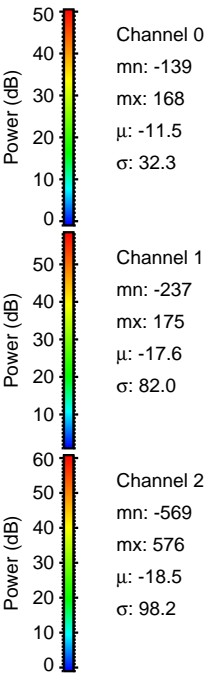
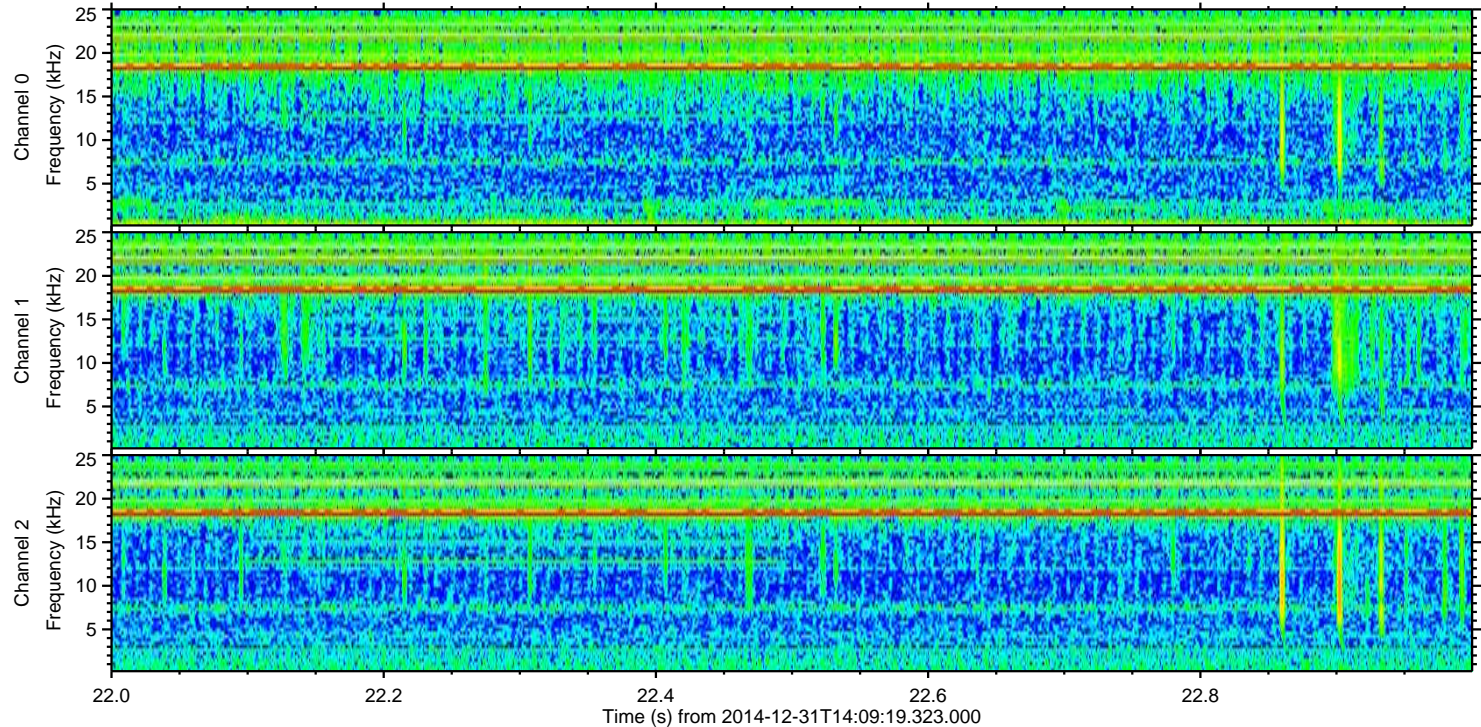
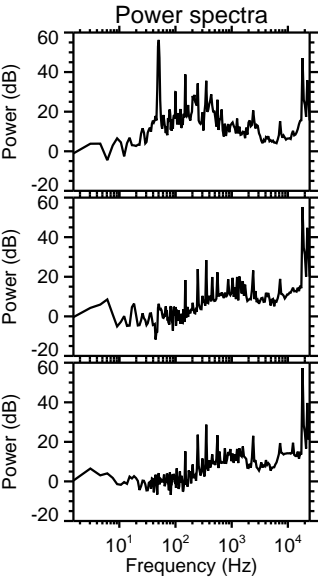
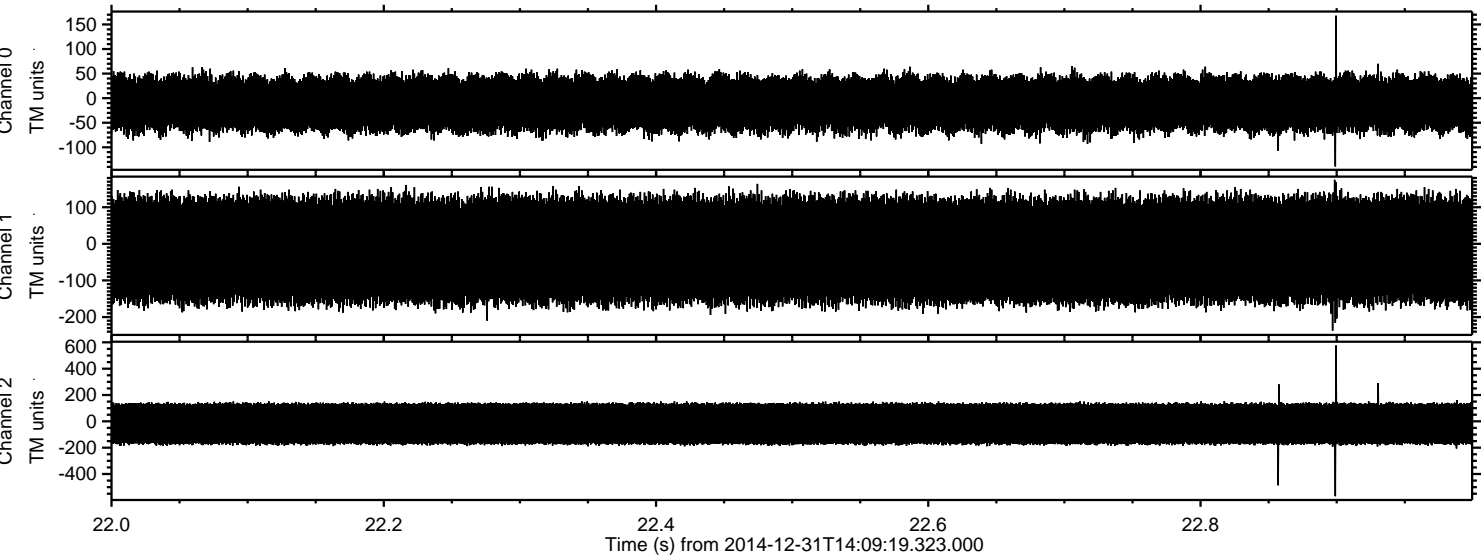
ELMAVAN 3D WAVEFORMS (Measured data sampled at 50 kHz) 49808 packets of 144 samples from 2014-12-31T14:09:19.323.000. Part 133/144



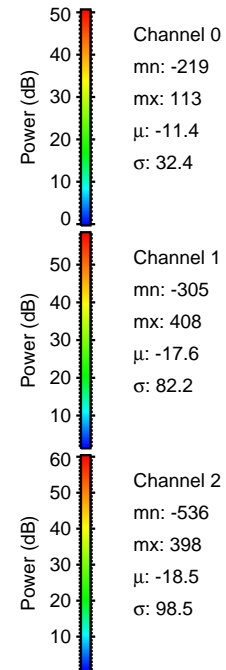
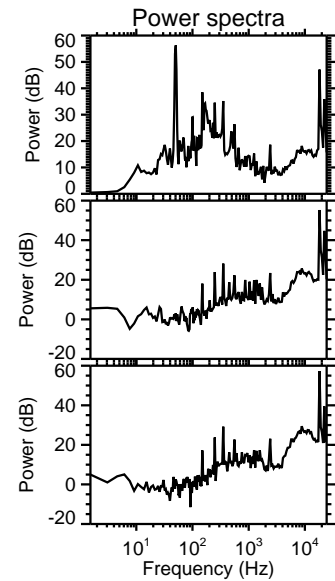
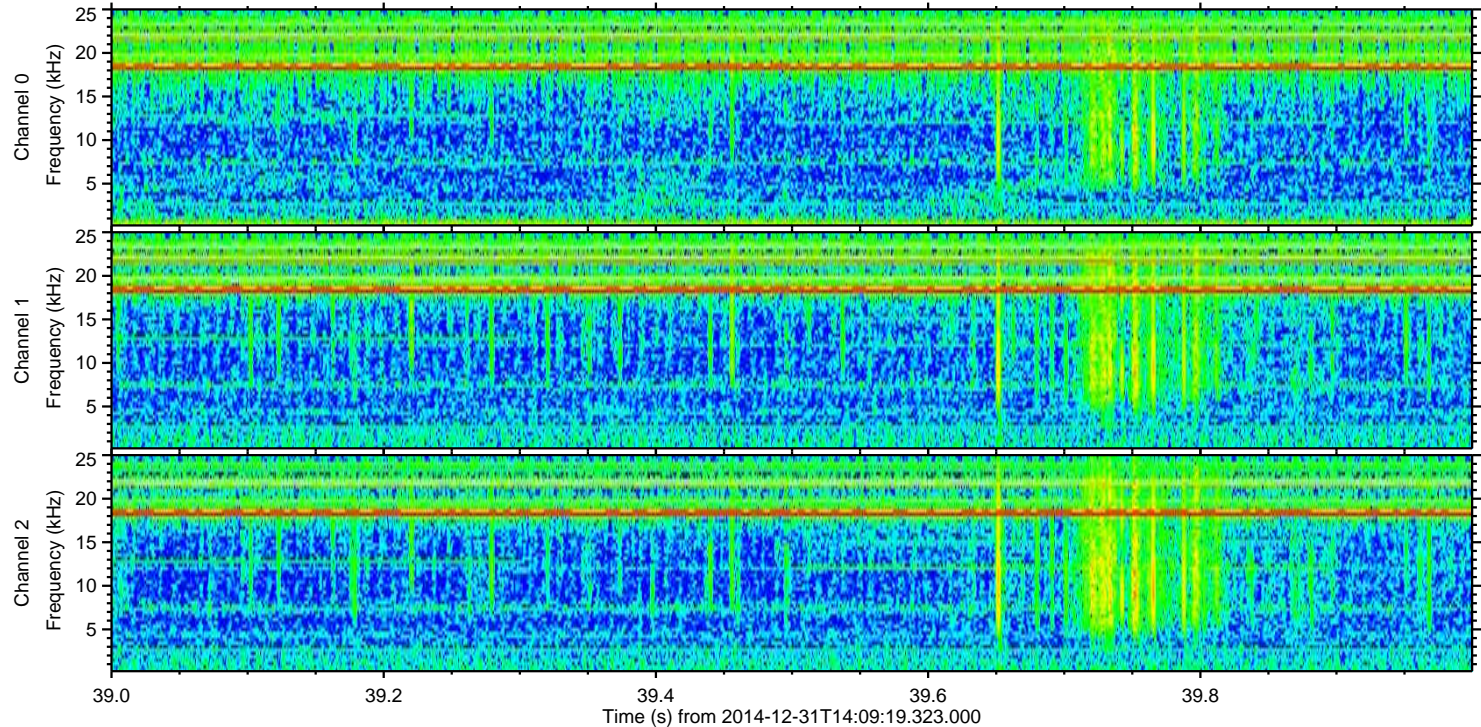
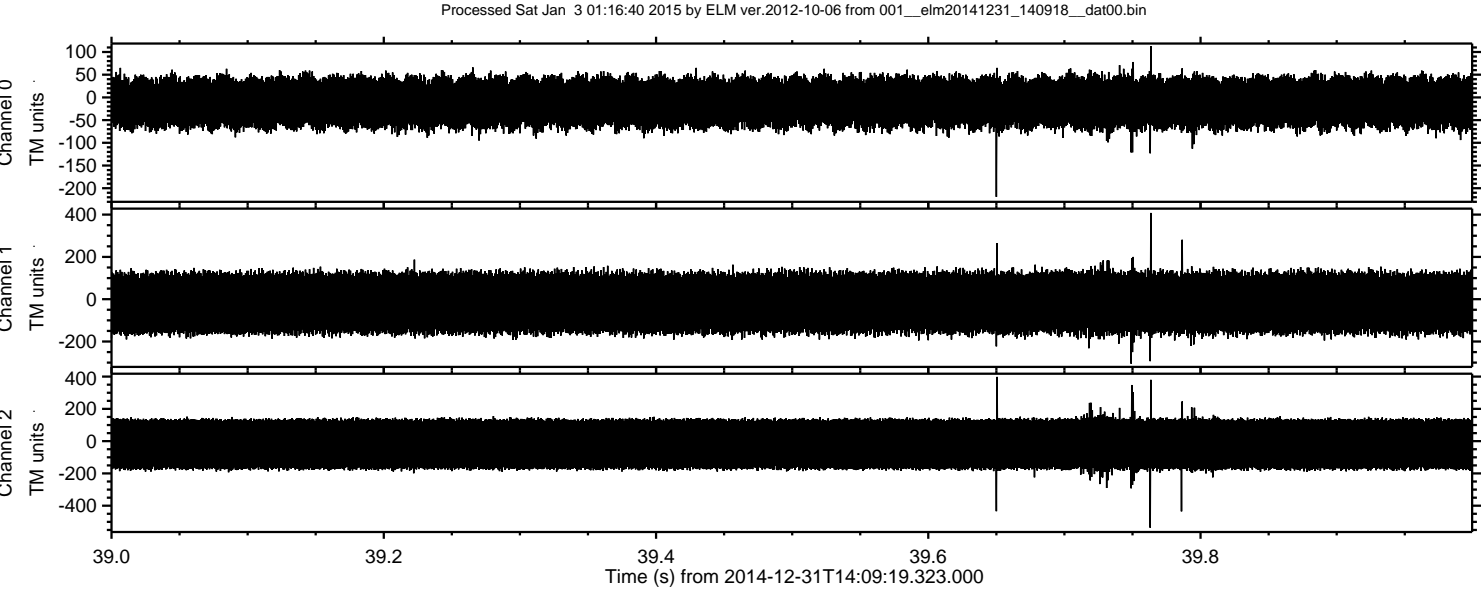


ELMAVAN 3D WAVEFORMS (Measured data sampled at 50 kHz) 49808 packets of 144 samples from 2014-12-31T14:09:19.323.000. Part 23/144

Processed Sat Jan 3 01:16:39 2015 by ELM ver.2012-10-06 from 001\_\_elm20141231\_140918\_\_dat00.bin

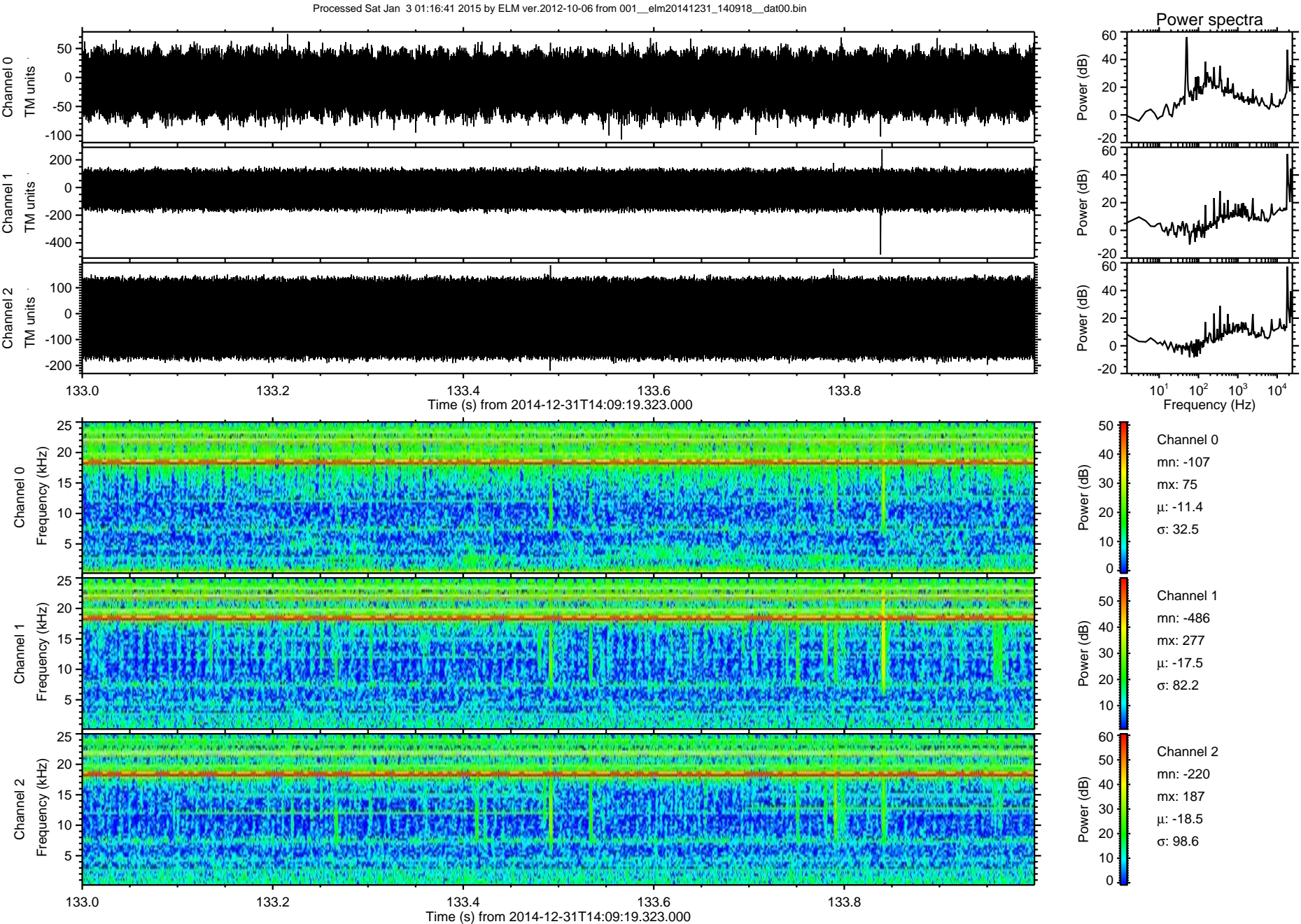








ELMAVAN 3D WAVEFORMS (Measured data sampled at 50 kHz) 49808 packets of 144 samples from 2014-12-31T14:09:19.323.000. Part 134/144





Processed Sat Jan 3 01:16:42 2015 by ELM ver.2012-10-06 from 001\_\_elm20141231\_140918\_\_dat00.bin

