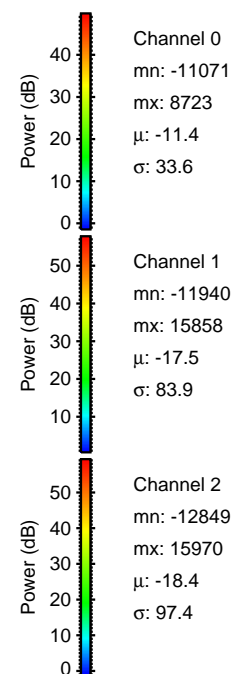
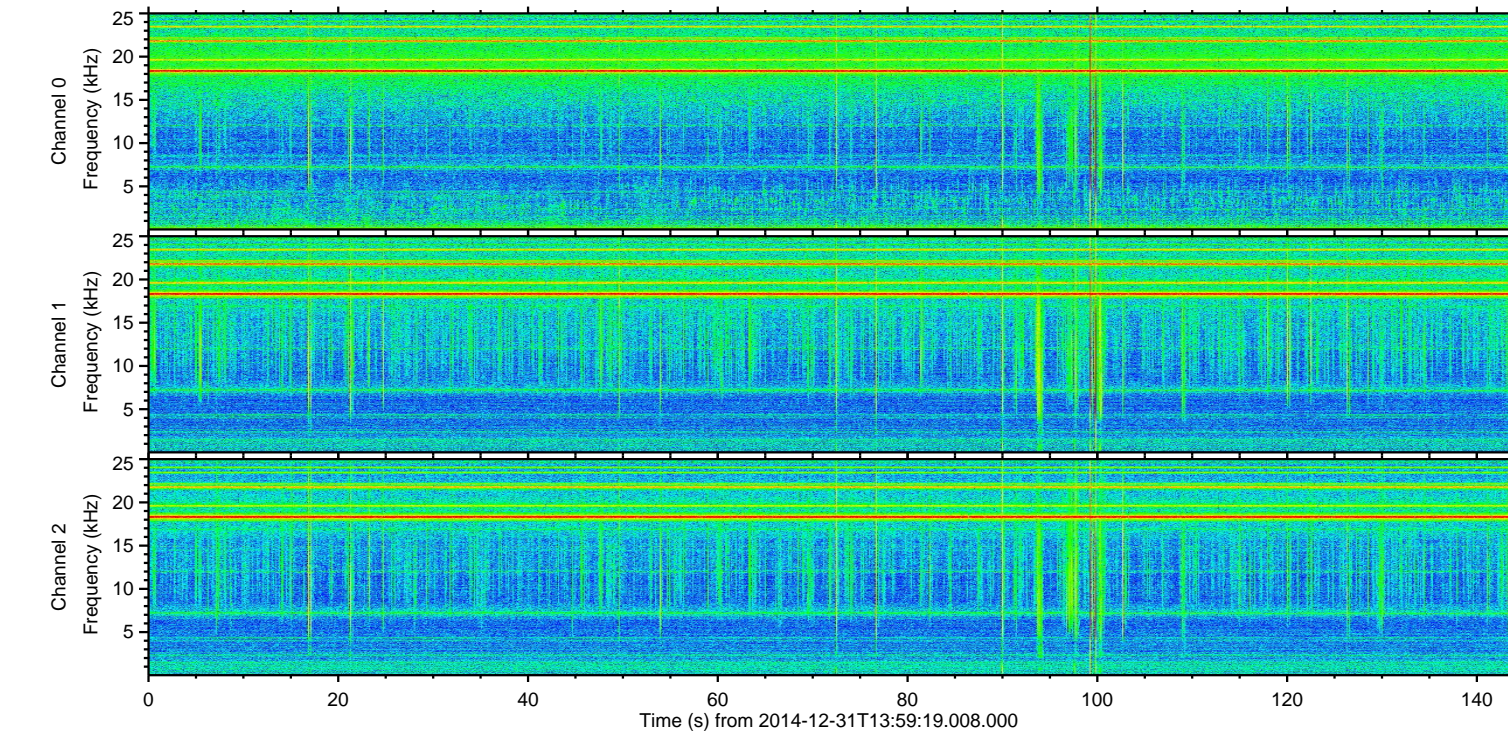
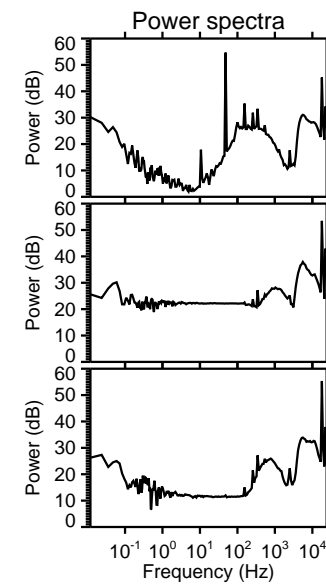
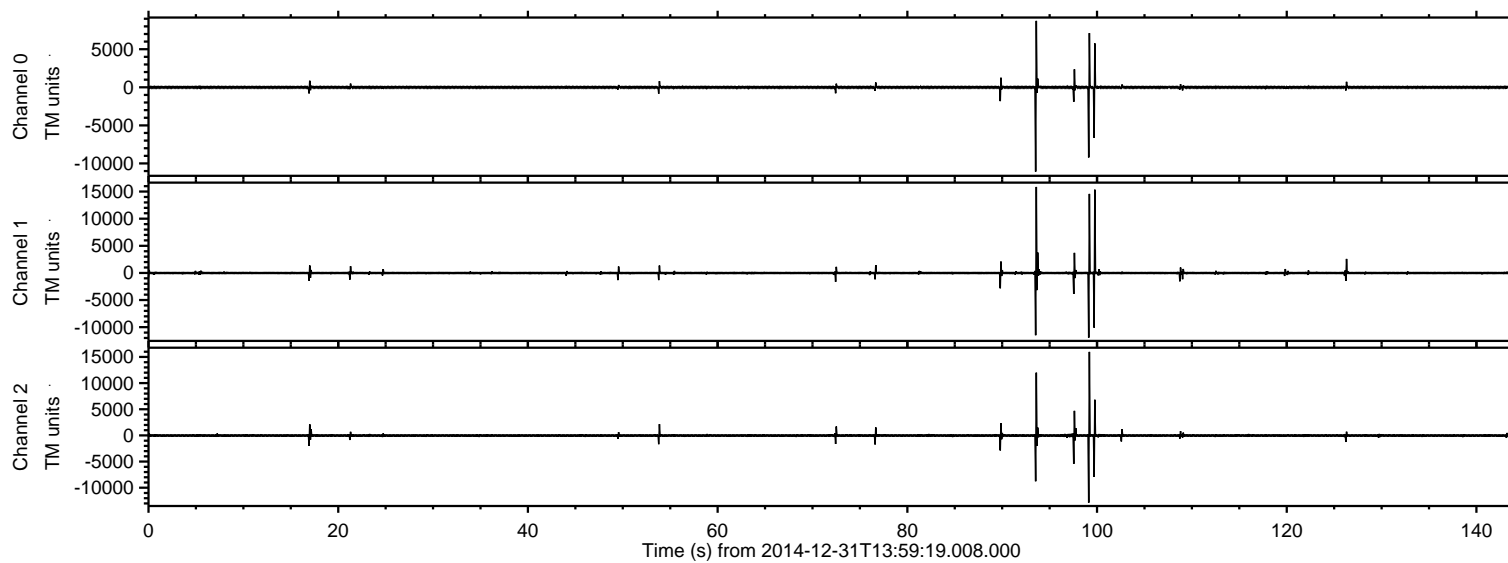
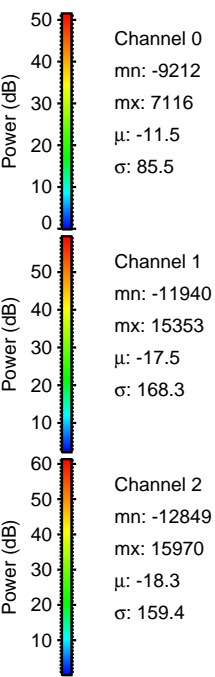
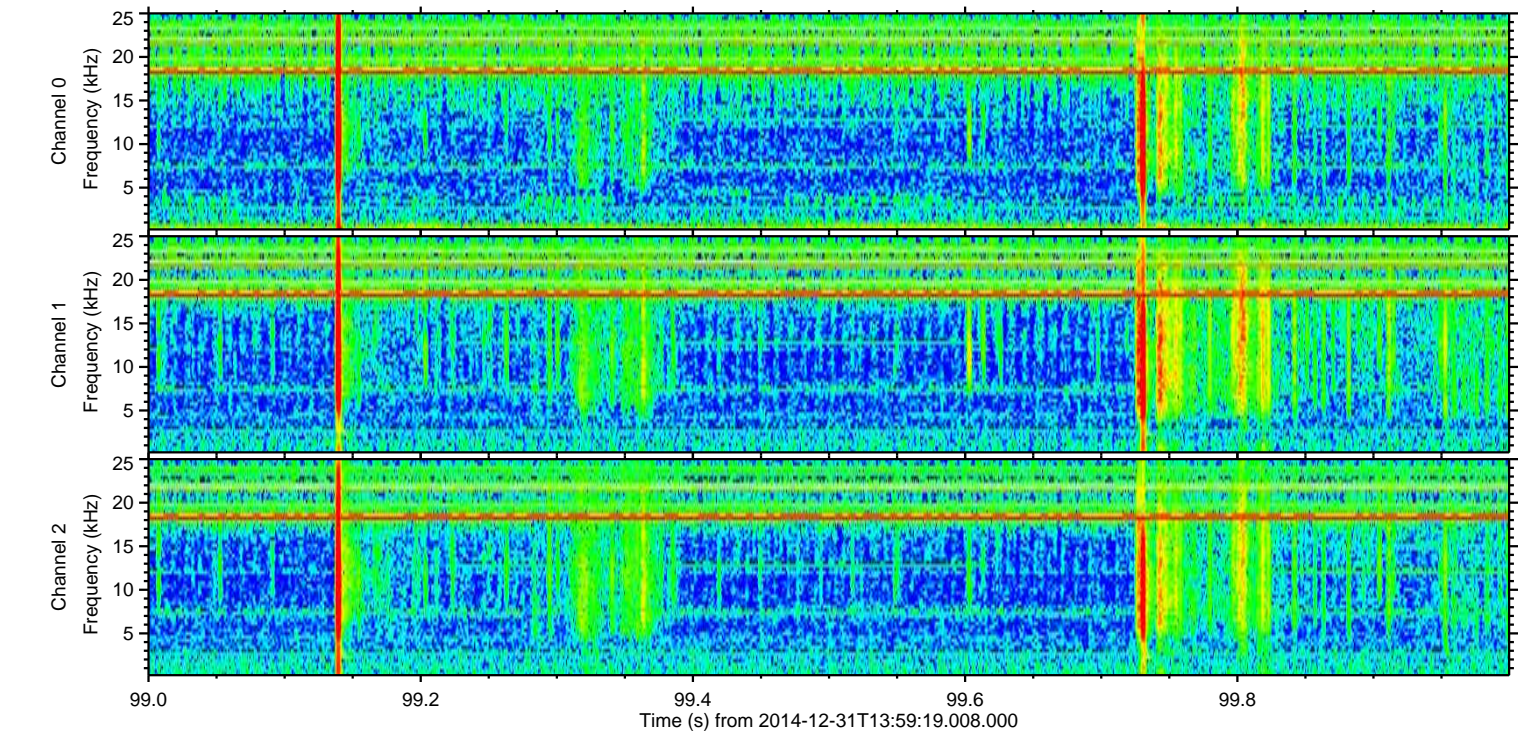
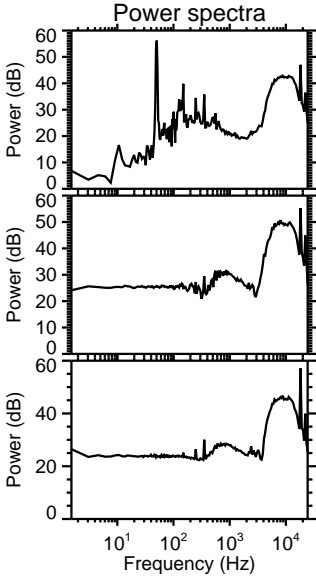
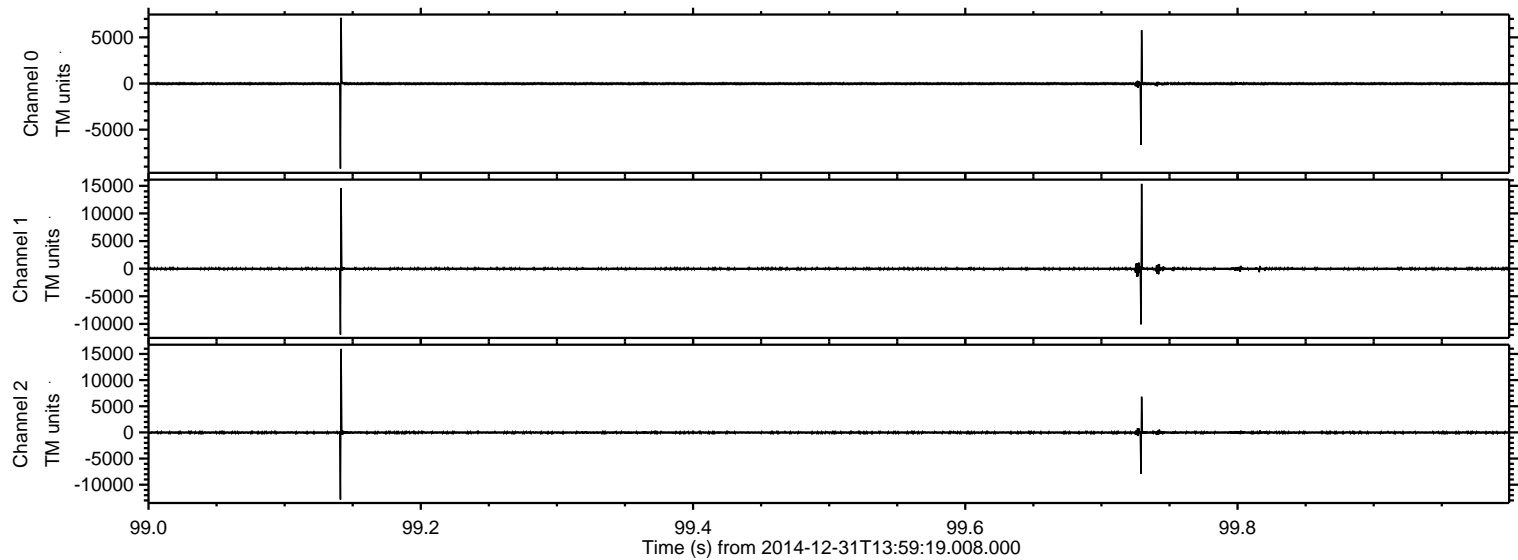


ELMAVAN 3D WAVEFORMS (Measured data sampled at 50 kHz) 49808 packets of 144 samples from 2014-12-31T13:59:19.008.000.

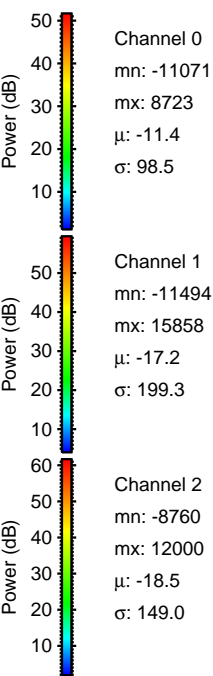
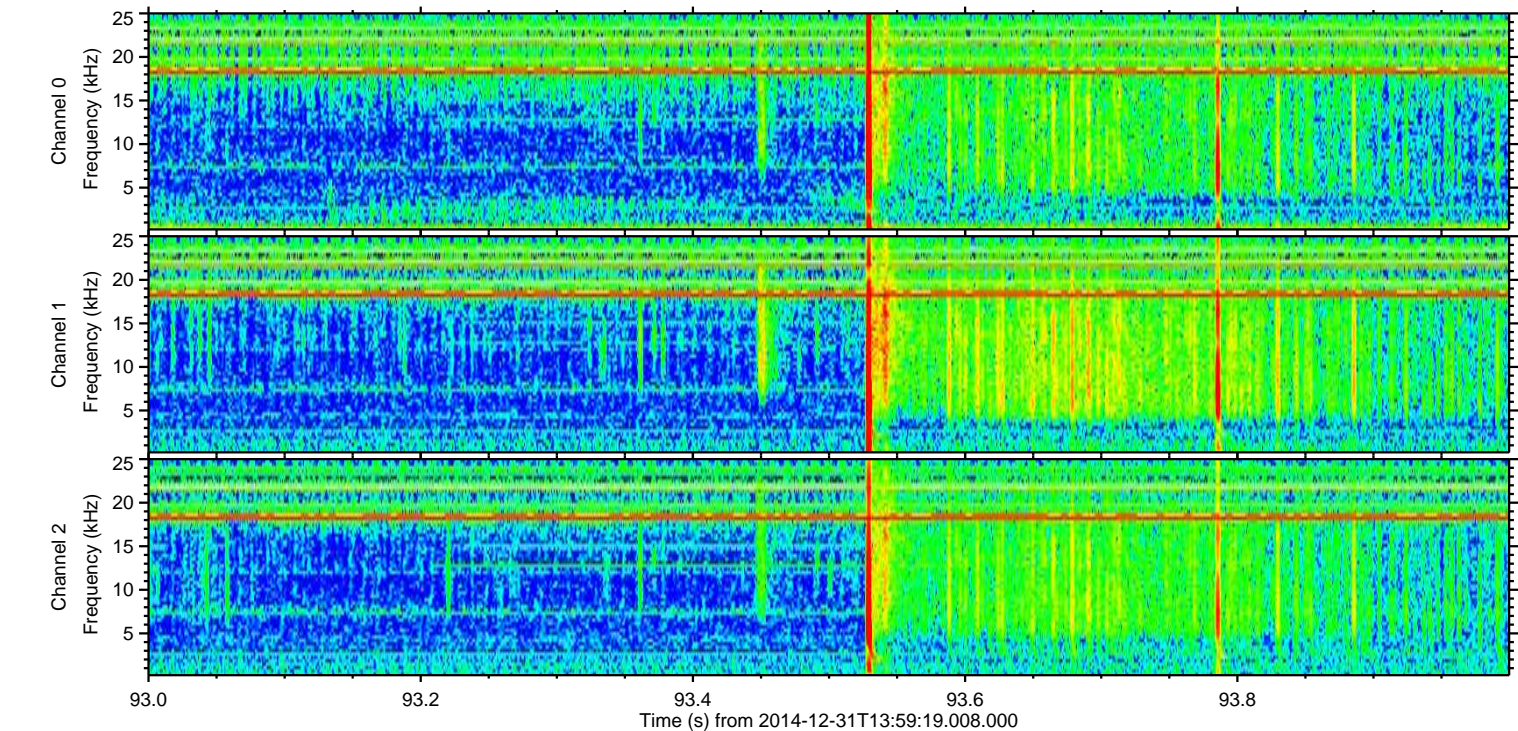
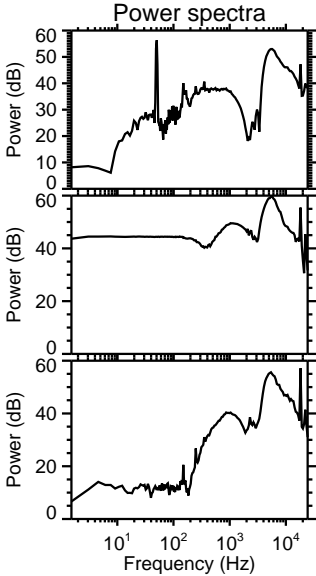
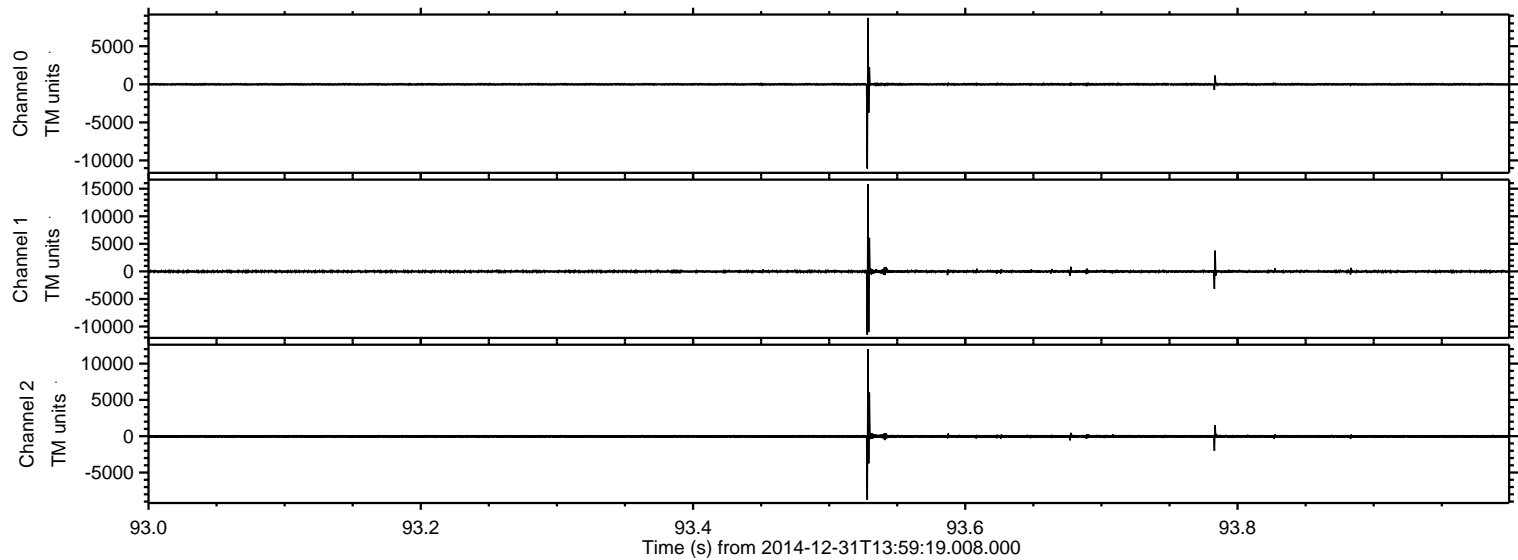
Processed Sat Jan 3 01:14:05 2015 by ELM ver.2012-10-06 from 001__elm20141231_135918__dat00.bin



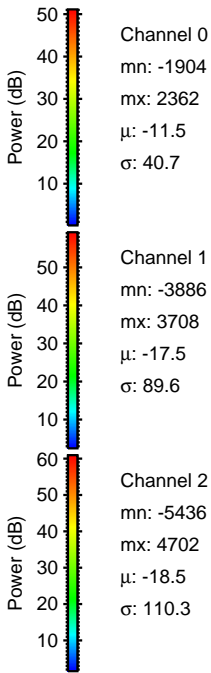
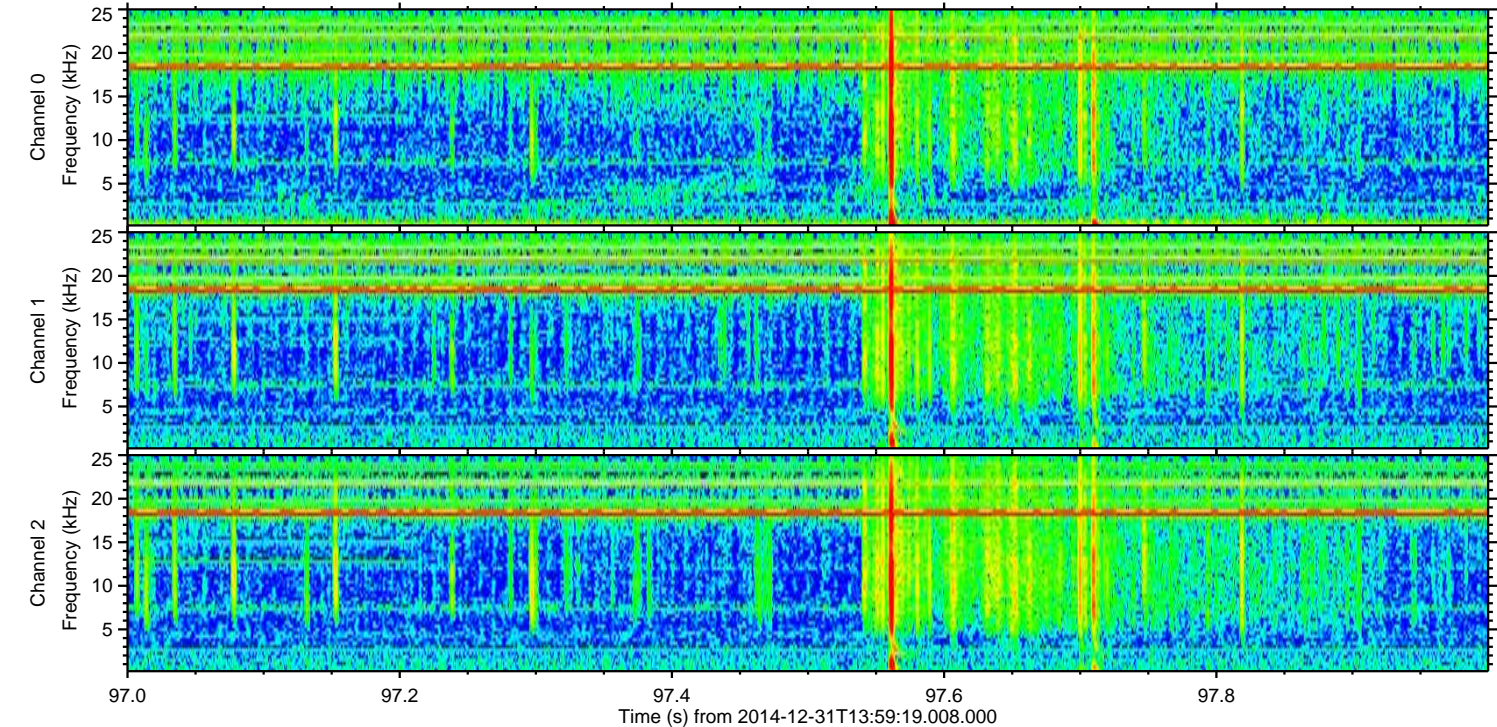
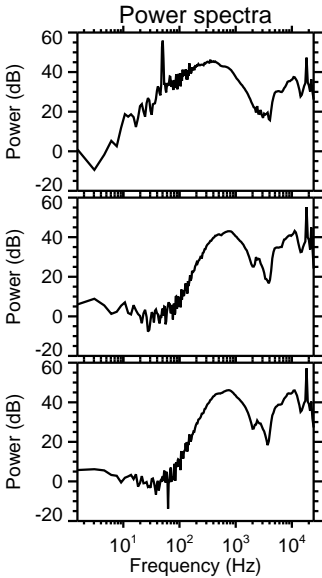
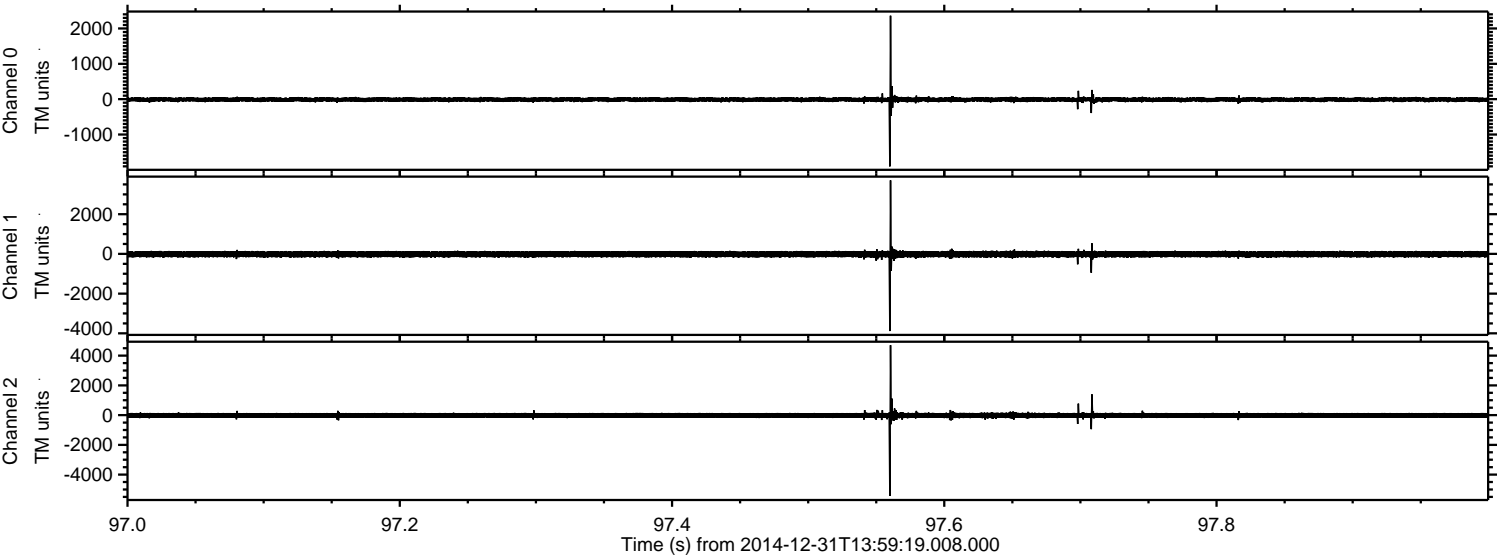
Processed Sat Jan 3 01:14:17 2015 by ELM ver.2012-10-06 from 001__elm20141231_135918__dat00.bin



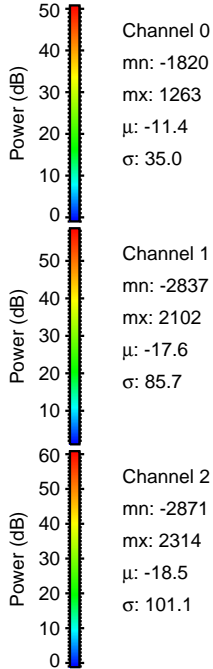
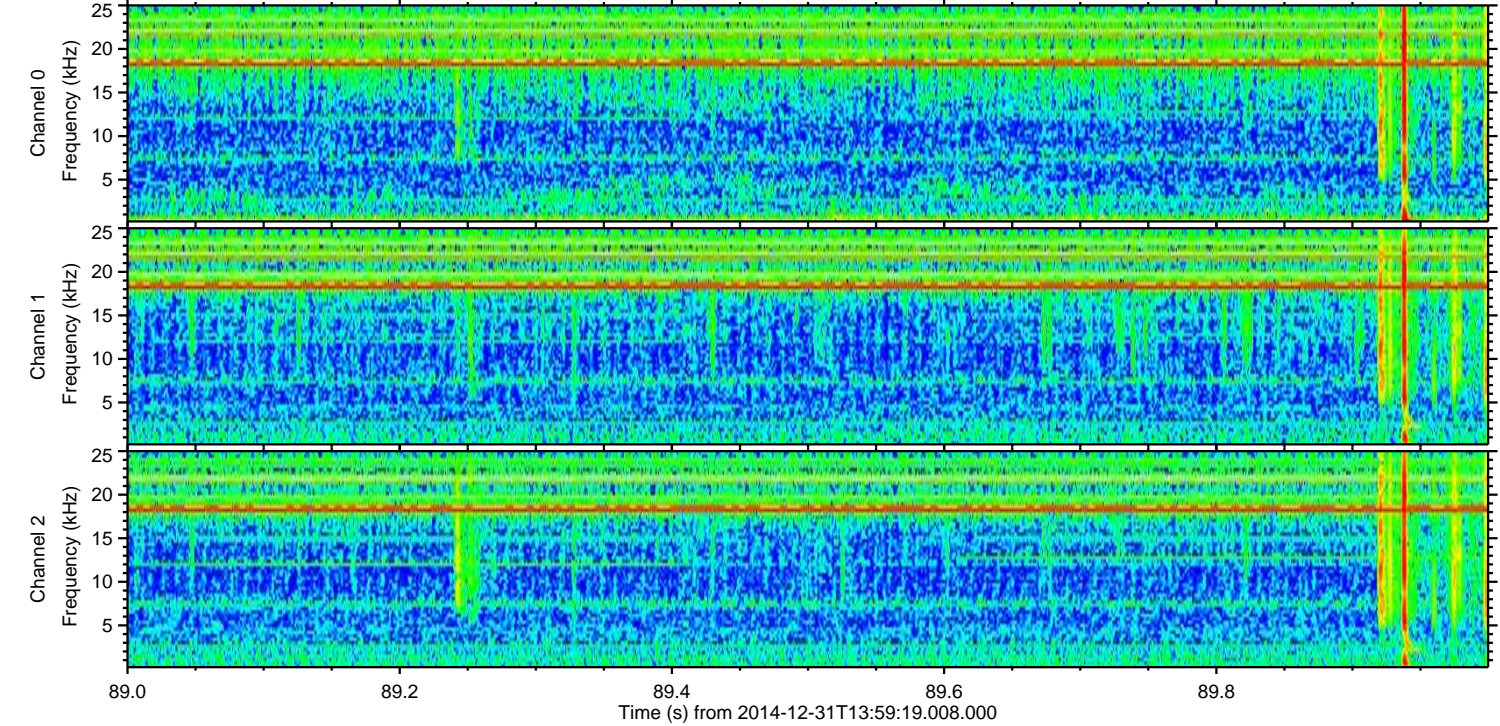
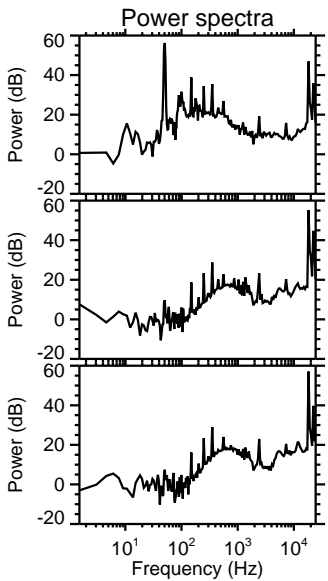
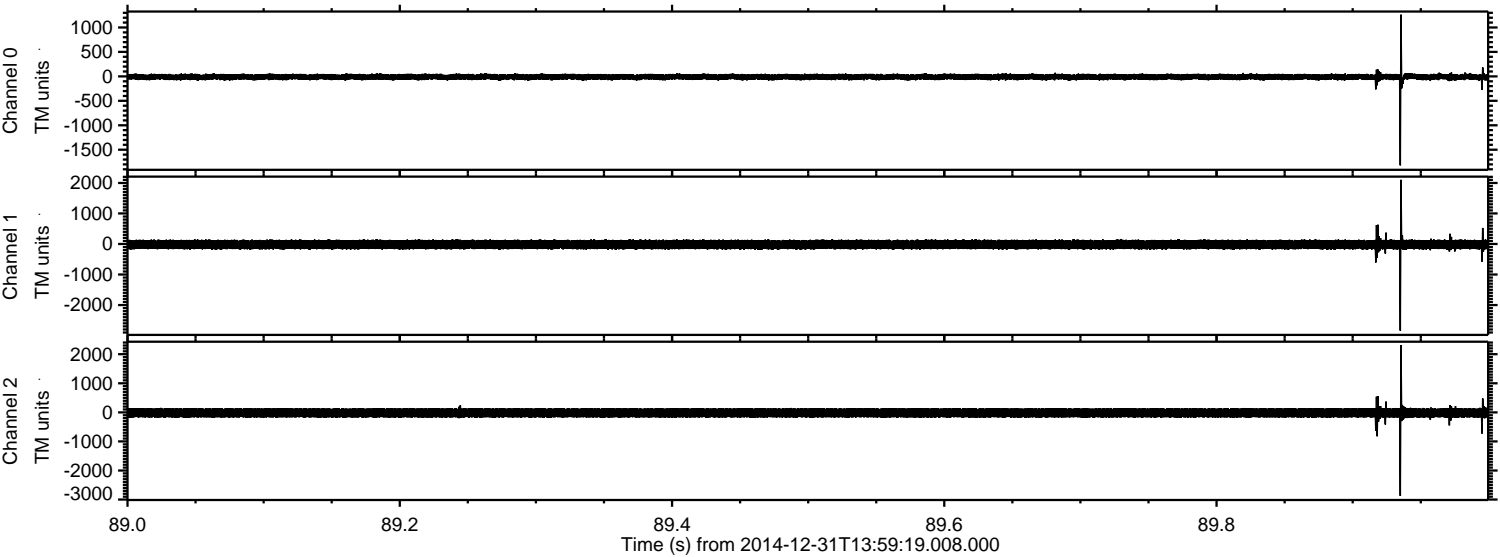
Processed Sat Jan 3 01:14:18 2015 by ELM ver.2012-10-06 from 001__elm20141231_135918__dat00.bin



Processed Sat Jan 3 01:14:19 2015 by ELM ver.2012-10-06 from 001__elm20141231_135918__dat00.bin

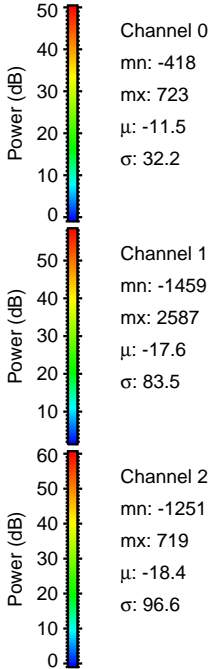
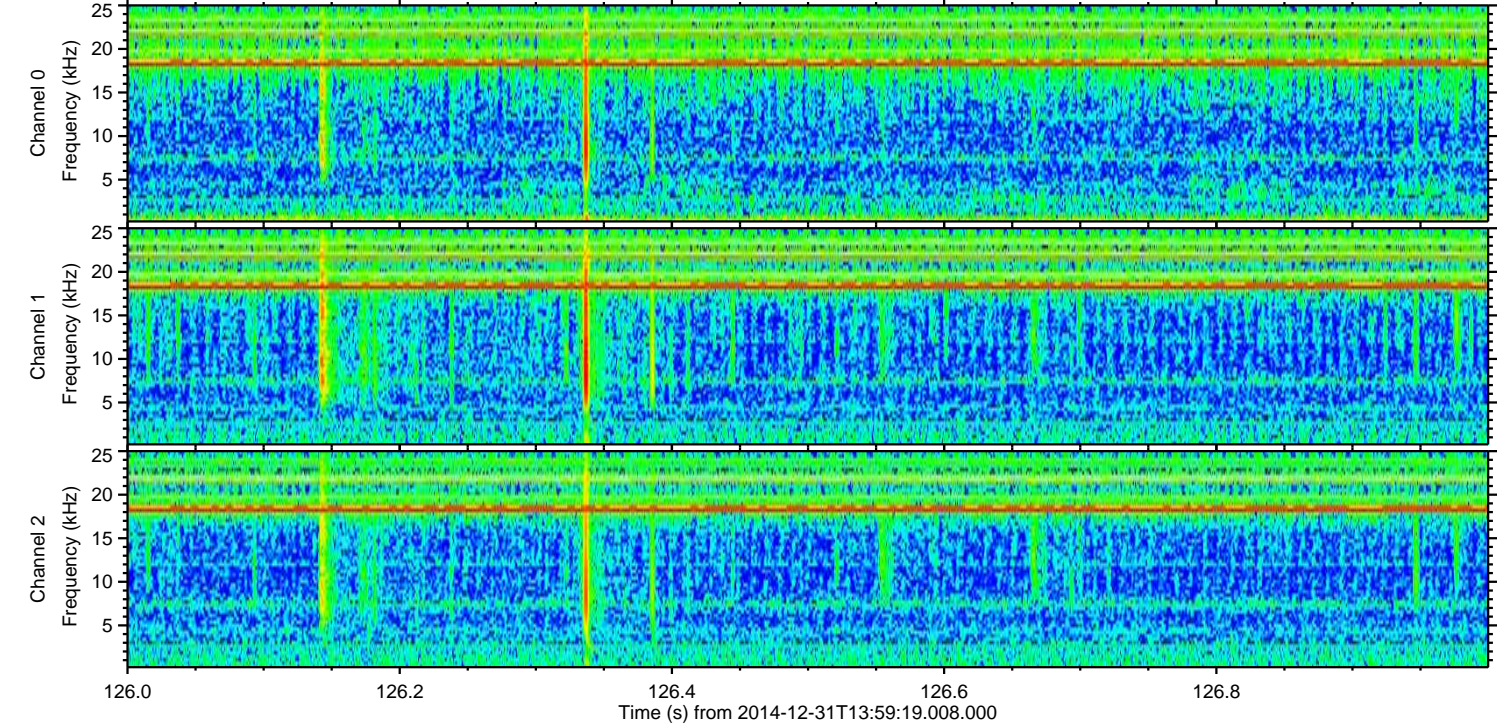
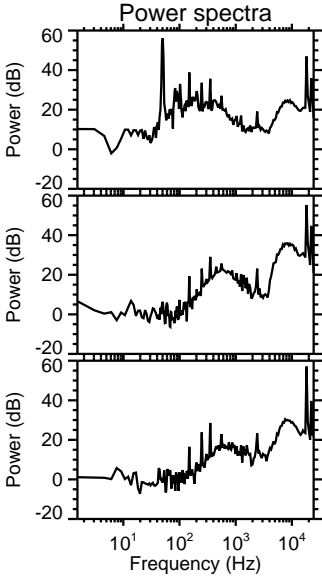
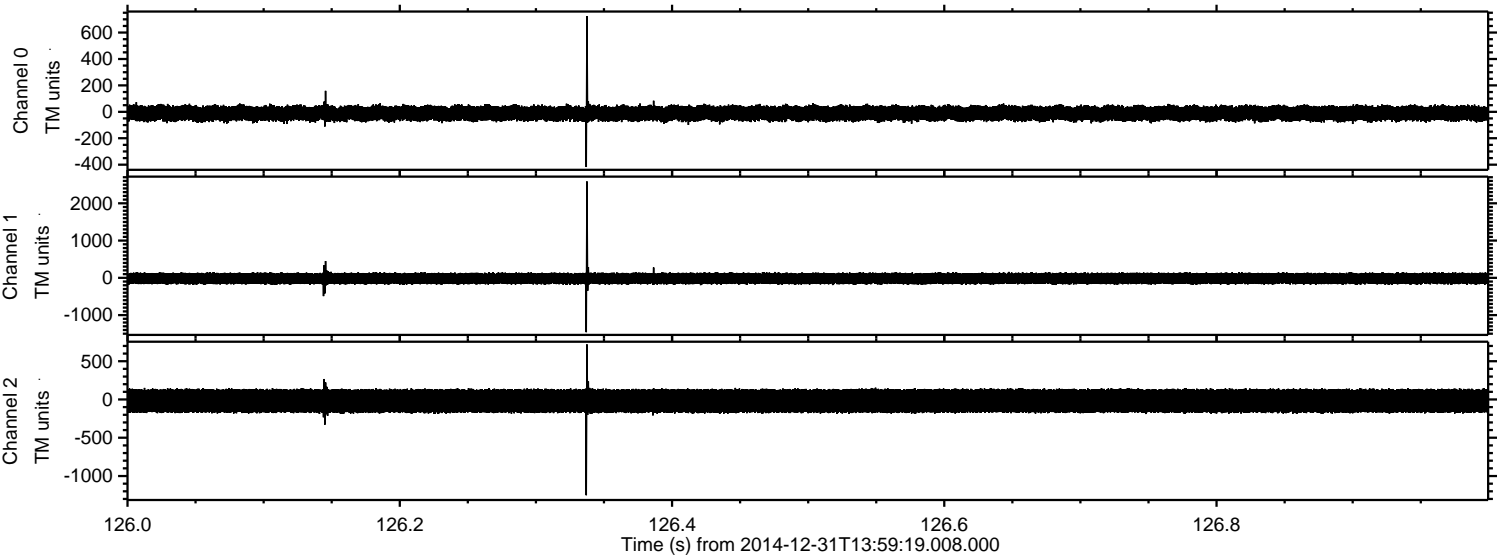


Processed Sat Jan 3 01:14:20 2015 by ELM ver.2012-10-06 from 001__elm20141231_135918__dat00.bin

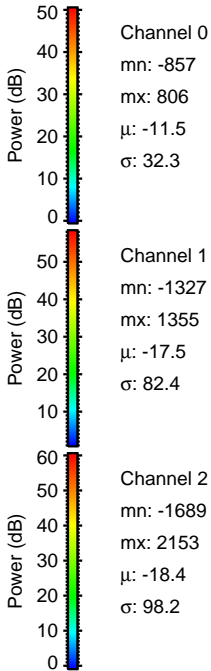
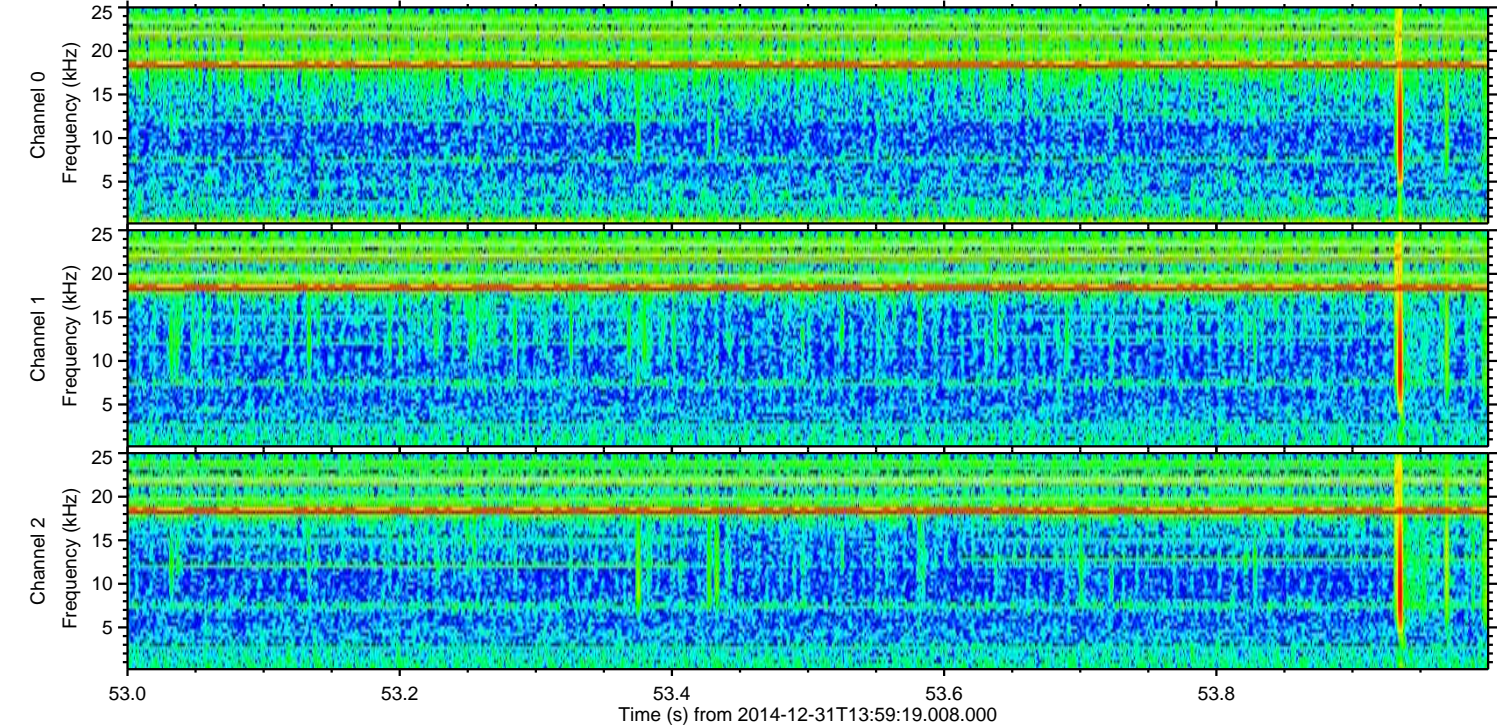
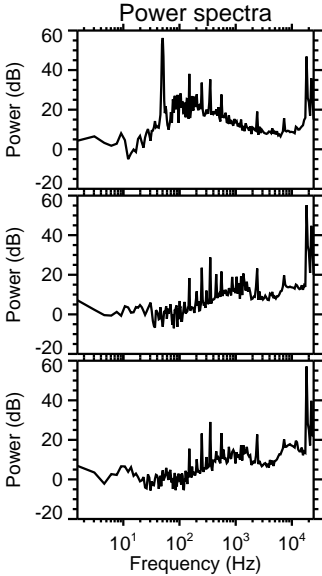
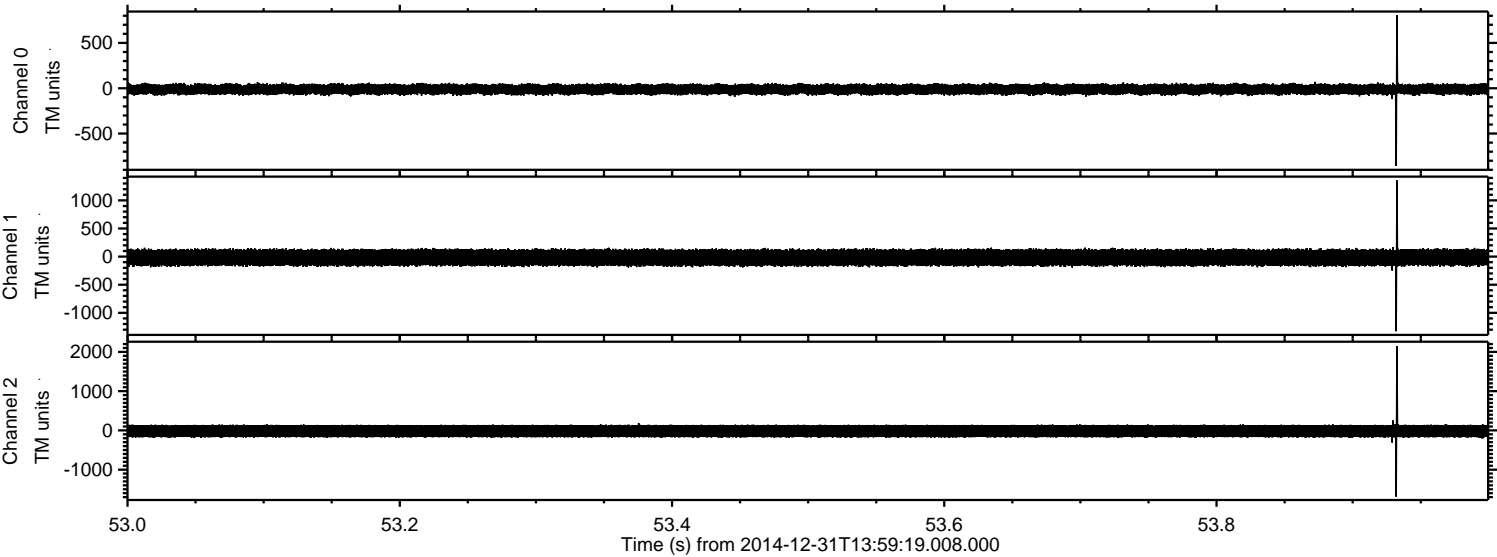


ELMAVAN 3D WAVEFORMS (Measured data sampled at 50 kHz) 49808 packets of 144 samples from 2014-12-31T13:59:19.008.000. Part 127/144

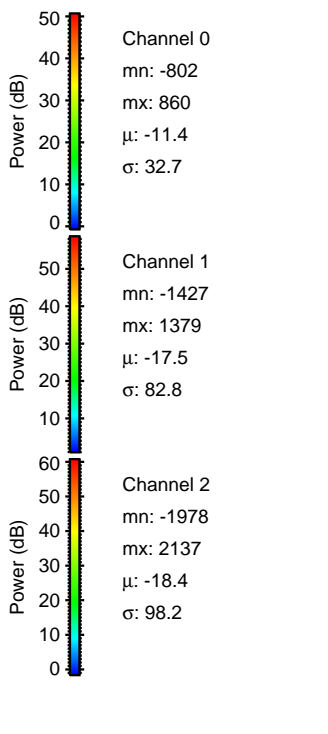
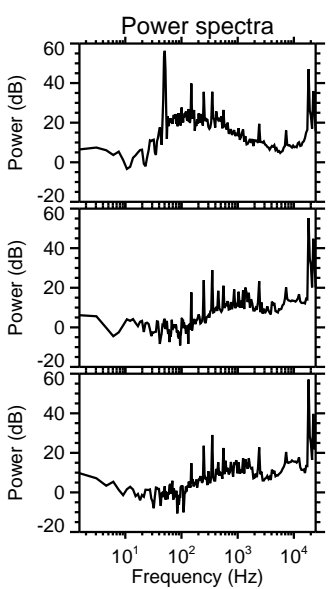
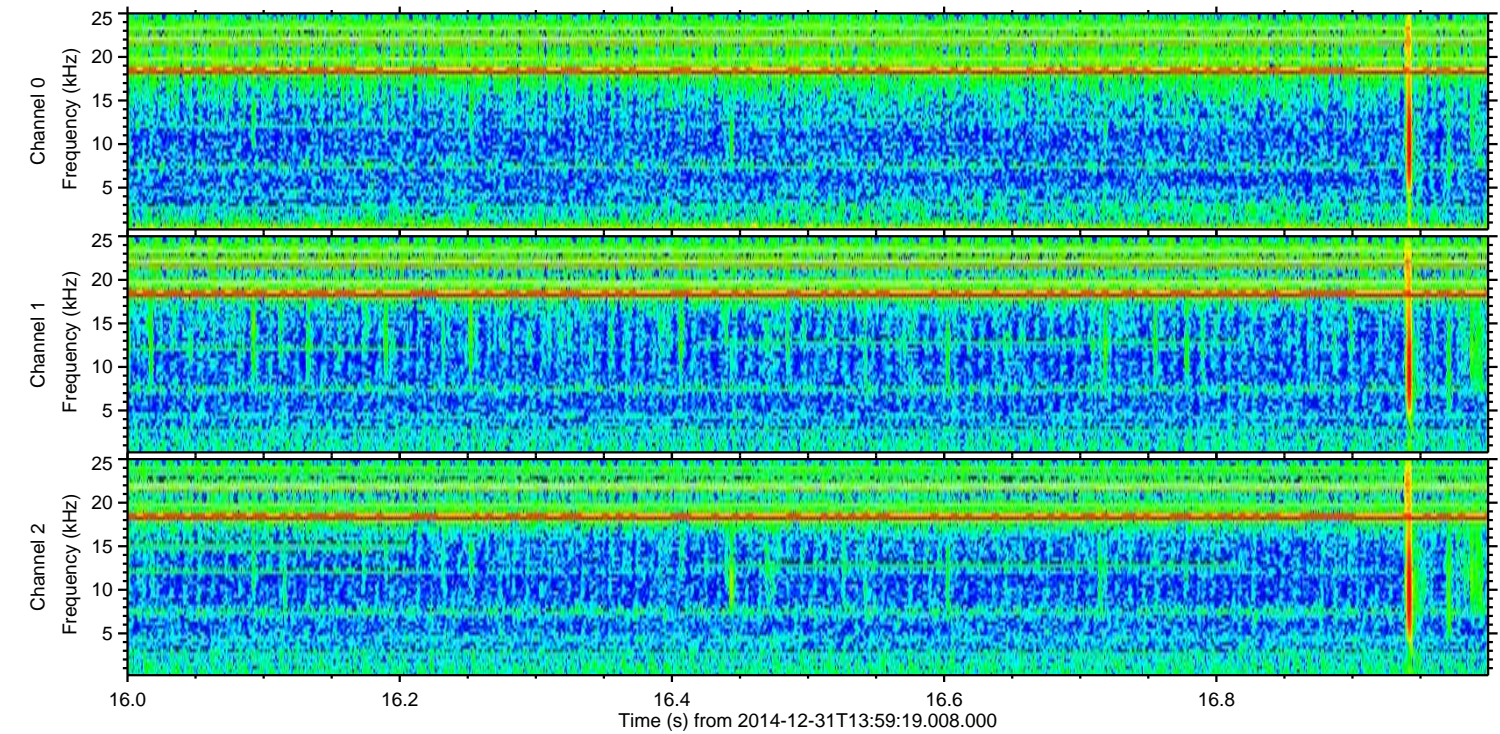
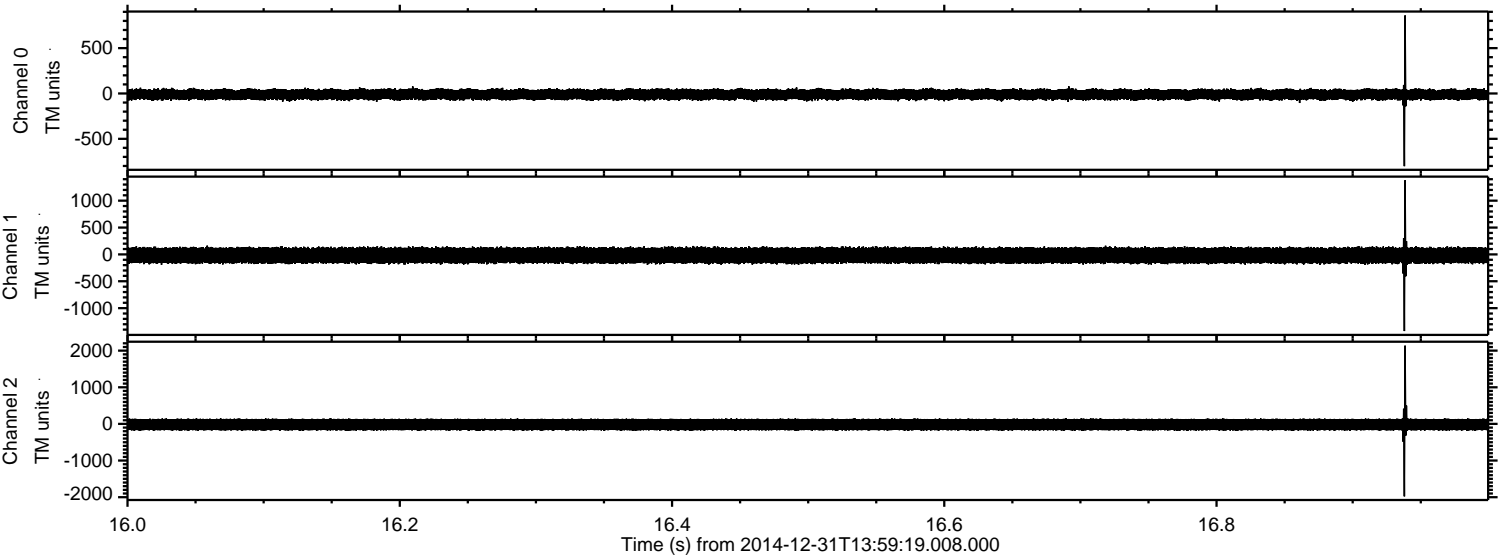
Processed Sat Jan 3 01:14:21 2015 by ELM ver.2012-10-06 from 001__elm20141231_135918__dat00.bin



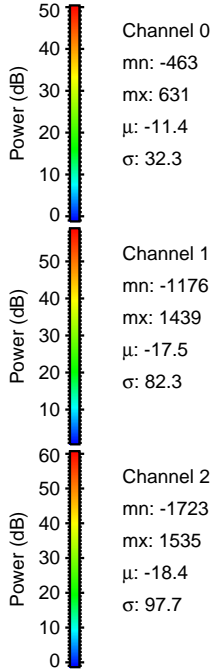
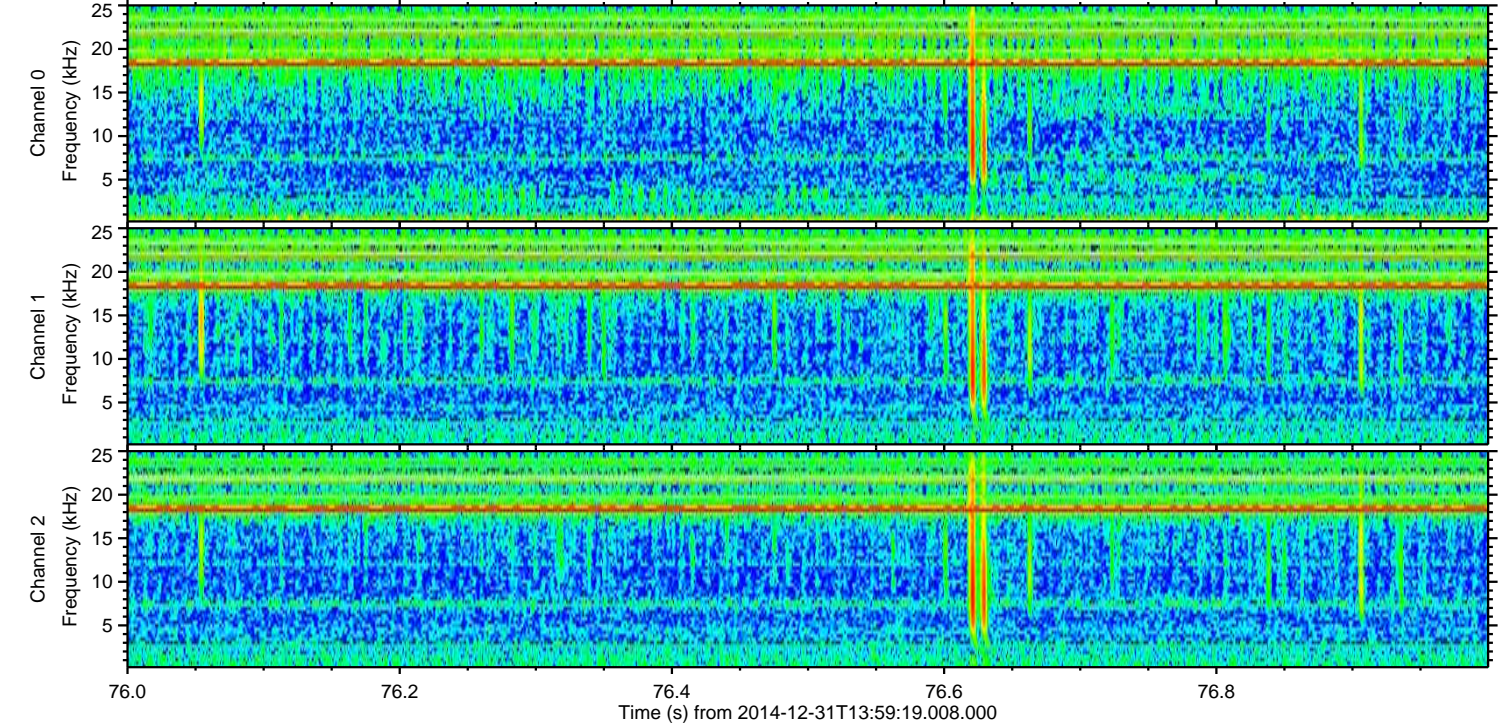
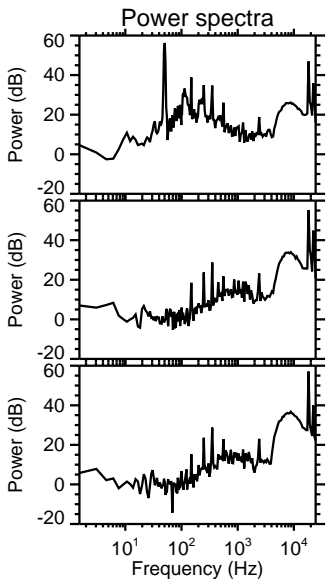
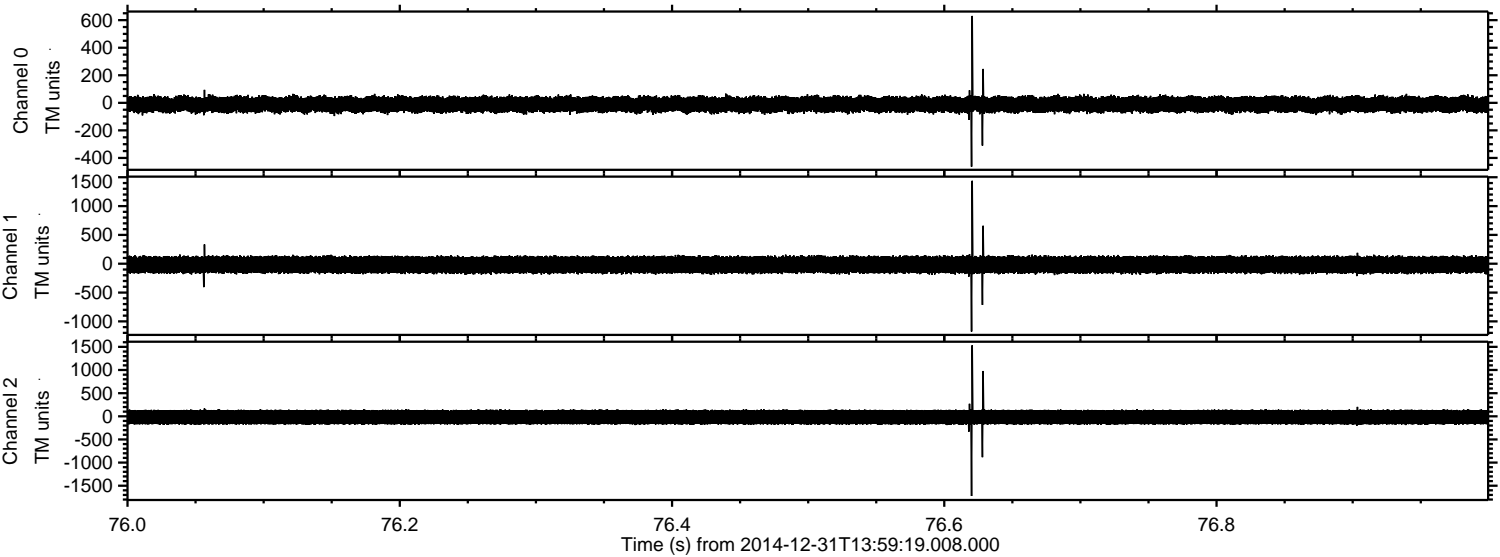
Processed Sat Jan 3 01:14:22 2015 by ELM ver.2012-10-06 from 001__elm20141231_135918__dat00.bin



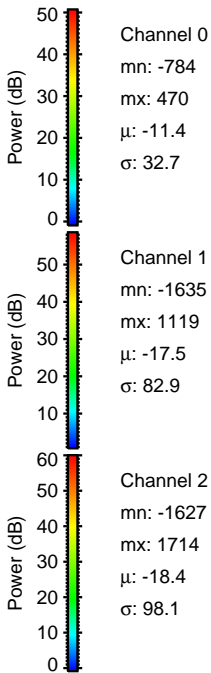
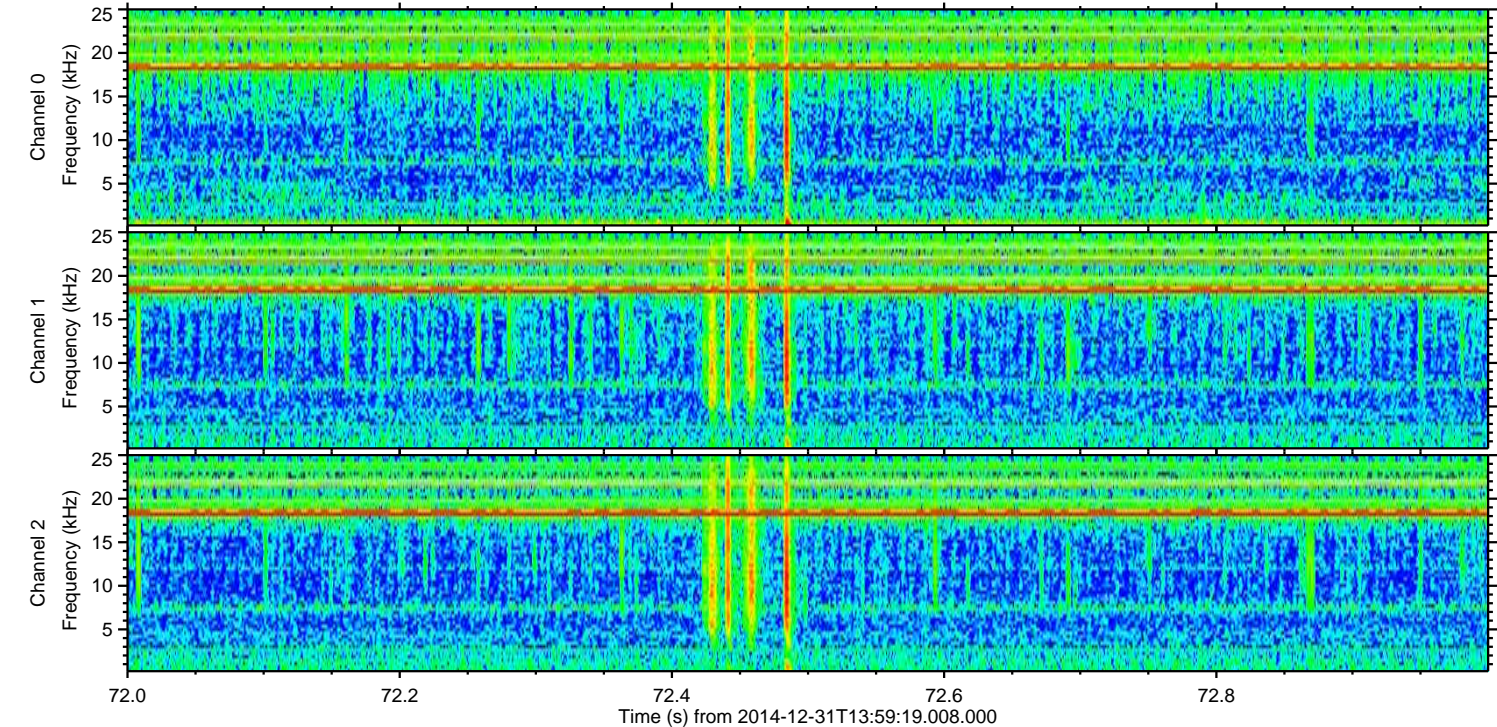
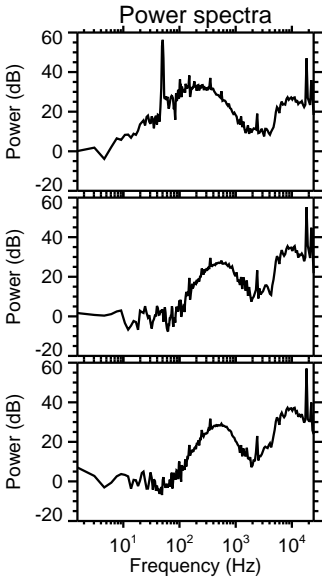
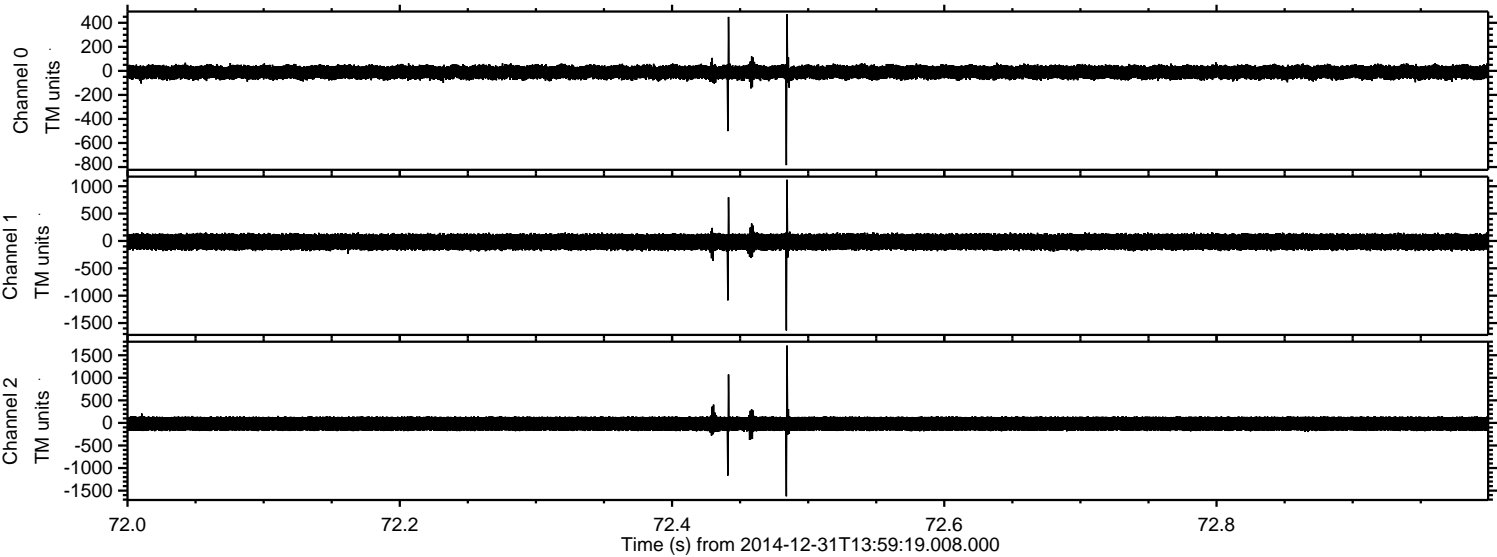
Processed Sat Jan 3 01:14:23 2015 by ELM ver.2012-10-06 from 001__elm20141231_135918__dat00.bin



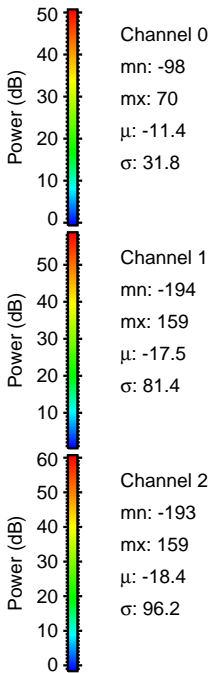
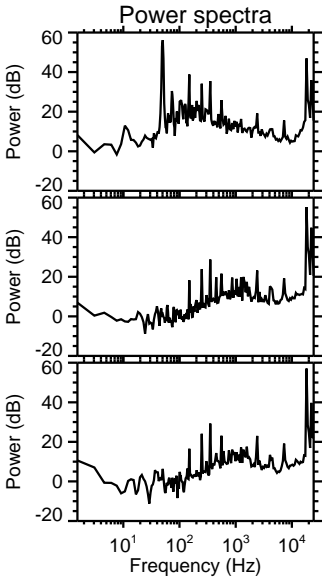
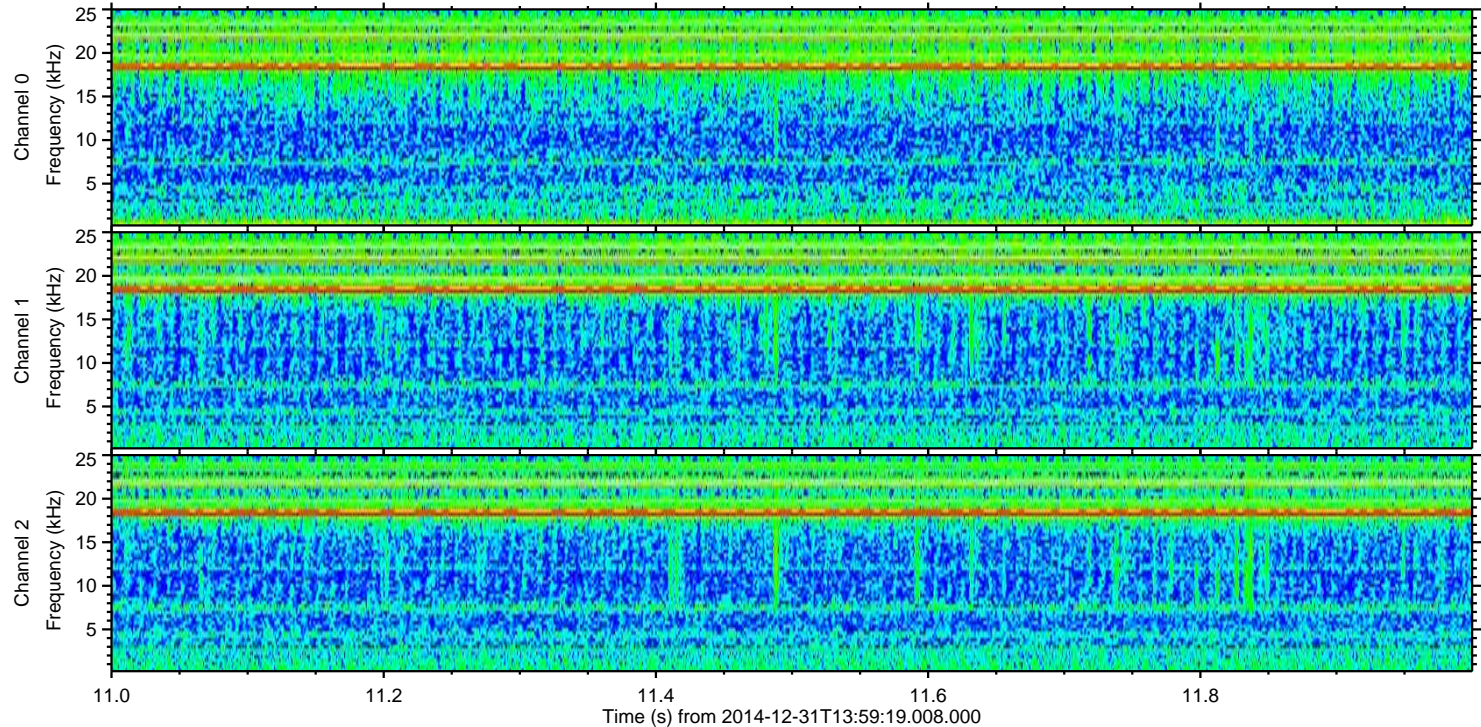
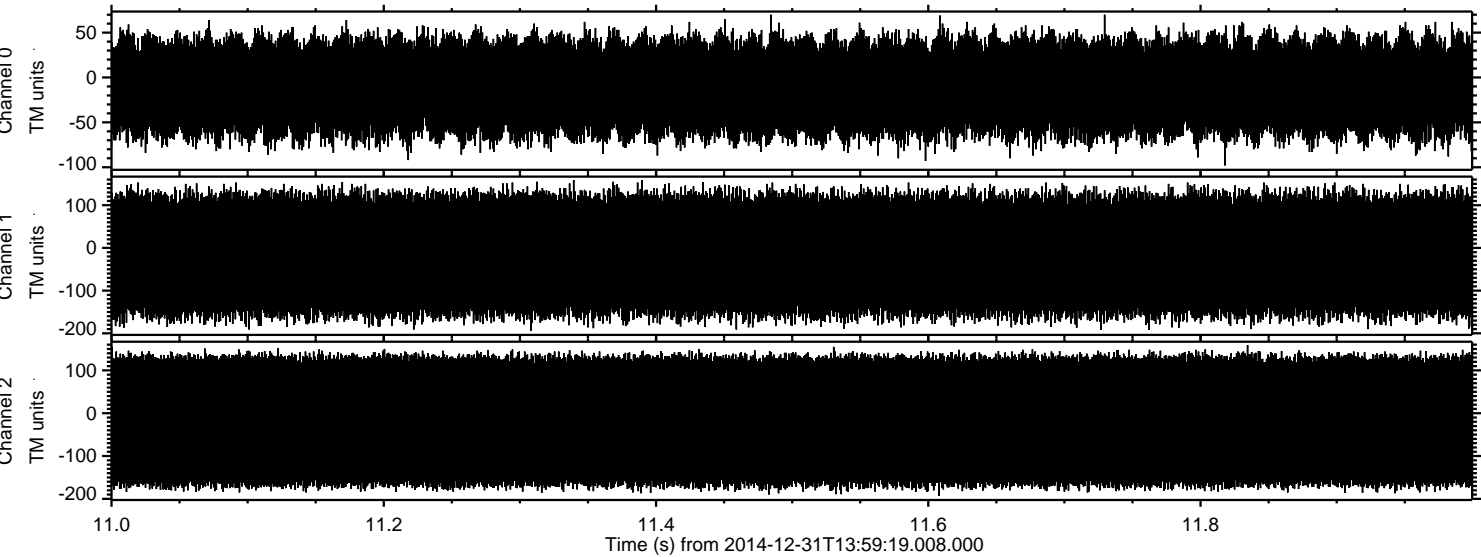
Processed Sat Jan 3 01:14:24 2015 by ELM ver.2012-10-06 from 001__elm20141231_135918__dat00.bin



Processed Sat Jan 3 01:14:25 2015 by ELM ver.2012-10-06 from 001__elm20141231_135918__dat00.bin



Processed Sat Jan 3 01:14:26 2015 by ELM ver.2012-10-06 from 001__elm20141231_135918__dat00.bin



Channel 0
mn: -98
mx: 70
 μ : -11.4
 σ : 31.8

Channel 1
mn: -194
mx: 159
 μ : -17.5
 σ : 81.4

Channel 2
mn: -193
mx: 159
 μ : -18.4
 σ : 96.2