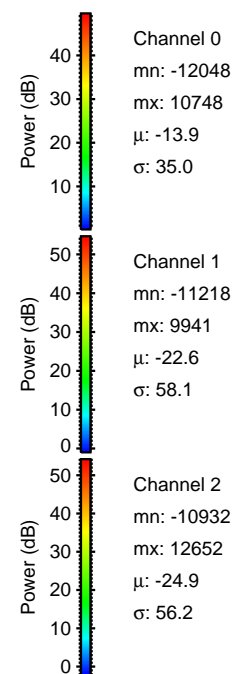
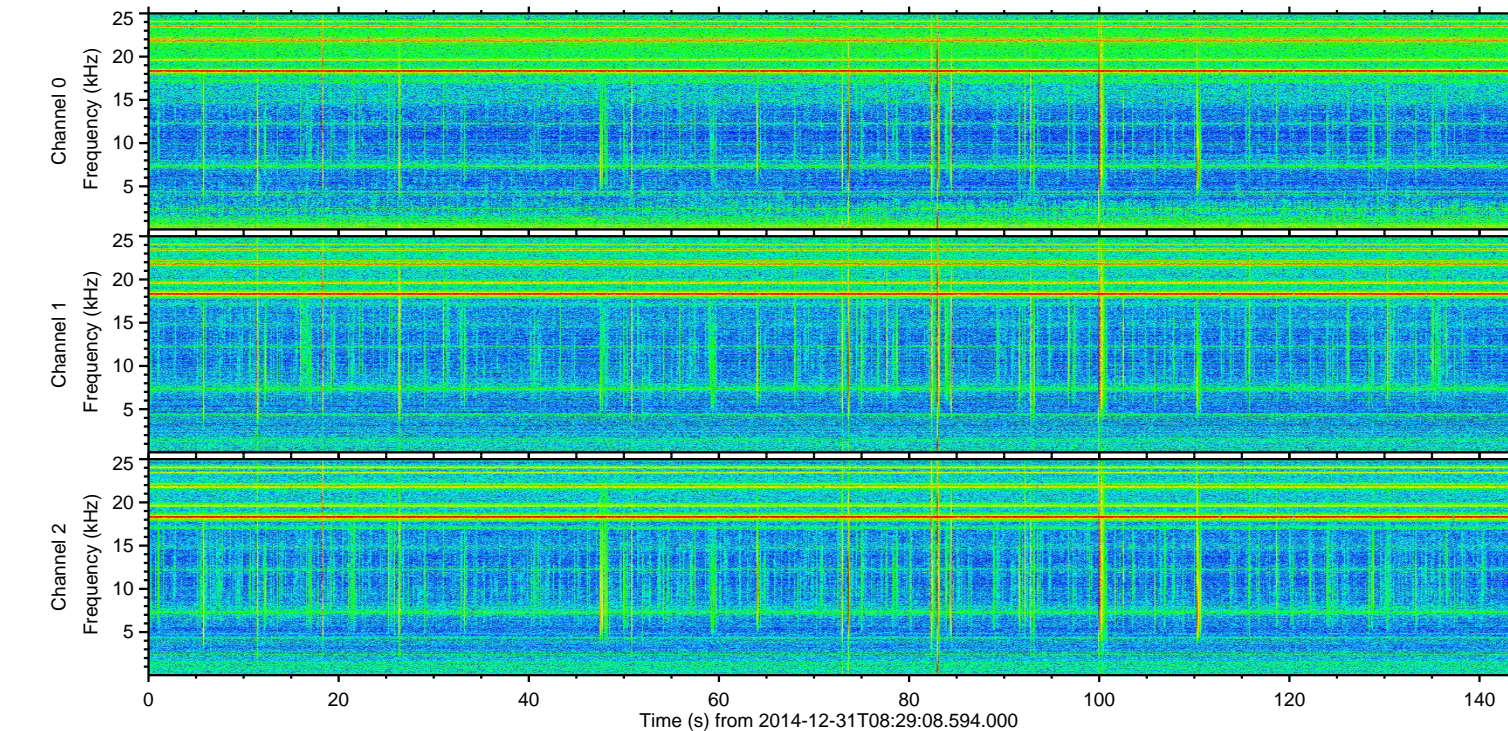
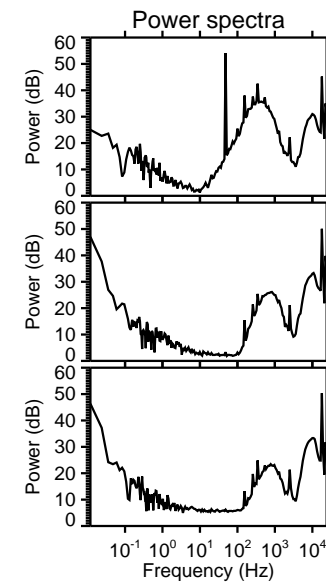
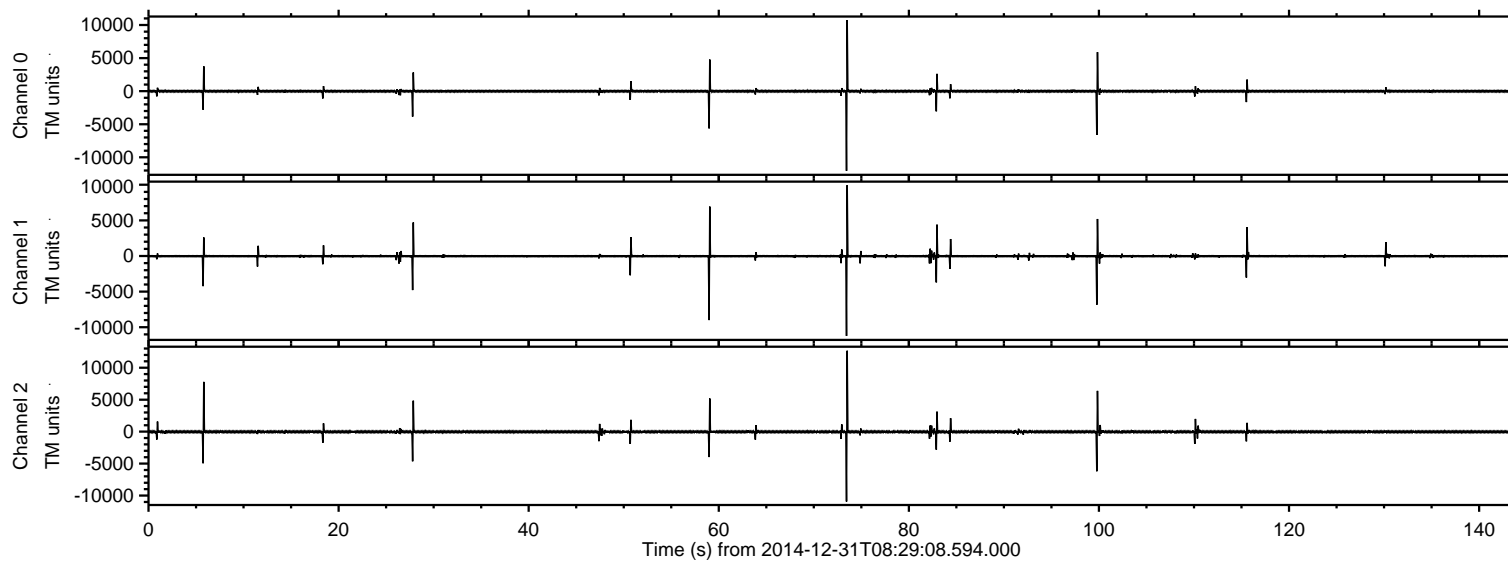


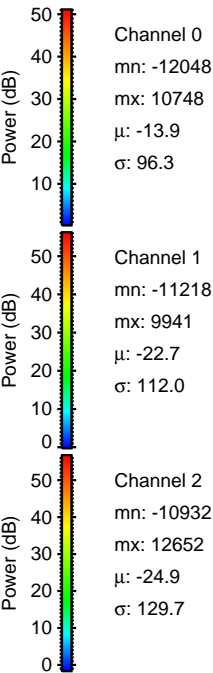
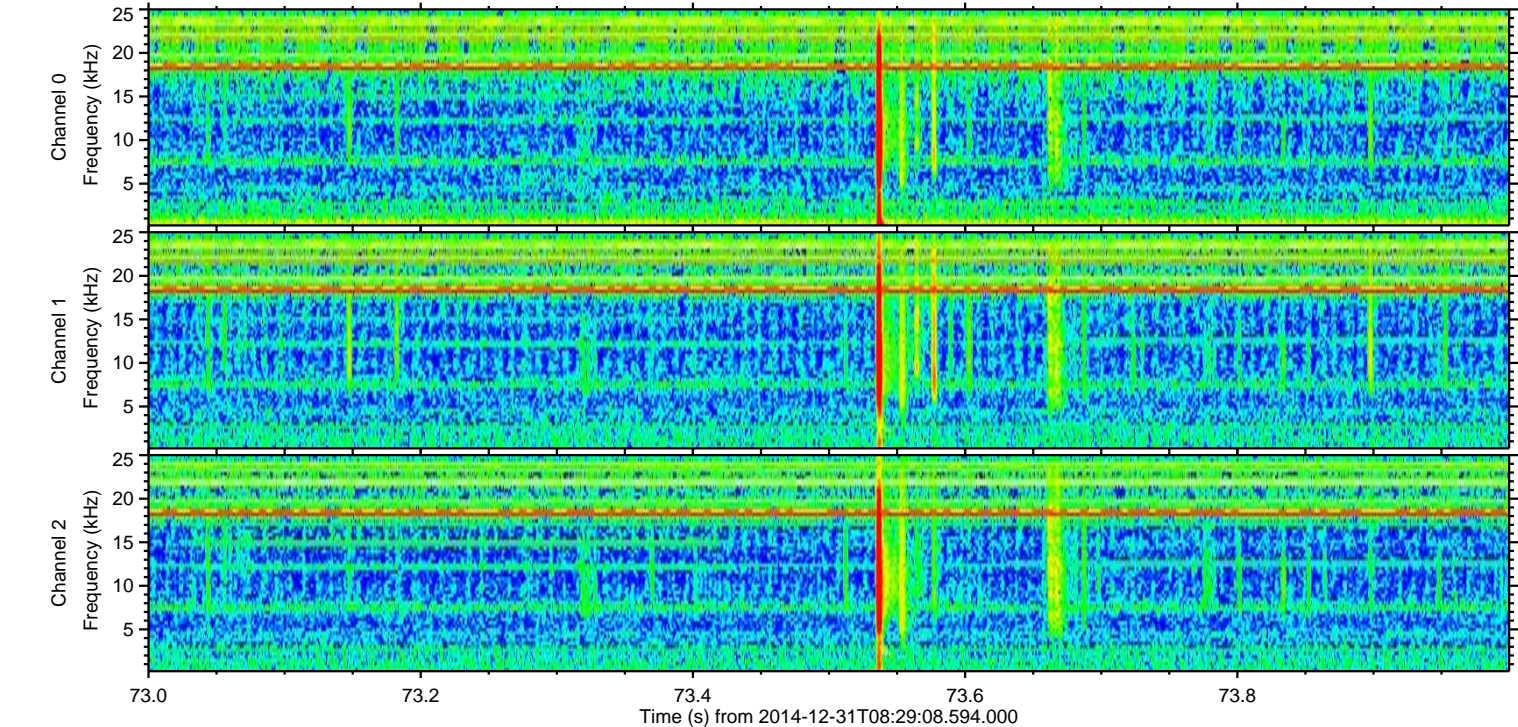
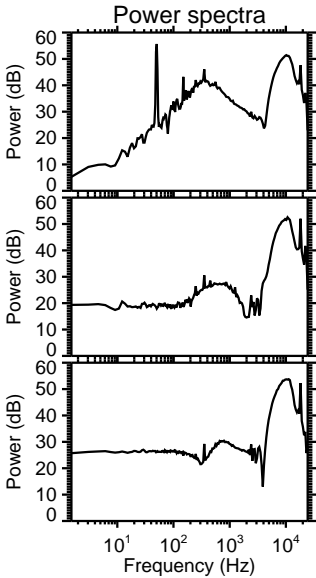
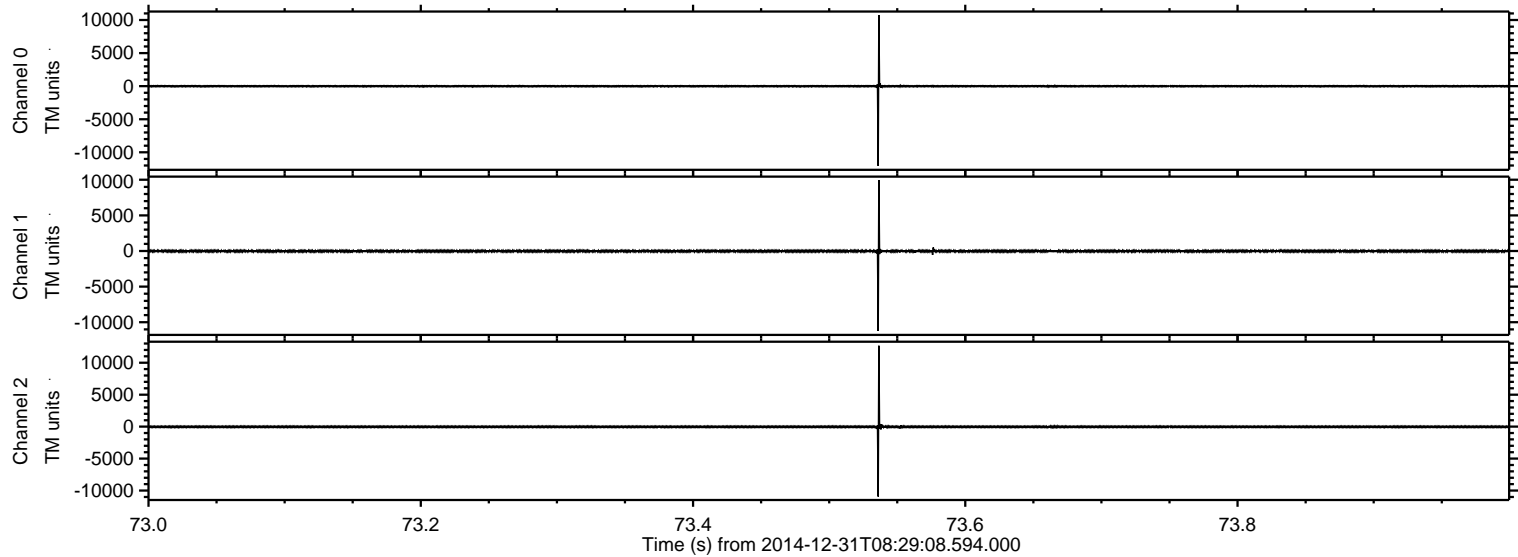
ELMAVAN 3D WAVEFORMS (Measured data sampled at 50 kHz) 49708 packets of 144 samples from 2014-12-31T08:29:08.594.000.

Processed Fri Jan 2 23:40:57 2015 by ELM ver.2012-10-06 from 001\_\_elm20141231\_082907\_\_dat00.bin



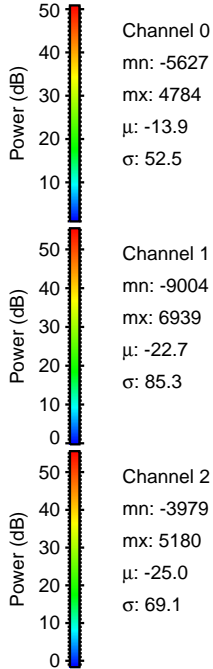
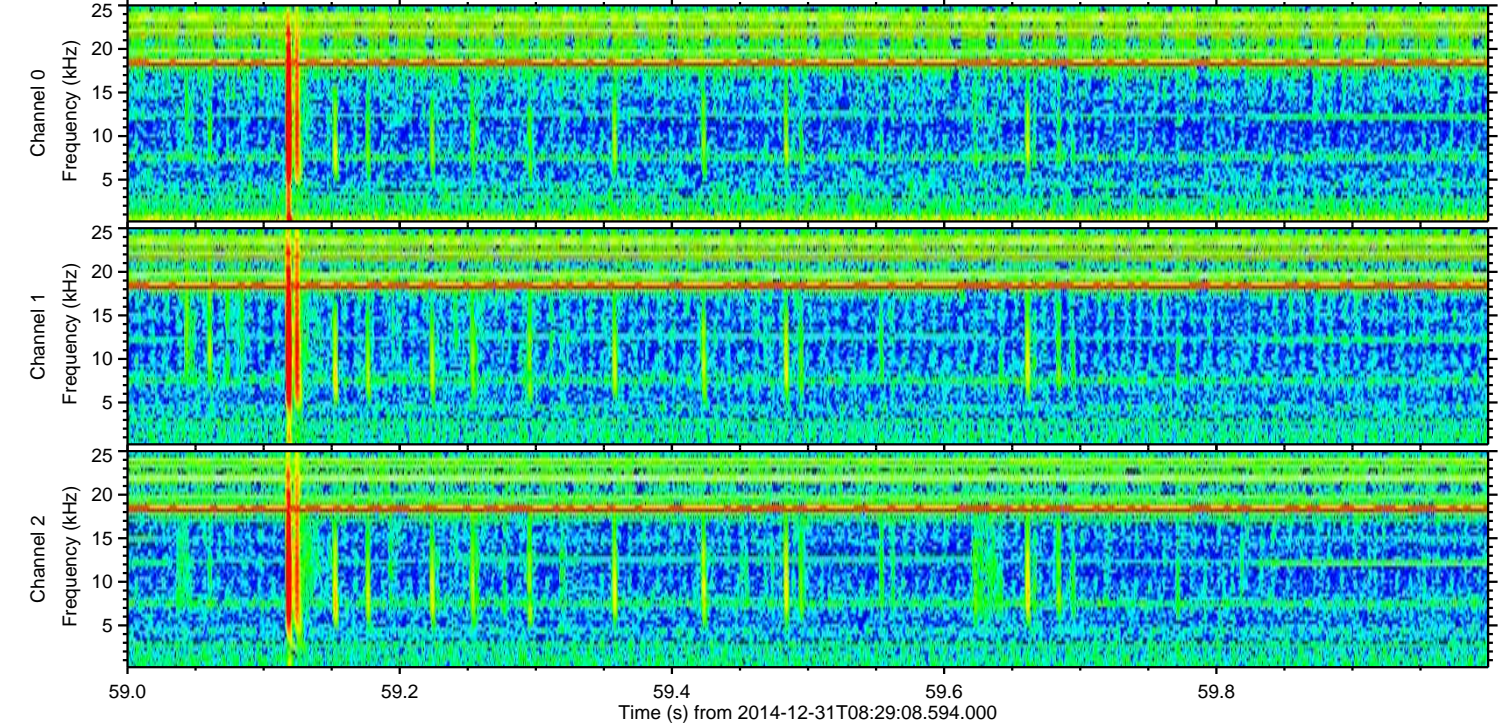
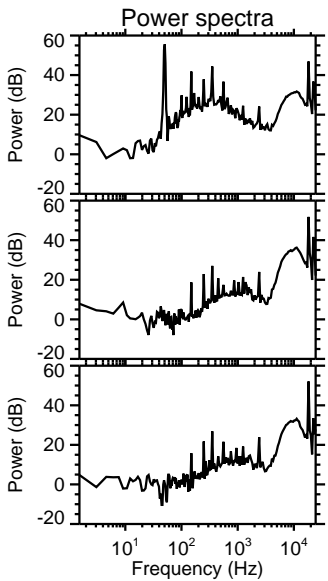
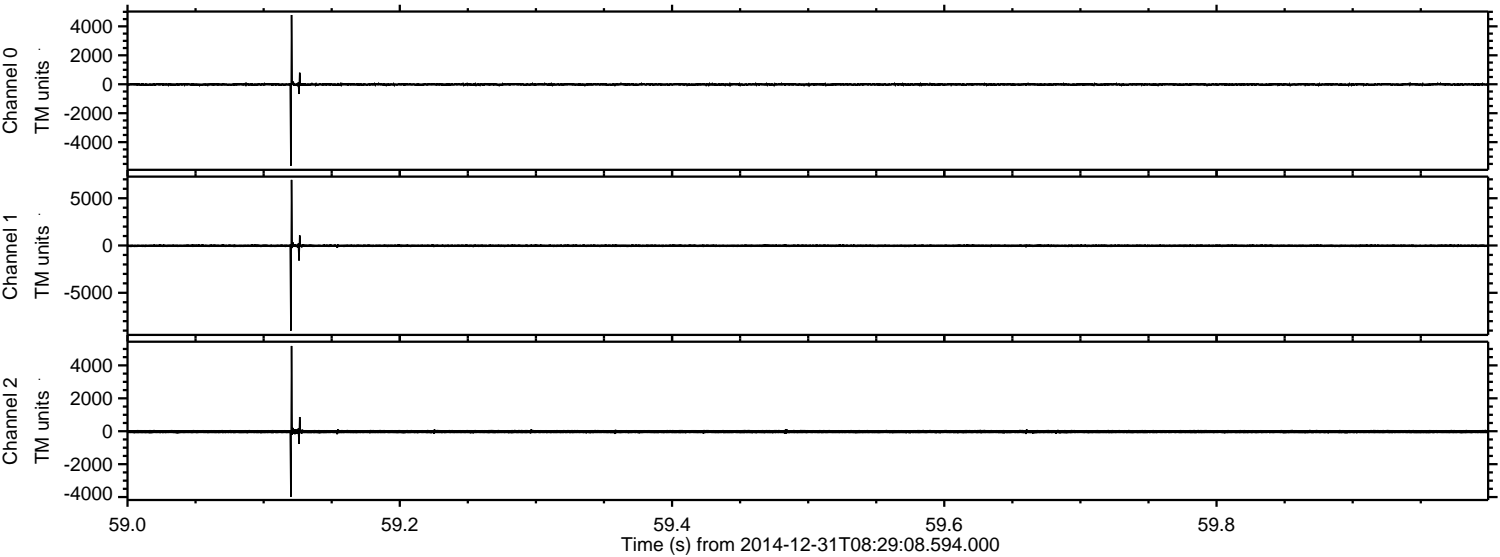


Processed Fri Jan 2 23:41:13 2015 by ELM ver.2012-10-06 from 001\_\_elm20141231\_082907\_\_dat00.bin



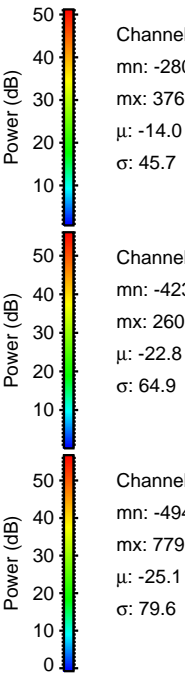
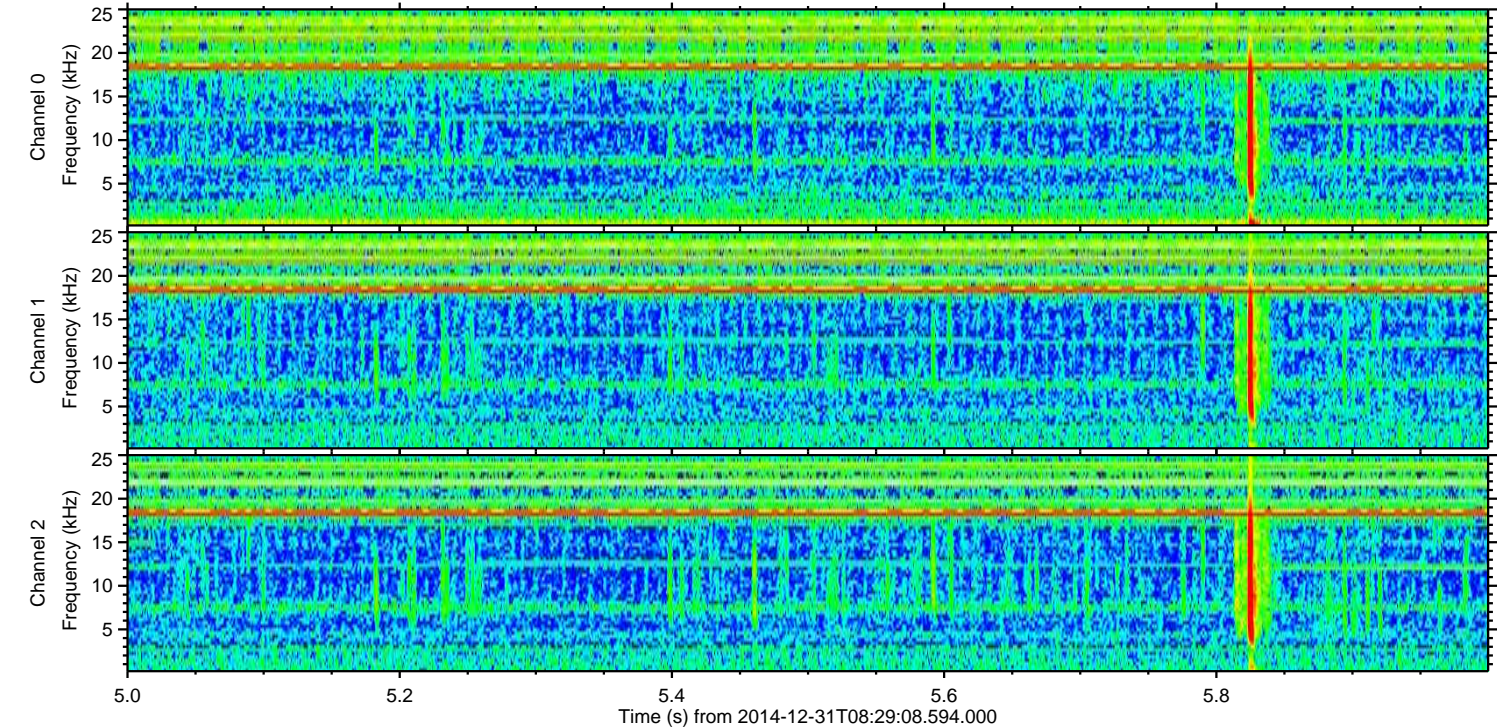
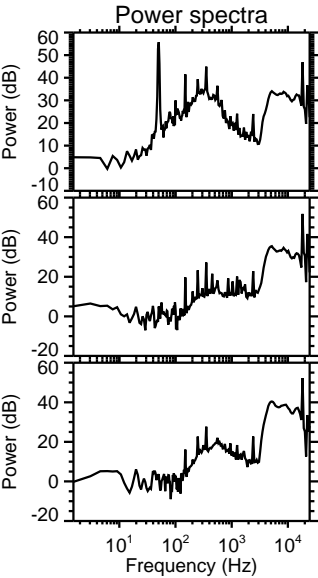
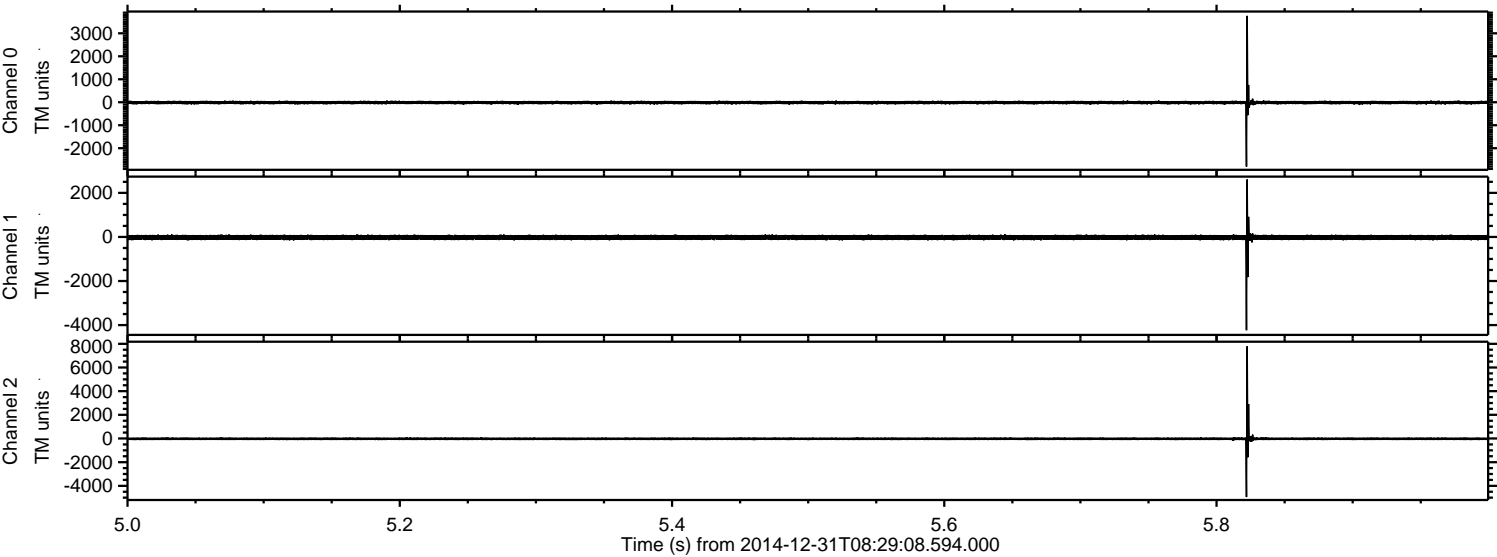


Processed Fri Jan 2 23:41:14 2015 by ELM ver.2012-10-06 from 001\_\_elm20141231\_082907\_\_dat00.bin





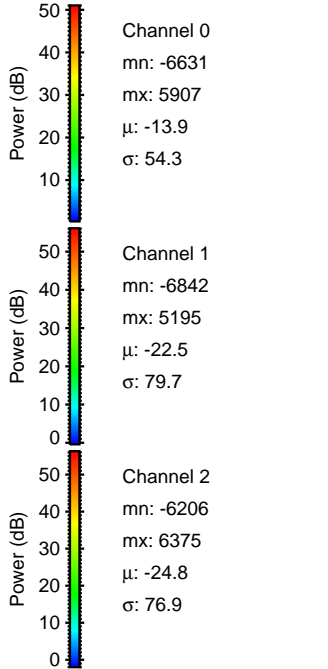
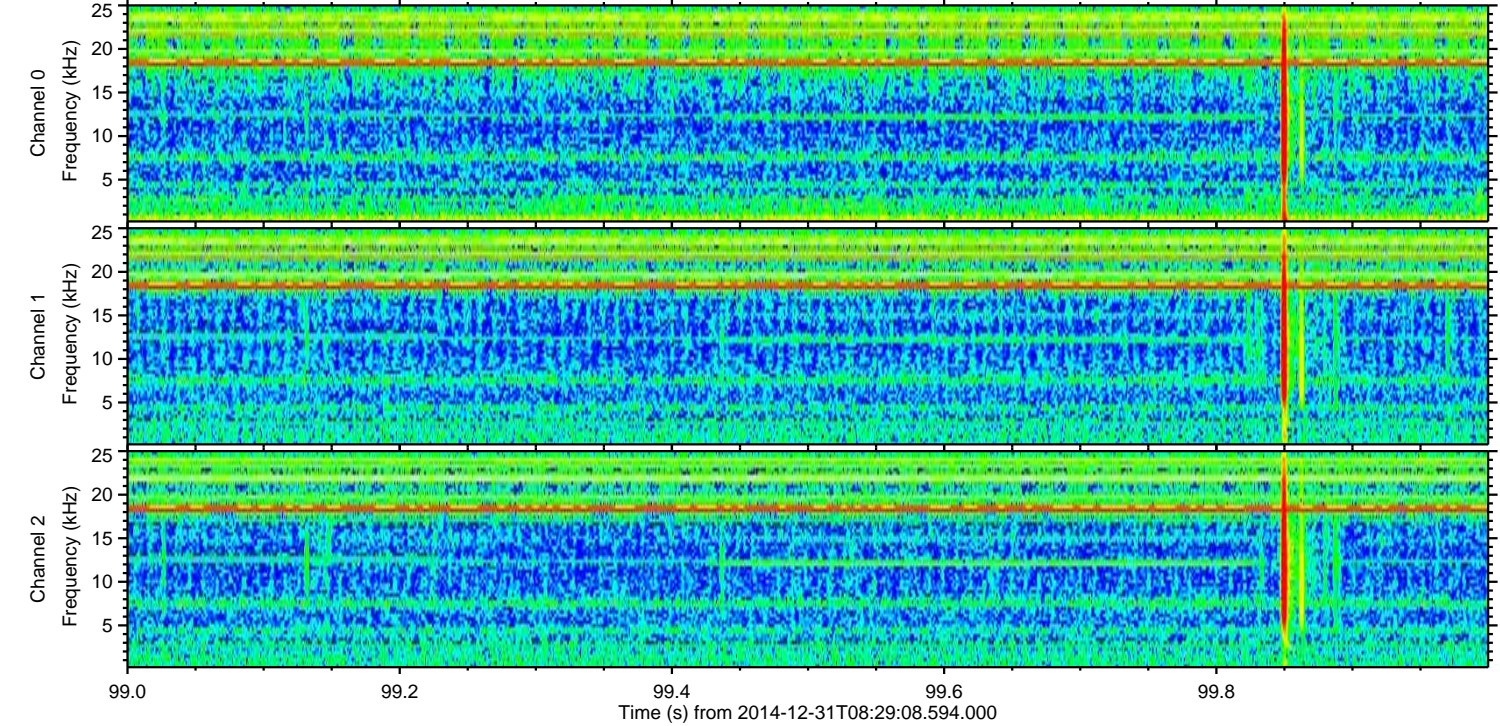
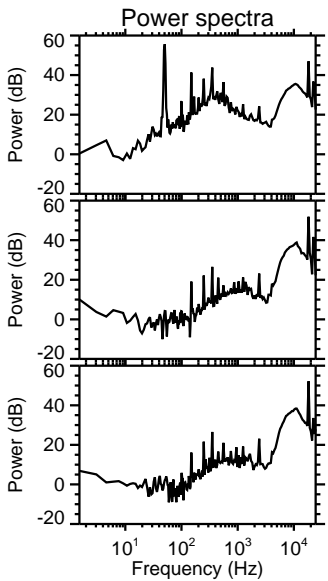
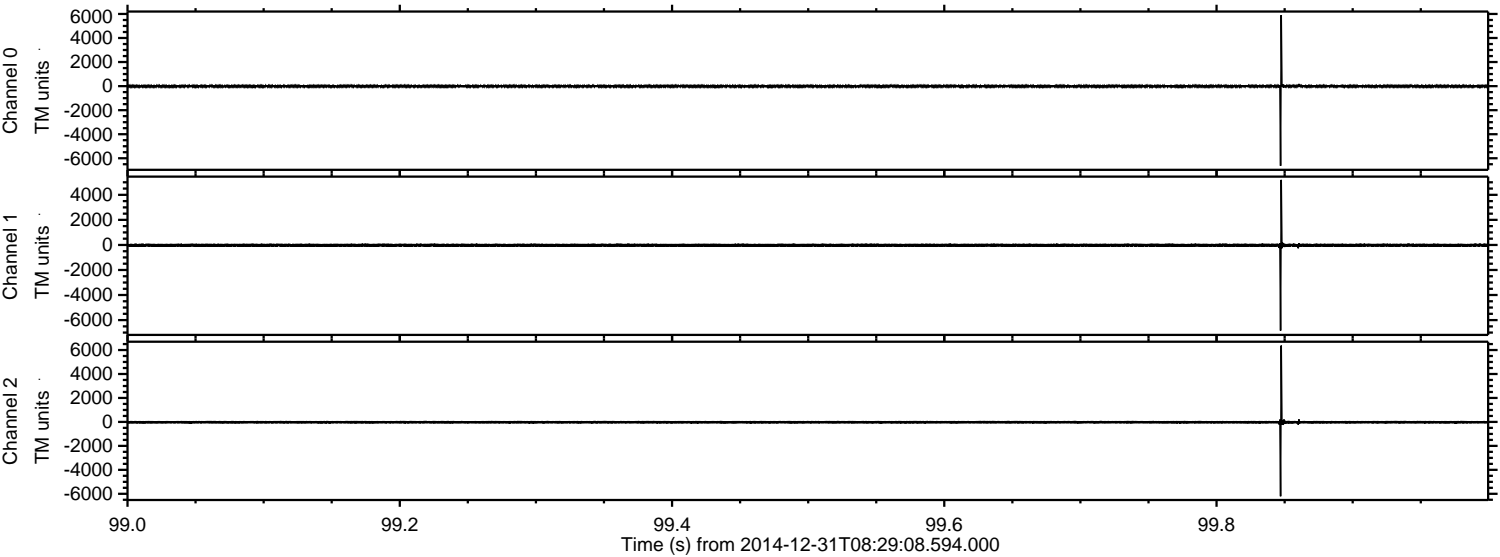
Processed Fri Jan 2 23:41:15 2015 by ELM ver.2012-10-06 from 001\_\_elm20141231\_082907\_\_dat00.bin





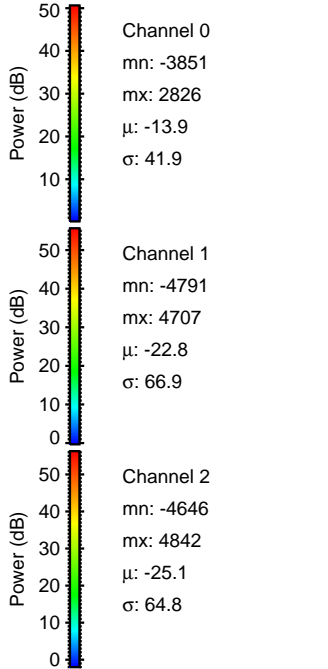
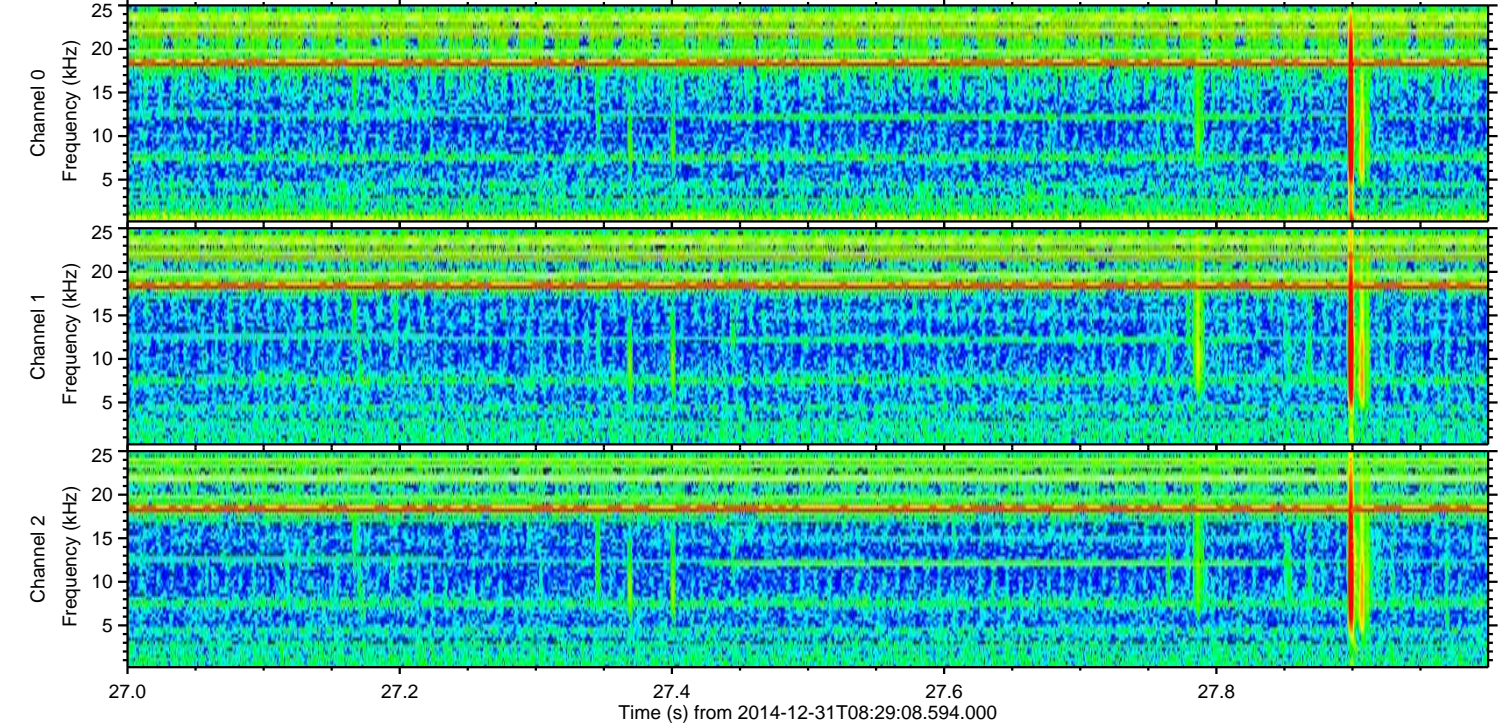
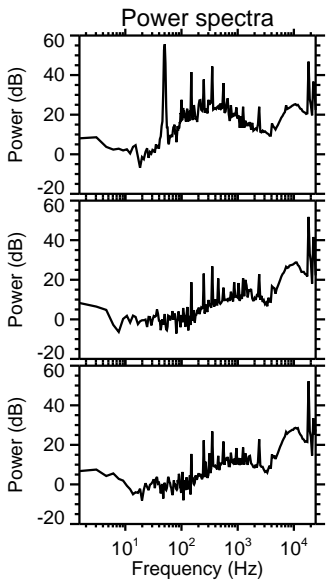
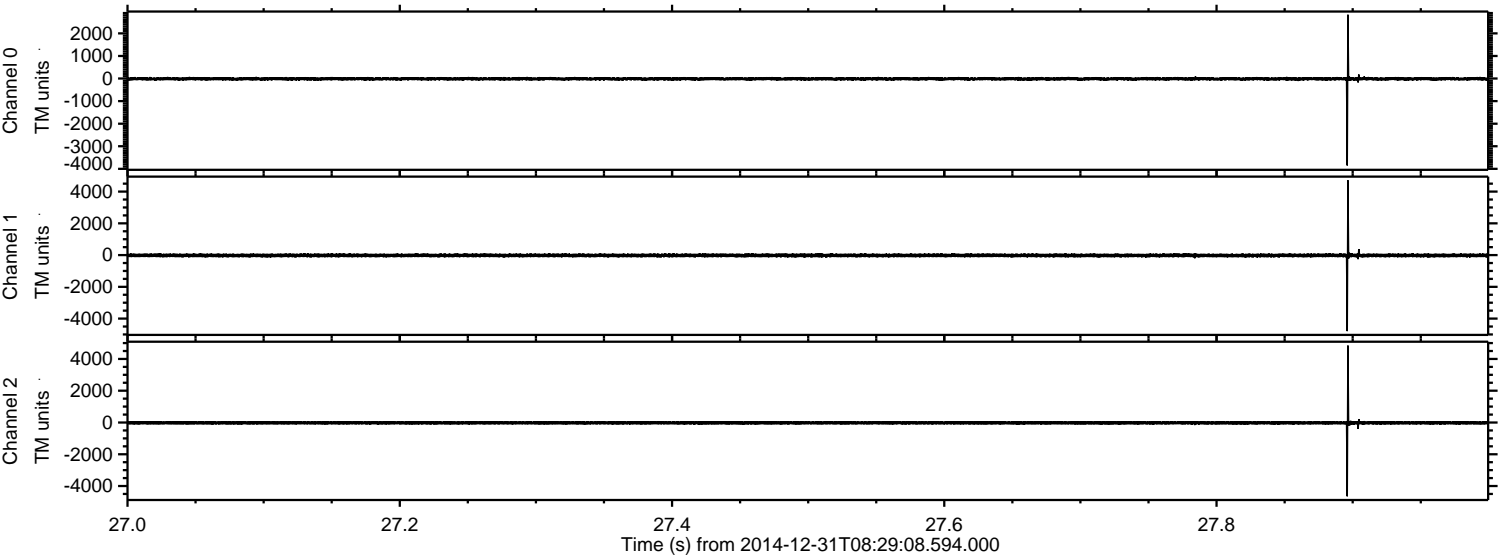
ELMAVAN 3D WAVEFORMS (Measured data sampled at 50 kHz) 49708 packets of 144 samples from 2014-12-31T08:29:08.594.000. Part 100/144

Processed Fri Jan 2 23:41:16 2015 by ELM ver.2012-10-06 from 001\_\_elm20141231\_082907\_\_dat00.bin



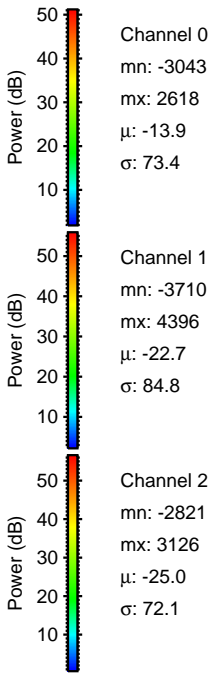
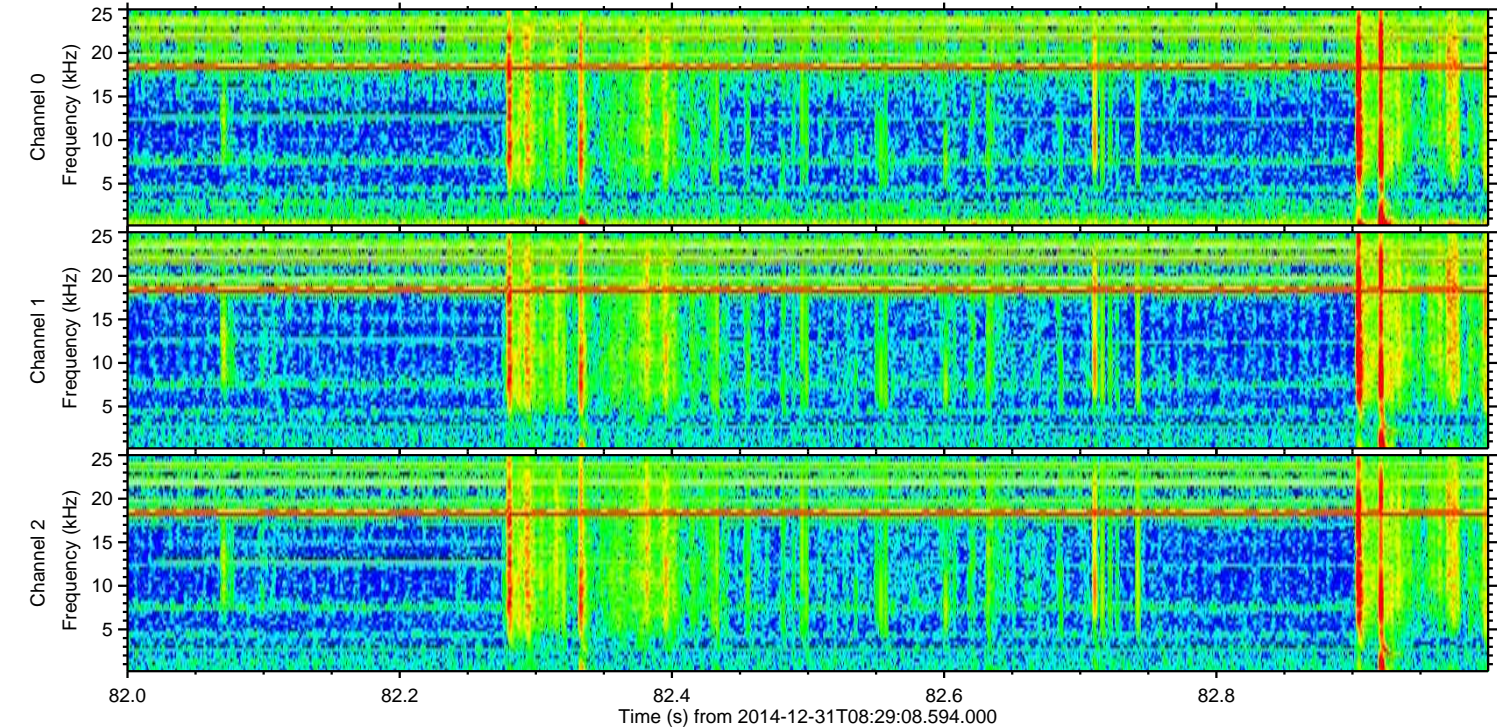
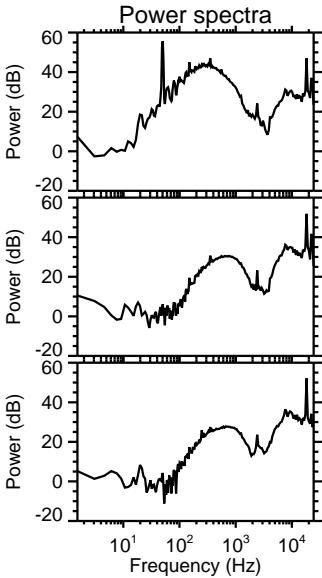
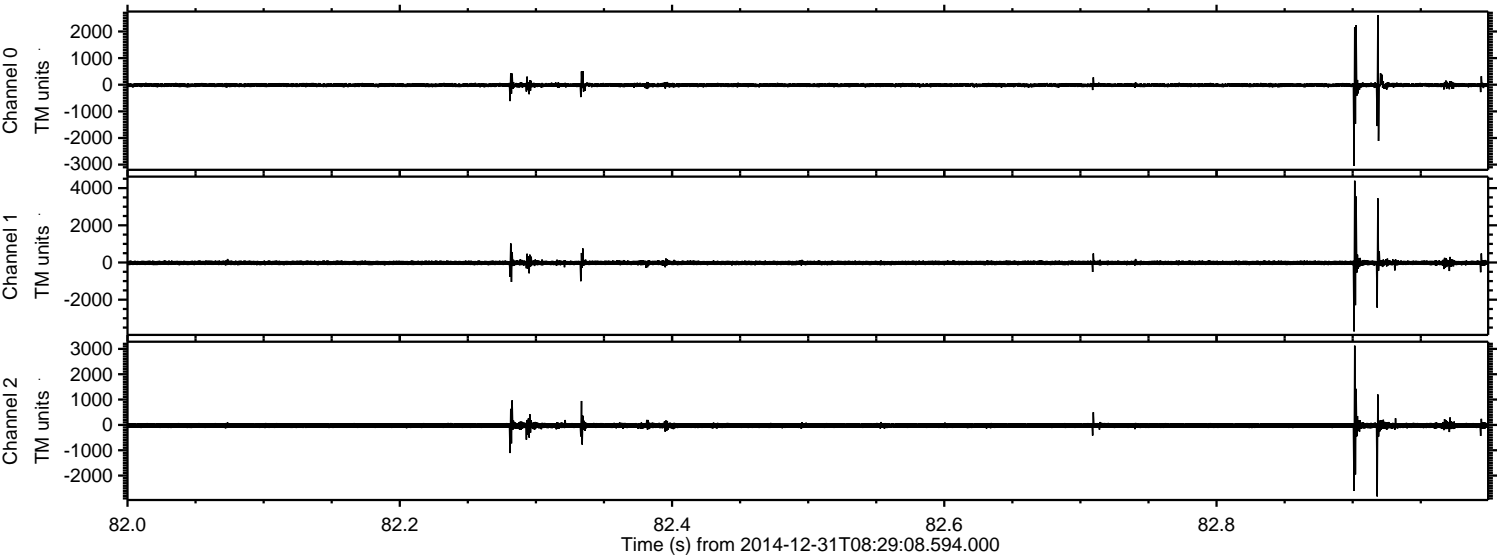


Processed Fri Jan 2 23:41:17 2015 by ELM ver.2012-10-06 from 001\_\_elm20141231\_082907\_\_dat00.bin





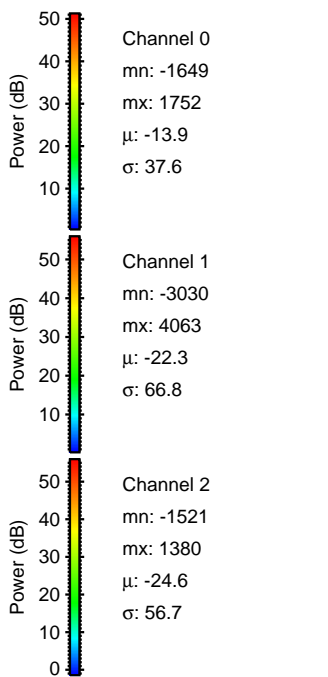
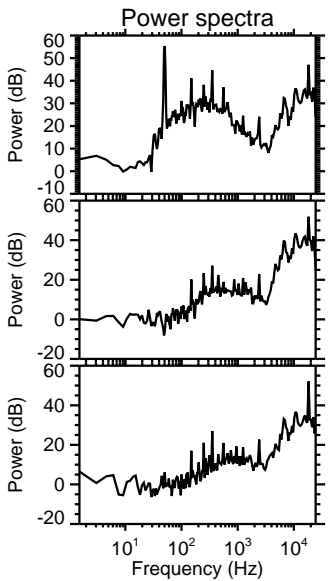
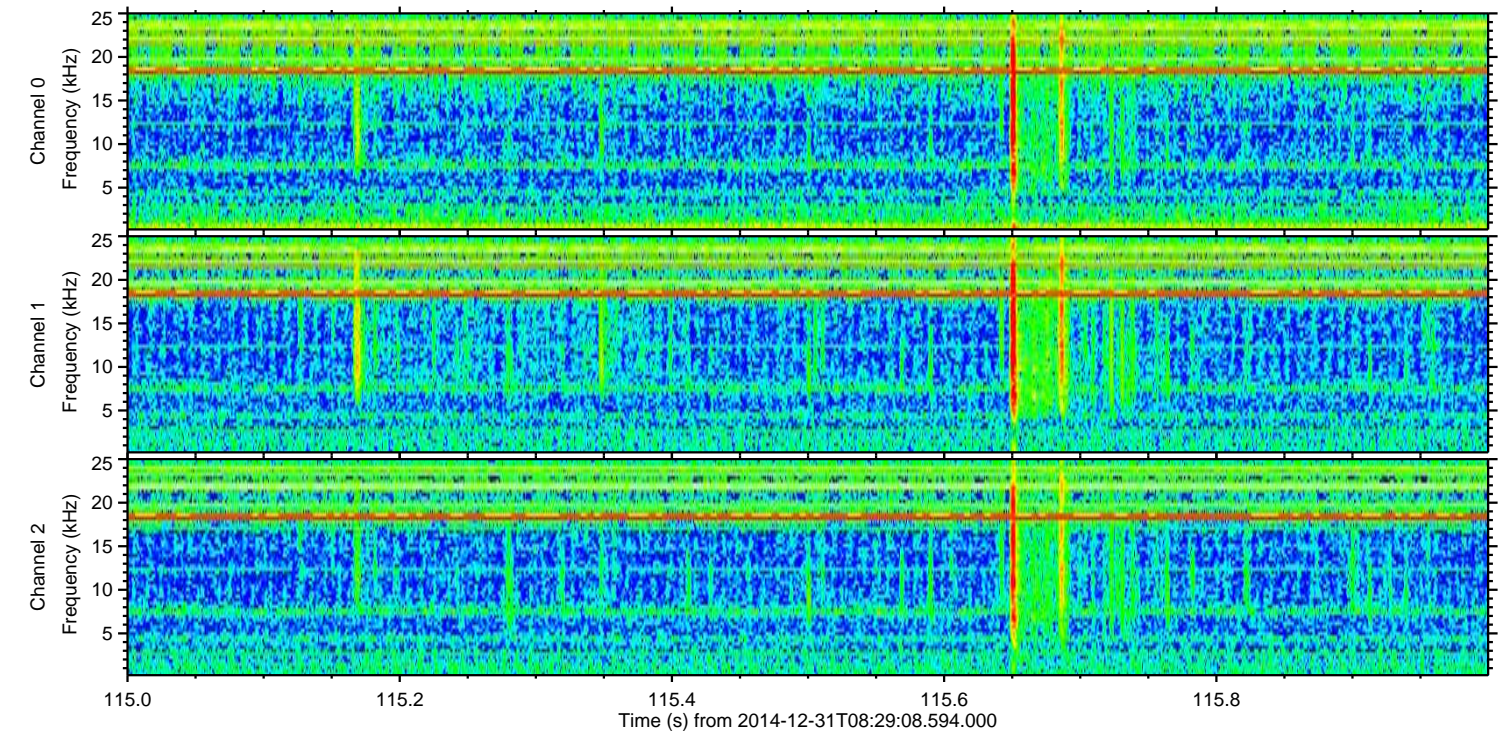
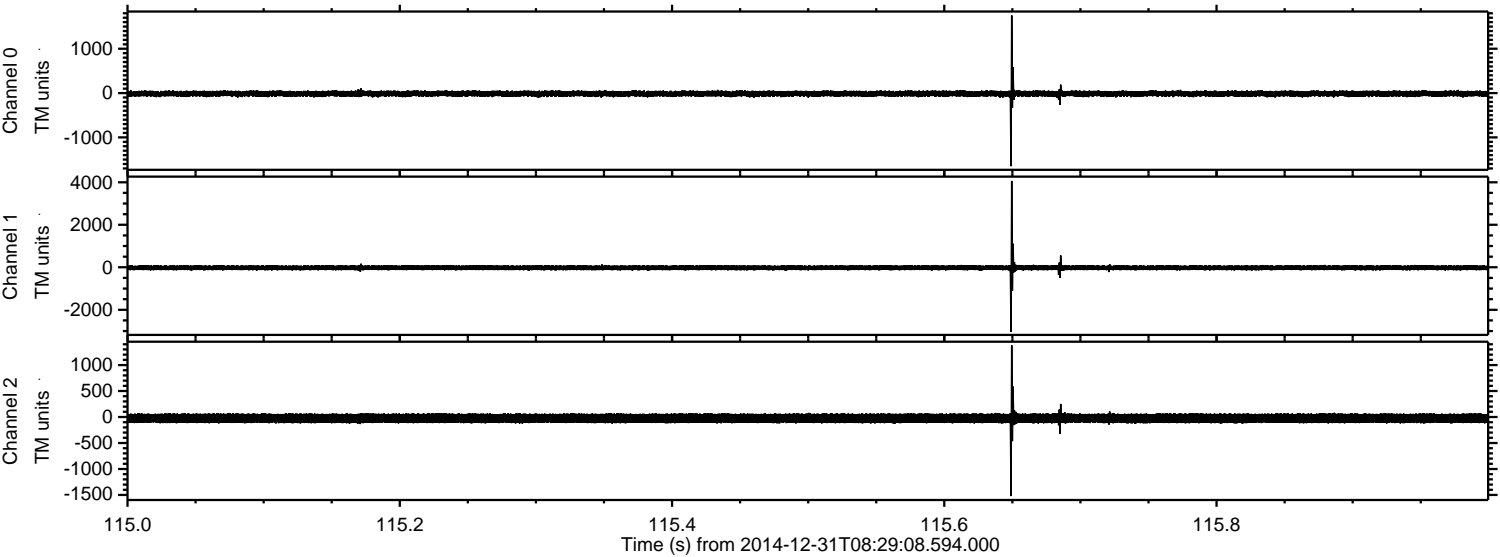
Processed Fri Jan 2 23:41:19 2015 by ELM ver.2012-10-06 from 001\_\_elm20141231\_082907\_\_dat00.bin





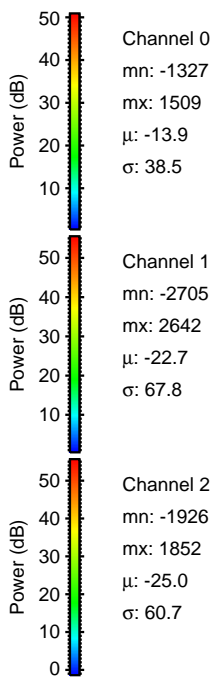
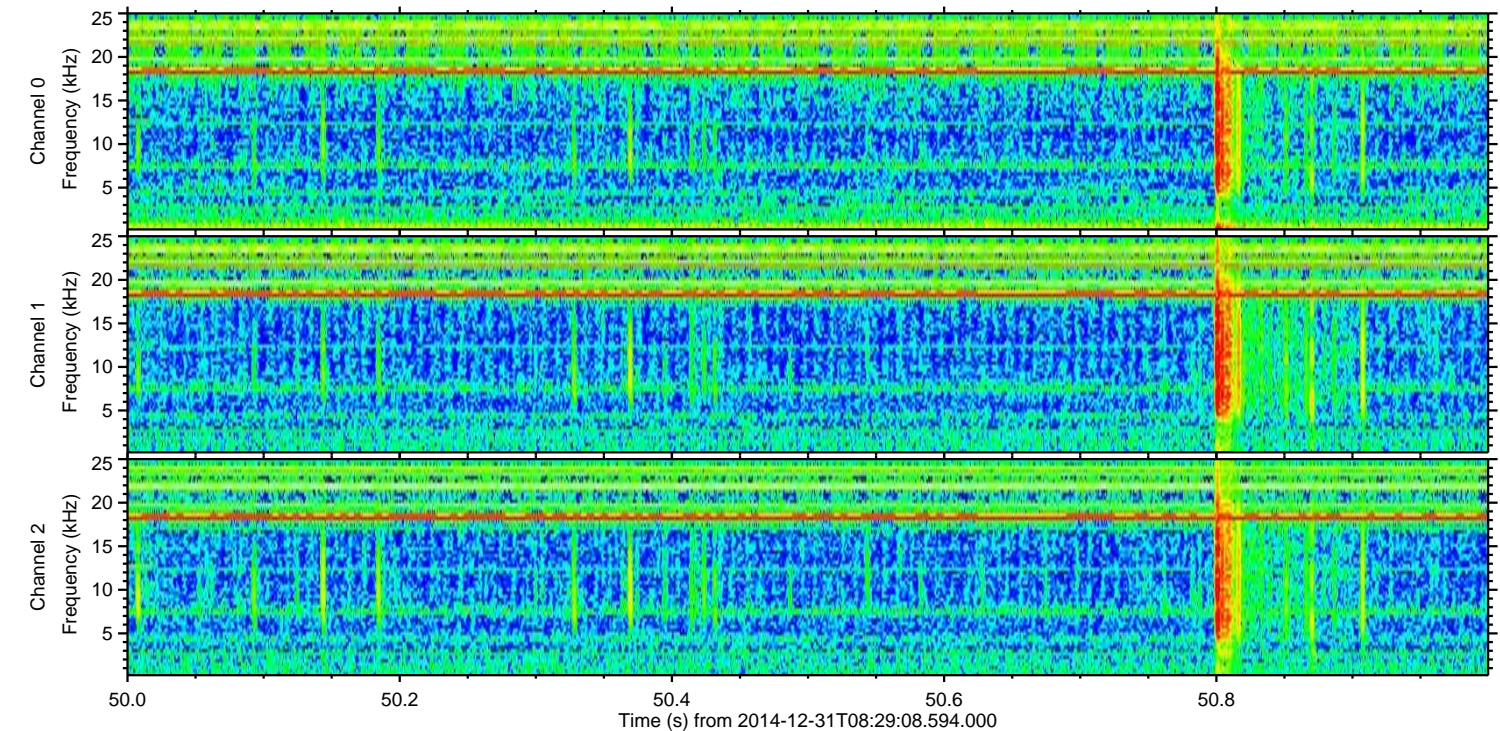
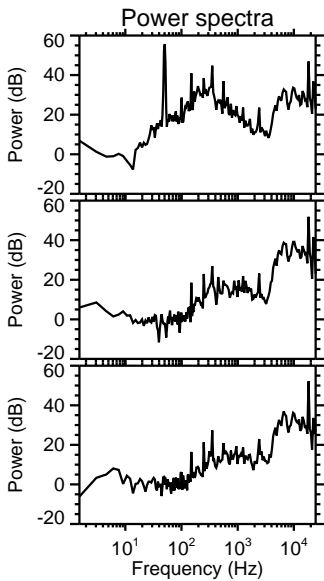
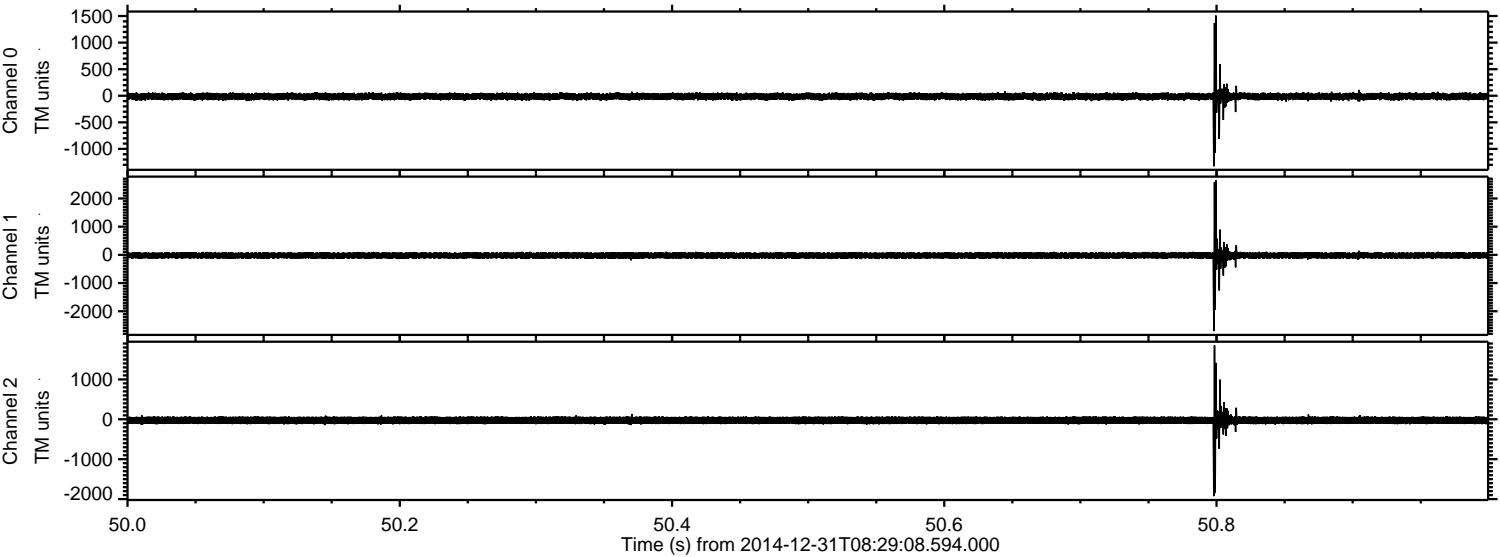
ELMAVAN 3D WAVEFORMS (Measured data sampled at 50 kHz) 49708 packets of 144 samples from 2014-12-31T08:29:08.594.000. Part 116/144

Processed Fri Jan 2 23:41:21 2015 by ELM ver.2012-10-06 from 001\_\_elm20141231\_082907\_\_dat00.bin





Processed Fri Jan 2 23:41:22 2015 by ELM ver.2012-10-06 from 001\_\_elm20141231\_082907\_\_dat00.bin





Processed Fri Jan 2 23:41:23 2015 by ELM ver.2012-10-06 from 001\_\_elm20141231\_082907\_\_dat00.bin

