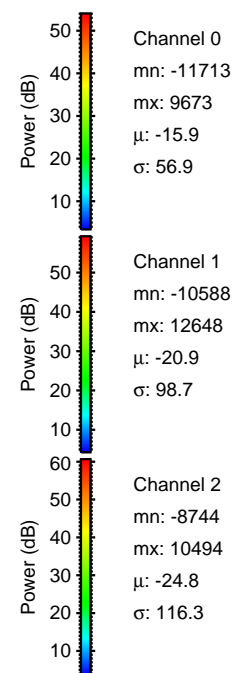
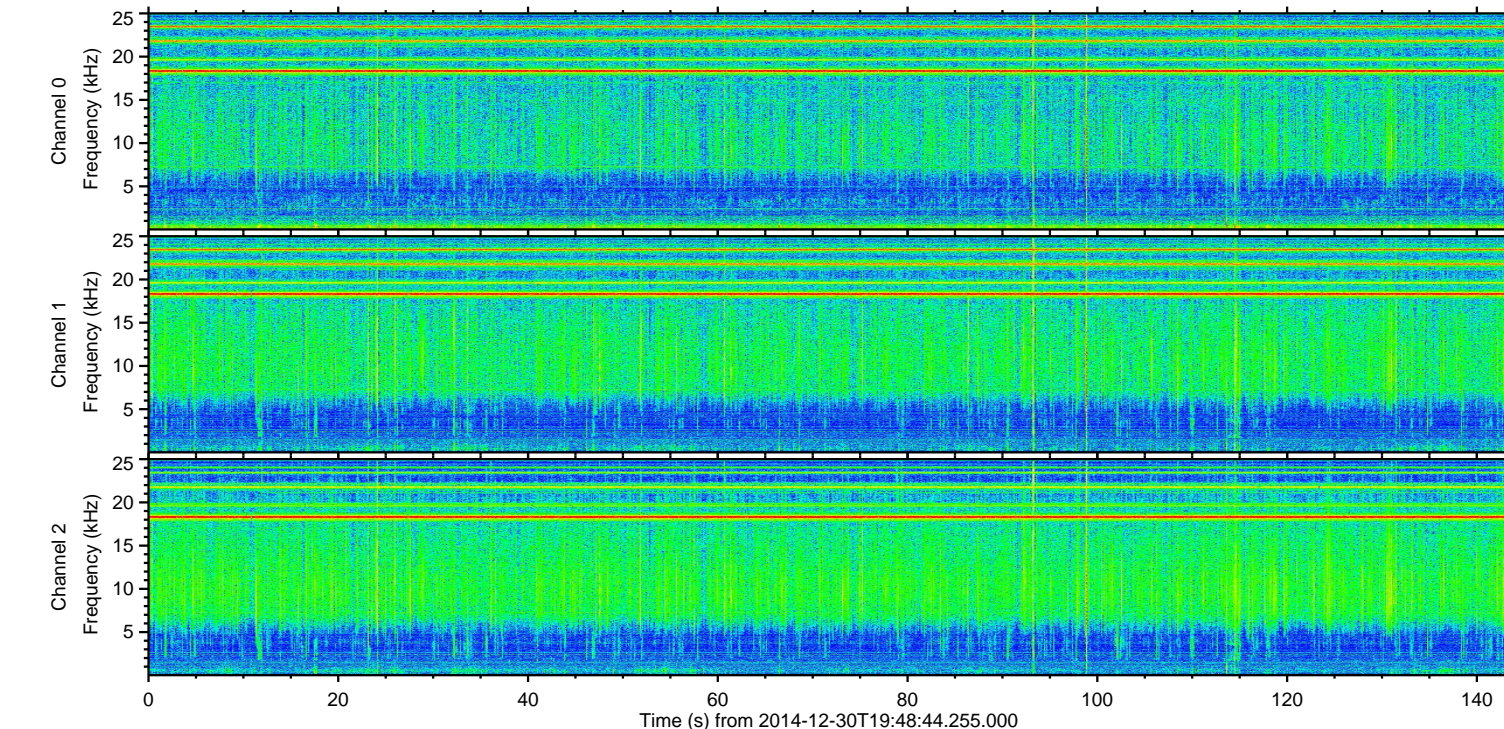
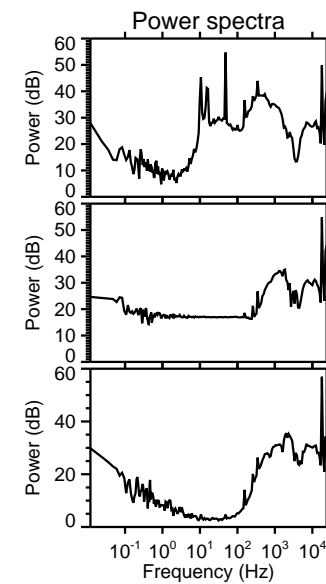
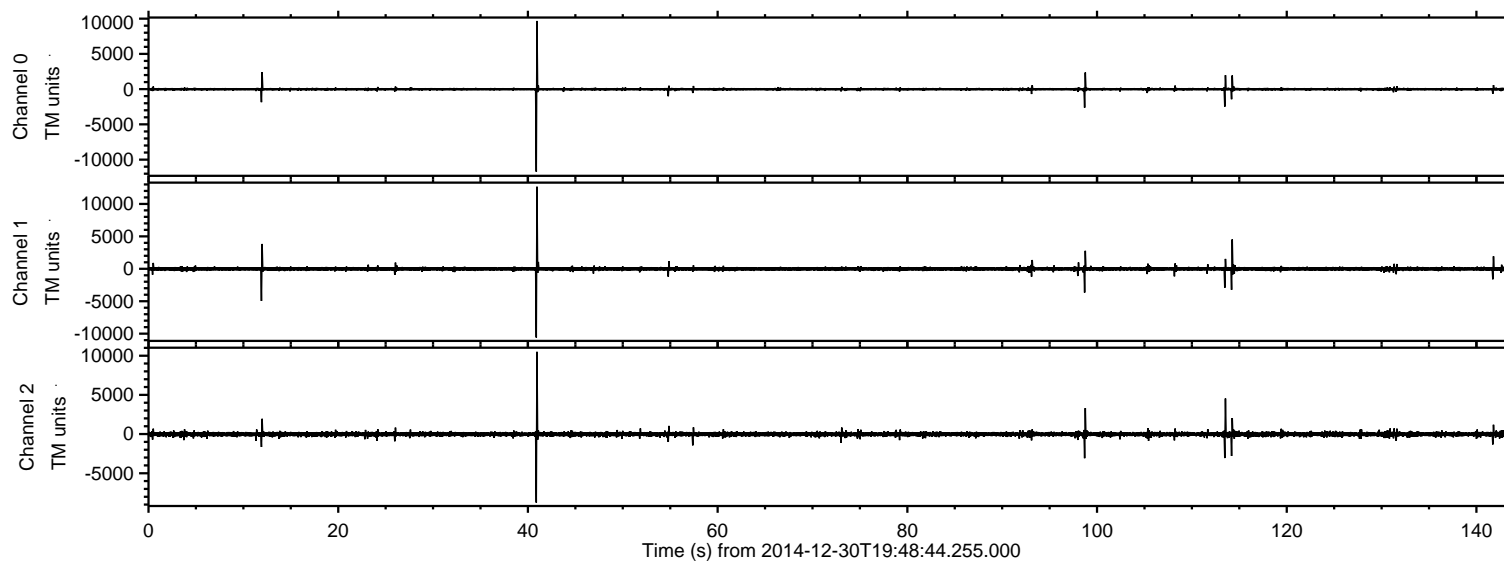


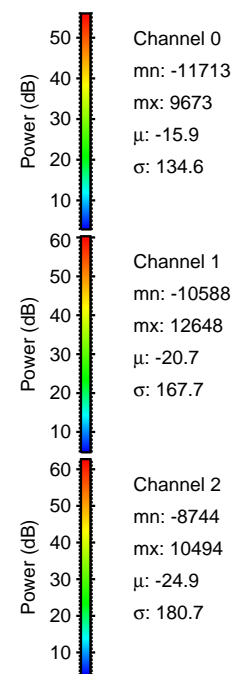
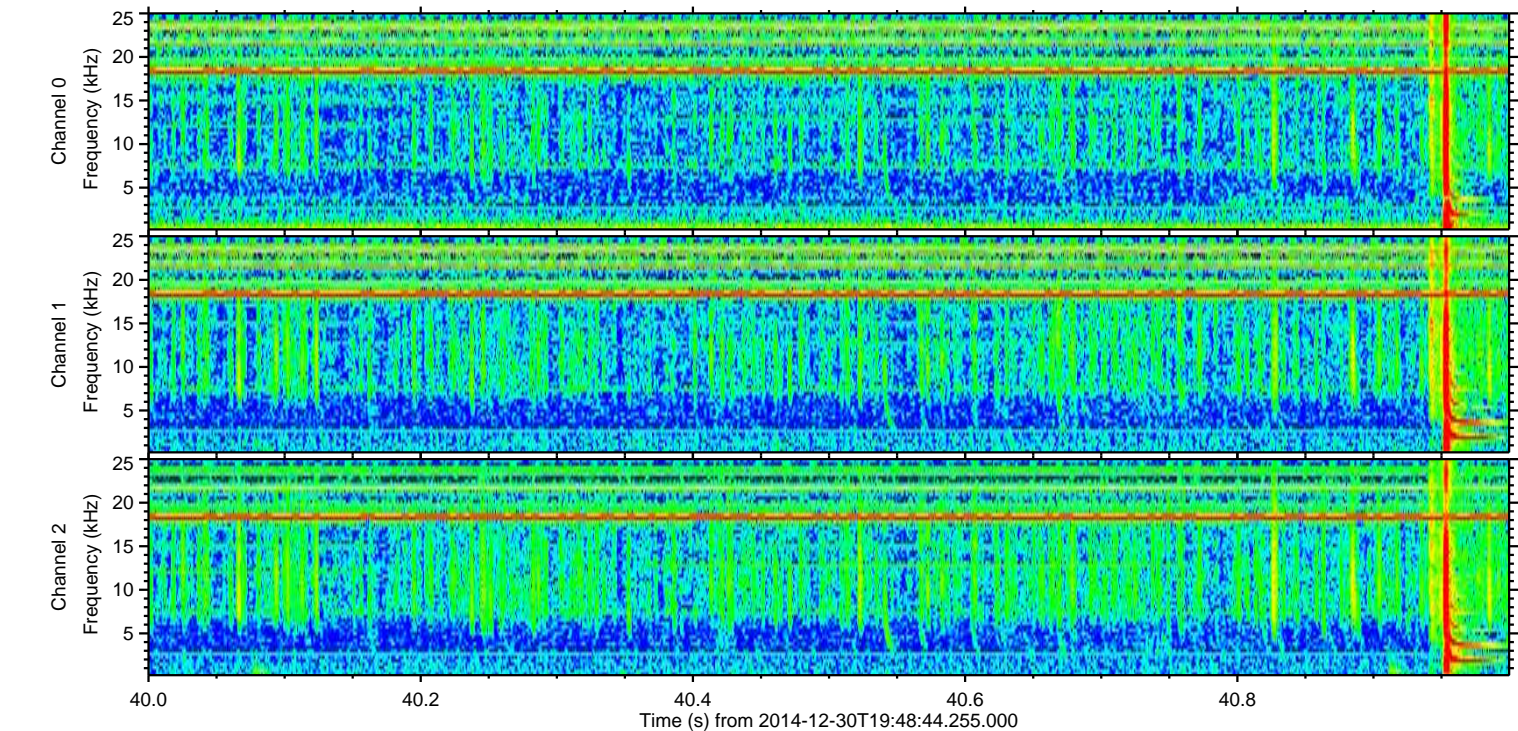
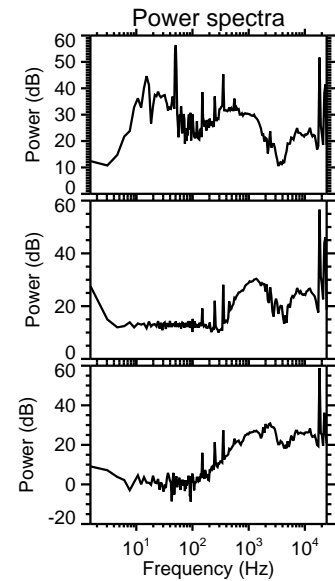
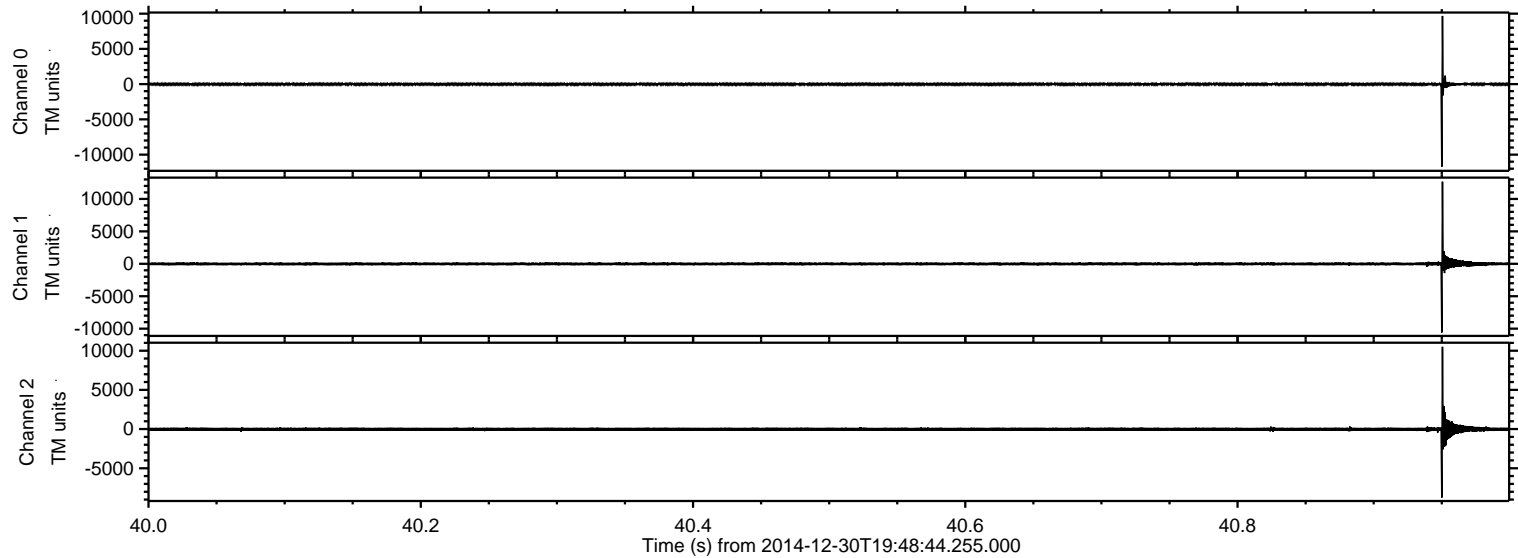
ELMAVAN 3D WAVEFORMS (Measured data sampled at 50 kHz) 49808 packets of 144 samples from 2014-12-30T19:48:44.255.000.

Processed Fri Jan 2 19:50:15 2015 by ELM ver.2012-10-06 from 001__elm20141230_194843__dat00.bin



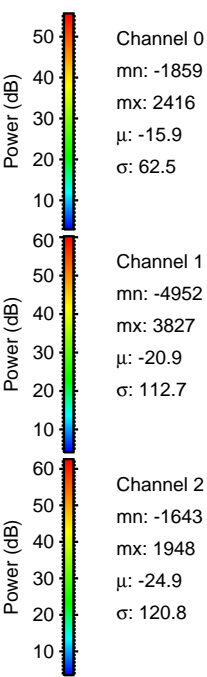
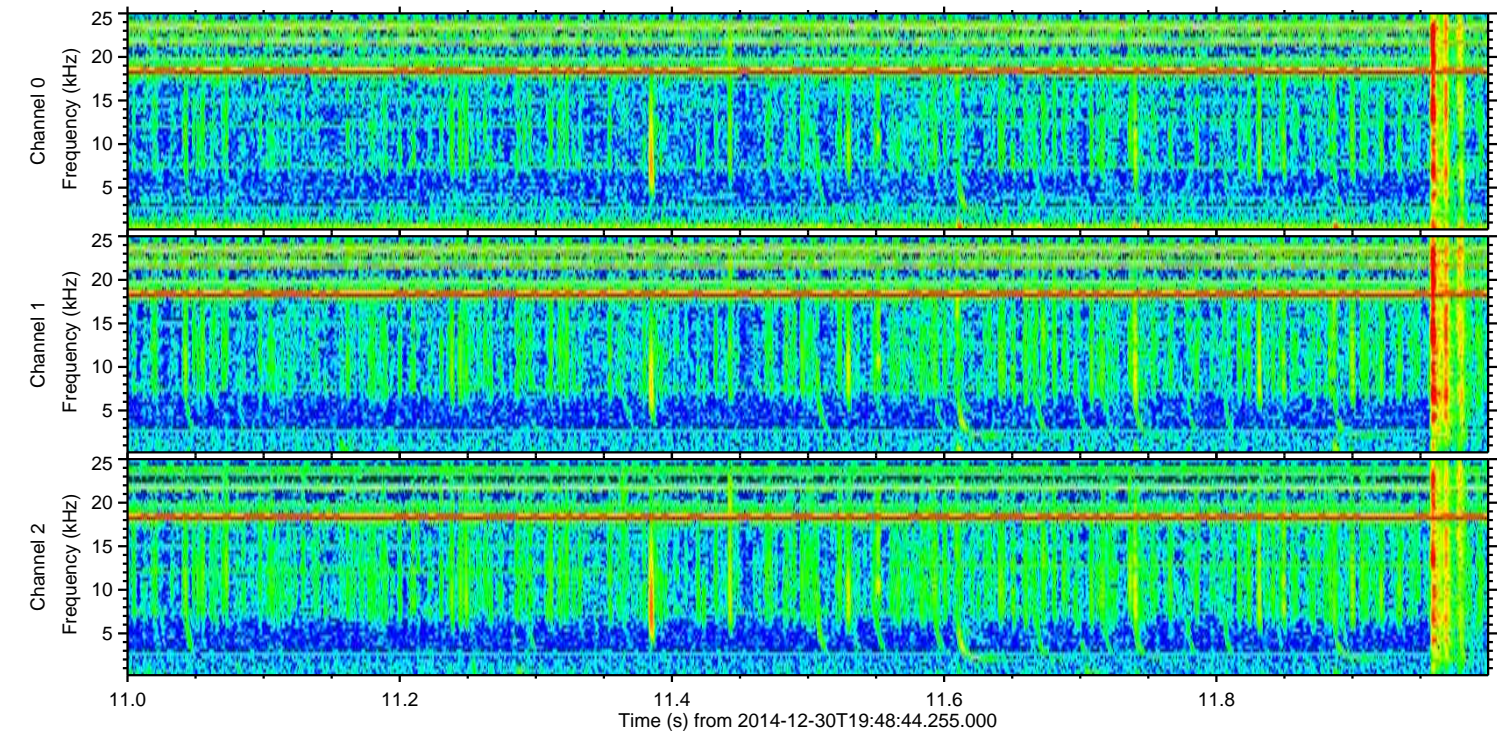
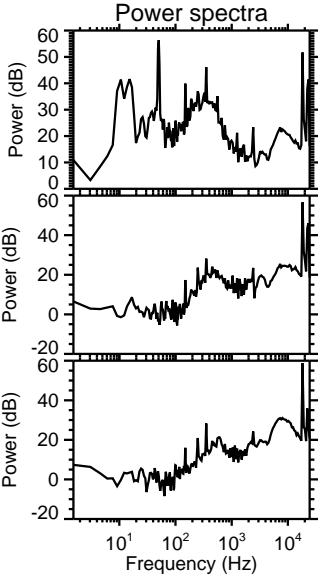
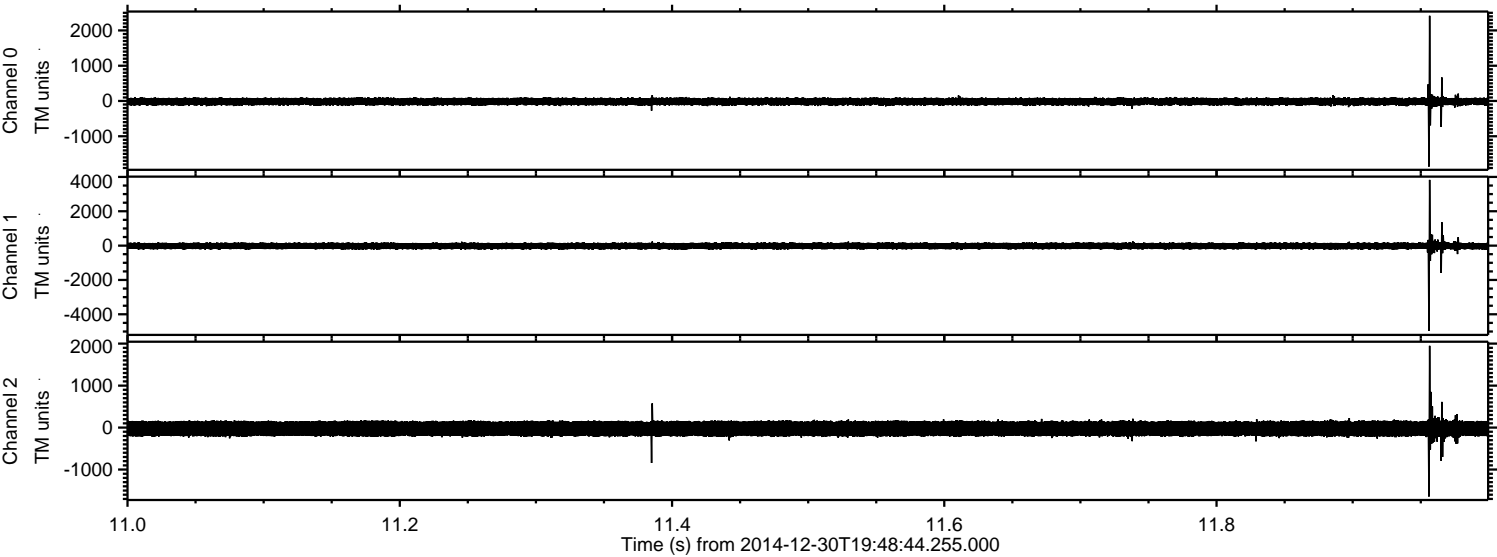
ELMAVAN 3D WAVEFORMS (Measured data sampled at 50 kHz) 49808 packets of 144 samples from 2014-12-30T19:48:44.255.000. Part 41/144

Processed Fri Jan 2 19:50:31 2015 by ELM ver.2012-10-06 from 001__elm20141230_194843__dat00.bin



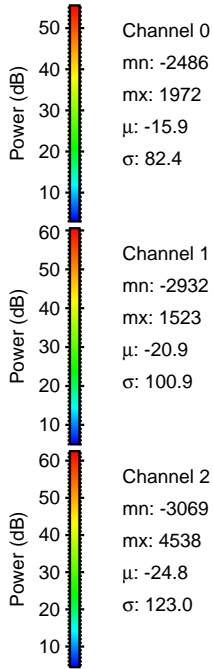
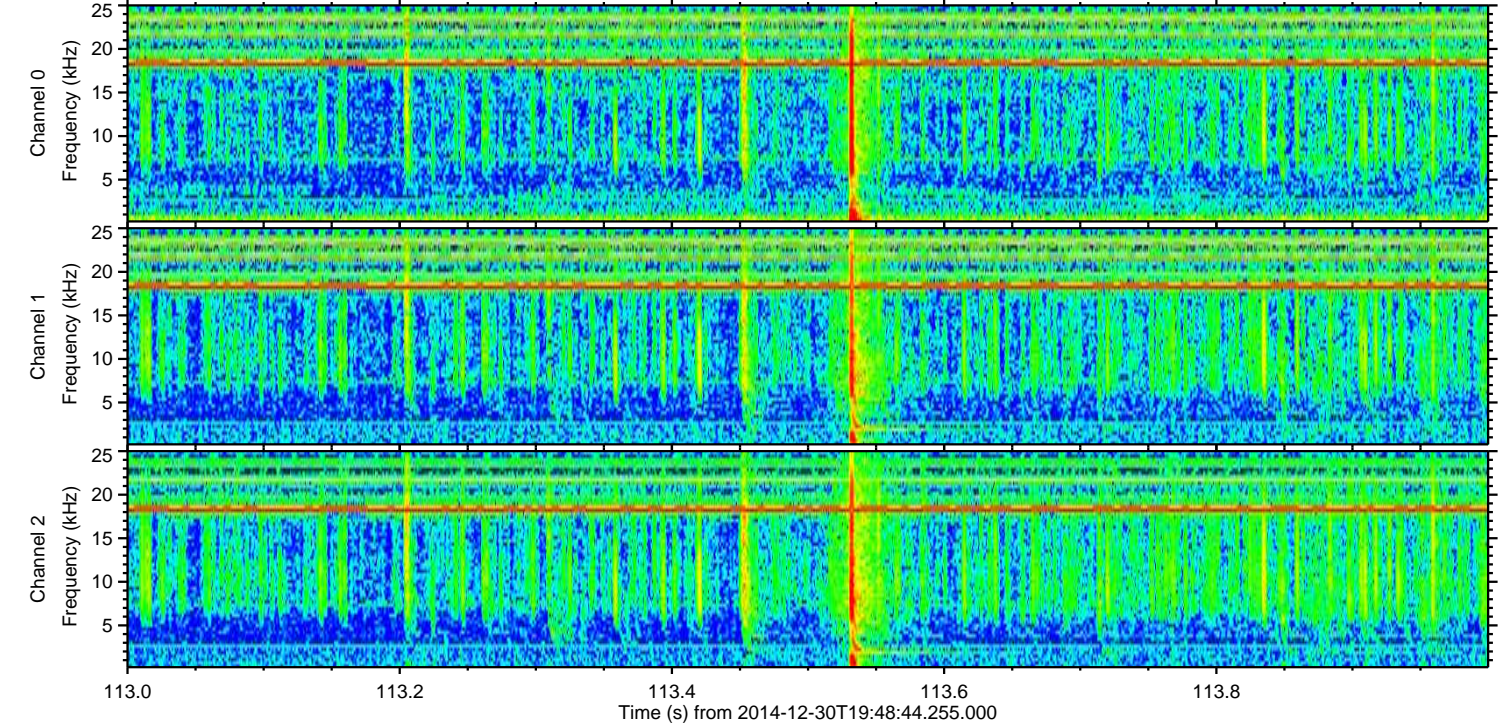
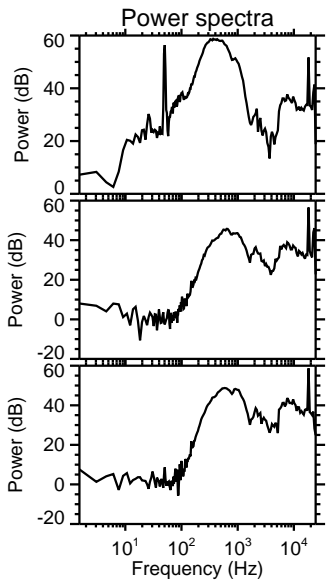
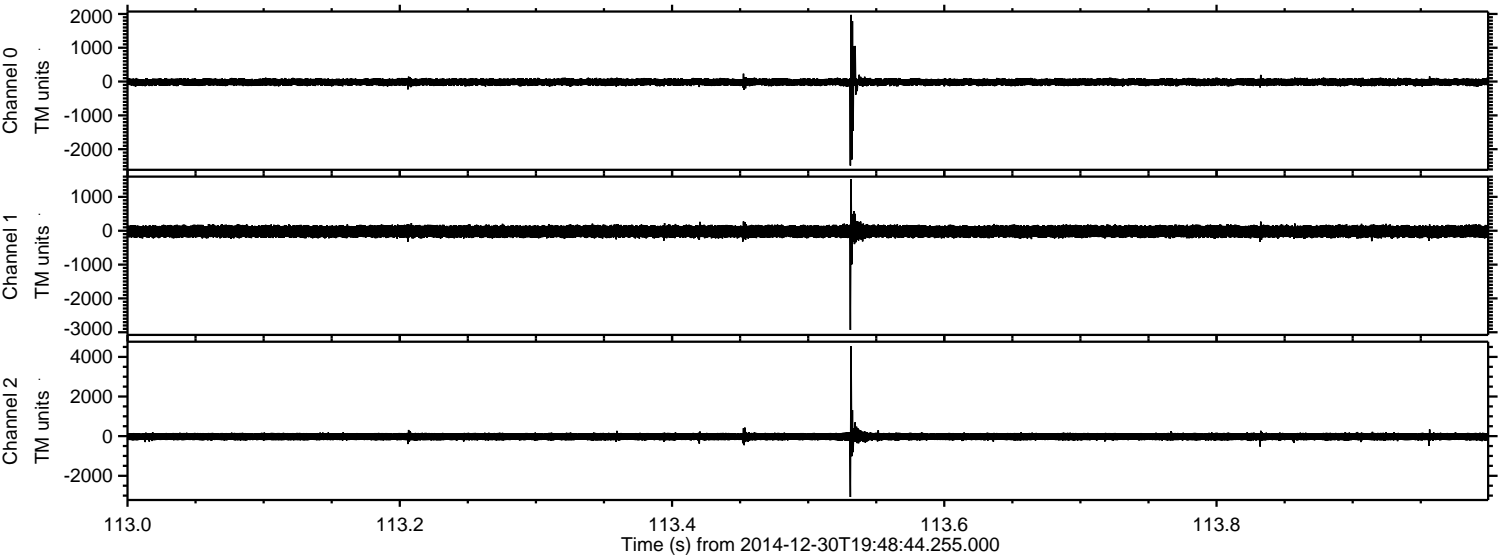
ELMAVAN 3D WAVEFORMS (Measured data sampled at 50 kHz) 49808 packets of 144 samples from 2014-12-30T19:48:44.255.000. Part 12/144

Processed Fri Jan 2 19:50:32 2015 by ELM ver.2012-10-06 from 001__elm20141230_194843__dat00.bin



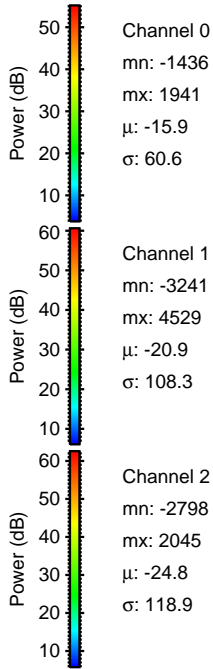
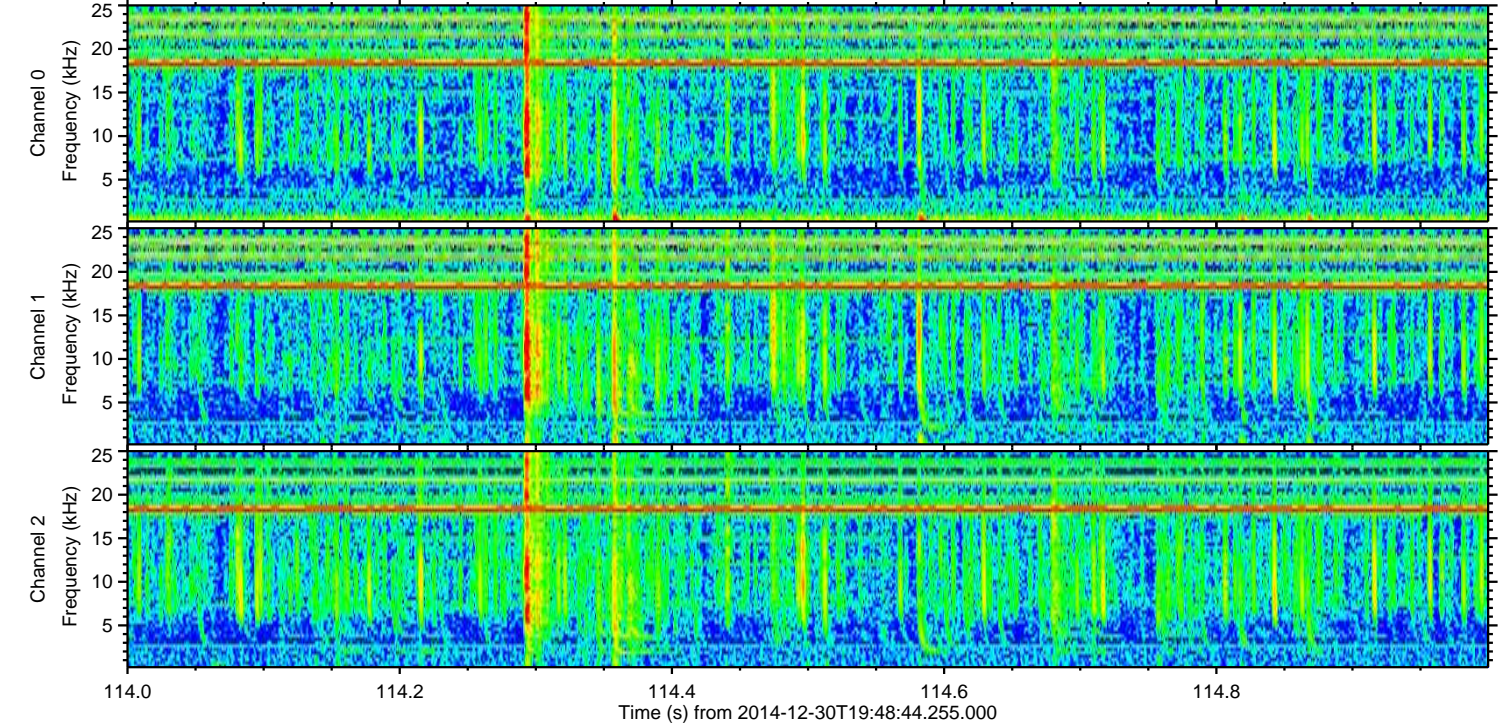
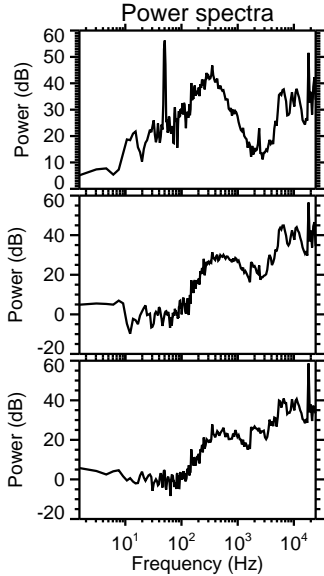
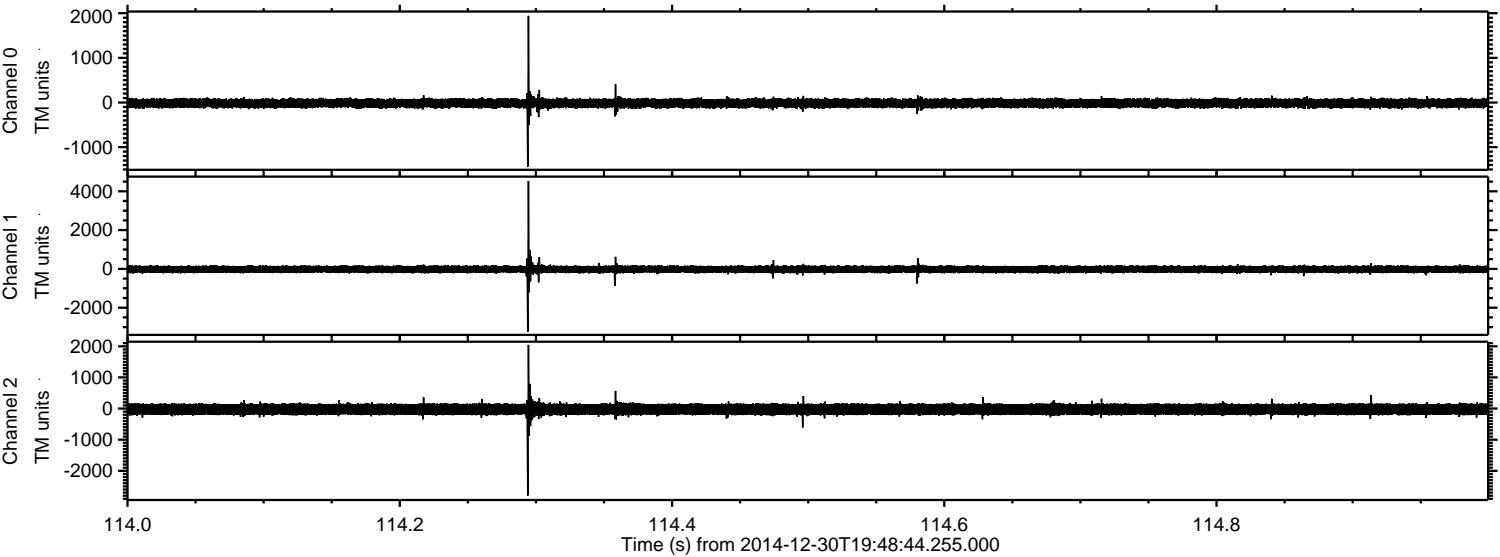
ELMAVAN 3D WAVEFORMS (Measured data sampled at 50 kHz) 49808 packets of 144 samples from 2014-12-30T19:48:44.255.000. Part 114/144

Processed Fri Jan 2 19:50:33 2015 by ELM ver.2012-10-06 from 001__elm20141230_194843__dat00.bin

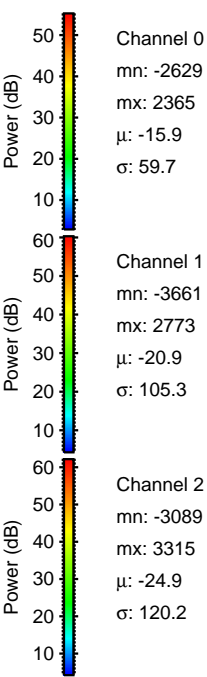
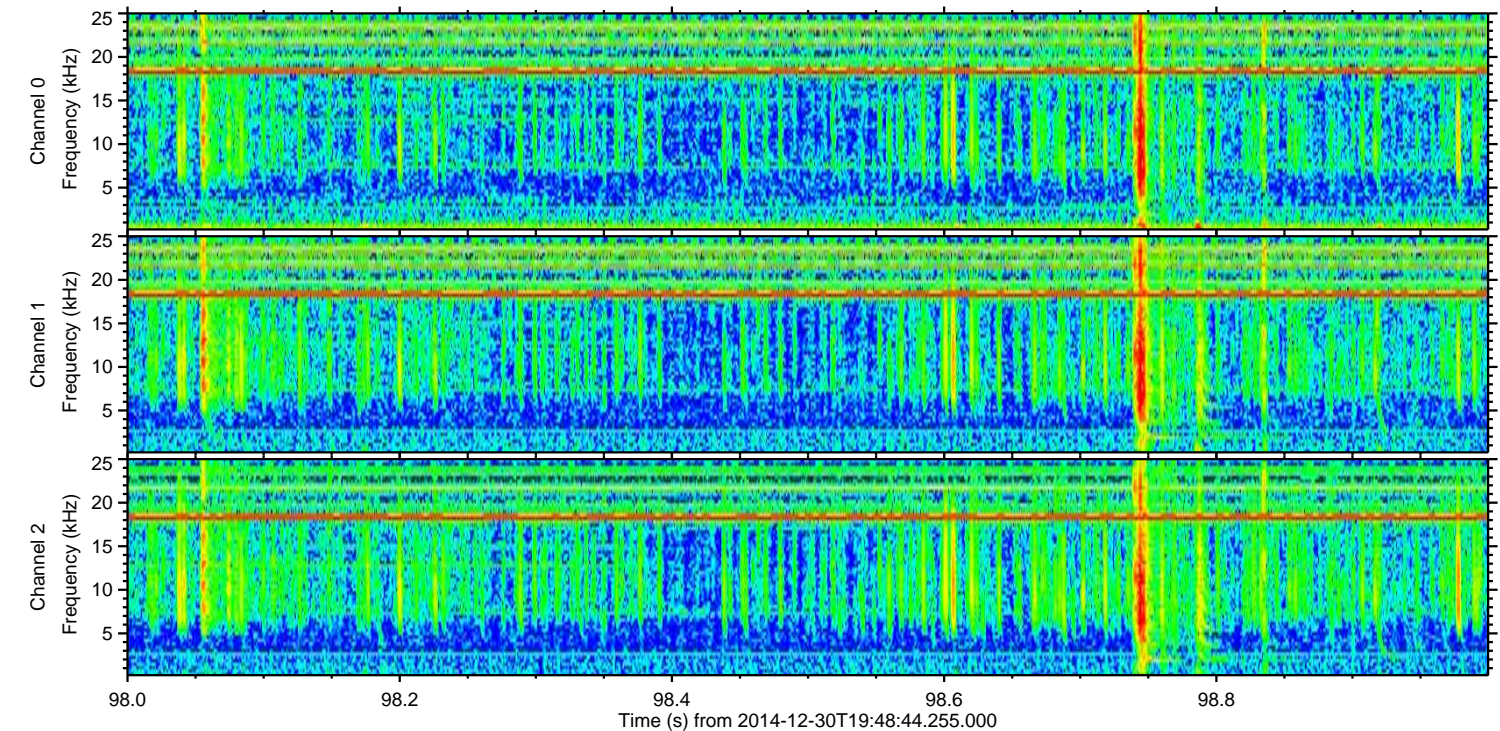
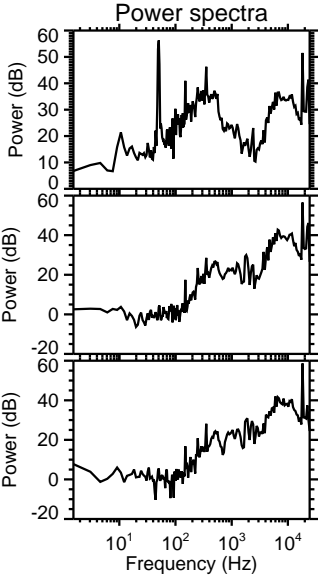
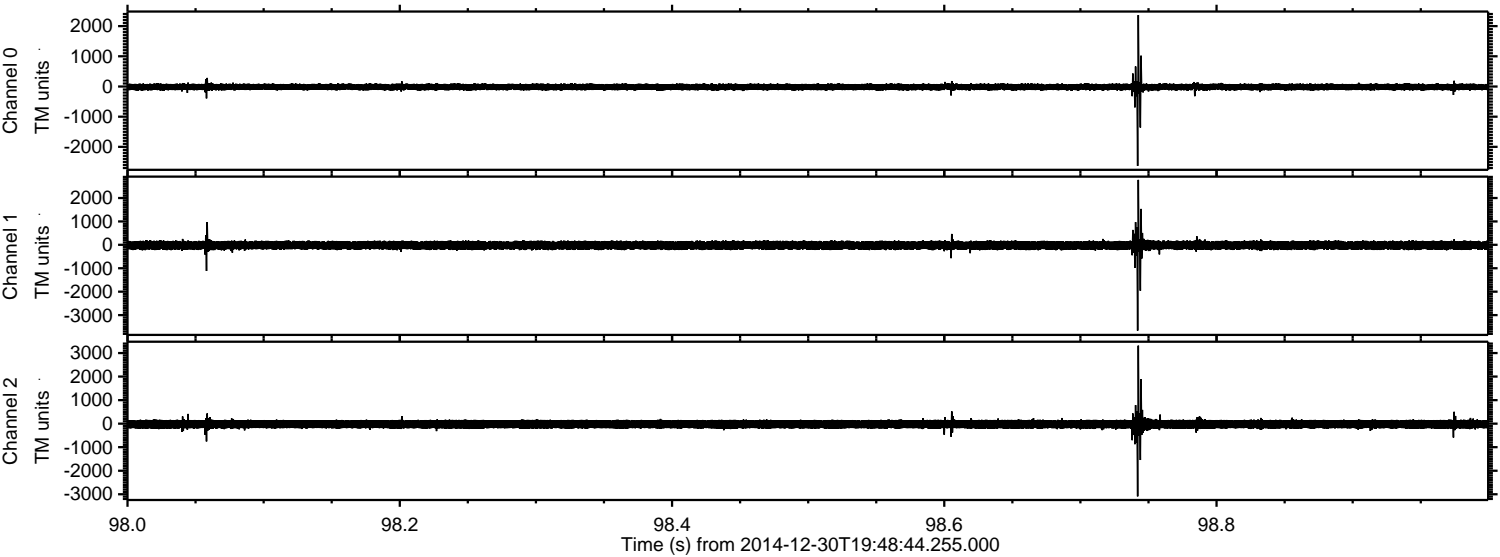


ELMAVAN 3D WAVEFORMS (Measured data sampled at 50 kHz) 49808 packets of 144 samples from 2014-12-30T19:48:44.255.000. Part 115/144

Processed Fri Jan 2 19:50:34 2015 by ELM ver.2012-10-06 from 001__elm20141230_194843__dat00.bin



Processed Fri Jan 2 19:50:35 2015 by ELM ver.2012-10-06 from 001__elm20141230_194843__dat00.bin



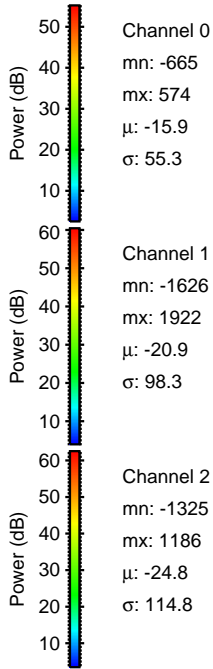
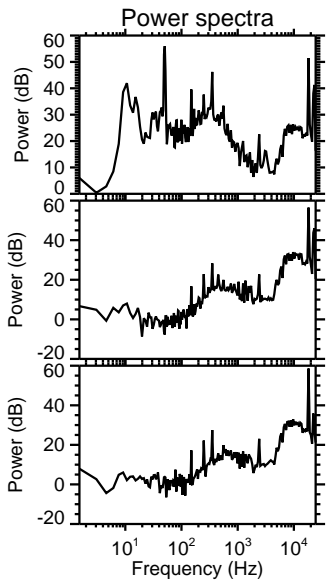
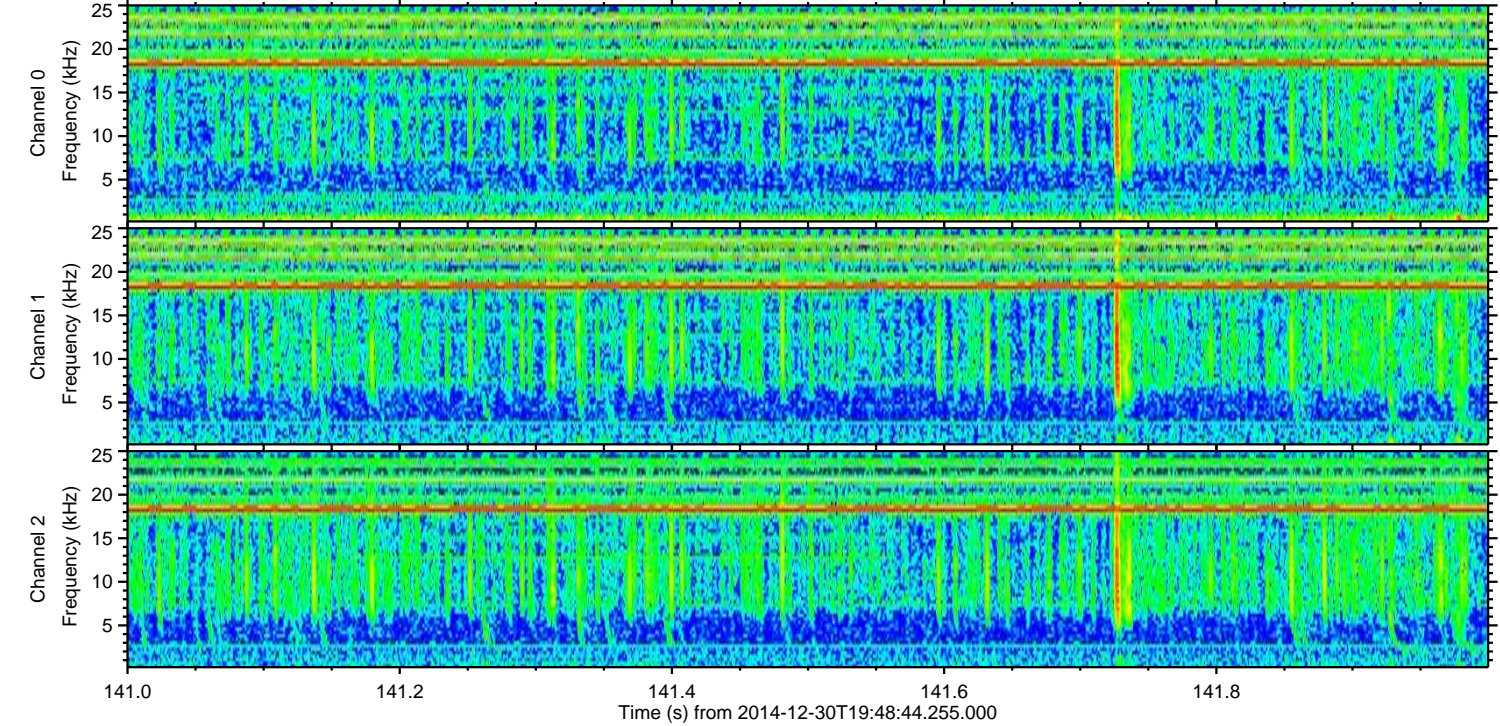
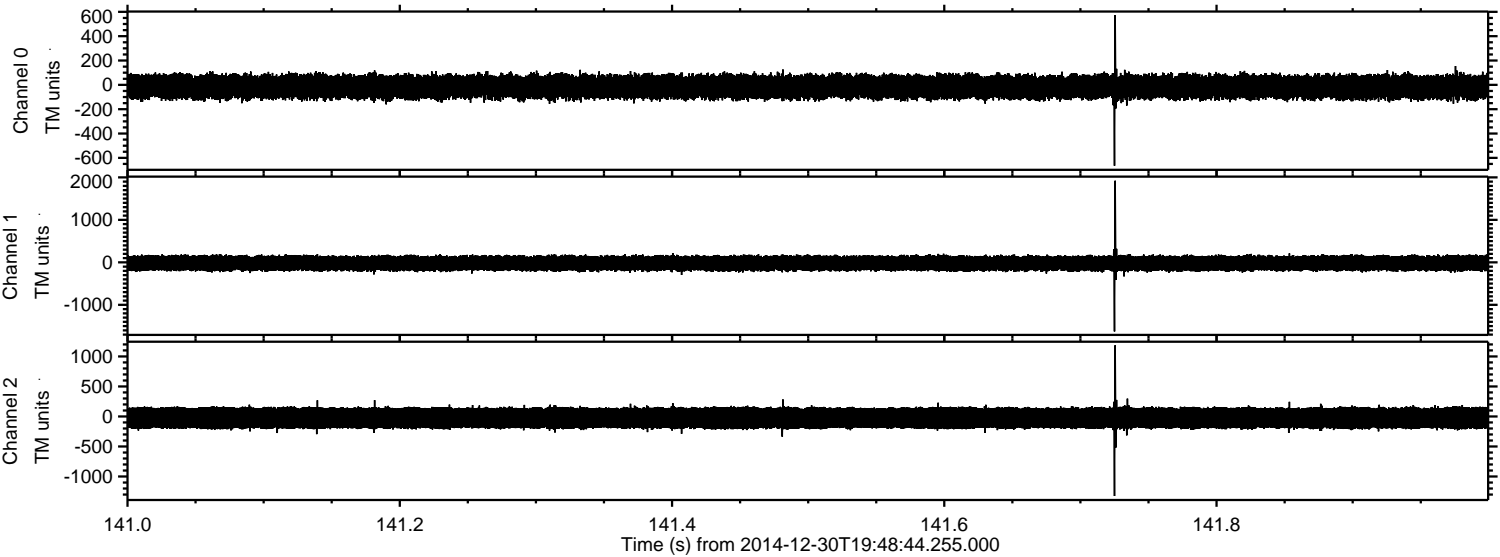
Channel 0
mn: -2629
mx: 2365
 μ : -15.9
 σ : 59.7

Channel 1
mn: -3661
mx: 2773
 μ : -20.9
 σ : 105.3

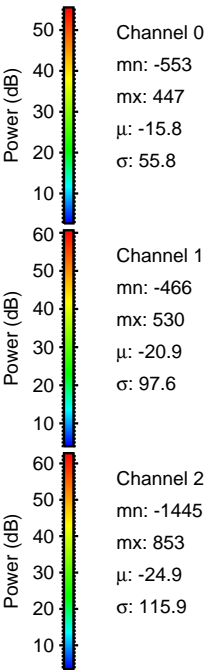
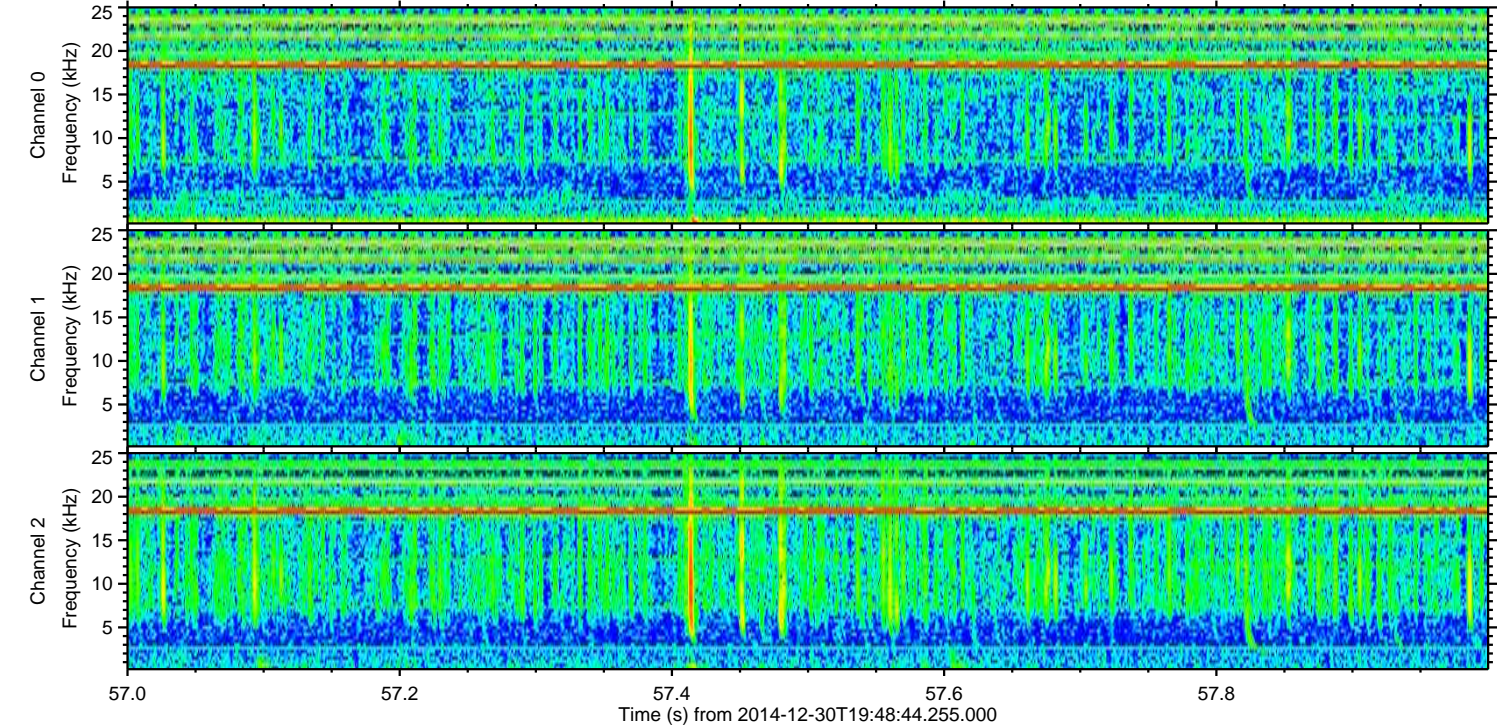
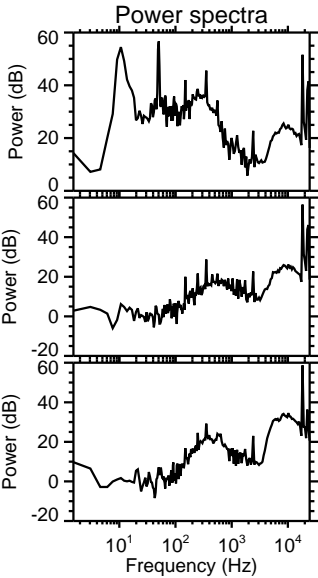
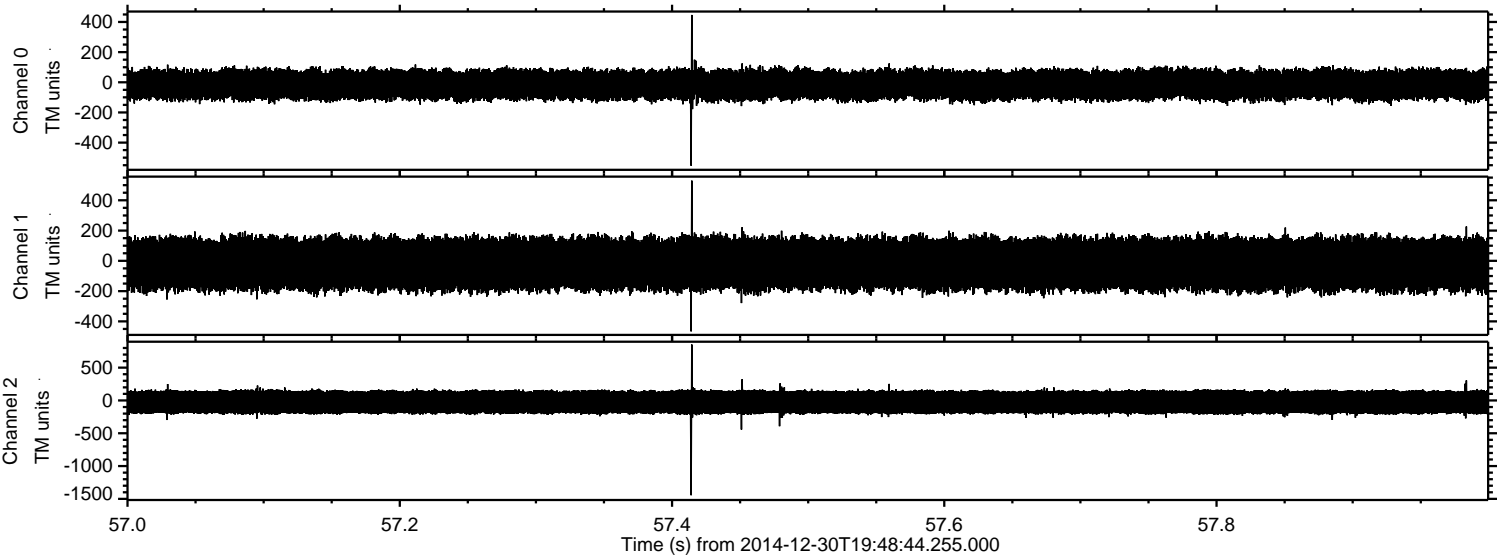
Channel 2
mn: -3089
mx: 3315
 μ : -24.9
 σ : 120.2

ELMAVAN 3D WAVEFORMS (Measured data sampled at 50 kHz) 49808 packets of 144 samples from 2014-12-30T19:48:44.255.000. Part 142/144

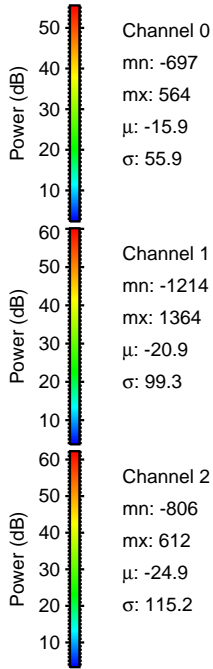
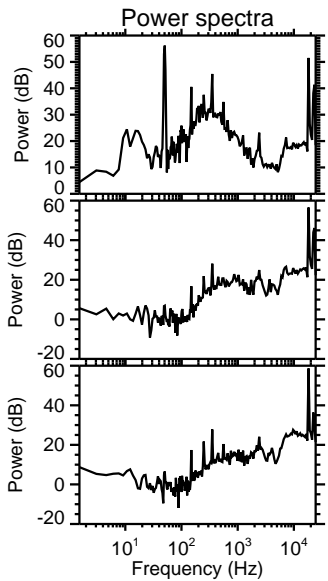
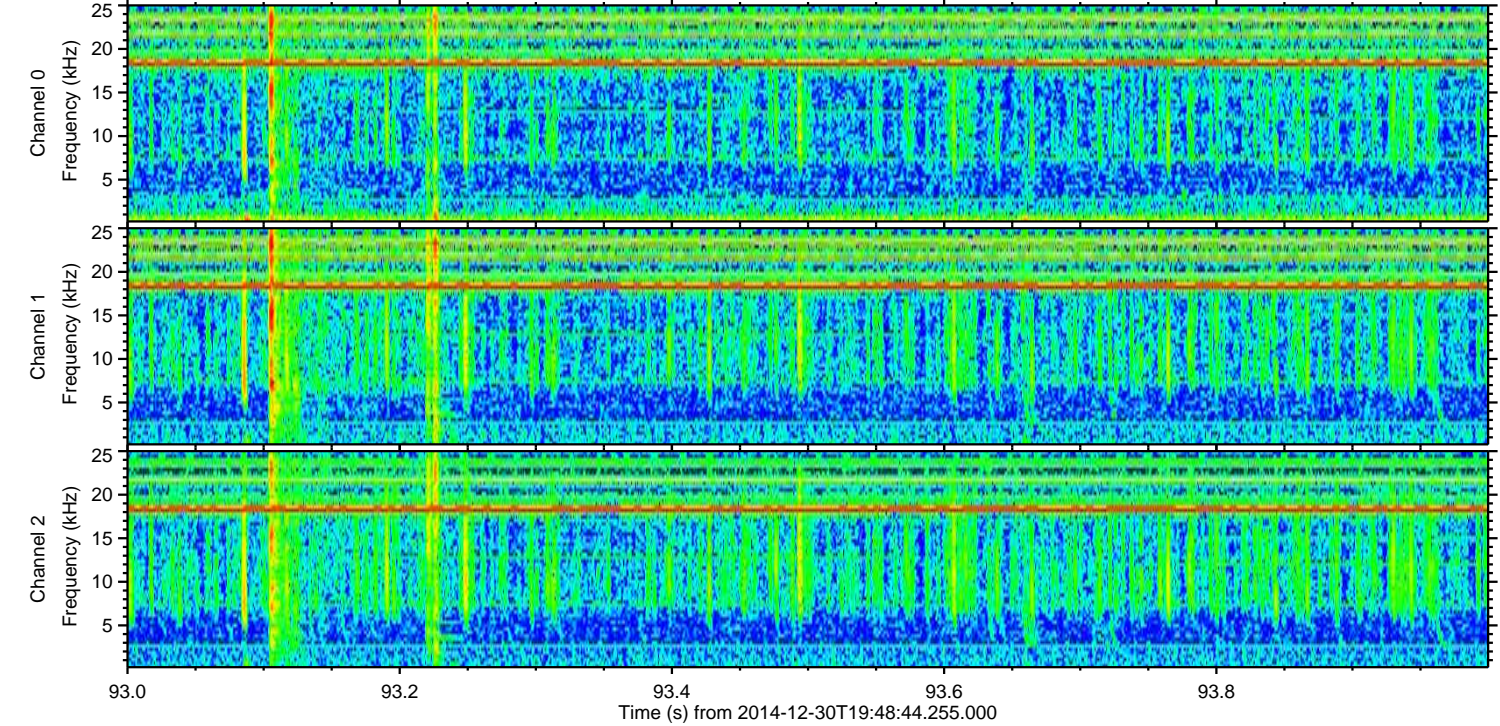
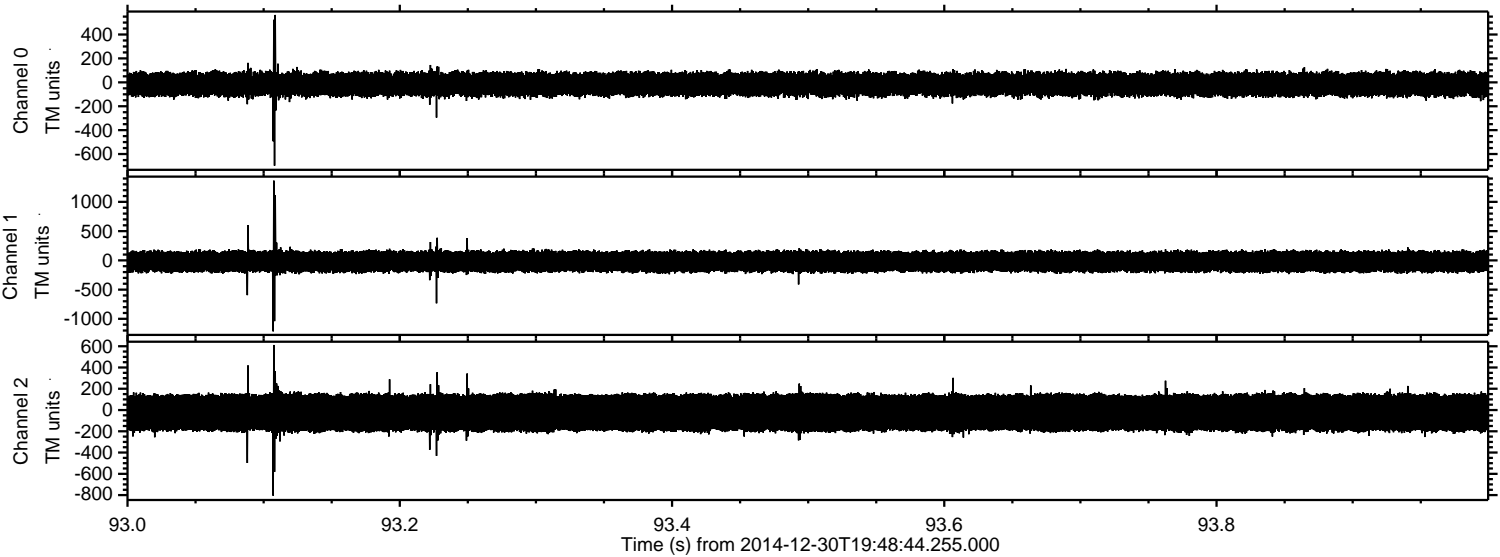
Processed Fri Jan 2 19:50:37 2015 by ELM ver.2012-10-06 from 001__elm20141230_194843__dat00.bin



Processed Fri Jan 2 19:50:39 2015 by ELM ver.2012-10-06 from 001__elm20141230_194843__dat00.bin



Processed Fri Jan 2 19:50:41 2015 by ELM ver.2012-10-06 from 001__elm20141230_194843__dat00.bin

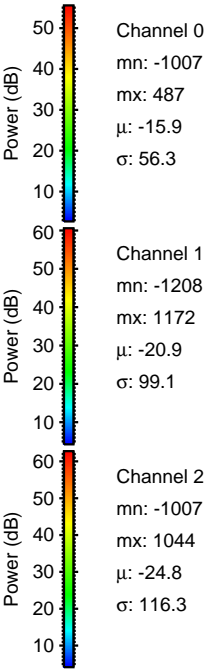
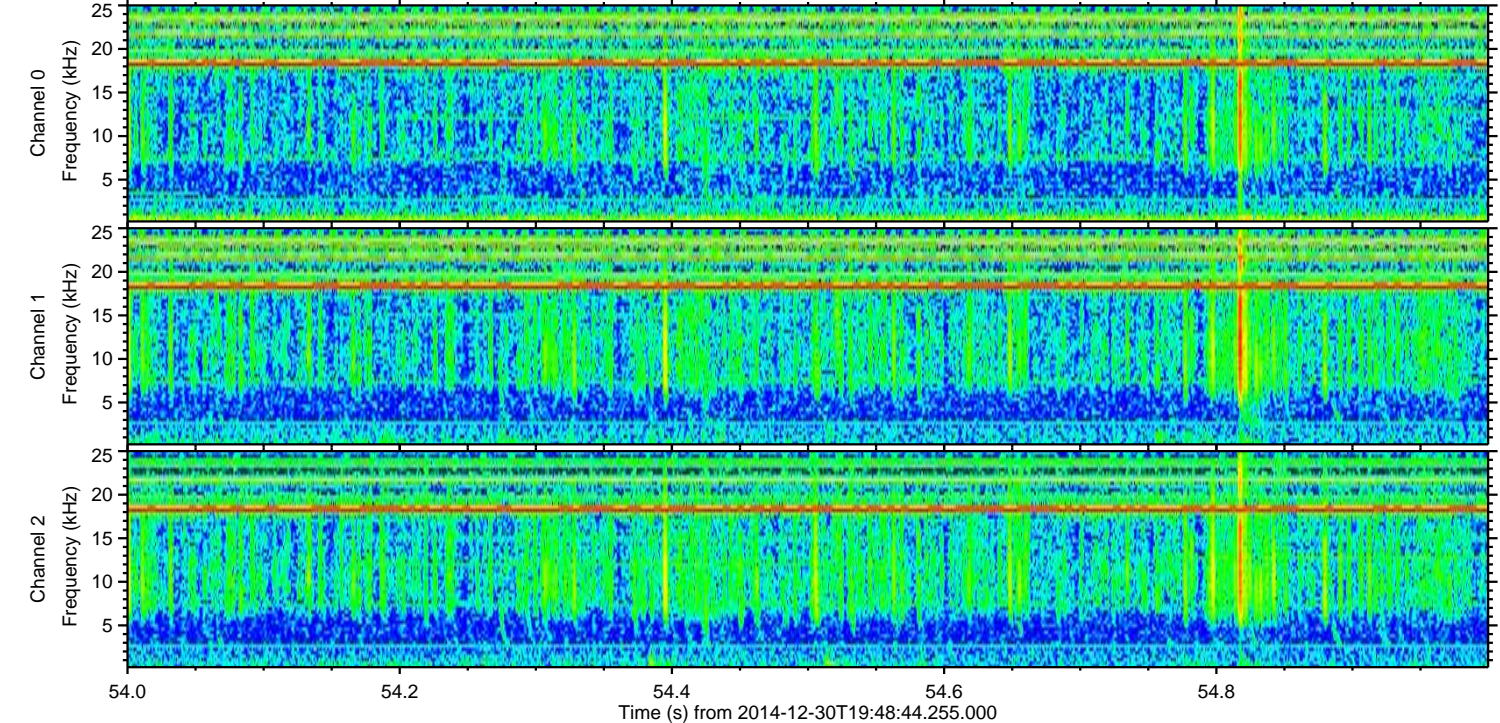
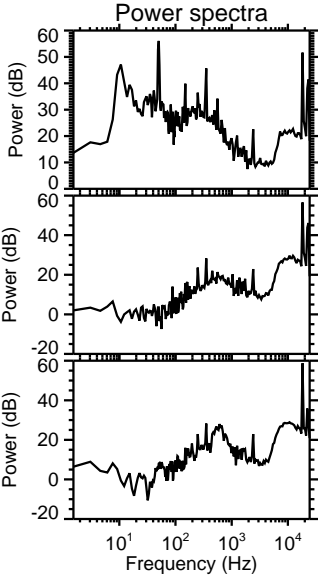
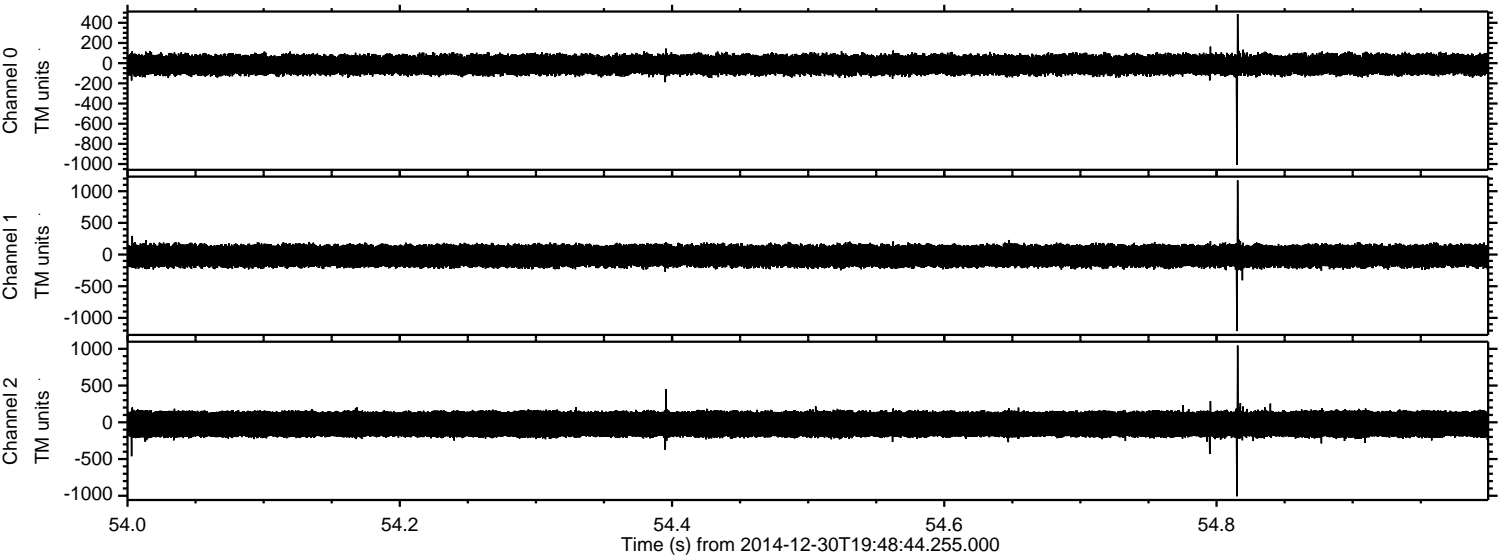


Channel 0
mn: -697
mx: 564
 μ : -15.9
 σ : 55.9

Channel 1
mn: -1214
mx: 1364
 μ : -20.9
 σ : 99.3

Channel 2
mn: -806
mx: 612
 μ : -24.9
 σ : 115.2

Processed Fri Jan 2 19:50:43 2015 by ELM ver.2012-10-06 from 001__elm20141230_194843__dat00.bin



Channel 0
mn: -1007
mx: 487
 μ : -15.9
 σ : 56.3

Channel 1
mn: -1208
mx: 1172
 μ : -20.9
 σ : 99.1

Channel 2
mn: -1007
mx: 1044
 μ : -24.8
 σ : 116.3

Processed Fri Jan 2 19:50:45 2015 by ELM ver.2012-10-06 from 001__elm20141230_194843__dat00.bin

