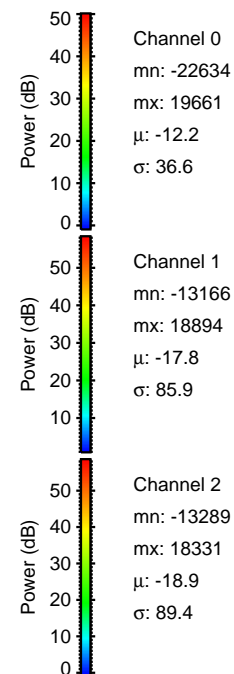
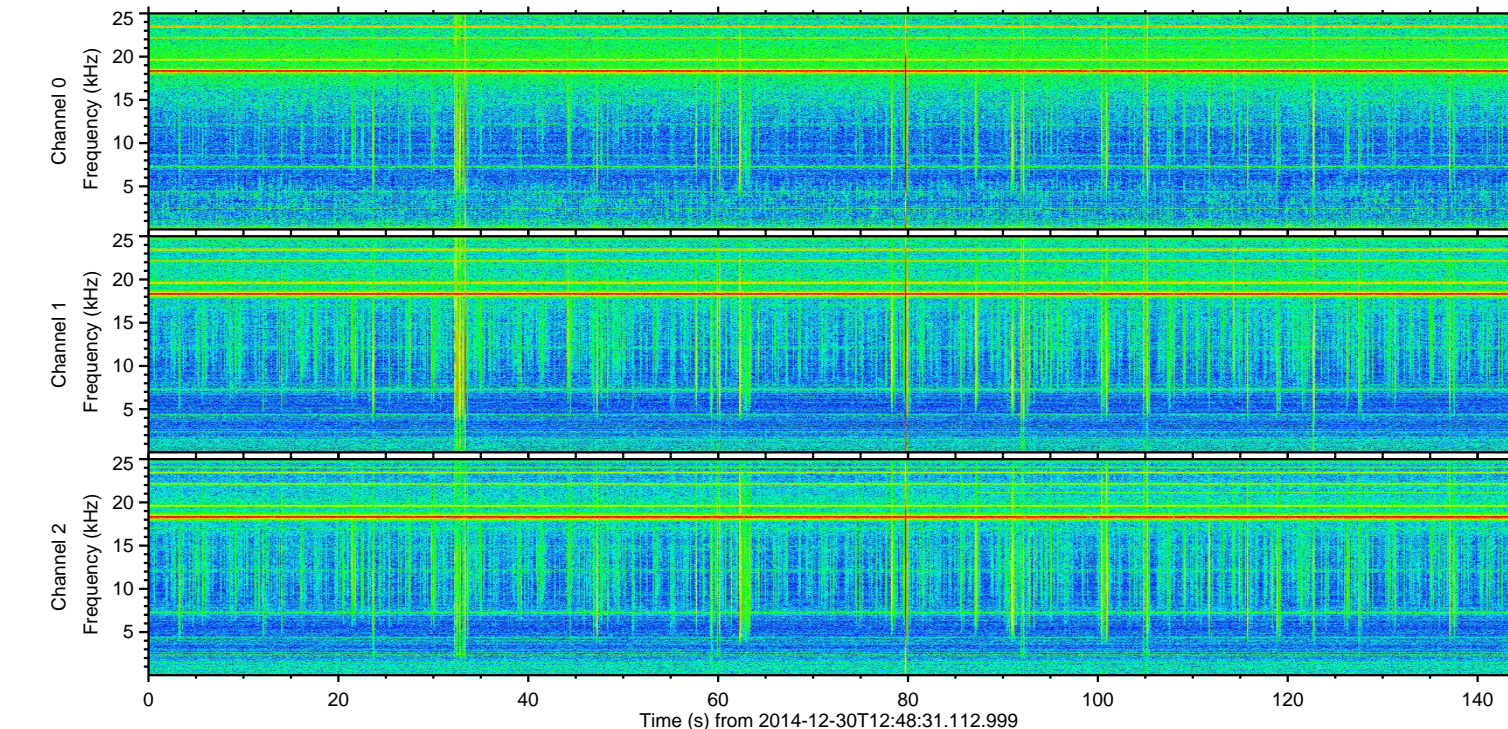
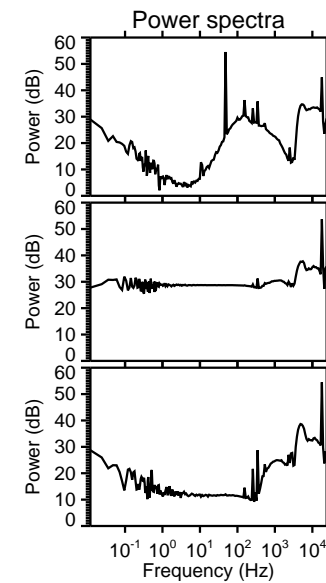
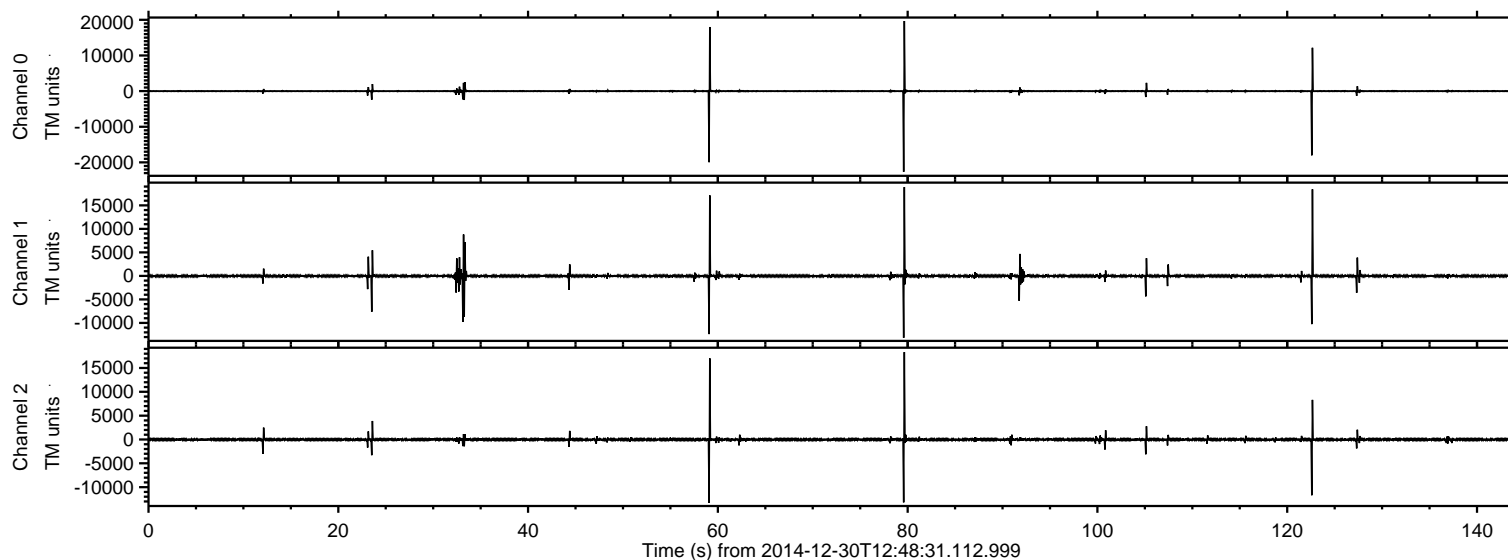
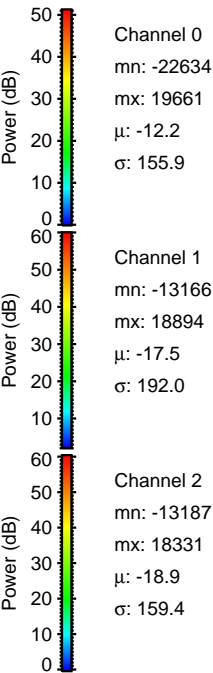
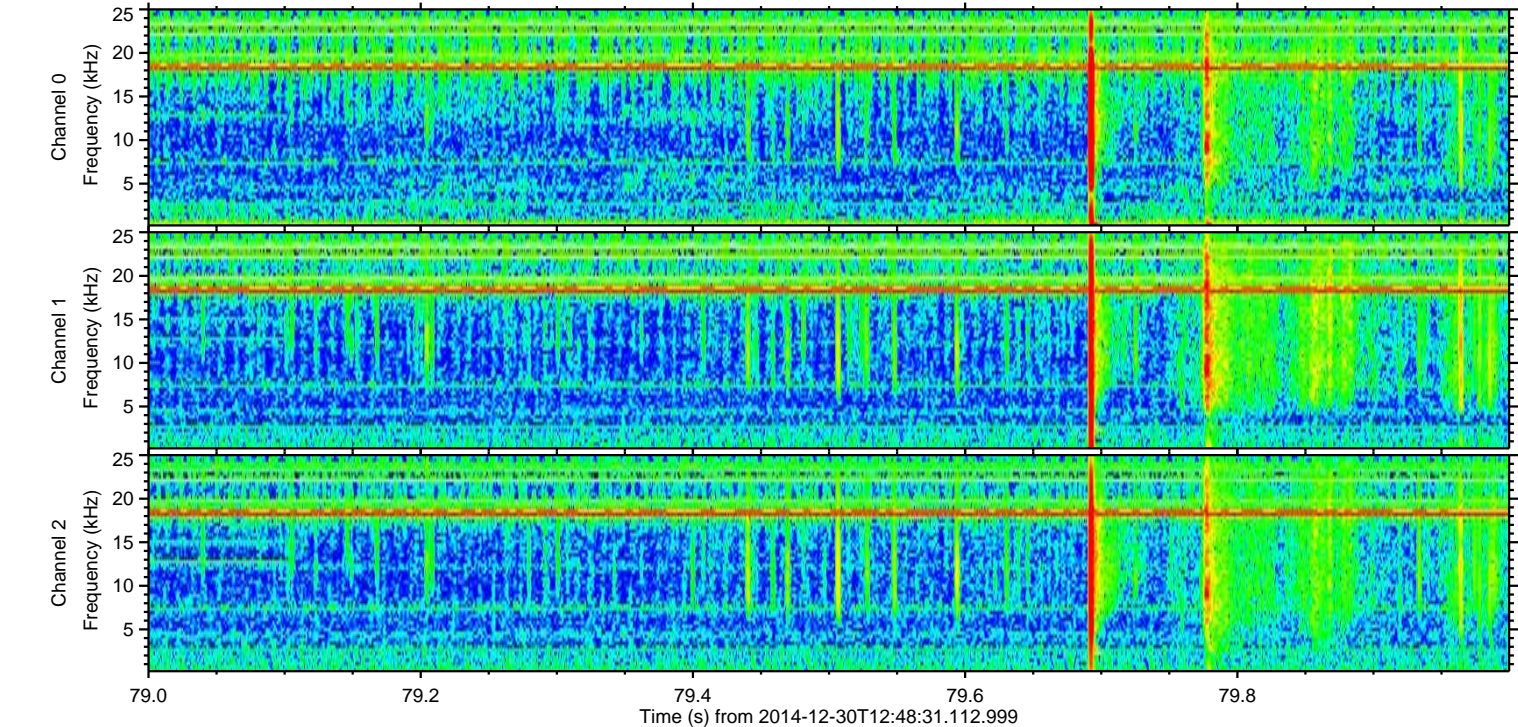
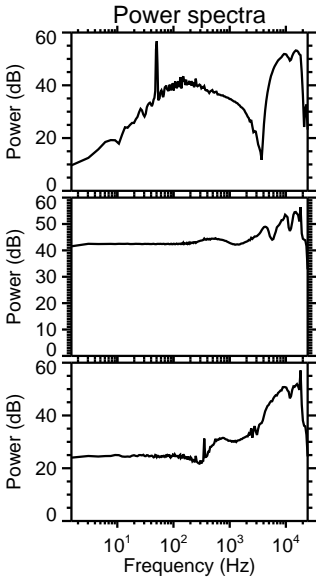
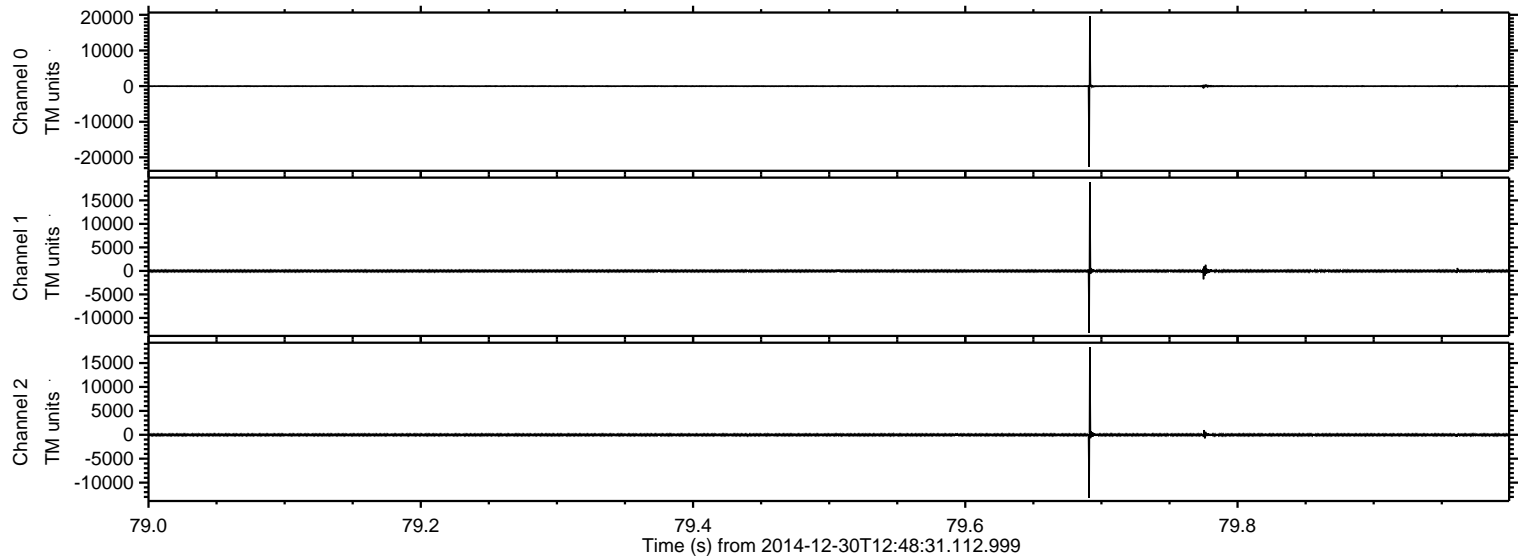


ELMAVAN 3D WAVEFORMS (Measured data sampled at 50 kHz) 49788 packets of 144 samples from 2014-12-30T12:48:31.112.999.

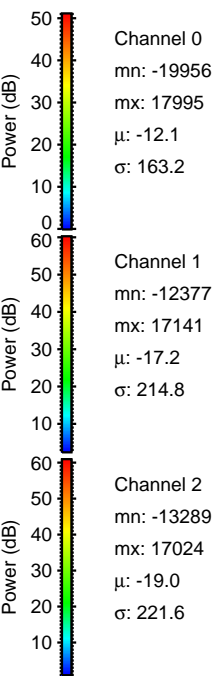
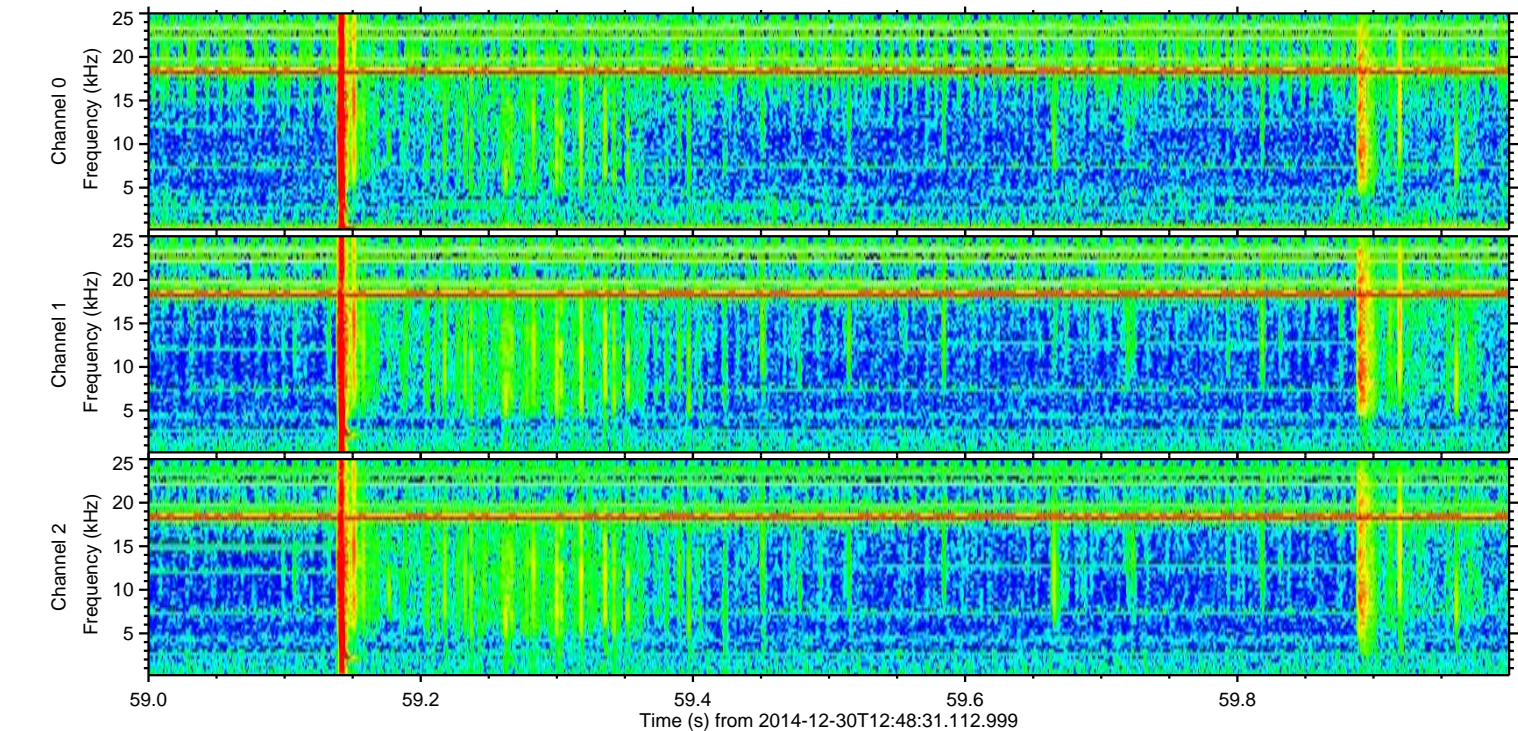
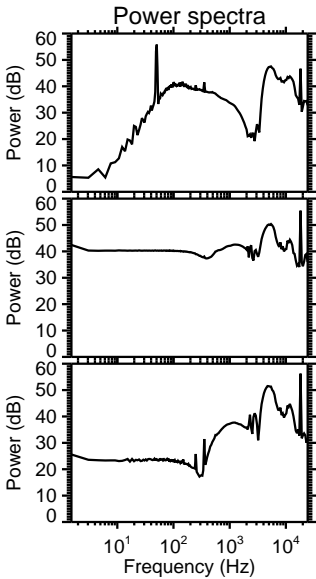
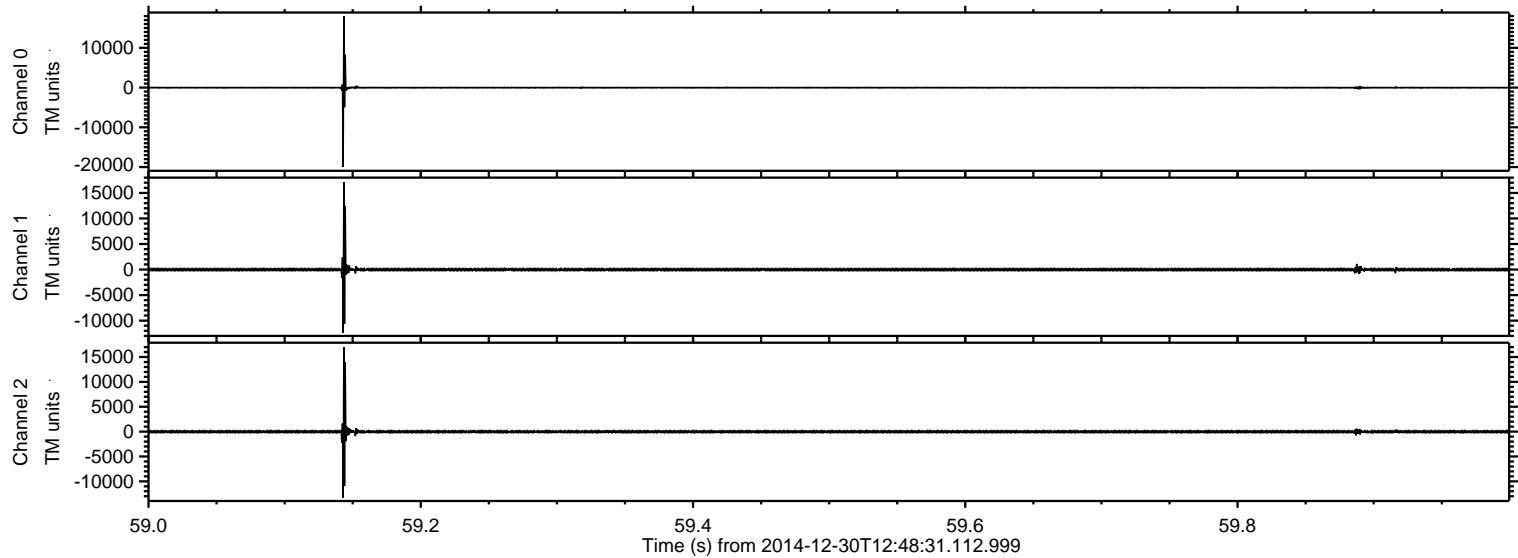
Processed Fri Jan 2 17:53:20 2015 by ELM ver.2012-10-06 from 001__elm20141230_124830__dat00.bin



Processed Fri Jan 2 17:53:31 2015 by ELM ver.2012-10-06 from 001__elm20141230_124830__dat00.bin

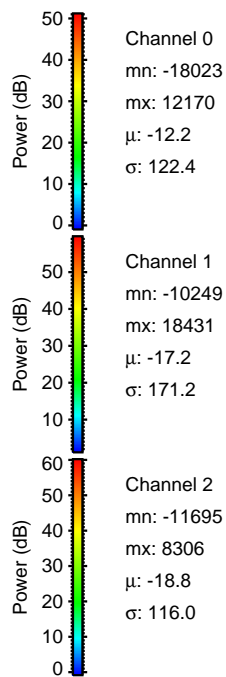
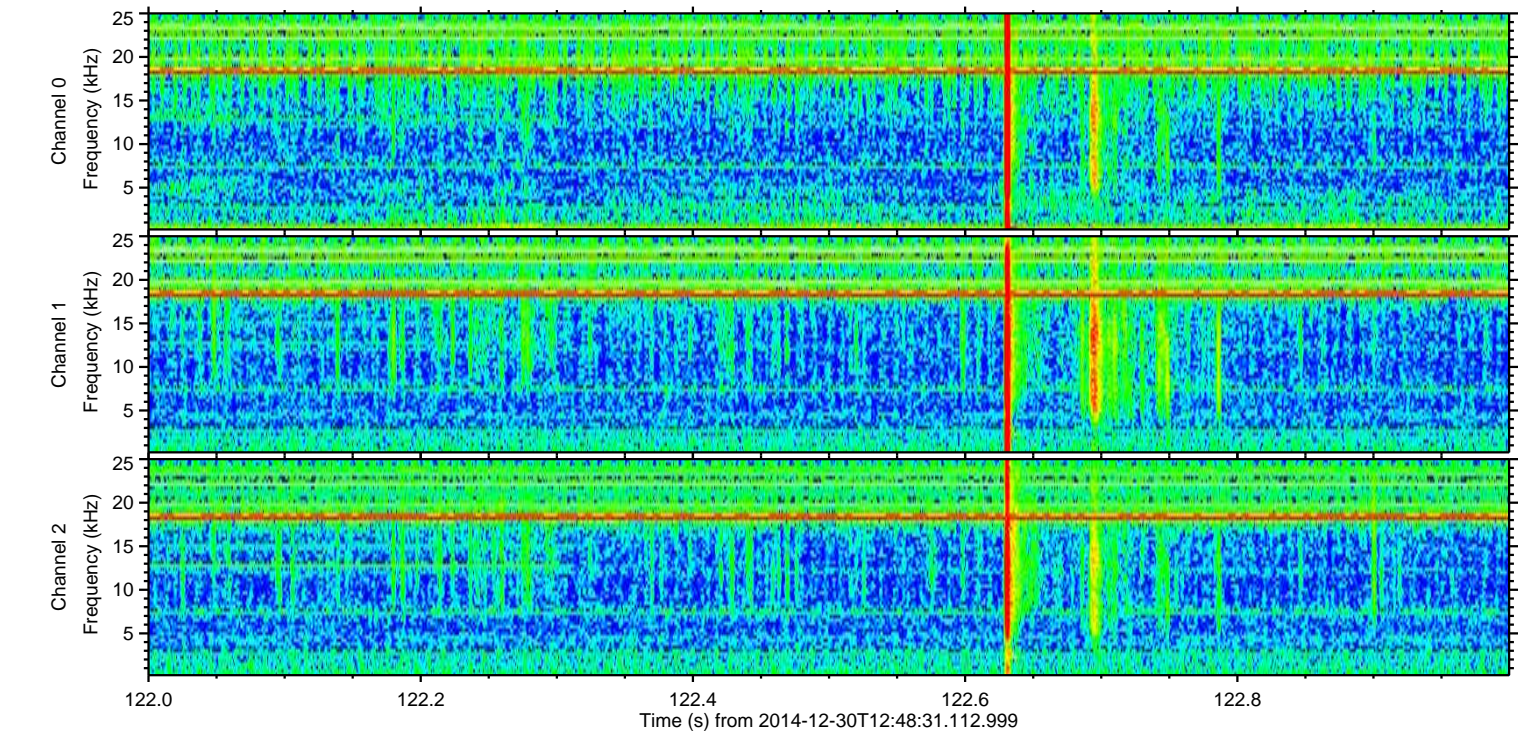
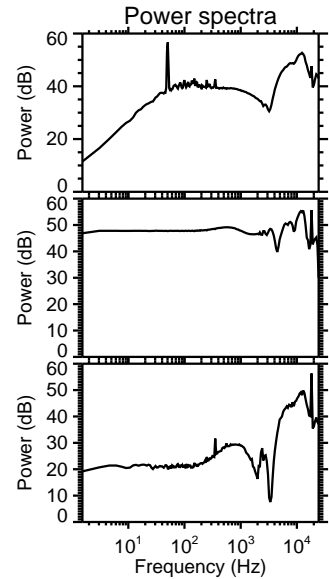
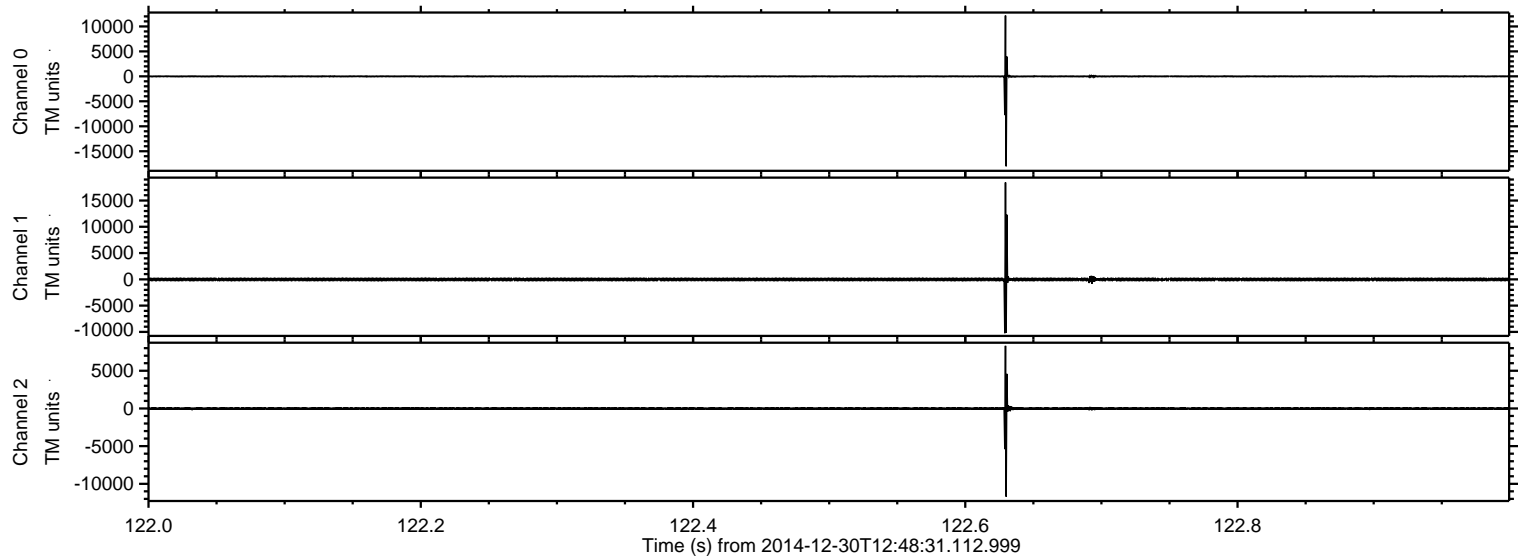


Processed Fri Jan 2 17:53:32 2015 by ELM ver.2012-10-06 from 001__elm20141230_124830__dat00.bin

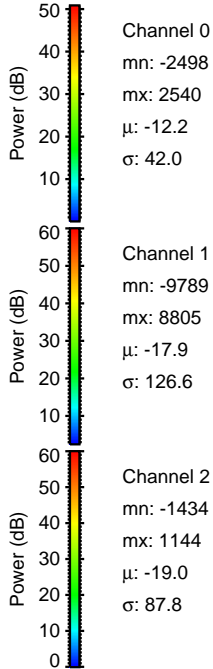
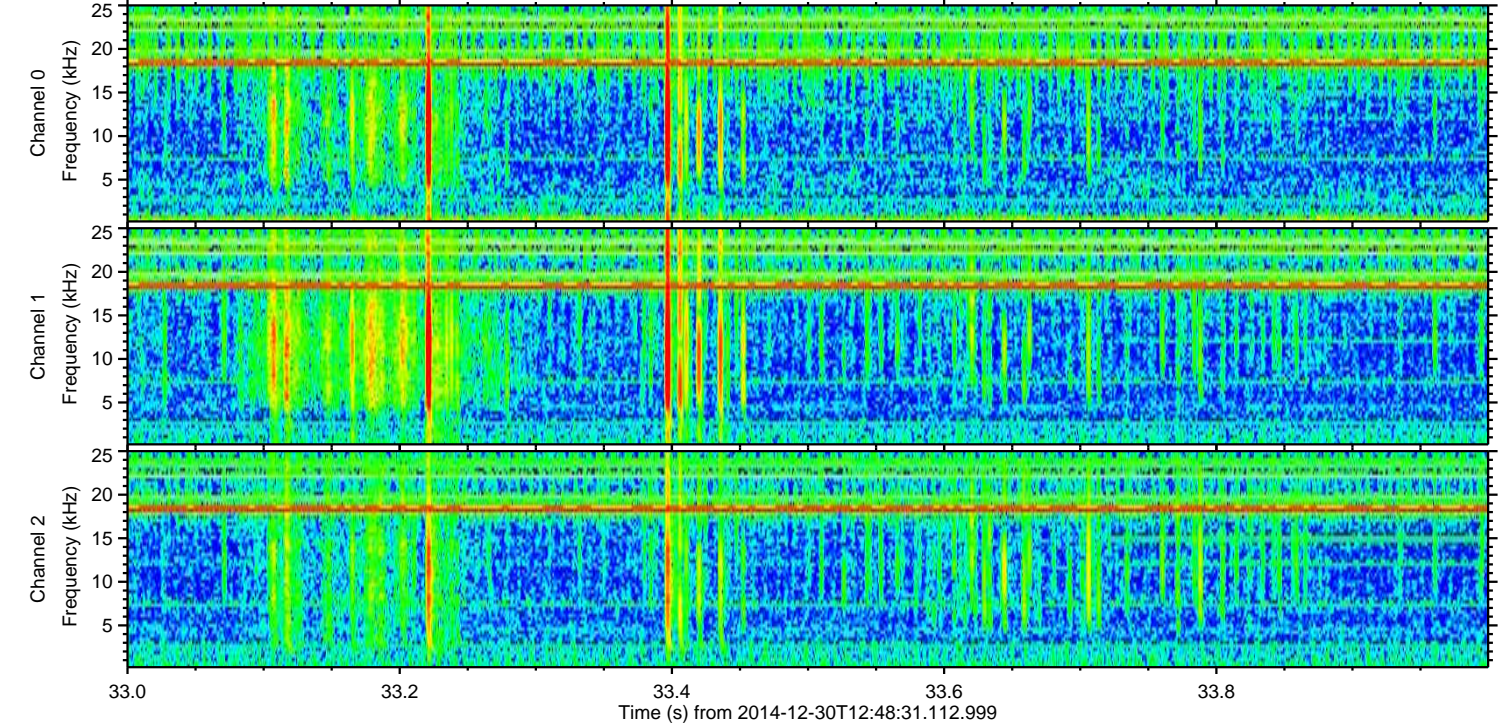
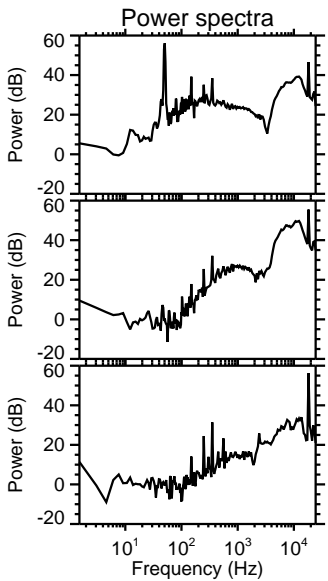
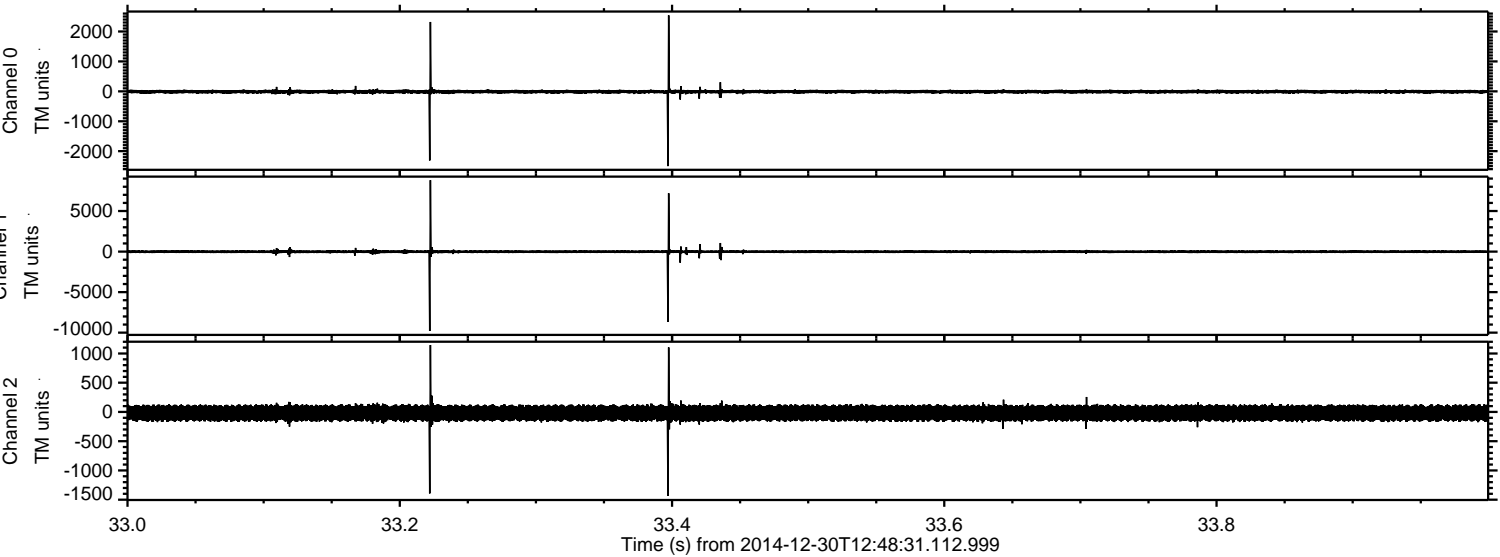


ELMAVAN 3D WAVEFORMS (Measured data sampled at 50 kHz) 49788 packets of 144 samples from 2014-12-30T12:48:31.112.999. Part 123/144

Processed Fri Jan 2 17:53:33 2015 by ELM ver.2012-10-06 from 001__elm20141230_124830__dat00.bin

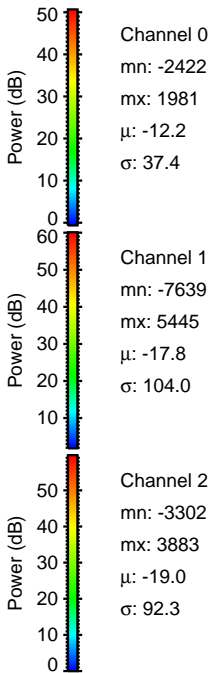
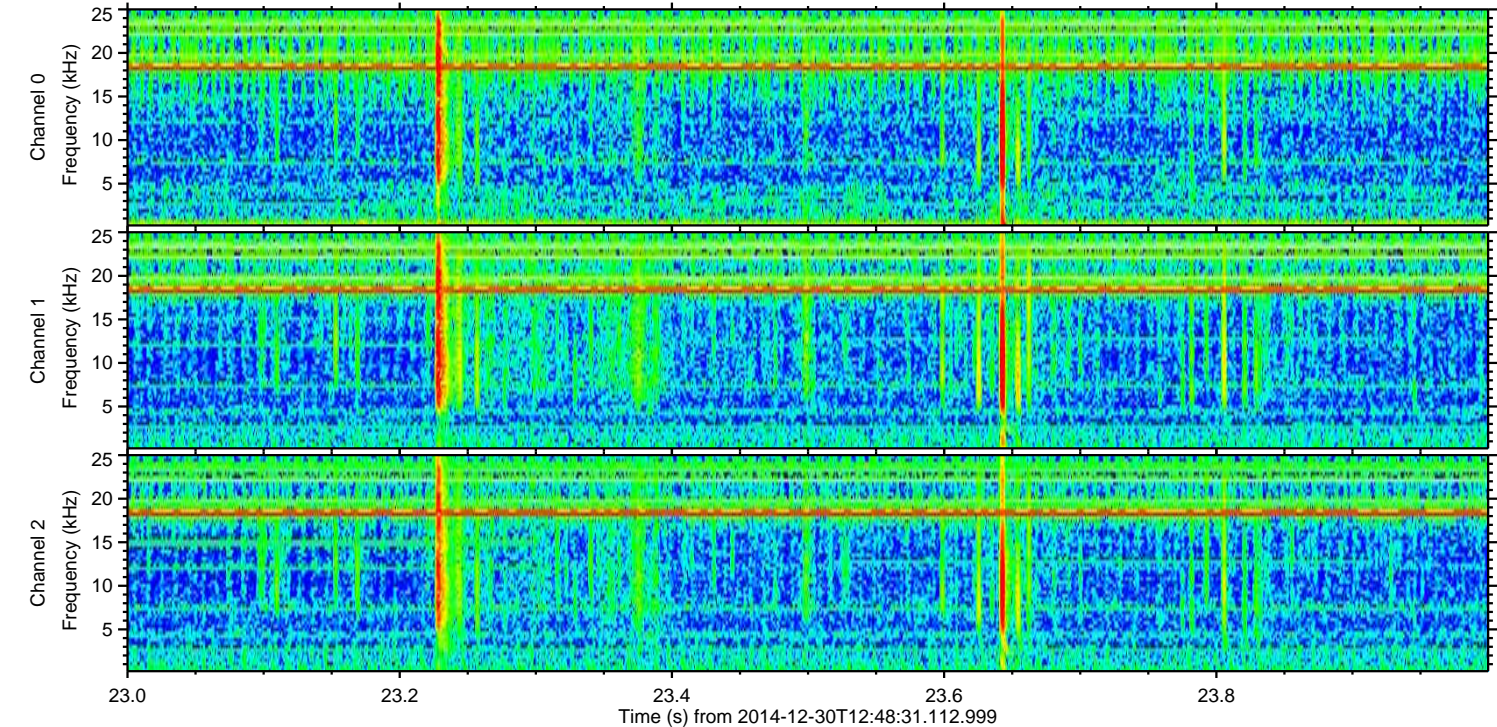
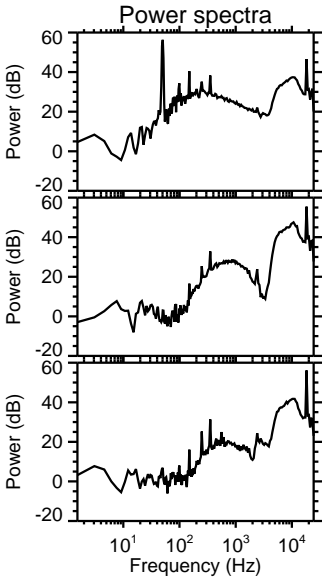
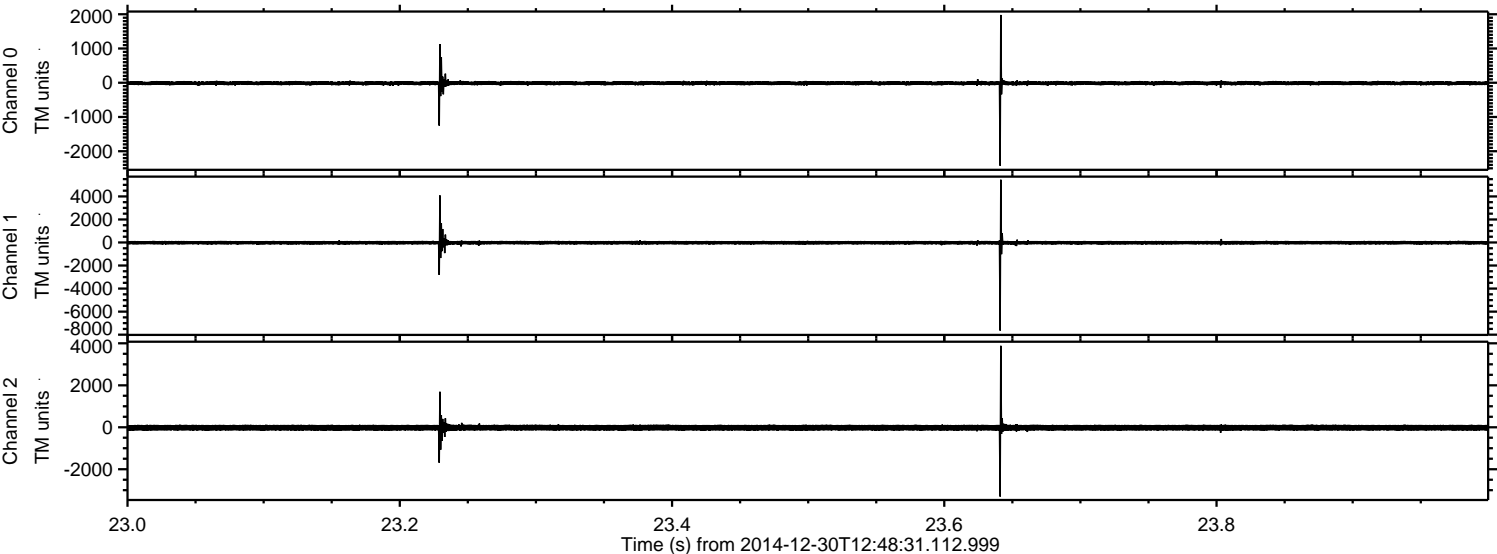


Processed Fri Jan 2 17:53:34 2015 by ELM ver.2012-10-06 from 001__elm20141230_124830__dat00.bin

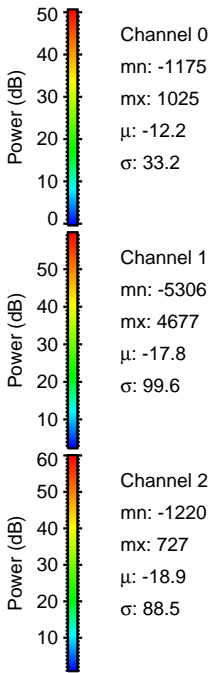
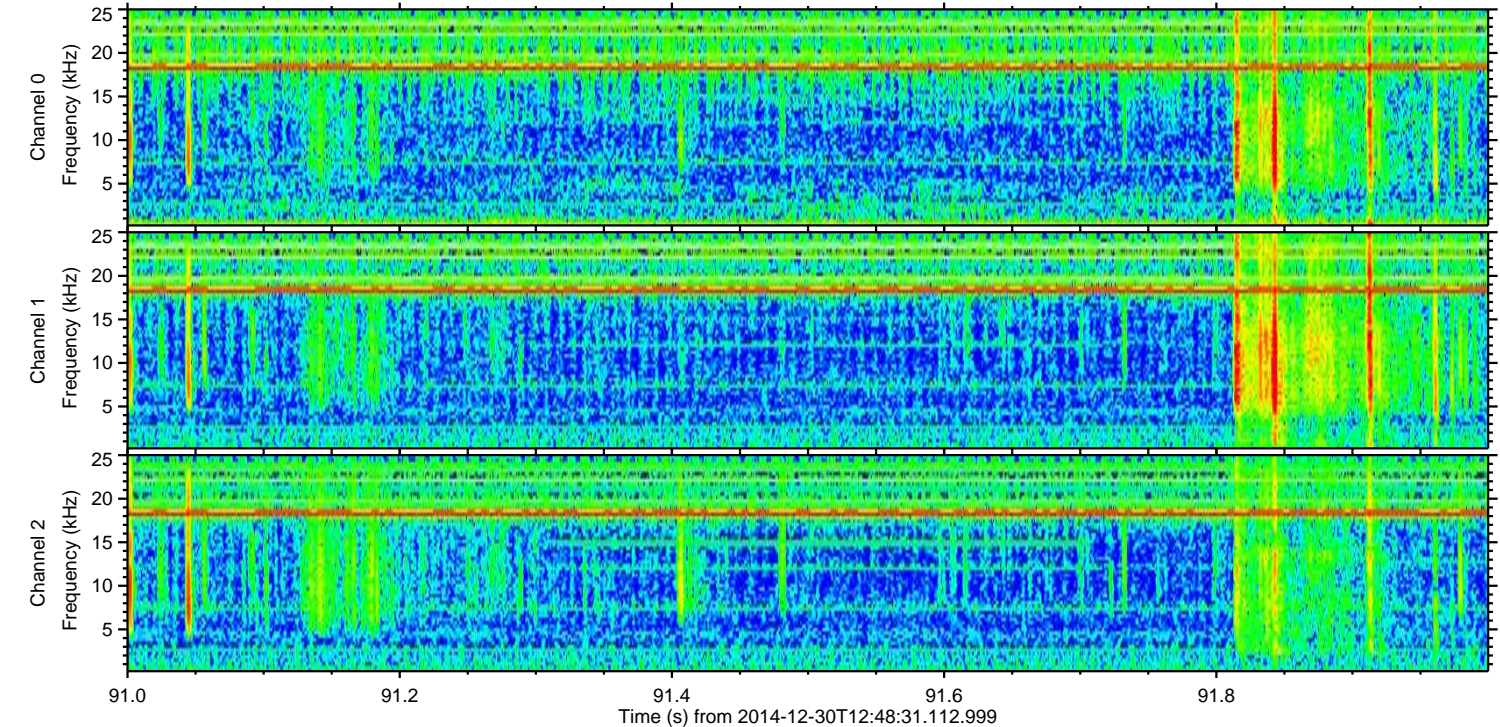
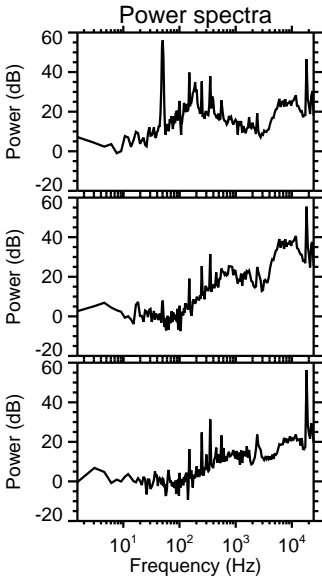
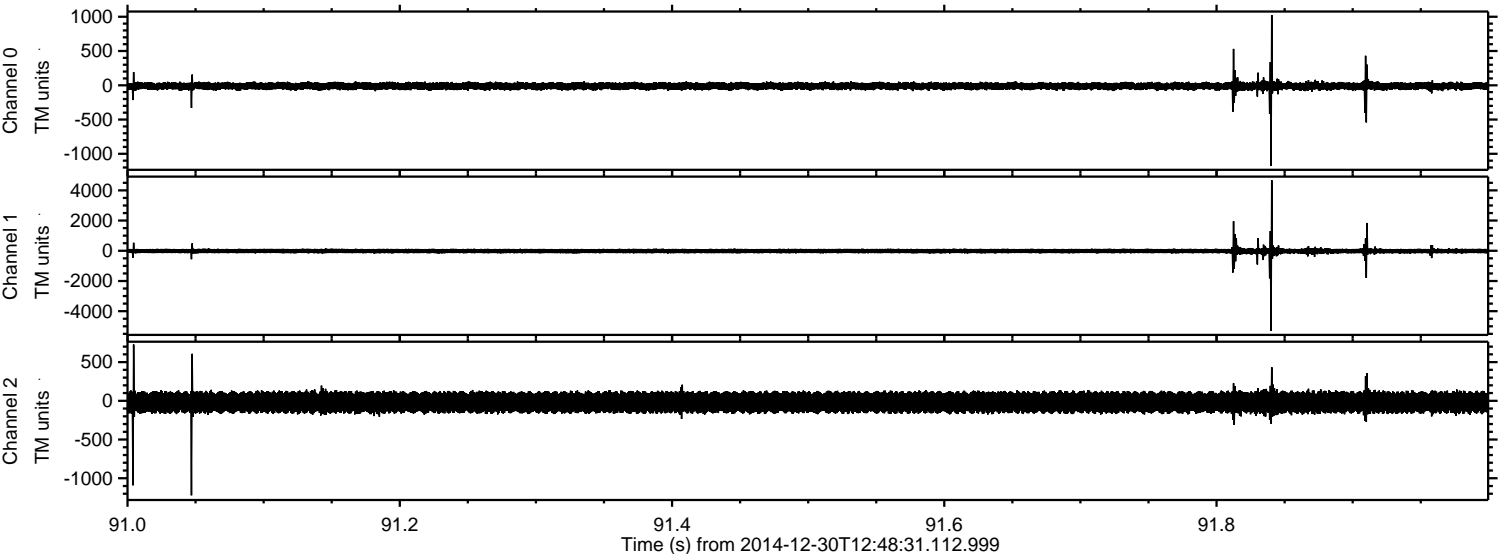


ELMAVAN 3D WAVEFORMS (Measured data sampled at 50 kHz) 49788 packets of 144 samples from 2014-12-30T12:48:31.112.999. Part 24/144

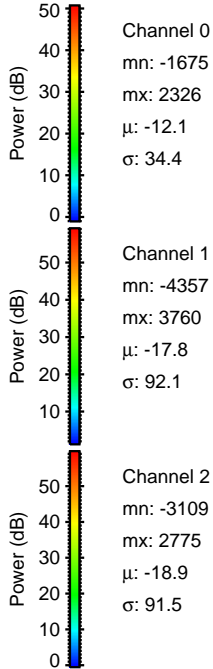
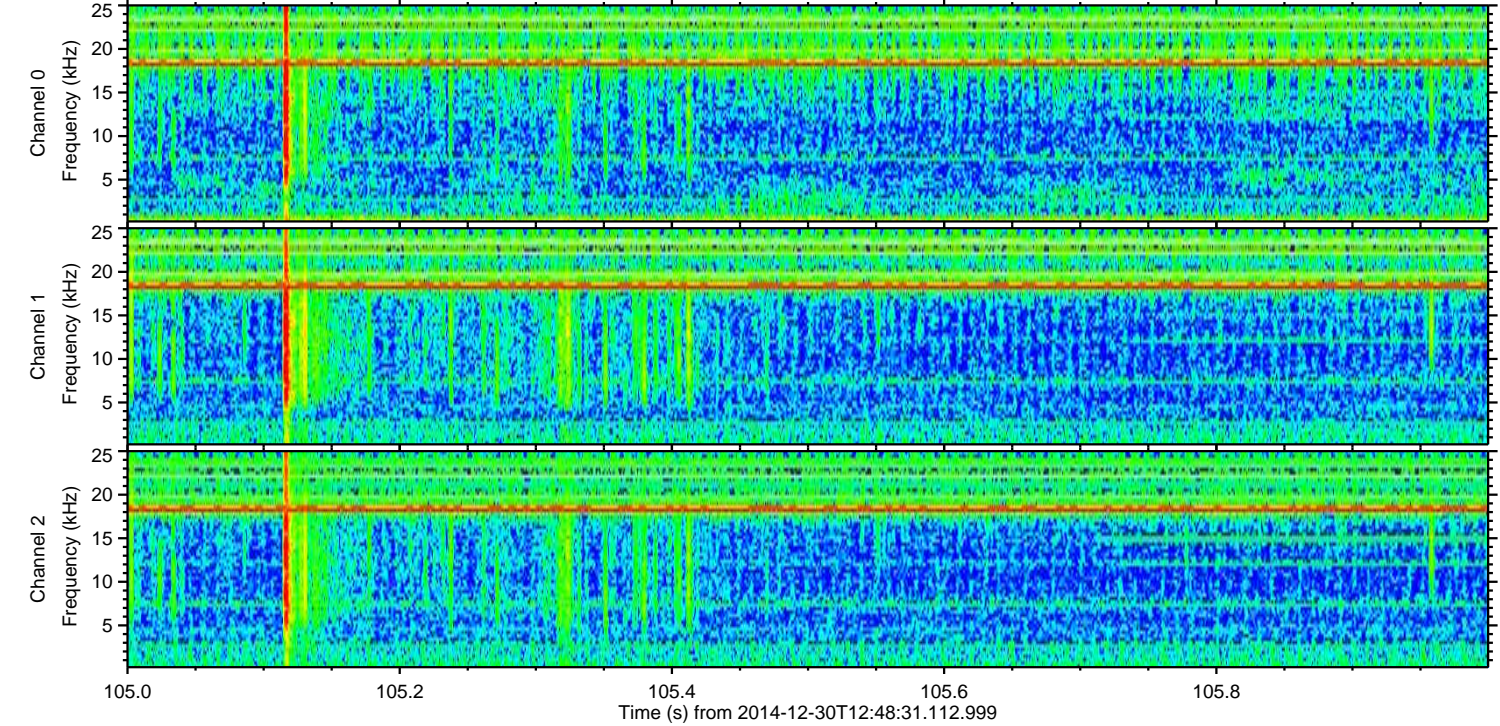
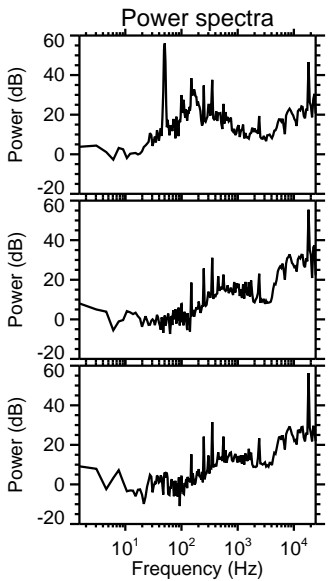
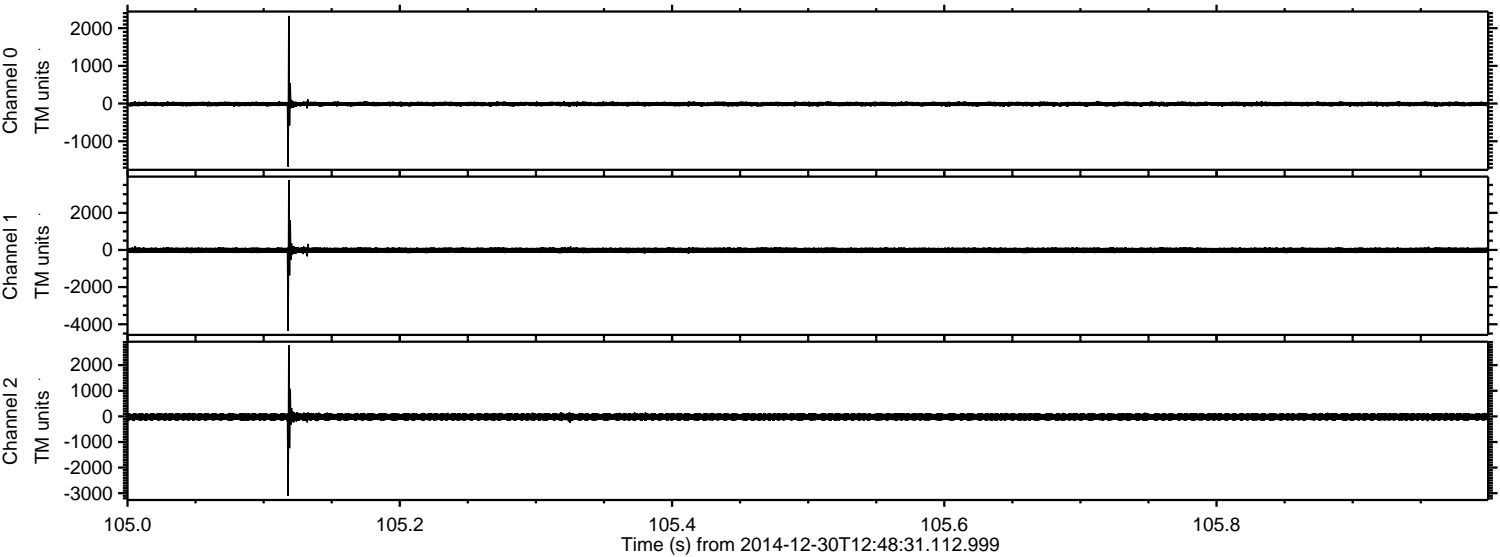
Processed Fri Jan 2 17:53:35 2015 by ELM ver.2012-10-06 from 001__elm20141230_124830__dat00.bin



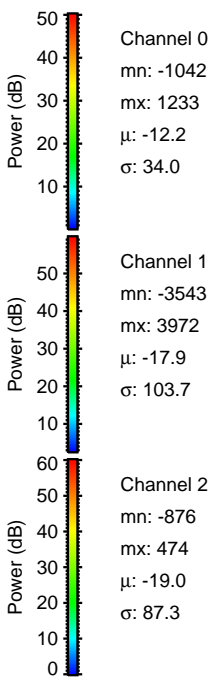
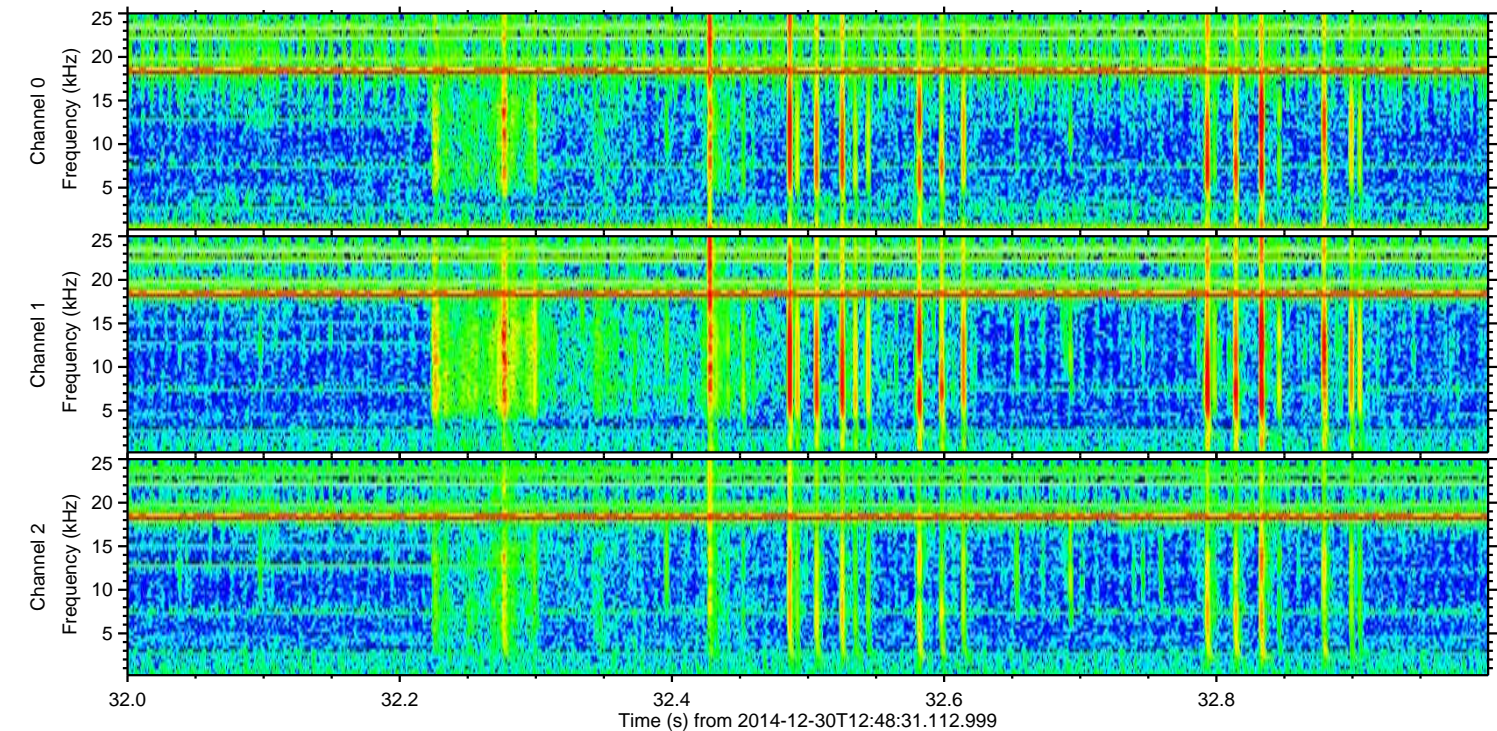
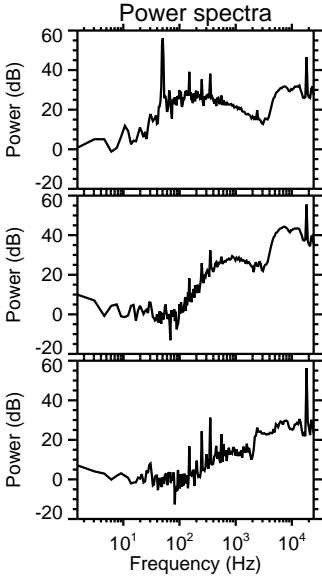
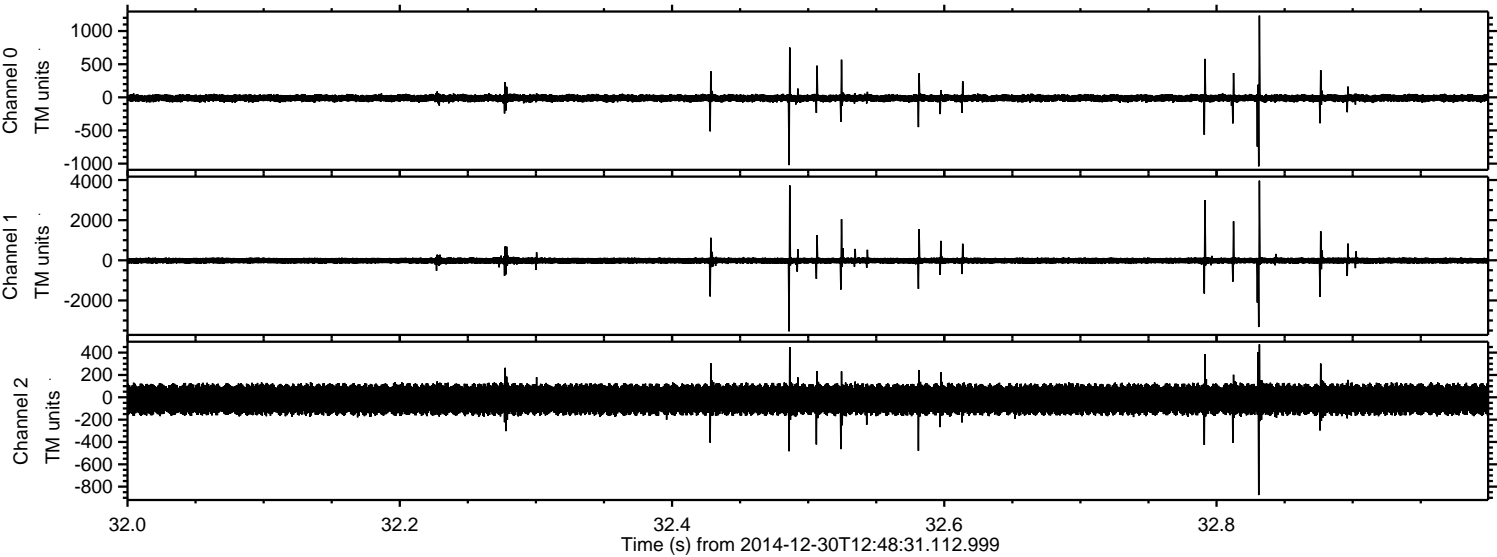
Processed Fri Jan 2 17:53:36 2015 by ELM ver.2012-10-06 from 001__elm20141230_124830__dat00.bin



Processed Fri Jan 2 17:53:37 2015 by ELM ver.2012-10-06 from 001__elm20141230_124830__dat00.bin

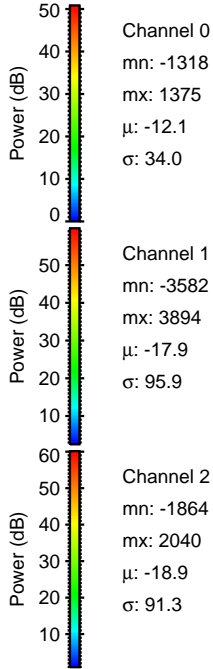
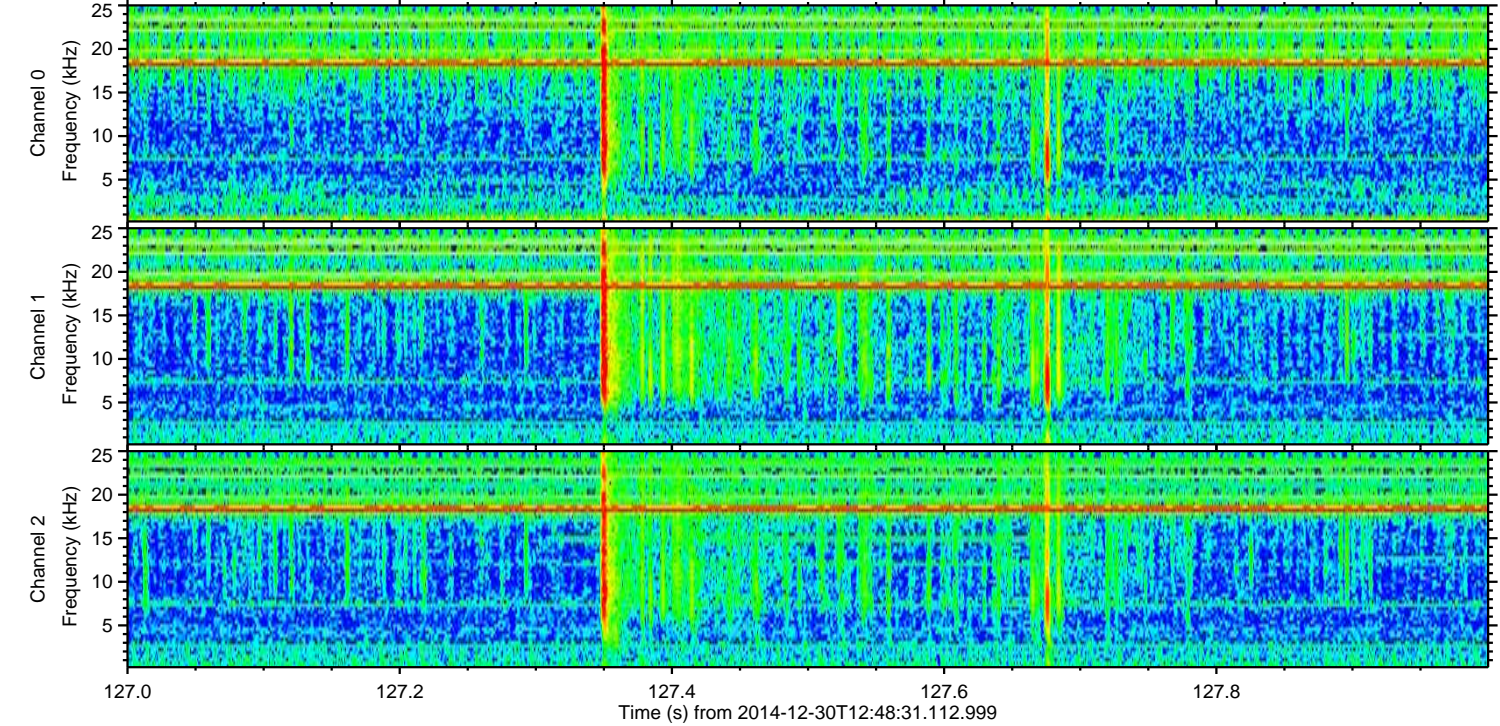
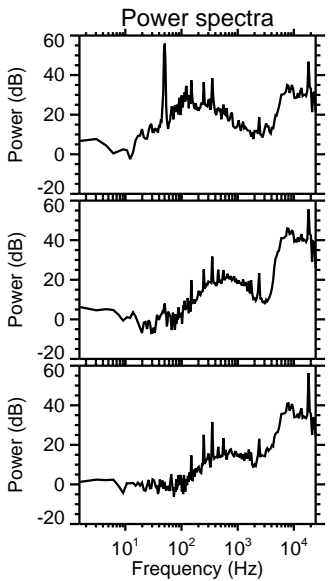
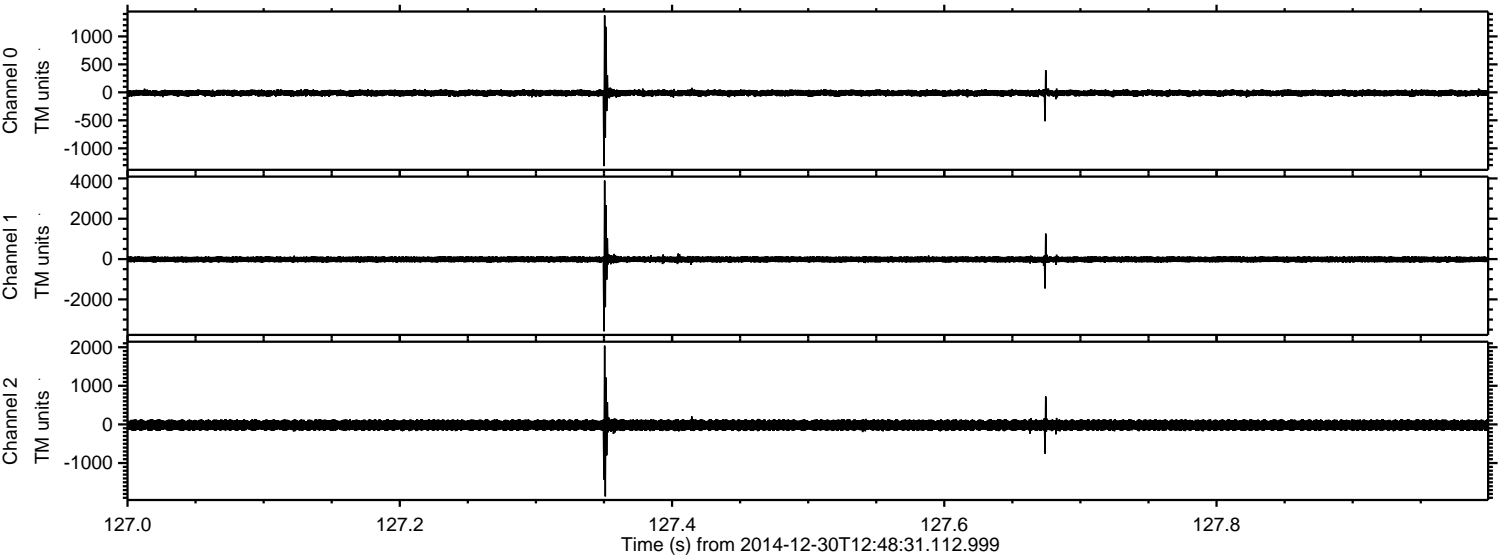


Processed Fri Jan 2 17:53:38 2015 by ELM ver.2012-10-06 from 001__elm20141230_124830__dat00.bin



ELMAVAN 3D WAVEFORMS (Measured data sampled at 50 kHz) 49788 packets of 144 samples from 2014-12-30T12:48:31.112.999. Part 128/144

Processed Fri Jan 2 17:53:39 2015 by ELM ver.2012-10-06 from 001__elm20141230_124830__dat00.bin



Channel 0
mn: -1318
mx: 1375
 μ : -12.1
 σ : 34.0

Channel 1
mn: -3582
mx: 3894
 μ : -17.9
 σ : 95.9

Channel 2
mn: -1864
mx: 2040
 μ : -18.9
 σ : 91.3

Processed Fri Jan 2 17:53:40 2015 by ELM ver.2012-10-06 from 001__elm20141230_124830__dat00.bin

