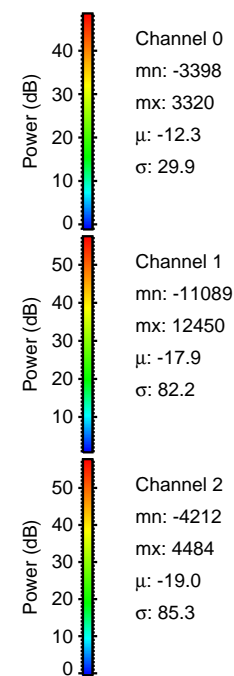
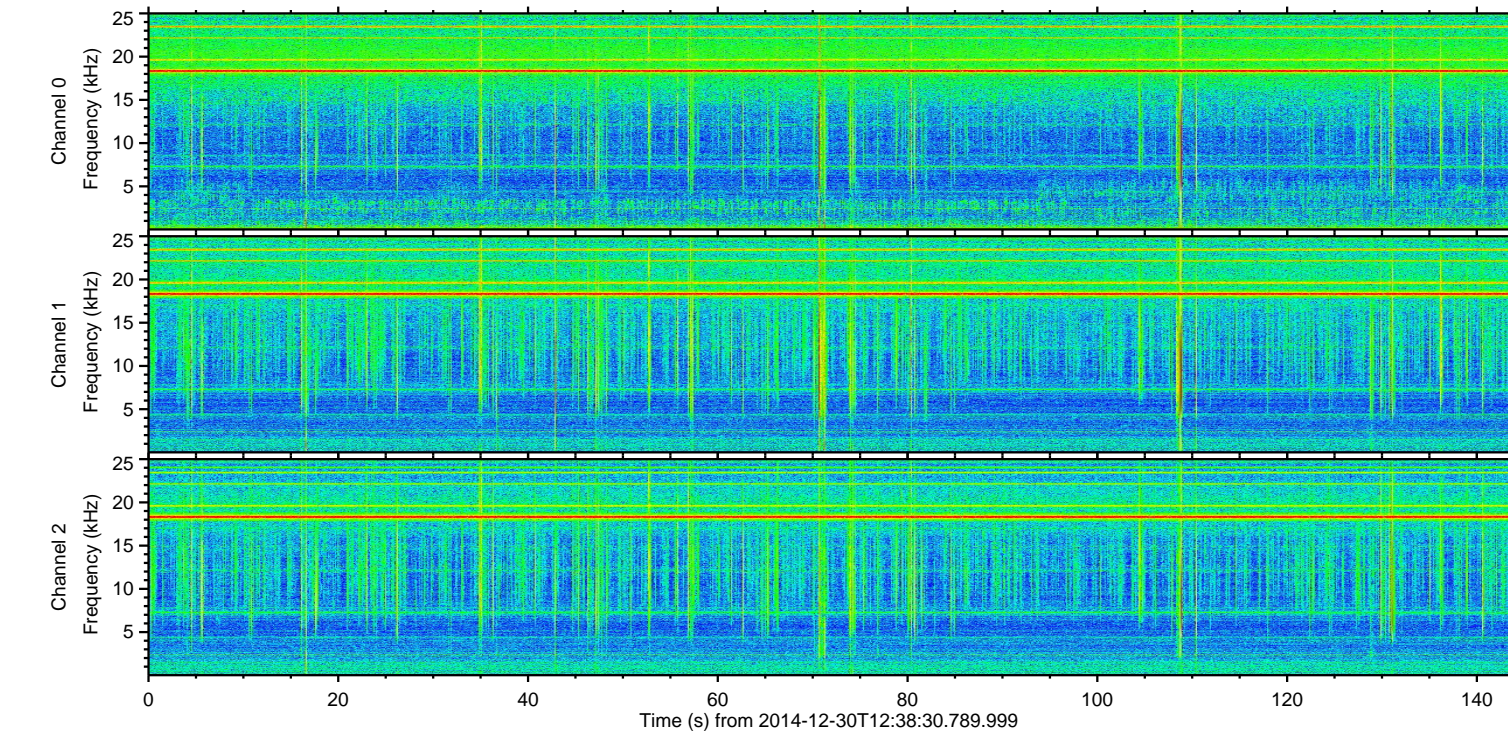
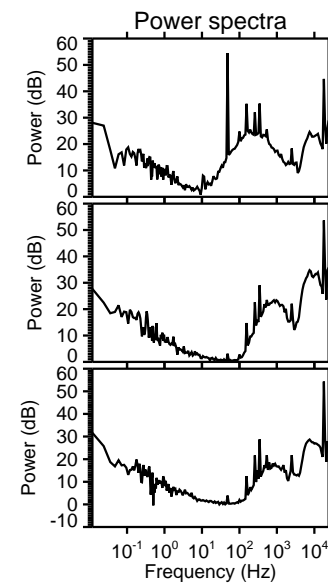
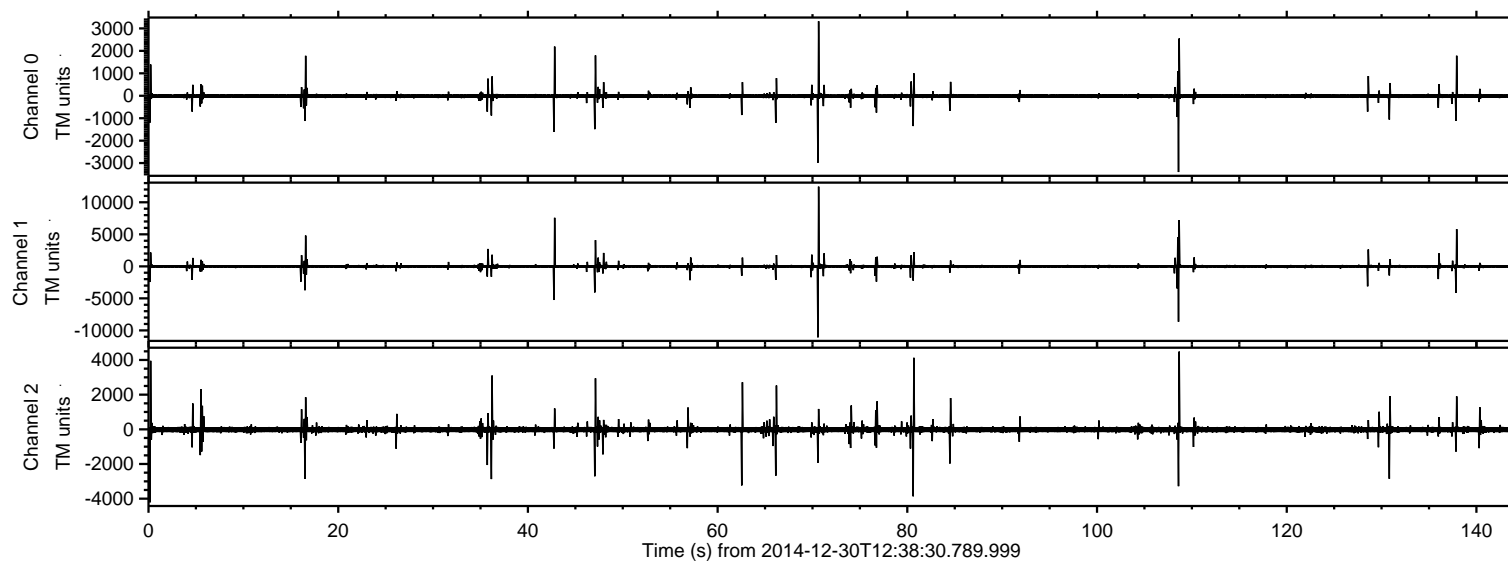
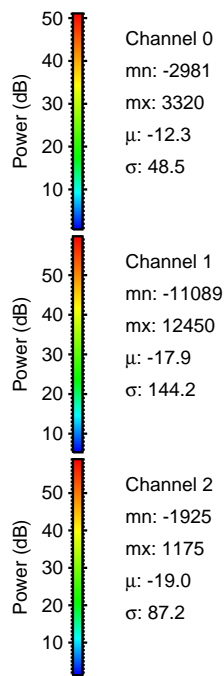
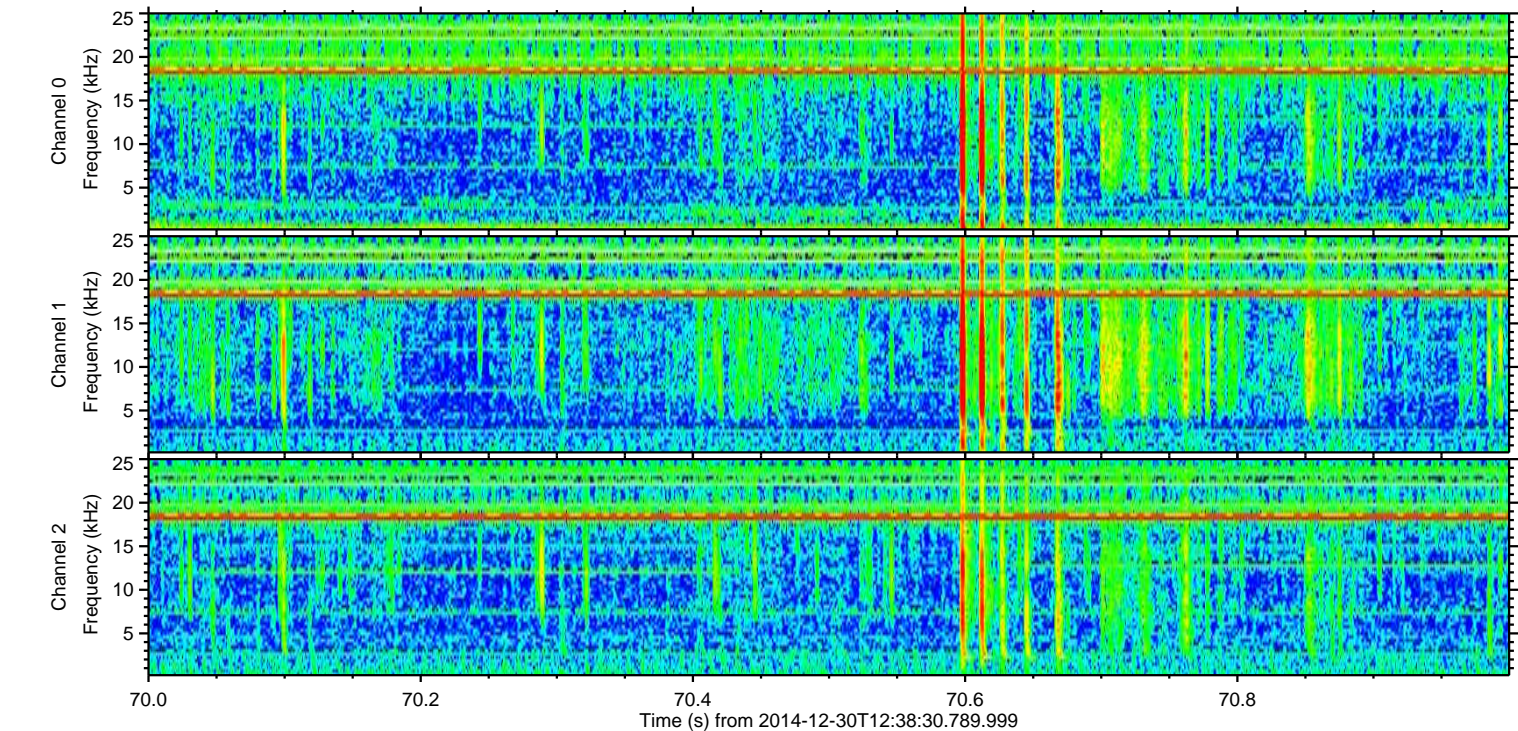
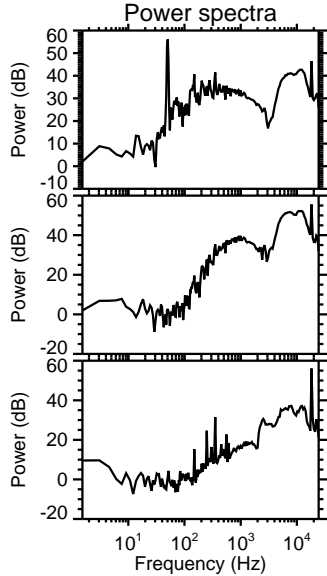
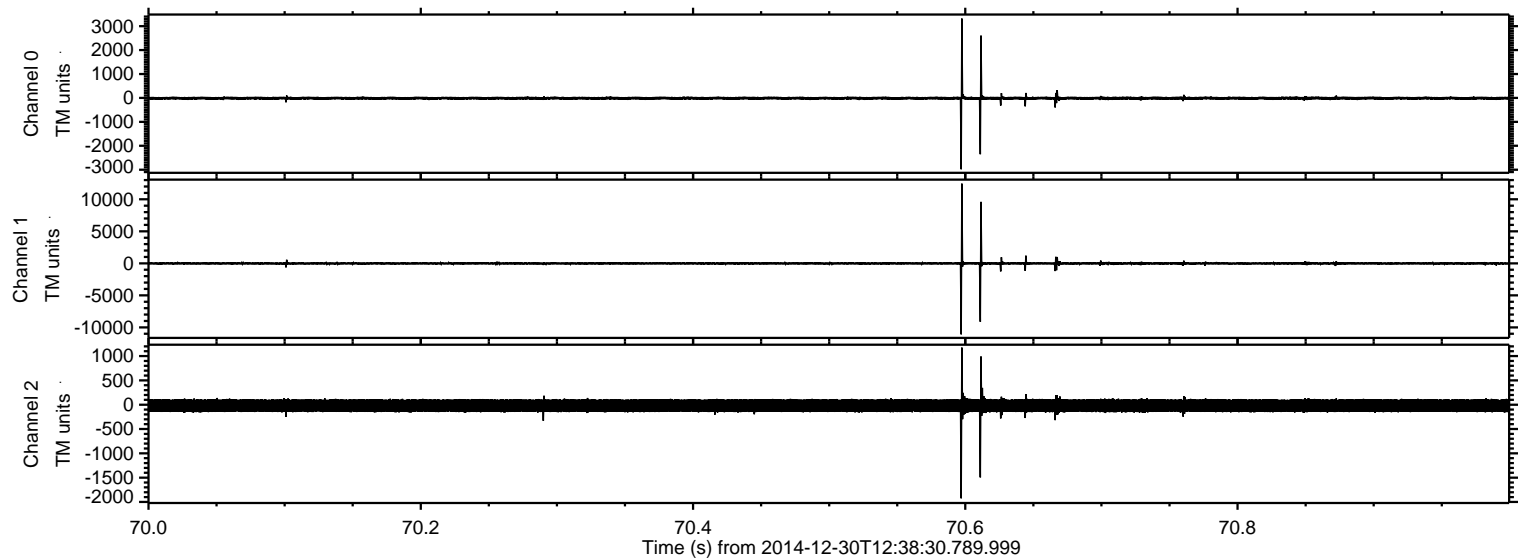


ELMAVAN 3D WAVEFORMS (Measured data sampled at 50 kHz) 49809 packets of 144 samples from 2014-12-30T12:38:30.789.999.

Processed Fri Jan 2 17:51:08 2015 by ELM ver.2012-10-06 from 001__elm20141230_123829__dat00.bin

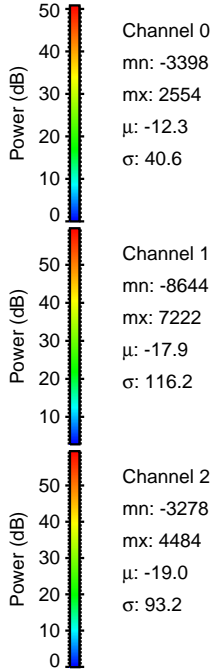
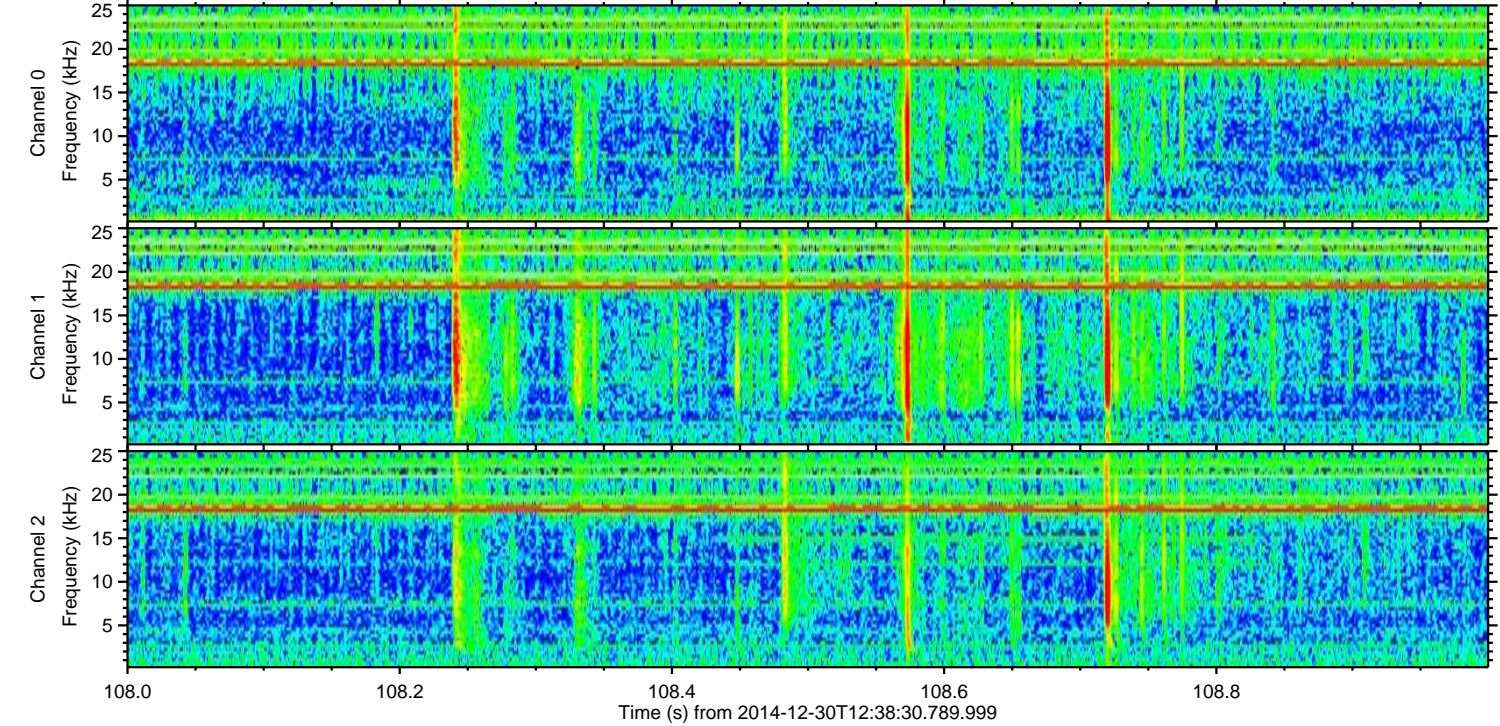
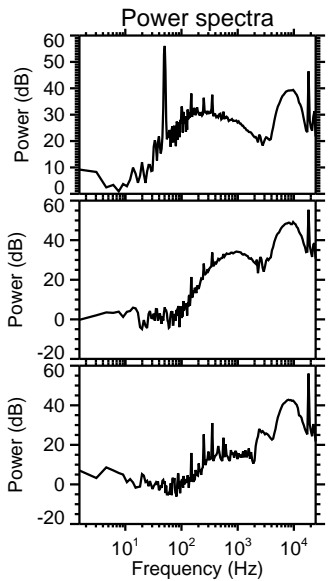
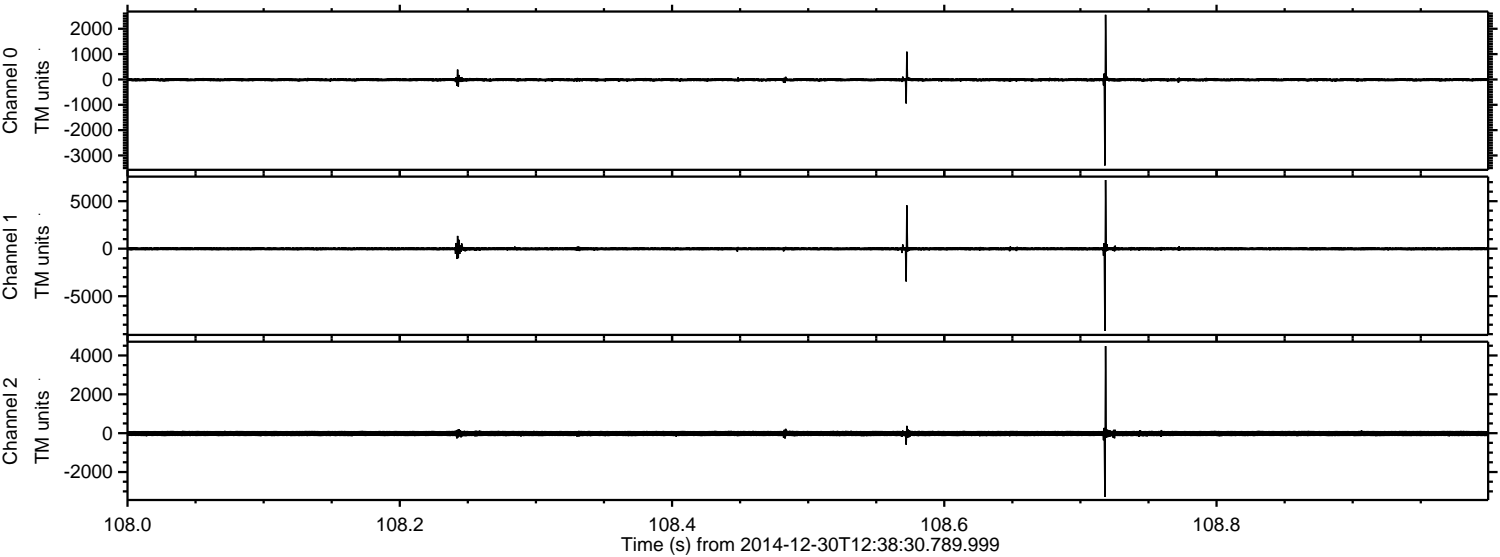


Processed Fri Jan 2 17:51:20 2015 by ELM ver.2012-10-06 from 001__elm20141230_123829__dat00.bin

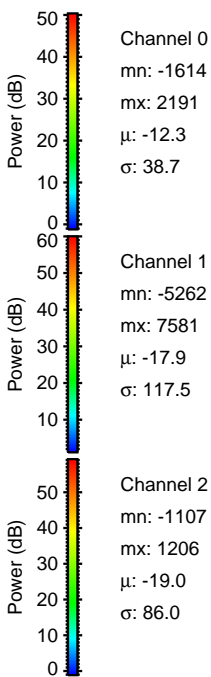
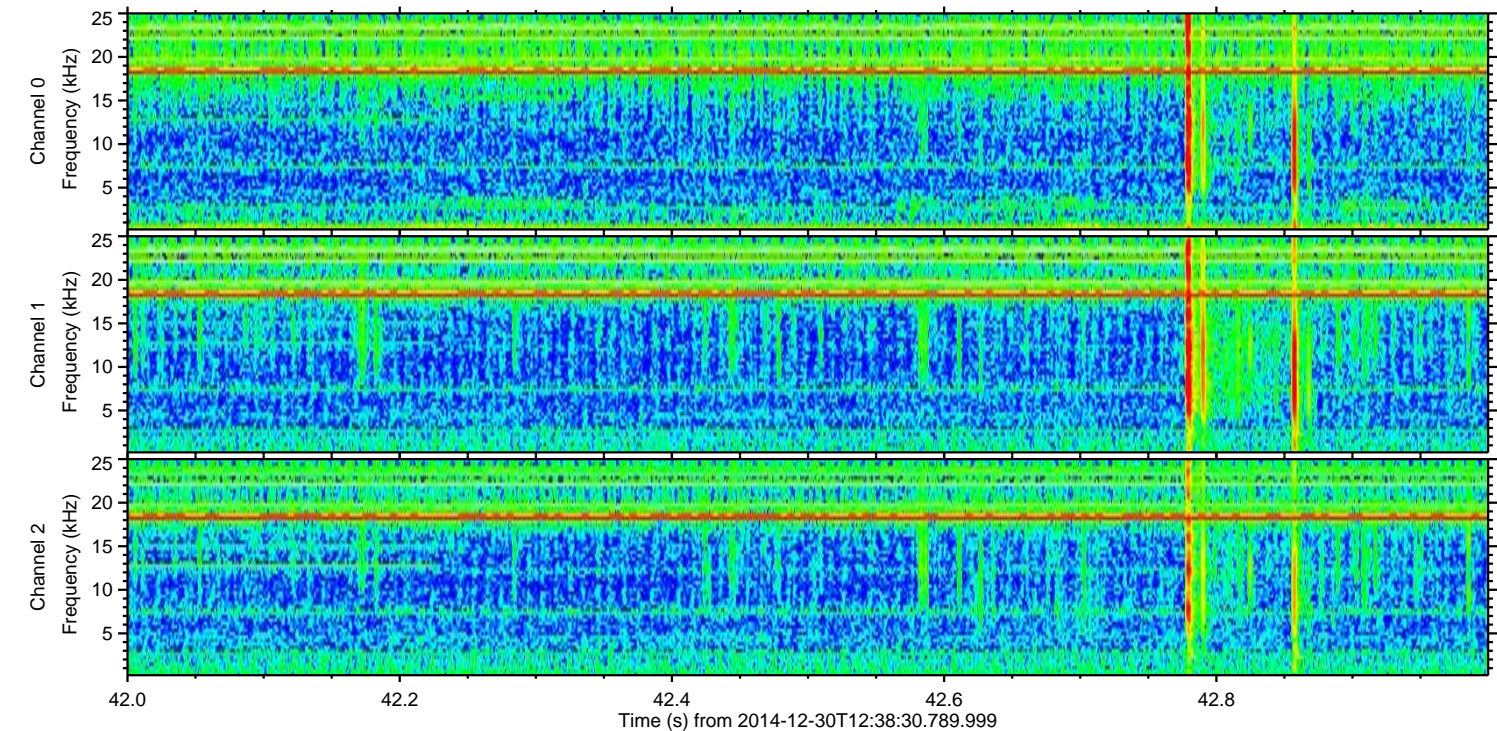
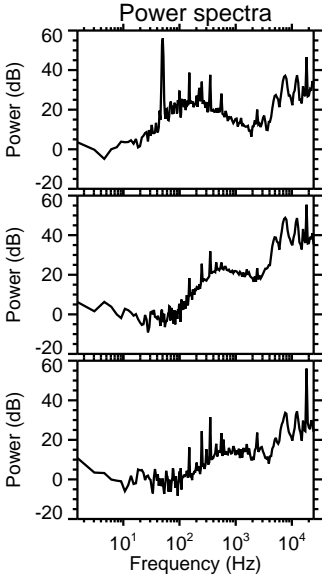
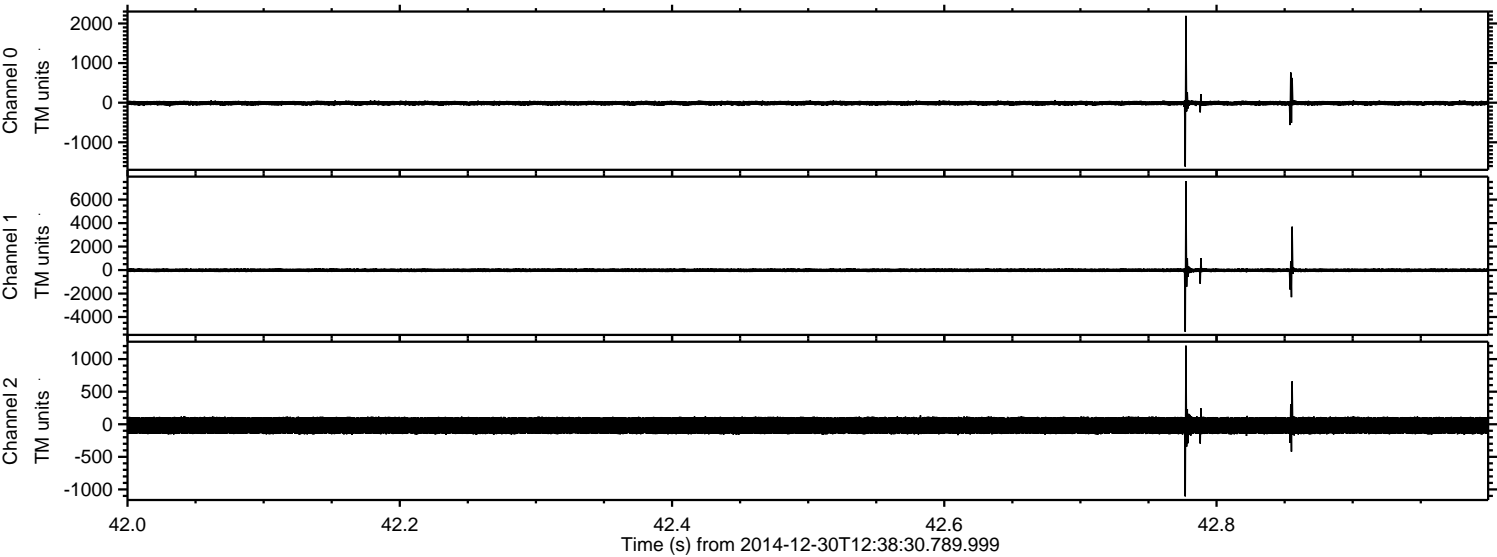


ELMAVAN 3D WAVEFORMS (Measured data sampled at 50 kHz) 49809 packets of 144 samples from 2014-12-30T12:38:30.789.999. Part 109/144

Processed Fri Jan 2 17:51:20 2015 by ELM ver.2012-10-06 from 001__elm20141230_123829__dat00.bin

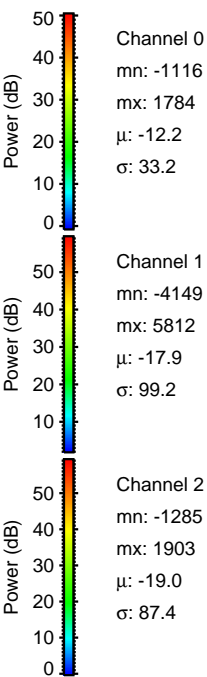
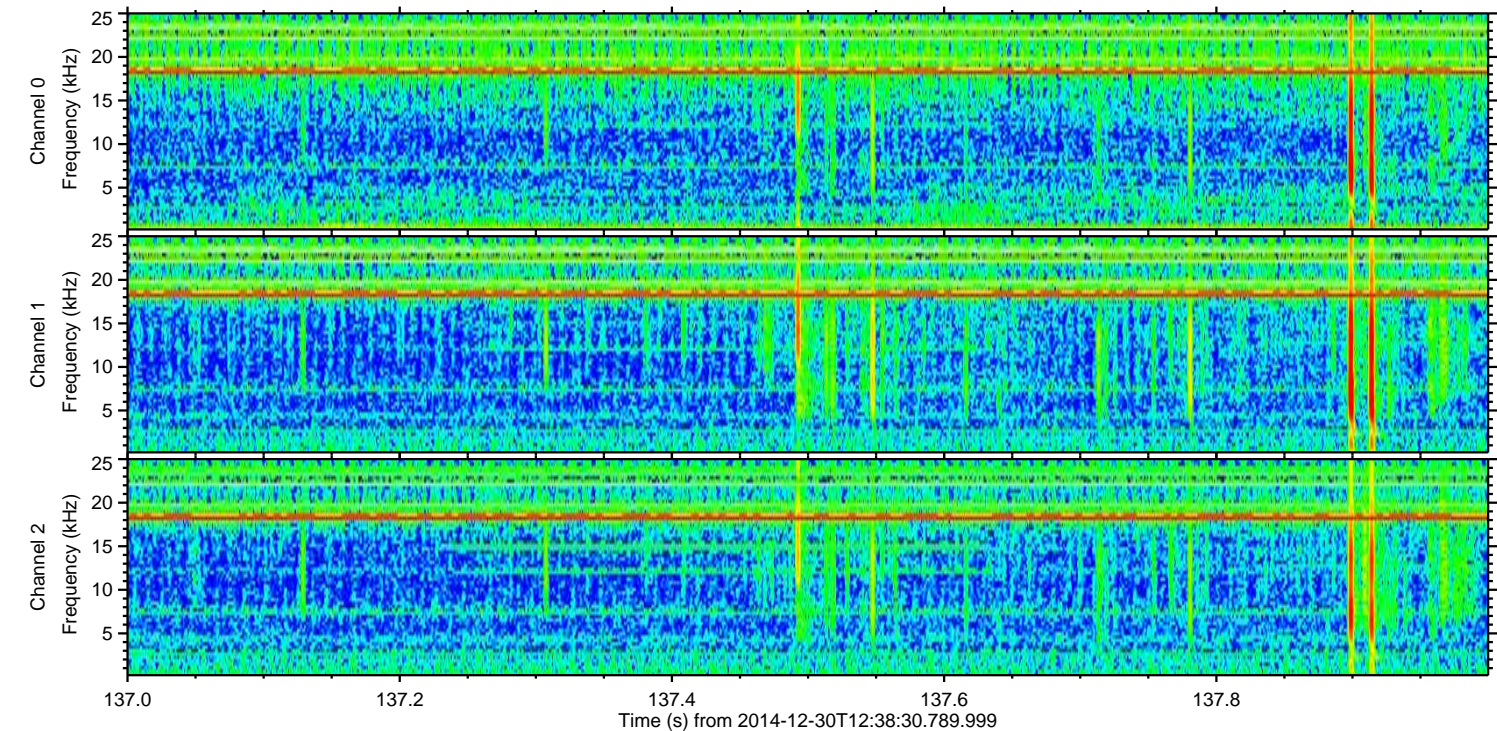
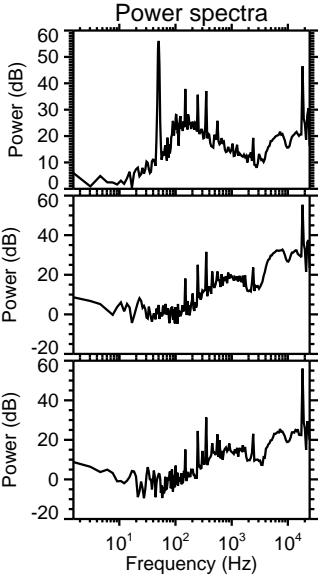
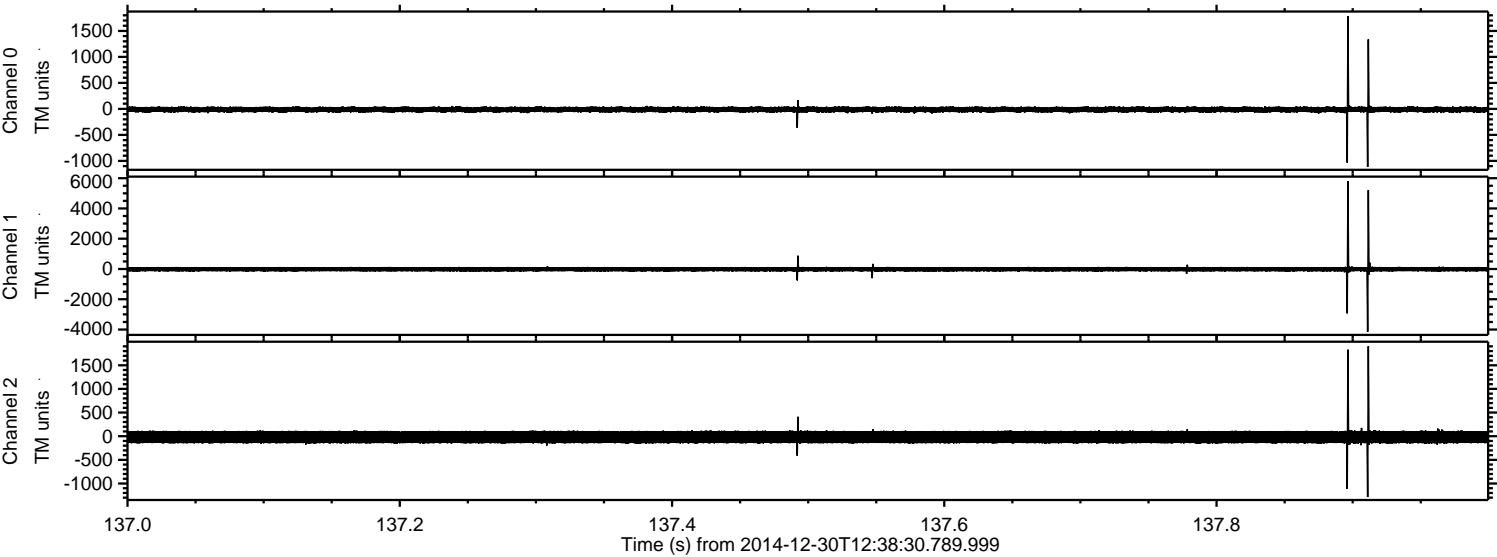


Processed Fri Jan 2 17:51:21 2015 by ELM ver.2012-10-06 from 001__elm20141230_123829__dat00.bin



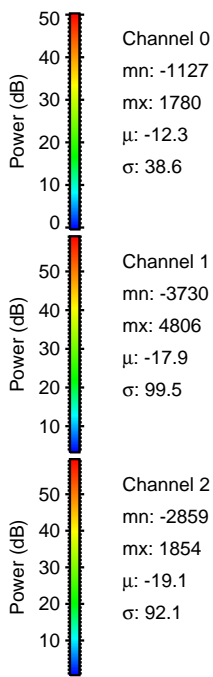
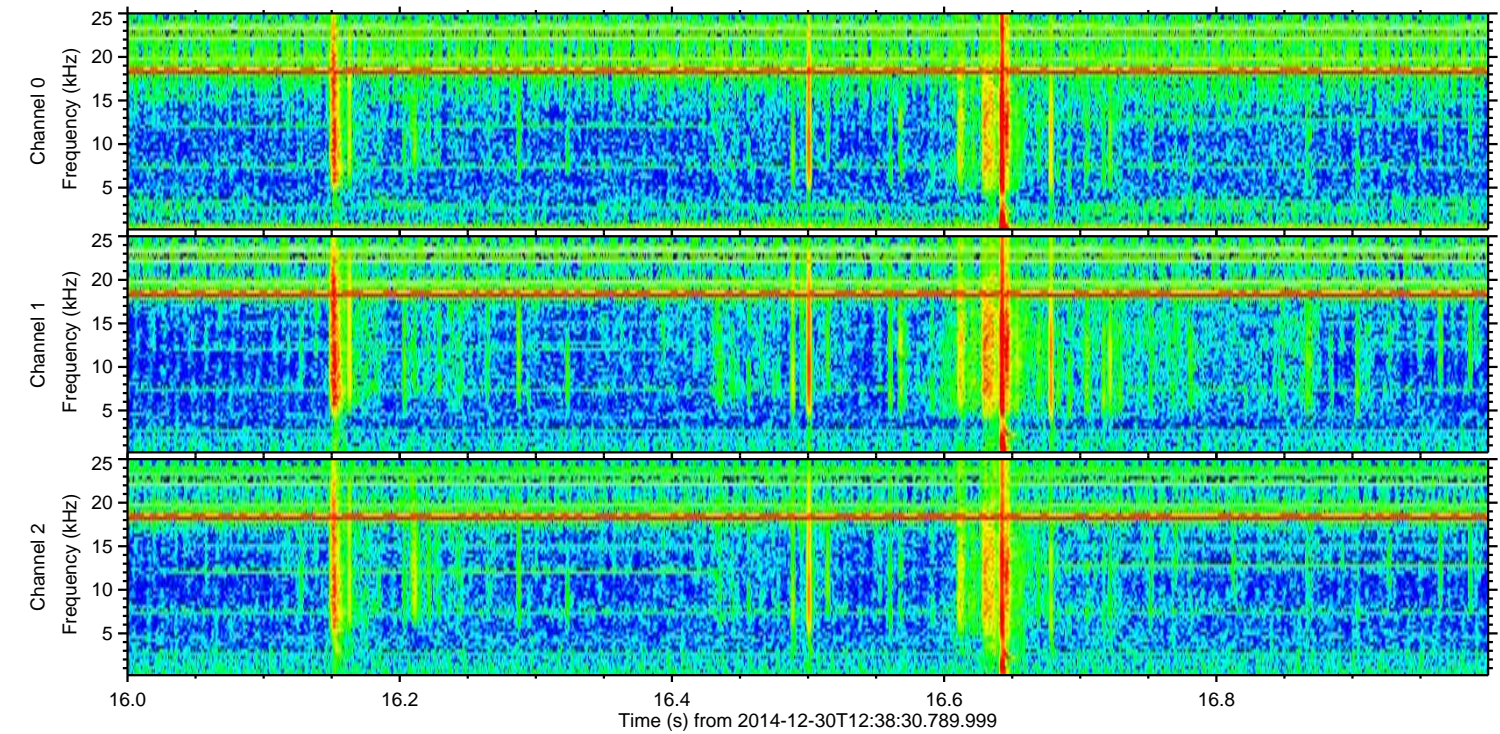
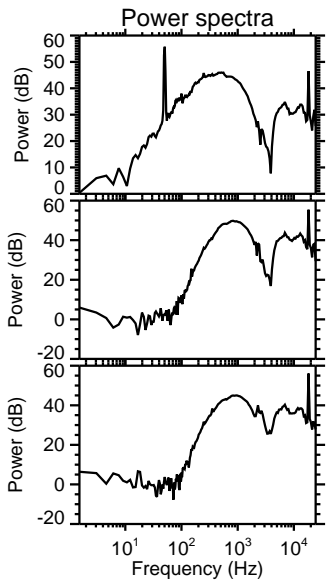
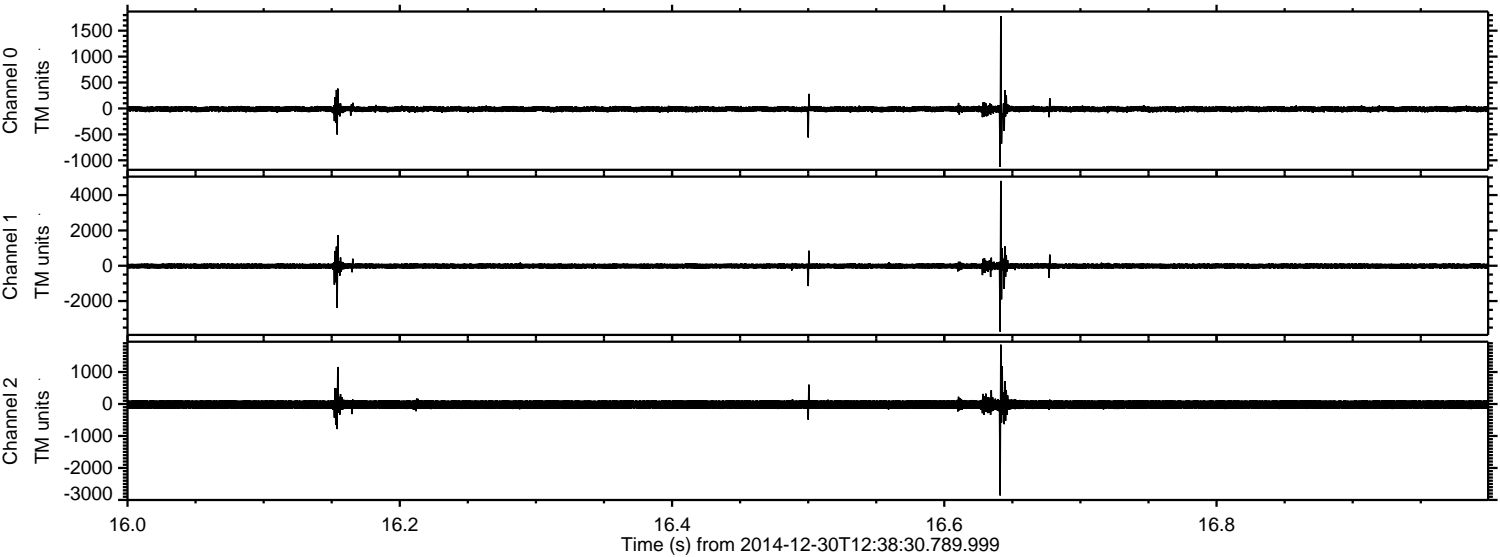
ELMAVAN 3D WAVEFORMS (Measured data sampled at 50 kHz) 49809 packets of 144 samples from 2014-12-30T12:38:30.789.999. Part 138/144

Processed Fri Jan 2 17:51:22 2015 by ELM ver.2012-10-06 from 001__elm20141230_123829__dat00.bin



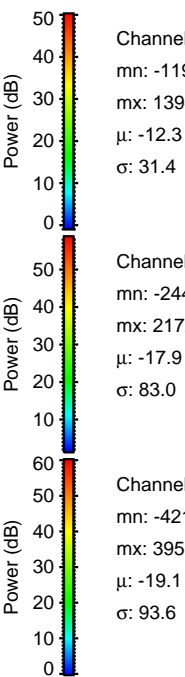
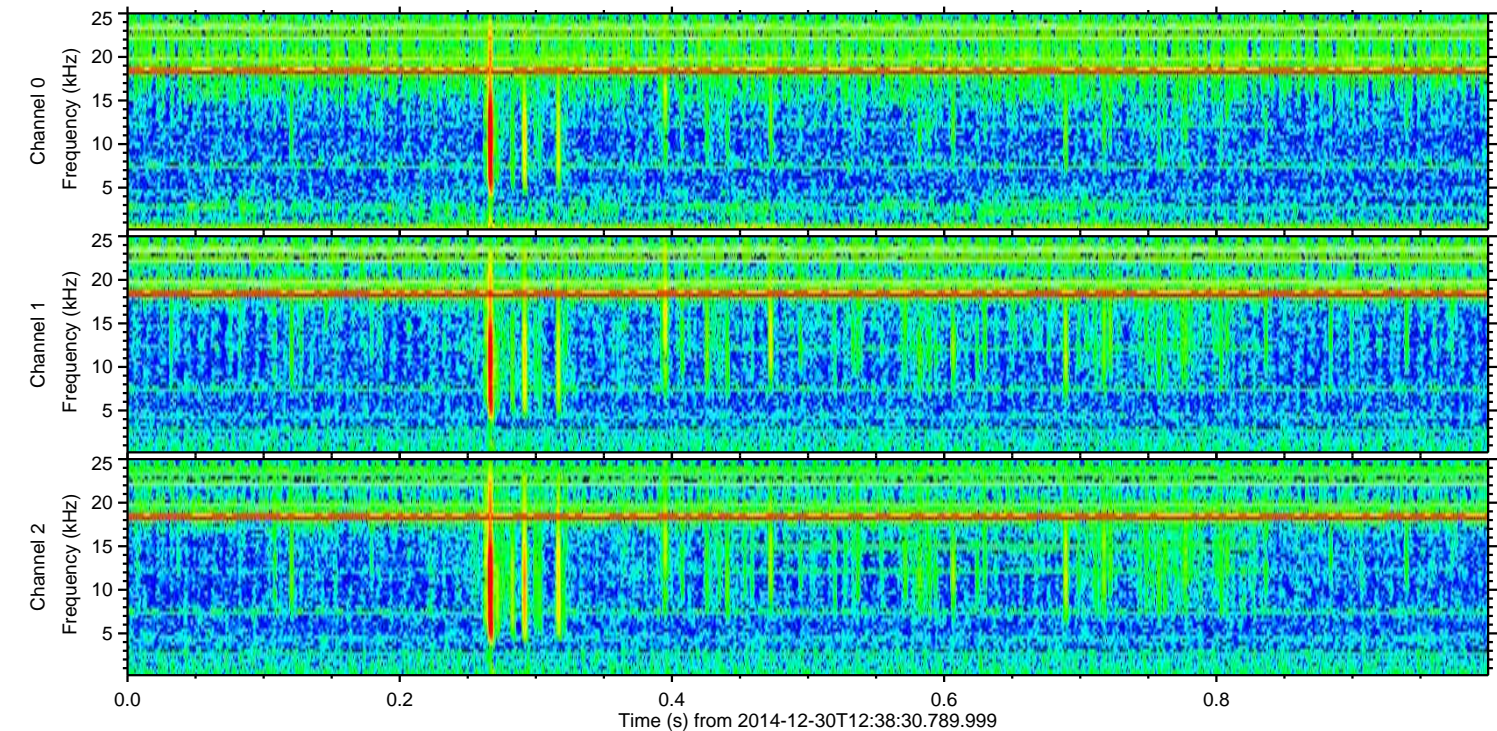
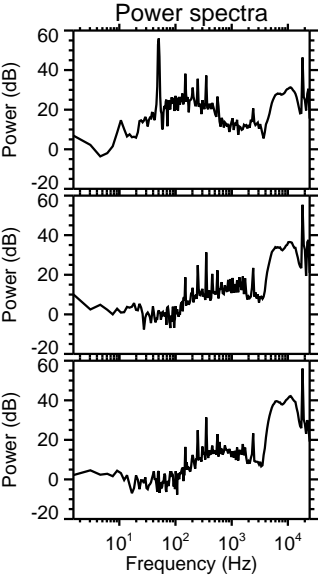
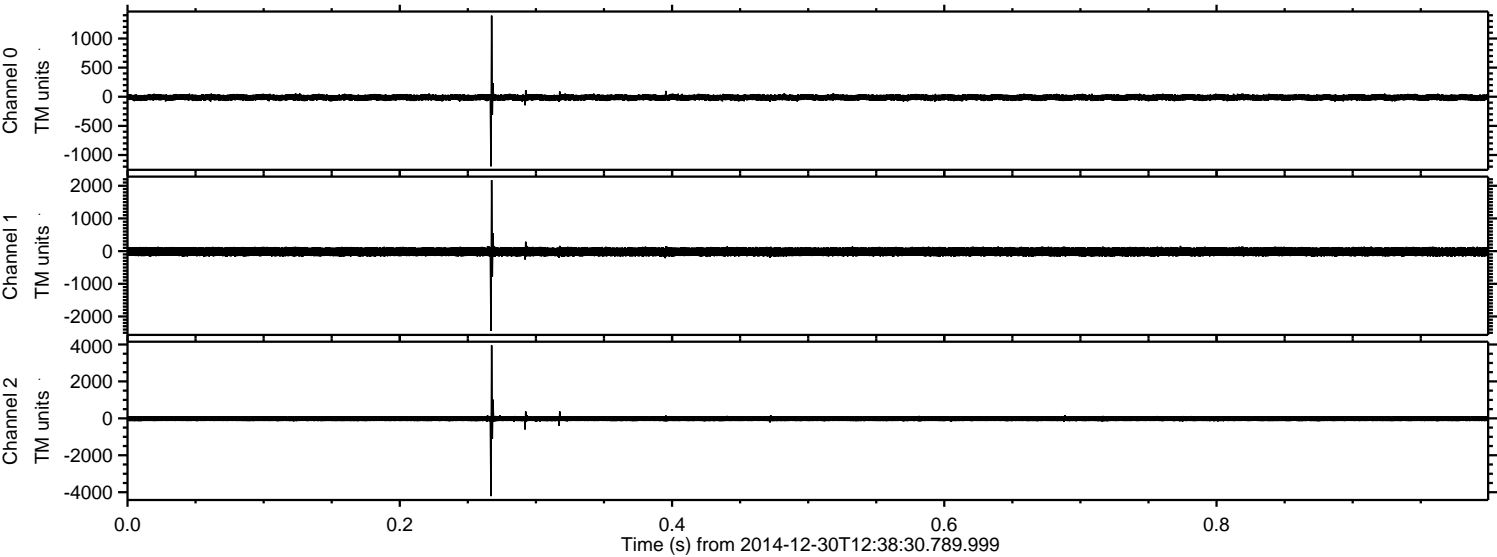
ELMAVAN 3D WAVEFORMS (Measured data sampled at 50 kHz) 49809 packets of 144 samples from 2014-12-30T12:38:30.789.999. Part 17/144

Processed Fri Jan 2 17:51:23 2015 by ELM ver.2012-10-06 from 001__elm20141230_123829__dat00.bin

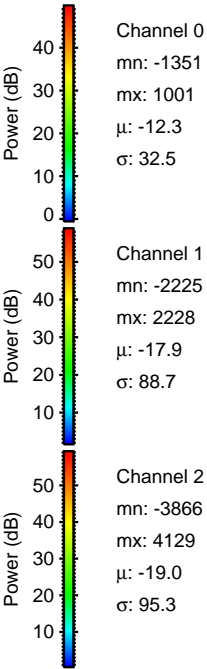
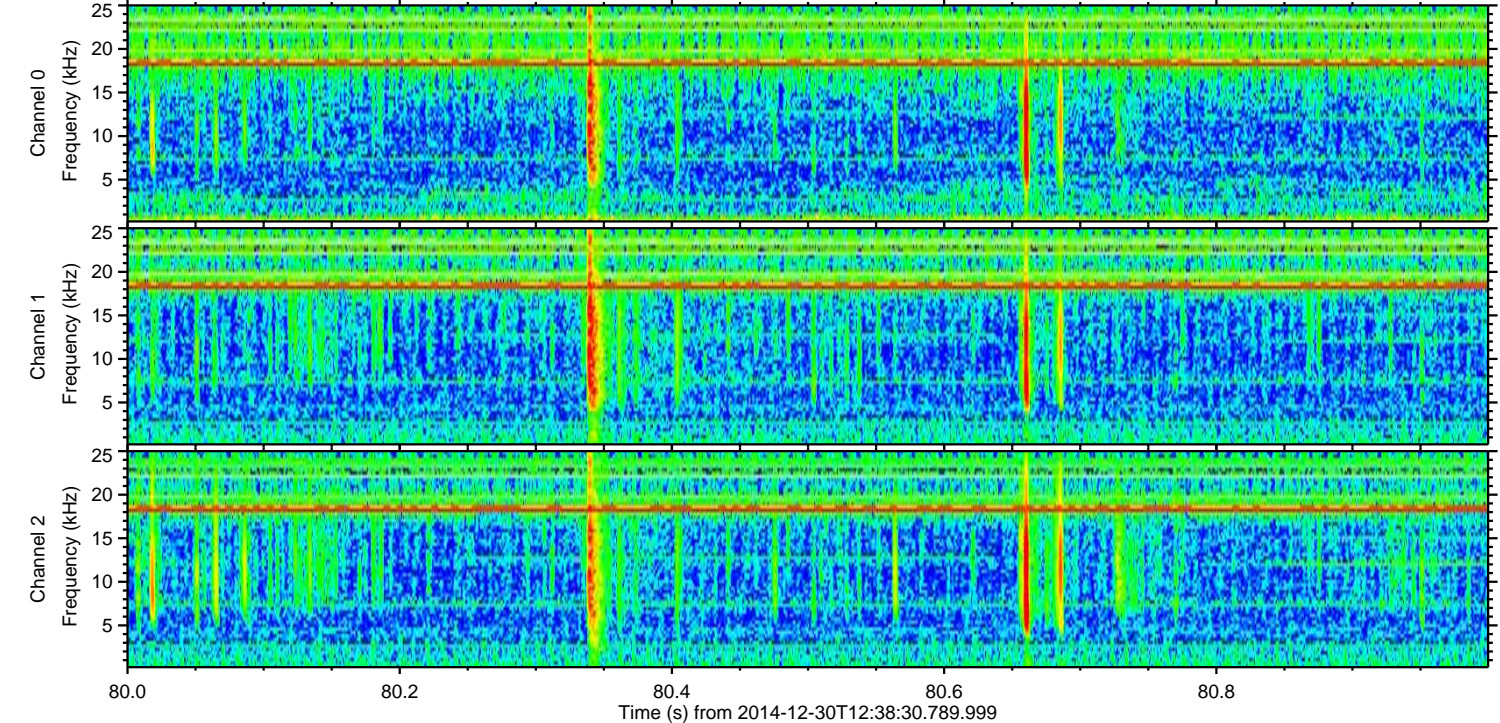
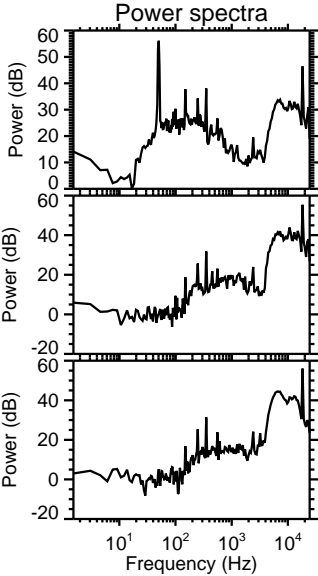
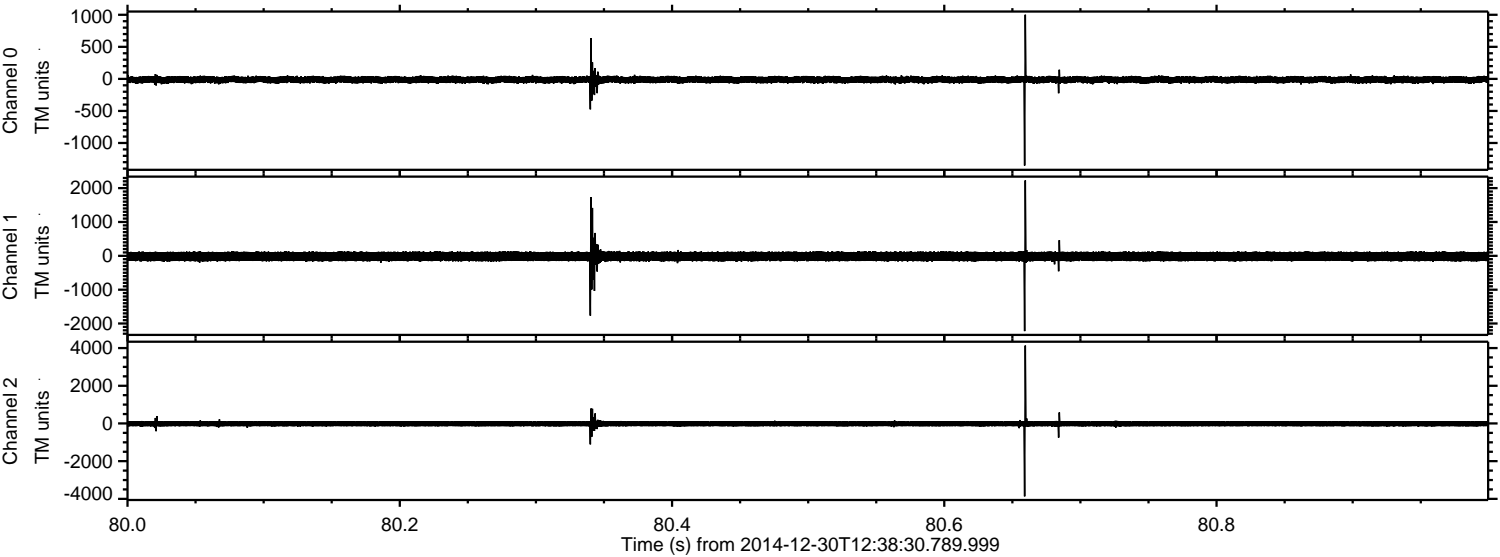


ELMAVAN 3D WAVEFORMS (Measured data sampled at 50 kHz) 49809 packets of 144 samples from 2014-12-30T12:38:30.789.999. Part 1/144

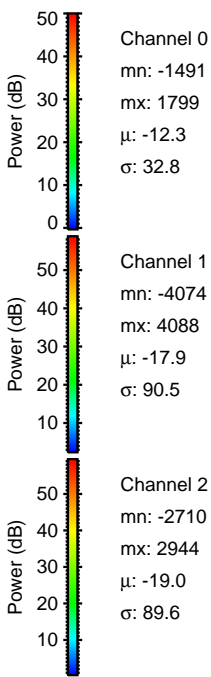
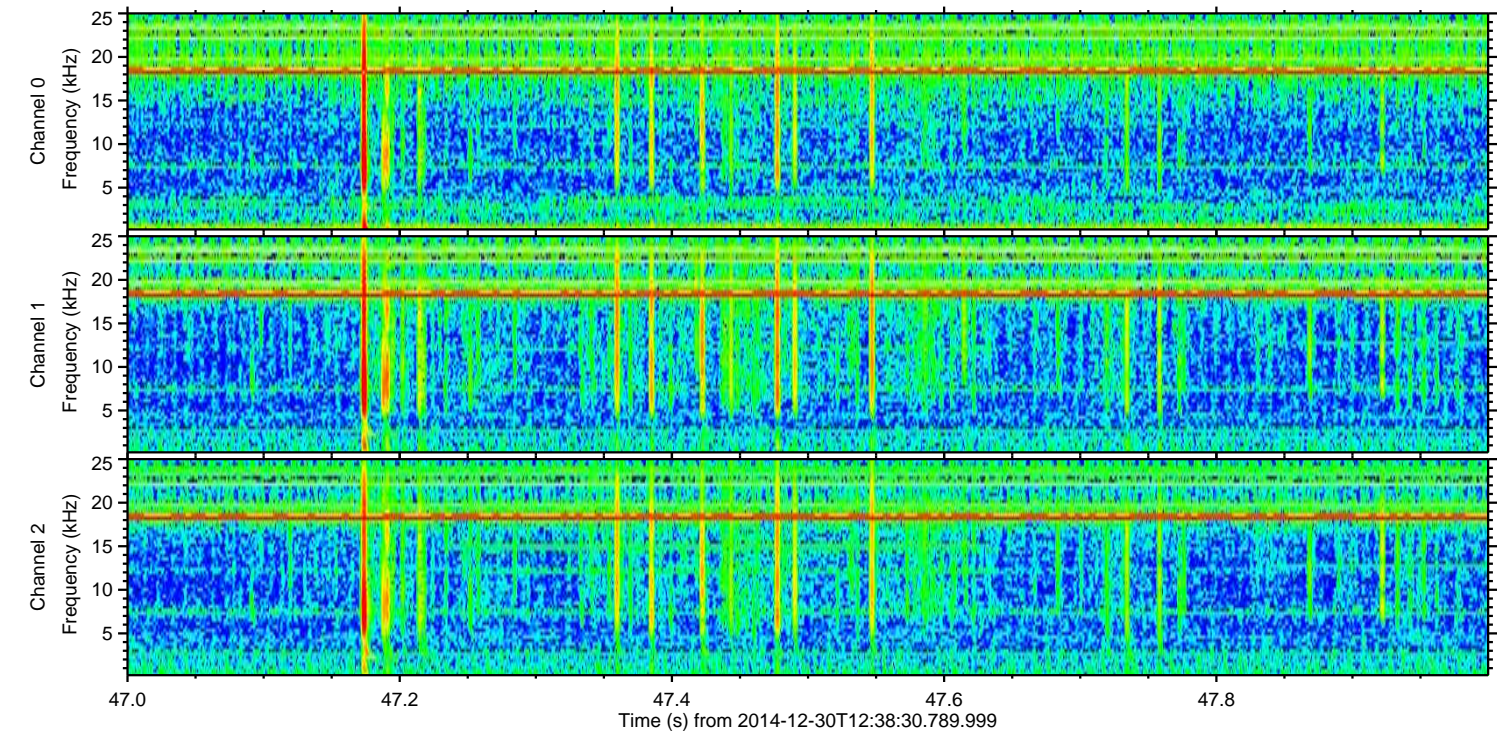
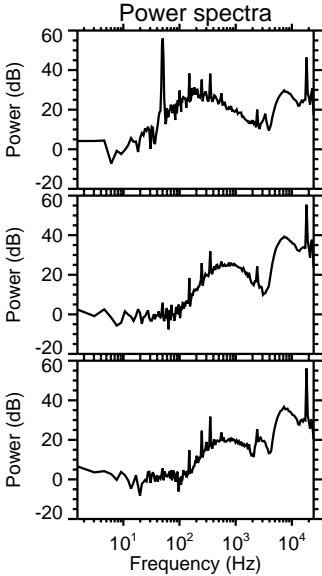
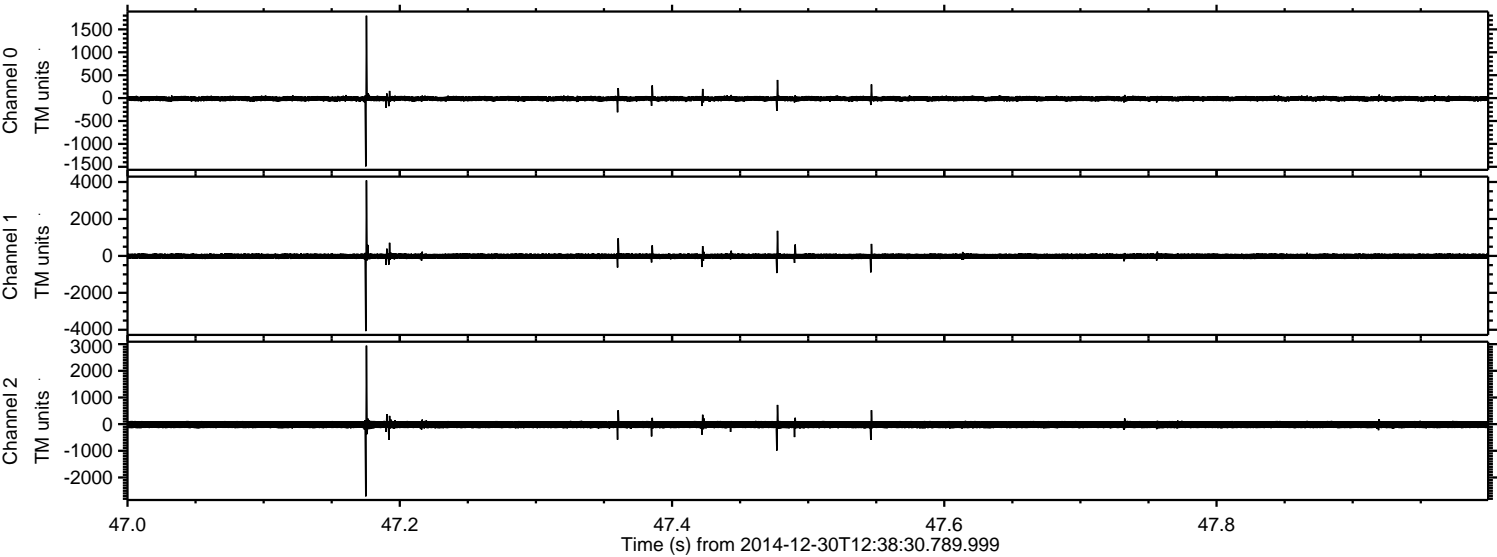
Processed Fri Jan 2 17:51:24 2015 by ELM ver.2012-10-06 from 001__elm20141230_123829__dat00.bin



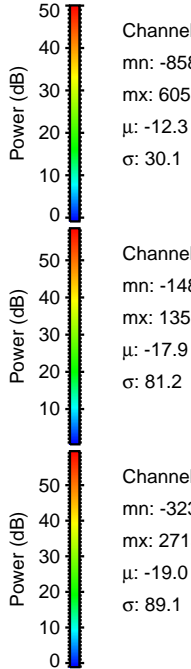
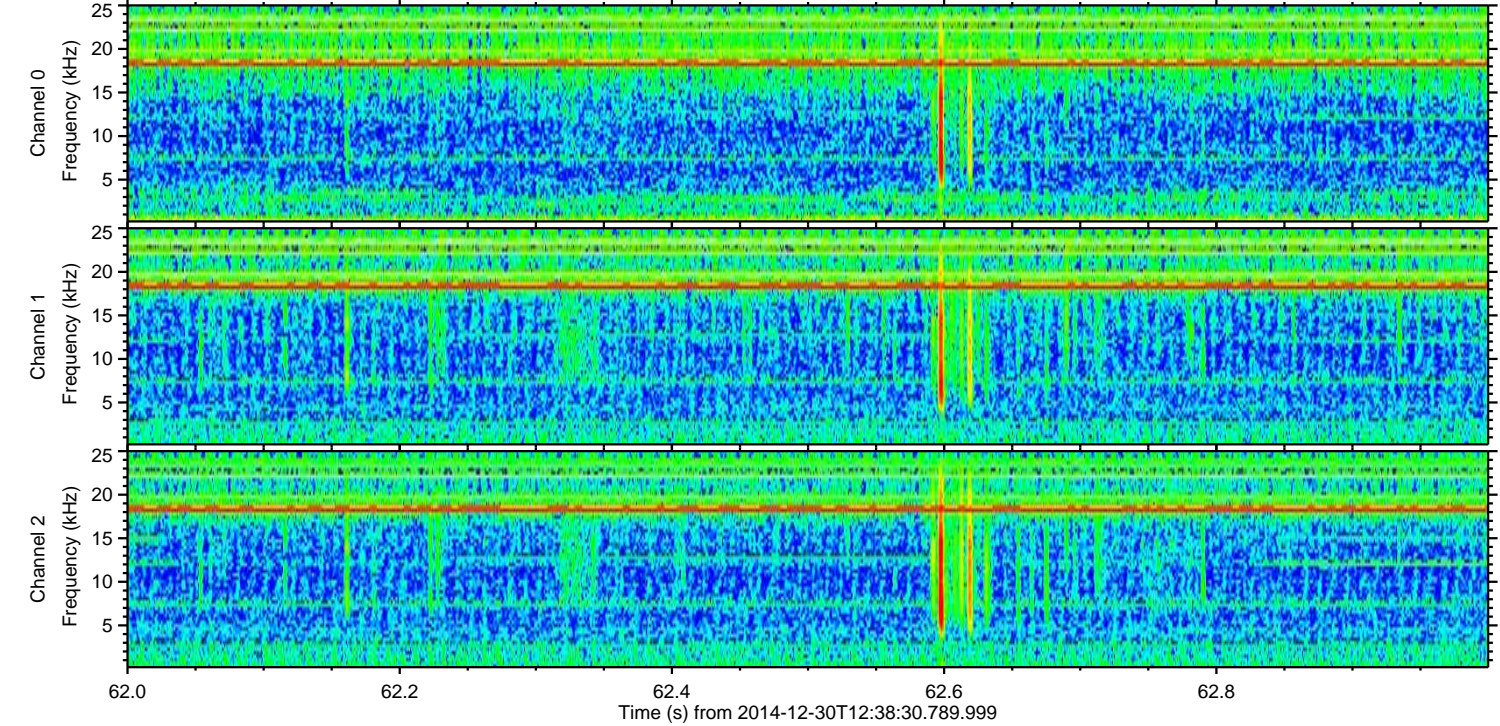
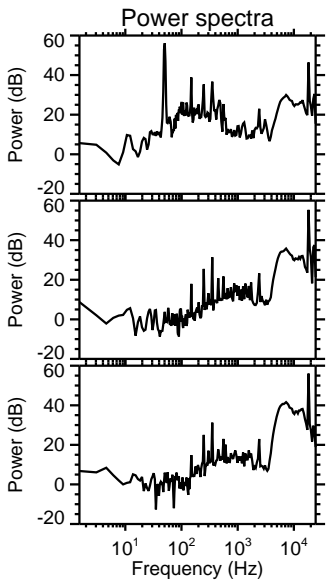
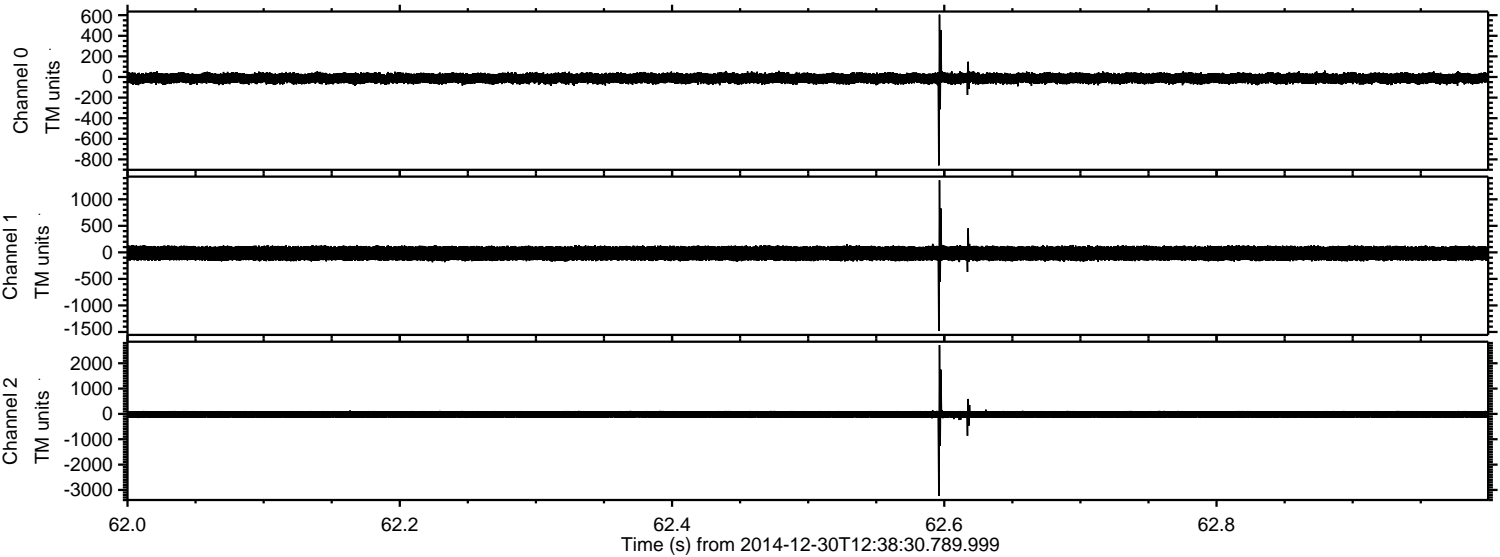
Processed Fri Jan 2 17:51:25 2015 by ELM ver.2012-10-06 from 001__elm20141230_123829__dat00.bin



Processed Fri Jan 2 17:51:26 2015 by ELM ver.2012-10-06 from 001__elm20141230_123829__dat00.bin



Processed Fri Jan 2 17:51:27 2015 by ELM ver.2012-10-06 from 001__elm20141230_123829__dat00.bin



Channel 0
mn: -858
mx: 605
 μ : -12.3
 σ : 30.1

Channel 1
mn: -1481
mx: 1359
 μ : -17.9
 σ : 81.2

Channel 2
mn: -3236
mx: 2715
 μ : -19.0
 σ : 89.1

