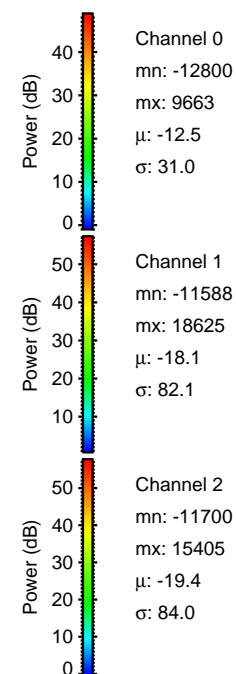
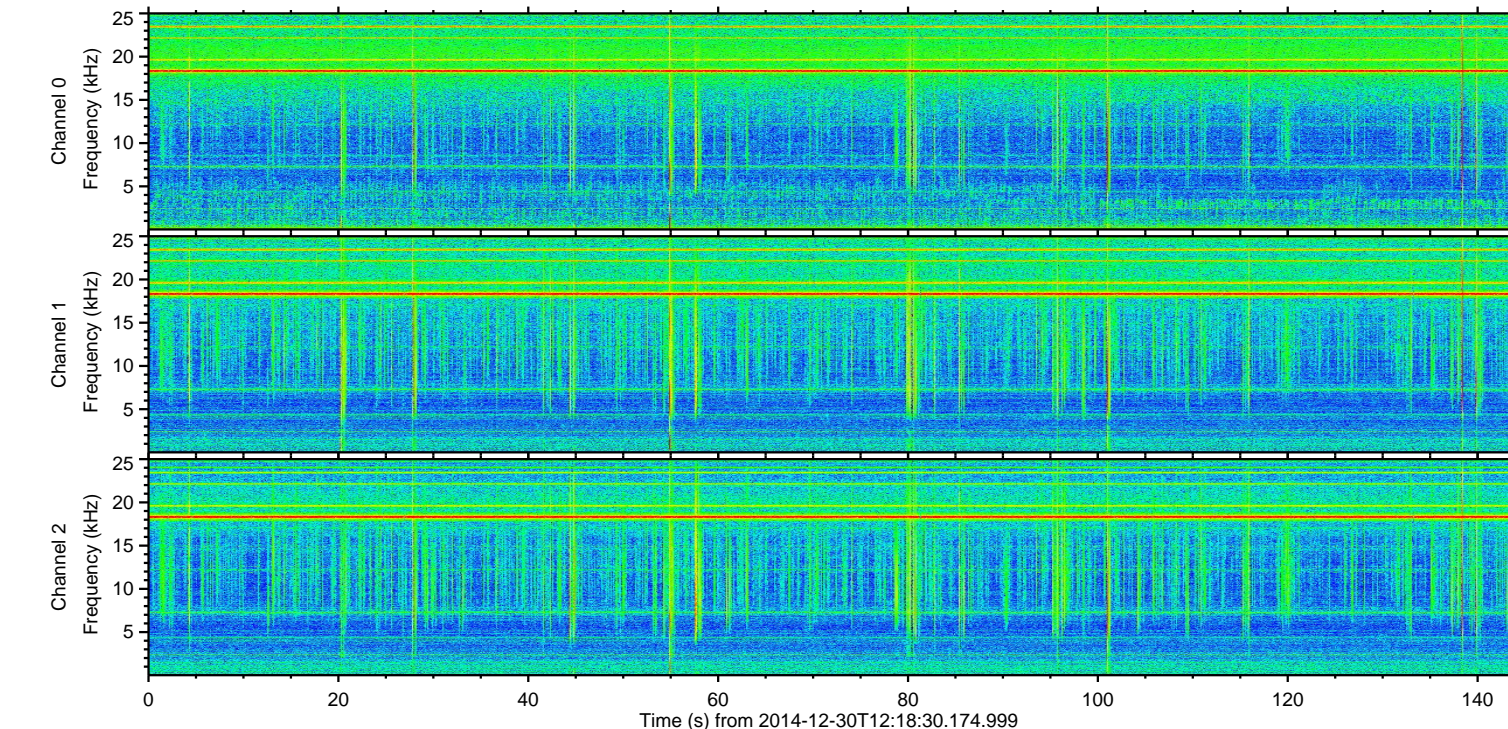
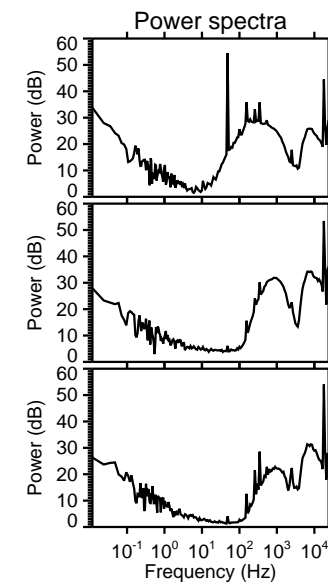
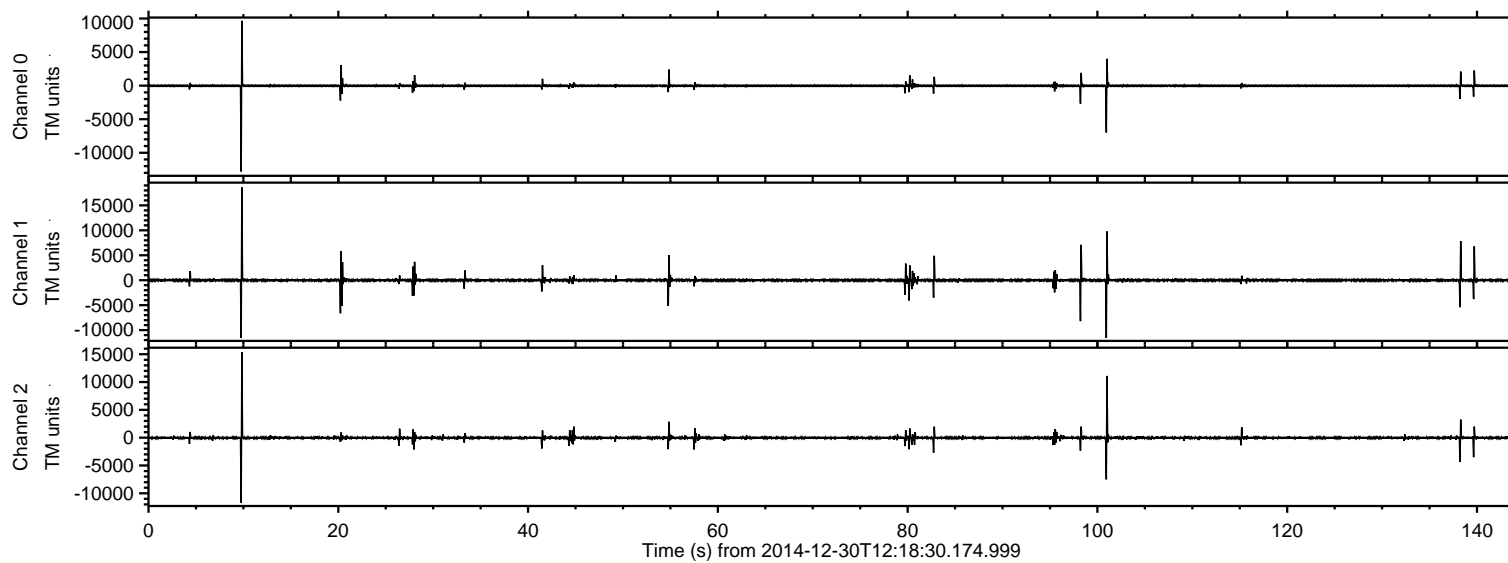
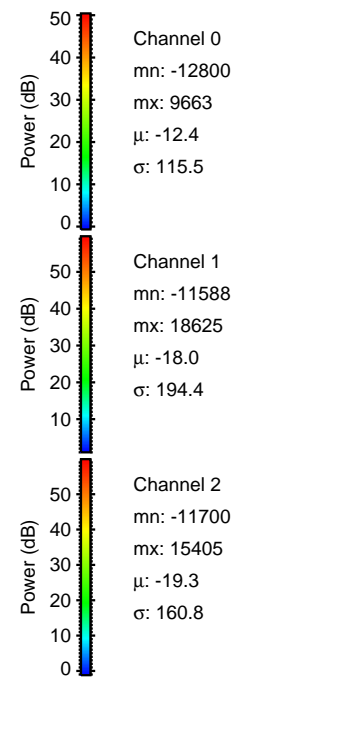
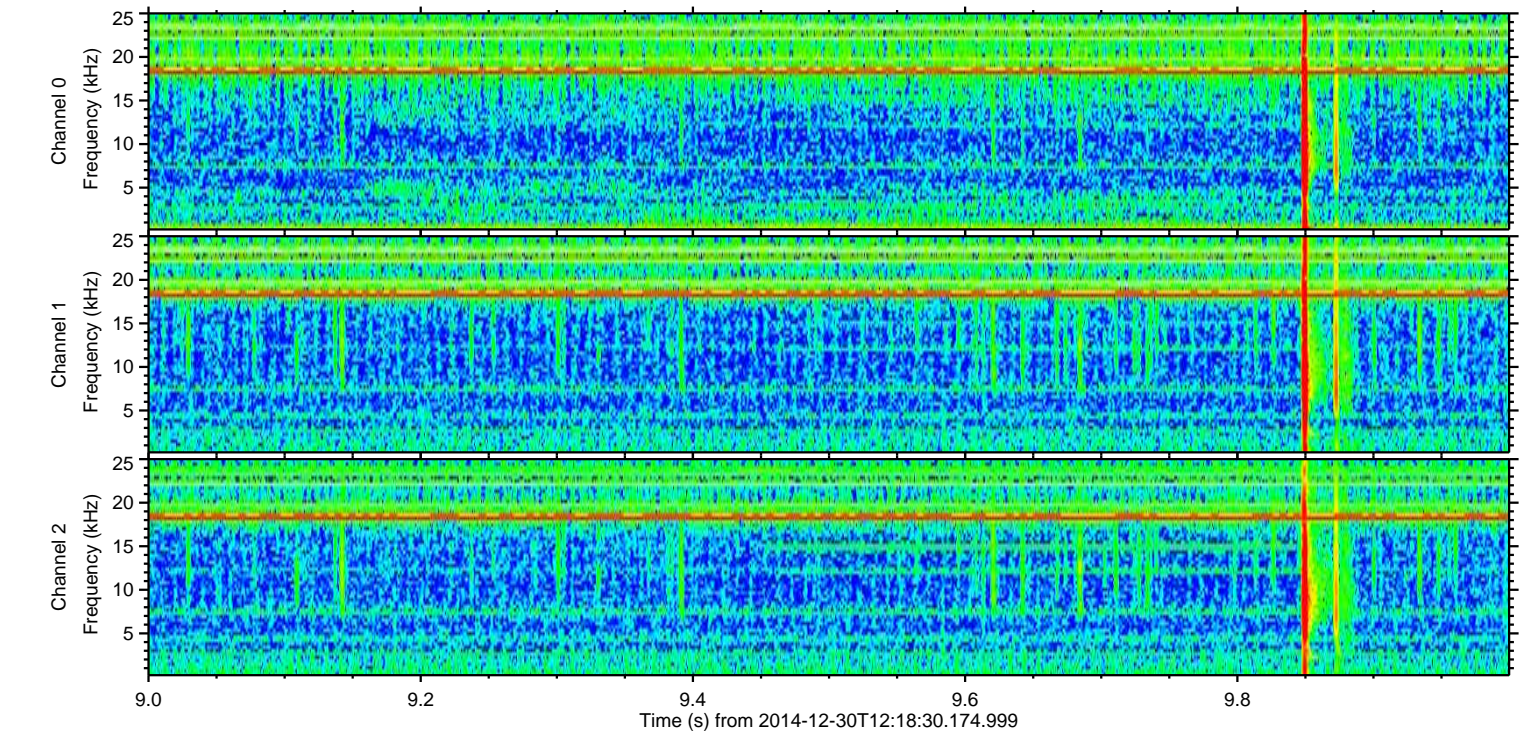
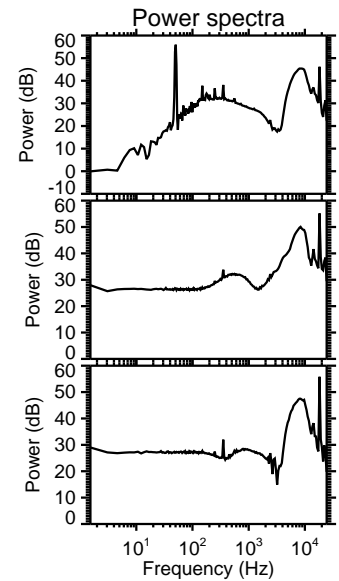
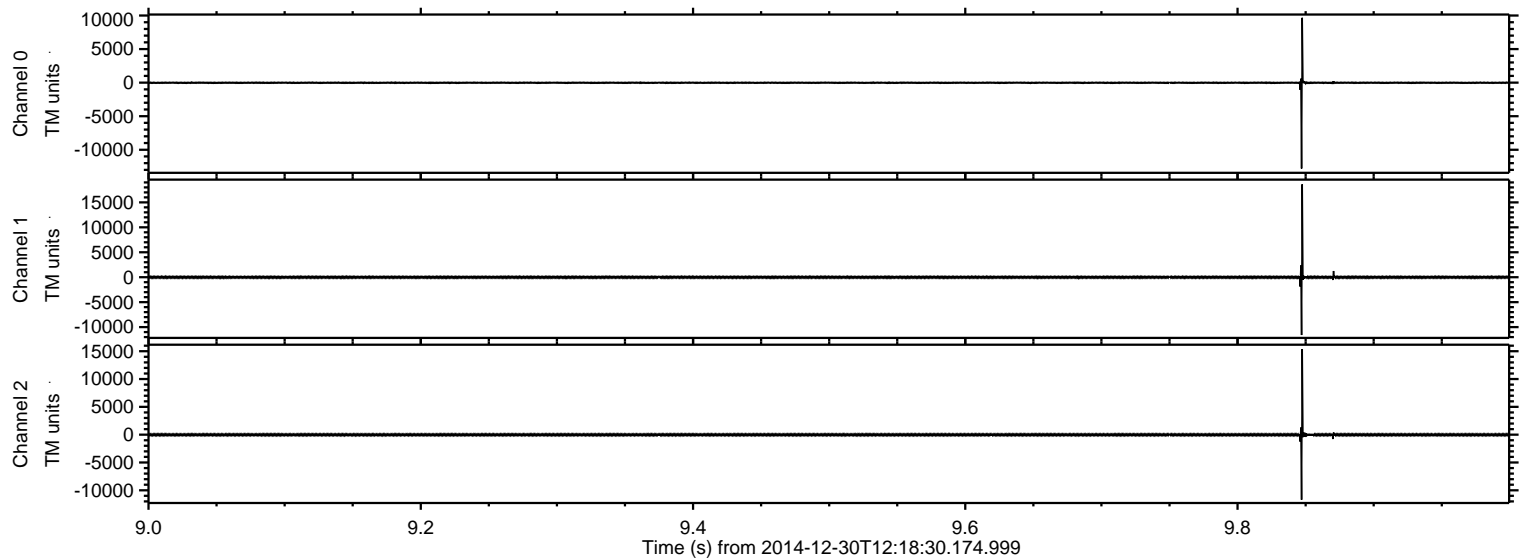


ELMAVAN 3D WAVEFORMS (Measured data sampled at 50 kHz) 49788 packets of 144 samples from 2014-12-30T12:18:30.174.999.

Processed Fri Jan 2 17:46:08 2015 by ELM ver.2012-10-06 from 001__elm20141230_121829__dat00.bin

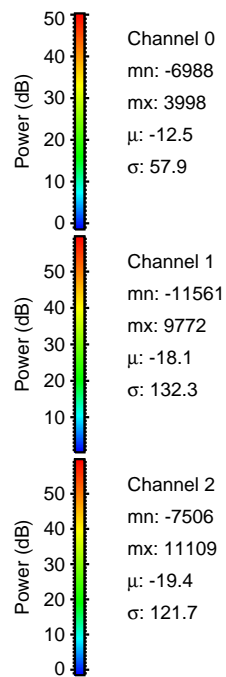
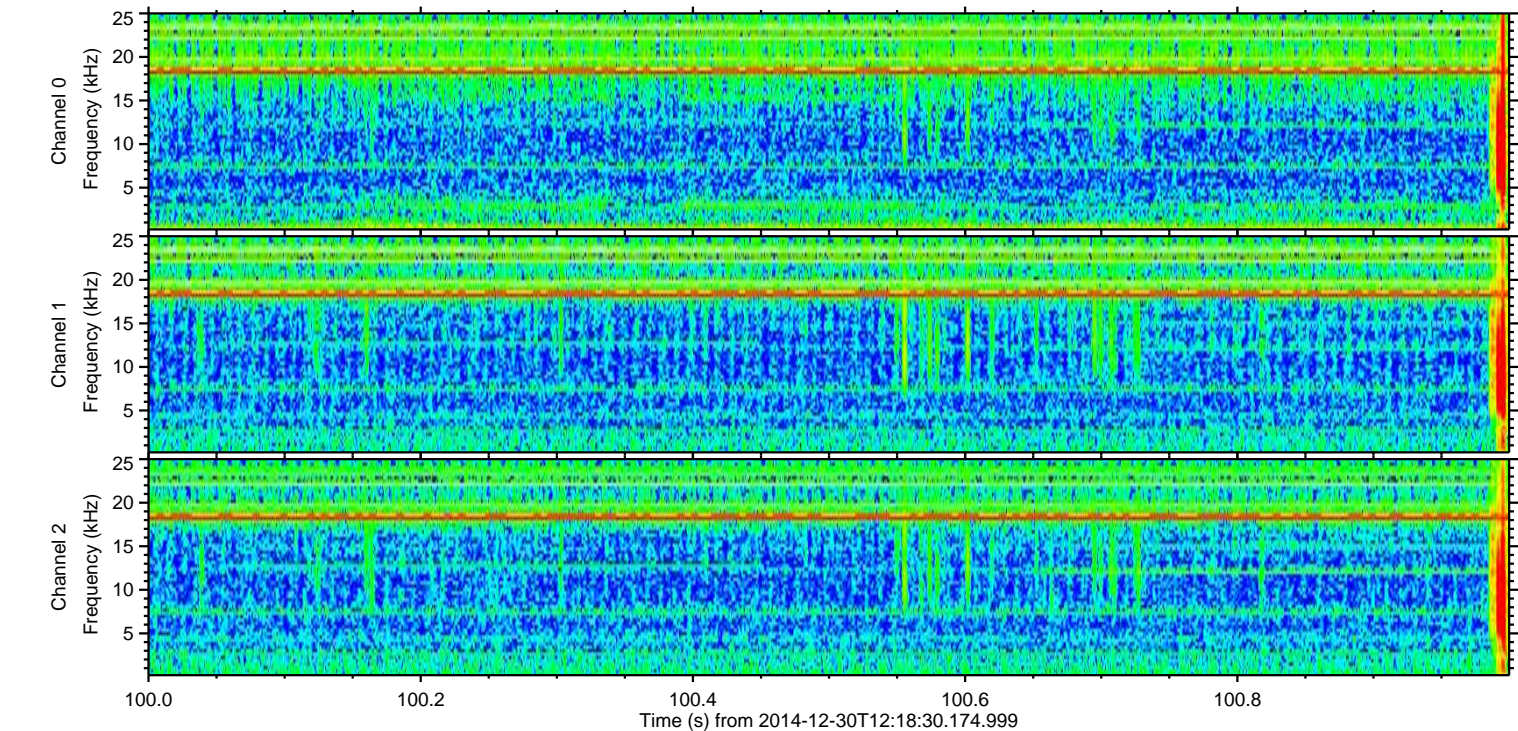
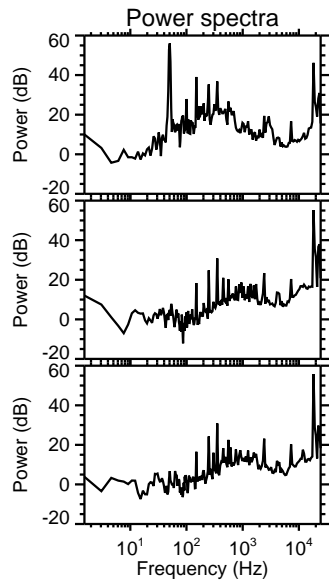
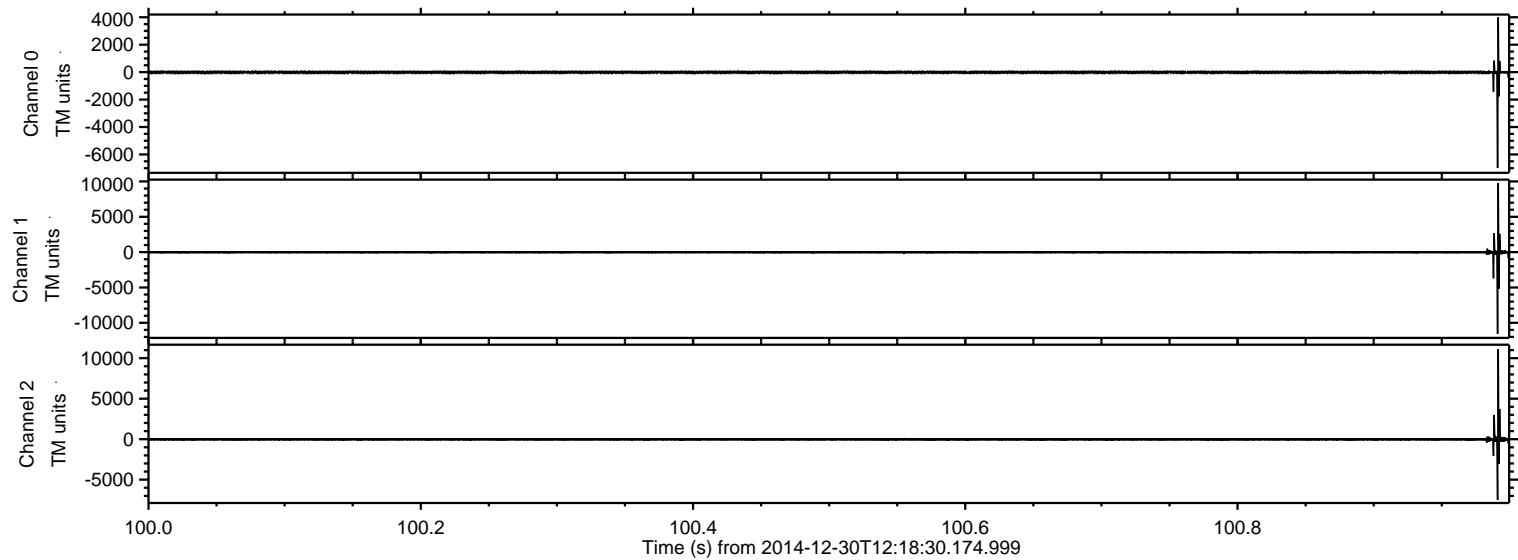


Processed Fri Jan 2 17:46:23 2015 by ELM ver.2012-10-06 from 001__elm20141230_121829__dat00.bin

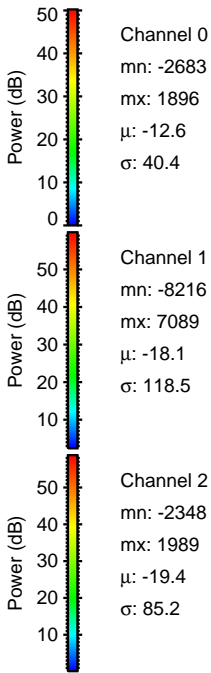
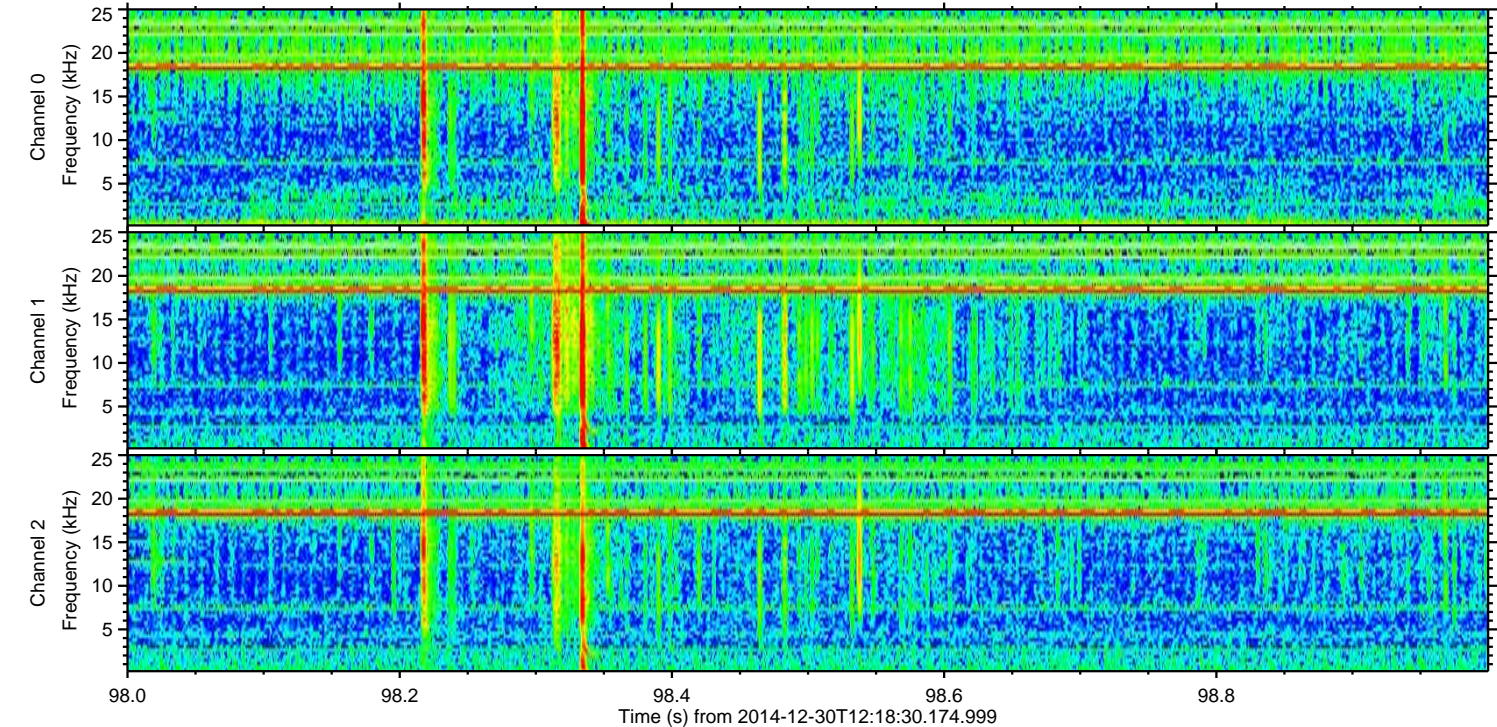
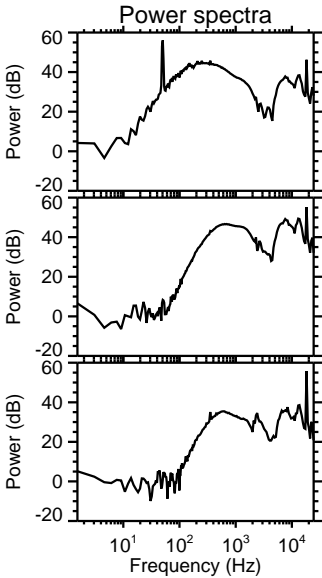
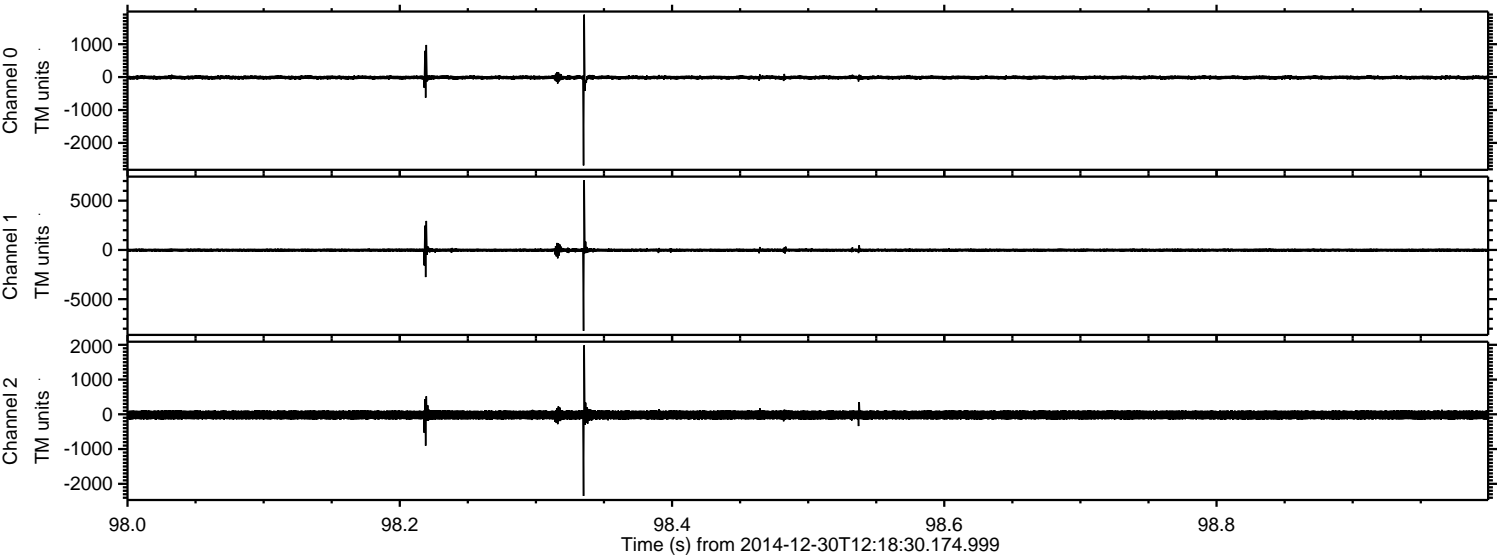


ELMAVAN 3D WAVEFORMS (Measured data sampled at 50 kHz) 49788 packets of 144 samples from 2014-12-30T12:18:30.174.999. Part 101/144

Processed Fri Jan 2 17:46:24 2015 by ELM ver.2012-10-06 from 001__elm20141230_121829__dat00.bin

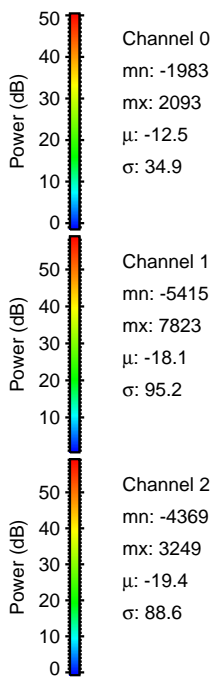
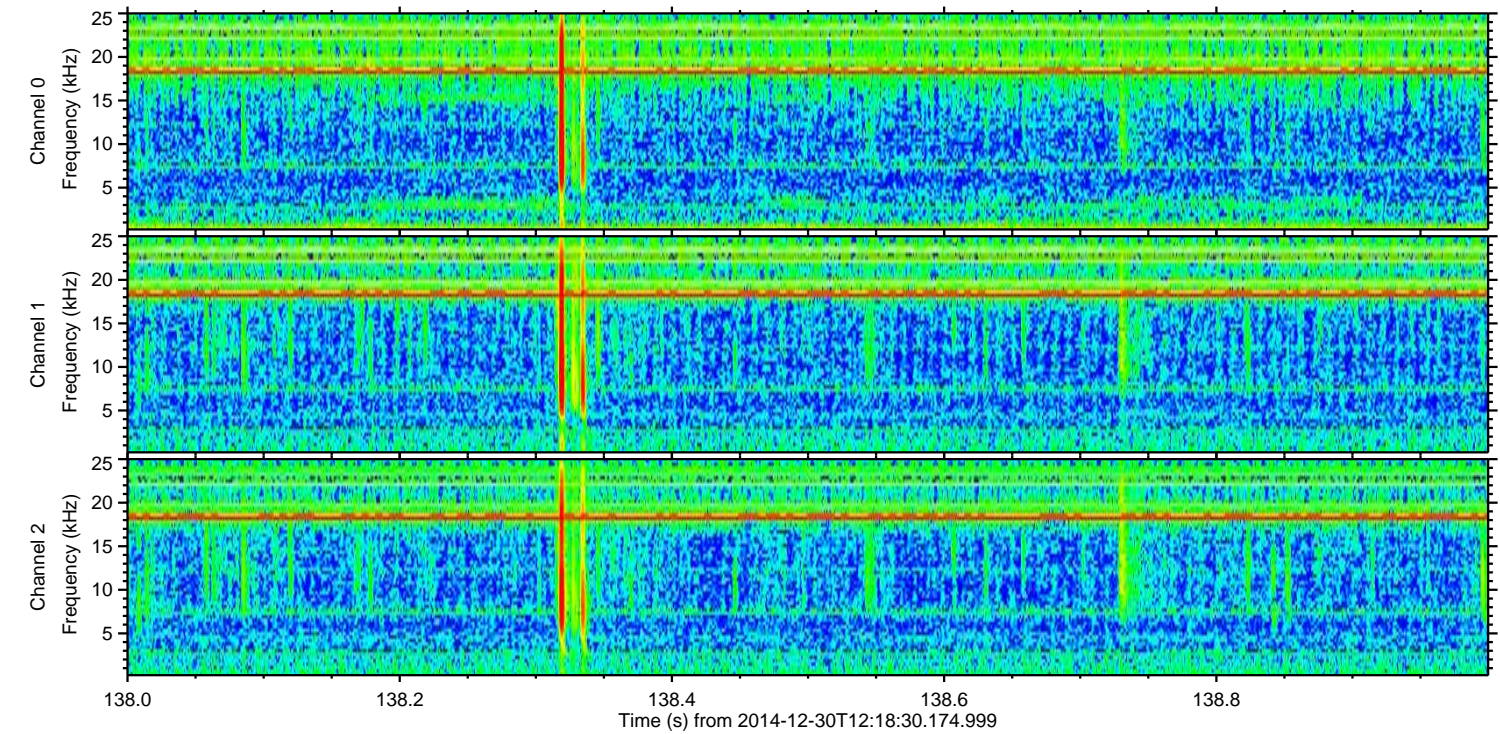
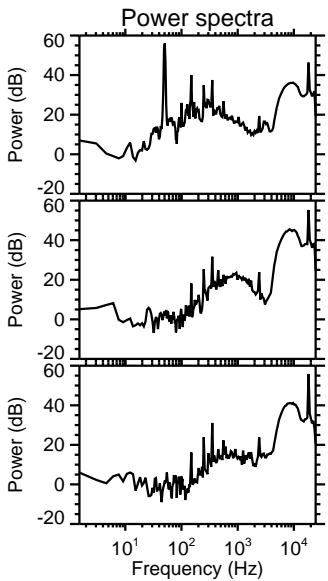
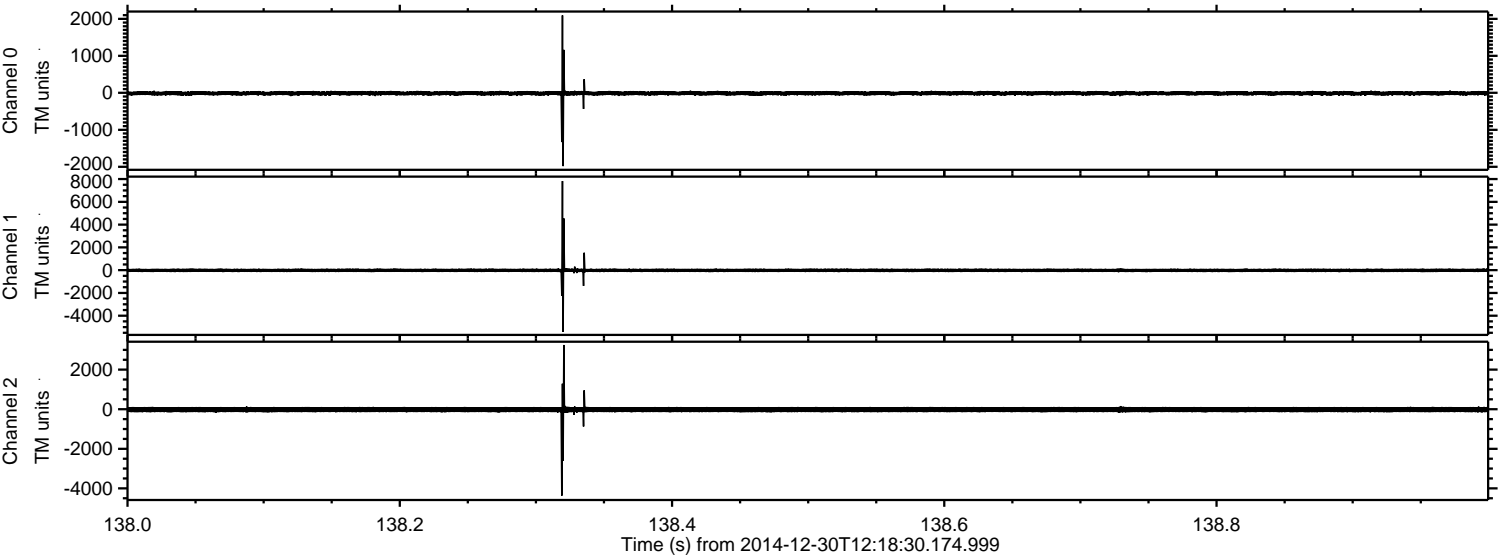


Processed Fri Jan 2 17:46:25 2015 by ELM ver.2012-10-06 from 001__elm20141230_121829__dat00.bin



ELMAVAN 3D WAVEFORMS (Measured data sampled at 50 kHz) 49788 packets of 144 samples from 2014-12-30T12:18:30.174.999. Part 139/144

Processed Fri Jan 2 17:46:26 2015 by ELM ver.2012-10-06 from 001__elm20141230_121829__dat00.bin



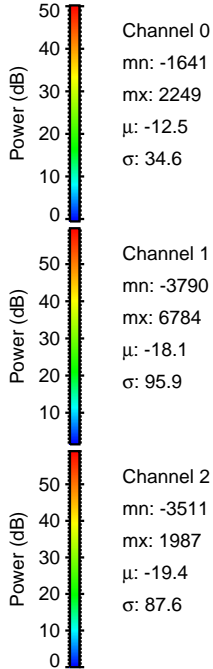
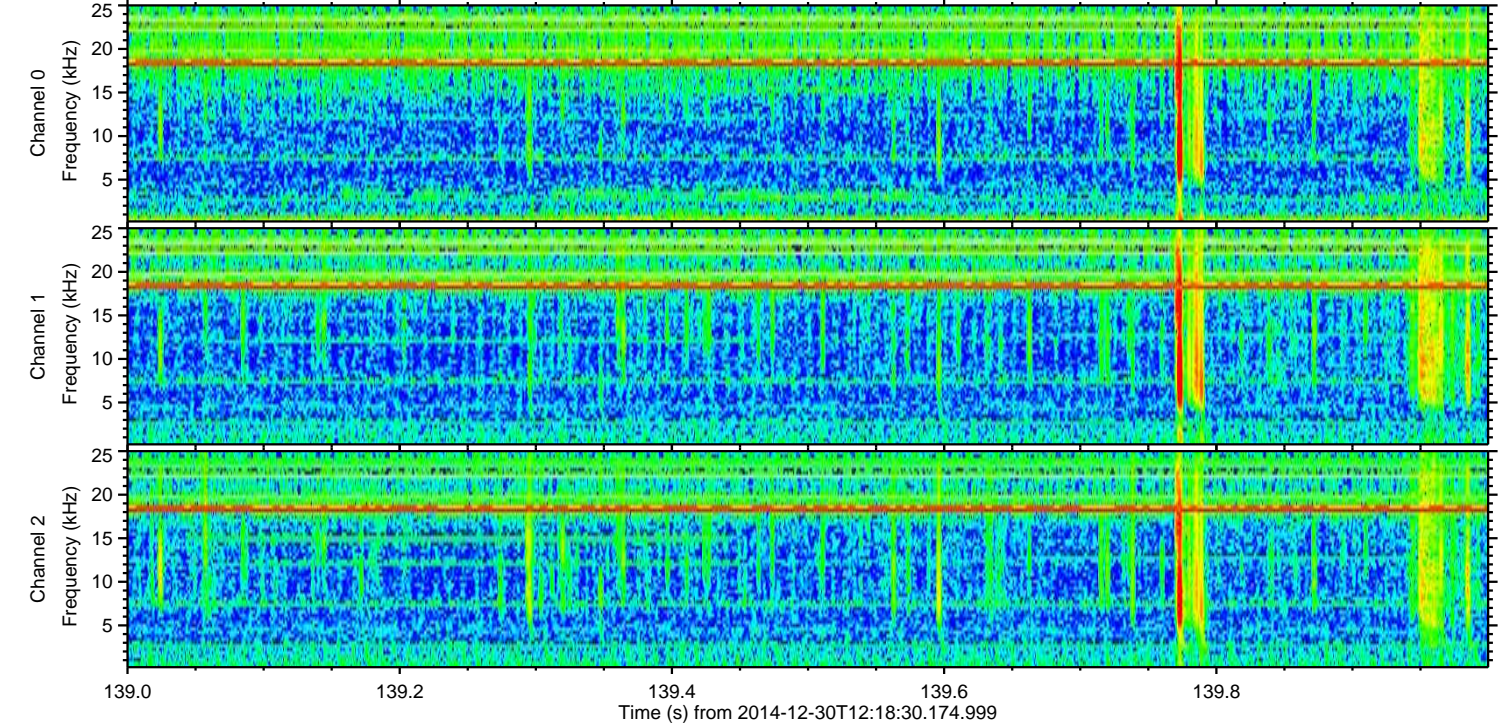
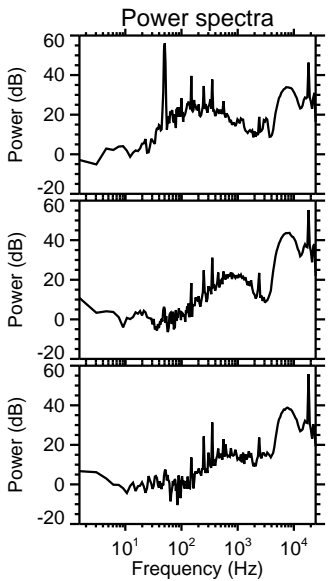
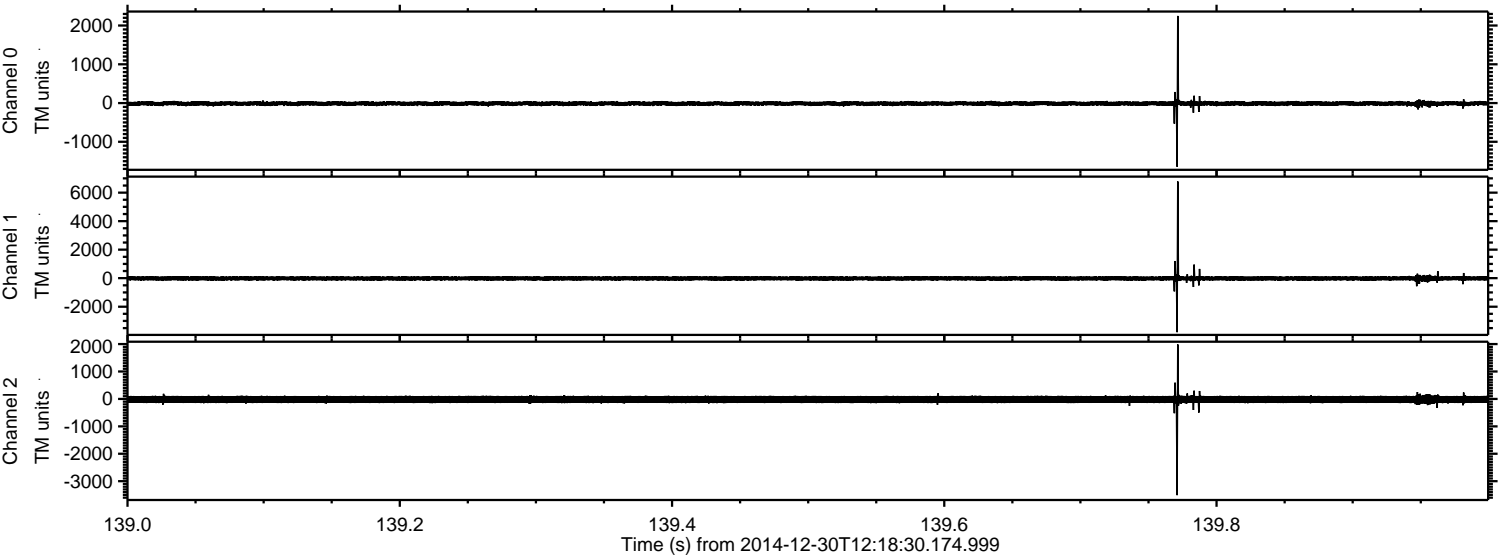
Channel 0
mn: -1983
mx: 2093
 μ : -12.5
 σ : 34.9

Channel 1
mn: -5415
mx: 7823
 μ : -18.1
 σ : 95.2

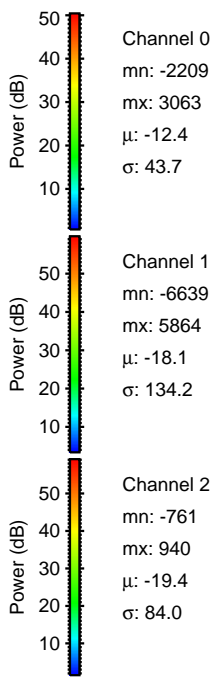
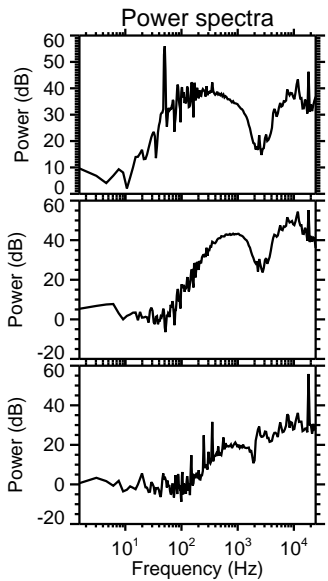
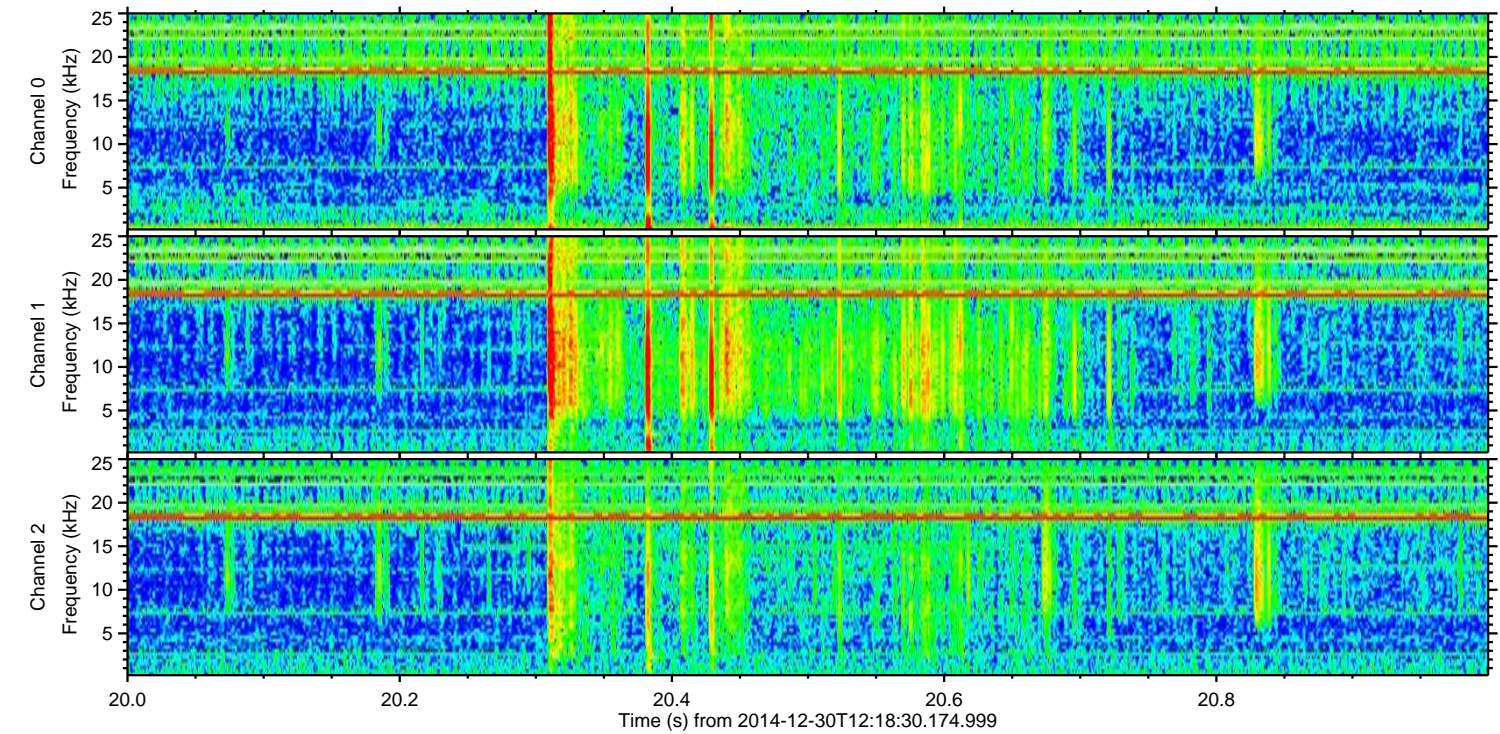
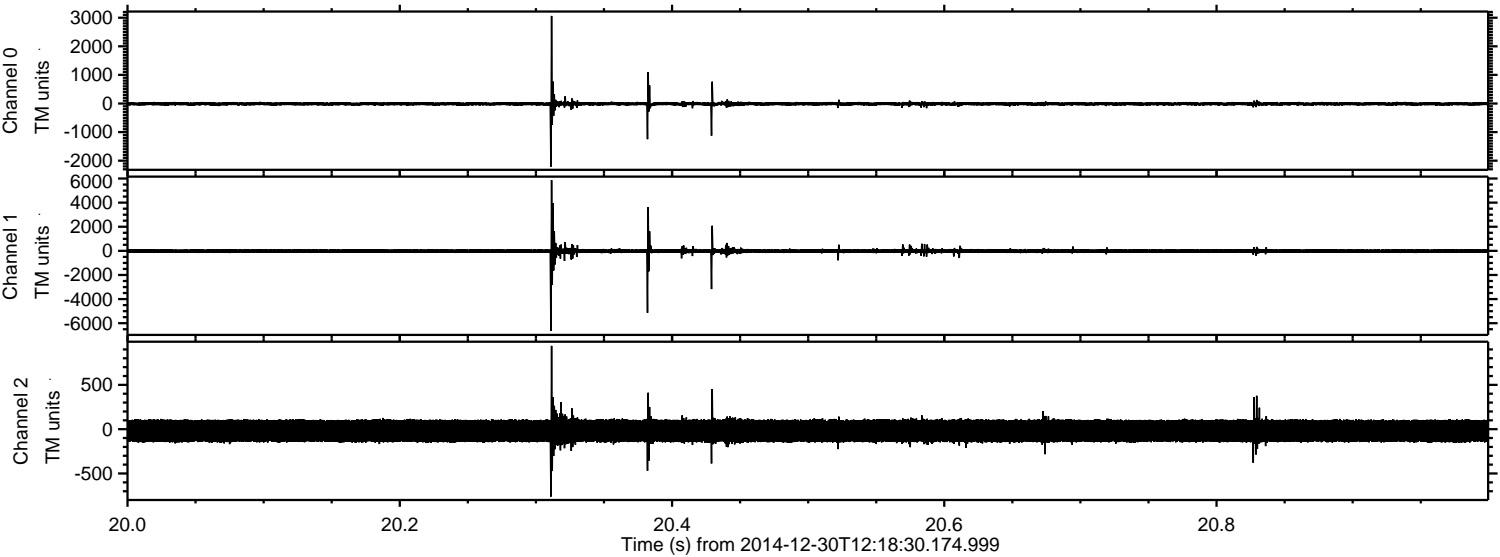
Channel 2
mn: -4369
mx: 3249
 μ : -19.4
 σ : 88.6

ELMAVAN 3D WAVEFORMS (Measured data sampled at 50 kHz) 49788 packets of 144 samples from 2014-12-30T12:18:30.174.999. Part 140/144

Processed Fri Jan 2 17:46:27 2015 by ELM ver.2012-10-06 from 001__elm20141230_121829__dat00.bin



Processed Fri Jan 2 17:46:29 2015 by ELM ver.2012-10-06 from 001__elm20141230_121829__dat00.bin

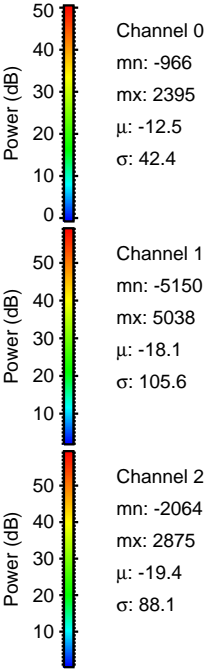
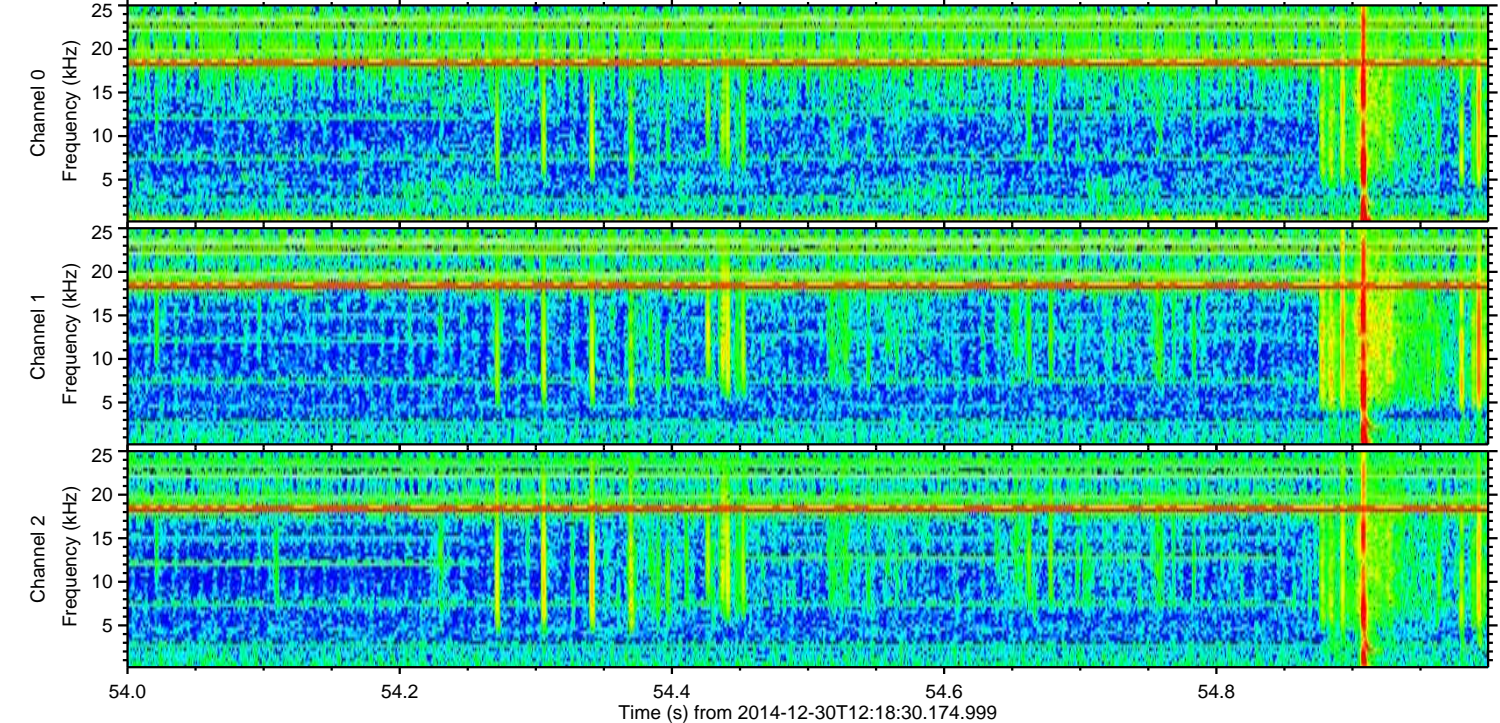
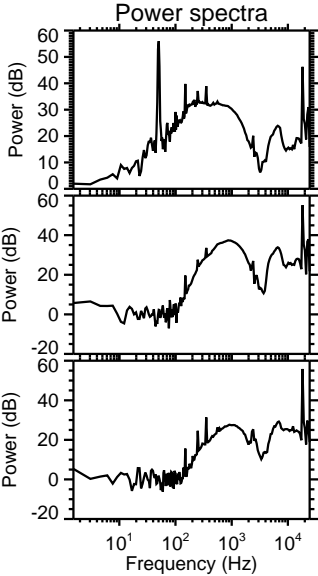
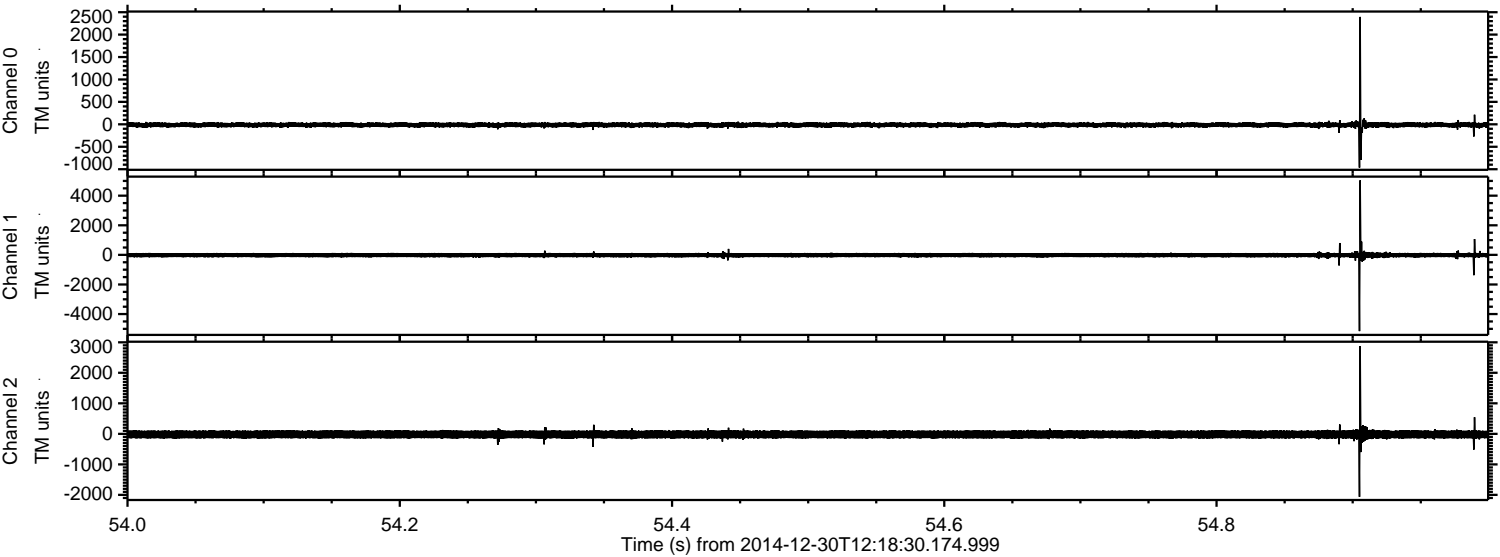


Channel 0
mn: -2209
mx: 3063
 μ : -12.4
 σ : 43.7

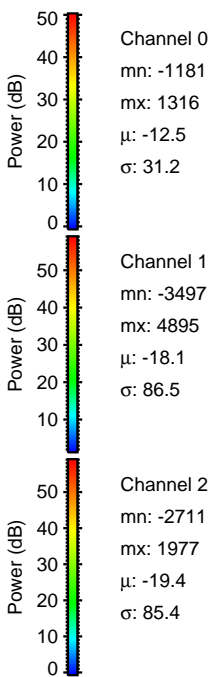
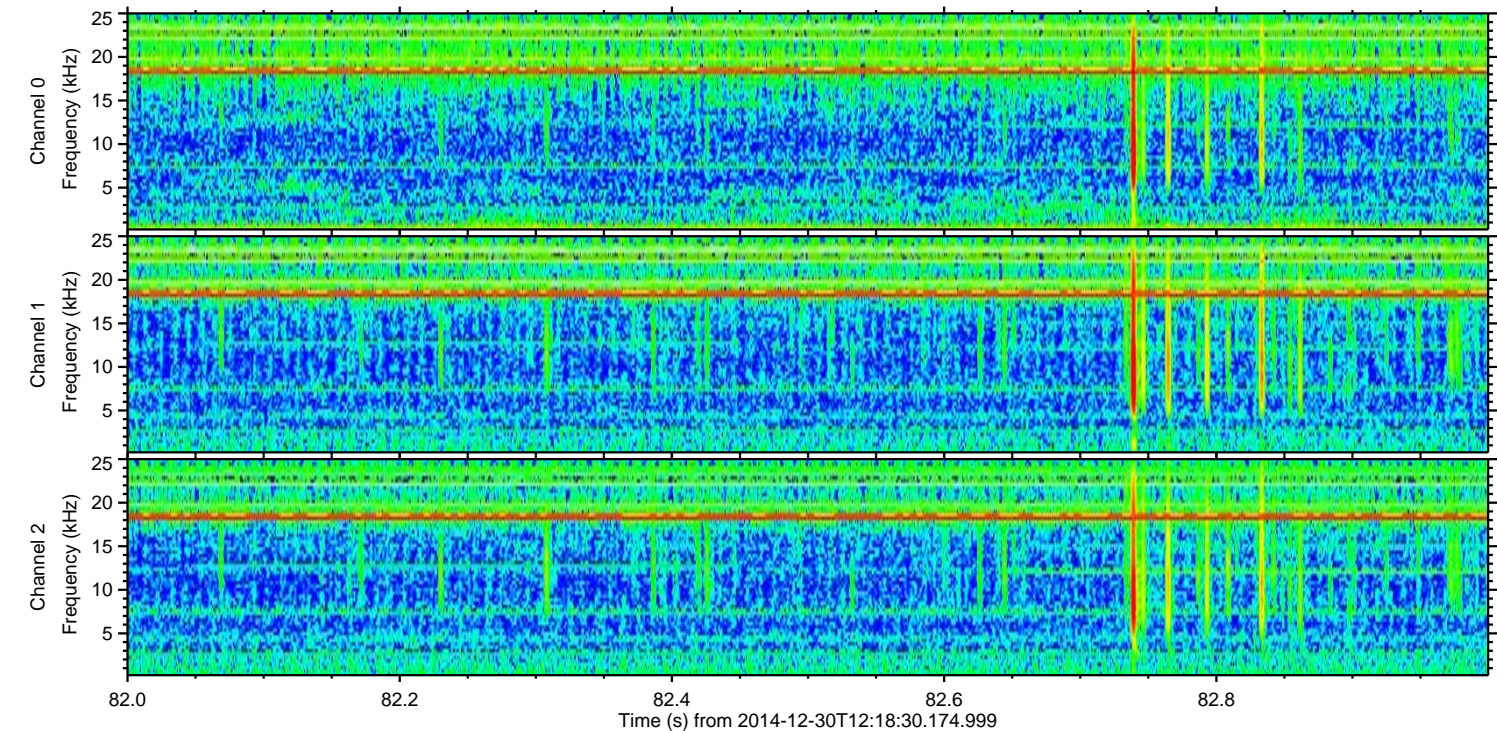
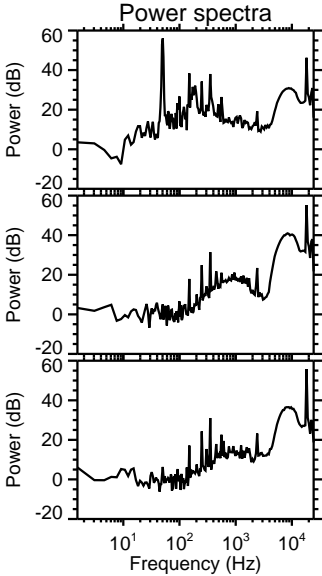
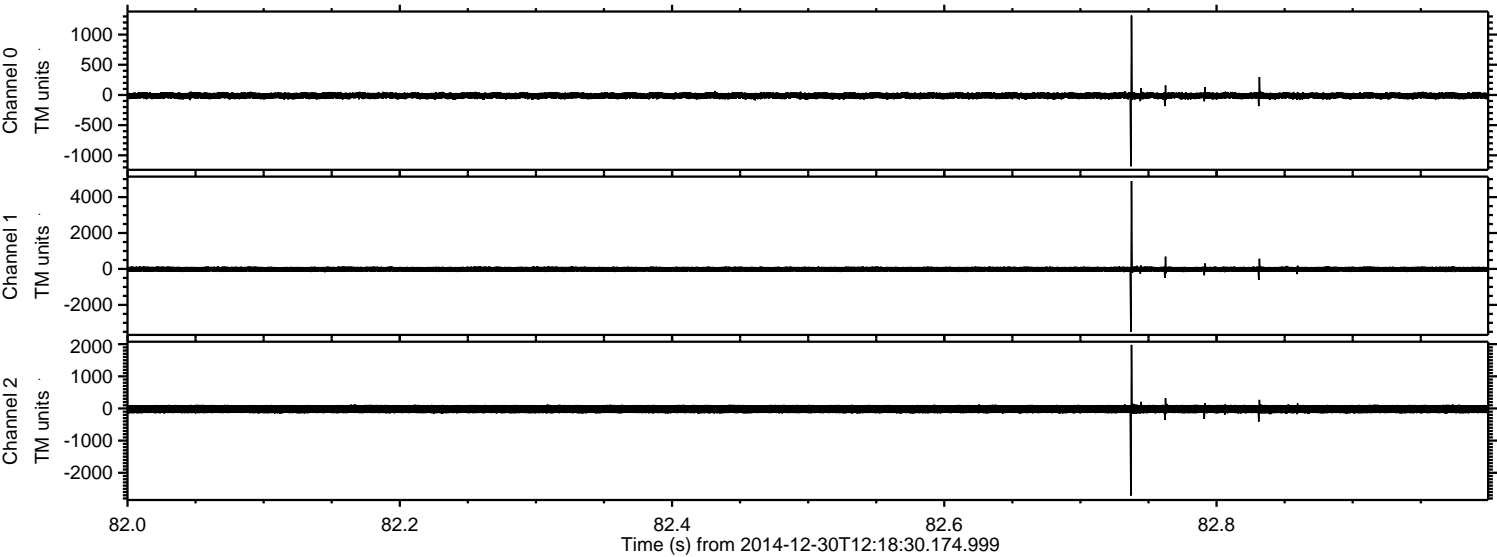
Channel 1
mn: -6639
mx: 5864
 μ : -18.1
 σ : 134.2

Channel 2
mn: -761
mx: 940
 μ : -19.4
 σ : 84.0

Processed Fri Jan 2 17:46:30 2015 by ELM ver.2012-10-06 from 001__elm20141230_121829__dat00.bin



Processed Fri Jan 2 17:46:31 2015 by ELM ver.2012-10-06 from 001__elm20141230_121829__dat00.bin



Processed Fri Jan 2 17:46:32 2015 by ELM ver.2012-10-06 from 001__elm20141230_121829__dat00.bin

