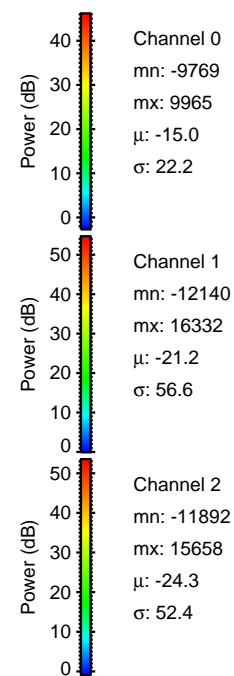
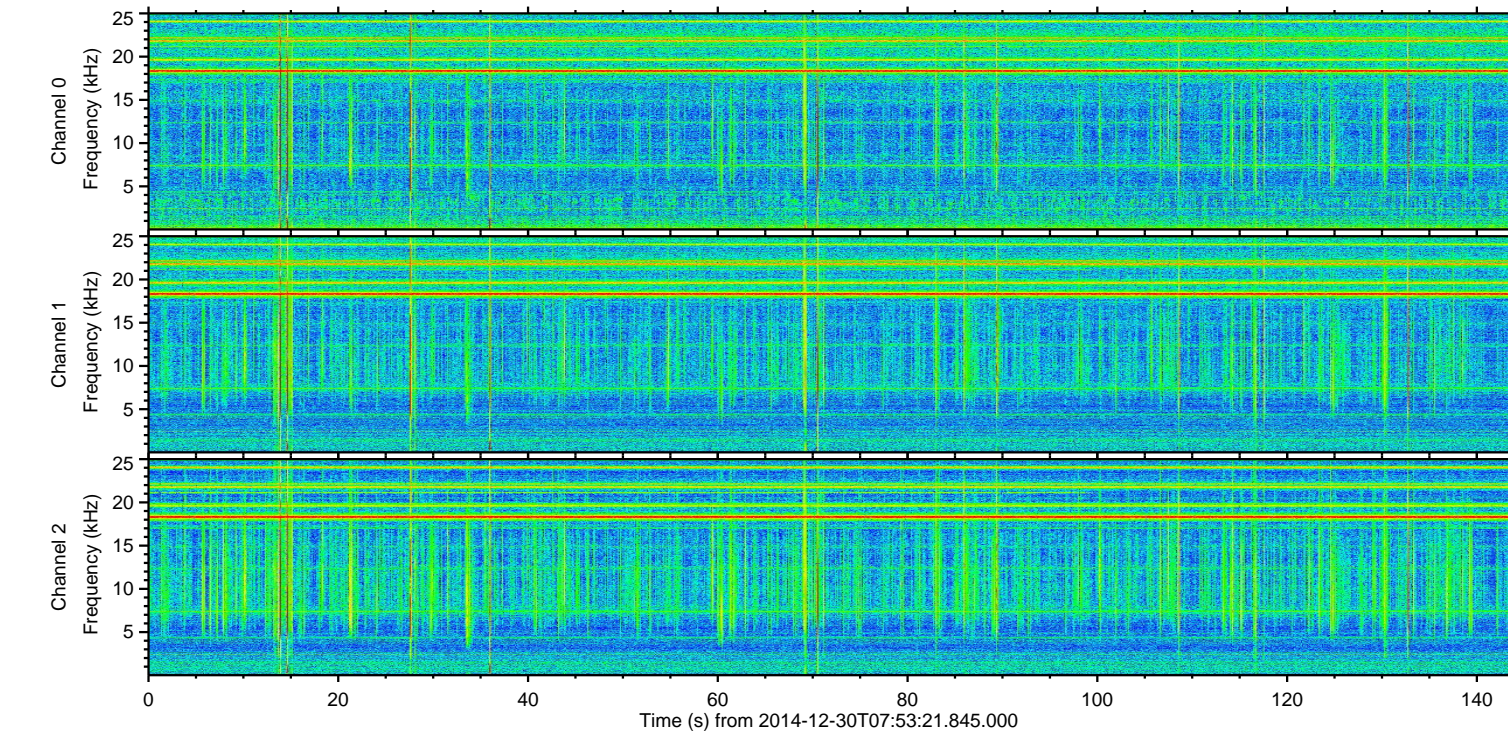
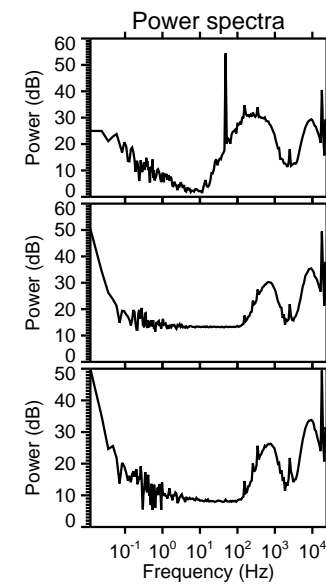
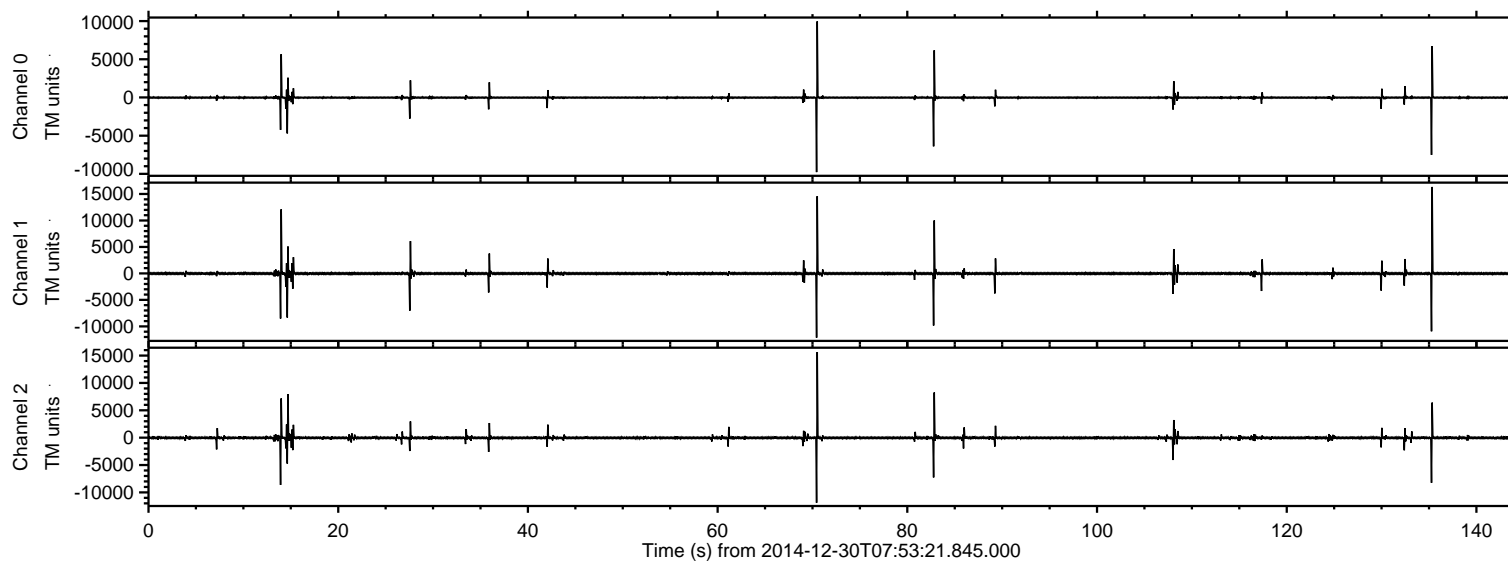


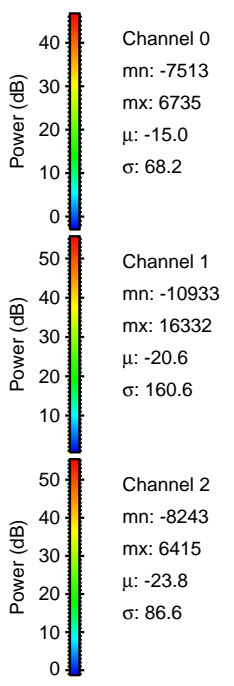
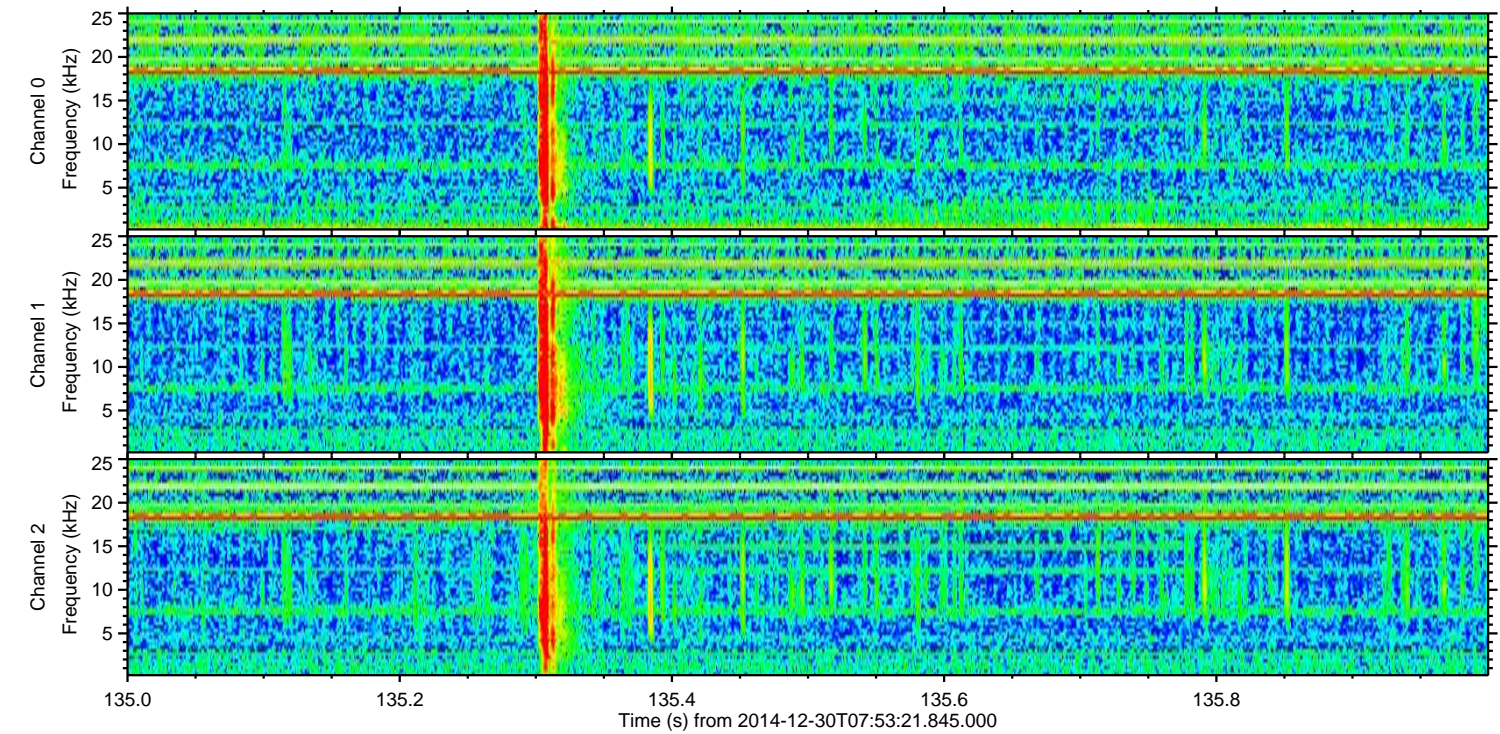
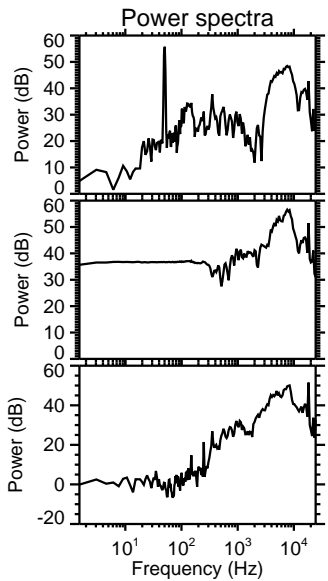
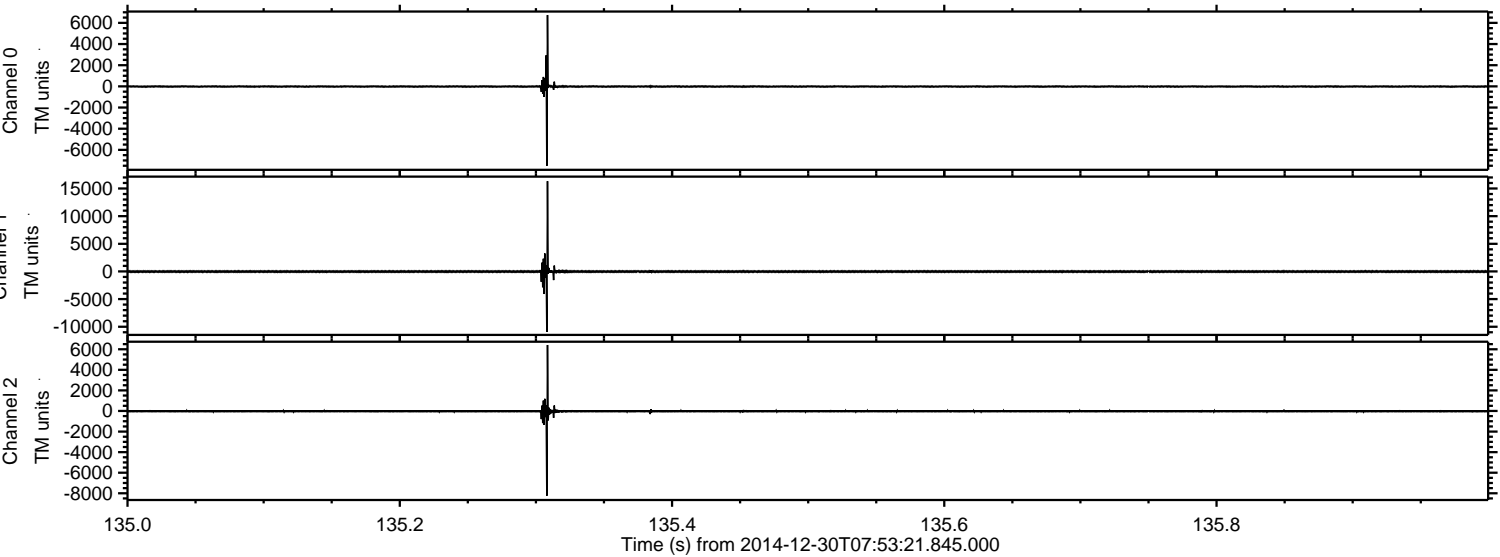
ELMAVAN 3D WAVEFORMS (Measured data sampled at 50 kHz) 49809 packets of 144 samples from 2014-12-30T07:53:21.845.000.

Processed Fri Jan 2 16:41:41 2015 by ELM ver.2012-10-06 from 001__elm20141230_075320__dat00.bin

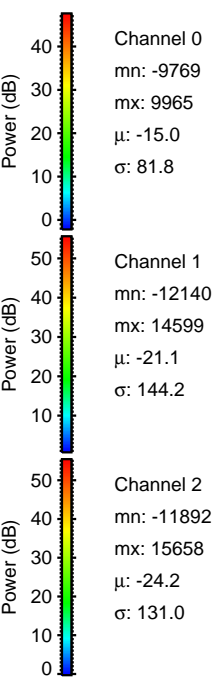
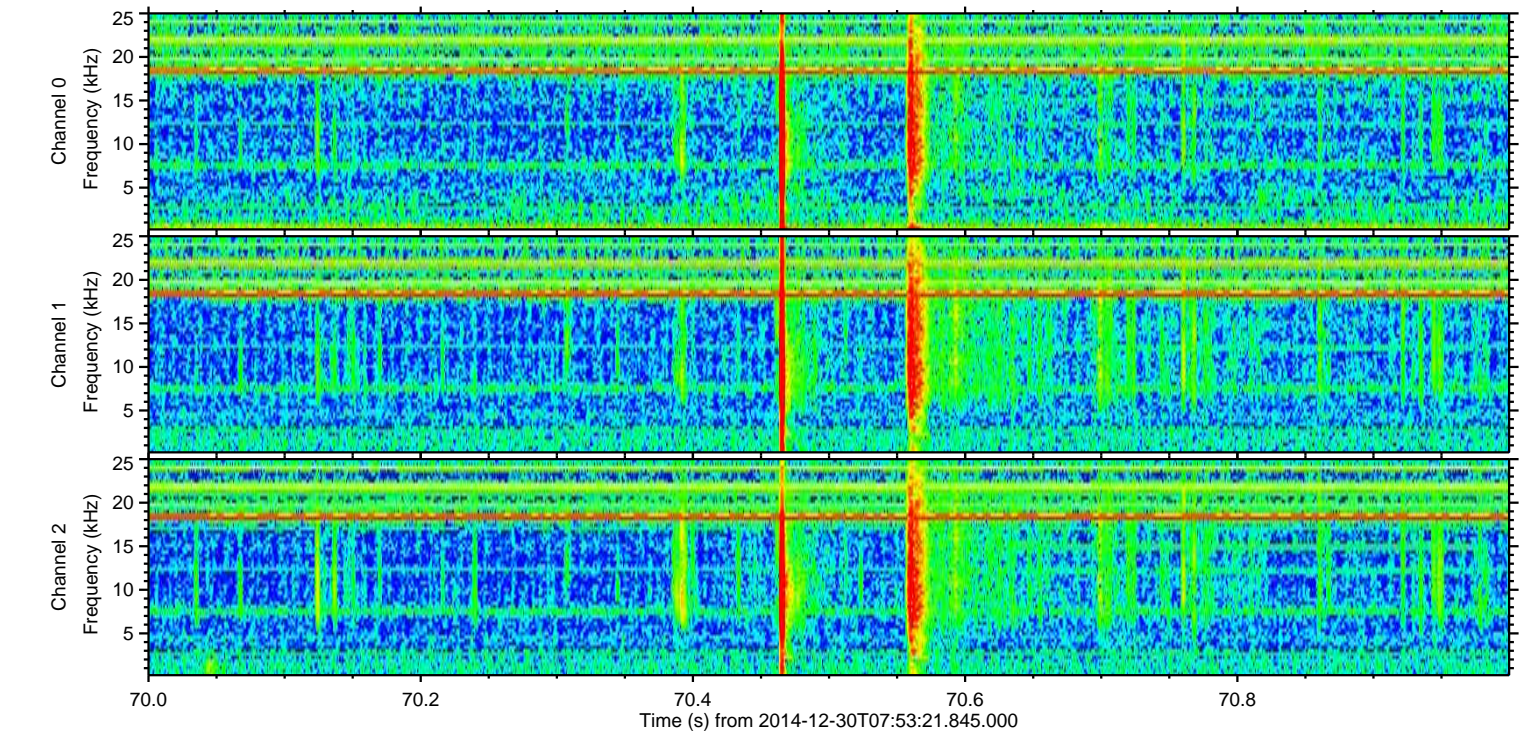
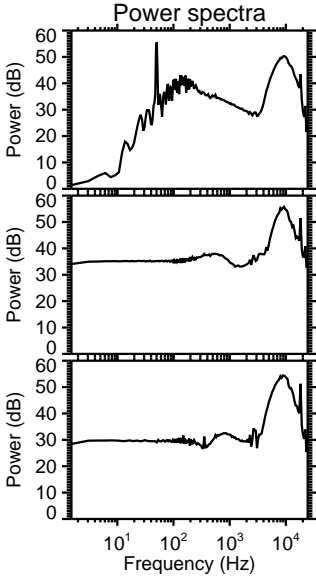
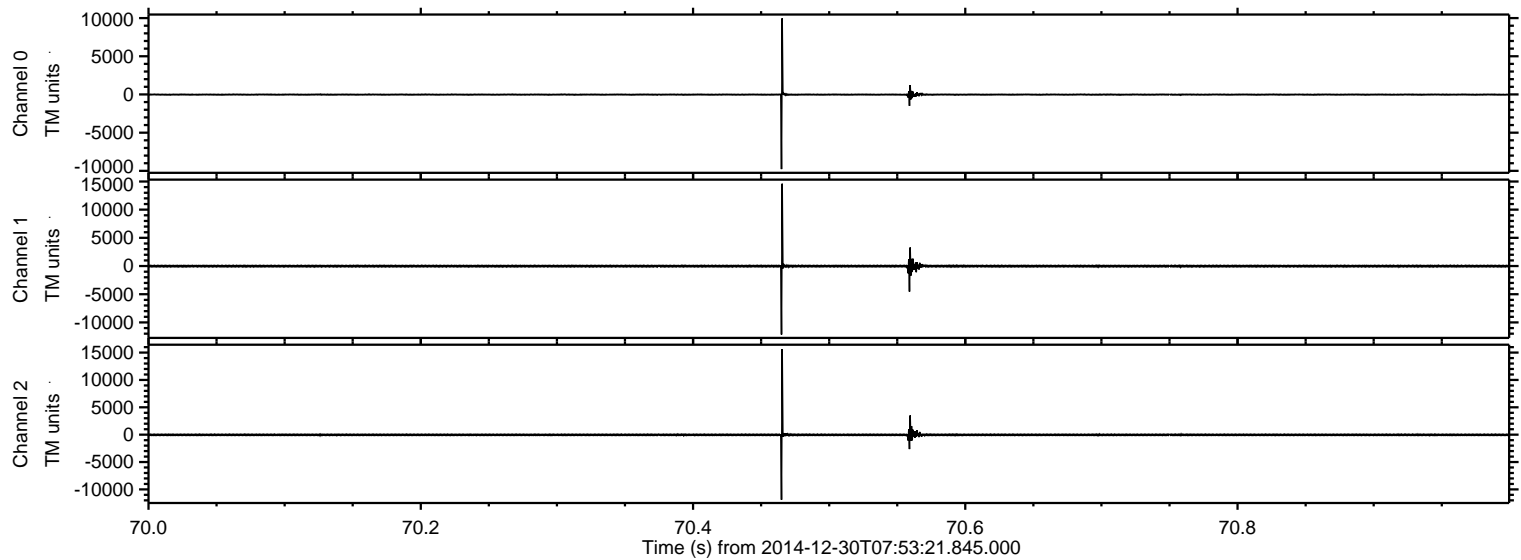


ELMAVAN 3D WAVEFORMS (Measured data sampled at 50 kHz) 49809 packets of 144 samples from 2014-12-30T07:53:21.845.000. Part 136/144

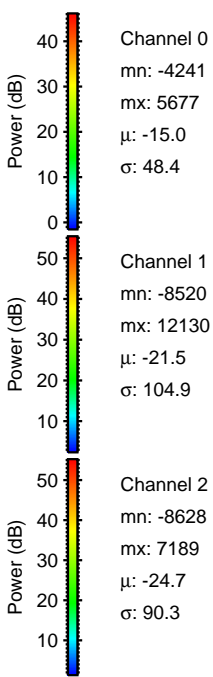
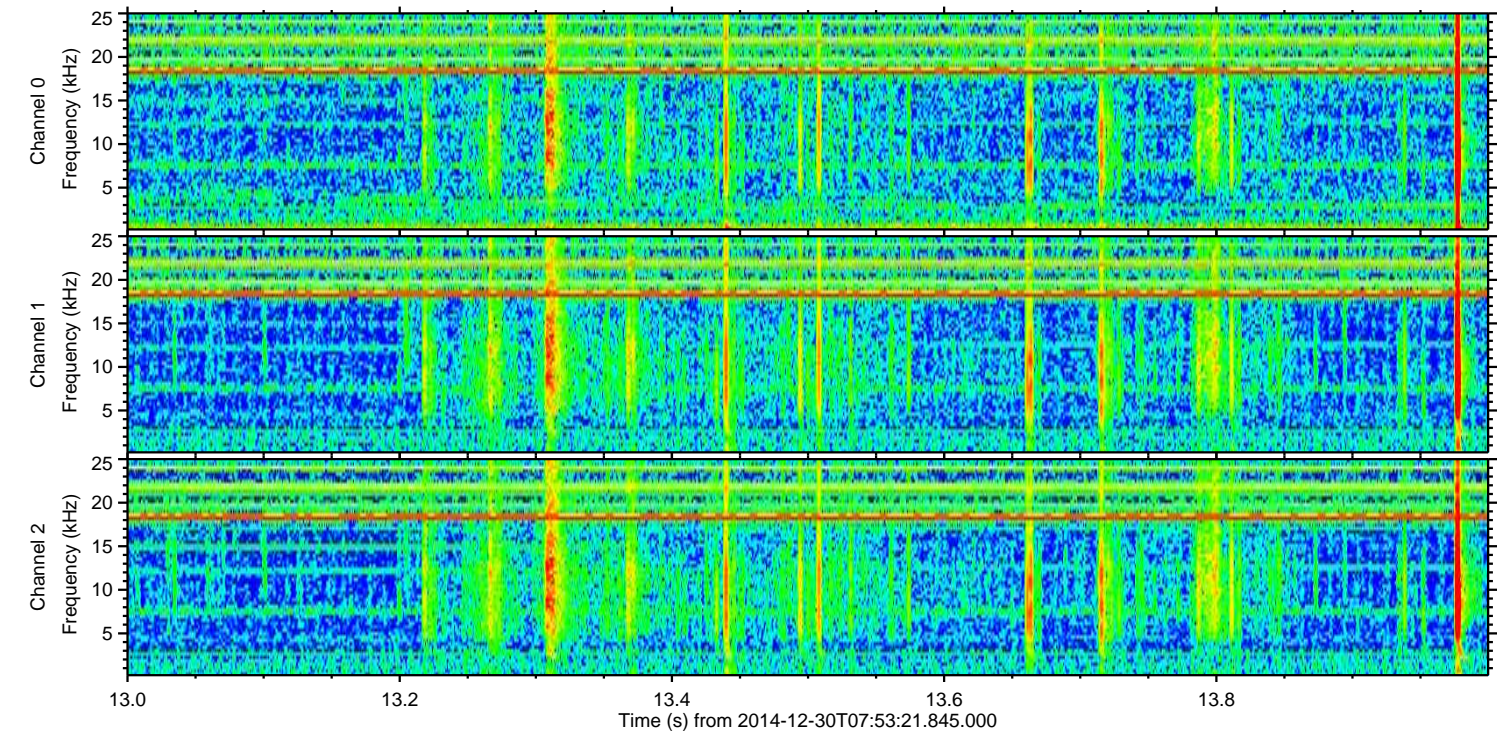
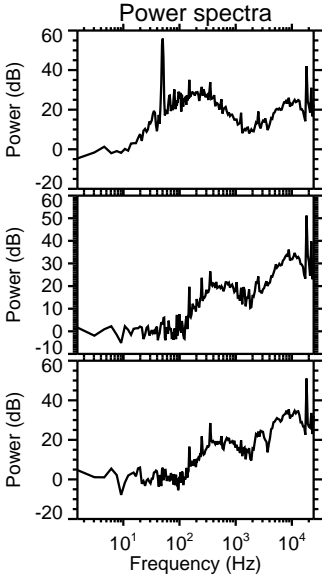
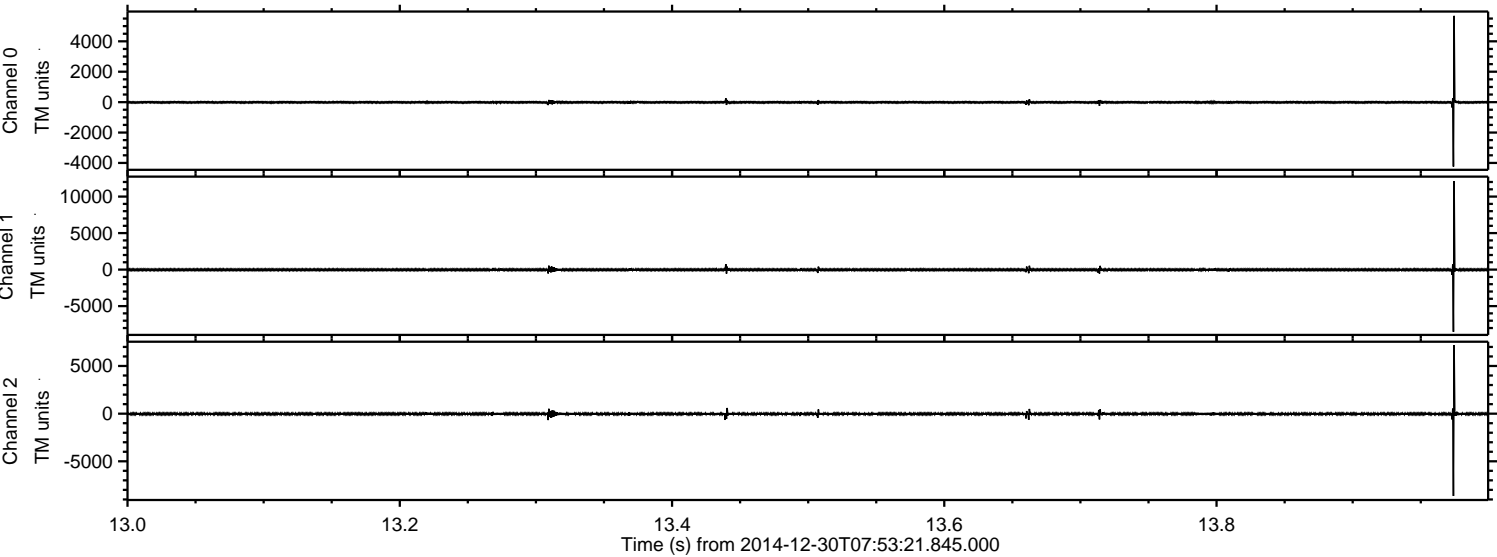
Processed Fri Jan 2 16:41:53 2015 by ELM ver.2012-10-06 from 001__elm20141230_075320__dat00.bin



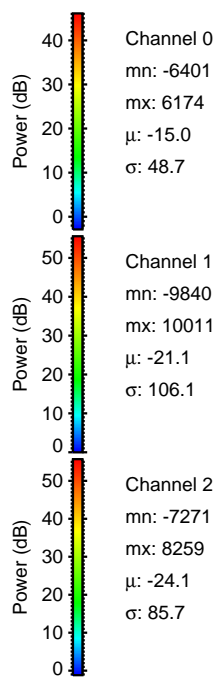
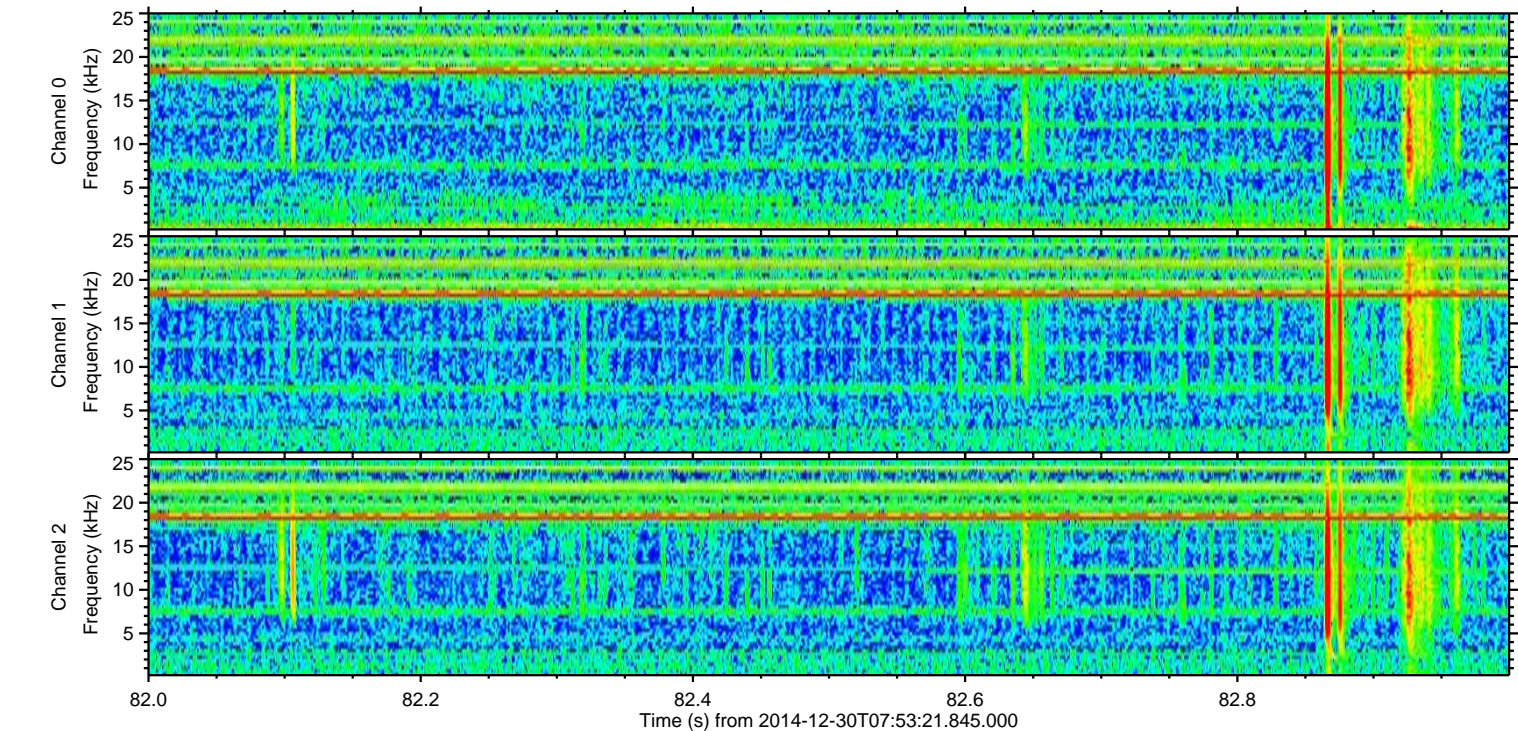
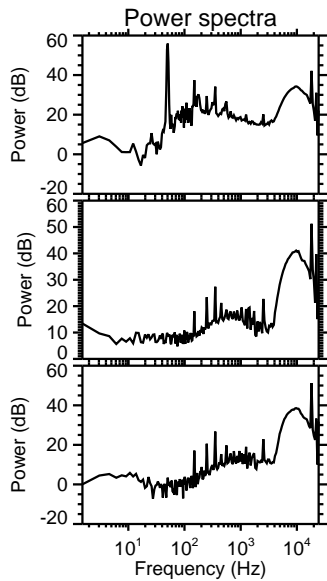
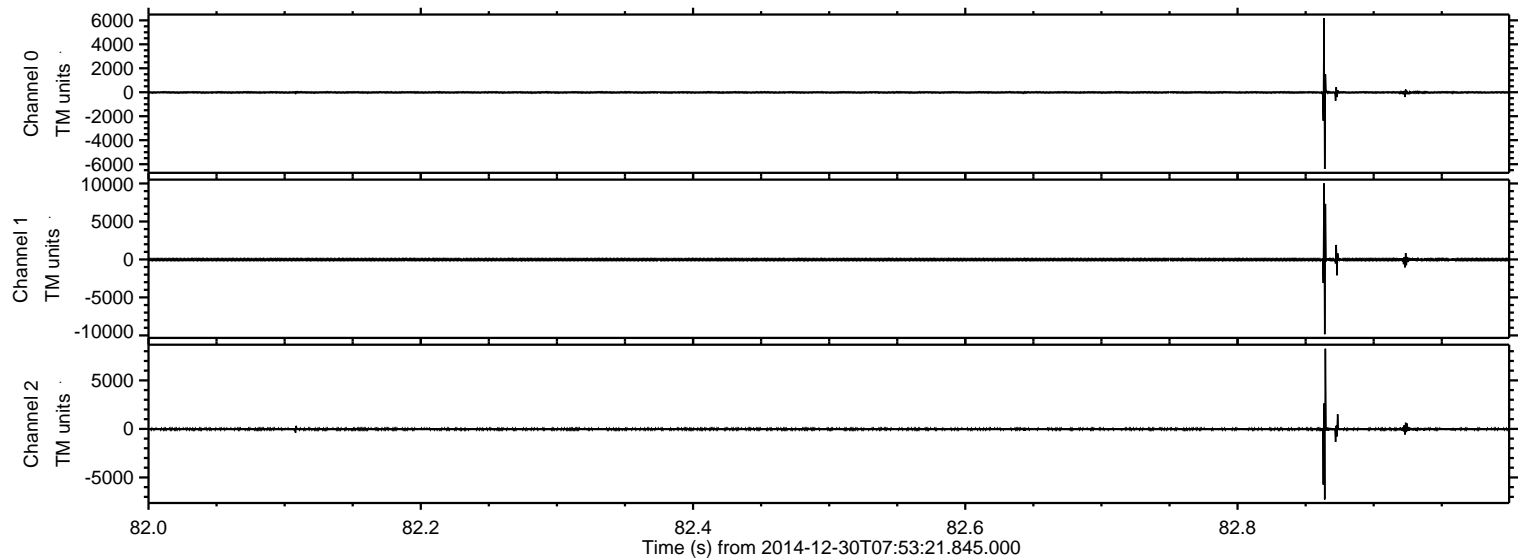
Processed Fri Jan 2 16:41:54 2015 by ELM ver.2012-10-06 from 001__elm20141230_075320__dat00.bin



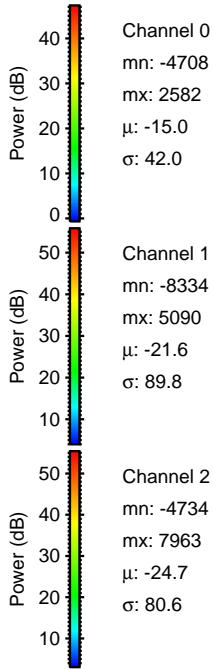
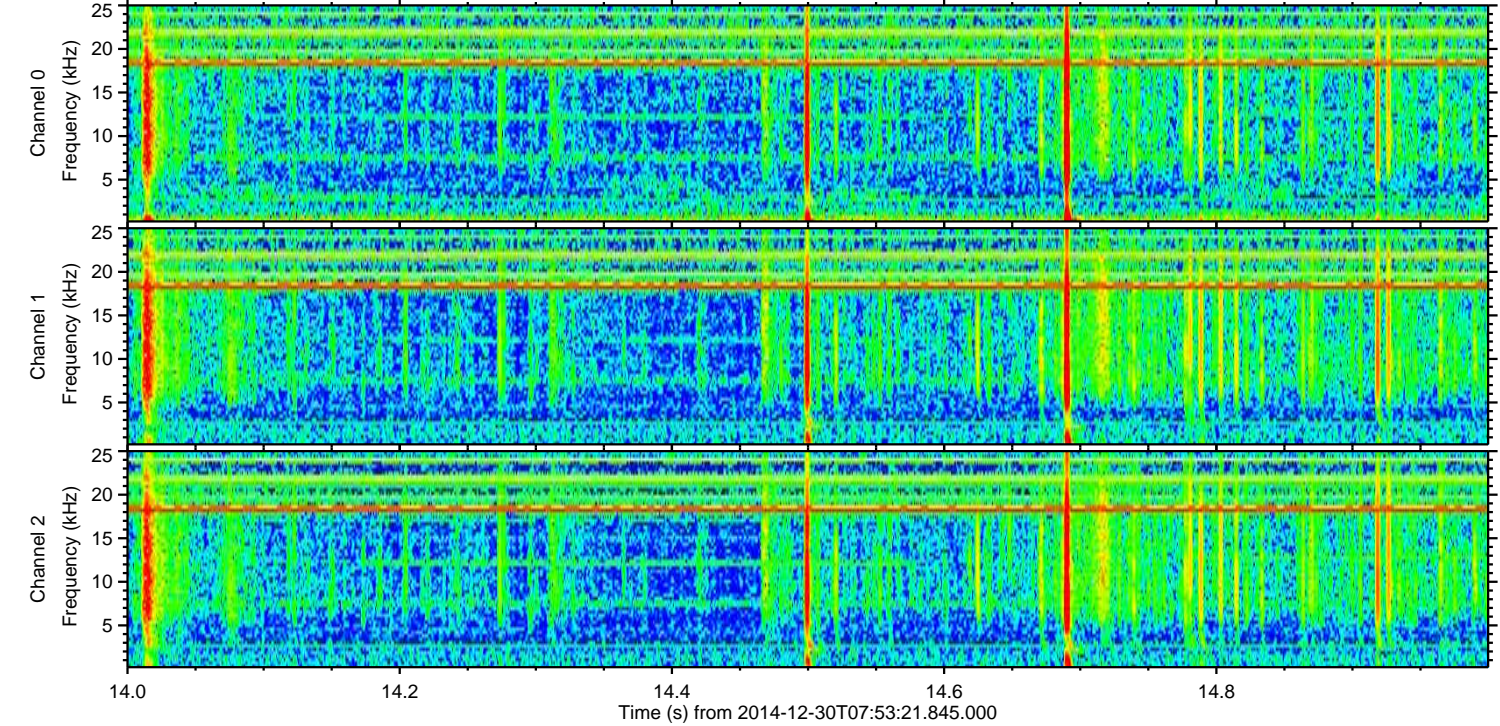
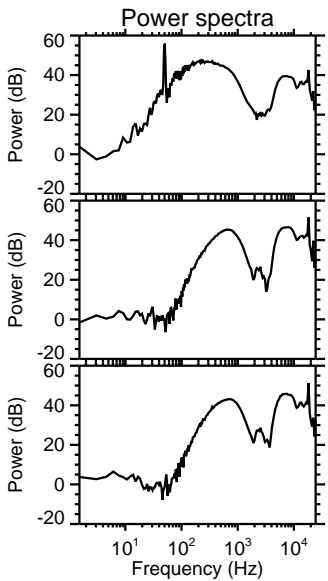
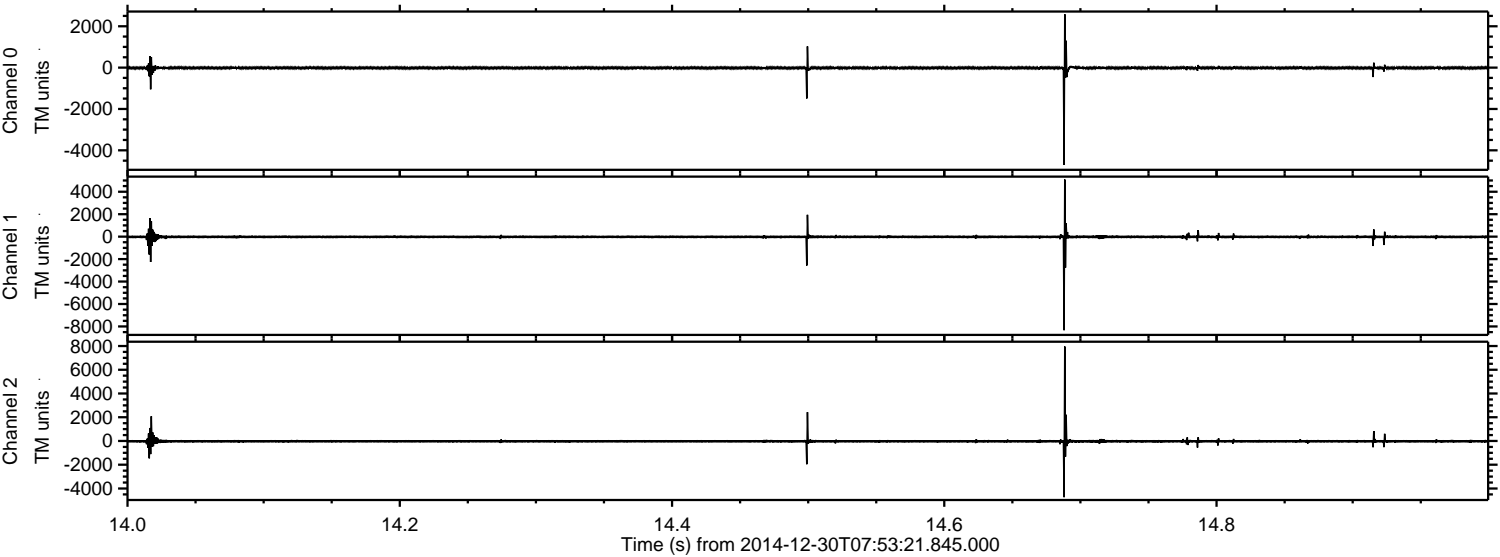
Processed Fri Jan 2 16:41:55 2015 by ELM ver.2012-10-06 from 001__elm20141230_075320__dat00.bin



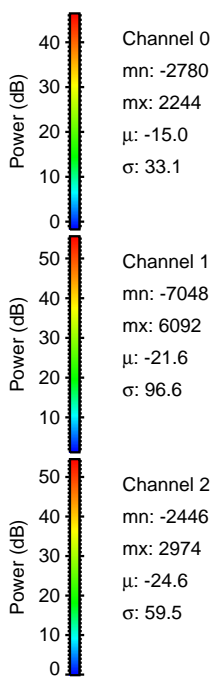
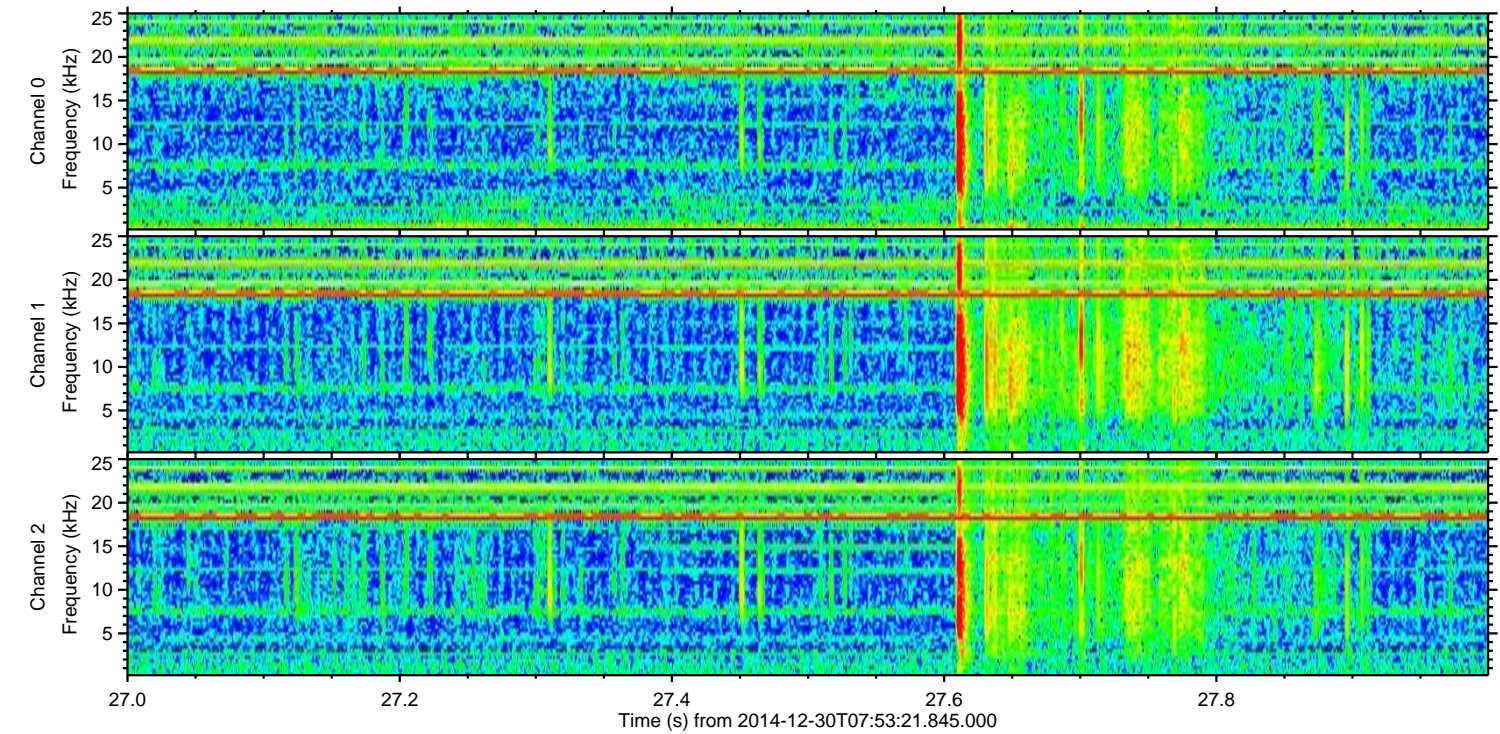
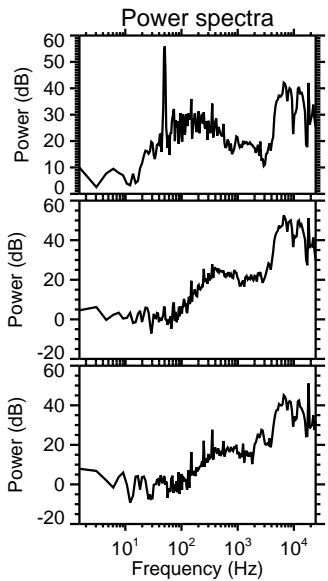
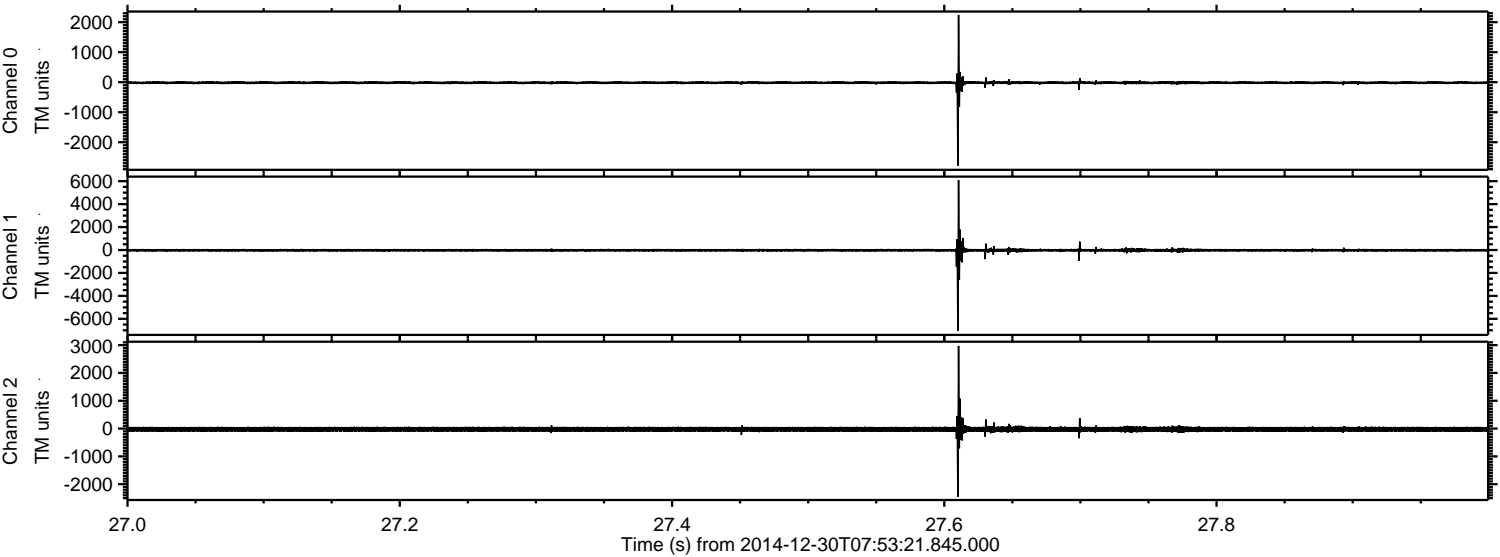
Processed Fri Jan 2 16:41:56 2015 by ELM ver.2012-10-06 from 001__elm20141230_075320__dat00.bin



Processed Fri Jan 2 16:41:57 2015 by ELM ver.2012-10-06 from 001__elm20141230_075320__dat00.bin



Processed Fri Jan 2 16:41:57 2015 by ELM ver.2012-10-06 from 001__elm20141230_075320__dat00.bin

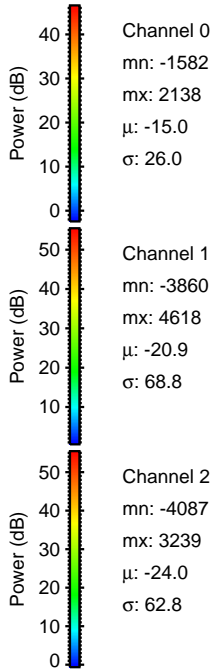
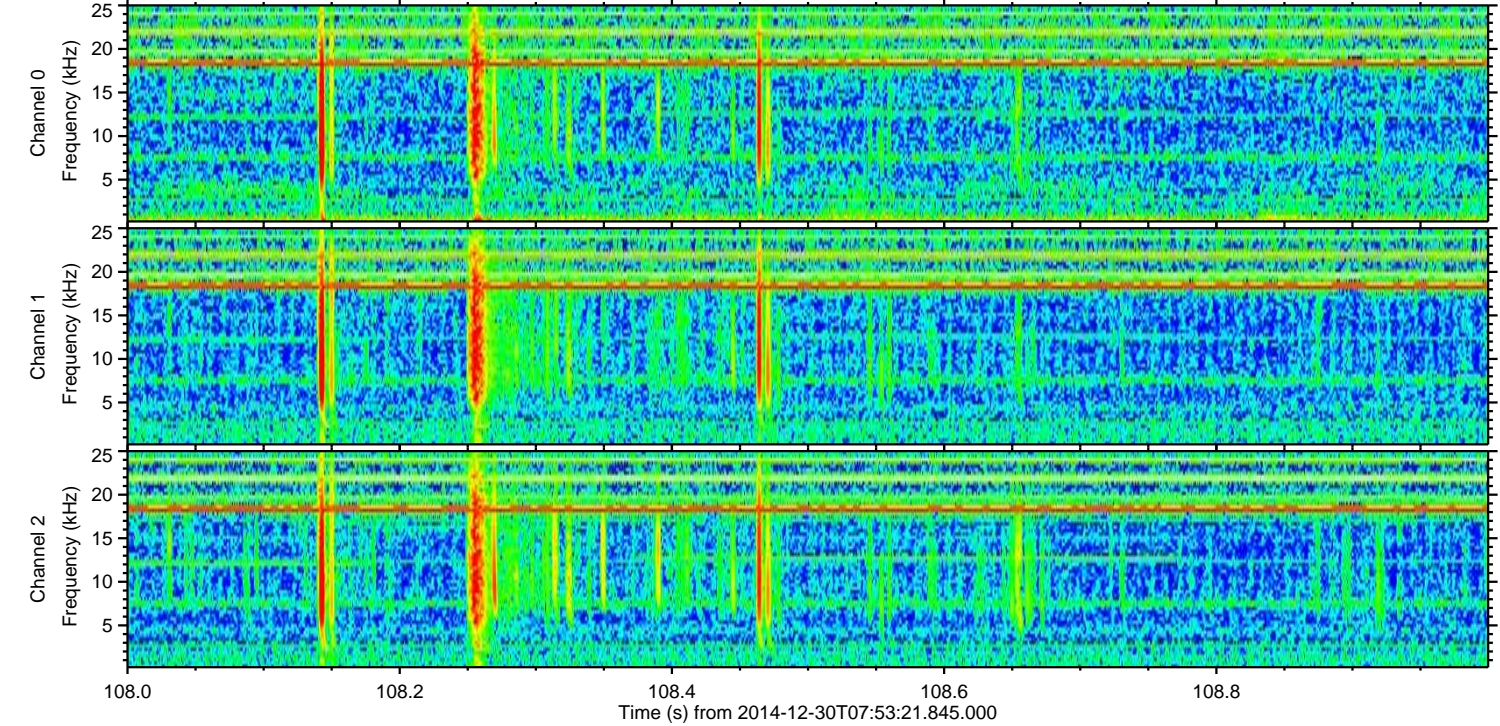
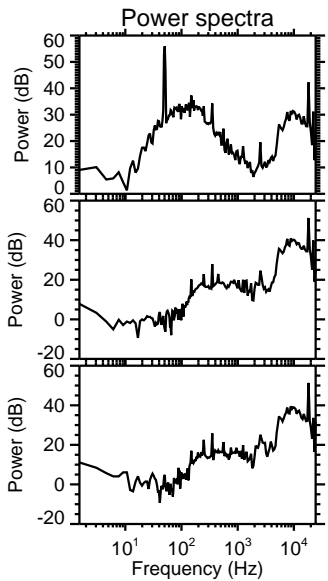
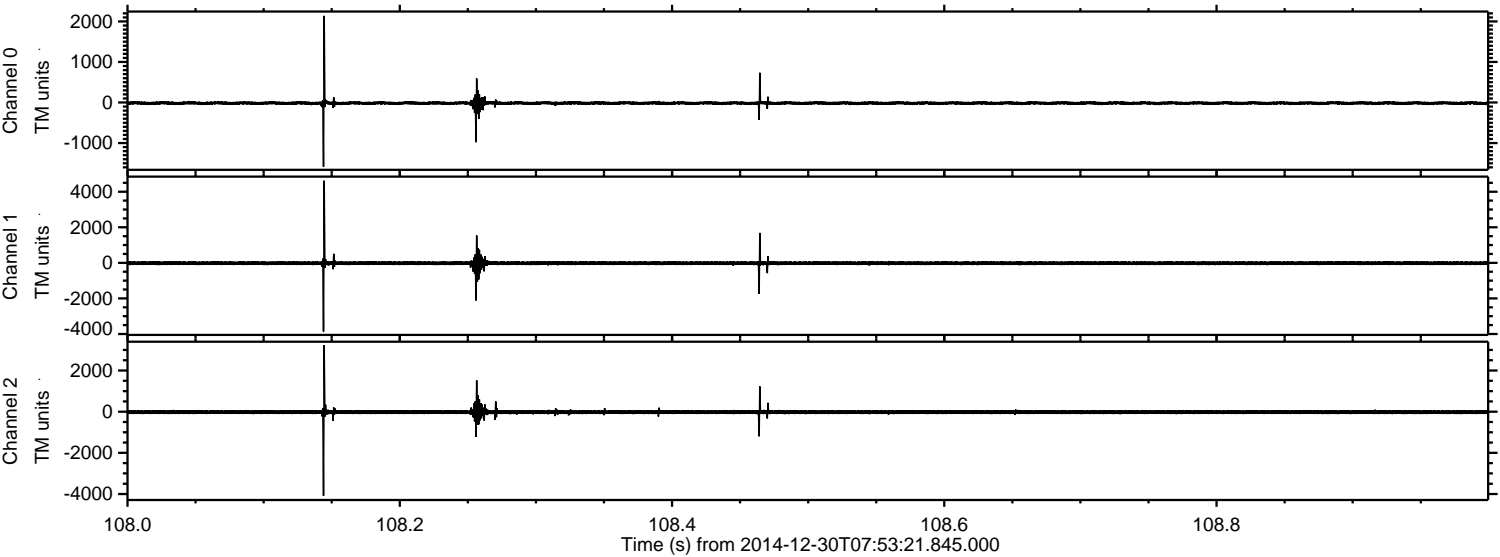


Channel 0
mn: -2780
mx: 2244
 μ : -15.0
 σ : 33.1

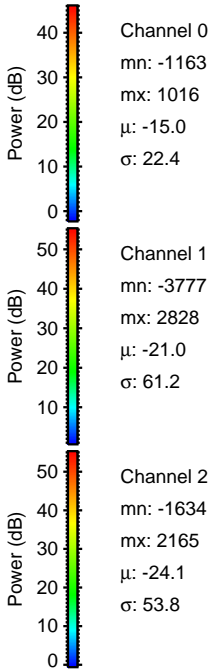
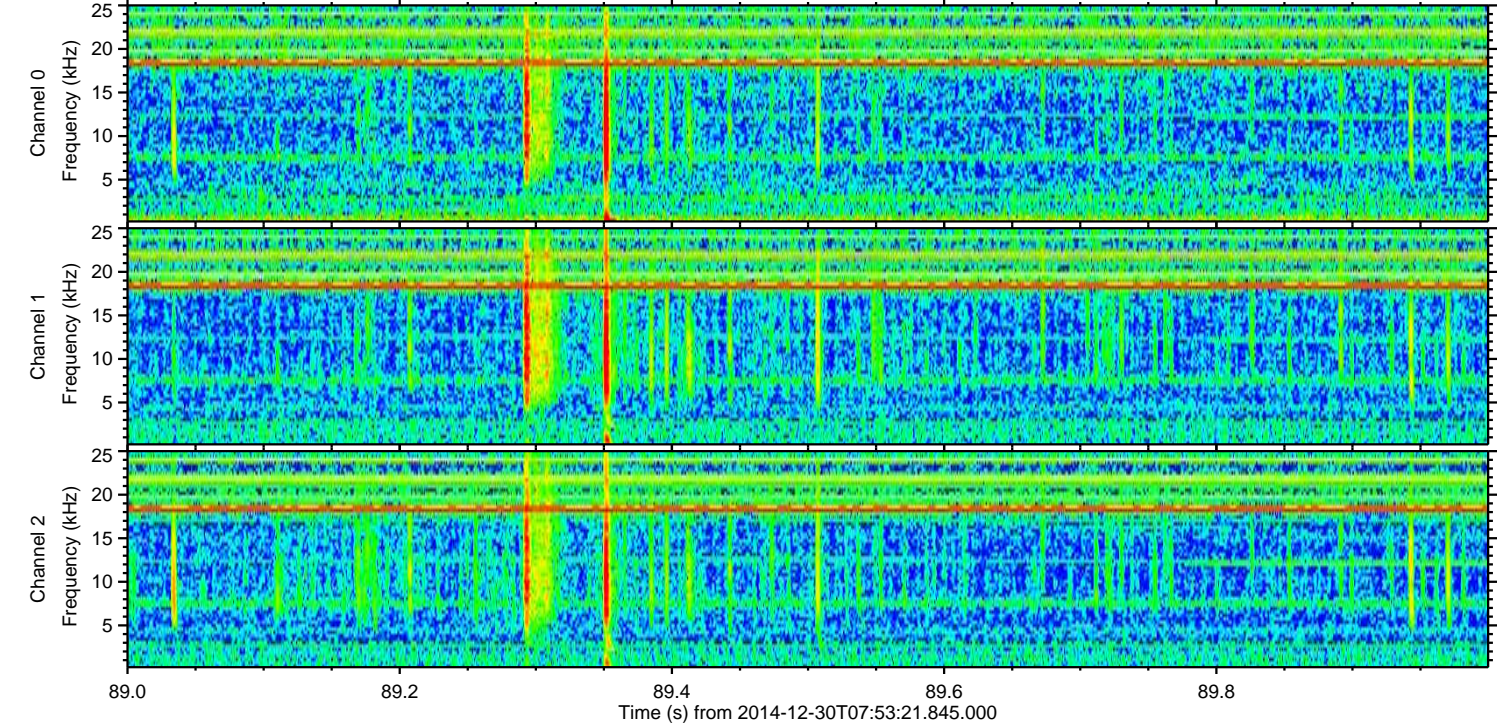
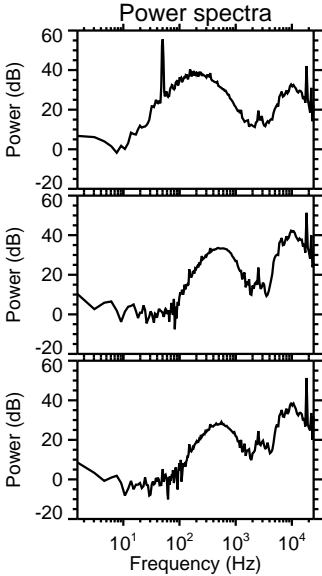
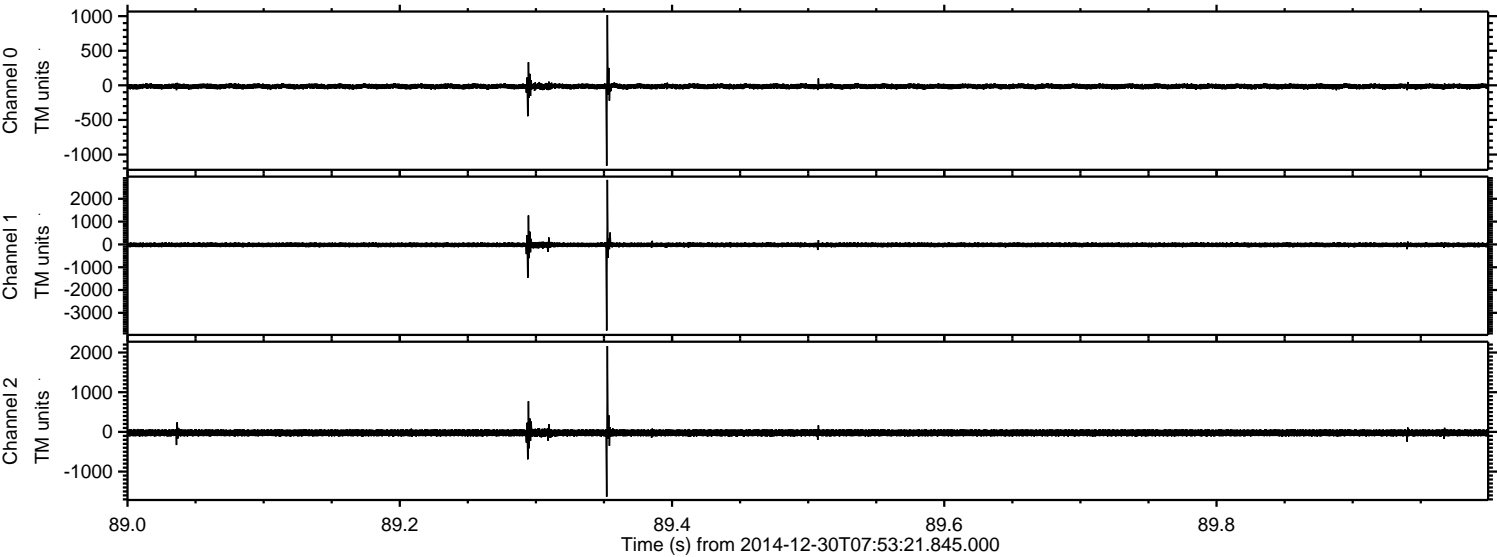
Channel 1
mn: -7048
mx: 6092
 μ : -21.6
 σ : 96.6

Channel 2
mn: -2446
mx: 2974
 μ : -24.6
 σ : 59.5

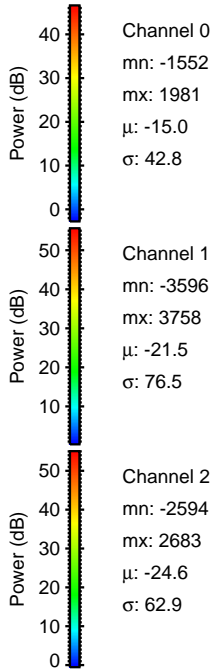
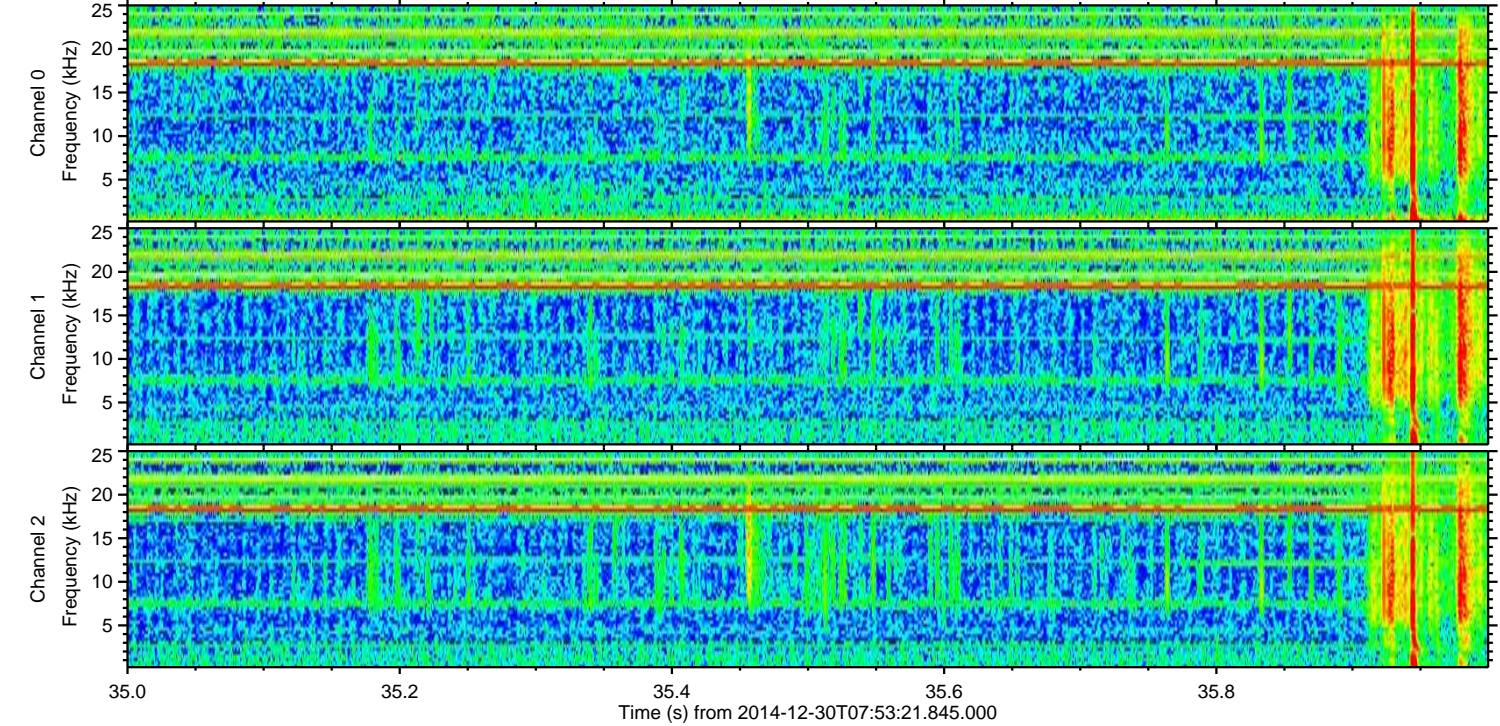
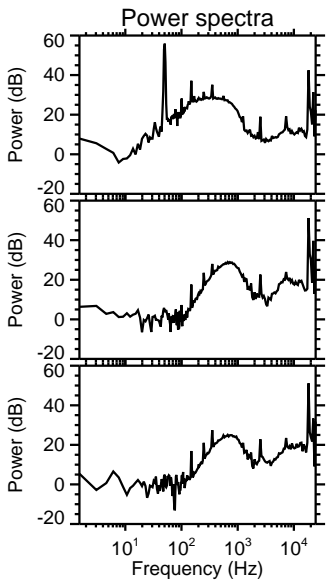
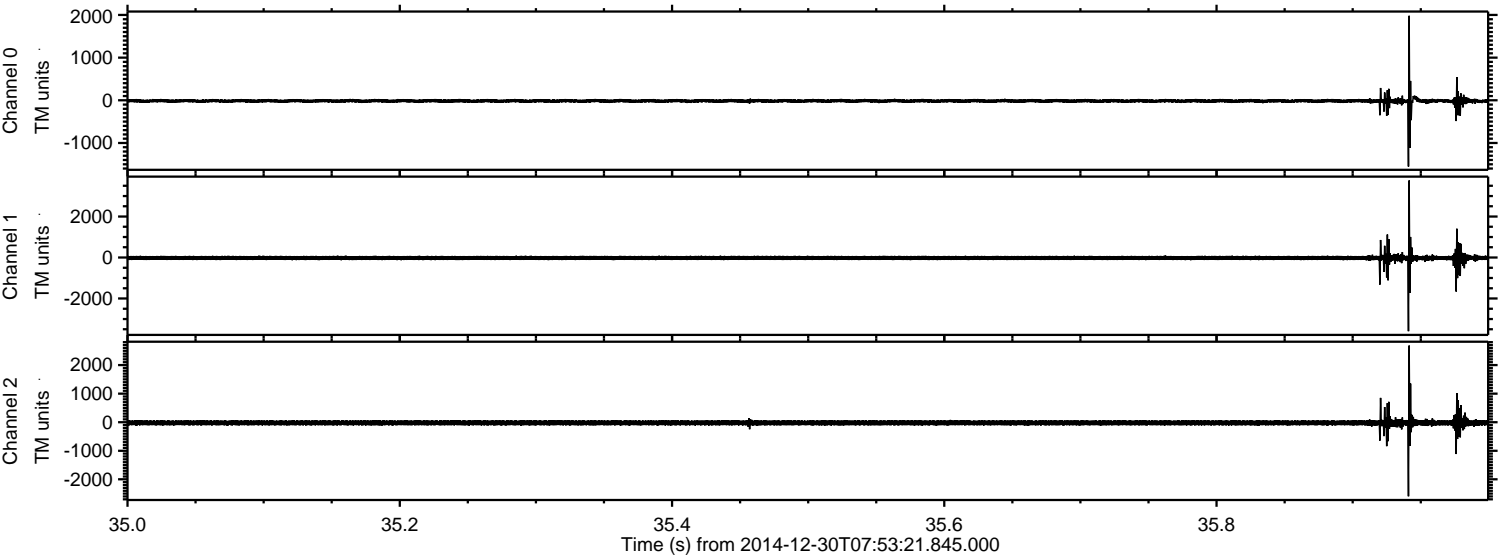
Processed Fri Jan 2 16:41:58 2015 by ELM ver.2012-10-06 from 001__elm20141230_075320__dat00.bin



Processed Fri Jan 2 16:41:59 2015 by ELM ver.2012-10-06 from 001__elm20141230_075320__dat00.bin



Processed Fri Jan 2 16:42:00 2015 by ELM ver.2012-10-06 from 001__elm20141230_075320__dat00.bin



Channel 0
mn: -1552
mx: 1981
 μ : -15.0
 σ : 42.8

Channel 1
mn: -3596
mx: 3758
 μ : -21.5
 σ : 76.5

Channel 2
mn: -2594
mx: 2683
 μ : -24.6
 σ : 62.9

