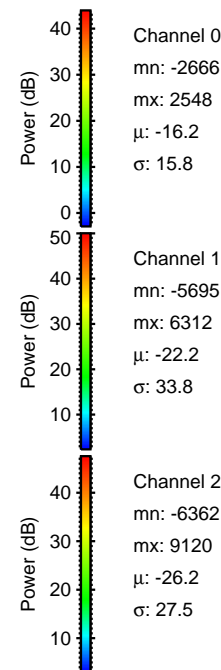
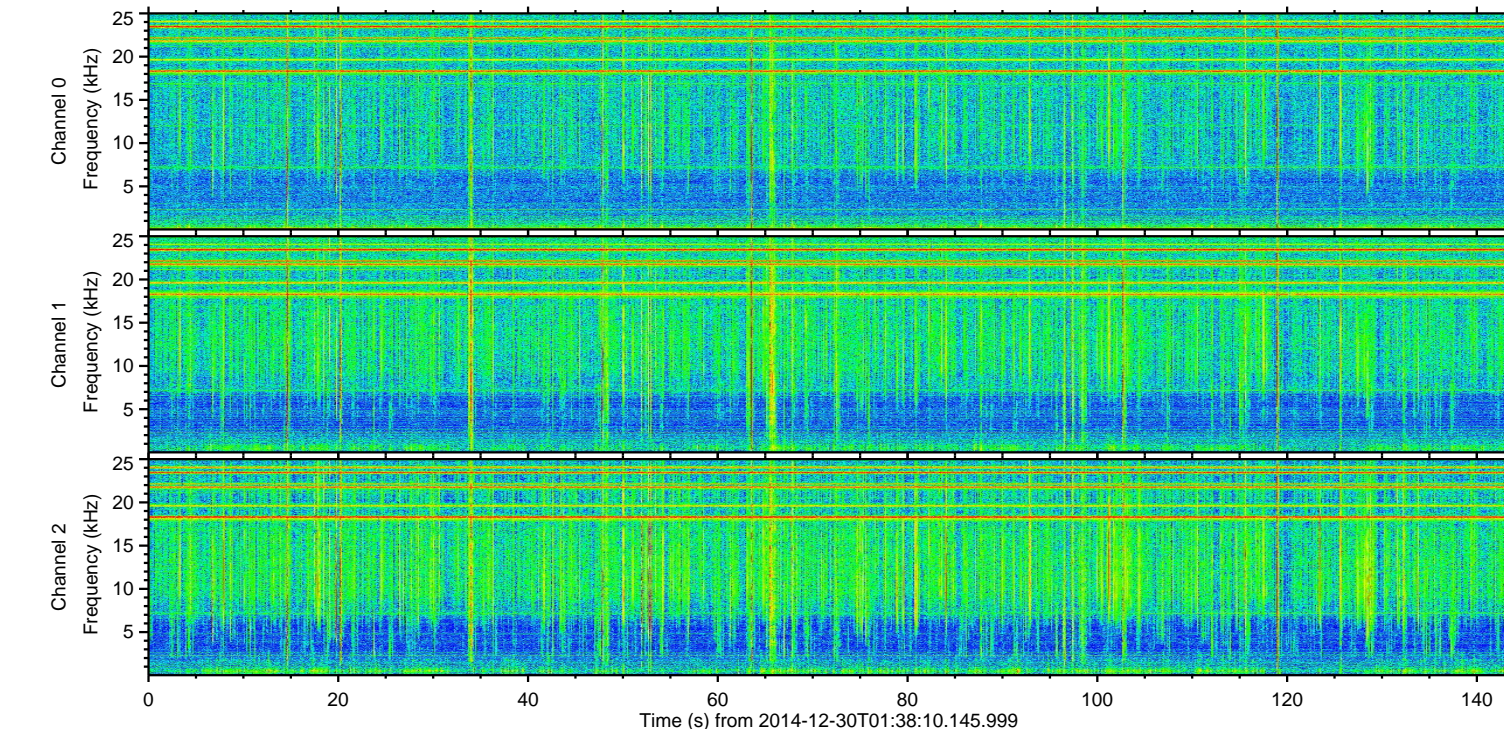
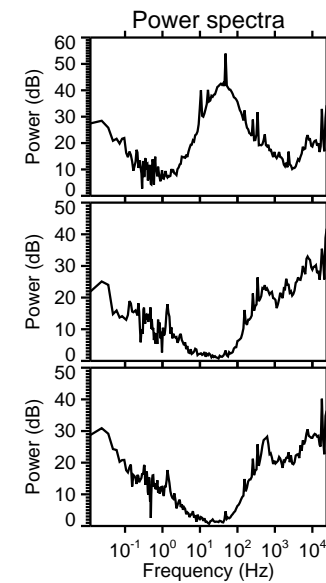
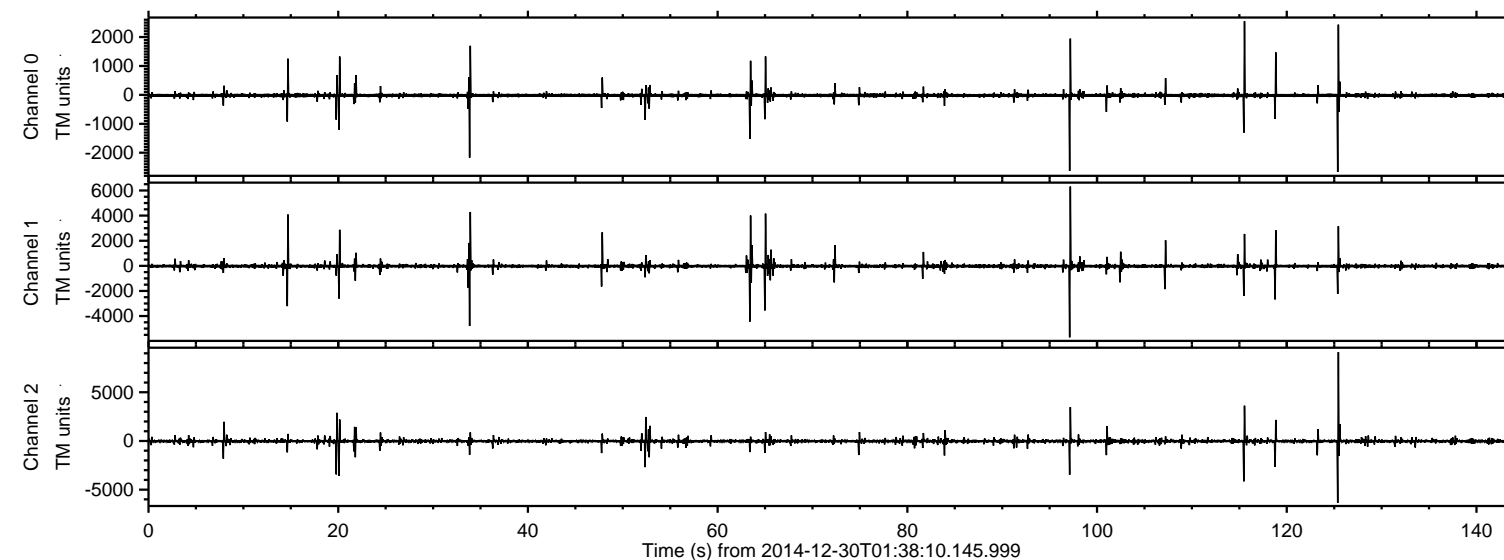


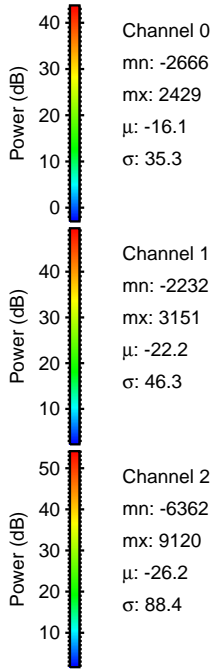
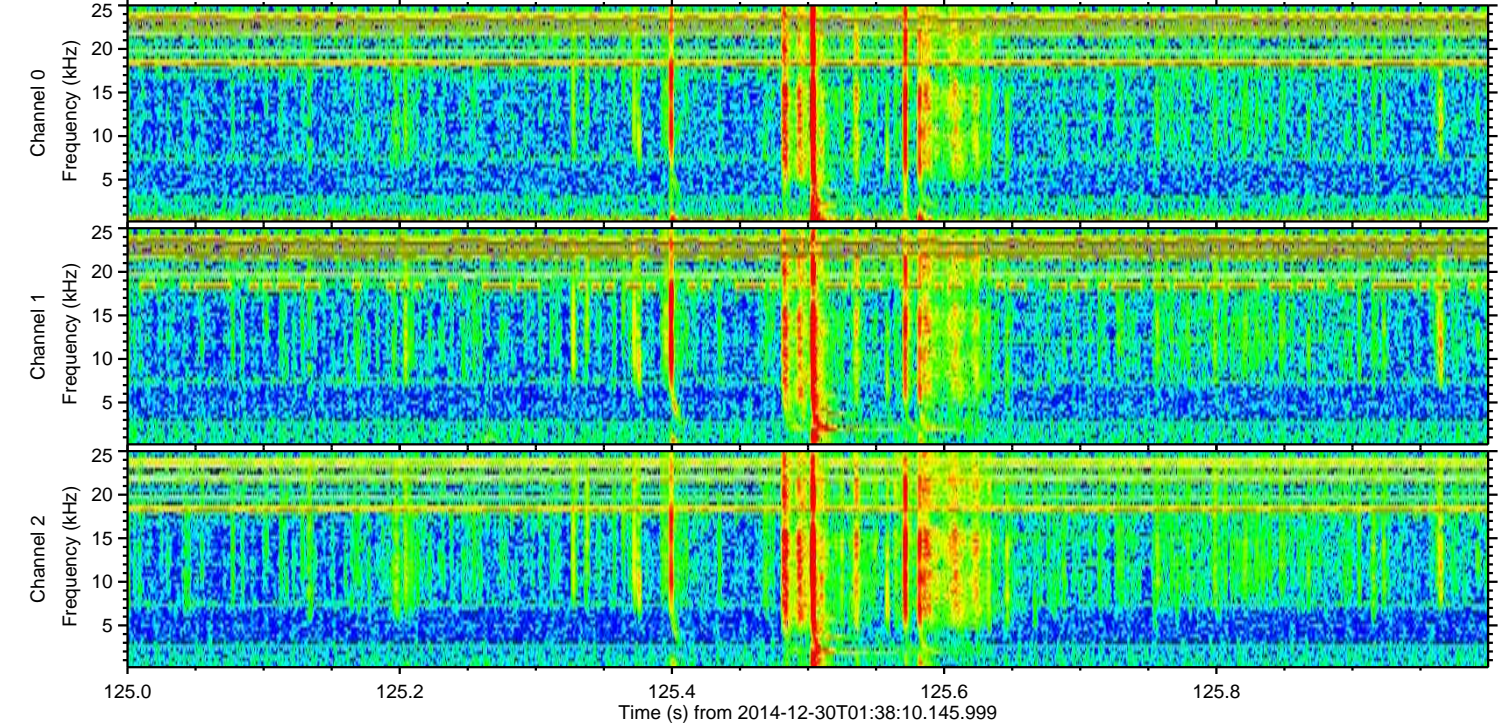
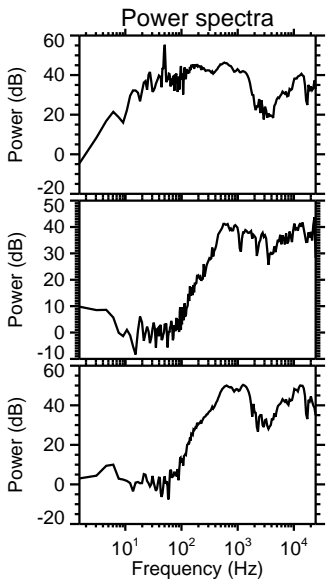
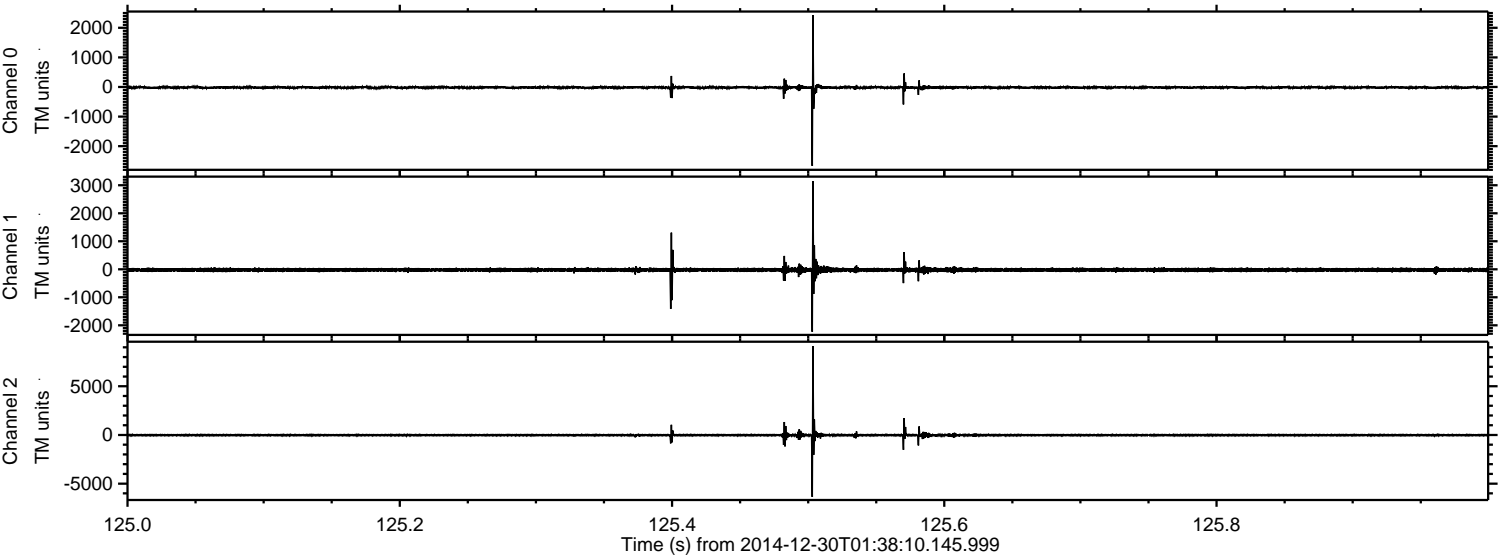
ELMAVAN 3D WAVEFORMS (Measured data sampled at 50 kHz) 49807 packets of 144 samples from 2014-12-30T01:38:10.145.999.

Processed Fri Jan 2 14:49:54 2015 by ELM ver.2012-10-06 from 001__elm20141230_013809__dat00.bin



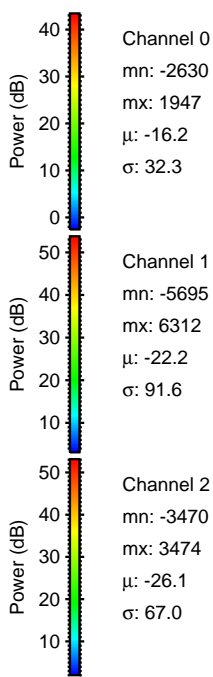
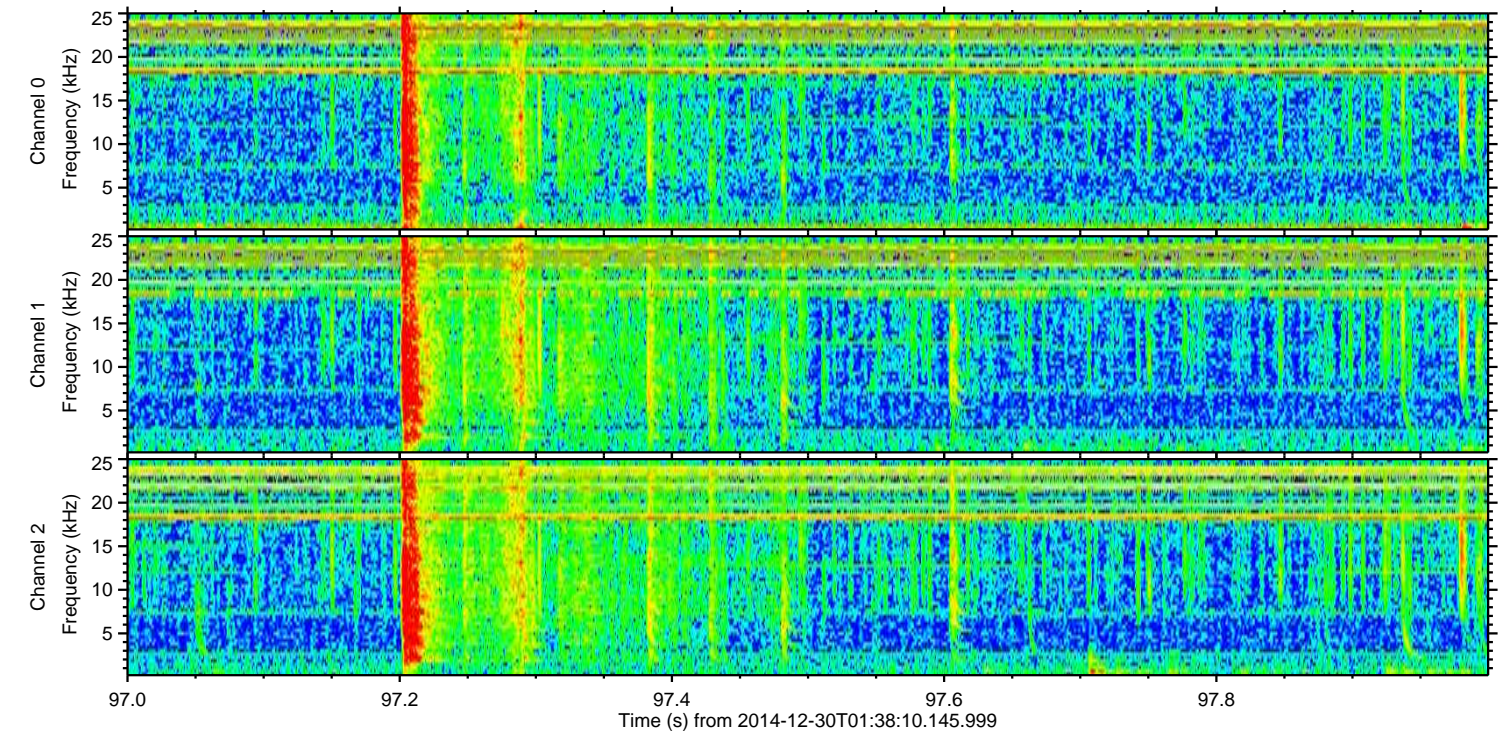
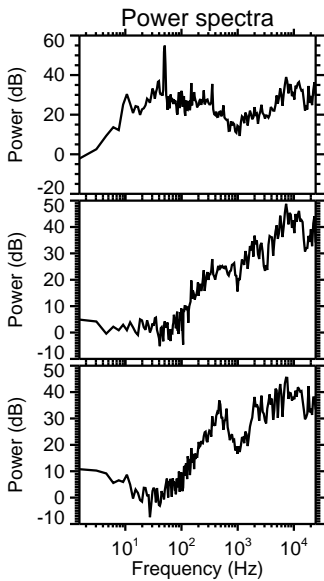
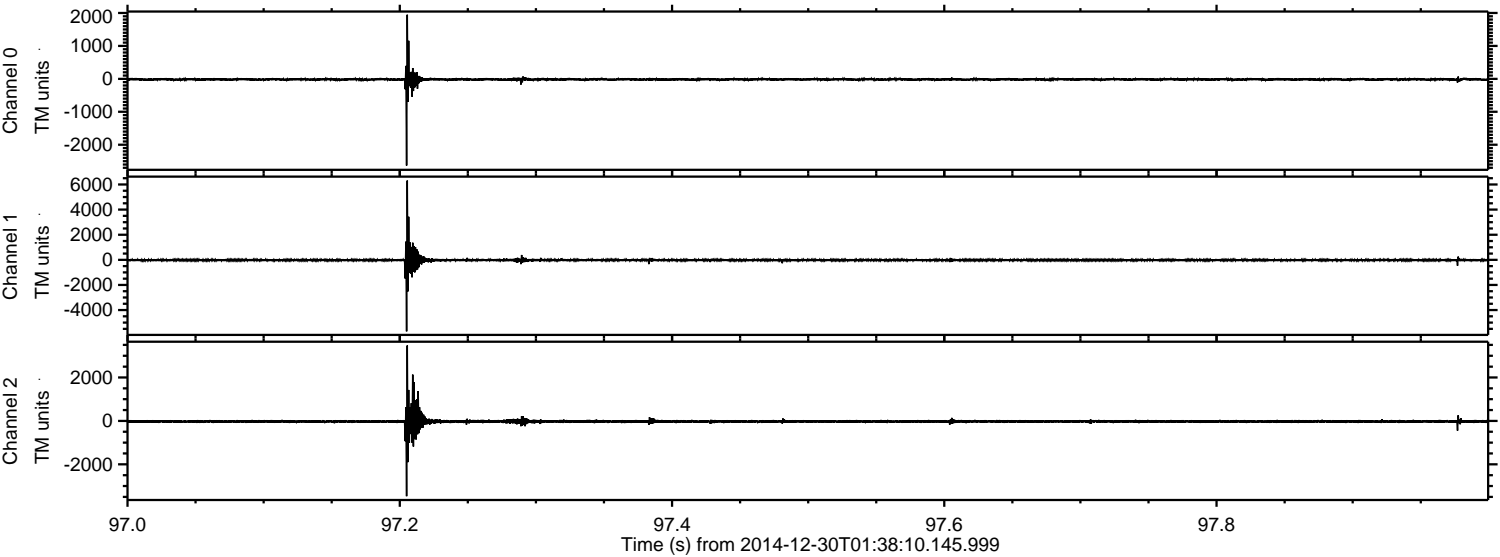
ELMAVAN 3D WAVEFORMS (Measured data sampled at 50 kHz) 49807 packets of 144 samples from 2014-12-30T01:38:10.145.999. Part 126/144

Processed Fri Jan 2 14:50:07 2015 by ELM ver.2012-10-06 from 001__elm20141230_013809__dat00.bin

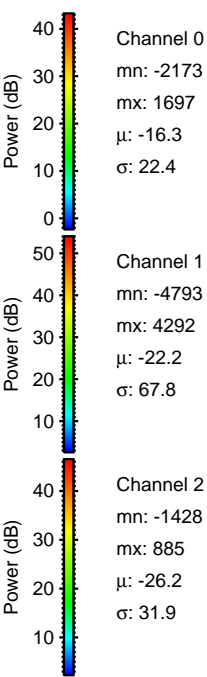
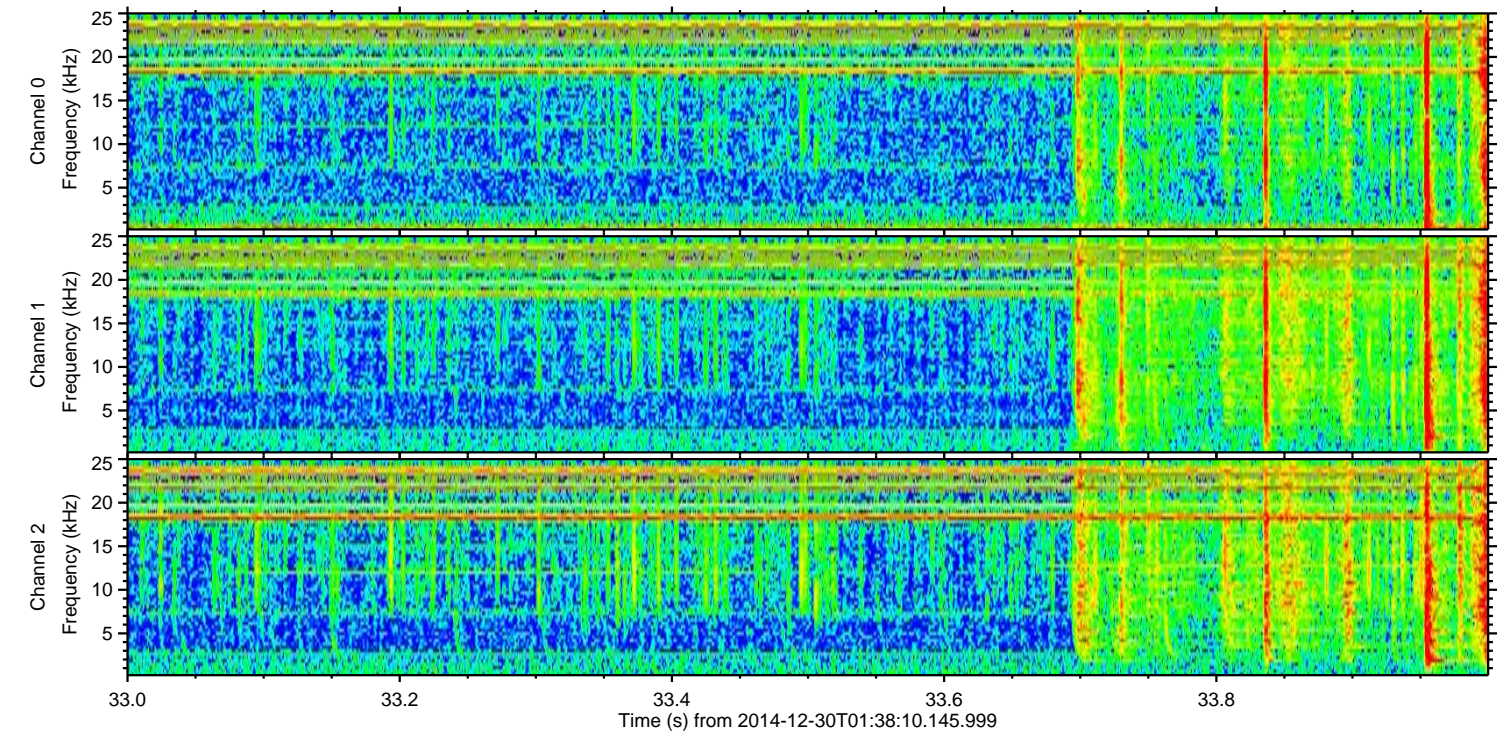
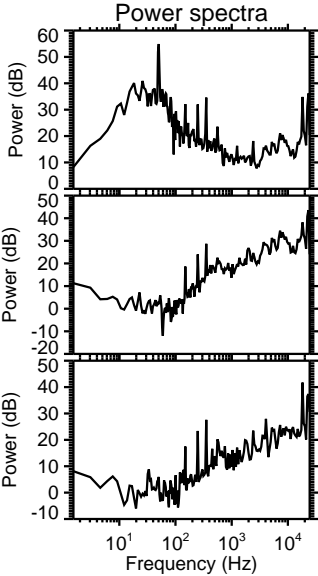
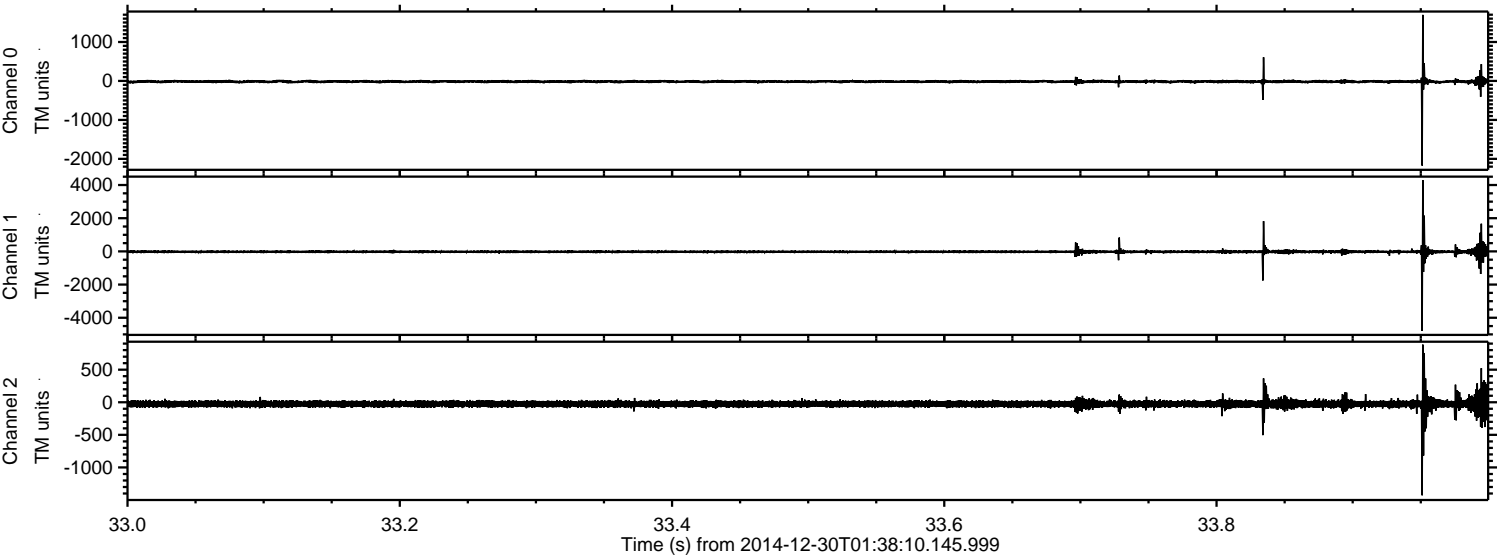


ELMAVAN 3D WAVEFORMS (Measured data sampled at 50 kHz) 49807 packets of 144 samples from 2014-12-30T01:38:10.145.999. Part 98/144

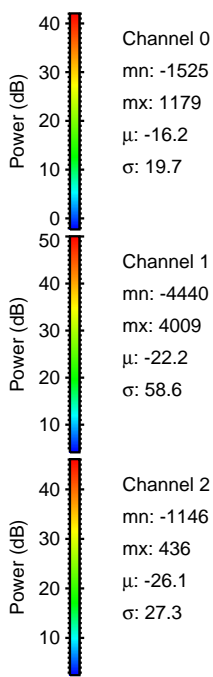
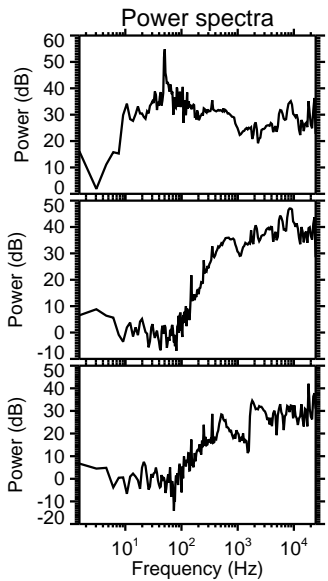
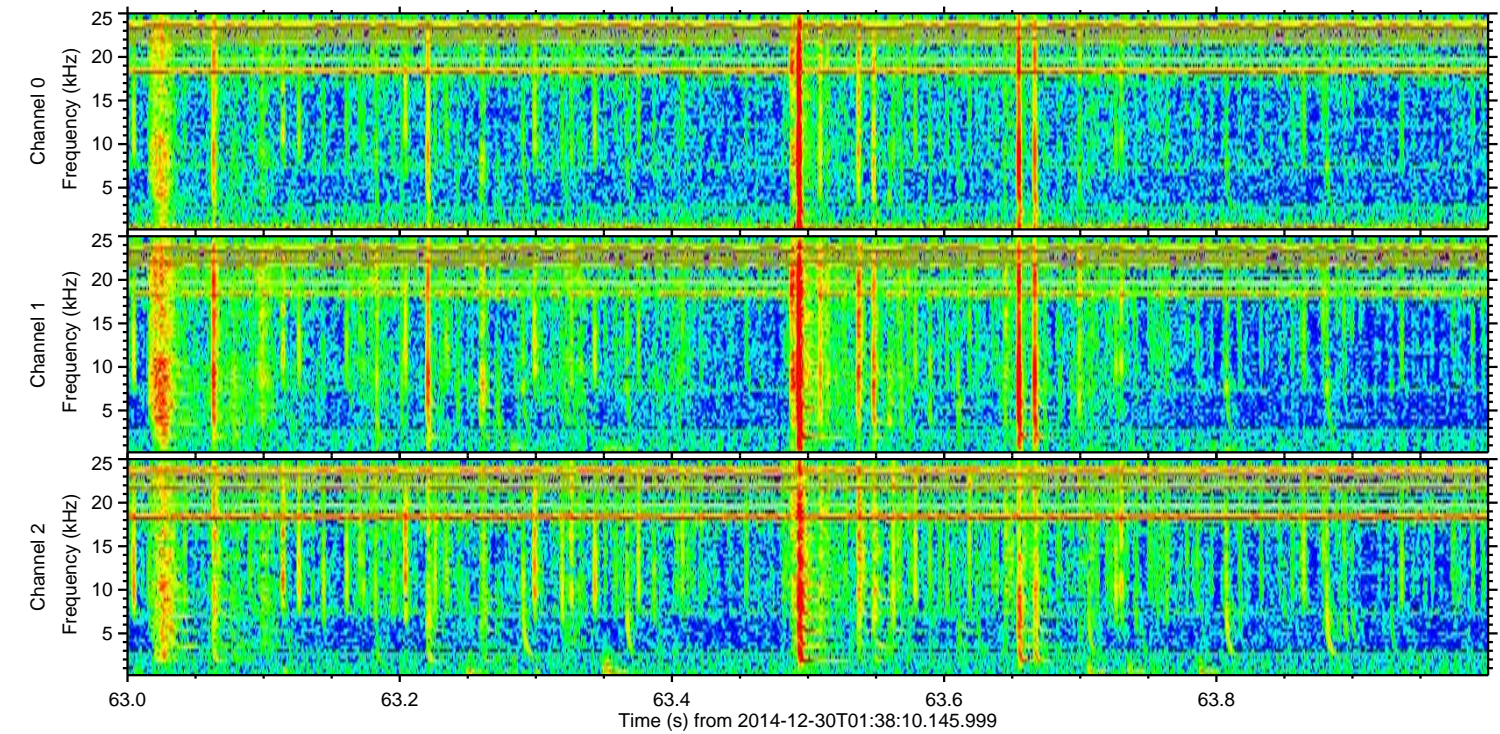
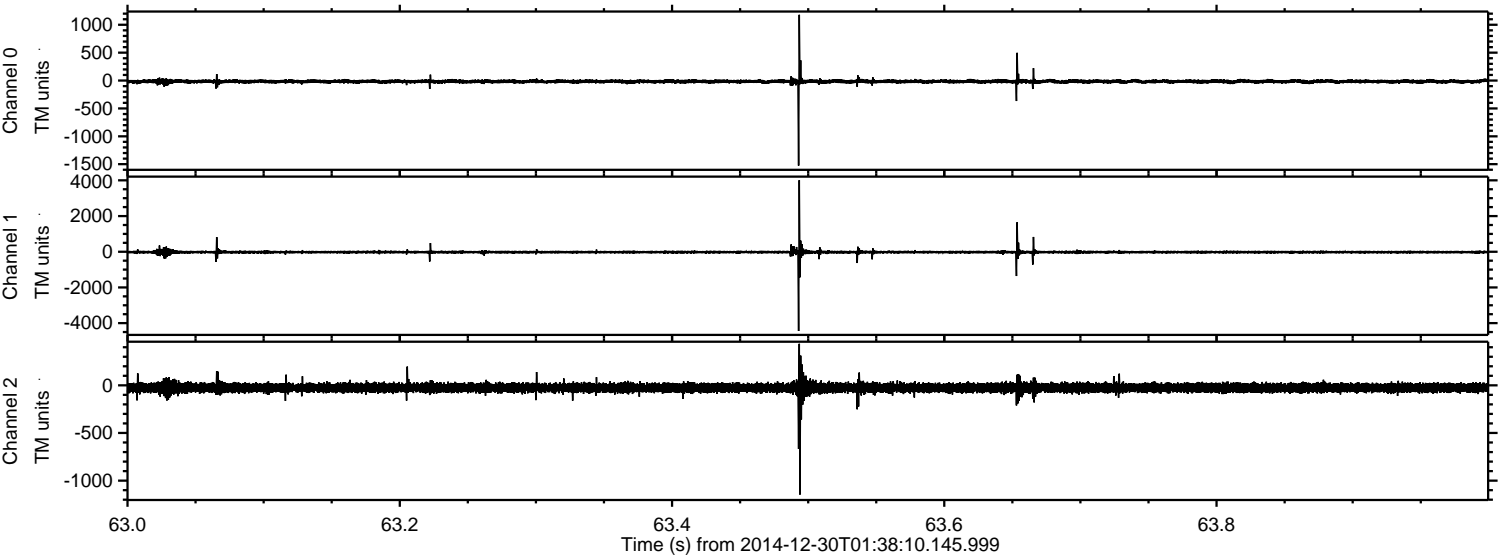
Processed Fri Jan 2 14:50:07 2015 by ELM ver.2012-10-06 from 001__elm20141230_013809__dat00.bin



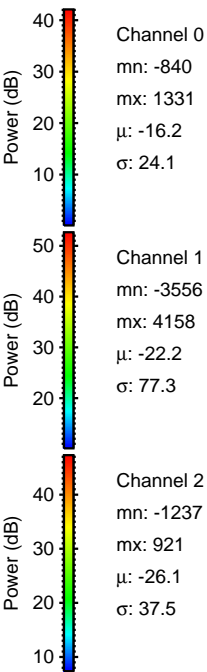
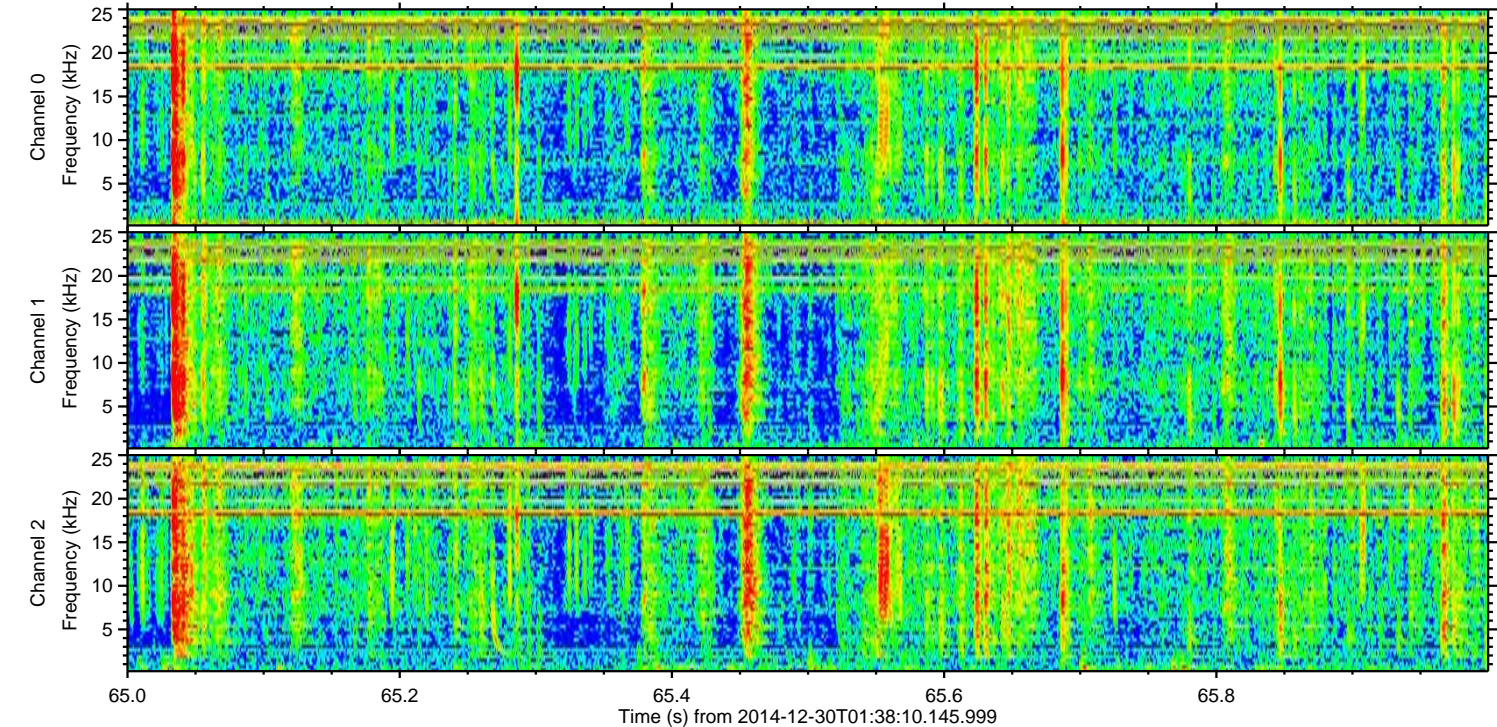
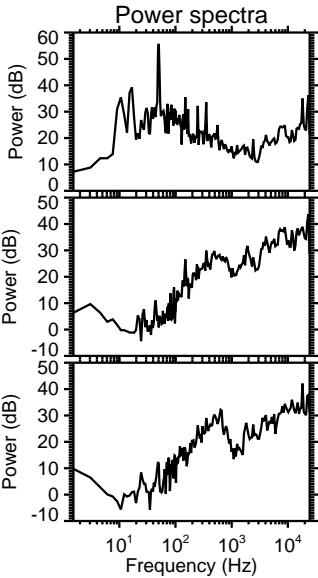
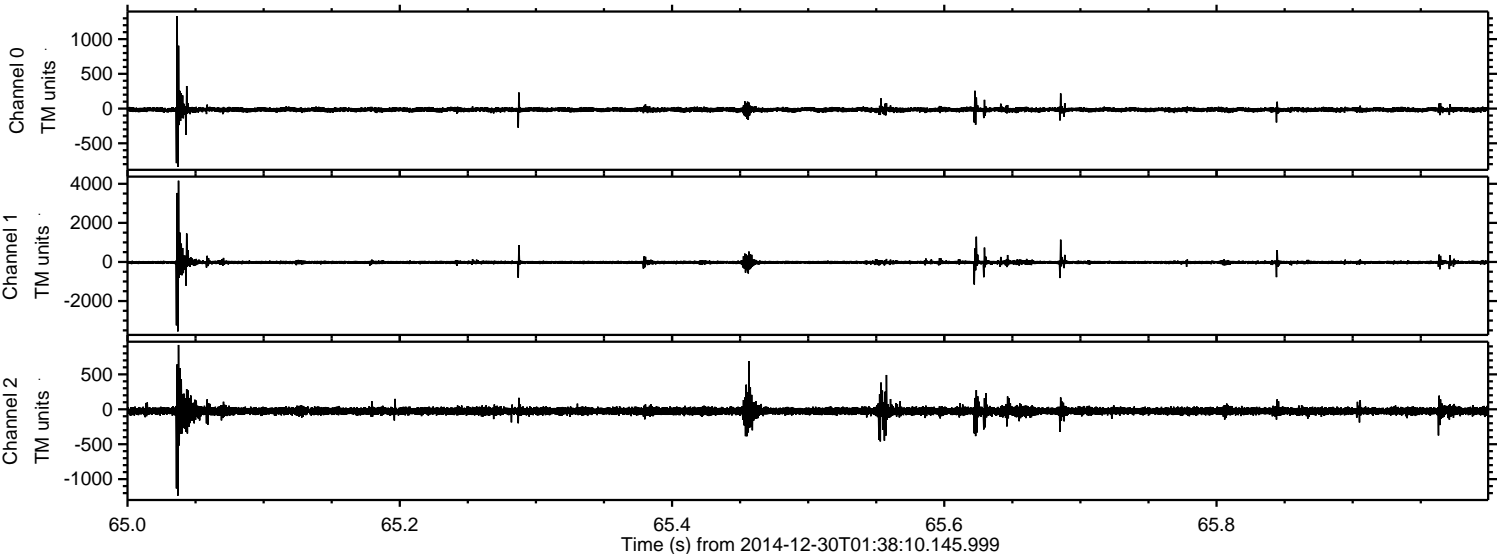
Processed Fri Jan 2 14:50:08 2015 by ELM ver.2012-10-06 from 001__elm20141230_013809__dat00.bin



Processed Fri Jan 2 14:50:09 2015 by ELM ver.2012-10-06 from 001__elm20141230_013809__dat00.bin

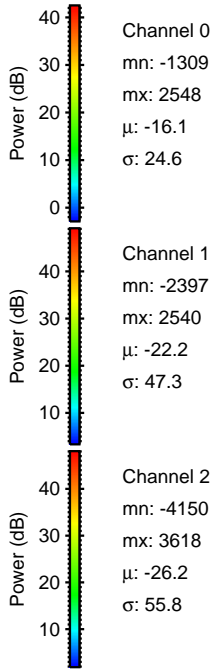
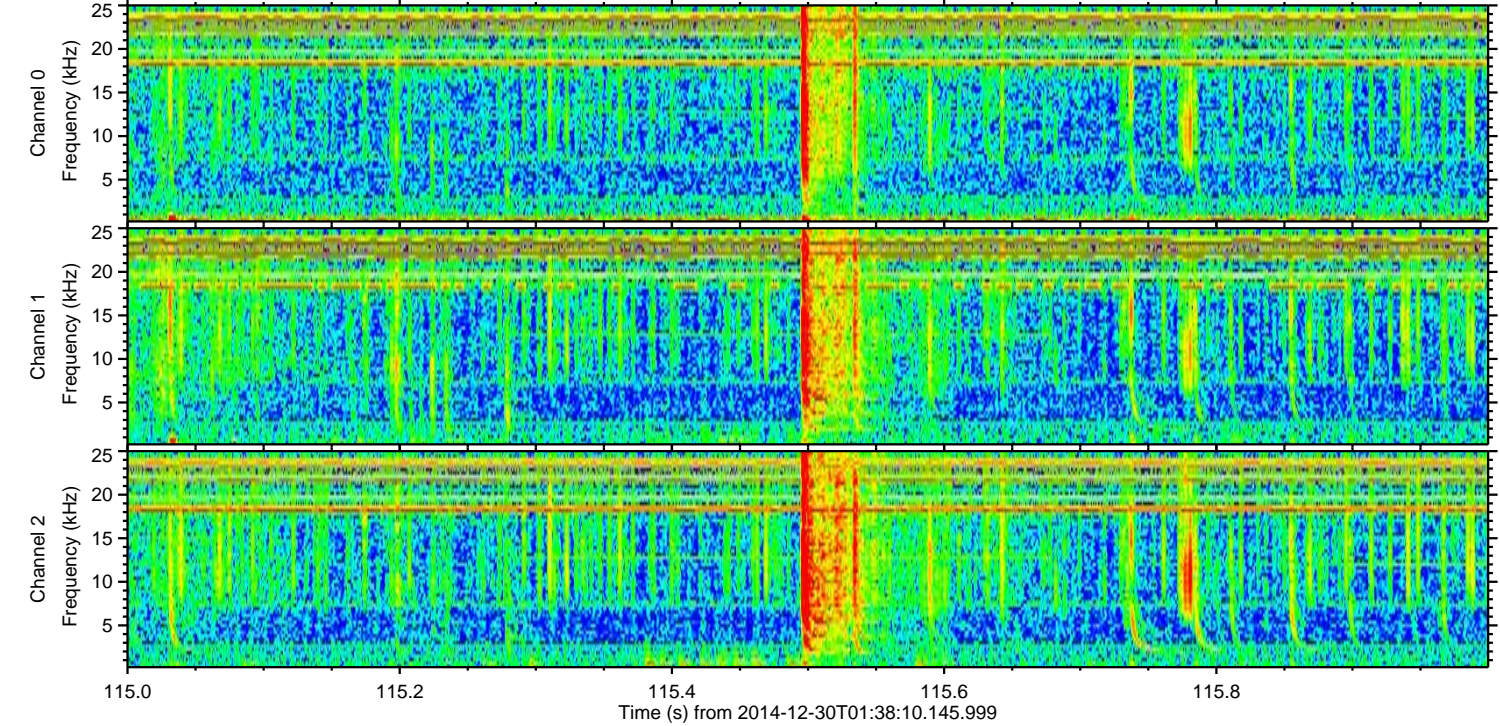
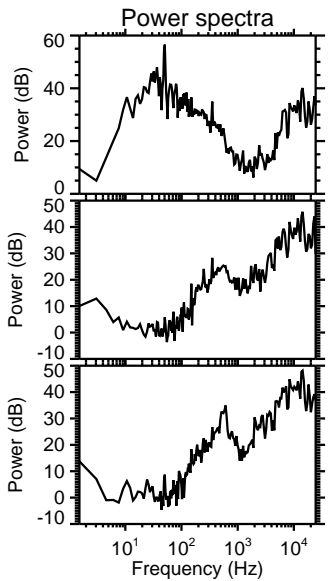
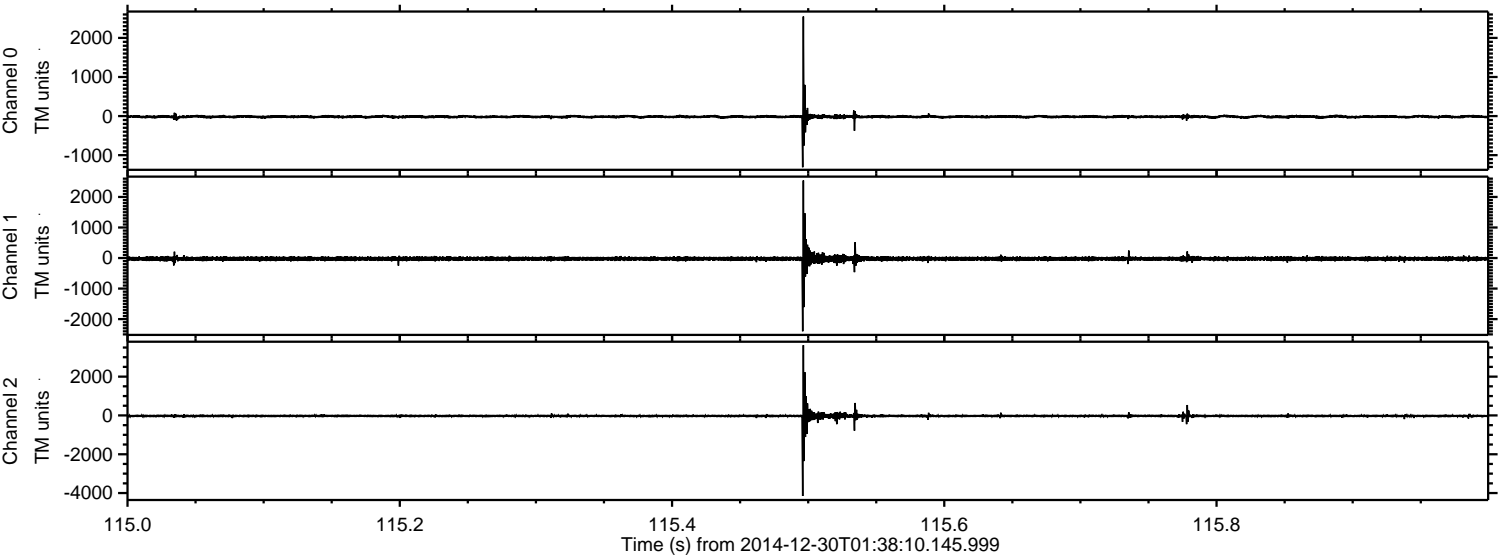


Processed Fri Jan 2 14:50:10 2015 by ELM ver.2012-10-06 from 001__elm20141230_013809__dat00.bin

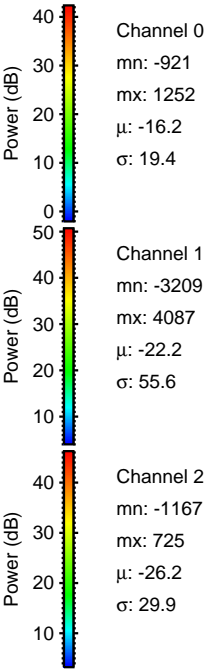
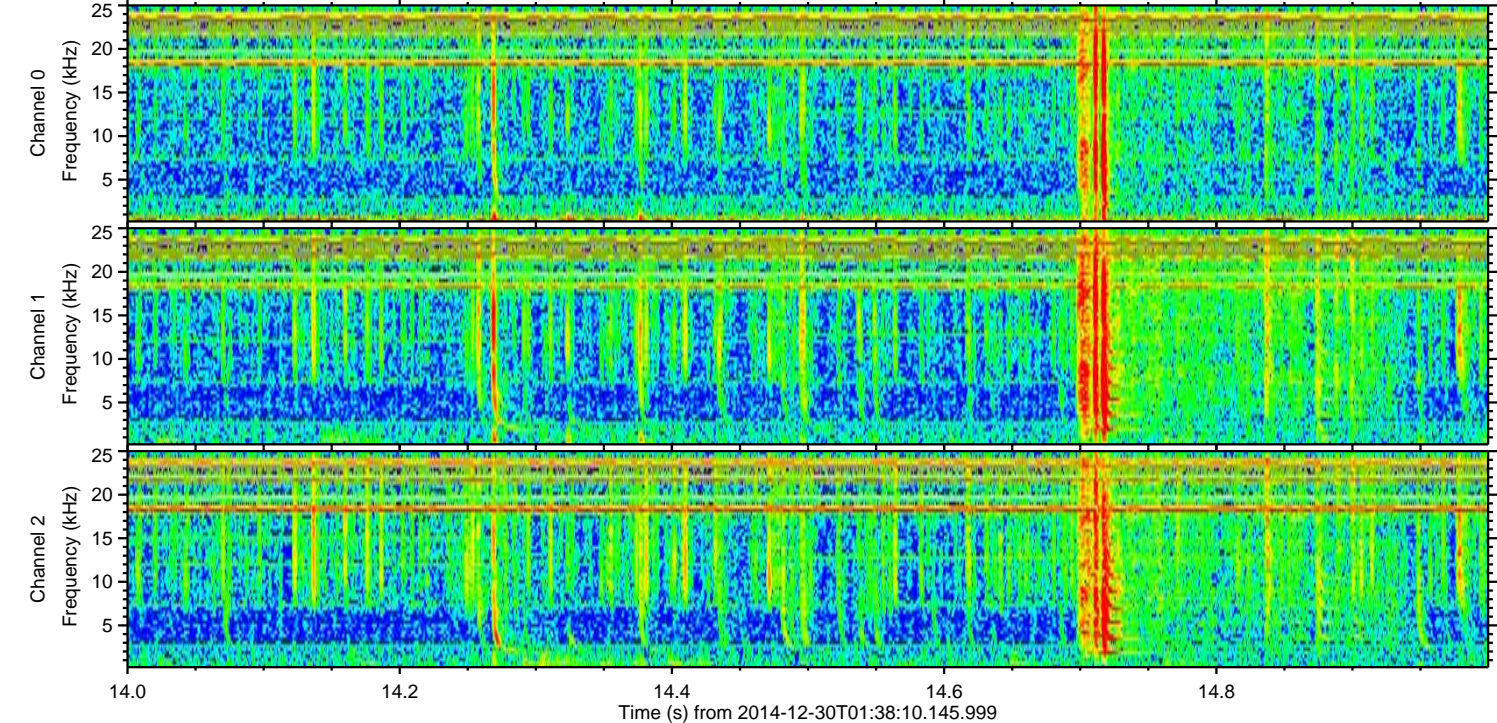
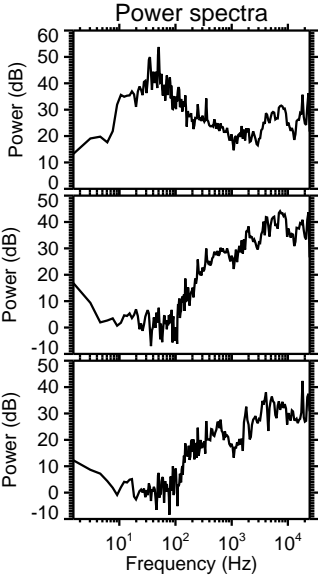
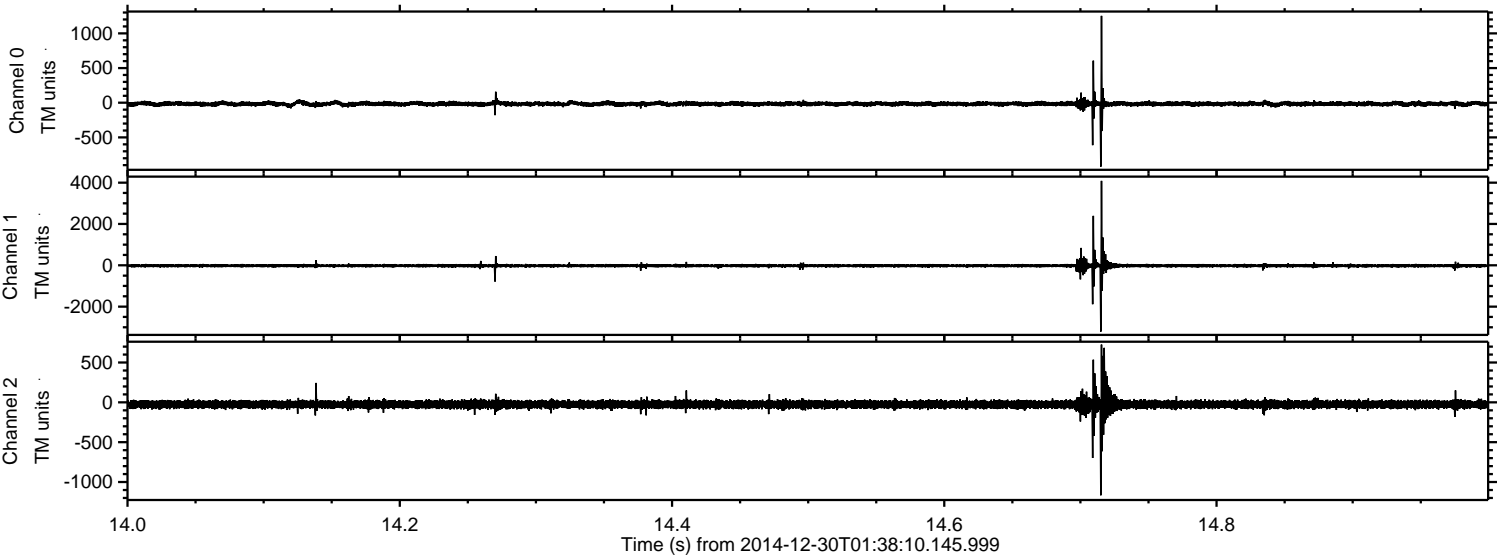


ELMAVAN 3D WAVEFORMS (Measured data sampled at 50 kHz) 49807 packets of 144 samples from 2014-12-30T01:38:10.145.999. Part 116/144

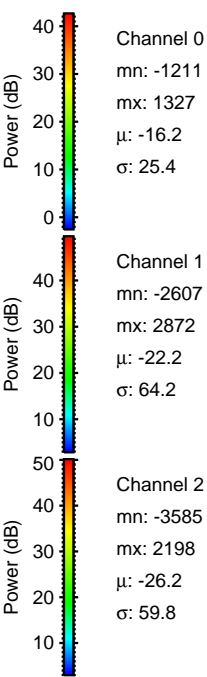
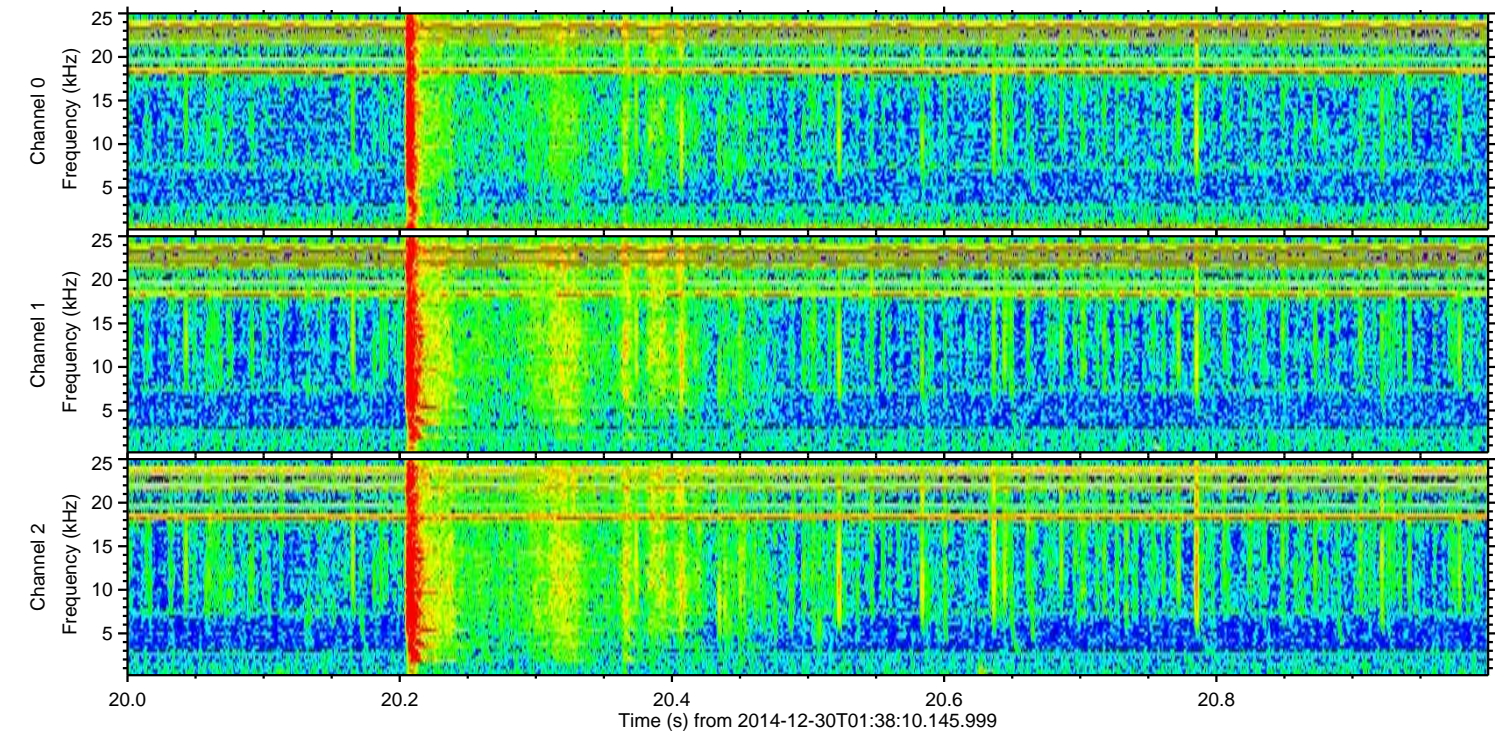
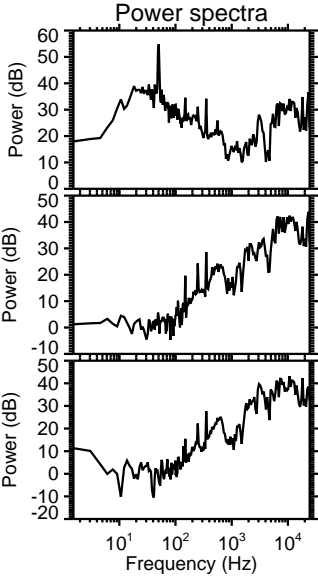
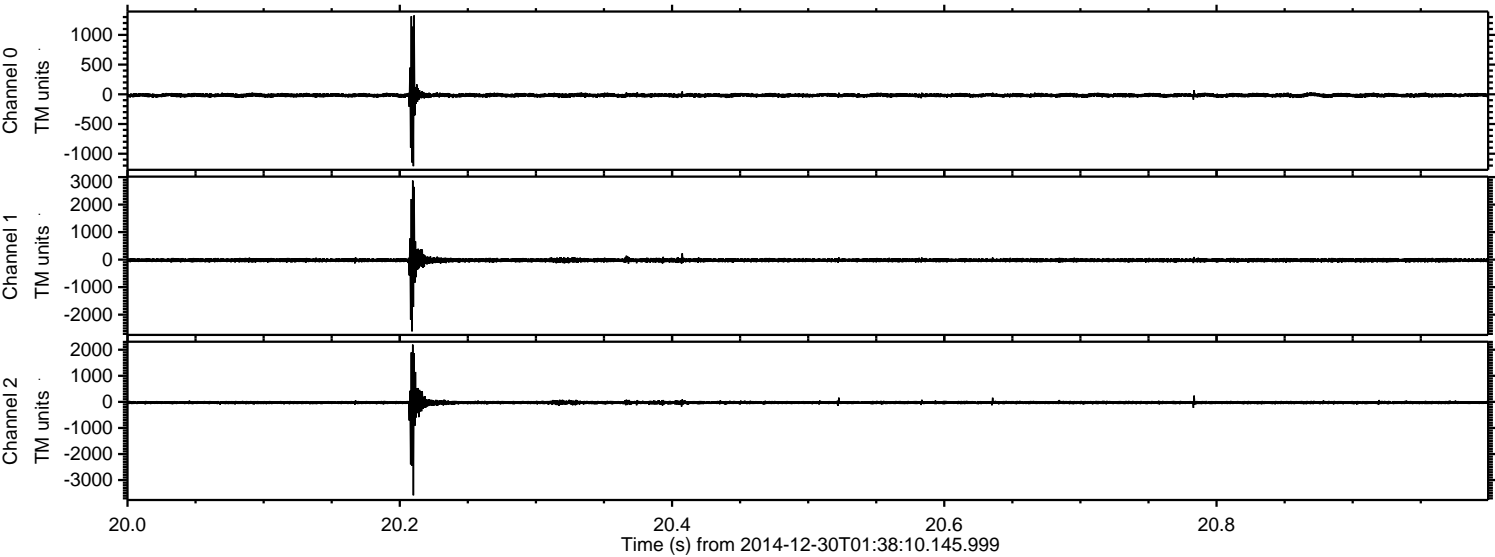
Processed Fri Jan 2 14:50:11 2015 by ELM ver.2012-10-06 from 001__elm20141230_013809__dat00.bin



Processed Fri Jan 2 14:50:12 2015 by ELM ver.2012-10-06 from 001__elm20141230_013809__dat00.bin



Processed Fri Jan 2 14:50:13 2015 by ELM ver.2012-10-06 from 001__elm20141230_013809__dat00.bin

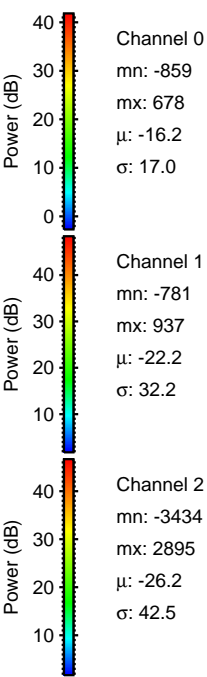
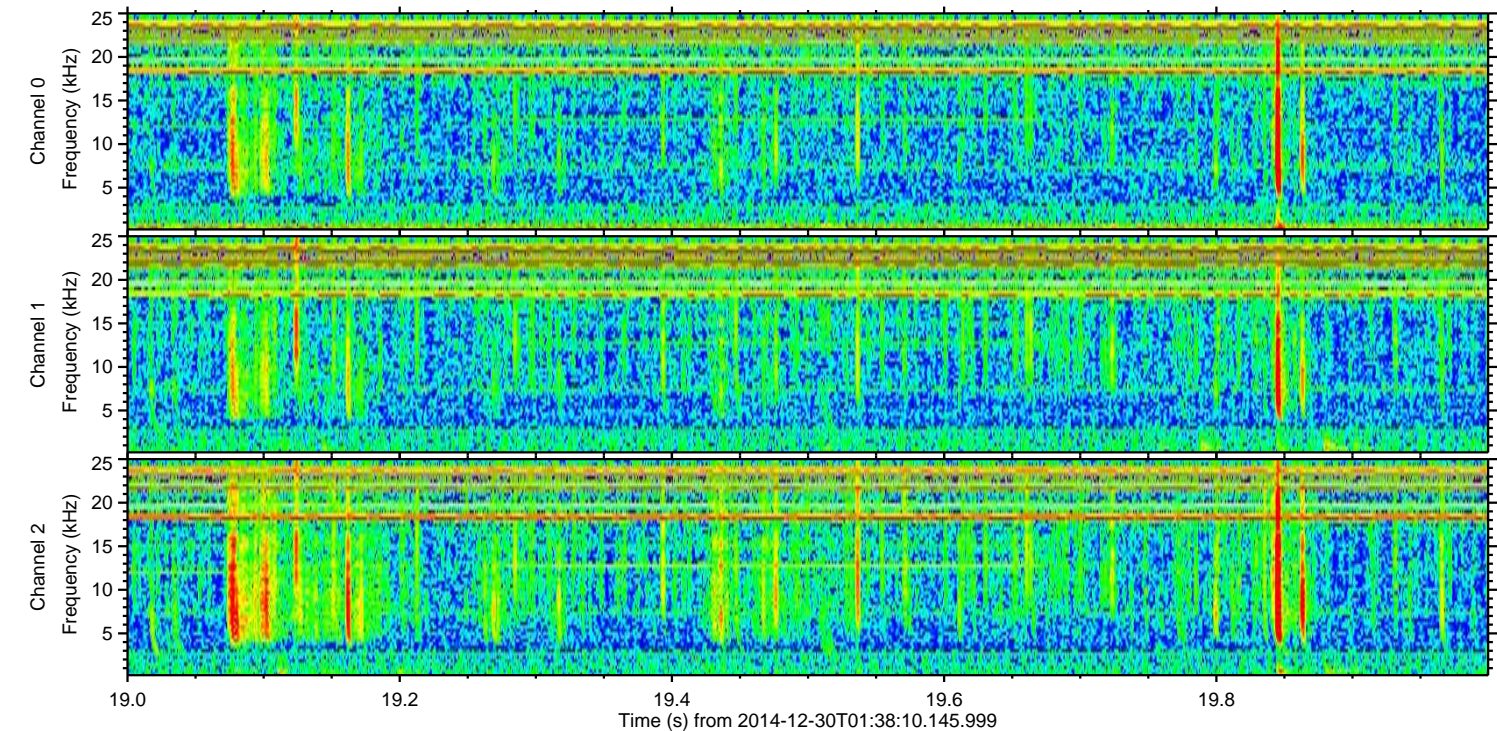
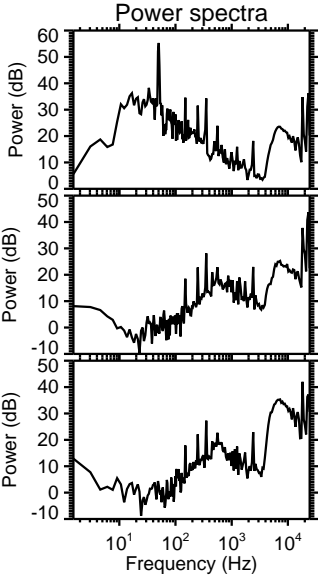
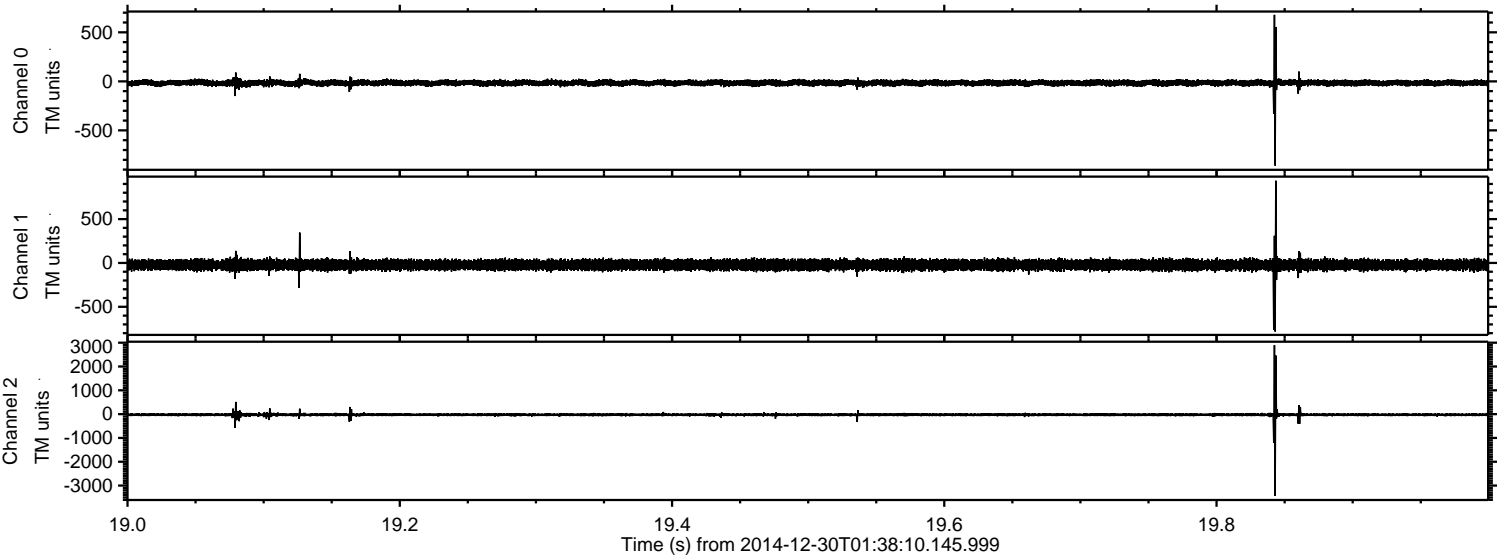


Channel 0
mn: -1211
mx: 1327
 μ : -16.2
 σ : 25.4

Channel 1
mn: -2607
mx: 2872
 μ : -22.2
 σ : 64.2

Channel 2
mn: -3585
mx: 2198
 μ : -26.2
 σ : 59.8

Processed Fri Jan 2 14:50:14 2015 by ELM ver.2012-10-06 from 001__elm20141230_013809__dat00.bin



Processed Fri Jan 2 14:50:15 2015 by ELM ver.2012-10-06 from 001__elm20141230_013809__dat00.bin

