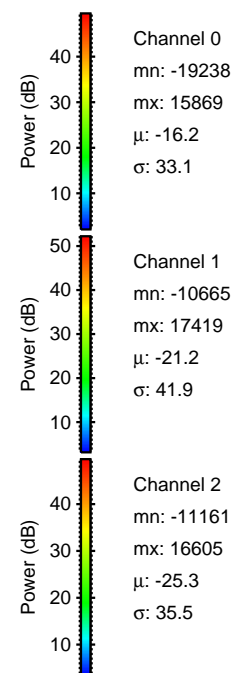
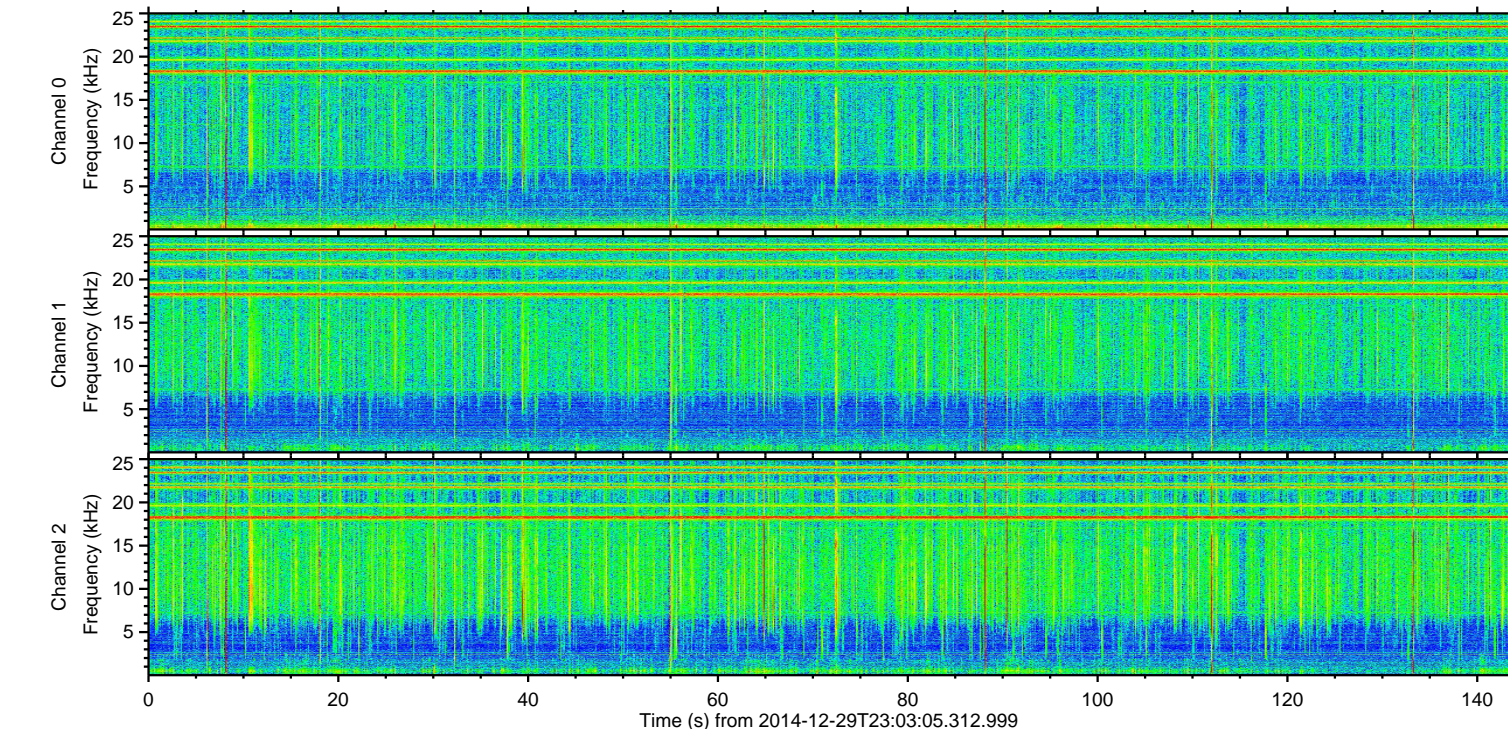
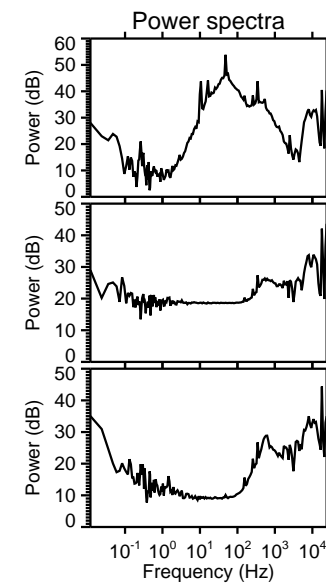
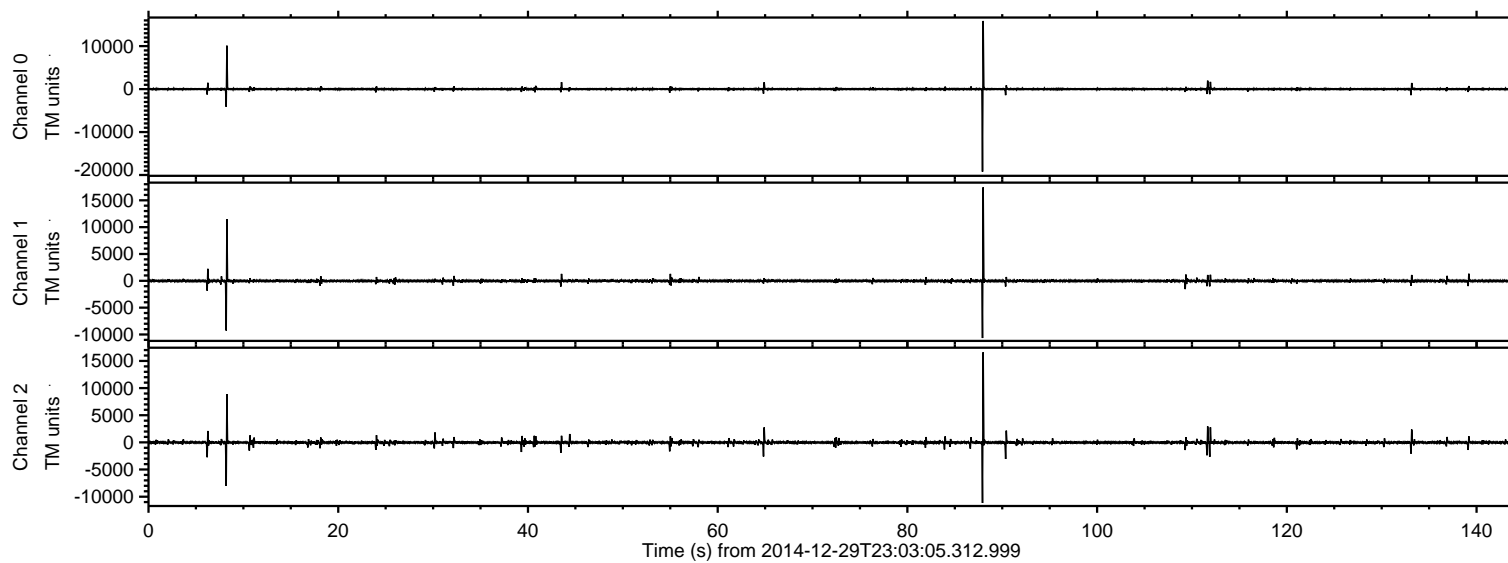


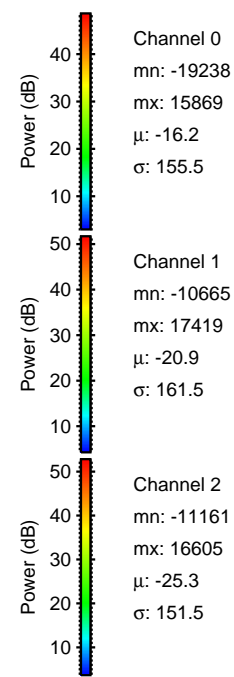
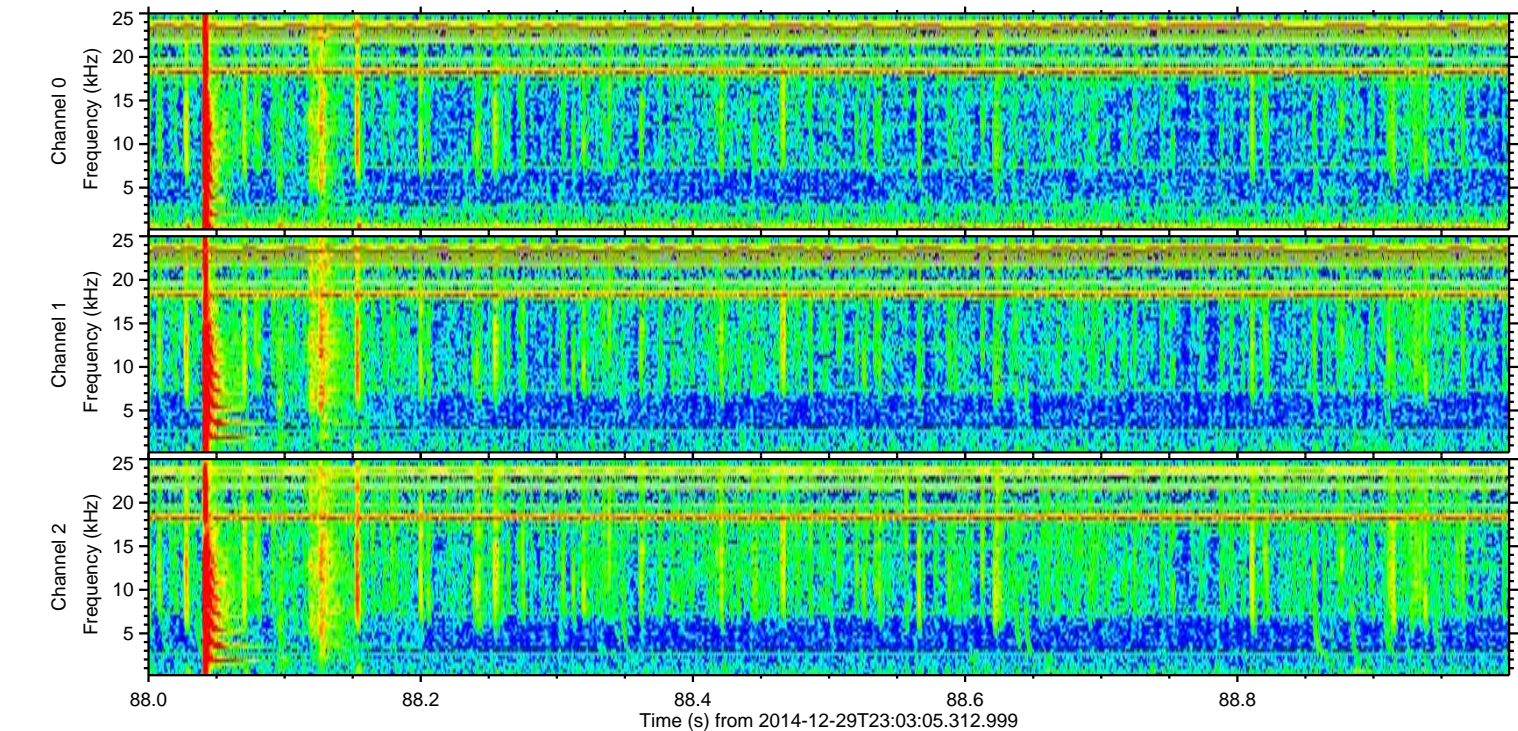
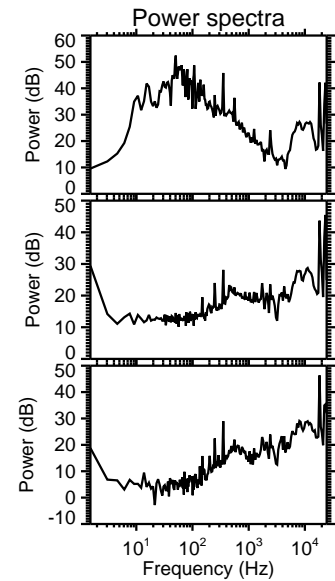
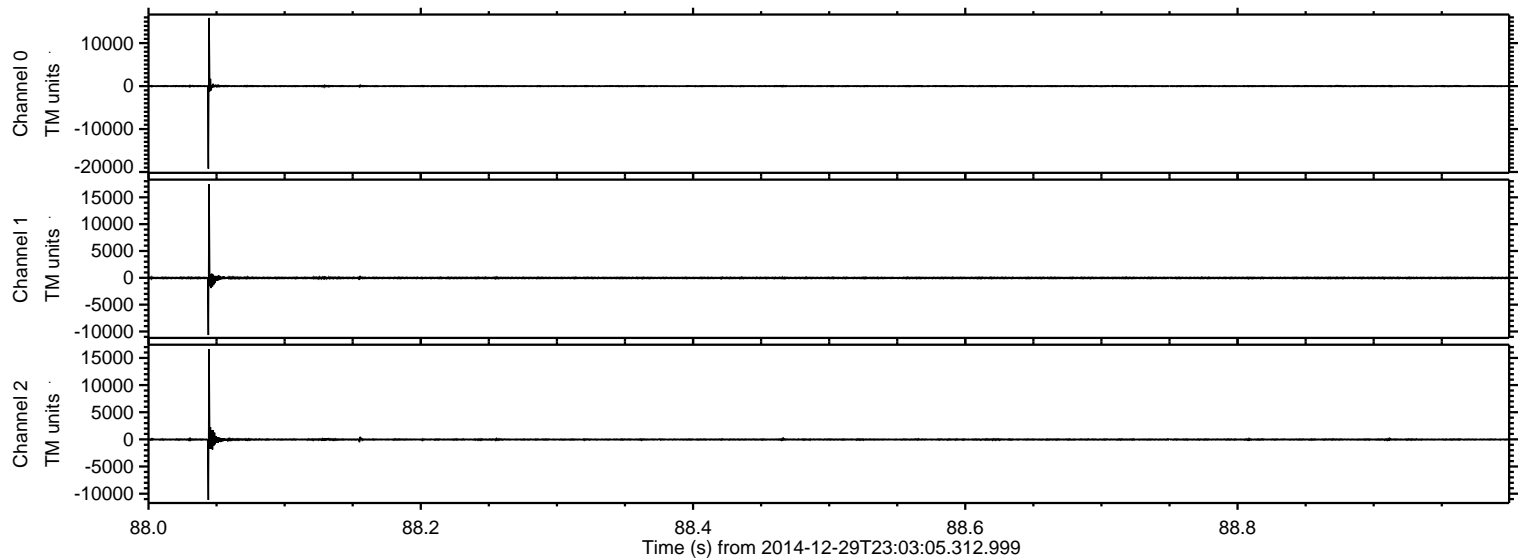
# ELMAVAN 3D WAVEFORMS (Measured data sampled at 50 kHz) 49804 packets of 144 samples from 2014-12-29T23:03:05.312.999.

Processed Fri Jan 2 14:06:51 2015 by ELM ver.2012-10-06 from 001\_\_elm20141229\_230304\_\_dat00.bin



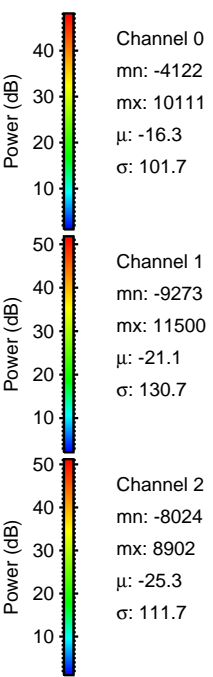
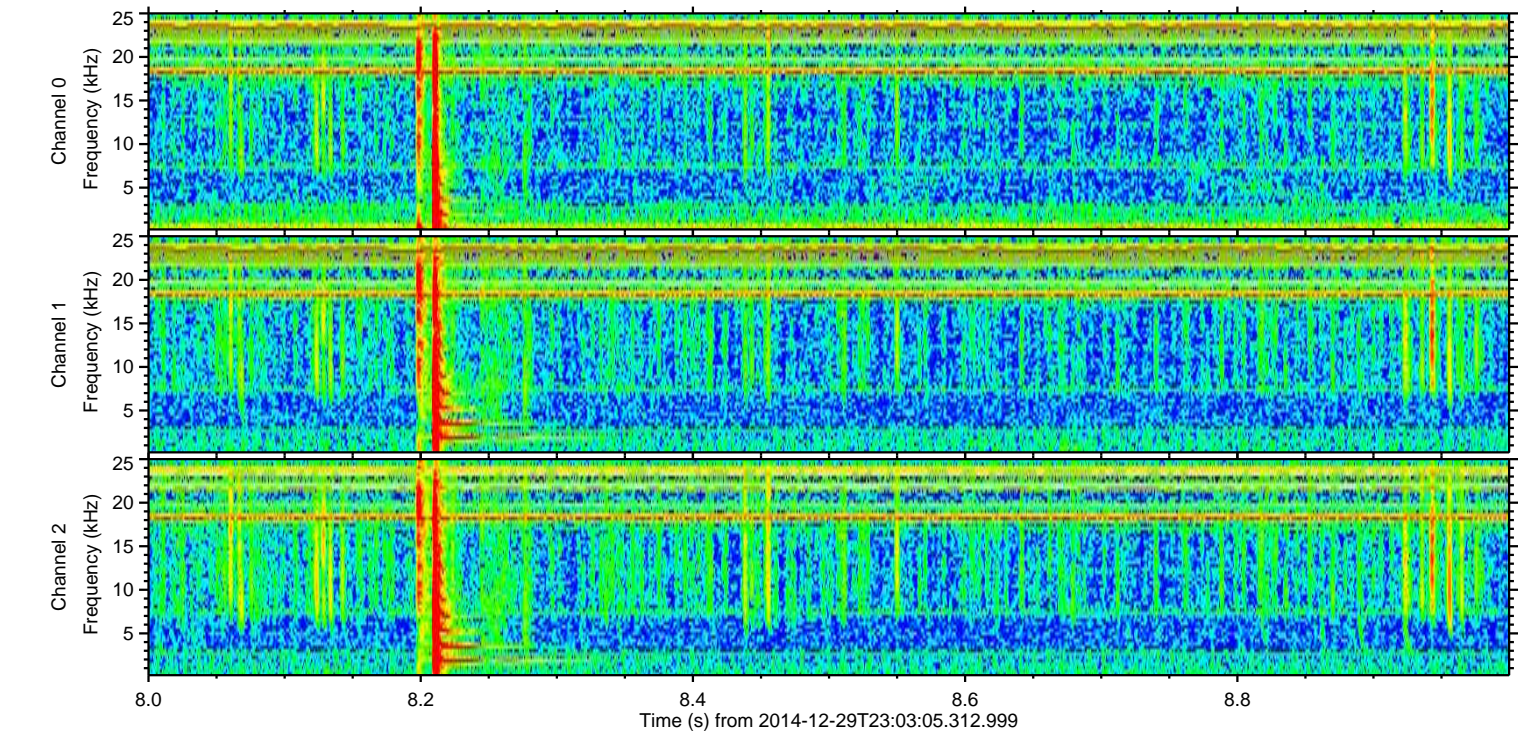
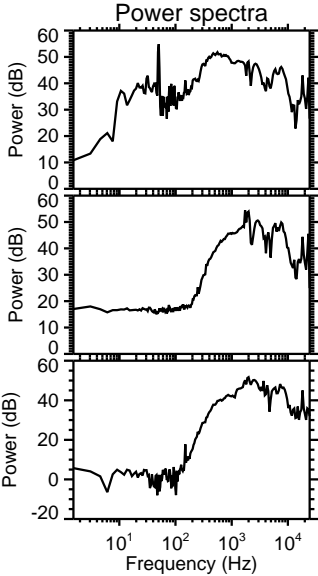
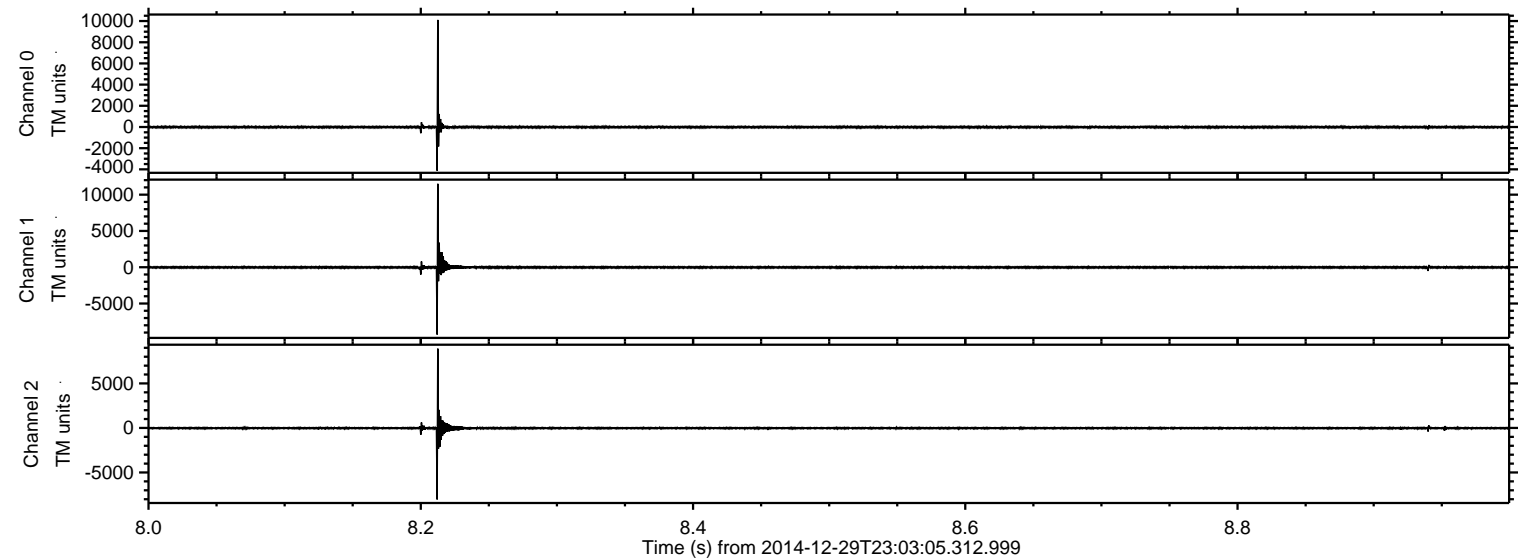


Processed Fri Jan 2 14:07:11 2015 by ELM ver.2012-10-06 from 001\_\_elm20141229\_230304\_\_dat00.bin



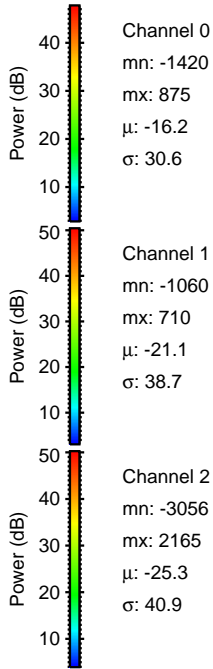
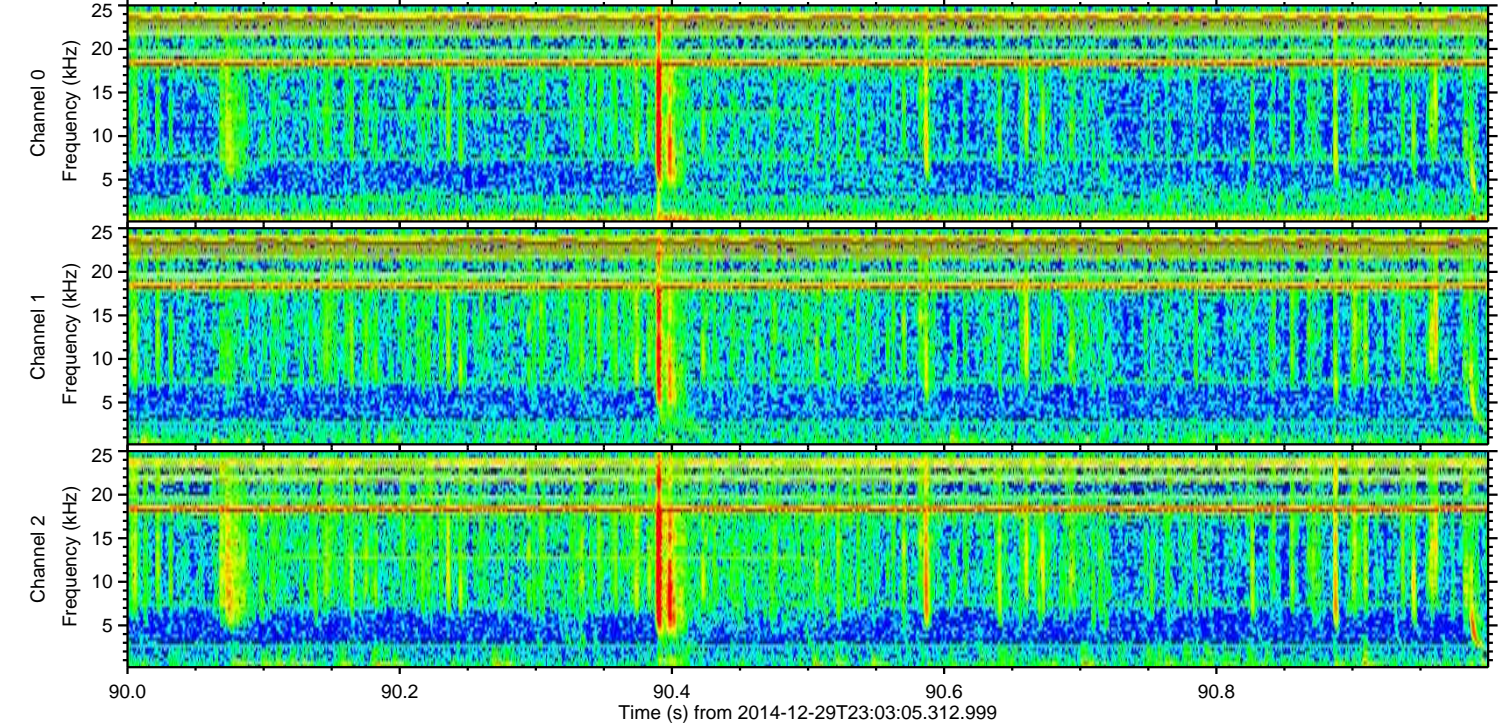
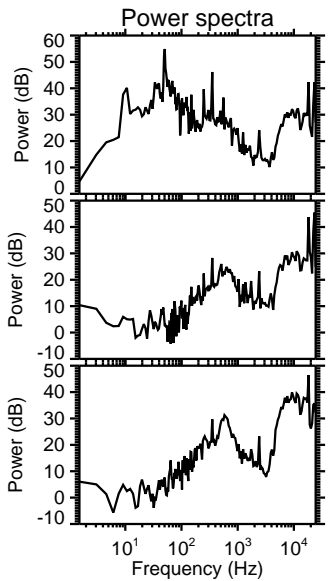
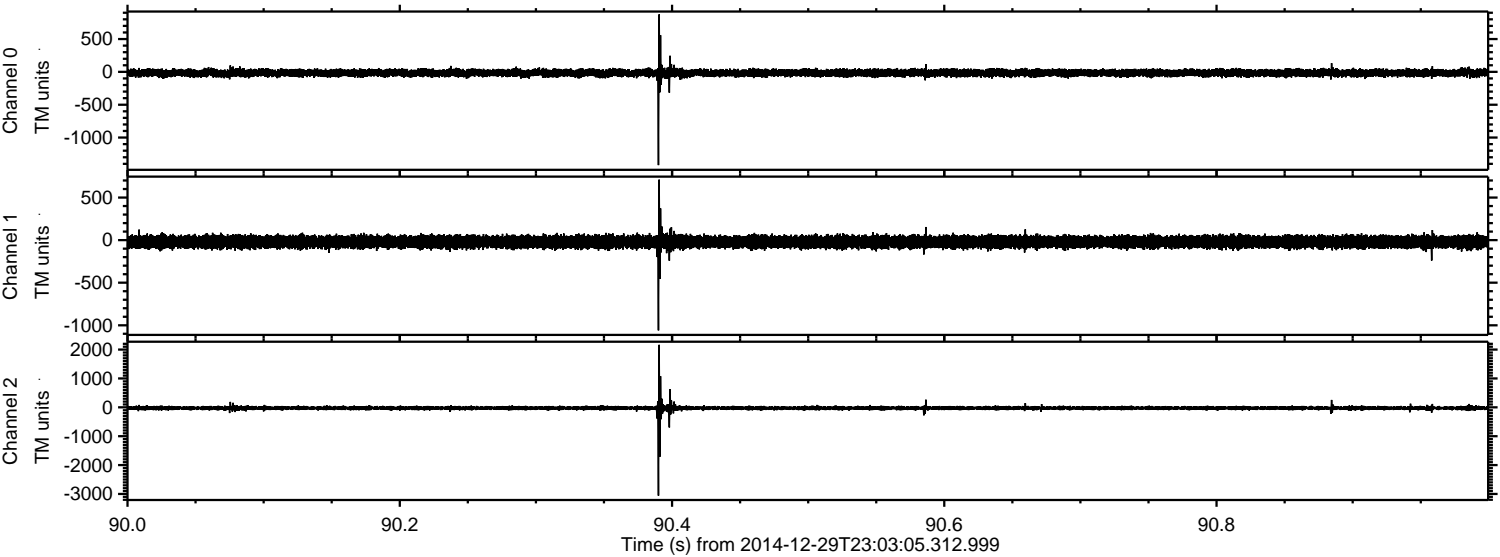


Processed Fri Jan 2 14:07:12 2015 by ELM ver.2012-10-06 from 001\_\_elm20141229\_230304\_\_dat00.bin





Processed Fri Jan 2 14:07:13 2015 by ELM ver.2012-10-06 from 001\_\_elm20141229\_230304\_\_dat00.bin



Channel 0  
mn: -1420  
mx: 875  
 $\mu$ : -16.2  
 $\sigma$ : 30.6

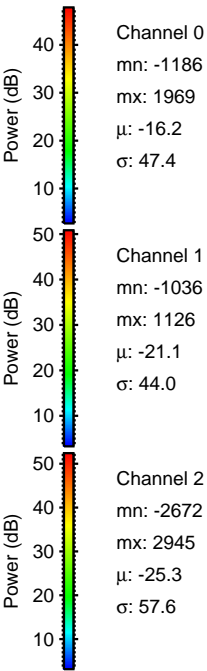
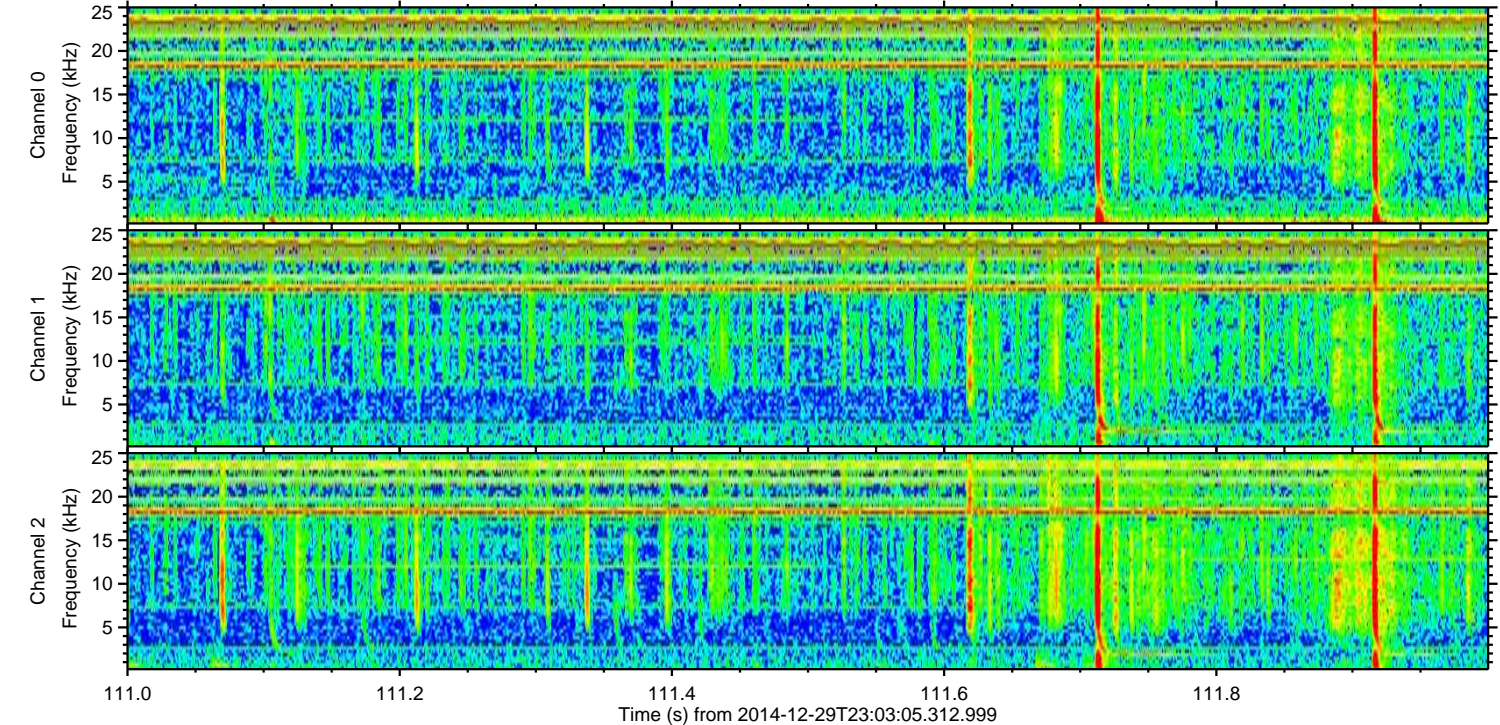
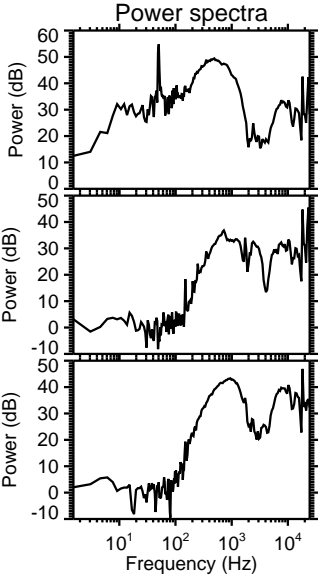
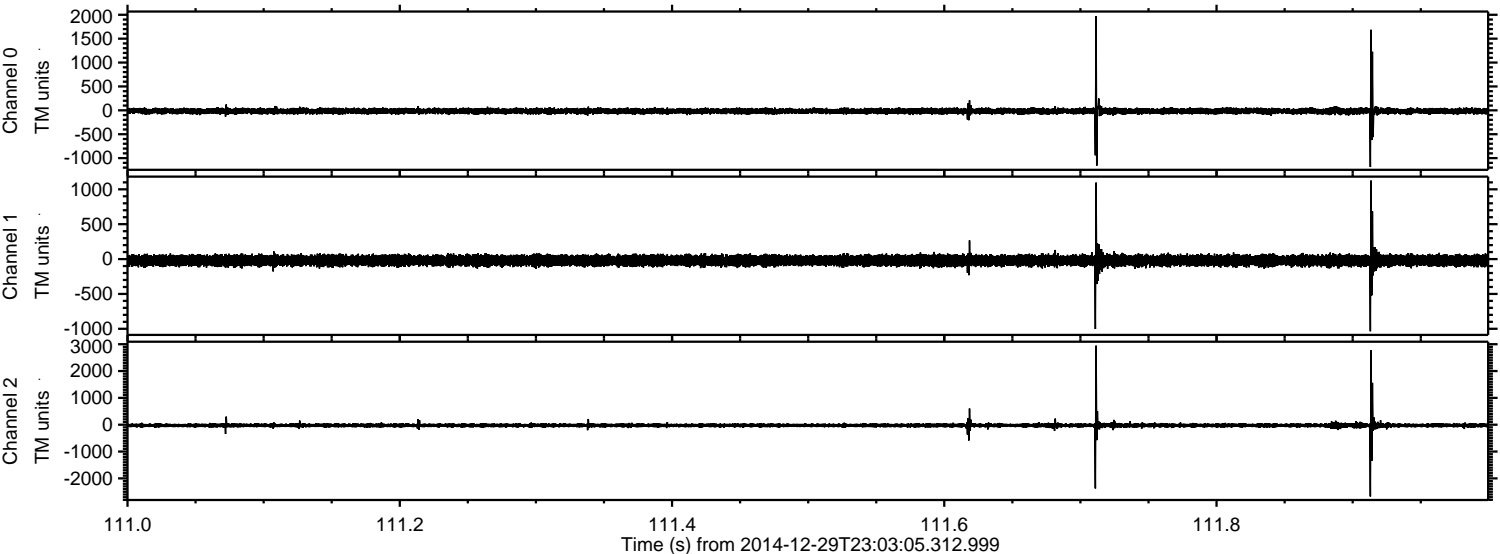
Channel 1  
mn: -1060  
mx: 710  
 $\mu$ : -21.1  
 $\sigma$ : 38.7

Channel 2  
mn: -3056  
mx: 2165  
 $\mu$ : -25.3  
 $\sigma$ : 40.9



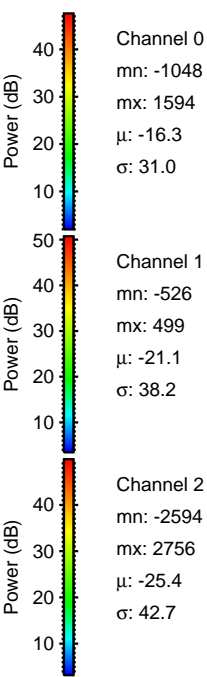
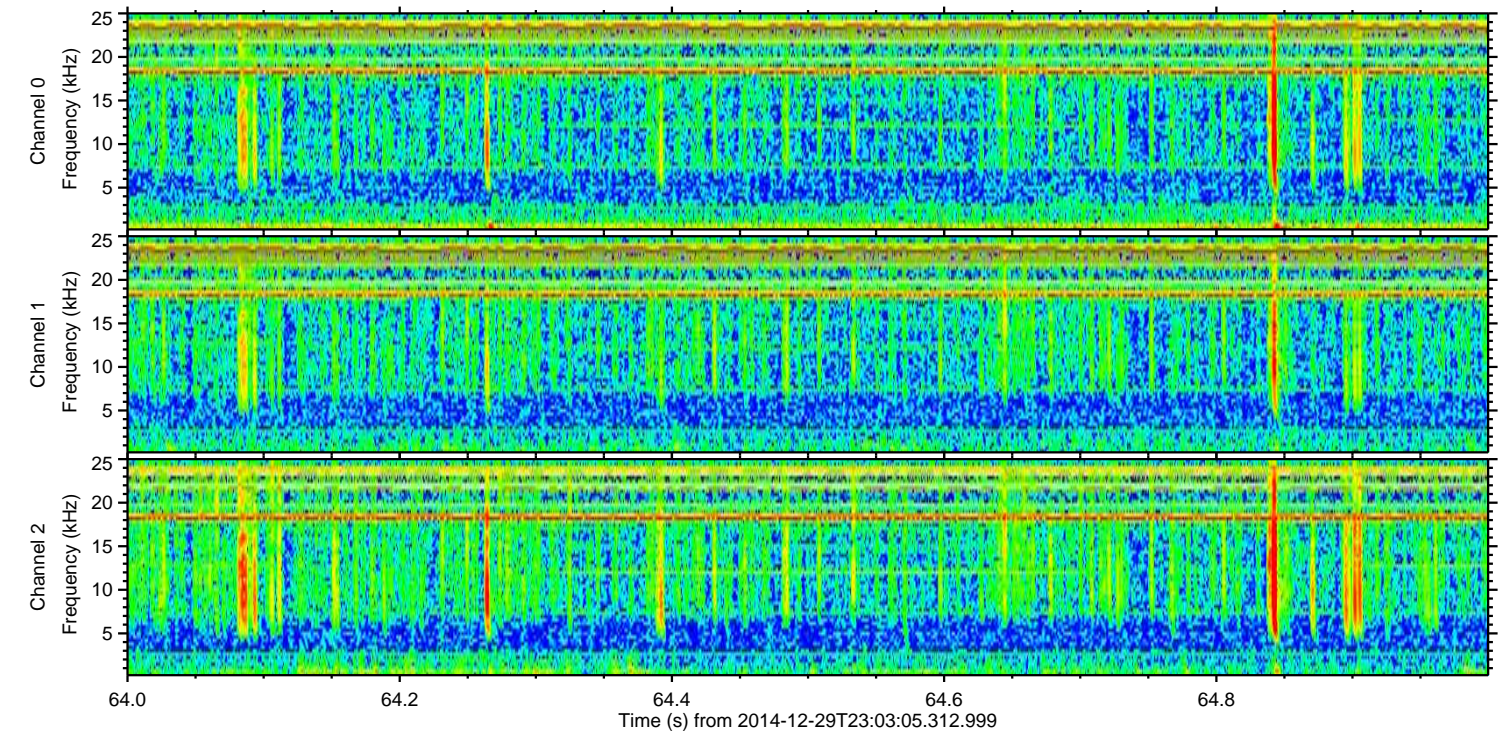
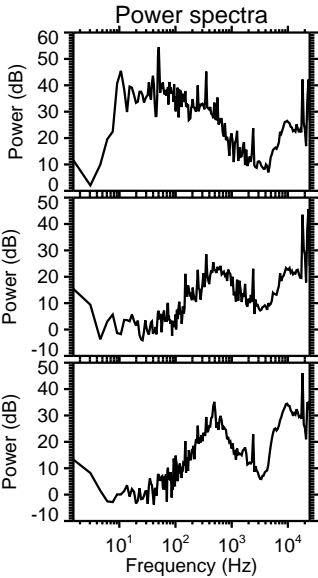
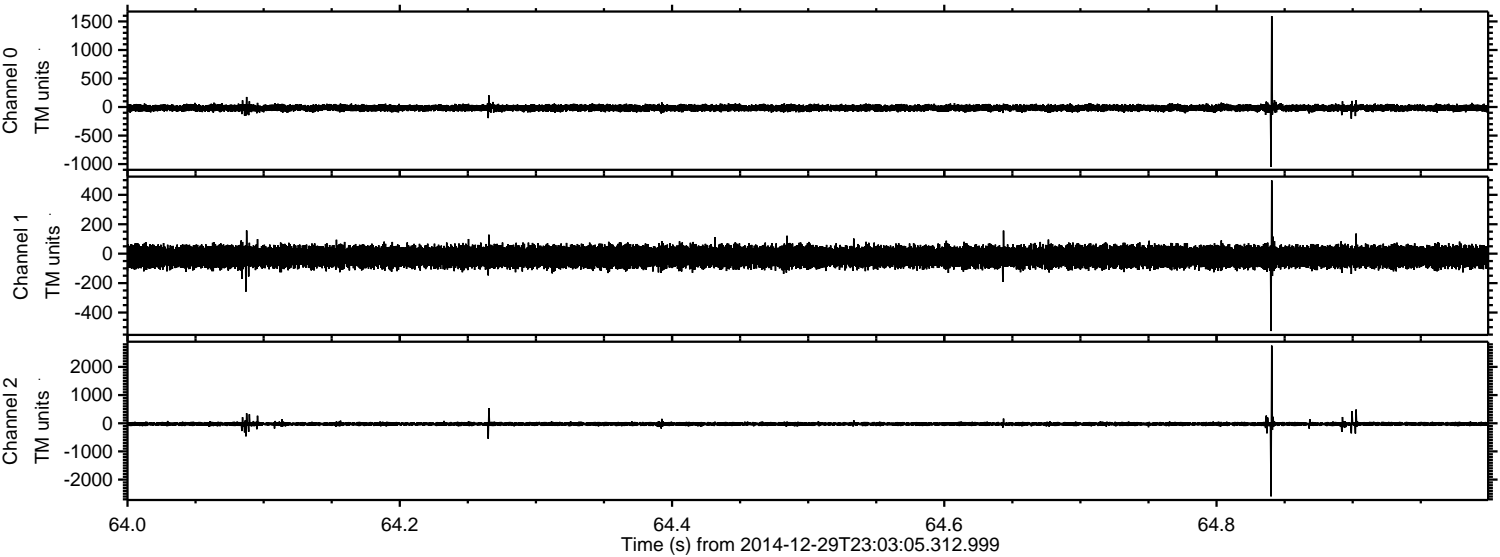
ELMAVAN 3D WAVEFORMS (Measured data sampled at 50 kHz) 49804 packets of 144 samples from 2014-12-29T23:03:05.312.999. Part 112/144

Processed Fri Jan 2 14:07:14 2015 by ELM ver.2012-10-06 from 001\_\_elm20141229\_230304\_\_dat00.bin





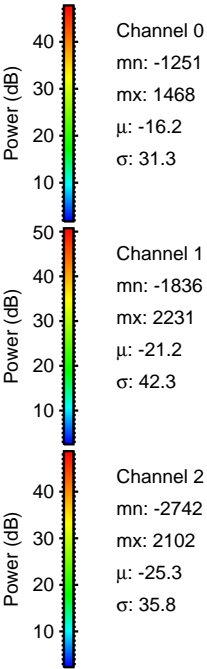
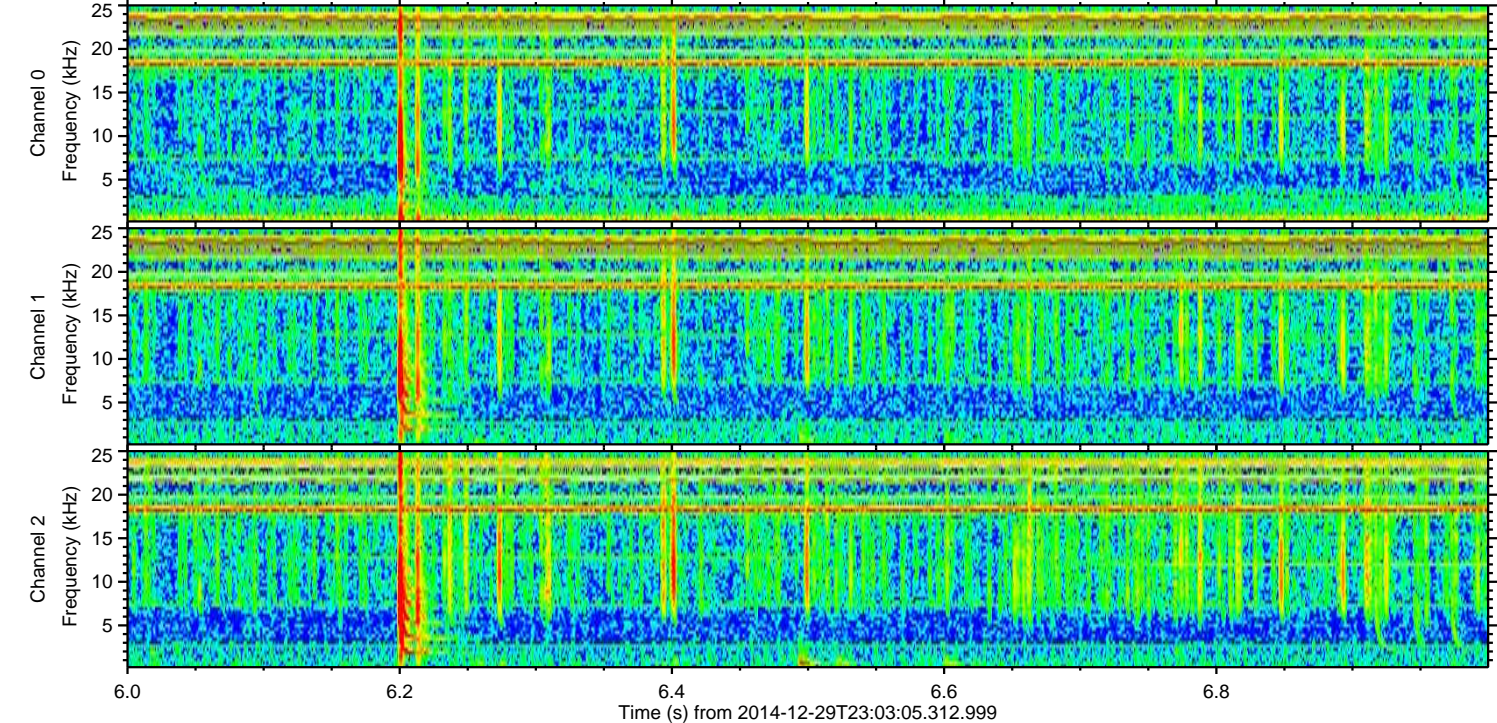
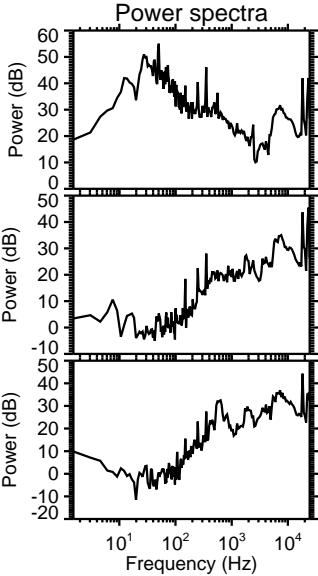
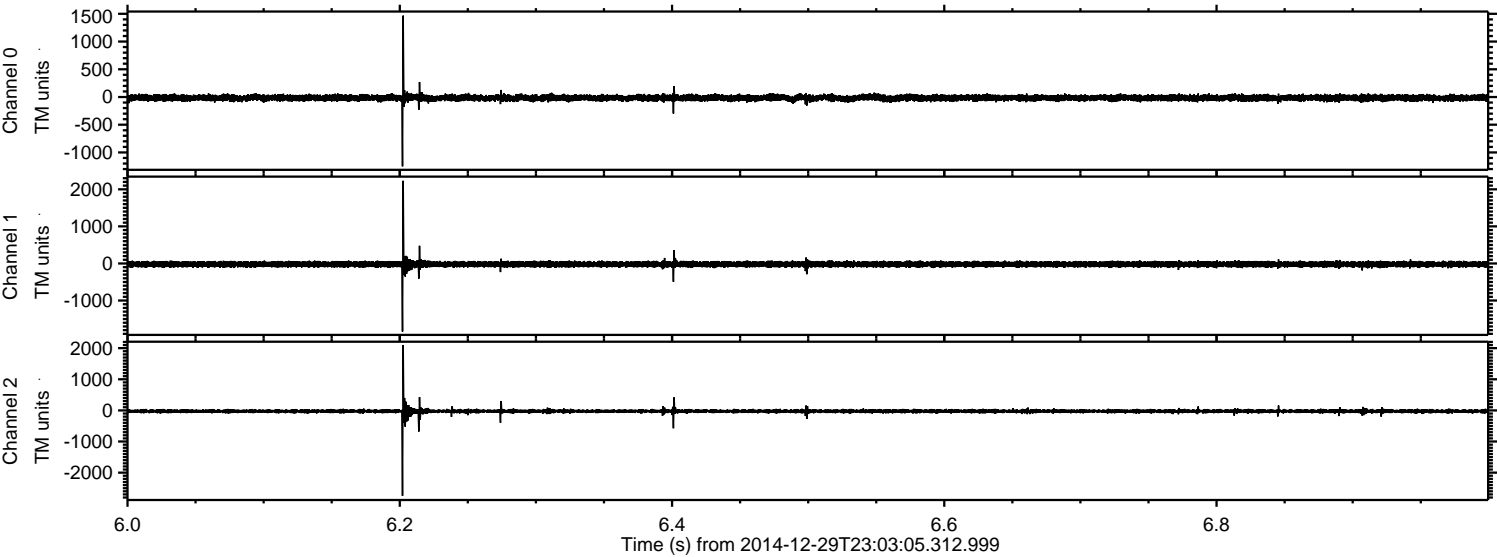
Processed Fri Jan 2 14:07:15 2015 by ELM ver.2012-10-06 from 001\_\_elm20141229\_230304\_\_dat00.bin





ELMAVAN 3D WAVEFORMS (Measured data sampled at 50 kHz) 49804 packets of 144 samples from 2014-12-29T23:03:05.312.999. Part 7/144

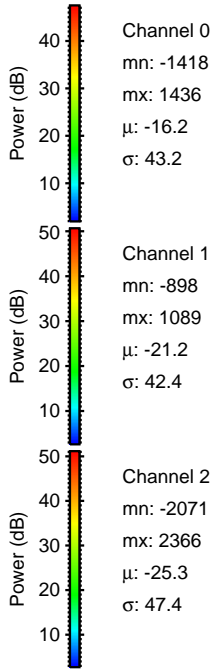
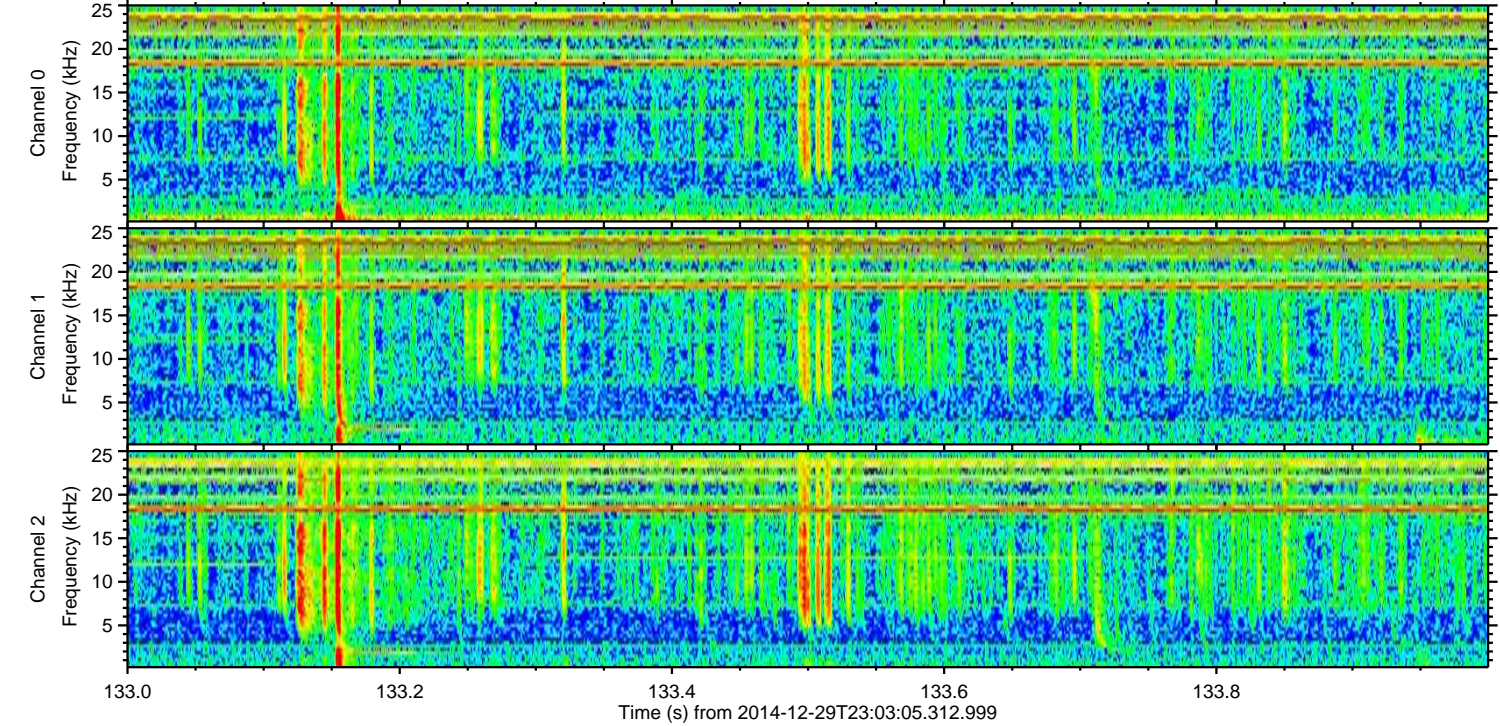
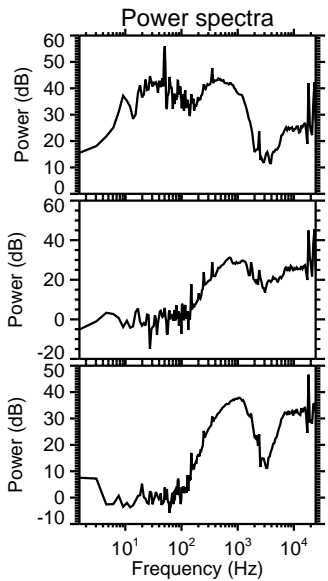
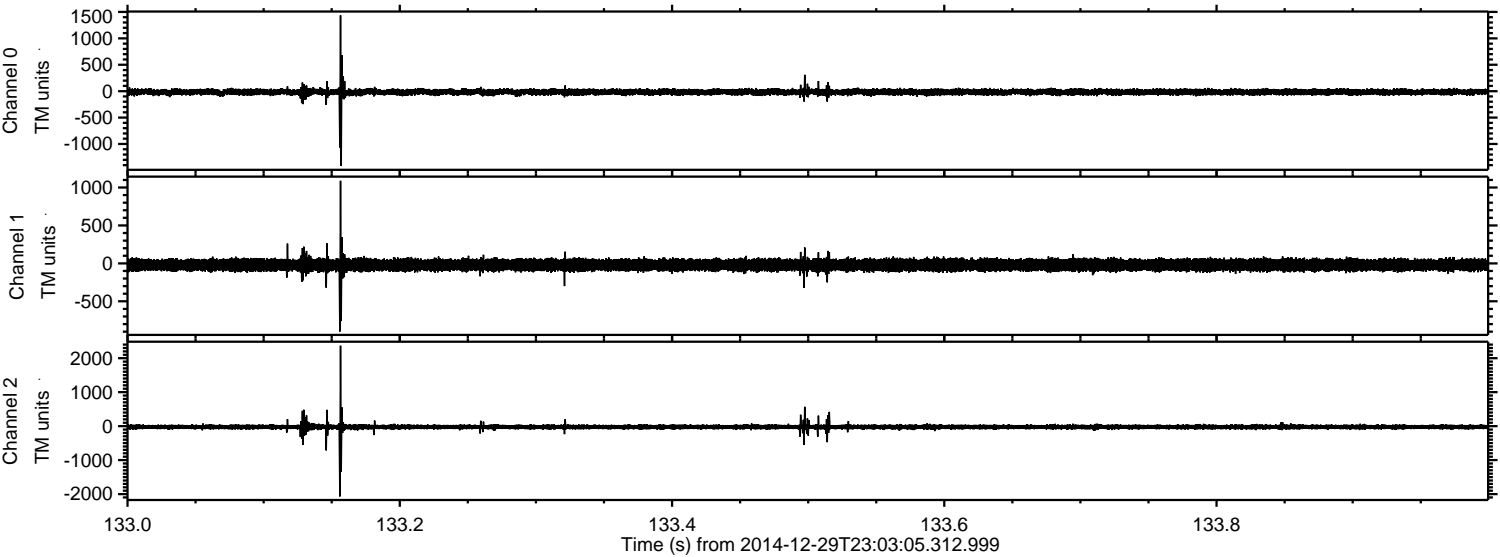
Processed Fri Jan 2 14:07:16 2015 by ELM ver.2012-10-06 from 001\_\_elm20141229\_230304\_\_dat00.bin





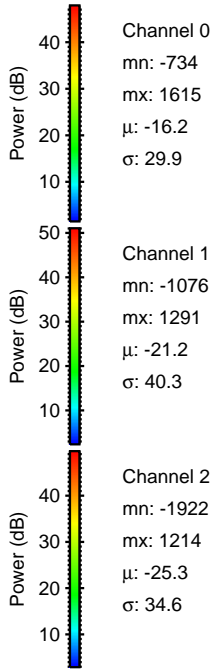
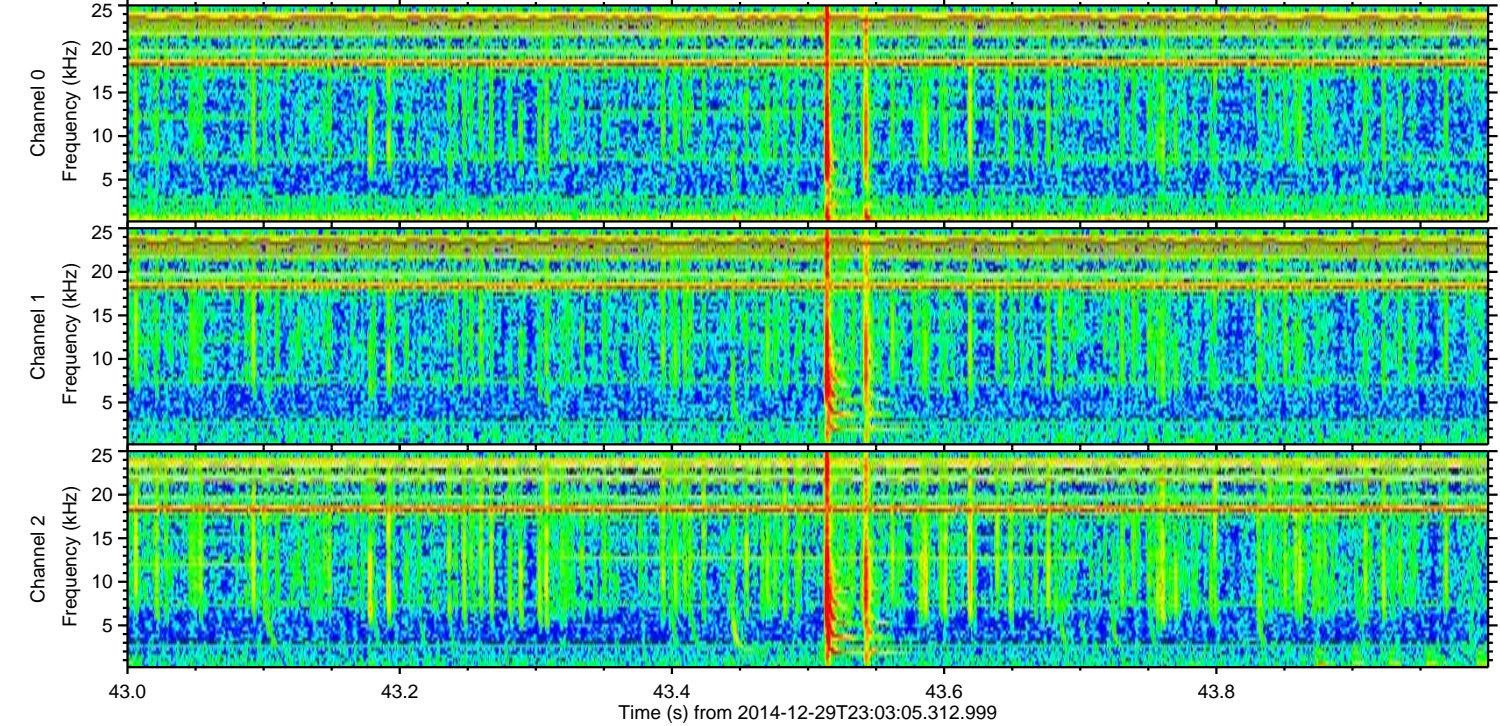
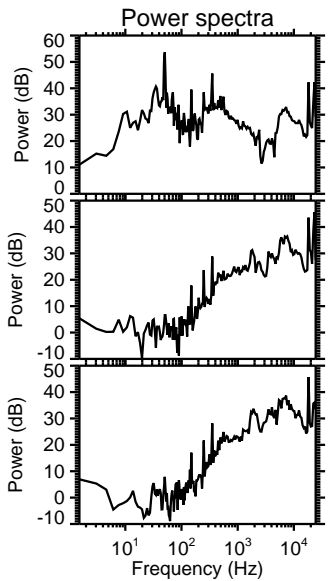
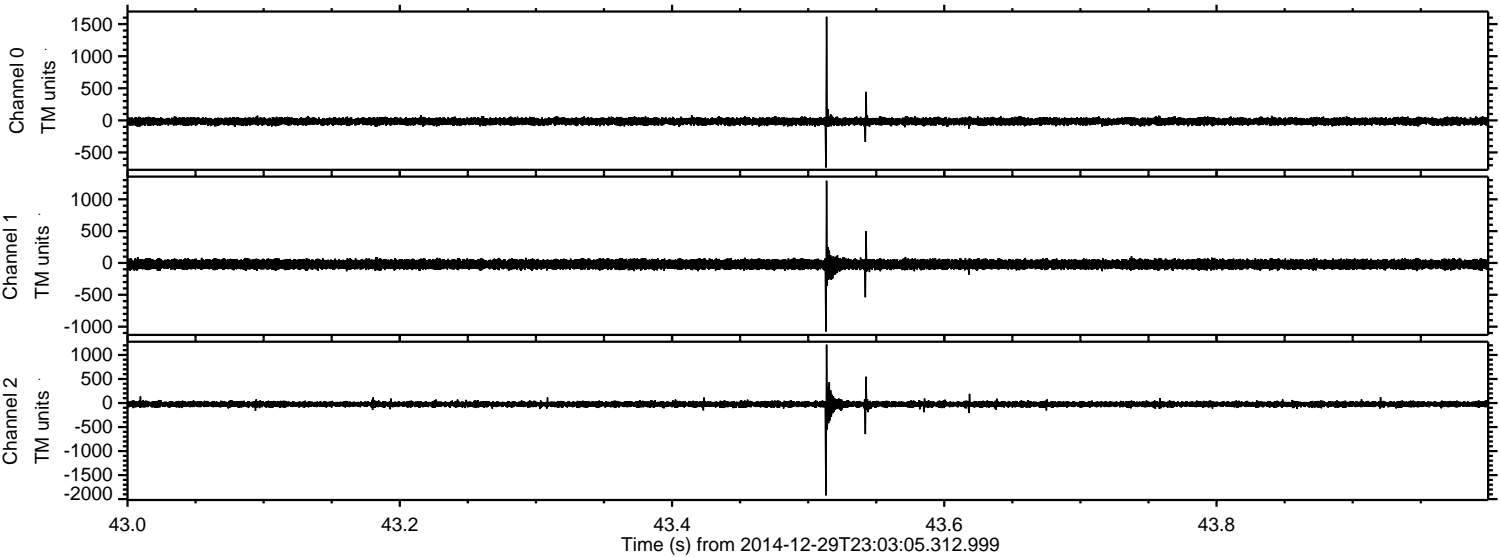
ELMAVAN 3D WAVEFORMS (Measured data sampled at 50 kHz) 49804 packets of 144 samples from 2014-12-29T23:03:05.312.999. Part 134/144

Processed Fri Jan 2 14:07:17 2015 by ELM ver.2012-10-06 from 001\_\_elm20141229\_230304\_\_dat00.bin





Processed Fri Jan 2 14:07:18 2015 by ELM ver.2012-10-06 from 001\_\_elm20141229\_230304\_\_dat00.bin



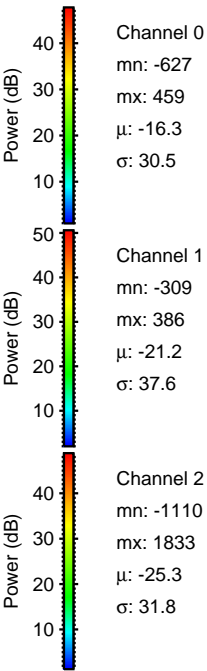
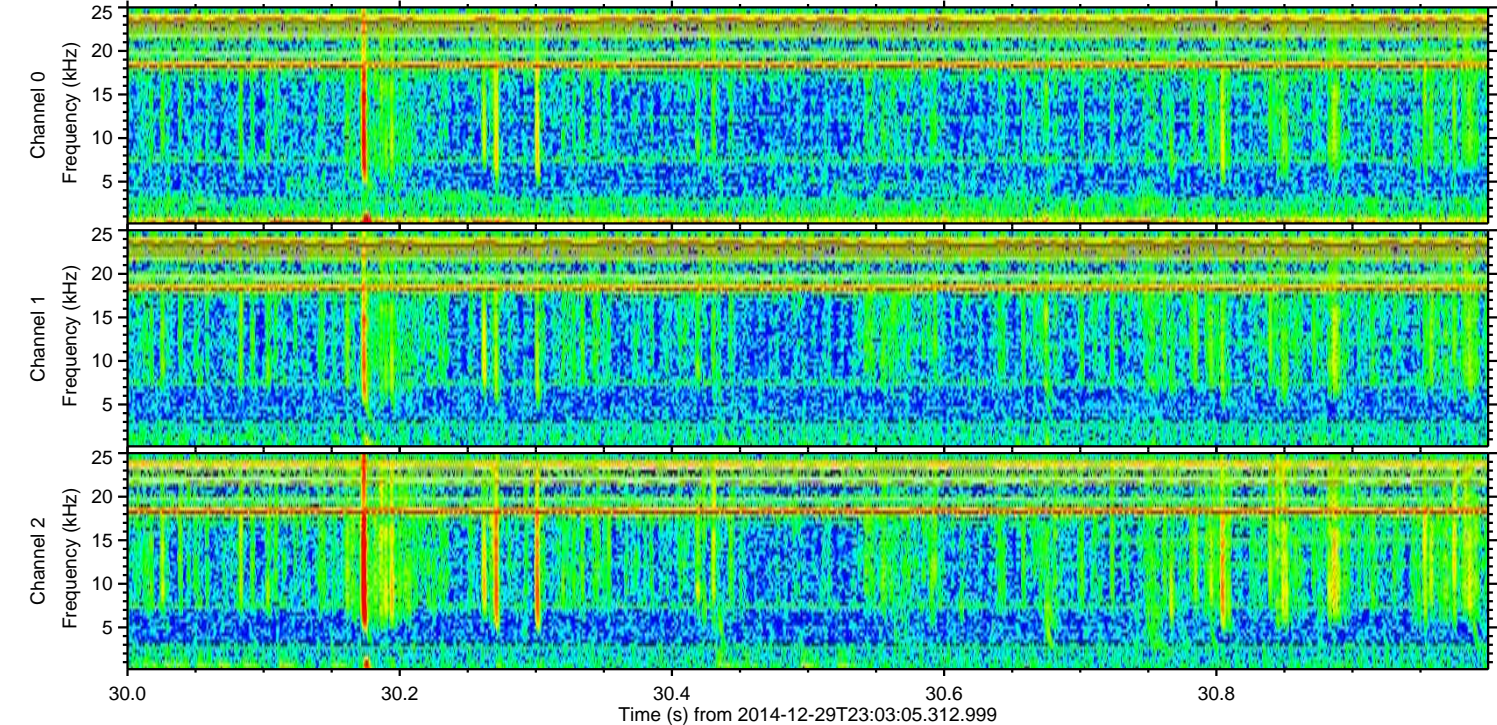
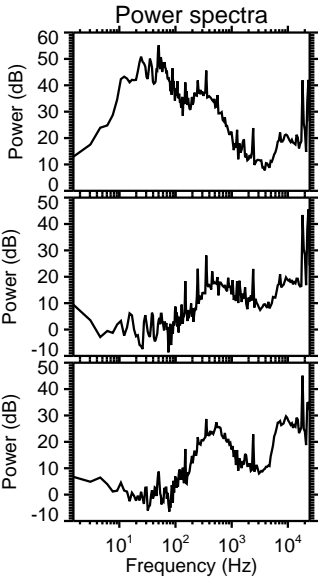
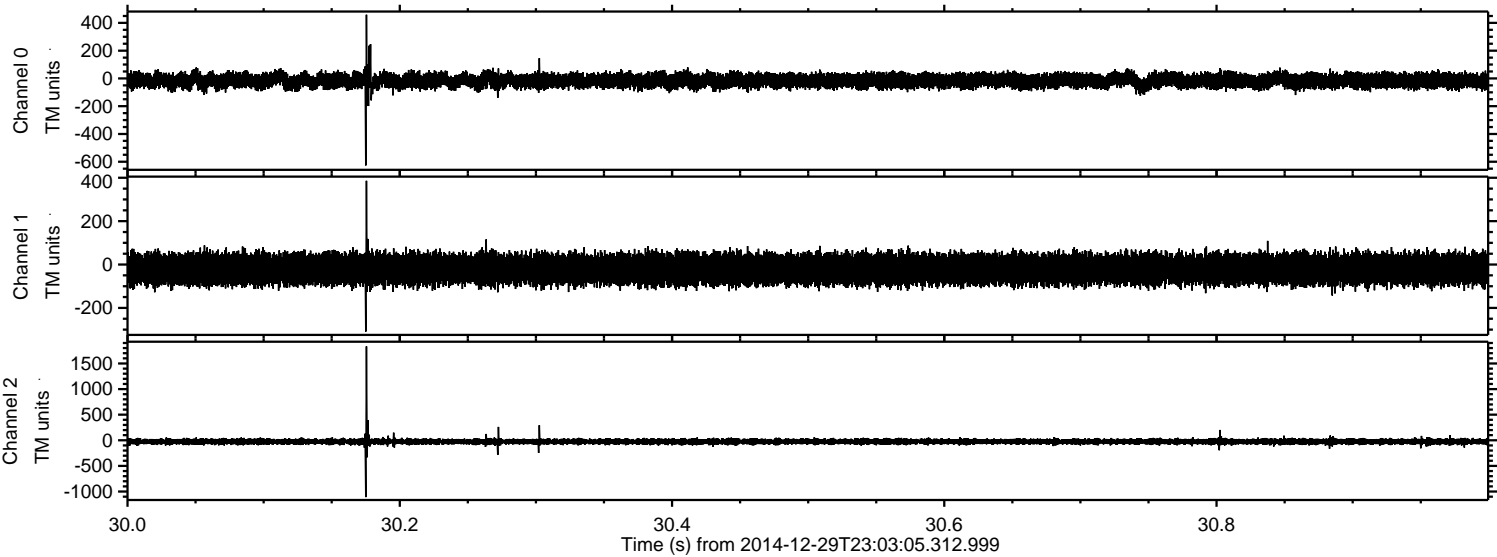
Channel 0  
mn: -734  
mx: 1615  
 $\mu$ : -16.2  
 $\sigma$ : 29.9

Channel 1  
mn: -1076  
mx: 1291  
 $\mu$ : -21.2  
 $\sigma$ : 40.3

Channel 2  
mn: -1922  
mx: 1214  
 $\mu$ : -25.3  
 $\sigma$ : 34.6



Processed Fri Jan 2 14:07:19 2015 by ELM ver.2012-10-06 from 001\_\_elm20141229\_230304\_\_dat00.bin





Processed Fri Jan 2 14:07:20 2015 by ELM ver.2012-10-06 from 001\_\_elm20141229\_230304\_\_dat00.bin

