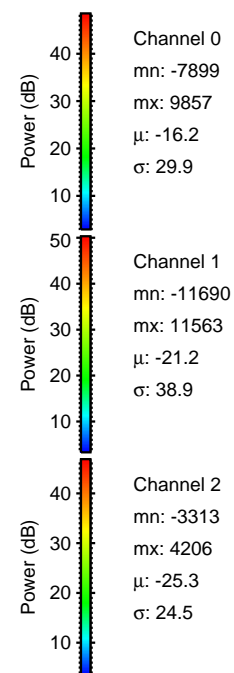
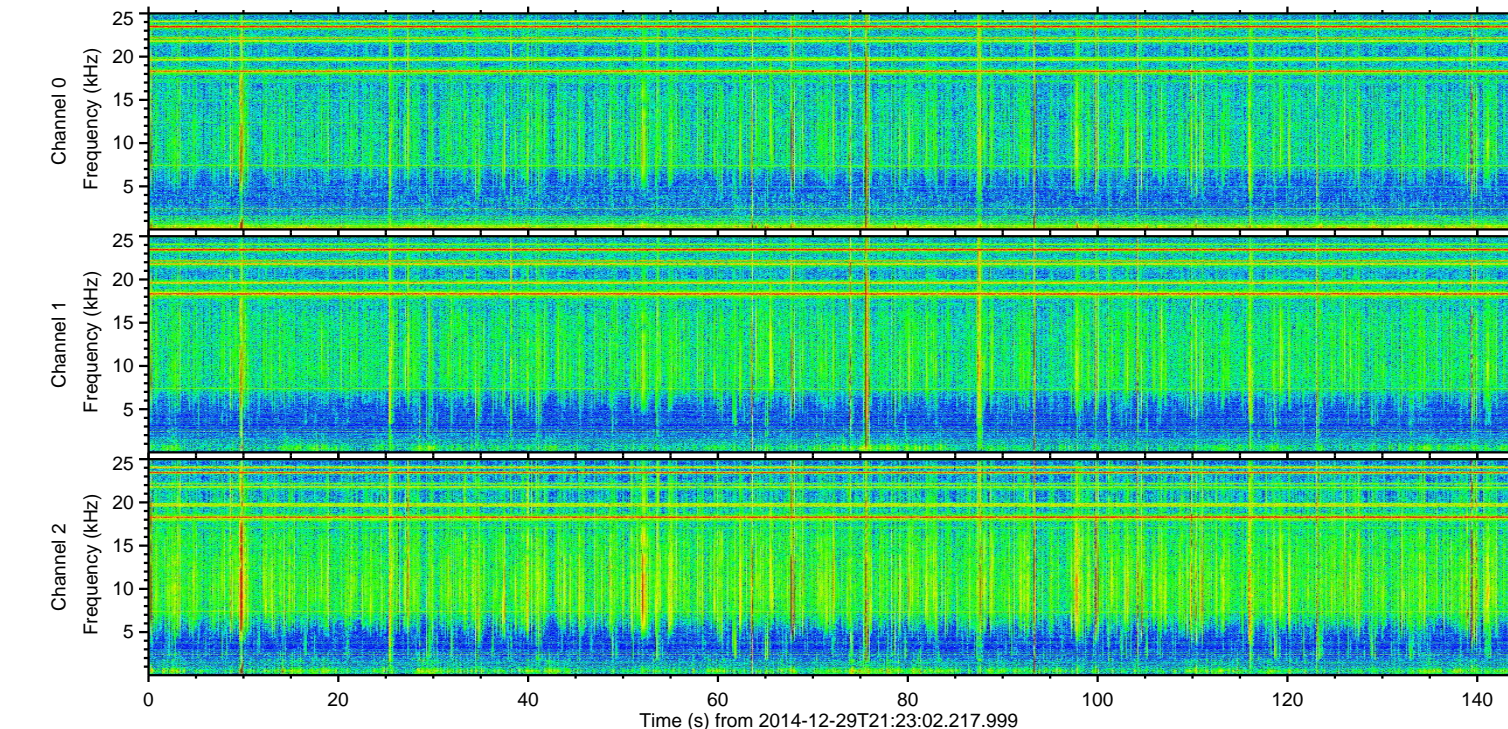
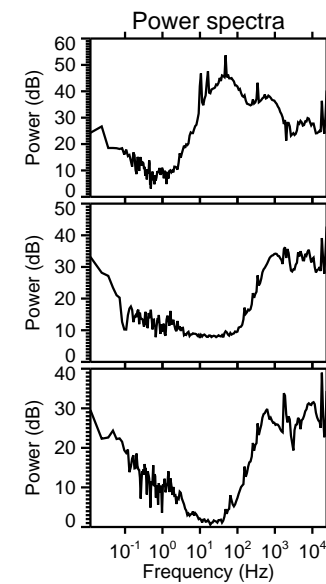
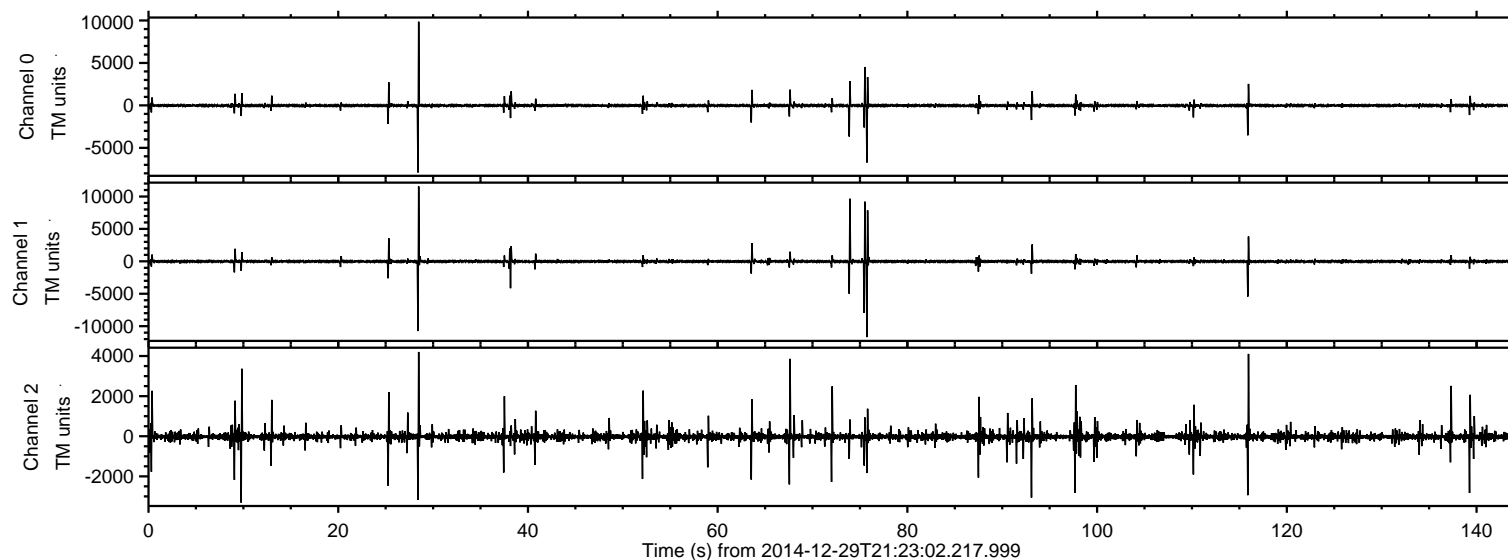


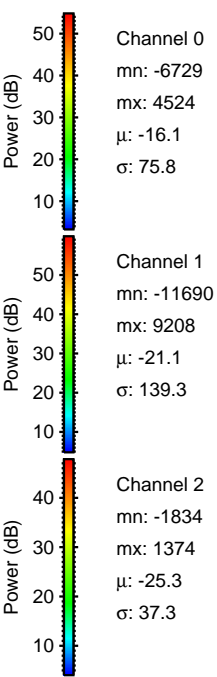
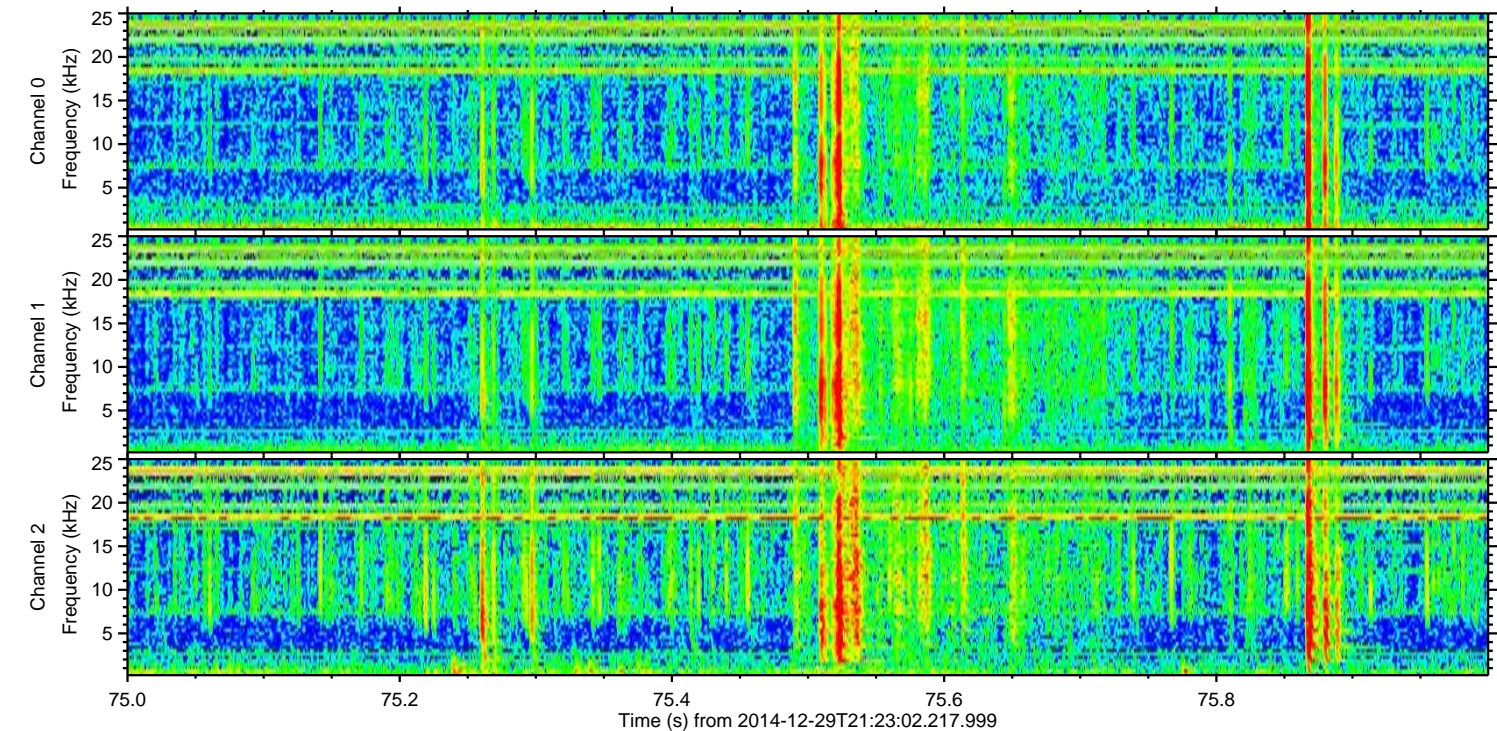
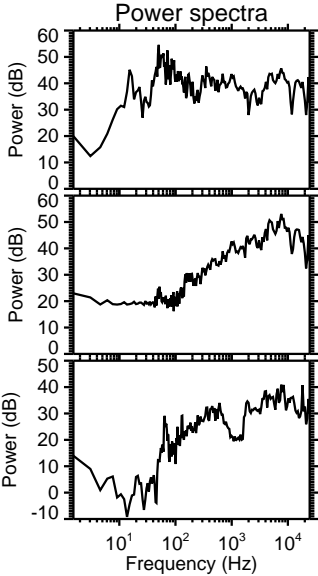
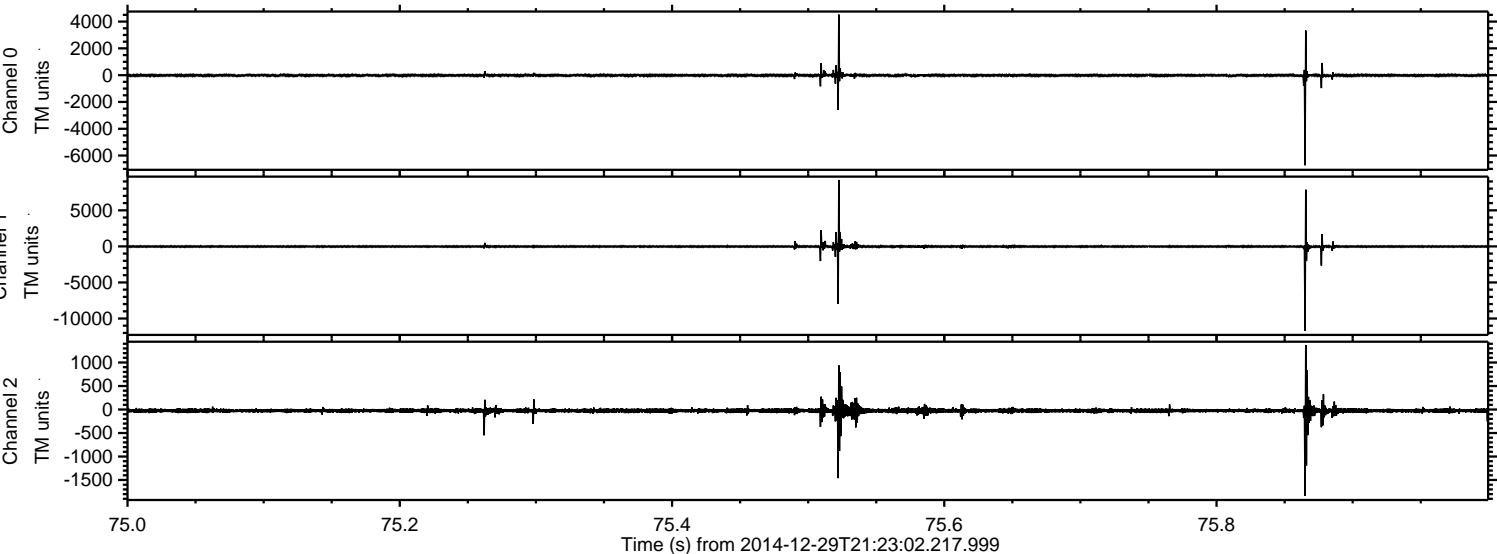
ELMAVAN 3D WAVEFORMS (Measured data sampled at 50 kHz) 49805 packets of 144 samples from 2014-12-29T21:23:02.217.999.

Processed Fri Jan 2 13:31:41 2015 by ELM ver.2012-10-06 from 001__elm20141229_212301__dat00.bin



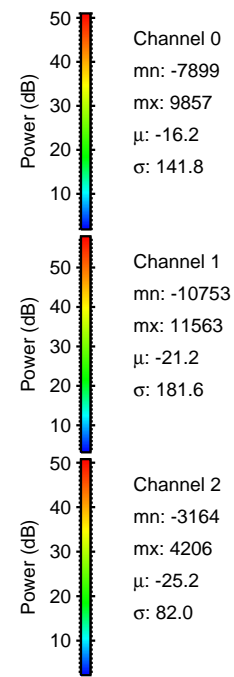
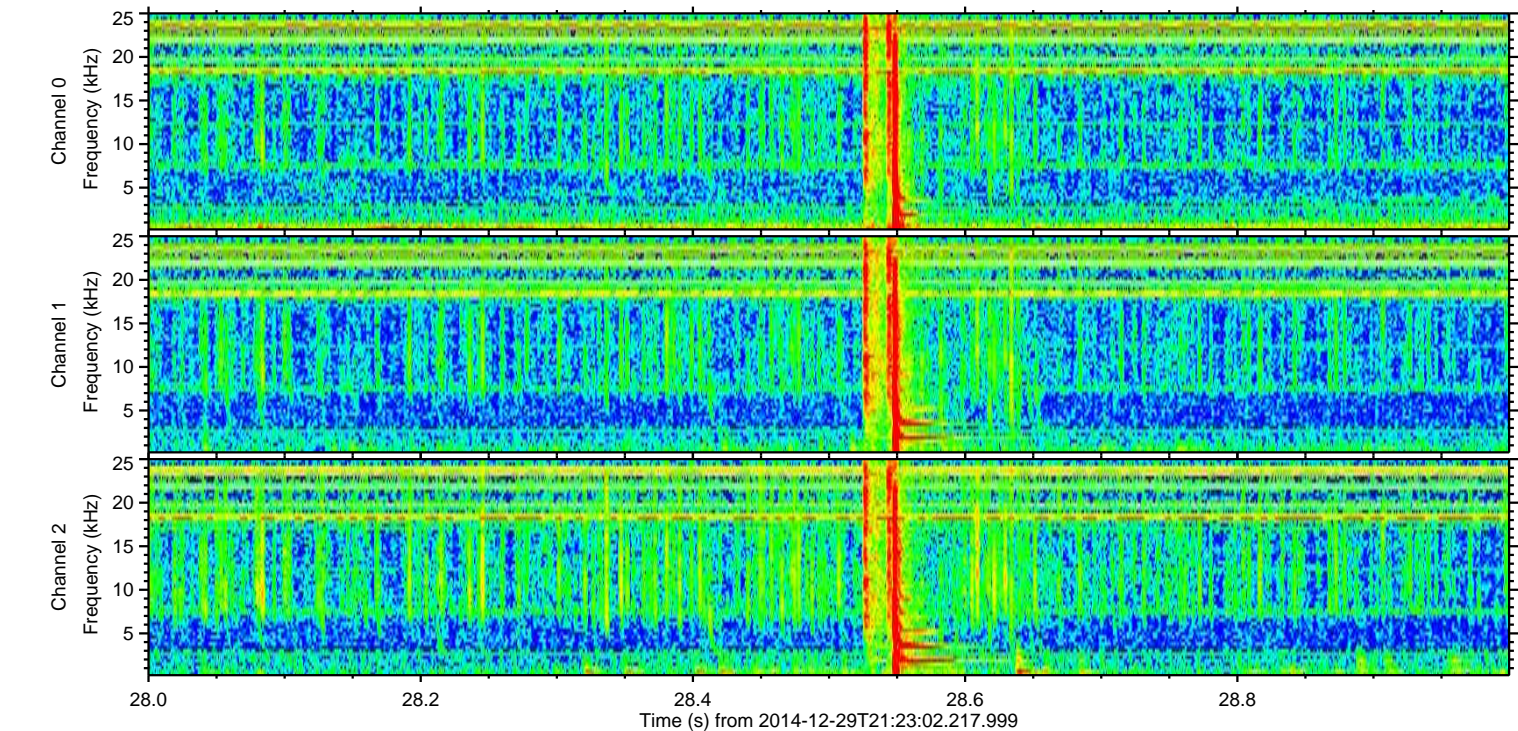
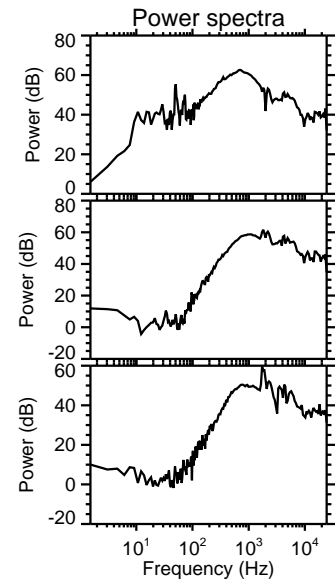
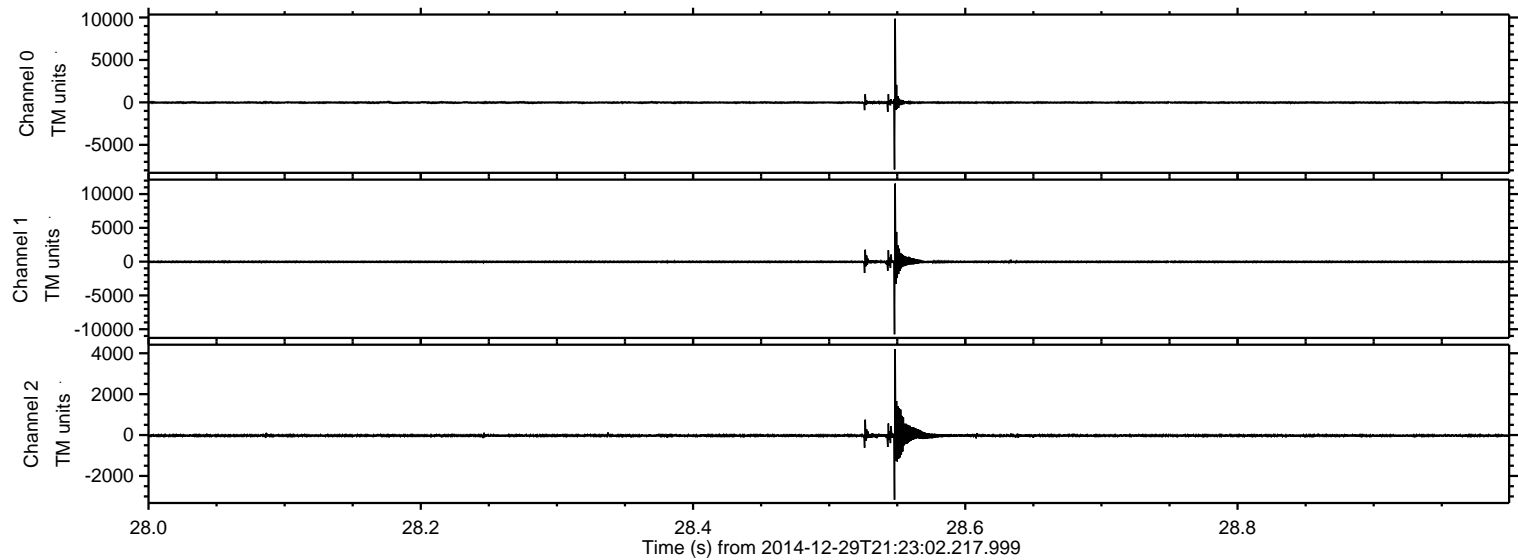
ELMAVAN 3D WAVEFORMS (Measured data sampled at 50 kHz) 49805 packets of 144 samples from 2014-12-29T21:23:02.217.999. Part 76/144

Processed Fri Jan 2 13:31:54 2015 by ELM ver.2012-10-06 from 001__elm20141229_212301__dat00.bin



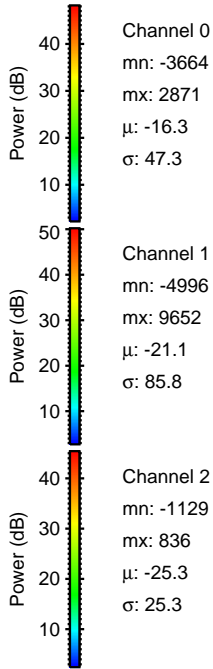
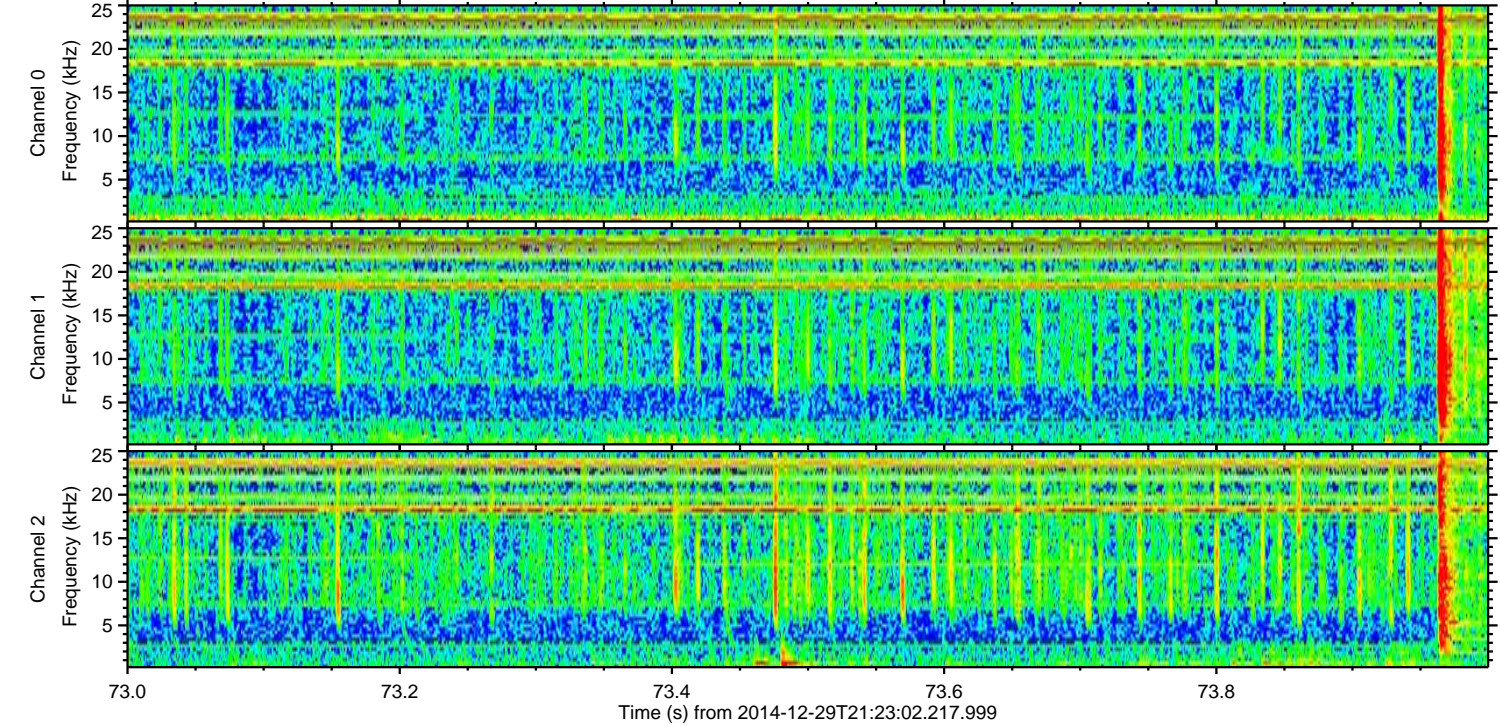
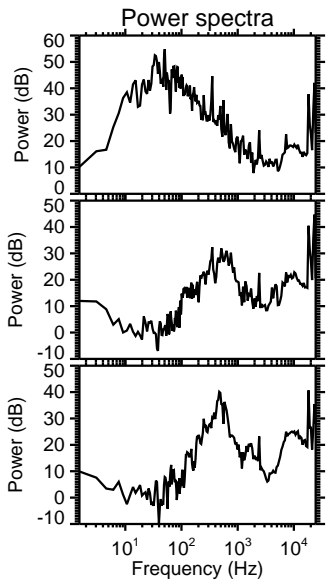
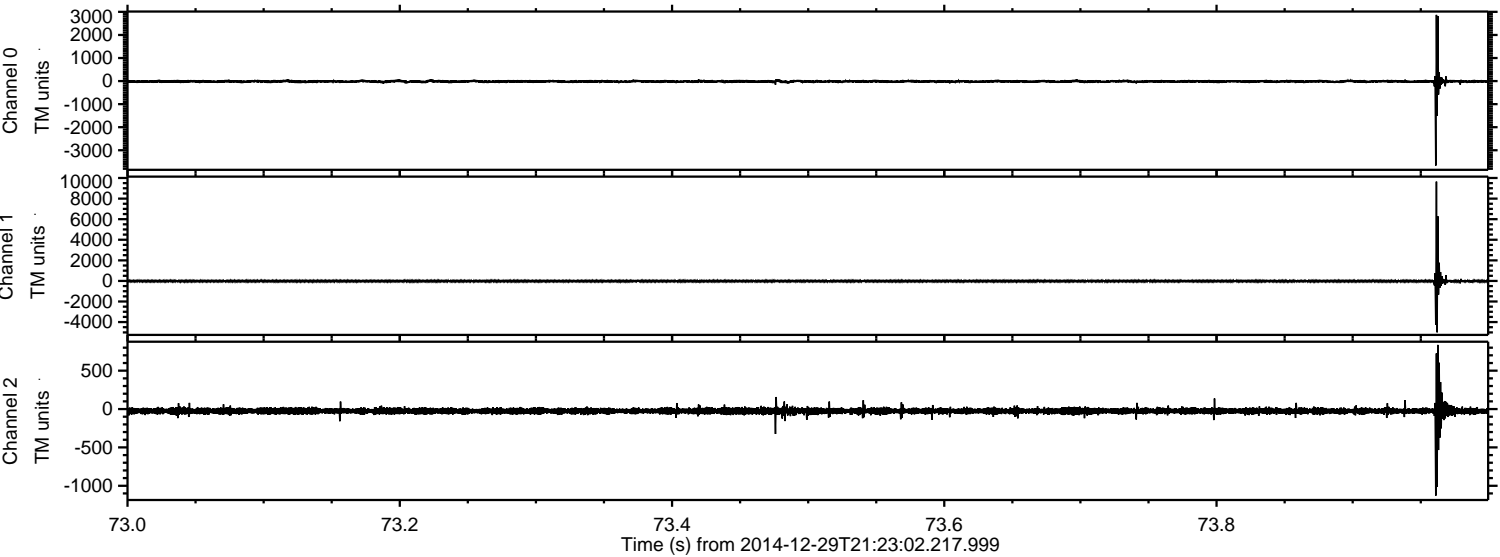
ELMAVAN 3D WAVEFORMS (Measured data sampled at 50 kHz) 49805 packets of 144 samples from 2014-12-29T21:23:02.217.999. Part 29/144

Processed Fri Jan 2 13:31:55 2015 by ELM ver.2012-10-06 from 001__elm20141229_212301__dat00.bin



ELMAVAN 3D WAVEFORMS (Measured data sampled at 50 kHz) 49805 packets of 144 samples from 2014-12-29T21:23:02.217.999. Part 74/144

Processed Fri Jan 2 13:31:56 2015 by ELM ver.2012-10-06 from 001__elm20141229_212301__dat00.bin



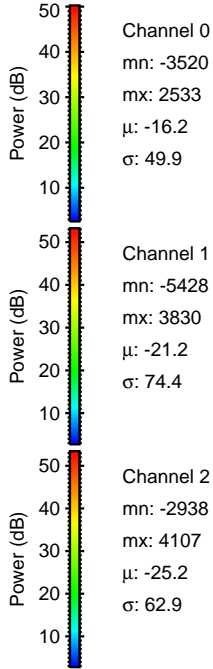
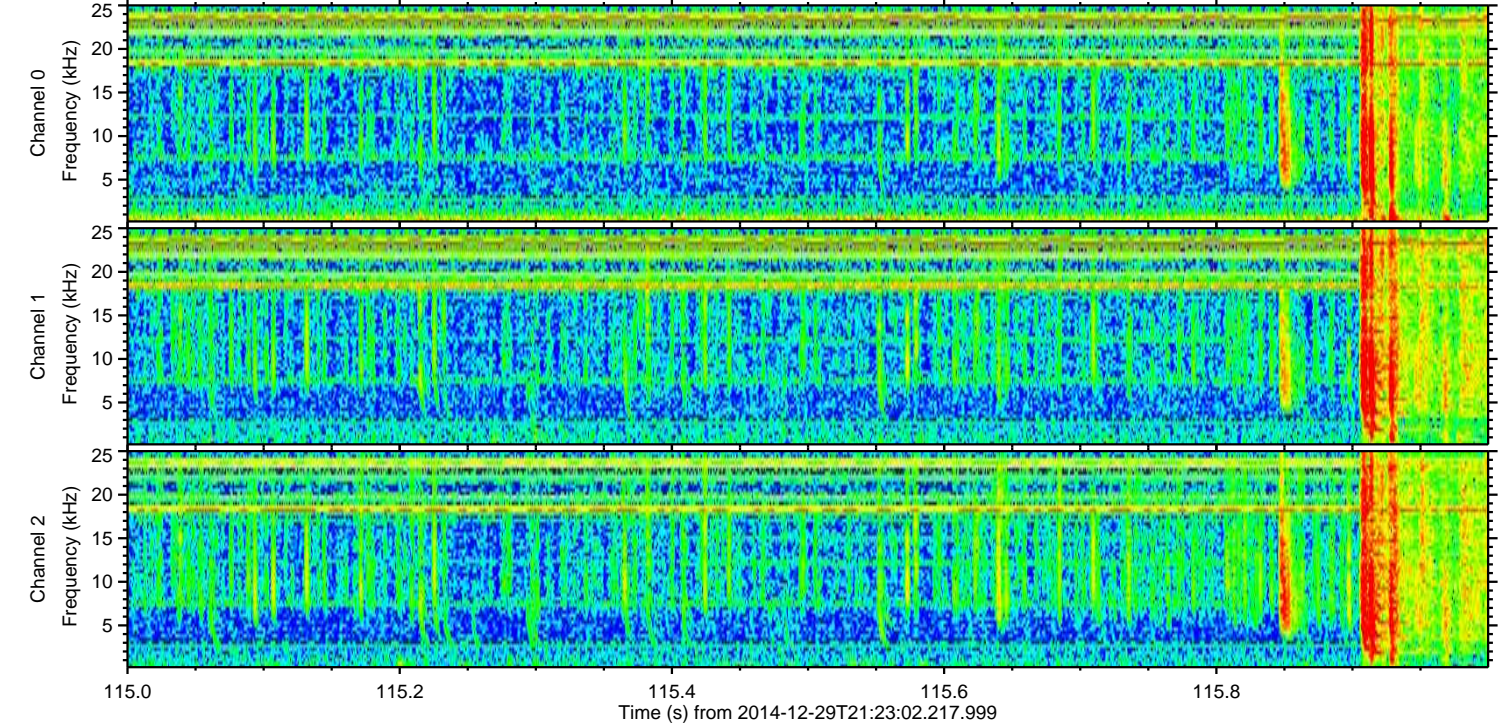
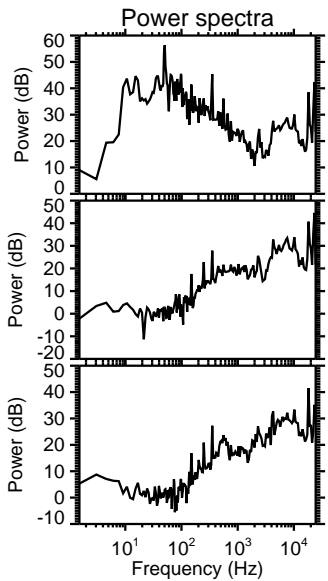
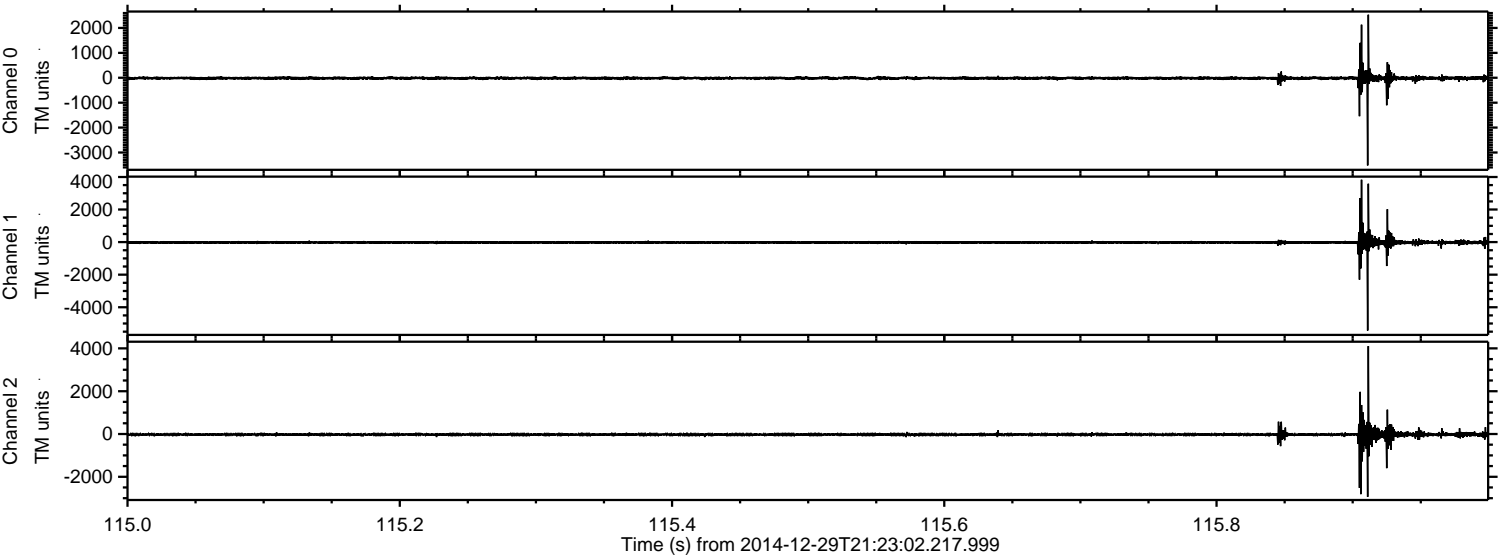
Channel 0
mn: -3664
mx: 2871
 μ : -16.3
 σ : 47.3

Channel 1
mn: -4996
mx: 9652
 μ : -21.1
 σ : 85.8

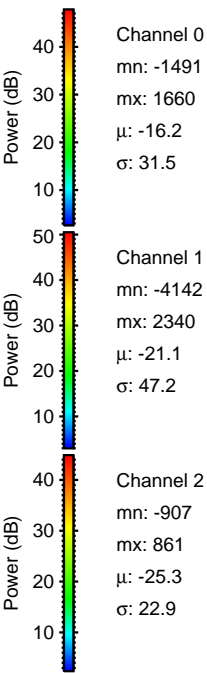
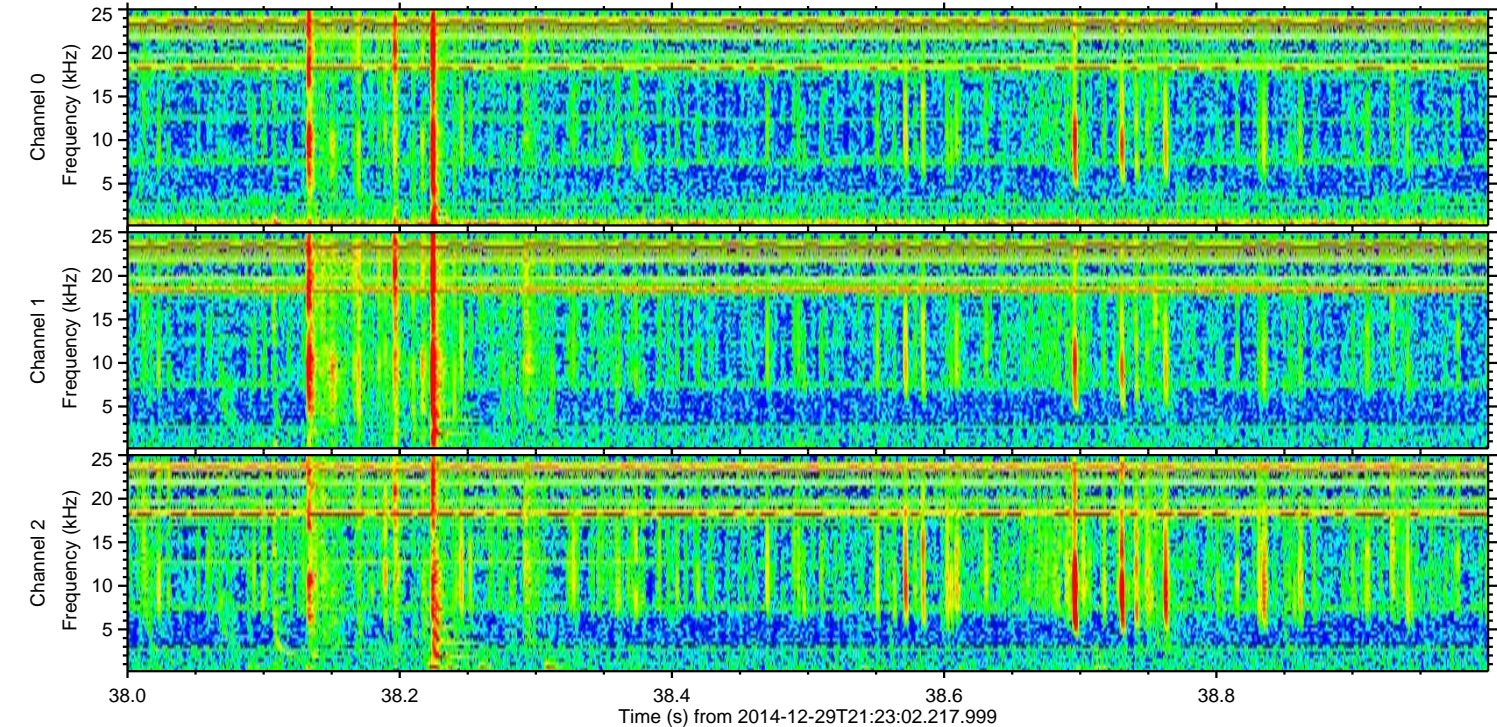
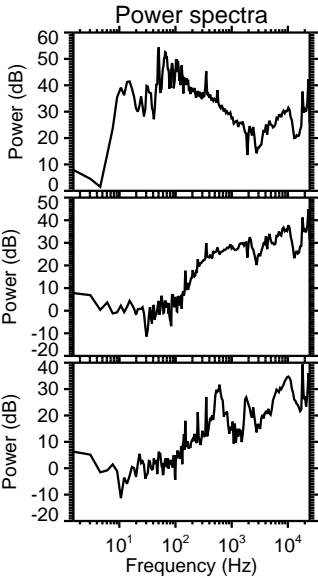
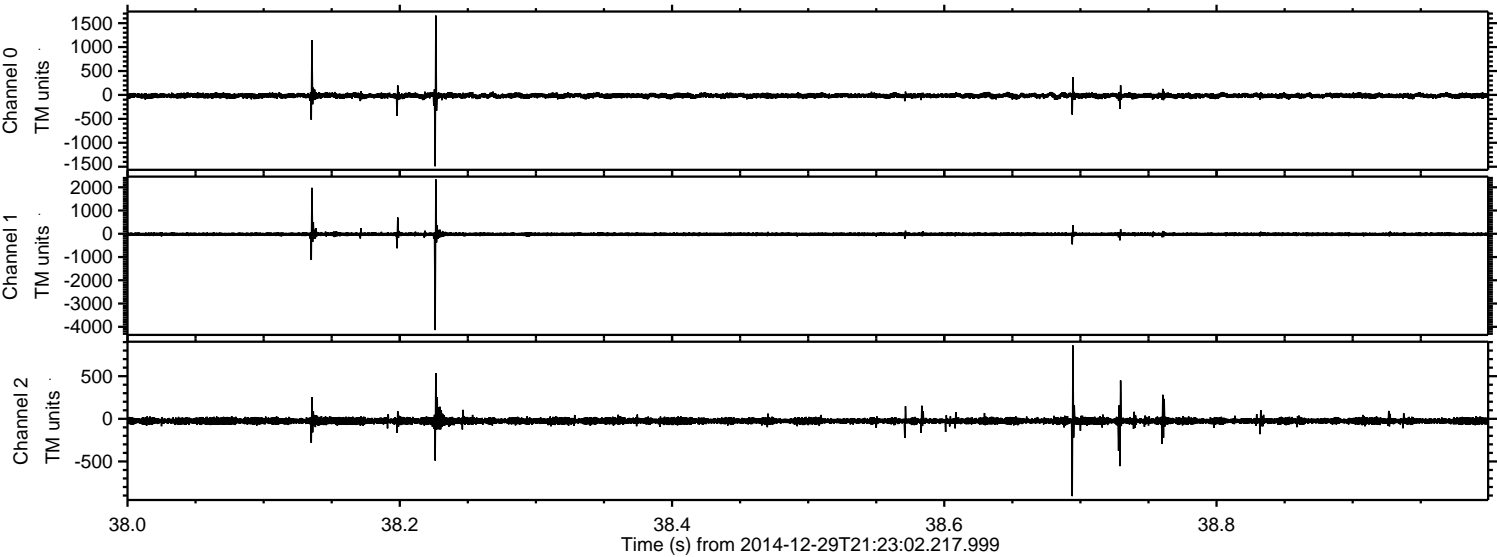
Channel 2
mn: -1129
mx: 836
 μ : -25.3
 σ : 25.3

ELMAVAN 3D WAVEFORMS (Measured data sampled at 50 kHz) 49805 packets of 144 samples from 2014-12-29T21:23:02.217.999. Part 116/144

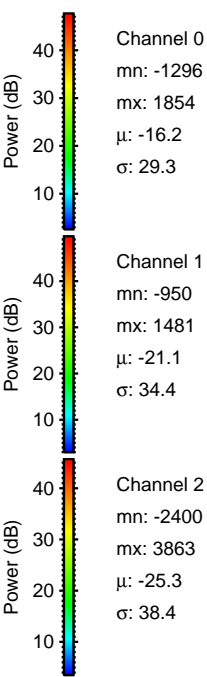
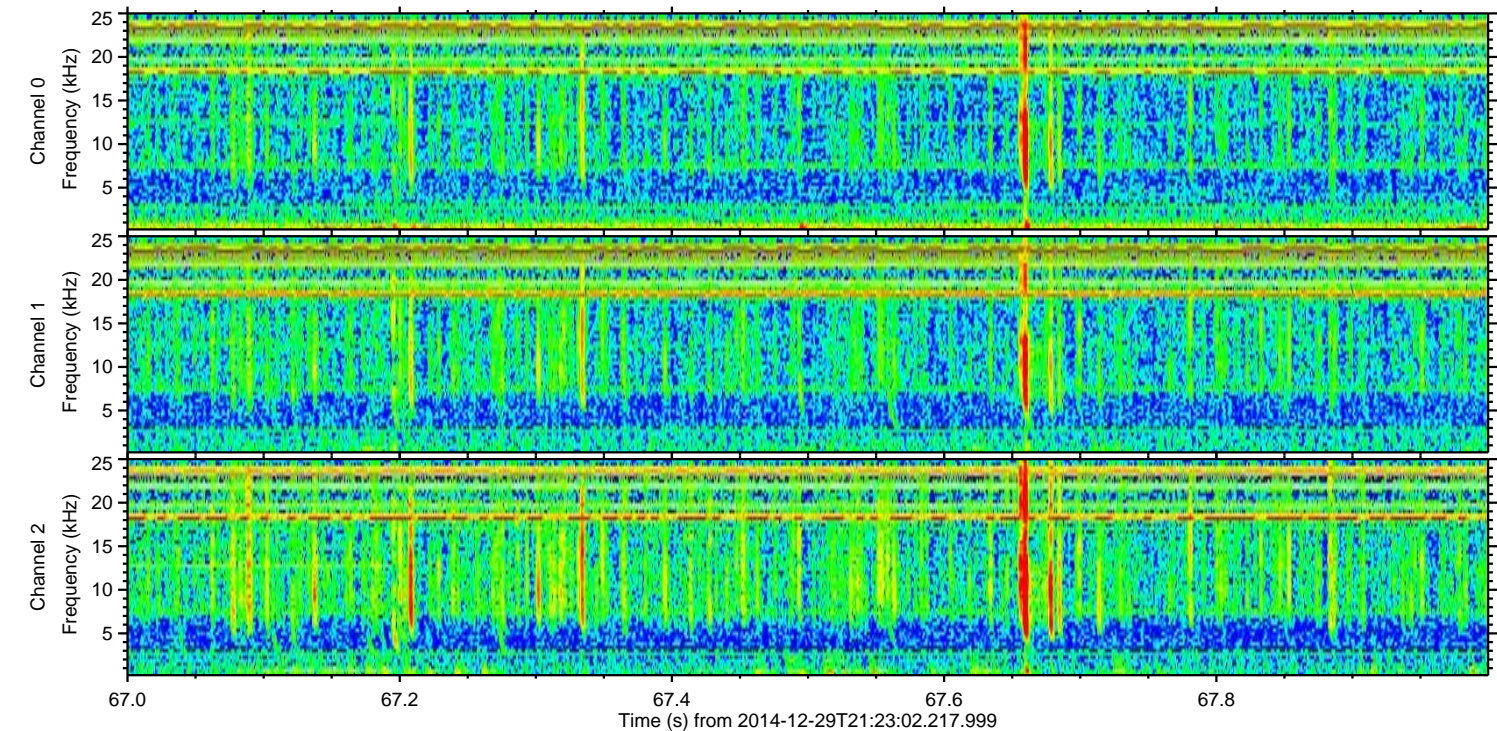
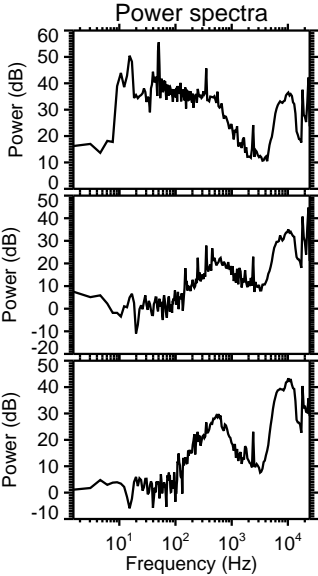
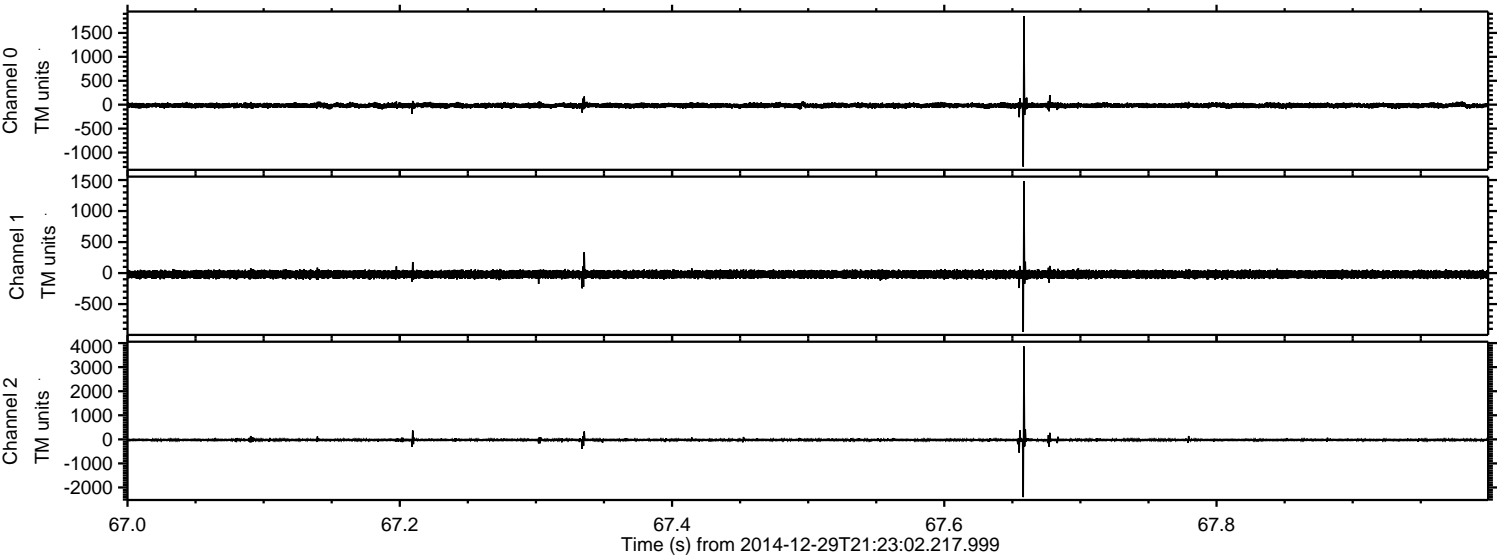
Processed Fri Jan 2 13:31:57 2015 by ELM ver.2012-10-06 from 001__elm20141229_212301__dat00.bin



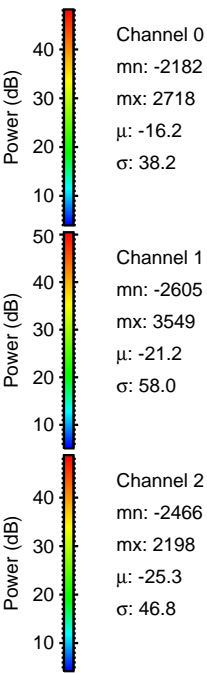
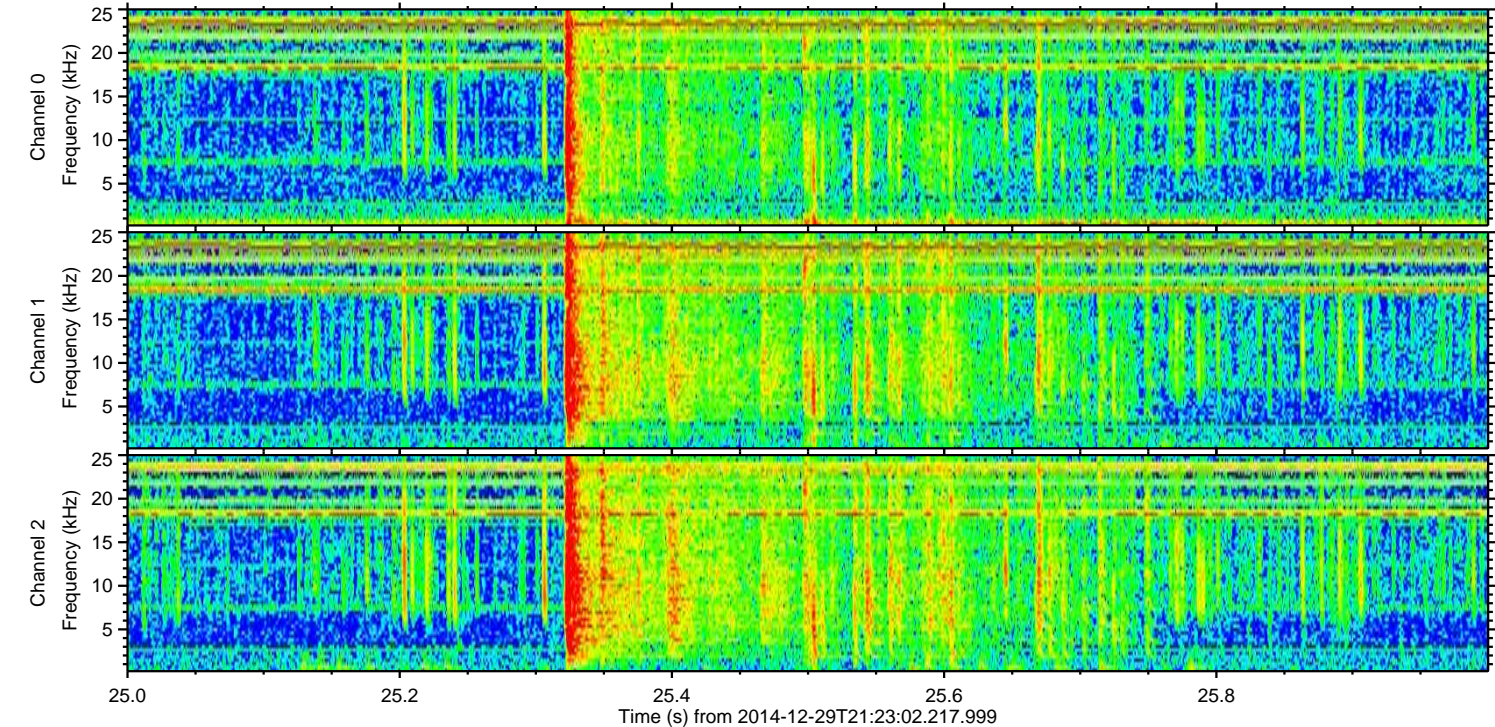
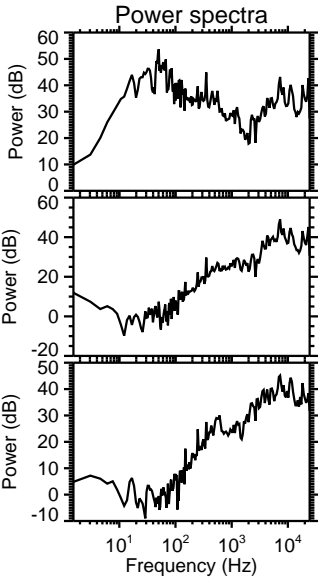
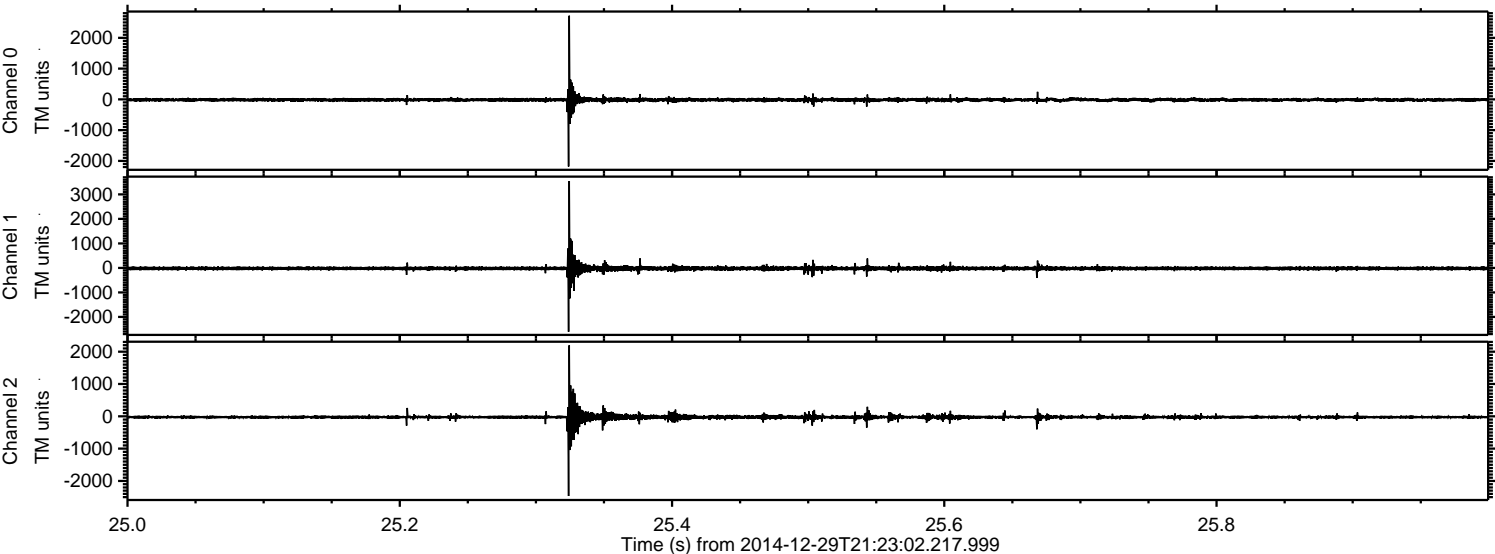
Processed Fri Jan 2 13:31:58 2015 by ELM ver.2012-10-06 from 001__elm20141229_212301__dat00.bin



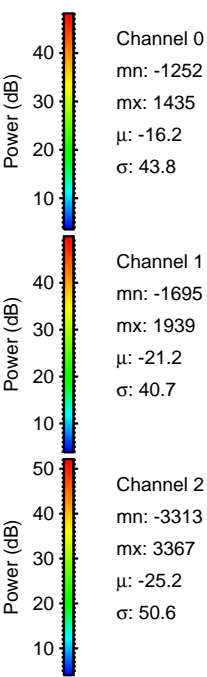
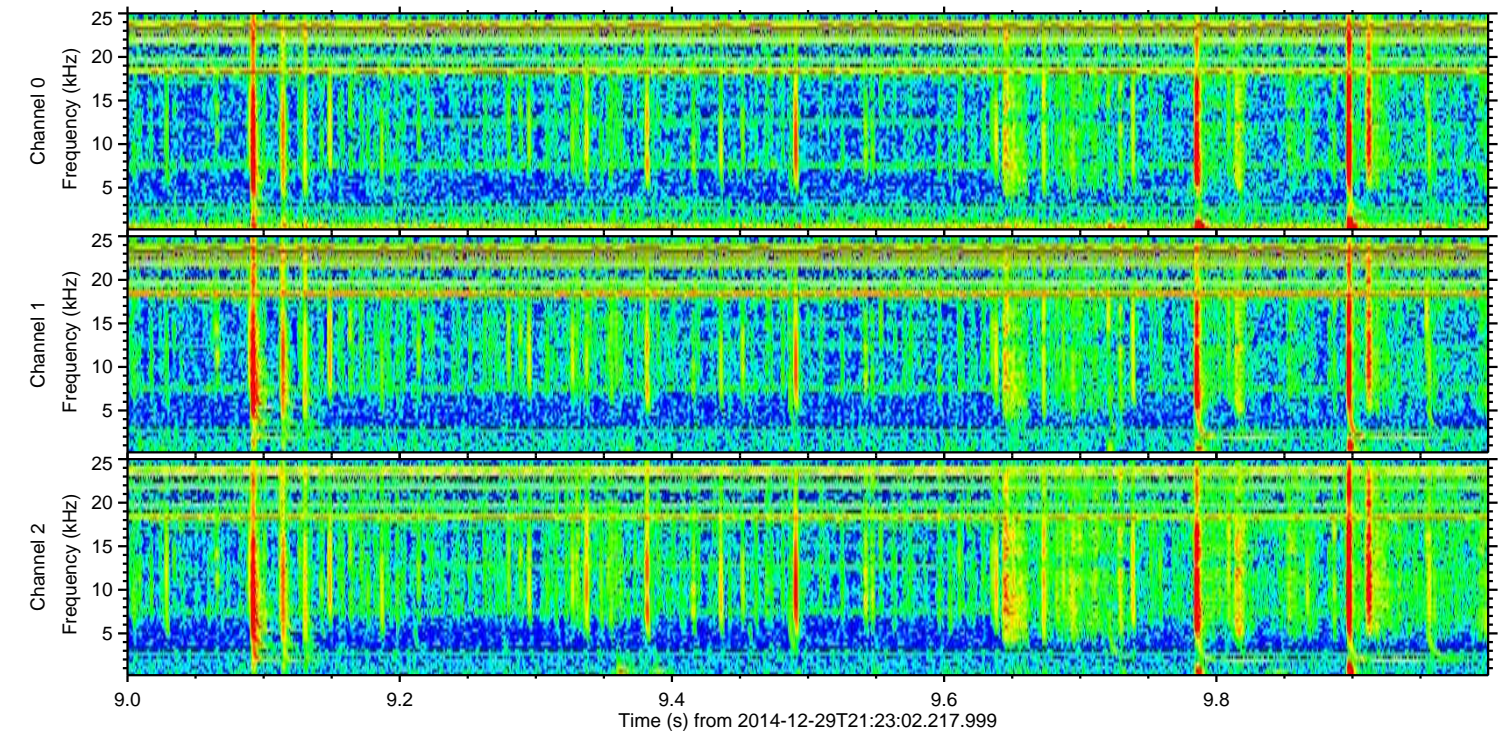
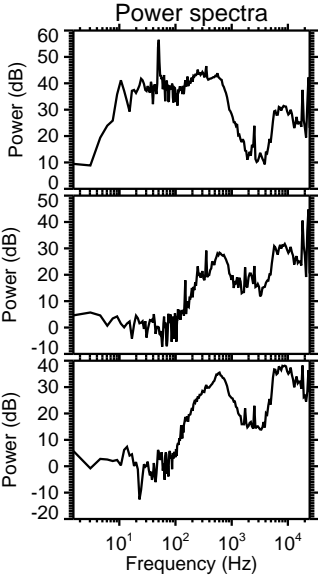
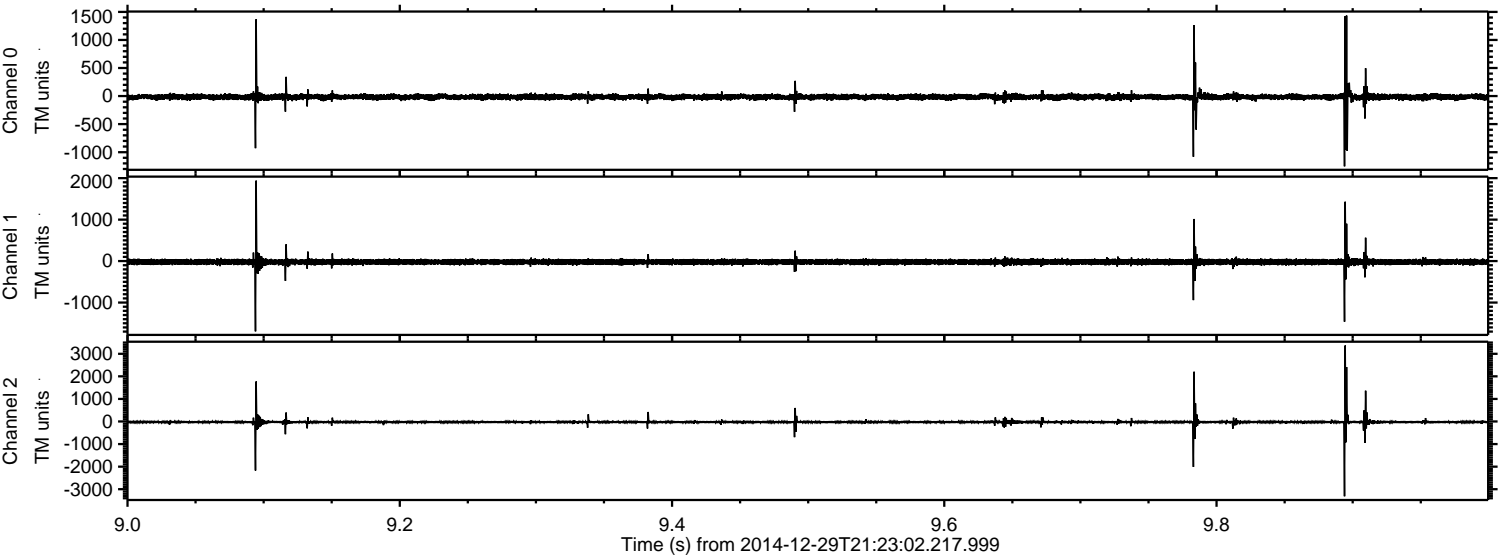
Processed Fri Jan 2 13:31:59 2015 by ELM ver.2012-10-06 from 001__elm20141229_212301__dat00.bin



Processed Fri Jan 2 13:32:00 2015 by ELM ver.2012-10-06 from 001__elm20141229_212301__dat00.bin



Processed Fri Jan 2 13:32:01 2015 by ELM ver.2012-10-06 from 001__elm20141229_212301__dat00.bin



Processed Fri Jan 2 13:32:02 2015 by ELM ver.2012-10-06 from 001__elm20141229_212301__dat00.bin

