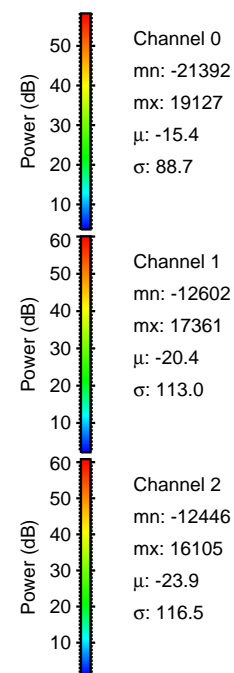
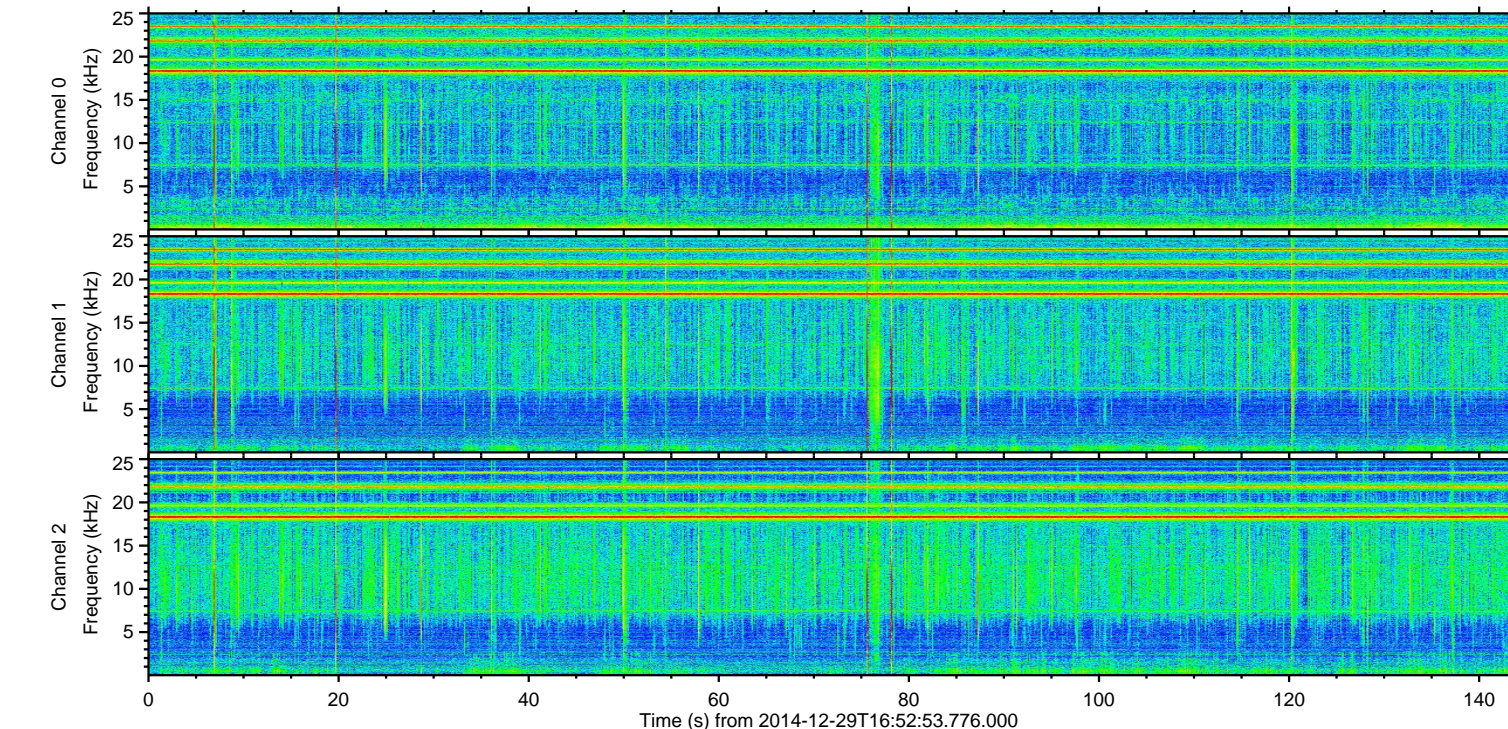
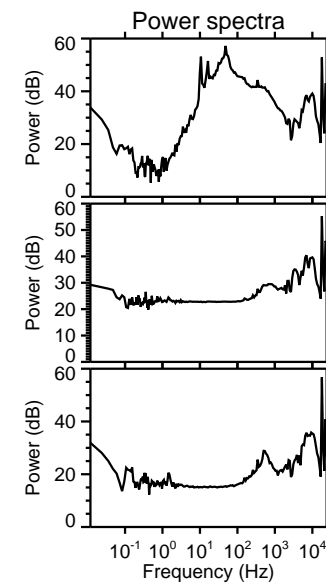
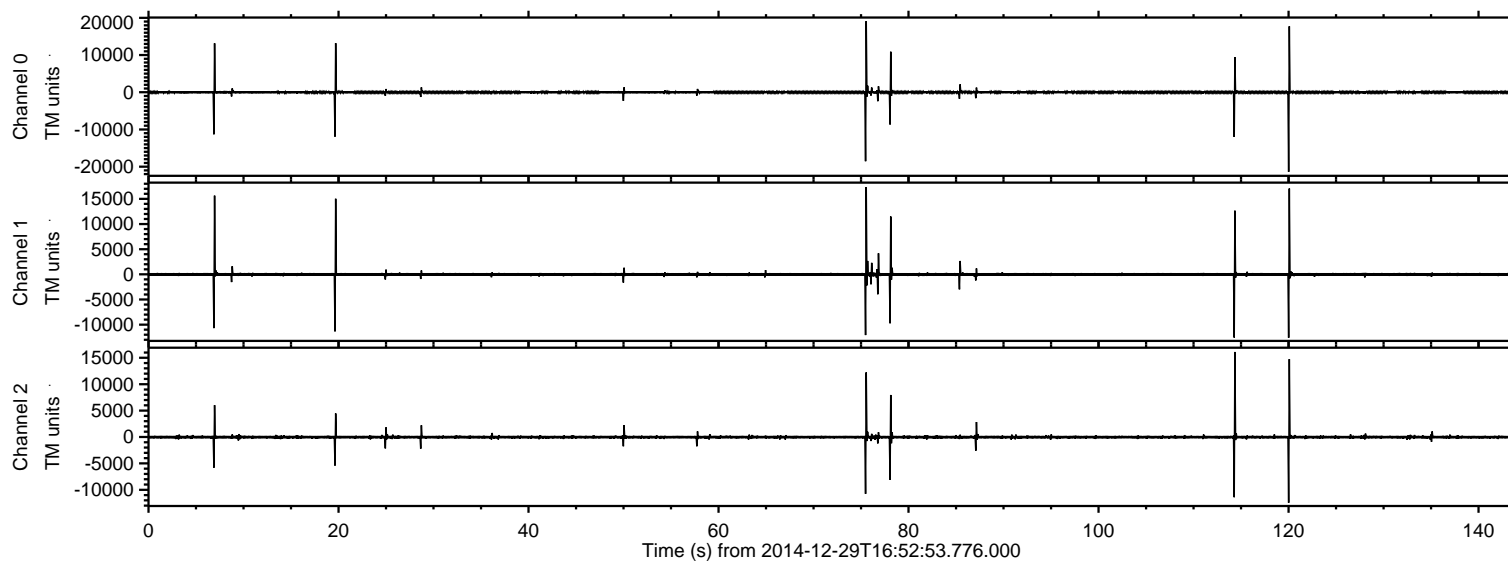


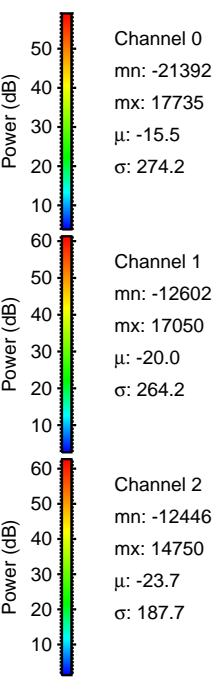
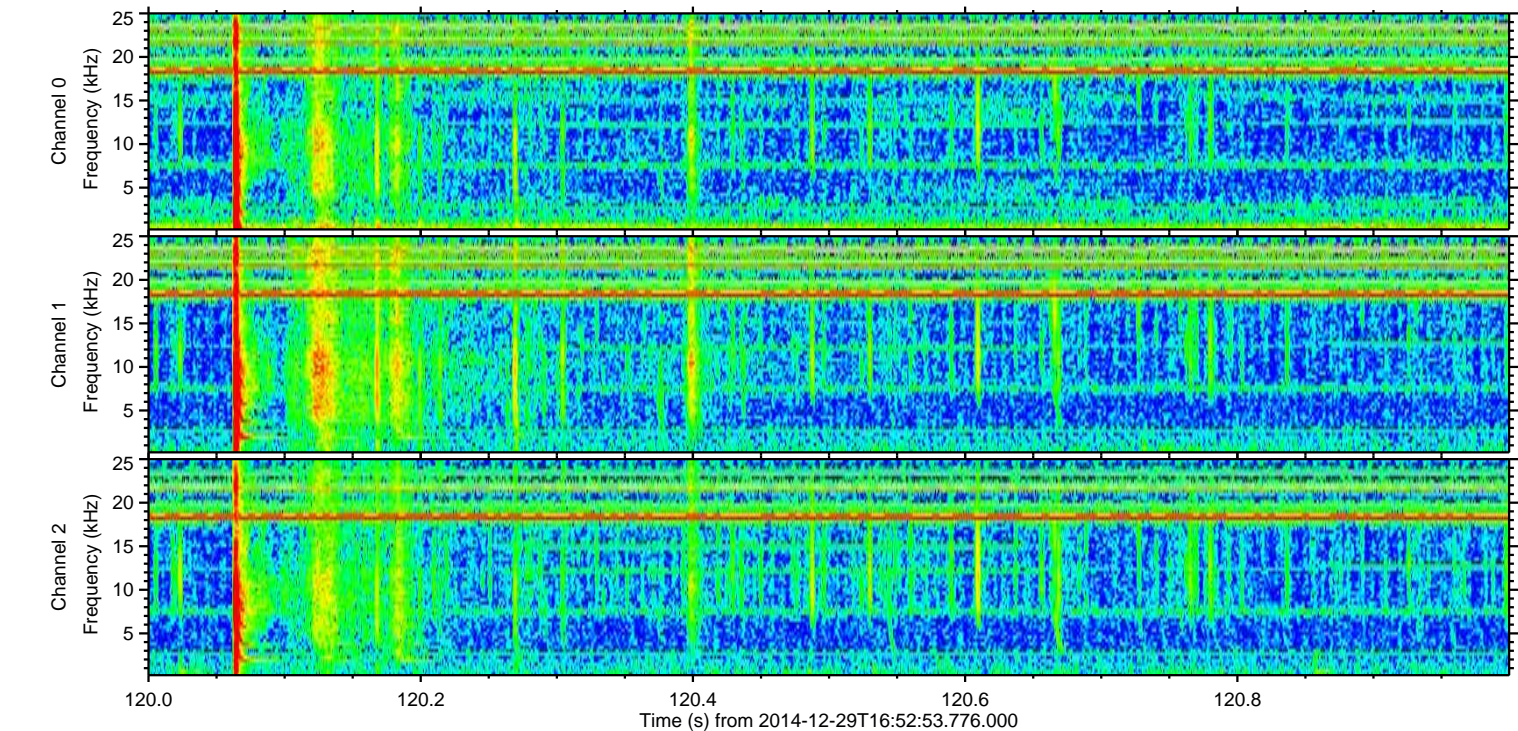
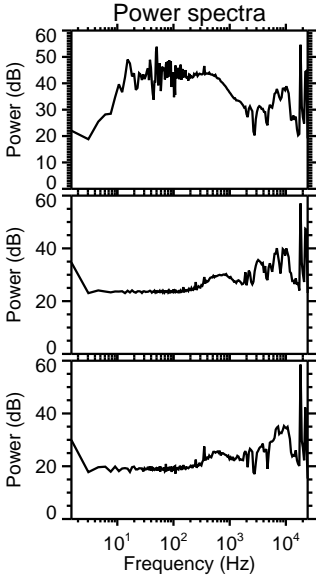
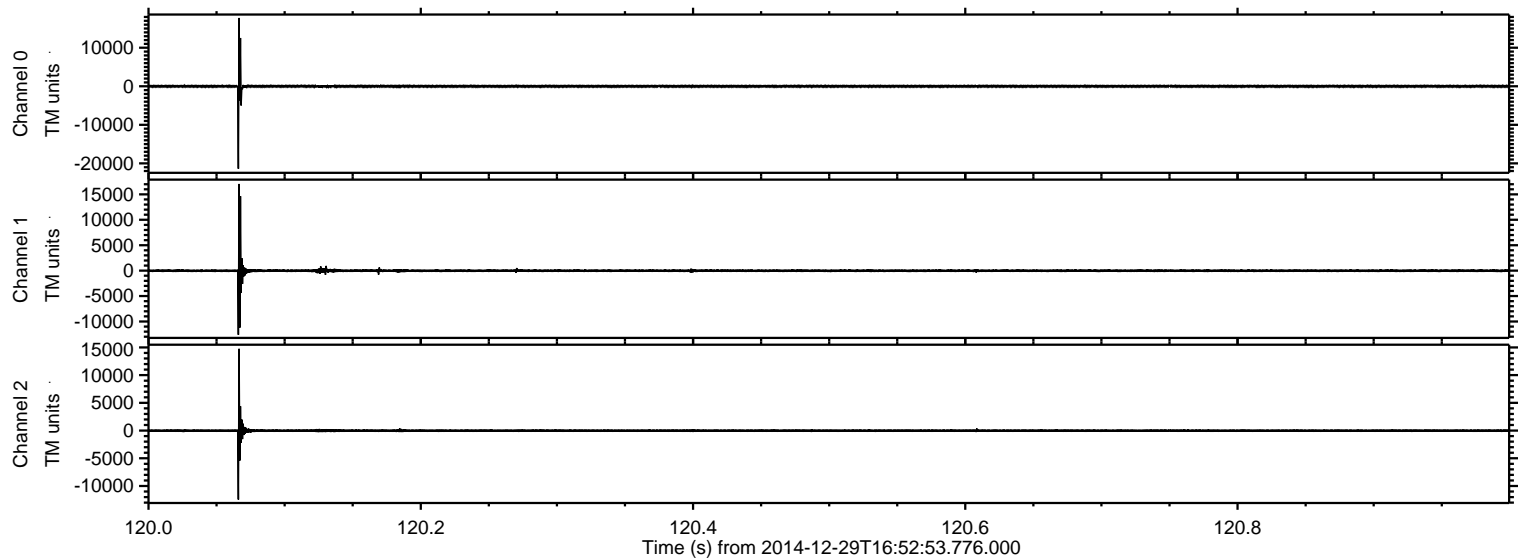
ELMAVAN 3D WAVEFORMS (Measured data sampled at 50 kHz) 49729 packets of 144 samples from 2014-12-29T16:52:53.776.000.

Processed Fri Jan 2 11:35:16 2015 by ELM ver.2012-10-06 from 001__elm20141229_165252__dat00.bin

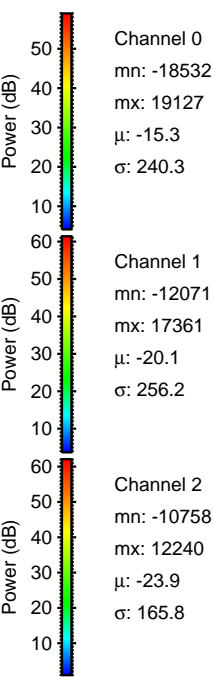
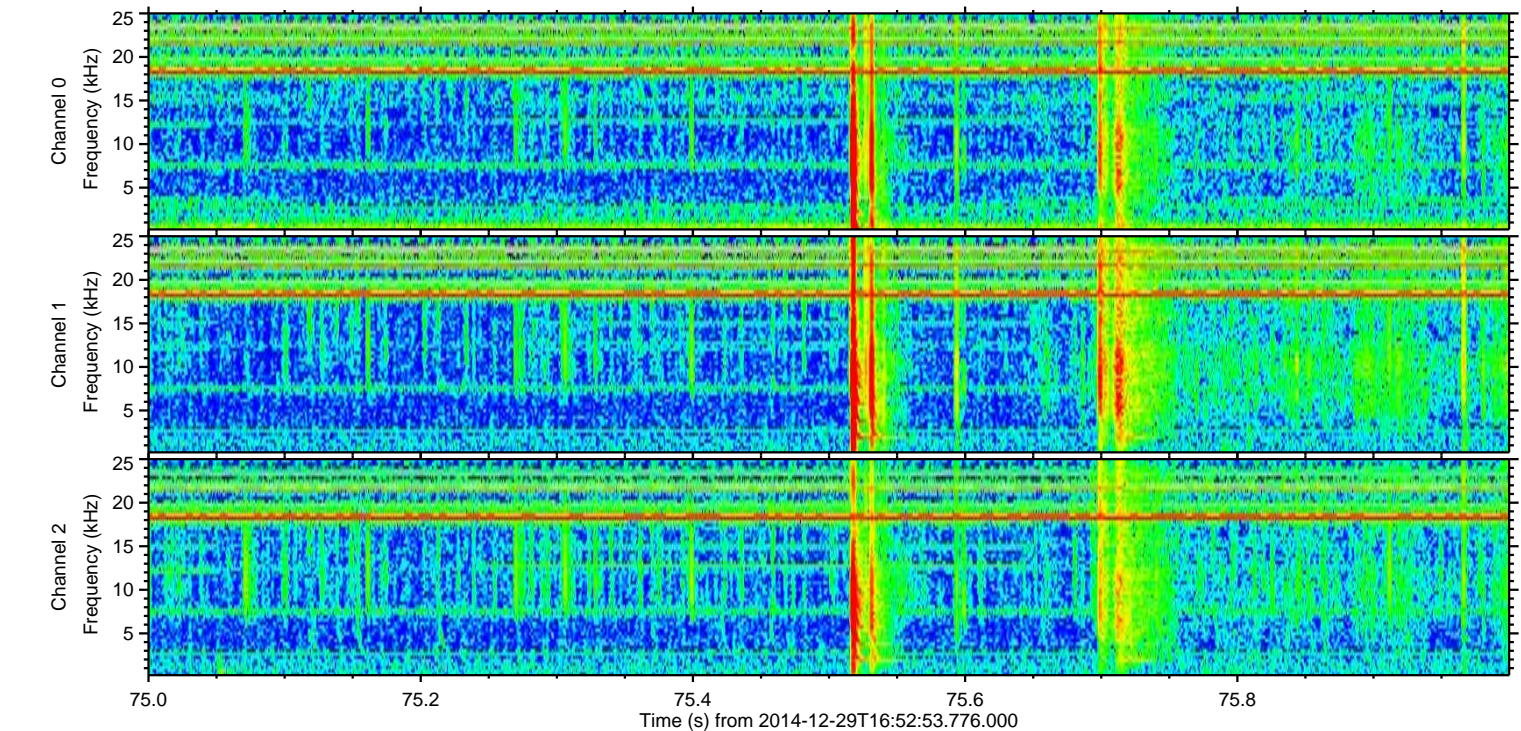
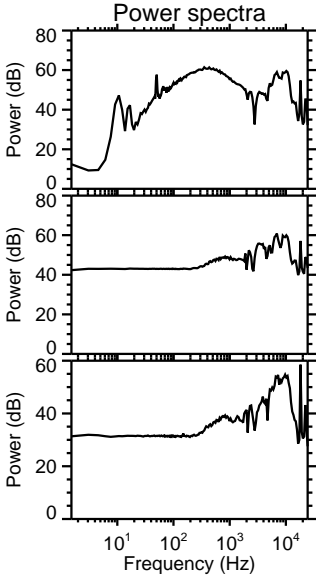
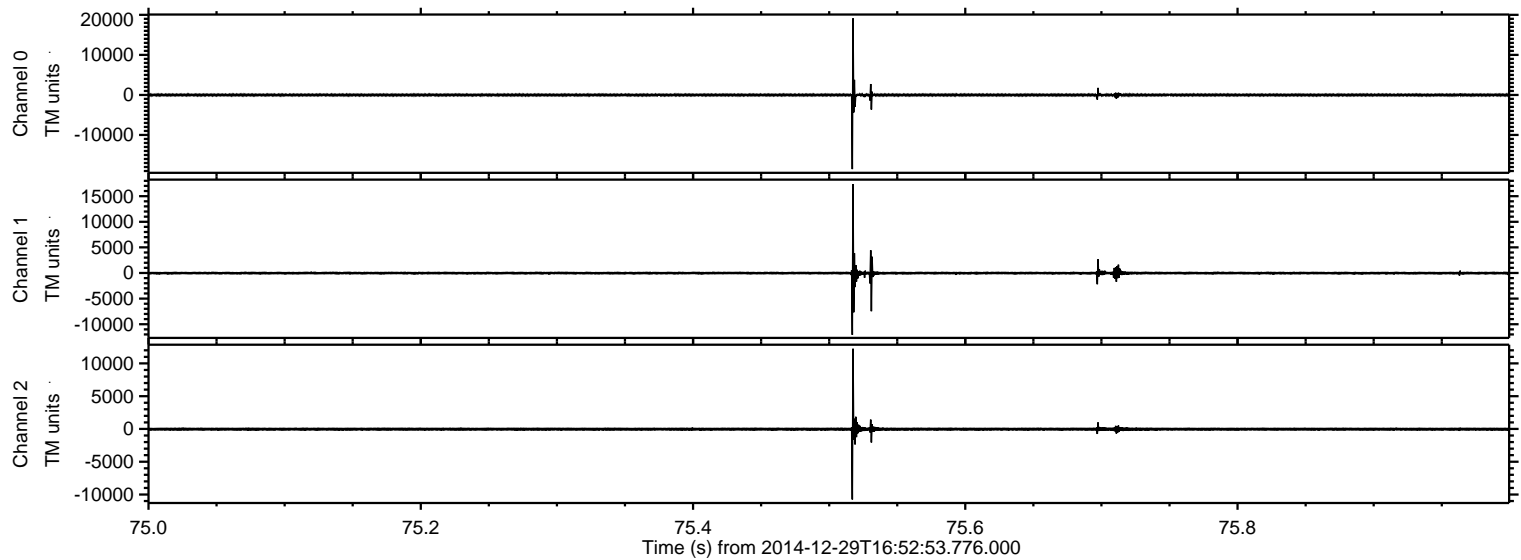


ELMAVAN 3D WAVEFORMS (Measured data sampled at 50 kHz) 49729 packets of 144 samples from 2014-12-29T16:52:53.776.000. Part 121/144

Processed Fri Jan 2 11:35:32 2015 by ELM ver.2012-10-06 from 001__elm20141229_165252__dat00.bin

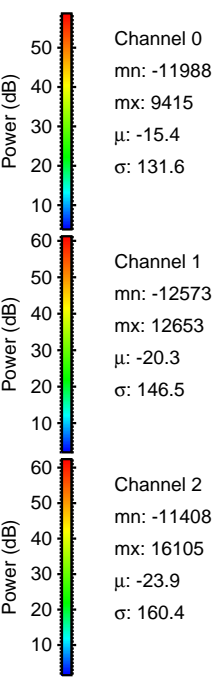
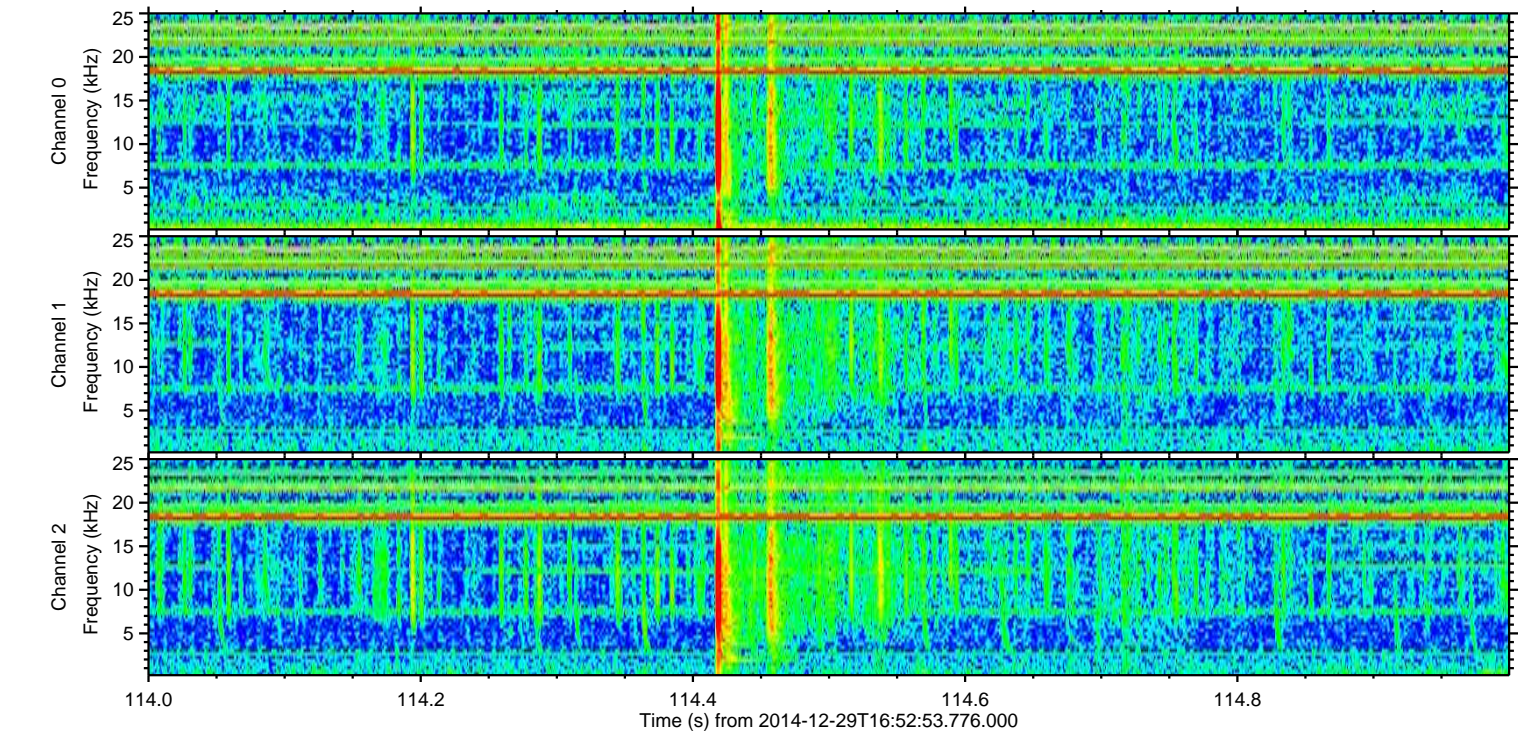
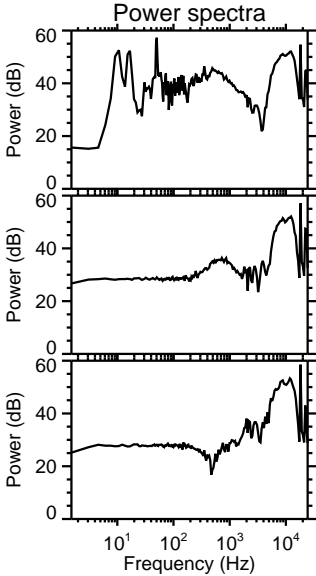
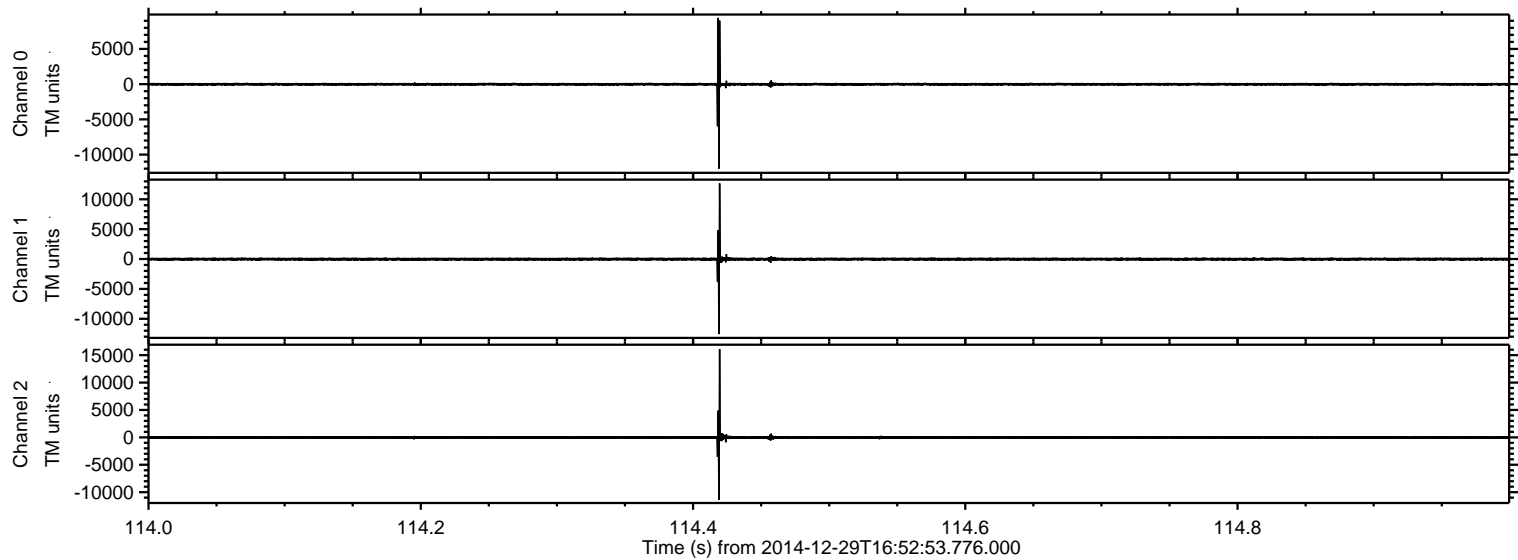


Processed Fri Jan 2 11:35:33 2015 by ELM ver.2012-10-06 from 001__elm20141229_165252__dat00.bin

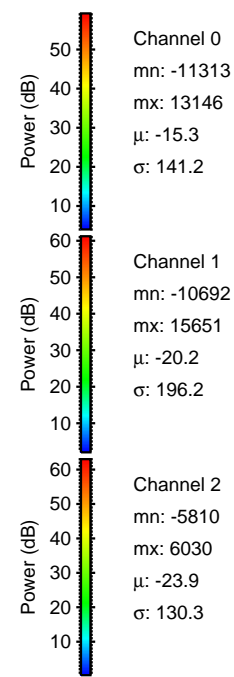
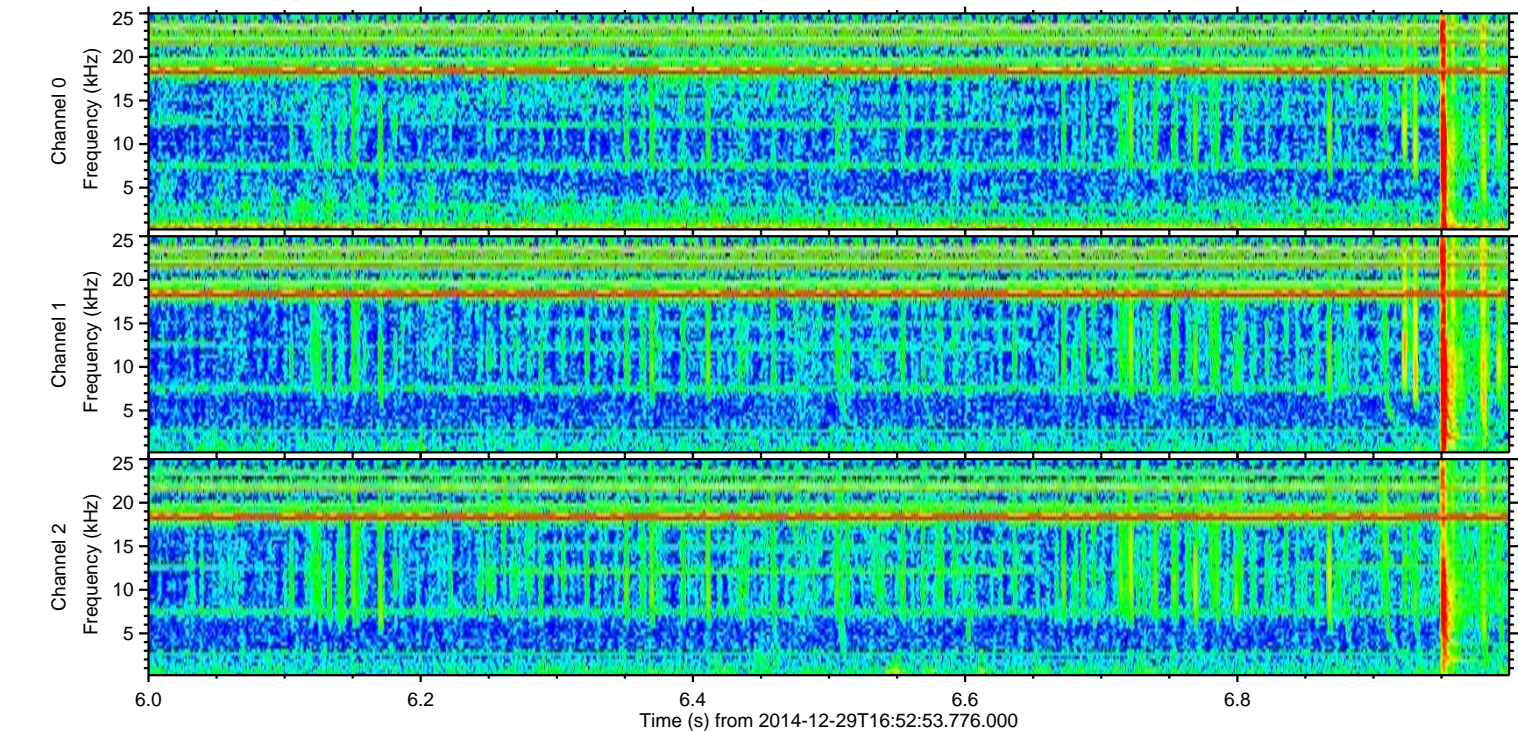
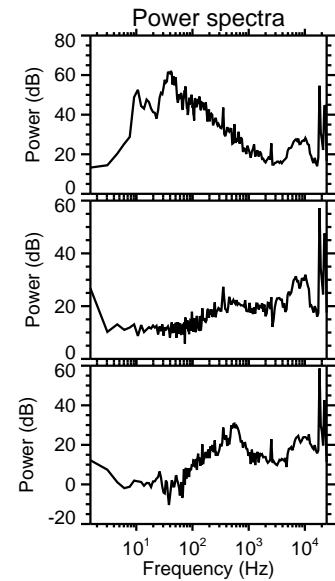
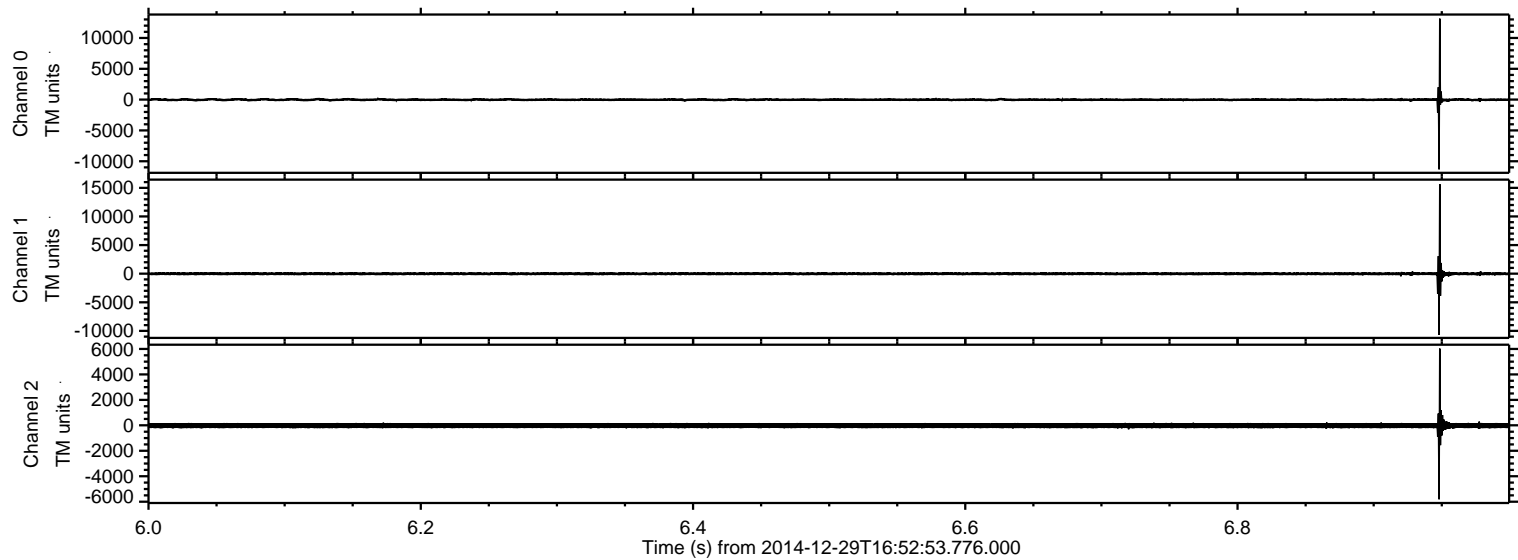


ELMAVAN 3D WAVEFORMS (Measured data sampled at 50 kHz) 49729 packets of 144 samples from 2014-12-29T16:52:53.776.000. Part 115/144

Processed Fri Jan 2 11:35:34 2015 by ELM ver.2012-10-06 from 001__elm20141229_165252__dat00.bin

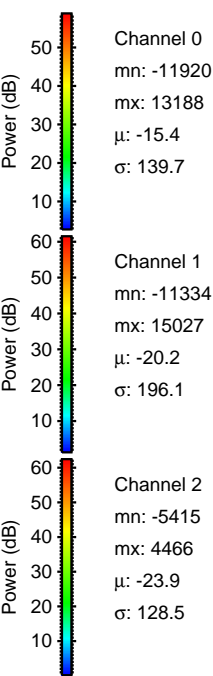
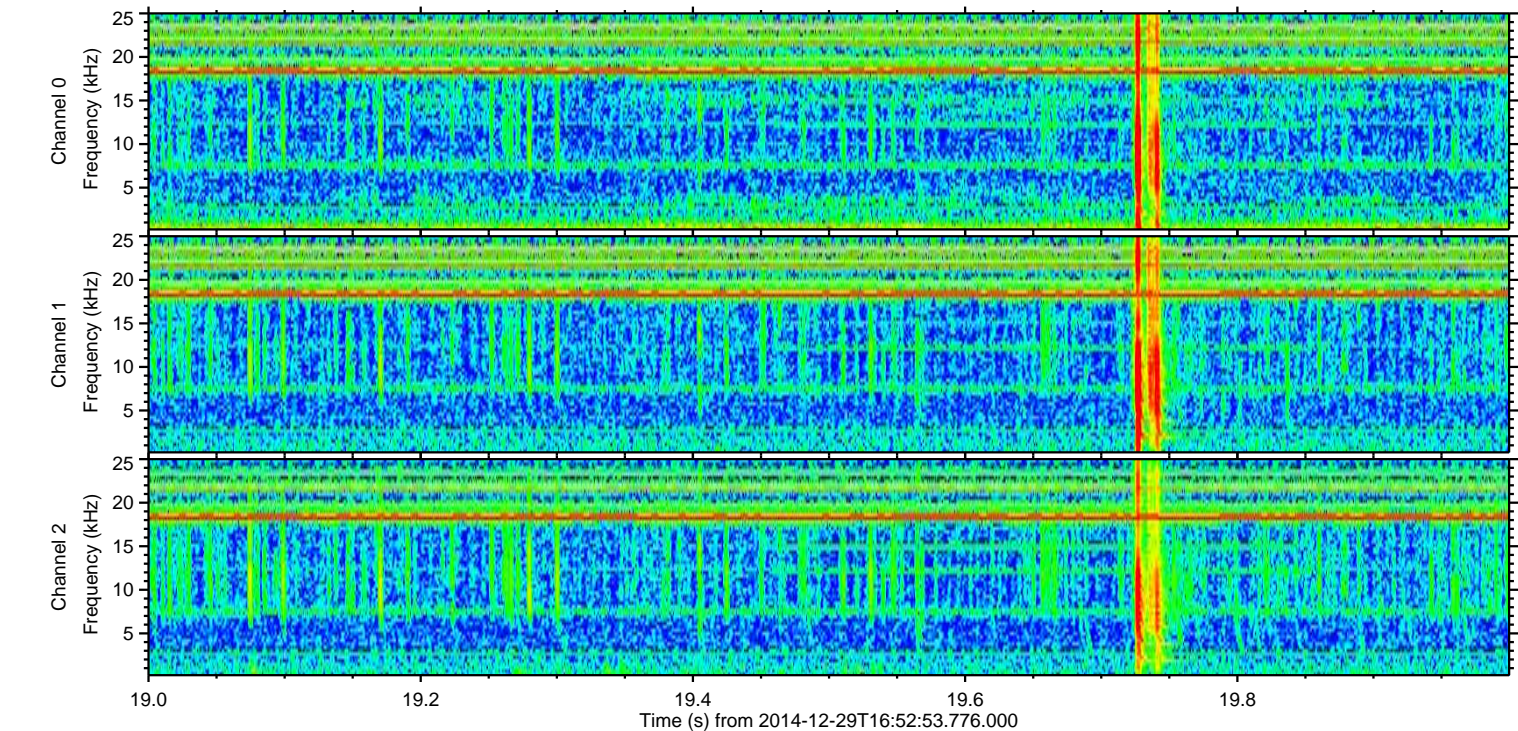
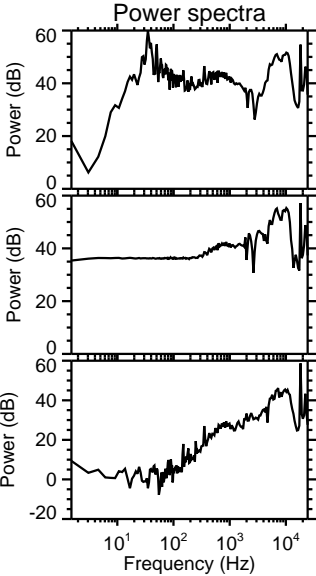
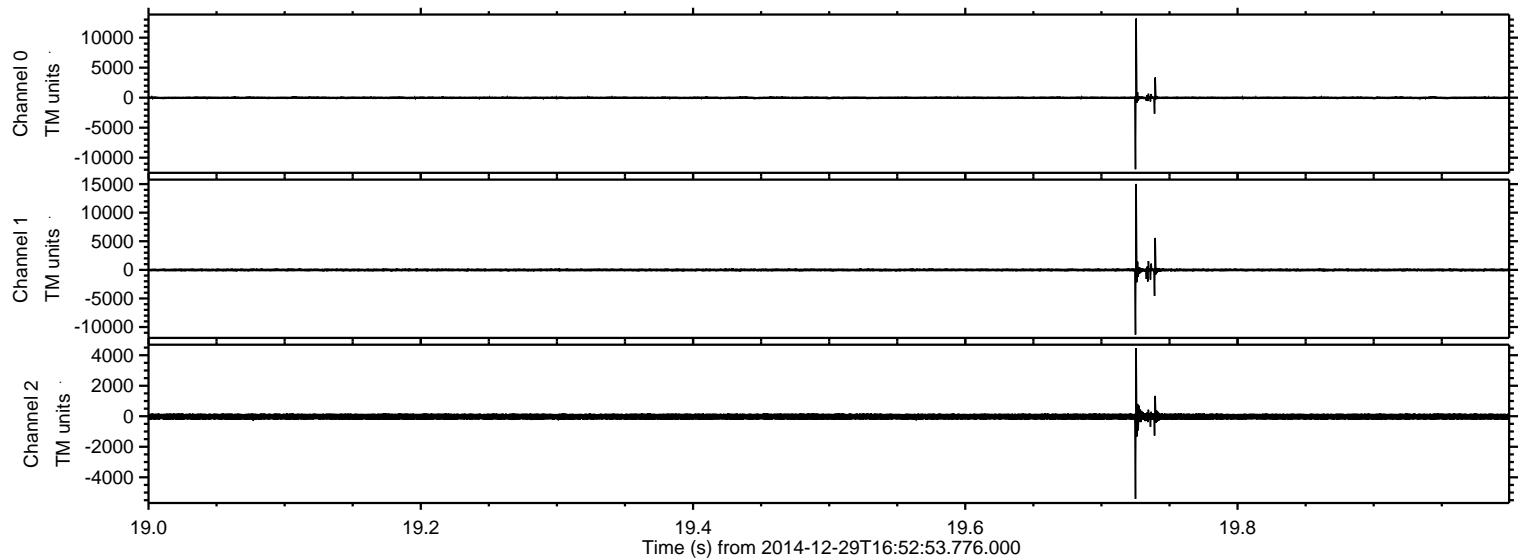


Processed Fri Jan 2 11:35:35 2015 by ELM ver.2012-10-06 from 001__elm20141229_165252__dat00.bin

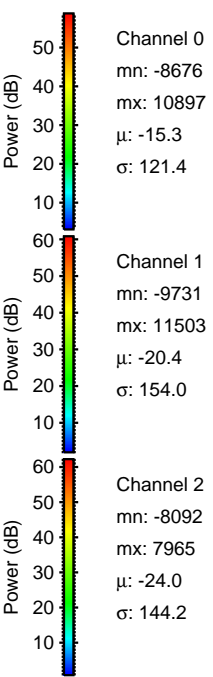
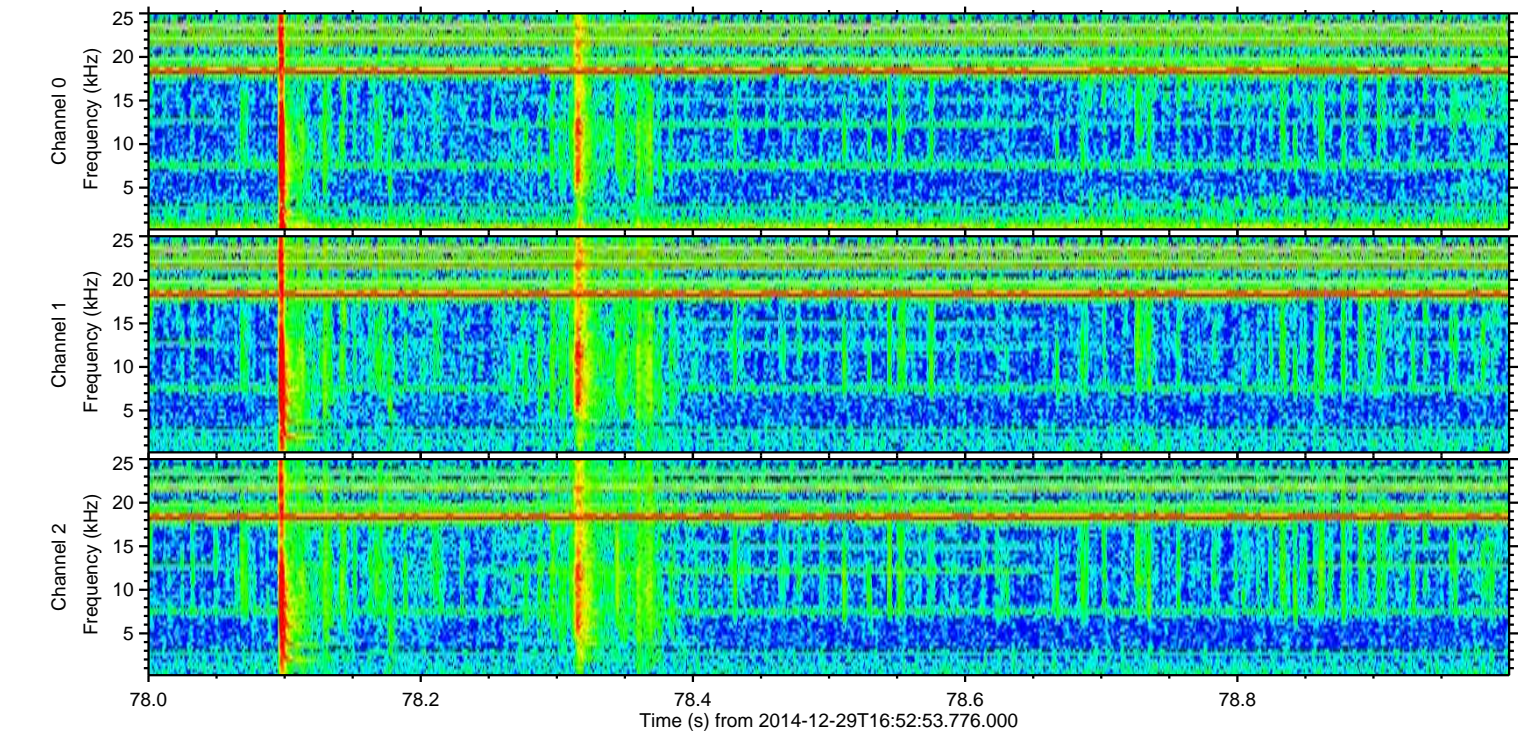
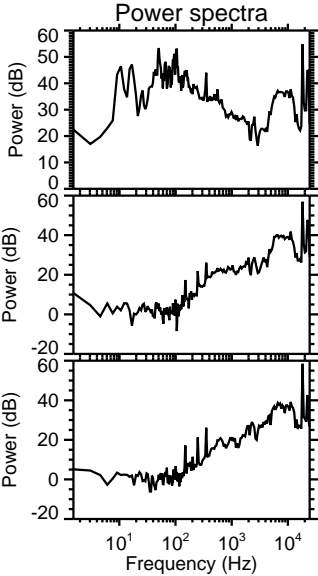
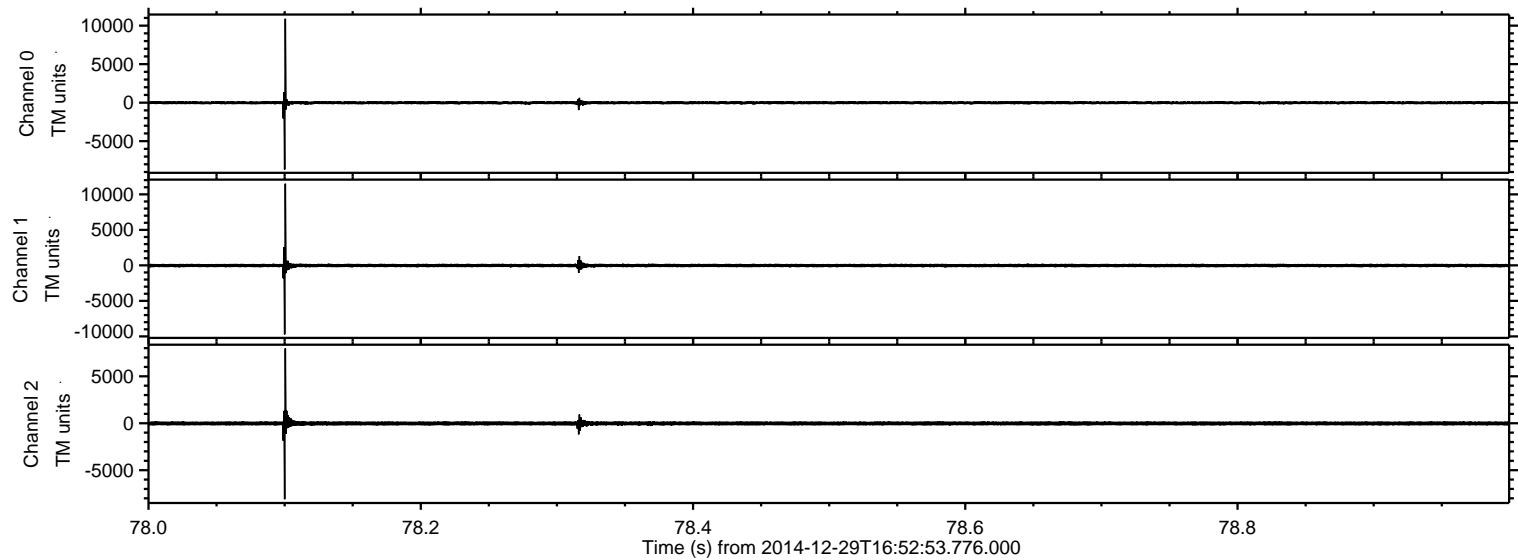


ELMAVAN 3D WAVEFORMS (Measured data sampled at 50 kHz) 49729 packets of 144 samples from 2014-12-29T16:52:53.776.000. Part 20/144

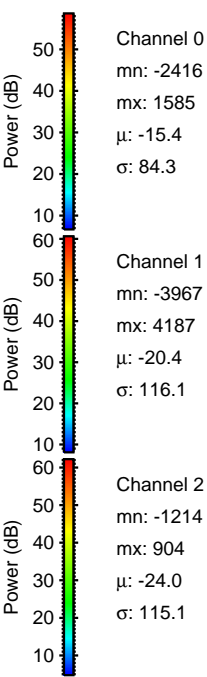
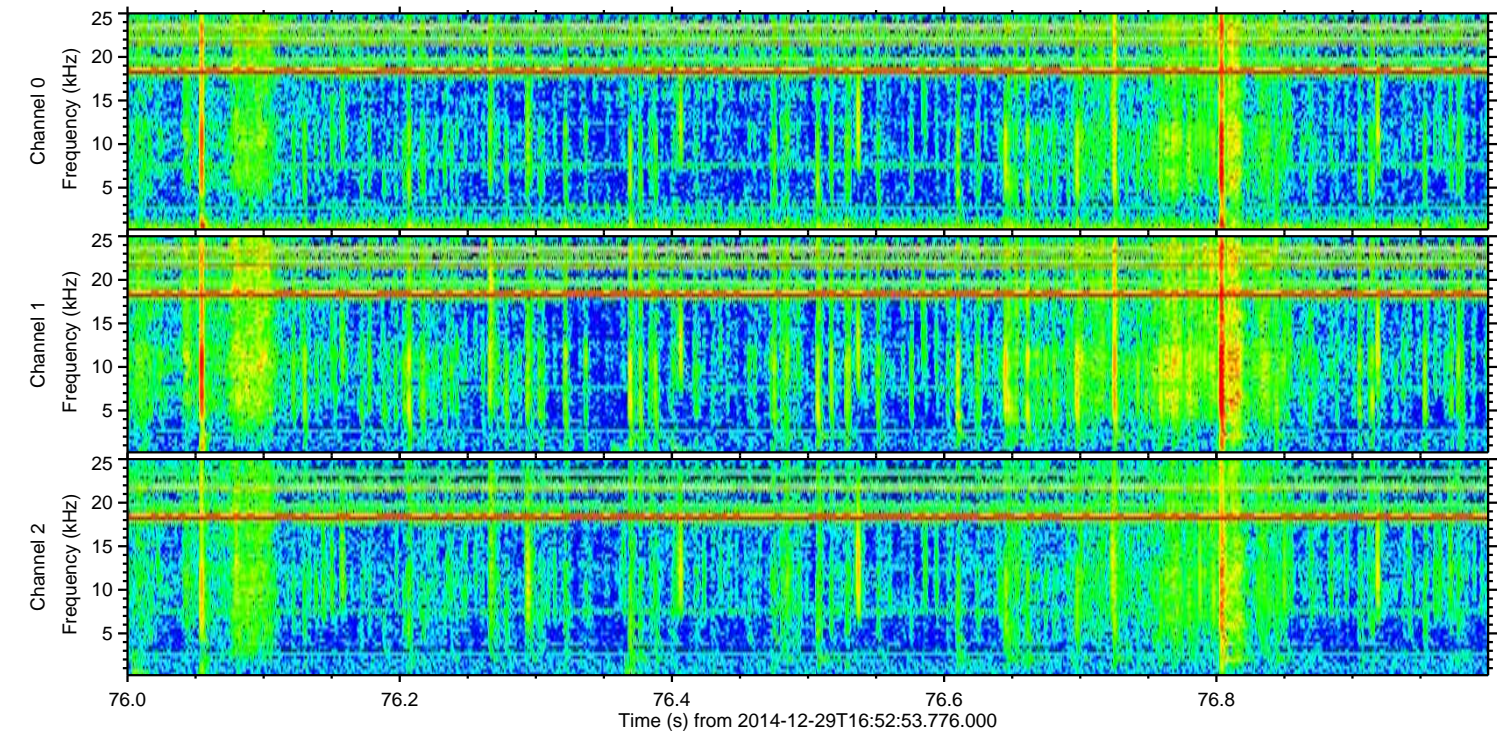
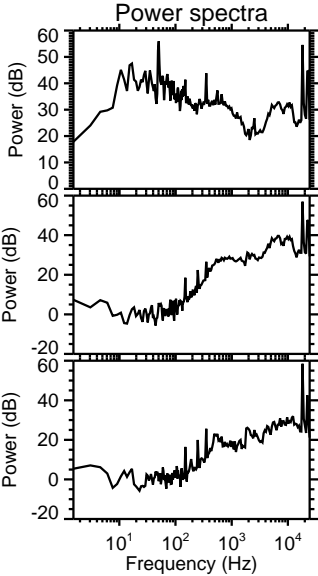
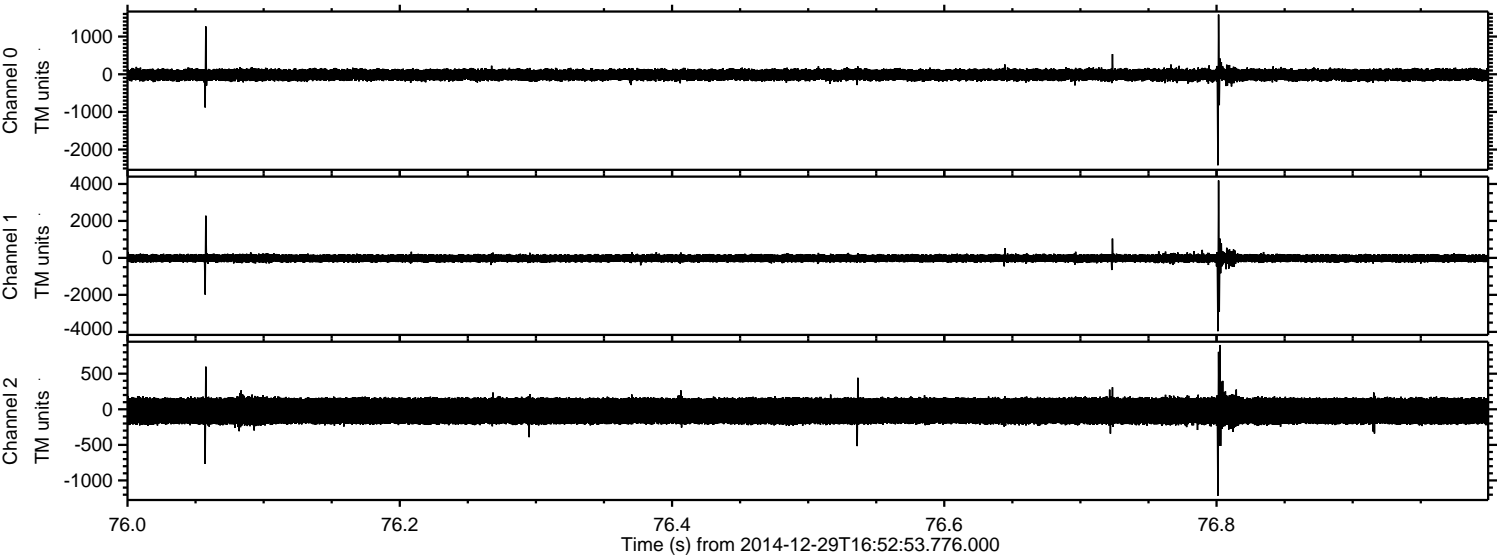
Processed Fri Jan 2 11:35:36 2015 by ELM ver.2012-10-06 from 001__elm20141229_165252__dat00.bin



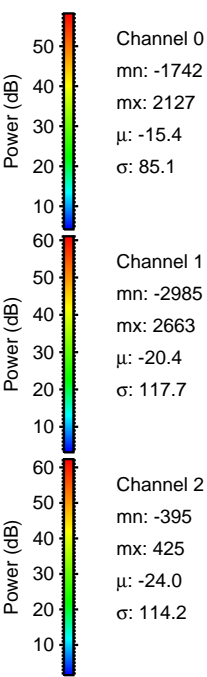
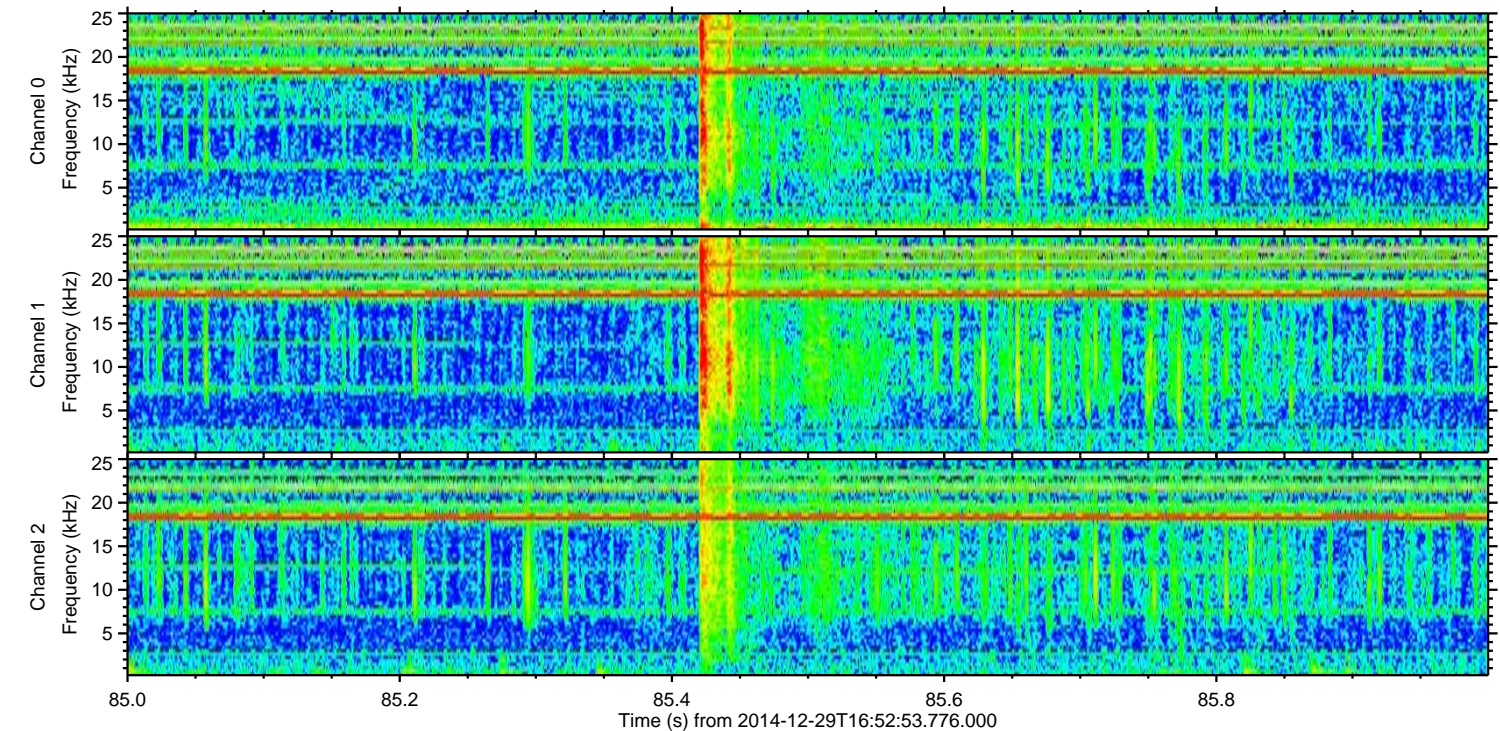
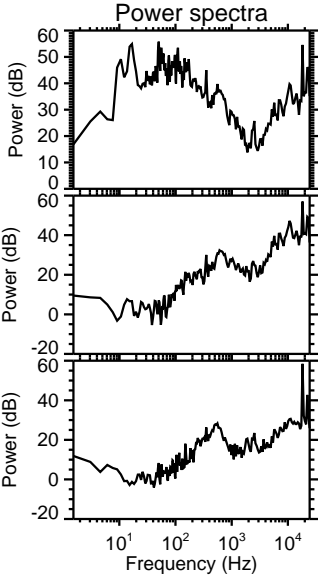
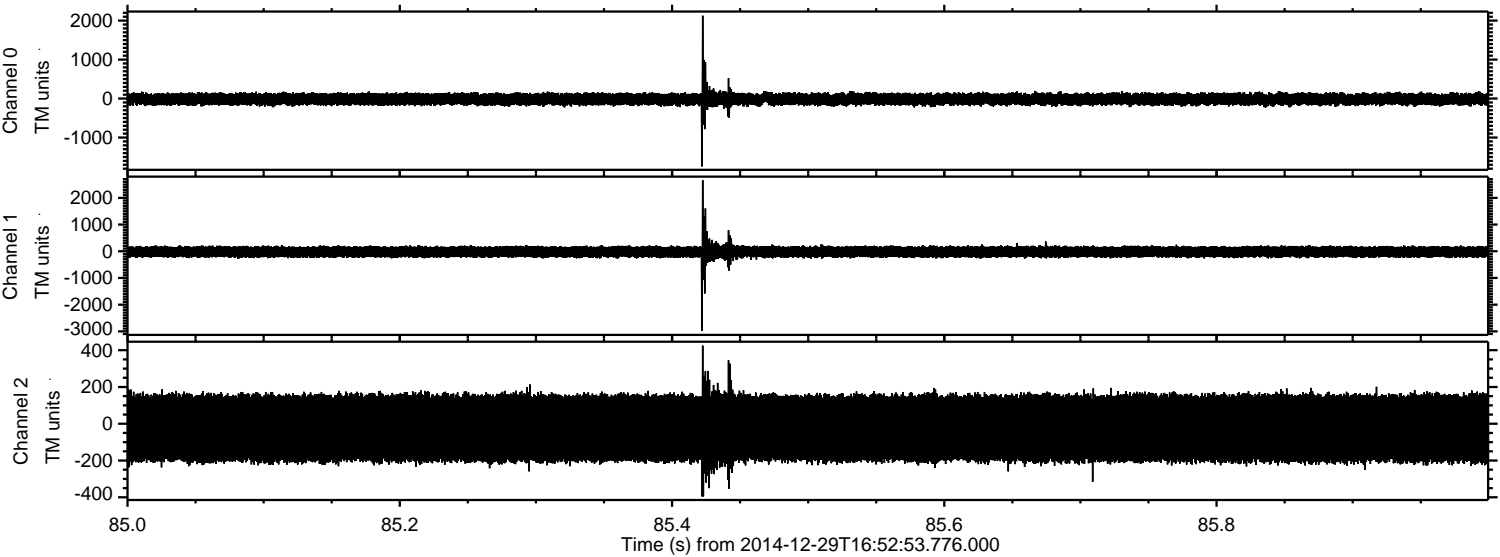
Processed Fri Jan 2 11:35:38 2015 by ELM ver.2012-10-06 from 001__elm20141229_165252__dat00.bin



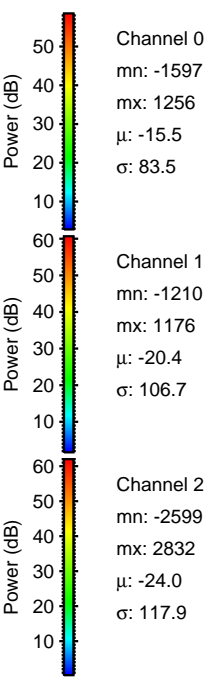
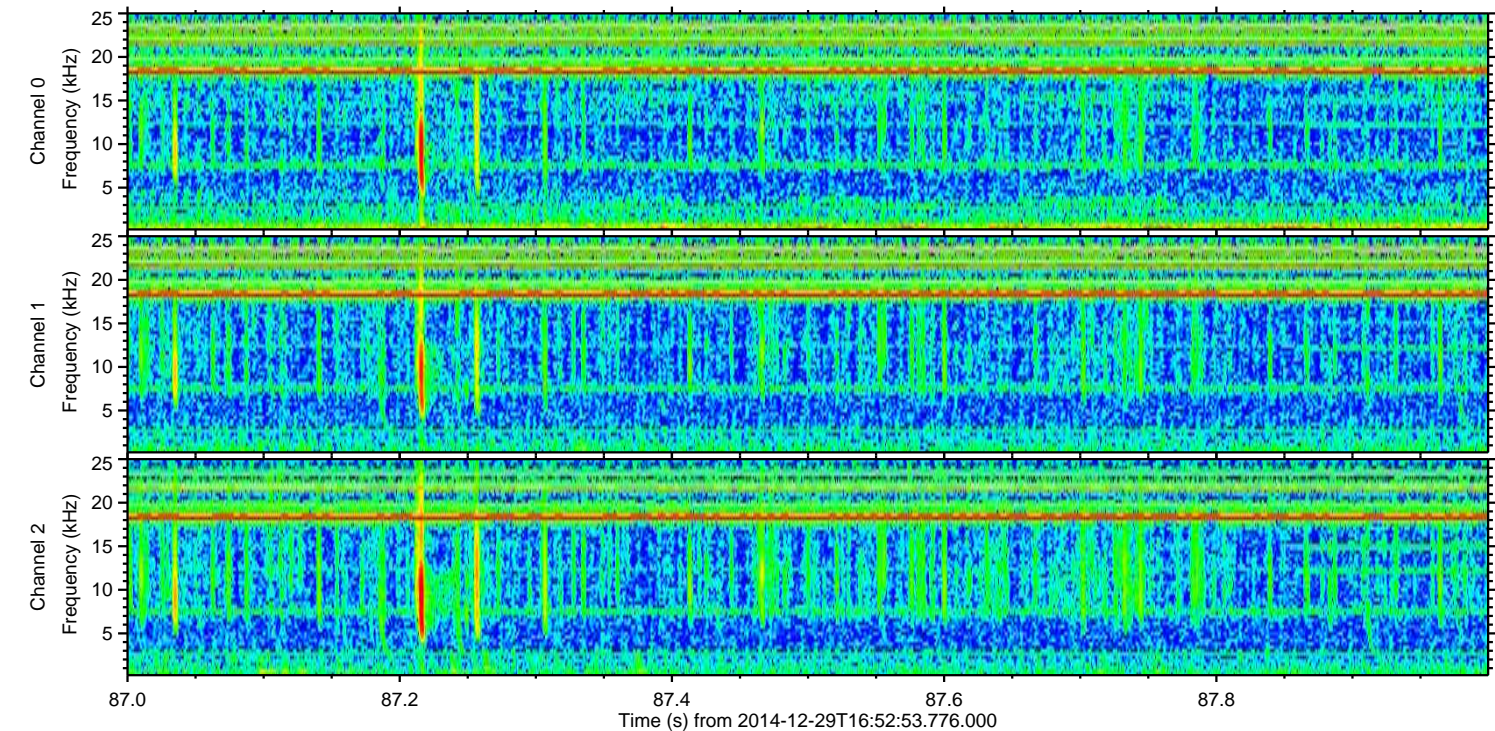
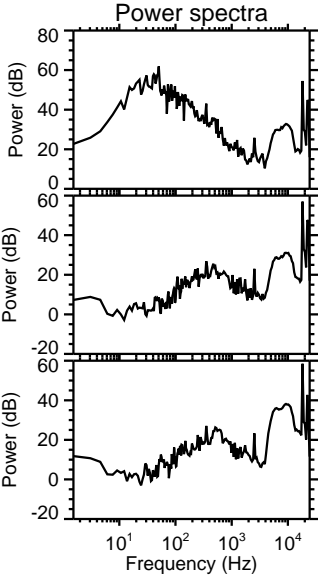
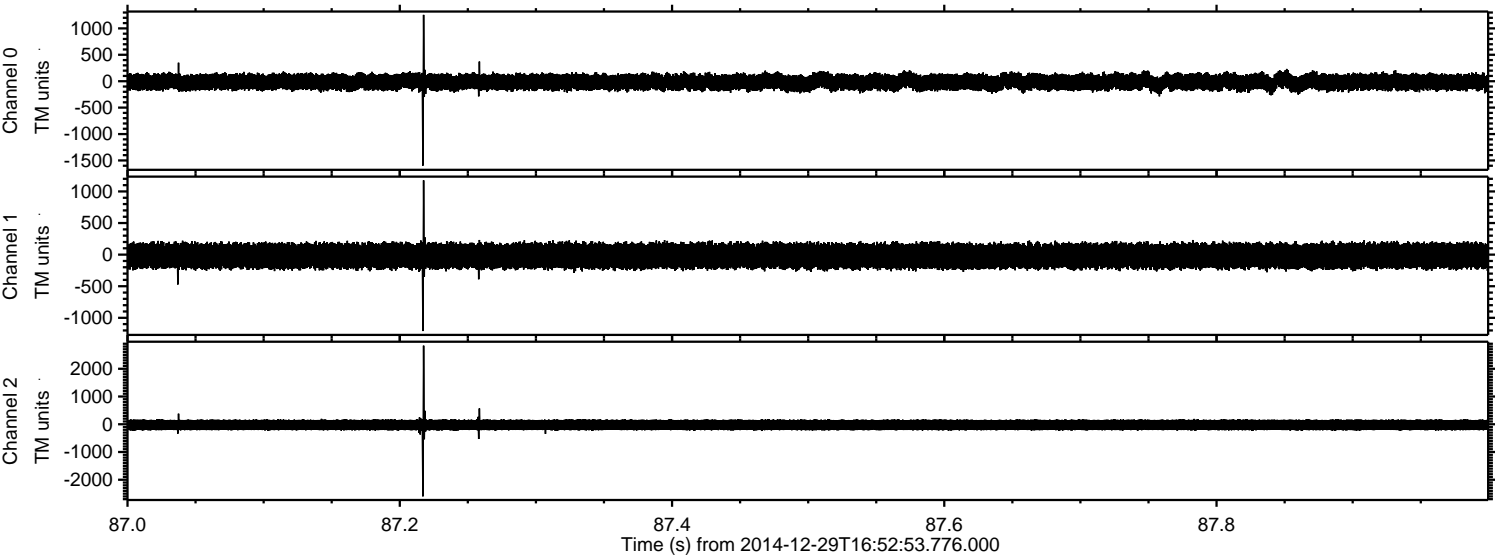
Processed Fri Jan 2 11:35:39 2015 by ELM ver.2012-10-06 from 001__elm20141229_165252__dat00.bin



Processed Fri Jan 2 11:35:40 2015 by ELM ver.2012-10-06 from 001__elm20141229_165252__dat00.bin



Processed Fri Jan 2 11:35:41 2015 by ELM ver.2012-10-06 from 001__elm20141229_165252__dat00.bin



Channel 0
mn: -1597
mx: 1256
 μ : -15.5
 σ : 83.5

Channel 1
mn: -1210
mx: 1176
 μ : -20.4
 σ : 106.7

Channel 2
mn: -2599
mx: 2832
 μ : -24.0
 σ : 117.9

Processed Fri Jan 2 11:35:42 2015 by ELM ver.2012-10-06 from 001__elm20141229_165252__dat00.bin

