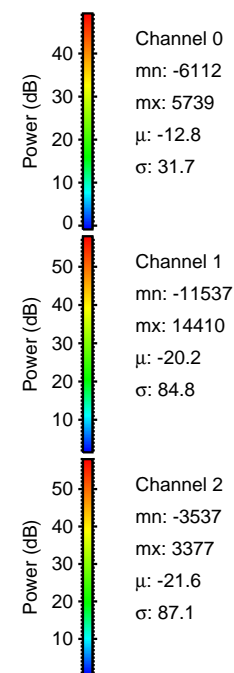
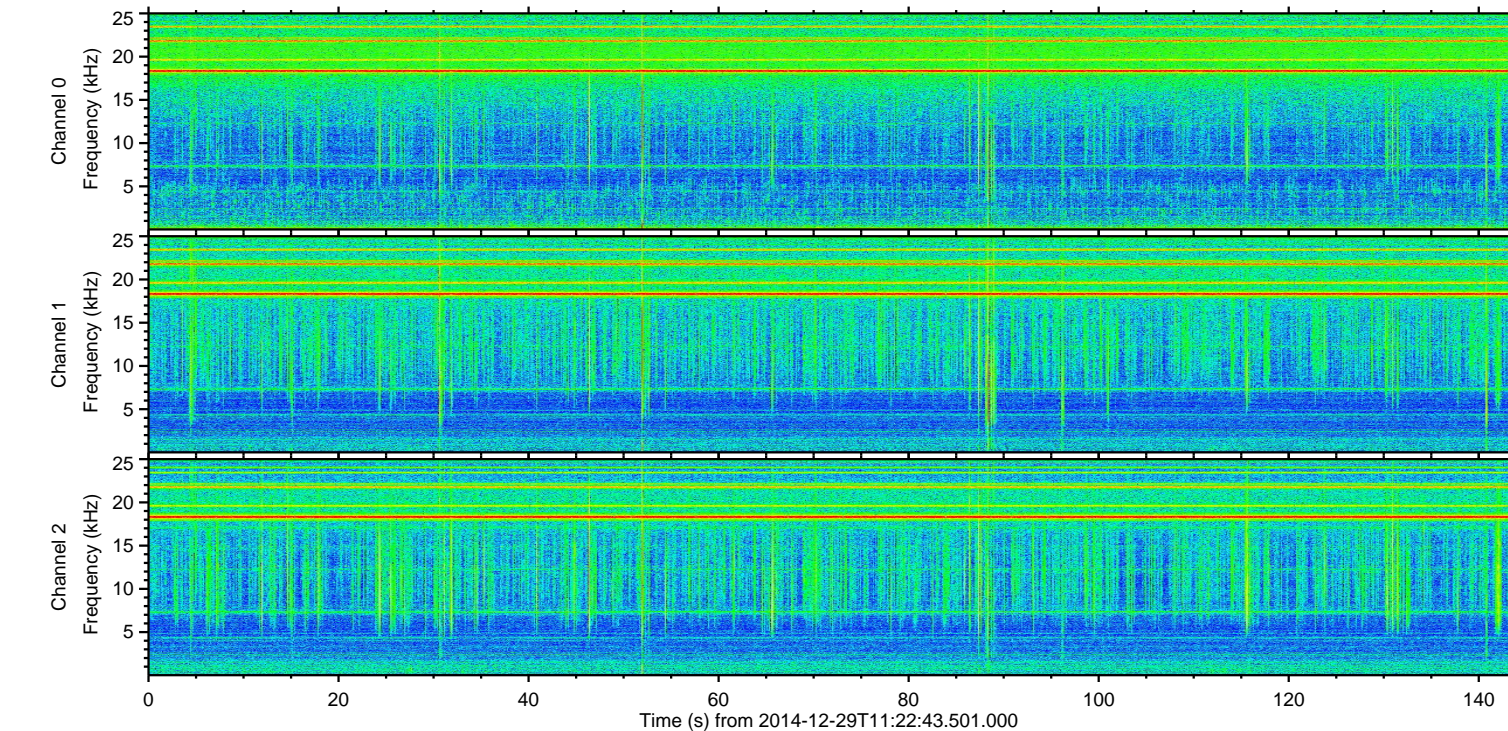
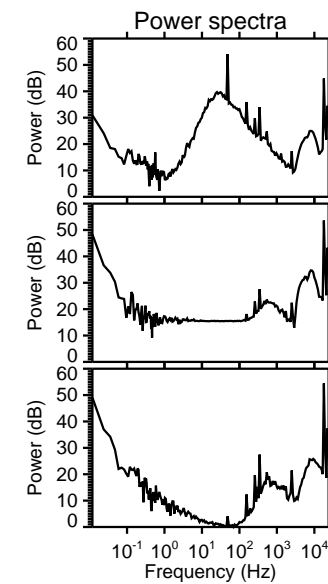
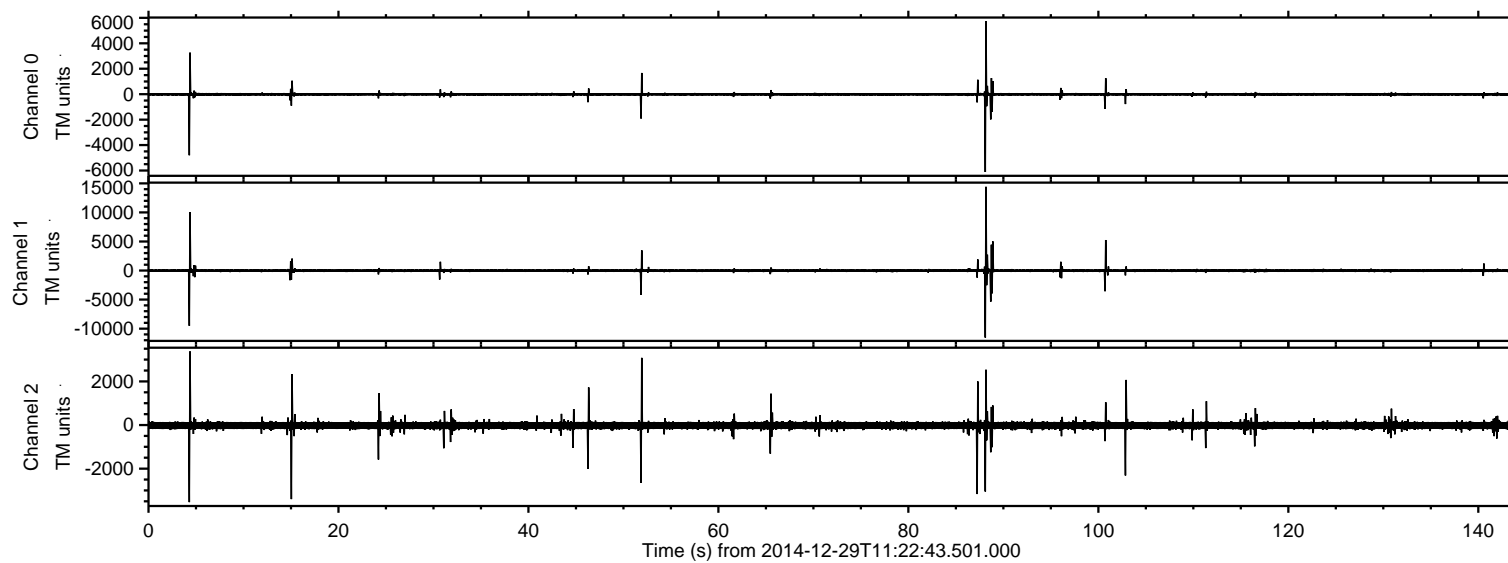


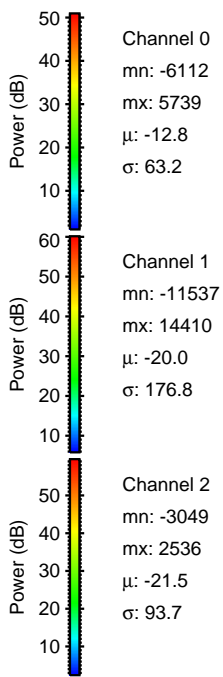
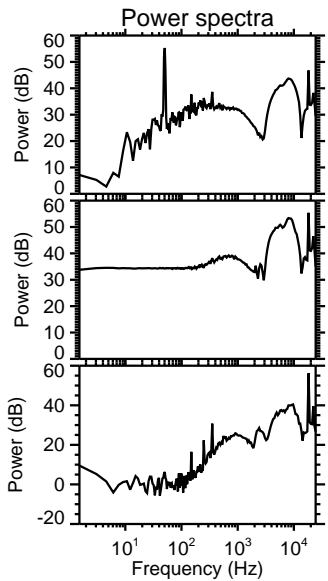
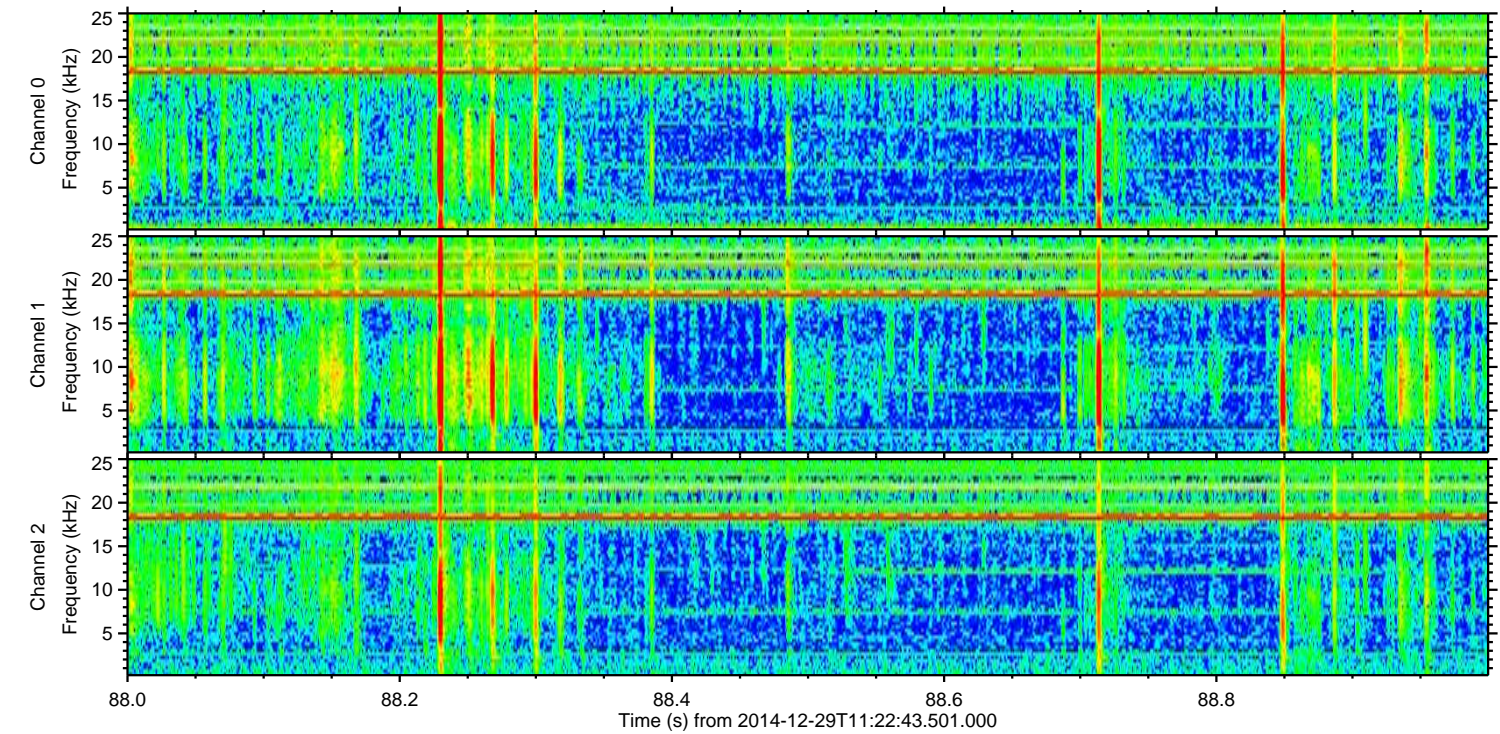
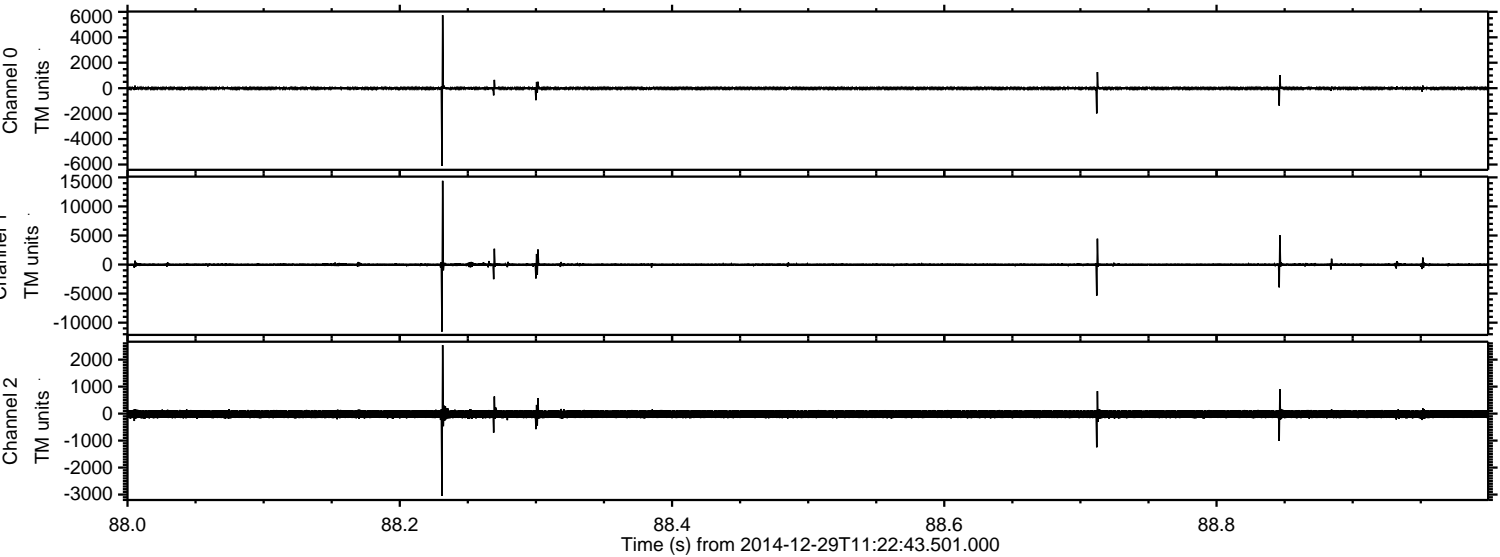
# ELMAVAN 3D WAVEFORMS (Measured data sampled at 50 kHz) 49739 packets of 144 samples from 2014-12-29T11:22:43.501.000.

Processed Fri Jan 2 07:56:34 2015 by ELM ver.2012-10-06 from 001\_\_elm20141229\_112242\_\_dat00.bin



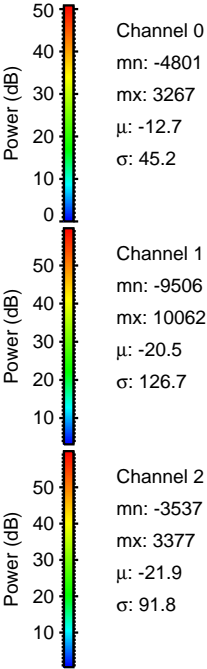
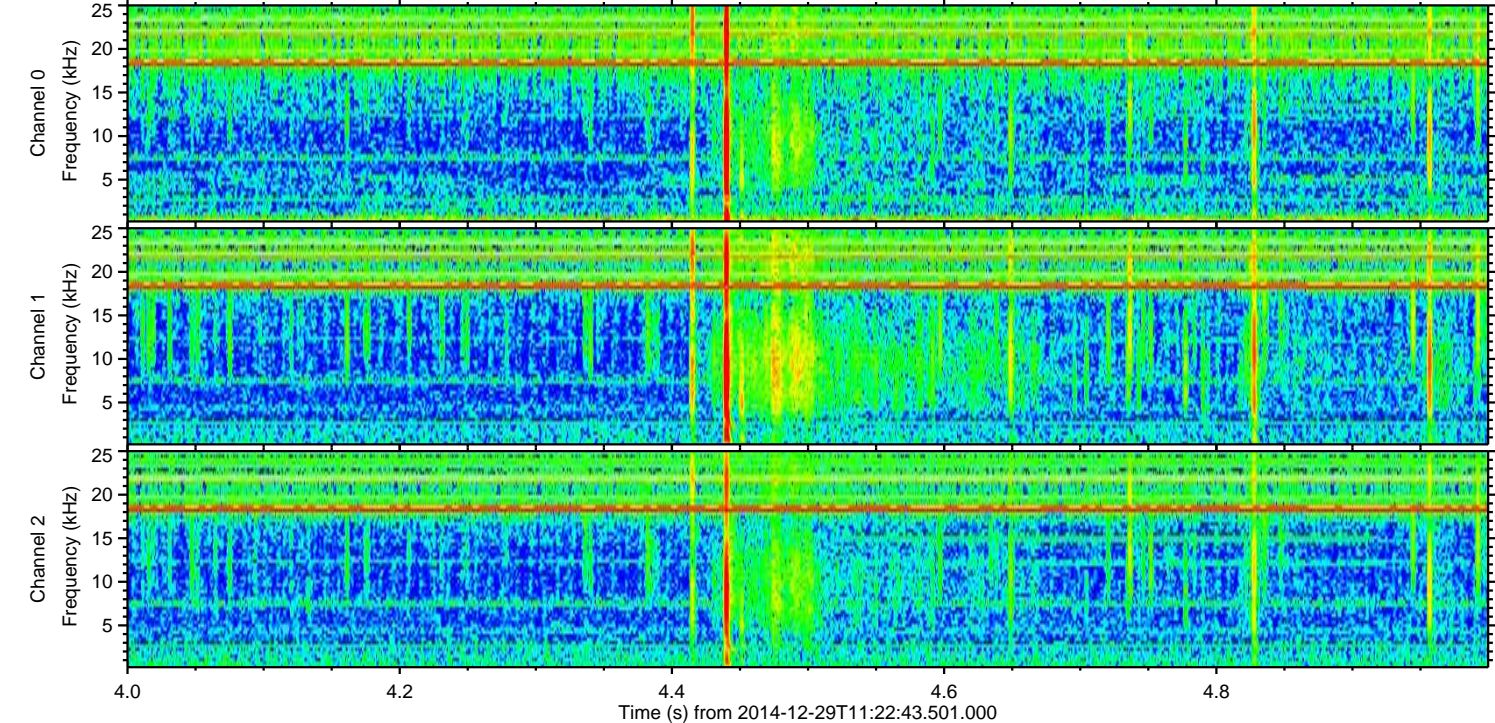
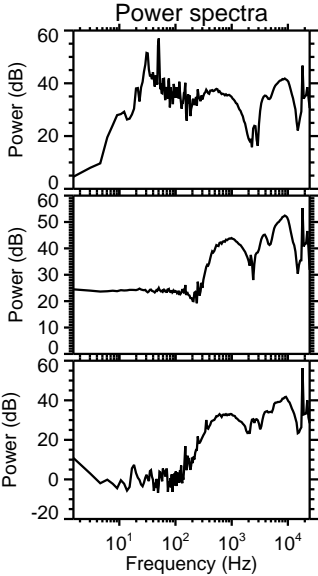
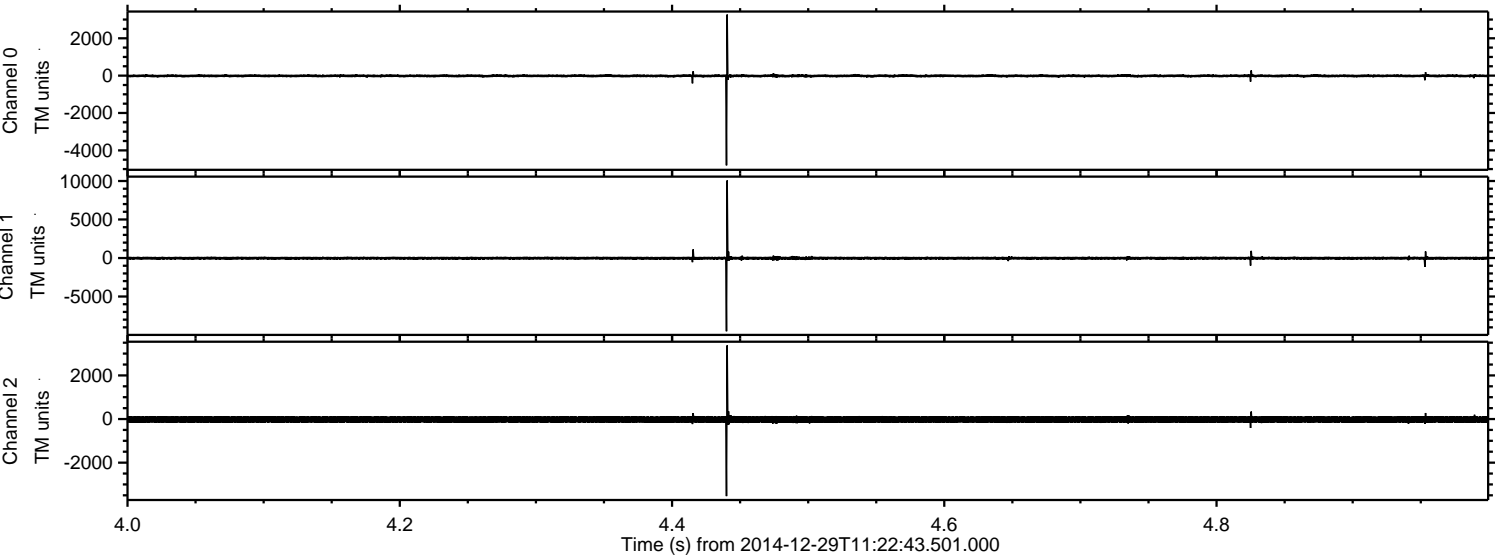


Processed Fri Jan 2 07:56:52 2015 by ELM ver.2012-10-06 from 001\_\_elm20141229\_112242\_\_dat00.bin





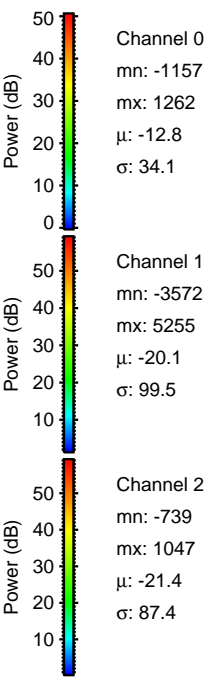
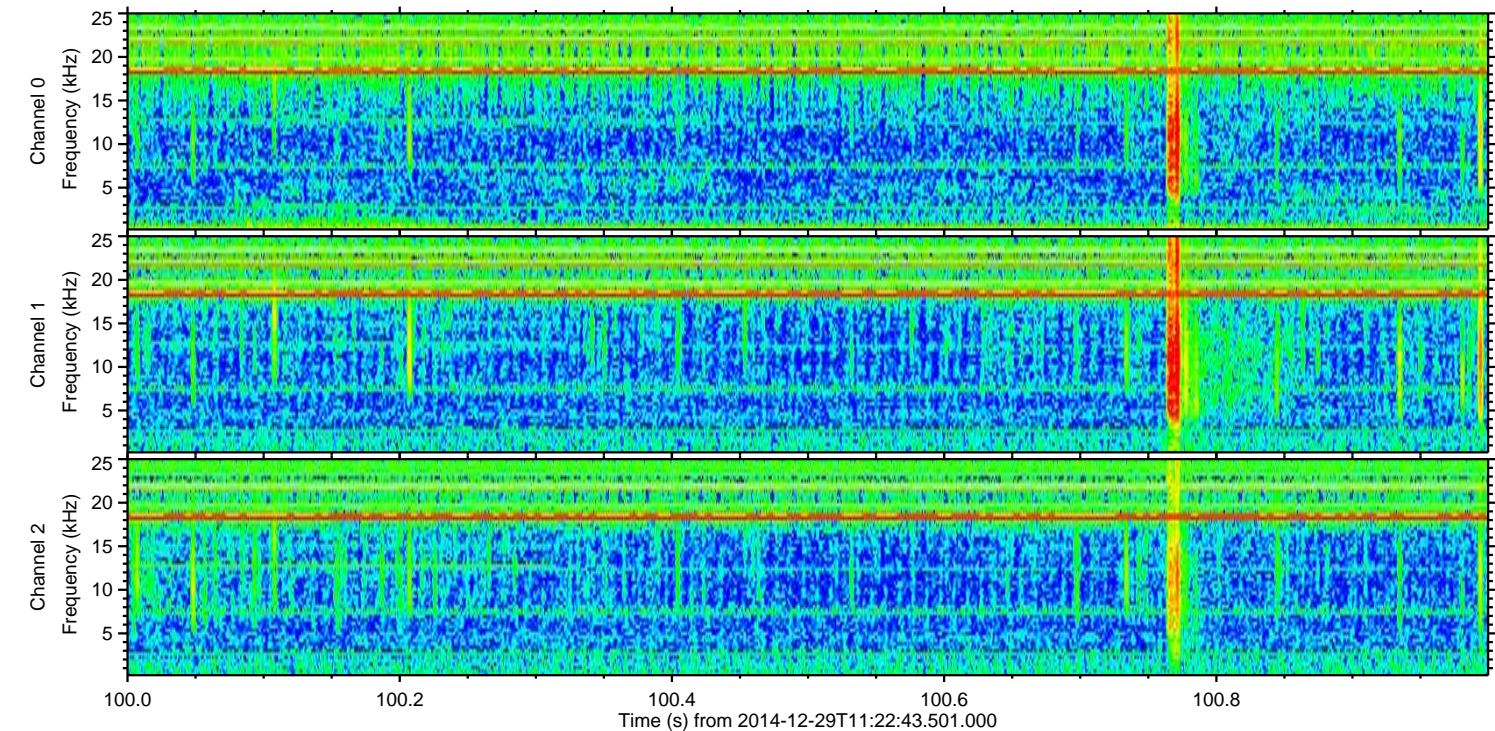
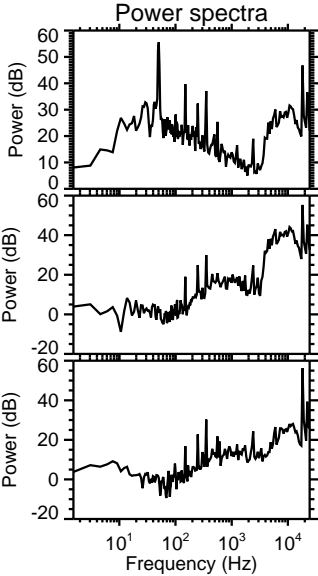
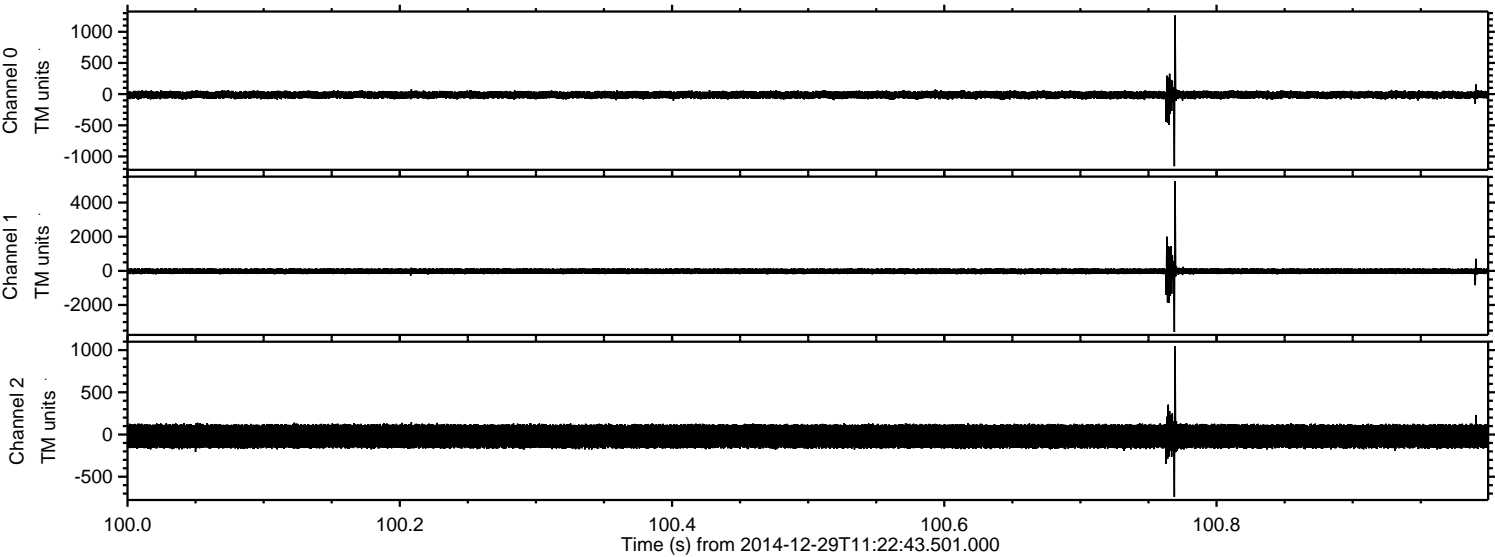
Processed Fri Jan 2 07:56:53 2015 by ELM ver.2012-10-06 from 001\_\_elm20141229\_112242\_\_dat00.bin





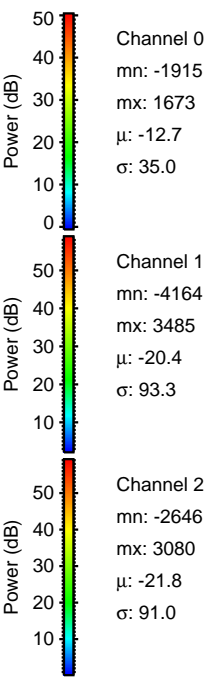
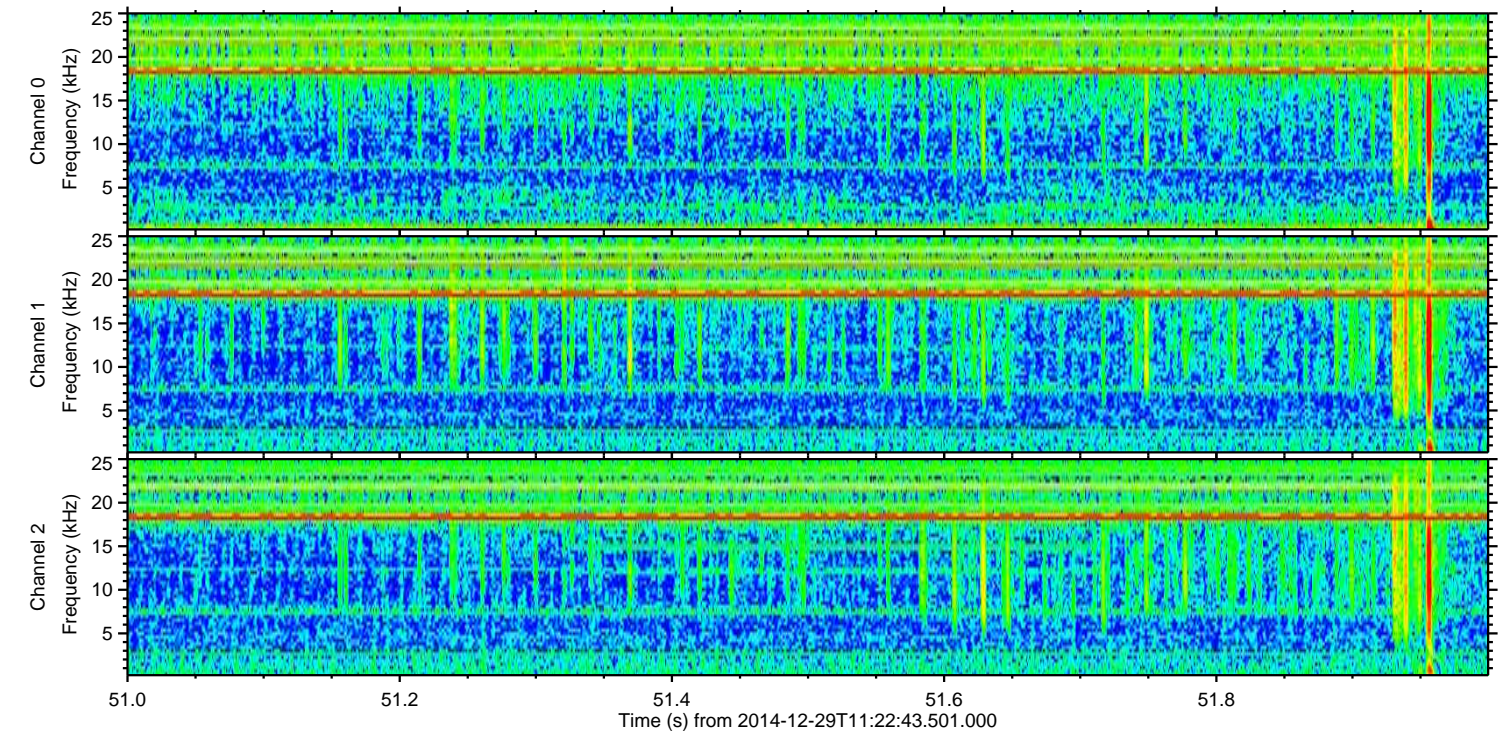
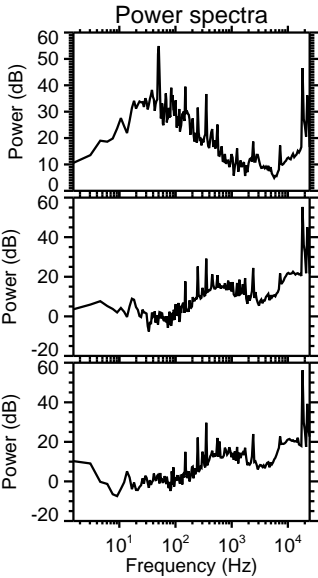
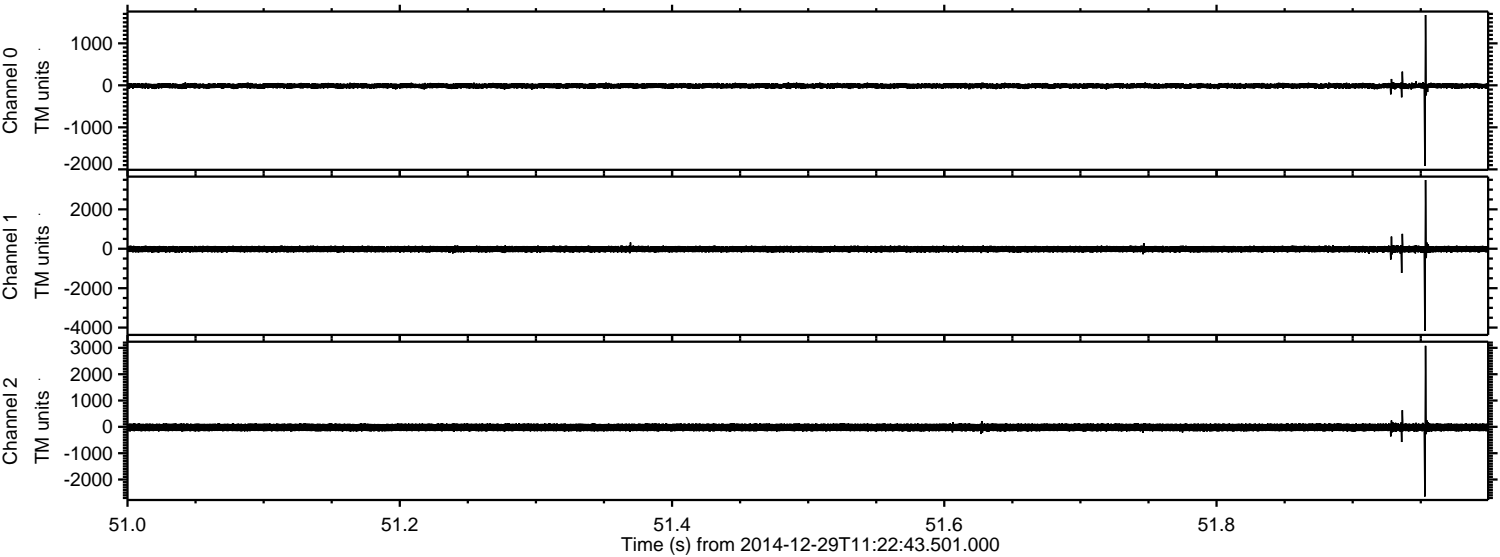
ELMAVAN 3D WAVEFORMS (Measured data sampled at 50 kHz) 49739 packets of 144 samples from 2014-12-29T11:22:43.501.000. Part 101/144

Processed Fri Jan 2 07:56:54 2015 by ELM ver.2012-10-06 from 001\_\_elm20141229\_112242\_\_dat00.bin



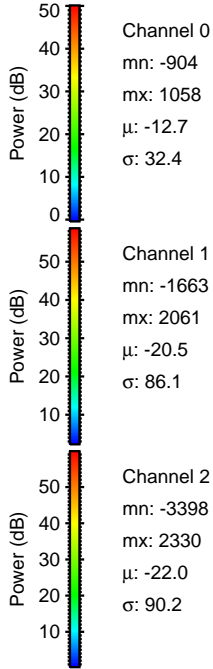
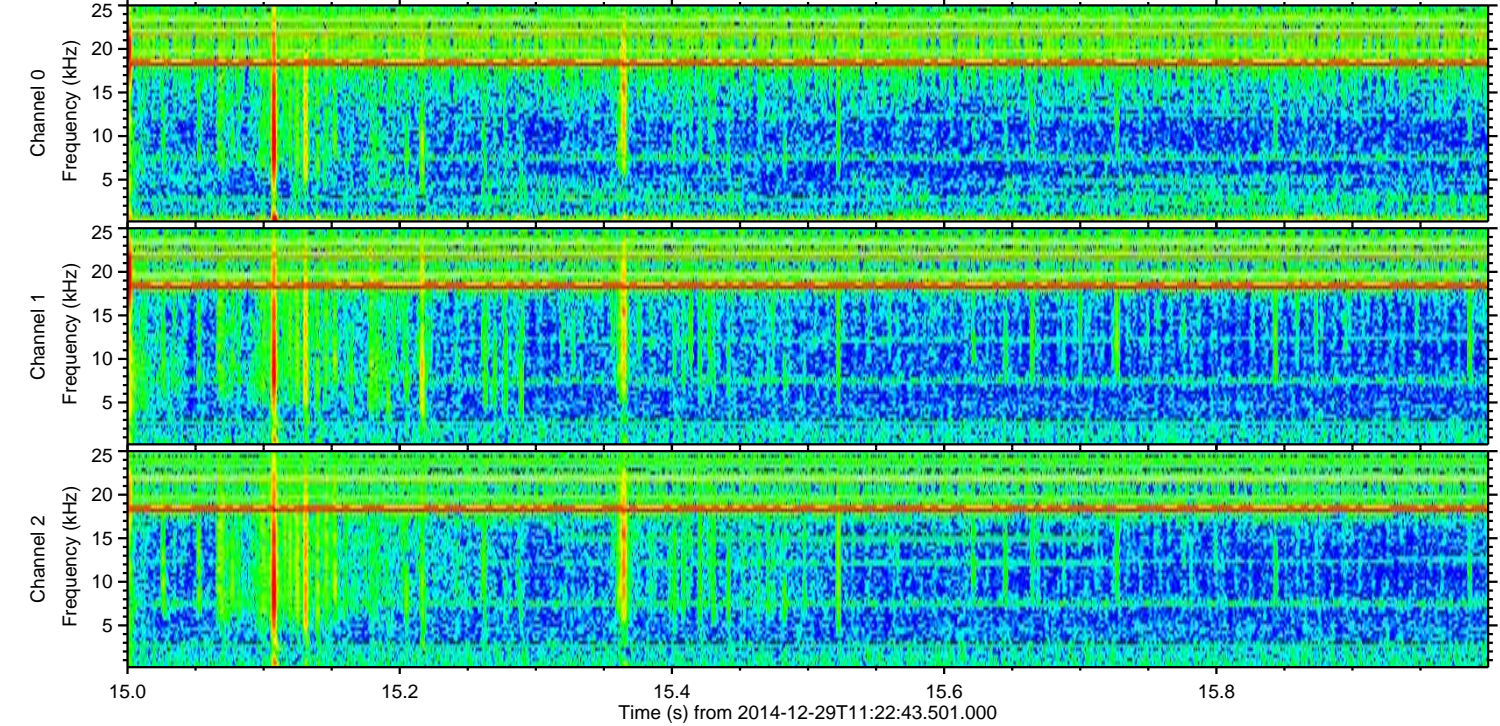
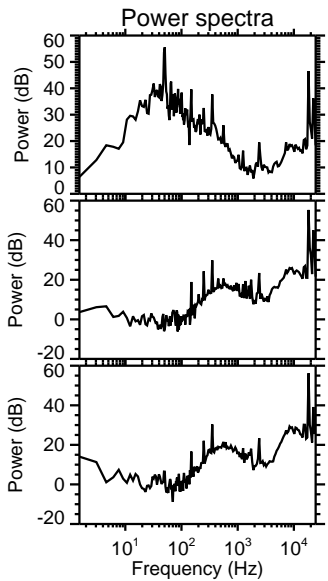
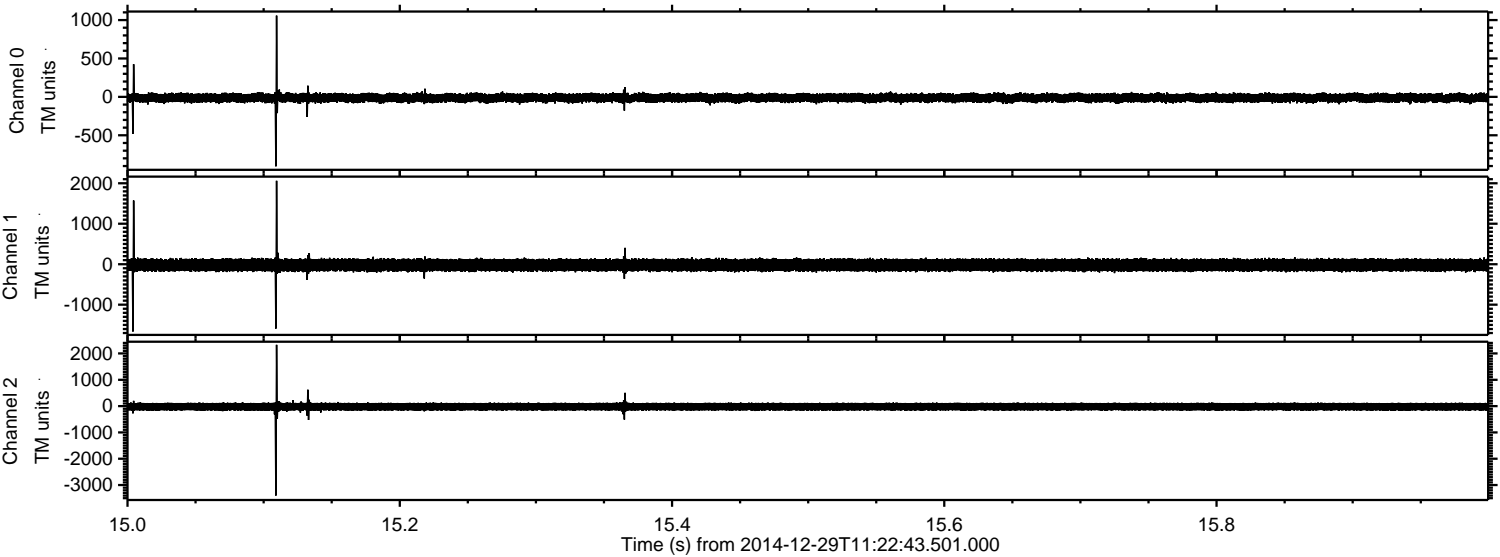


Processed Fri Jan 2 07:56:55 2015 by ELM ver.2012-10-06 from 001\_\_elm20141229\_112242\_\_dat00.bin



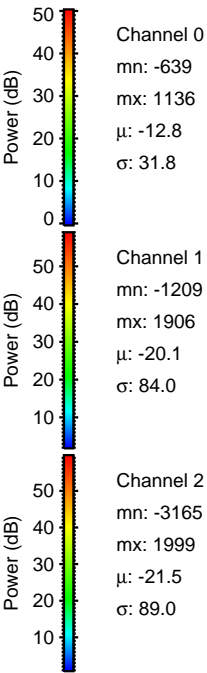
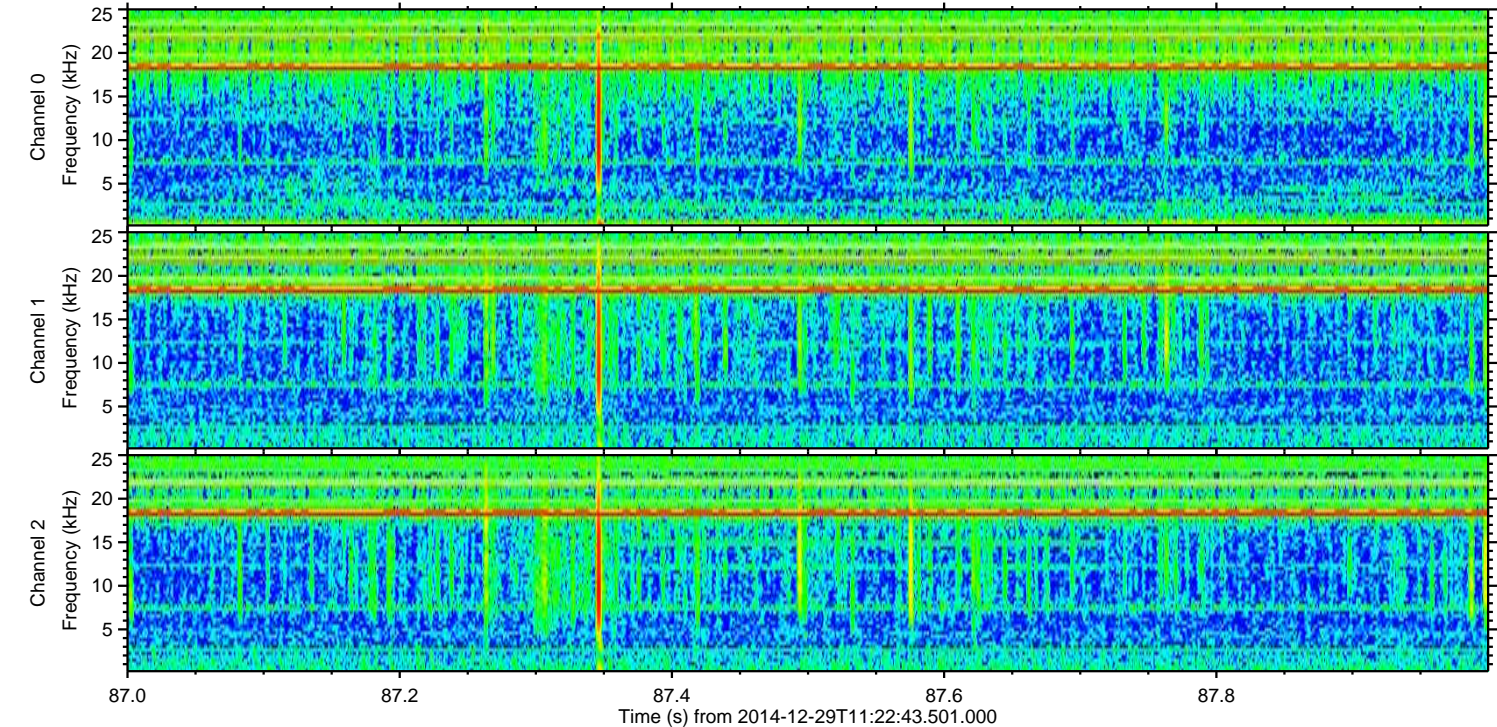
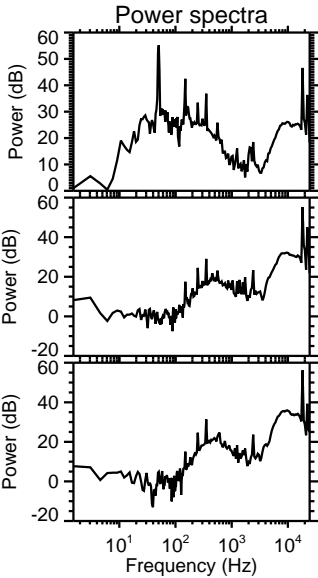
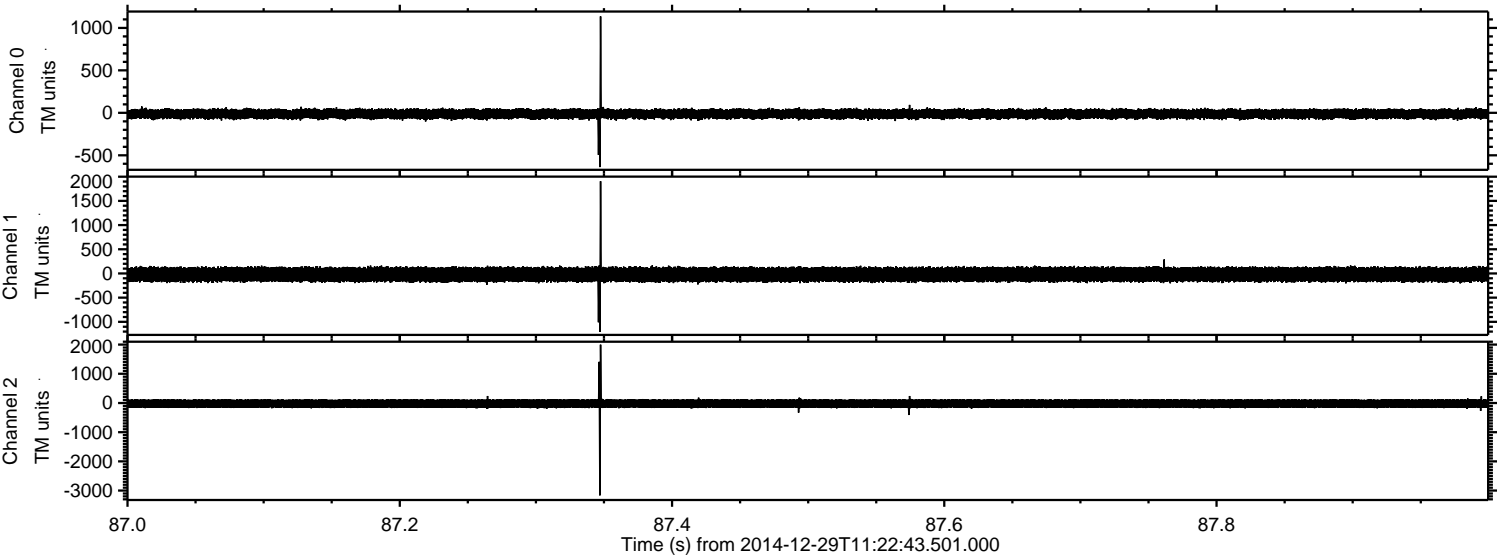


Processed Fri Jan 2 07:56:56 2015 by ELM ver.2012-10-06 from 001\_\_elm20141229\_112242\_\_dat00.bin





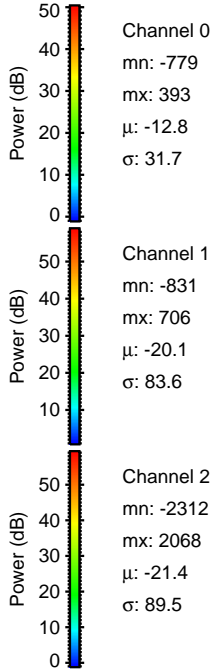
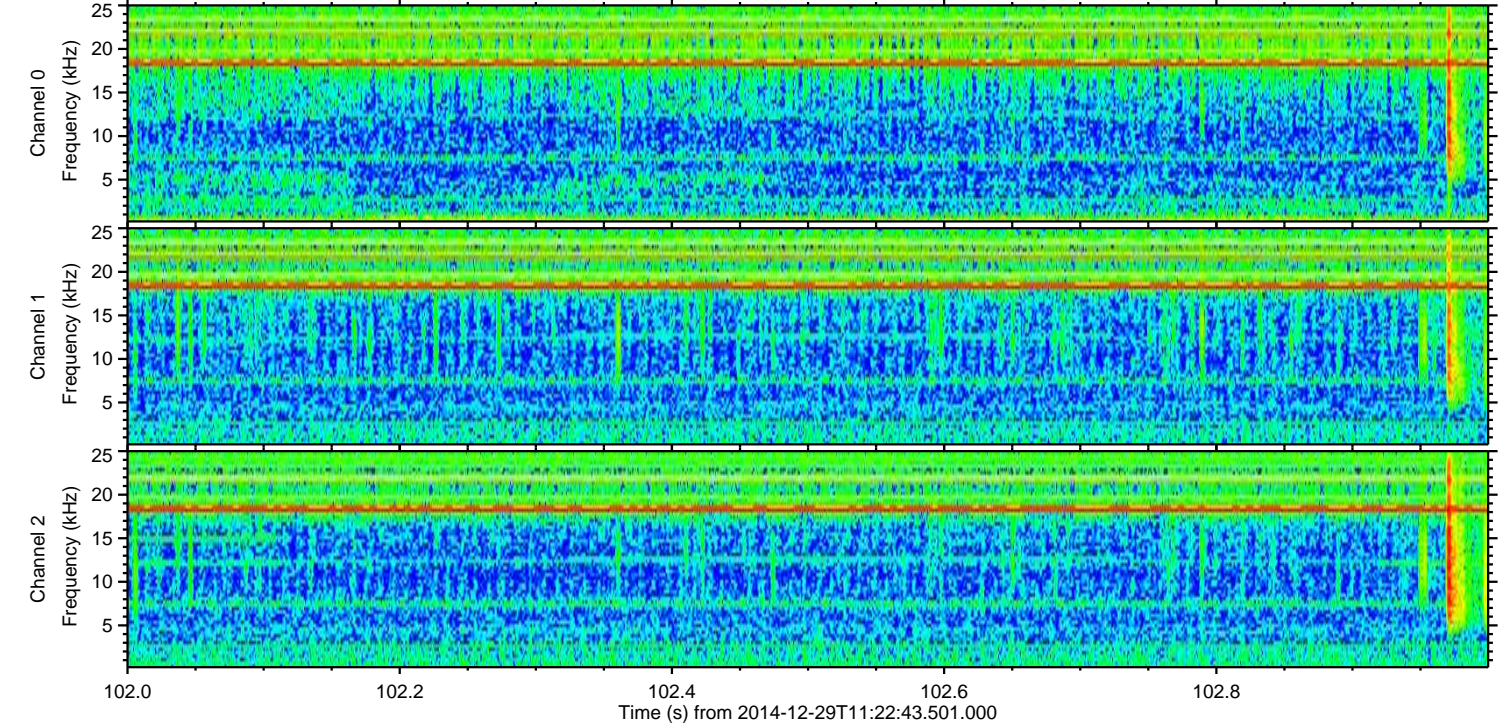
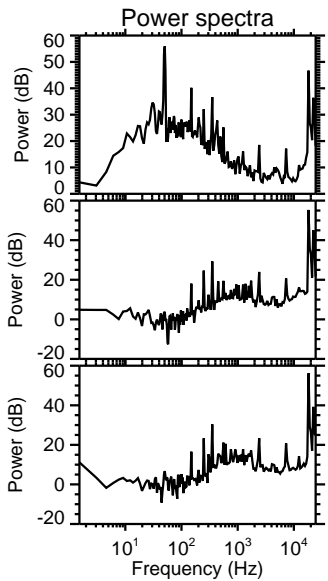
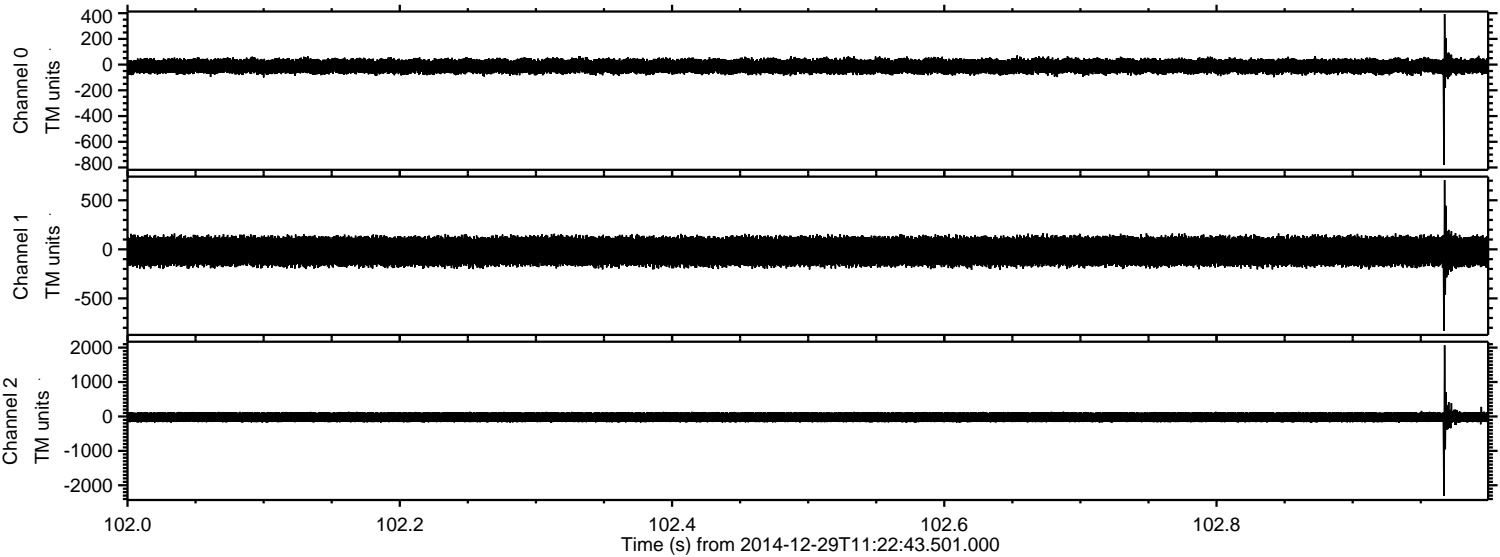
Processed Fri Jan 2 07:56:57 2015 by ELM ver.2012-10-06 from 001\_\_elm20141229\_112242\_\_dat00.bin





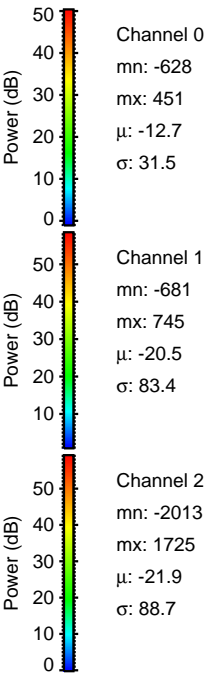
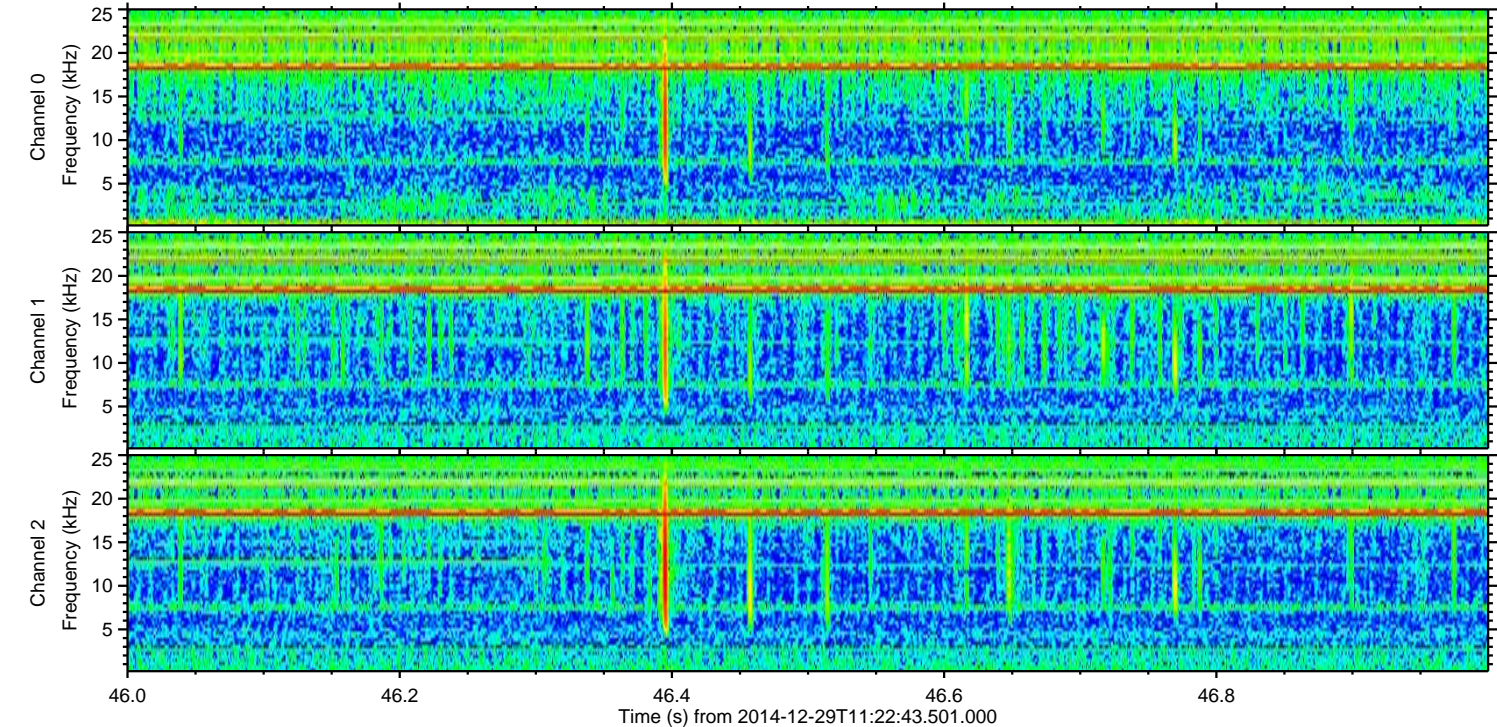
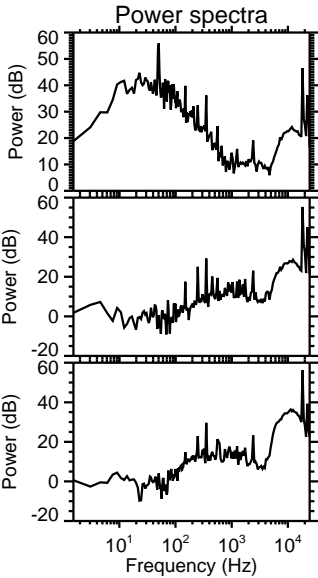
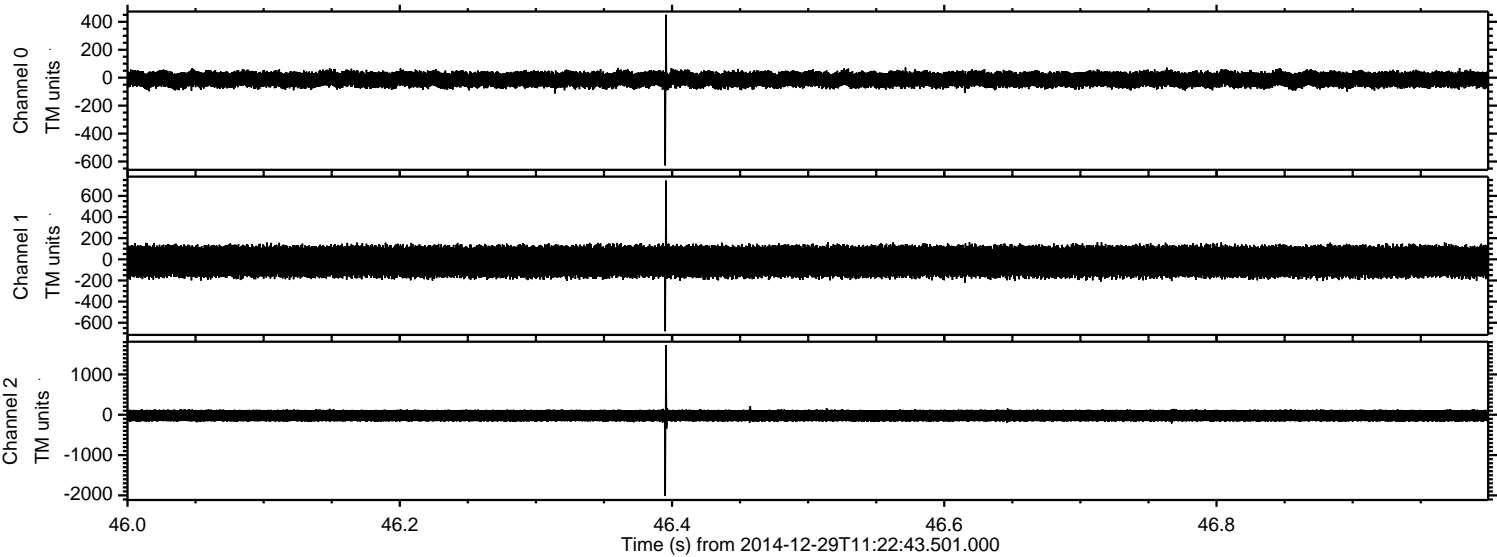
ELMAVAN 3D WAVEFORMS (Measured data sampled at 50 kHz) 49739 packets of 144 samples from 2014-12-29T11:22:43.501.000. Part 103/144

Processed Fri Jan 2 07:56:58 2015 by ELM ver.2012-10-06 from 001\_\_elm20141229\_112242\_\_dat00.bin





Processed Fri Jan 2 07:56:59 2015 by ELM ver.2012-10-06 from 001\_\_elm20141229\_112242\_\_dat00.bin





Processed Fri Jan 2 07:57:00 2015 by ELM ver.2012-10-06 from 001\_\_elm20141229\_112242\_\_dat00.bin

