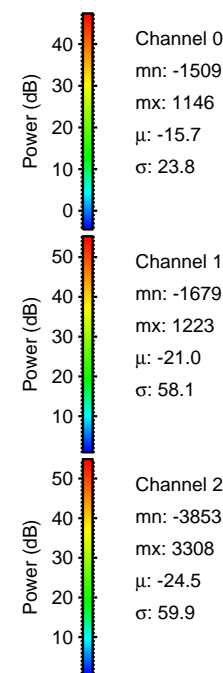
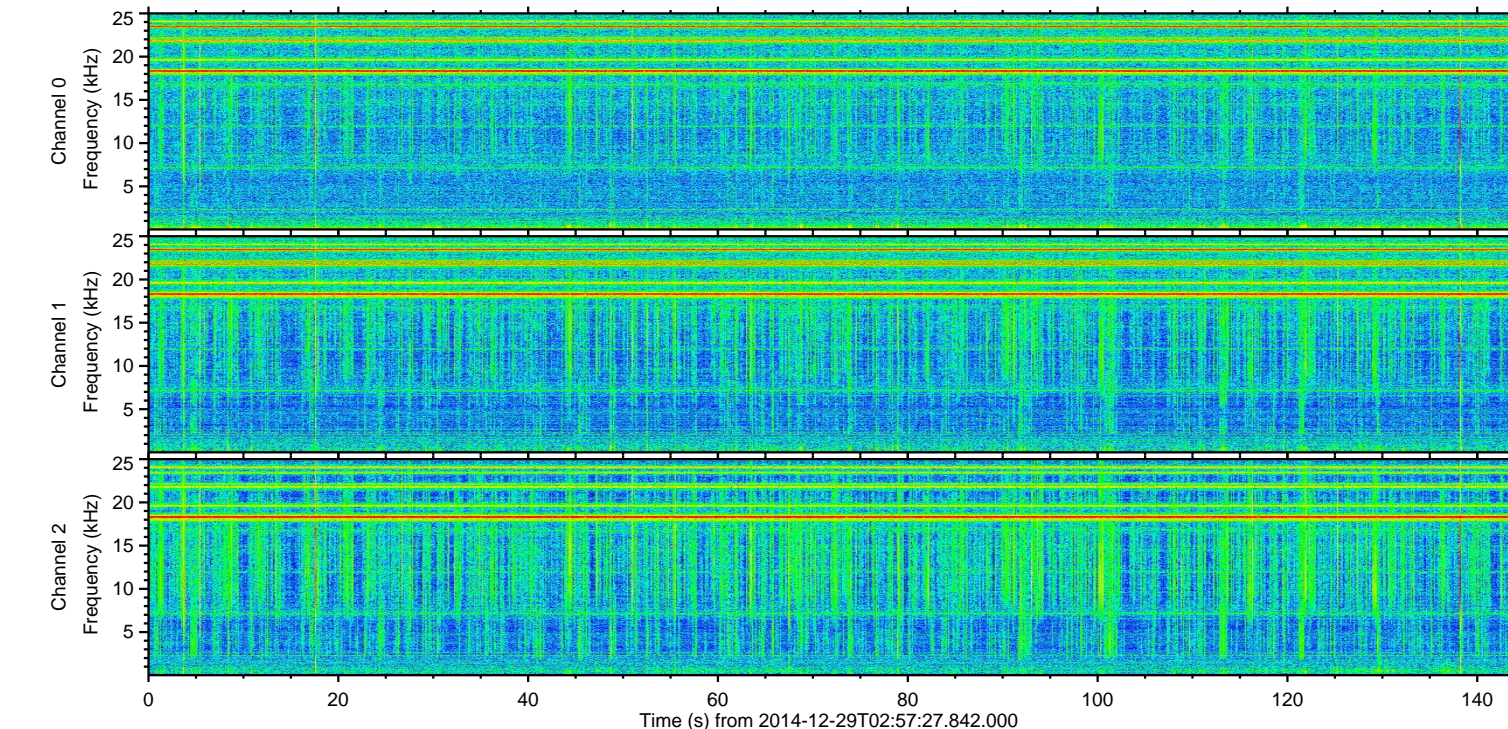
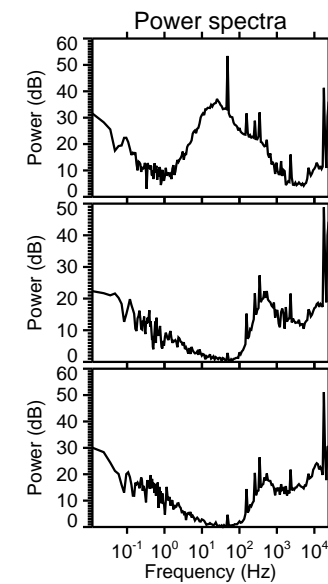
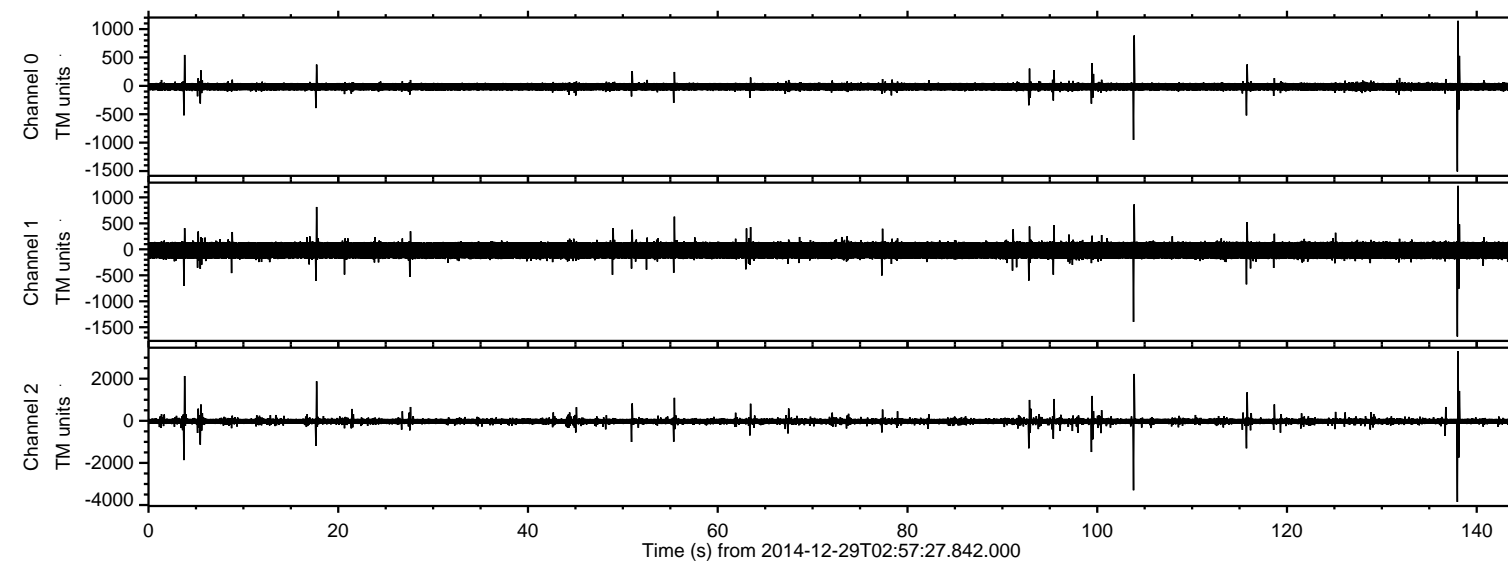


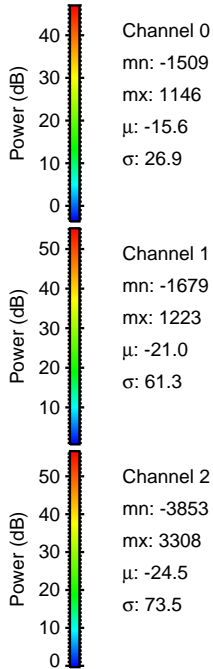
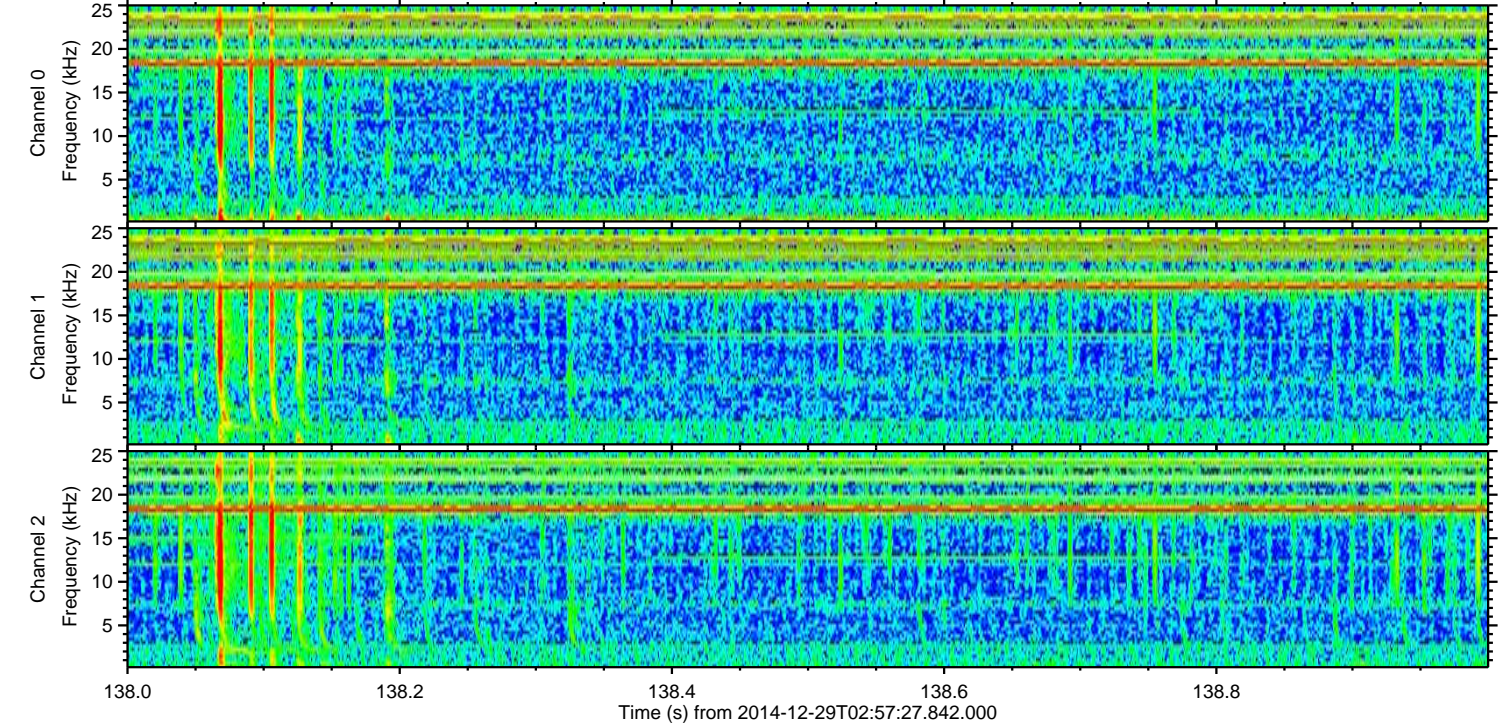
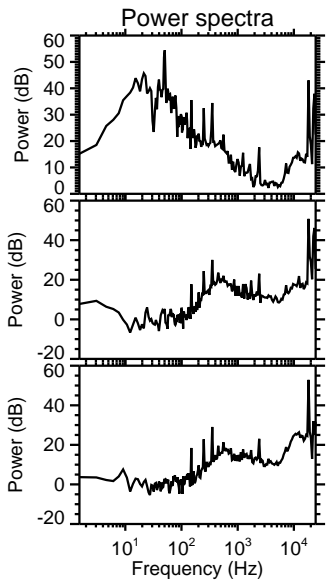
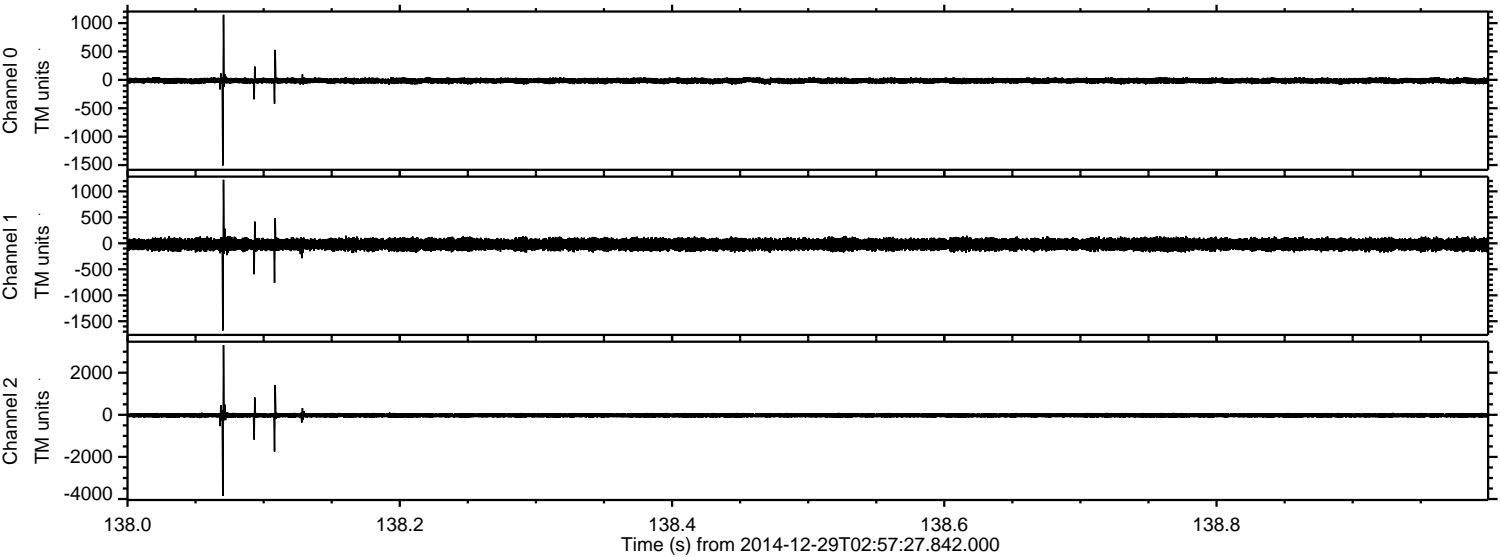
ELMAVAN 3D WAVEFORMS (Measured data sampled at 50 kHz) 49798 packets of 144 samples from 2014-12-29T02:57:27.842.000.

Processed Fri Jan 2 02:19:03 2015 by ELM ver.2012-10-06 from 001__elm20141229_025726__dat00.bin



ELMAVAN 3D WAVEFORMS (Measured data sampled at 50 kHz) 49798 packets of 144 samples from 2014-12-29T02:57:27.842.000. Part 139/144

Processed Fri Jan 2 02:19:16 2015 by ELM ver.2012-10-06 from 001__elm20141229_025726__dat00.bin



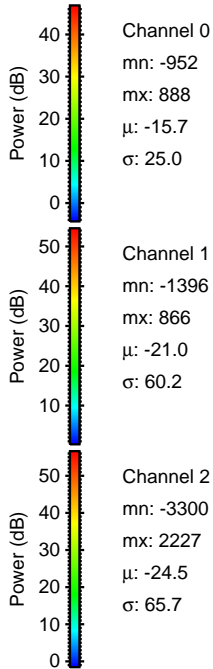
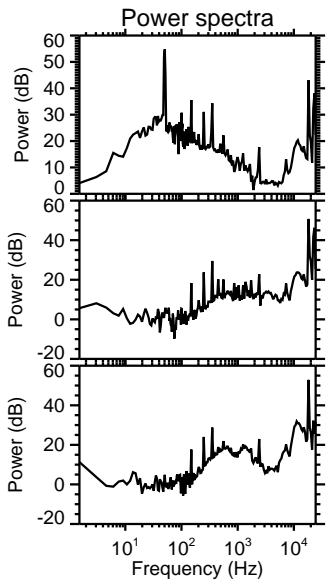
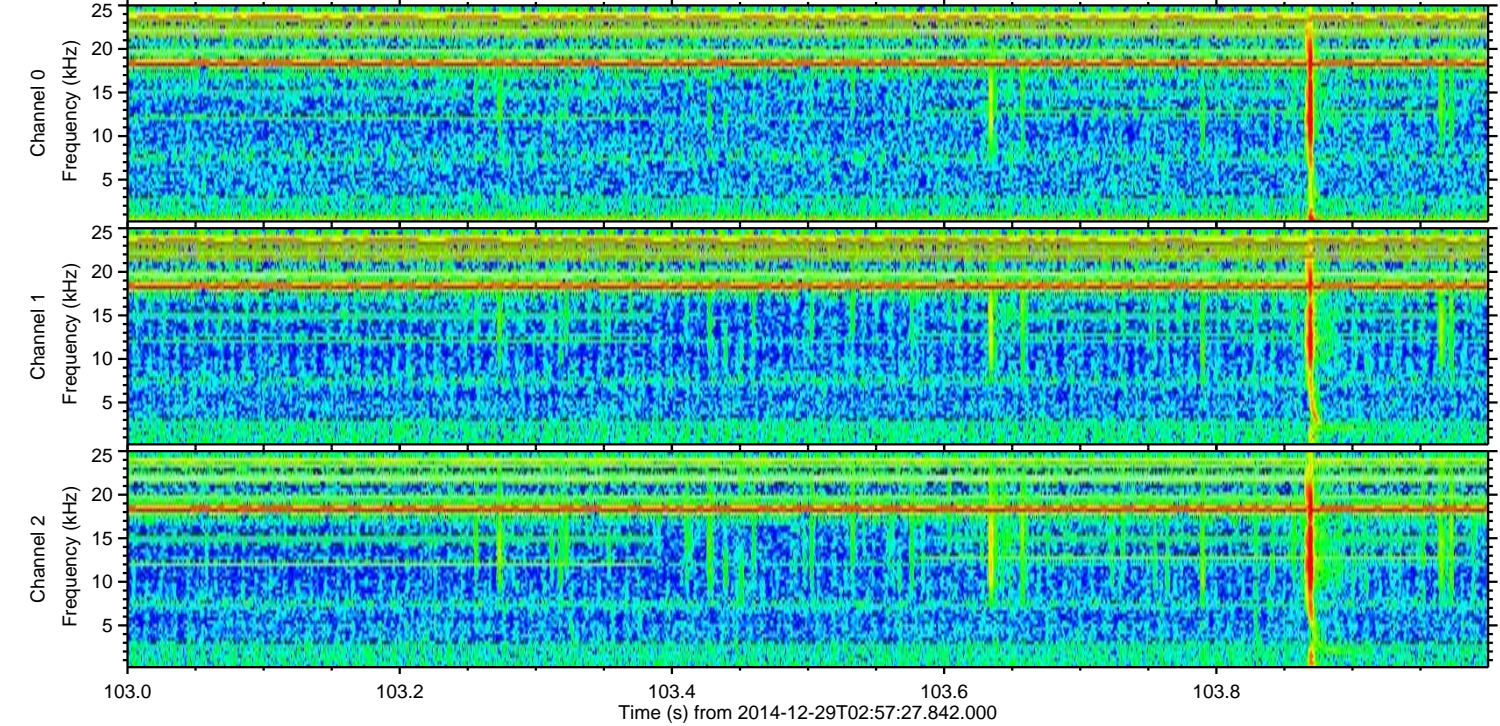
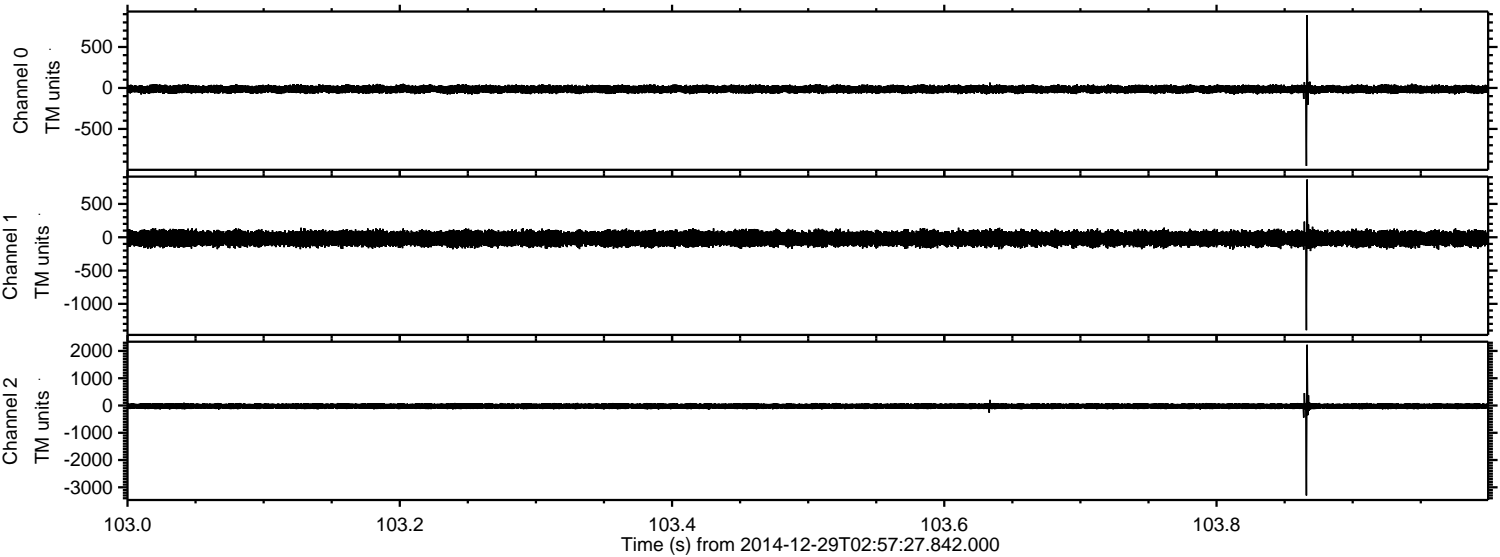
Channel 0
mn: -1509
mx: 1146
 μ : -15.6
 σ : 26.9

Channel 1
mn: -1679
mx: 1223
 μ : -21.0
 σ : 61.3

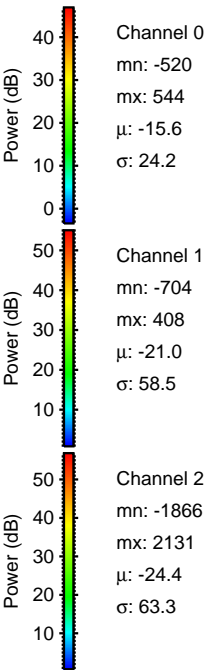
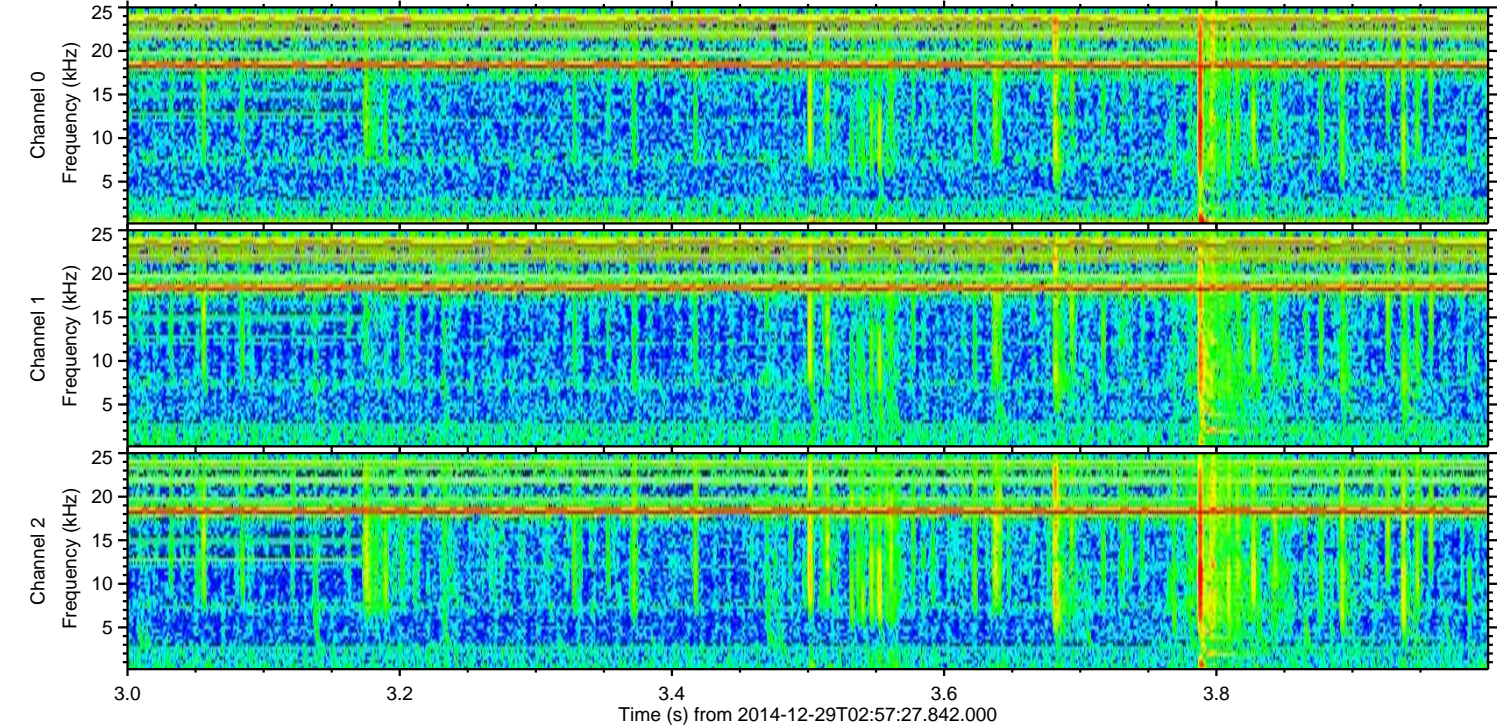
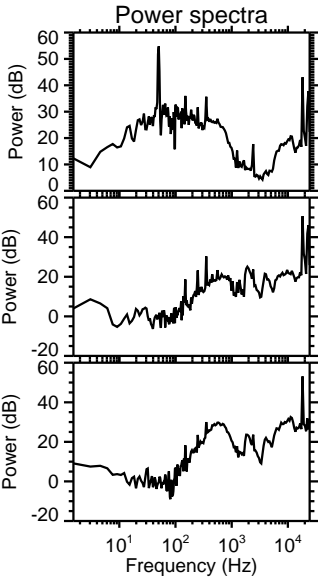
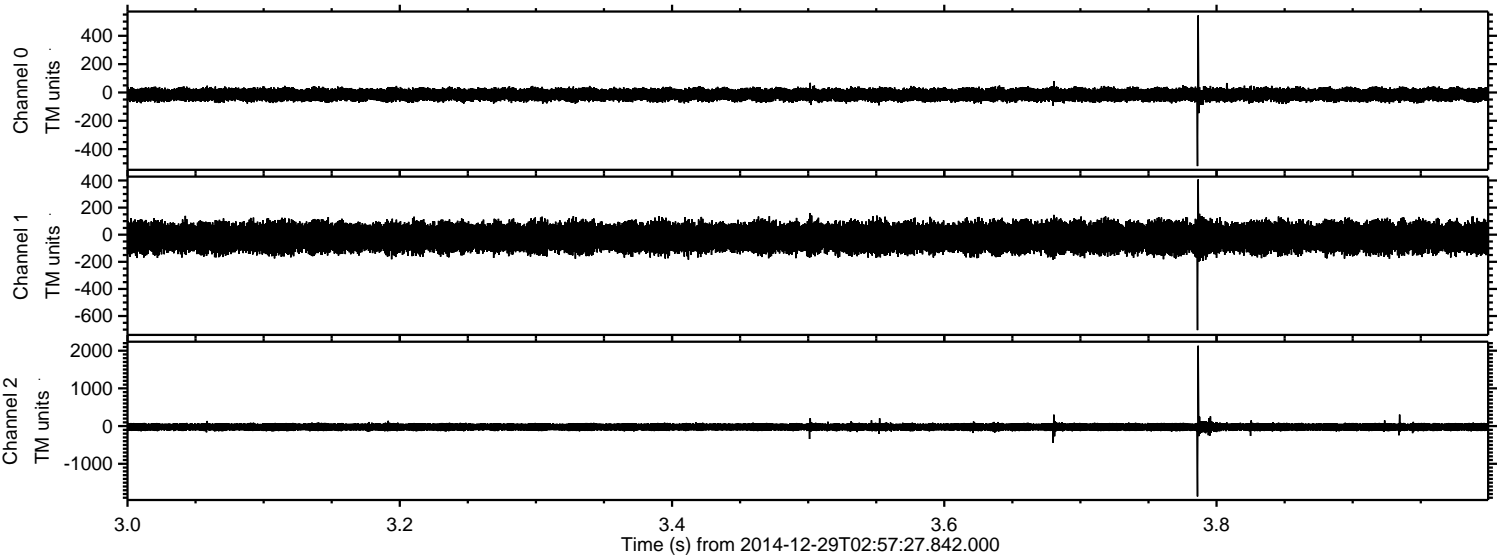
Channel 2
mn: -3853
mx: 3308
 μ : -24.5
 σ : 73.5

ELMAVAN 3D WAVEFORMS (Measured data sampled at 50 kHz) 49798 packets of 144 samples from 2014-12-29T02:57:27.842.000. Part 104/144

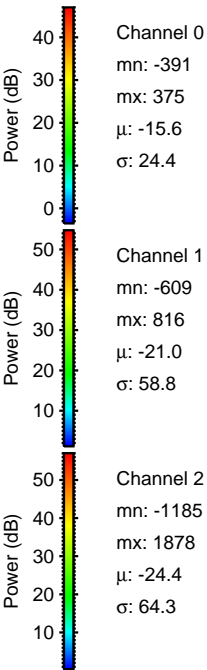
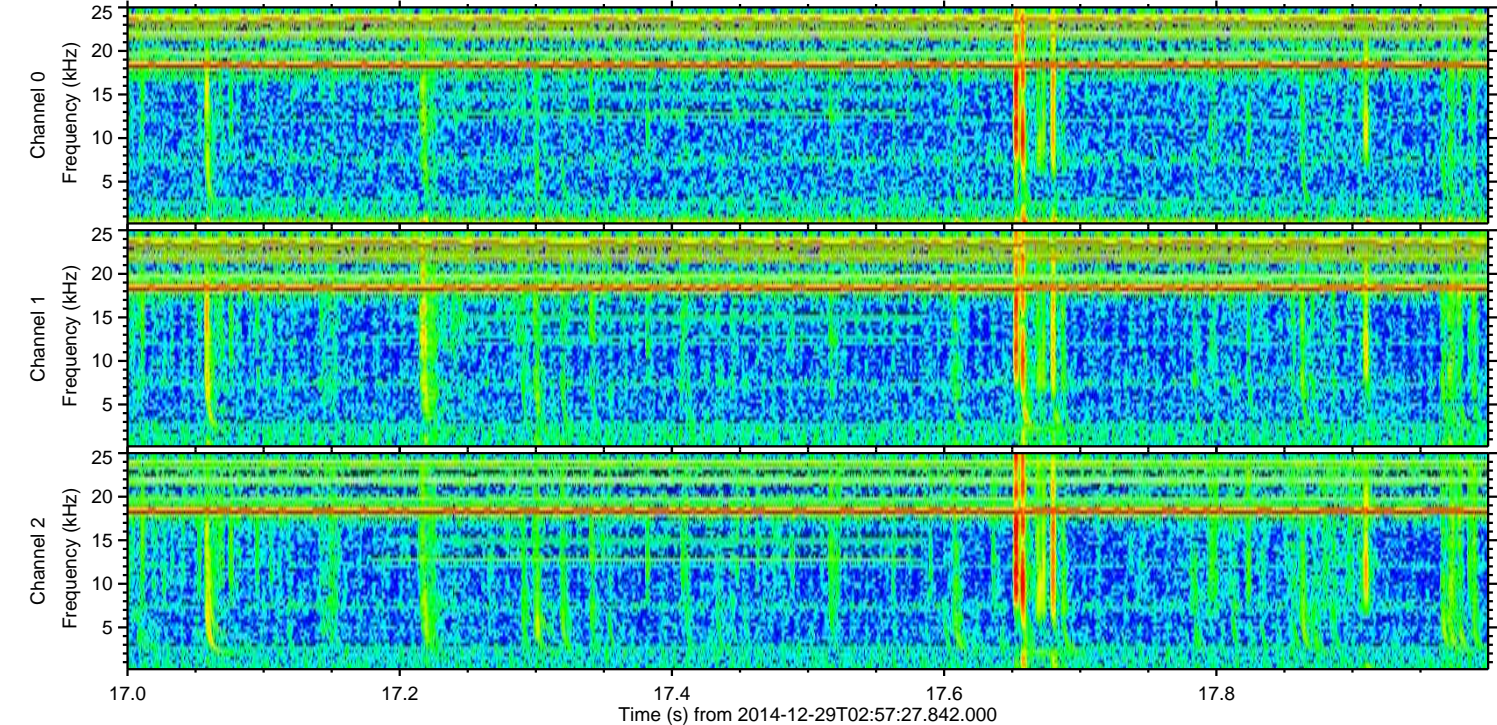
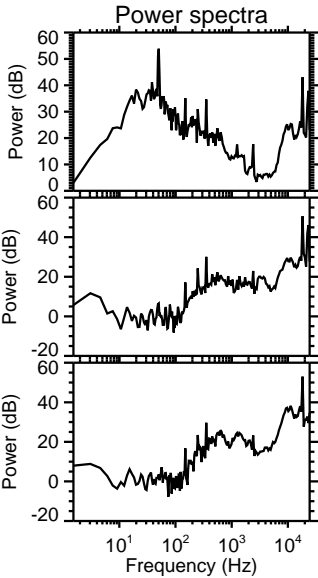
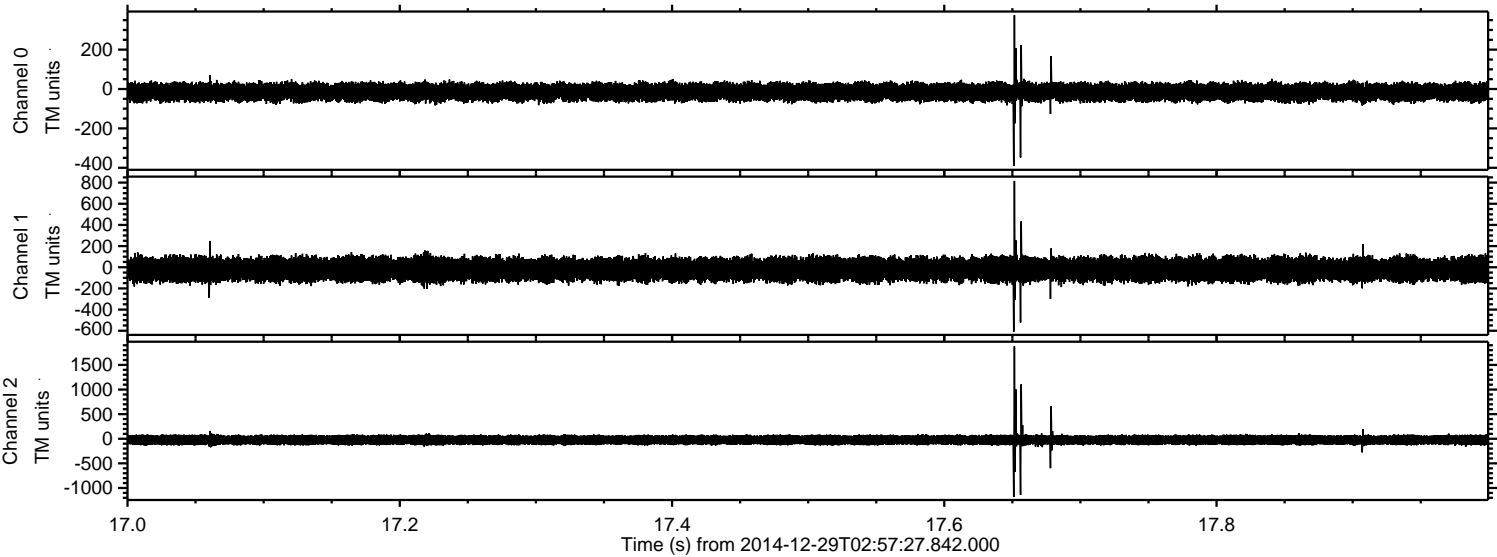
Processed Fri Jan 2 02:19:17 2015 by ELM ver.2012-10-06 from 001__elm20141229_025726__dat00.bin



Processed Fri Jan 2 02:19:18 2015 by ELM ver.2012-10-06 from 001__elm20141229_025726__dat00.bin

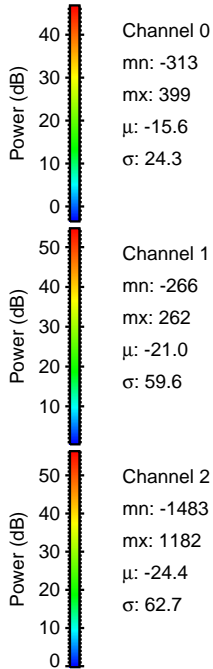
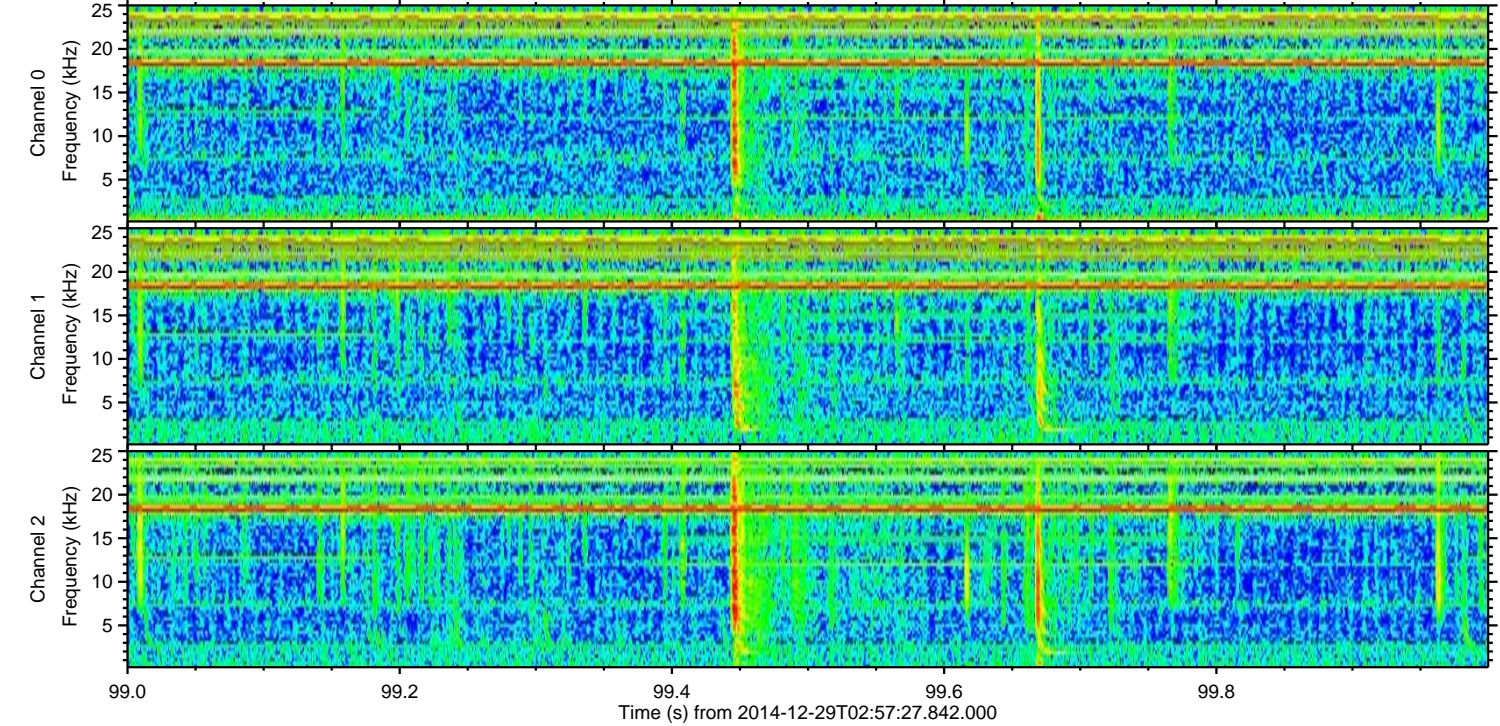
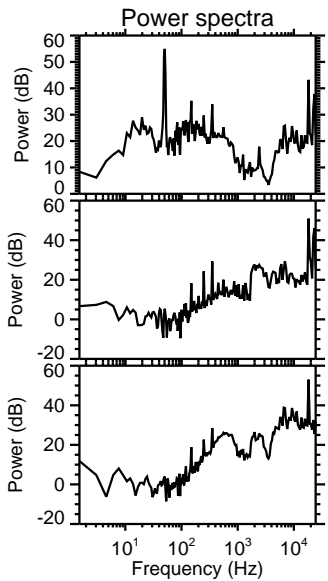
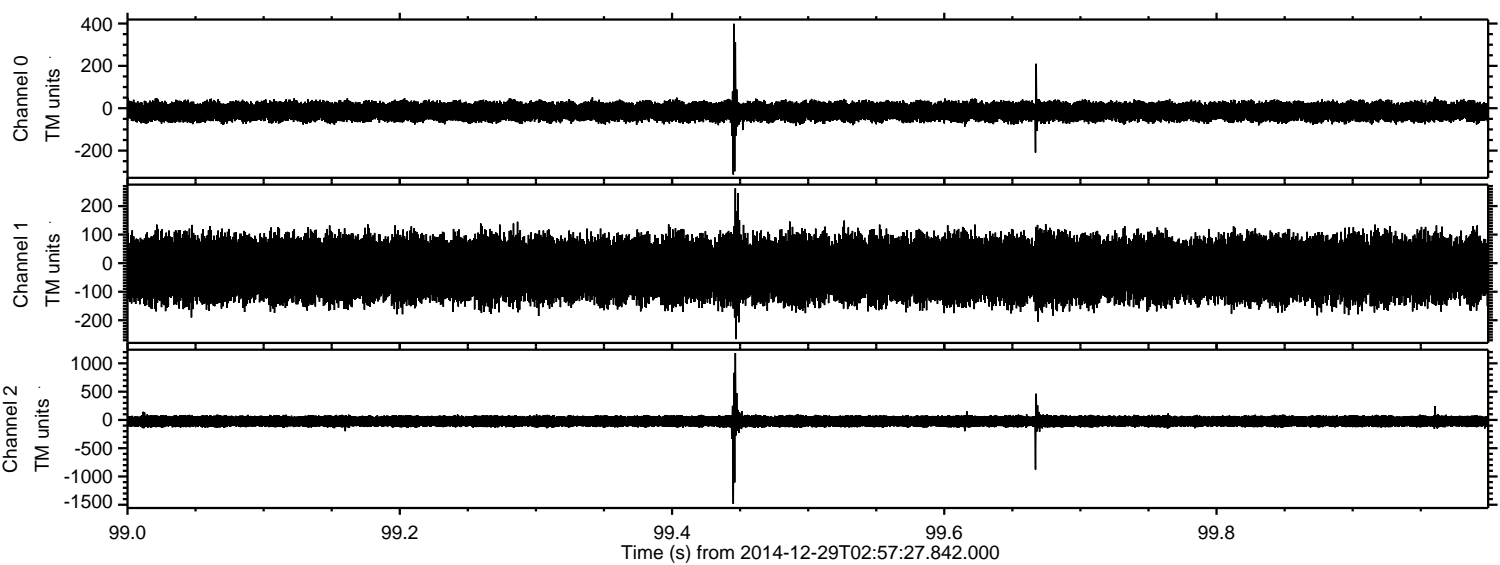


Processed Fri Jan 2 02:19:20 2015 by ELM ver.2012-10-06 from 001__elm20141229_025726__dat00.bin



ELMAVAN 3D WAVEFORMS (Measured data sampled at 50 kHz) 49798 packets of 144 samples from 2014-12-29T02:57:27.842.000. Part 100/144

Processed Fri Jan 2 02:19:21 2015 by ELM ver.2012-10-06 from 001__elm20141229_025726__dat00.bin



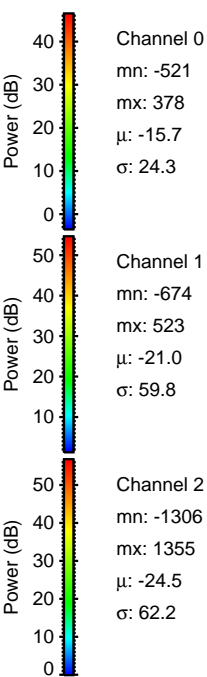
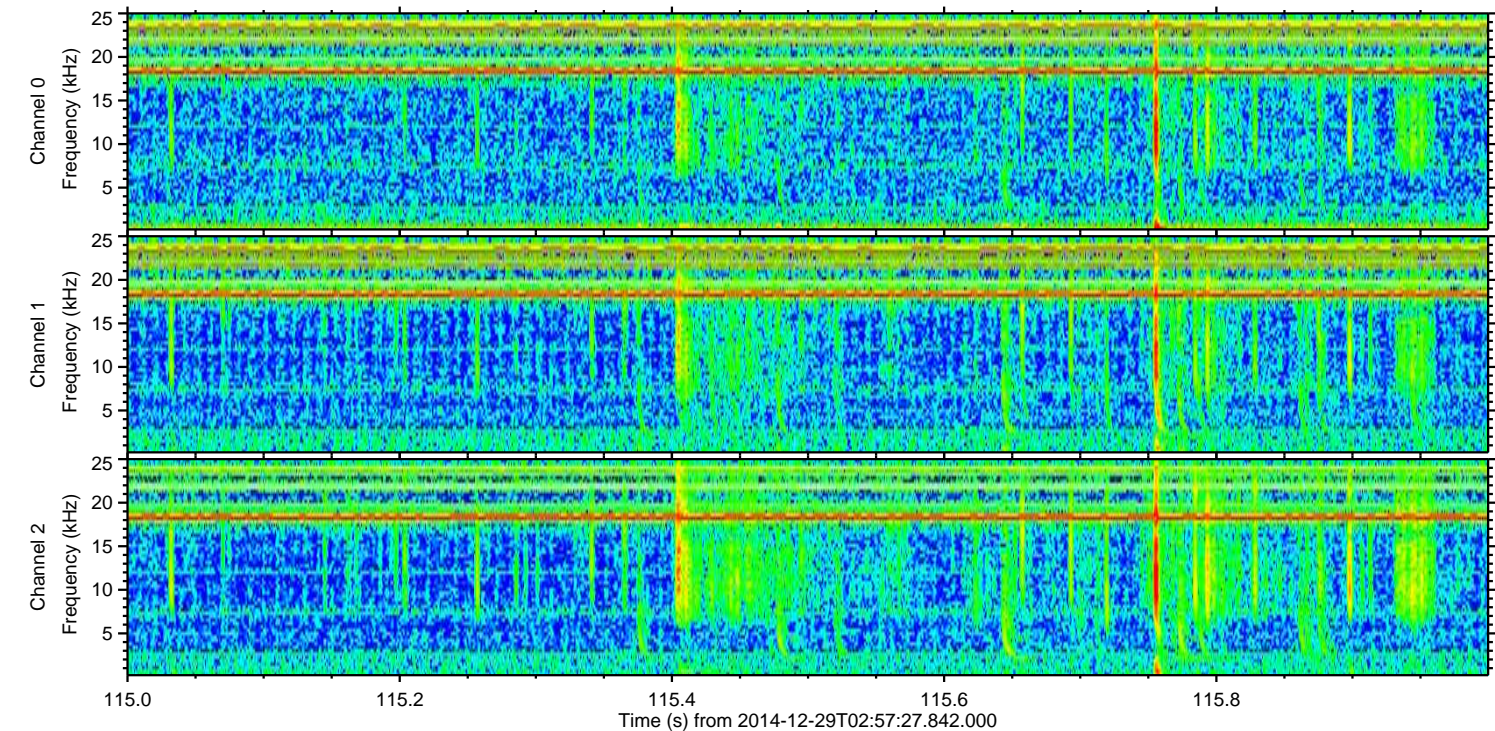
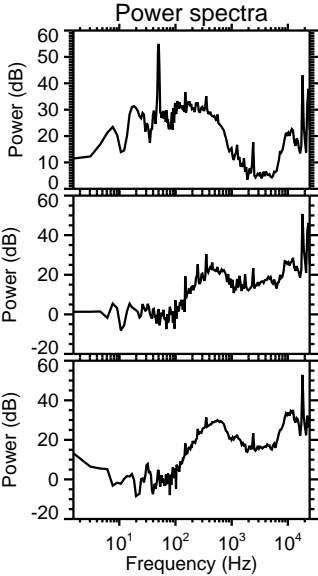
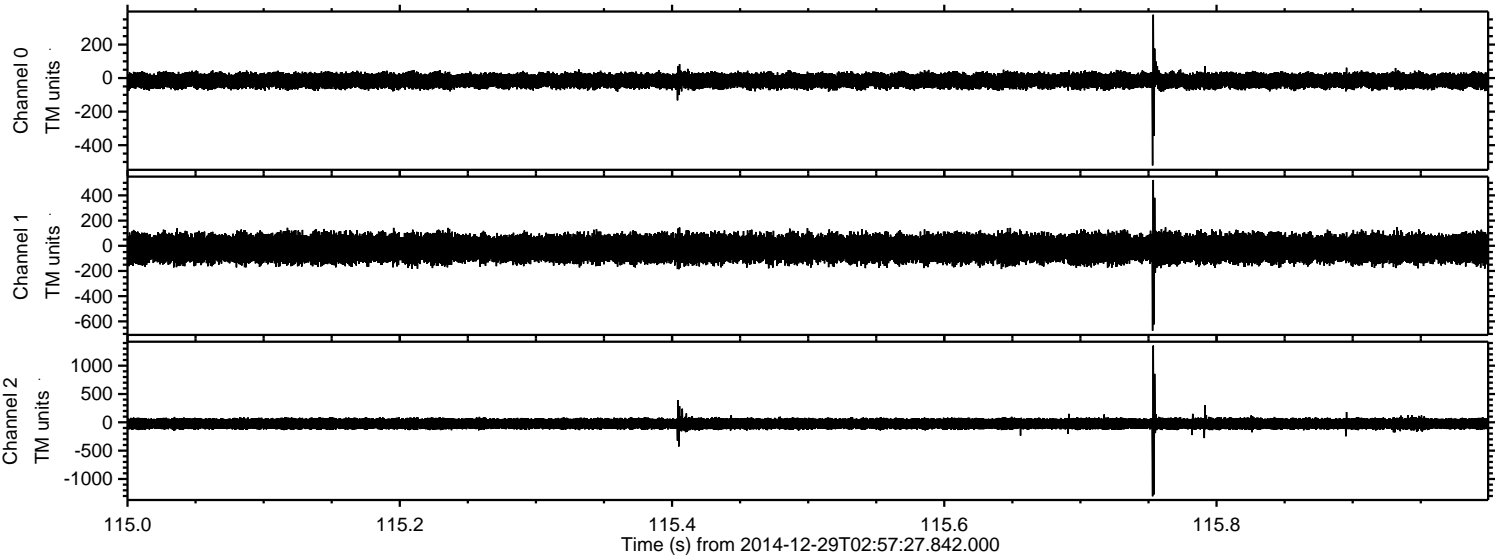
Channel 0
mn: -313
mx: 399
 μ : -15.6
 σ : 24.3

Channel 1
mn: -266
mx: 262
 μ : -21.0
 σ : 59.6

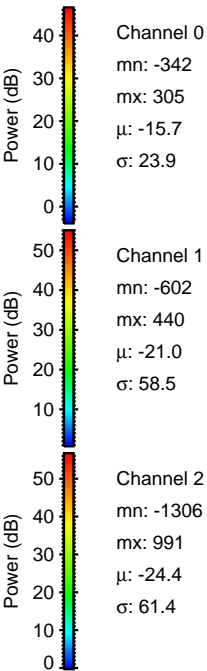
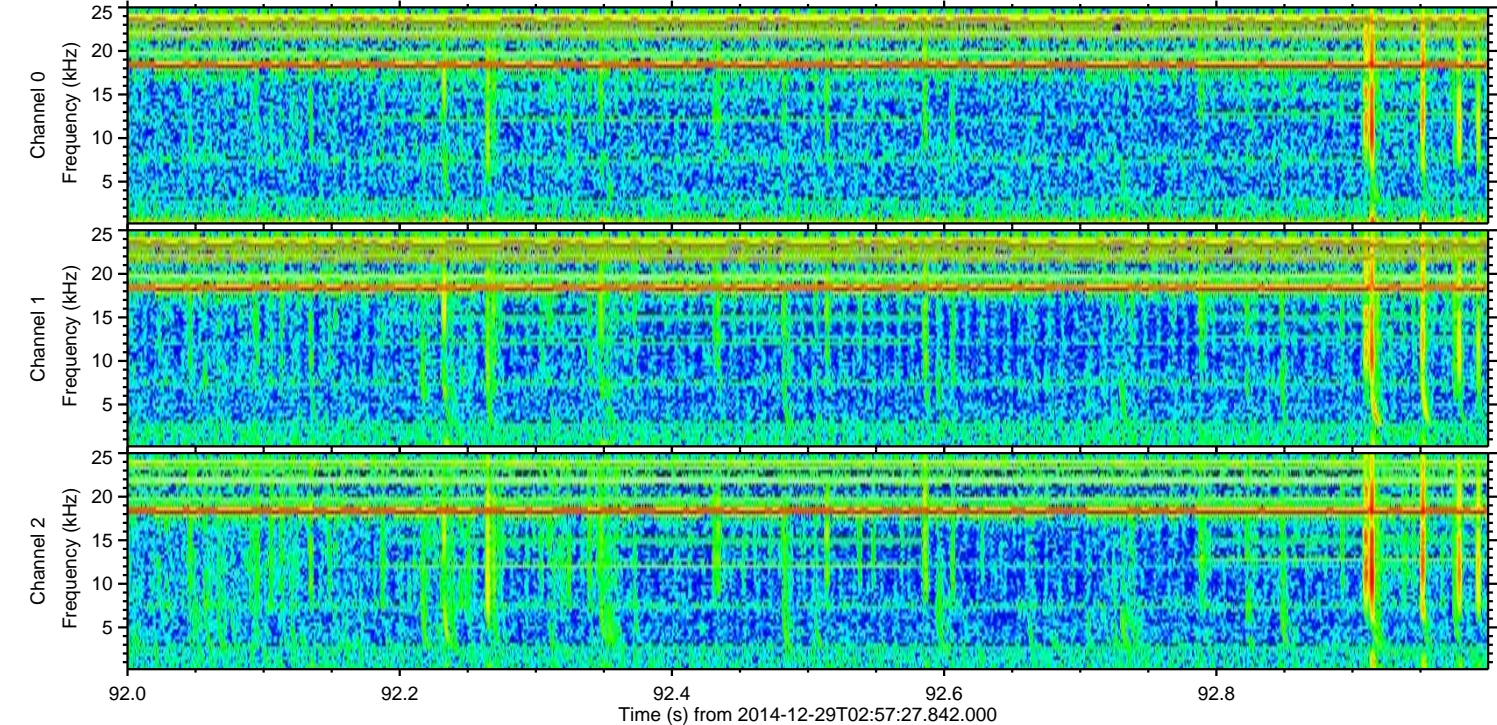
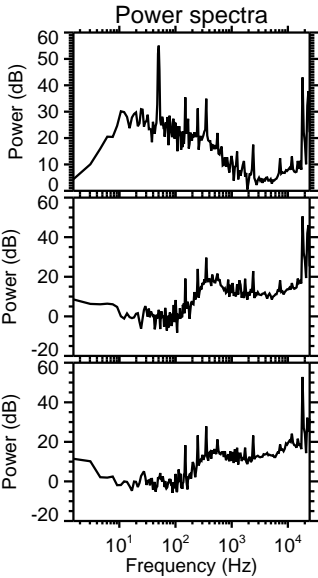
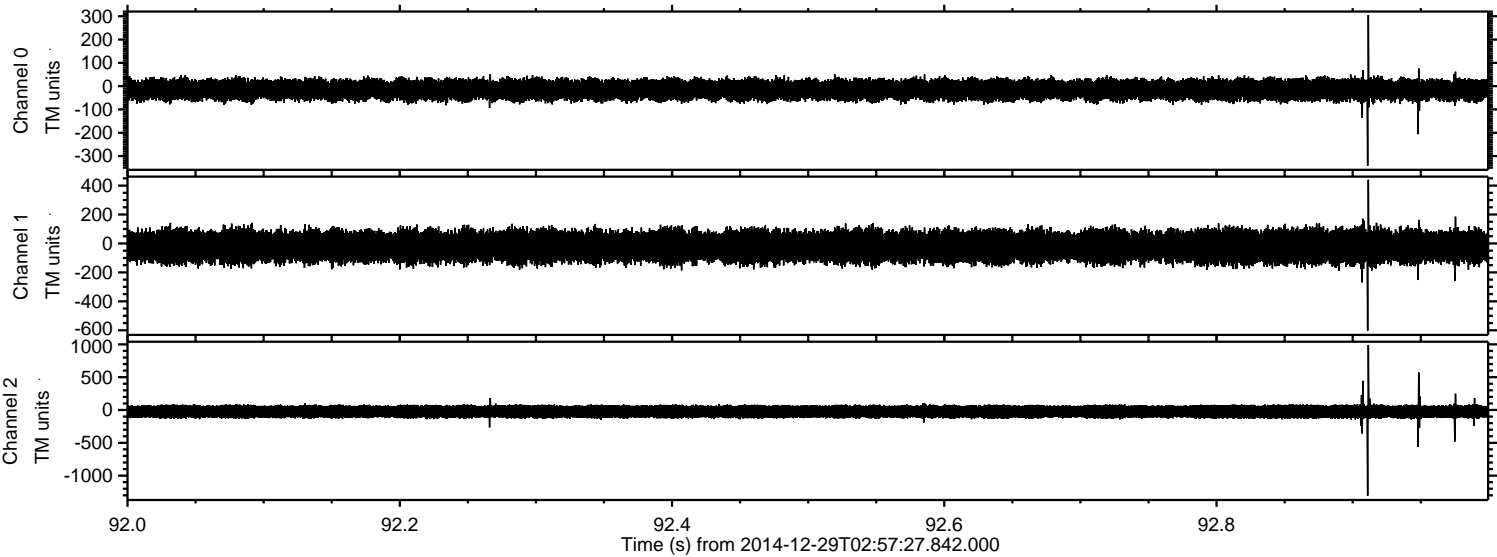
Channel 2
mn: -1483
mx: 1182
 μ : -24.4
 σ : 62.7

ELMAVAN 3D WAVEFORMS (Measured data sampled at 50 kHz) 49798 packets of 144 samples from 2014-12-29T02:57:27.842.000. Part 116/144

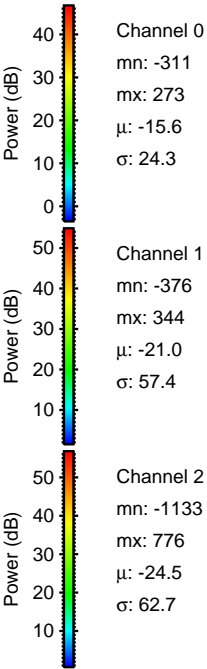
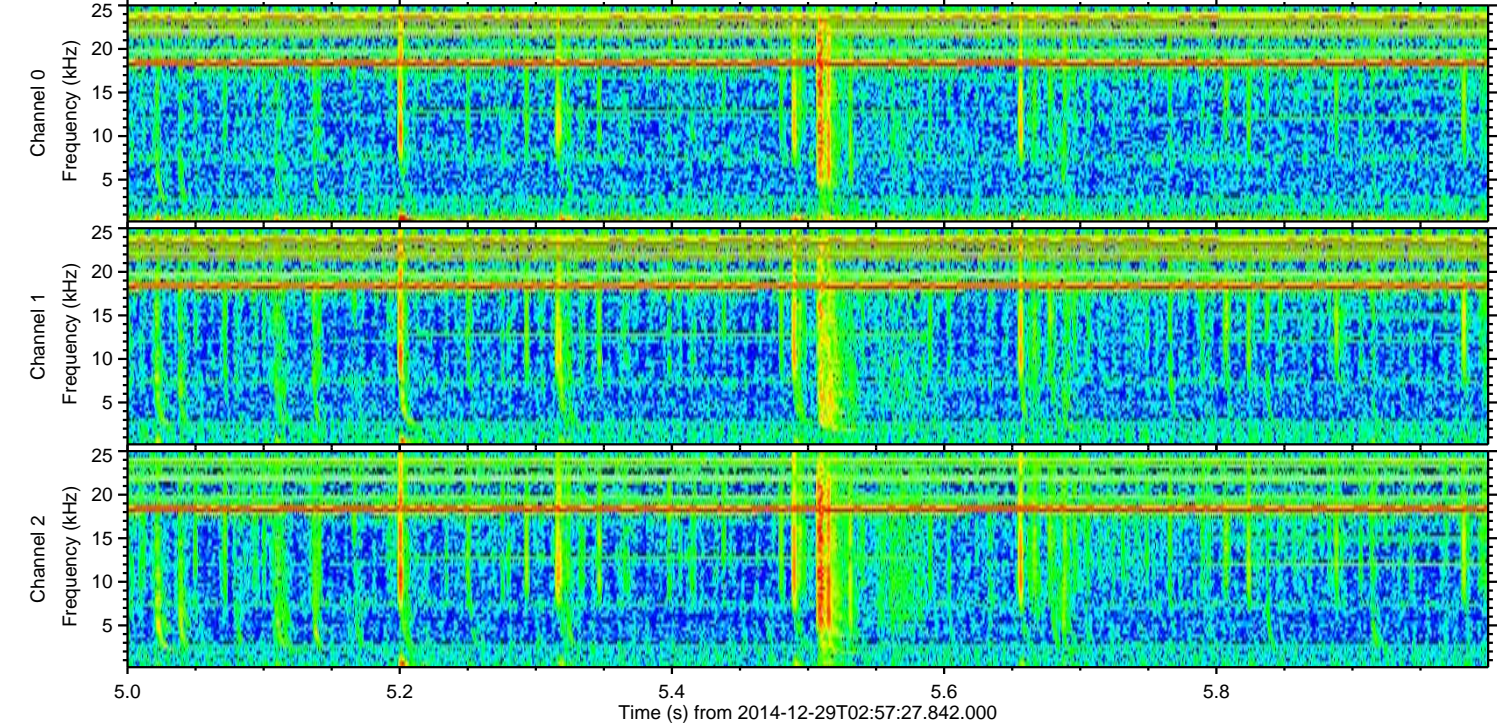
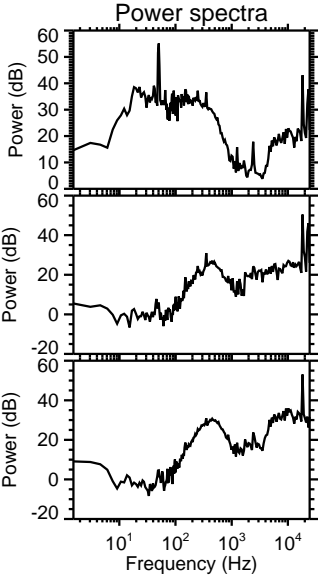
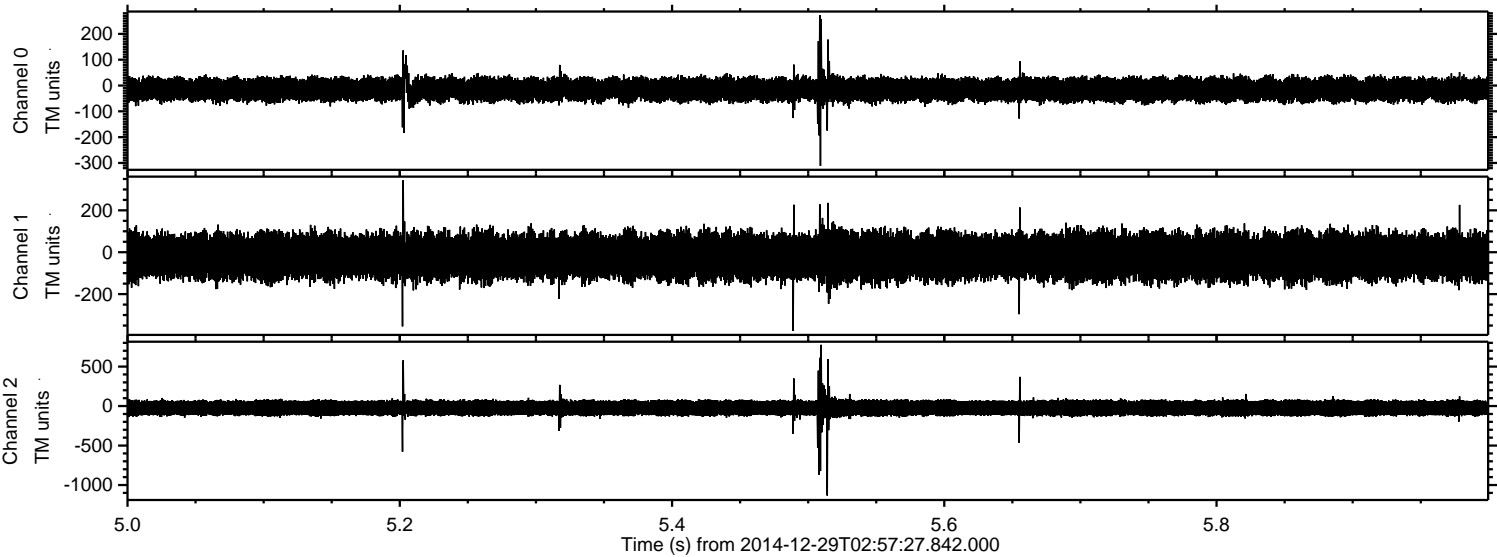
Processed Fri Jan 2 02:19:21 2015 by ELM ver.2012-10-06 from 001__elm20141229_025726__dat00.bin



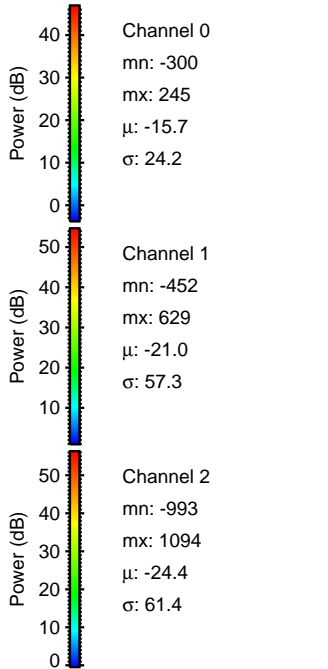
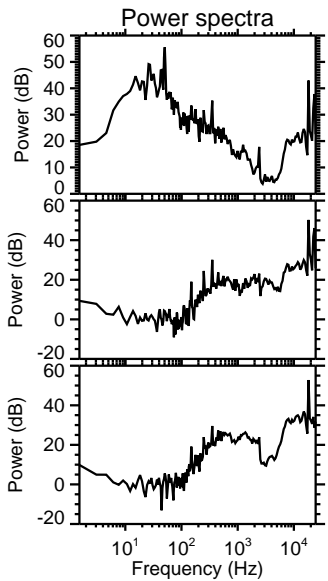
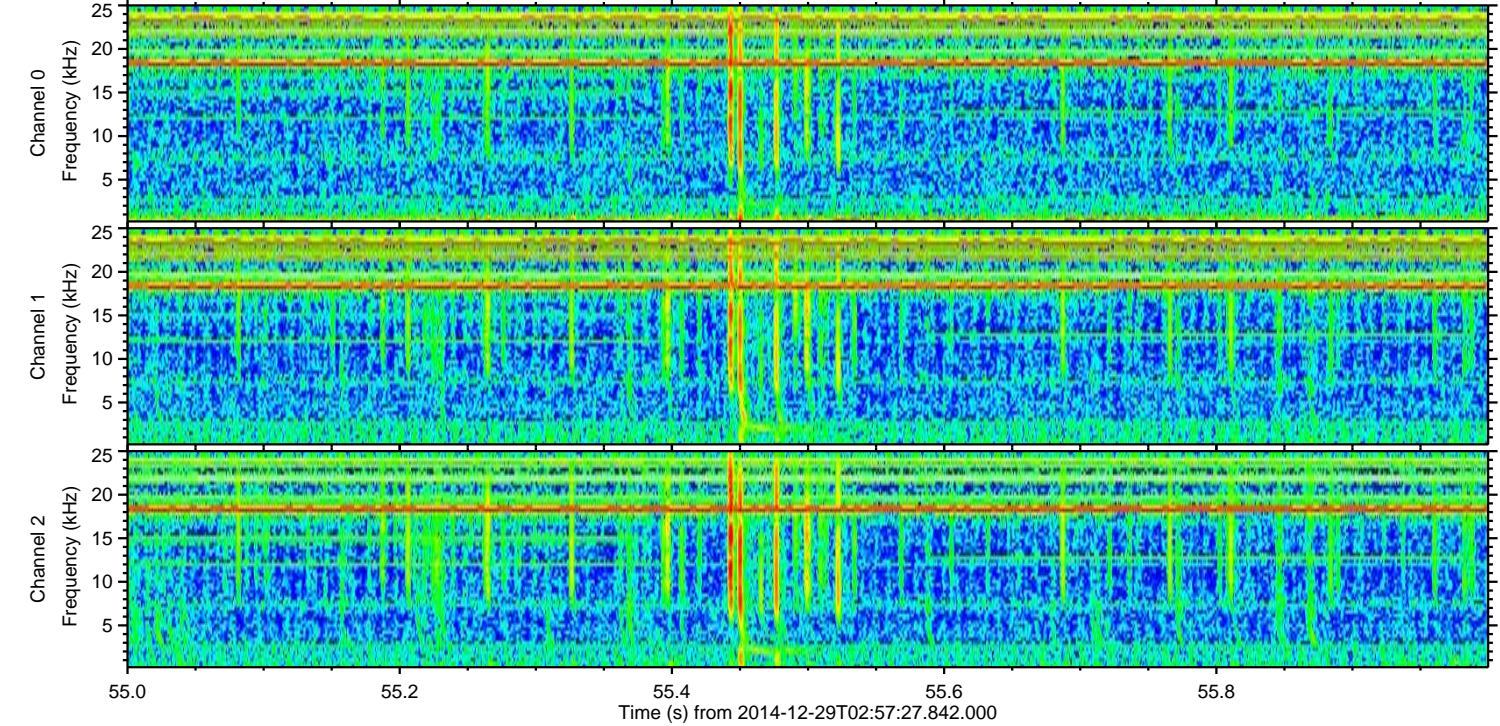
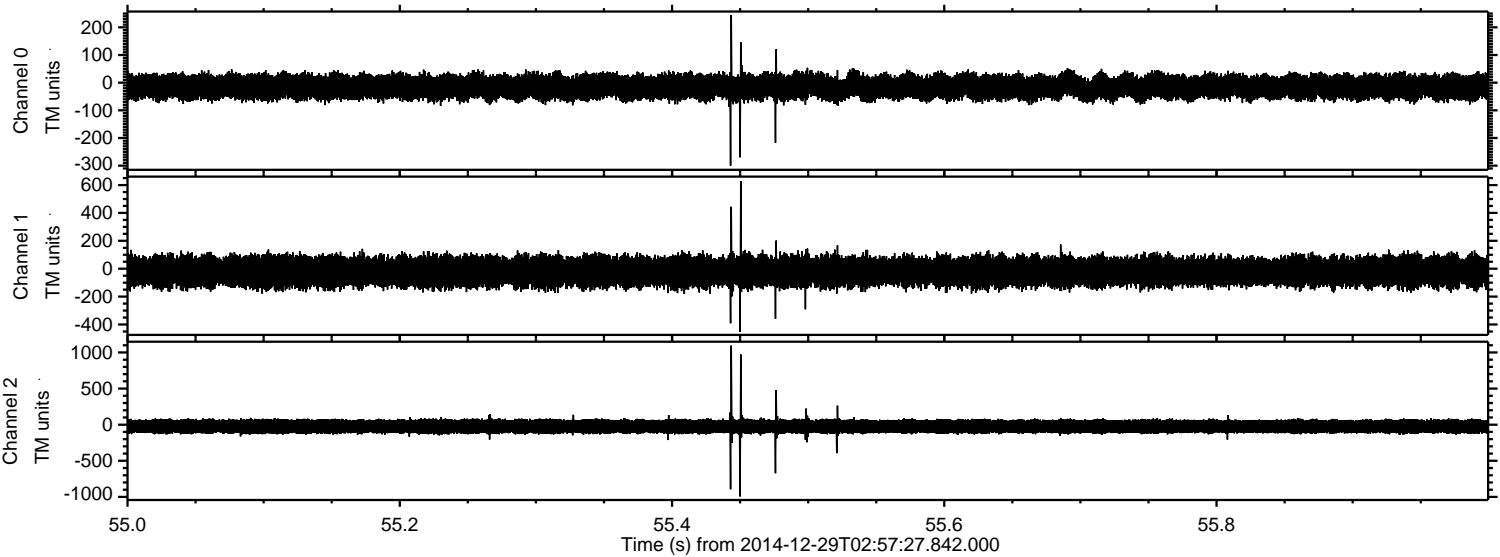
Processed Fri Jan 2 02:19:22 2015 by ELM ver.2012-10-06 from 001__elm20141229_025726__dat00.bin



Processed Fri Jan 2 02:19:23 2015 by ELM ver.2012-10-06 from 001__elm20141229_025726__dat00.bin



Processed Fri Jan 2 02:19:24 2015 by ELM ver.2012-10-06 from 001__elm20141229_025726__dat00.bin



Processed Fri Jan 2 02:19:25 2015 by ELM ver.2012-10-06 from 001__elm20141229_025726__dat00.bin

