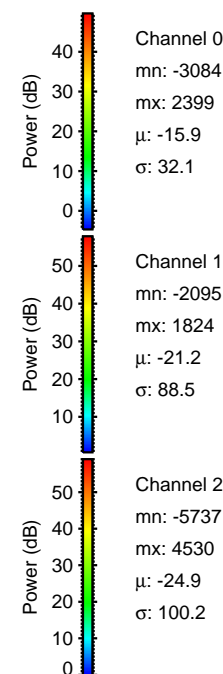
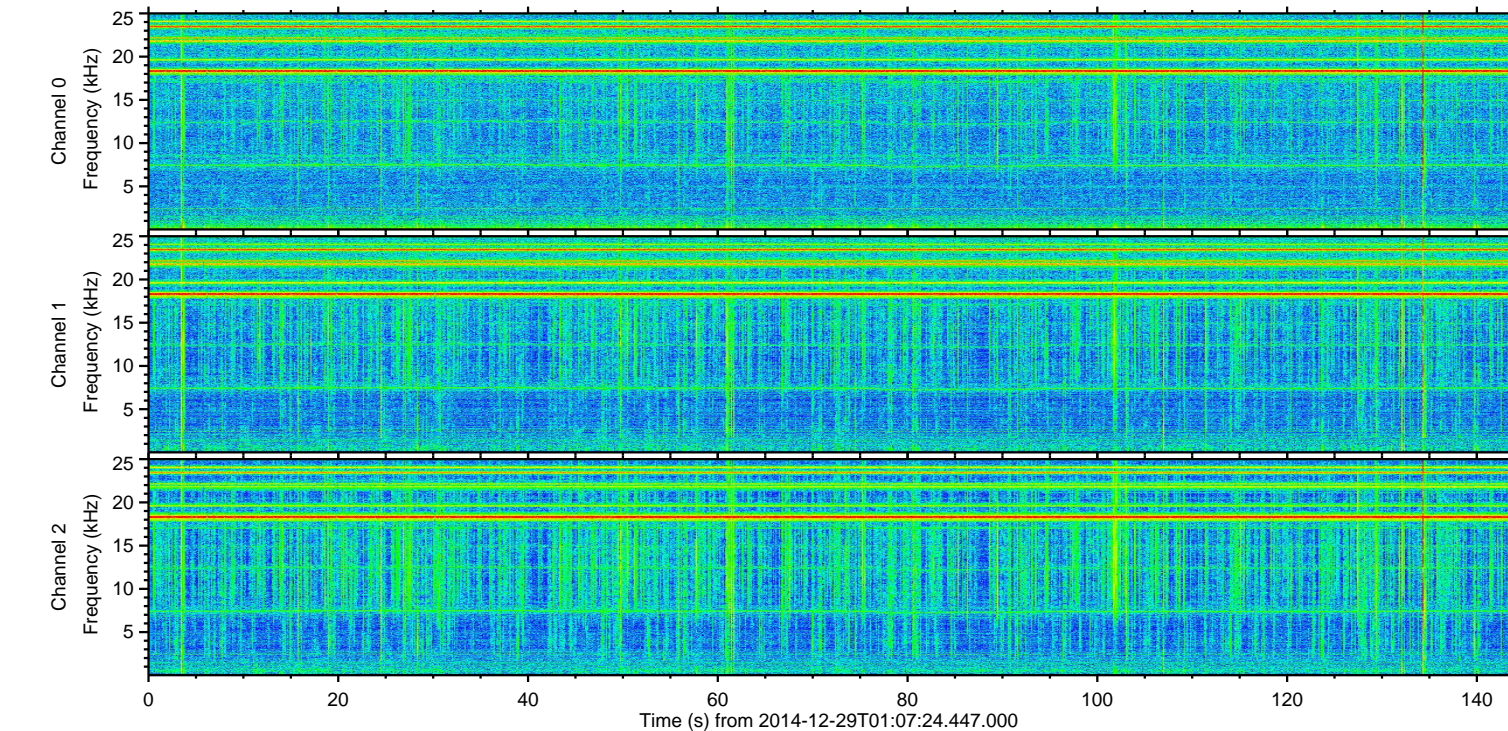
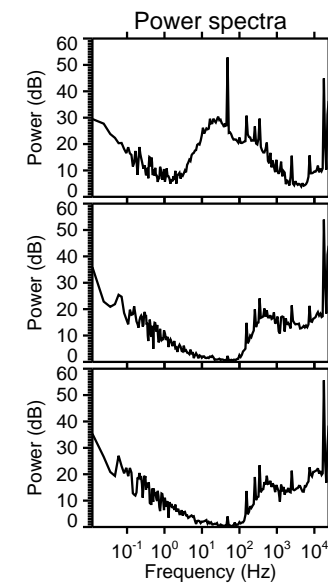
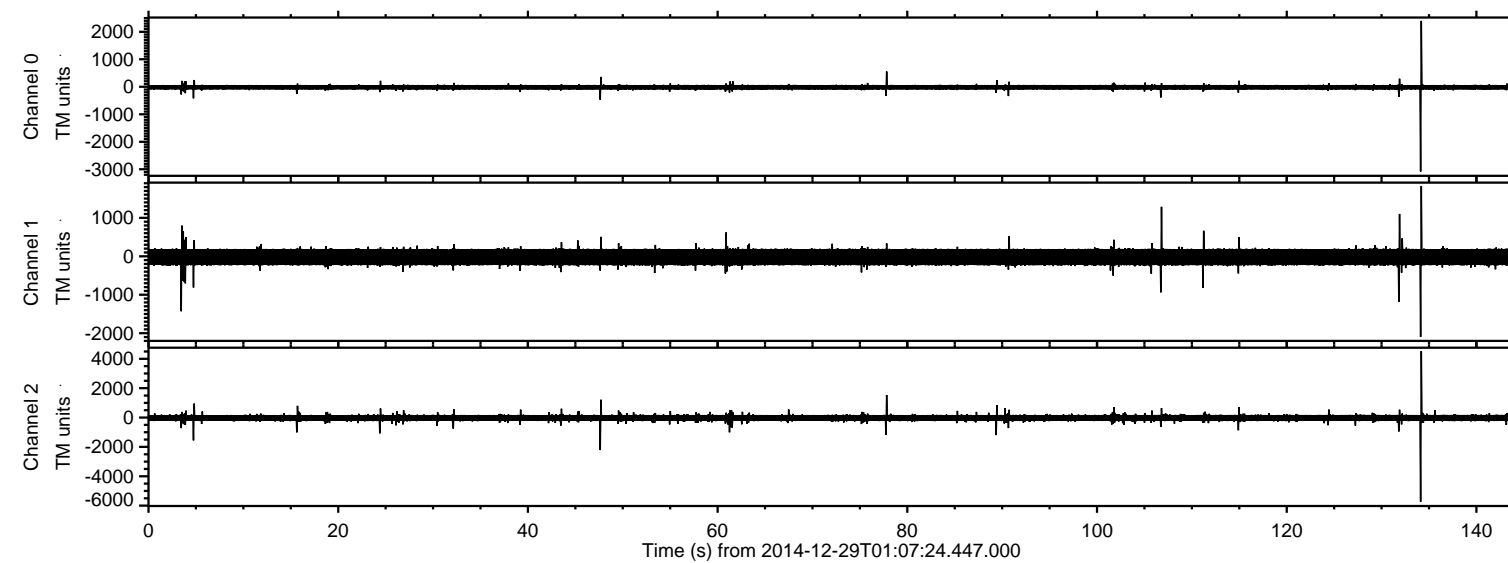


# ELMAVAN 3D WAVEFORMS (Measured data sampled at 50 kHz) 49809 packets of 144 samples from 2014-12-29T01:07:24.447.000.

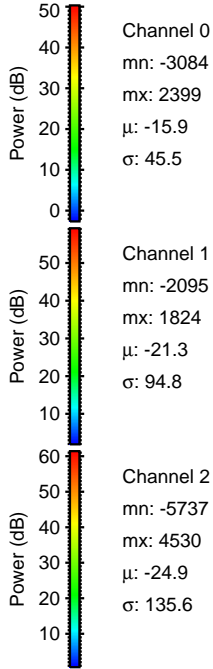
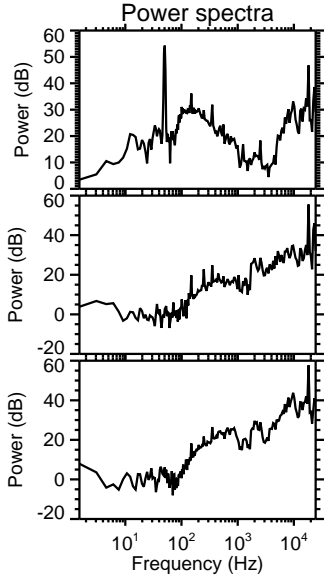
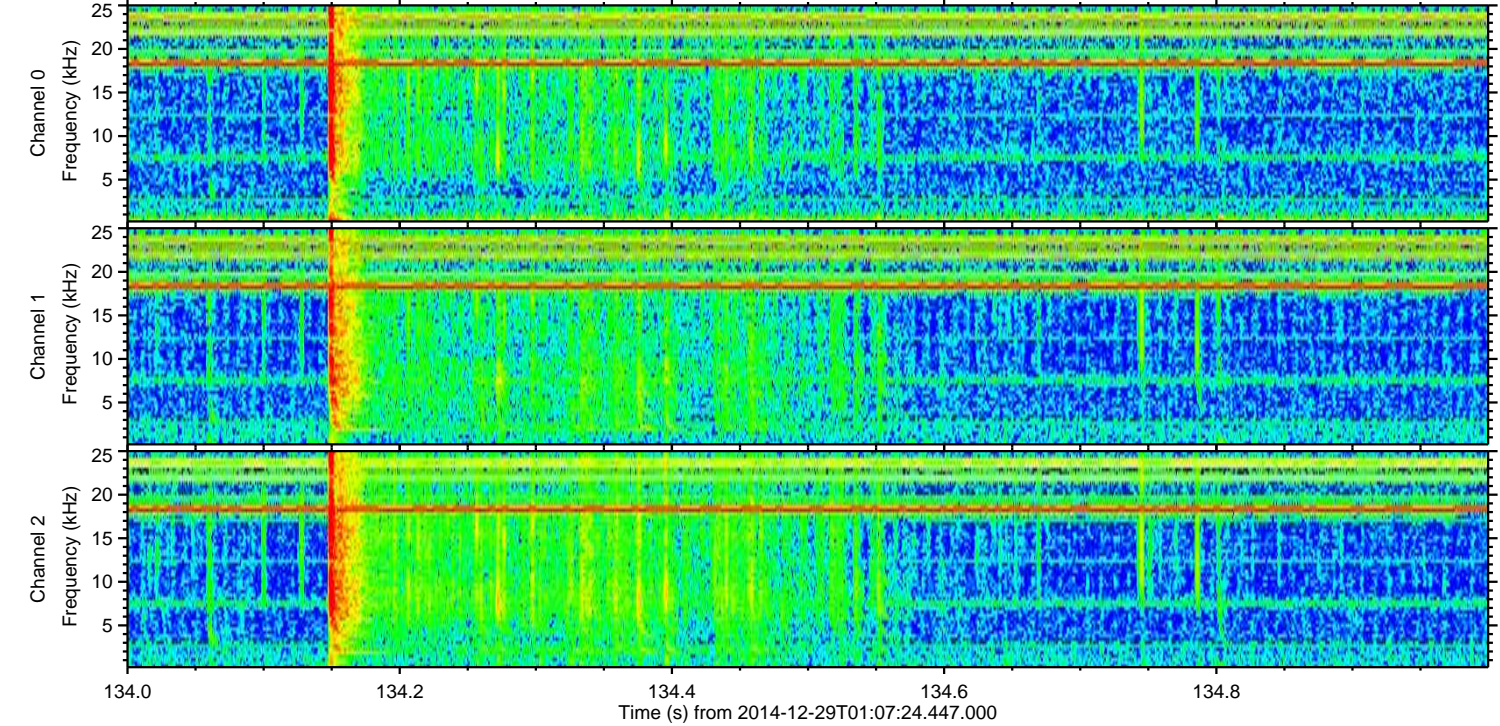
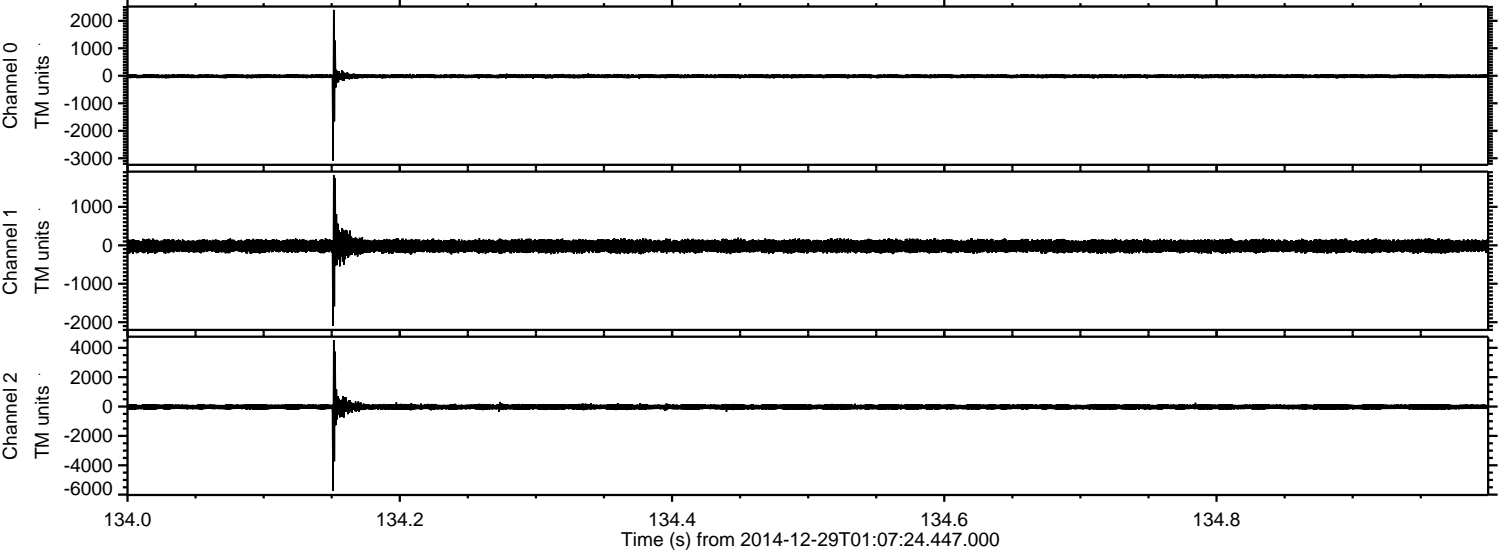
Processed Fri Jan 2 01:03:22 2015 by ELM ver.2012-10-06 from 001\_\_elm20141229\_010723\_\_dat00.bin





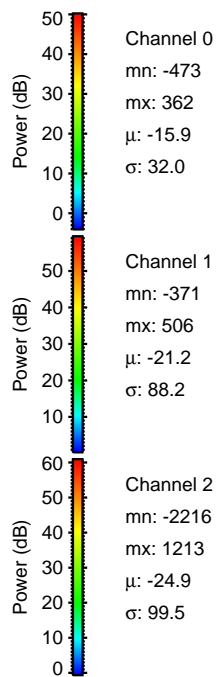
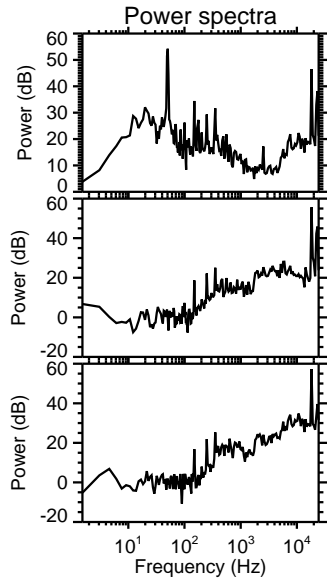
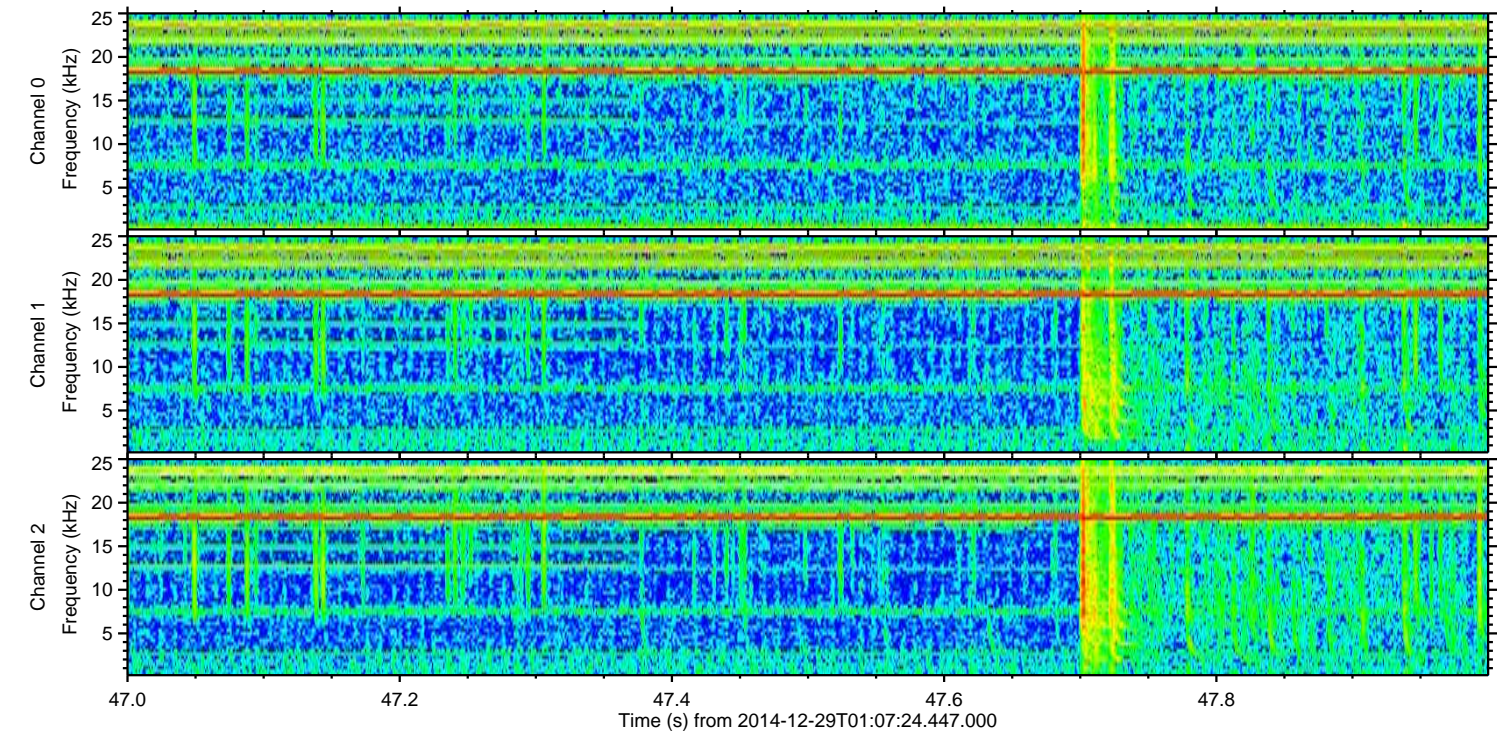
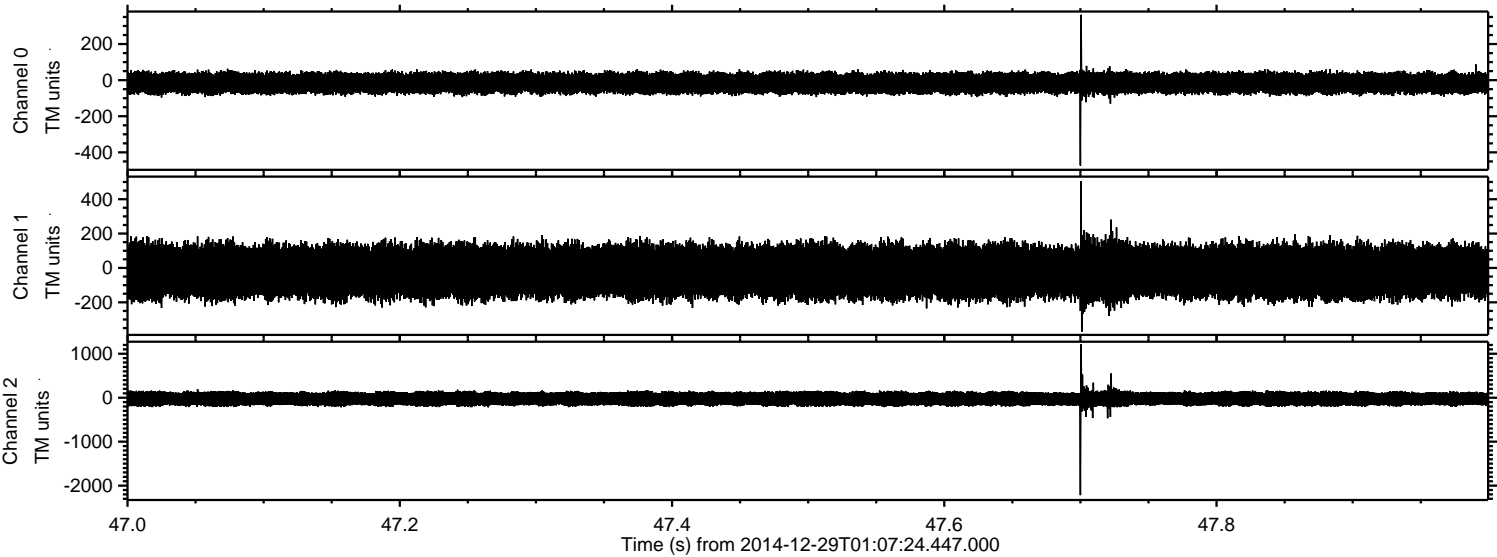
ELMAVAN 3D WAVEFORMS (Measured data sampled at 50 kHz) 49809 packets of 144 samples from 2014-12-29T01:07:24.447.000. Part 135/144

Processed Fri Jan 2 01:03:35 2015 by ELM ver.2012-10-06 from 001\_\_elm20141229\_010723\_\_dat00.bin





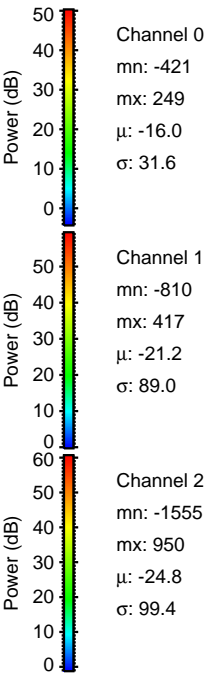
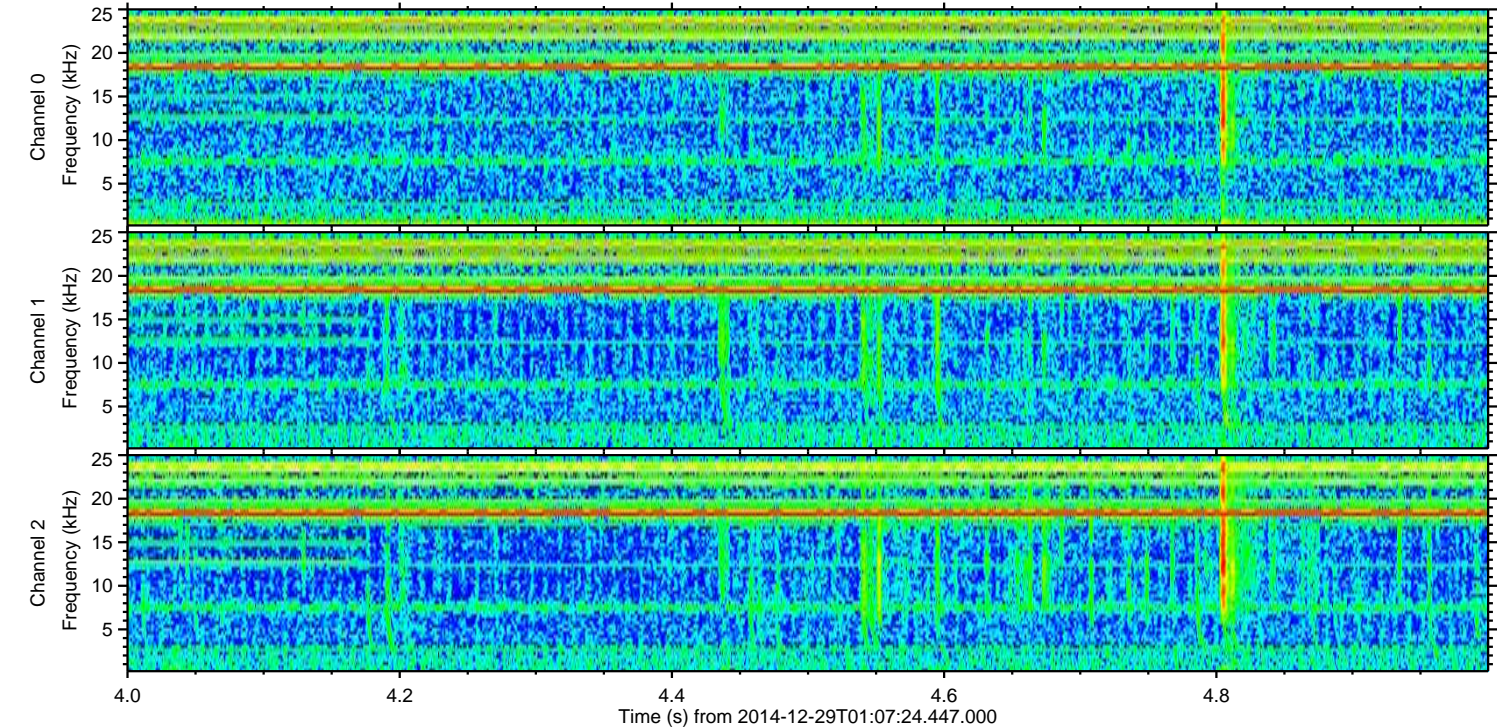
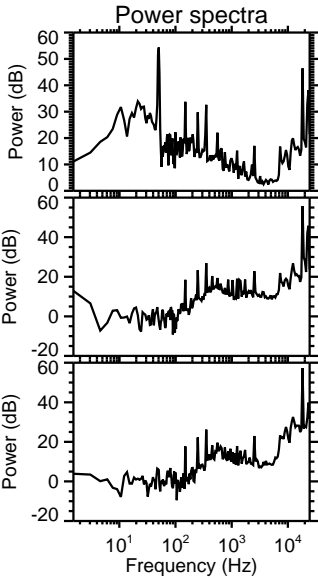
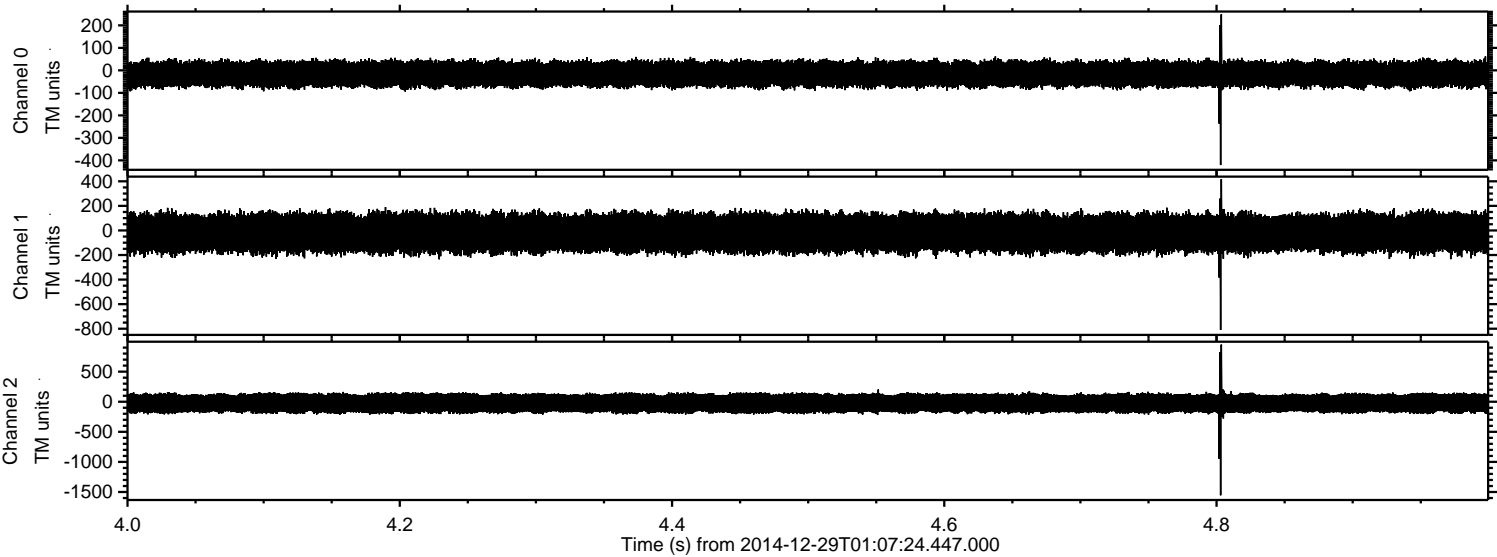
Processed Fri Jan 2 01:03:35 2015 by ELM ver.2012-10-06 from 001\_\_elm20141229\_010723\_\_dat00.bin





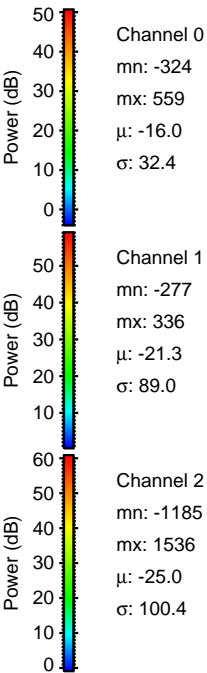
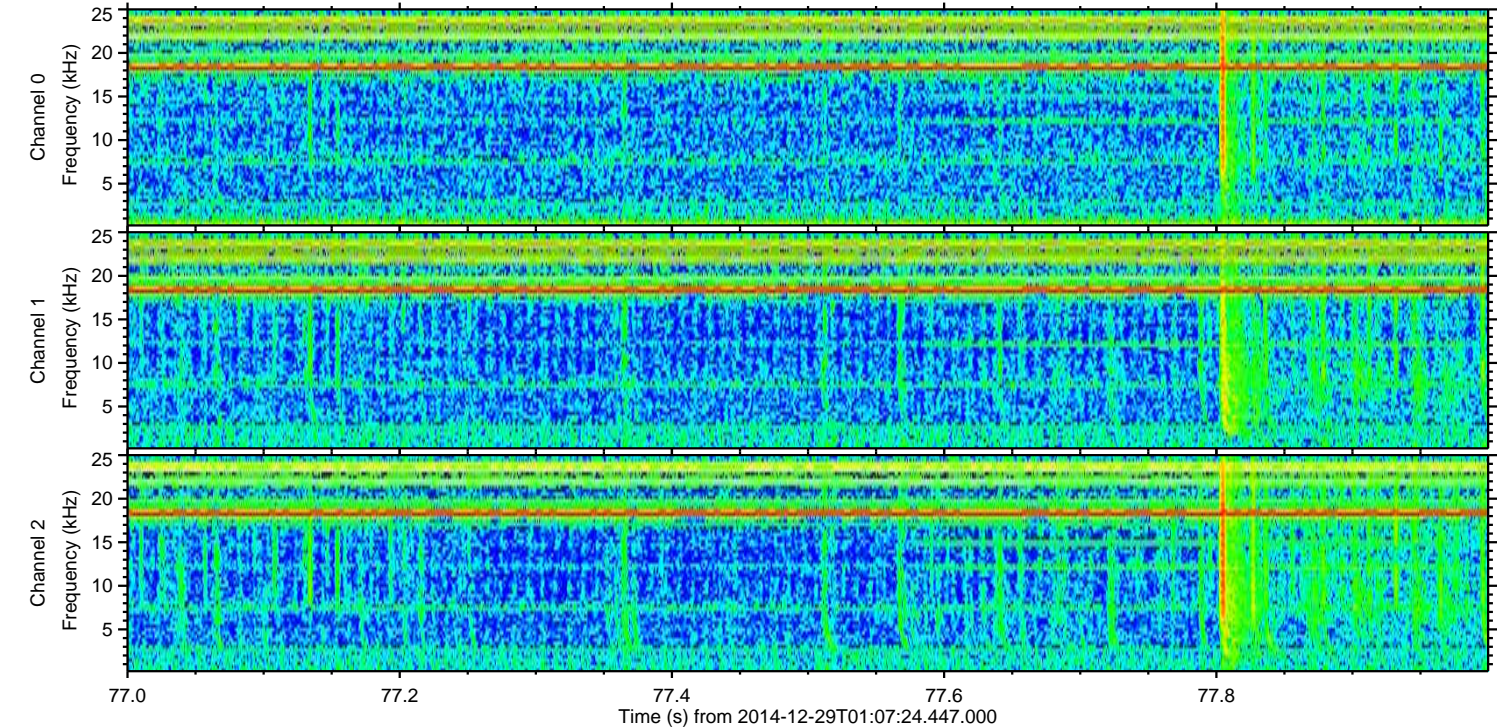
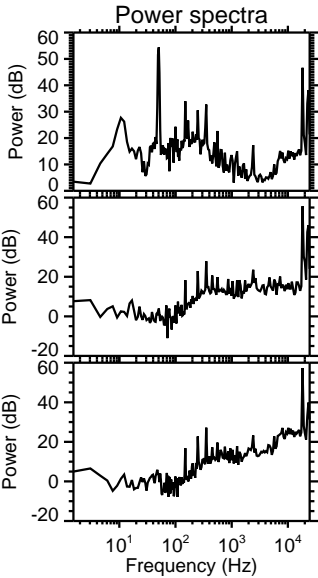
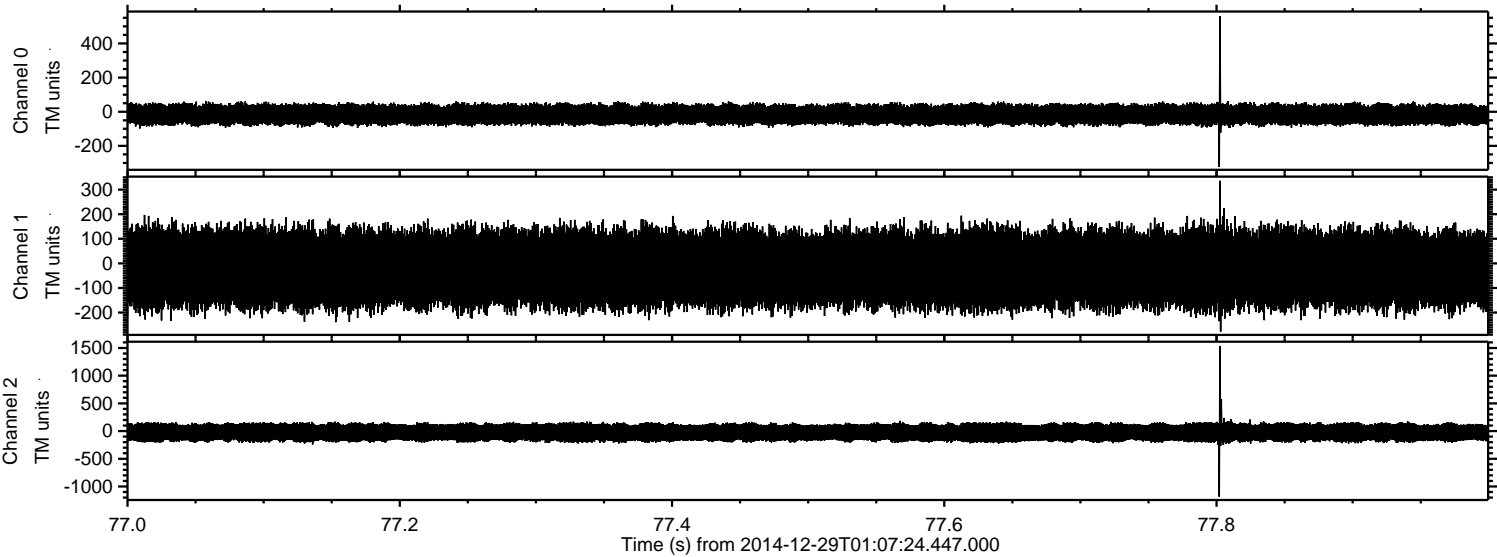
ELMAVAN 3D WAVEFORMS (Measured data sampled at 50 kHz) 49809 packets of 144 samples from 2014-12-29T01:07:24.447.000. Part 5/144

Processed Fri Jan 2 01:03:36 2015 by ELM ver.2012-10-06 from 001\_\_elm20141229\_010723\_\_dat00.bin



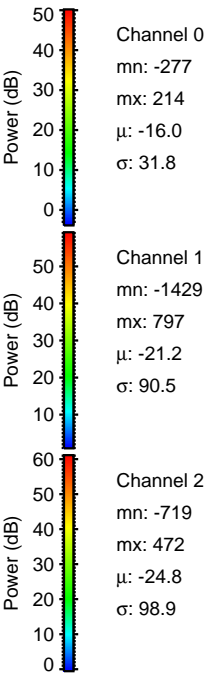
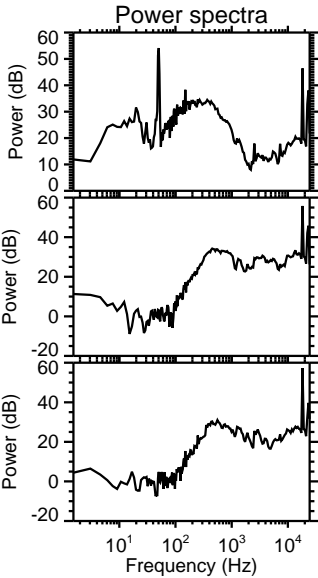
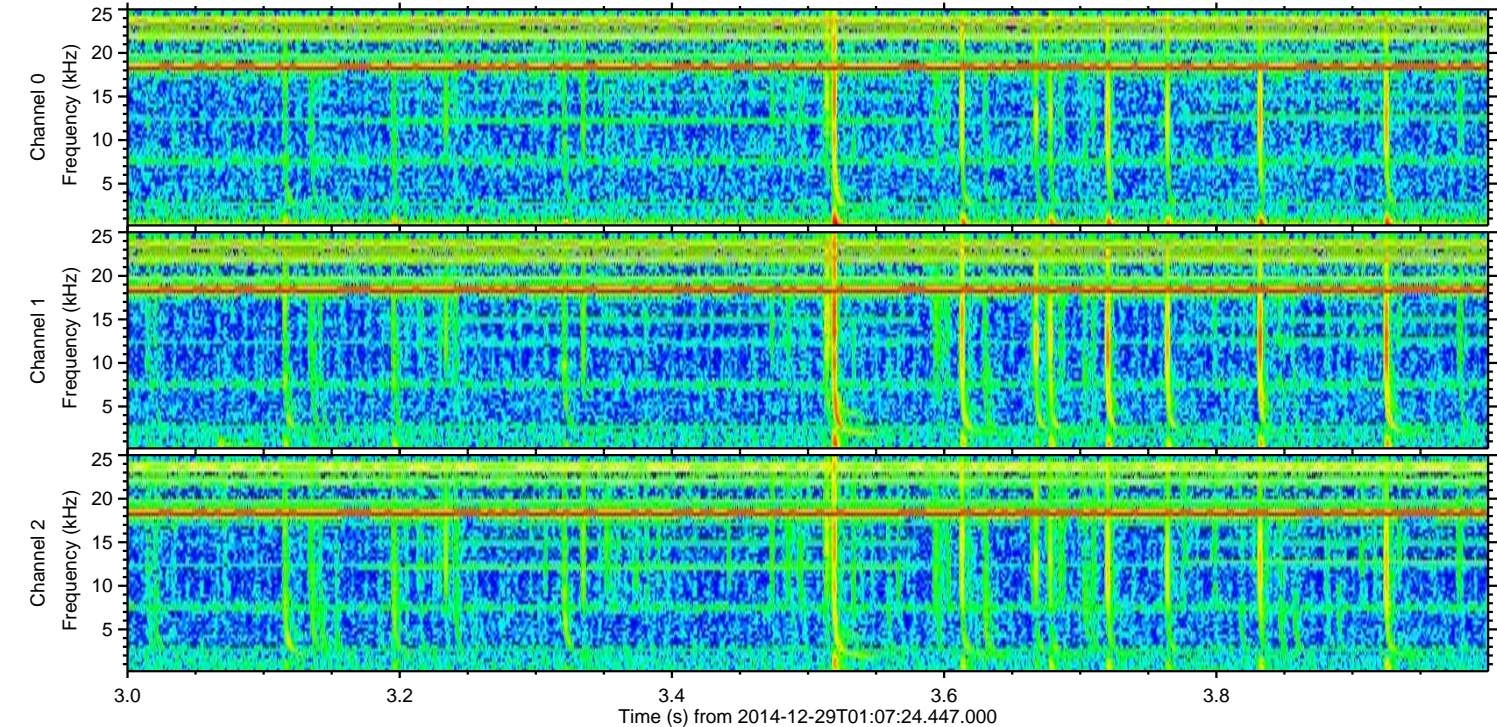
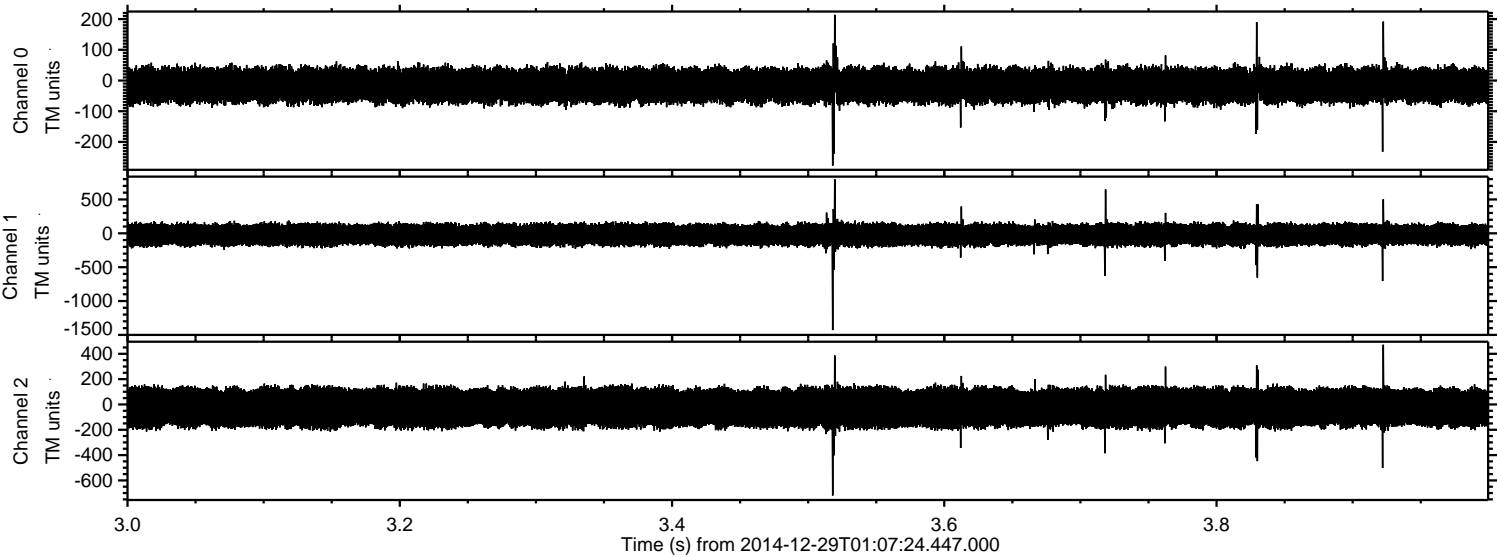


Processed Fri Jan 2 01:03:37 2015 by ELM ver.2012-10-06 from 001\_\_elm20141229\_010723\_\_dat00.bin



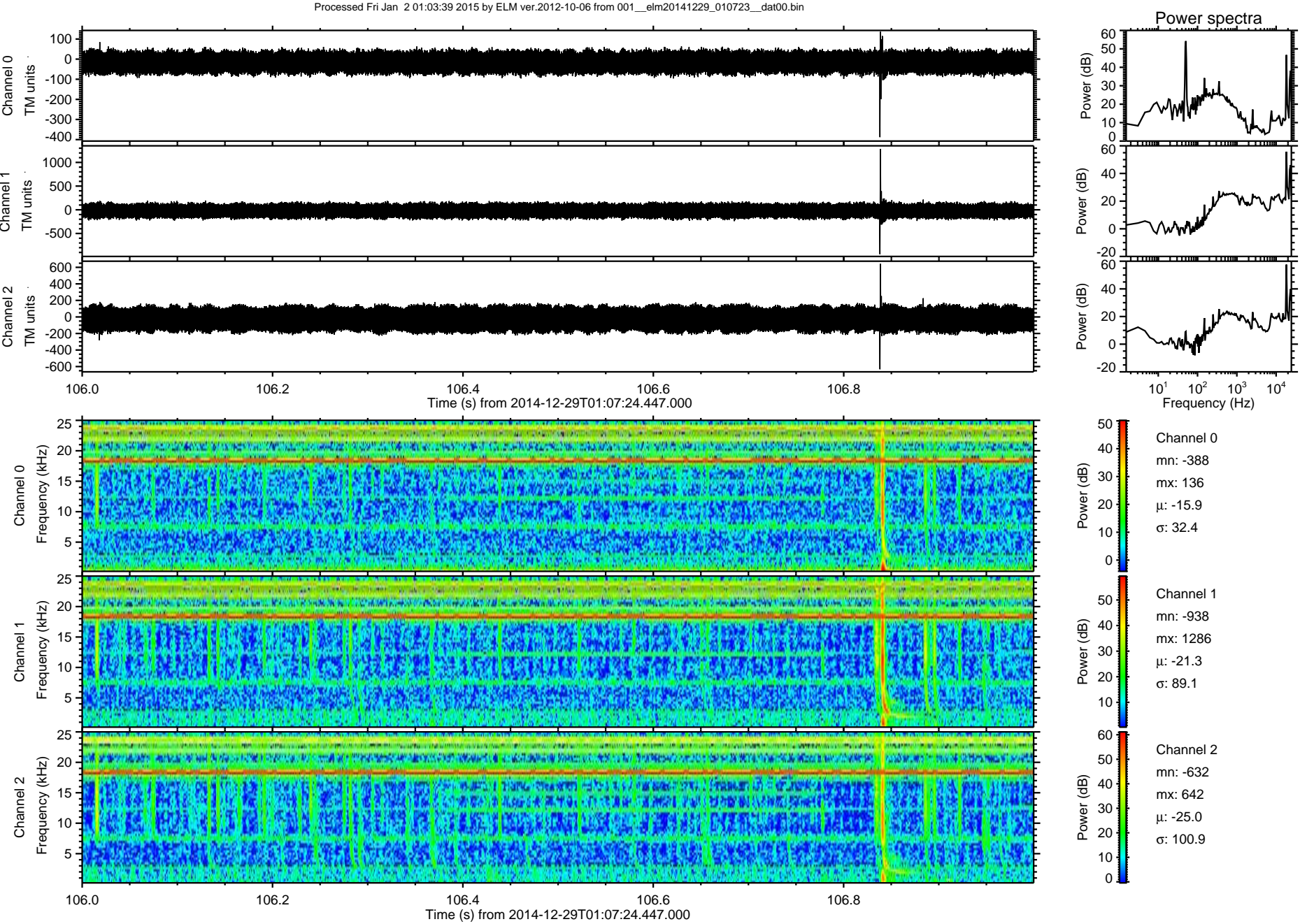


Processed Fri Jan 2 01:03:38 2015 by ELM ver.2012-10-06 from 001\_\_elm20141229\_010723\_\_dat00.bin



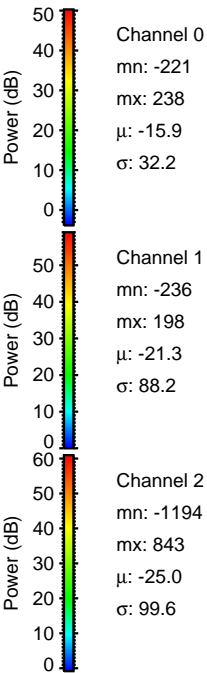
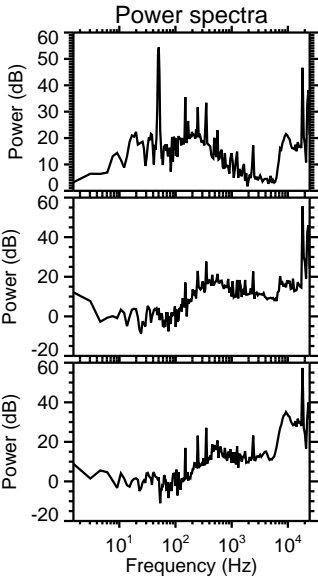
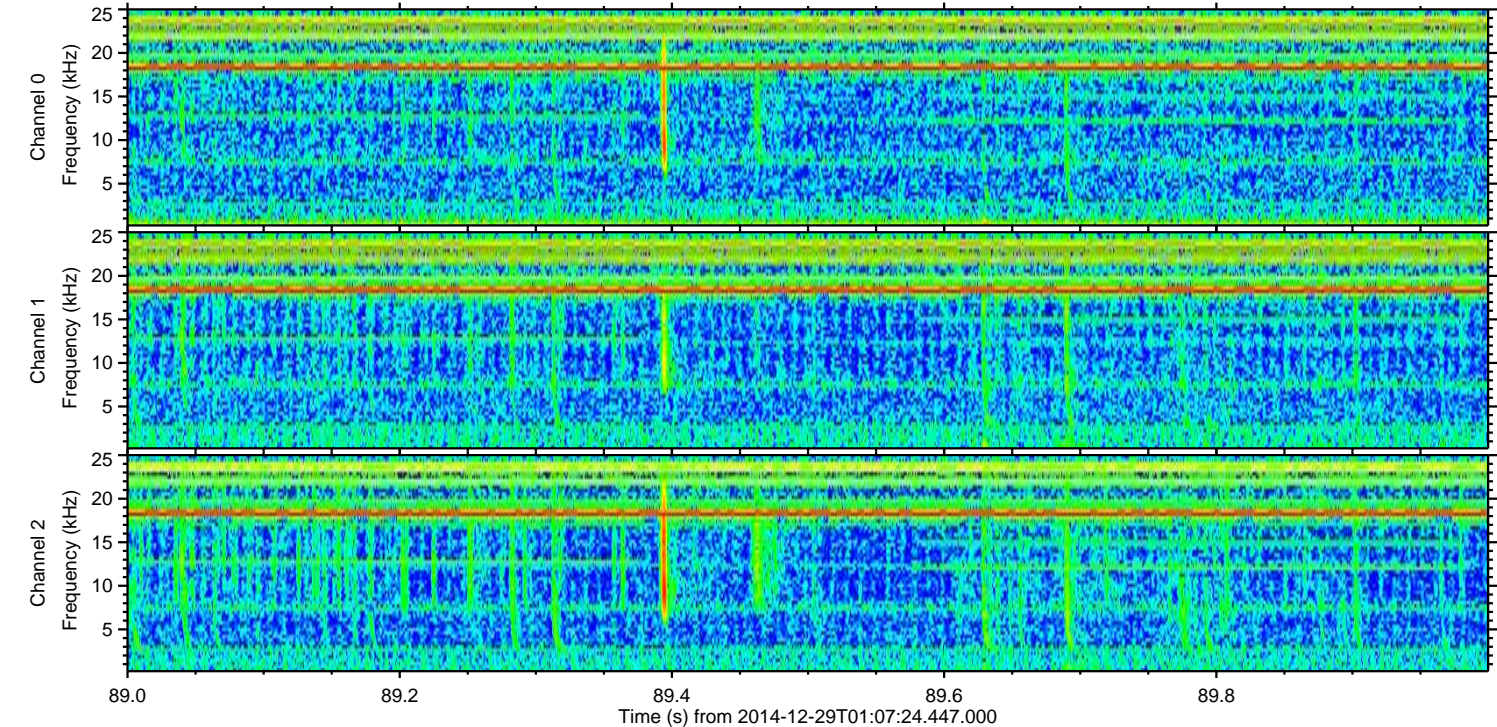
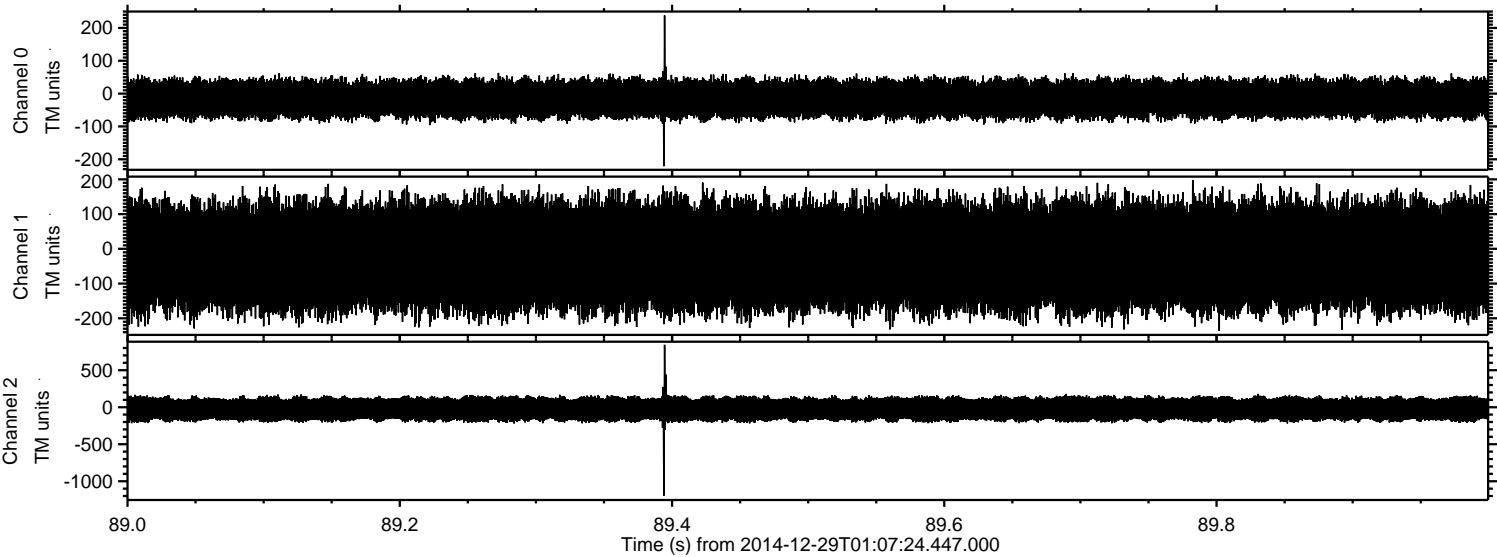


ELMAVAN 3D WAVEFORMS (Measured data sampled at 50 kHz) 49809 packets of 144 samples from 2014-12-29T01:07:24.447.000. Part 107/144





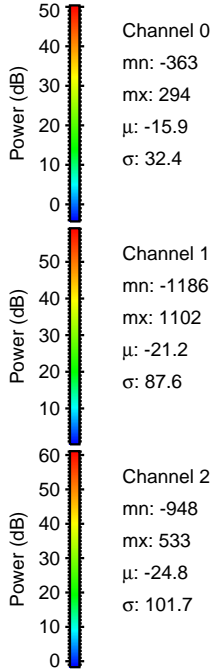
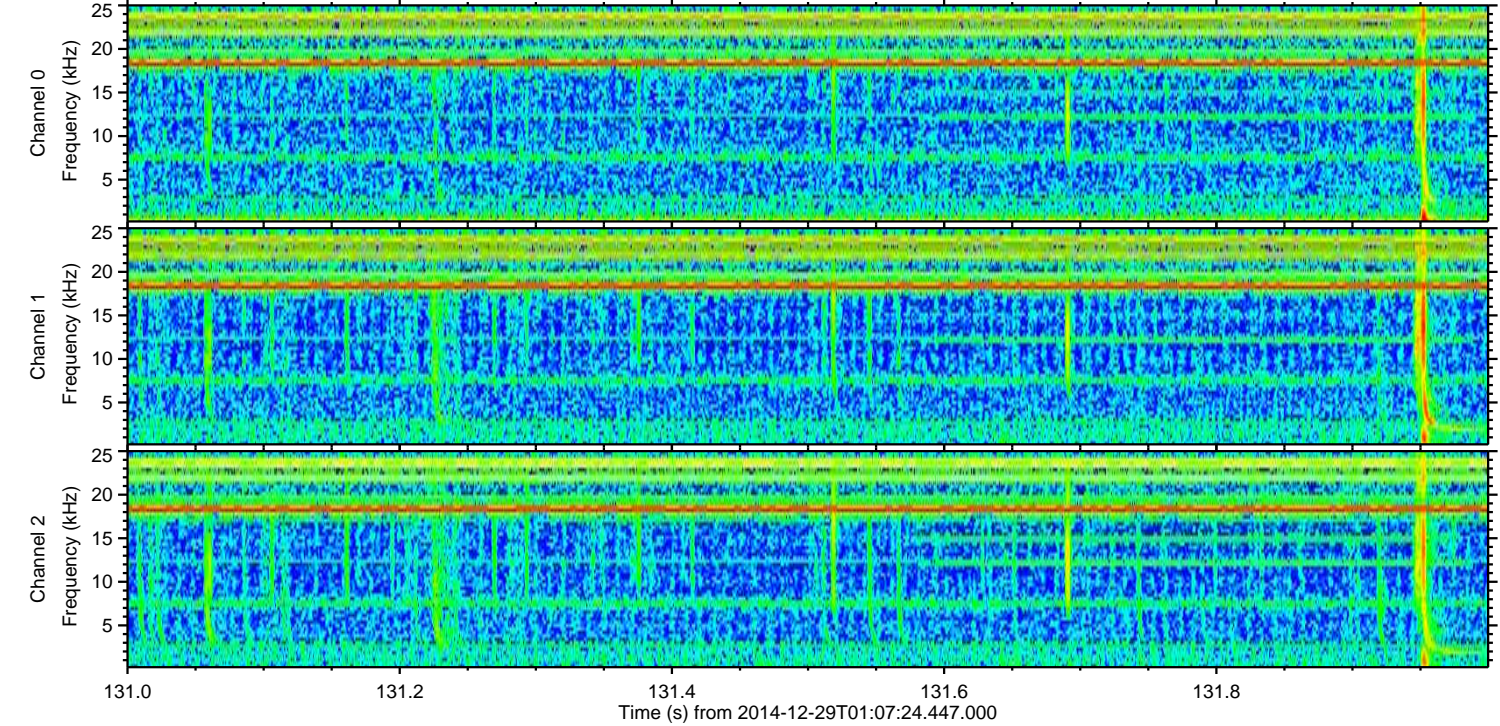
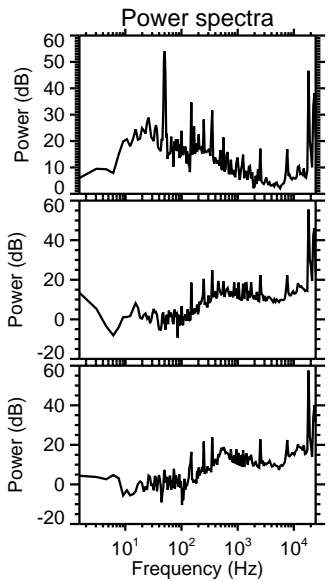
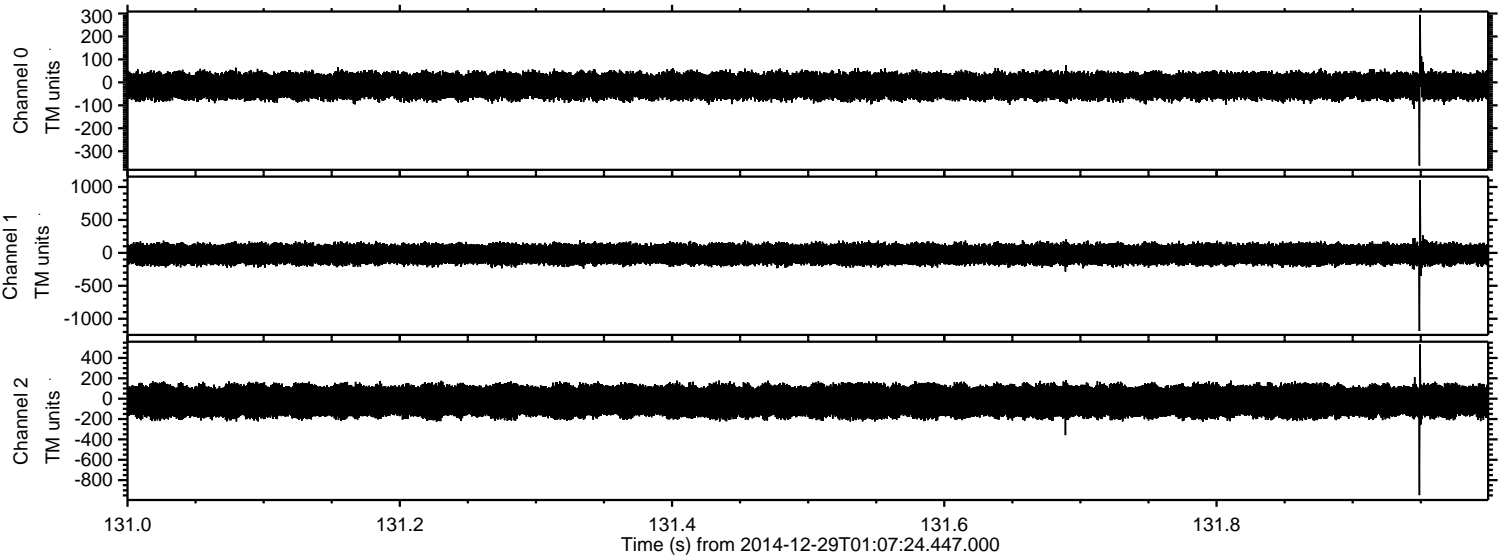
Processed Fri Jan 2 01:03:40 2015 by ELM ver.2012-10-06 from 001\_\_elm20141229\_010723\_\_dat00.bin





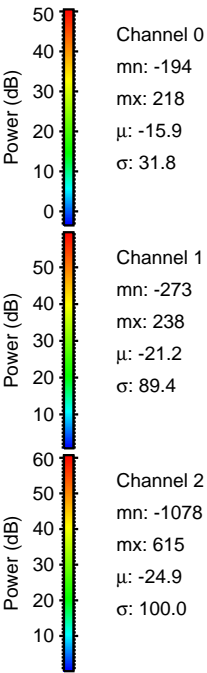
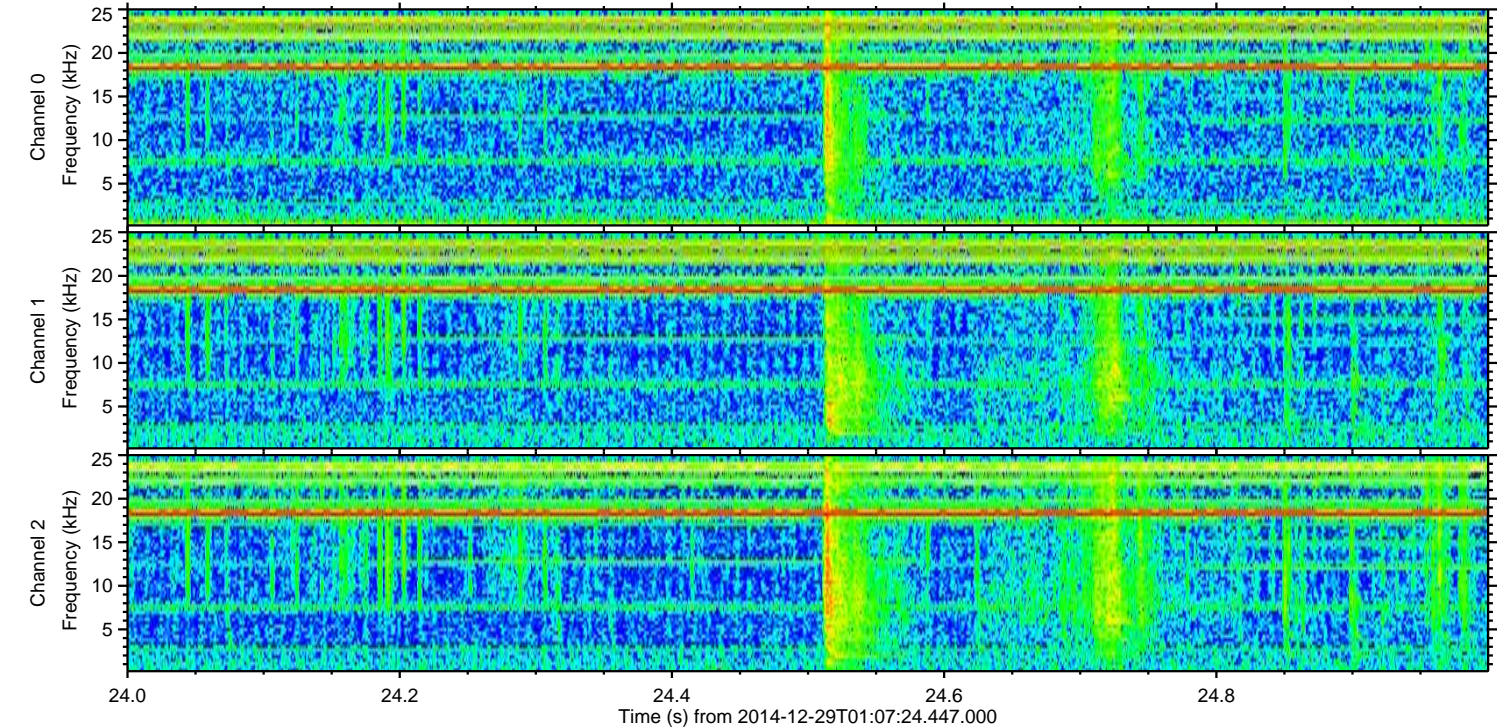
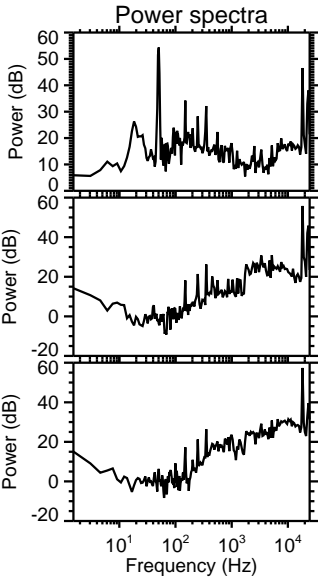
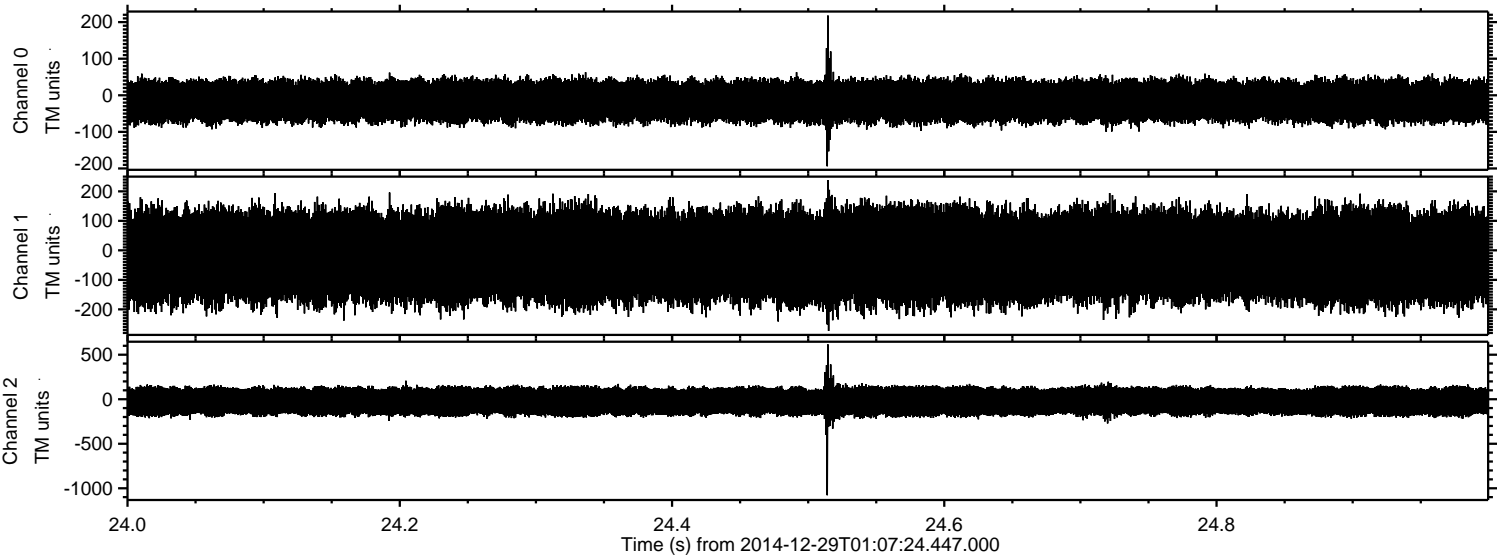
ELMAVAN 3D WAVEFORMS (Measured data sampled at 50 kHz) 49809 packets of 144 samples from 2014-12-29T01:07:24.447.000. Part 132/144

Processed Fri Jan 2 01:03:41 2015 by ELM ver.2012-10-06 from 001\_\_elm20141229\_010723\_\_dat00.bin





Processed Fri Jan 2 01:03:42 2015 by ELM ver.2012-10-06 from 001\_\_elm20141229\_010723\_\_dat00.bin





Processed Fri Jan 2 01:03:43 2015 by ELM ver.2012-10-06 from 001\_\_elm20141229\_010723\_\_dat00.bin

