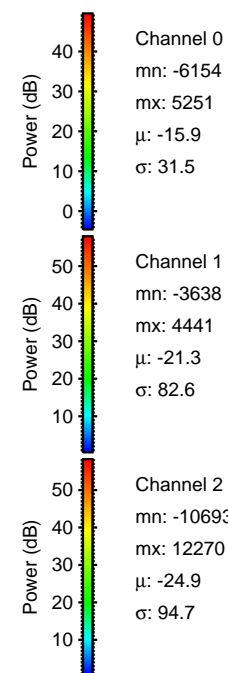
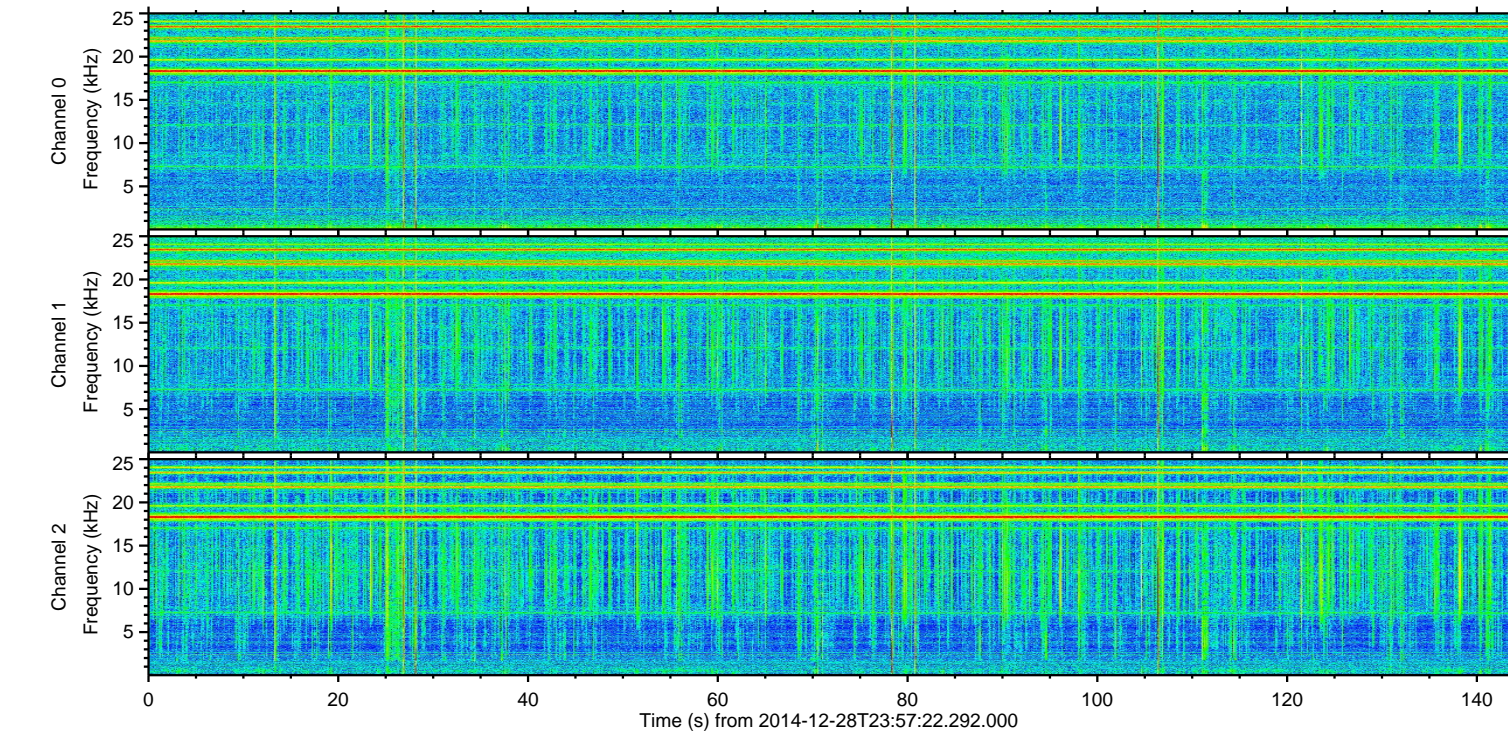
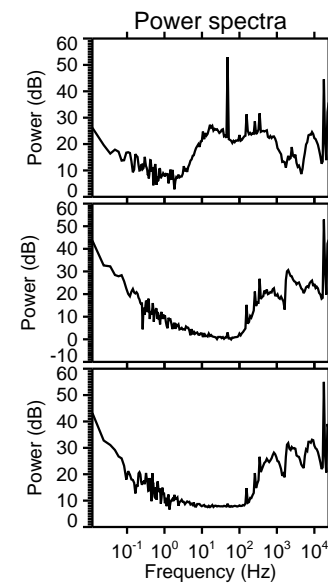
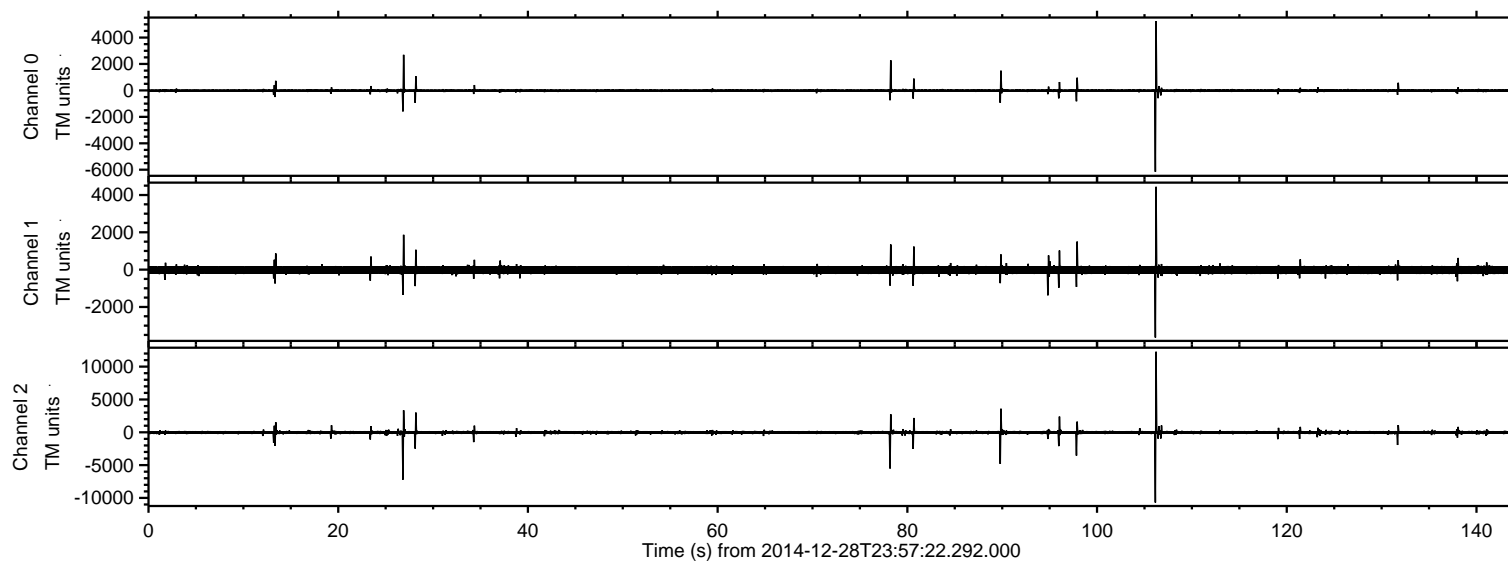


# ELMAVAN 3D WAVEFORMS (Measured data sampled at 50 kHz) 49807 packets of 144 samples from 2014-12-28T23:57:22.292.000.

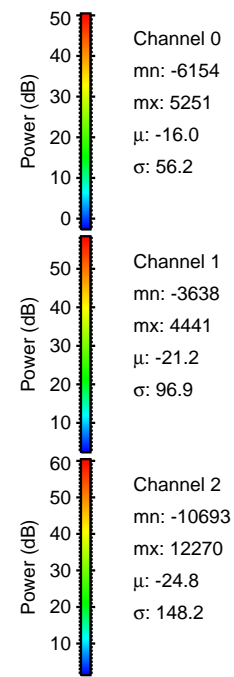
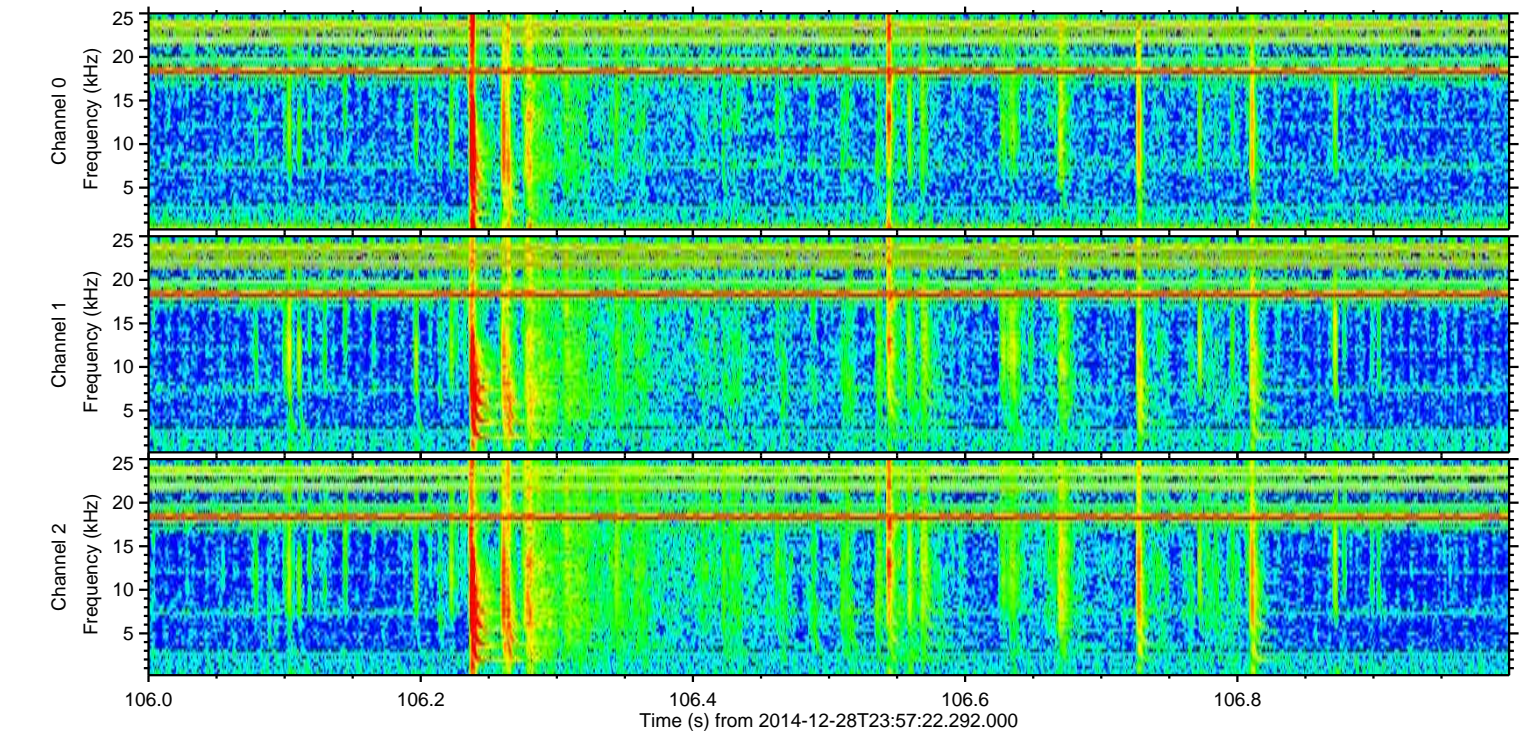
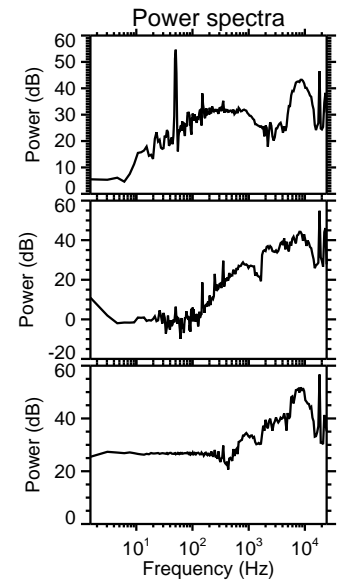
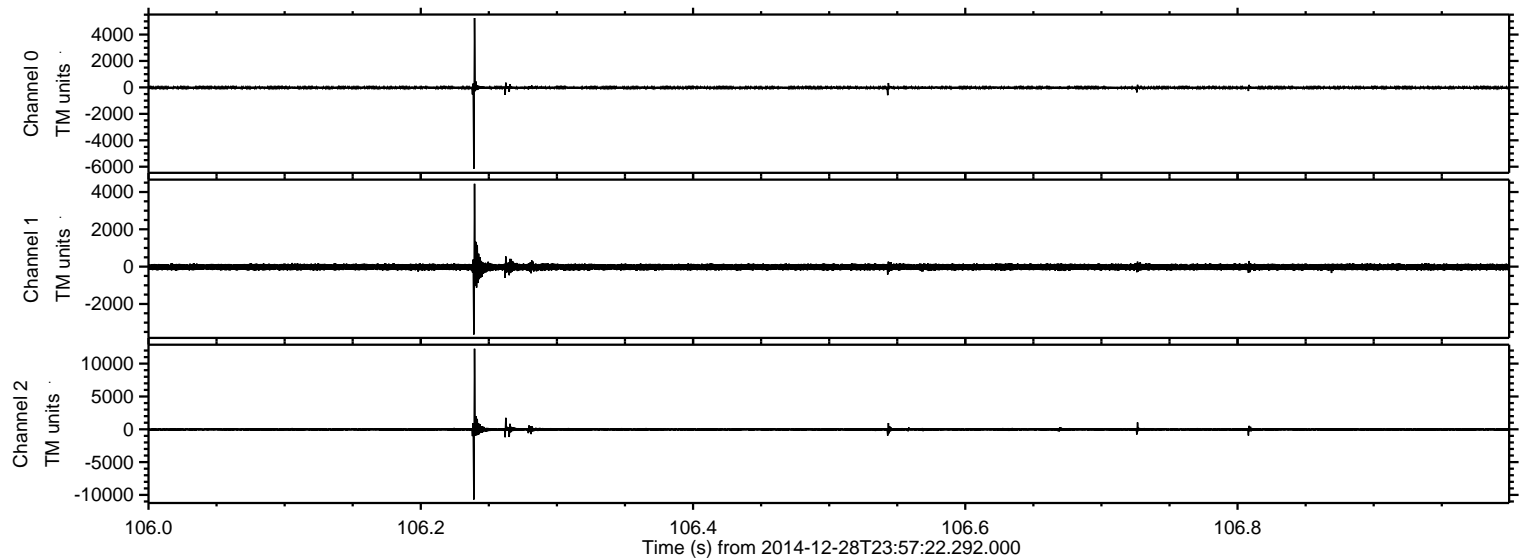
Processed Fri Jan 2 00:20:16 2015 by ELM ver.2012-10-06 from 001\_\_elm20141228\_235721\_\_dat00.bin





ELMAVAN 3D WAVEFORMS (Measured data sampled at 50 kHz) 49807 packets of 144 samples from 2014-12-28T23:57:22.292.000. Part 107/144

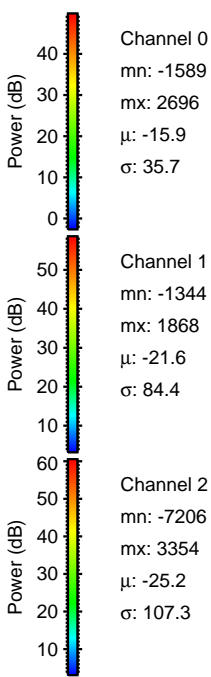
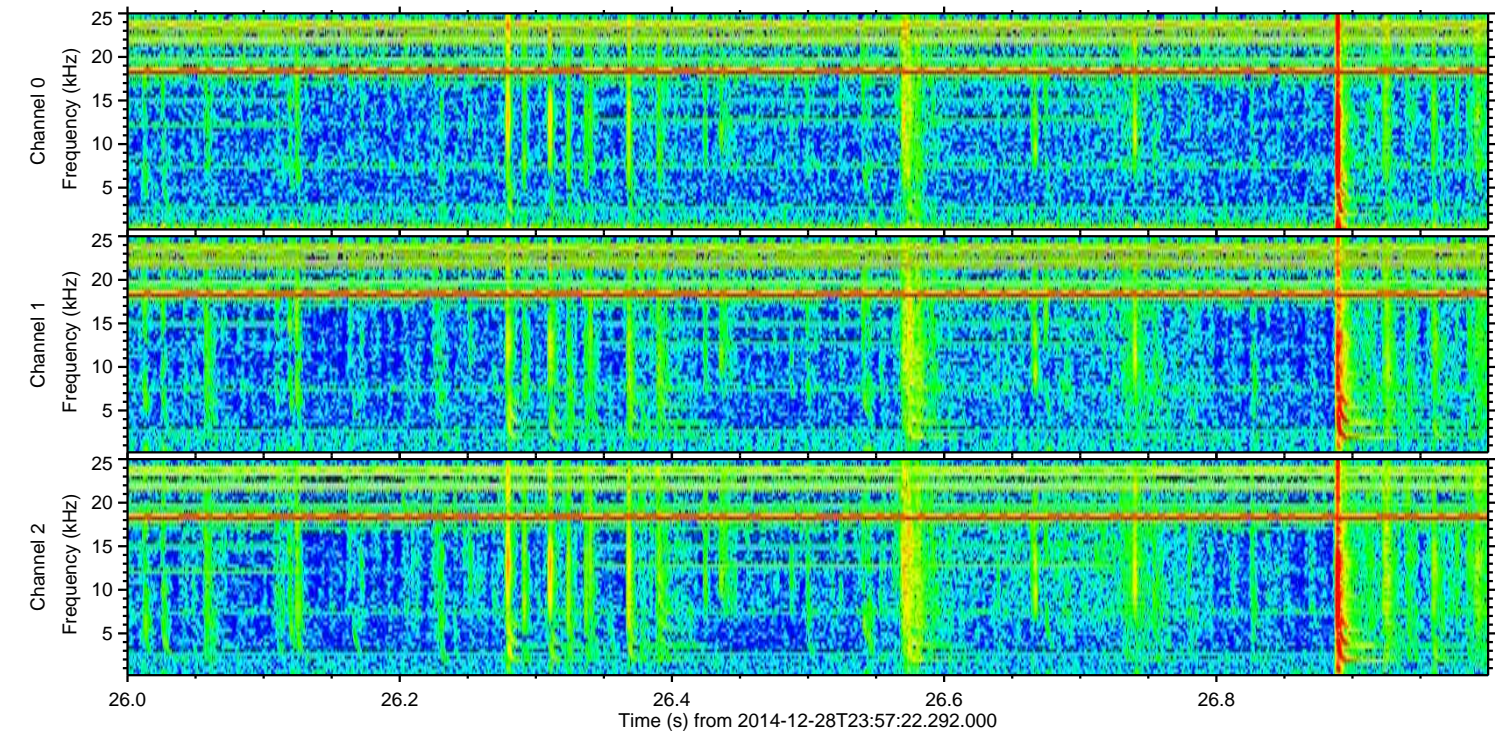
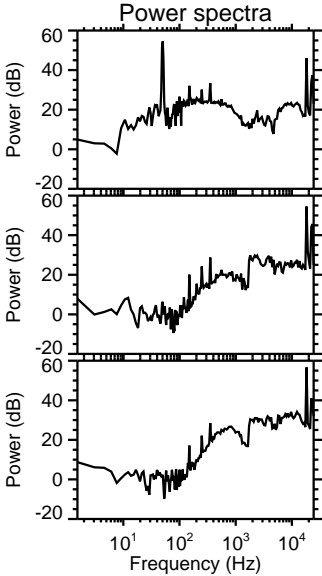
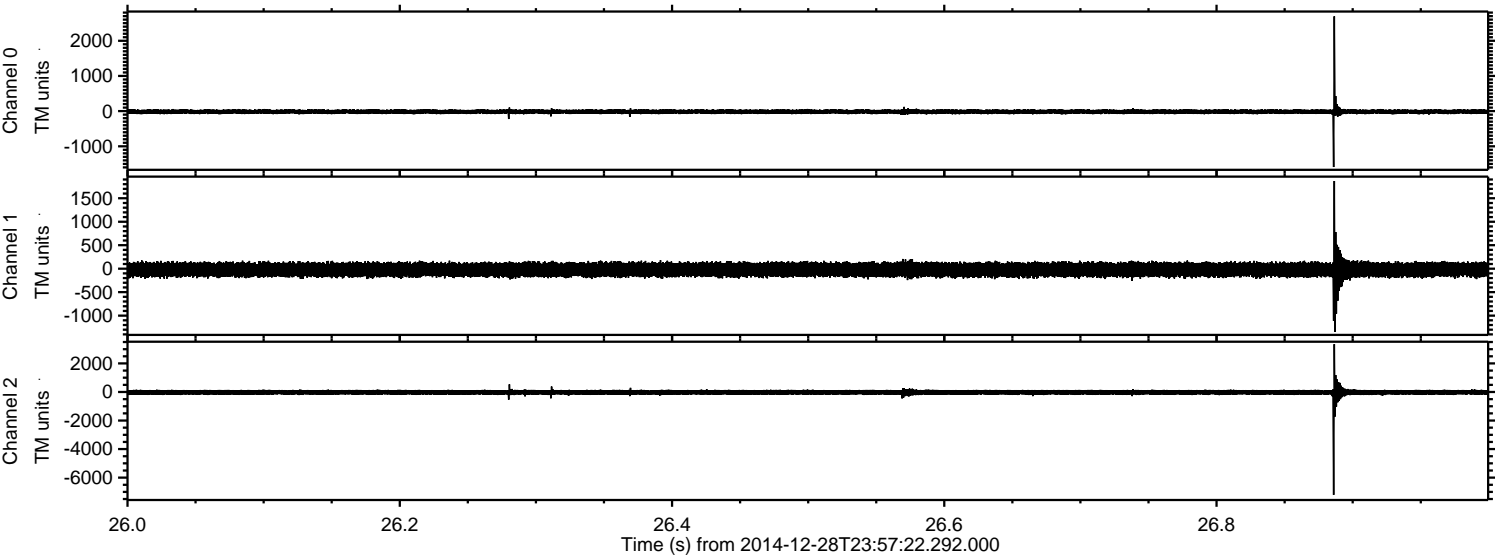
Processed Fri Jan 2 00:20:28 2015 by ELM ver.2012-10-06 from 001\_\_elm20141228\_235721\_\_dat00.bin





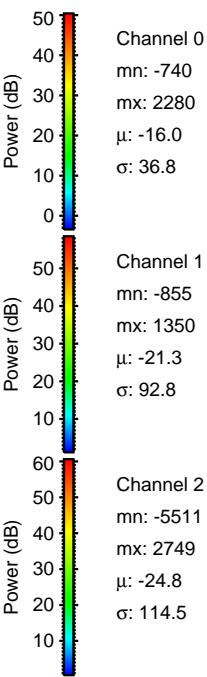
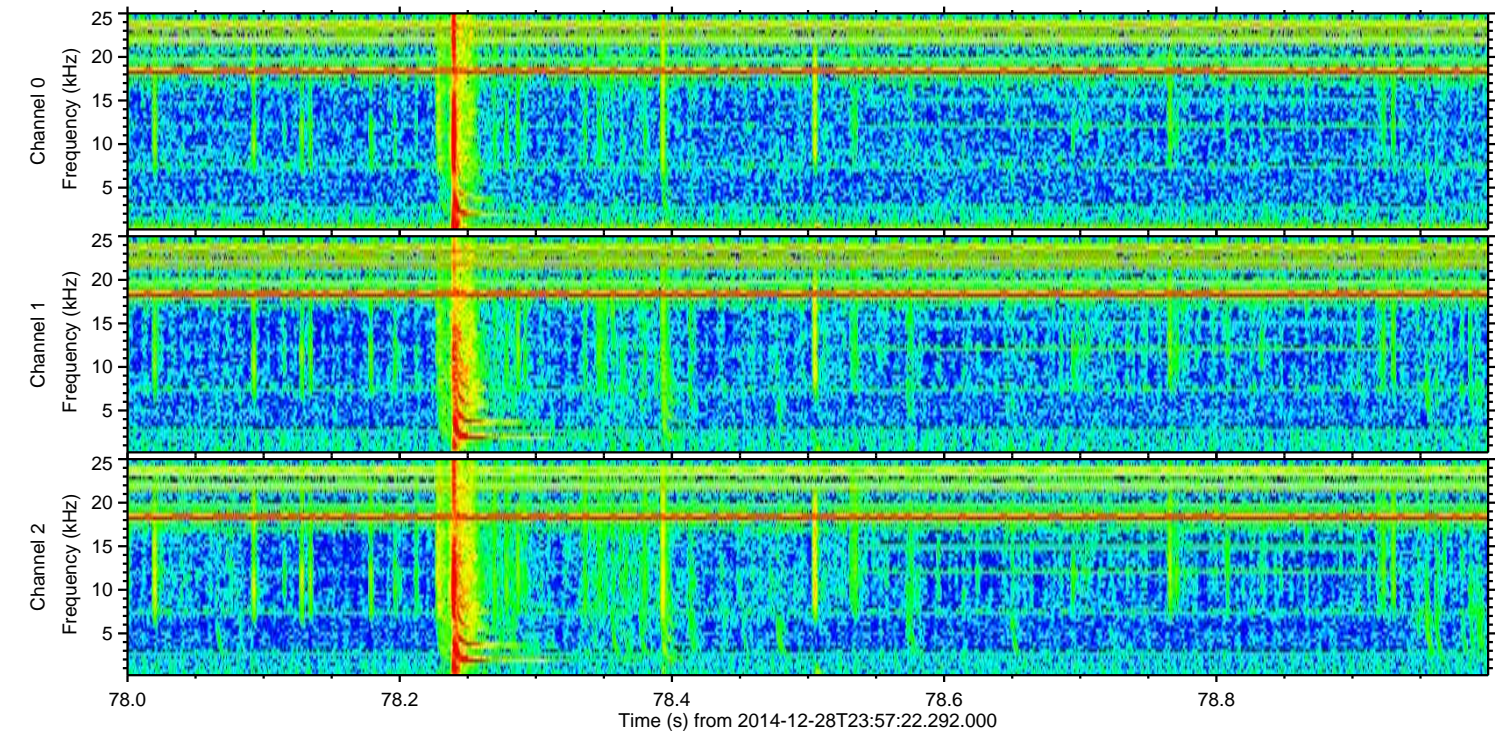
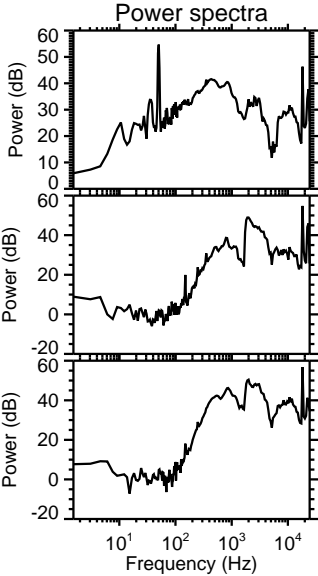
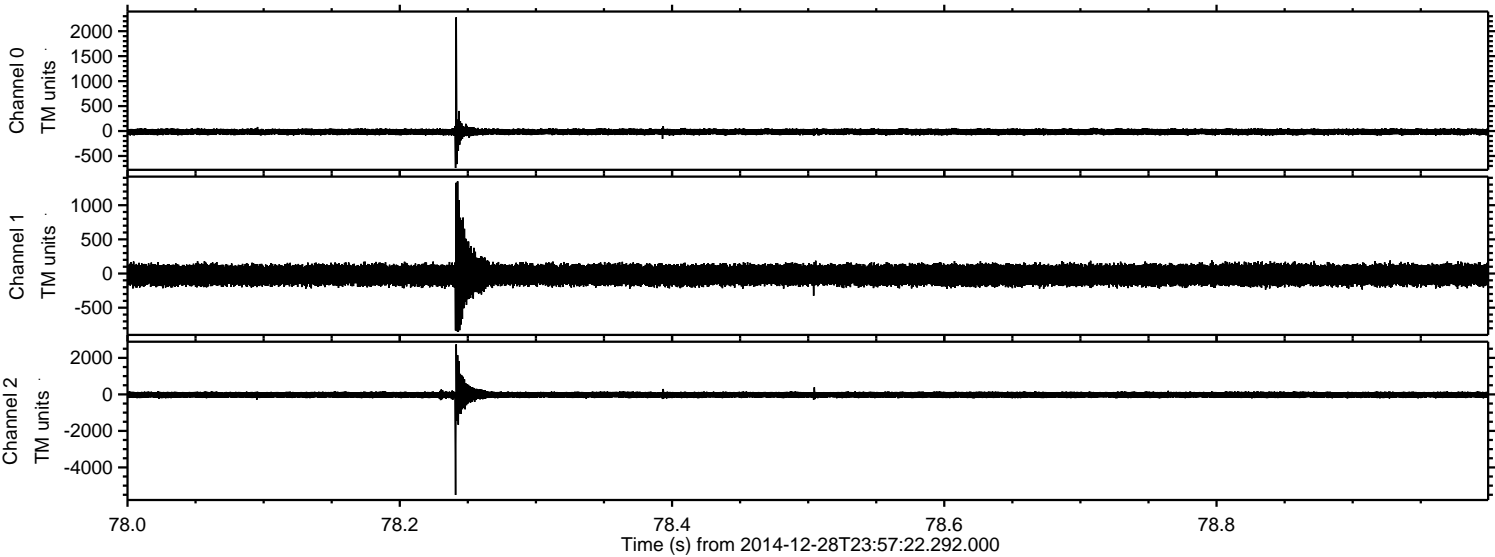
ELMAVAN 3D WAVEFORMS (Measured data sampled at 50 kHz) 49807 packets of 144 samples from 2014-12-28T23:57:22.292.000. Part 27/144

Processed Fri Jan 2 00:20:29 2015 by ELM ver.2012-10-06 from 001\_\_elm20141228\_235721\_\_dat00.bin



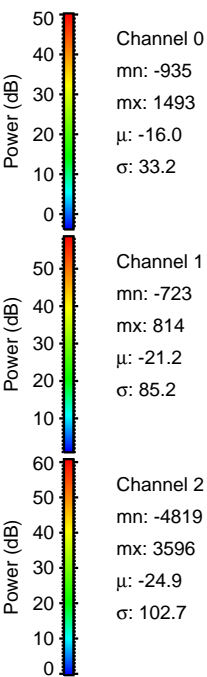
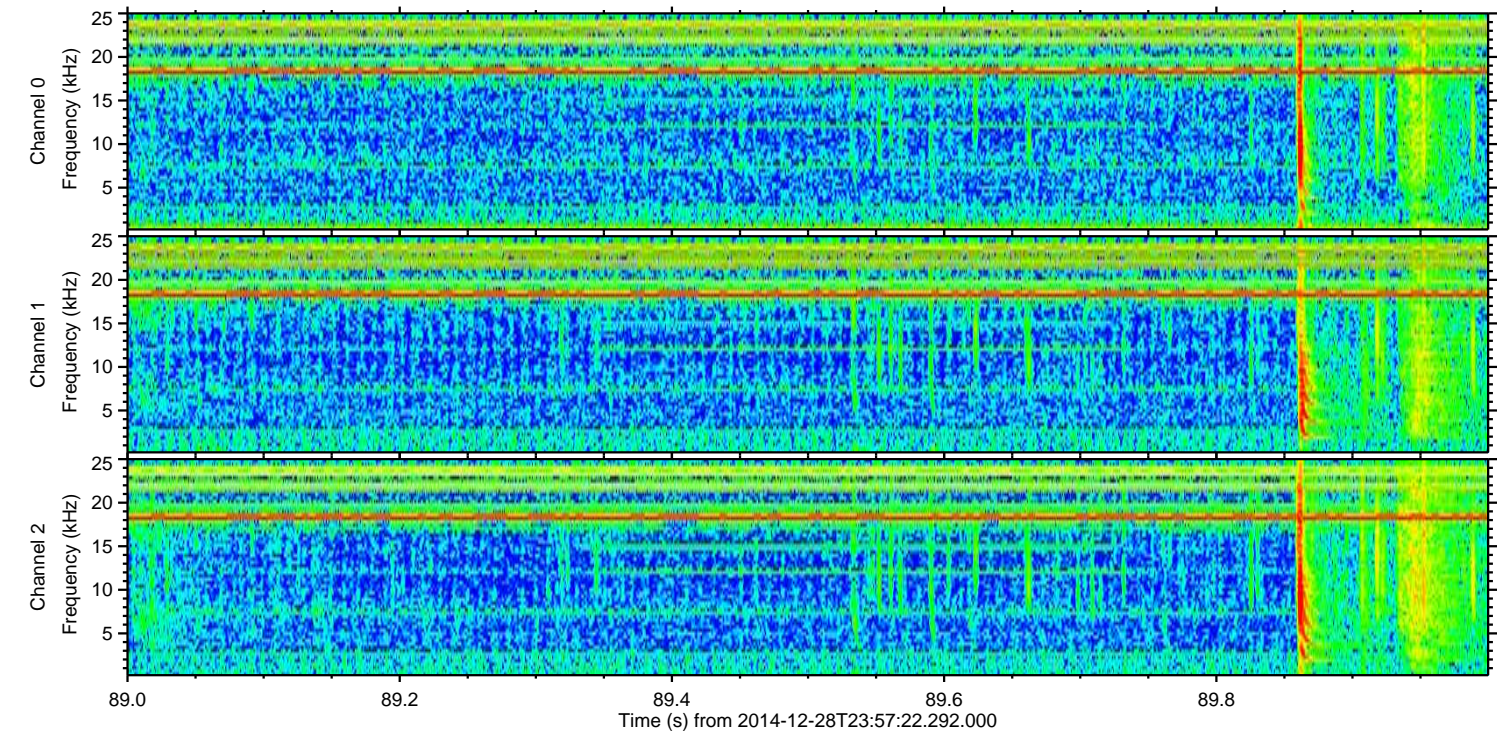
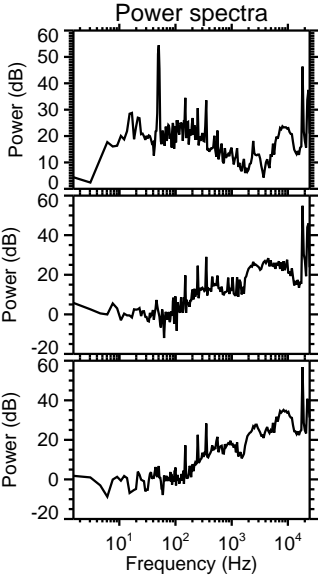
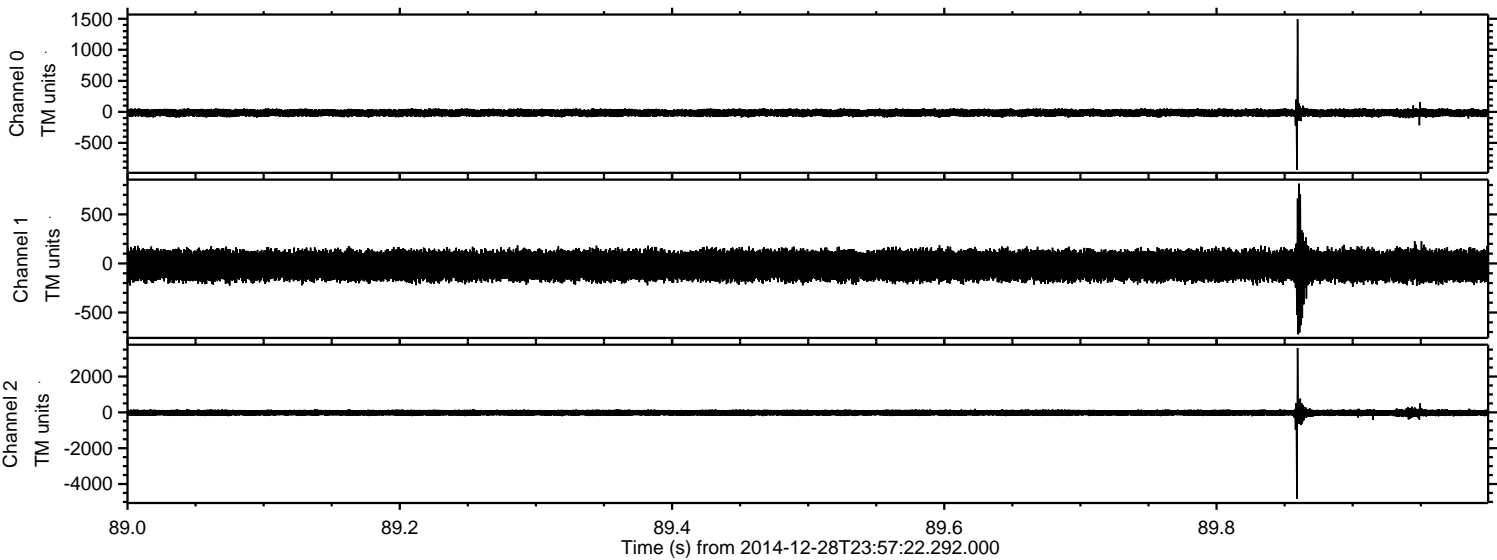


Processed Fri Jan 2 00:20:30 2015 by ELM ver.2012-10-06 from 001\_\_elm20141228\_235721\_\_dat00.bin



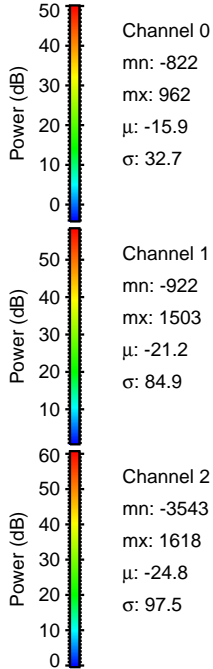
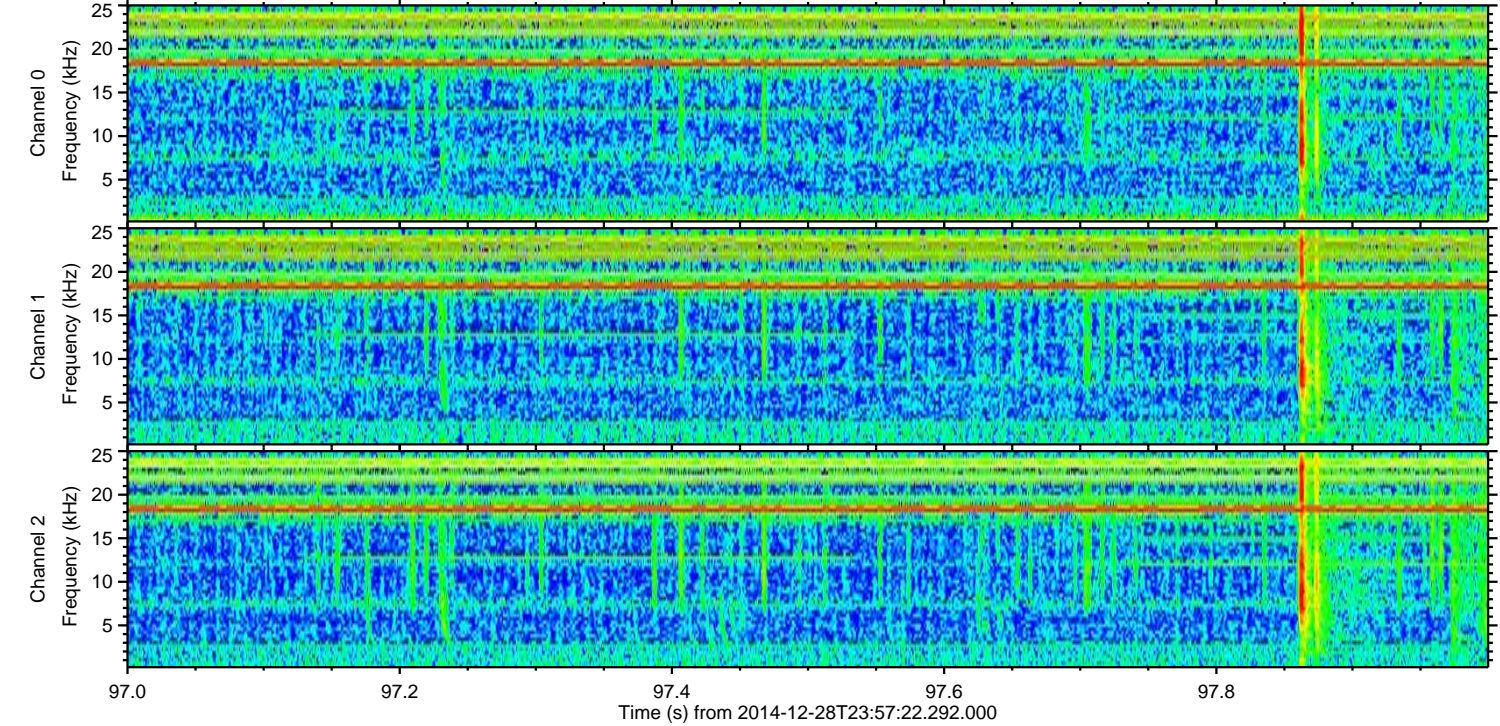
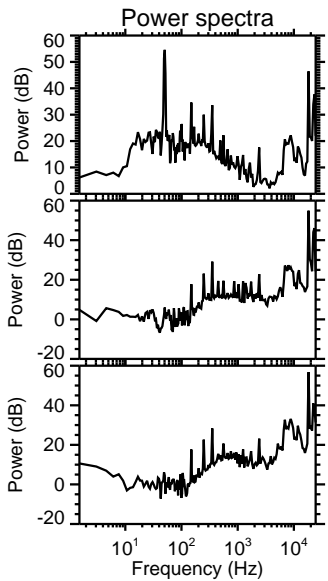
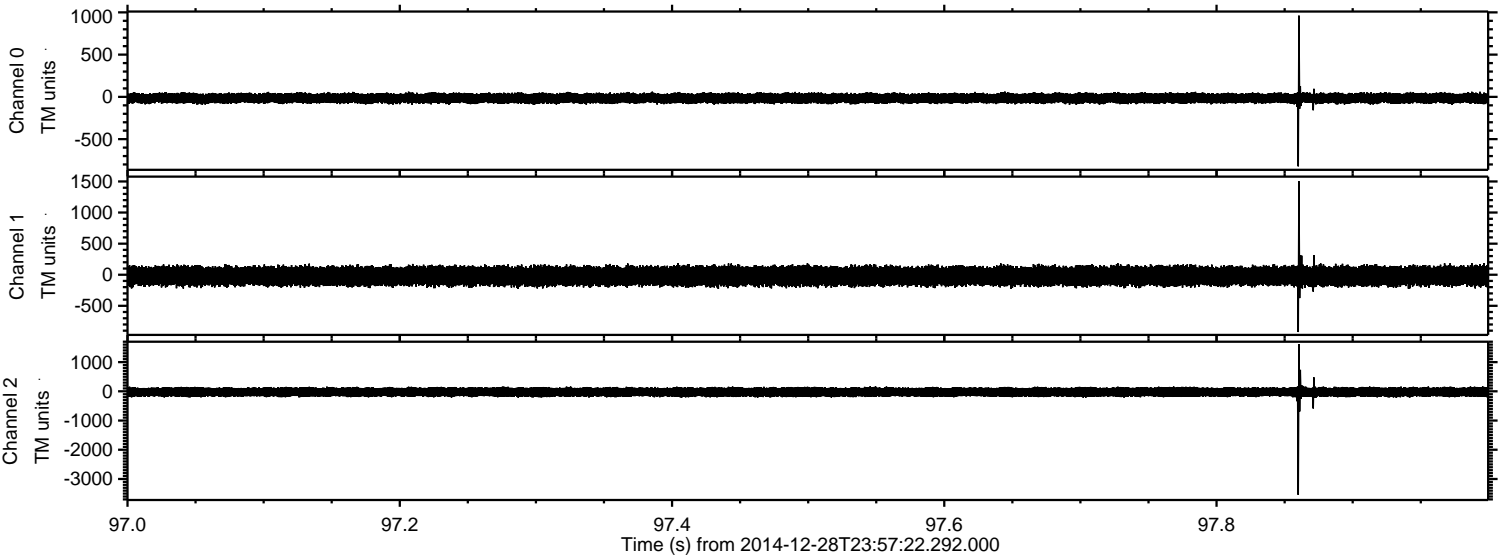


Processed Fri Jan 2 00:20:31 2015 by ELM ver.2012-10-06 from 001\_\_elm20141228\_235721\_\_dat00.bin



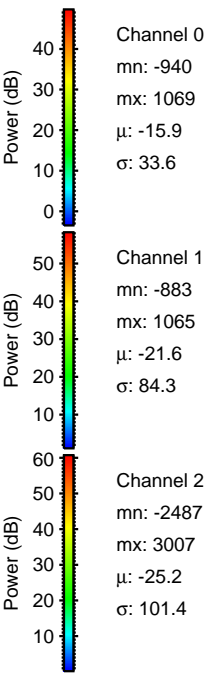
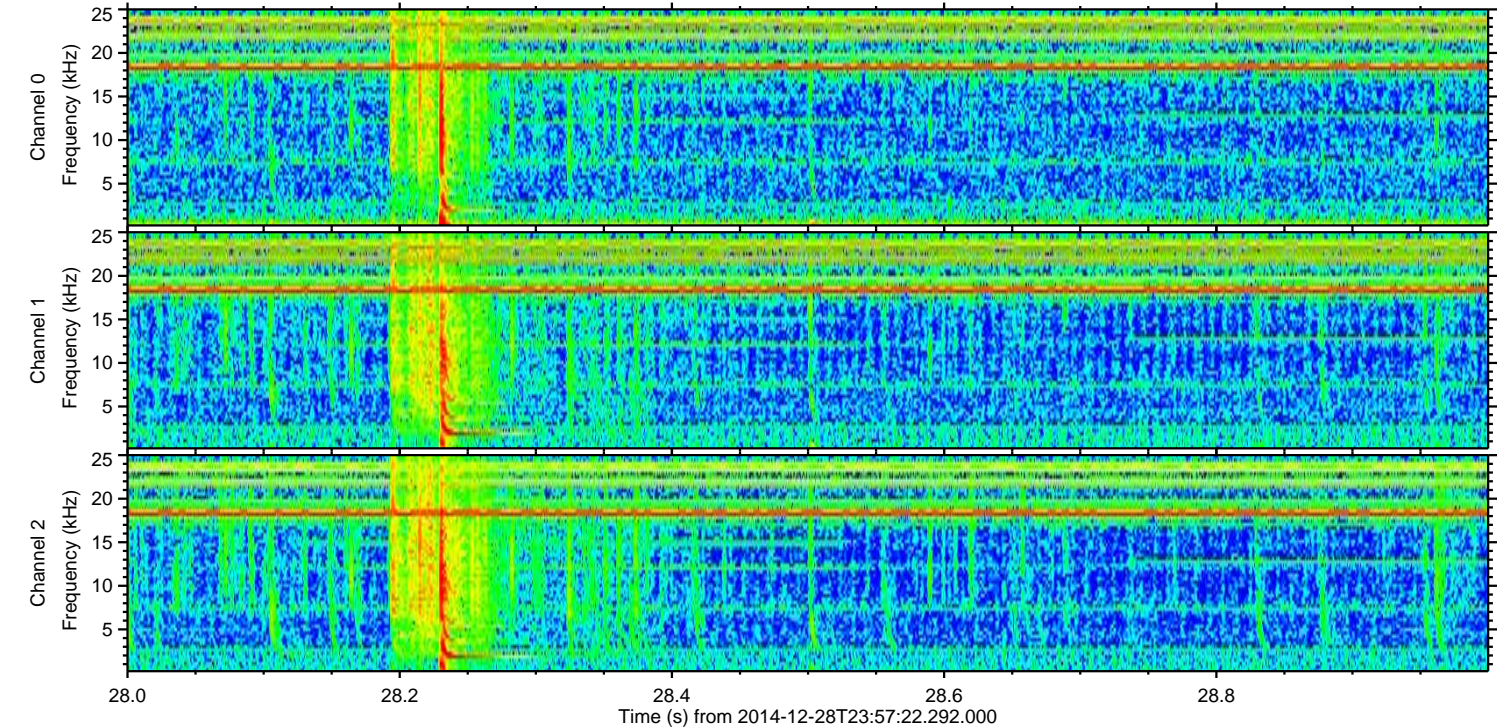
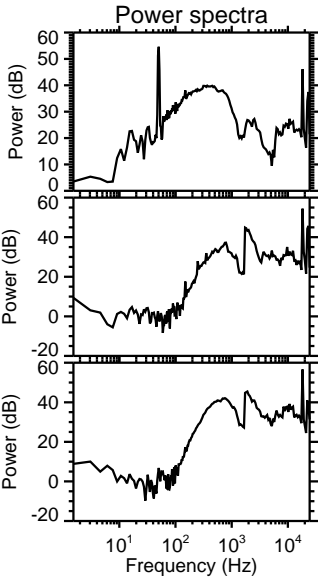
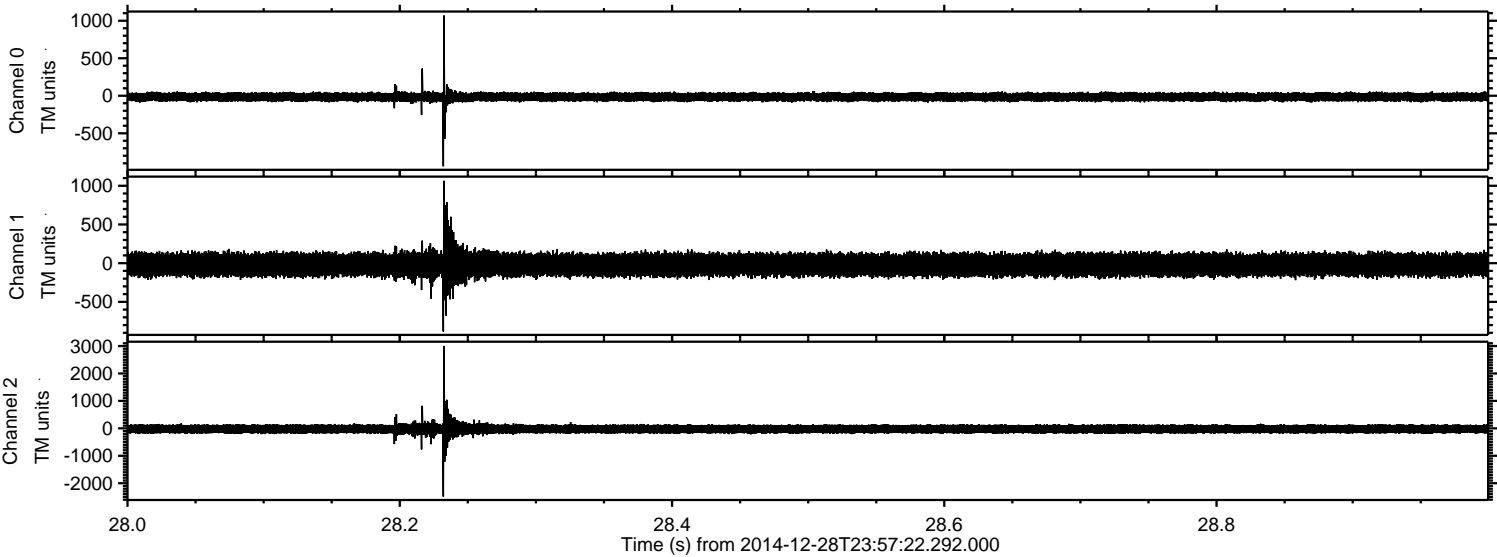


Processed Fri Jan 2 00:20:32 2015 by ELM ver.2012-10-06 from 001\_\_elm20141228\_235721\_\_dat00.bin



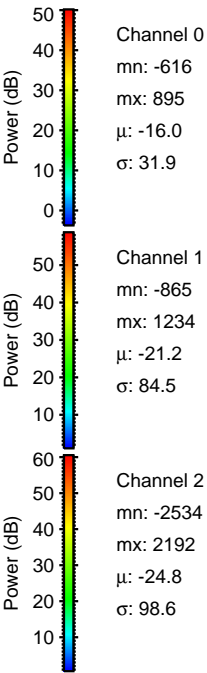
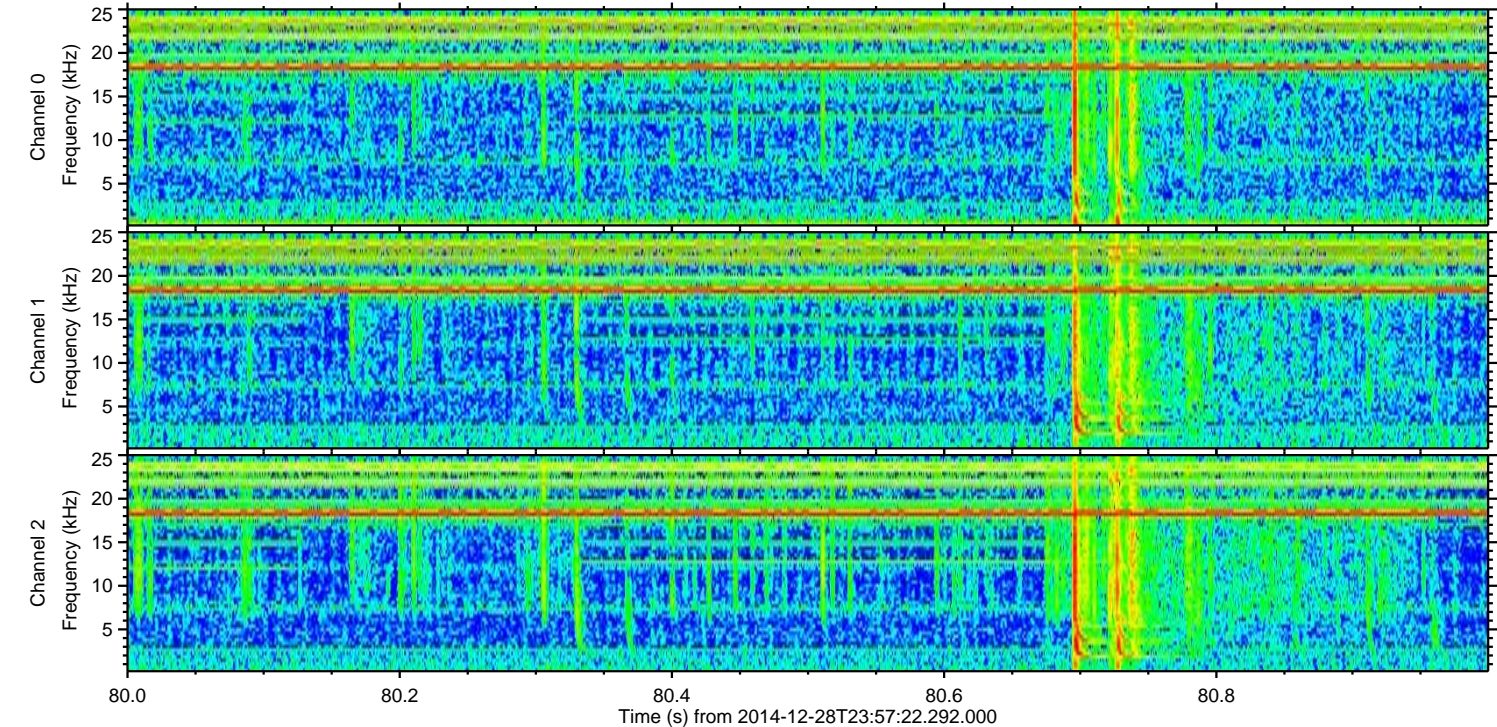
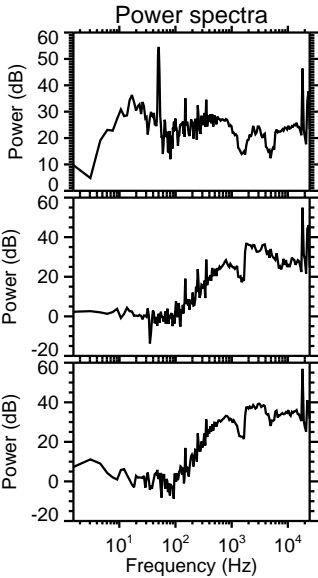
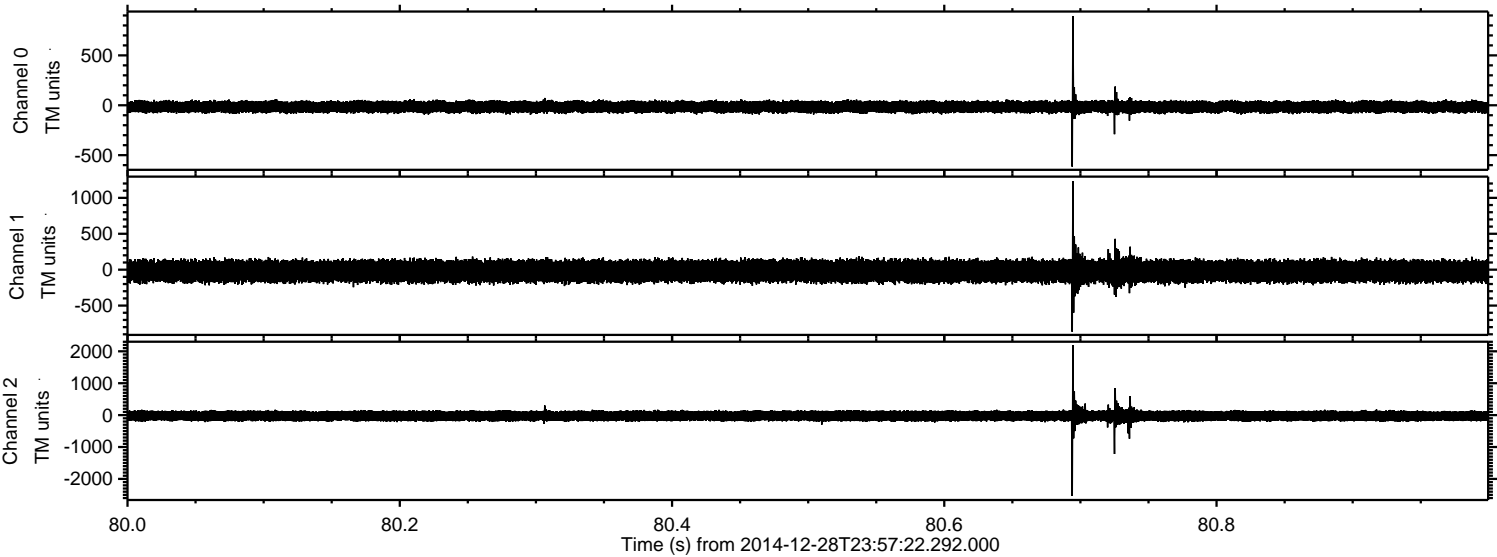


Processed Fri Jan 2 00:20:33 2015 by ELM ver.2012-10-06 from 001\_\_elm20141228\_235721\_\_dat00.bin



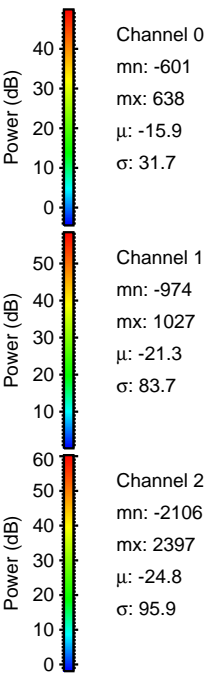
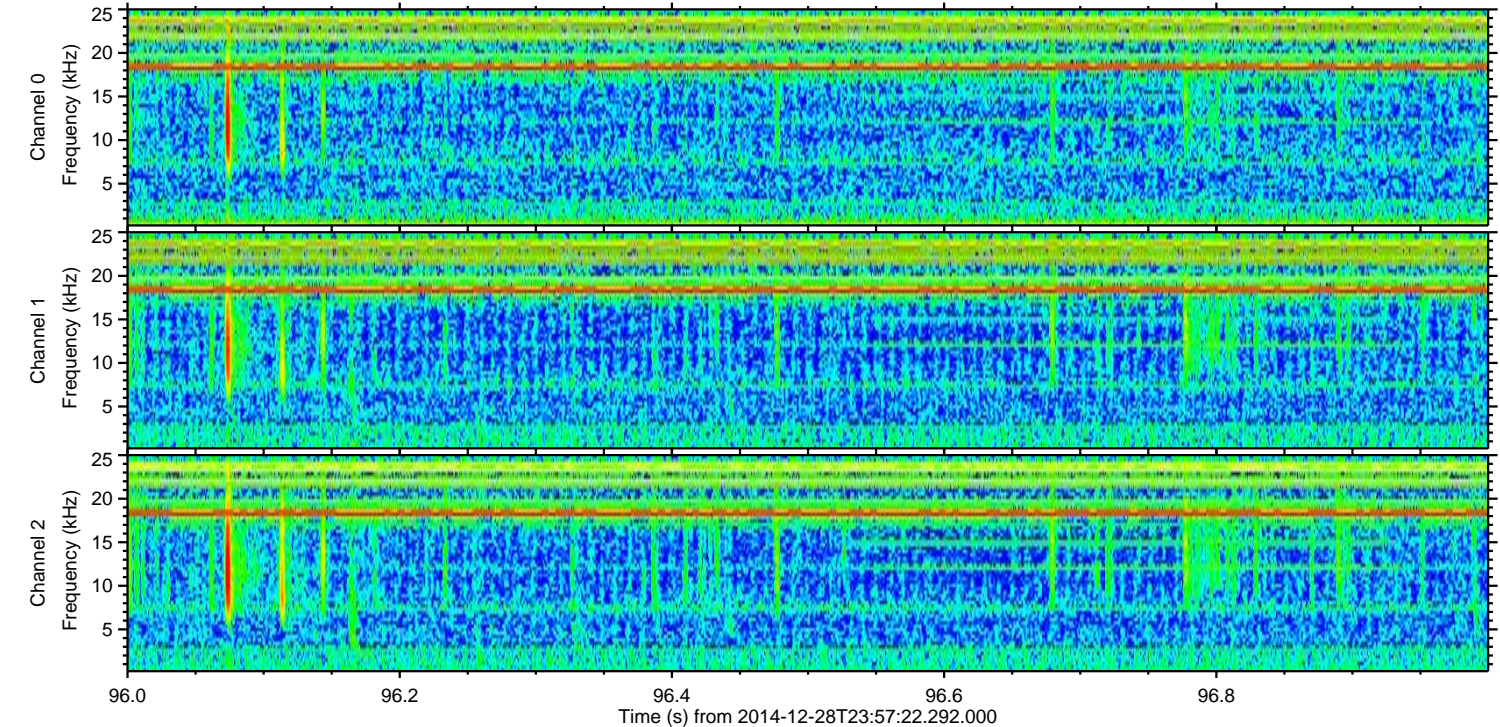
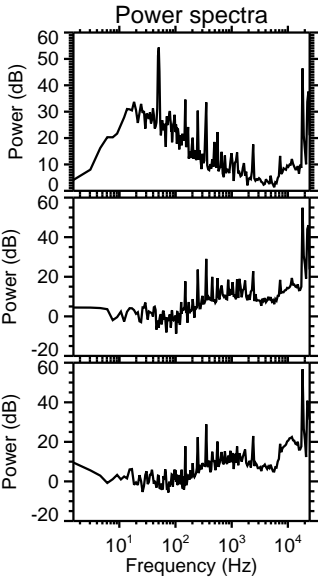
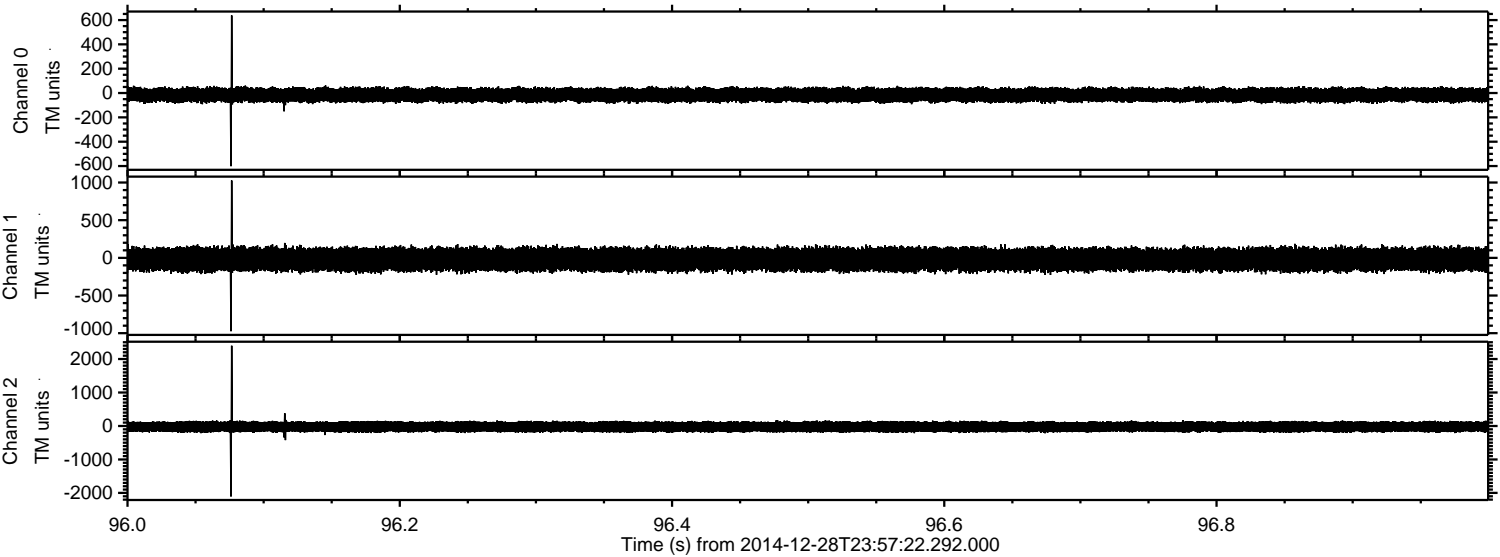


Processed Fri Jan 2 00:20:34 2015 by ELM ver.2012-10-06 from 001\_\_elm20141228\_235721\_\_dat00.bin





Processed Fri Jan 2 00:20:35 2015 by ELM ver.2012-10-06 from 001\_\_elm20141228\_235721\_\_dat00.bin





Processed Fri Jan 2 00:20:36 2015 by ELM ver.2012-10-06 from 001\_\_elm20141228\_235721\_\_dat00.bin

