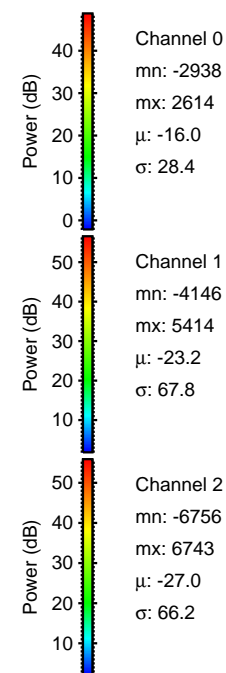
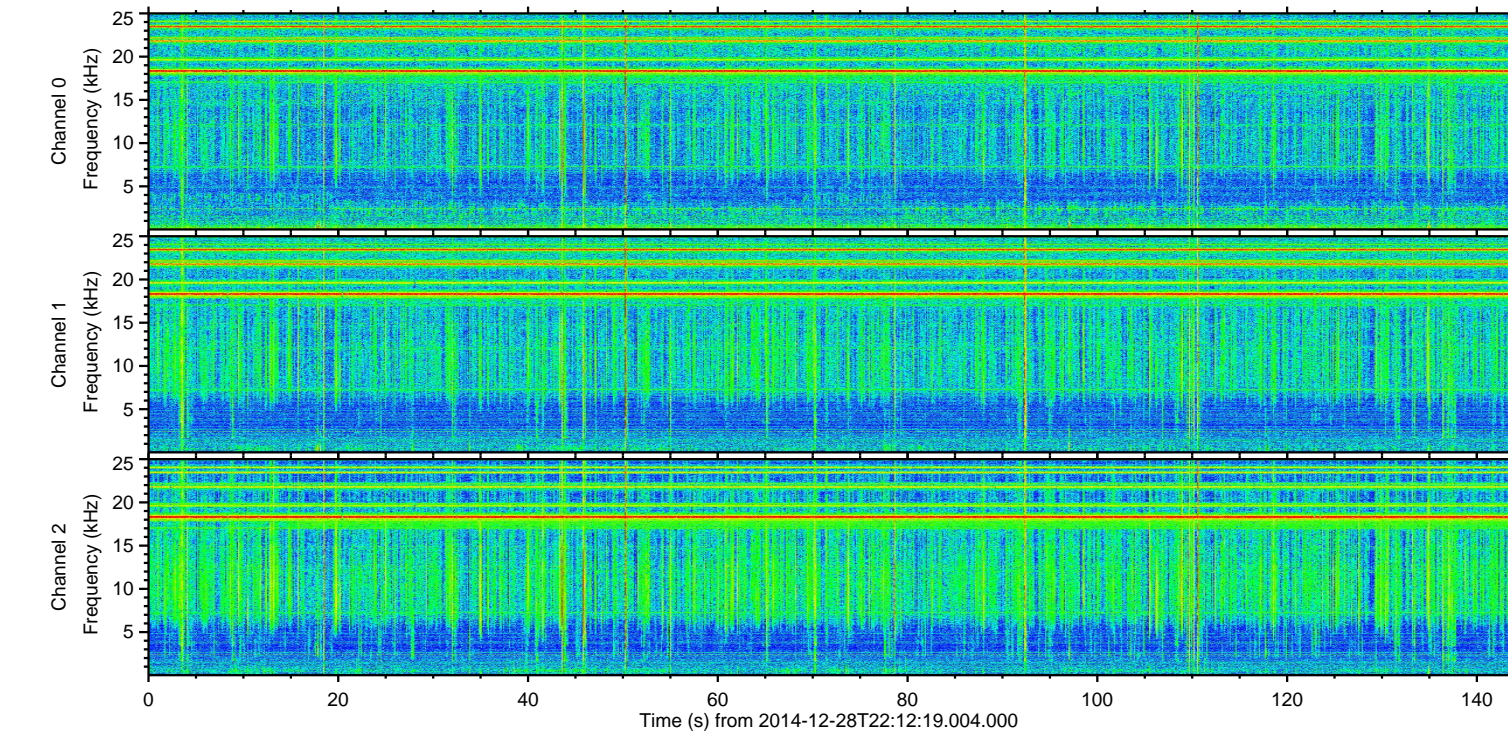
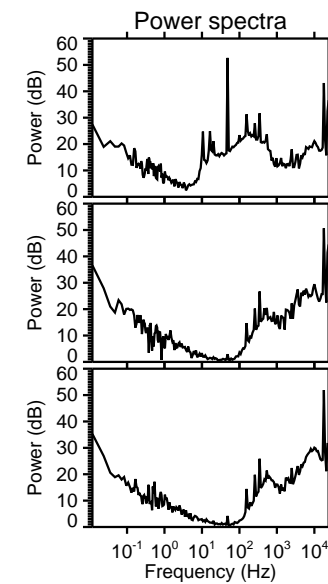
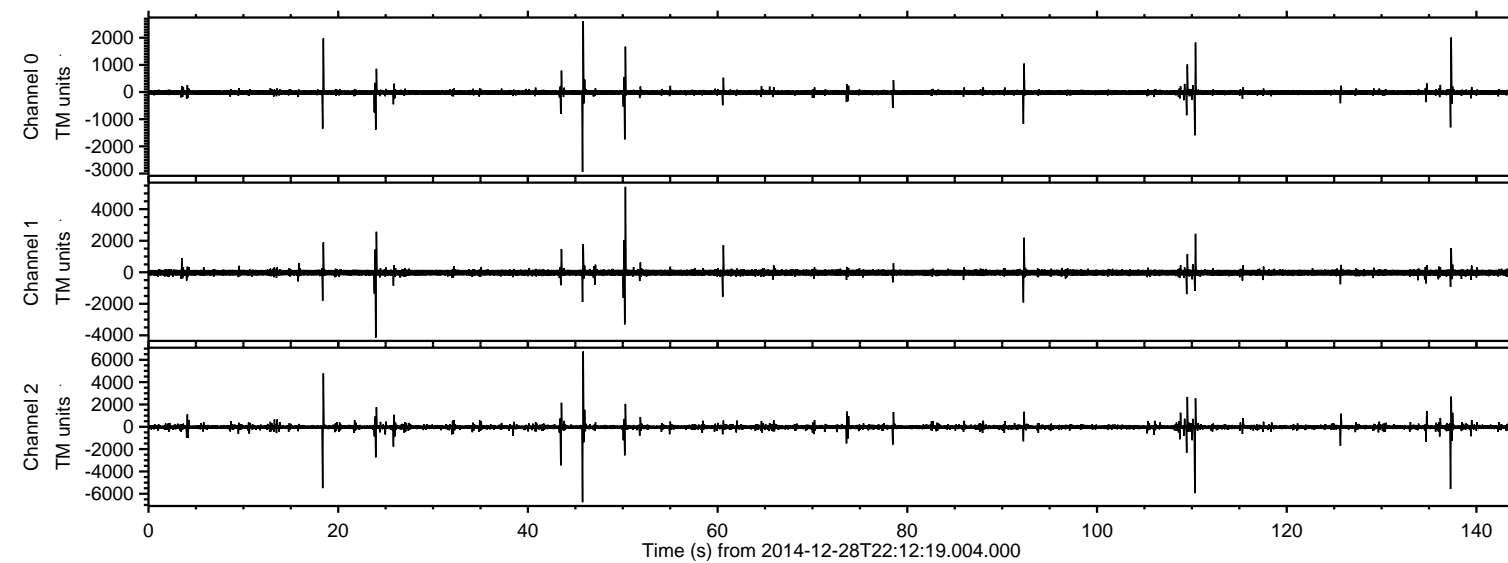
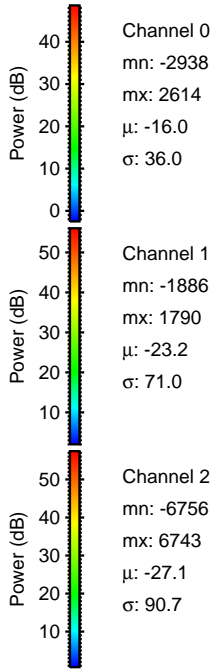
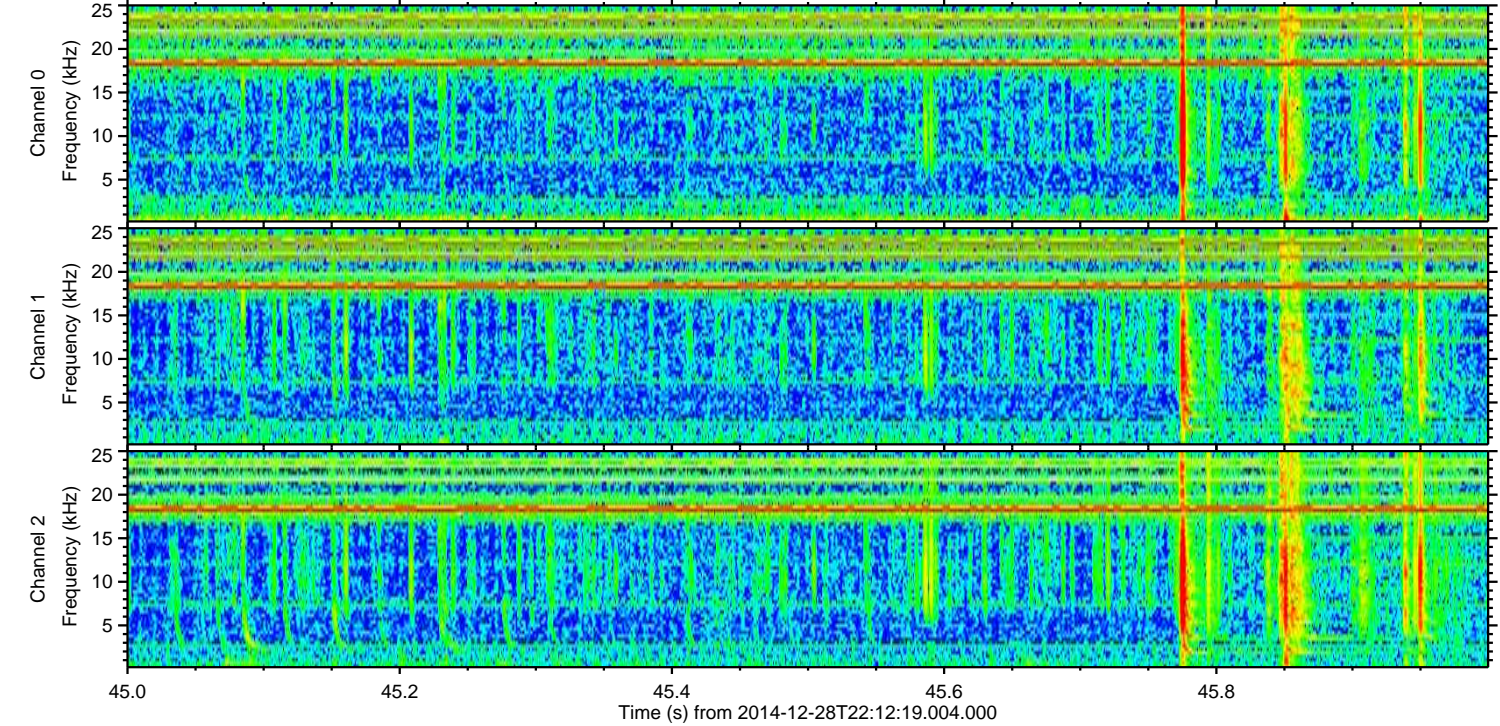
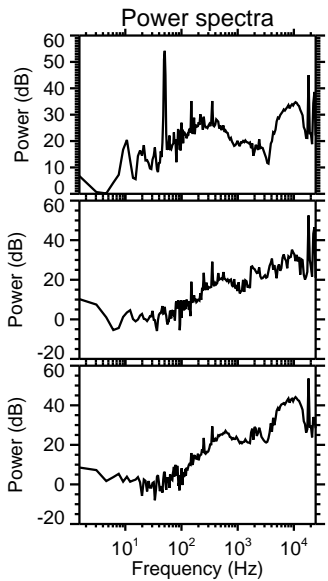
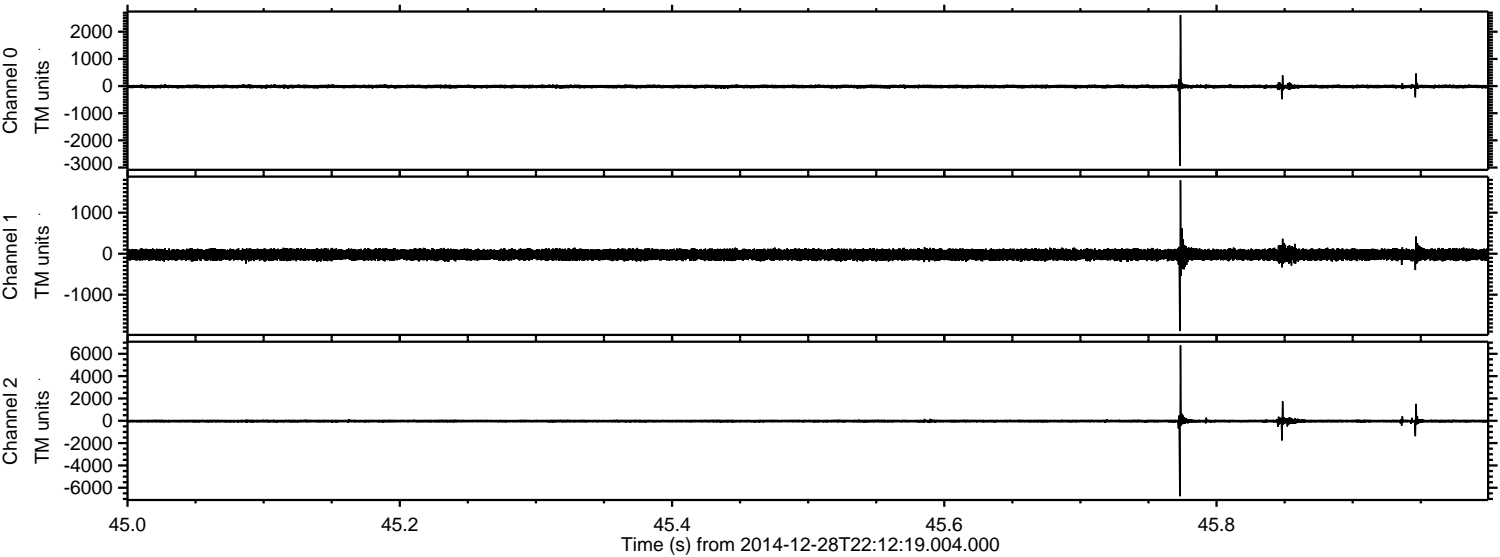


ELMAVAN 3D WAVEFORMS (Measured data sampled at 50 kHz) 49809 packets of 144 samples from 2014-12-28T22:12:19.004.000.

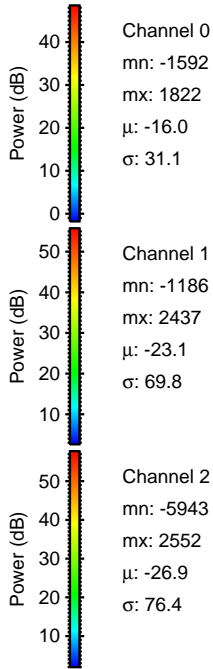
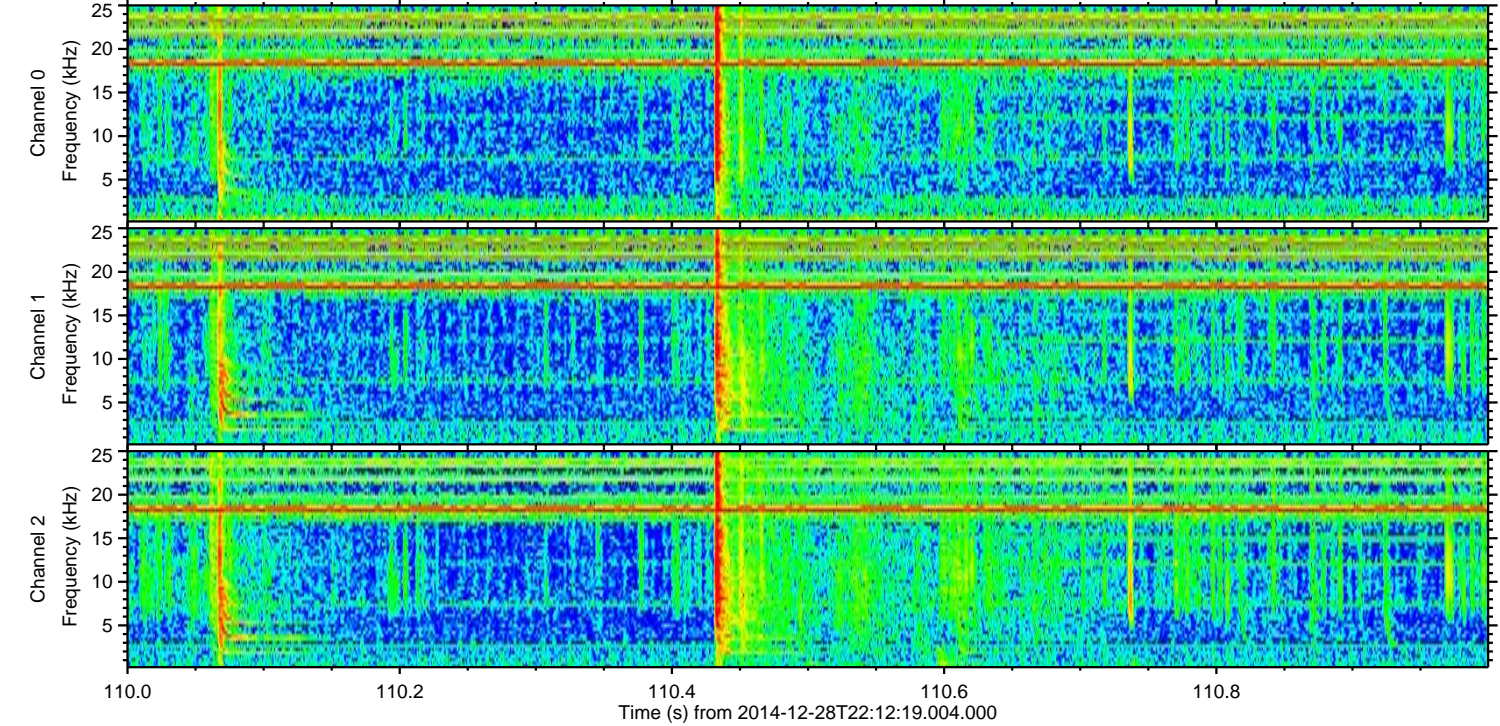
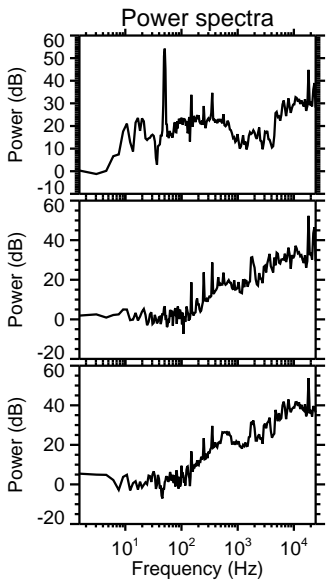
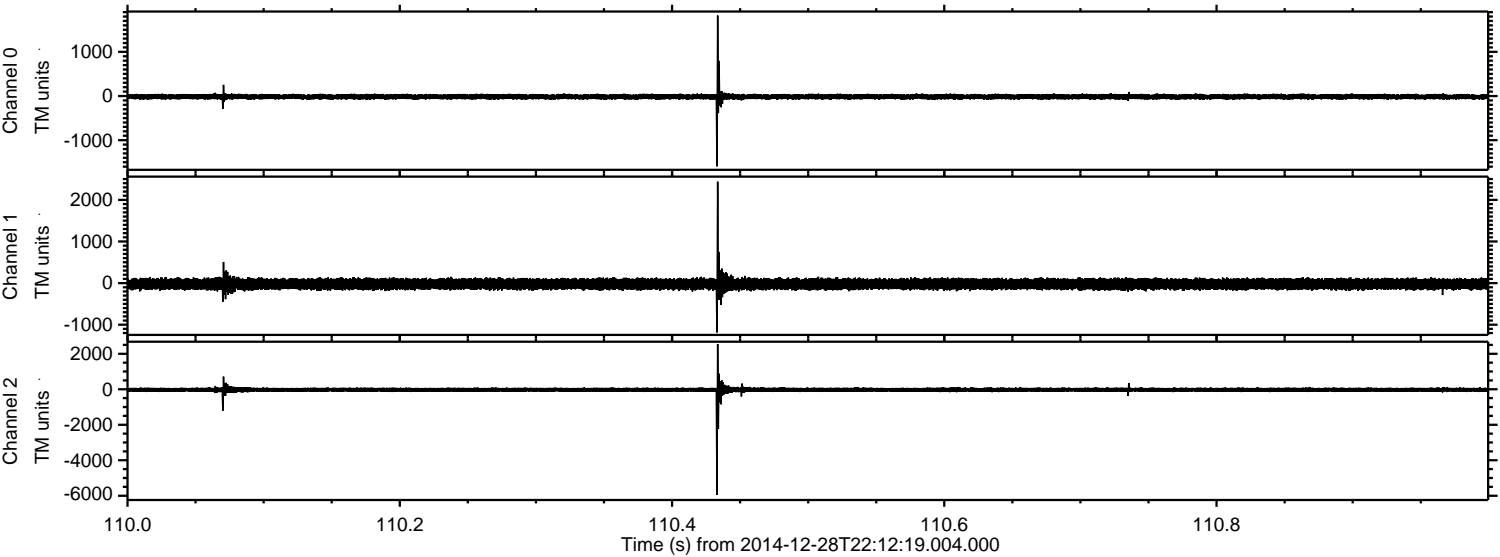
Processed Thu Jan 1 23:12:12 2015 by ELM ver.2012-10-06 from 001__elm20141228_221217__dat00.bin



Processed Thu Jan 1 23:12:25 2015 by ELM ver.2012-10-06 from 001__elm20141228_221217__dat00.bin

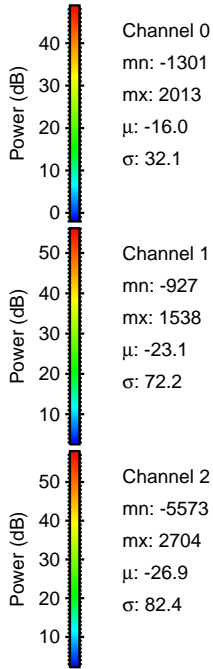
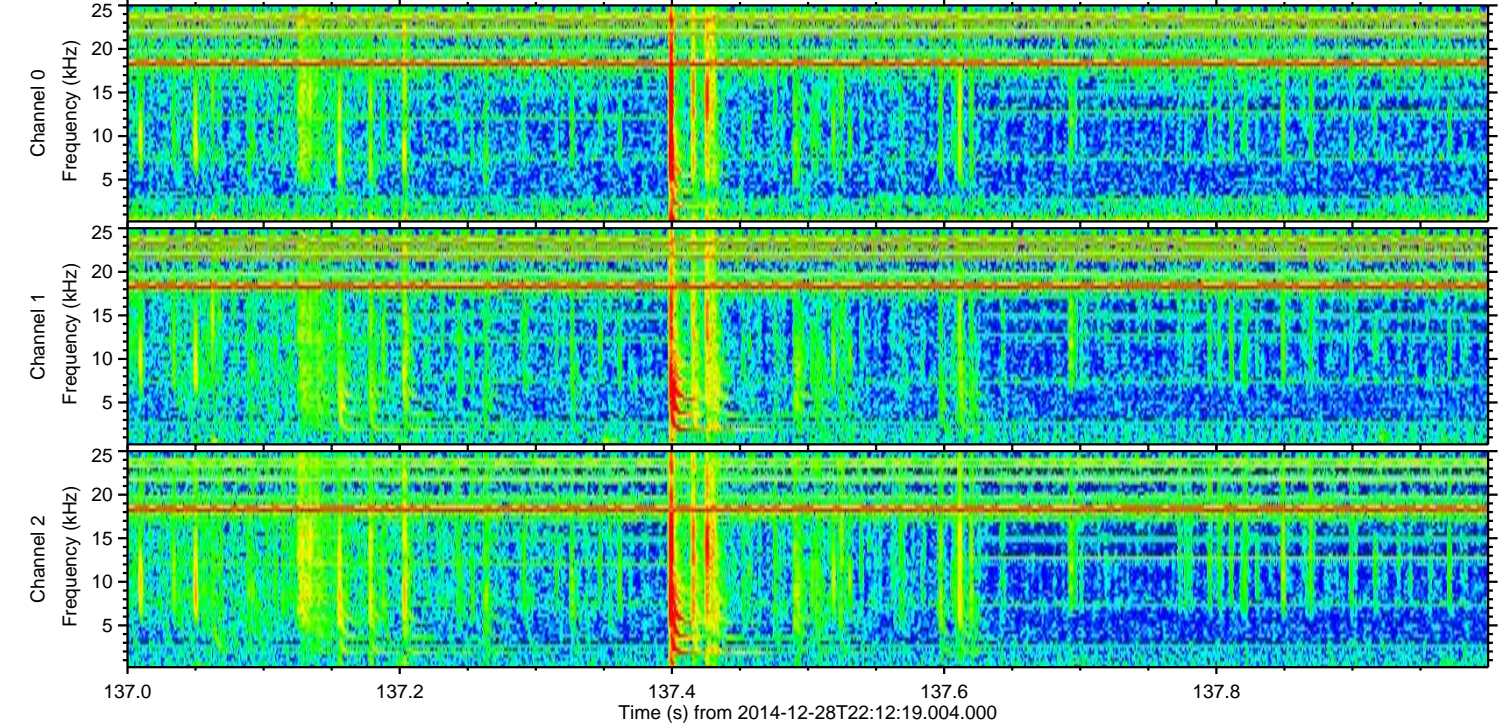
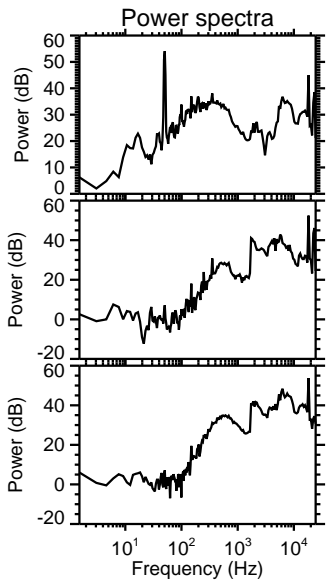
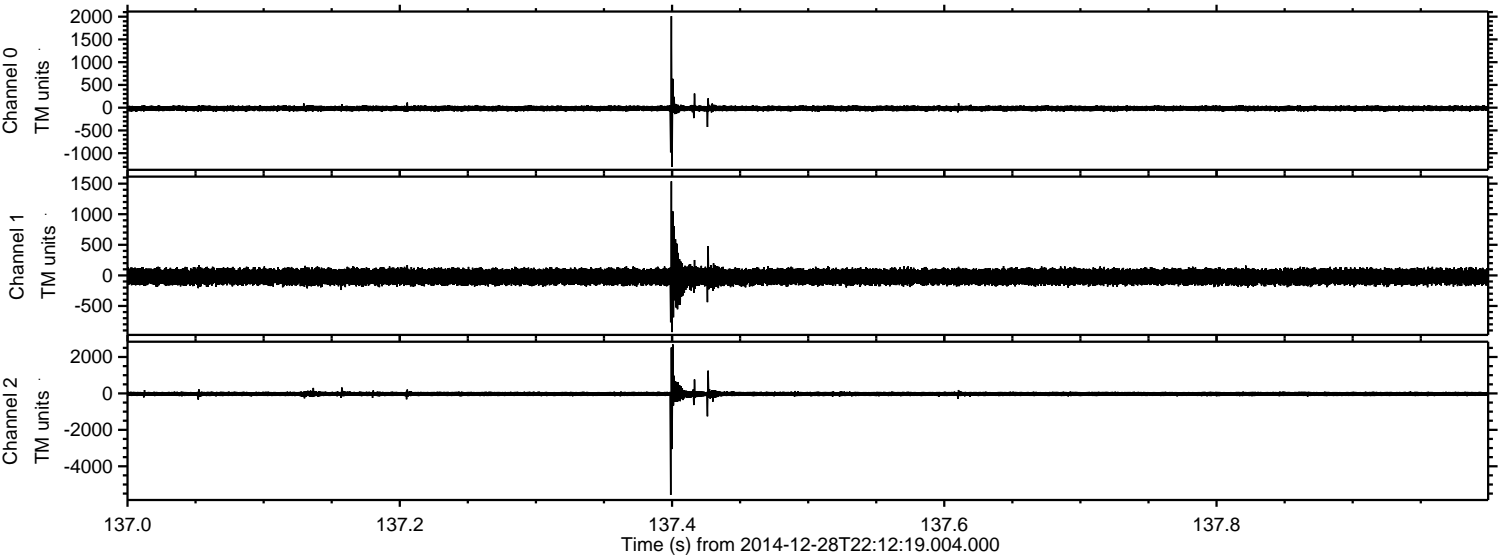


Processed Thu Jan 1 23:12:26 2015 by ELM ver.2012-10-06 from 001__elm20141228_221217__dat00.bin



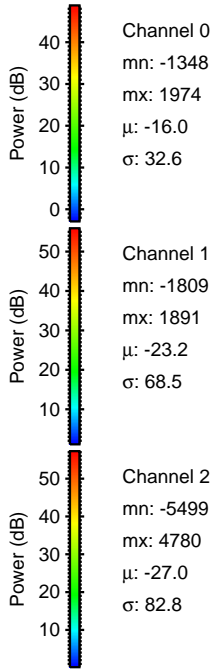
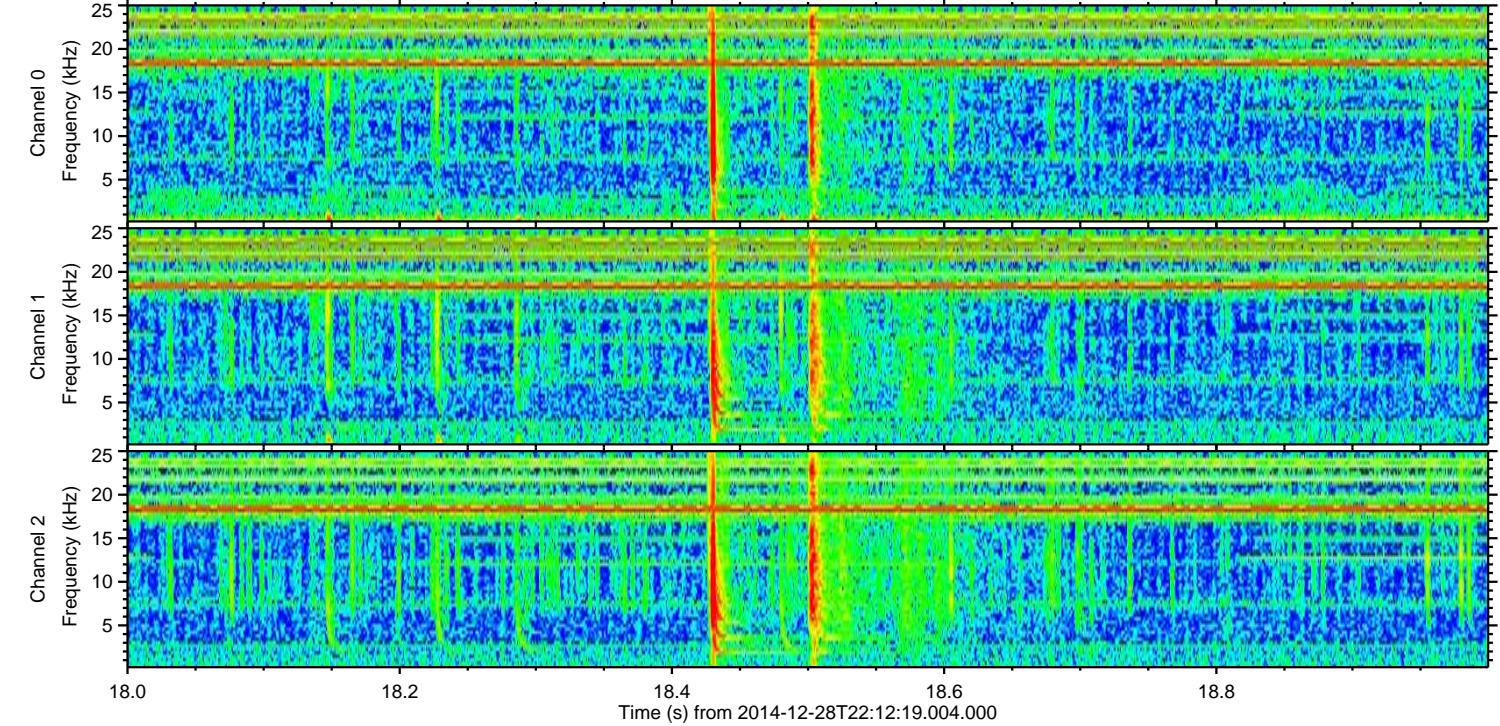
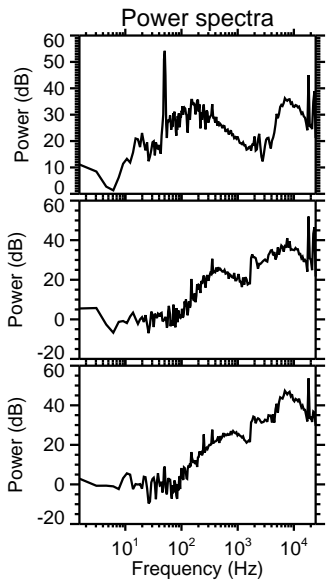
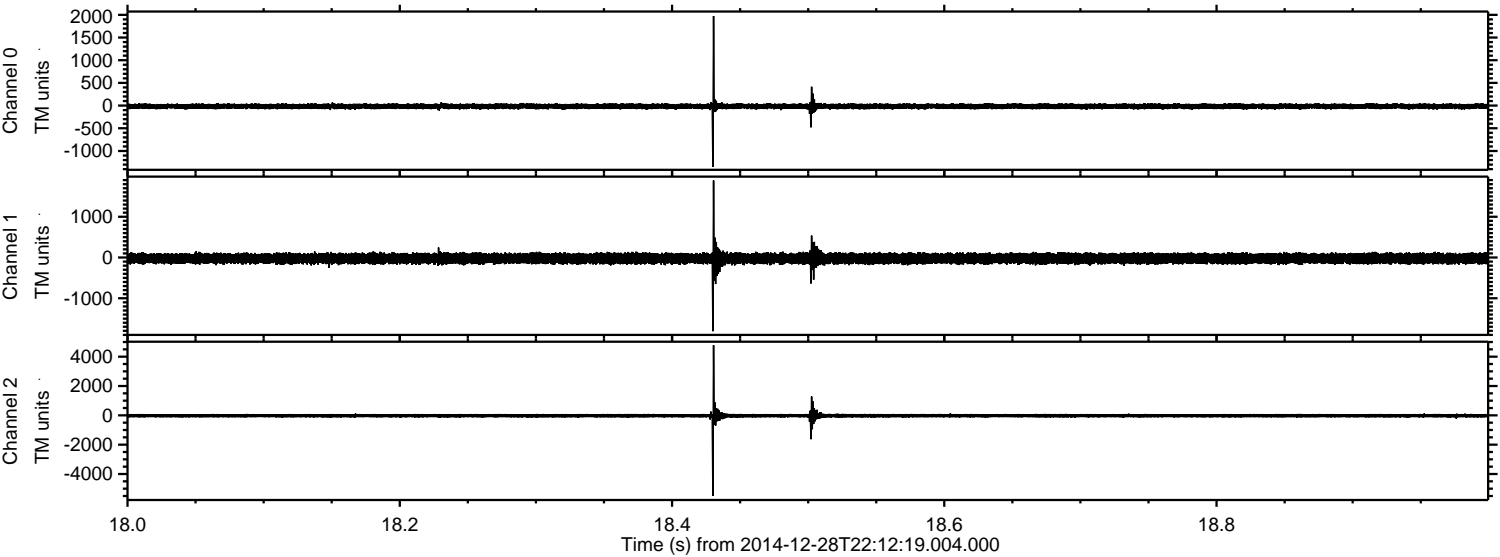
ELMAVAN 3D WAVEFORMS (Measured data sampled at 50 kHz) 49809 packets of 144 samples from 2014-12-28T22:12:19.004.000. Part 138/144

Processed Thu Jan 1 23:12:26 2015 by ELM ver.2012-10-06 from 001__elm20141228_221217__dat00.bin

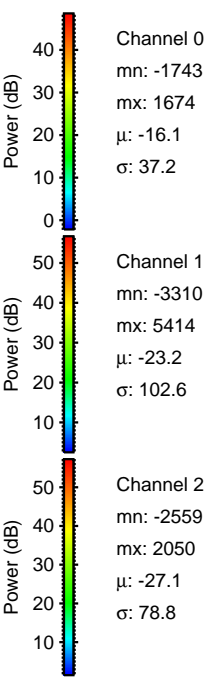
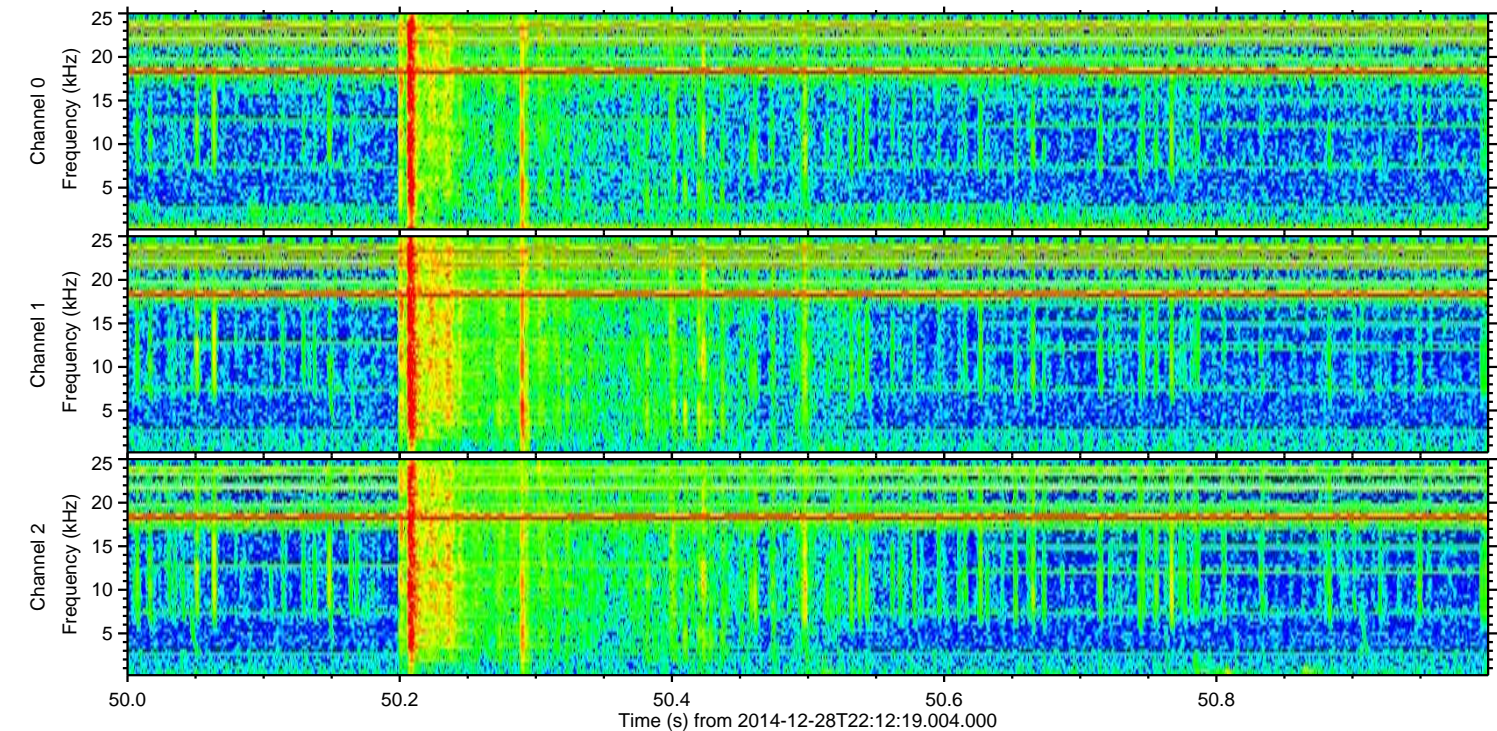
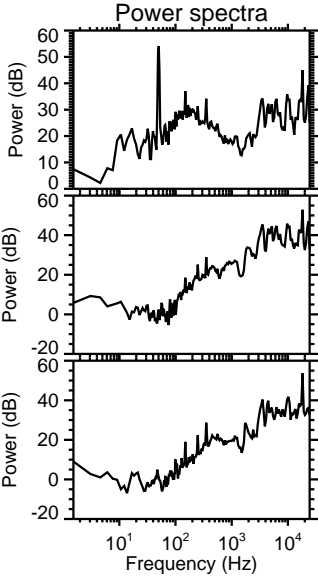
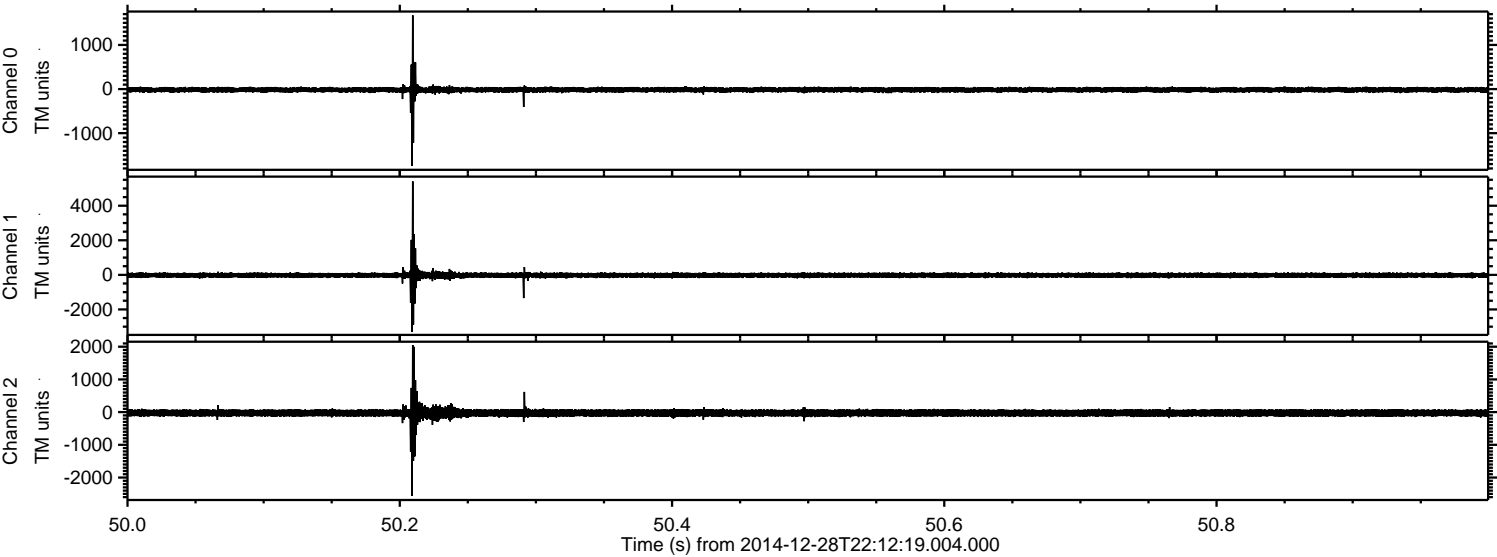


ELMAVAN 3D WAVEFORMS (Measured data sampled at 50 kHz) 49809 packets of 144 samples from 2014-12-28T22:12:19.004.000. Part 19/144

Processed Thu Jan 1 23:12:27 2015 by ELM ver.2012-10-06 from 001__elm20141228_221217__dat00.bin

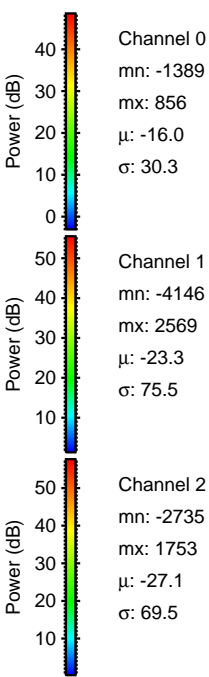
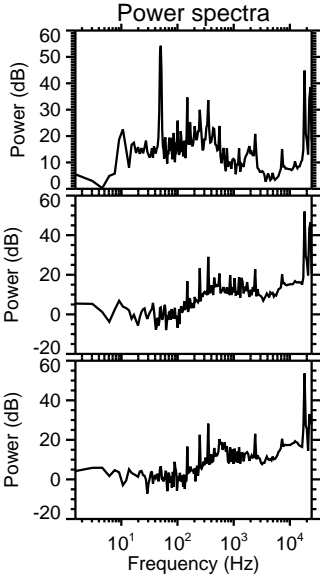
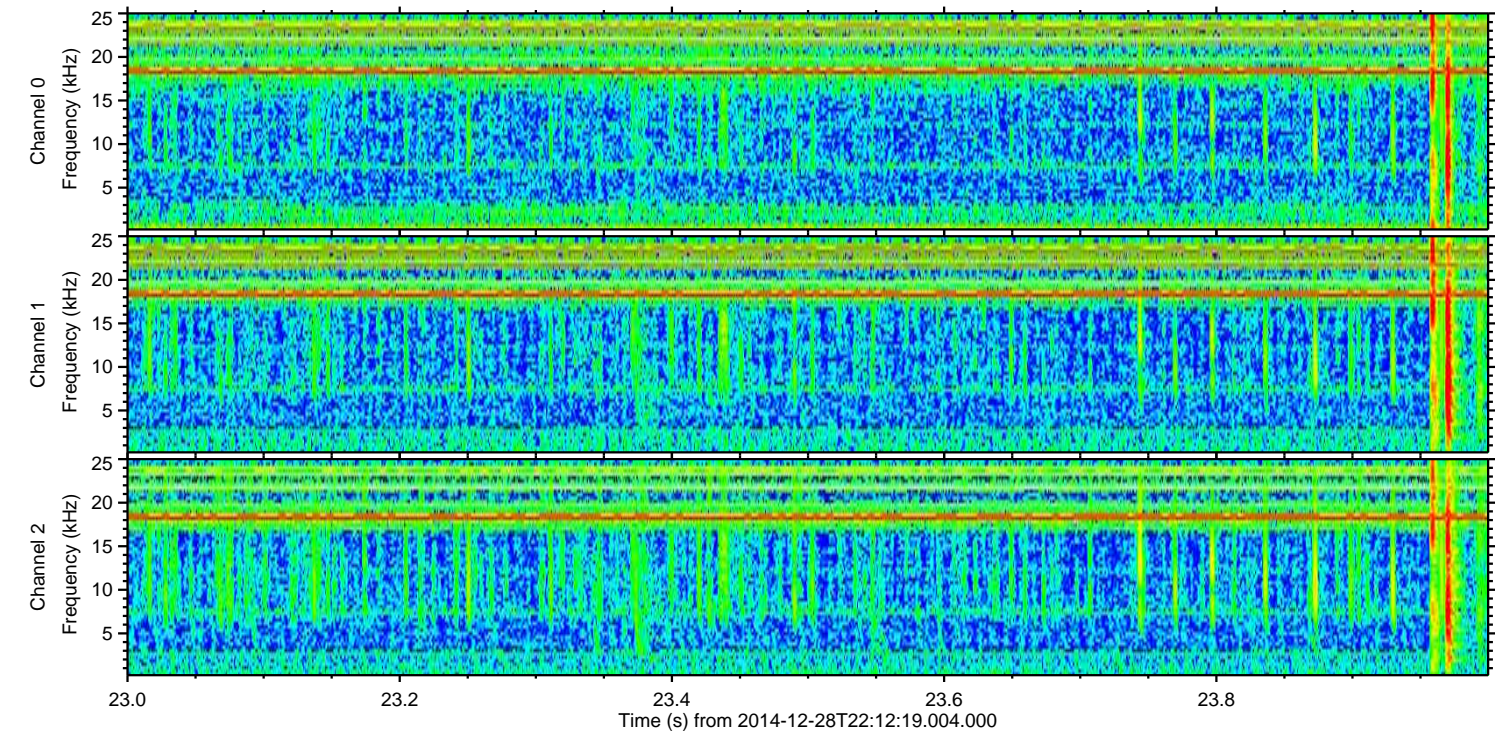
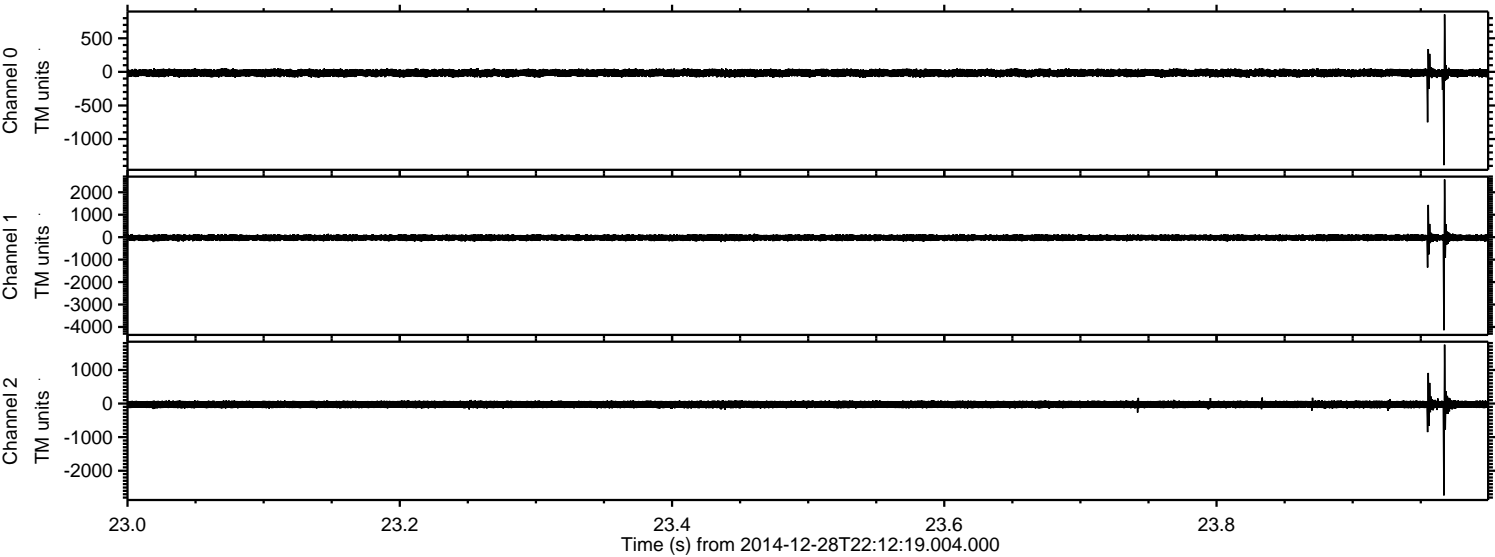


Processed Thu Jan 1 23:12:28 2015 by ELM ver.2012-10-06 from 001__elm20141228_221217__dat00.bin

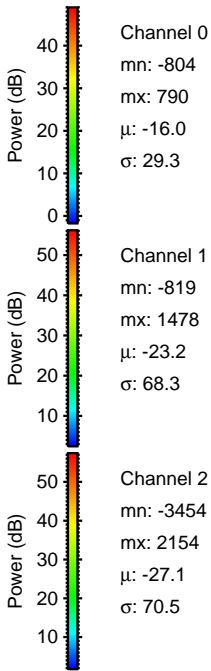
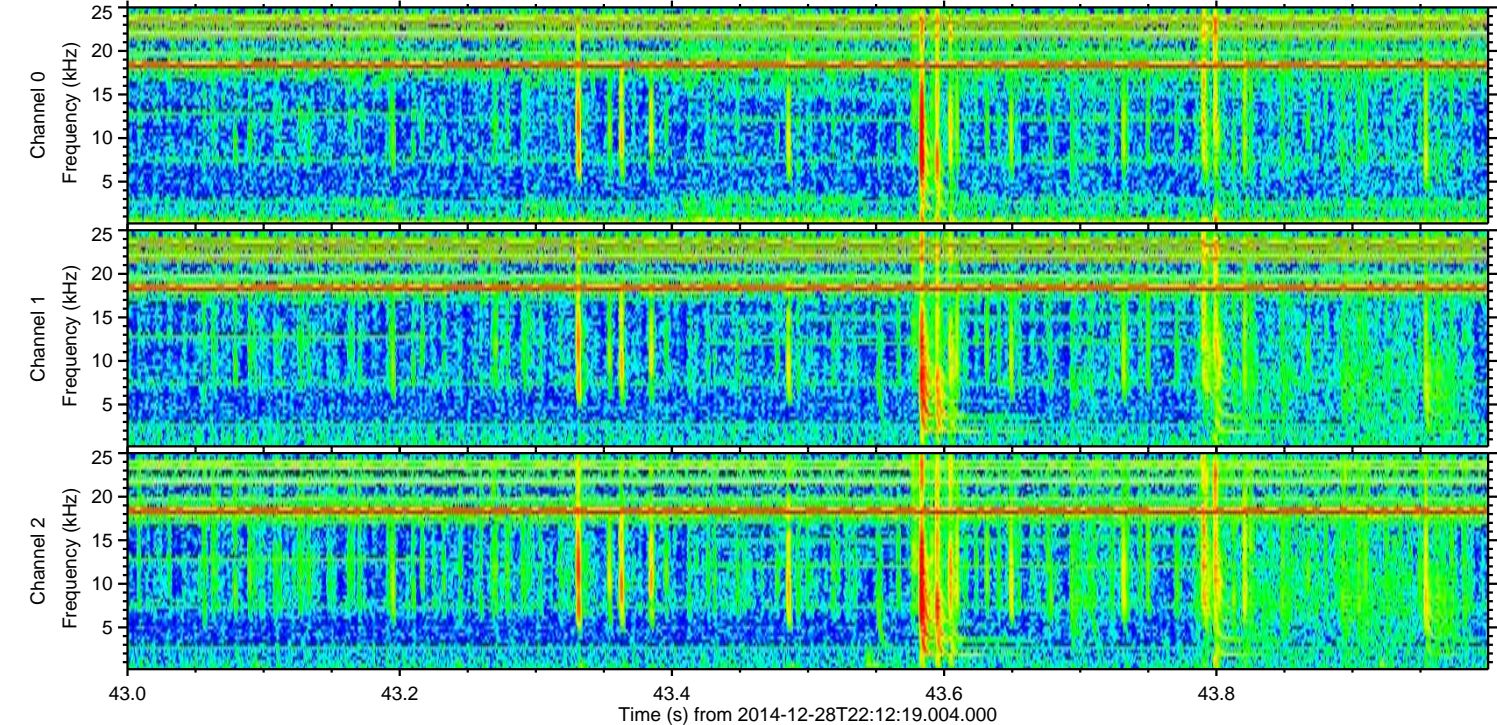
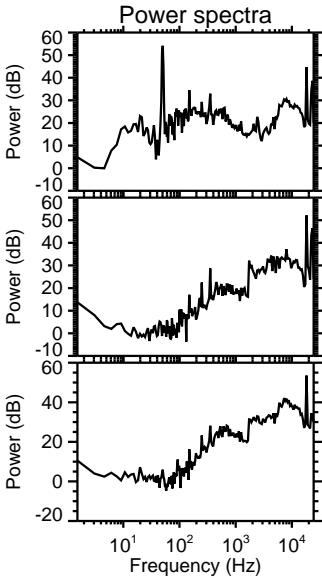
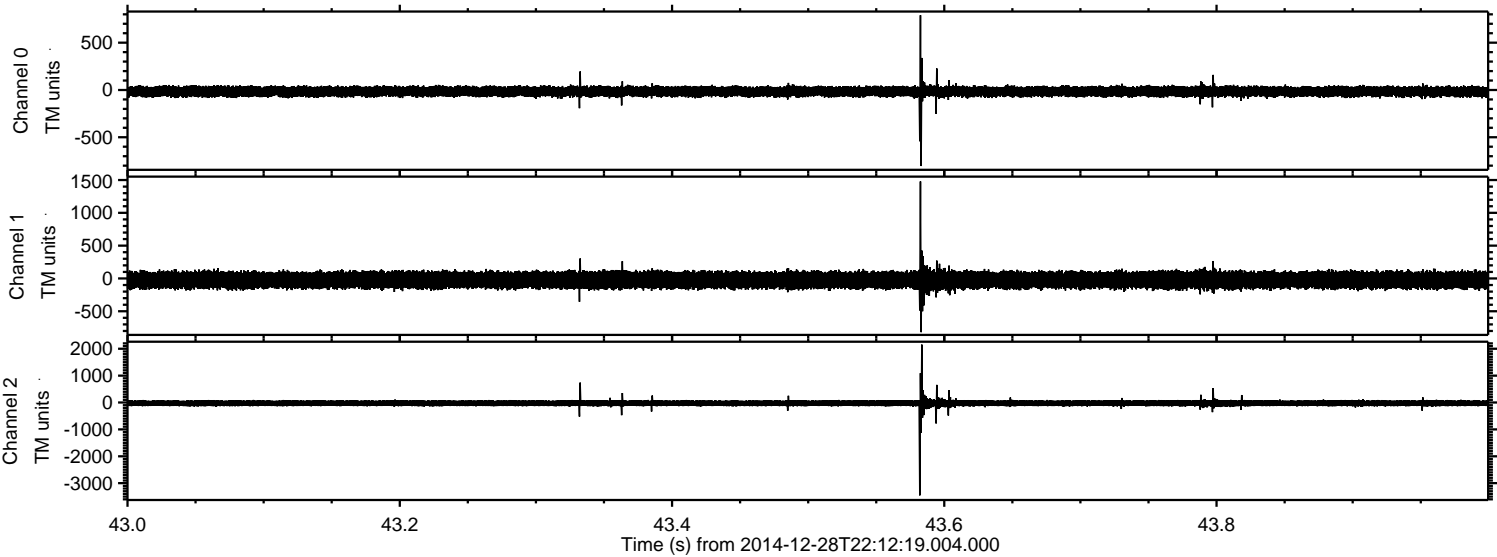


ELMAVAN 3D WAVEFORMS (Measured data sampled at 50 kHz) 49809 packets of 144 samples from 2014-12-28T22:12:19.004.000. Part 24/144

Processed Thu Jan 1 23:12:29 2015 by ELM ver.2012-10-06 from 001__elm20141228_221217__dat00.bin

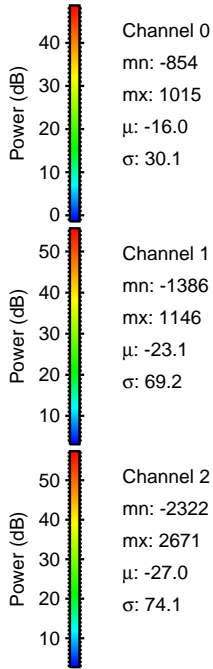
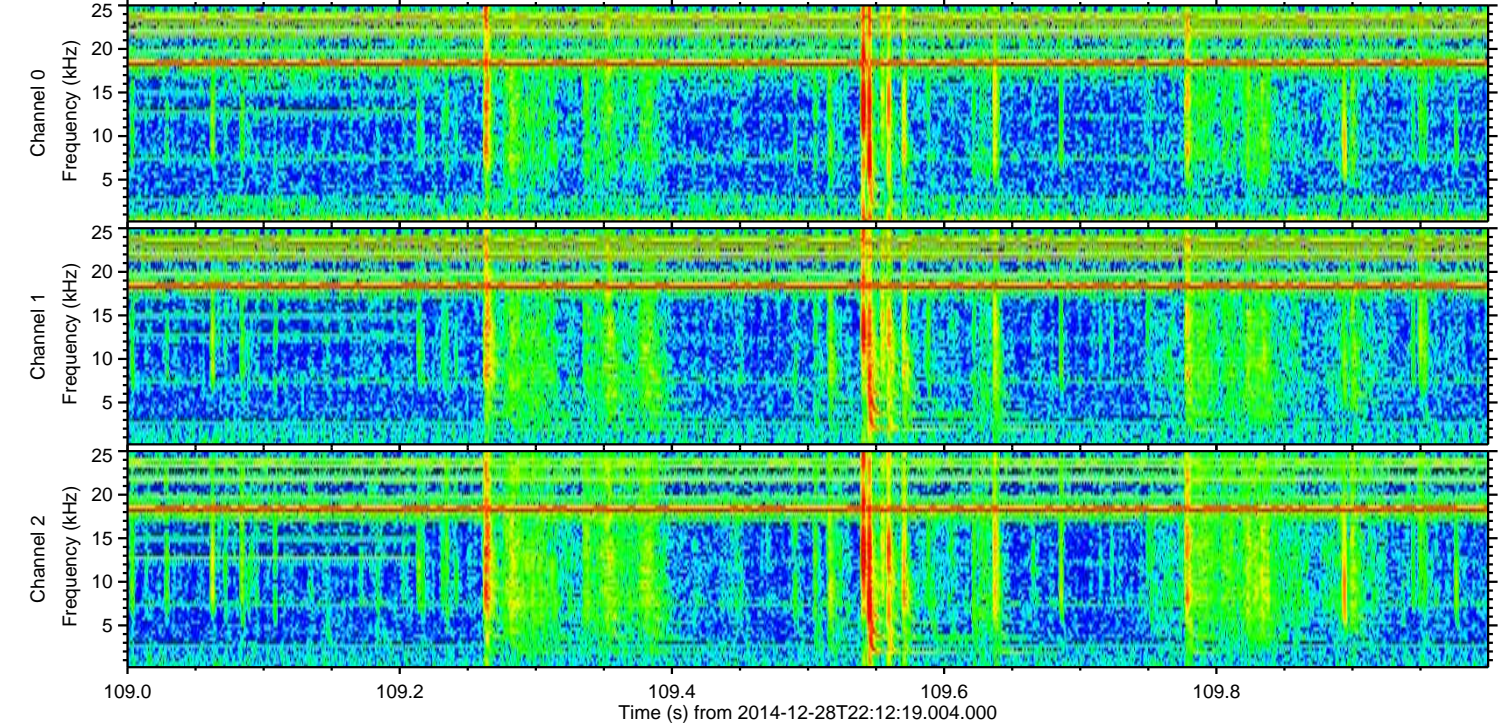
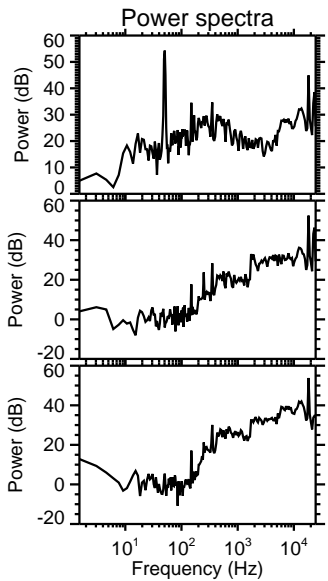
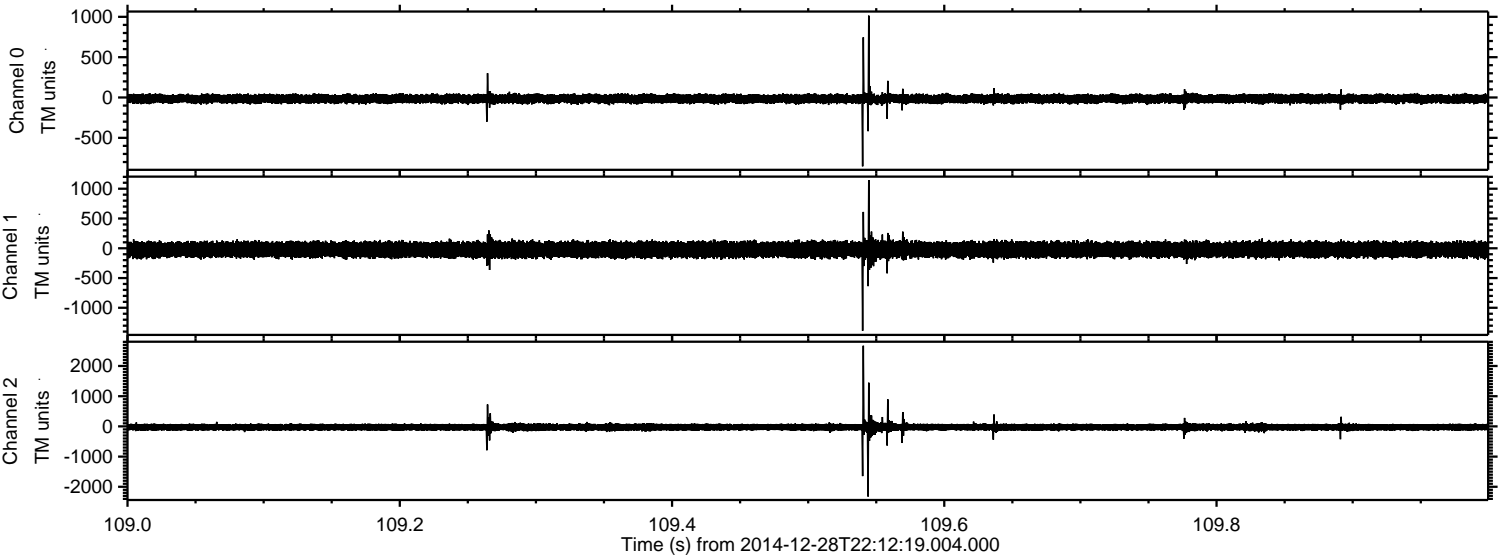


Processed Thu Jan 1 23:12:30 2015 by ELM ver.2012-10-06 from 001__elm20141228_221217__dat00.bin



ELMAVAN 3D WAVEFORMS (Measured data sampled at 50 kHz) 49809 packets of 144 samples from 2014-12-28T22:12:19.004.000. Part 110/144

Processed Thu Jan 1 23:12:31 2015 by ELM ver.2012-10-06 from 001__elm20141228_221217__dat00.bin

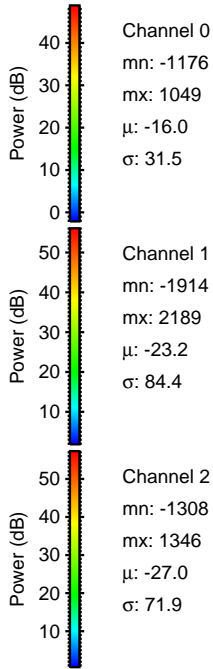
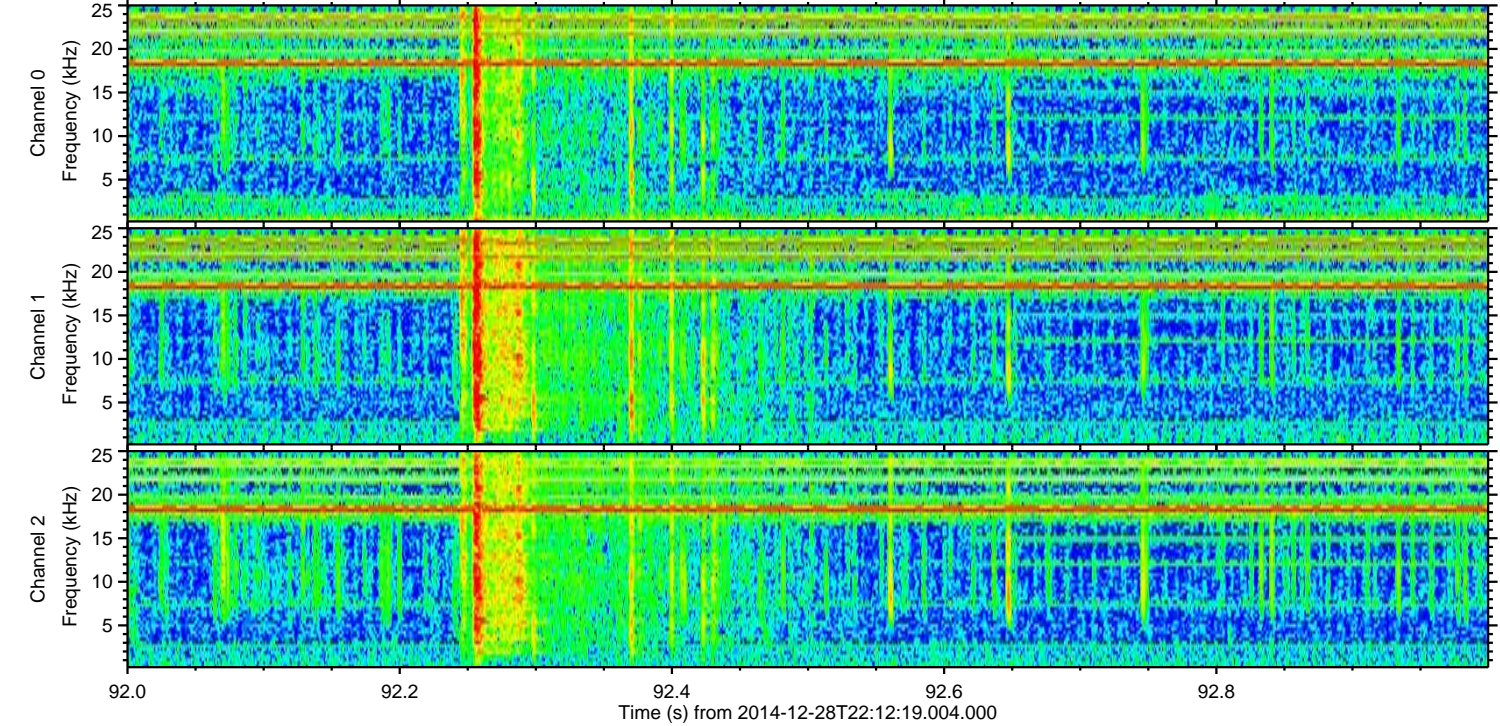
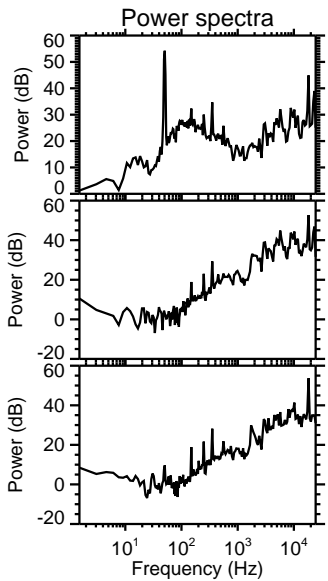
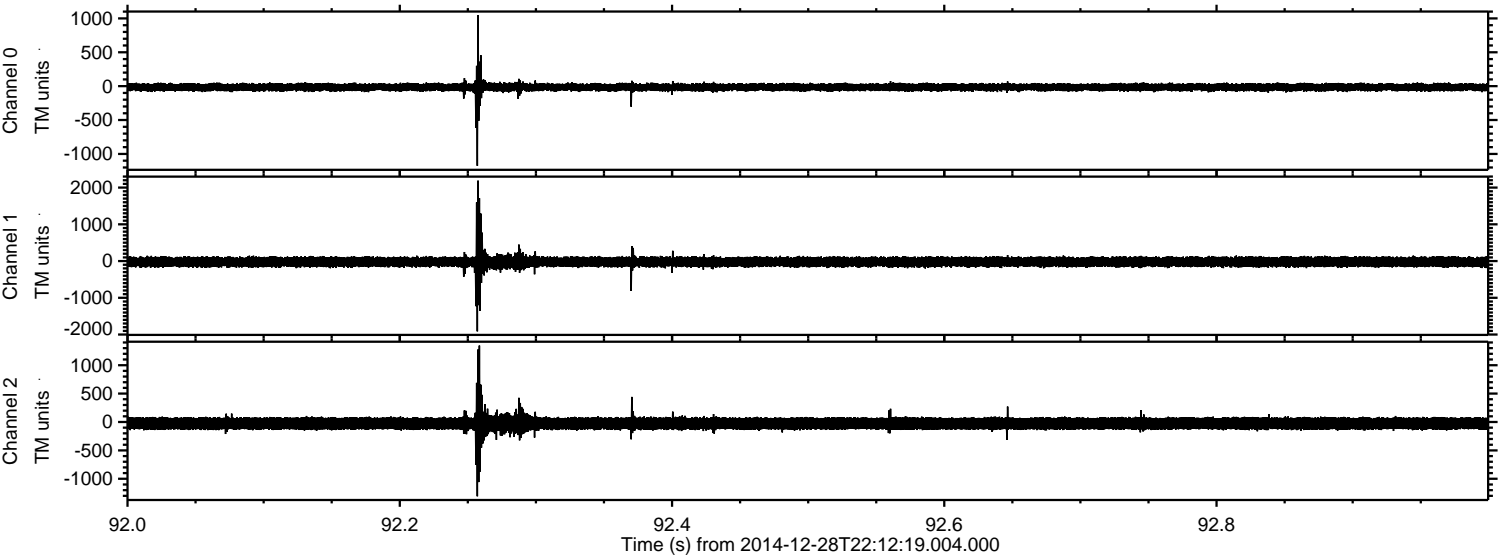


Channel 0
mn: -854
mx: 1015
 μ : -16.0
 σ : 30.1

Channel 1
mn: -1386
mx: 1146
 μ : -23.1
 σ : 69.2

Channel 2
mn: -2322
mx: 2671
 μ : -27.0
 σ : 74.1

Processed Thu Jan 1 23:12:32 2015 by ELM ver.2012-10-06 from 001__elm20141228_221217__dat00.bin



Processed Thu Jan 1 23:12:33 2015 by ELM ver.2012-10-06 from 001__elm20141228_221217__dat00.bin

