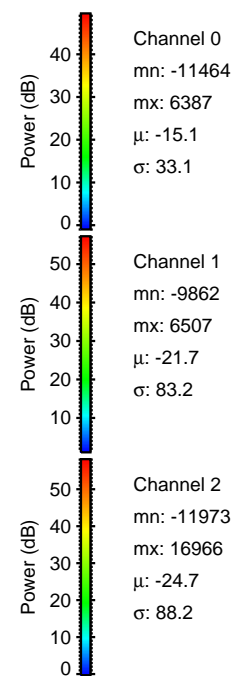
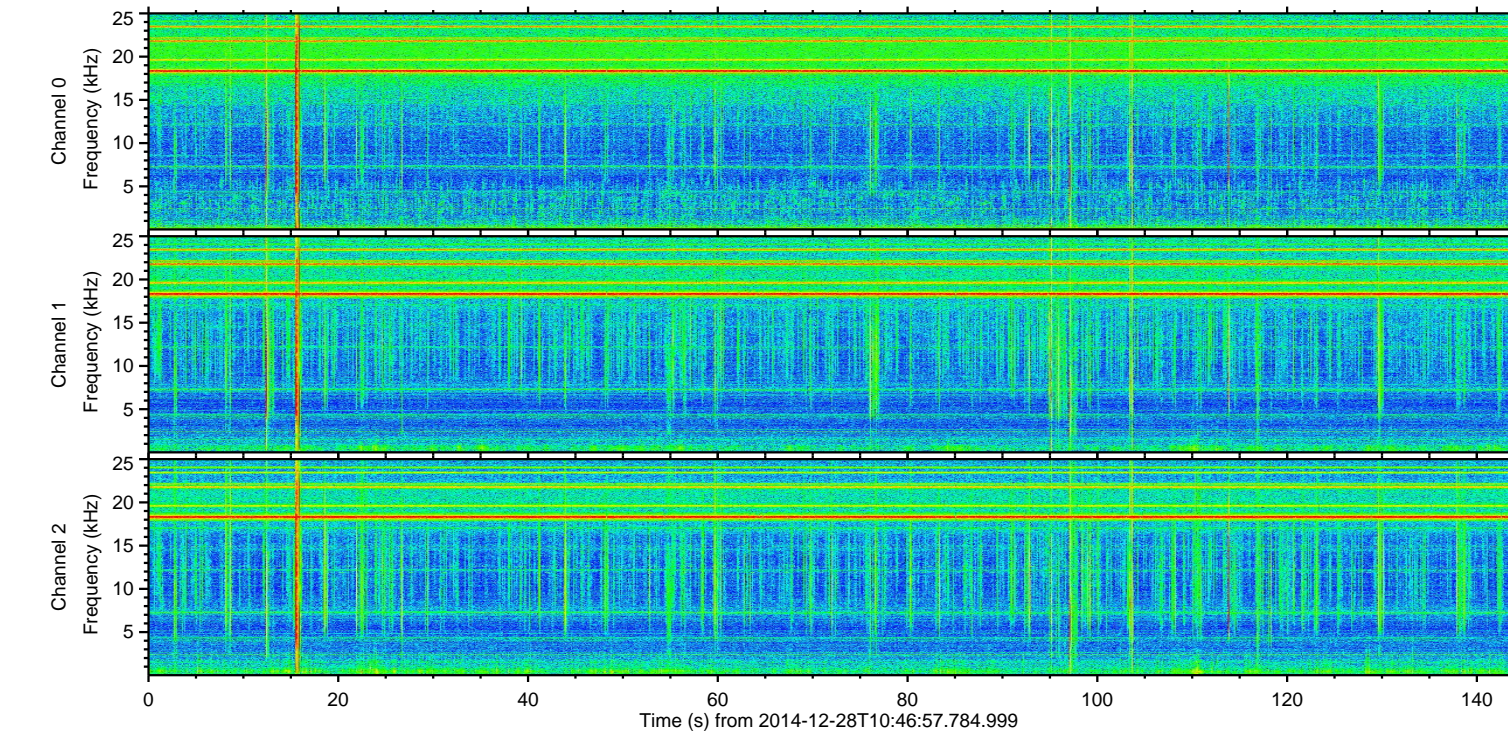
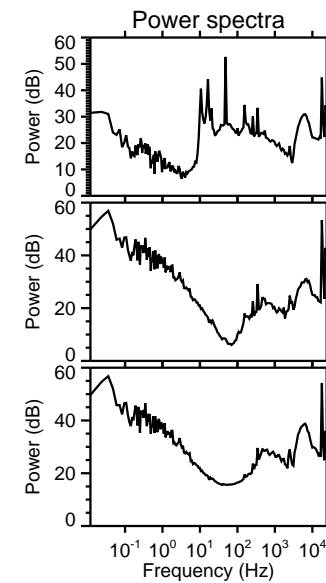
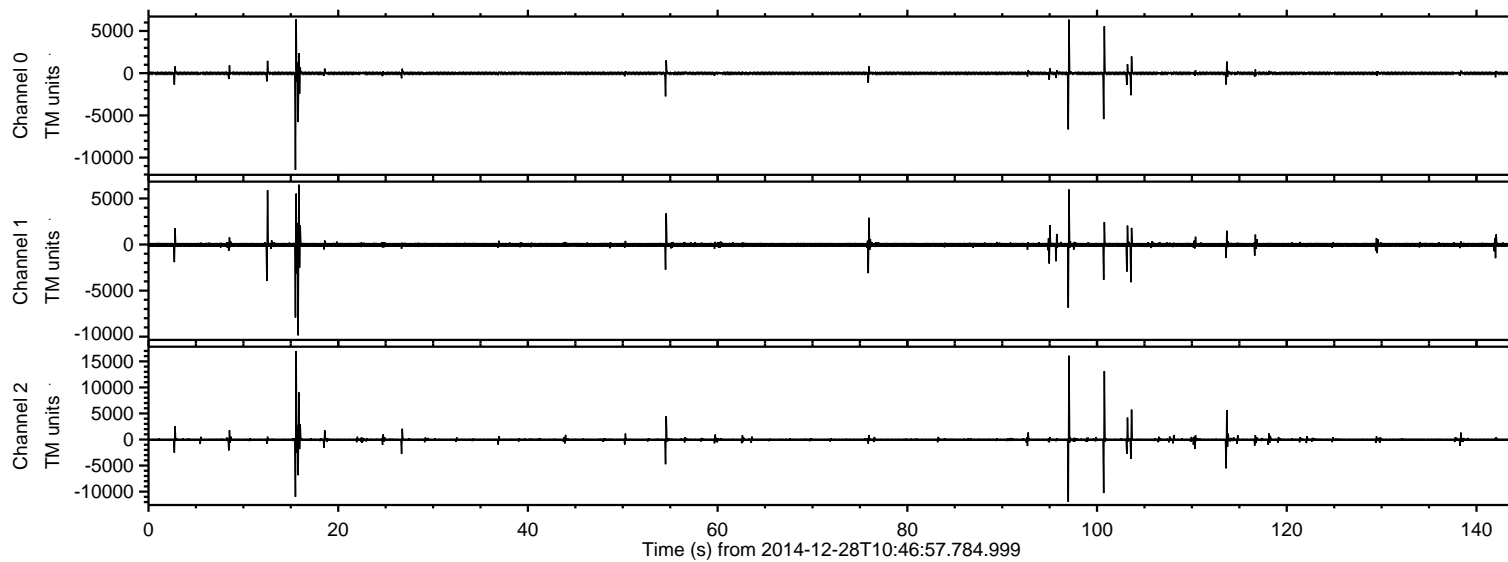


# ELMAVAN 3D WAVEFORMS (Measured data sampled at 50 kHz) 49807 packets of 144 samples from 2014-12-28T10:46:57.784.999.

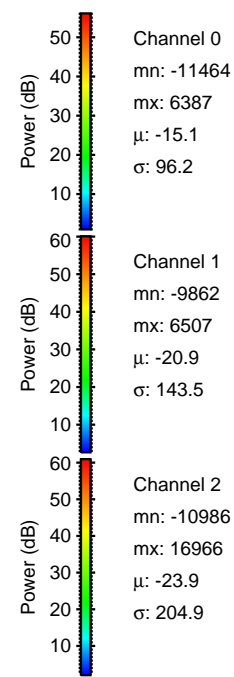
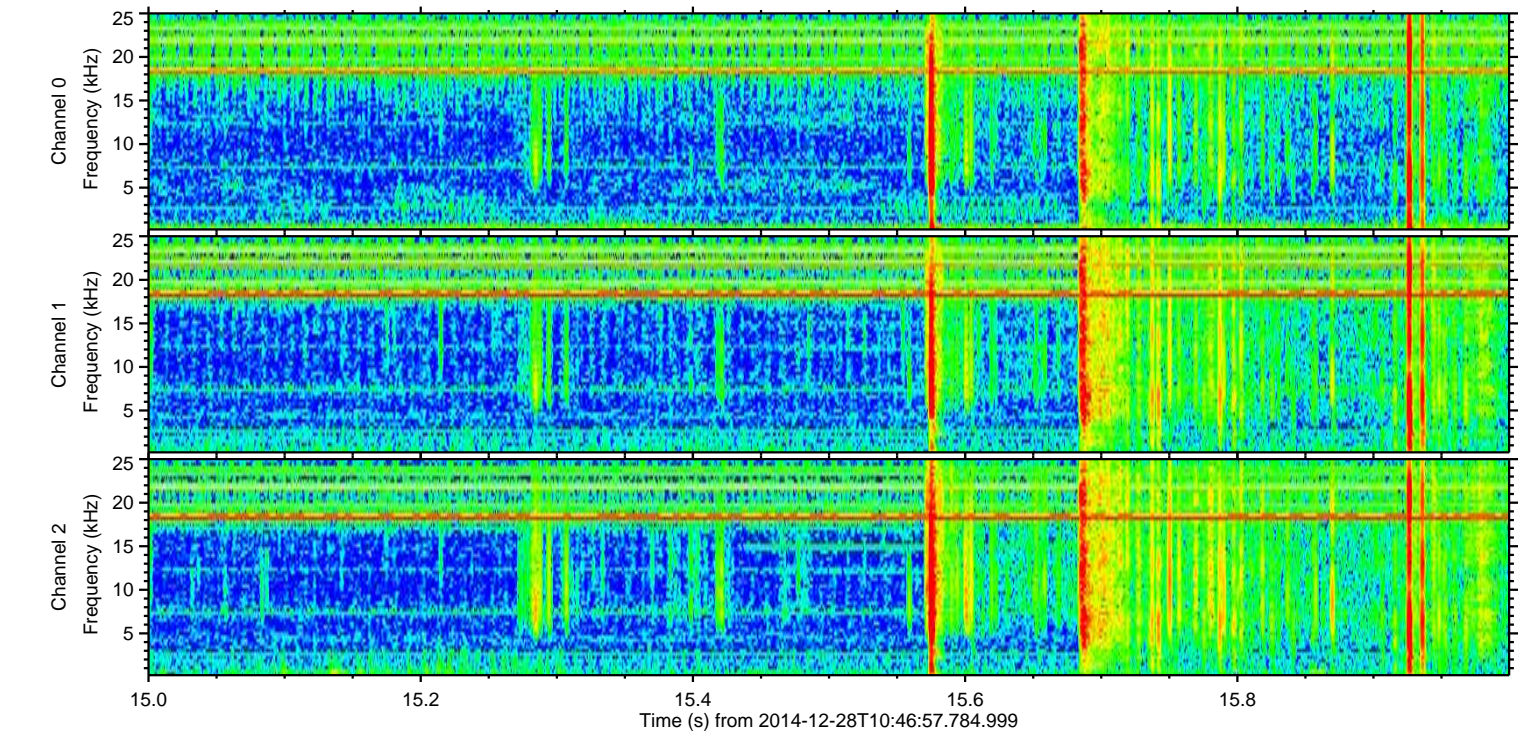
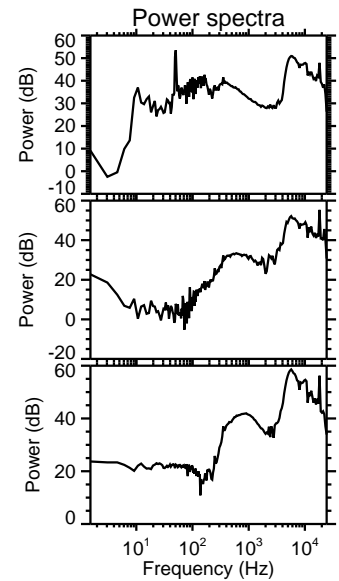
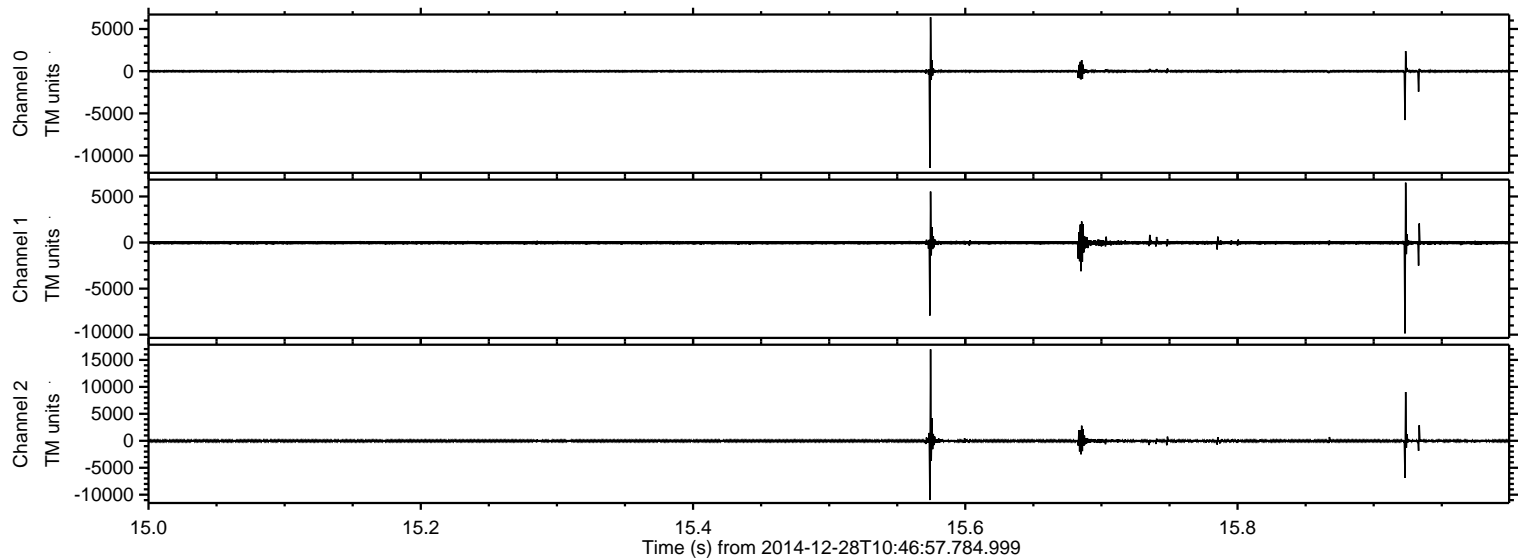
Processed Thu Jan 1 17:05:49 2015 by ELM ver.2012-10-06 from 001\_\_elm20141228\_104656\_\_dat00.bin





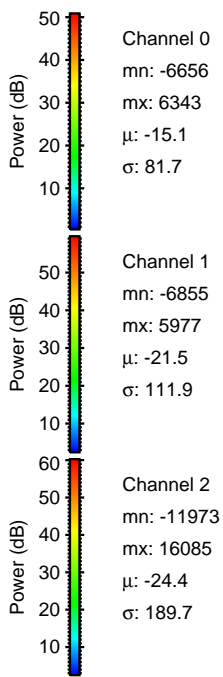
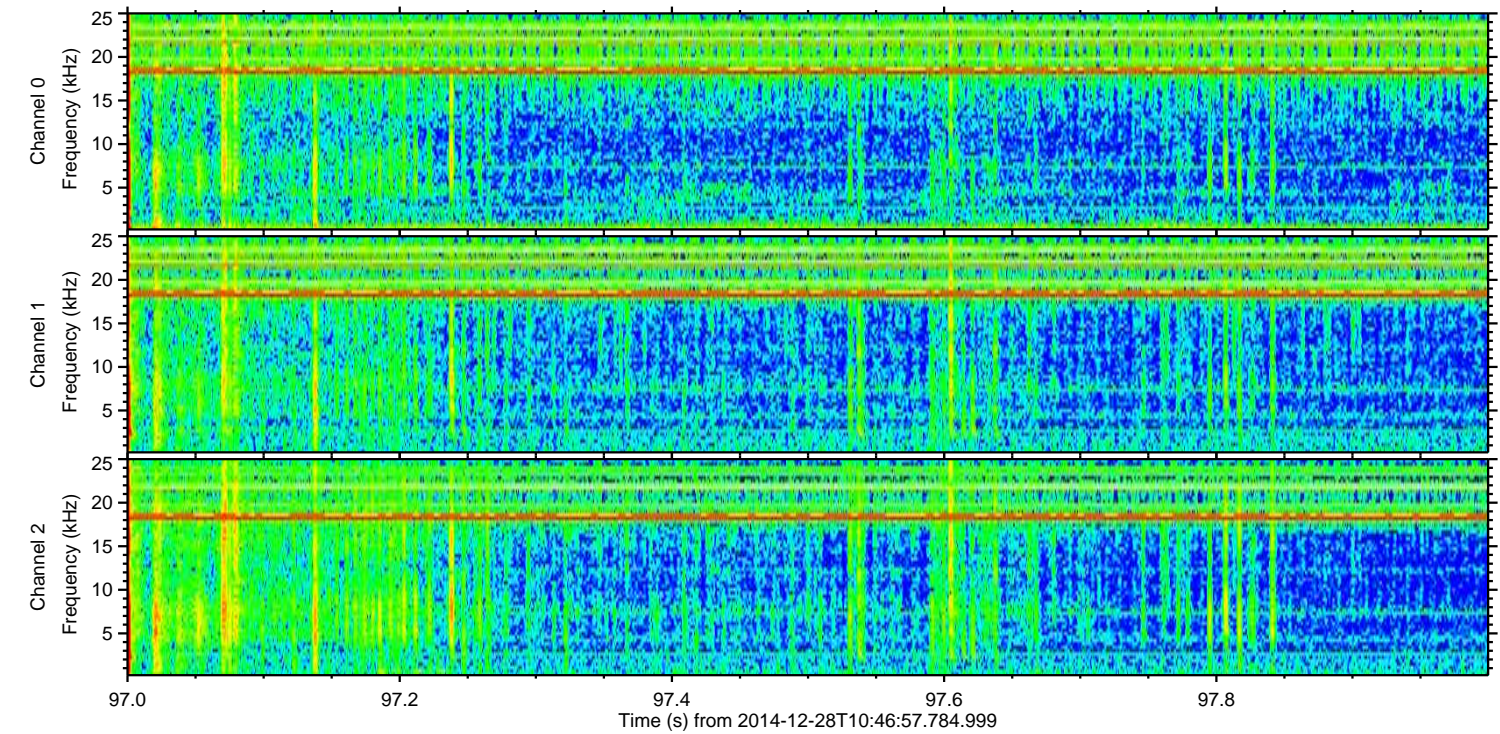
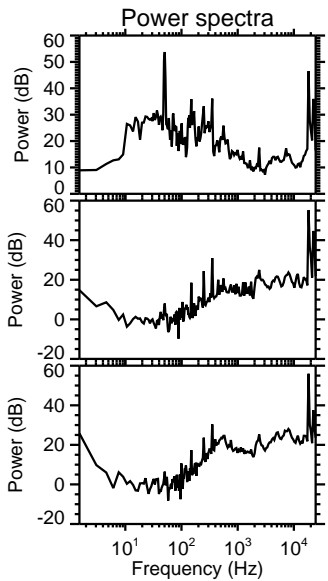
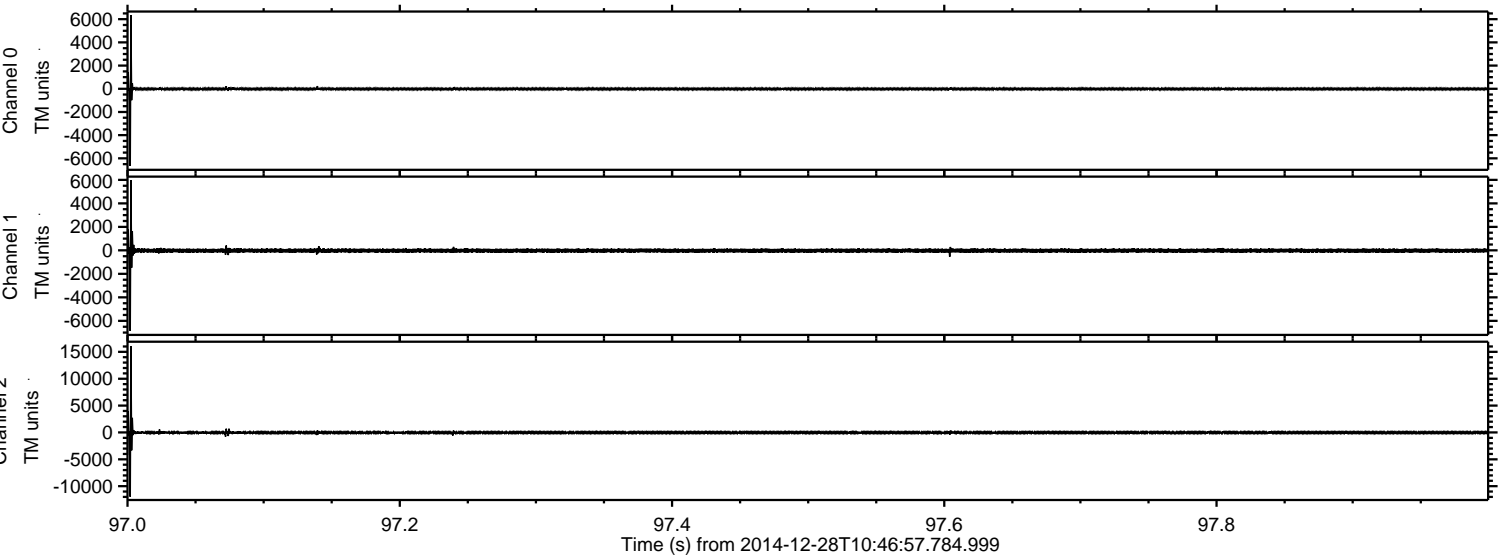
ELMAVAN 3D WAVEFORMS (Measured data sampled at 50 kHz) 49807 packets of 144 samples from 2014-12-28T10:46:57.784.999. Part 16/144

Processed Thu Jan 1 17:06:02 2015 by ELM ver.2012-10-06 from 001\_\_elm20141228\_104656\_\_dat00.bin





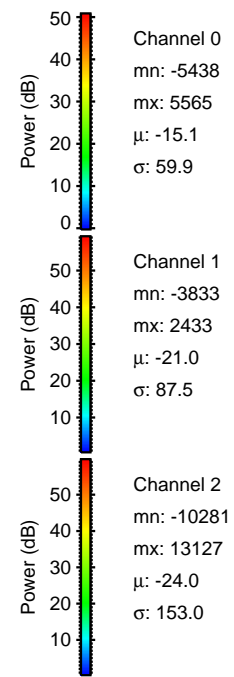
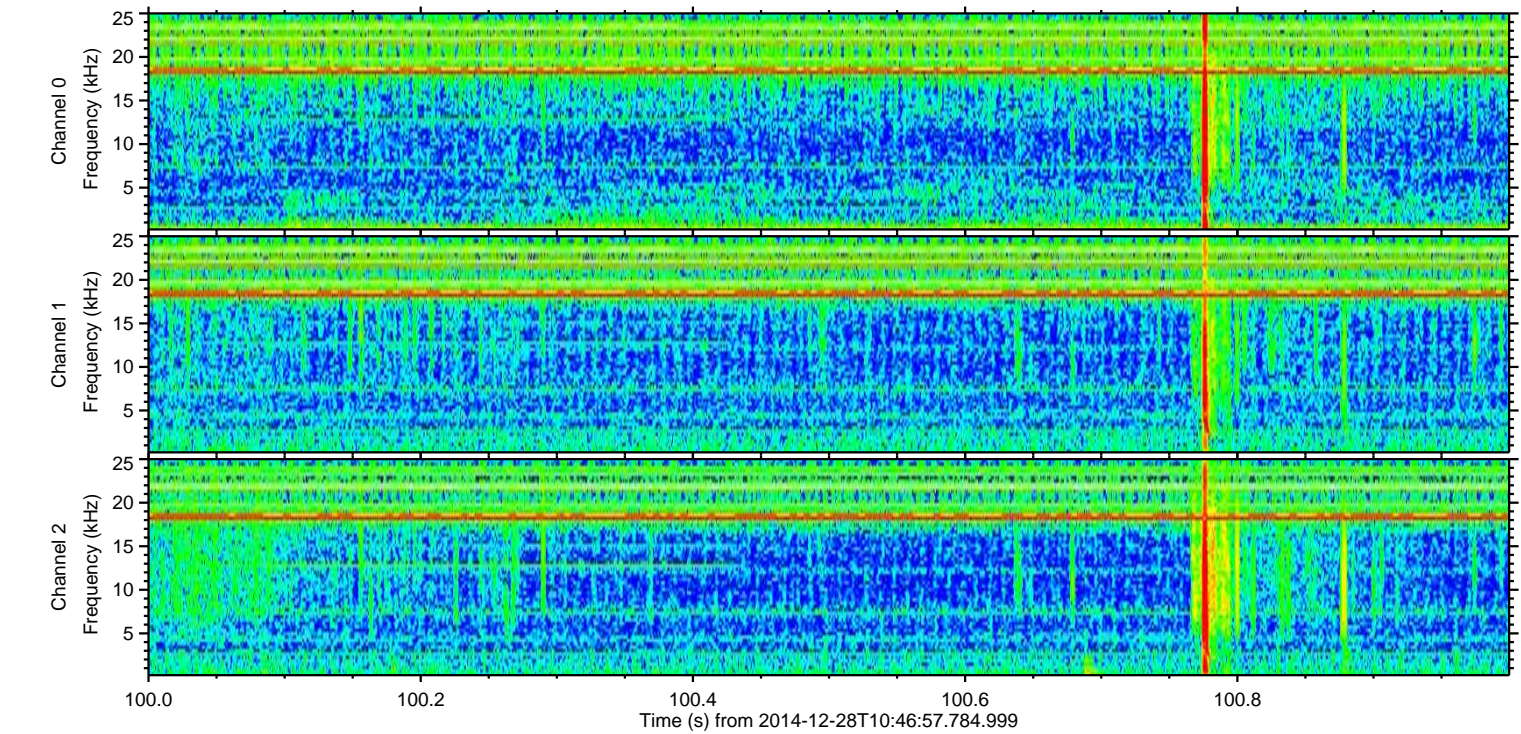
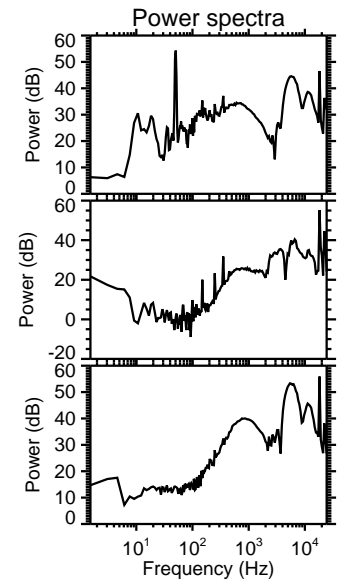
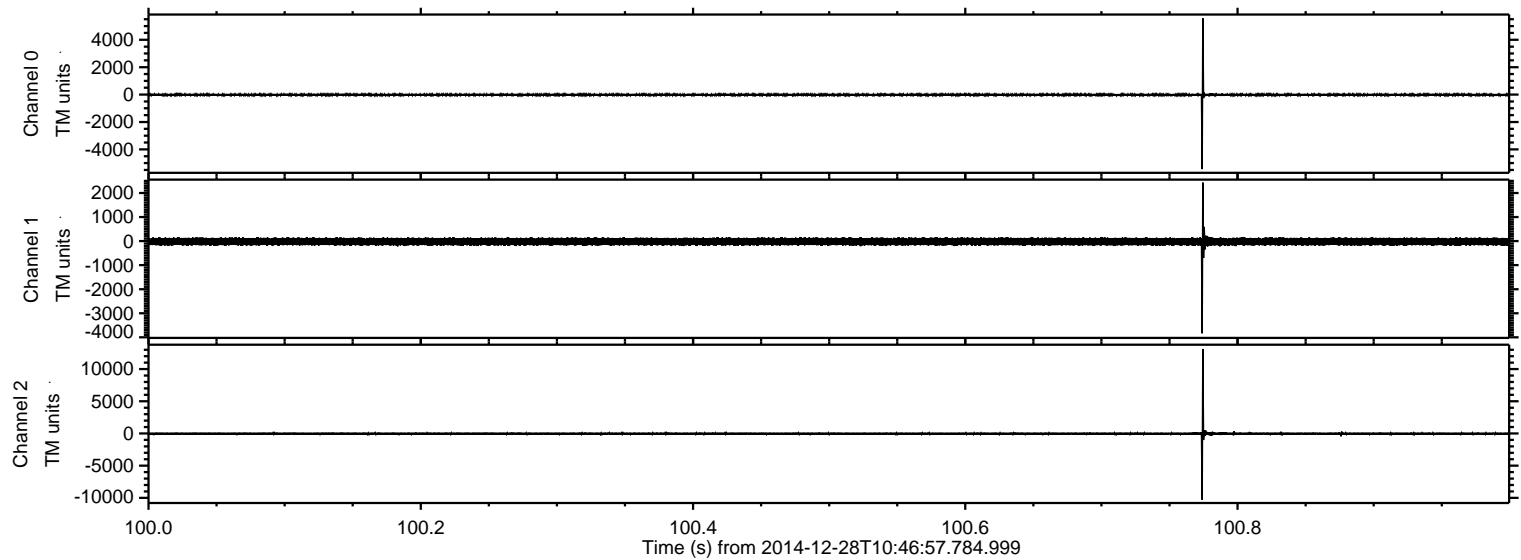
Processed Thu Jan 1 17:06:02 2015 by ELM ver.2012-10-06 from 001\_\_elm20141228\_104656\_\_dat00.bin





ELMAVAN 3D WAVEFORMS (Measured data sampled at 50 kHz) 49807 packets of 144 samples from 2014-12-28T10:46:57.784.999. Part 101/144

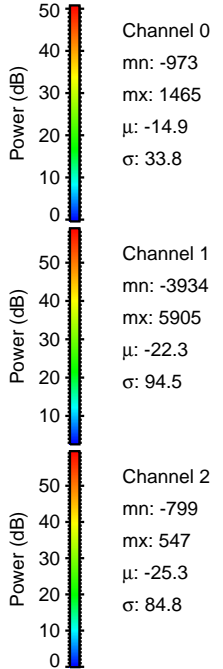
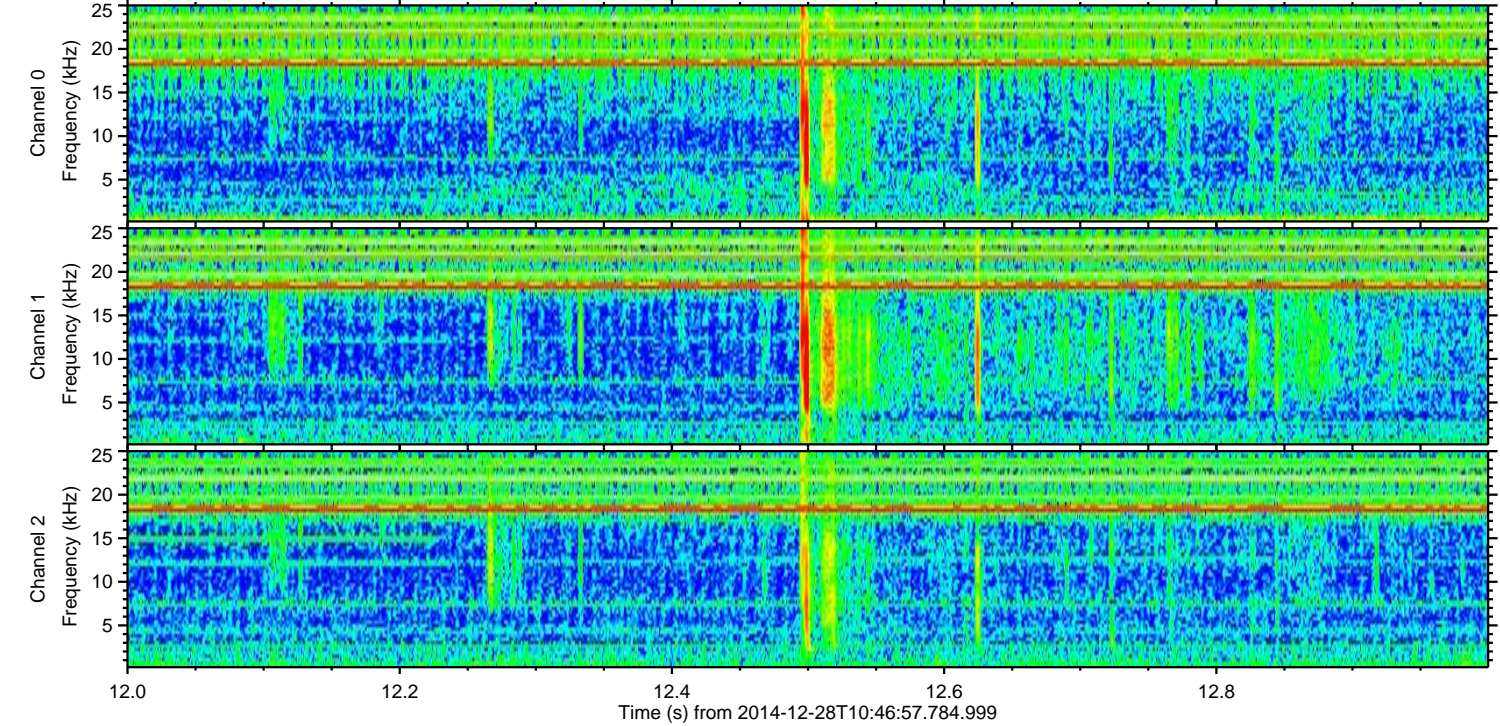
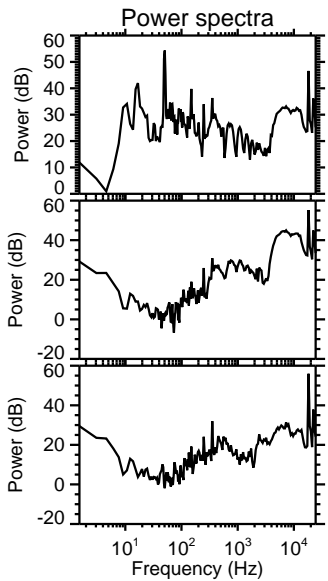
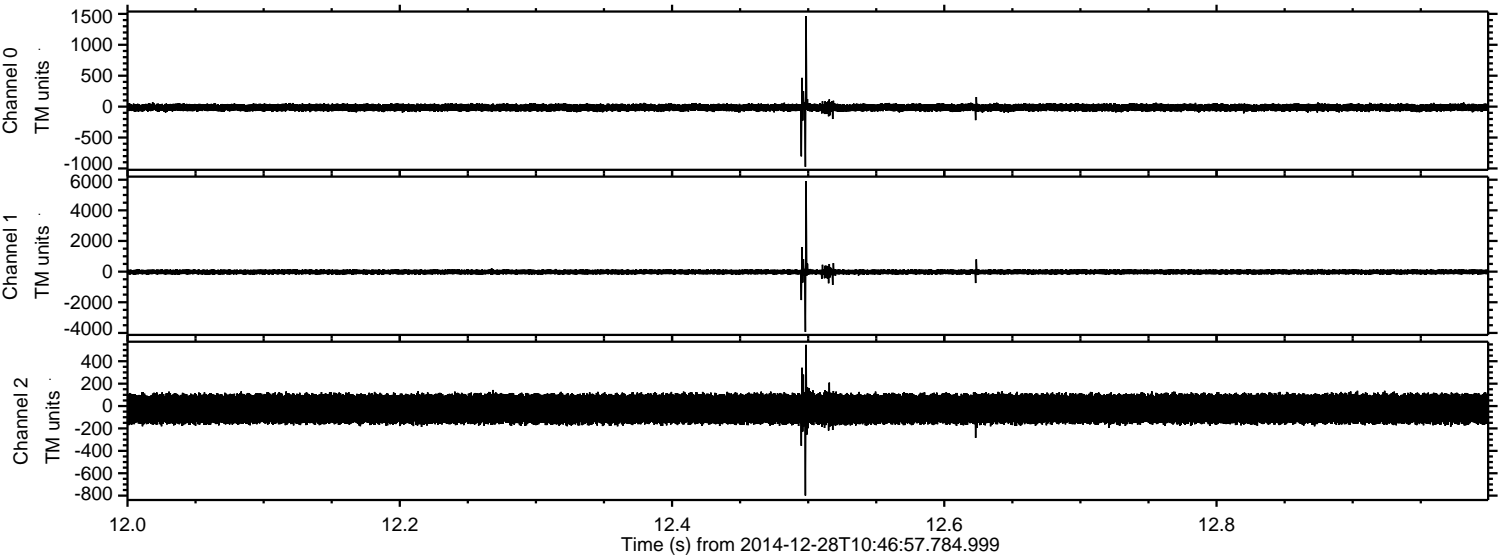
Processed Thu Jan 1 17:06:03 2015 by ELM ver.2012-10-06 from 001\_\_elm20141228\_104656\_\_dat00.bin





ELMAVAN 3D WAVEFORMS (Measured data sampled at 50 kHz) 49807 packets of 144 samples from 2014-12-28T10:46:57.784.999. Part 13/144

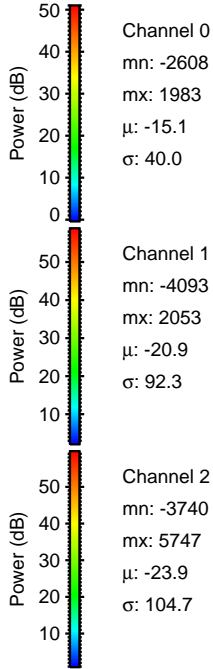
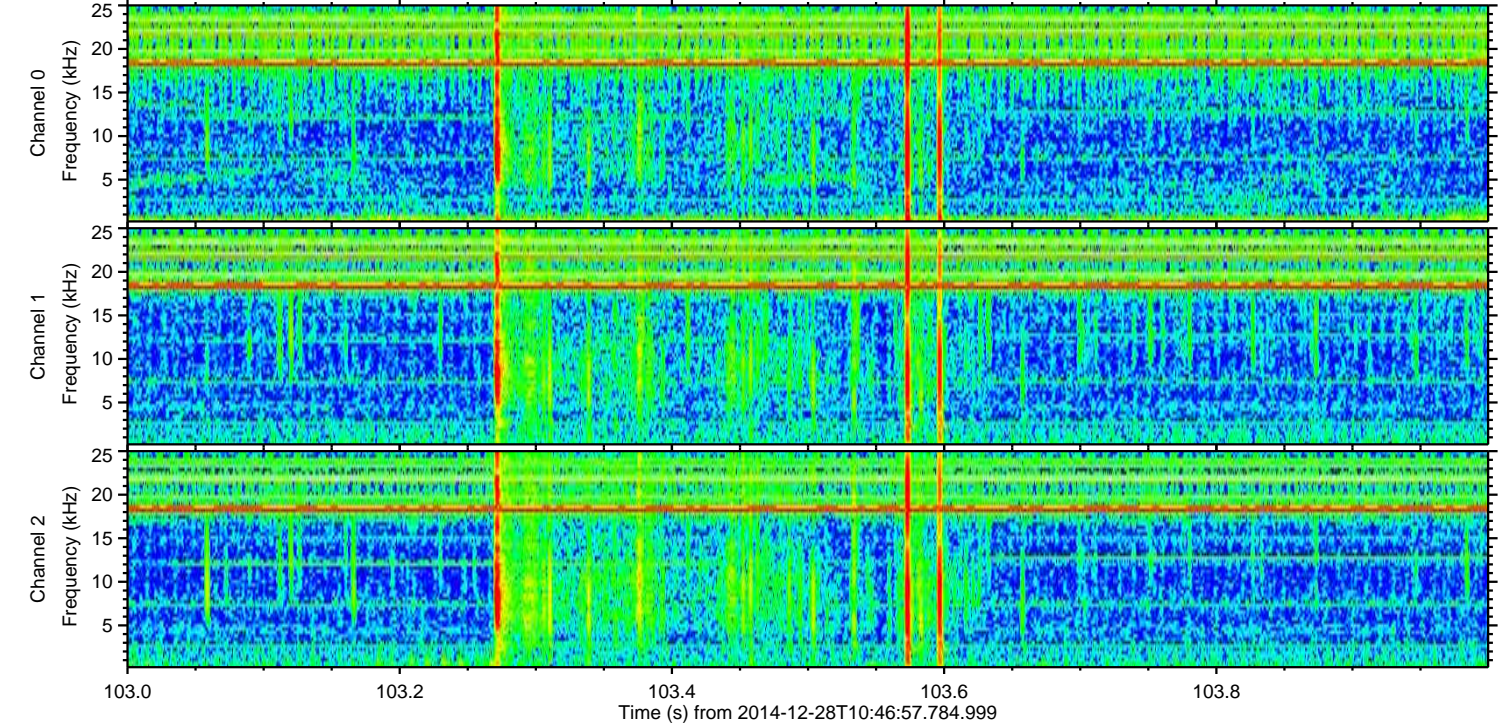
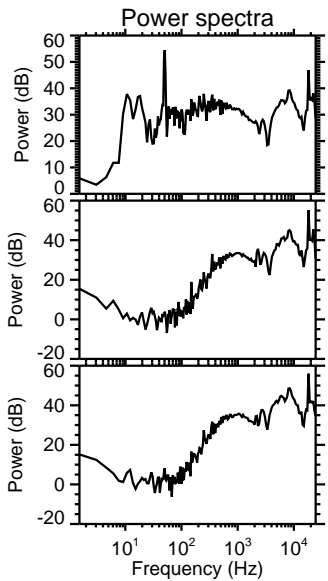
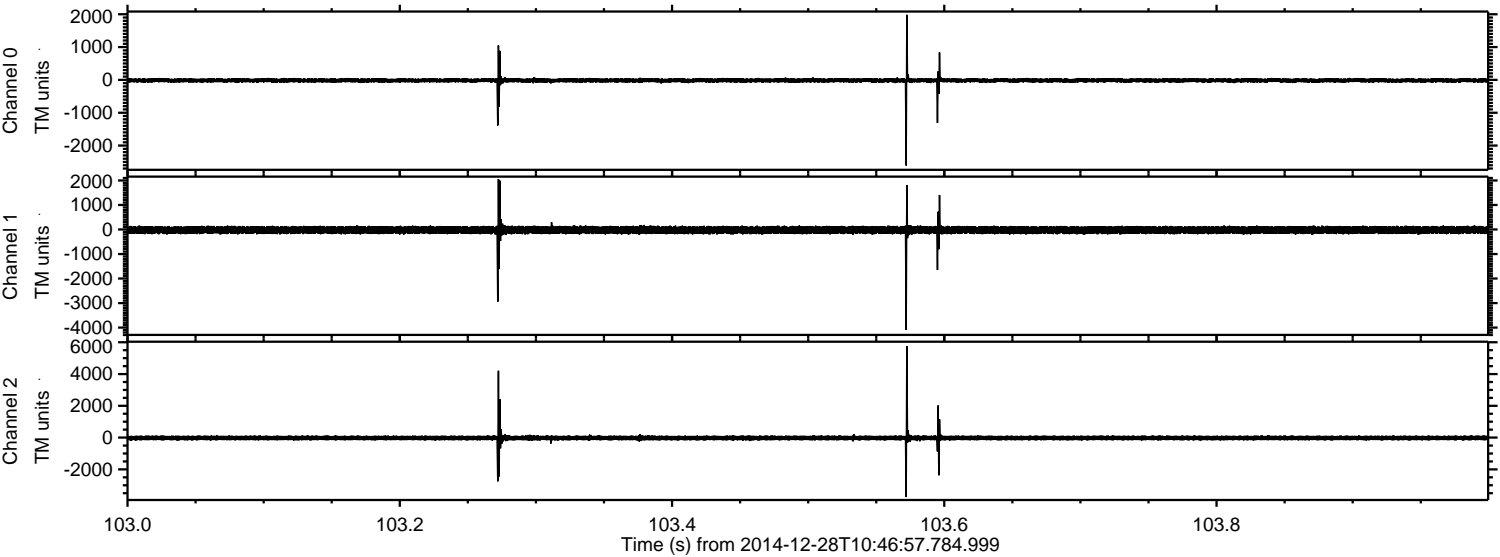
Processed Thu Jan 1 17:06:04 2015 by ELM ver.2012-10-06 from 001\_\_elm20141228\_104656\_\_dat00.bin





ELMAVAN 3D WAVEFORMS (Measured data sampled at 50 kHz) 49807 packets of 144 samples from 2014-12-28T10:46:57.784.999. Part 104/144

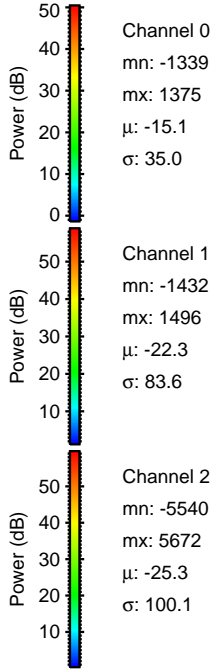
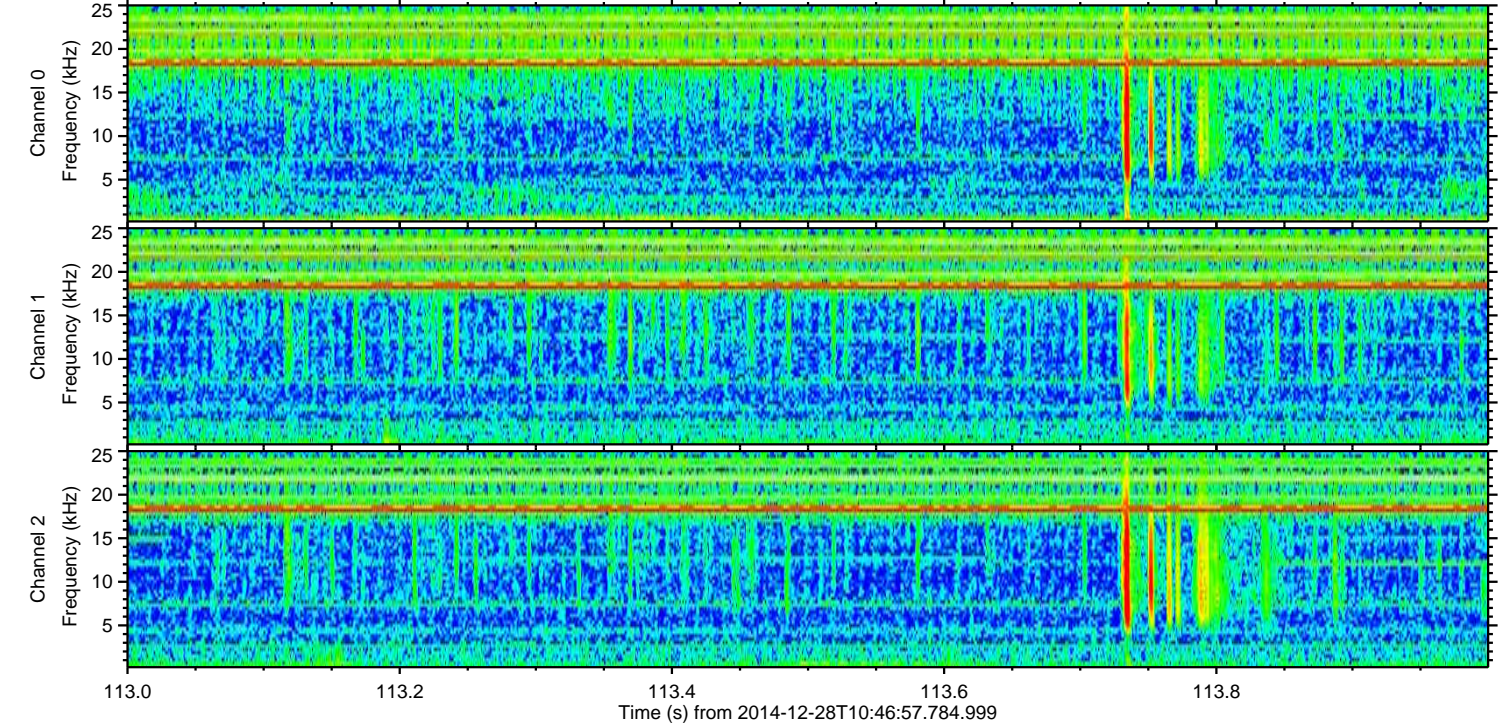
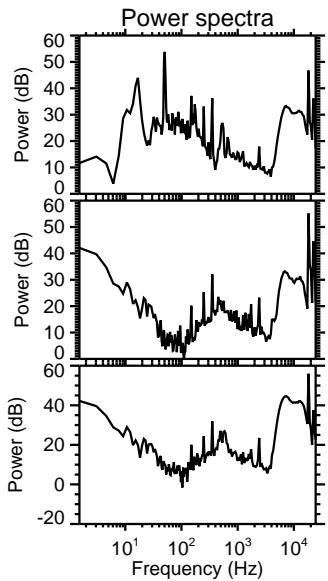
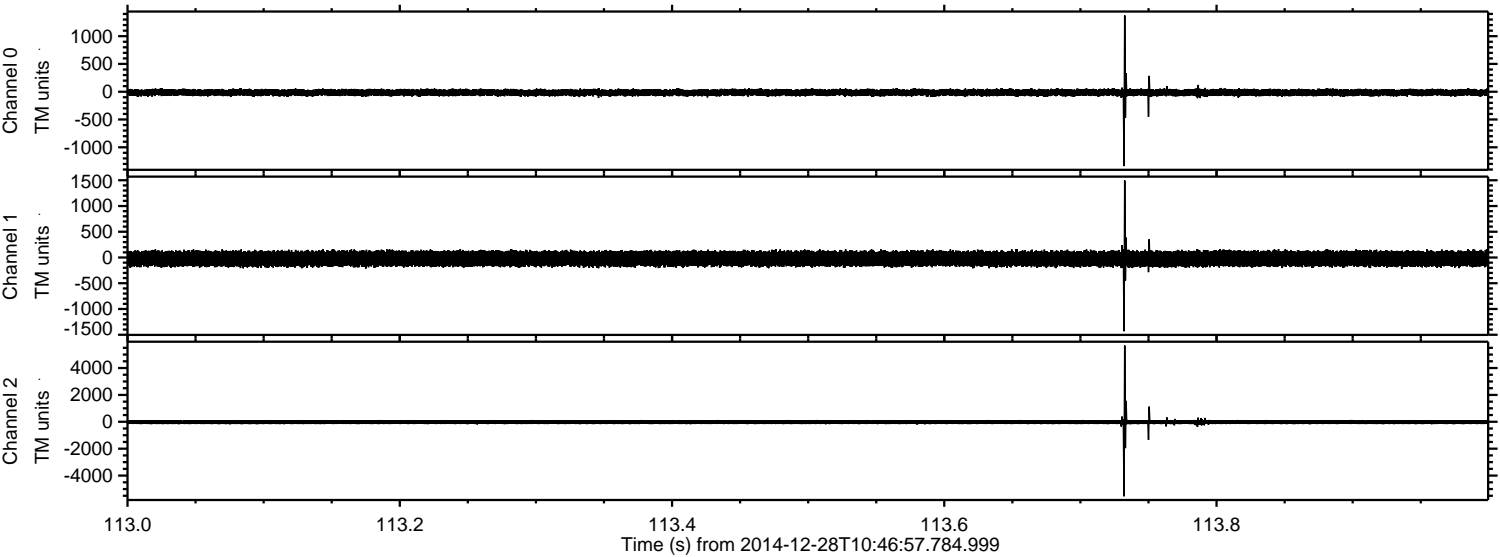
Processed Thu Jan 1 17:06:05 2015 by ELM ver.2012-10-06 from 001\_\_elm20141228\_104656\_\_dat00.bin





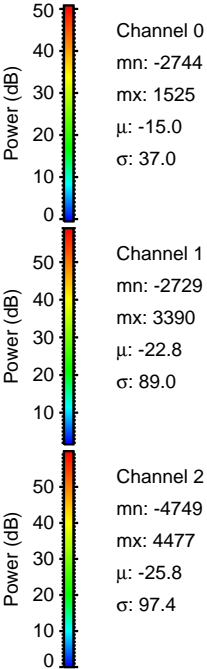
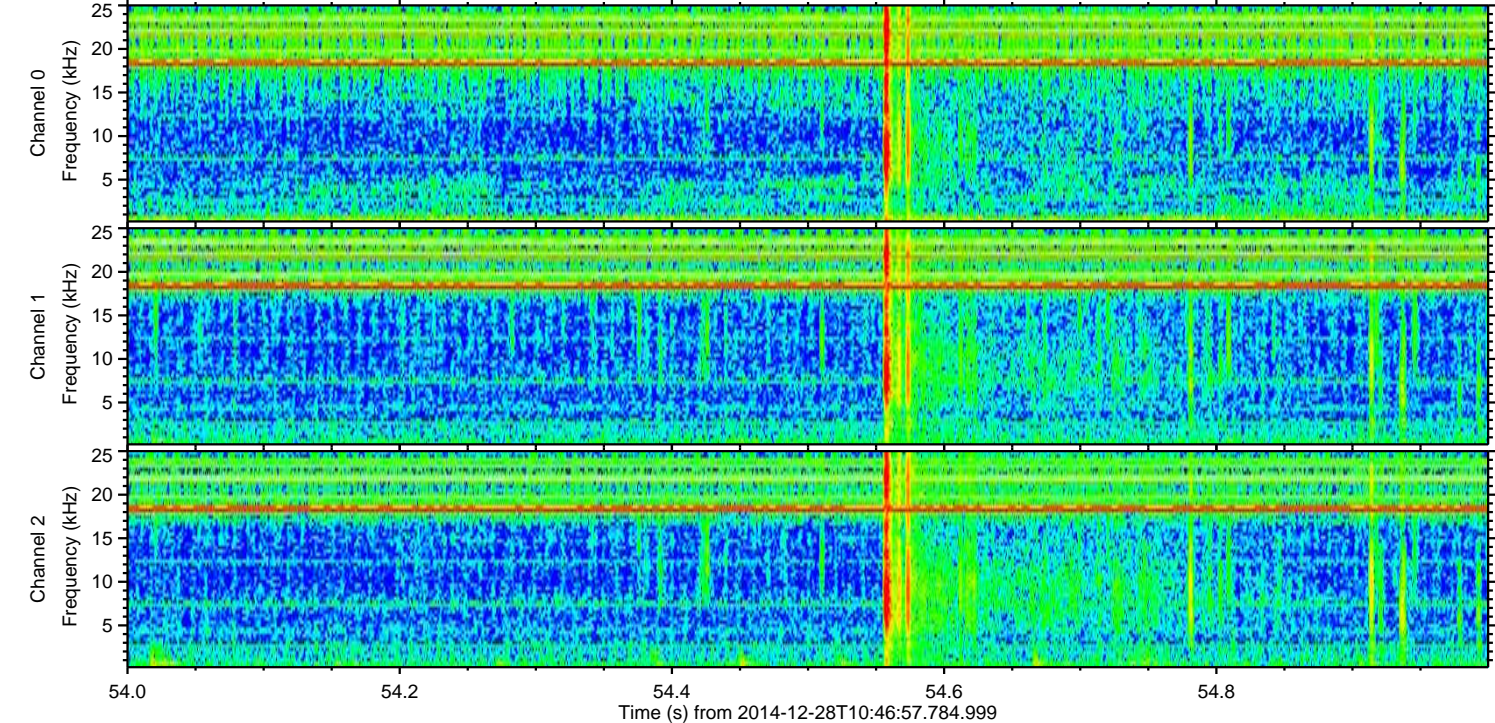
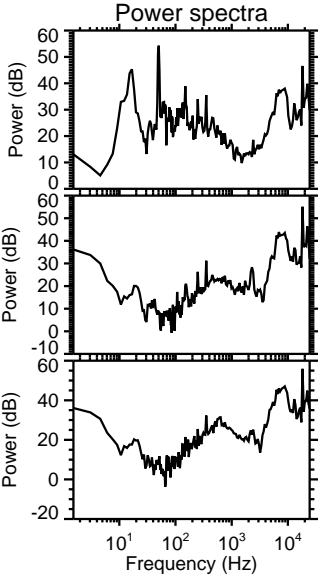
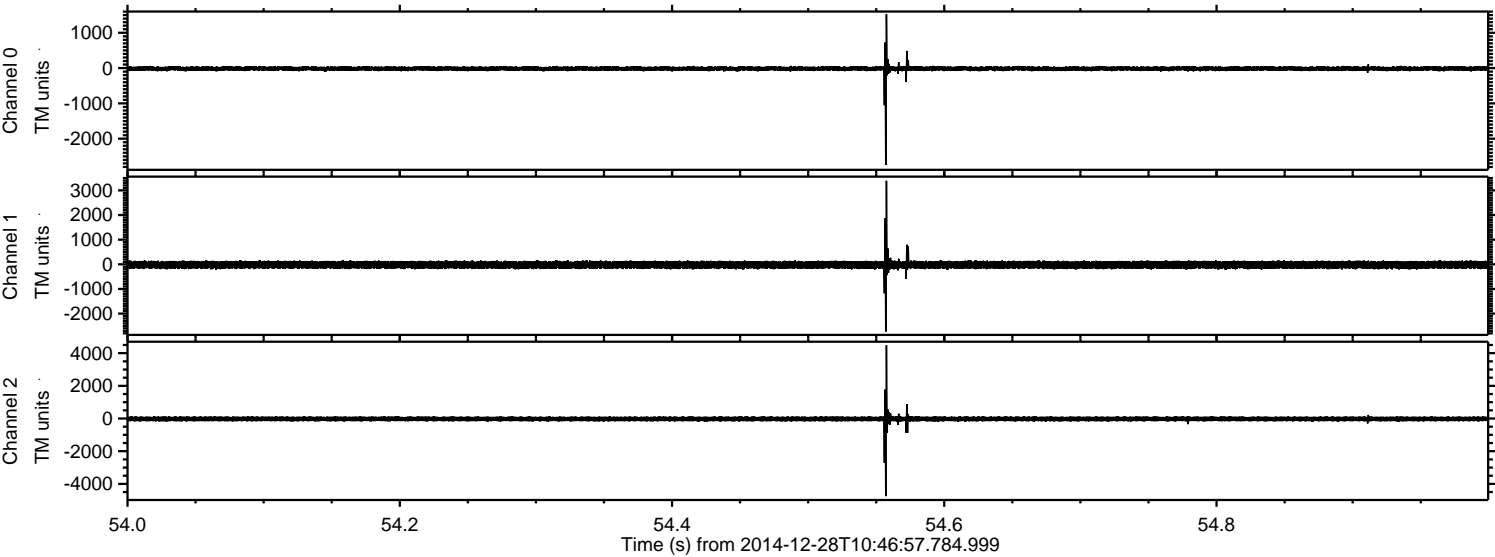
ELMAVAN 3D WAVEFORMS (Measured data sampled at 50 kHz) 49807 packets of 144 samples from 2014-12-28T10:46:57.784.999. Part 114/144

Processed Thu Jan 1 17:06:06 2015 by ELM ver.2012-10-06 from 001\_\_elm20141228\_104656\_\_dat00.bin



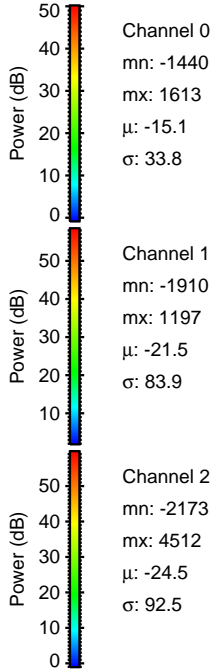
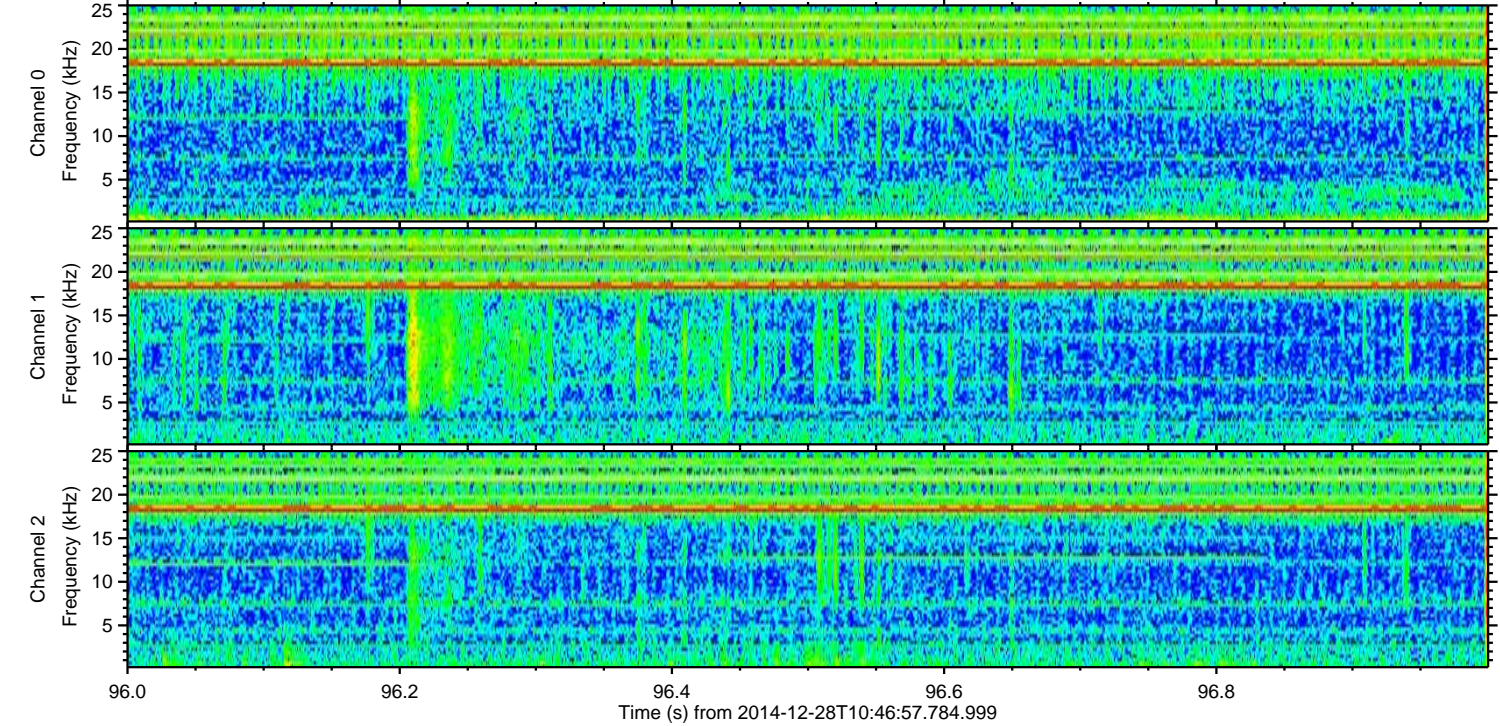
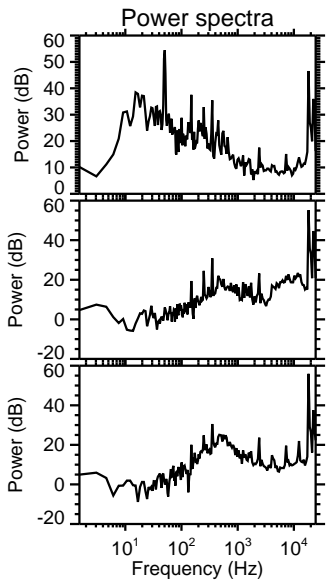
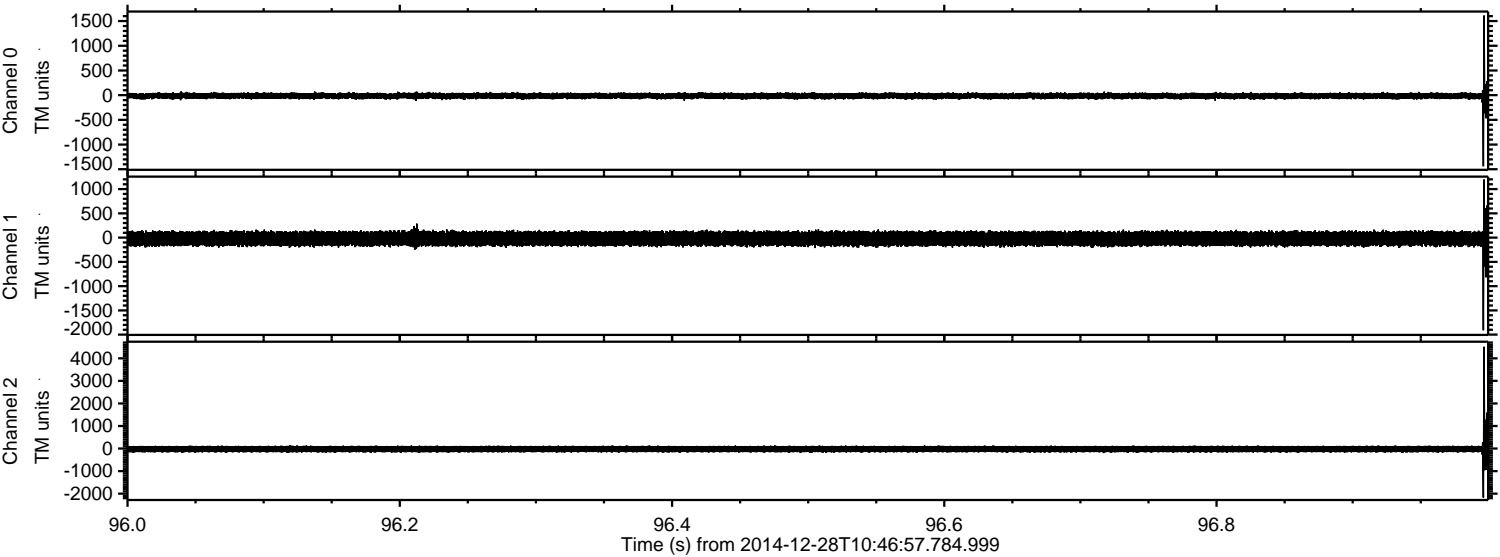


Processed Thu Jan 1 17:06:07 2015 by ELM ver.2012-10-06 from 001\_\_elm20141228\_104656\_\_dat00.bin





Processed Thu Jan 1 17:06:08 2015 by ELM ver.2012-10-06 from 001\_\_elm20141228\_104656\_\_dat00.bin



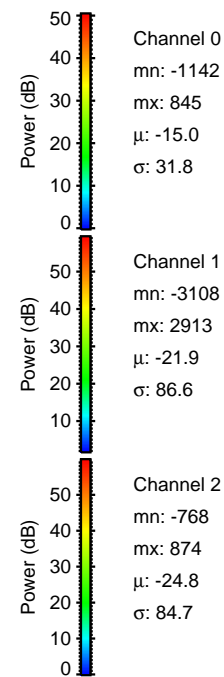
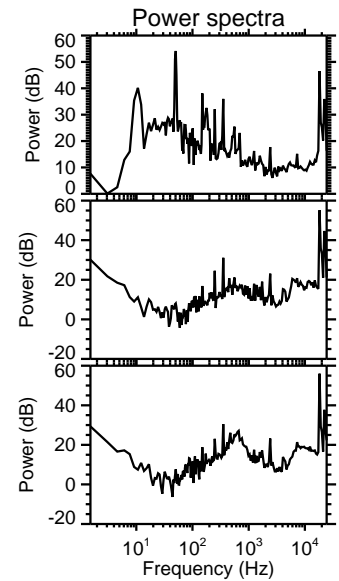
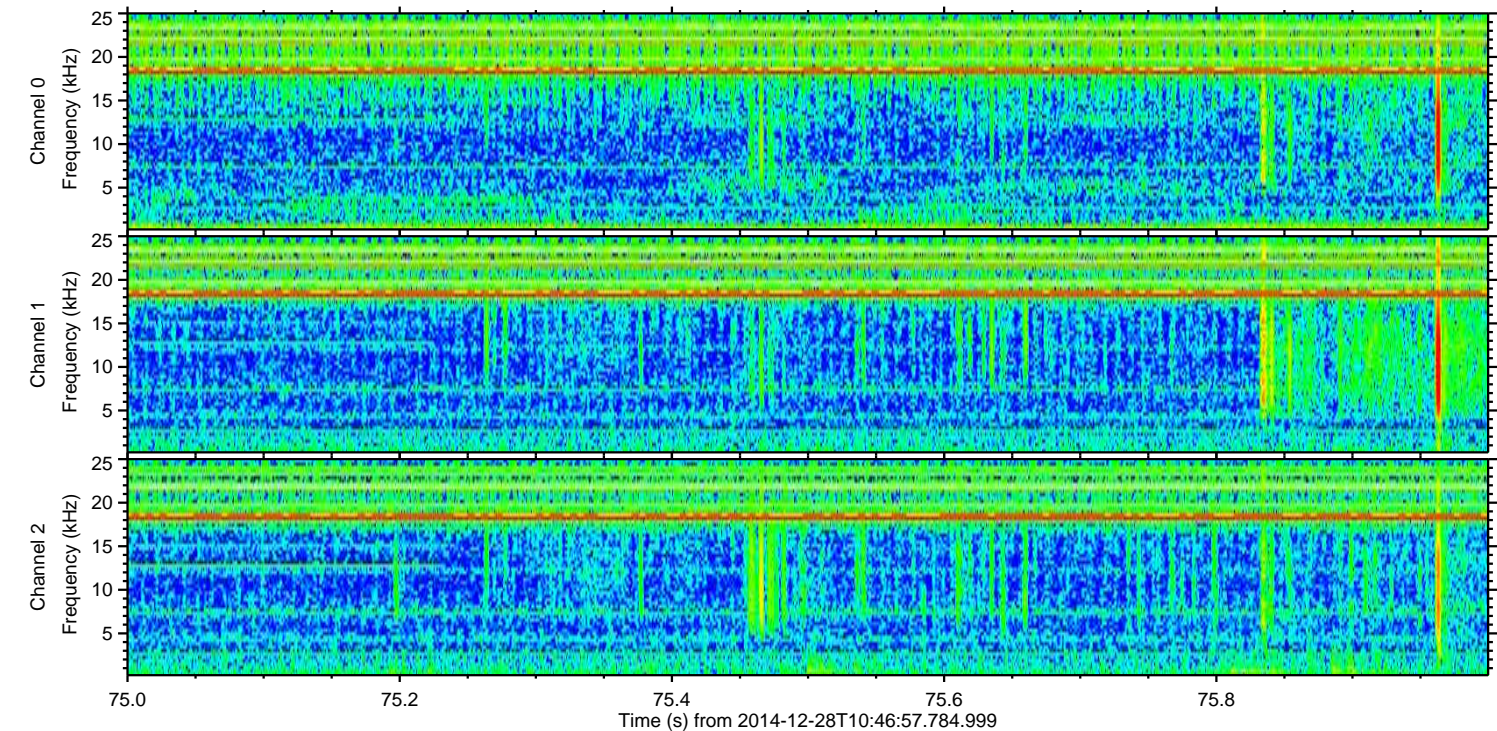
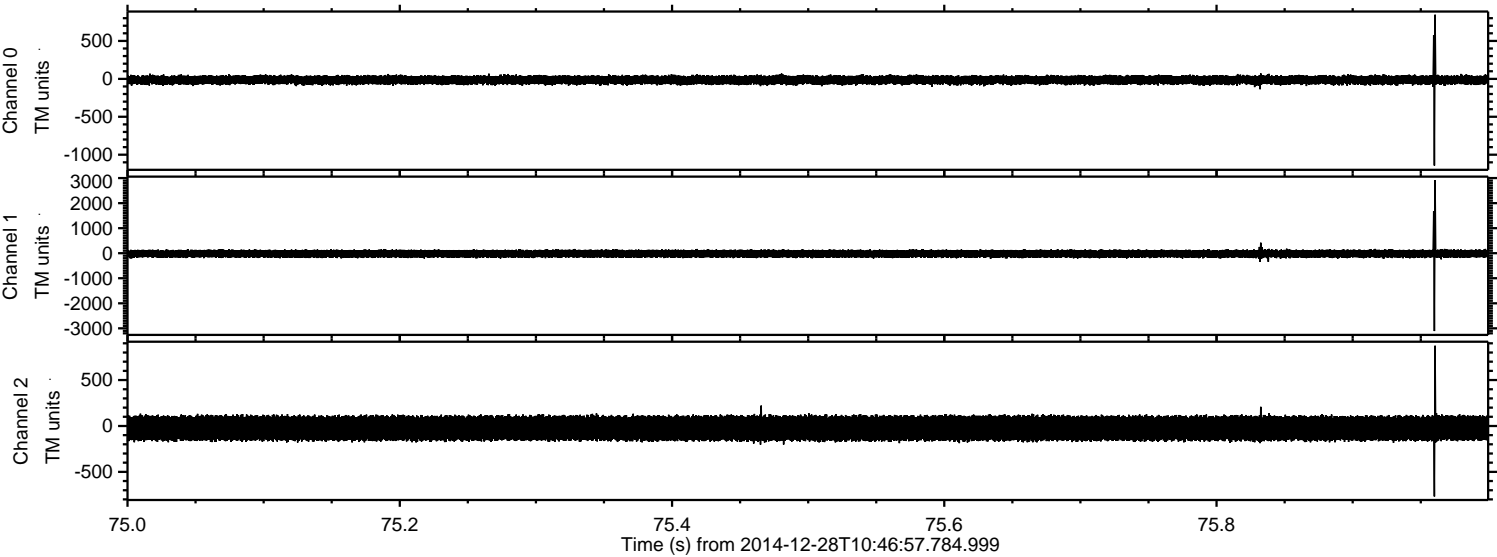
Channel 0  
mn: -1440  
mx: 1613  
 $\mu$ : -15.1  
 $\sigma$ : 33.8

Channel 1  
mn: -1910  
mx: 1197  
 $\mu$ : -21.5  
 $\sigma$ : 83.9

Channel 2  
mn: -2173  
mx: 4512  
 $\mu$ : -24.5  
 $\sigma$ : 92.5



Processed Thu Jan 1 17:06:09 2015 by ELM ver.2012-10-06 from 001\_\_elm20141228\_104656\_\_dat00.bin



Channel 0  
mn: -1142  
mx: 845  
 $\mu$ : -15.0  
 $\sigma$ : 31.8

Channel 1  
mn: -3108  
mx: 2913  
 $\mu$ : -21.9  
 $\sigma$ : 86.6

Channel 2  
mn: -768  
mx: 874  
 $\mu$ : -24.8  
 $\sigma$ : 84.7



Processed Thu Jan 1 17:06:10 2015 by ELM ver.2012-10-06 from 001\_\_elm20141228\_104656\_\_dat00.bin

