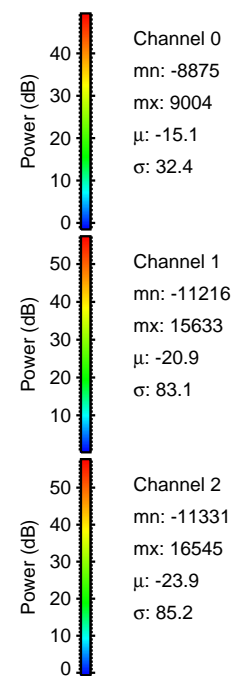
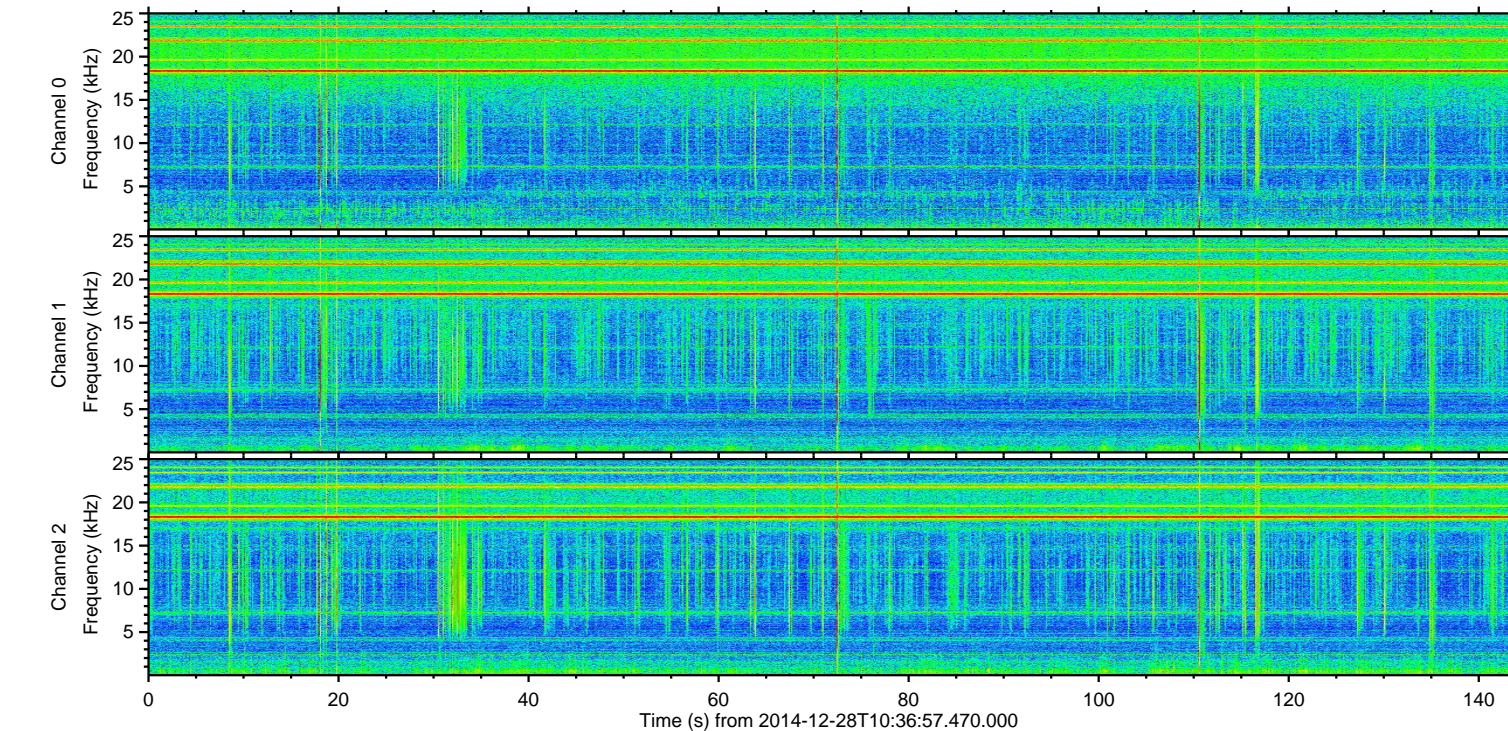
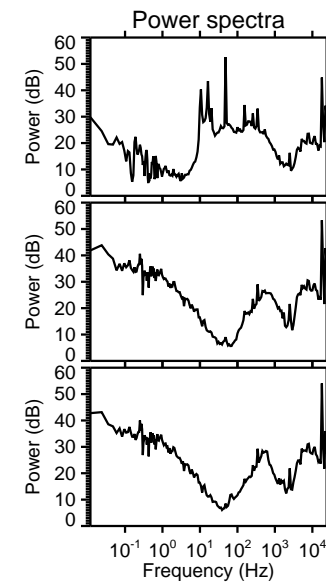
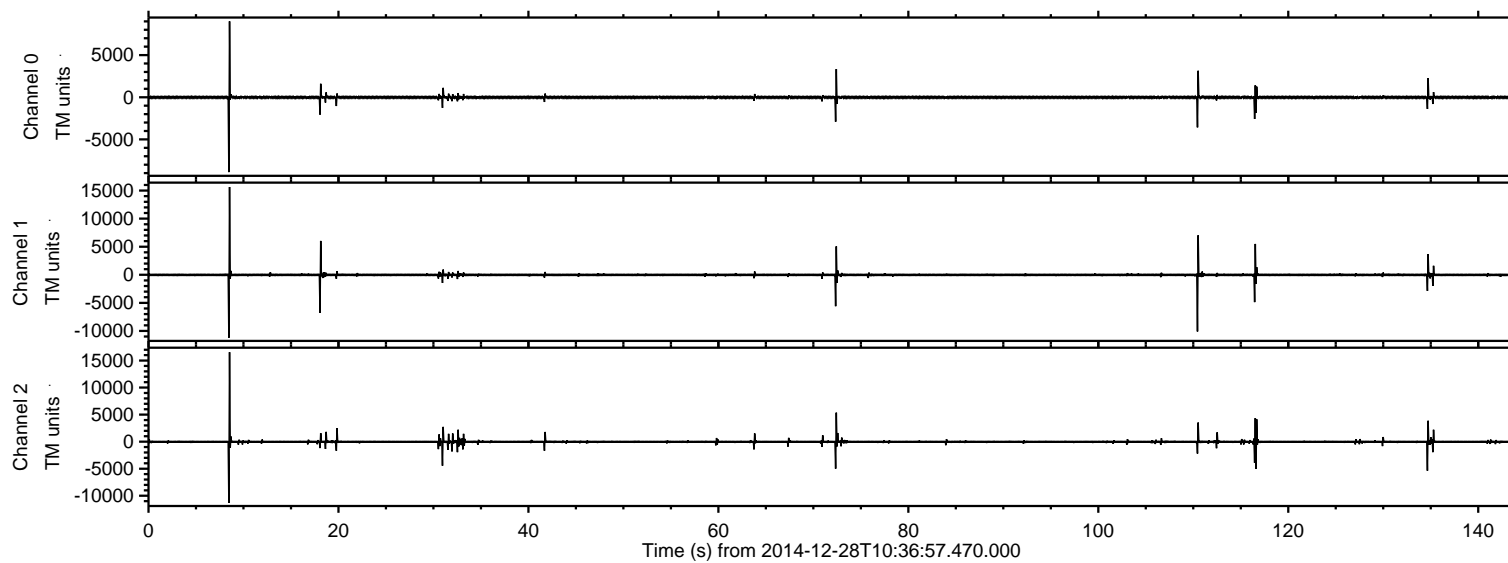
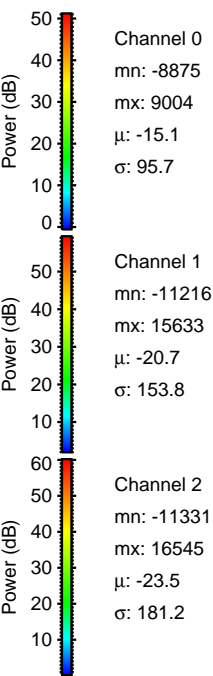
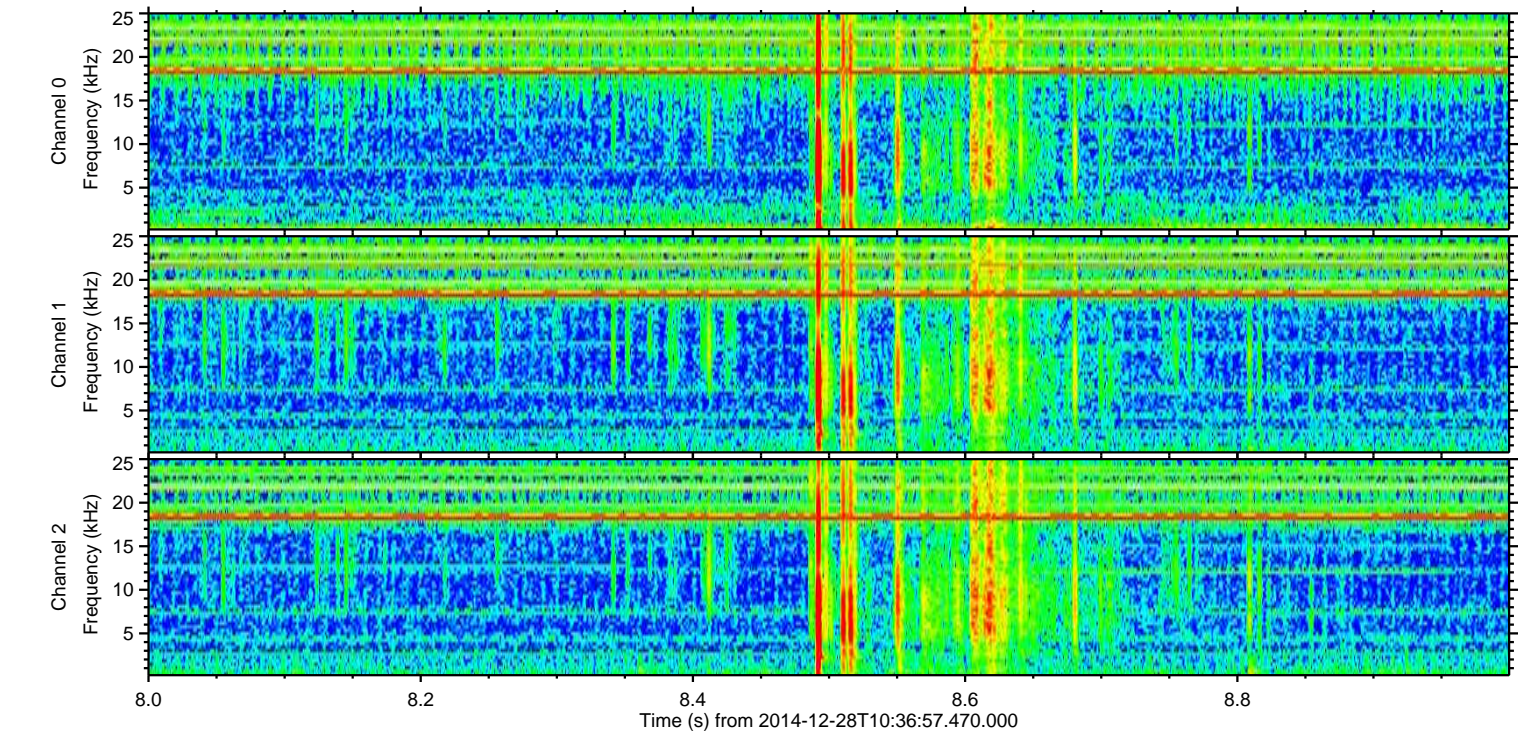
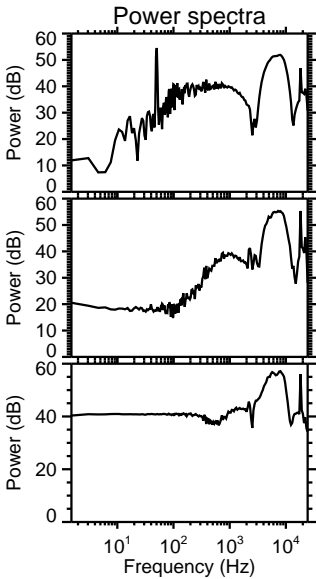
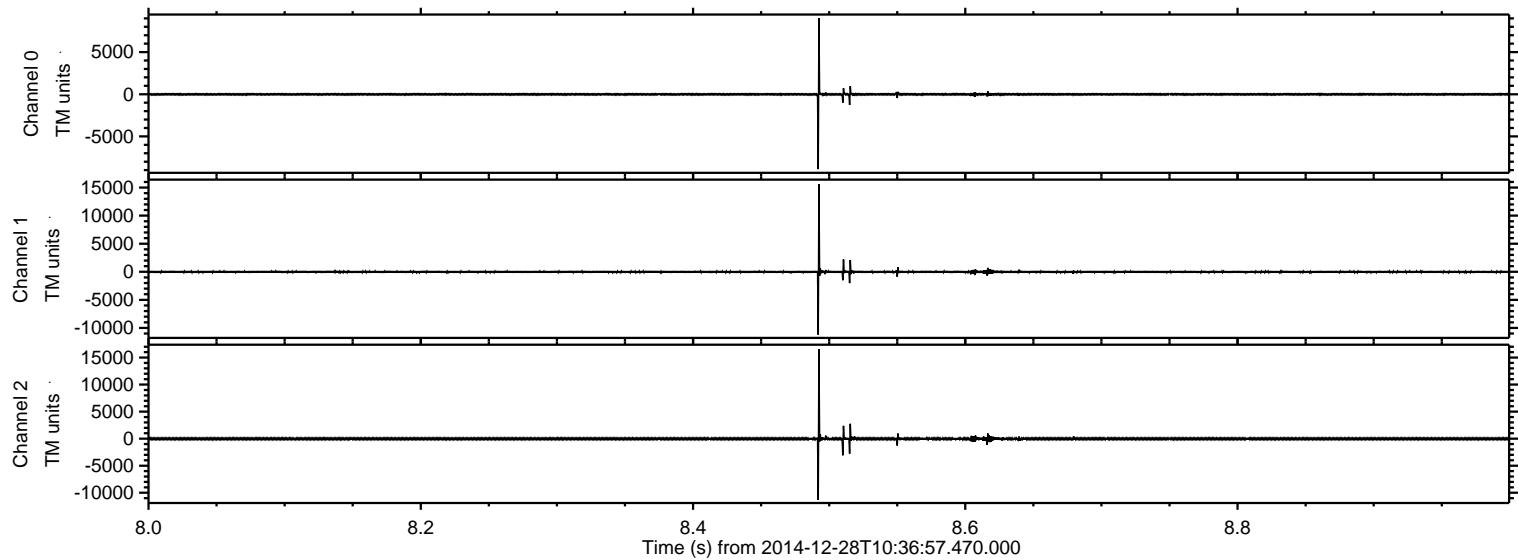


ELMAVAN 3D WAVEFORMS (Measured data sampled at 50 kHz) 49742 packets of 144 samples from 2014-12-28T10:36:57.470.000.

Processed Thu Jan 1 17:02:28 2015 by ELM ver.2012-10-06 from 001__elm20141228_103656__dat00.bin

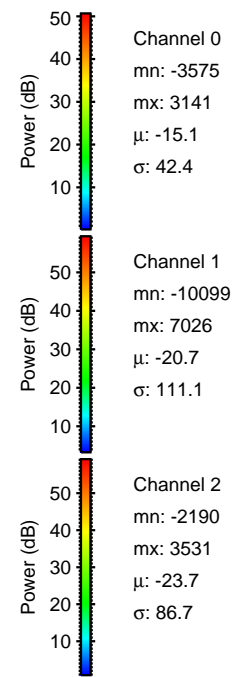
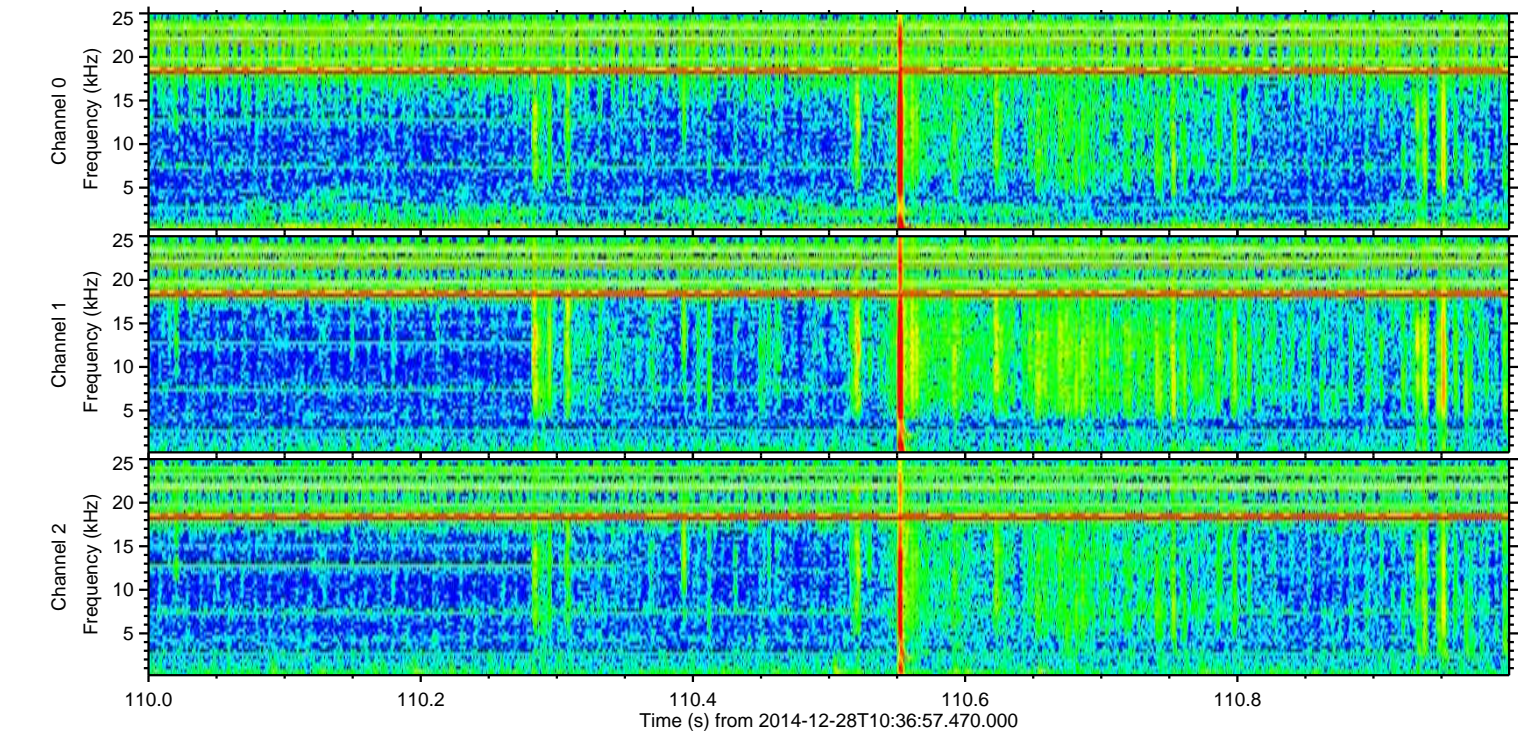
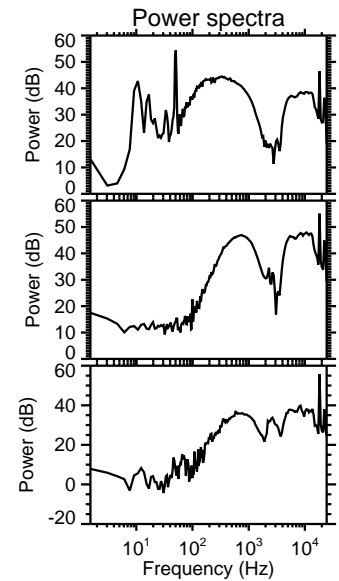
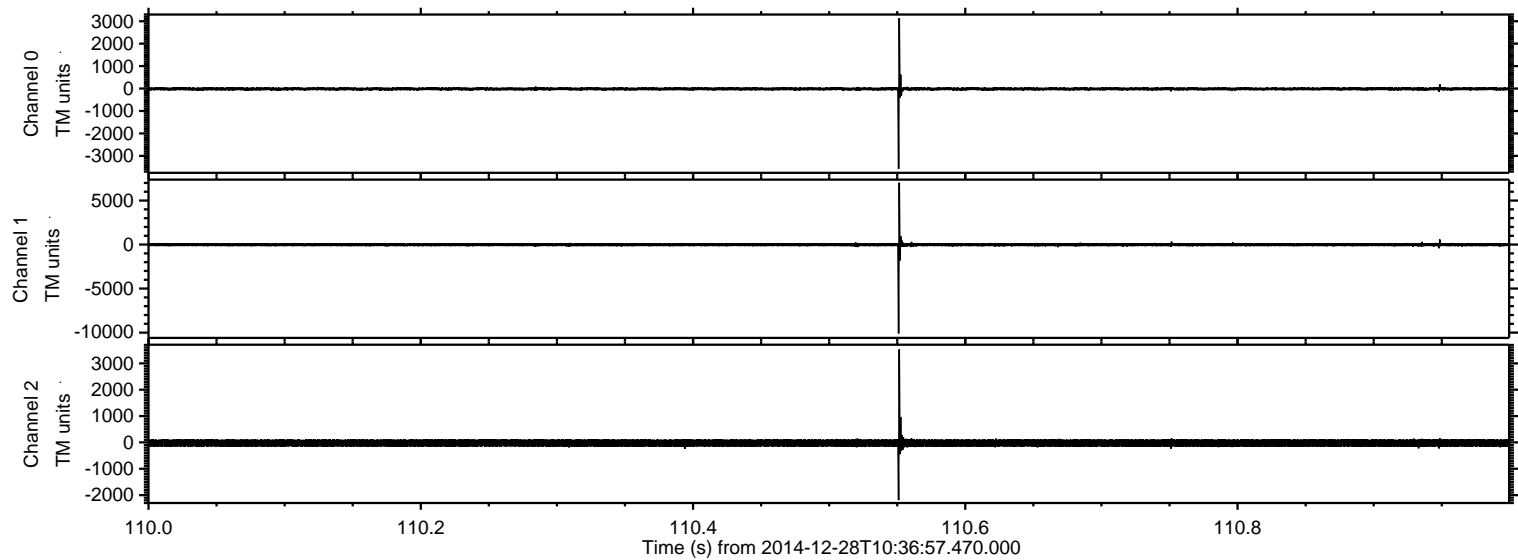


Processed Thu Jan 1 17:02:43 2015 by ELM ver.2012-10-06 from 001__elm20141228_103656__dat00.bin



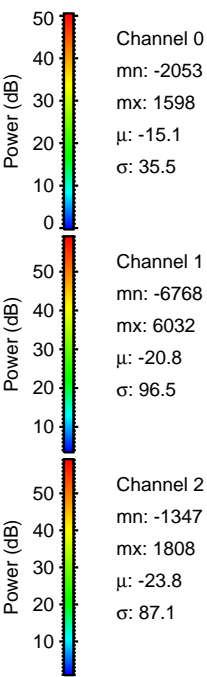
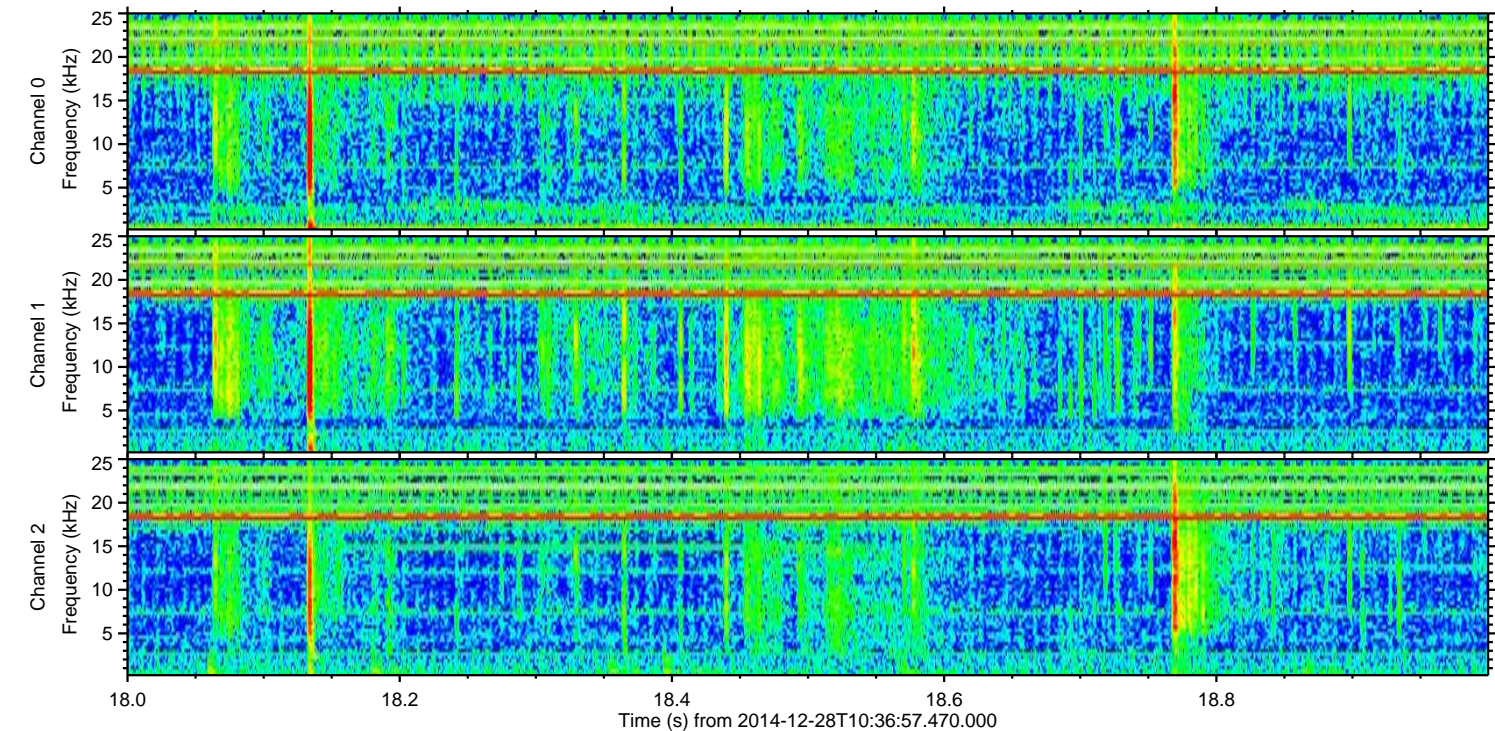
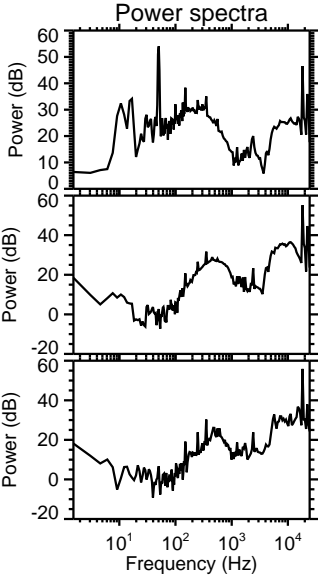
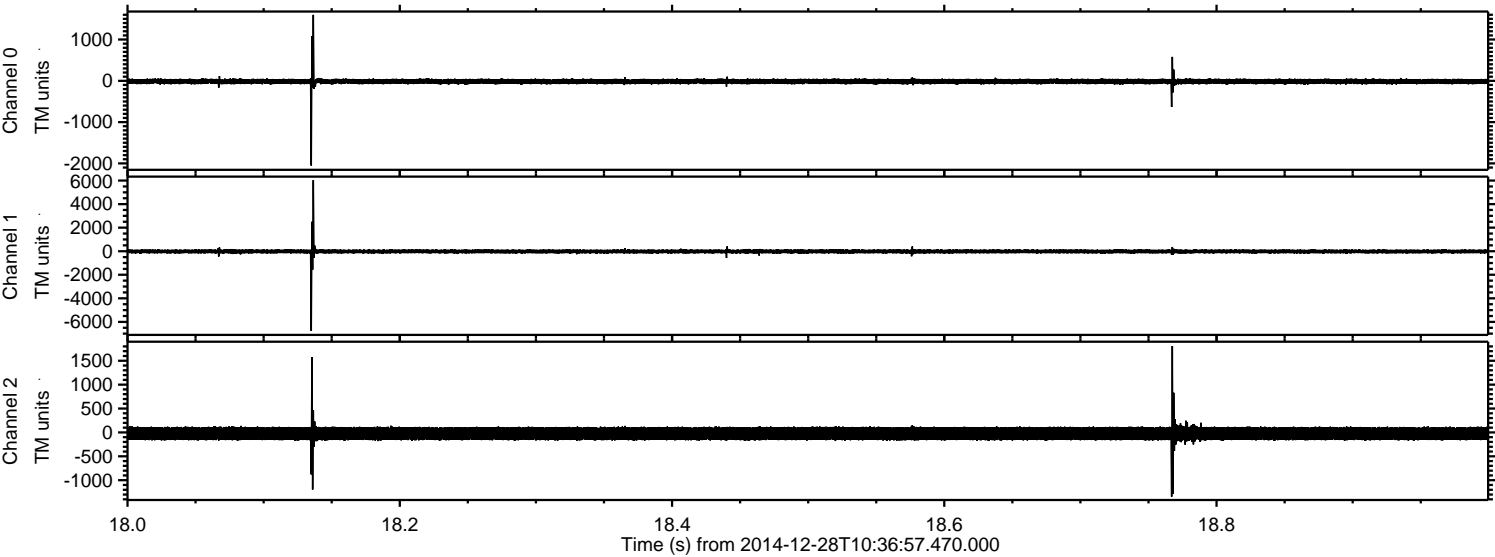
ELMAVAN 3D WAVEFORMS (Measured data sampled at 50 kHz) 49742 packets of 144 samples from 2014-12-28T10:36:57.470.000. Part 111/144

Processed Thu Jan 1 17:02:44 2015 by ELM ver.2012-10-06 from 001__elm20141228_103656__dat00.bin

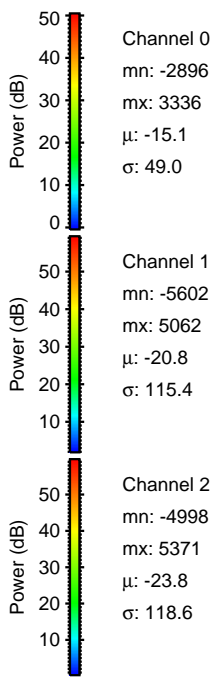
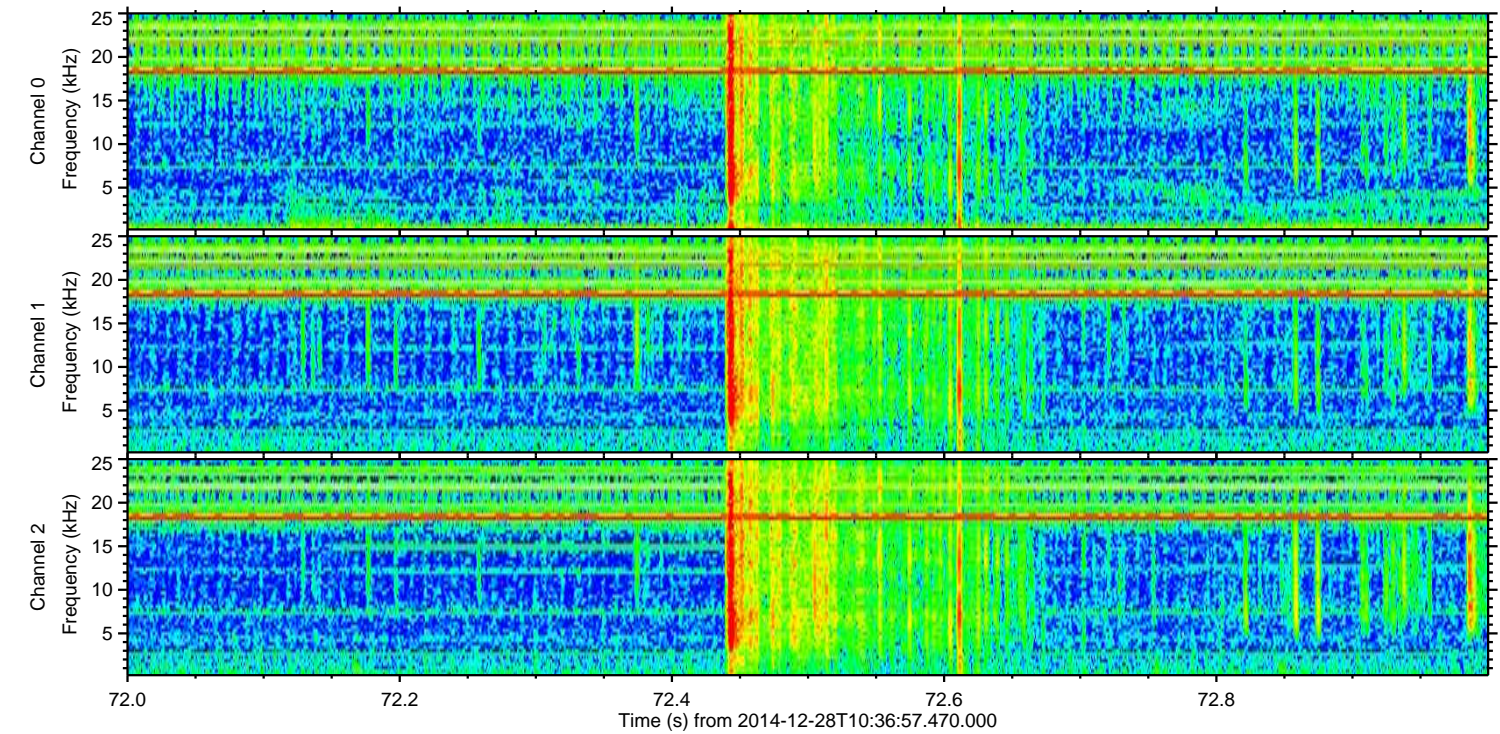
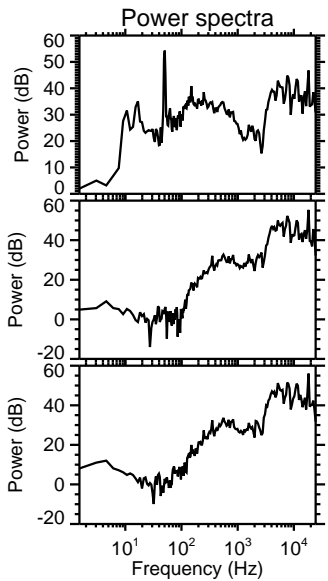
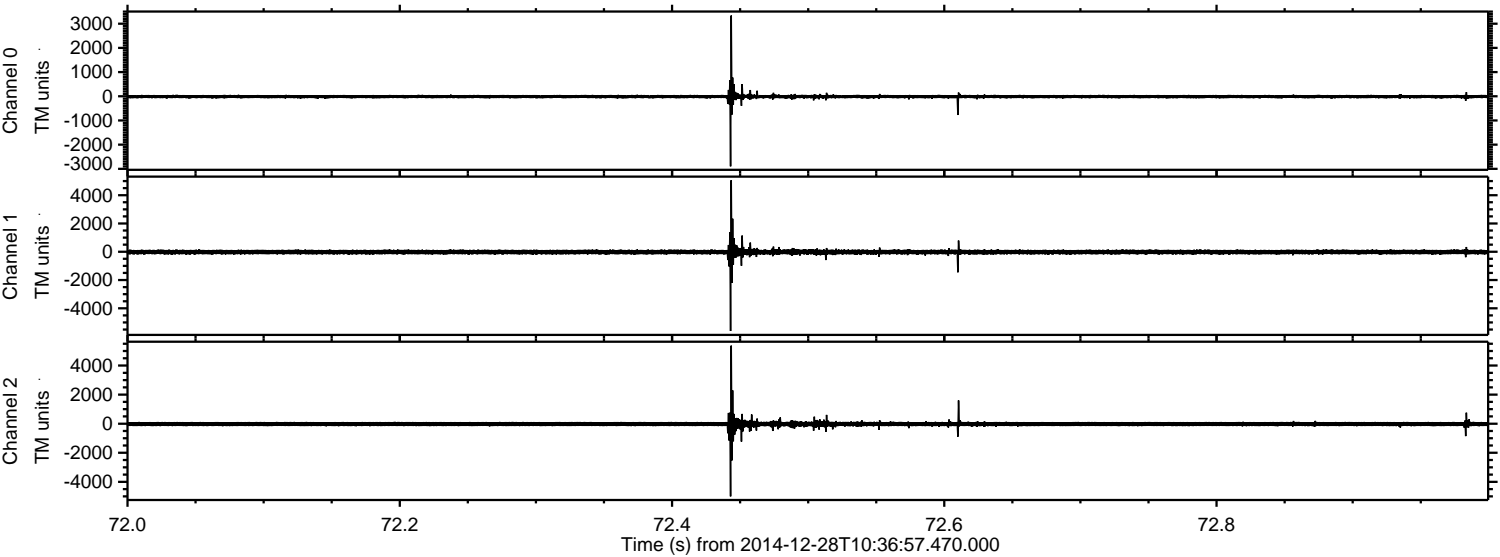


ELMAVAN 3D WAVEFORMS (Measured data sampled at 50 kHz) 49742 packets of 144 samples from 2014-12-28T10:36:57.470.000. Part 19/144

Processed Thu Jan 1 17:02:45 2015 by ELM ver.2012-10-06 from 001__elm20141228_103656__dat00.bin

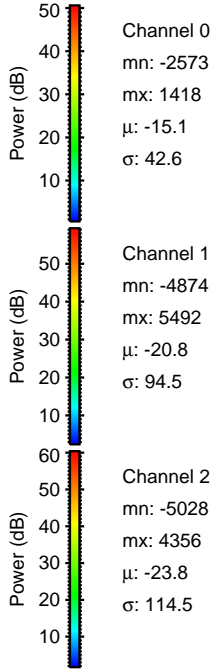
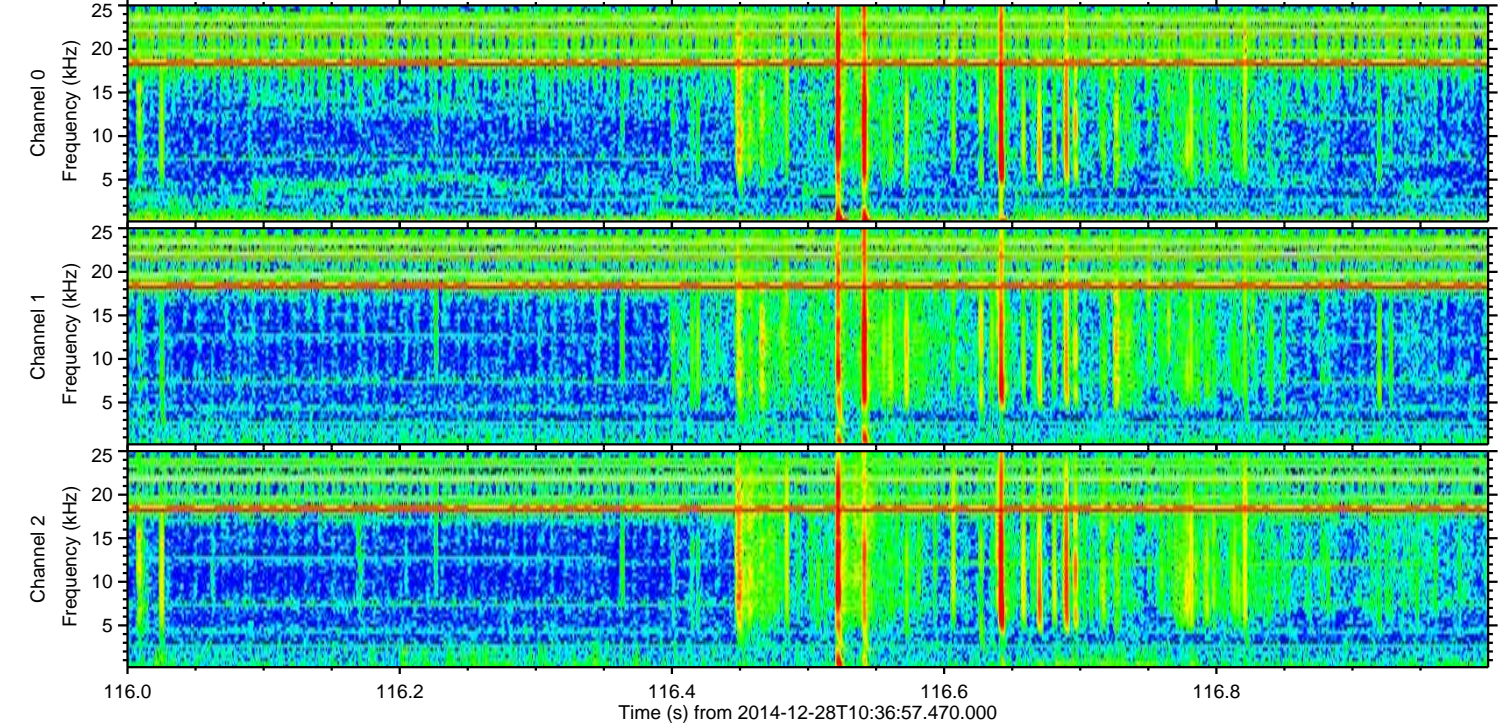
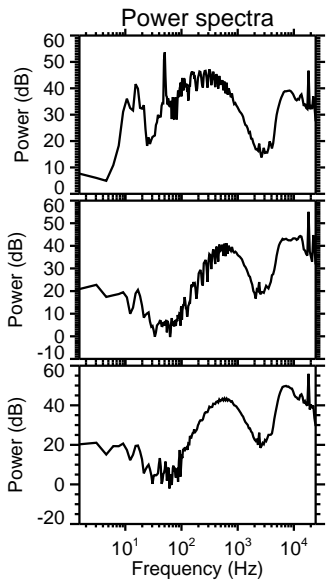
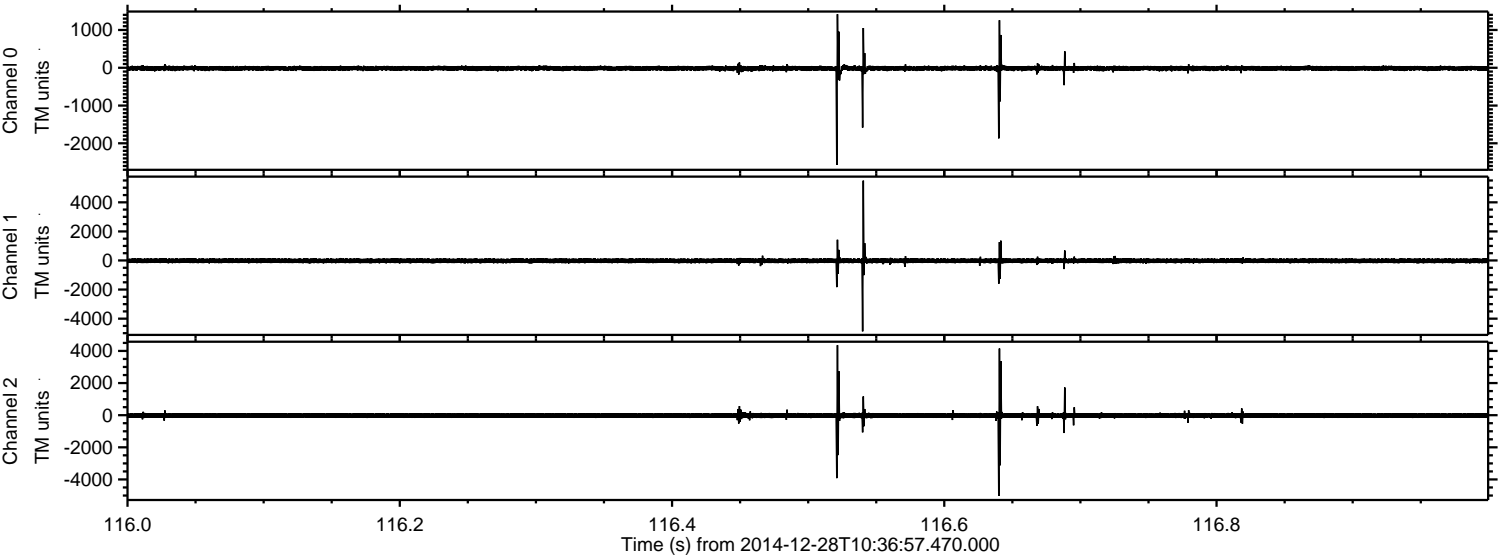


Processed Thu Jan 1 17:02:46 2015 by ELM ver.2012-10-06 from 001__elm20141228_103656__dat00.bin



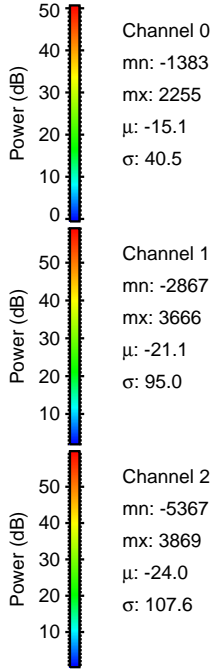
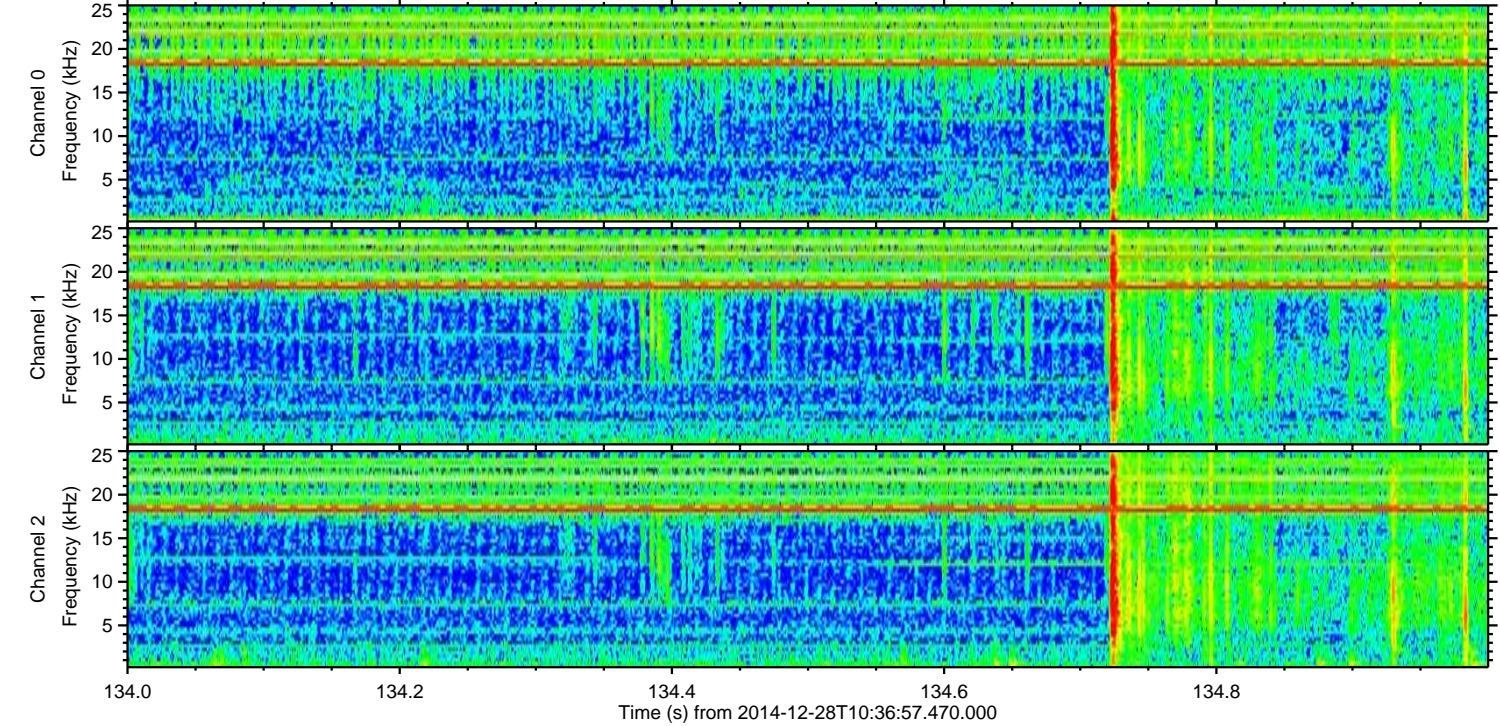
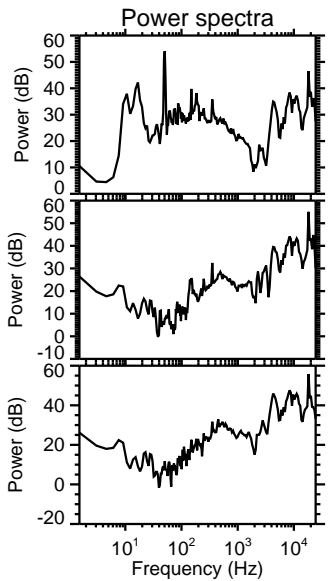
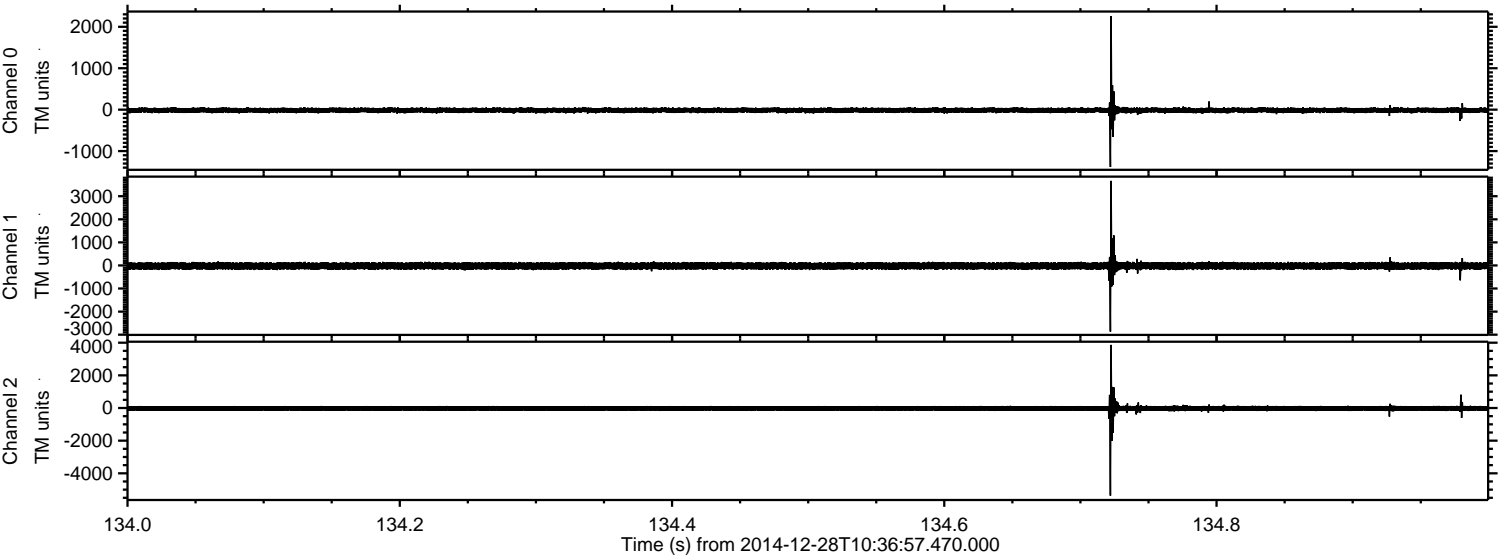
ELMAVAN 3D WAVEFORMS (Measured data sampled at 50 kHz) 49742 packets of 144 samples from 2014-12-28T10:36:57.470.000. Part 117/144

Processed Thu Jan 1 17:02:47 2015 by ELM ver.2012-10-06 from 001__elm20141228_103656__dat00.bin

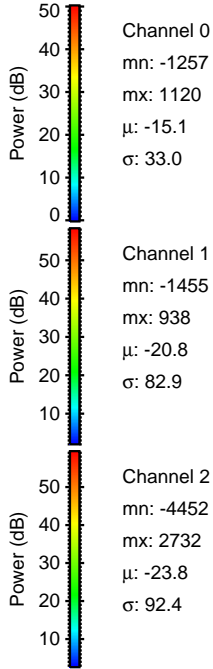
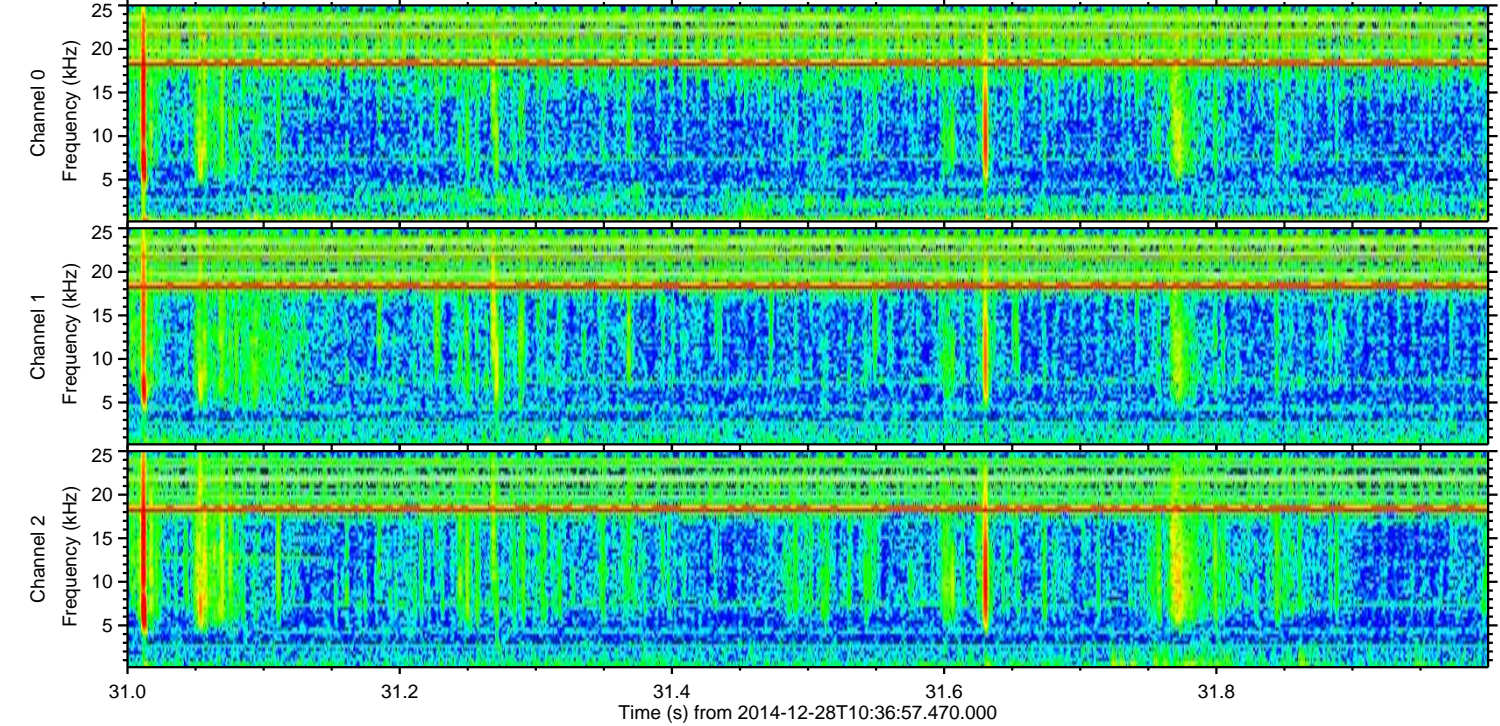
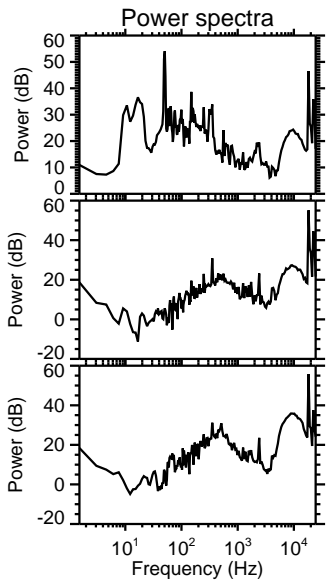
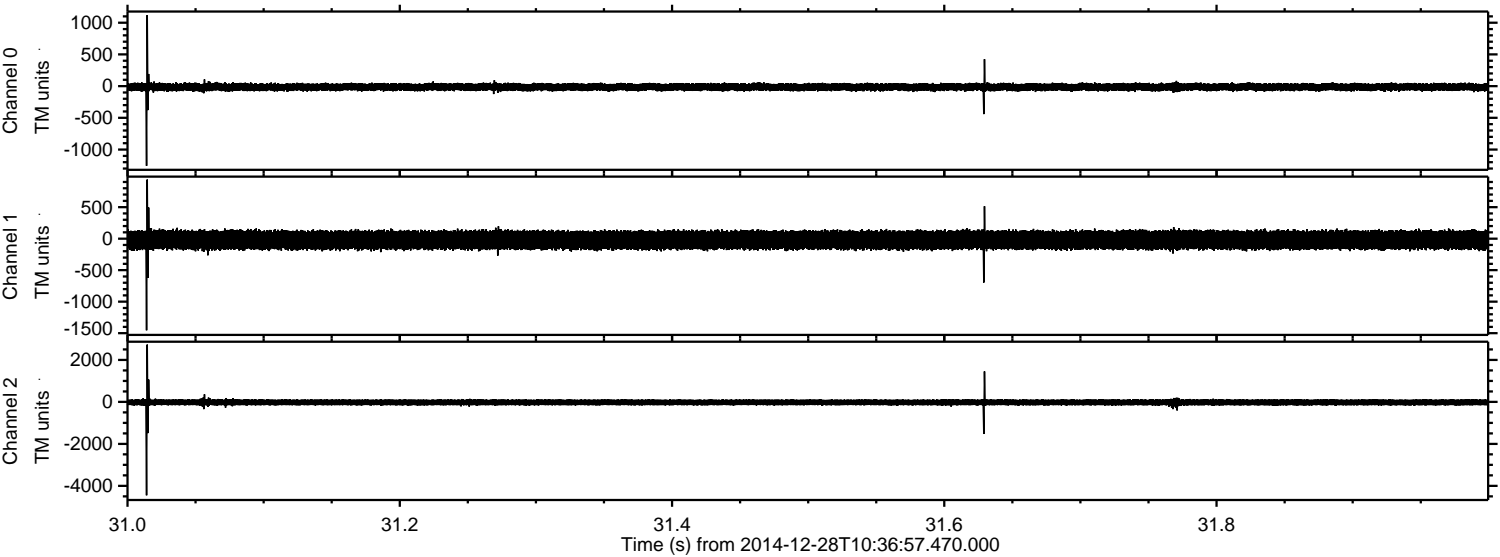


ELMAVAN 3D WAVEFORMS (Measured data sampled at 50 kHz) 49742 packets of 144 samples from 2014-12-28T10:36:57.470.000. Part 135/144

Processed Thu Jan 1 17:02:48 2015 by ELM ver.2012-10-06 from 001__elm20141228_103656__dat00.bin



Processed Thu Jan 1 17:02:49 2015 by ELM ver.2012-10-06 from 001__elm20141228_103656__dat00.bin

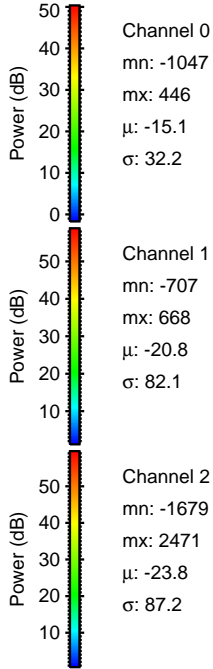
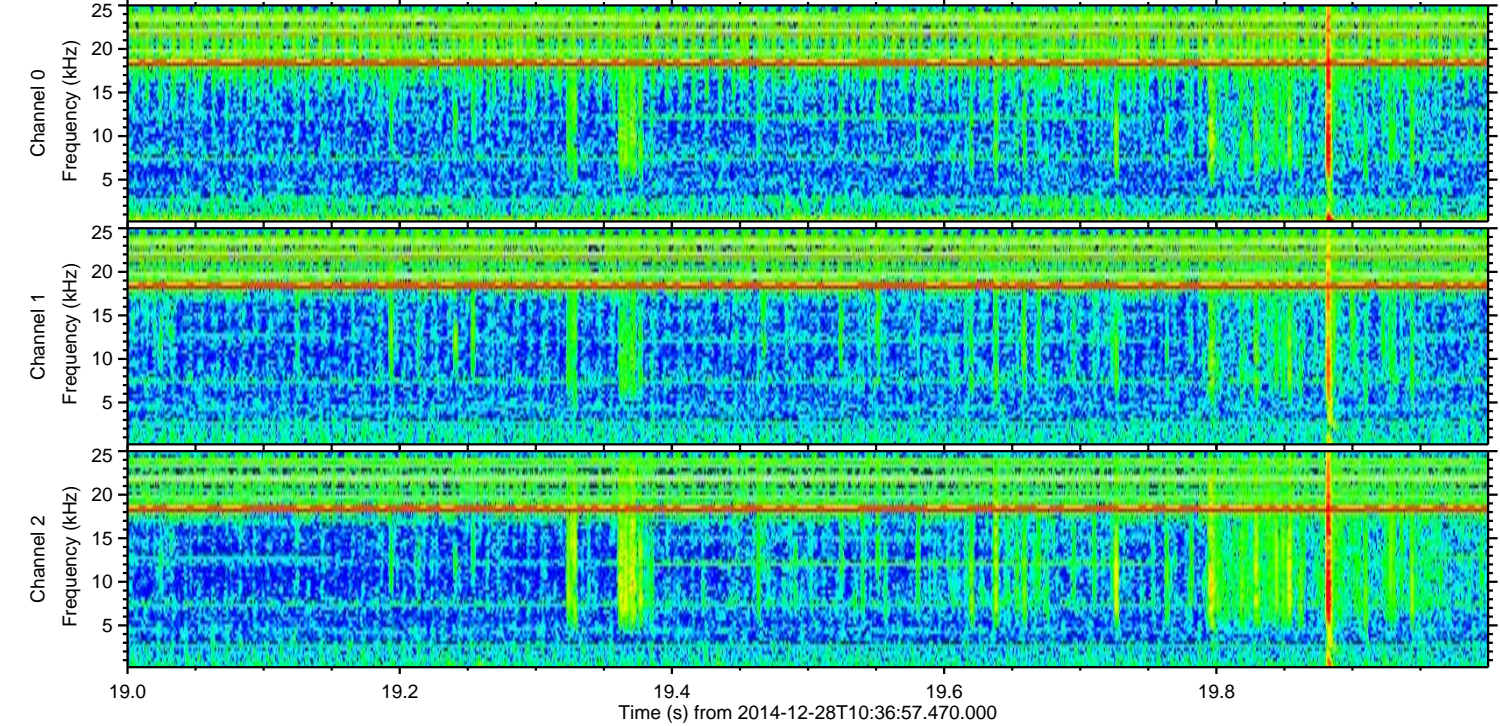
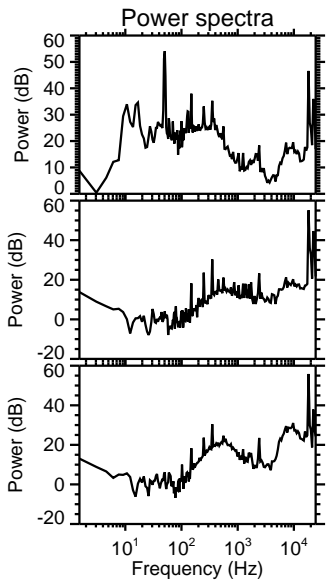
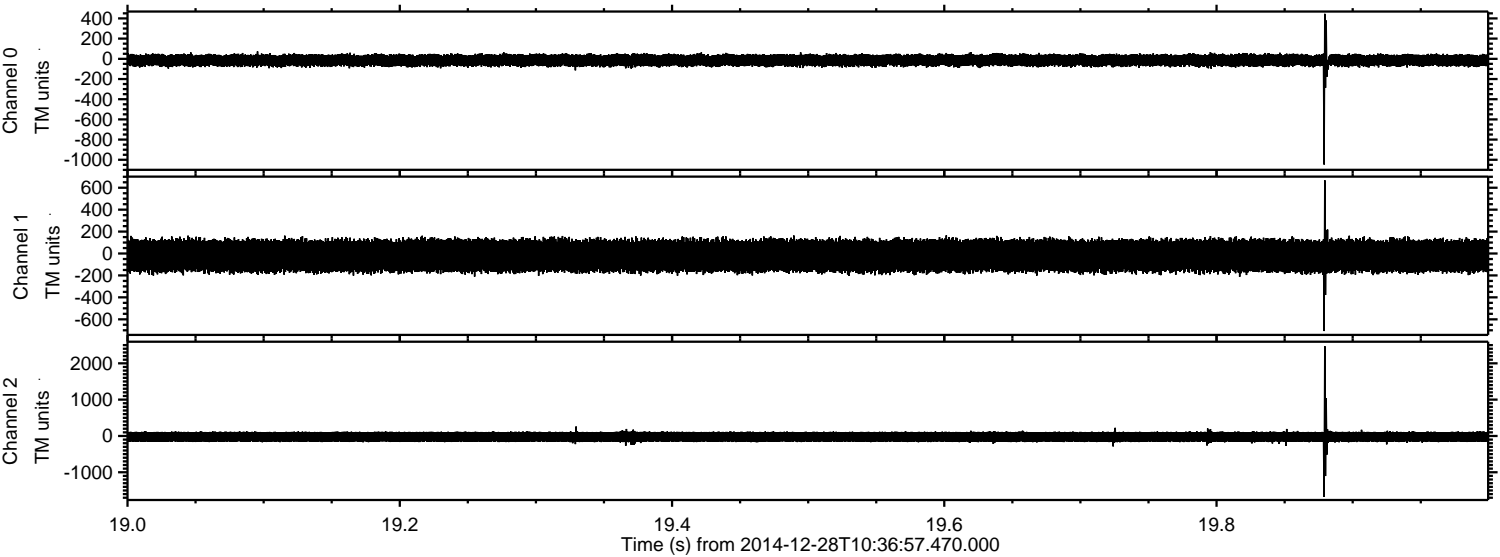


Channel 0
mn: -1257
mx: 1120
 μ : -15.1
 σ : 33.0

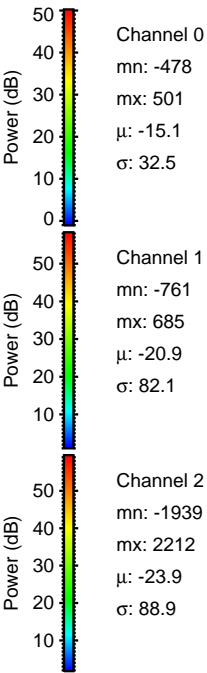
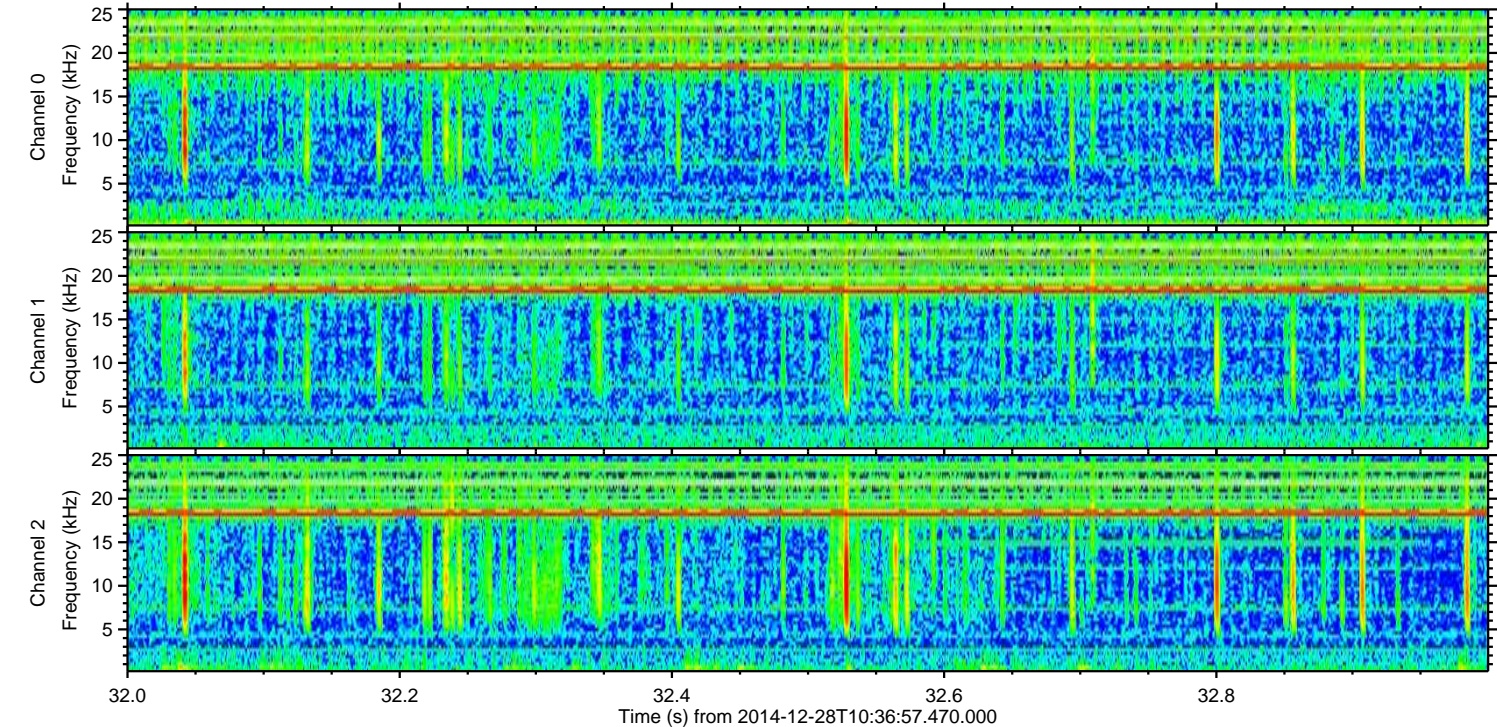
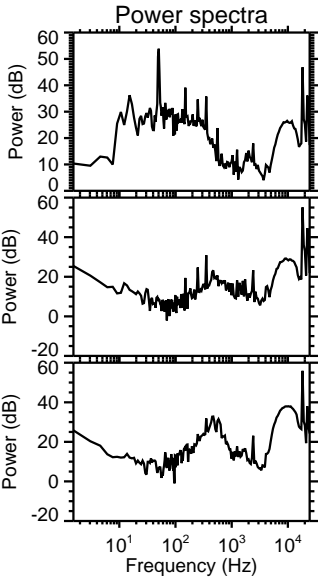
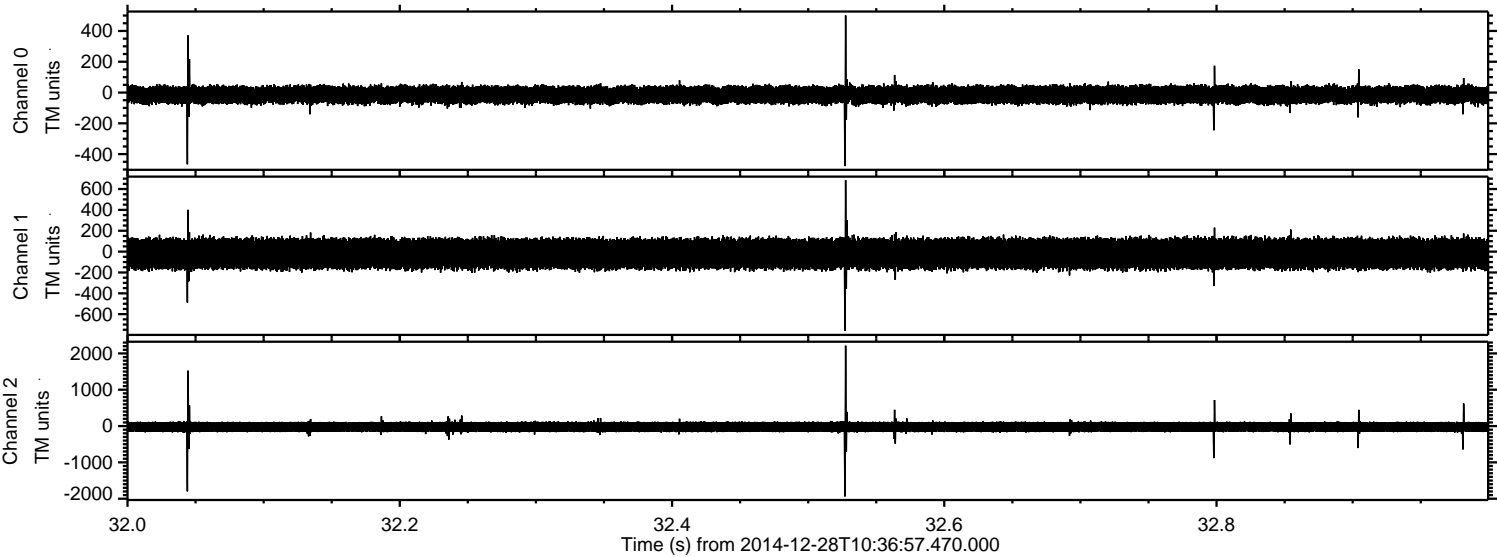
Channel 1
mn: -1455
mx: 938
 μ : -20.8
 σ : 82.9

Channel 2
mn: -4452
mx: 2732
 μ : -23.8
 σ : 92.4

Processed Thu Jan 1 17:02:51 2015 by ELM ver.2012-10-06 from 001__elm20141228_103656__dat00.bin



Processed Thu Jan 1 17:02:52 2015 by ELM ver.2012-10-06 from 001__elm20141228_103656__dat00.bin



Processed Thu Jan 1 17:02:53 2015 by ELM ver.2012-10-06 from 001__elm20141228_103656__dat00.bin

