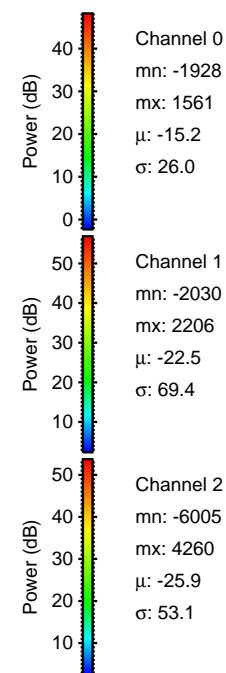
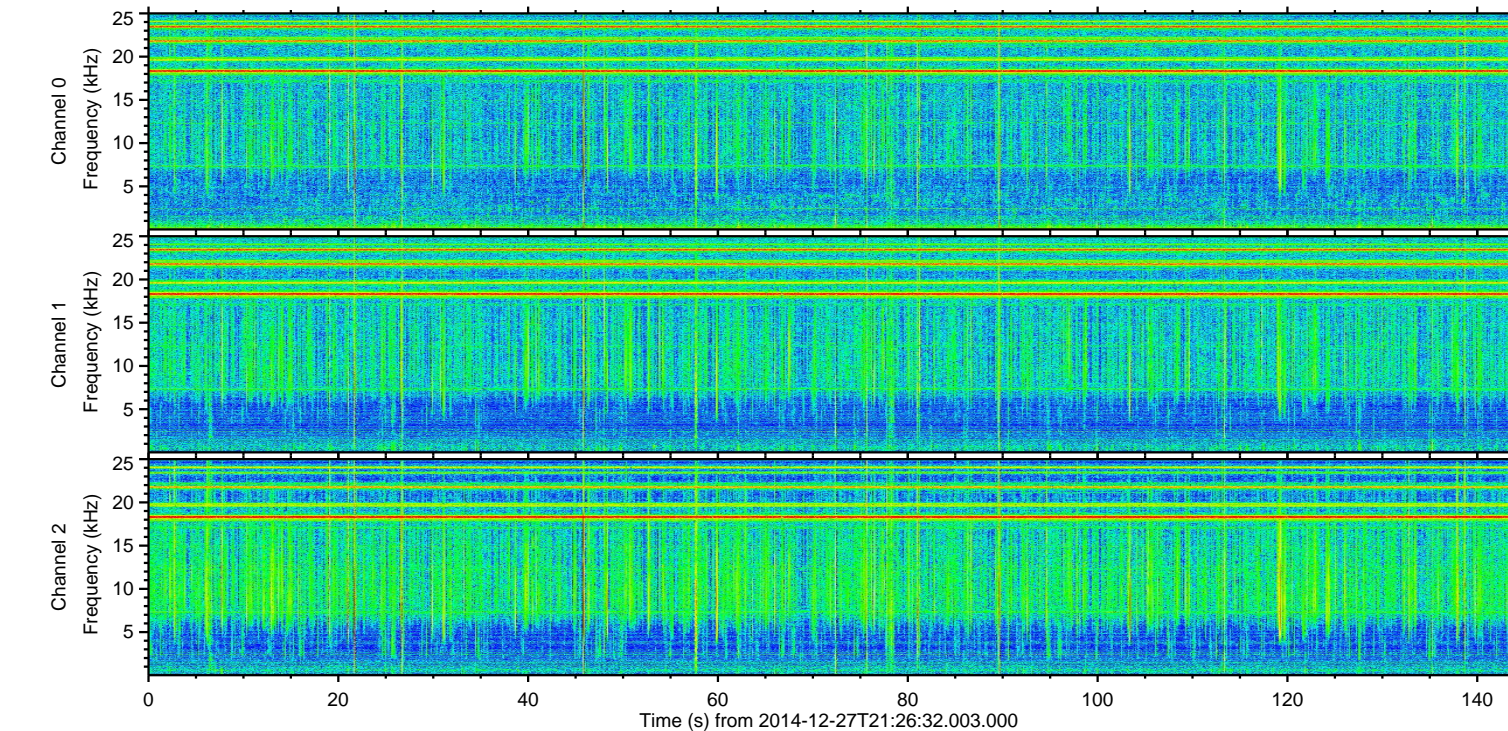
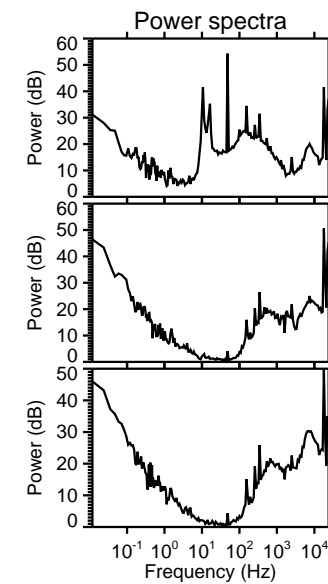
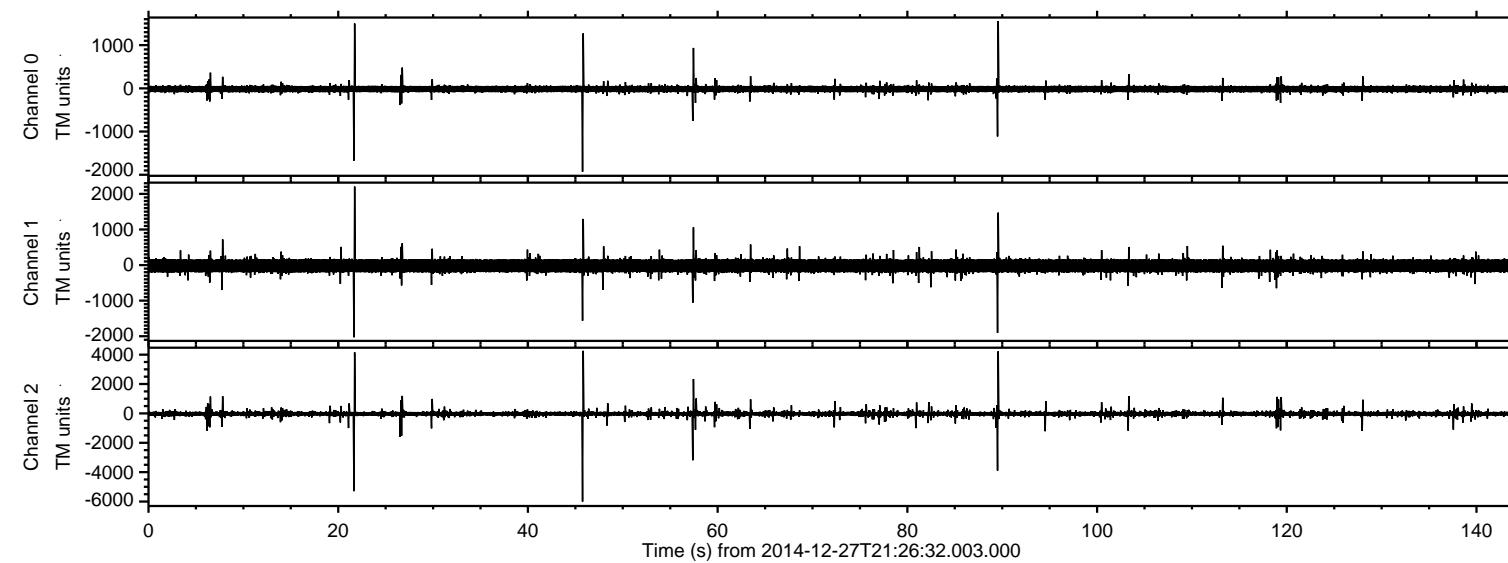
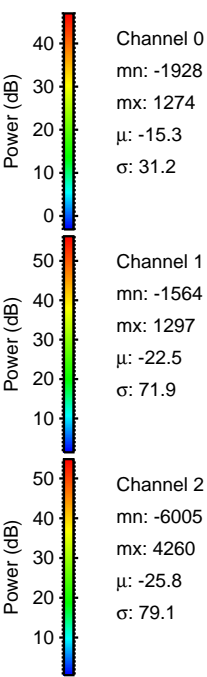
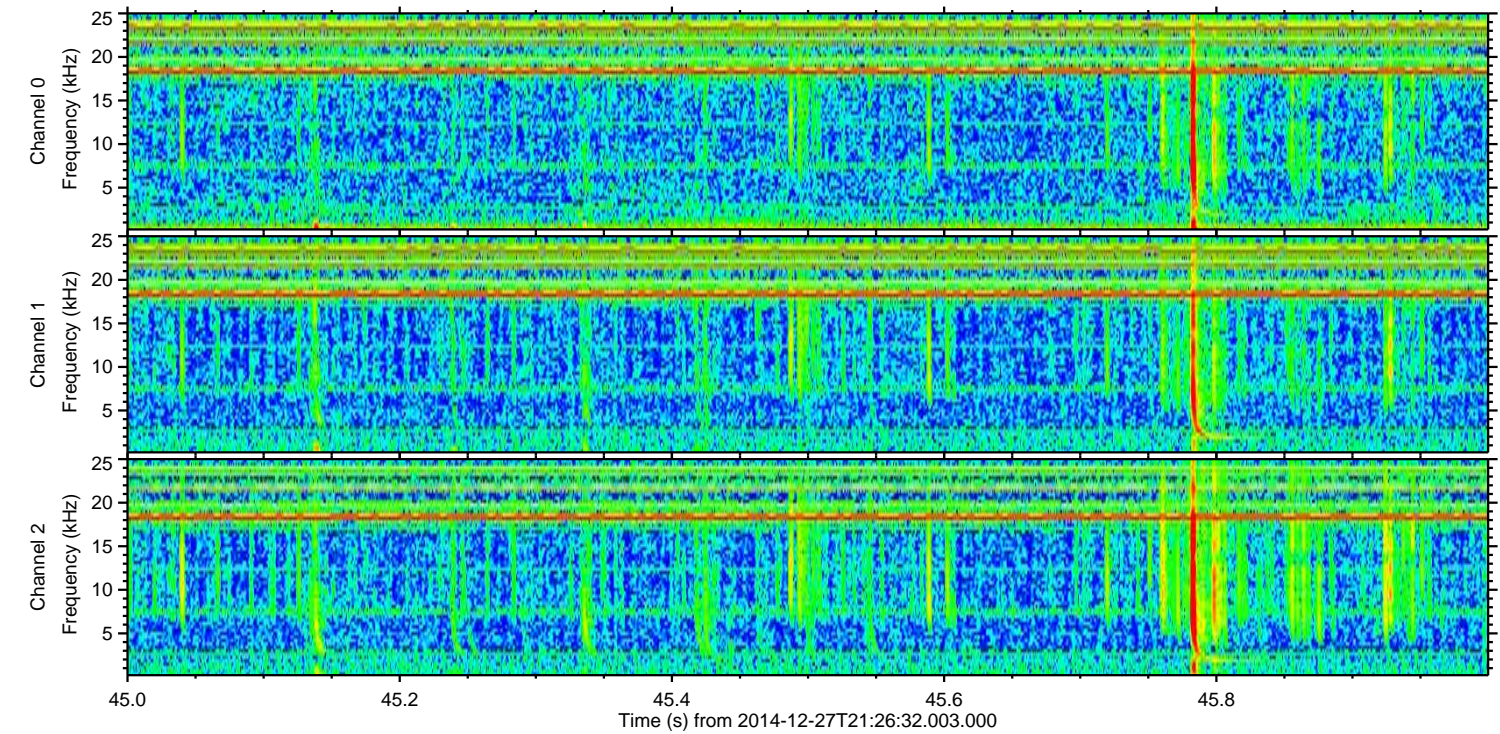
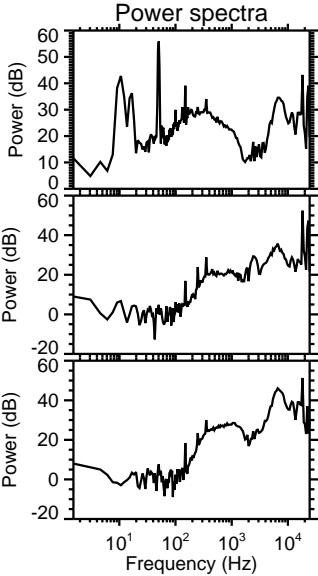
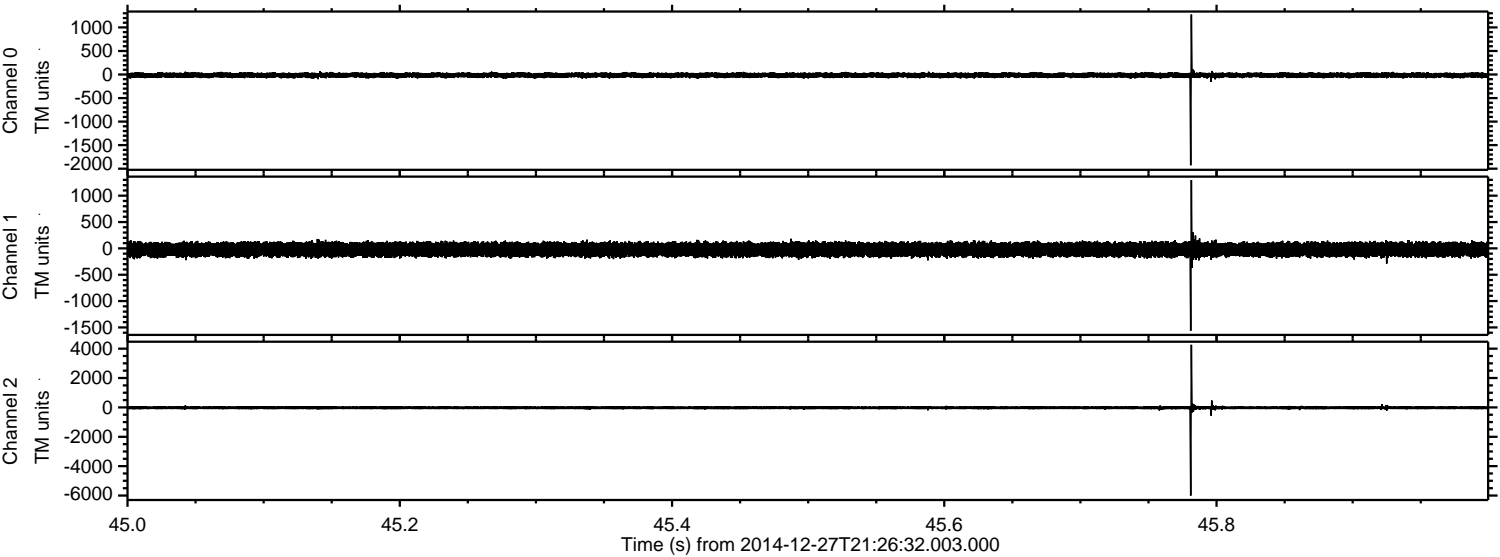


ELMAVAN 3D WAVEFORMS (Measured data sampled at 50 kHz) 49806 packets of 144 samples from 2014-12-27T21:26:32.003.000.

Processed Wed Dec 31 18:20:25 2014 by ELM ver.2012-10-06 from 001__elm20141227_212630__dat00.bin



Processed Wed Dec 31 18:20:37 2014 by ELM ver.2012-10-06 from 001__elm20141227_212630__dat00.bin



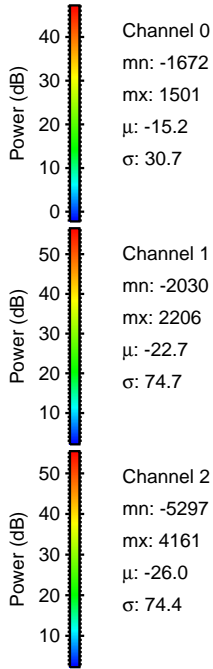
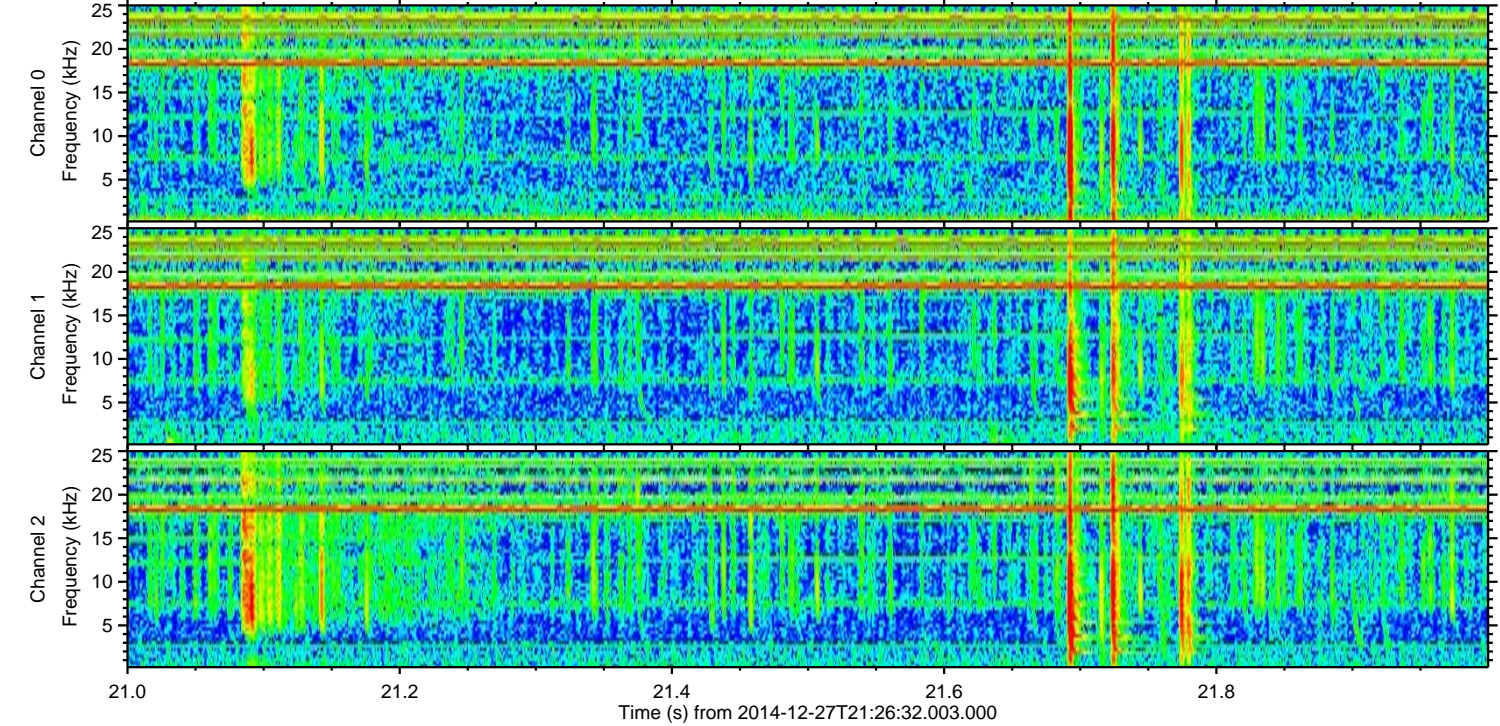
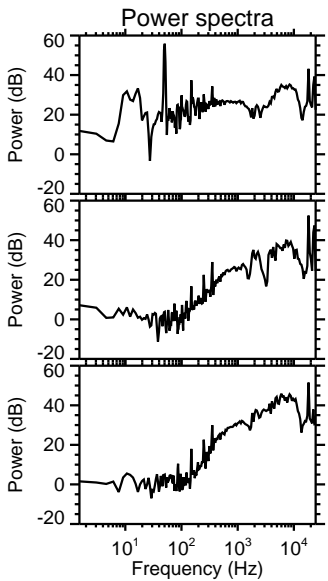
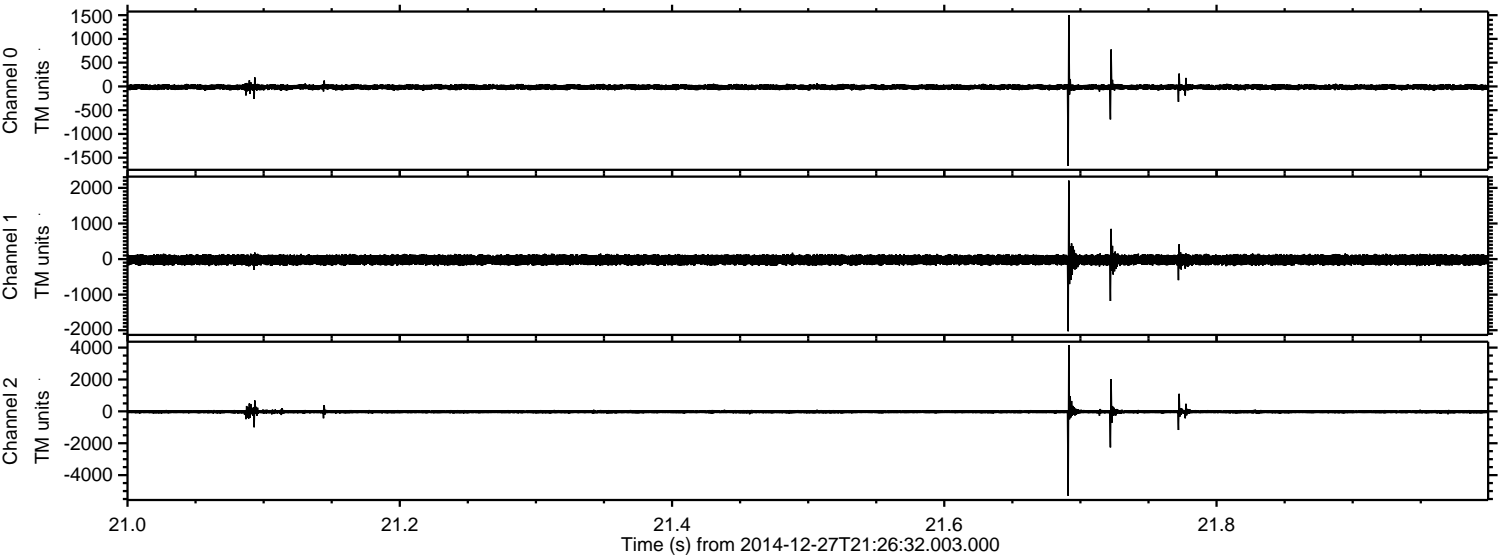
Channel 0
mn: -1928
mx: 1274
 μ : -15.3
 σ : 31.2

Channel 1
mn: -1564
mx: 1297
 μ : -22.5
 σ : 71.9

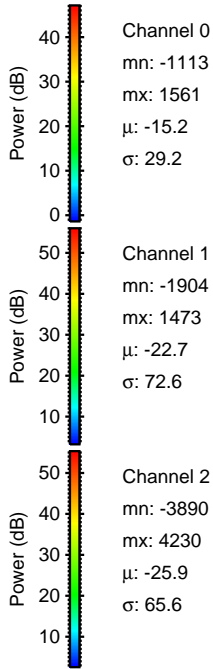
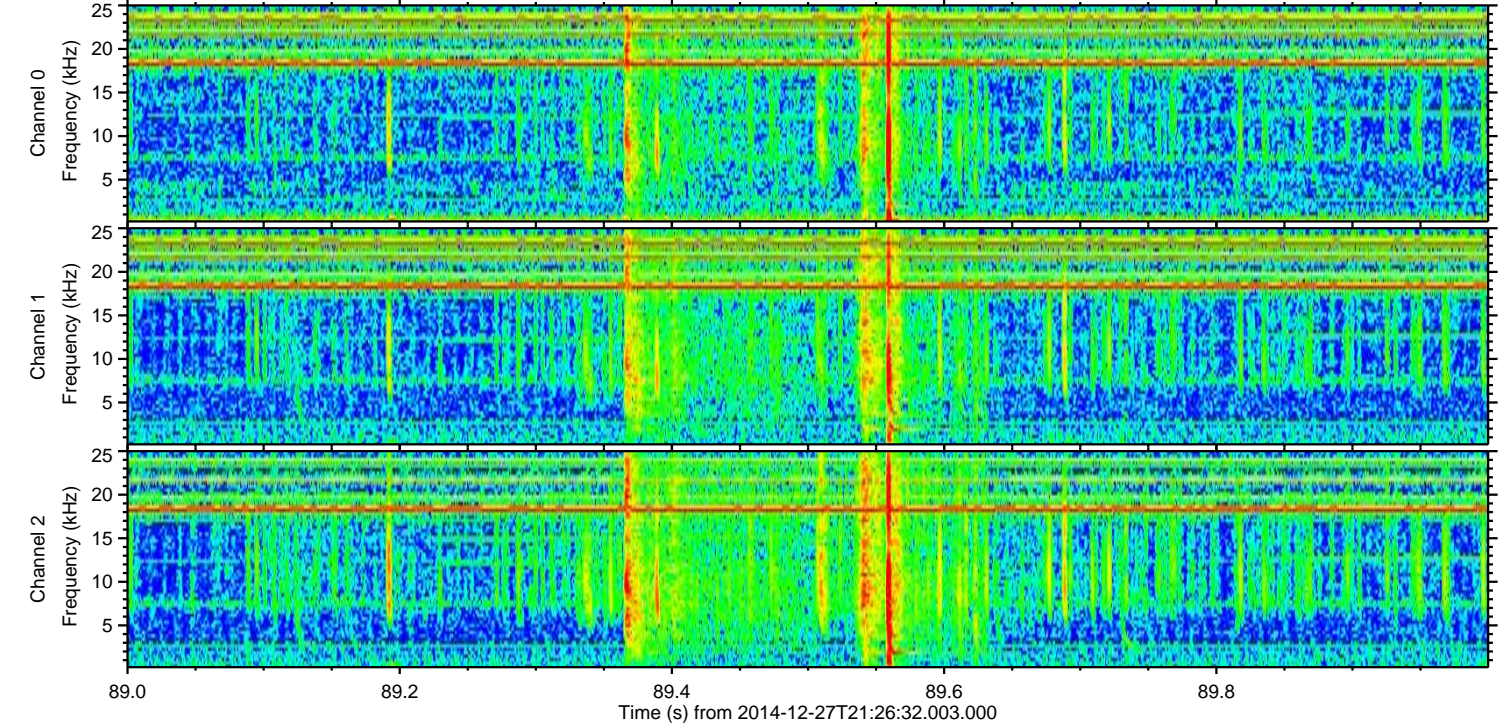
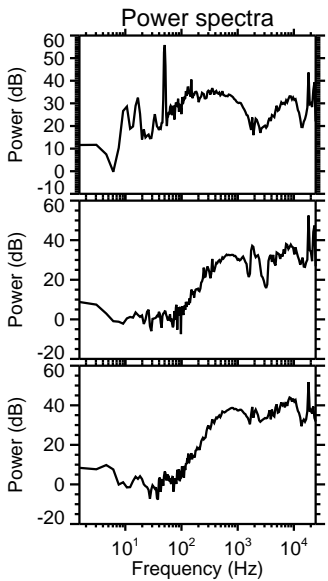
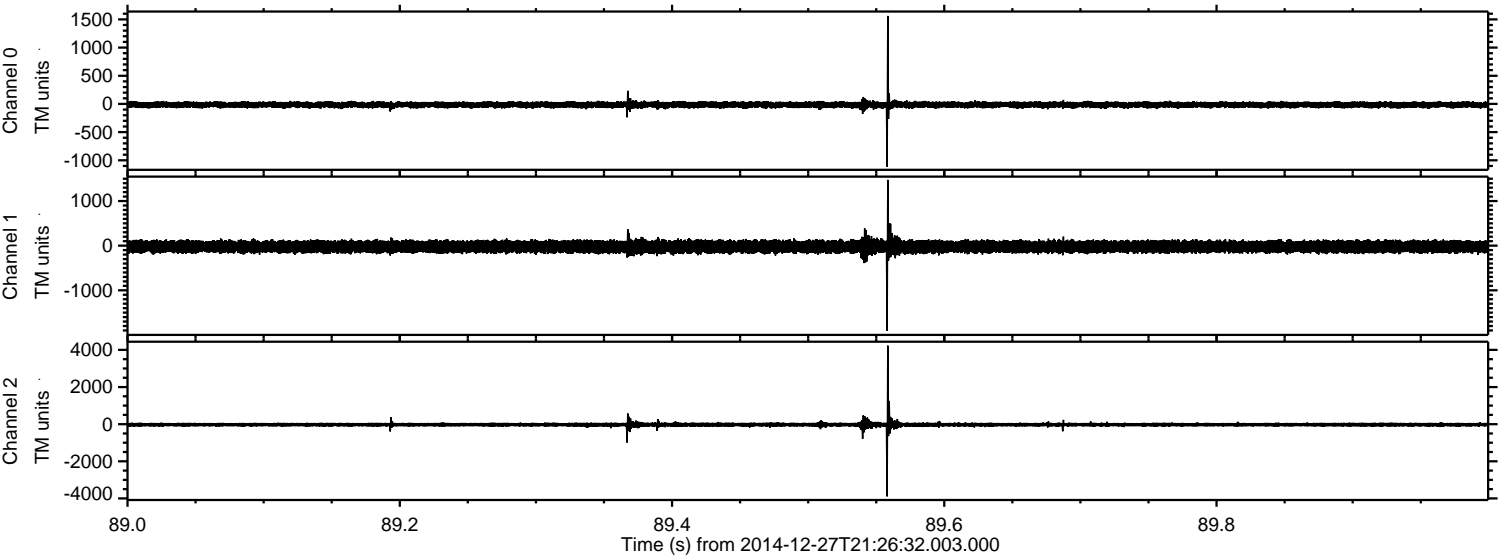
Channel 2
mn: -6005
mx: 4260
 μ : -25.8
 σ : 79.1

ELMAVAN 3D WAVEFORMS (Measured data sampled at 50 kHz) 49806 packets of 144 samples from 2014-12-27T21:26:32.003.000. Part 22/144

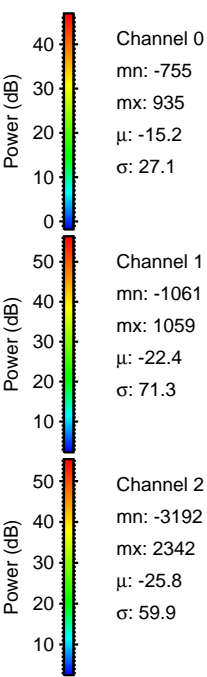
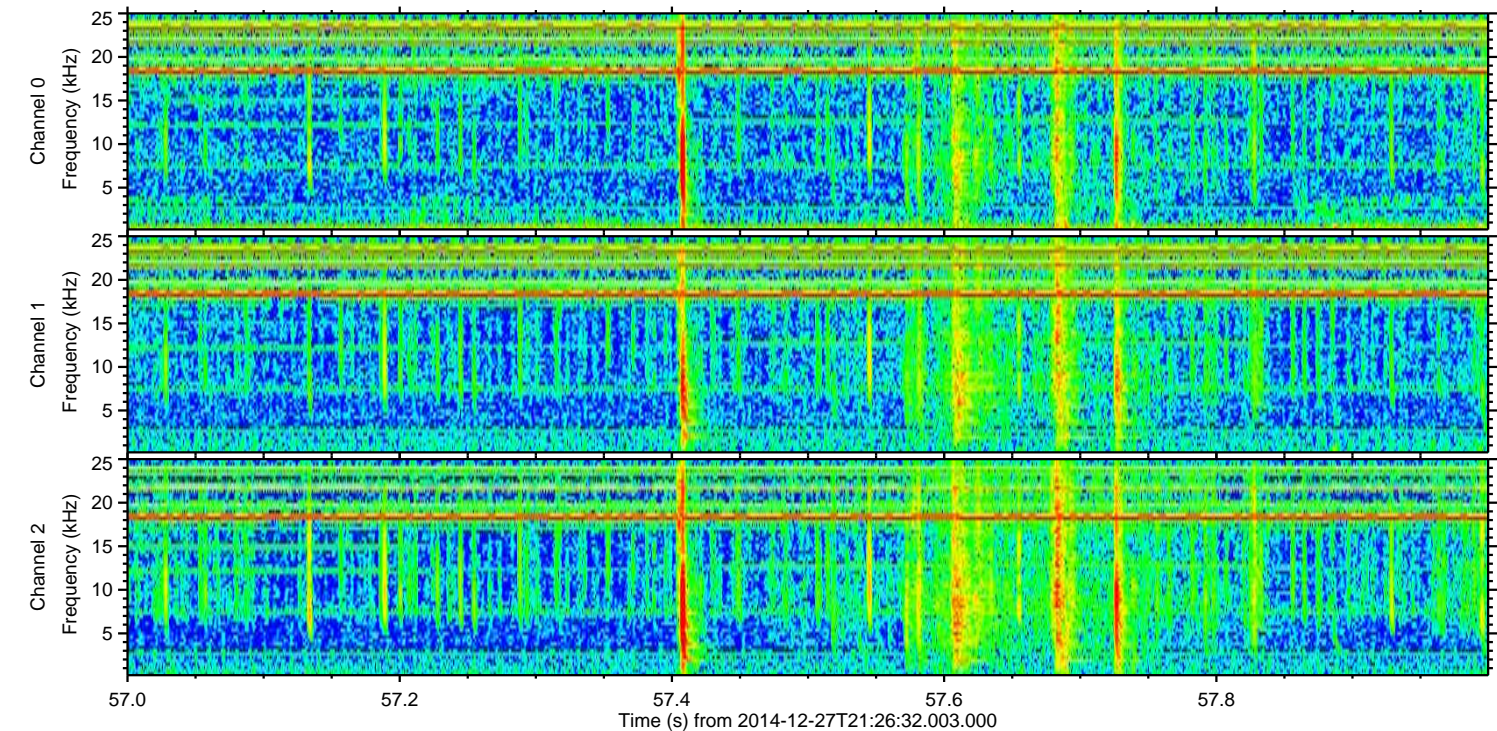
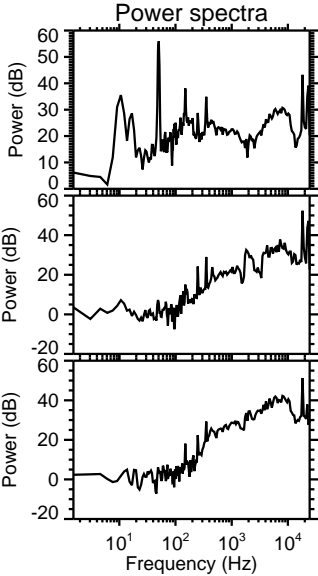
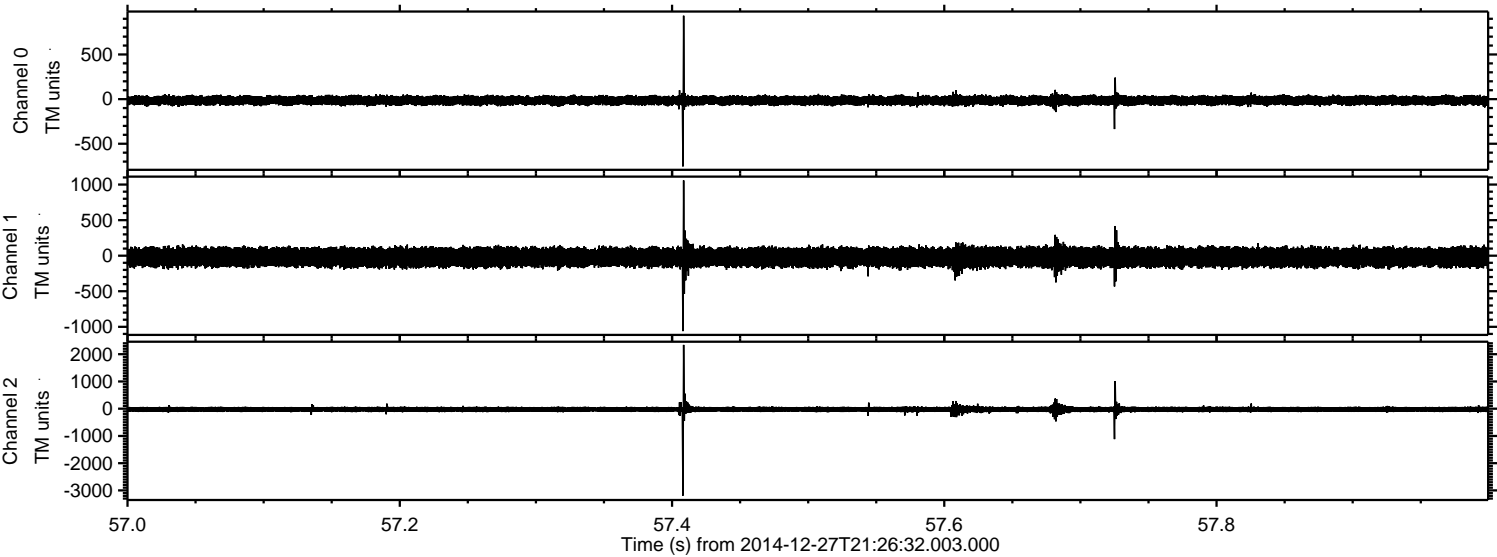
Processed Wed Dec 31 18:20:38 2014 by ELM ver.2012-10-06 from 001__elm20141227_212630__dat00.bin



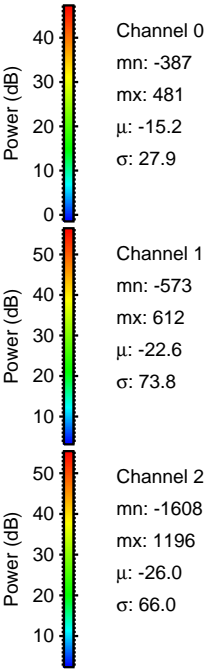
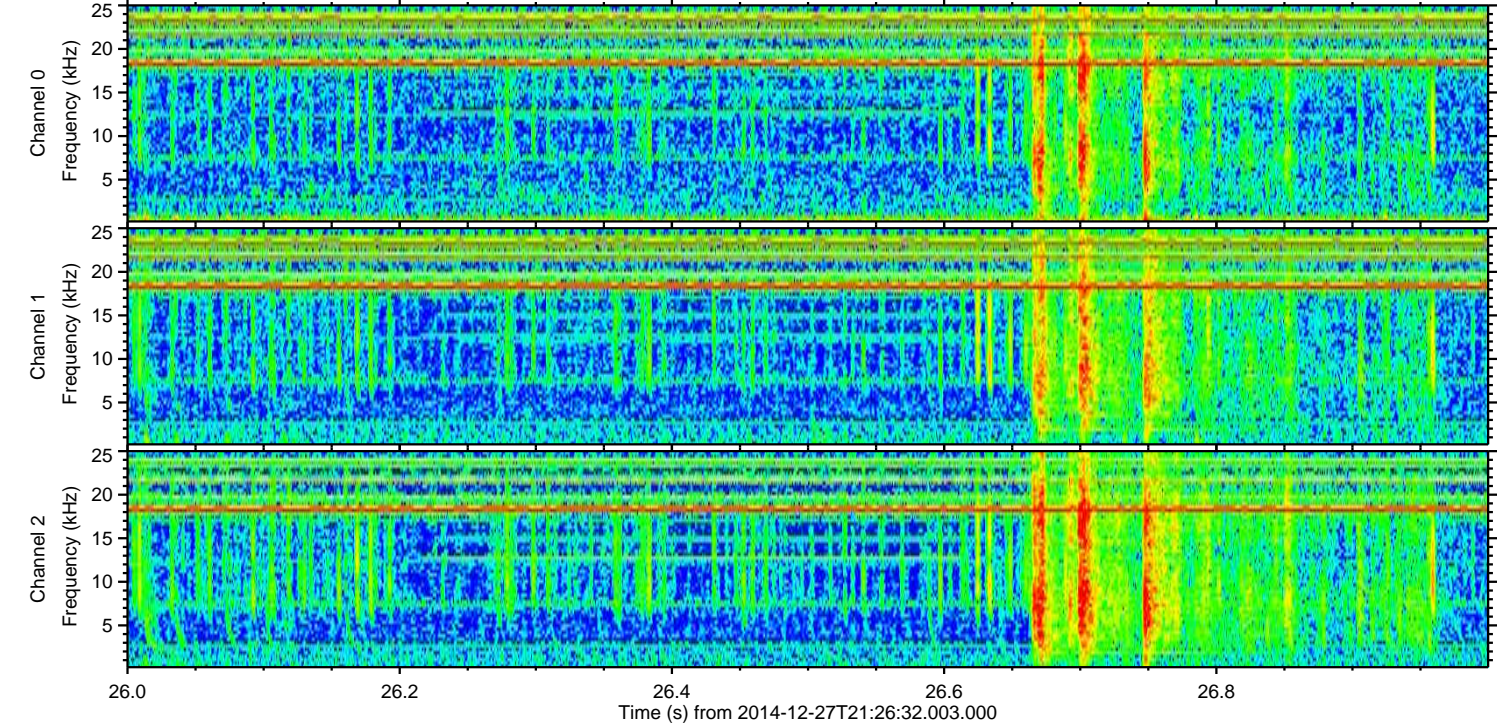
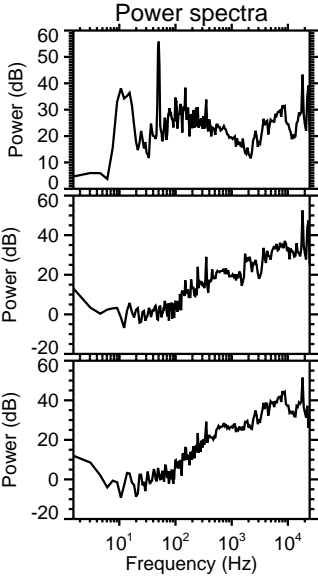
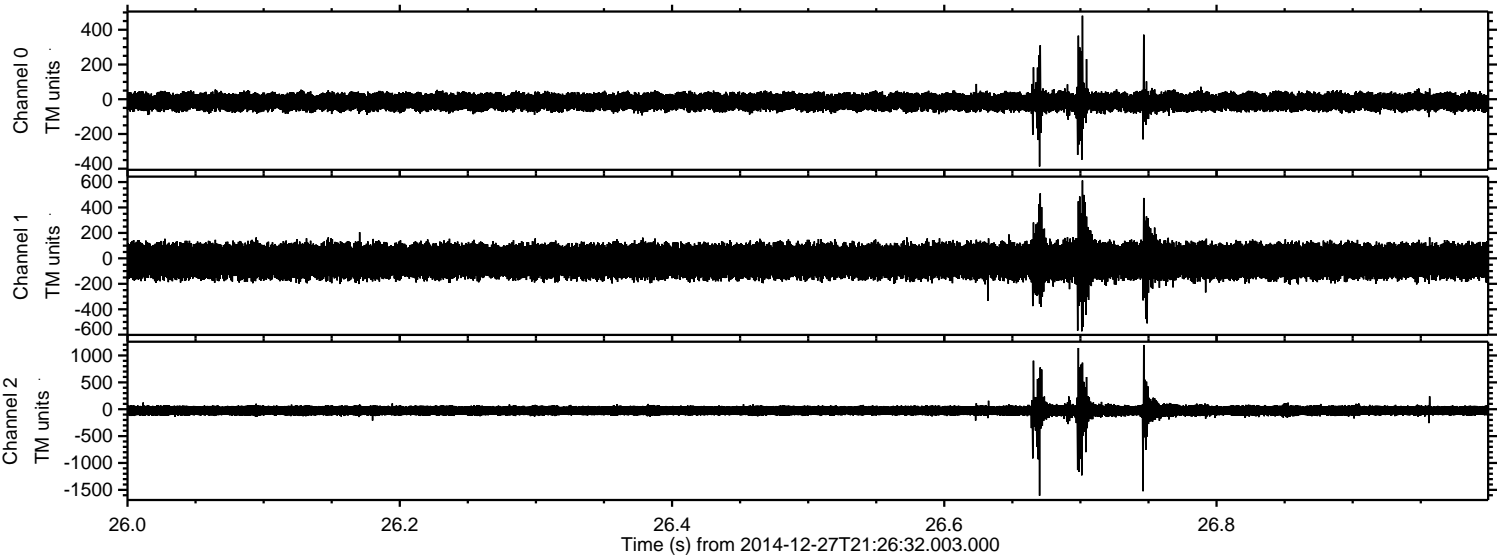
Processed Wed Dec 31 18:20:39 2014 by ELM ver.2012-10-06 from 001__elm20141227_212630__dat00.bin



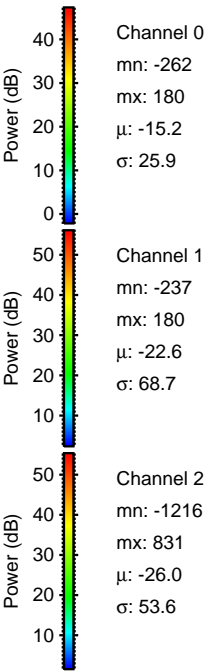
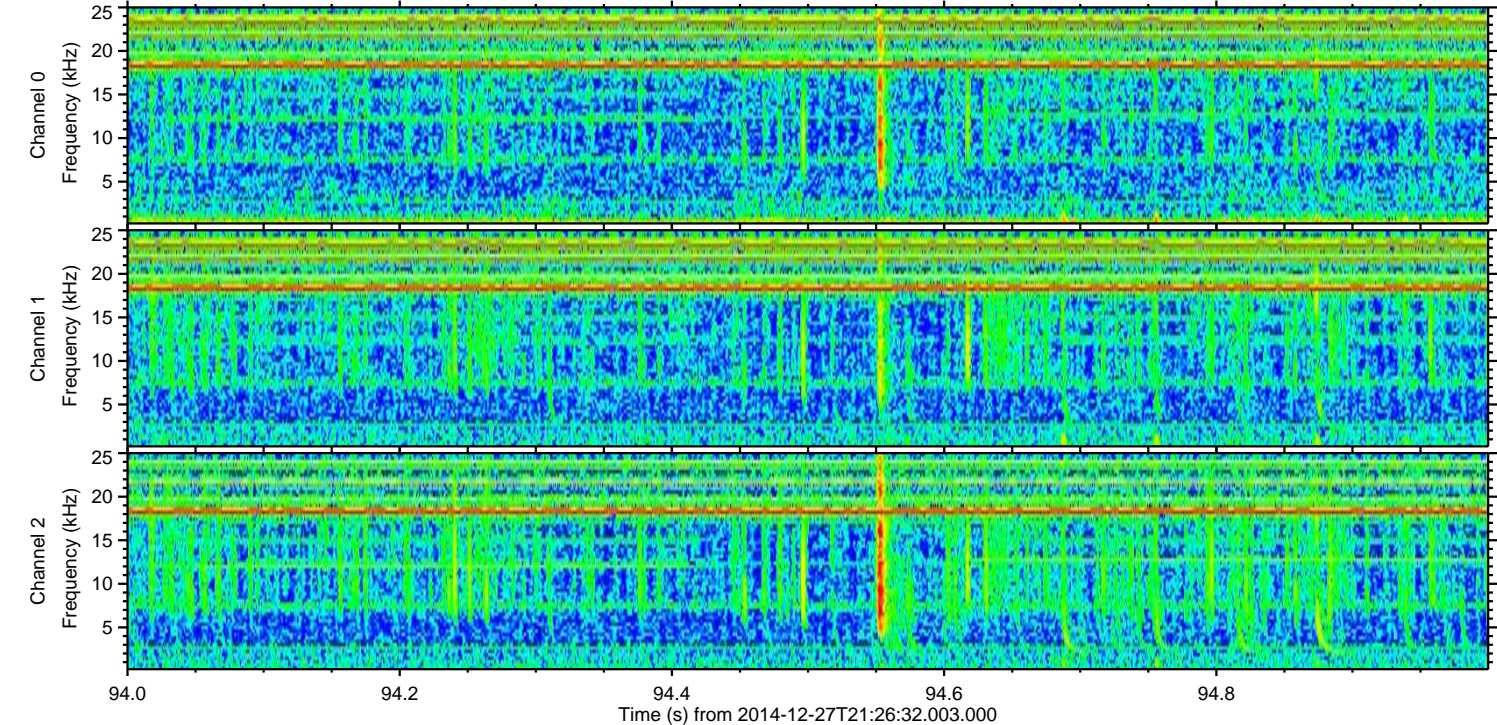
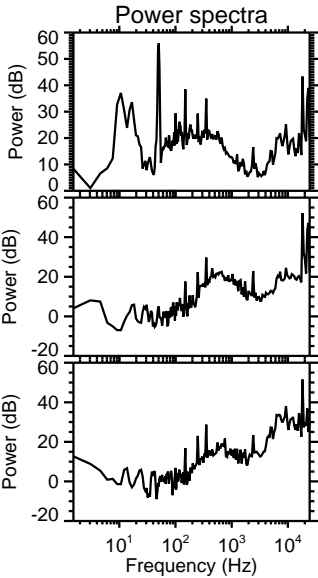
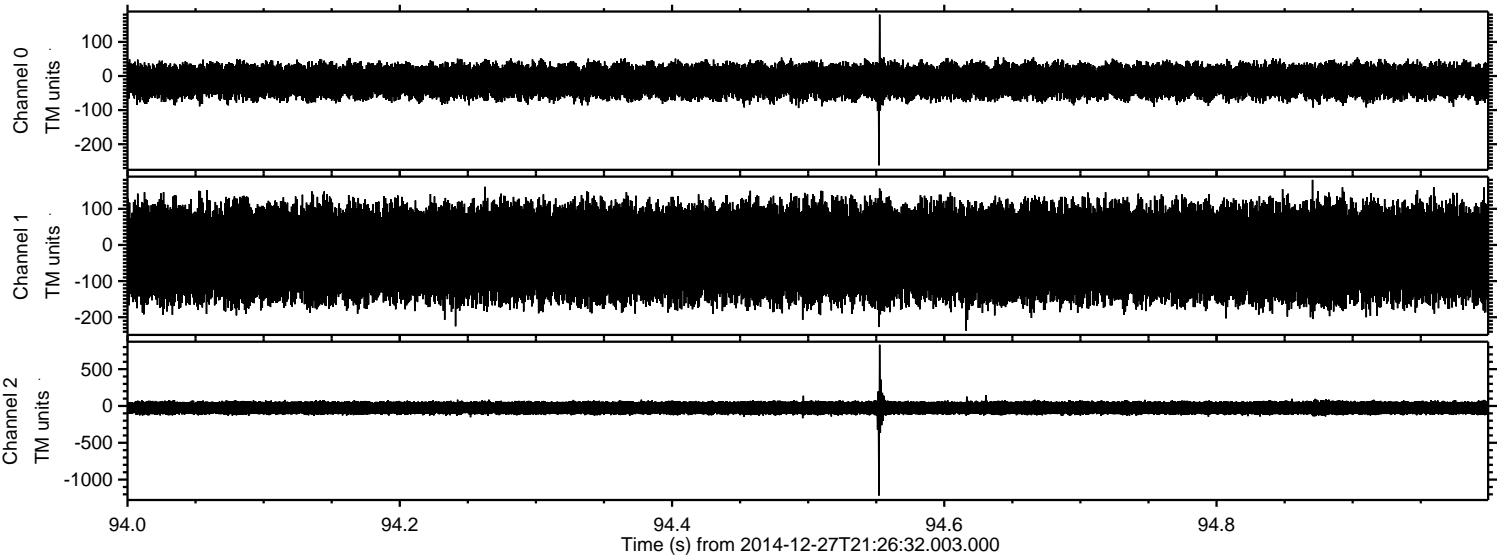
Processed Wed Dec 31 18:20:40 2014 by ELM ver.2012-10-06 from 001__elm20141227_212630__dat00.bin



Processed Wed Dec 31 18:20:41 2014 by ELM ver.2012-10-06 from 001__elm20141227_212630__dat00.bin

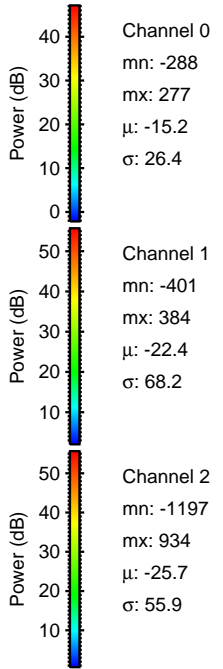
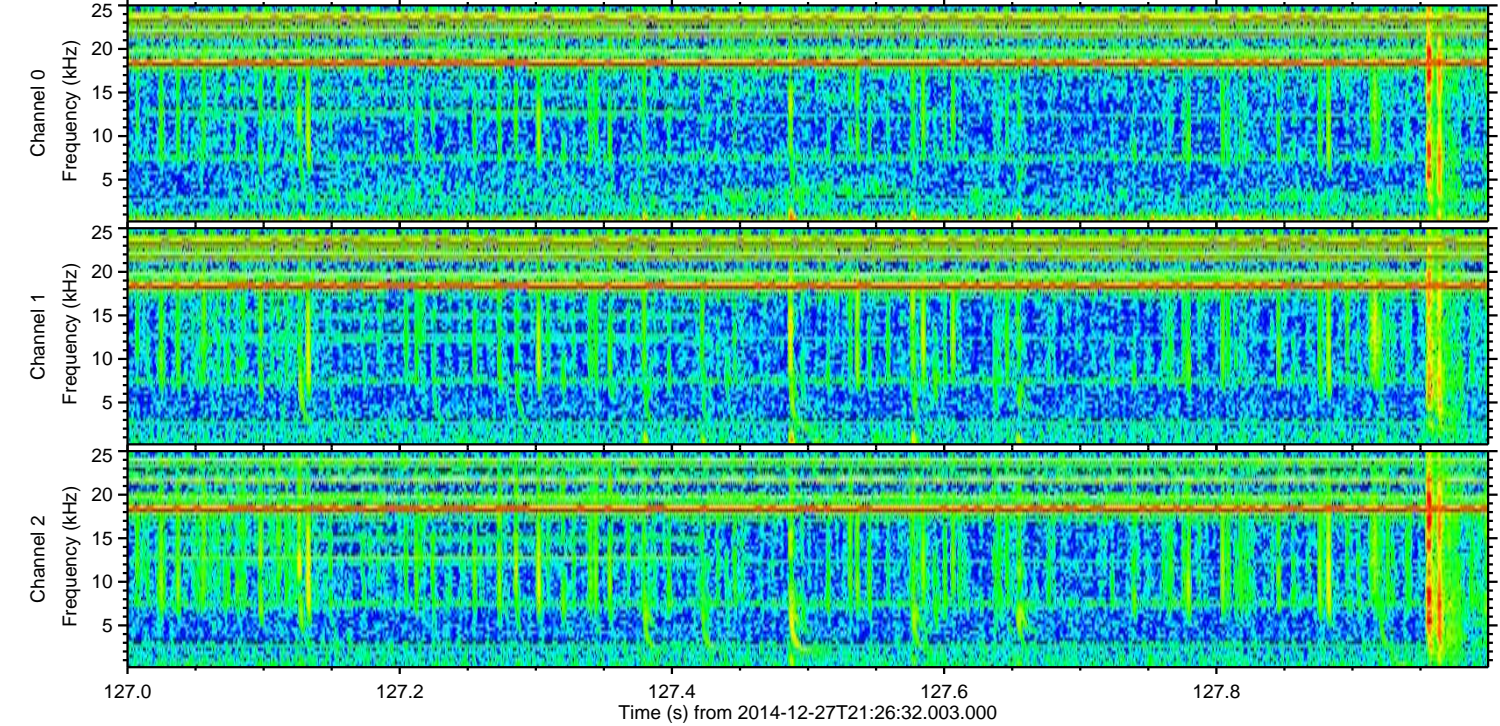
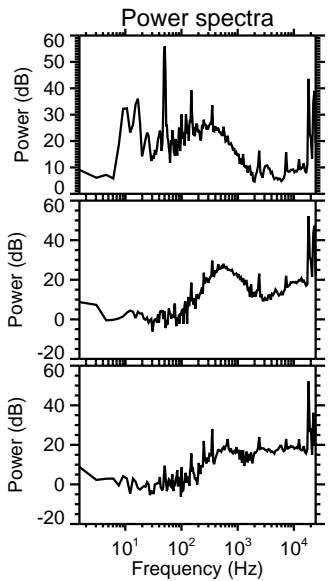
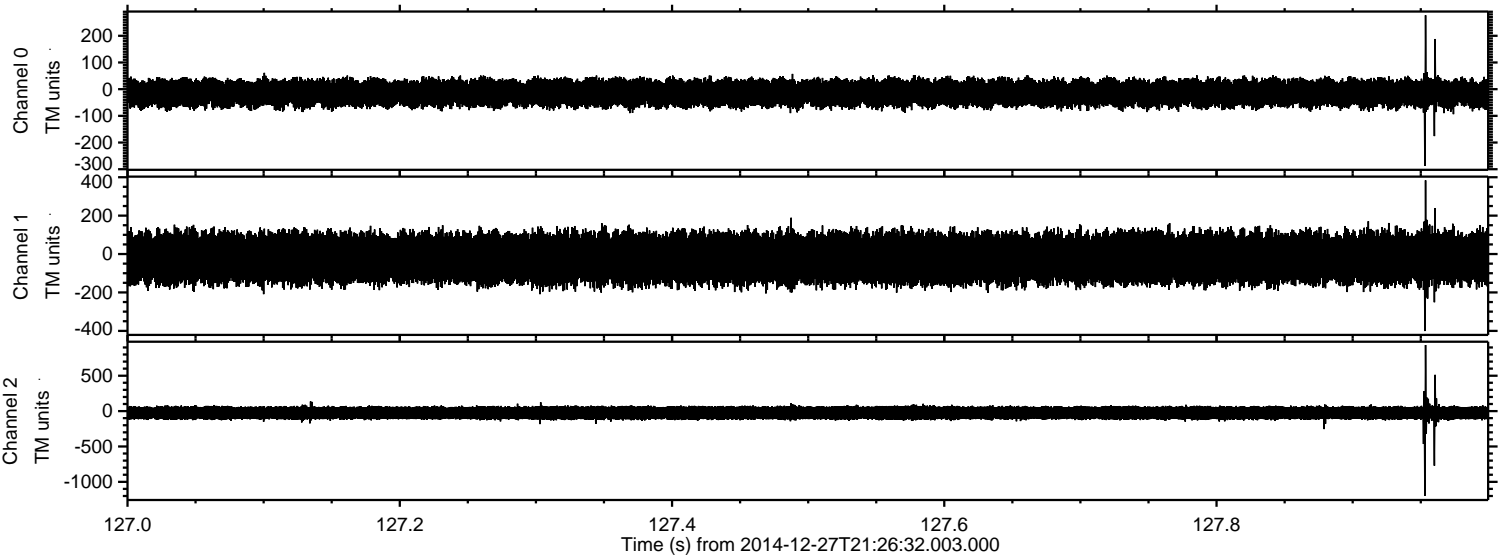


Processed Wed Dec 31 18:20:42 2014 by ELM ver.2012-10-06 from 001__elm20141227_212630__dat00.bin

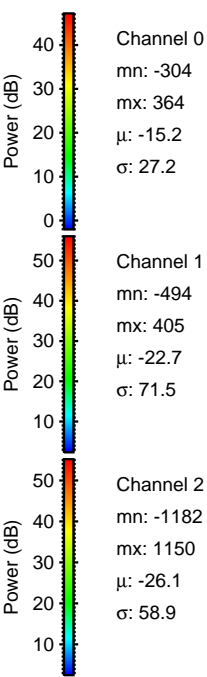
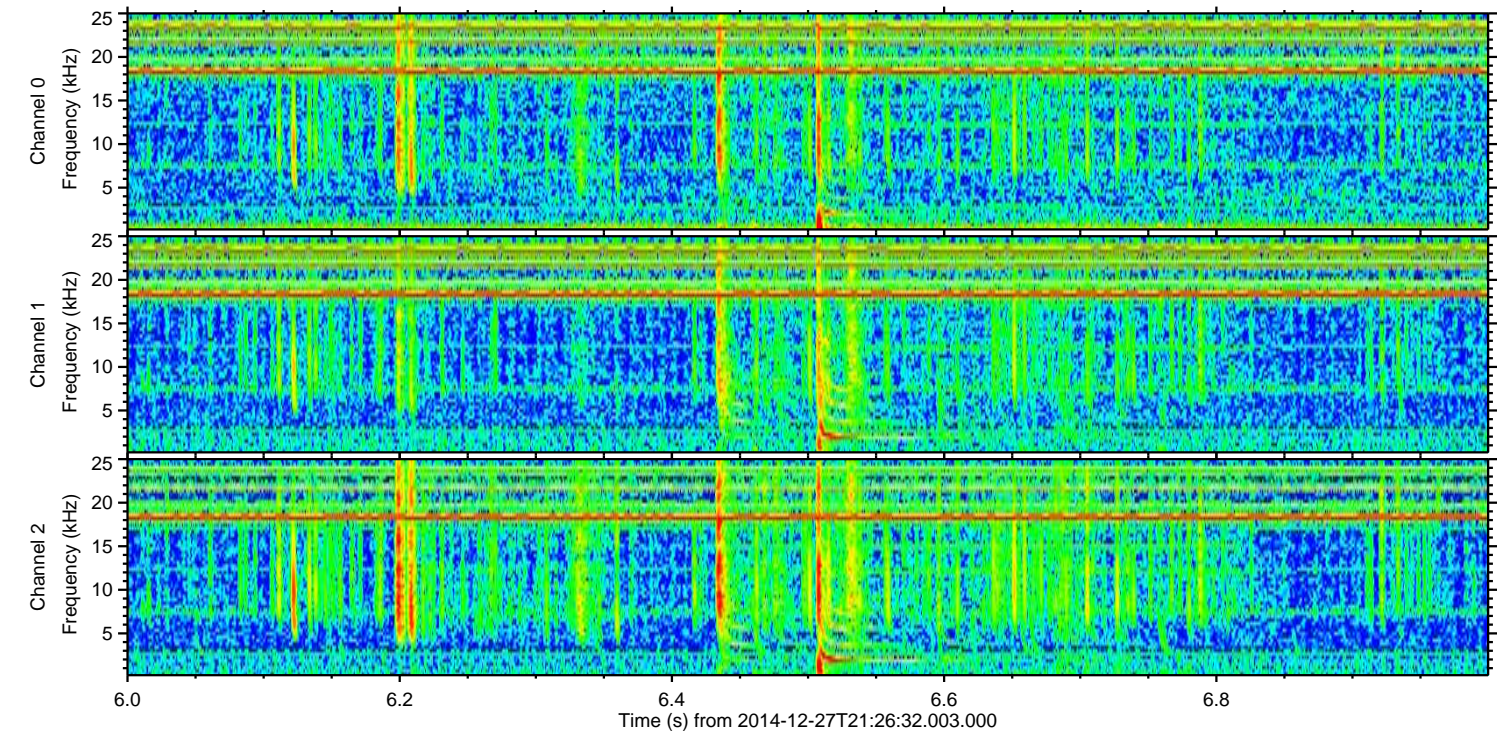
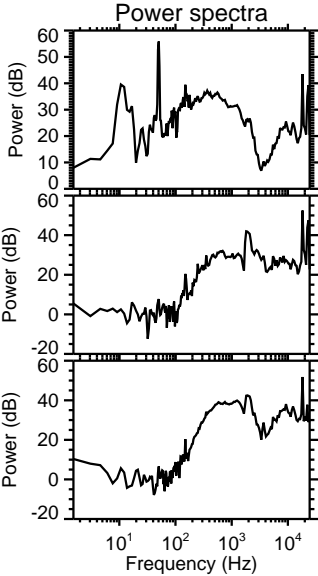
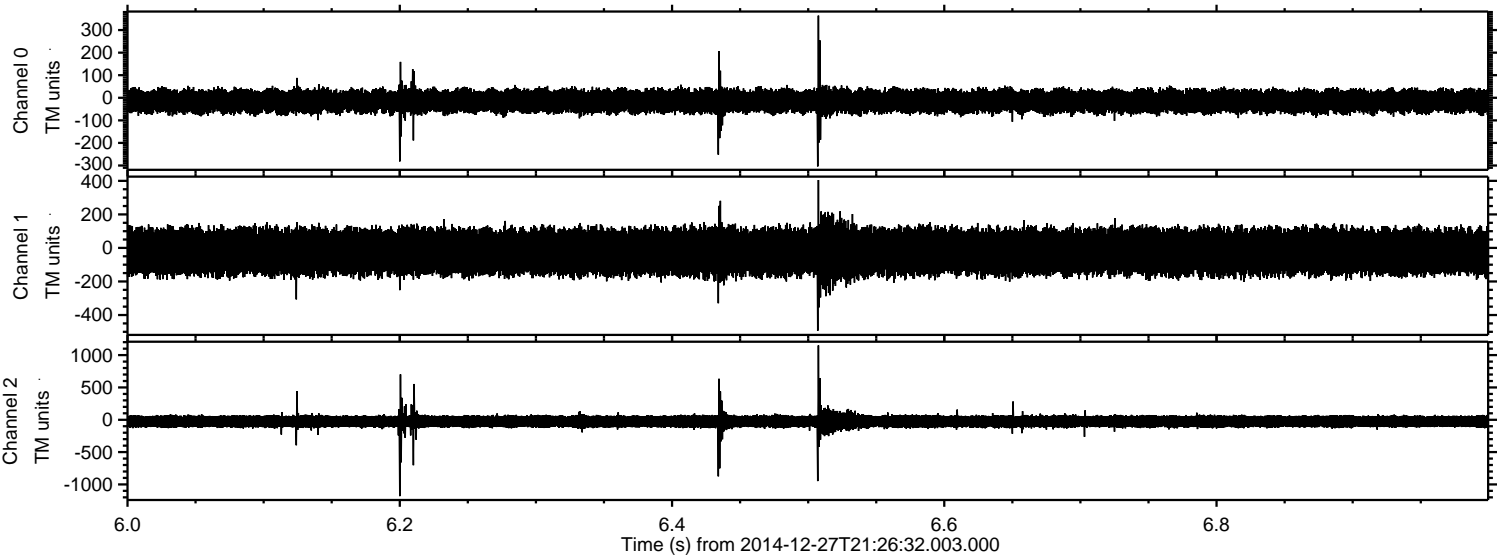


ELMAVAN 3D WAVEFORMS (Measured data sampled at 50 kHz) 49806 packets of 144 samples from 2014-12-27T21:26:32.003.000. Part 128/144

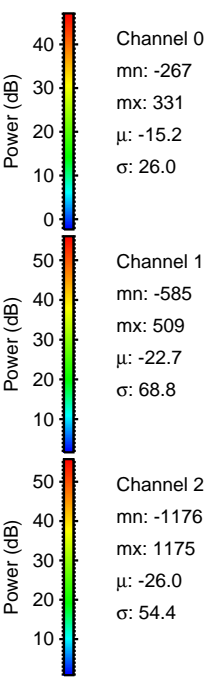
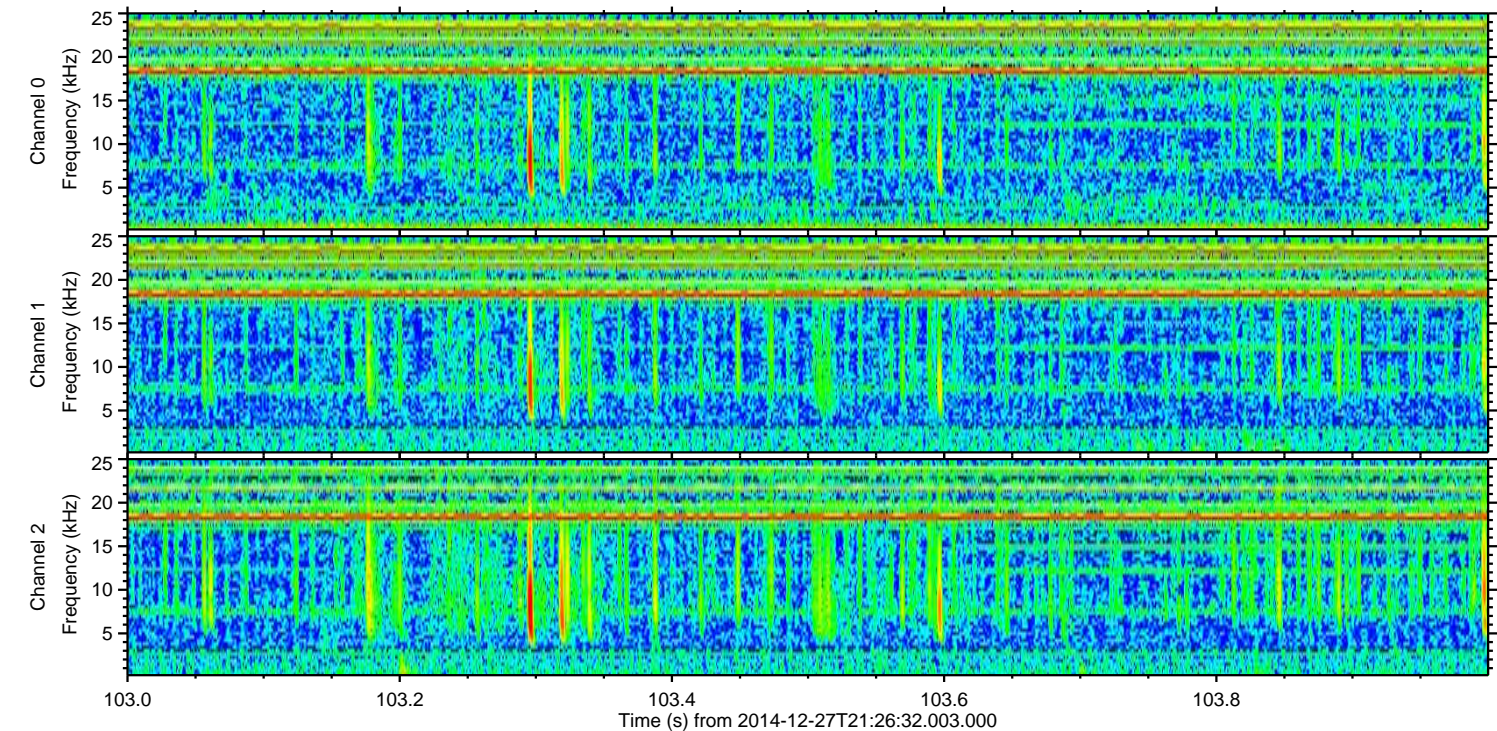
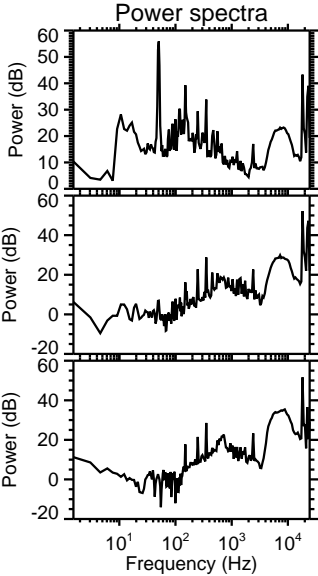
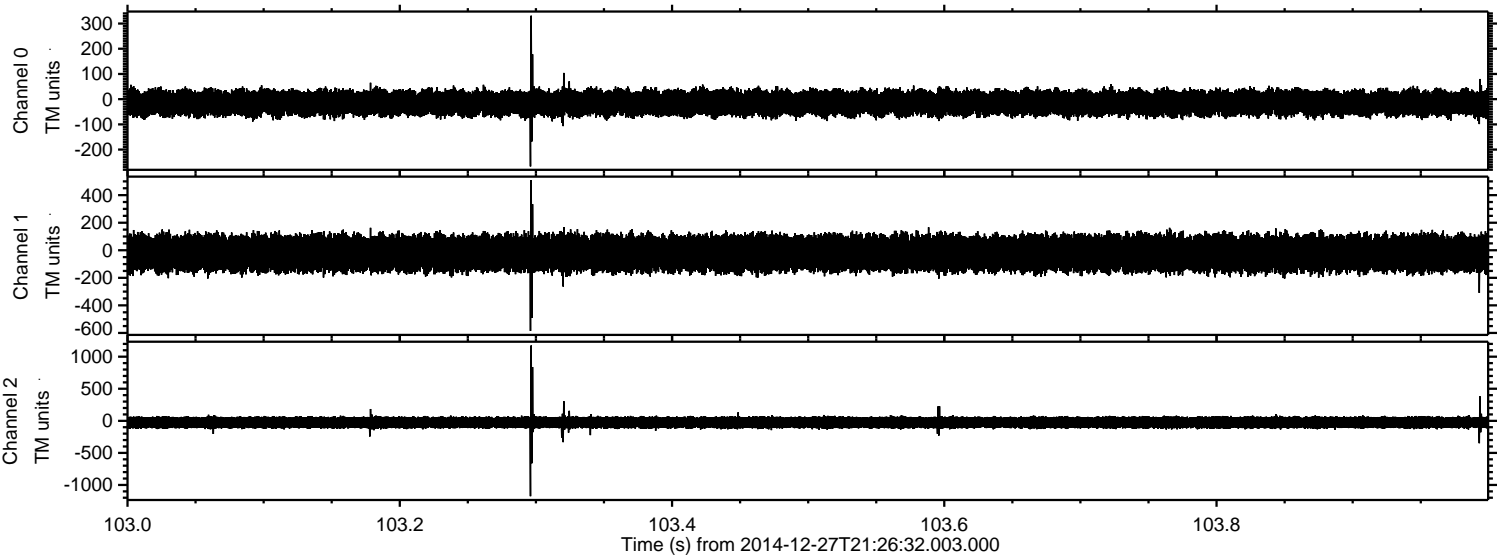
Processed Wed Dec 31 18:20:43 2014 by ELM ver.2012-10-06 from 001__elm20141227_212630__dat00.bin



Processed Wed Dec 31 18:20:44 2014 by ELM ver.2012-10-06 from 001__elm20141227_212630__dat00.bin



Processed Wed Dec 31 18:20:45 2014 by ELM ver.2012-10-06 from 001__elm20141227_212630__dat00.bin



Channel 0
mn: -267
mx: 331
 μ : -15.2
 σ : 26.0

Channel 1
mn: -585
mx: 509
 μ : -22.7
 σ : 68.8

Channel 2
mn: -1176
mx: 1175
 μ : -26.0
 σ : 54.4

