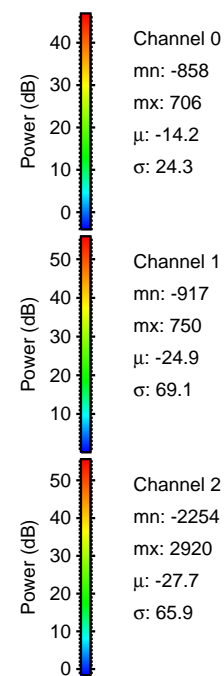
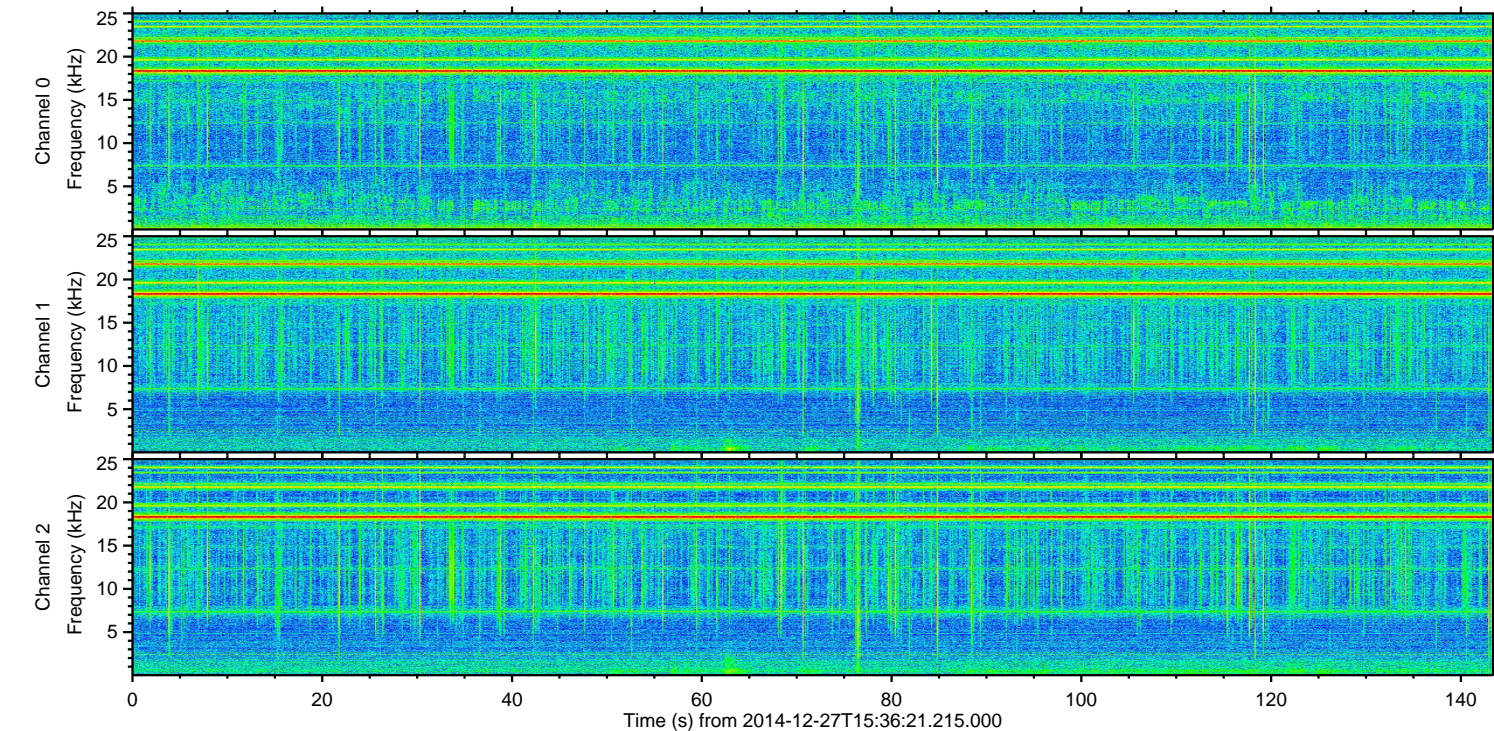
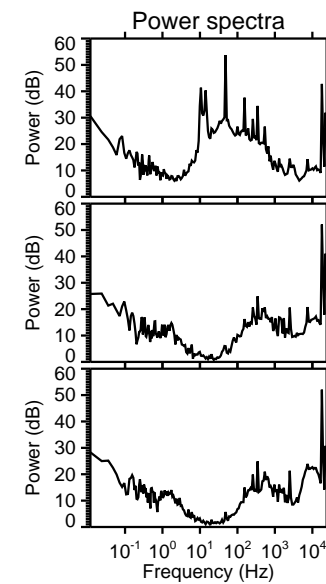
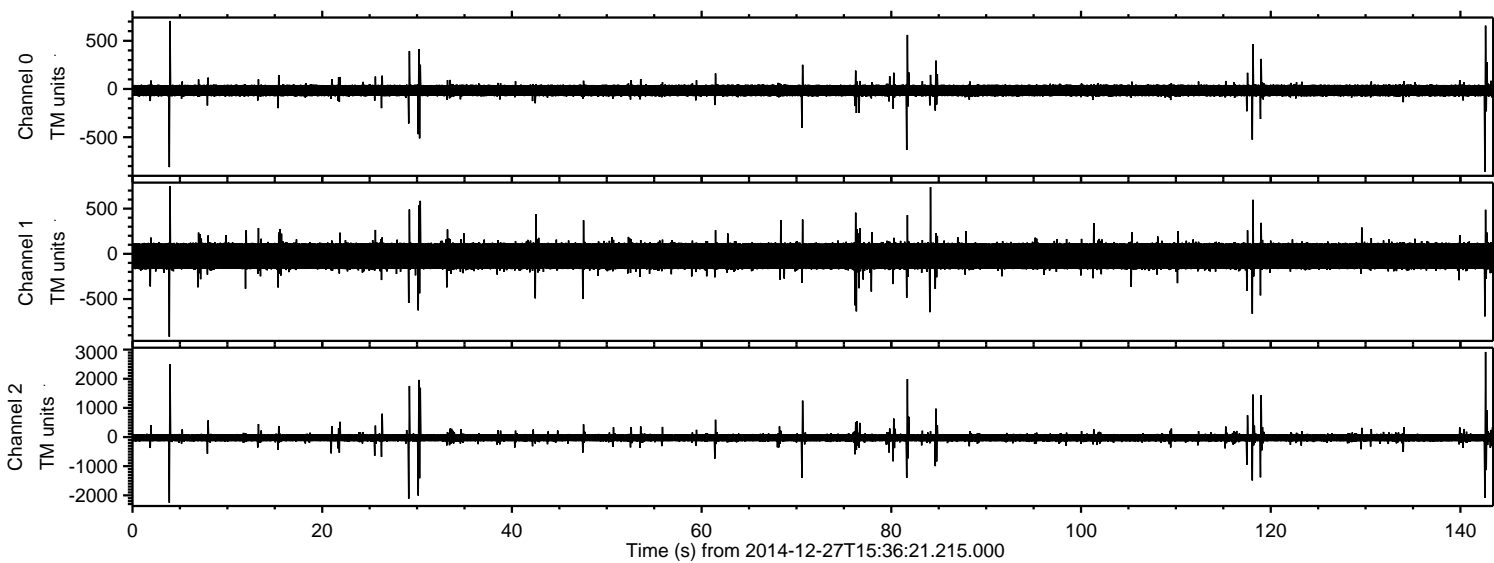
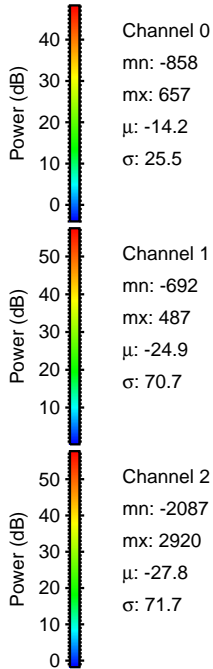
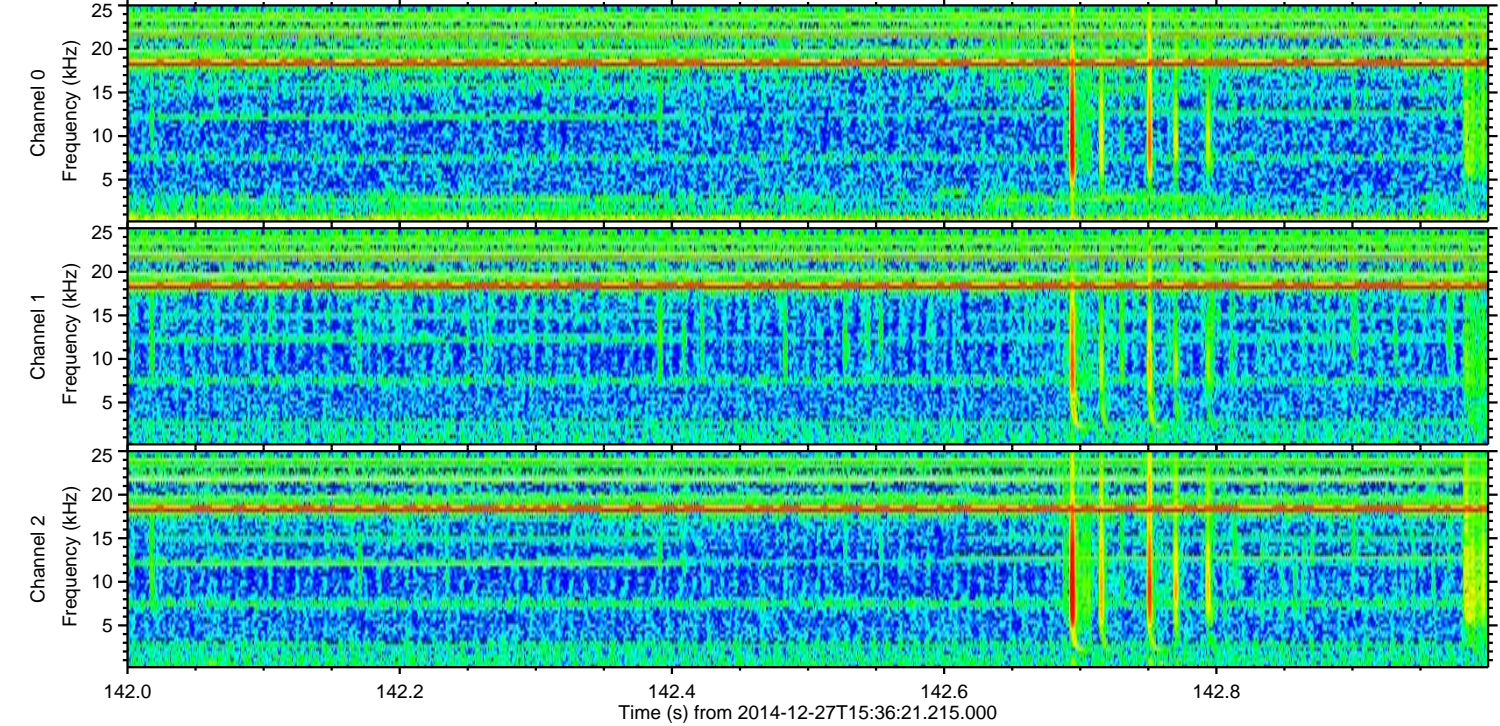
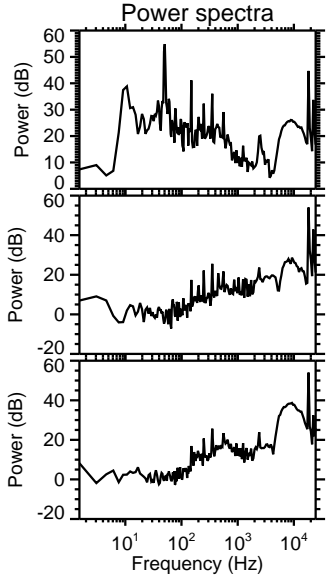
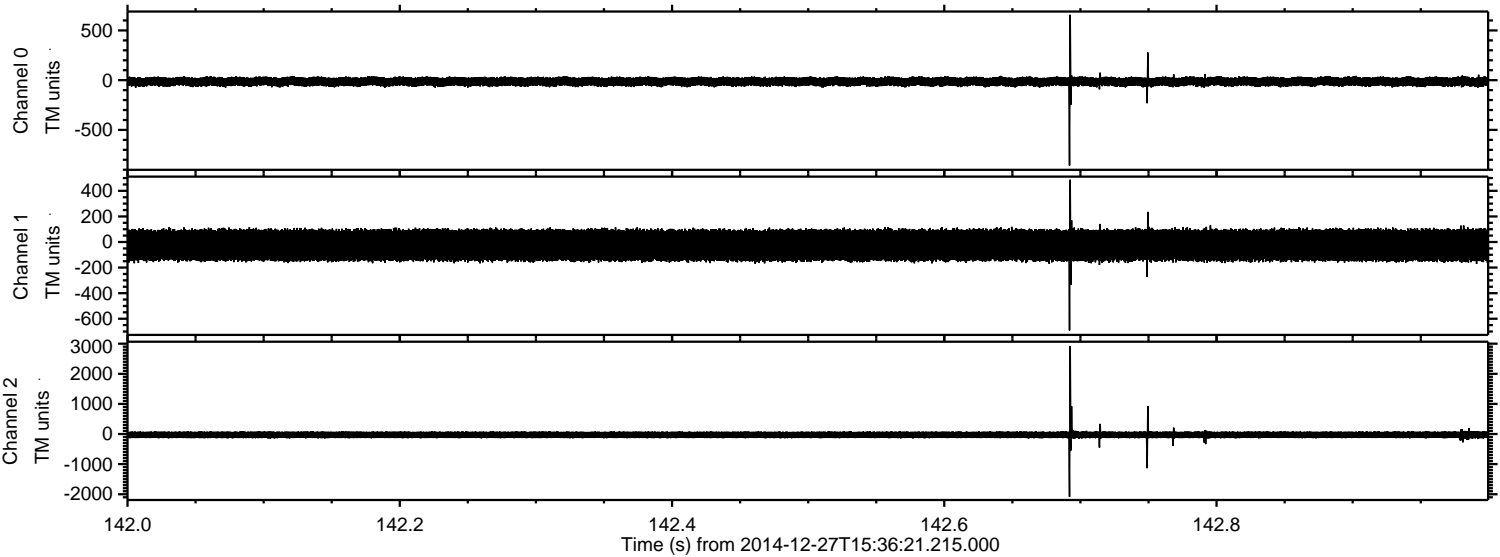


ELMAVAN 3D WAVEFORMS (Measured data sampled at 50 kHz) 49809 packets of 144 samples from 2014-12-27T15:36:21.215.000.

Processed Tue Dec 30 16:01:13 2014 by ELM ver.2012-10-06 from 001__elm20141227_153620__dat00.bin

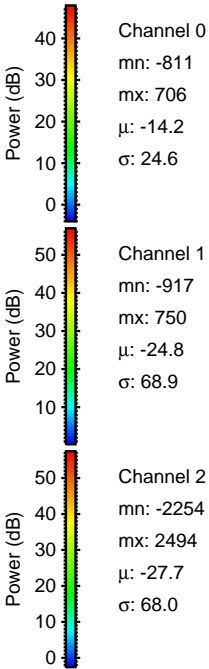
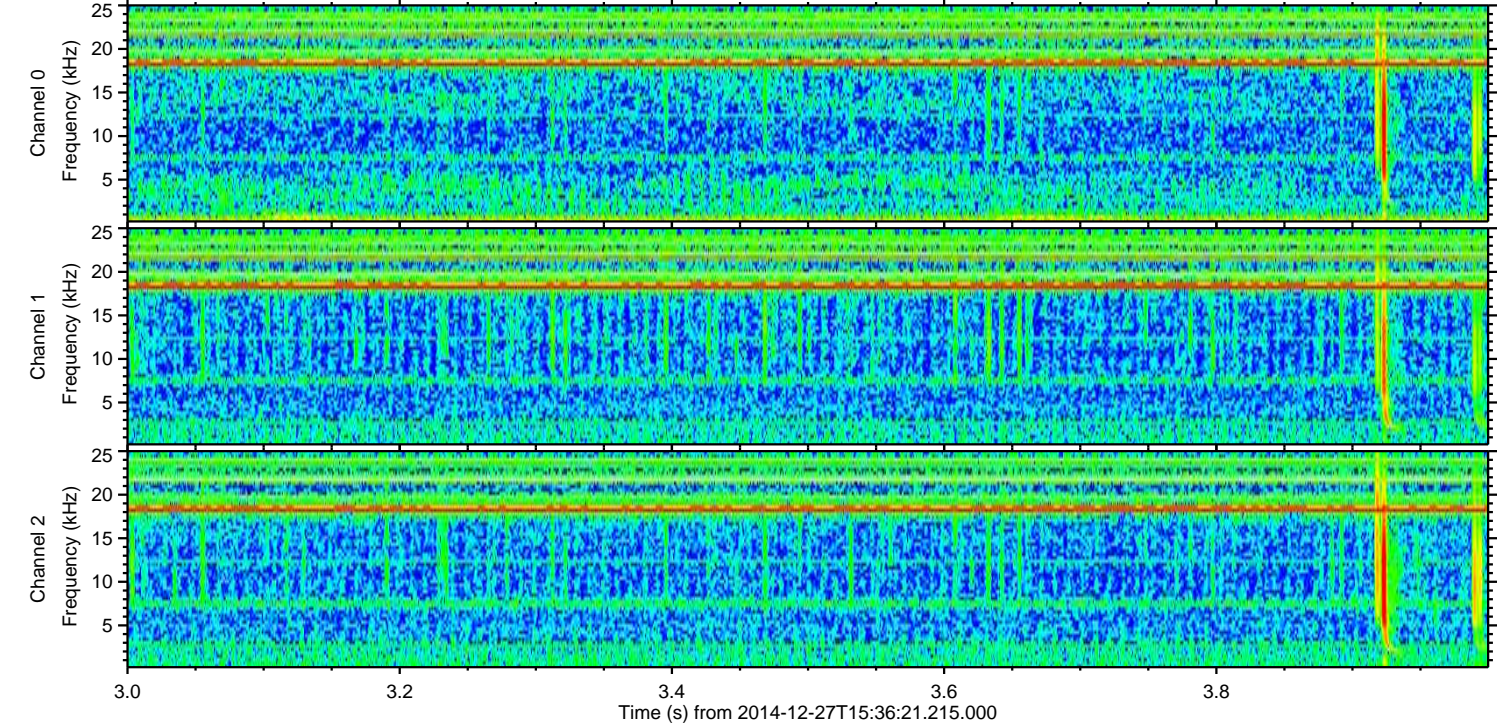
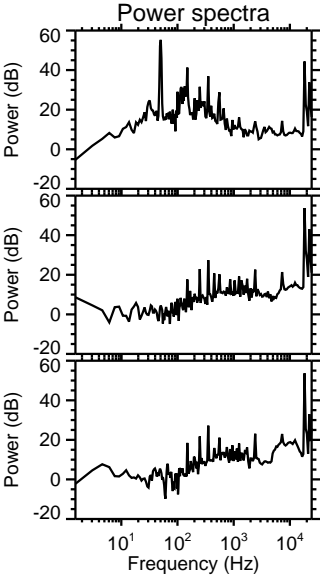
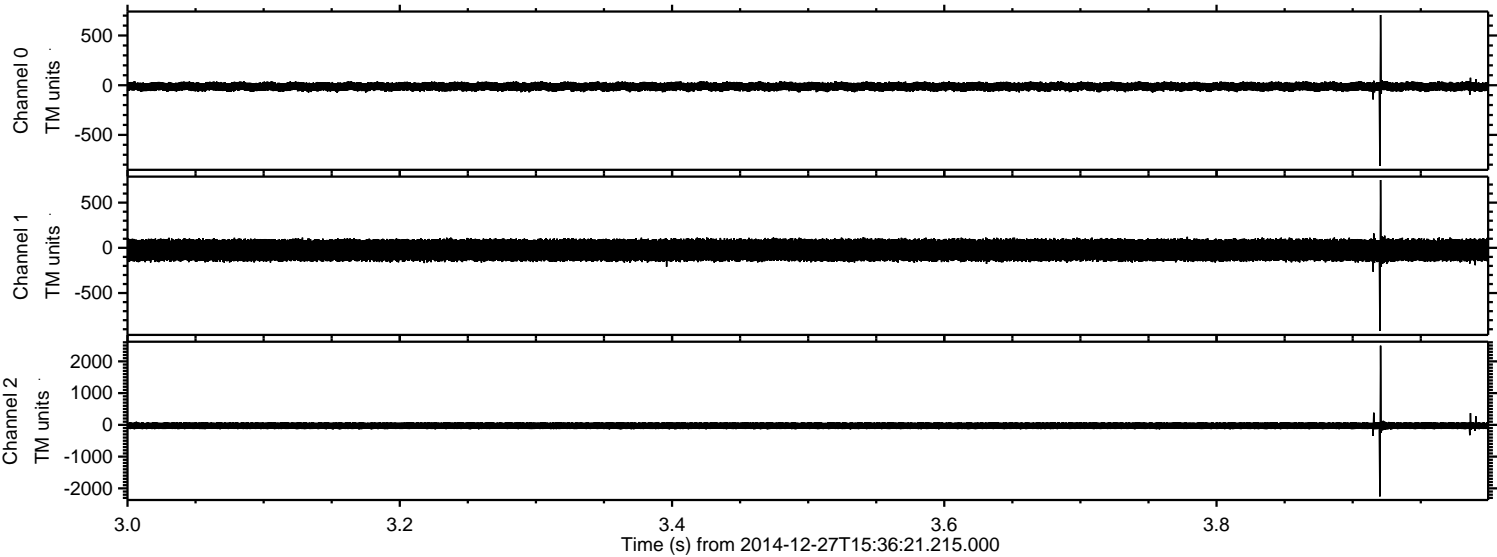


Processed Tue Dec 30 16:01:25 2014 by ELM ver.2012-10-06 from 001__elm20141227_153620__dat00.bin



ELMAVAN 3D WAVEFORMS (Measured data sampled at 50 kHz) 49809 packets of 144 samples from 2014-12-27T15:36:21.215.000. Part 4/144

Processed Tue Dec 30 16:01:26 2014 by ELM ver.2012-10-06 from 001__elm20141227_153620__dat00.bin

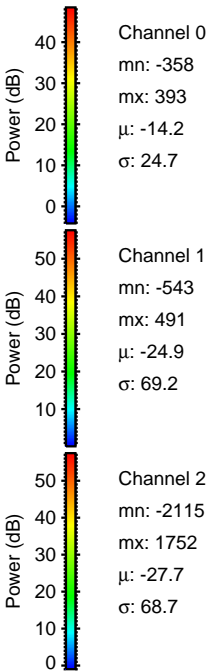
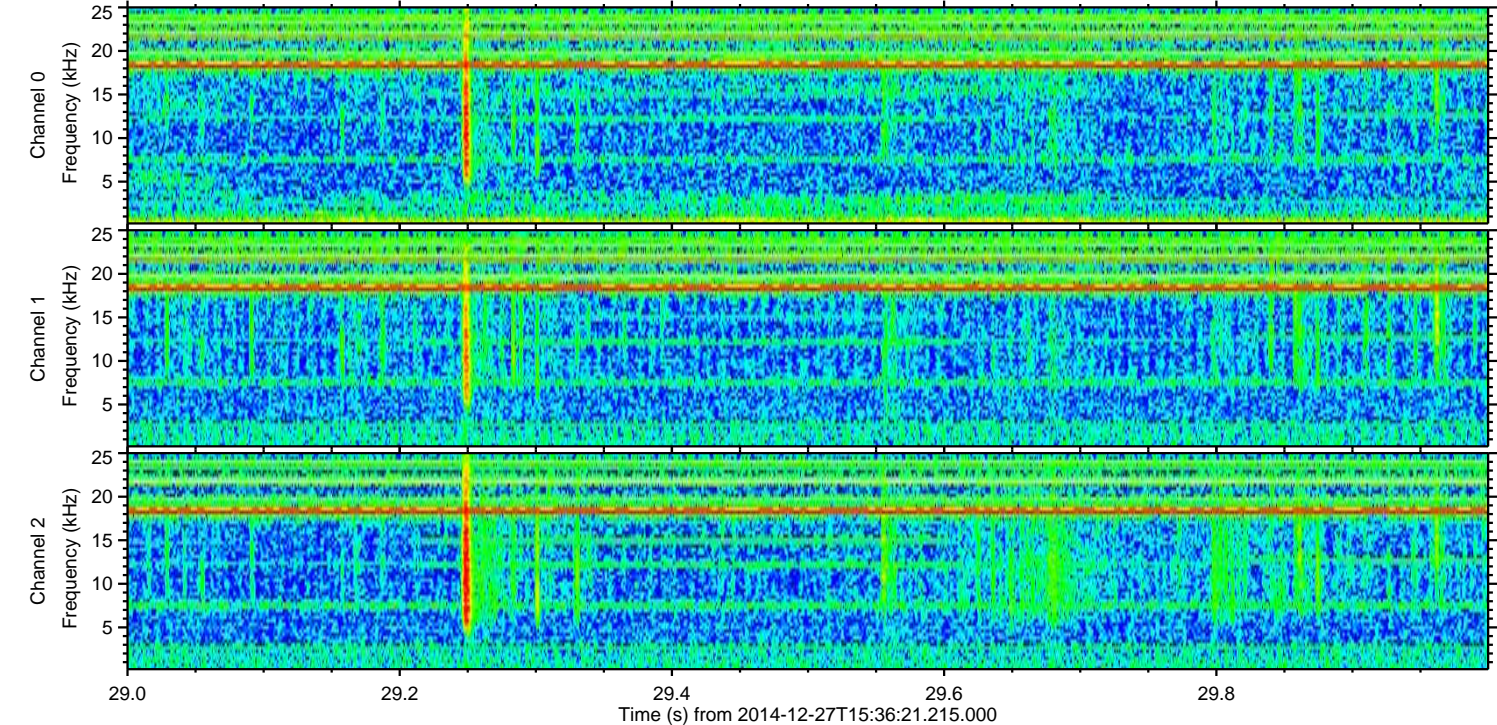
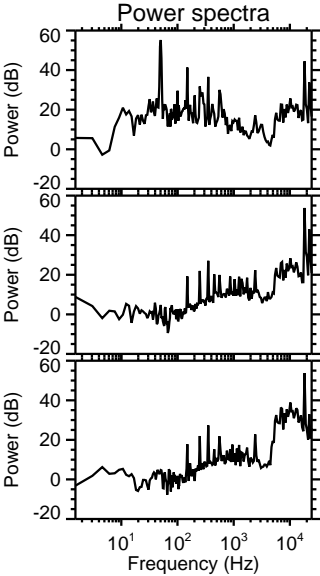
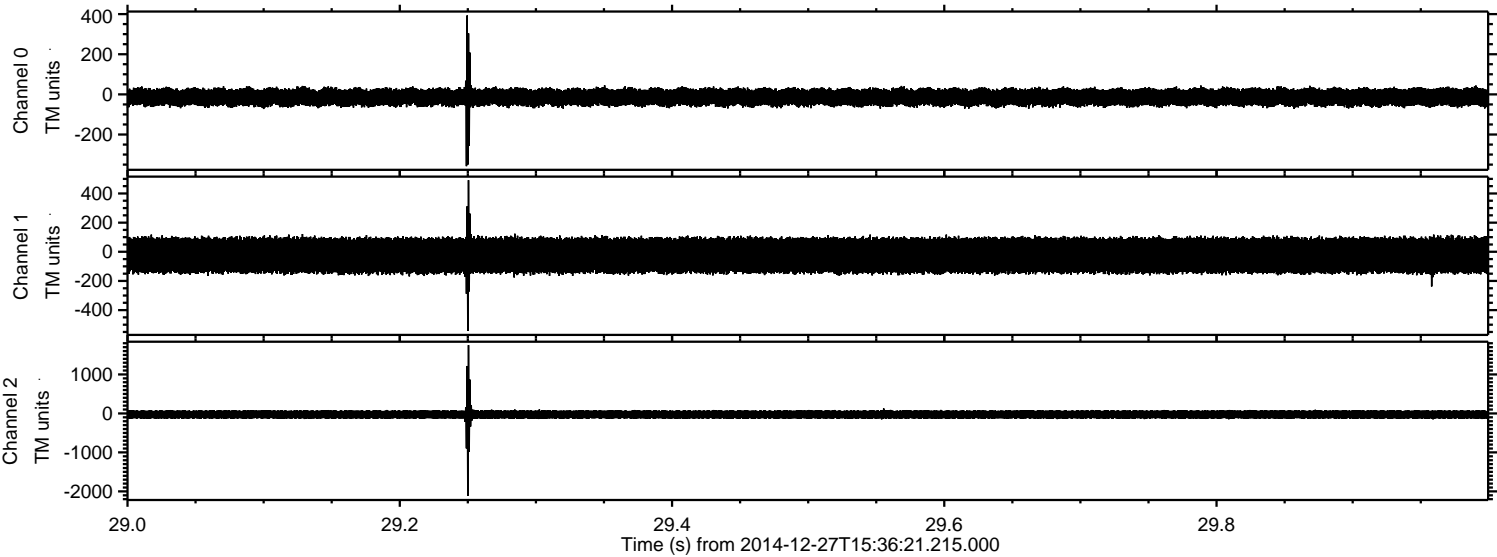


Channel 0
mn: -811
mx: 706
 μ : -14.2
 σ : 24.6

Channel 1
mn: -917
mx: 750
 μ : -24.8
 σ : 68.9

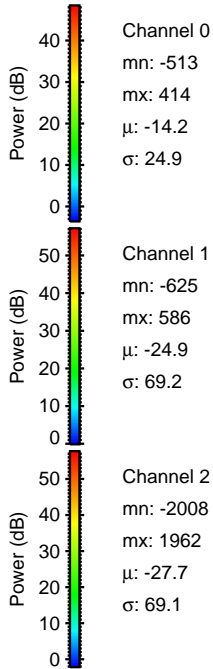
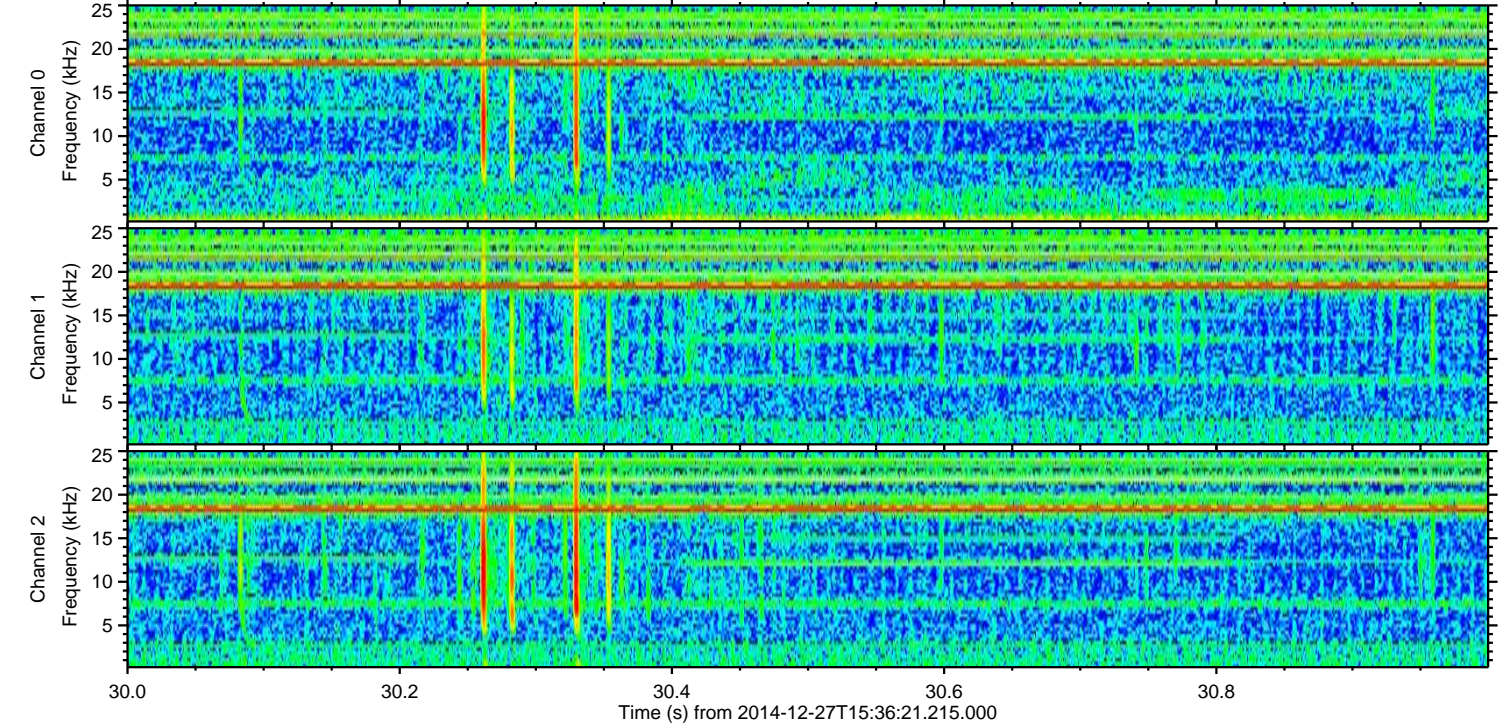
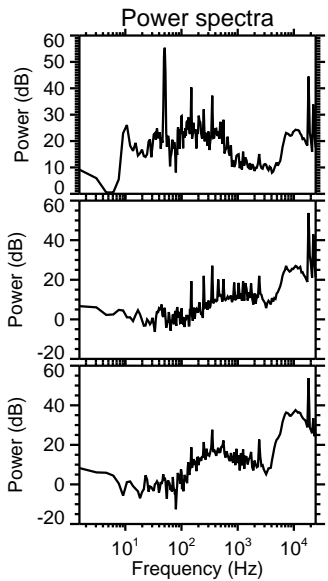
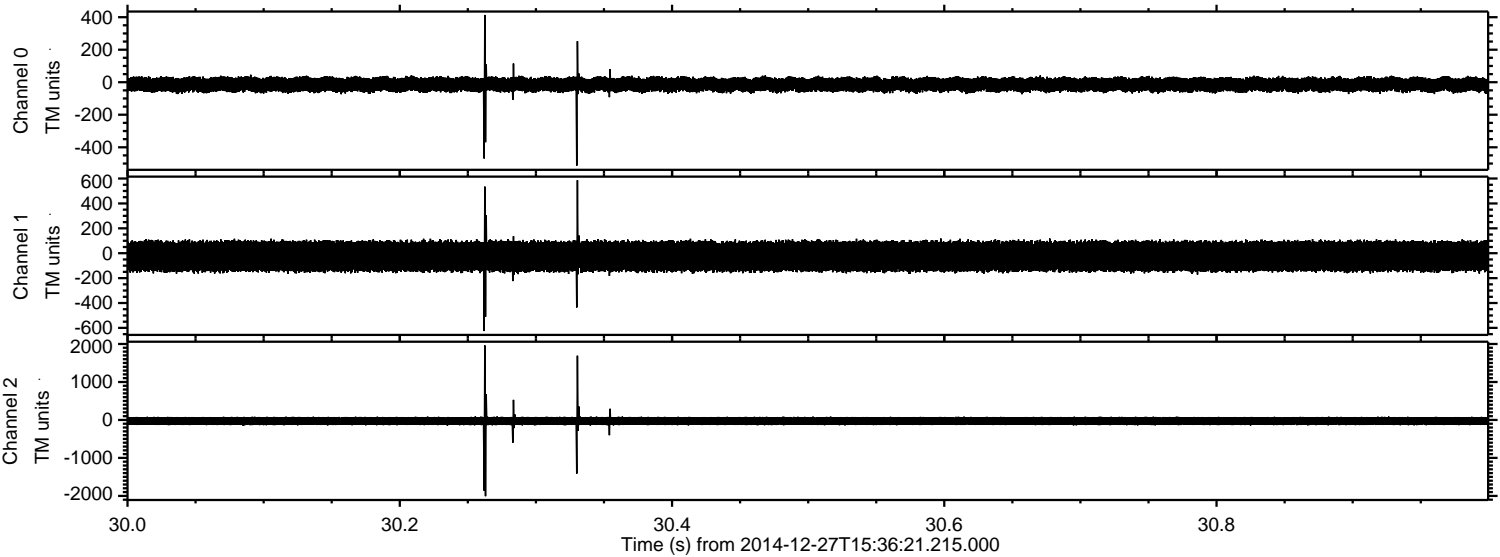
Channel 2
mn: -2254
mx: 2494
 μ : -27.7
 σ : 68.0

Processed Tue Dec 30 16:01:27 2014 by ELM ver.2012-10-06 from 001__elm20141227_153620__dat00.bin

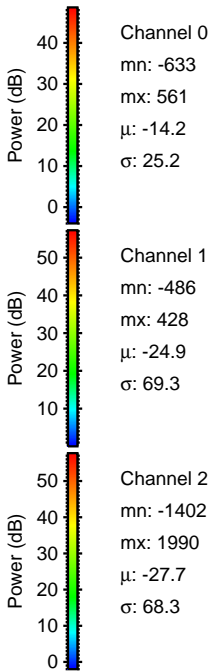
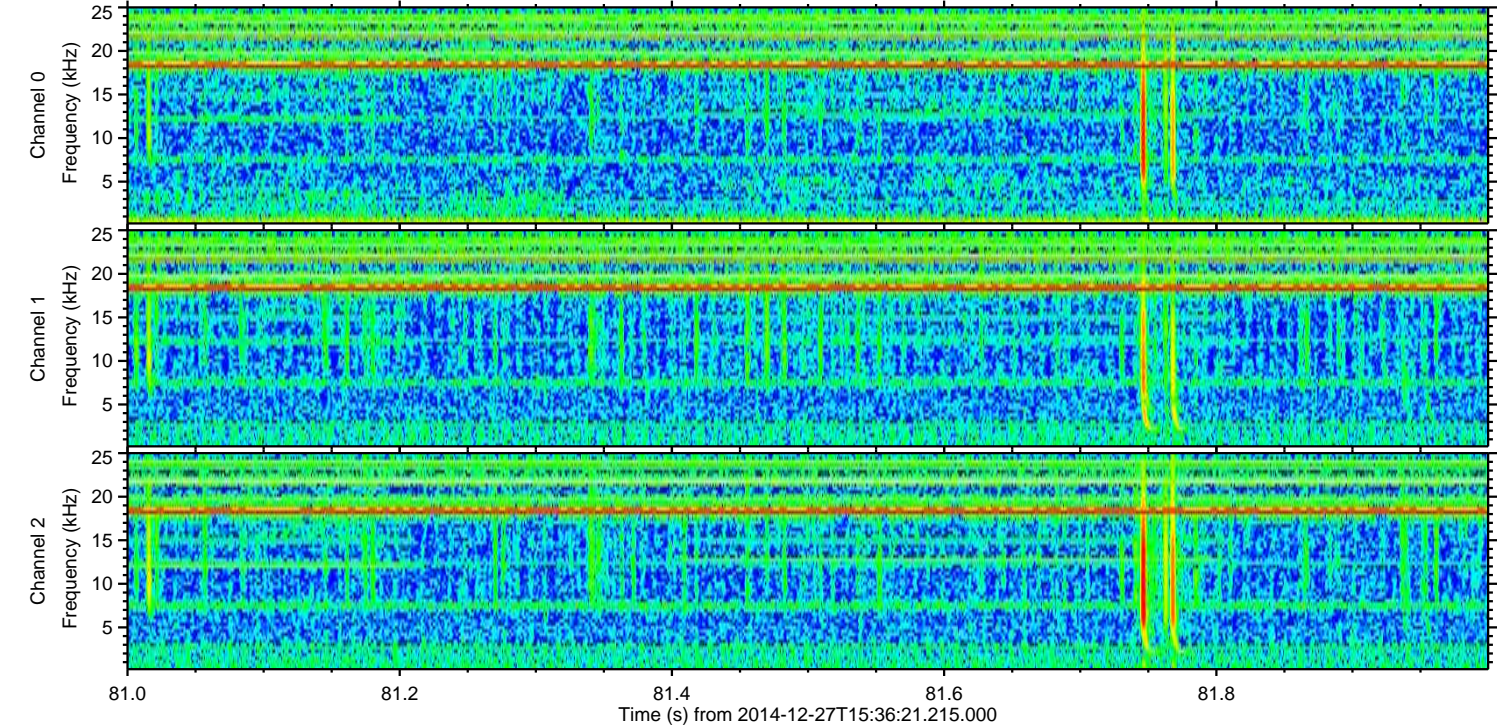
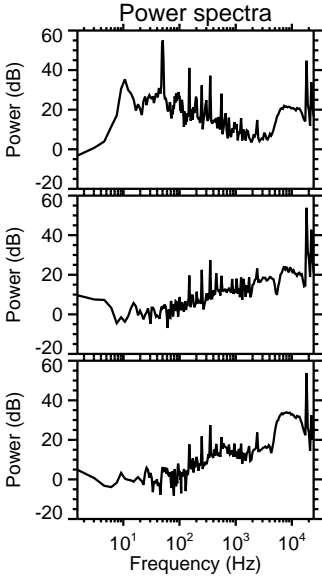
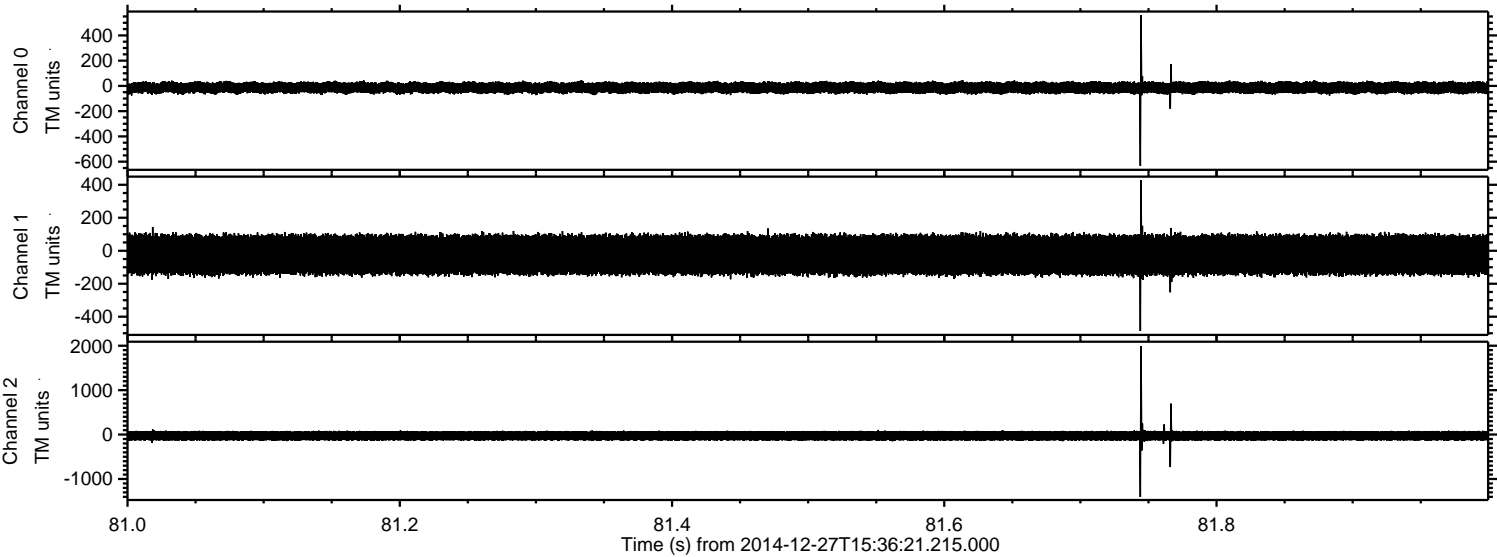


ELMAVAN 3D WAVEFORMS (Measured data sampled at 50 kHz) 49809 packets of 144 samples from 2014-12-27T15:36:21.215.000. Part 31/144

Processed Tue Dec 30 16:01:28 2014 by ELM ver.2012-10-06 from 001__elm20141227_153620__dat00.bin

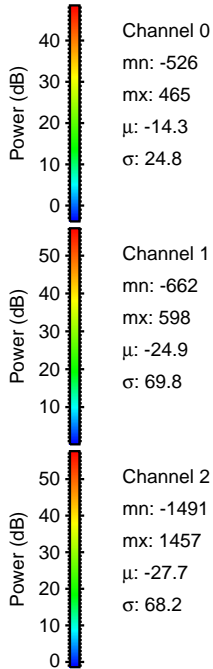
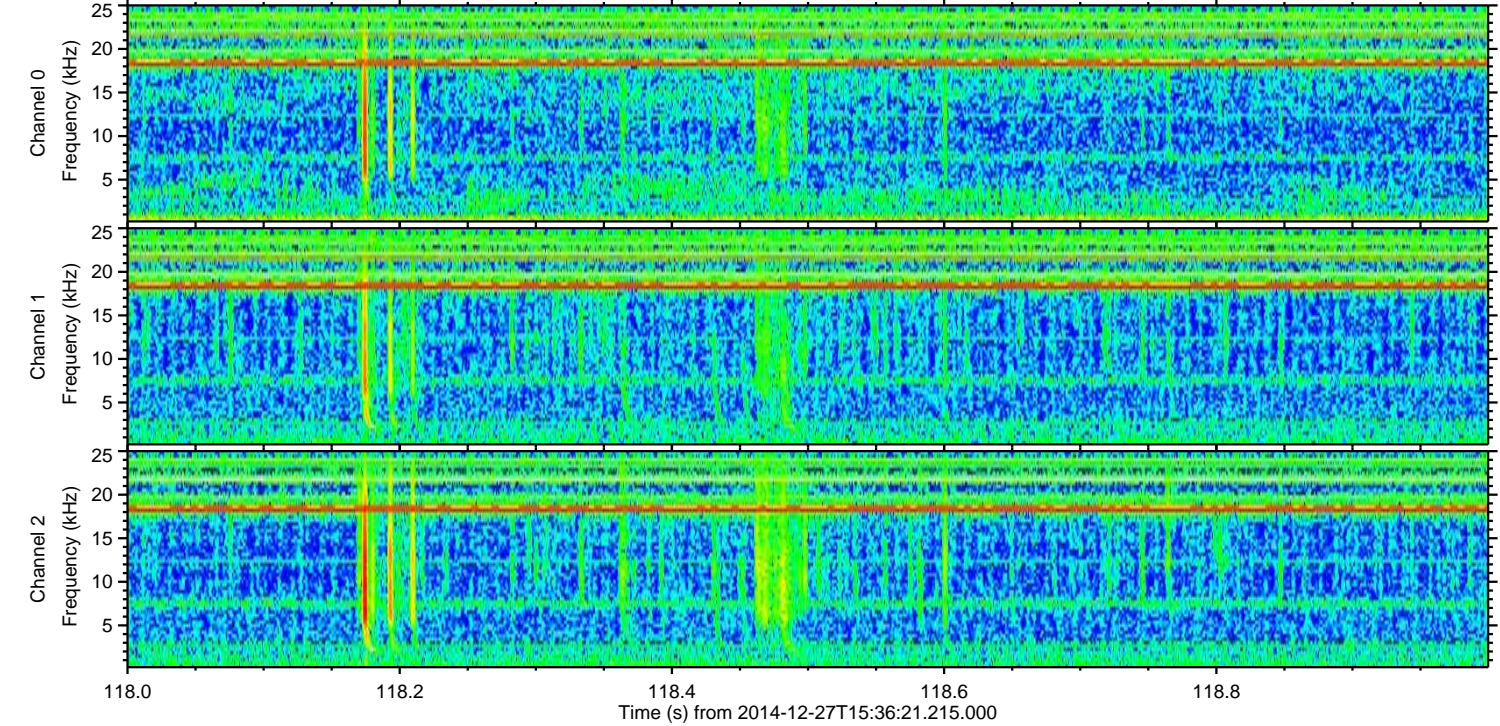
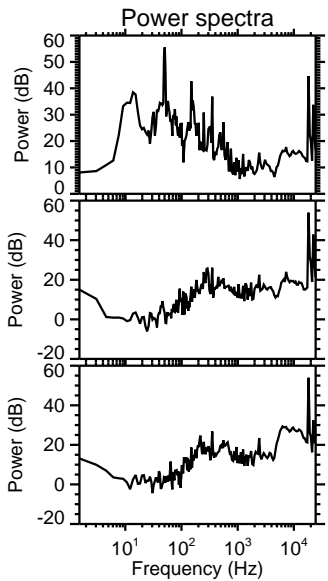
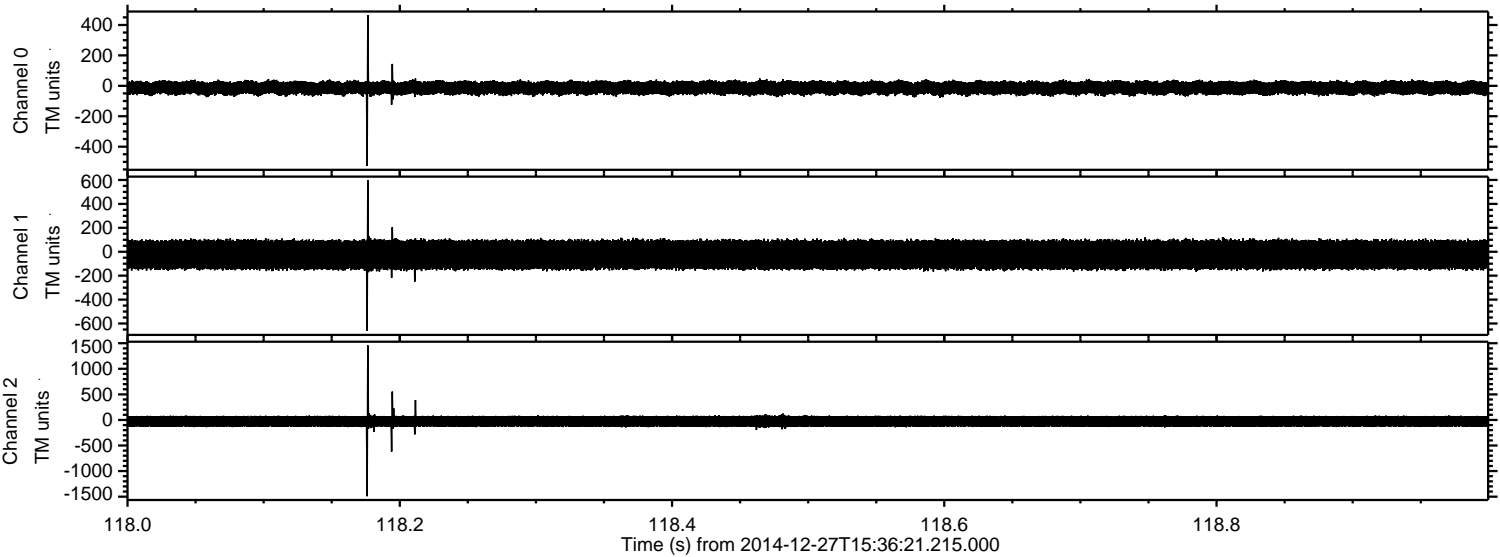


Processed Tue Dec 30 16:01:29 2014 by ELM ver.2012-10-06 from 001__elm20141227_153620__dat00.bin

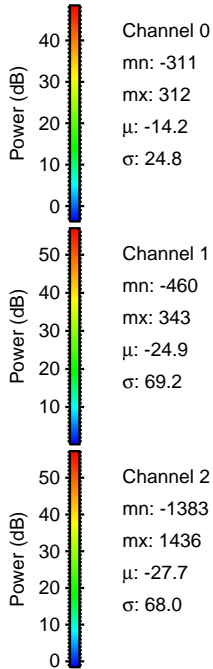
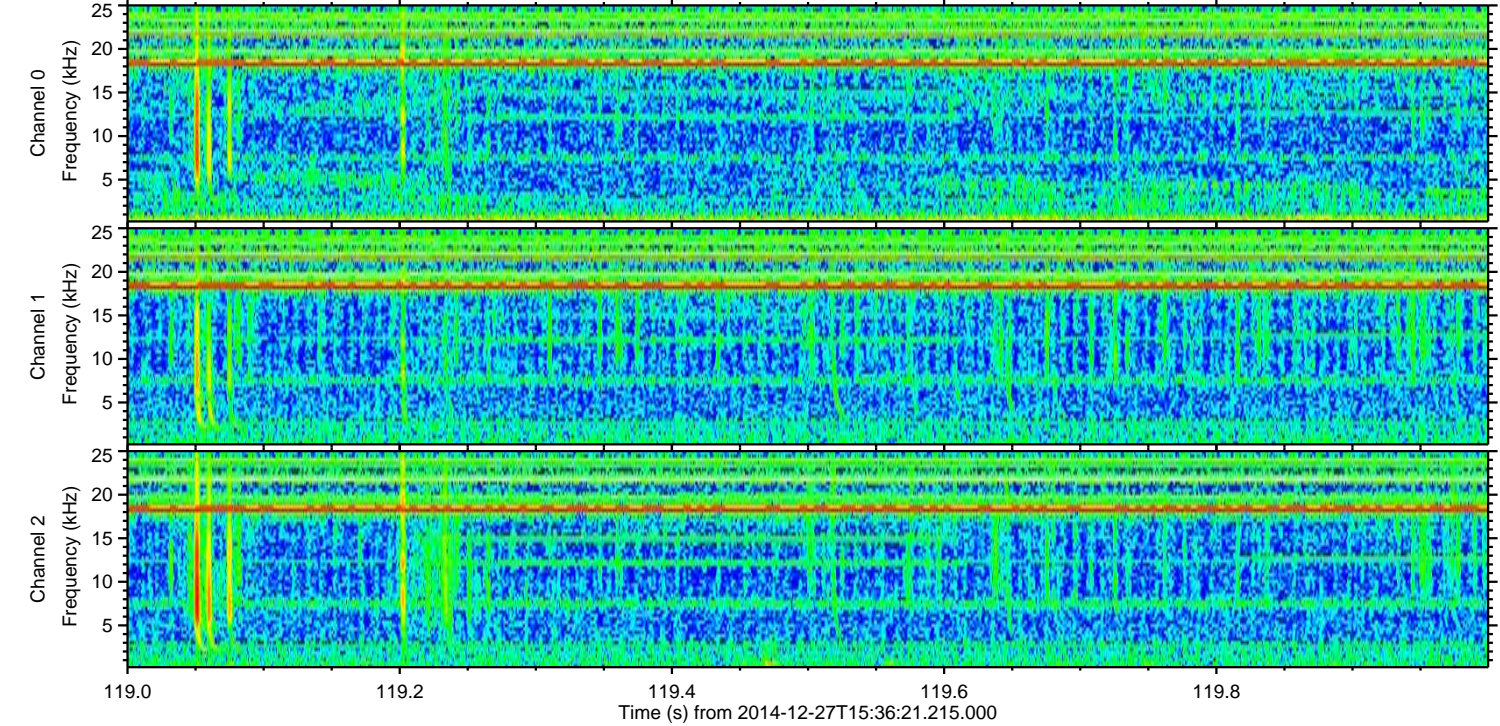
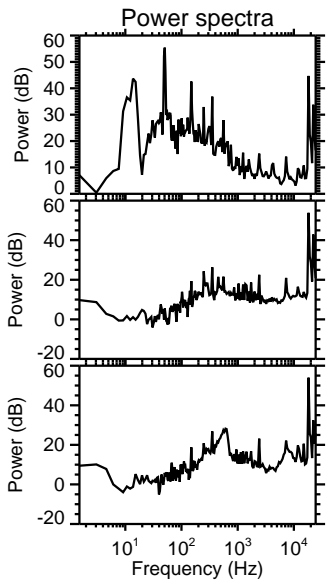
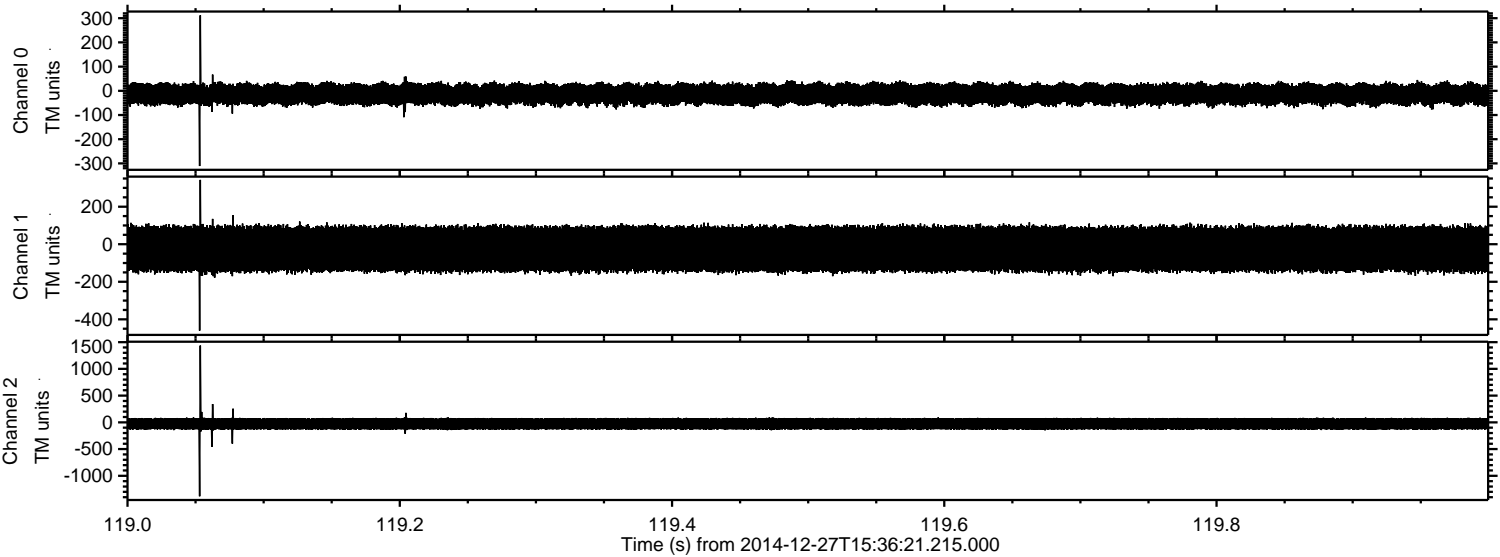


ELMAVAN 3D WAVEFORMS (Measured data sampled at 50 kHz) 49809 packets of 144 samples from 2014-12-27T15:36:21.215.000. Part 119/144

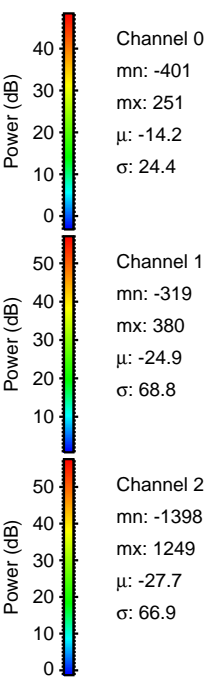
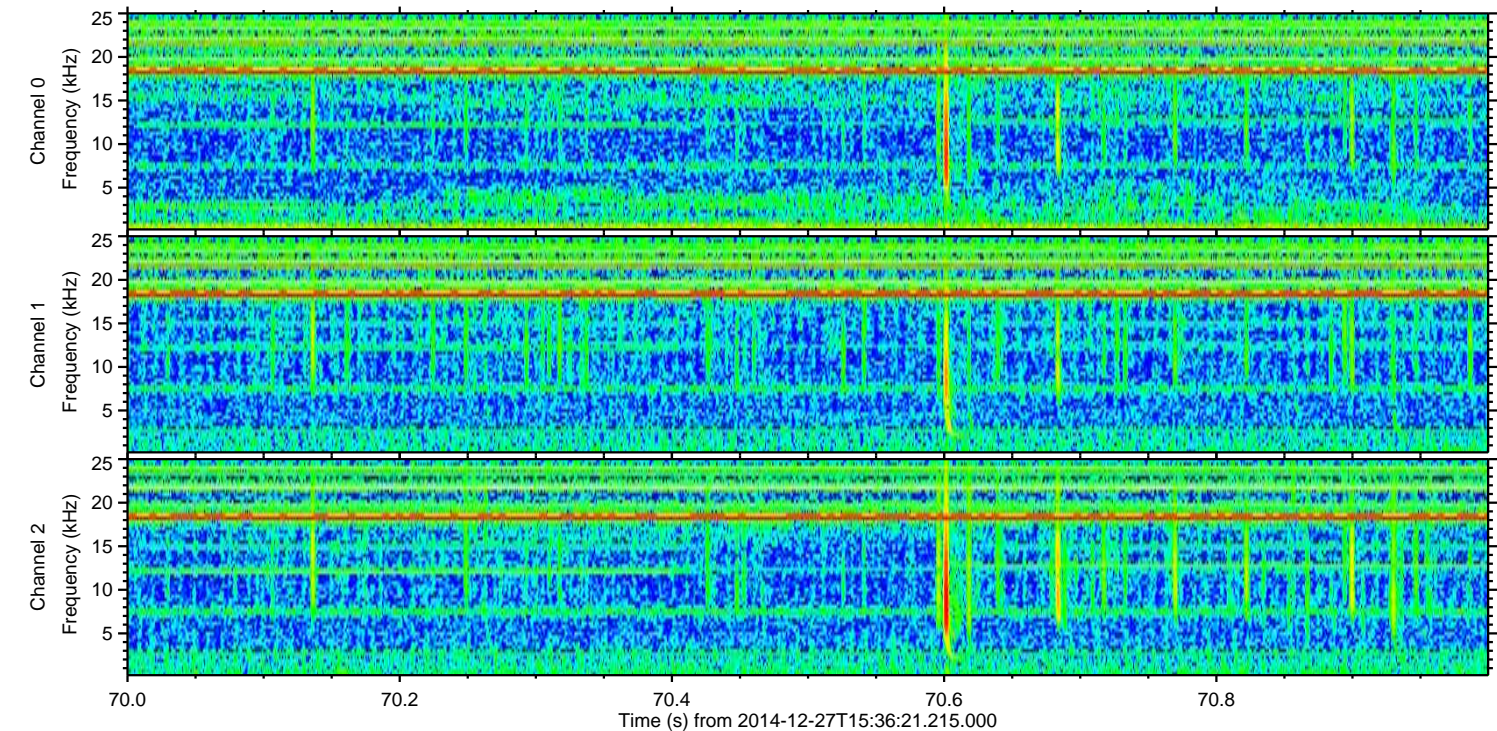
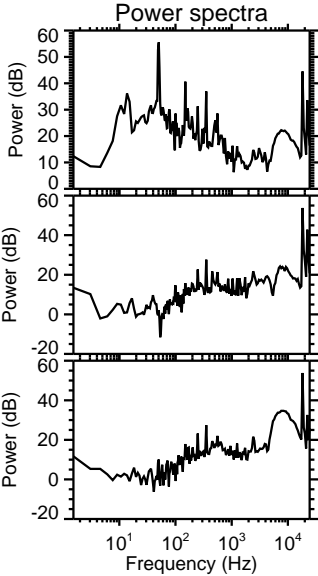
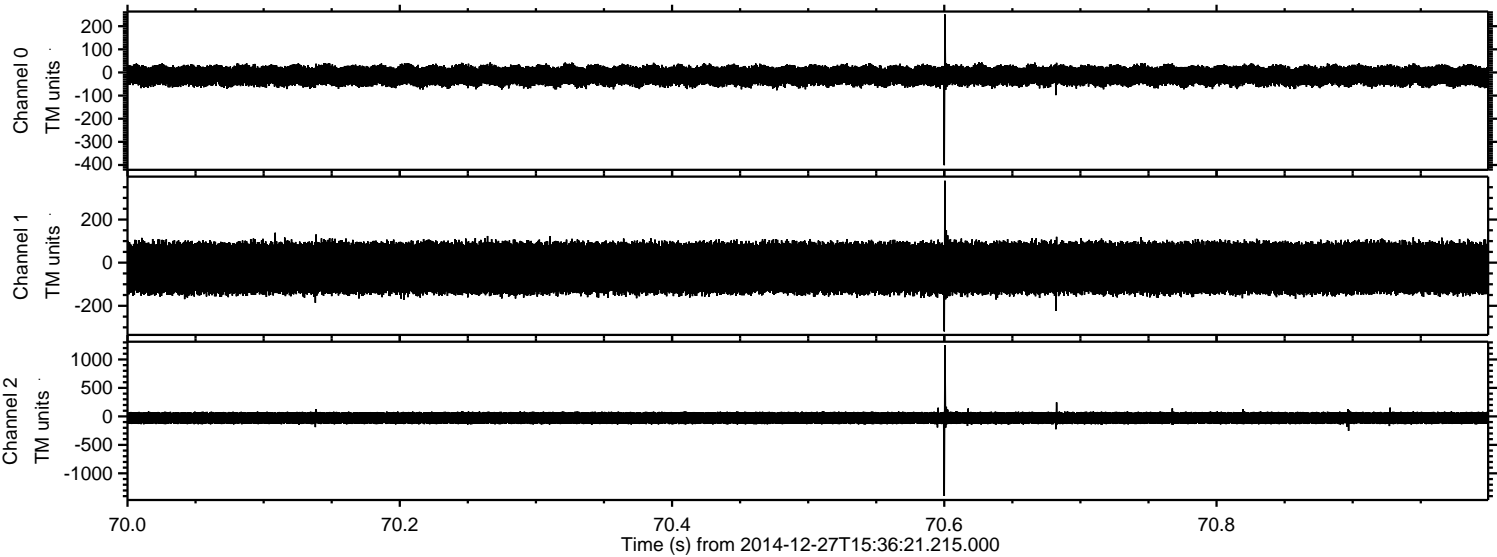
Processed Tue Dec 30 16:01:30 2014 by ELM ver.2012-10-06 from 001__elm20141227_153620__dat00.bin



Processed Tue Dec 30 16:01:31 2014 by ELM ver.2012-10-06 from 001__elm20141227_153620__dat00.bin



Processed Tue Dec 30 16:01:32 2014 by ELM ver.2012-10-06 from 001__elm20141227_153620__dat00.bin

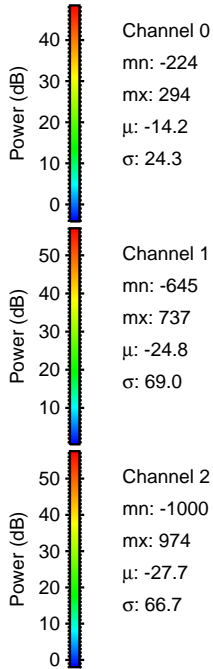
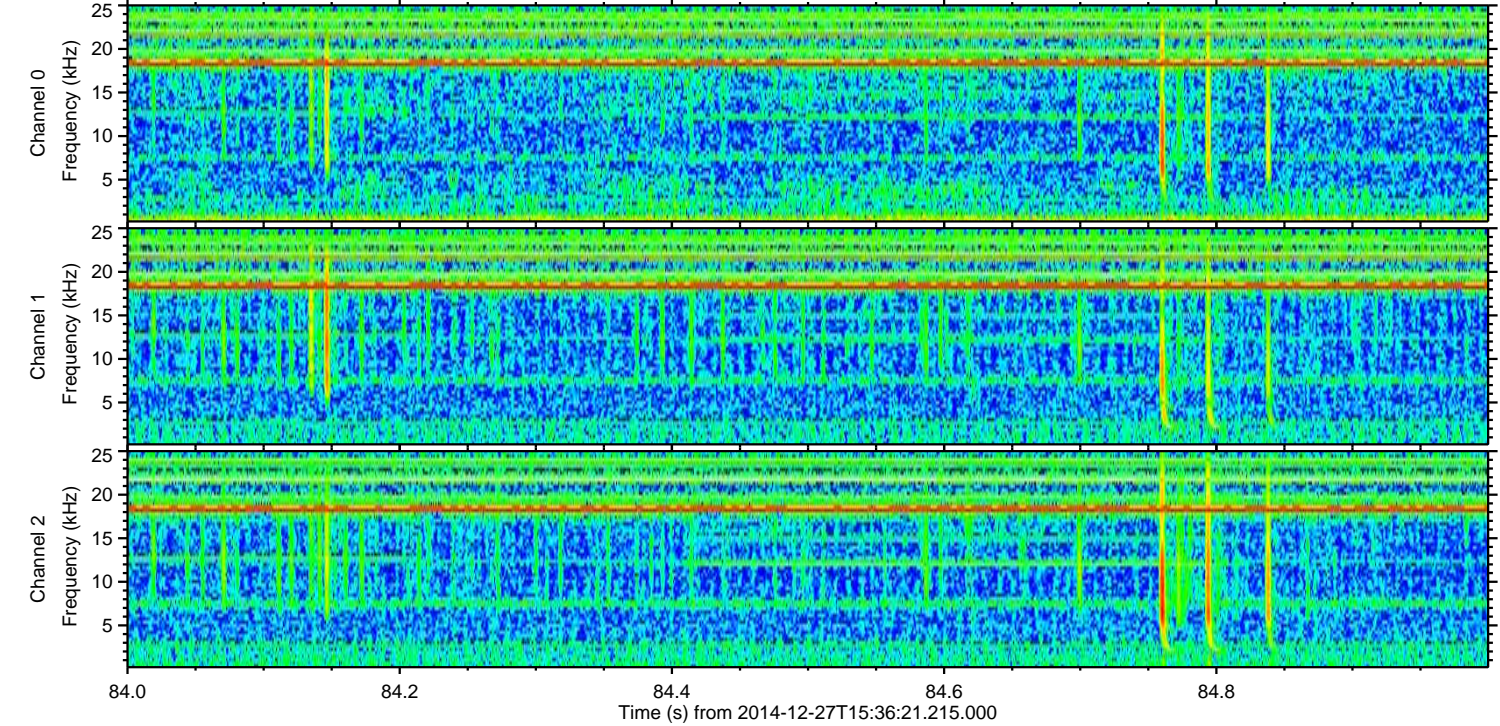
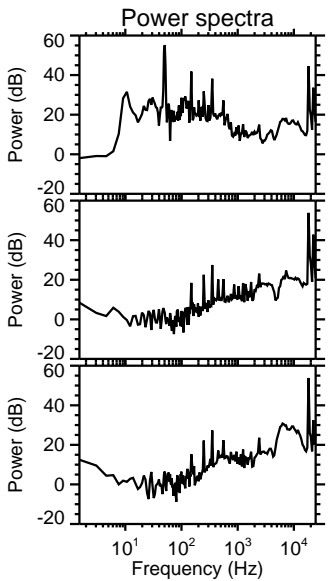
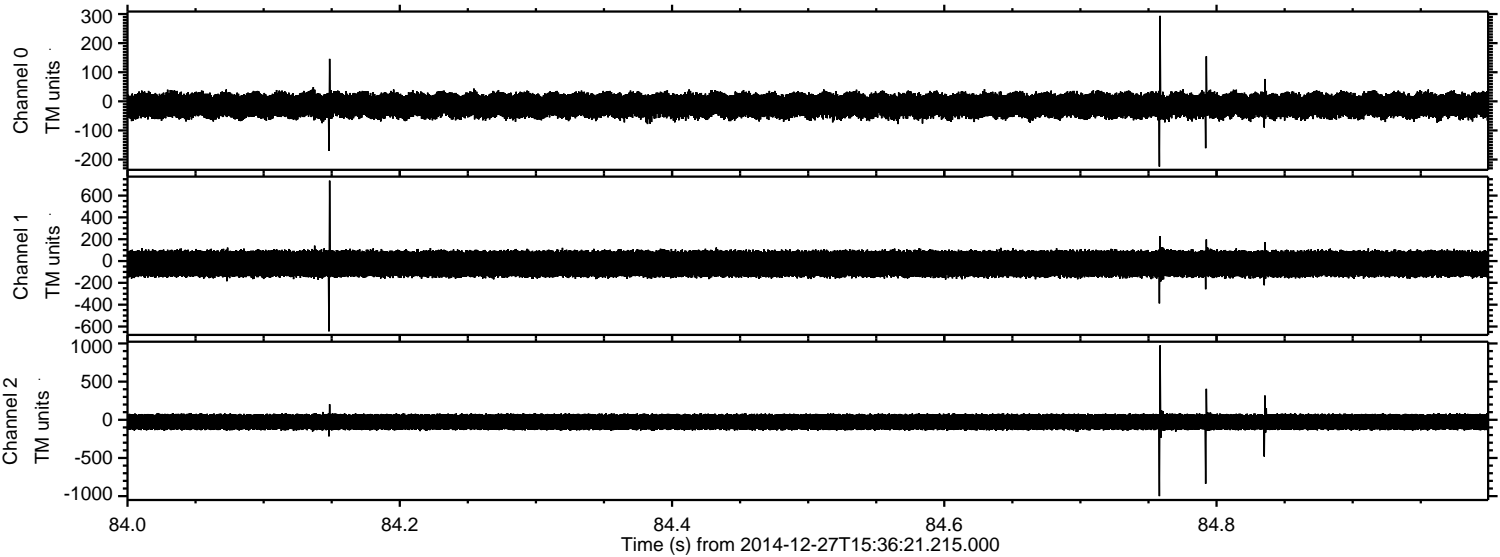


Channel 0
mn: -401
mx: 251
 μ : -14.2
 σ : 24.4

Channel 1
mn: -319
mx: 380
 μ : -24.9
 σ : 68.8

Channel 2
mn: -1398
mx: 1249
 μ : -27.7
 σ : 66.9

Processed Tue Dec 30 16:01:33 2014 by ELM ver.2012-10-06 from 001__elm20141227_153620__dat00.bin



Processed Tue Dec 30 16:01:34 2014 by ELM ver.2012-10-06 from 001__elm20141227_153620__dat00.bin

