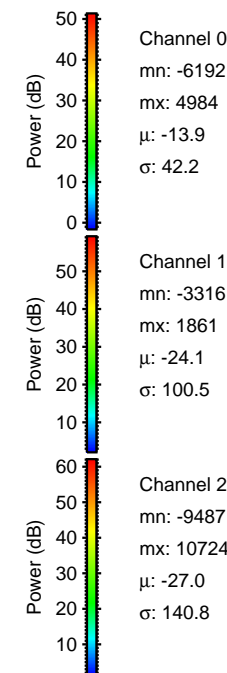
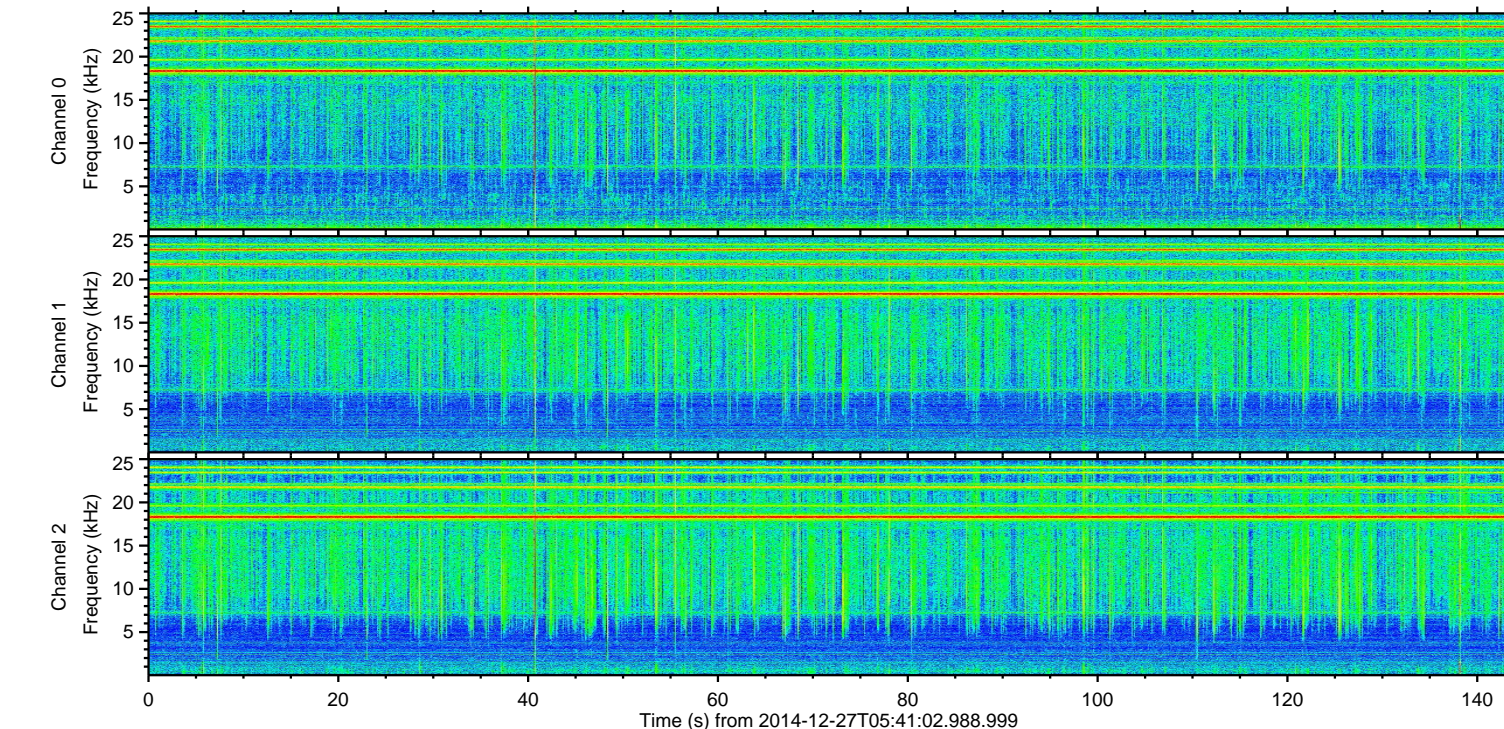
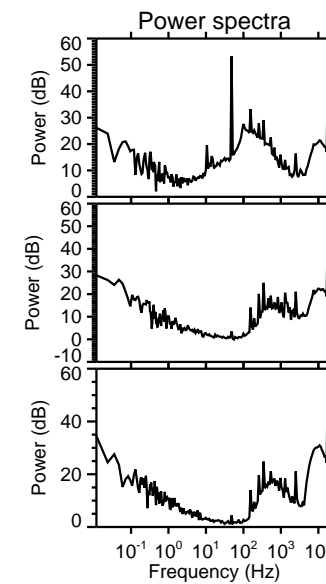
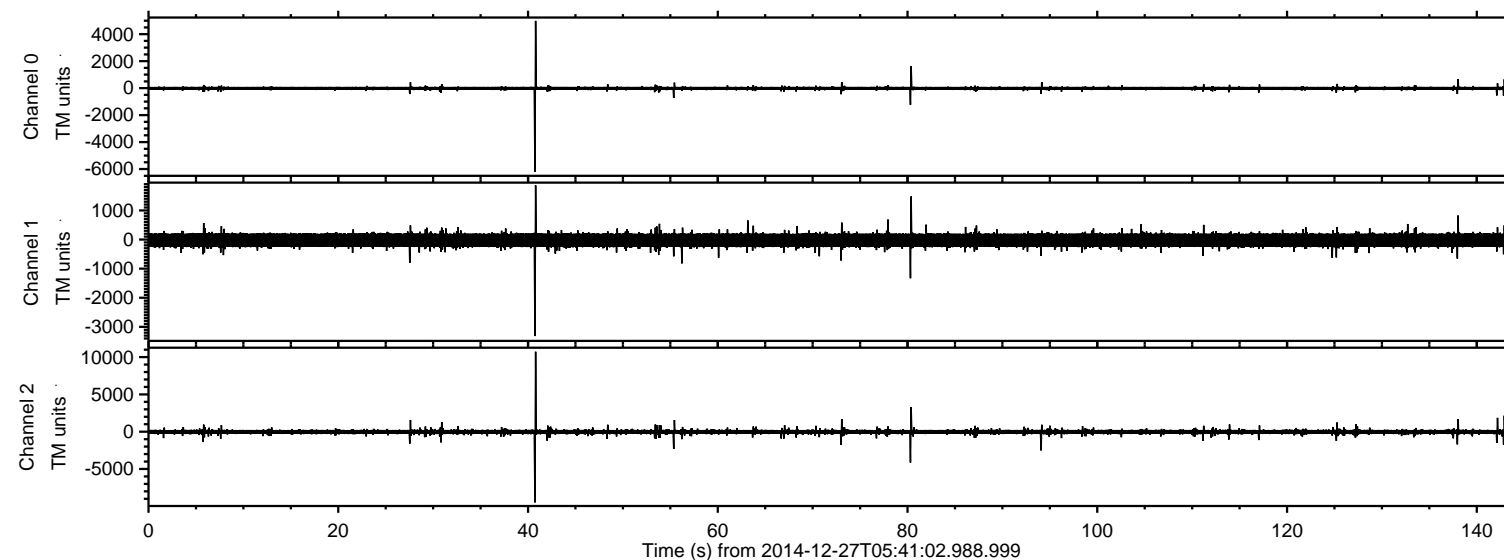


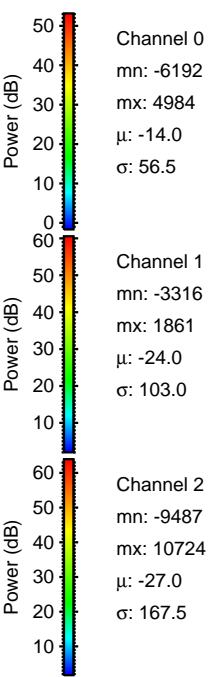
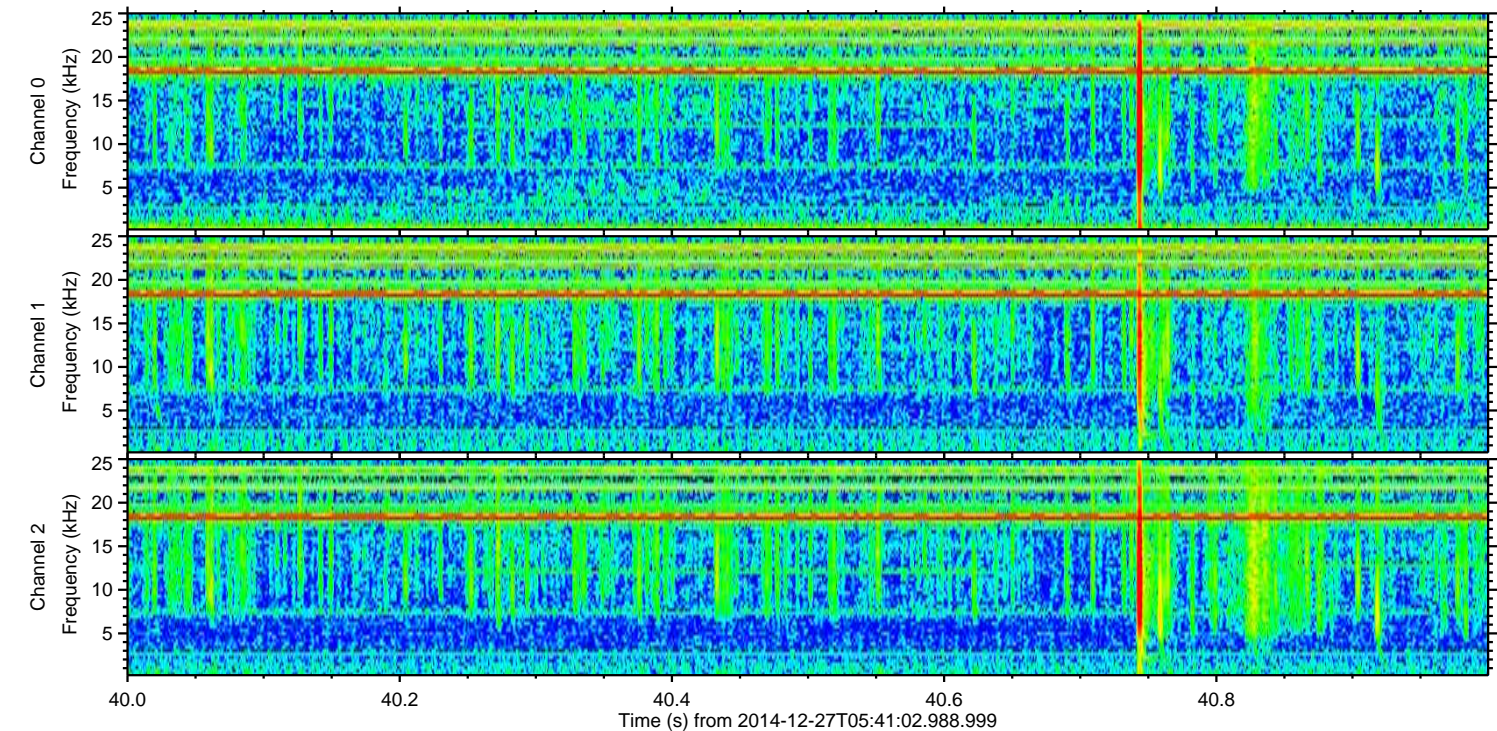
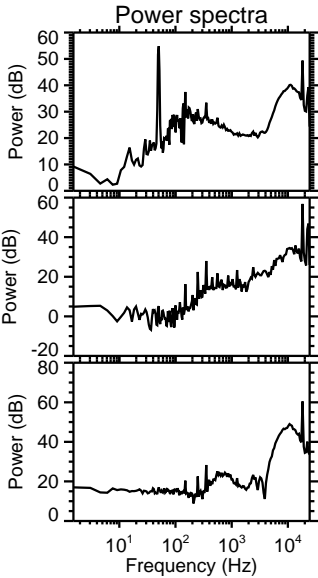
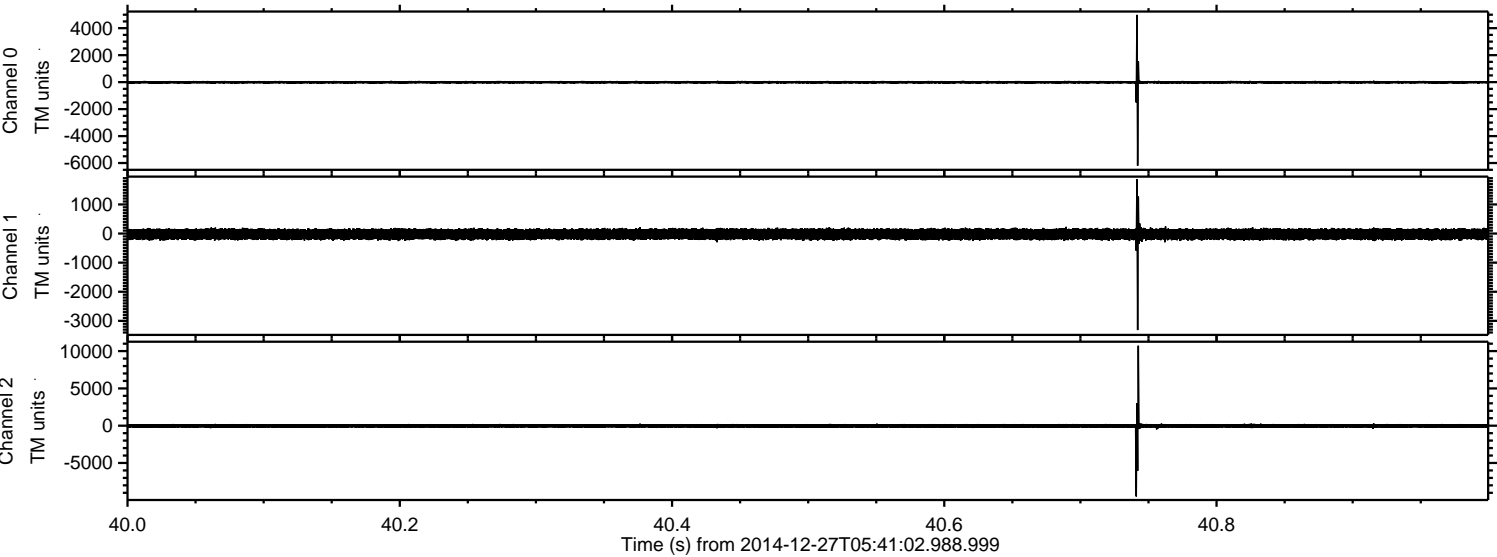
ELMAVAN 3D WAVEFORMS (Measured data sampled at 50 kHz) 49795 packets of 144 samples from 2014-12-27T05:41:02.988.999.

Processed Sat Dec 27 07:59:28 2014 by ELM ver.2012-10-06 from 001__elm20141227_054101__dat00.bin



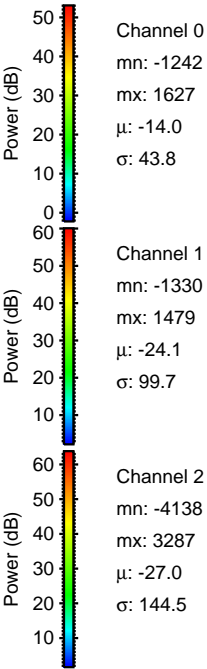
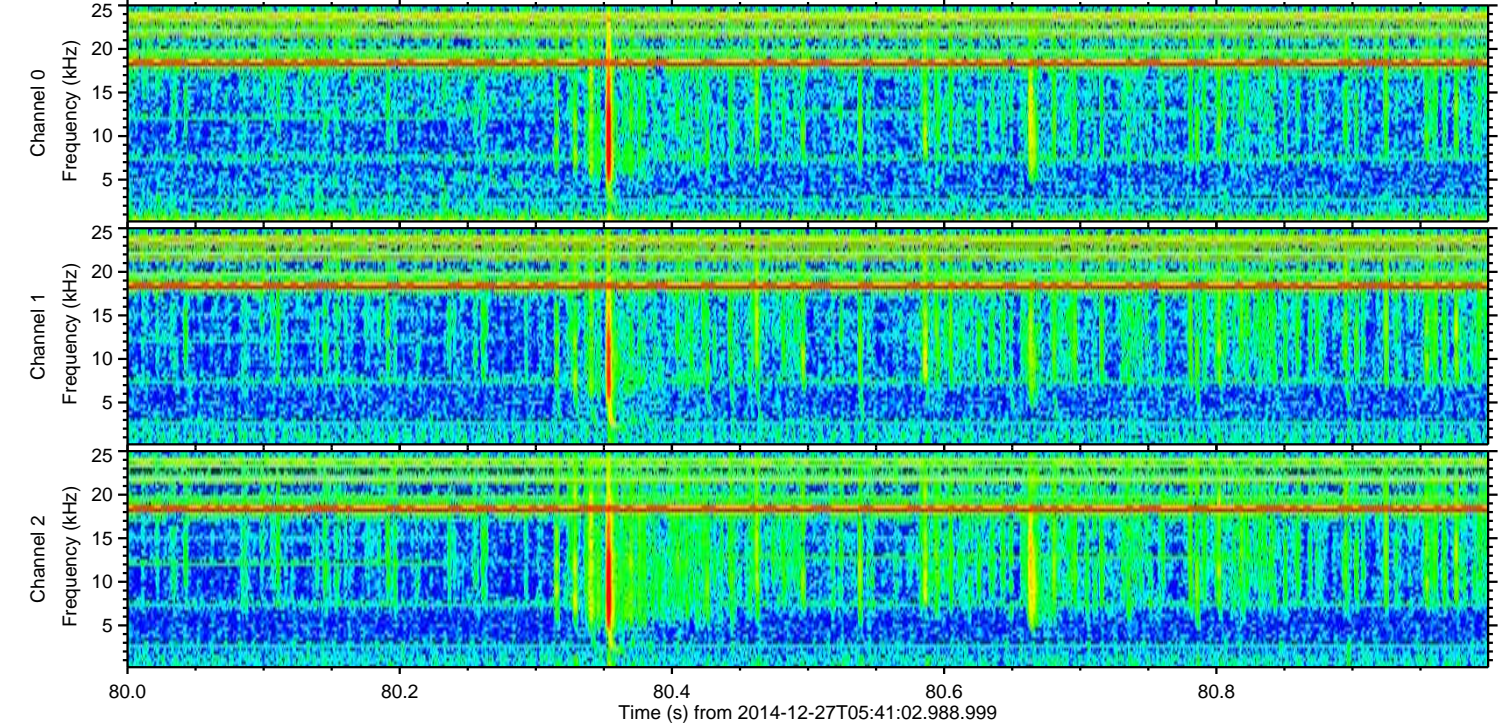
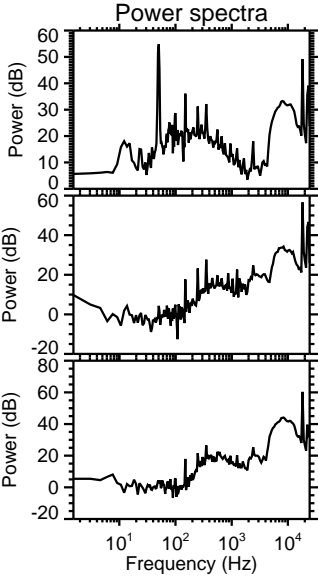
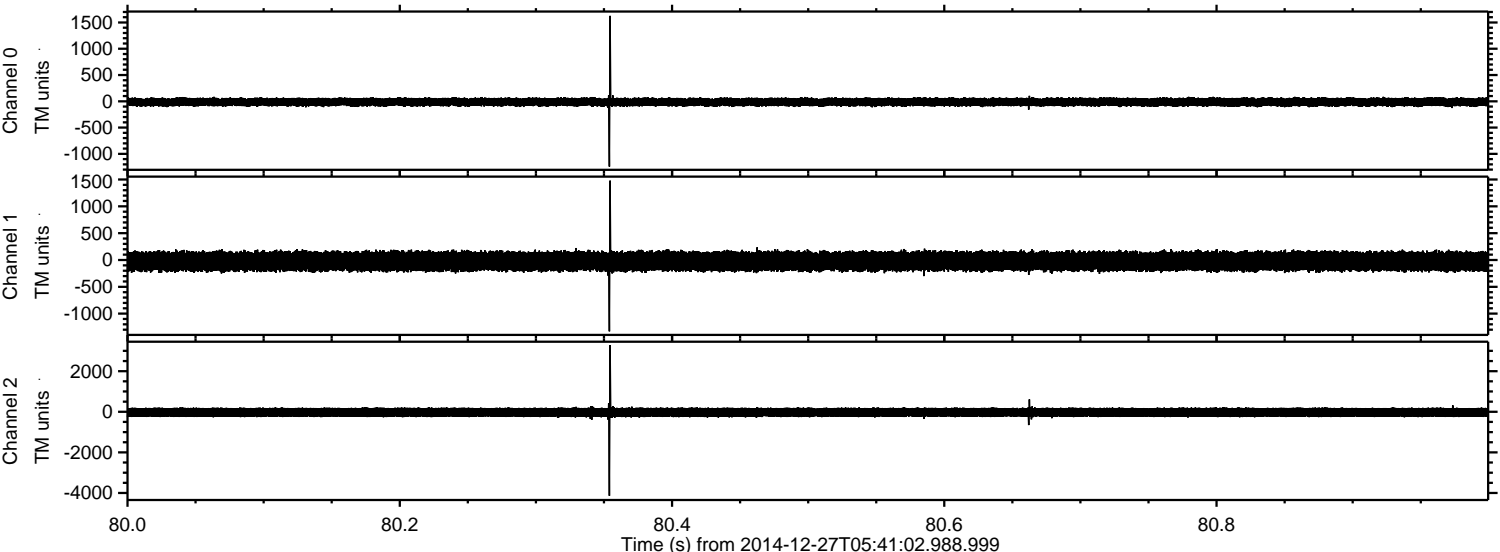
ELMAVAN 3D WAVEFORMS (Measured data sampled at 50 kHz) 49795 packets of 144 samples from 2014-12-27T05:41:02.988.999. Part 41/144

Processed Sat Dec 27 07:59:40 2014 by ELM ver.2012-10-06 from 001__elm20141227_054101__dat00.bin



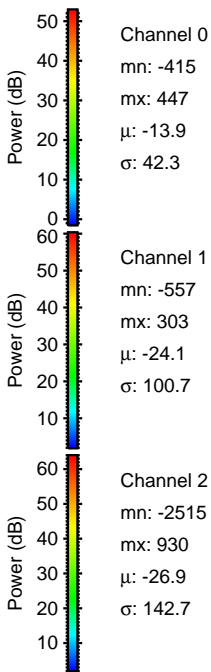
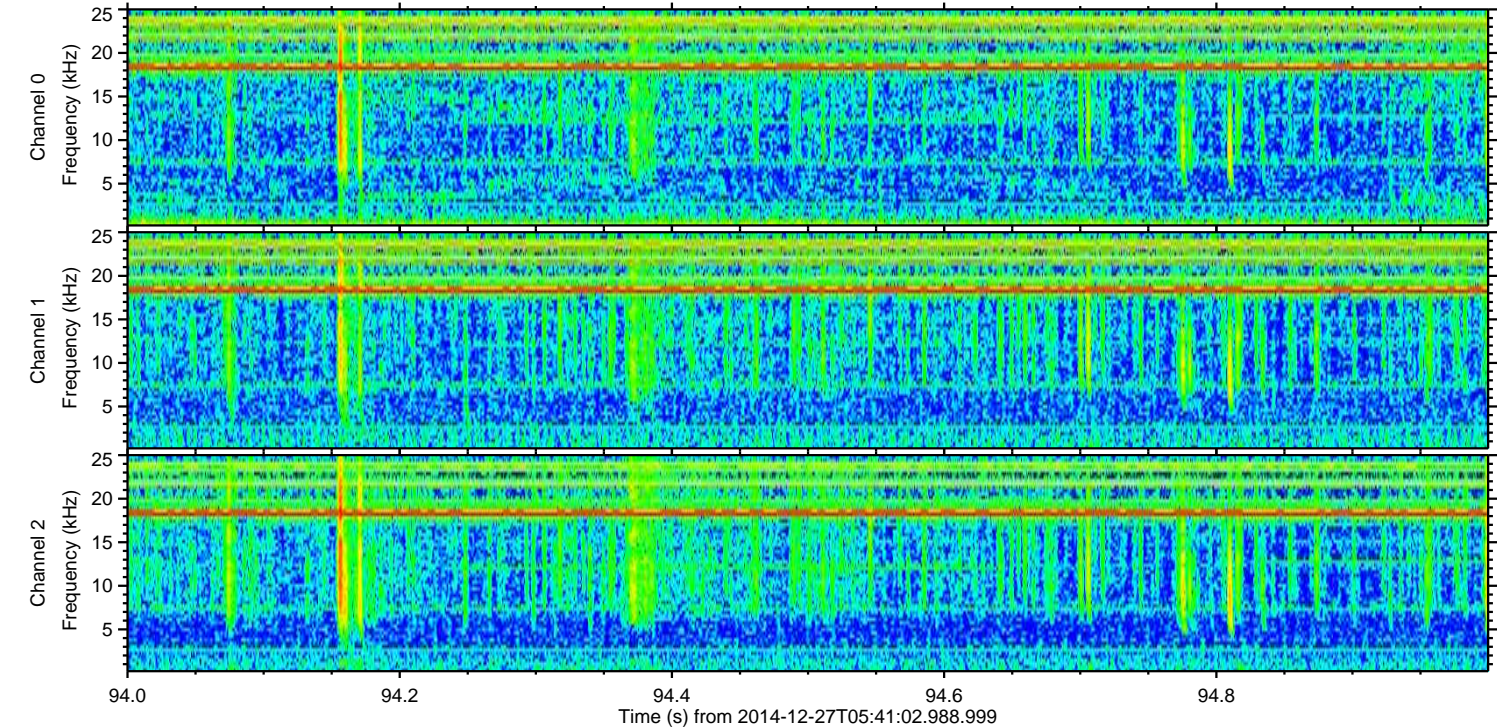
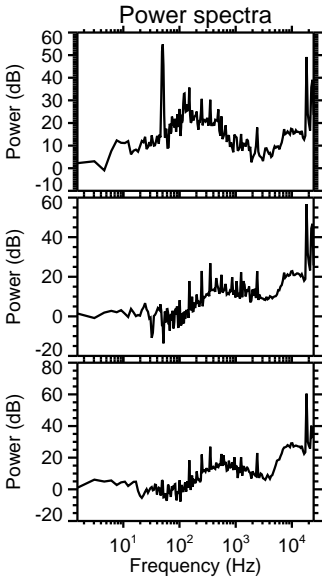
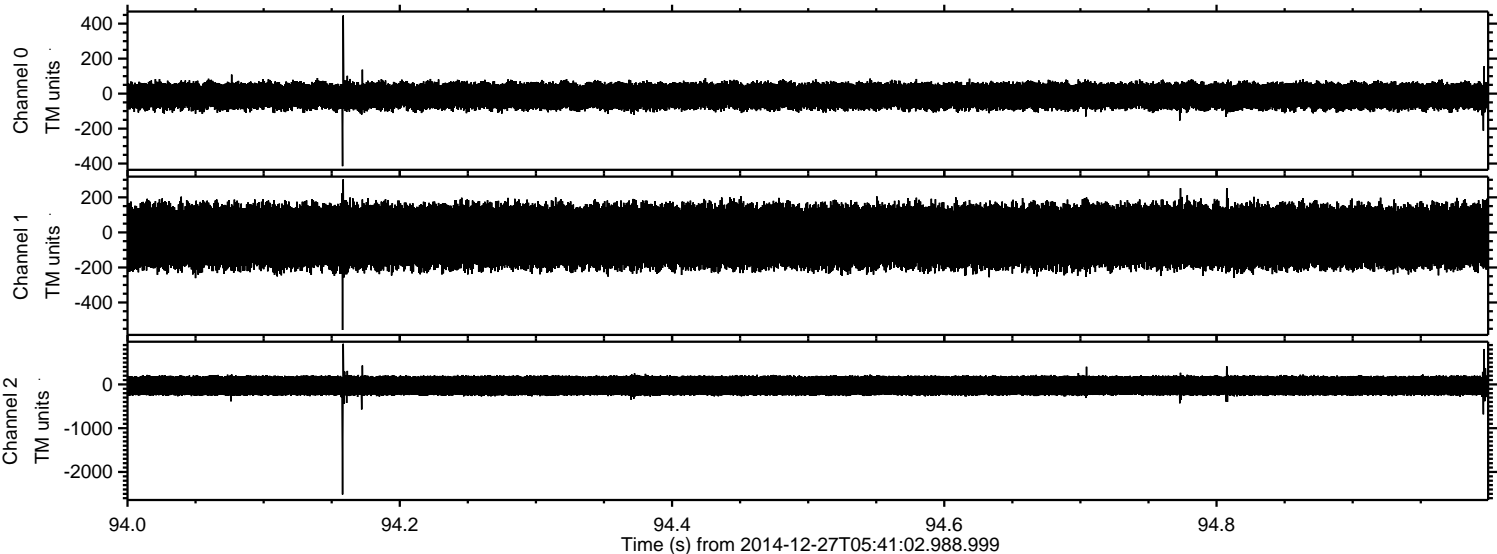
ELMAVAN 3D WAVEFORMS (Measured data sampled at 50 kHz) 49795 packets of 144 samples from 2014-12-27T05:41:02.988.999. Part 81/144

Processed Sat Dec 27 07:59:41 2014 by ELM ver.2012-10-06 from 001__elm20141227_054101__dat00.bin

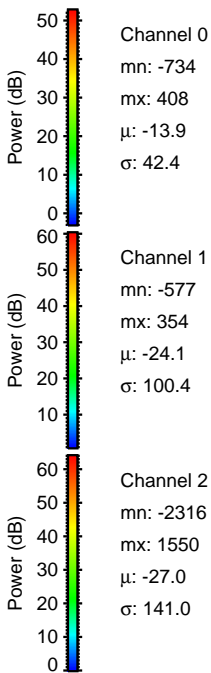
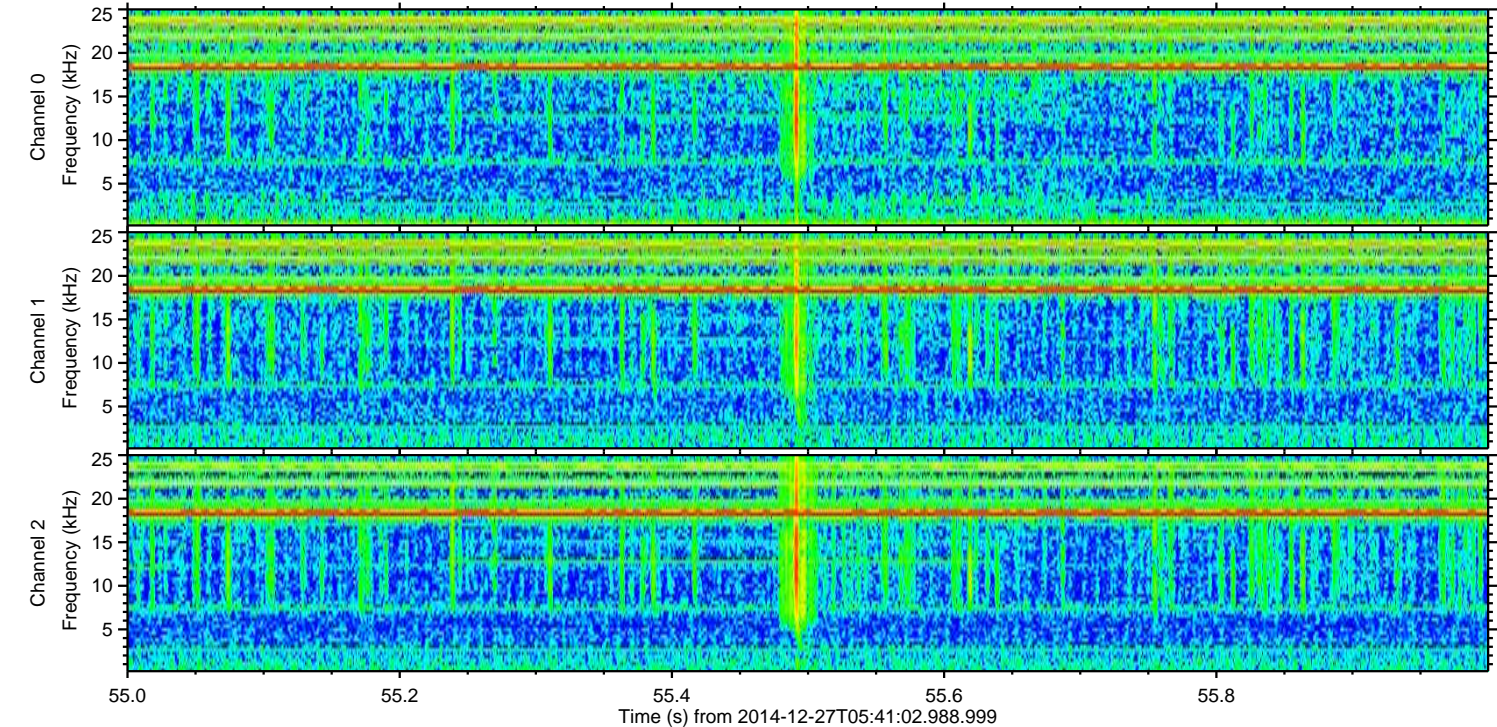
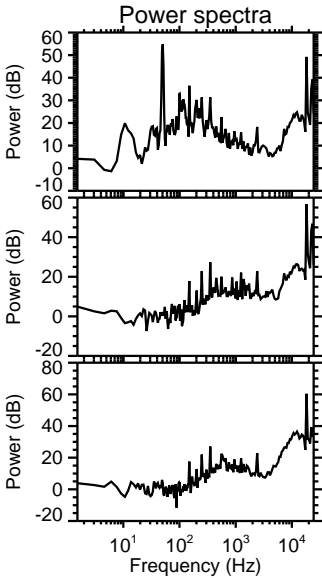
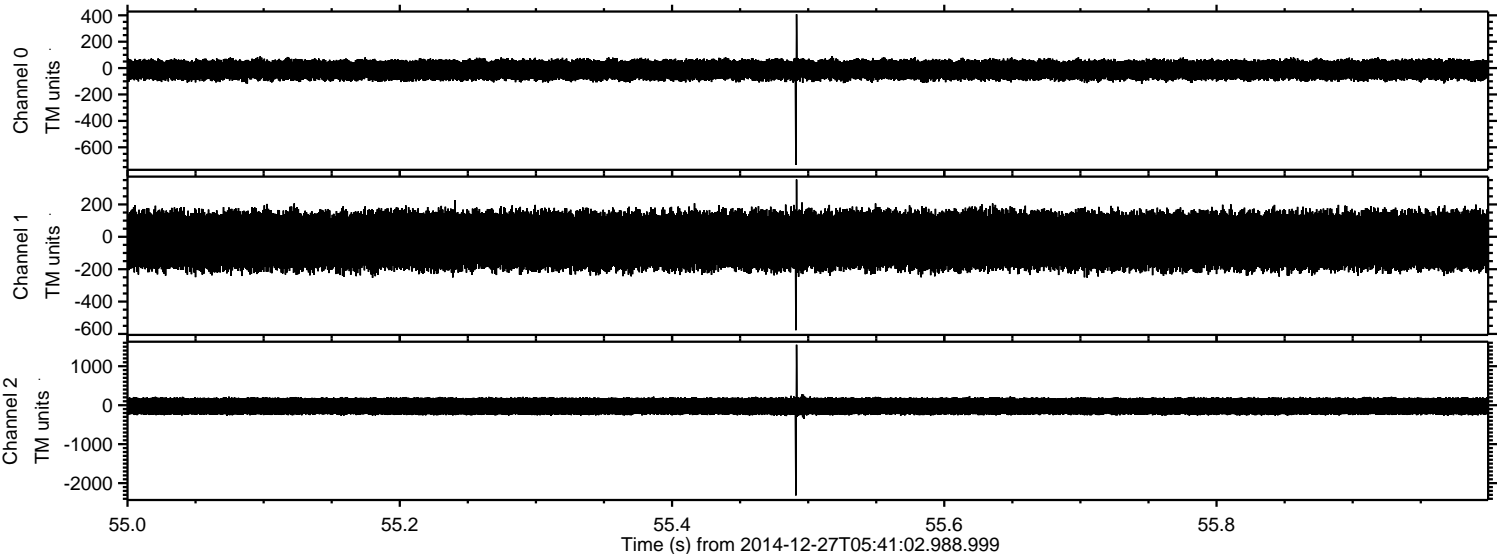


ELMAVAN 3D WAVEFORMS (Measured data sampled at 50 kHz) 49795 packets of 144 samples from 2014-12-27T05:41:02.988.999. Part 95/144

Processed Sat Dec 27 07:59:42 2014 by ELM ver.2012-10-06 from 001__elm20141227_054101__dat00.bin

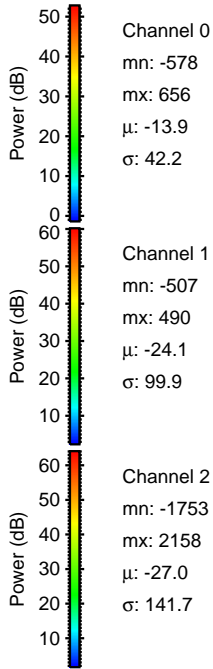
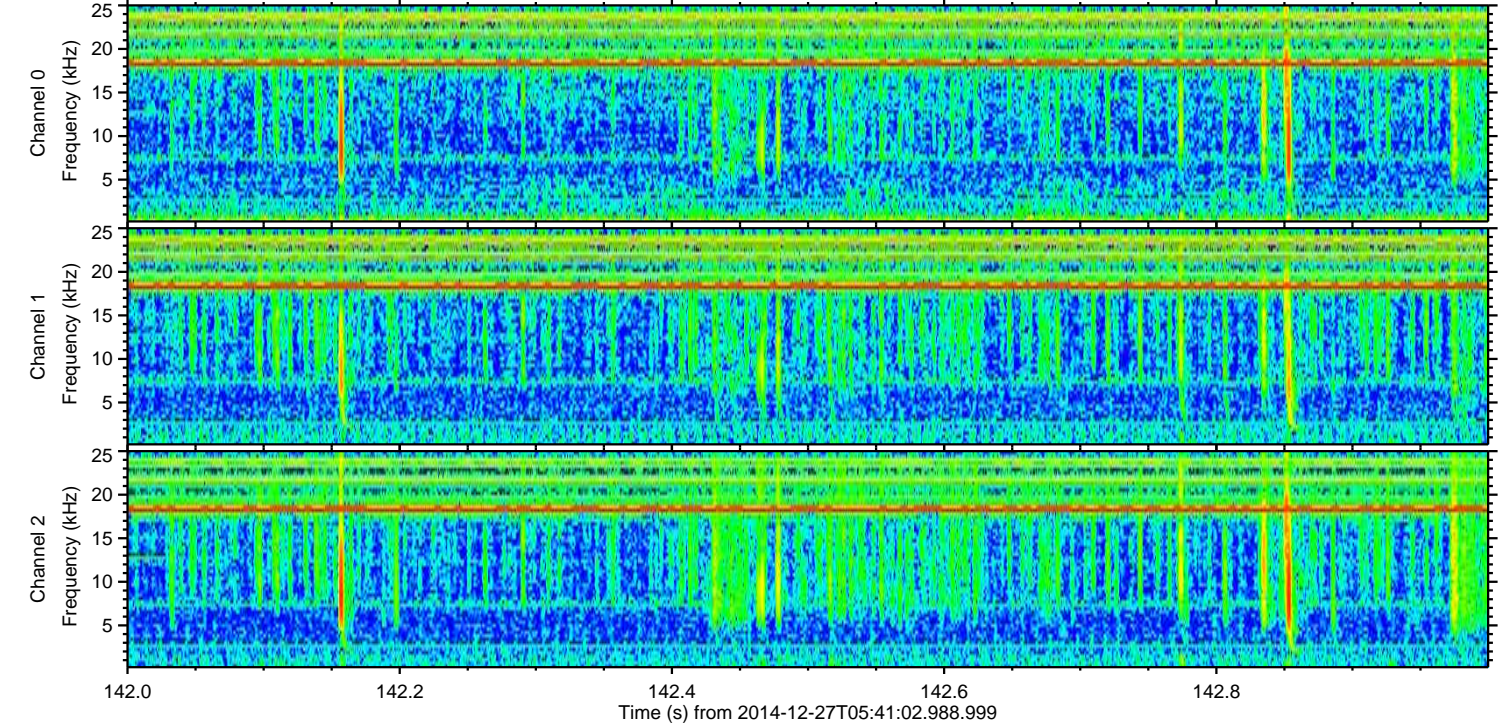
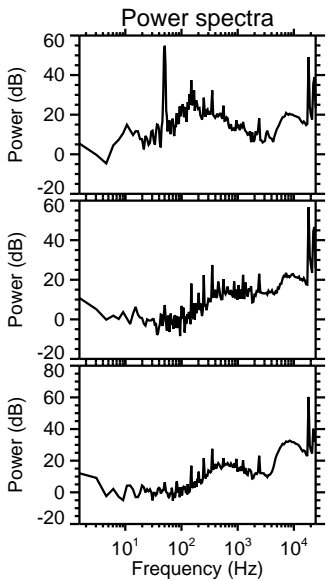
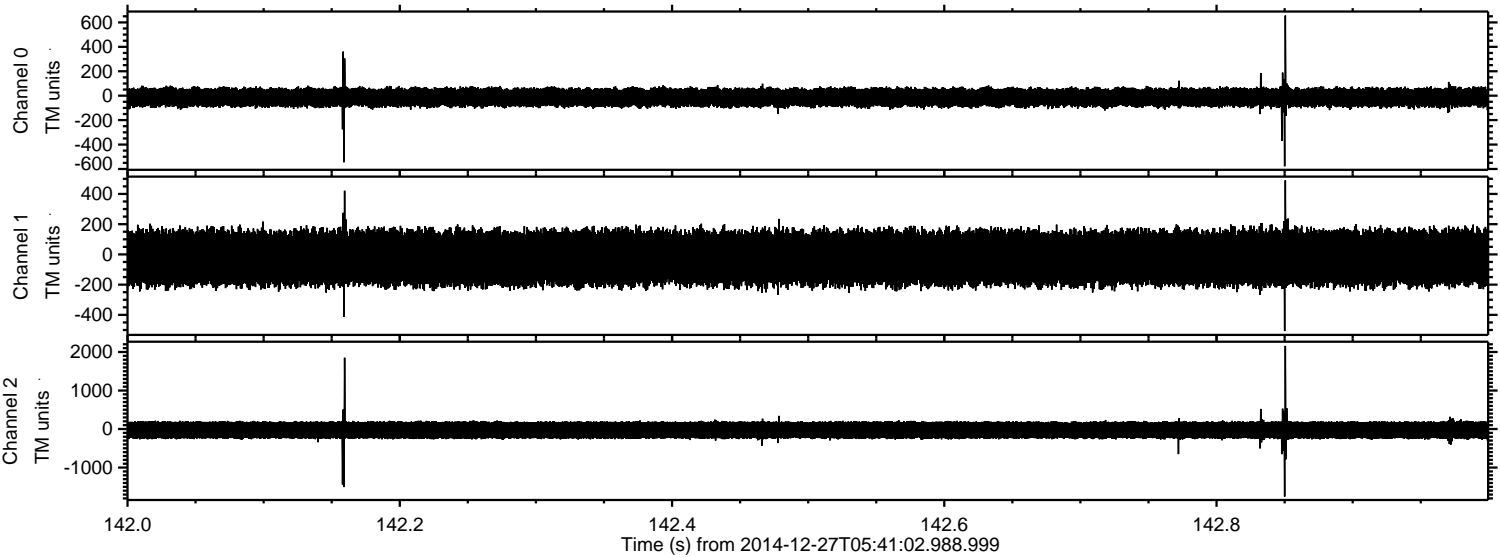


Processed Sat Dec 27 07:59:43 2014 by ELM ver.2012-10-06 from 001__elm20141227_054101__dat00.bin



ELMAVAN 3D WAVEFORMS (Measured data sampled at 50 kHz) 49795 packets of 144 samples from 2014-12-27T05:41:02.988.999. Part 143/144

Processed Sat Dec 27 07:59:44 2014 by ELM ver.2012-10-06 from 001__elm20141227_054101__dat00.bin



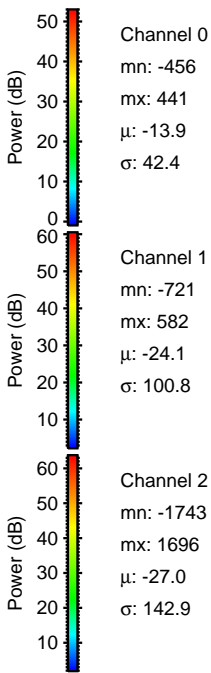
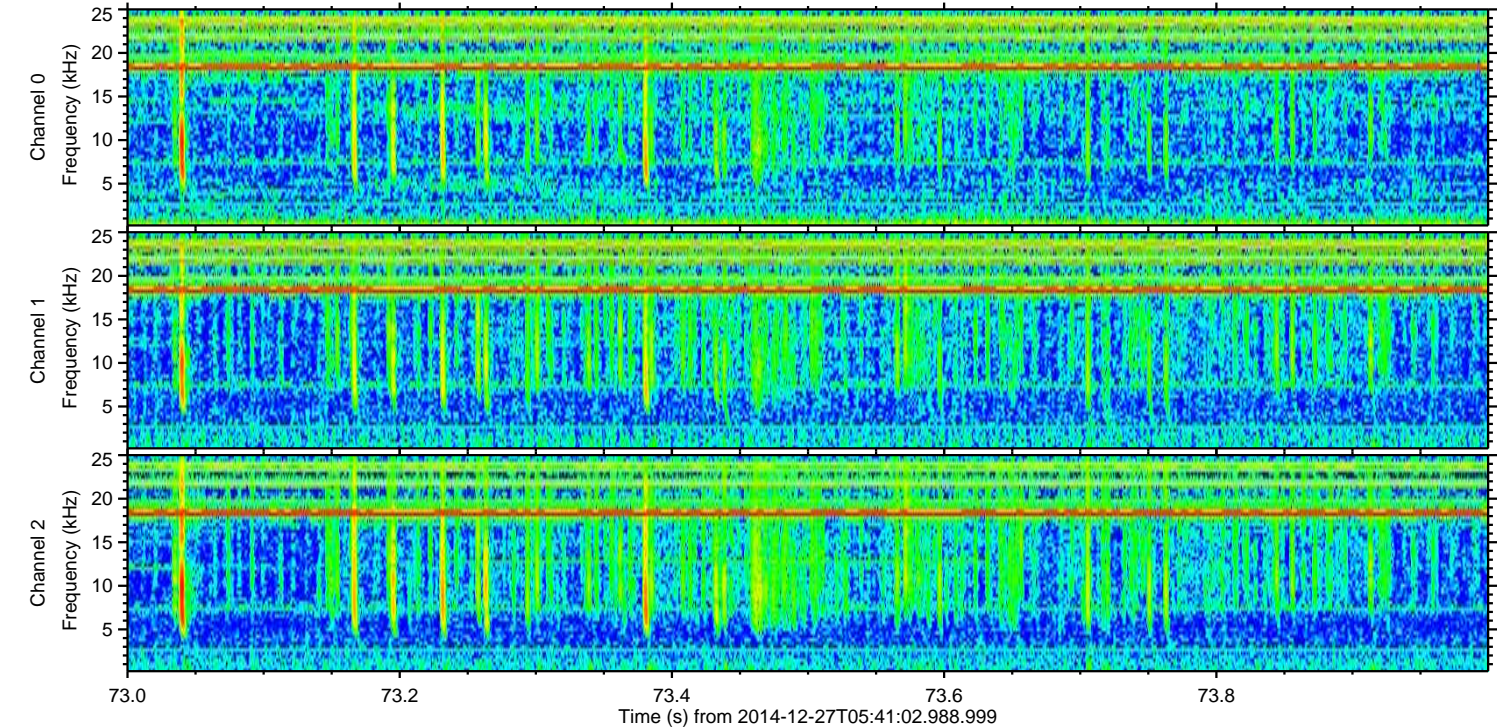
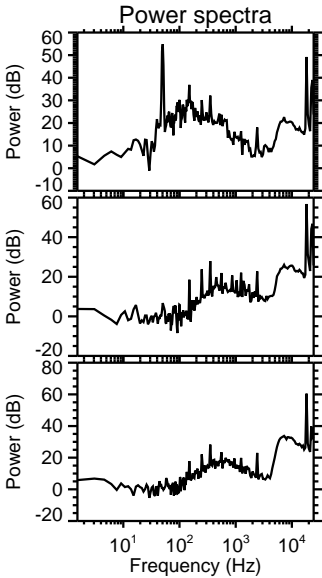
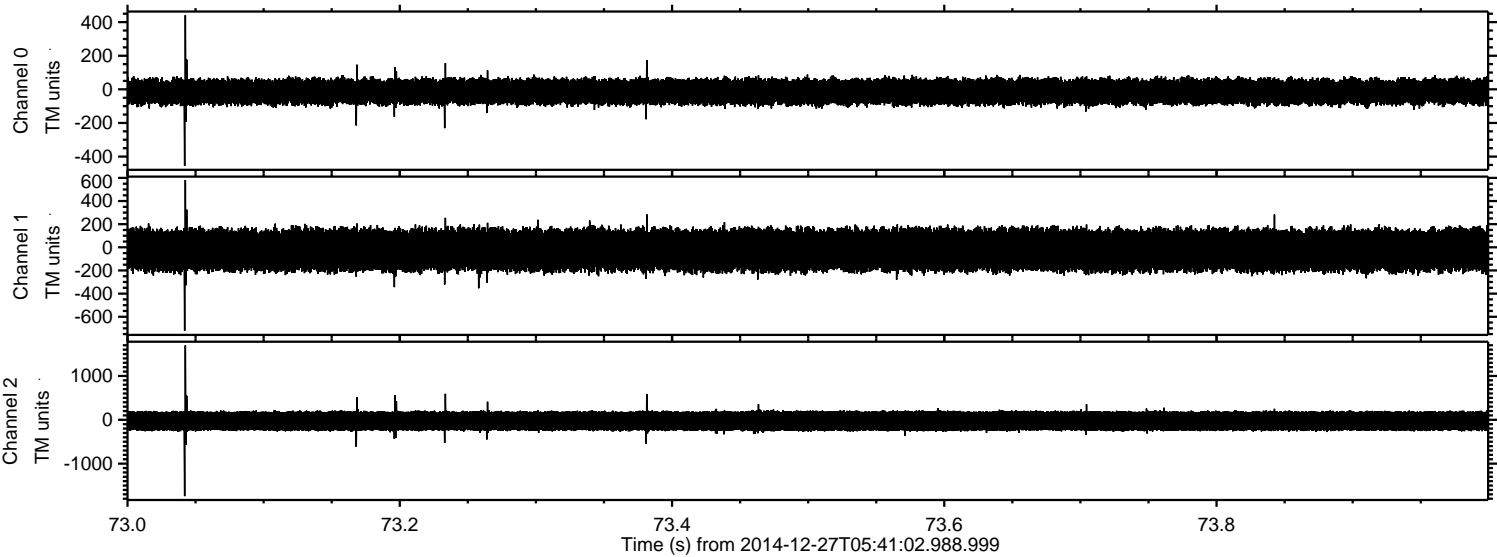
Channel 0
mn: -578
mx: 656
 μ : -13.9
 σ : 42.2

Channel 1
mn: -507
mx: 490
 μ : -24.1
 σ : 99.9

Channel 2
mn: -1753
mx: 2158
 μ : -27.0
 σ : 141.7

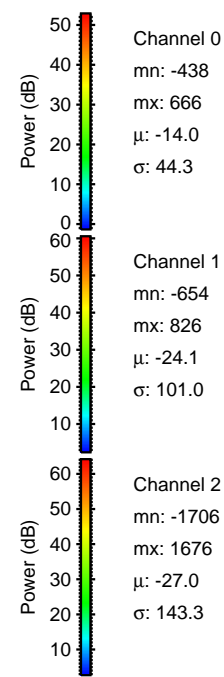
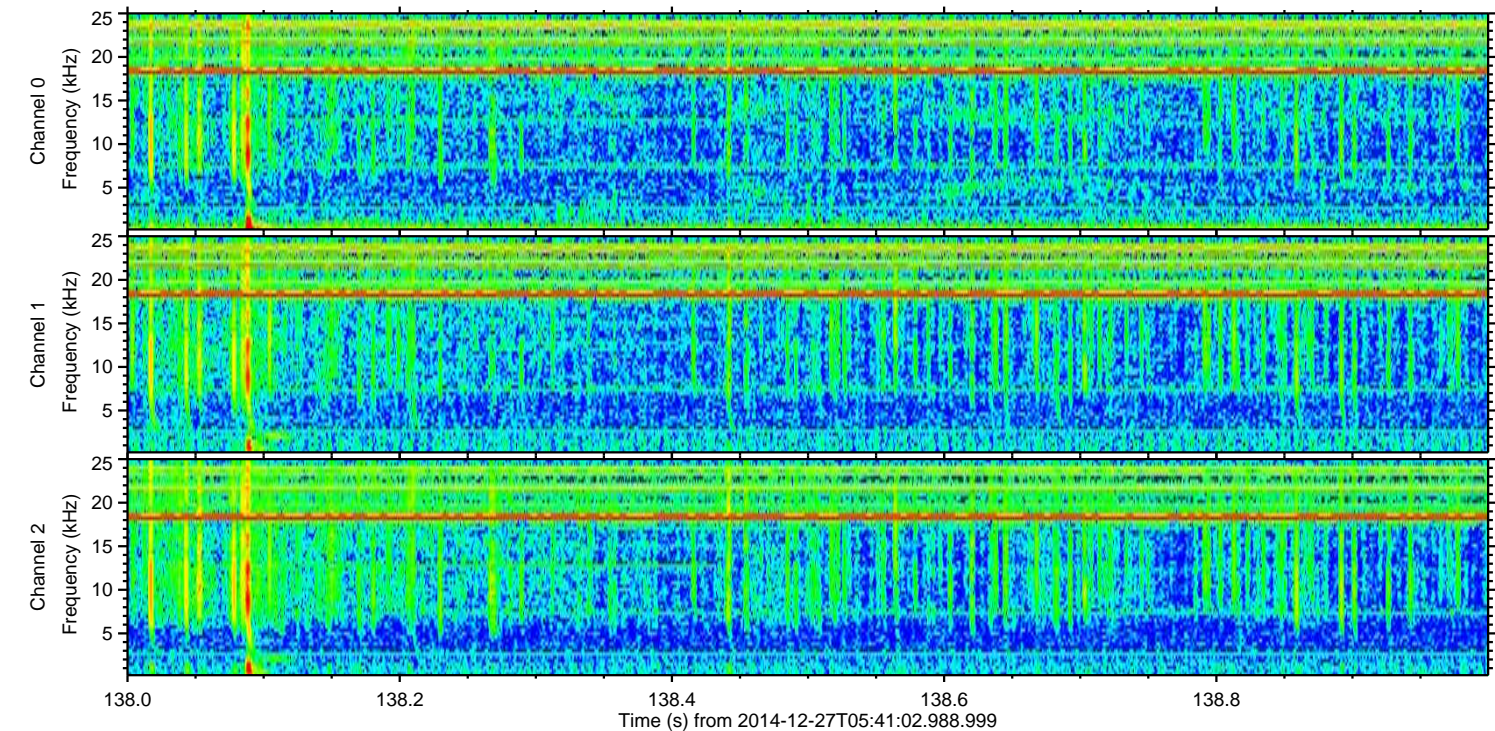
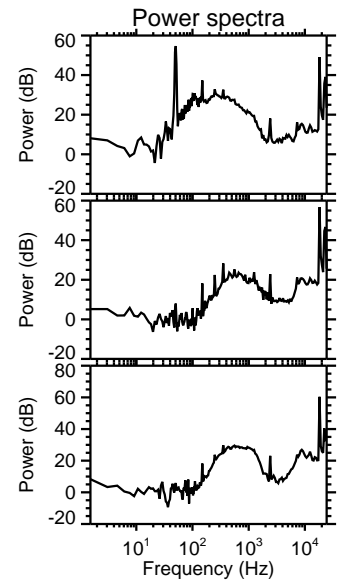
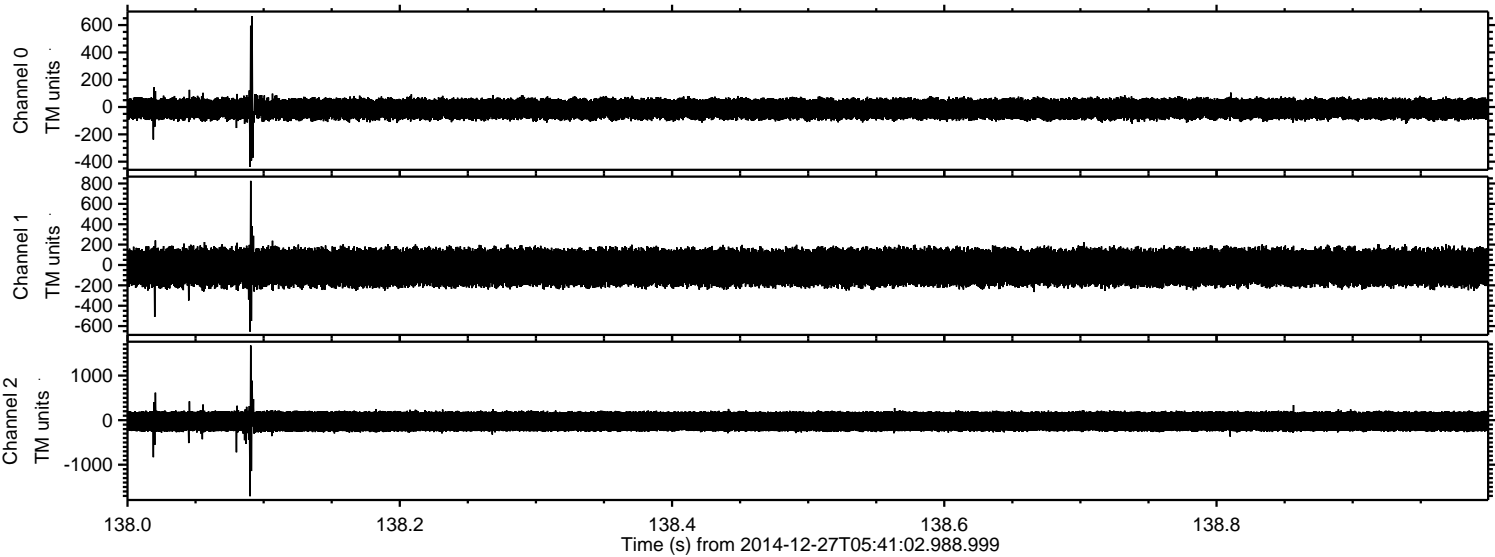
ELMAVAN 3D WAVEFORMS (Measured data sampled at 50 kHz) 49795 packets of 144 samples from 2014-12-27T05:41:02.988.999. Part 74/144

Processed Sat Dec 27 07:59:45 2014 by ELM ver.2012-10-06 from 001__elm20141227_054101__dat00.bin



ELMAVAN 3D WAVEFORMS (Measured data sampled at 50 kHz) 49795 packets of 144 samples from 2014-12-27T05:41:02.988.999. Part 139/144

Processed Sat Dec 27 07:59:46 2014 by ELM ver.2012-10-06 from 001__elm20141227_054101__dat00.bin



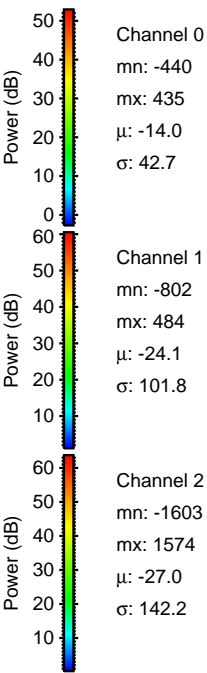
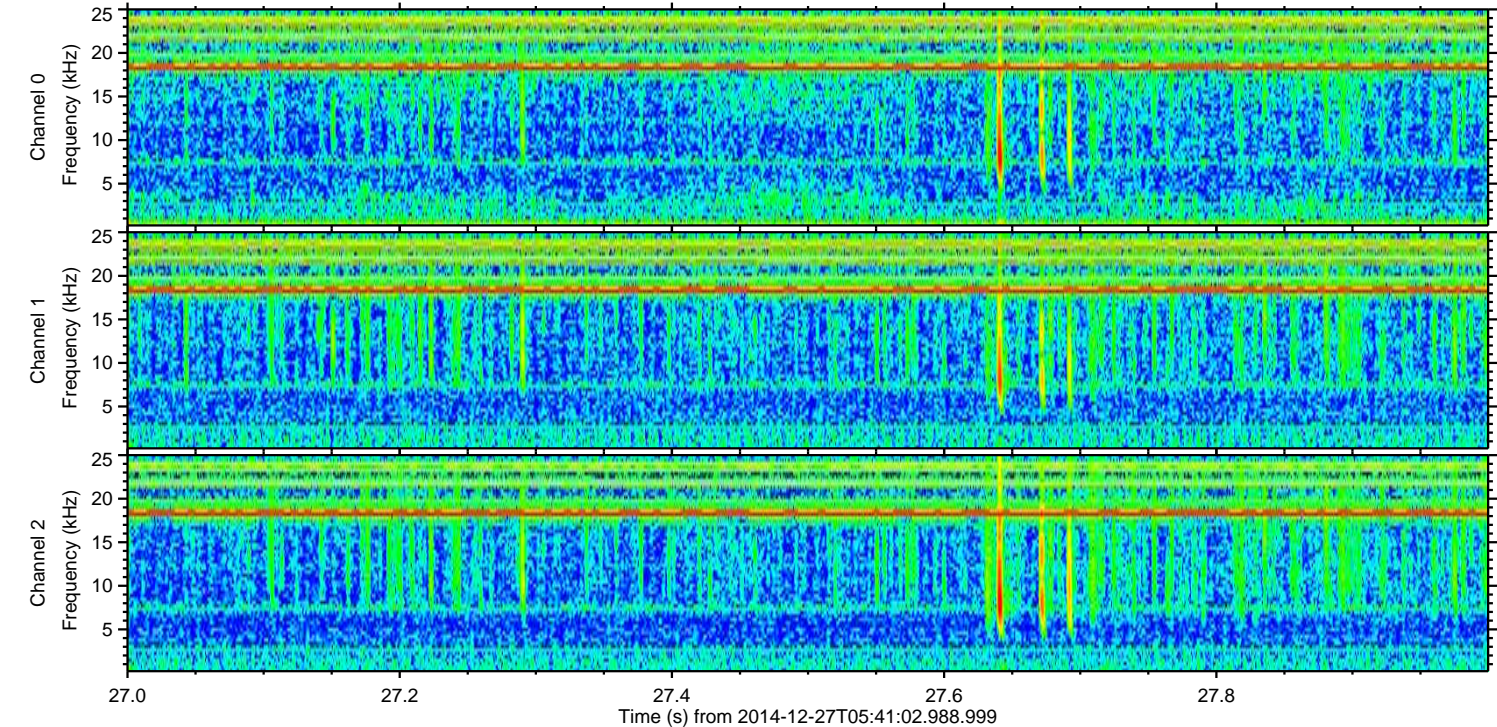
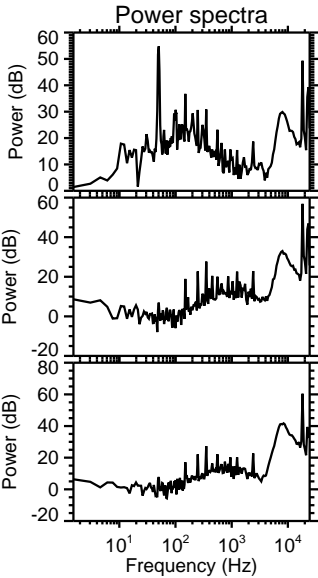
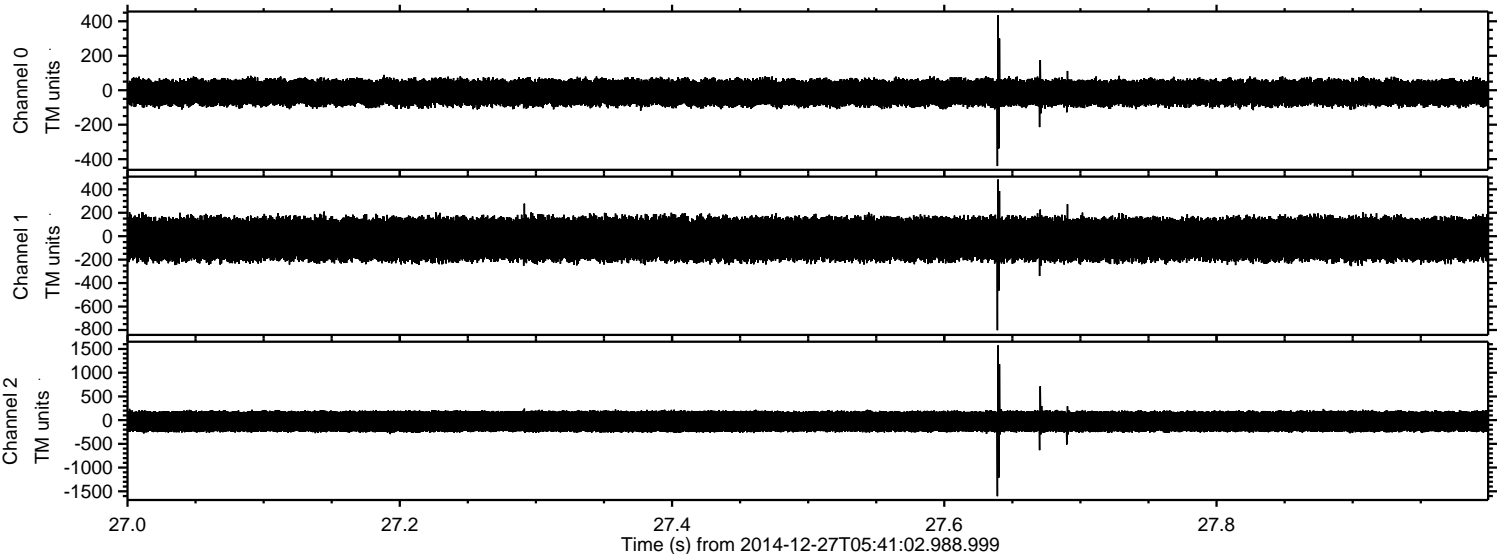
Channel 0
mn: -438
mx: 666
 μ : -14.0
 σ : 44.3

Channel 1
mn: -654
mx: 826
 μ : -24.1
 σ : 101.0

Channel 2
mn: -1706
mx: 1676
 μ : -27.0
 σ : 143.3

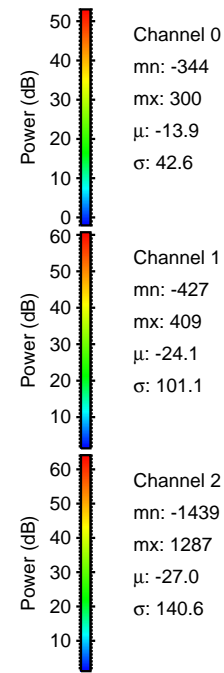
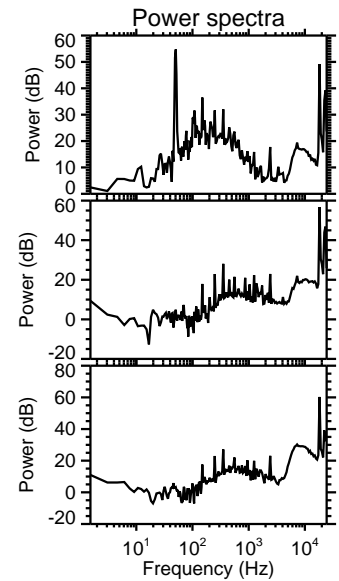
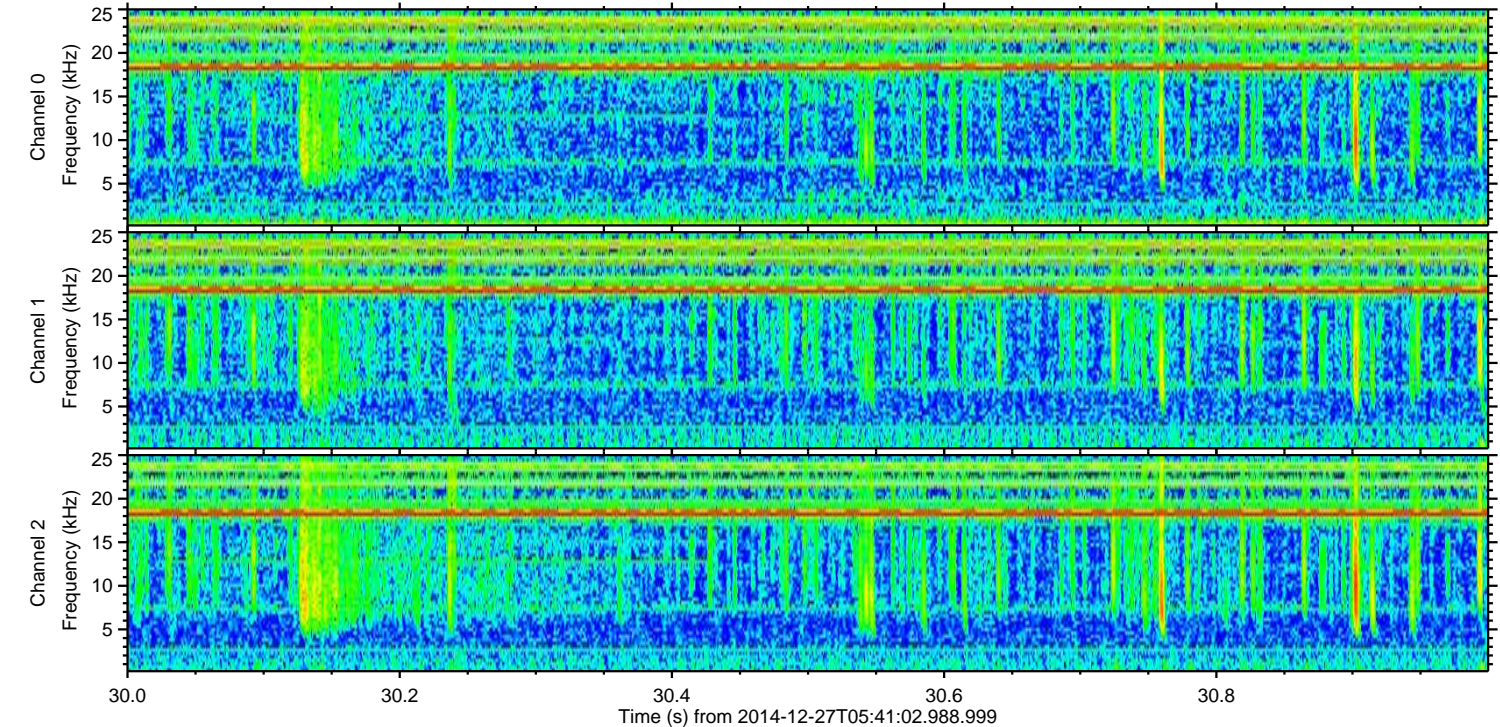
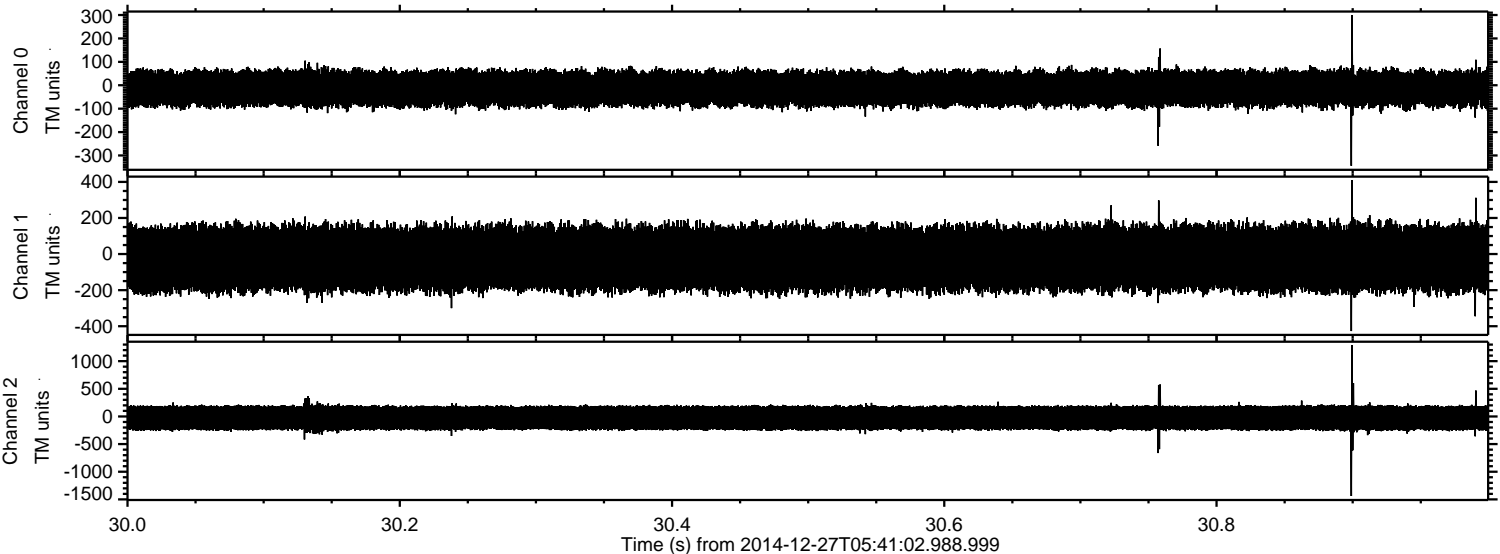
ELMAVAN 3D WAVEFORMS (Measured data sampled at 50 kHz) 49795 packets of 144 samples from 2014-12-27T05:41:02.988.999. Part 28/144

Processed Sat Dec 27 07:59:47 2014 by ELM ver.2012-10-06 from 001__elm20141227_054101__dat00.bin



ELMAVAN 3D WAVEFORMS (Measured data sampled at 50 kHz) 49795 packets of 144 samples from 2014-12-27T05:41:02.988.999. Part 31/144

Processed Sat Dec 27 07:59:48 2014 by ELM ver.2012-10-06 from 001__elm20141227_054101__dat00.bin



Channel 0
mn: -344
mx: 300
 μ : -13.9
 σ : 42.6

Channel 1
mn: -427
mx: 409
 μ : -24.1
 σ : 101.1

Channel 2
mn: -1439
mx: 1287
 μ : -27.0
 σ : 140.6

Processed Sat Dec 27 07:59:49 2014 by ELM ver.2012-10-06 from 001__elm20141227_054101__dat00.bin

