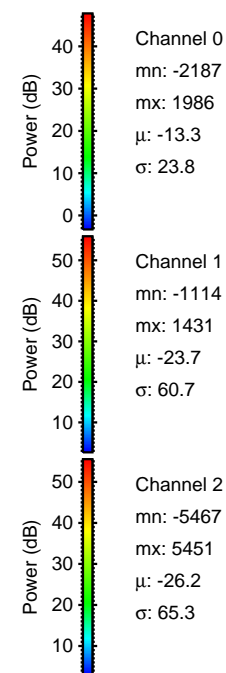
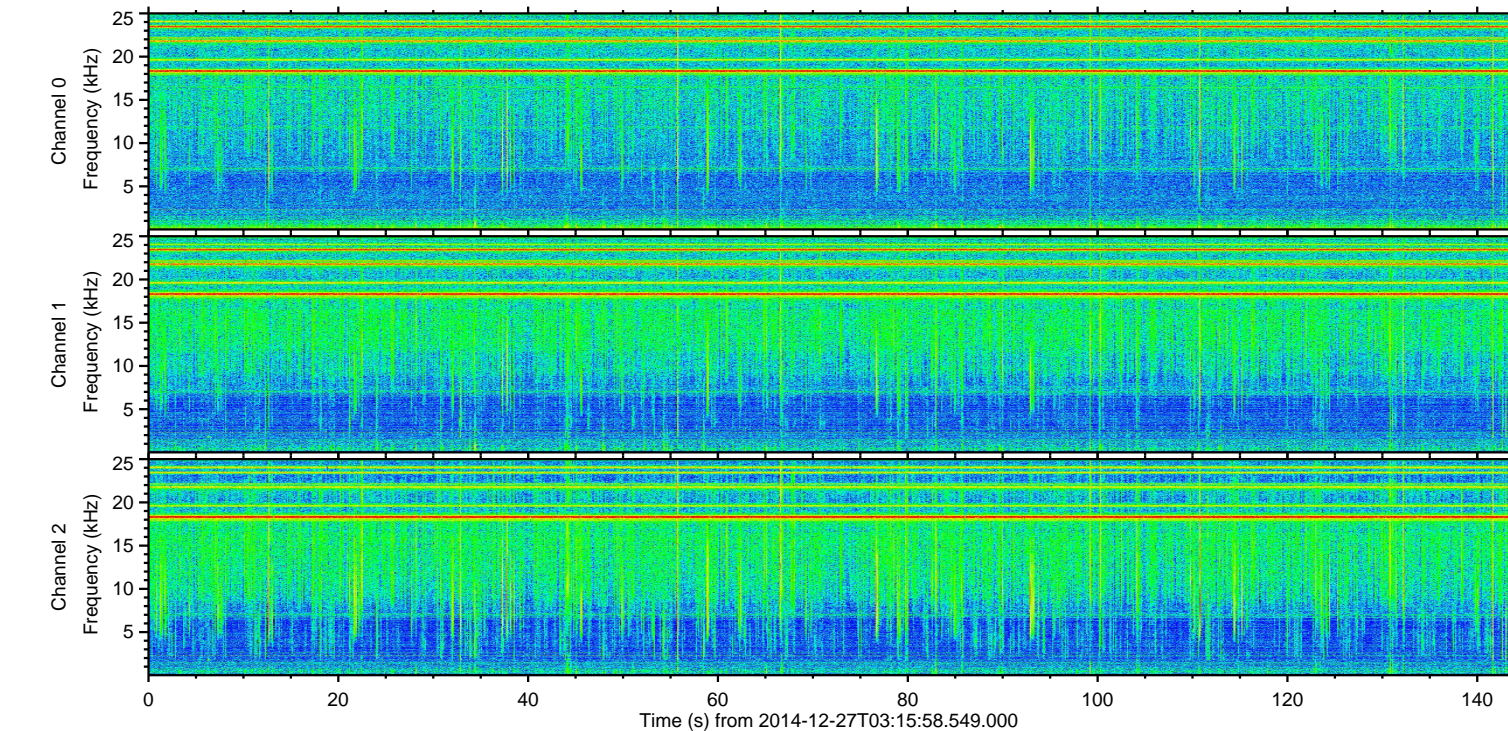
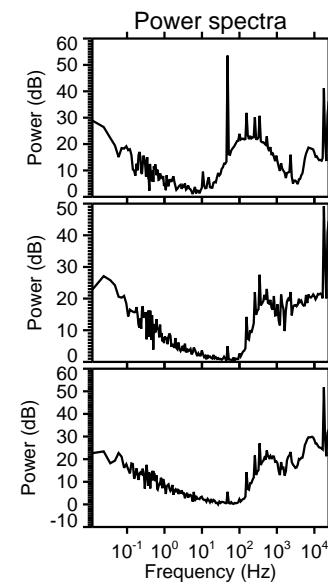
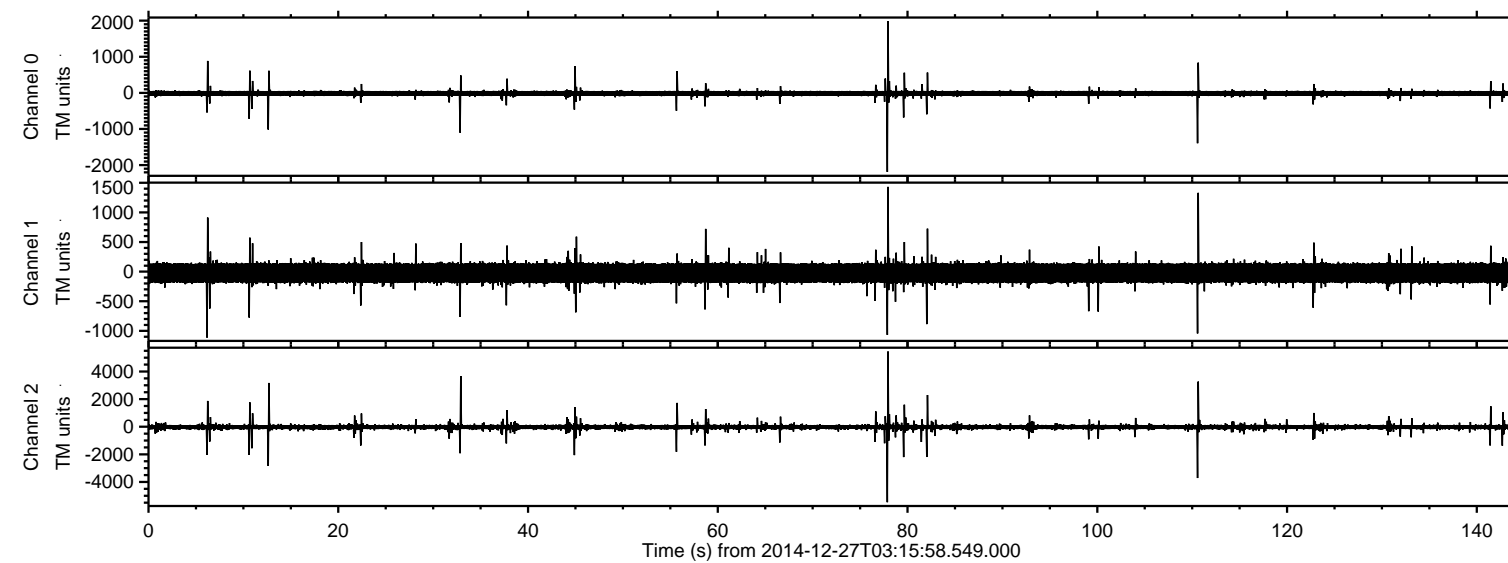


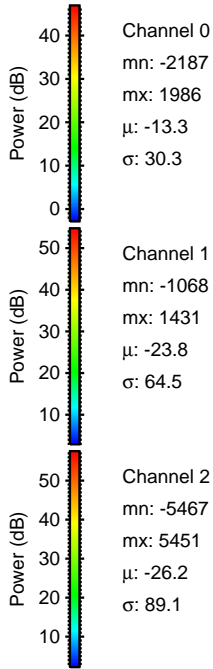
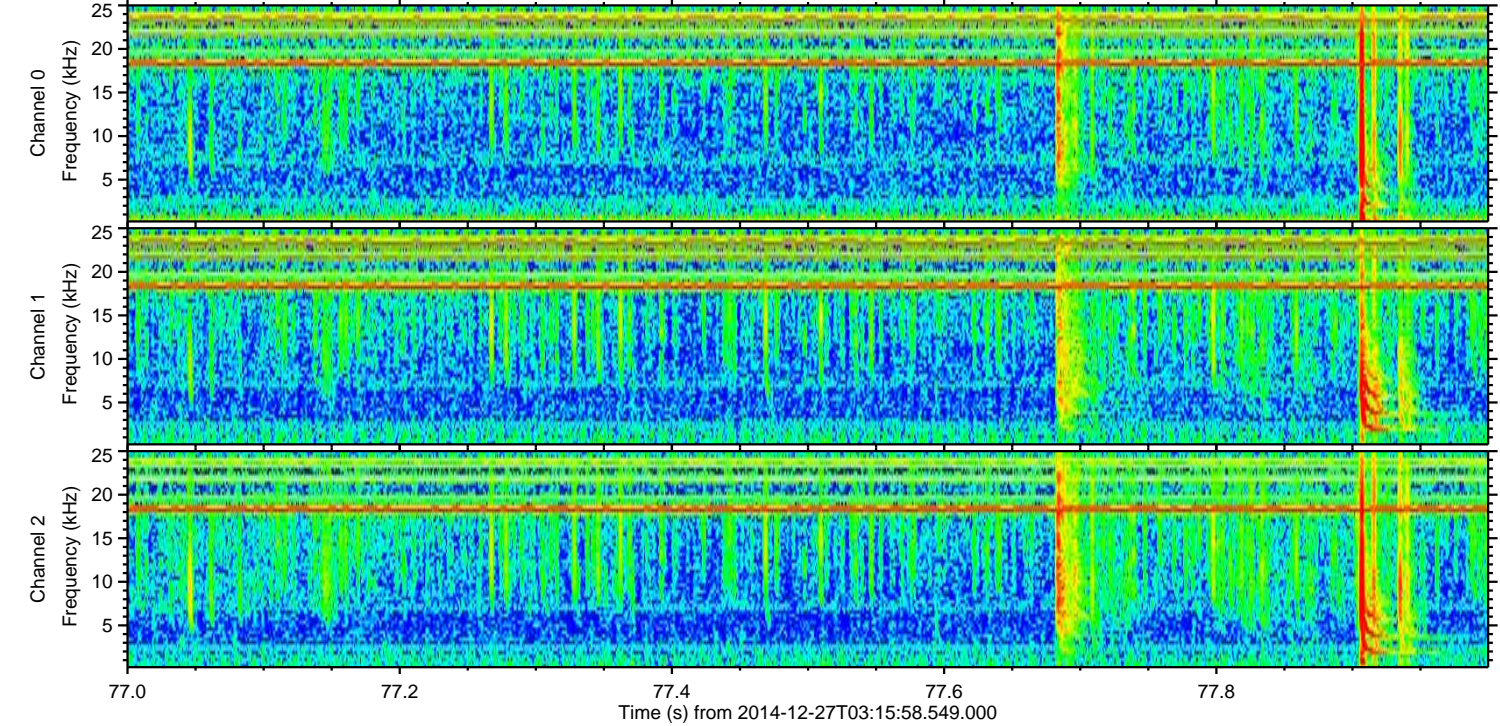
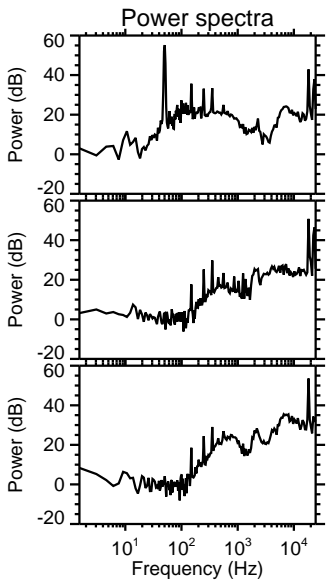
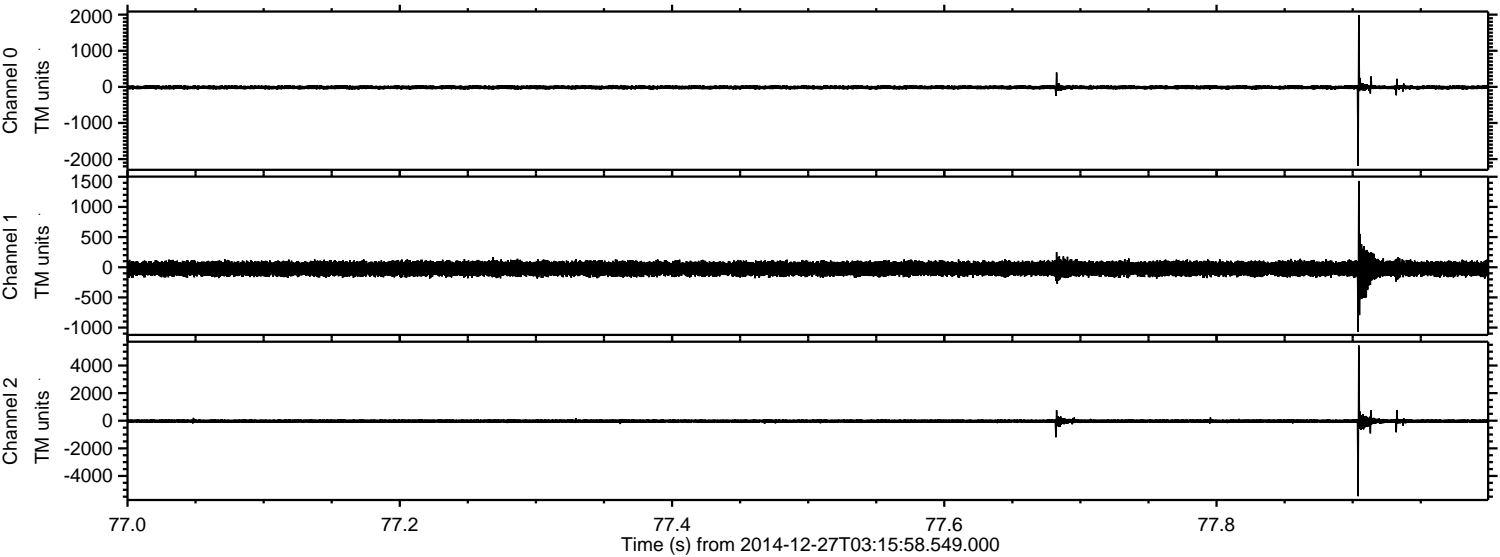
ELMAVAN 3D WAVEFORMS (Measured data sampled at 50 kHz) 49794 packets of 144 samples from 2014-12-27T03:15:58.549.000.

Processed Sat Dec 27 04:40:49 2014 by ELM ver.2012-10-06 from 001__elm20141227_031557__dat00.bin



ELMAVAN 3D WAVEFORMS (Measured data sampled at 50 kHz) 49794 packets of 144 samples from 2014-12-27T03:15:58.549.000. Part 78/144

Processed Sat Dec 27 04:41:02 2014 by ELM ver.2012-10-06 from 001__elm20141227_031557__dat00.bin



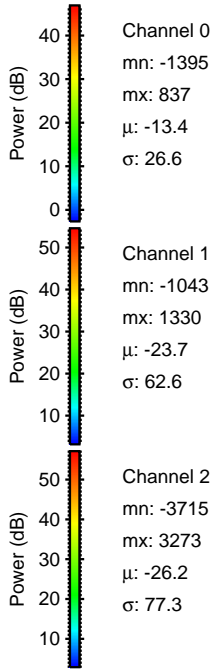
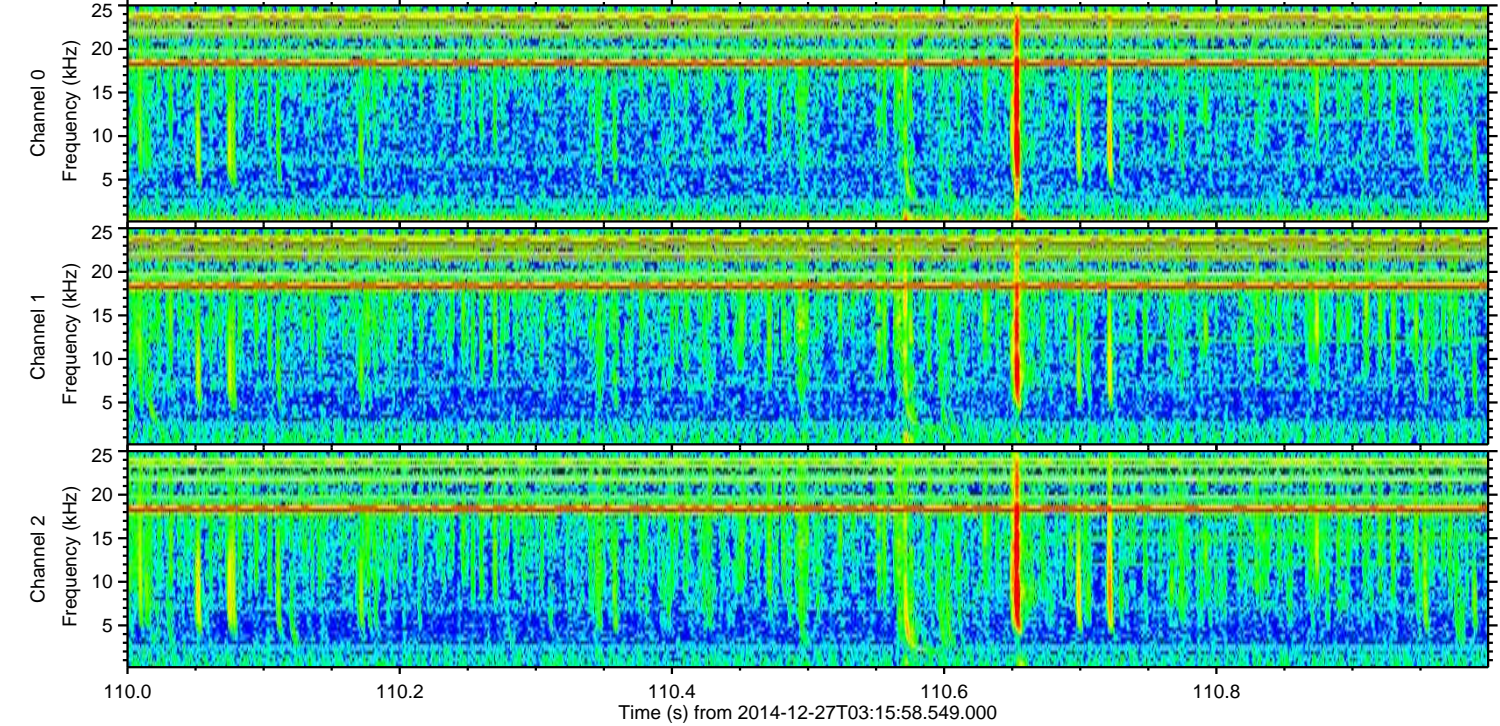
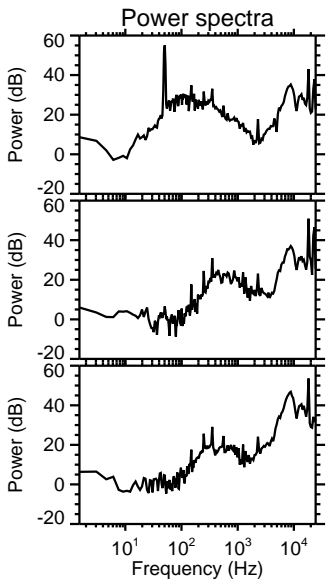
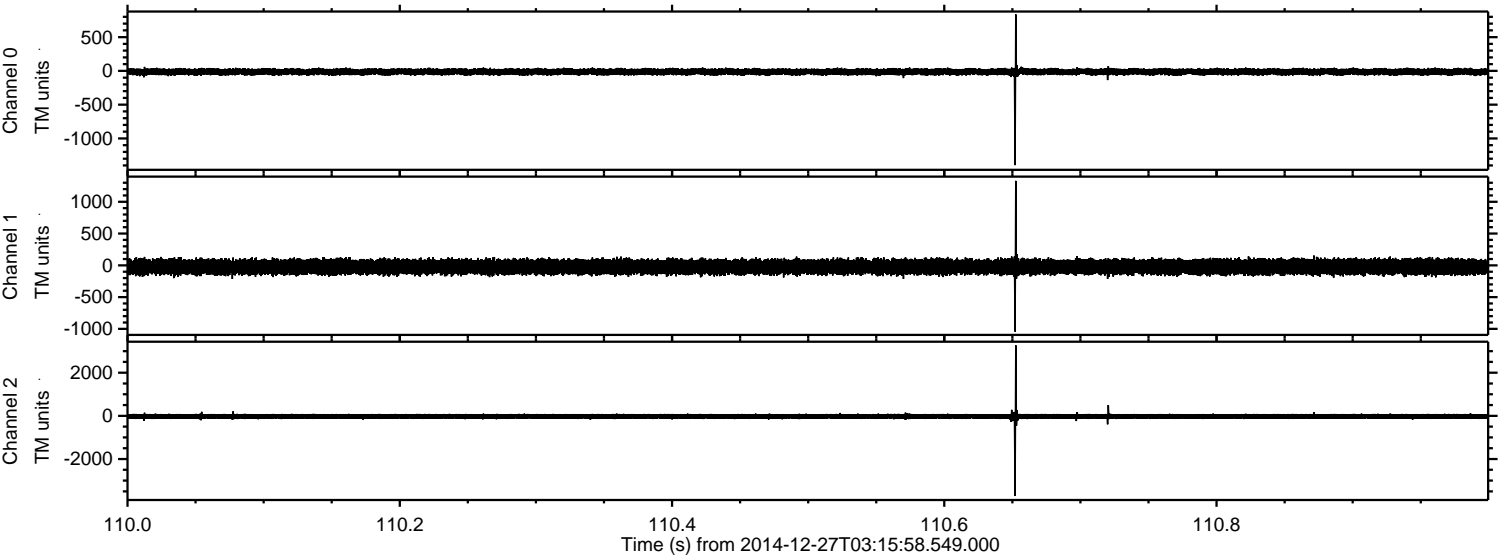
Channel 0
mn: -2187
mx: 1986
 μ : -13.3
 σ : 30.3

Channel 1
mn: -1068
mx: 1431
 μ : -23.8
 σ : 64.5

Channel 2
mn: -5467
mx: 5451
 μ : -26.2
 σ : 89.1

ELMAVAN 3D WAVEFORMS (Measured data sampled at 50 kHz) 49794 packets of 144 samples from 2014-12-27T03:15:58.549.000. Part 111/144

Processed Sat Dec 27 04:41:03 2014 by ELM ver.2012-10-06 from 001__elm20141227_031557__dat00.bin

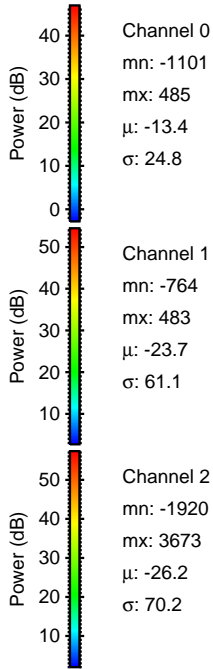
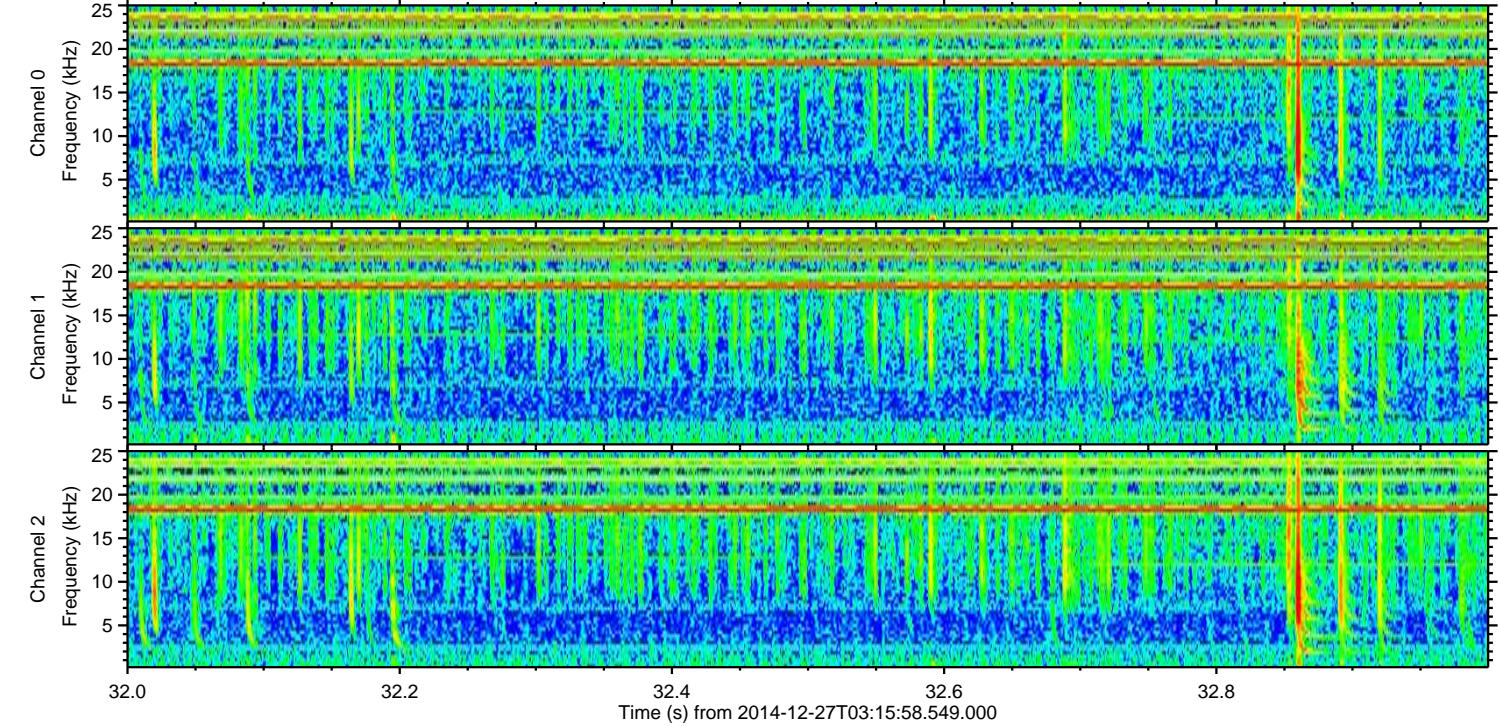
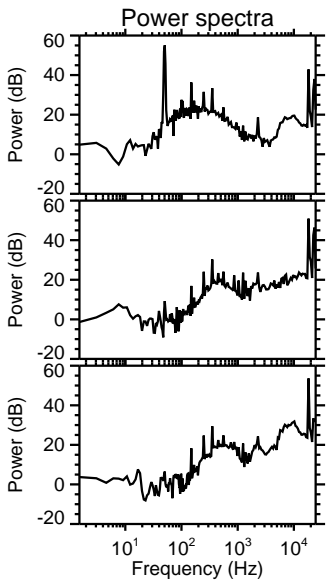
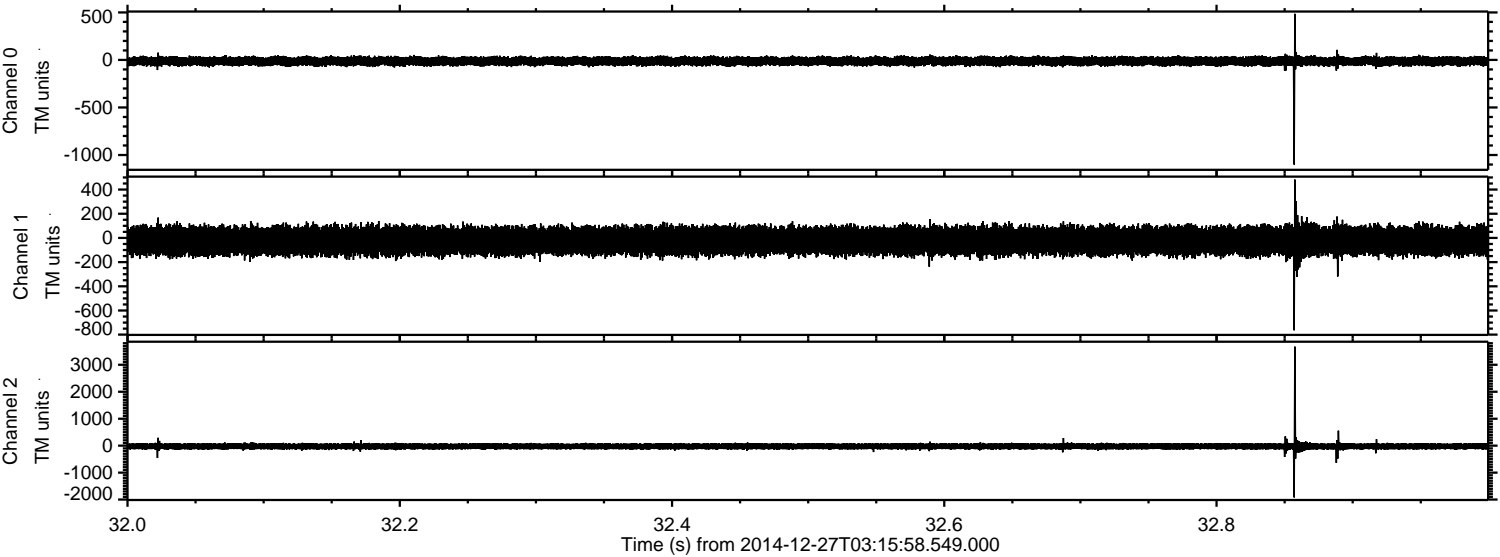


Channel 0
mn: -1395
mx: 837
 μ : -13.4
 σ : 26.6

Channel 1
mn: -1043
mx: 1330
 μ : -23.7
 σ : 62.6

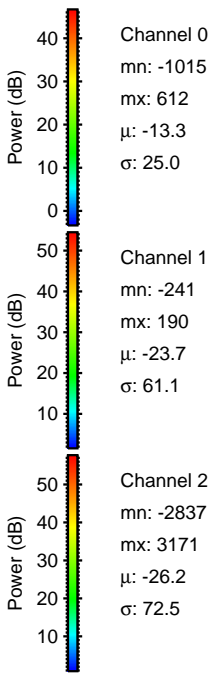
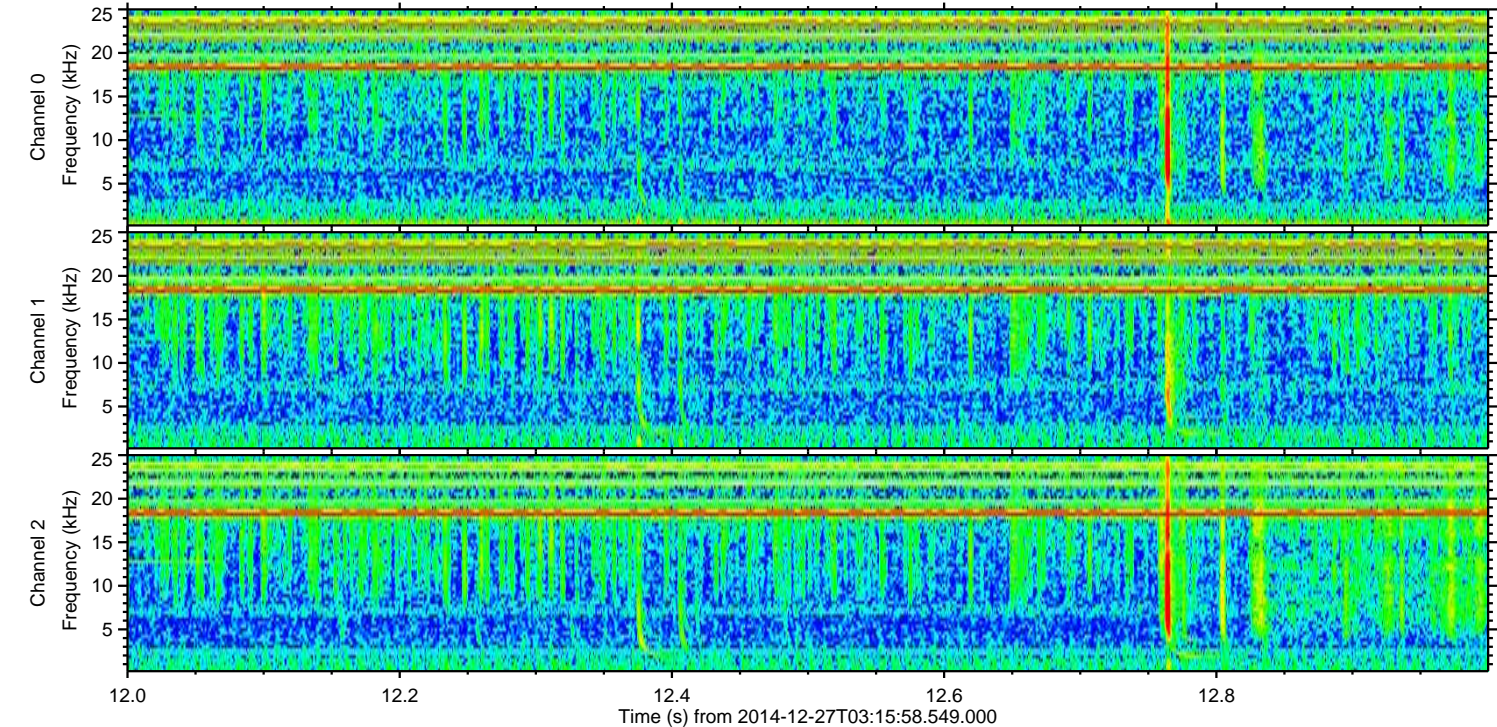
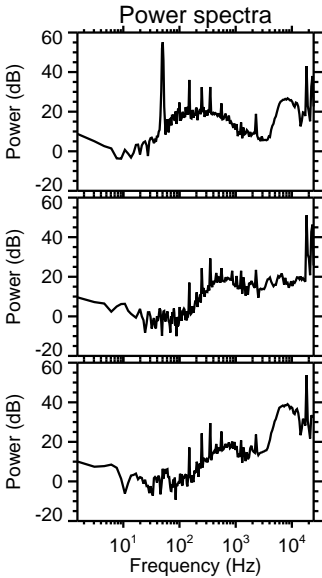
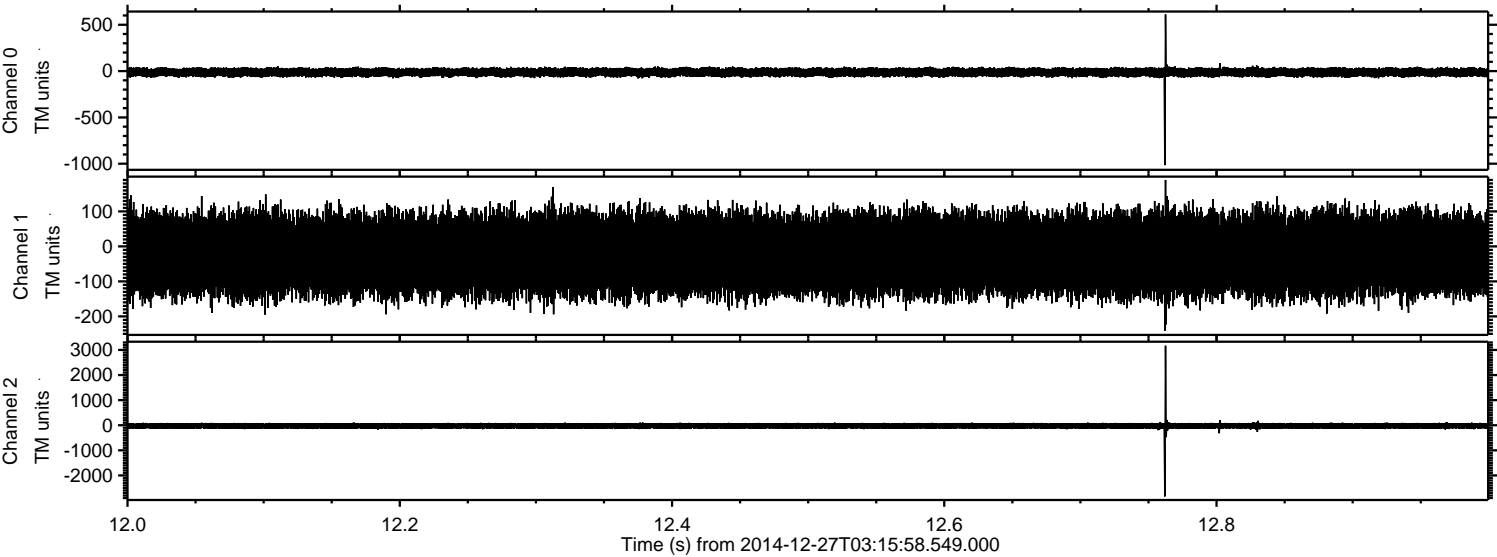
Channel 2
mn: -3715
mx: 3273
 μ : -26.2
 σ : 77.3

Processed Sat Dec 27 04:41:04 2014 by ELM ver.2012-10-06 from 001__elm20141227_031557__dat00.bin

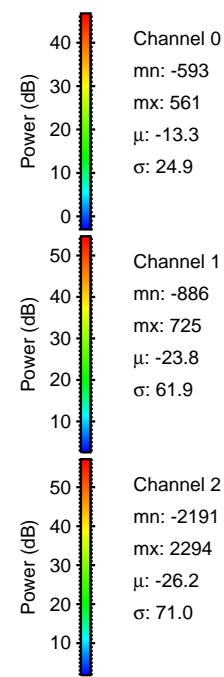
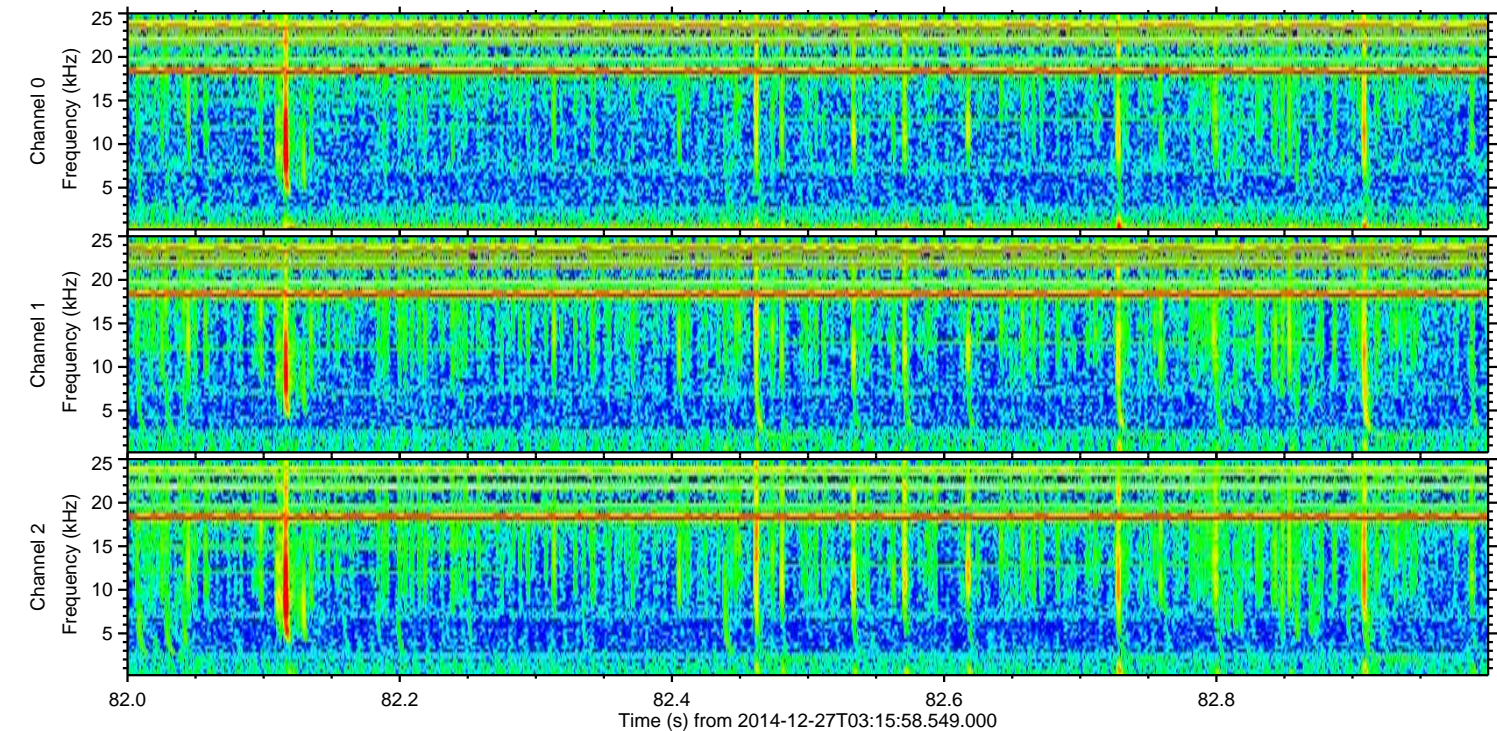
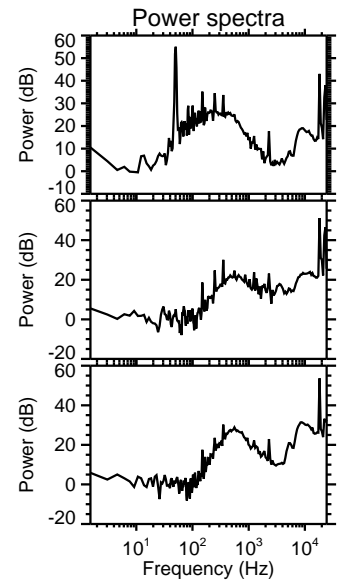
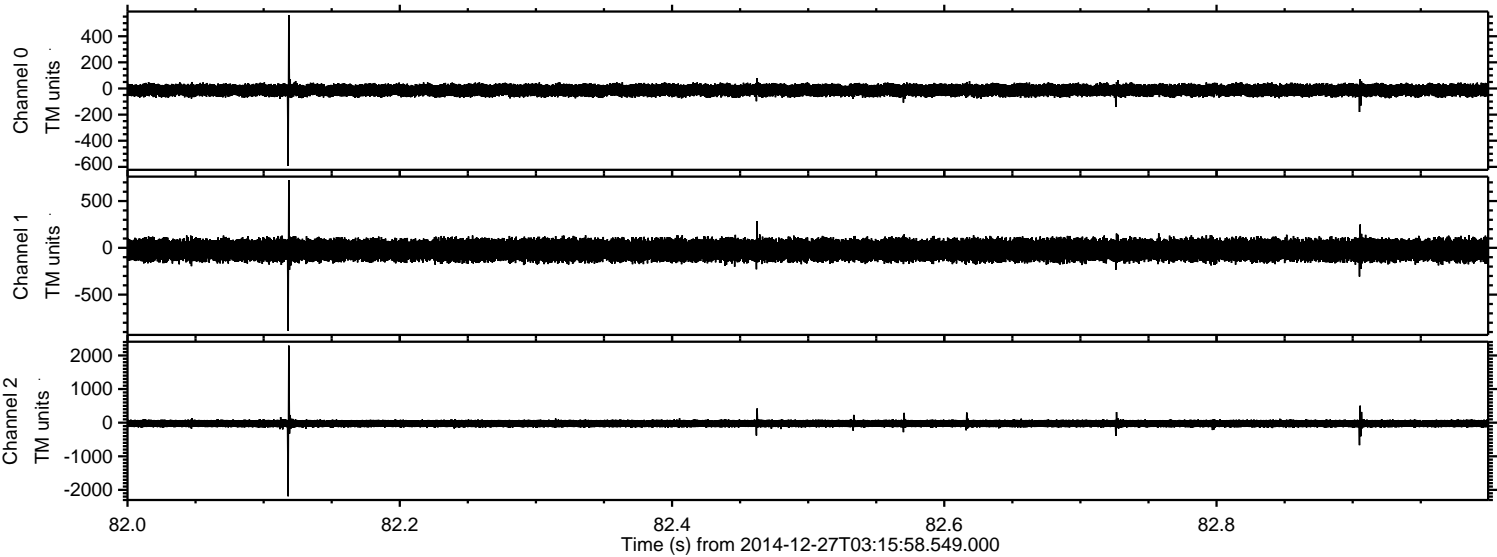


ELMAVAN 3D WAVEFORMS (Measured data sampled at 50 kHz) 49794 packets of 144 samples from 2014-12-27T03:15:58.549.000. Part 13/144

Processed Sat Dec 27 04:41:05 2014 by ELM ver.2012-10-06 from 001__elm20141227_031557__dat00.bin

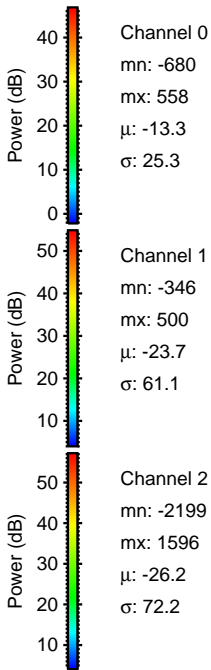
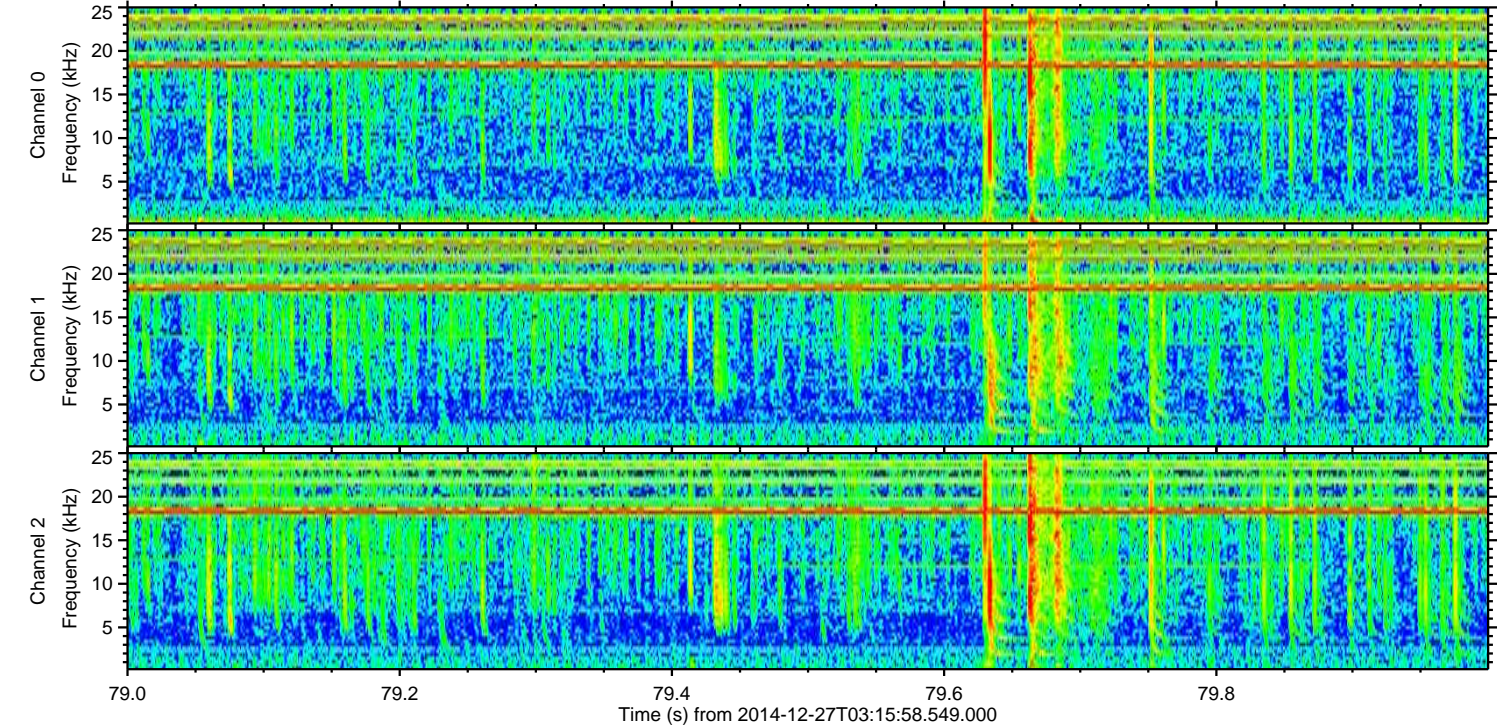
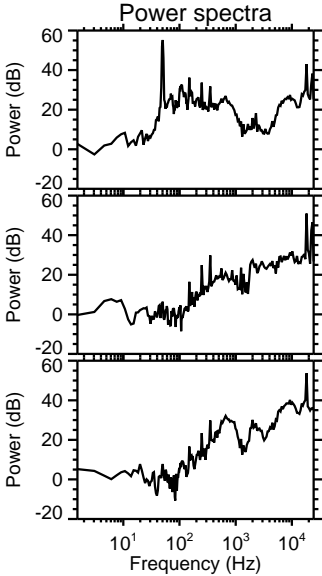
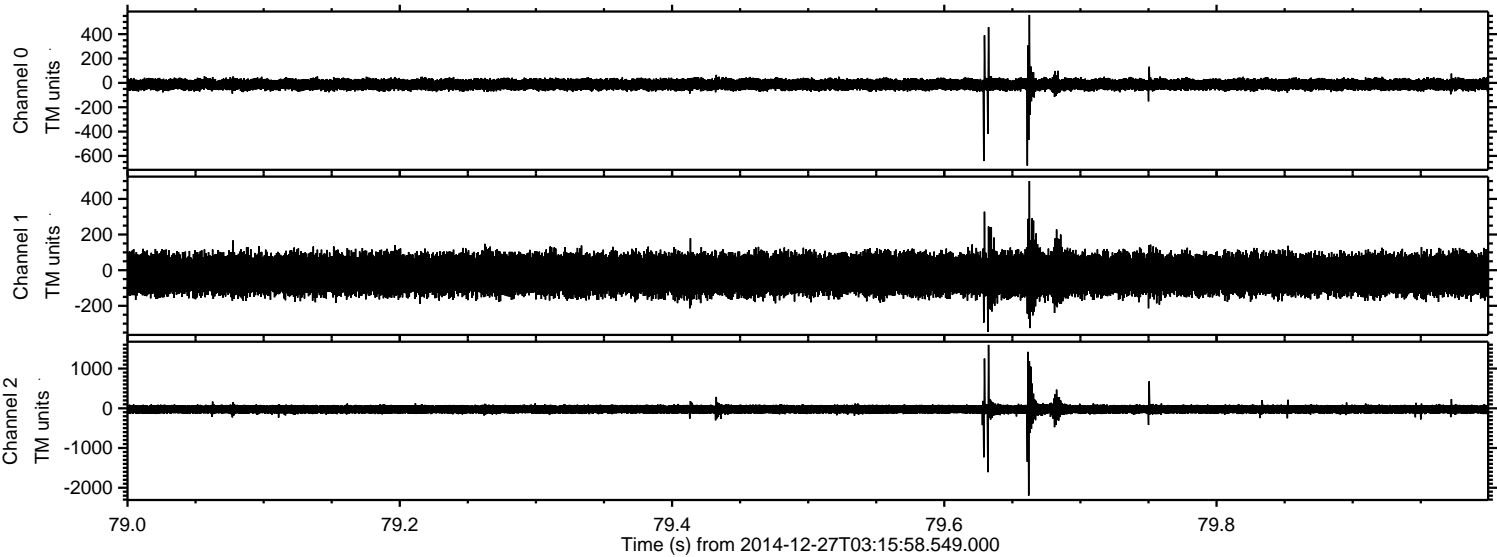


Processed Sat Dec 27 04:41:05 2014 by ELM ver.2012-10-06 from 001__elm20141227_031557__dat00.bin



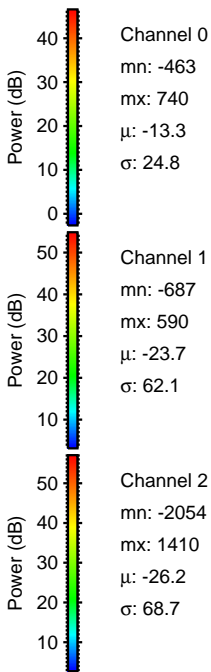
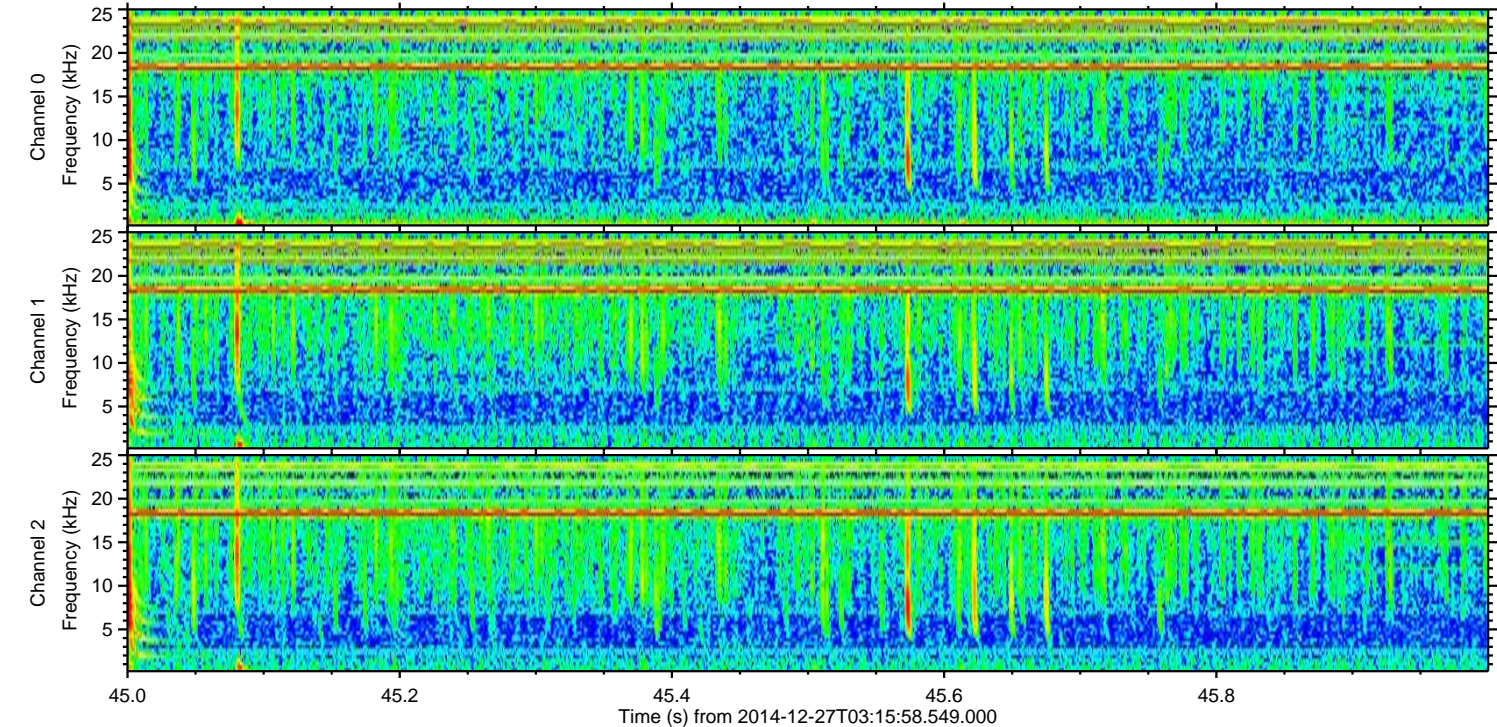
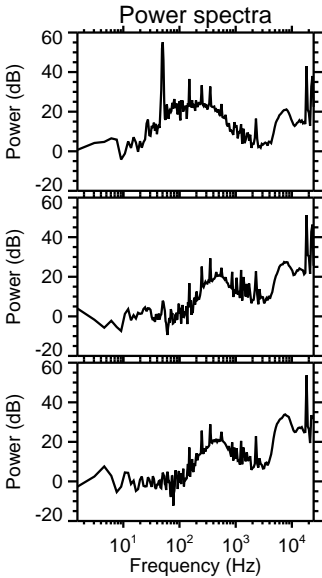
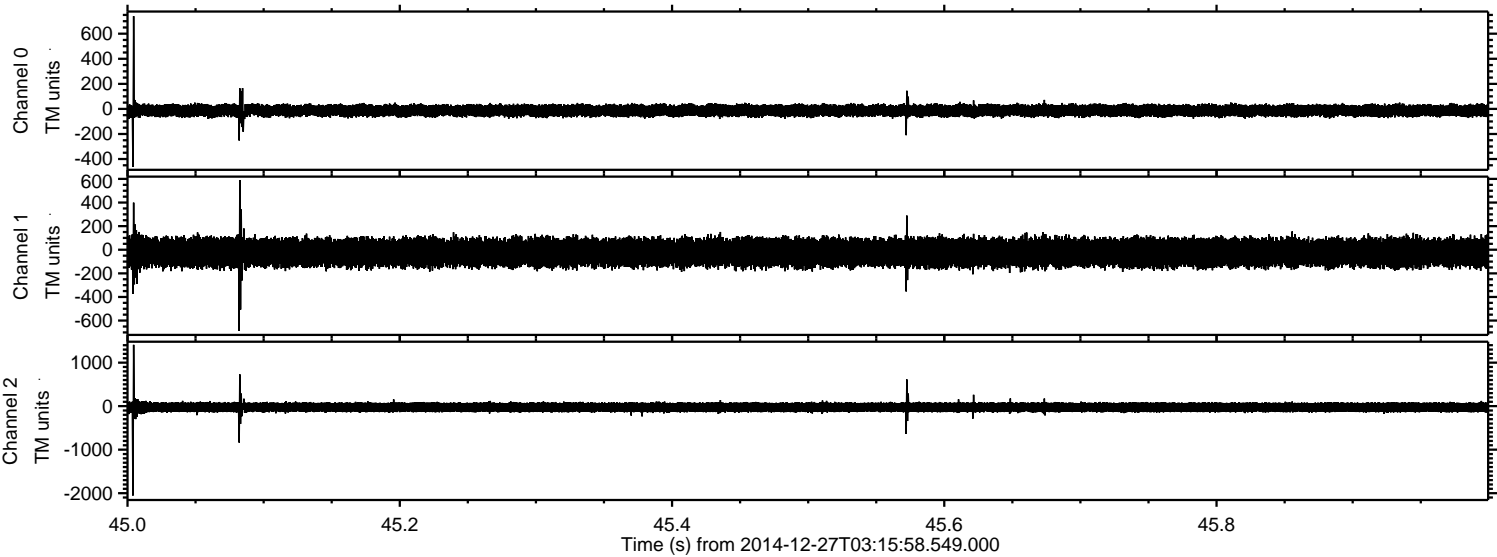
ELMAVAN 3D WAVEFORMS (Measured data sampled at 50 kHz) 49794 packets of 144 samples from 2014-12-27T03:15:58.549.000. Part 80/144

Processed Sat Dec 27 04:41:06 2014 by ELM ver.2012-10-06 from 001__elm20141227_031557__dat00.bin



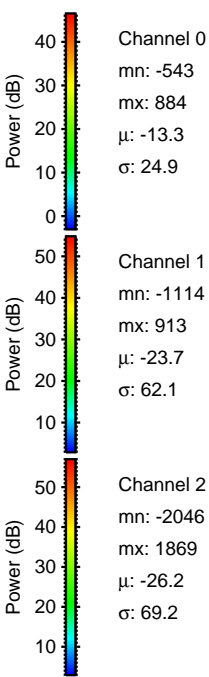
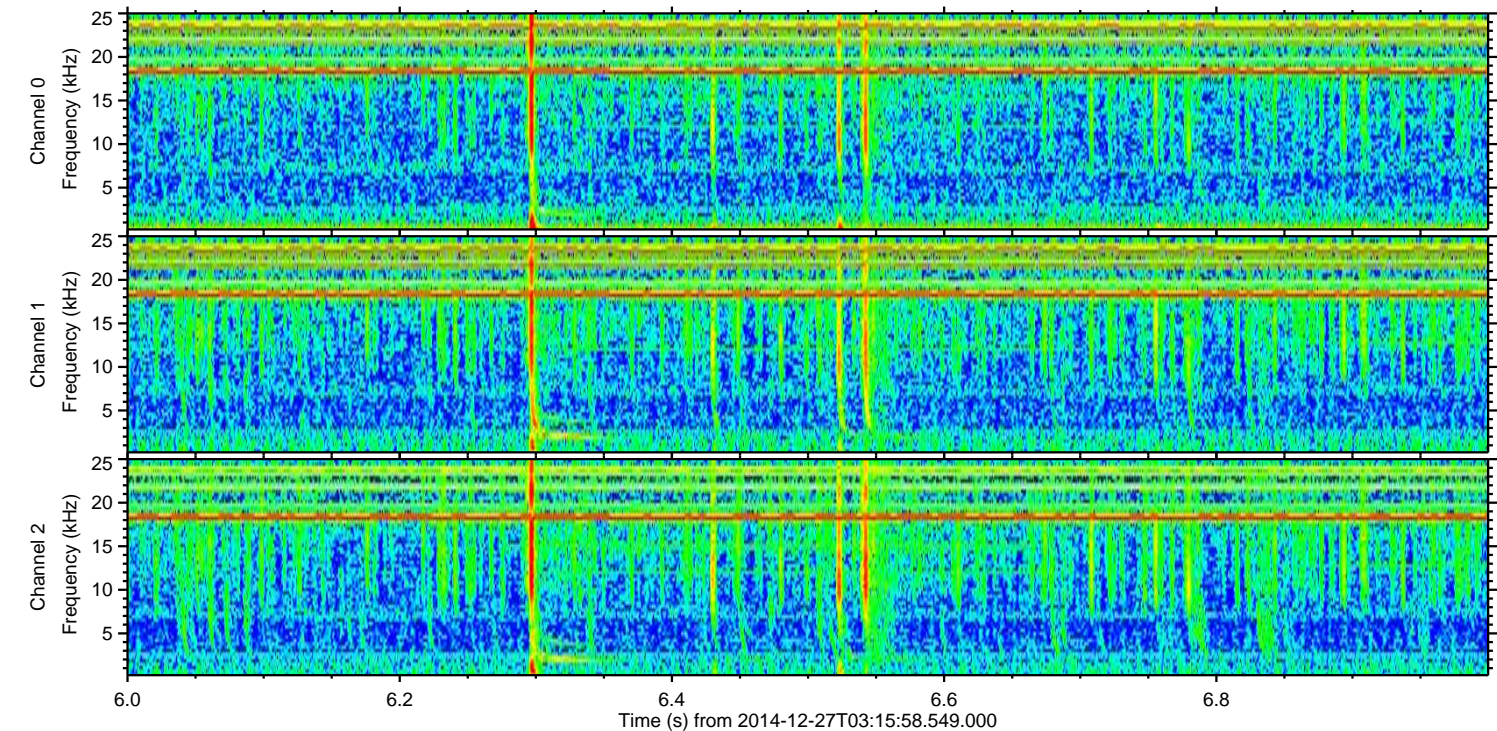
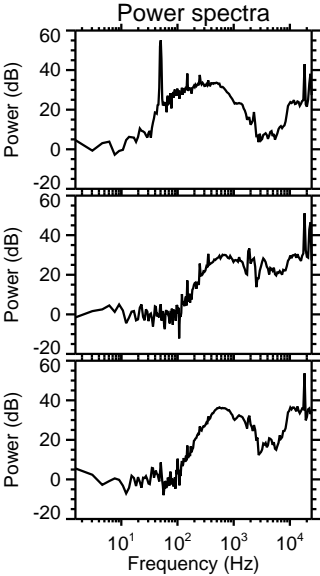
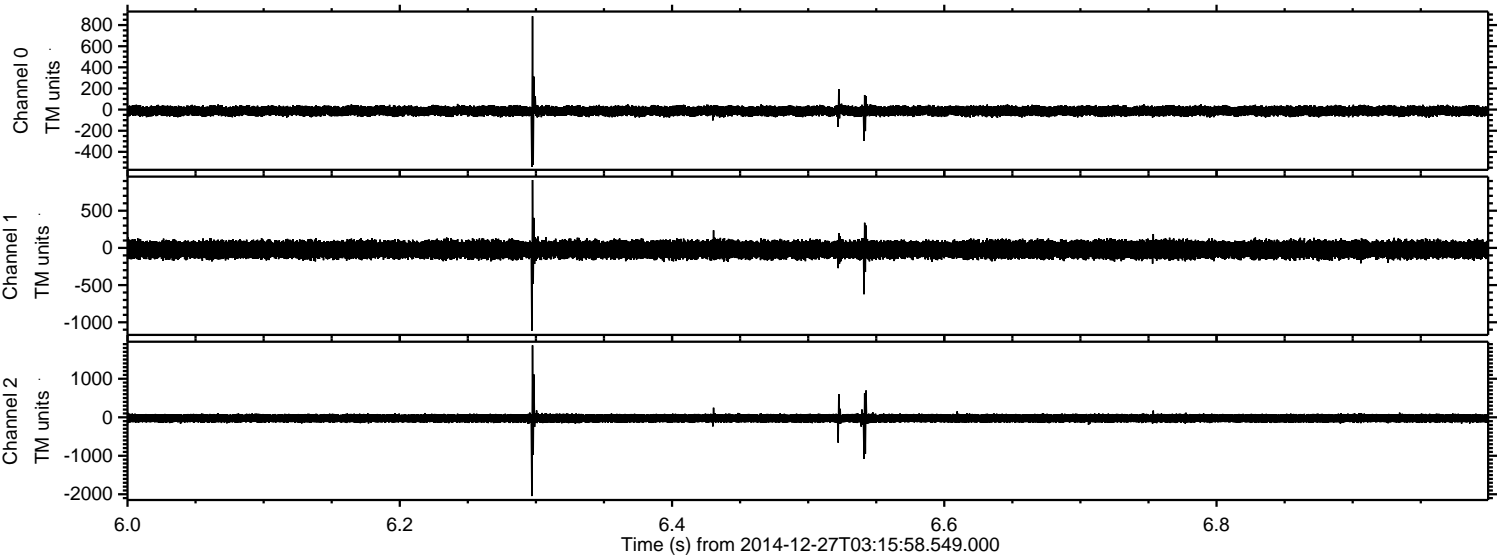
ELMAVAN 3D WAVEFORMS (Measured data sampled at 50 kHz) 49794 packets of 144 samples from 2014-12-27T03:15:58.549.000. Part 46/144

Processed Sat Dec 27 04:41:07 2014 by ELM ver.2012-10-06 from 001__elm20141227_031557__dat00.bin



ELMAVAN 3D WAVEFORMS (Measured data sampled at 50 kHz) 49794 packets of 144 samples from 2014-12-27T03:15:58.549.000. Part 7/144

Processed Sat Dec 27 04:41:08 2014 by ELM ver.2012-10-06 from 001__elm20141227_031557__dat00.bin



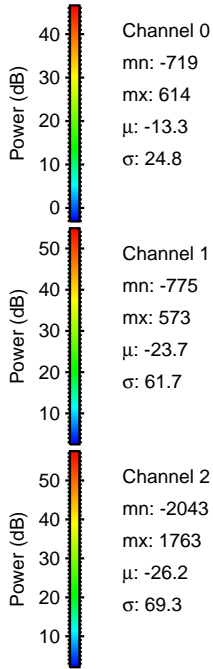
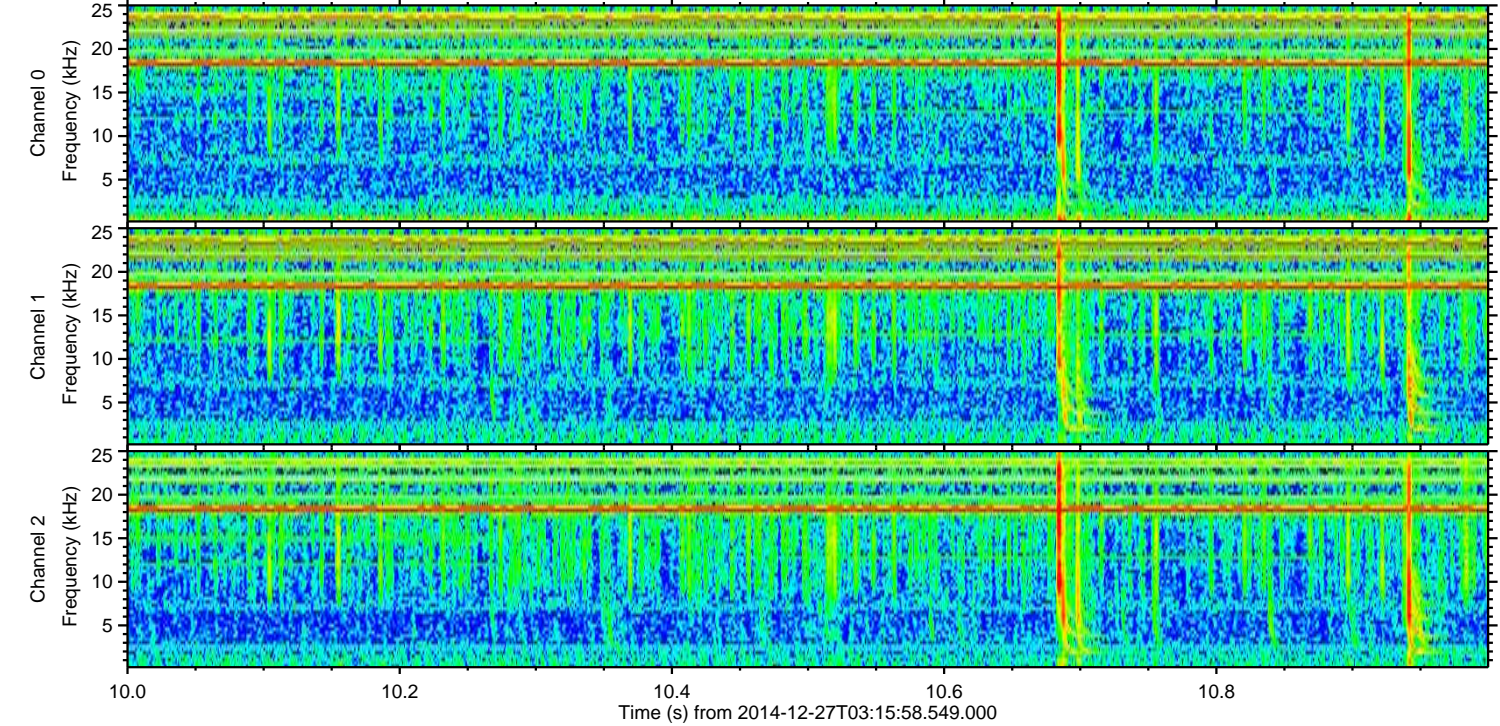
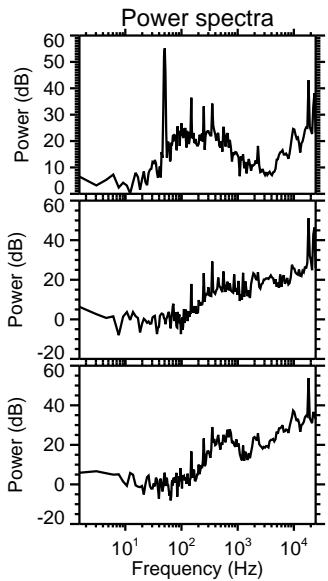
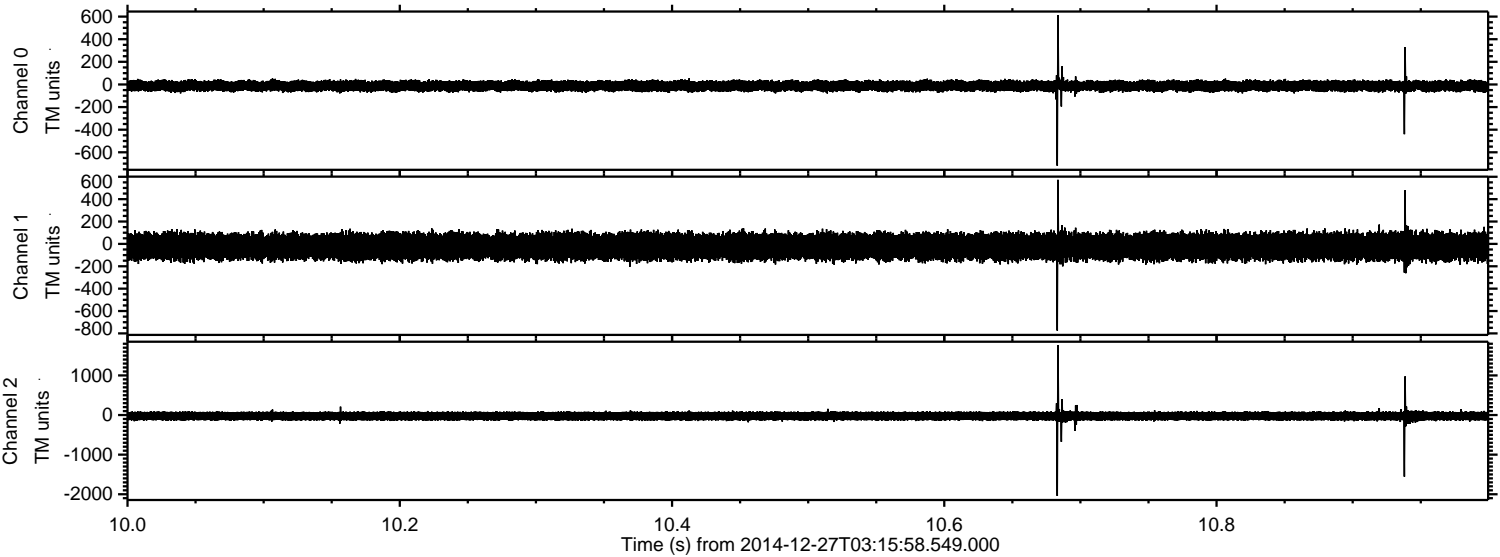
Channel 0
mn: -543
mx: 884
 μ : -13.3
 σ : 24.9

Channel 1
mn: -1114
mx: 913
 μ : -23.7
 σ : 62.1

Channel 2
mn: -2046
mx: 1869
 μ : -26.2
 σ : 69.2

ELMAVAN 3D WAVEFORMS (Measured data sampled at 50 kHz) 49794 packets of 144 samples from 2014-12-27T03:15:58.549.000. Part 11/144

Processed Sat Dec 27 04:41:09 2014 by ELM ver.2012-10-06 from 001__elm20141227_031557__dat00.bin



ELMAVAN 3D WAVEFORMS (Measured data sampled at 50 kHz) 49794 packets of 144 samples from 2014-12-27T03:15:58.549.000. Part 102/144

