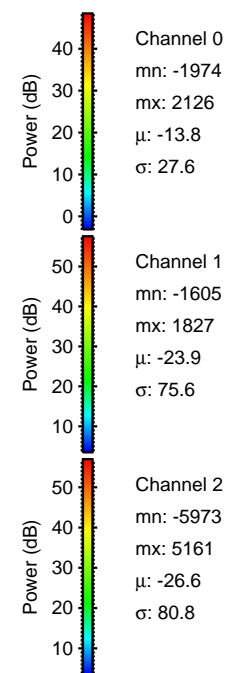
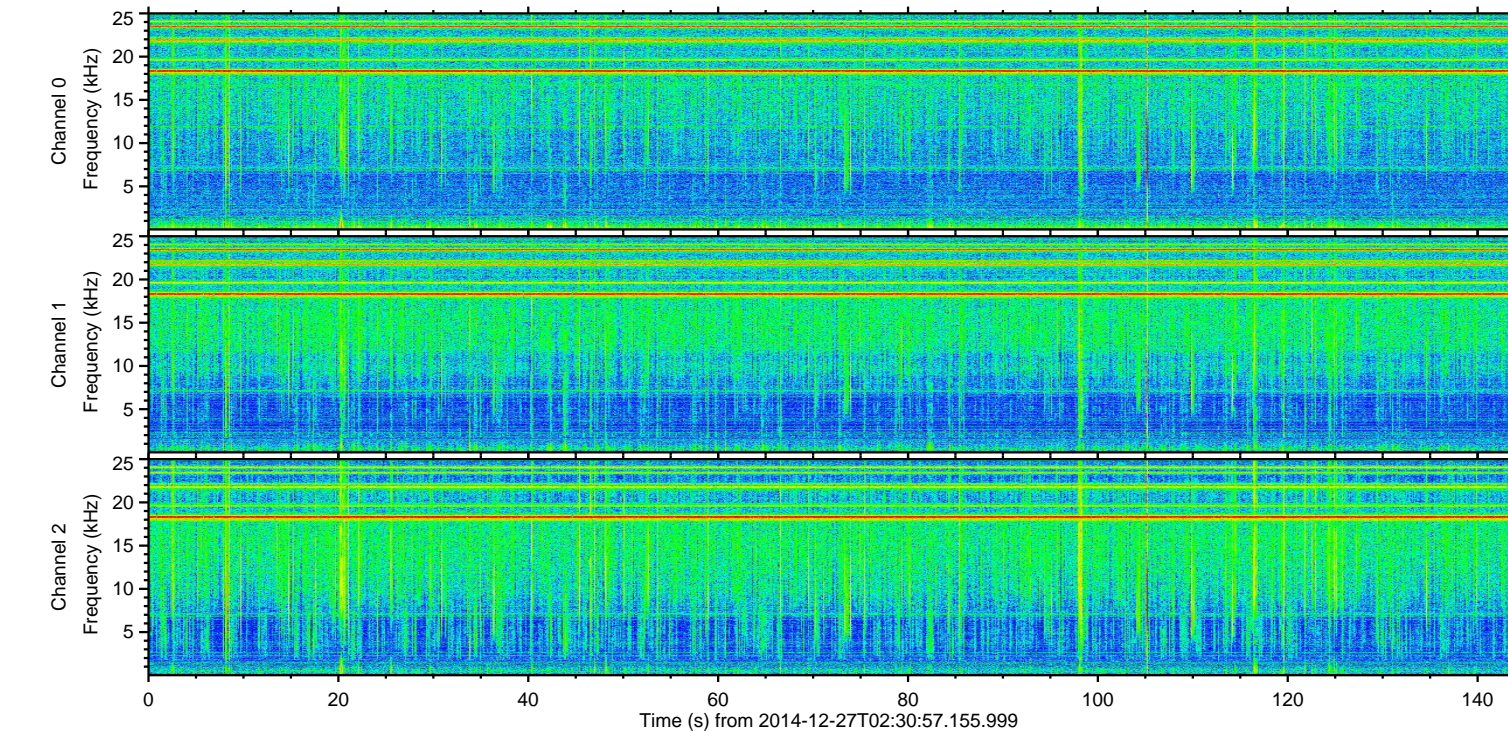
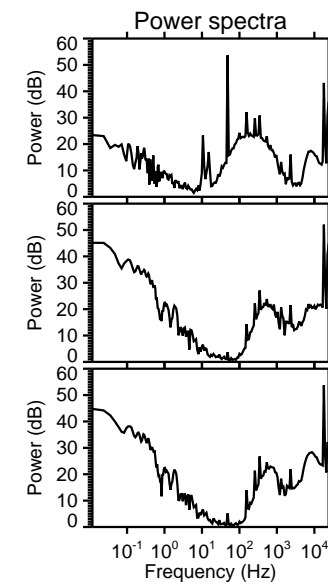
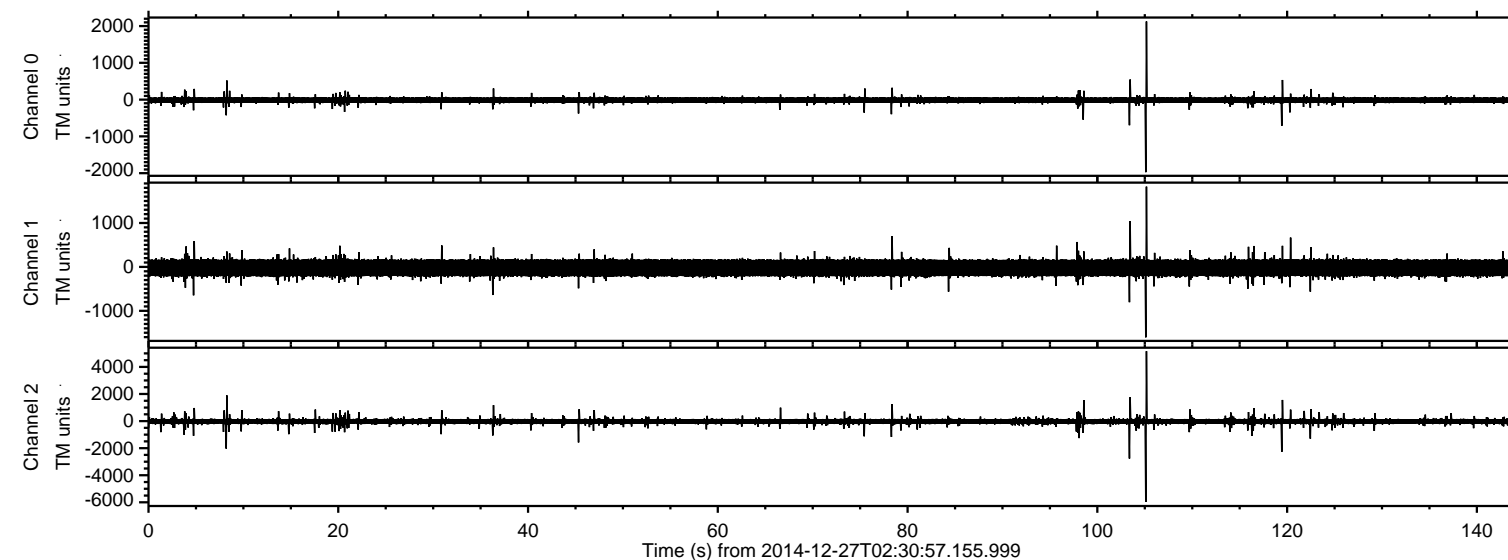


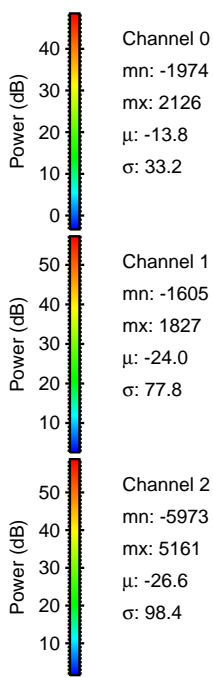
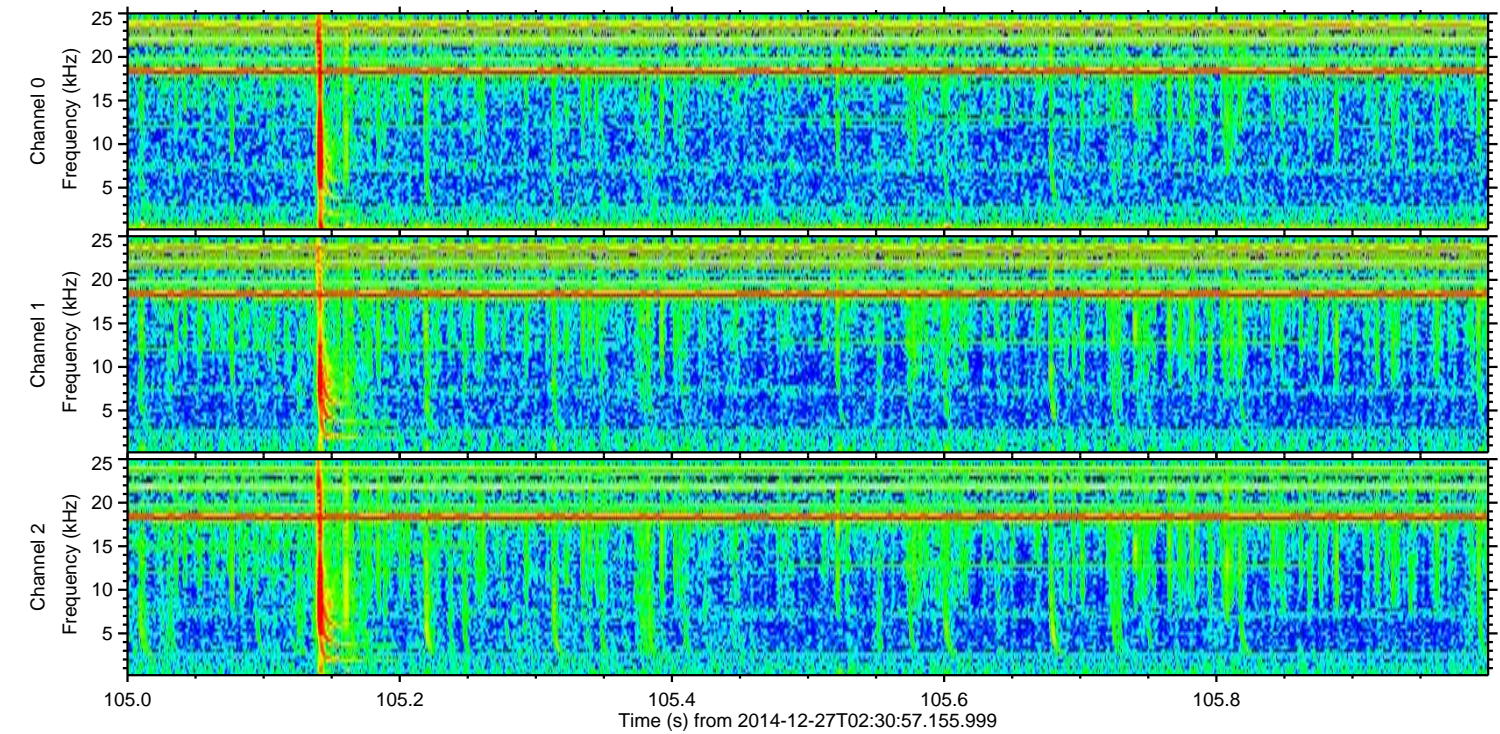
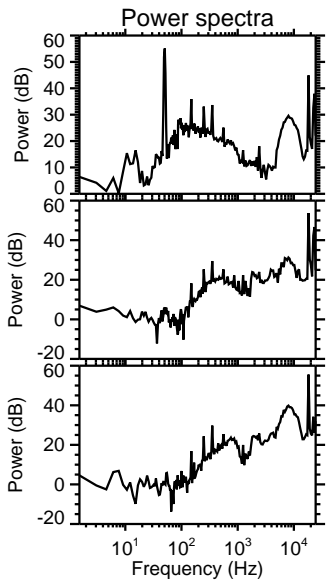
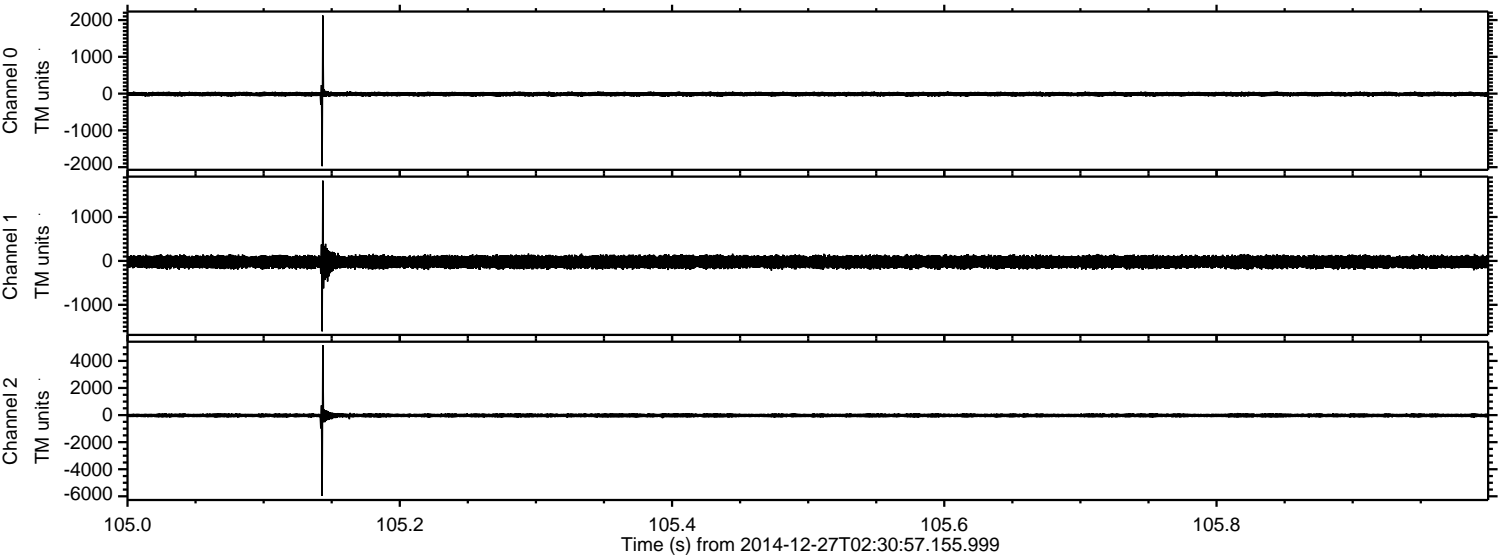
ELMAVAN 3D WAVEFORMS (Measured data sampled at 50 kHz) 49791 packets of 144 samples from 2014-12-27T02:30:57.155.999.

Processed Sat Dec 27 03:50:28 2014 by ELM ver.2012-10-06 from 001__elm20141227_023056__dat00.bin



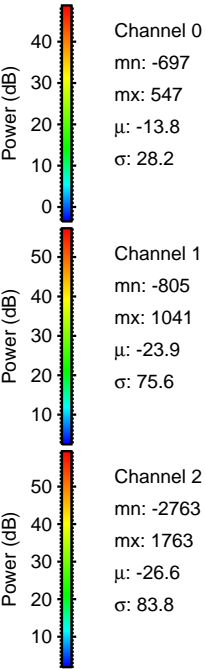
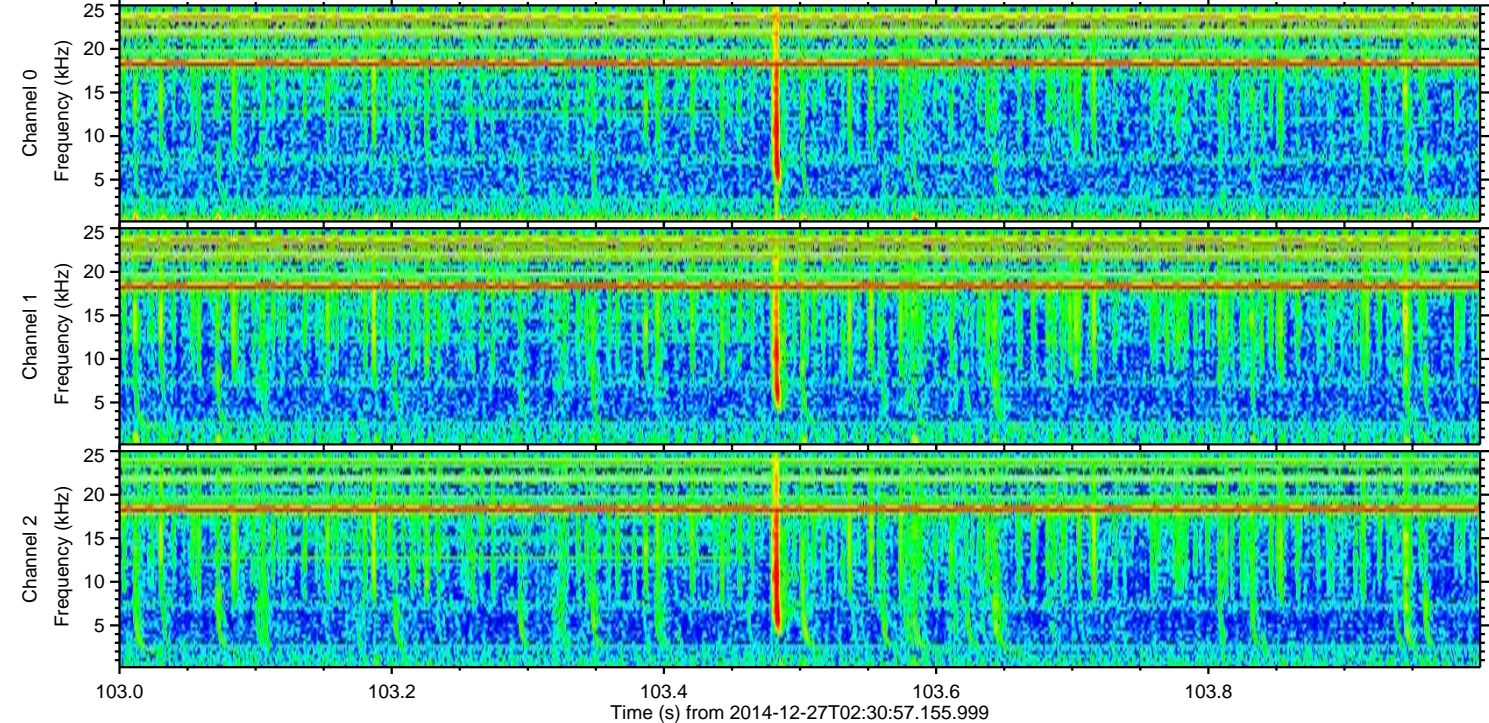
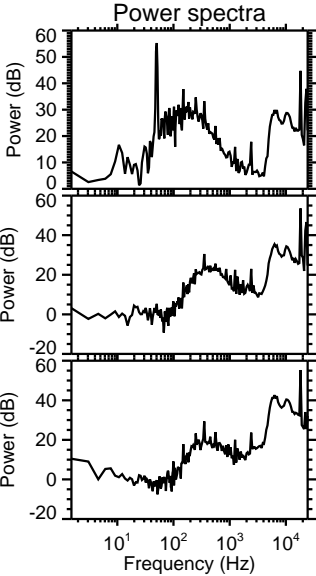
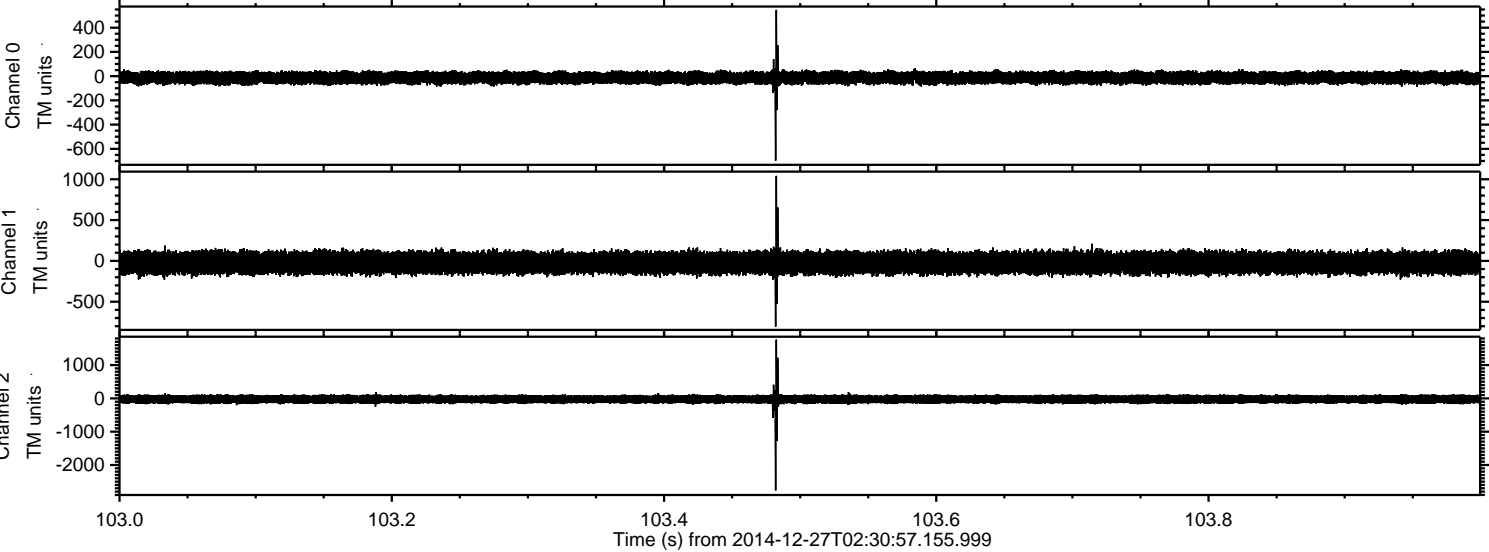
ELMAVAN 3D WAVEFORMS (Measured data sampled at 50 kHz) 49791 packets of 144 samples from 2014-12-27T02:30:57.155.999. Part 106/144

Processed Sat Dec 27 03:50:41 2014 by ELM ver.2012-10-06 from 001__elm20141227_023056__dat00.bin



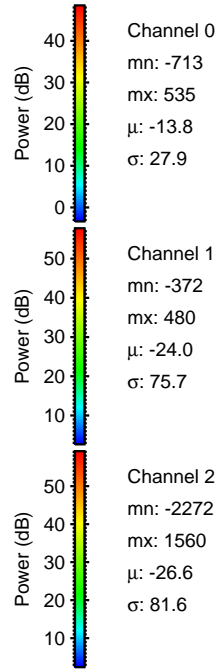
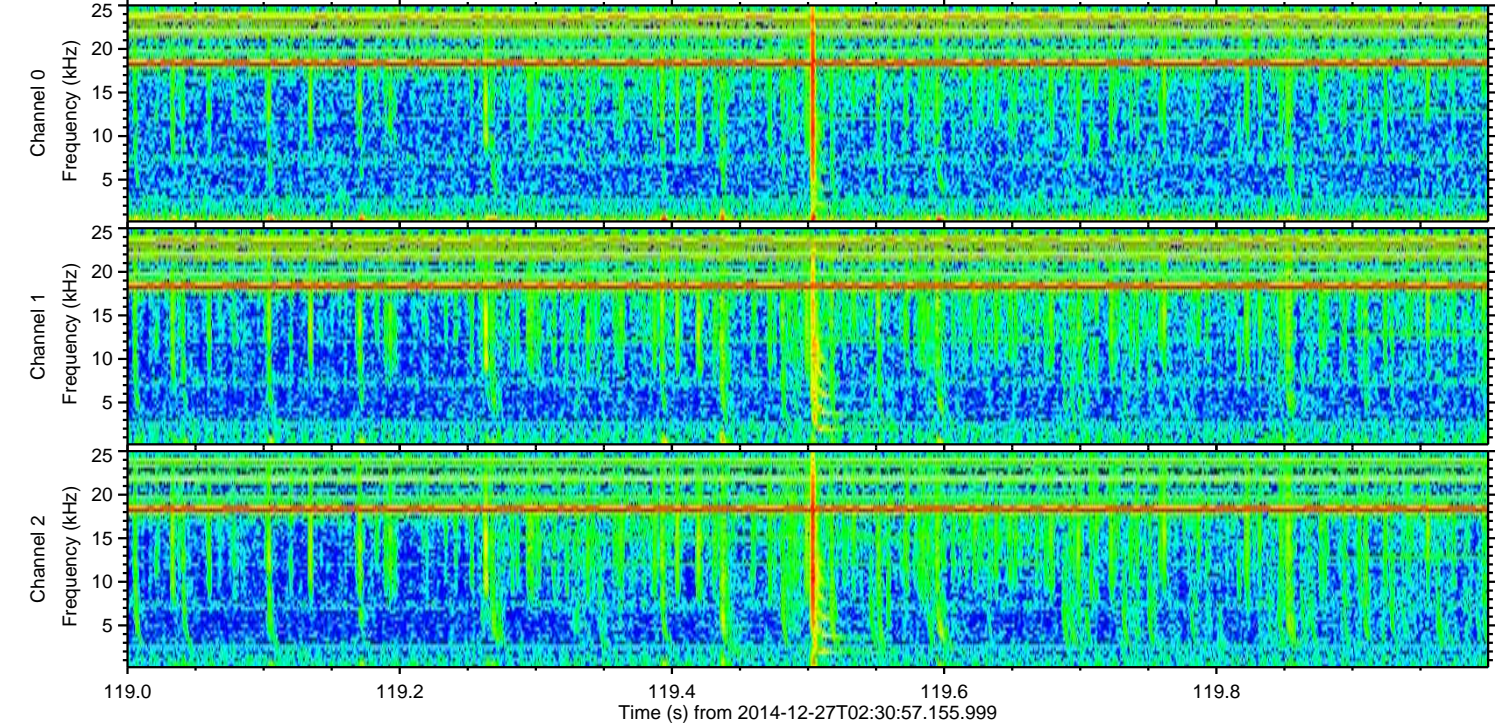
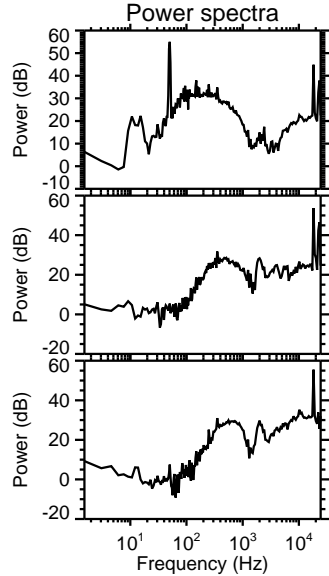
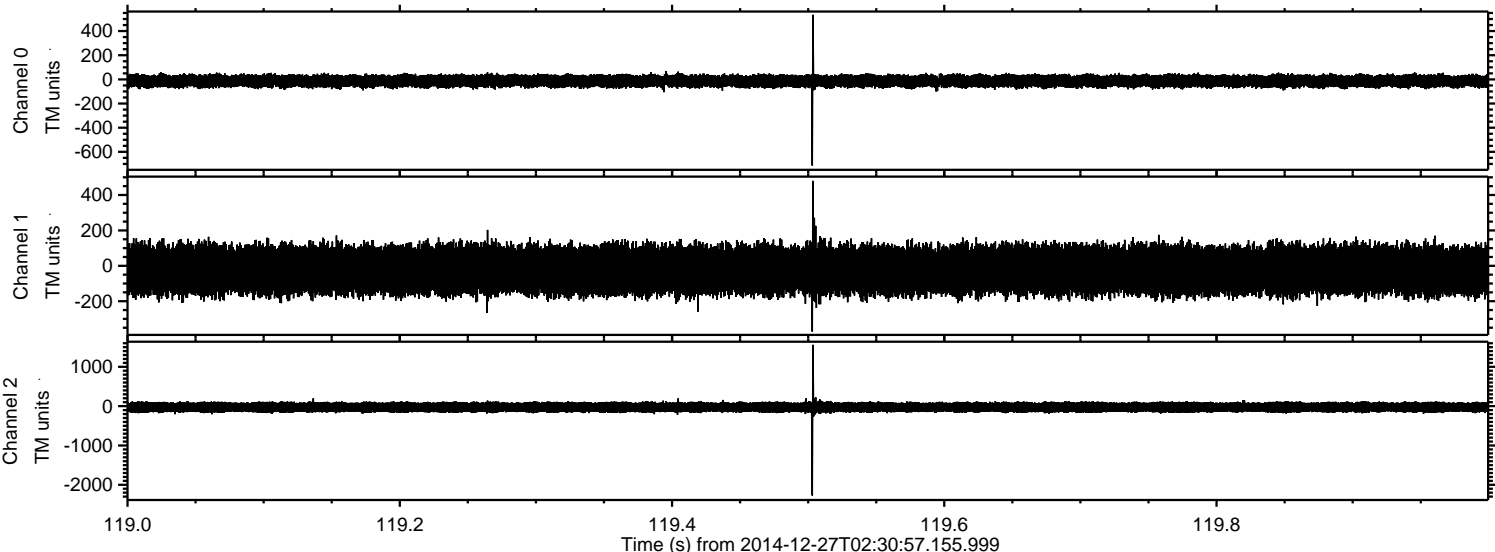
ELMAVAN 3D WAVEFORMS (Measured data sampled at 50 kHz) 49791 packets of 144 samples from 2014-12-27T02:30:57.155.999. Part 104/144

Processed Sat Dec 27 03:50:42 2014 by ELM ver.2012-10-06 from 001__elm20141227_023056__dat00.bin



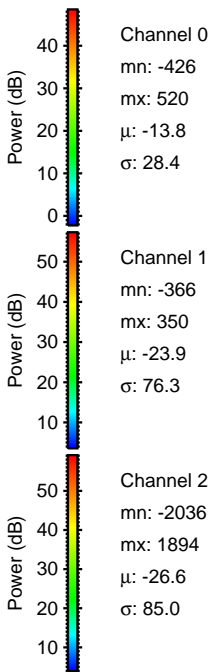
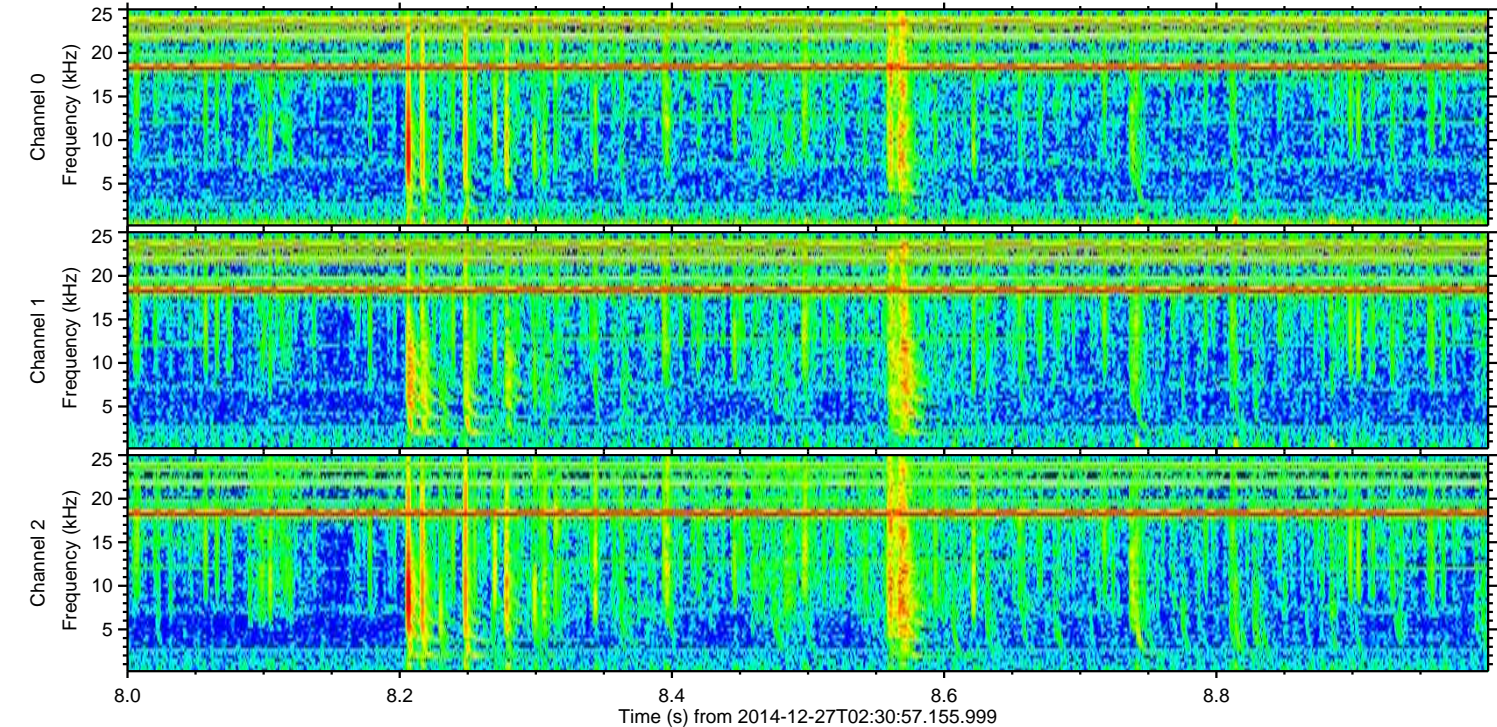
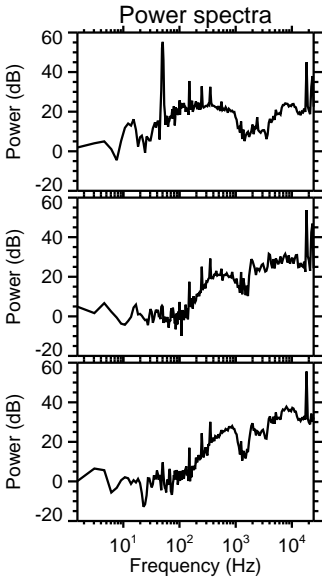
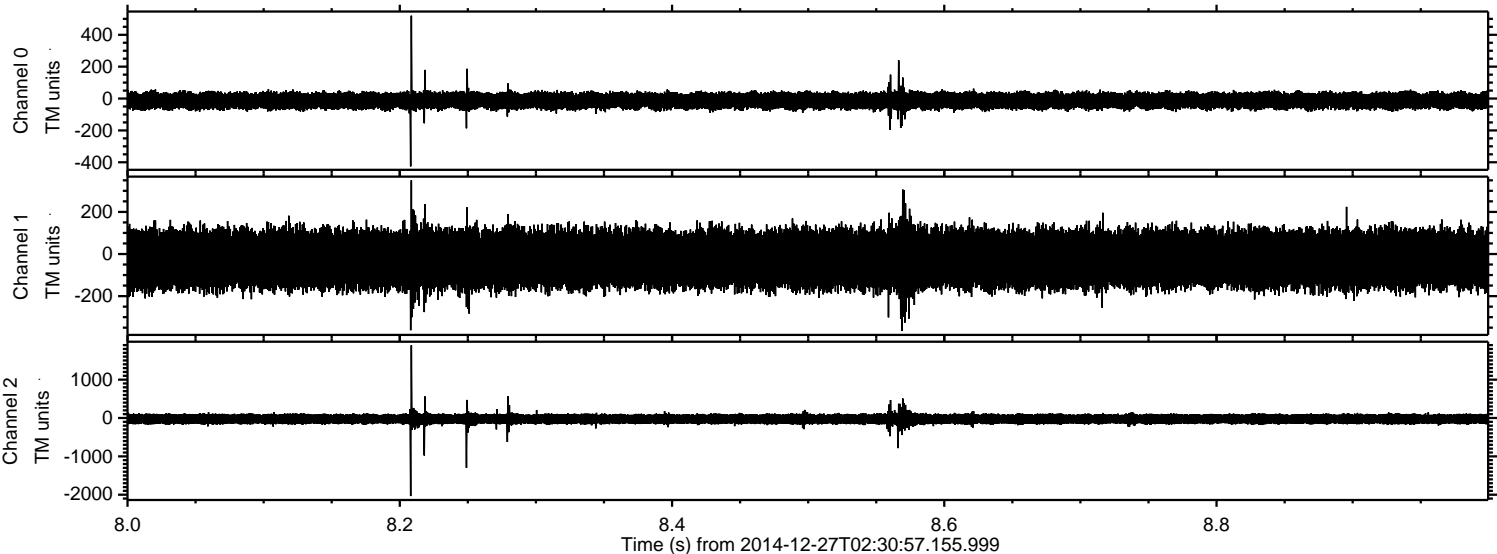
ELMAVAN 3D WAVEFORMS (Measured data sampled at 50 kHz) 49791 packets of 144 samples from 2014-12-27T02:30:57.155.999. Part 120/144

Processed Sat Dec 27 03:50:43 2014 by ELM ver.2012-10-06 from 001__elm20141227_023056__dat00.bin



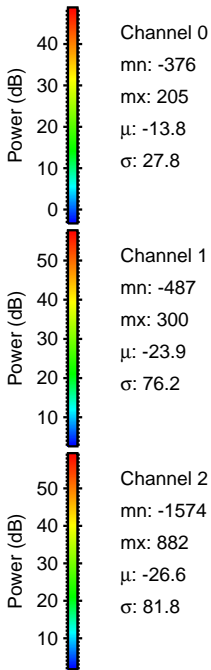
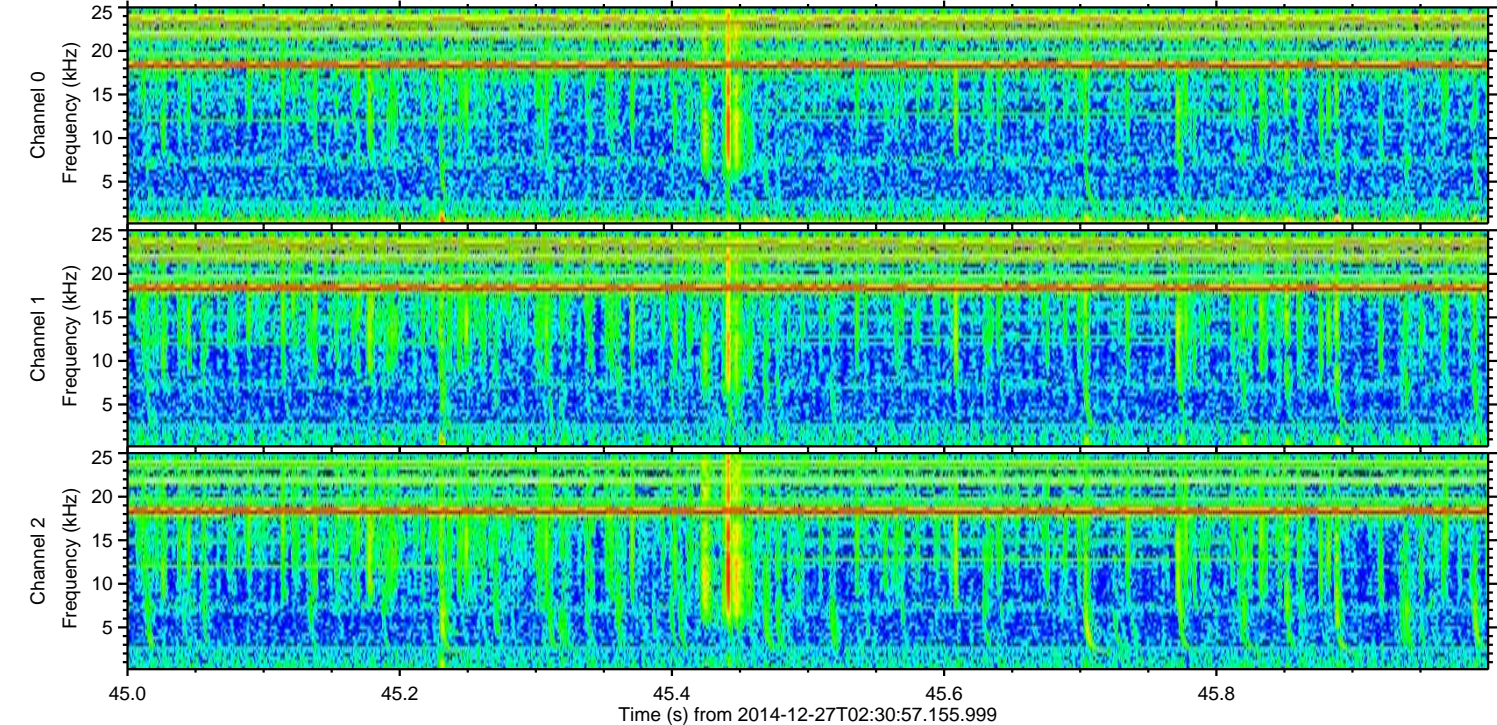
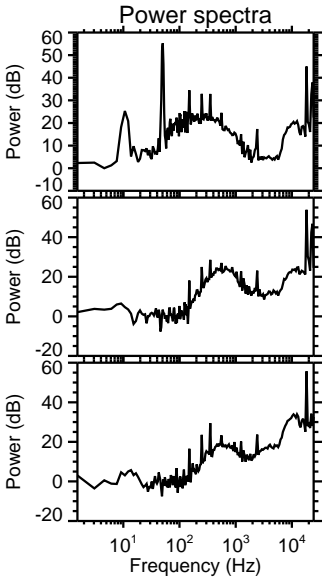
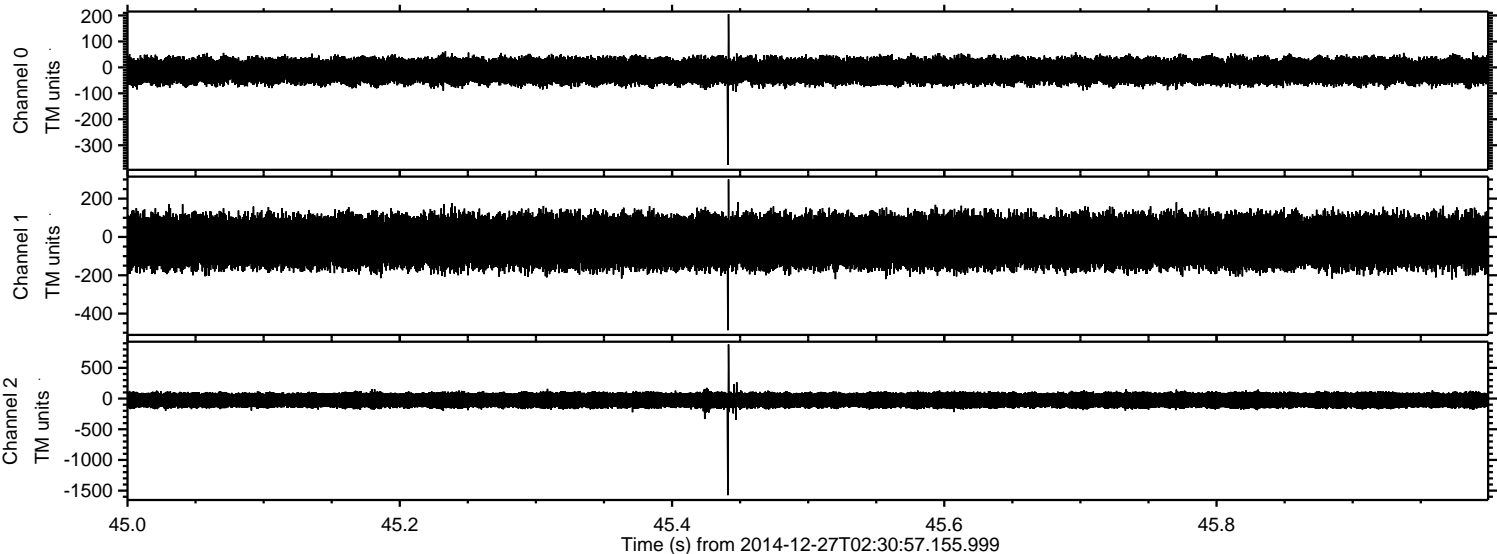
ELMAVAN 3D WAVEFORMS (Measured data sampled at 50 kHz) 49791 packets of 144 samples from 2014-12-27T02:30:57.155.999. Part 9/144

Processed Sat Dec 27 03:50:44 2014 by ELM ver.2012-10-06 from 001__elm20141227_023056__dat00.bin



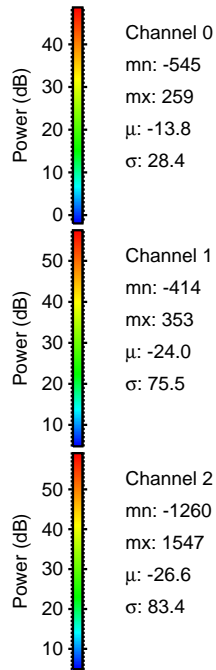
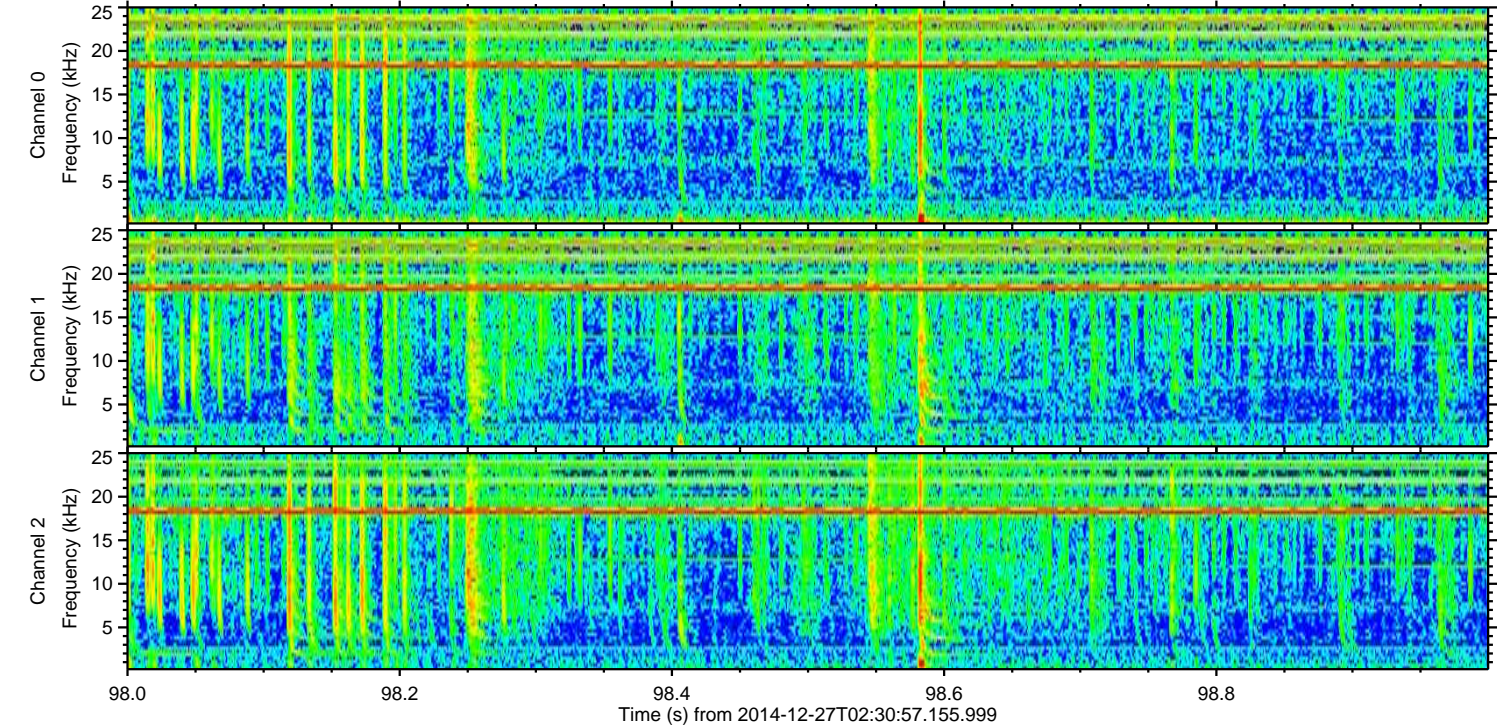
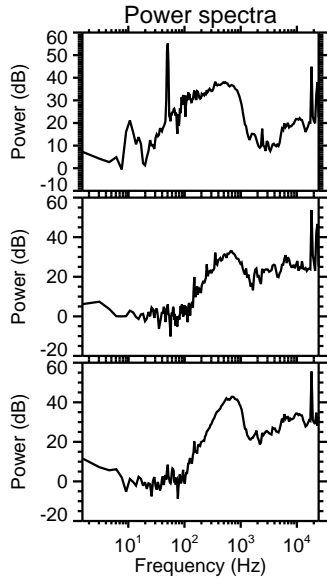
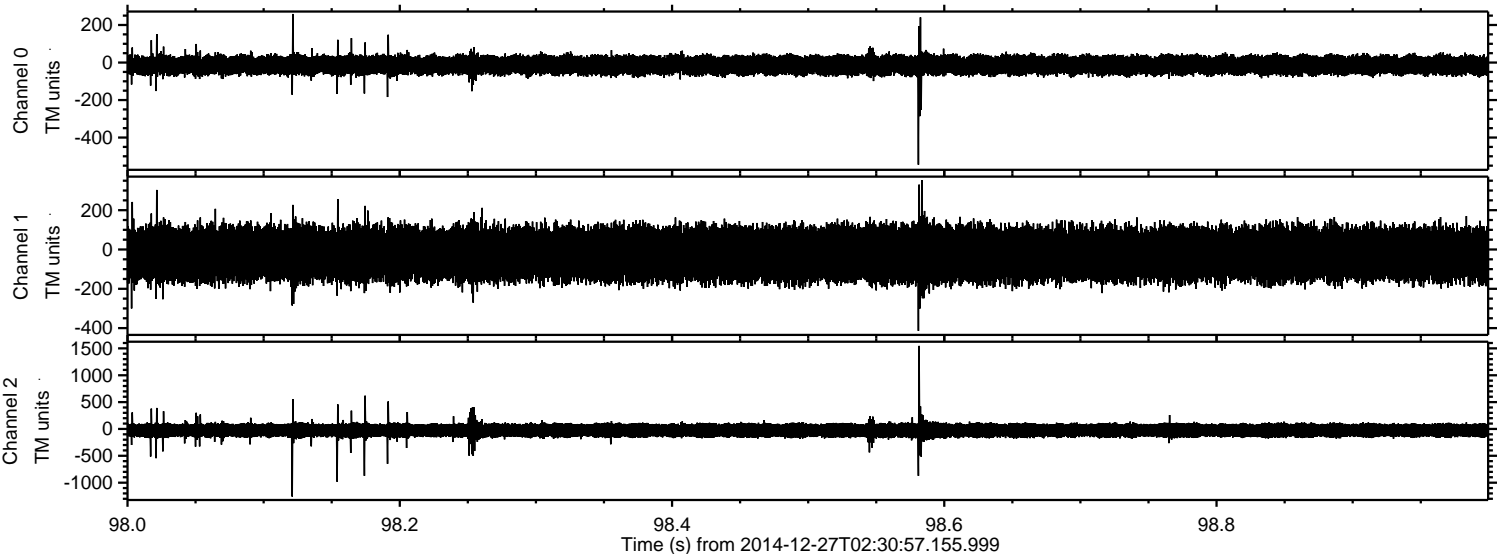
ELMAVAN 3D WAVEFORMS (Measured data sampled at 50 kHz) 49791 packets of 144 samples from 2014-12-27T02:30:57.155.999. Part 46/144

Processed Sat Dec 27 03:50:45 2014 by ELM ver.2012-10-06 from 001__elm20141227_023056__dat00.bin



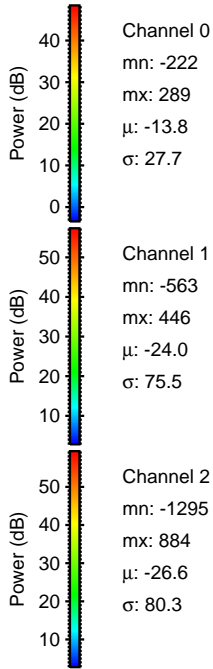
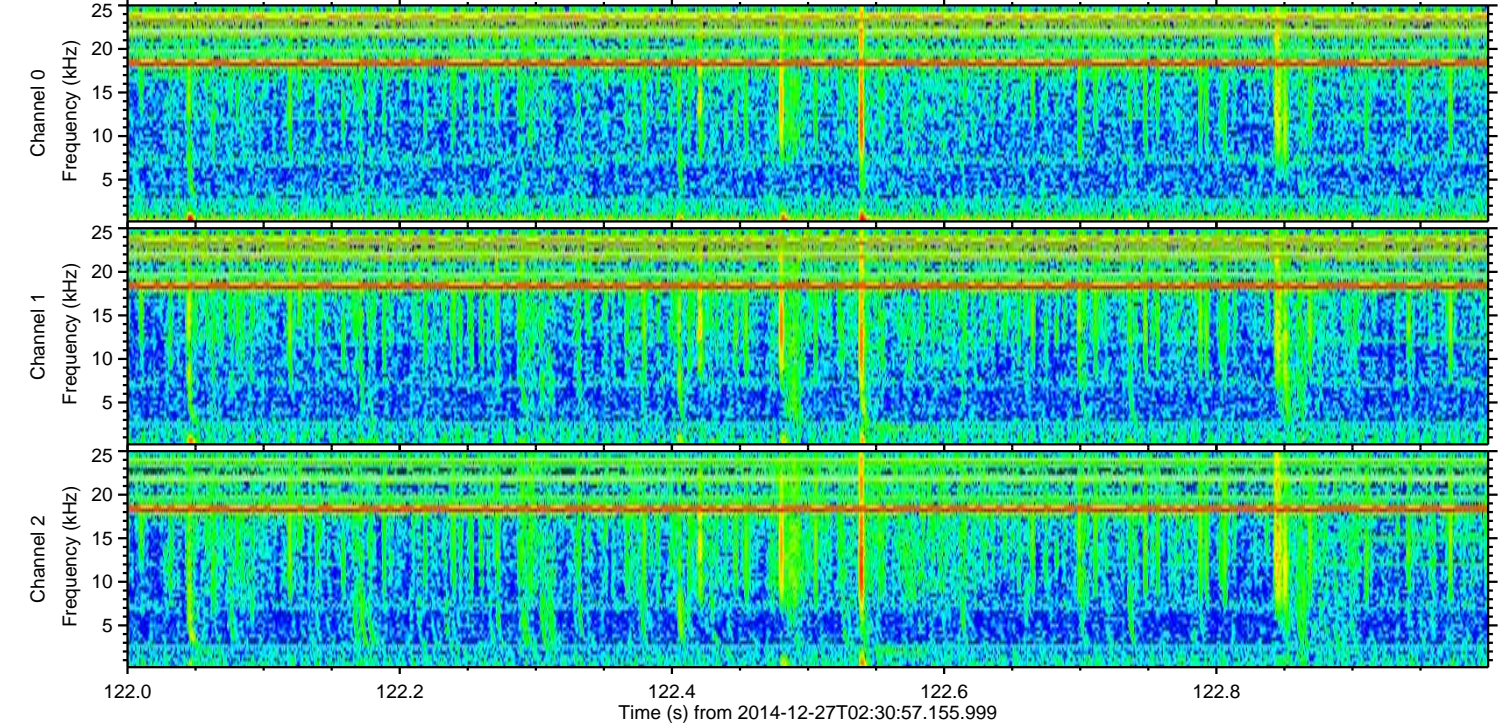
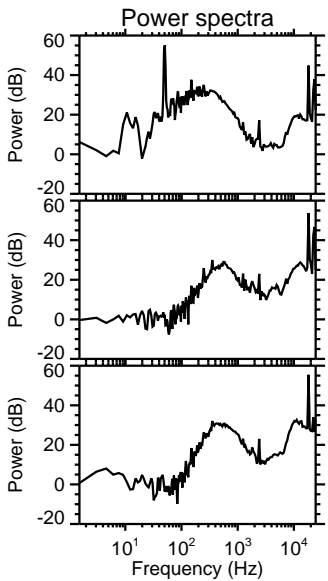
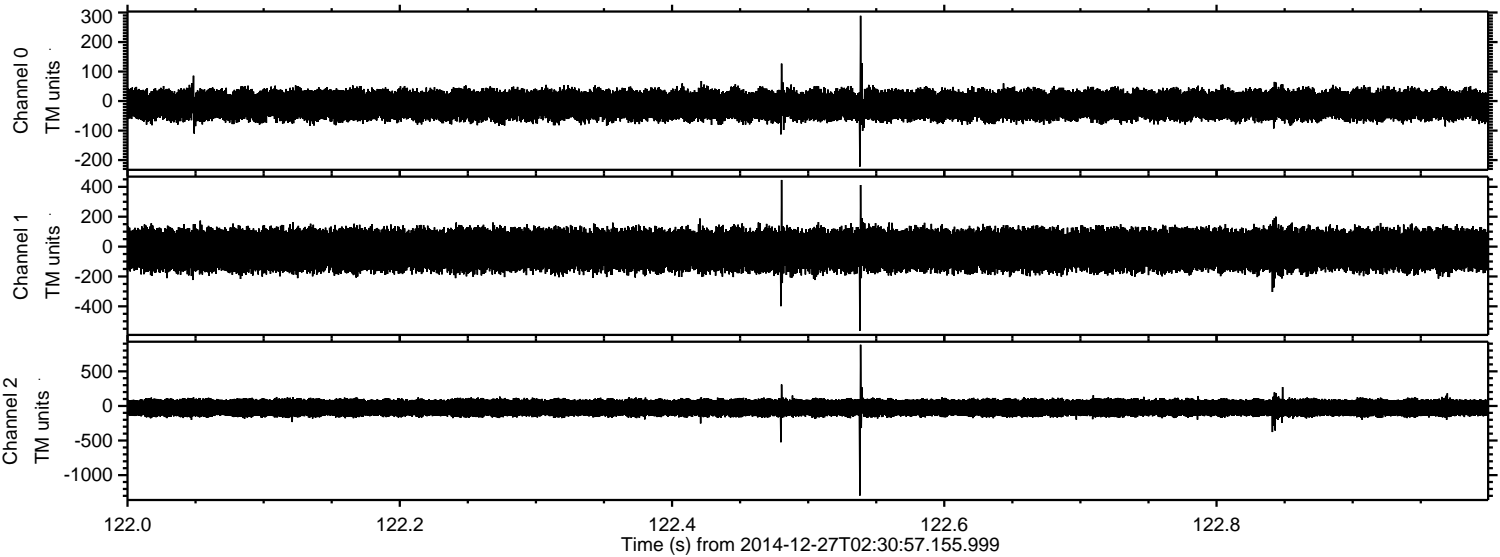
ELMAVAN 3D WAVEFORMS (Measured data sampled at 50 kHz) 49791 packets of 144 samples from 2014-12-27T02:30:57.155.999. Part 99/144

Processed Sat Dec 27 03:50:46 2014 by ELM ver.2012-10-06 from 001__elm20141227_023056__dat00.bin



ELMAVAN 3D WAVEFORMS (Measured data sampled at 50 kHz) 49791 packets of 144 samples from 2014-12-27T02:30:57.155.999. Part 123/144

Processed Sat Dec 27 03:50:47 2014 by ELM ver.2012-10-06 from 001__elm20141227_023056__dat00.bin



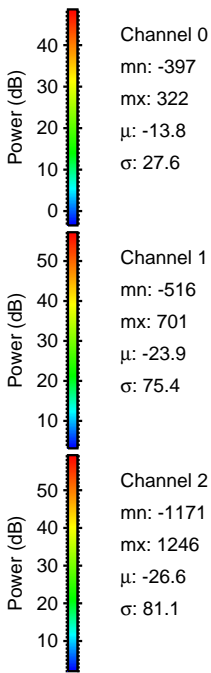
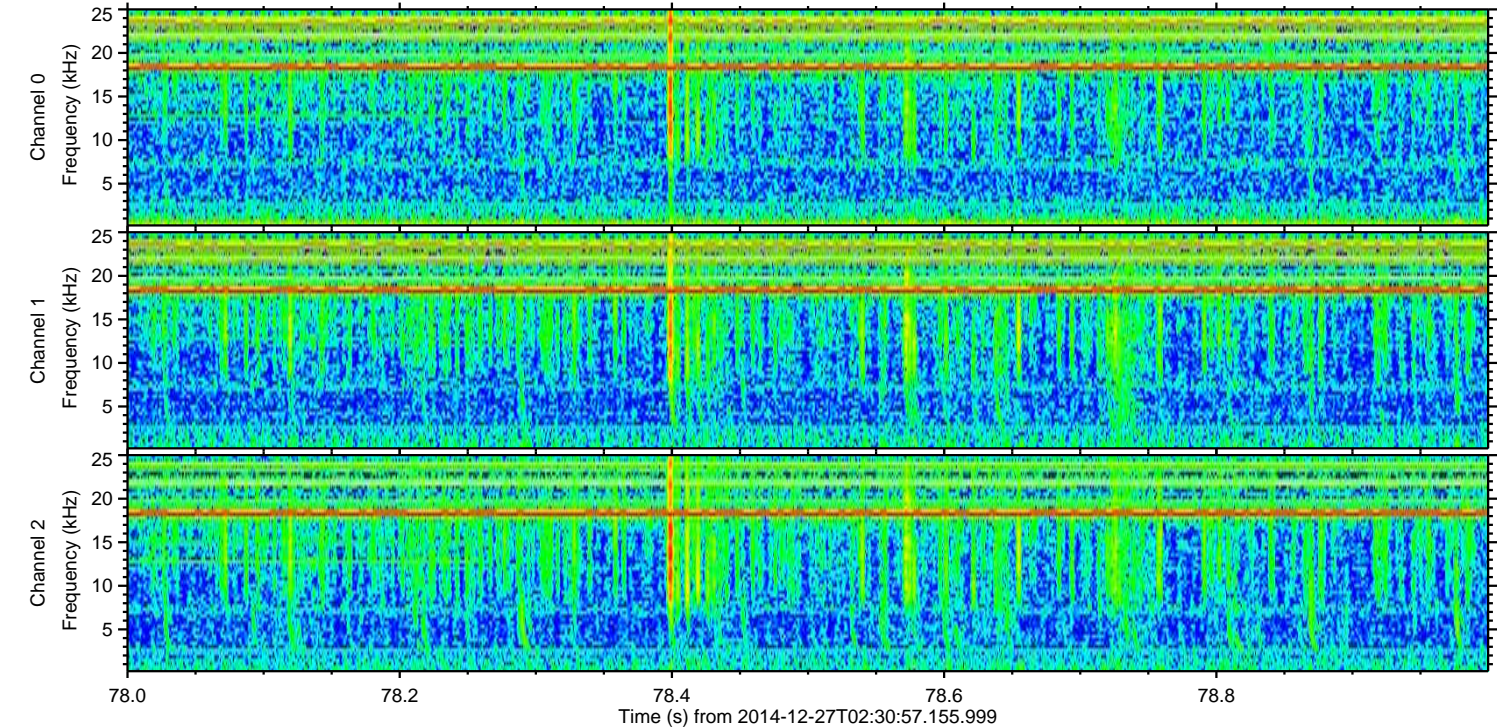
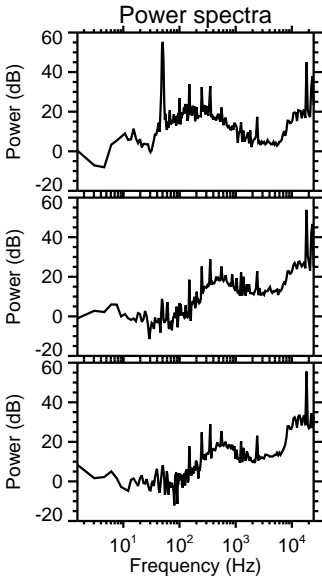
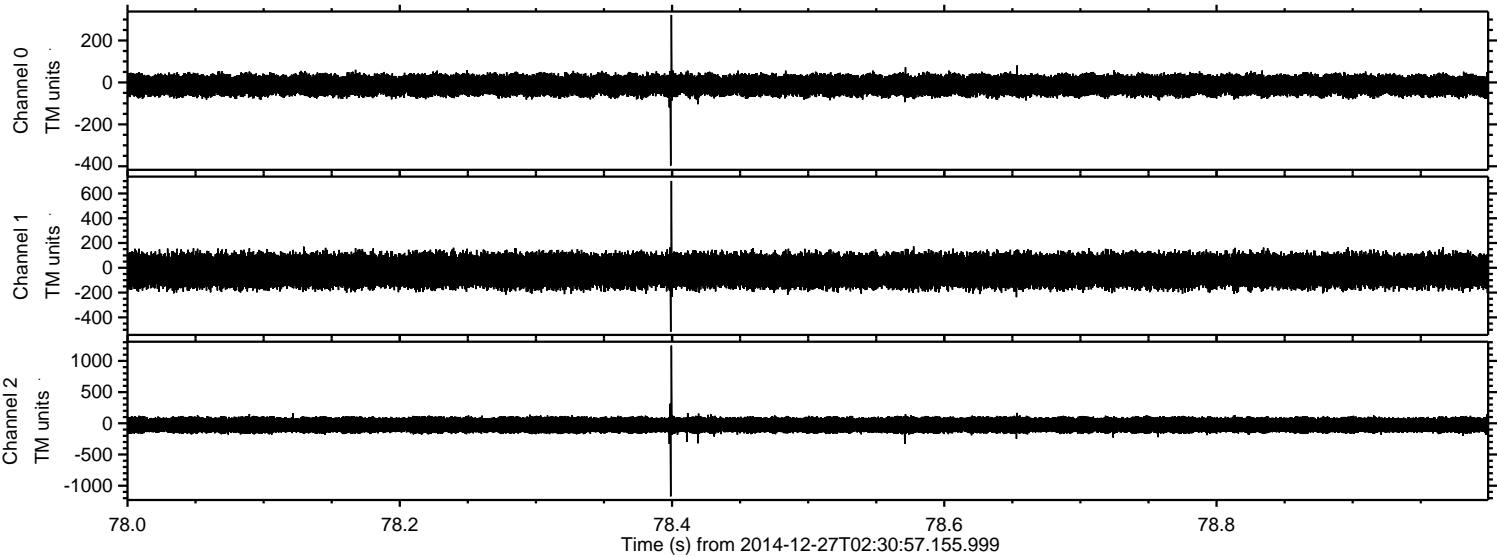
Channel 0
mn: -222
mx: 289
 μ : -13.8
 σ : 27.7

Channel 1
mn: -563
mx: 446
 μ : -24.0
 σ : 75.5

Channel 2
mn: -1295
mx: 884
 μ : -26.6
 σ : 80.3

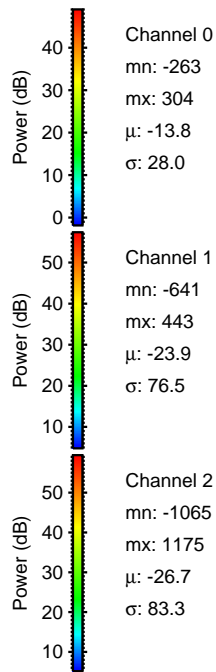
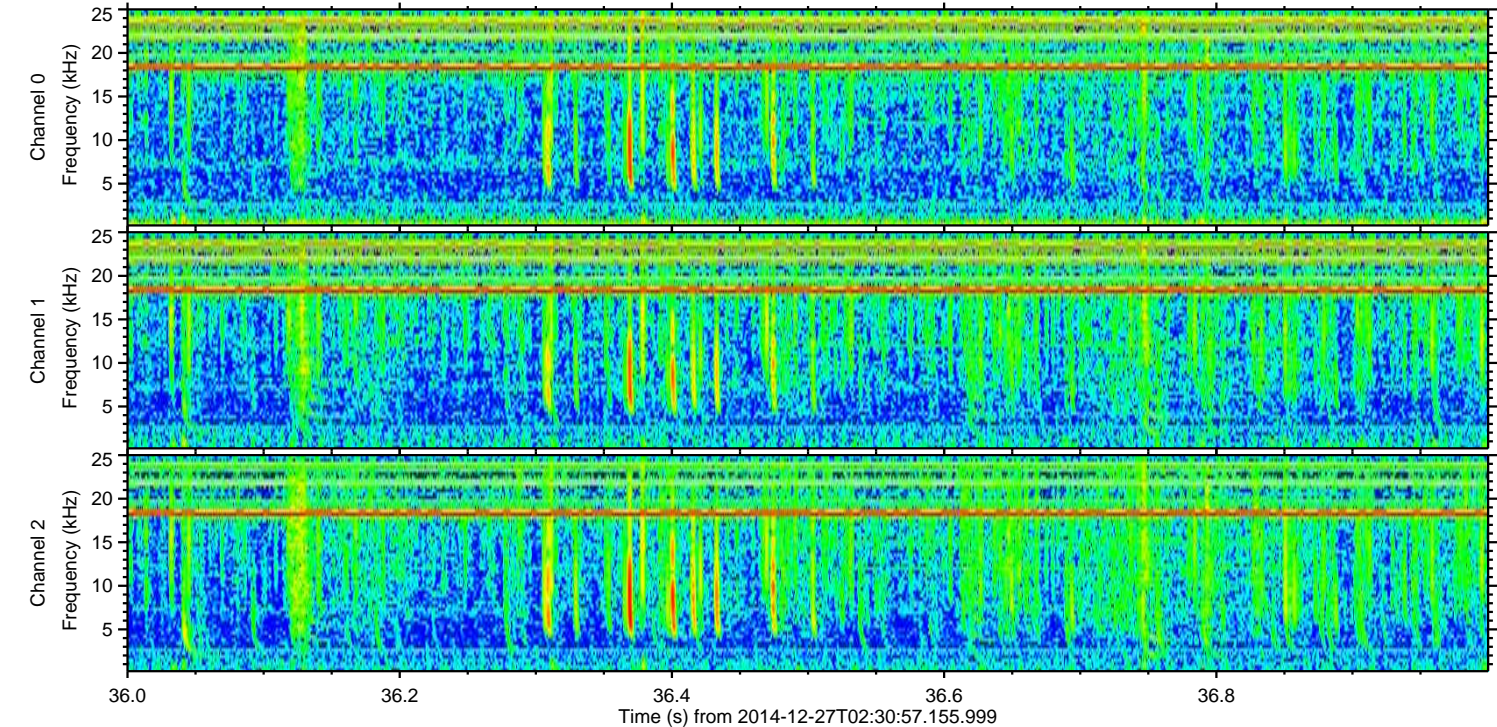
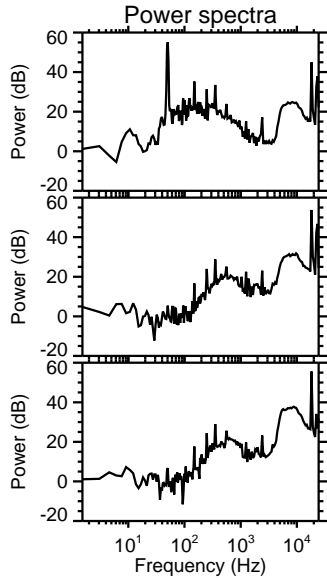
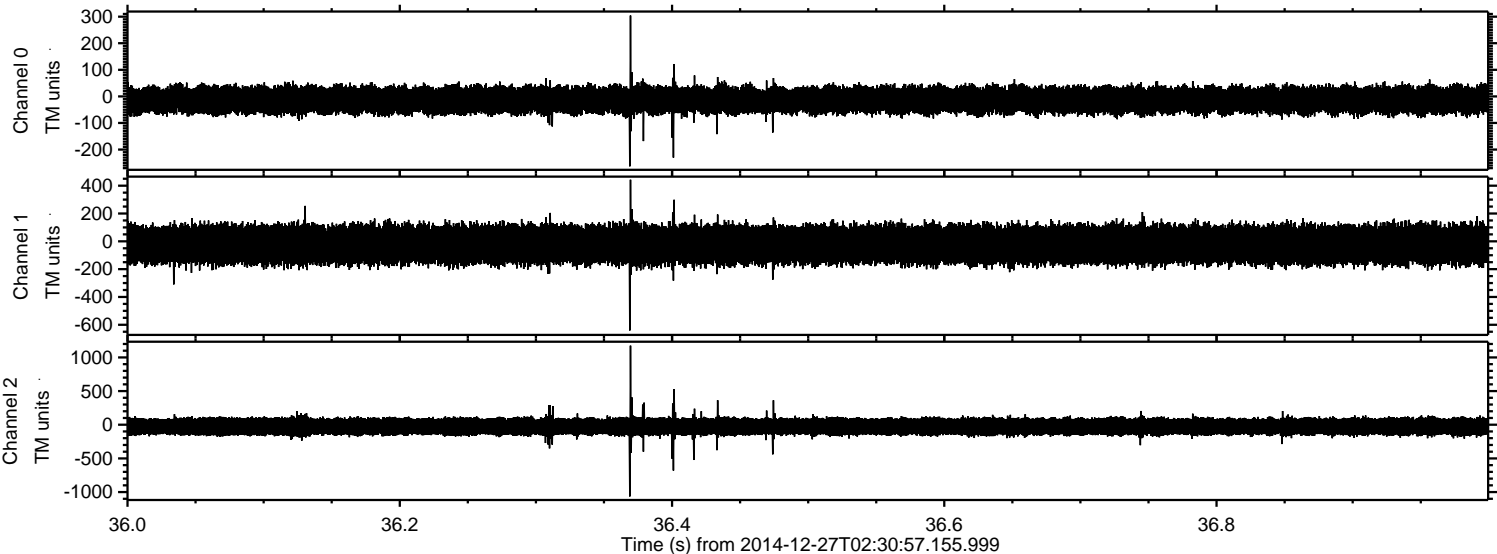
ELMAVAN 3D WAVEFORMS (Measured data sampled at 50 kHz) 49791 packets of 144 samples from 2014-12-27T02:30:57.155.999. Part 79/144

Processed Sat Dec 27 03:50:47 2014 by ELM ver.2012-10-06 from 001__elm20141227_023056__dat00.bin



ELMAVAN 3D WAVEFORMS (Measured data sampled at 50 kHz) 49791 packets of 144 samples from 2014-12-27T02:30:57.155.999. Part 37/144

Processed Sat Dec 27 03:50:48 2014 by ELM ver.2012-10-06 from 001__elm20141227_023056__dat00.bin



ELMAVAN 3D WAVEFORMS (Measured data sampled at 50 kHz) 49791 packets of 144 samples from 2014-12-27T02:30:57.155.999. Part 84/144

Processed Sat Dec 27 03:50:49 2014 by ELM ver.2012-10-06 from 001__elm20141227_023056__dat00.bin

