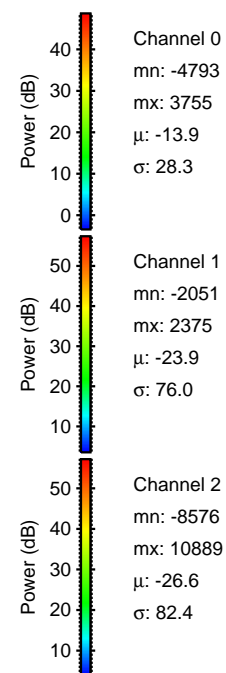
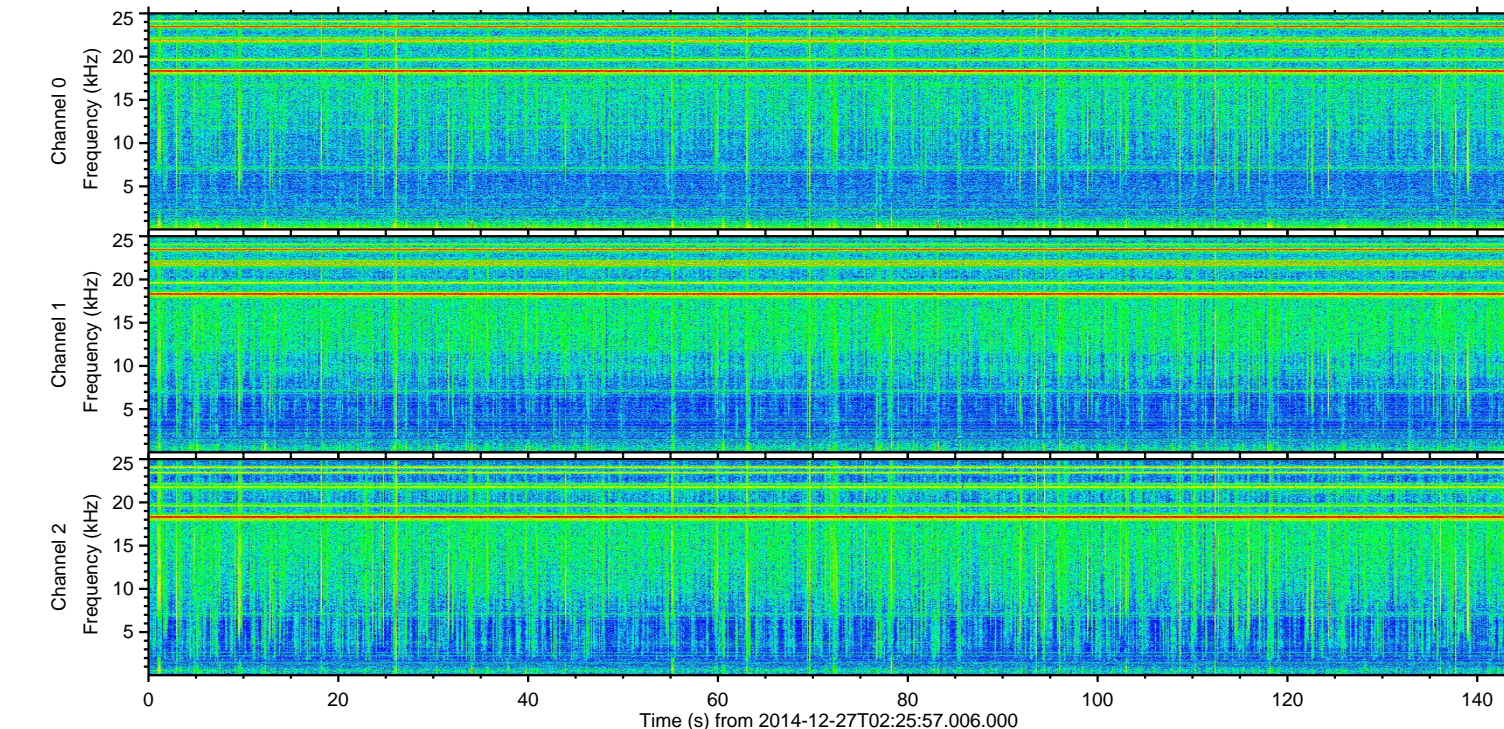
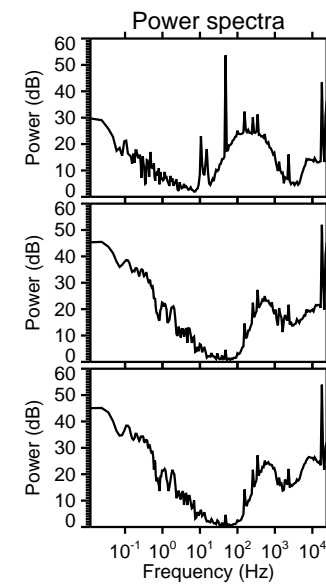
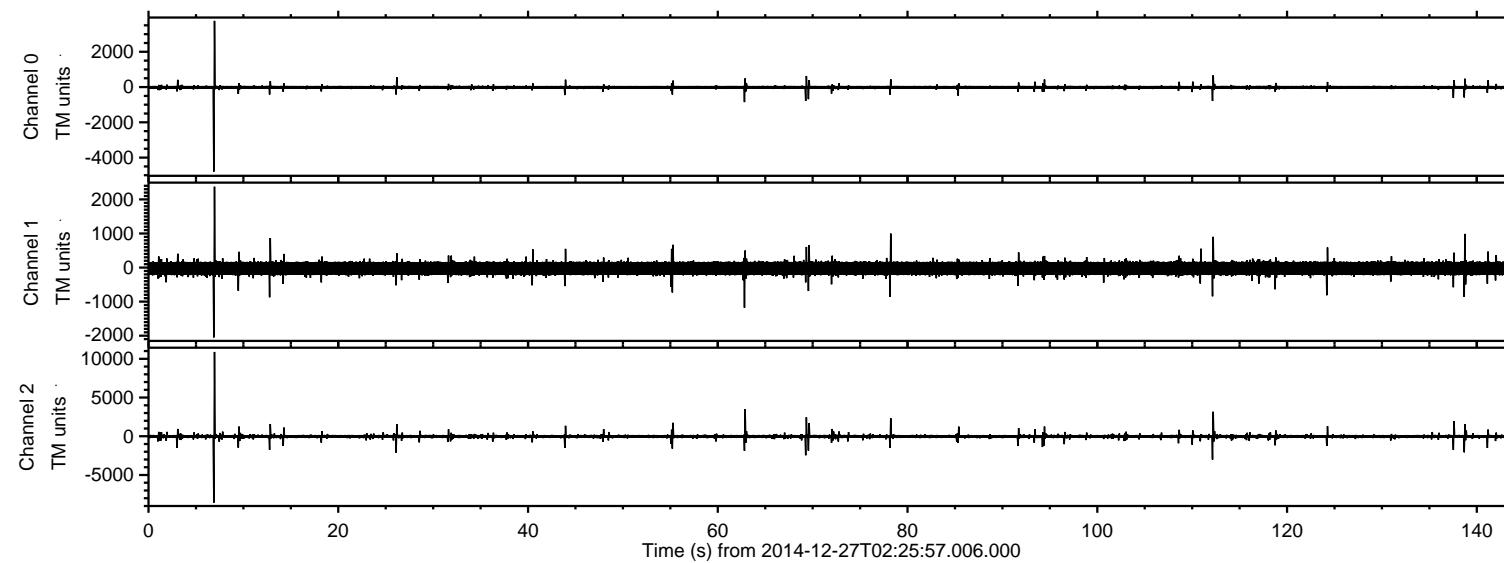
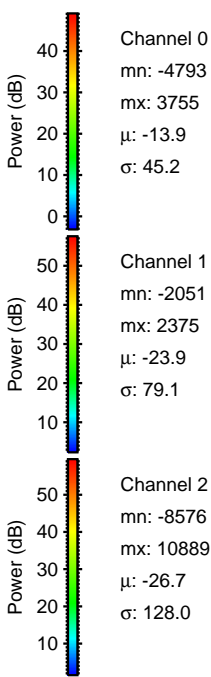
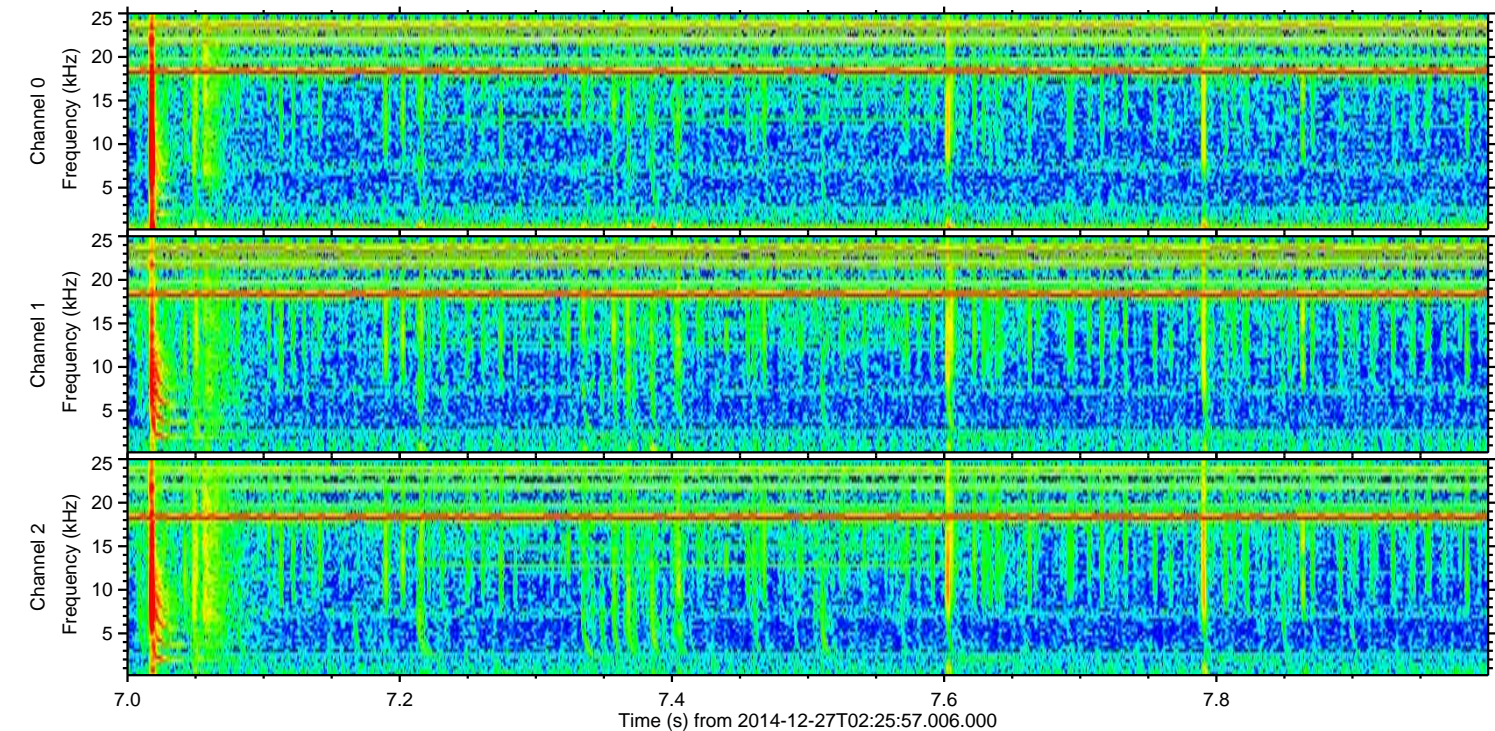
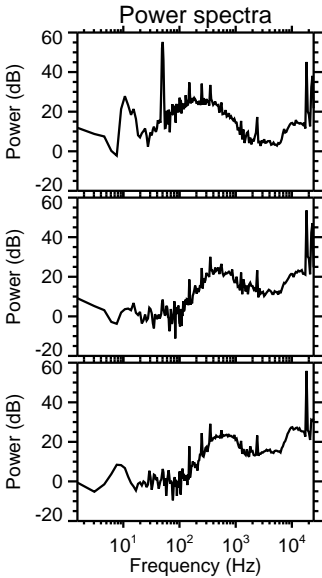
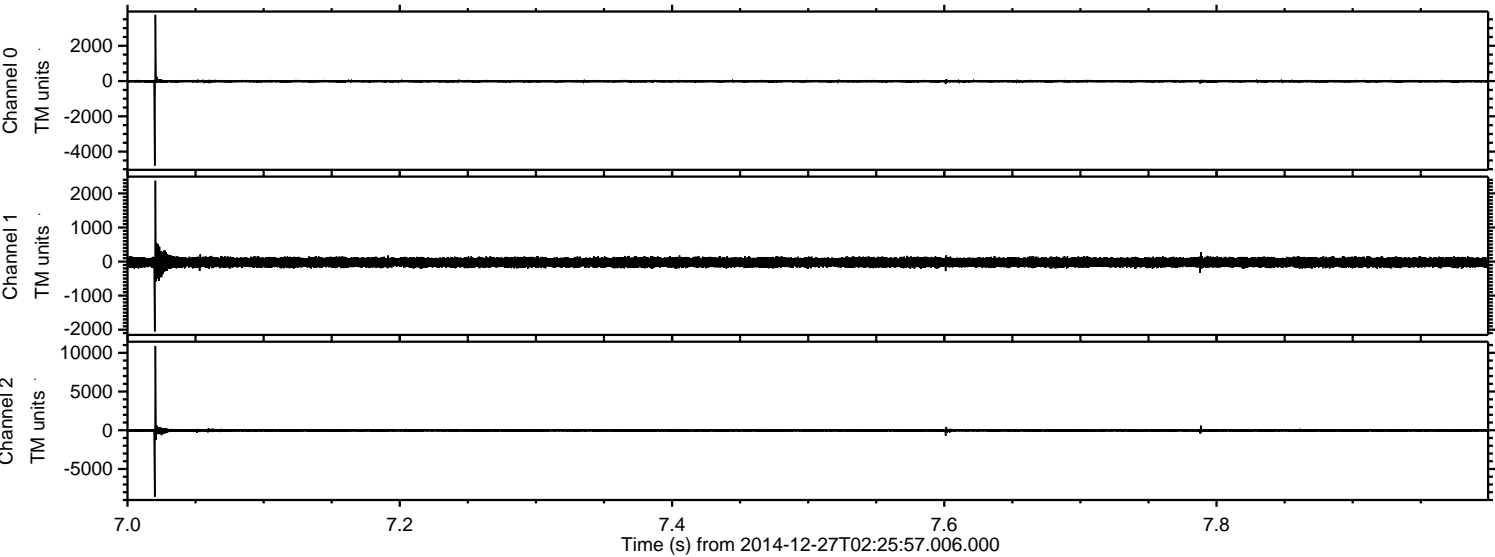


ELMAVAN 3D WAVEFORMS (Measured data sampled at 50 kHz) 49794 packets of 144 samples from 2014-12-27T02:25:57.006.000.

Processed Sat Dec 27 03:46:25 2014 by ELM ver.2012-10-06 from 001__elm20141227_022555__dat00.bin

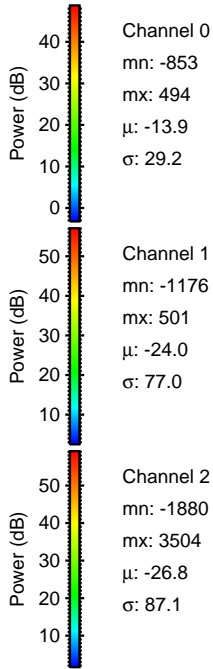
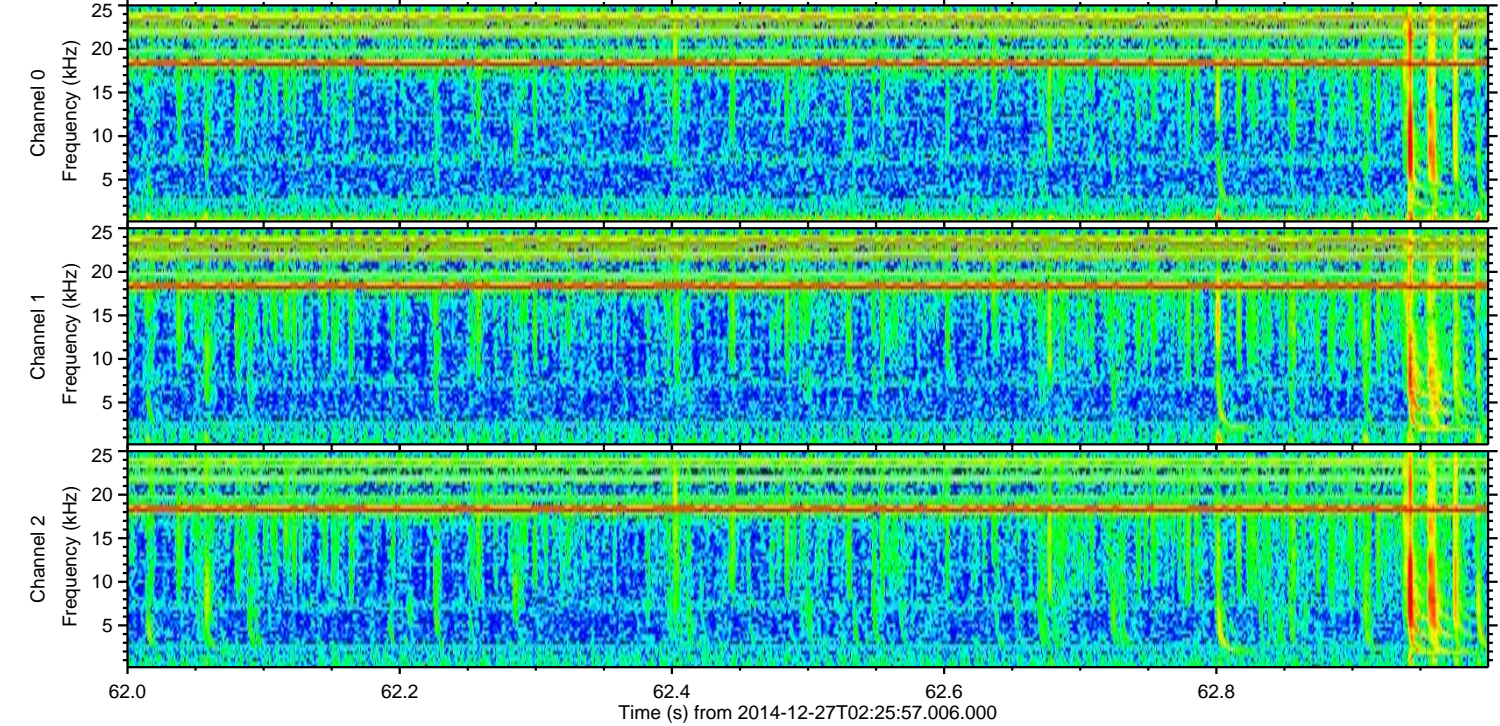
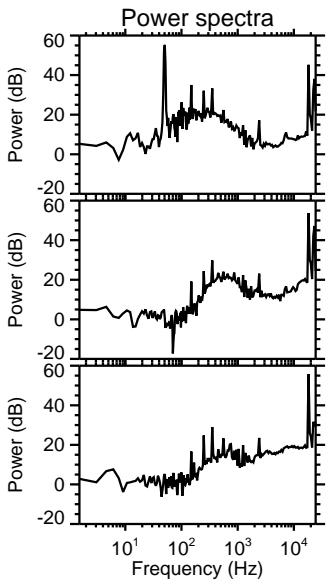
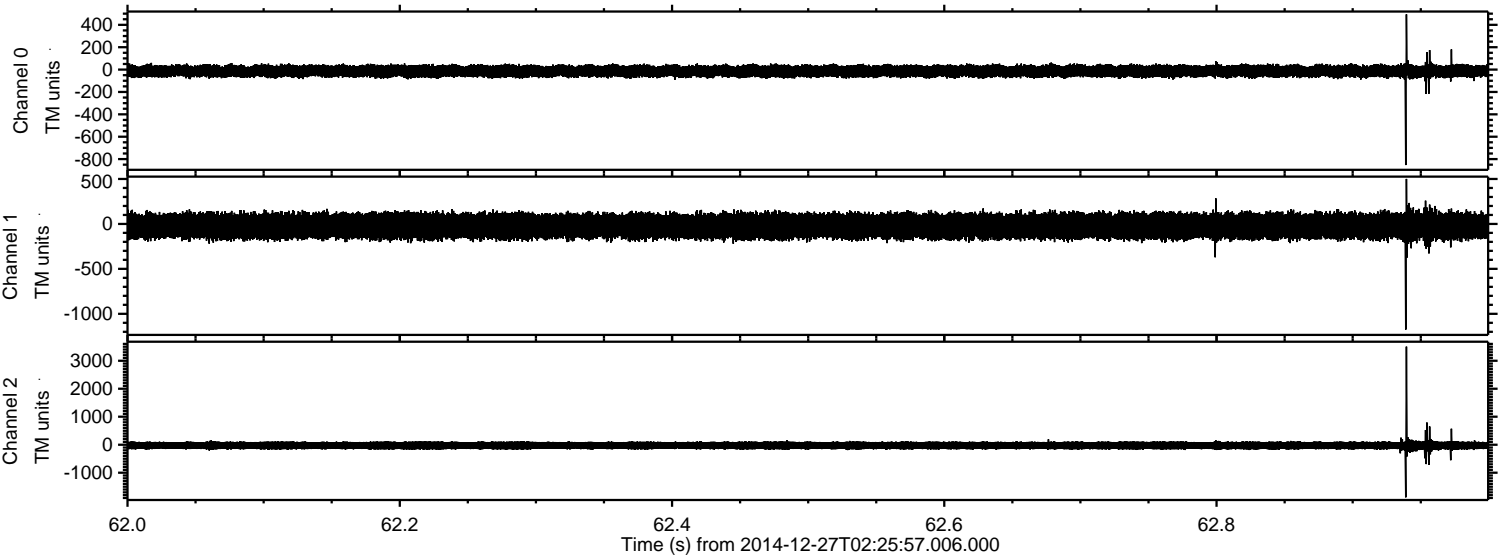


Processed Sat Dec 27 03:46:38 2014 by ELM ver.2012-10-06 from 001__elm20141227_022555__dat00.bin



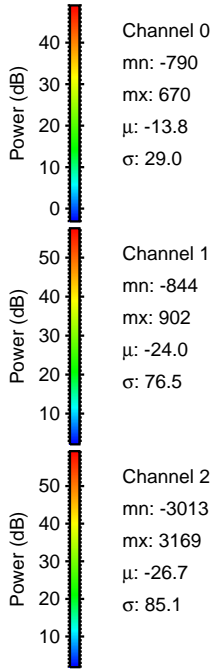
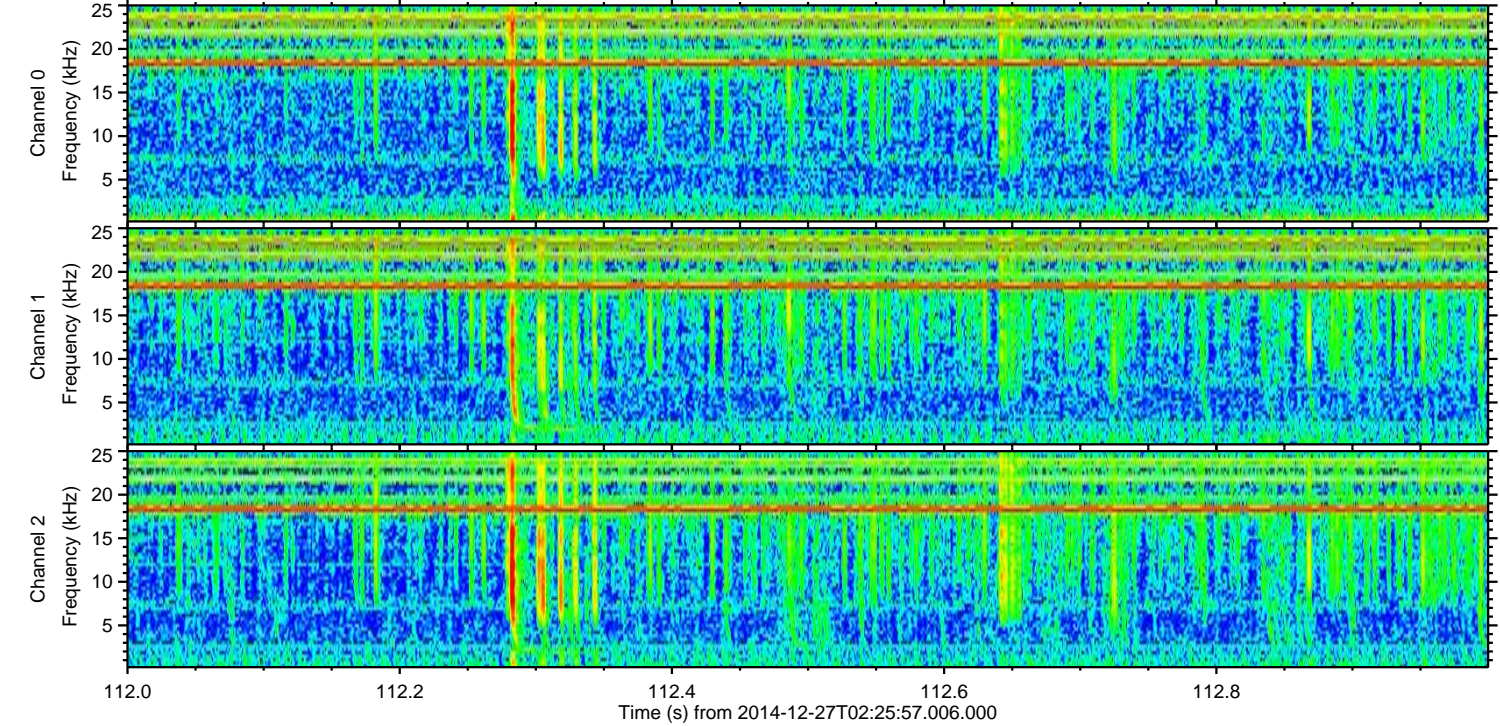
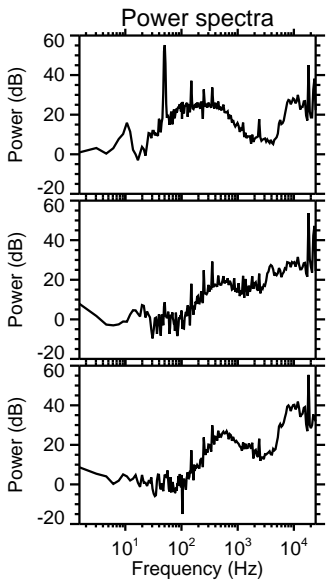
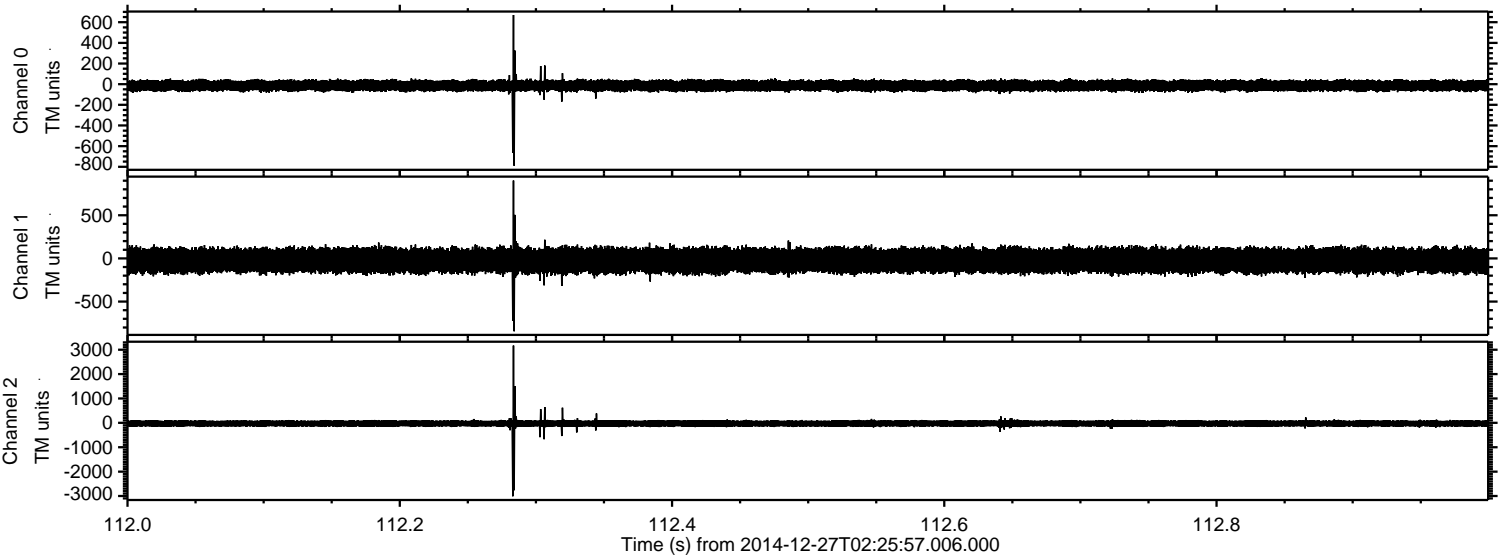
ELMAVAN 3D WAVEFORMS (Measured data sampled at 50 kHz) 49794 packets of 144 samples from 2014-12-27T02:25:57.006.000. Part 63/144

Processed Sat Dec 27 03:46:39 2014 by ELM ver.2012-10-06 from 001__elm20141227_022555__dat00.bin



ELMAVAN 3D WAVEFORMS (Measured data sampled at 50 kHz) 49794 packets of 144 samples from 2014-12-27T02:25:57.006.000. Part 113/144

Processed Sat Dec 27 03:46:39 2014 by ELM ver.2012-10-06 from 001__elm20141227_022555__dat00.bin



Channel 0

mn: -790
mx: 670
 μ : -13.8
 σ : 29.0

Channel 1

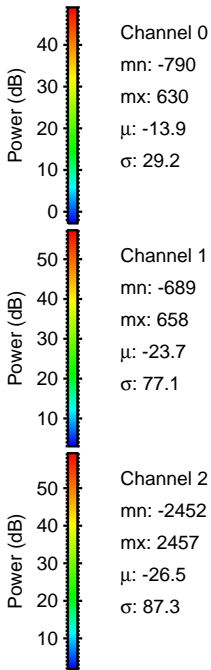
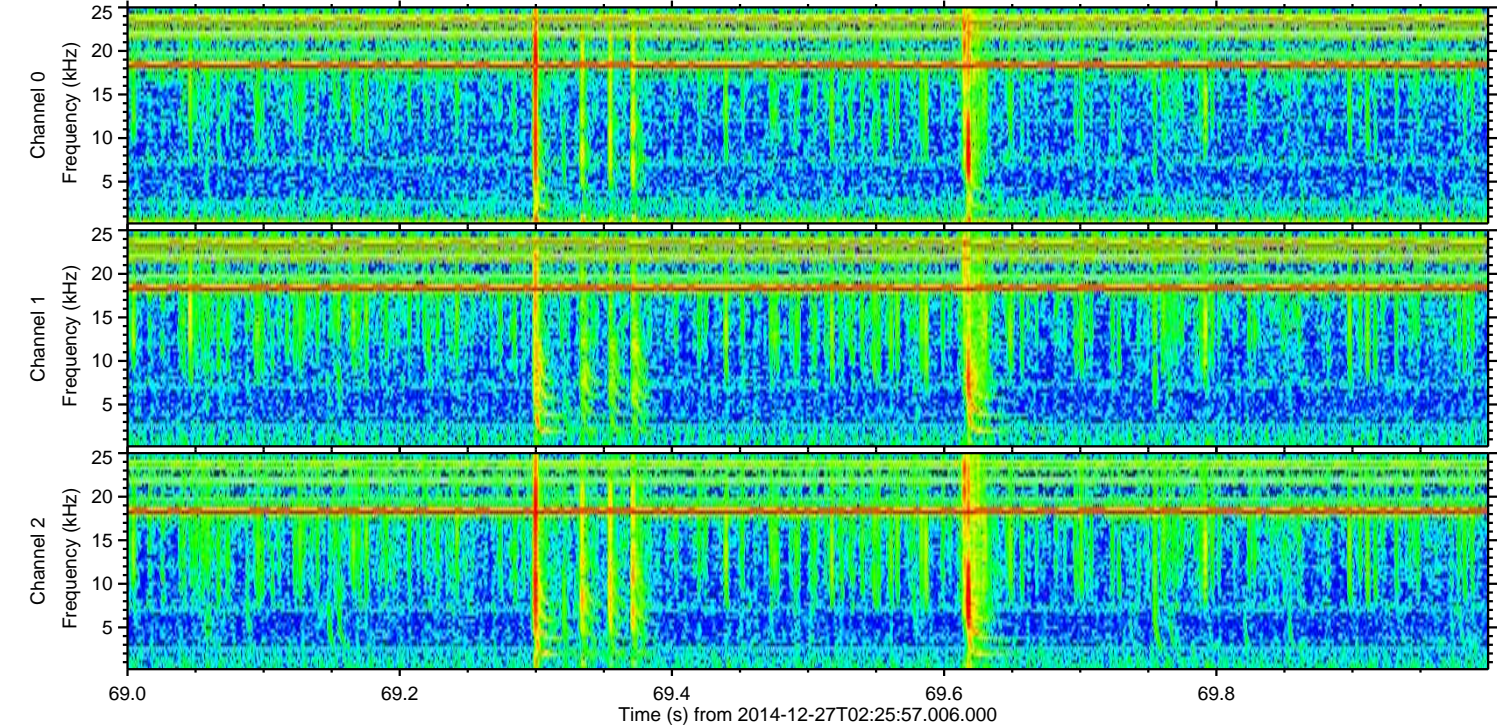
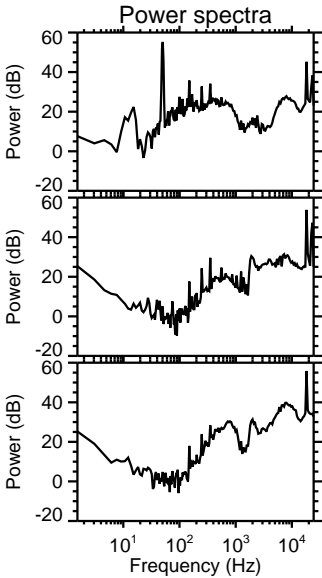
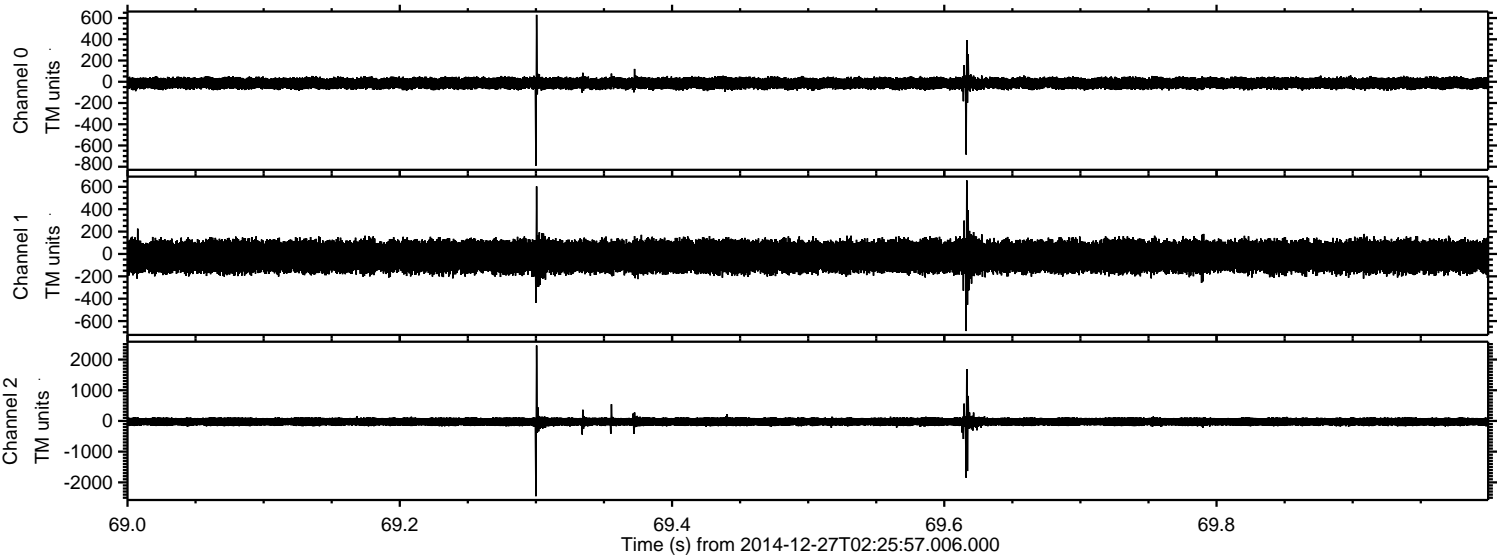
mn: -844
mx: 902
 μ : -24.0
 σ : 76.5

Channel 2

mn: -3013
mx: 3169
 μ : -26.7
 σ : 85.1

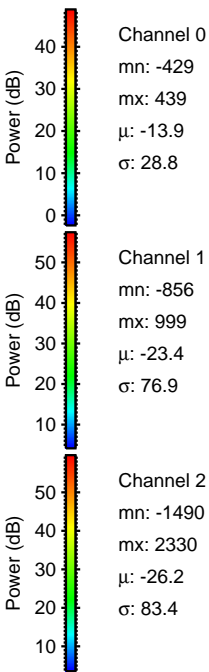
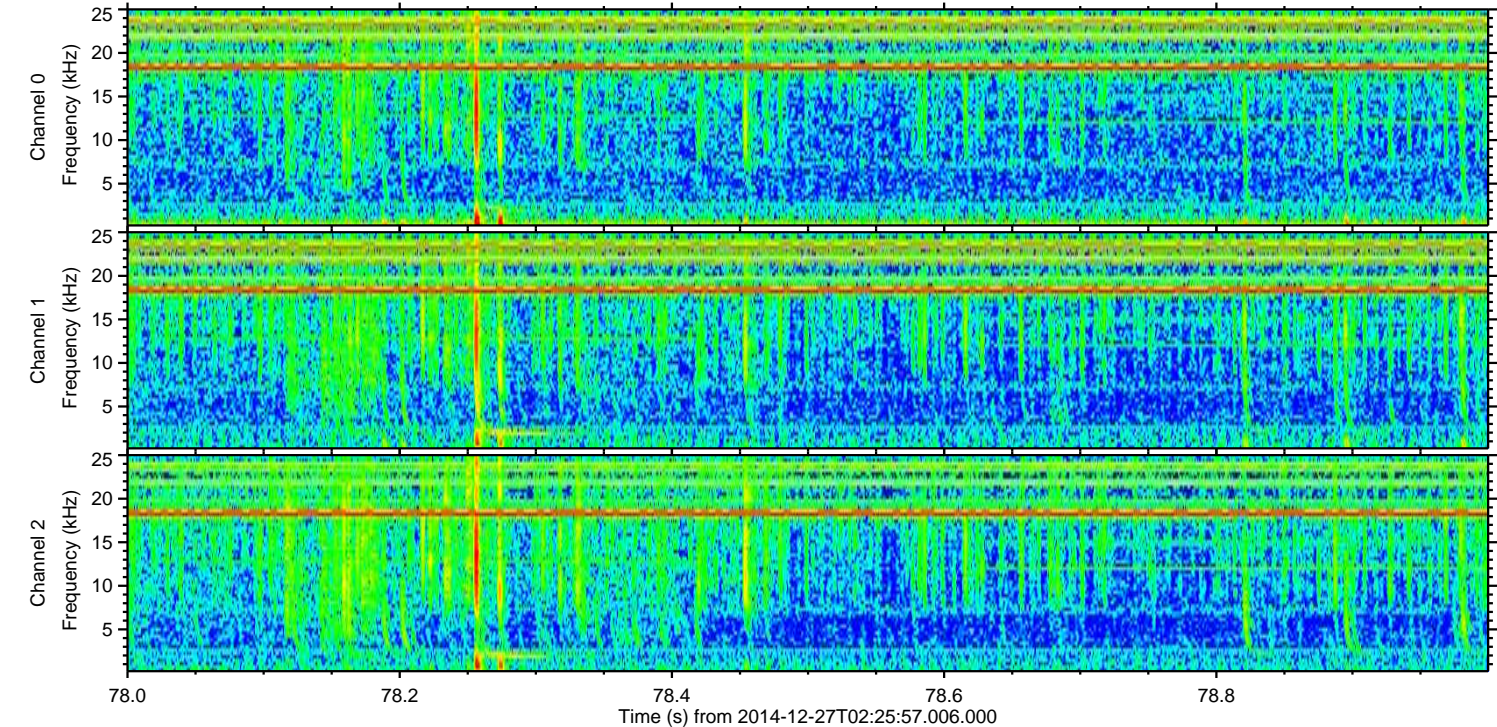
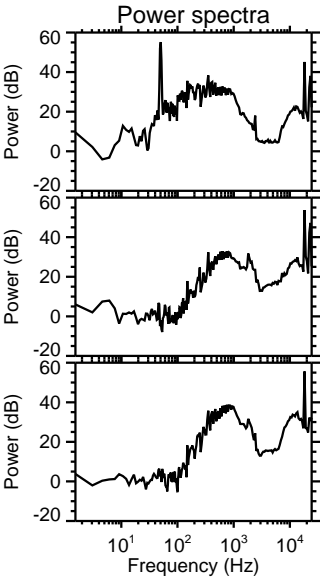
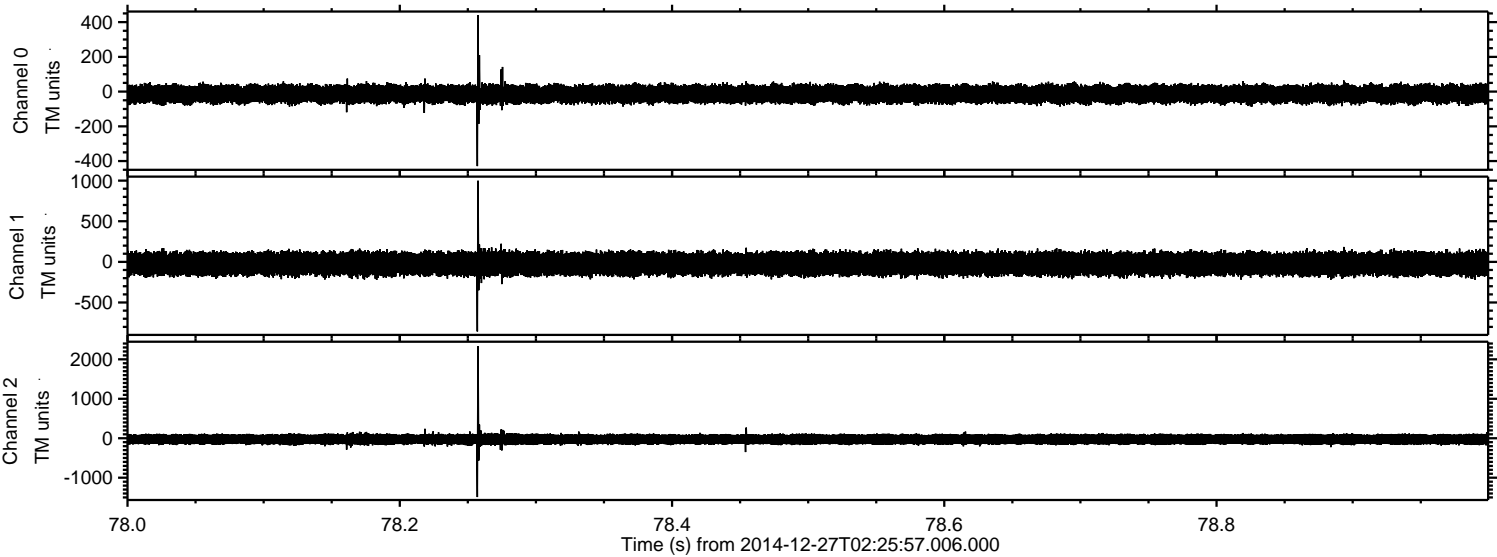
ELMAVAN 3D WAVEFORMS (Measured data sampled at 50 kHz) 49794 packets of 144 samples from 2014-12-27T02:25:57.006.000. Part 70/144

Processed Sat Dec 27 03:46:40 2014 by ELM ver.2012-10-06 from 001__elm20141227_022555__dat00.bin



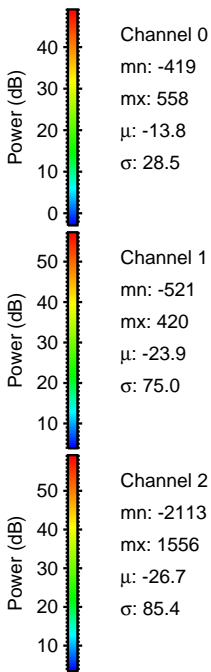
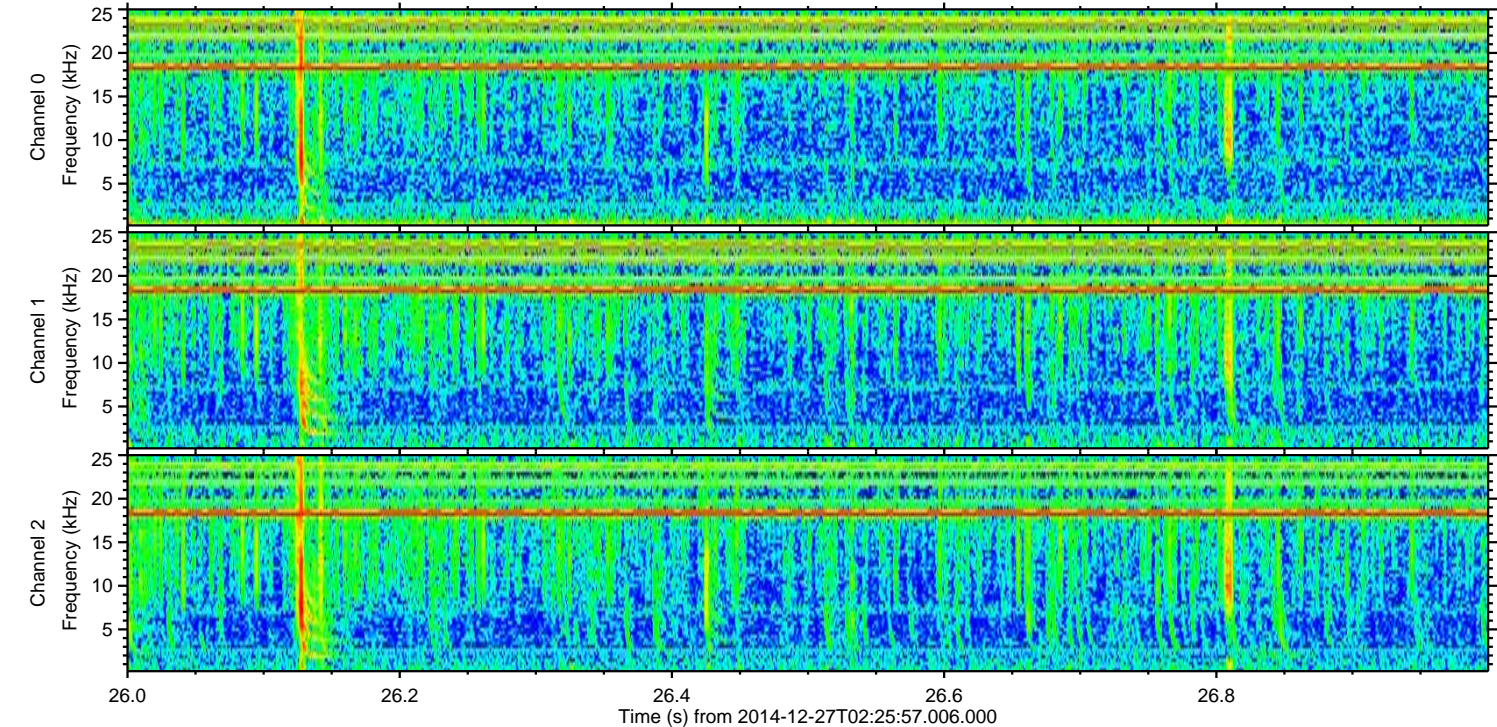
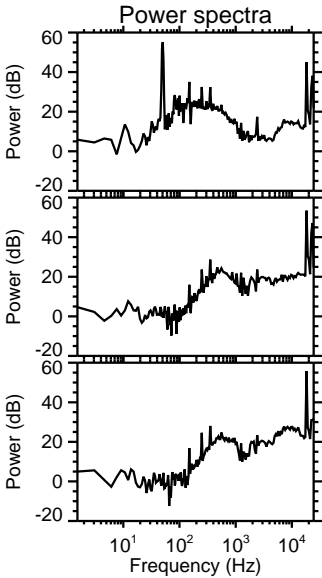
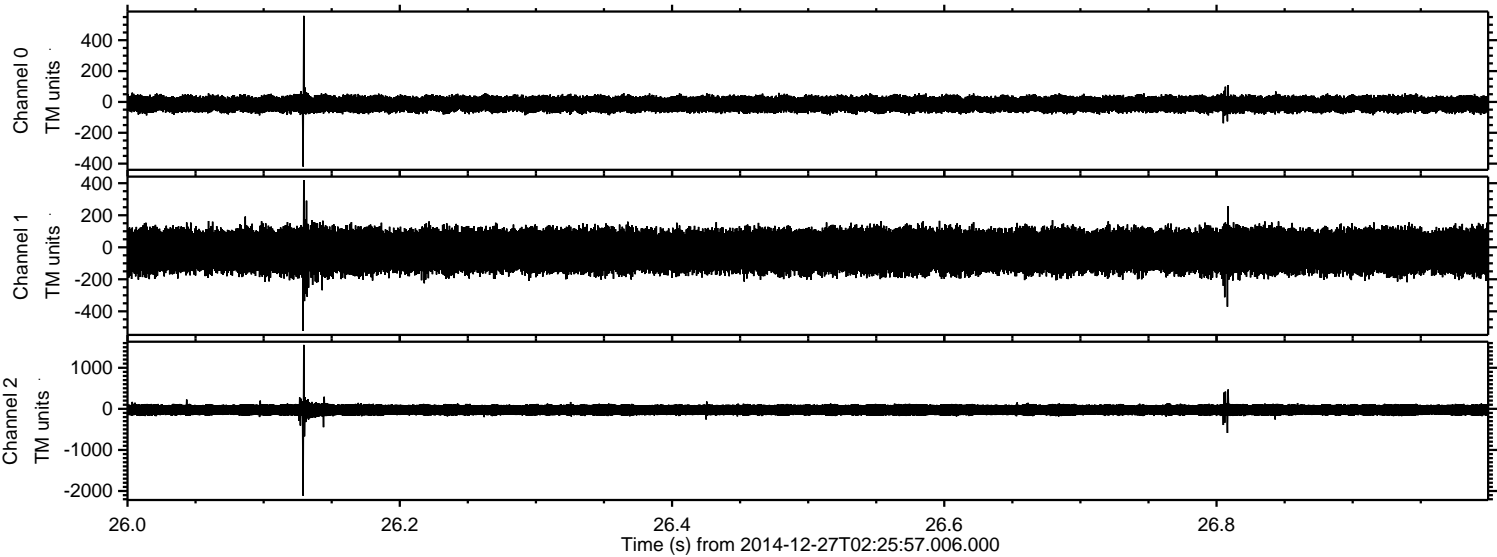
ELMAVAN 3D WAVEFORMS (Measured data sampled at 50 kHz) 49794 packets of 144 samples from 2014-12-27T02:25:57.006.000. Part 79/144

Processed Sat Dec 27 03:46:41 2014 by ELM ver.2012-10-06 from 001__elm20141227_022555__dat00.bin



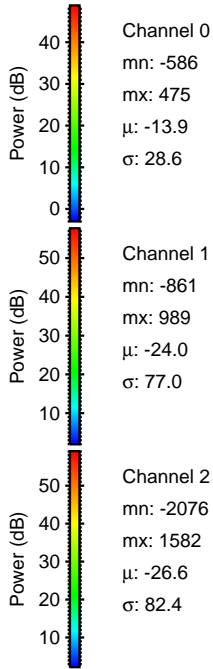
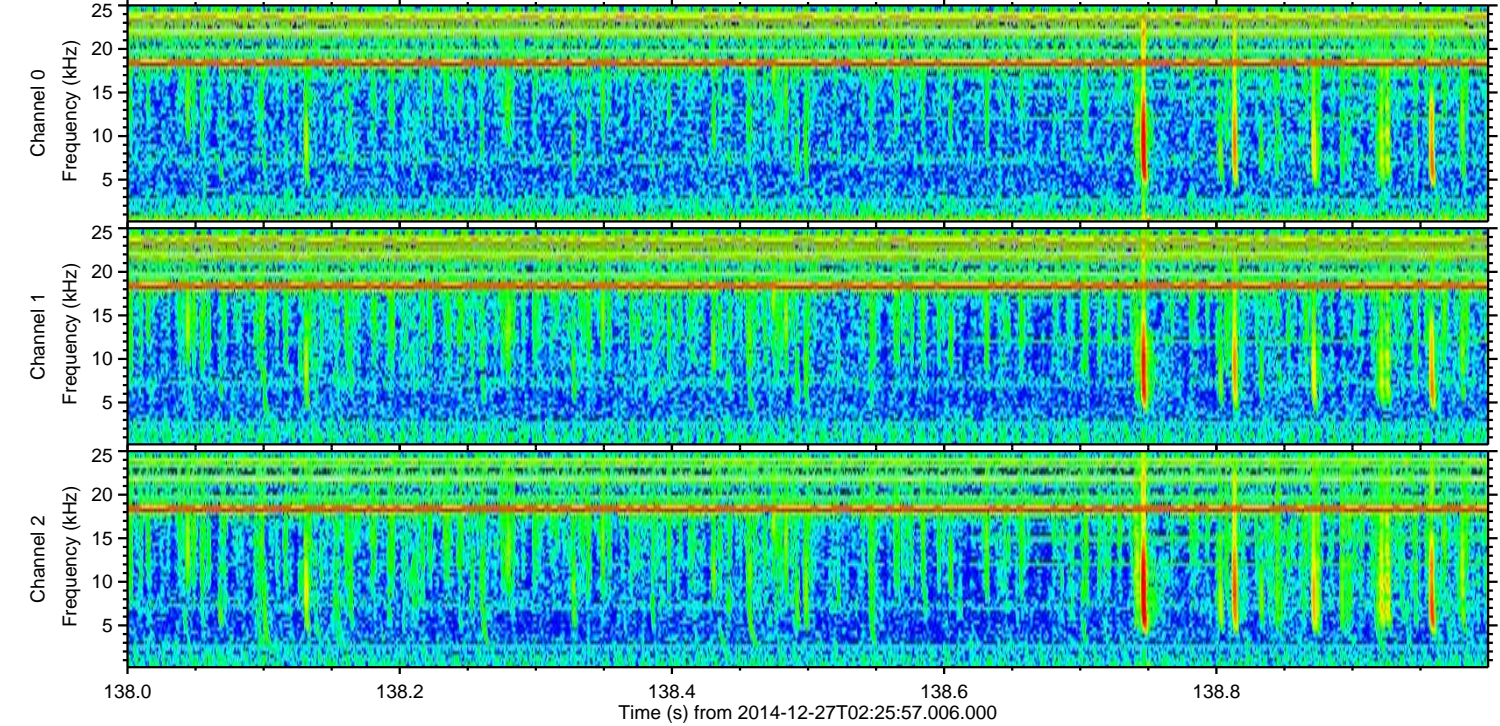
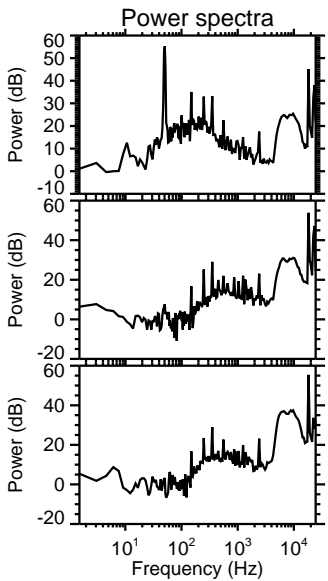
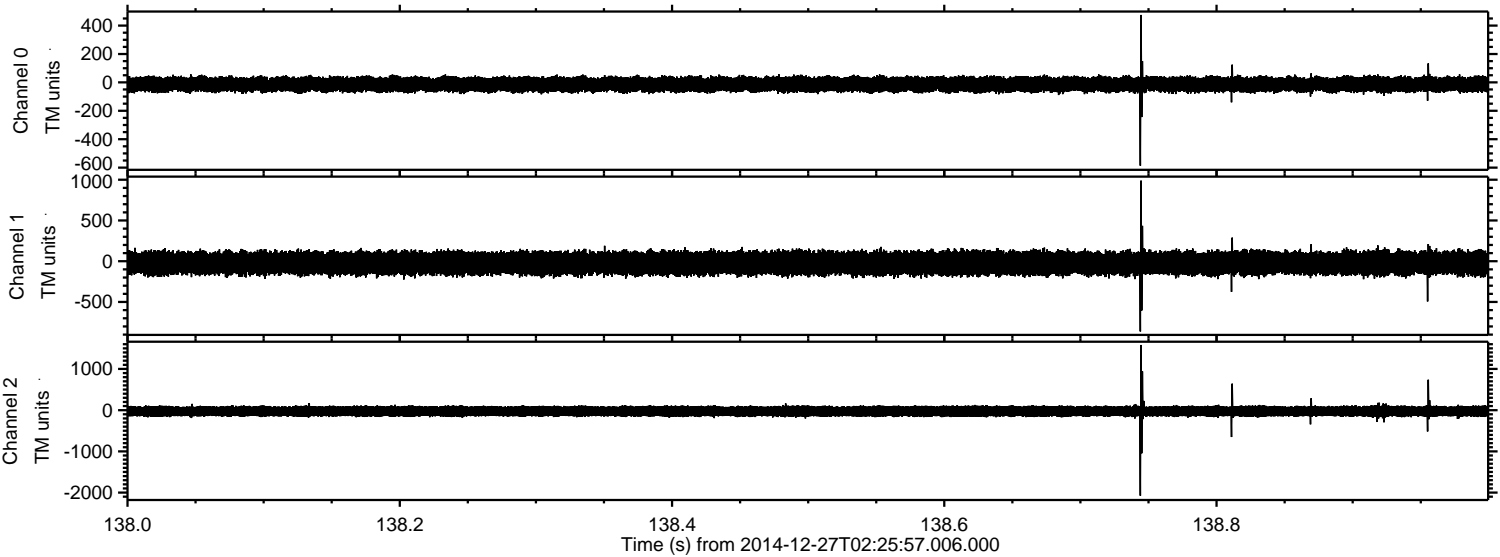
ELMAVAN 3D WAVEFORMS (Measured data sampled at 50 kHz) 49794 packets of 144 samples from 2014-12-27T02:25:57.006.000. Part 27/144

Processed Sat Dec 27 03:46:42 2014 by ELM ver.2012-10-06 from 001__elm20141227_022555__dat00.bin



ELMAVAN 3D WAVEFORMS (Measured data sampled at 50 kHz) 49794 packets of 144 samples from 2014-12-27T02:25:57.006.000. Part 139/144

Processed Sat Dec 27 03:46:43 2014 by ELM ver.2012-10-06 from 001__elm20141227_022555__dat00.bin



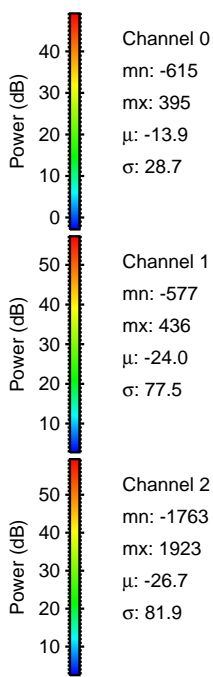
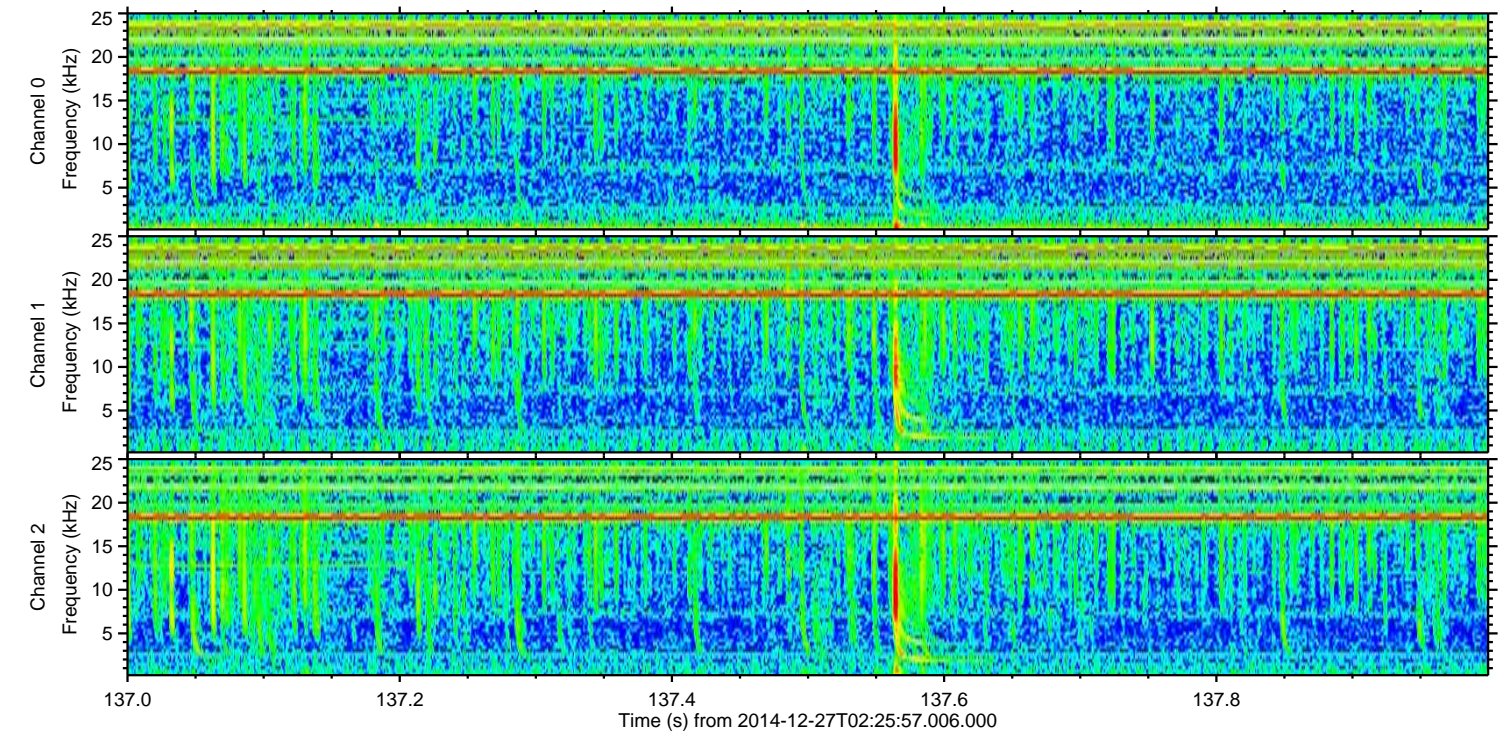
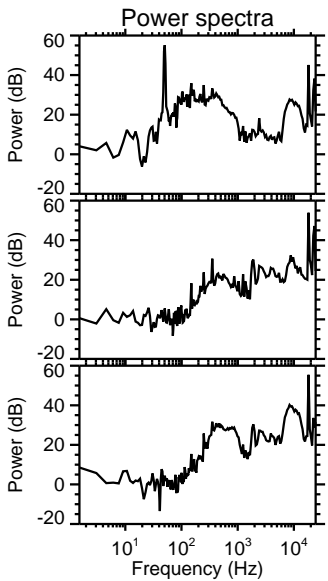
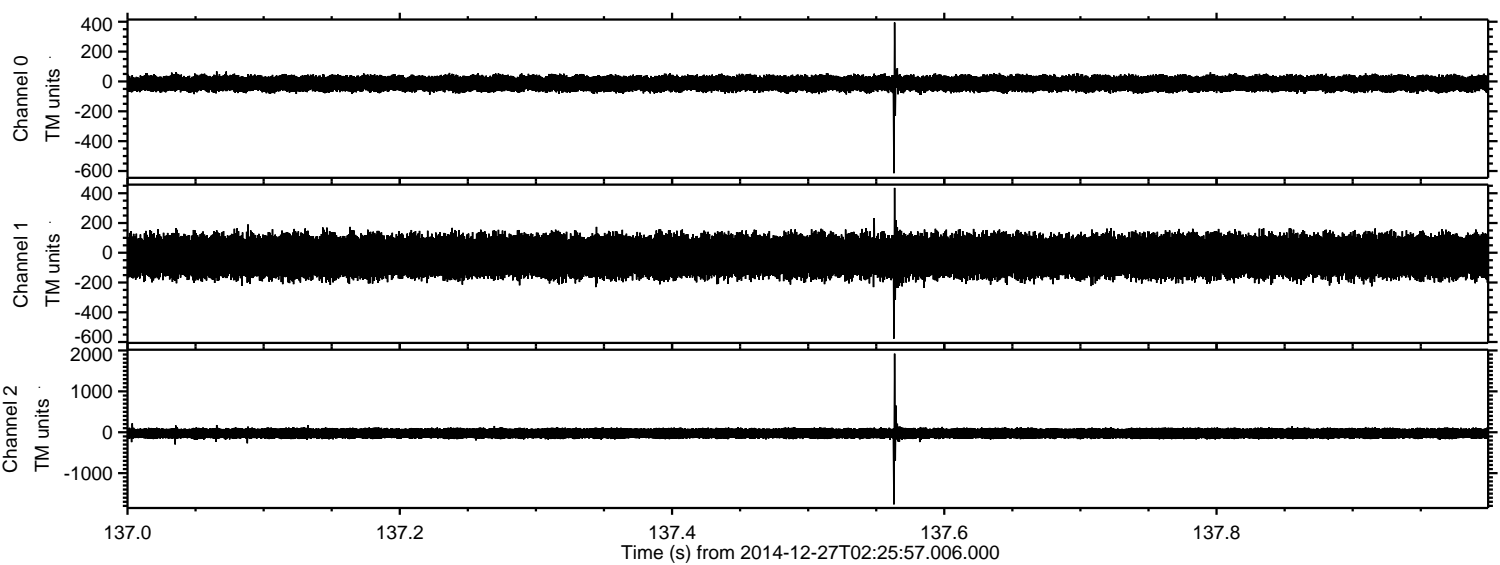
Channel 0
mn: -586
mx: 475
 μ : -13.9
 σ : 28.6

Channel 1
mn: -861
mx: 989
 μ : -24.0
 σ : 77.0

Channel 2
mn: -2076
mx: 1582
 μ : -26.6
 σ : 82.4

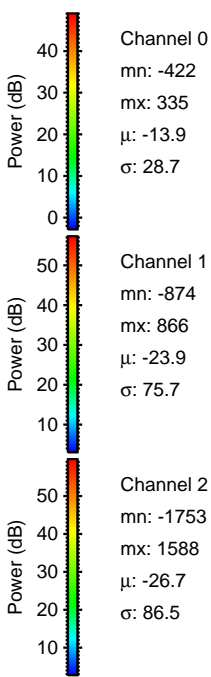
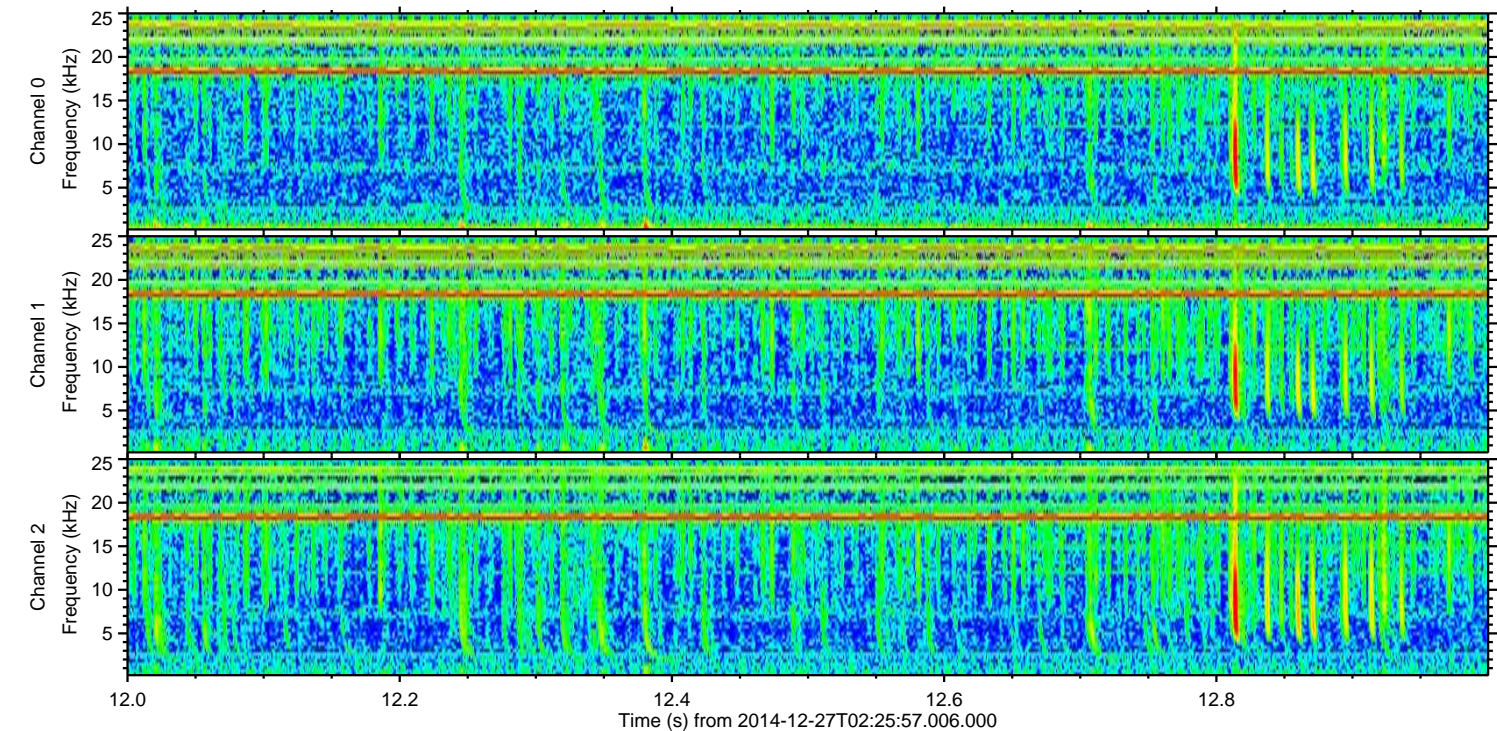
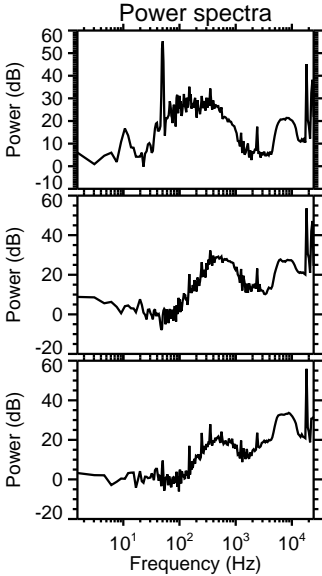
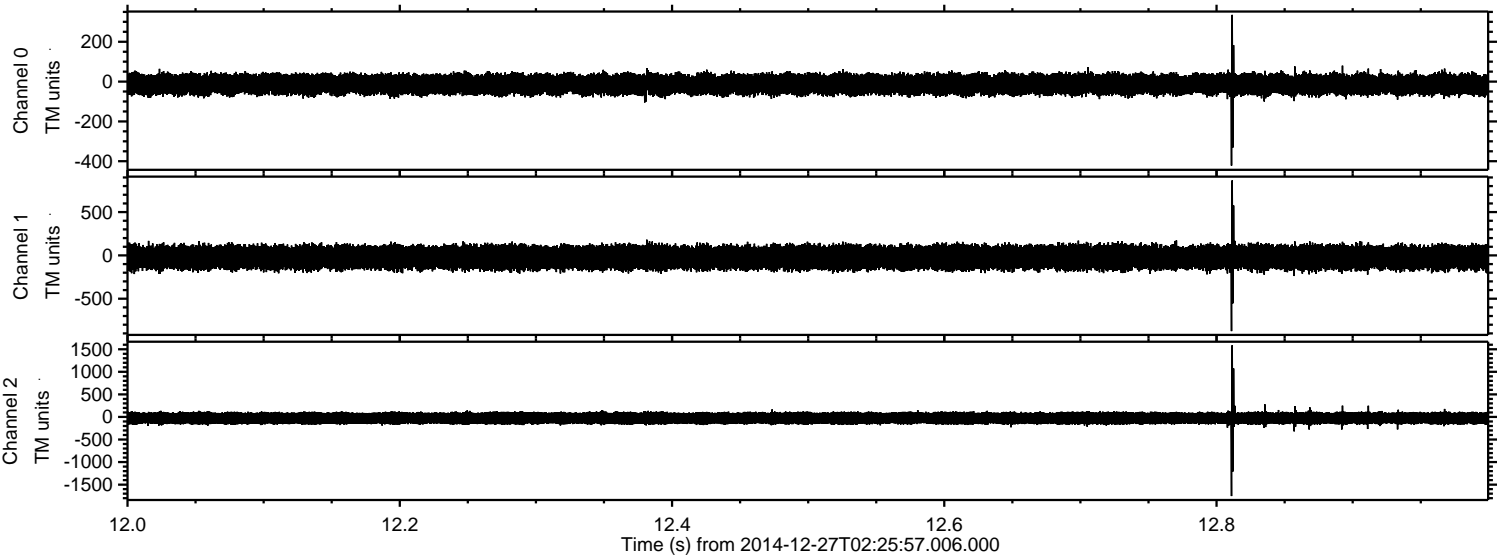
ELMAVAN 3D WAVEFORMS (Measured data sampled at 50 kHz) 49794 packets of 144 samples from 2014-12-27T02:25:57.006.000. Part 138/144

Processed Sat Dec 27 03:46:44 2014 by ELM ver.2012-10-06 from 001__elm20141227_022555__dat00.bin



ELMAVAN 3D WAVEFORMS (Measured data sampled at 50 kHz) 49794 packets of 144 samples from 2014-12-27T02:25:57.006.000. Part 13/144

Processed Sat Dec 27 03:46:45 2014 by ELM ver.2012-10-06 from 001__elm20141227_022555__dat00.bin



ELMAVAN 3D WAVEFORMS (Measured data sampled at 50 kHz) 49794 packets of 144 samples from 2014-12-27T02:25:57.006.000. Part 20/144

Processed Sat Dec 27 03:46:46 2014 by ELM ver.2012-10-06 from 001__elm20141227_022555__dat00.bin

