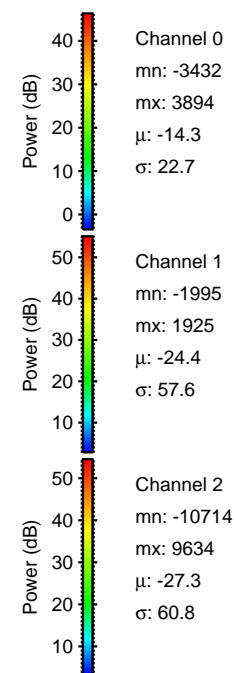
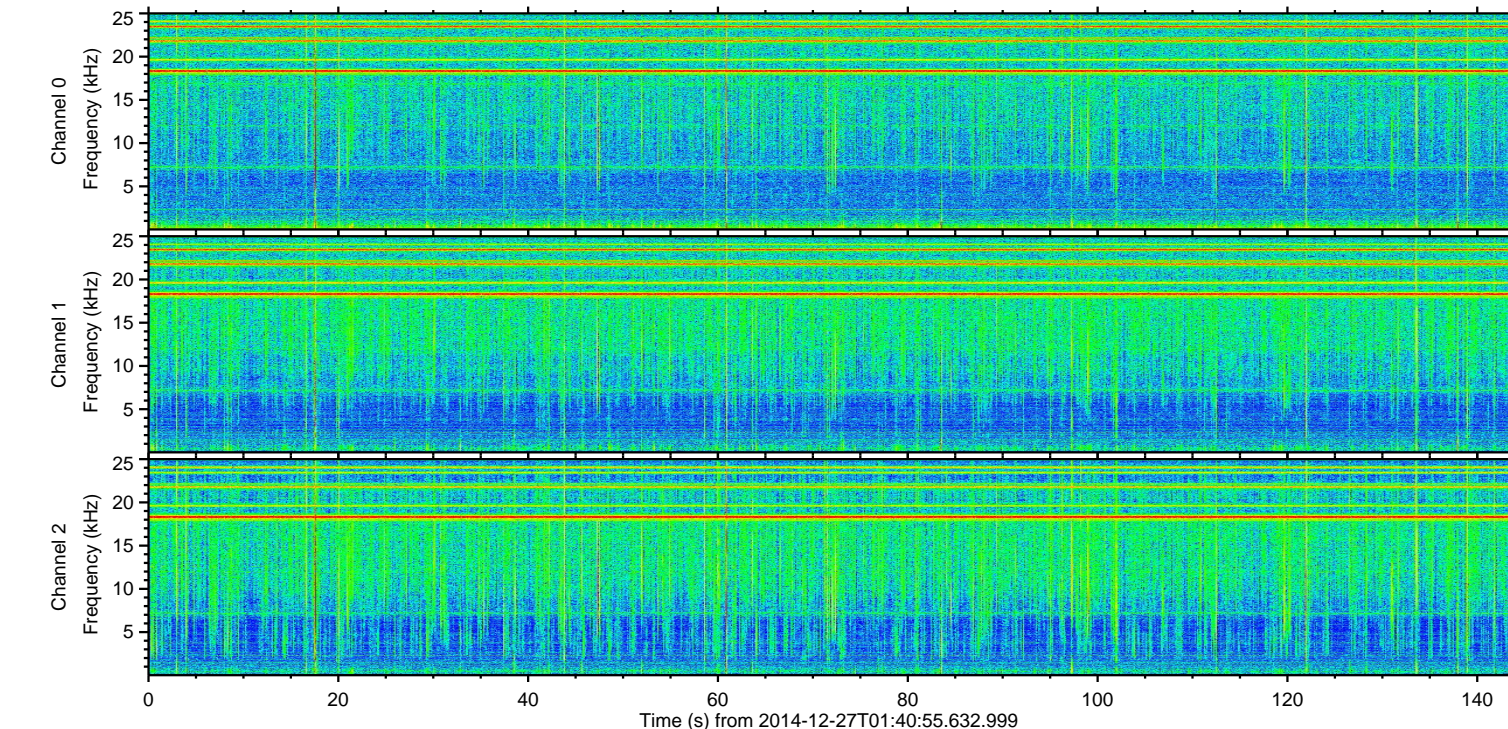
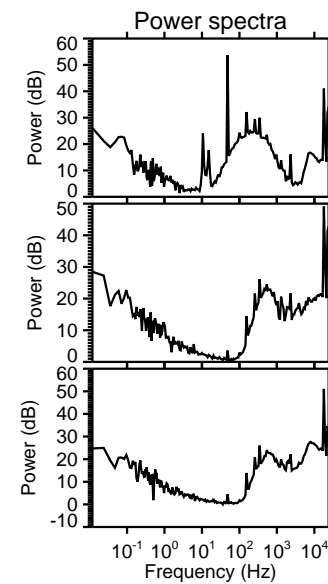
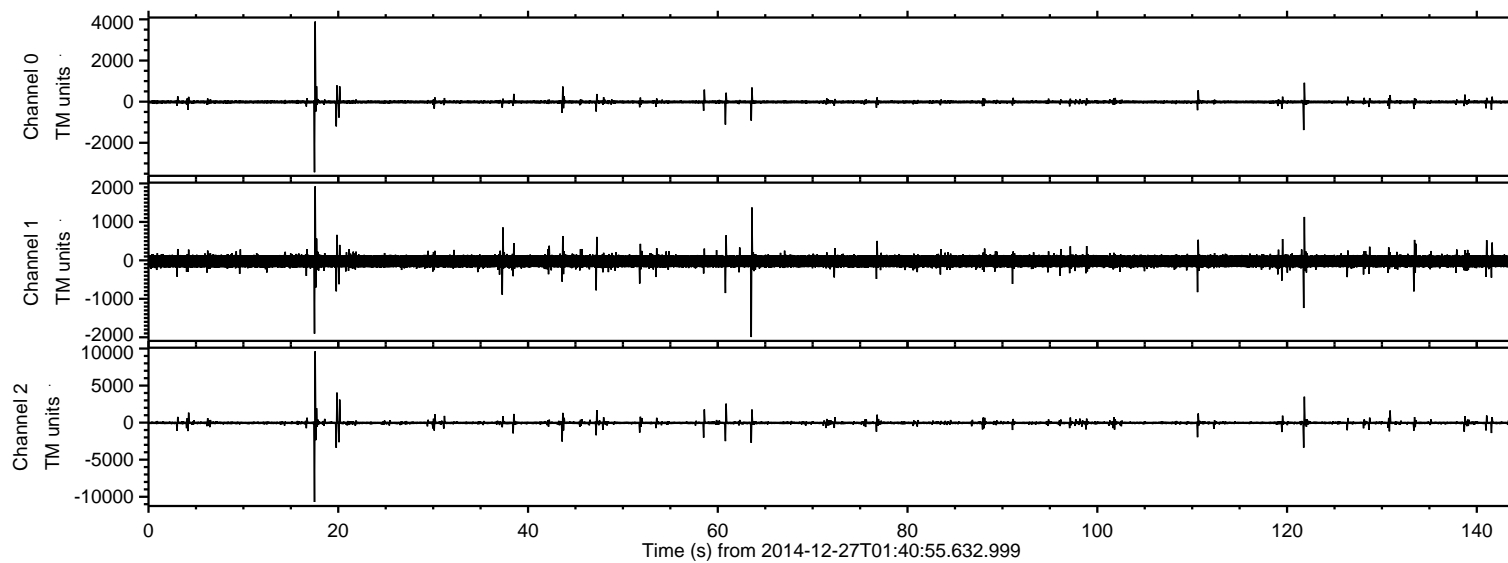


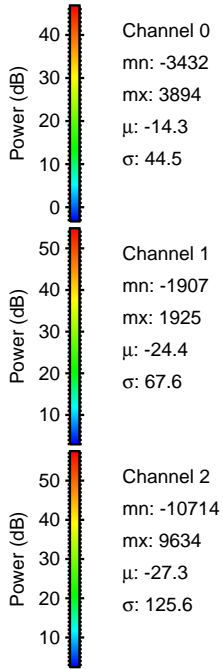
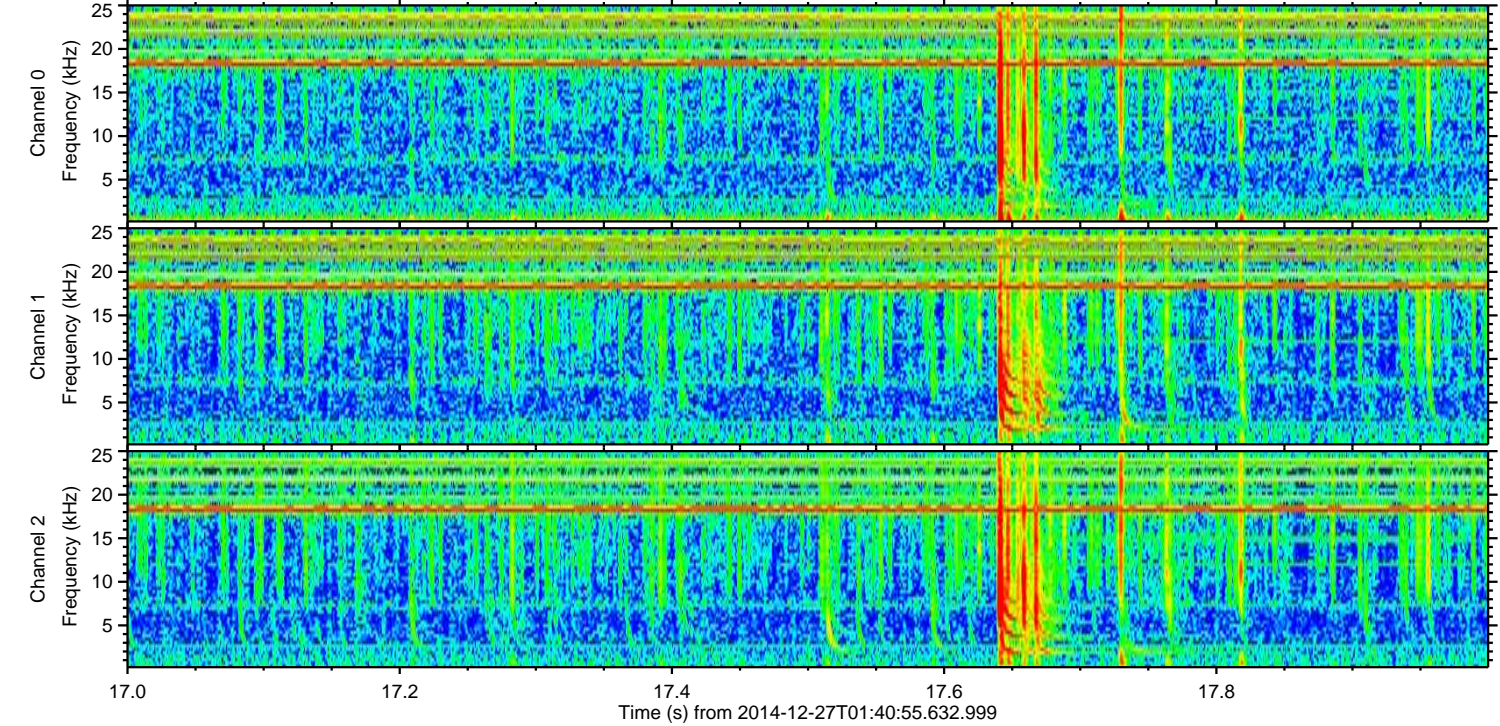
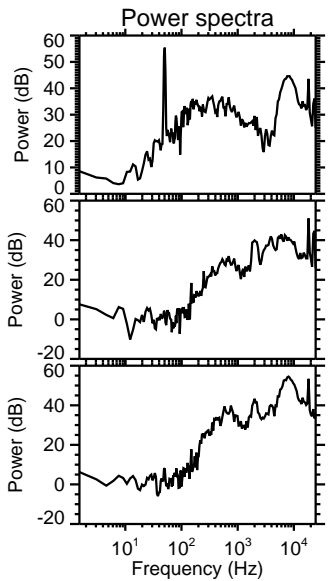
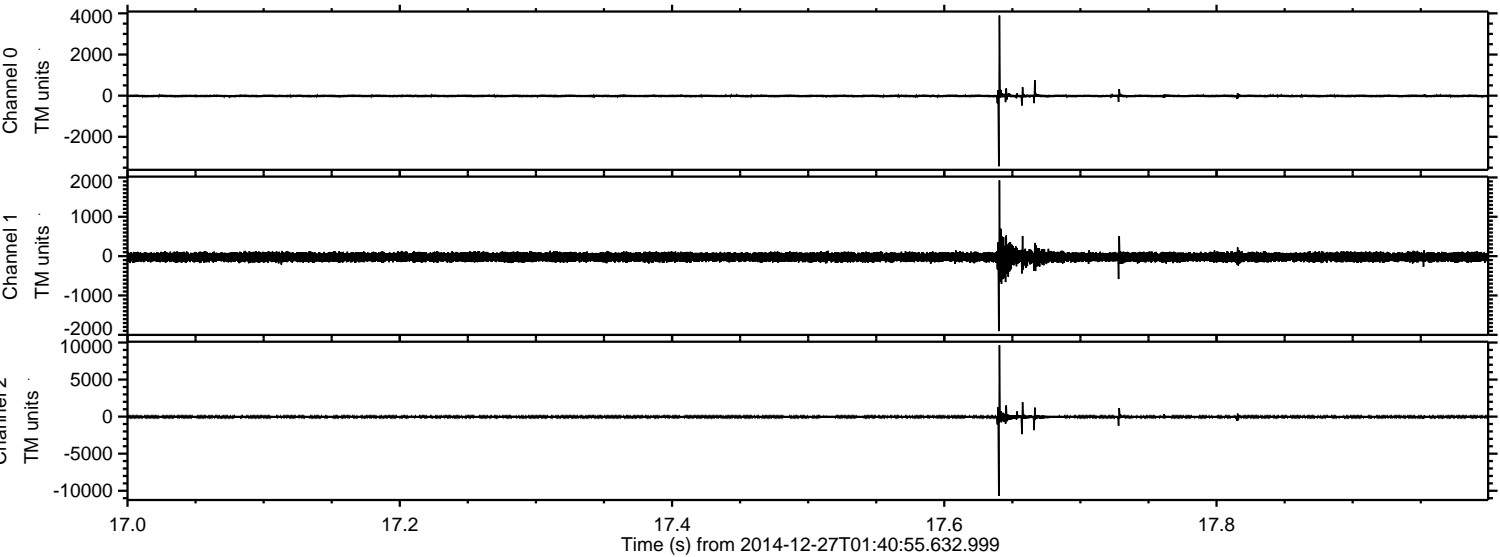
ELMAVAN 3D WAVEFORMS (Measured data sampled at 50 kHz) 49794 packets of 144 samples from 2014-12-27T01:40:55.632.999.

Processed Sat Dec 27 03:00:09 2014 by ELM ver.2012-10-06 from 001__elm20141227_014054__dat00.bin



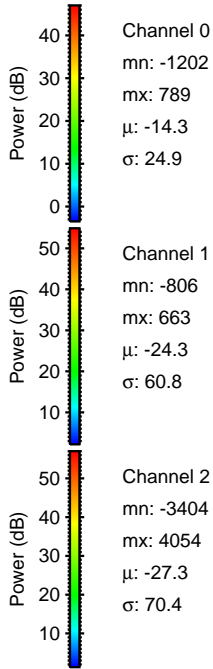
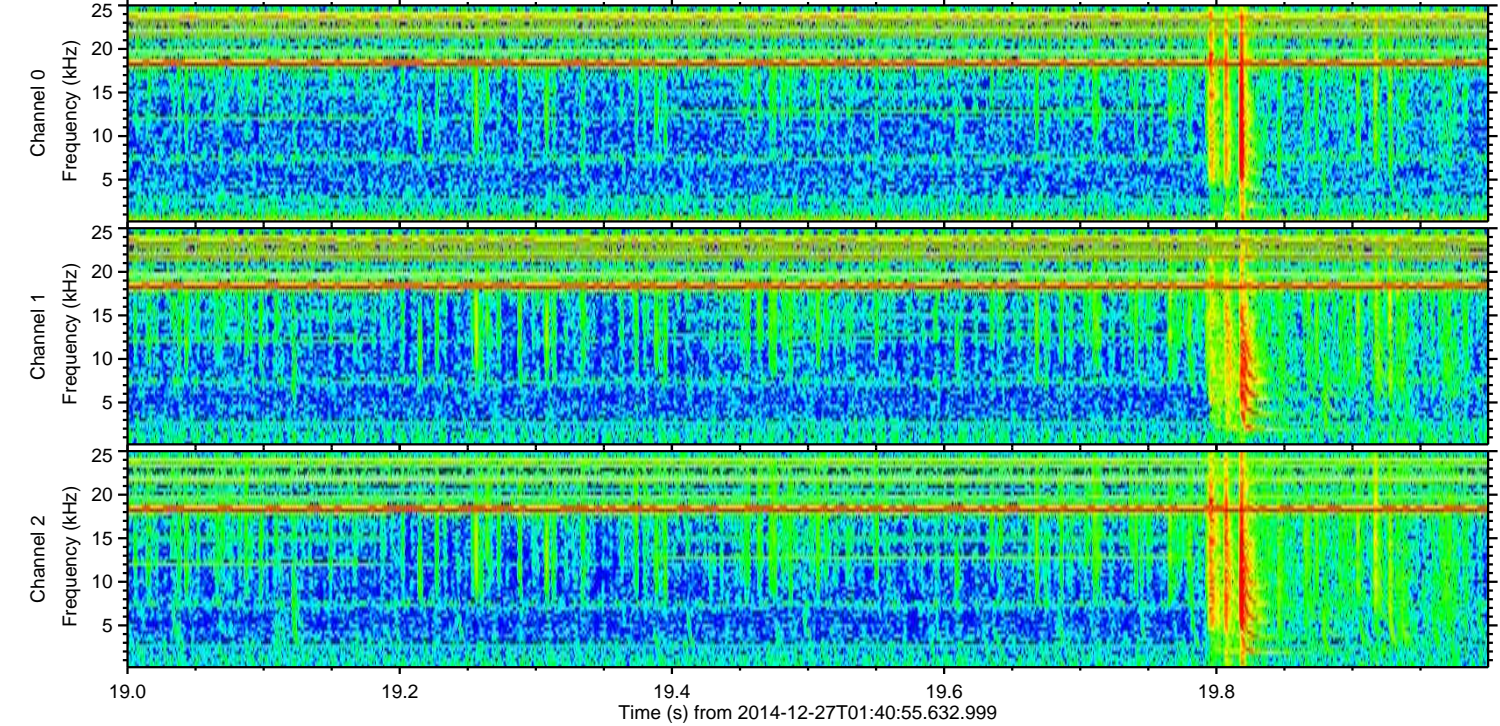
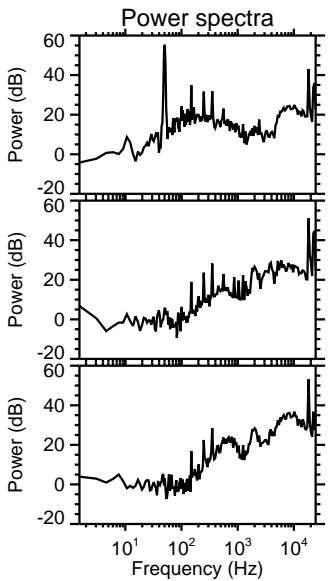
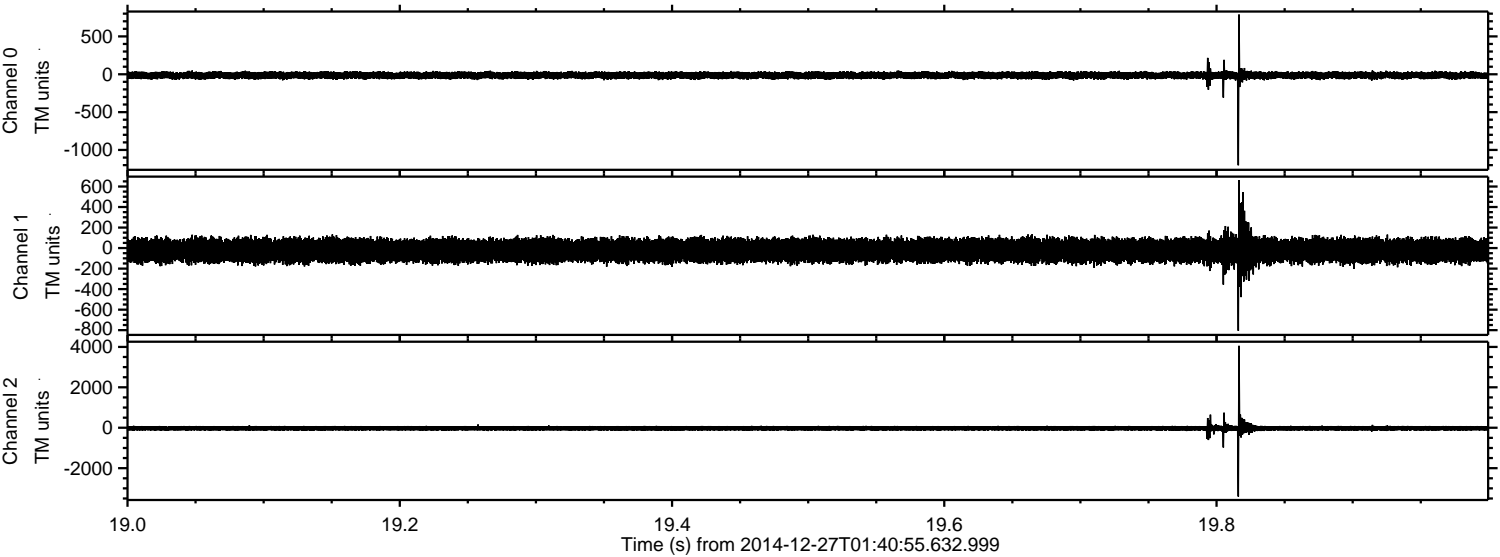
ELMAVAN 3D WAVEFORMS (Measured data sampled at 50 kHz) 49794 packets of 144 samples from 2014-12-27T01:40:55.632.999. Part 18/144

Processed Sat Dec 27 03:00:22 2014 by ELM ver.2012-10-06 from 001__elm20141227_014054__dat00.bin



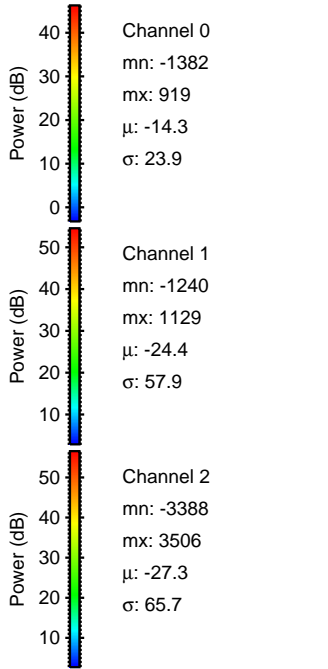
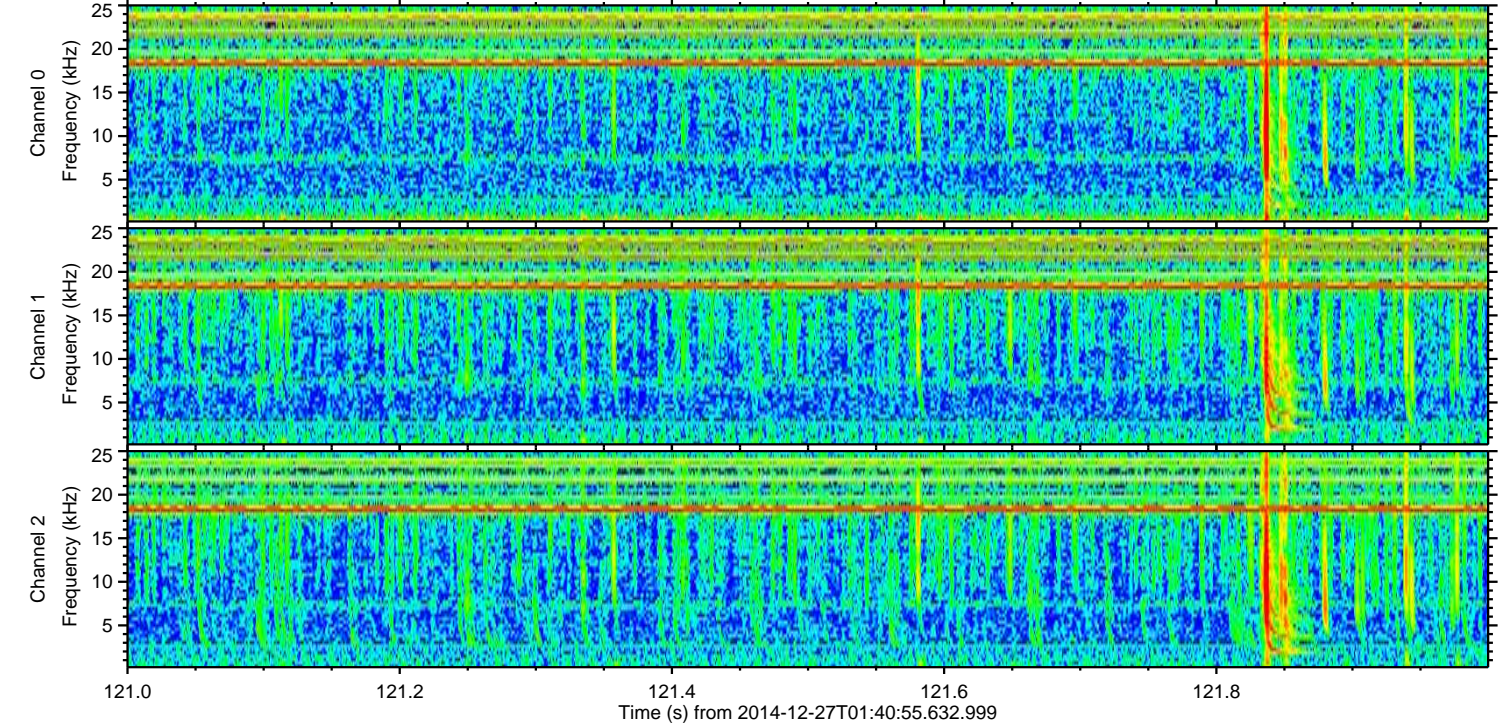
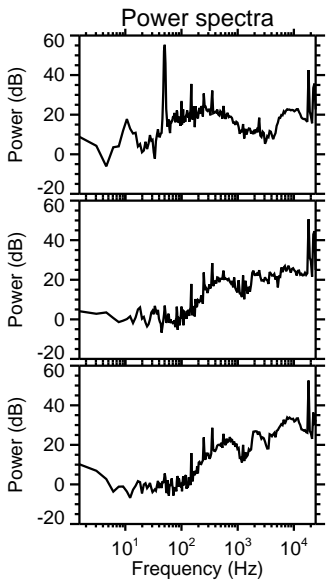
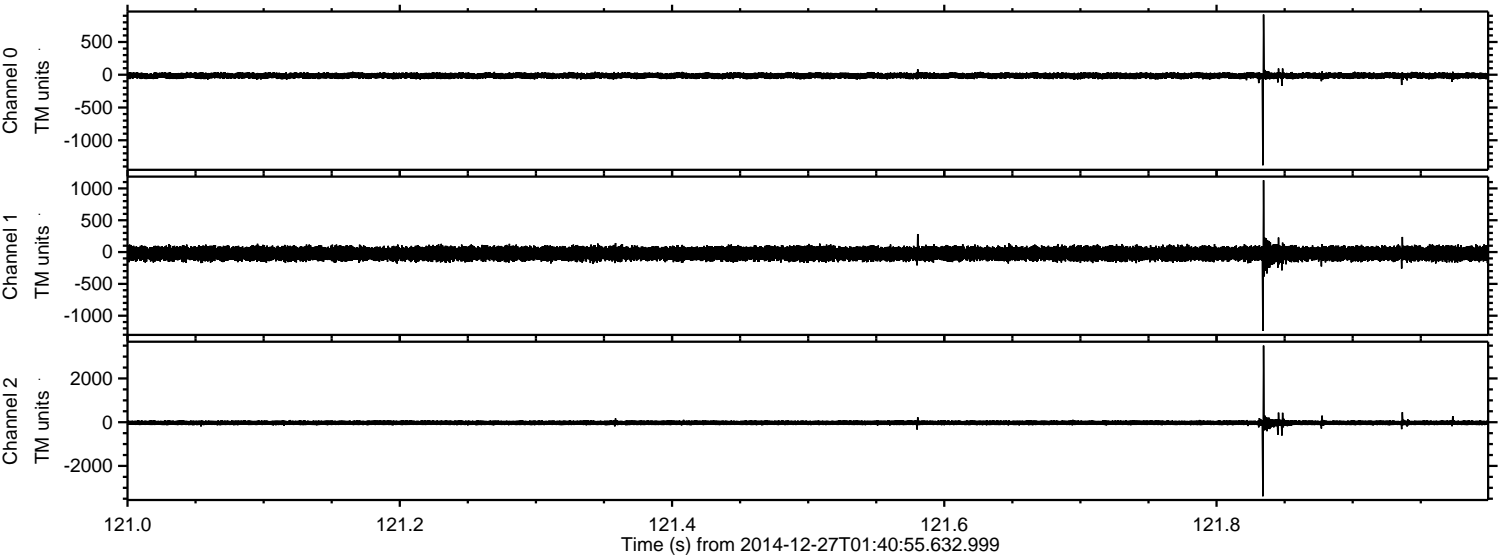
ELMAVAN 3D WAVEFORMS (Measured data sampled at 50 kHz) 49794 packets of 144 samples from 2014-12-27T01:40:55.632.999. Part 20/144

Processed Sat Dec 27 03:00:23 2014 by ELM ver.2012-10-06 from 001__elm20141227_014054__dat00.bin



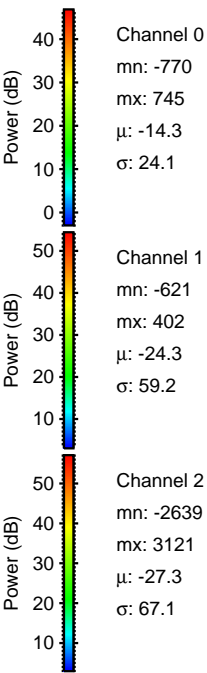
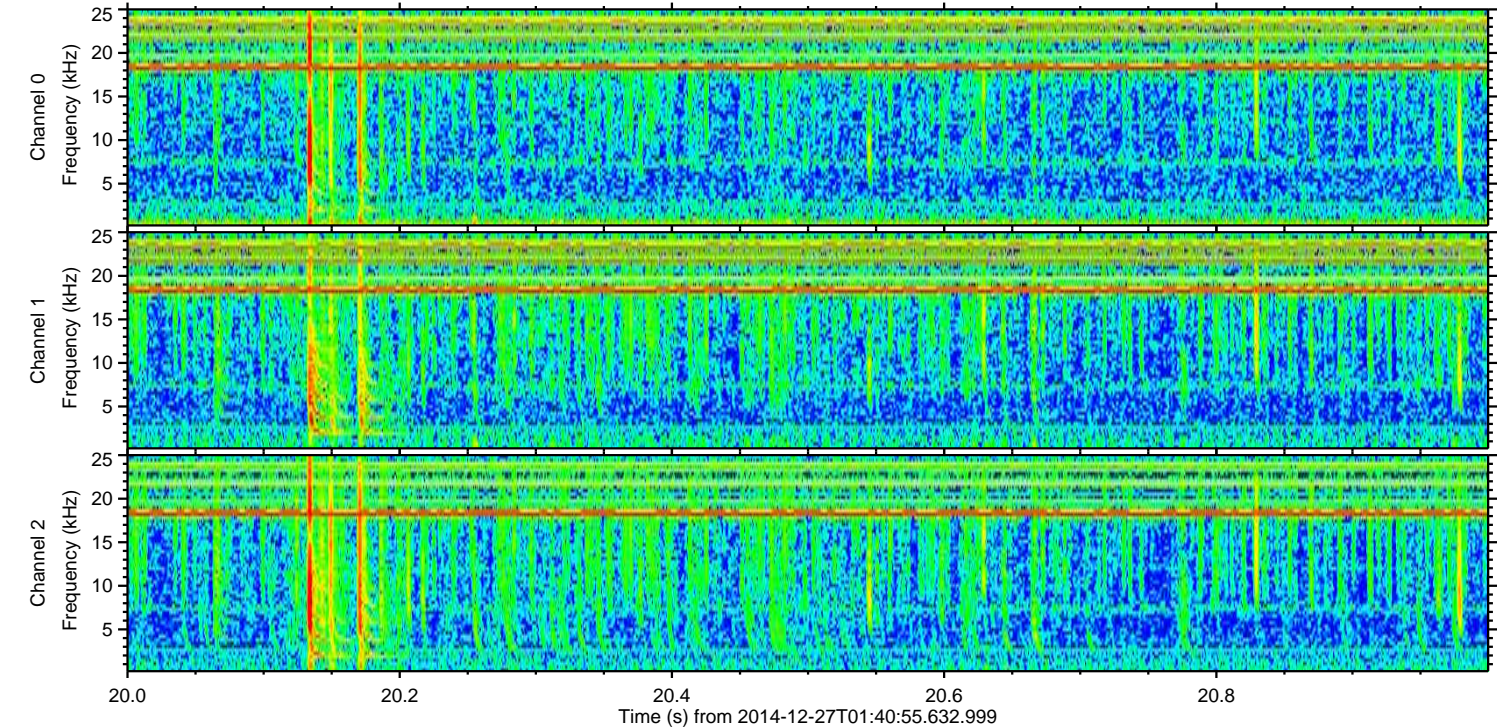
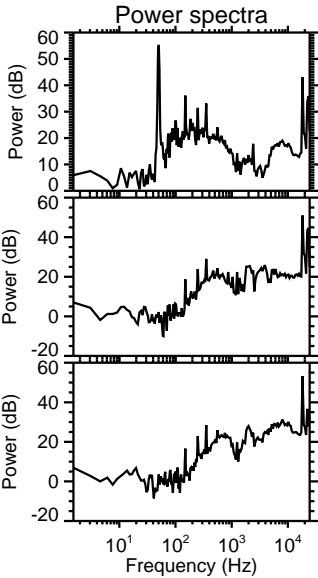
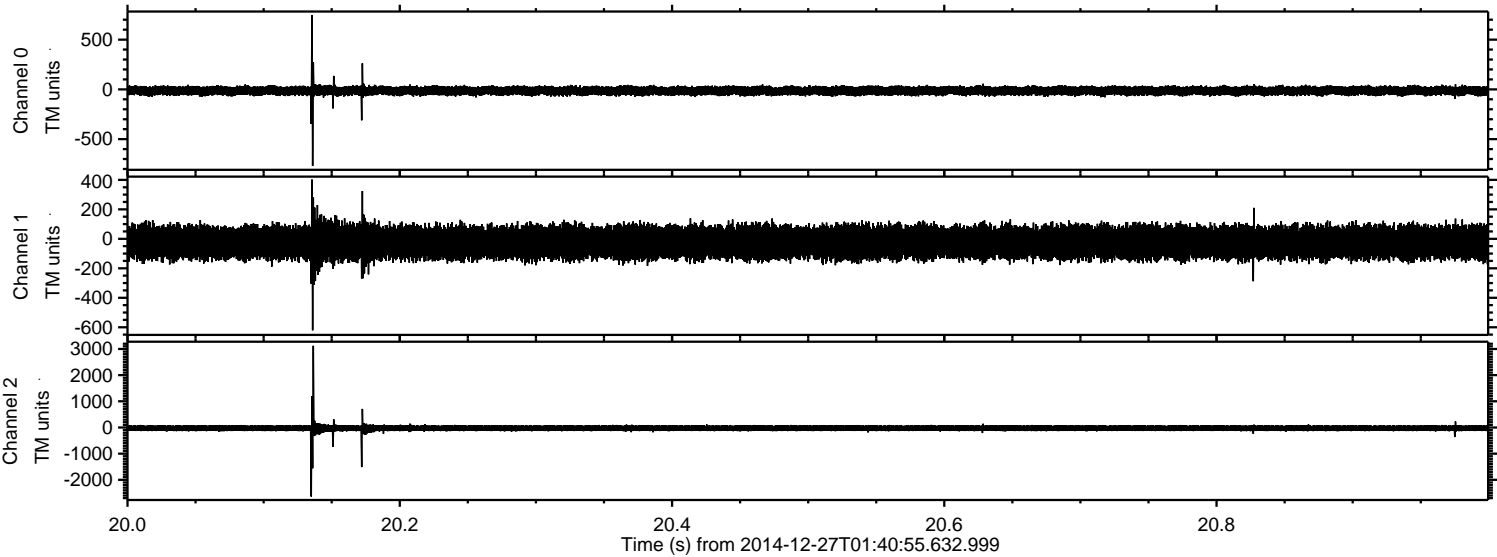
ELMAVAN 3D WAVEFORMS (Measured data sampled at 50 kHz) 49794 packets of 144 samples from 2014-12-27T01:40:55.632.999. Part 122/144

Processed Sat Dec 27 03:00:24 2014 by ELM ver.2012-10-06 from 001__elm20141227_014054__dat00.bin



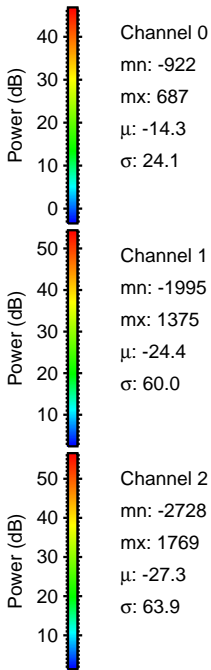
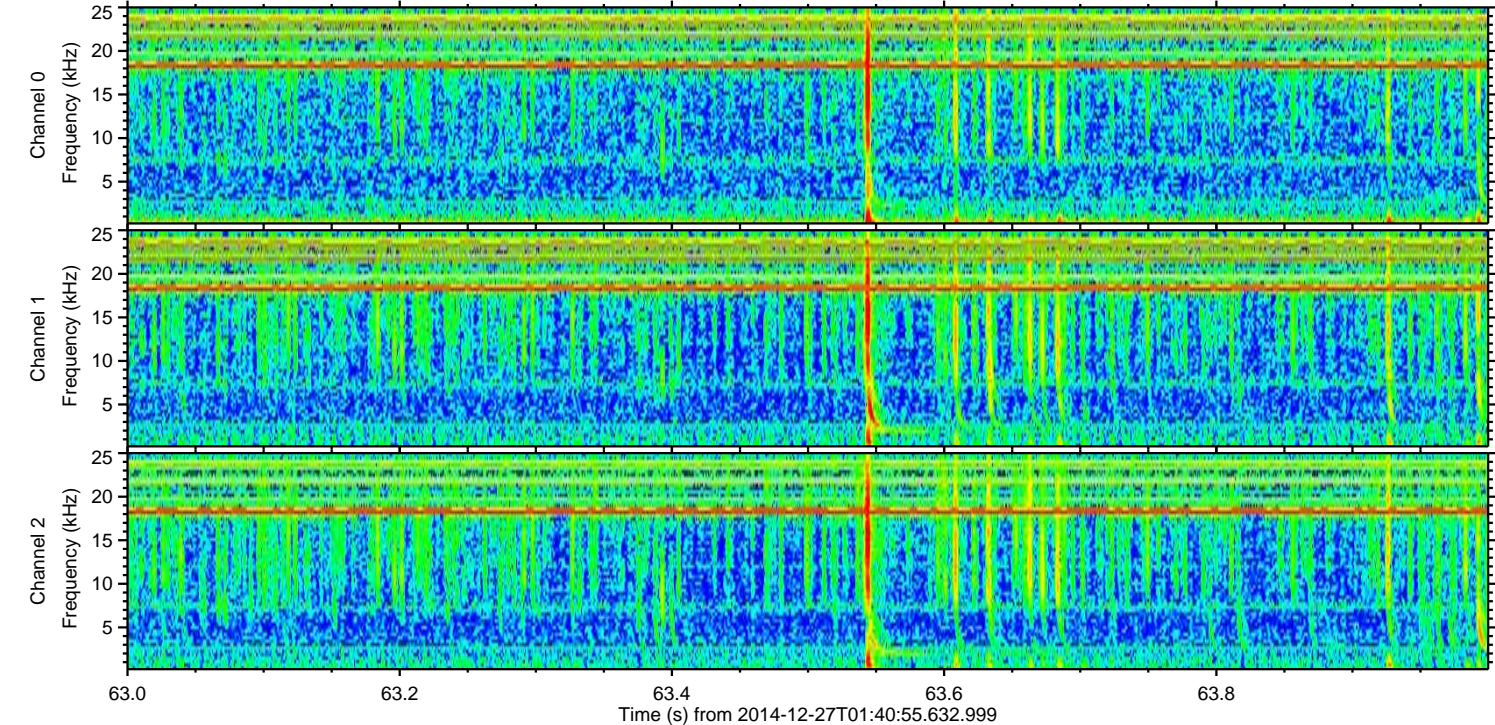
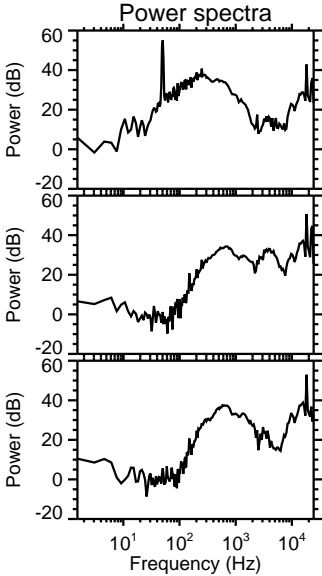
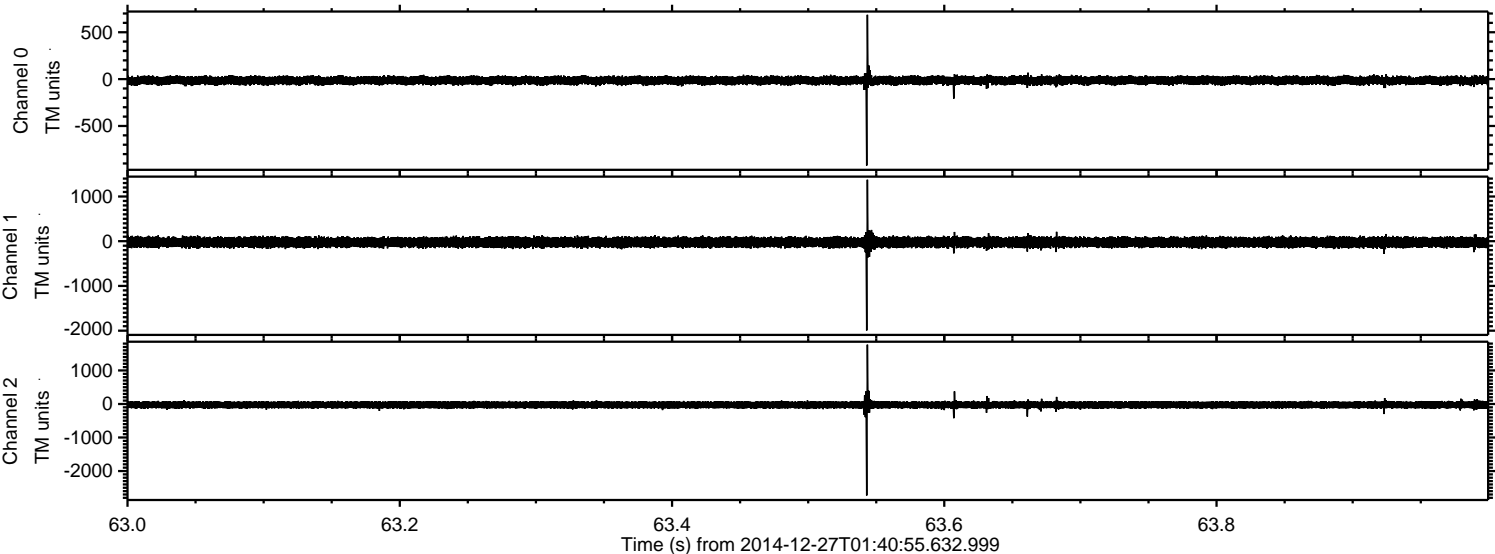
ELMAVAN 3D WAVEFORMS (Measured data sampled at 50 kHz) 49794 packets of 144 samples from 2014-12-27T01:40:55.632.999. Part 21/144

Processed Sat Dec 27 03:00:25 2014 by ELM ver.2012-10-06 from 001__elm20141227_014054__dat00.bin



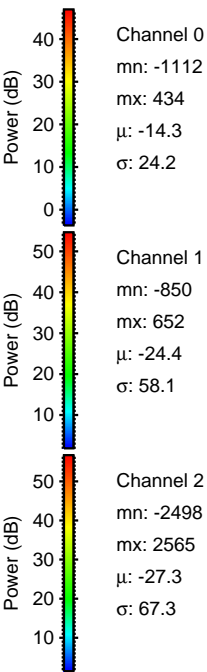
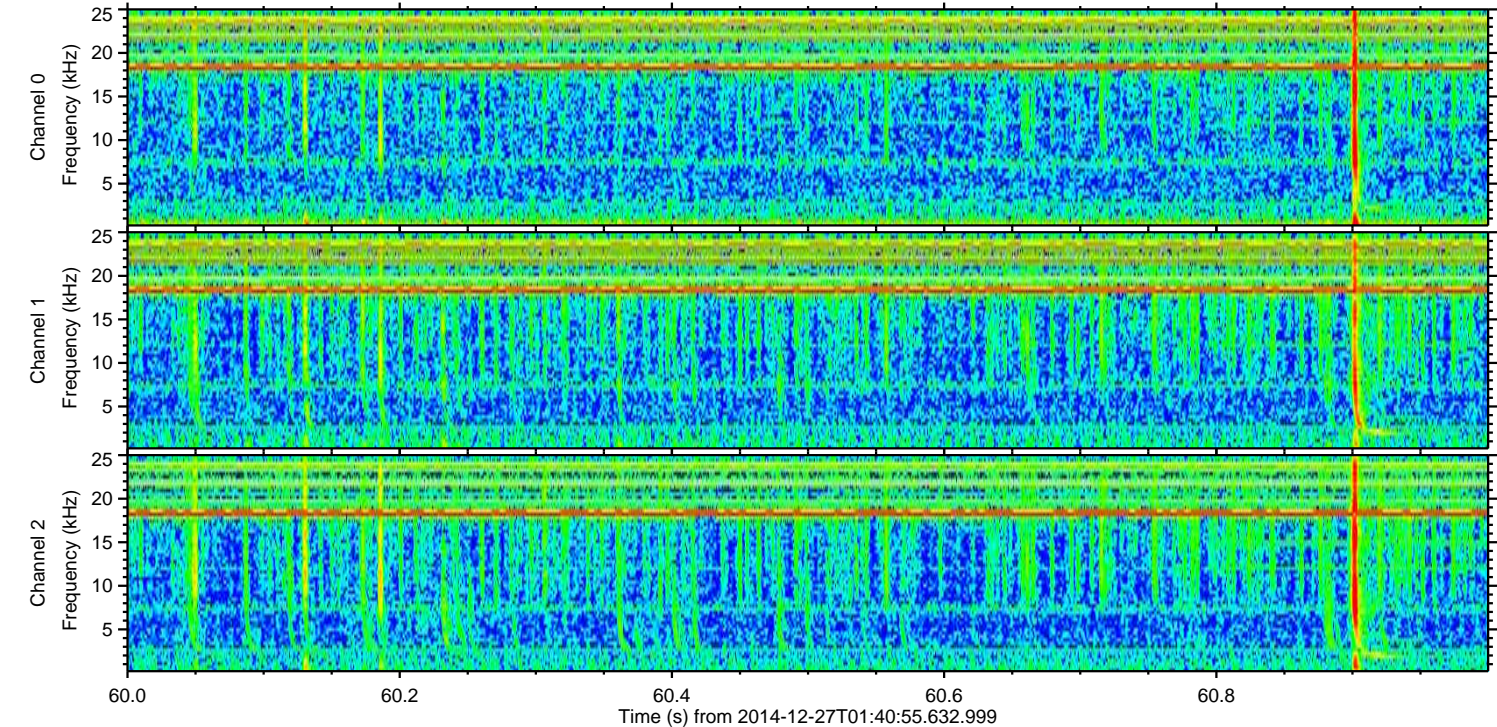
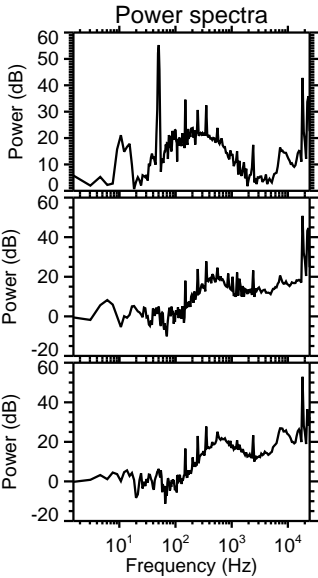
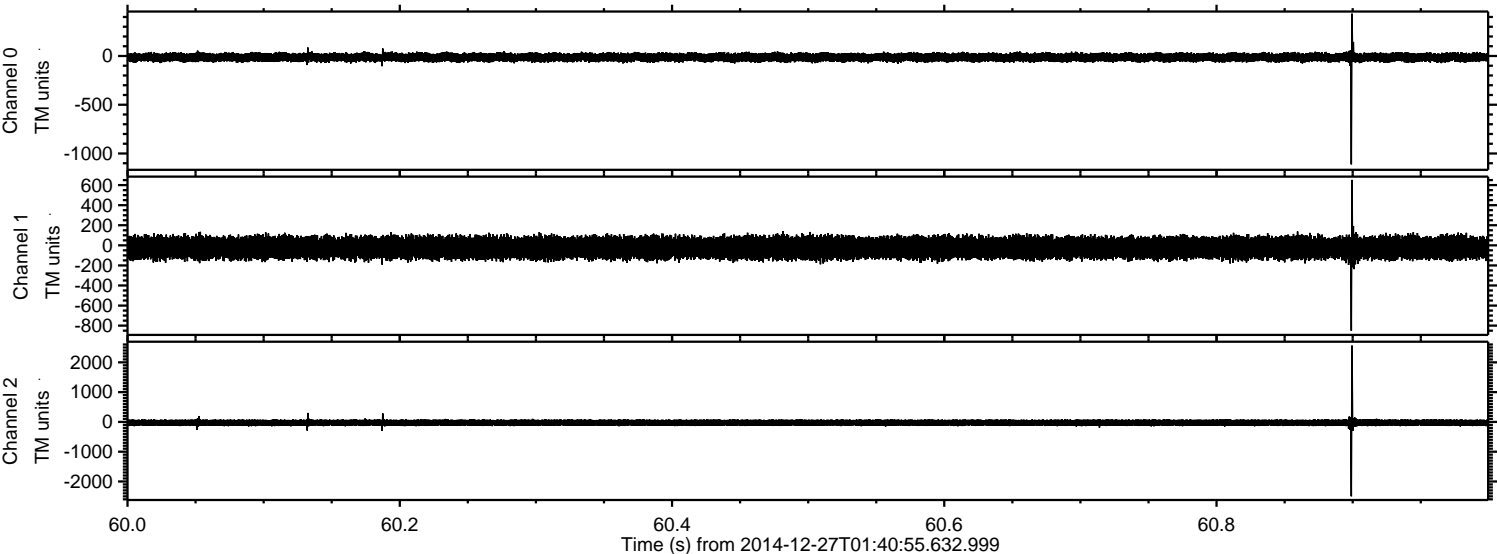
ELMAVAN 3D WAVEFORMS (Measured data sampled at 50 kHz) 49794 packets of 144 samples from 2014-12-27T01:40:55.632.999. Part 64/144

Processed Sat Dec 27 03:00:26 2014 by ELM ver.2012-10-06 from 001__elm20141227_014054__dat00.bin



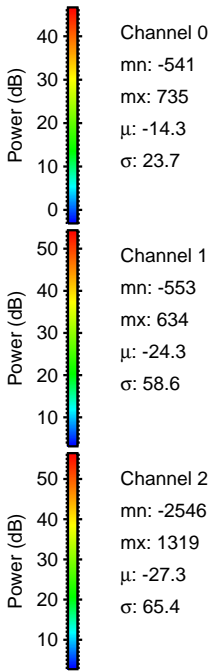
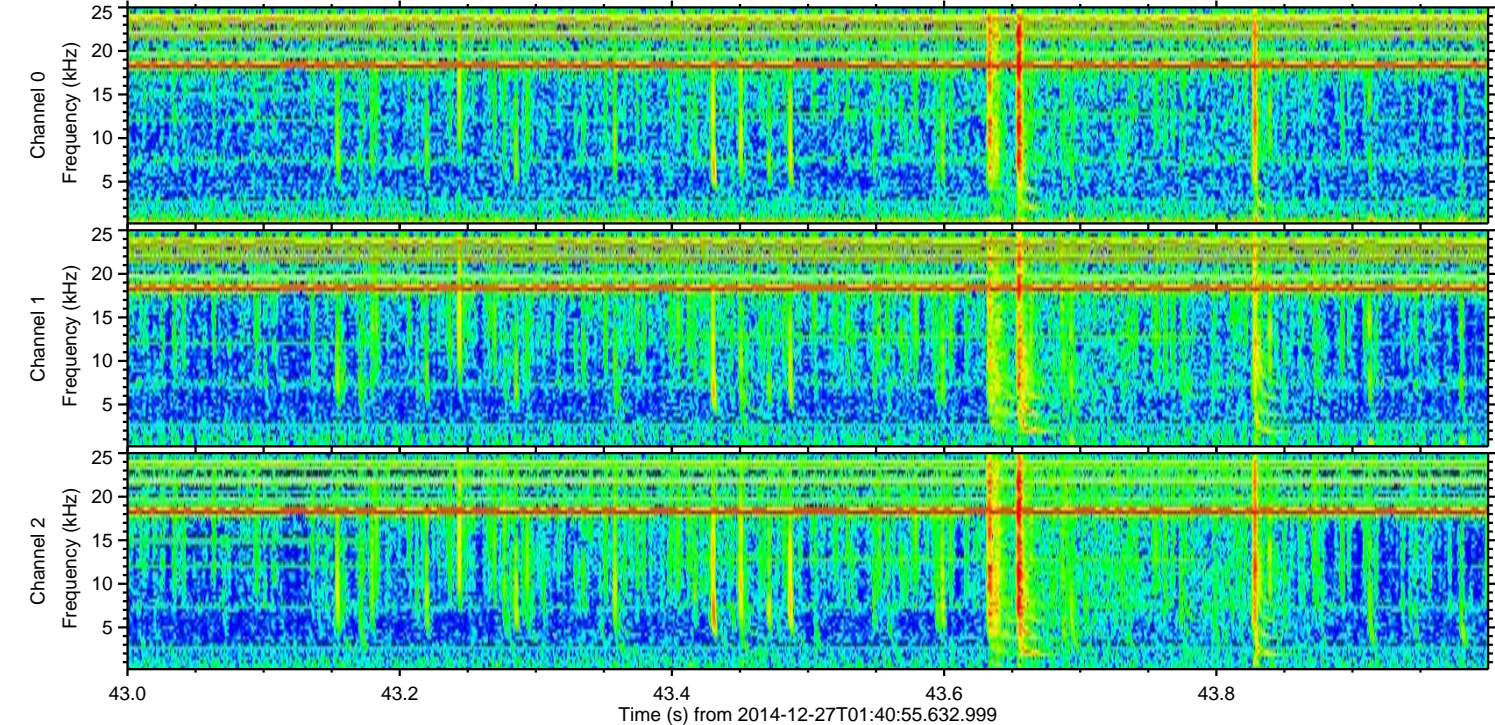
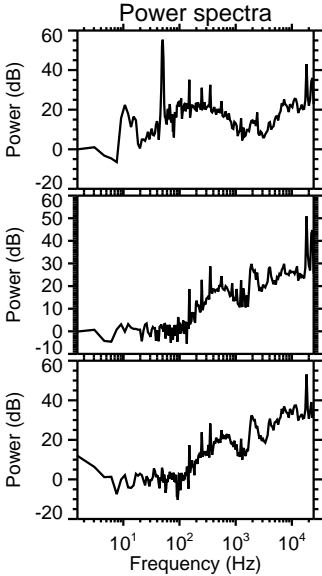
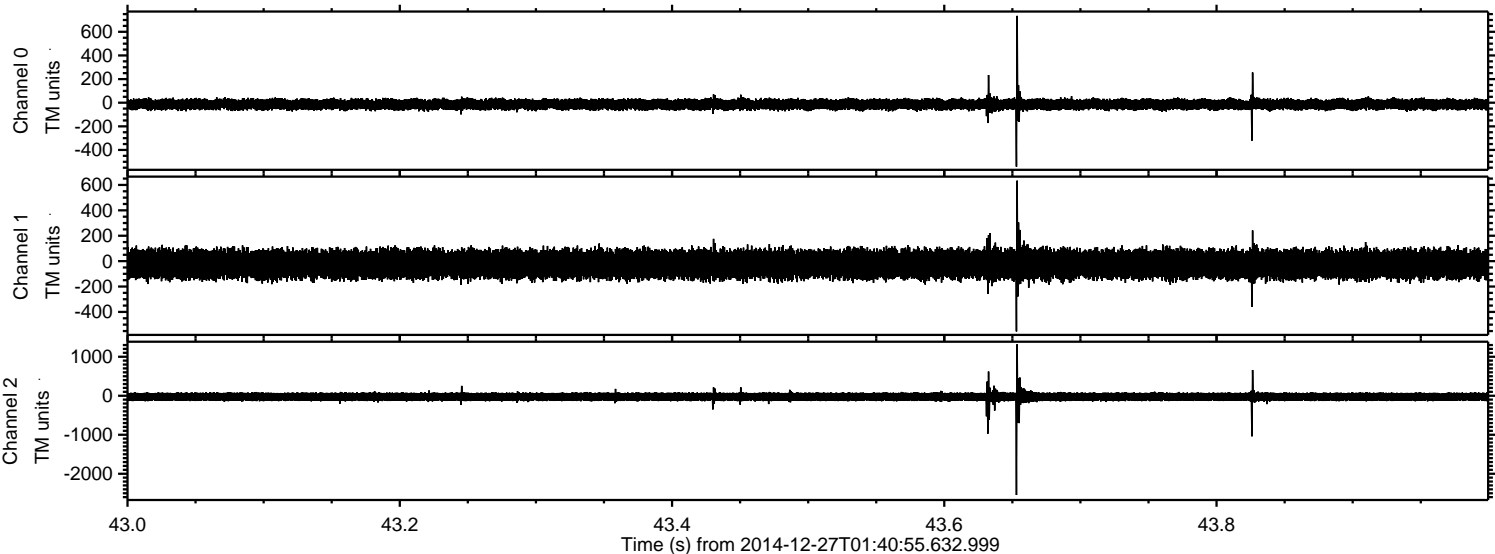
ELMAVAN 3D WAVEFORMS (Measured data sampled at 50 kHz) 49794 packets of 144 samples from 2014-12-27T01:40:55.632.999. Part 61/144

Processed Sat Dec 27 03:00:27 2014 by ELM ver.2012-10-06 from 001__elm20141227_014054__dat00.bin



ELMAVAN 3D WAVEFORMS (Measured data sampled at 50 kHz) 49794 packets of 144 samples from 2014-12-27T01:40:55.632.999. Part 44/144

Processed Sat Dec 27 03:00:28 2014 by ELM ver.2012-10-06 from 001__elm20141227_014054__dat00.bin



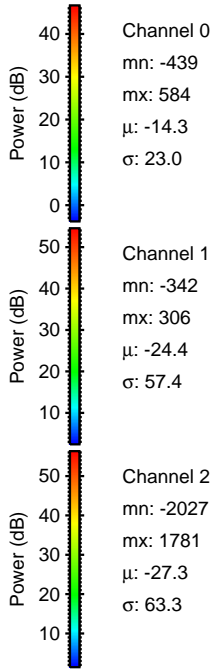
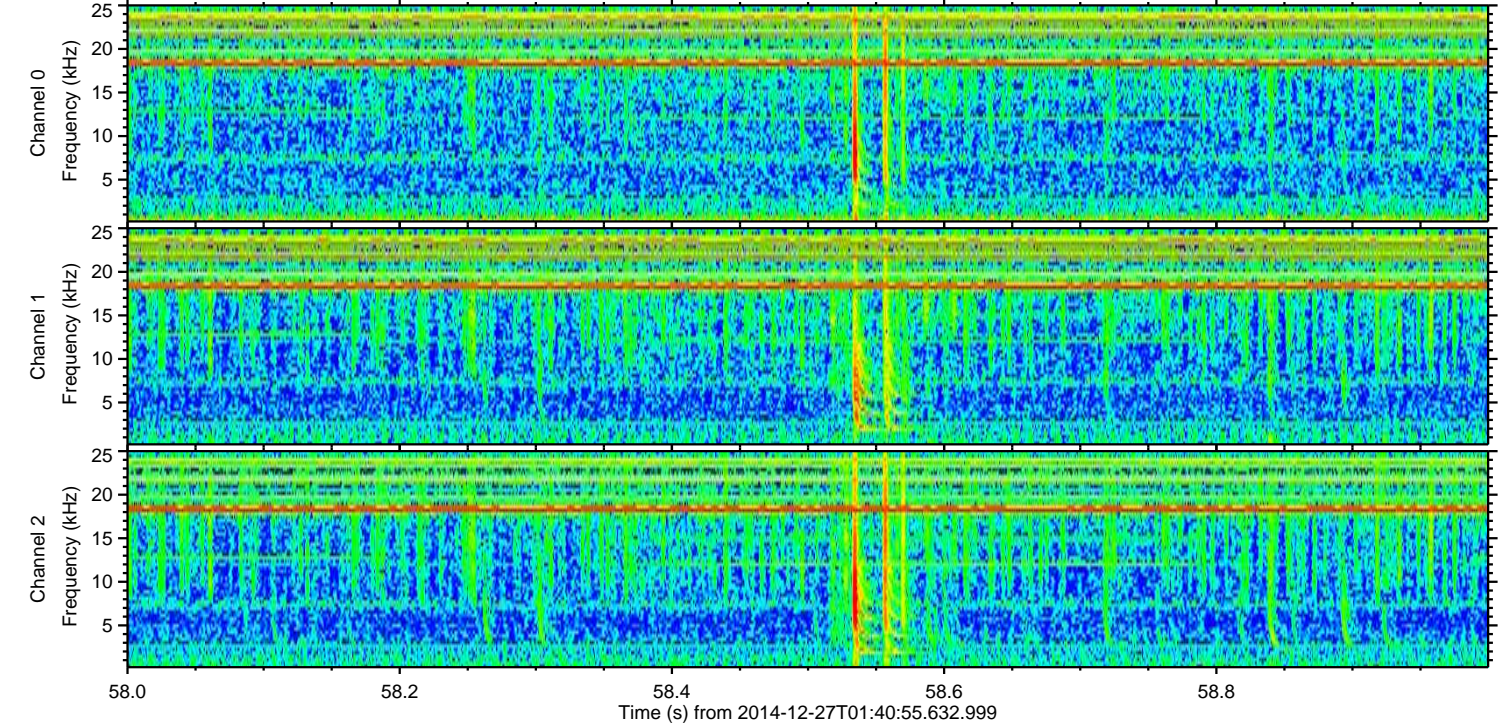
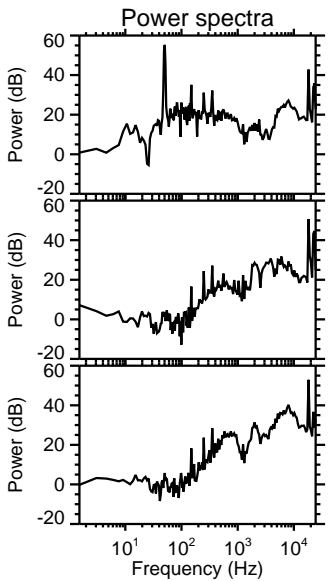
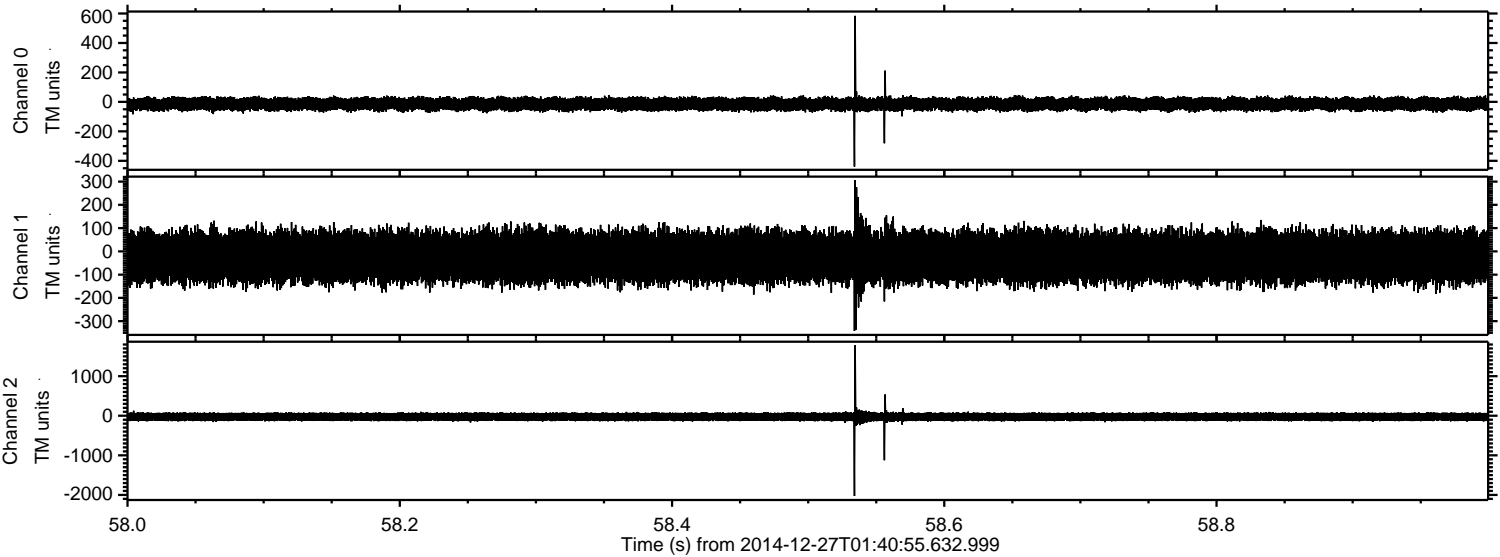
Channel 0
mn: -541
mx: 735
 μ : -14.3
 σ : 23.7

Channel 1
mn: -553
mx: 634
 μ : -24.3
 σ : 58.6

Channel 2
mn: -2546
mx: 1319
 μ : -27.3
 σ : 65.4

ELMAVAN 3D WAVEFORMS (Measured data sampled at 50 kHz) 49794 packets of 144 samples from 2014-12-27T01:40:55.632.999. Part 59/144

Processed Sat Dec 27 03:00:29 2014 by ELM ver.2012-10-06 from 001__elm20141227_014054__dat00.bin



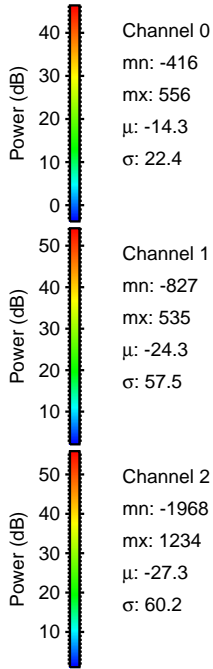
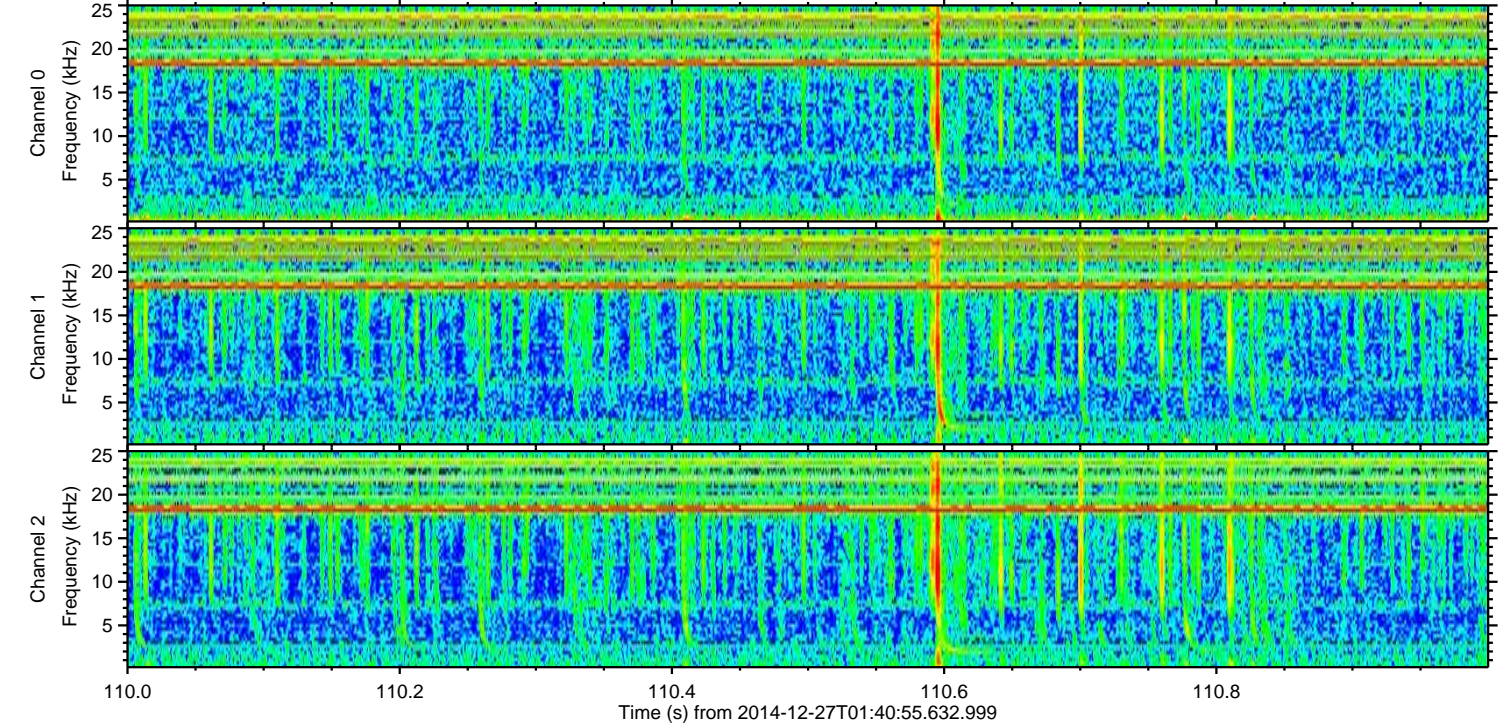
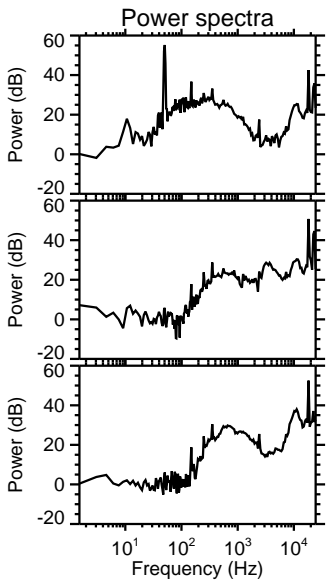
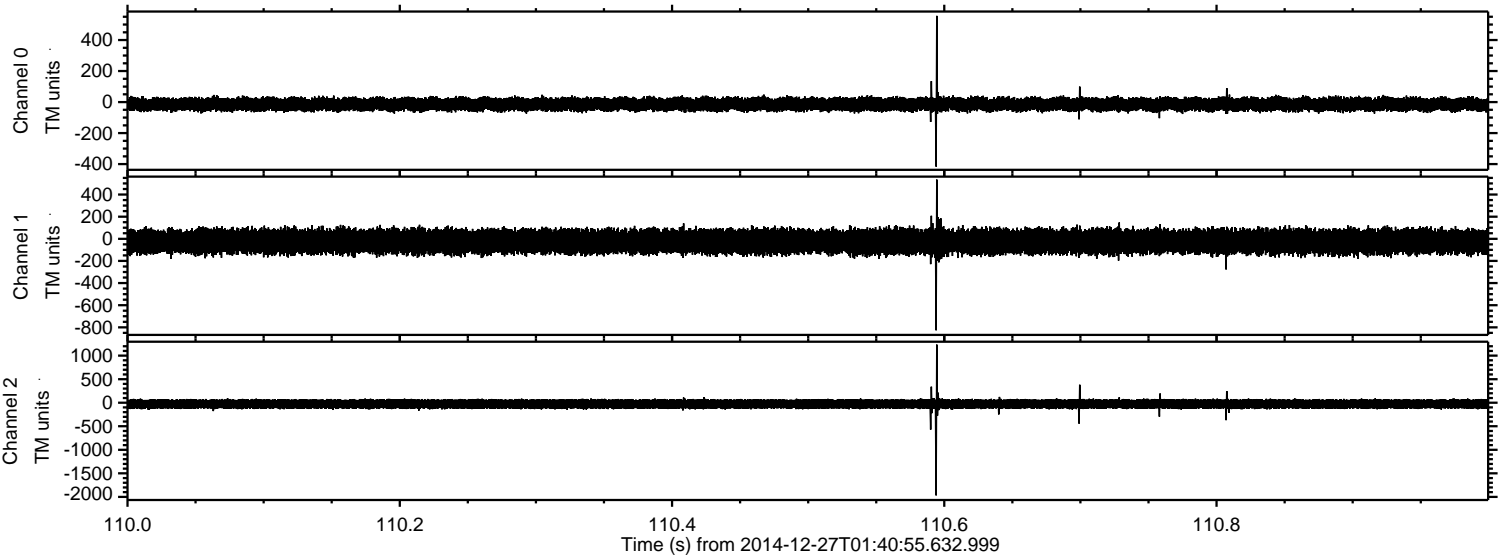
Channel 0
mn: -439
mx: 584
 μ : -14.3
 σ : 23.0

Channel 1
mn: -342
mx: 306
 μ : -24.4
 σ : 57.4

Channel 2
mn: -2027
mx: 1781
 μ : -27.3
 σ : 63.3

ELMAVAN 3D WAVEFORMS (Measured data sampled at 50 kHz) 49794 packets of 144 samples from 2014-12-27T01:40:55.632.999. Part 111/144

Processed Sat Dec 27 03:00:30 2014 by ELM ver.2012-10-06 from 001__elm20141227_014054__dat00.bin



ELMAVAN 3D WAVEFORMS (Measured data sampled at 50 kHz) 49794 packets of 144 samples from 2014-12-27T01:40:55.632.999. Part 56/144

Processed Sat Dec 27 03:00:30 2014 by ELM ver.2012-10-06 from 001__elm20141227_014054__dat00.bin

