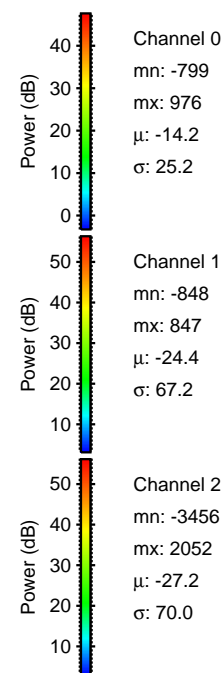
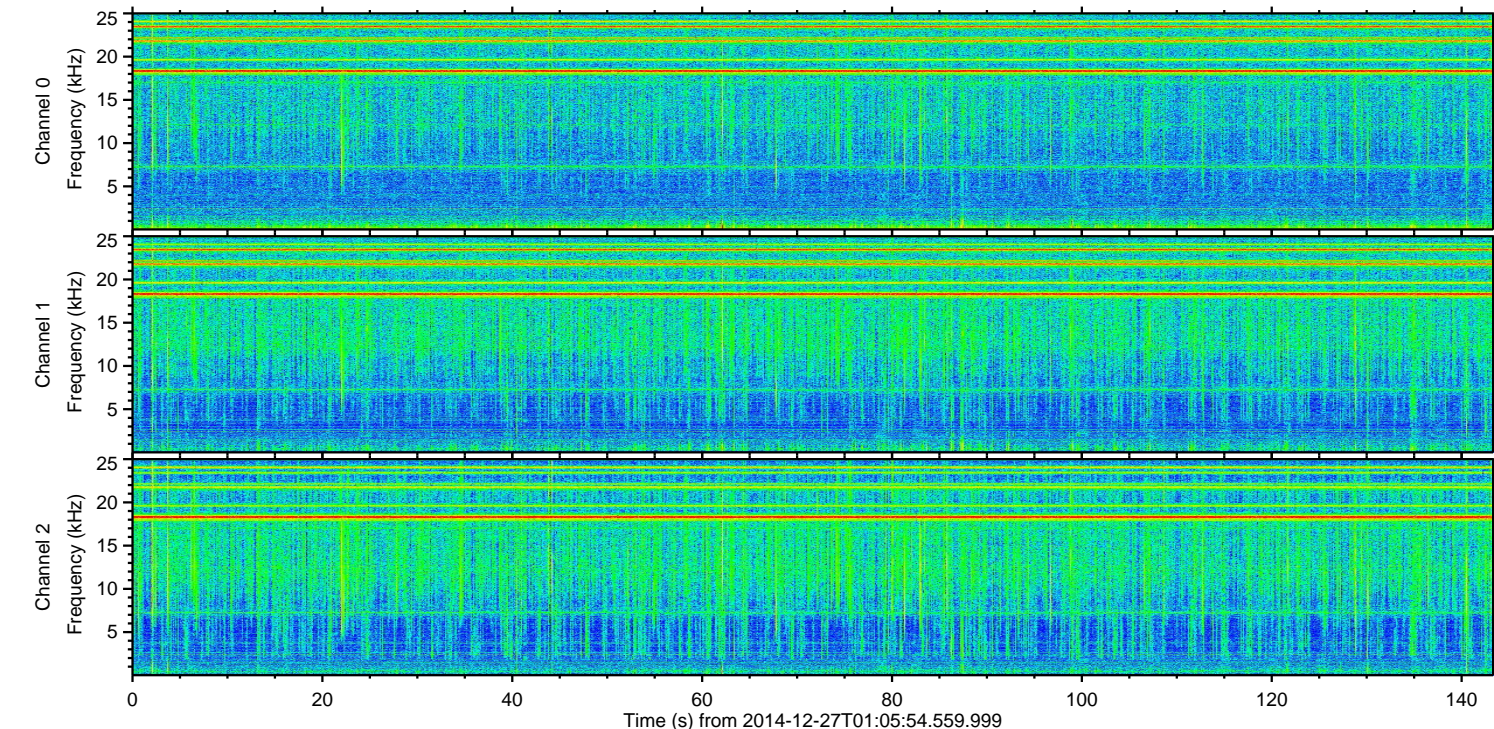
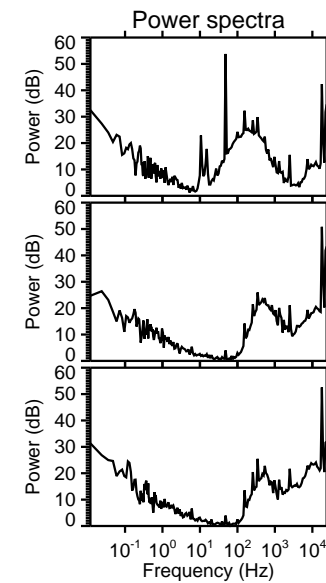
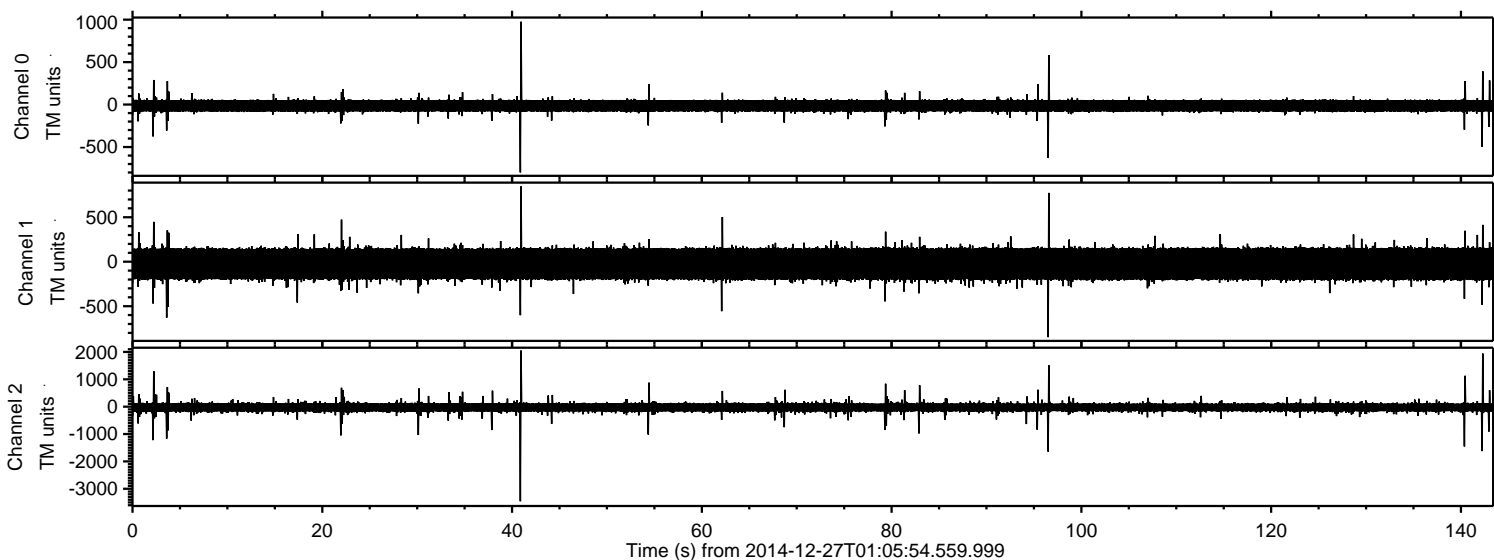


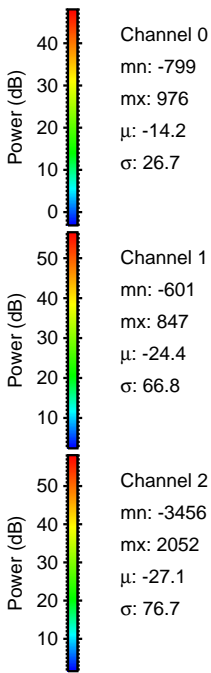
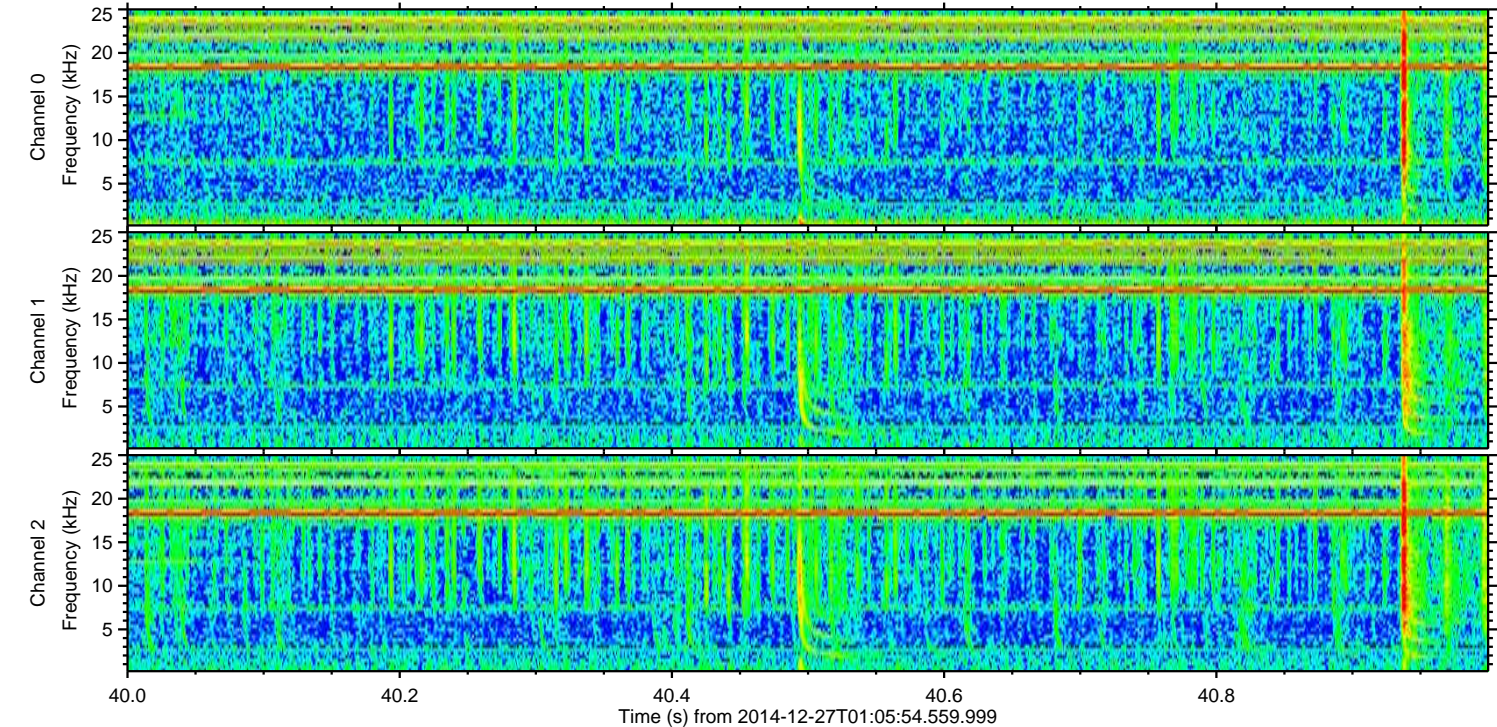
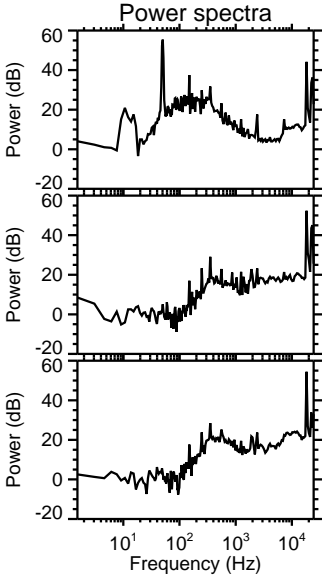
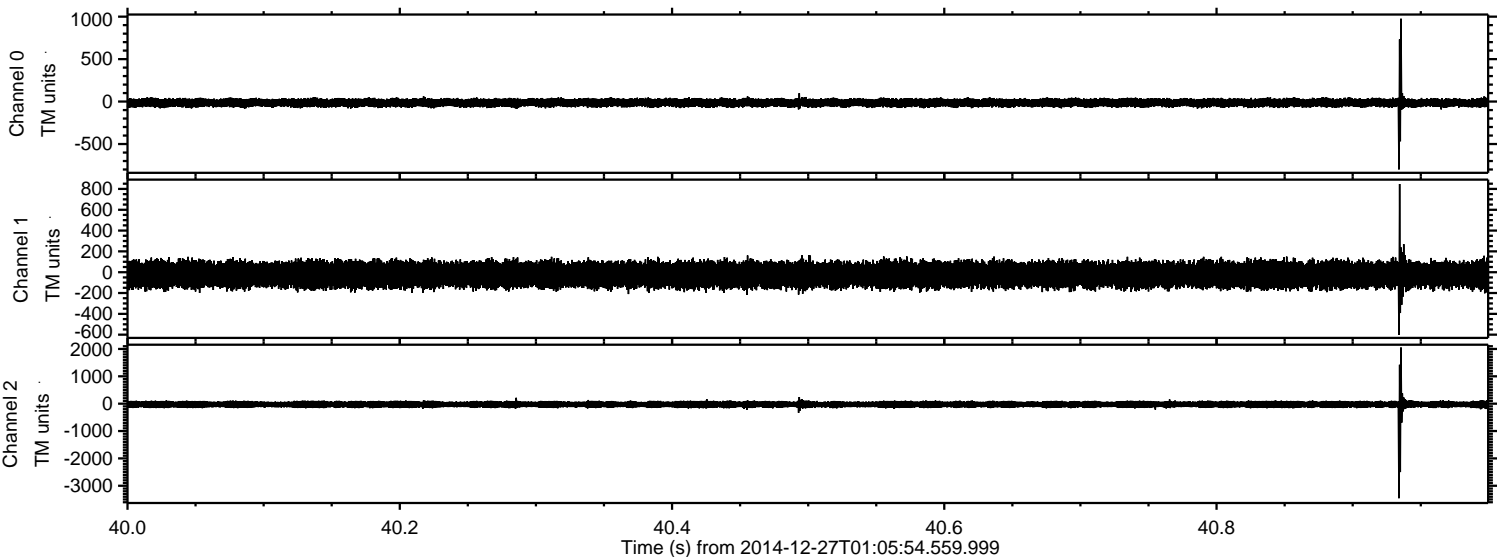
ELMAVAN 3D WAVEFORMS (Measured data sampled at 50 kHz) 49790 packets of 144 samples from 2014-12-27T01:05:54.559.999.

Processed Sat Dec 27 02:23:04 2014 by ELM ver.2012-10-06 from 001__elm20141227_010553__dat00.bin



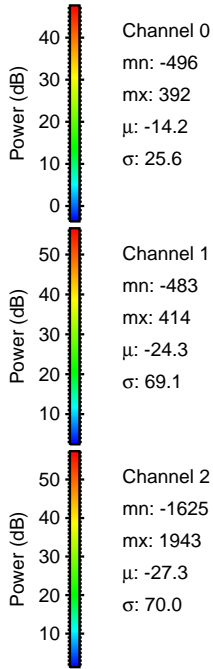
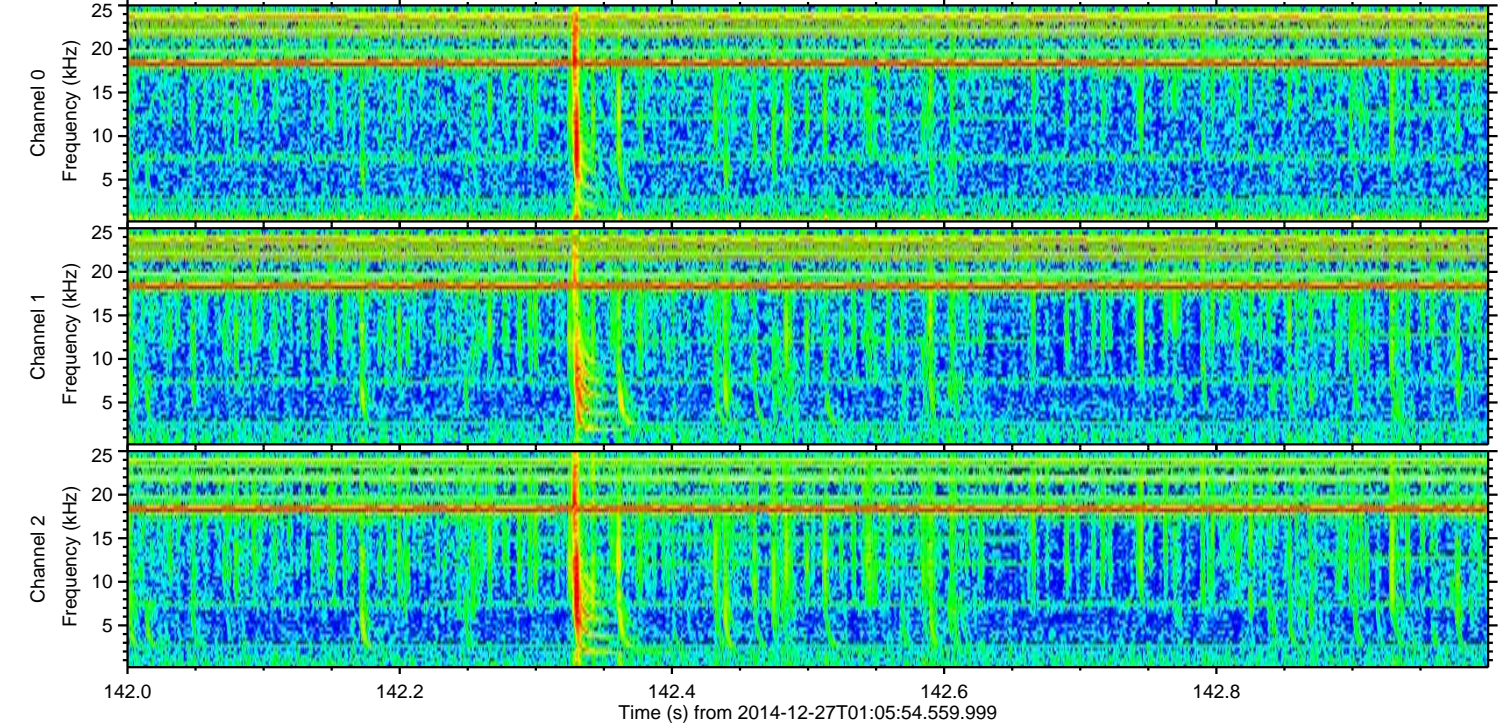
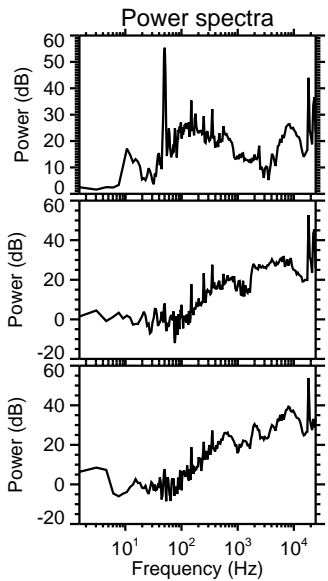
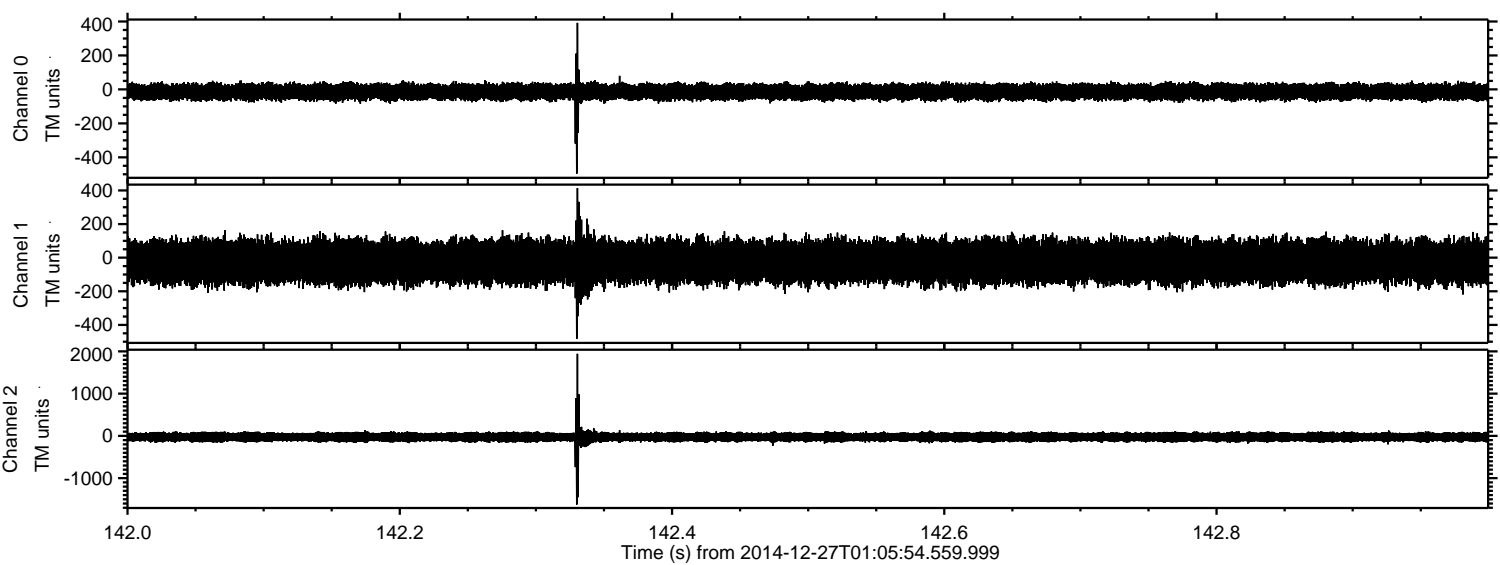
ELMAVAN 3D WAVEFORMS (Measured data sampled at 50 kHz) 49790 packets of 144 samples from 2014-12-27T01:05:54.559.999. Part 41/144

Processed Sat Dec 27 02:23:17 2014 by ELM ver.2012-10-06 from 001__elm20141227_010553__dat00.bin



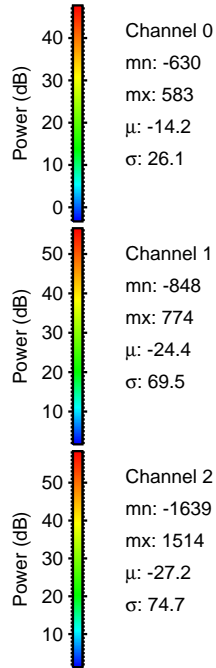
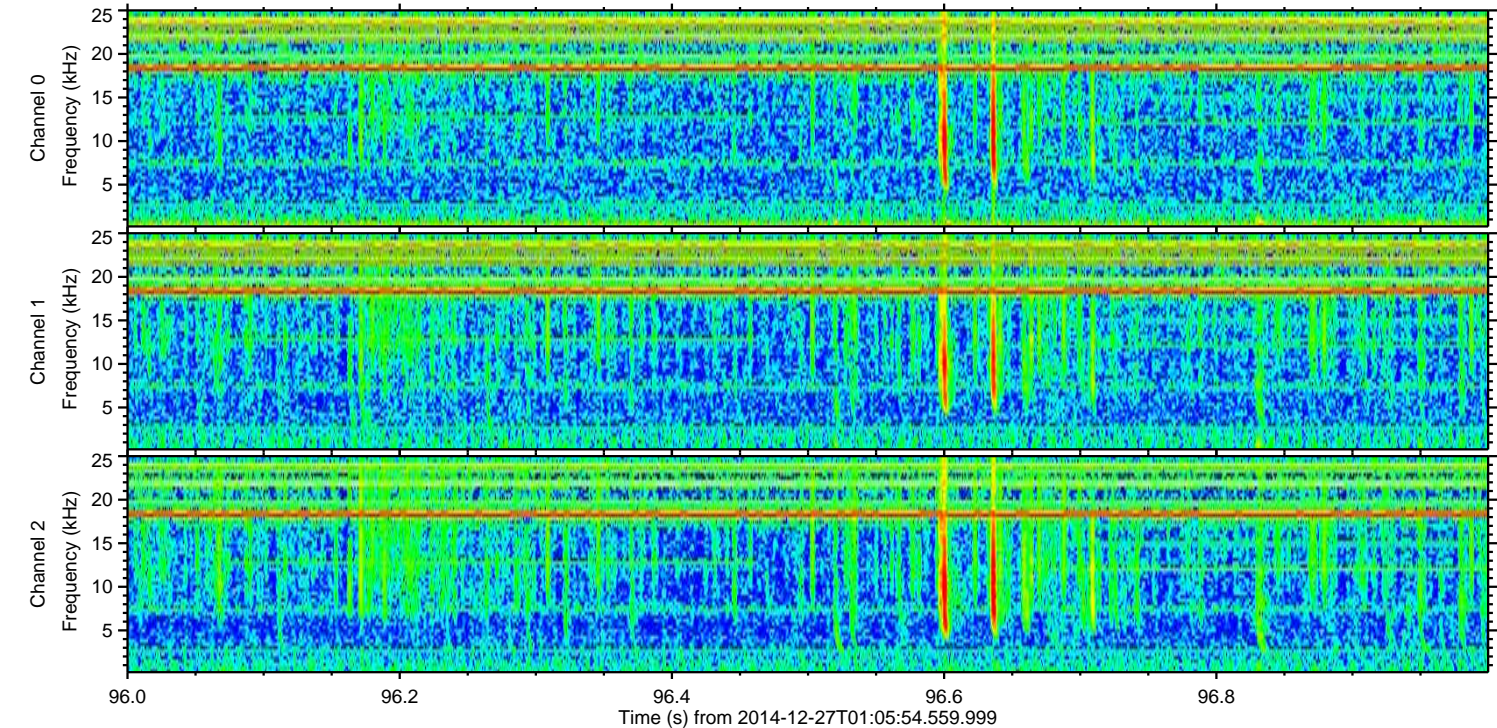
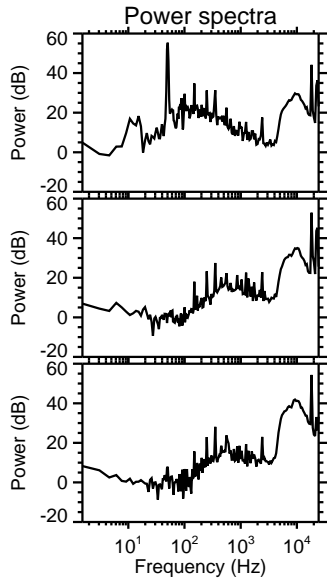
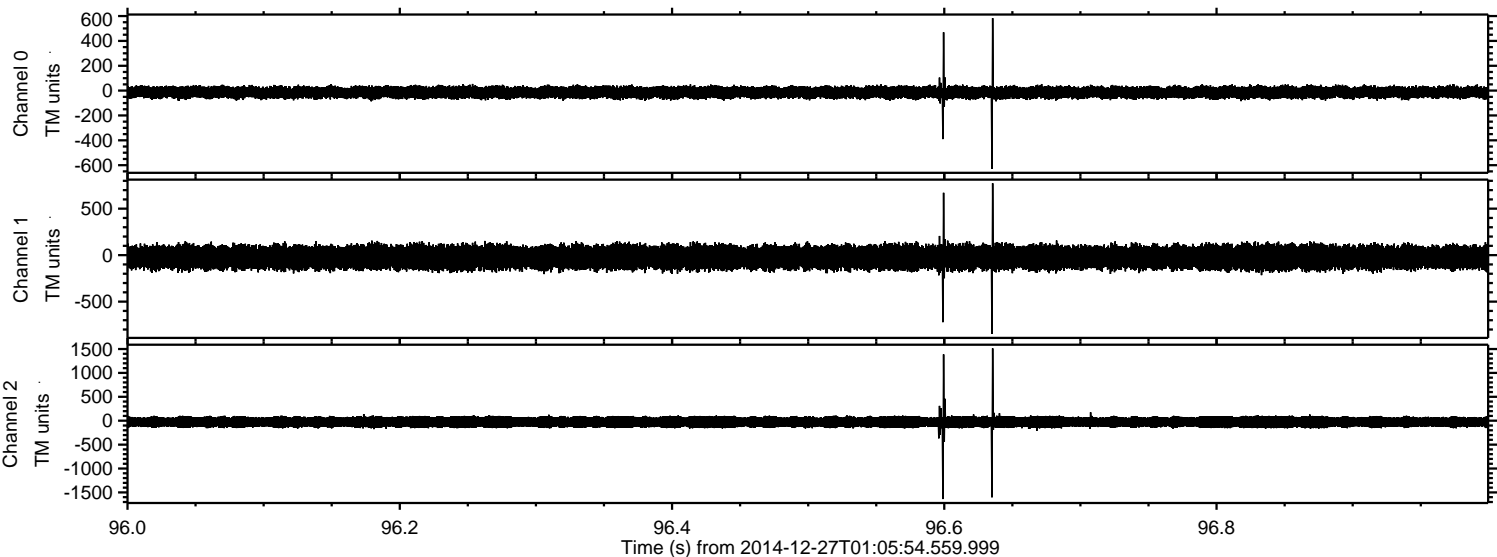
ELMAVAN 3D WAVEFORMS (Measured data sampled at 50 kHz) 49790 packets of 144 samples from 2014-12-27T01:05:54.559.999. Part 143/144

Processed Sat Dec 27 02:23:18 2014 by ELM ver.2012-10-06 from 001__elm20141227_010553__dat00.bin



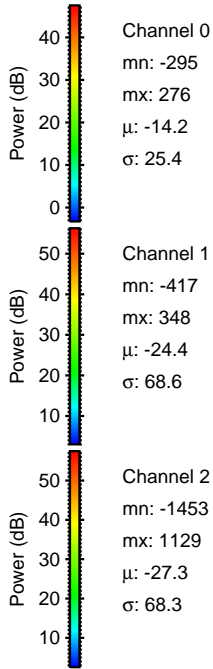
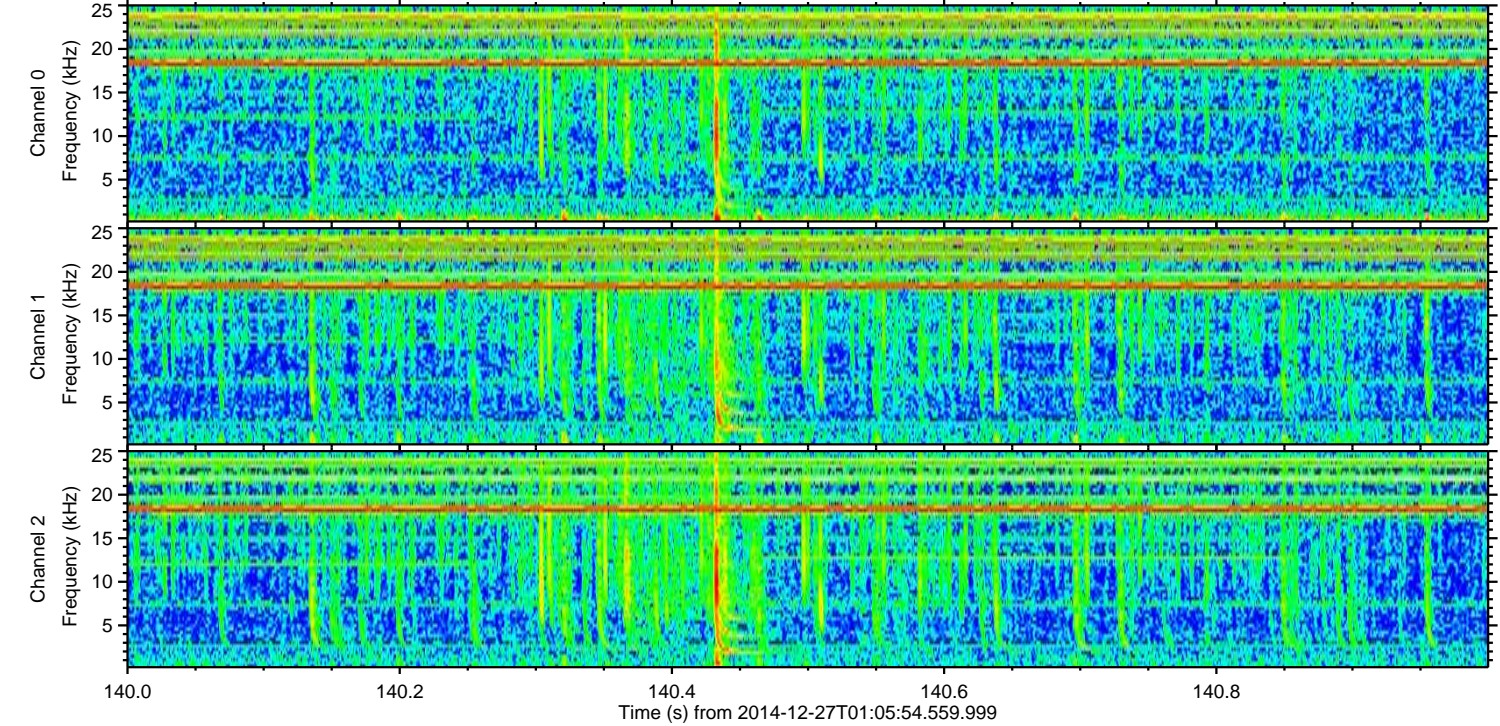
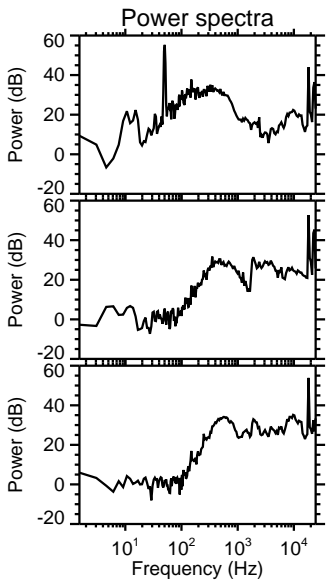
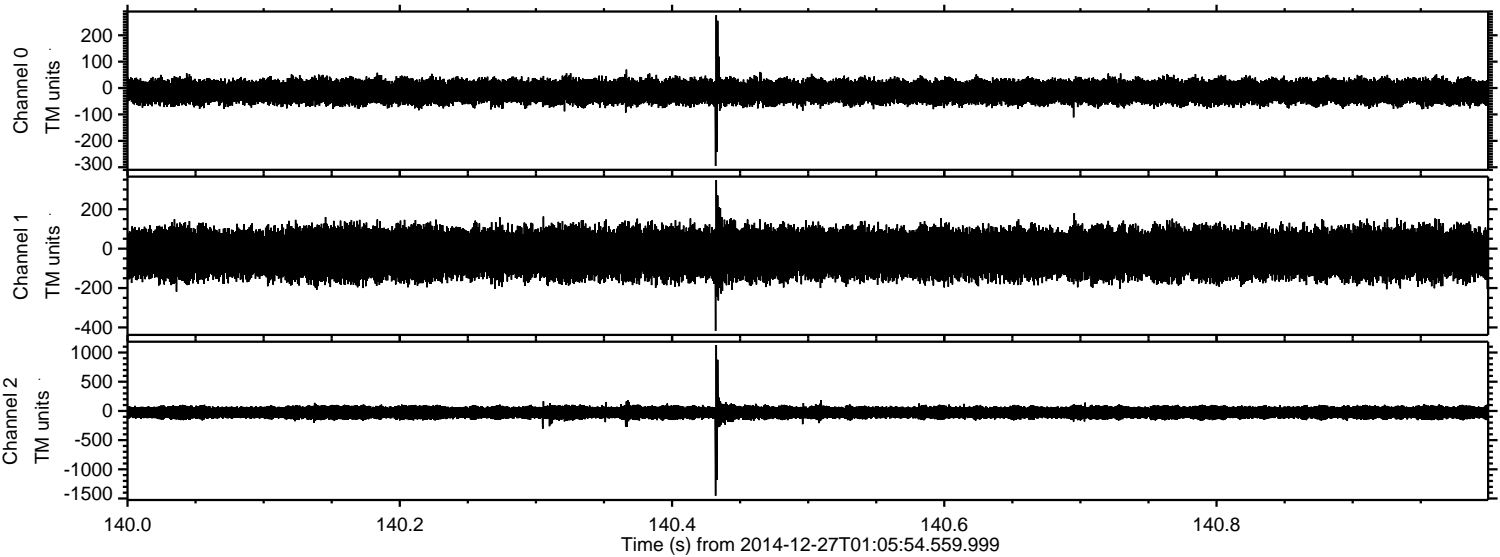
ELMAVAN 3D WAVEFORMS (Measured data sampled at 50 kHz) 49790 packets of 144 samples from 2014-12-27T01:05:54.559.999. Part 97/144

Processed Sat Dec 27 02:23:19 2014 by ELM ver.2012-10-06 from 001__elm20141227_010553__dat00.bin



ELMAVAN 3D WAVEFORMS (Measured data sampled at 50 kHz) 49790 packets of 144 samples from 2014-12-27T01:05:54.559.999. Part 141/144

Processed Sat Dec 27 02:23:20 2014 by ELM ver.2012-10-06 from 001__elm20141227_010553__dat00.bin



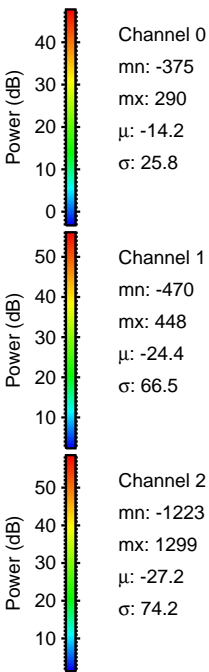
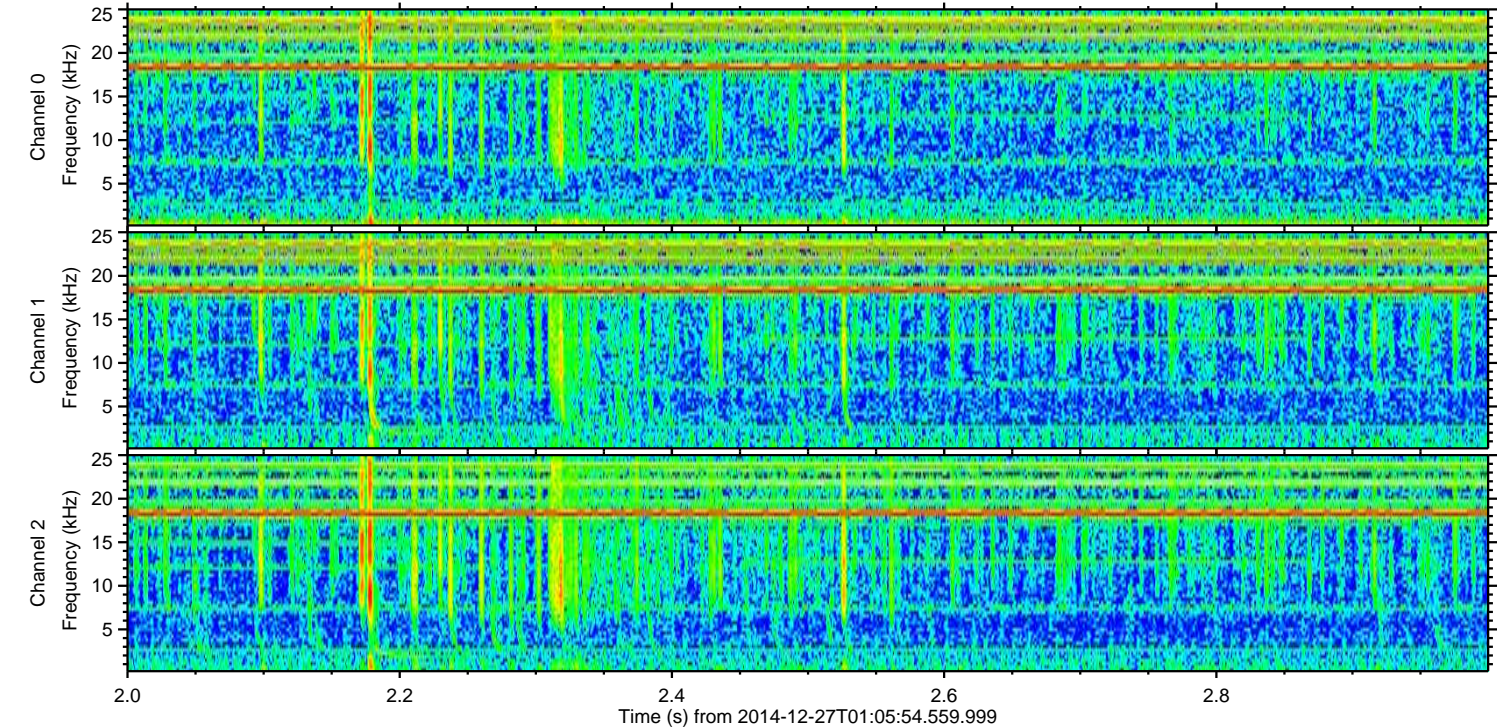
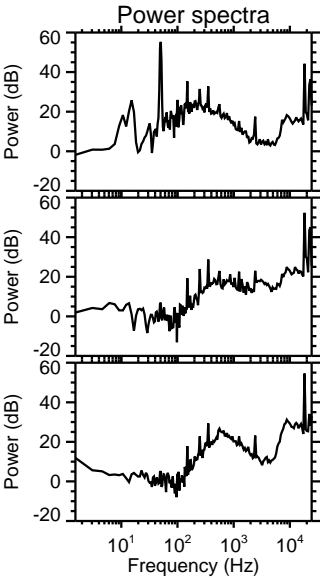
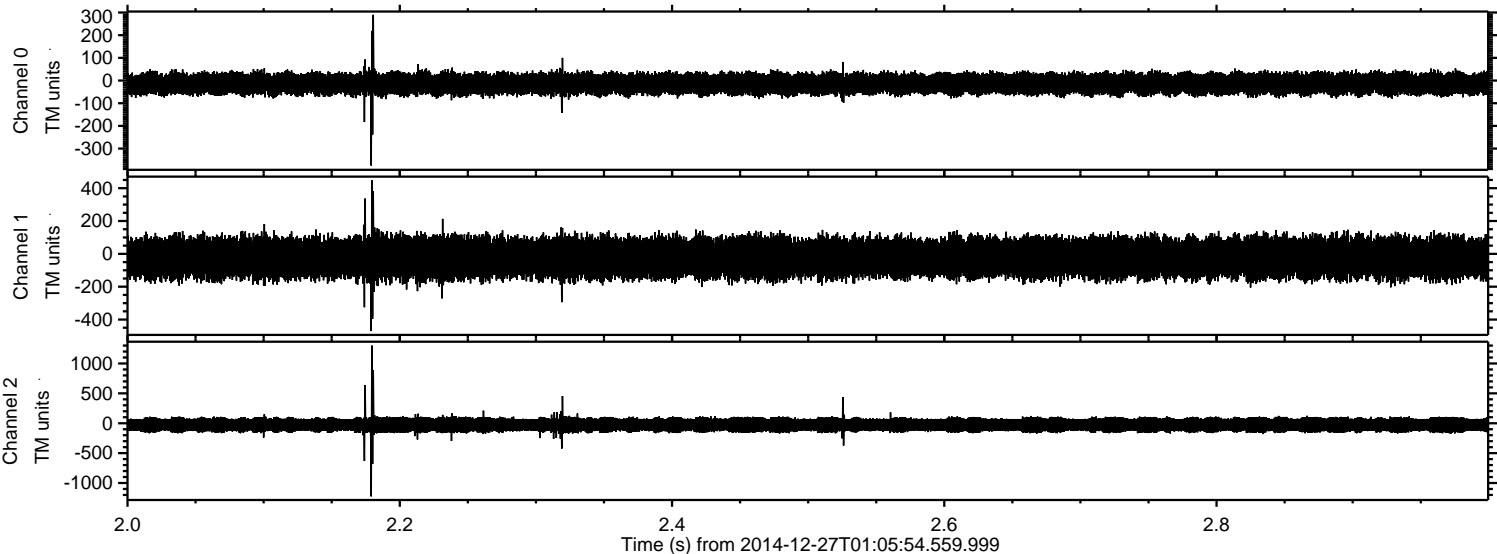
Channel 0
mn: -295
mx: 276
 μ : -14.2
 σ : 25.4

Channel 1
mn: -417
mx: 348
 μ : -24.4
 σ : 68.6

Channel 2
mn: -1453
mx: 1129
 μ : -27.3
 σ : 68.3

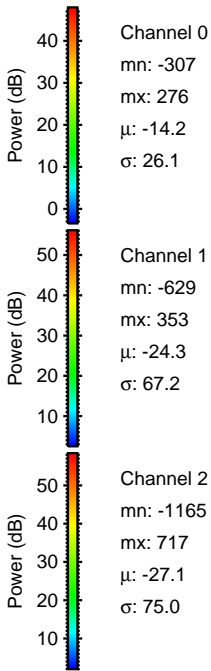
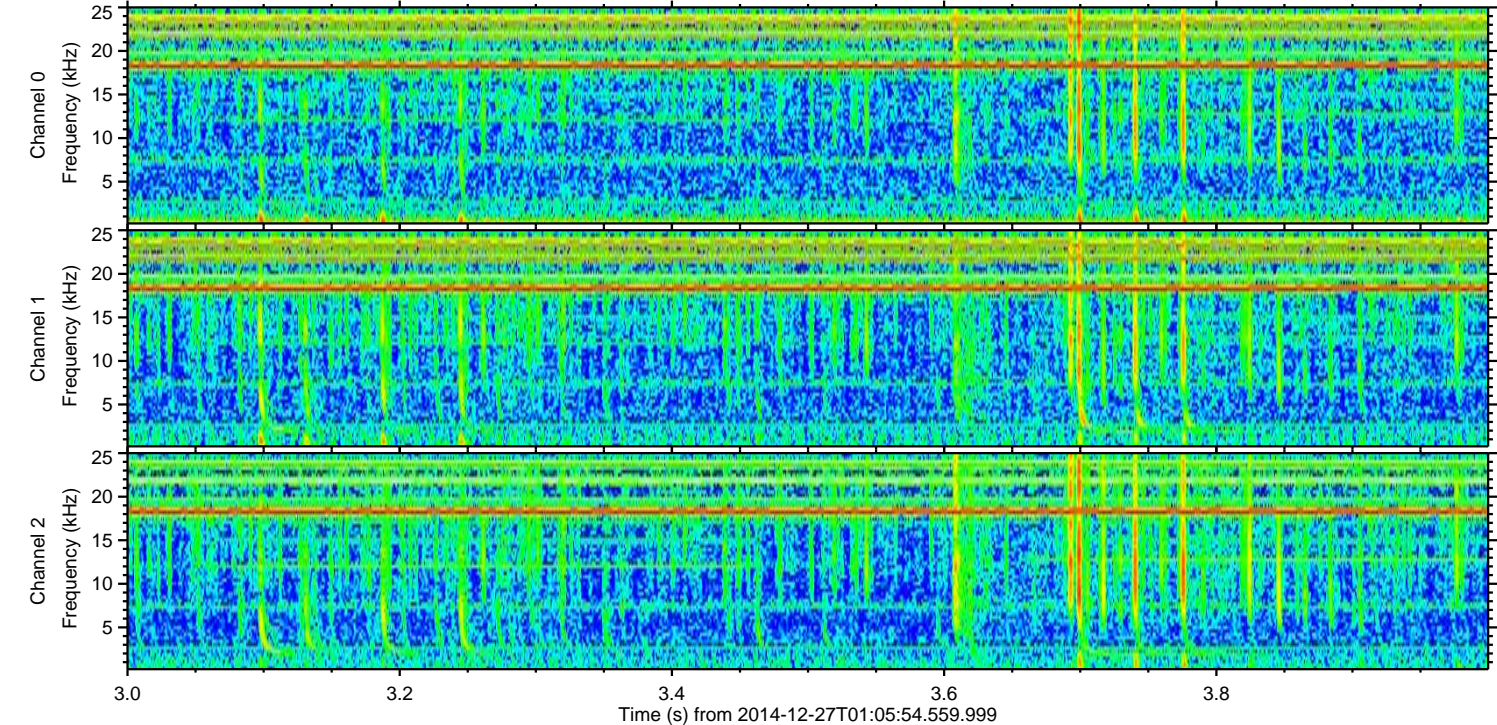
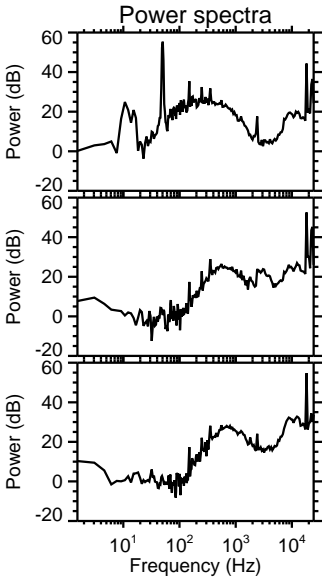
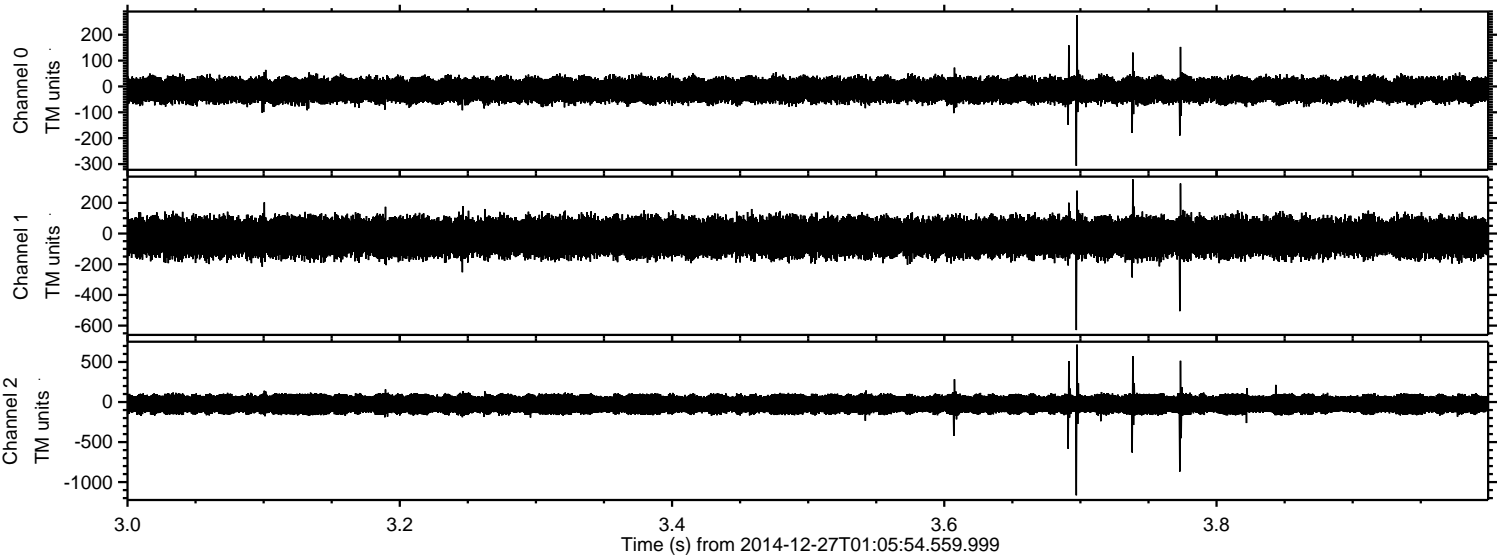
ELMAVAN 3D WAVEFORMS (Measured data sampled at 50 kHz) 49790 packets of 144 samples from 2014-12-27T01:05:54.559.999. Part 3/144

Processed Sat Dec 27 02:23:21 2014 by ELM ver.2012-10-06 from 001__elm20141227_010553__dat00.bin



ELMAVAN 3D WAVEFORMS (Measured data sampled at 50 kHz) 49790 packets of 144 samples from 2014-12-27T01:05:54.559.999. Part 4/144

Processed Sat Dec 27 02:23:22 2014 by ELM ver.2012-10-06 from 001__elm20141227_010553__dat00.bin



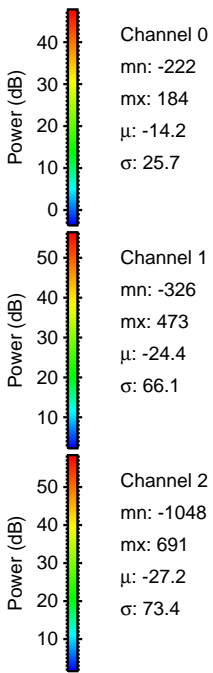
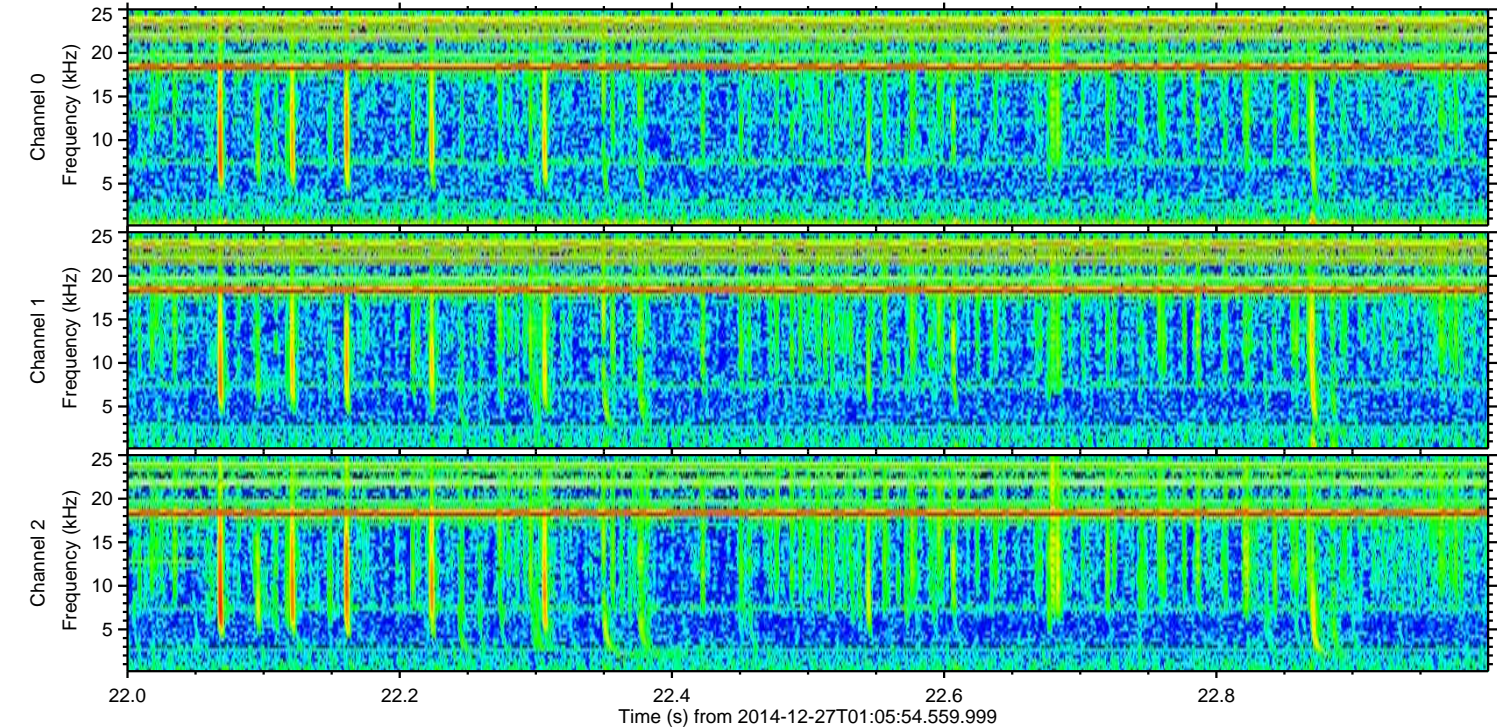
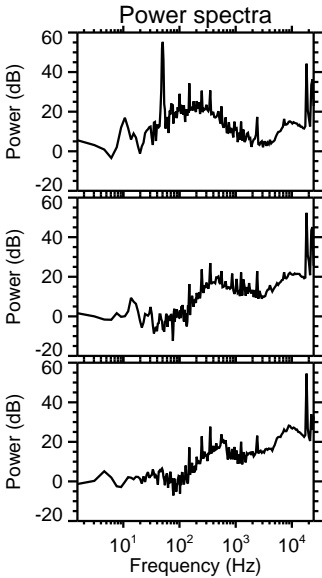
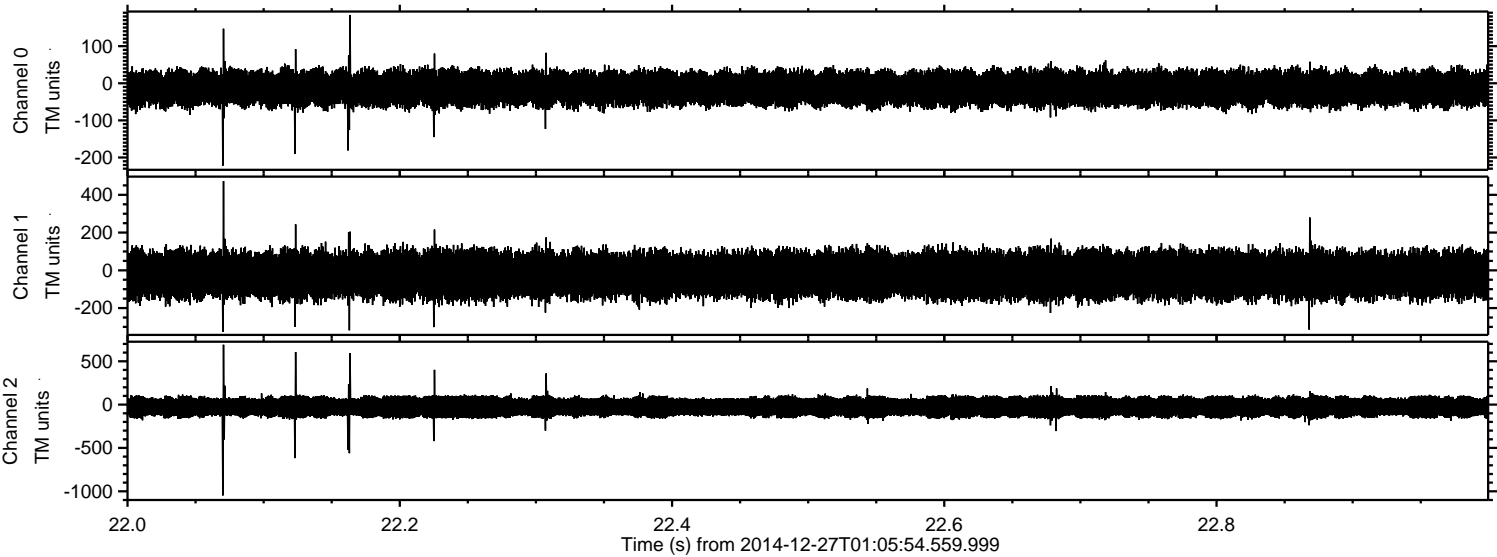
Channel 0
mn: -307
mx: 276
 μ : -14.2
 σ : 26.1

Channel 1
mn: -629
mx: 353
 μ : -24.3
 σ : 67.2

Channel 2
mn: -1165
mx: 717
 μ : -27.1
 σ : 75.0

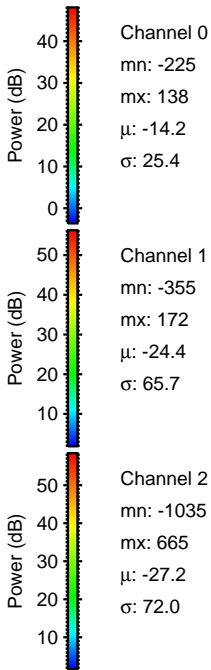
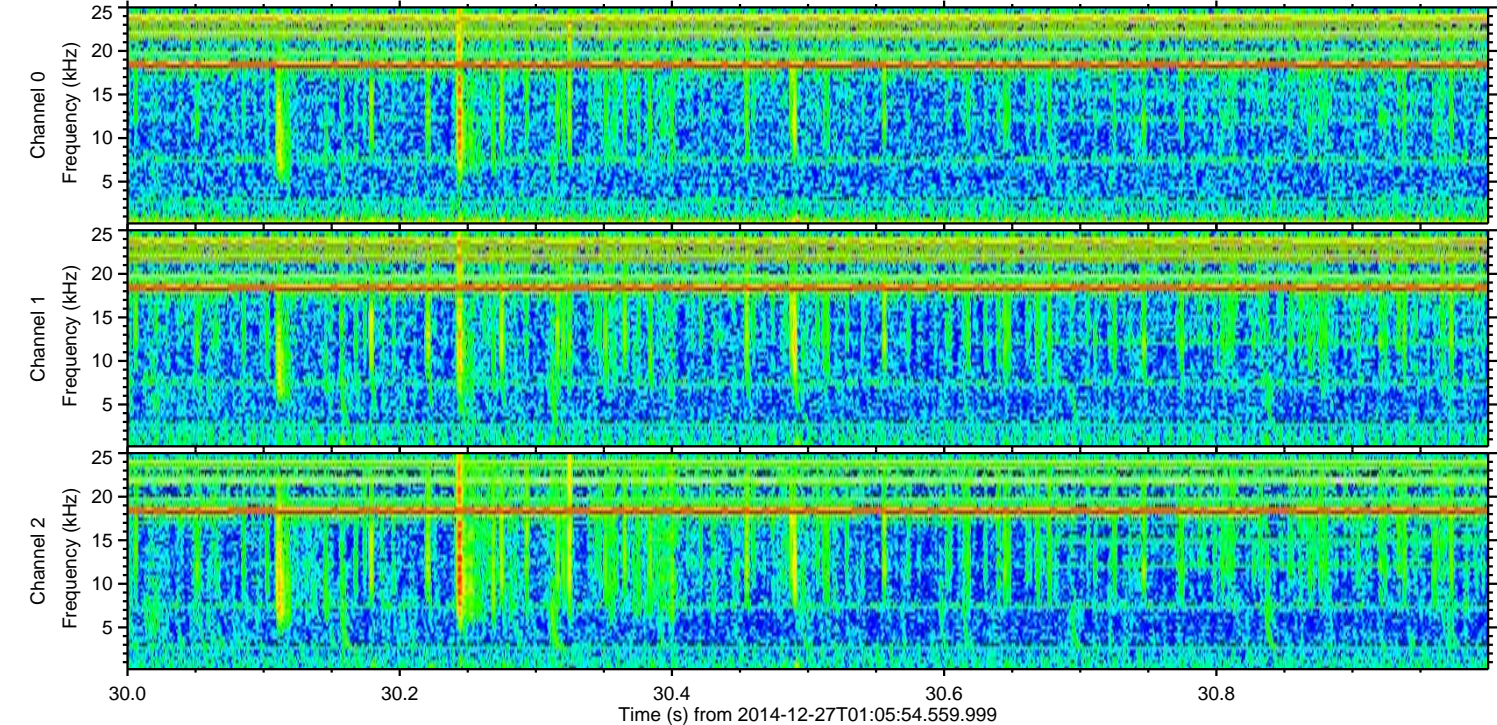
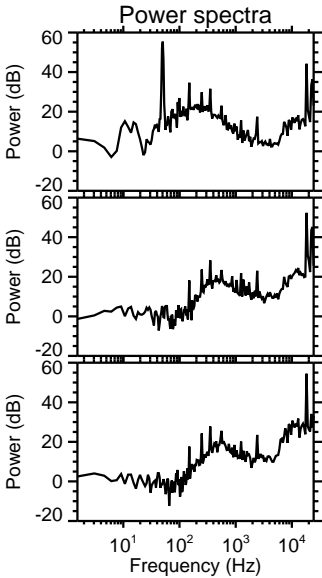
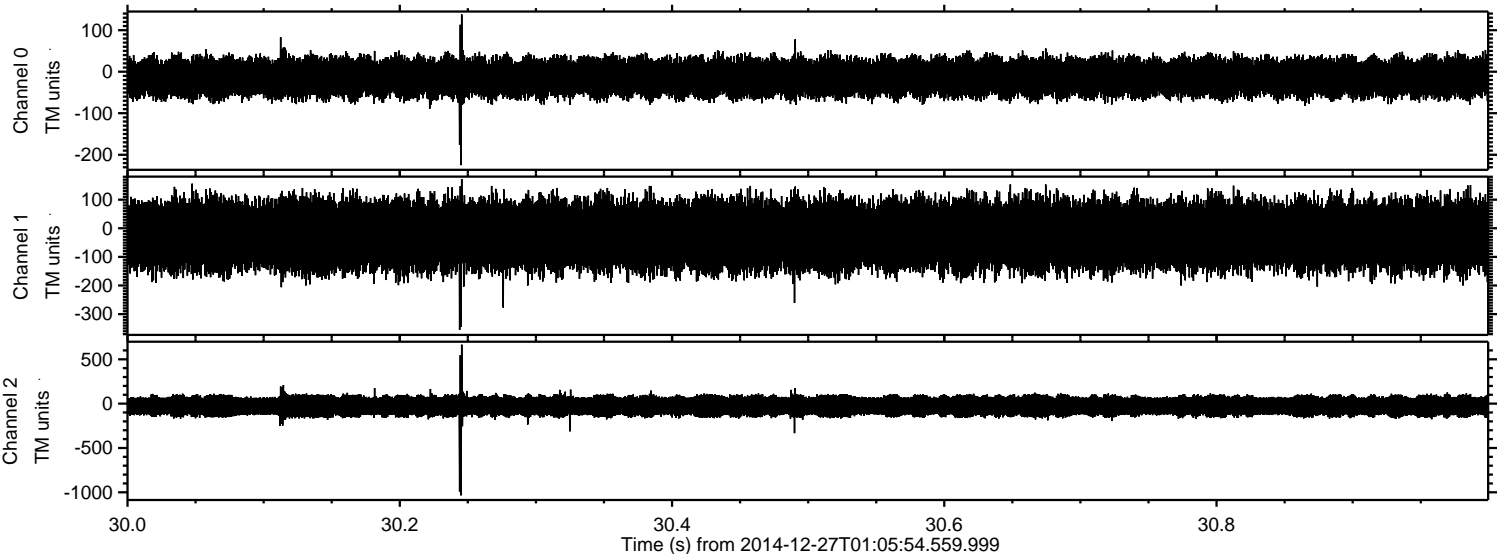
ELMAVAN 3D WAVEFORMS (Measured data sampled at 50 kHz) 49790 packets of 144 samples from 2014-12-27T01:05:54.559.999. Part 23/144

Processed Sat Dec 27 02:23:22 2014 by ELM ver.2012-10-06 from 001__elm20141227_010553__dat00.bin

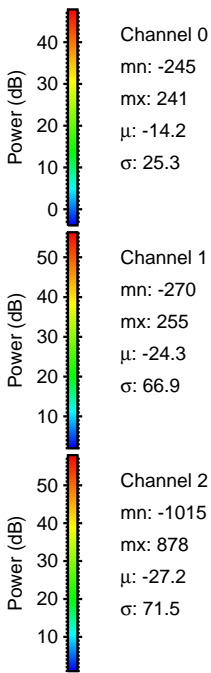
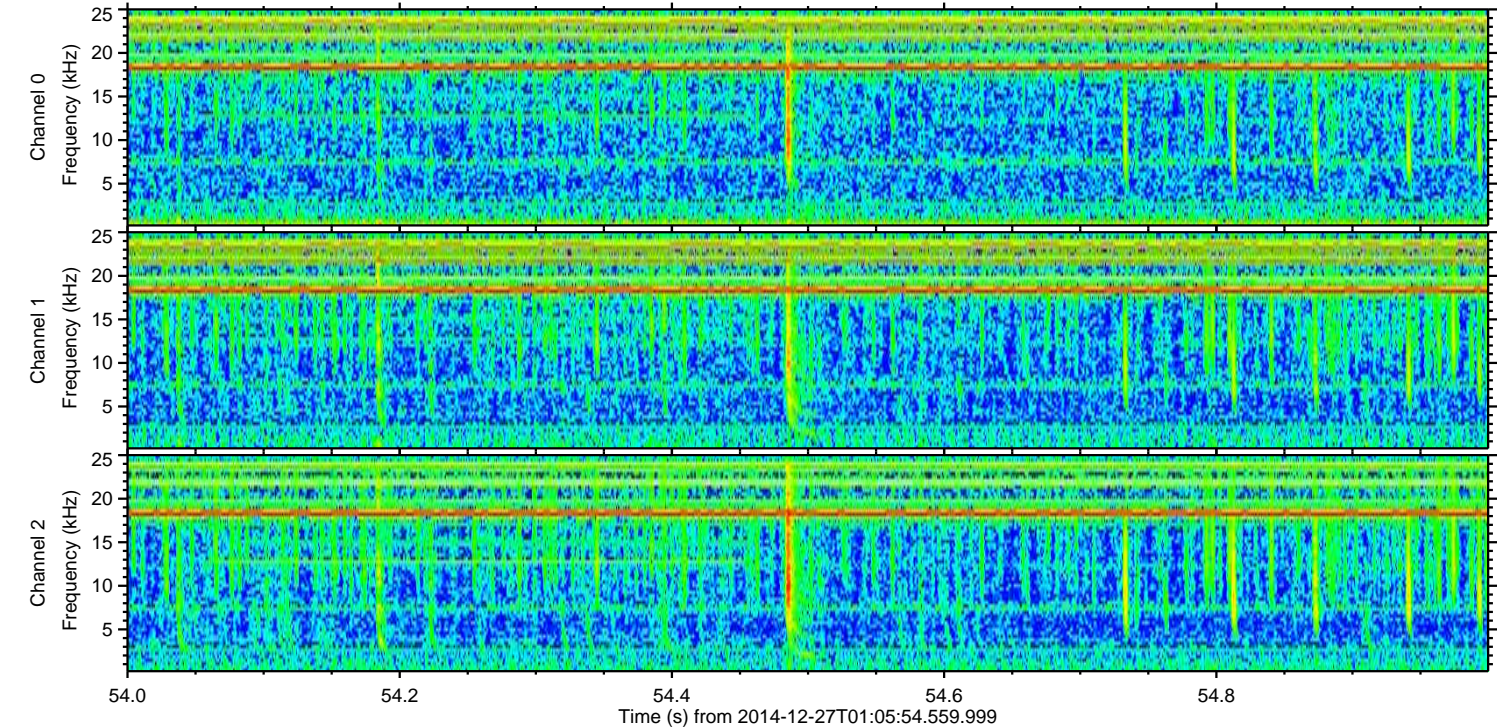
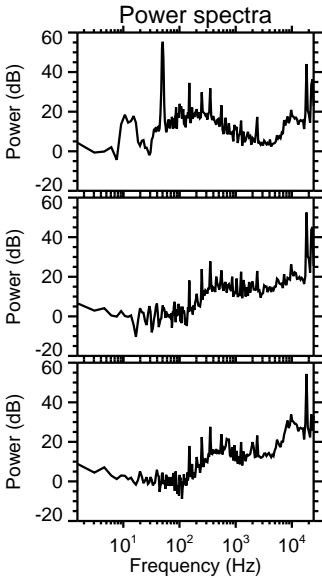
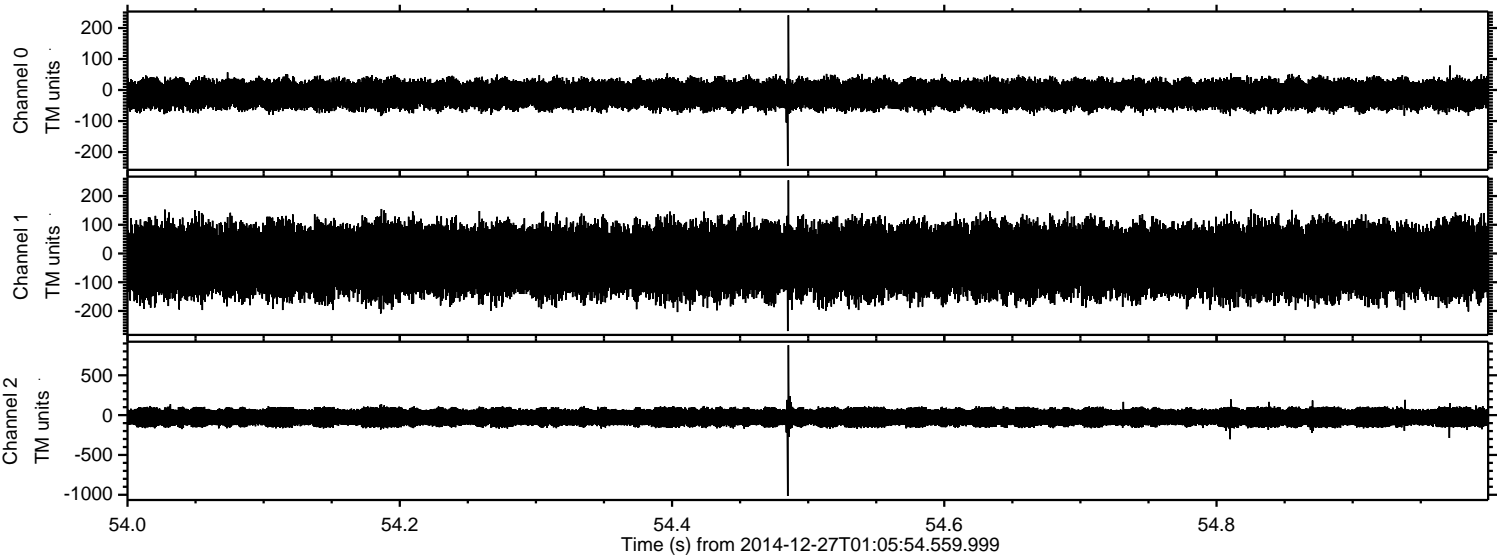


ELMAVAN 3D WAVEFORMS (Measured data sampled at 50 kHz) 49790 packets of 144 samples from 2014-12-27T01:05:54.559.999. Part 31/144

Processed Sat Dec 27 02:23:23 2014 by ELM ver.2012-10-06 from 001__elm20141227_010553__dat00.bin



Processed Sat Dec 27 02:23:24 2014 by ELM ver.2012-10-06 from 001__elm20141227_010553__dat00.bin



ELMAVAN 3D WAVEFORMS (Measured data sampled at 50 kHz) 49790 packets of 144 samples from 2014-12-27T01:05:54.559.999. Part 36/144

Processed Sat Dec 27 02:23:25 2014 by ELM ver.2012-10-06 from 001__elm20141227_010553__dat00.bin

