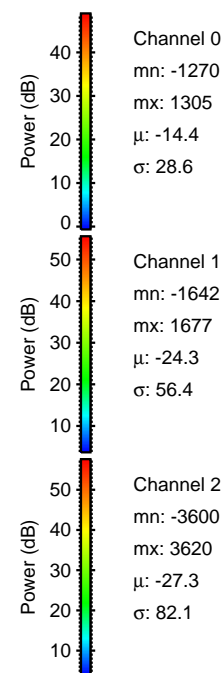
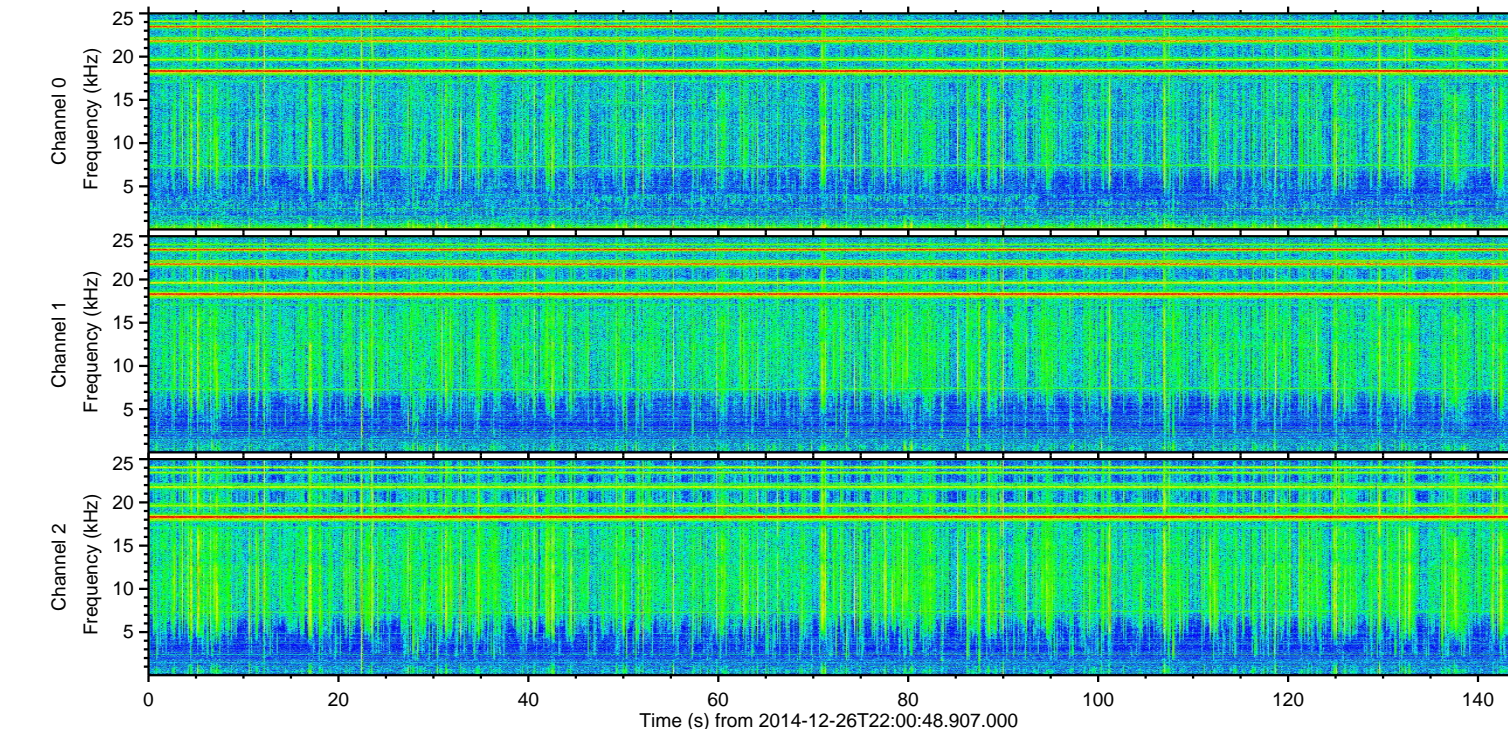
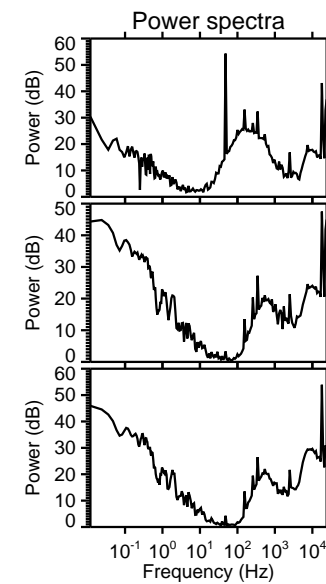
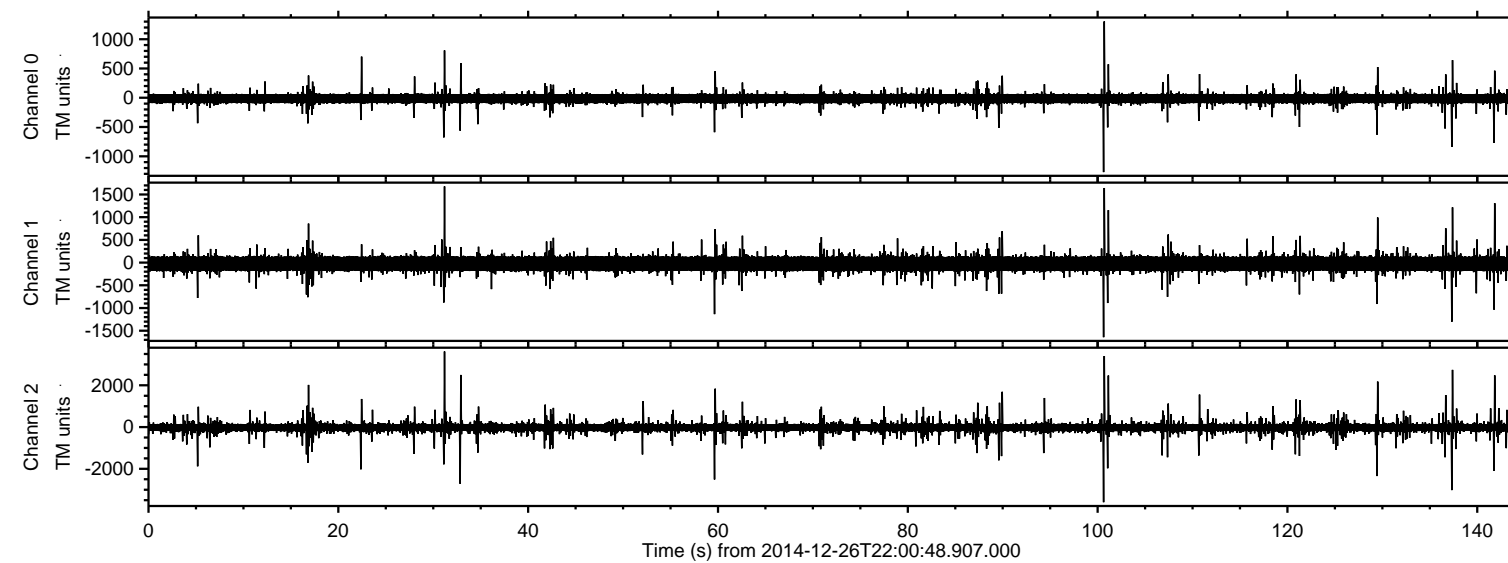
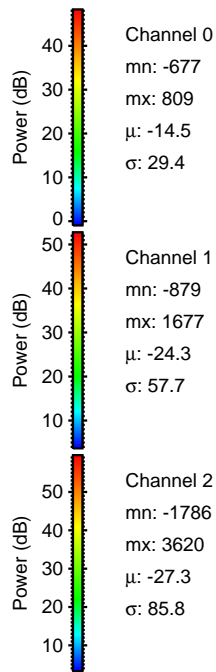
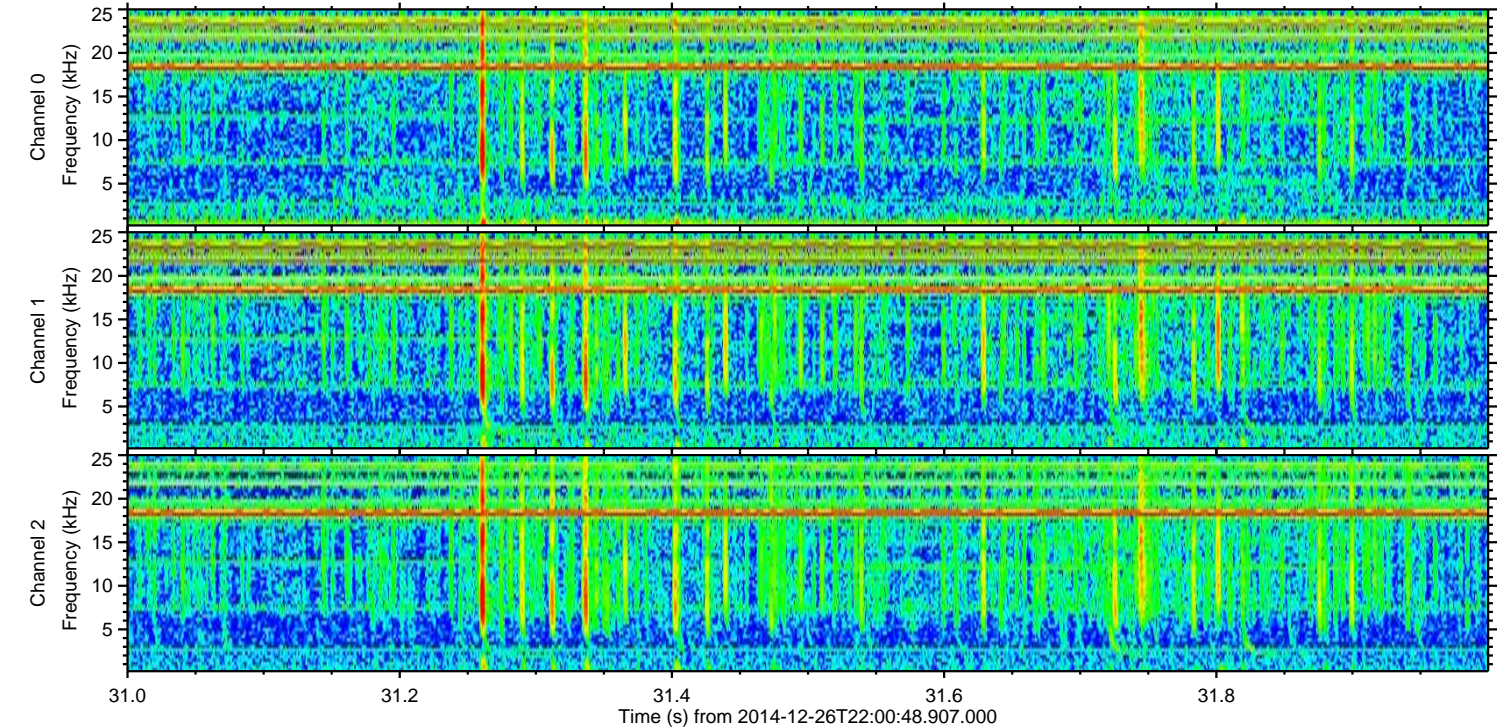
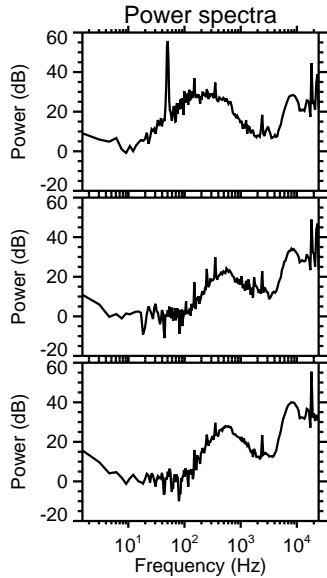
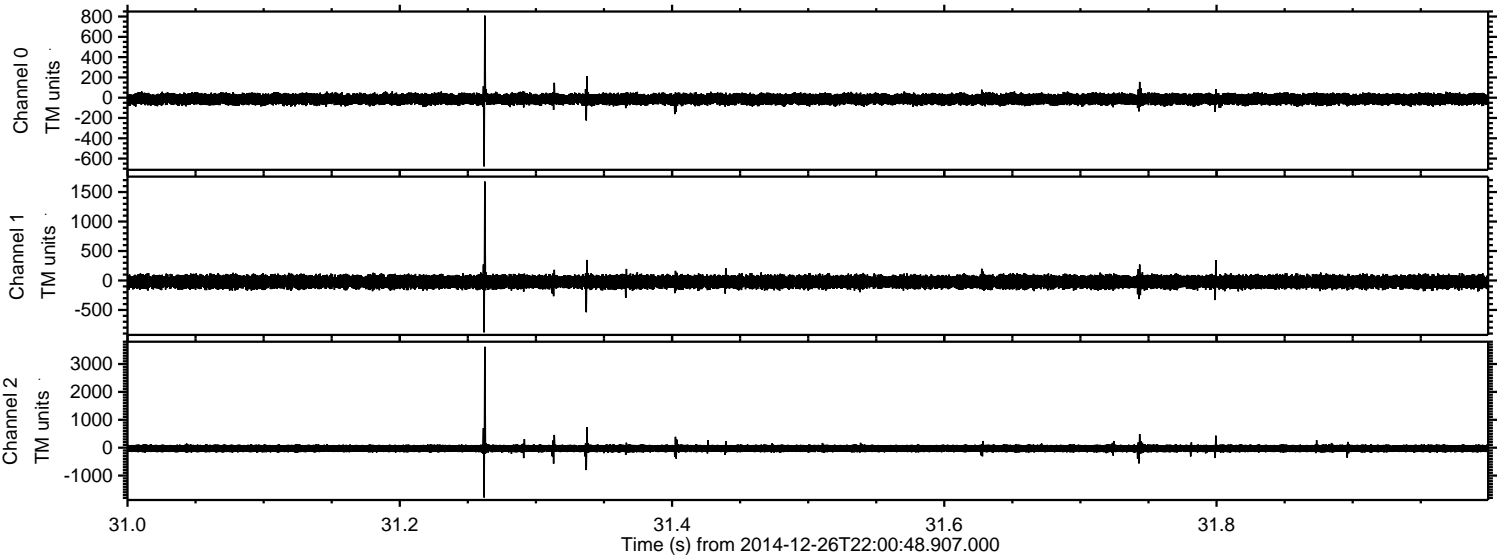


ELMAVAN 3D WAVEFORMS (Measured data sampled at 50 kHz) 49777 packets of 144 samples from 2014-12-26T22:00:48.907.000.

Processed Fri Dec 26 23:12:54 2014 by ELM ver.2012-10-06 from 001__elm20141226_220047__dat00.bin

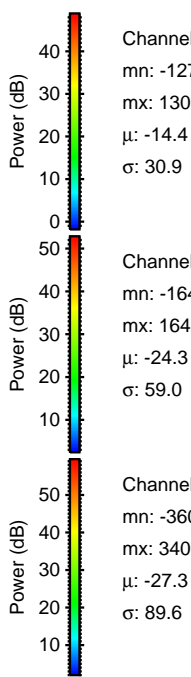
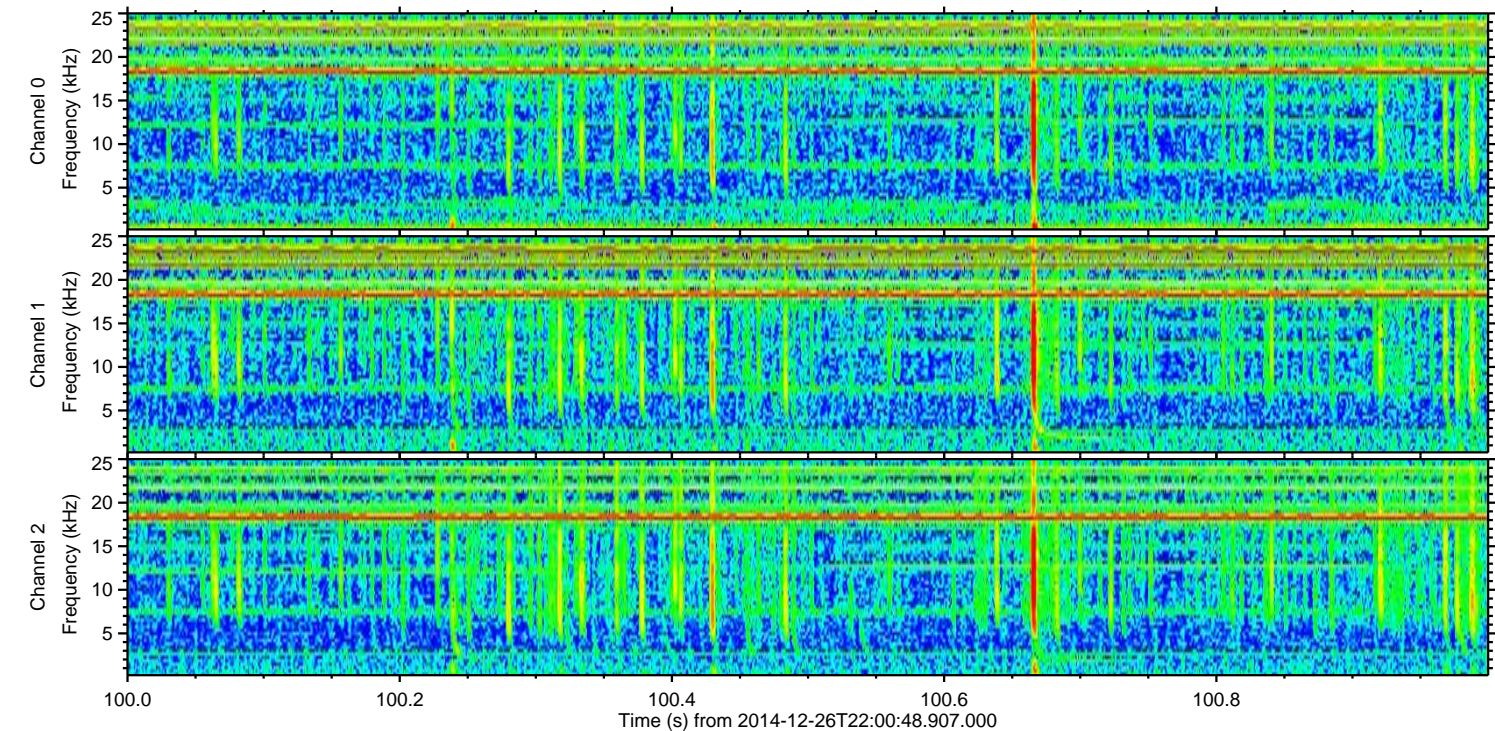
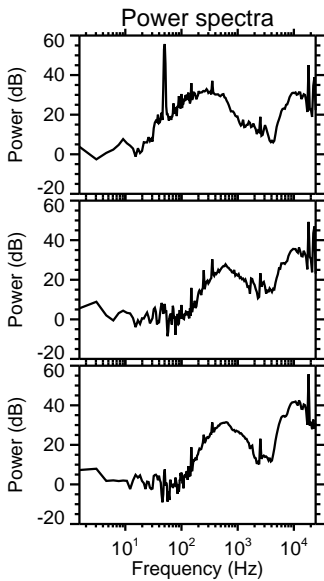
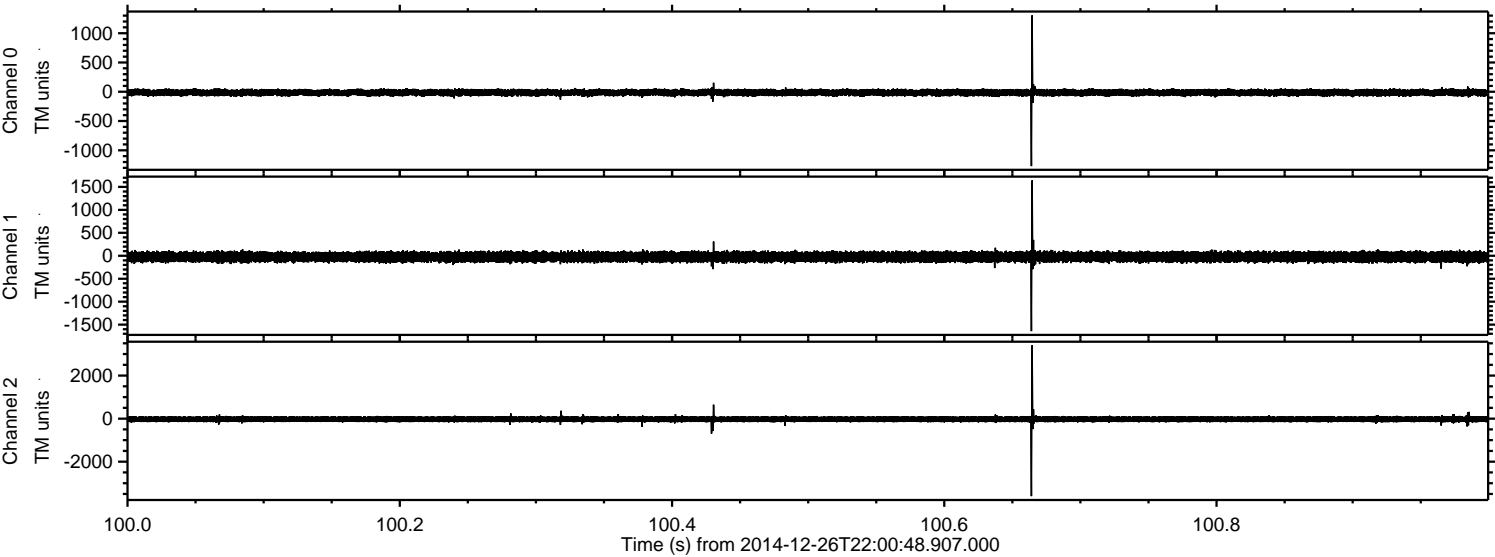


Processed Fri Dec 26 23:13:06 2014 by ELM ver.2012-10-06 from 001__elm20141226_220047__dat00.bin

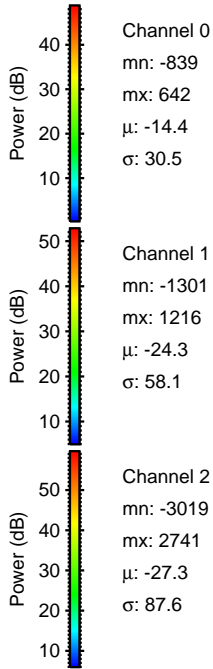
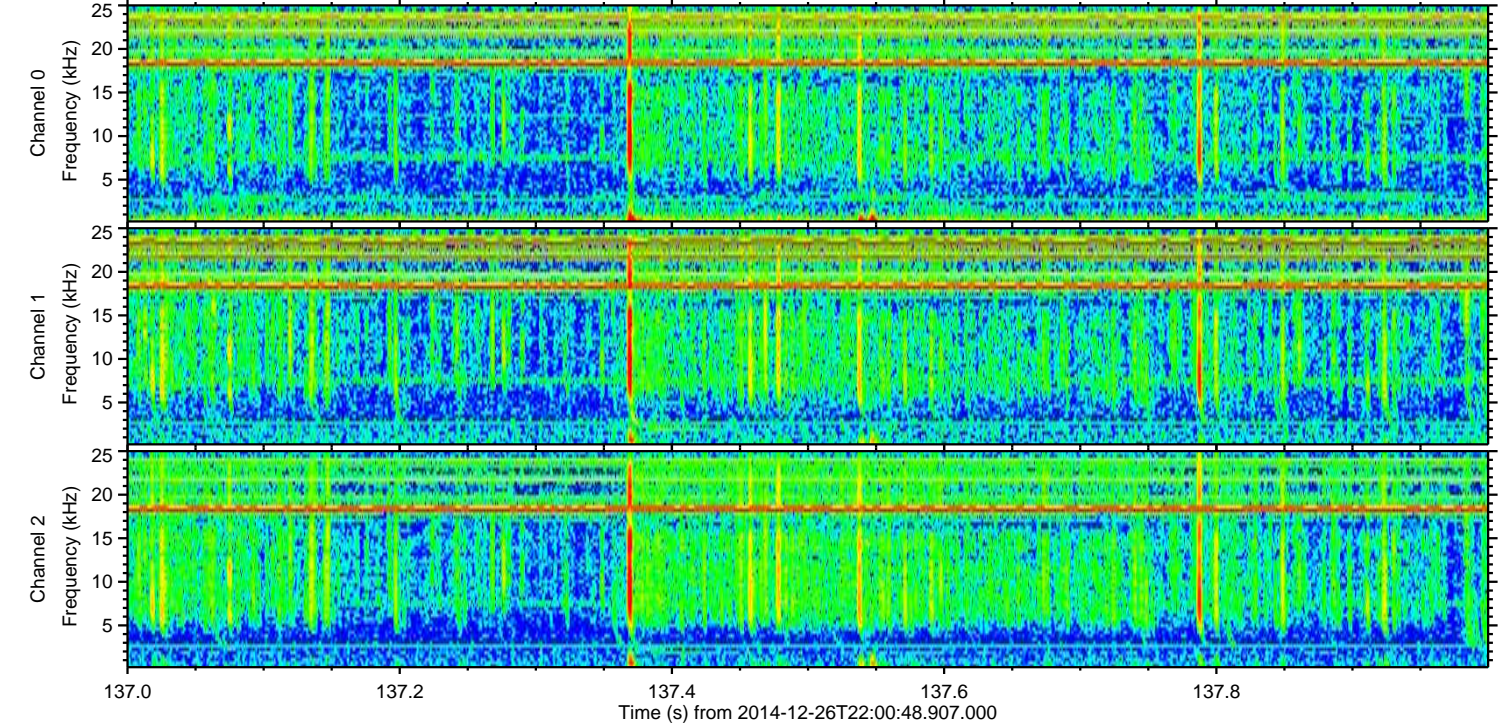
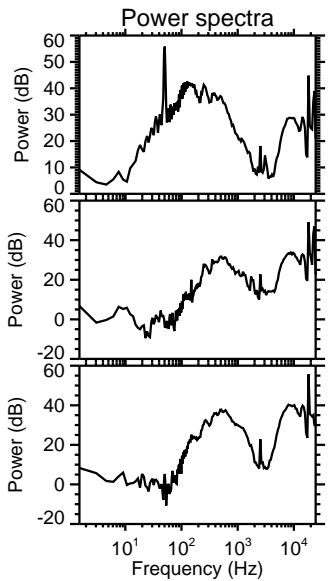
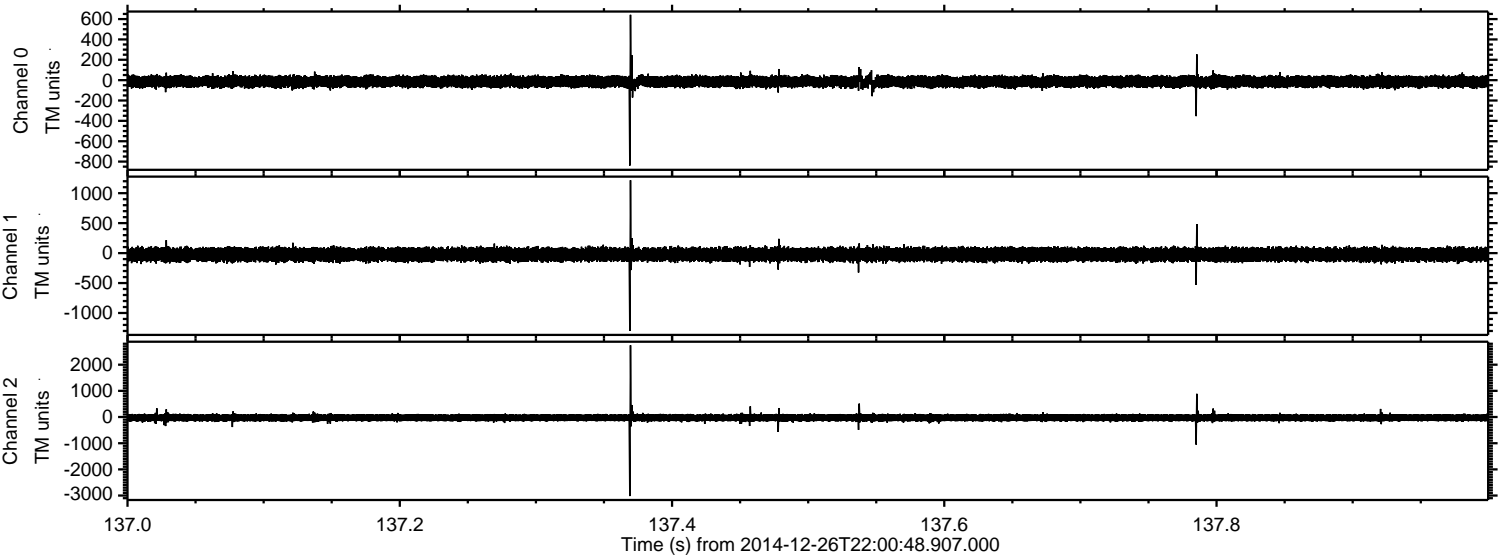


ELMAVAN 3D WAVEFORMS (Measured data sampled at 50 kHz) 49777 packets of 144 samples from 2014-12-26T22:00:48.907.000. Part 101/144

Processed Fri Dec 26 23:13:07 2014 by ELM ver.2012-10-06 from 001__elm20141226_220047__dat00.bin

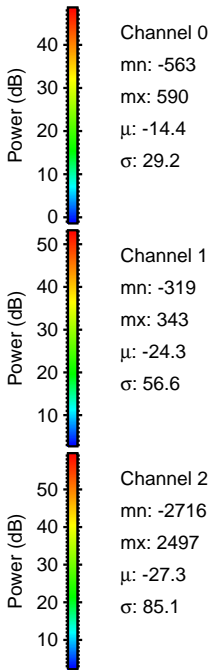
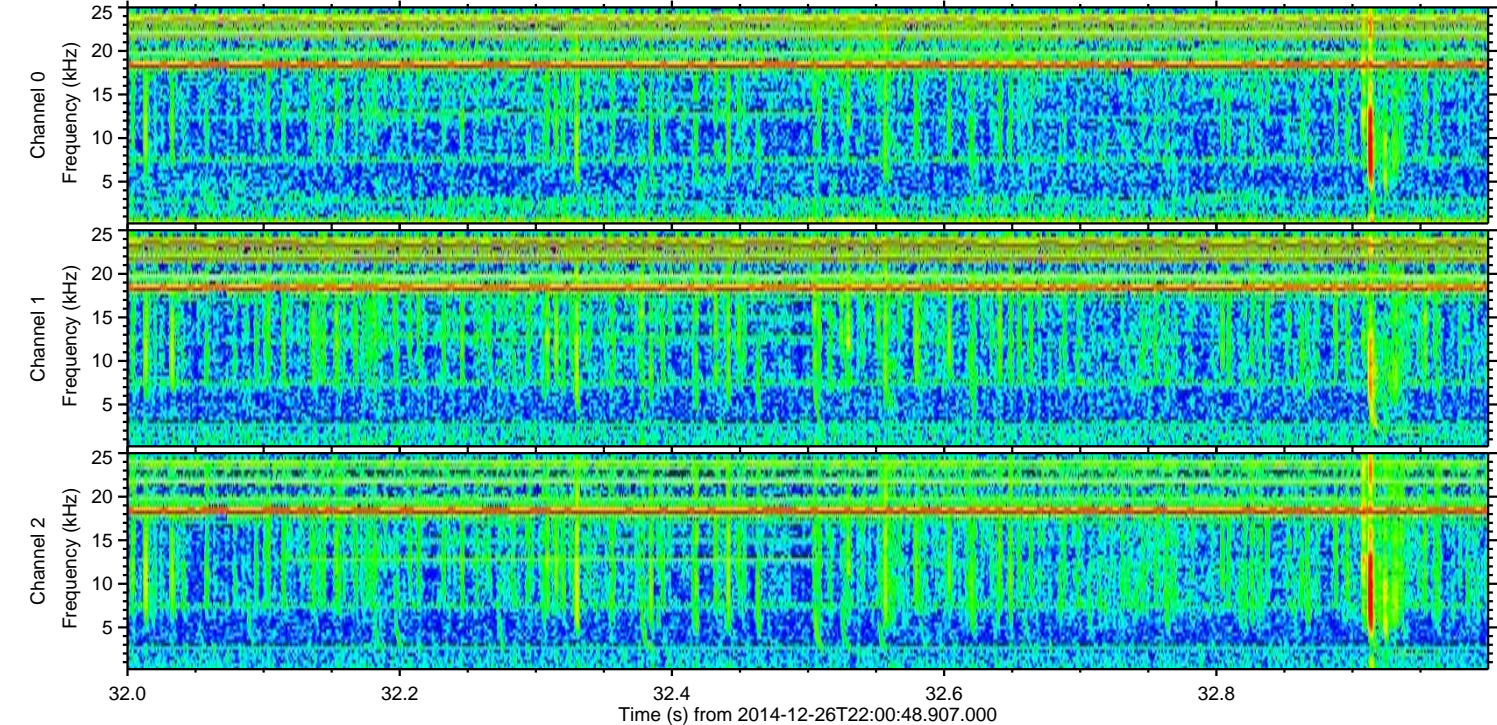
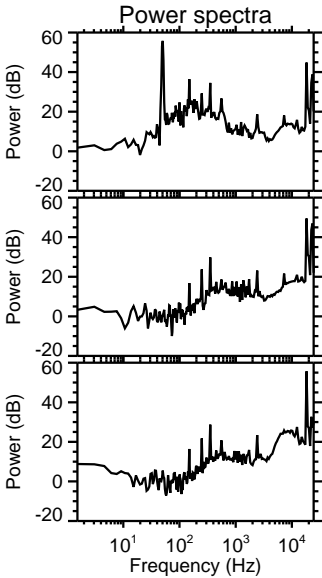
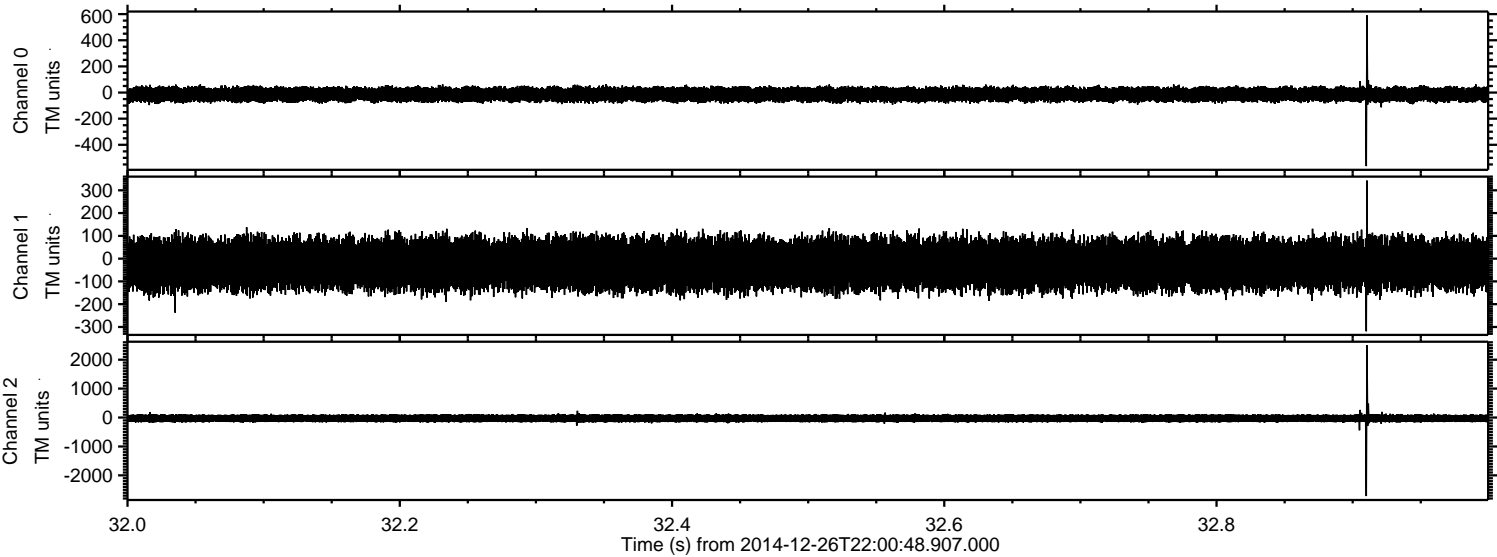


Processed Fri Dec 26 23:13:08 2014 by ELM ver.2012-10-06 from 001__elm20141226_220047__dat00.bin



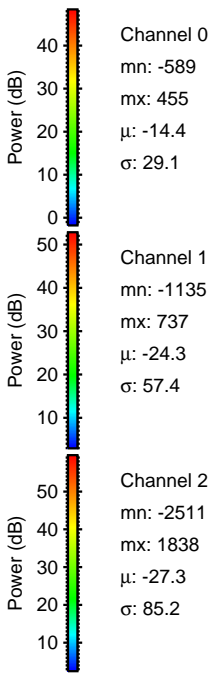
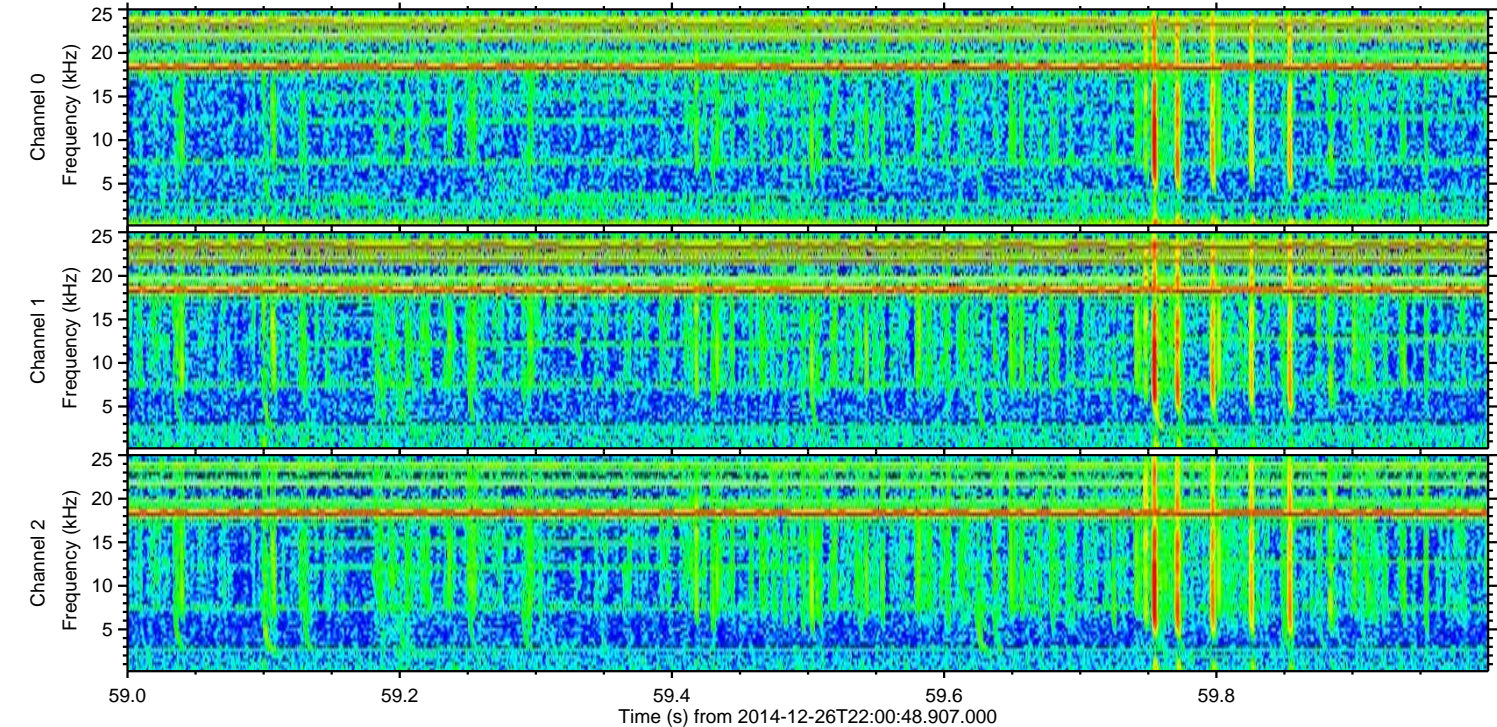
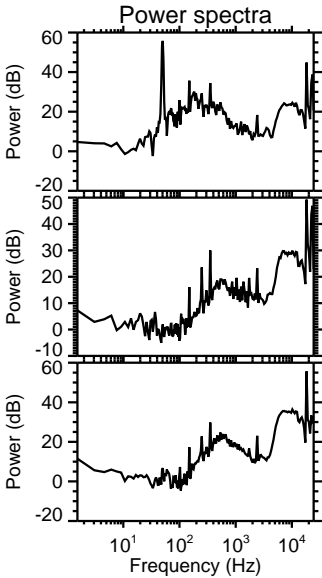
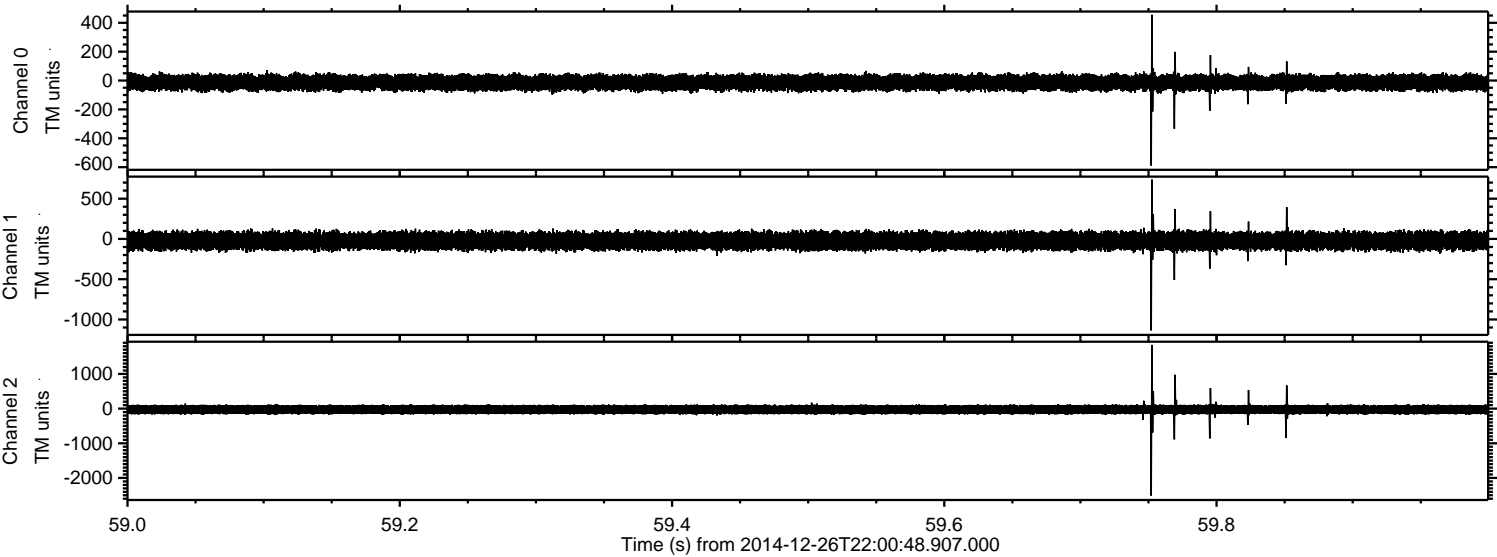
ELMAVAN 3D WAVEFORMS (Measured data sampled at 50 kHz) 49777 packets of 144 samples from 2014-12-26T22:00:48.907.000. Part 33/144

Processed Fri Dec 26 23:13:09 2014 by ELM ver.2012-10-06 from 001__elm20141226_220047__dat00.bin

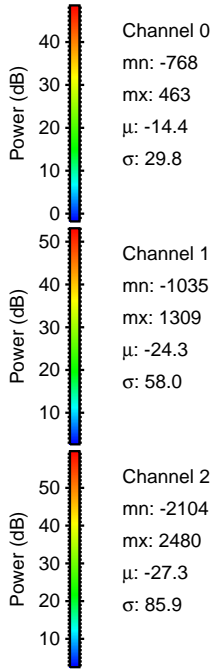
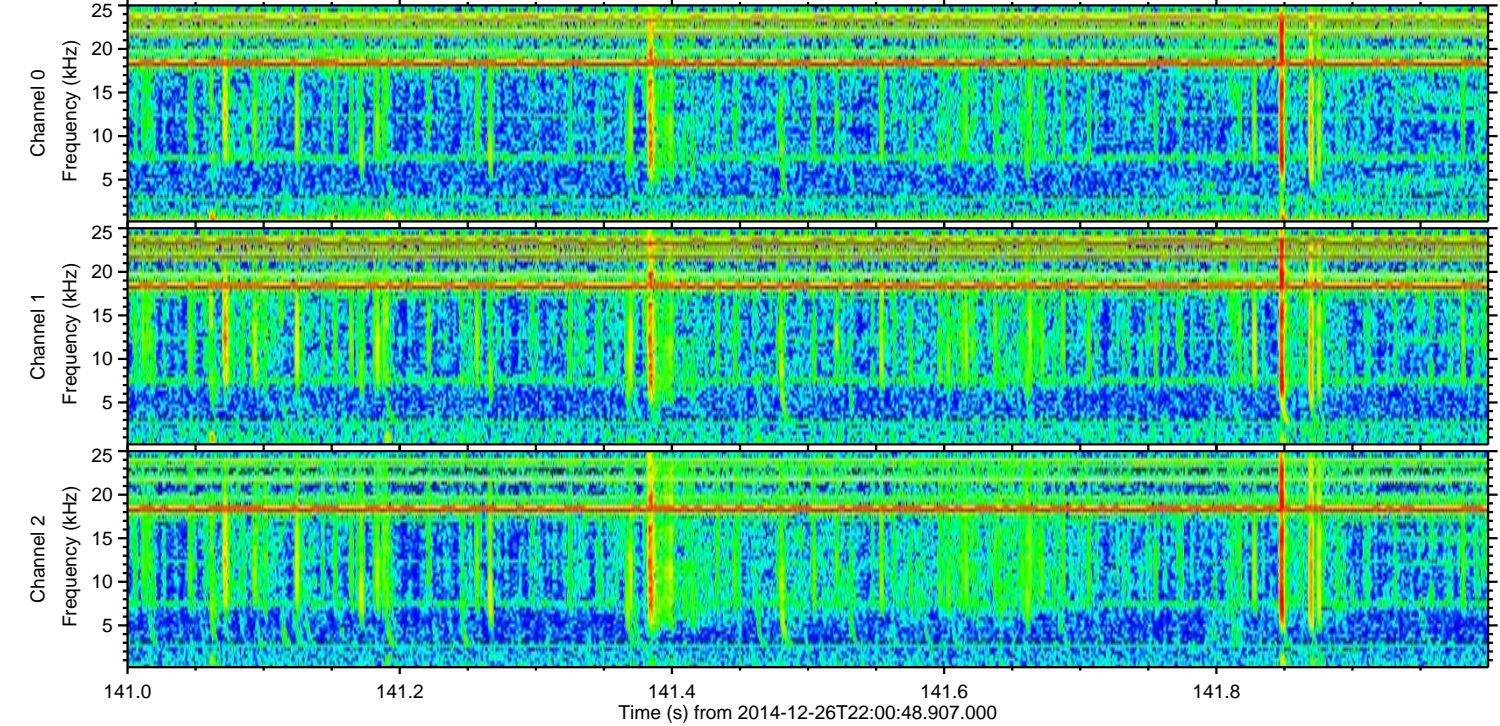
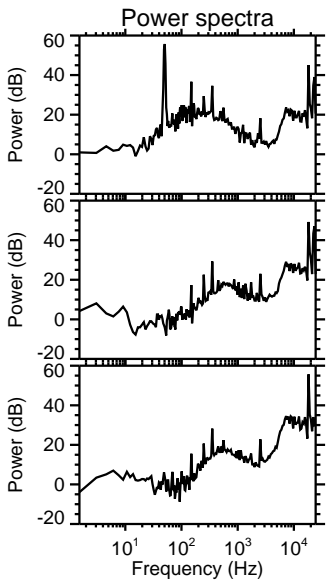
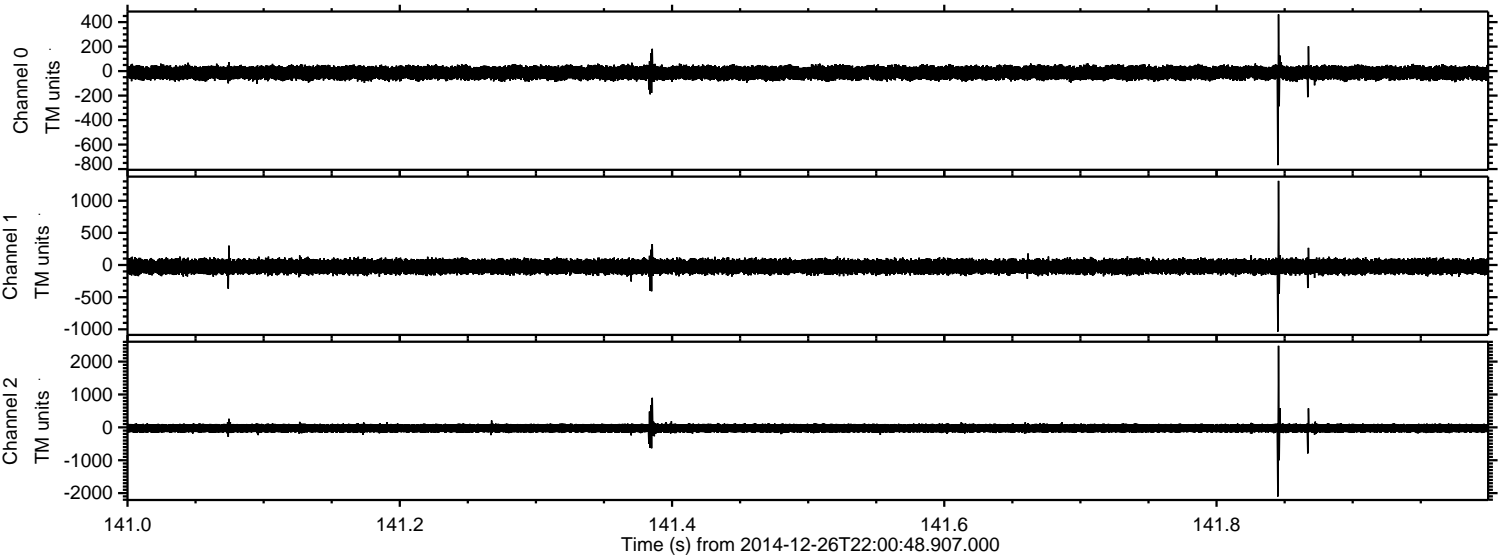


ELMAVAN 3D WAVEFORMS (Measured data sampled at 50 kHz) 49777 packets of 144 samples from 2014-12-26T22:00:48.907.000. Part 60/144

Processed Fri Dec 26 23:13:10 2014 by ELM ver.2012-10-06 from 001__elm20141226_220047__dat00.bin

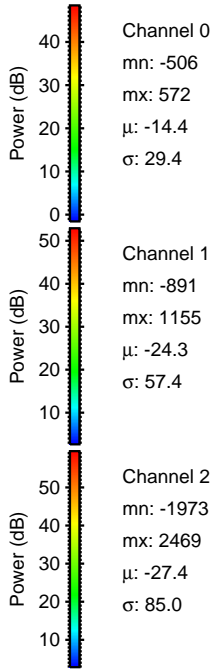
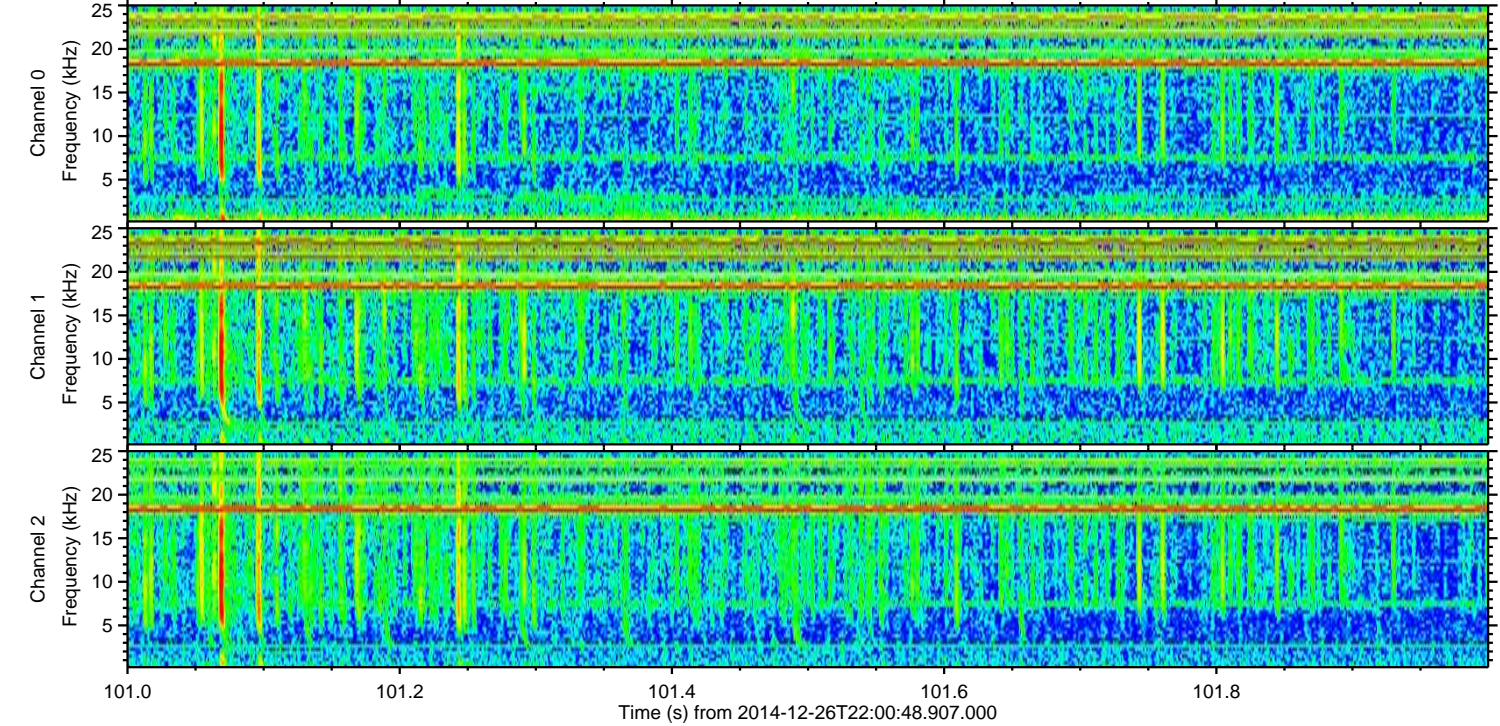
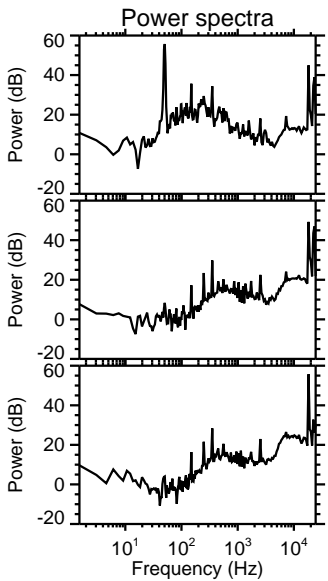
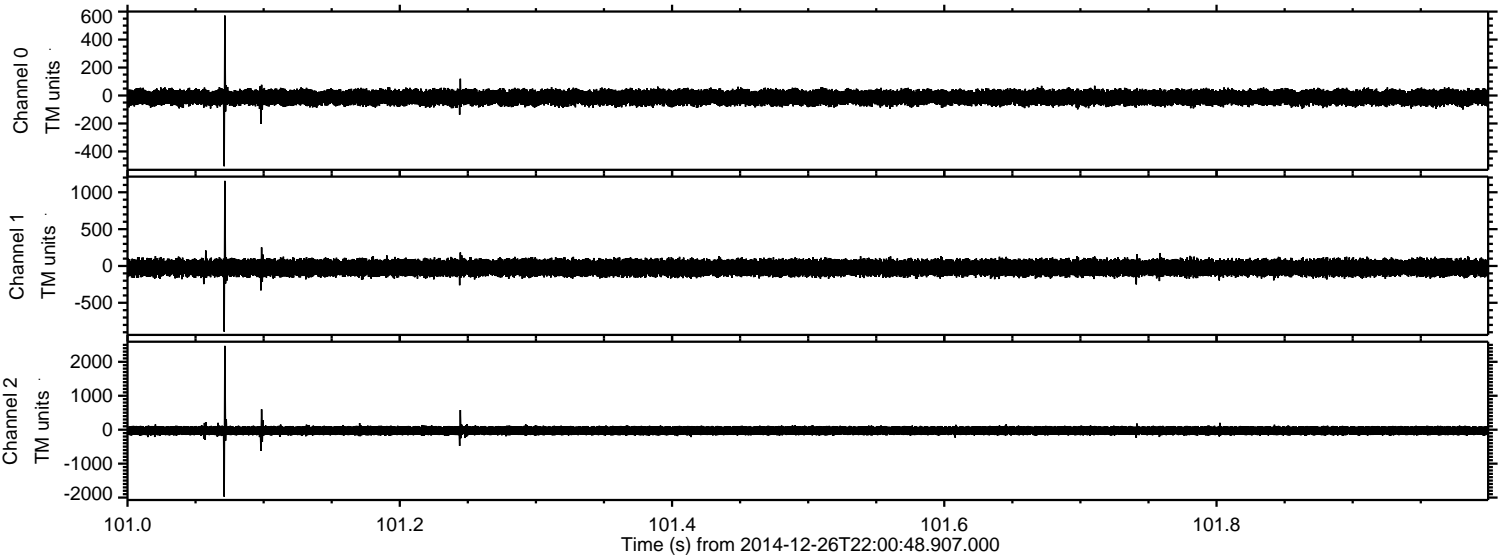


Processed Fri Dec 26 23:13:11 2014 by ELM ver.2012-10-06 from 001__elm20141226_220047__dat00.bin



ELMAVAN 3D WAVEFORMS (Measured data sampled at 50 kHz) 49777 packets of 144 samples from 2014-12-26T22:00:48.907.000. Part 102/144

Processed Fri Dec 26 23:13:12 2014 by ELM ver.2012-10-06 from 001__elm20141226_220047__dat00.bin

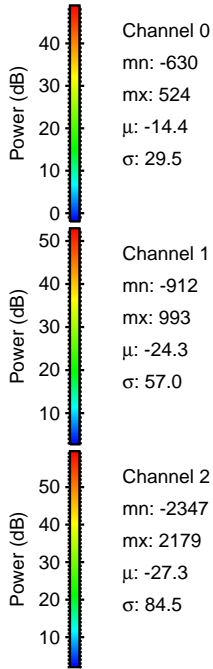
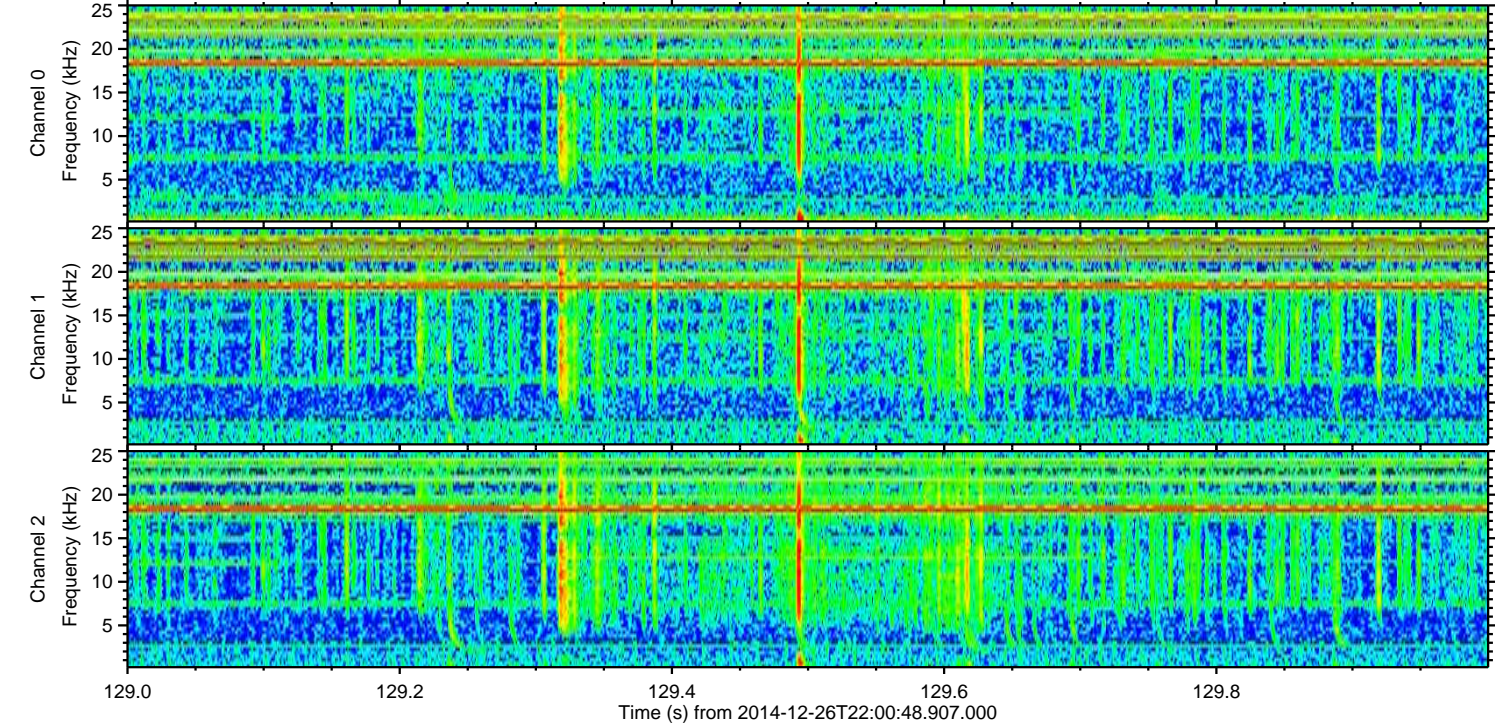
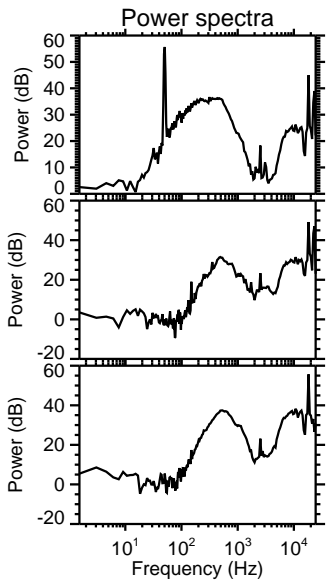
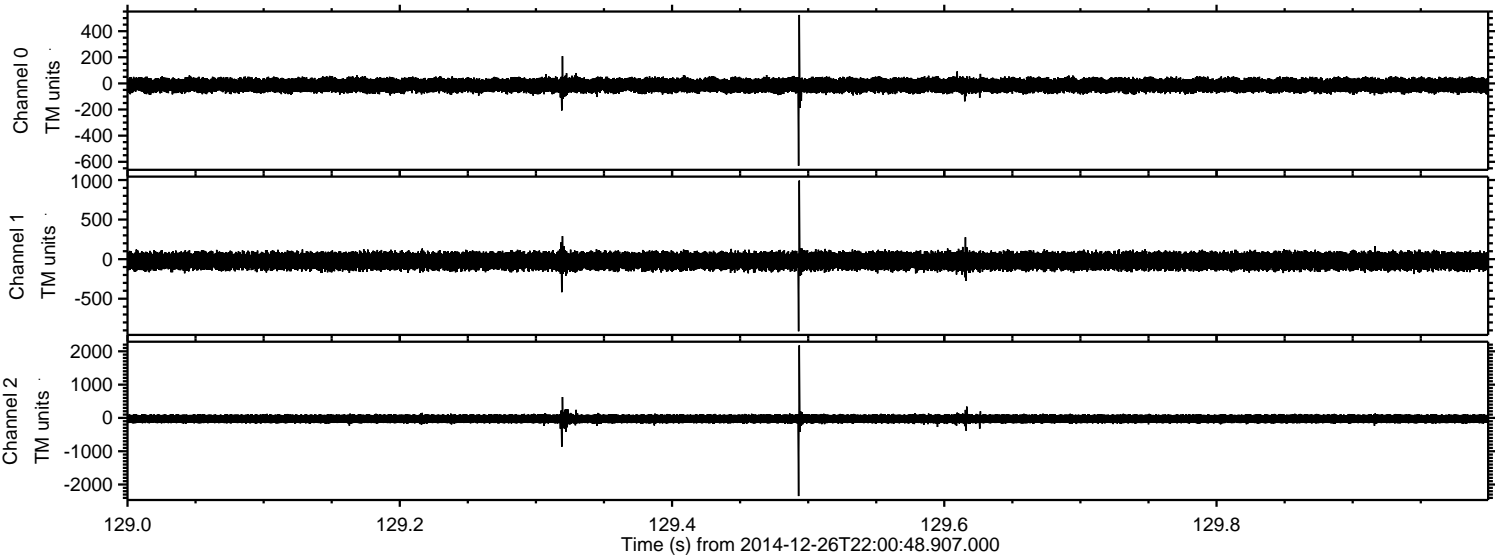


Channel 0
mn: -506
mx: 572
 μ : -14.4
 σ : 29.4

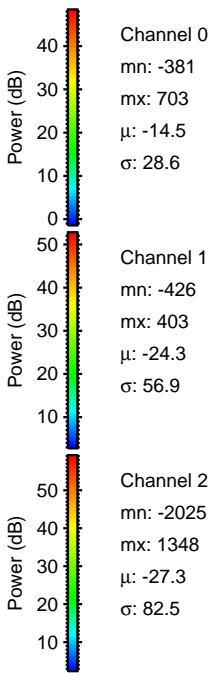
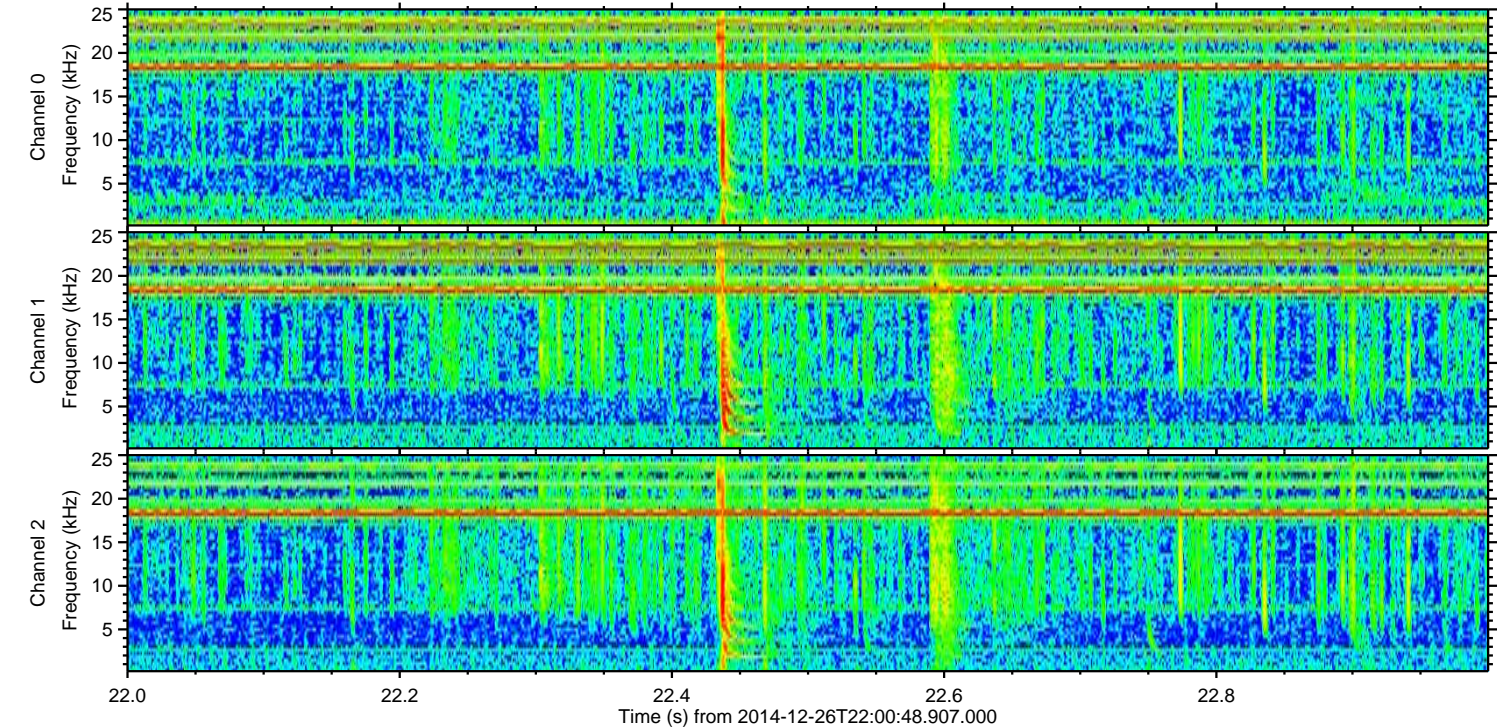
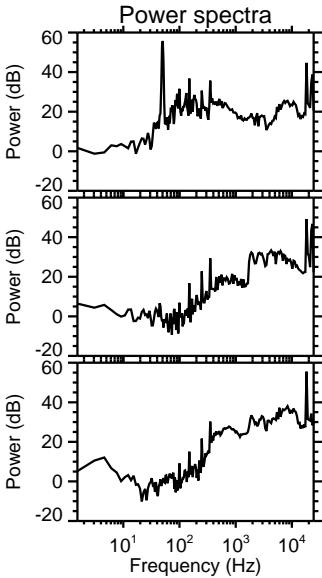
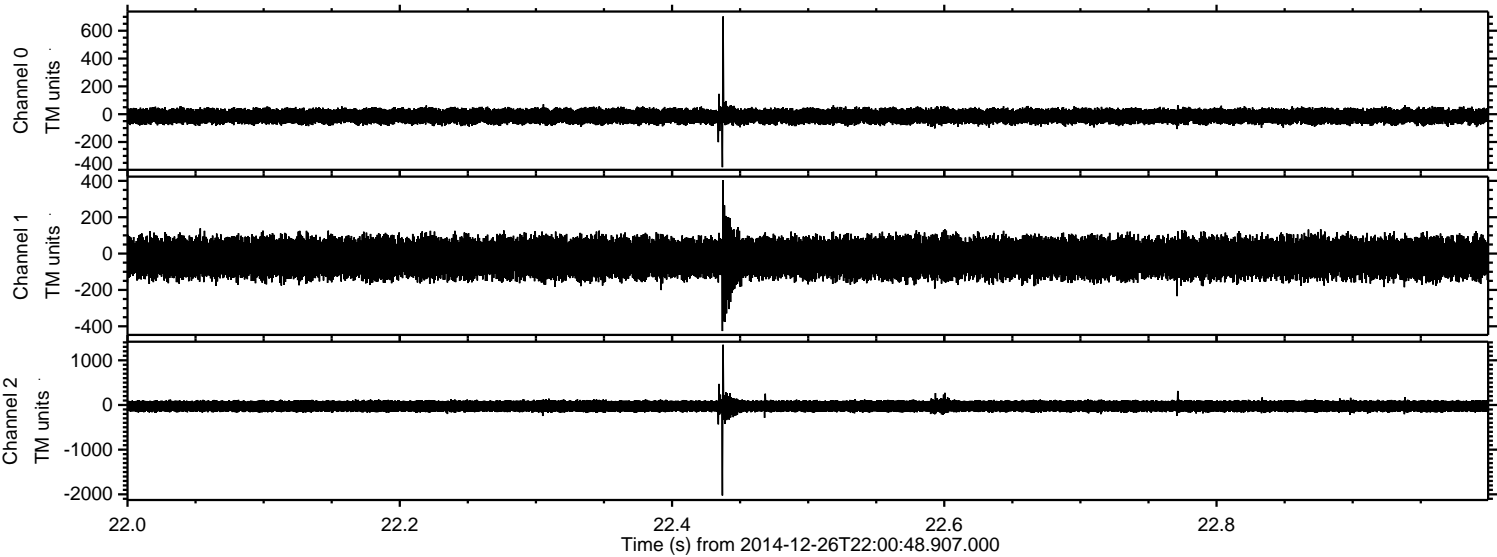
Channel 1
mn: -891
mx: 1155
 μ : -24.3
 σ : 57.4

Channel 2
mn: -1973
mx: 2469
 μ : -27.4
 σ : 85.0

Processed Fri Dec 26 23:13:13 2014 by ELM ver.2012-10-06 from 001__elm20141226_220047__dat00.bin



Processed Fri Dec 26 23:13:14 2014 by ELM ver.2012-10-06 from 001__elm20141226_220047__dat00.bin



Processed Fri Dec 26 23:13:15 2014 by ELM ver.2012-10-06 from 001__elm20141226_220047__dat00.bin

