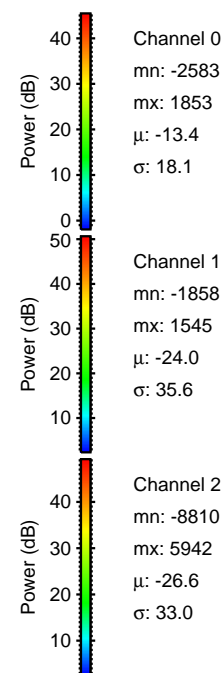
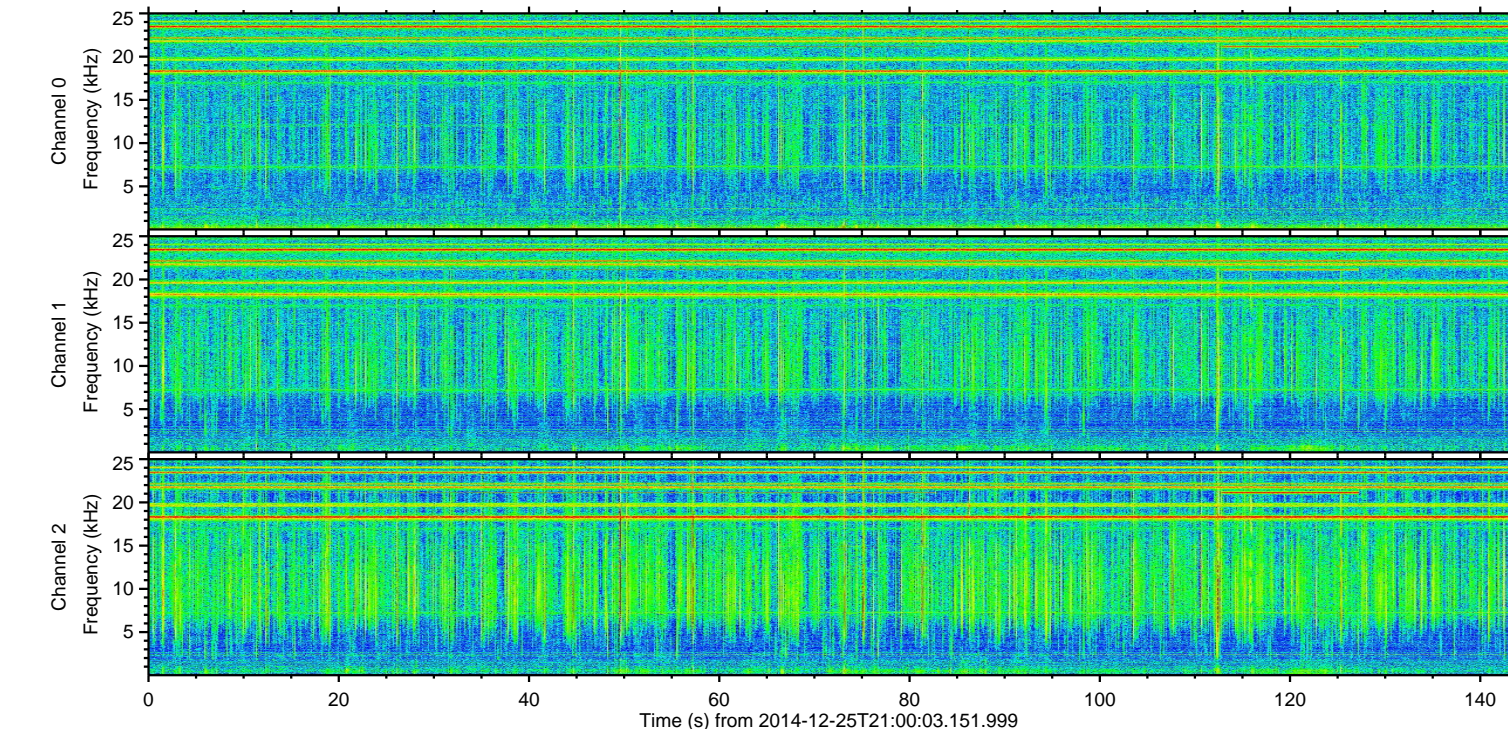
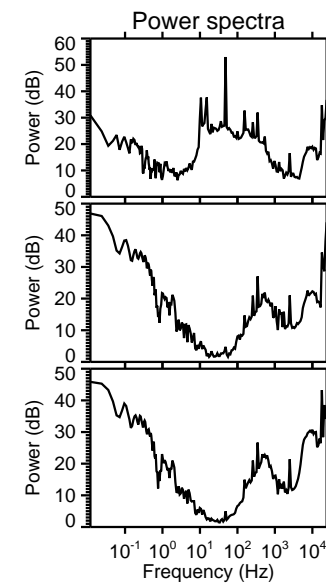
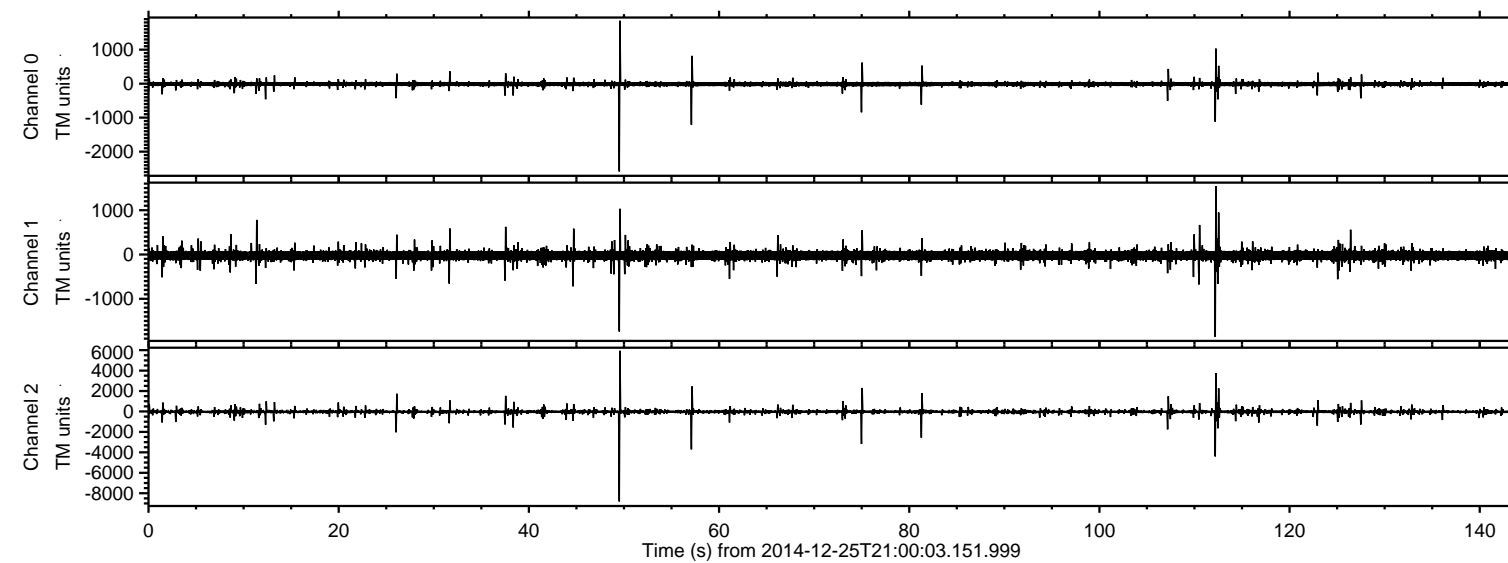
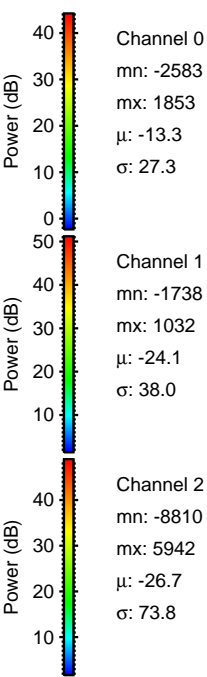
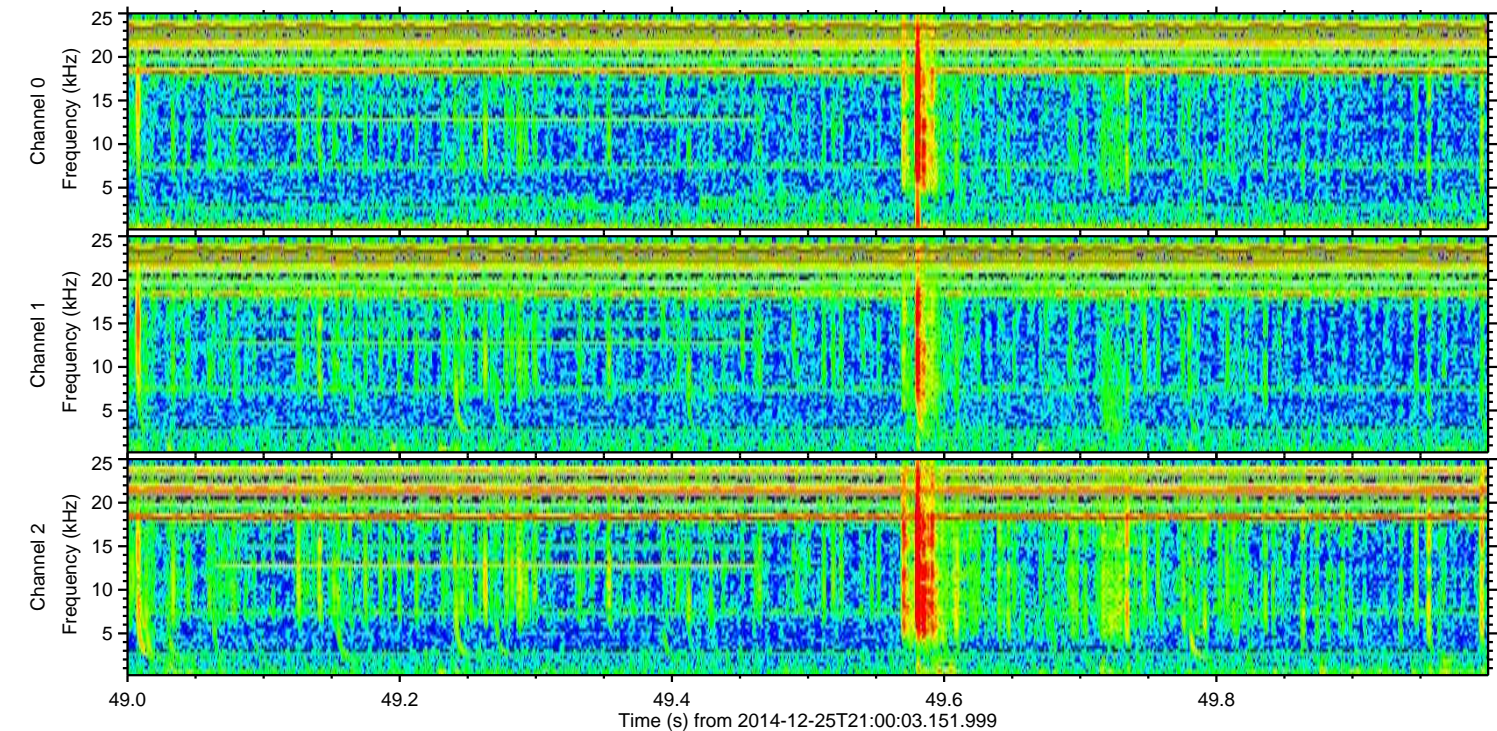
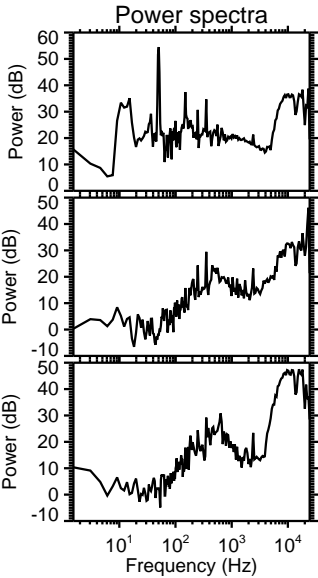
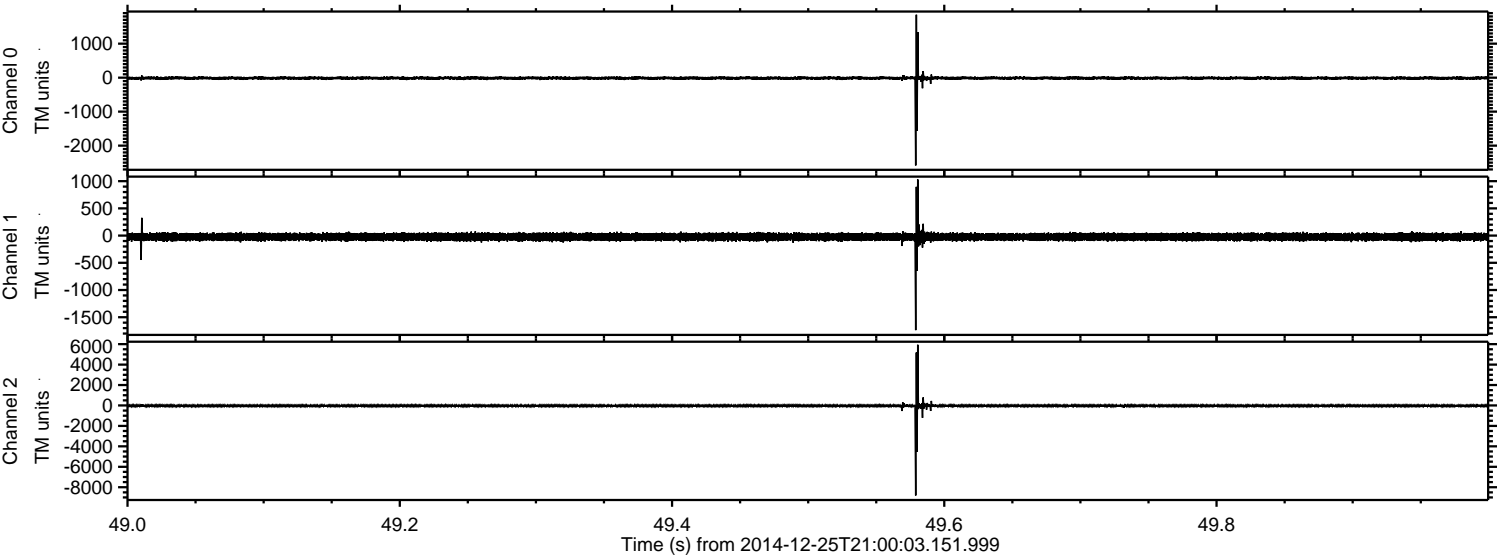


ELMAVAN 3D WAVEFORMS (Measured data sampled at 50 kHz) 49684 packets of 144 samples from 2014-12-25T21:00:03.151.999.

Processed Thu Dec 25 22:11:47 2014 by ELM ver.2012-10-06 from 001__elm20141225_210002__dat00.bin

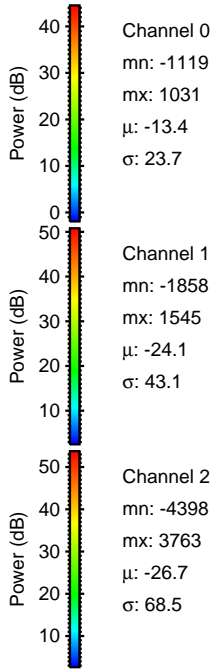
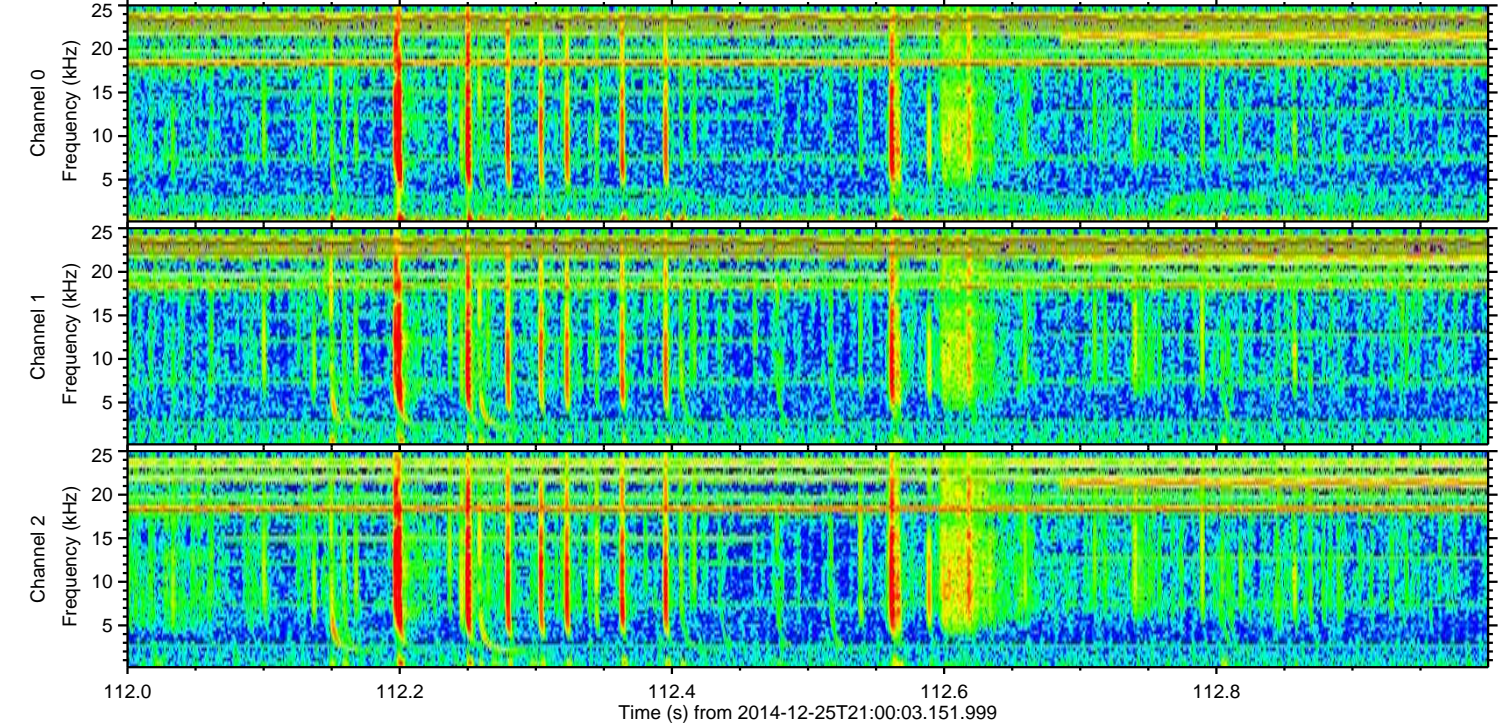
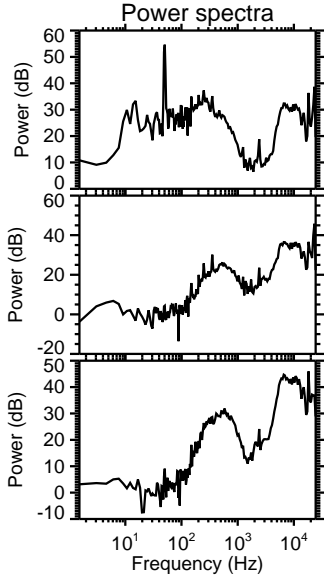
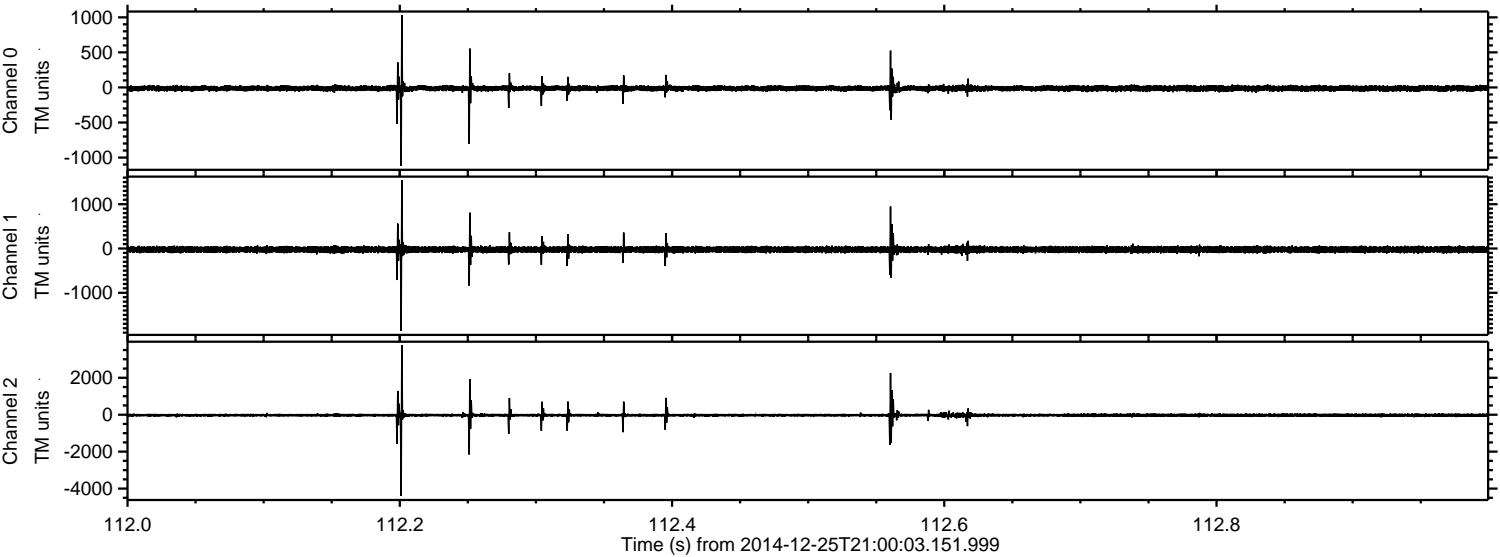


Processed Thu Dec 25 22:12:03 2014 by ELM ver.2012-10-06 from 001__elm20141225_210002__dat00.bin



ELMAVAN 3D WAVEFORMS (Measured data sampled at 50 kHz) 49684 packets of 144 samples from 2014-12-25T21:00:03.151.999. Part 113/144

Processed Thu Dec 25 22:12:04 2014 by ELM ver.2012-10-06 from 001__elm20141225_210002__dat00.bin

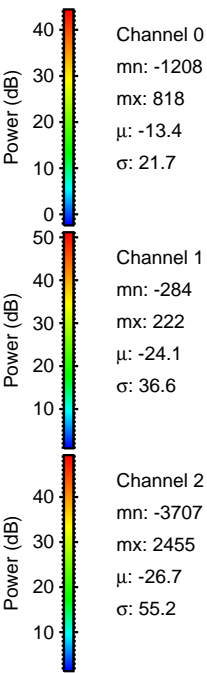
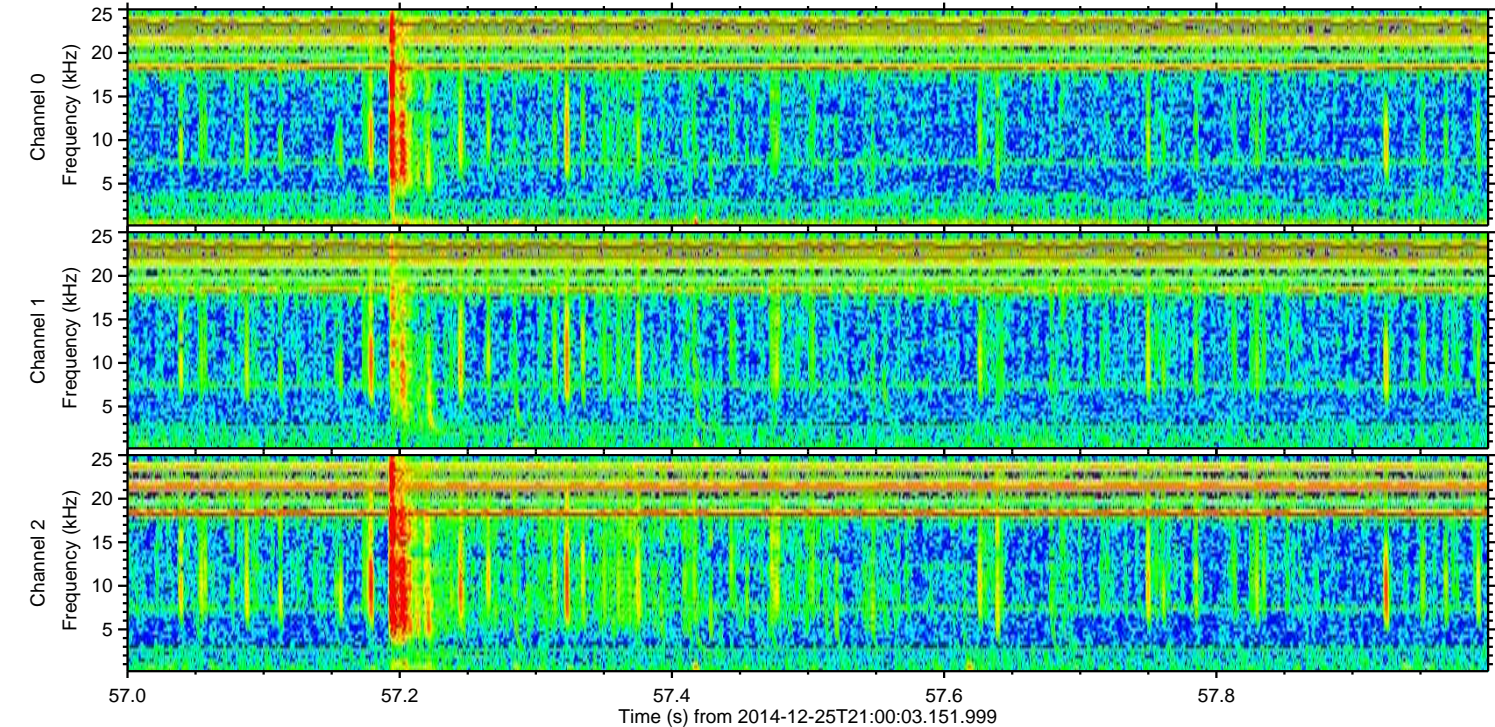
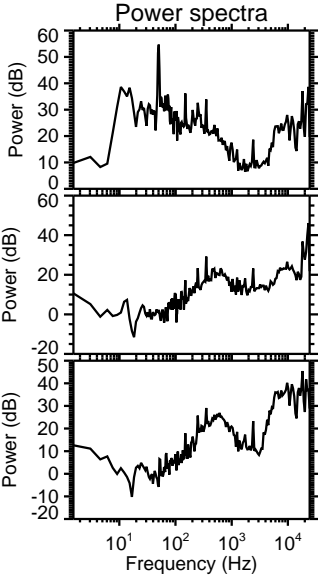
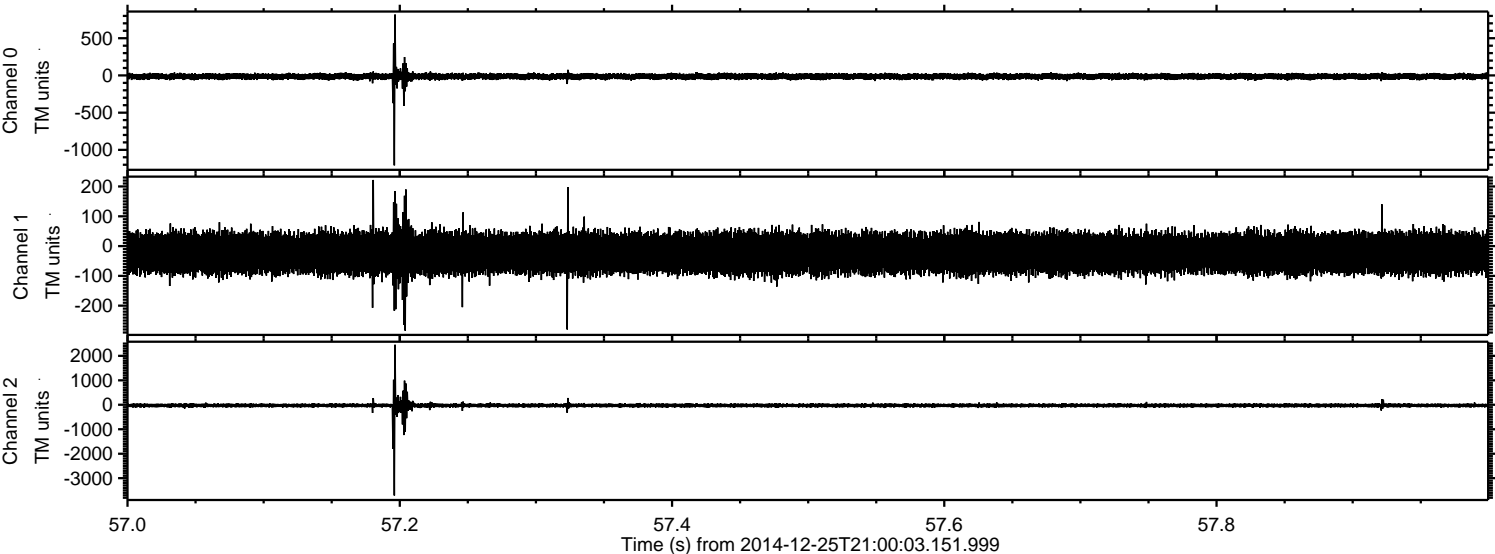


Channel 0
mn: -1119
mx: 1031
 μ : -13.4
 σ : 23.7

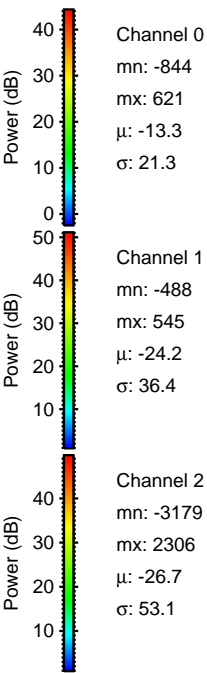
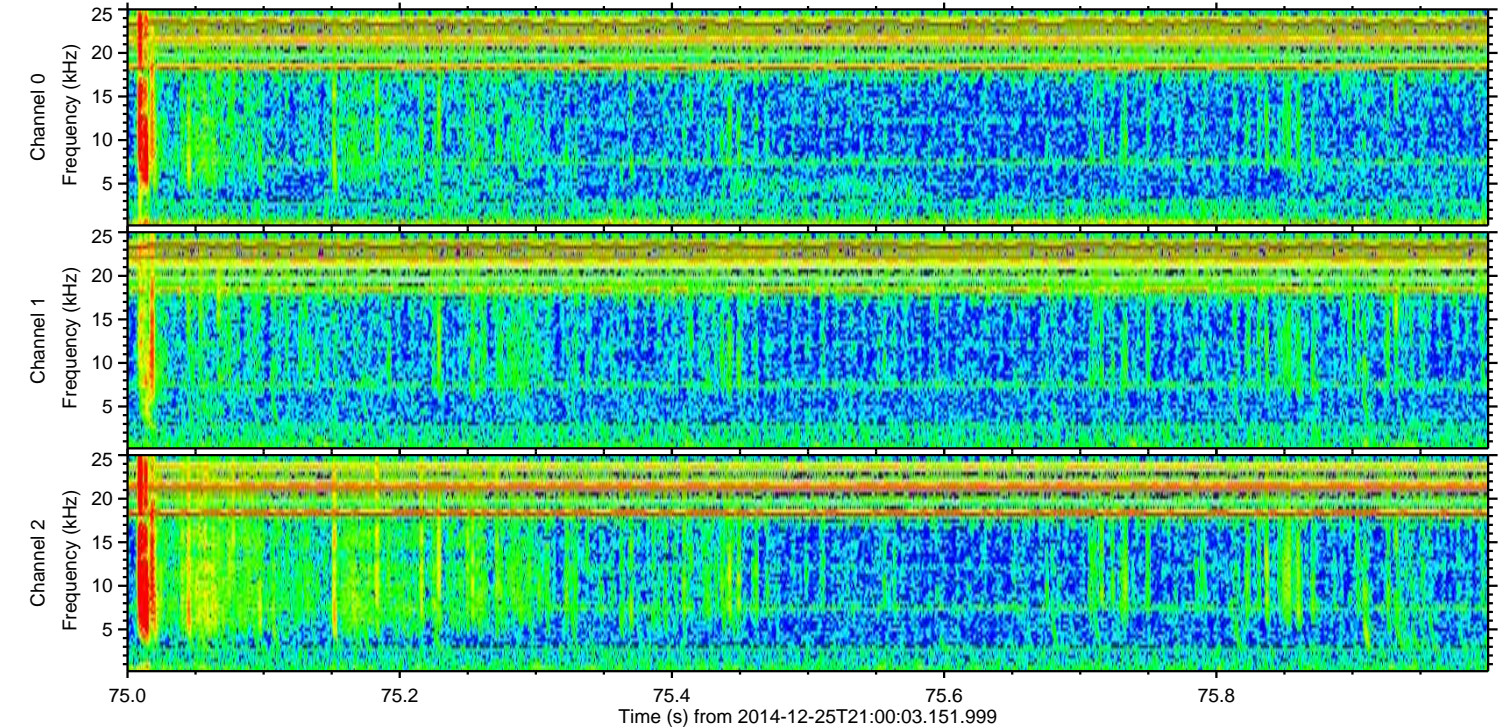
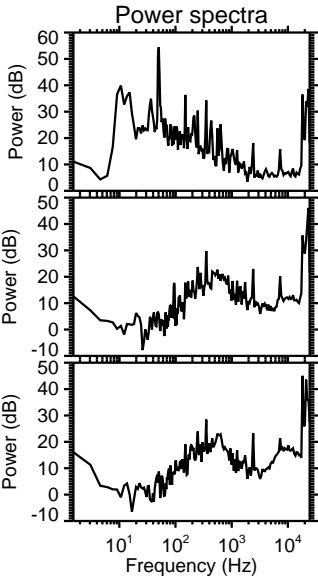
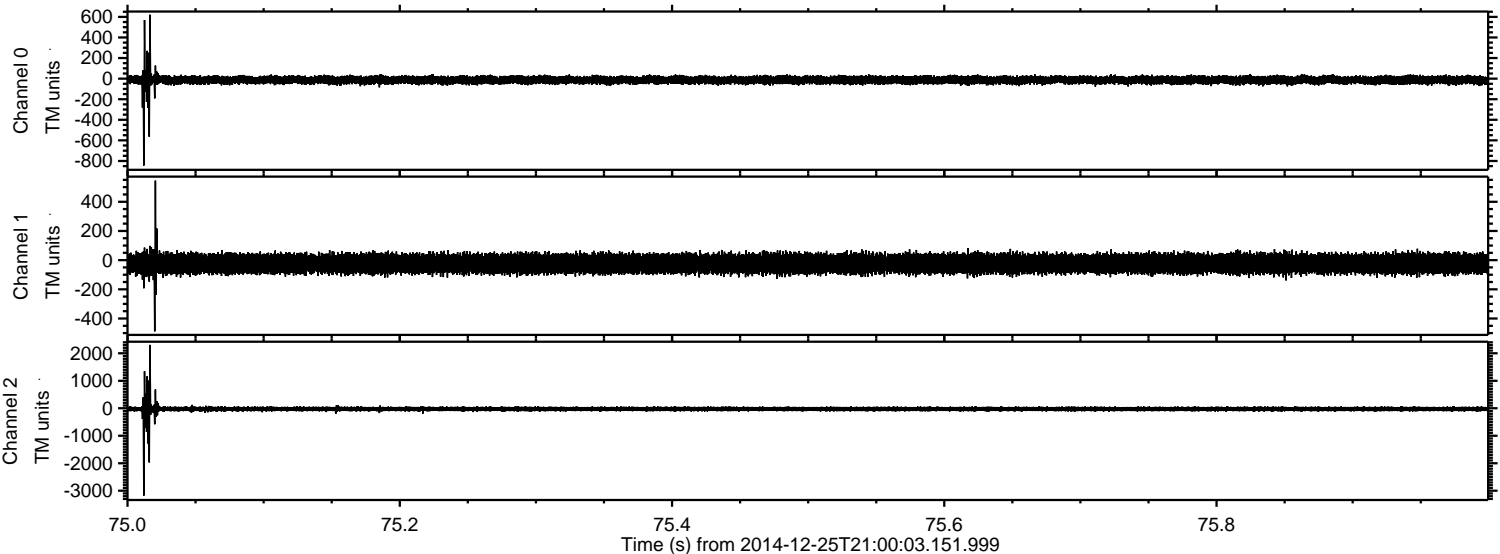
Channel 1
mn: -1858
mx: 1545
 μ : -24.1
 σ : 43.1

Channel 2
mn: -4398
mx: 3763
 μ : -26.7
 σ : 68.5

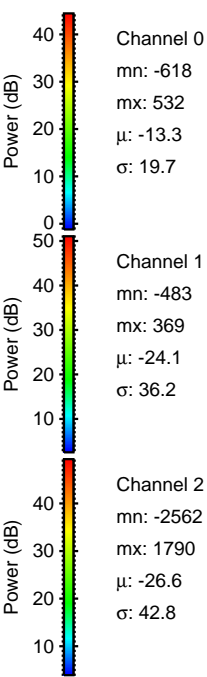
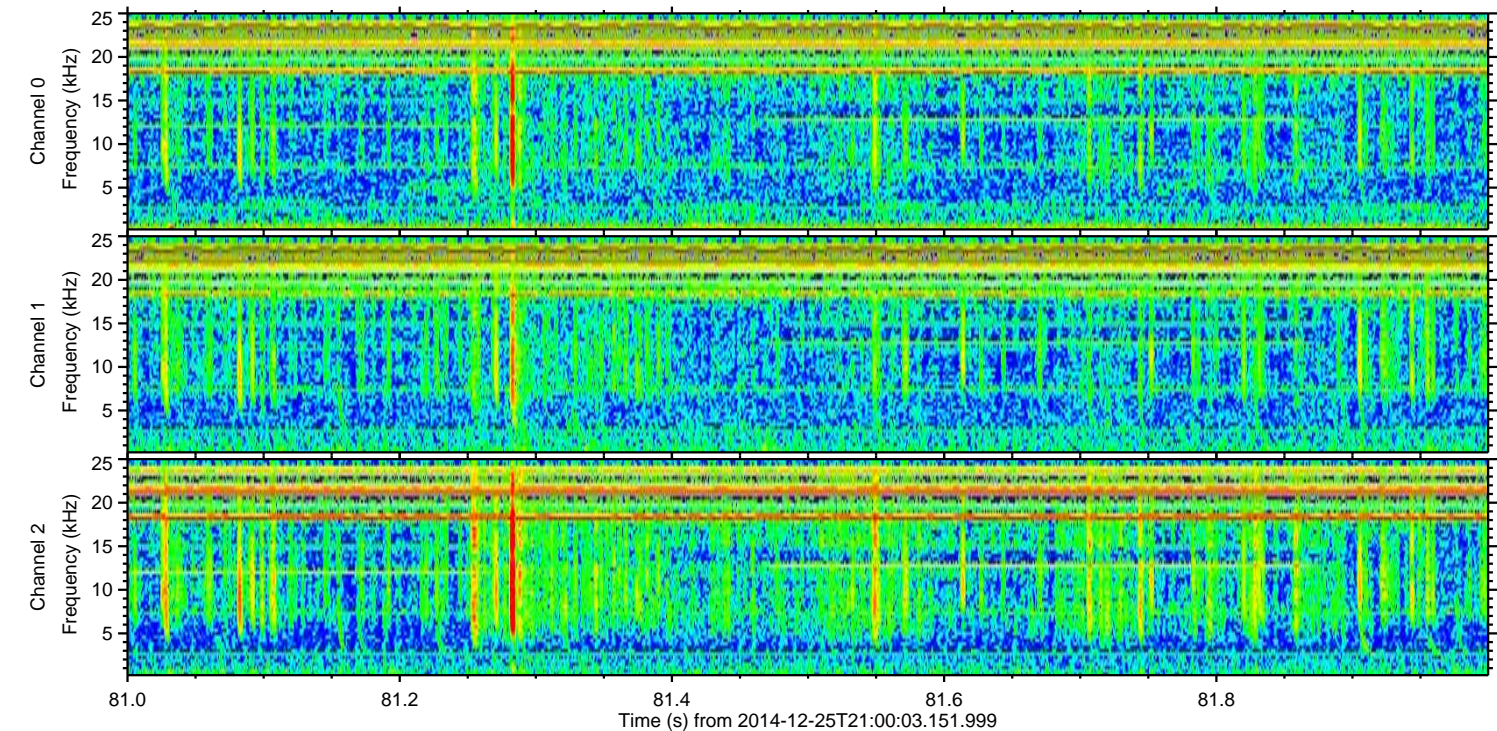
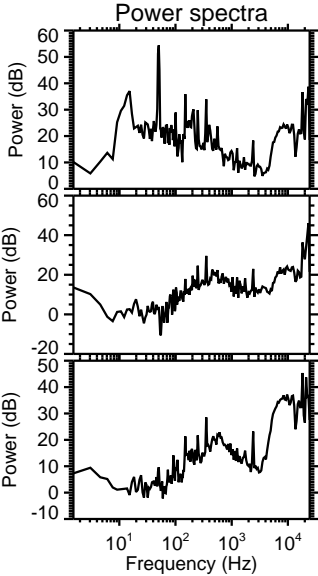
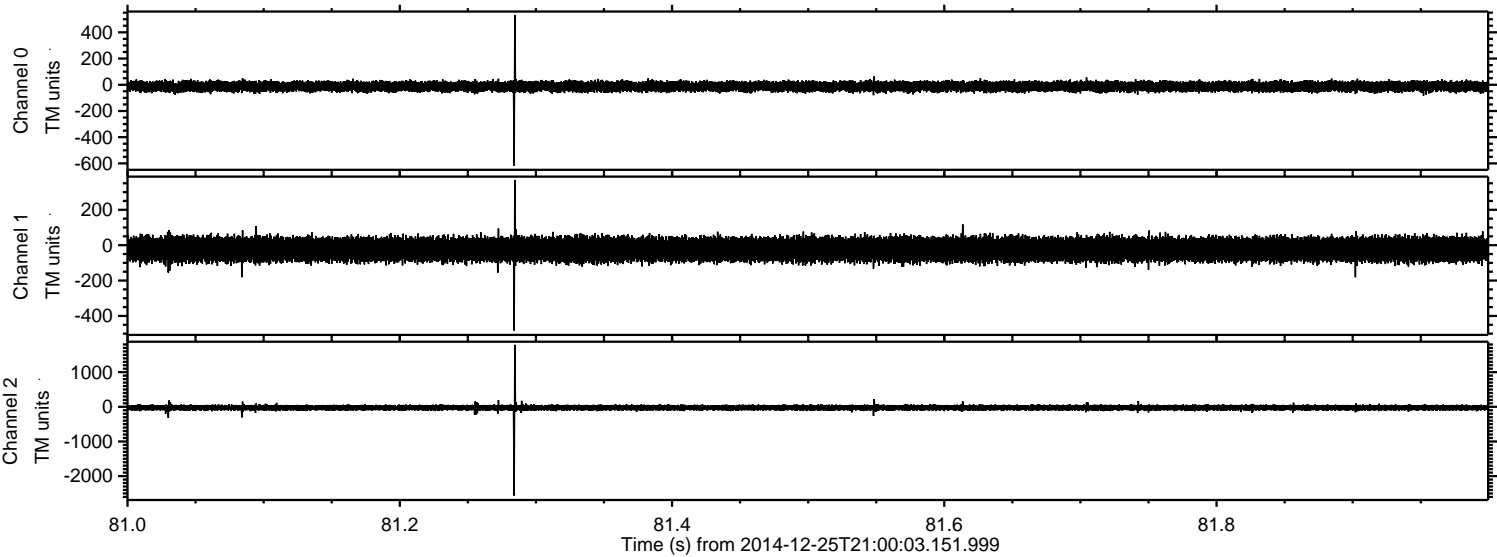
Processed Thu Dec 25 22:12:05 2014 by ELM ver.2012-10-06 from 001__elm20141225_210002__dat00.bin



Processed Thu Dec 25 22:12:06 2014 by ELM ver.2012-10-06 from 001__elm20141225_210002__dat00.bin



Processed Thu Dec 25 22:12:07 2014 by ELM ver.2012-10-06 from 001__elm20141225_210002__dat00.bin



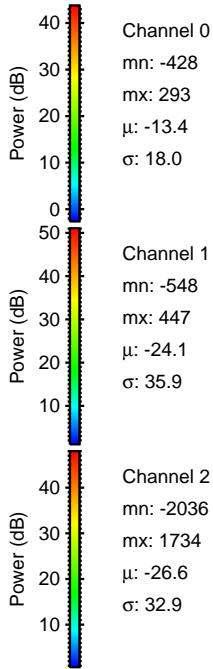
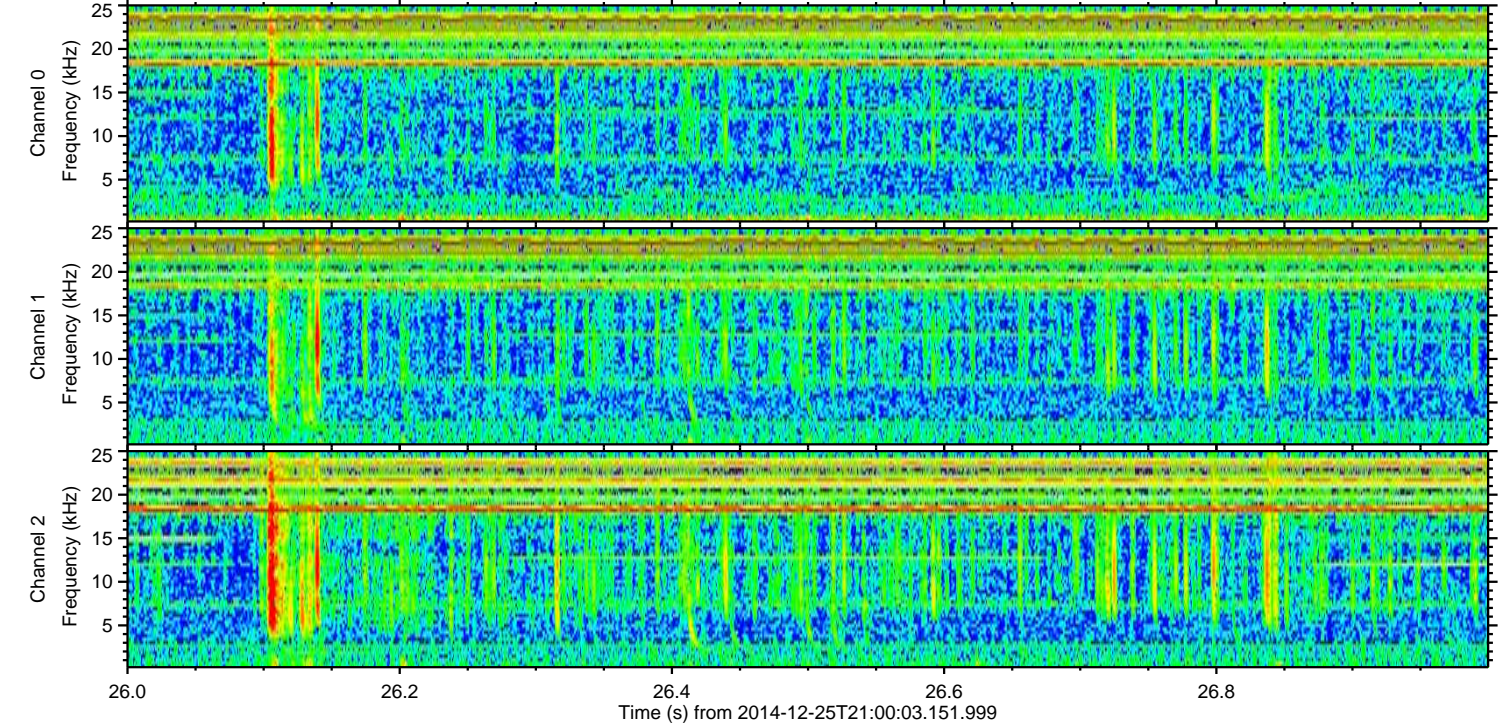
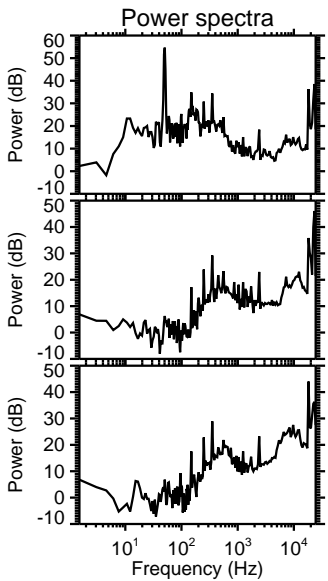
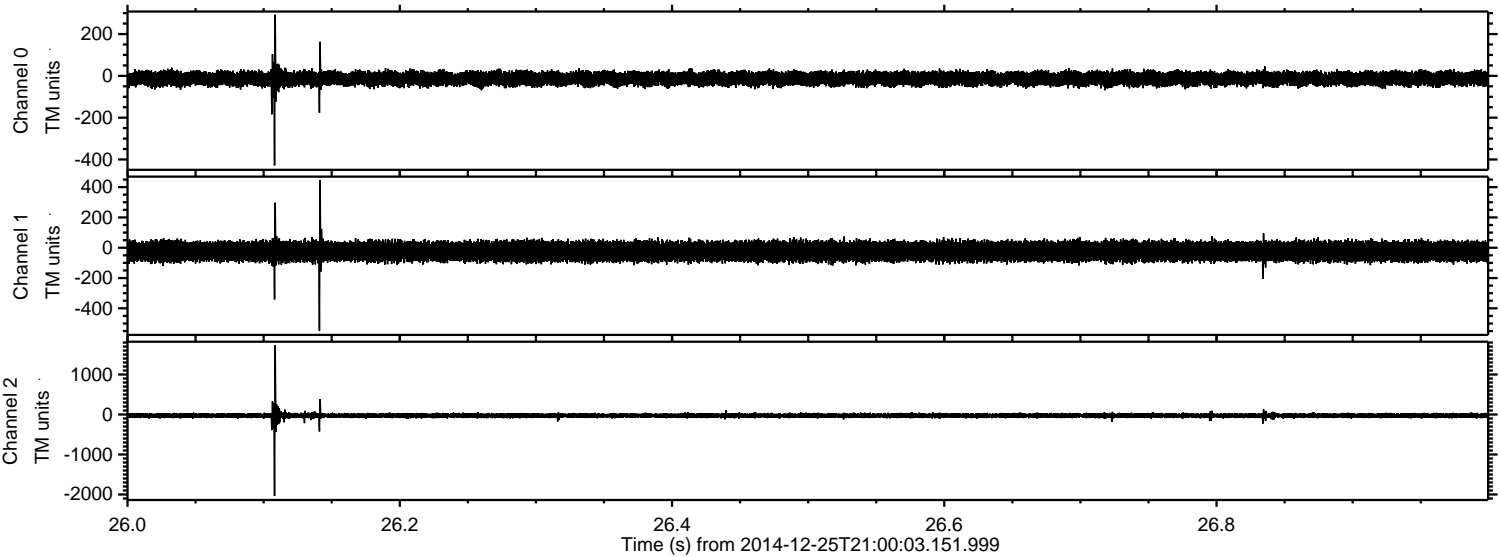
Channel 0
mn: -618
mx: 532
 μ : -13.3
 σ : 19.7

Channel 1
mn: -483
mx: 369
 μ : -24.1
 σ : 36.2

Channel 2
mn: -2562
mx: 1790
 μ : -26.6
 σ : 42.8

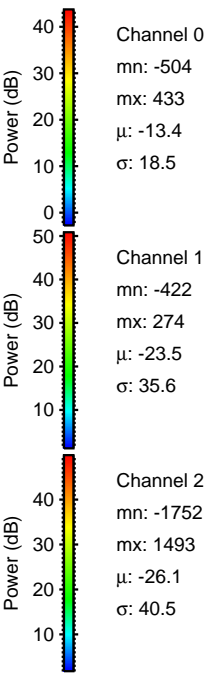
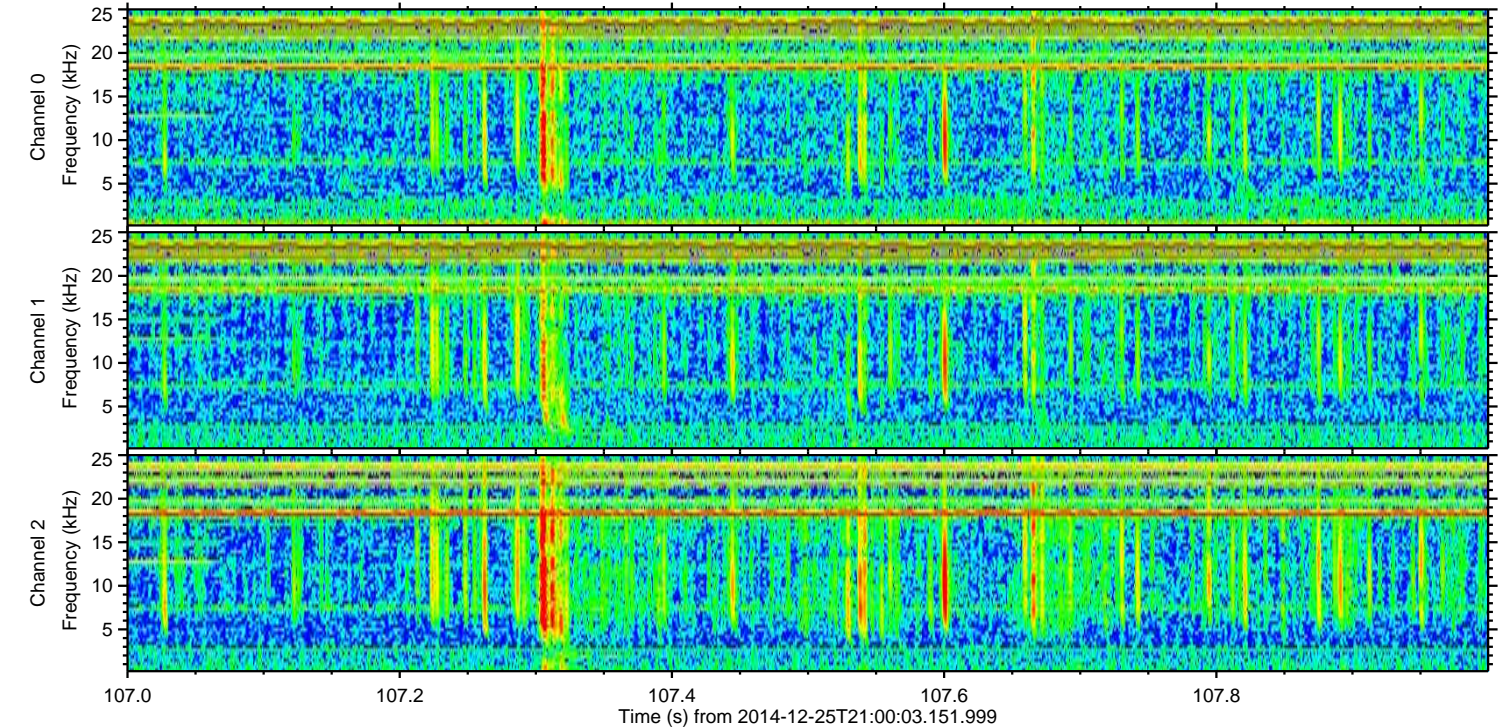
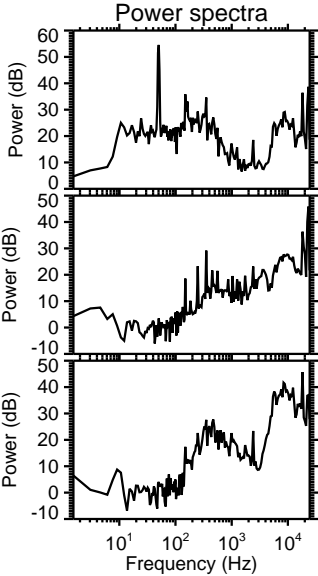
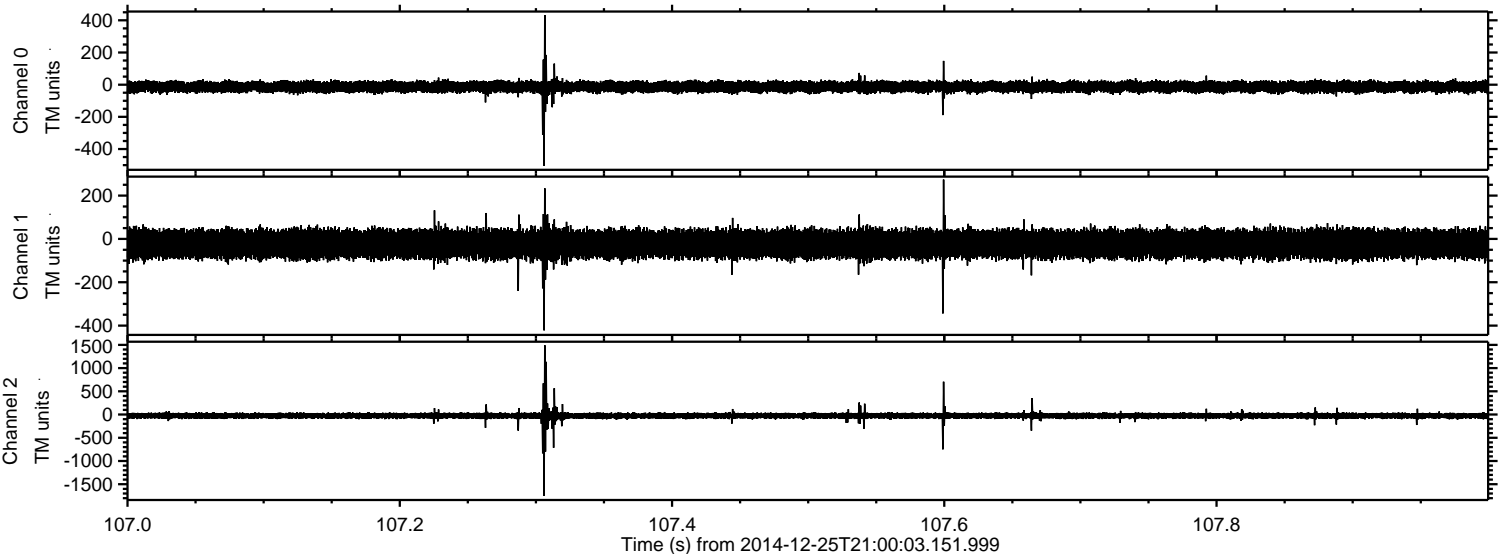
ELMAVAN 3D WAVEFORMS (Measured data sampled at 50 kHz) 49684 packets of 144 samples from 2014-12-25T21:00:03.151.999. Part 27/144

Processed Thu Dec 25 22:12:08 2014 by ELM ver.2012-10-06 from 001__elm20141225_210002__dat00.bin

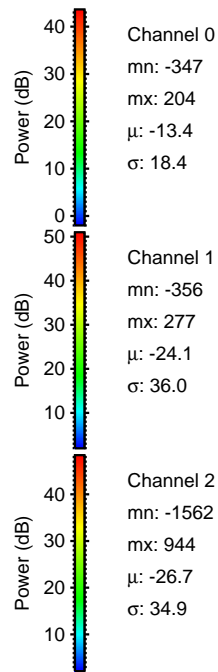
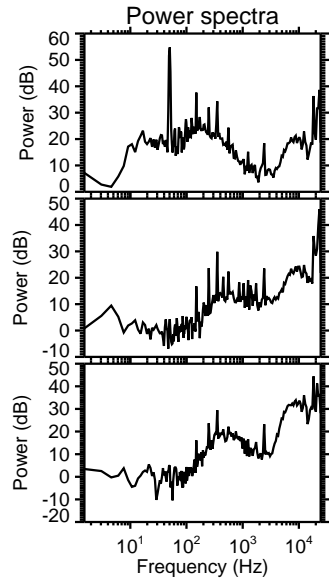
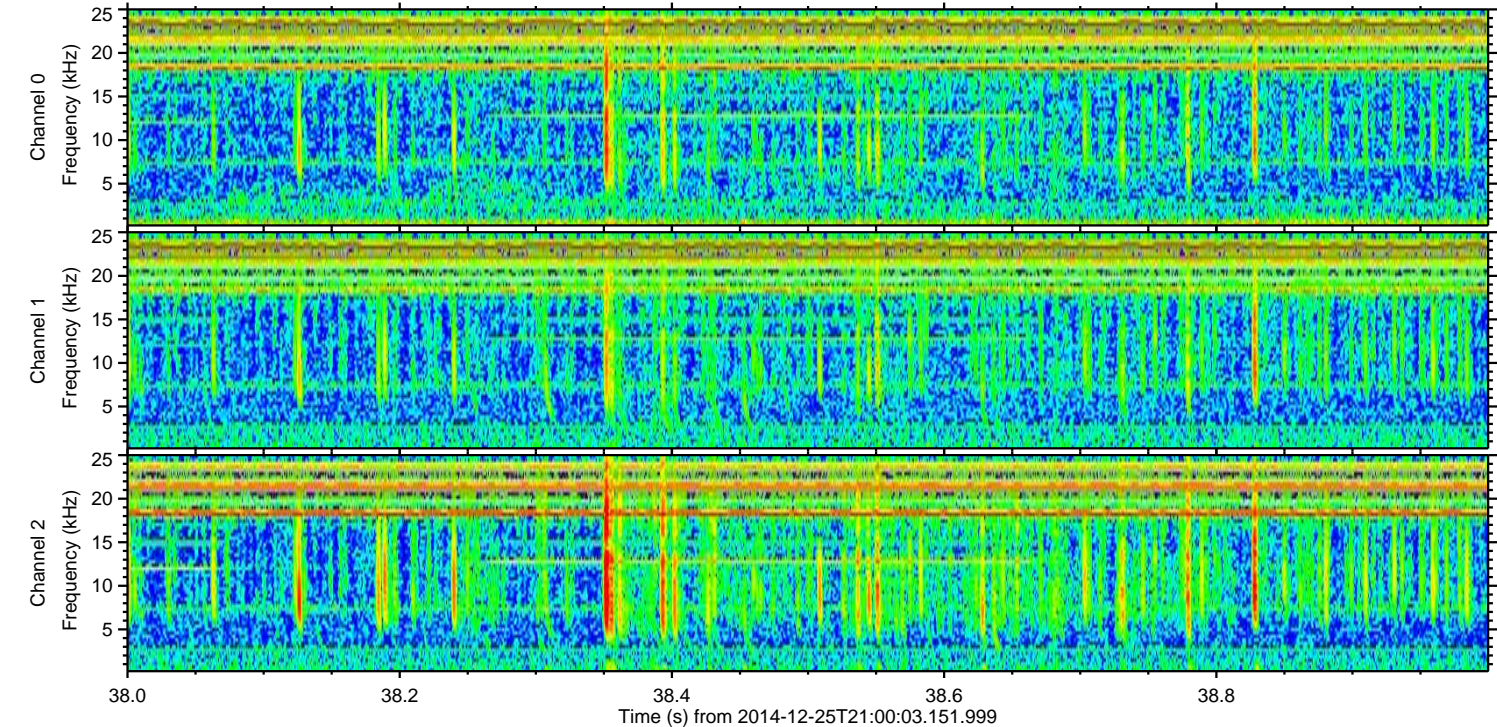
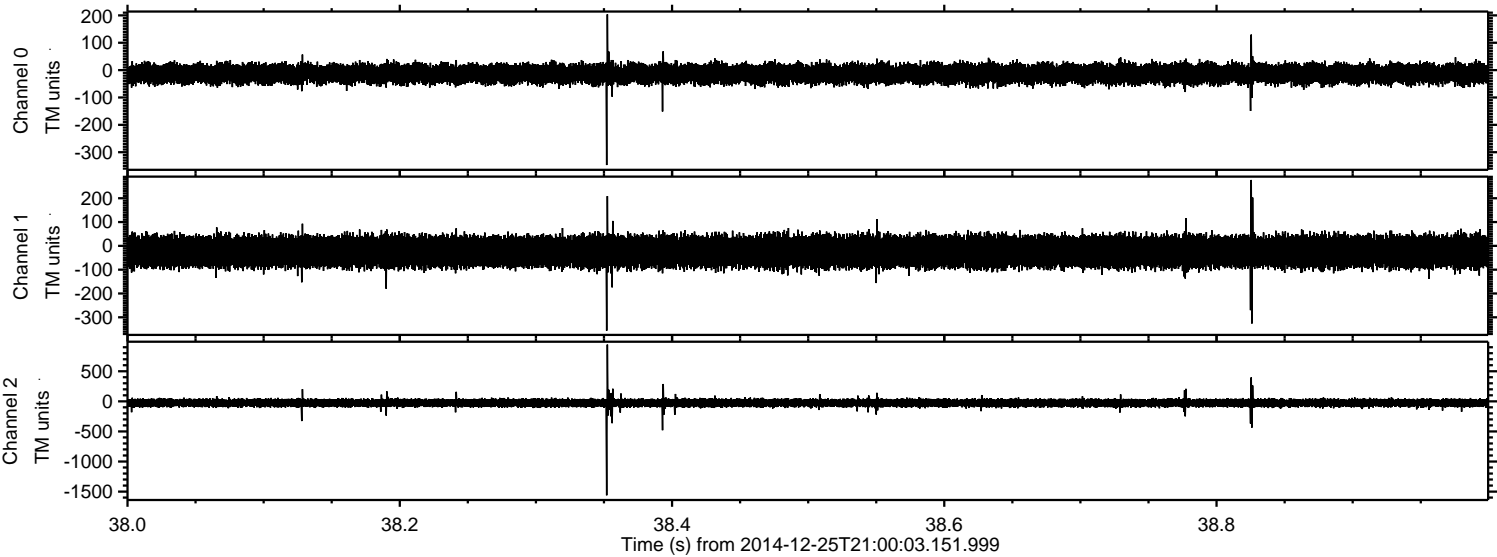


ELMAVAN 3D WAVEFORMS (Measured data sampled at 50 kHz) 49684 packets of 144 samples from 2014-12-25T21:00:03.151.999. Part 108/144

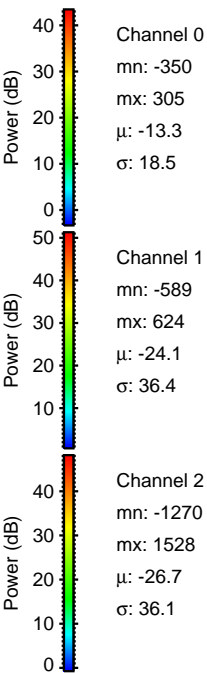
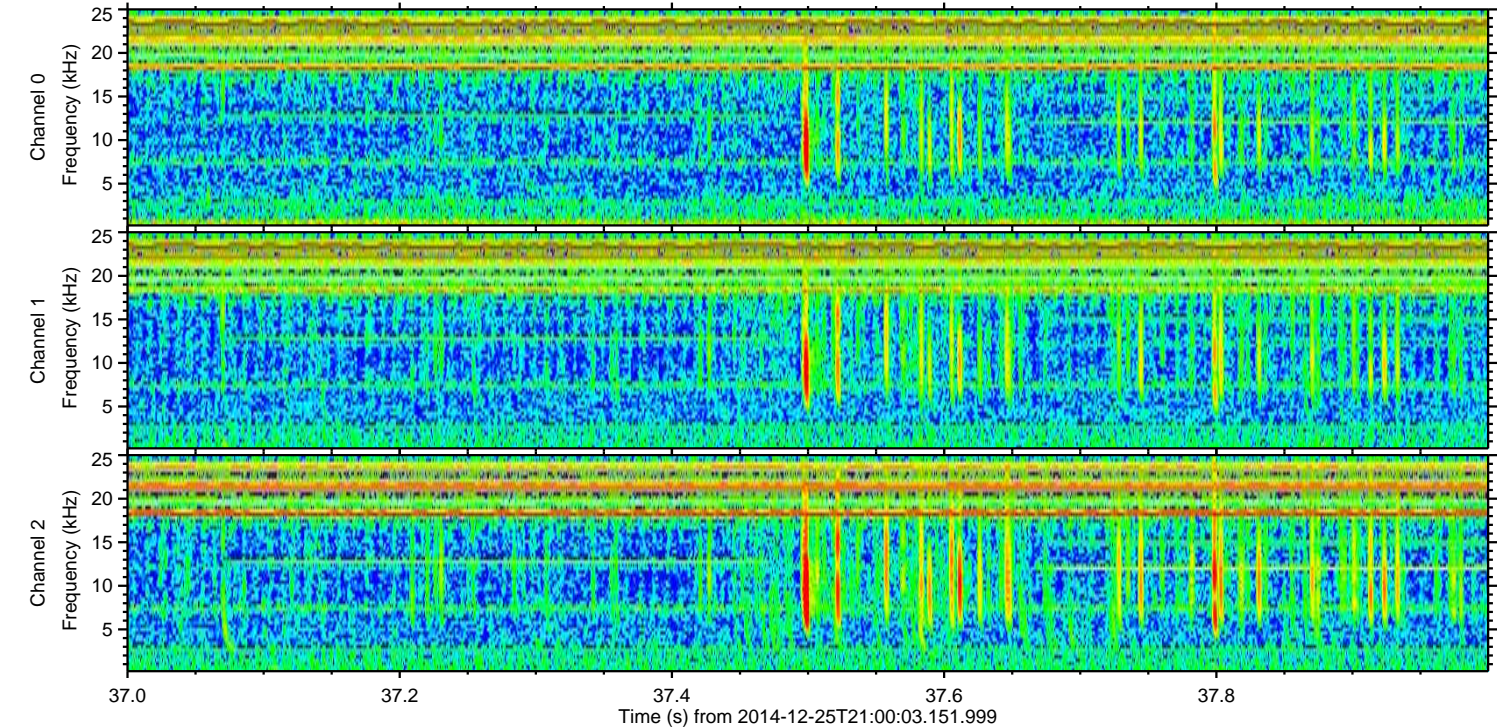
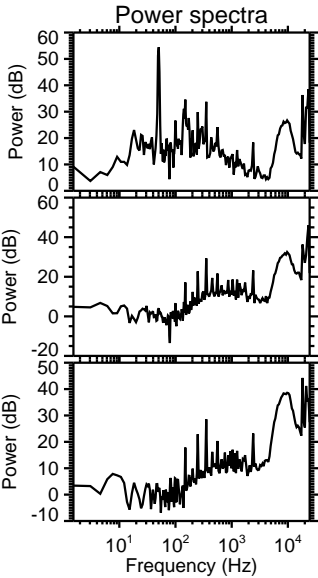
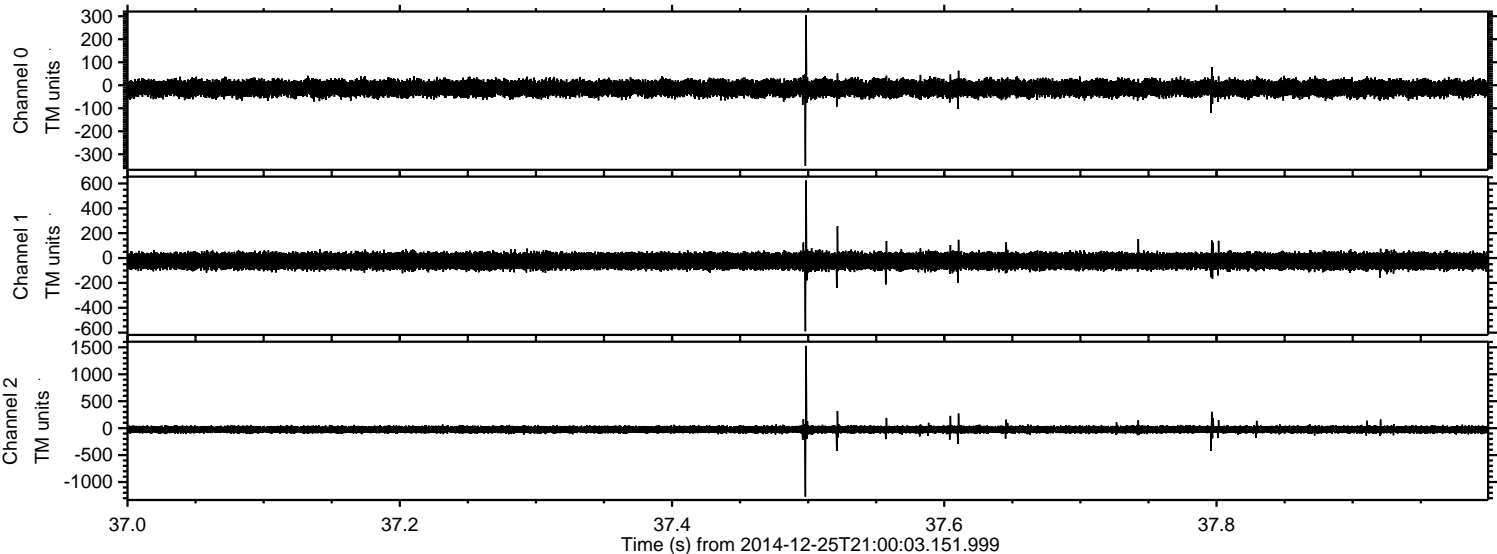
Processed Thu Dec 25 22:12:10 2014 by ELM ver.2012-10-06 from 001__elm20141225_210002__dat00.bin



Processed Thu Dec 25 22:12:11 2014 by ELM ver.2012-10-06 from 001__elm20141225_210002__dat00.bin



Processed Thu Dec 25 22:12:12 2014 by ELM ver.2012-10-06 from 001__elm20141225_210002__dat00.bin



Power spectra

Channel 0
mn: -350
mx: 305
 μ : -13.3
 σ : 18.5

Channel 1
mn: -589
mx: 624
 μ : -24.1
 σ : 36.4

Channel 2
mn: -1270
mx: 1528
 μ : -26.7
 σ : 36.1

Processed Thu Dec 25 22:12:13 2014 by ELM ver.2012-10-06 from 001__elm20141225_210002__dat00.bin

